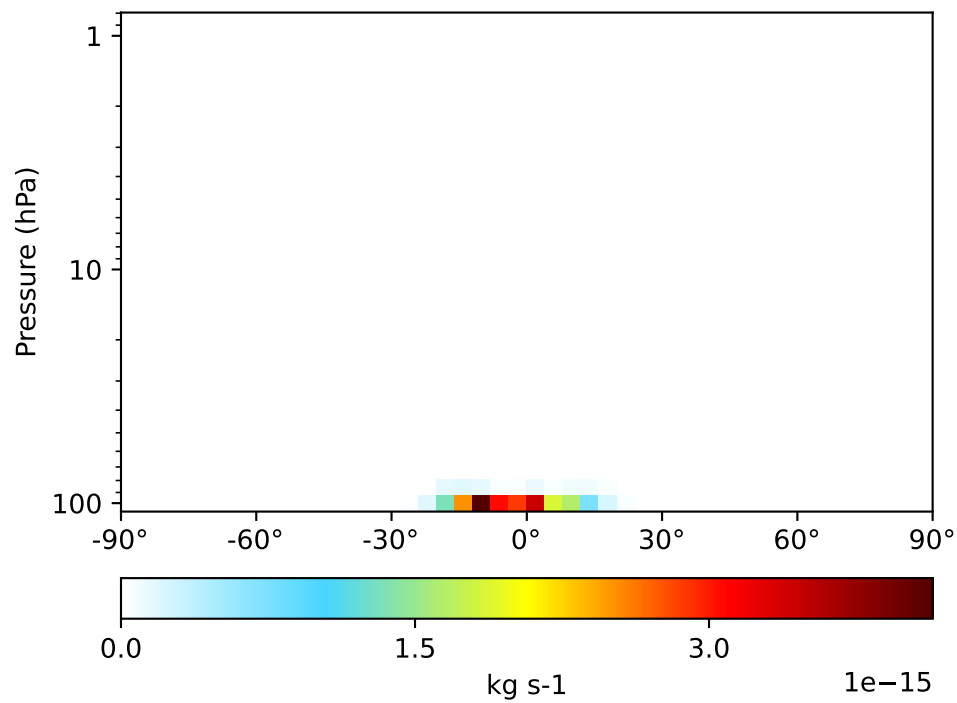
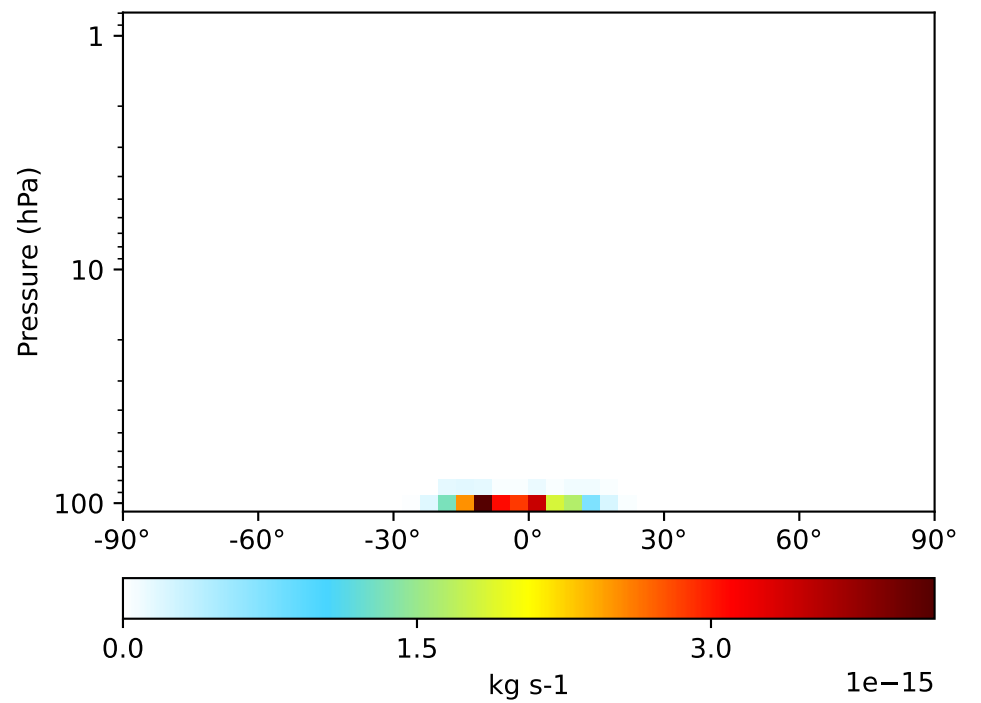


# WetLossLS\_Be10, Zonal Mean (Apr2019)

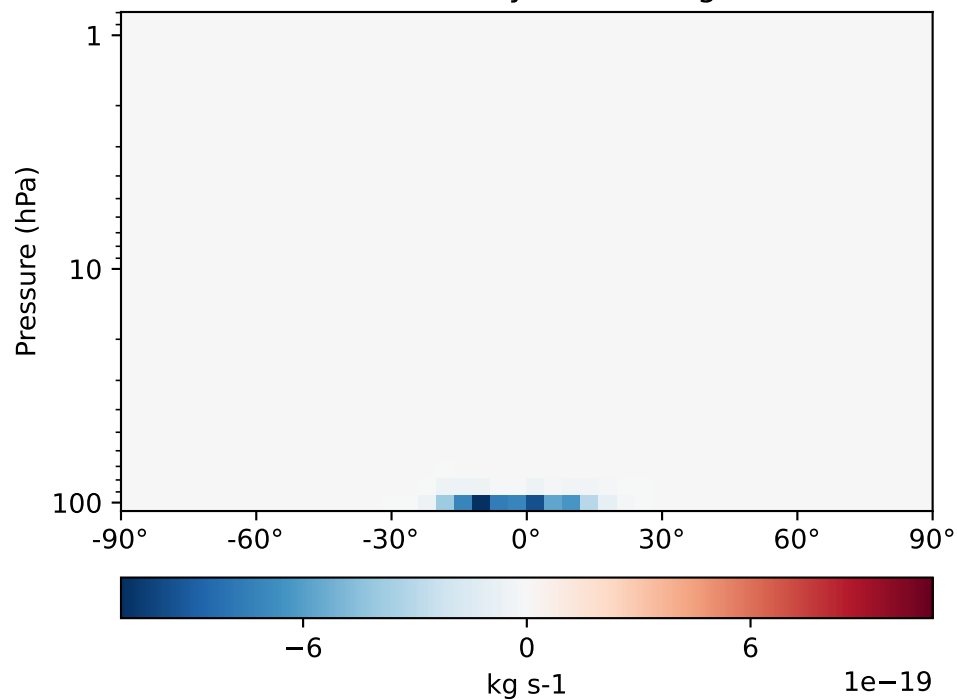
GCC\_13.0.0-TransportTracers (Ref)  
4.0x5.0



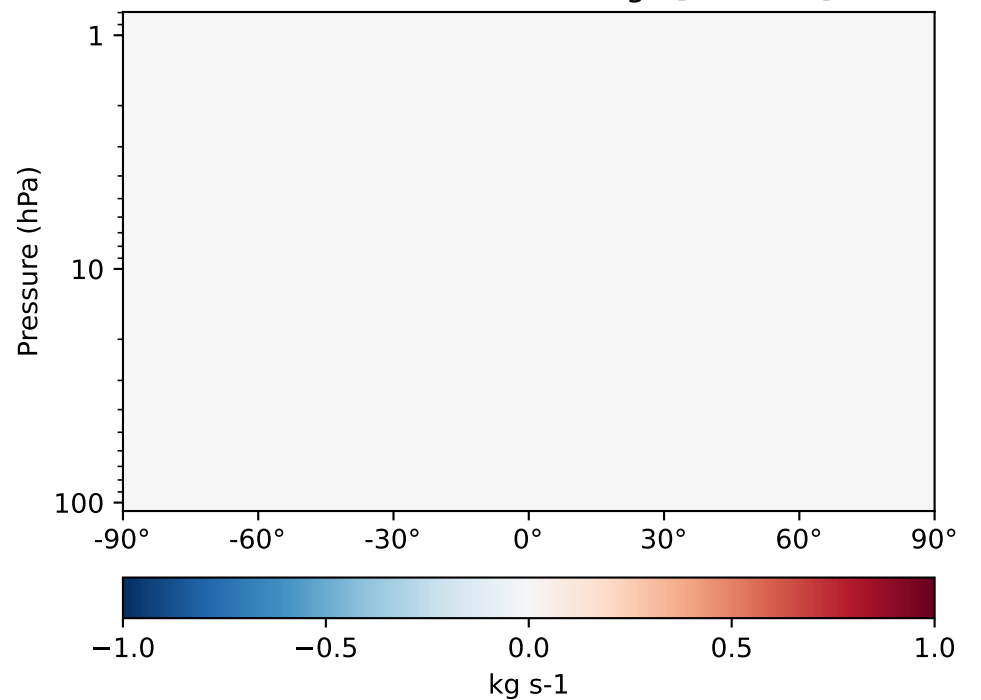
GCC\_13.2.0-TransportTracers (Dev)  
4.0x5.0



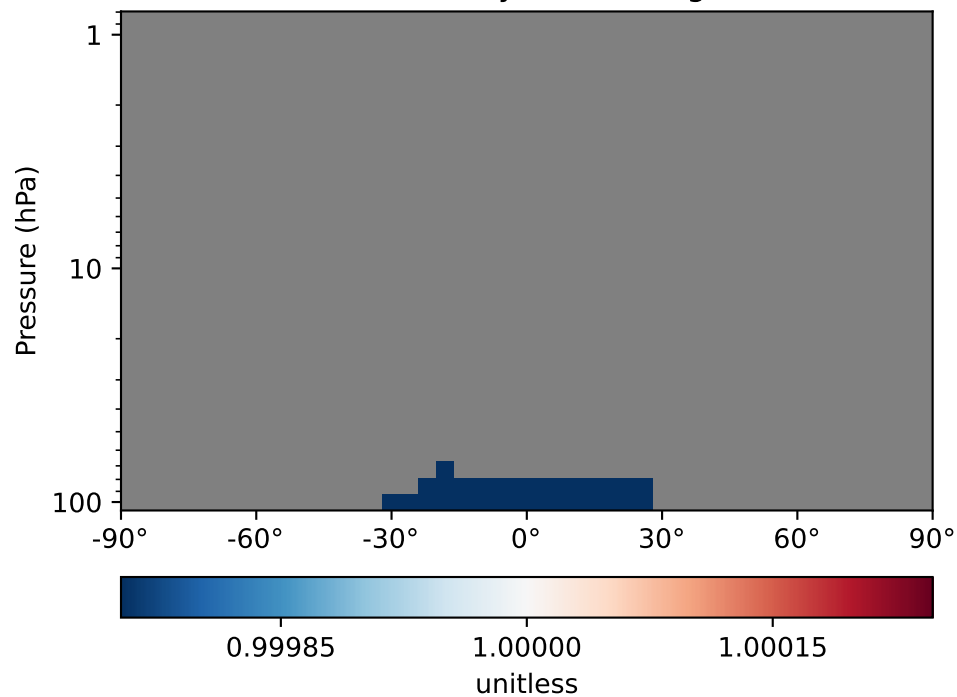
Difference  
Dev - Ref, Dynamic Range



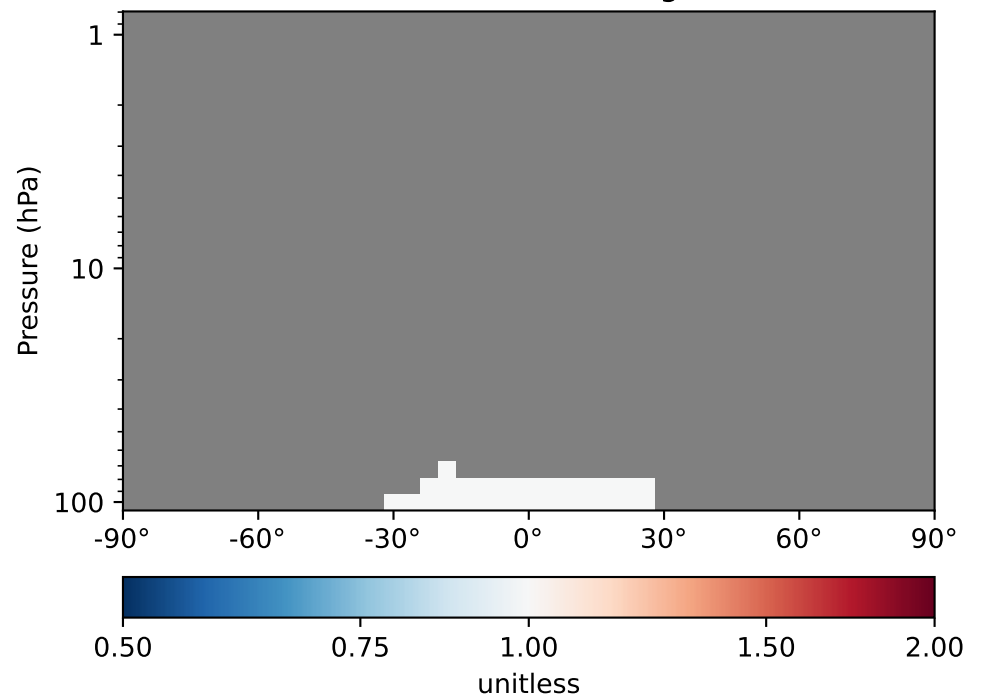
Difference  
Dev - Ref, Restricted Range [5%,95%]



Ratio  
Dev/Ref, Dynamic Range

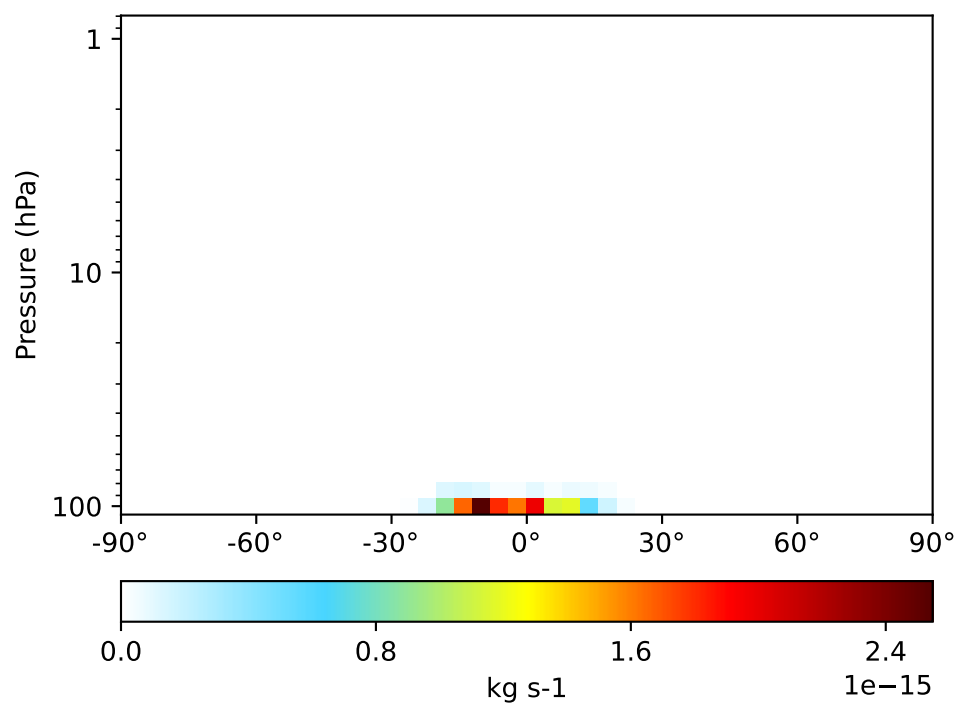


Ratio  
Dev/Ref, Fixed Range

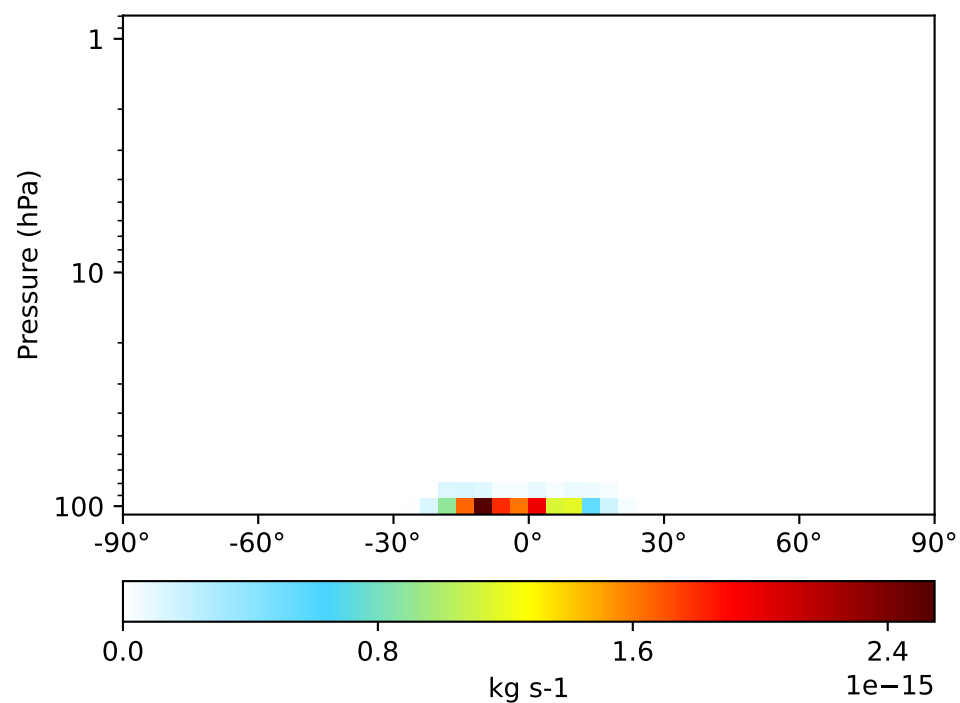


# WetLossLS\_Be10Strat, Zonal Mean (Apr2019)

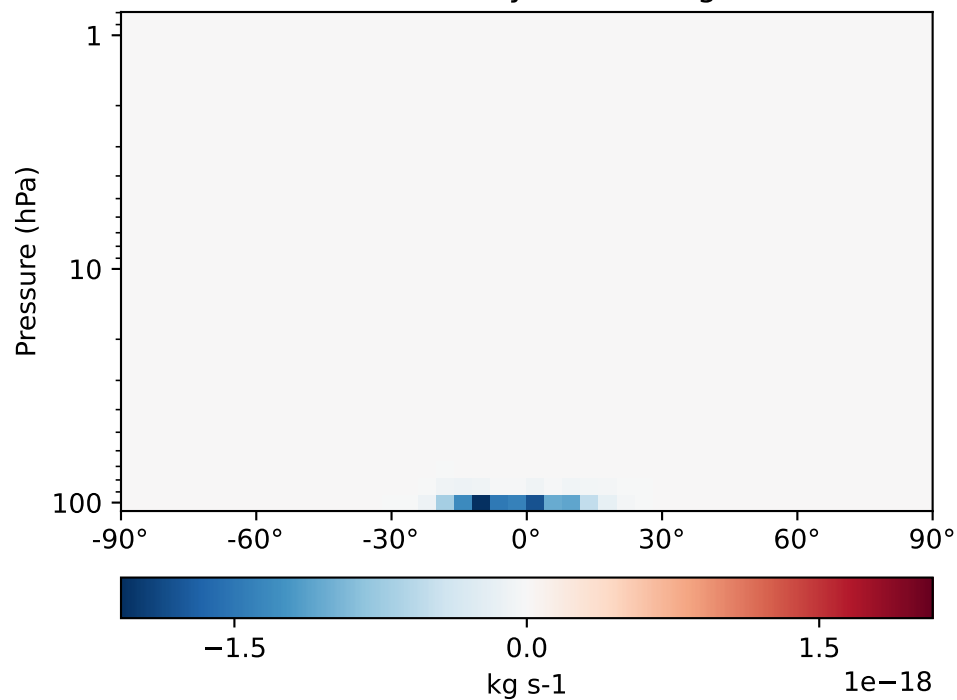
GCC\_13.0.0-TransportTracers (Ref)  
4.0x5.0



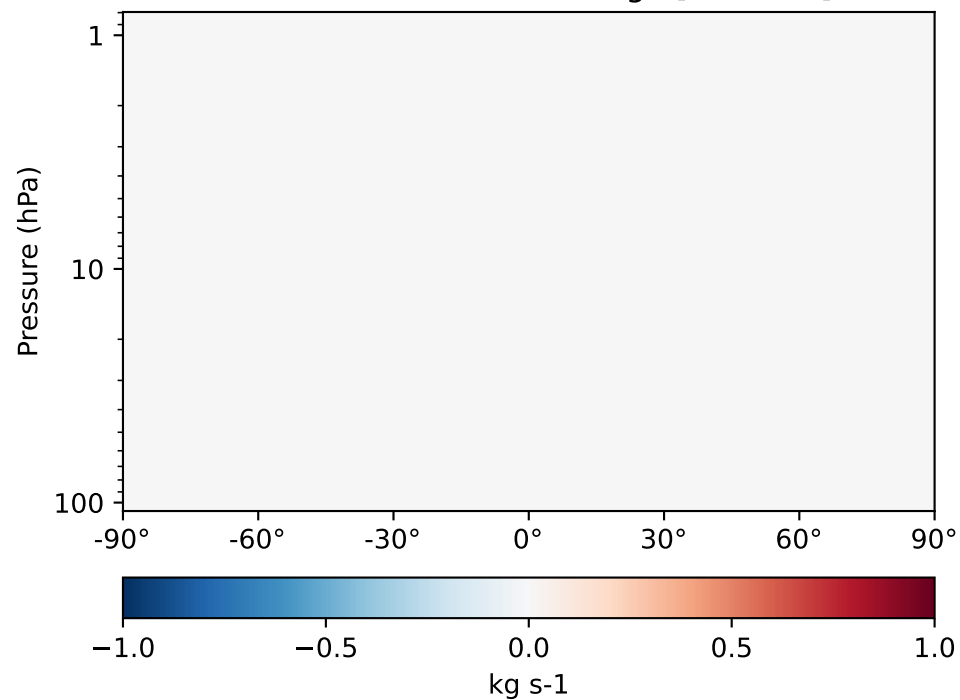
GCC\_13.2.0-TransportTracers (Dev)  
4.0x5.0



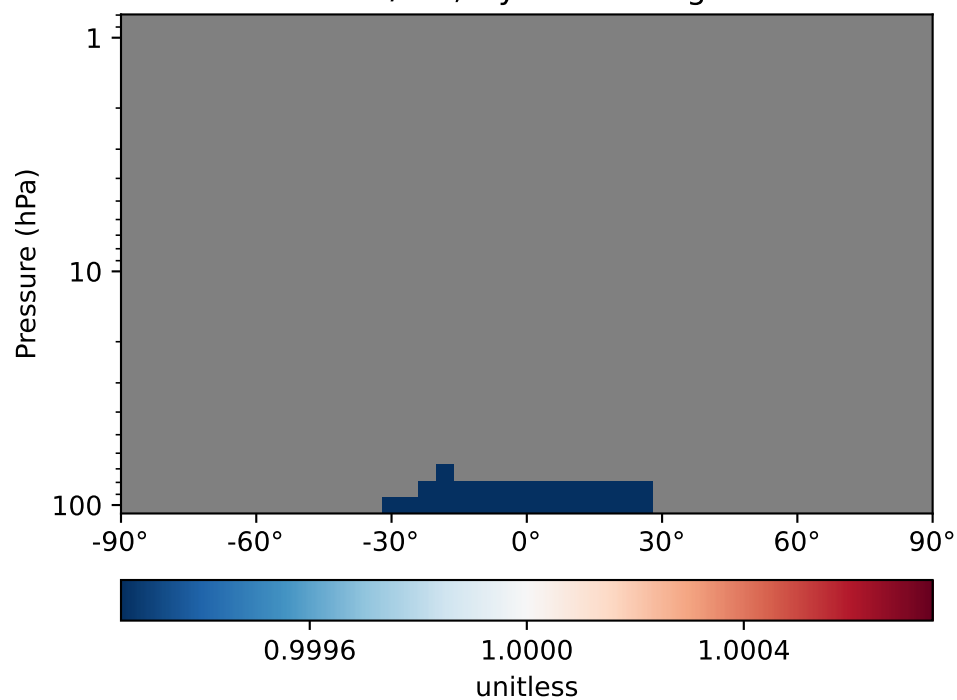
Difference  
Dev - Ref, Dynamic Range



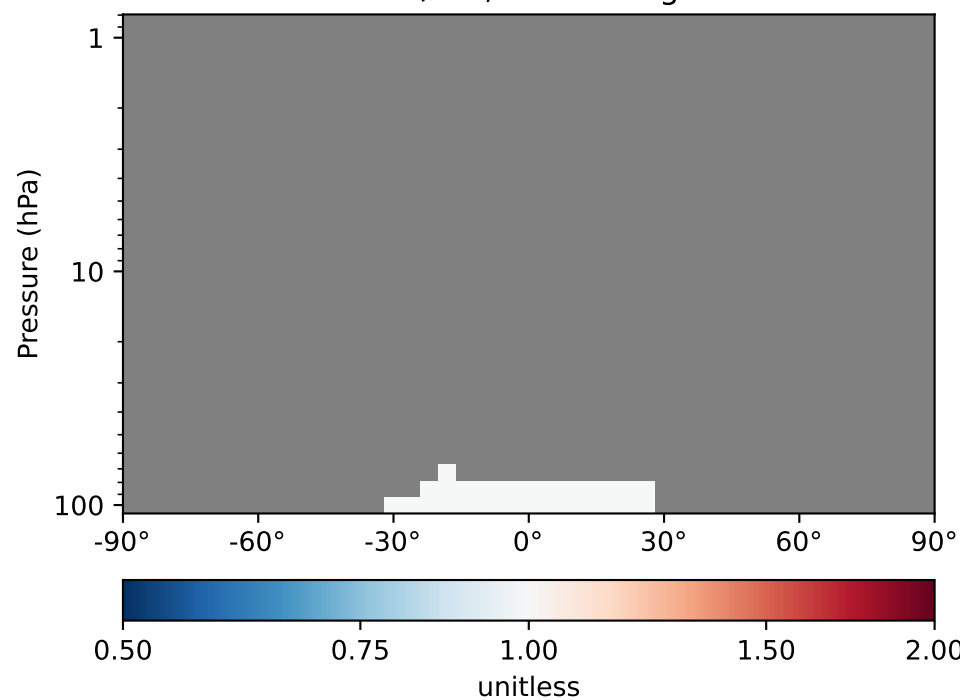
Difference  
Dev - Ref, Restricted Range [5%,95%]



Ratio  
Dev/Ref, Dynamic Range

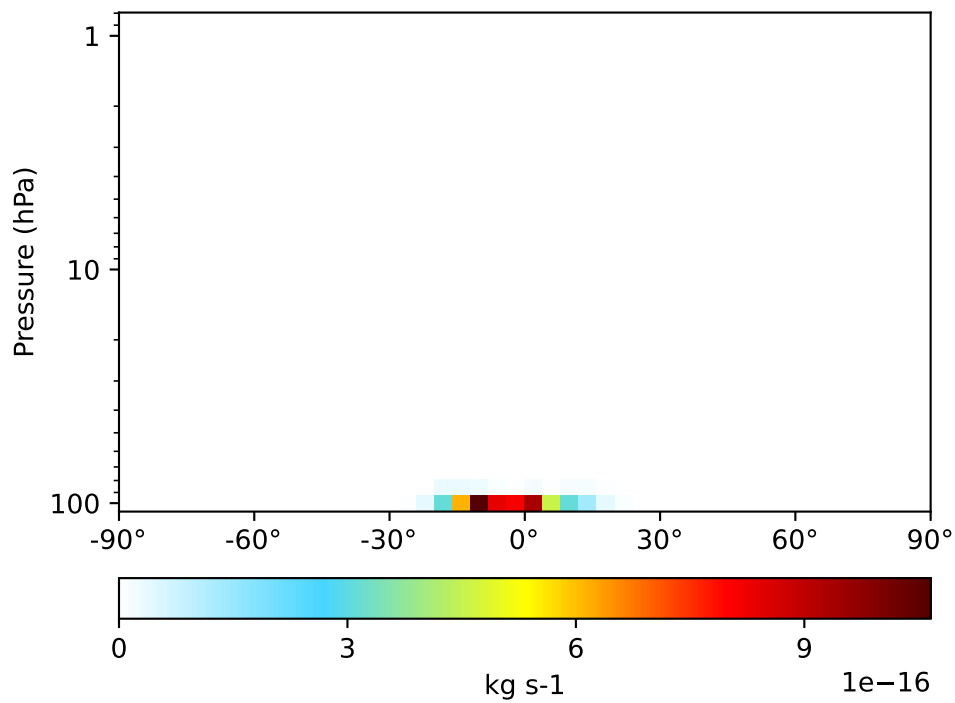


Ratio  
Dev/Ref, Fixed Range

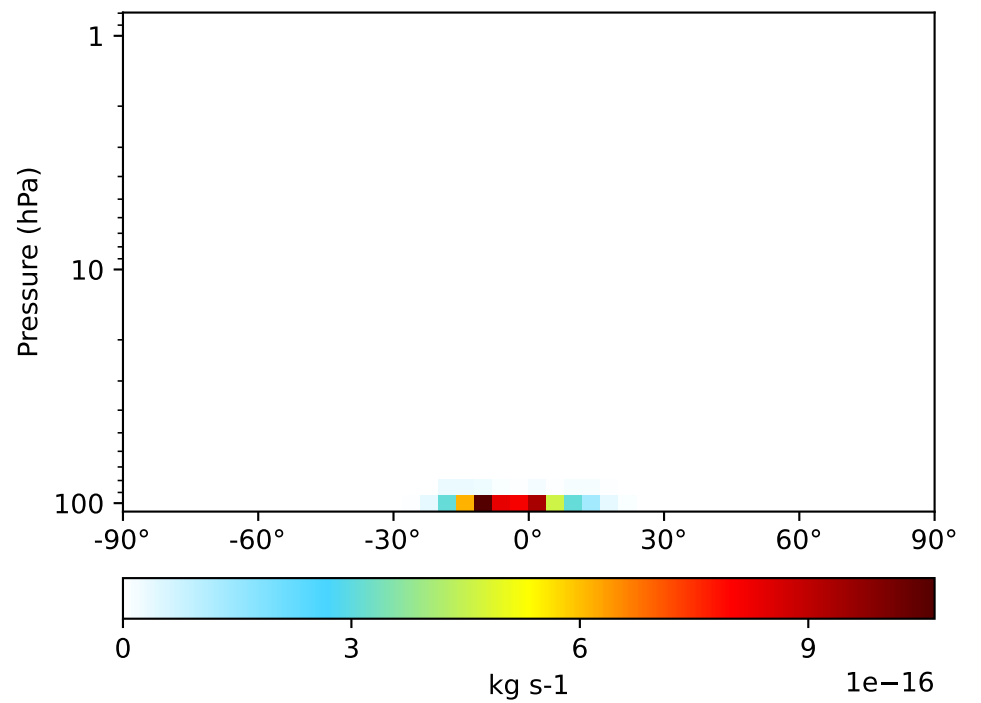


# WetLossLS\_Be7, Zonal Mean (Apr2019)

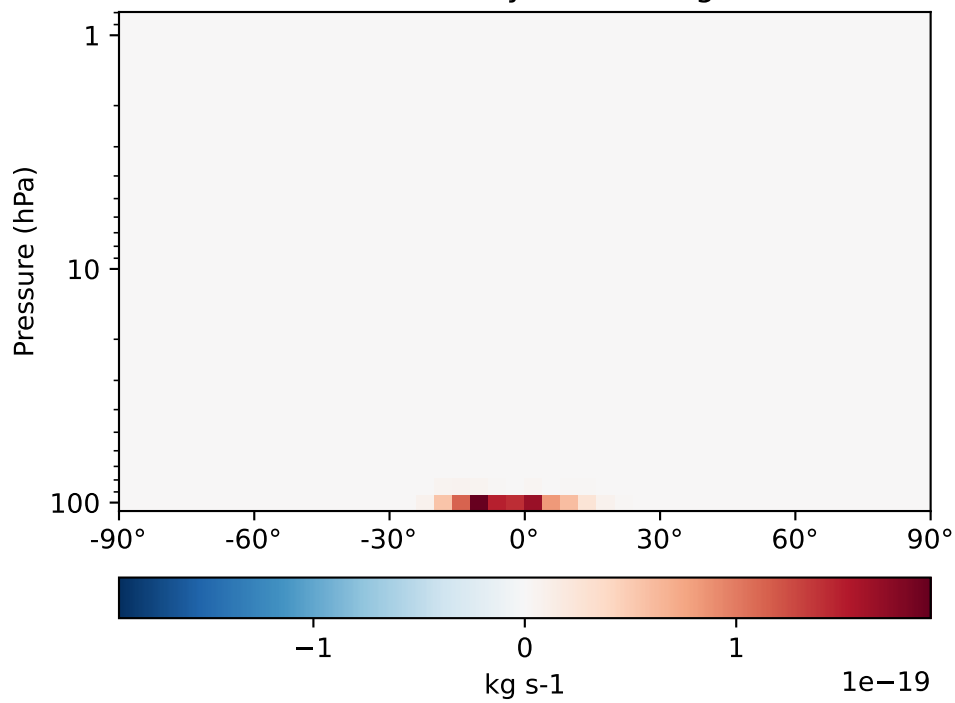
GCC\_13.0.0-TransportTracers (Ref)  
4.0x5.0



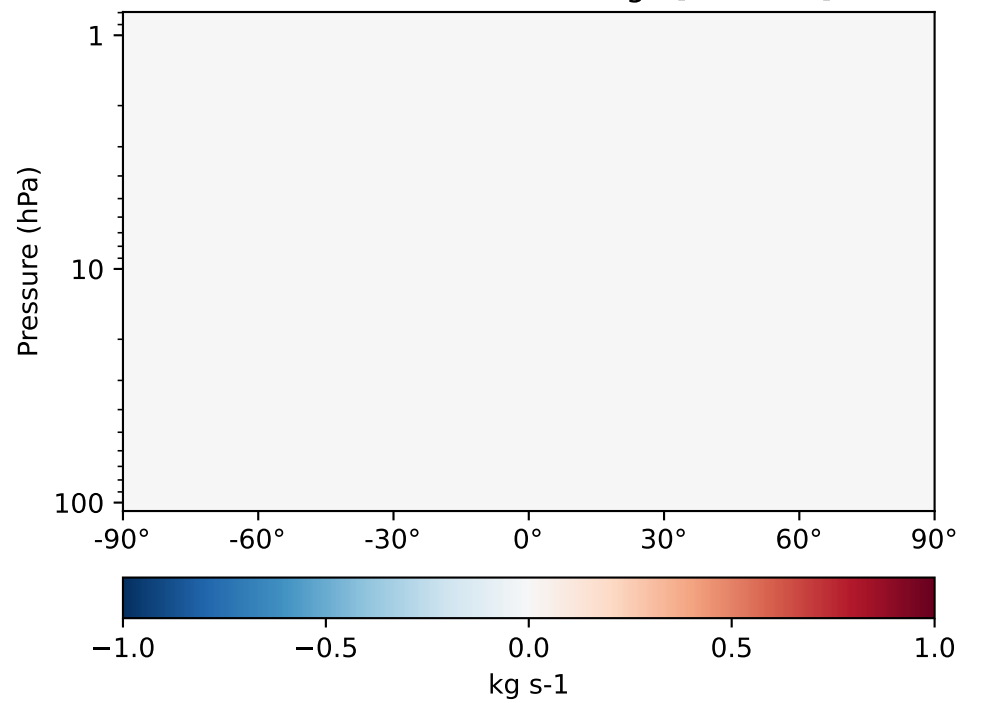
GCC\_13.2.0-TransportTracers (Dev)  
4.0x5.0



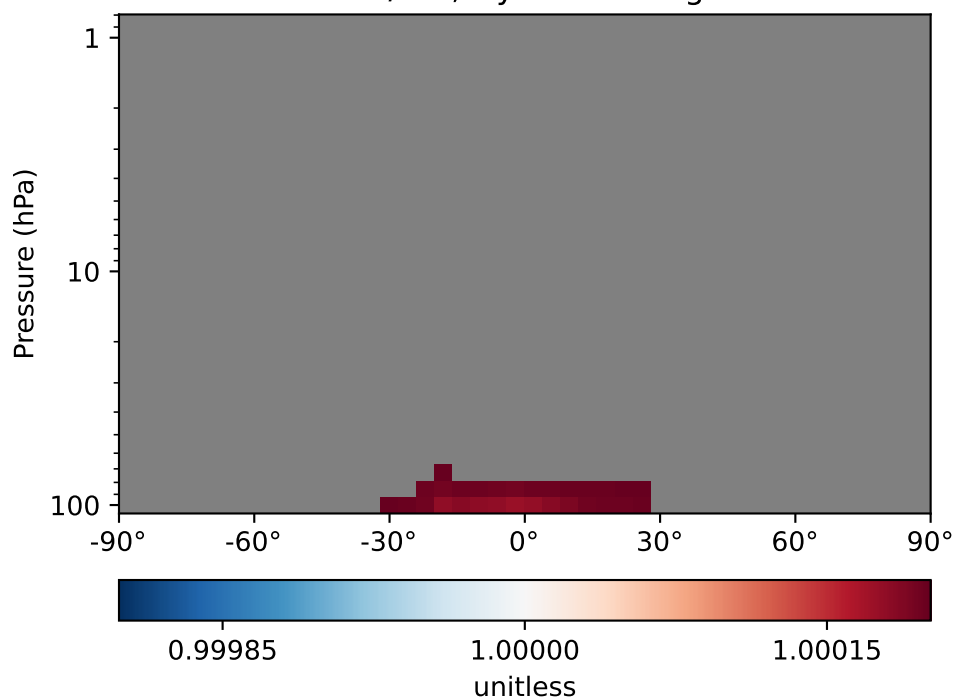
Difference  
Dev - Ref, Dynamic Range



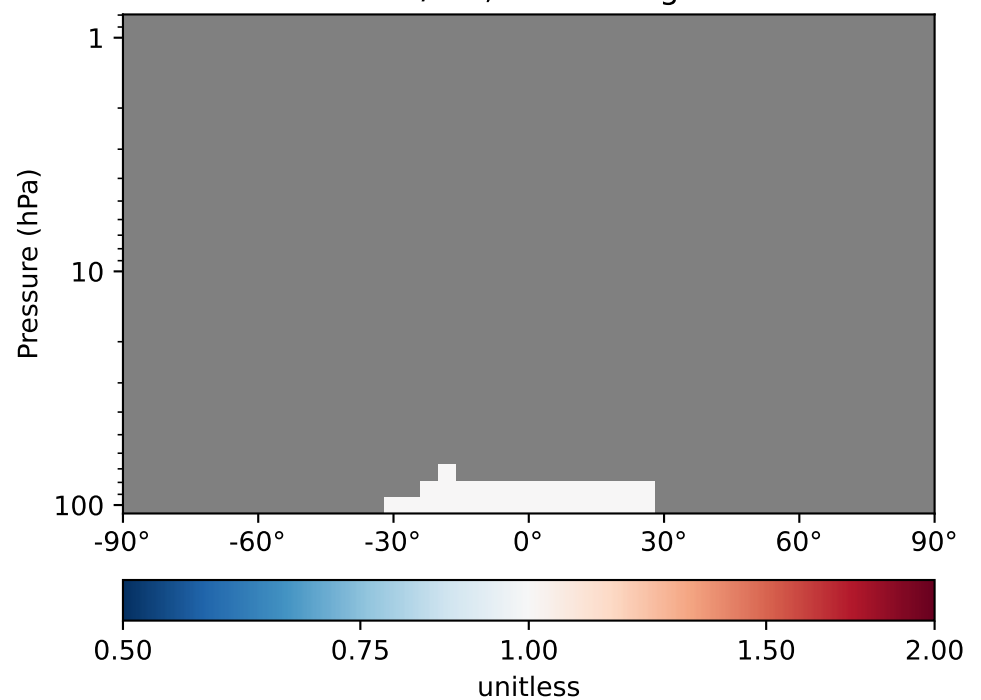
Difference  
Dev - Ref, Restricted Range [5%,95%]



Ratio  
Dev/Ref, Dynamic Range

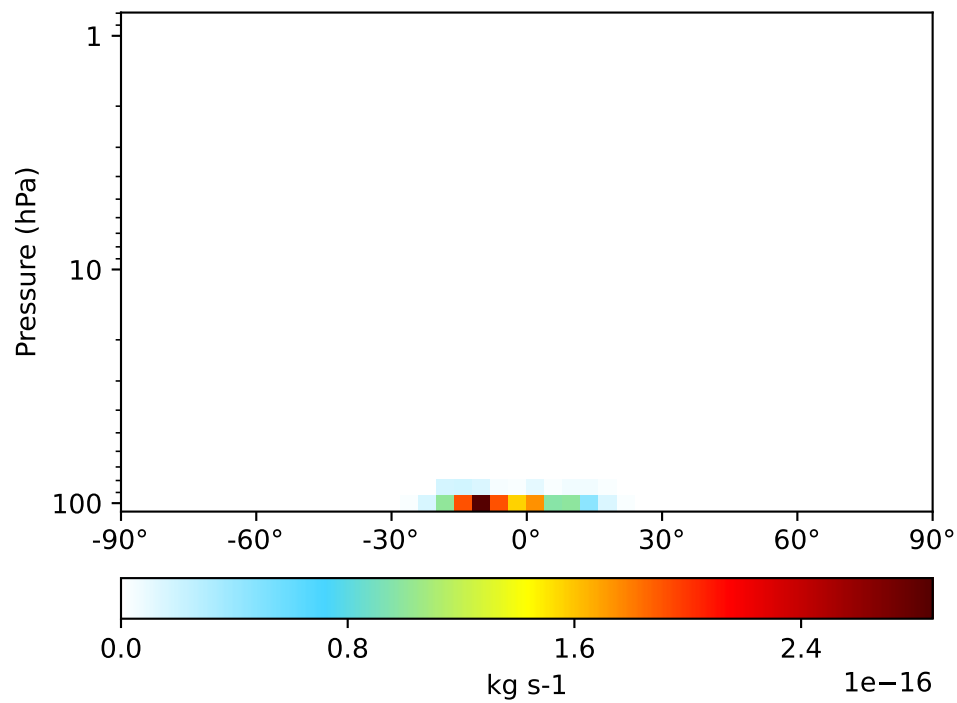


Ratio  
Dev/Ref, Fixed Range

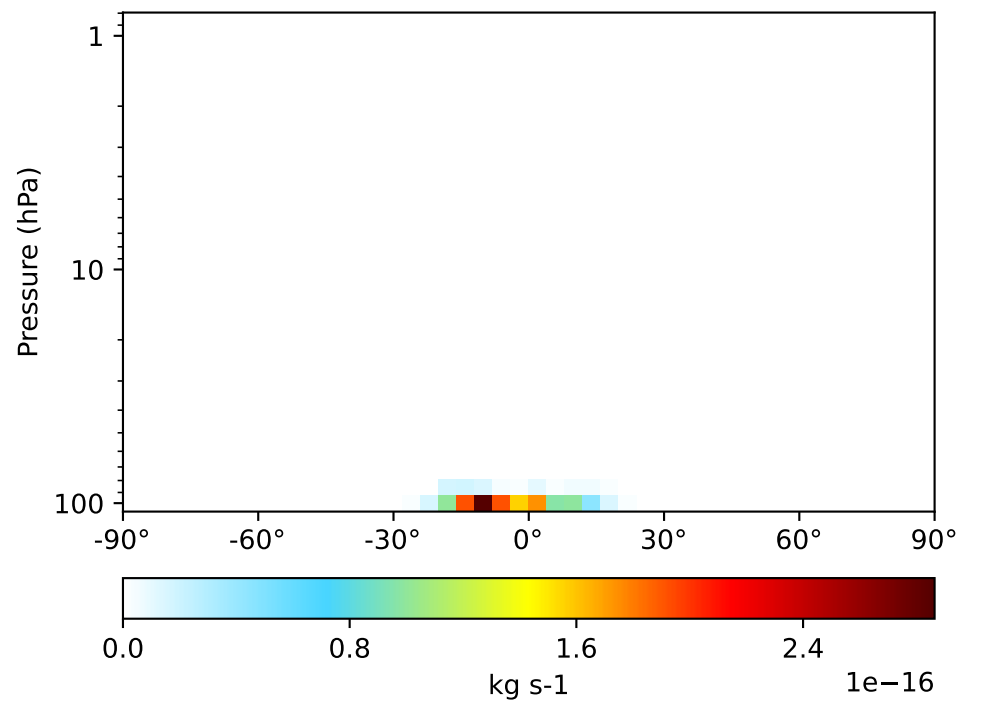


# WetLossLS\_Be7Strat, Zonal Mean (Apr2019)

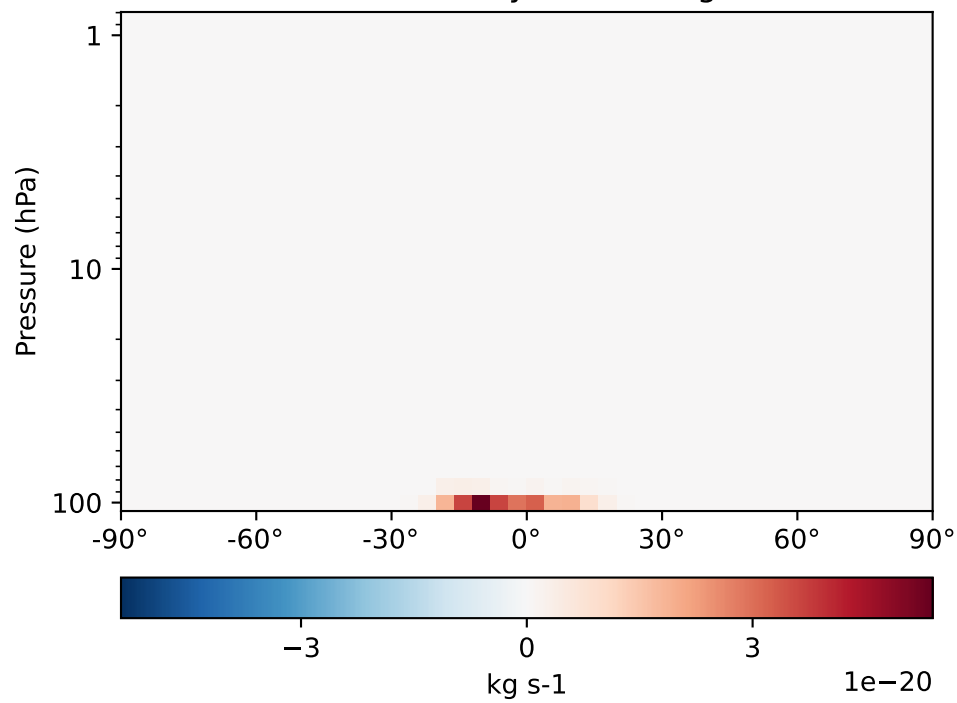
GCC\_13.0.0-TransportTracers (Ref)  
4.0x5.0



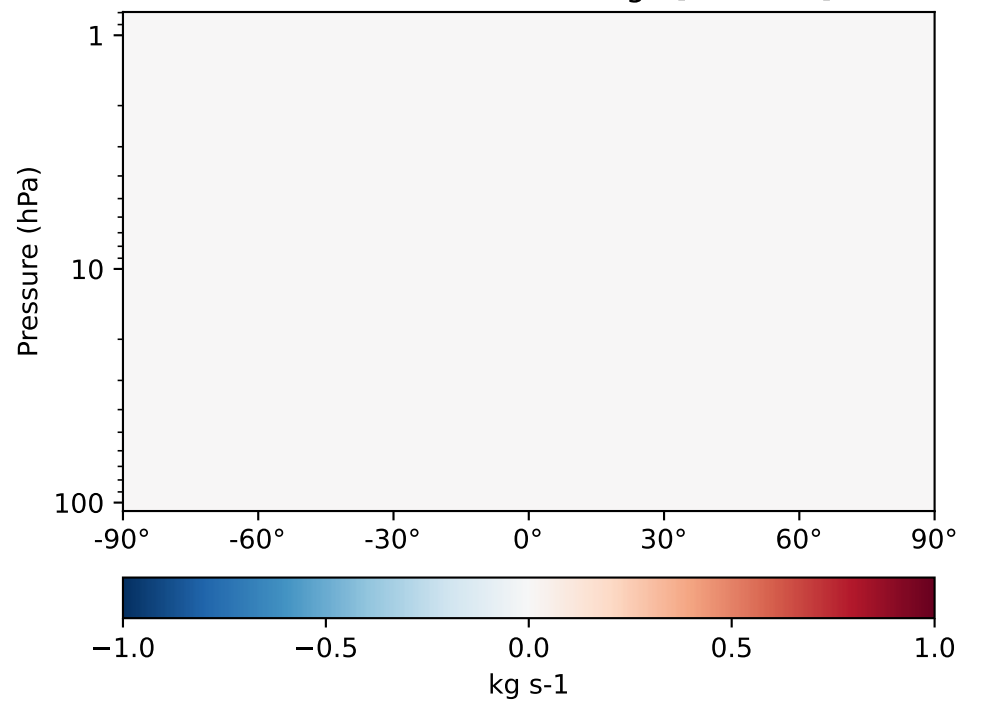
GCC\_13.2.0-TransportTracers (Dev)  
4.0x5.0



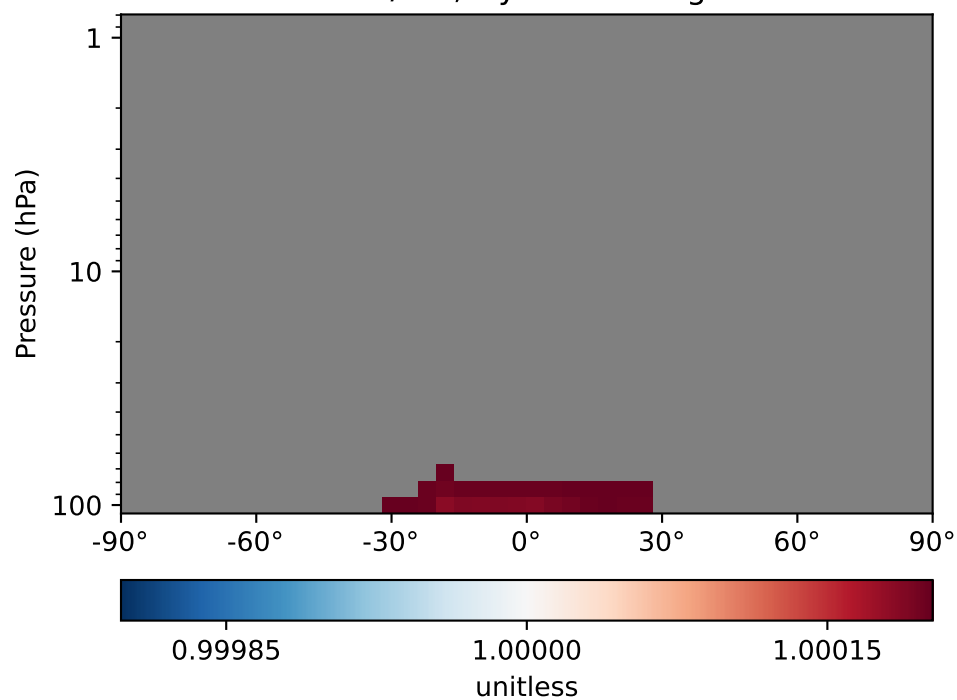
Difference  
Dev - Ref, Dynamic Range



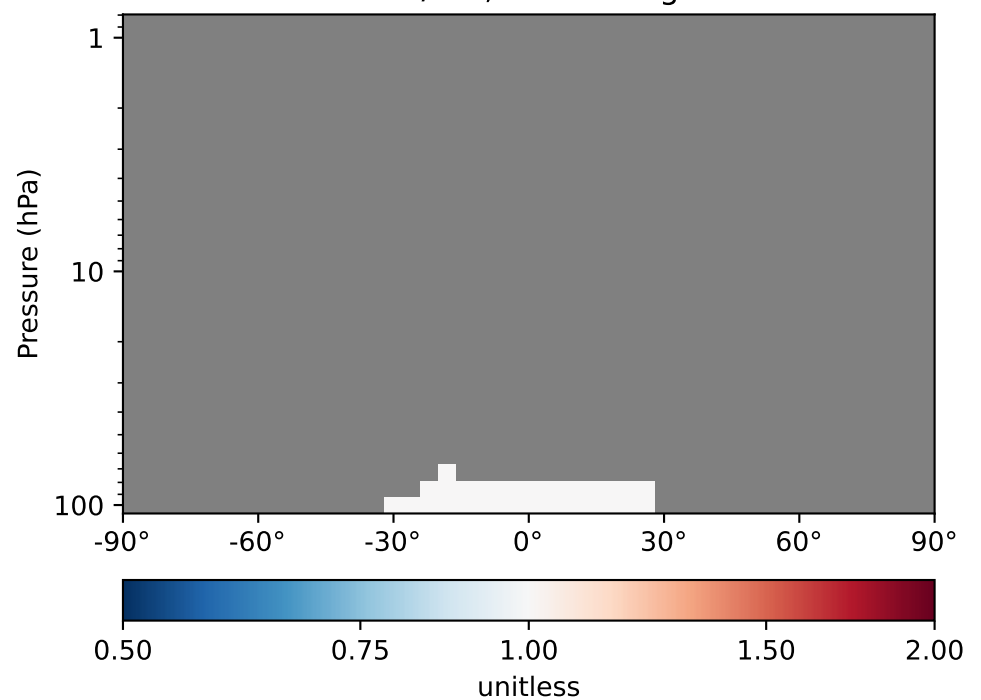
Difference  
Dev - Ref, Restricted Range [5%,95%]



Ratio  
Dev/Ref, Dynamic Range

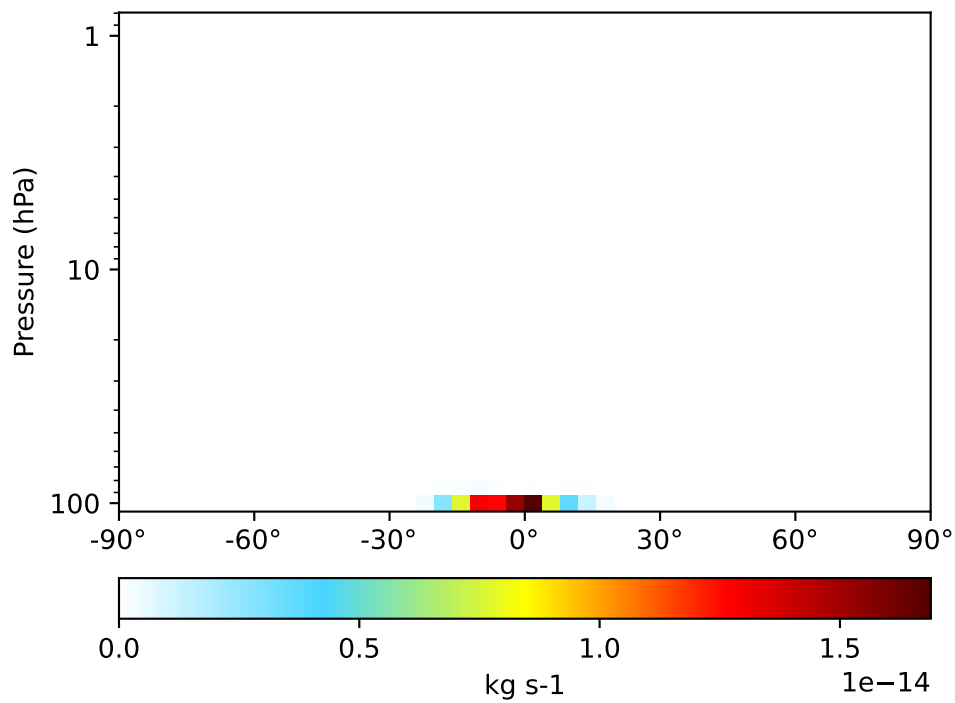


Ratio  
Dev/Ref, Fixed Range

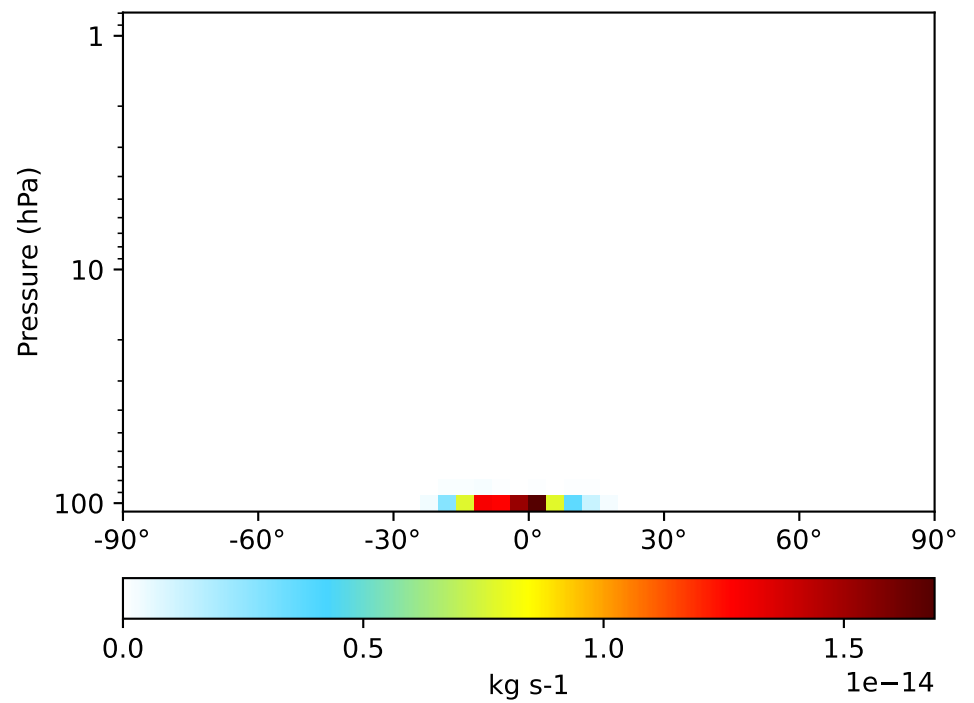


# WetLossLS\_Pb210, Zonal Mean (Apr2019)

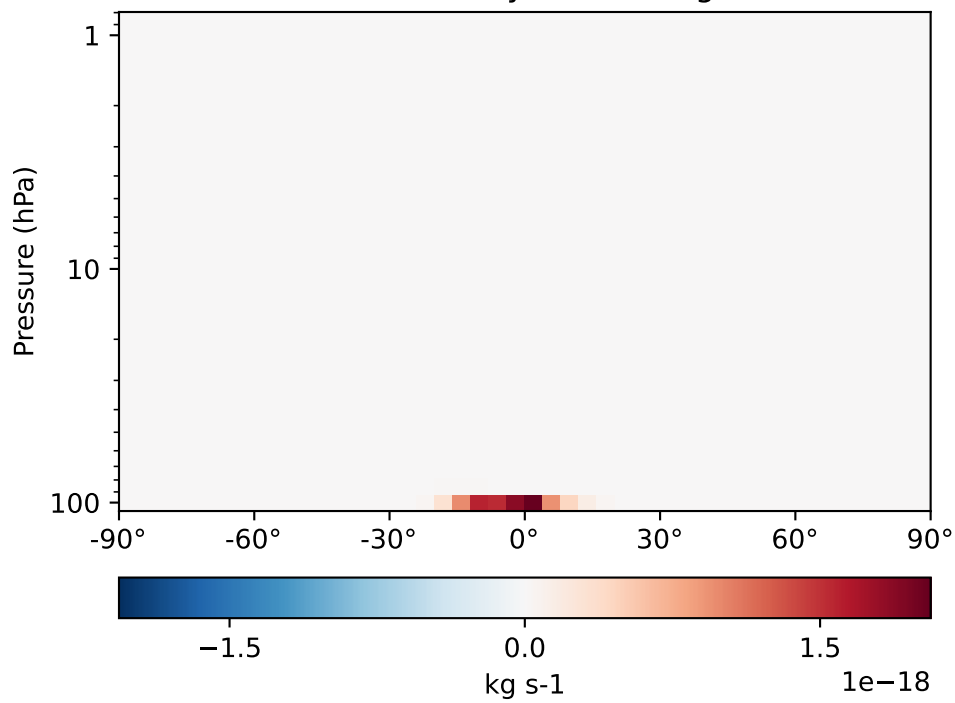
GCC\_13.0.0-TransportTracers (Ref)  
4.0x5.0



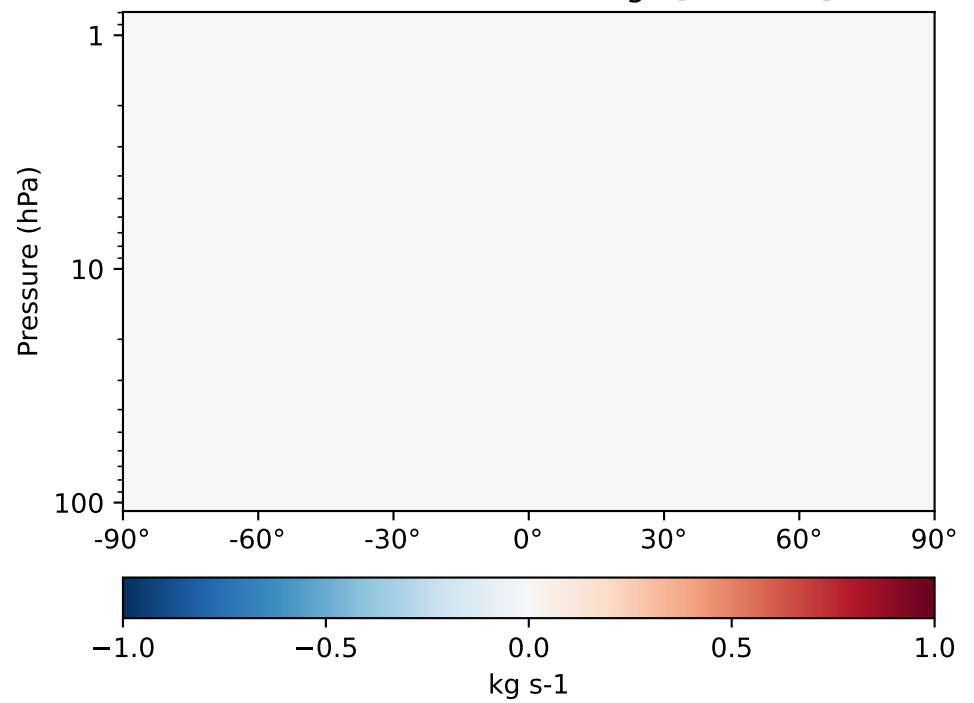
GCC\_13.2.0-TransportTracers (Dev)  
4.0x5.0



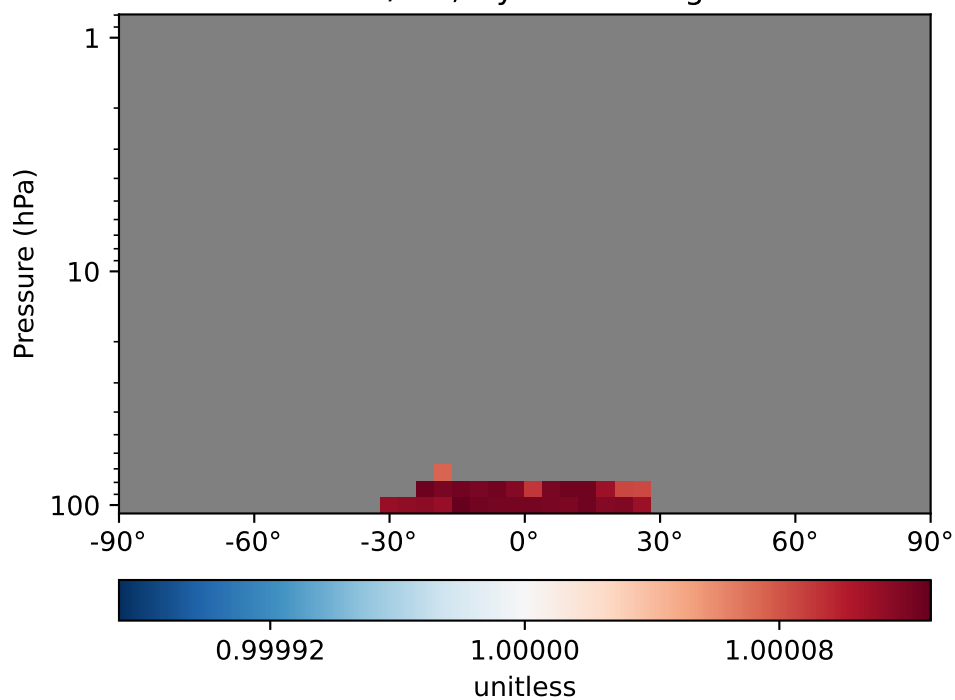
Difference  
Dev - Ref, Dynamic Range



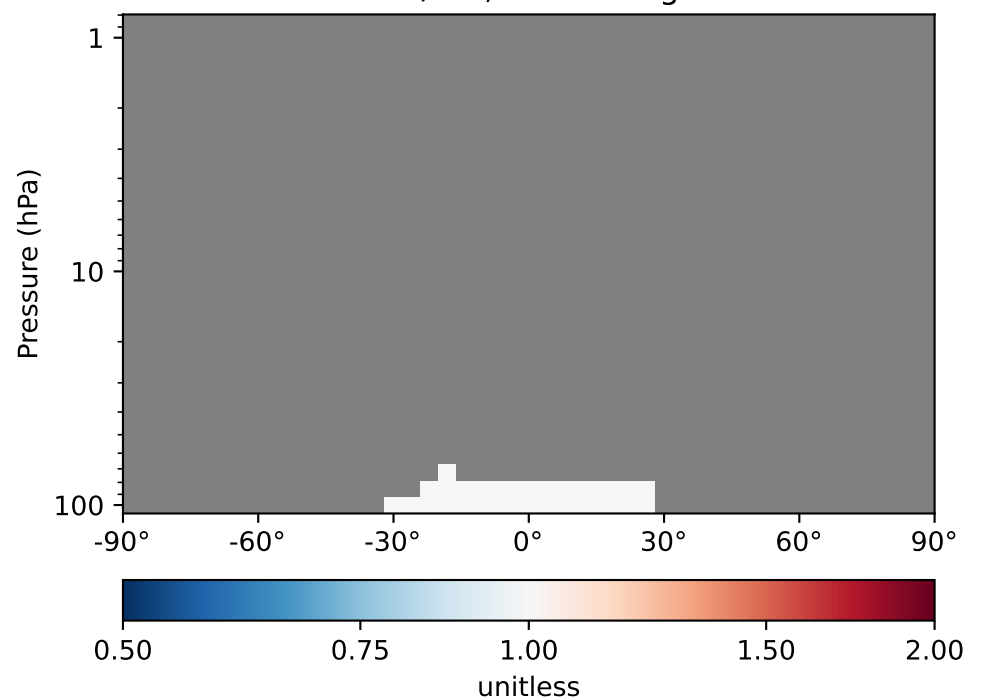
Difference  
Dev - Ref, Restricted Range [5%,95%]



Ratio  
Dev/Ref, Dynamic Range



Ratio  
Dev/Ref, Fixed Range



# WetLossLS\_Pb210Strat, Zonal Mean (Apr2019)

