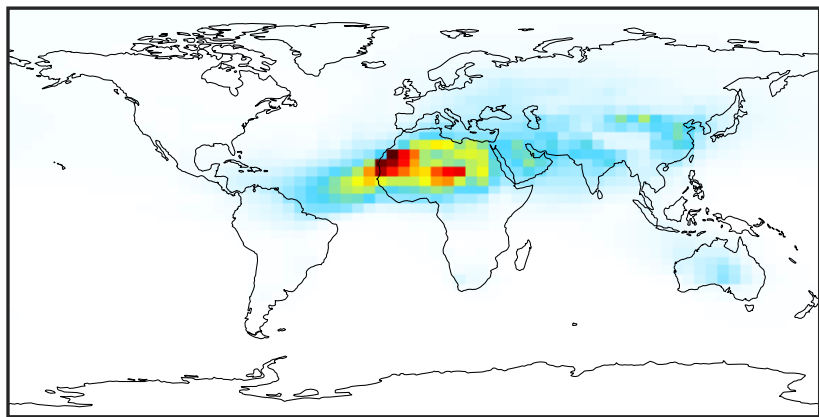


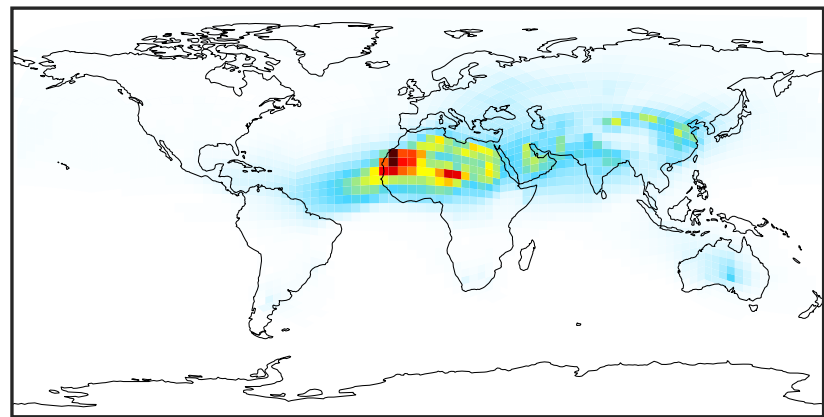
SpeciesConcVW_DST1 (AnnualMean)

GCC_14.2.0 (Ref)
4.0x5.0



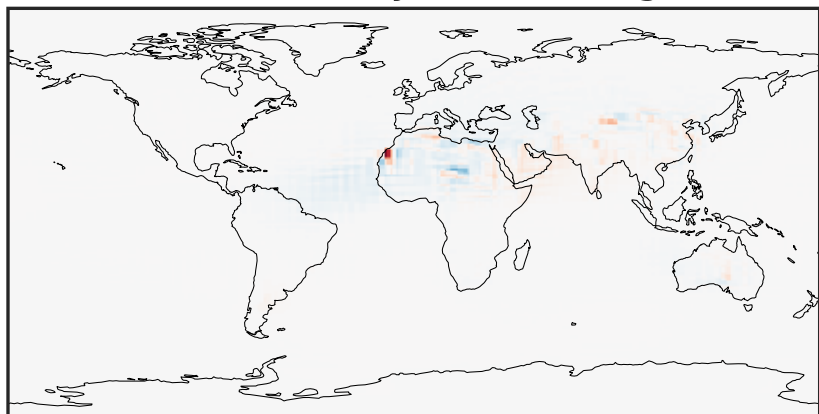
0.02 10.85 21.70 32.55 43.42
 $\mu\text{g}/\text{m}^3$

GCHP_14.2.0 (Dev)
c24



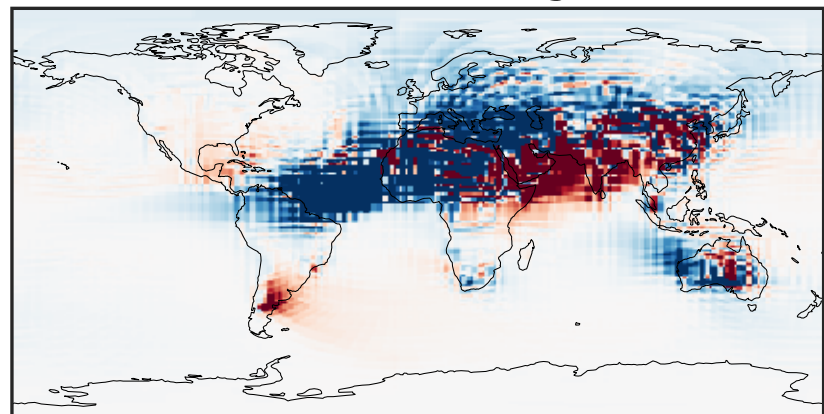
0.02 10.85 21.70 32.55 43.42
 $\mu\text{g}/\text{m}^3$

Difference (1x1.25)
Dev - Ref, Dynamic Range



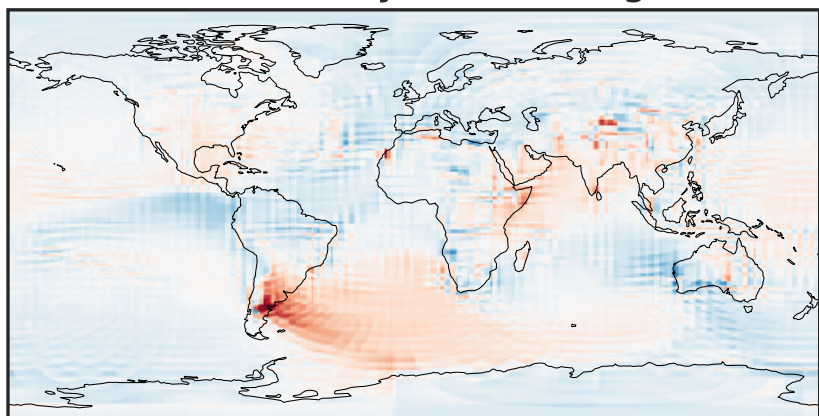
-38.35 -19.17 0.00 19.17 38.35
 $\mu\text{g}/\text{m}^3$

Difference (1x1.25)
Dev - Ref, Restricted Range [5%,95%]



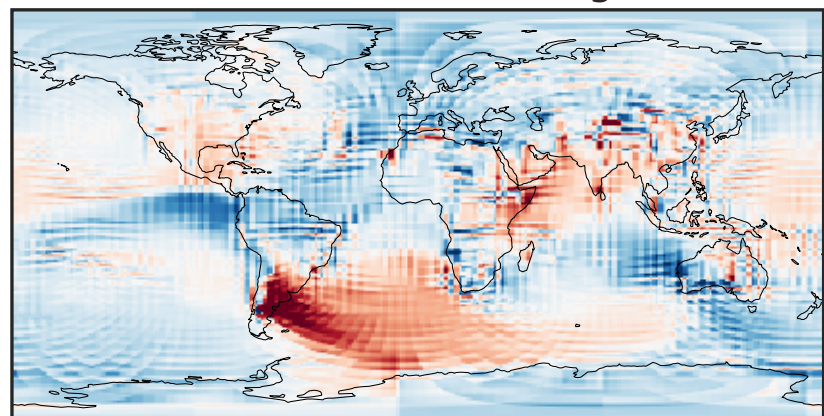
-0.665 -0.332 0.000 0.332 0.665
 $\mu\text{g}/\text{m}^3$

Ratio (1x1.25)
Dev/Ref, Dynamic Range



0.206 0.603 1.000 2.930 4.861
unitless

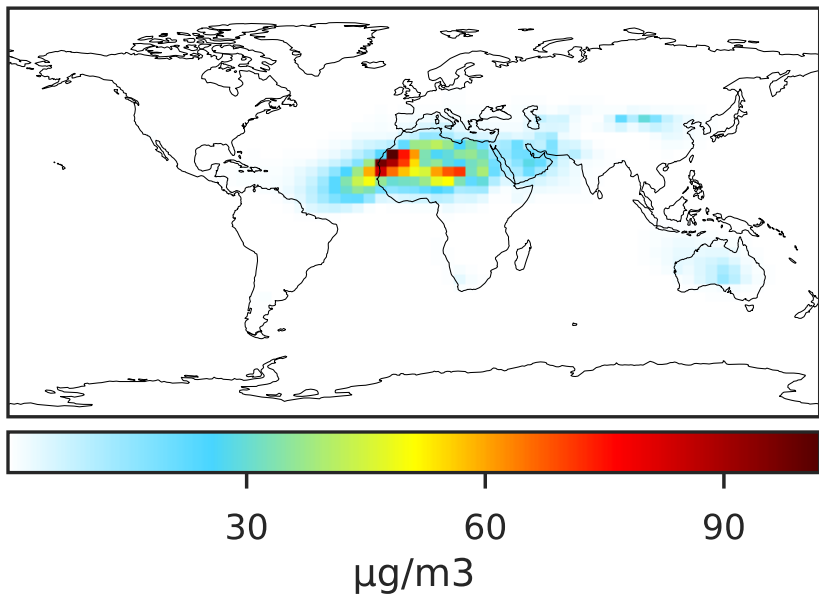
Ratio (1x1.25)
Dev/Ref, Fixed Range



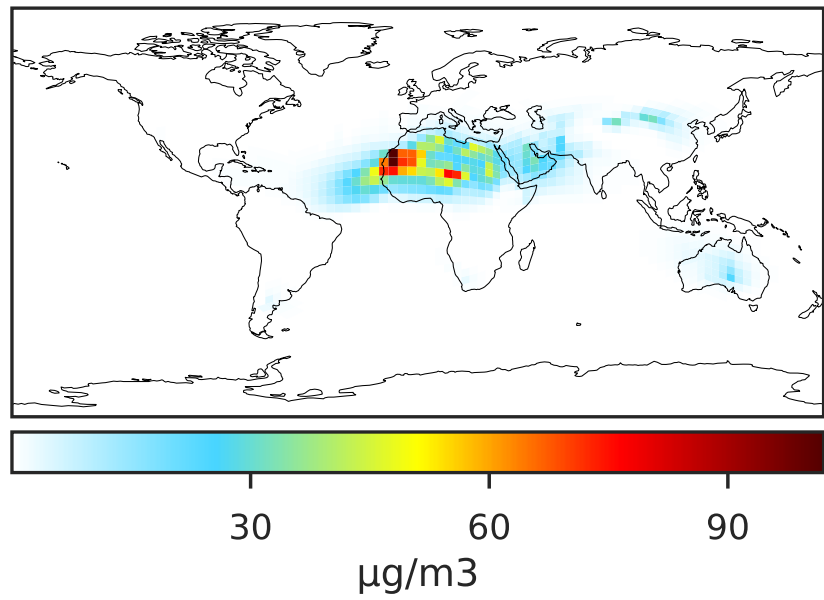
0.50 0.75 1.00 1.50 2.00
unitless

SpeciesConcVW_DST2 (AnnualMean)

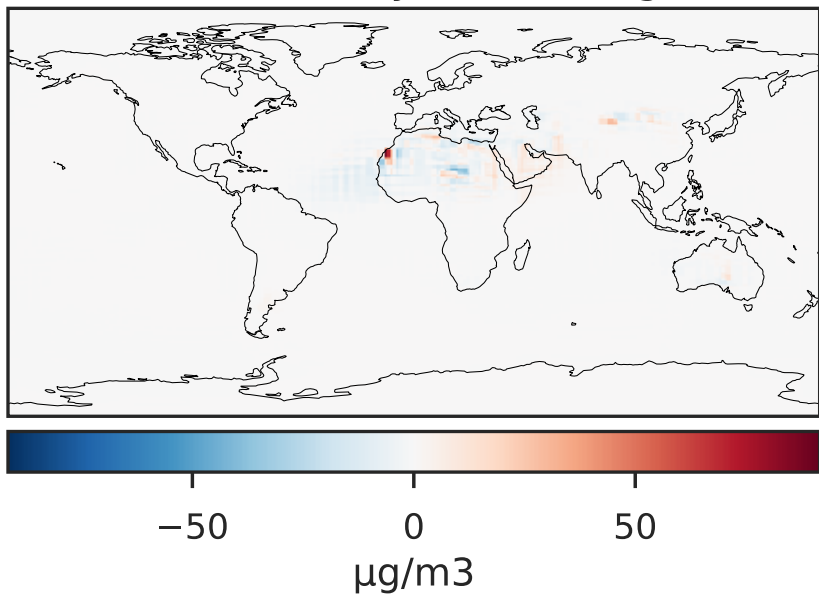
GCC_14.2.0 (Ref)
4.0x5.0



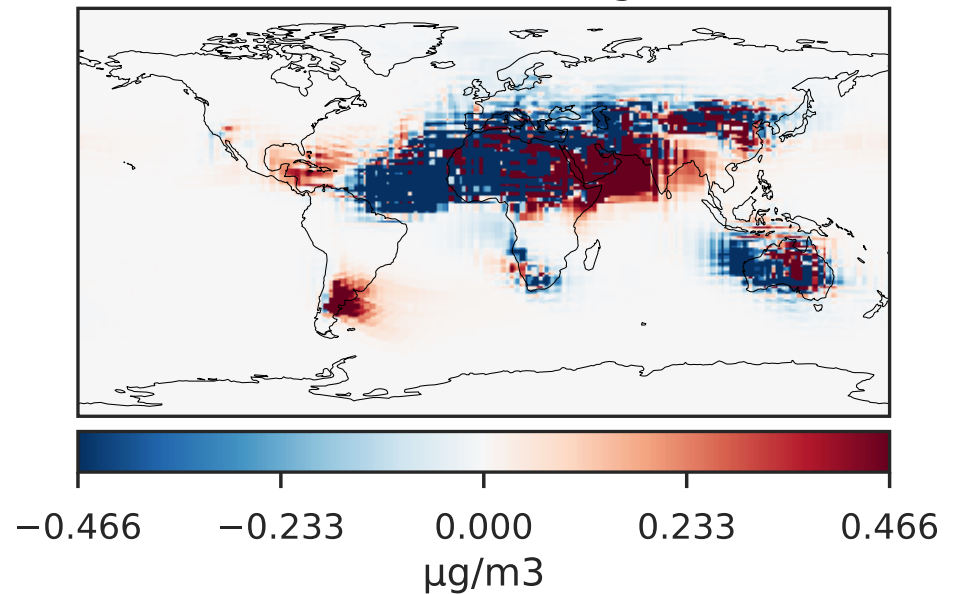
GCHP_14.2.0 (Dev)
c24



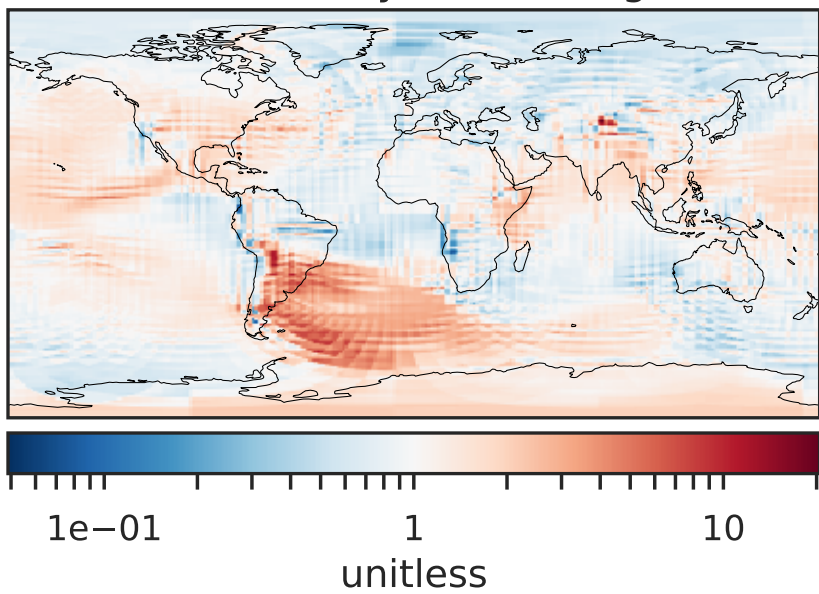
Difference (1x1.25)
Dev - Ref, Dynamic Range



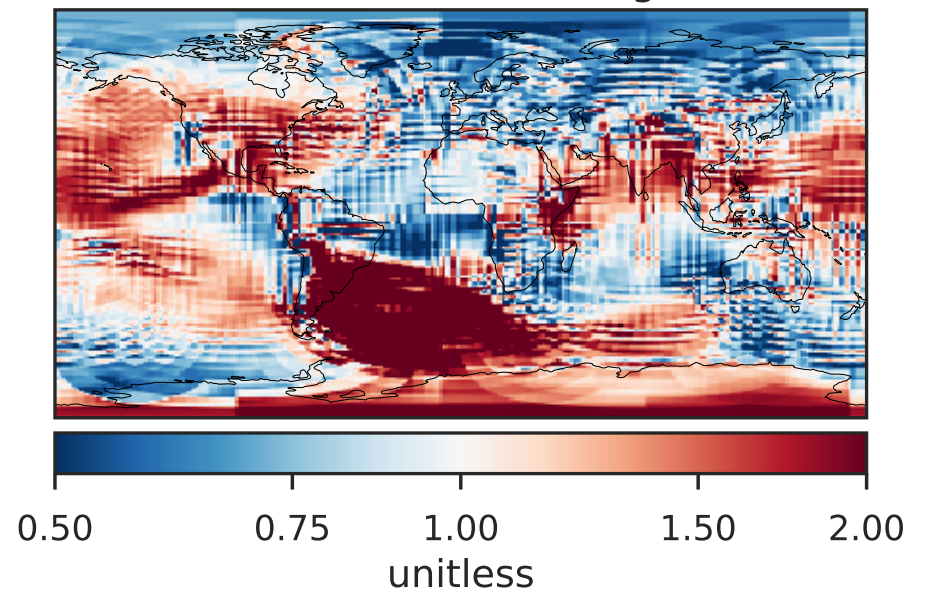
Difference (1x1.25)
Dev - Ref, Restricted Range [5%,95%]



Ratio (1x1.25)
Dev/Ref, Dynamic Range

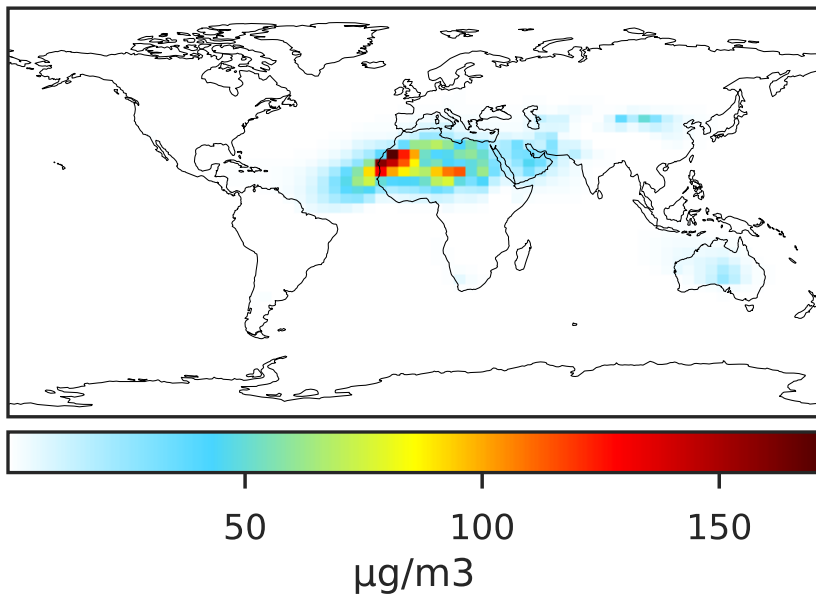


Ratio (1x1.25)
Dev/Ref, Fixed Range

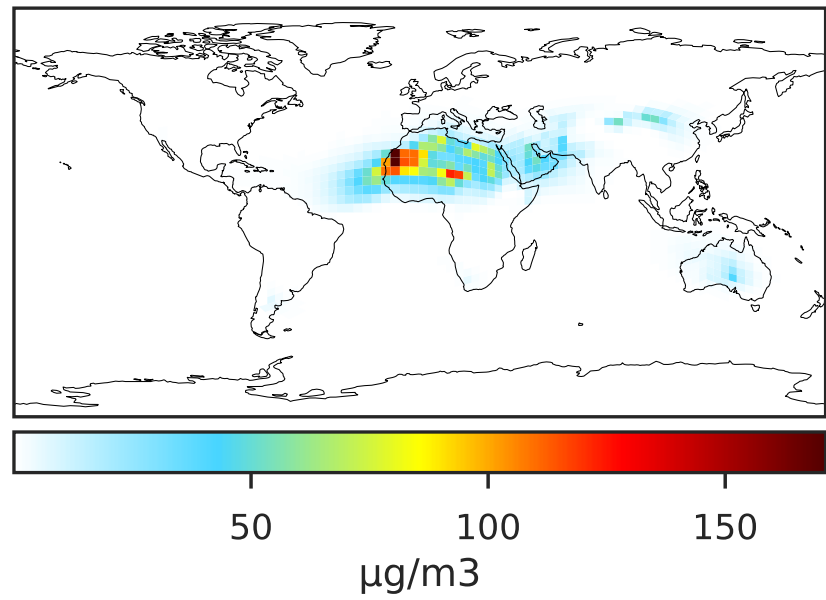


SpeciesConcVV_DST3 (AnnualMean)

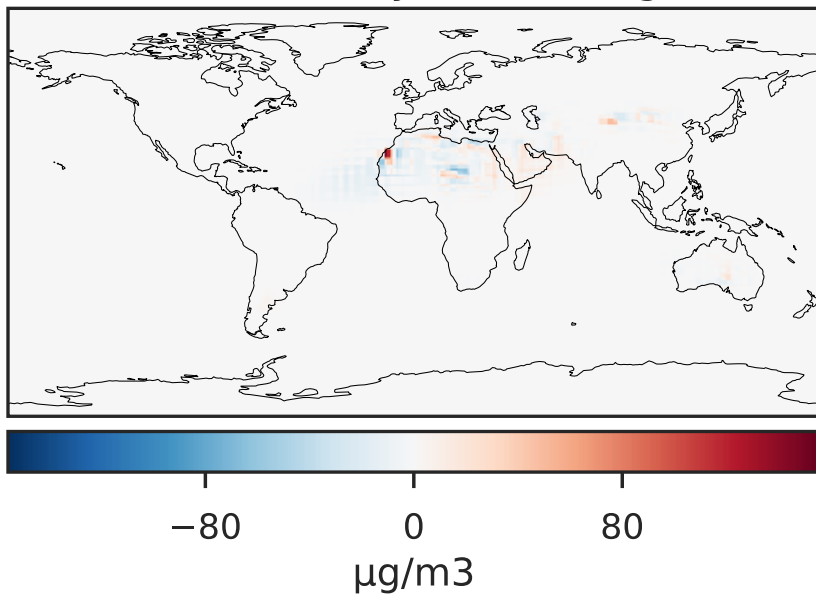
GCC_14.2.0 (Ref)
4.0x5.0



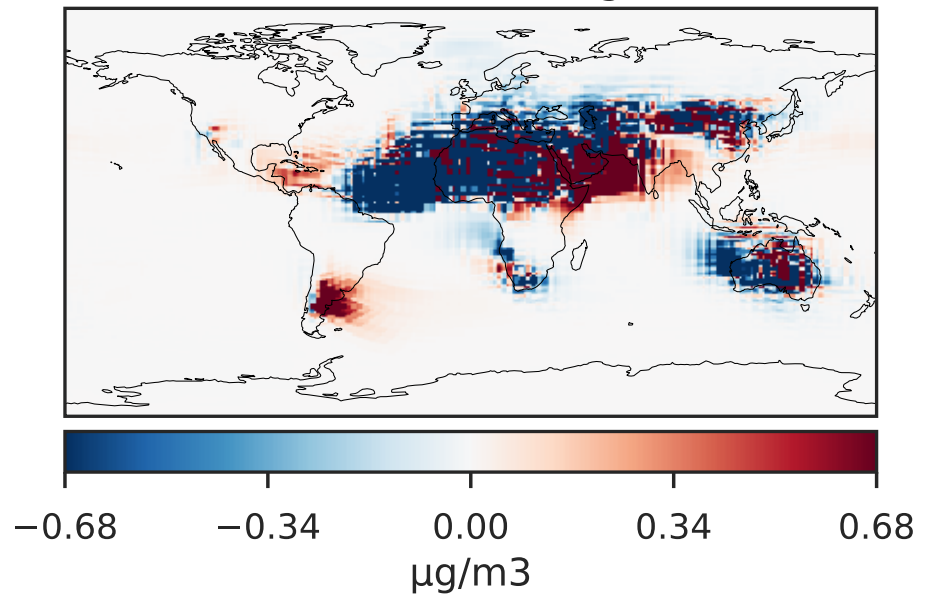
GCHP_14.2.0 (Dev)
c24



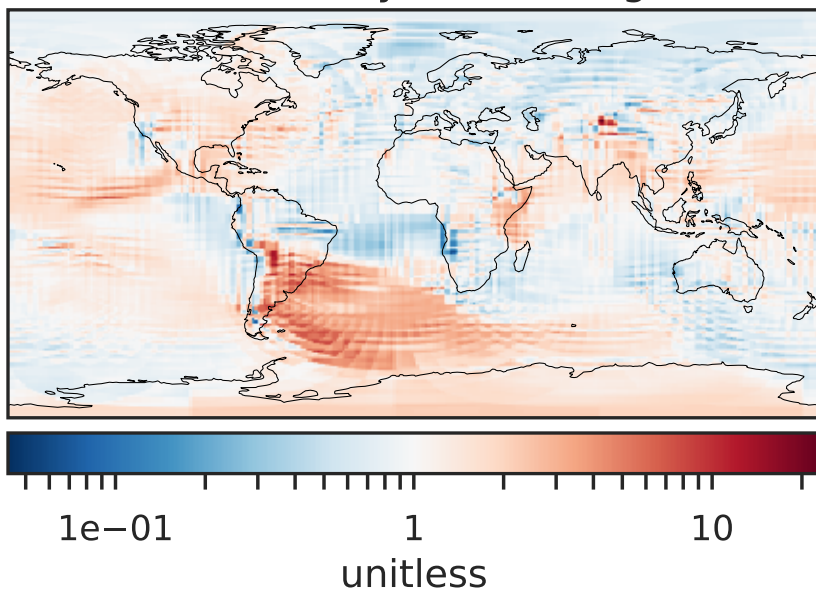
Difference (1x1.25)
Dev - Ref, Dynamic Range



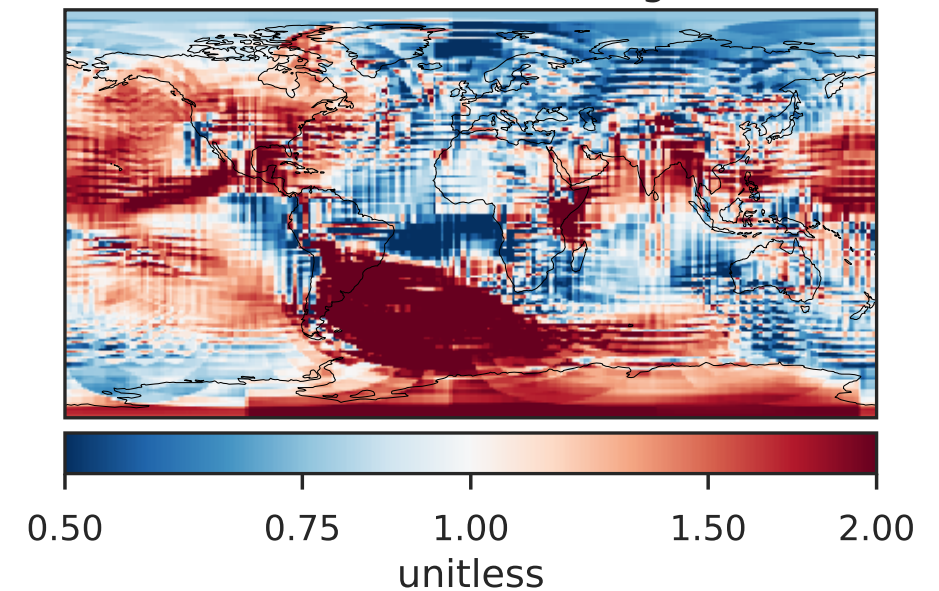
Difference (1x1.25)
Dev - Ref, Restricted Range [5%,95%]



Ratio (1x1.25)
Dev/Ref, Dynamic Range

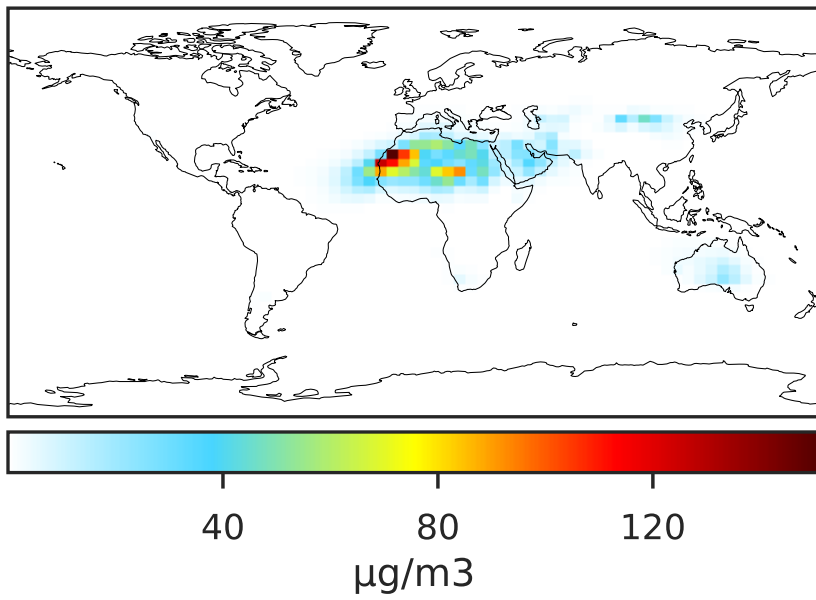


Ratio (1x1.25)
Dev/Ref, Fixed Range

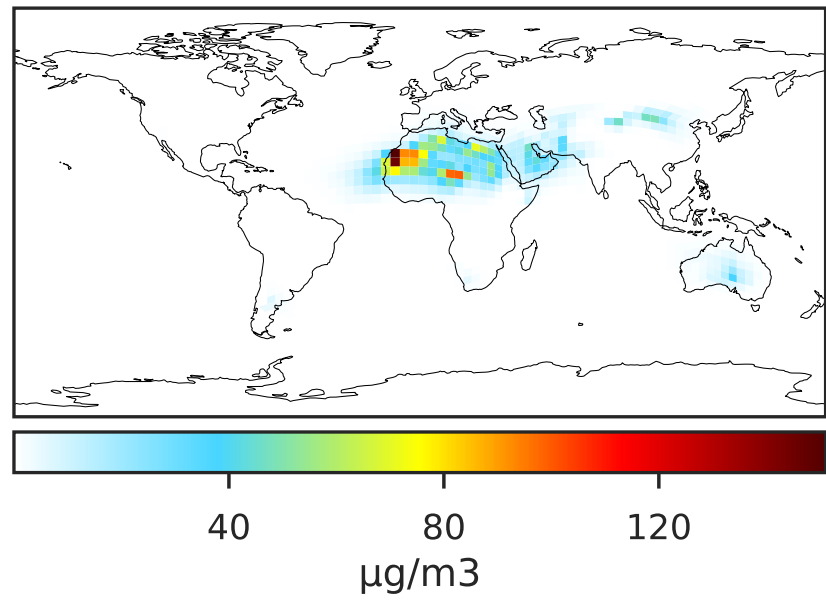


SpeciesConcVW_DST4 (AnnualMean)

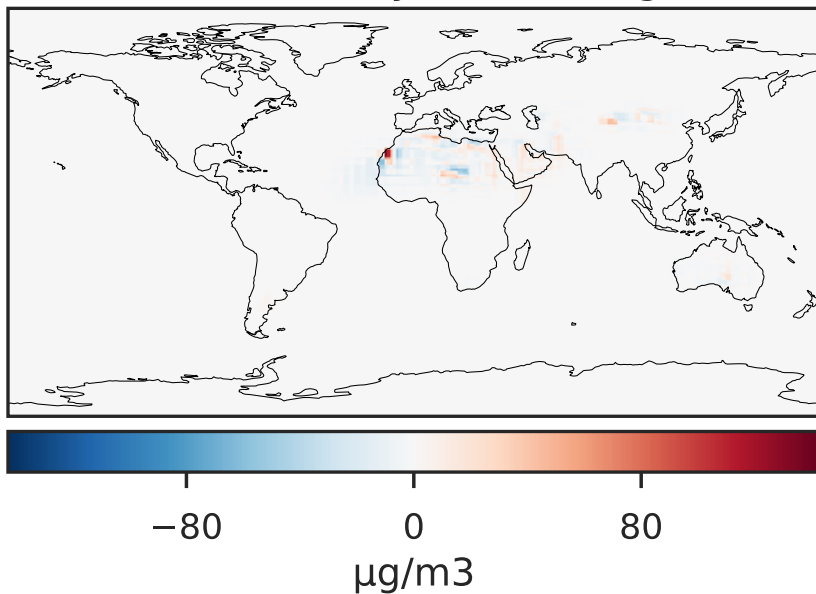
GCC_14.2.0 (Ref)
4.0x5.0



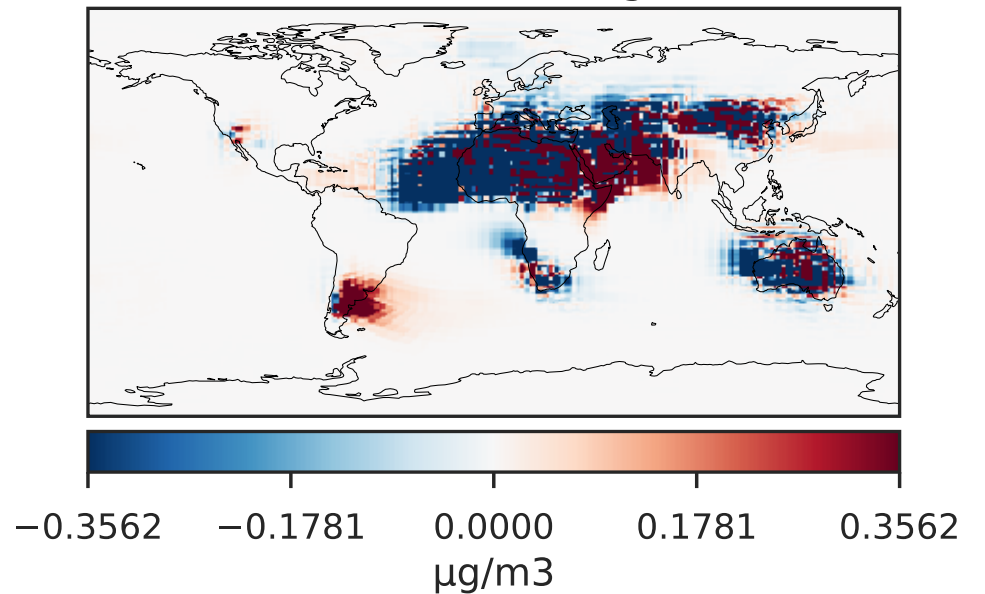
GCHP_14.2.0 (Dev)
c24



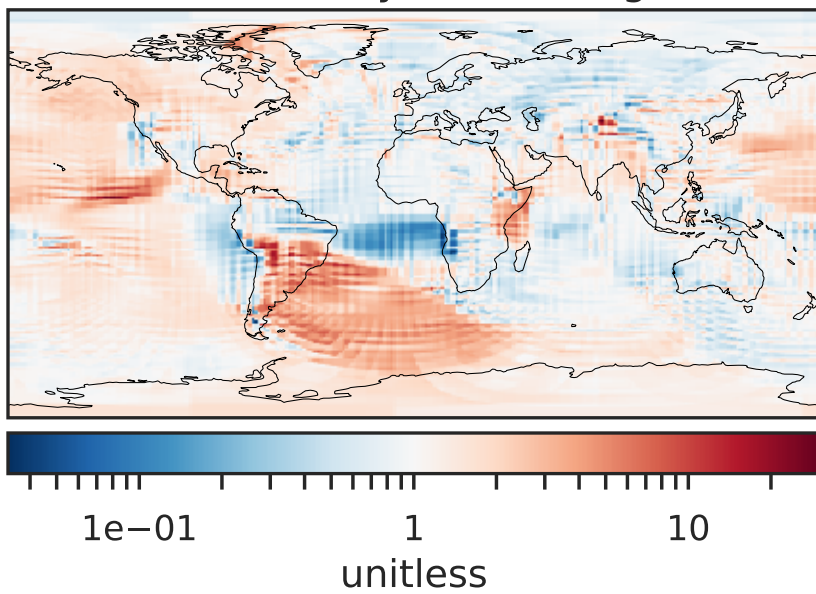
Difference (1x1.25)
Dev - Ref, Dynamic Range



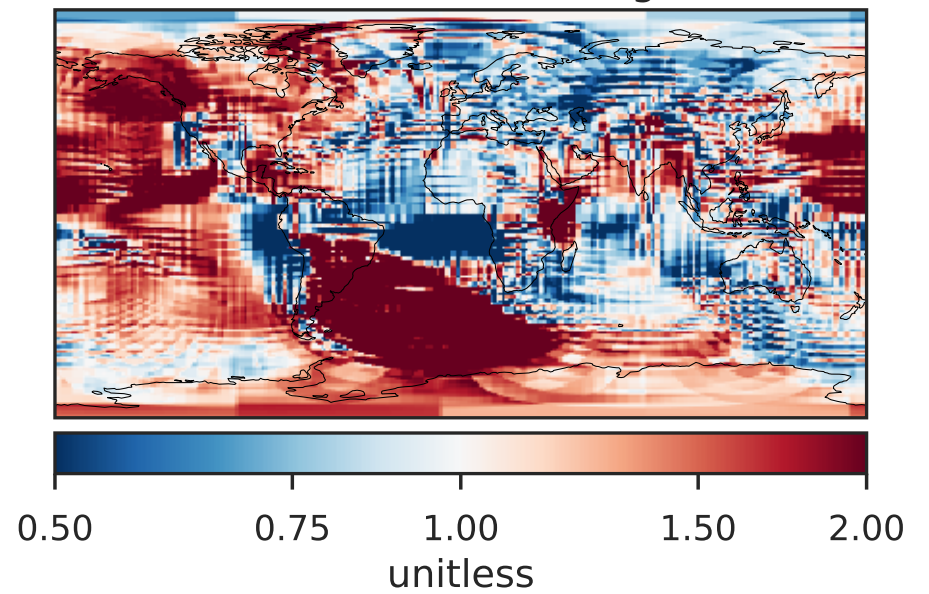
Difference (1x1.25)
Dev - Ref, Restricted Range [5%,95%]



Ratio (1x1.25)
Dev/Ref, Dynamic Range

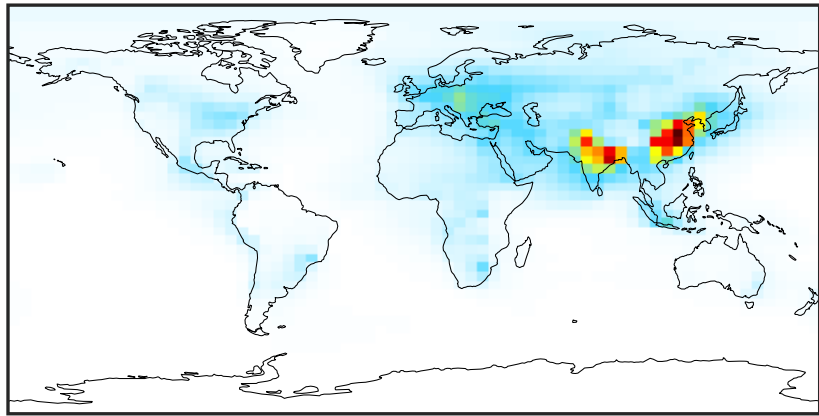


Ratio (1x1.25)
Dev/Ref, Fixed Range



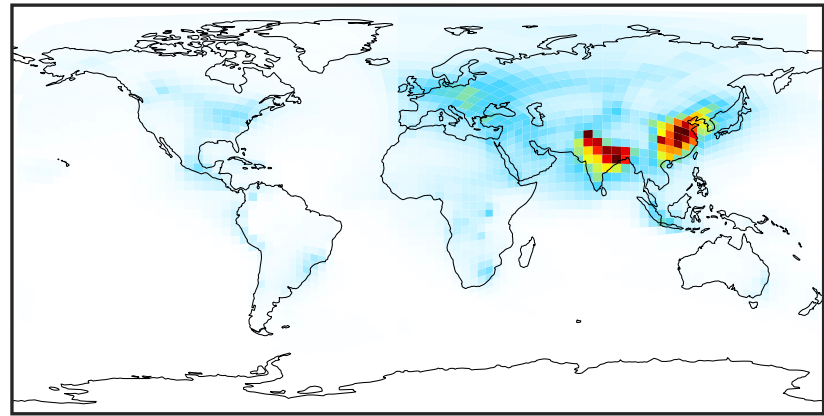
SpeciesConcVV_NH4 (AnnualMean)

GCC_14.2.0 (Ref)
4.0x5.0



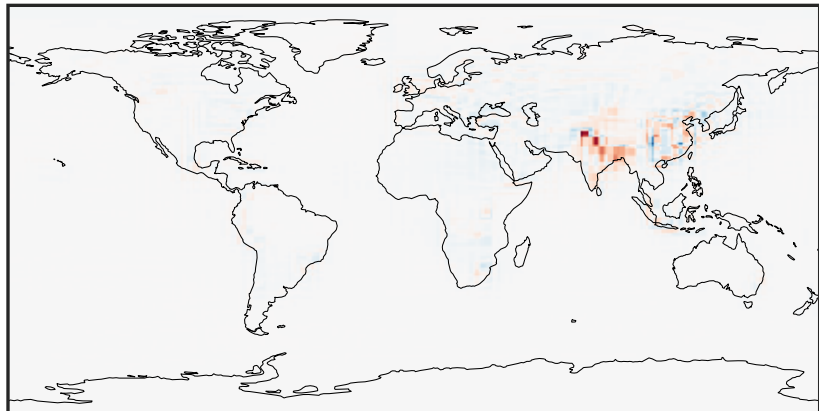
0.01 2.55 5.11 7.66 10.22
 $\mu\text{g}/\text{m}^3$

GCHP_14.2.0 (Dev)
c24



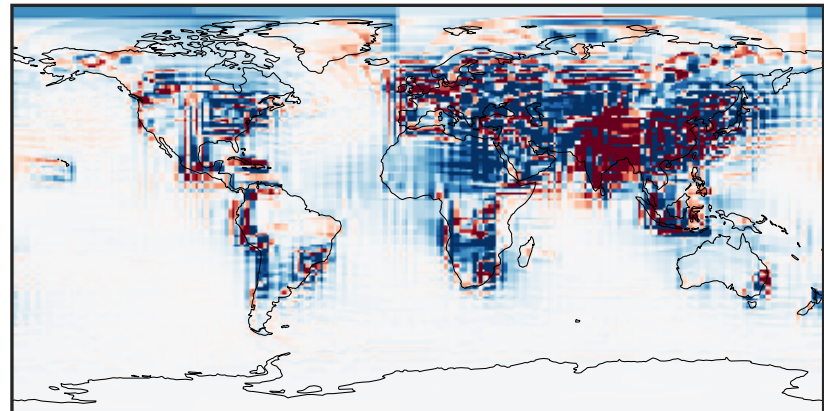
0.01 2.55 5.11 7.66 10.22
 $\mu\text{g}/\text{m}^3$

Difference (1x1.25)
Dev - Ref, Dynamic Range



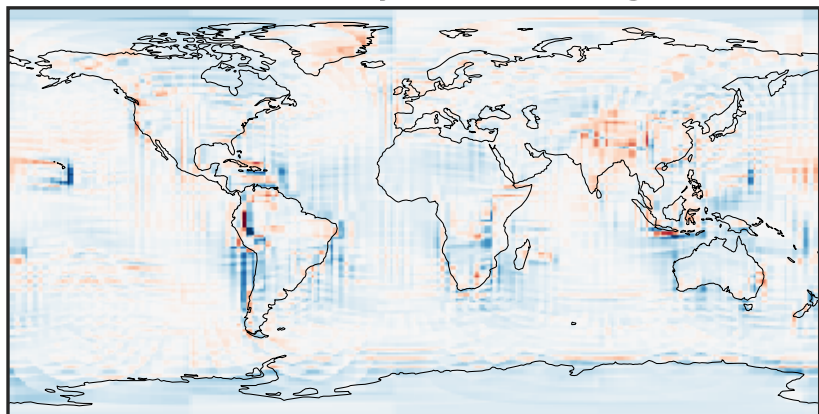
-5.6 -2.8 0.0 2.8 5.6
 $\mu\text{g}/\text{m}^3$

Difference (1x1.25)
Dev - Ref, Restricted Range [5%,95%]



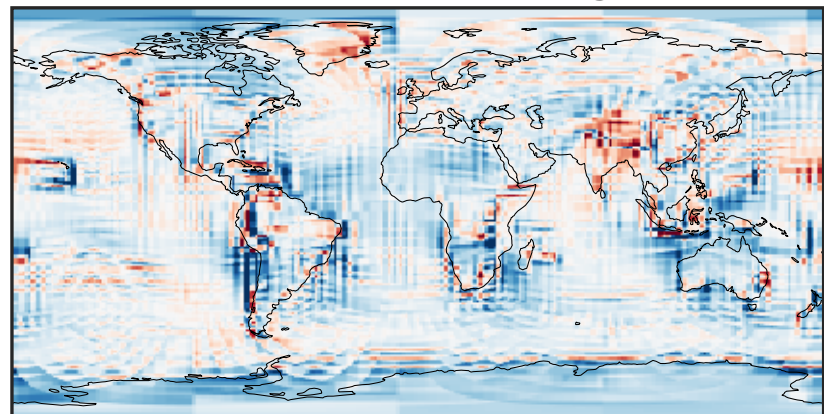
-0.148 -0.074 0.000 0.074 0.148
 $\mu\text{g}/\text{m}^3$

Ratio (1x1.25)
Dev/Ref, Dynamic Range



0.227 0.614 1.000 2.701 4.403
unitless

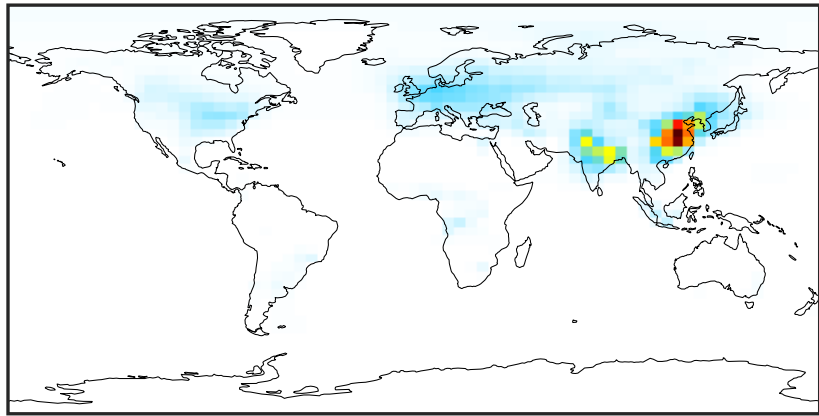
Ratio (1x1.25)
Dev/Ref, Fixed Range



0.50 0.75 1.00 1.50 2.00
unitless

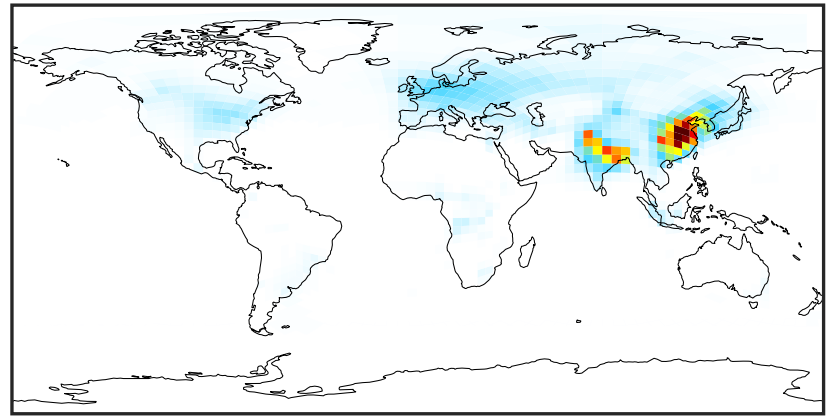
SpeciesConcVV_NIT (AnnualMean)

GCC_14.2.0 (Ref)
4.0x5.0



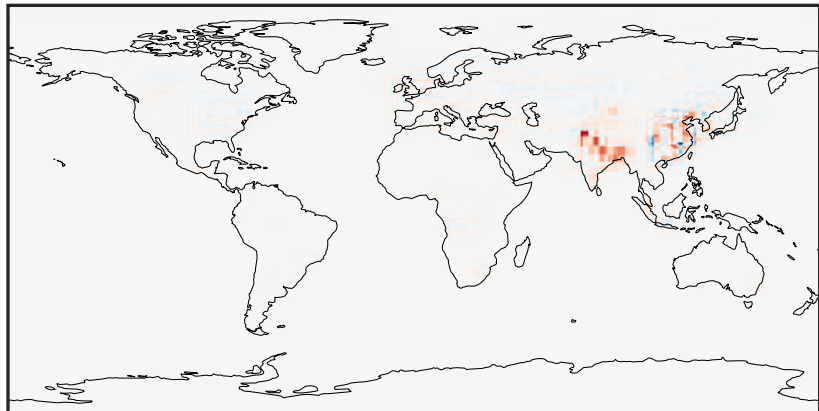
0.00 5.18 10.36 15.54 20.72
µg/m3

GCHP_14.2.0 (Dev)
c24



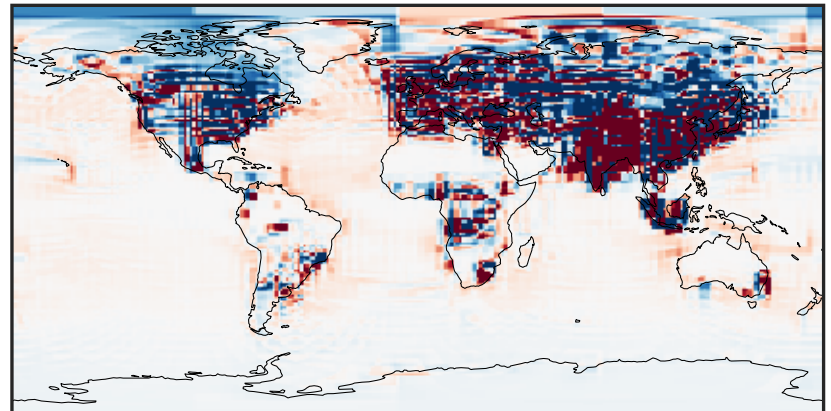
0.00 5.18 10.36 15.54 20.72
µg/m3

Difference (1x1.25)
Dev - Ref, Dynamic Range



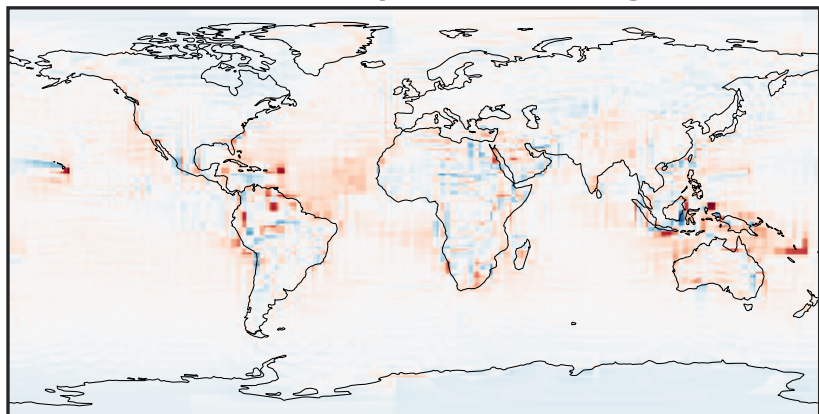
-9.73 -4.87 0.00 4.87 9.73
µg/m3

Difference (1x1.25)
Dev - Ref, Restricted Range [5%,95%]



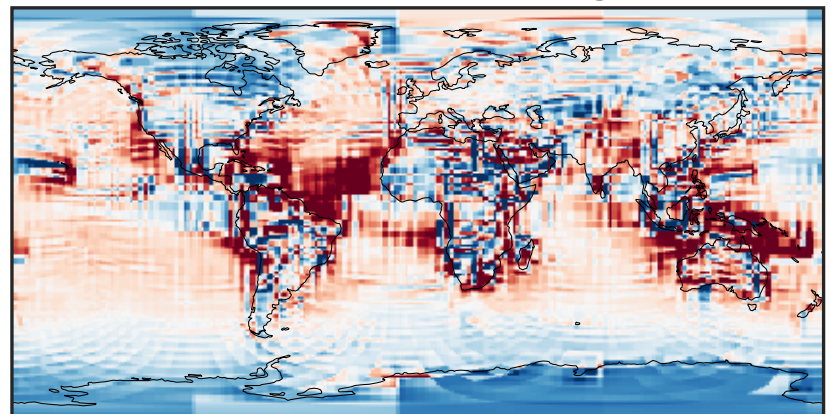
-0.12 -0.06 0.00 0.06 0.12
µg/m3

Ratio (1x1.25)
Dev/Ref, Dynamic Range



1e-01 1 10
unitless

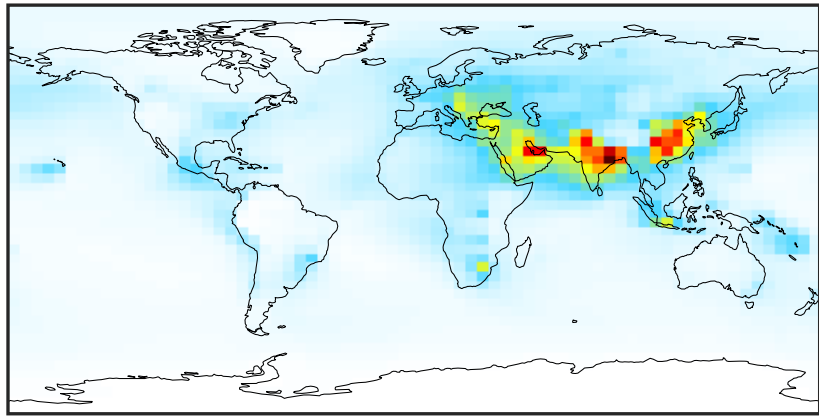
Ratio (1x1.25)
Dev/Ref, Fixed Range



0.50 0.75 1.00 1.50 2.00
unitless

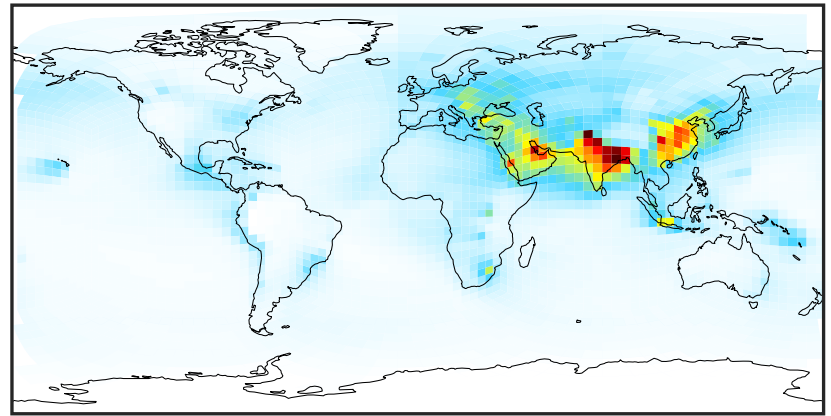
SpeciesConcVV_SO4 (AnnualMean)

GCC_14.2.0 (Ref)
4.0x5.0



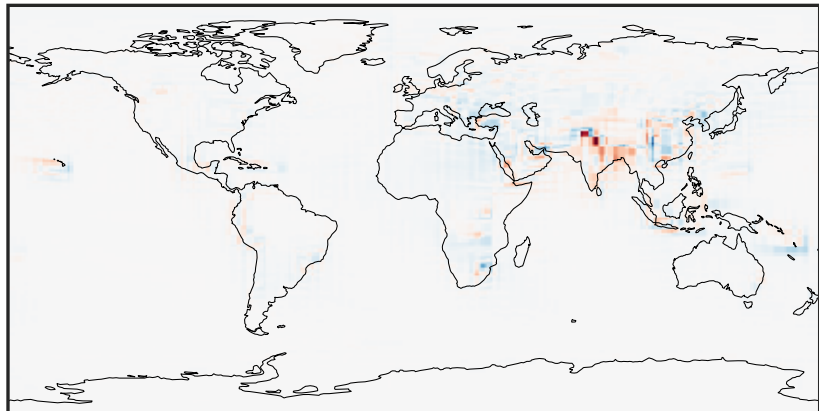
0.11 3.75 7.50 11.26 15.11
 $\mu\text{g}/\text{m}^3$

GCHP_14.2.0 (Dev)
c24



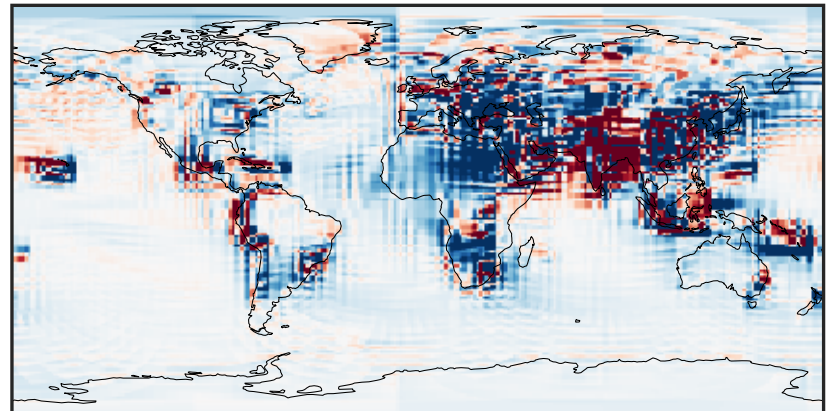
0.11 3.75 7.50 11.26 15.11
 $\mu\text{g}/\text{m}^3$

Difference (1x1.25)
Dev - Ref, Dynamic Range



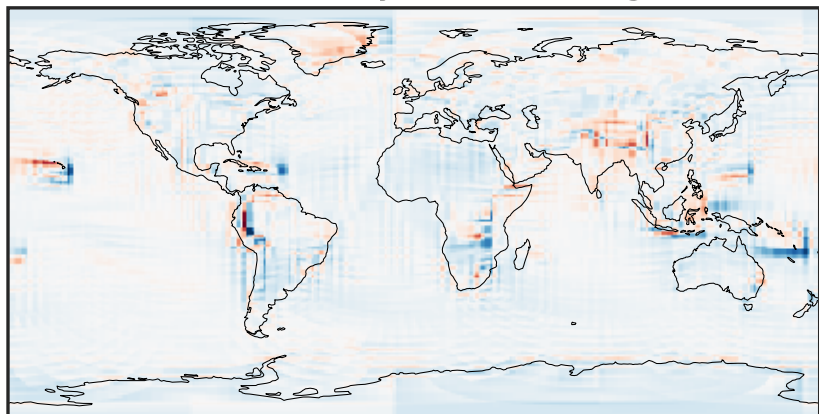
-7.34 -3.67 0.00 3.67 7.34
 $\mu\text{g}/\text{m}^3$

Difference (1x1.25)
Dev - Ref, Restricted Range [5%,95%]



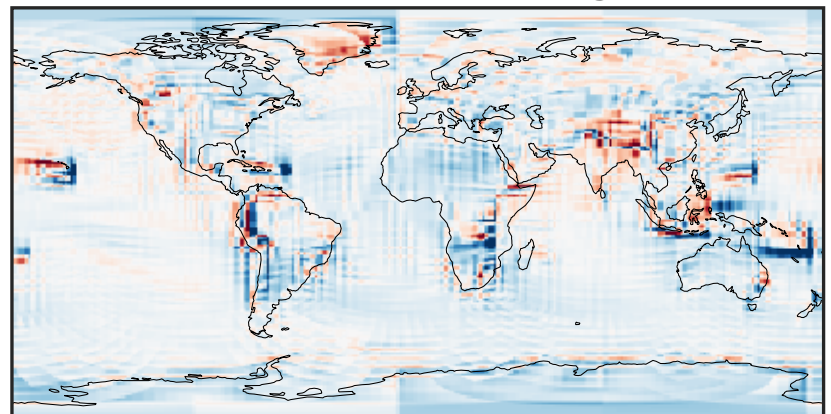
-0.3401 -0.1701 0.0000 0.1701 0.3401
 $\mu\text{g}/\text{m}^3$

Ratio (1x1.25)
Dev/Ref, Dynamic Range



0.258 0.629 1.000 2.441 3.883
unitless

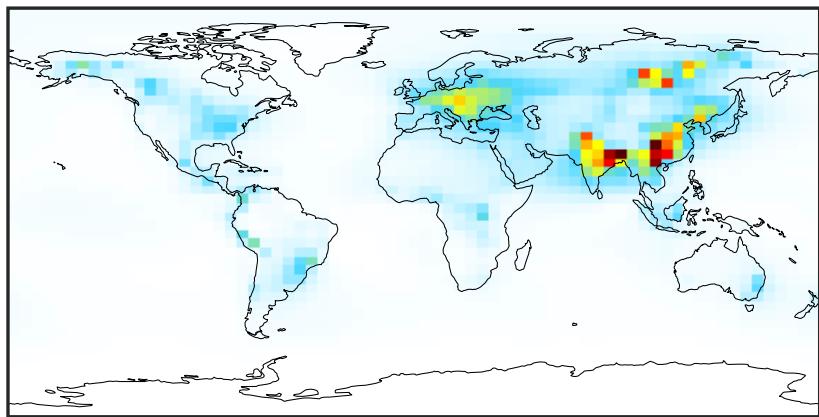
Ratio (1x1.25)
Dev/Ref, Fixed Range



0.50 0.75 1.00 1.50 2.00
unitless

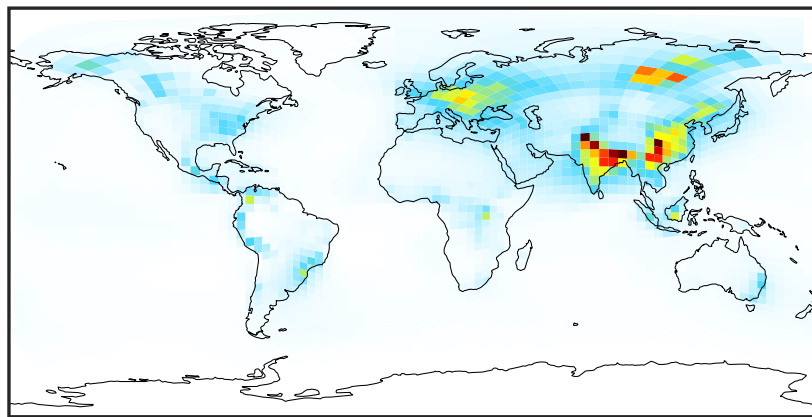
SpeciesConcVV_HMS (AnnualMean)

GCC_14.2.0 (Ref)
4.0x5.0



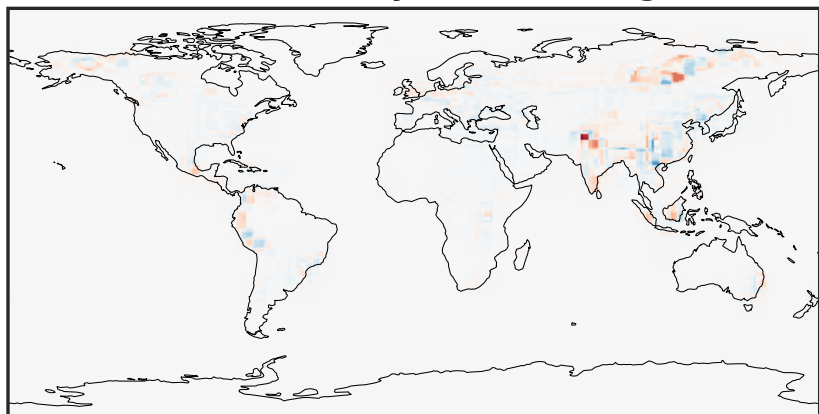
0.002 0.521 1.042 1.563 2.087
 $\mu\text{g}/\text{m}^3$

GCHP_14.2.0 (Dev)
c24



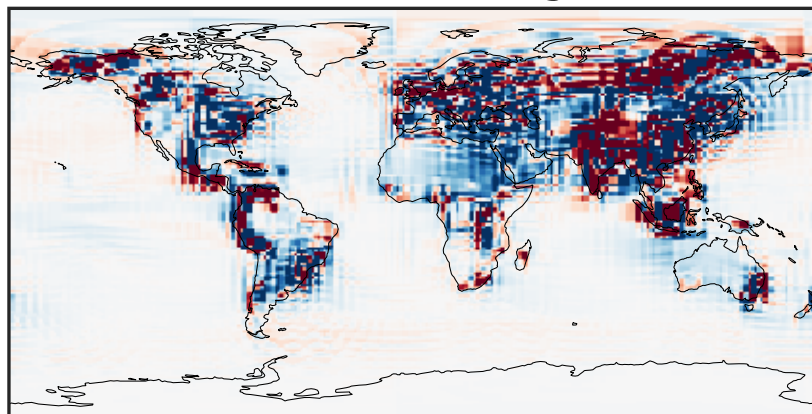
0.002 0.521 1.042 1.563 2.087
 $\mu\text{g}/\text{m}^3$

Difference (1x1.25)
Dev - Ref, Dynamic Range



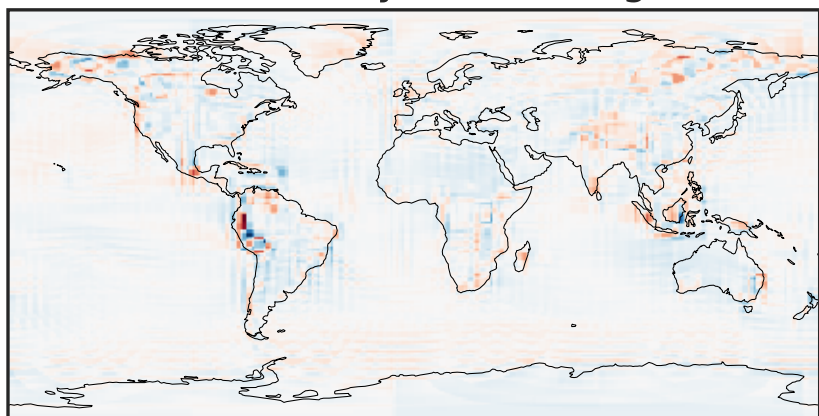
-1.655 -0.827 0.000 0.827 1.655
 $\mu\text{g}/\text{m}^3$

Difference (1x1.25)
Dev - Ref, Restricted Range [5%,95%]



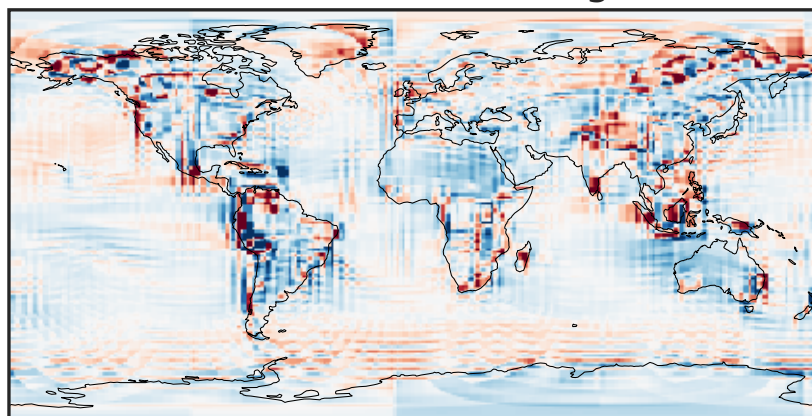
-0.02 0.00 0.02
 $\mu\text{g}/\text{m}^3$

Ratio (1x1.25)
Dev/Ref, Dynamic Range



1e-01 1 10
unitless

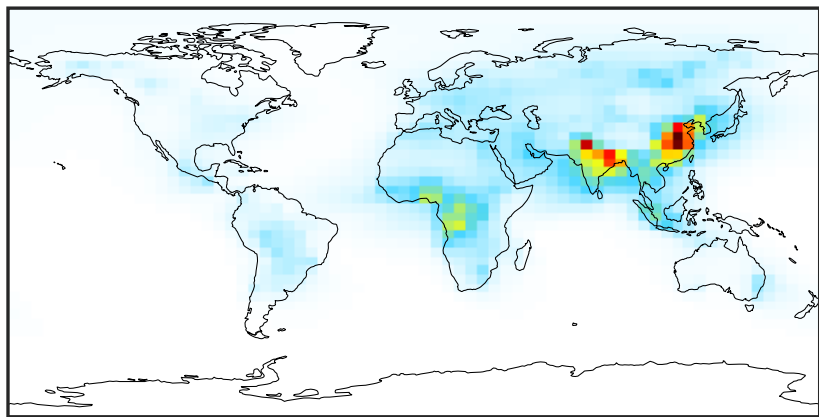
Ratio (1x1.25)
Dev/Ref, Fixed Range



0.50 0.75 1.00 1.50 2.00
unitless

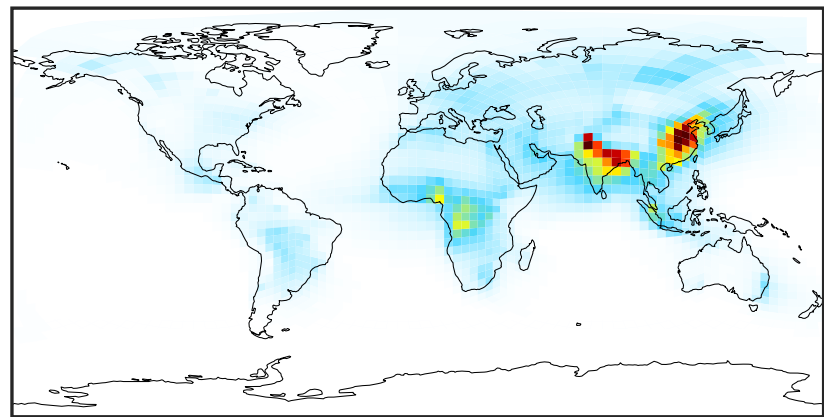
SpeciesConcVV_BCPI (AnnualMean)

GCC_14.2.0 (Ref)
4.0x5.0



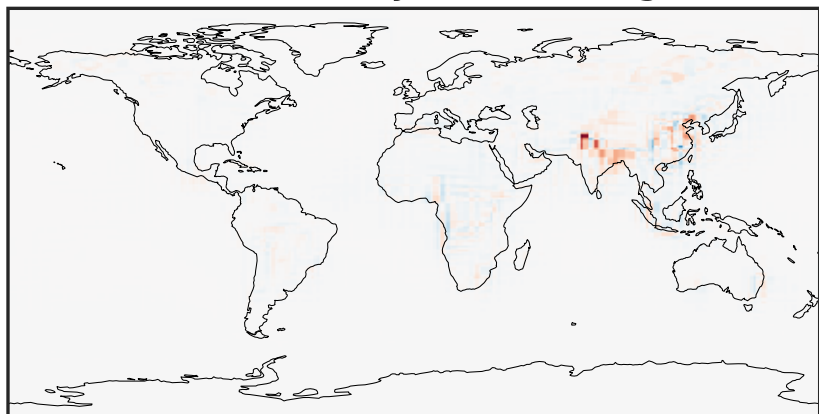
0.000 0.480 0.959 1.439 1.919
 $\mu\text{g}/\text{m}^3$

GCHP_14.2.0 (Dev)
c24



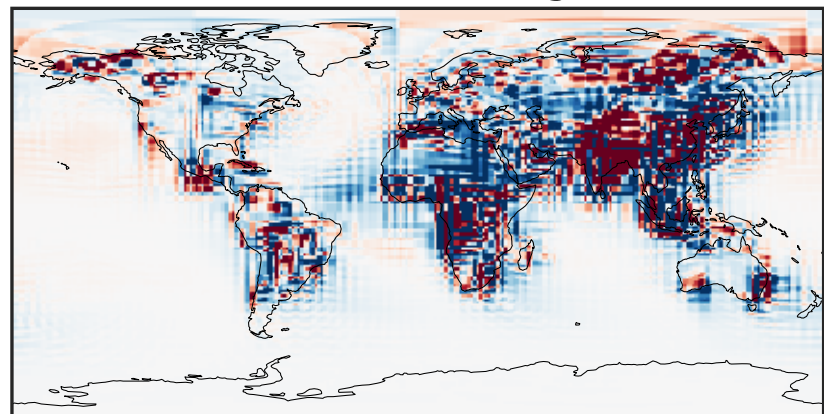
0.000 0.480 0.959 1.439 1.919
 $\mu\text{g}/\text{m}^3$

Difference (1x1.25)
Dev - Ref, Dynamic Range



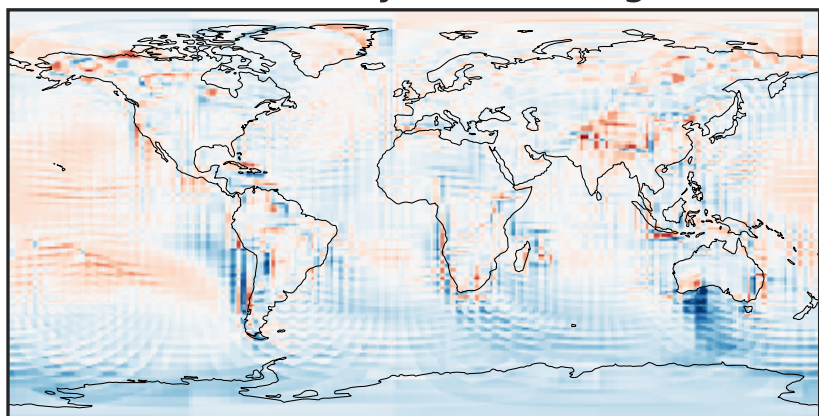
-1.144 -0.572 0.000 0.572 1.144
 $\mu\text{g}/\text{m}^3$

Difference (1x1.25)
Dev - Ref, Restricted Range [5%,95%]



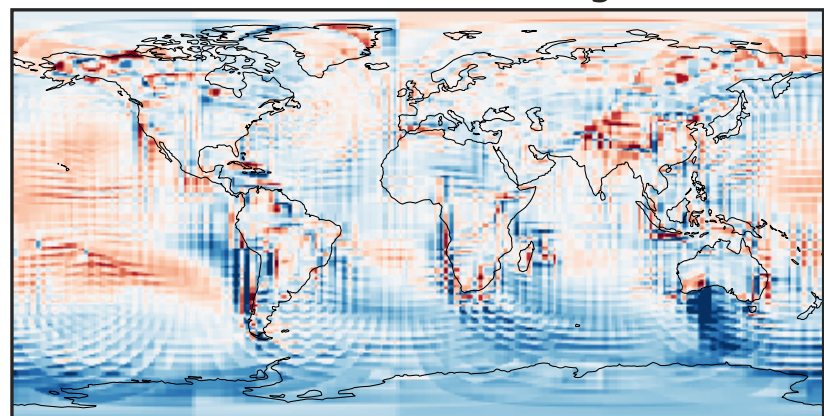
-0.015 0.000 0.015
 $\mu\text{g}/\text{m}^3$

Ratio (1x1.25)
Dev/Ref, Dynamic Range



0.292 0.646 1.000 2.215 3.429
unitless

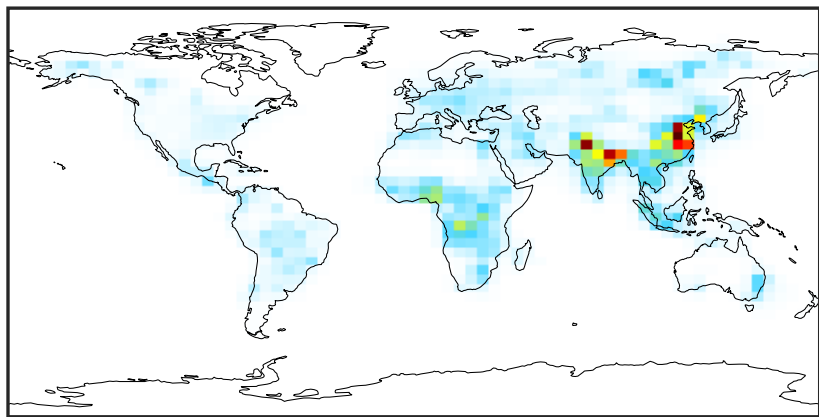
Ratio (1x1.25)
Dev/Ref, Fixed Range



0.50 0.75 1.00 1.50 2.00
unitless

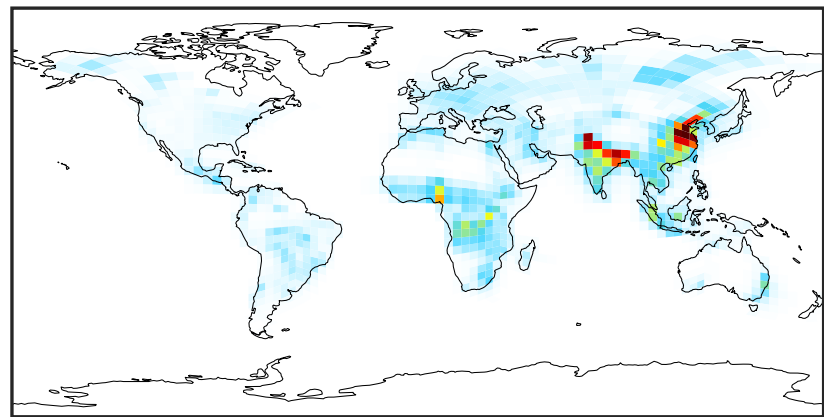
SpeciesConcVV_BCPO (AnnualMean)

GCC_14.2.0 (Ref)
4.0x5.0



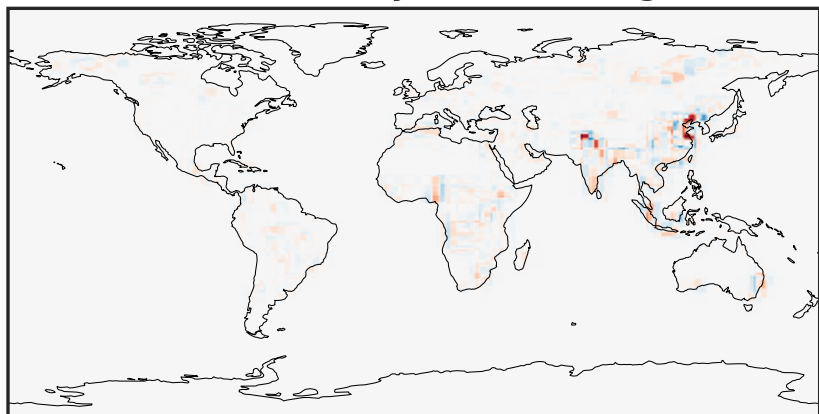
0.000 0.361 0.722 1.084 1.445
µg/m3

GCHP_14.2.0 (Dev)
c24



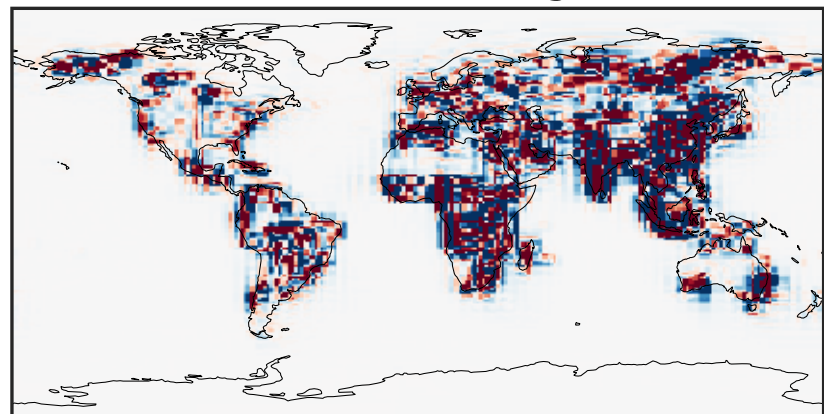
0.000 0.361 0.722 1.084 1.445
µg/m3

Difference (1x1.25)
Dev - Ref, Dynamic Range



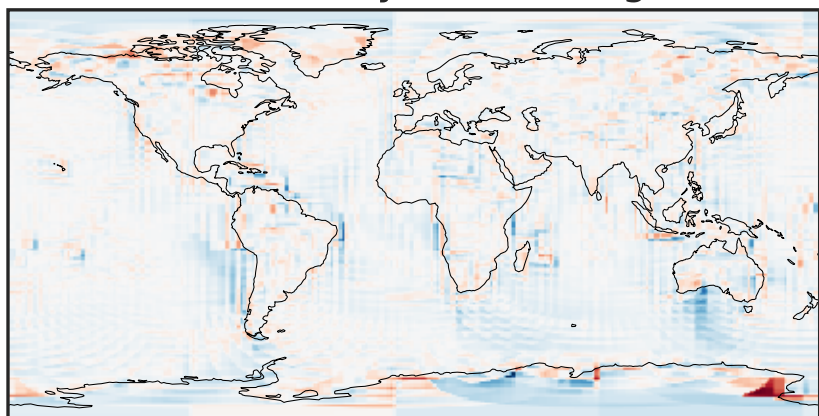
-0.821 -0.411 0.000 0.411 0.821
µg/m3

Difference (1x1.25)
Dev - Ref, Restricted Range [5%,95%]



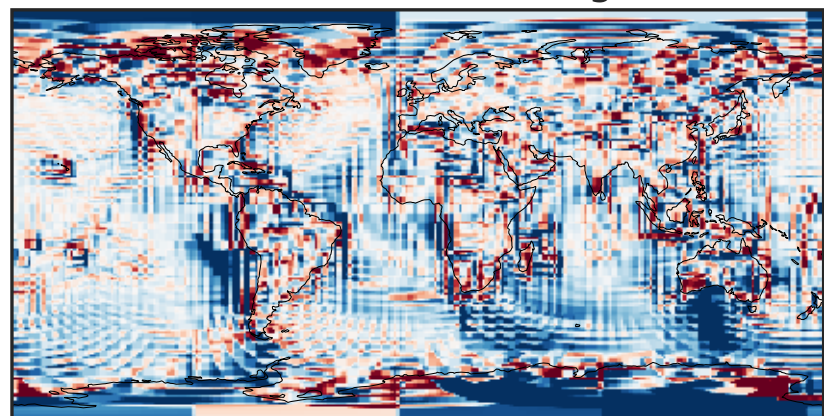
-0.01 0.00 0.01
µg/m3

Ratio (1x1.25)
Dev/Ref, Dynamic Range



1e-01 1 10
unitless

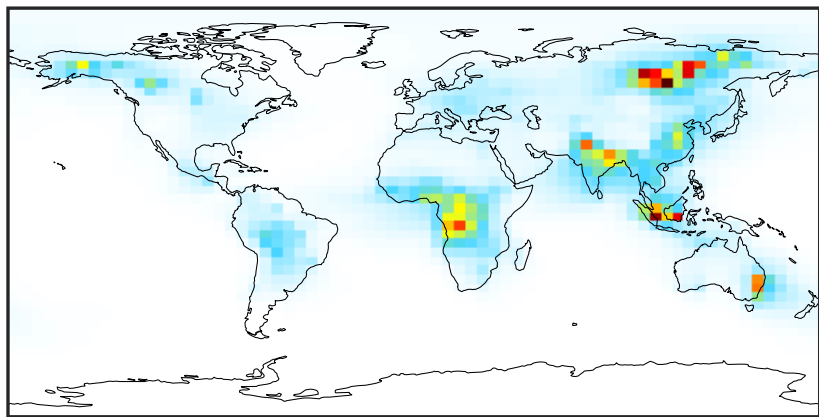
Ratio (1x1.25)
Dev/Ref, Fixed Range



0.50 0.75 1.00 1.50 2.00
unitless

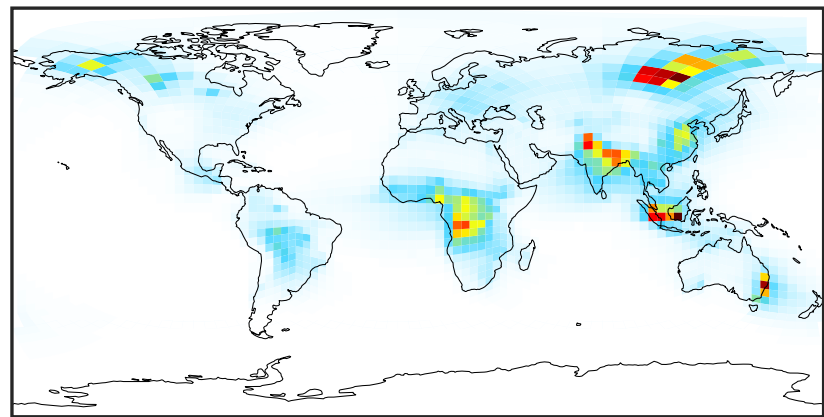
SpeciesConcVV_OCPI (AnnualMean)

GCC_14.2.0 (Ref)
4.0x5.0



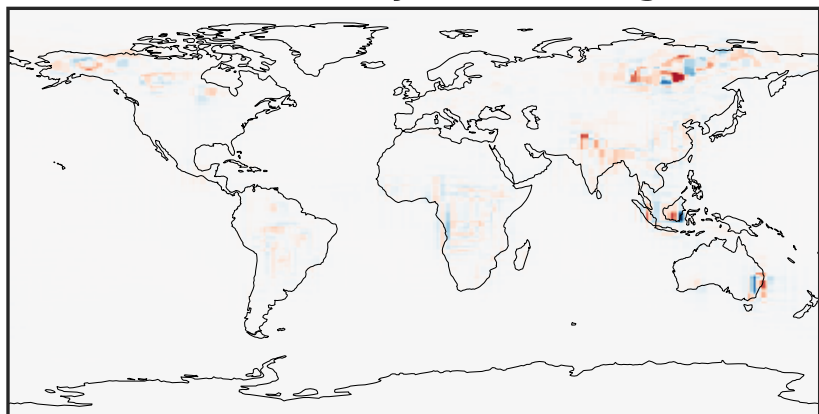
0.001 2.337 4.673 7.010 9.348
 $\mu\text{g}/\text{m}^3$

GCHP_14.2.0 (Dev)
c24



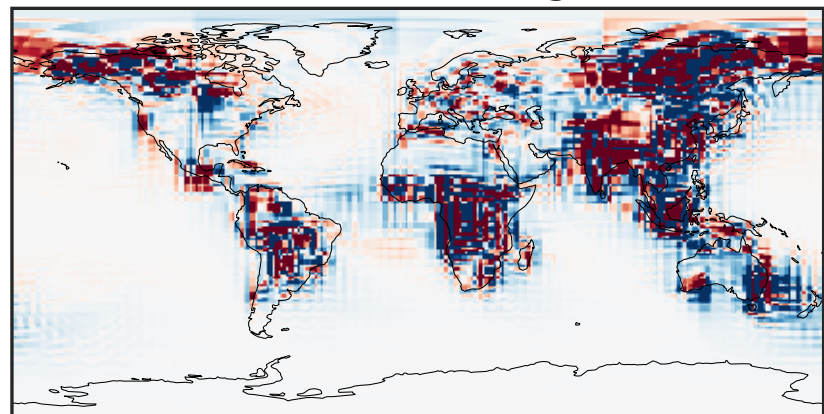
0.001 2.337 4.673 7.010 9.348
 $\mu\text{g}/\text{m}^3$

Difference (1x1.25)
Dev - Ref, Dynamic Range



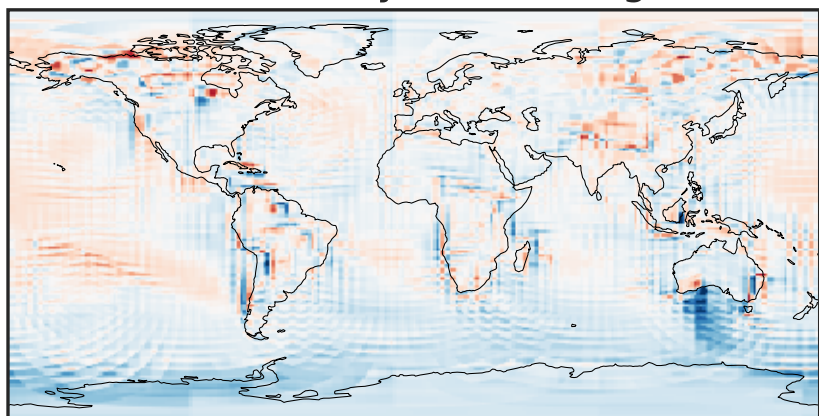
-6.2 -3.1 0.0 3.1 6.2
 $\mu\text{g}/\text{m}^3$

Difference (1x1.25)
Dev - Ref, Restricted Range [5%,95%]



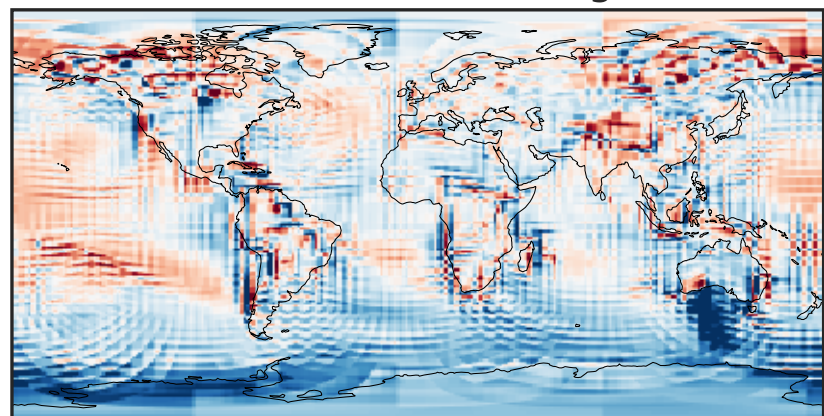
-0.1409 -0.0705 0.0000 0.0705 0.1409
 $\mu\text{g}/\text{m}^3$

Ratio (1x1.25)
Dev/Ref, Dynamic Range



0.207 0.603 1.000 2.920 4.839
unitless

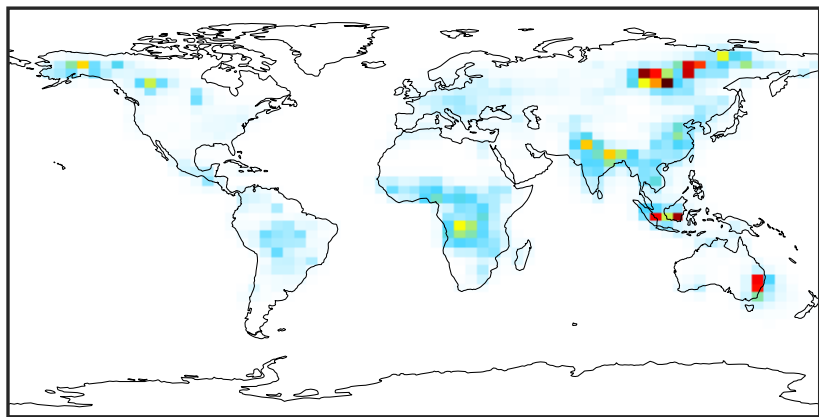
Ratio (1x1.25)
Dev/Ref, Fixed Range



0.50 0.75 1.00 1.50 2.00
unitless

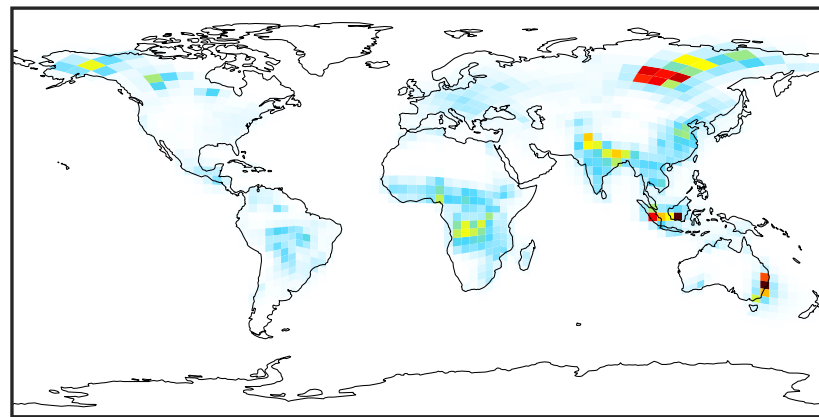
SpeciesConcVV_OCPO (AnnualMean)

GCC_14.2.0 (Ref)
4.0x5.0



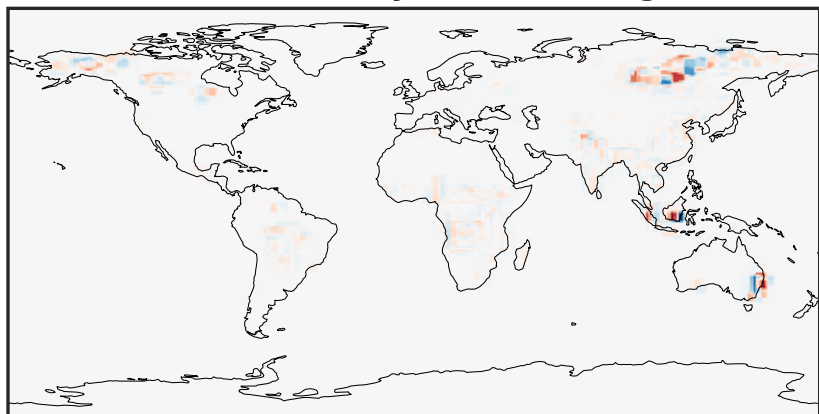
0.000 1.107 2.214 3.321 4.428
µg/m3

GCHP_14.2.0 (Dev)
c24



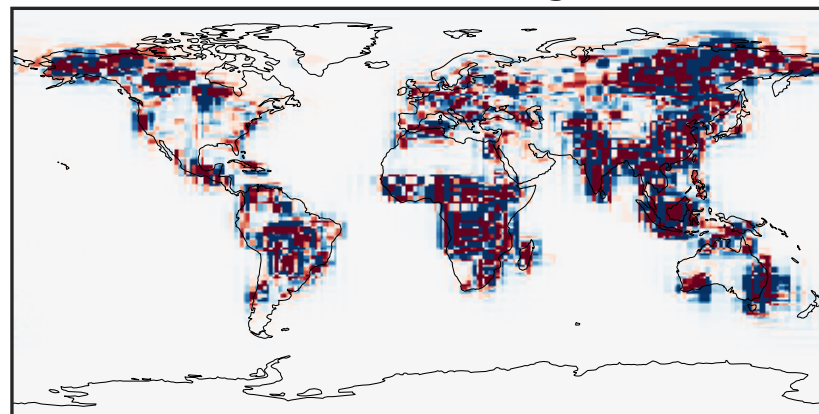
0.000 1.107 2.214 3.321 4.428
µg/m3

Difference (1x1.25)
Dev - Ref, Dynamic Range



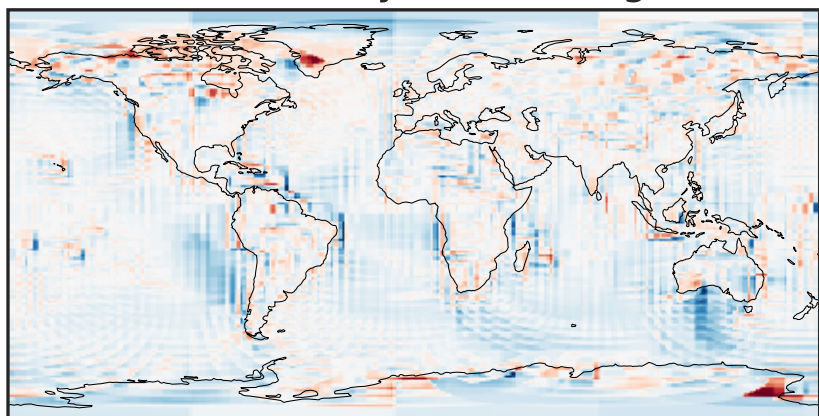
-3.654 -1.827 0.000 1.827 3.654
µg/m3

Difference (1x1.25)
Dev - Ref, Restricted Range [5%,95%]



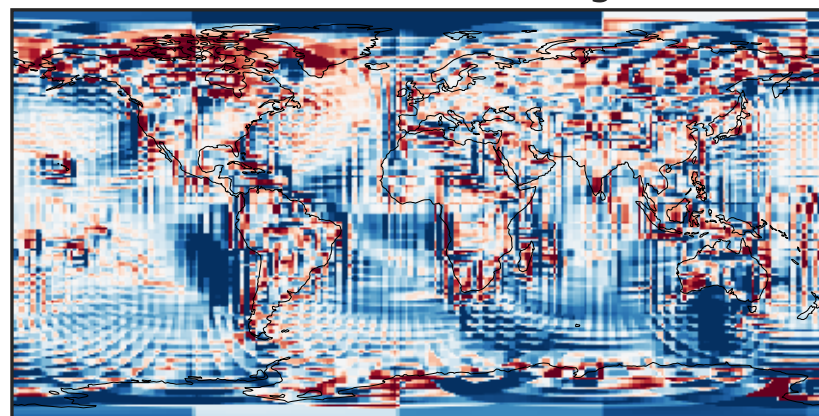
-0.0537 -0.0269 0.0000 0.0269 0.0537
µg/m3

Ratio (1x1.25)
Dev/Ref, Dynamic Range



1e-01 1 10
unitless

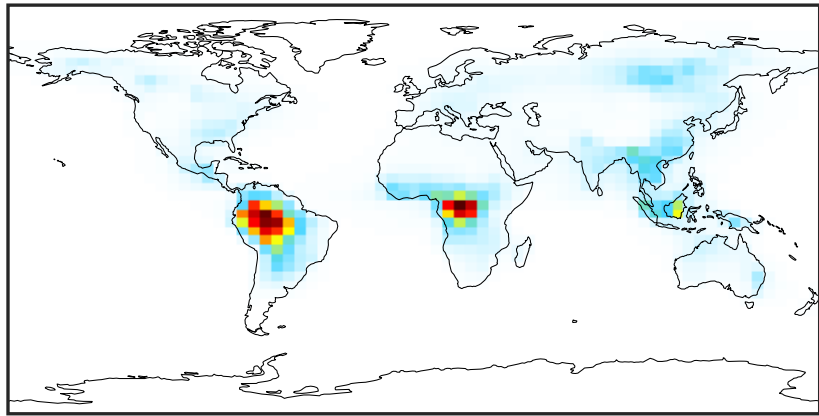
Ratio (1x1.25)
Dev/Ref, Fixed Range



0.50 0.75 1.00 1.50 2.00
unitless

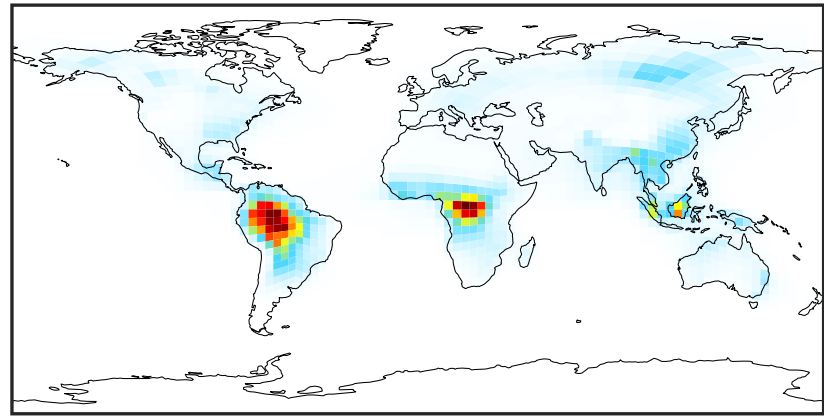
SpeciesConcVV_Complex_SOA (AnnualMean)

GCC_14.2.0 (Ref)
4.0x5.0



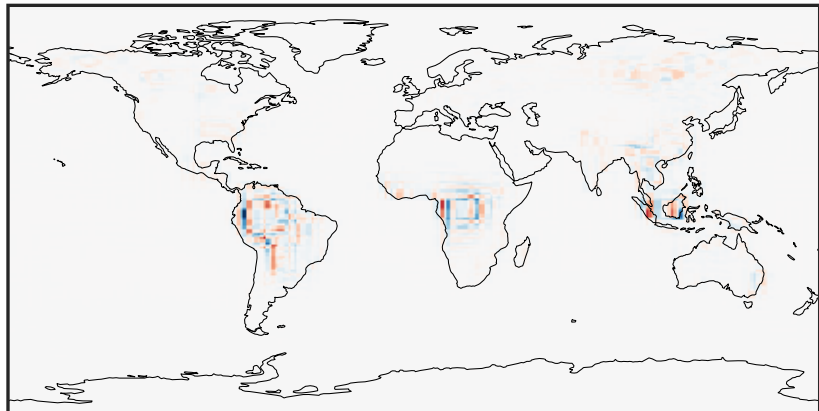
0.001 1.700 3.401 5.101 6.802
 $\mu\text{g}/\text{m}^3$

GCHP_14.2.0 (Dev)
c24



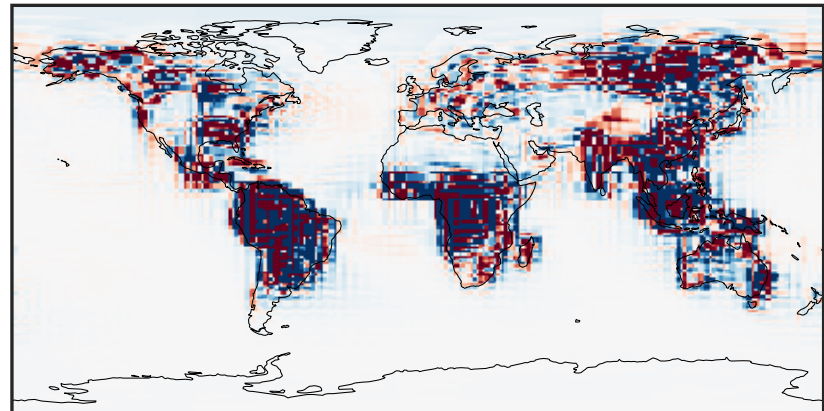
0.001 1.700 3.401 5.101 6.802
 $\mu\text{g}/\text{m}^3$

Difference (1x1.25)
Dev - Ref, Dynamic Range



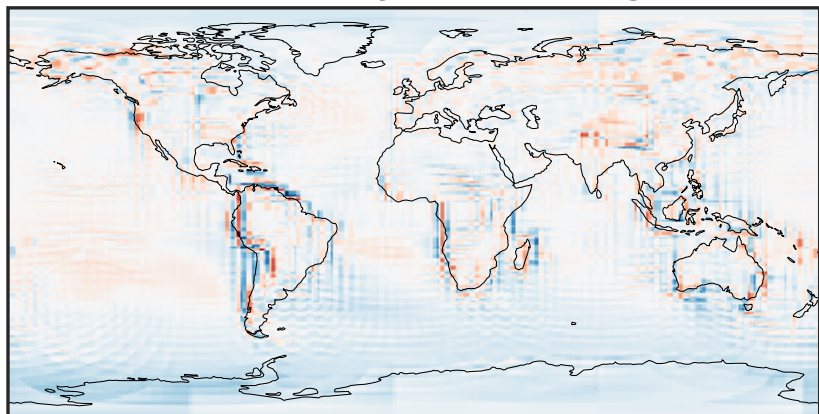
-2.617 -1.308 0.000 1.308 2.617
 $\mu\text{g}/\text{m}^3$

Difference (1x1.25)
Dev - Ref, Restricted Range [5%,95%]



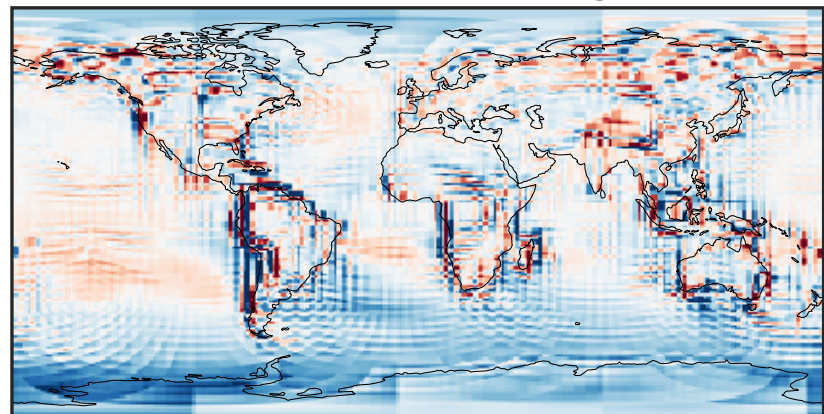
-0.025 0.000 0.025
 $\mu\text{g}/\text{m}^3$

Ratio (1x1.25)
Dev/Ref, Dynamic Range



0.158 0.579 1.000 3.666 6.333
unitless

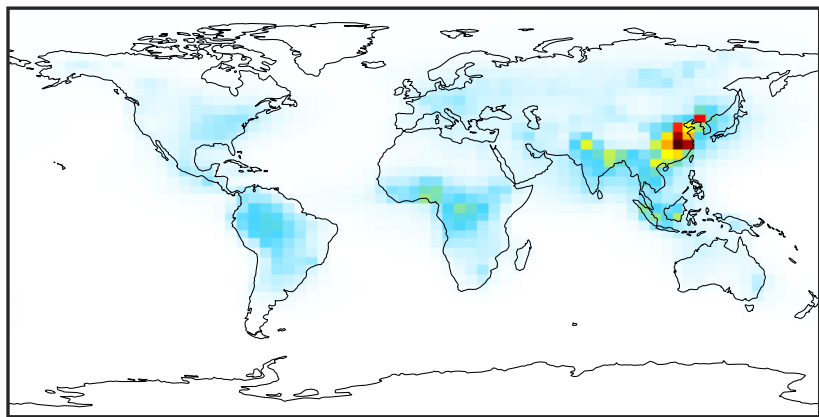
Ratio (1x1.25)
Dev/Ref, Fixed Range



0.50 0.75 1.00 1.50 2.00
unitless

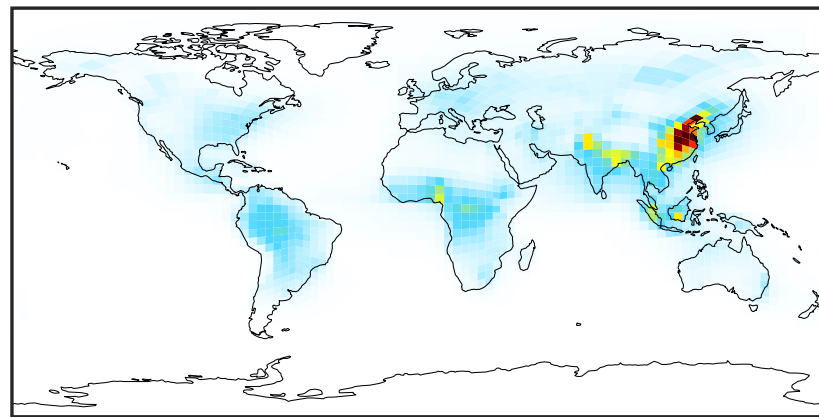
SpeciesConcVV_Simple_SOA (AnnualMean)

GCC_14.2.0 (Ref)
4.0x5.0



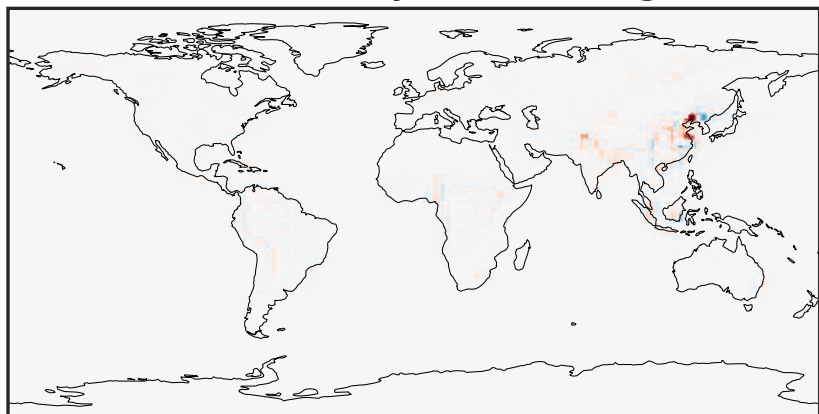
0.01 7.00 14.00 21.01 28.02
 $\mu\text{g}/\text{m}^3$

GCHP_14.2.0 (Dev)
c24



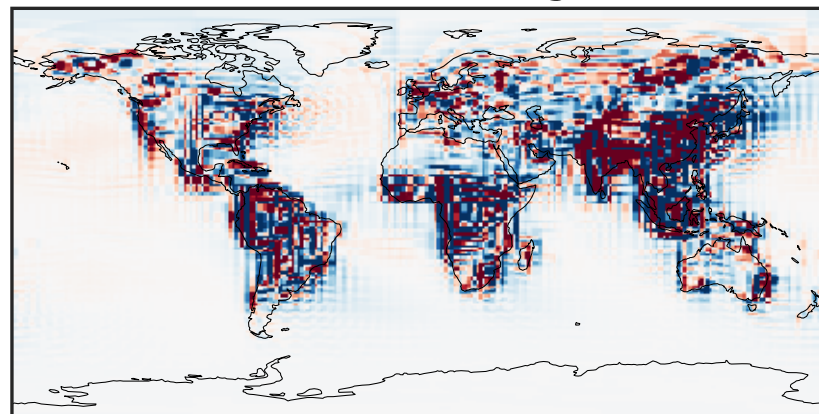
0.01 7.00 14.00 21.01 28.02
 $\mu\text{g}/\text{m}^3$

Difference (1x1.25)
Dev - Ref, Dynamic Range



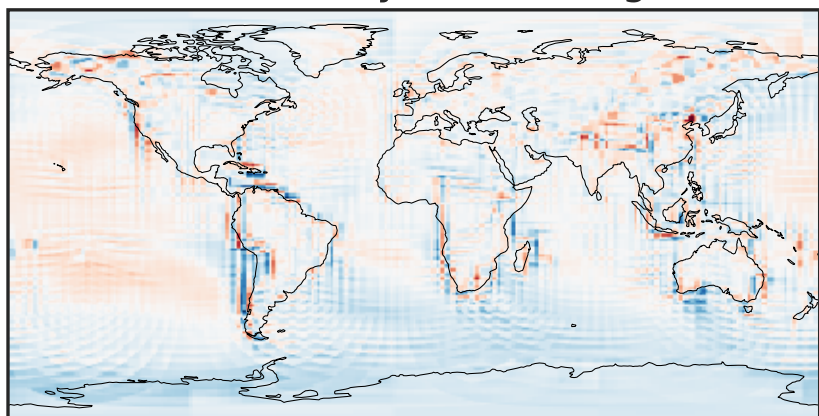
-22.91 -11.45 0.00 11.45 22.91
 $\mu\text{g}/\text{m}^3$

Difference (1x1.25)
Dev - Ref, Restricted Range [5%,95%]



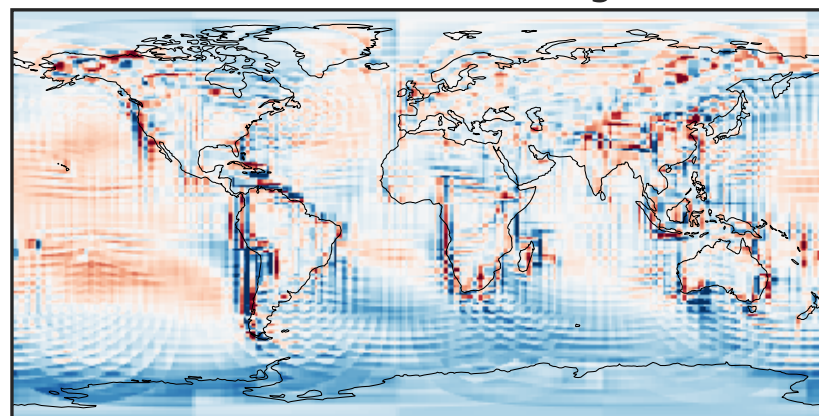
-0.2852 -0.1426 0.0000 0.1426 0.2852
 $\mu\text{g}/\text{m}^3$

Ratio (1x1.25)
Dev/Ref, Dynamic Range



0.231 0.615 1.000 2.667 4.334
unitless

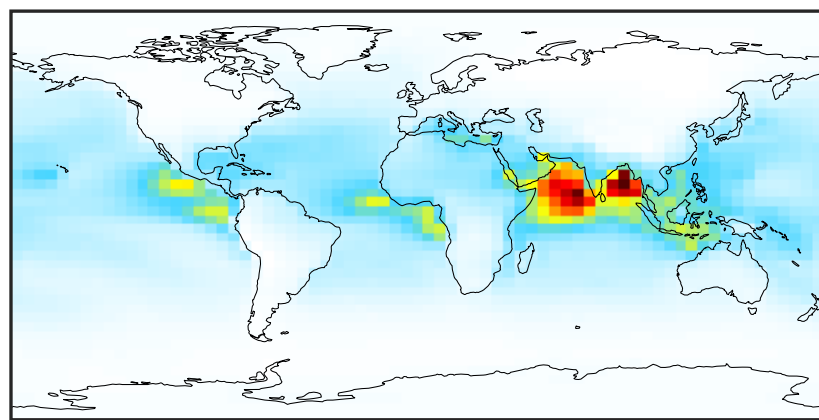
Ratio (1x1.25)
Dev/Ref, Fixed Range



0.50 0.75 1.00 1.50 2.00
unitless

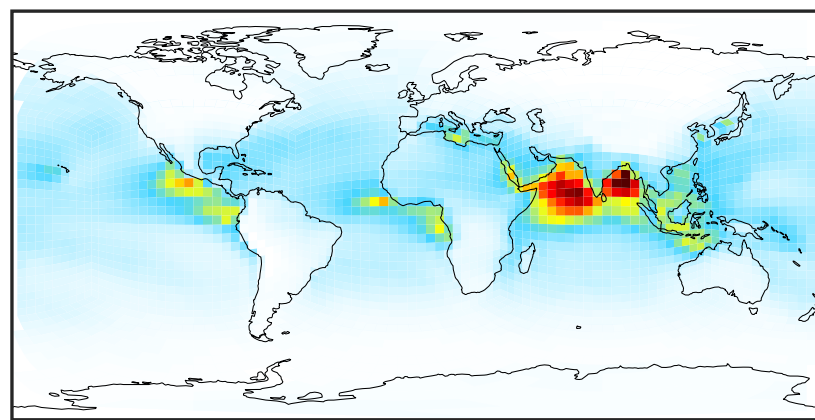
SpeciesConcVV_AERI (AnnualMean)

GCC_14.2.0 (Ref)
4.0x5.0



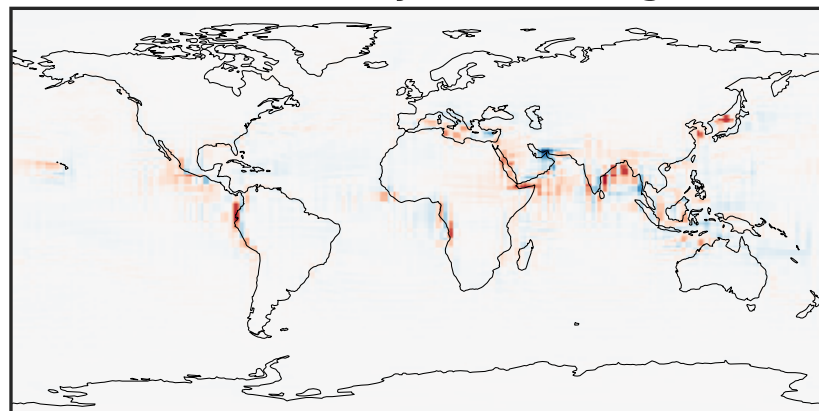
0.015 0.030
 $\mu\text{g}/\text{m}^3$

GCHP_14.2.0 (Dev)
c24



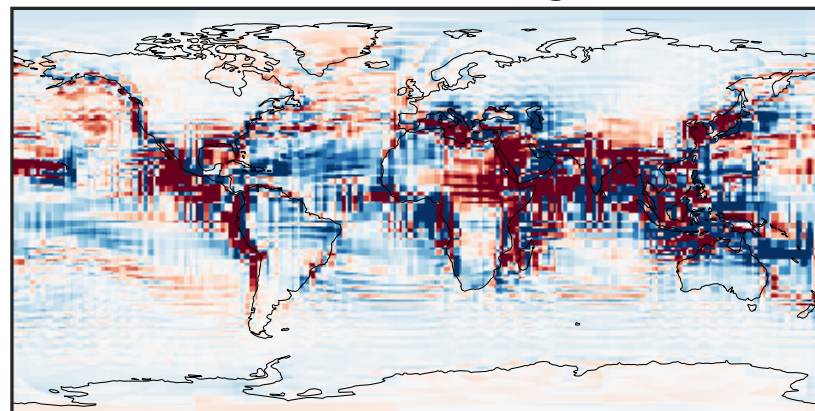
0.015 0.030
 $\mu\text{g}/\text{m}^3$

Difference (1x1.25)
Dev - Ref, Dynamic Range



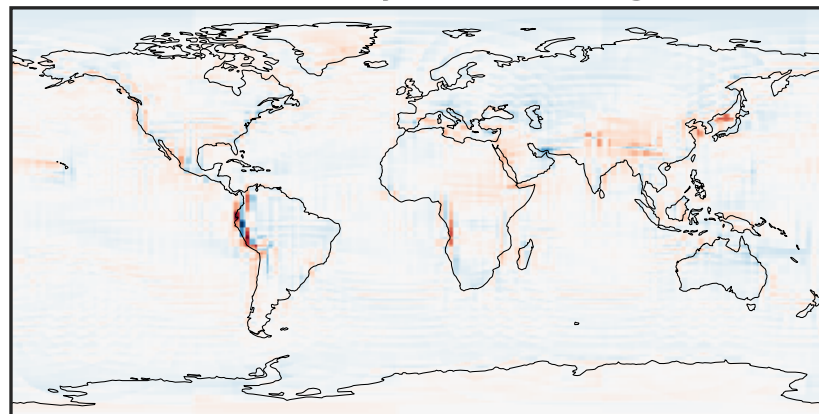
-0.008 0.000 0.008
 $\mu\text{g}/\text{m}^3$

Difference (1x1.25)
Dev - Ref, Restricted Range [5%,95%]



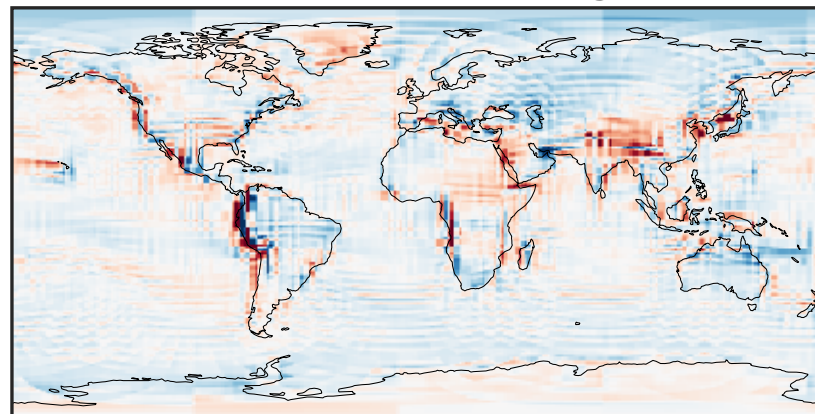
-0.0004 0.0000 0.0004
 $\mu\text{g}/\text{m}^3$

Ratio (1x1.25)
Dev/Ref, Dynamic Range



0.155 0.577 1.000 3.727 6.453
unitless

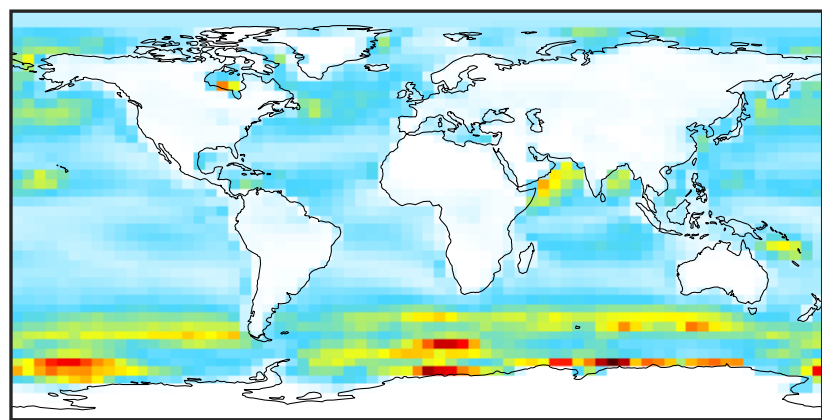
Ratio (1x1.25)
Dev/Ref, Fixed Range



0.50 0.75 1.00 1.50 2.00
unitless

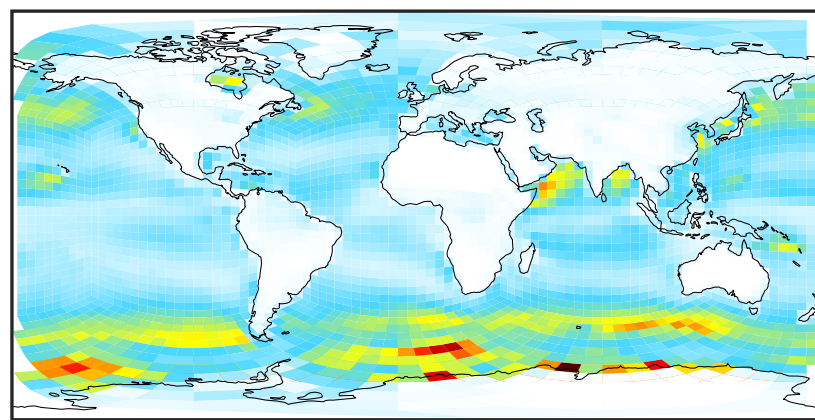
SpeciesConcVV_BrSALA (AnnualMean)

GCC_14.2.0 (Ref)
4.0x5.0



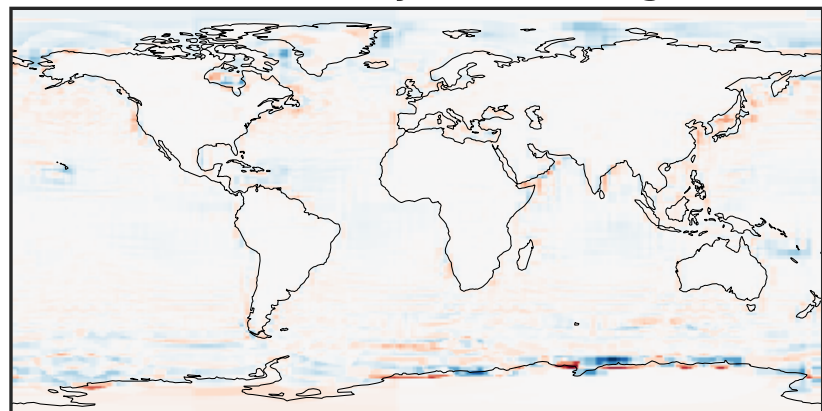
0.0015 0.0030 0.0045
 $\mu\text{g}/\text{m}^3$

GCHP_14.2.0 (Dev)
c24



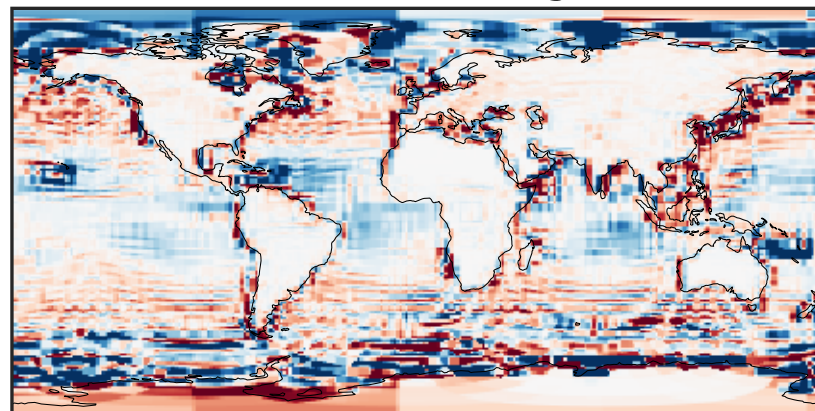
0.0015 0.0030 0.0045
 $\mu\text{g}/\text{m}^3$

Difference (1x1.25)
Dev - Ref, Dynamic Range



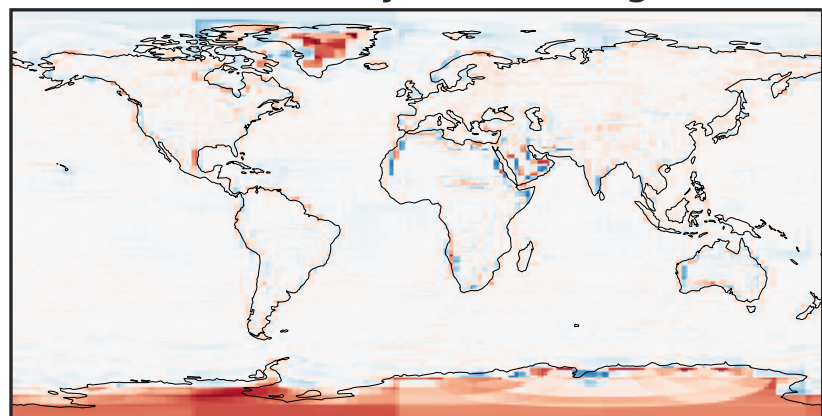
-0.0015 0.0000 0.0015
 $\mu\text{g}/\text{m}^3$

Difference (1x1.25)
Dev - Ref, Restricted Range [5%,95%]



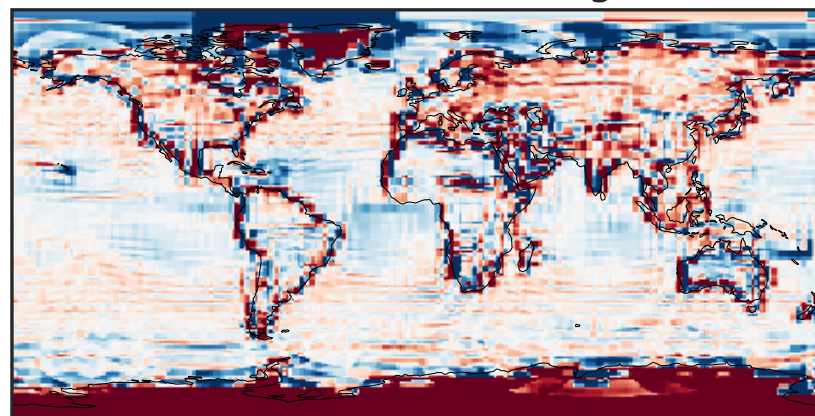
-0.0002 0.0000 0.0002
 $\mu\text{g}/\text{m}^3$

Ratio (1x1.25)
Dev/Ref, Dynamic Range



1e-02 1e-01 1 10 100
unitless

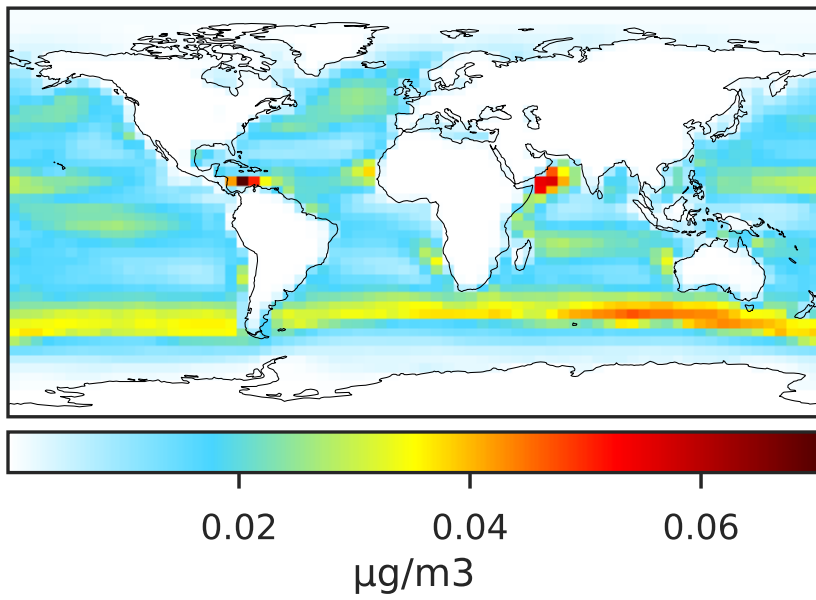
Ratio (1x1.25)
Dev/Ref, Fixed Range



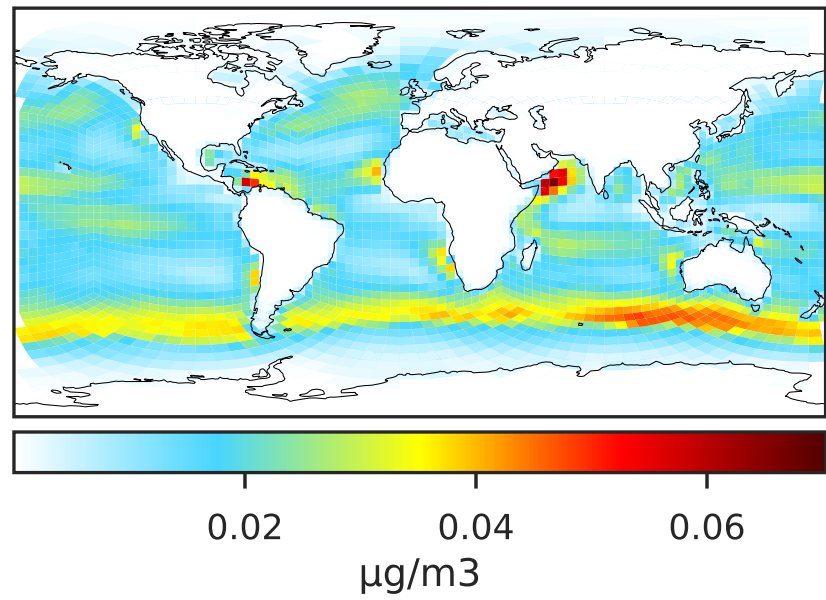
0.50 0.75 1.00 1.50 2.00
unitless

SpeciesConcVV_BrSALC (AnnualMean)

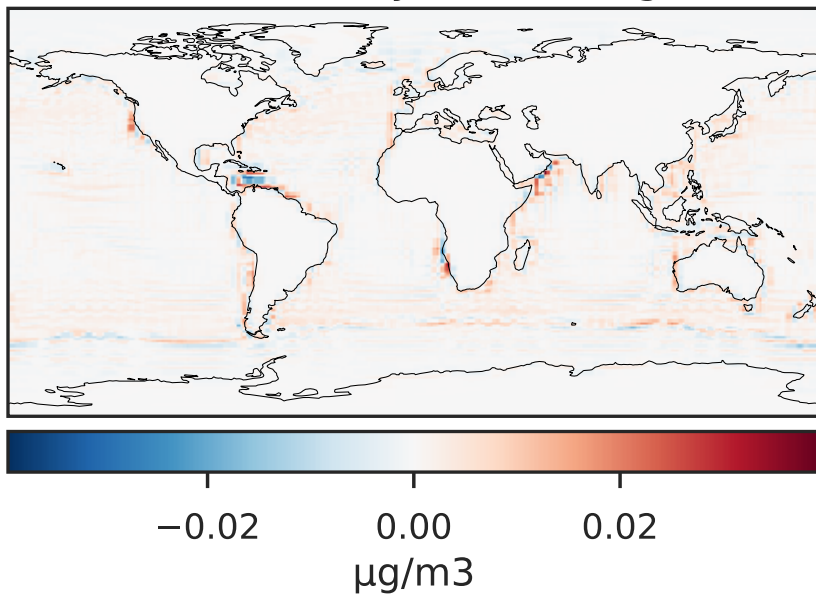
GCC_14.2.0 (Ref)
4.0x5.0



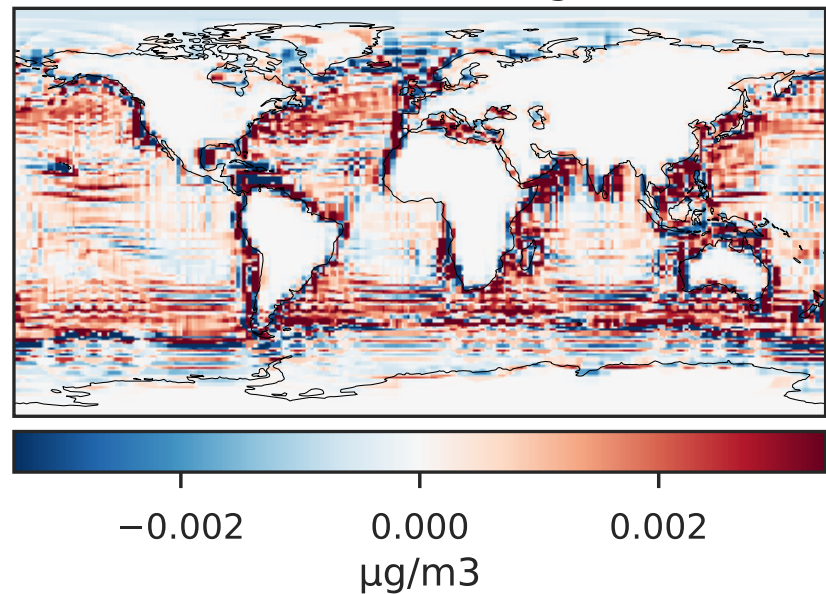
GCHP_14.2.0 (Dev)
c24



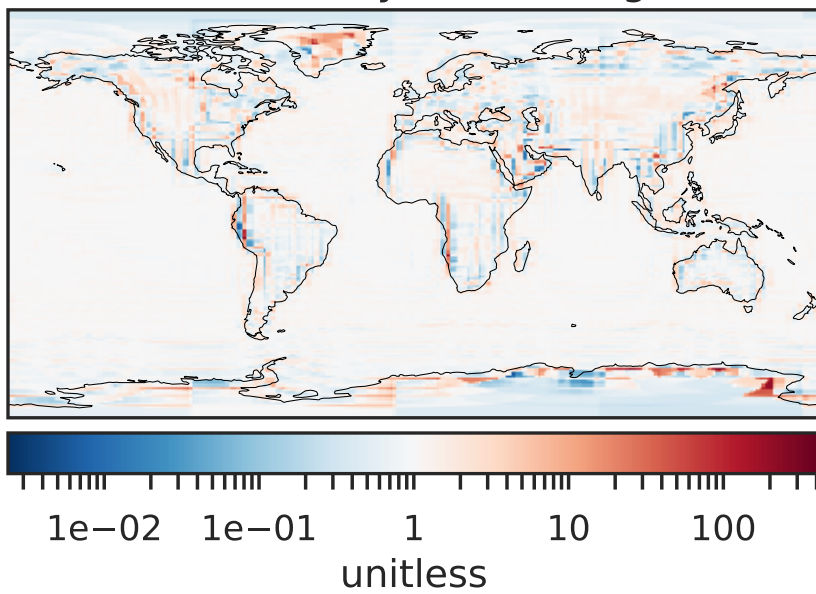
Difference (1x1.25)
Dev - Ref, Dynamic Range



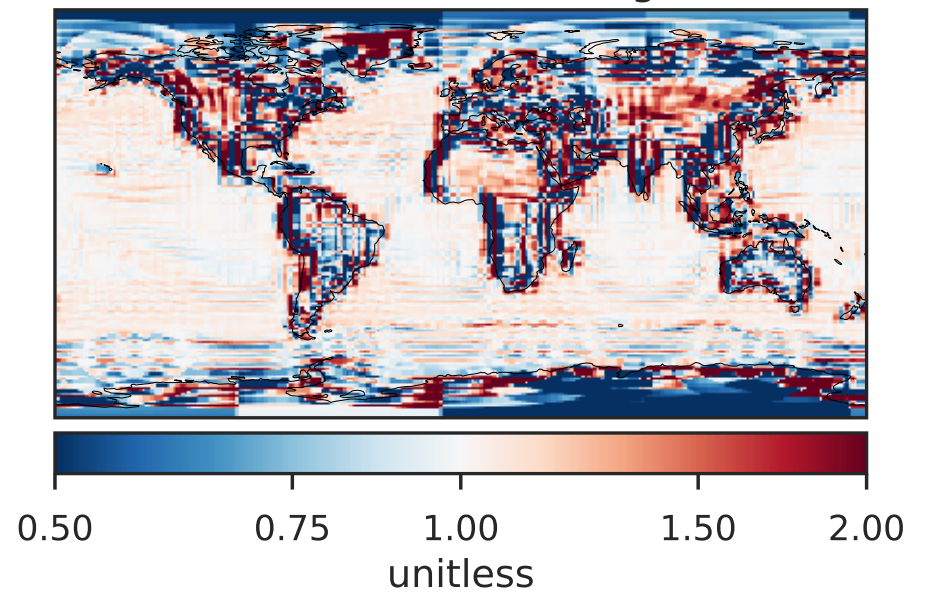
Difference (1x1.25)
Dev - Ref, Restricted Range [5%,95%]



Ratio (1x1.25)
Dev/Ref, Dynamic Range

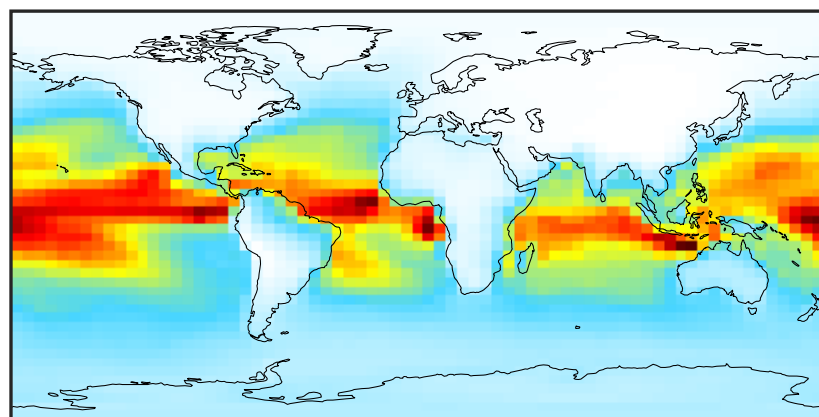


Ratio (1x1.25)
Dev/Ref, Fixed Range



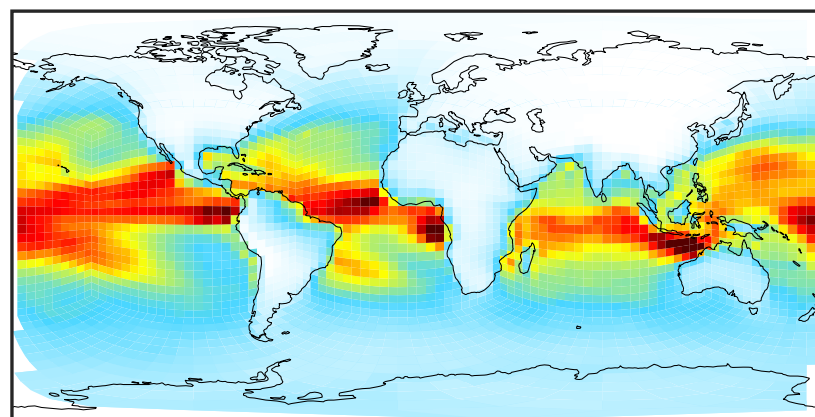
SpeciesConcVV_ISALA (AnnualMean)

GCC_14.2.0 (Ref)
4.0x5.0



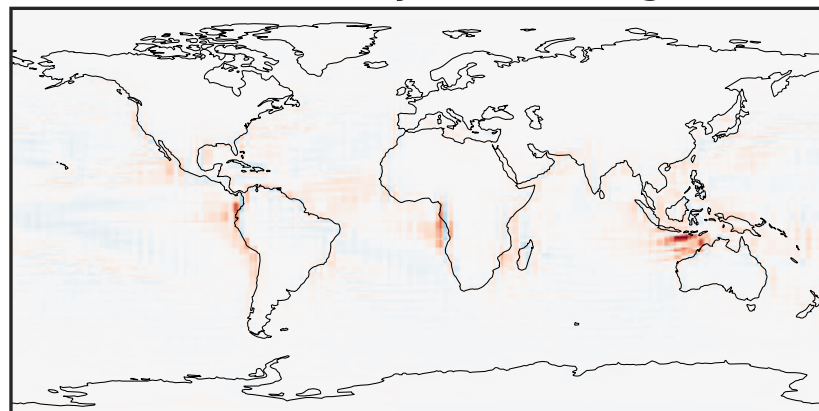
0.0015 0.0030 0.0045
 $\mu\text{g}/\text{m}^3$

GCHP_14.2.0 (Dev)
c24



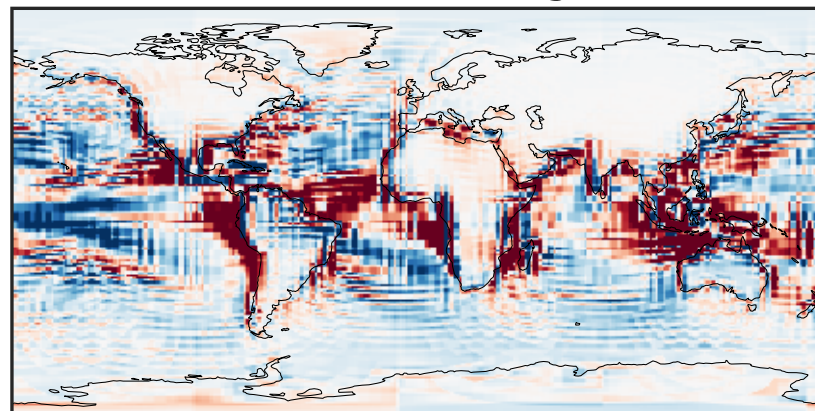
0.0015 0.0030 0.0045
 $\mu\text{g}/\text{m}^3$

Difference (1x1.25)
Dev - Ref, Dynamic Range



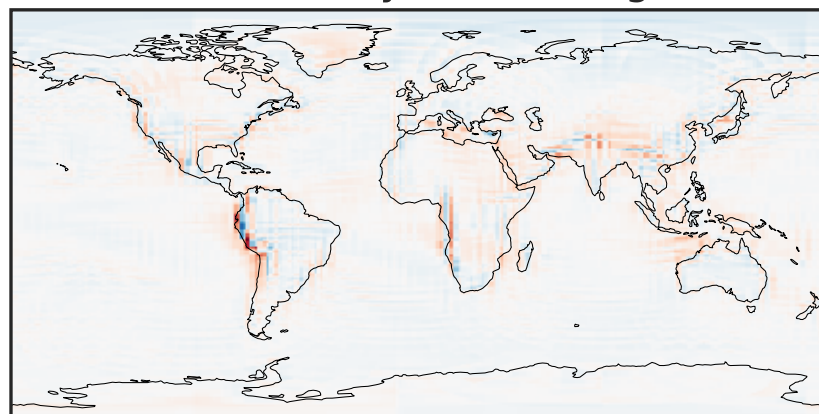
-0.0025 0.0000 0.0025
 $\mu\text{g}/\text{m}^3$

Difference (1x1.25)
Dev - Ref, Restricted Range [5%,95%]



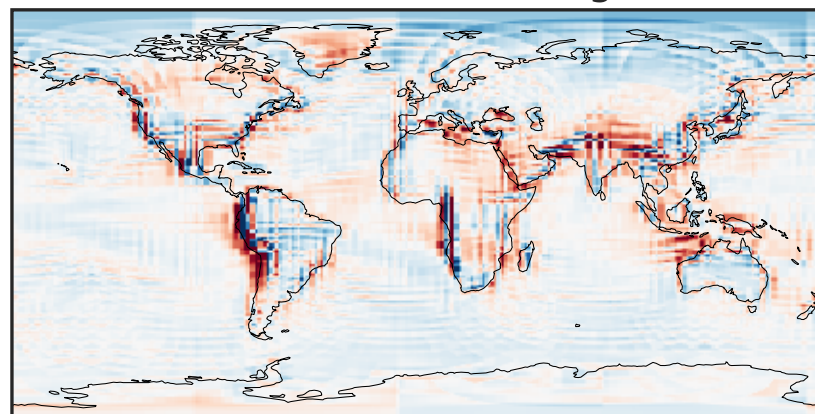
-0.00015 0.00000 0.00015
 $\mu\text{g}/\text{m}^3$

Ratio (1x1.25)
Dev/Ref, Dynamic Range



1e-01 1 10
unitless

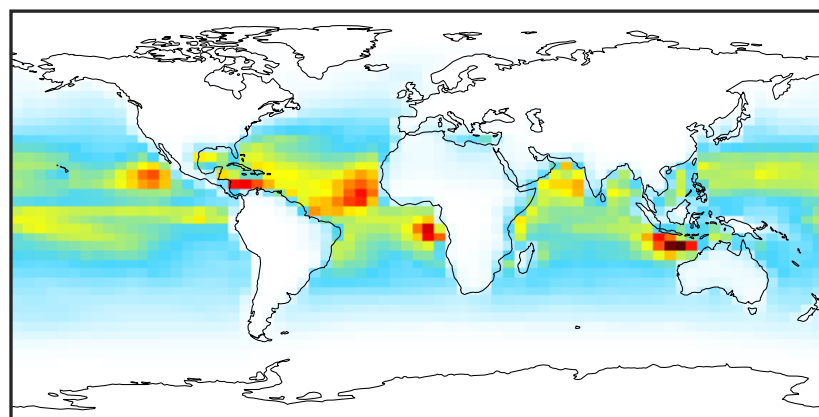
Ratio (1x1.25)
Dev/Ref, Fixed Range



0.50 0.75 1.00 1.50 2.00
unitless

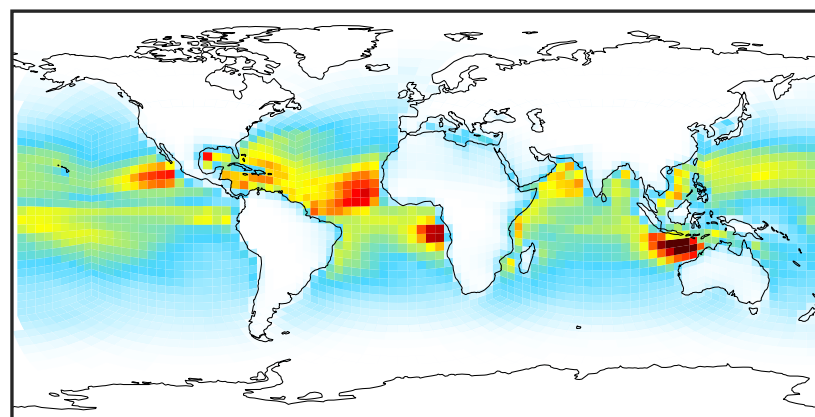
SpeciesConcVV_ISALC (AnnualMean)

GCC_14.2.0 (Ref)
4.0x5.0



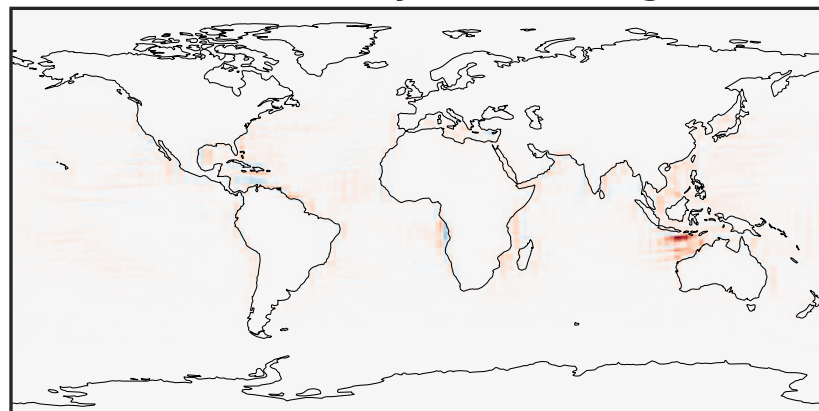
0.0015 0.0030 0.0045
 $\mu\text{g}/\text{m}^3$

GCHP_14.2.0 (Dev)
c24



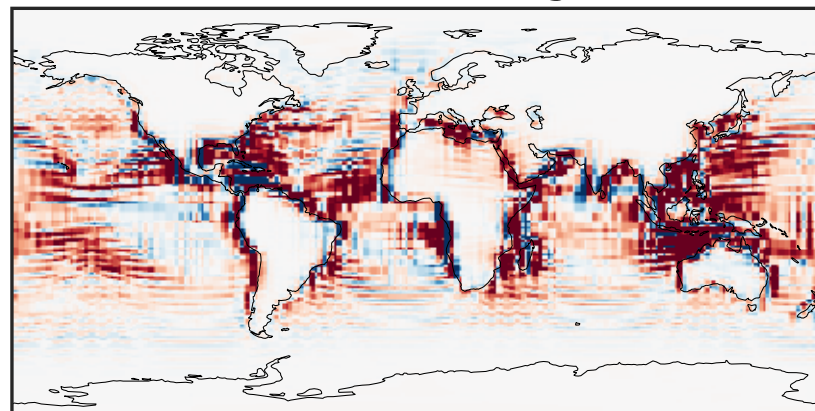
0.0015 0.0030 0.0045
 $\mu\text{g}/\text{m}^3$

Difference (1x1.25)
Dev - Ref, Dynamic Range



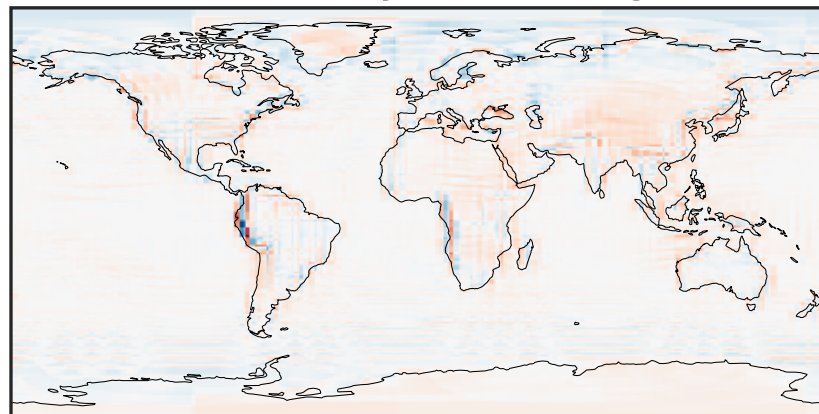
-0.004 0.000 0.004
 $\mu\text{g}/\text{m}^3$

Difference (1x1.25)
Dev - Ref, Restricted Range [5%,95%]



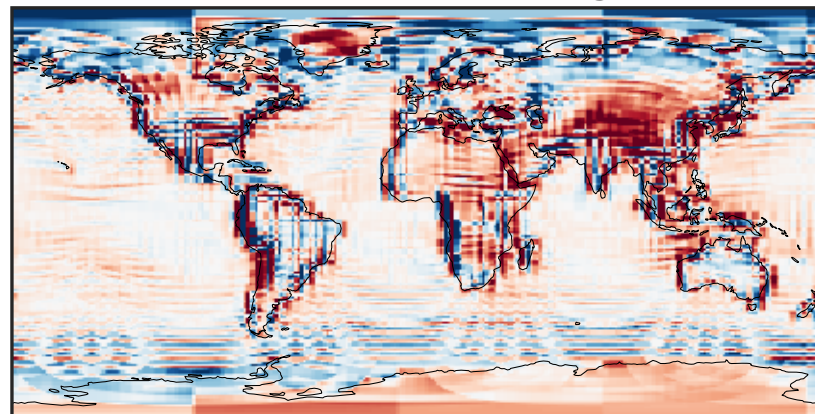
-0.00015 0.00000 0.00015
 $\mu\text{g}/\text{m}^3$

Ratio (1x1.25)
Dev/Ref, Dynamic Range



1e-01 1 10
unitless

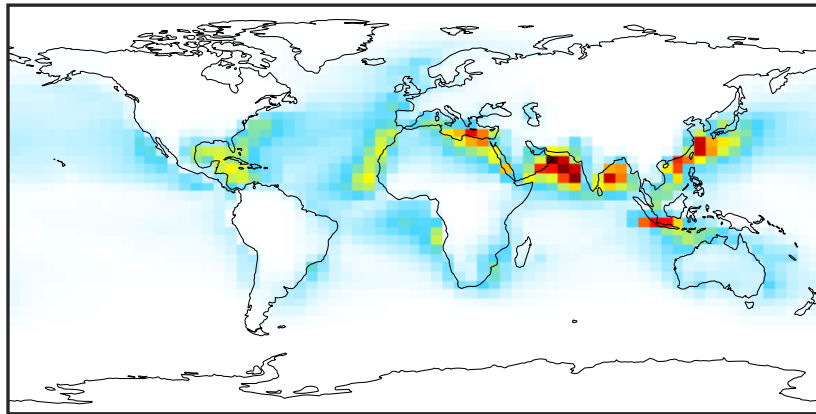
Ratio (1x1.25)
Dev/Ref, Fixed Range



0.50 0.75 1.00 1.50 2.00
unitless

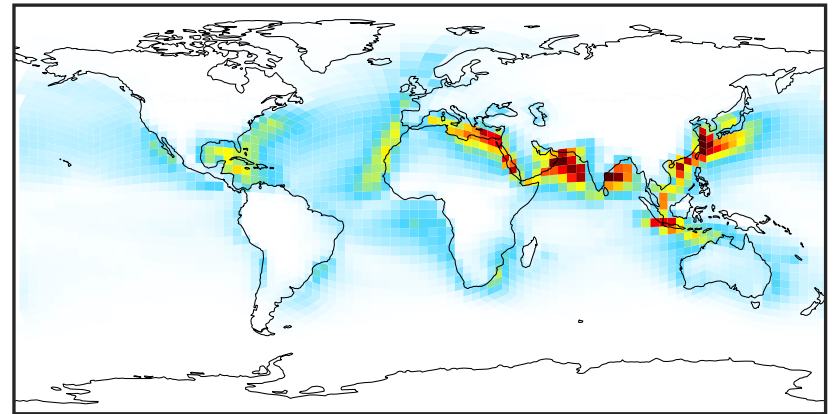
SpeciesConcVV_NITs (AnnualMean)

GCC_14.2.0 (Ref)
4.0x5.0



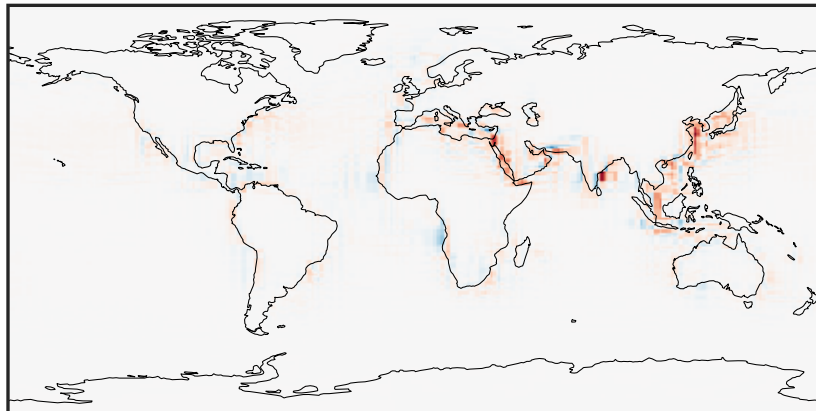
0.0000 0.1252 0.2503 0.3755 0.5007
 $\mu\text{g}/\text{m}^3$

GCHP_14.2.0 (Dev)
c24



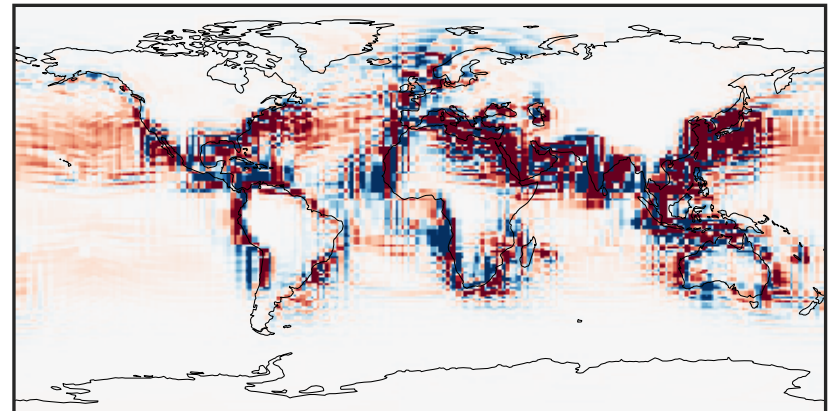
0.0000 0.1252 0.2503 0.3755 0.5007
 $\mu\text{g}/\text{m}^3$

Difference (1x1.25)
Dev - Ref, Dynamic Range



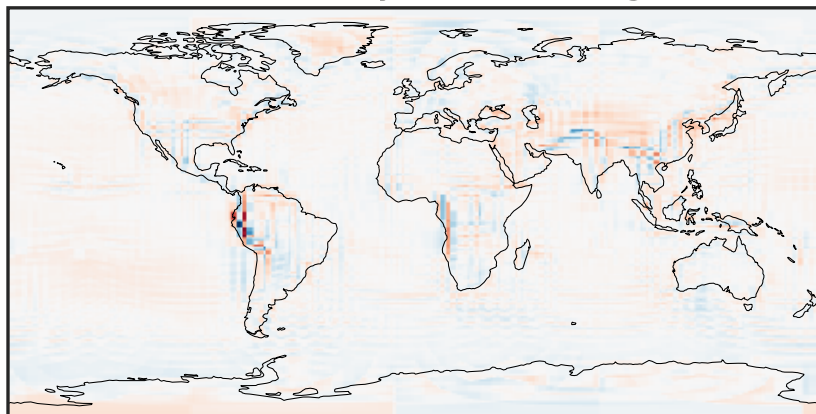
-0.3405 -0.1702 0.0000 0.1702 0.3405
 $\mu\text{g}/\text{m}^3$

Difference (1x1.25)
Dev - Ref, Restricted Range [5%,95%]



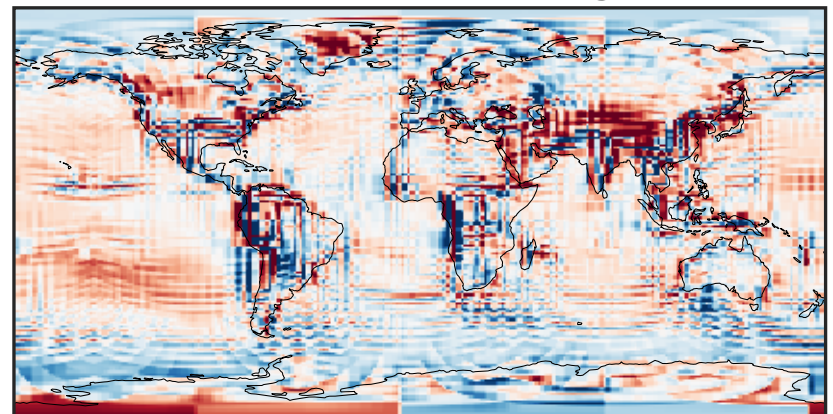
-0.01 0.00 0.01
 $\mu\text{g}/\text{m}^3$

Ratio (1x1.25)
Dev/Ref, Dynamic Range



1e-02 1e-01 1 10 100
unitless

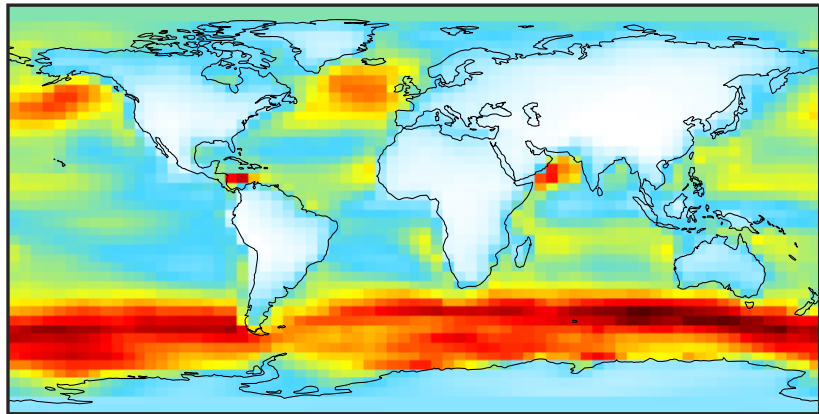
Ratio (1x1.25)
Dev/Ref, Fixed Range



0.50 0.75 1.00 1.50 2.00
unitless

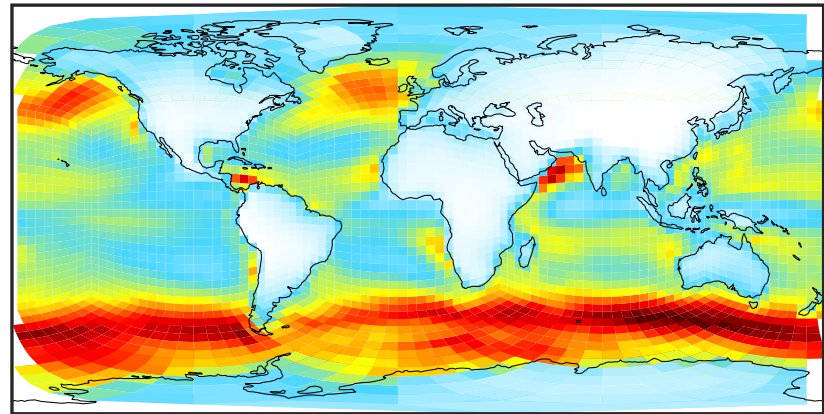
SpeciesConcVV_SALA (AnnualMean)

GCC_14.2.0 (Ref)
4.0x5.0



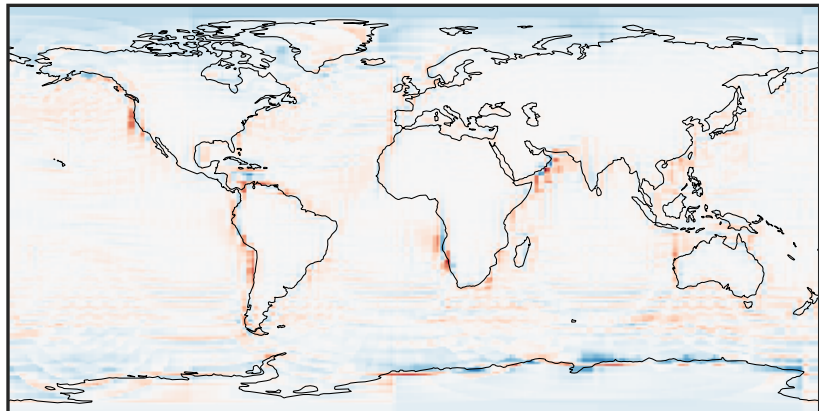
0.003 0.398 0.796 1.194 1.595
 $\mu\text{g}/\text{m}^3$

GCHP_14.2.0 (Dev)
c24



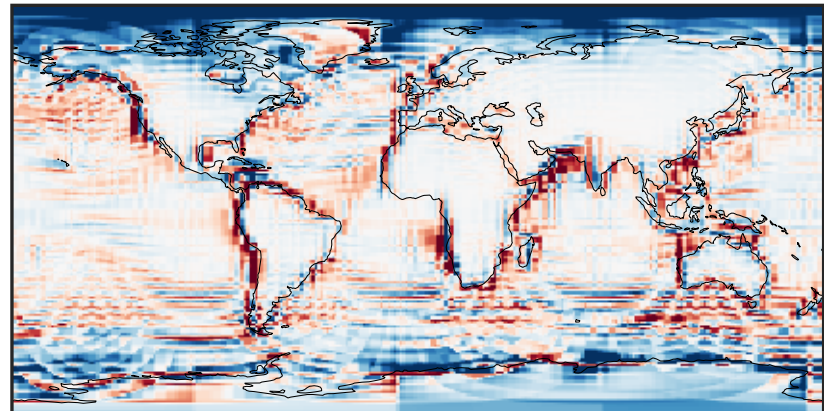
0.003 0.398 0.796 1.194 1.595
 $\mu\text{g}/\text{m}^3$

Difference (1x1.25)
Dev - Ref, Dynamic Range



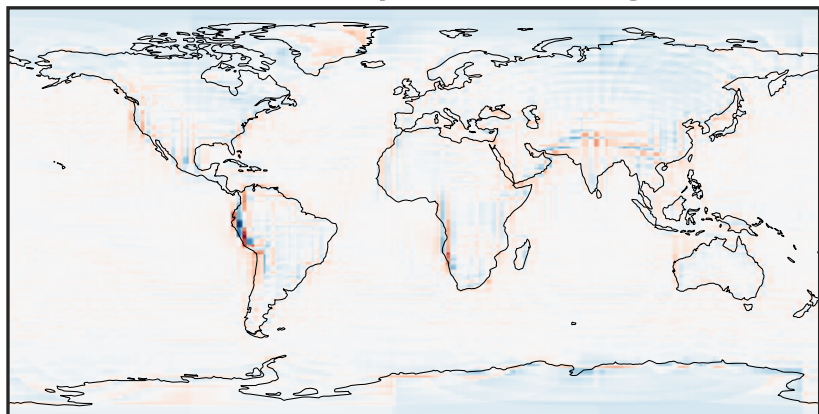
-0.725 -0.362 0.000 0.362 0.725
 $\mu\text{g}/\text{m}^3$

Difference (1x1.25)
Dev - Ref, Restricted Range [5%,95%]



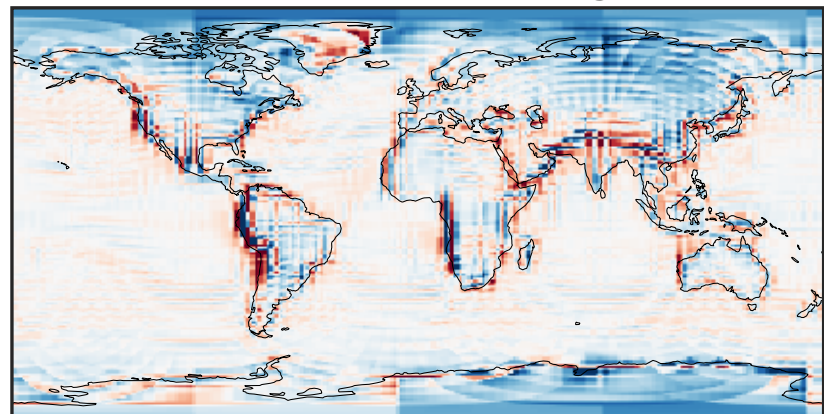
-0.1587 -0.0794 0.0000 0.0794 0.1587
 $\mu\text{g}/\text{m}^3$

Ratio (1x1.25)
Dev/Ref, Dynamic Range



1e-01 1 10
unitless

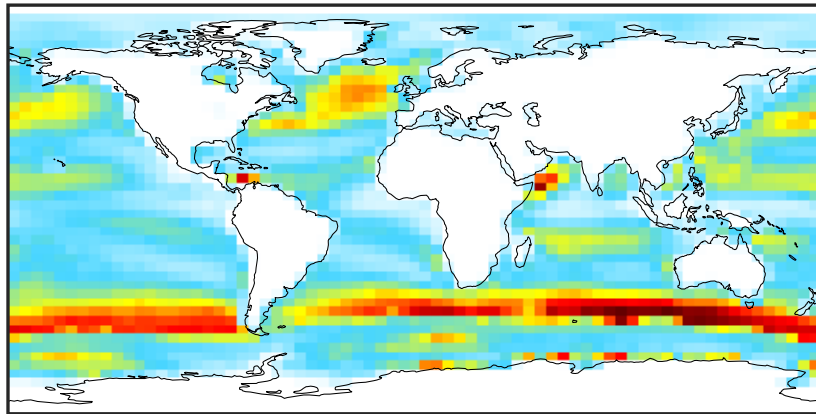
Ratio (1x1.25)
Dev/Ref, Fixed Range



0.50 0.75 1.00 1.50 2.00
unitless

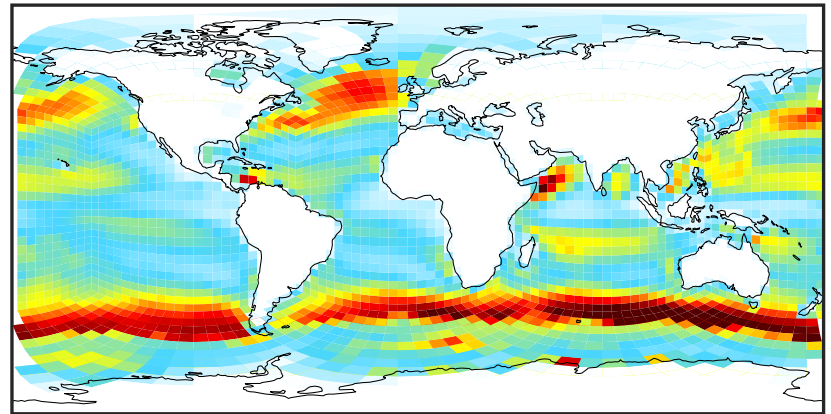
SpeciesConcVV_SALAAL (AnnualMean)

GCC_14.2.0 (Ref)
4.0x5.0



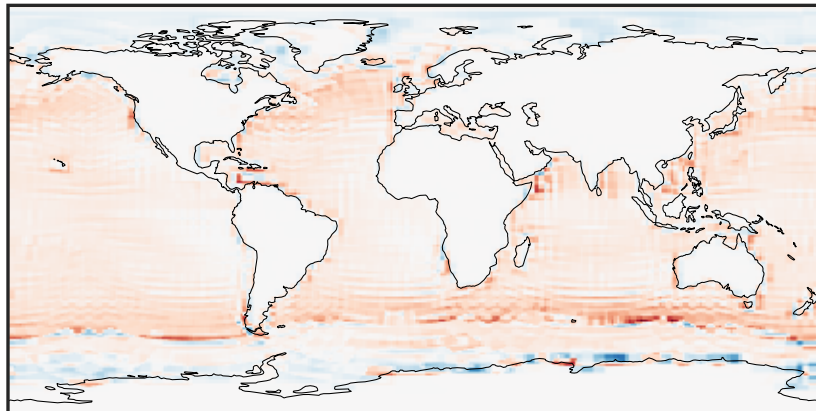
0.005 0.010 0.015
 $\mu\text{g}/\text{m}^3$

GCHP_14.2.0 (Dev)
c24



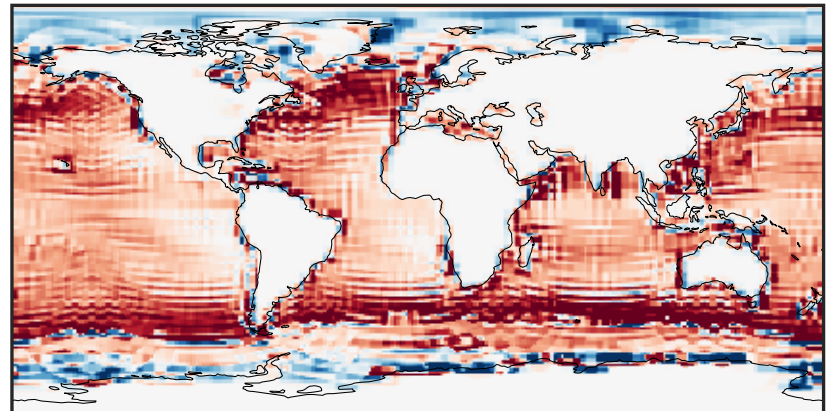
0.005 0.010 0.015
 $\mu\text{g}/\text{m}^3$

Difference (1x1.25)
Dev - Ref, Dynamic Range



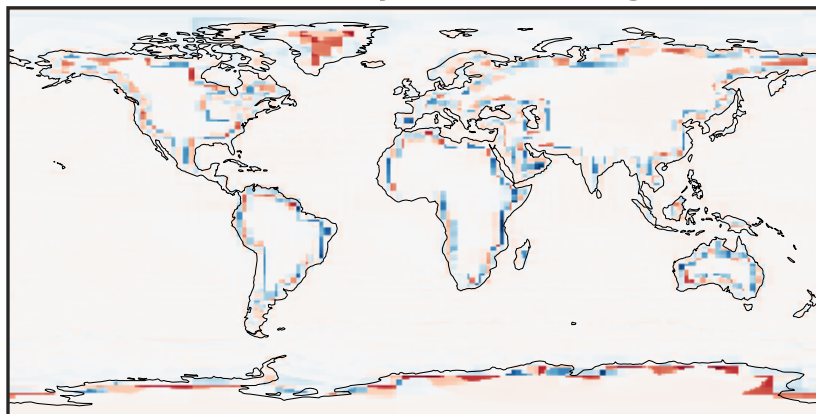
-0.006 0.000 0.006
 $\mu\text{g}/\text{m}^3$

Difference (1x1.25)
Dev - Ref, Restricted Range [5%,95%]



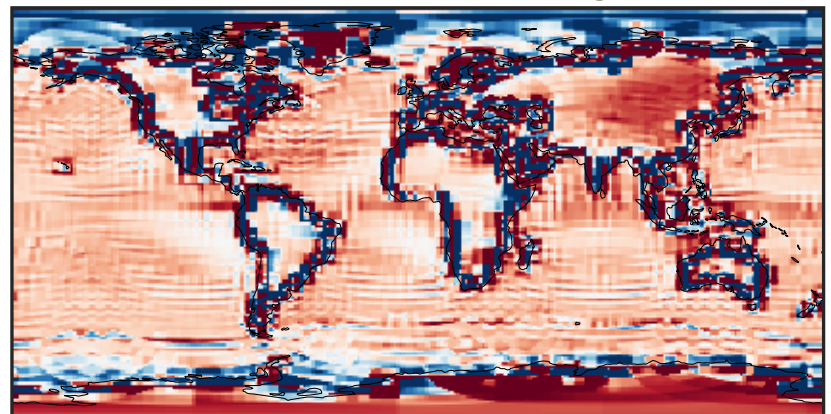
-0.0015 0.0000 0.0015
 $\mu\text{g}/\text{m}^3$

Ratio (1x1.25)
Dev/Ref, Dynamic Range



1e-05 1e-03 1e-01 10 1000 1e+05
unitless

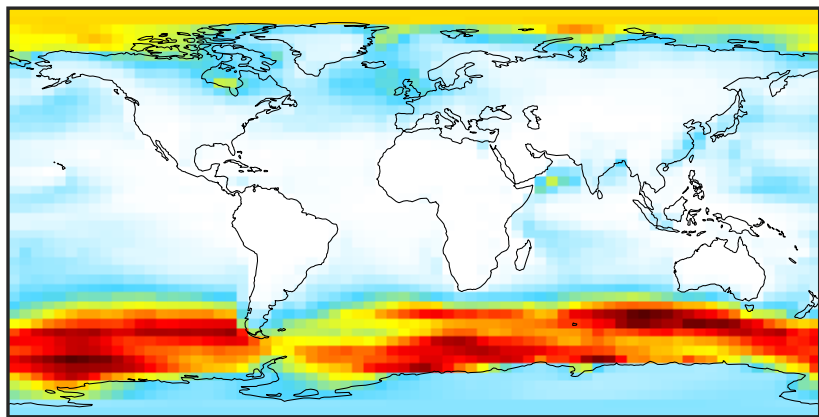
Ratio (1x1.25)
Dev/Ref, Fixed Range



0.50 0.75 1.00 1.50 2.00
unitless

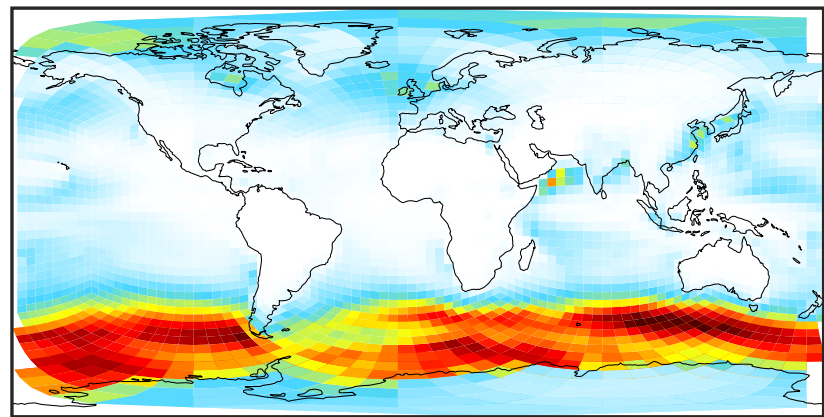
SpeciesConcVV_SALACL (AnnualMean)

GCC_14.2.0 (Ref)
4.0x5.0



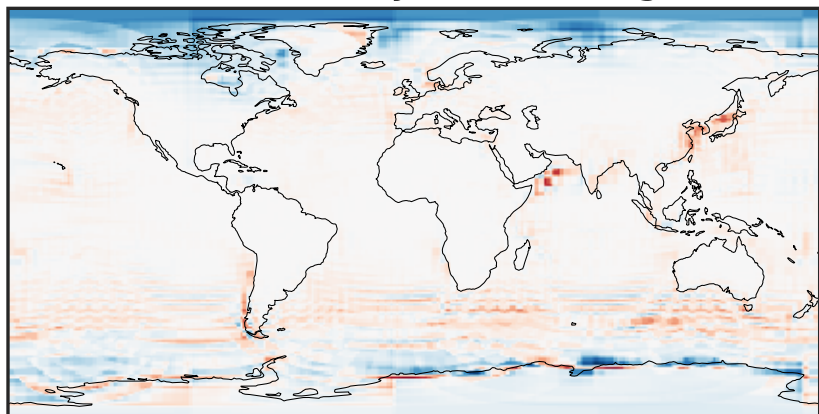
0.000 0.145 0.290 0.435 0.580
 $\mu\text{g}/\text{m}^3$

GCHP_14.2.0 (Dev)
c24



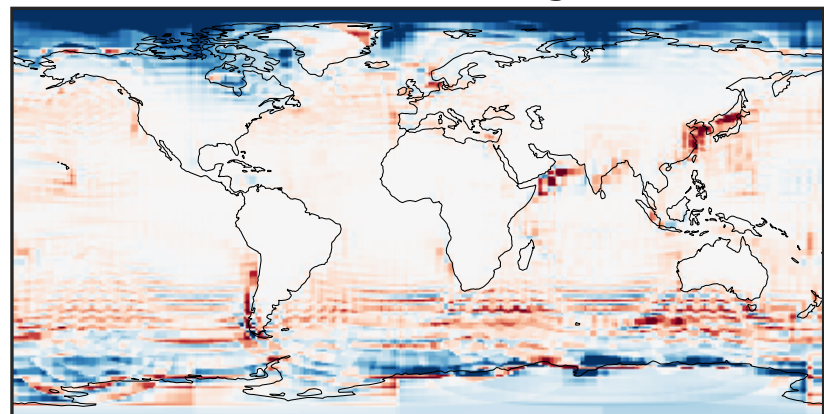
0.000 0.145 0.290 0.435 0.580
 $\mu\text{g}/\text{m}^3$

Difference (1x1.25)
Dev - Ref, Dynamic Range



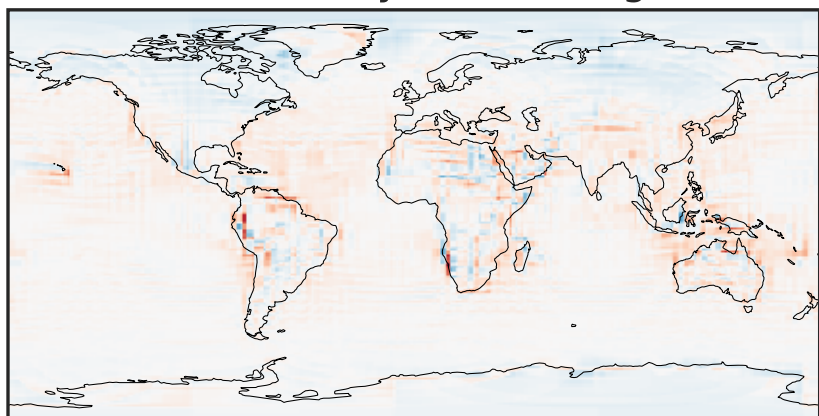
-0.2473 -0.1237 0.0000 0.1237 0.2473
 $\mu\text{g}/\text{m}^3$

Difference (1x1.25)
Dev - Ref, Restricted Range [5%,95%]



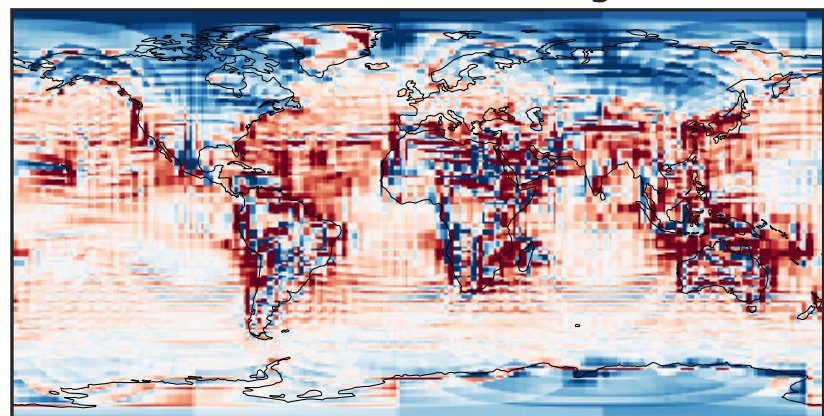
-0.1044 -0.0522 0.0000 0.0522 0.1044
 $\mu\text{g}/\text{m}^3$

Ratio (1x1.25)
Dev/Ref, Dynamic Range



1e-02 1e-01 1 10 100
unitless

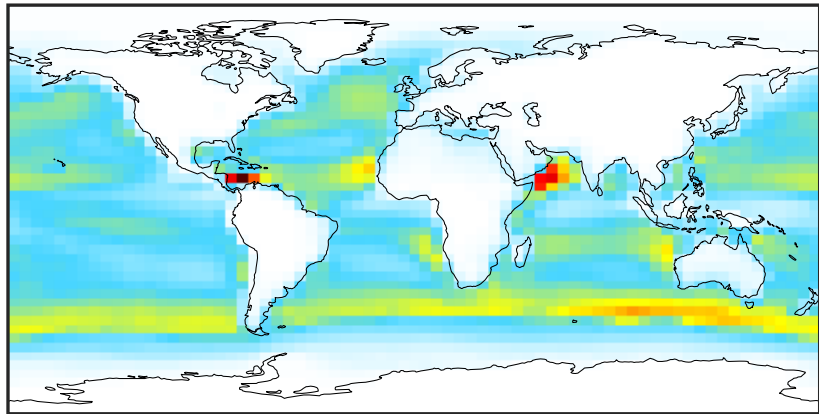
Ratio (1x1.25)
Dev/Ref, Fixed Range



0.50 0.75 1.00 1.50 2.00
unitless

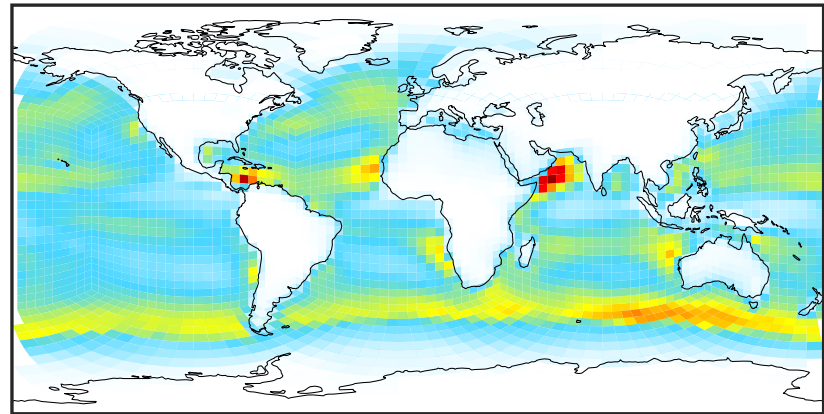
SpeciesConcVV_SALC (AnnualMean)

GCC_14.2.0 (Ref)
4.0x5.0



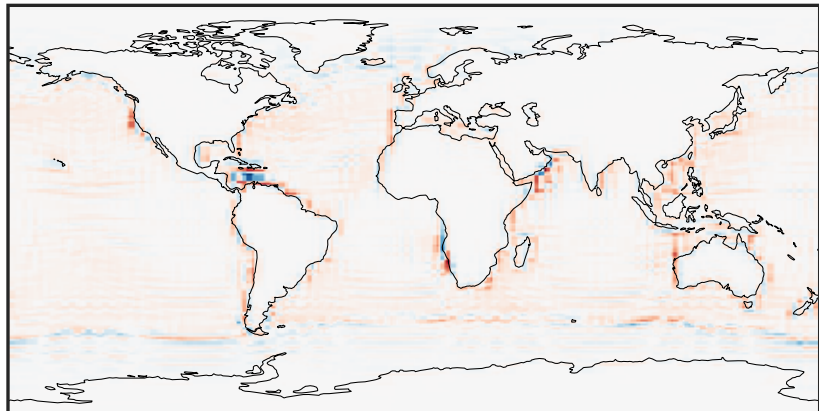
0.00 9.13 18.26 27.39 36.52
 $\mu\text{g}/\text{m}^3$

GCHP_14.2.0 (Dev)
c24



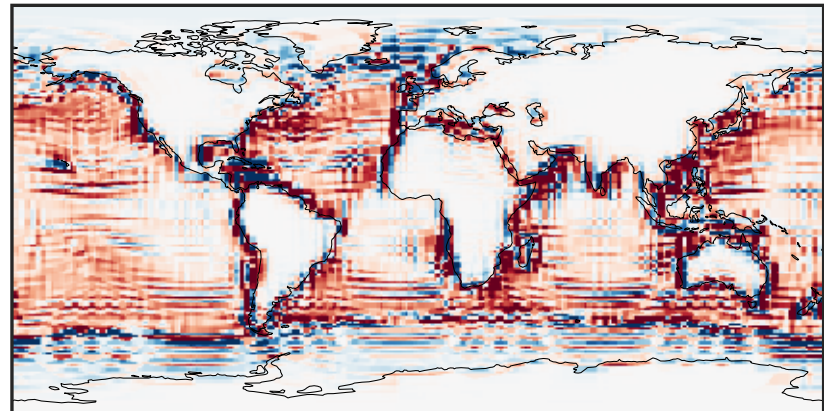
0.00 9.13 18.26 27.39 36.52
 $\mu\text{g}/\text{m}^3$

Difference (1x1.25)
Dev - Ref, Dynamic Range



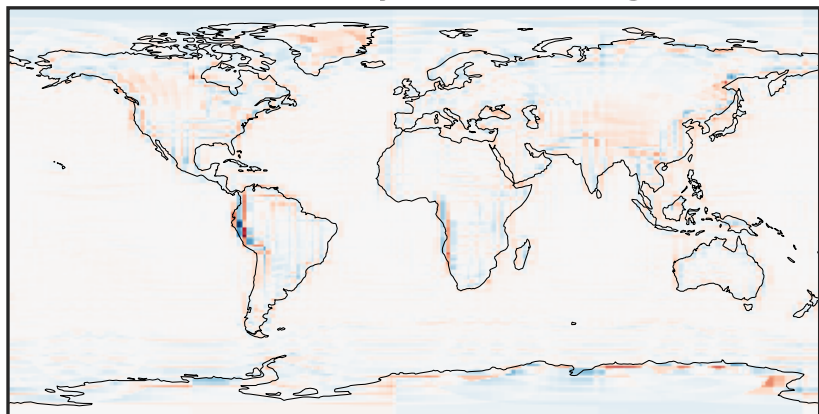
-15.8 -7.9 0.0 7.9 15.8
 $\mu\text{g}/\text{m}^3$

Difference (1x1.25)
Dev - Ref, Restricted Range [5%,95%]



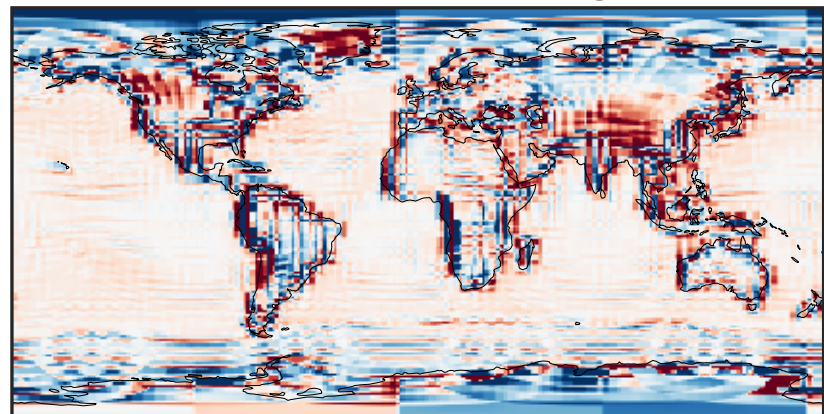
-1.751 -0.876 0.000 0.876 1.751
 $\mu\text{g}/\text{m}^3$

Ratio (1x1.25)
Dev/Ref, Dynamic Range



1e-02 1e-01 1 10 100
unitless

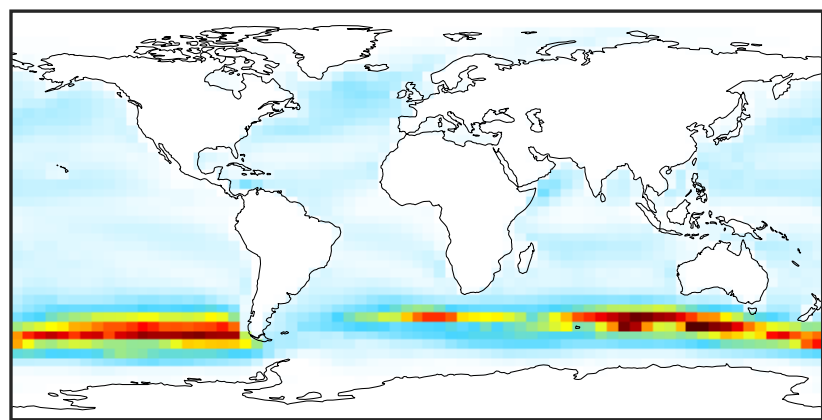
Ratio (1x1.25)
Dev/Ref, Fixed Range



0.50 0.75 1.00 1.50 2.00
unitless

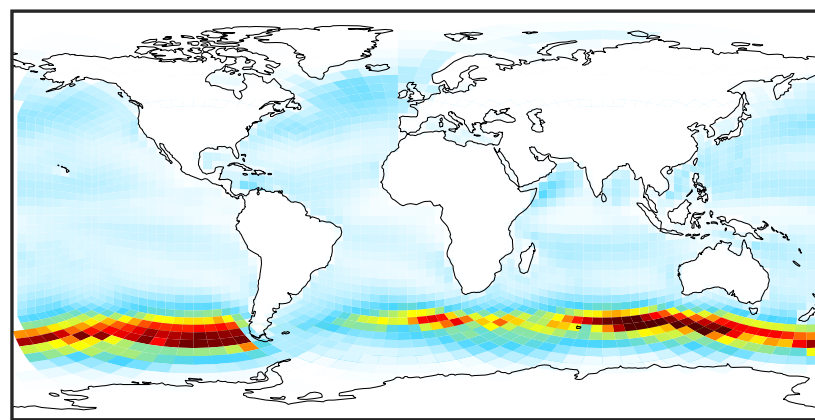
SpeciesConcVV_SALCAL (AnnualMean)

GCC_14.2.0 (Ref)
4.0x5.0



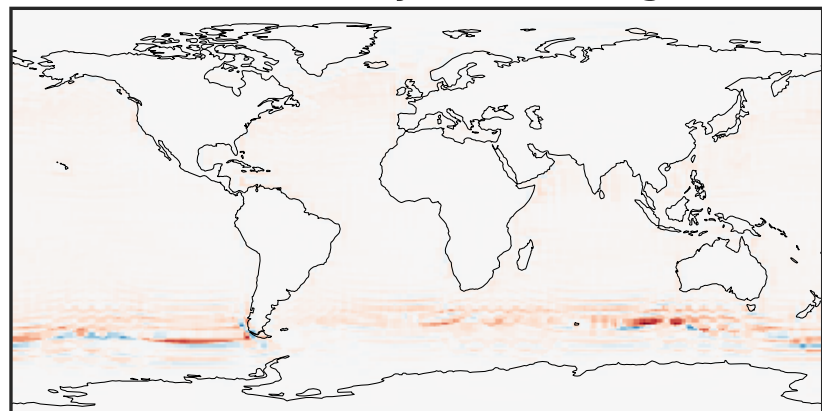
0.000 1.276 2.552 3.828 5.104
µg/m3

GCHP_14.2.0 (Dev)
c24



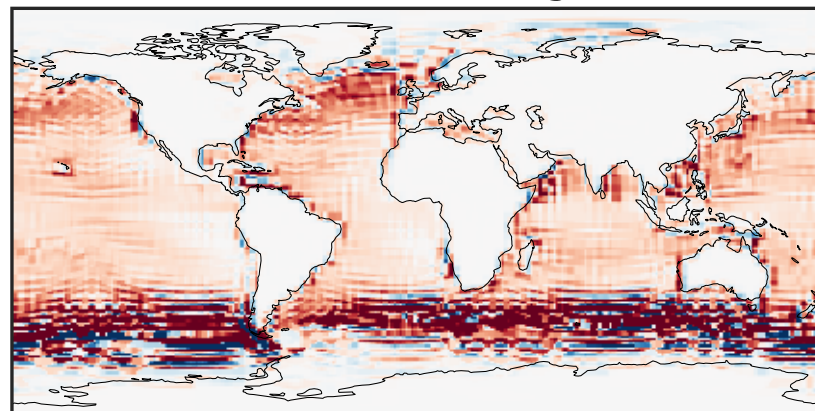
0.000 1.276 2.552 3.828 5.104
µg/m3

Difference (1x1.25)
Dev - Ref, Dynamic Range



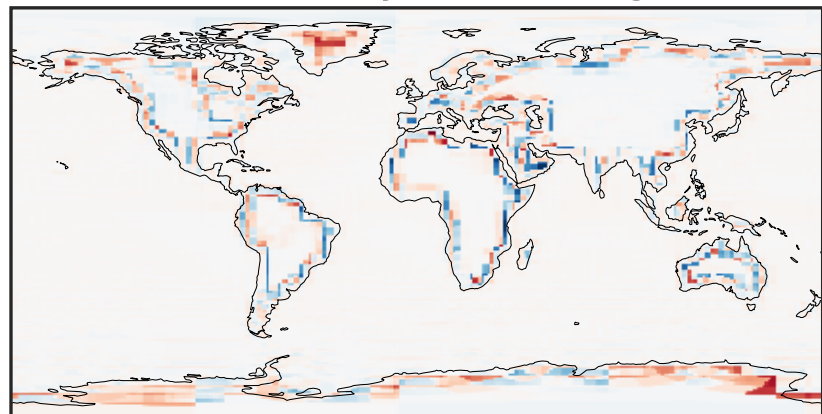
-3.442 -1.721 0.000 1.721 3.442
µg/m3

Difference (1x1.25)
Dev - Ref, Restricted Range [5%,95%]



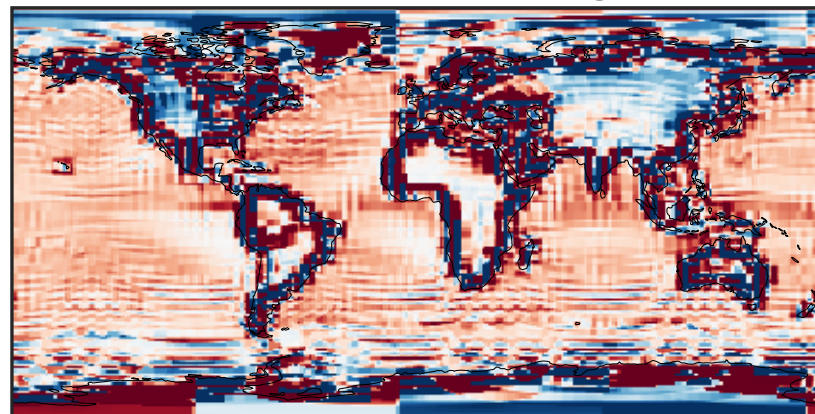
-0.2808 -0.1404 0.0000 0.1404 0.2808
µg/m3

Ratio (1x1.25)
Dev/Ref, Dynamic Range



1e-06 1e-03 1 1000 1e+06
unitless

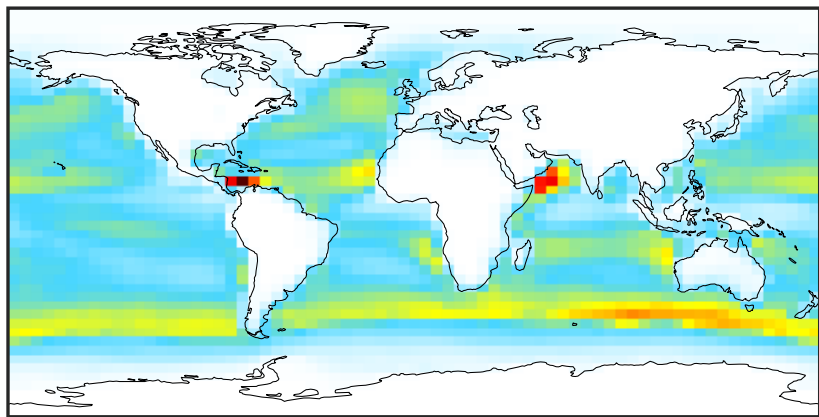
Ratio (1x1.25)
Dev/Ref, Fixed Range



0.50 0.75 1.00 1.50 2.00
unitless

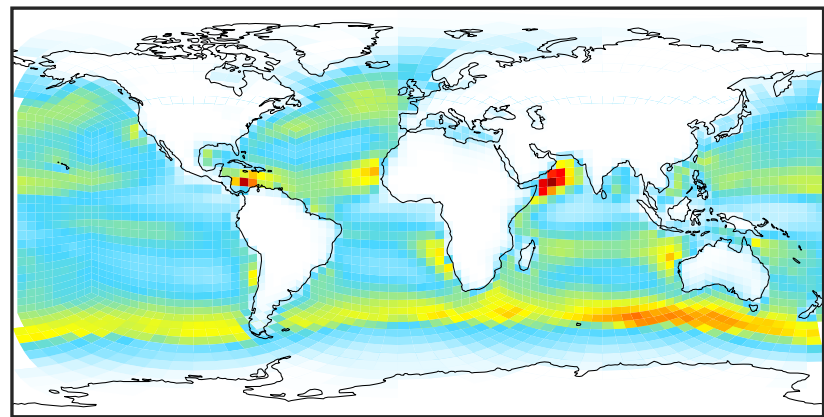
SpeciesConcVV_SALCCL (AnnualMean)

GCC_14.2.0 (Ref)
4.0x5.0



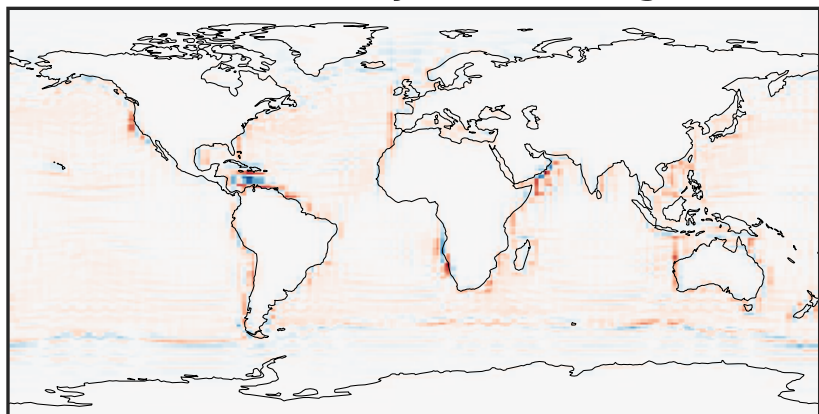
0.00 4.88 9.75 14.63 19.50
 $\mu\text{g}/\text{m}^3$

GCHP_14.2.0 (Dev)
c24



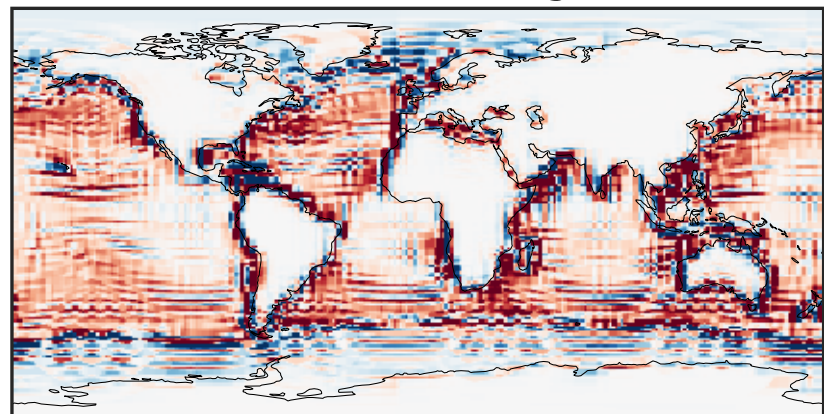
0.00 4.88 9.75 14.63 19.50
 $\mu\text{g}/\text{m}^3$

Difference (1x1.25)
Dev - Ref, Dynamic Range



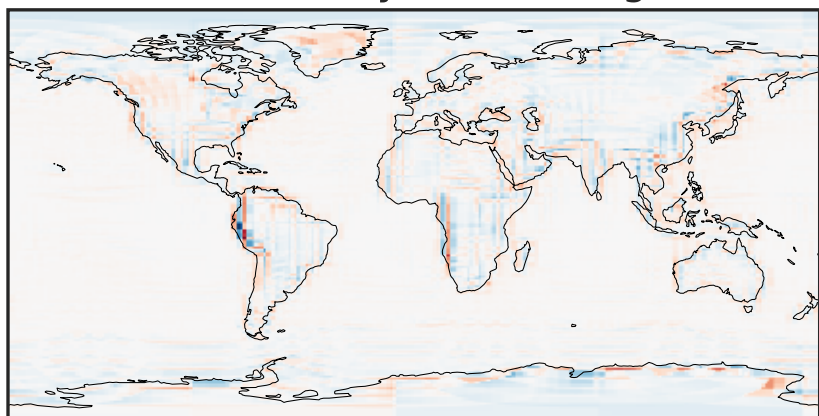
-8.77 -4.38 0.00 4.38 8.77
 $\mu\text{g}/\text{m}^3$

Difference (1x1.25)
Dev - Ref, Restricted Range [5%,95%]



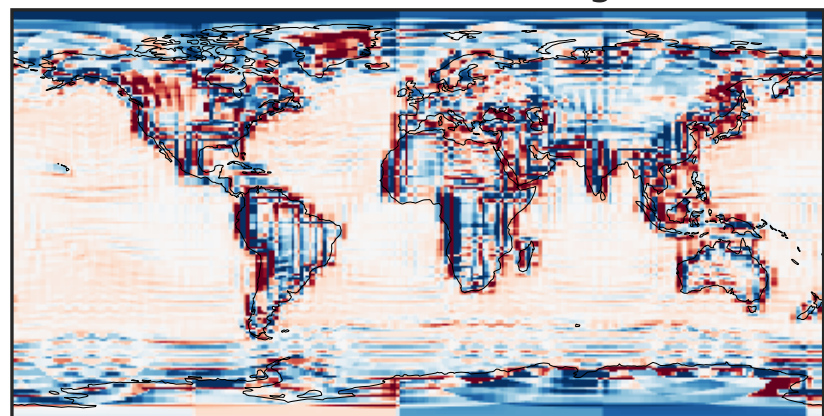
-0.942 -0.471 0.000 0.471 0.942
 $\mu\text{g}/\text{m}^3$

Ratio (1x1.25)
Dev/Ref, Dynamic Range



1e-02 1e-01 1 10 100
unitless

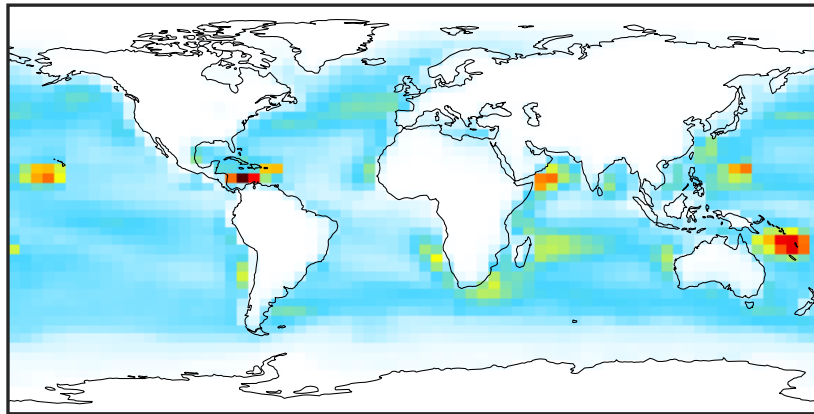
Ratio (1x1.25)
Dev/Ref, Fixed Range



0.50 0.75 1.00 1.50 2.00
unitless

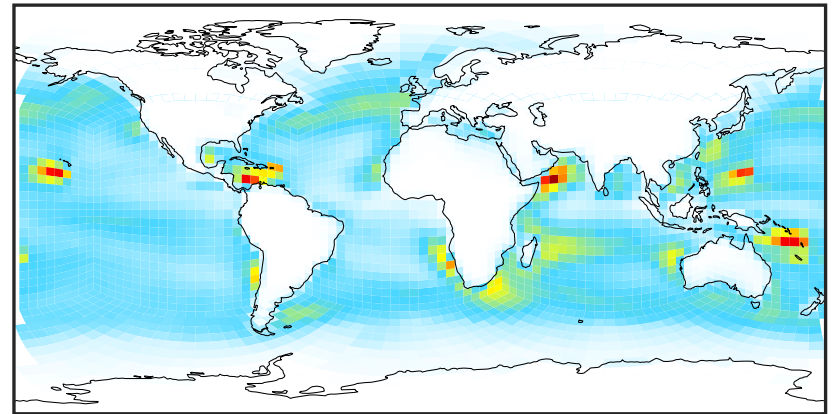
SpeciesConcVV_SO4s (AnnualMean)

GCC_14.2.0 (Ref)
4.0x5.0



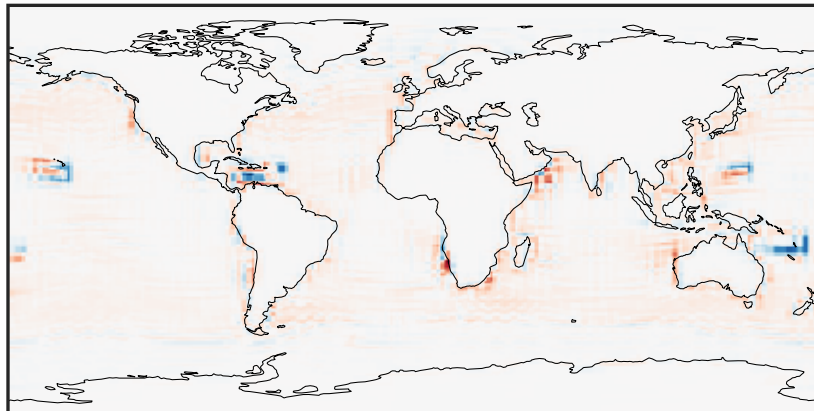
0.0025 0.0050 0.0075
 $\mu\text{g}/\text{m}^3$

GCHP_14.2.0 (Dev)
c24



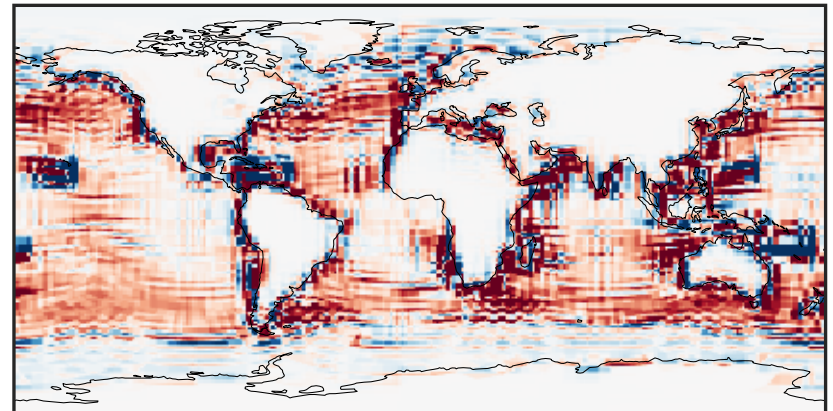
0.0025 0.0050 0.0075
 $\mu\text{g}/\text{m}^3$

Difference (1x1.25)
Dev - Ref, Dynamic Range



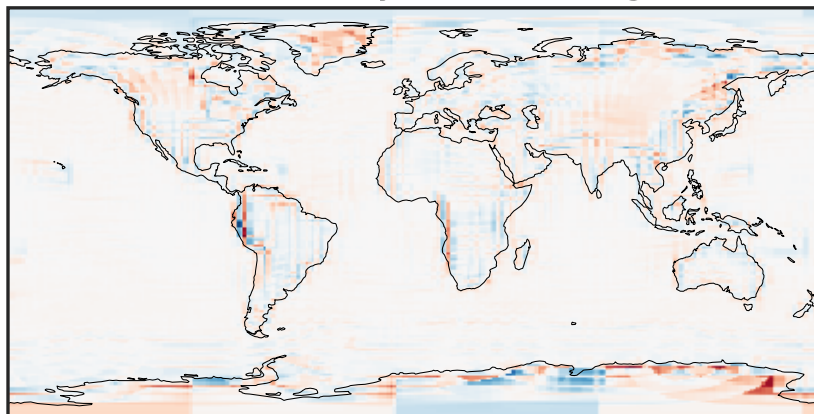
-0.0025 0.0000 0.0025
 $\mu\text{g}/\text{m}^3$

Difference (1x1.25)
Dev - Ref, Restricted Range [5%,95%]



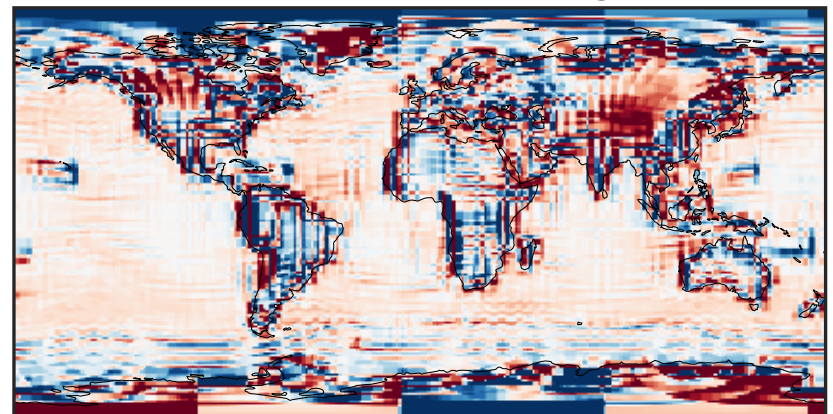
-0.00025 0.00000 0.00025
 $\mu\text{g}/\text{m}^3$

Ratio (1x1.25)
Dev/Ref, Dynamic Range



1e-02 1e-01 1 10 100
unitless

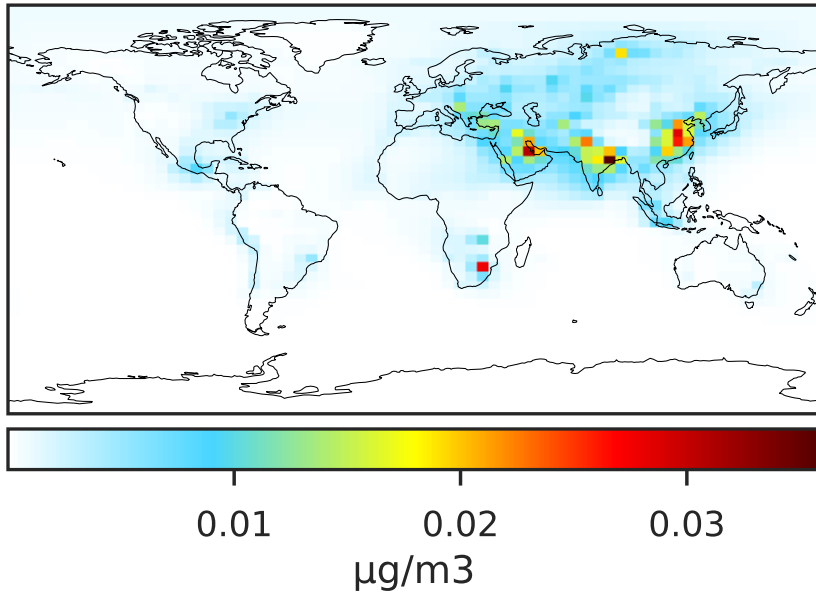
Ratio (1x1.25)
Dev/Ref, Fixed Range



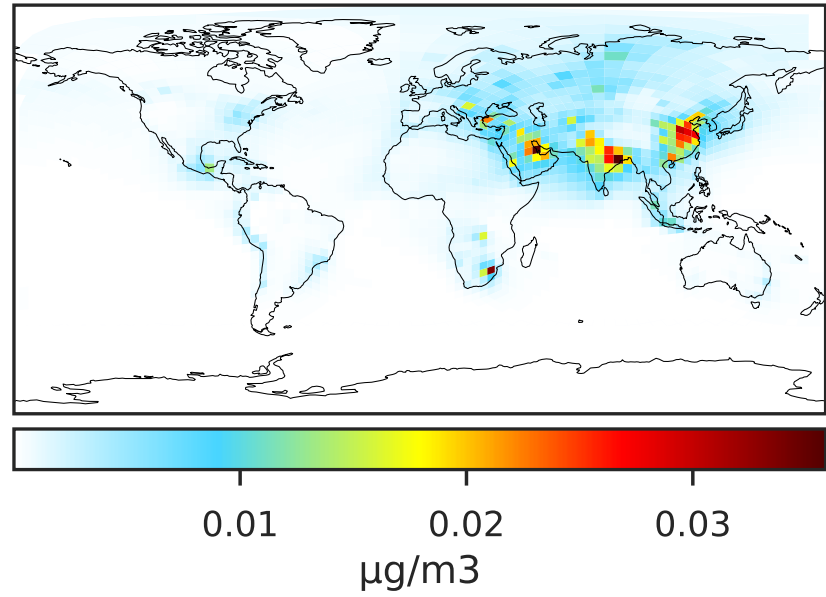
0.50 0.75 1.00 1.50 2.00
unitless

SpeciesConcVV_pFe (AnnualMean)

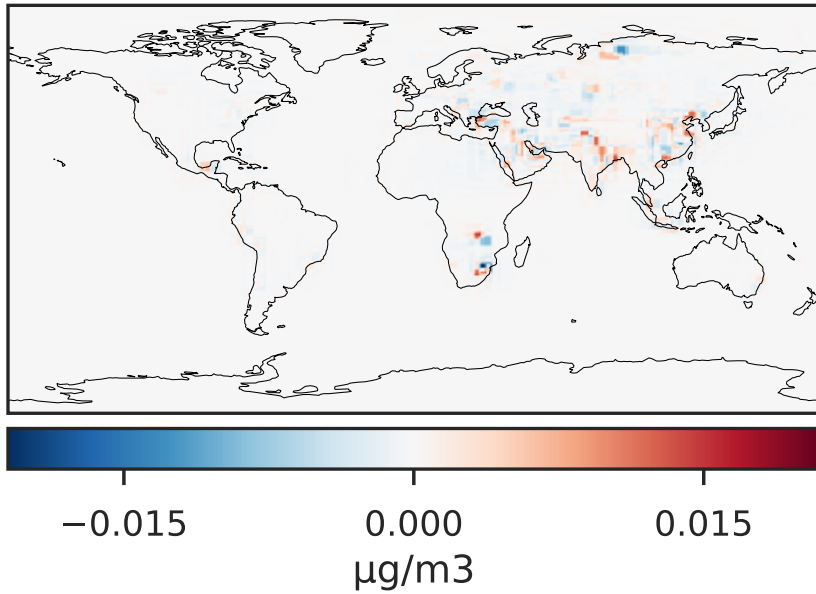
GCC_14.2.0 (Ref)
4.0x5.0



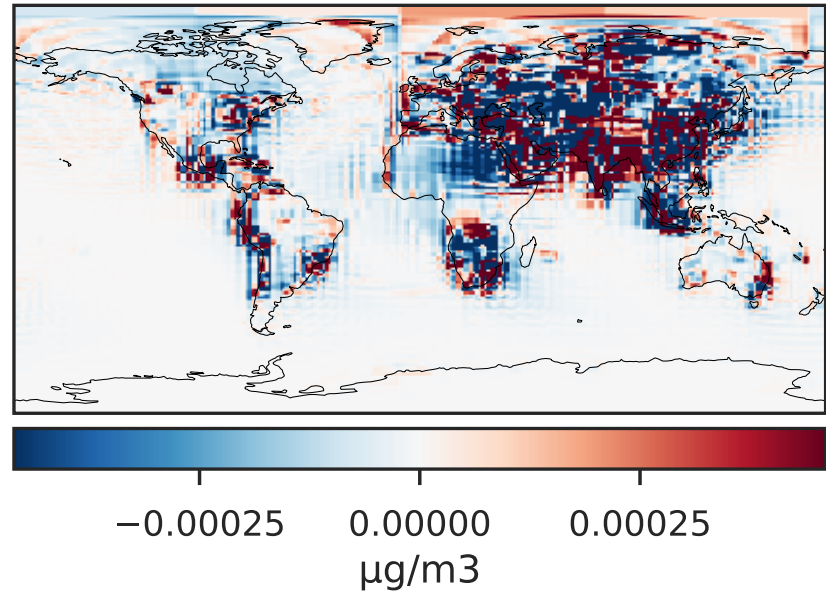
GCHP_14.2.0 (Dev)
c24



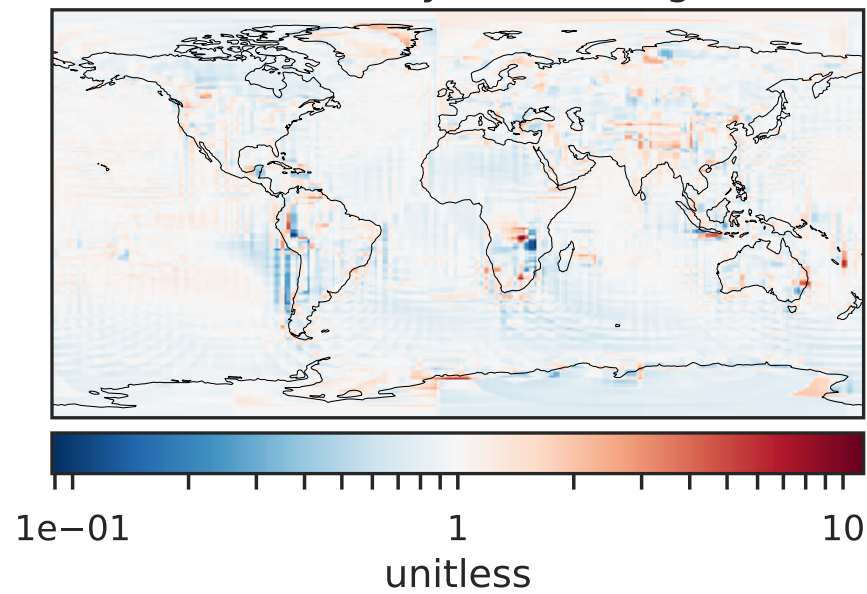
Difference (1x1.25)
Dev - Ref, Dynamic Range



Difference (1x1.25)
Dev - Ref, Restricted Range [5%,95%]



Ratio (1x1.25)
Dev/Ref, Dynamic Range



Ratio (1x1.25)
Dev/Ref, Fixed Range

