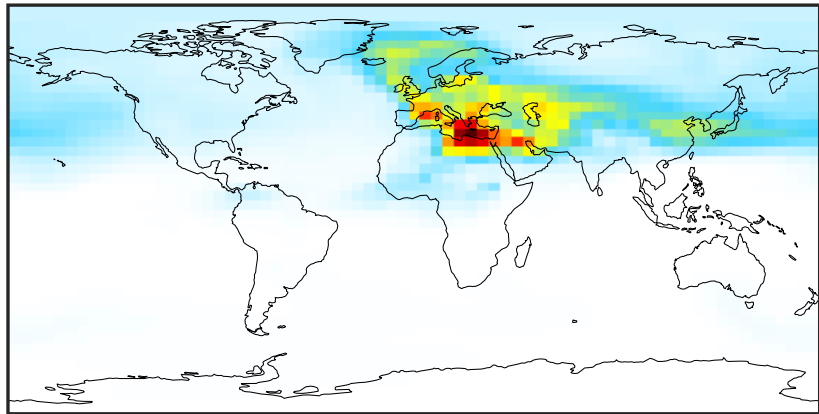


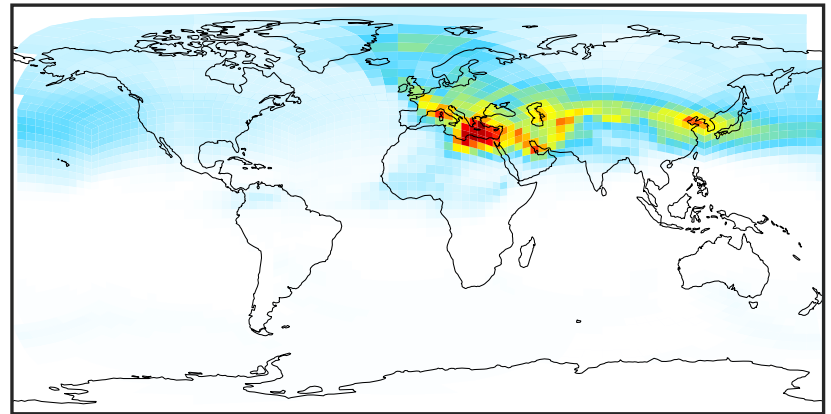
# SpeciesConcVW\_DST1 (Apr2019)

GCC\_14.2.0 (Ref)  
4.0x5.0



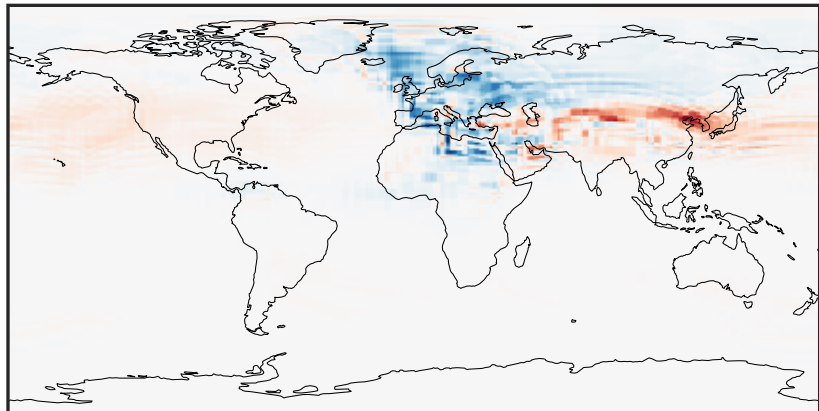
0.000 1.313 2.627 3.940 5.254  
µg/m3

GCHP\_14.2.0 (Dev)  
c24



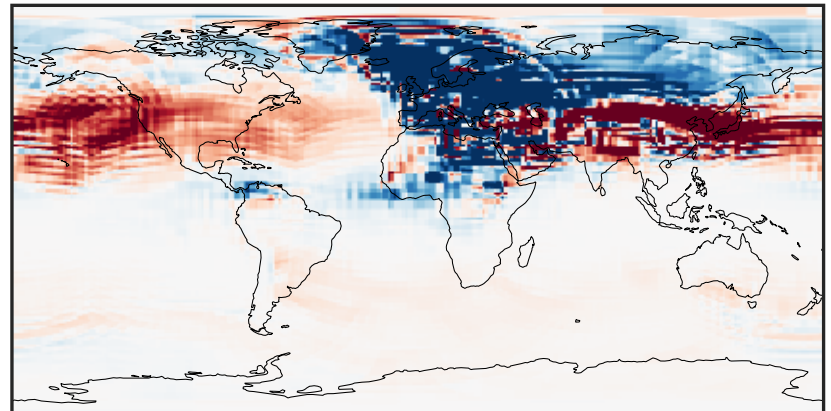
0.000 1.313 2.627 3.940 5.254  
µg/m3

Difference (1x1.25)  
Dev - Ref, Dynamic Range



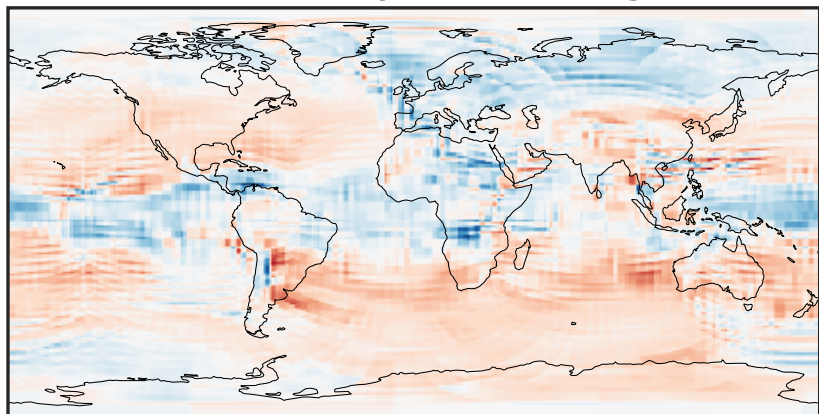
-1.639 -0.819 0.000 0.819 1.639  
µg/m3

Difference (1x1.25)  
Dev - Ref, Restricted Range [5%,95%]



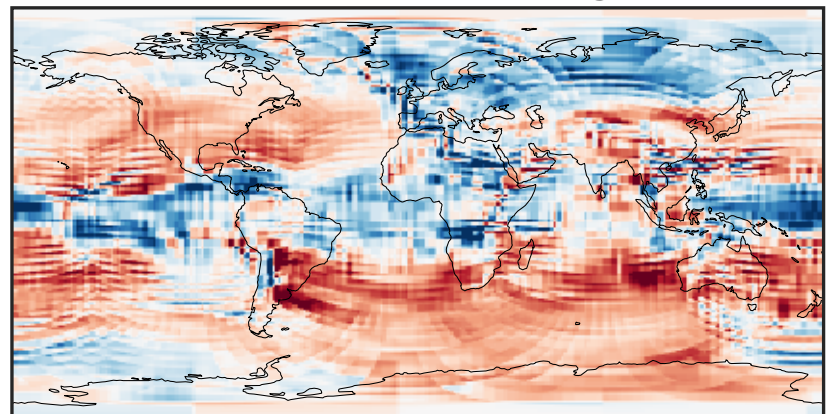
-0.1876 -0.0938 0.0000 0.0938 0.1876  
µg/m3

Ratio (1x1.25)  
Dev/Ref, Dynamic Range



0.213 0.606 1.000 2.852 4.703  
unitless

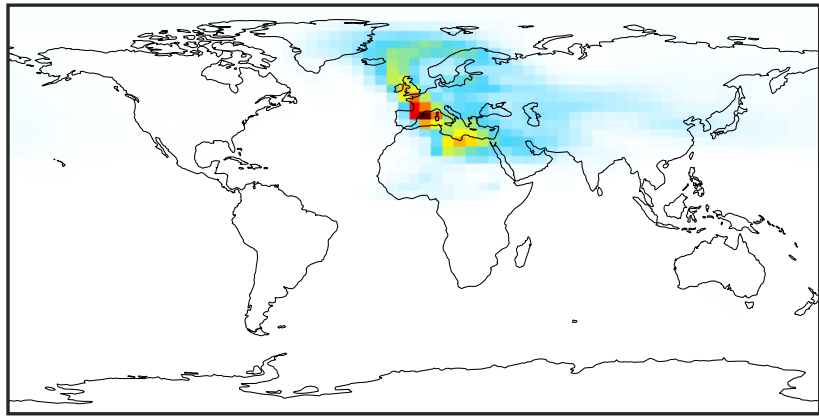
Ratio (1x1.25)  
Dev/Ref, Fixed Range



0.50 0.75 1.00 1.50 2.00  
unitless

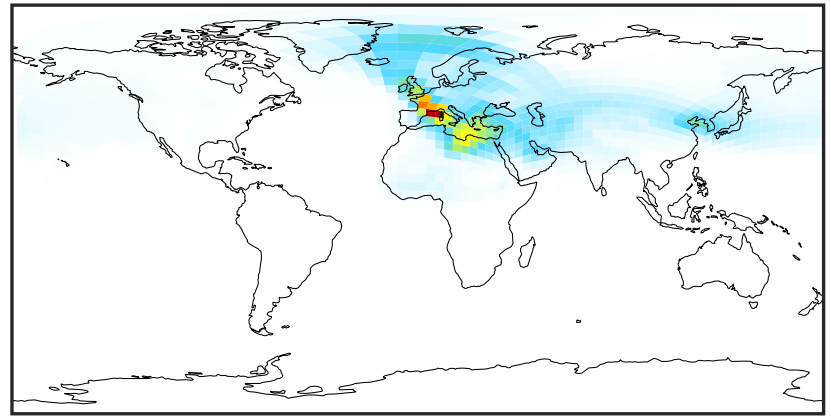
# SpeciesConcVV\_DST2 (Apr2019)

GCC\_14.2.0 (Ref)  
4.0x5.0



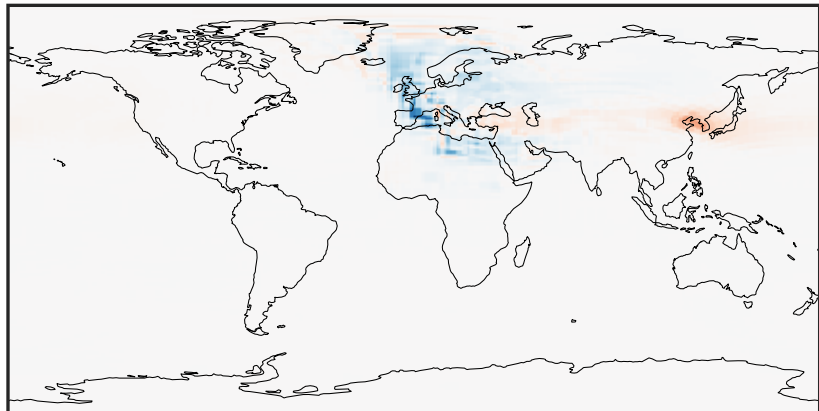
0.00 1.34 2.68 4.02 5.36  
µg/m3

GCHP\_14.2.0 (Dev)  
c24



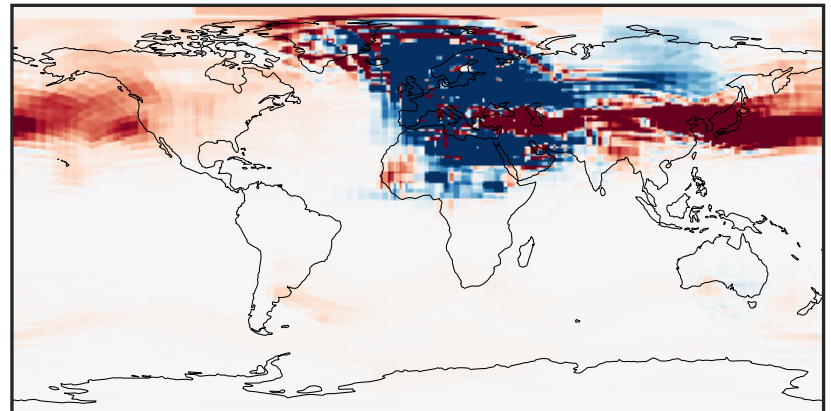
0.00 1.34 2.68 4.02 5.36  
µg/m3

Difference (1x1.25)  
Dev - Ref, Dynamic Range



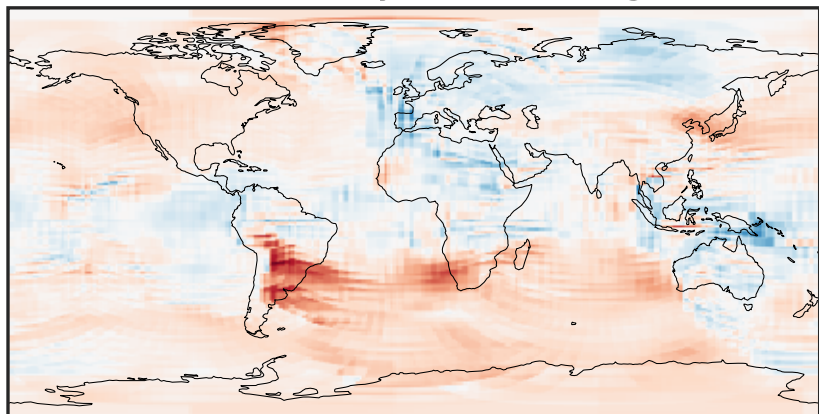
-3.130 -1.565 0.000 1.565 3.130  
µg/m3

Difference (1x1.25)  
Dev - Ref, Restricted Range [5%,95%]



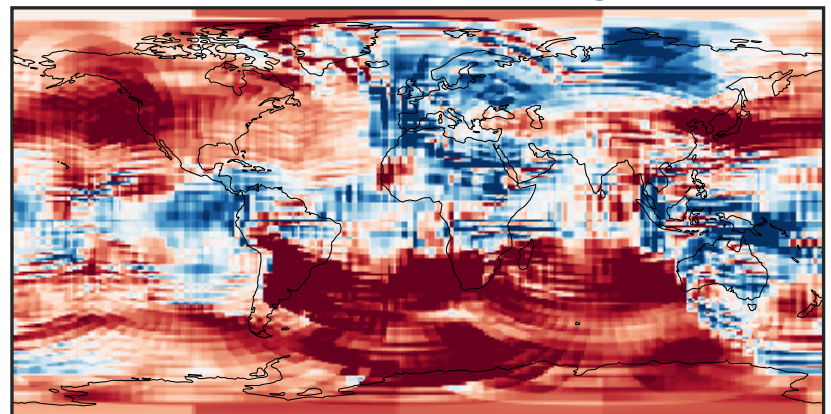
-0.0858 -0.0429 0.0000 0.0429 0.0858  
µg/m3

Ratio (1x1.25)  
Dev/Ref, Dynamic Range



1e-01 1 10  
unitless

Ratio (1x1.25)  
Dev/Ref, Fixed Range

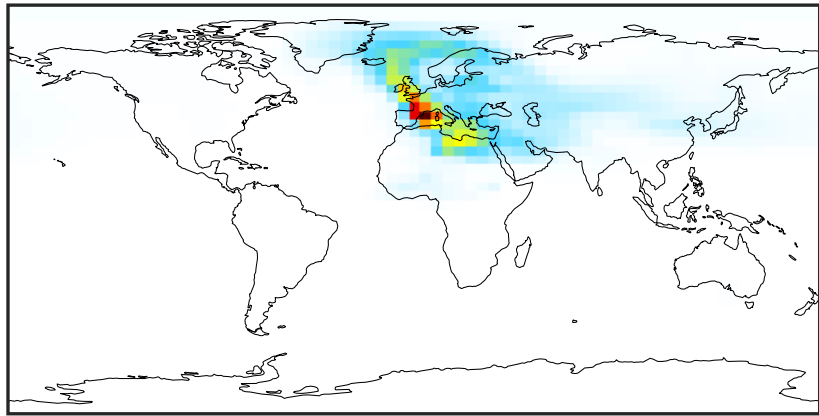


0.50 0.75 1.00 1.50 2.00  
unitless



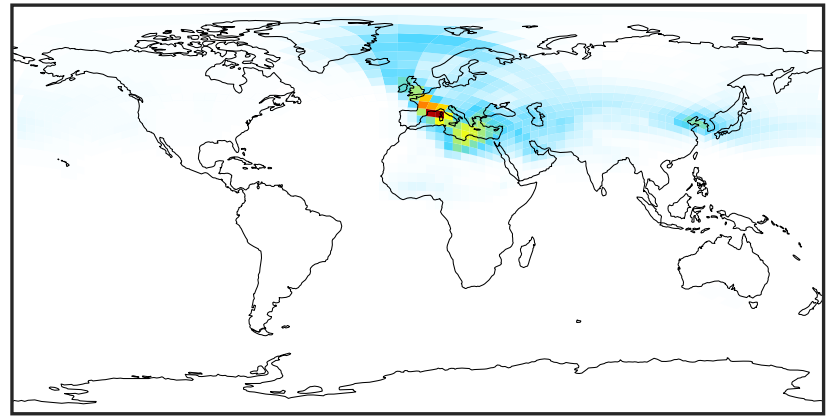
# SpeciesConcVV\_DST3 (Apr2019)

GCC\_14.2.0 (Ref)  
4.0x5.0



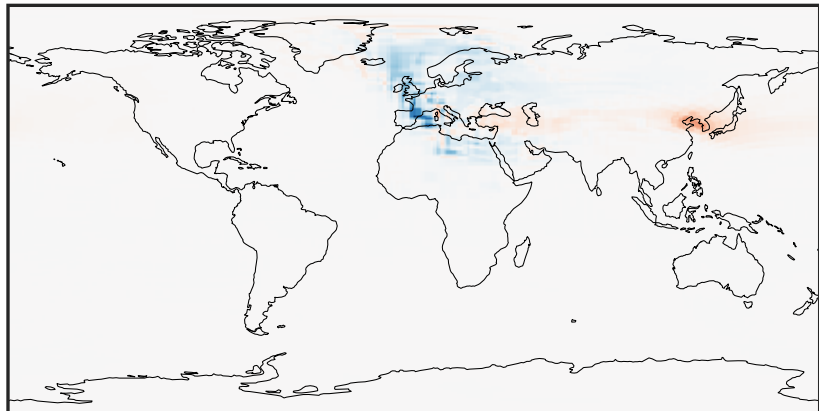
0.000 1.993 3.986 5.979 7.972  
 $\mu\text{g}/\text{m}^3$

GCHP\_14.2.0 (Dev)  
c24



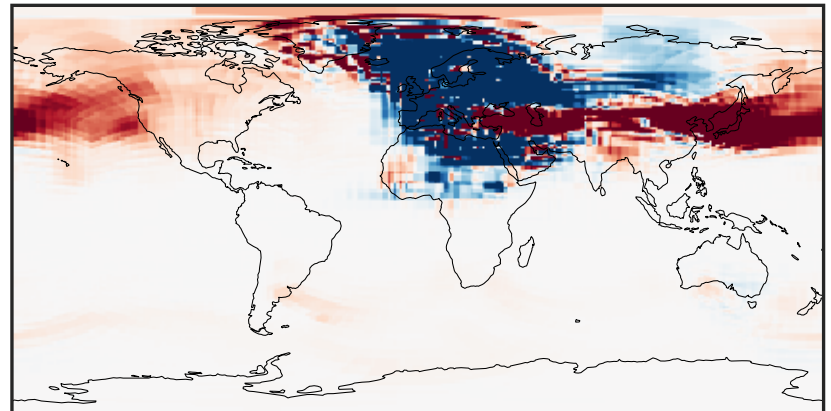
0.000 1.993 3.986 5.979 7.972  
 $\mu\text{g}/\text{m}^3$

Difference (1x1.25)  
Dev - Ref, Dynamic Range



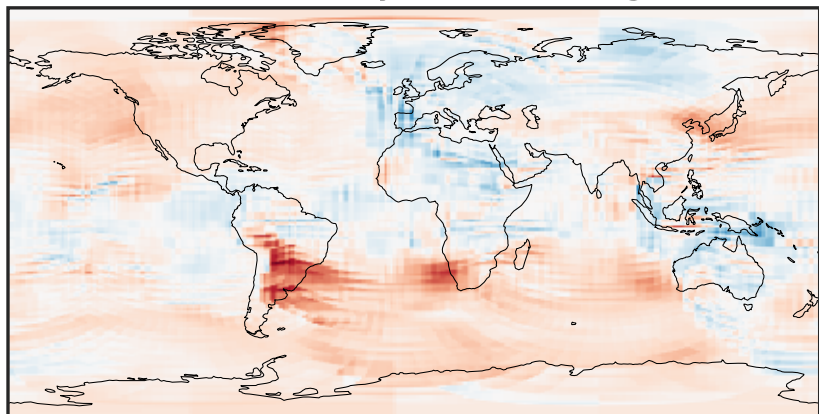
-4.835 -2.418 0.000 2.418 4.835  
 $\mu\text{g}/\text{m}^3$

Difference (1x1.25)  
Dev - Ref, Restricted Range [5%,95%]



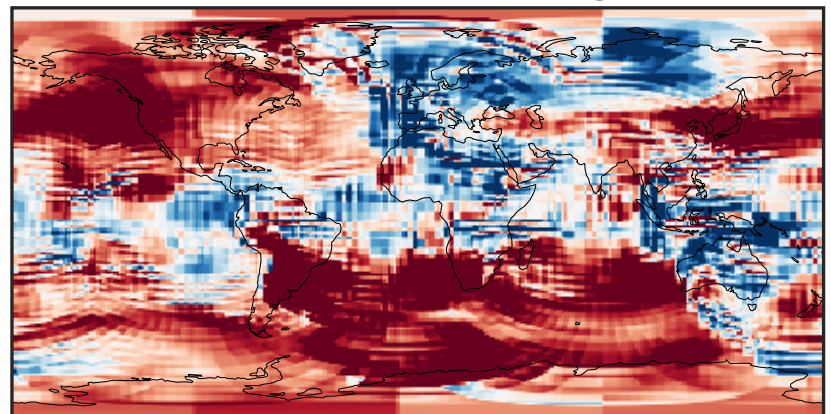
-0.1109 -0.0555 0.0000 0.0555 0.1109  
 $\mu\text{g}/\text{m}^3$

Ratio (1x1.25)  
Dev/Ref, Dynamic Range



1e-01 1 10  
unitless

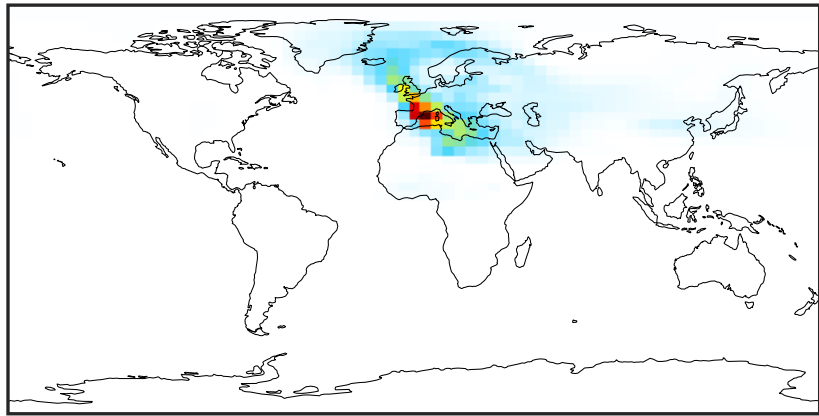
Ratio (1x1.25)  
Dev/Ref, Fixed Range



0.50 0.75 1.00 1.50 2.00  
unitless

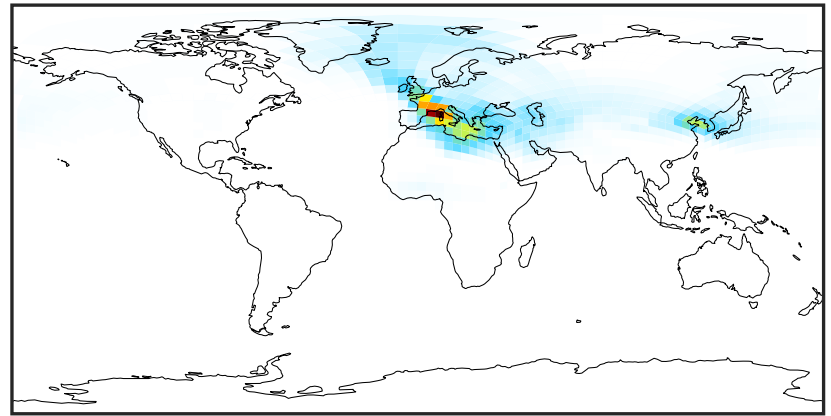
# SpeciesConcVV\_DST4 (Apr2019)

GCC\_14.2.0 (Ref)  
4.0x5.0



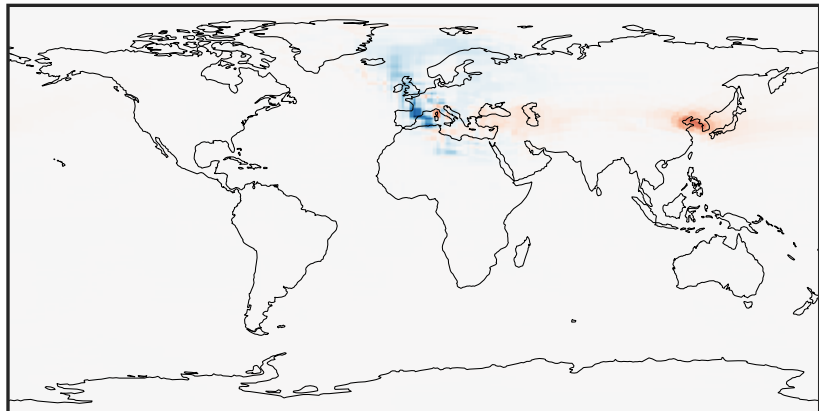
0.00 1.08 2.16 3.24 4.32  
µg/m<sup>3</sup>

GCHP\_14.2.0 (Dev)  
c24



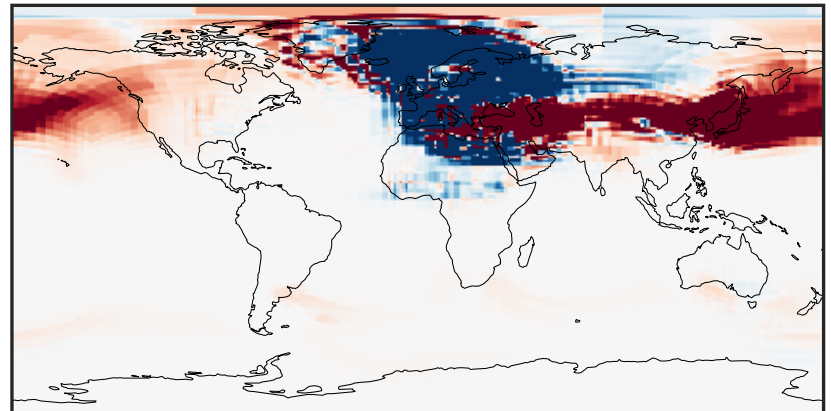
0.00 1.08 2.16 3.24 4.32  
µg/m<sup>3</sup>

Difference (1x1.25)  
Dev - Ref, Dynamic Range



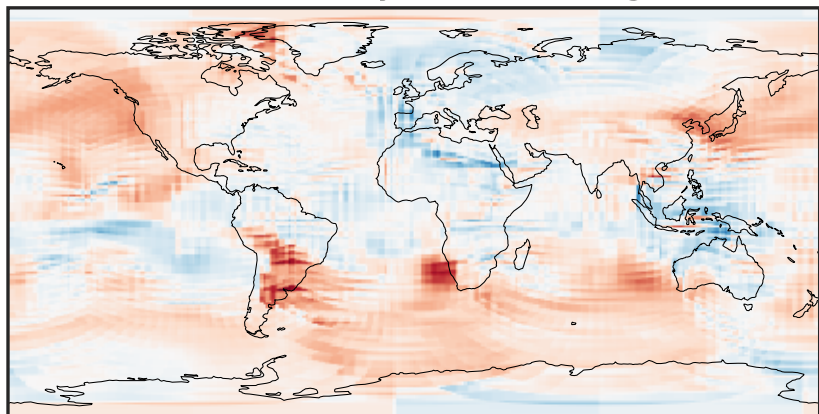
-2.791 -1.396 0.000 1.396 2.791  
µg/m<sup>3</sup>

Difference (1x1.25)  
Dev - Ref, Restricted Range [5%,95%]



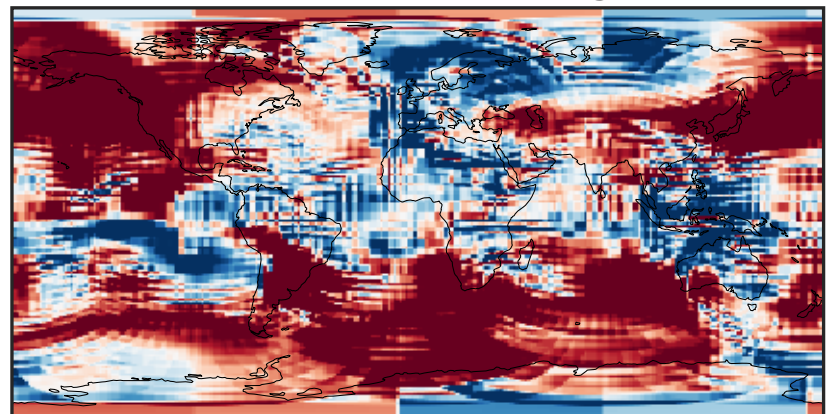
-0.025 0.000 0.025  
µg/m<sup>3</sup>

Ratio (1x1.25)  
Dev/Ref, Dynamic Range



1e-01 1 10  
unitless

Ratio (1x1.25)  
Dev/Ref, Fixed Range

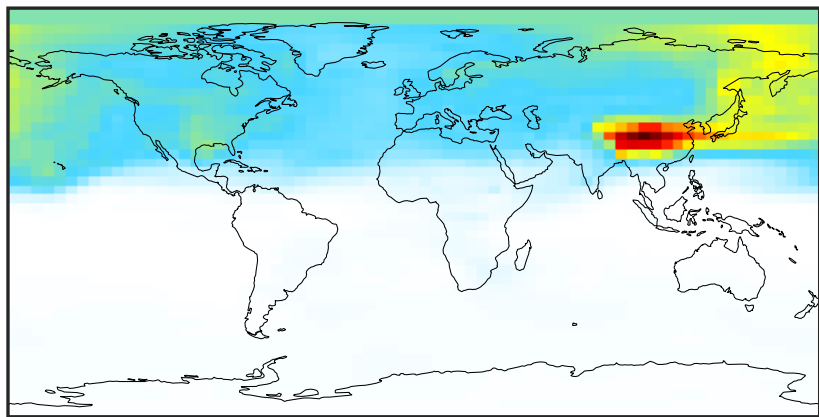


0.50 0.75 1.00 1.50 2.00  
unitless



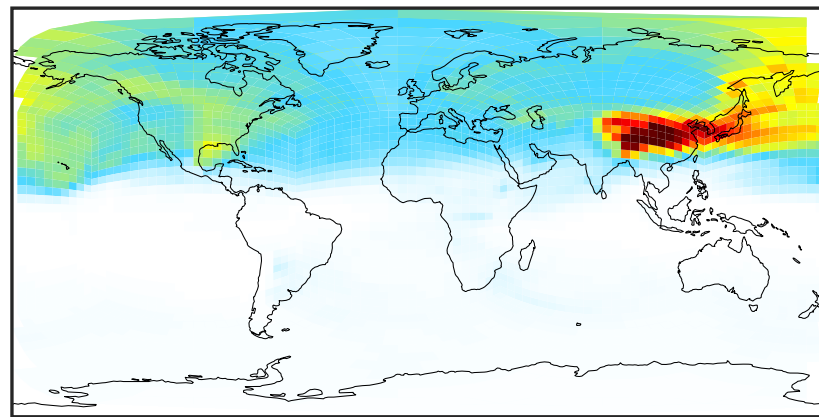
# SpeciesConcVV\_NH4 (Apr2019)

GCC\_14.2.0 (Ref)  
4.0x5.0



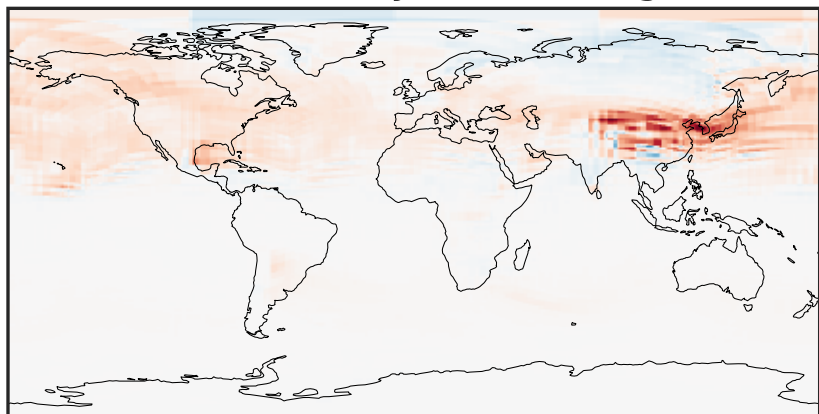
0.0001 0.0895 0.1790 0.2685 0.3581  
 $\mu\text{g}/\text{m}^3$

GCHP\_14.2.0 (Dev)  
c24



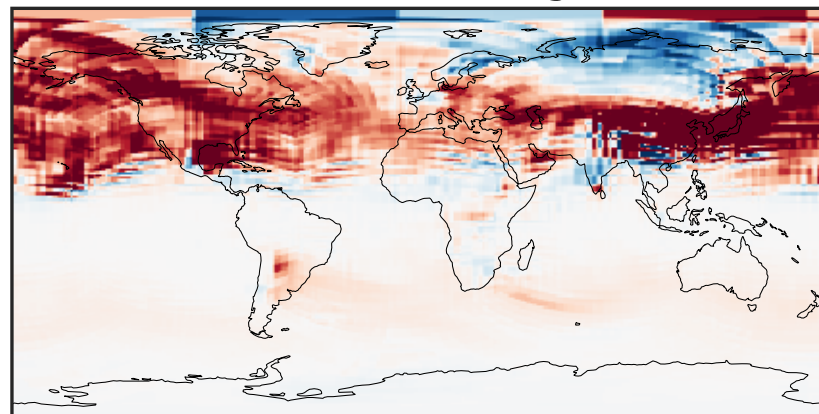
0.0001 0.0895 0.1790 0.2685 0.3581  
 $\mu\text{g}/\text{m}^3$

Difference (1x1.25)  
Dev - Ref, Dynamic Range



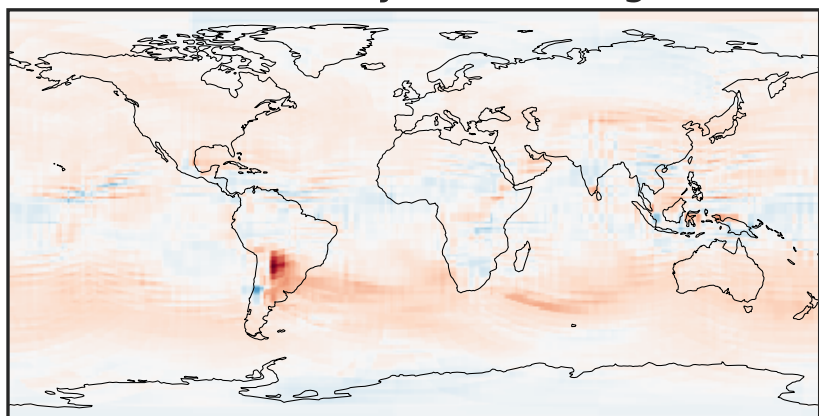
-0.1498 -0.0749 0.0000 0.0749 0.1498  
 $\mu\text{g}/\text{m}^3$

Difference (1x1.25)  
Dev - Ref, Restricted Range [5%,95%]



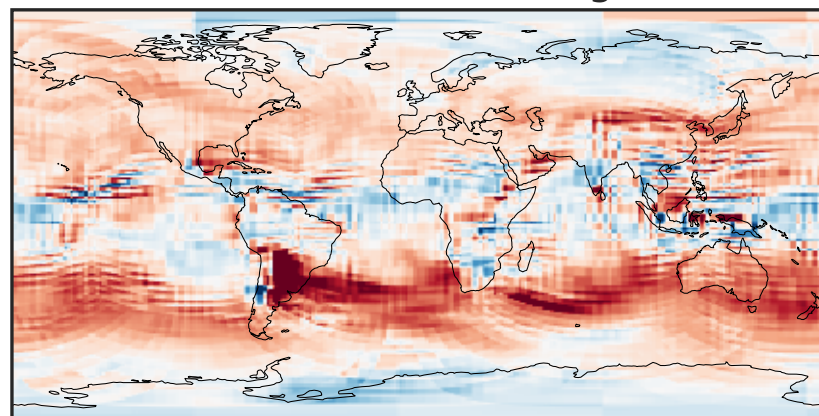
-0.015 0.000 0.015  
 $\mu\text{g}/\text{m}^3$

Ratio (1x1.25)  
Dev/Ref, Dynamic Range



1e-01 1 10  
unitless

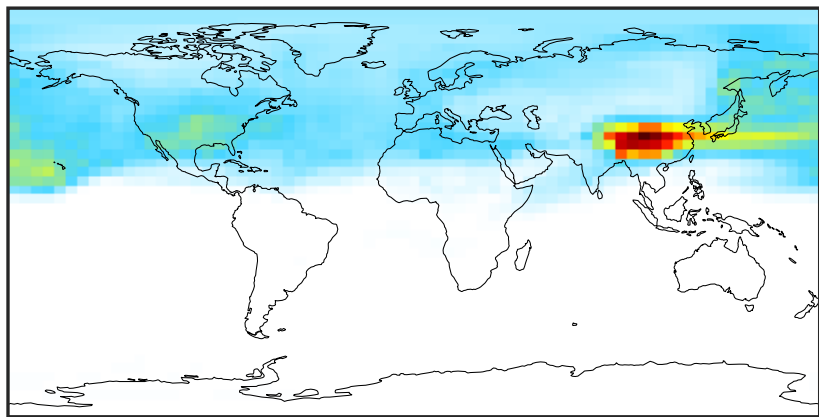
Ratio (1x1.25)  
Dev/Ref, Fixed Range



0.50 0.75 1.00 1.50 2.00  
unitless

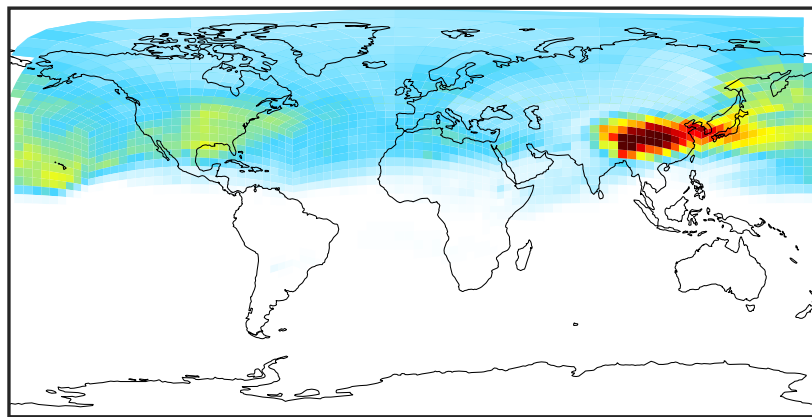
# SpeciesConcVV\_NIT (Apr2019)

GCC\_14.2.0 (Ref)  
4.0x5.0



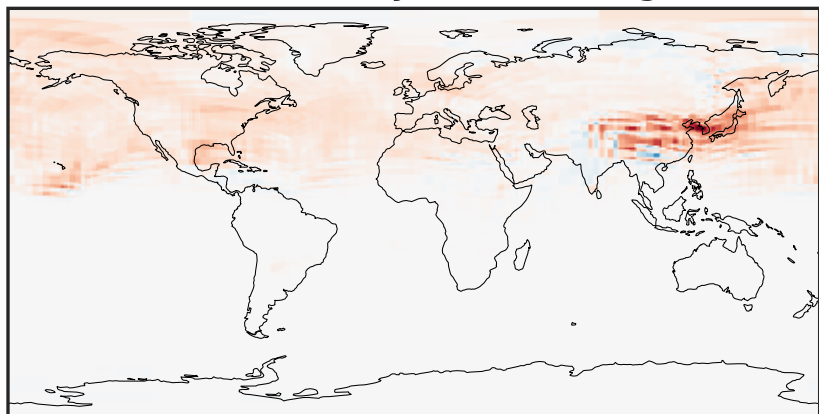
0.0000 0.1526 0.3052 0.4577 0.6103  
 $\mu\text{g}/\text{m}^3$

GCHP\_14.2.0 (Dev)  
c24



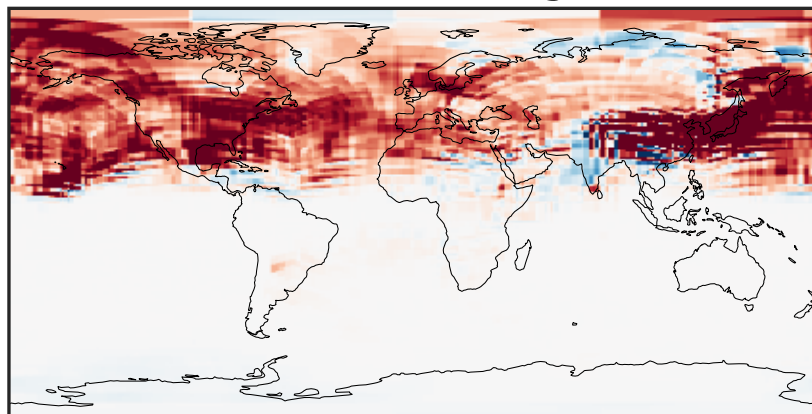
0.0000 0.1526 0.3052 0.4577 0.6103  
 $\mu\text{g}/\text{m}^3$

Difference (1x1.25)  
Dev - Ref, Dynamic Range



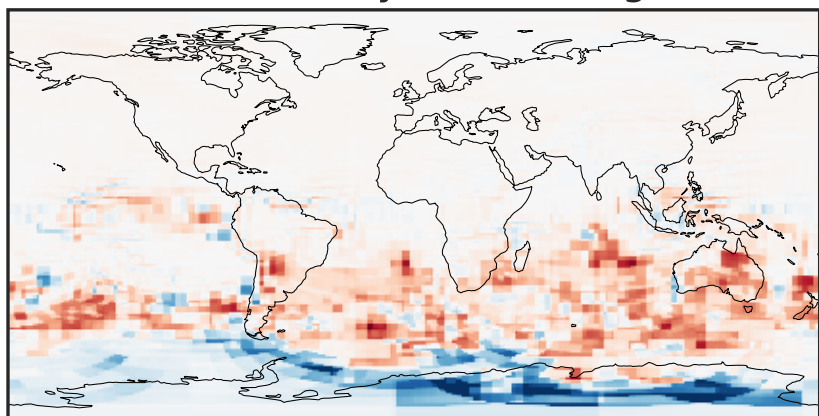
-0.2797 -0.1398 0.0000 0.1398 0.2797  
 $\mu\text{g}/\text{m}^3$

Difference (1x1.25)  
Dev - Ref, Restricted Range [5%,95%]



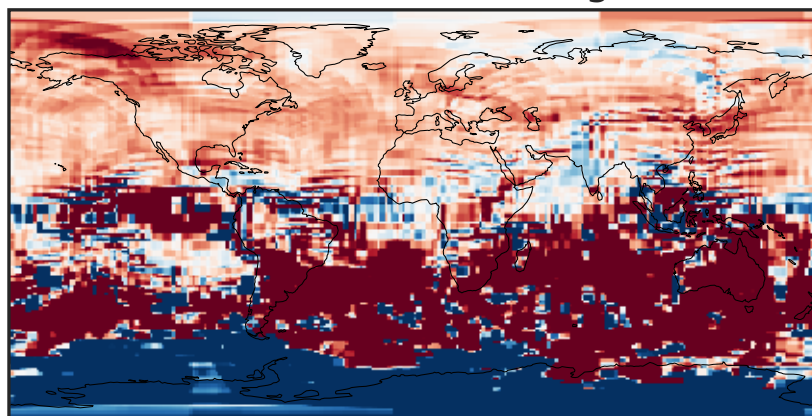
-0.025 0.000 0.025  
 $\mu\text{g}/\text{m}^3$

Ratio (1x1.25)  
Dev/Ref, Dynamic Range



1e-05 1e-03 1e-01 10 1000 1e+05  
unitless

Ratio (1x1.25)  
Dev/Ref, Fixed Range

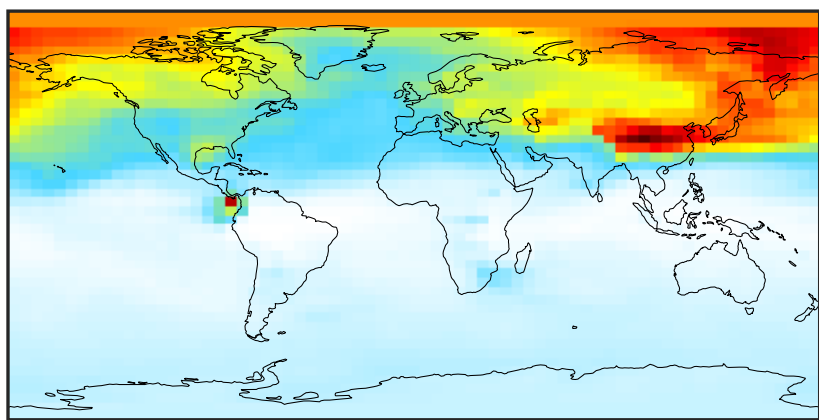


0.50 0.75 1.00 1.50 2.00  
unitless



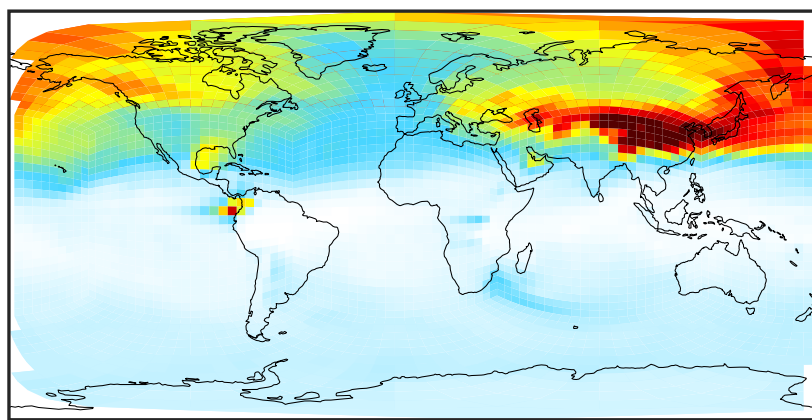
# SpeciesConcVV\_SO4 (Apr2019)

GCC\_14.2.0 (Ref)  
4.0x5.0



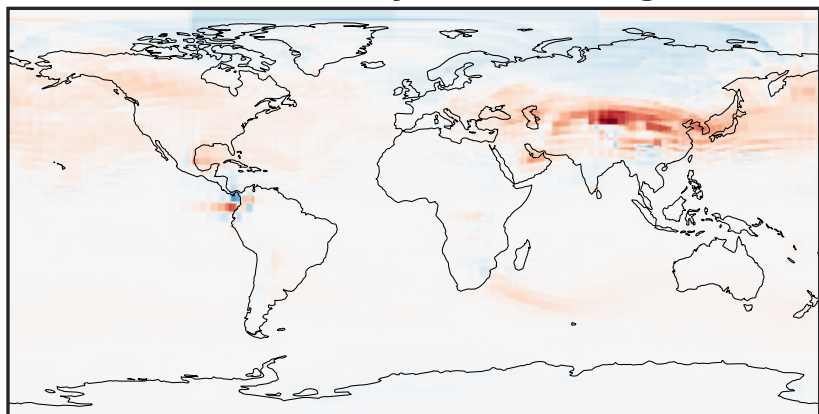
0.0036 0.1115 0.2230 0.3346 0.4497  
 $\mu\text{g}/\text{m}^3$

GCHP\_14.2.0 (Dev)  
c24



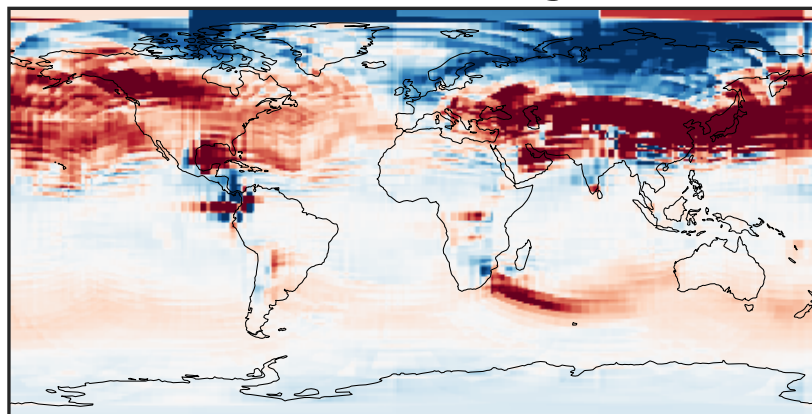
0.0036 0.1115 0.2230 0.3346 0.4497  
 $\mu\text{g}/\text{m}^3$

Difference (1x1.25)  
Dev - Ref, Dynamic Range



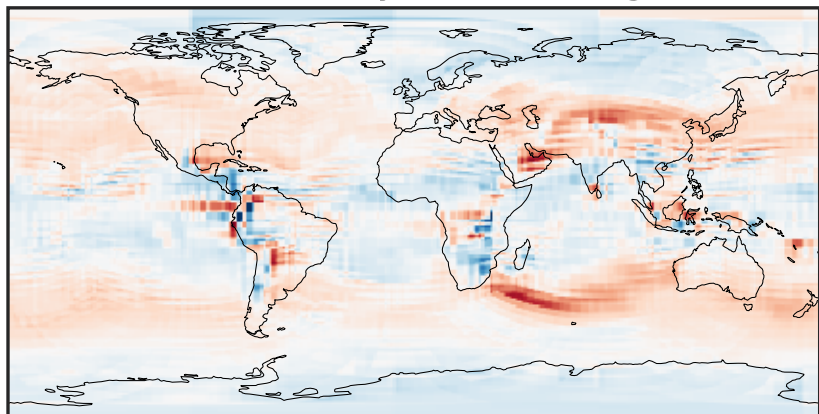
-0.3030 -0.1515 0.0000 0.1515 0.3030  
 $\mu\text{g}/\text{m}^3$

Difference (1x1.25)  
Dev - Ref, Restricted Range [5%,95%]



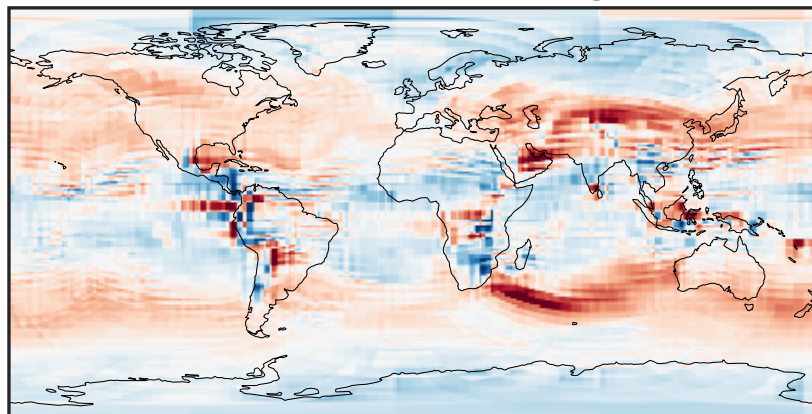
-0.02 0.00 0.02  
 $\mu\text{g}/\text{m}^3$

Ratio (1x1.25)  
Dev/Ref, Dynamic Range



0.344 0.672 1.000 1.955 2.911  
unitless

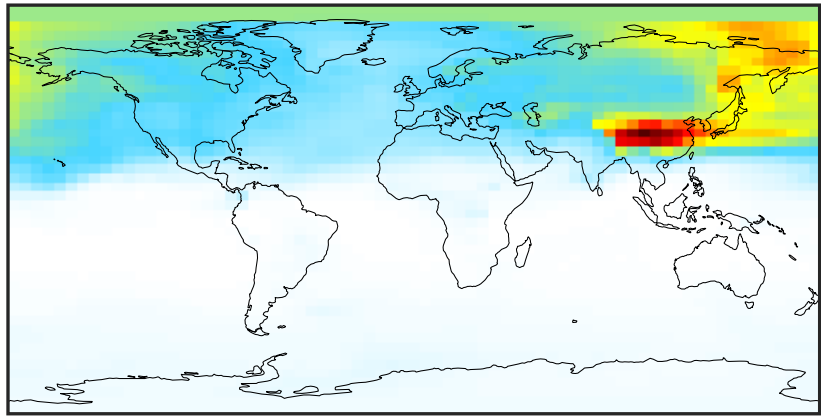
Ratio (1x1.25)  
Dev/Ref, Fixed Range



0.50 0.75 1.00 1.50 2.00  
unitless

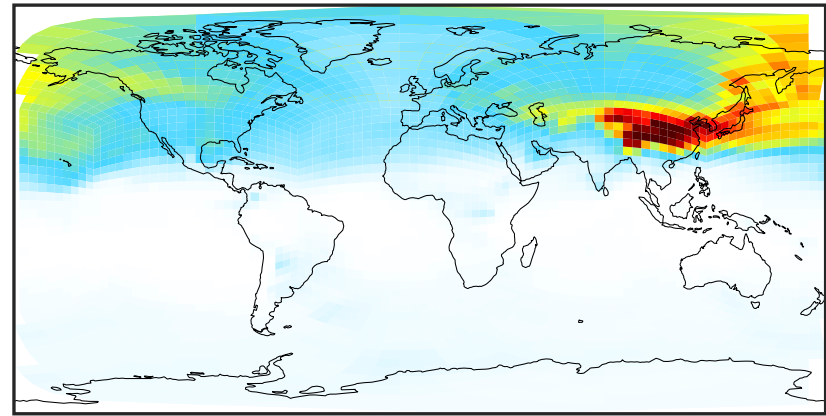
# SpeciesConcVV\_HMS (Apr2019)

GCC\_14.2.0 (Ref)  
4.0x5.0



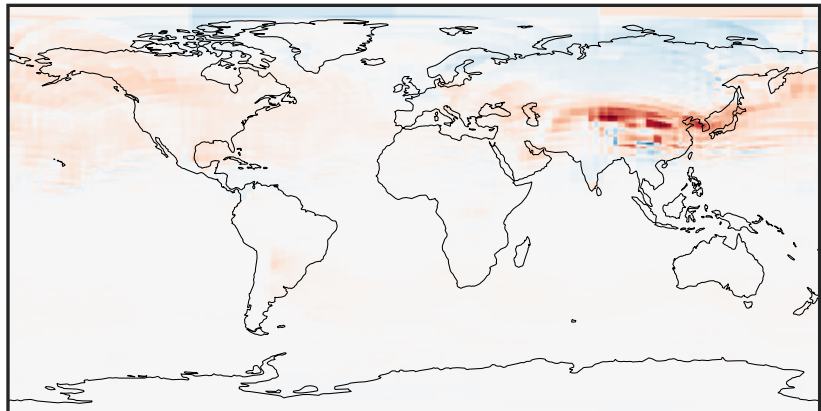
0.015 0.030 0.045  
 $\mu\text{g}/\text{m}^3$

GCHP\_14.2.0 (Dev)  
c24



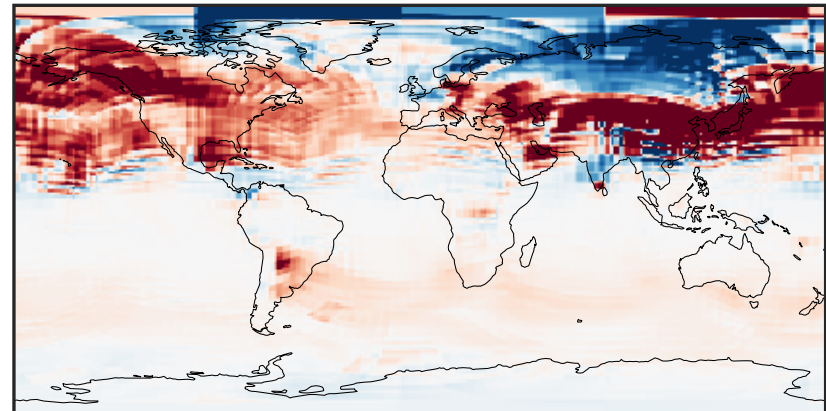
0.015 0.030 0.045  
 $\mu\text{g}/\text{m}^3$

Difference (1x1.25)  
Dev - Ref, Dynamic Range



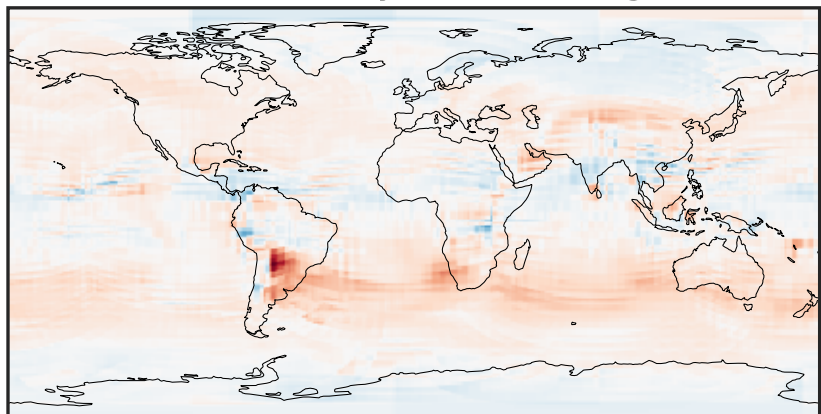
-0.015 0.000 0.015  
 $\mu\text{g}/\text{m}^3$

Difference (1x1.25)  
Dev - Ref, Restricted Range [5%,95%]



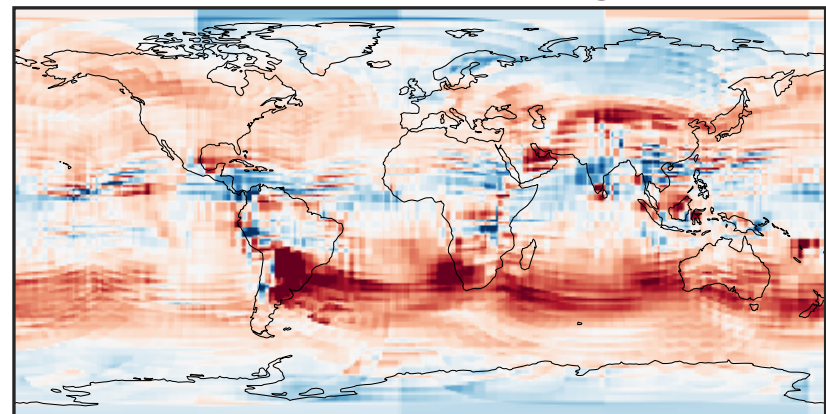
-0.002 0.000 0.002  
 $\mu\text{g}/\text{m}^3$

Ratio (1x1.25)  
Dev/Ref, Dynamic Range



0.109 0.554 1.000 5.107 9.214  
unitless

Ratio (1x1.25)  
Dev/Ref, Fixed Range

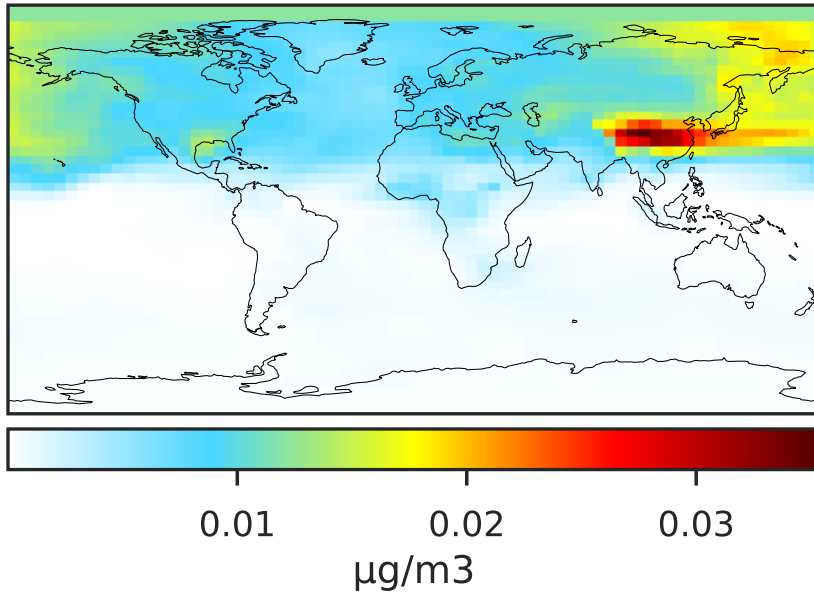


0.50 0.75 1.00 1.50 2.00  
unitless

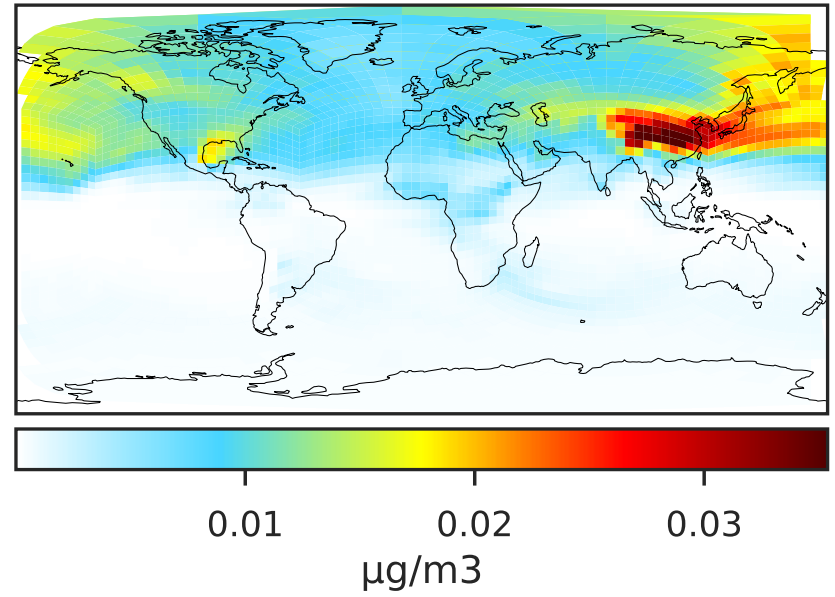


# SpeciesConcVV\_BCPI (Apr2019)

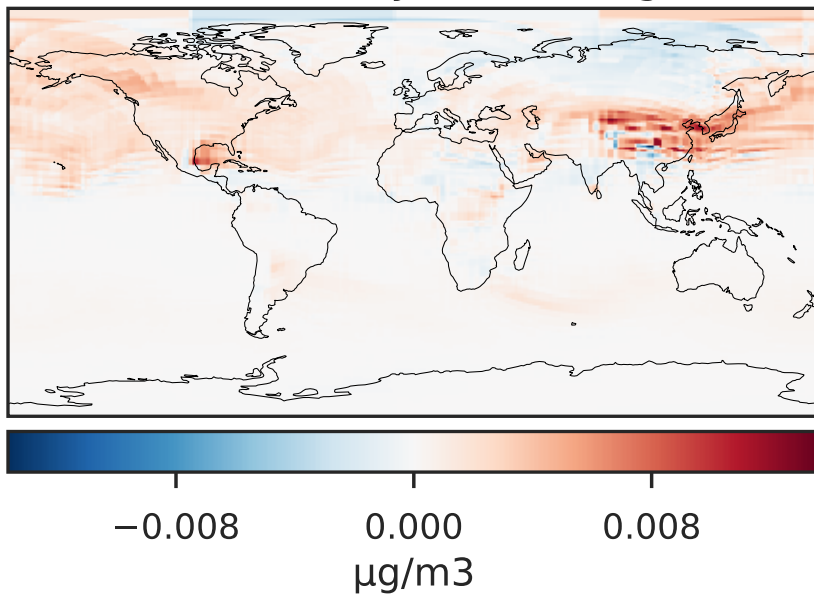
GCC\_14.2.0 (Ref)  
4.0x5.0



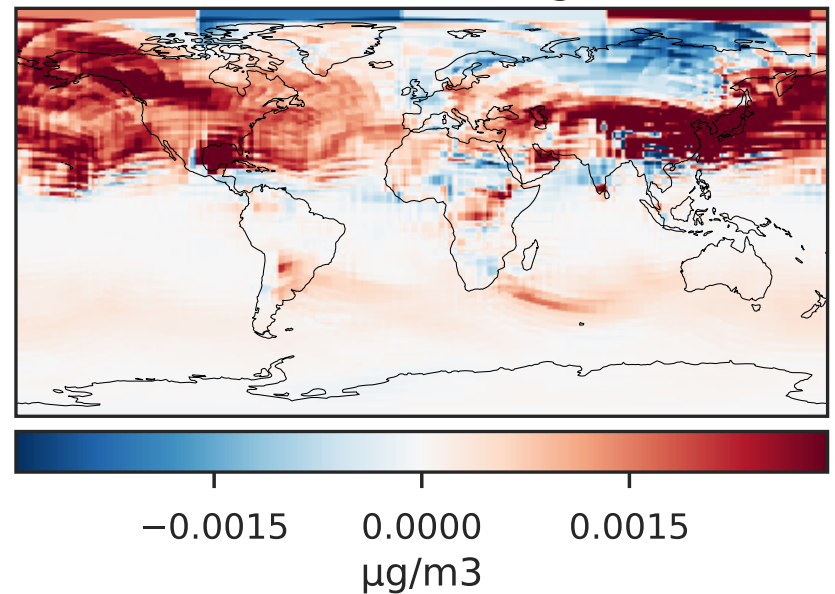
GCHP\_14.2.0 (Dev)  
c24



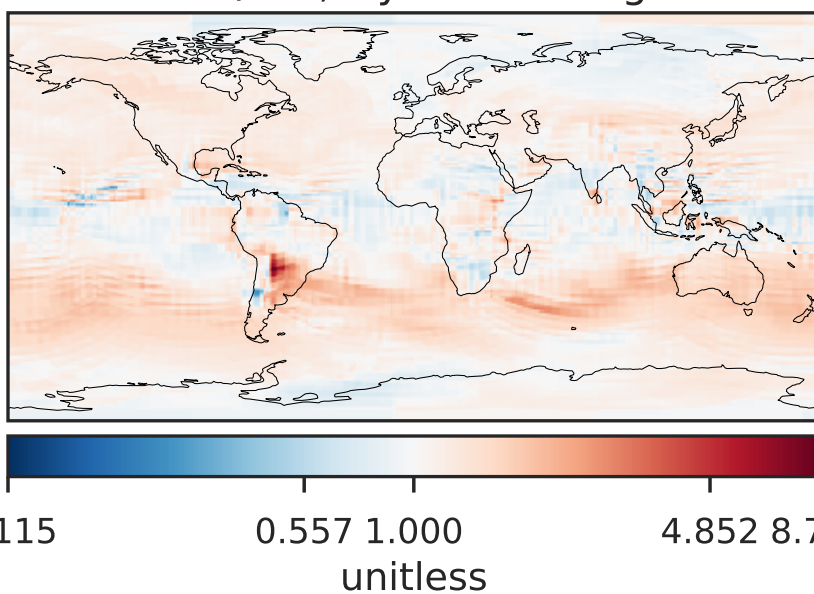
Difference (1x1.25)  
Dev - Ref, Dynamic Range



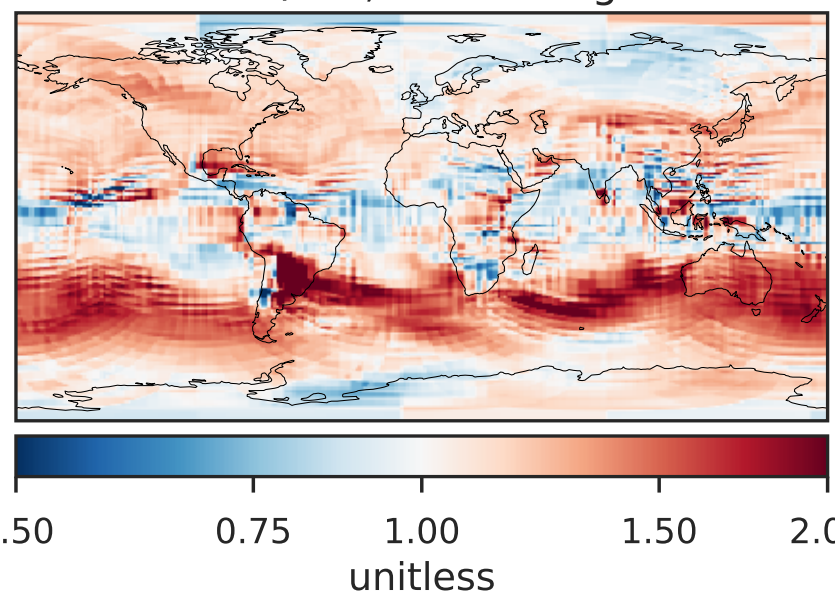
Difference (1x1.25)  
Dev - Ref, Restricted Range [5%,95%]



Ratio (1x1.25)  
Dev/Ref, Dynamic Range

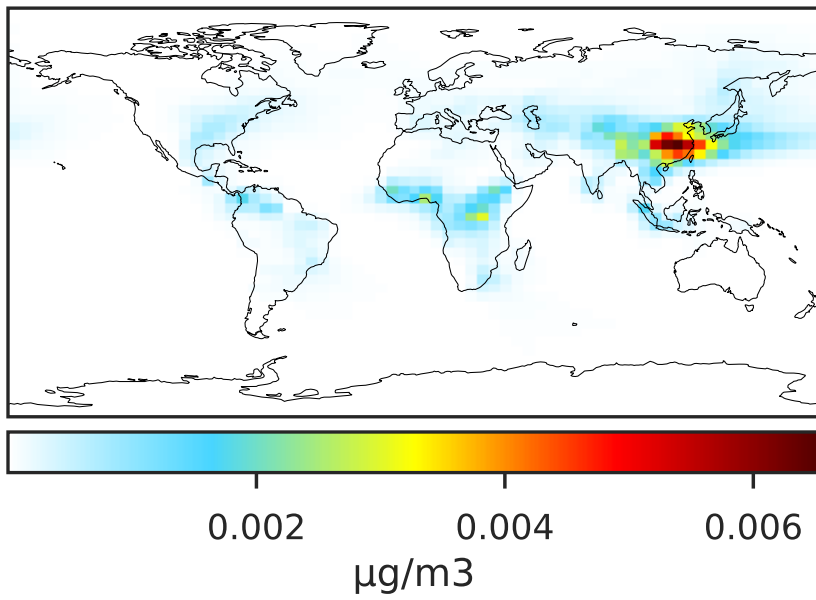


Ratio (1x1.25)  
Dev/Ref, Fixed Range

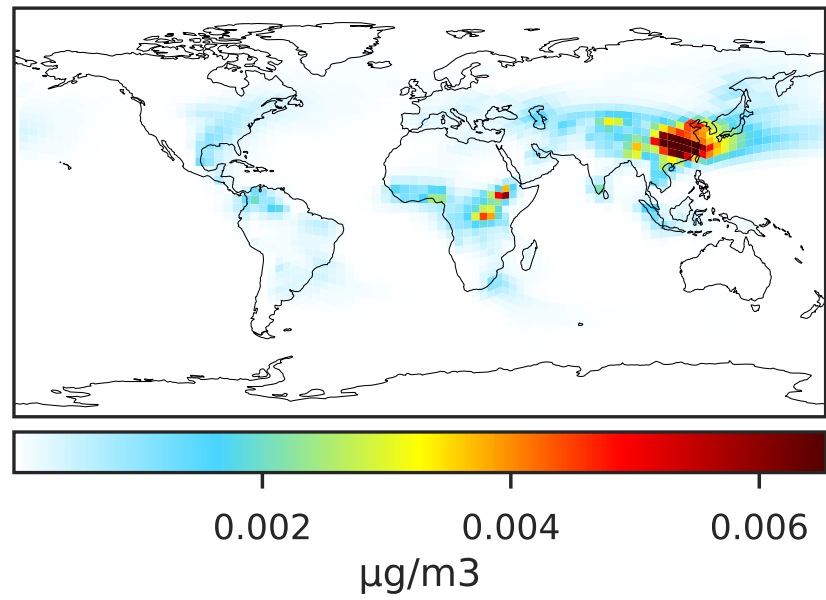


# SpeciesConcVV\_BCPO (Apr2019)

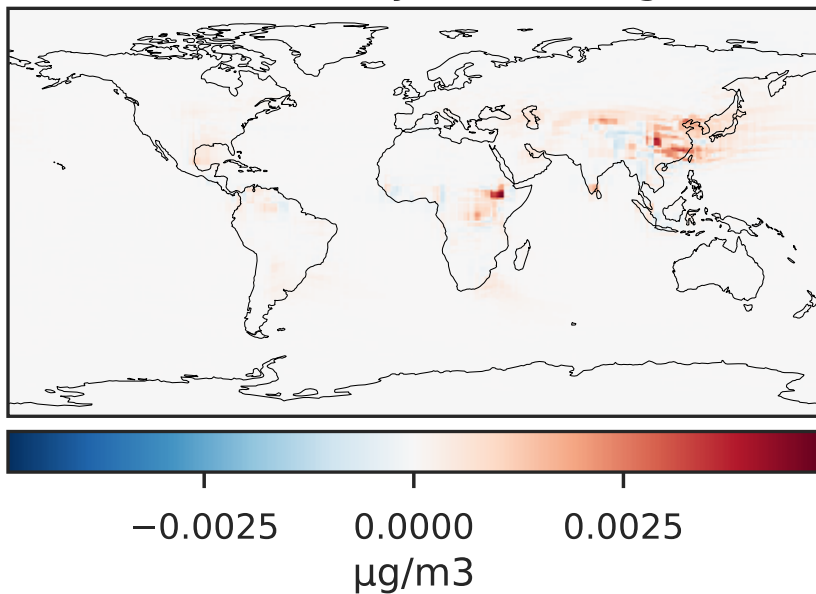
GCC\_14.2.0 (Ref)  
4.0x5.0



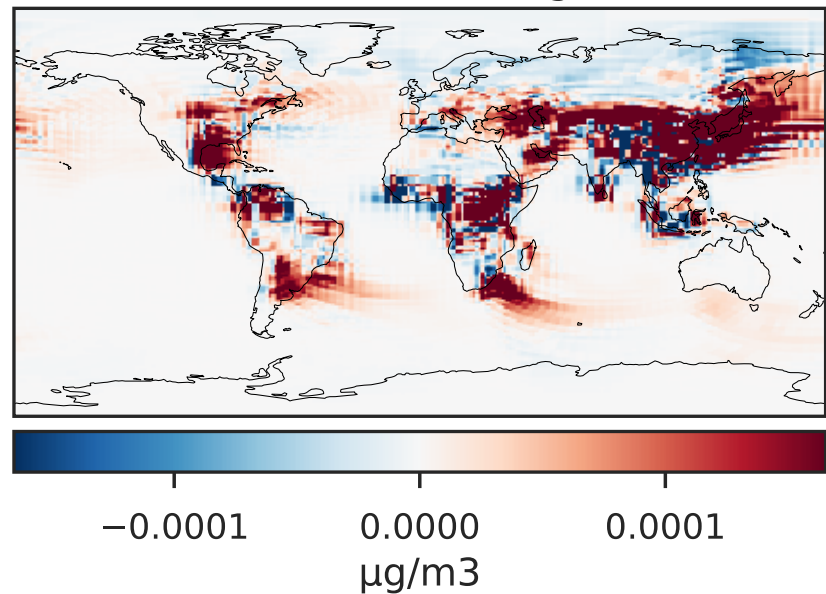
GCHP\_14.2.0 (Dev)  
c24



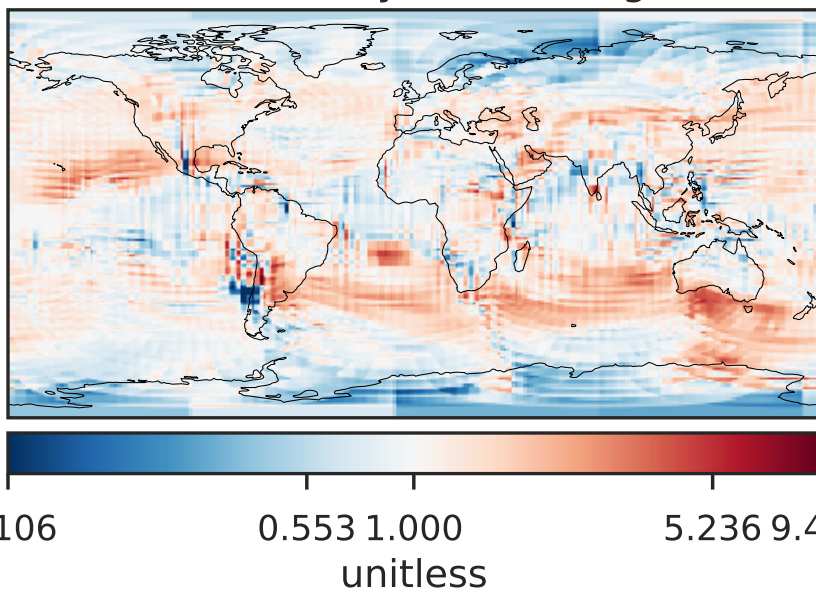
Difference (1x1.25)  
Dev - Ref, Dynamic Range



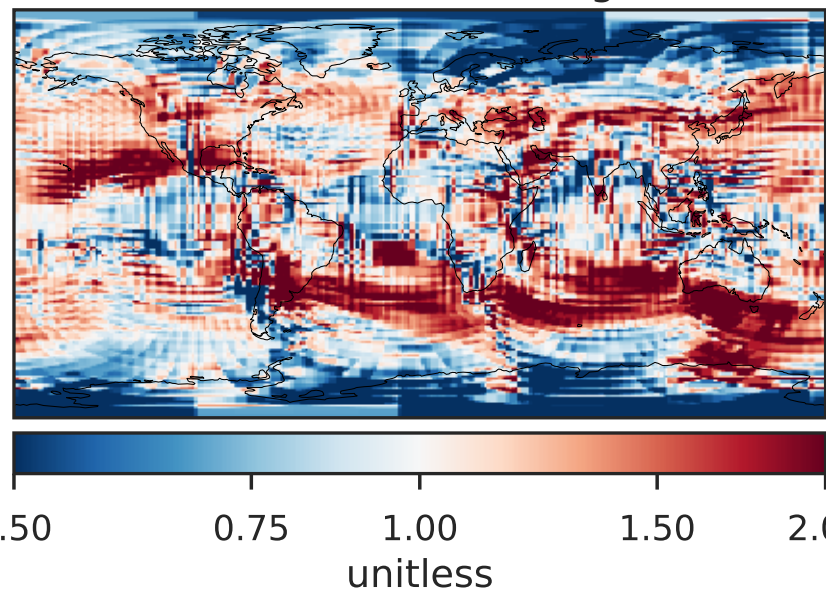
Difference (1x1.25)  
Dev - Ref, Restricted Range [5%,95%]



Ratio (1x1.25)  
Dev/Ref, Dynamic Range



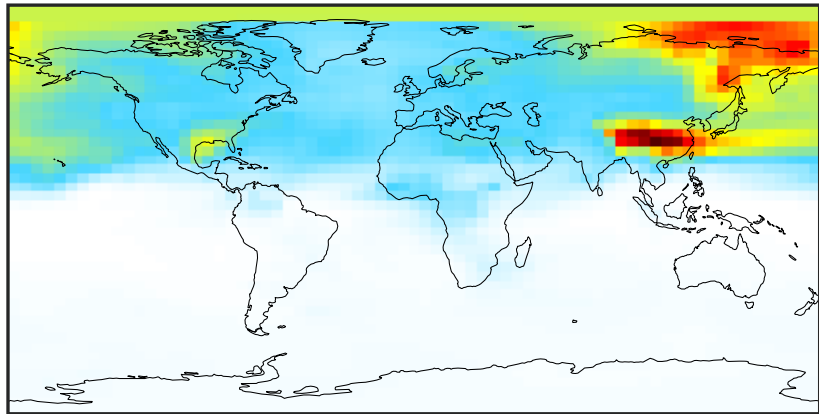
Ratio (1x1.25)  
Dev/Ref, Fixed Range





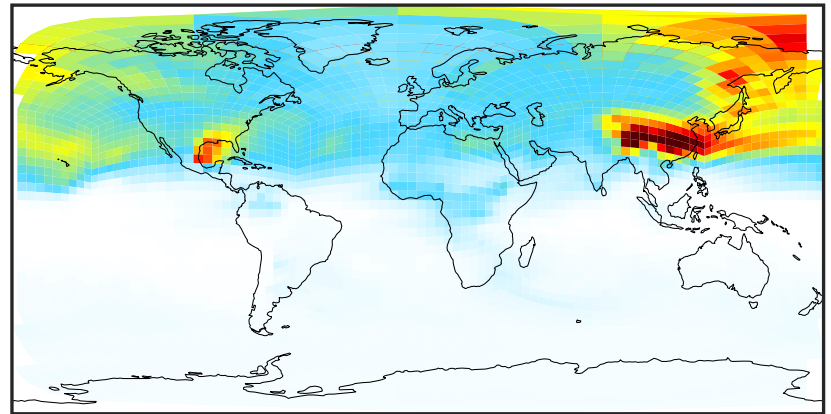
# SpeciesConcVV\_OCPI (Apr2019)

GCC\_14.2.0 (Ref)  
4.0x5.0



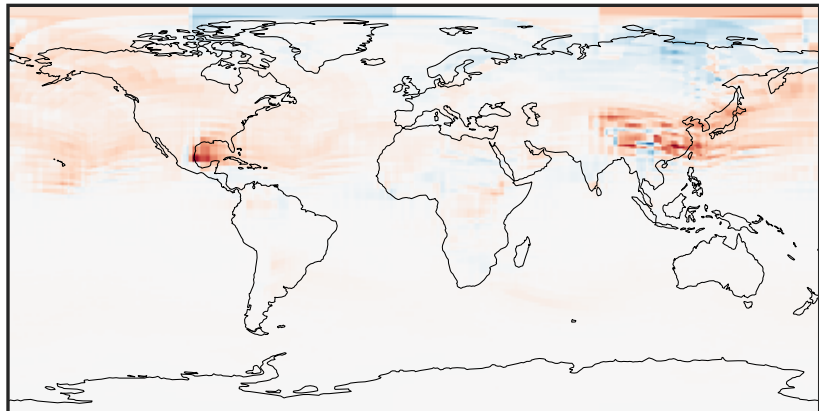
0.0000 0.0264 0.0528 0.0792 0.1056  
 $\mu\text{g}/\text{m}^3$

GCHP\_14.2.0 (Dev)  
c24



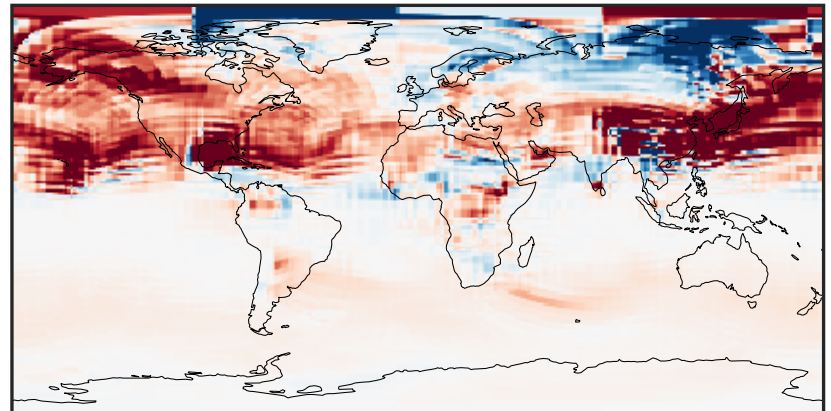
0.0000 0.0264 0.0528 0.0792 0.1056  
 $\mu\text{g}/\text{m}^3$

Difference (1x1.25)  
Dev - Ref, Dynamic Range



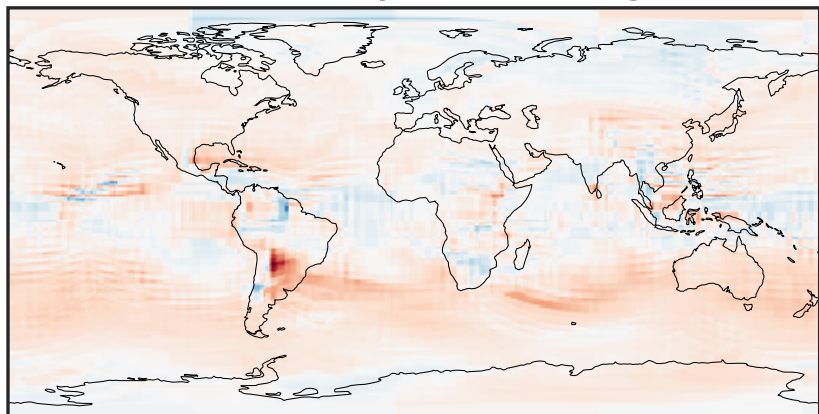
-0.0524 -0.0262 0.0000 0.0262 0.0524  
 $\mu\text{g}/\text{m}^3$

Difference (1x1.25)  
Dev - Ref, Restricted Range [5%,95%]



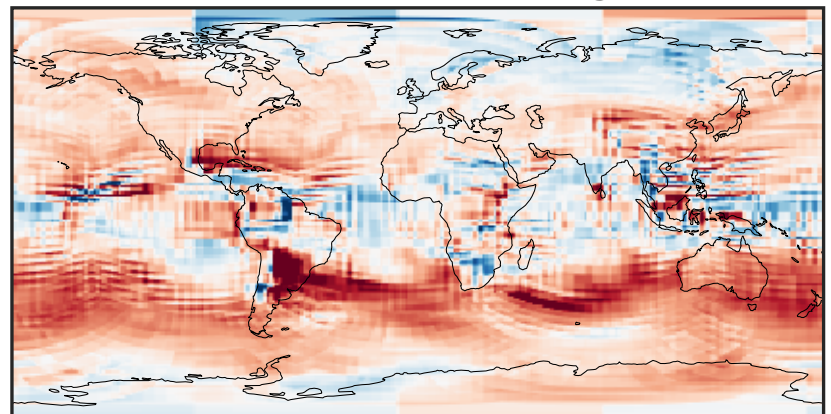
-0.005 0.000 0.005  
 $\mu\text{g}/\text{m}^3$

Ratio (1x1.25)  
Dev/Ref, Dynamic Range



0.117 0.559 1.000 4.773 8.546  
unitless

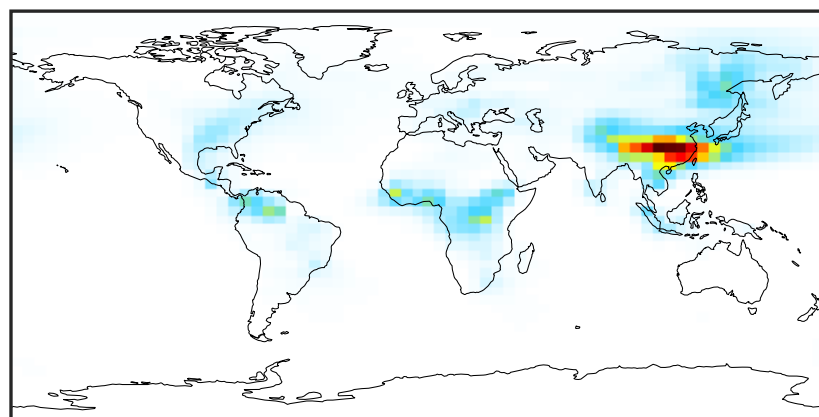
Ratio (1x1.25)  
Dev/Ref, Fixed Range



0.50 0.75 1.00 1.50 2.00  
unitless

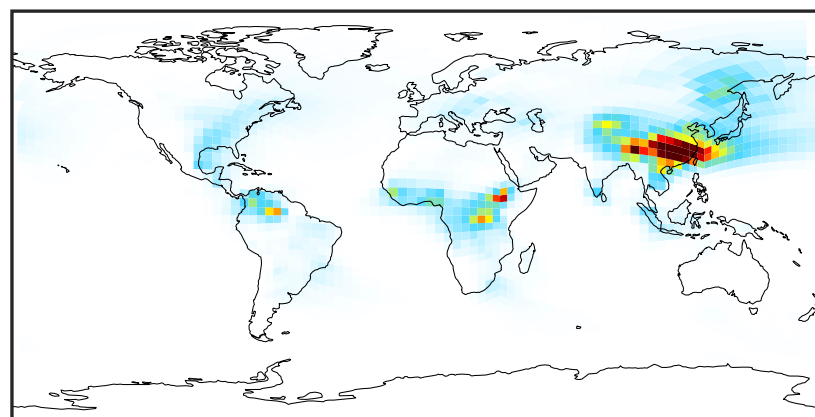
# SpeciesConcVV\_OCPO (Apr2019)

GCC\_14.2.0 (Ref)  
4.0x5.0



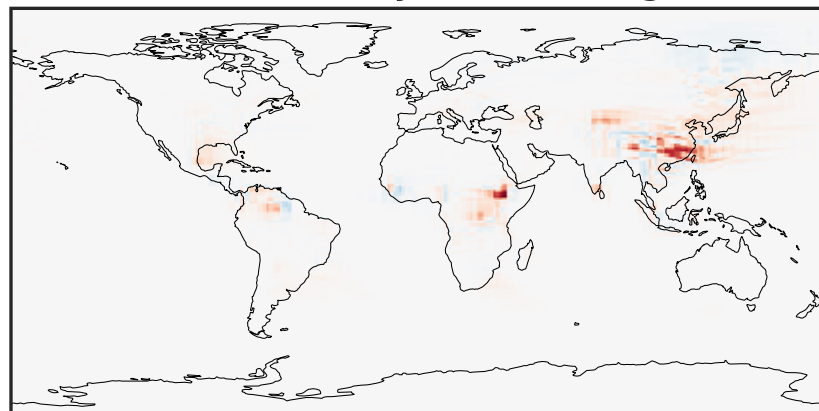
0.004 0.008 0.012  
 $\mu\text{g}/\text{m}^3$

GCHP\_14.2.0 (Dev)  
c24



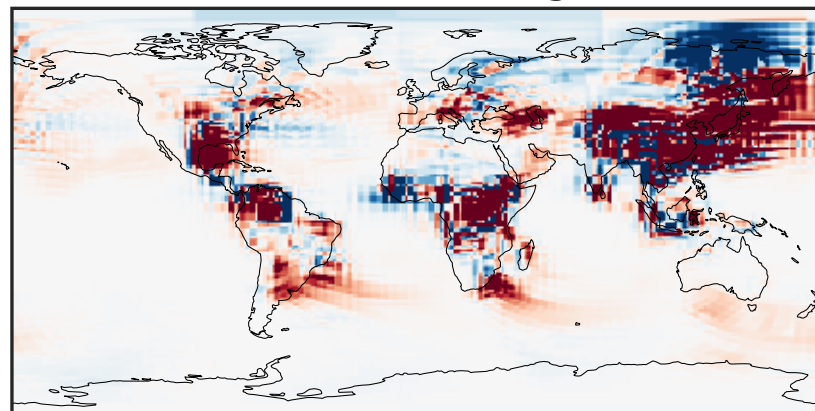
0.004 0.008 0.012  
 $\mu\text{g}/\text{m}^3$

Difference (1x1.25)  
Dev - Ref, Dynamic Range



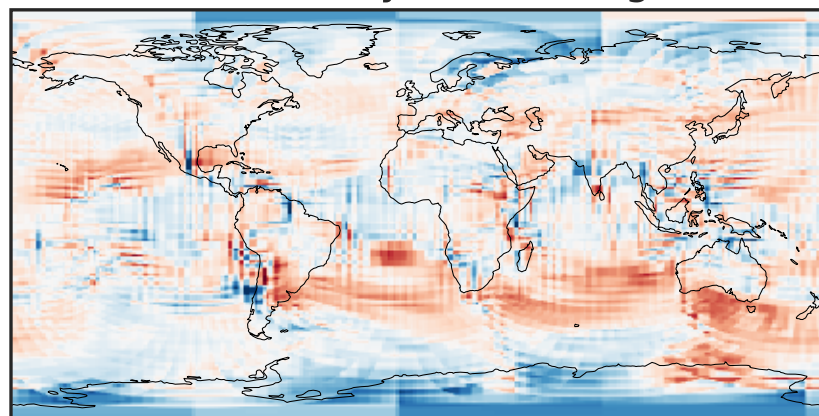
-0.006 0.000 0.006  
 $\mu\text{g}/\text{m}^3$

Difference (1x1.25)  
Dev - Ref, Restricted Range [5%,95%]



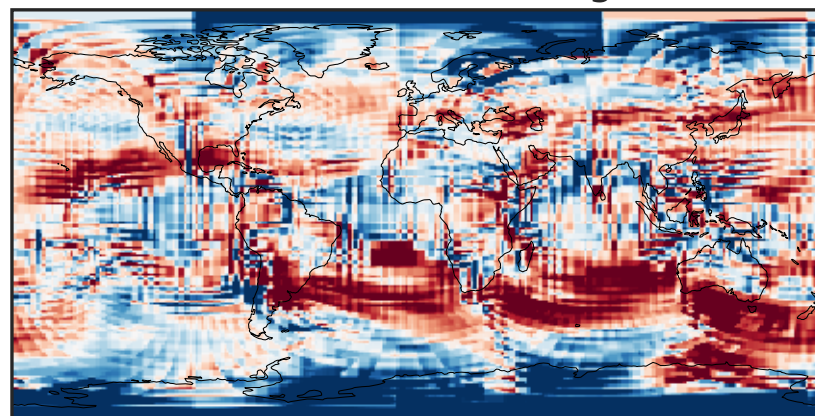
-0.0002 0.0000 0.0002  
 $\mu\text{g}/\text{m}^3$

Ratio (1x1.25)  
Dev/Ref, Dynamic Range



0.131 0.566 1.000 4.310 7.620  
unitless

Ratio (1x1.25)  
Dev/Ref, Fixed Range

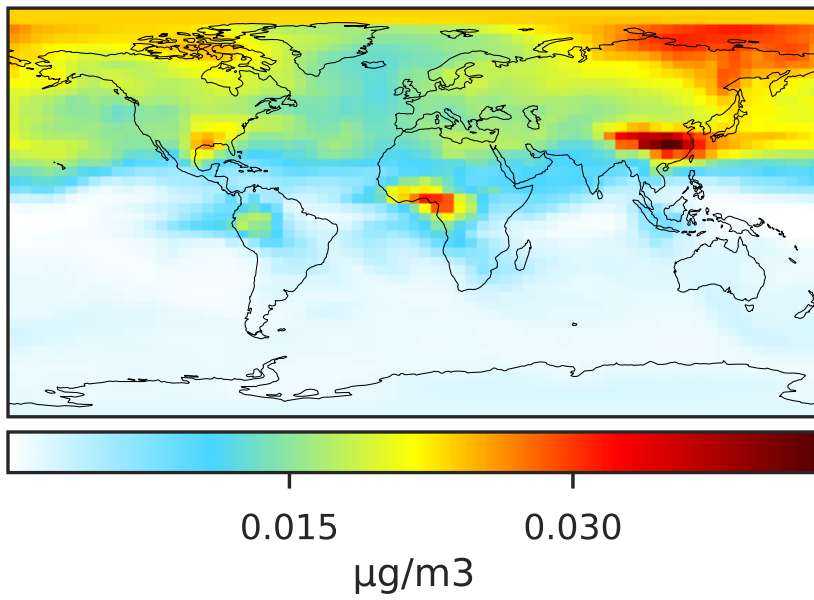


0.50 0.75 1.00 1.50 2.00  
unitless

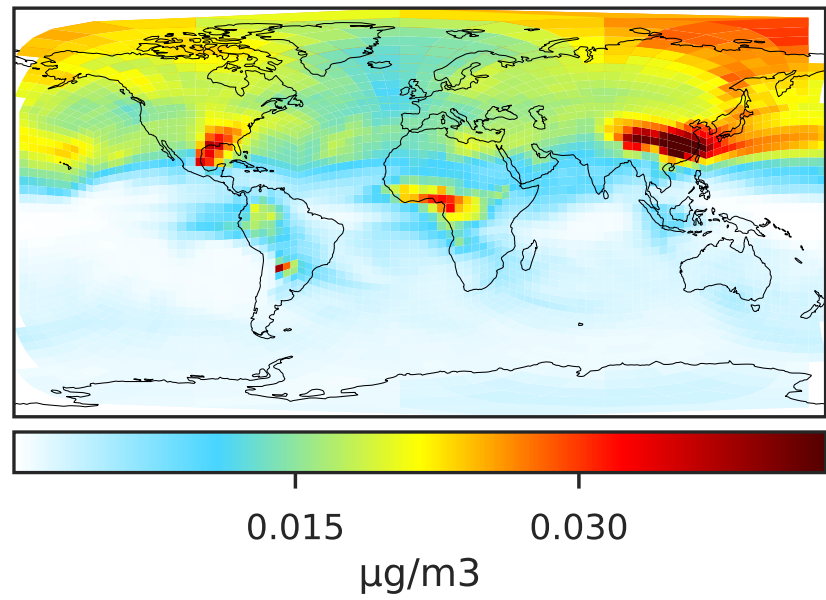


# SpeciesConcVV\_Complex\_SOA (Apr2019)

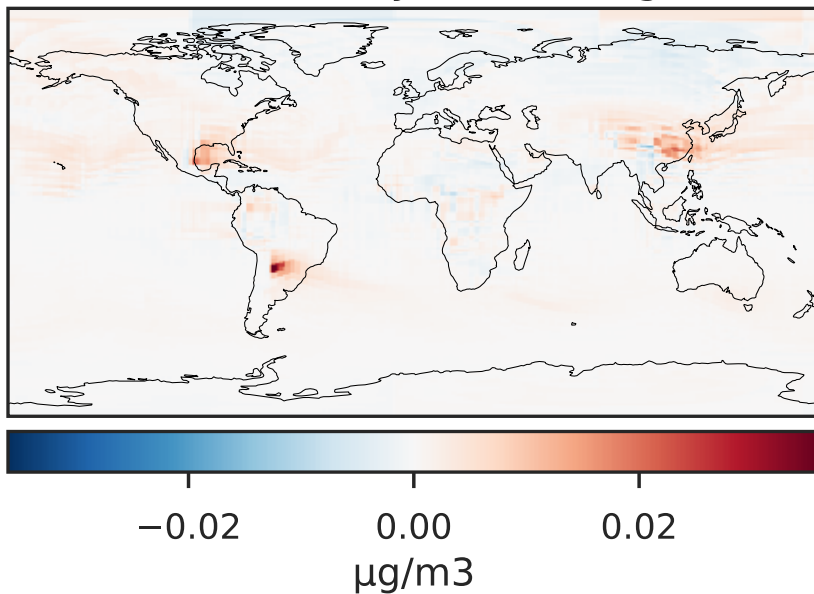
GCC\_14.2.0 (Ref)  
4.0x5.0



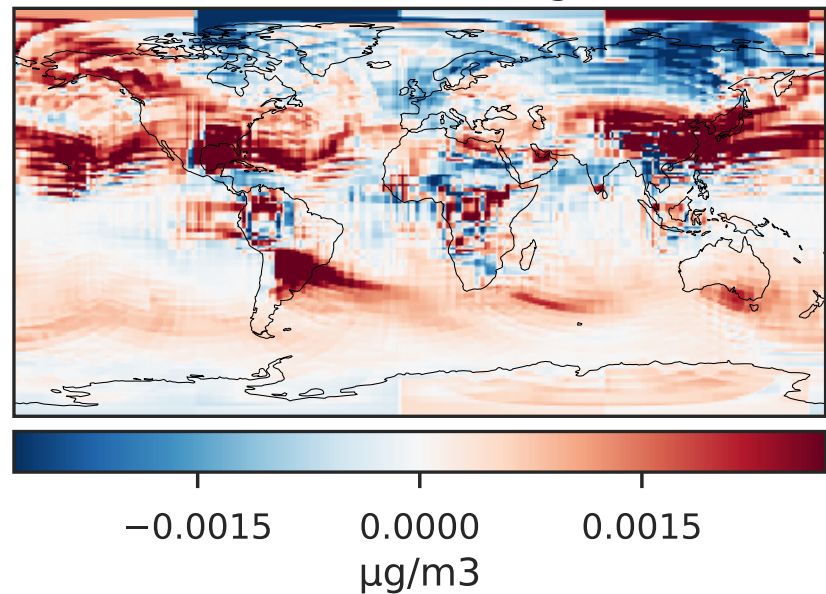
GCHP\_14.2.0 (Dev)  
c24



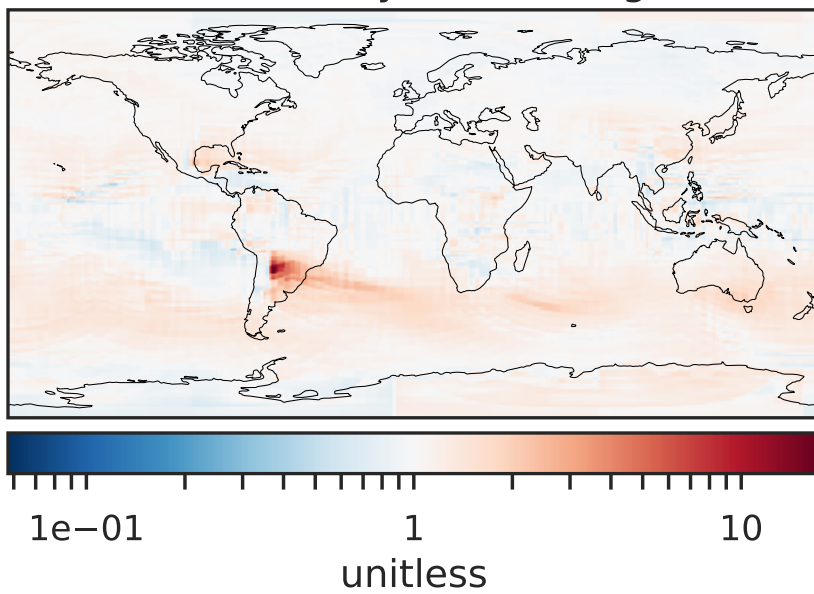
Difference (1x1.25)  
Dev - Ref, Dynamic Range



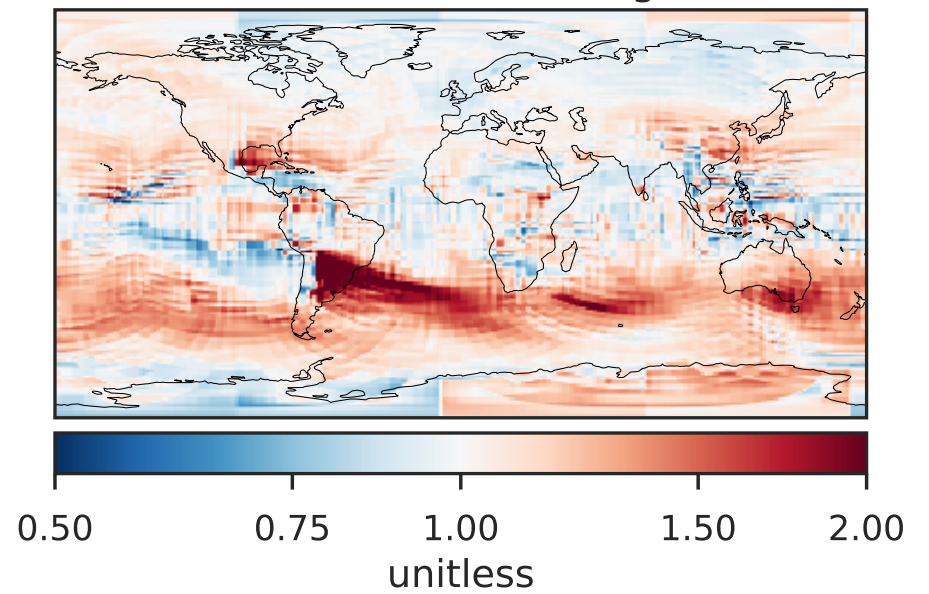
Difference (1x1.25)  
Dev - Ref, Restricted Range [5%,95%]



Ratio (1x1.25)  
Dev/Ref, Dynamic Range

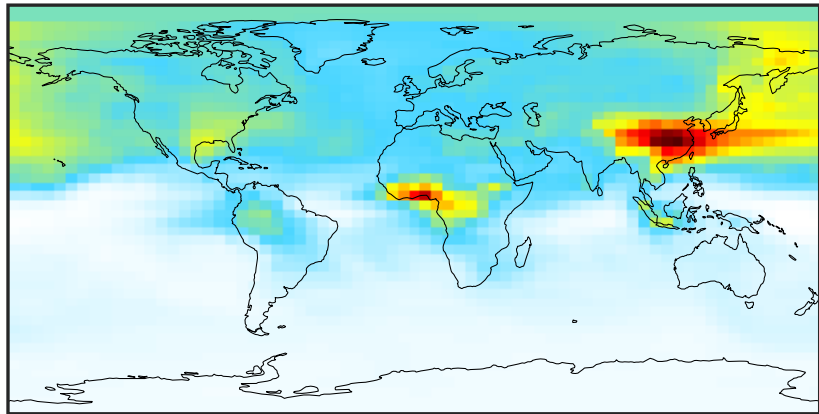


Ratio (1x1.25)  
Dev/Ref, Fixed Range



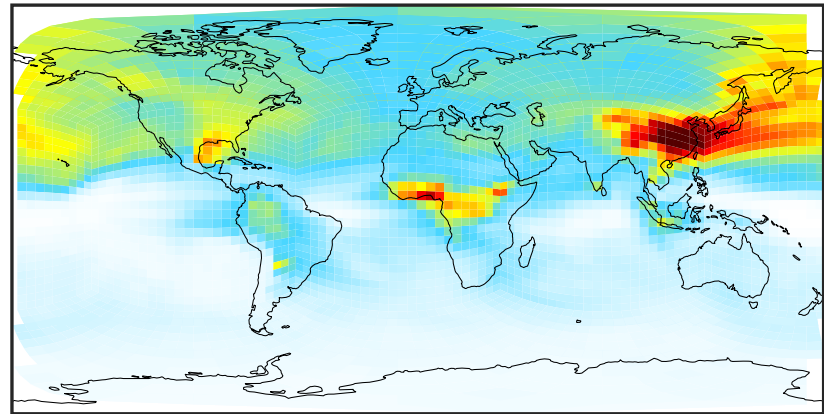
# SpeciesConcVV\_Simple\_SOA (Apr2019)

GCC\_14.2.0 (Ref)  
4.0x5.0



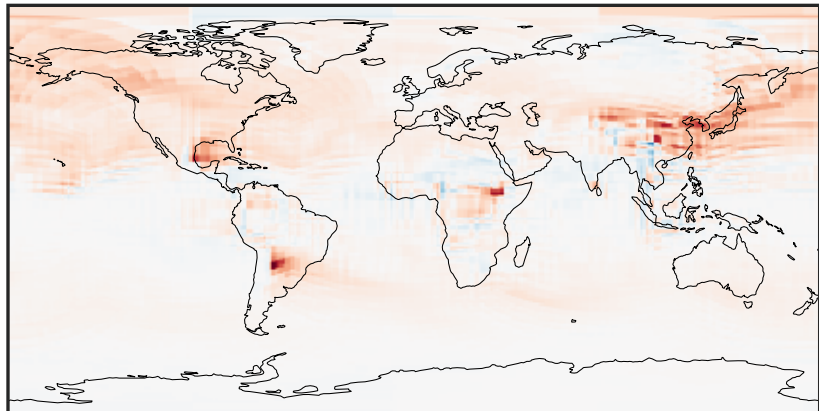
0.0010 0.0952 0.1904 0.2856 0.3818  
 $\mu\text{g}/\text{m}^3$

GCHP\_14.2.0 (Dev)  
c24



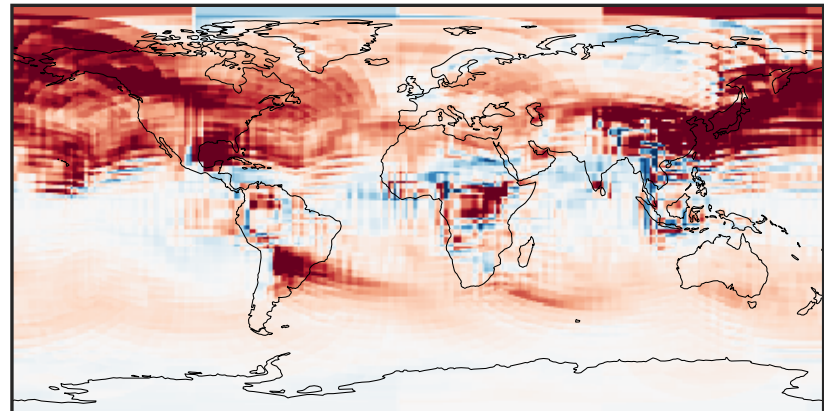
0.0010 0.0952 0.1904 0.2856 0.3818  
 $\mu\text{g}/\text{m}^3$

Difference (1x1.25)  
Dev - Ref, Dynamic Range



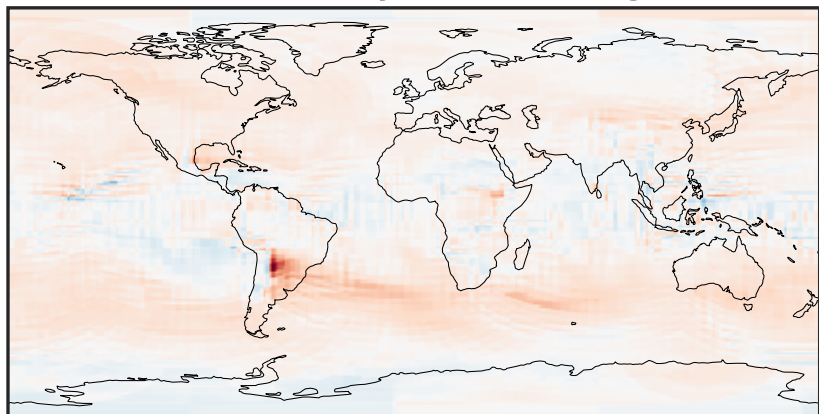
-0.1621 -0.0811 0.0000 0.0811 0.1621  
 $\mu\text{g}/\text{m}^3$

Difference (1x1.25)  
Dev - Ref, Restricted Range [5%,95%]



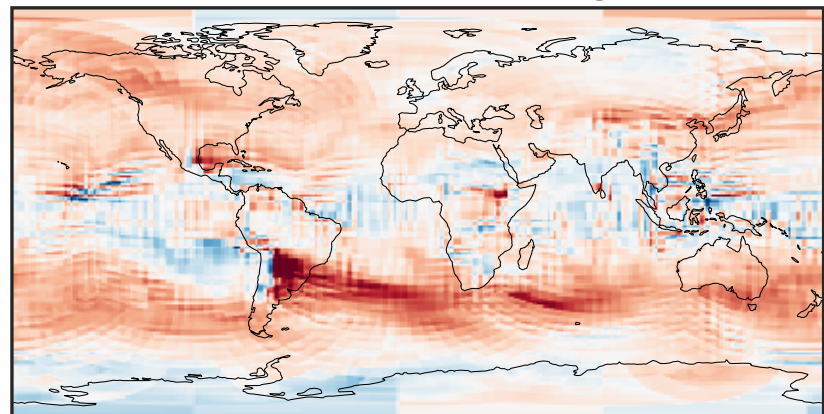
-0.02 0.00 0.02  
 $\mu\text{g}/\text{m}^3$

Ratio (1x1.25)  
Dev/Ref, Dynamic Range



0.130 0.565 1.000 4.336 7.671  
unitless

Ratio (1x1.25)  
Dev/Ref, Fixed Range

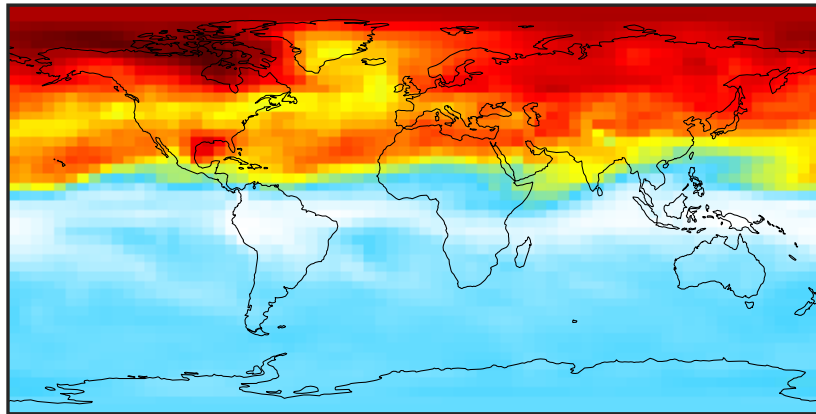


0.50 0.75 1.00 1.50 2.00  
unitless



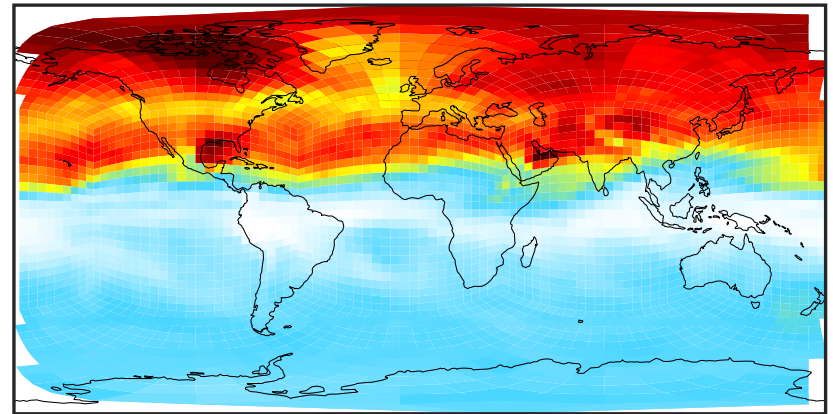
# SpeciesConcVV\_AERI (Apr2019)

GCC\_14.2.0 (Ref)  
4.0x5.0



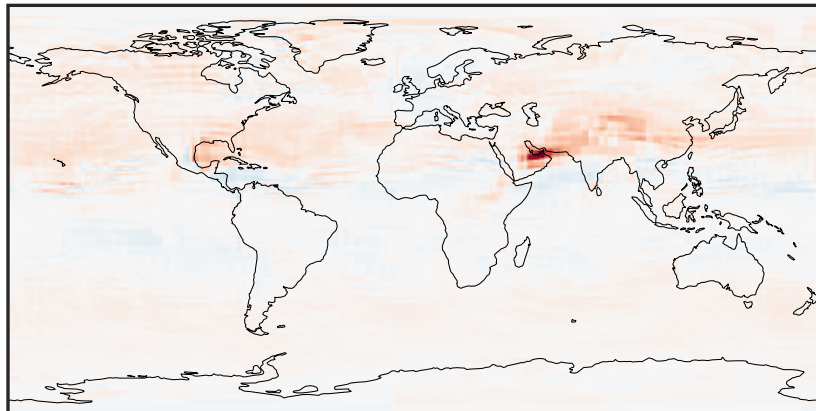
0.00025 0.00050 0.00075  
 $\mu\text{g}/\text{m}^3$

GCHP\_14.2.0 (Dev)  
c24



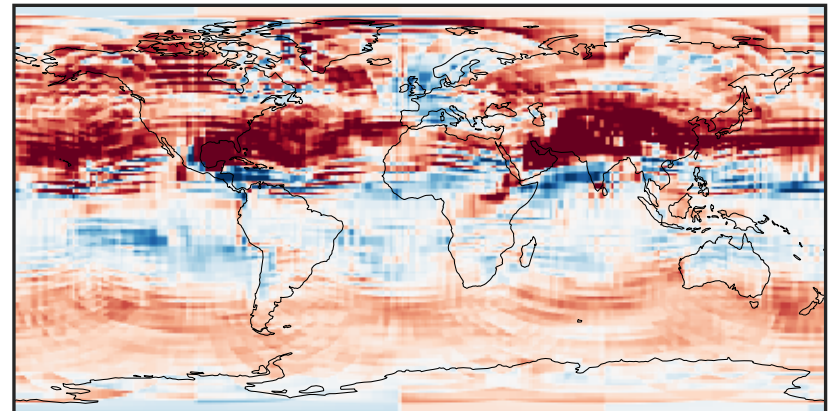
0.00025 0.00050 0.00075  
 $\mu\text{g}/\text{m}^3$

Difference (1x1.25)  
Dev - Ref, Dynamic Range



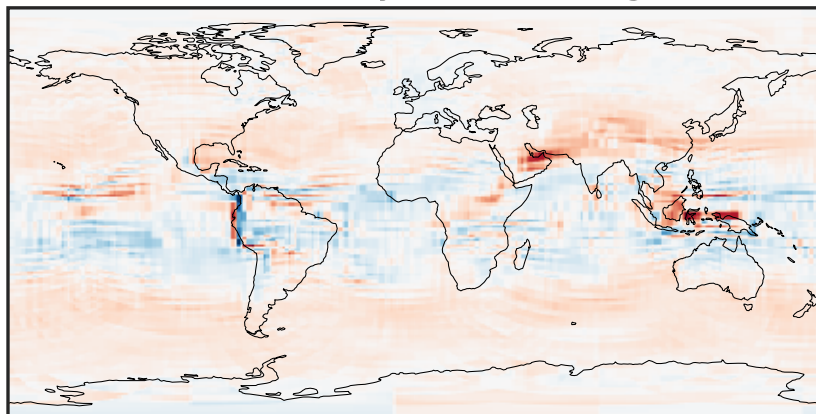
-0.0003 0.0000 0.0003  
 $\mu\text{g}/\text{m}^3$

Difference (1x1.25)  
Dev - Ref, Restricted Range [5%,95%]



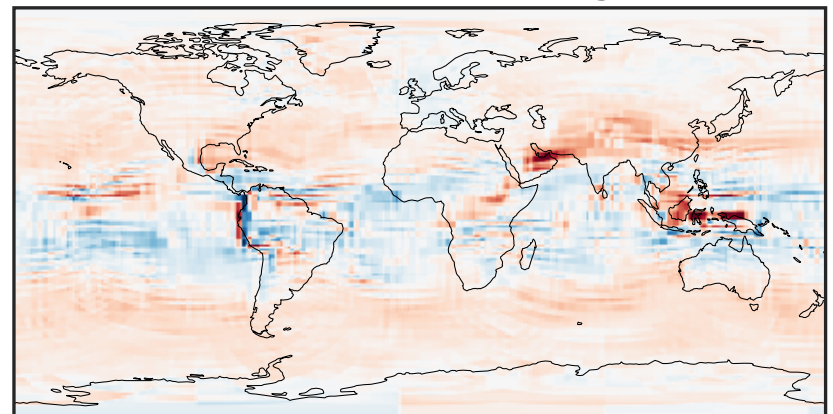
-4 0 4  
 $\mu\text{g}/\text{m}^3$   $1\text{e}-5$

Ratio (1x1.25)  
Dev/Ref, Dynamic Range



0.423 0.711 1.000 1.682 2.365  
unitless

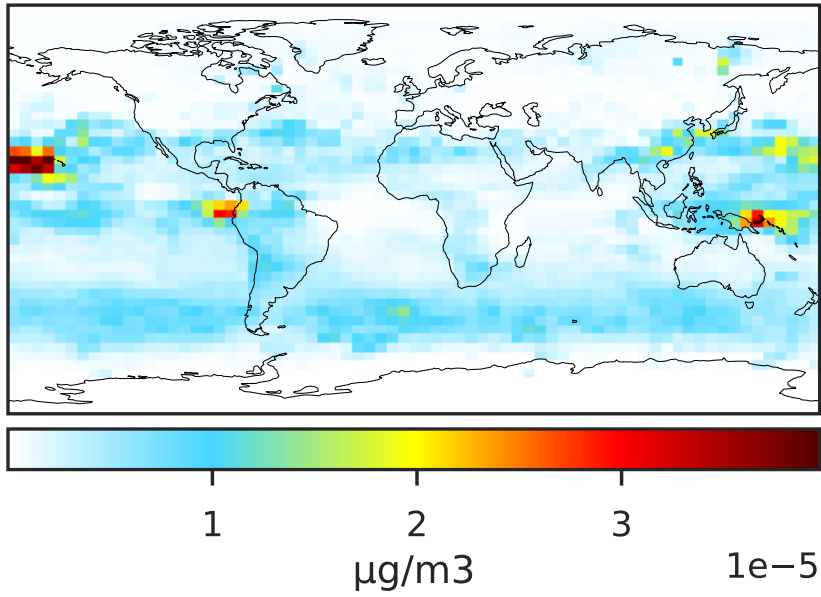
Ratio (1x1.25)  
Dev/Ref, Fixed Range



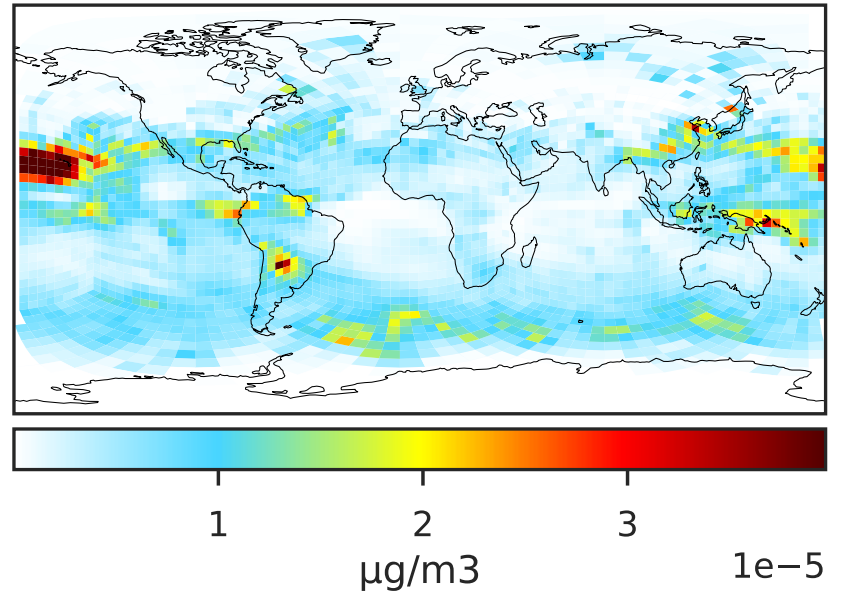
0.50 0.75 1.00 1.50 2.00  
unitless

# SpeciesConcVV\_BrSALA (Apr2019)

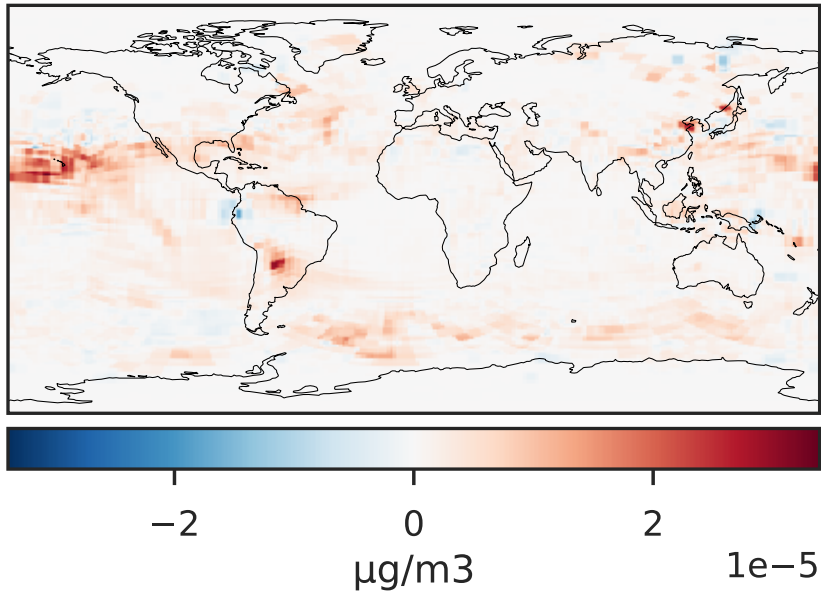
GCC\_14.2.0 (Ref)  
4.0x5.0



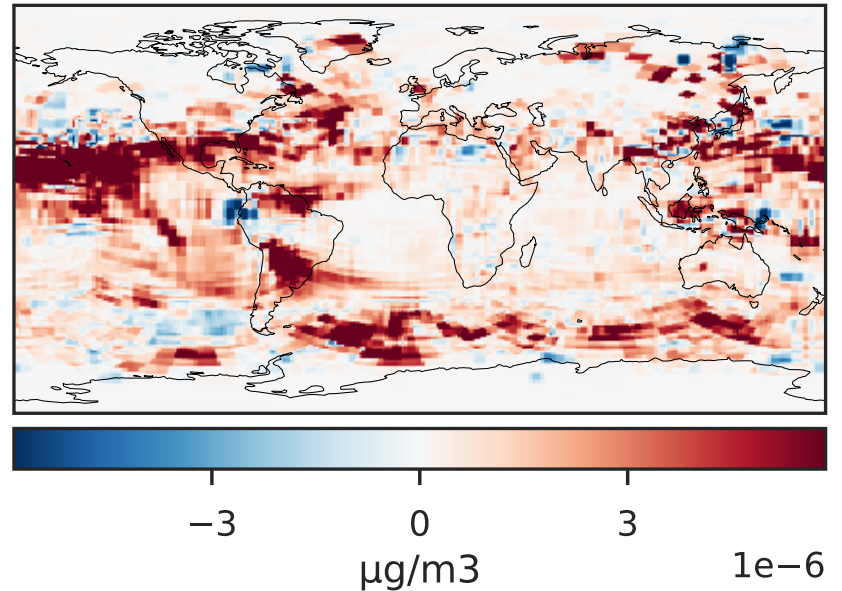
GCHP\_14.2.0 (Dev)  
c24



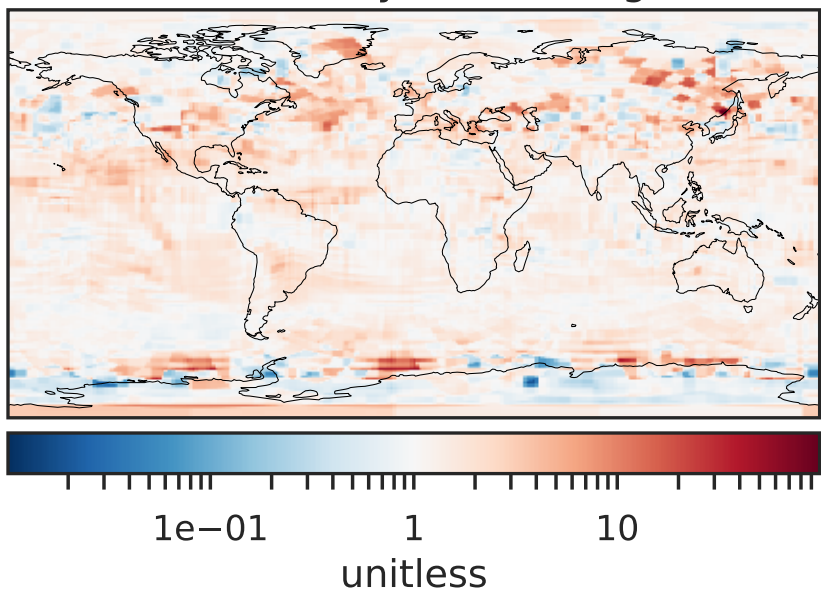
Difference (1x1.25)  
Dev - Ref, Dynamic Range



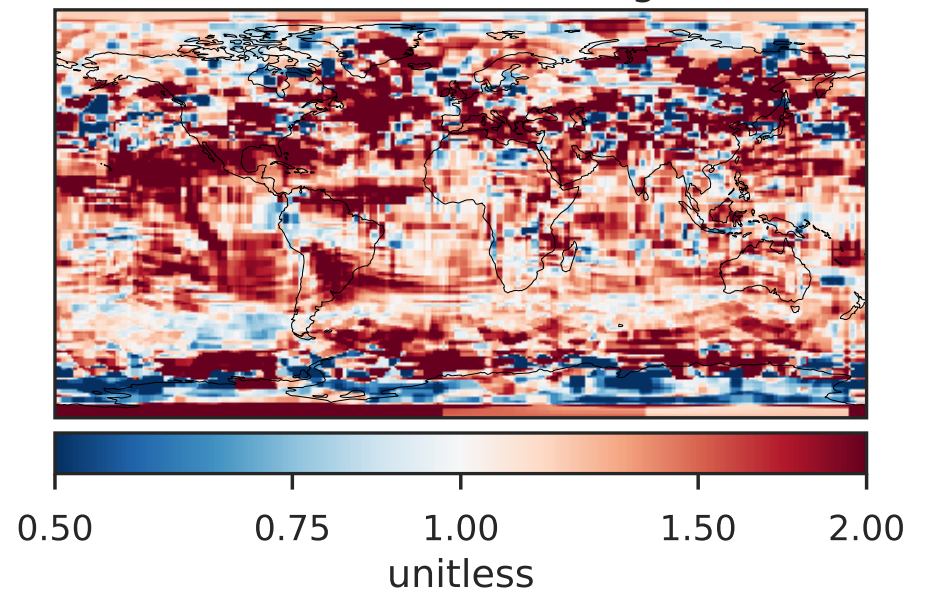
Difference (1x1.25)  
Dev - Ref, Restricted Range [5%,95%]



Ratio (1x1.25)  
Dev/Ref, Dynamic Range



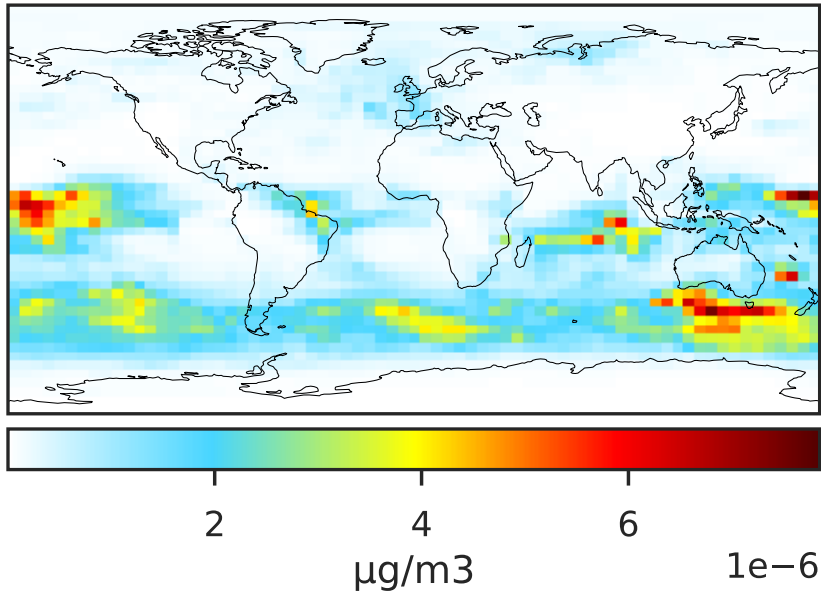
Ratio (1x1.25)  
Dev/Ref, Fixed Range



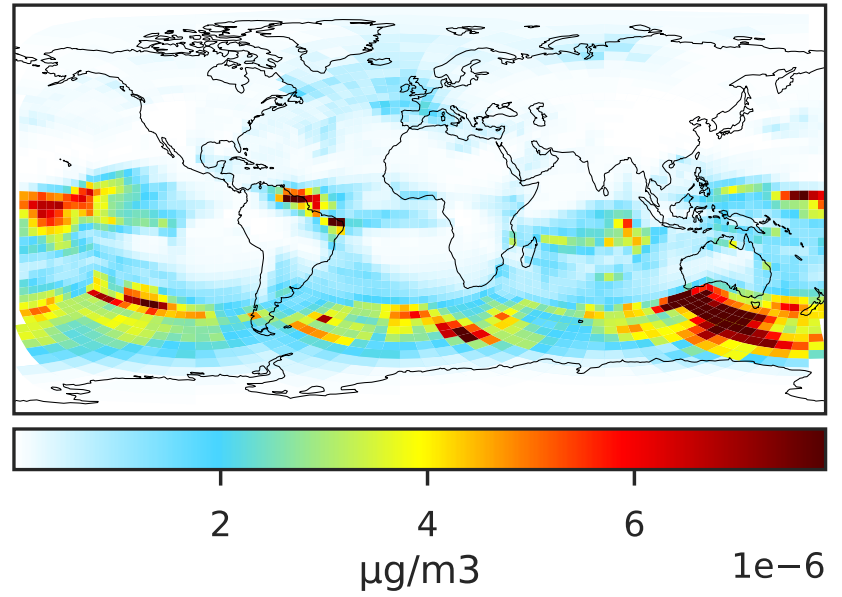


# SpeciesConcVV\_BrSALC (Apr2019)

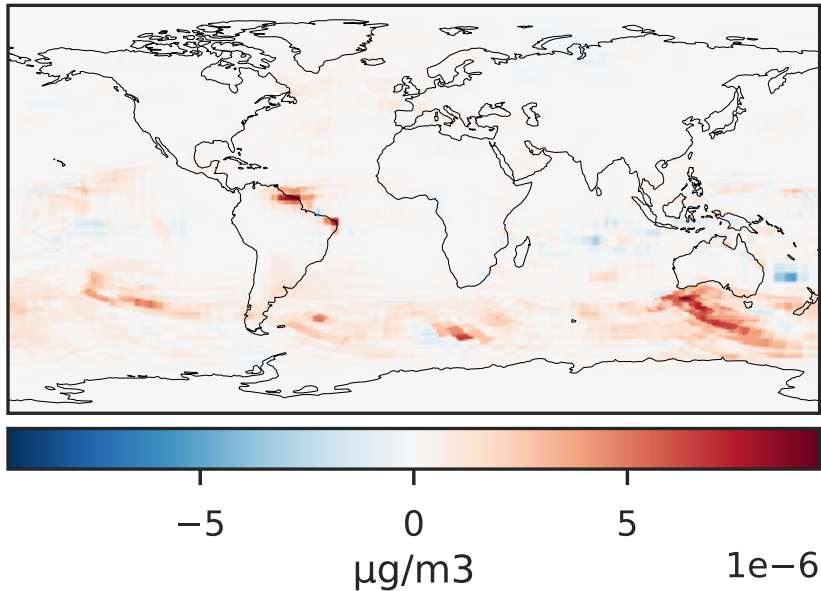
GCC\_14.2.0 (Ref)  
4.0x5.0



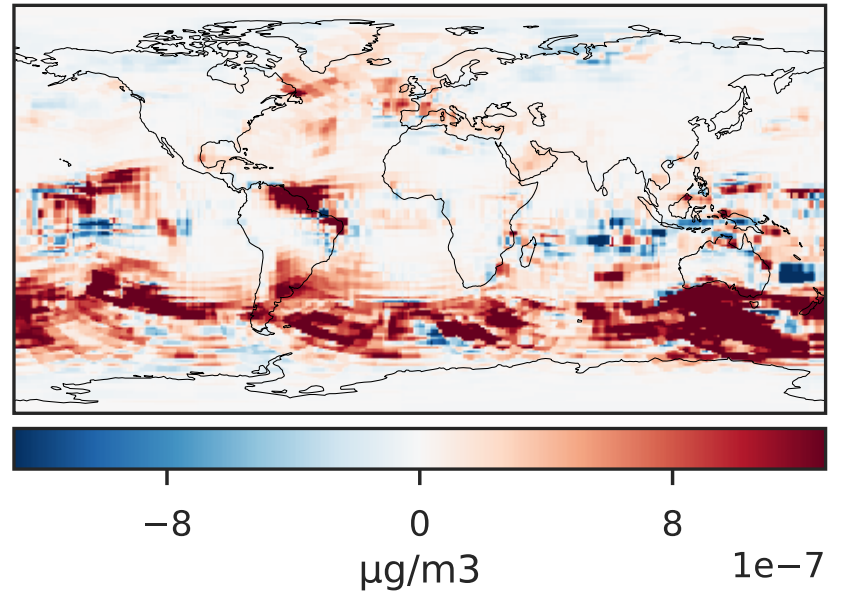
GCHP\_14.2.0 (Dev)  
c24



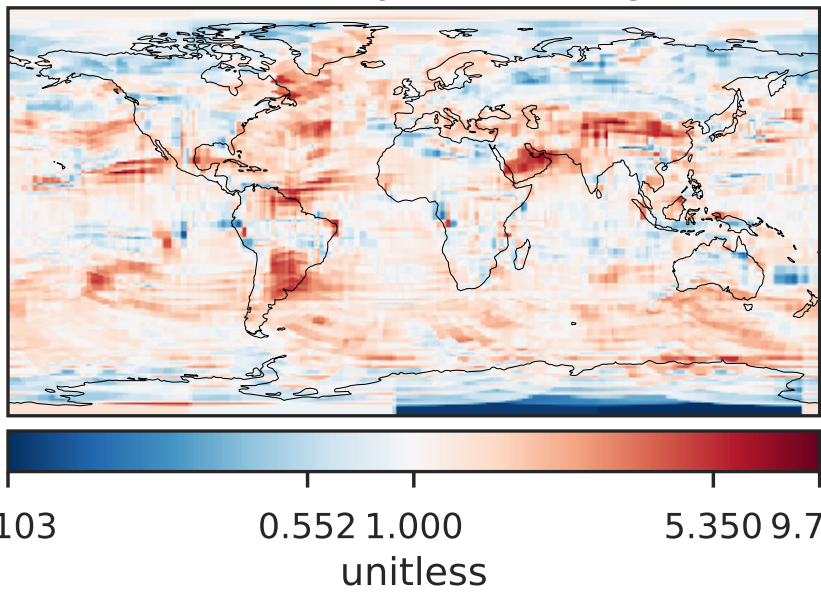
Difference (1x1.25)  
Dev - Ref, Dynamic Range



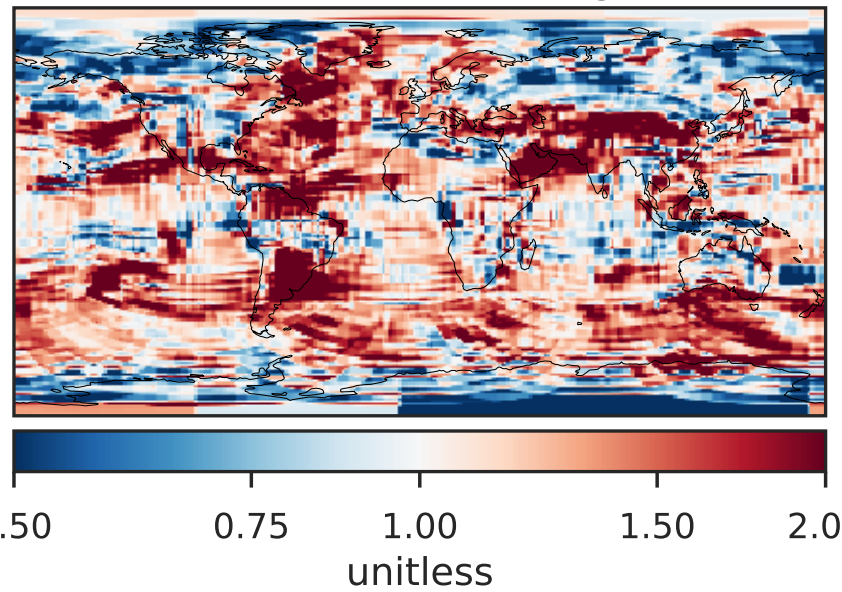
Difference (1x1.25)  
Dev - Ref, Restricted Range [5%,95%]



Ratio (1x1.25)  
Dev/Ref, Dynamic Range

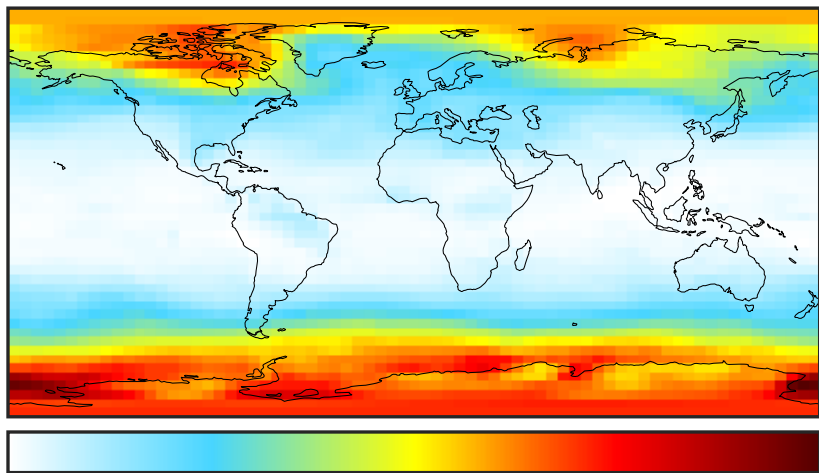


Ratio (1x1.25)  
Dev/Ref, Fixed Range



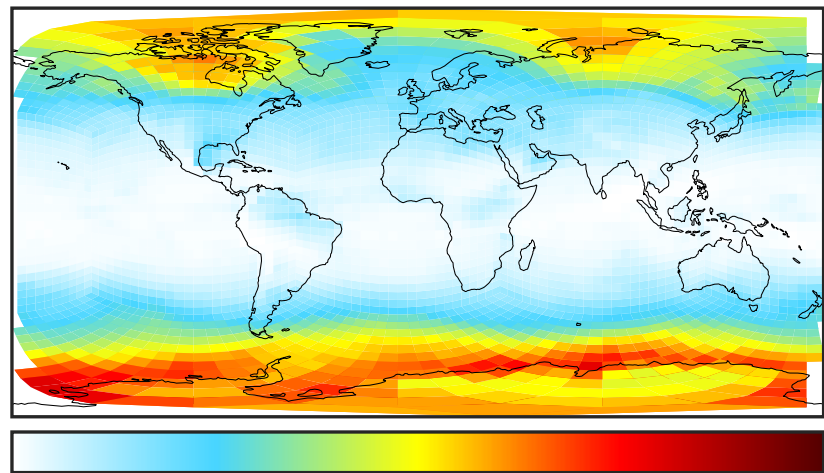
# SpeciesConcVV\_ISALA (Apr2019)

GCC\_14.2.0 (Ref)  
4.0x5.0



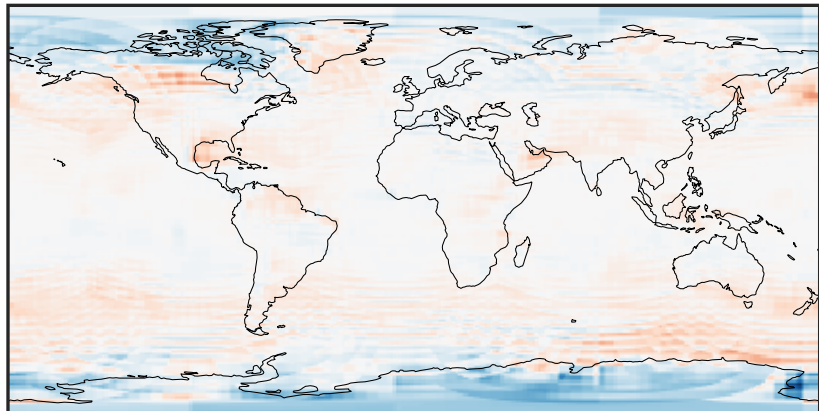
0.00004 0.00008 0.00012  
 $\mu\text{g}/\text{m}^3$

GCHP\_14.2.0 (Dev)  
c24



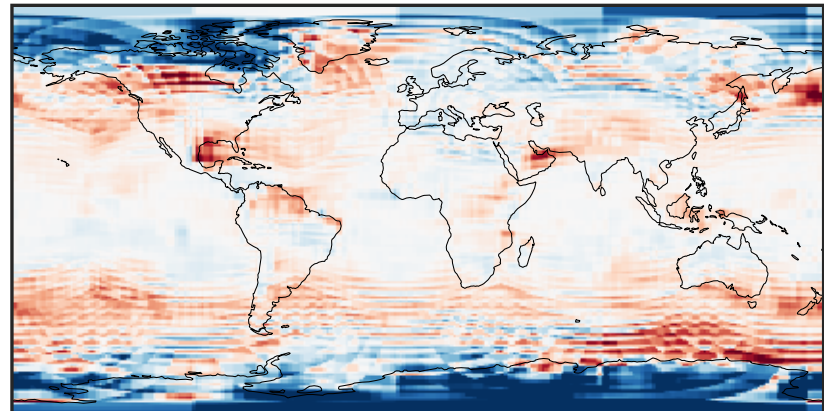
0.00004 0.00008 0.00012  
 $\mu\text{g}/\text{m}^3$

Difference (1x1.25)  
Dev - Ref, Dynamic Range



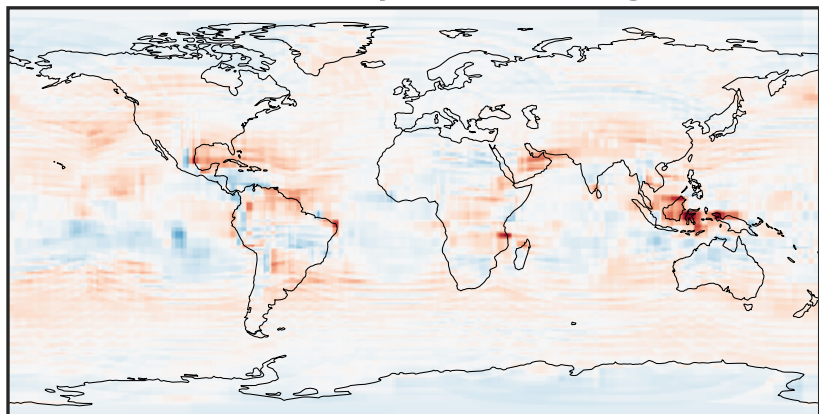
-2.5 0.0 2.5  
 $\mu\text{g}/\text{m}^3$   $1\text{e}-5$

Difference (1x1.25)  
Dev - Ref, Restricted Range [5%,95%]



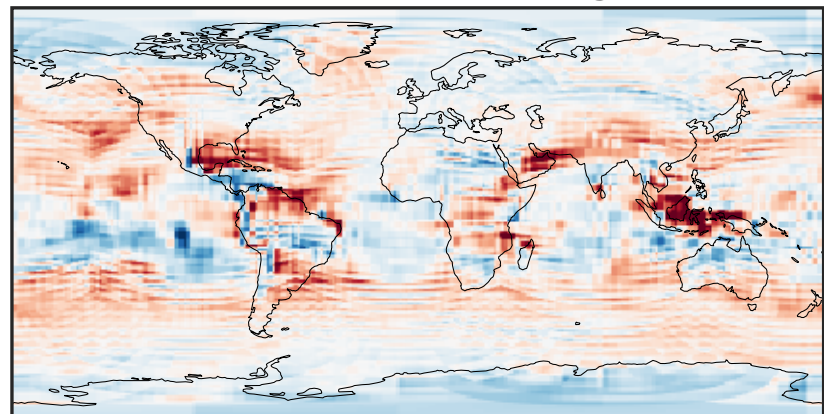
-8 0 8  
 $\mu\text{g}/\text{m}^3$   $1\text{e}-6$

Ratio (1x1.25)  
Dev/Ref, Dynamic Range



0.204 0.602 1.000 2.950 4.901  
unitless

Ratio (1x1.25)  
Dev/Ref, Fixed Range

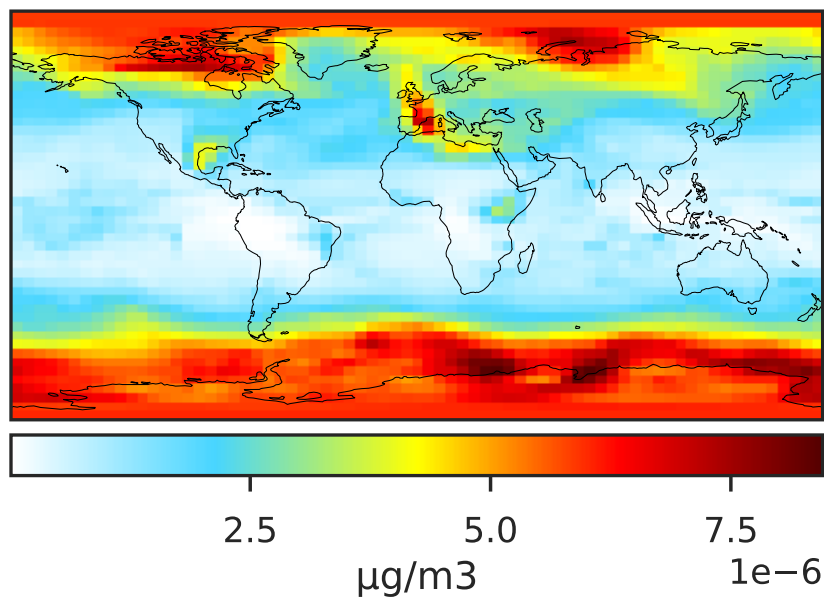


0.50 0.75 1.00 1.50 2.00  
unitless

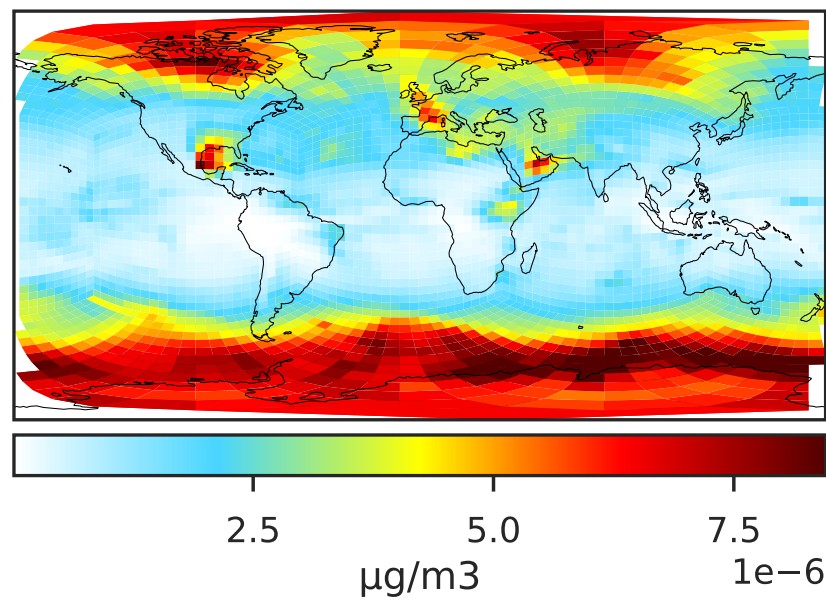


# SpeciesConcVV\_ISALC (Apr2019)

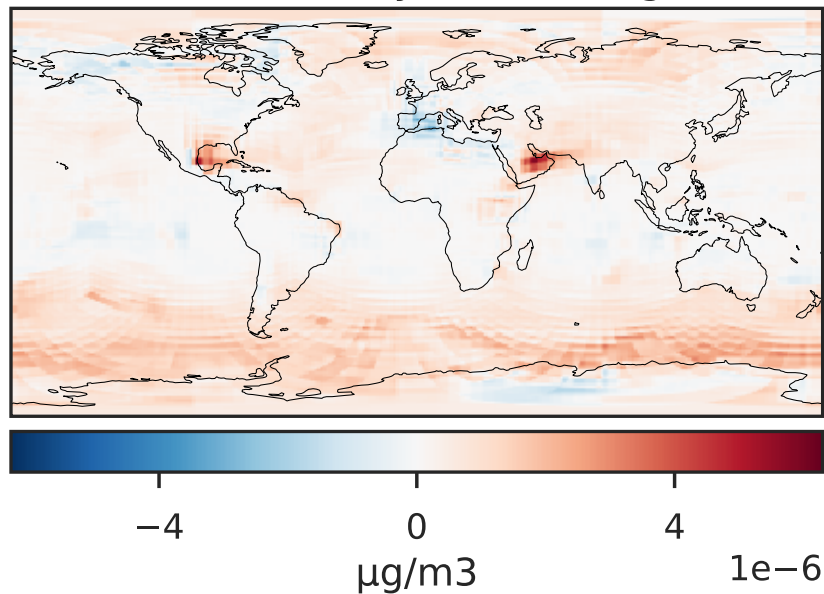
GCC\_14.2.0 (Ref)  
4.0x5.0



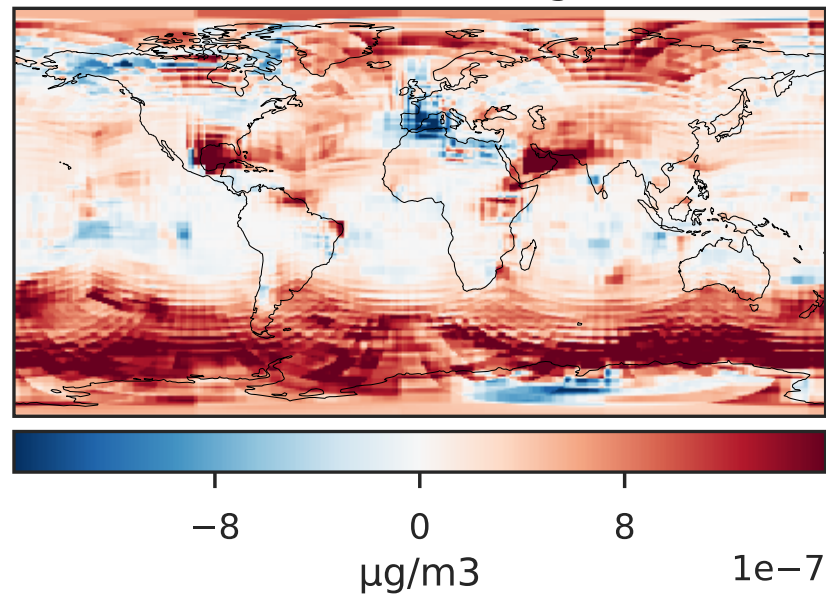
GCHP\_14.2.0 (Dev)  
c24



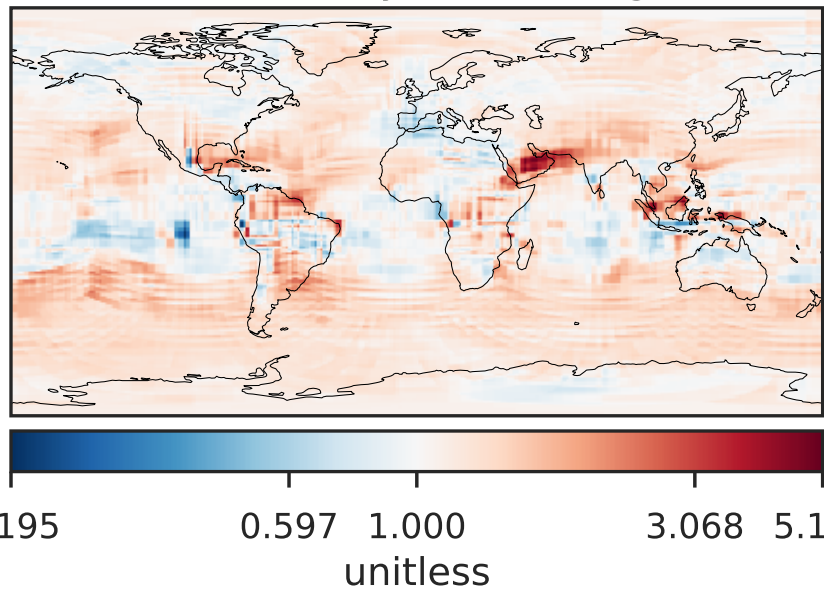
Difference (1x1.25)  
Dev - Ref, Dynamic Range



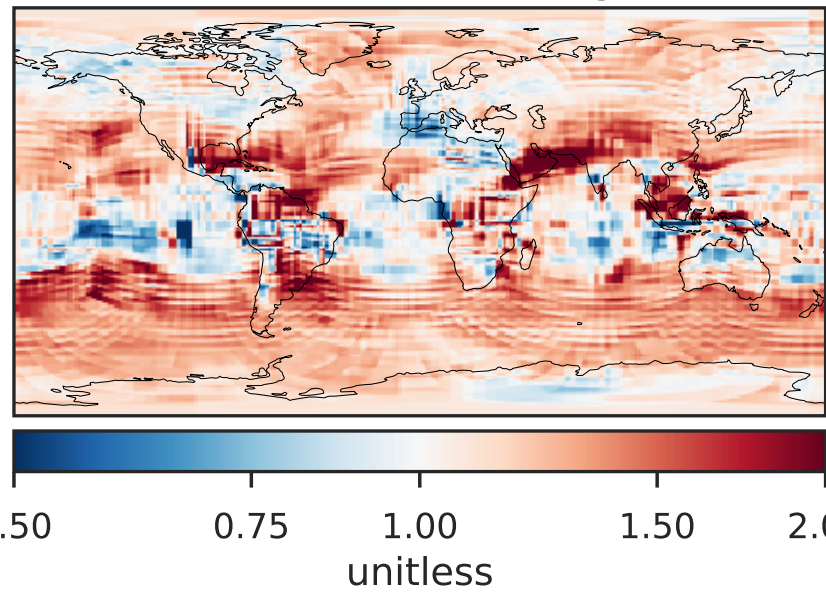
Difference (1x1.25)  
Dev - Ref, Restricted Range [5%,95%]



Ratio (1x1.25)  
Dev/Ref, Dynamic Range

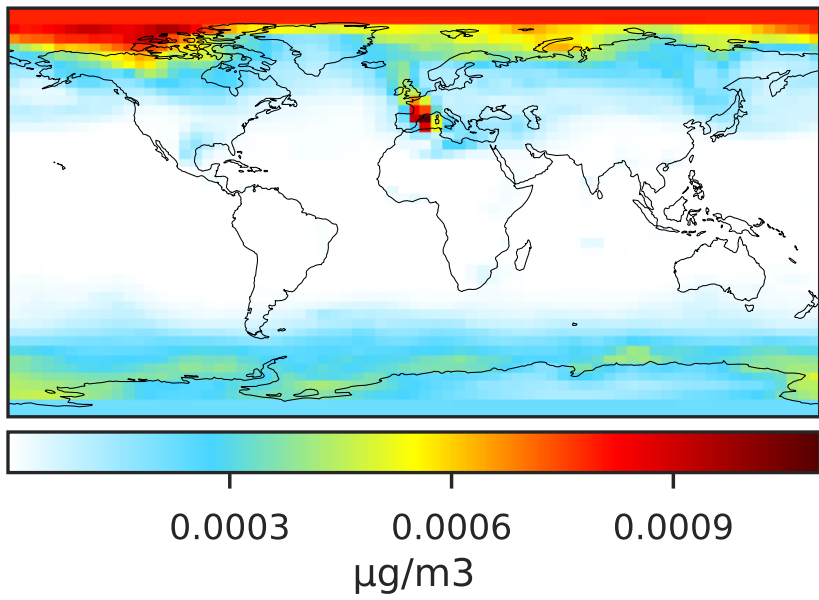


Ratio (1x1.25)  
Dev/Ref, Fixed Range

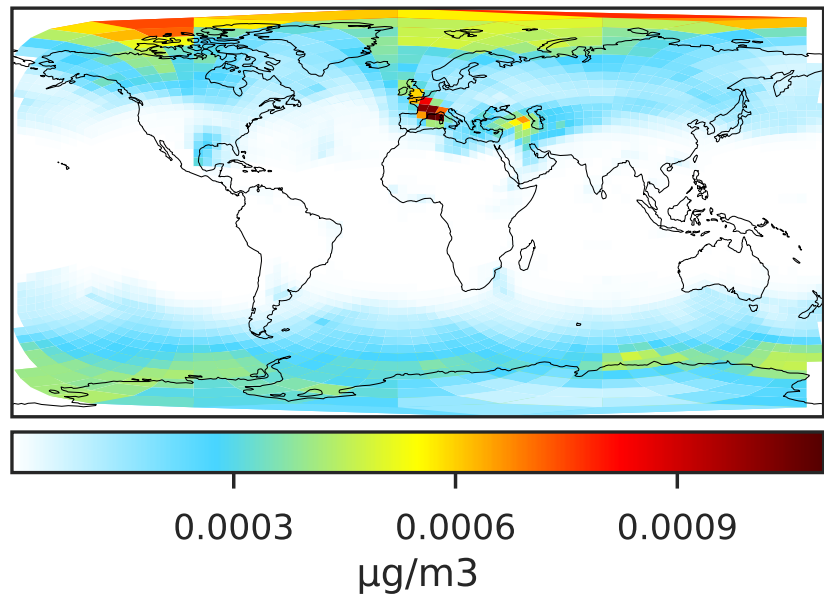


# SpeciesConcVV\_NITs (Apr2019)

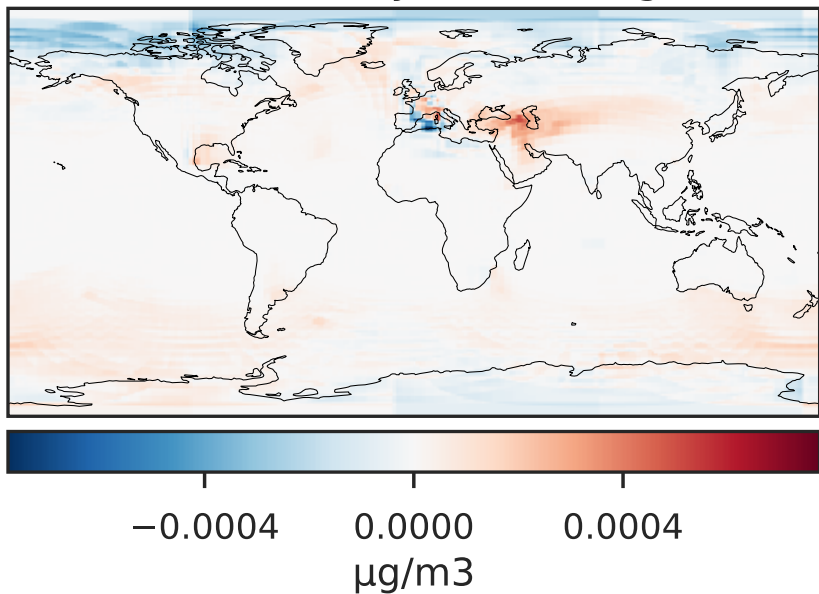
GCC\_14.2.0 (Ref)  
4.0x5.0



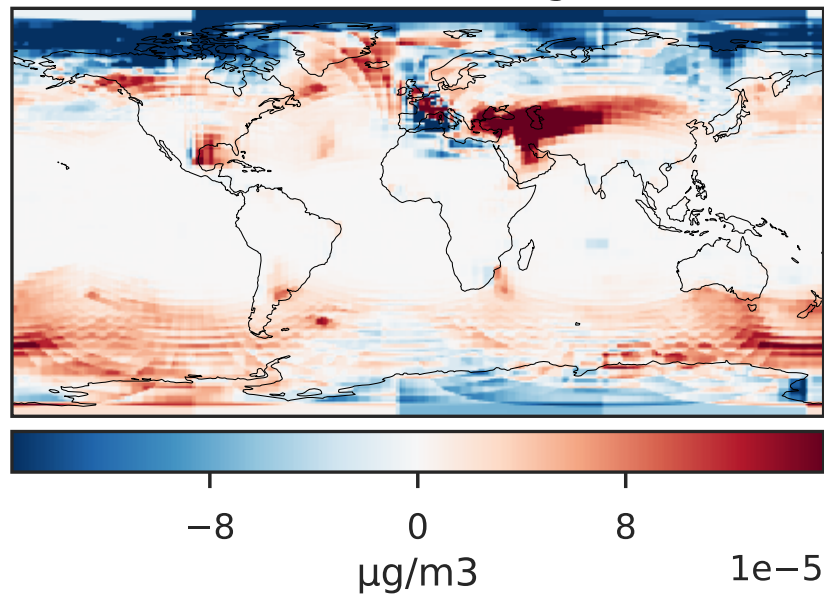
GCHP\_14.2.0 (Dev)  
c24



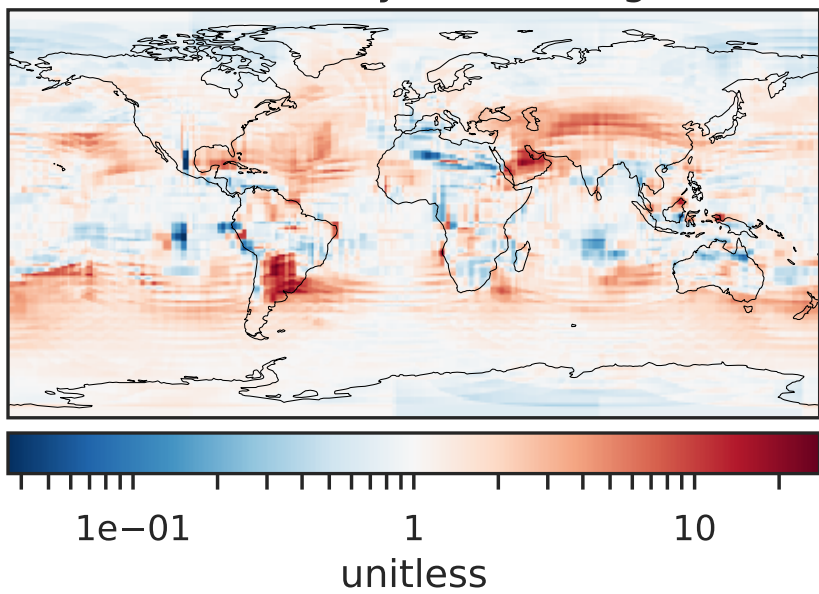
Difference (1x1.25)  
Dev - Ref, Dynamic Range



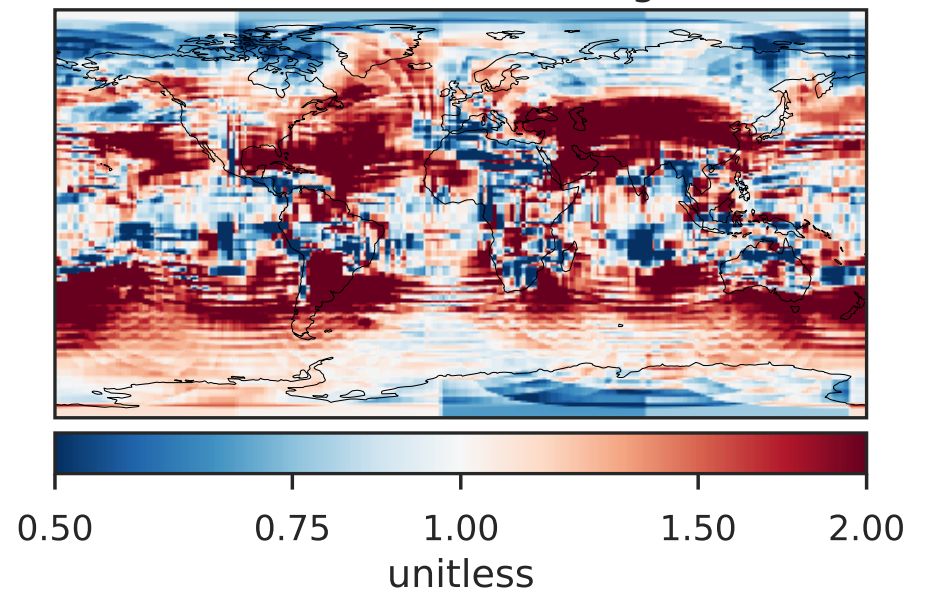
Difference (1x1.25)  
Dev - Ref, Restricted Range [5%,95%]



Ratio (1x1.25)  
Dev/Ref, Dynamic Range



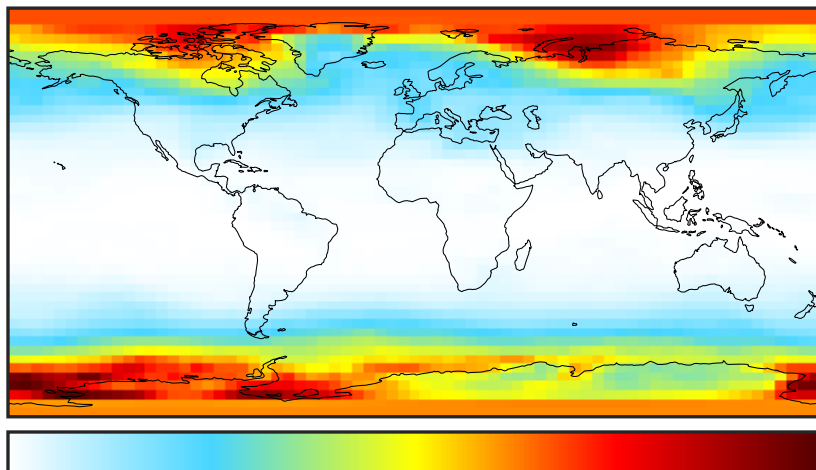
Ratio (1x1.25)  
Dev/Ref, Fixed Range





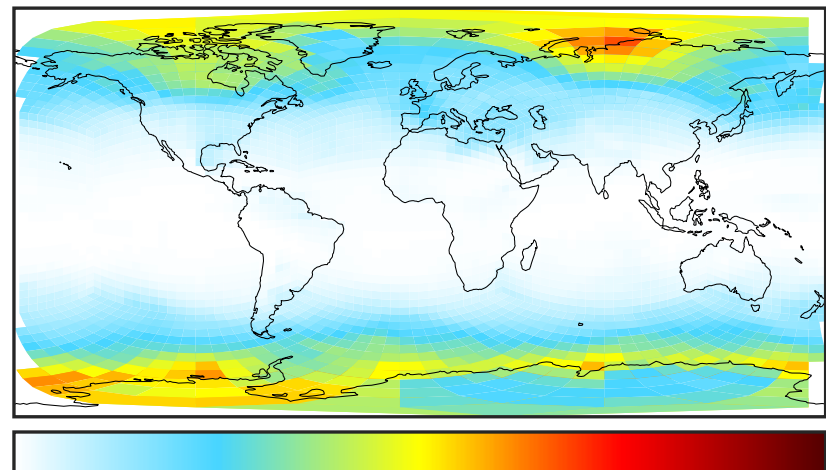
# SpeciesConcVV\_SALA (Apr2019)

GCC\_14.2.0 (Ref)  
4.0x5.0



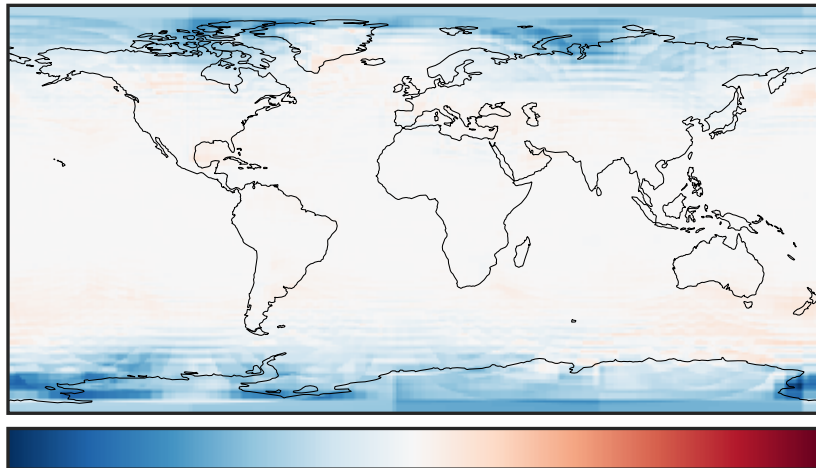
0.015 0.030  
 $\mu\text{g}/\text{m}^3$

GCHP\_14.2.0 (Dev)  
c24



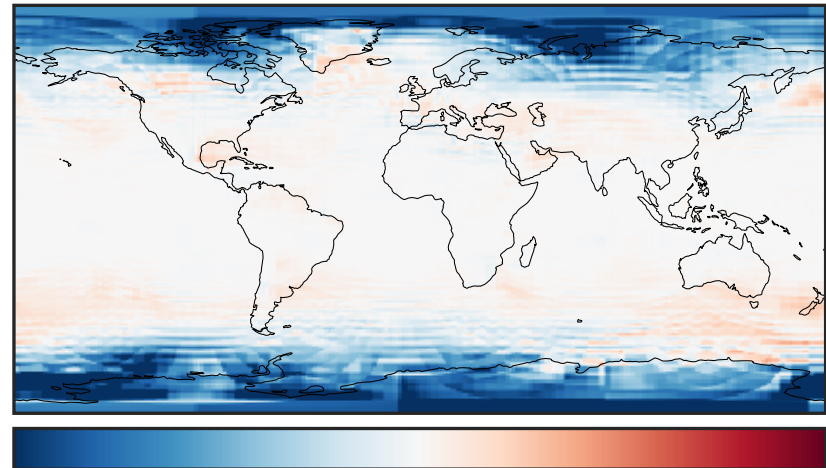
0.015 0.030  
 $\mu\text{g}/\text{m}^3$

Difference (1x1.25)  
Dev - Ref, Dynamic Range



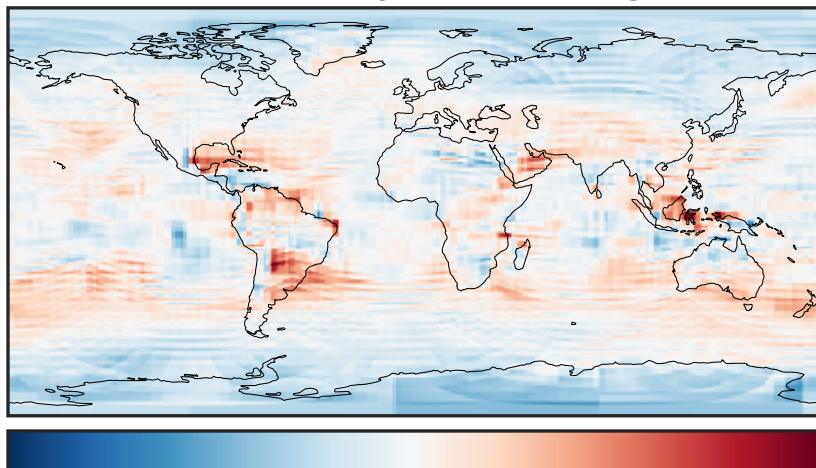
-0.015 0.000 0.015  
 $\mu\text{g}/\text{m}^3$

Difference (1x1.25)  
Dev - Ref, Restricted Range [5%,95%]



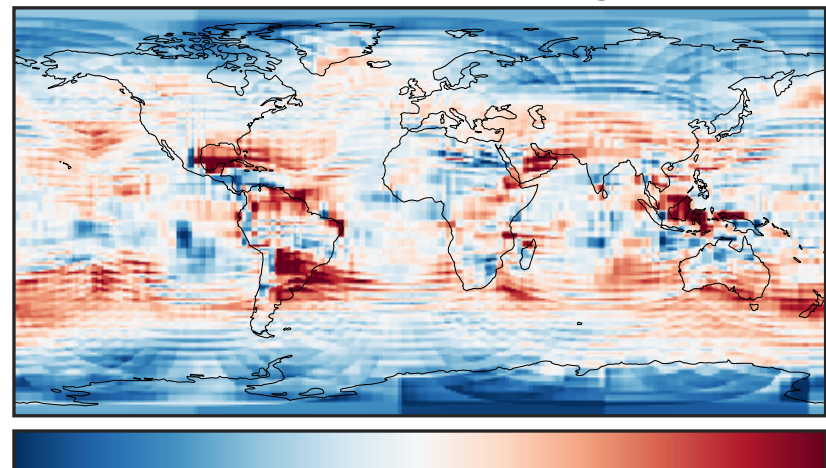
-0.006 0.000 0.006  
 $\mu\text{g}/\text{m}^3$

Ratio (1x1.25)  
Dev/Ref, Dynamic Range



0.221 0.610 1.000 2.766 4.531  
unitless

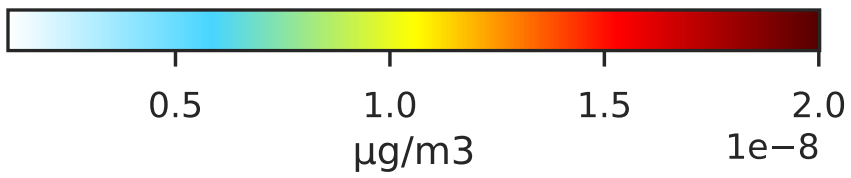
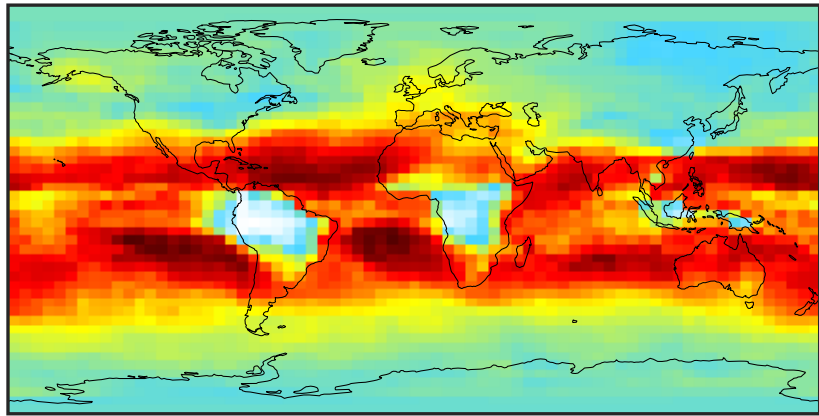
Ratio (1x1.25)  
Dev/Ref, Fixed Range



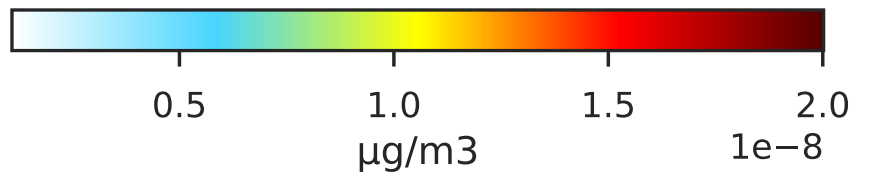
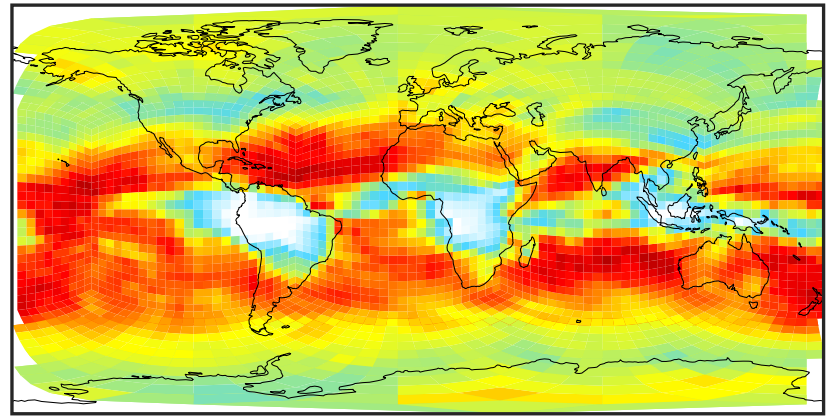
0.50 0.75 1.00 1.50 2.00  
unitless

# SpeciesConcVV\_SALAAL (Apr2019)

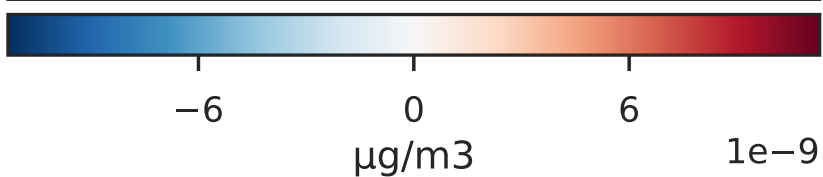
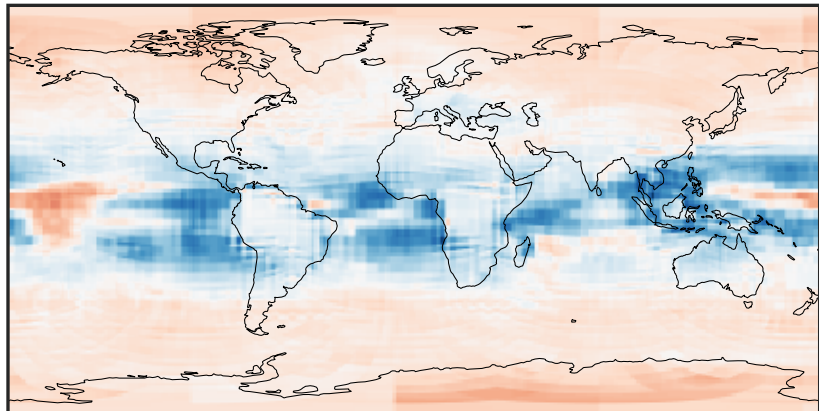
GCC\_14.2.0 (Ref)  
4.0x5.0



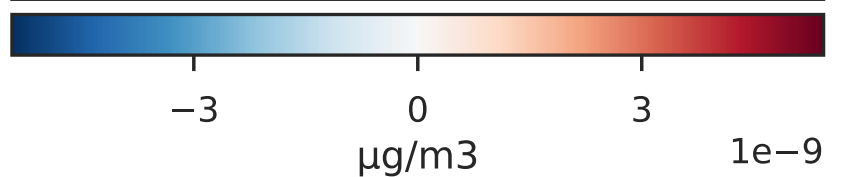
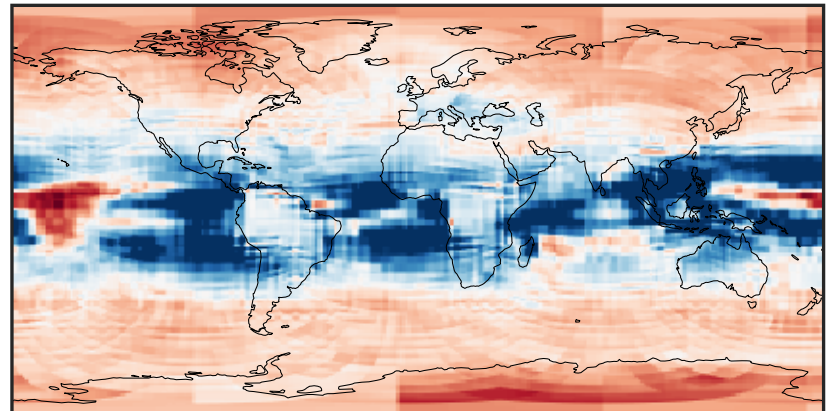
GCHP\_14.2.0 (Dev)  
c24



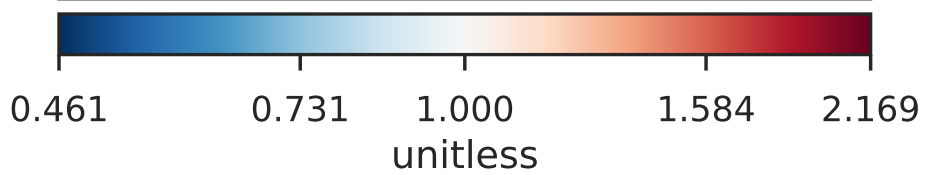
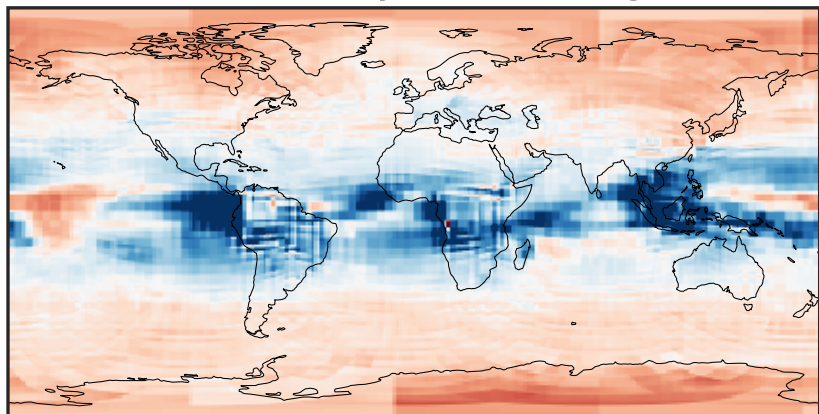
Difference (1x1.25)  
Dev - Ref, Dynamic Range



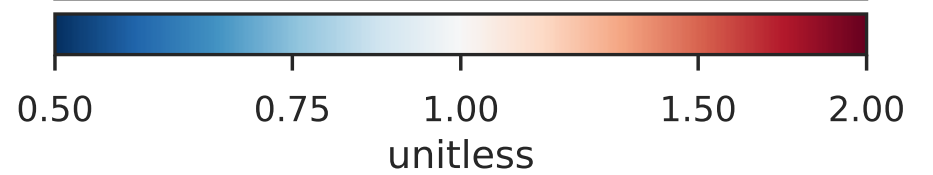
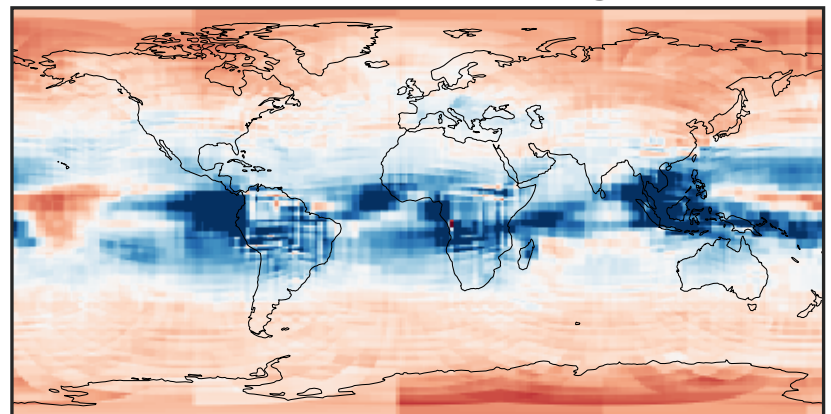
Difference (1x1.25)  
Dev - Ref, Restricted Range [5%,95%]



Ratio (1x1.25)  
Dev/Ref, Dynamic Range



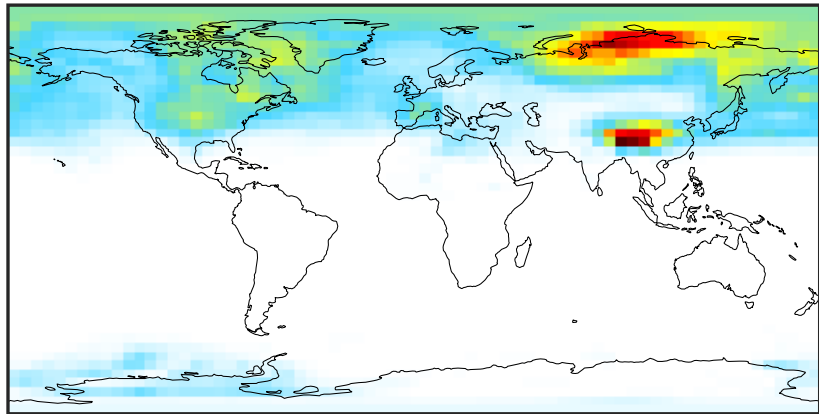
Ratio (1x1.25)  
Dev/Ref, Fixed Range





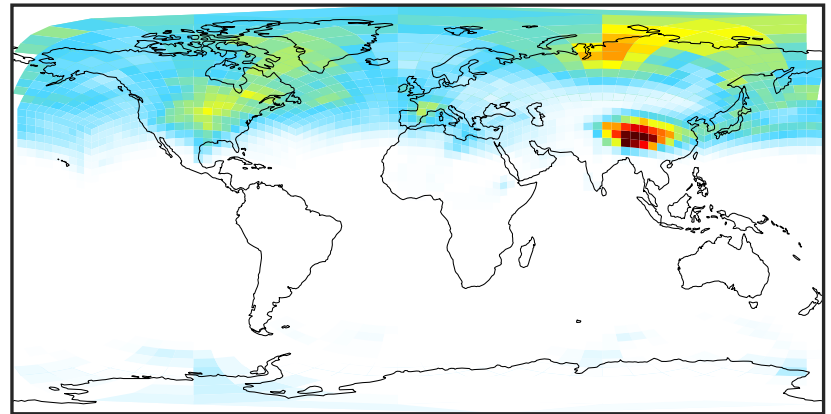
# SpeciesConcVV\_SALACL (Apr2019)

GCC\_14.2.0 (Ref)  
4.0x5.0



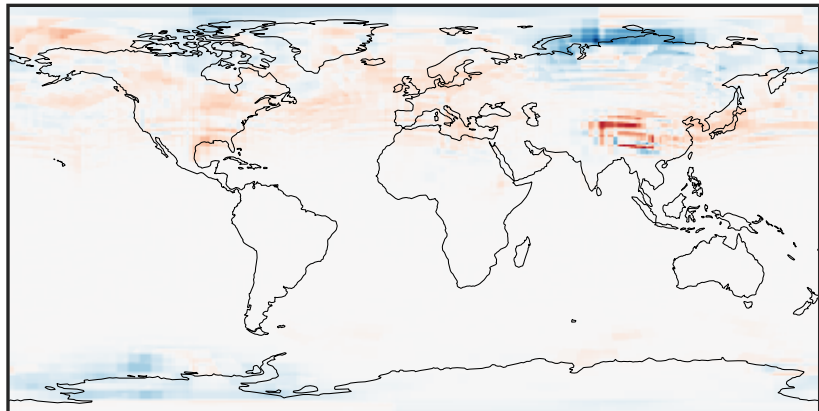
0.000 0.005 0.010 0.015  
 $\mu\text{g}/\text{m}^3$

GCHP\_14.2.0 (Dev)  
c24



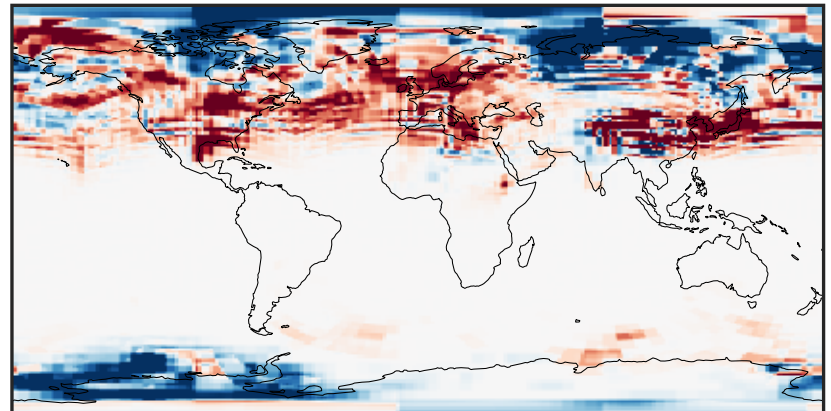
0.000 0.005 0.010 0.015  
 $\mu\text{g}/\text{m}^3$

Difference (1x1.25)  
Dev - Ref, Dynamic Range



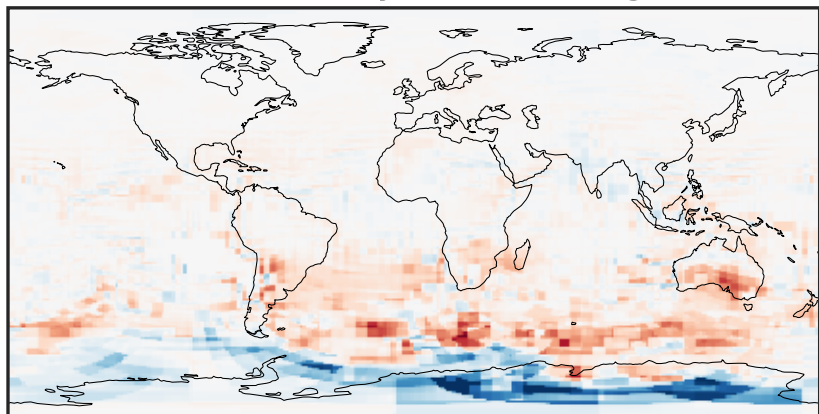
-0.004 0.000 0.004  
 $\mu\text{g}/\text{m}^3$

Difference (1x1.25)  
Dev - Ref, Restricted Range [5%,95%]



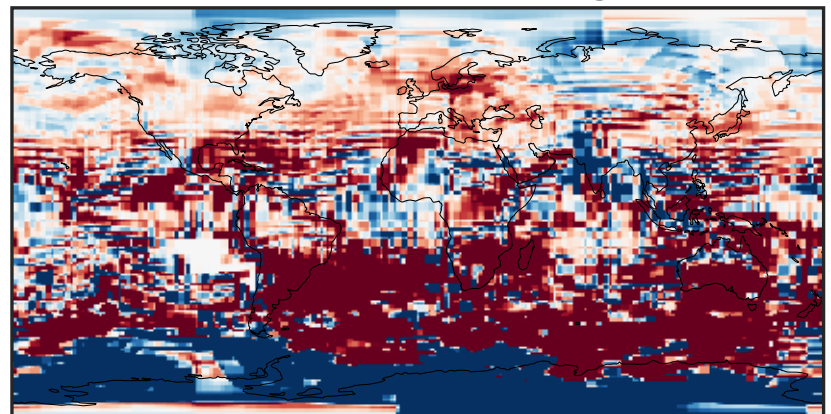
-0.0006 0.0000 0.0006  
 $\mu\text{g}/\text{m}^3$

Ratio (1x1.25)  
Dev/Ref, Dynamic Range



1e-05 1e-02 10 1e4 1e+07  
unitless

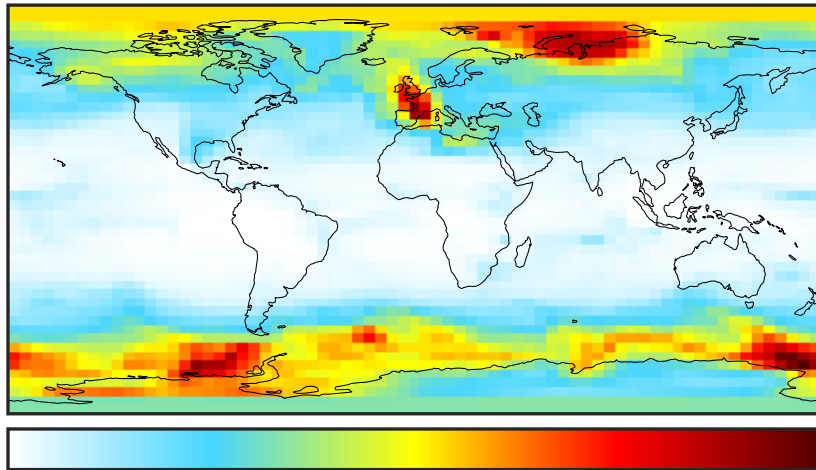
Ratio (1x1.25)  
Dev/Ref, Fixed Range



0.50 0.75 1.00 1.50 2.00  
unitless

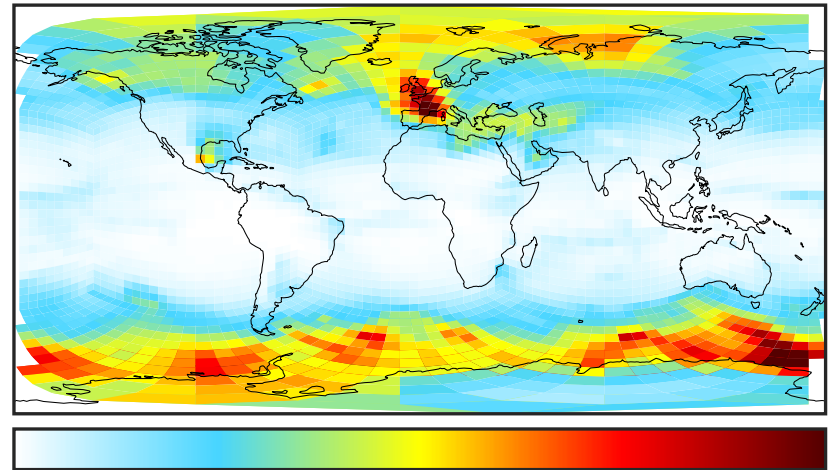
# SpeciesConcVV\_SALC (Apr2019)

GCC\_14.2.0 (Ref)  
4.0x5.0



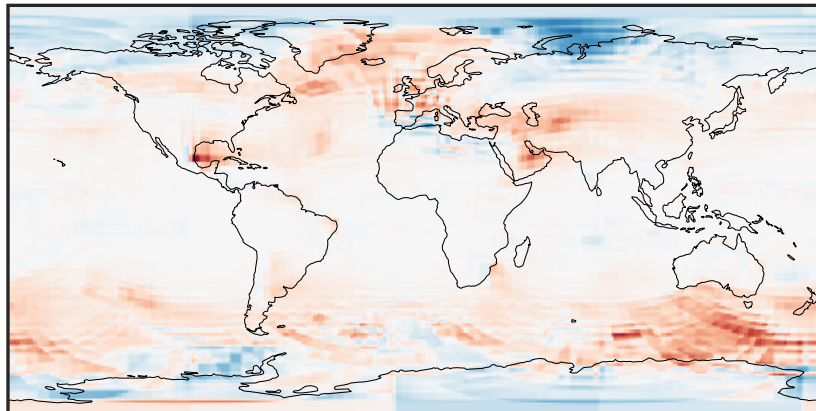
0.015 0.030  
µg/m<sup>3</sup>

GCHP\_14.2.0 (Dev)  
c24



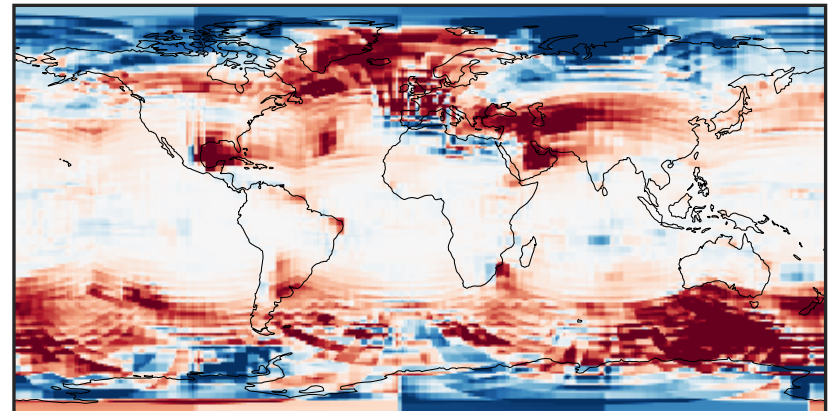
0.015 0.030  
µg/m<sup>3</sup>

Difference (1x1.25)  
Dev - Ref, Dynamic Range



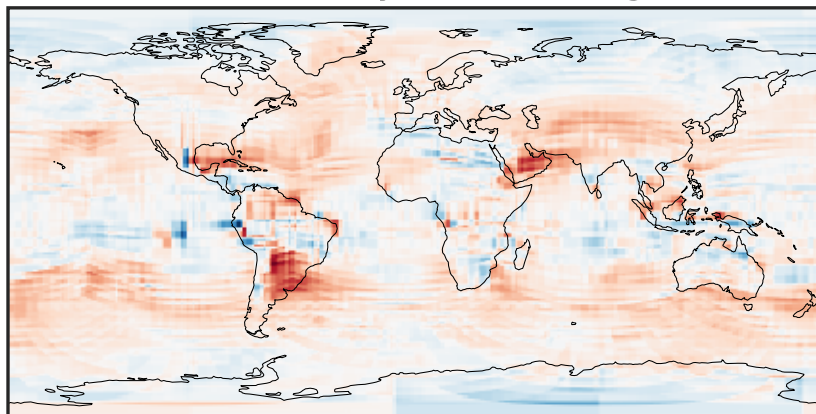
-0.015 0.000 0.015  
µg/m<sup>3</sup>

Difference (1x1.25)  
Dev - Ref, Restricted Range [5%,95%]



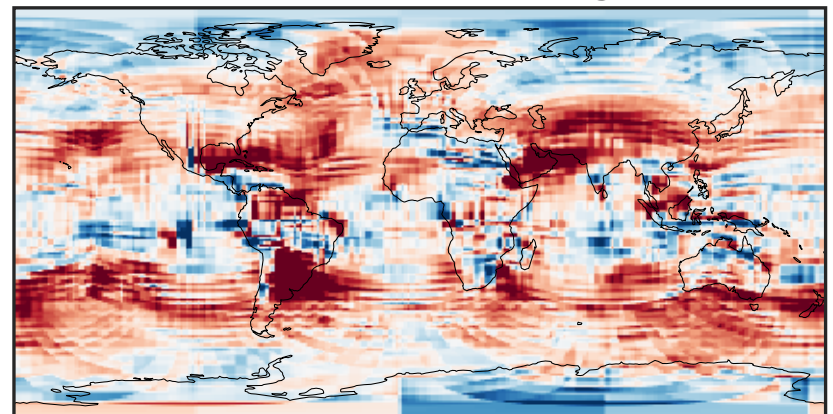
-0.003 0.000 0.003  
µg/m<sup>3</sup>

Ratio (1x1.25)  
Dev/Ref, Dynamic Range



0.122 0.561 1.000 4.588 8.175  
unitless

Ratio (1x1.25)  
Dev/Ref, Fixed Range

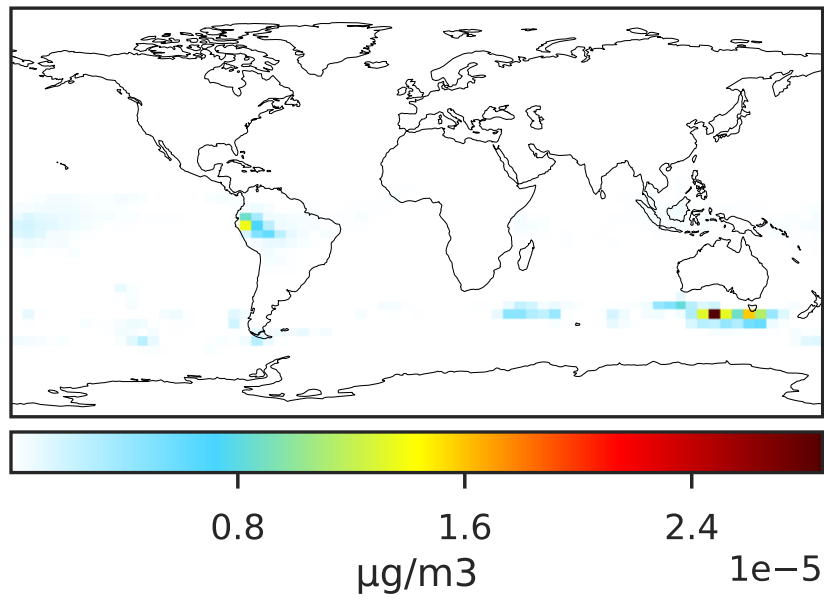


0.50 0.75 1.00 1.50 2.00  
unitless

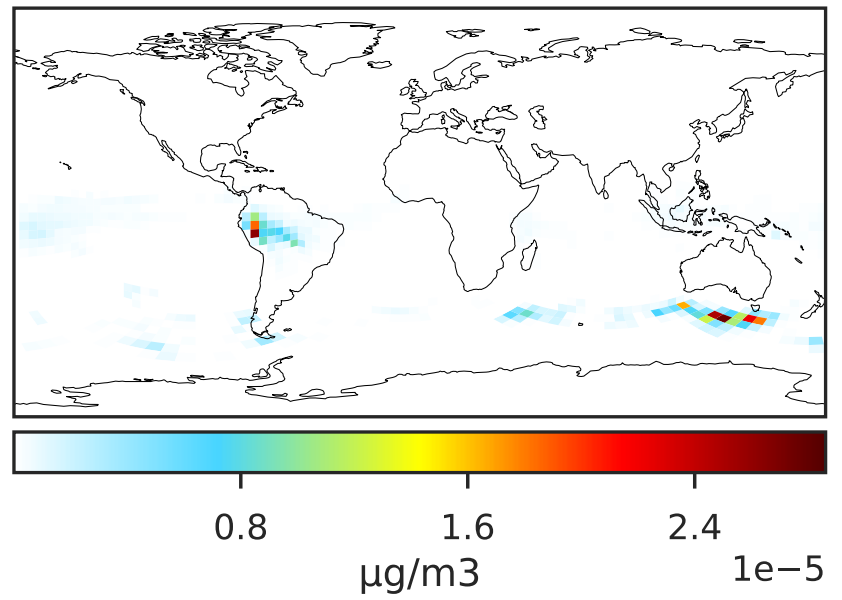


# SpeciesConcVV\_SALCAL (Apr2019)

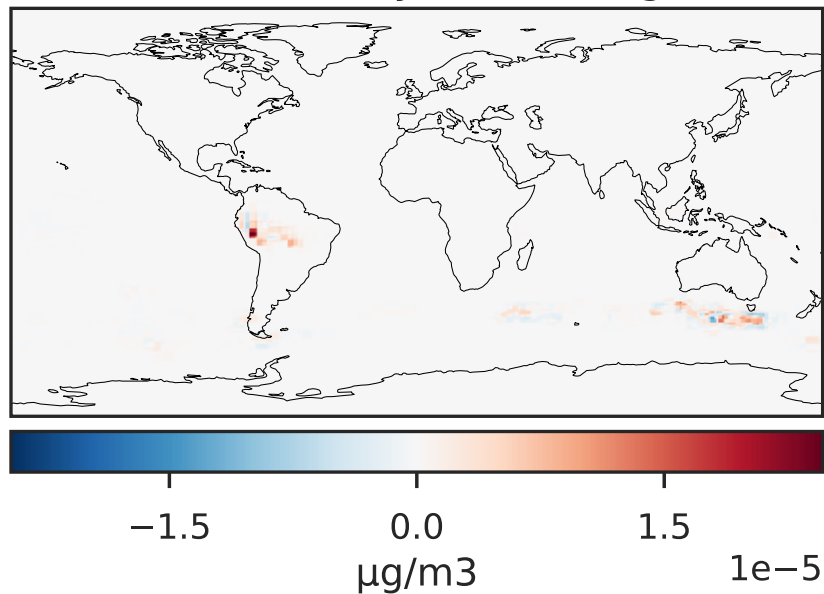
GCC\_14.2.0 (Ref)  
4.0x5.0



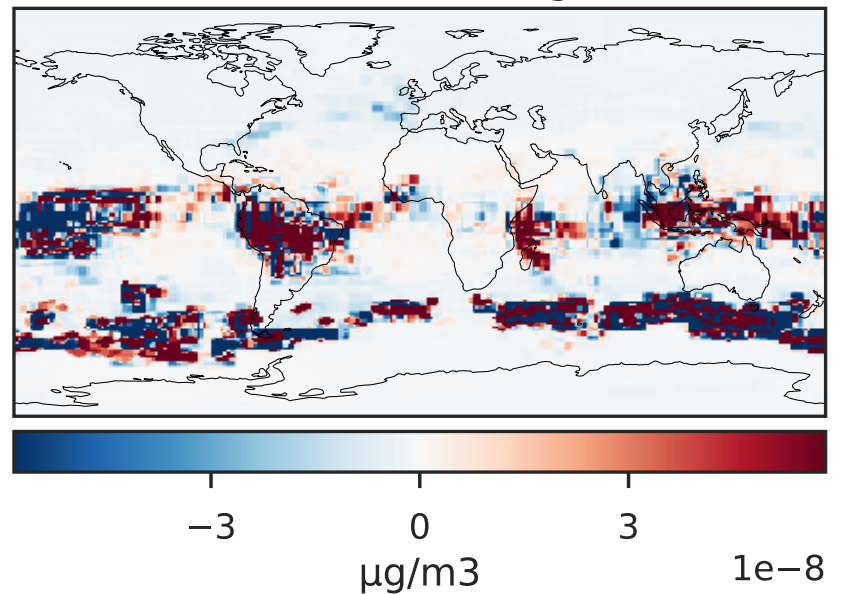
GCHP\_14.2.0 (Dev)  
c24



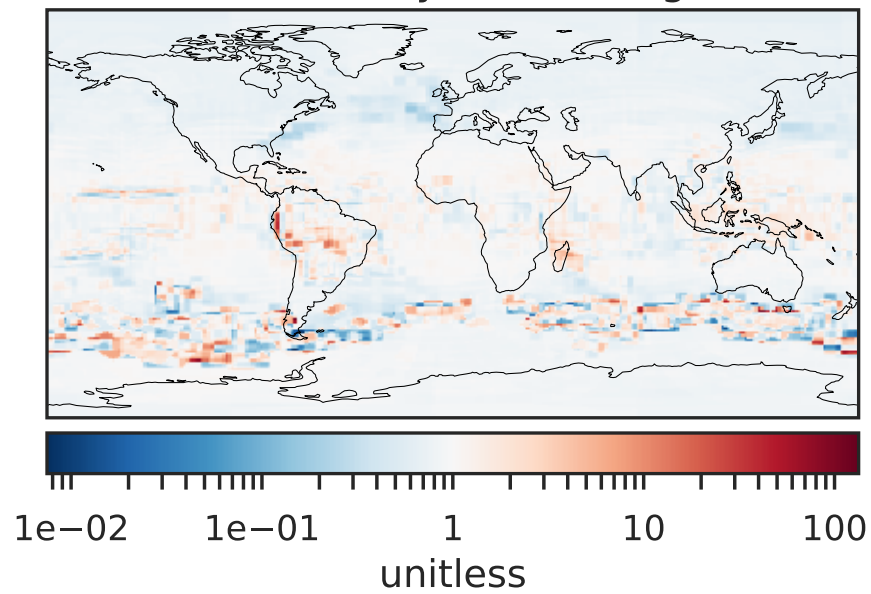
Difference (1x1.25)  
Dev - Ref, Dynamic Range



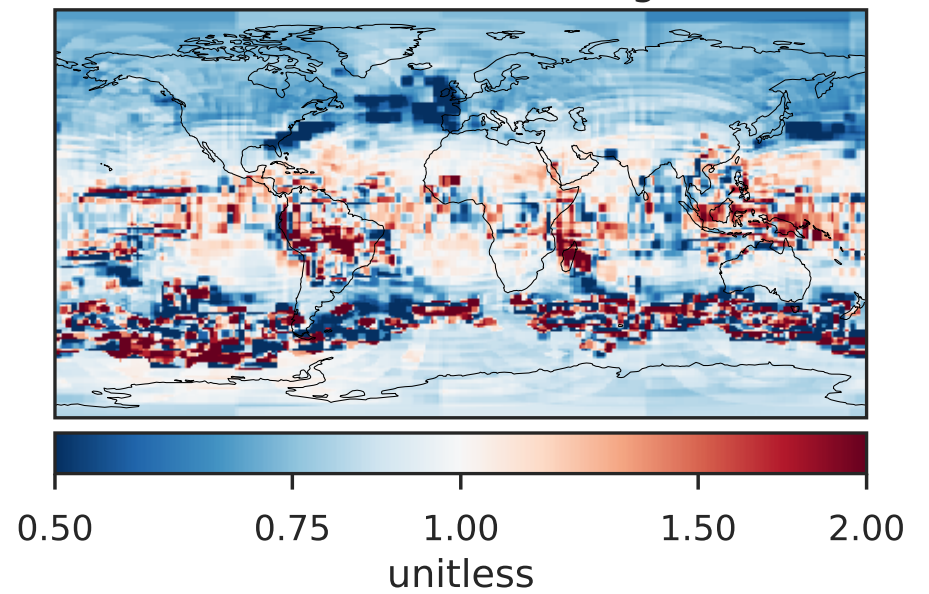
Difference (1x1.25)  
Dev - Ref, Restricted Range [5%,95%]



Ratio (1x1.25)  
Dev/Ref, Dynamic Range

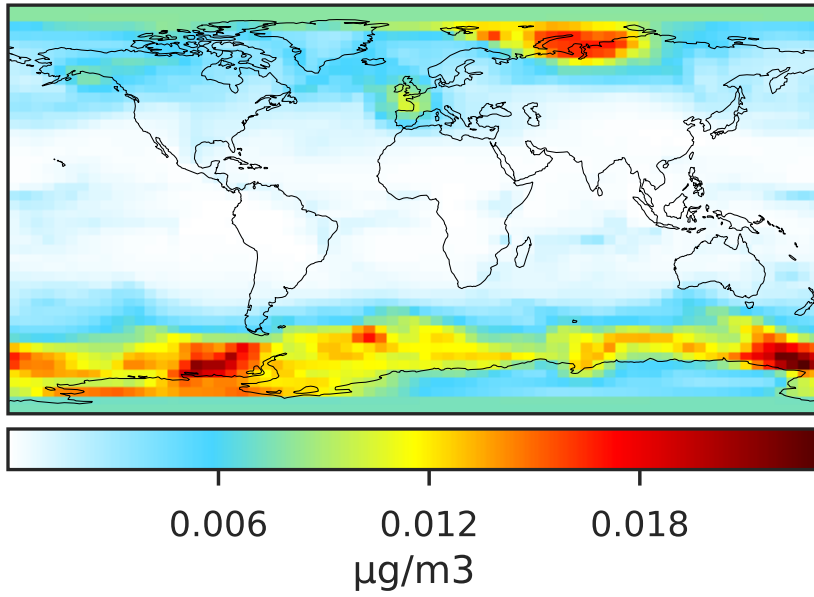


Ratio (1x1.25)  
Dev/Ref, Fixed Range

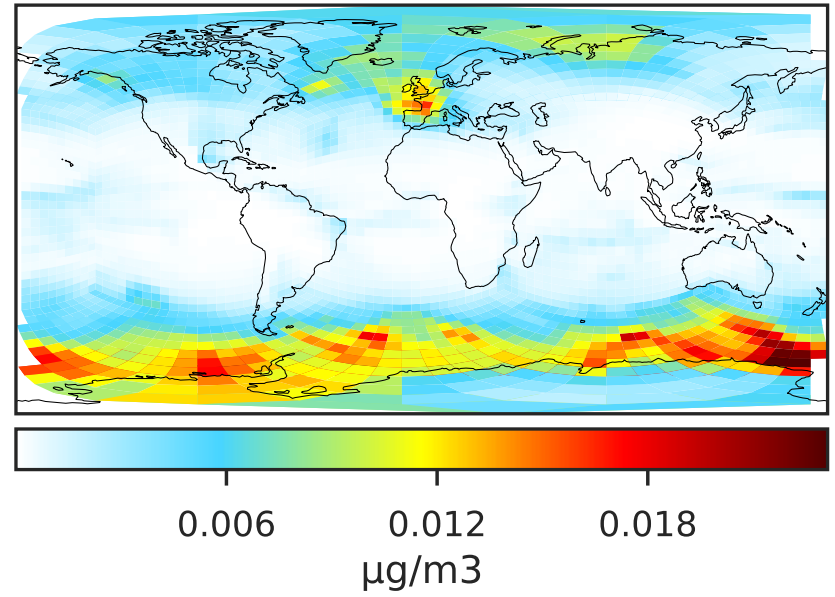


# SpeciesConcVV\_SALCCL (Apr2019)

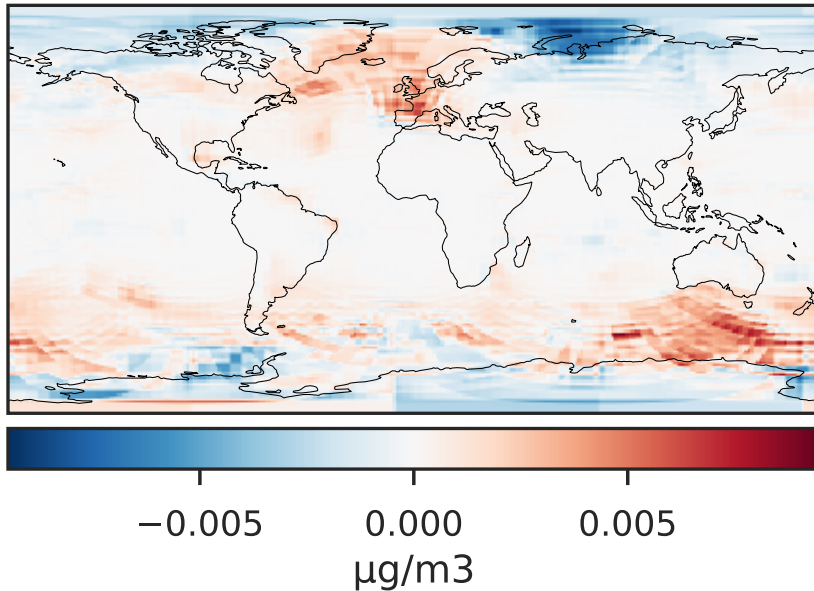
GCC\_14.2.0 (Ref)  
4.0x5.0



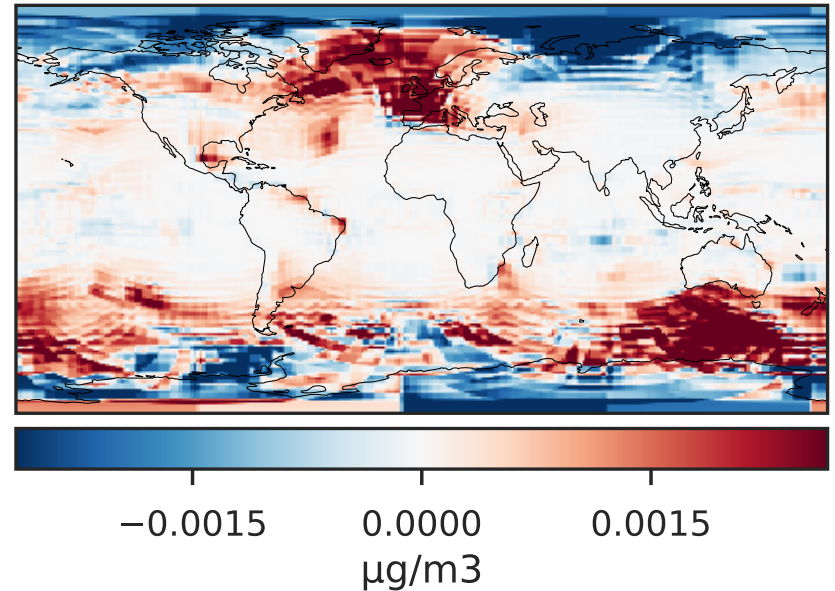
GCHP\_14.2.0 (Dev)  
c24



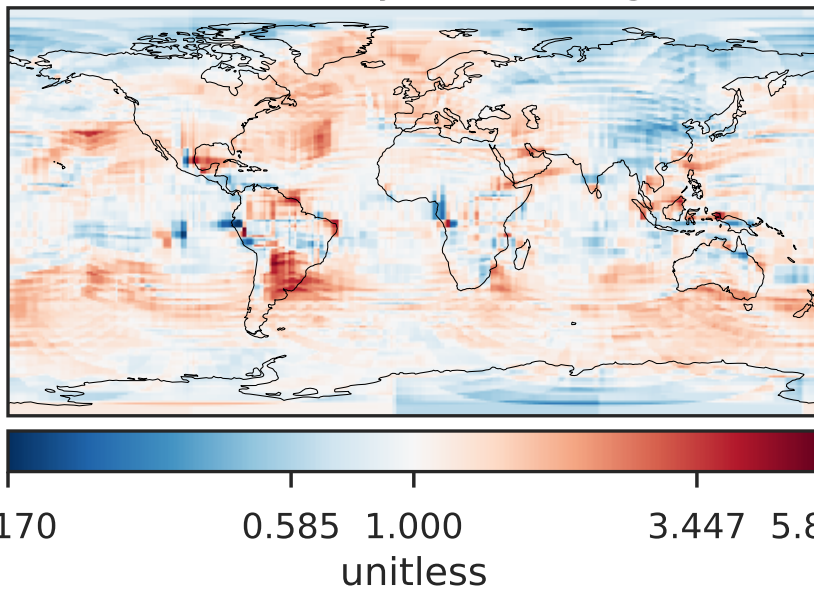
Difference (1x1.25)  
Dev - Ref, Dynamic Range



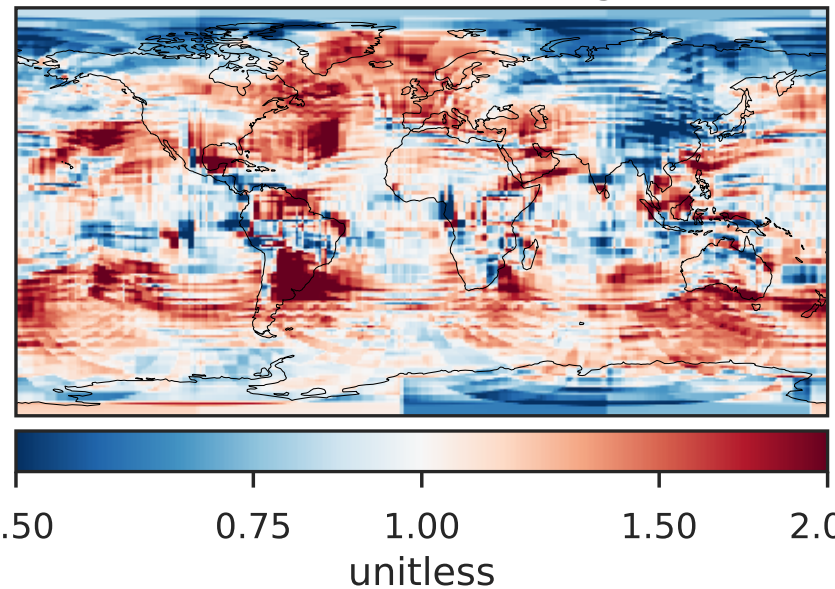
Difference (1x1.25)  
Dev - Ref, Restricted Range [5%,95%]



Ratio (1x1.25)  
Dev/Ref, Dynamic Range



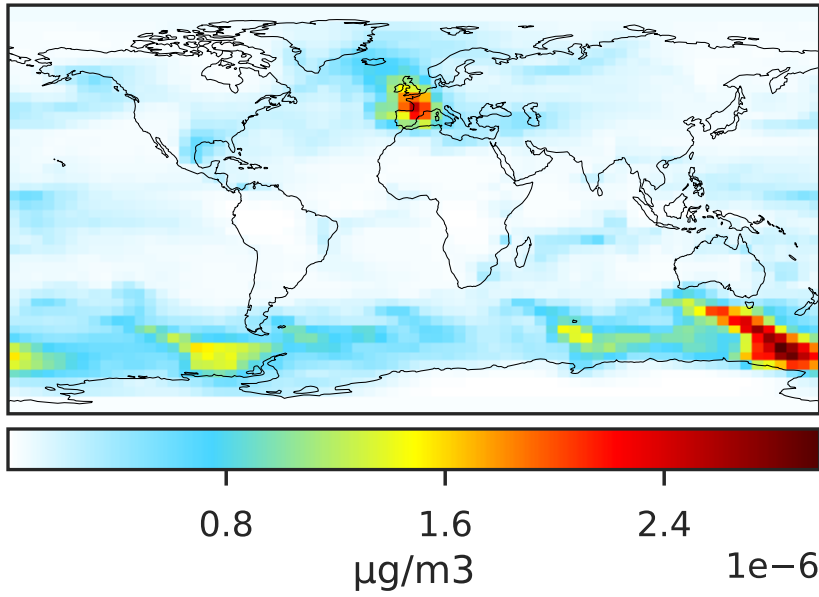
Ratio (1x1.25)  
Dev/Ref, Fixed Range



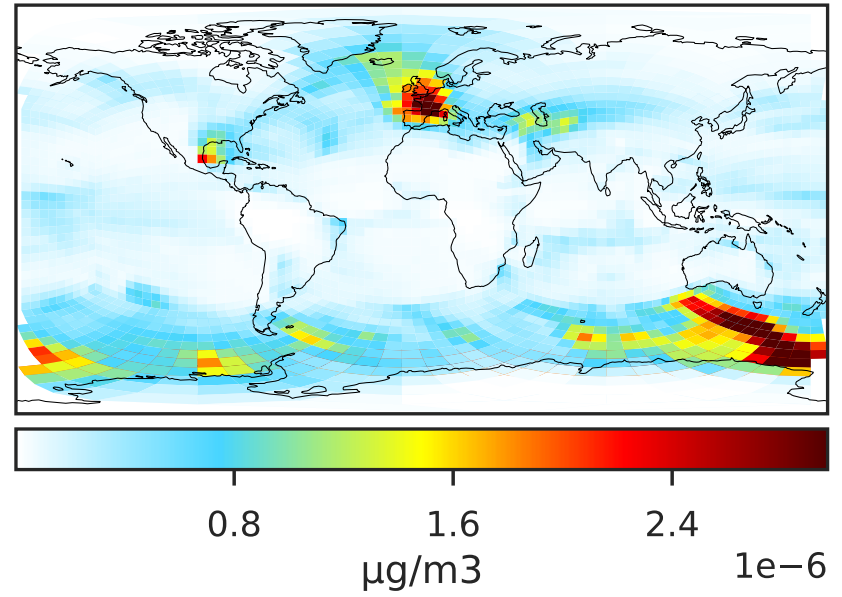


# SpeciesConcVV\_SO4s (Apr2019)

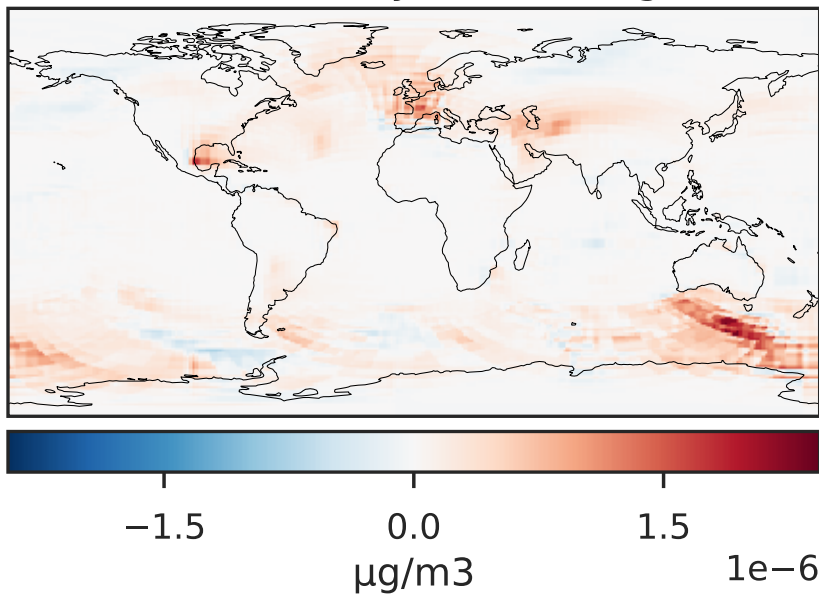
GCC\_14.2.0 (Ref)  
4.0x5.0



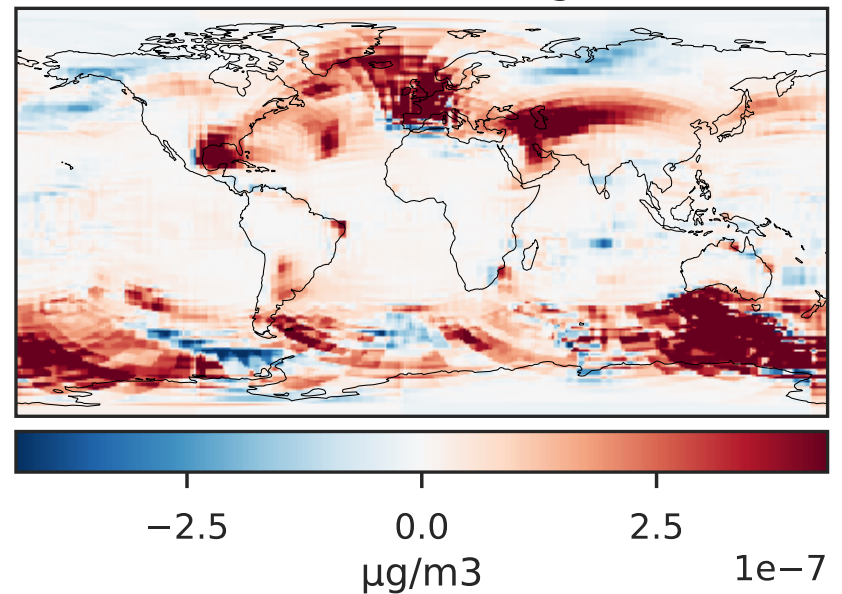
GCHP\_14.2.0 (Dev)  
c24



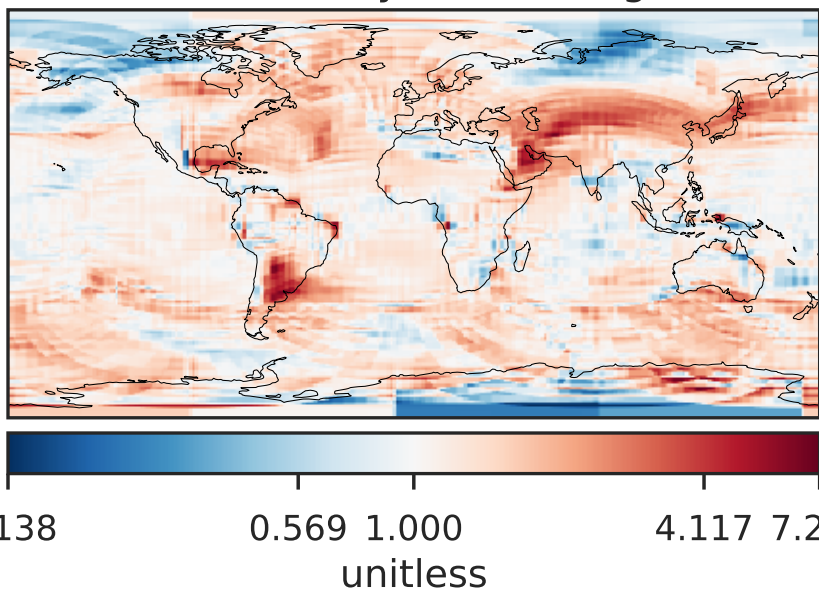
Difference (1x1.25)  
Dev - Ref, Dynamic Range



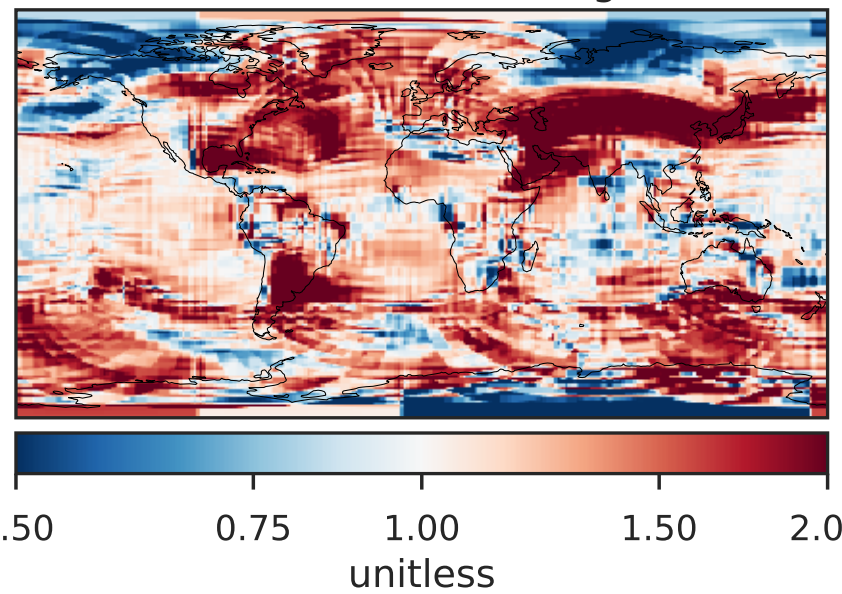
Difference (1x1.25)  
Dev - Ref, Restricted Range [5%,95%]



Ratio (1x1.25)  
Dev/Ref, Dynamic Range

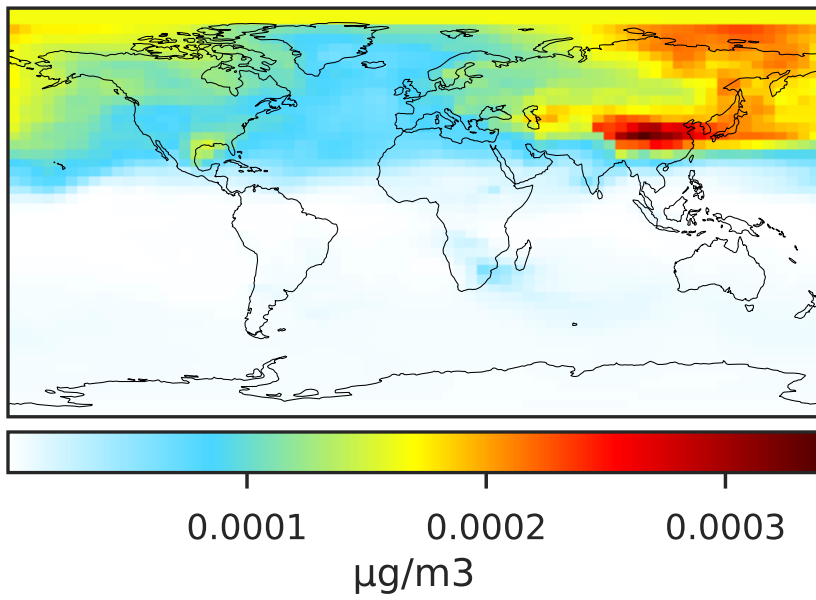


Ratio (1x1.25)  
Dev/Ref, Fixed Range

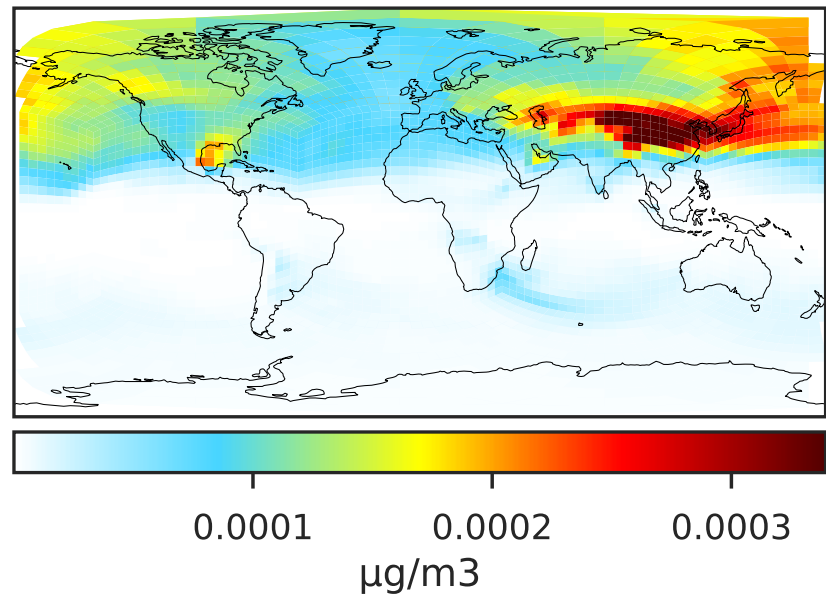


# SpeciesConcVV\_pFe (Apr2019)

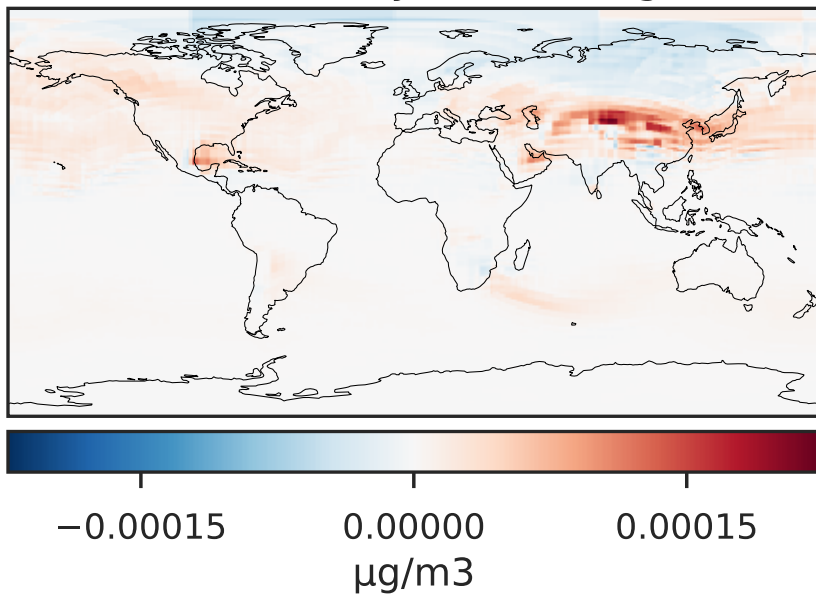
GCC\_14.2.0 (Ref)  
4.0x5.0



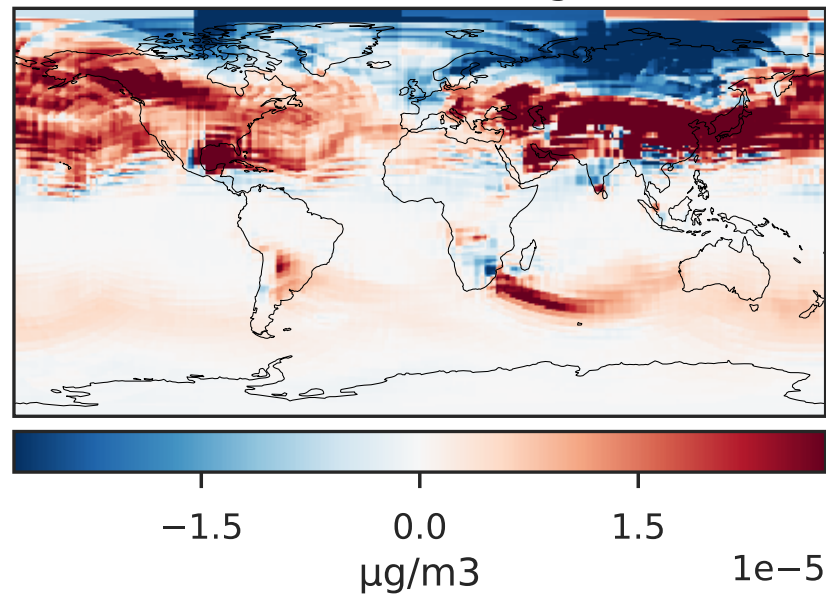
GCHP\_14.2.0 (Dev)  
c24



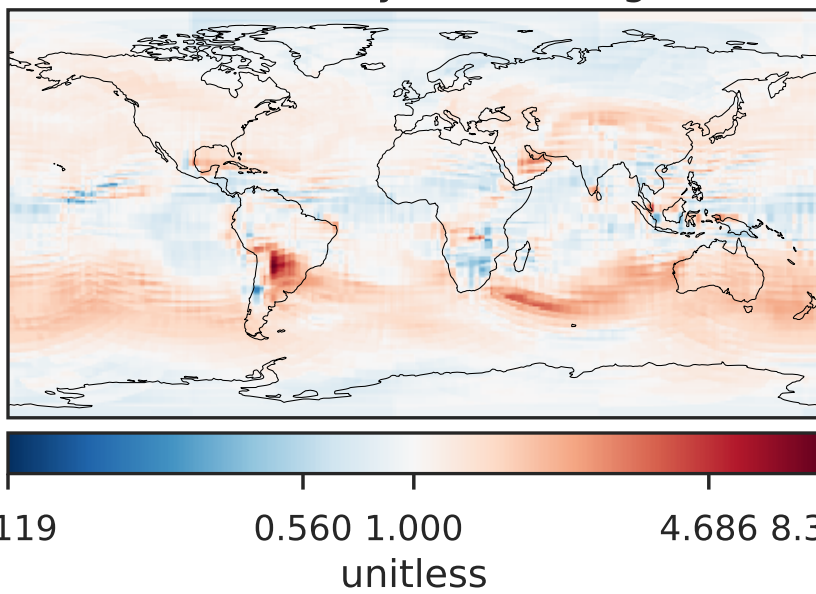
Difference (1x1.25)  
Dev - Ref, Dynamic Range



Difference (1x1.25)  
Dev - Ref, Restricted Range [5%,95%]



Ratio (1x1.25)  
Dev/Ref, Dynamic Range



Ratio (1x1.25)  
Dev/Ref, Fixed Range

