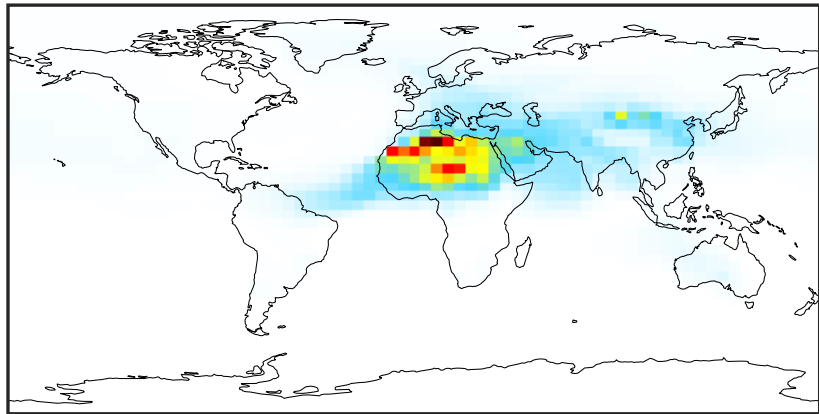


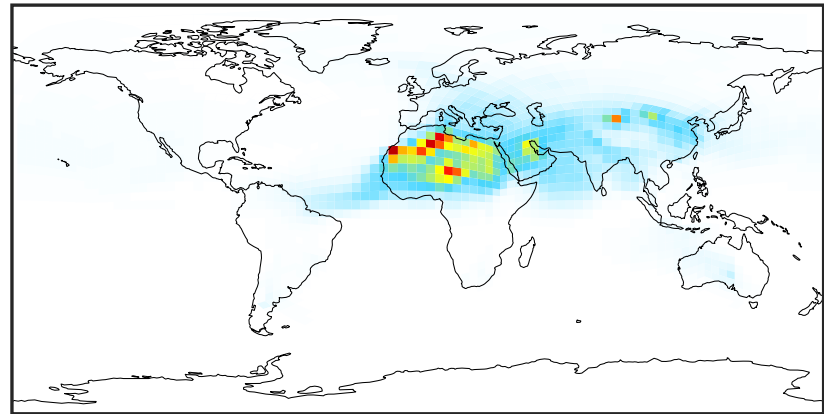
SpeciesConcVW_DST1 (Apr2019)

GCC_14.2.0 (Ref)
4.0x5.0



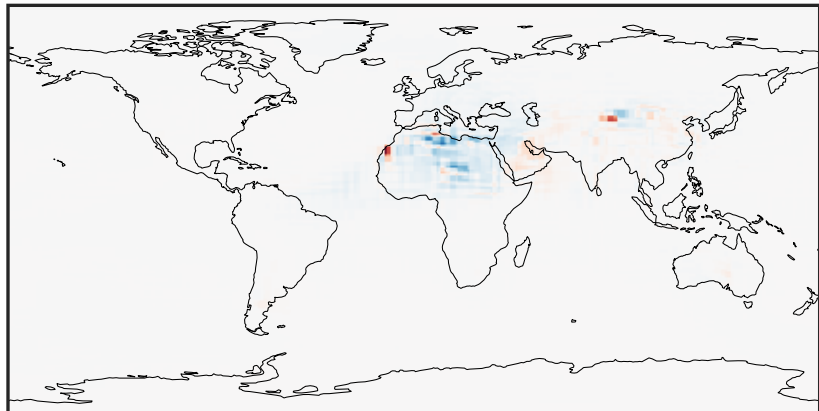
0.01 19.54 39.08 58.63 78.18
 $\mu\text{g}/\text{m}^3$

GCHP_14.2.0 (Dev)
c24



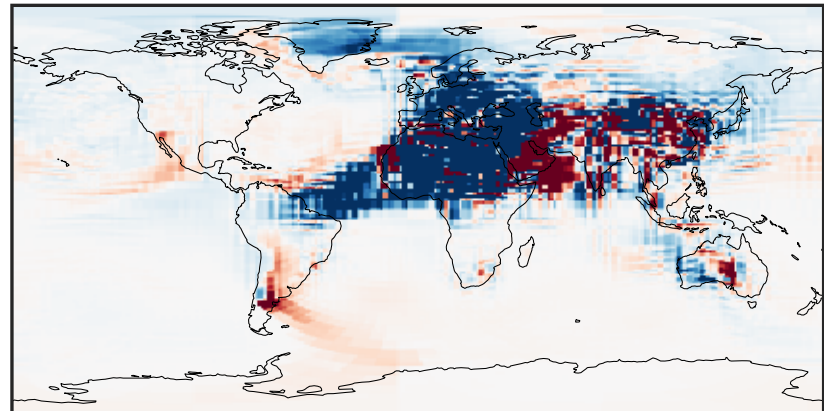
0.01 19.54 39.08 58.63 78.18
 $\mu\text{g}/\text{m}^3$

Difference (1x1.25)
Dev - Ref, Dynamic Range



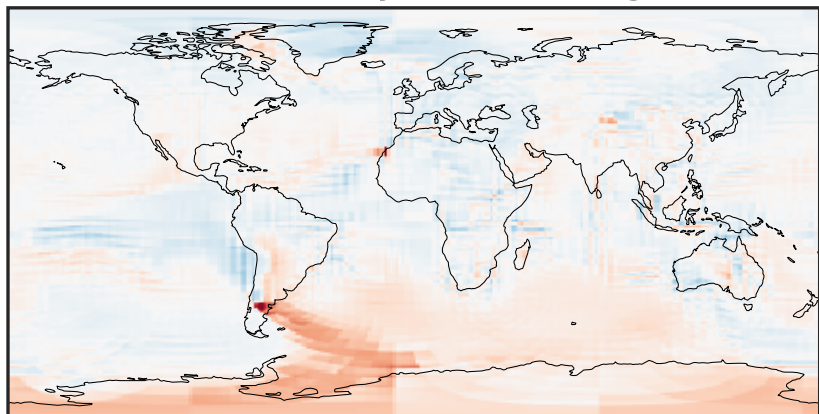
-30 0 30
 $\mu\text{g}/\text{m}^3$

Difference (1x1.25)
Dev - Ref, Restricted Range [5%,95%]



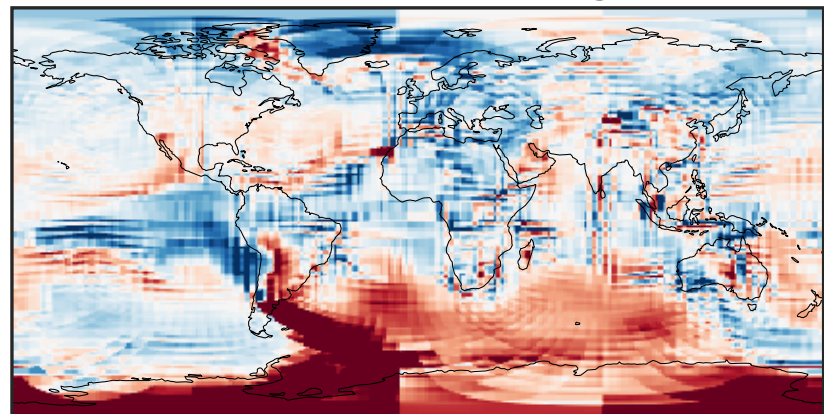
-0.882 -0.441 0.000 0.441 0.882
 $\mu\text{g}/\text{m}^3$

Ratio (1x1.25)
Dev/Ref, Dynamic Range



1e-01 1 10
unitless

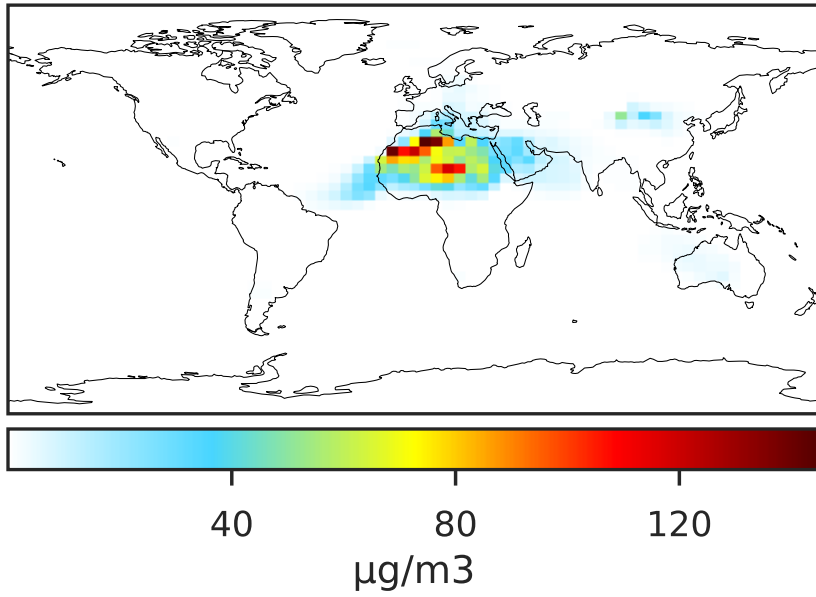
Ratio (1x1.25)
Dev/Ref, Fixed Range



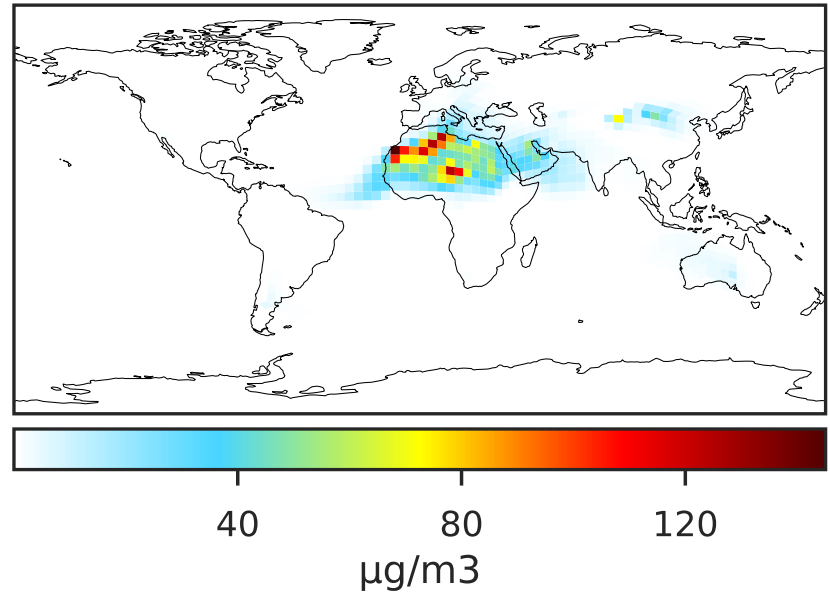
0.50 0.75 1.00 1.50 2.00
unitless

SpeciesConcVW_DST2 (Apr2019)

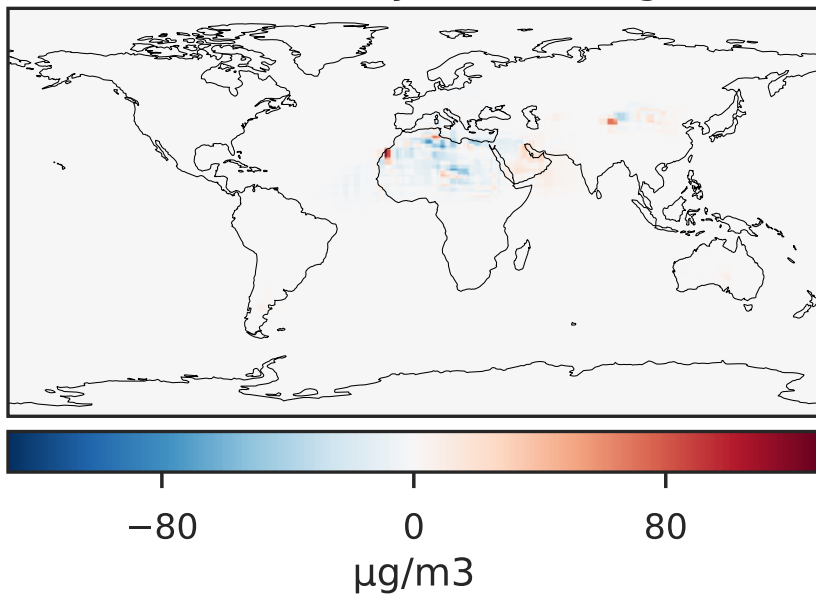
GCC_14.2.0 (Ref)
4.0x5.0



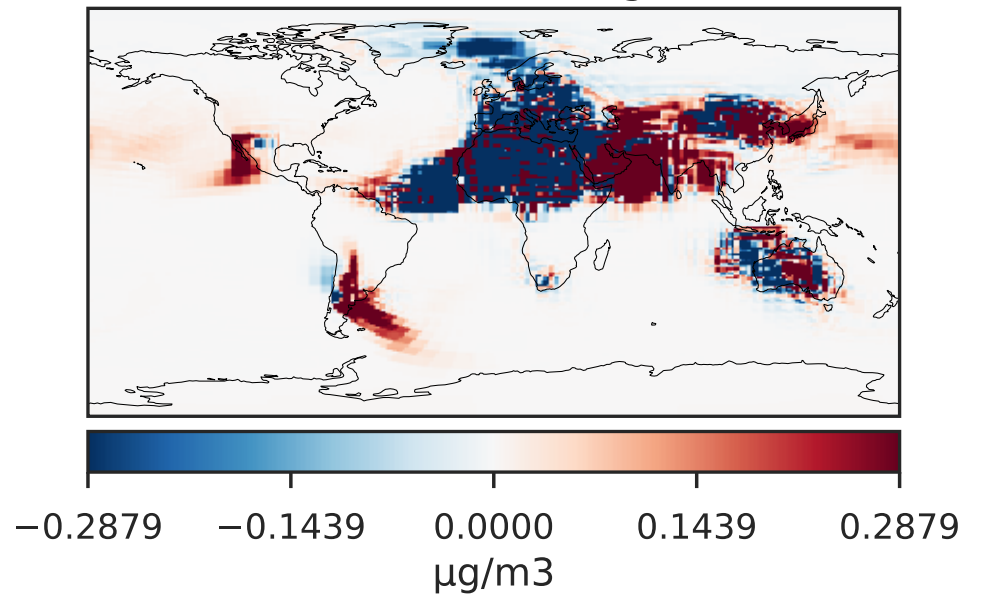
GCHP_14.2.0 (Dev)
c24



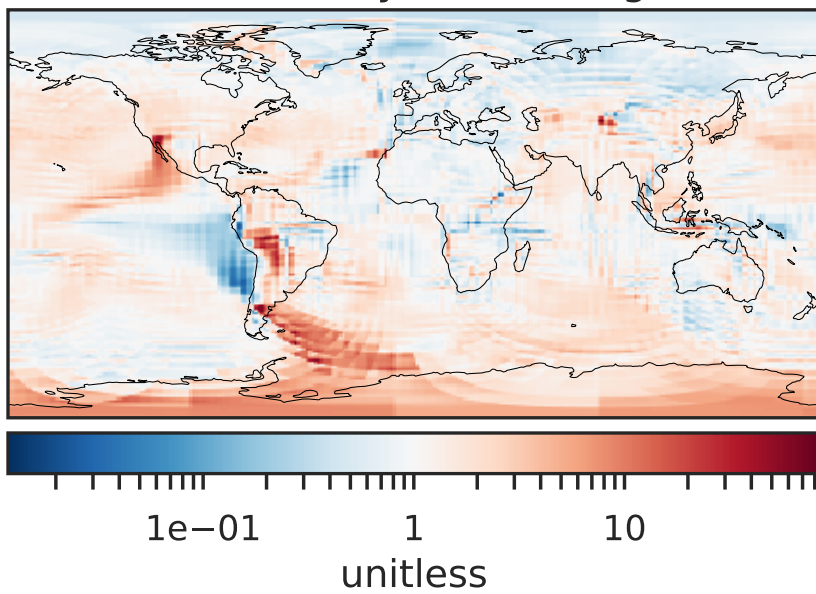
Difference (1x1.25)
Dev - Ref, Dynamic Range



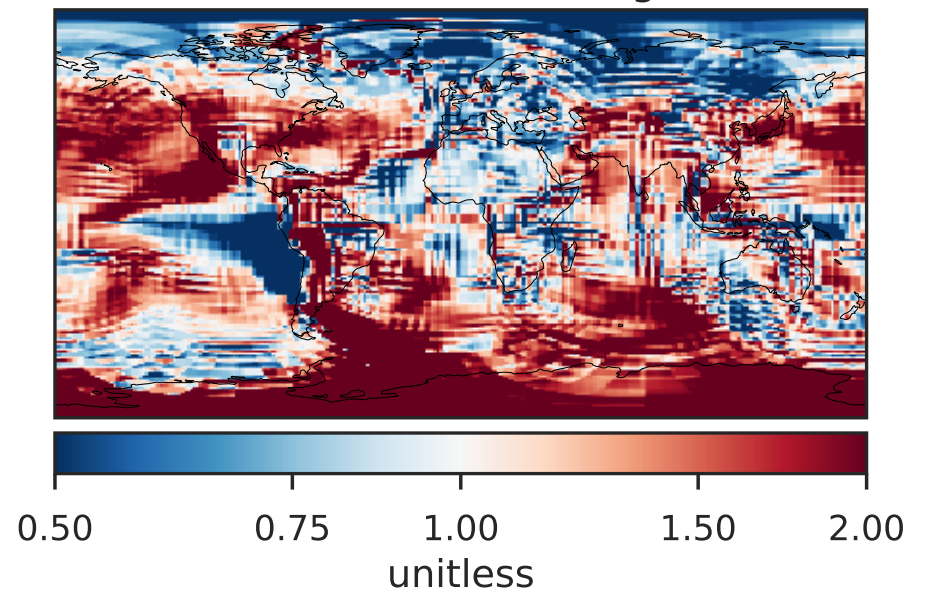
Difference (1x1.25)
Dev - Ref, Restricted Range [5%,95%]



Ratio (1x1.25)
Dev/Ref, Dynamic Range

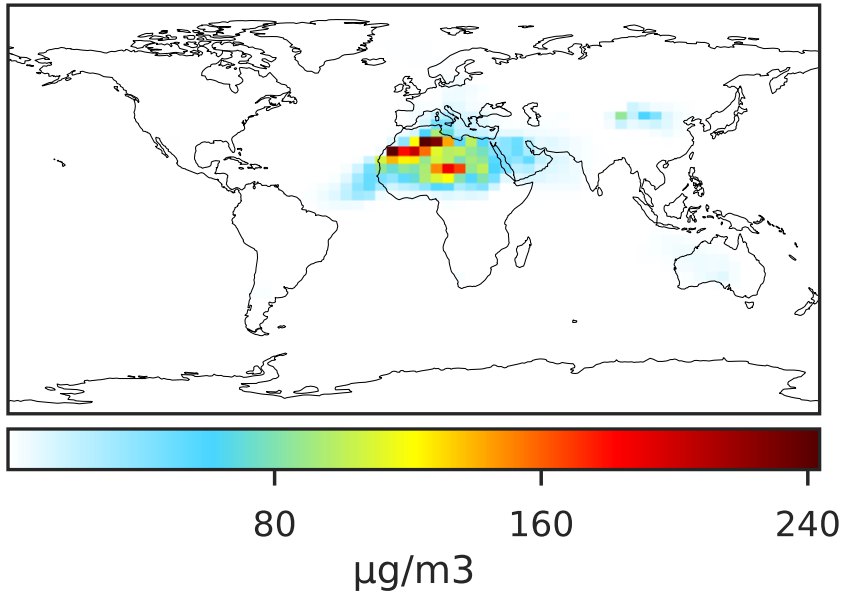


Ratio (1x1.25)
Dev/Ref, Fixed Range

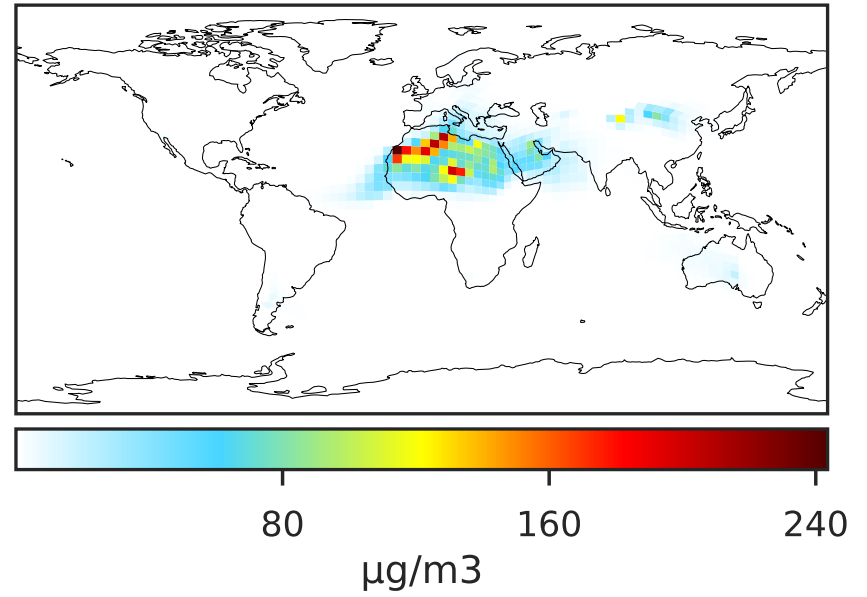


SpeciesConcVV_DST3 (Apr2019)

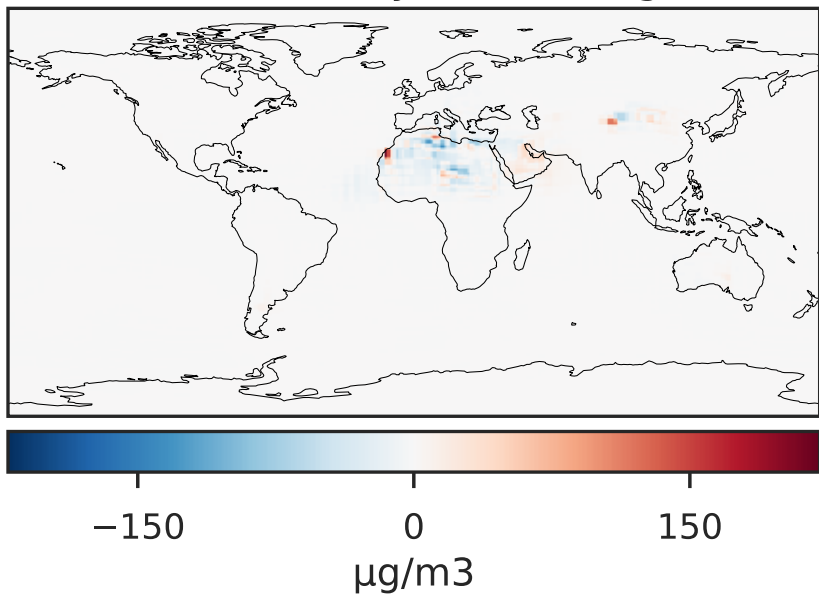
GCC_14.2.0 (Ref)
4.0x5.0



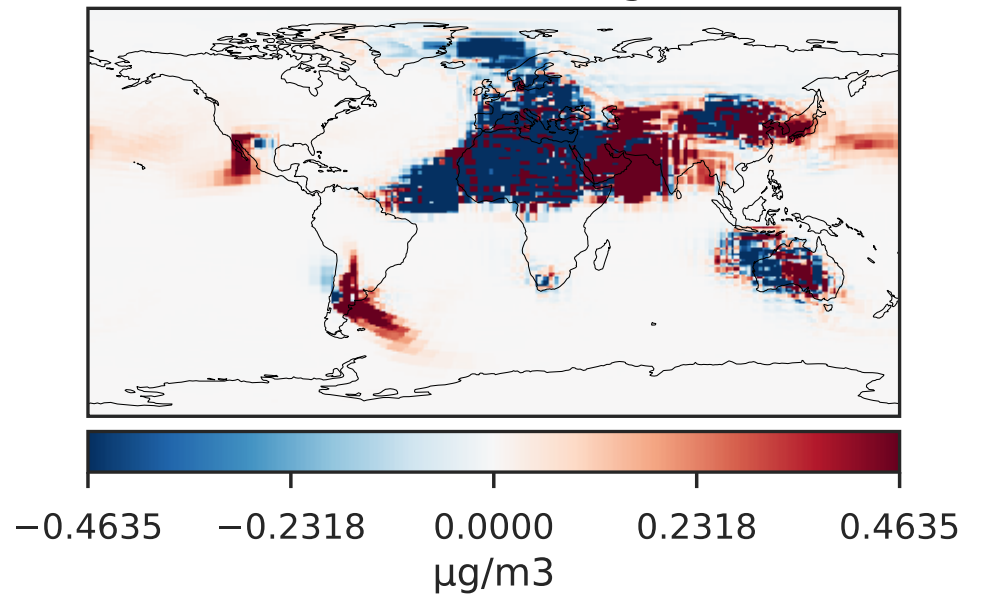
GCHP_14.2.0 (Dev)
c24



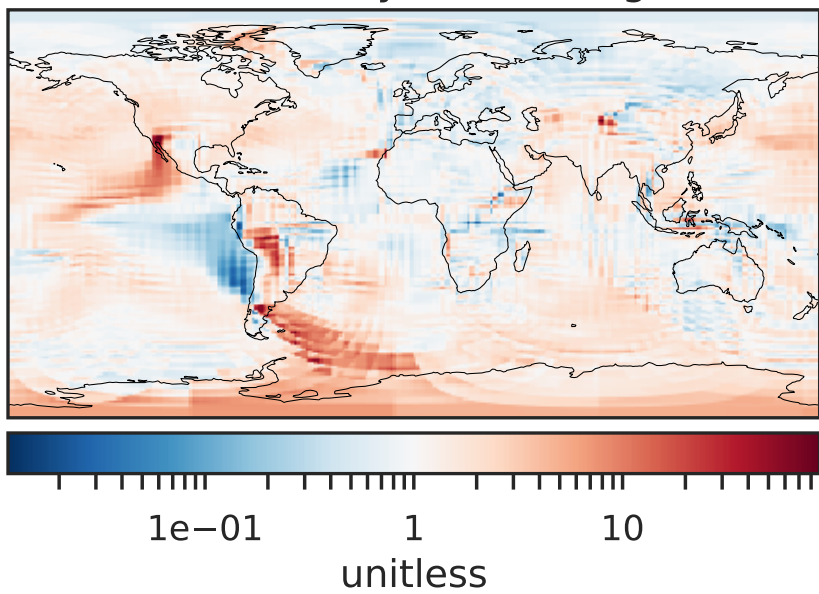
Difference (1x1.25)
Dev - Ref, Dynamic Range



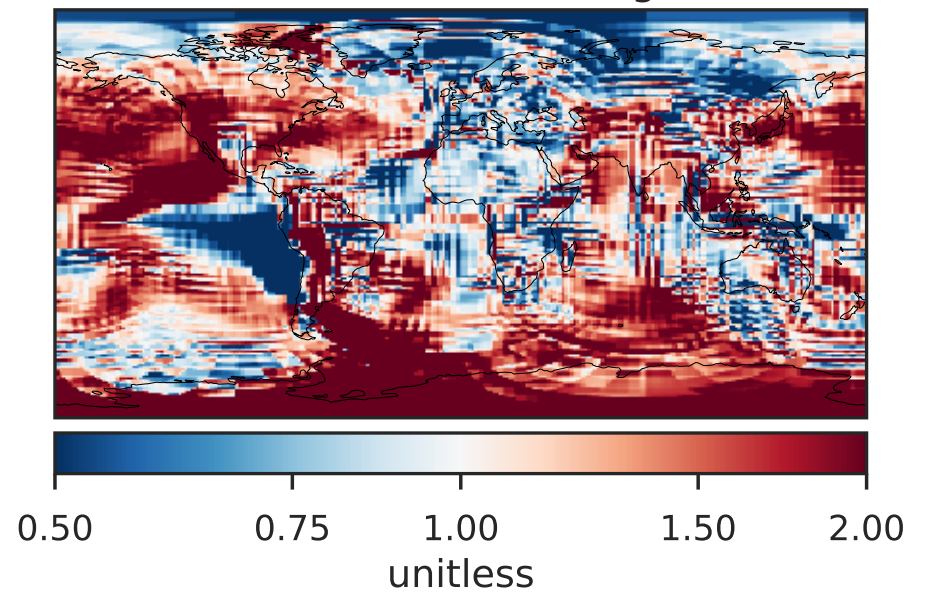
Difference (1x1.25)
Dev - Ref, Restricted Range [5%,95%]



Ratio (1x1.25)
Dev/Ref, Dynamic Range

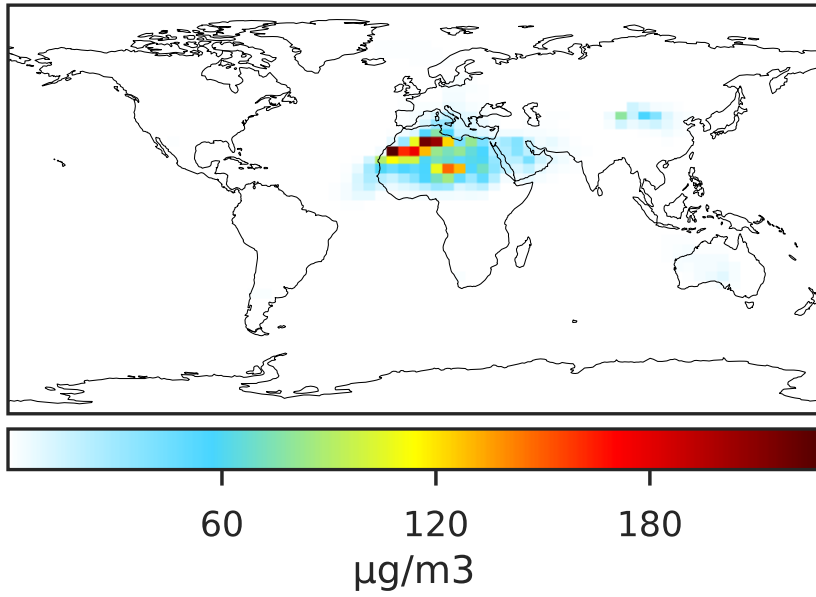


Ratio (1x1.25)
Dev/Ref, Fixed Range

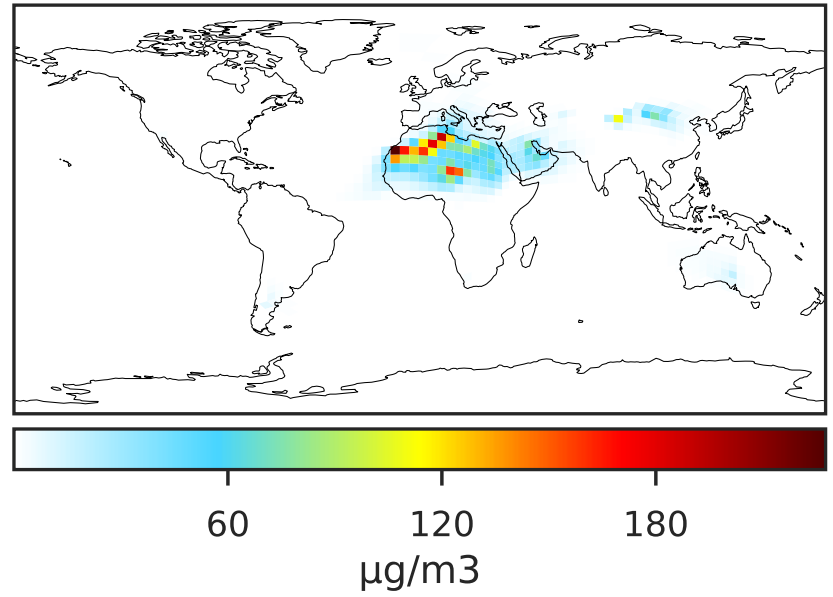


SpeciesConcVW_DST4 (Apr2019)

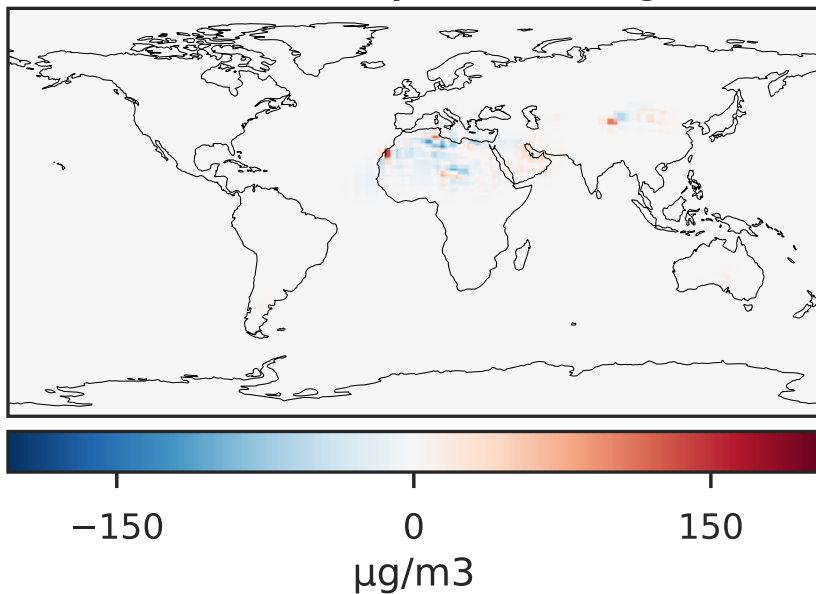
GCC_14.2.0 (Ref)
4.0x5.0



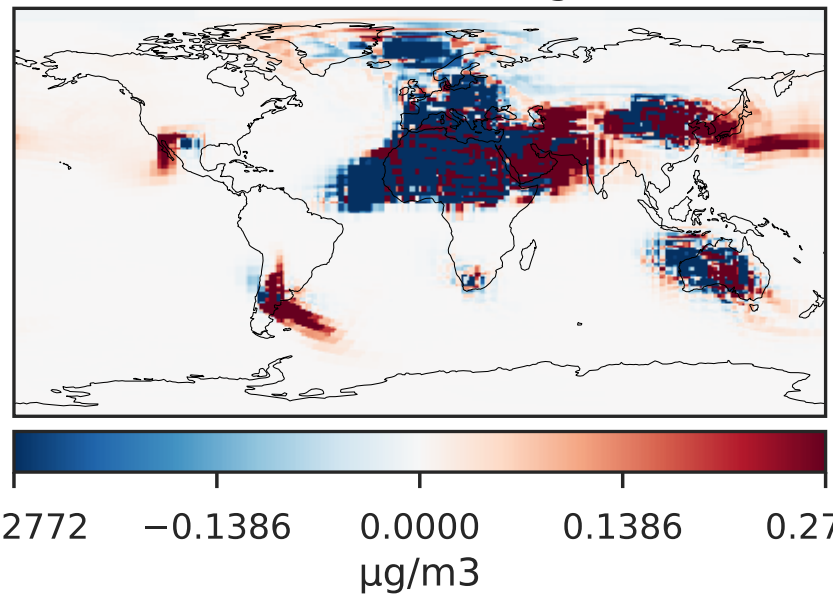
GCHP_14.2.0 (Dev)
c24



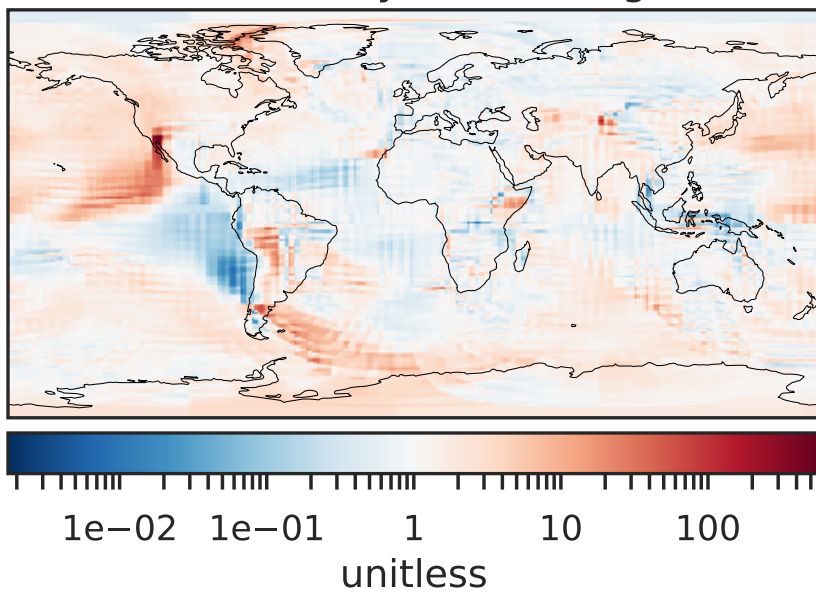
Difference (1x1.25)
Dev - Ref, Dynamic Range



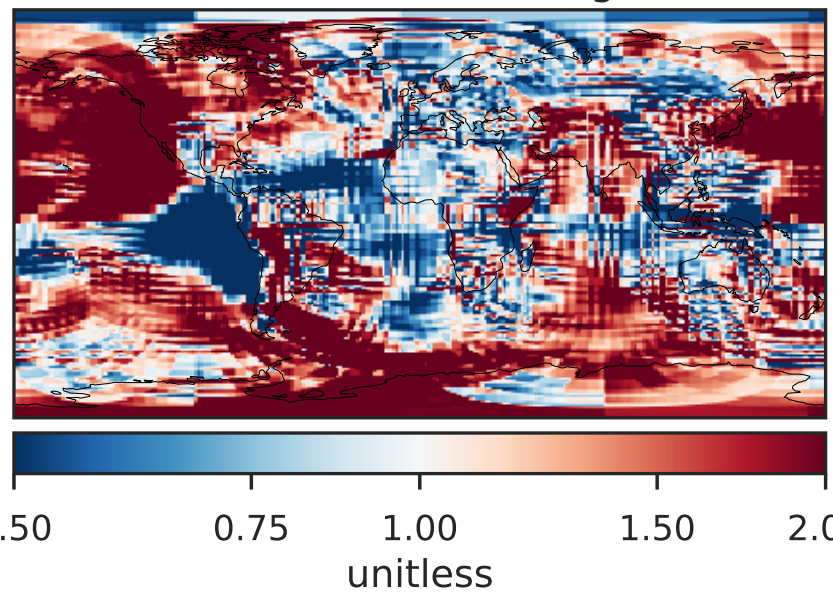
Difference (1x1.25)
Dev - Ref, Restricted Range [5%,95%]



Ratio (1x1.25)
Dev/Ref, Dynamic Range

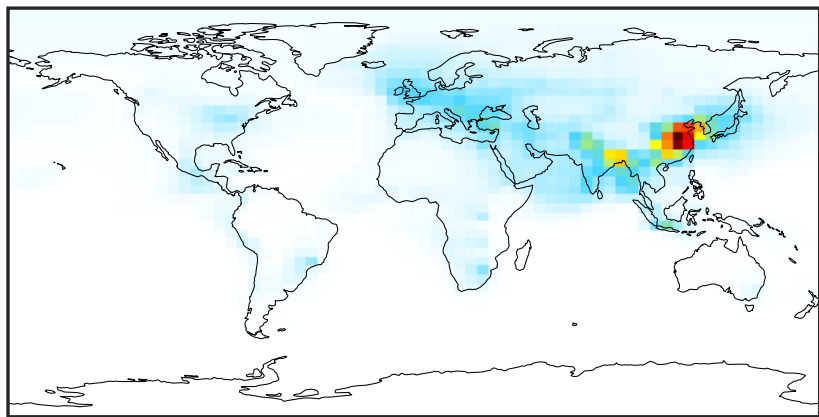


Ratio (1x1.25)
Dev/Ref, Fixed Range



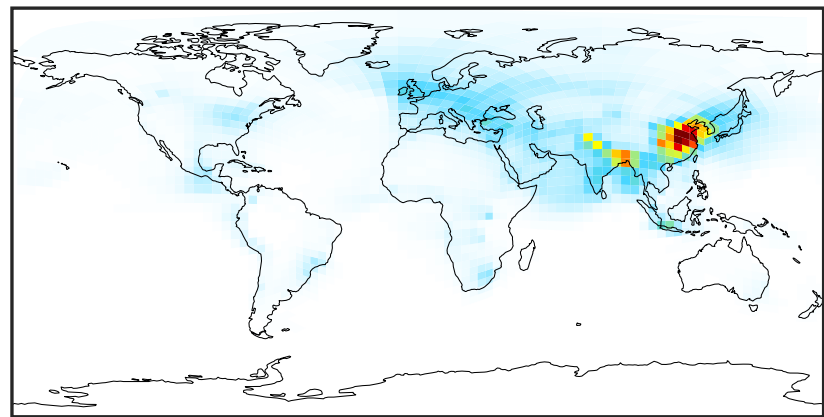
SpeciesConcVV_NH4 (Apr2019)

GCC_14.2.0 (Ref)
4.0x5.0



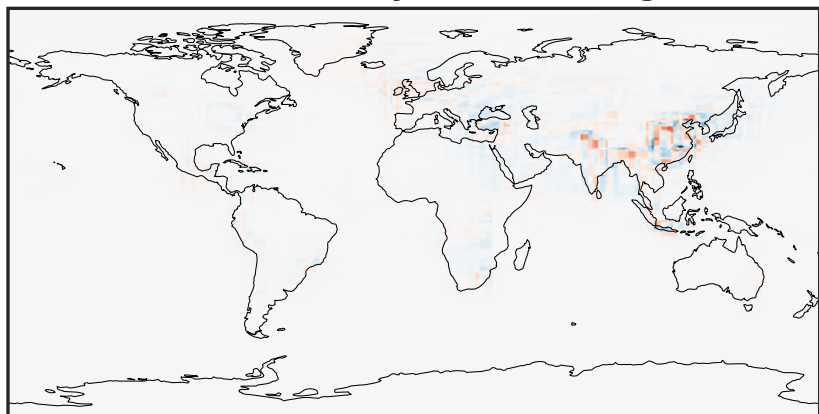
0.00 3.79 7.58 11.37 15.16
 $\mu\text{g}/\text{m}^3$

GCHP_14.2.0 (Dev)
c24



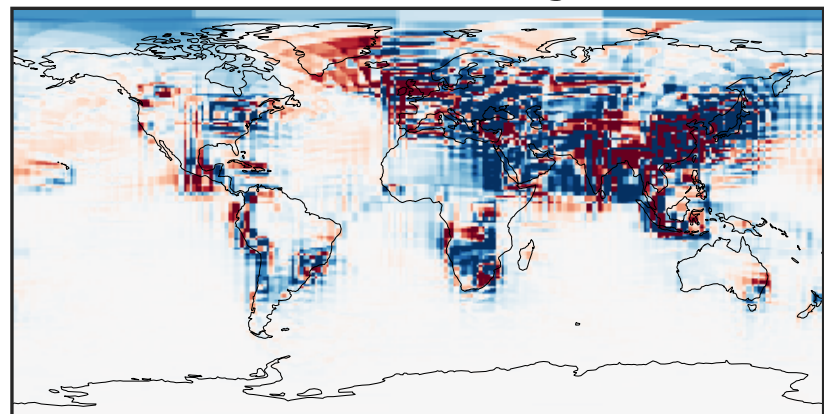
0.00 3.79 7.58 11.37 15.16
 $\mu\text{g}/\text{m}^3$

Difference (1x1.25)
Dev - Ref, Dynamic Range



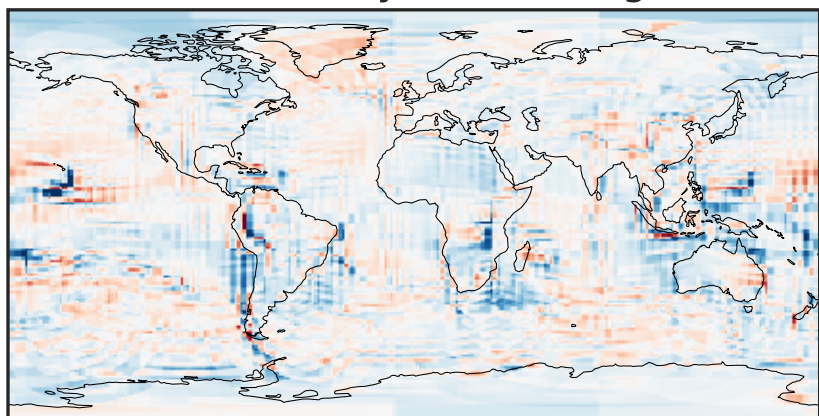
-6.13 -3.07 0.00 3.07 6.13
 $\mu\text{g}/\text{m}^3$

Difference (1x1.25)
Dev - Ref, Restricted Range [5%,95%]



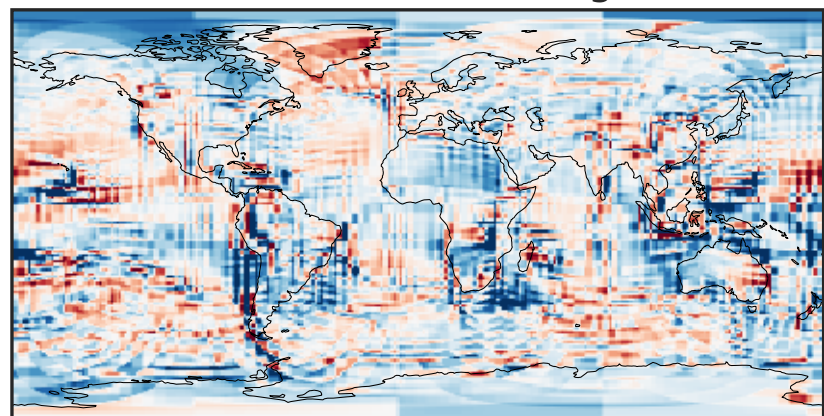
-0.1925 -0.0963 0.0000 0.0963 0.1925
 $\mu\text{g}/\text{m}^3$

Ratio (1x1.25)
Dev/Ref, Dynamic Range



0.209 0.605 1.000 2.891 4.783
unitless

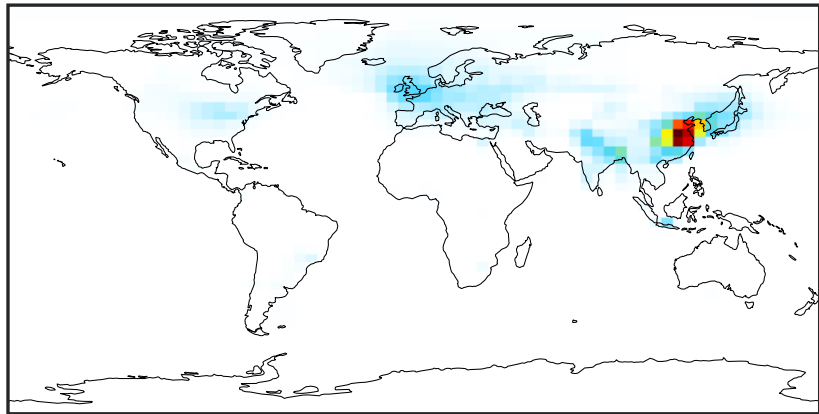
Ratio (1x1.25)
Dev/Ref, Fixed Range



0.50 0.75 1.00 1.50 2.00
unitless

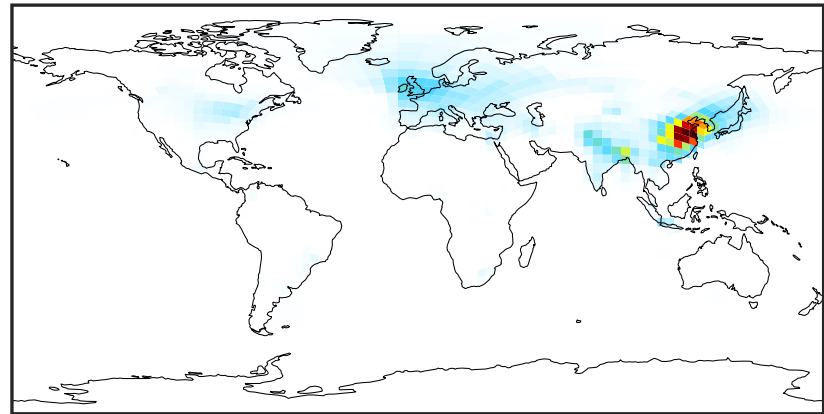
SpeciesConcVV_NIT (Apr2019)

GCC_14.2.0 (Ref)
4.0x5.0



0.00 7.19 14.37 21.56 28.75
µg/m3

GCHP_14.2.0 (Dev)
c24



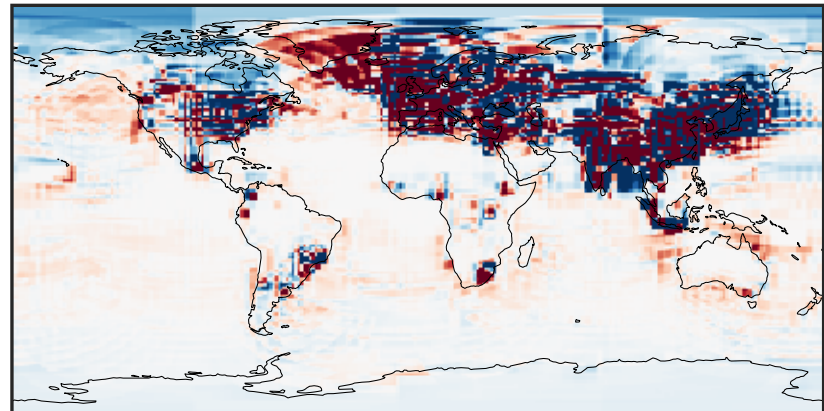
0.00 7.19 14.37 21.56 28.75
µg/m3

Difference (1x1.25)
Dev - Ref, Dynamic Range



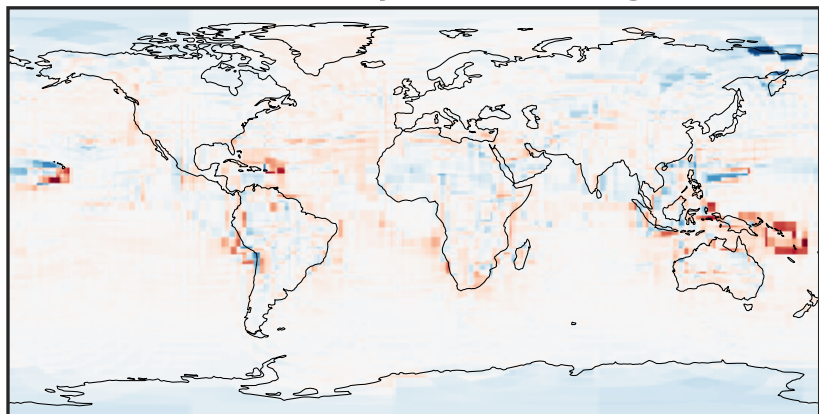
-14.64 -7.32 0.00 7.32 14.64
µg/m3

Difference (1x1.25)
Dev - Ref, Restricted Range [5%,95%]



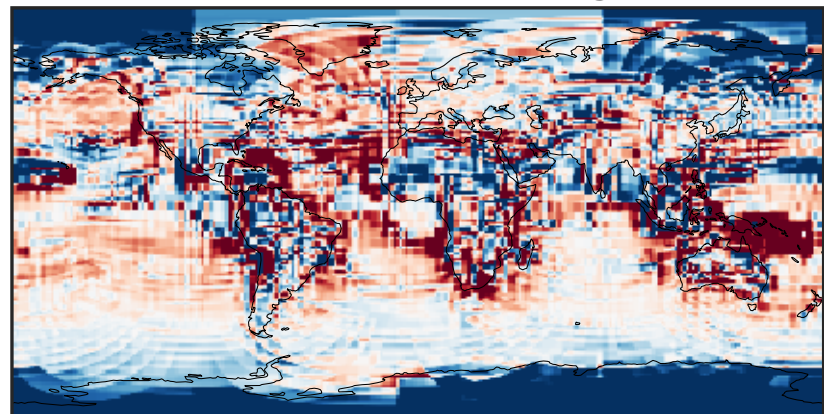
-0.1156 -0.0578 0.0000 0.0578 0.1156
µg/m3

Ratio (1x1.25)
Dev/Ref, Dynamic Range



1e-02 1e-01 1 10 100
unitless

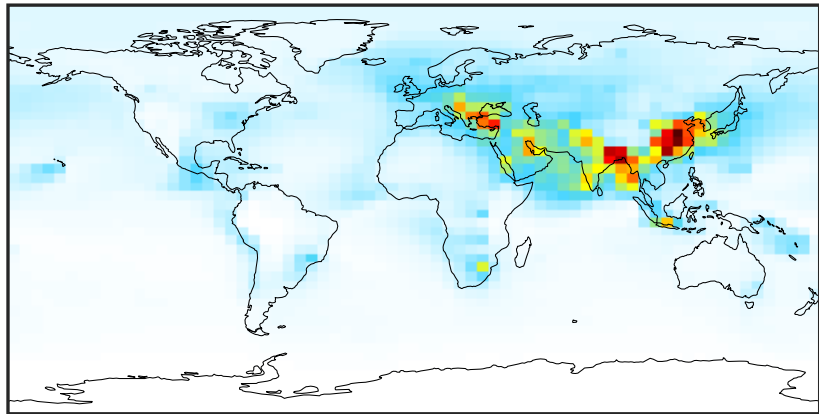
Ratio (1x1.25)
Dev/Ref, Fixed Range



0.50 0.75 1.00 1.50 2.00
unitless

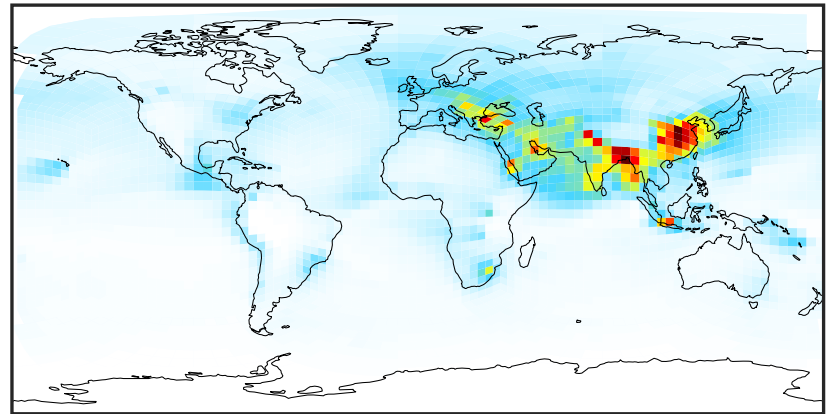
SpeciesConcVV_SO4 (Apr2019)

GCC_14.2.0 (Ref)
4.0x5.0



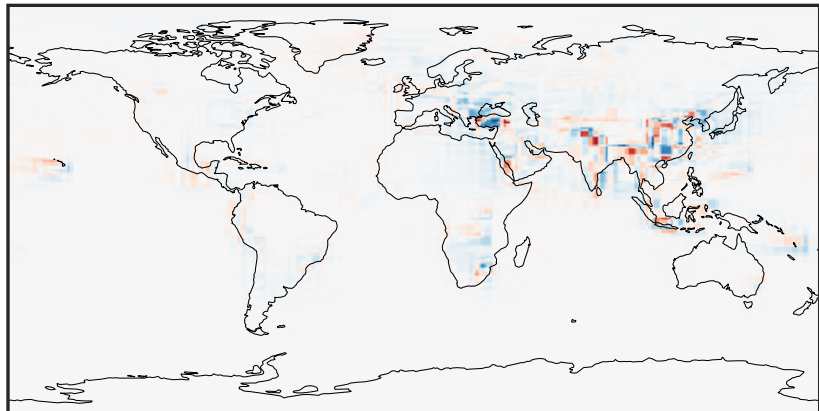
0.07 4.27 8.54 12.81 17.14
 $\mu\text{g}/\text{m}^3$

GCHP_14.2.0 (Dev)
c24



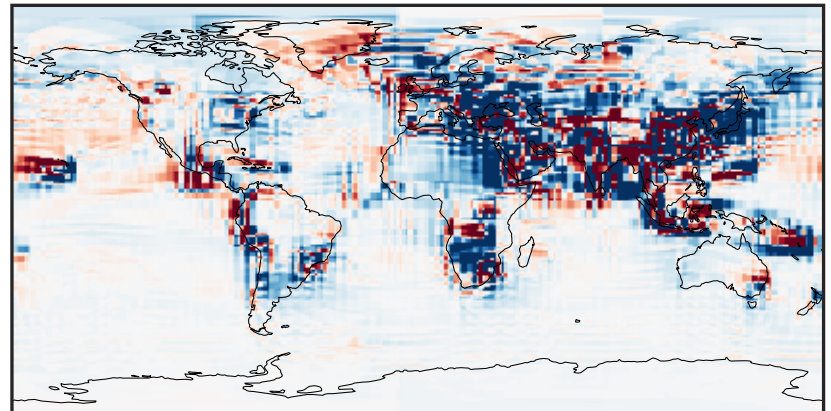
0.07 4.27 8.54 12.81 17.14
 $\mu\text{g}/\text{m}^3$

Difference (1x1.25)
Dev - Ref, Dynamic Range



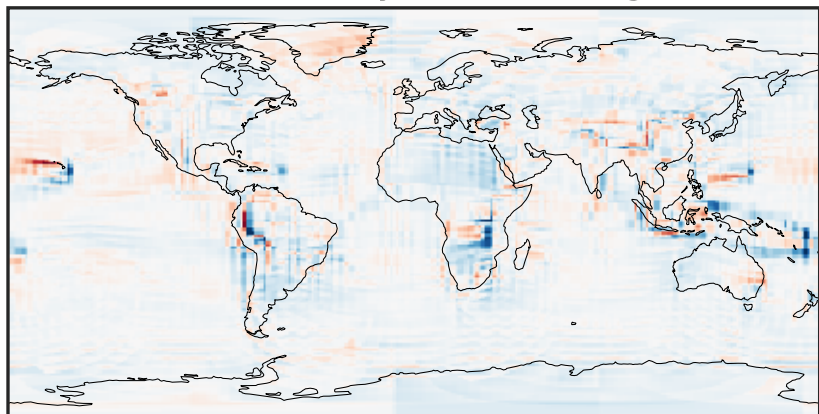
-6.87 -3.43 0.00 3.43 6.87
 $\mu\text{g}/\text{m}^3$

Difference (1x1.25)
Dev - Ref, Restricted Range [5%,95%]



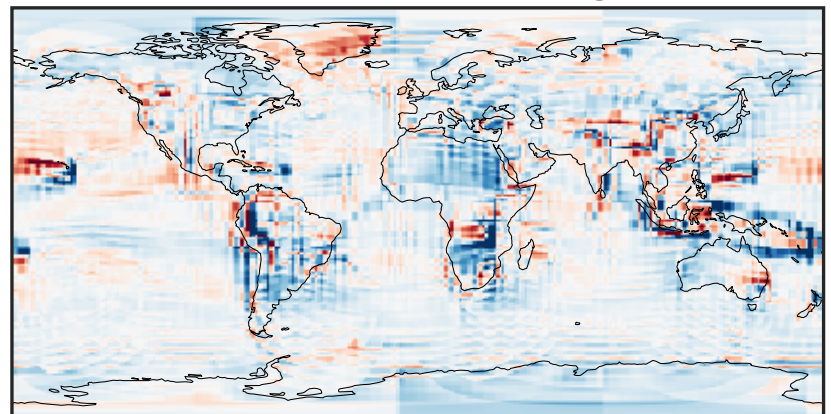
-0.4477 -0.2239 0.0000 0.2239 0.4477
 $\mu\text{g}/\text{m}^3$

Ratio (1x1.25)
Dev/Ref, Dynamic Range



0.206 0.603 1.000 2.923 4.846
unitless

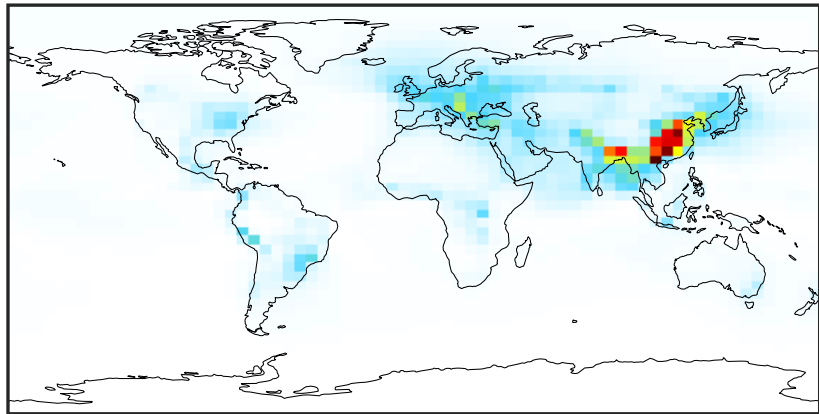
Ratio (1x1.25)
Dev/Ref, Fixed Range



0.50 0.75 1.00 1.50 2.00
unitless

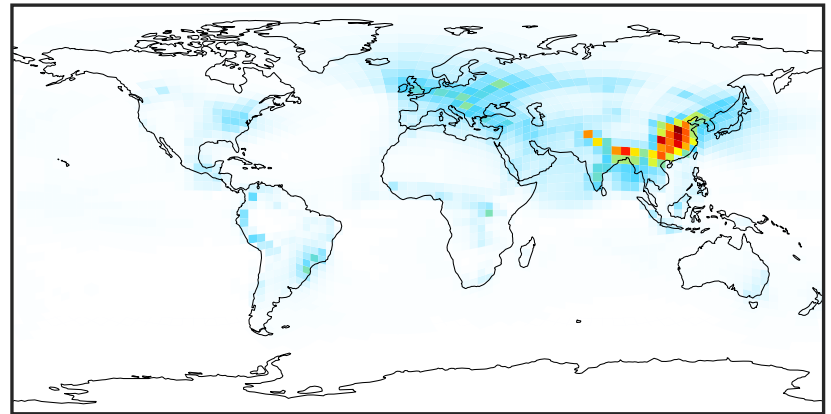
SpeciesConcVV_HMS (Apr2019)

GCC_14.2.0 (Ref)
4.0x5.0



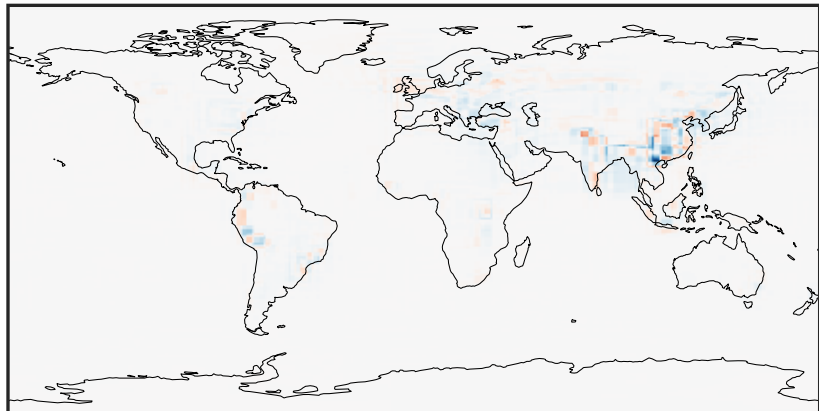
0.002 0.766 1.532 2.298 3.066
 $\mu\text{g}/\text{m}^3$

GCHP_14.2.0 (Dev)
c24



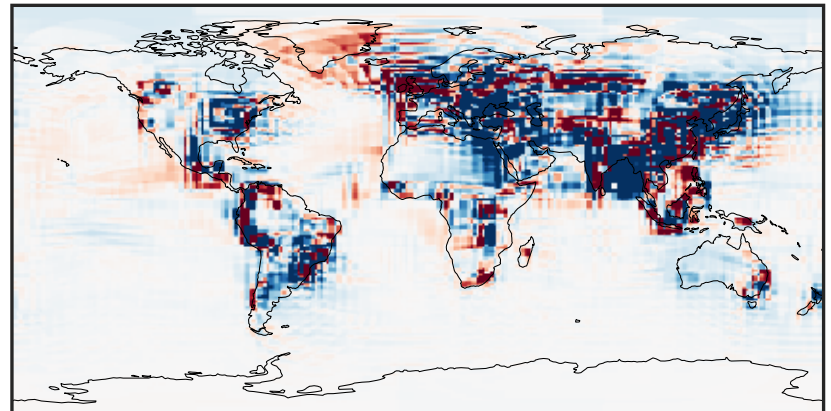
0.002 0.766 1.532 2.298 3.066
 $\mu\text{g}/\text{m}^3$

Difference (1x1.25)
Dev - Ref, Dynamic Range



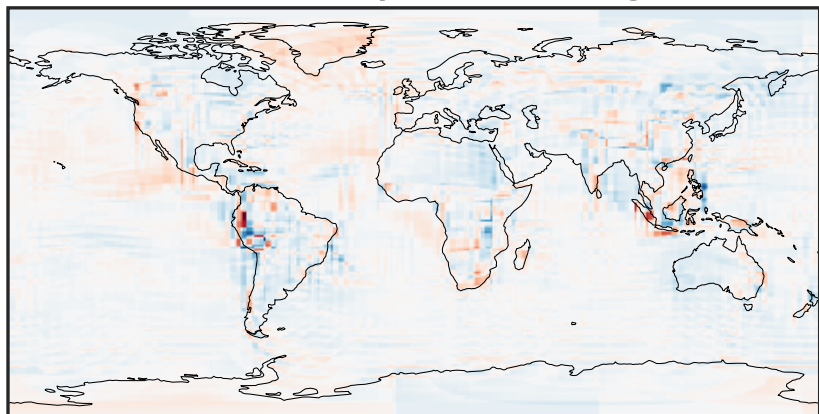
-2.033 -1.016 0.000 1.016 2.033
 $\mu\text{g}/\text{m}^3$

Difference (1x1.25)
Dev - Ref, Restricted Range [5%,95%]



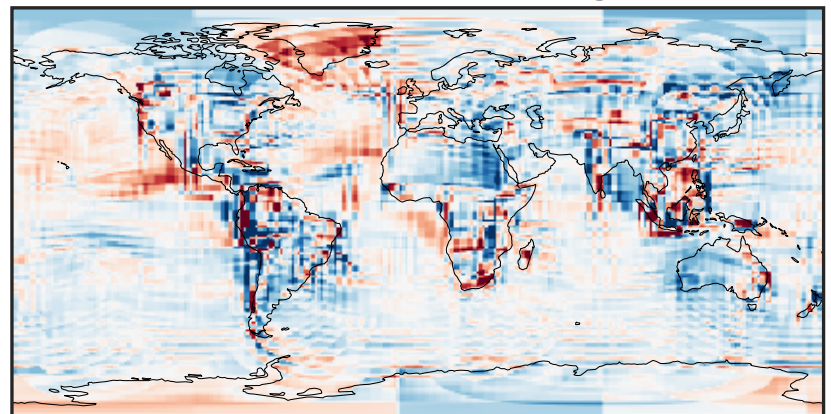
-0.025 0.000 0.025
 $\mu\text{g}/\text{m}^3$

Ratio (1x1.25)
Dev/Ref, Dynamic Range



1e-01 1 10
unitless

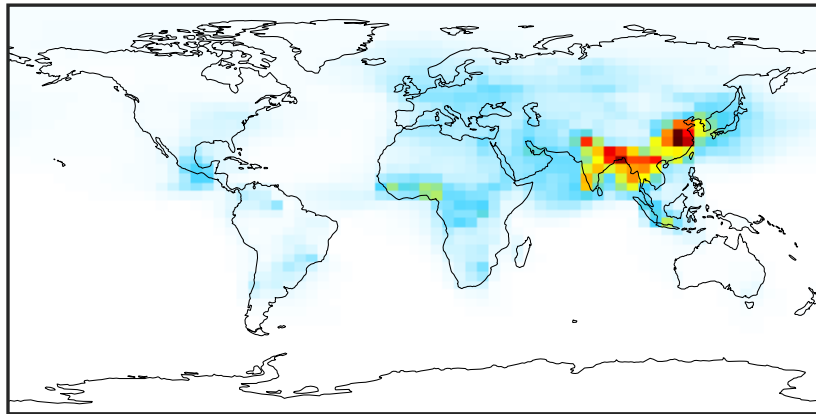
Ratio (1x1.25)
Dev/Ref, Fixed Range



0.50 0.75 1.00 1.50 2.00
unitless

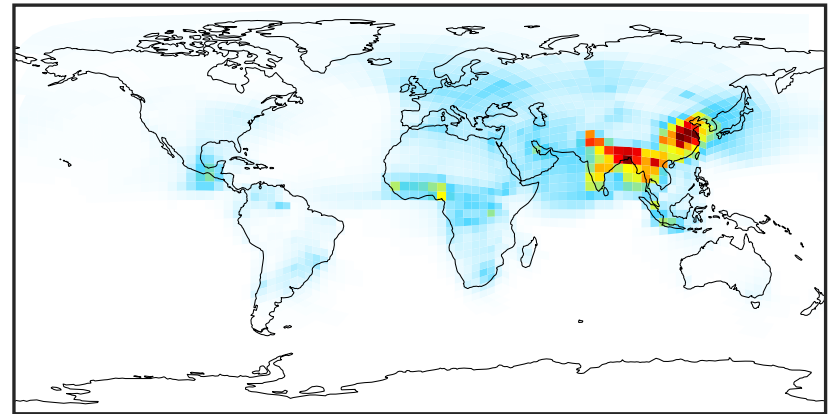
SpeciesConcVV_BCPI (Apr2019)

GCC_14.2.0 (Ref)
4.0x5.0



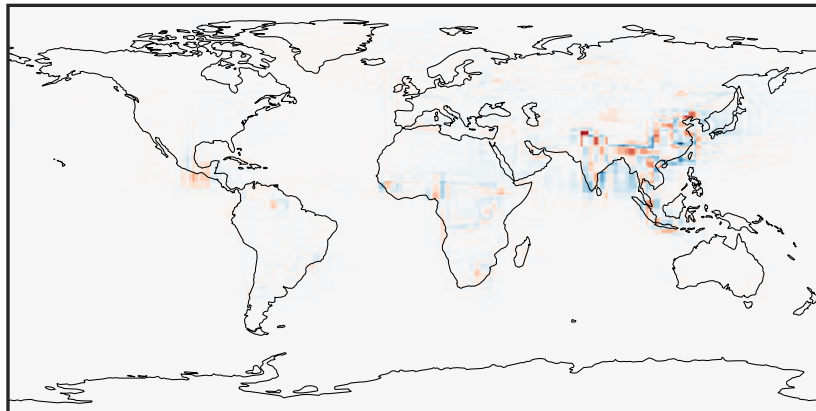
0.000 0.384 0.767 1.151 1.535
µg/m3

GCHP_14.2.0 (Dev)
c24



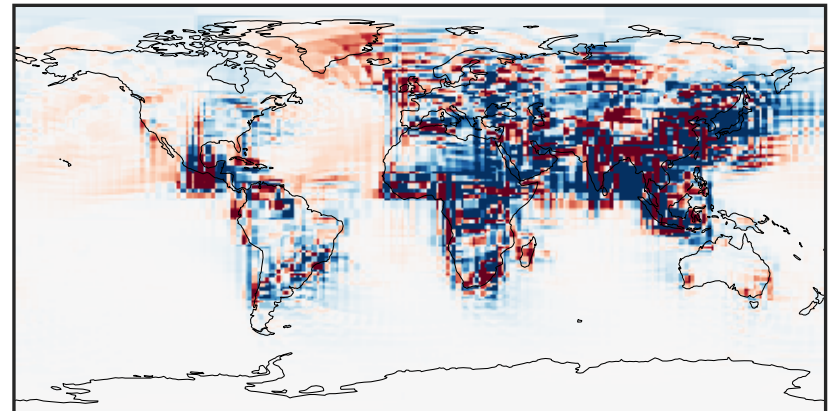
0.000 0.384 0.767 1.151 1.535
µg/m3

Difference (1x1.25)
Dev - Ref, Dynamic Range



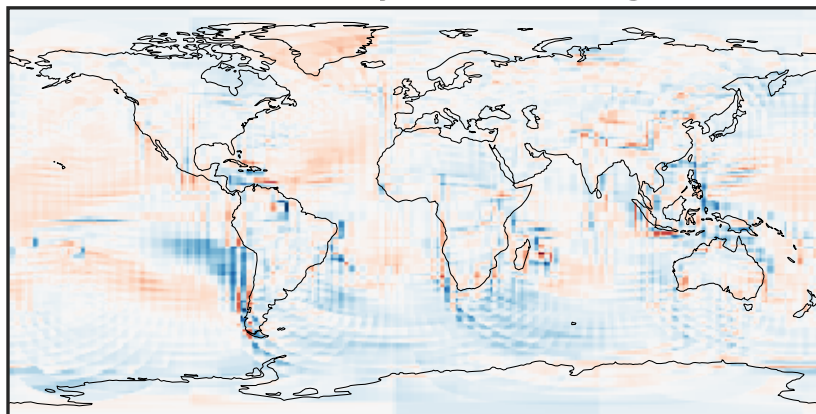
-0.616 -0.308 0.000 0.308 0.616
µg/m3

Difference (1x1.25)
Dev - Ref, Restricted Range [5%,95%]



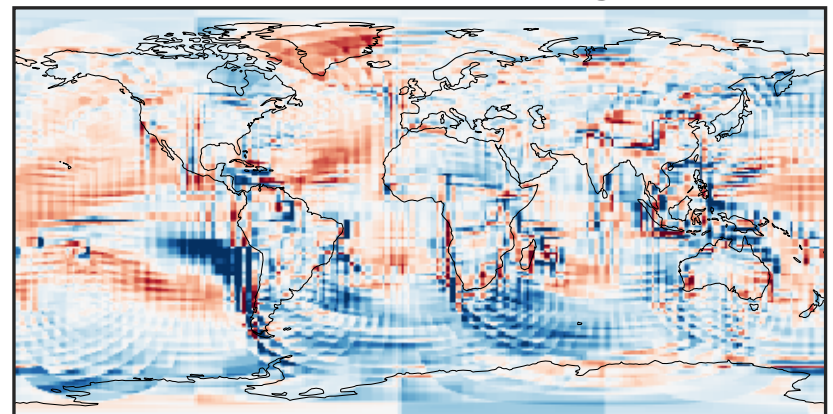
-0.015 0.000 0.015
µg/m3

Ratio (1x1.25)
Dev/Ref, Dynamic Range



0.165 0.582 1.000 3.537 6.074
unitless

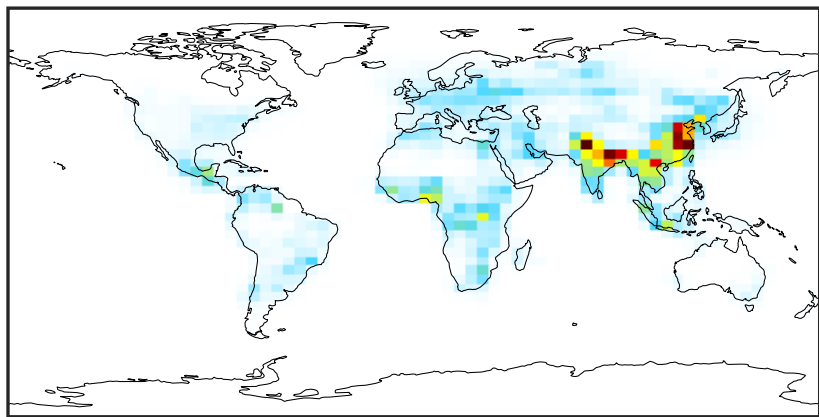
Ratio (1x1.25)
Dev/Ref, Fixed Range



0.50 0.75 1.00 1.50 2.00
unitless

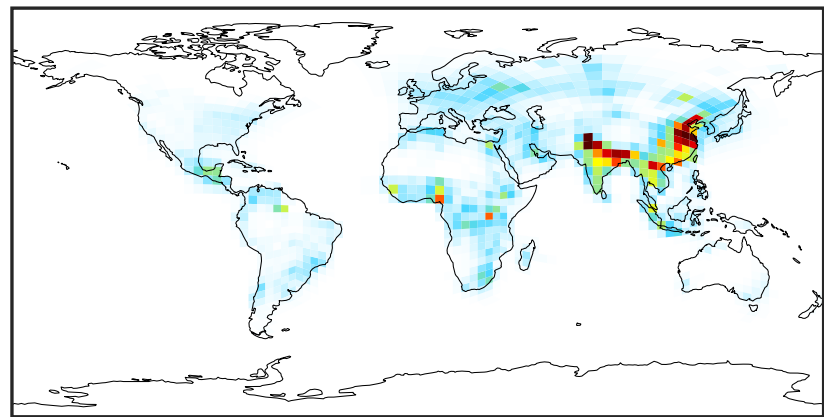
SpeciesConcVV_BCPO (Apr2019)

GCC_14.2.0 (Ref)
4.0x5.0



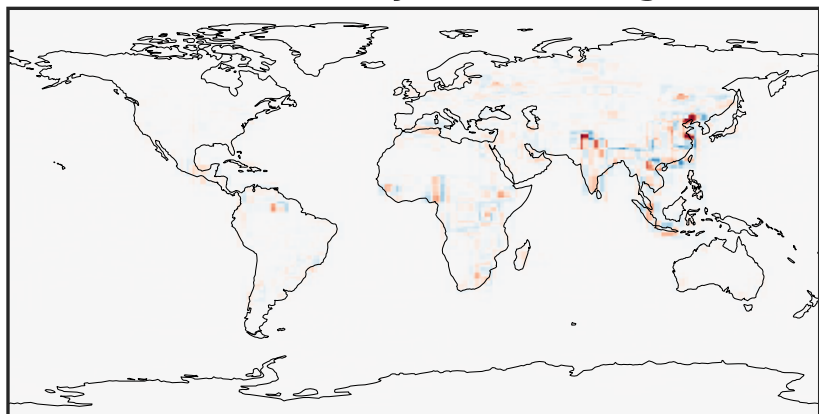
0.000 0.253 0.507 0.760 1.013
µg/m3

GCHP_14.2.0 (Dev)
c24



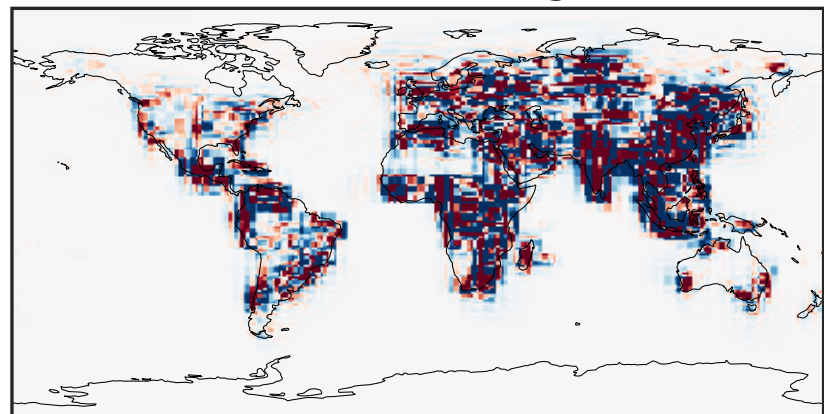
0.000 0.253 0.507 0.760 1.013
µg/m3

Difference (1x1.25)
Dev - Ref, Dynamic Range



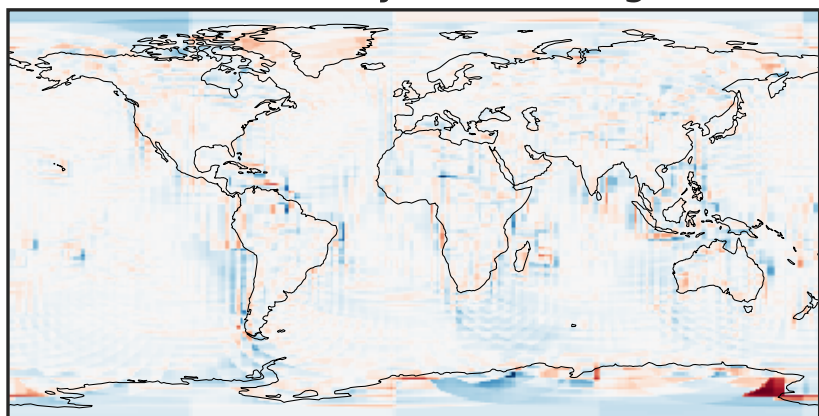
-0.623 -0.312 0.000 0.312 0.623
µg/m3

Difference (1x1.25)
Dev - Ref, Restricted Range [5%,95%]



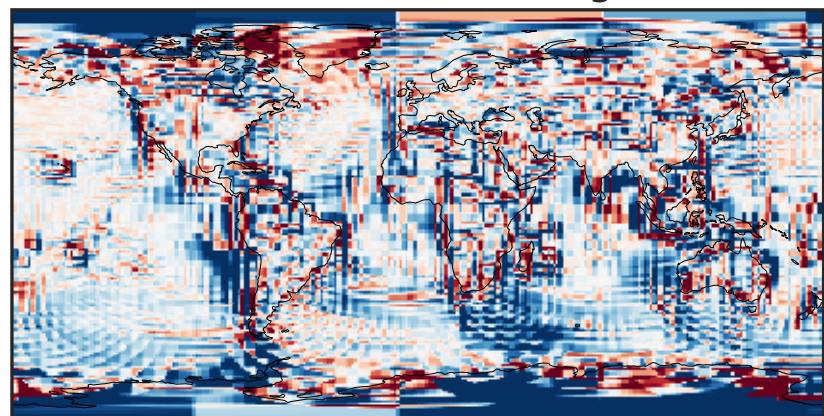
-0.008 0.000 0.008
µg/m3

Ratio (1x1.25)
Dev/Ref, Dynamic Range



1e-02 1e-01 1 10 100
unitless

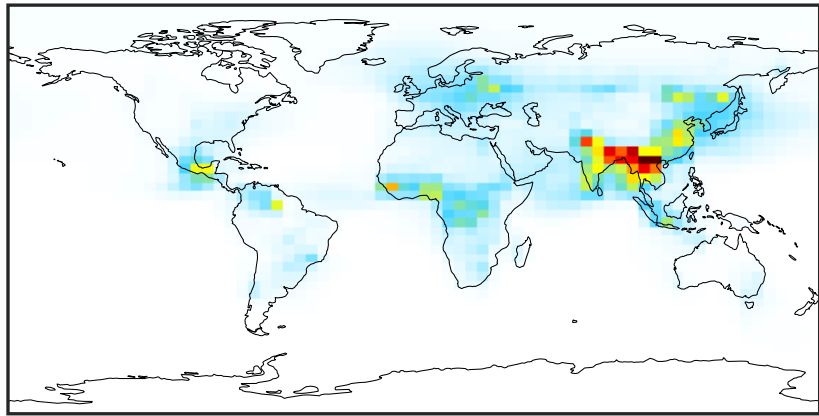
Ratio (1x1.25)
Dev/Ref, Fixed Range



0.50 0.75 1.00 1.50 2.00
unitless

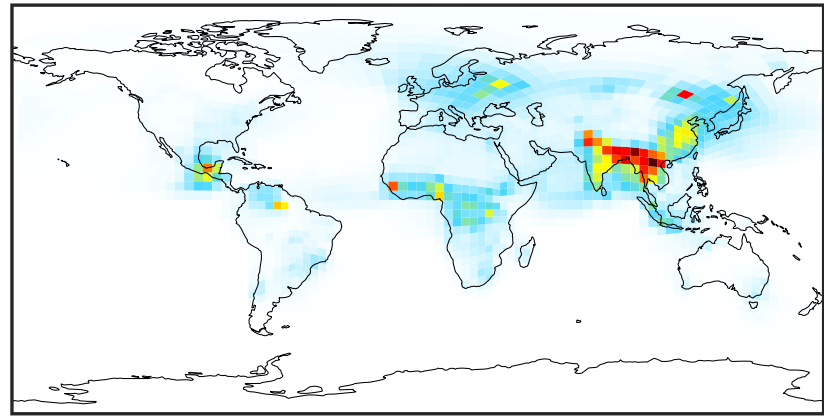
SpeciesConcVV_OCPI (Apr2019)

GCC_14.2.0 (Ref)
4.0x5.0



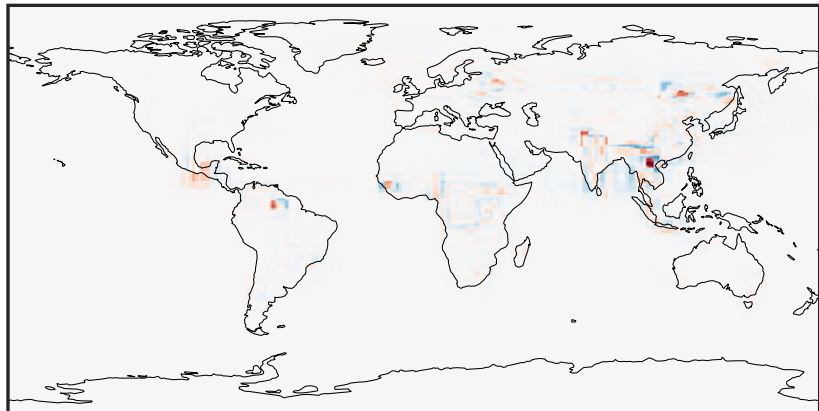
0.00 1.53 3.06 4.59 6.12
µg/m3

GCHP_14.2.0 (Dev)
c24



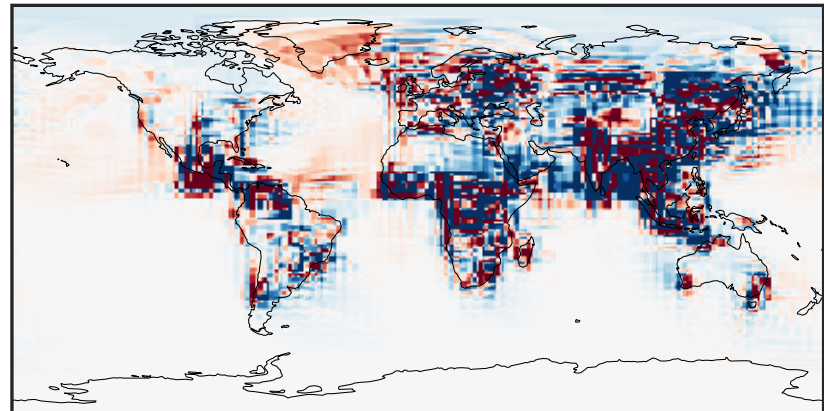
0.00 1.53 3.06 4.59 6.12
µg/m3

Difference (1x1.25)
Dev - Ref, Dynamic Range



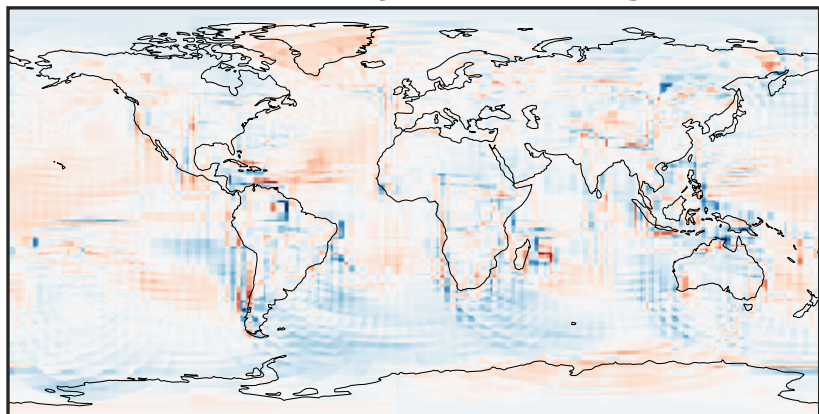
-3.641 -1.821 0.000 1.821 3.641
µg/m3

Difference (1x1.25)
Dev - Ref, Restricted Range [5%,95%]



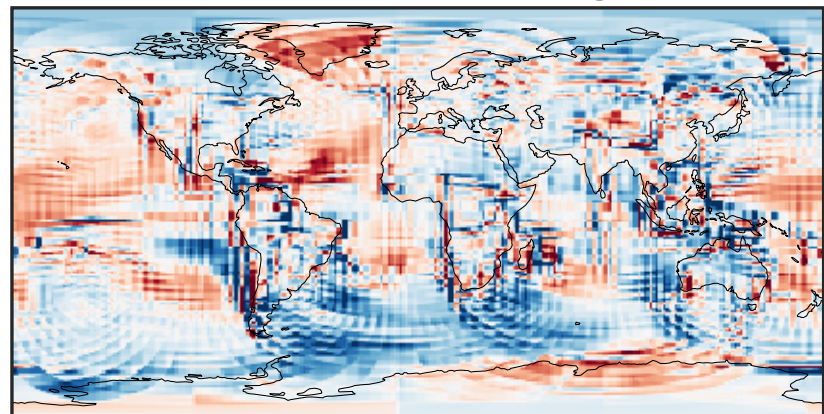
-0.0883 -0.0442 0.0000 0.0442 0.0883
µg/m3

Ratio (1x1.25)
Dev/Ref, Dynamic Range



0.128 0.564 1.000 4.406 7.813
unitless

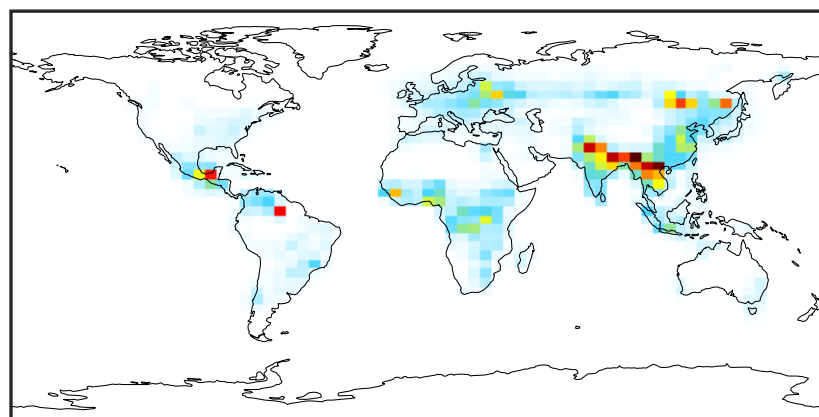
Ratio (1x1.25)
Dev/Ref, Fixed Range



0.50 0.75 1.00 1.50 2.00
unitless

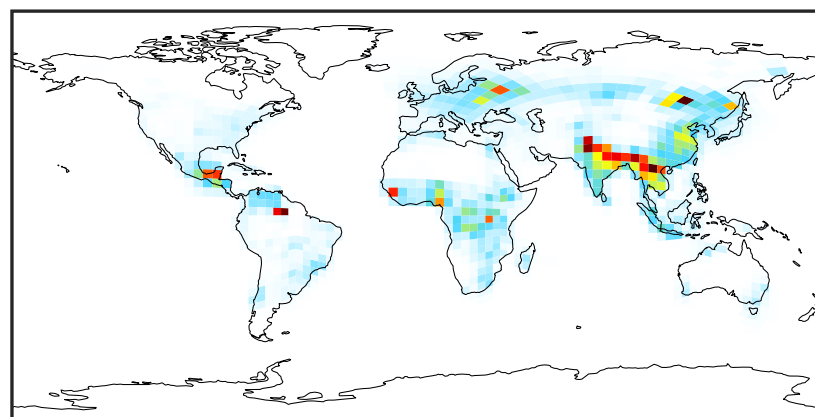
SpeciesConcVV_OCPO (Apr2019)

GCC_14.2.0 (Ref)
4.0x5.0



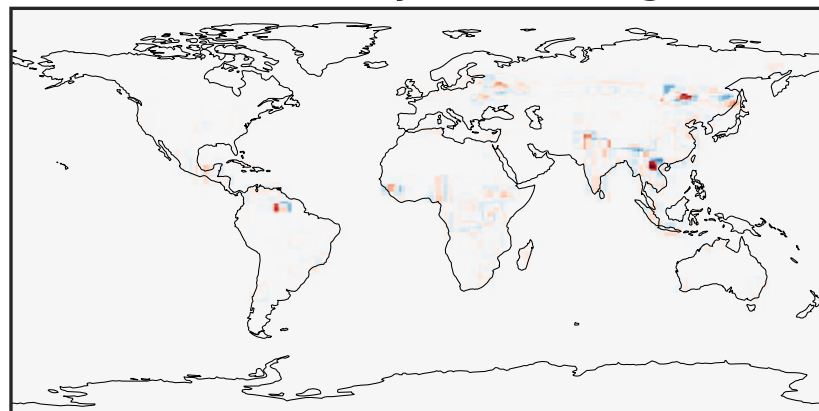
0.000 0.572 1.144 1.716 2.288
µg/m³

GCHP_14.2.0 (Dev)
c24



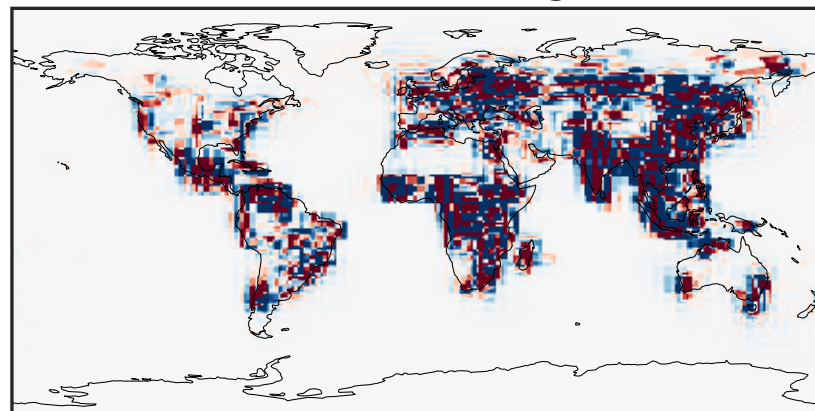
0.000 0.572 1.144 1.716 2.288
µg/m³

Difference (1x1.25)
Dev - Ref, Dynamic Range



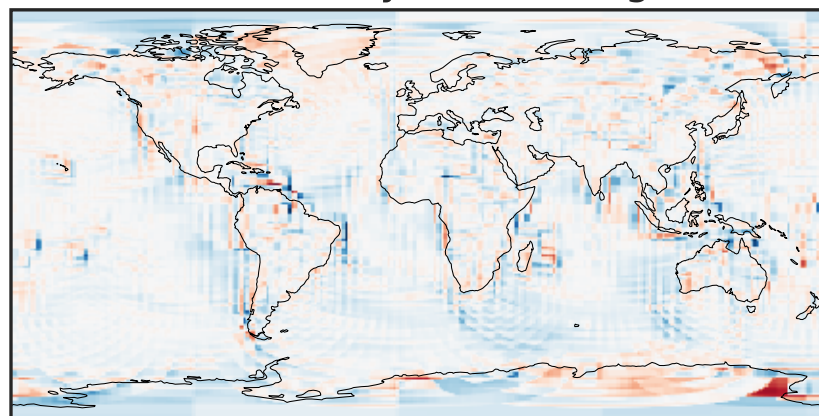
-2.010 -1.005 0.000 1.005 2.010
µg/m³

Difference (1x1.25)
Dev - Ref, Restricted Range [5%,95%]



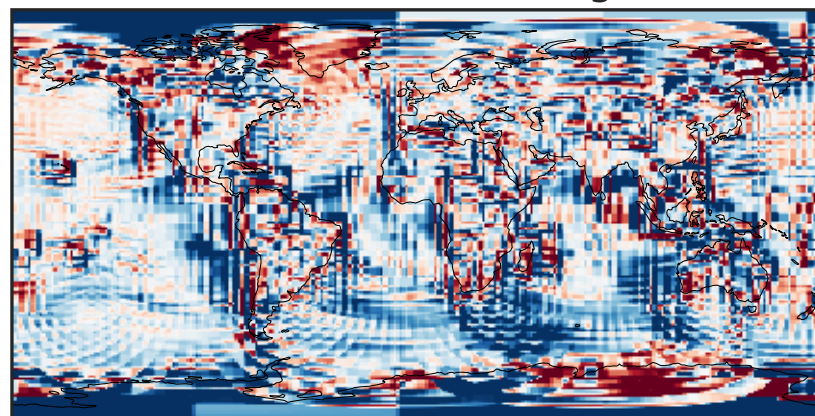
-0.015 0.000 0.015
µg/m³

Ratio (1x1.25)
Dev/Ref, Dynamic Range



1e-01 1 10
unitless

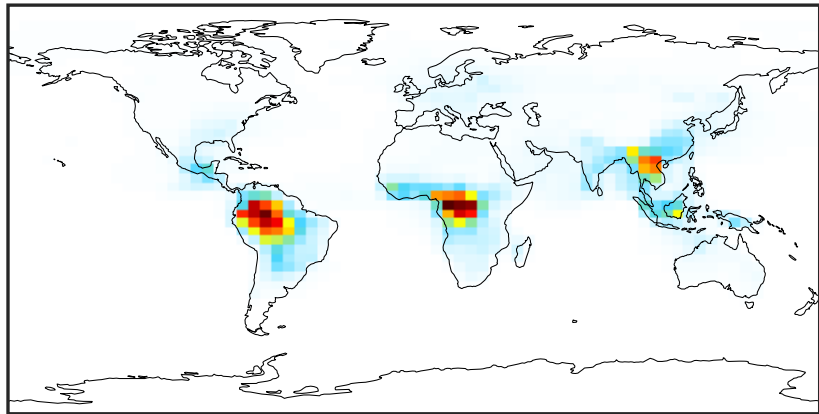
Ratio (1x1.25)
Dev/Ref, Fixed Range



0.50 0.75 1.00 1.50 2.00
unitless

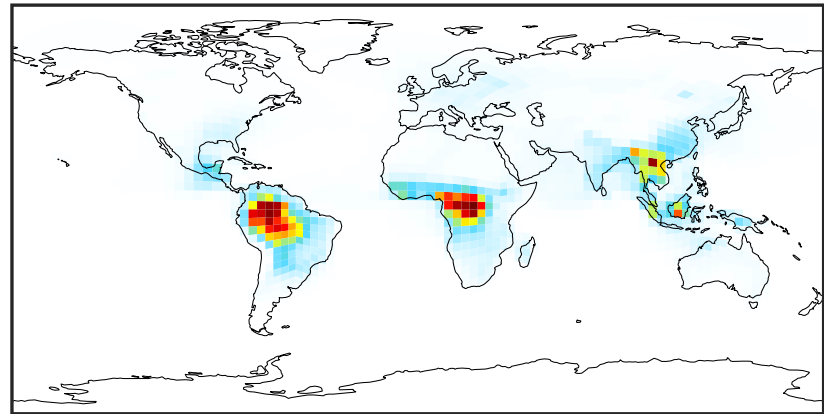
SpeciesConcVV_Complex_SOA (Apr2019)

GCC_14.2.0 (Ref)
4.0x5.0



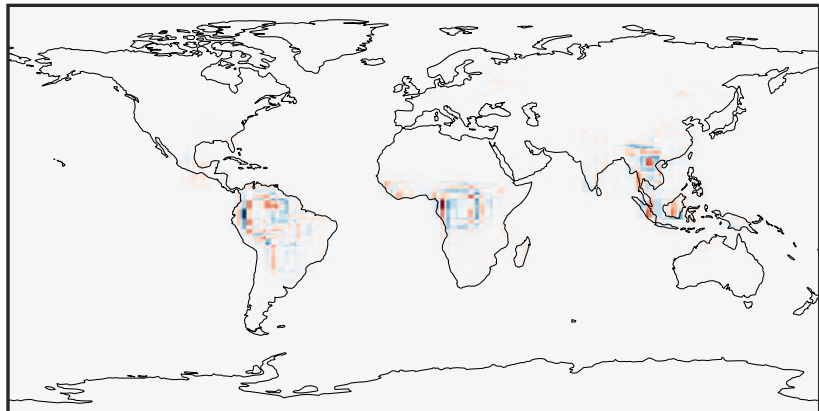
0.000 1.458 2.916 4.374 5.832
µg/m3

GCHP_14.2.0 (Dev)
c24



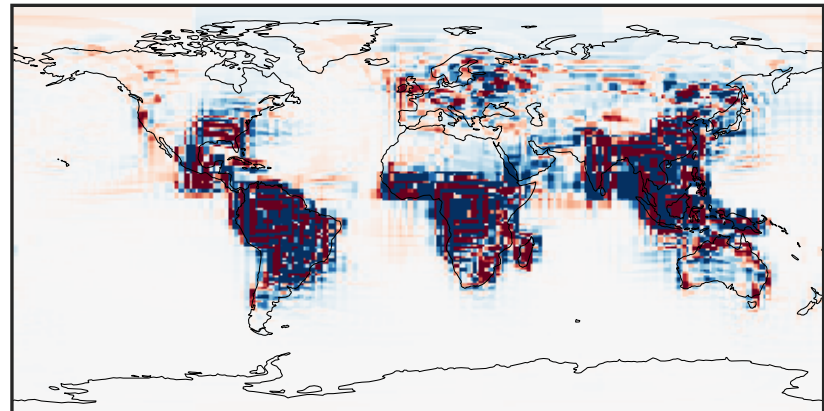
0.000 1.458 2.916 4.374 5.832
µg/m3

Difference (1x1.25)
Dev - Ref, Dynamic Range



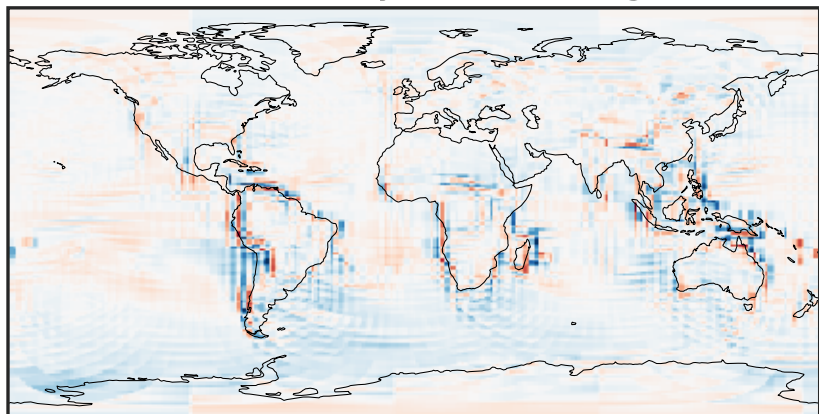
-2.636 -1.318 0.000 1.318 2.636
µg/m3

Difference (1x1.25)
Dev - Ref, Restricted Range [5%,95%]



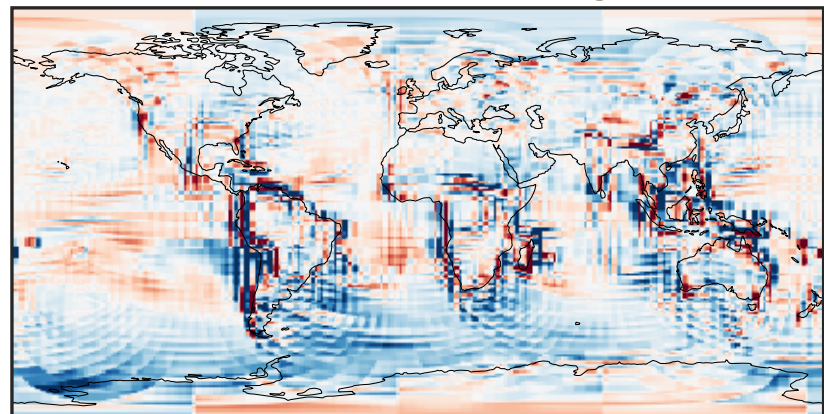
-0.02 0.00 0.02
µg/m3

Ratio (1x1.25)
Dev/Ref, Dynamic Range



0.140 0.570 1.000 4.062 7.124
unitless

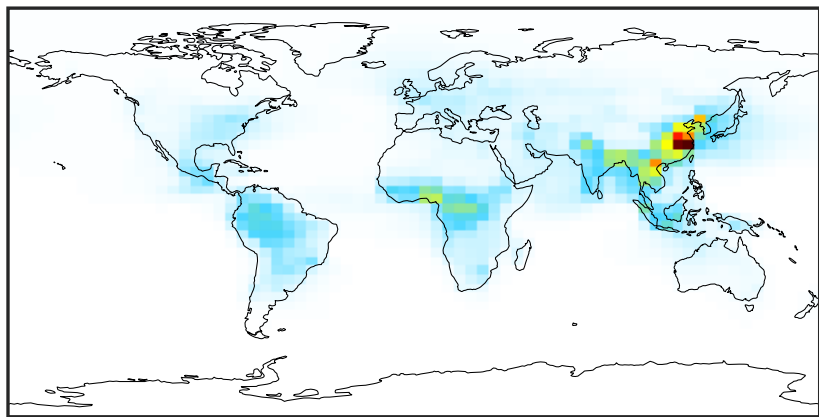
Ratio (1x1.25)
Dev/Ref, Fixed Range



0.50 0.75 1.00 1.50 2.00
unitless

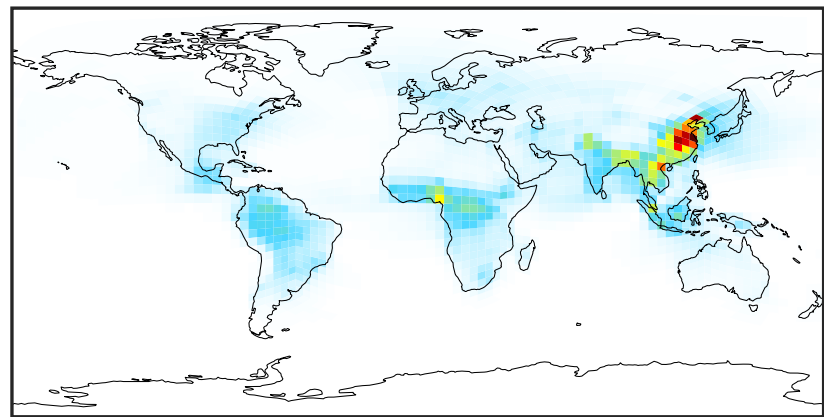
SpeciesConcVV_Simple_SOA (Apr2019)

GCC_14.2.0 (Ref)
4.0x5.0



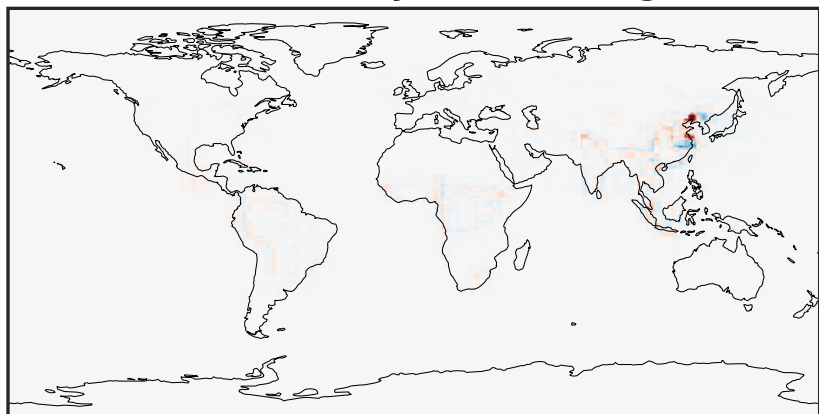
0.00 6.09 12.18 18.27 24.37
 $\mu\text{g}/\text{m}^3$

GCHP_14.2.0 (Dev)
c24



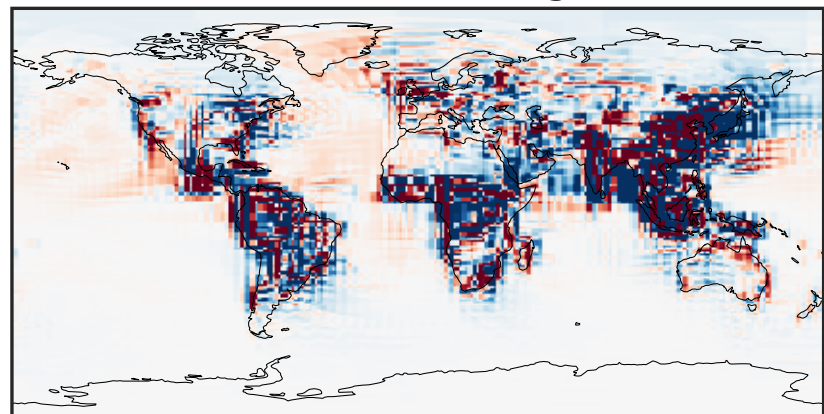
0.00 6.09 12.18 18.27 24.37
 $\mu\text{g}/\text{m}^3$

Difference (1x1.25)
Dev - Ref, Dynamic Range



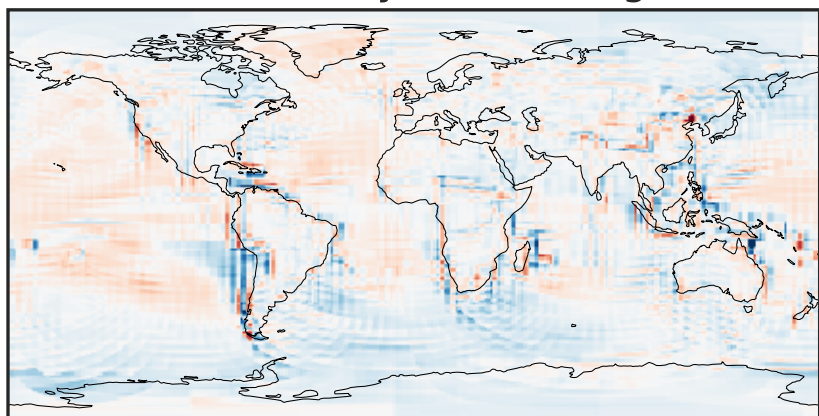
-17.72 -8.86 0.00 8.86 17.72
 $\mu\text{g}/\text{m}^3$

Difference (1x1.25)
Dev - Ref, Restricted Range [5%,95%]



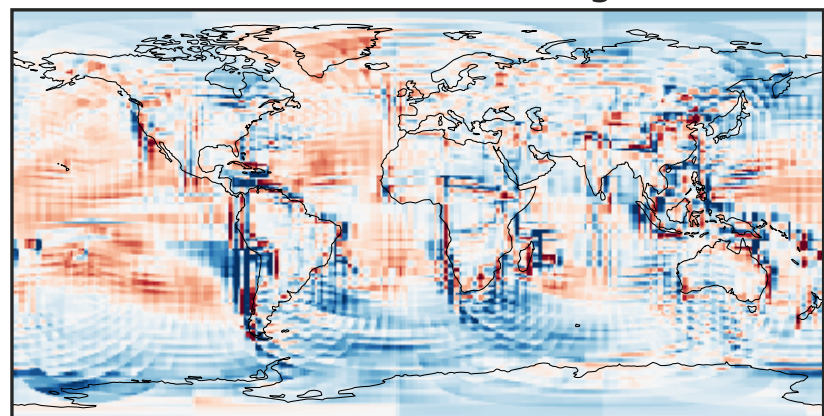
-0.2715 -0.1358 0.0000 0.1358 0.2715
 $\mu\text{g}/\text{m}^3$

Ratio (1x1.25)
Dev/Ref, Dynamic Range



0.173 0.586 1.000 3.393 5.785
unitless

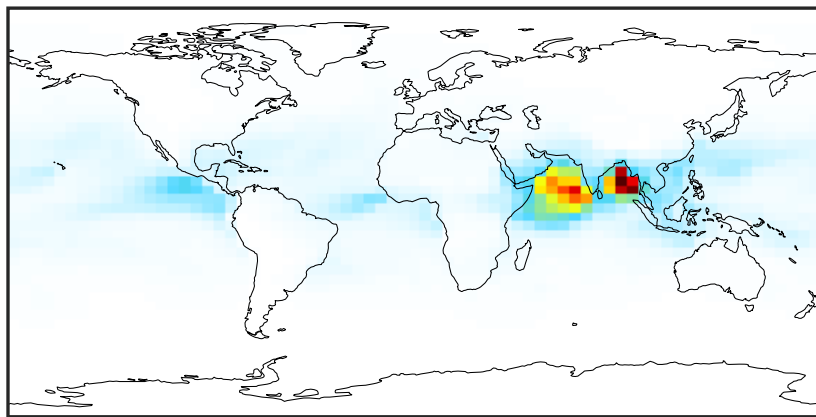
Ratio (1x1.25)
Dev/Ref, Fixed Range



0.50 0.75 1.00 1.50 2.00
unitless

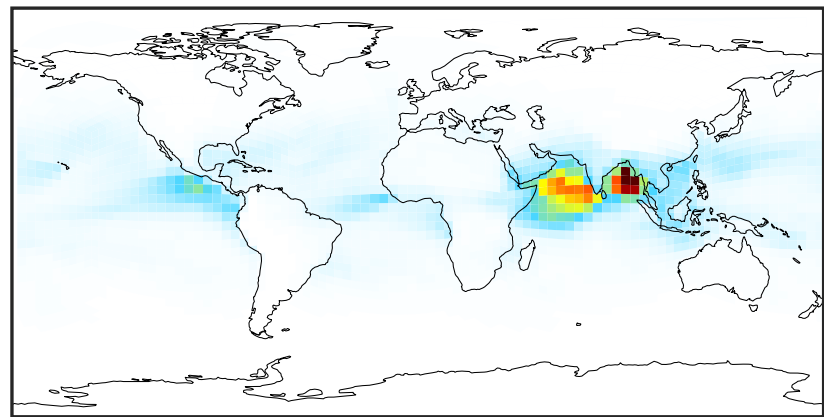
SpeciesConcVV_AERI (Apr2019)

GCC_14.2.0 (Ref)
4.0x5.0



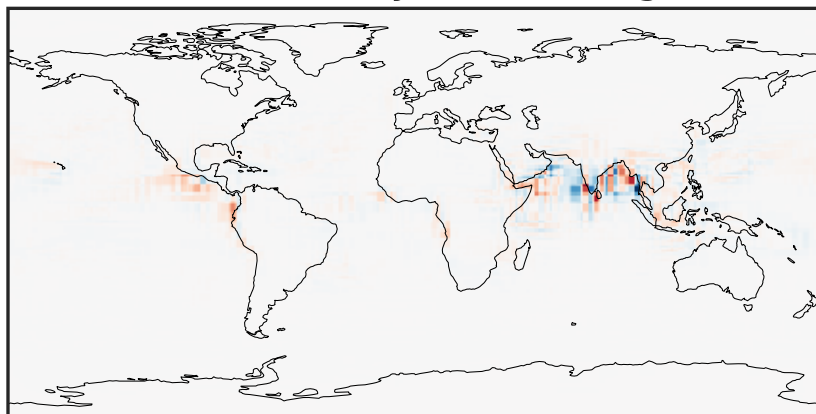
0.0002 0.0453 0.0905 0.1358 0.1813
 $\mu\text{g}/\text{m}^3$

GCHP_14.2.0 (Dev)
c24



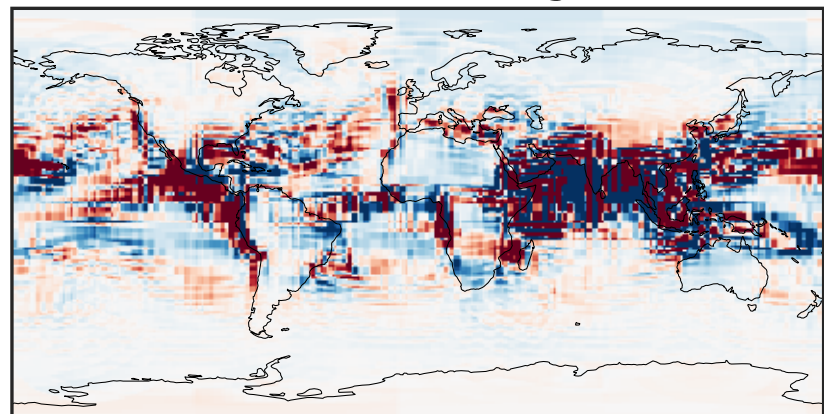
0.0002 0.0453 0.0905 0.1358 0.1813
 $\mu\text{g}/\text{m}^3$

Difference (1x1.25)
Dev - Ref, Dynamic Range



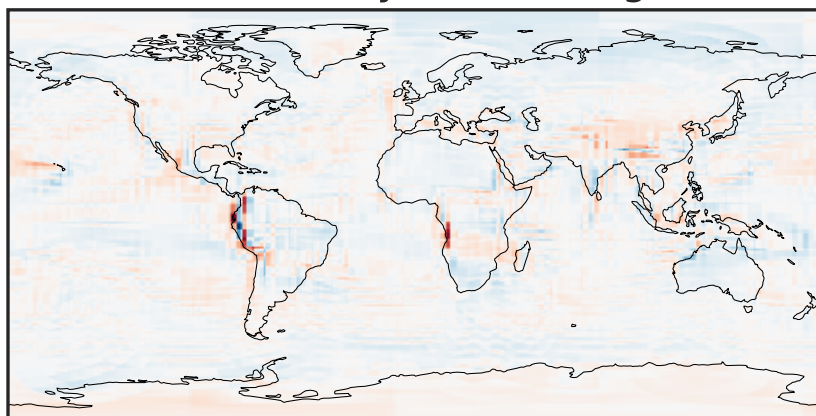
-0.025 0.000 0.025
 $\mu\text{g}/\text{m}^3$

Difference (1x1.25)
Dev - Ref, Restricted Range [5%,95%]



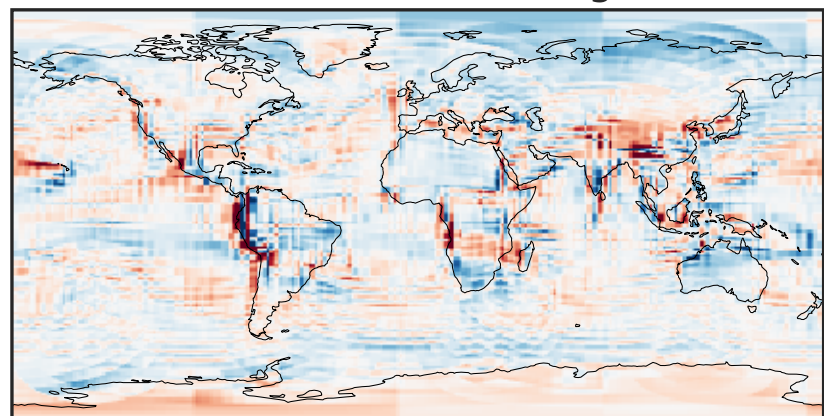
-0.0006 0.0000 0.0006
 $\mu\text{g}/\text{m}^3$

Ratio (1x1.25)
Dev/Ref, Dynamic Range



0.126 0.563 1.000 4.474 7.949
unitless

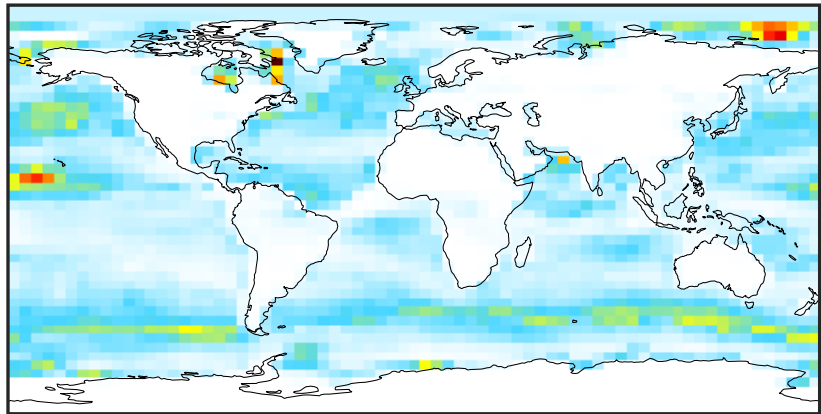
Ratio (1x1.25)
Dev/Ref, Fixed Range



0.50 0.75 1.00 1.50 2.00
unitless

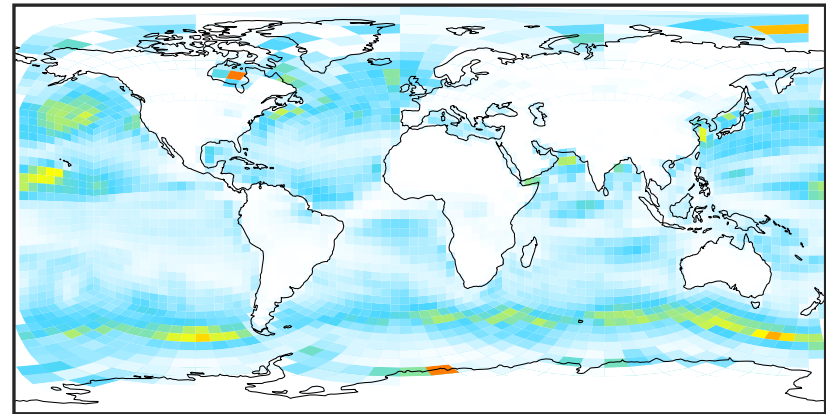
SpeciesConcVV_BrSALA (Apr2019)

GCC_14.2.0 (Ref)
4.0x5.0



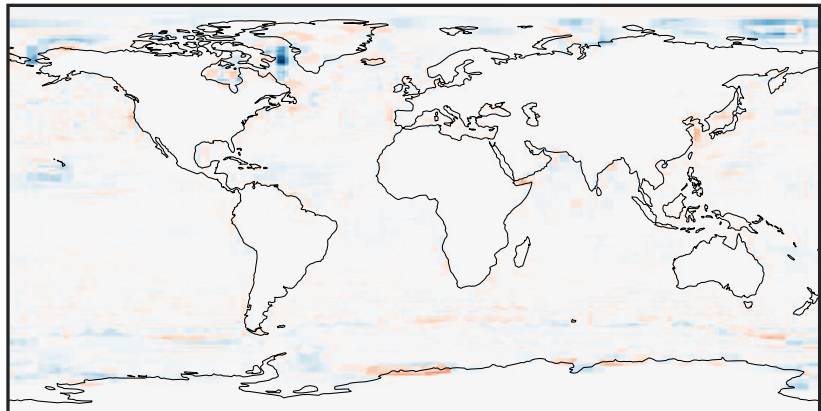
0.002 0.004 0.006
 $\mu\text{g}/\text{m}^3$

GCHP_14.2.0 (Dev)
c24



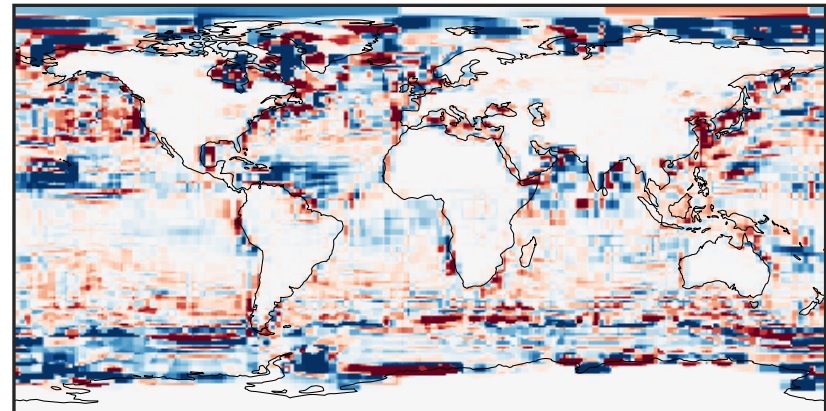
0.002 0.004 0.006
 $\mu\text{g}/\text{m}^3$

Difference (1x1.25)
Dev - Ref, Dynamic Range



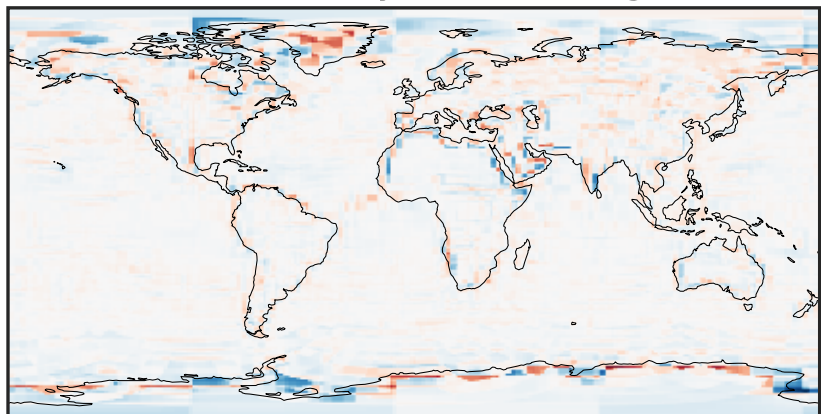
-0.003 0.000 0.003
 $\mu\text{g}/\text{m}^3$

Difference (1x1.25)
Dev - Ref, Restricted Range [5%,95%]



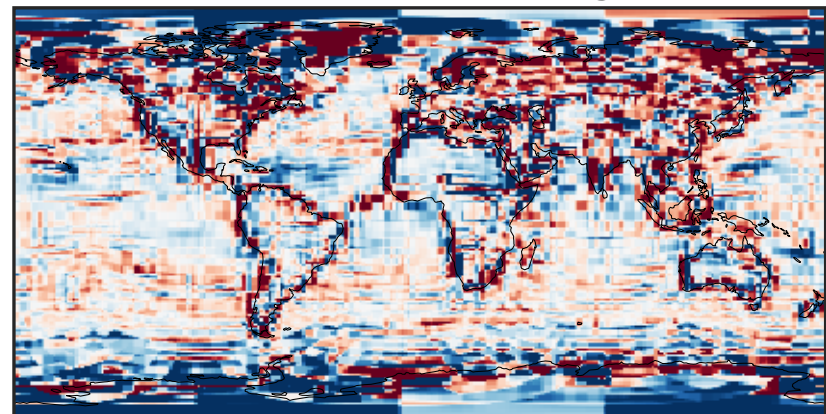
-0.00025 0.00000 0.00025
 $\mu\text{g}/\text{m}^3$

Ratio (1x1.25)
Dev/Ref, Dynamic Range



unitless

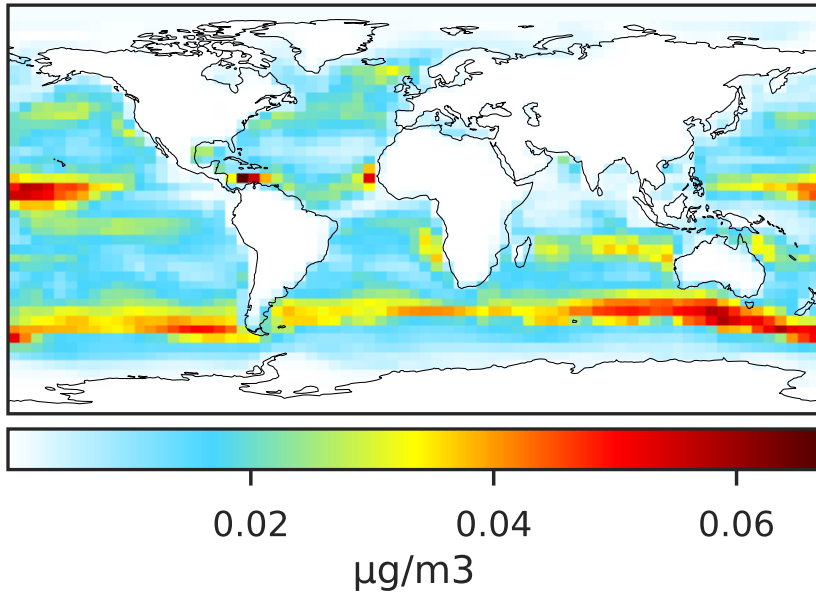
Ratio (1x1.25)
Dev/Ref, Fixed Range



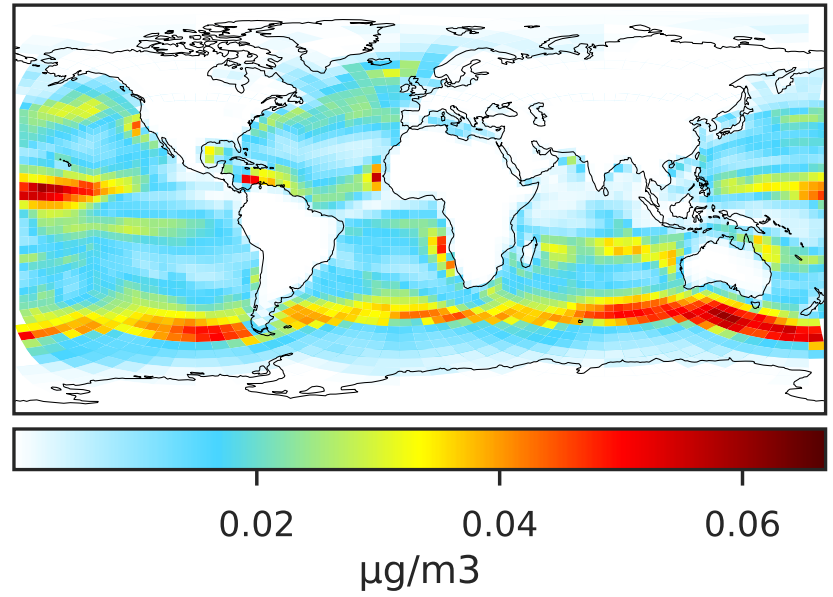
0.50 0.75 1.00 1.50 2.00
unitless

SpeciesConcVV_BrSALC (Apr2019)

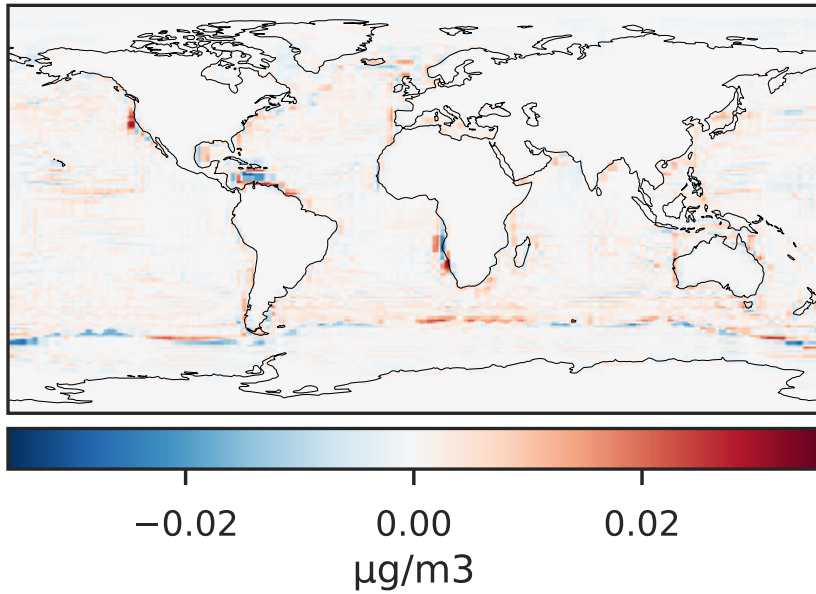
GCC_14.2.0 (Ref)
4.0x5.0



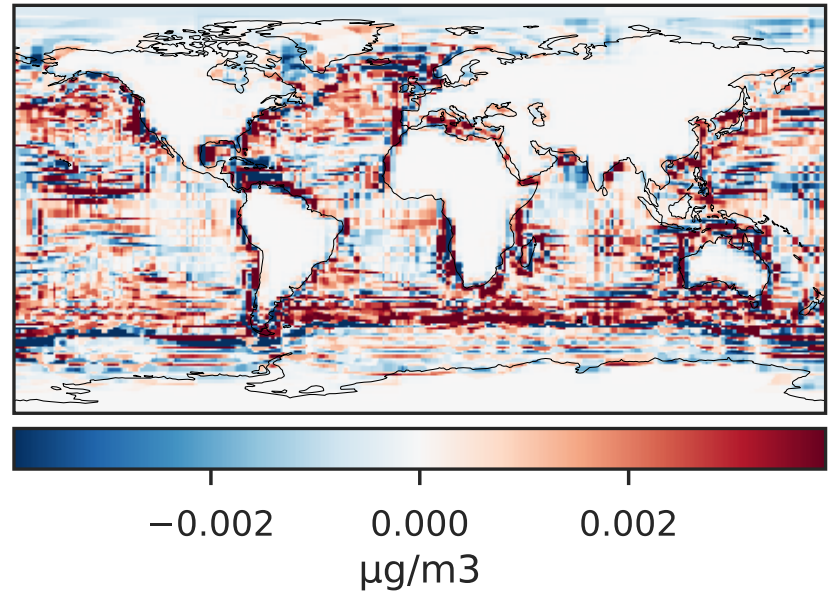
GCHP_14.2.0 (Dev)
c24



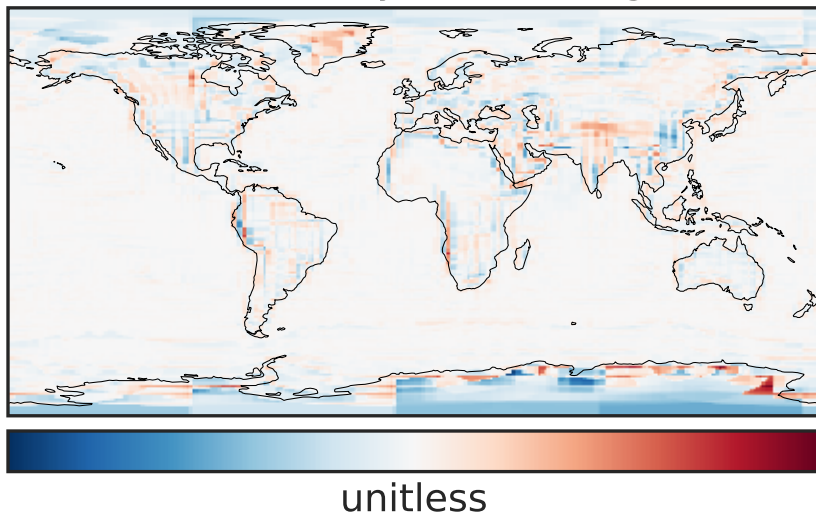
Difference (1x1.25)
Dev - Ref, Dynamic Range



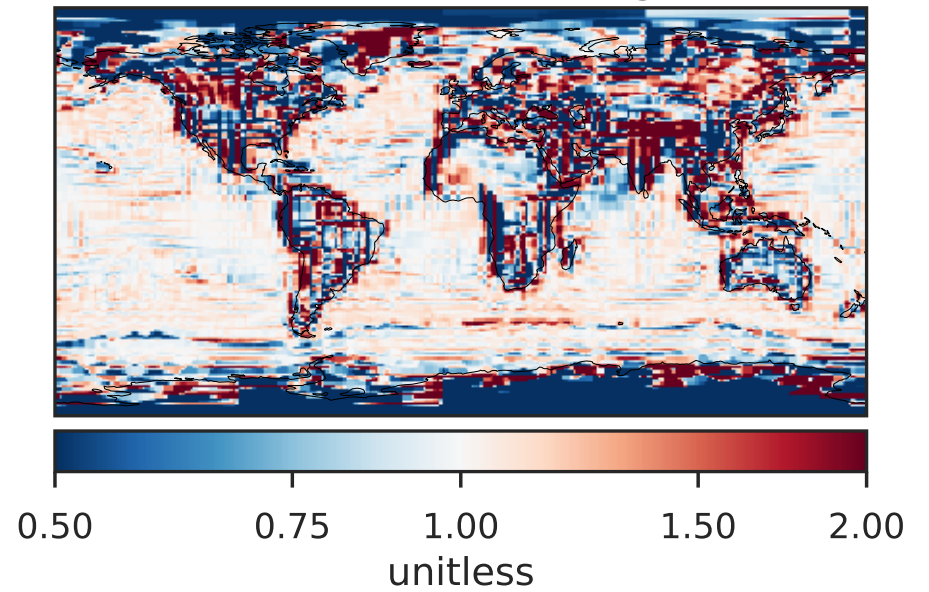
Difference (1x1.25)
Dev - Ref, Restricted Range [5%,95%]



Ratio (1x1.25)
Dev/Ref, Dynamic Range

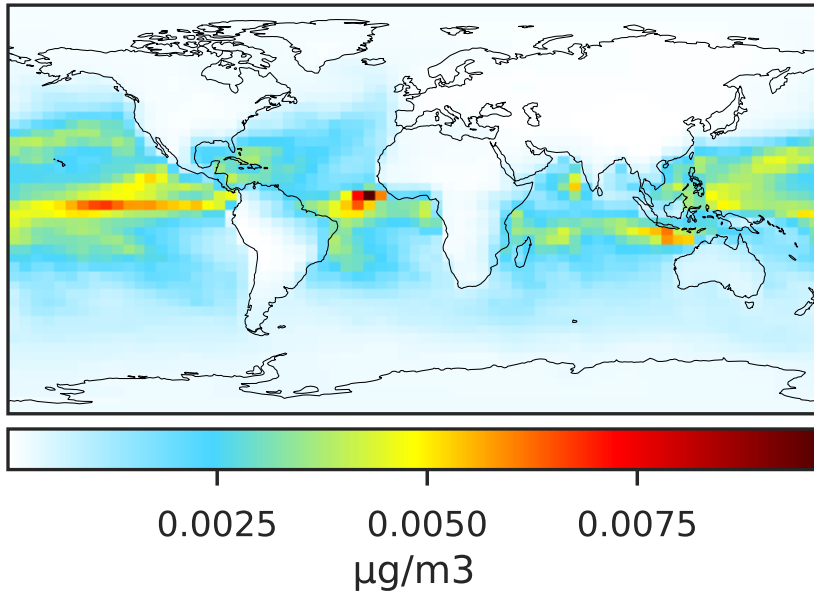


Ratio (1x1.25)
Dev/Ref, Fixed Range

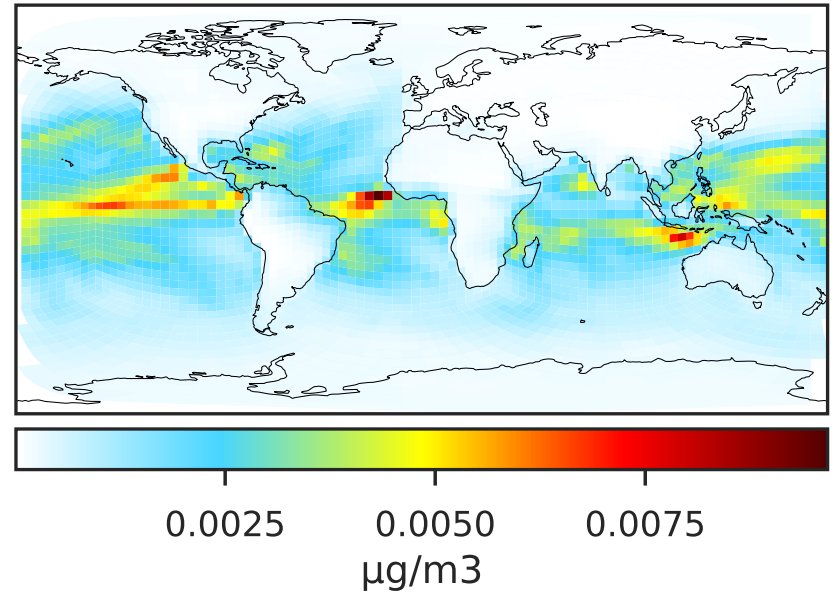


SpeciesConcVV_ISALA (Apr2019)

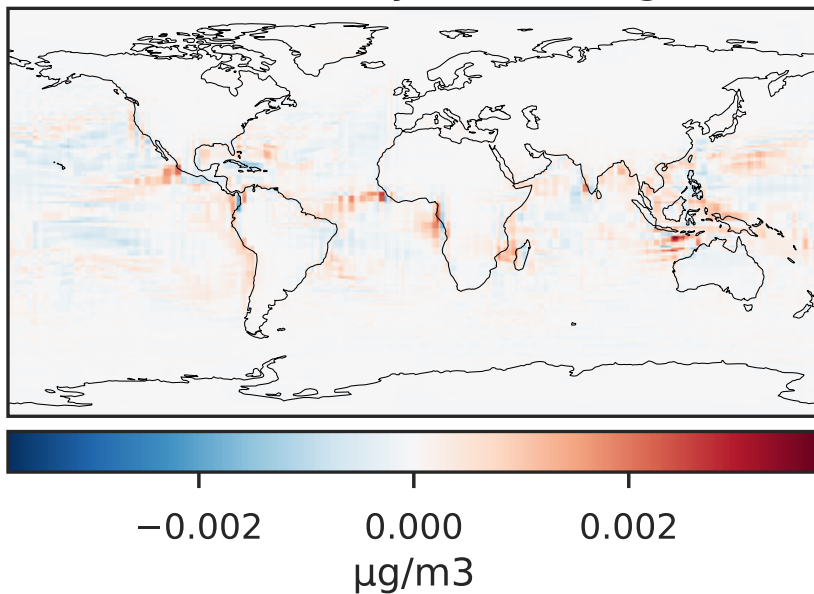
GCC_14.2.0 (Ref)
4.0x5.0



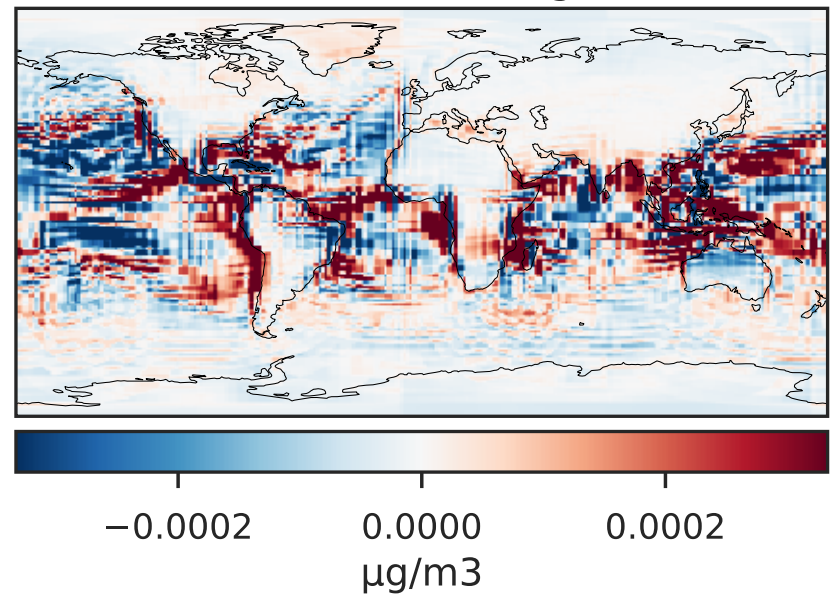
GCHP_14.2.0 (Dev)
c24



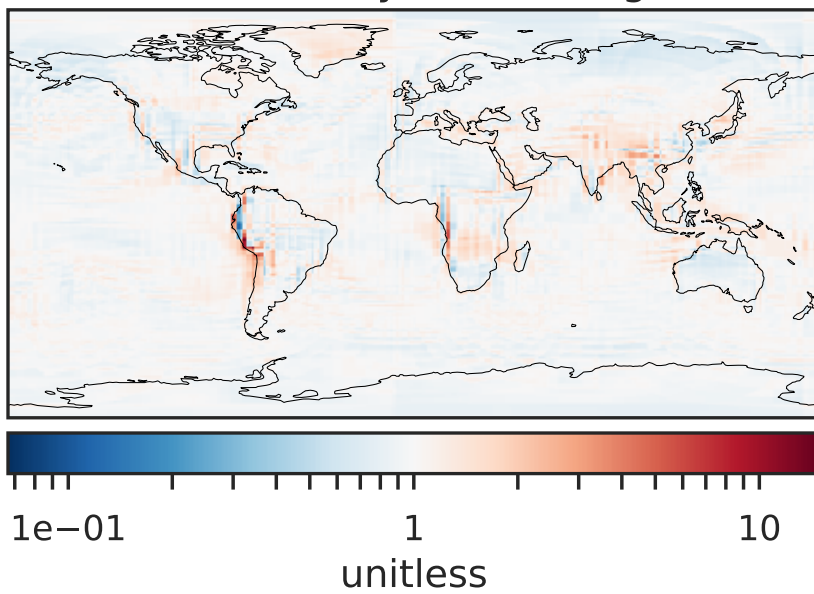
Difference (1x1.25)
Dev - Ref, Dynamic Range



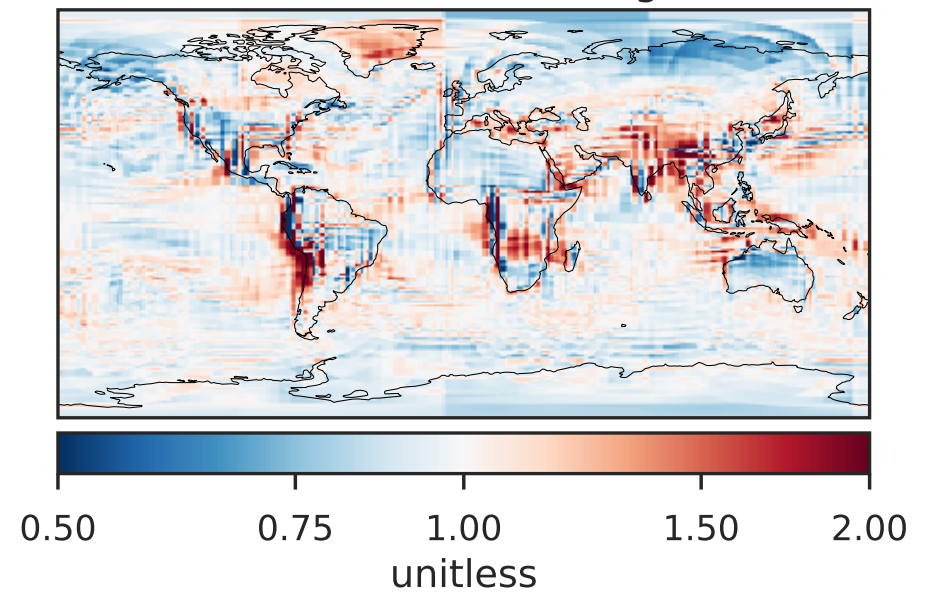
Difference (1x1.25)
Dev - Ref, Restricted Range [5%,95%]



Ratio (1x1.25)
Dev/Ref, Dynamic Range

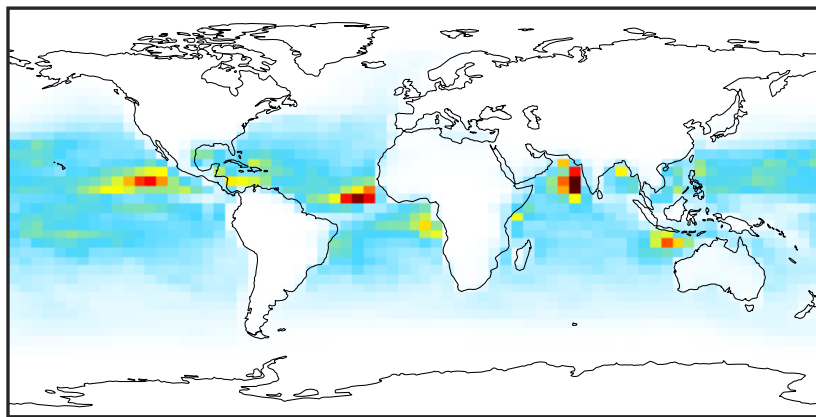


Ratio (1x1.25)
Dev/Ref, Fixed Range



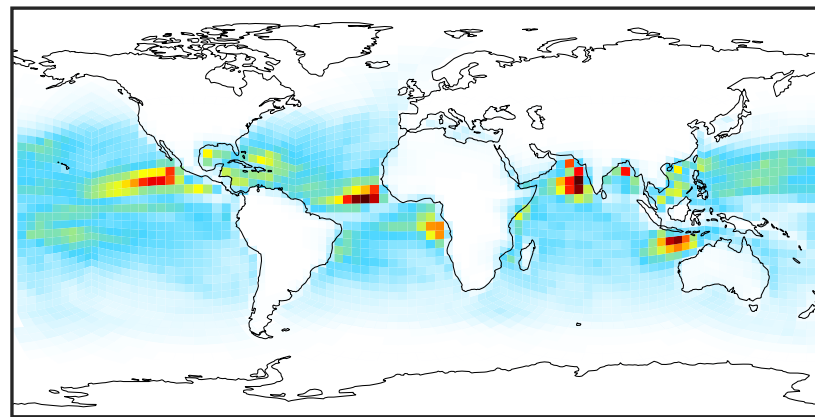
SpeciesConcVV_ISALC (Apr2019)

GCC_14.2.0 (Ref)
4.0x5.0



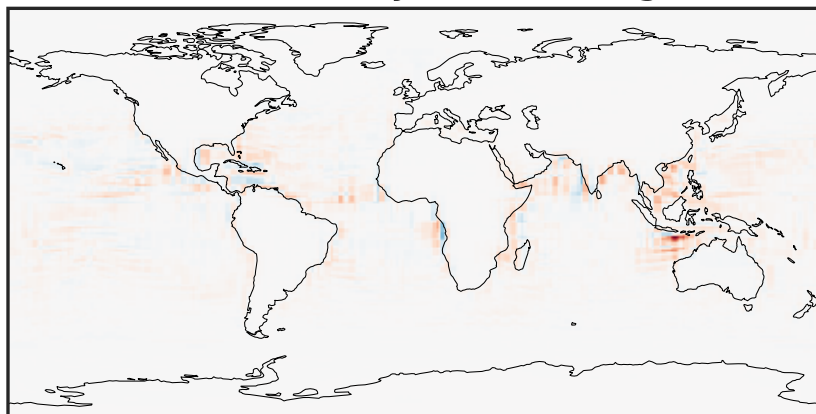
0.0025 0.0050 0.0075
 $\mu\text{g}/\text{m}^3$

GCHP_14.2.0 (Dev)
c24



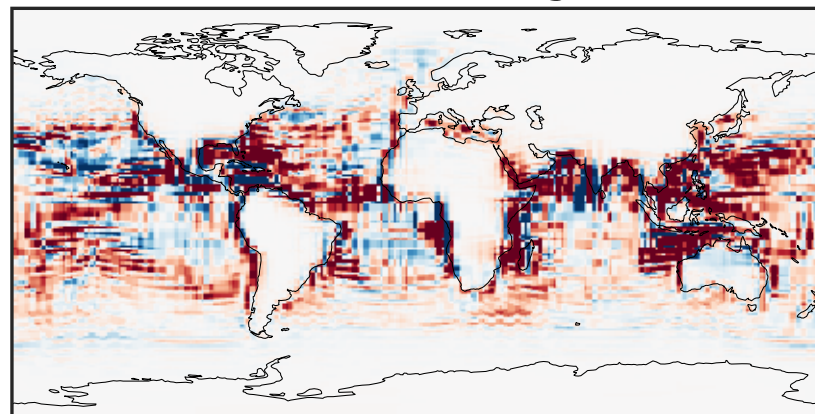
0.0025 0.0050 0.0075
 $\mu\text{g}/\text{m}^3$

Difference (1x1.25)
Dev - Ref, Dynamic Range



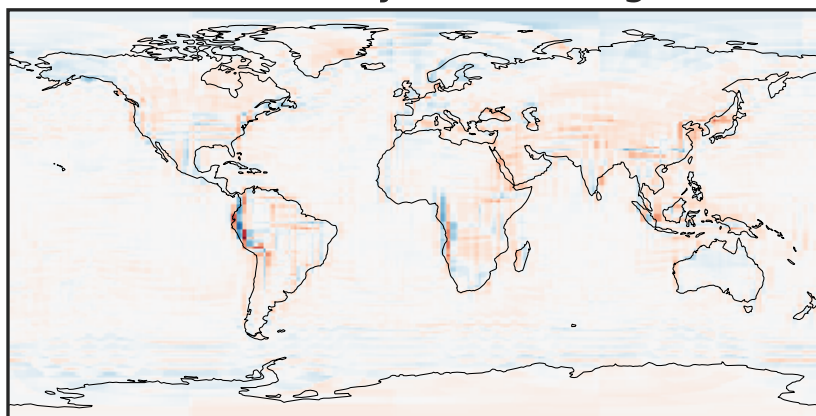
-0.004 0.000 0.004
 $\mu\text{g}/\text{m}^3$

Difference (1x1.25)
Dev - Ref, Restricted Range [5%,95%]



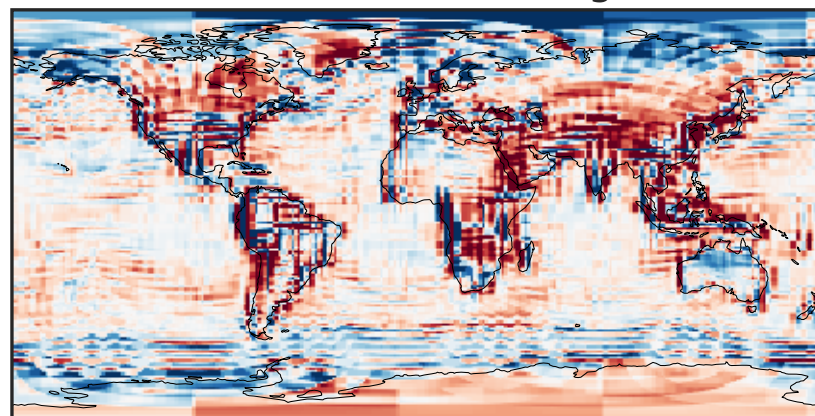
-0.0002 0.0000 0.0002
 $\mu\text{g}/\text{m}^3$

Ratio (1x1.25)
Dev/Ref, Dynamic Range



1e-02 1e-01 1 10 100
unitless

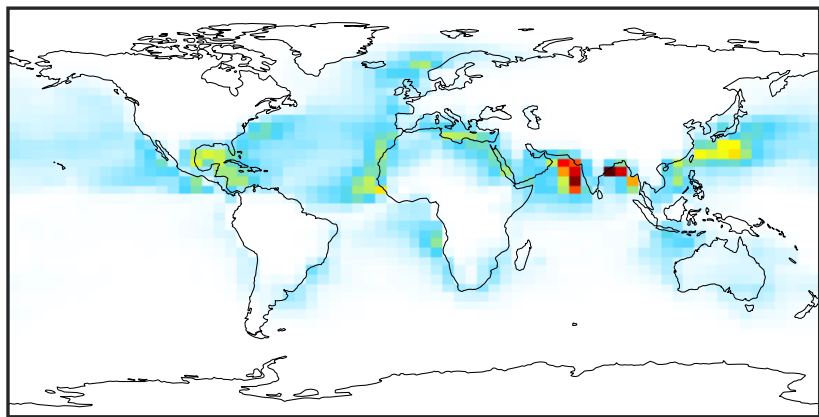
Ratio (1x1.25)
Dev/Ref, Fixed Range



0.50 0.75 1.00 1.50 2.00
unitless

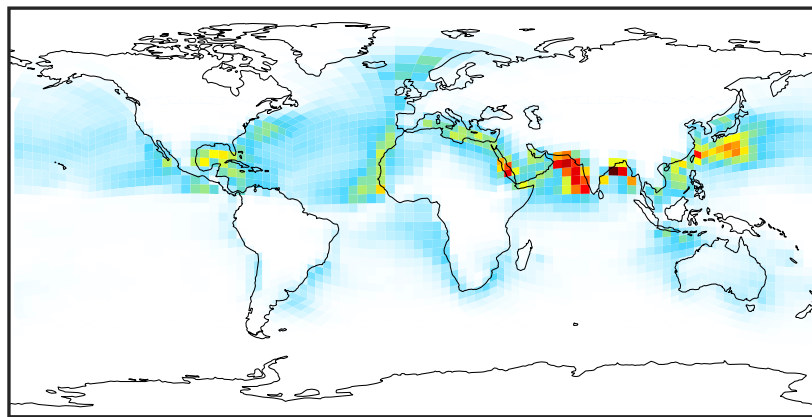
SpeciesConcVV_NITs (Apr2019)

GCC_14.2.0 (Ref)
4.0x5.0



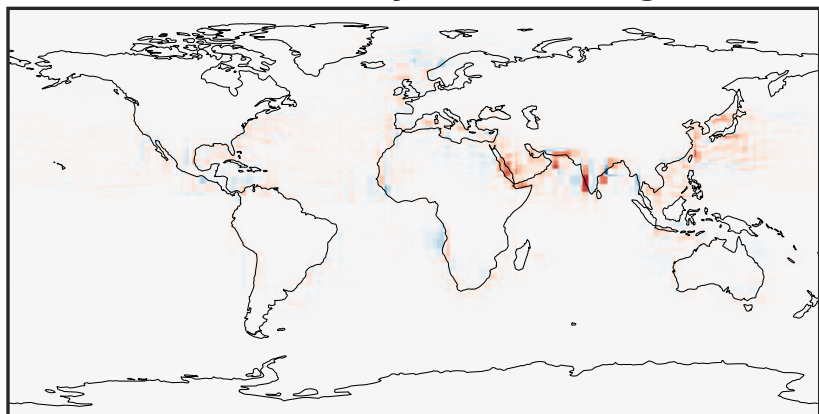
0.0000 0.1518 0.3036 0.4554 0.6072
 $\mu\text{g}/\text{m}^3$

GCHP_14.2.0 (Dev)
c24



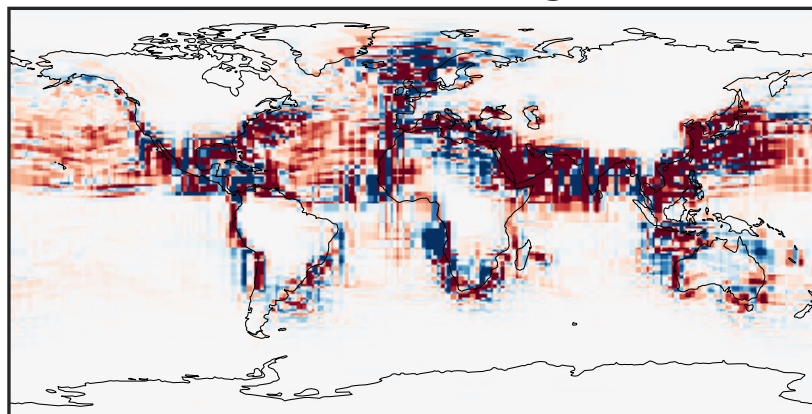
0.0000 0.1518 0.3036 0.4554 0.6072
 $\mu\text{g}/\text{m}^3$

Difference (1x1.25)
Dev - Ref, Dynamic Range



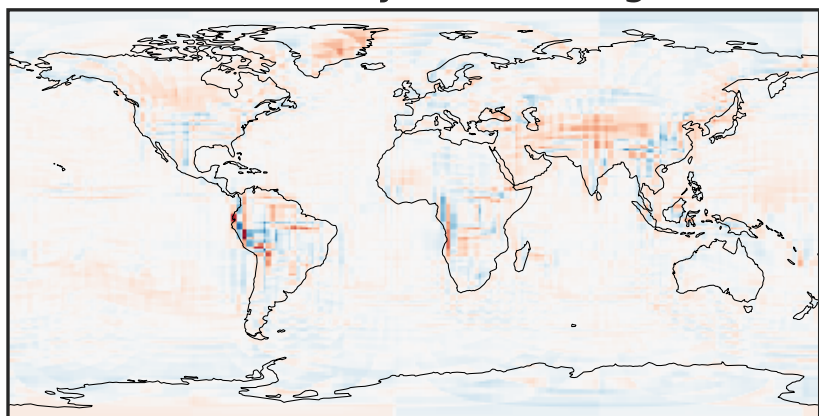
-0.4 -0.2 0.0 0.2 0.4
 $\mu\text{g}/\text{m}^3$

Difference (1x1.25)
Dev - Ref, Restricted Range [5%,95%]



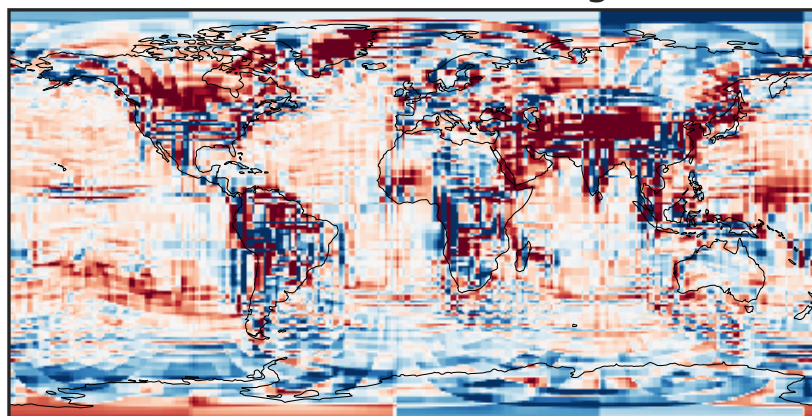
-0.01 0.00 0.01
 $\mu\text{g}/\text{m}^3$

Ratio (1x1.25)
Dev/Ref, Dynamic Range



1e-02 1e-01 1 10 100
unitless

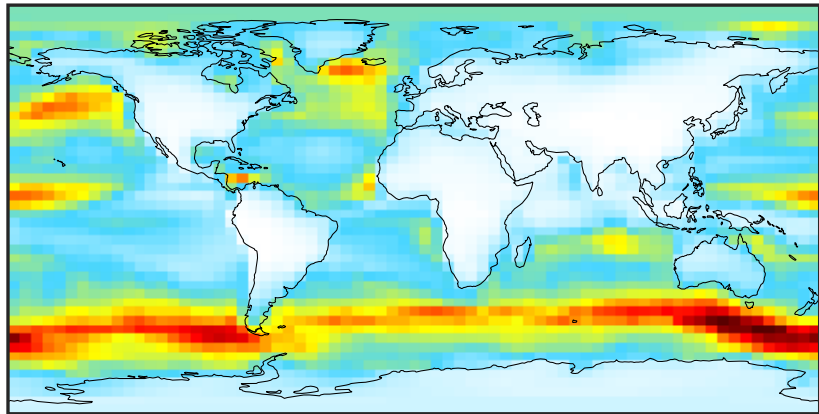
Ratio (1x1.25)
Dev/Ref, Fixed Range



0.50 0.75 1.00 1.50 2.00
unitless

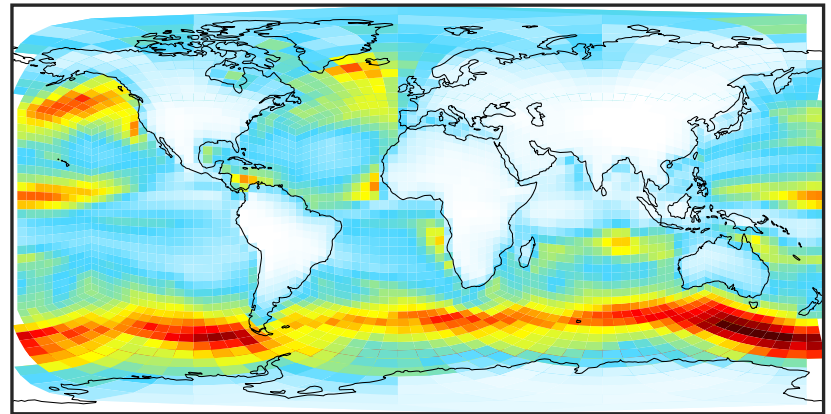
SpeciesConcVV_SALA (Apr2019)

GCC_14.2.0 (Ref)
4.0x5.0



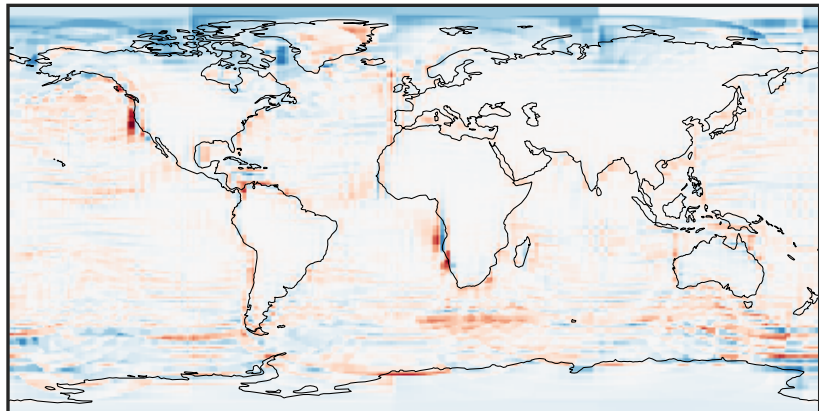
0.002 0.515 1.030 1.545 2.063
 $\mu\text{g}/\text{m}^3$

GCHP_14.2.0 (Dev)
c24



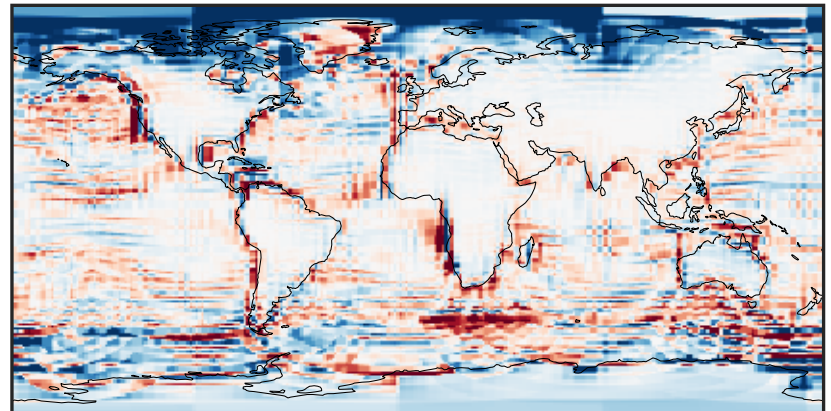
0.002 0.515 1.030 1.545 2.063
 $\mu\text{g}/\text{m}^3$

Difference (1x1.25)
Dev - Ref, Dynamic Range



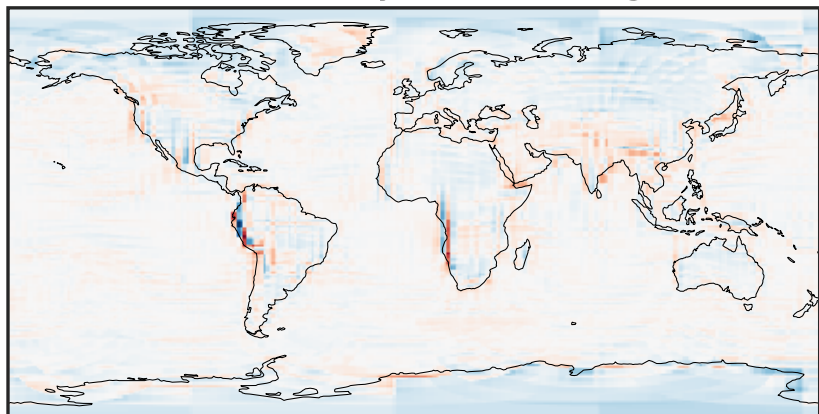
-0.653 -0.326 0.000 0.326 0.653
 $\mu\text{g}/\text{m}^3$

Difference (1x1.25)
Dev - Ref, Restricted Range [5%,95%]



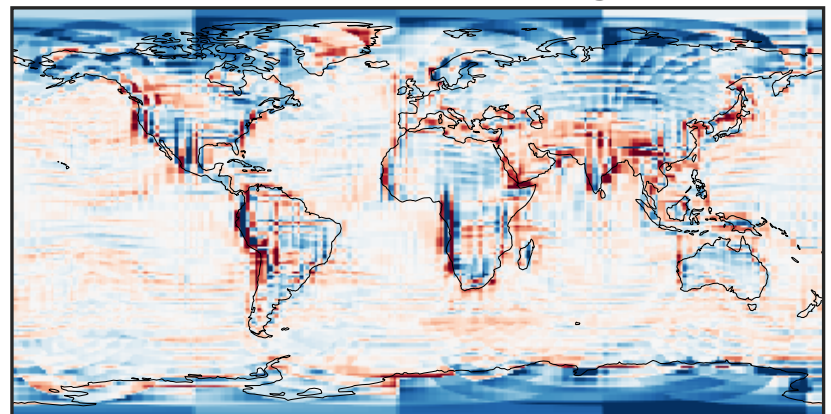
-0.2117 -0.1059 0.0000 0.1059 0.2117
 $\mu\text{g}/\text{m}^3$

Ratio (1x1.25)
Dev/Ref, Dynamic Range



1e-01 1 10
unitless

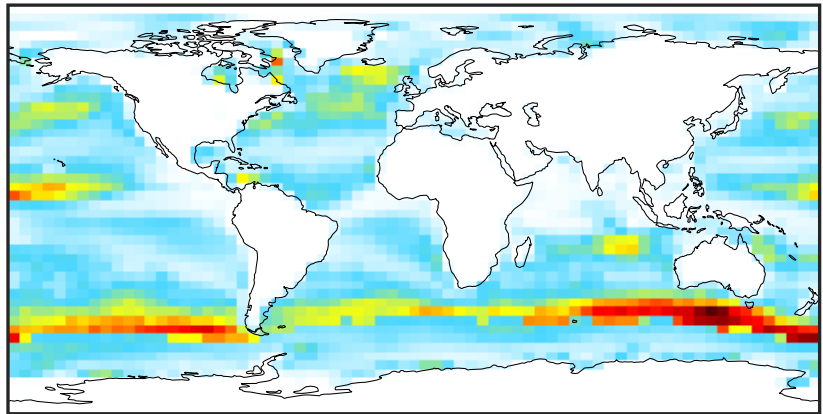
Ratio (1x1.25)
Dev/Ref, Fixed Range



0.50 0.75 1.00 1.50 2.00
unitless

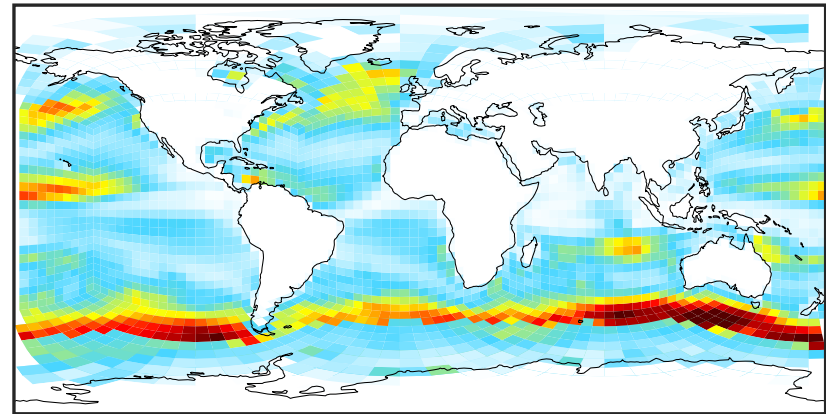
SpeciesConcVV_SALAAL (Apr2019)

GCC_14.2.0 (Ref)
4.0x5.0



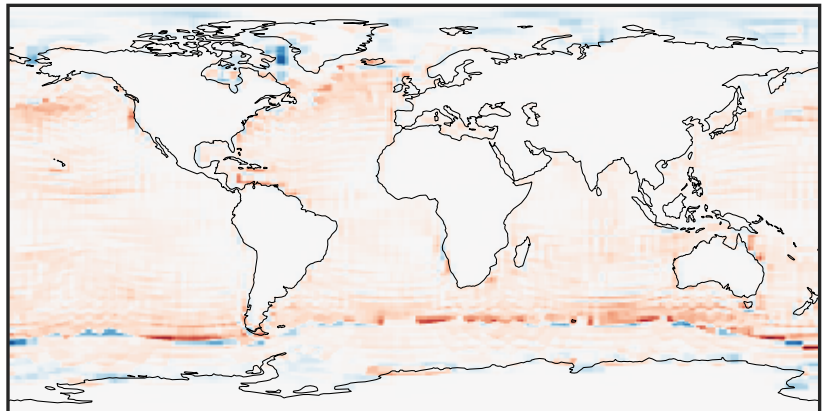
0.008 0.016 0.024
 $\mu\text{g}/\text{m}^3$

GCHP_14.2.0 (Dev)
c24



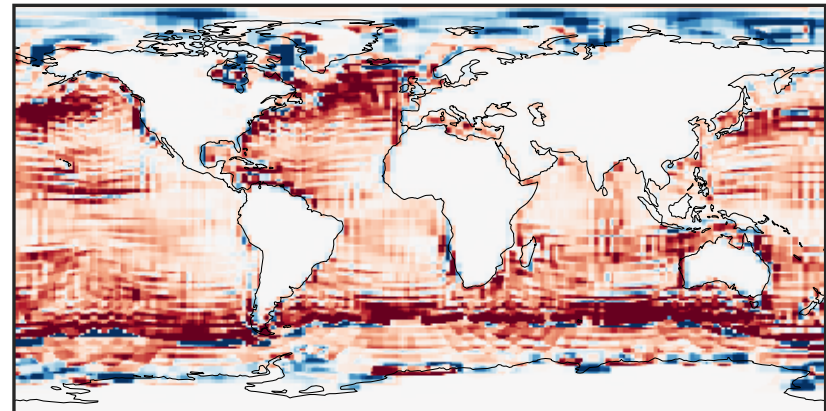
0.008 0.016 0.024
 $\mu\text{g}/\text{m}^3$

Difference (1x1.25)
Dev - Ref, Dynamic Range



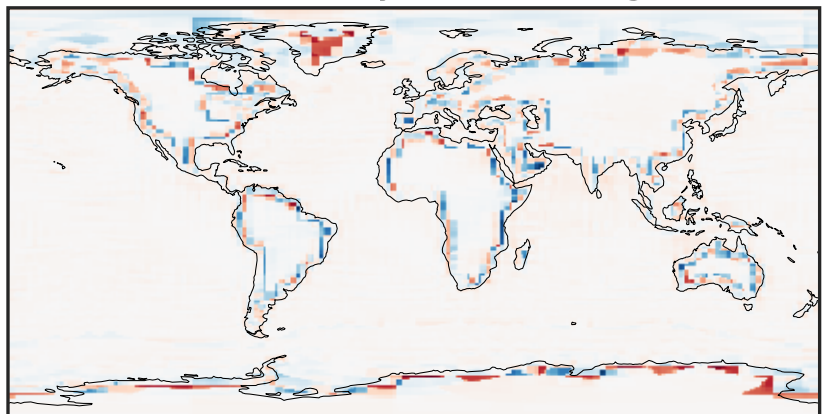
-0.01 0.00 0.01
 $\mu\text{g}/\text{m}^3$

Difference (1x1.25)
Dev - Ref, Restricted Range [5%,95%]



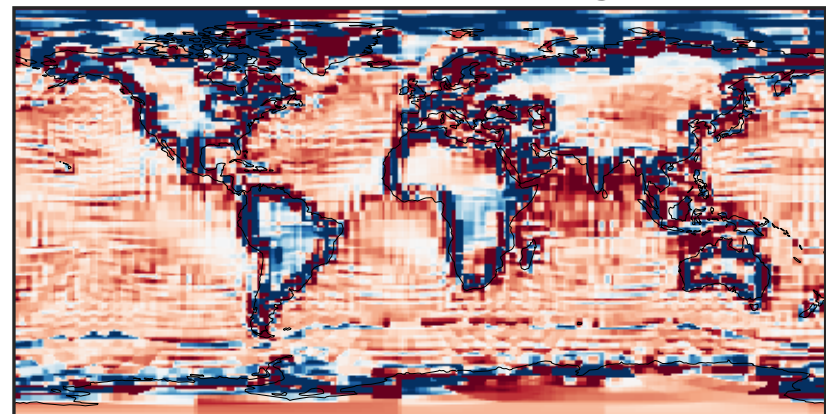
-0.0015 0.0000 0.0015
 $\mu\text{g}/\text{m}^3$

Ratio (1x1.25)
Dev/Ref, Dynamic Range



1e-05 1e-03 1e-01 10 1000 1e+05
unitless

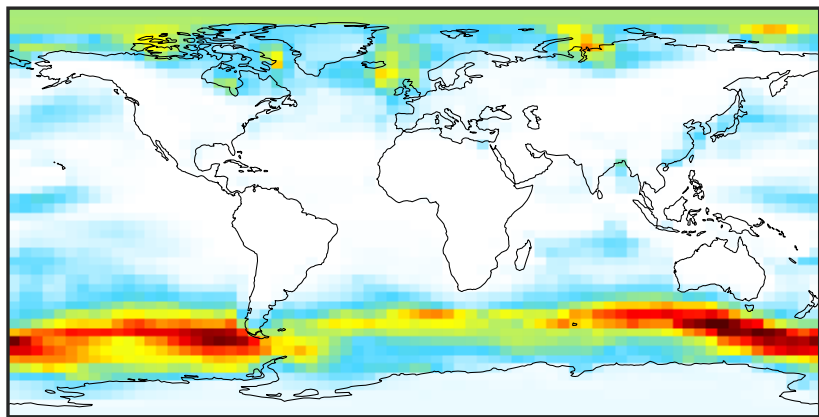
Ratio (1x1.25)
Dev/Ref, Fixed Range



0.50 0.75 1.00 1.50 2.00
unitless

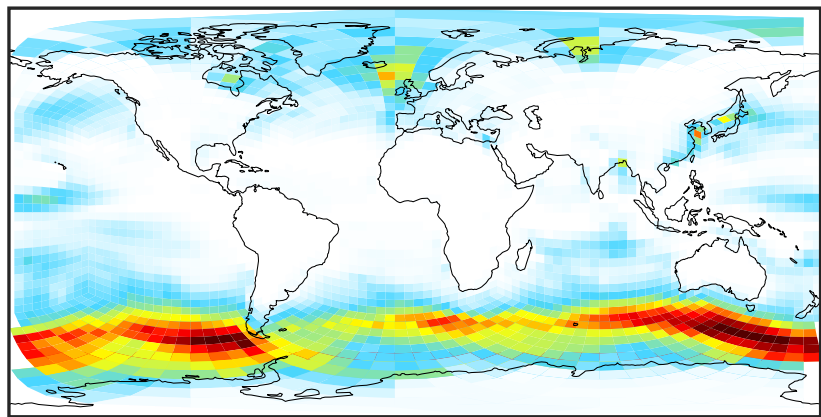
SpeciesConcVV_SALACL (Apr2019)

GCC_14.2.0 (Ref)
4.0x5.0



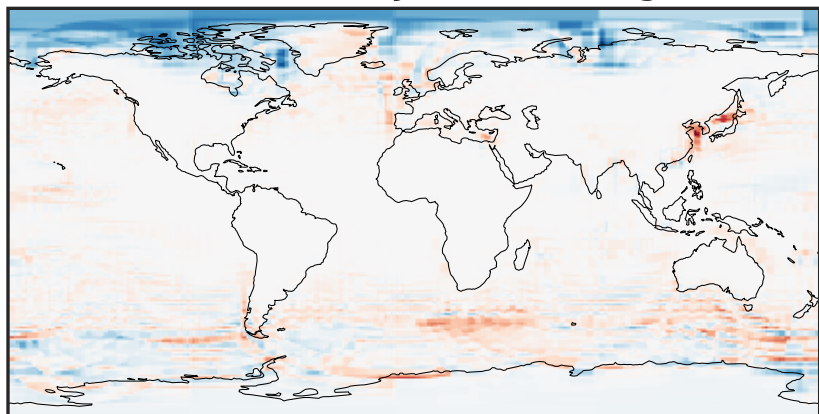
0.0000 0.2107 0.4215 0.6322 0.8429
 $\mu\text{g}/\text{m}^3$

GCHP_14.2.0 (Dev)
c24



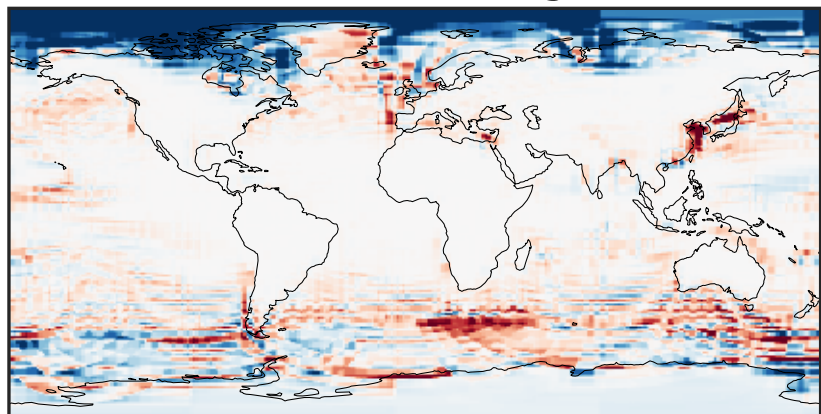
0.0000 0.2107 0.4215 0.6322 0.8429
 $\mu\text{g}/\text{m}^3$

Difference (1x1.25)
Dev - Ref, Dynamic Range



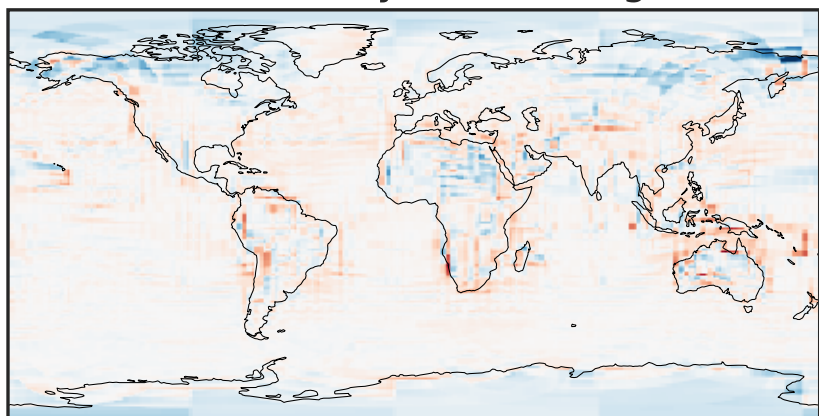
-0.3832 -0.1916 0.0000 0.1916 0.3832
 $\mu\text{g}/\text{m}^3$

Difference (1x1.25)
Dev - Ref, Restricted Range [5%,95%]



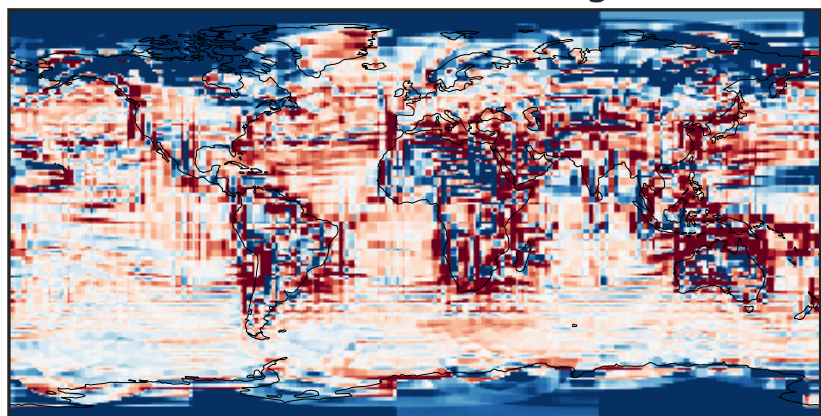
-0.1510 -0.0755 0.0000 0.0755 0.1510
 $\mu\text{g}/\text{m}^3$

Ratio (1x1.25)
Dev/Ref, Dynamic Range



1e-02 1e-01 1 10 100
unitless

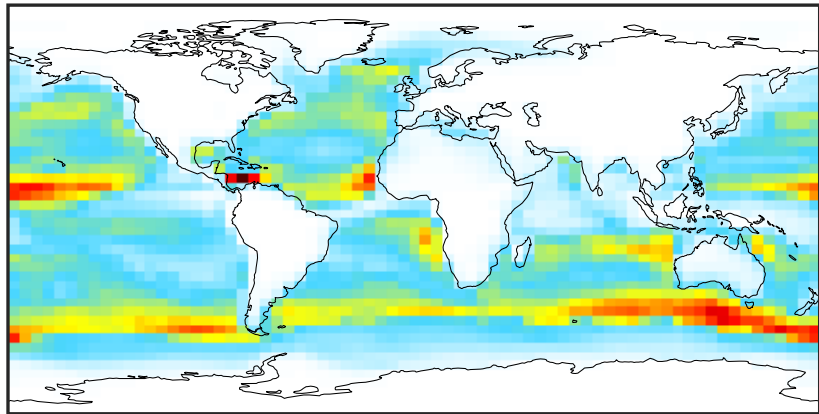
Ratio (1x1.25)
Dev/Ref, Fixed Range



0.50 0.75 1.00 1.50 2.00
unitless

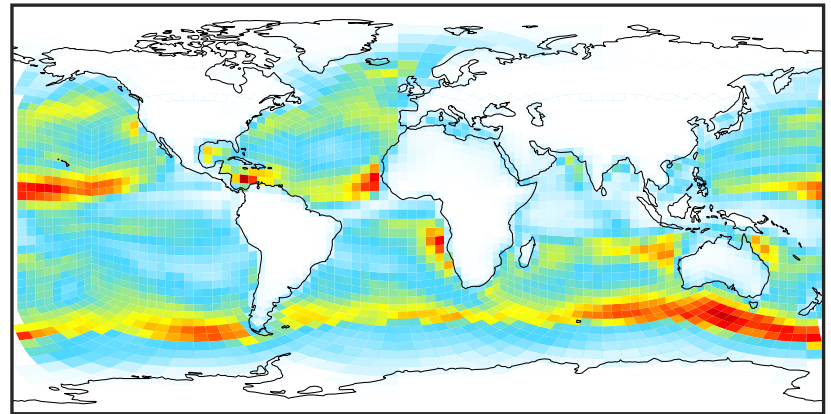
SpeciesConcVV_SALC (Apr2019)

GCC_14.2.0 (Ref)
4.0x5.0



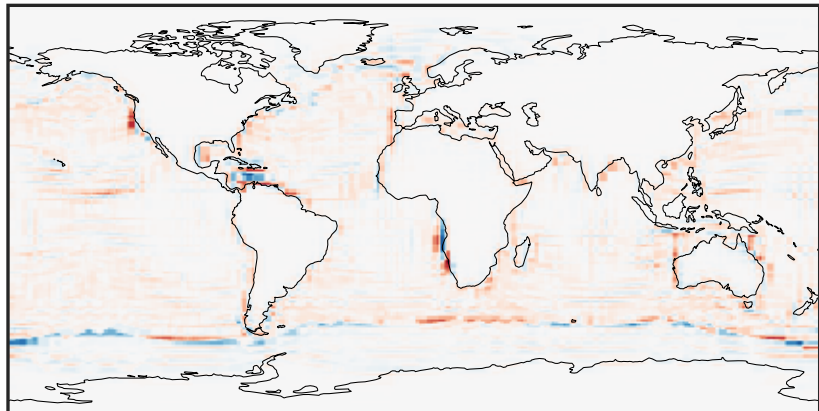
0.00 8.68 17.37 26.05 34.73
 $\mu\text{g}/\text{m}^3$

GCHP_14.2.0 (Dev)
c24



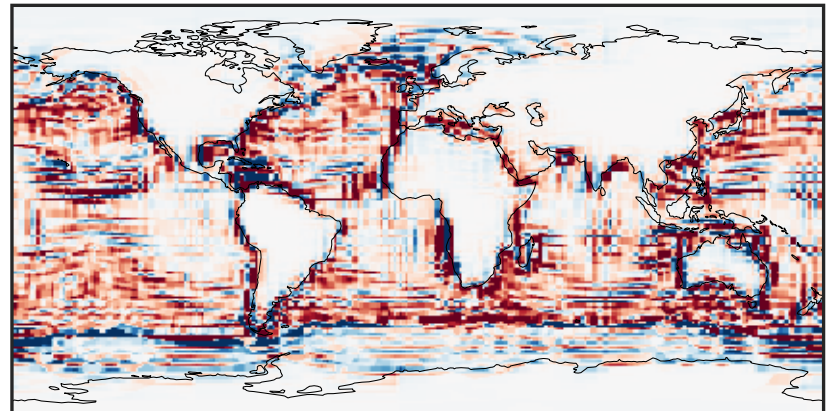
0.00 8.68 17.37 26.05 34.73
 $\mu\text{g}/\text{m}^3$

Difference (1x1.25)
Dev - Ref, Dynamic Range



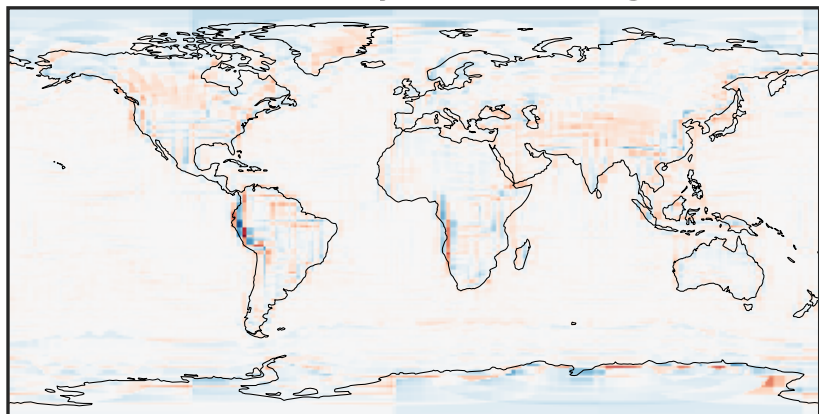
-16.10 -8.05 0.00 8.05 16.10
 $\mu\text{g}/\text{m}^3$

Difference (1x1.25)
Dev - Ref, Restricted Range [5%,95%]



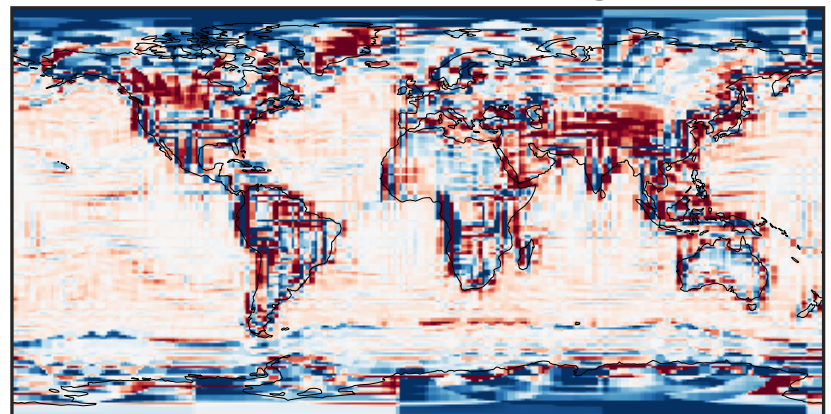
-2.010 -1.005 0.000 1.005 2.010
 $\mu\text{g}/\text{m}^3$

Ratio (1x1.25)
Dev/Ref, Dynamic Range



1e-02 1e-01 1 10 100
unitless

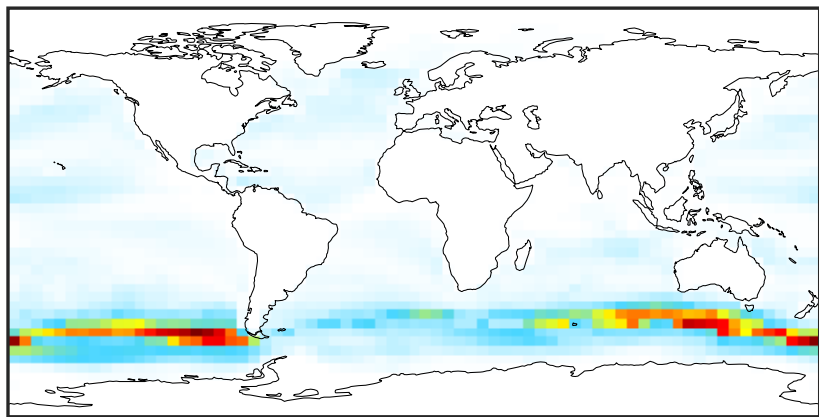
Ratio (1x1.25)
Dev/Ref, Fixed Range



0.50 0.75 1.00 1.50 2.00
unitless

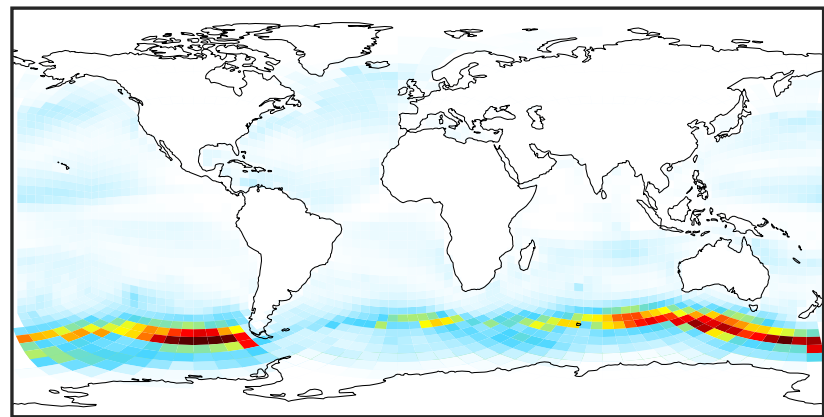
SpeciesConcVV_SALCAL (Apr2019)

GCC_14.2.0 (Ref)
4.0x5.0



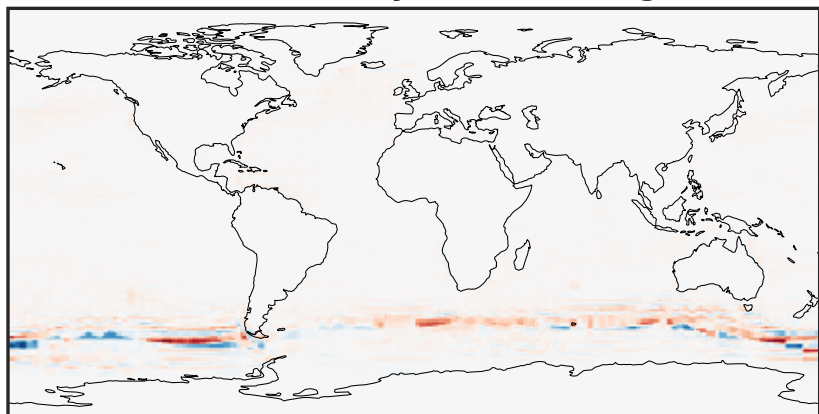
0.00 2.71 5.41 8.12 10.82
µg/m3

GCHP_14.2.0 (Dev)
c24



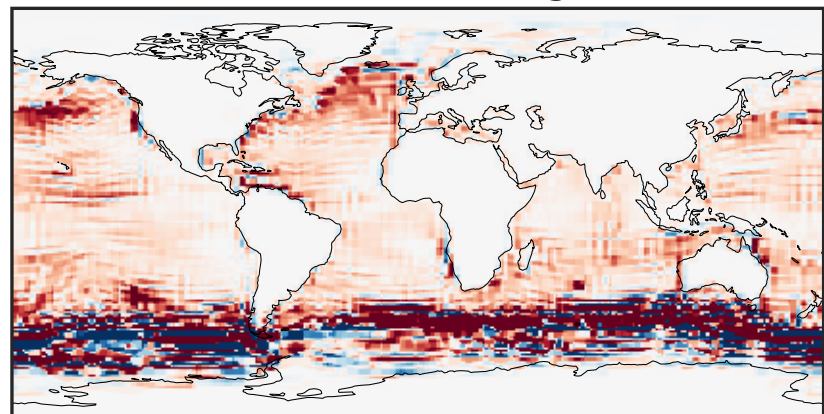
0.00 2.71 5.41 8.12 10.82
µg/m3

Difference (1x1.25)
Dev - Ref, Dynamic Range



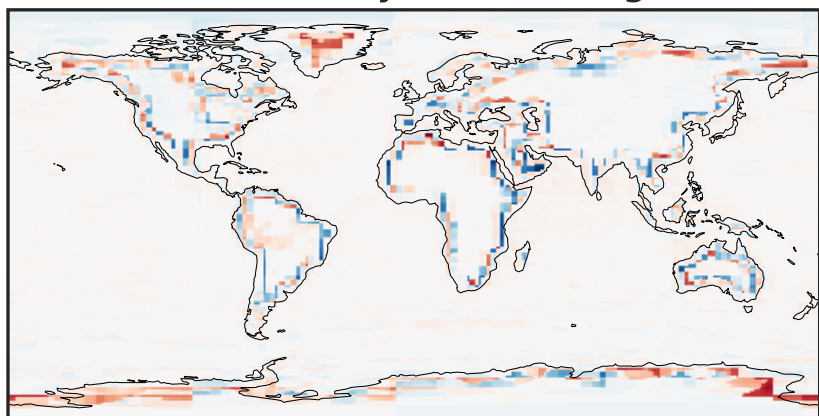
-6.75 -3.38 0.00 3.38 6.75
µg/m3

Difference (1x1.25)
Dev - Ref, Restricted Range [5%,95%]



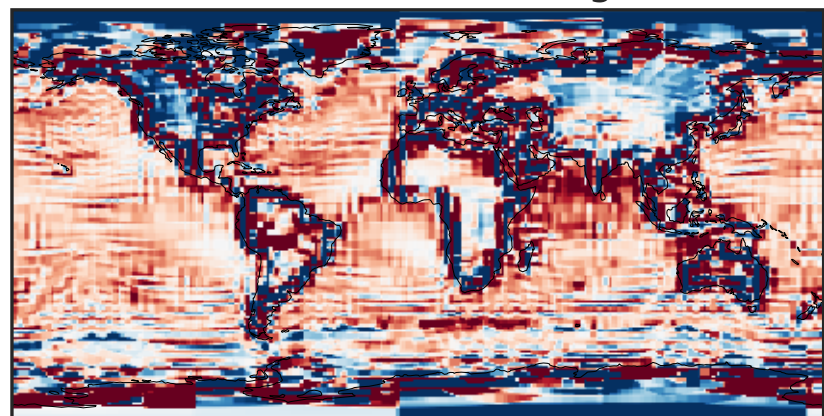
-0.3193 -0.1596 0.0000 0.1596 0.3193
µg/m3

Ratio (1x1.25)
Dev/Ref, Dynamic Range



1e-06 1e-03 1 1000 1e+06
unitless

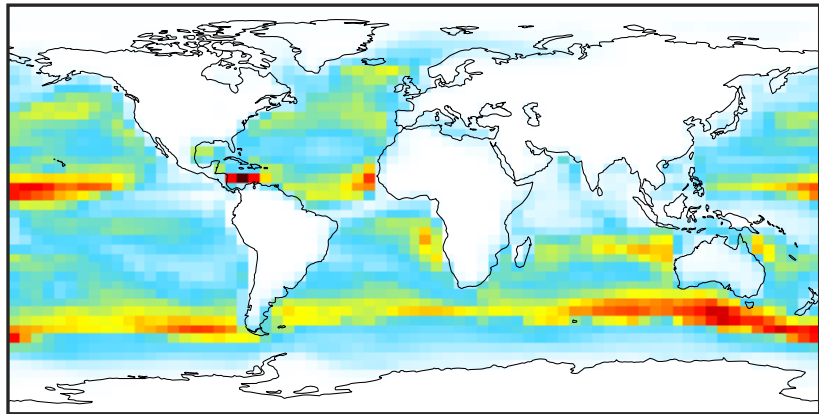
Ratio (1x1.25)
Dev/Ref, Fixed Range



0.50 0.75 1.00 1.50 2.00
unitless

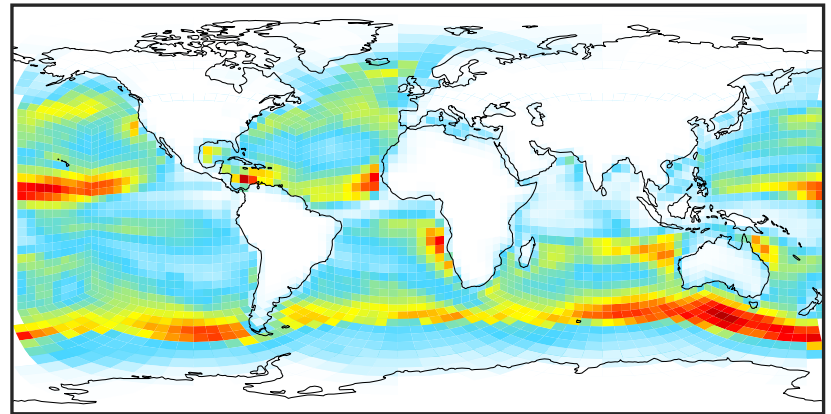
SpeciesConcVV_SALCCL (Apr2019)

GCC_14.2.0 (Ref)
4.0x5.0



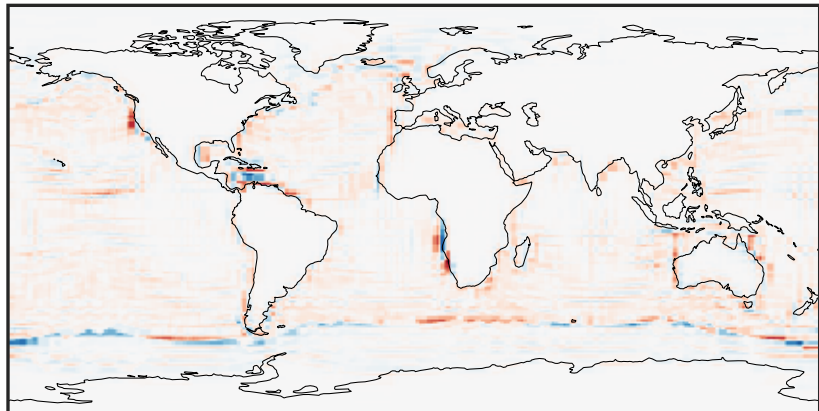
0.00 4.63 9.26 13.89 18.52
 $\mu\text{g}/\text{m}^3$

GCHP_14.2.0 (Dev)
c24



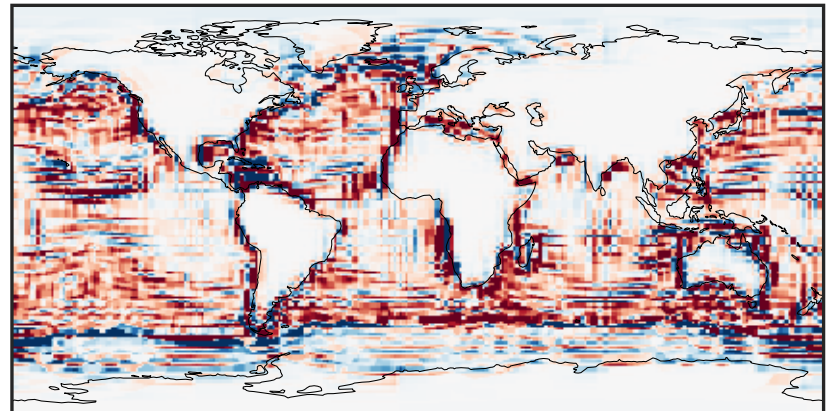
0.00 4.63 9.26 13.89 18.52
 $\mu\text{g}/\text{m}^3$

Difference (1x1.25)
Dev - Ref, Dynamic Range



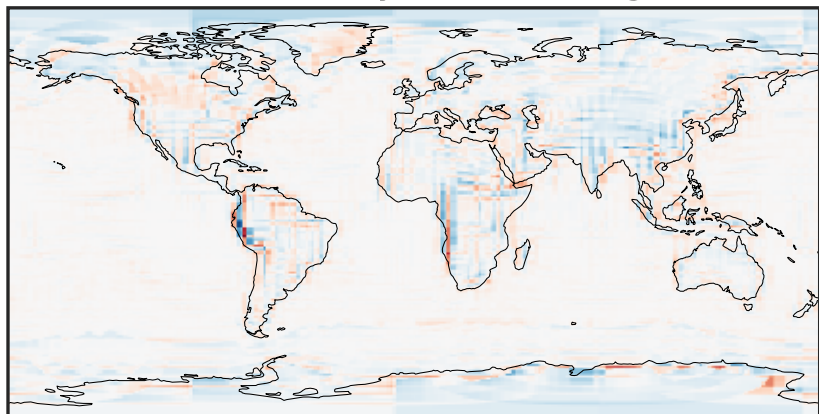
-8.84 -4.42 0.00 4.42 8.84
 $\mu\text{g}/\text{m}^3$

Difference (1x1.25)
Dev - Ref, Restricted Range [5%,95%]



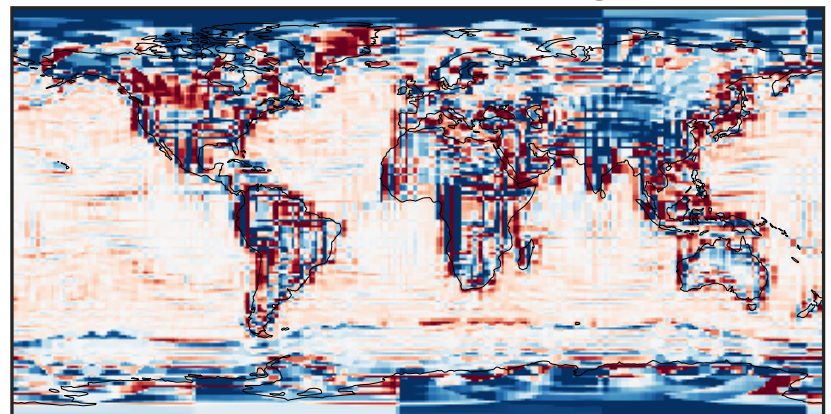
-1.067 -0.533 0.000 0.533 1.067
 $\mu\text{g}/\text{m}^3$

Ratio (1x1.25)
Dev/Ref, Dynamic Range



1e-02 1e-01 1 10 100
unitless

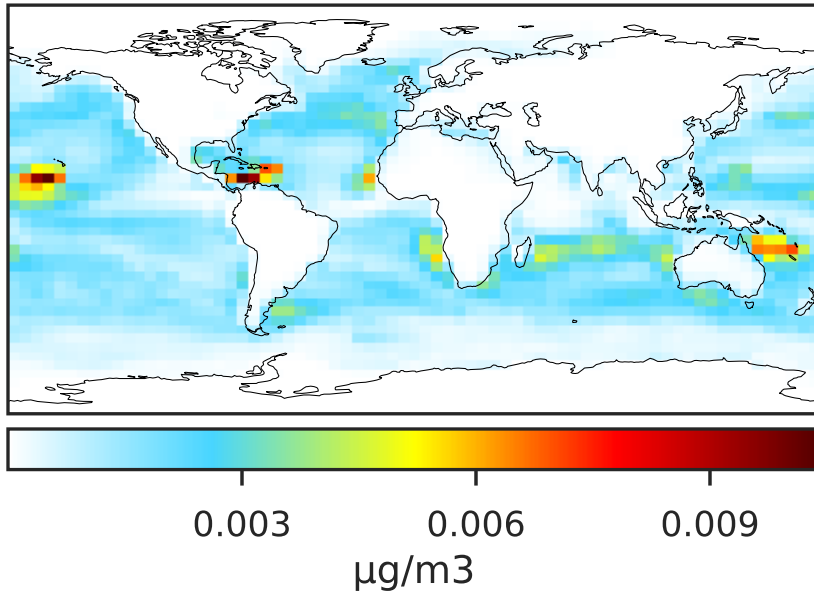
Ratio (1x1.25)
Dev/Ref, Fixed Range



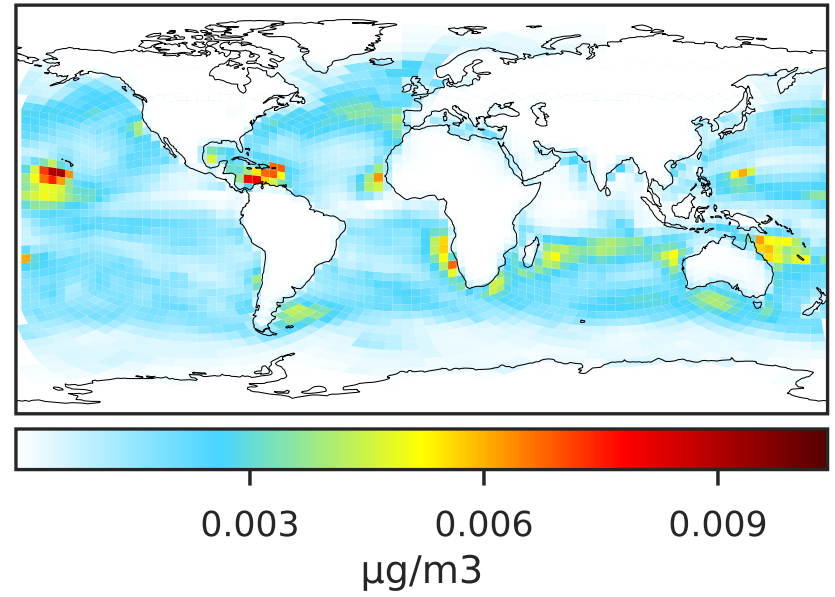
0.50 0.75 1.00 1.50 2.00
unitless

SpeciesConcVV_SO4s (Apr2019)

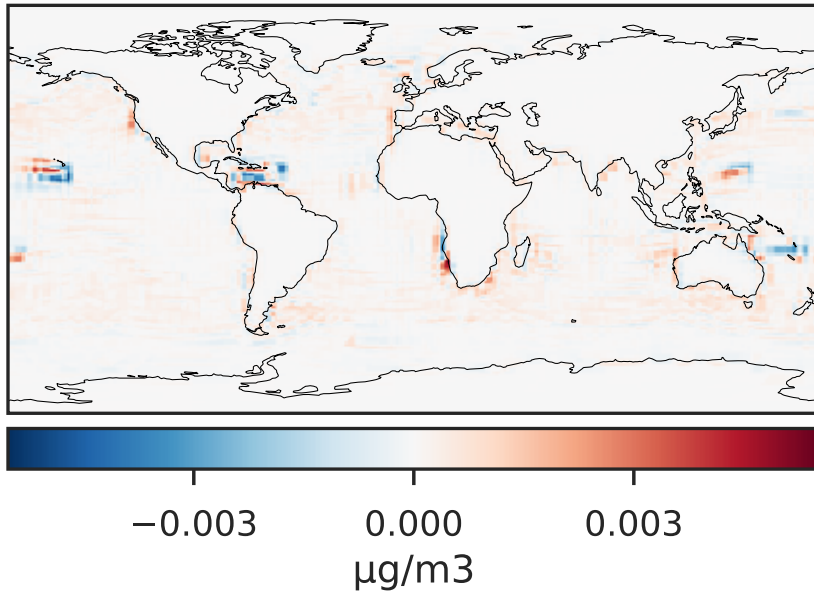
GCC_14.2.0 (Ref)
4.0x5.0



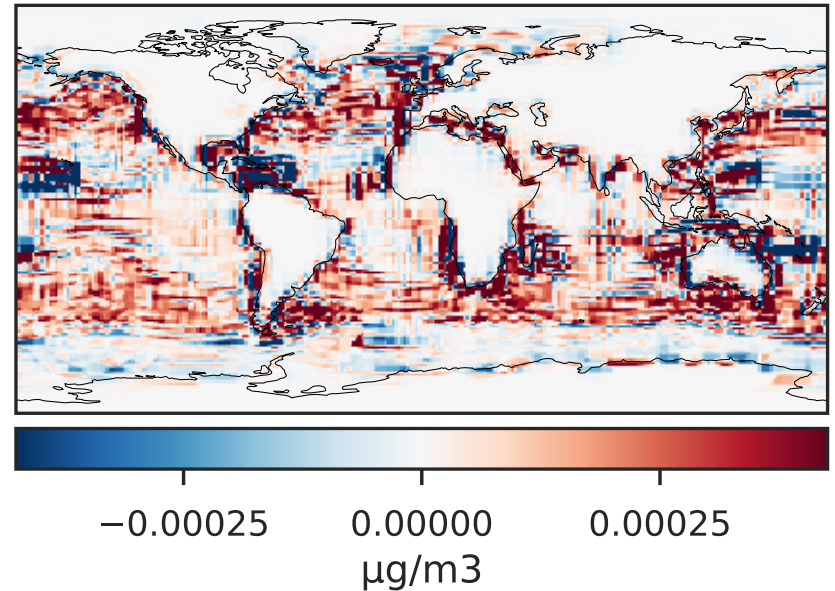
GCHP_14.2.0 (Dev)
c24



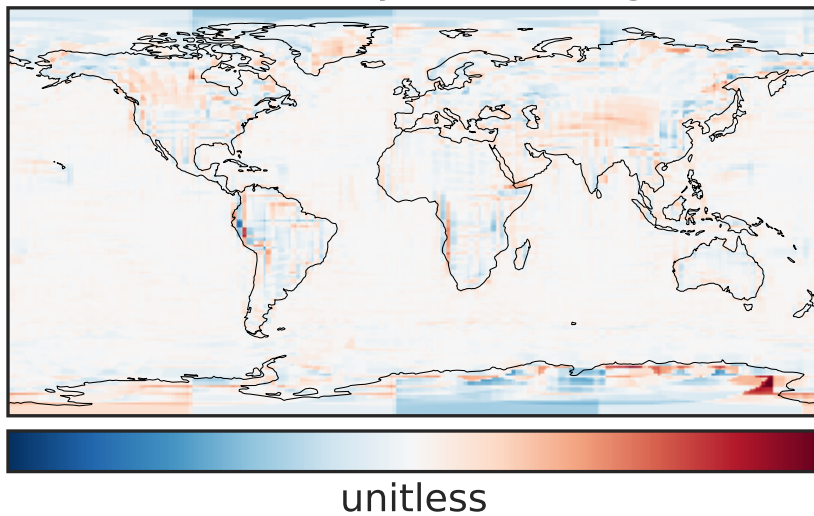
Difference (1x1.25)
Dev - Ref, Dynamic Range



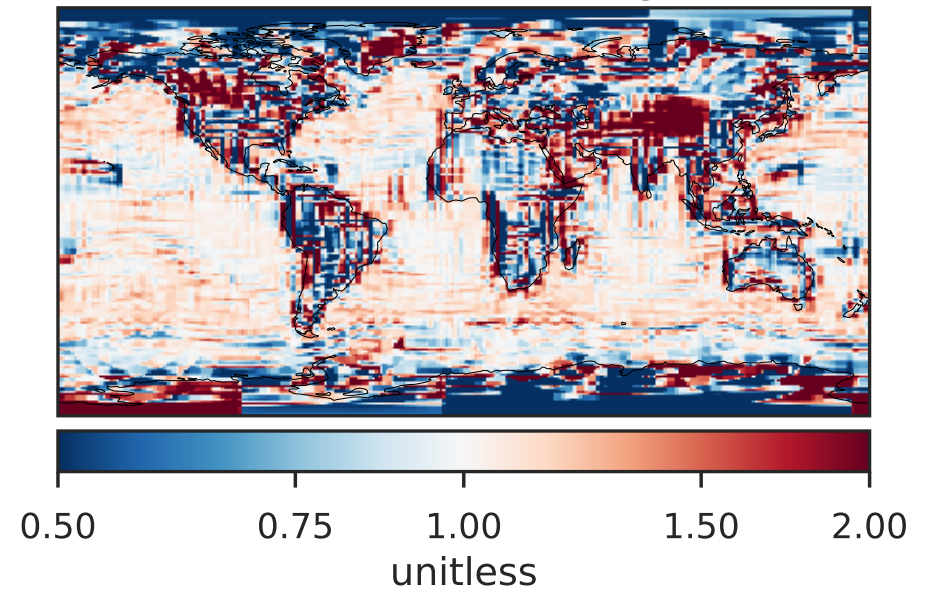
Difference (1x1.25)
Dev - Ref, Restricted Range [5%,95%]



Ratio (1x1.25)
Dev/Ref, Dynamic Range

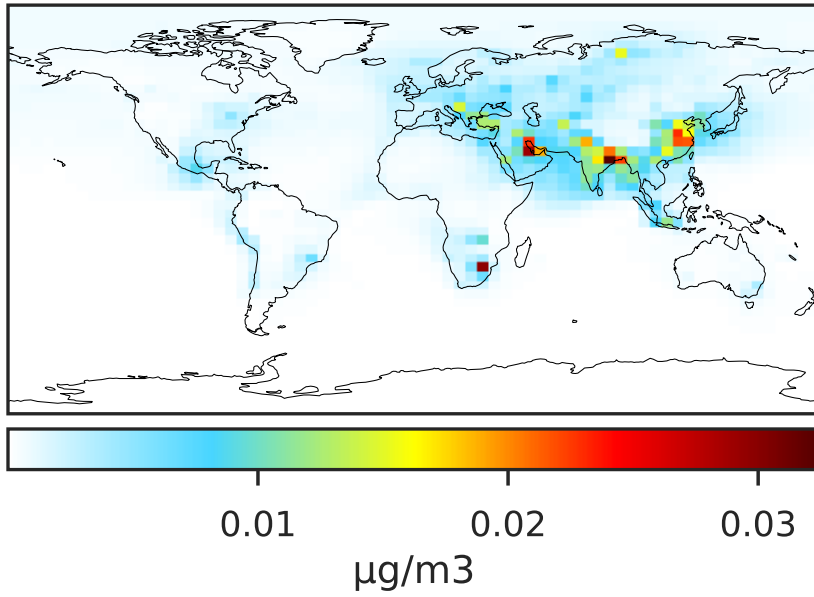


Ratio (1x1.25)
Dev/Ref, Fixed Range

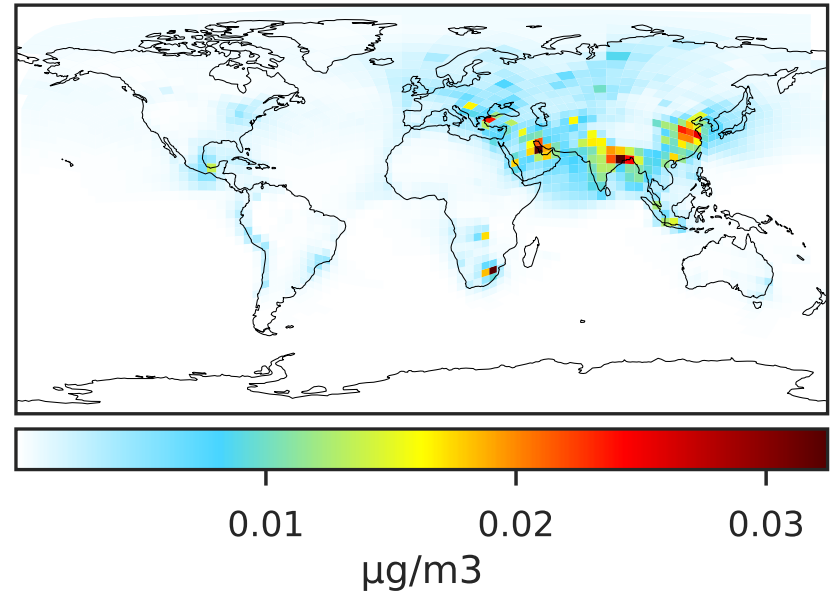


SpeciesConcVV_pFe (Apr2019)

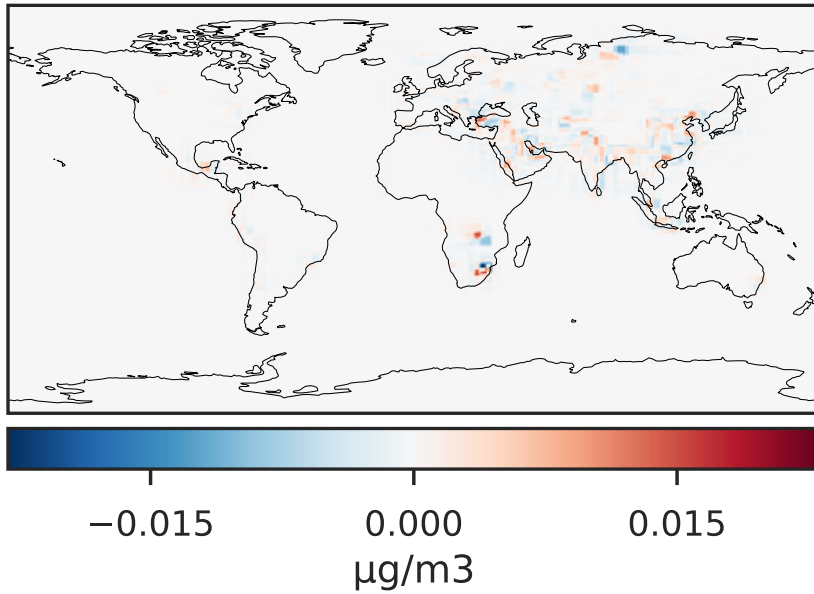
GCC_14.2.0 (Ref)
4.0x5.0



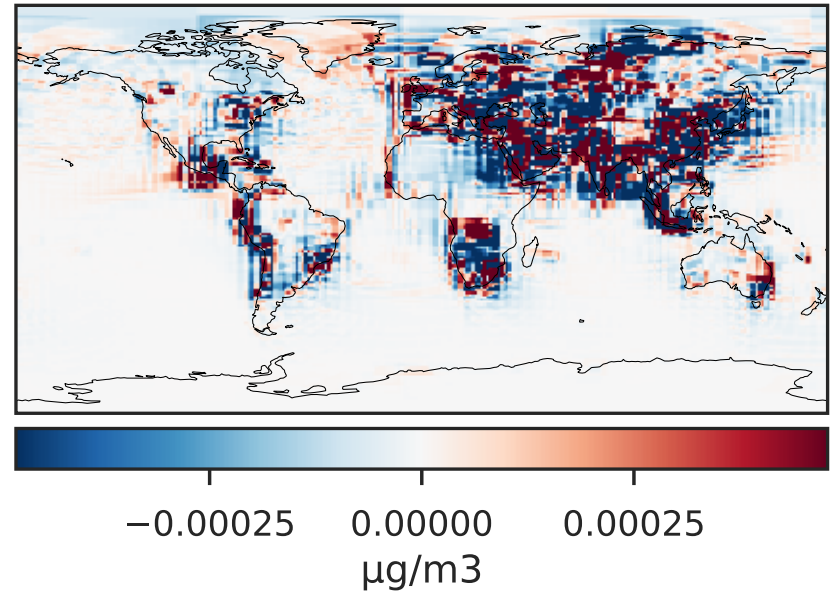
GCHP_14.2.0 (Dev)
c24



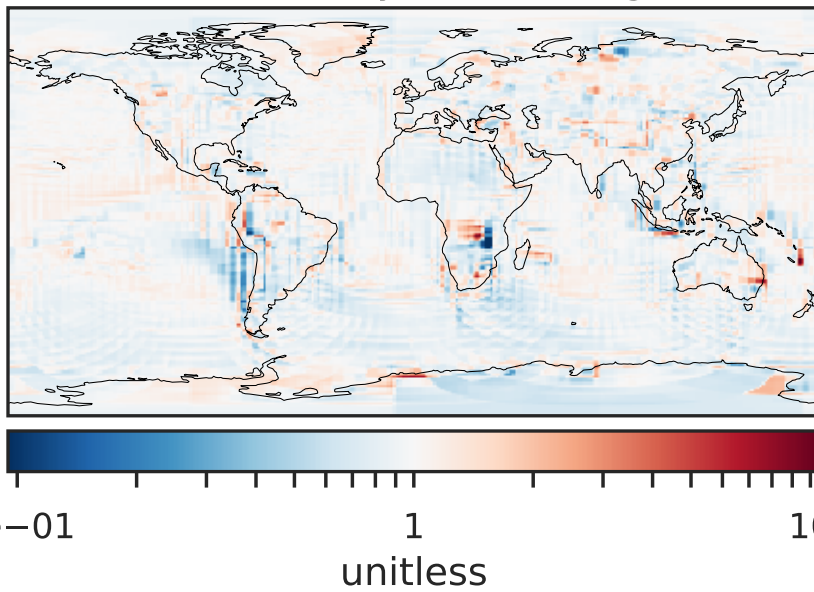
Difference (1x1.25)
Dev - Ref, Dynamic Range



Difference (1x1.25)
Dev - Ref, Restricted Range [5%,95%]



Ratio (1x1.25)
Dev/Ref, Dynamic Range



Ratio (1x1.25)
Dev/Ref, Fixed Range

