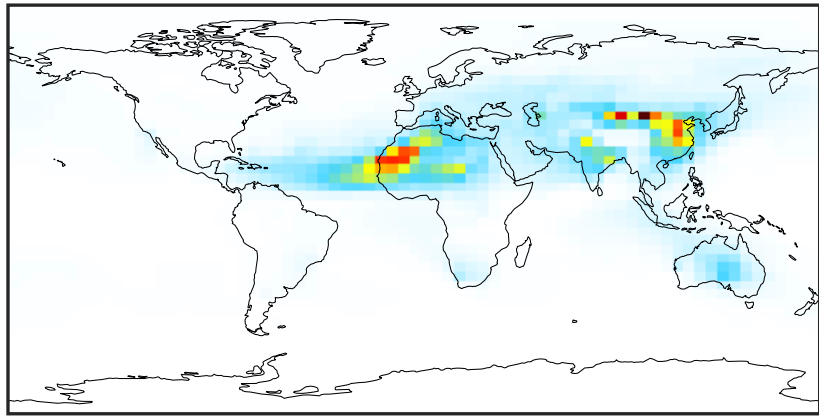


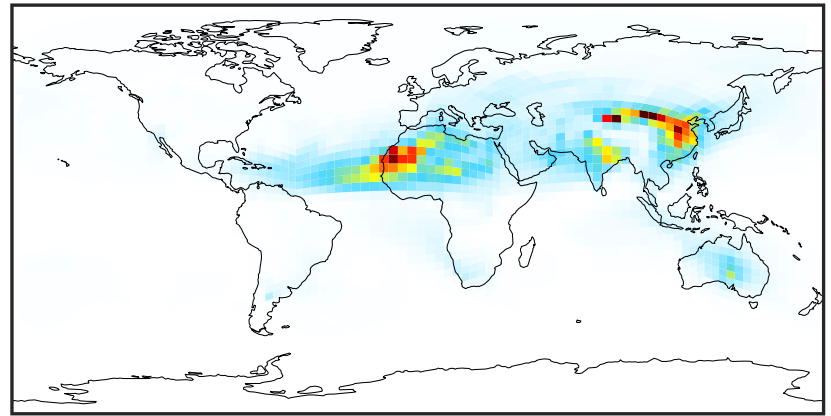
SpeciesConcVW_DST1 (Oct2019)

GCC_14.2.0 (Ref)
4.0x5.0



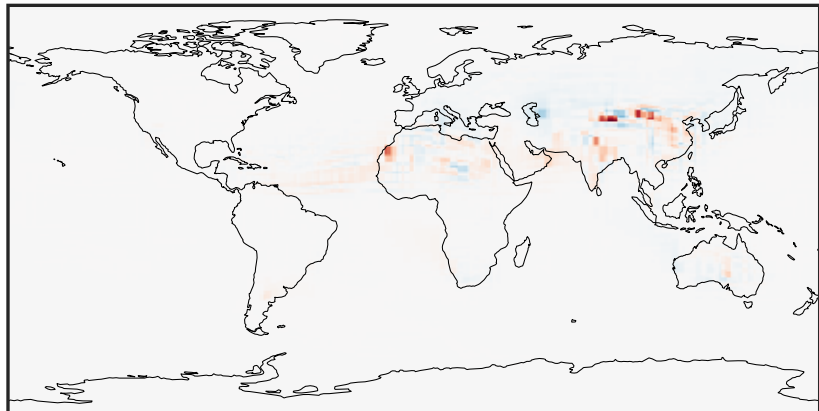
0.00 6.81 13.61 20.42 27.22
µg/m3

GCHP_14.2.0 (Dev)
c24



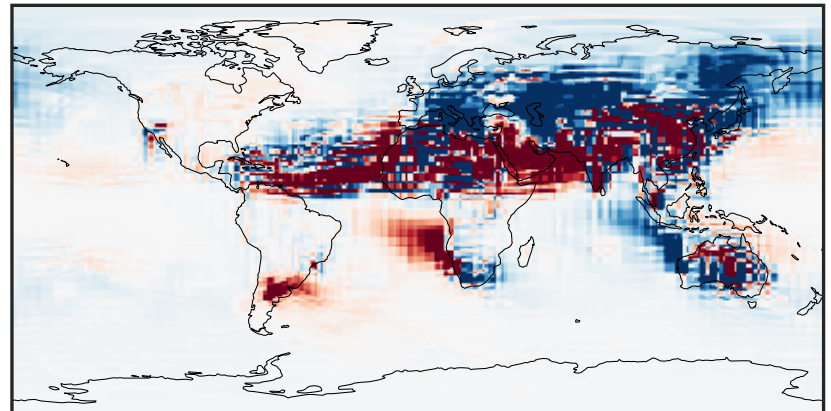
0.00 6.81 13.61 20.42 27.22
µg/m3

Difference (1x1.25)
Dev - Ref, Dynamic Range



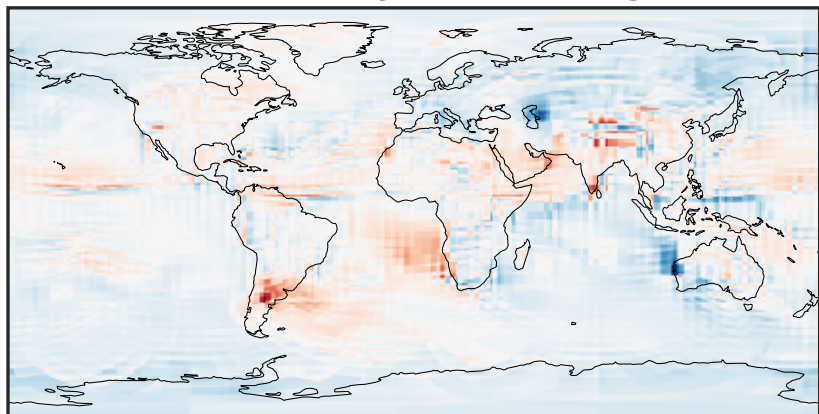
-22.38 -11.19 0.00 11.19 22.38
µg/m3

Difference (1x1.25)
Dev - Ref, Restricted Range [5%,95%]



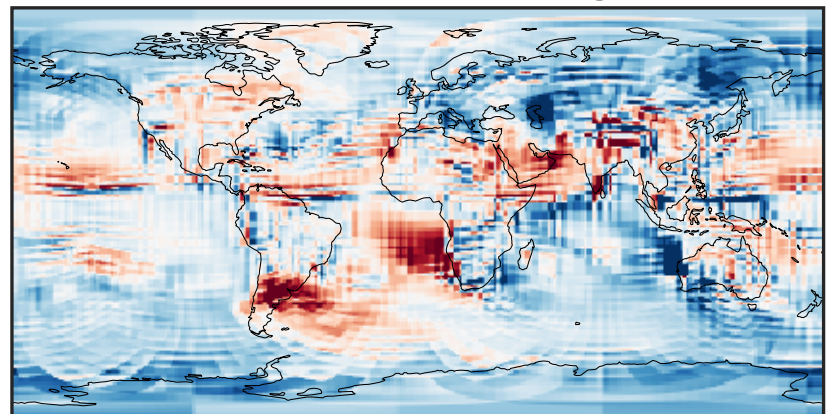
-0.4043 -0.2021 0.0000 0.2021 0.4043
µg/m3

Ratio (1x1.25)
Dev/Ref, Dynamic Range



0.117 0.558 1.000 4.775 8.550
unitless

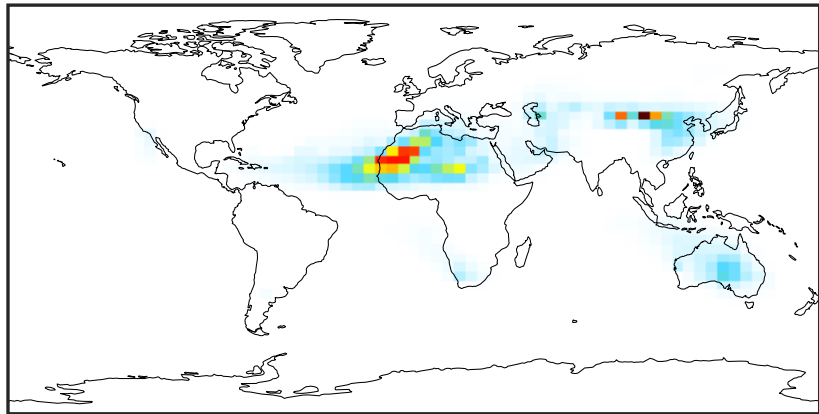
Ratio (1x1.25)
Dev/Ref, Fixed Range



0.50 0.75 1.00 1.50 2.00
unitless

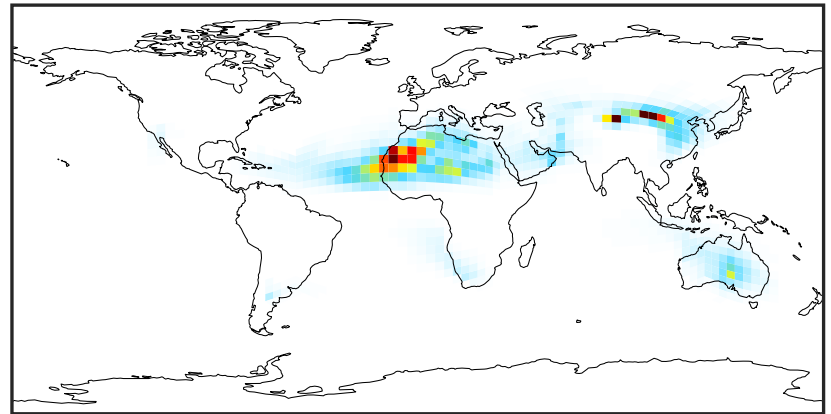
SpeciesConcVW_DST2 (Oct2019)

GCC_14.2.0 (Ref)
4.0x5.0



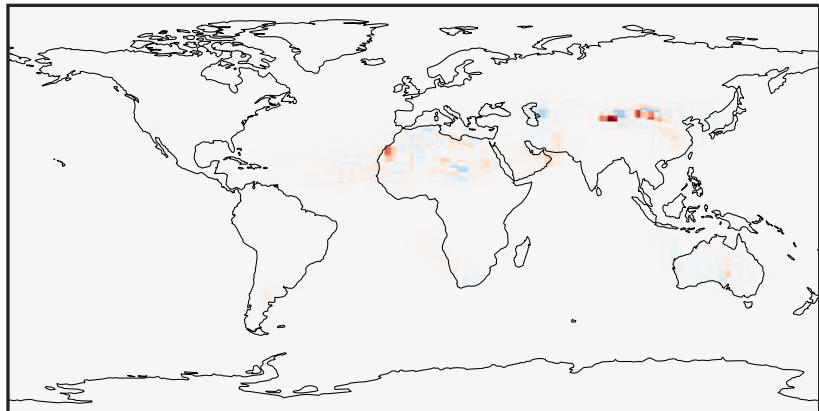
0.00 13.93 27.86 41.79 55.72
 $\mu\text{g}/\text{m}^3$

GCHP_14.2.0 (Dev)
c24



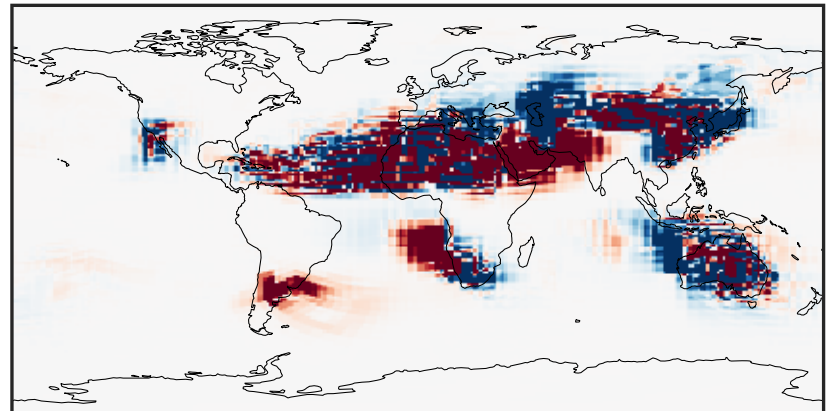
0.00 13.93 27.86 41.79 55.72
 $\mu\text{g}/\text{m}^3$

Difference (1x1.25)
Dev - Ref, Dynamic Range



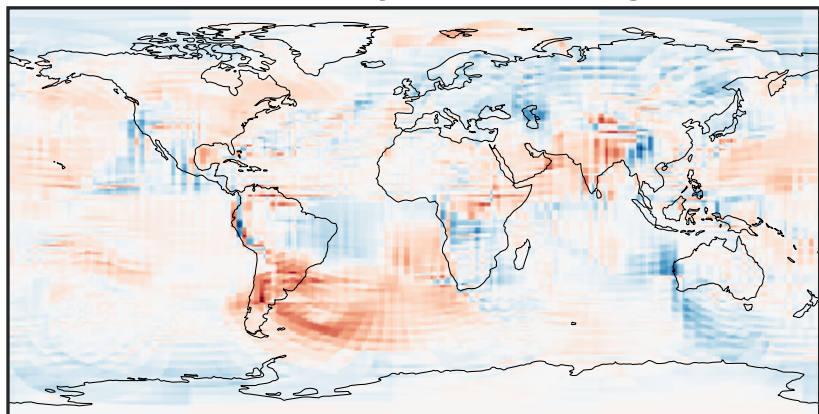
-30 0 30
 $\mu\text{g}/\text{m}^3$

Difference (1x1.25)
Dev - Ref, Restricted Range [5%,95%]



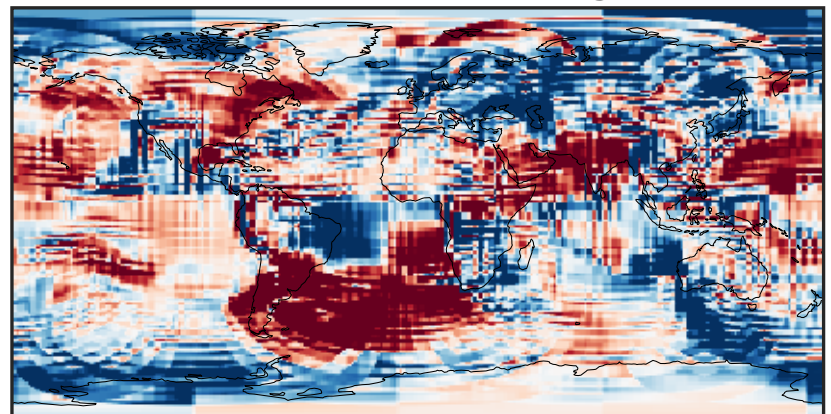
-0.2769 -0.1384 0.0000 0.1384 0.2769
 $\mu\text{g}/\text{m}^3$

Ratio (1x1.25)
Dev/Ref, Dynamic Range



1e-01 1 10
unitless

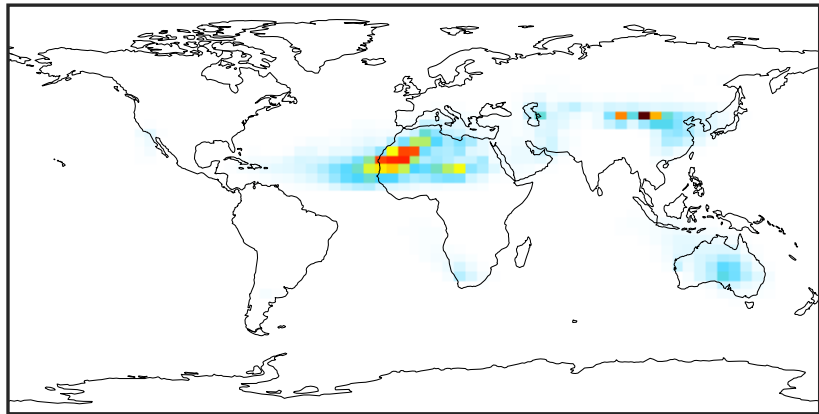
Ratio (1x1.25)
Dev/Ref, Fixed Range



0.50 0.75 1.00 1.50 2.00
unitless

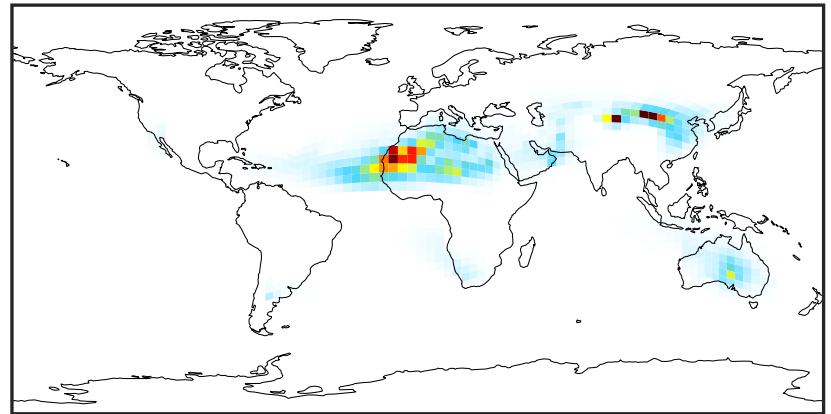
SpeciesConcVV_DST3 (Oct2019)

GCC_14.2.0 (Ref)
4.0x5.0



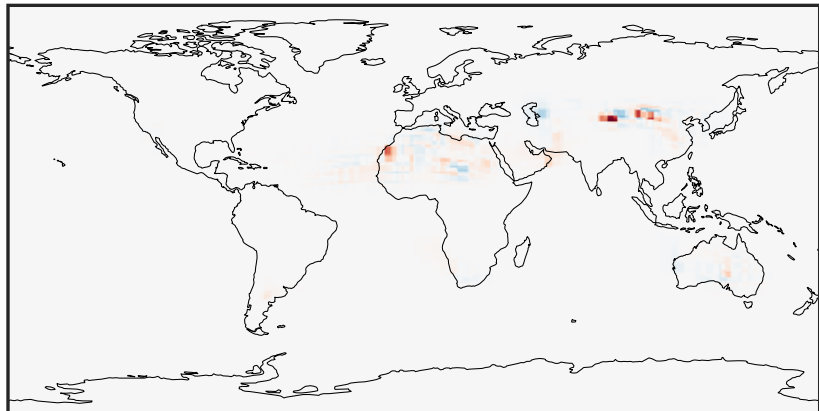
0.00 23.46 46.92 70.38 93.84
µg/m3

GCHP_14.2.0 (Dev)
c24



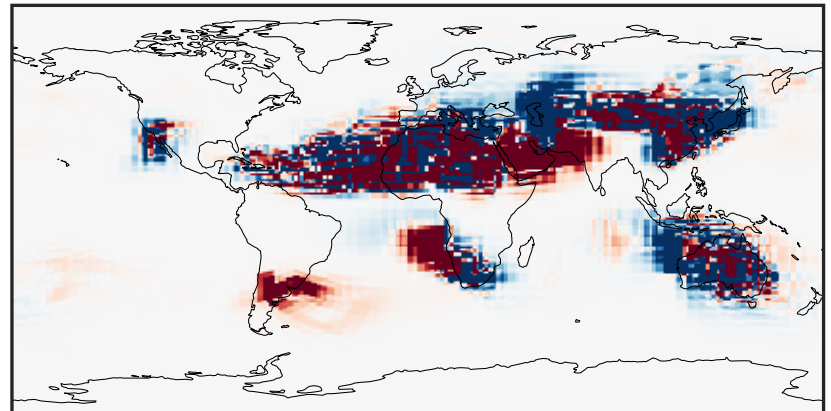
0.00 23.46 46.92 70.38 93.84
µg/m3

Difference (1x1.25)
Dev - Ref, Dynamic Range



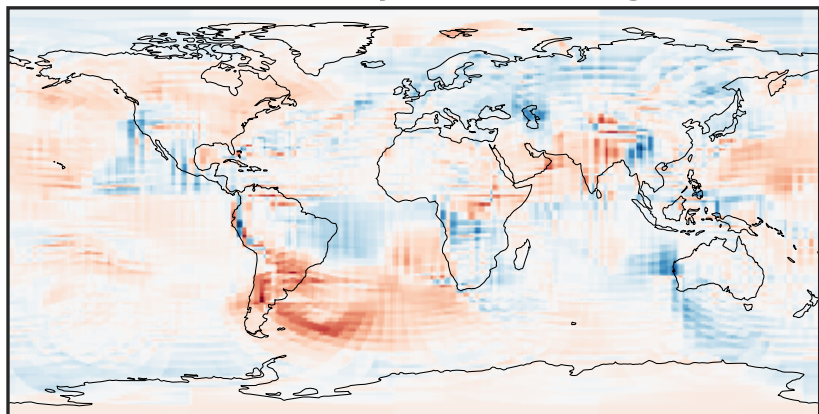
-50 0 50
µg/m3

Difference (1x1.25)
Dev - Ref, Restricted Range [5%,95%]



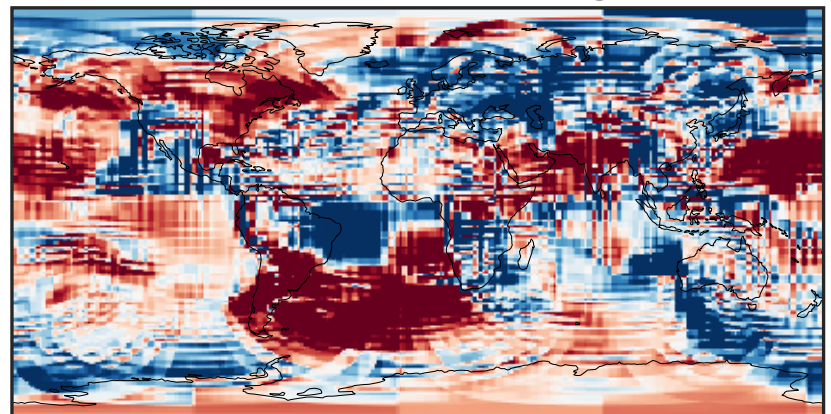
-0.338 -0.169 0.000 0.169 0.338
µg/m3

Ratio (1x1.25)
Dev/Ref, Dynamic Range



1e-01 1 10
unitless

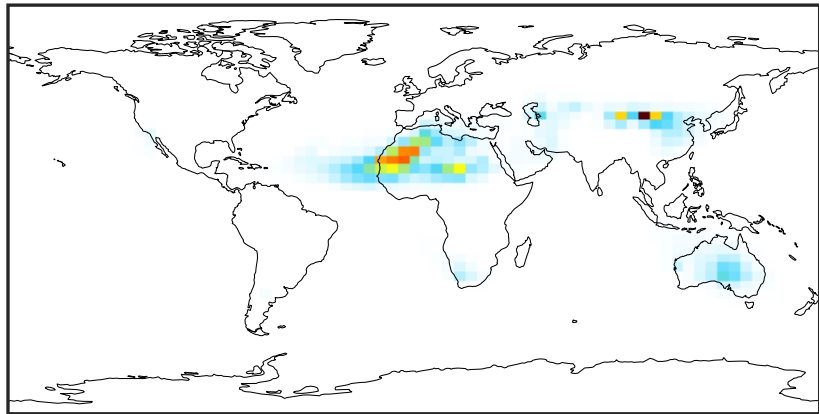
Ratio (1x1.25)
Dev/Ref, Fixed Range



0.50 0.75 1.00 1.50 2.00
unitless

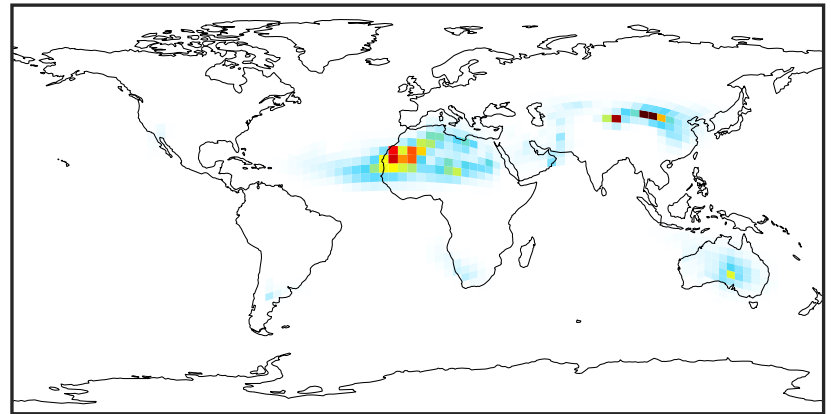
SpeciesConcVV_DST4 (Oct2019)

GCC_14.2.0 (Ref)
4.0x5.0



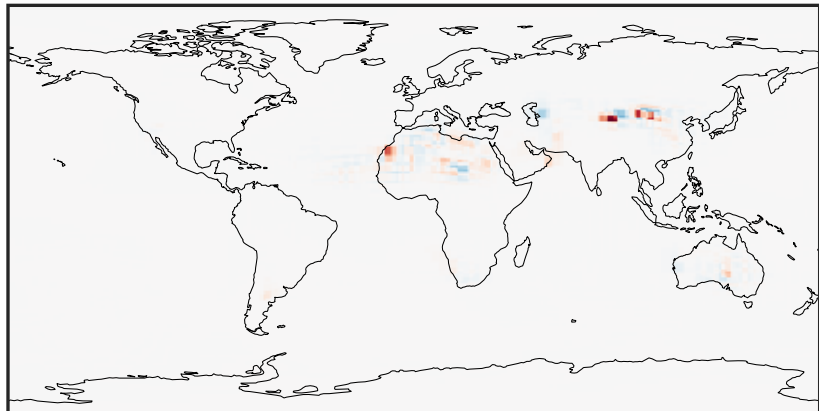
0.00 21.47 42.94 64.42 85.89
µg/m3

GCHP_14.2.0 (Dev)
c24



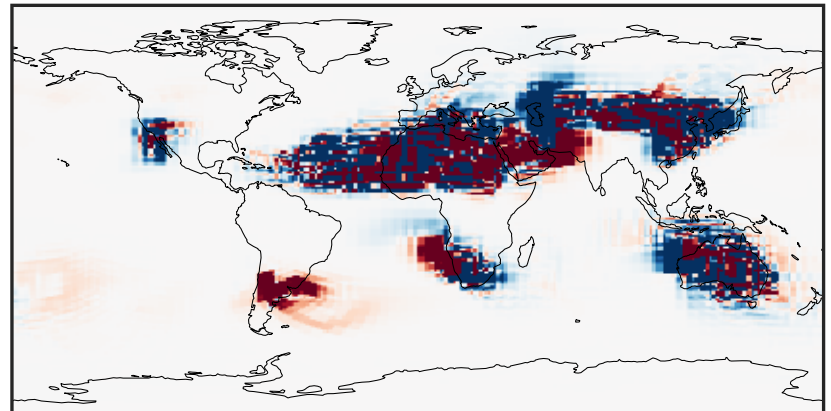
0.00 21.47 42.94 64.42 85.89
µg/m3

Difference (1x1.25)
Dev - Ref, Dynamic Range



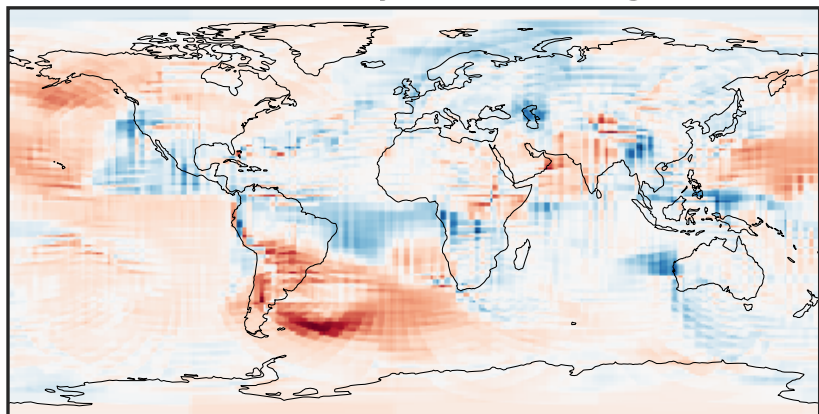
-40 0 40
µg/m3

Difference (1x1.25)
Dev - Ref, Restricted Range [5%,95%]



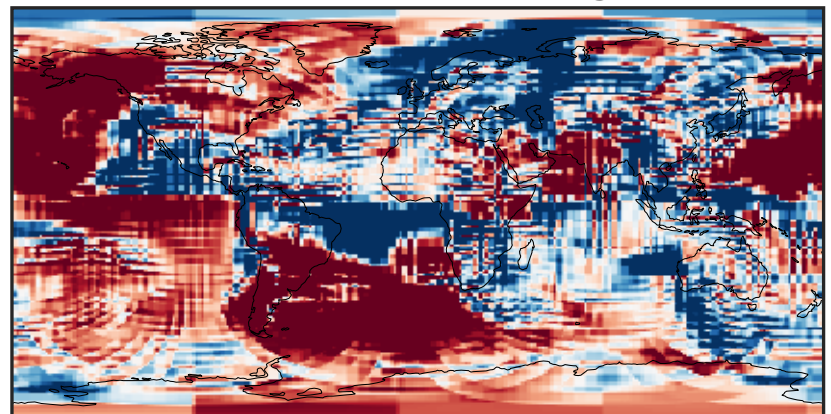
-0.1942 -0.0971 0.0000 0.0971 0.1942
µg/m3

Ratio (1x1.25)
Dev/Ref, Dynamic Range



1e-02 1e-01 1 10 100
unitless

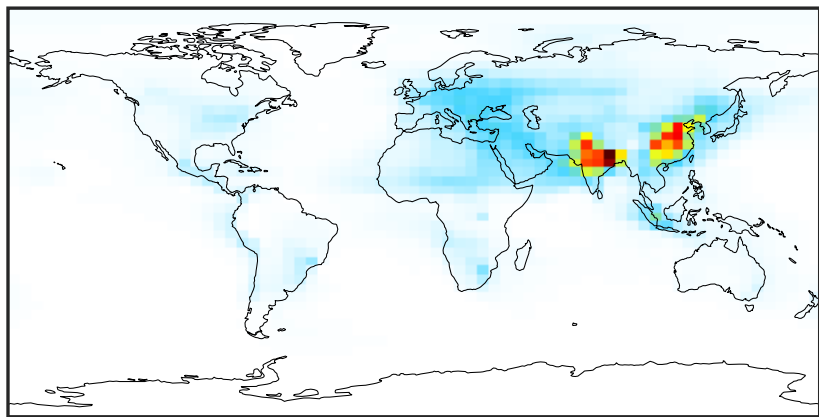
Ratio (1x1.25)
Dev/Ref, Fixed Range



0.50 0.75 1.00 1.50 2.00
unitless

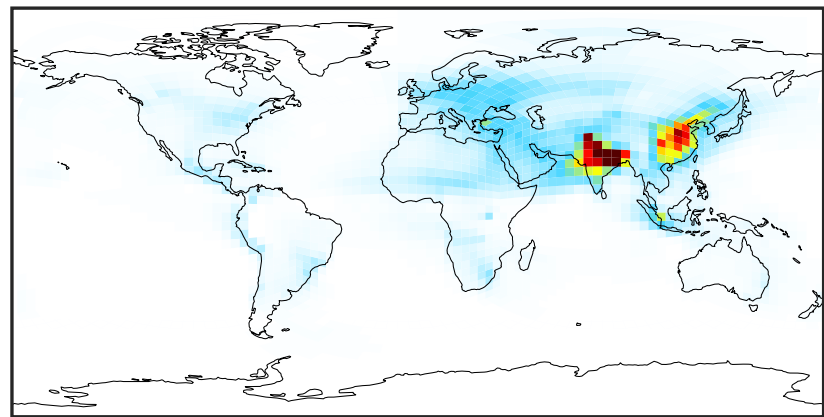
SpeciesConcVV_NH4 (Oct2019)

GCC_14.2.0 (Ref)
4.0x5.0



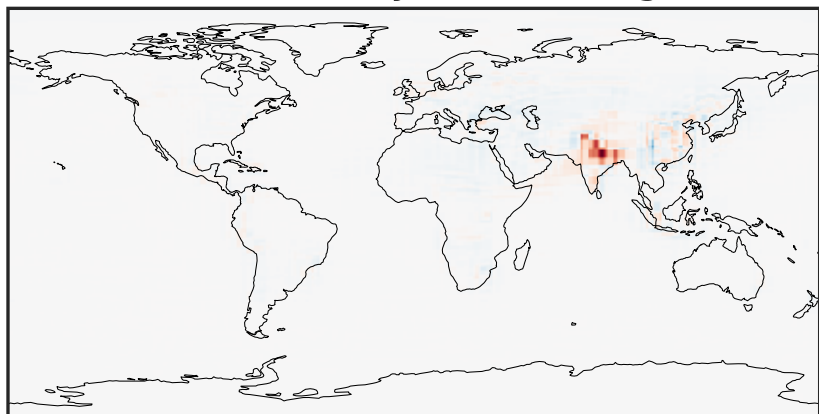
0.00 2.98 5.96 8.95 11.93
 $\mu\text{g}/\text{m}^3$

GCHP_14.2.0 (Dev)
c24



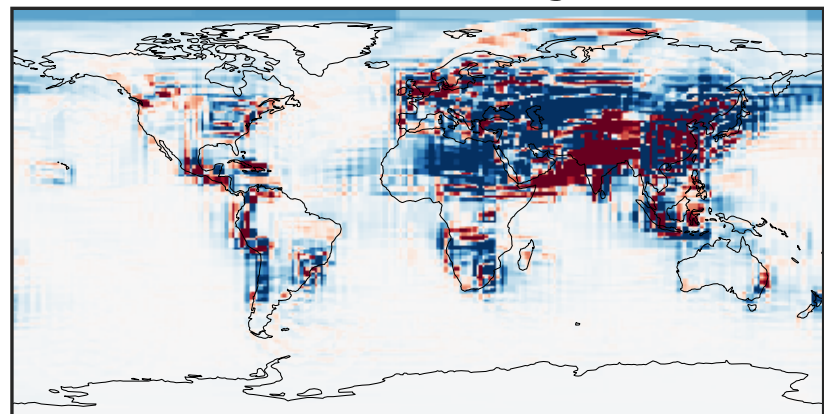
0.00 2.98 5.96 8.95 11.93
 $\mu\text{g}/\text{m}^3$

Difference (1x1.25)
Dev - Ref, Dynamic Range



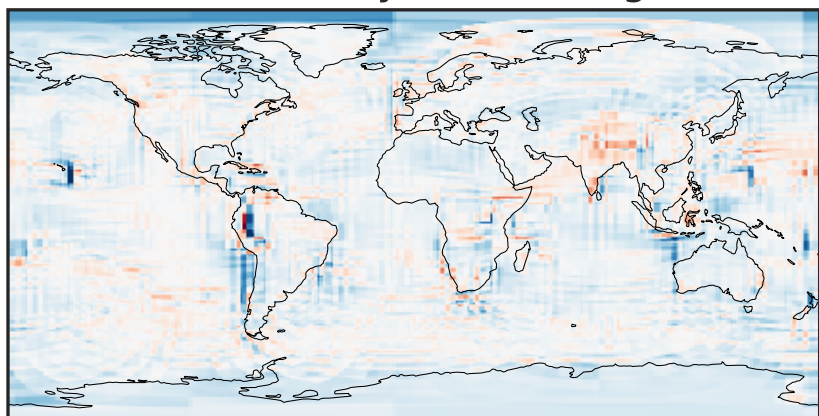
-9.35 -4.68 0.00 4.68 9.35
 $\mu\text{g}/\text{m}^3$

Difference (1x1.25)
Dev - Ref, Restricted Range [5%,95%]



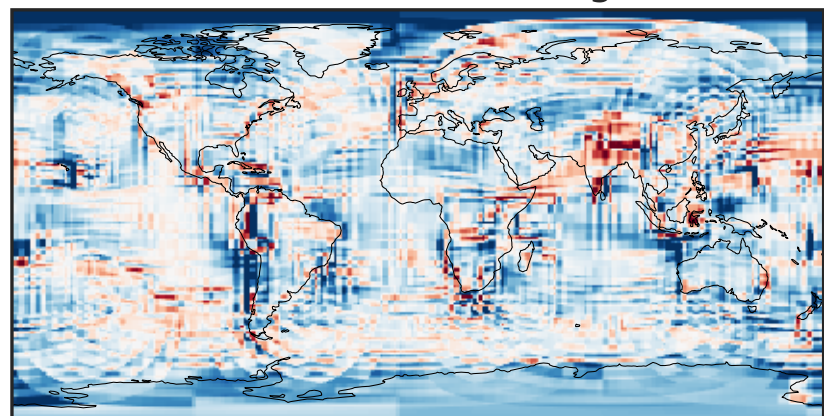
-0.1945 -0.0972 0.0000 0.0972 0.1945
 $\mu\text{g}/\text{m}^3$

Ratio (1x1.25)
Dev/Ref, Dynamic Range



0.130 0.565 1.000 4.334 7.668
unitless

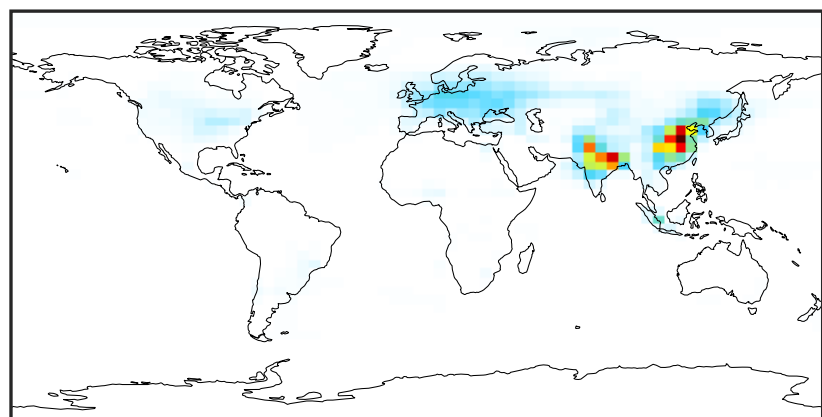
Ratio (1x1.25)
Dev/Ref, Fixed Range



0.50 0.75 1.00 1.50 2.00
unitless

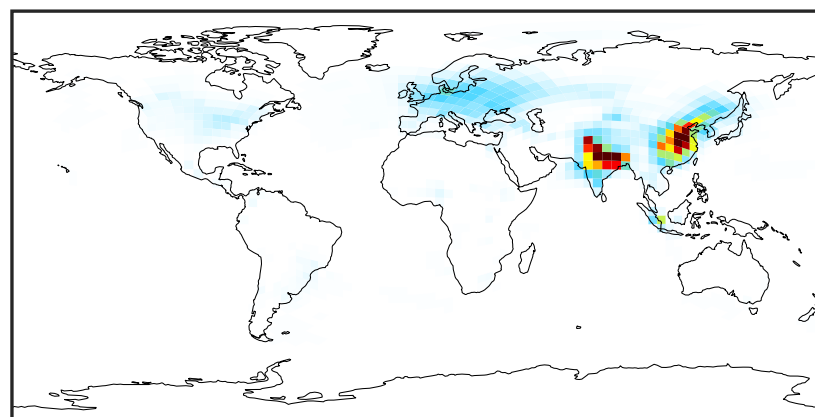
SpeciesConcVV_NIT (Oct2019)

GCC_14.2.0 (Ref)
4.0x5.0



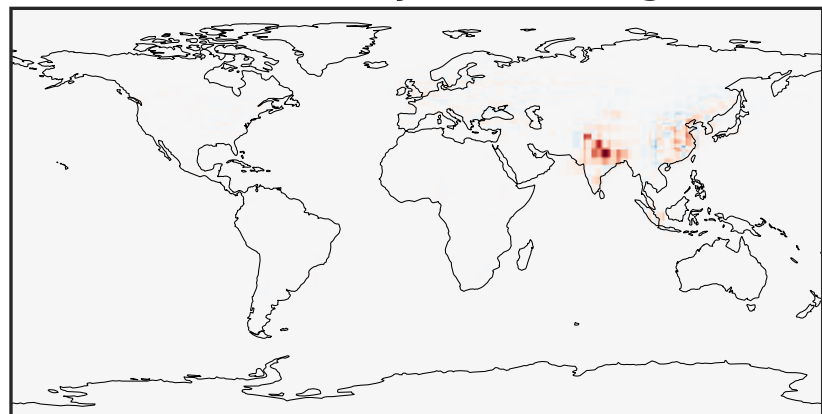
0.00 5.14 10.28 15.42 20.56
µg/m³

GCHP_14.2.0 (Dev)
c24



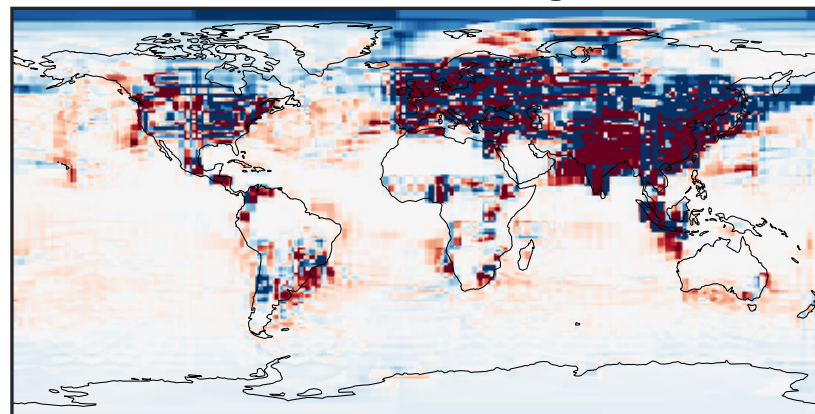
0.00 5.14 10.28 15.42 20.56
µg/m³

Difference (1x1.25)
Dev - Ref, Dynamic Range



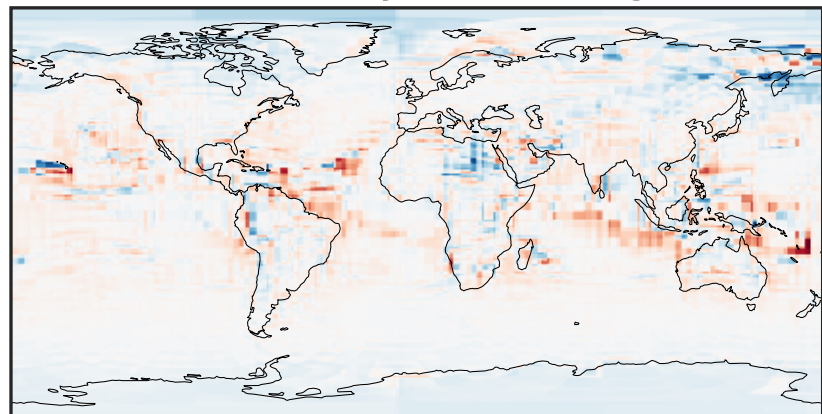
-16.59 -8.29 0.00 8.29 16.59
µg/m³

Difference (1x1.25)
Dev - Ref, Restricted Range [5%,95%]



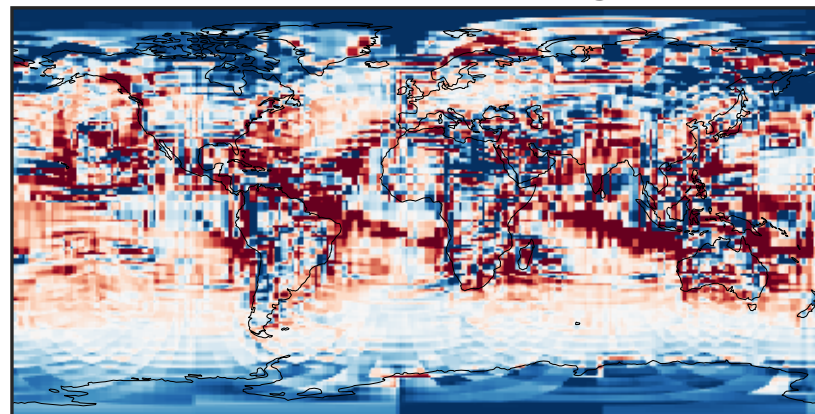
-0.0888 -0.0444 0.0000 0.0444 0.0888
µg/m³

Ratio (1x1.25)
Dev/Ref, Dynamic Range



1e-02 1e-01 1 10 100
unitless

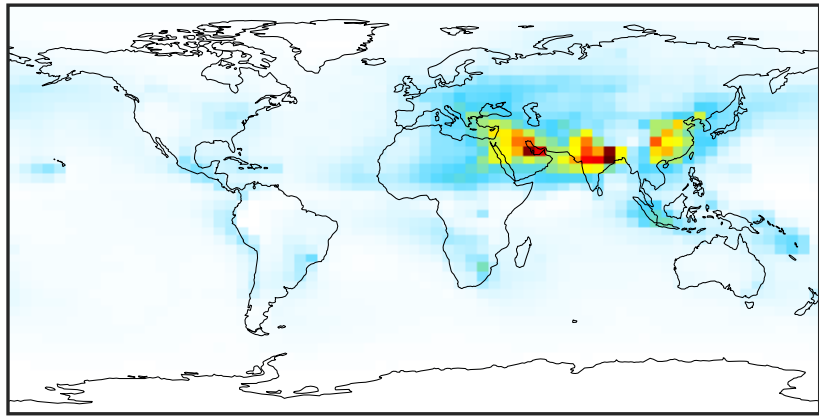
Ratio (1x1.25)
Dev/Ref, Fixed Range



0.50 0.75 1.00 1.50 2.00
unitless

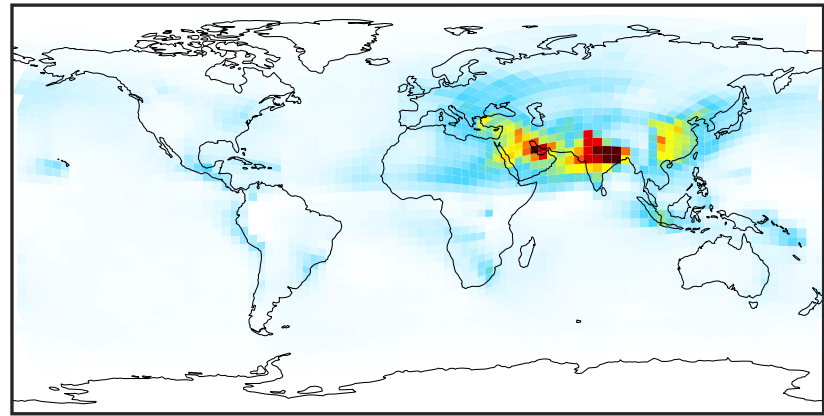
SpeciesConcVV_SO4 (Oct2019)

GCC_14.2.0 (Ref)
4.0x5.0



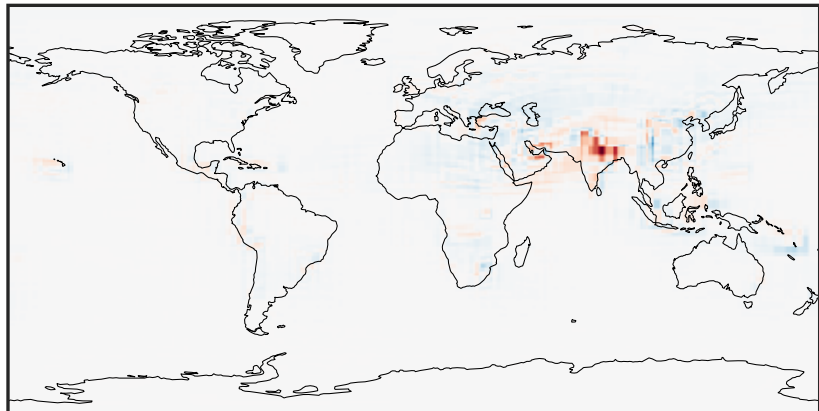
0.09 4.73 9.45 14.18 19.00
 $\mu\text{g}/\text{m}^3$

GCHP_14.2.0 (Dev)
c24



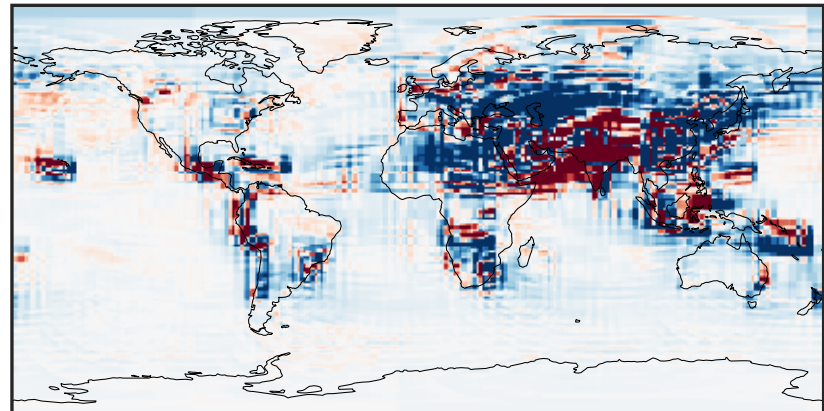
0.09 4.73 9.45 14.18 19.00
 $\mu\text{g}/\text{m}^3$

Difference (1x1.25)
Dev - Ref, Dynamic Range



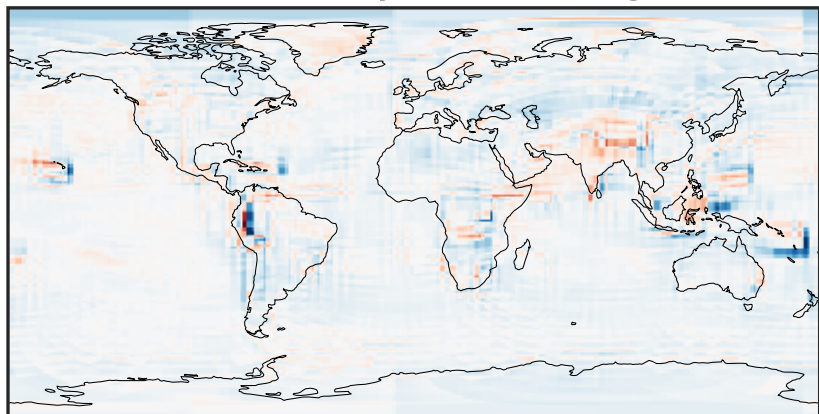
-11.58 -5.79 0.00 5.79 11.58
 $\mu\text{g}/\text{m}^3$

Difference (1x1.25)
Dev - Ref, Restricted Range [5%,95%]



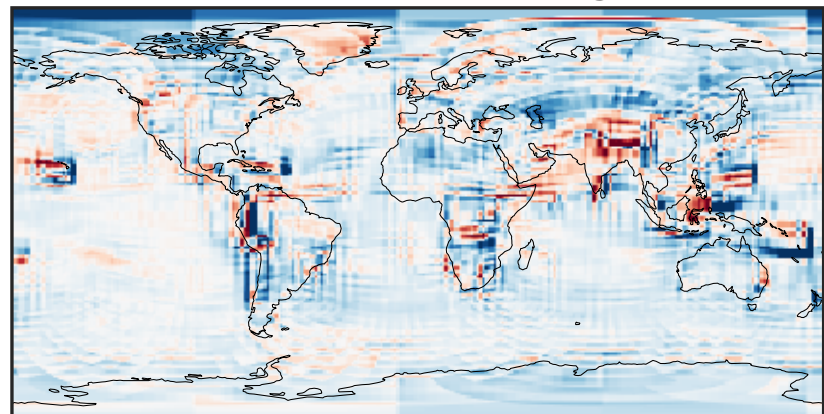
-0.4837 -0.2418 0.0000 0.2418 0.4837
 $\mu\text{g}/\text{m}^3$

Ratio (1x1.25)
Dev/Ref, Dynamic Range



0.151 0.575 1.000 3.813 6.626
unitless

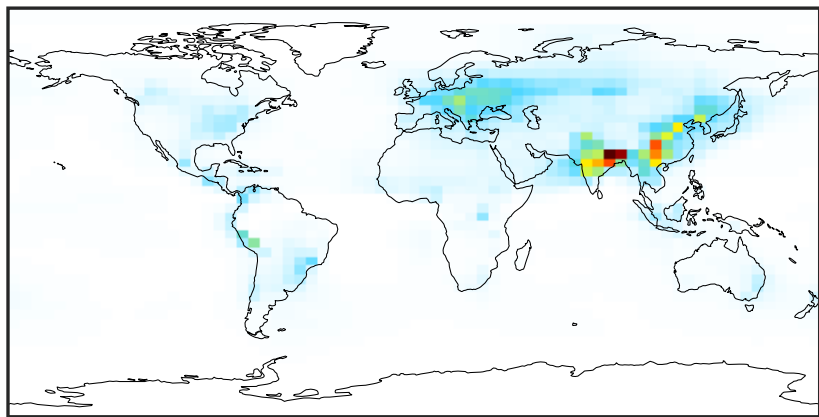
Ratio (1x1.25)
Dev/Ref, Fixed Range



0.50 0.75 1.00 1.50 2.00
unitless

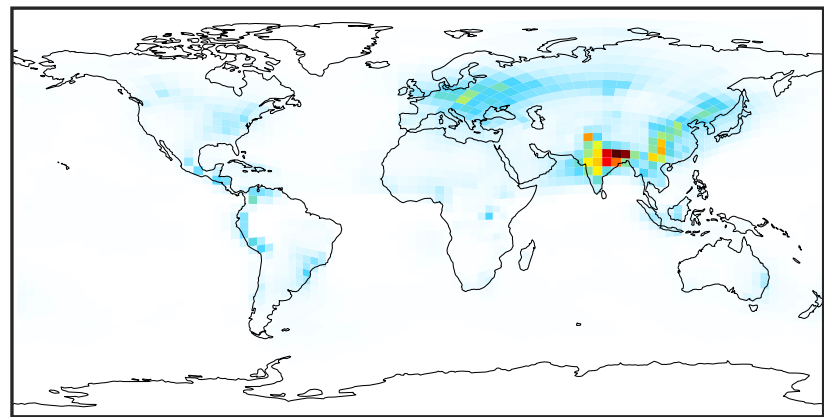
SpeciesConcVV_HMS (Oct2019)

GCC_14.2.0 (Ref)
4.0x5.0



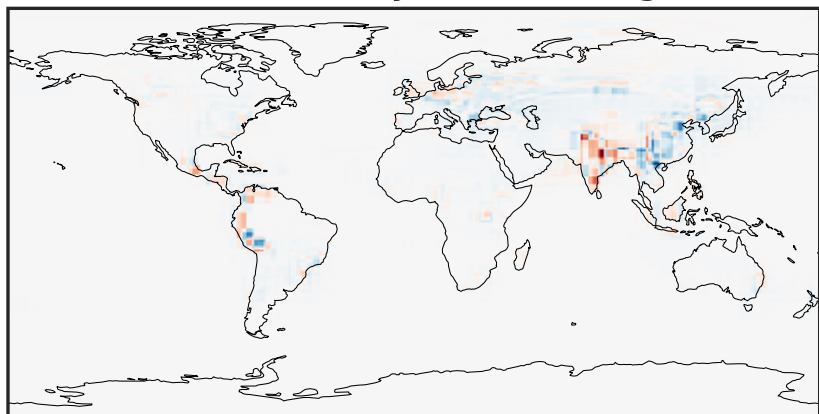
0.002 0.782 1.564 2.345 3.130
 $\mu\text{g}/\text{m}^3$

GCHP_14.2.0 (Dev)
c24



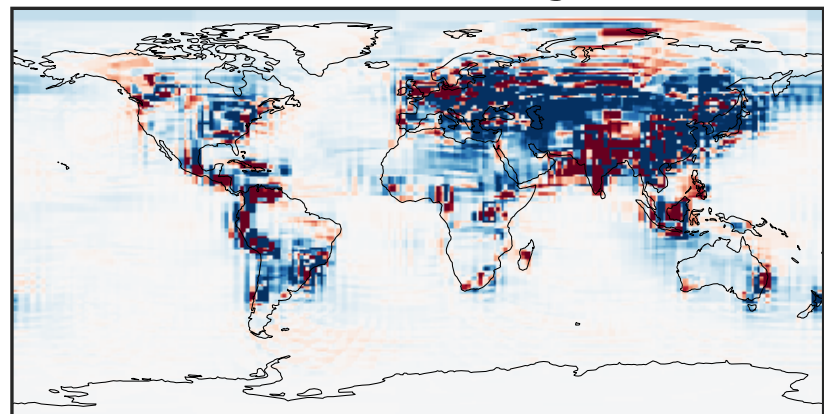
0.002 0.782 1.564 2.345 3.130
 $\mu\text{g}/\text{m}^3$

Difference (1x1.25)
Dev - Ref, Dynamic Range



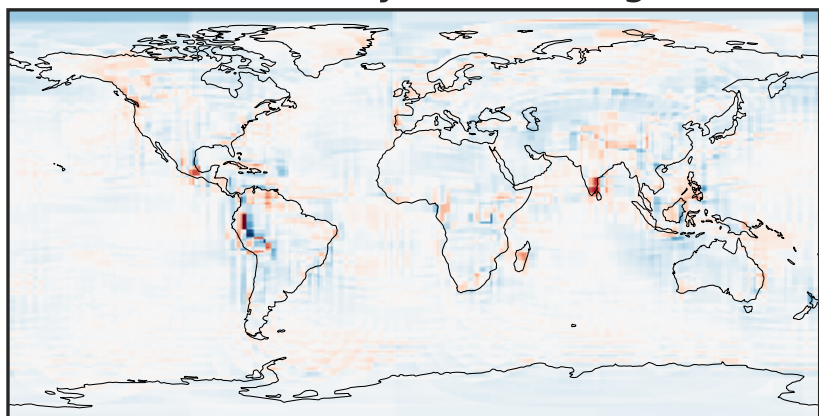
-1.275 -0.638 0.000 0.638 1.275
 $\mu\text{g}/\text{m}^3$

Difference (1x1.25)
Dev - Ref, Restricted Range [5%,95%]



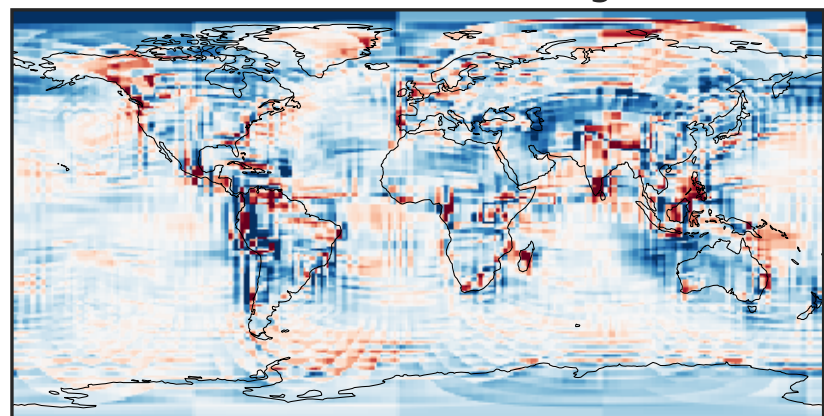
-0.025 0.000 0.025
 $\mu\text{g}/\text{m}^3$

Ratio (1x1.25)
Dev/Ref, Dynamic Range



1e-01 1 10
unitless

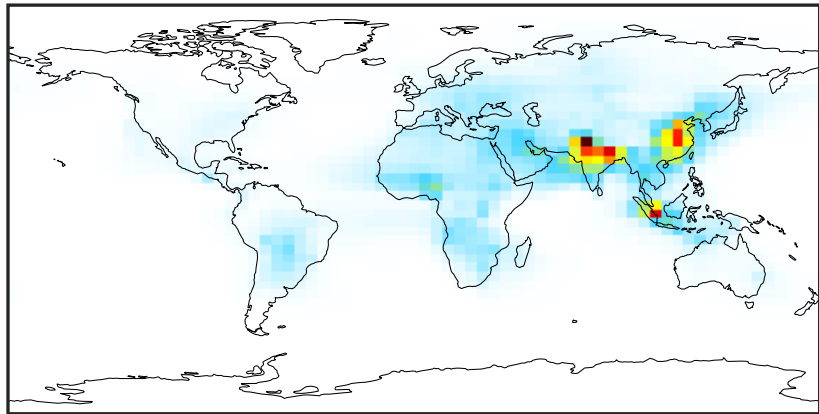
Ratio (1x1.25)
Dev/Ref, Fixed Range



0.50 0.75 1.00 1.50 2.00
unitless

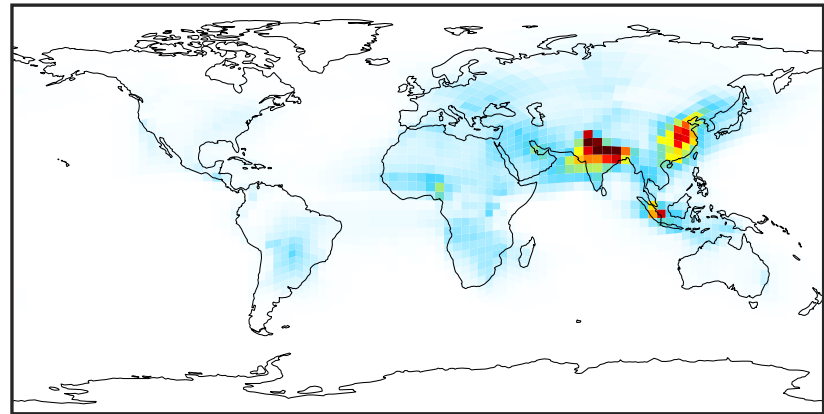
SpeciesConcVV_BCPI (Oct2019)

GCC_14.2.0 (Ref)
4.0x5.0



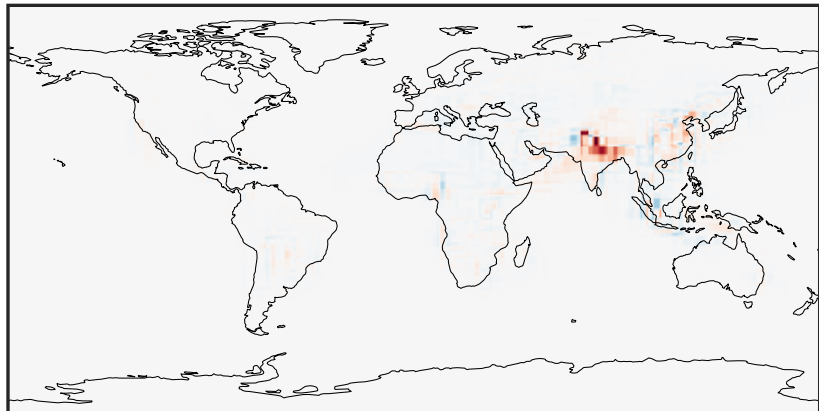
0.000 0.559 1.118 1.678 2.237
 $\mu\text{g}/\text{m}^3$

GCHP_14.2.0 (Dev)
c24



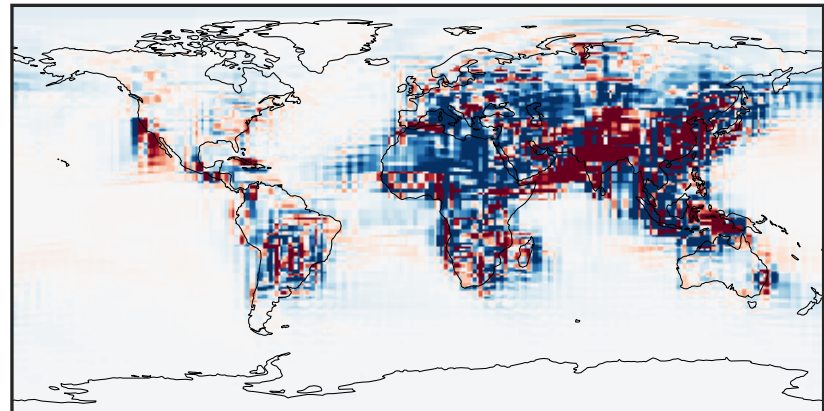
0.000 0.559 1.118 1.678 2.237
 $\mu\text{g}/\text{m}^3$

Difference (1x1.25)
Dev - Ref, Dynamic Range



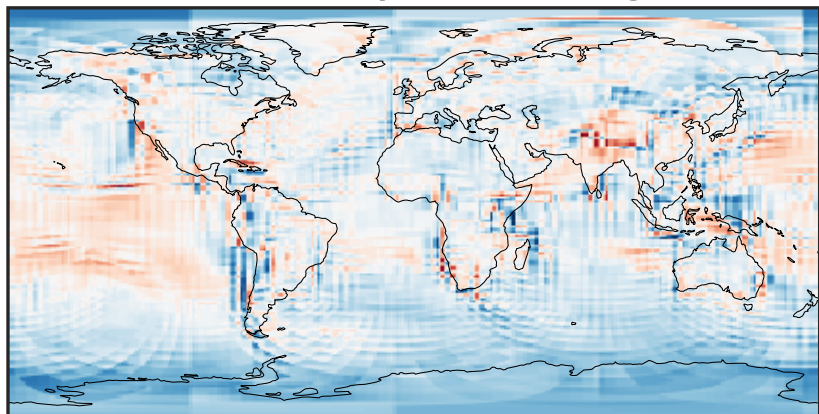
-1.394 -0.697 0.000 0.697 1.394
 $\mu\text{g}/\text{m}^3$

Difference (1x1.25)
Dev - Ref, Restricted Range [5%,95%]



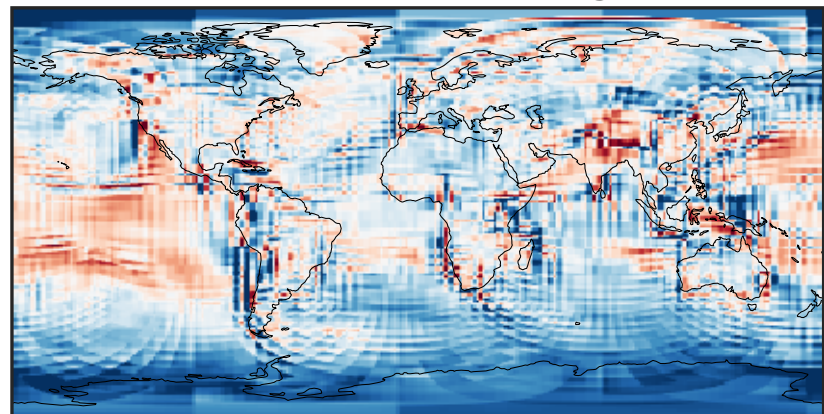
-0.015 0.000 0.015
 $\mu\text{g}/\text{m}^3$

Ratio (1x1.25)
Dev/Ref, Dynamic Range



0.282 0.641 1.000 2.274 3.548
unitless

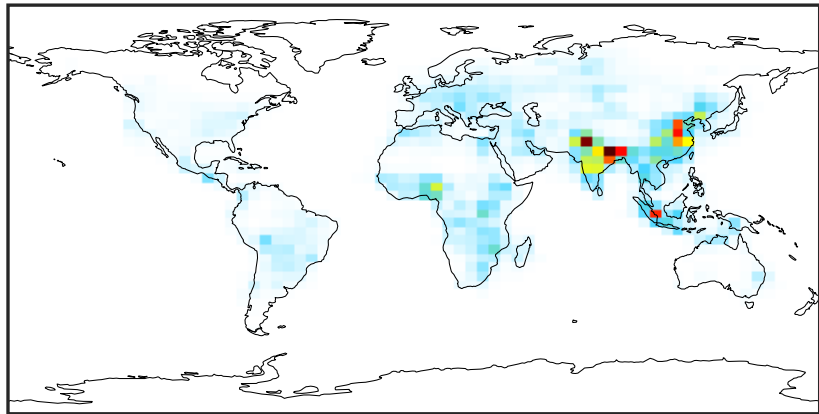
Ratio (1x1.25)
Dev/Ref, Fixed Range



0.50 0.75 1.00 1.50 2.00
unitless

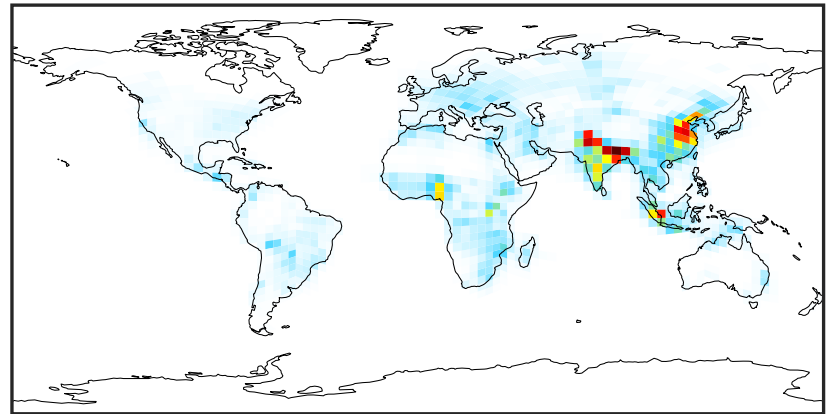
SpeciesConcVV_BCPO (Oct2019)

GCC_14.2.0 (Ref)
4.0x5.0



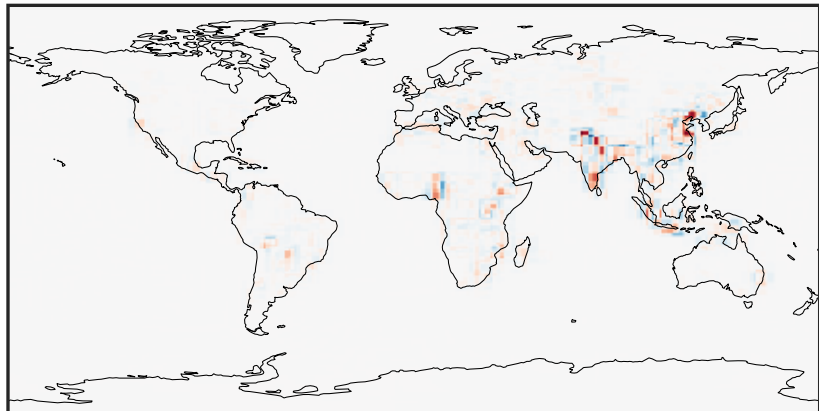
0.000 0.388 0.776 1.163 1.551
µg/m3

GCHP_14.2.0 (Dev)
c24



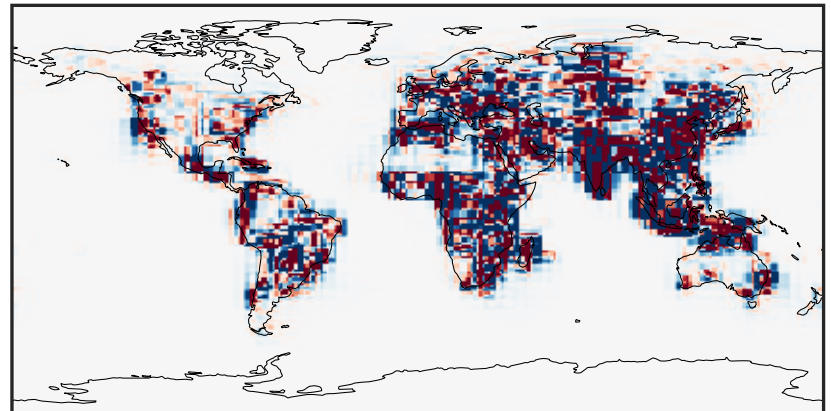
0.000 0.388 0.776 1.163 1.551
µg/m3

Difference (1x1.25)
Dev - Ref, Dynamic Range



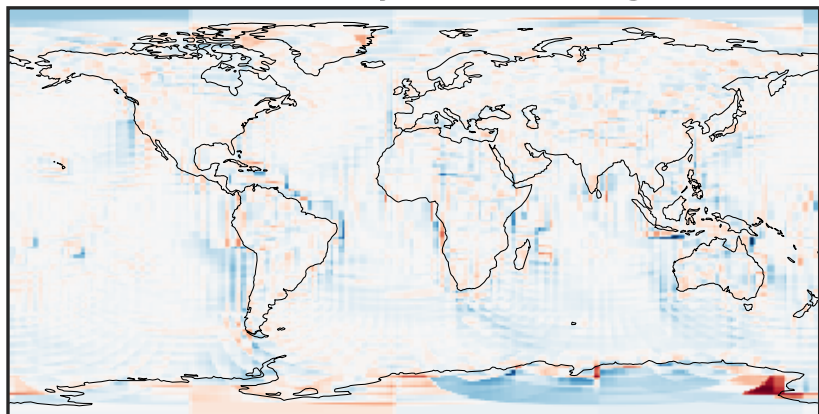
-0.724 -0.362 0.000 0.362 0.724
µg/m3

Difference (1x1.25)
Dev - Ref, Restricted Range [5%,95%]



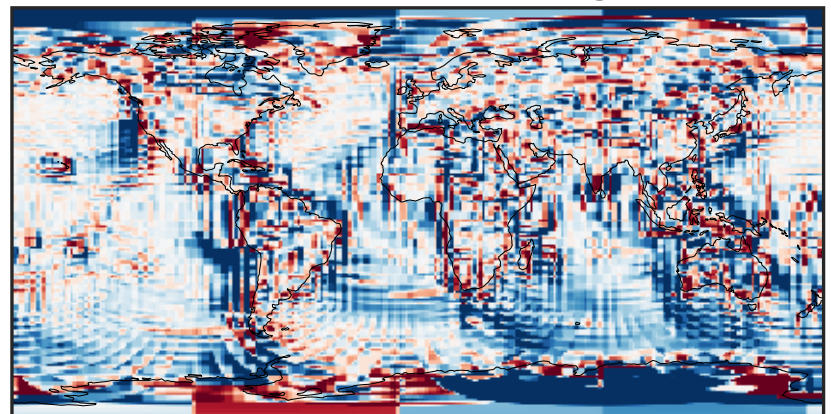
-0.008 0.000 0.008
µg/m3

Ratio (1x1.25)
Dev/Ref, Dynamic Range



1e-02 1e-01 1 10 100
unitless

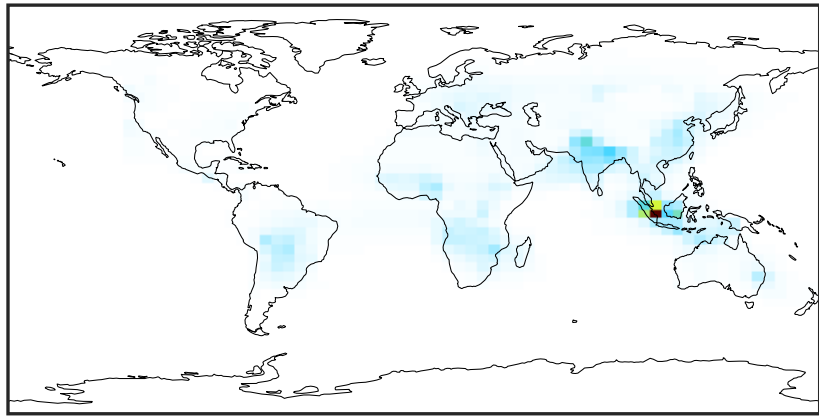
Ratio (1x1.25)
Dev/Ref, Fixed Range



0.50 0.75 1.00 1.50 2.00
unitless

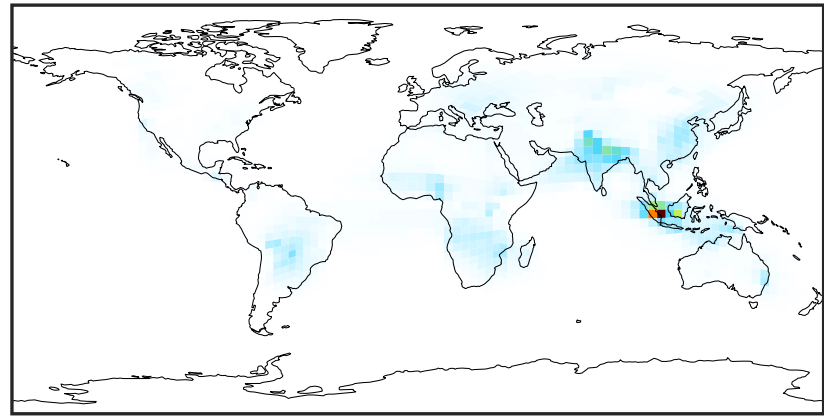
SpeciesConcVV_OCPI (Oct2019)

GCC_14.2.0 (Ref)
4.0x5.0



0.00 7.07 14.13 21.20 28.27
µg/m3

GCHP_14.2.0 (Dev)
c24



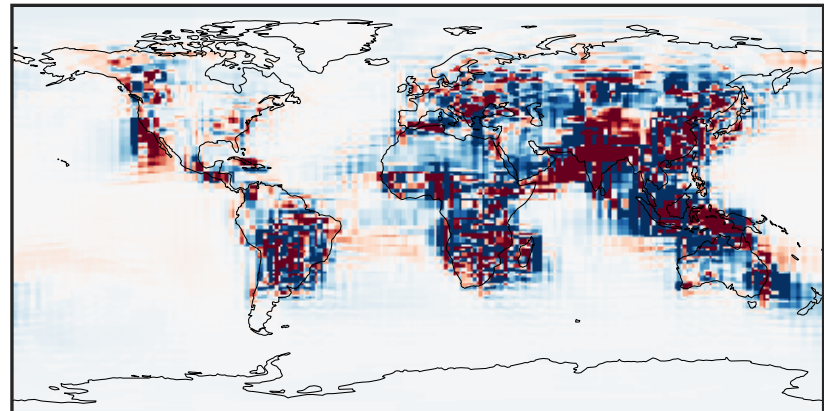
0.00 7.07 14.13 21.20 28.27
µg/m3

Difference (1x1.25)
Dev - Ref, Dynamic Range



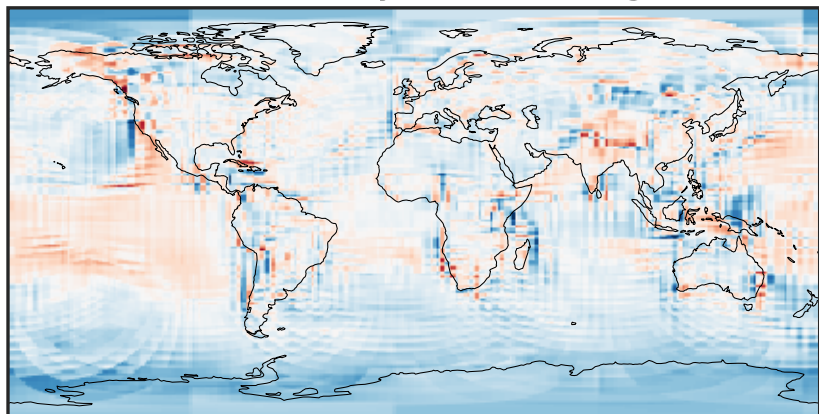
-11.56 -5.78 0.00 5.78 11.56
µg/m3

Difference (1x1.25)
Dev - Ref, Restricted Range [5%,95%]



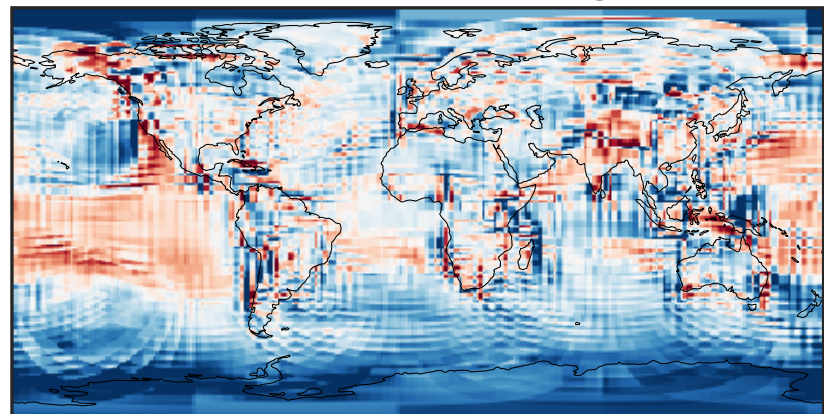
-0.1105 -0.0553 0.0000 0.0553 0.1105
µg/m3

Ratio (1x1.25)
Dev/Ref, Dynamic Range



0.206 0.603 1.000 2.922 4.844
unitless

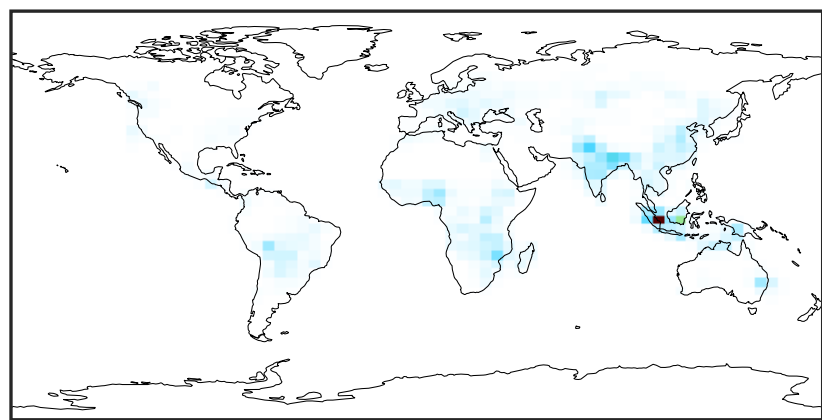
Ratio (1x1.25)
Dev/Ref, Fixed Range



0.50 0.75 1.00 1.50 2.00
unitless

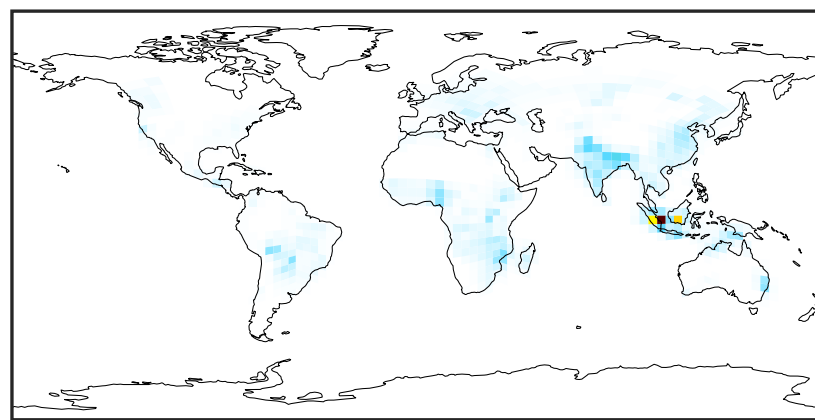
SpeciesConcVV_OCPO (Oct2019)

GCC_14.2.0 (Ref)
4.0x5.0



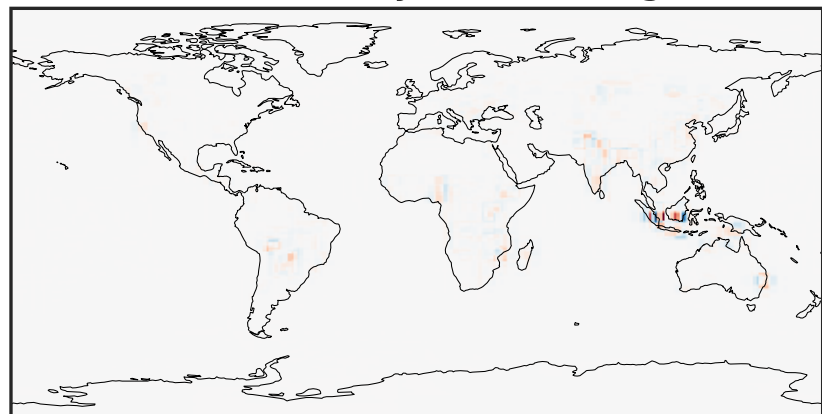
0.00 2.76 5.53 8.29 11.05
µg/m3

GCHP_14.2.0 (Dev)
c24



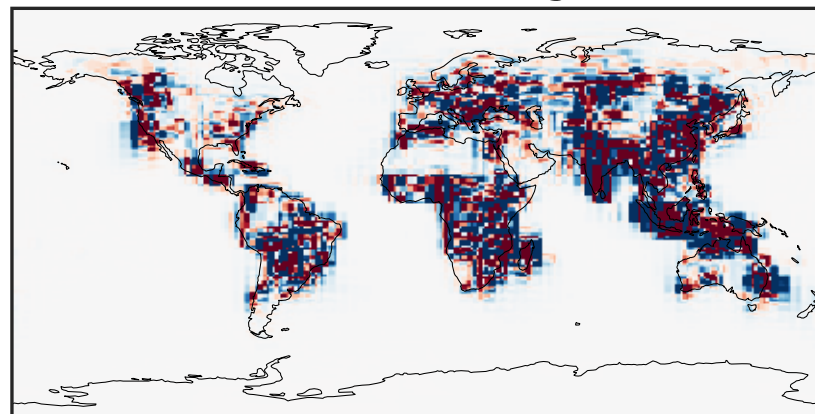
0.00 2.76 5.53 8.29 11.05
µg/m3

Difference (1x1.25)
Dev - Ref, Dynamic Range



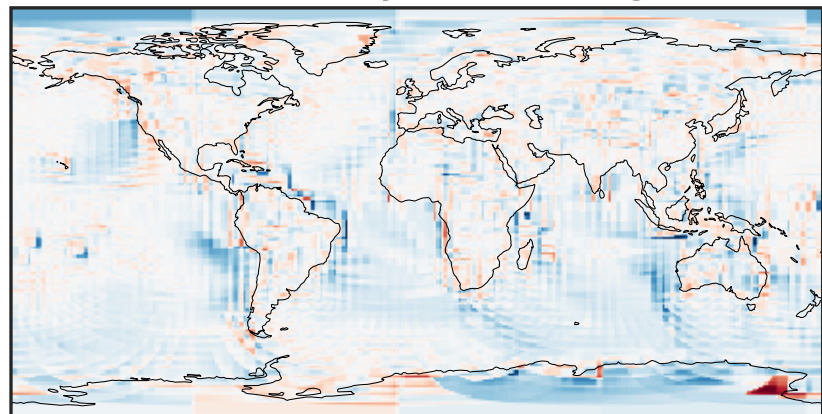
-4.503 -2.252 0.000 2.252 4.503
µg/m3

Difference (1x1.25)
Dev - Ref, Restricted Range [5%,95%]



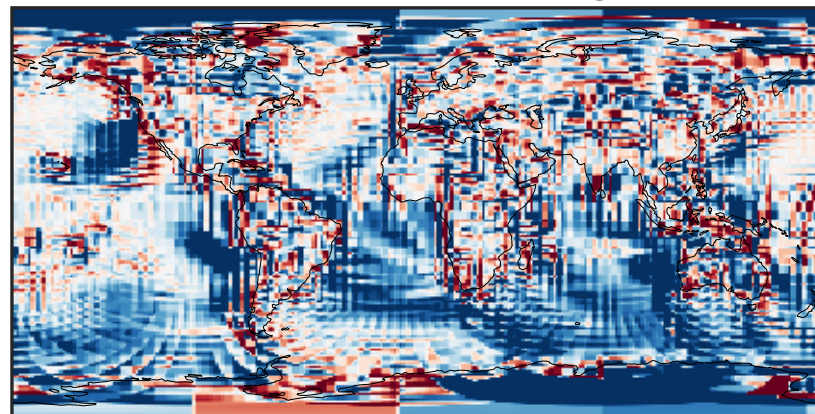
-0.02 0.00 0.02
µg/m3

Ratio (1x1.25)
Dev/Ref, Dynamic Range



1e-01 1 10
unitless

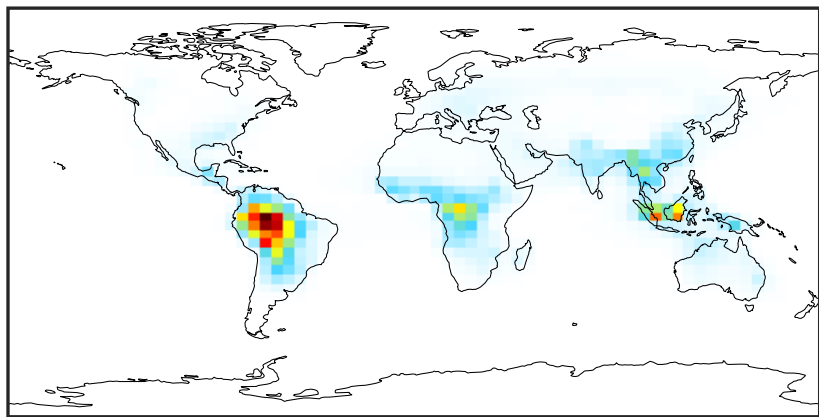
Ratio (1x1.25)
Dev/Ref, Fixed Range



0.50 0.75 1.00 1.50 2.00
unitless

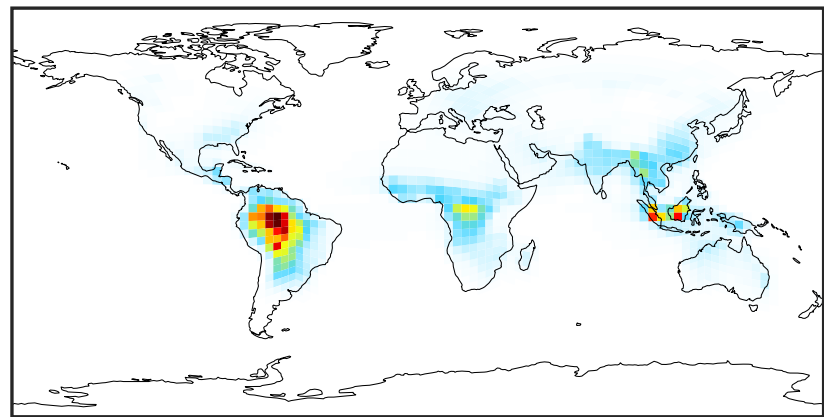
SpeciesConcVV_Complex_SOA (Oct2019)

GCC_14.2.0 (Ref)
4.0x5.0



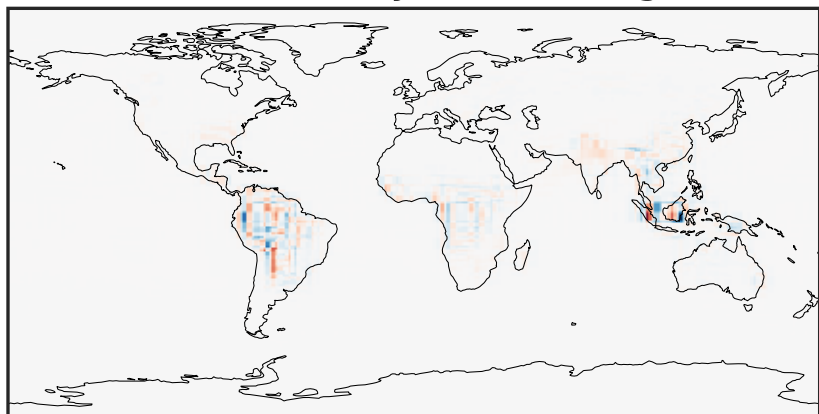
0.001 1.834 3.668 5.502 7.337
 $\mu\text{g}/\text{m}^3$

GCHP_14.2.0 (Dev)
c24



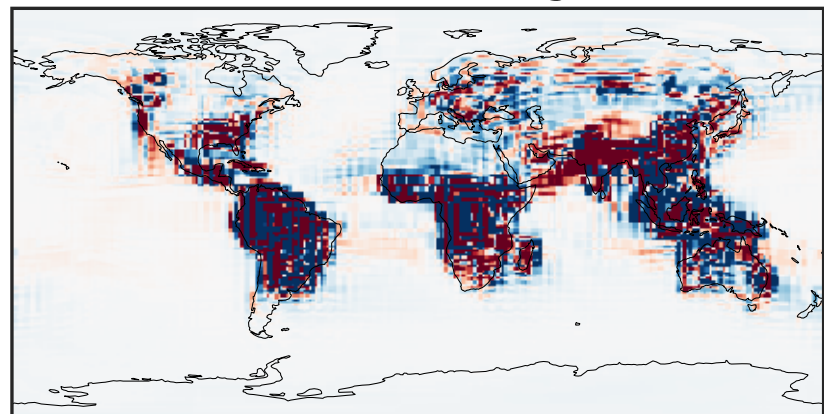
0.001 1.834 3.668 5.502 7.337
 $\mu\text{g}/\text{m}^3$

Difference (1x1.25)
Dev - Ref, Dynamic Range



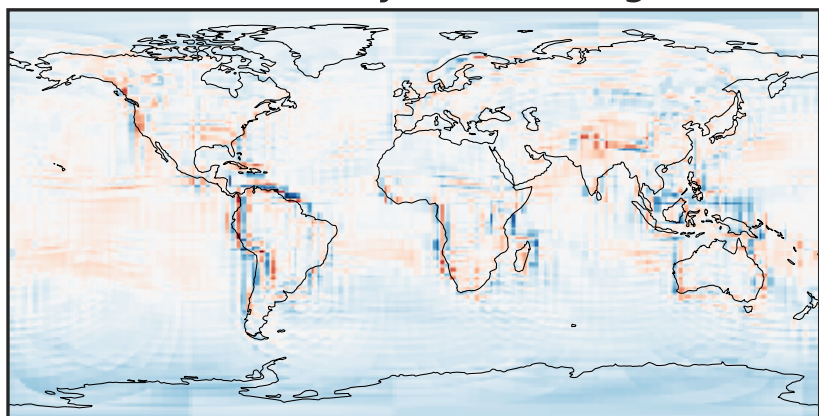
-3.143 -1.572 0.000 1.572 3.143
 $\mu\text{g}/\text{m}^3$

Difference (1x1.25)
Dev - Ref, Restricted Range [5%,95%]



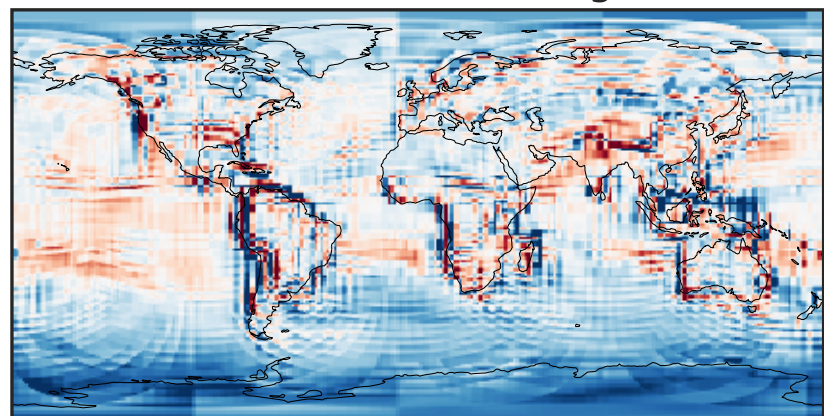
-0.02 0.00 0.02
 $\mu\text{g}/\text{m}^3$

Ratio (1x1.25)
Dev/Ref, Dynamic Range



0.137 0.568 1.000 4.162 7.323
unitless

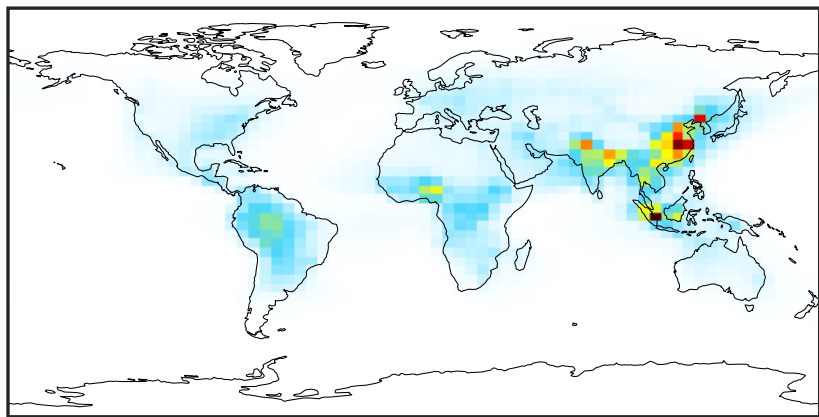
Ratio (1x1.25)
Dev/Ref, Fixed Range



0.50 0.75 1.00 1.50 2.00
unitless

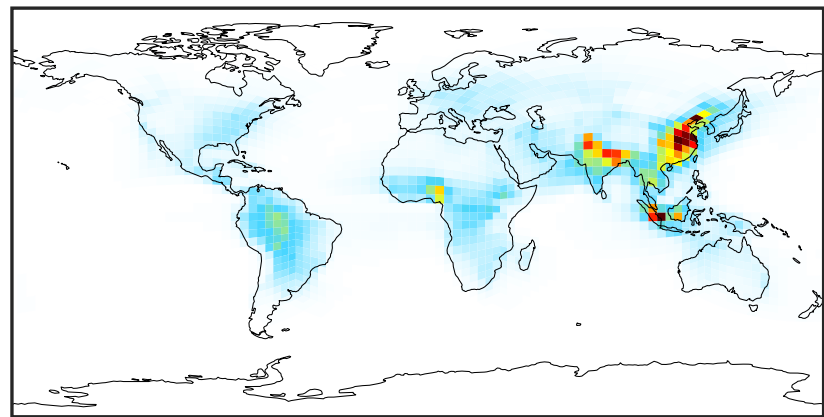
SpeciesConcVV_Simple_SOA (Oct2019)

GCC_14.2.0 (Ref)
4.0x5.0



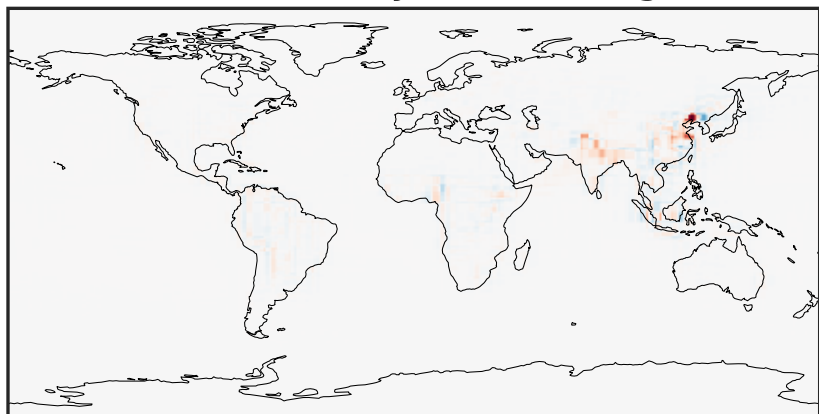
0.01 6.35 12.70 19.05 25.41
 $\mu\text{g}/\text{m}^3$

GCHP_14.2.0 (Dev)
c24



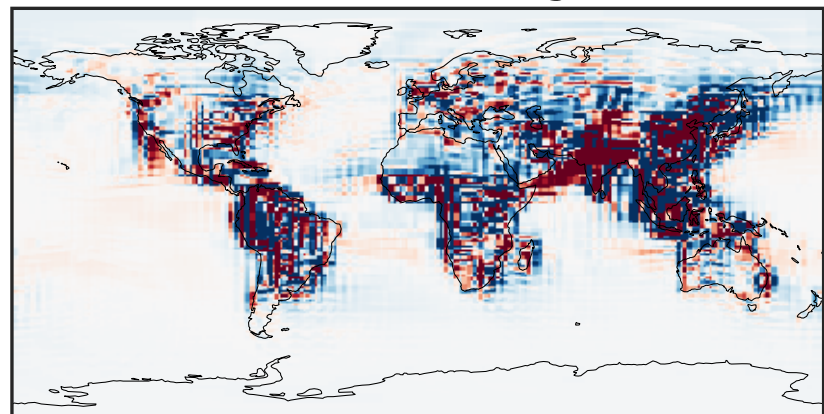
0.01 6.35 12.70 19.05 25.41
 $\mu\text{g}/\text{m}^3$

Difference (1x1.25)
Dev - Ref, Dynamic Range



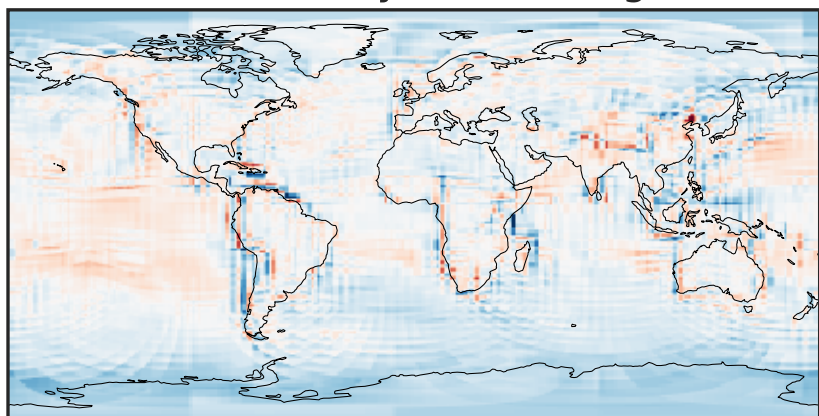
-23.76 -11.88 0.00 11.88 23.76
 $\mu\text{g}/\text{m}^3$

Difference (1x1.25)
Dev - Ref, Restricted Range [5%,95%]



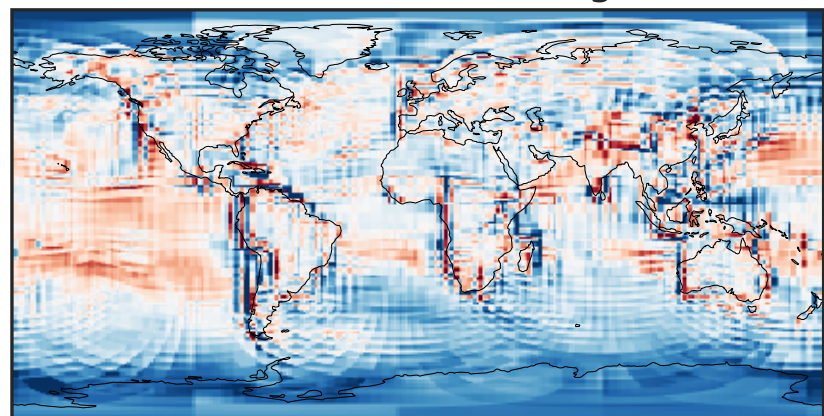
-0.2918 -0.1459 0.0000 0.1459 0.2918
 $\mu\text{g}/\text{m}^3$

Ratio (1x1.25)
Dev/Ref, Dynamic Range



0.196 0.598 1.000 3.052 5.105
unitless

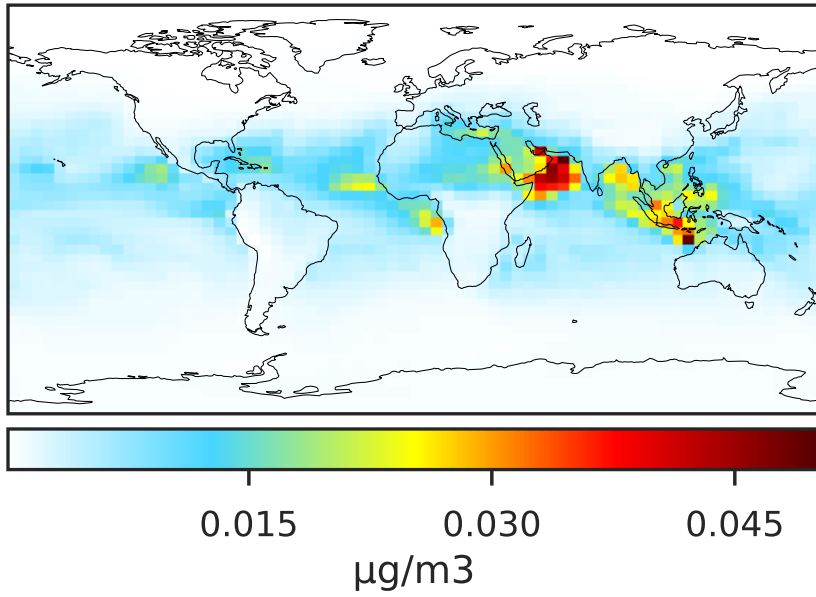
Ratio (1x1.25)
Dev/Ref, Fixed Range



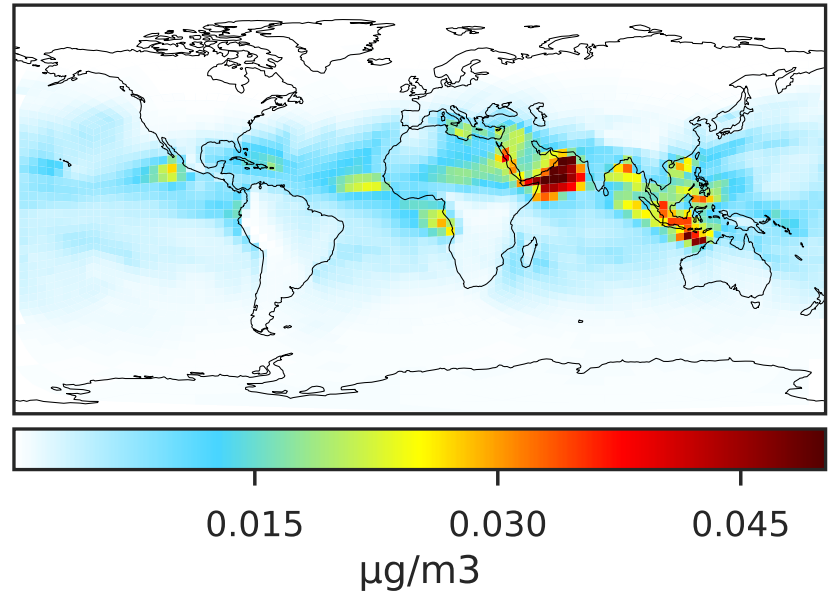
0.50 0.75 1.00 1.50 2.00
unitless

SpeciesConcVV_AERI (Oct2019)

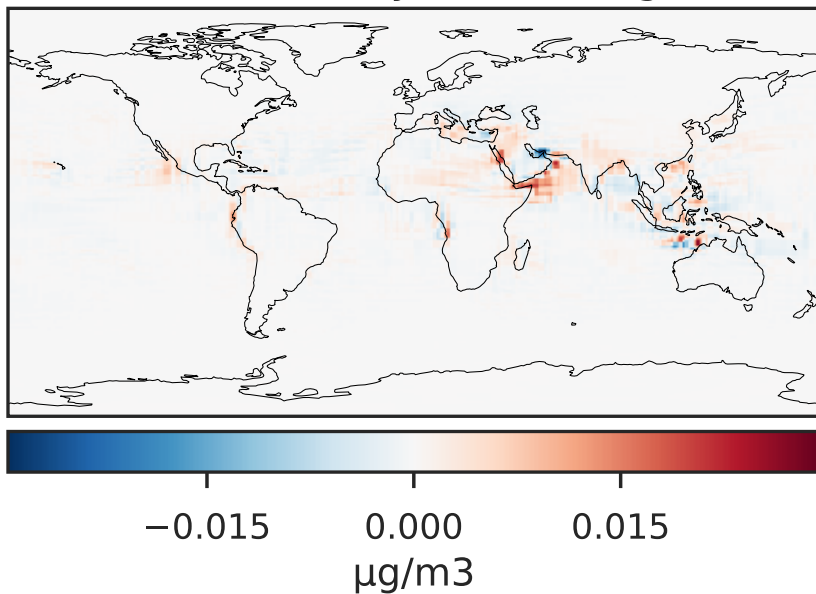
GCC_14.2.0 (Ref)
4.0x5.0



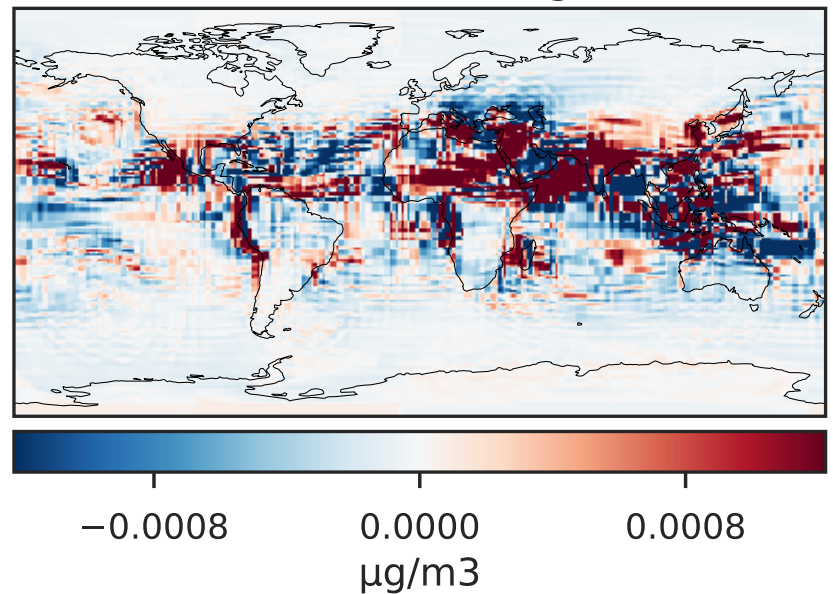
GCHP_14.2.0 (Dev)
c24



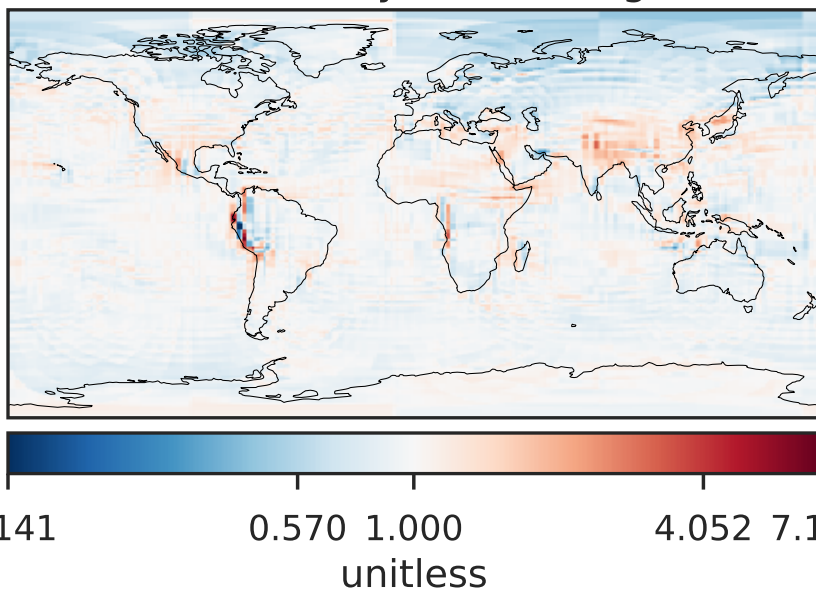
Difference (1x1.25)
Dev - Ref, Dynamic Range



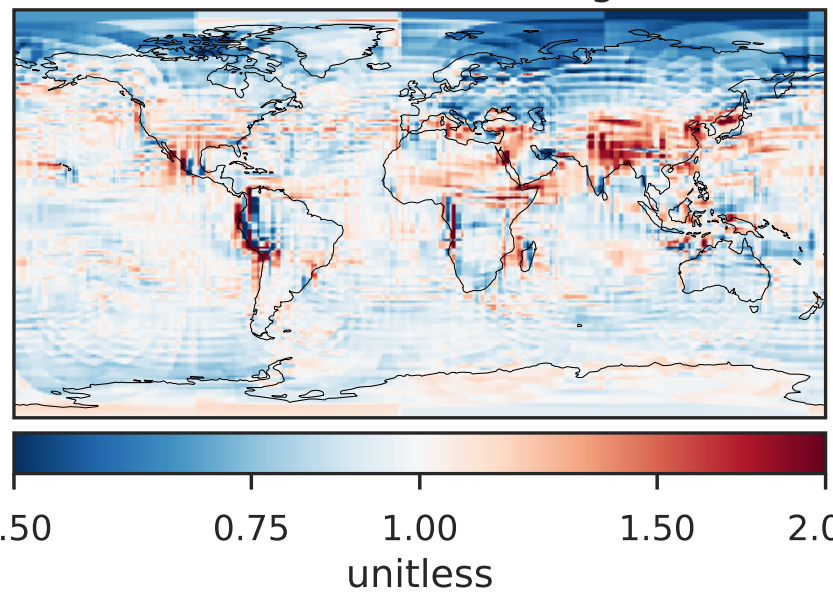
Difference (1x1.25)
Dev - Ref, Restricted Range [5%,95%]



Ratio (1x1.25)
Dev/Ref, Dynamic Range

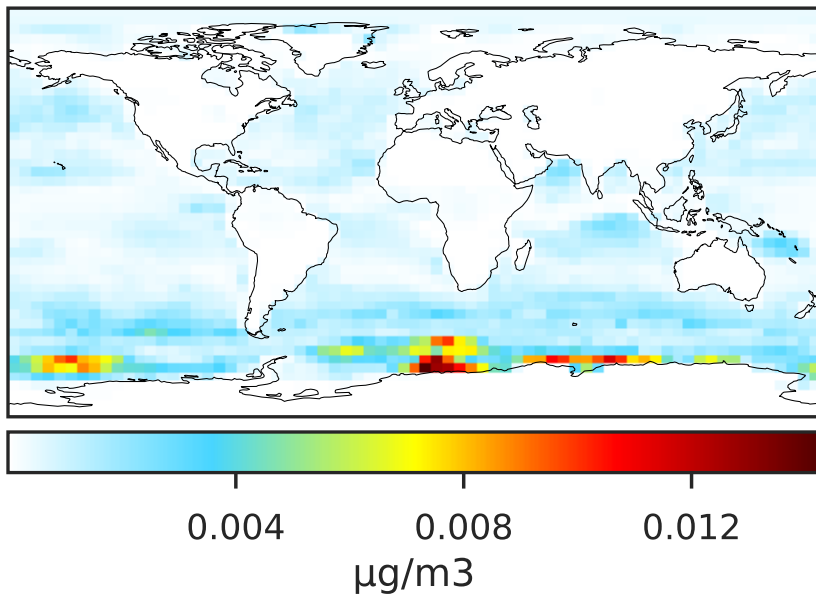


Ratio (1x1.25)
Dev/Ref, Fixed Range

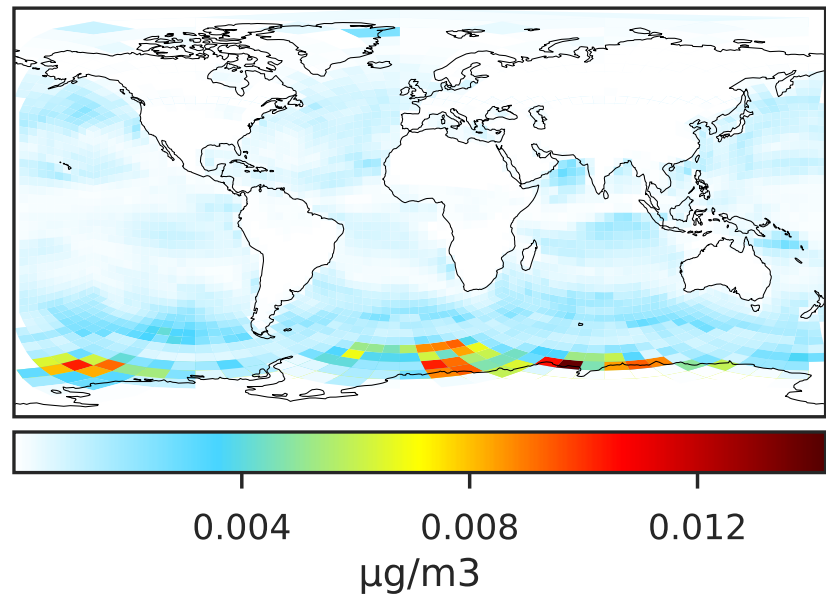


SpeciesConcVV_BrSALA (Oct2019)

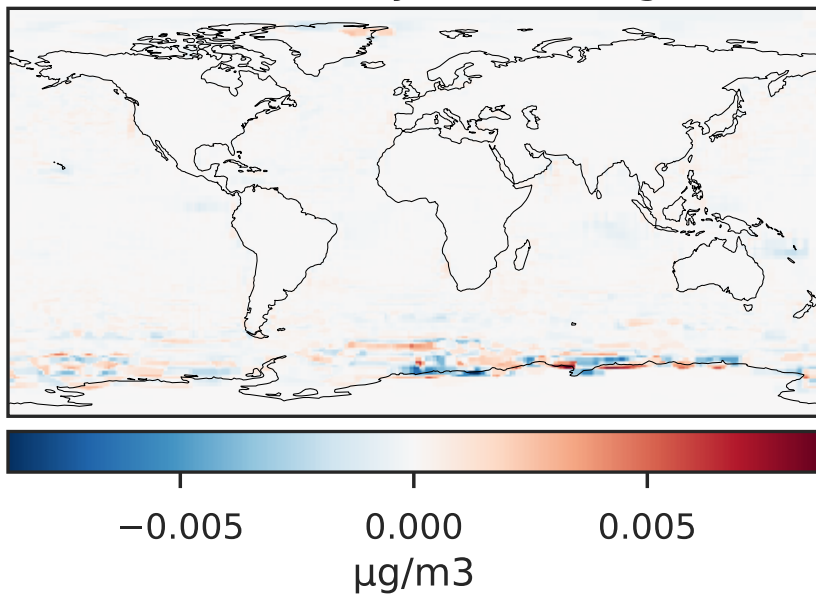
GCC_14.2.0 (Ref)
4.0x5.0



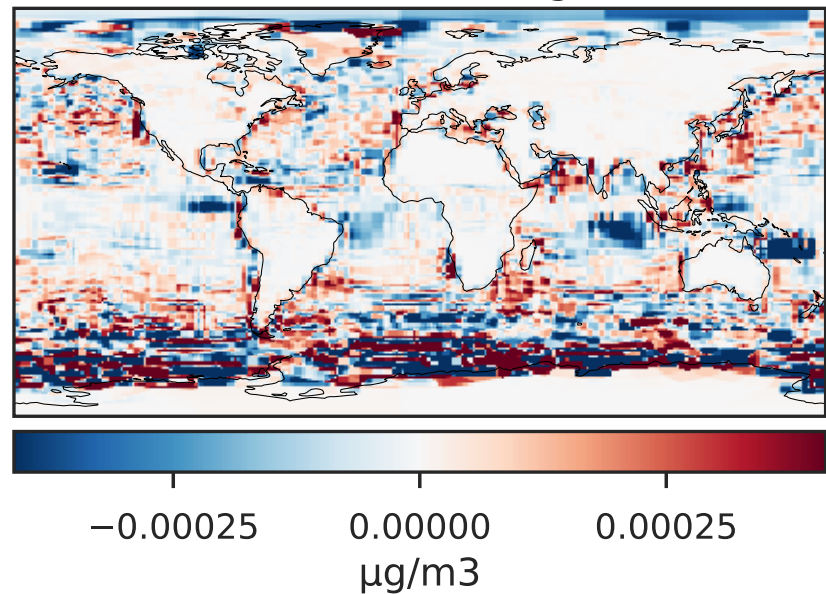
GCHP_14.2.0 (Dev)
c24



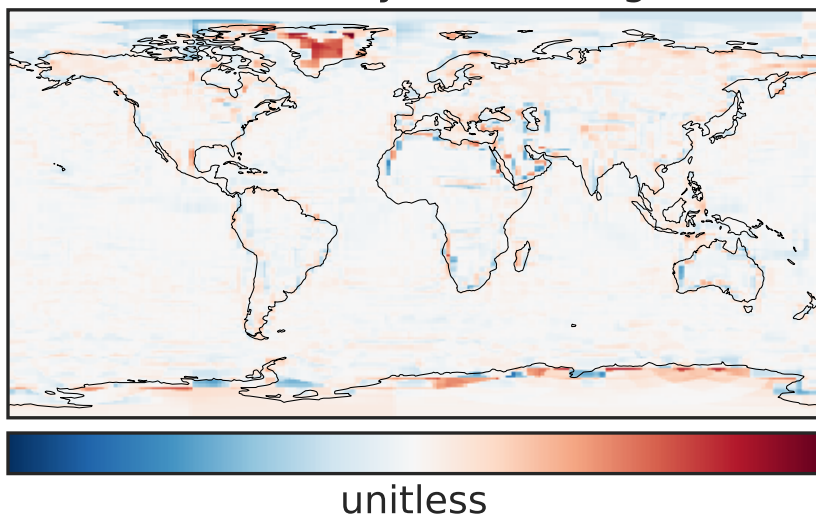
Difference (1x1.25)
Dev - Ref, Dynamic Range



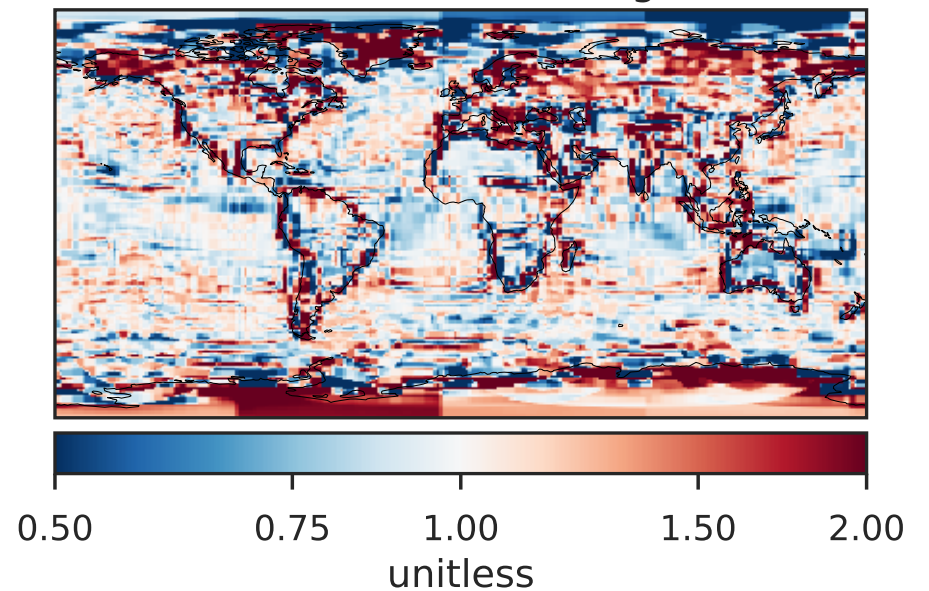
Difference (1x1.25)
Dev - Ref, Restricted Range [5%,95%]



Ratio (1x1.25)
Dev/Ref, Dynamic Range

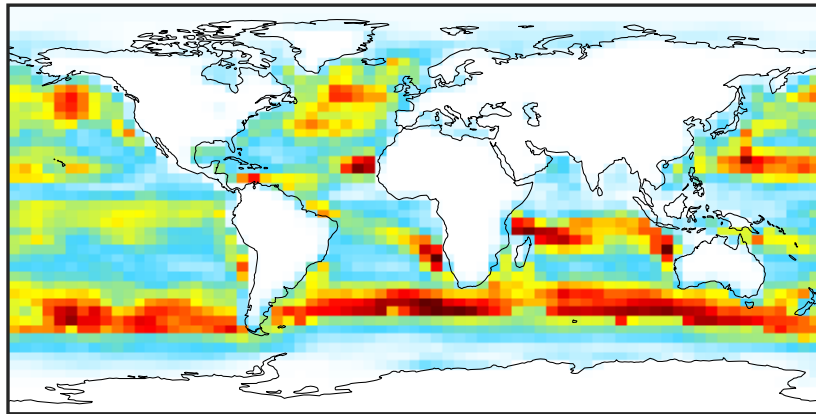


Ratio (1x1.25)
Dev/Ref, Fixed Range



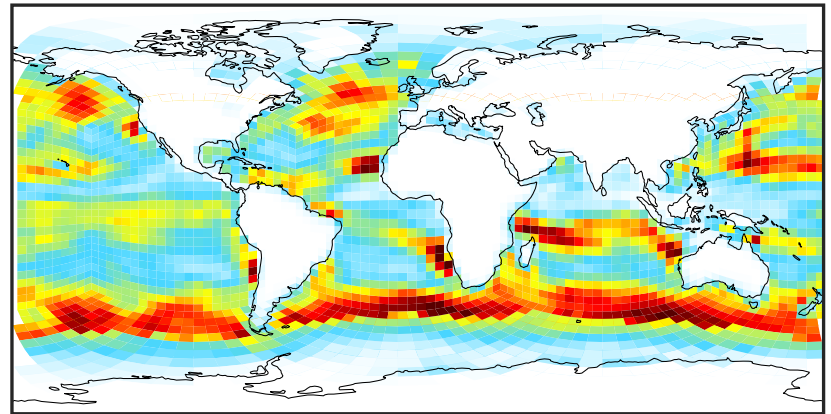
SpeciesConcVV_BrSALC (Oct2019)

GCC_14.2.0 (Ref)
4.0x5.0



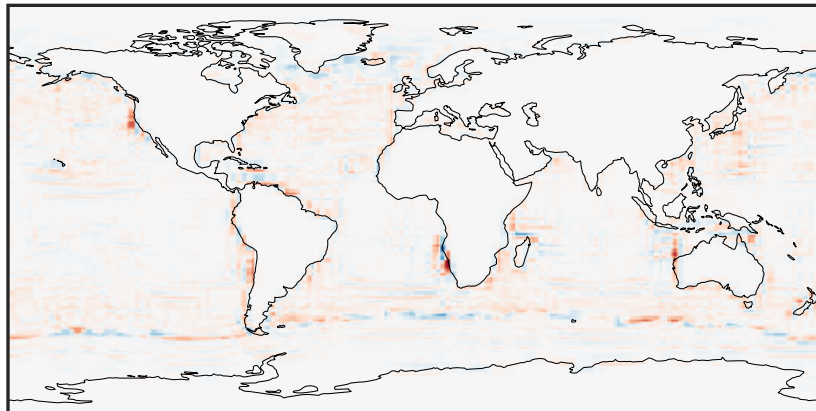
0.015 0.030
 $\mu\text{g}/\text{m}^3$

GCHP_14.2.0 (Dev)
c24



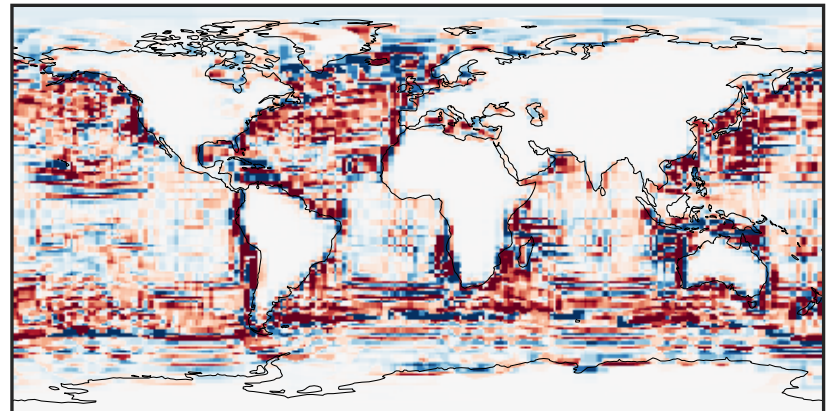
0.015 0.030
 $\mu\text{g}/\text{m}^3$

Difference (1x1.25)
Dev - Ref, Dynamic Range



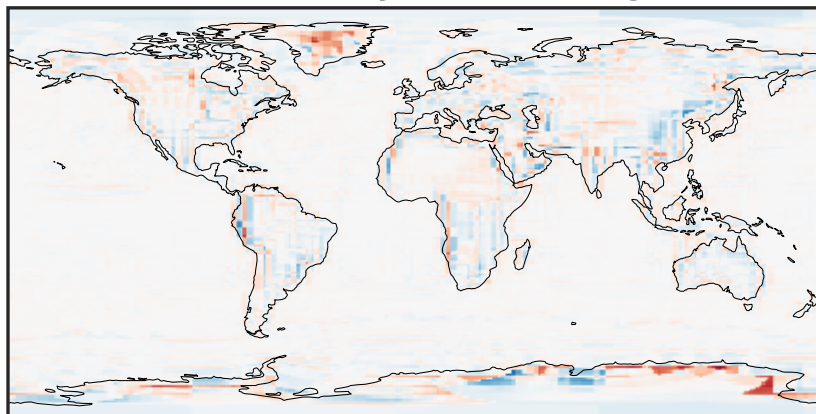
-0.02 0.00 0.02
 $\mu\text{g}/\text{m}^3$

Difference (1x1.25)
Dev - Ref, Restricted Range [5%,95%]



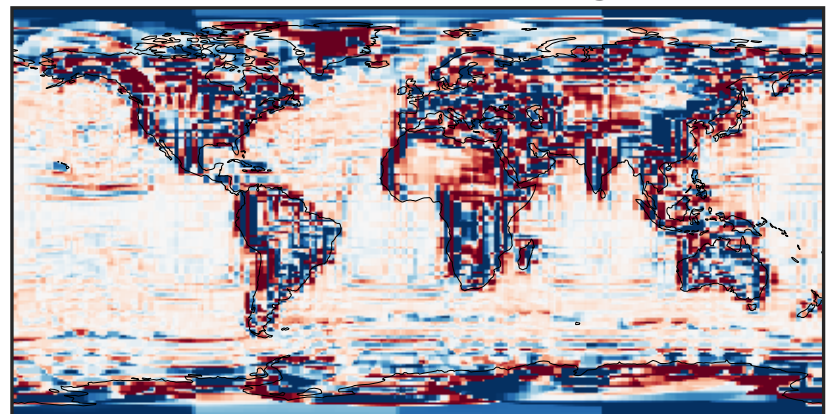
-0.002 0.000 0.002
 $\mu\text{g}/\text{m}^3$

Ratio (1x1.25)
Dev/Ref, Dynamic Range



unitless

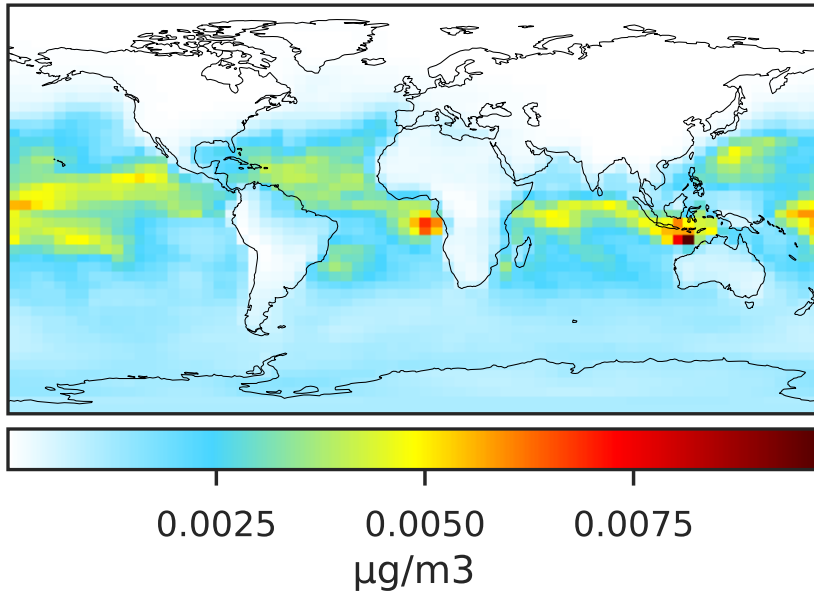
Ratio (1x1.25)
Dev/Ref, Fixed Range



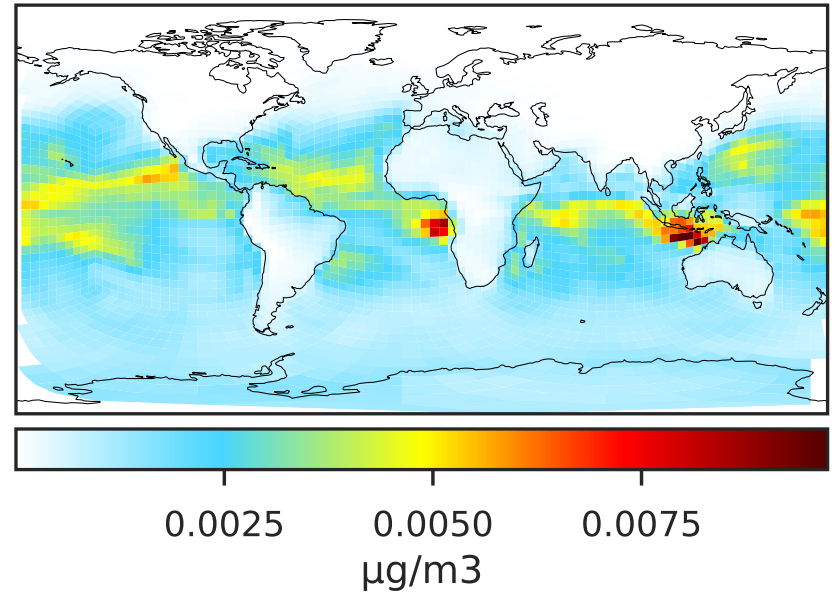
0.50 0.75 1.00 1.50 2.00
unitless

SpeciesConcVV_ISALA (Oct2019)

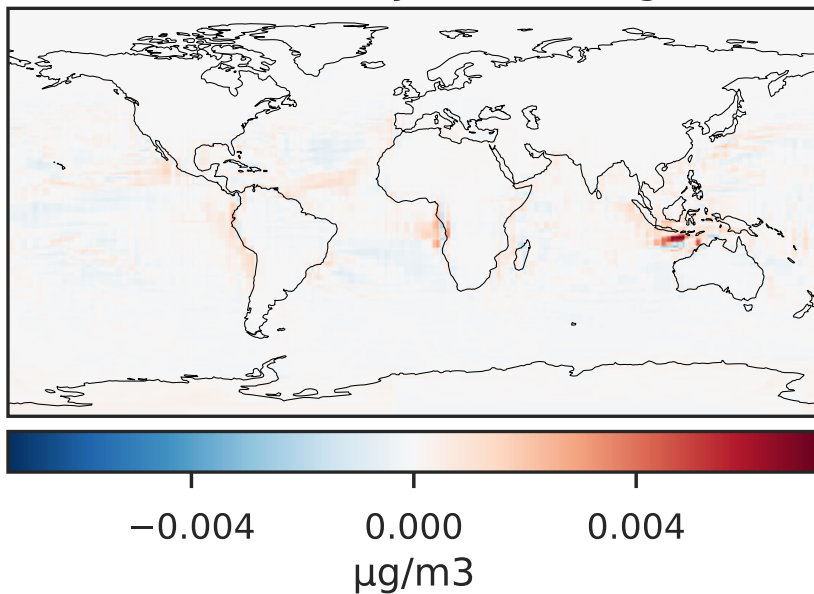
GCC_14.2.0 (Ref)
4.0x5.0



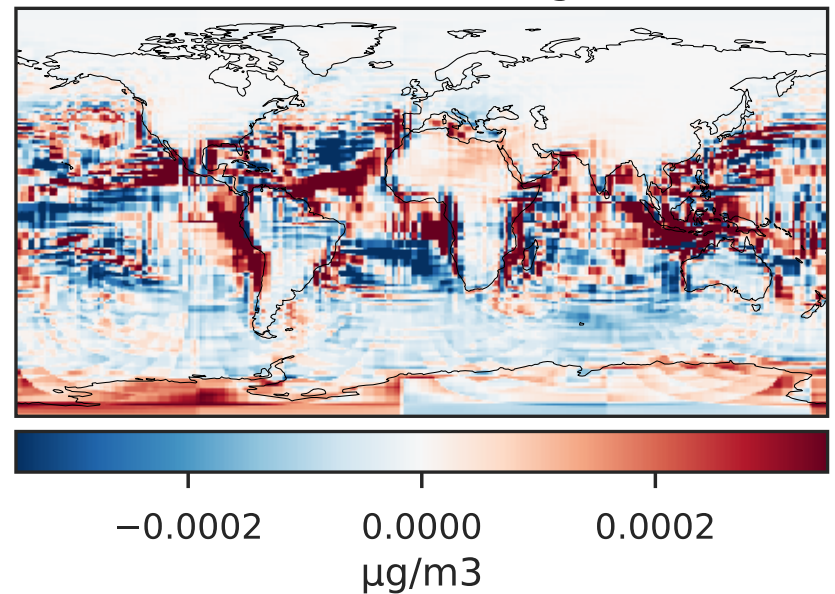
GCHP_14.2.0 (Dev)
c24



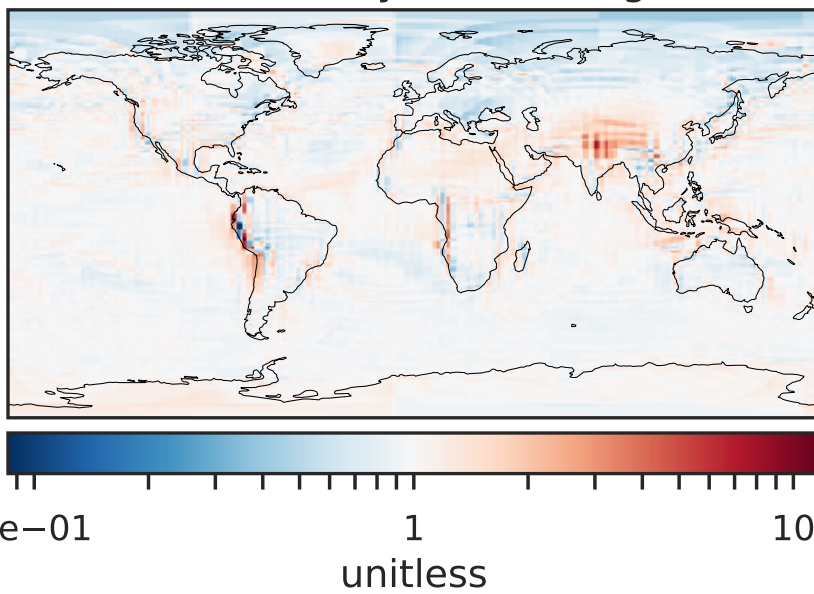
Difference (1x1.25)
Dev - Ref, Dynamic Range



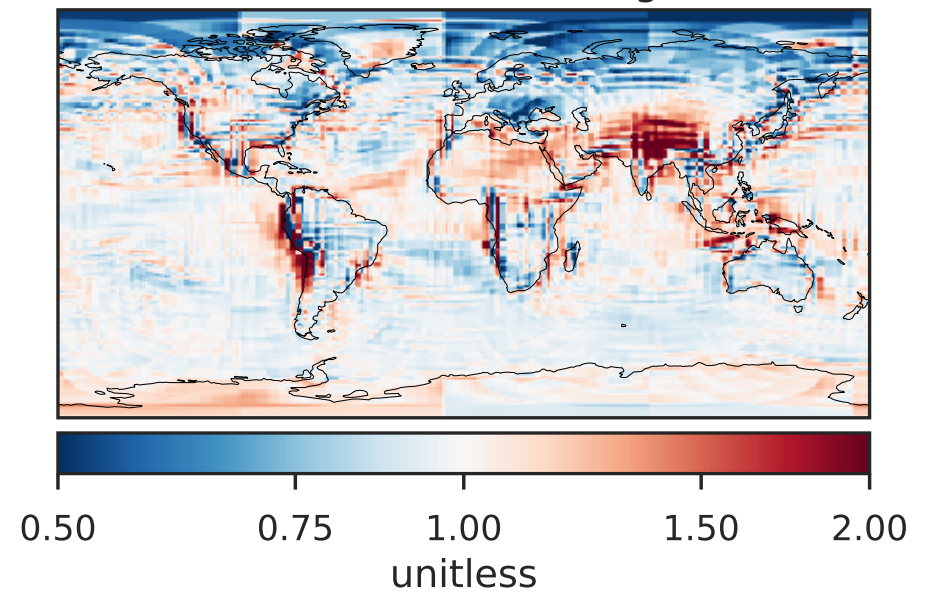
Difference (1x1.25)
Dev - Ref, Restricted Range [5%,95%]



Ratio (1x1.25)
Dev/Ref, Dynamic Range

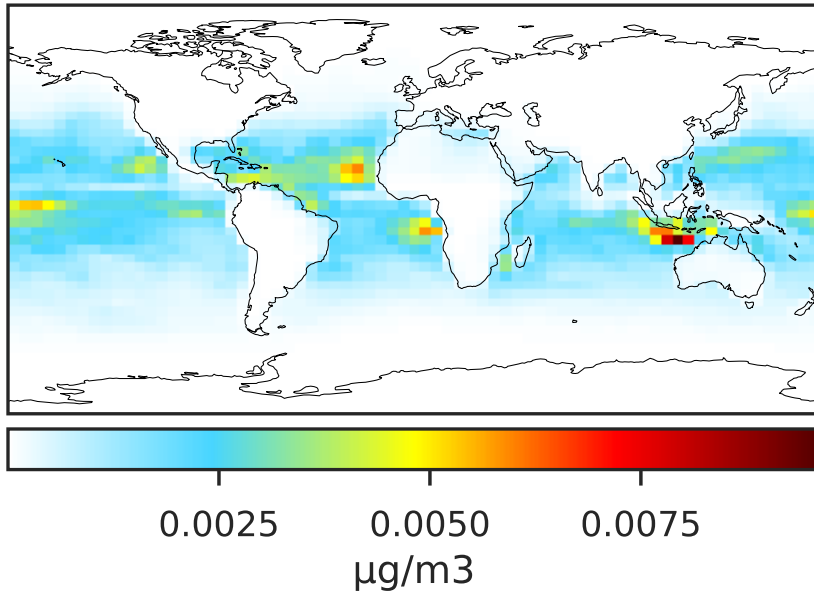


Ratio (1x1.25)
Dev/Ref, Fixed Range

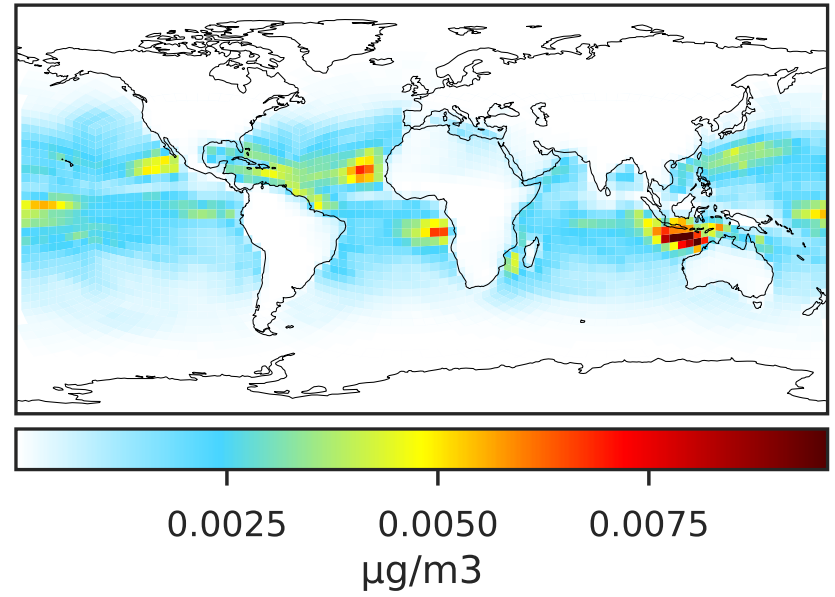


SpeciesConcVV_ISALC (Oct2019)

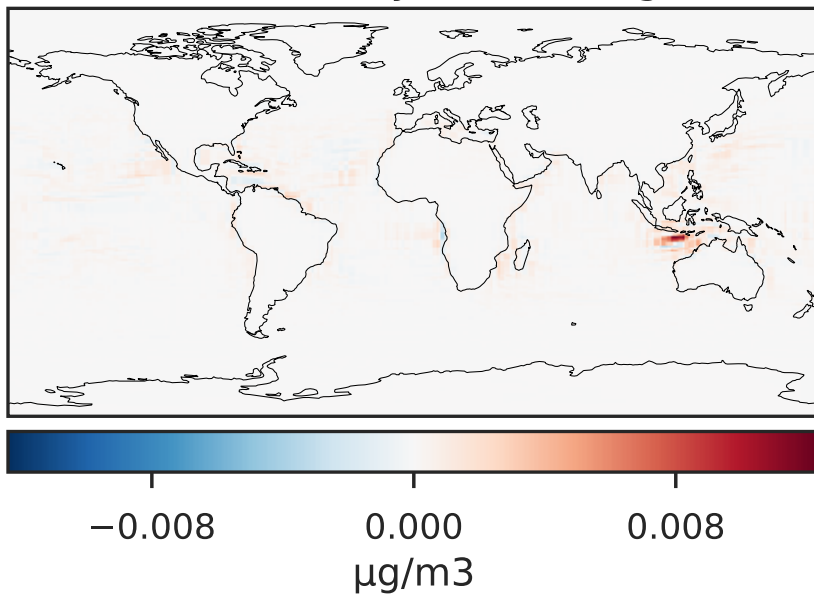
GCC_14.2.0 (Ref)
4.0x5.0



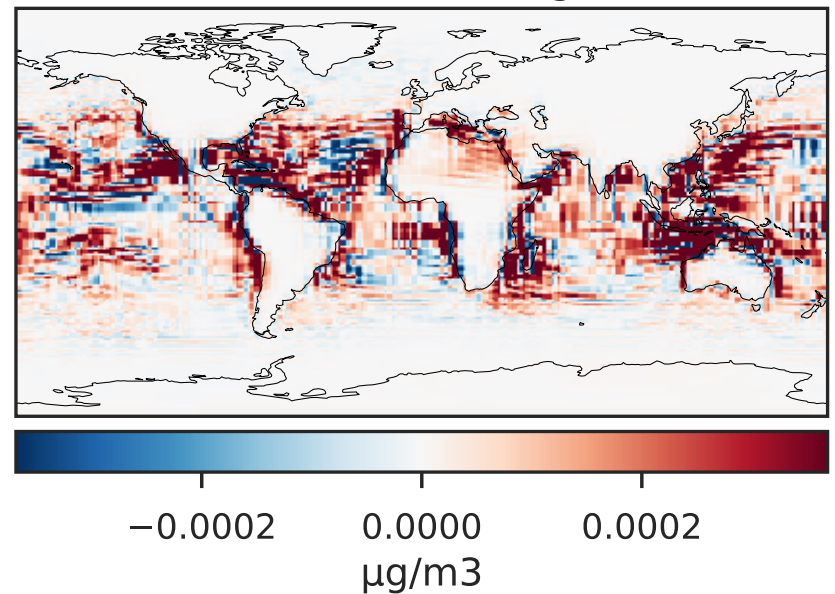
GCHP_14.2.0 (Dev)
c24



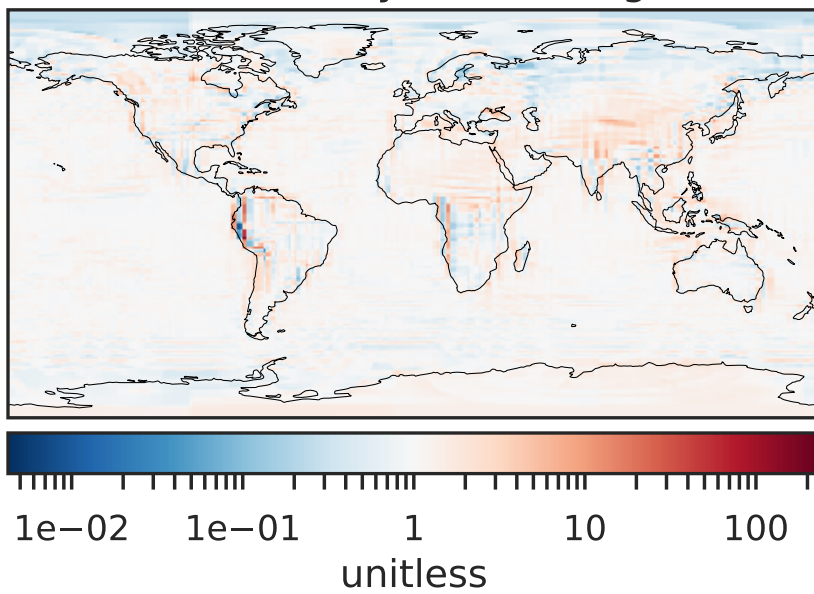
Difference (1x1.25)
Dev - Ref, Dynamic Range



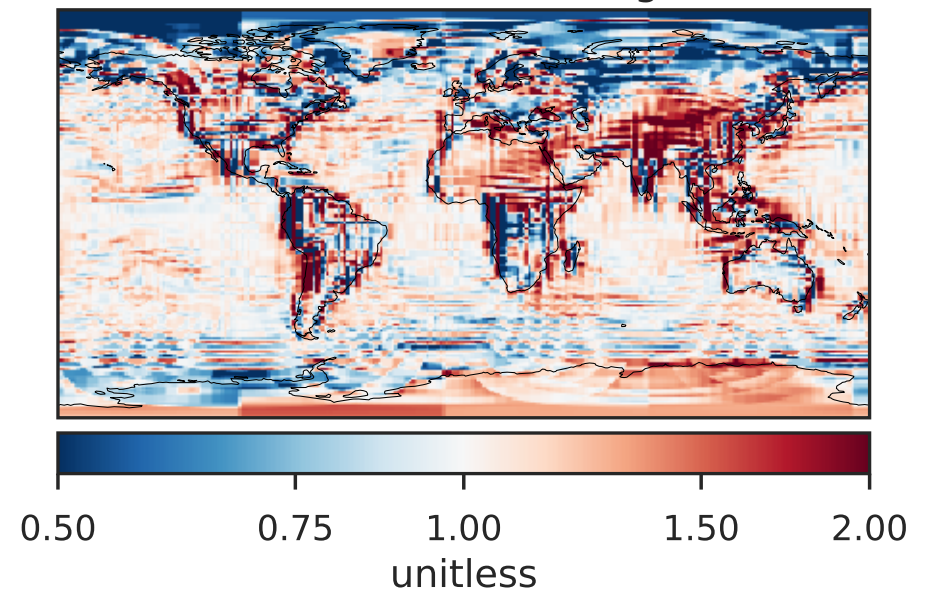
Difference (1x1.25)
Dev - Ref, Restricted Range [5%,95%]



Ratio (1x1.25)
Dev/Ref, Dynamic Range

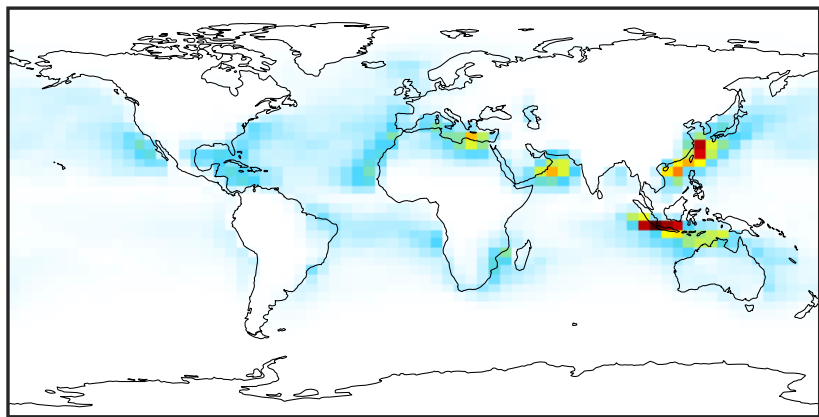


Ratio (1x1.25)
Dev/Ref, Fixed Range



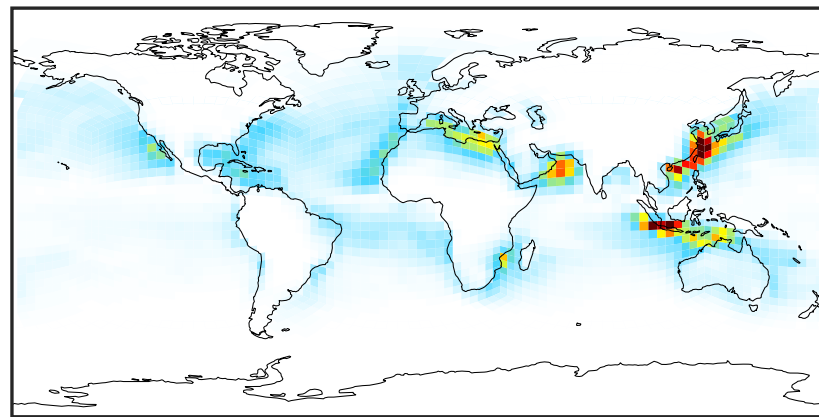
SpeciesConcVV_NITs (Oct2019)

GCC_14.2.0 (Ref)
4.0x5.0



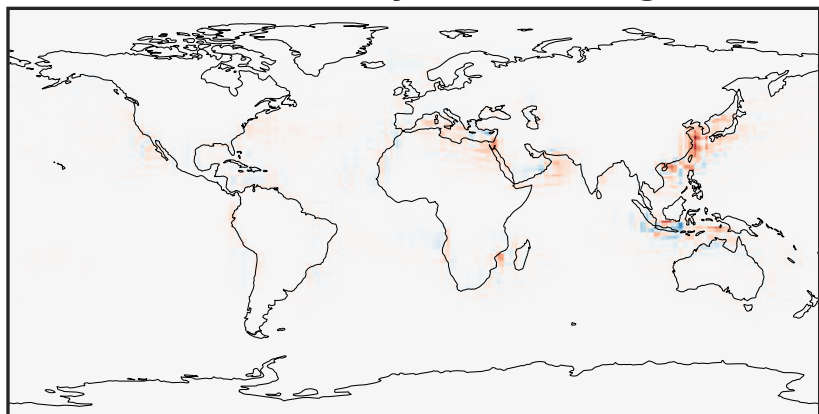
0.0000 0.2017 0.4034 0.6051 0.8067
 $\mu\text{g}/\text{m}^3$

GCHP_14.2.0 (Dev)
c24



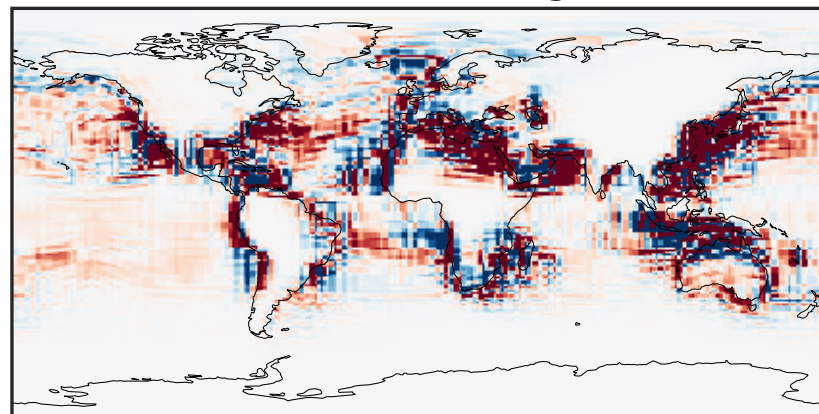
0.0000 0.2017 0.4034 0.6051 0.8067
 $\mu\text{g}/\text{m}^3$

Difference (1x1.25)
Dev - Ref, Dynamic Range



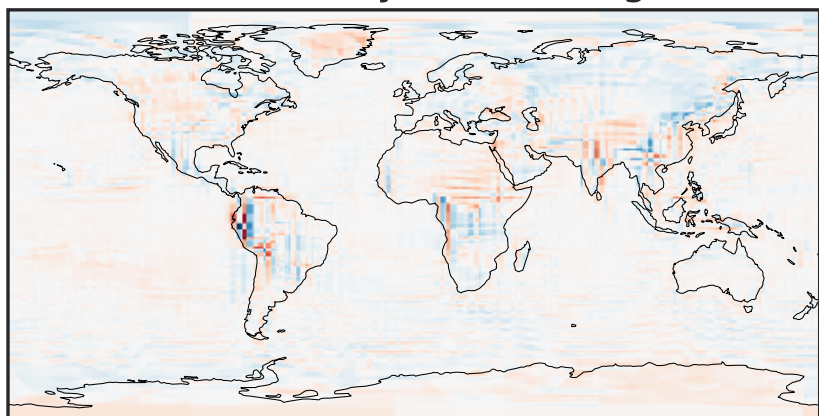
-0.588 -0.294 0.000 0.294 0.588
 $\mu\text{g}/\text{m}^3$

Difference (1x1.25)
Dev - Ref, Restricted Range [5%,95%]



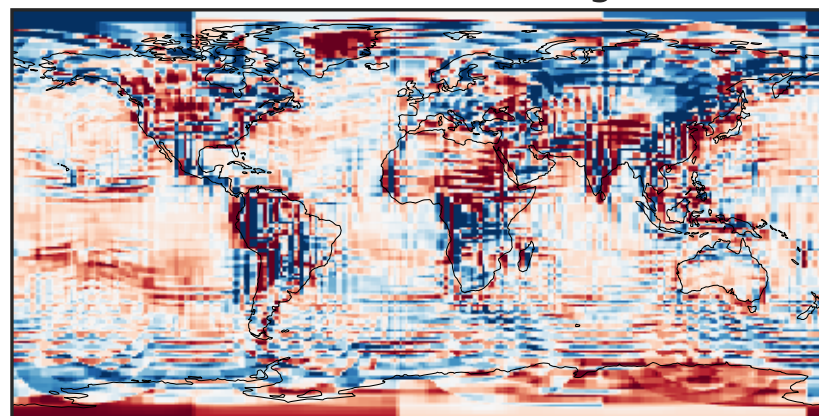
-0.01 0.00 0.01
 $\mu\text{g}/\text{m}^3$

Ratio (1x1.25)
Dev/Ref, Dynamic Range



1e-02 1e-01 1 10 100
unitless

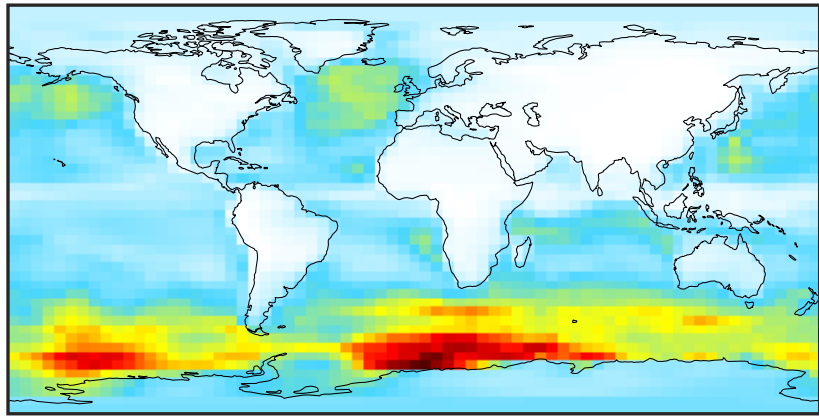
Ratio (1x1.25)
Dev/Ref, Fixed Range



0.50 0.75 1.00 1.50 2.00
unitless

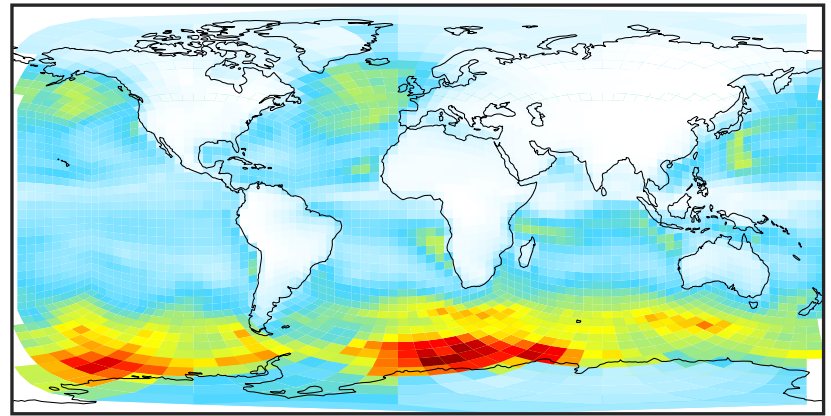
SpeciesConcVV_SALA (Oct2019)

GCC_14.2.0 (Ref)
4.0x5.0



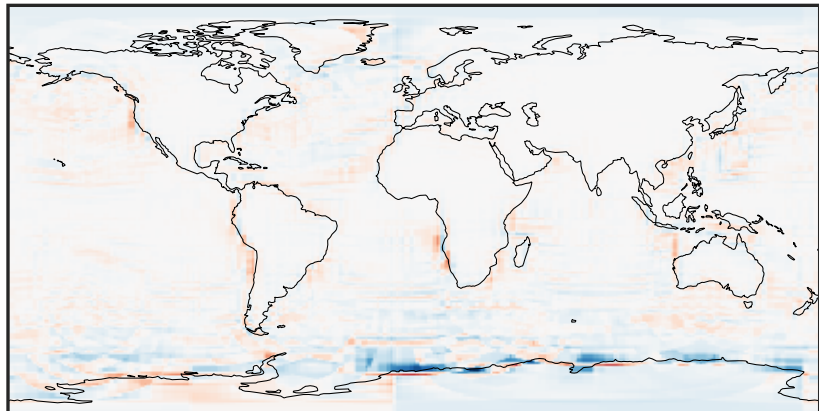
0.000 0.709 1.418 2.127 2.836
 $\mu\text{g}/\text{m}^3$

GCHP_14.2.0 (Dev)
c24



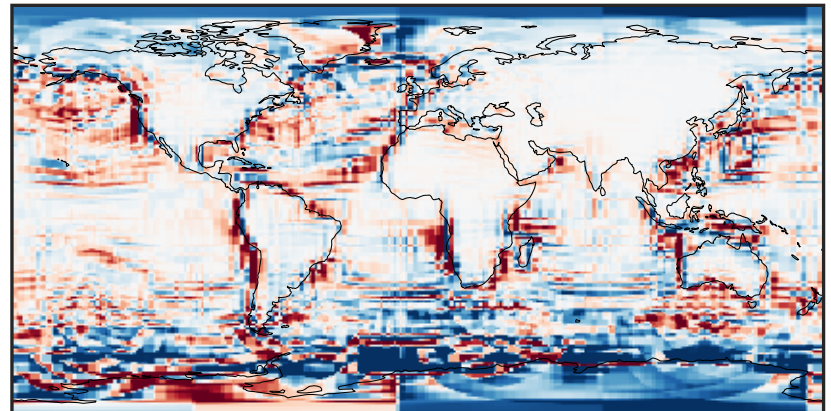
0.000 0.709 1.418 2.127 2.836
 $\mu\text{g}/\text{m}^3$

Difference (1x1.25)
Dev - Ref, Dynamic Range



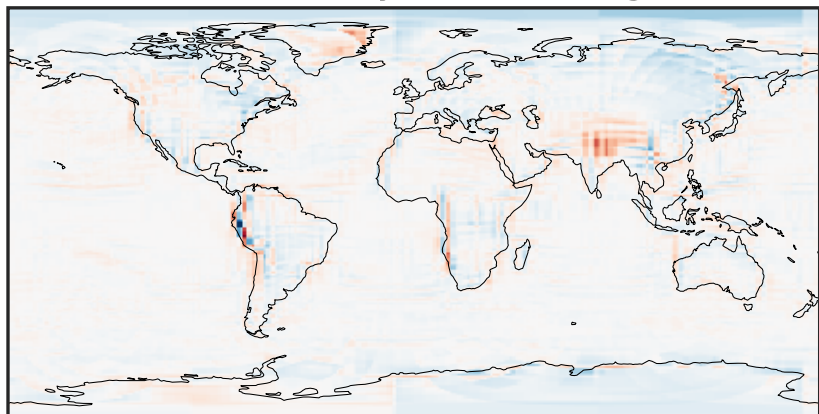
-1.30 -0.65 0.00 0.65 1.30
 $\mu\text{g}/\text{m}^3$

Difference (1x1.25)
Dev - Ref, Restricted Range [5%,95%]



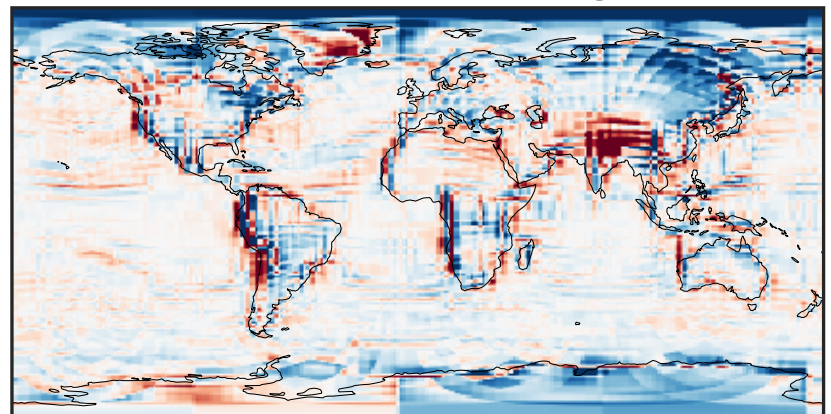
-0.1625 -0.0812 0.0000 0.0812 0.1625
 $\mu\text{g}/\text{m}^3$

Ratio (1x1.25)
Dev/Ref, Dynamic Range



1e-01 1 10
unitless

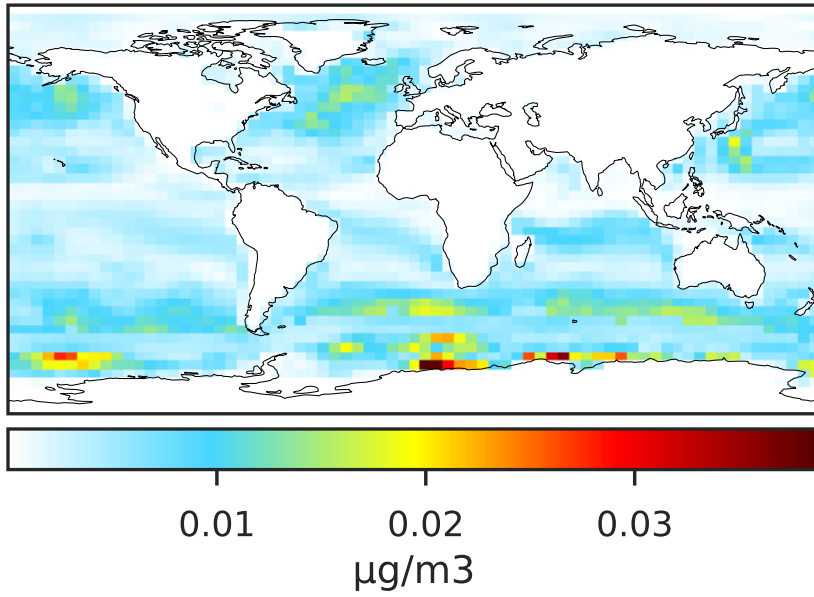
Ratio (1x1.25)
Dev/Ref, Fixed Range



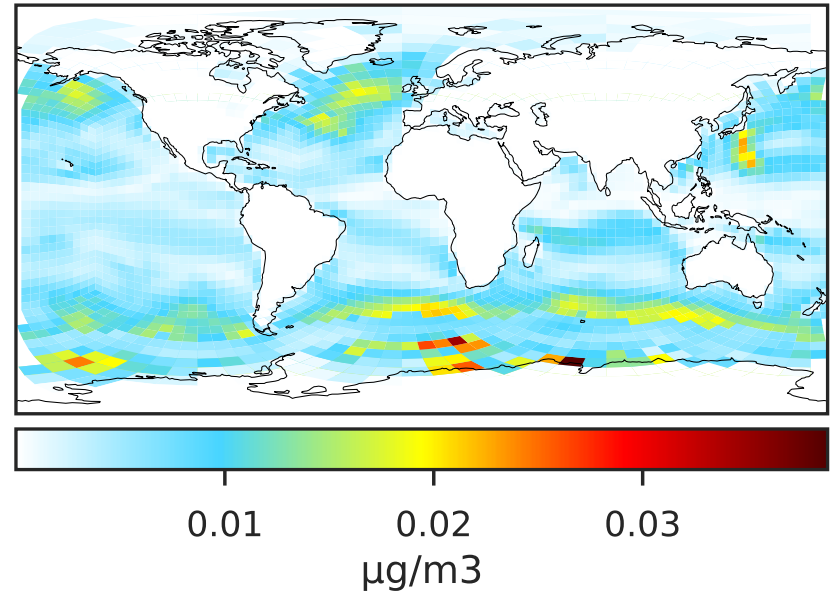
0.50 0.75 1.00 1.50 2.00
unitless

SpeciesConcVV_SALAAL (Oct2019)

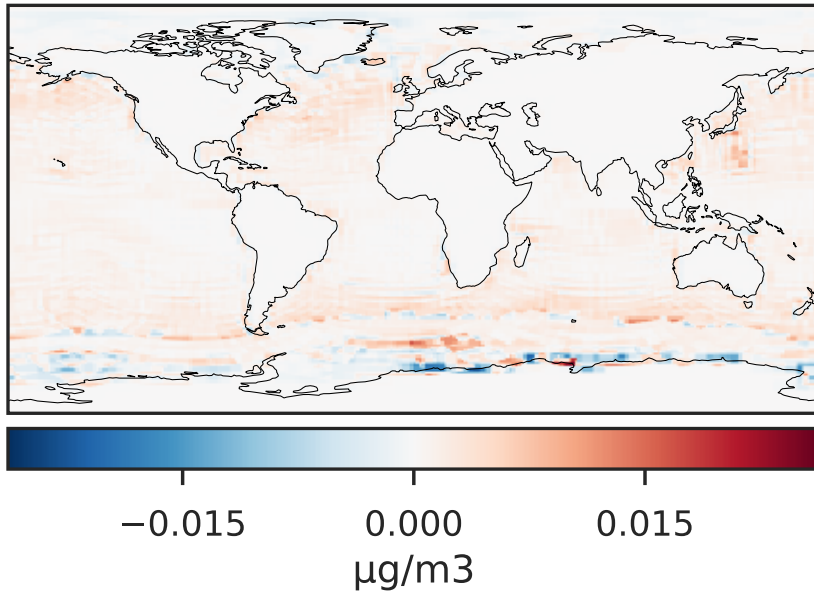
GCC_14.2.0 (Ref)
4.0x5.0



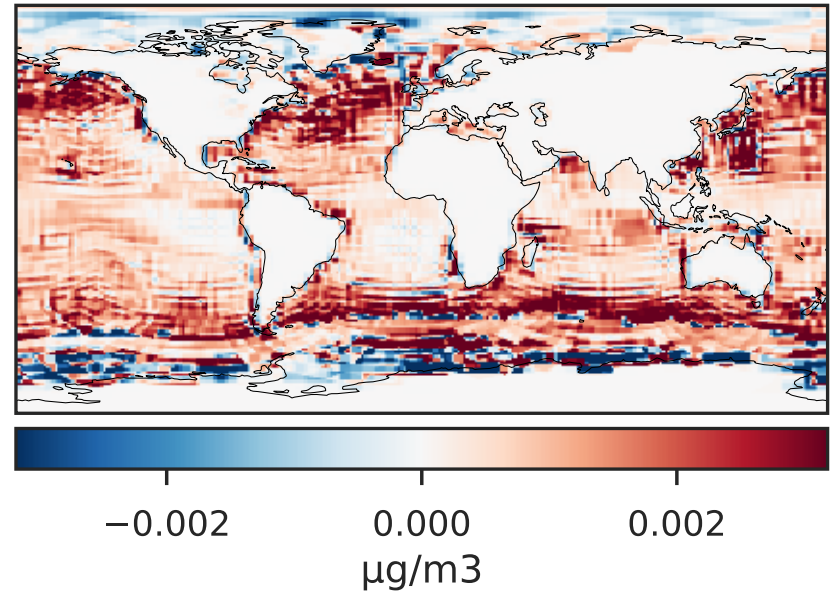
GCHP_14.2.0 (Dev)
c24



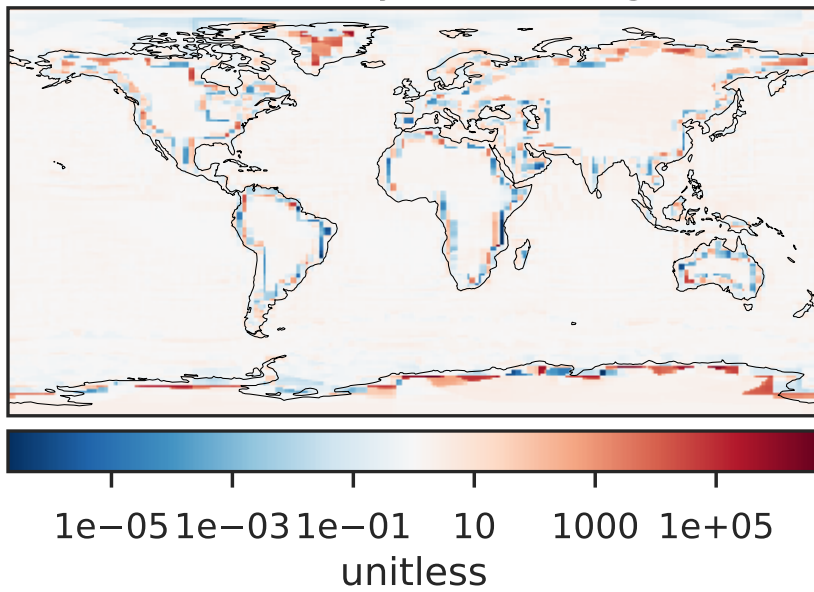
Difference (1x1.25)
Dev - Ref, Dynamic Range



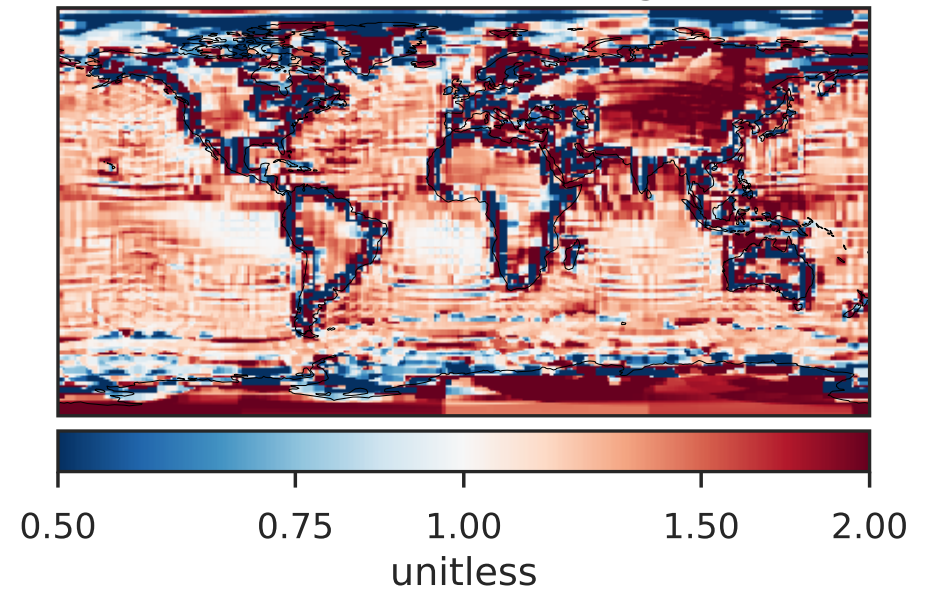
Difference (1x1.25)
Dev - Ref, Restricted Range [5%,95%]



Ratio (1x1.25)
Dev/Ref, Dynamic Range

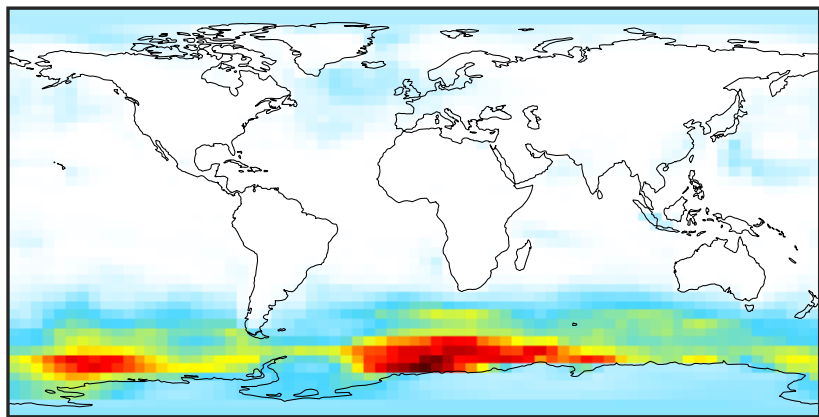


Ratio (1x1.25)
Dev/Ref, Fixed Range



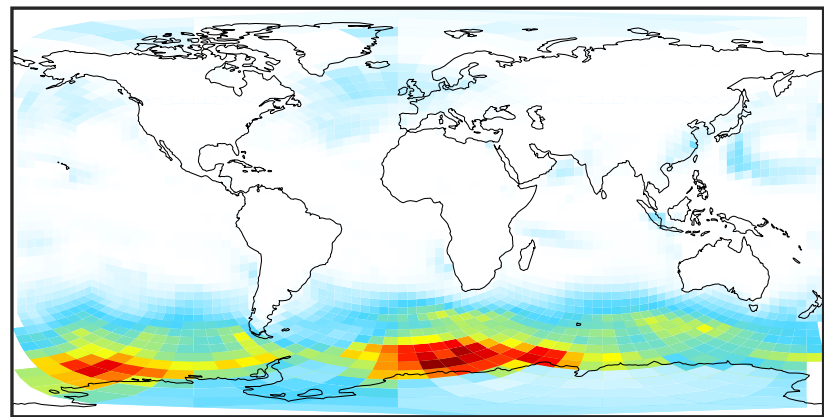
SpeciesConcVV_SALACL (Oct2019)

GCC_14.2.0 (Ref)
4.0x5.0



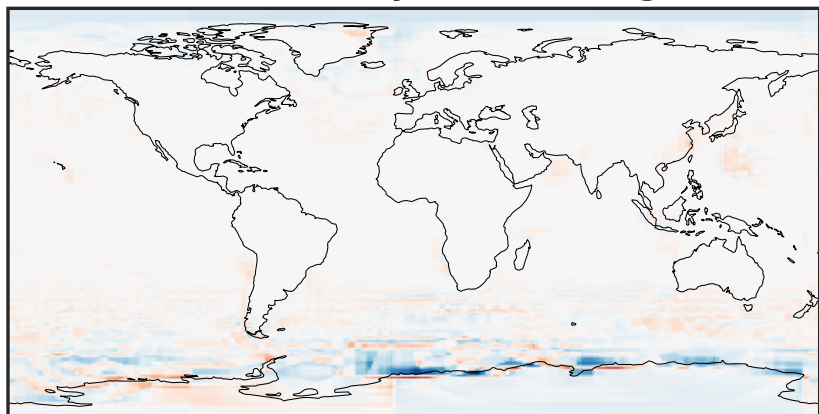
0.000 0.370 0.741 1.111 1.481
 $\mu\text{g}/\text{m}^3$

GCHP_14.2.0 (Dev)
c24



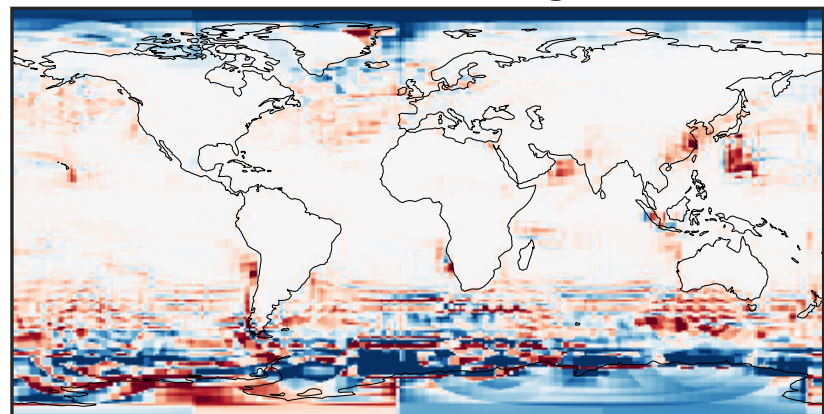
0.000 0.370 0.741 1.111 1.481
 $\mu\text{g}/\text{m}^3$

Difference (1x1.25)
Dev - Ref, Dynamic Range



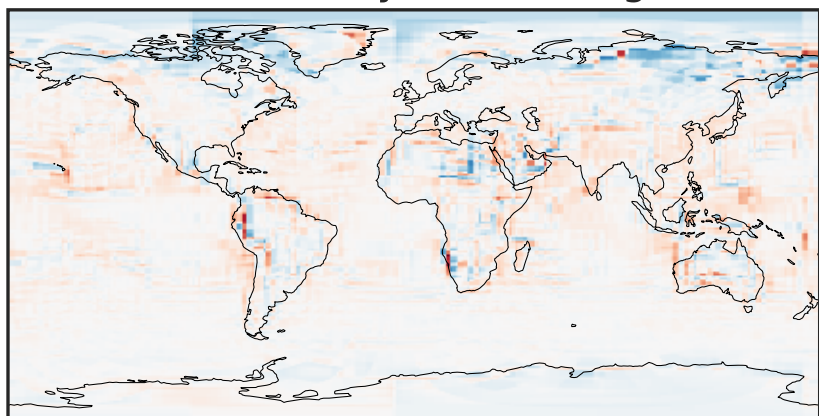
-0.692 -0.346 0.000 0.346 0.692
 $\mu\text{g}/\text{m}^3$

Difference (1x1.25)
Dev - Ref, Restricted Range [5%,95%]



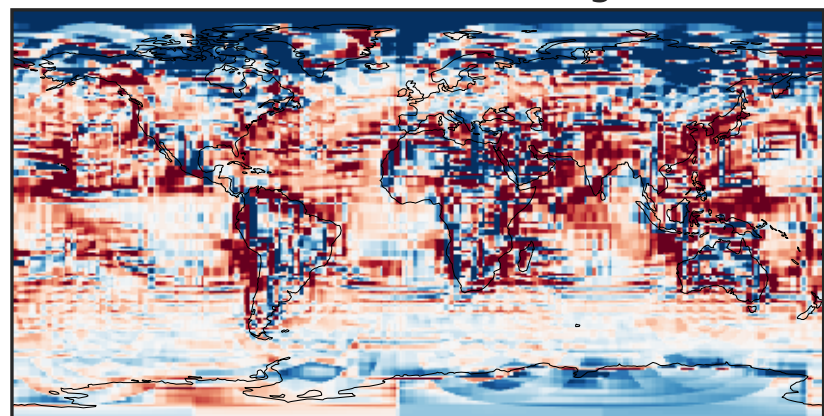
-0.1059 -0.0529 0.0000 0.0529 0.1059
 $\mu\text{g}/\text{m}^3$

Ratio (1x1.25)
Dev/Ref, Dynamic Range



1e-02 1e-01 1 10 100
unitless

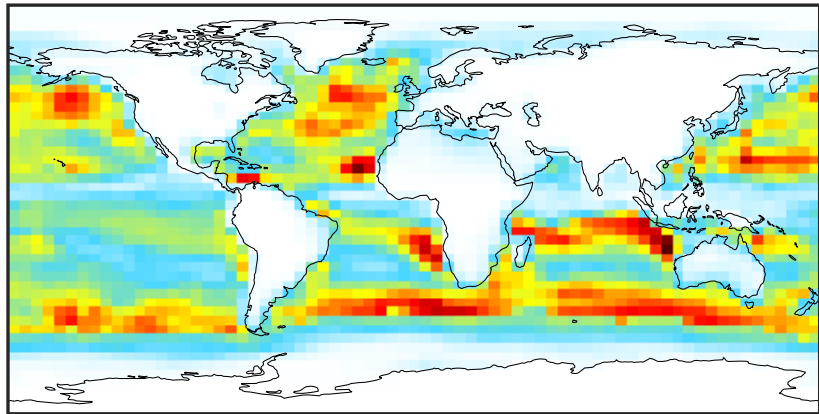
Ratio (1x1.25)
Dev/Ref, Fixed Range



0.50 0.75 1.00 1.50 2.00
unitless

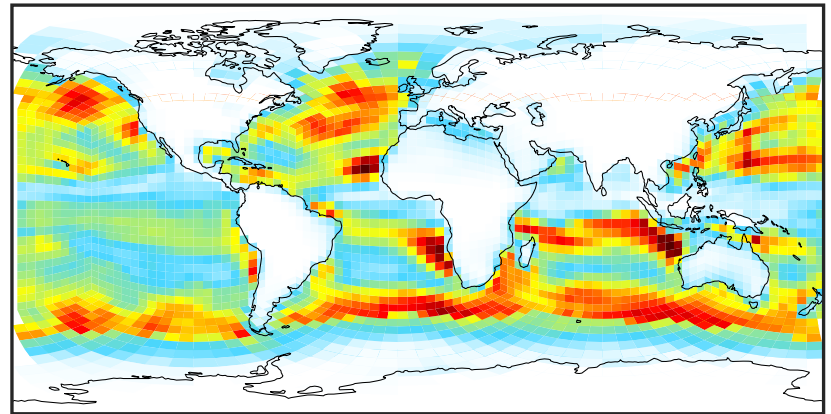
SpeciesConcVV_SALC (Oct2019)

GCC_14.2.0 (Ref)
4.0x5.0



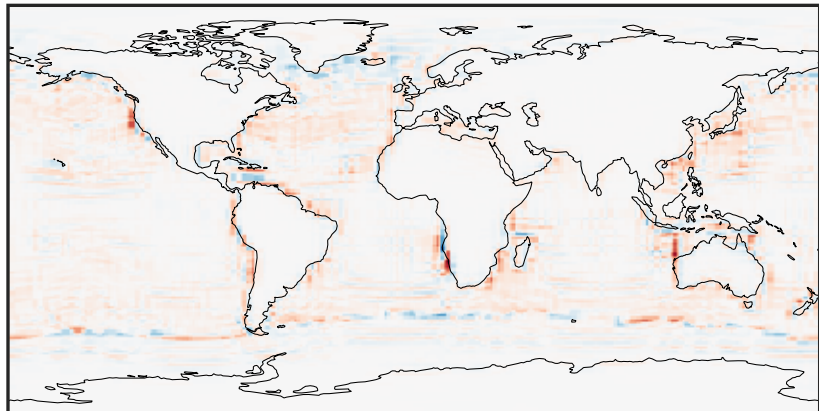
0.00 6.16 12.31 18.47 24.63
 $\mu\text{g}/\text{m}^3$

GCHP_14.2.0 (Dev)
c24



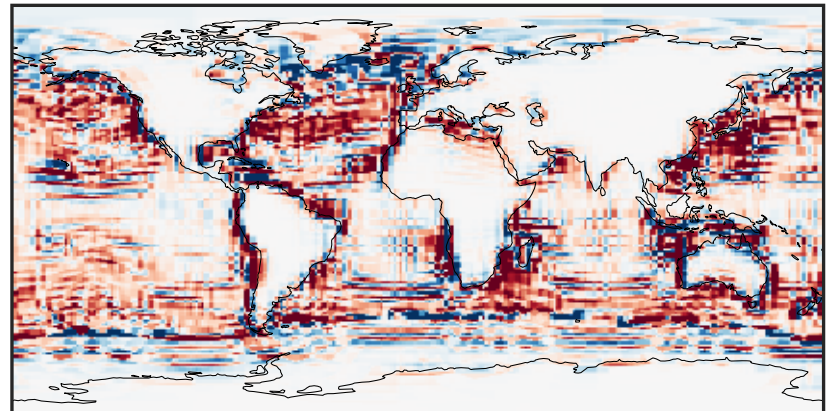
0.00 6.16 12.31 18.47 24.63
 $\mu\text{g}/\text{m}^3$

Difference (1x1.25)
Dev - Ref, Dynamic Range



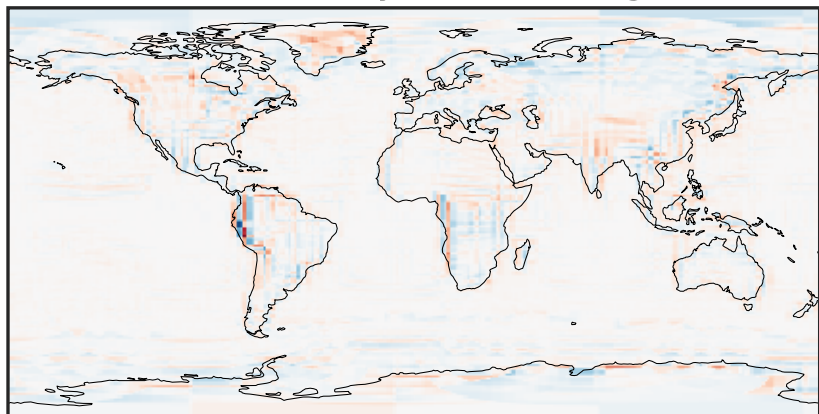
-16.68 -8.34 0.00 8.34 16.68
 $\mu\text{g}/\text{m}^3$

Difference (1x1.25)
Dev - Ref, Restricted Range [5%,95%]



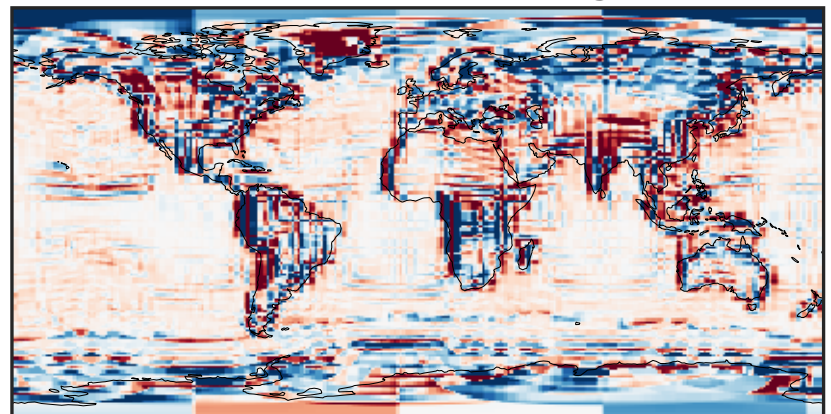
-2.033 -1.016 0.000 1.016 2.033
 $\mu\text{g}/\text{m}^3$

Ratio (1x1.25)
Dev/Ref, Dynamic Range



1e-02 1e-01 1 10 100
unitless

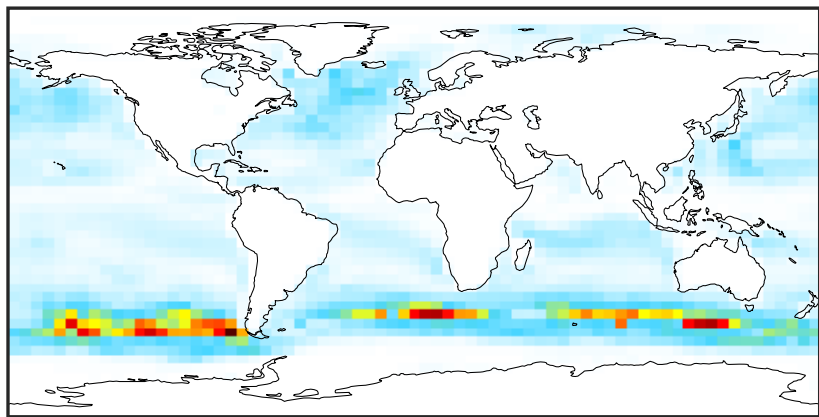
Ratio (1x1.25)
Dev/Ref, Fixed Range



0.50 0.75 1.00 1.50 2.00
unitless

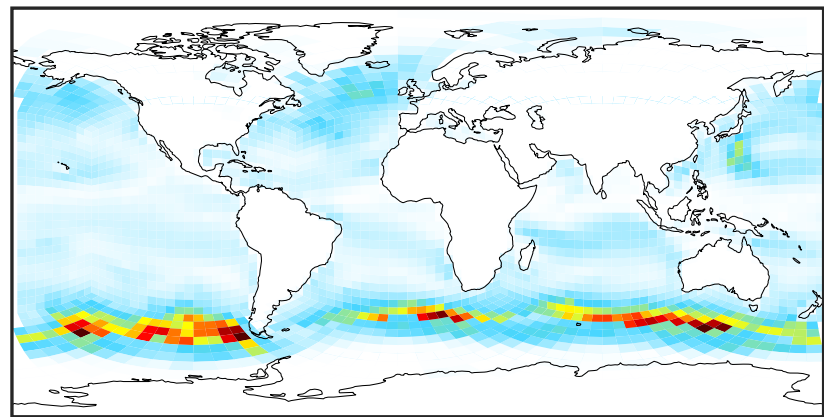
SpeciesConcVV_SALCAL (Oct2019)

GCC_14.2.0 (Ref)
4.0x5.0



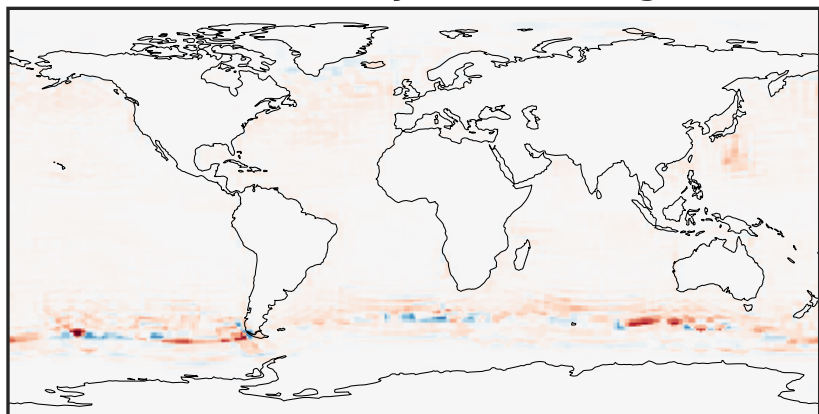
0.000 1.136 2.272 3.409 4.545
 $\mu\text{g}/\text{m}^3$

GCHP_14.2.0 (Dev)
c24



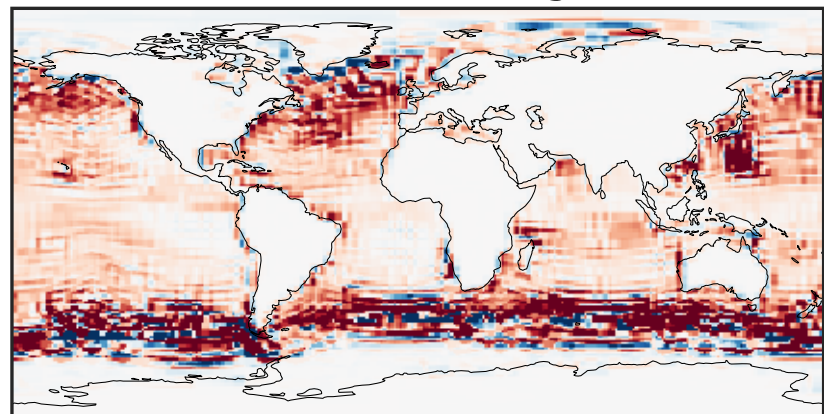
0.000 1.136 2.272 3.409 4.545
 $\mu\text{g}/\text{m}^3$

Difference (1x1.25)
Dev - Ref, Dynamic Range



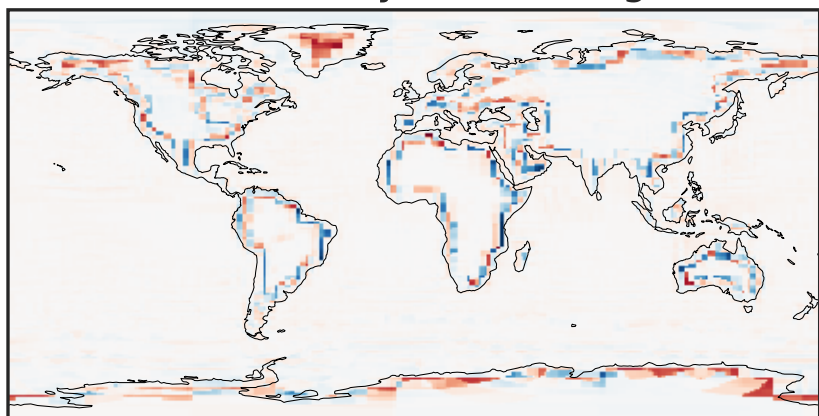
-3.176 -1.588 0.000 1.588 3.176
 $\mu\text{g}/\text{m}^3$

Difference (1x1.25)
Dev - Ref, Restricted Range [5%,95%]



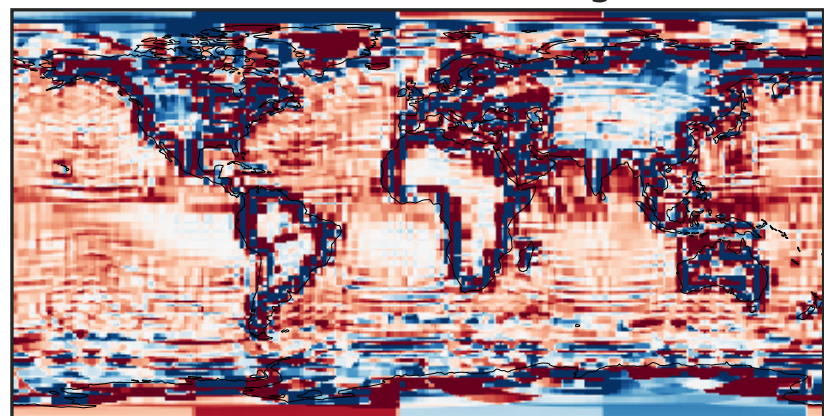
-0.2631 -0.1316 0.0000 0.1316 0.2631
 $\mu\text{g}/\text{m}^3$

Ratio (1x1.25)
Dev/Ref, Dynamic Range



1e-06 1e-03 1 1000 1e+06
unitless

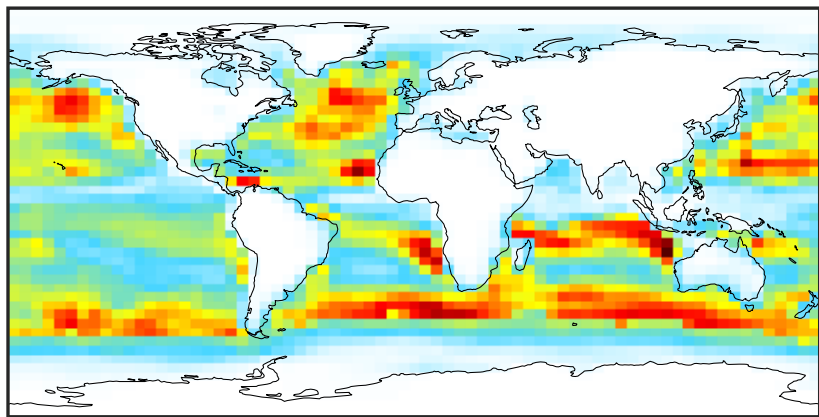
Ratio (1x1.25)
Dev/Ref, Fixed Range



0.50 0.75 1.00 1.50 2.00
unitless

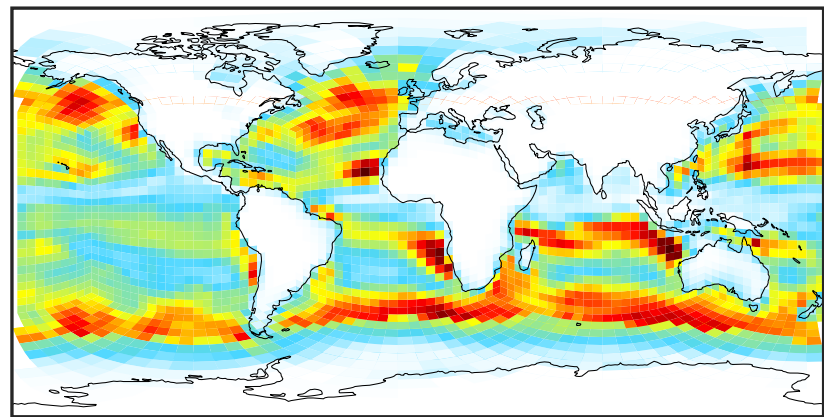
SpeciesConcVV_SALCCL (Oct2019)

GCC_14.2.0 (Ref)
4.0x5.0



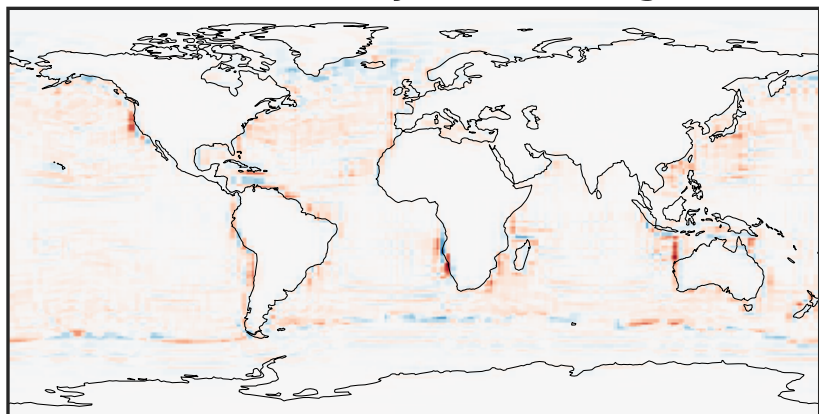
0.00 3.30 6.59 9.89 13.18
 $\mu\text{g}/\text{m}^3$

GCHP_14.2.0 (Dev)
c24



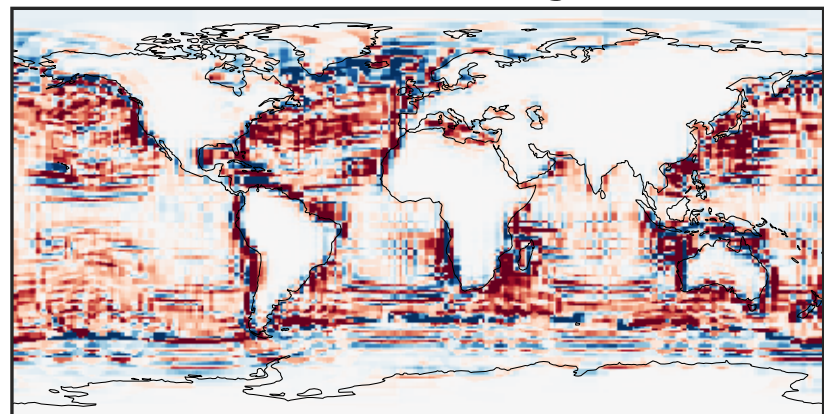
0.00 3.30 6.59 9.89 13.18
 $\mu\text{g}/\text{m}^3$

Difference (1x1.25)
Dev - Ref, Dynamic Range



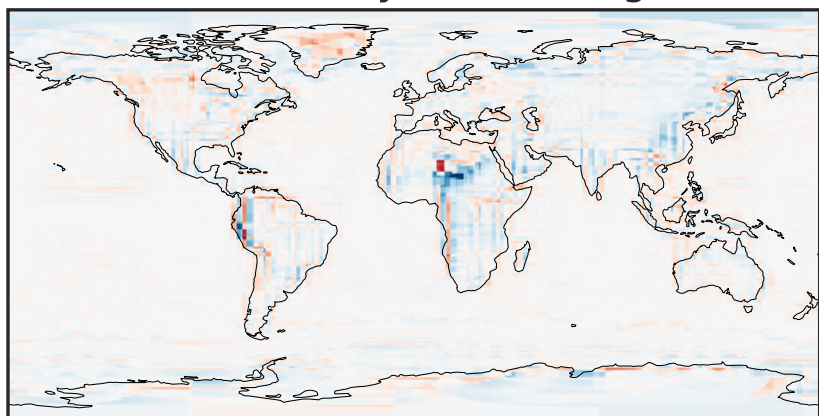
-9.17 -4.58 0.00 4.58 9.17
 $\mu\text{g}/\text{m}^3$

Difference (1x1.25)
Dev - Ref, Restricted Range [5%,95%]



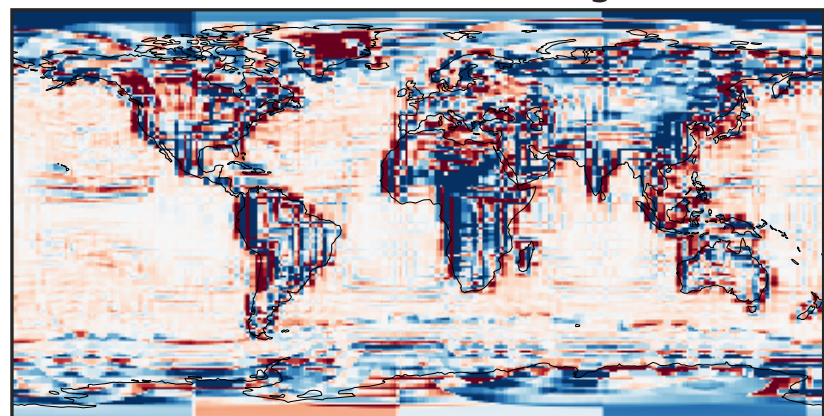
-1.092 -0.546 0.000 0.546 1.092
 $\mu\text{g}/\text{m}^3$

Ratio (1x1.25)
Dev/Ref, Dynamic Range



1e-02 1e-01 1 10 100
unitless

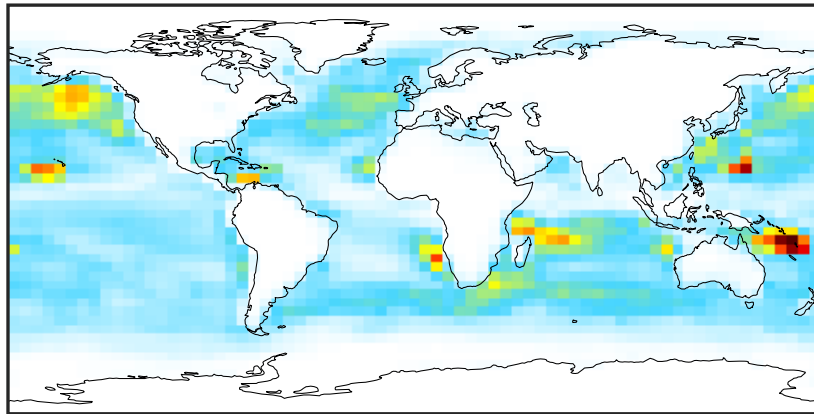
Ratio (1x1.25)
Dev/Ref, Fixed Range



0.50 0.75 1.00 1.50 2.00
unitless

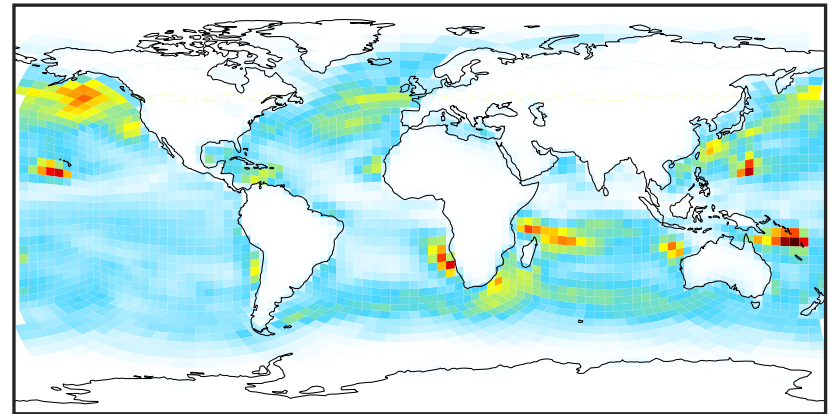
SpeciesConcVV_SO4s (Oct2019)

GCC_14.2.0 (Ref)
4.0x5.0



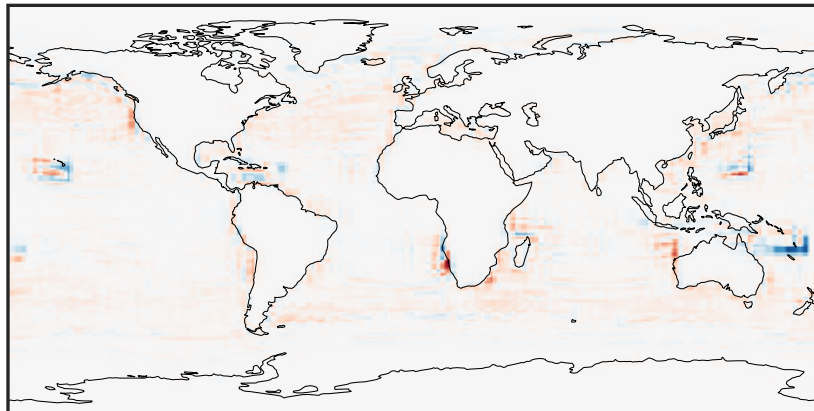
0.0025 0.0050 0.0075
 $\mu\text{g}/\text{m}^3$

GCHP_14.2.0 (Dev)
c24



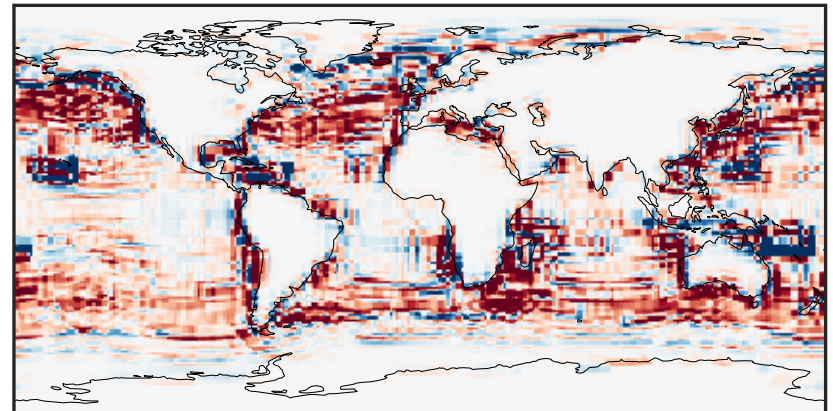
0.0025 0.0050 0.0075
 $\mu\text{g}/\text{m}^3$

Difference (1x1.25)
Dev - Ref, Dynamic Range



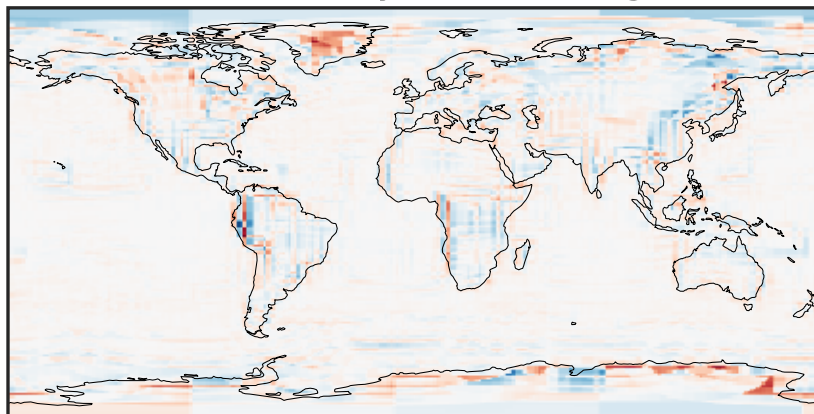
-0.003 0.000 0.003
 $\mu\text{g}/\text{m}^3$

Difference (1x1.25)
Dev - Ref, Restricted Range [5%,95%]



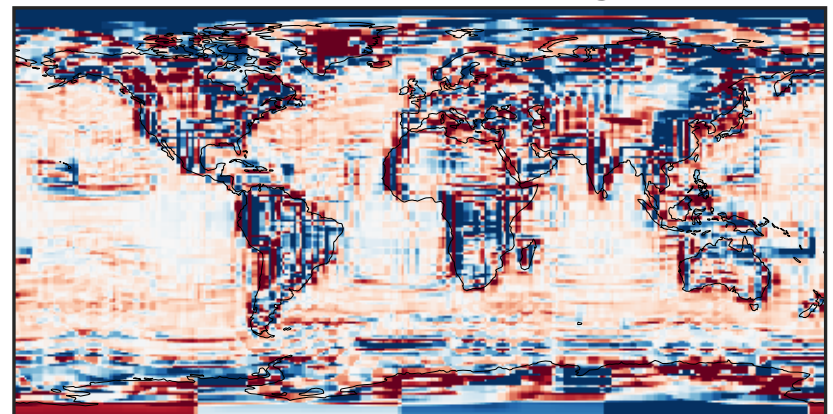
-0.0003 0.0000 0.0003
 $\mu\text{g}/\text{m}^3$

Ratio (1x1.25)
Dev/Ref, Dynamic Range



1e-02 1e-01 1 10 100
unitless

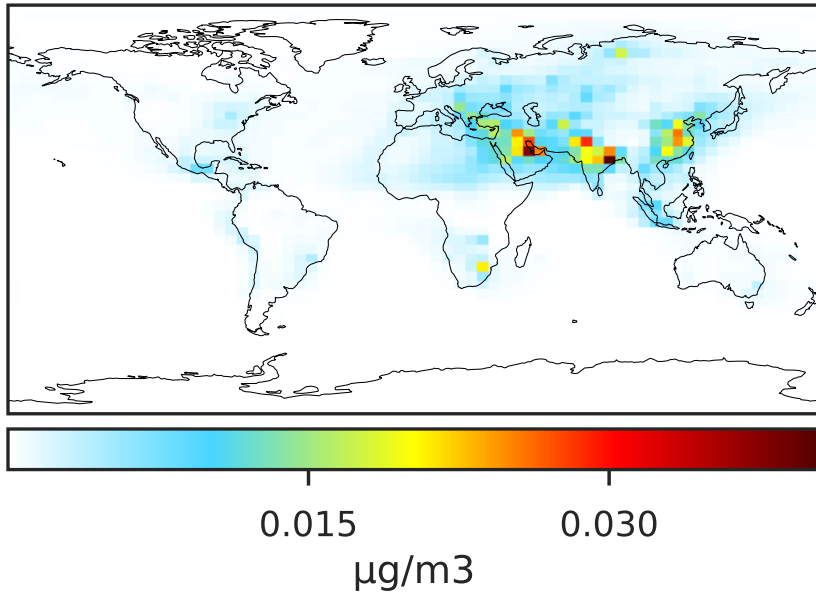
Ratio (1x1.25)
Dev/Ref, Fixed Range



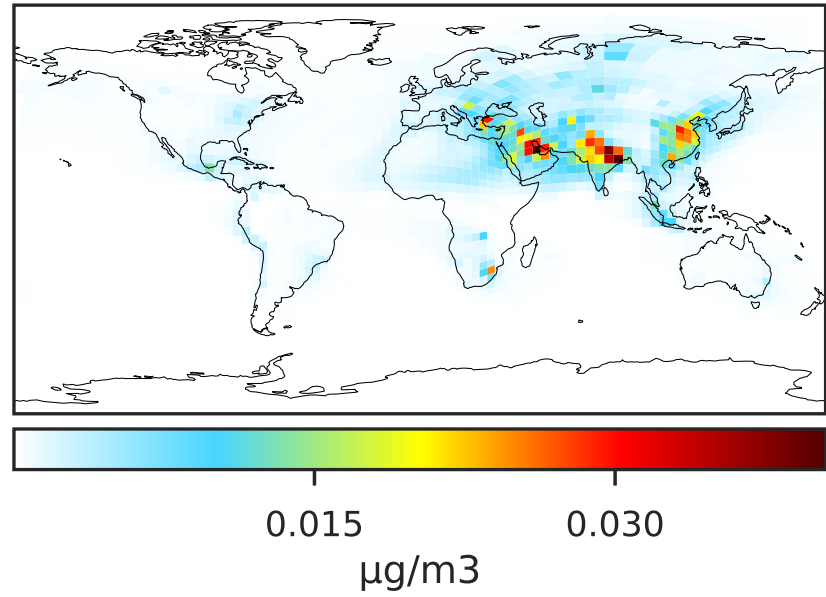
0.50 0.75 1.00 1.50 2.00
unitless

SpeciesConcVV_pFe (Oct2019)

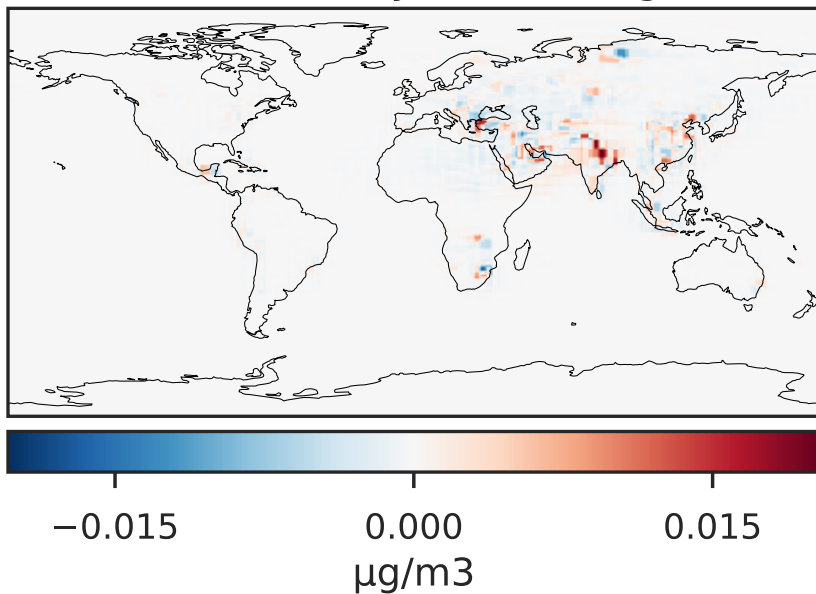
GCC_14.2.0 (Ref)
4.0x5.0



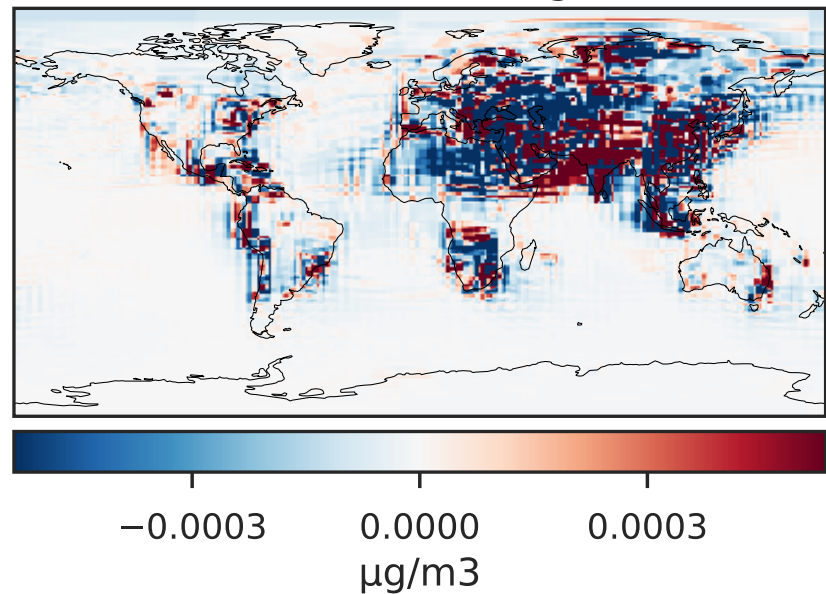
GCHP_14.2.0 (Dev)
c24



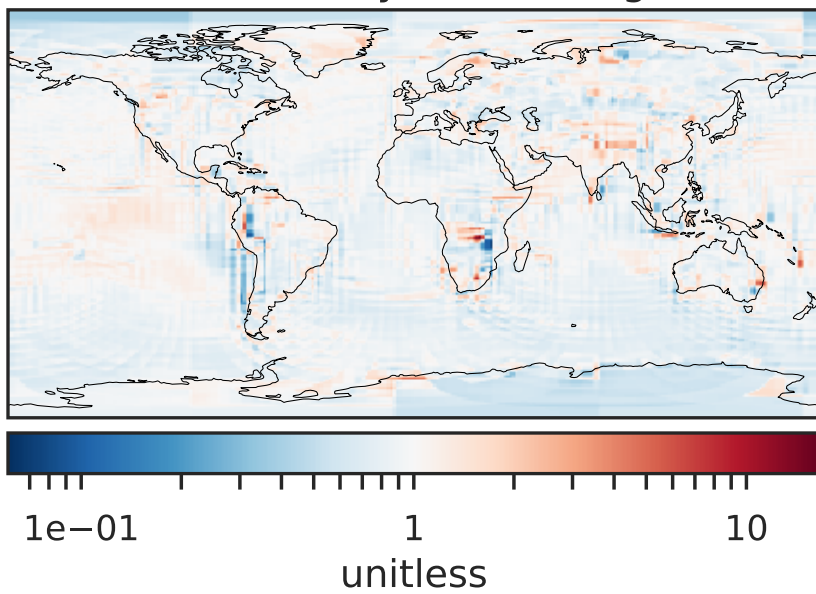
Difference (1x1.25)
Dev - Ref, Dynamic Range



Difference (1x1.25)
Dev - Ref, Restricted Range [5%,95%]



Ratio (1x1.25)
Dev/Ref, Dynamic Range



Ratio (1x1.25)
Dev/Ref, Fixed Range

