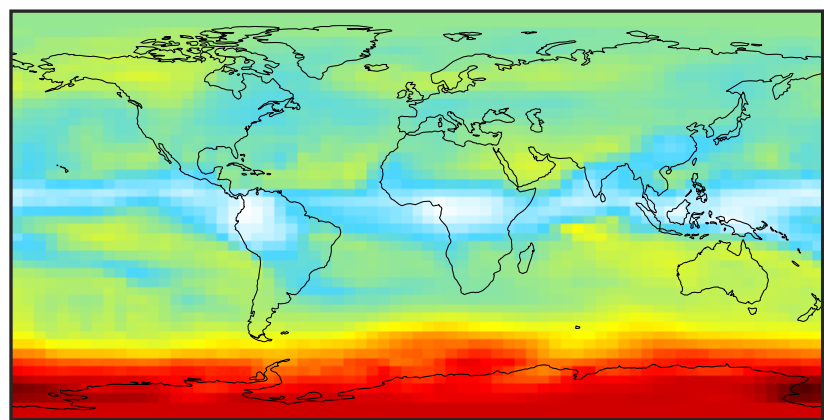


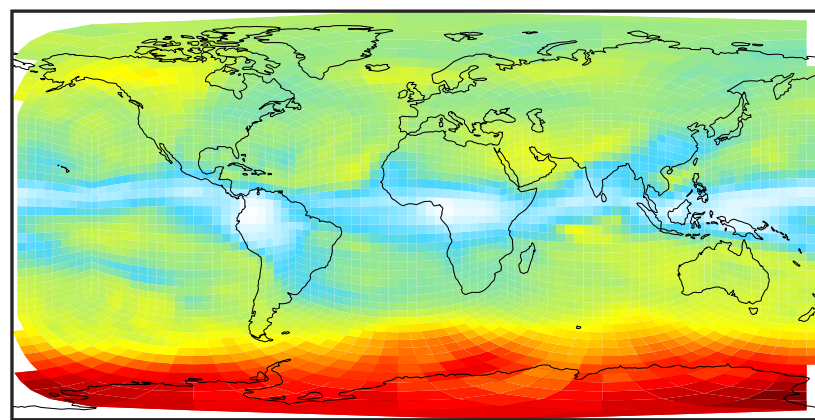
# SpeciesConcVW\_Bry (Oct2019)

GCC\_14.2.0 (Ref)  
4.0x5.0



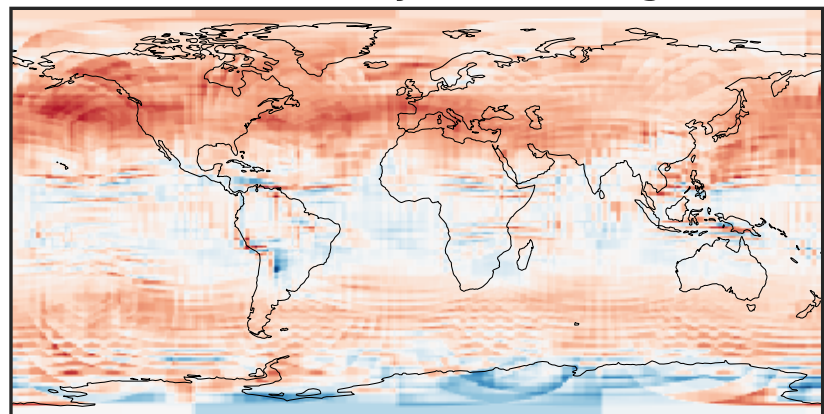
0.0015 0.0030 0.0045 0.0060  
ppb

GCHP\_14.2.0 (Dev)  
c24



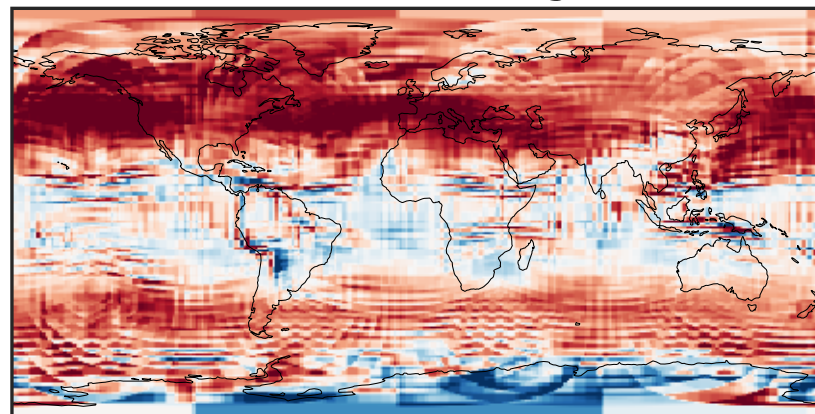
0.0015 0.0030 0.0045 0.0060  
ppb

Difference (1x1.25)  
Dev - Ref, Dynamic Range



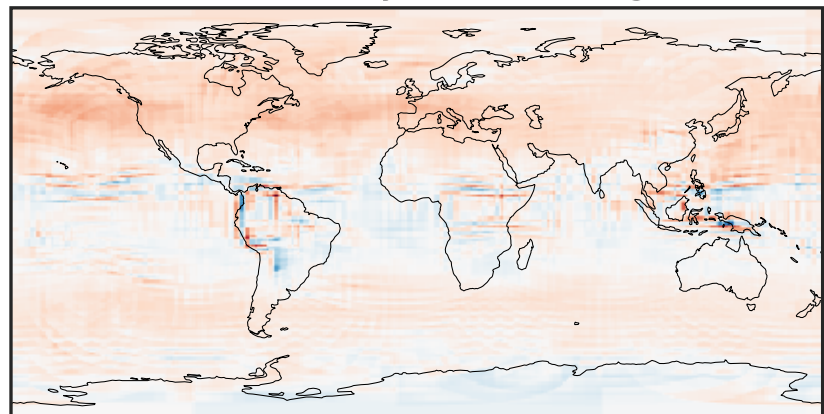
-0.0005 0.0000 0.0005  
ppb

Difference (1x1.25)  
Dev - Ref, Restricted Range [5%,95%]



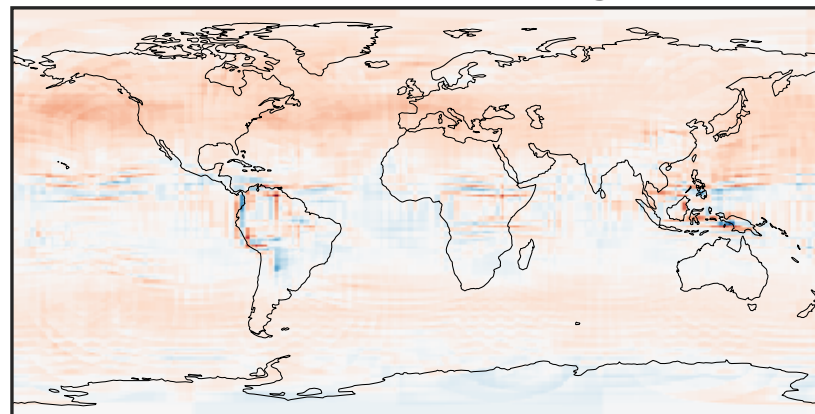
-0.0002 0.0000 0.0002  
ppb

Ratio (1x1.25)  
Dev/Ref, Dynamic Range



0.518 0.759 1.000 1.466 1.932  
unitless

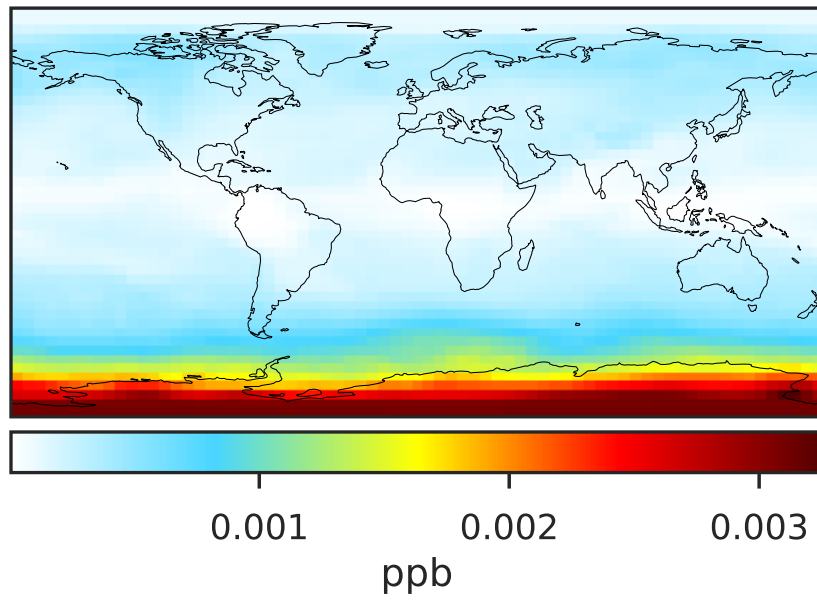
Ratio (1x1.25)  
Dev/Ref, Fixed Range



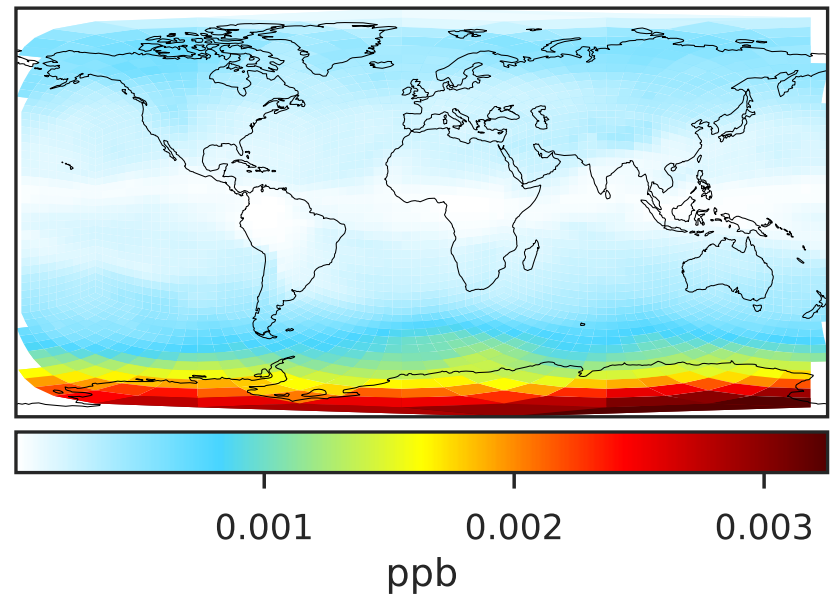
0.50 0.75 1.00 1.50 2.00  
unitless

# SpeciesConcVV\_BrOx (Oct2019)

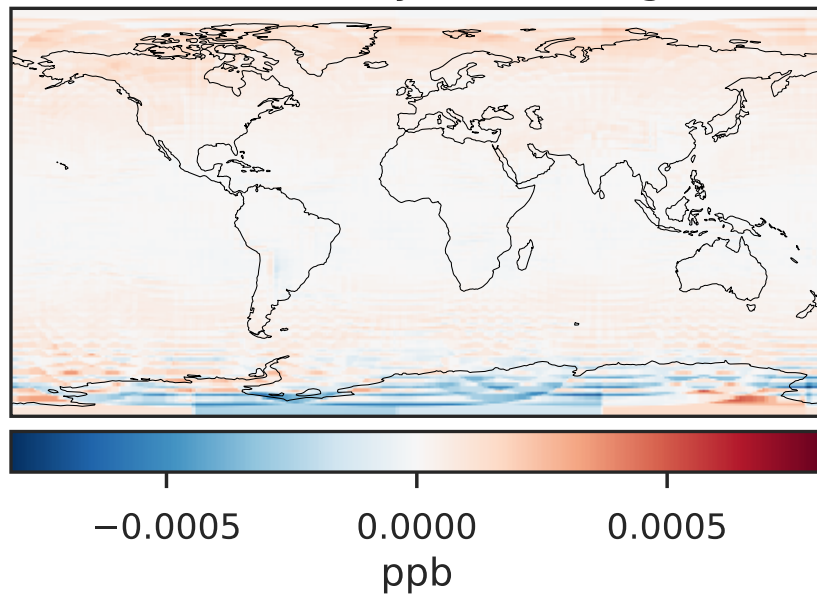
GCC\_14.2.0 (Ref)  
4.0x5.0



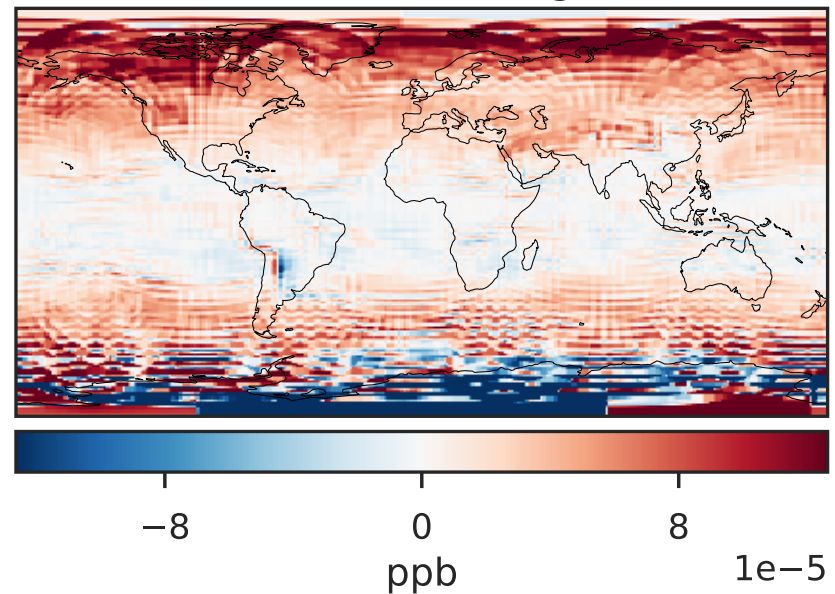
GCHP\_14.2.0 (Dev)  
c24



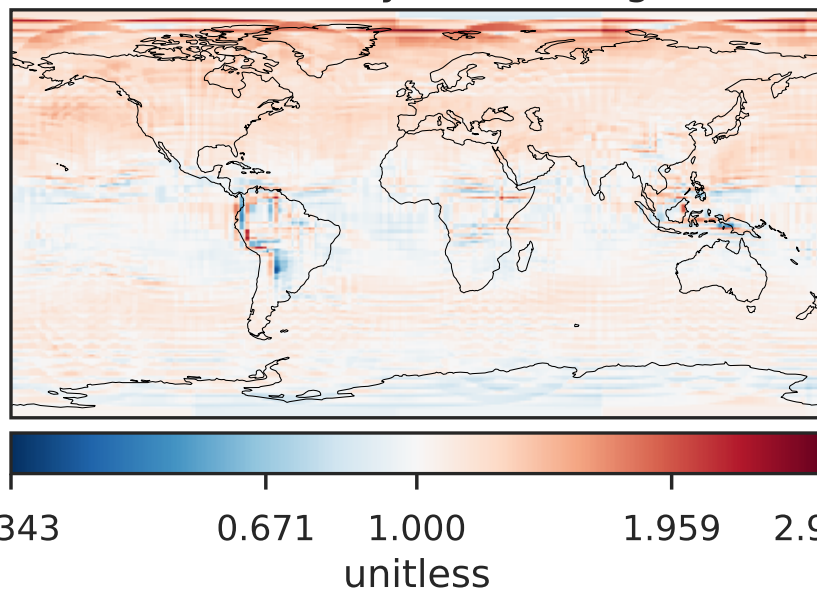
Difference (1x1.25)  
Dev - Ref, Dynamic Range



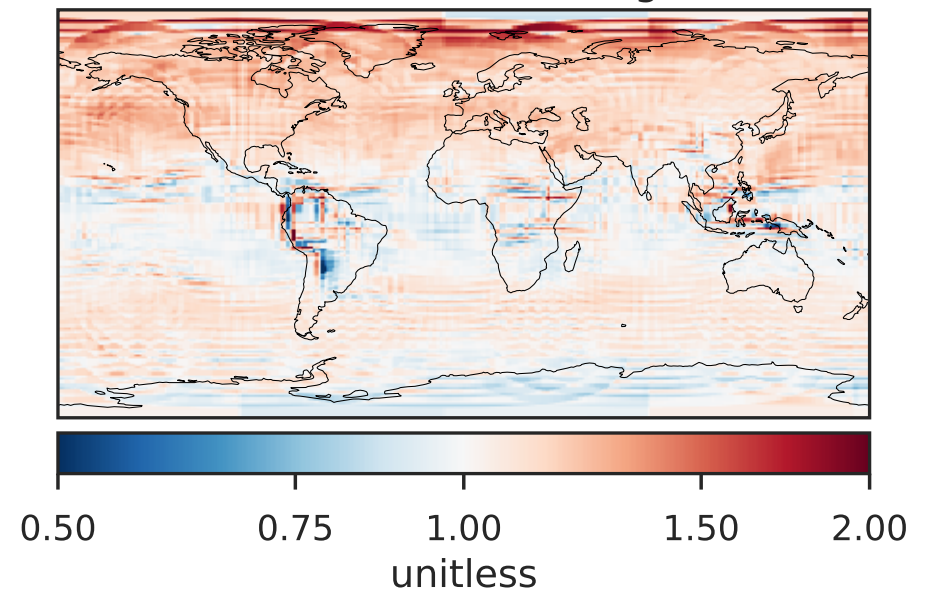
Difference (1x1.25)  
Dev - Ref, Restricted Range [5%,95%]



Ratio (1x1.25)  
Dev/Ref, Dynamic Range

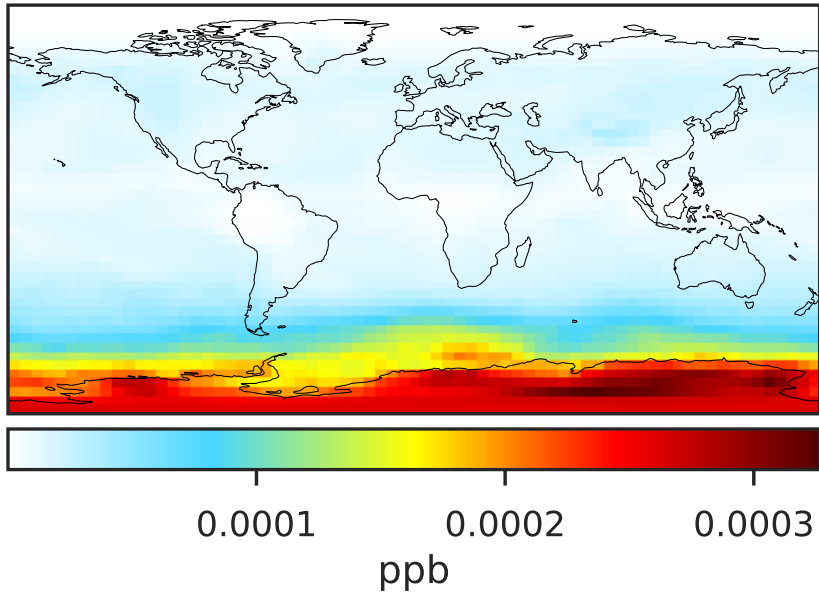


Ratio (1x1.25)  
Dev/Ref, Fixed Range

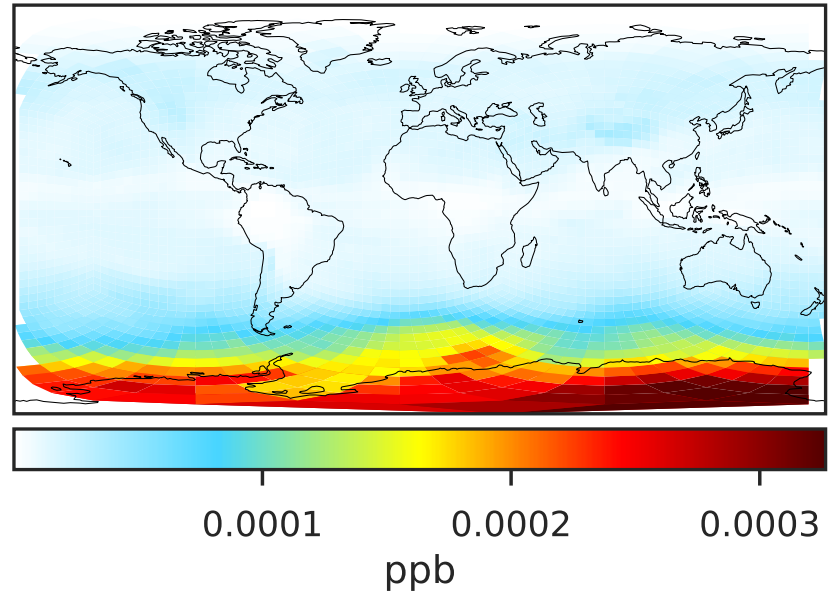


# SpeciesConcVV\_Br (Oct2019)

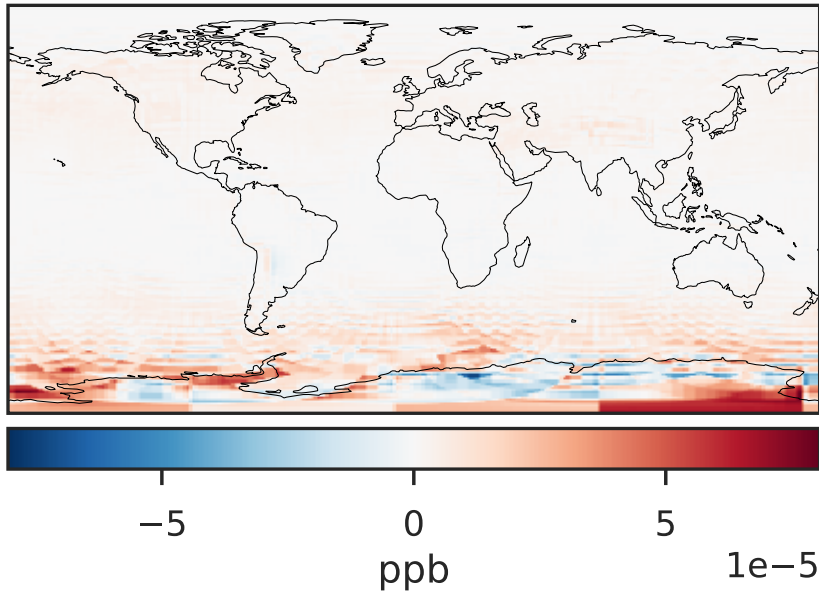
GCC\_14.2.0 (Ref)  
4.0x5.0



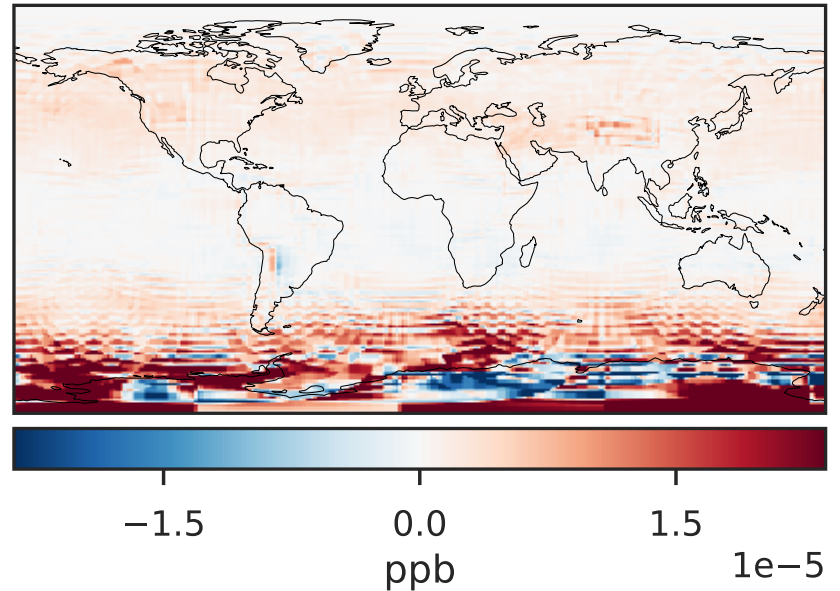
GCHP\_14.2.0 (Dev)  
c24



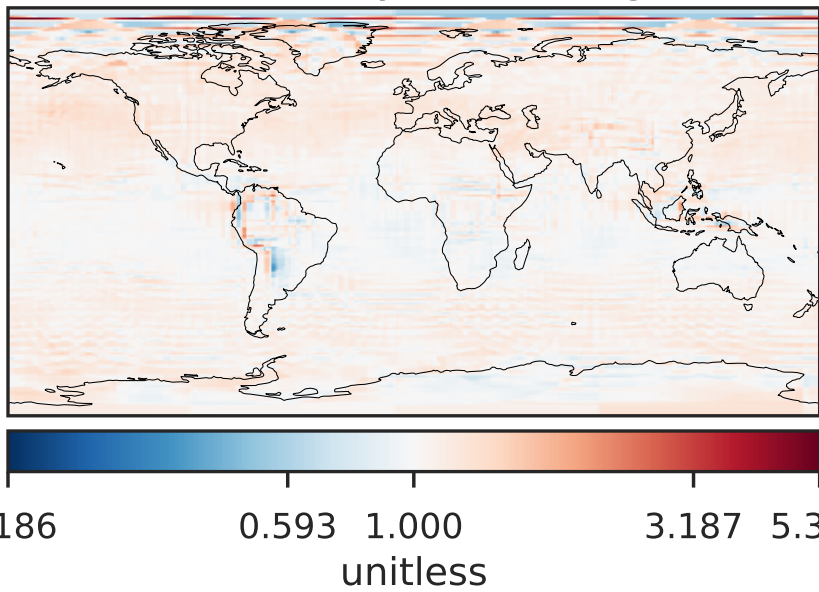
Difference (1x1.25)  
Dev - Ref, Dynamic Range



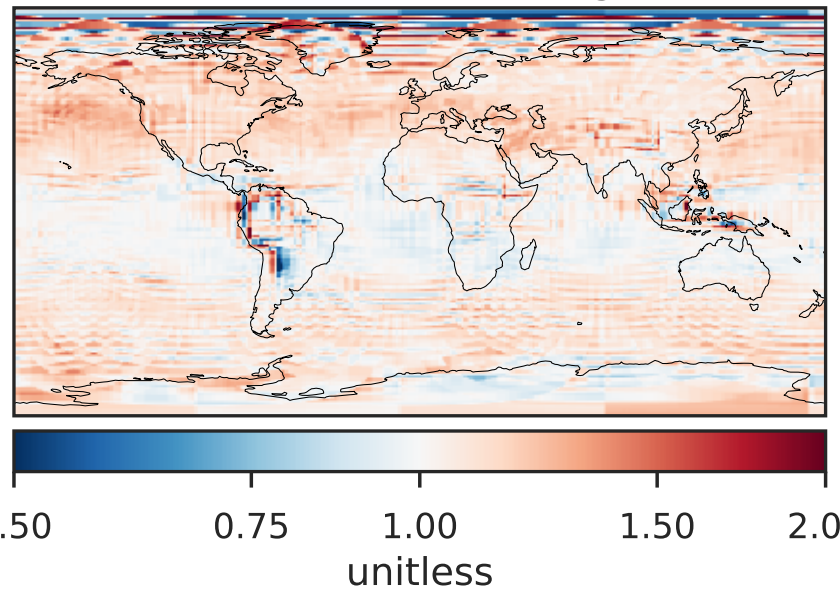
Difference (1x1.25)  
Dev - Ref, Restricted Range [5%,95%]



Ratio (1x1.25)  
Dev/Ref, Dynamic Range

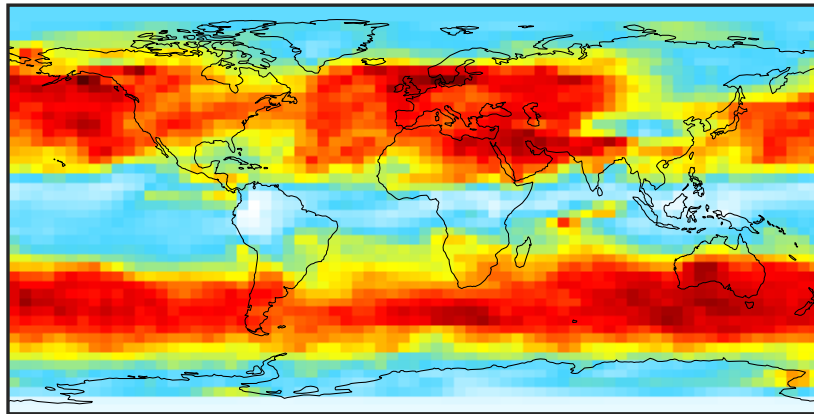


Ratio (1x1.25)  
Dev/Ref, Fixed Range



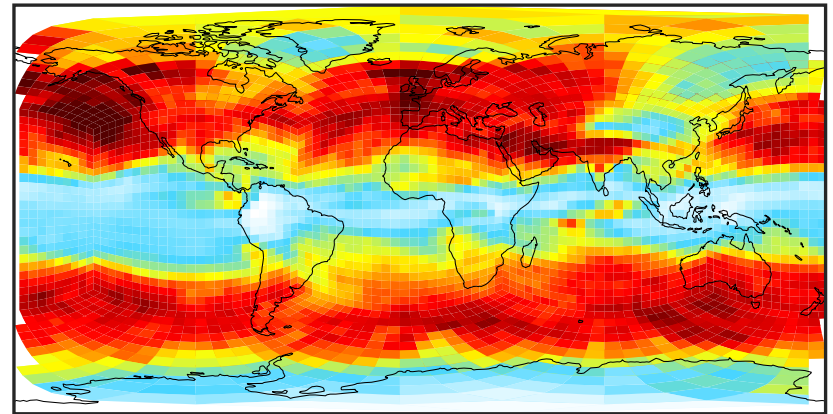
# SpeciesConcVW\_Br2 (Oct2019)

GCC\_14.2.0 (Ref)  
4.0x5.0



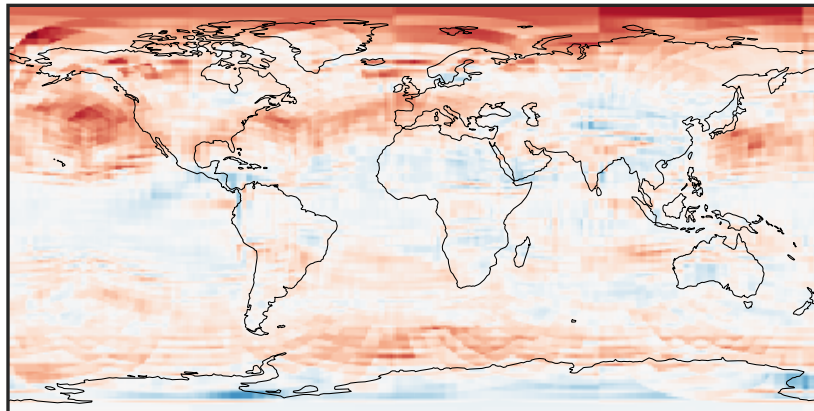
0.00006 0.00012 0.00018  
ppb

GCHP\_14.2.0 (Dev)  
c24



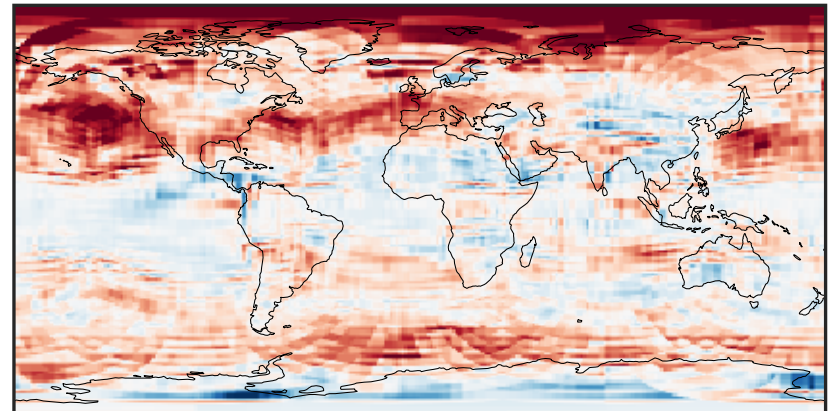
0.00006 0.00012 0.00018  
ppb

Difference (1x1.25)  
Dev - Ref, Dynamic Range



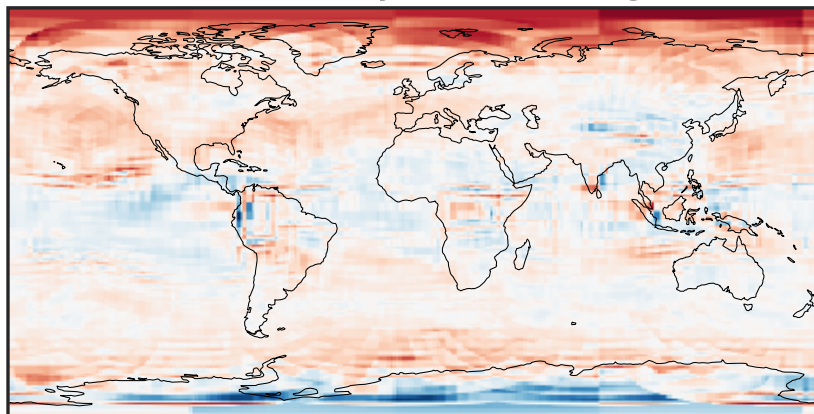
-6 0 6  
ppb 1e-5

Difference (1x1.25)  
Dev - Ref, Restricted Range [5%,95%]



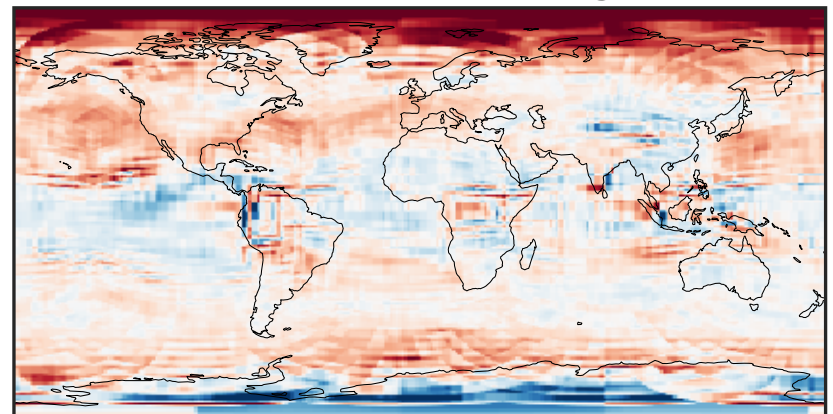
-3 0 3  
ppb 1e-5

Ratio (1x1.25)  
Dev/Ref, Dynamic Range



0.354 0.677 1.000 1.913 2.825  
unitless

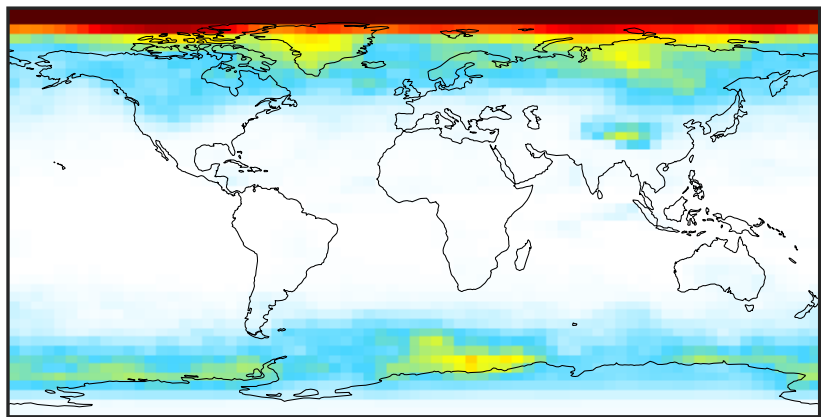
Ratio (1x1.25)  
Dev/Ref, Fixed Range



0.50 0.75 1.00 1.50 2.00  
unitless

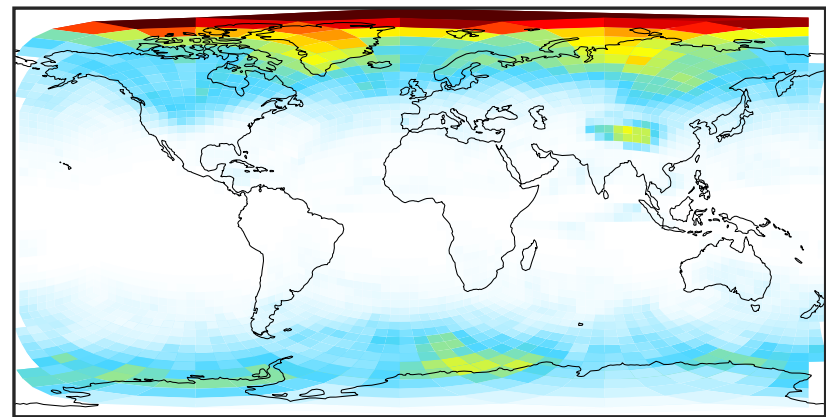
# SpeciesConcVV\_BrCl (Oct2019)

GCC\_14.2.0 (Ref)  
4.0x5.0



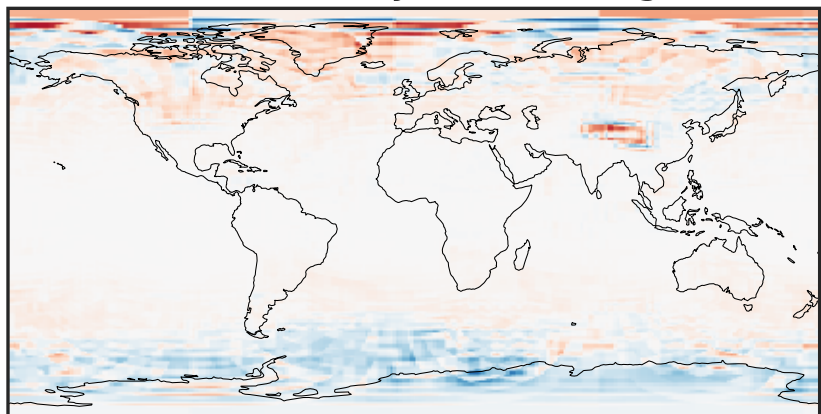
0.0004 0.0008 0.0012  
ppb

GCHP\_14.2.0 (Dev)  
c24



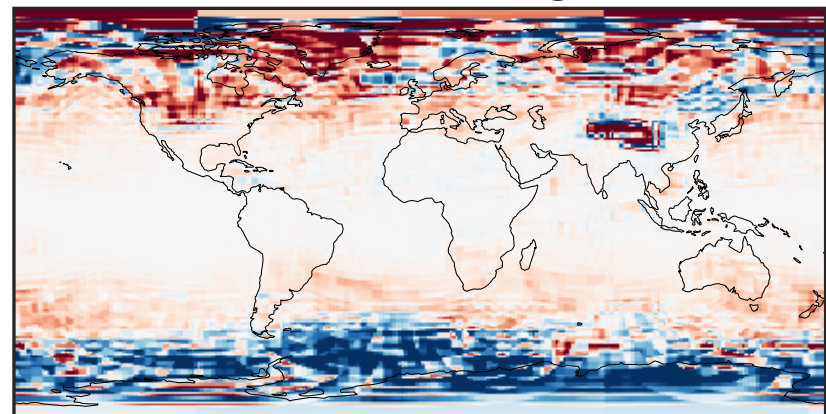
0.0004 0.0008 0.0012  
ppb

Difference (1x1.25)  
Dev - Ref, Dynamic Range



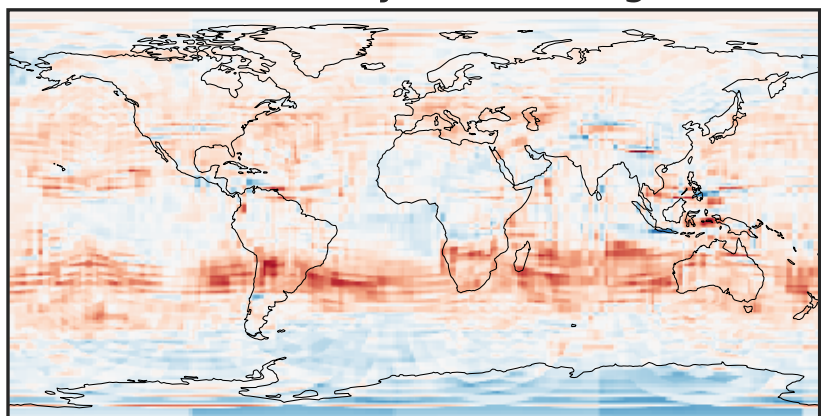
-0.0002 0.0000 0.0002  
ppb

Difference (1x1.25)  
Dev - Ref, Restricted Range [5%,95%]



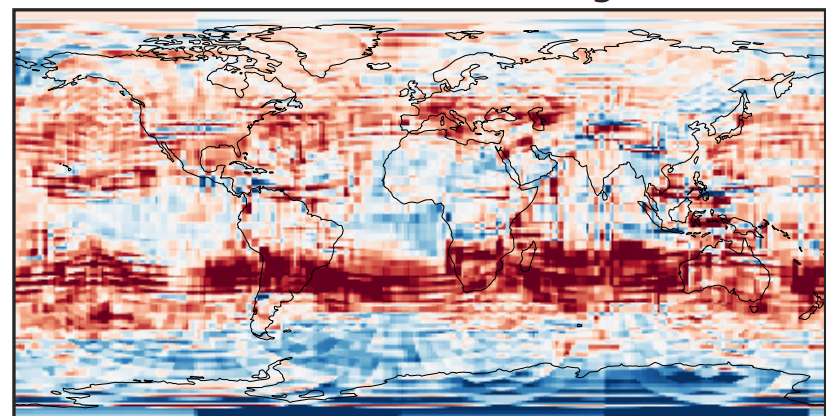
-5 0 5  
ppb  $1e-5$

Ratio (1x1.25)  
Dev/Ref, Dynamic Range



0.163 0.581 1.000 3.568 6.135  
unitless

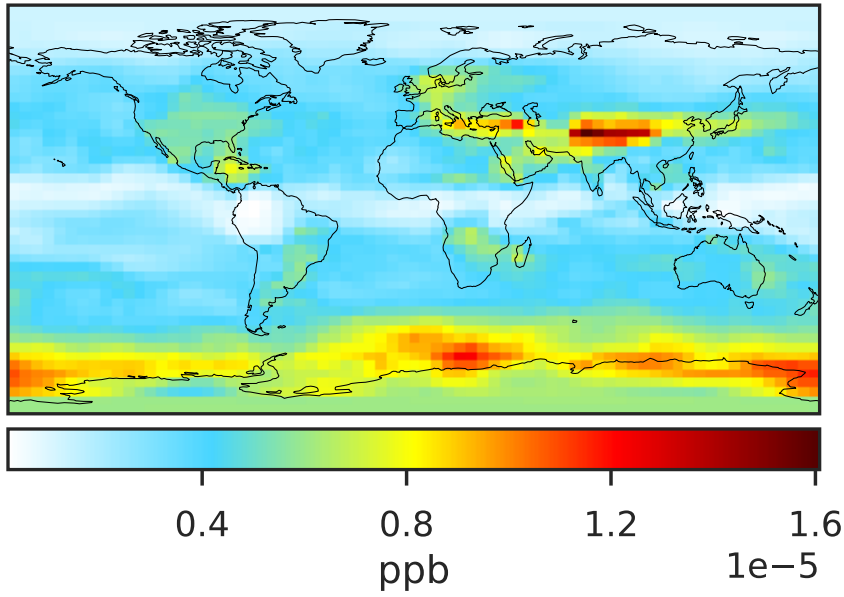
Ratio (1x1.25)  
Dev/Ref, Fixed Range



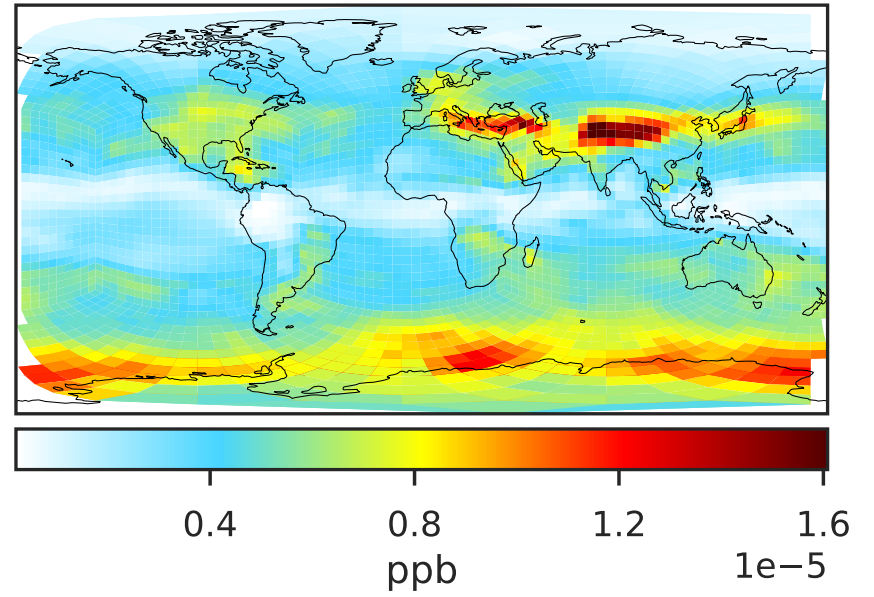
0.50 0.75 1.00 1.50 2.00  
unitless

# SpeciesConcVV\_BrNO2 (Oct2019)

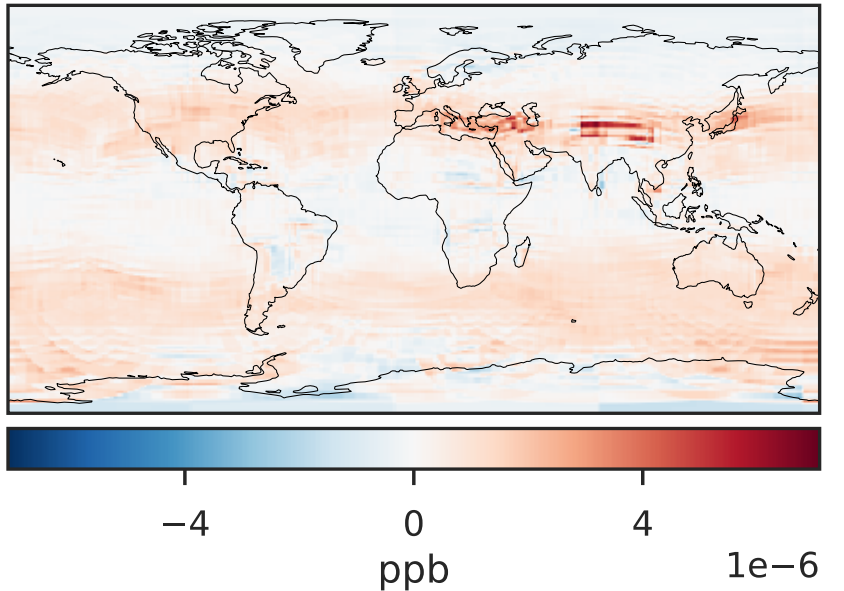
GCC\_14.2.0 (Ref)  
4.0x5.0



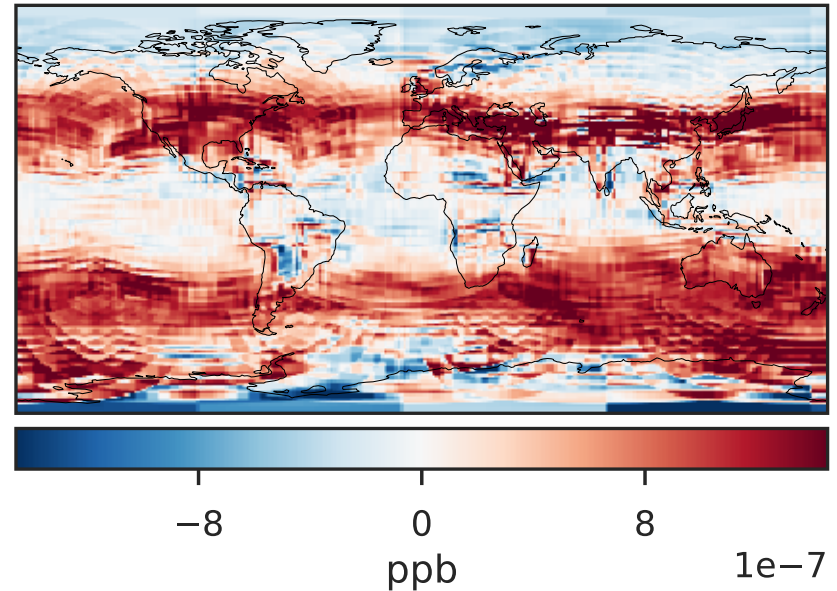
GCHP\_14.2.0 (Dev)  
c24



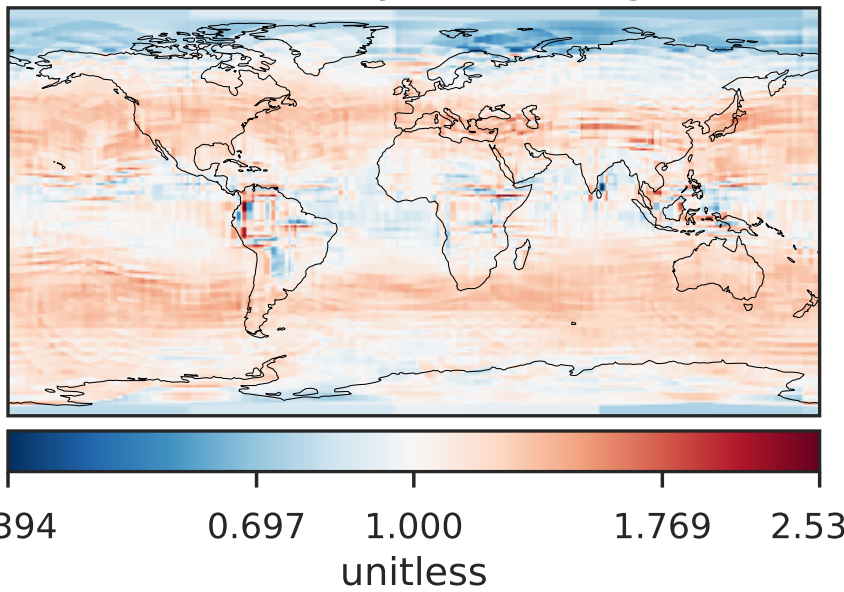
Difference (1x1.25)  
Dev - Ref, Dynamic Range



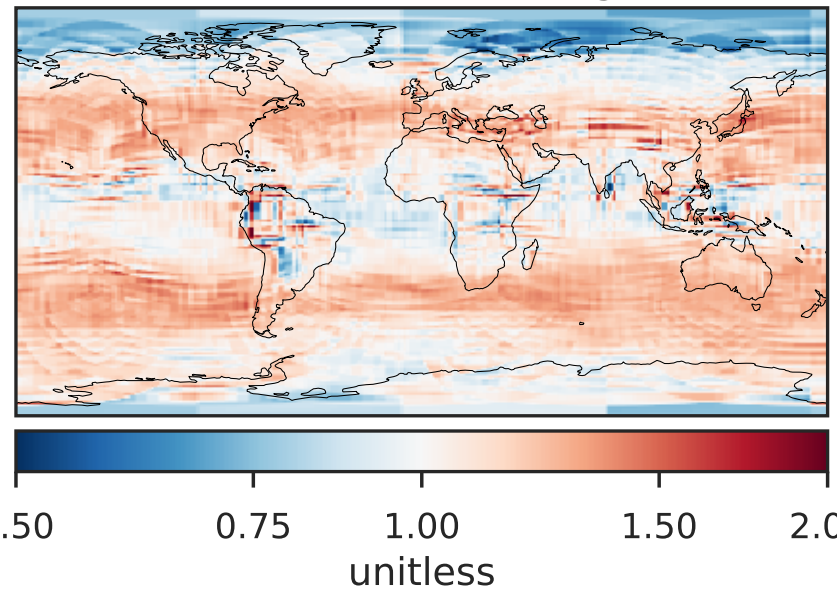
Difference (1x1.25)  
Dev - Ref, Restricted Range [5%,95%]



Ratio (1x1.25)  
Dev/Ref, Dynamic Range

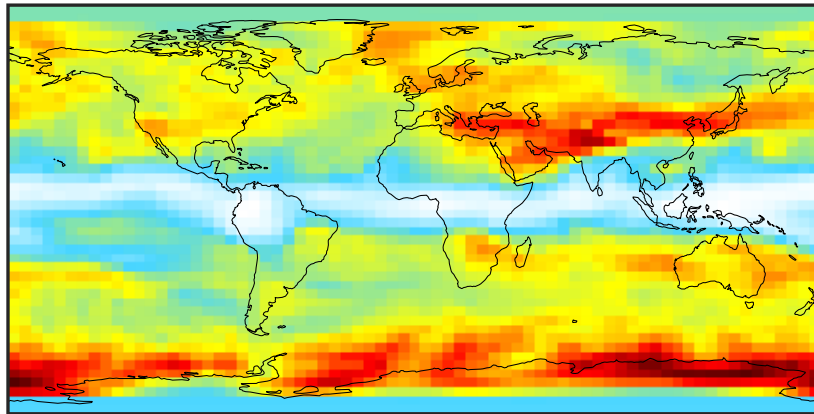


Ratio (1x1.25)  
Dev/Ref, Fixed Range



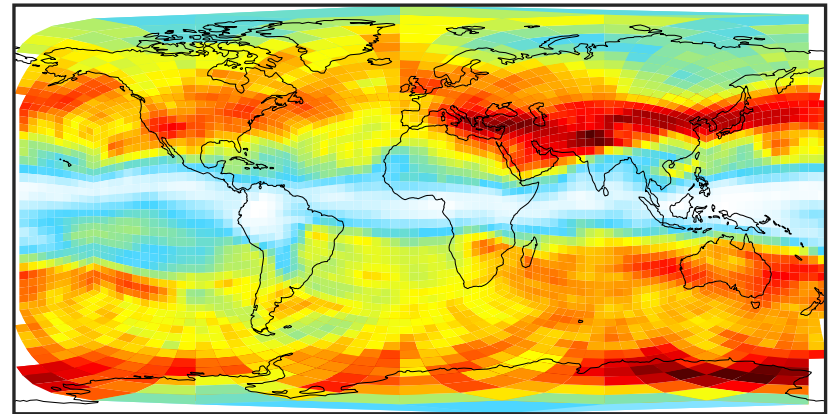
# SpeciesConcVV\_BrNO3 (Oct2019)

GCC\_14.2.0 (Ref)  
4.0x5.0



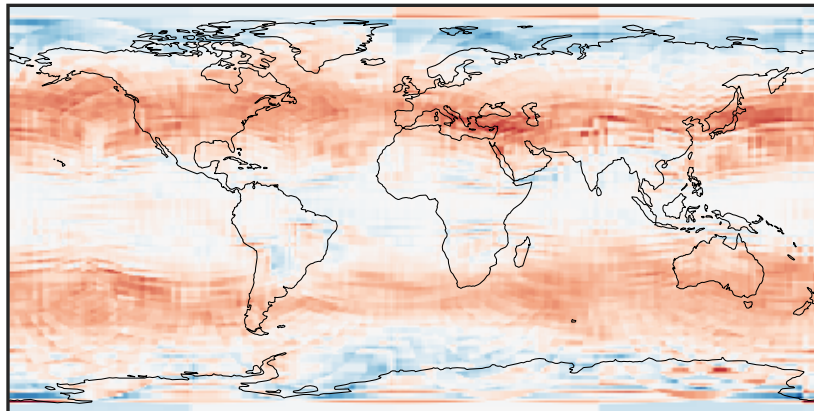
0.0004 0.0008 0.0012  
ppb

GCHP\_14.2.0 (Dev)  
c24



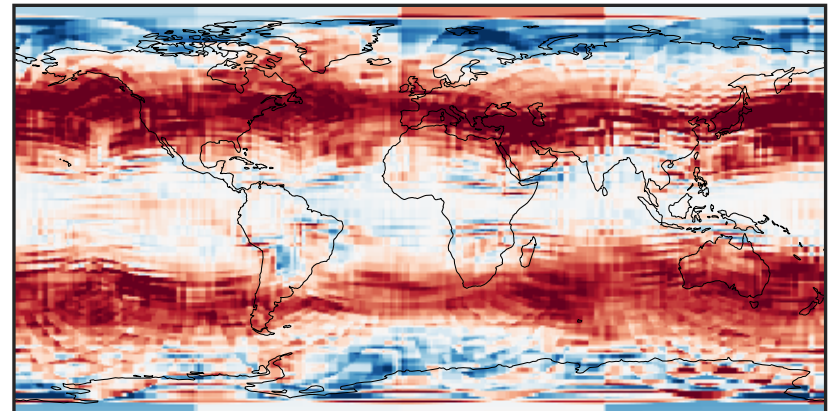
0.0004 0.0008 0.0012  
ppb

Difference (1x1.25)  
Dev - Ref, Dynamic Range



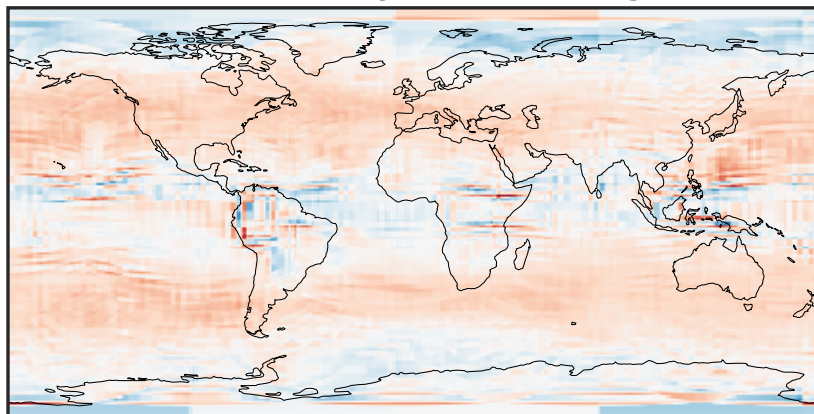
-0.00025 0.00000 0.00025  
ppb

Difference (1x1.25)  
Dev - Ref, Restricted Range [5%,95%]



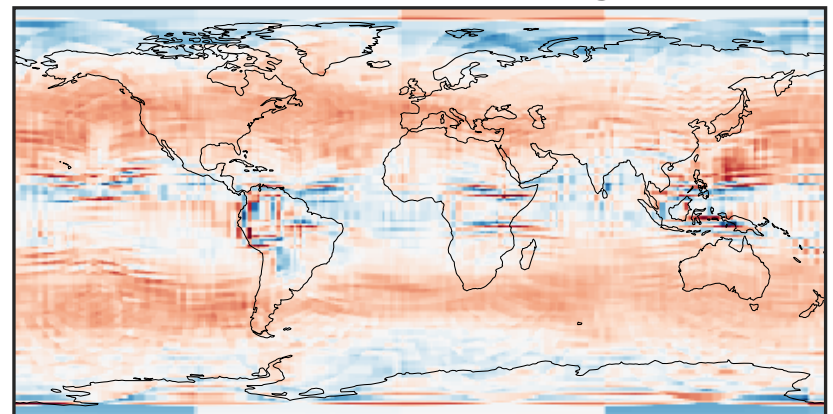
-0.00015 0.00000 0.00015  
ppb

Ratio (1x1.25)  
Dev/Ref, Dynamic Range



0.350 0.675 1.000 1.927 2.855  
unitless

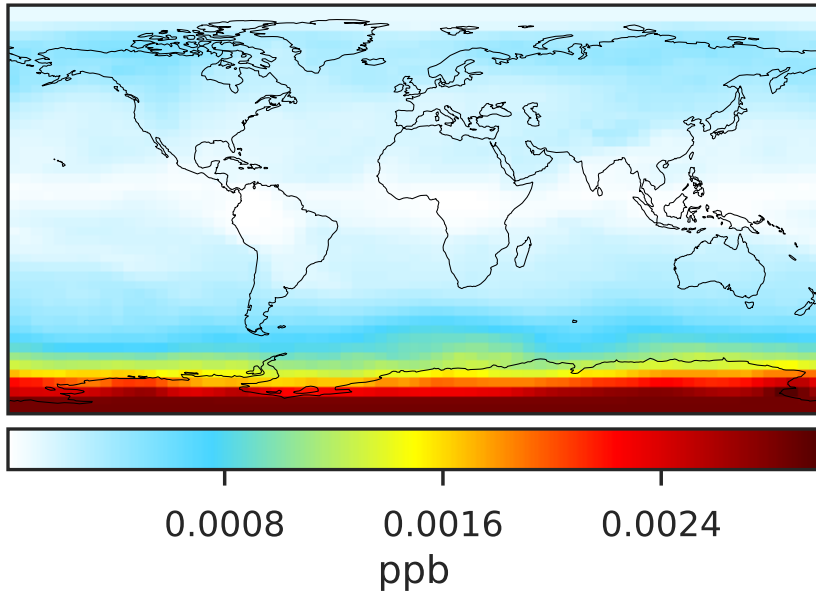
Ratio (1x1.25)  
Dev/Ref, Fixed Range



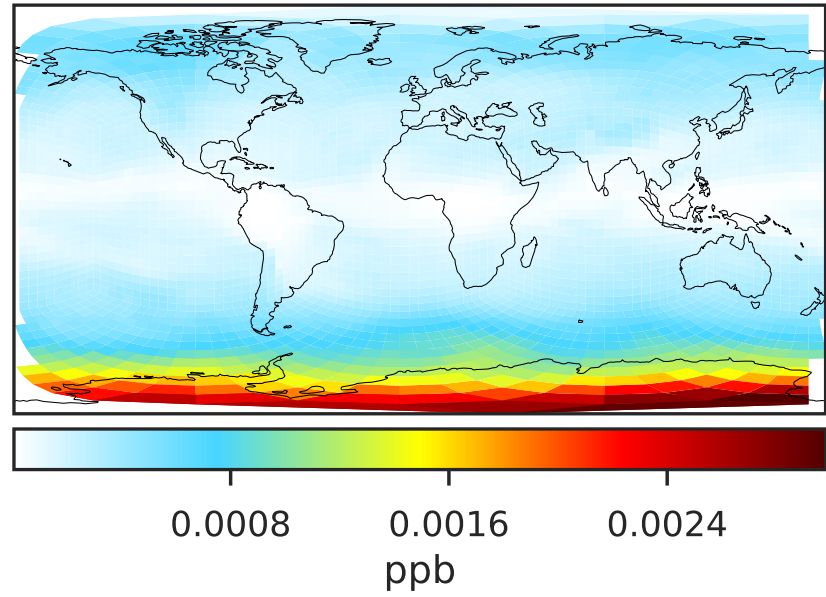
0.50 0.75 1.00 1.50 2.00  
unitless

# SpeciesConcVV\_BrO (Oct2019)

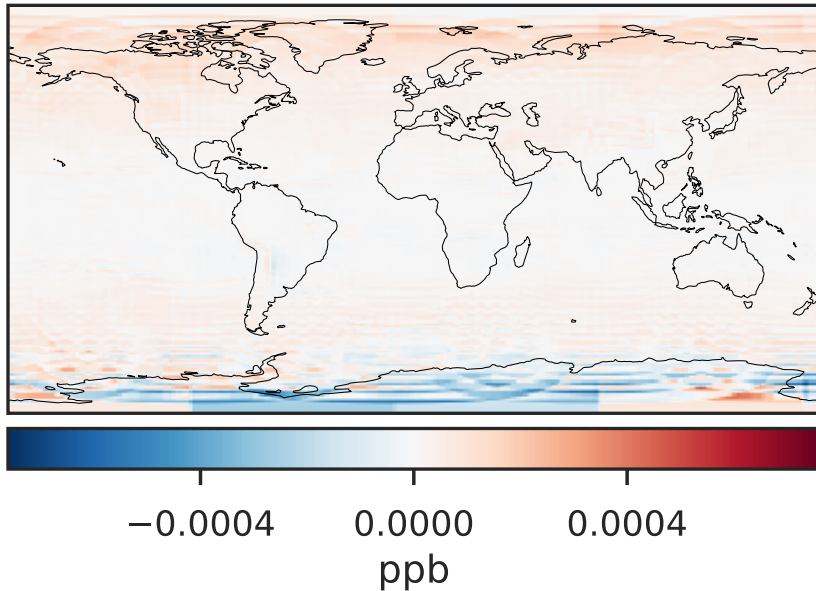
GCC\_14.2.0 (Ref)  
4.0x5.0



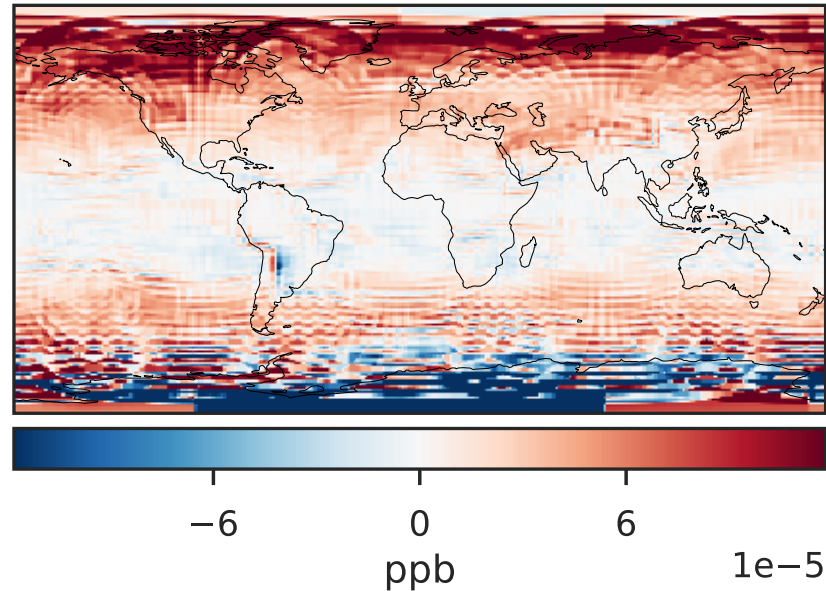
GCHP\_14.2.0 (Dev)  
c24



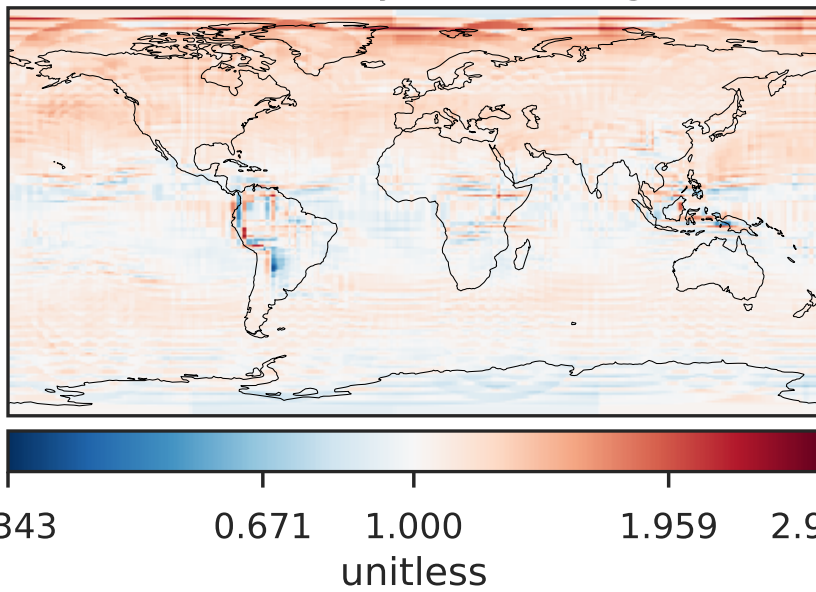
Difference (1x1.25)  
Dev - Ref, Dynamic Range



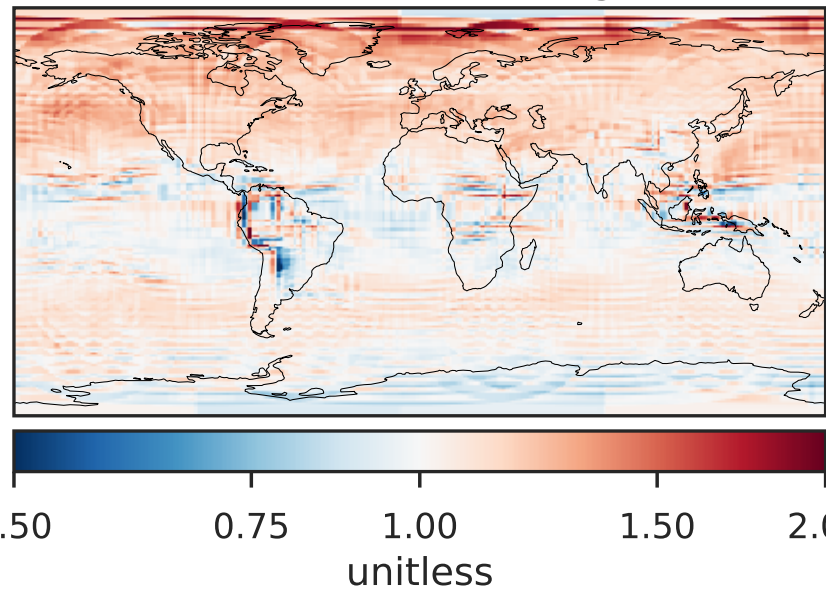
Difference (1x1.25)  
Dev - Ref, Restricted Range [5%,95%]



Ratio (1x1.25)  
Dev/Ref, Dynamic Range



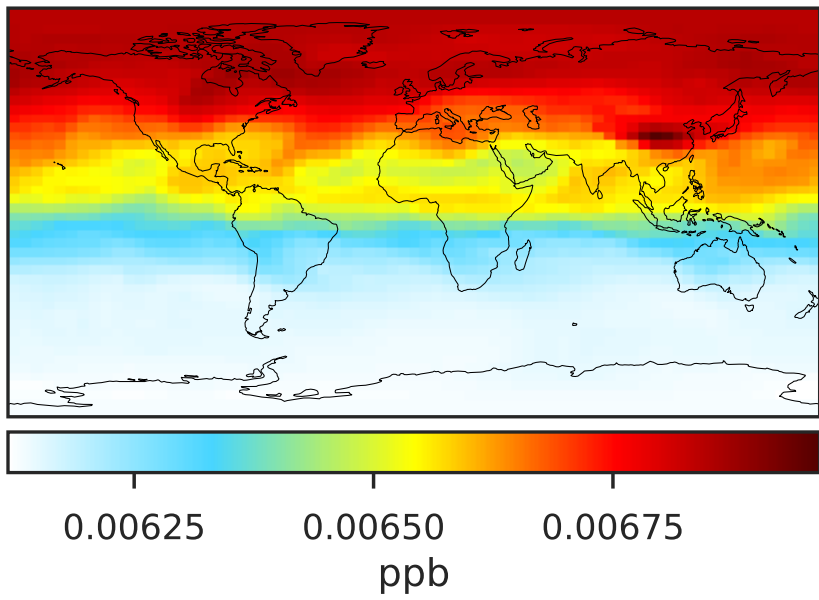
Ratio (1x1.25)  
Dev/Ref, Fixed Range



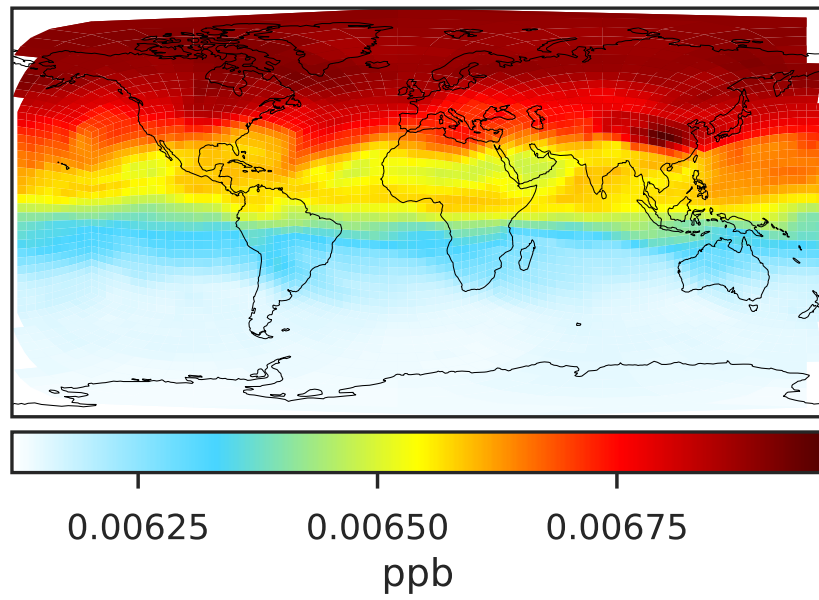


# SpeciesConcVV\_CH3Br (Oct2019)

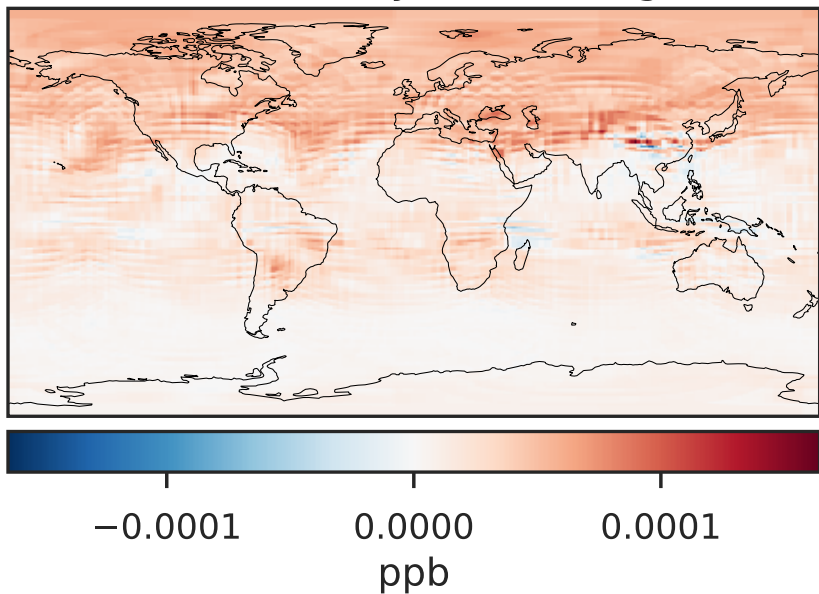
GCC\_14.2.0 (Ref)  
4.0x5.0



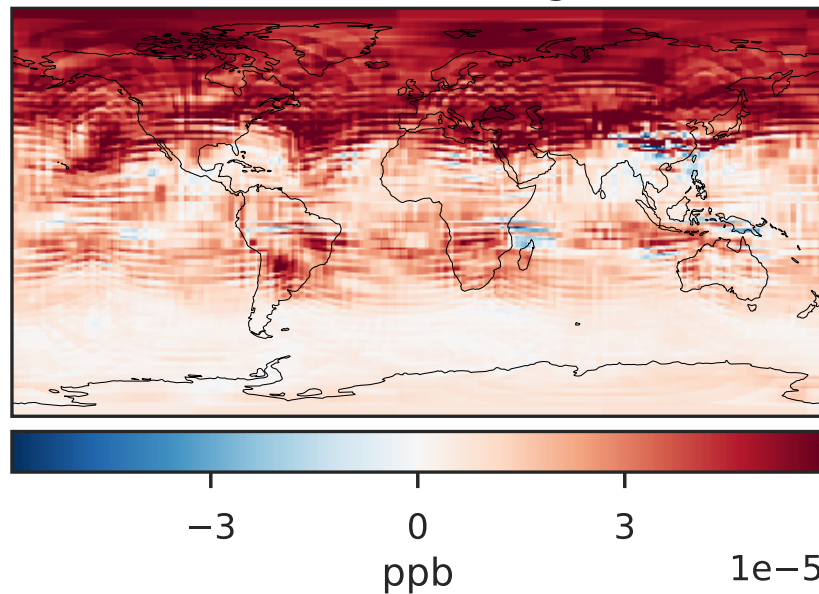
GCHP\_14.2.0 (Dev)  
c24



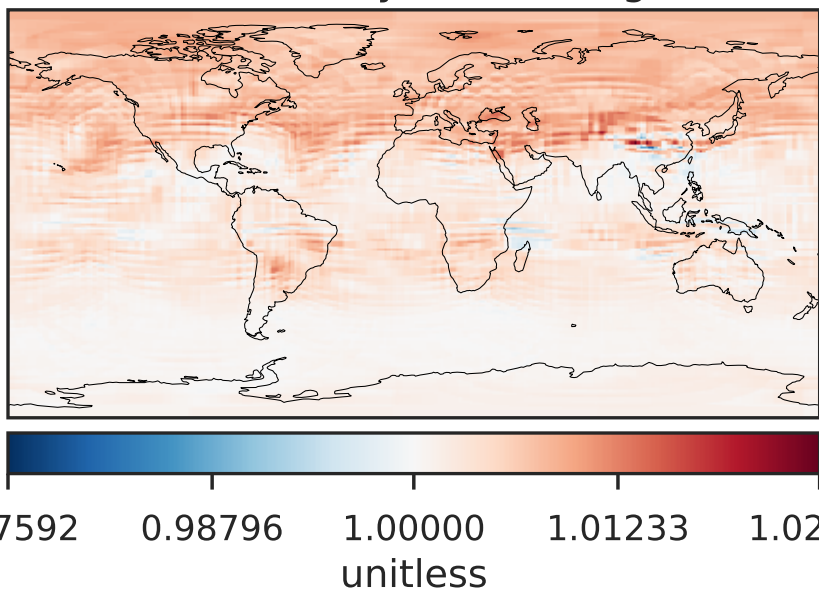
Difference (1x1.25)  
Dev - Ref, Dynamic Range



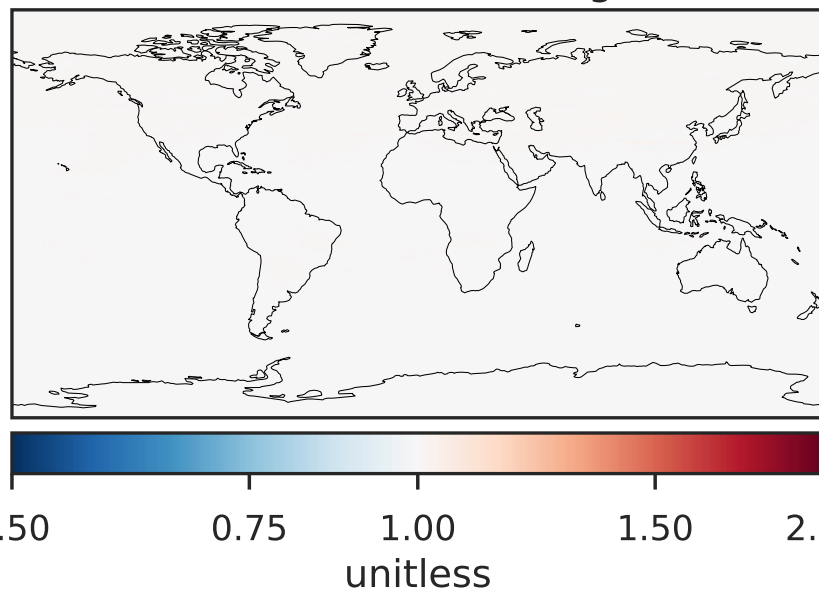
Difference (1x1.25)  
Dev - Ref, Restricted Range [5%,95%]



Ratio (1x1.25)  
Dev/Ref, Dynamic Range



Ratio (1x1.25)  
Dev/Ref, Fixed Range

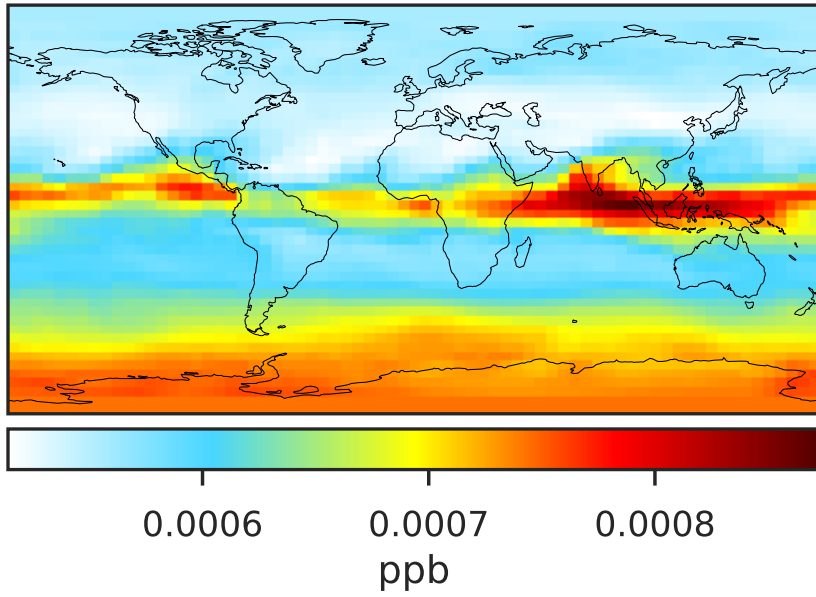


0.97592 0.98796 1.00000 1.01233 1.02467  
unitless

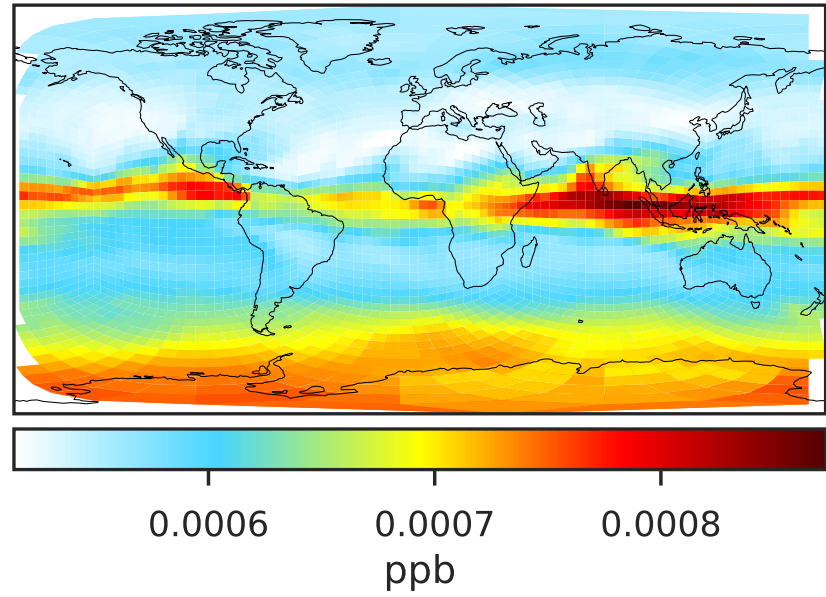
0.50 0.75 1.00 1.50 2.00  
unitless

# SpeciesConcVV\_CH2Br2 (Oct2019)

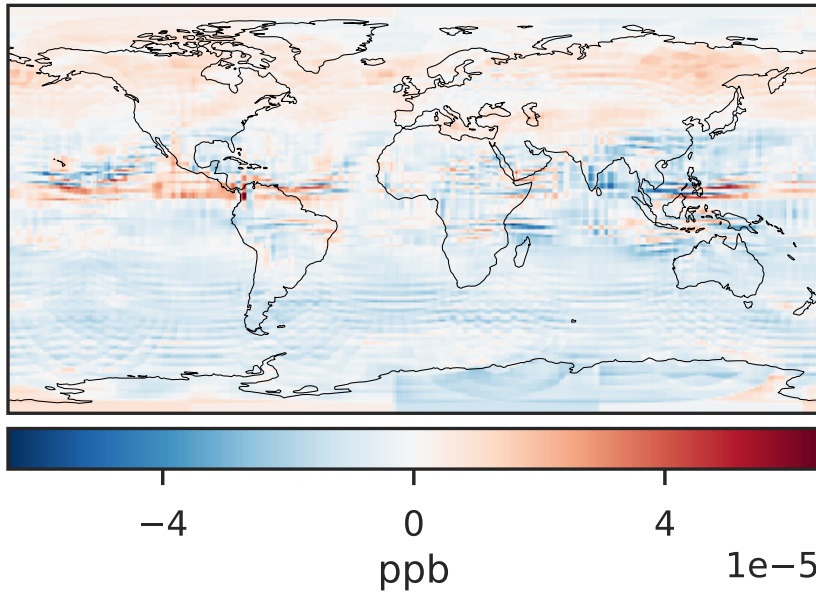
GCC\_14.2.0 (Ref)  
4.0x5.0



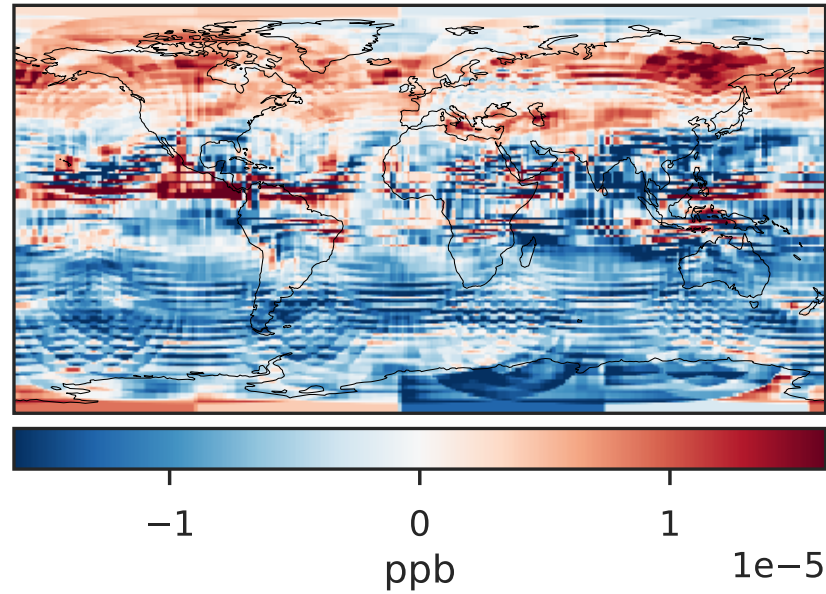
GCHP\_14.2.0 (Dev)  
c24



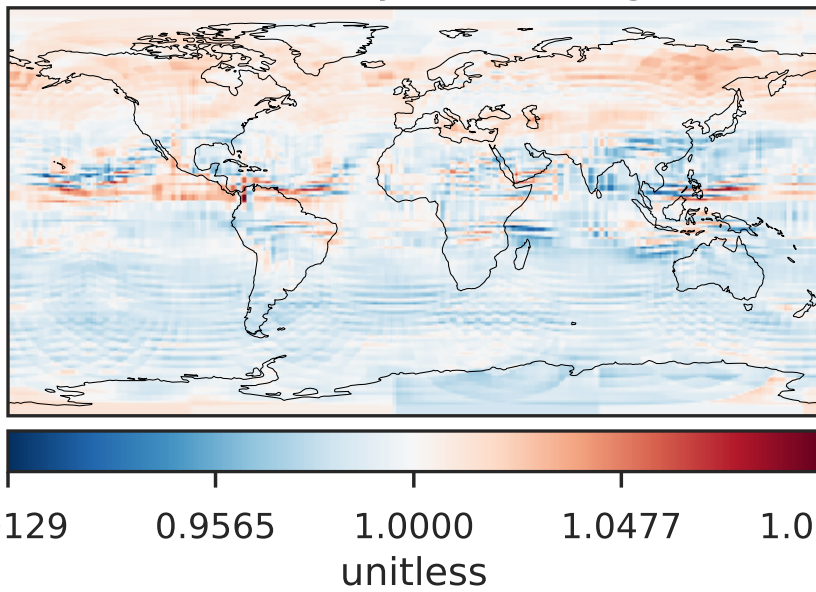
Difference (1x1.25)  
Dev - Ref, Dynamic Range



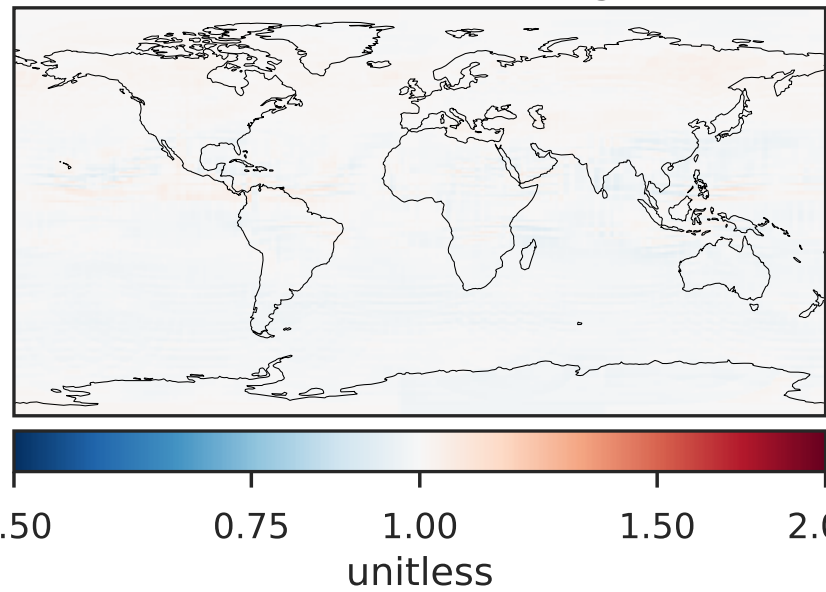
Difference (1x1.25)  
Dev - Ref, Restricted Range [5%,95%]



Ratio (1x1.25)  
Dev/Ref, Dynamic Range

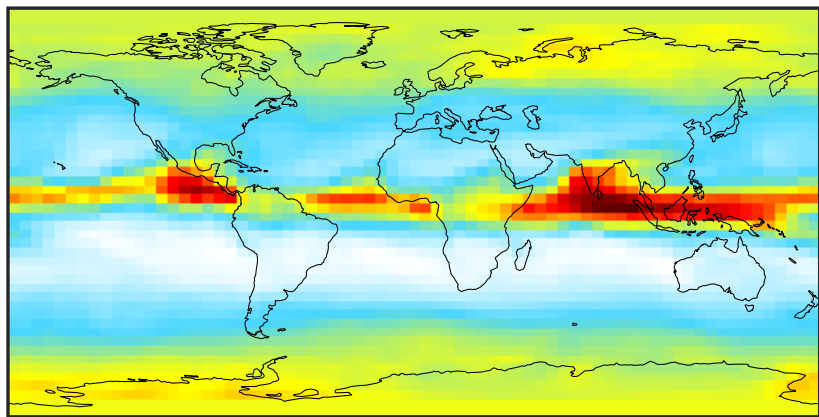


Ratio (1x1.25)  
Dev/Ref, Fixed Range



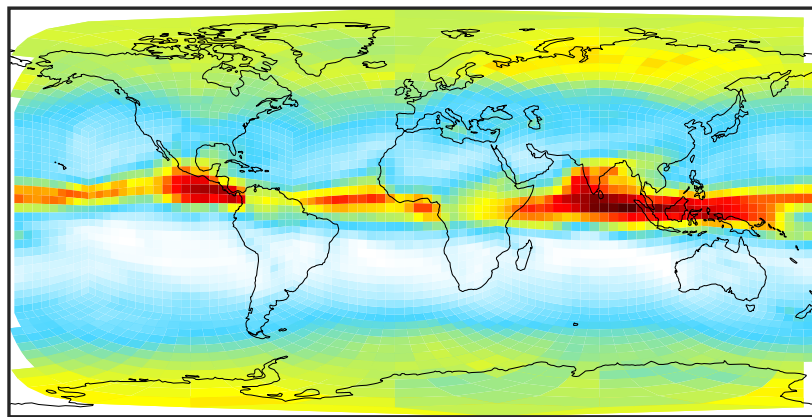
# SpeciesConcVV\_CHBr3 (Oct2019)

GCC\_14.2.0 (Ref)  
4.0x5.0



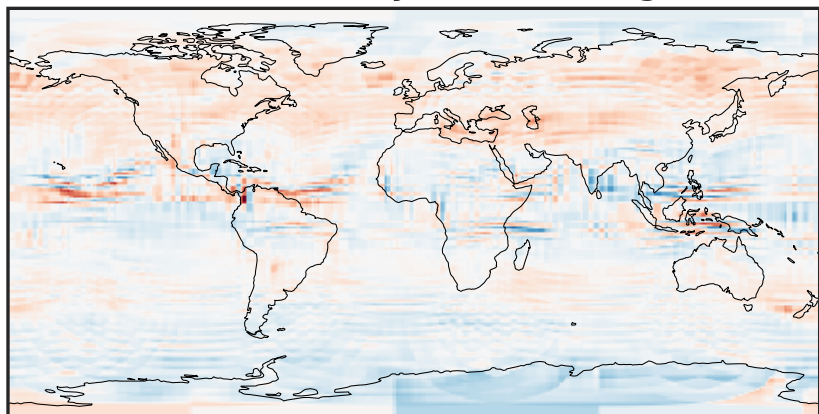
0.00025 0.00050 0.00075 0.00100  
ppb

GCHP\_14.2.0 (Dev)  
c24



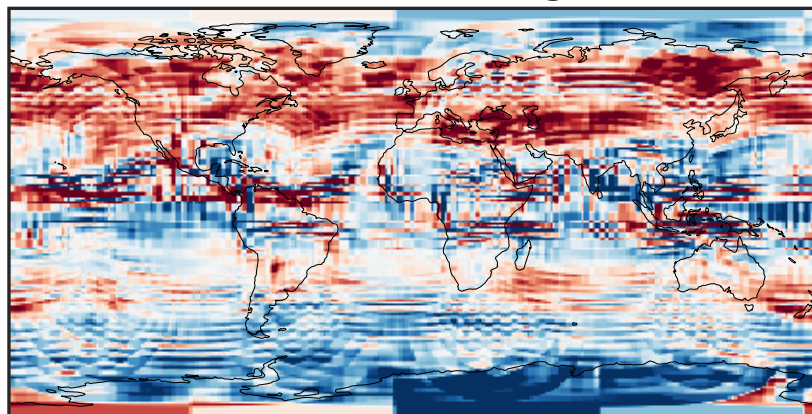
0.00025 0.00050 0.00075 0.00100  
ppb

Difference (1x1.25)  
Dev - Ref, Dynamic Range



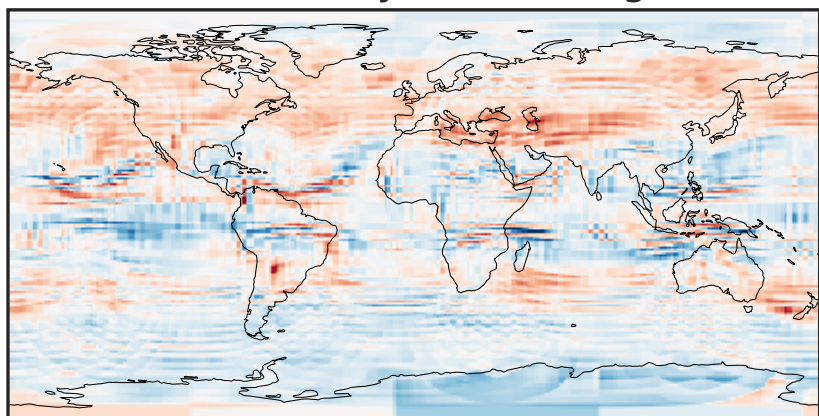
-0.00015 0.00000 0.00015  
ppb

Difference (1x1.25)  
Dev - Ref, Restricted Range [5%,95%]



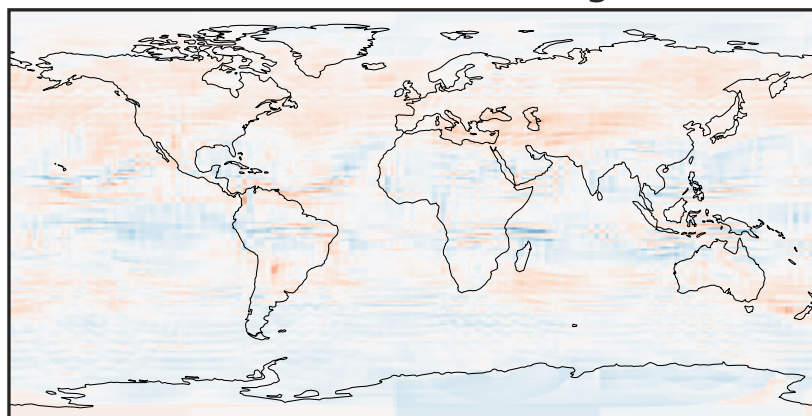
-2.5 0.0 2.5  
ppb 1e-5

Ratio (1x1.25)  
Dev/Ref, Dynamic Range



0.7536 0.8768 1.000 1.1635 1.3270  
unitless

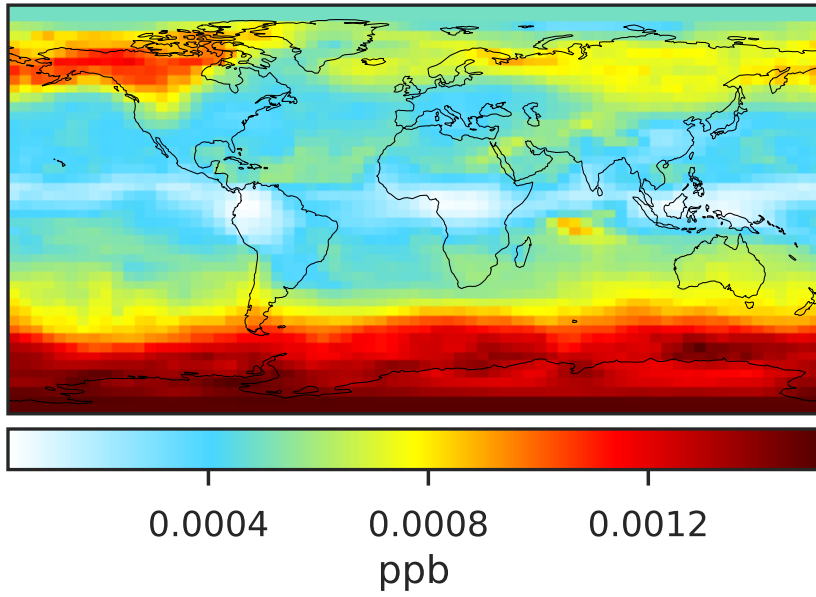
Ratio (1x1.25)  
Dev/Ref, Fixed Range



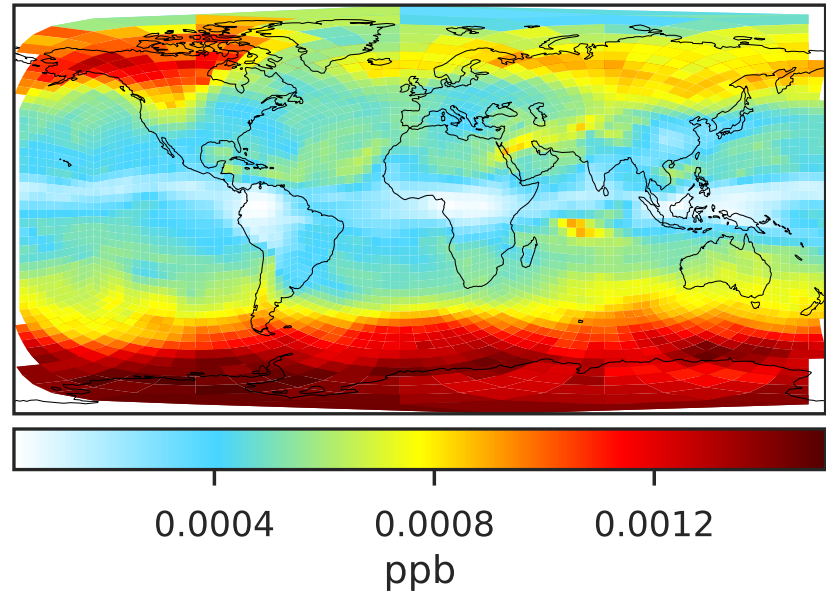
0.50 0.75 1.00 1.50 2.00  
unitless

# SpeciesConcVW\_HOBr (Oct2019)

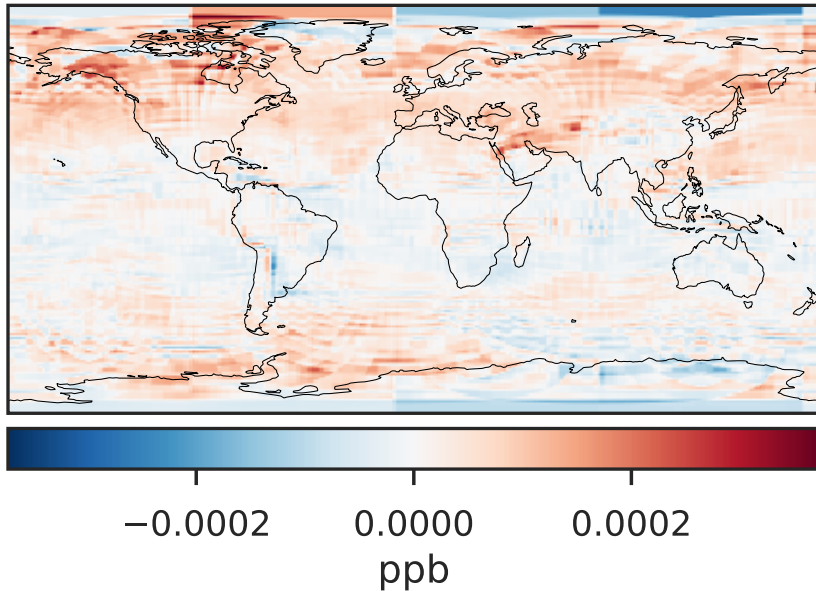
GCC\_14.2.0 (Ref)  
4.0x5.0



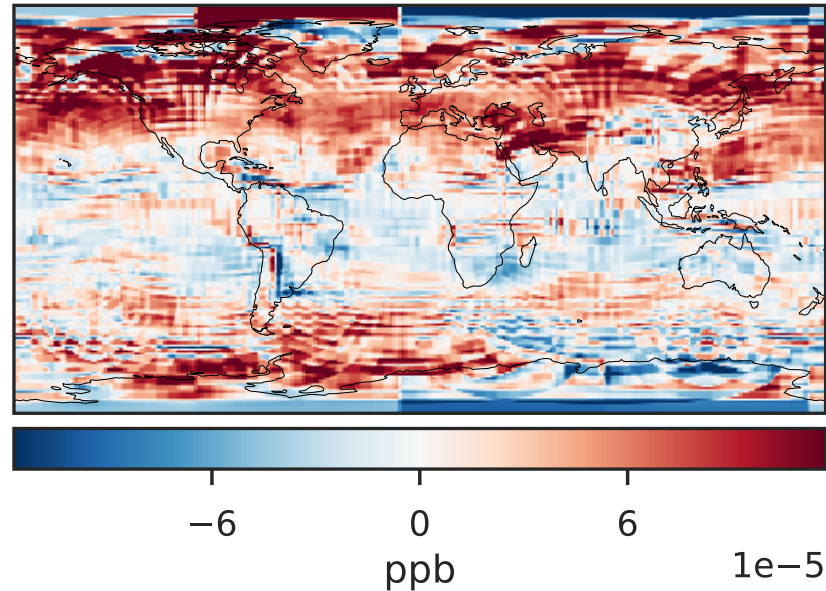
GCHP\_14.2.0 (Dev)  
c24



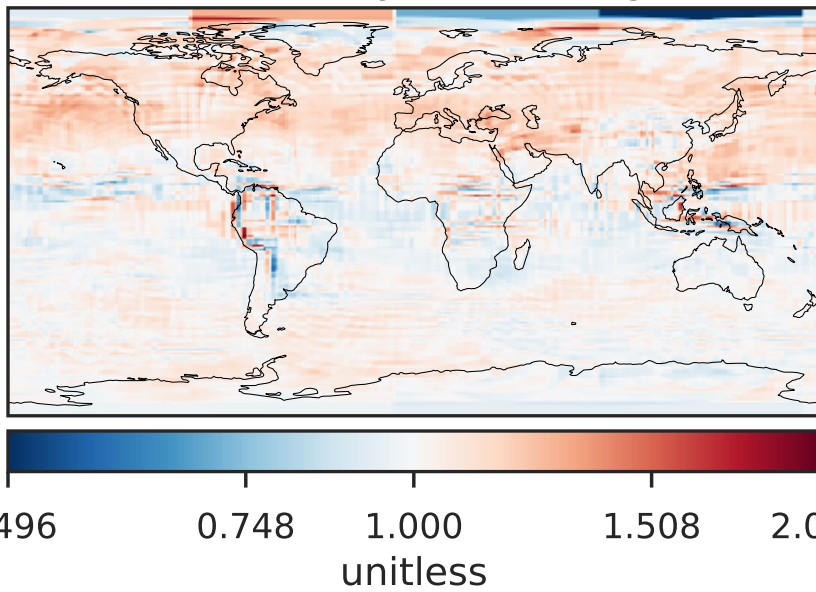
Difference (1x1.25)  
Dev - Ref, Dynamic Range



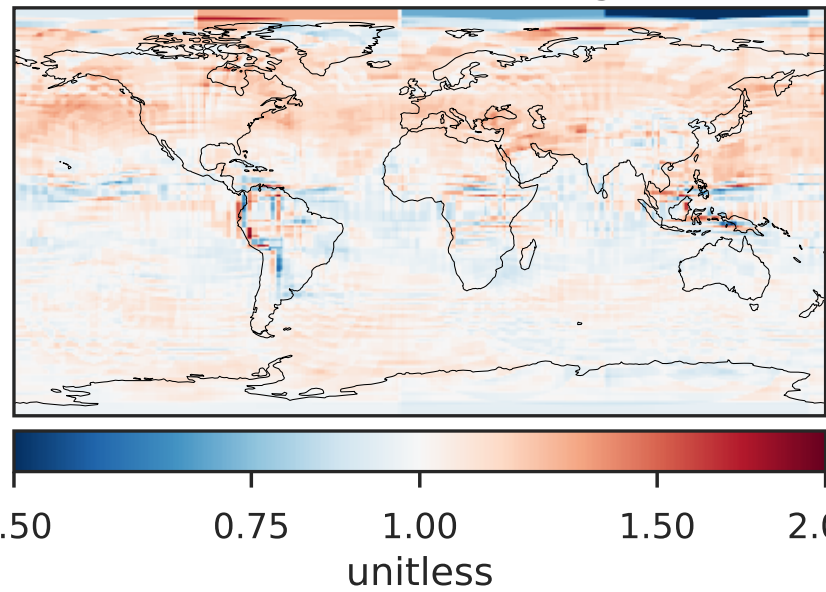
Difference (1x1.25)  
Dev - Ref, Restricted Range [5%,95%]



Ratio (1x1.25)  
Dev/Ref, Dynamic Range

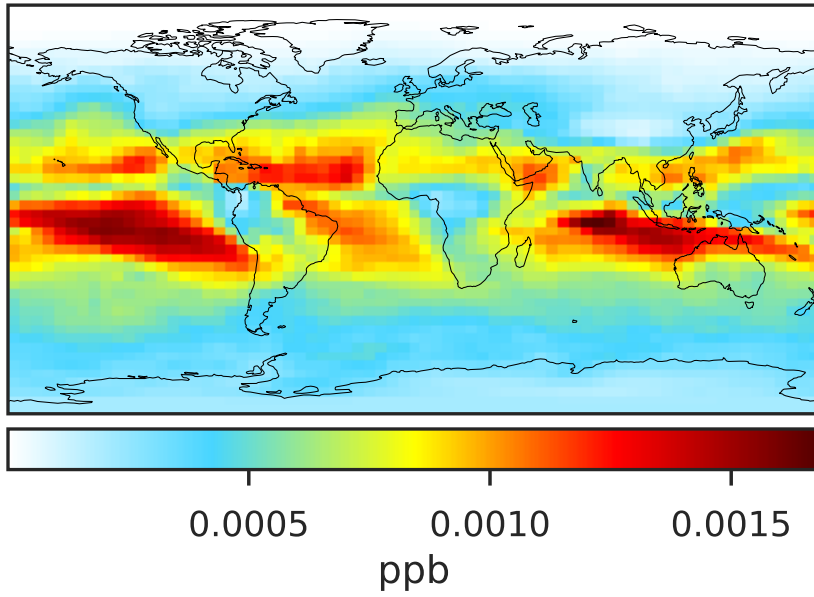


Ratio (1x1.25)  
Dev/Ref, Fixed Range

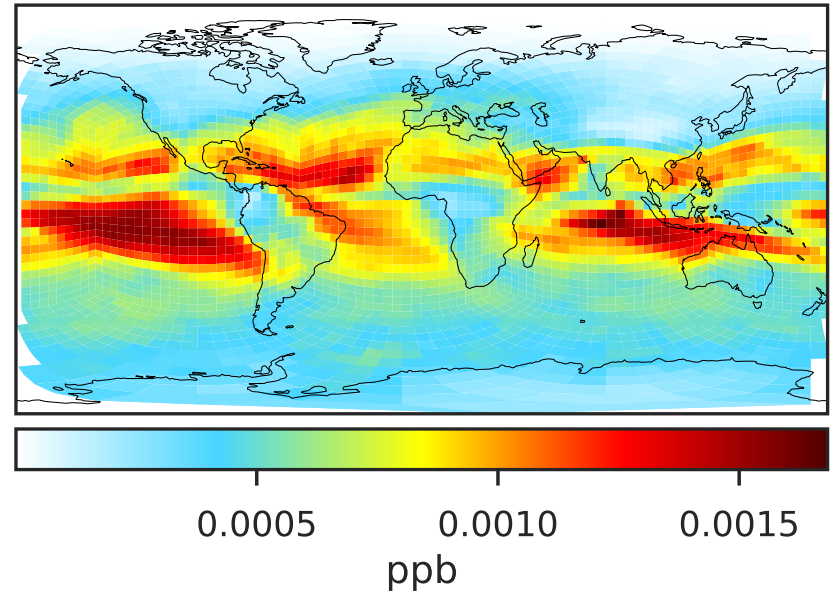


# SpeciesConcVV\_HBr (Oct2019)

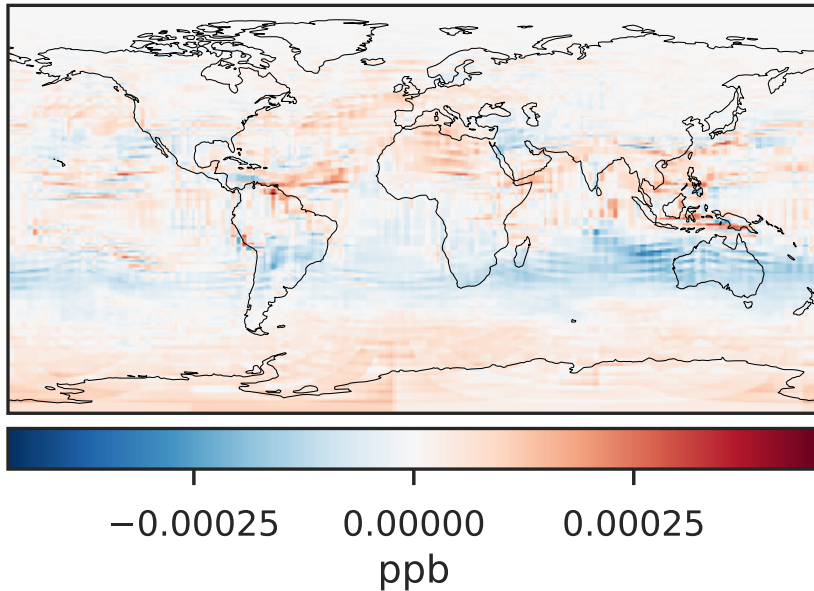
GCC\_14.2.0 (Ref)  
4.0x5.0



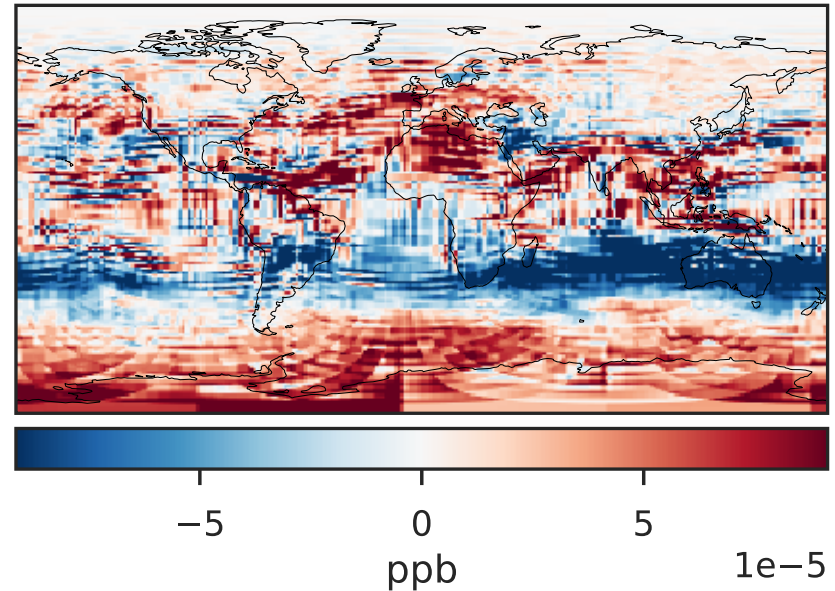
GCHP\_14.2.0 (Dev)  
c24



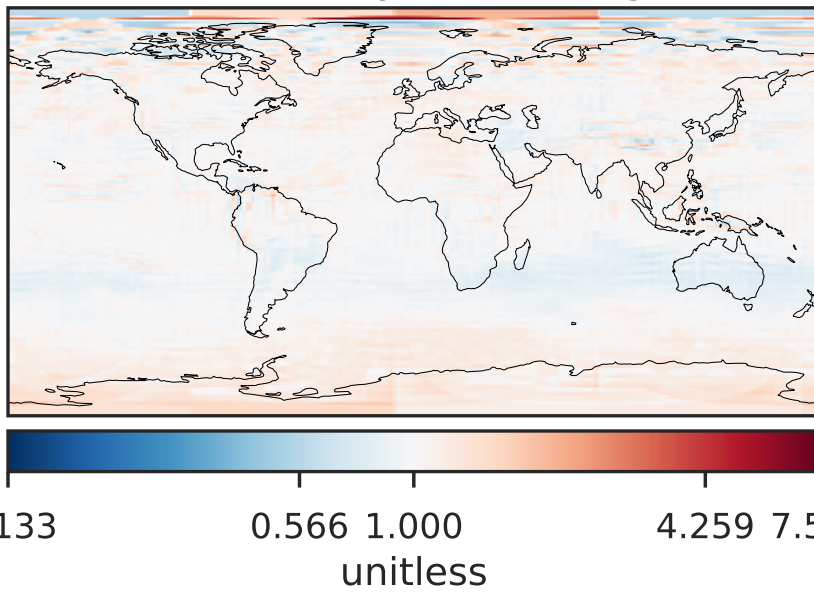
Difference (1x1.25)  
Dev - Ref, Dynamic Range



Difference (1x1.25)  
Dev - Ref, Restricted Range [5%,95%]



Ratio (1x1.25)  
Dev/Ref, Dynamic Range



Ratio (1x1.25)  
Dev/Ref, Fixed Range

