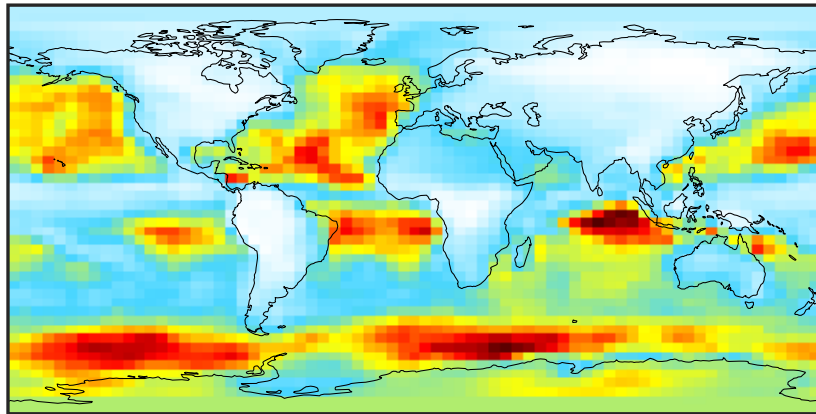


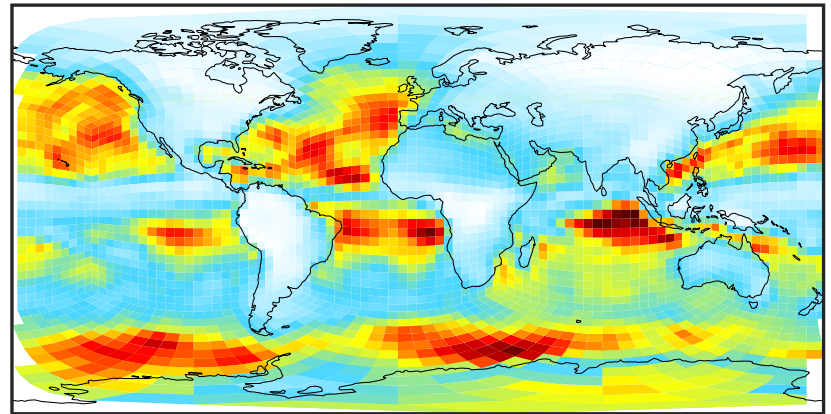
# SpeciesConcVW\_Bry (Oct2019)

GCC\_14.2.0 (Ref)  
4.0x5.0



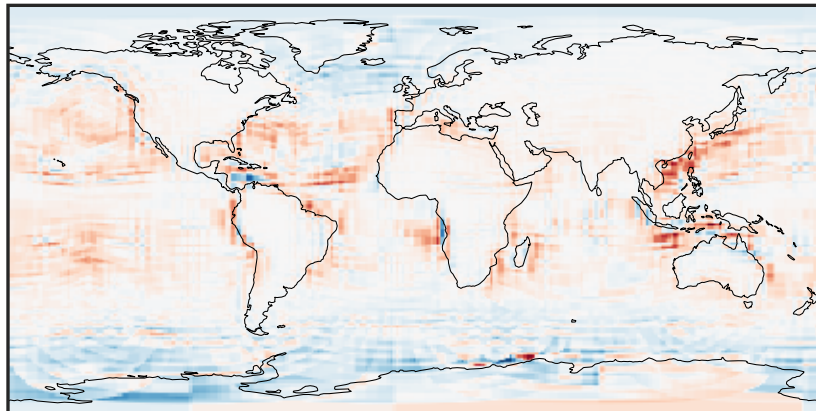
0.004 0.008 0.012  
ppb

GCHP\_14.2.0 (Dev)  
c24



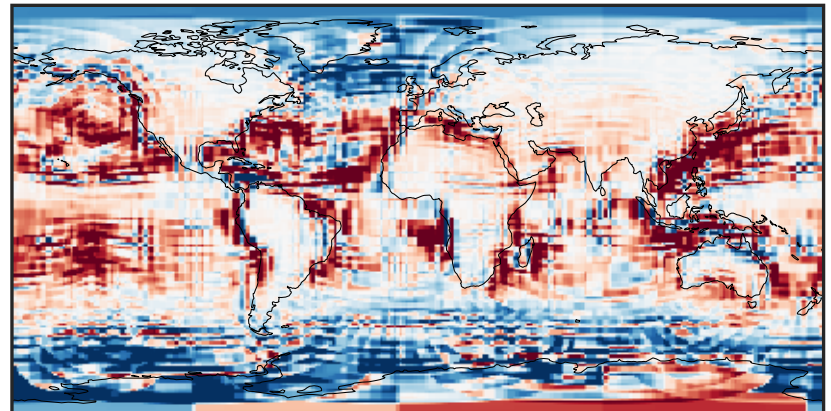
0.004 0.008 0.012  
ppb

Difference (1x1.25)  
Dev - Ref, Dynamic Range



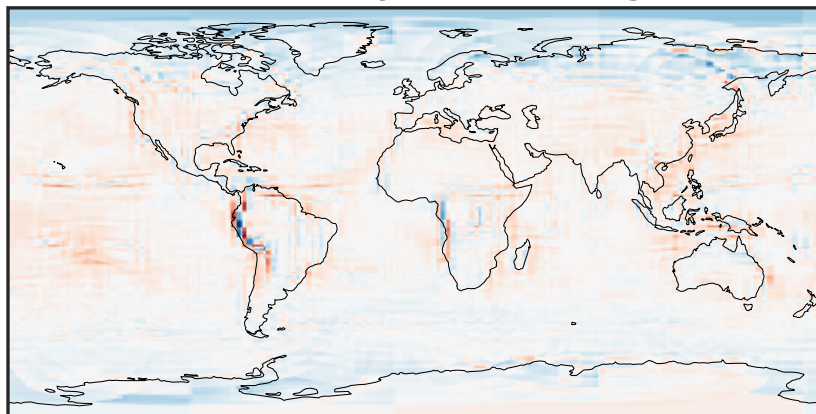
-0.004 0.000 0.004  
ppb

Difference (1x1.25)  
Dev - Ref, Restricted Range [5%,95%]



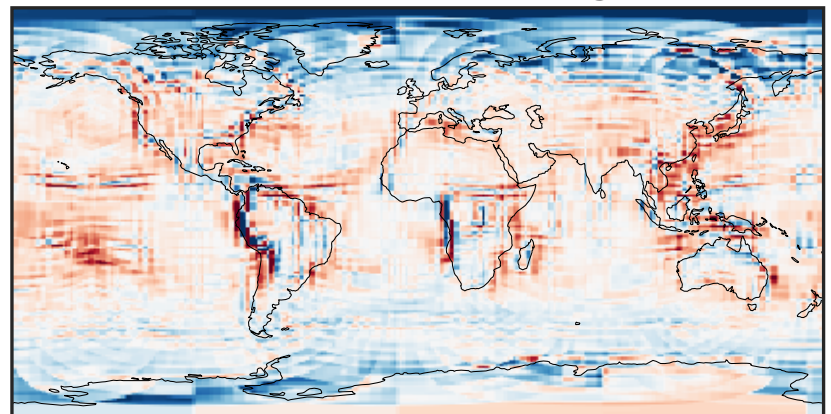
-0.0008 0.0000 0.0008  
ppb

Ratio (1x1.25)  
Dev/Ref, Dynamic Range



0.127 0.564 1.000 4.422 7.845  
unitless

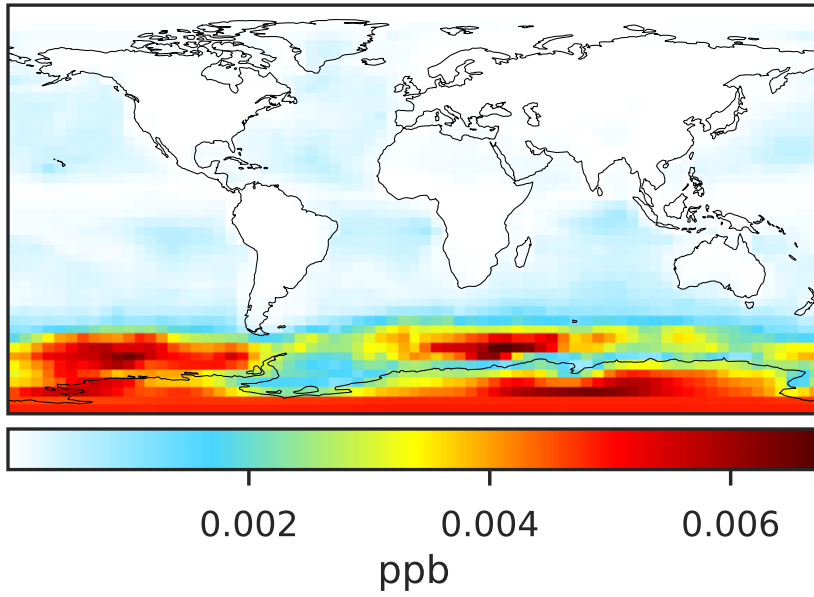
Ratio (1x1.25)  
Dev/Ref, Fixed Range



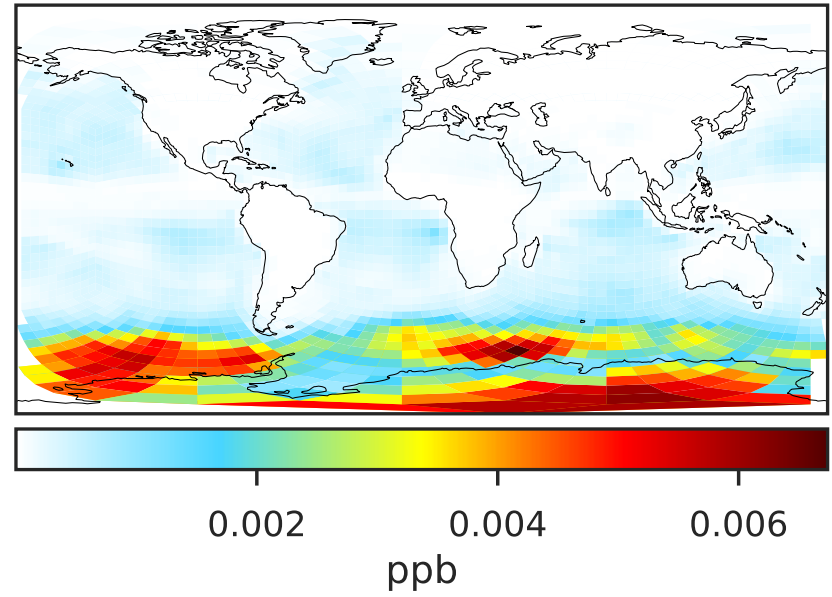
0.50 0.75 1.00 1.50 2.00  
unitless

# SpeciesConcVV\_BrOx (Oct2019)

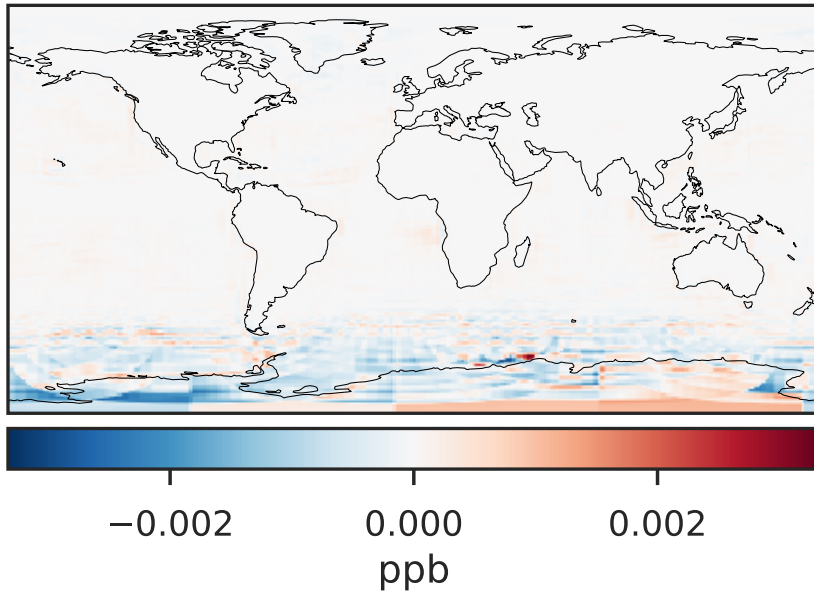
GCC\_14.2.0 (Ref)  
4.0x5.0



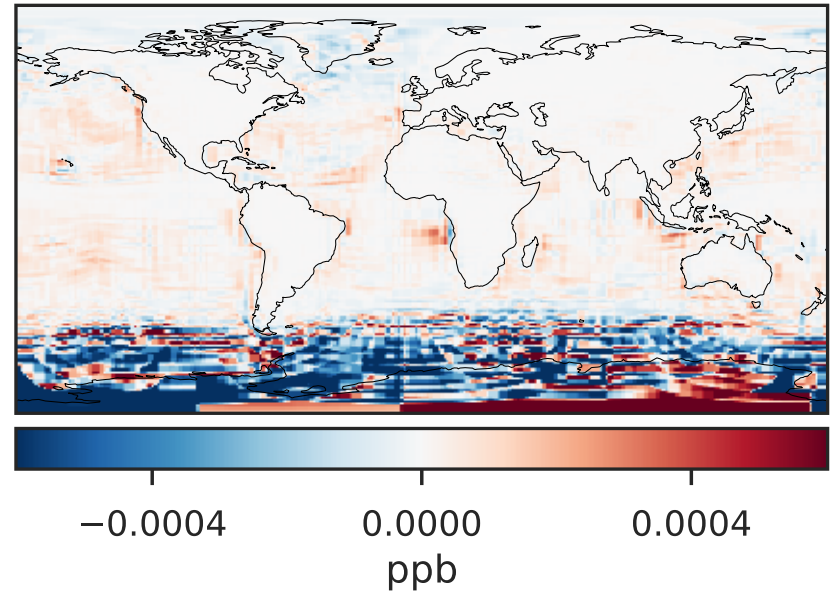
GCHP\_14.2.0 (Dev)  
c24



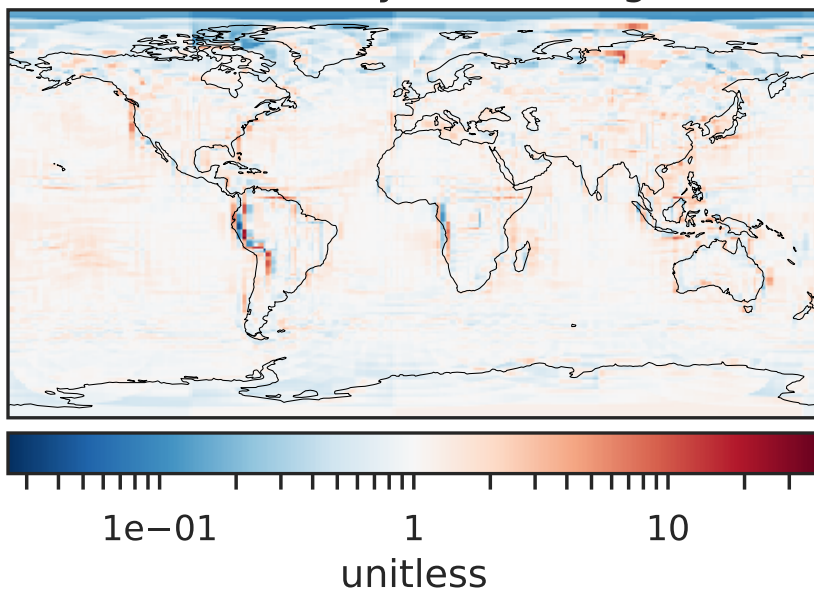
Difference (1x1.25)  
Dev - Ref, Dynamic Range



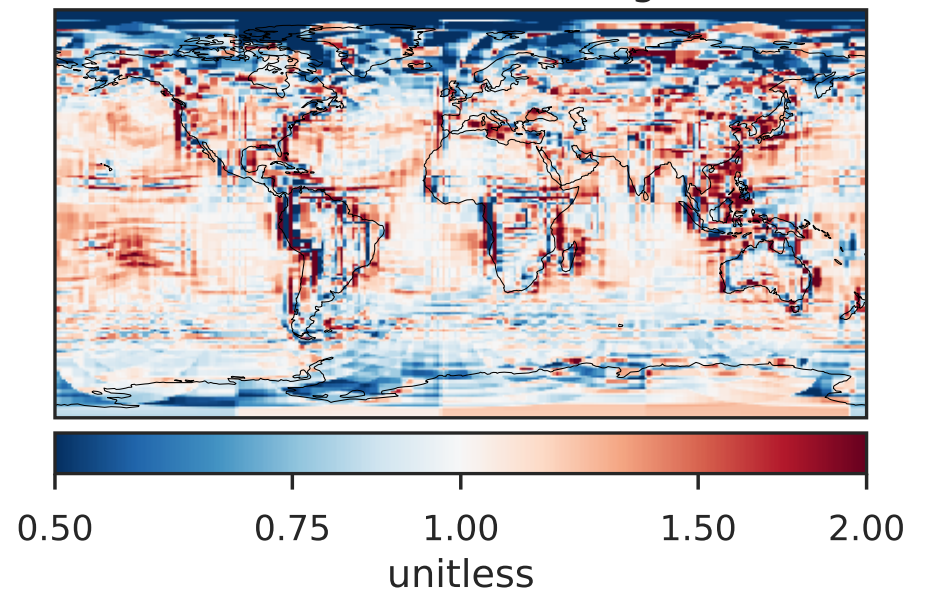
Difference (1x1.25)  
Dev - Ref, Restricted Range [5%,95%]



Ratio (1x1.25)  
Dev/Ref, Dynamic Range



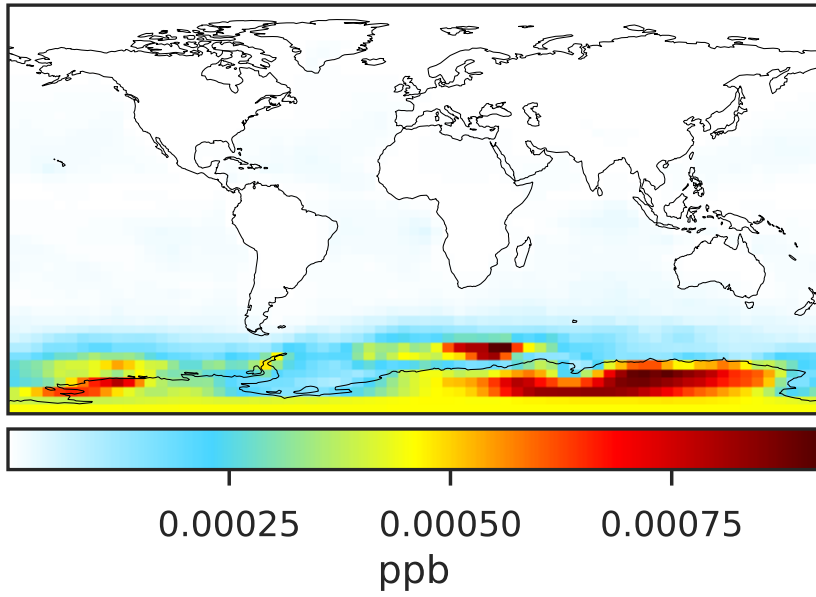
Ratio (1x1.25)  
Dev/Ref, Fixed Range



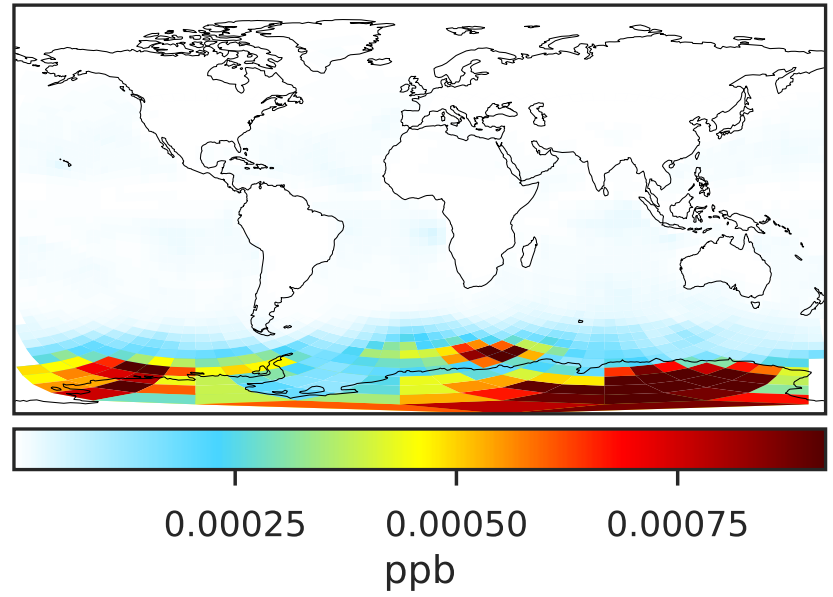


# SpeciesConcVV\_Br (Oct2019)

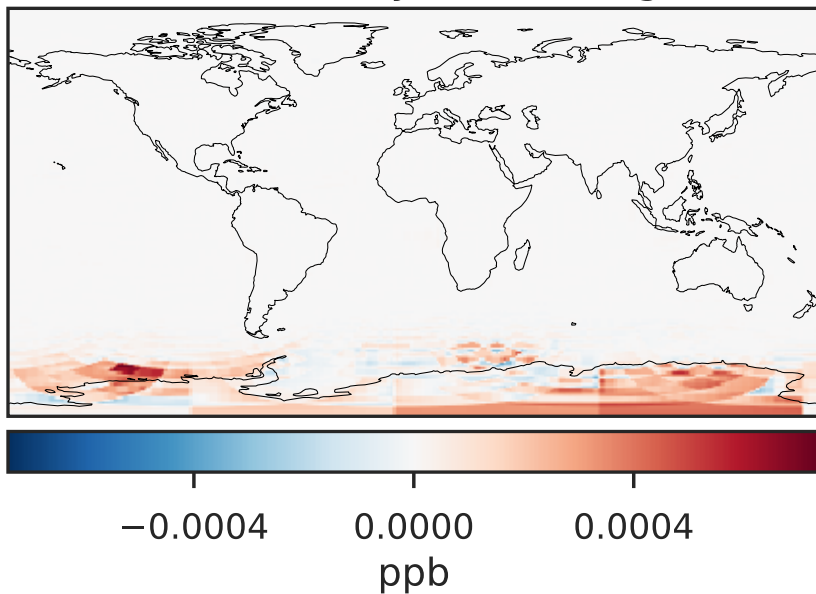
GCC\_14.2.0 (Ref)  
4.0x5.0



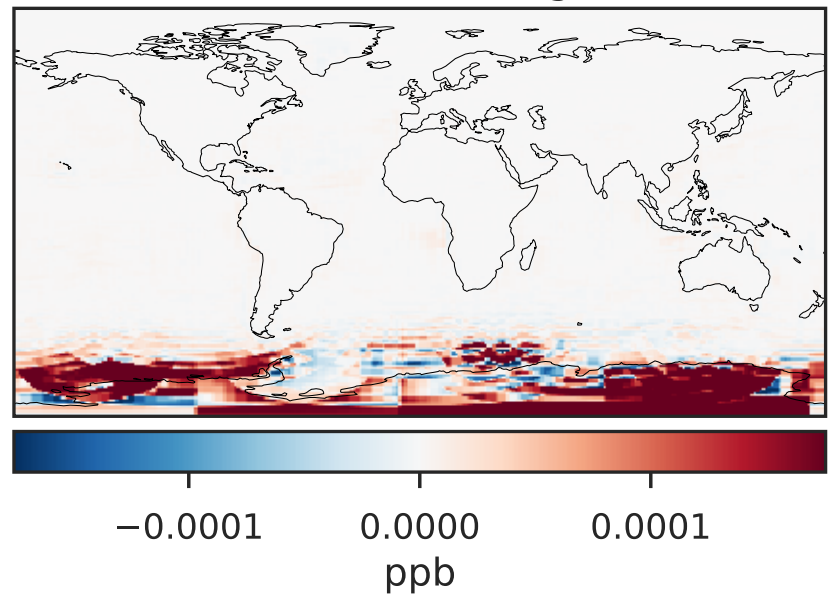
GCHP\_14.2.0 (Dev)  
c24



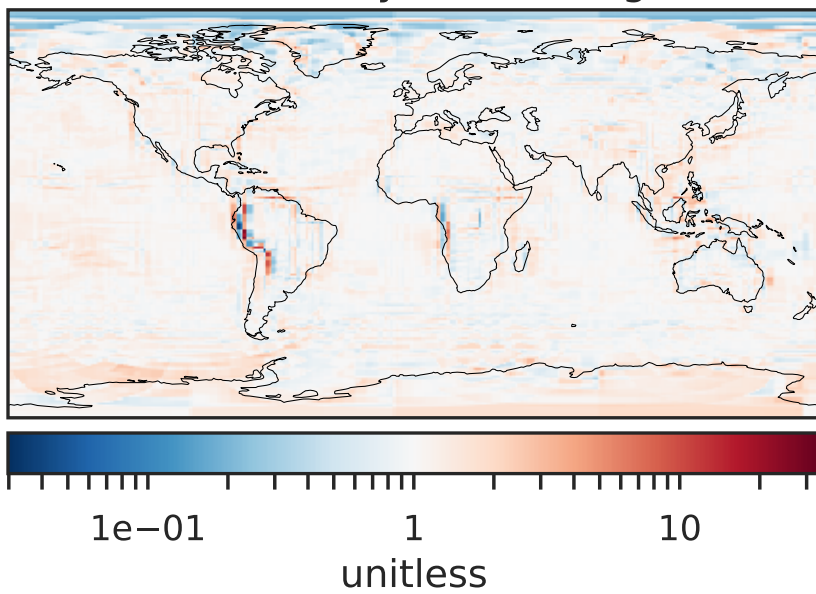
Difference (1x1.25)  
Dev - Ref, Dynamic Range



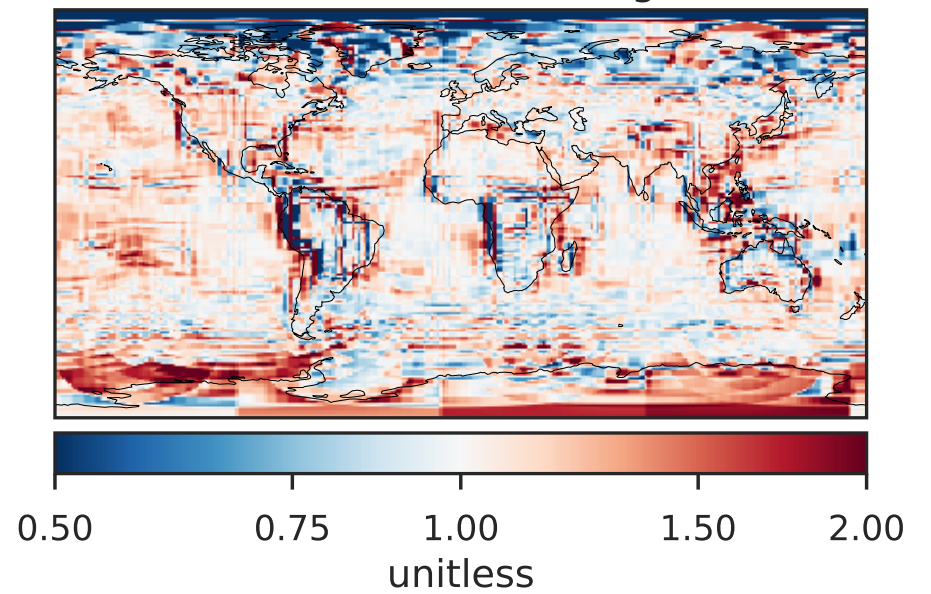
Difference (1x1.25)  
Dev - Ref, Restricted Range [5%,95%]



Ratio (1x1.25)  
Dev/Ref, Dynamic Range

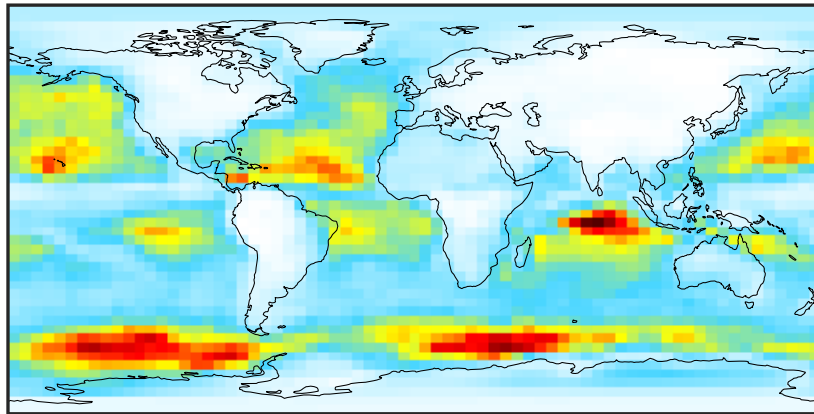


Ratio (1x1.25)  
Dev/Ref, Fixed Range



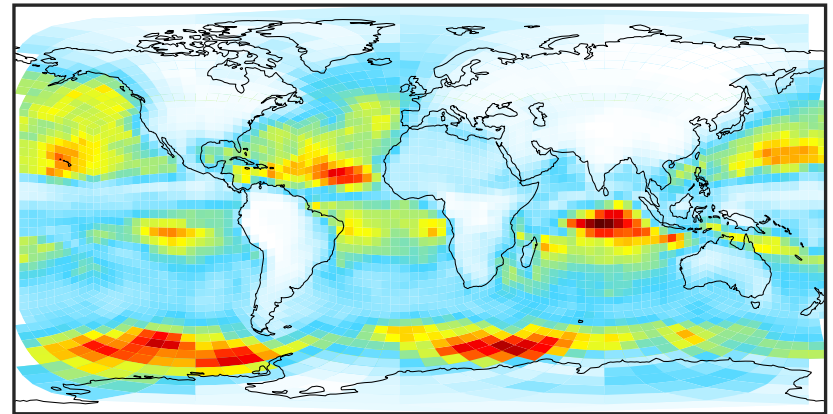
# SpeciesConcVW\_Br2 (Oct2019)

GCC\_14.2.0 (Ref)  
4.0x5.0



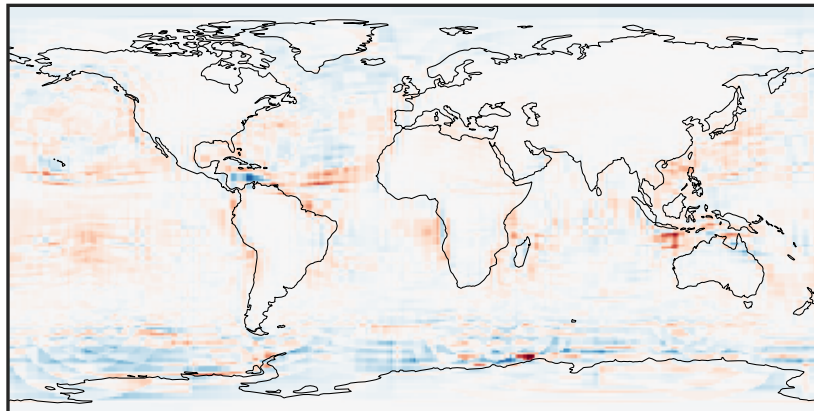
0.0008 0.0016 0.0024  
ppb

GCHP\_14.2.0 (Dev)  
c24



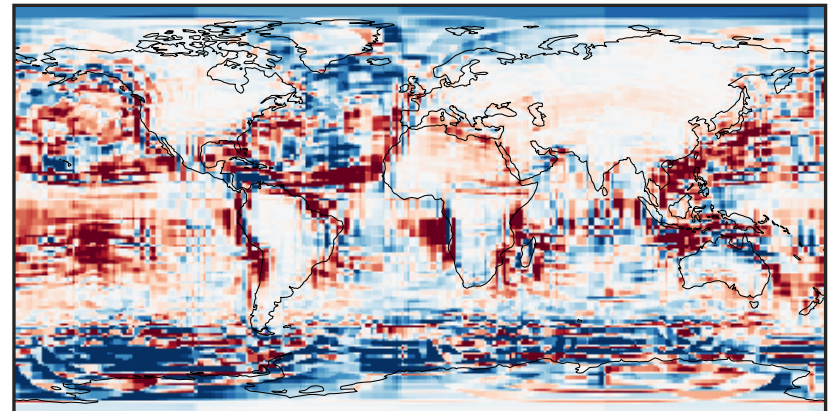
0.0008 0.0016 0.0024  
ppb

Difference (1x1.25)  
Dev - Ref, Dynamic Range



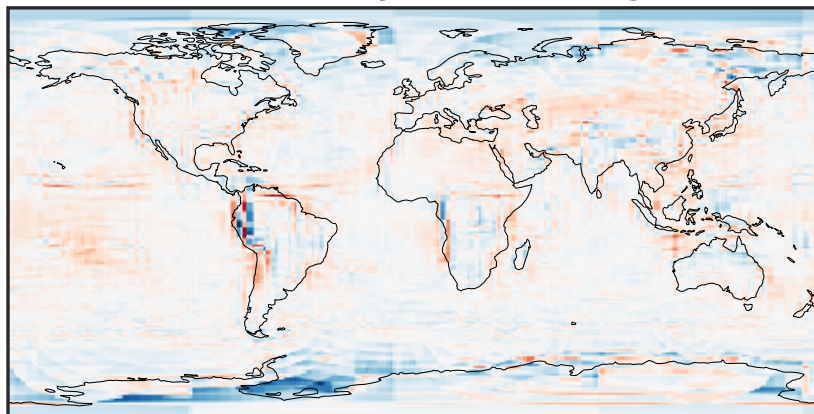
-0.0006 0.0000 0.0006  
ppb

Difference (1x1.25)  
Dev - Ref, Restricted Range [5%,95%]



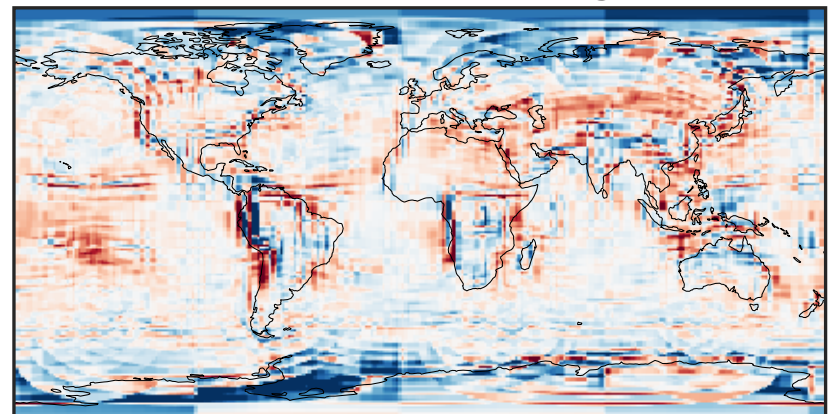
-0.0001 0.0000 0.0001  
ppb

Ratio (1x1.25)  
Dev/Ref, Dynamic Range



0.157 0.579 1.000 3.681 6.363  
unitless

Ratio (1x1.25)  
Dev/Ref, Fixed Range

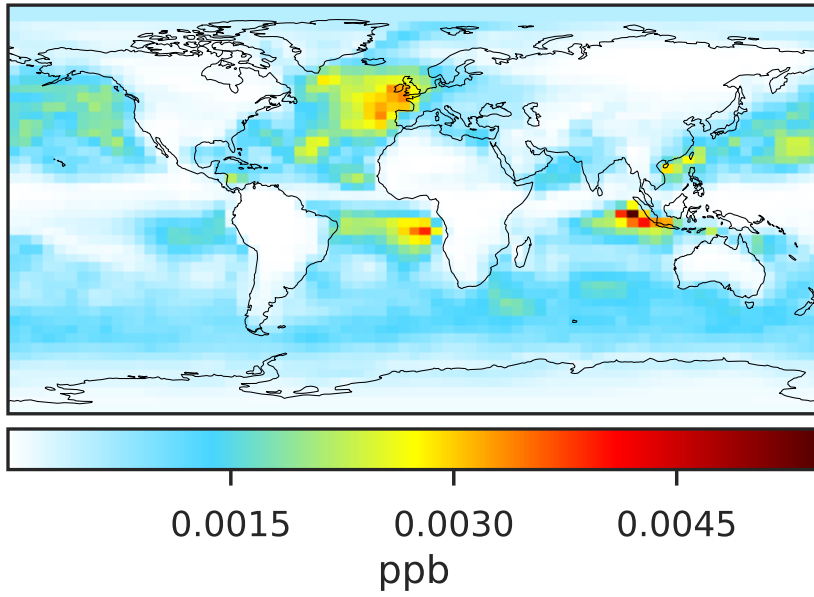


0.50 0.75 1.00 1.50 2.00  
unitless

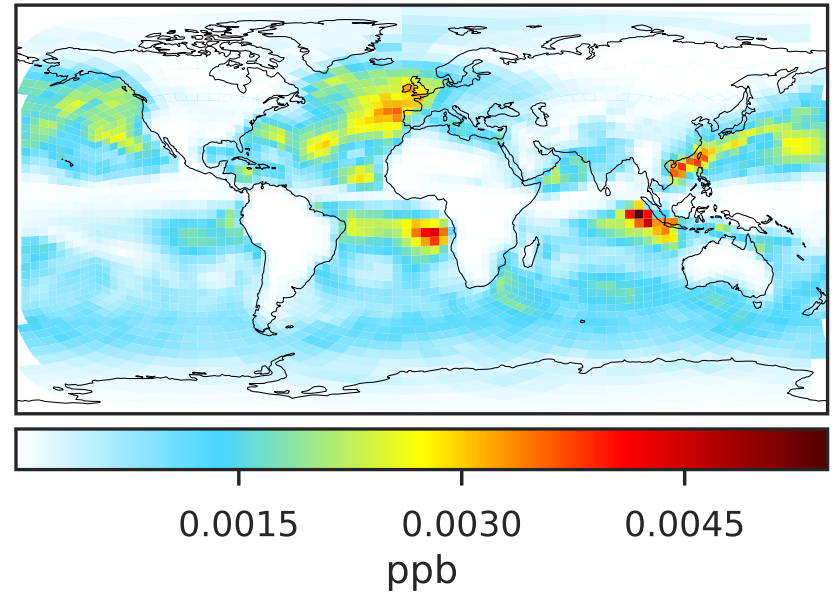


# SpeciesConcVV\_BrCl (Oct2019)

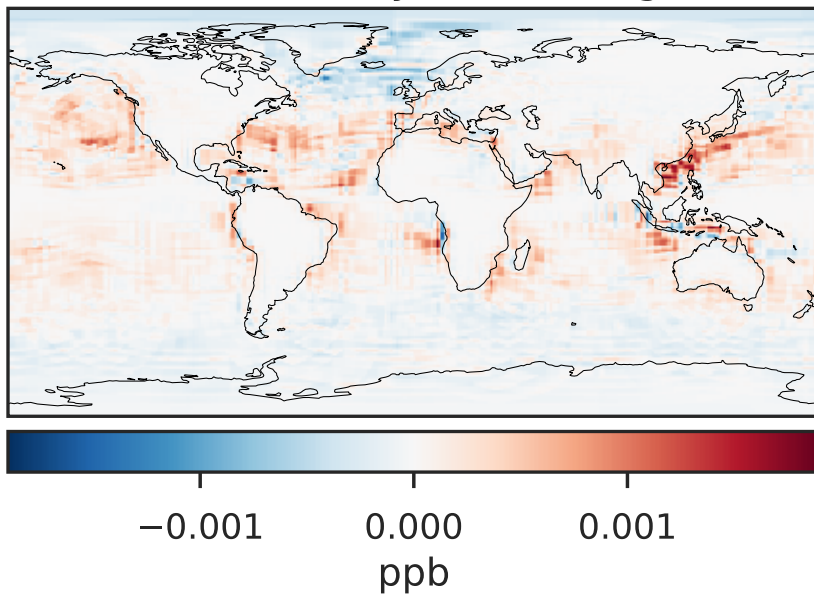
GCC\_14.2.0 (Ref)  
4.0x5.0



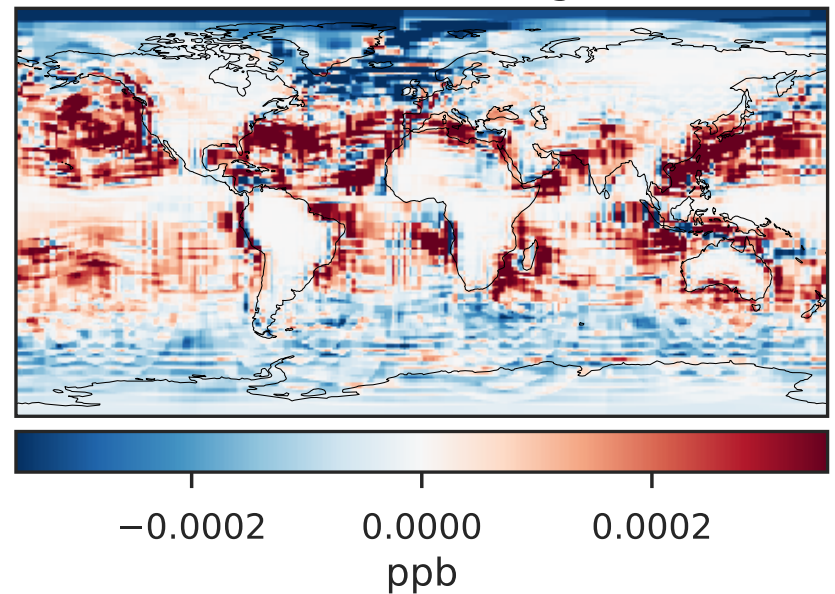
GCHP\_14.2.0 (Dev)  
c24



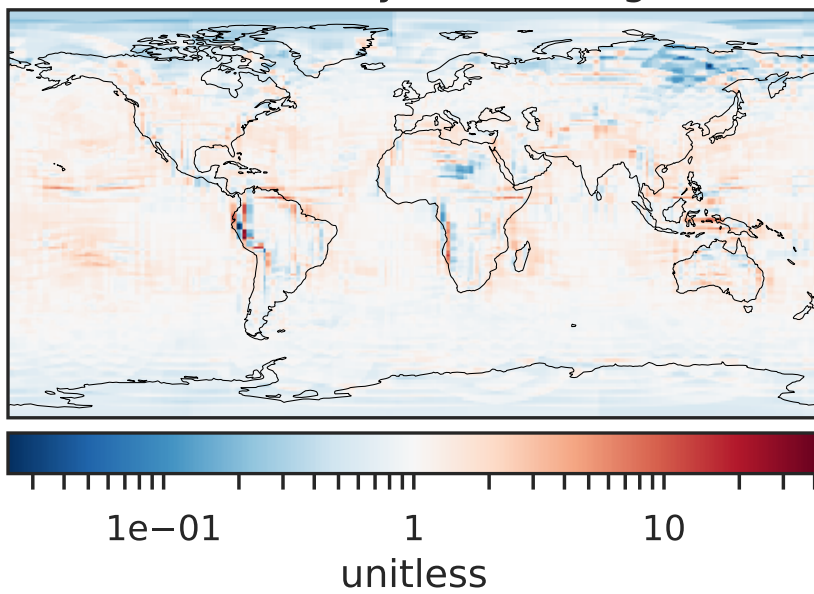
Difference (1x1.25)  
Dev - Ref, Dynamic Range



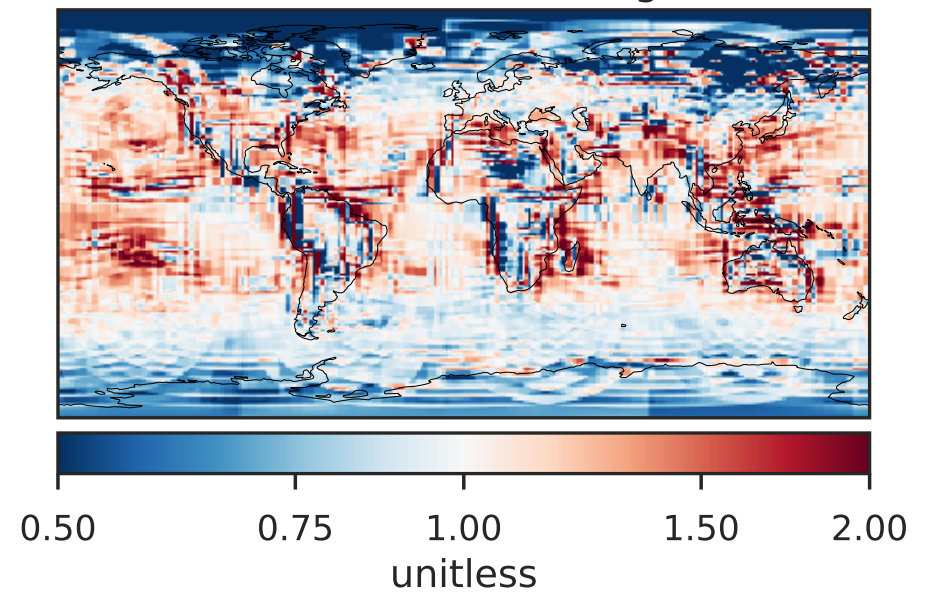
Difference (1x1.25)  
Dev - Ref, Restricted Range [5%,95%]



Ratio (1x1.25)  
Dev/Ref, Dynamic Range

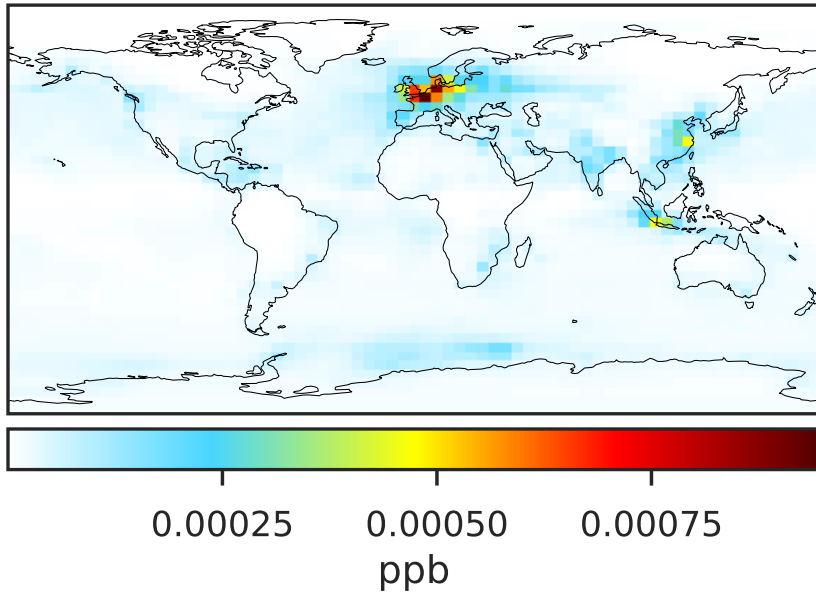


Ratio (1x1.25)  
Dev/Ref, Fixed Range

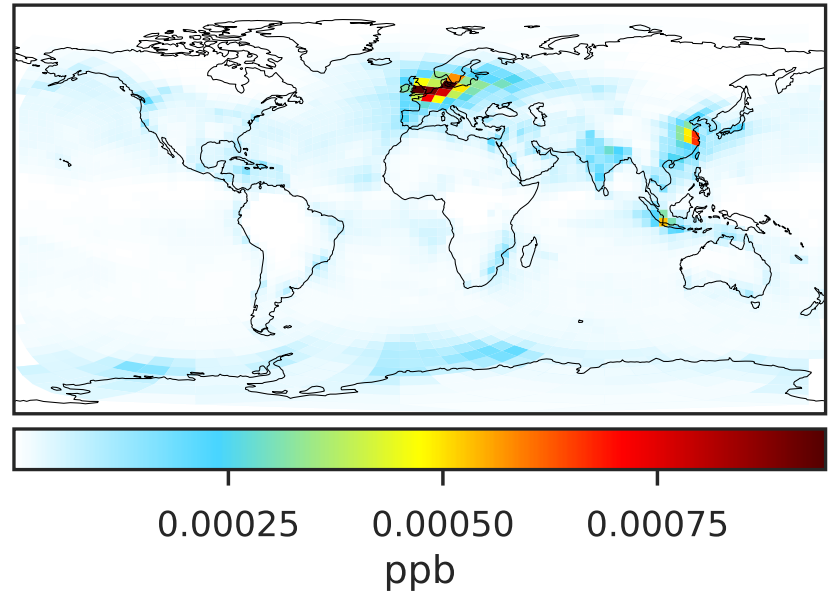


# SpeciesConcVV\_BrNO2 (Oct2019)

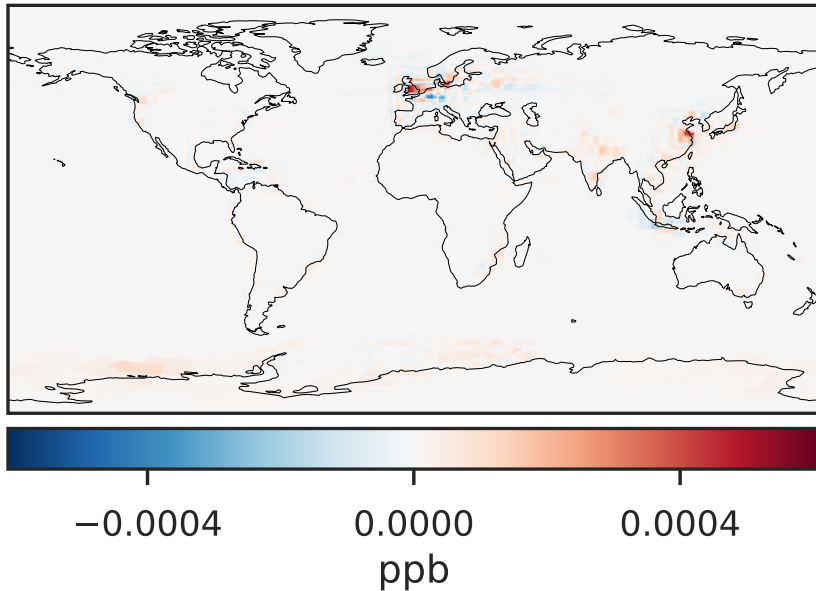
GCC\_14.2.0 (Ref)  
4.0x5.0



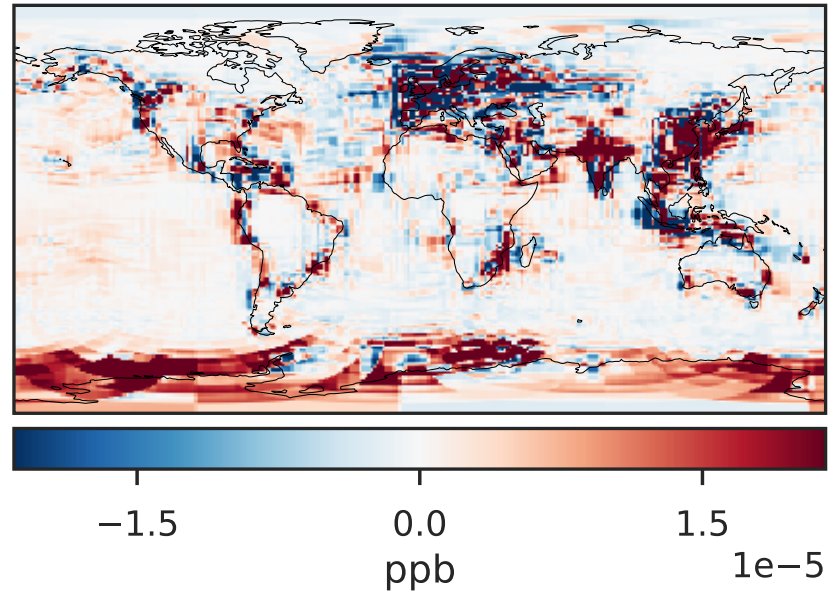
GCHP\_14.2.0 (Dev)  
c24



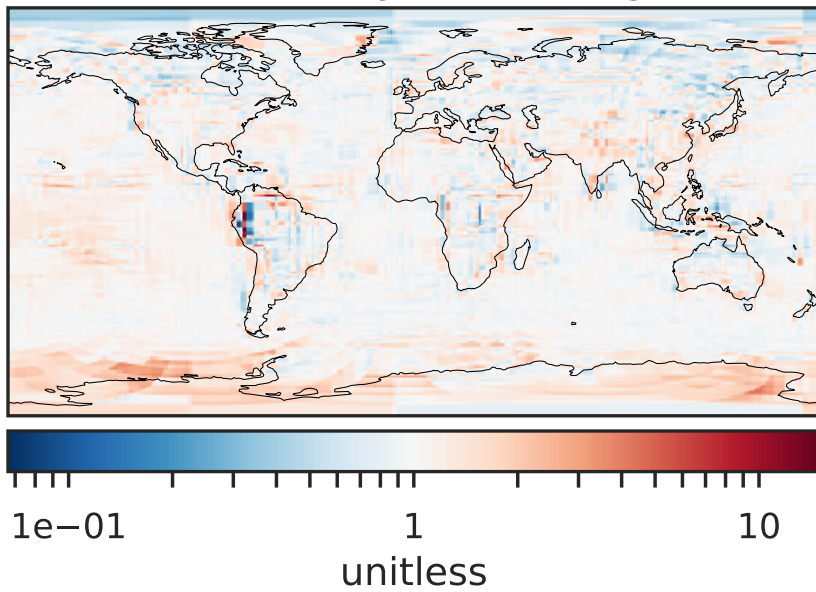
Difference (1x1.25)  
Dev - Ref, Dynamic Range



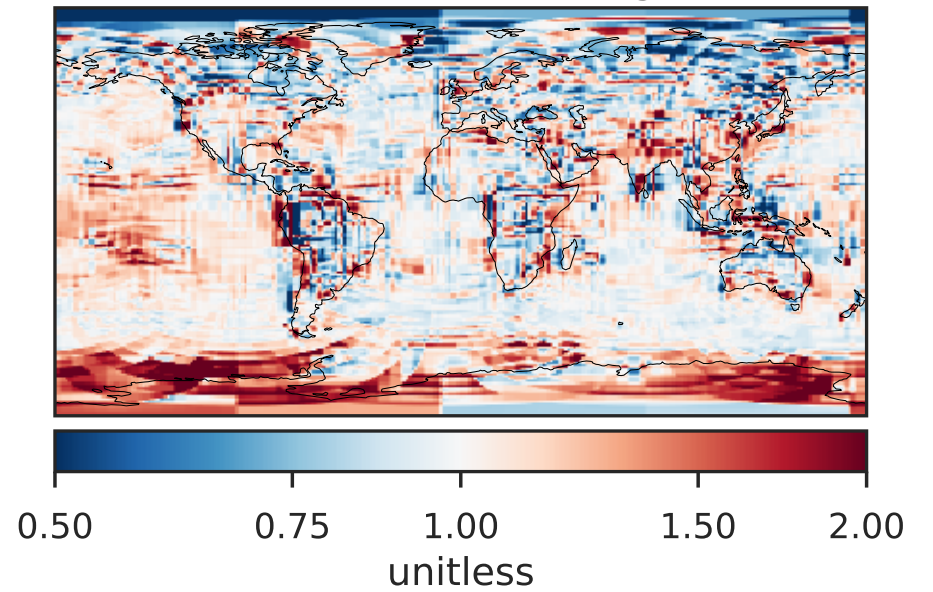
Difference (1x1.25)  
Dev - Ref, Restricted Range [5%,95%]



Ratio (1x1.25)  
Dev/Ref, Dynamic Range



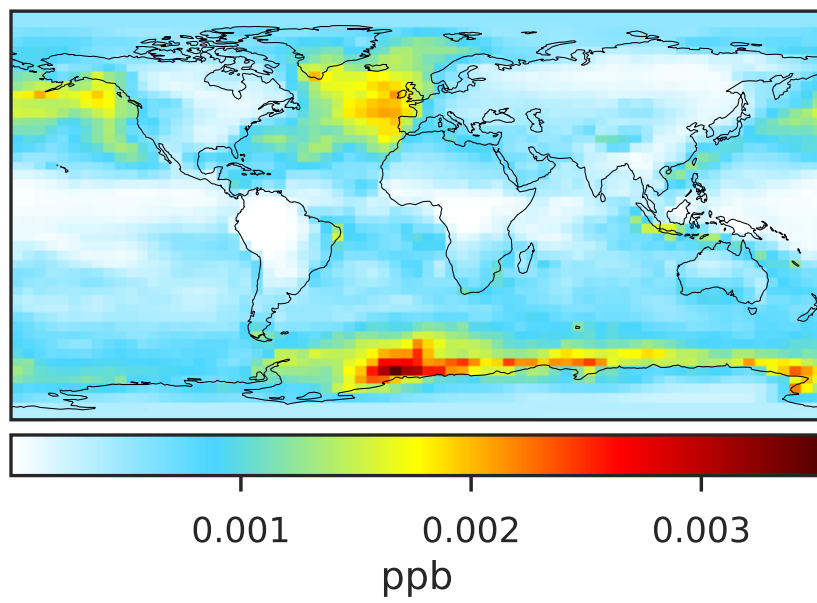
Ratio (1x1.25)  
Dev/Ref, Fixed Range



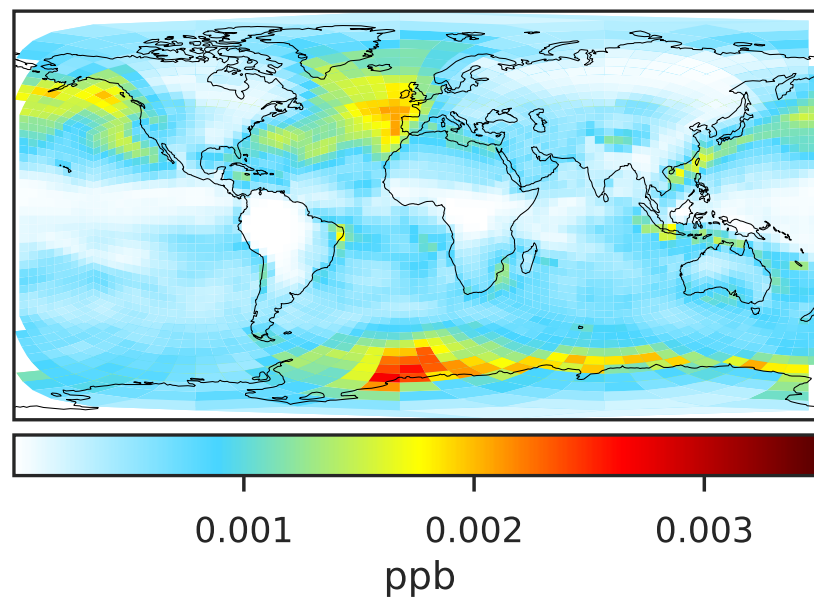


# SpeciesConcVV\_BrNO3 (Oct2019)

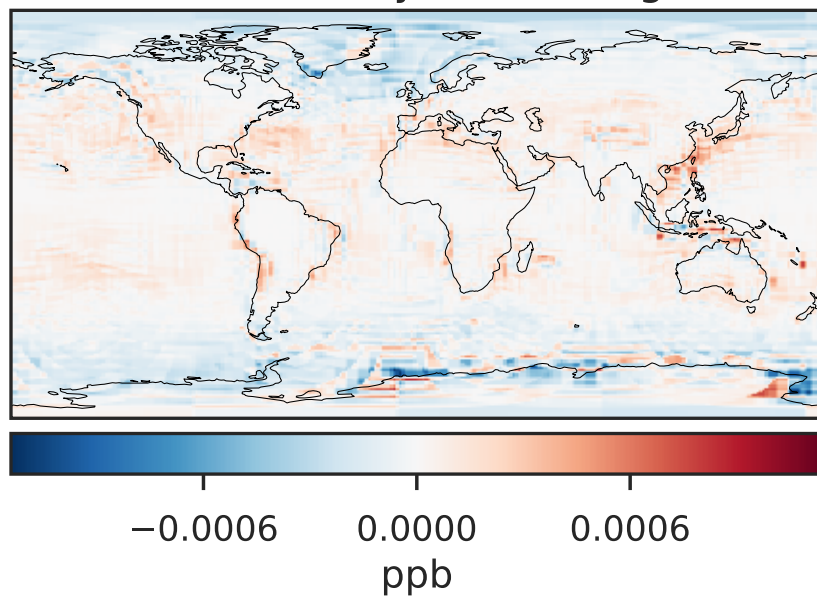
GCC\_14.2.0 (Ref)  
4.0x5.0



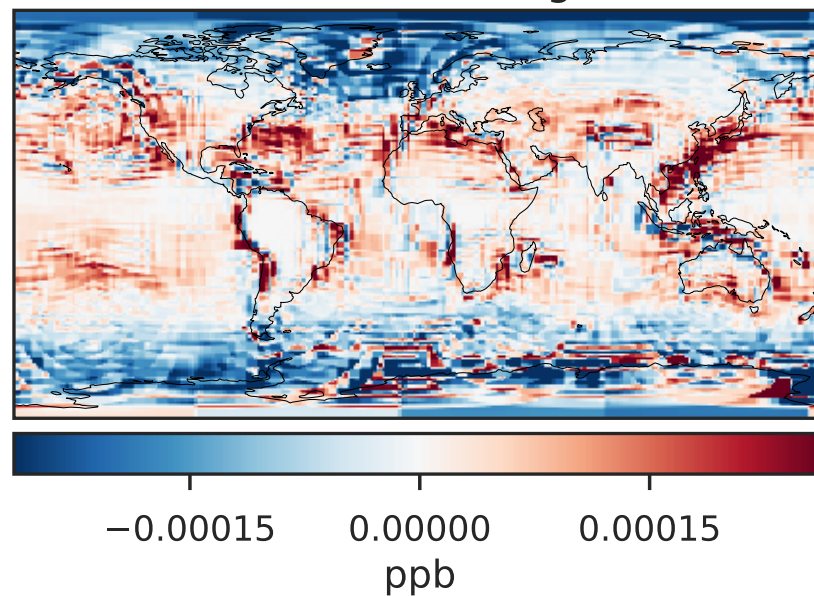
GCHP\_14.2.0 (Dev)  
c24



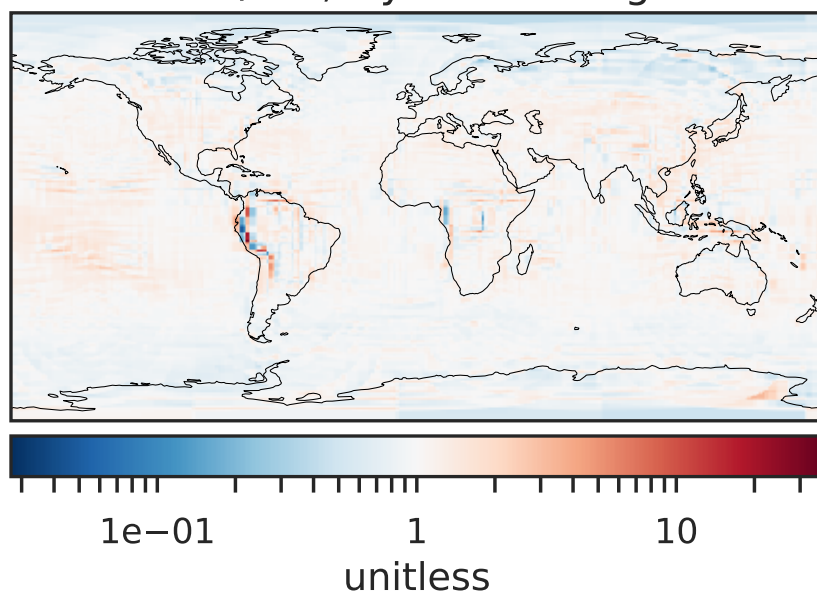
Difference (1x1.25)  
Dev - Ref, Dynamic Range



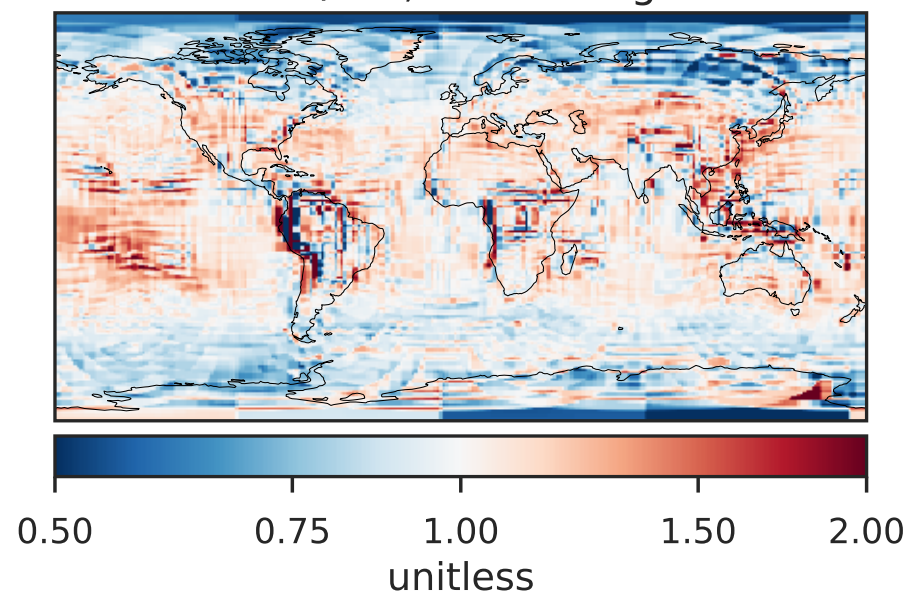
Difference (1x1.25)  
Dev - Ref, Restricted Range [5%,95%]



Ratio (1x1.25)  
Dev/Ref, Dynamic Range

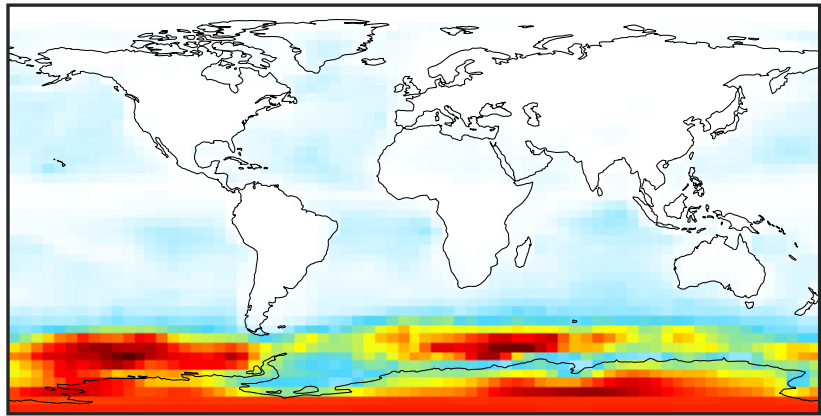


Ratio (1x1.25)  
Dev/Ref, Fixed Range



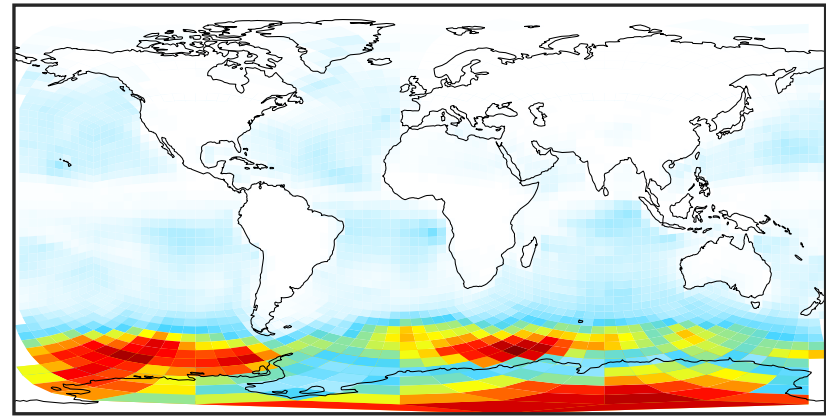
# SpeciesConcVV\_BrO (Oct2019)

GCC\_14.2.0 (Ref)  
4.0x5.0



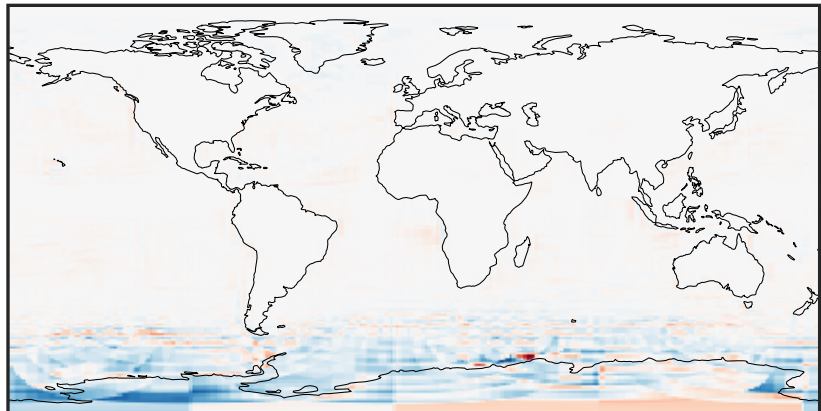
0.002 0.004 0.006  
ppb

GCHP\_14.2.0 (Dev)  
c24



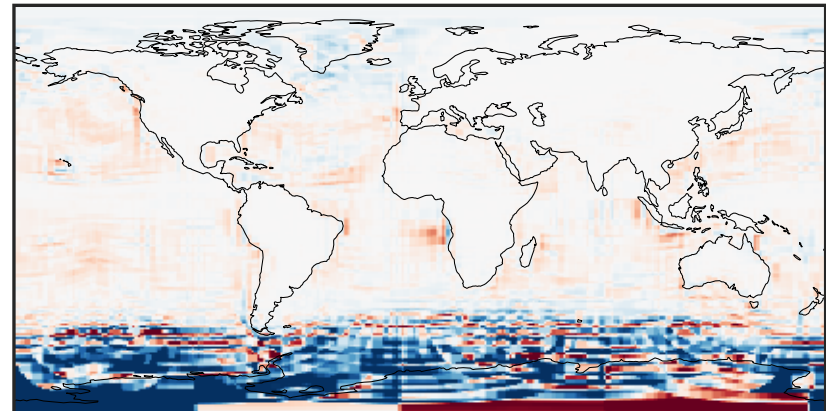
0.002 0.004 0.006  
ppb

Difference (1x1.25)  
Dev - Ref, Dynamic Range



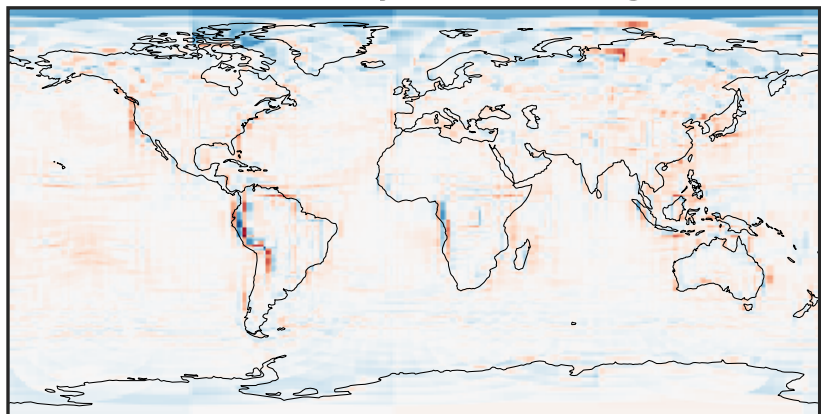
-0.0015 0.0000 0.0015  
ppb

Difference (1x1.25)  
Dev - Ref, Restricted Range [5%,95%]



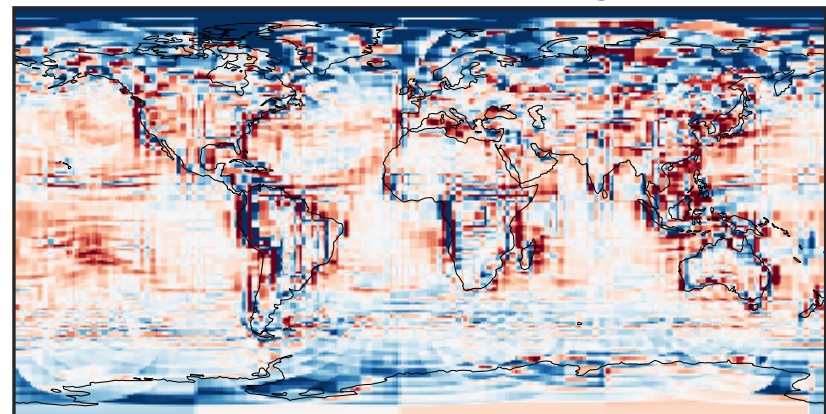
-0.0004 0.0000 0.0004  
ppb

Ratio (1x1.25)  
Dev/Ref, Dynamic Range



1e-01 1 10  
unitless

Ratio (1x1.25)  
Dev/Ref, Fixed Range

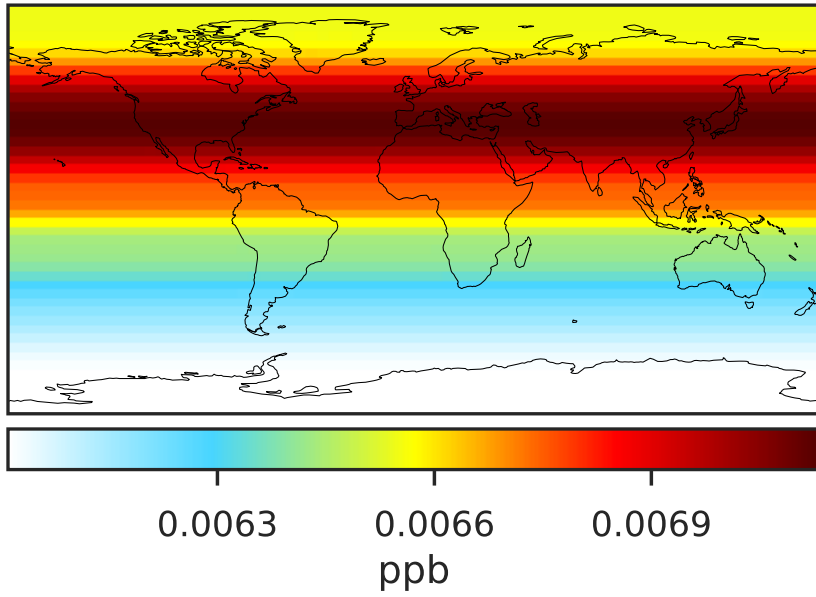


0.50 0.75 1.00 1.50 2.00  
unitless

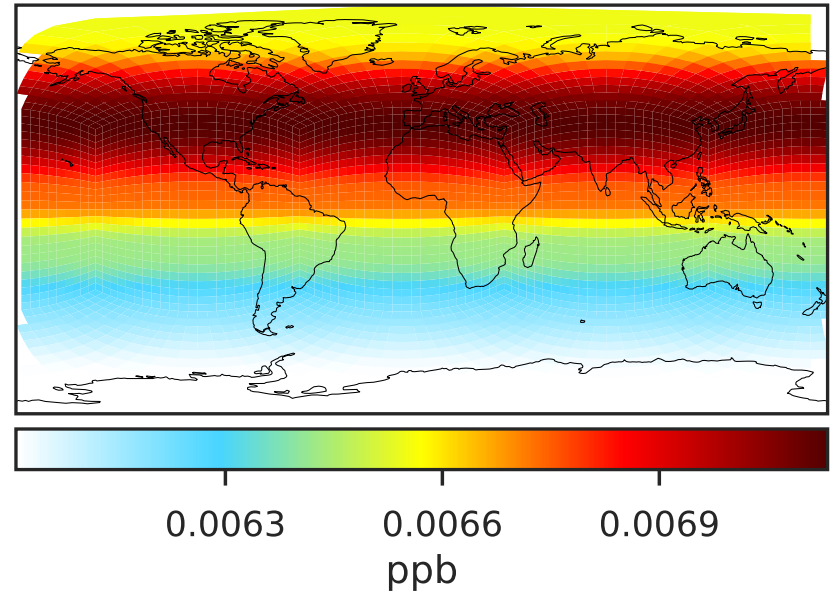


# SpeciesConcVV\_CH3Br (Oct2019)

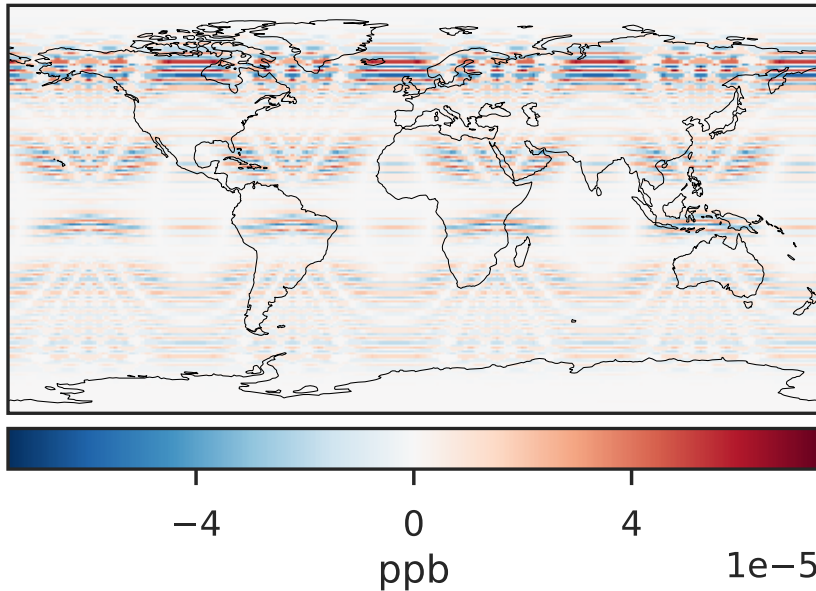
GCC\_14.2.0 (Ref)  
4.0x5.0



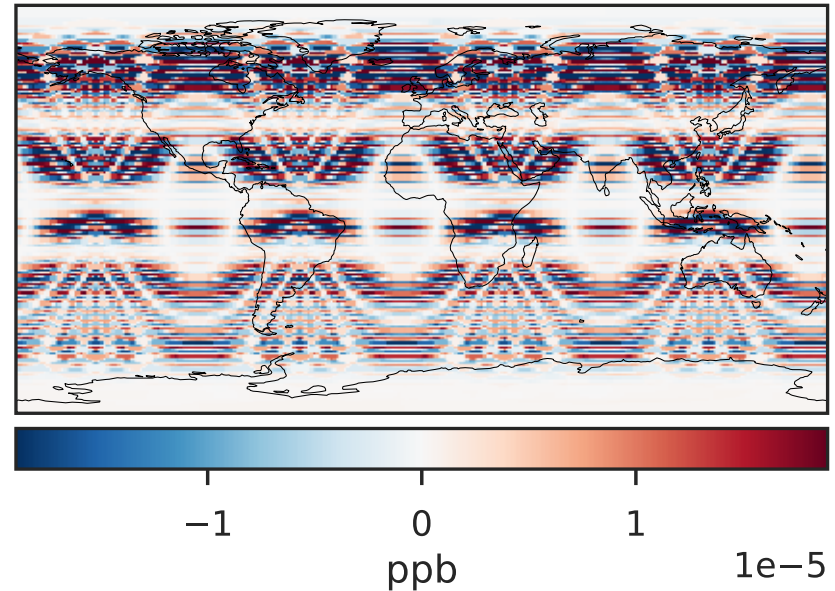
GCHP\_14.2.0 (Dev)  
c24



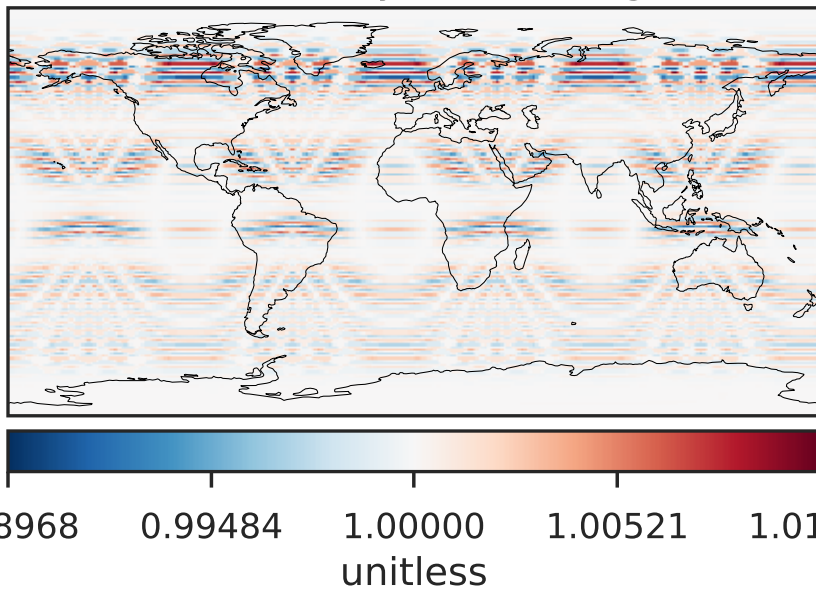
Difference (1x1.25)  
Dev - Ref, Dynamic Range



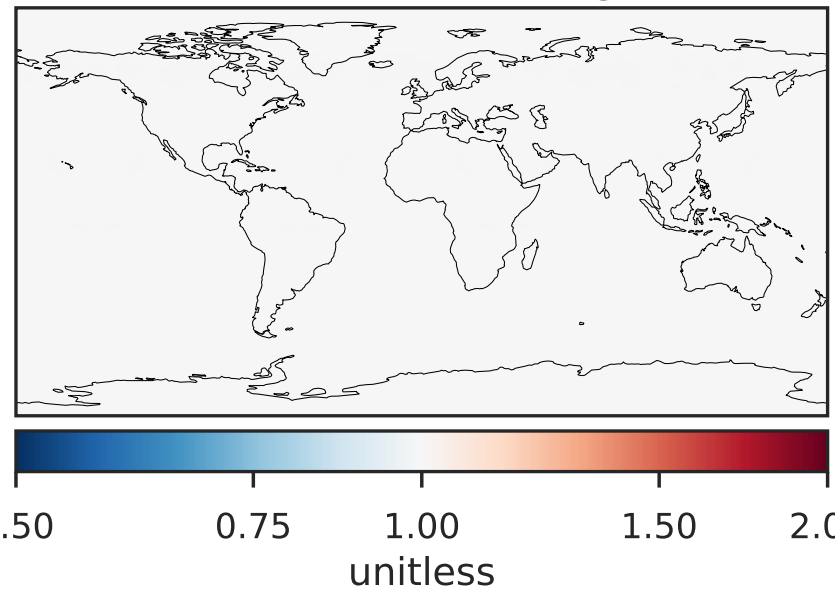
Difference (1x1.25)  
Dev - Ref, Restricted Range [5%,95%]



Ratio (1x1.25)  
Dev/Ref, Dynamic Range

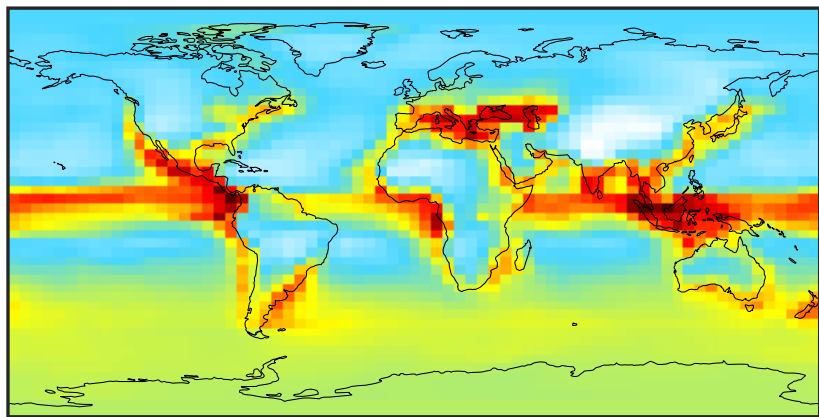


Ratio (1x1.25)  
Dev/Ref, Fixed Range



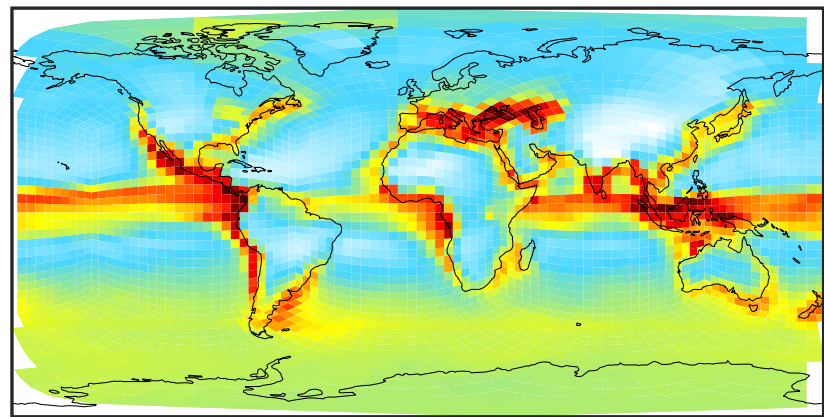
# SpeciesConcVV\_CH2Br2 (Oct2019)

GCC\_14.2.0 (Ref)  
4.0x5.0



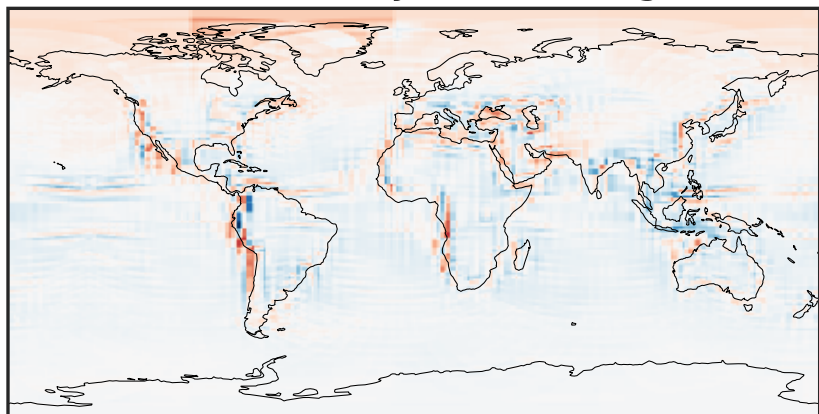
0.0006 0.0008 0.0010 0.0012  
ppb

GCHP\_14.2.0 (Dev)  
c24



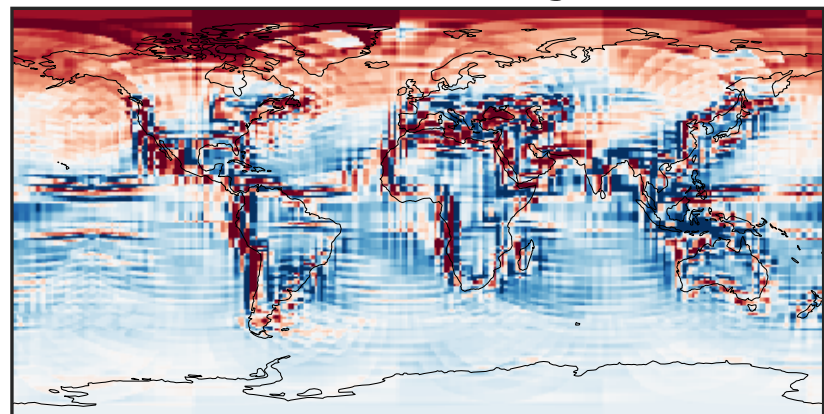
0.0006 0.0008 0.0010 0.0012  
ppb

Difference (1x1.25)  
Dev - Ref, Dynamic Range



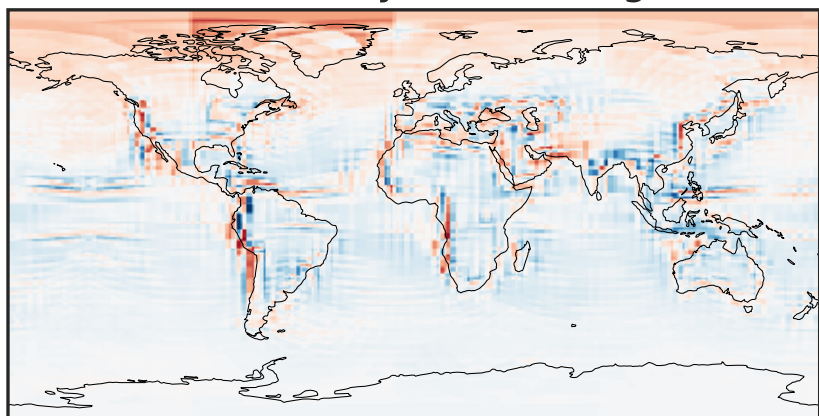
-0.0002 0.0000 0.0002  
ppb

Difference (1x1.25)  
Dev - Ref, Restricted Range [5%,95%]



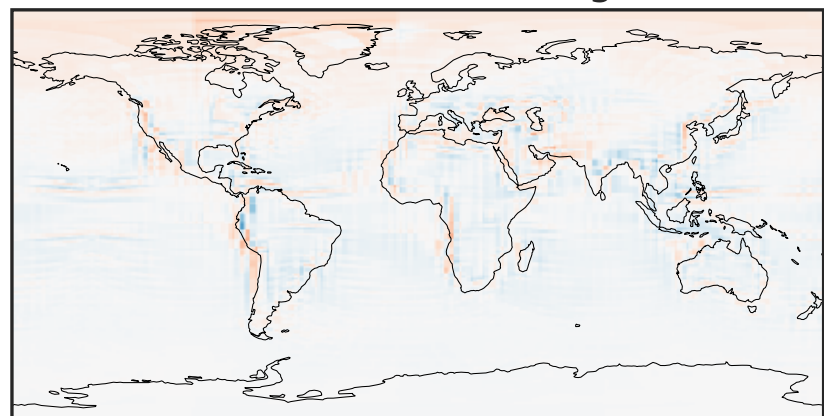
-3 0 3  
ppb  $1e-5$

Ratio (1x1.25)  
Dev/Ref, Dynamic Range



0.7655 0.8828 1.0000 1.1532 1.3063  
unitless

Ratio (1x1.25)  
Dev/Ref, Fixed Range

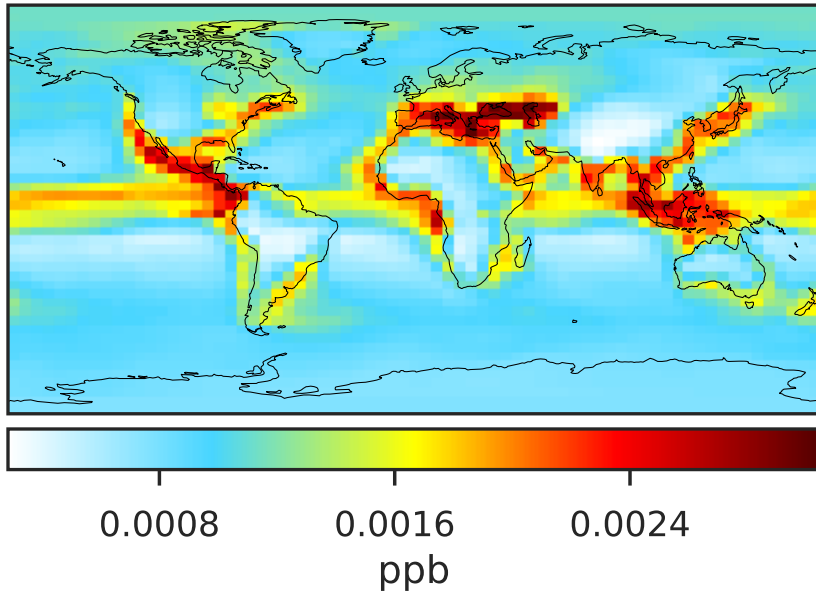


0.50 0.75 1.00 1.50 2.00  
unitless

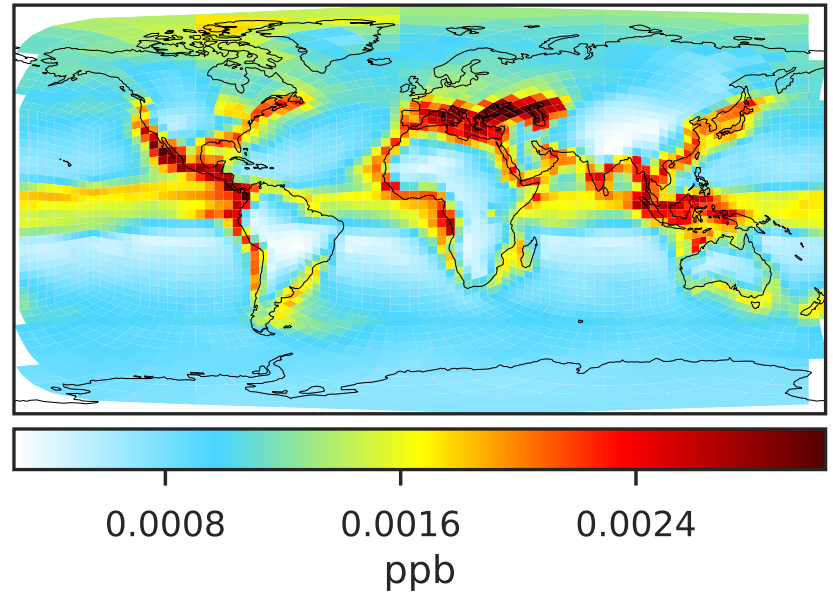


# SpeciesConcVW\_CHBr3 (Oct2019)

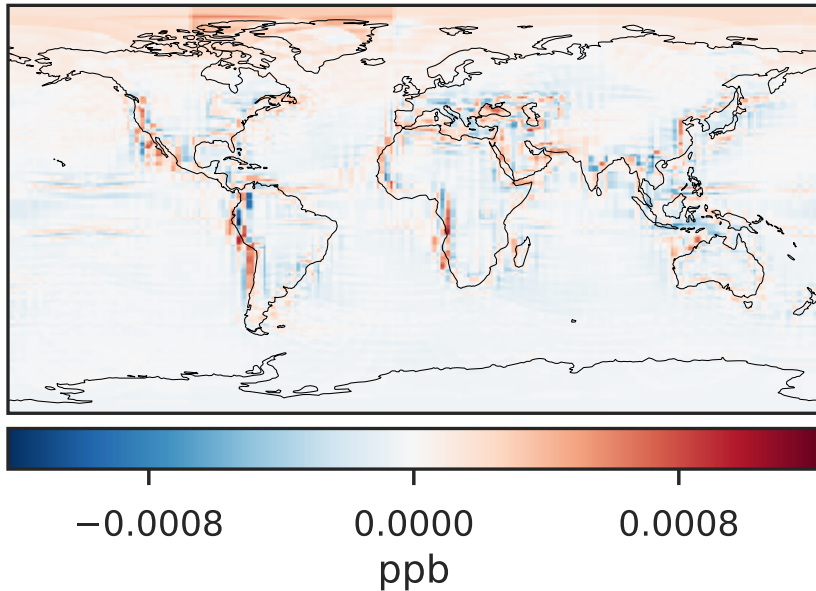
GCC\_14.2.0 (Ref)  
4.0x5.0



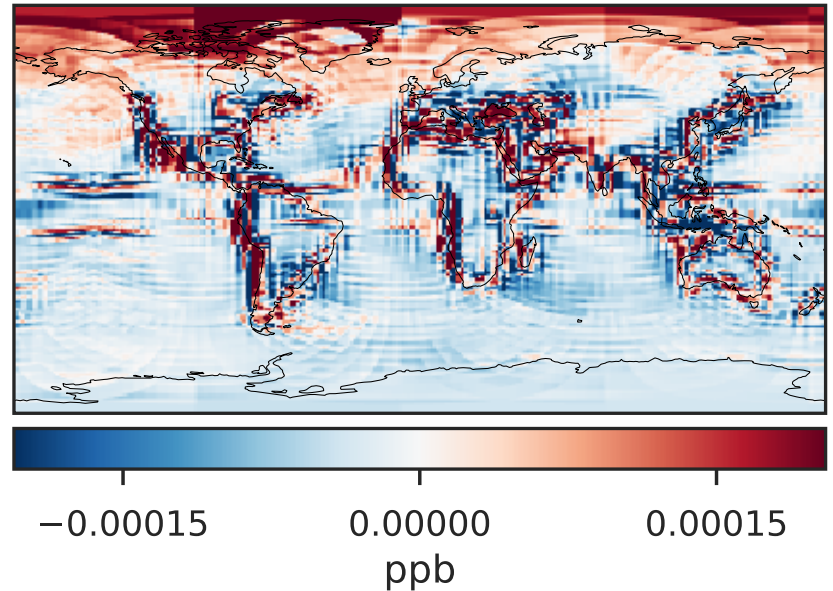
GCHP\_14.2.0 (Dev)  
c24



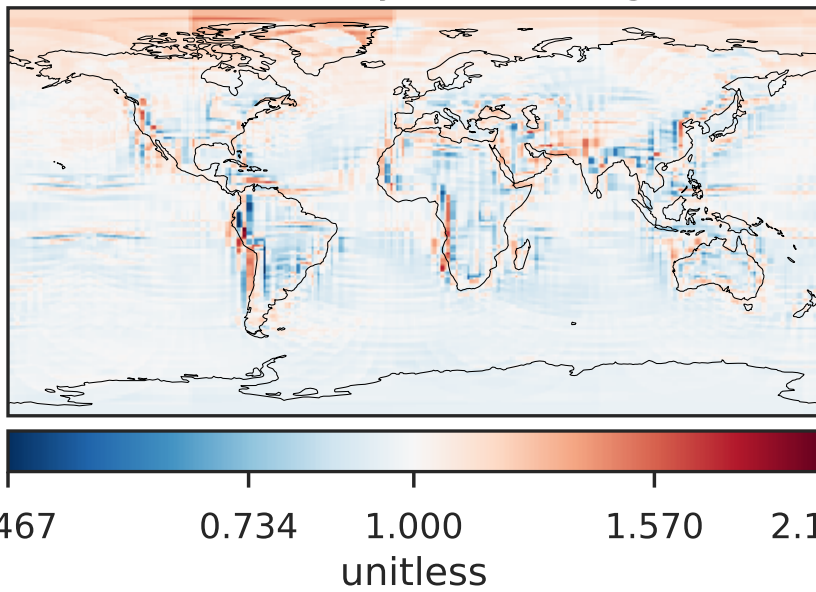
Difference (1x1.25)  
Dev - Ref, Dynamic Range



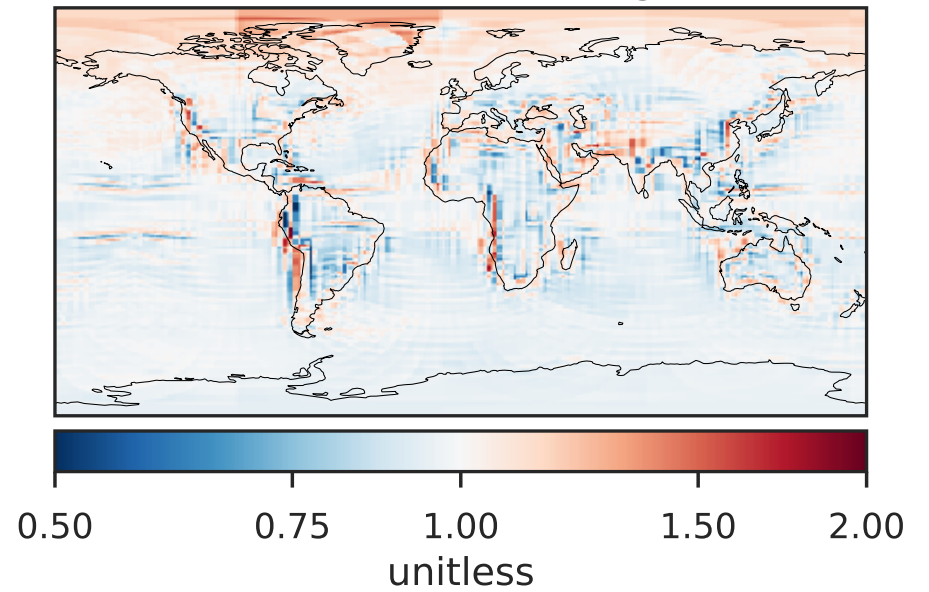
Difference (1x1.25)  
Dev - Ref, Restricted Range [5%,95%]



Ratio (1x1.25)  
Dev/Ref, Dynamic Range

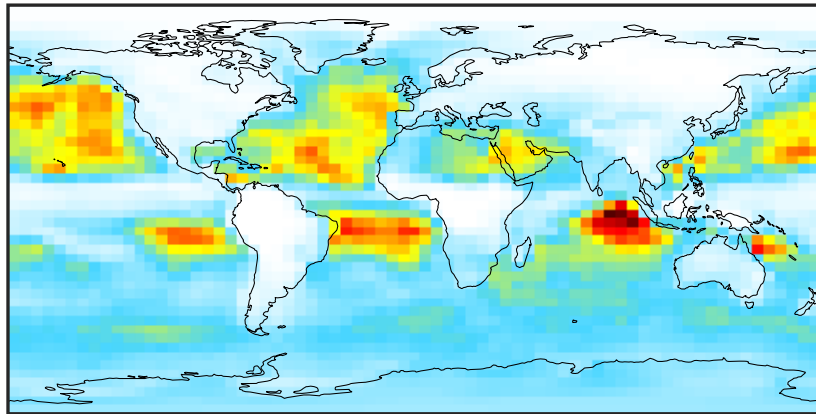


Ratio (1x1.25)  
Dev/Ref, Fixed Range



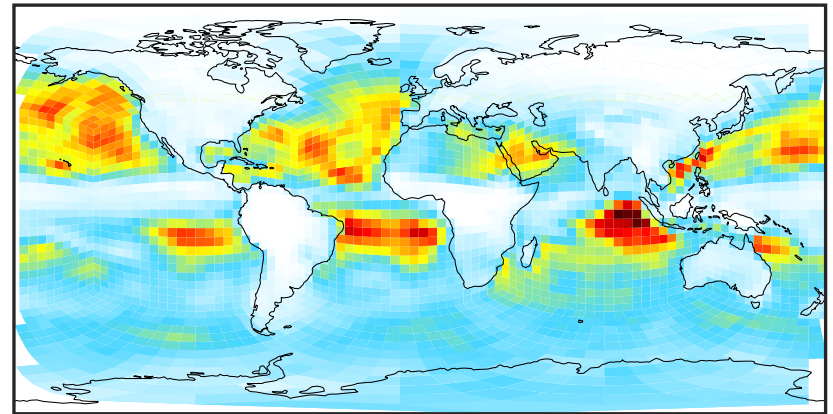
# SpeciesConcVV\_HOBr (Oct2019)

GCC\_14.2.0 (Ref)  
4.0x5.0



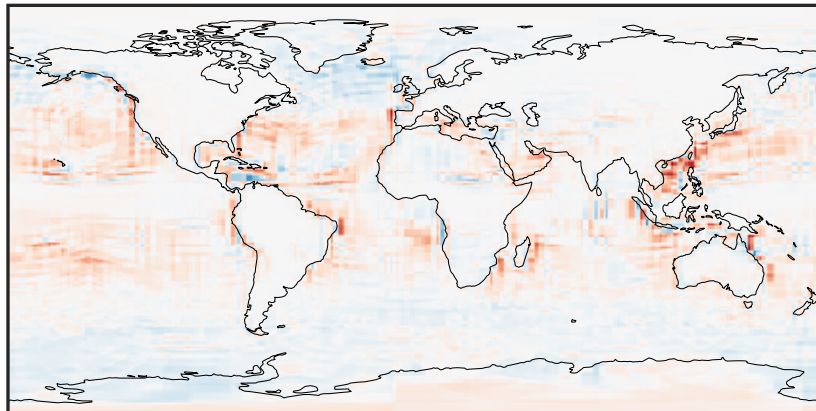
0.0015 0.0030  
ppb

GCHP\_14.2.0 (Dev)  
c24



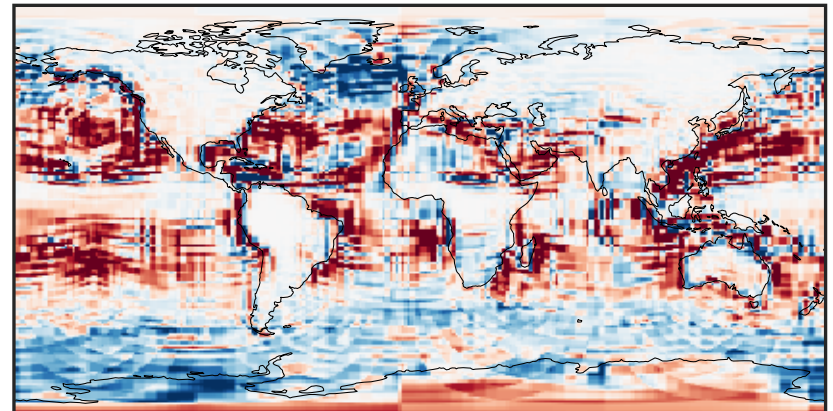
0.0015 0.0030  
ppb

Difference (1x1.25)  
Dev - Ref, Dynamic Range



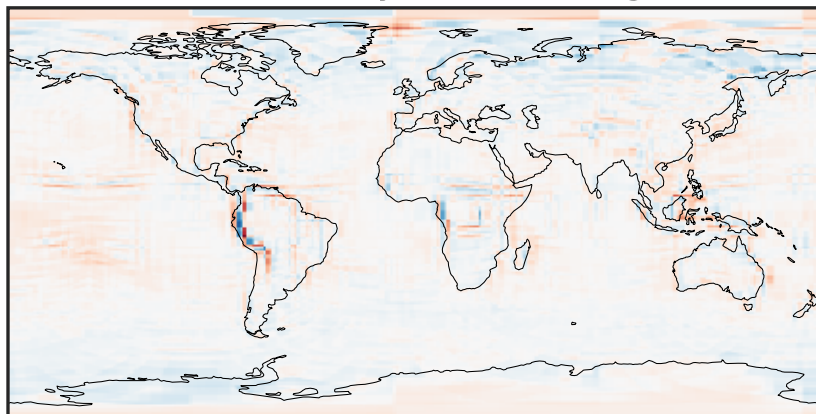
-0.001 0.000 0.001  
ppb

Difference (1x1.25)  
Dev - Ref, Restricted Range [5%,95%]



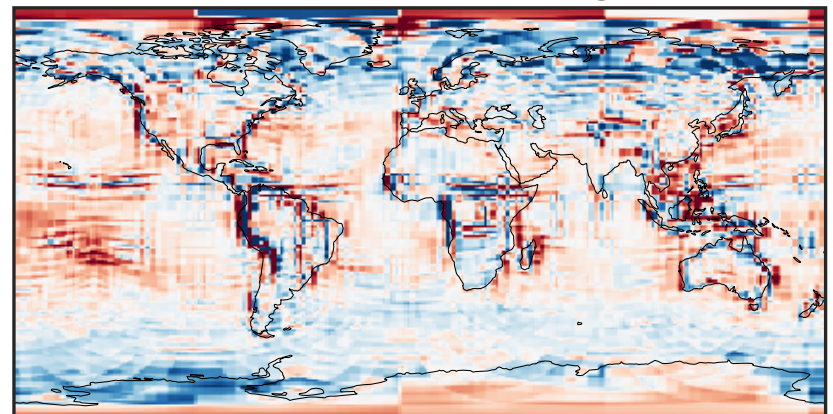
-0.00015 0.00000 0.00015  
ppb

Ratio (1x1.25)  
Dev/Ref, Dynamic Range



1e-01 1 10  
unitless

Ratio (1x1.25)  
Dev/Ref, Fixed Range

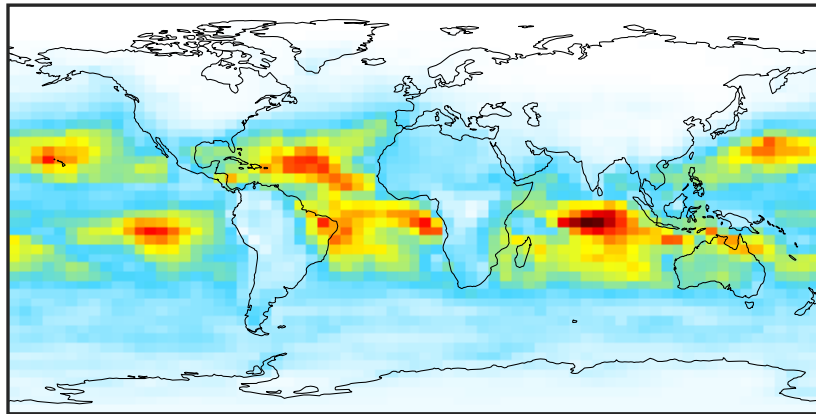


0.50 0.75 1.00 1.50 2.00  
unitless



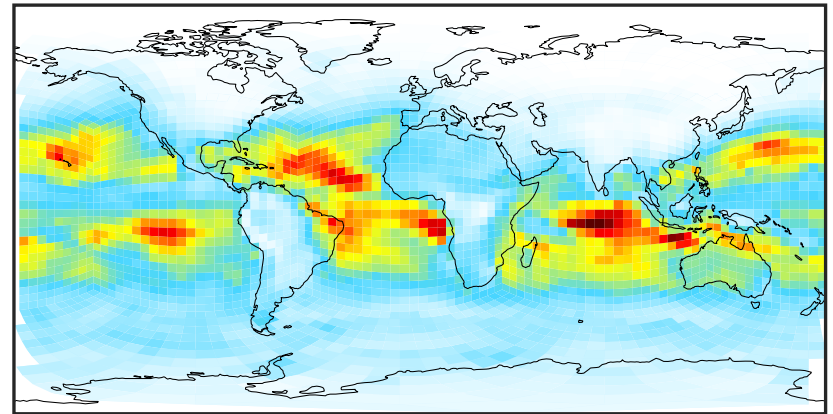
# SpeciesConcVV\_HBr (Oct2019)

GCC\_14.2.0 (Ref)  
4.0x5.0



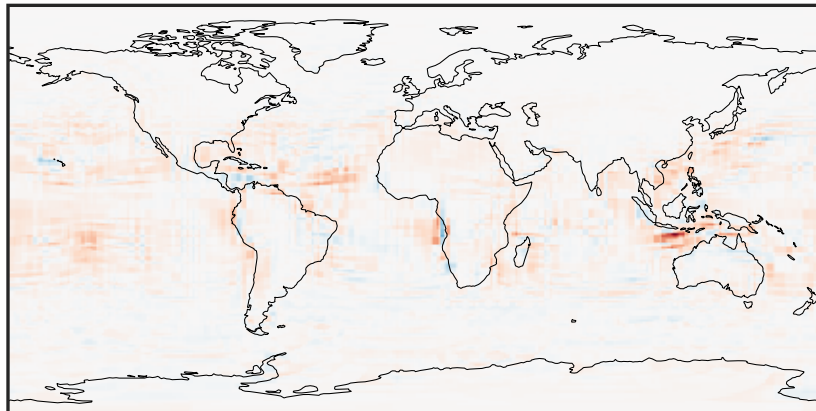
0.001 0.002 0.003  
ppb

GCHP\_14.2.0 (Dev)  
c24



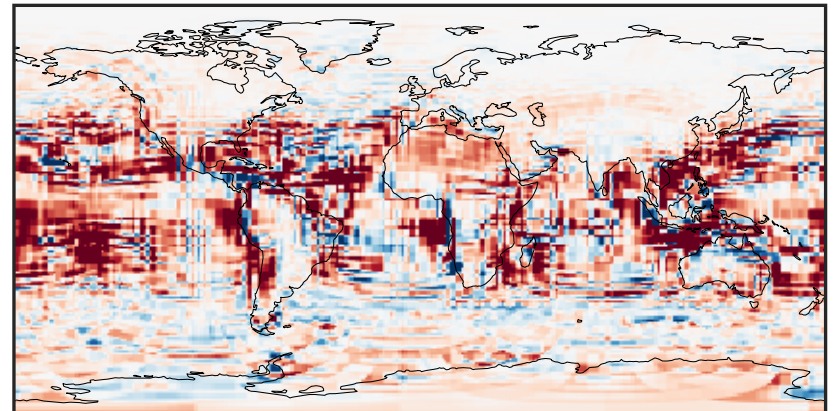
0.001 0.002 0.003  
ppb

Difference (1x1.25)  
Dev - Ref, Dynamic Range



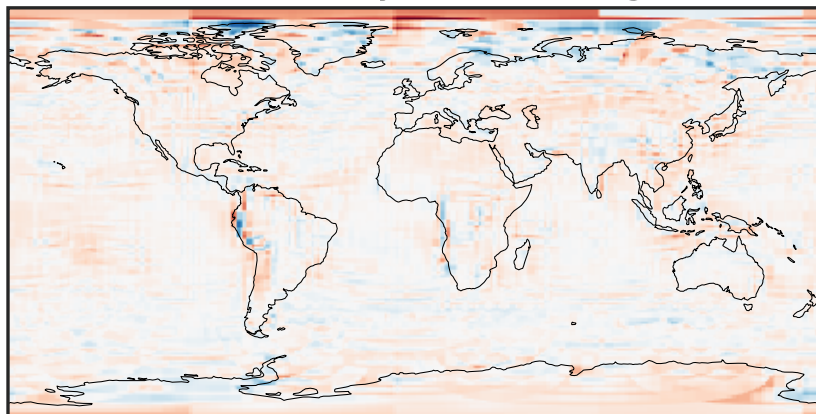
-0.001 0.000 0.001  
ppb

Difference (1x1.25)  
Dev - Ref, Restricted Range [5%,95%]



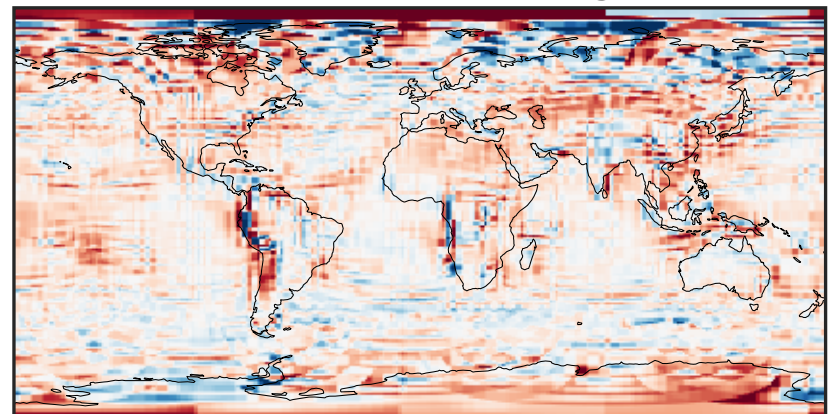
-0.00015 0.00000 0.00015  
ppb

Ratio (1x1.25)  
Dev/Ref, Dynamic Range



0.129 0.564 1.000 4.387 7.773  
unitless

Ratio (1x1.25)  
Dev/Ref, Fixed Range



0.50 0.75 1.00 1.50 2.00  
unitless