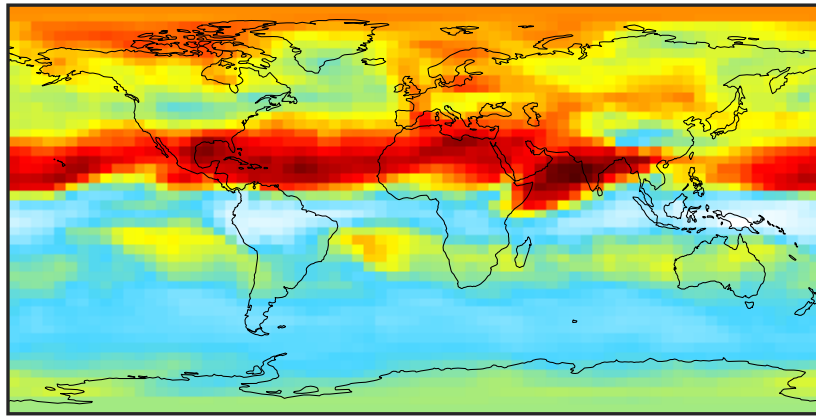


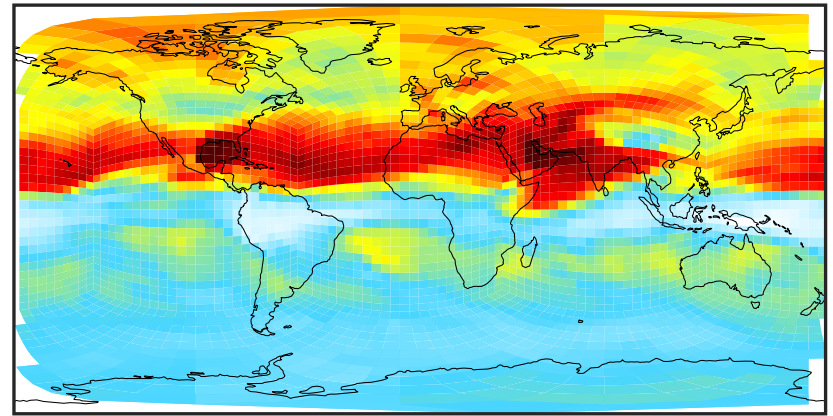
SpeciesConcVV_Cly (Apr2019)

GCC_14.2.0 (Ref)
4.0x5.0



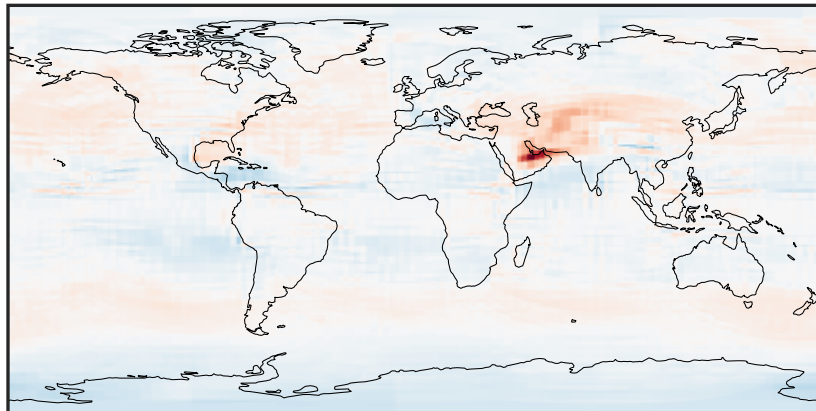
0.015 0.030 0.045
ppb

GCHP_14.2.0 (Dev)
c24



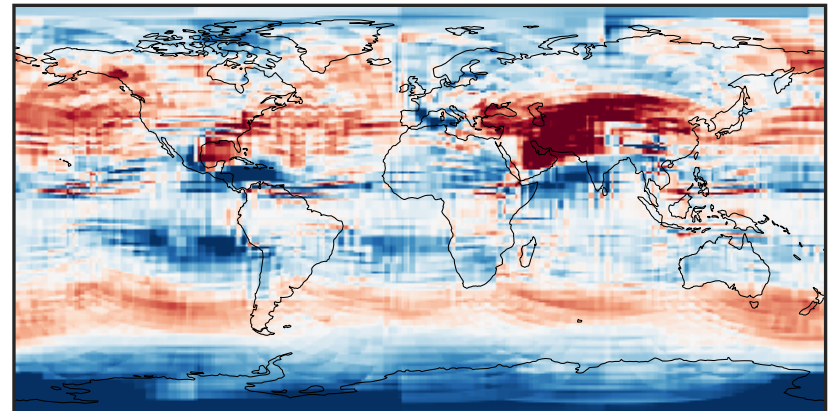
0.015 0.030 0.045
ppb

Difference (1x1.25)
Dev - Ref, Dynamic Range



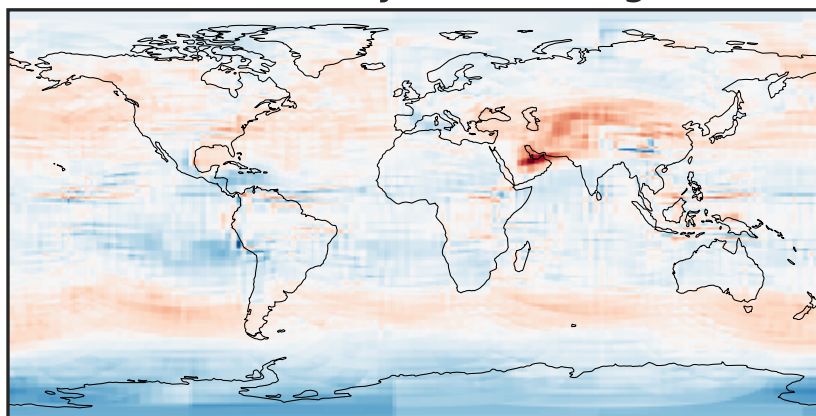
-0.02 0.00 0.02
ppb

Difference (1x1.25)
Dev - Ref, Restricted Range [5%,95%]



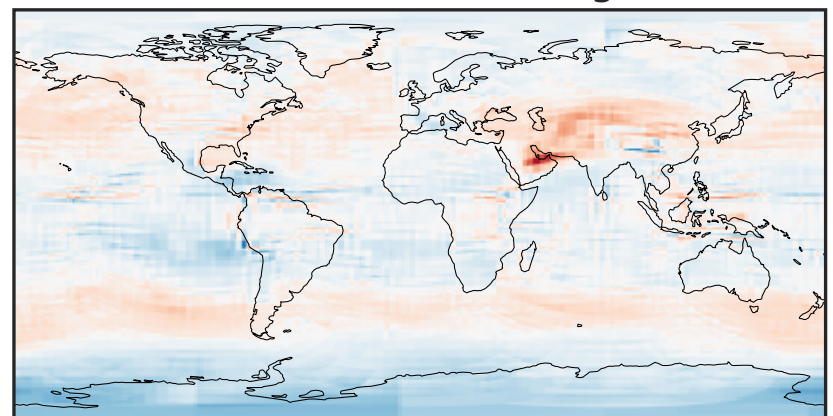
-0.003 0.000 0.003
ppb

Ratio (1x1.25)
Dev/Ref, Dynamic Range



0.564 0.782 1.000 1.386 1.772
unitless

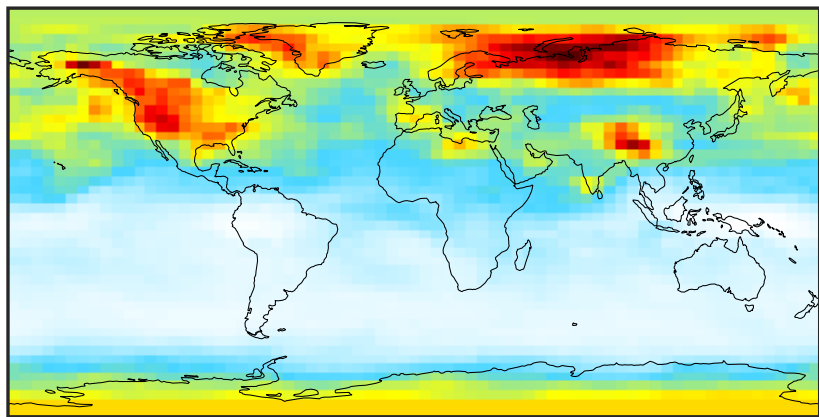
Ratio (1x1.25)
Dev/Ref, Fixed Range



0.50 0.75 1.00 1.50 2.00
unitless

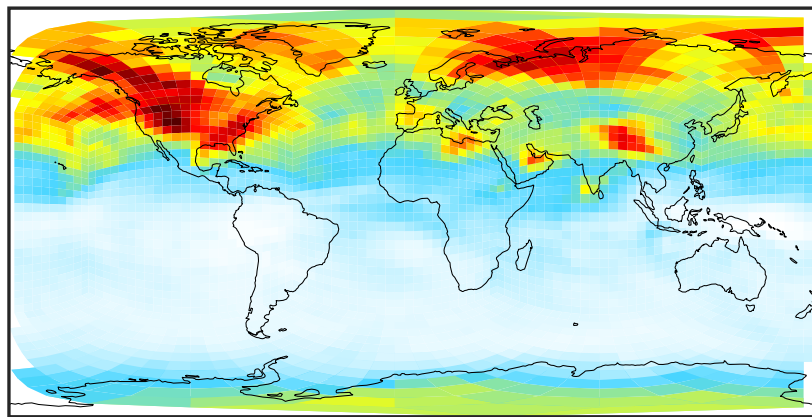
SpeciesConcVV_CIOx (Apr2019)

GCC_14.2.0 (Ref)
4.0x5.0



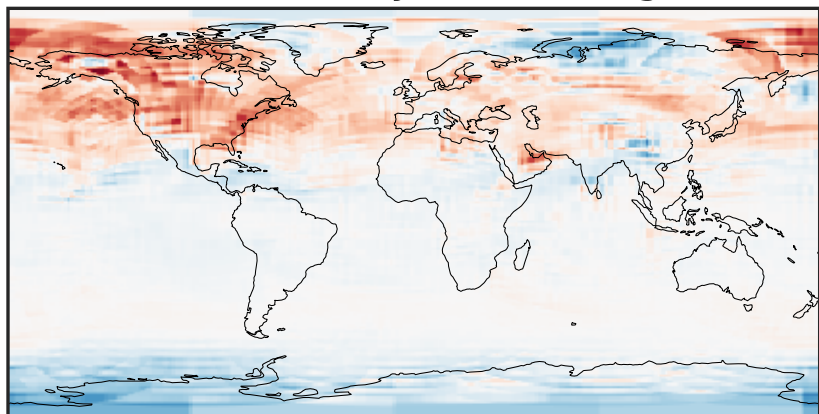
0.0006 0.0012 0.0018
ppb

GCHP_14.2.0 (Dev)
c24



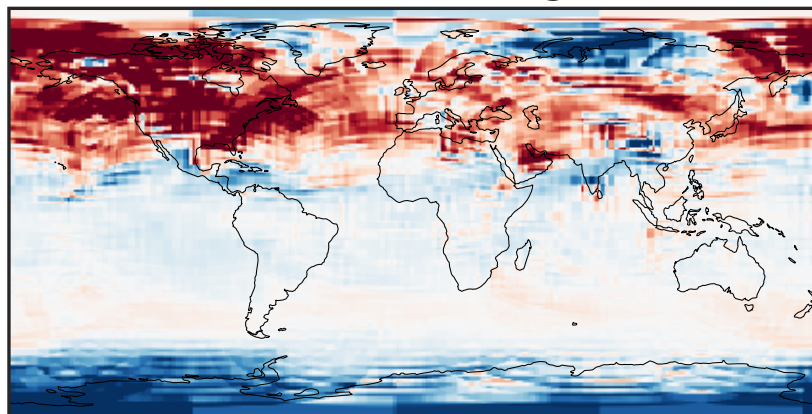
0.0006 0.0012 0.0018
ppb

Difference (1x1.25)
Dev - Ref, Dynamic Range



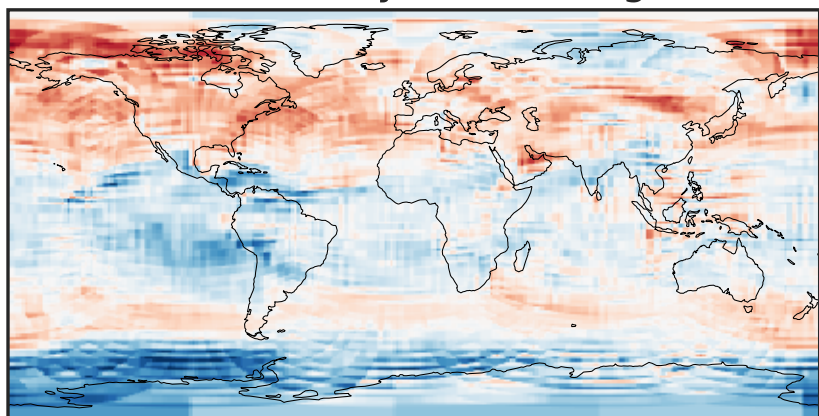
-0.0005 0.0000 0.0005
ppb

Difference (1x1.25)
Dev - Ref, Restricted Range [5%,95%]



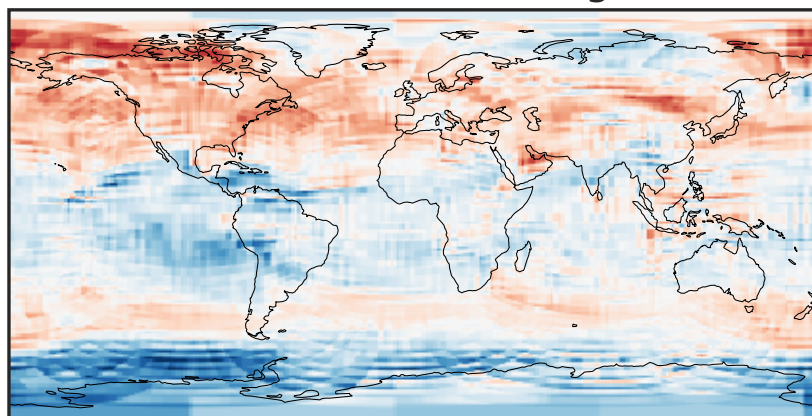
-0.0002 0.0000 0.0002
ppb

Ratio (1x1.25)
Dev/Ref, Dynamic Range



0.514 0.757 1.000 1.474 1.947
unitless

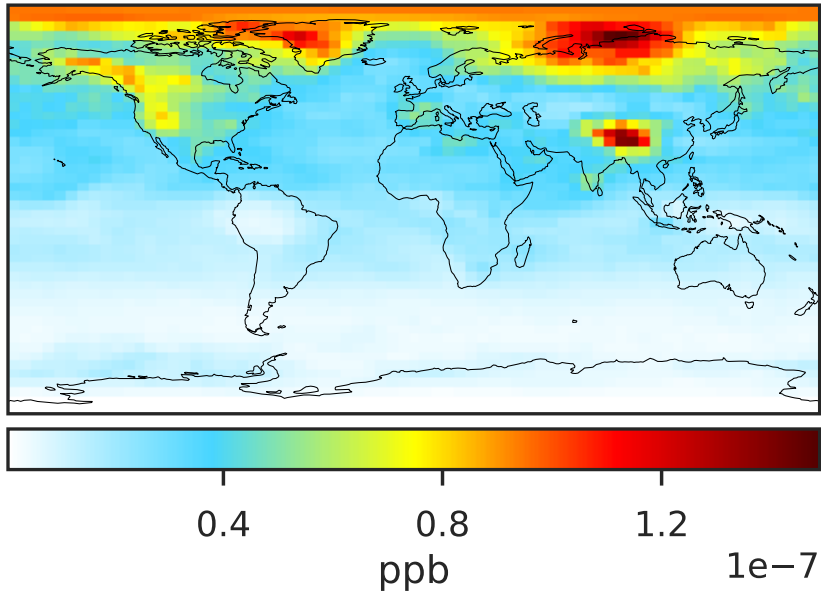
Ratio (1x1.25)
Dev/Ref, Fixed Range



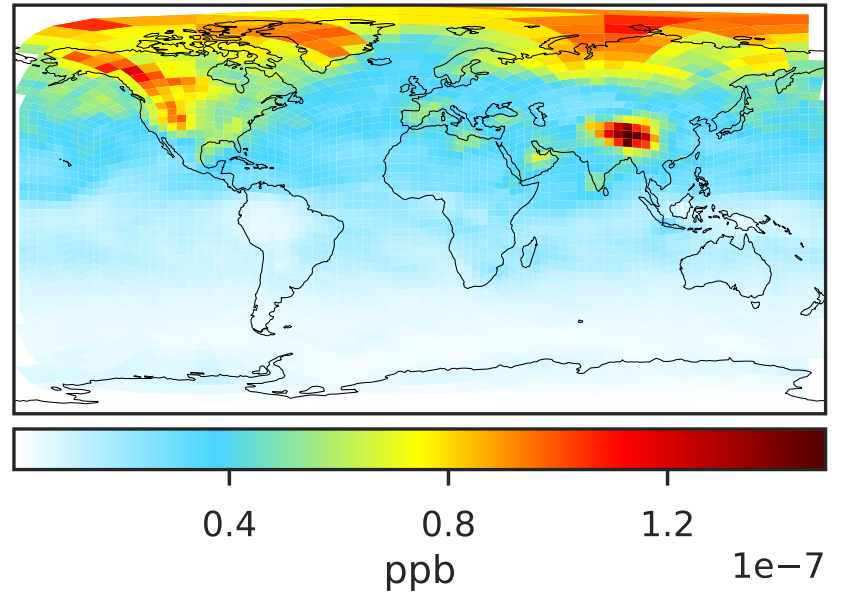
0.50 0.75 1.00 1.50 2.00
unitless

SpeciesConcVV_CI (Apr2019)

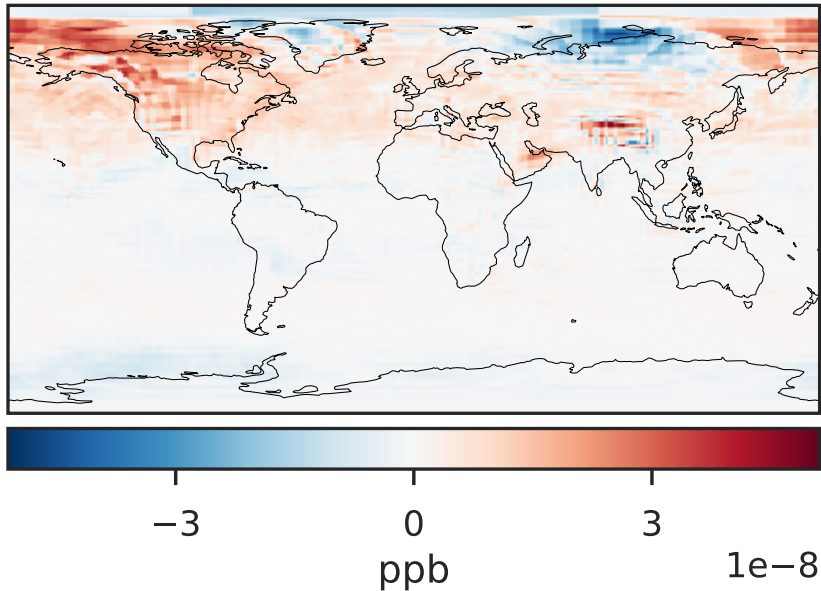
GCC_14.2.0 (Ref)
4.0x5.0



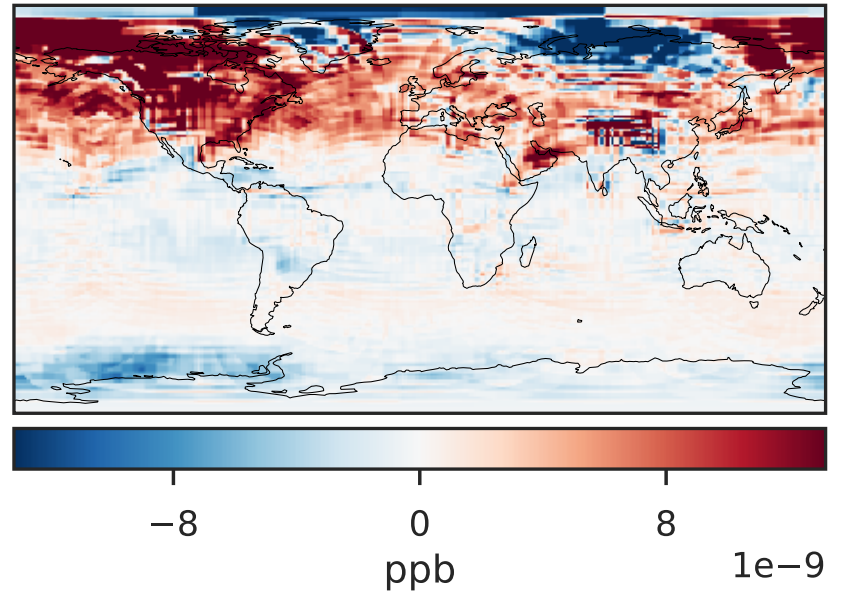
GCHP_14.2.0 (Dev)
c24



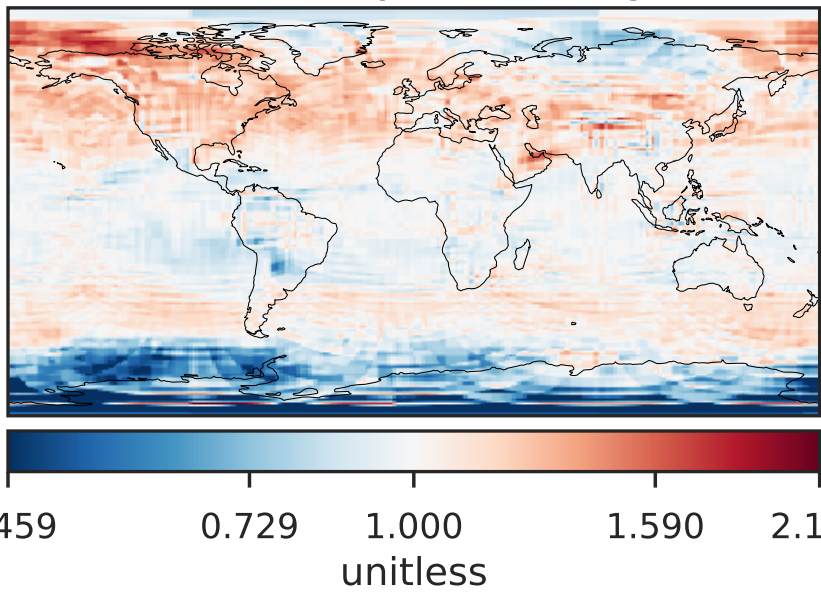
Difference (1x1.25)
Dev - Ref, Dynamic Range



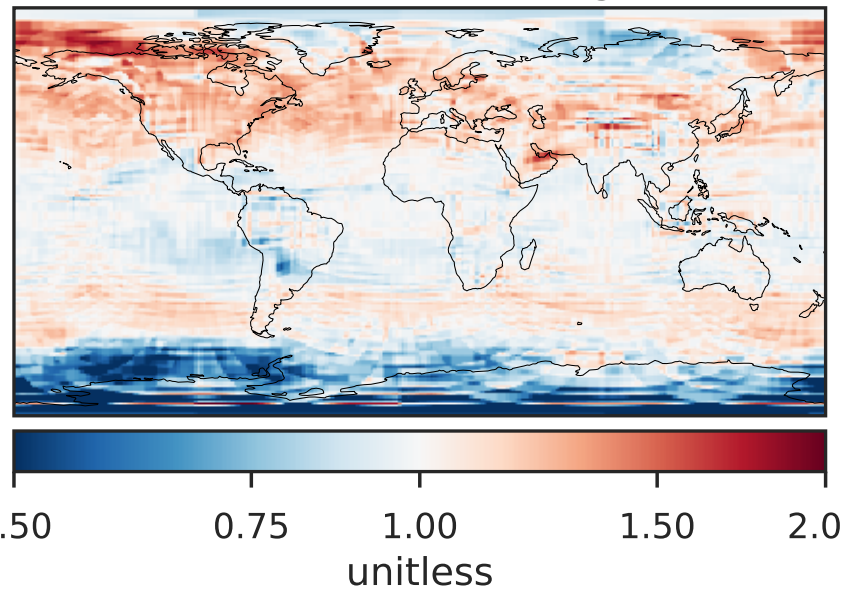
Difference (1x1.25)
Dev - Ref, Restricted Range [5%,95%]



Ratio (1x1.25)
Dev/Ref, Dynamic Range

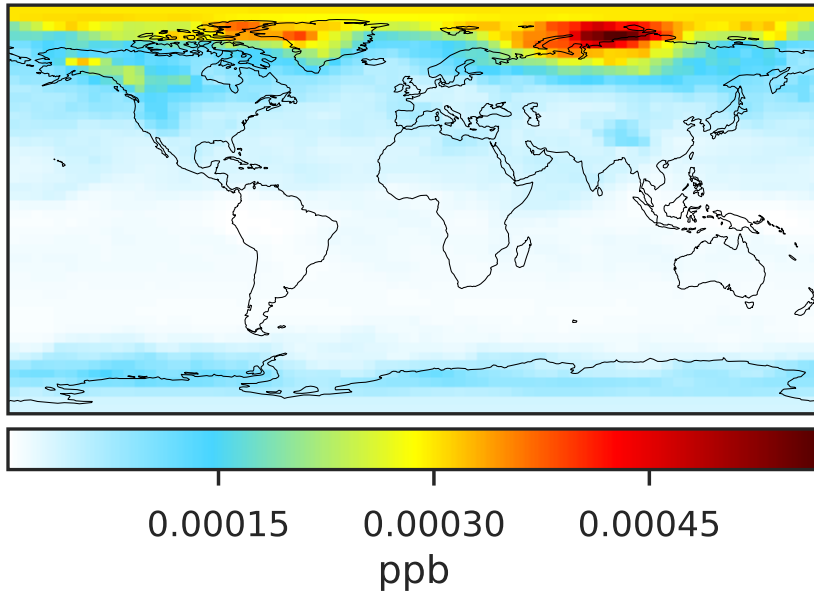


Ratio (1x1.25)
Dev/Ref, Fixed Range

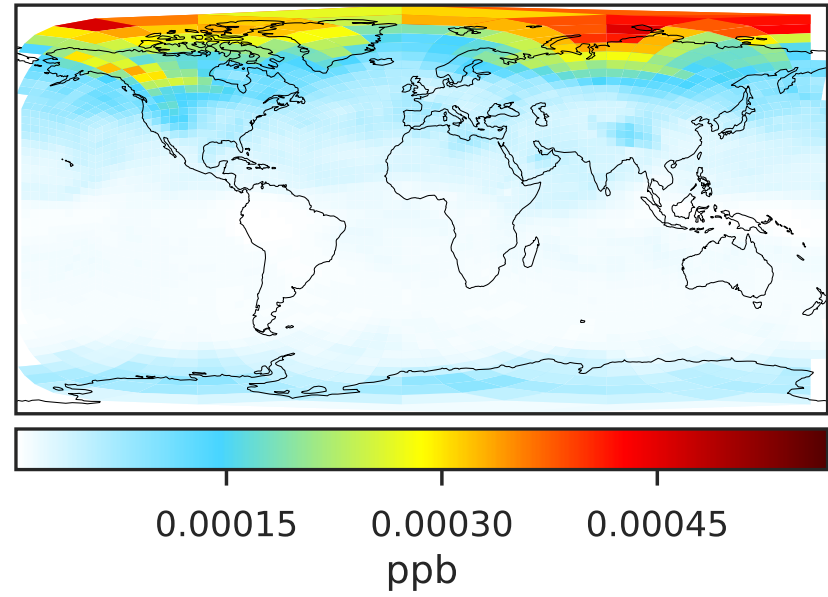


SpeciesConcVV_CIO (Apr2019)

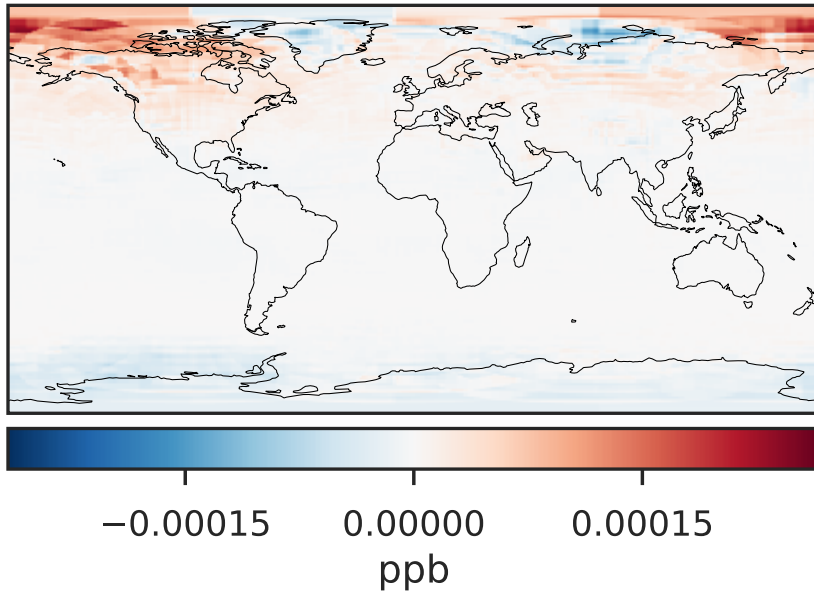
GCC_14.2.0 (Ref)
4.0x5.0



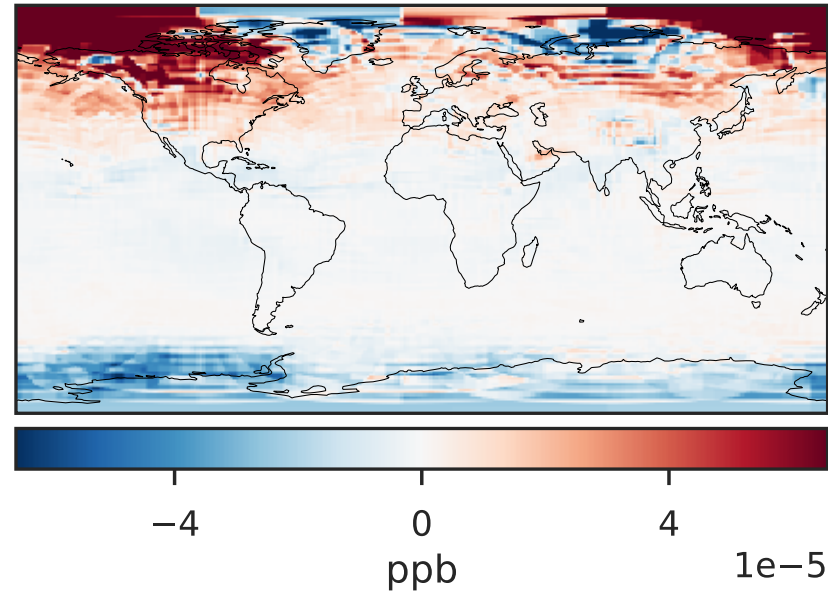
GCHP_14.2.0 (Dev)
c24



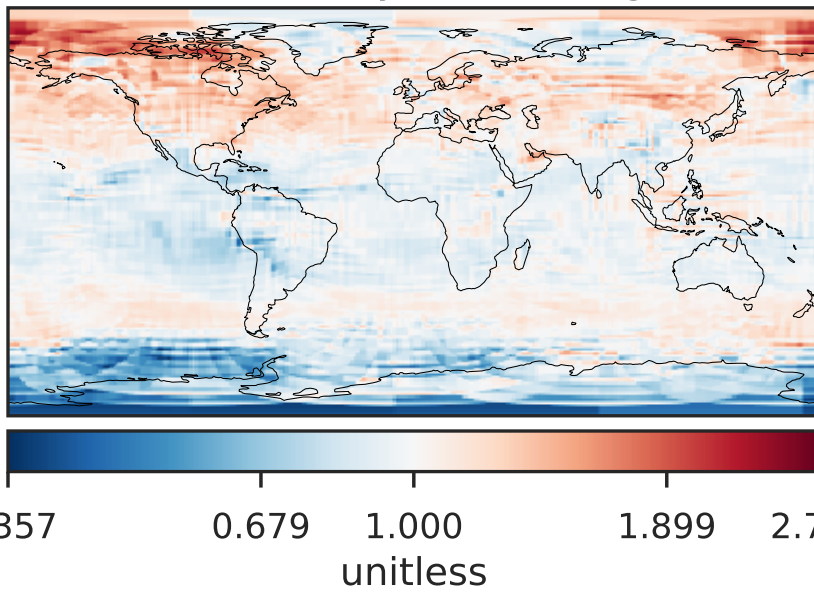
Difference (1x1.25)
Dev - Ref, Dynamic Range



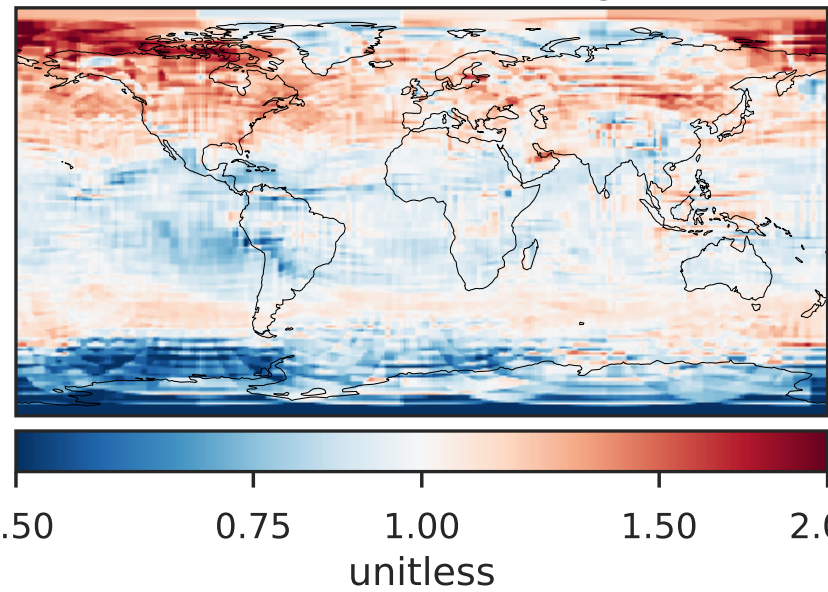
Difference (1x1.25)
Dev - Ref, Restricted Range [5%,95%]



Ratio (1x1.25)
Dev/Ref, Dynamic Range

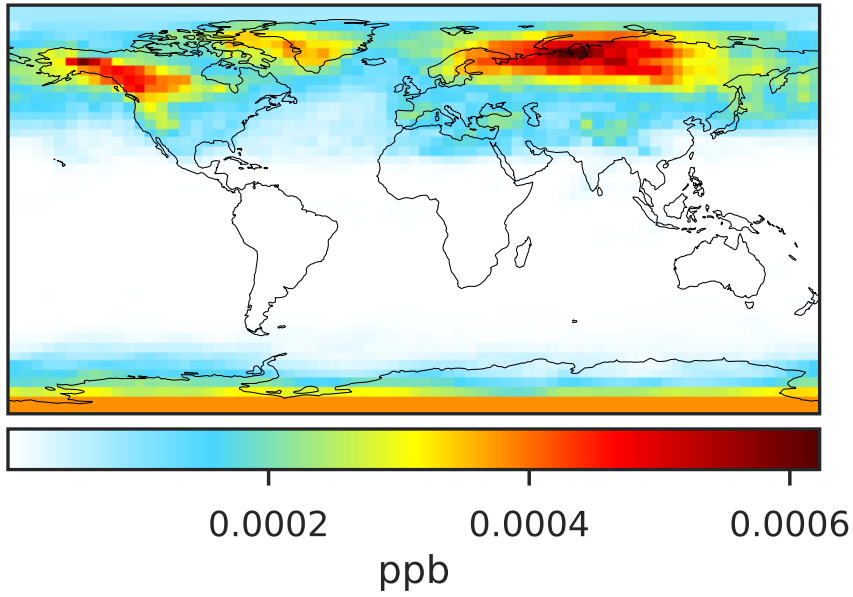


Ratio (1x1.25)
Dev/Ref, Fixed Range

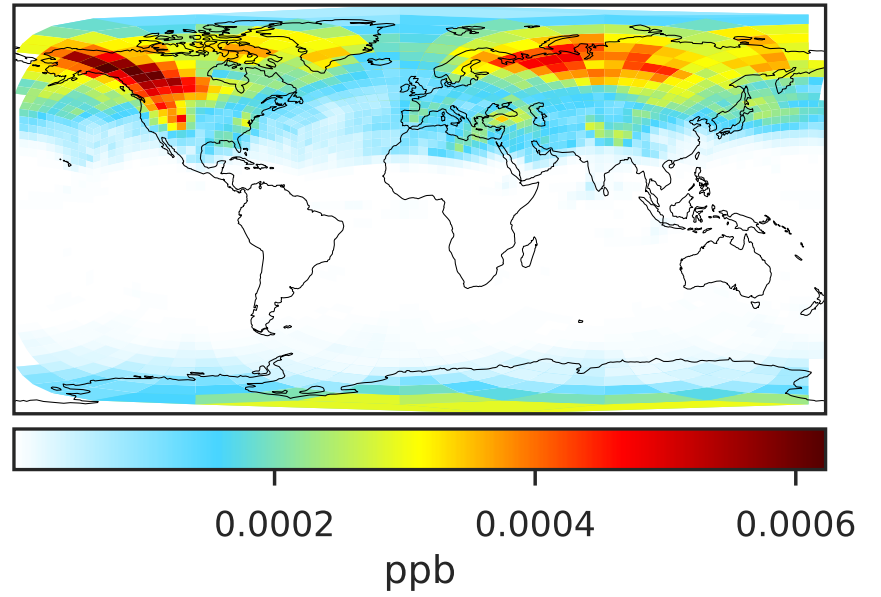


SpeciesConcVV_Cl2 (Apr2019)

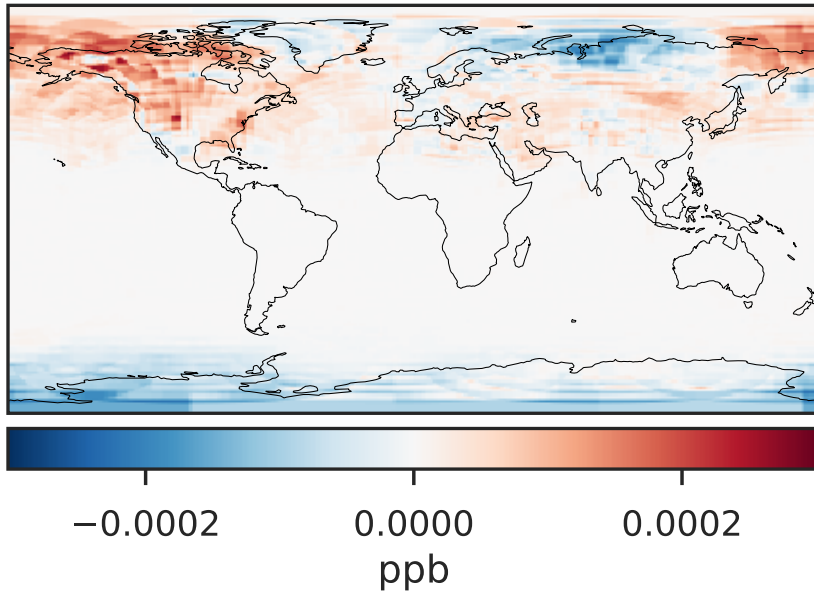
GCC_14.2.0 (Ref)
4.0x5.0



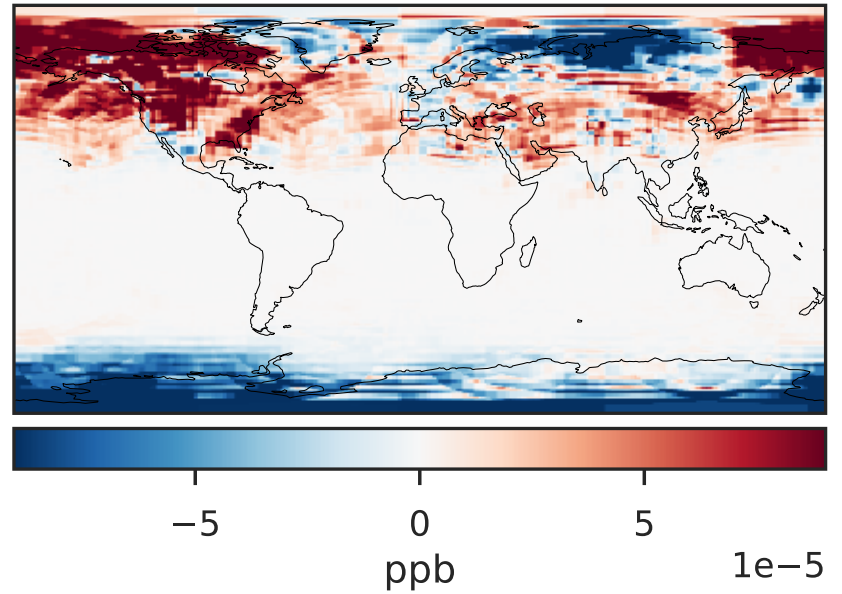
GCHP_14.2.0 (Dev)
c24



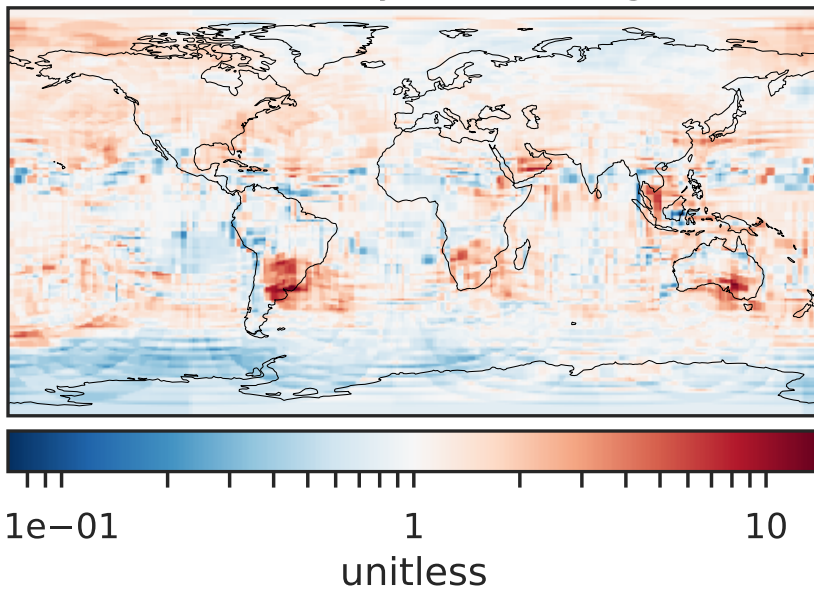
Difference (1x1.25)
Dev - Ref, Dynamic Range



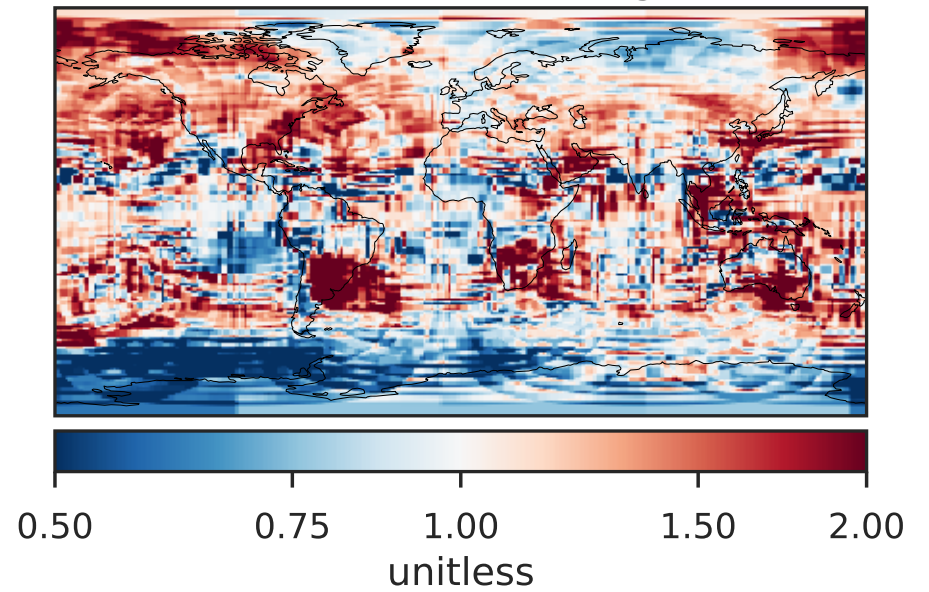
Difference (1x1.25)
Dev - Ref, Restricted Range [5%,95%]



Ratio (1x1.25)
Dev/Ref, Dynamic Range

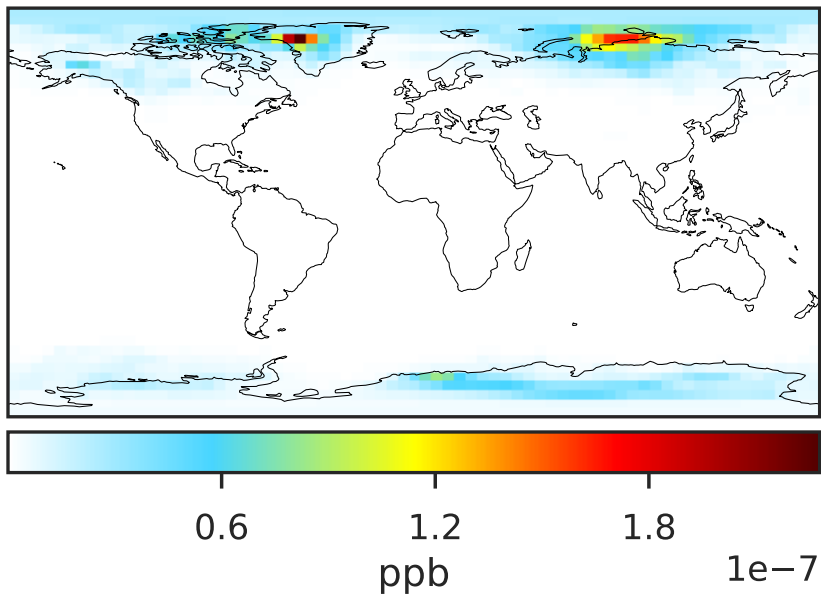


Ratio (1x1.25)
Dev/Ref, Fixed Range

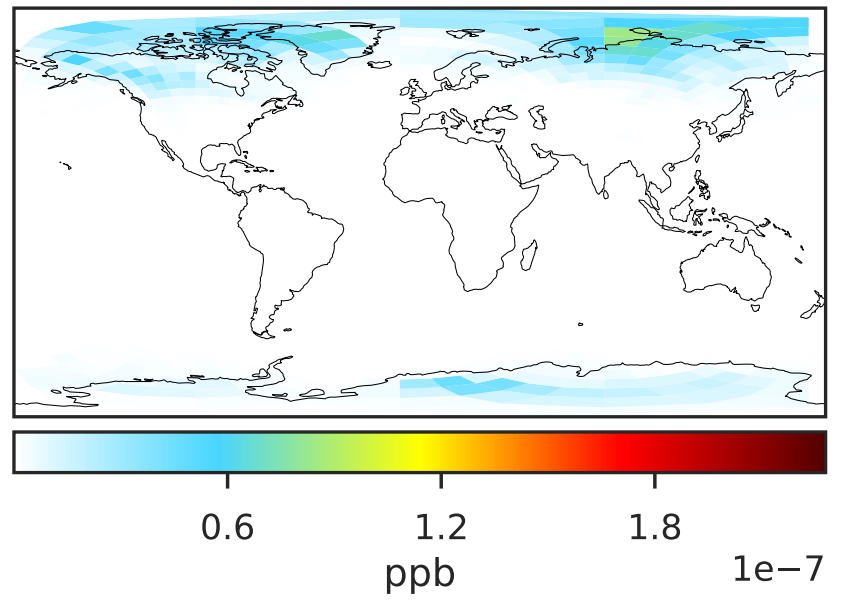


SpeciesConcVV_Cl2O2 (Apr2019)

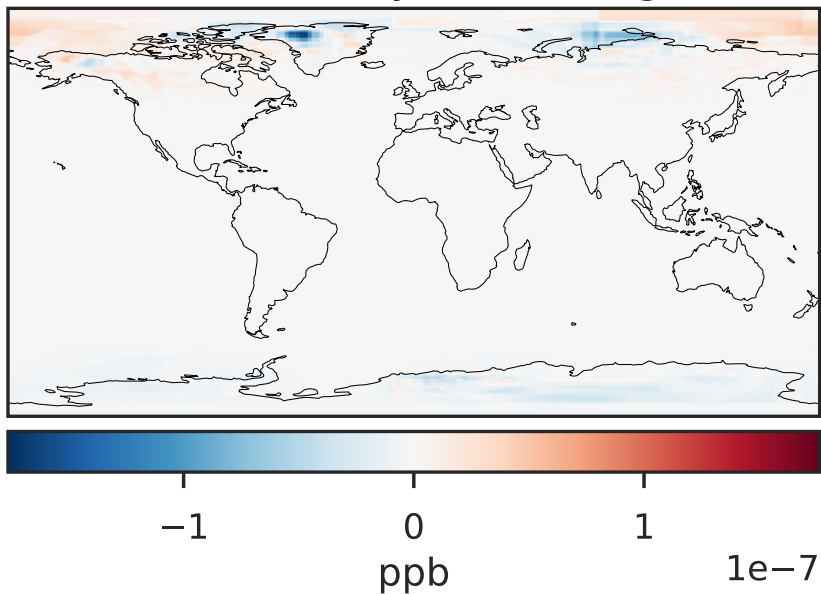
GCC_14.2.0 (Ref)
4.0x5.0



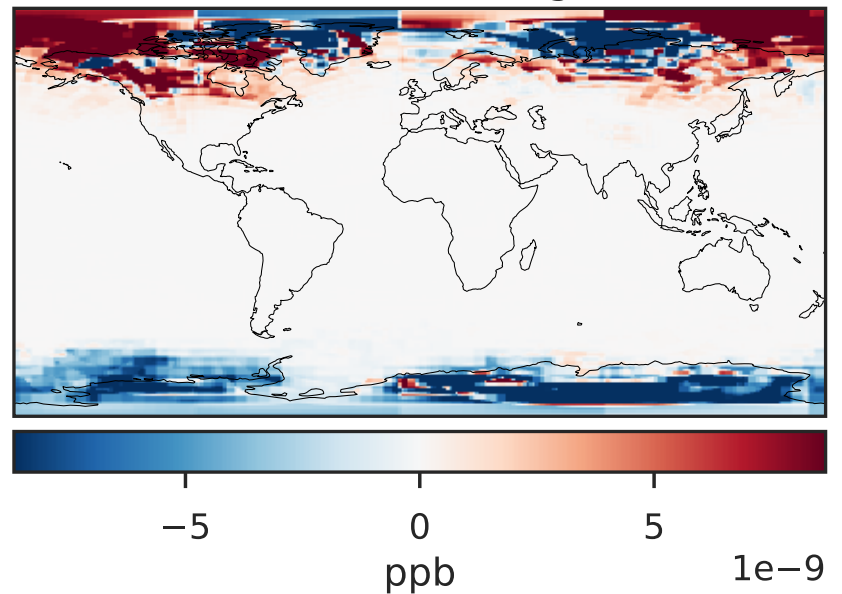
GCHP_14.2.0 (Dev)
c24



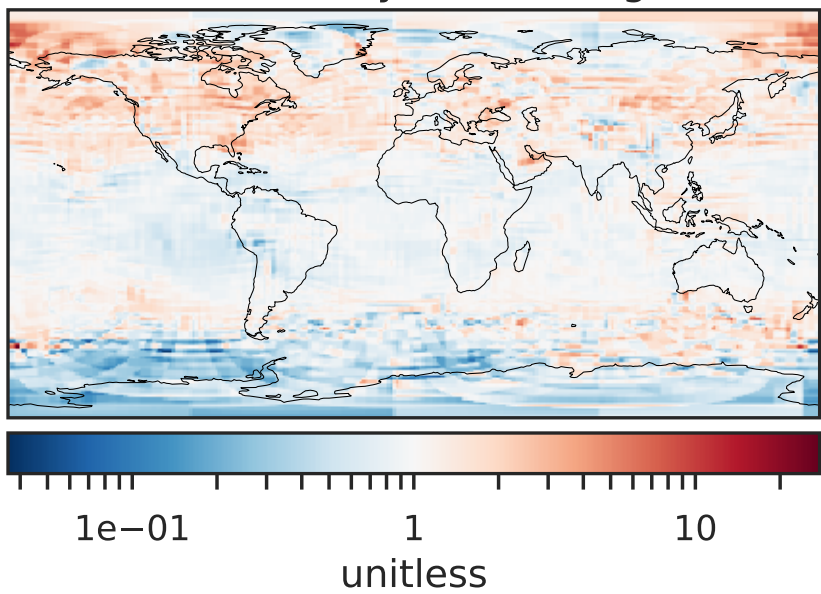
Difference (1x1.25)
Dev - Ref, Dynamic Range



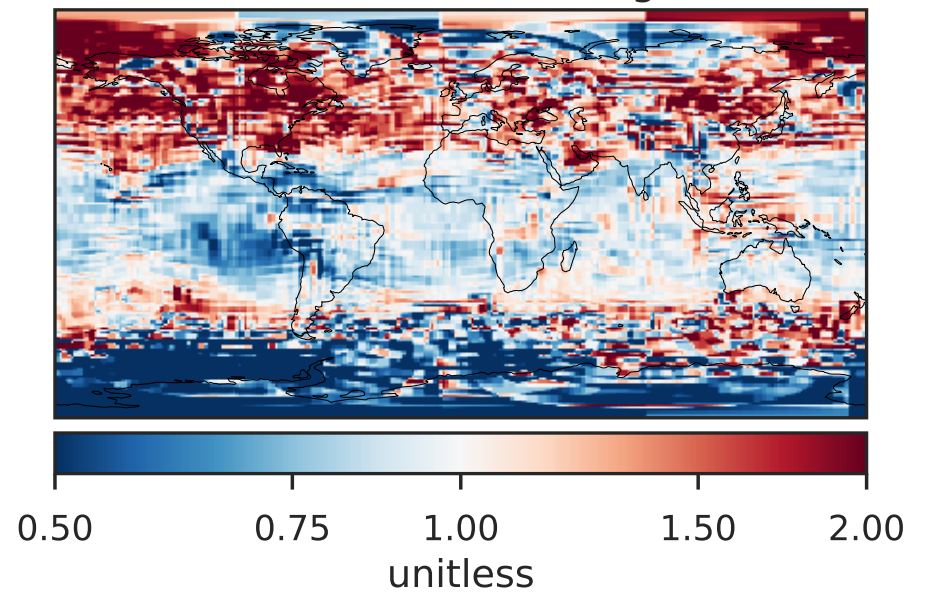
Difference (1x1.25)
Dev - Ref, Restricted Range [5%,95%]



Ratio (1x1.25)
Dev/Ref, Dynamic Range

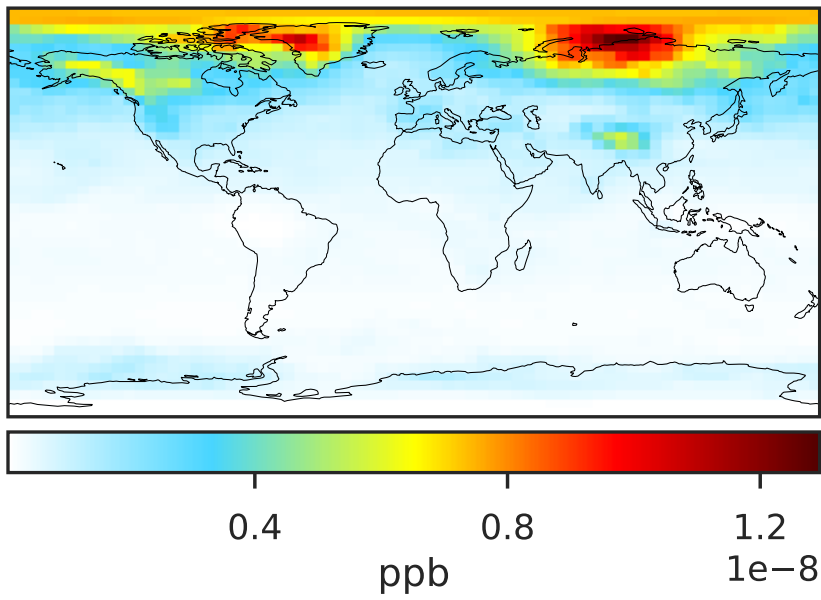


Ratio (1x1.25)
Dev/Ref, Fixed Range

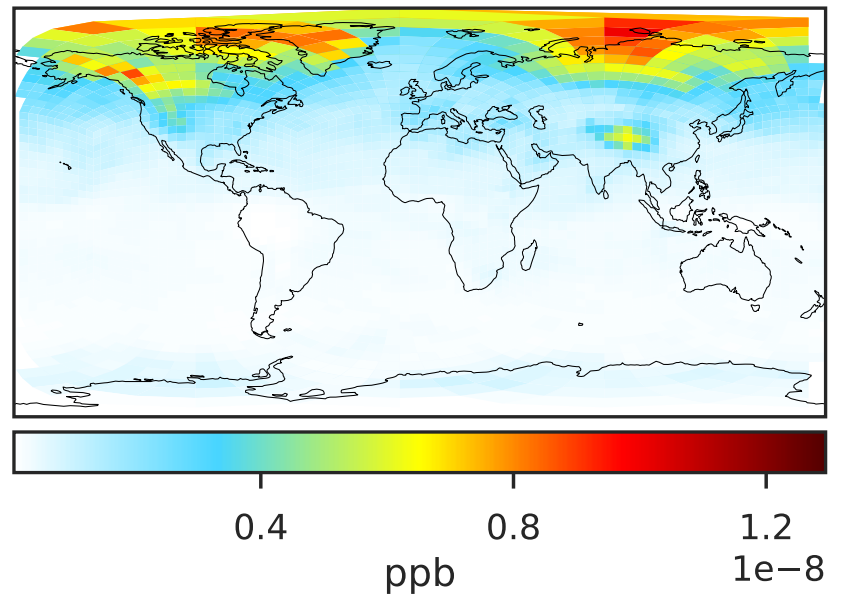


SpeciesConcVV_C100 (Apr2019)

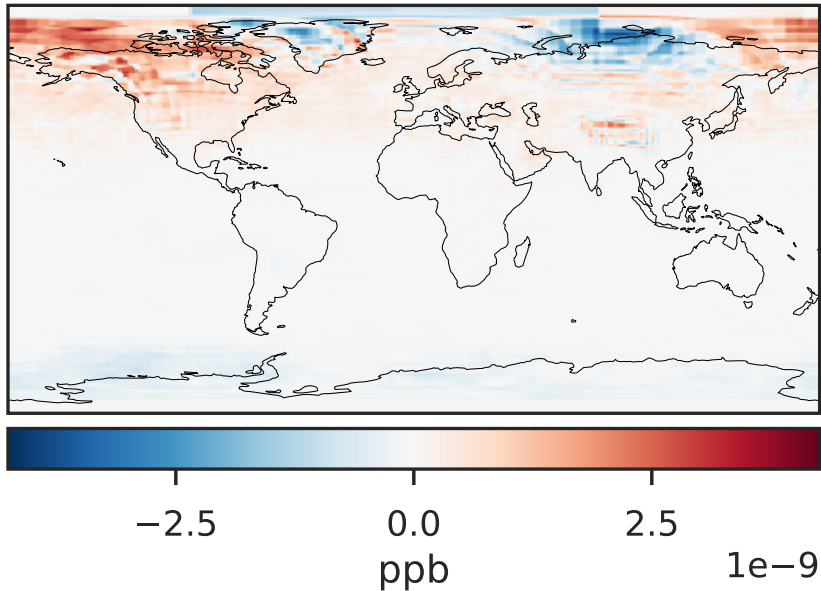
GCC_14.2.0 (Ref)
4.0x5.0



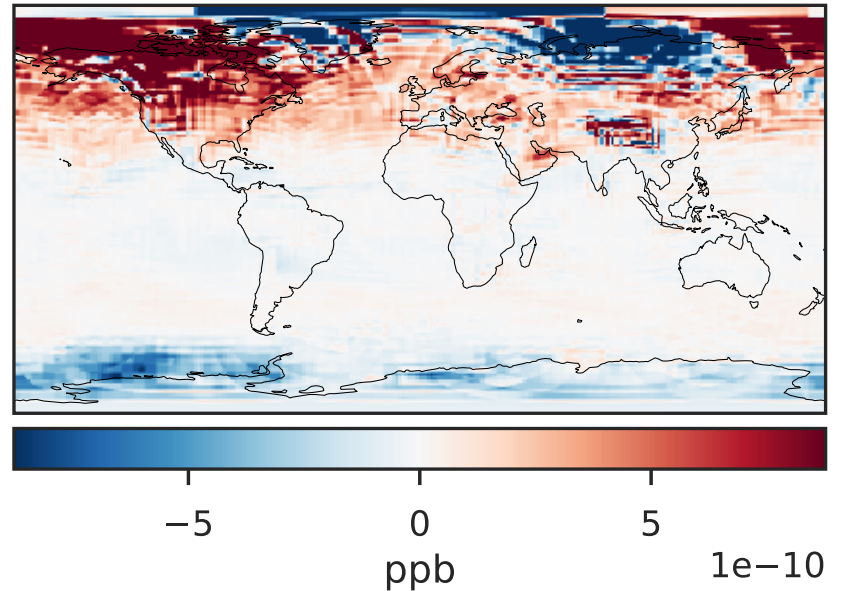
GCHP_14.2.0 (Dev)
c24



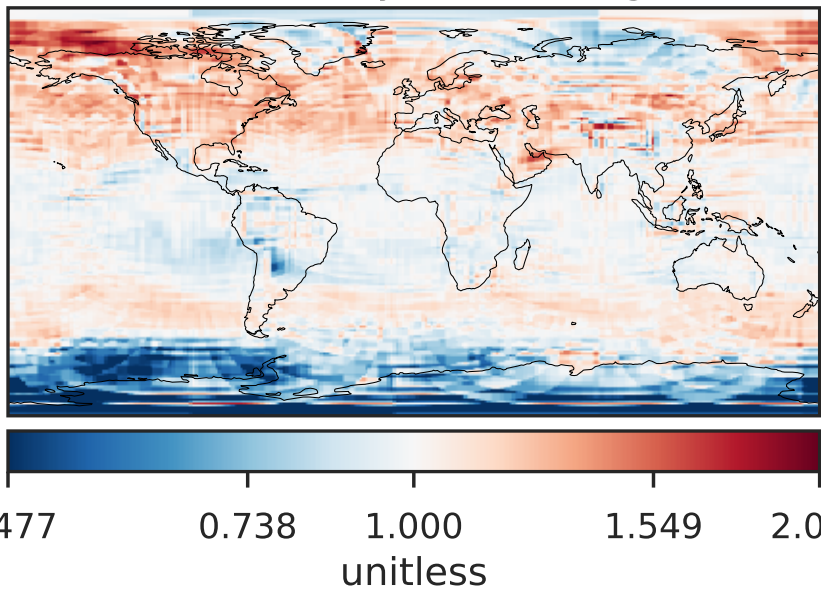
Difference (1x1.25)
Dev - Ref, Dynamic Range



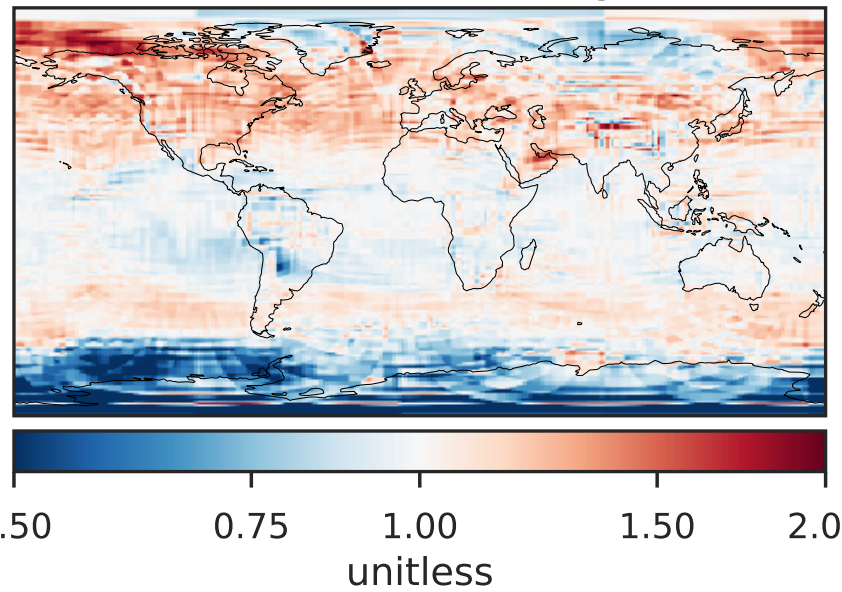
Difference (1x1.25)
Dev - Ref, Restricted Range [5%,95%]



Ratio (1x1.25)
Dev/Ref, Dynamic Range

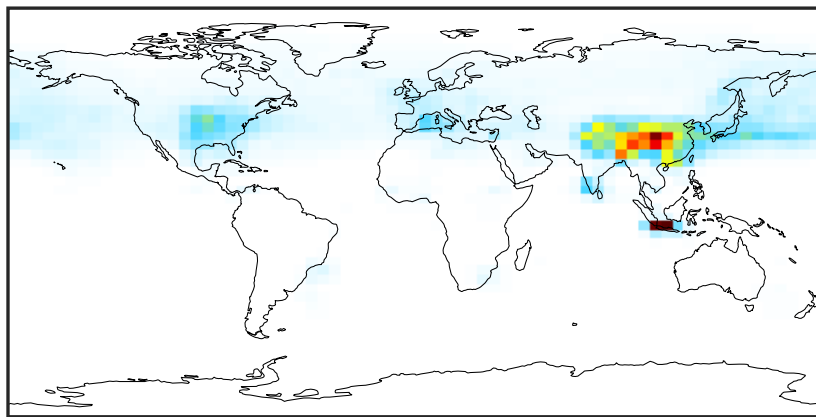


Ratio (1x1.25)
Dev/Ref, Fixed Range



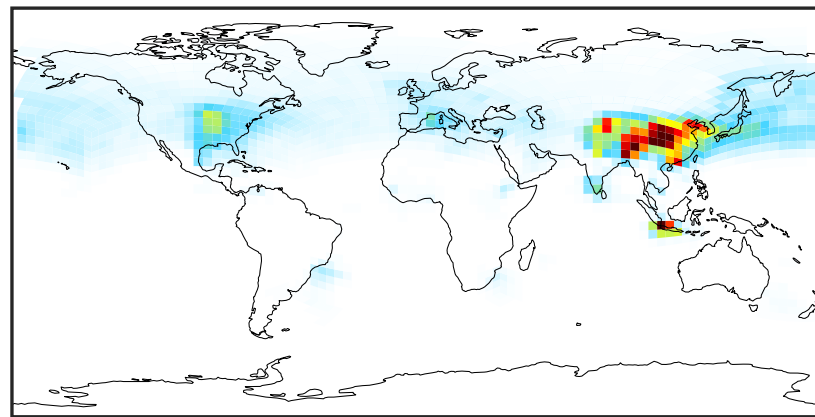
SpeciesConcVW_CINO2 (Apr2019)

GCC_14.2.0 (Ref)
4.0x5.0



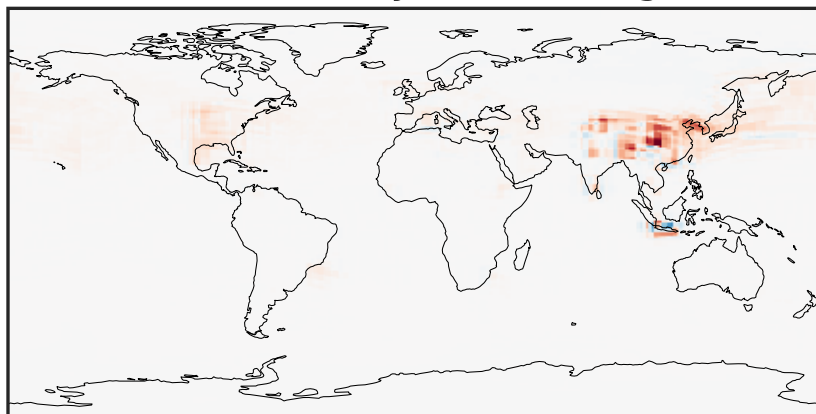
0.00008 0.00016 0.00024
ppb

GCHP_14.2.0 (Dev)
c24



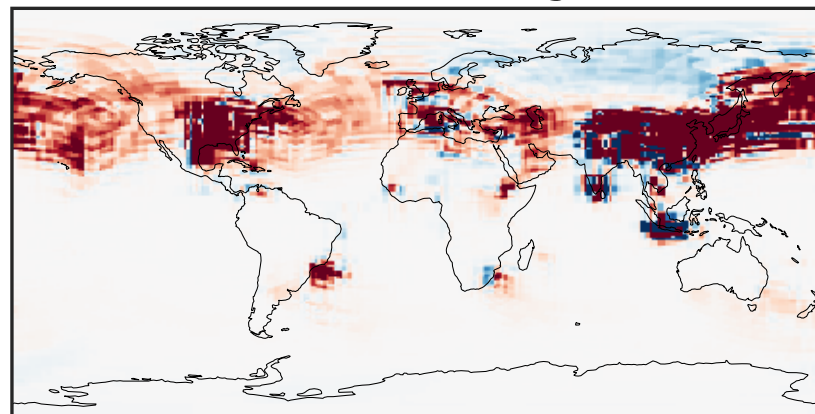
0.00008 0.00016 0.00024
ppb

Difference (1x1.25)
Dev - Ref, Dynamic Range



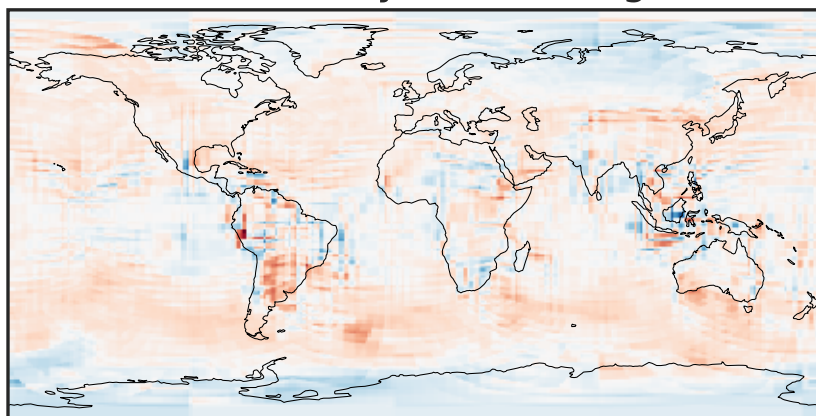
-0.00015 0.00000 0.00015
ppb

Difference (1x1.25)
Dev - Ref, Restricted Range [5%,95%]



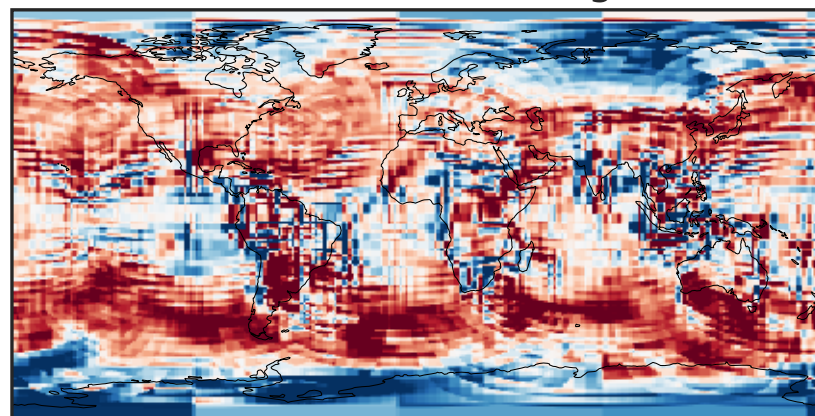
-5 0 5
ppb $1e-6$

Ratio (1x1.25)
Dev/Ref, Dynamic Range



$1e-01$ 1 10
unitless

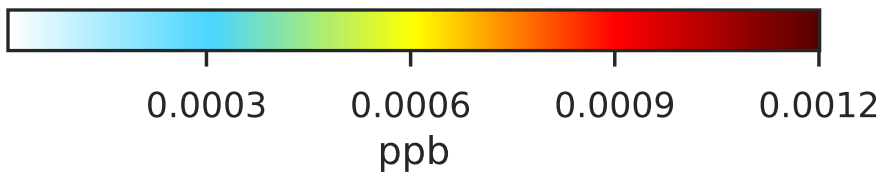
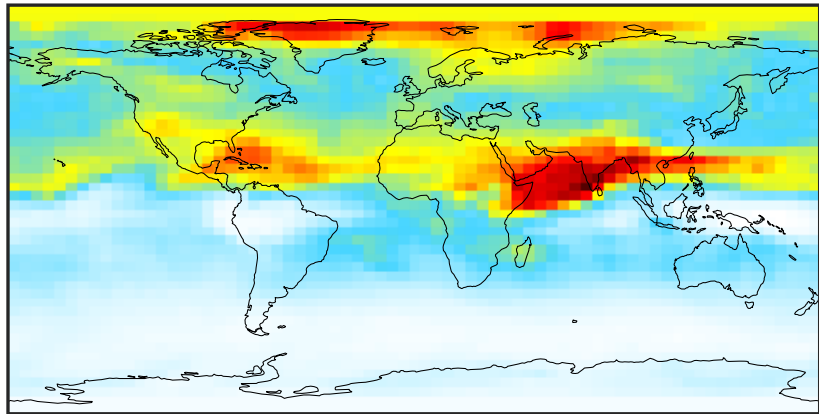
Ratio (1x1.25)
Dev/Ref, Fixed Range



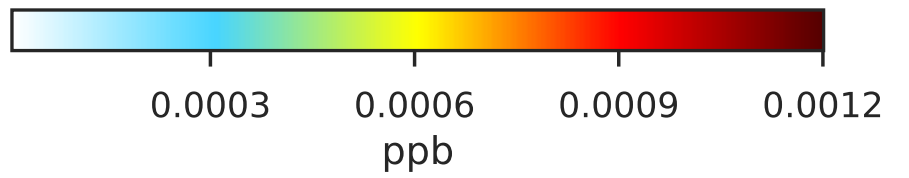
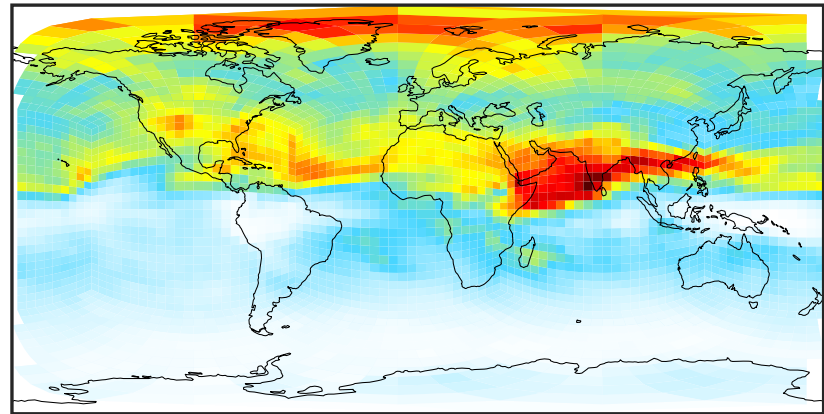
0.50 0.75 1.00 1.50 2.00
unitless

SpeciesConcVW_CINO3 (Apr2019)

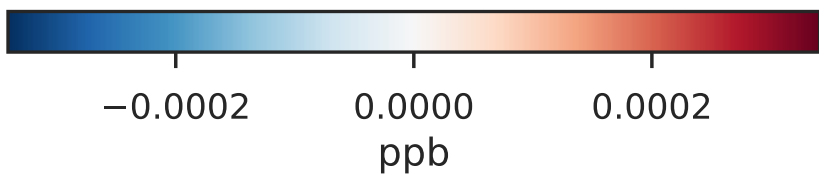
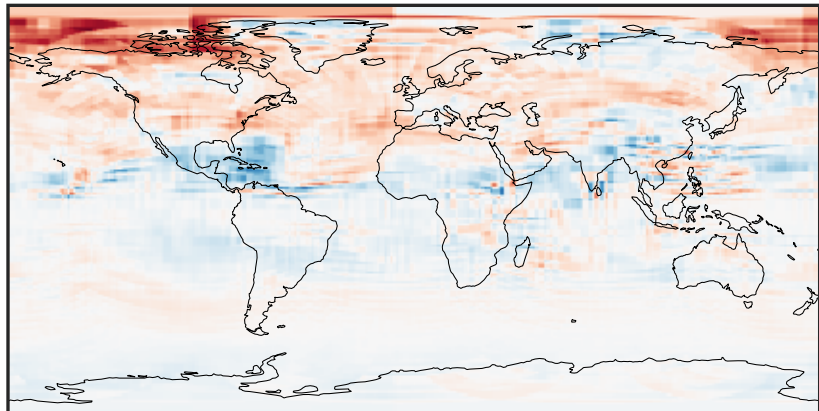
GCC_14.2.0 (Ref)
4.0x5.0



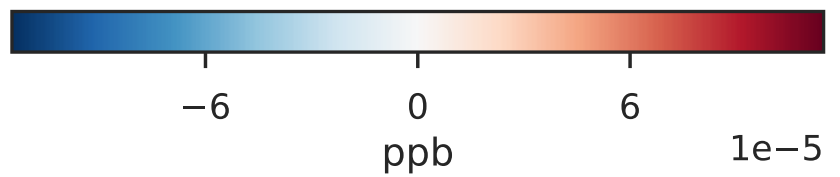
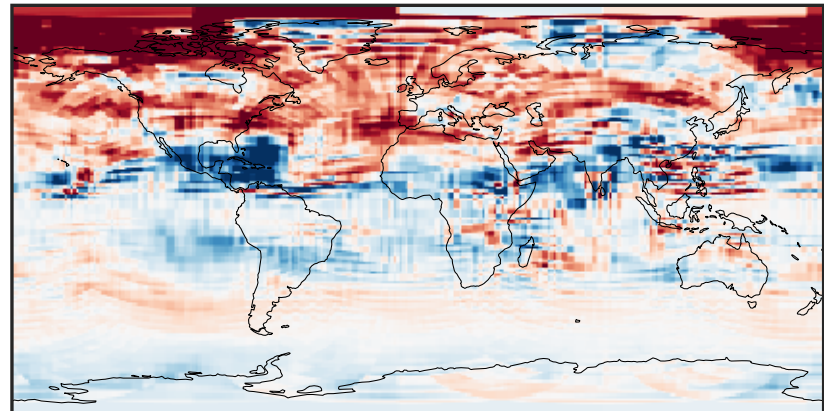
GCHP_14.2.0 (Dev)
c24



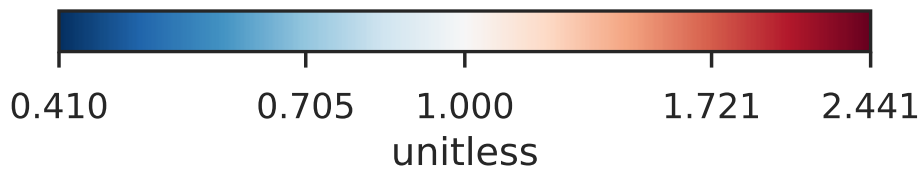
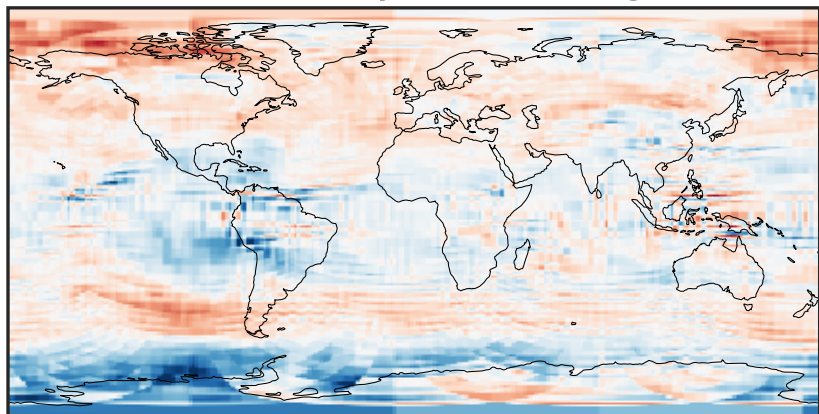
Difference (1x1.25)
Dev - Ref, Dynamic Range



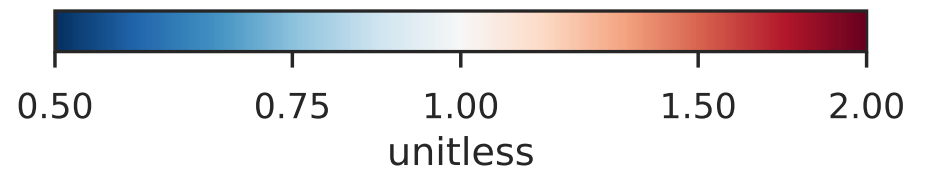
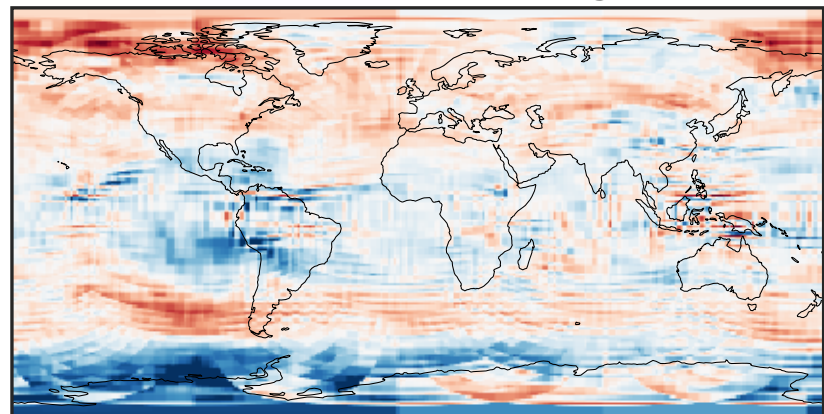
Difference (1x1.25)
Dev - Ref, Restricted Range [5%,95%]



Ratio (1x1.25)
Dev/Ref, Dynamic Range

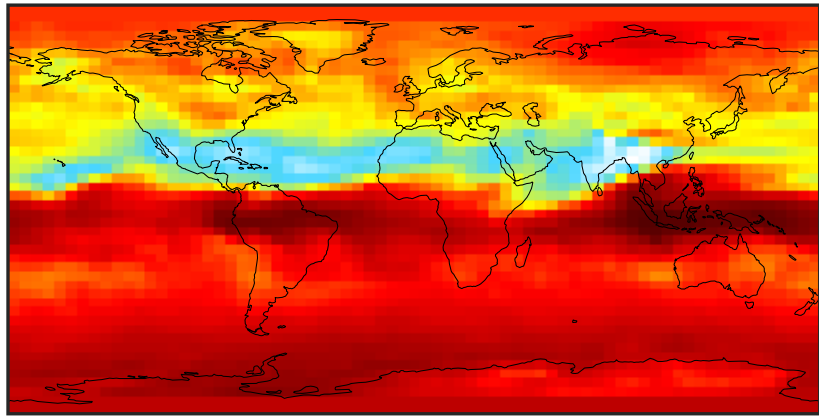


Ratio (1x1.25)
Dev/Ref, Fixed Range



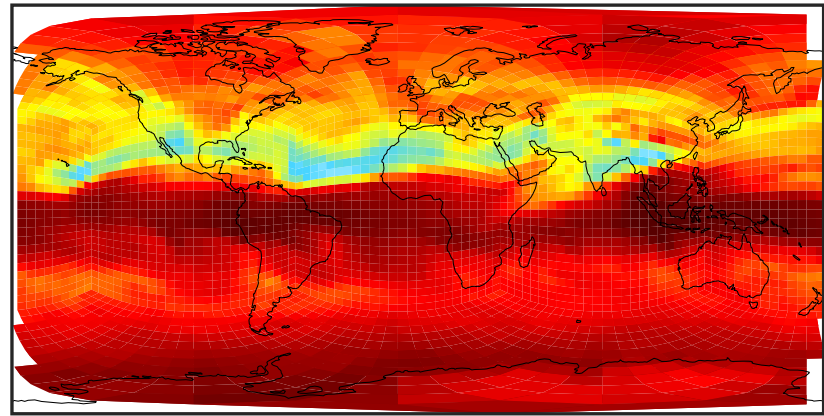
SpeciesConcVV_CCl4 (Apr2019)

GCC_14.2.0 (Ref)
4.0x5.0



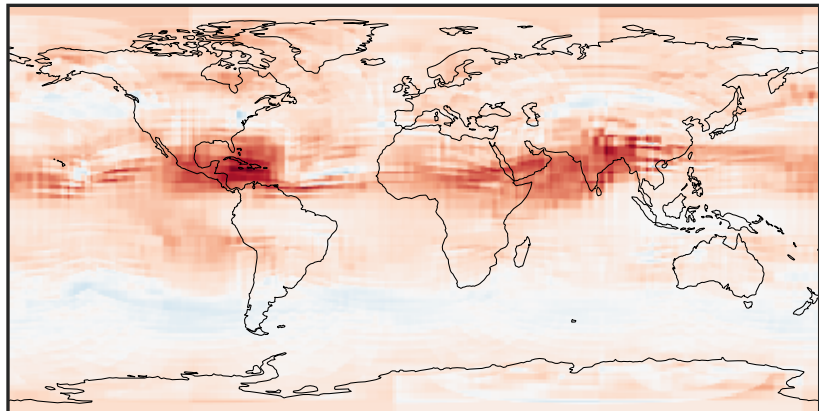
0.07705 0.07720 0.07735
ppb

GCHP_14.2.0 (Dev)
c24



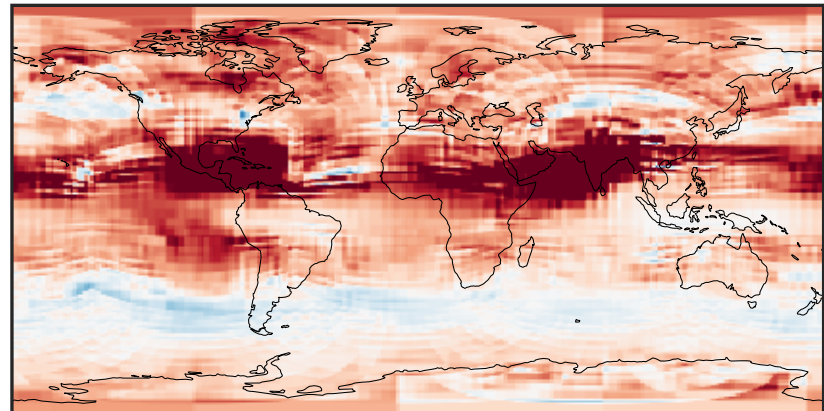
0.07705 0.07720 0.07735
ppb

Difference (1x1.25)
Dev - Ref, Dynamic Range



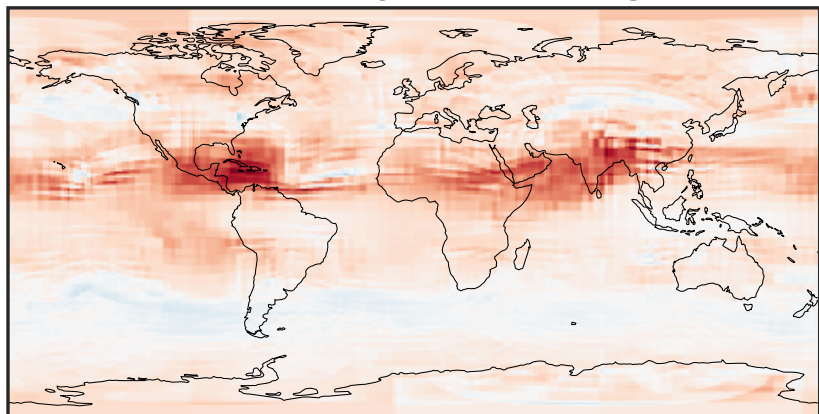
-0.0001 0.0000 0.0001
ppb

Difference (1x1.25)
Dev - Ref, Restricted Range [5%,95%]



-5 0 5
ppb 1e-5

Ratio (1x1.25)
Dev/Ref, Dynamic Range



0.997480 0.998740 1.000000 1.001263 1.002527
unitless

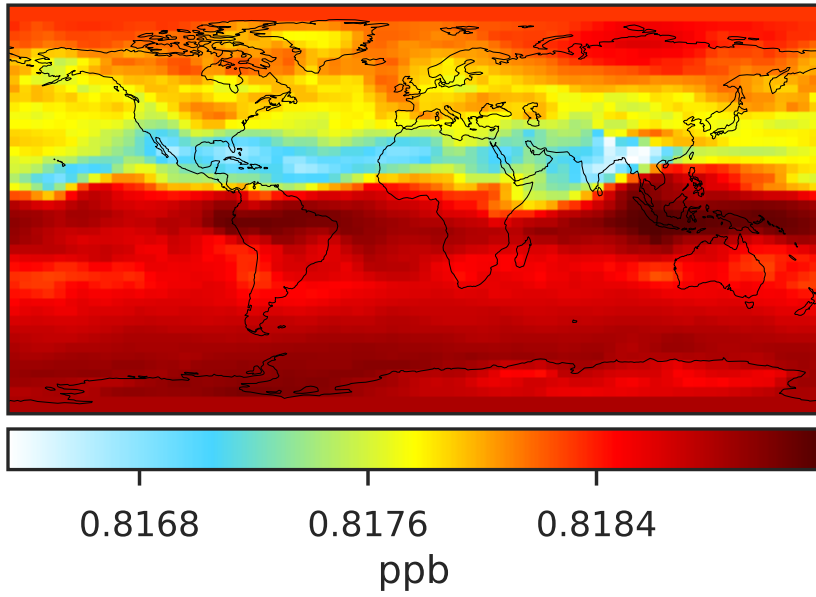
Ratio (1x1.25)
Dev/Ref, Fixed Range



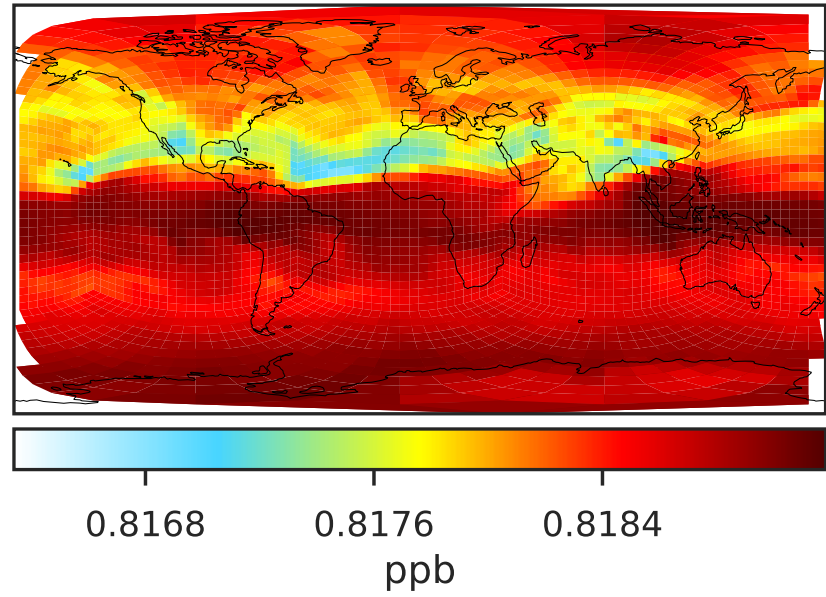
0.50 0.75 1.00 1.50 2.00
unitless

SpeciesConcVV_CFCs (Apr2019)

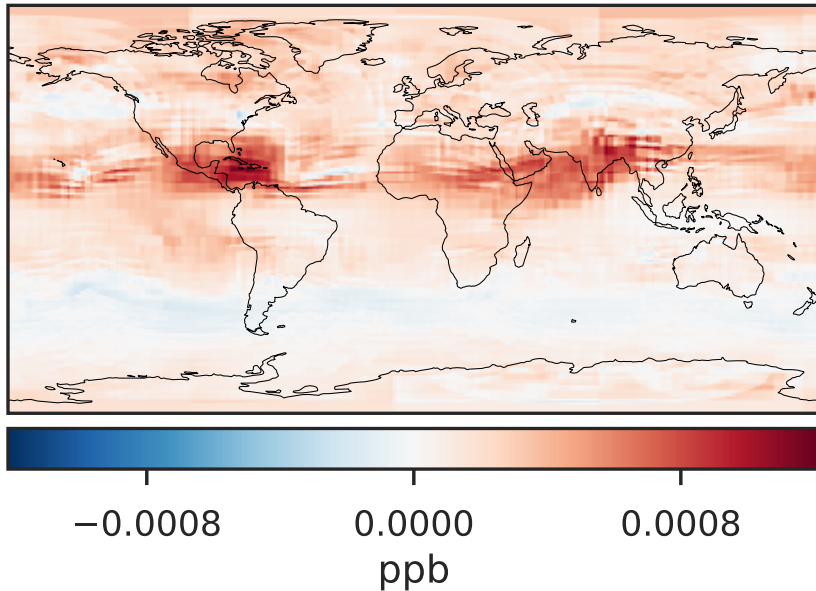
GCC_14.2.0 (Ref)
4.0x5.0



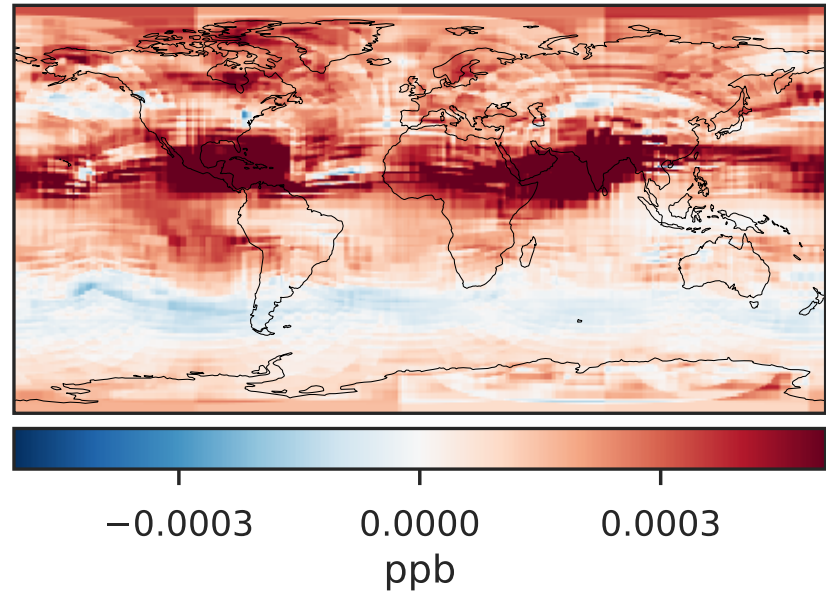
GCHP_14.2.0 (Dev)
c24



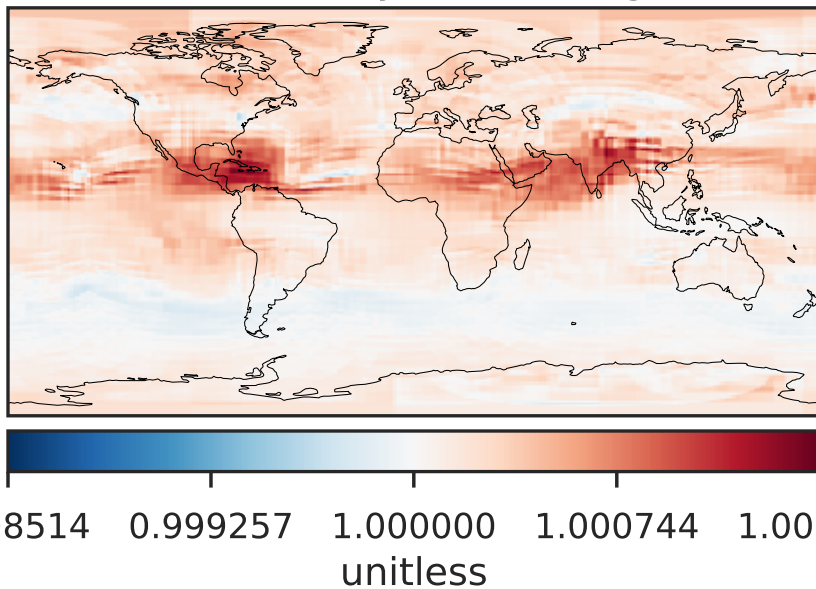
Difference (1x1.25)
Dev - Ref, Dynamic Range



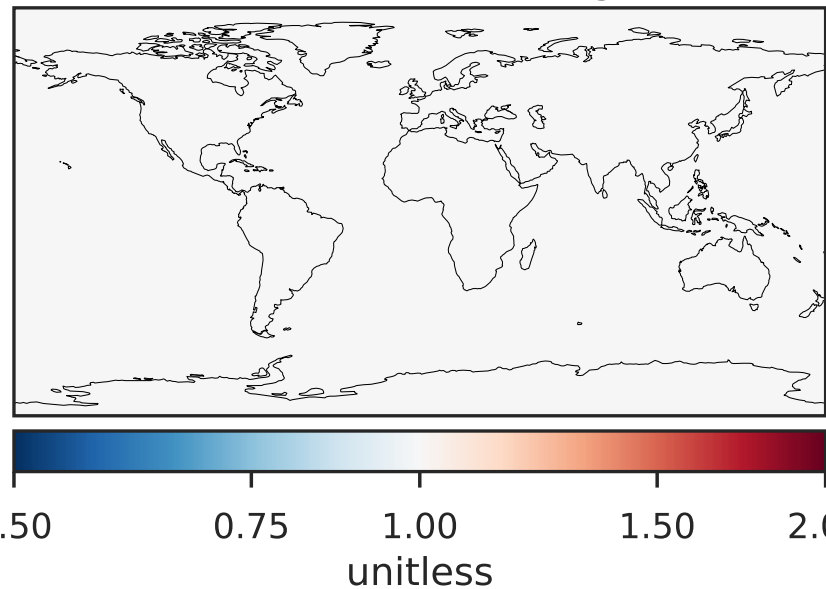
Difference (1x1.25)
Dev - Ref, Restricted Range [5%,95%]



Ratio (1x1.25)
Dev/Ref, Dynamic Range



Ratio (1x1.25)
Dev/Ref, Fixed Range

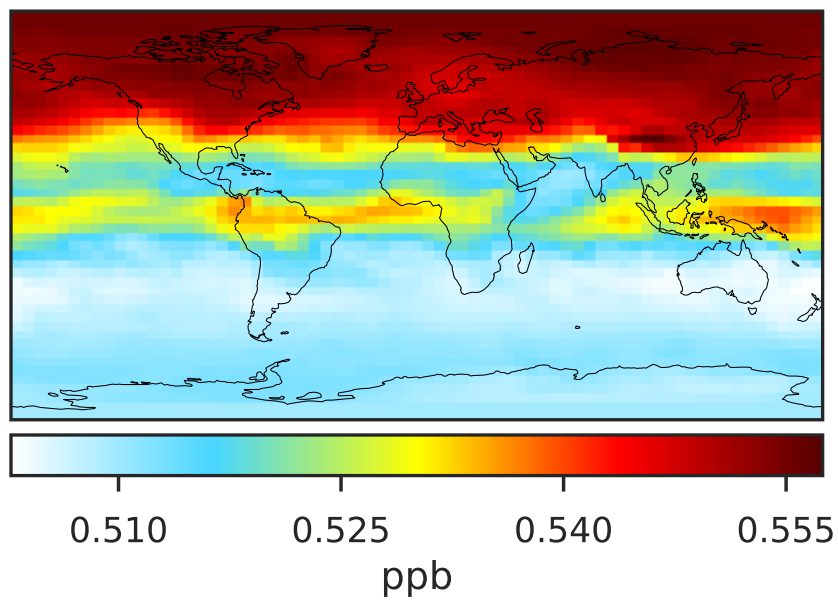


0.998514 0.999257 1.000000 1.000744 1.001488
unitless

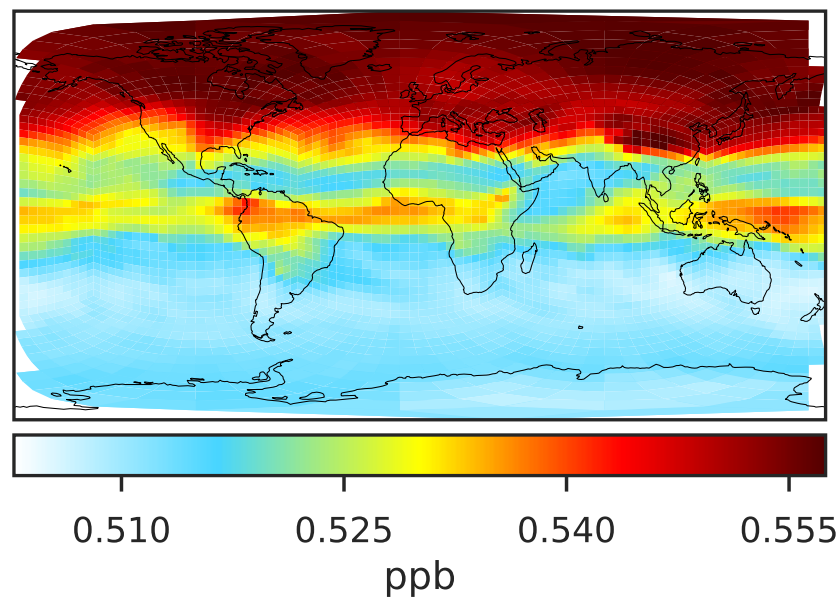
0.50 0.75 1.00 1.50 2.00
unitless

SpeciesConcVV_CH3Cl (Apr2019)

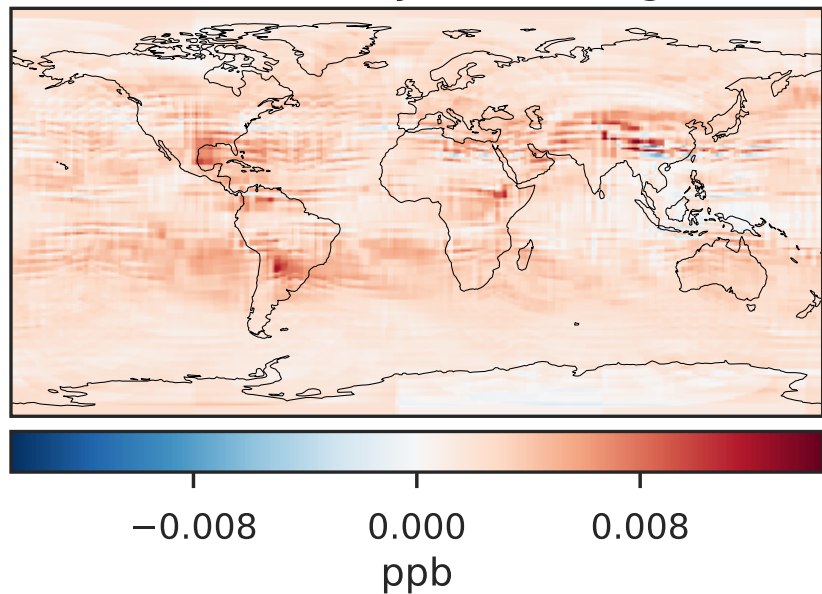
GCC_14.2.0 (Ref)
4.0x5.0



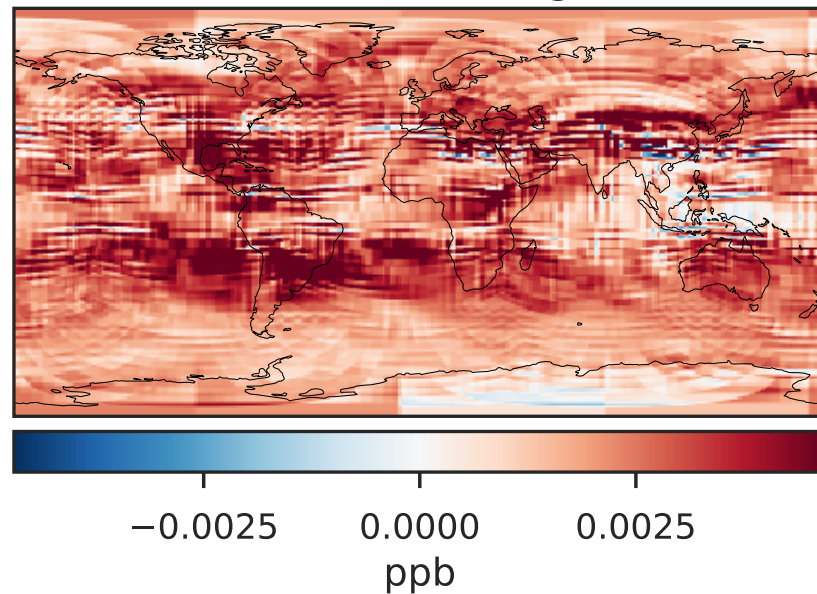
GCHP_14.2.0 (Dev)
c24



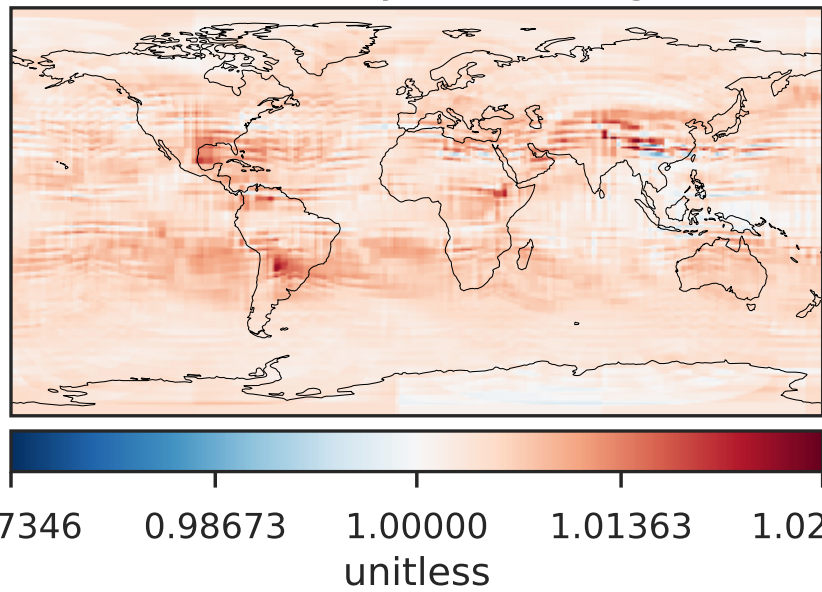
Difference (1x1.25)
Dev - Ref, Dynamic Range



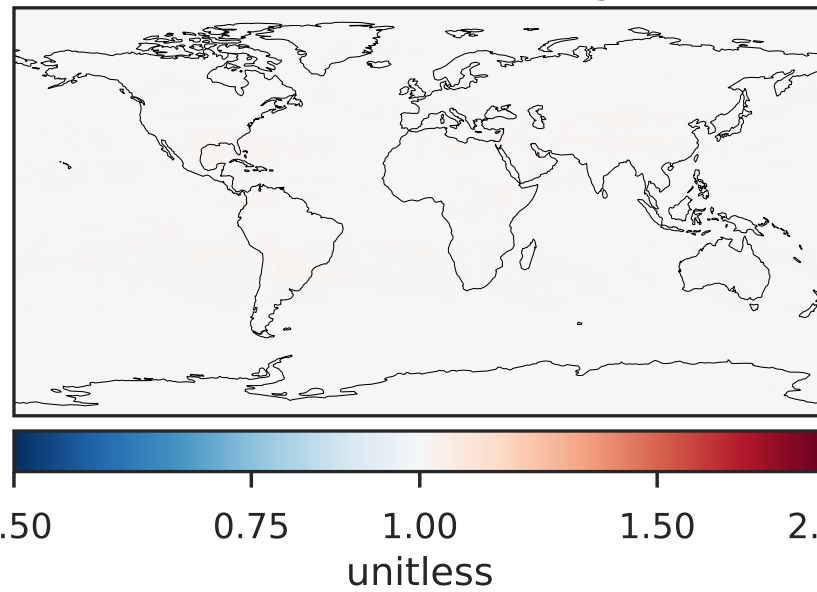
Difference (1x1.25)
Dev - Ref, Restricted Range [5%,95%]



Ratio (1x1.25)
Dev/Ref, Dynamic Range



Ratio (1x1.25)
Dev/Ref, Fixed Range

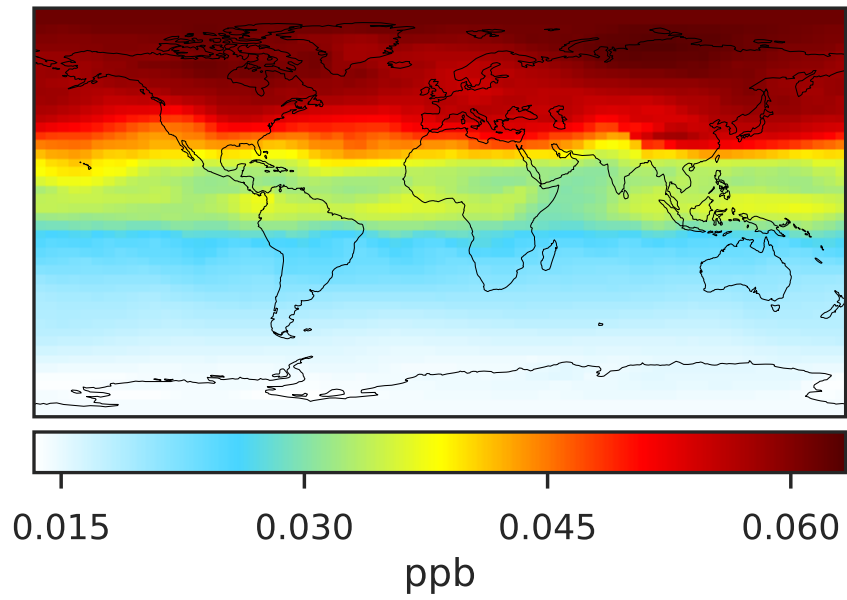


0.97346 0.98673 1.00000 1.01363 1.02726
unitless

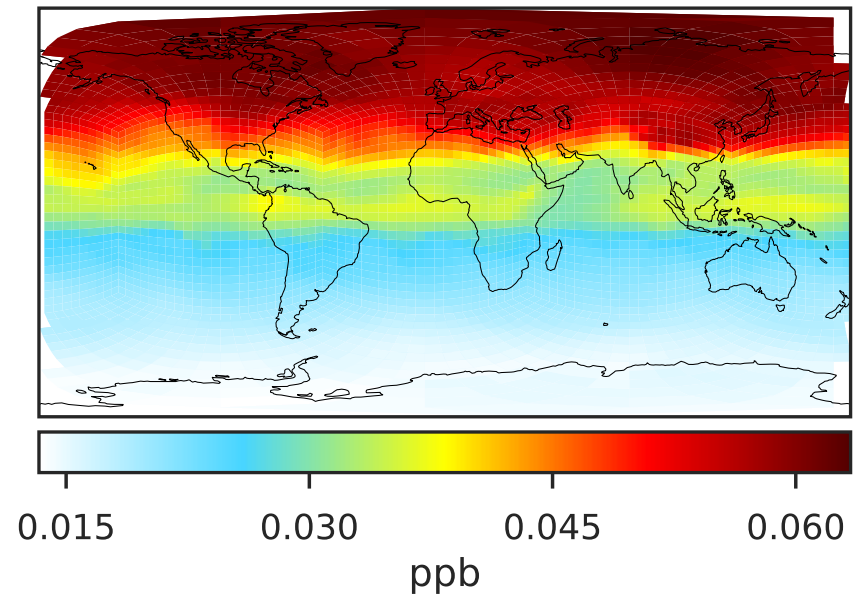
0.50 0.75 1.00 1.50 2.00
unitless

SpeciesConcVV_CH2Cl2 (Apr2019)

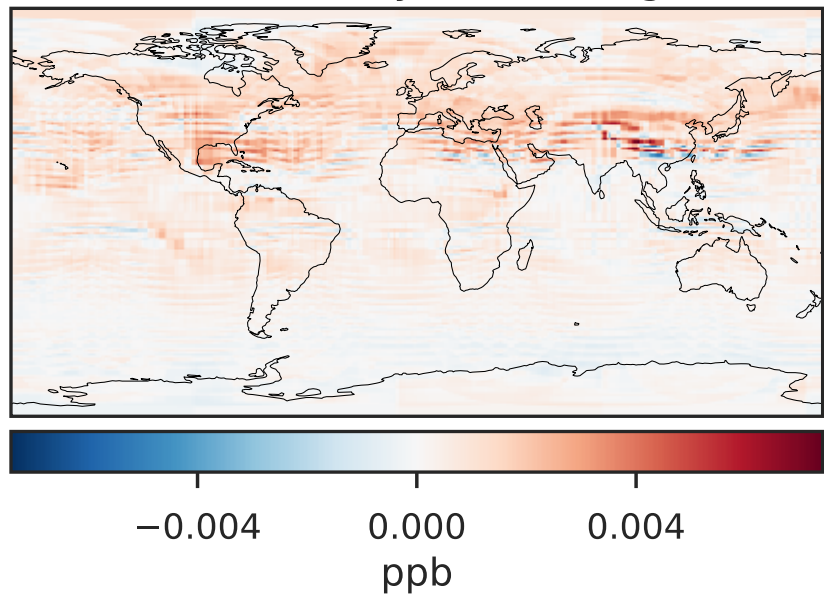
GCC_14.2.0 (Ref)
4.0x5.0



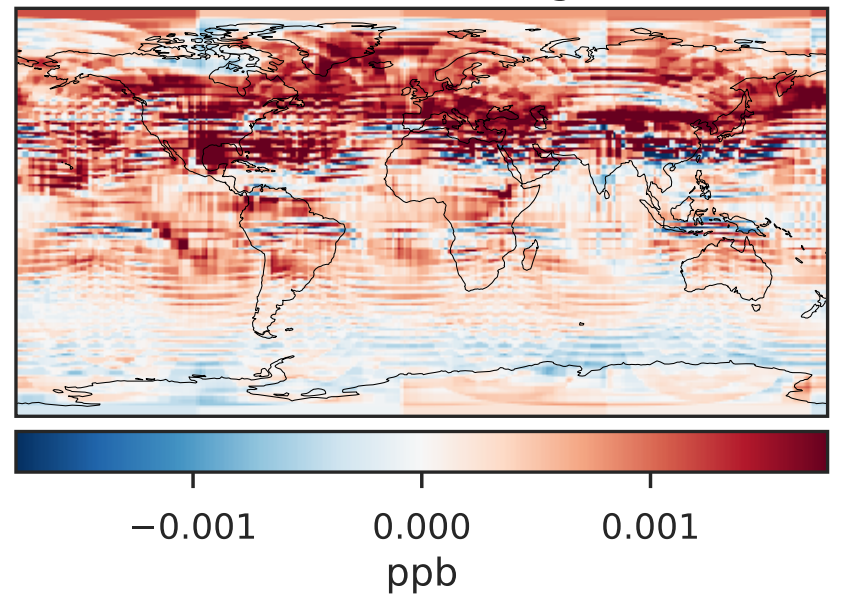
GCHP_14.2.0 (Dev)
c24



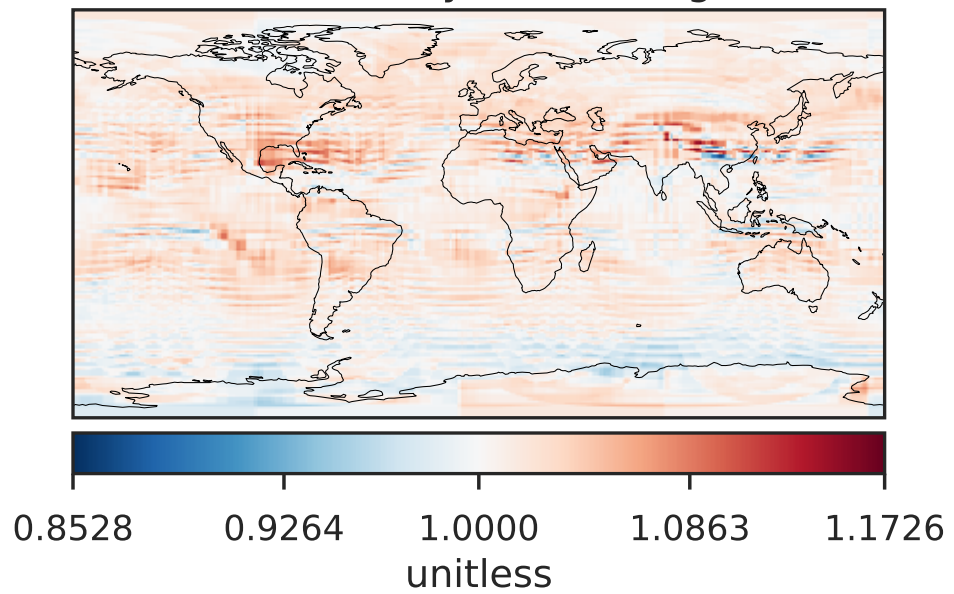
Difference (1x1.25)
Dev - Ref, Dynamic Range



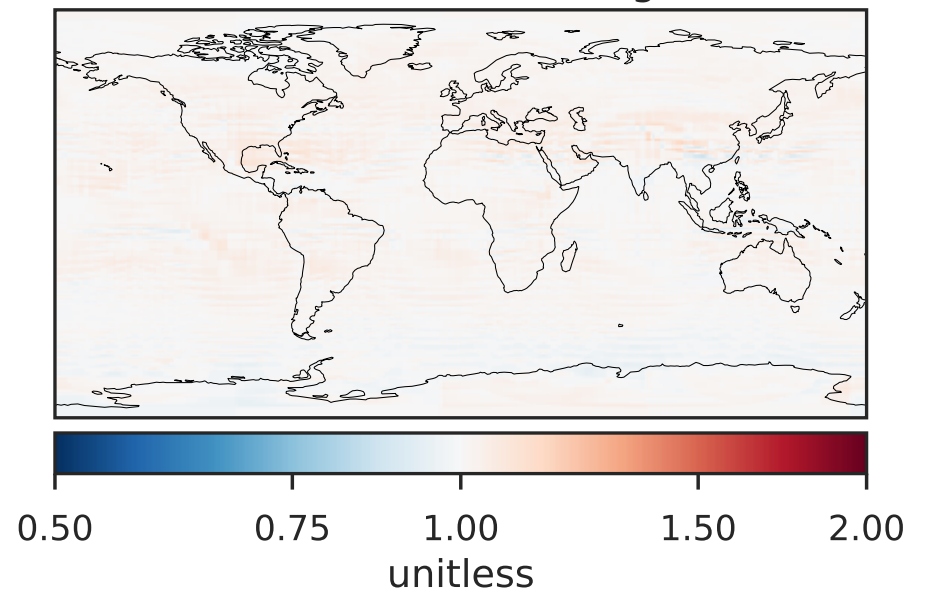
Difference (1x1.25)
Dev - Ref, Restricted Range [5%,95%]



Ratio (1x1.25)
Dev/Ref, Dynamic Range

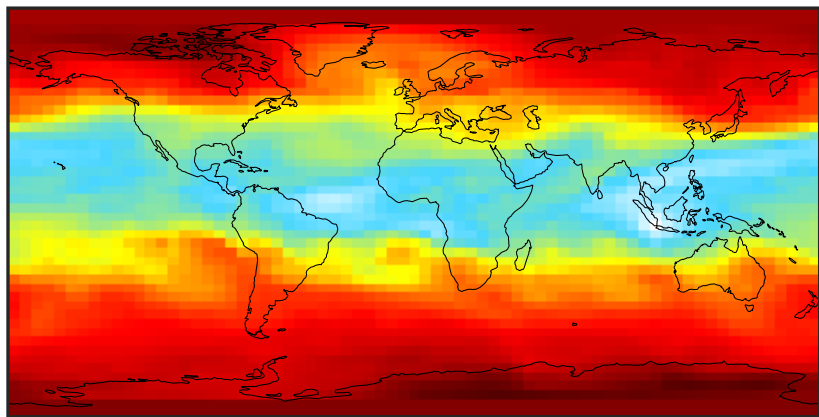


Ratio (1x1.25)
Dev/Ref, Fixed Range



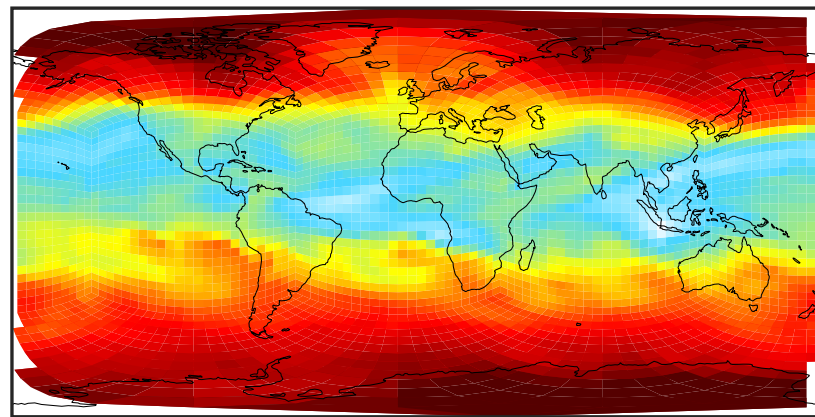
SpeciesConcVV_CH3CCI3 (Apr2019)

GCC_14.2.0 (Ref)
4.0x5.0



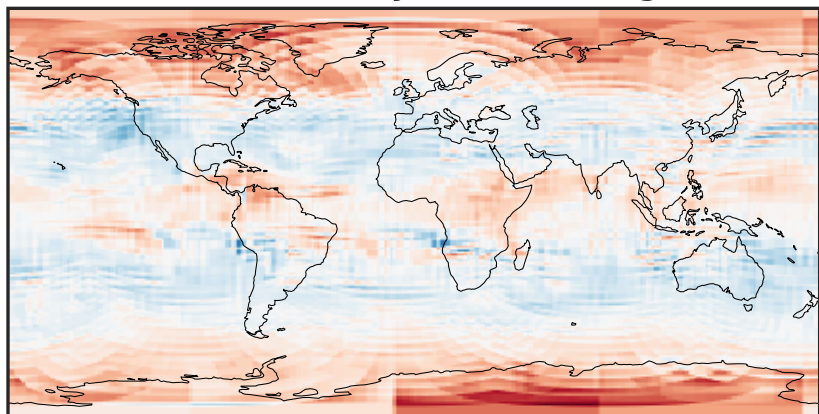
0.001422 0.001428 0.001434 0.001440
ppb

GCHP_14.2.0 (Dev)
c24



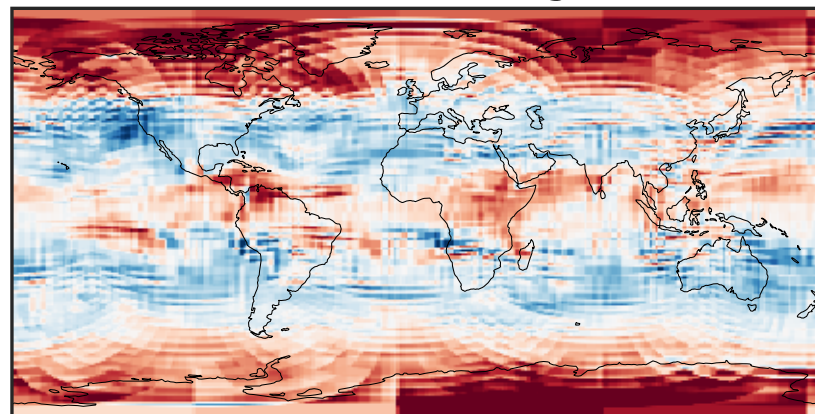
0.001422 0.001428 0.001434 0.001440
ppb

Difference (1x1.25)
Dev - Ref, Dynamic Range



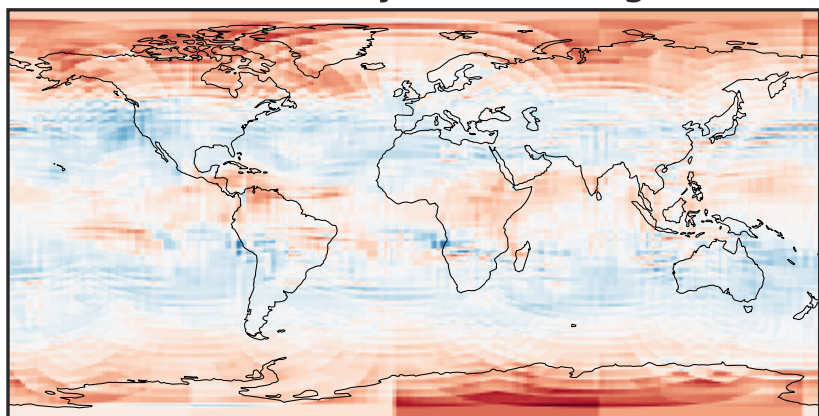
-2.5 0.0 2.5
ppb $1e-6$

Difference (1x1.25)
Dev - Ref, Restricted Range [5%,95%]



-1 0 1
ppb $1e-6$

Ratio (1x1.25)
Dev/Ref, Dynamic Range



0.997137 0.998569 1.000000 1.001436 1.002871
unitless

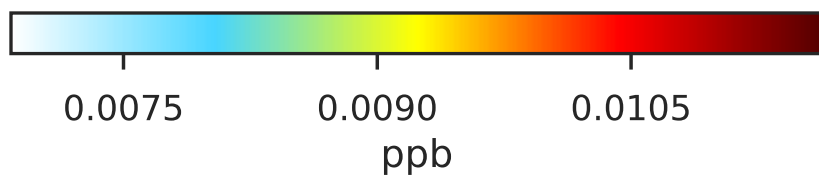
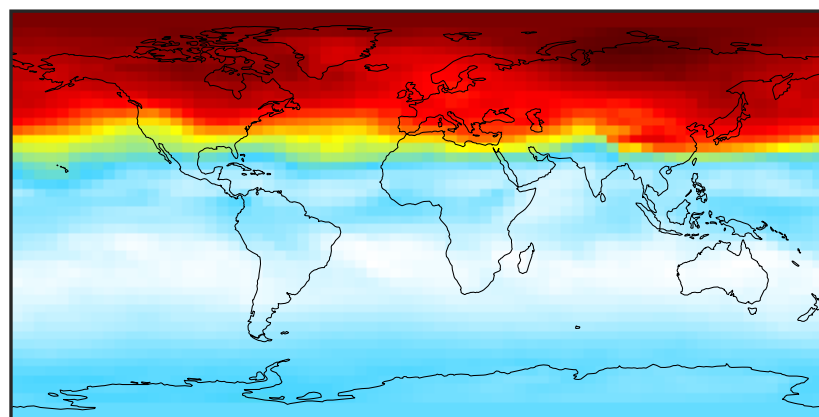
Ratio (1x1.25)
Dev/Ref, Fixed Range



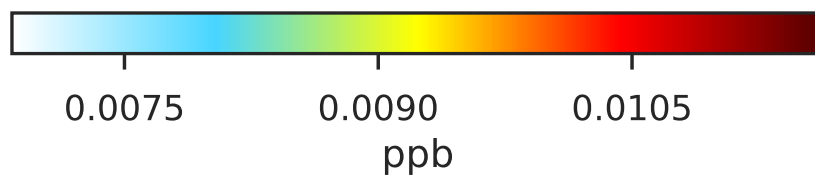
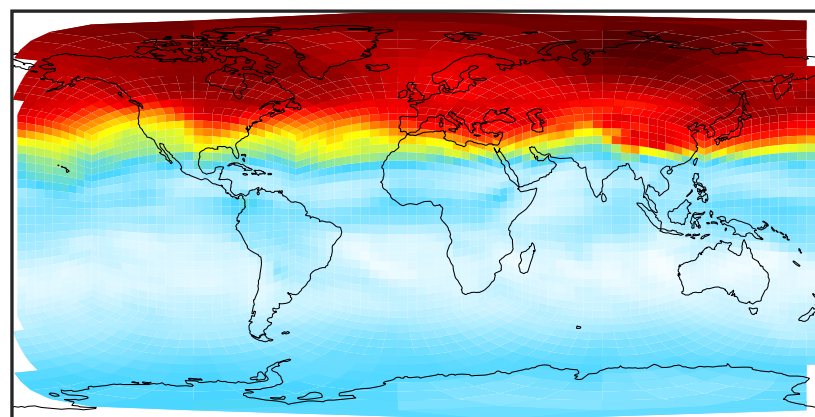
0.50 0.75 1.00 1.50 2.00
unitless

SpeciesConcVV_CHCl3 (Apr2019)

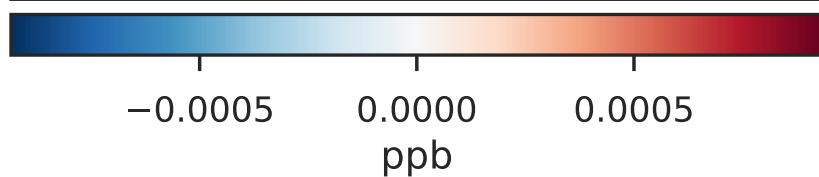
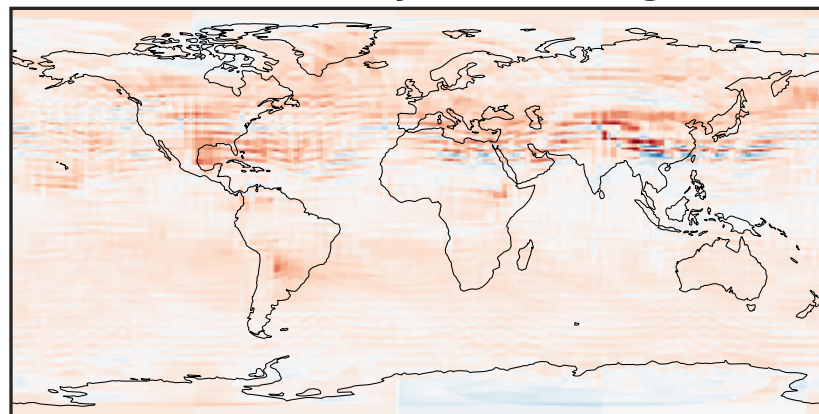
GCC_14.2.0 (Ref)
4.0x5.0



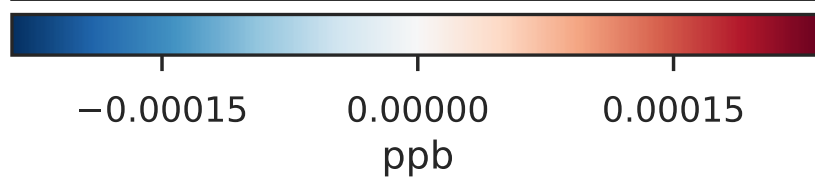
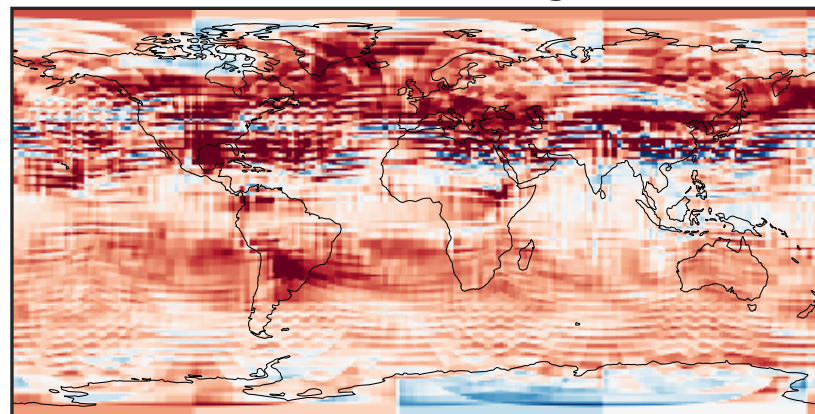
GCHP_14.2.0 (Dev)
c24



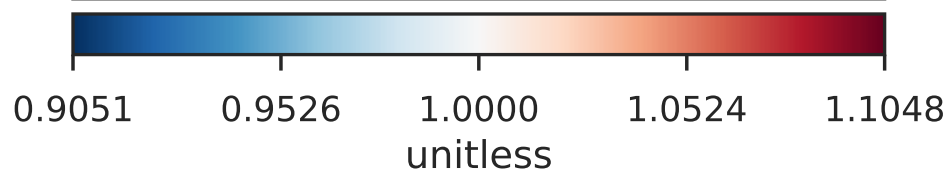
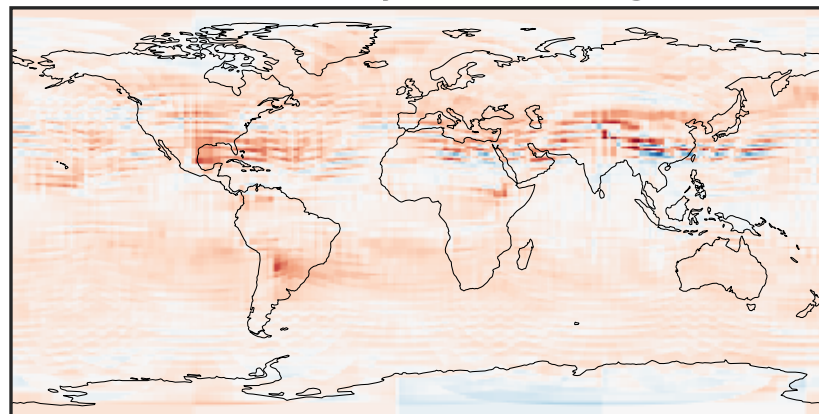
Difference (1x1.25)
Dev - Ref, Dynamic Range



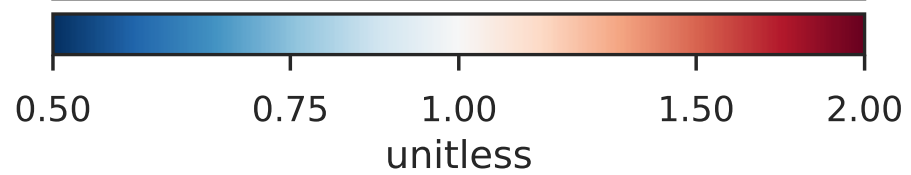
Difference (1x1.25)
Dev - Ref, Restricted Range [5%,95%]



Ratio (1x1.25)
Dev/Ref, Dynamic Range

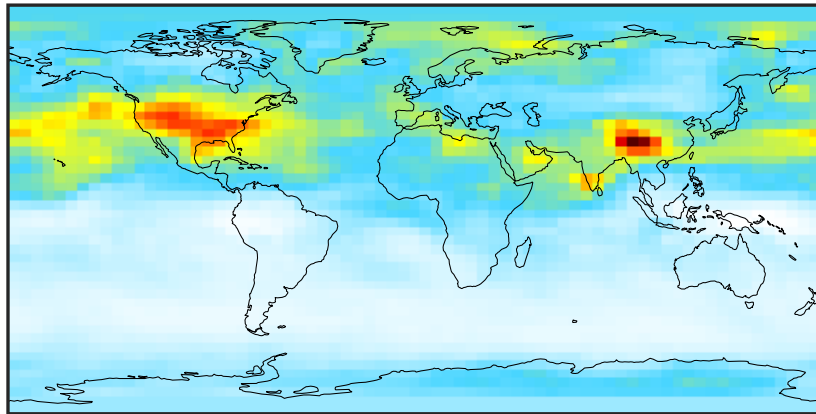


Ratio (1x1.25)
Dev/Ref, Fixed Range



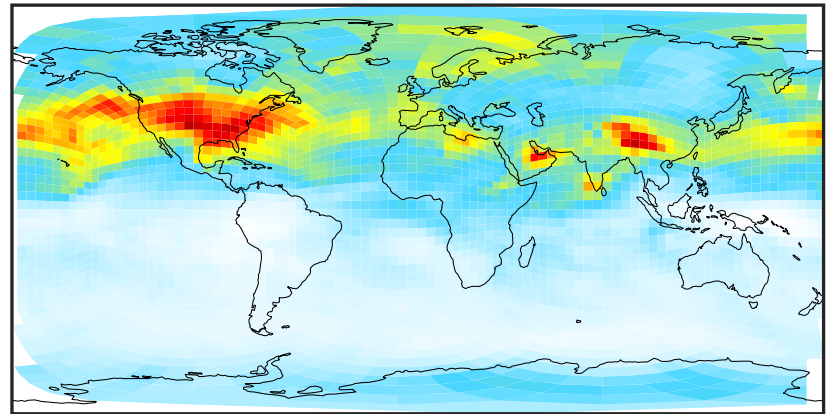
SpeciesConcVV_HOCl (Apr2019)

GCC_14.2.0 (Ref)
4.0x5.0



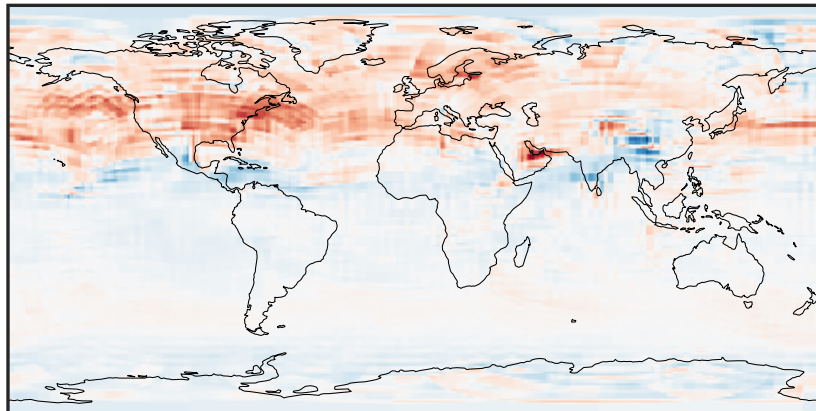
0.0005 0.0010 0.0015
ppb

GCHP_14.2.0 (Dev)
c24



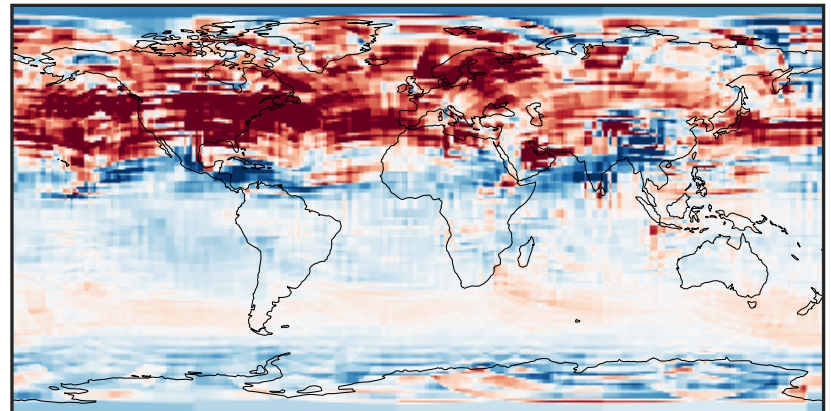
0.0005 0.0010 0.0015
ppb

Difference (1x1.25)
Dev - Ref, Dynamic Range



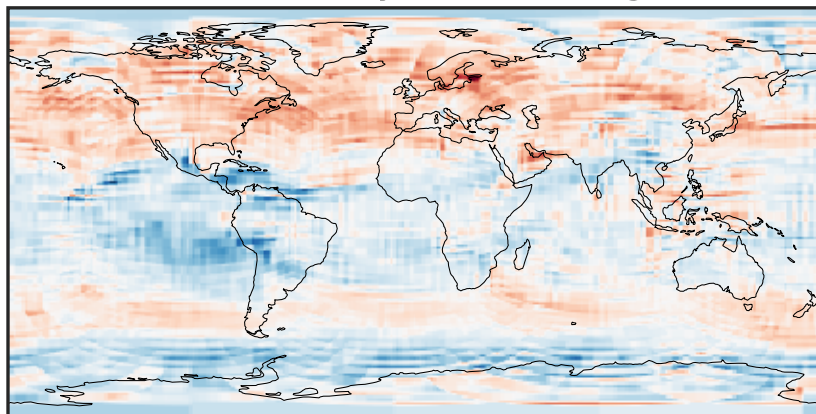
-0.00025 0.00000 0.00025
ppb

Difference (1x1.25)
Dev - Ref, Restricted Range [5%,95%]



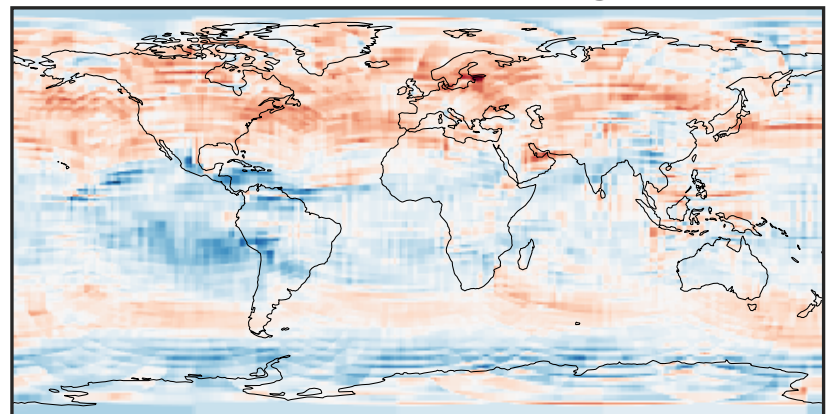
-8 0 8
ppb $1e-5$

Ratio (1x1.25)
Dev/Ref, Dynamic Range



0.498 0.749 1.000 1.505 2.010
unitless

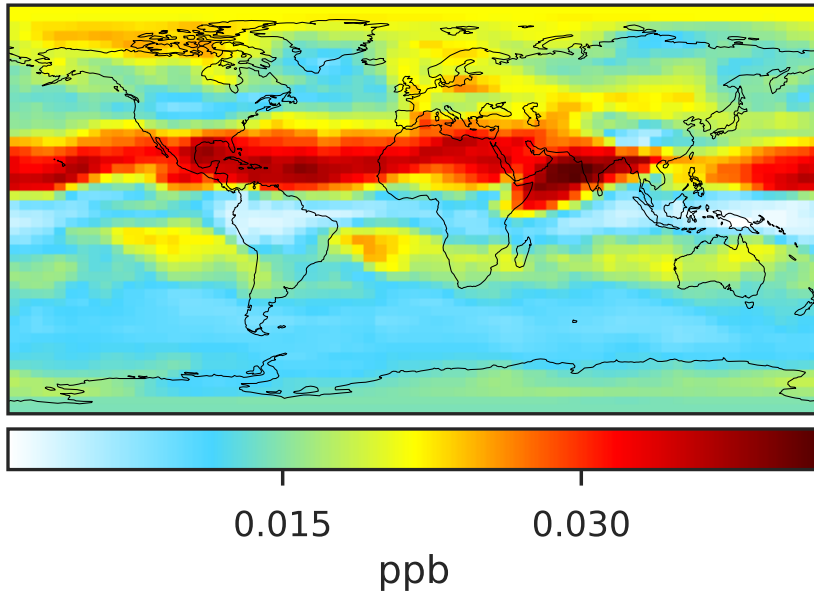
Ratio (1x1.25)
Dev/Ref, Fixed Range



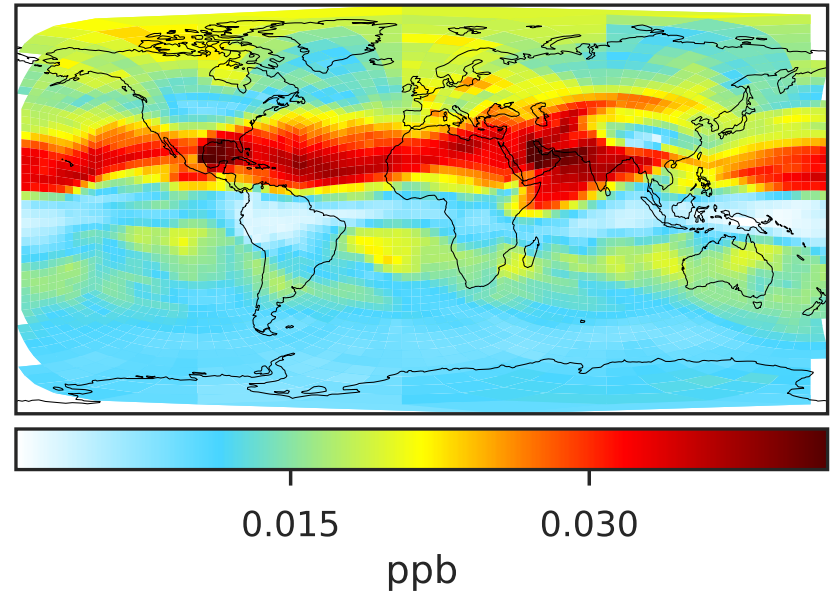
0.50 0.75 1.00 1.50 2.00
unitless

SpeciesConcVW_HCl (Apr2019)

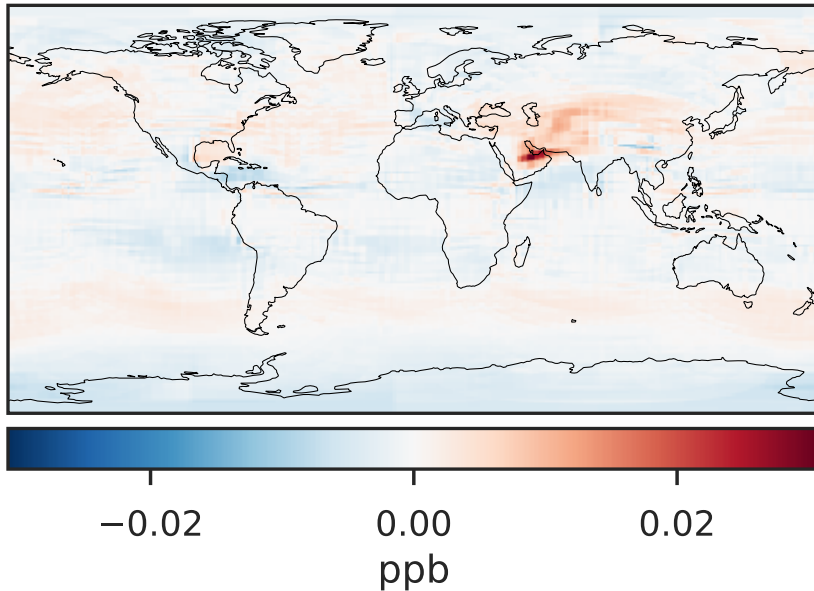
GCC_14.2.0 (Ref)
4.0x5.0



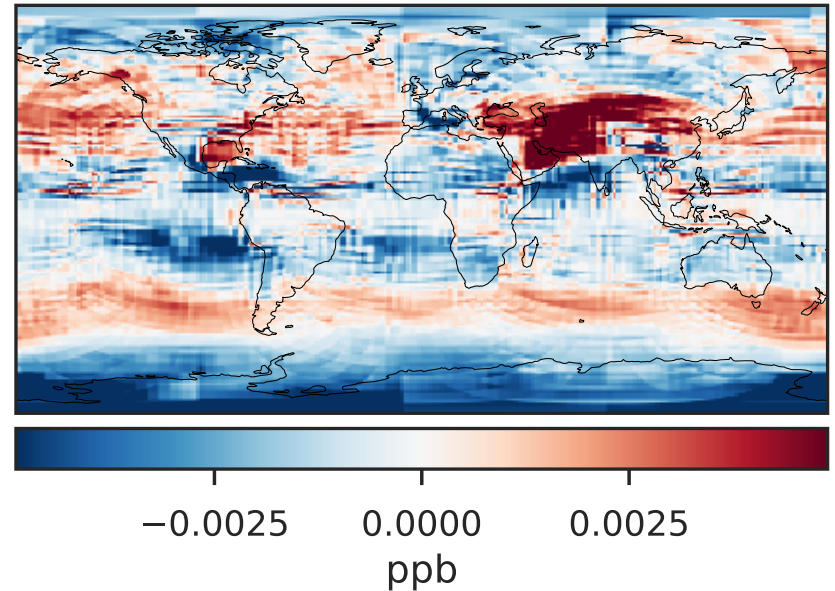
GCHP_14.2.0 (Dev)
c24



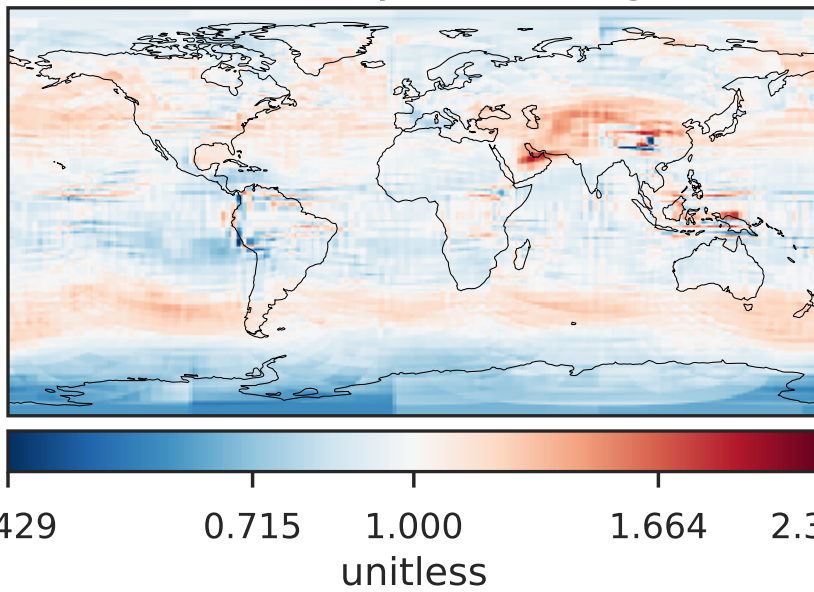
Difference (1x1.25)
Dev - Ref, Dynamic Range



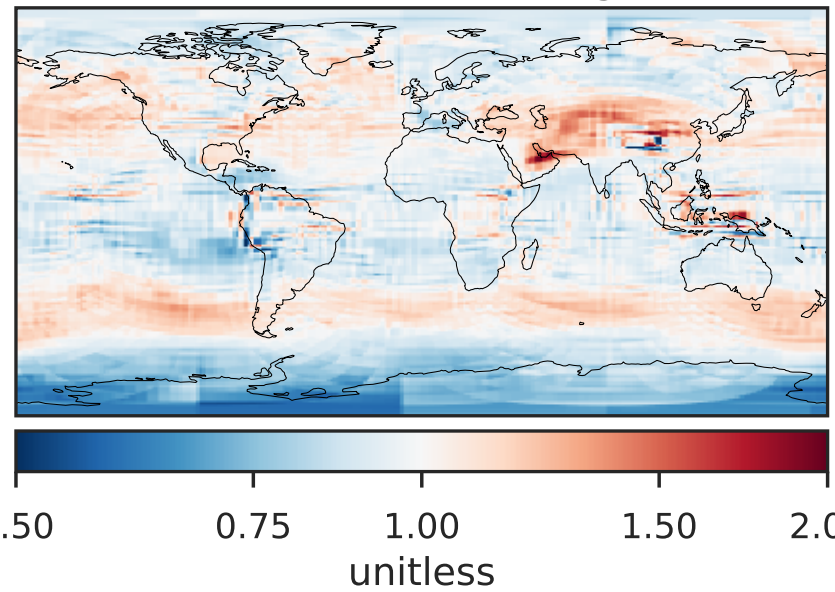
Difference (1x1.25)
Dev - Ref, Restricted Range [5%,95%]



Ratio (1x1.25)
Dev/Ref, Dynamic Range

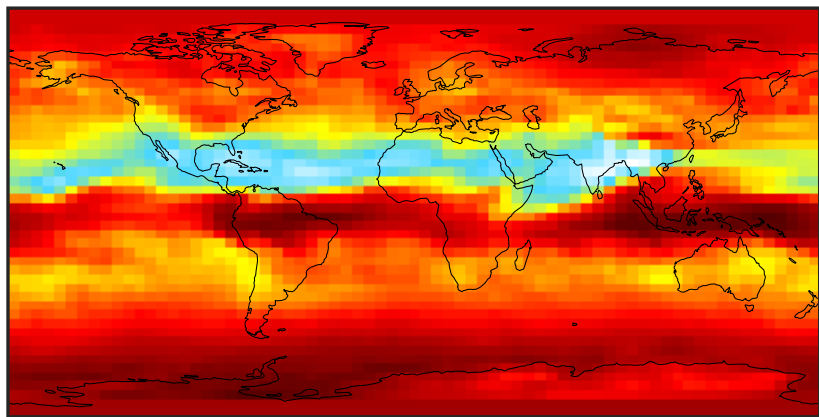


Ratio (1x1.25)
Dev/Ref, Fixed Range



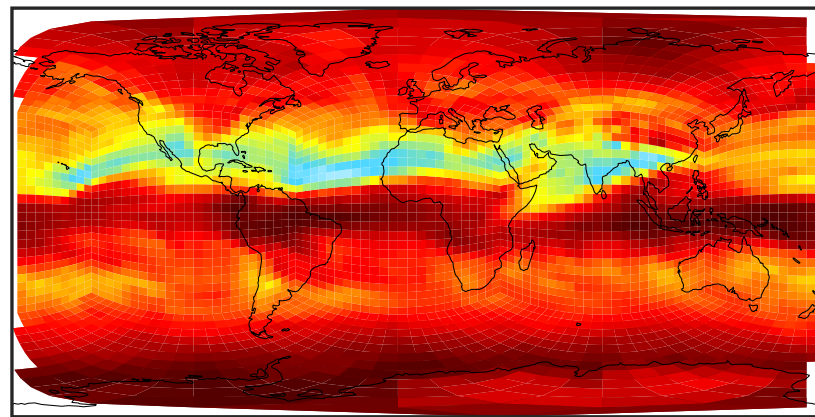
SpeciesConcVV_Halons (Apr2019)

GCC_14.2.0 (Ref)
4.0x5.0



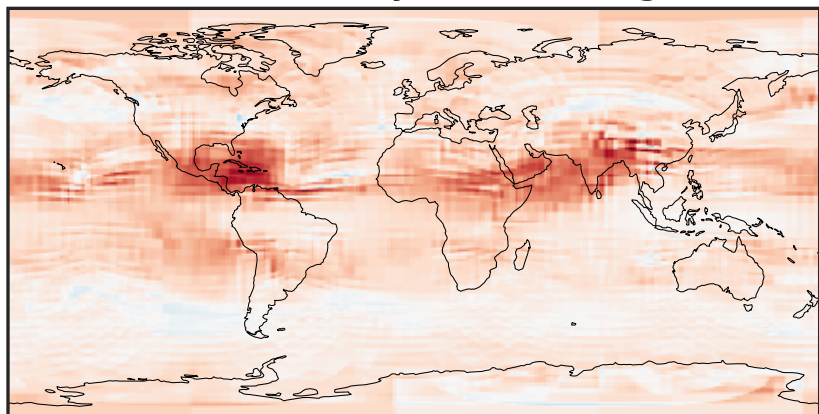
0.006925 0.006940 0.006955 0.006970
ppb

GCHP_14.2.0 (Dev)
c24



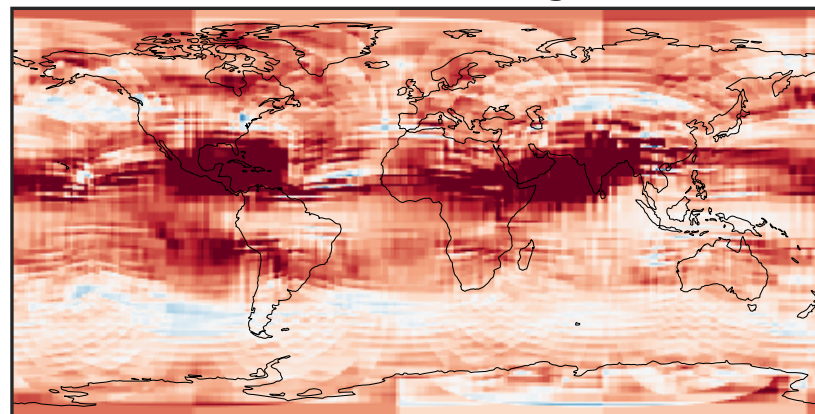
0.006925 0.006940 0.006955 0.006970
ppb

Difference (1x1.25)
Dev - Ref, Dynamic Range



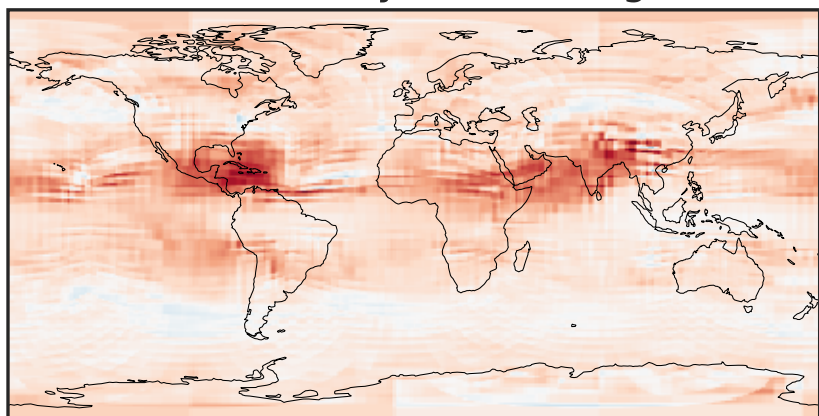
-1 0 1
ppb 1e-5

Difference (1x1.25)
Dev - Ref, Restricted Range [5%,95%]



-5 0 5
ppb 1e-6

Ratio (1x1.25)
Dev/Ref, Dynamic Range



0.997166 0.998583 1.000000 1.001421 1.002842
unitless

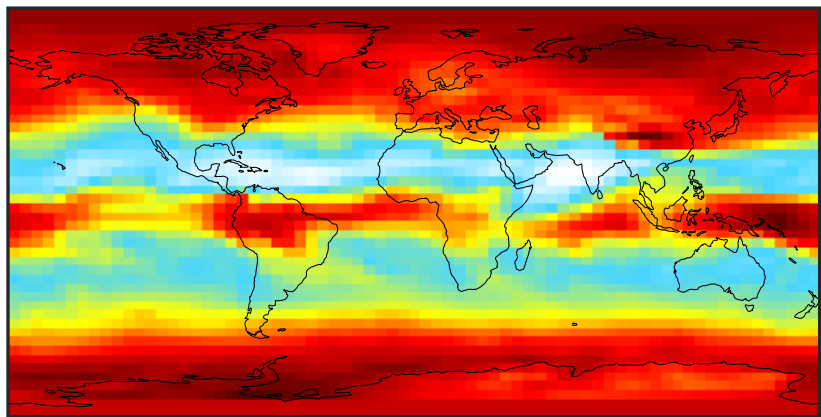
Ratio (1x1.25)
Dev/Ref, Fixed Range



0.50 0.75 1.00 1.50 2.00
unitless

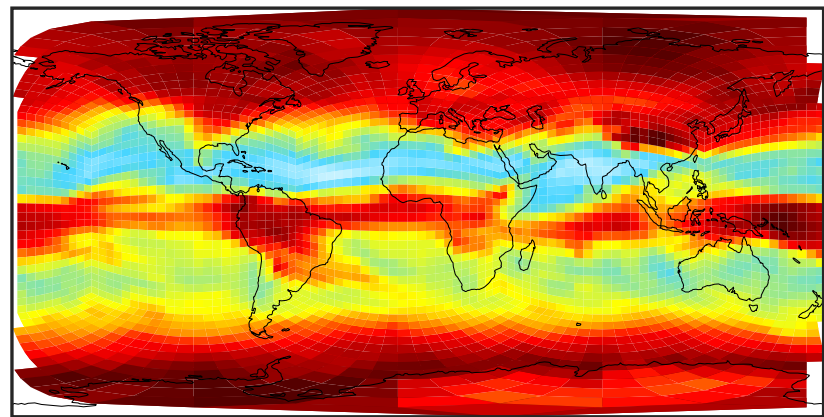
SpeciesConcVV_HCFCs (Apr2019)

GCC_14.2.0 (Ref)
4.0x5.0



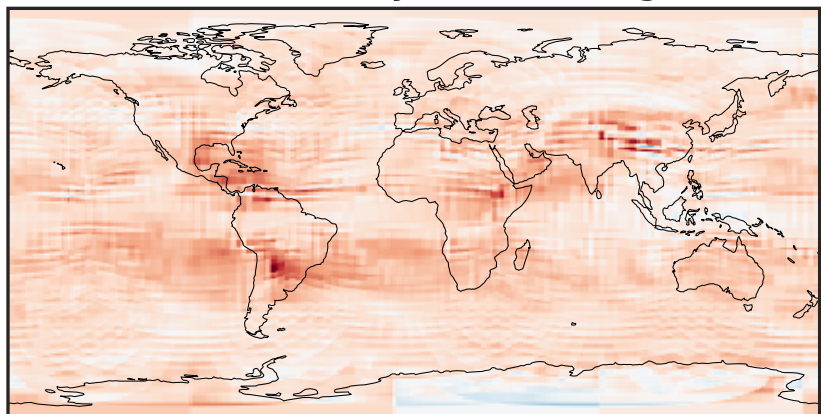
0.2944 0.2952 0.2960
ppb

GCHP_14.2.0 (Dev)
c24



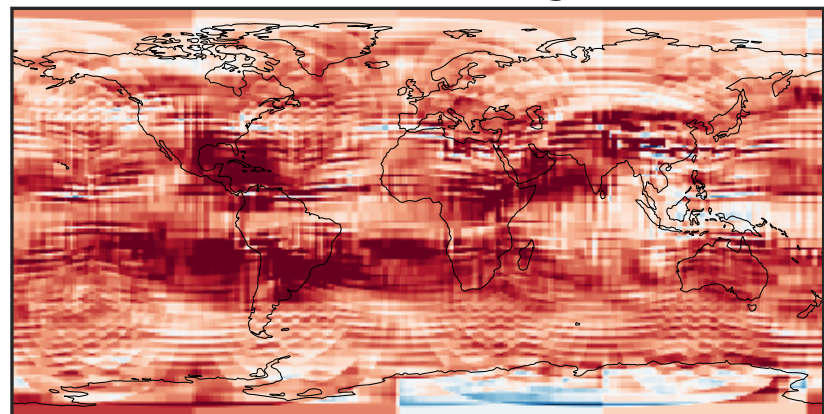
0.2944 0.2952 0.2960
ppb

Difference (1x1.25)
Dev - Ref, Dynamic Range



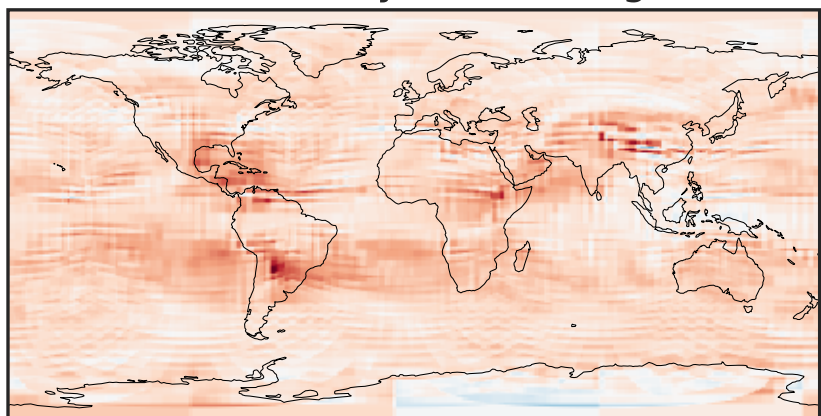
-0.0005 0.0000 0.0005
ppb

Difference (1x1.25)
Dev - Ref, Restricted Range [5%,95%]



-0.0002 0.0000 0.0002
ppb

Ratio (1x1.25)
Dev/Ref, Dynamic Range



0.996662 0.998331 1.000000 1.001674 1.003349
unitless

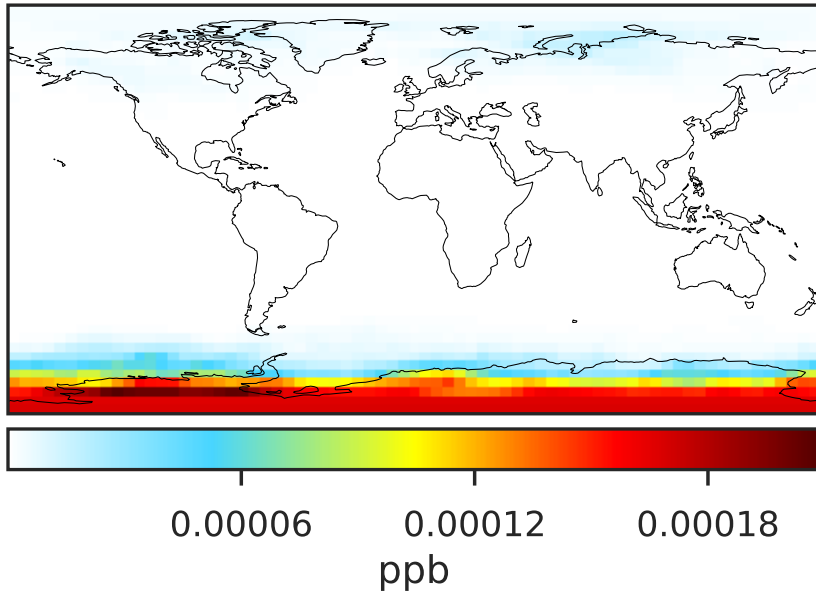
Ratio (1x1.25)
Dev/Ref, Fixed Range



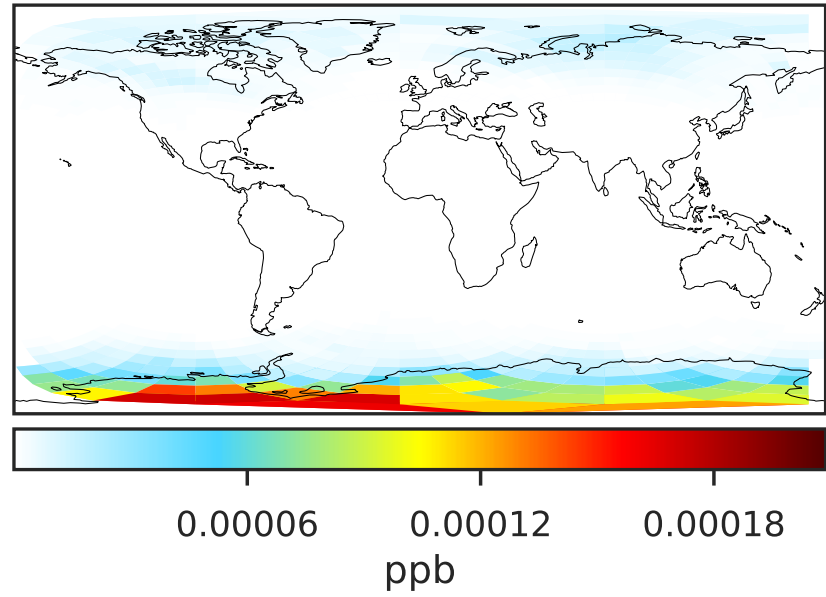
0.50 0.75 1.00 1.50 2.00
unitless

SpeciesConcVV_OCIO (Apr2019)

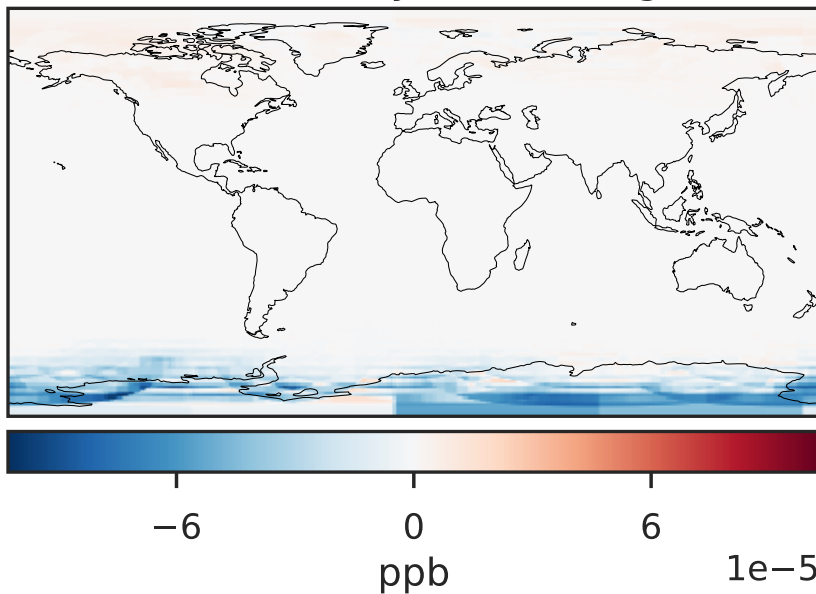
GCC_14.2.0 (Ref)
4.0x5.0



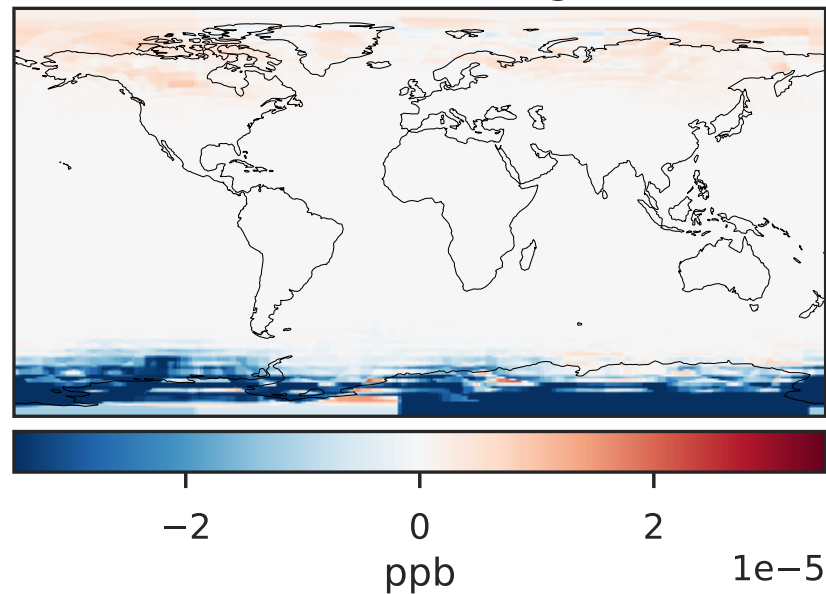
GCHP_14.2.0 (Dev)
c24



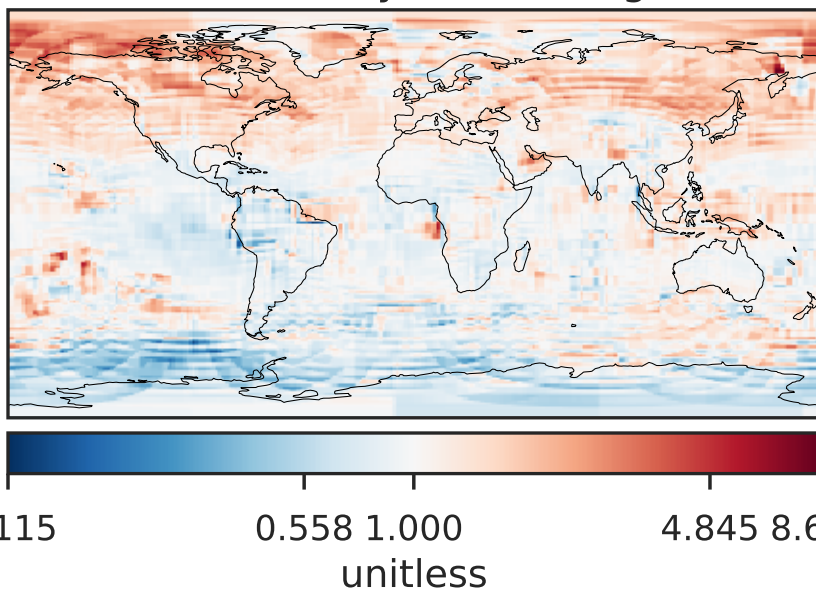
Difference (1x1.25)
Dev - Ref, Dynamic Range



Difference (1x1.25)
Dev - Ref, Restricted Range [5%,95%]



Ratio (1x1.25)
Dev/Ref, Dynamic Range



Ratio (1x1.25)
Dev/Ref, Fixed Range

