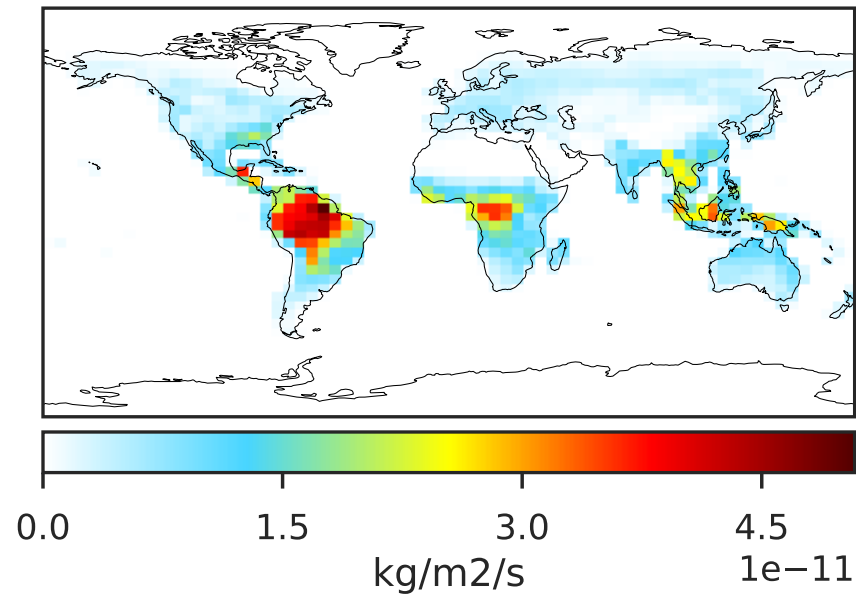
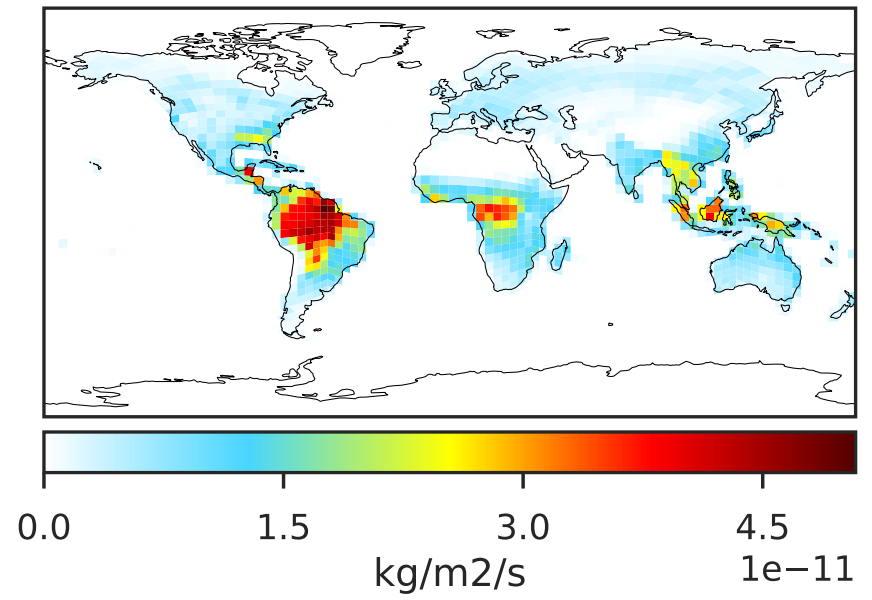


# EmisACET\_Biogenic (AnnualMean)

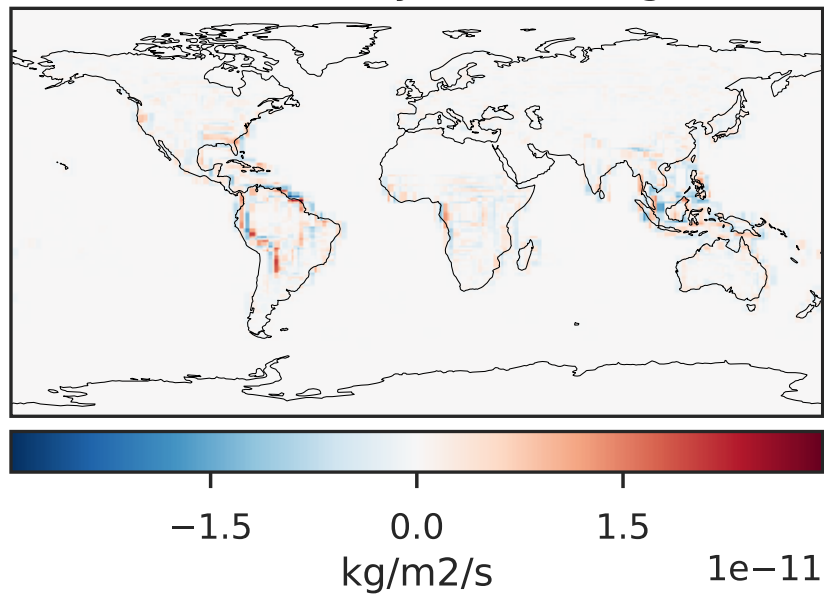
GCC\_14.2.0 (Ref)  
4.0x5.0



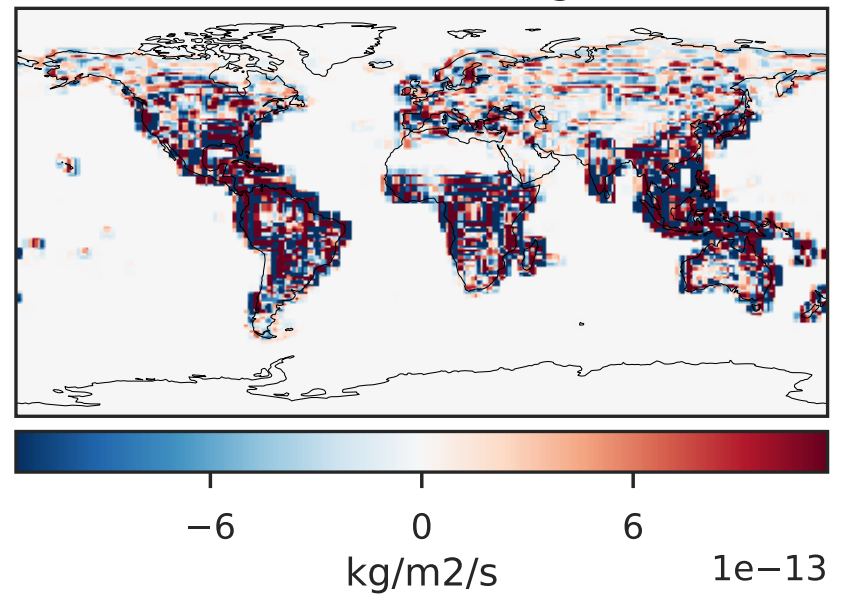
GCHP\_14.2.0 (Dev)  
c24



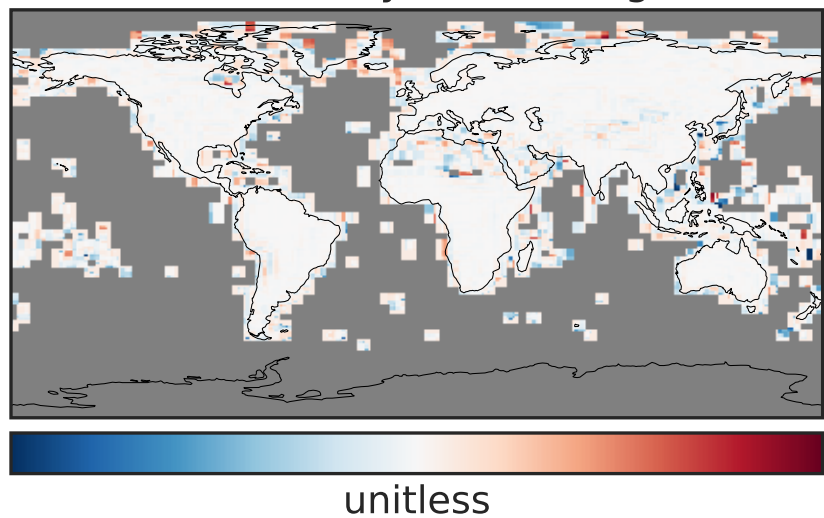
Difference (1x1.25)  
Dev - Ref, Dynamic Range



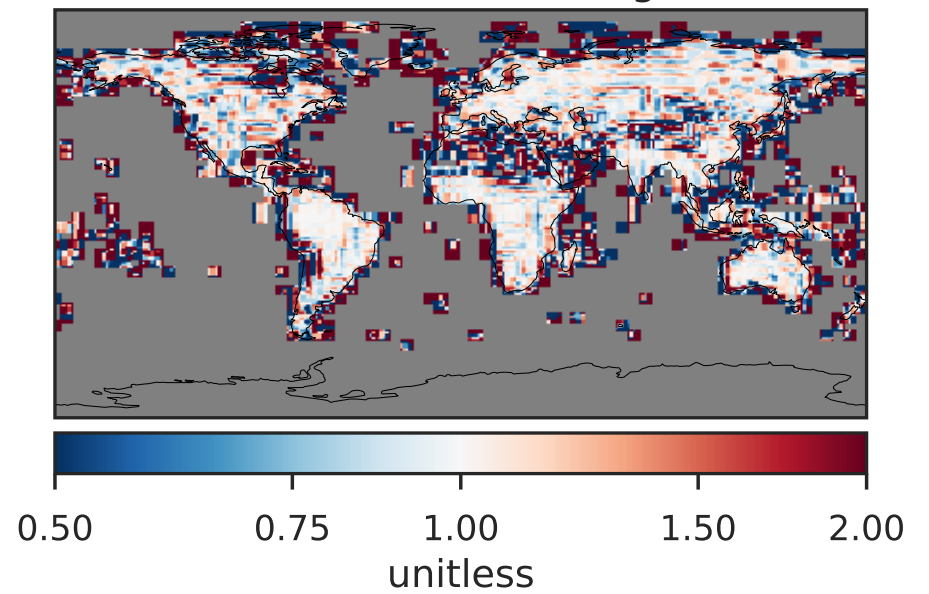
Difference (1x1.25)  
Dev - Ref, Restricted Range [5%,95%]



Ratio (1x1.25)  
Dev/Ref, Dynamic Range

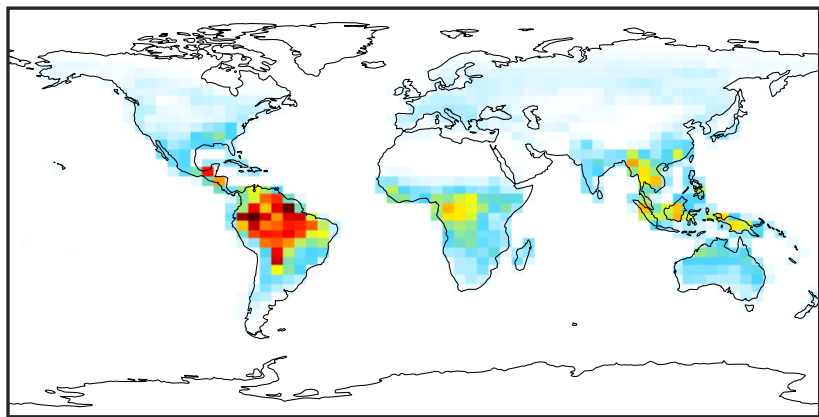


Ratio (1x1.25)  
Dev/Ref, Fixed Range



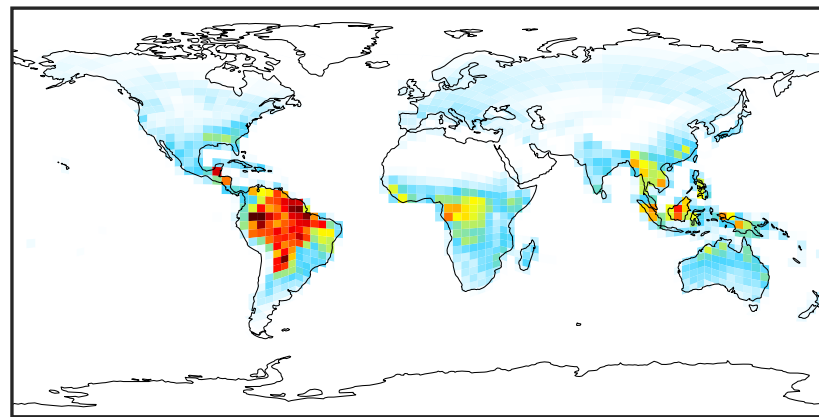
# EmisALD2\_Biogenic (AnnualMean)

GCC\_14.2.0 (Ref)  
4.0x5.0



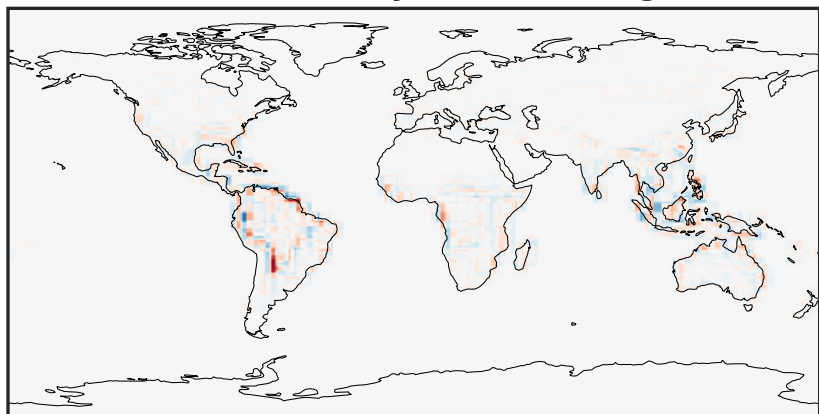
0.0 0.6 1.2 1.8  $10^{-11}$   
kg/m<sup>2</sup>/s

GCHP\_14.2.0 (Dev)  
c24



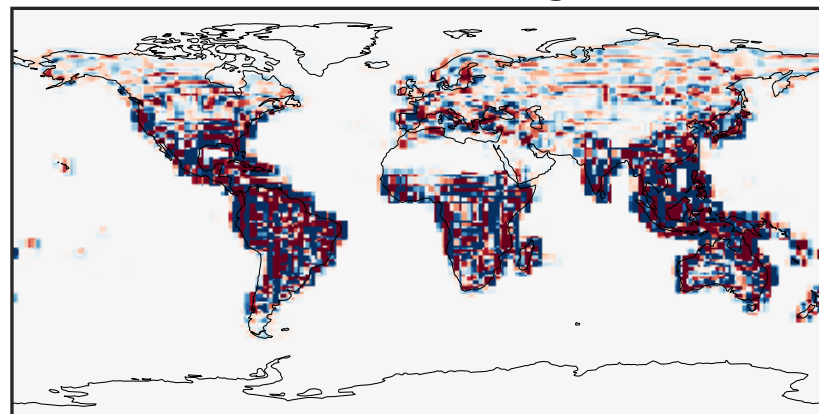
0.0 0.6 1.2 1.8  $10^{-11}$   
kg/m<sup>2</sup>/s

Difference (1x1.25)  
Dev - Ref, Dynamic Range



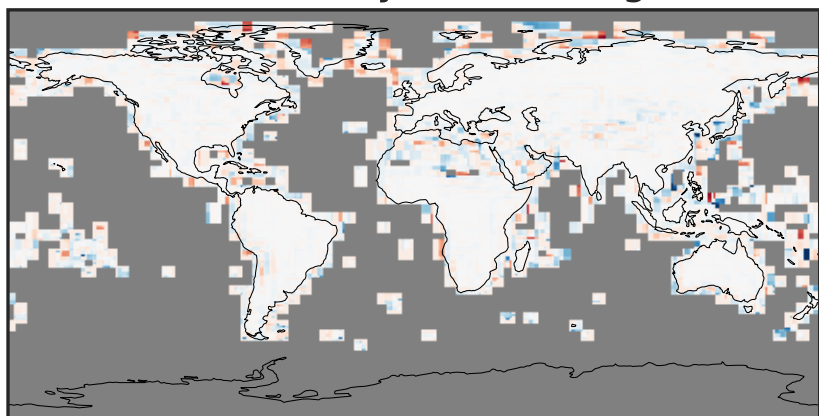
-8 0 8  $10^{-12}$   
kg/m<sup>2</sup>/s

Difference (1x1.25)  
Dev - Ref, Restricted Range [5%,95%]



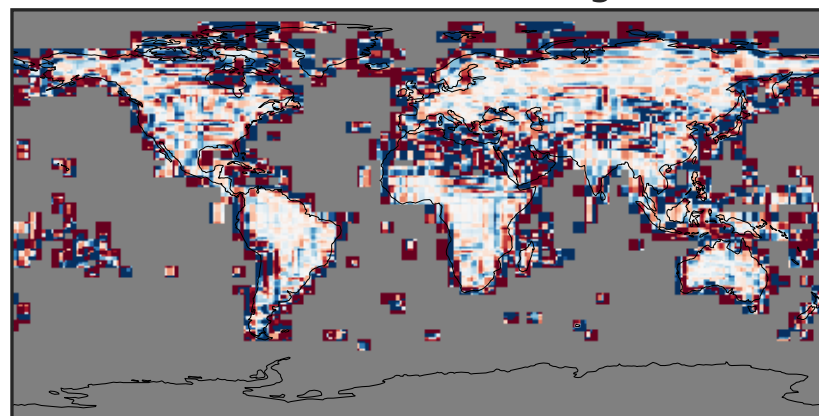
-3 0 3  $10^{-13}$   
kg/m<sup>2</sup>/s

Ratio (1x1.25)  
Dev/Ref, Dynamic Range



unitless

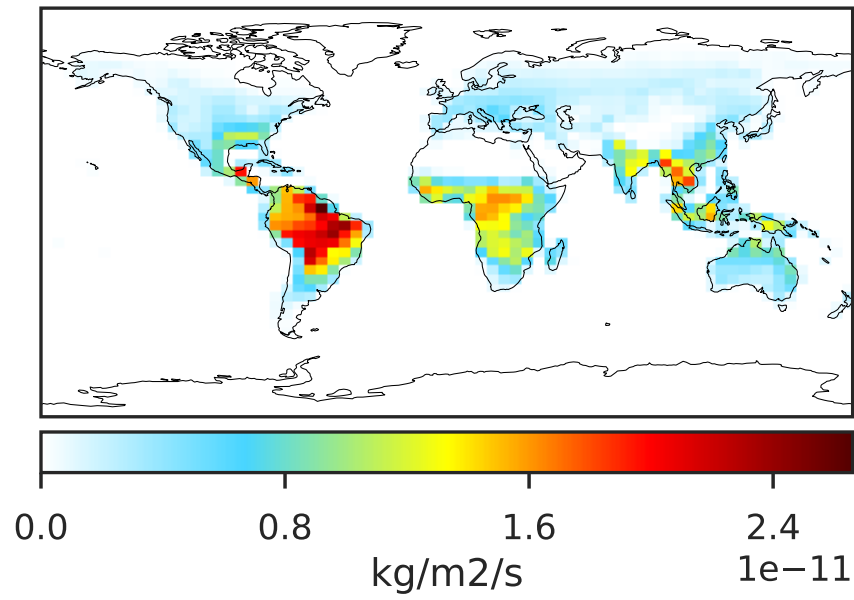
Ratio (1x1.25)  
Dev/Ref, Fixed Range



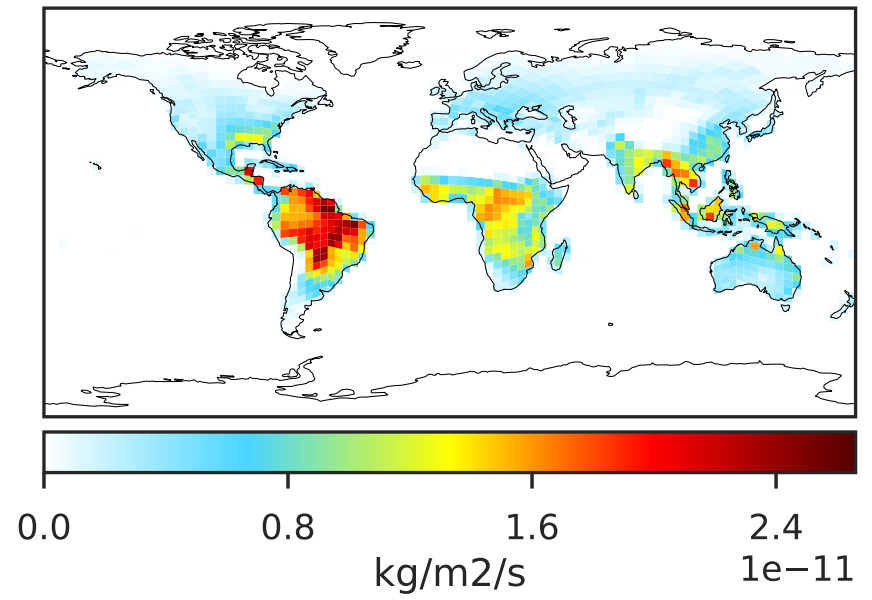
0.50 0.75 1.00 1.50 2.00  
unitless

# EmisC2H4\_Biogenic (AnnualMean)

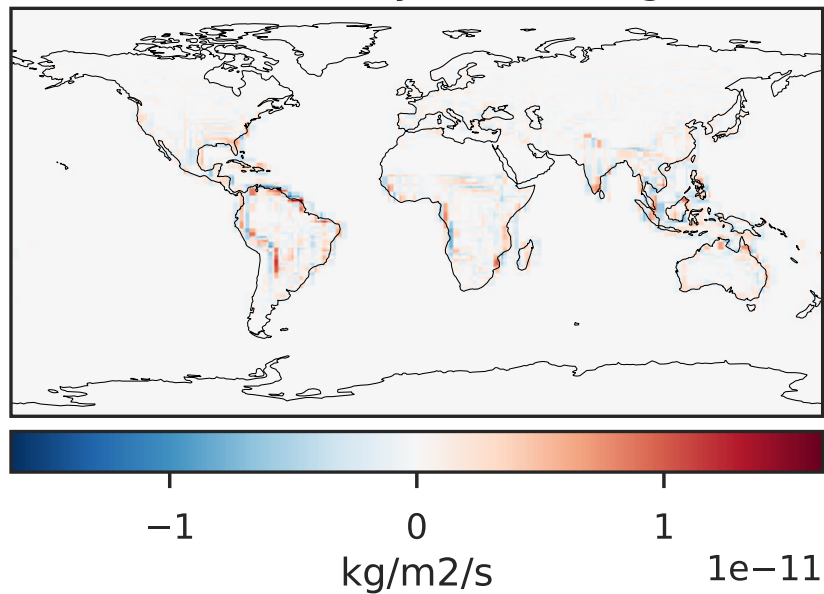
GCC\_14.2.0 (Ref)  
4.0x5.0



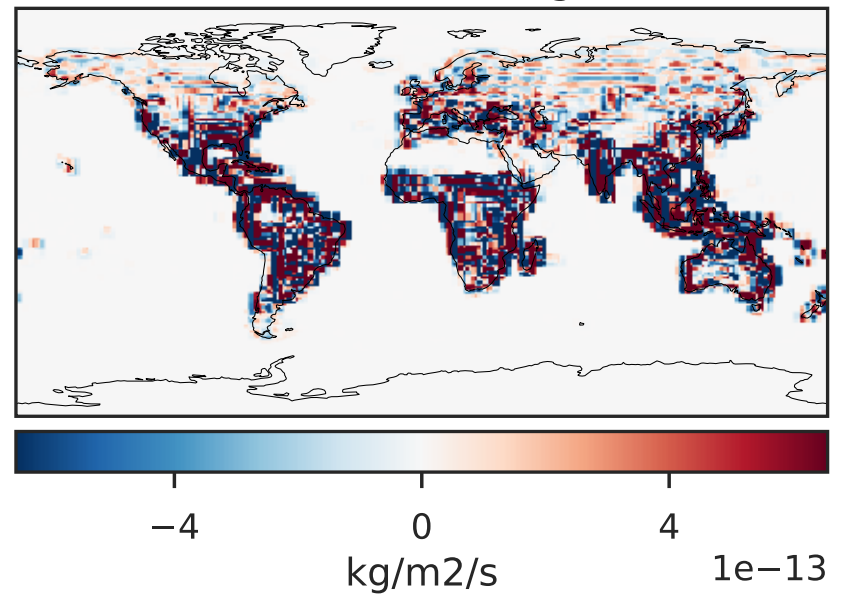
GCHP\_14.2.0 (Dev)  
c24



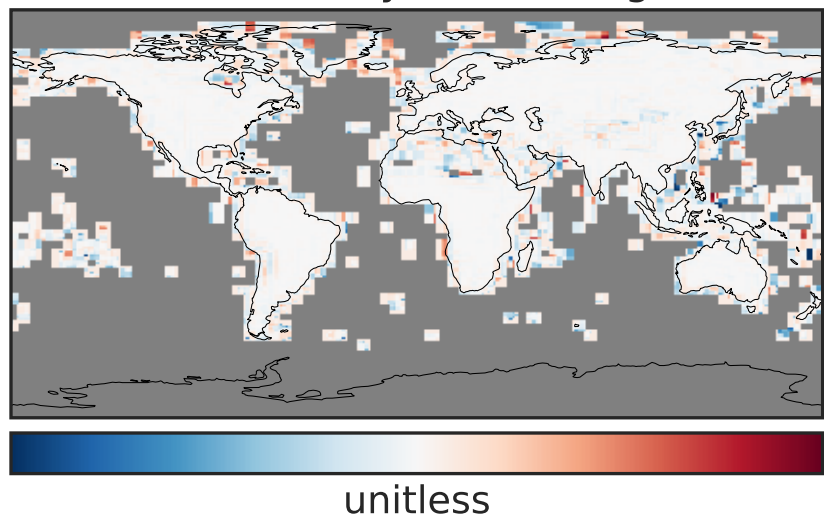
Difference (1x1.25)  
Dev - Ref, Dynamic Range



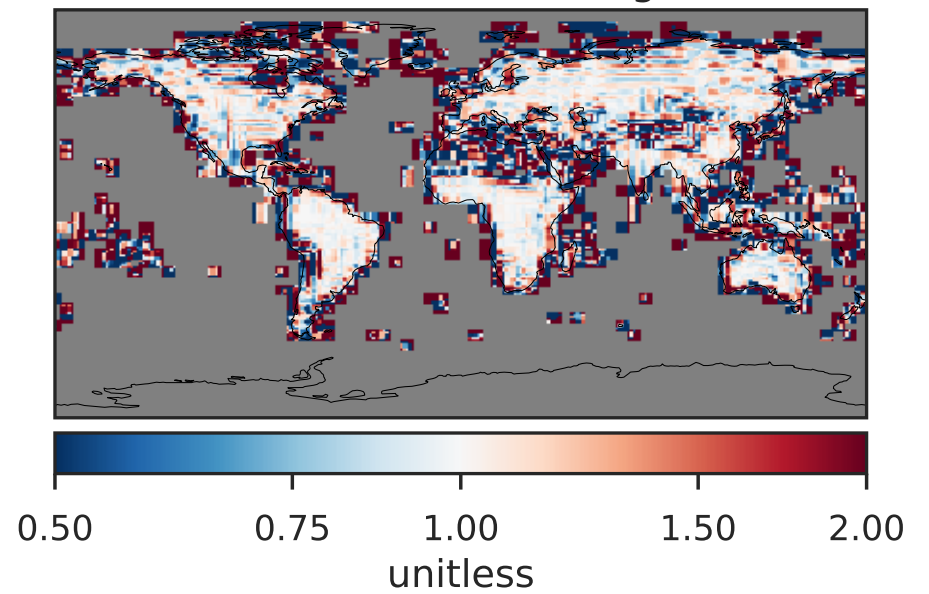
Difference (1x1.25)  
Dev - Ref, Restricted Range [5%,95%]



Ratio (1x1.25)  
Dev/Ref, Dynamic Range



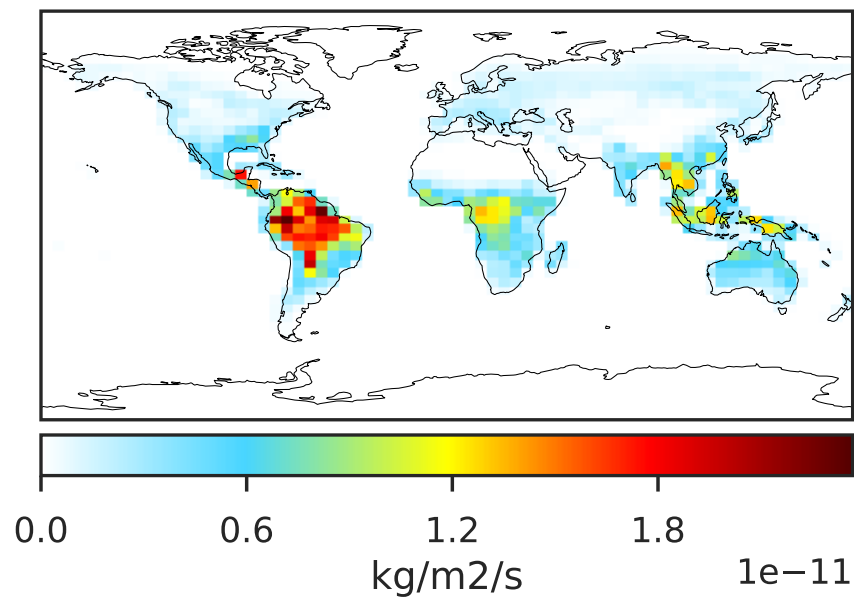
Ratio (1x1.25)  
Dev/Ref, Fixed Range



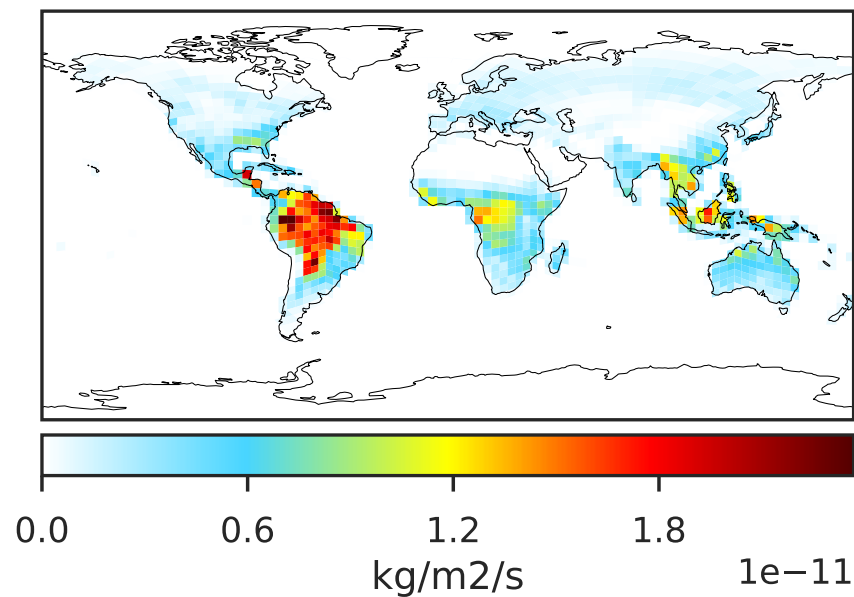


# EmisEOH\_Biogenic (AnnualMean)

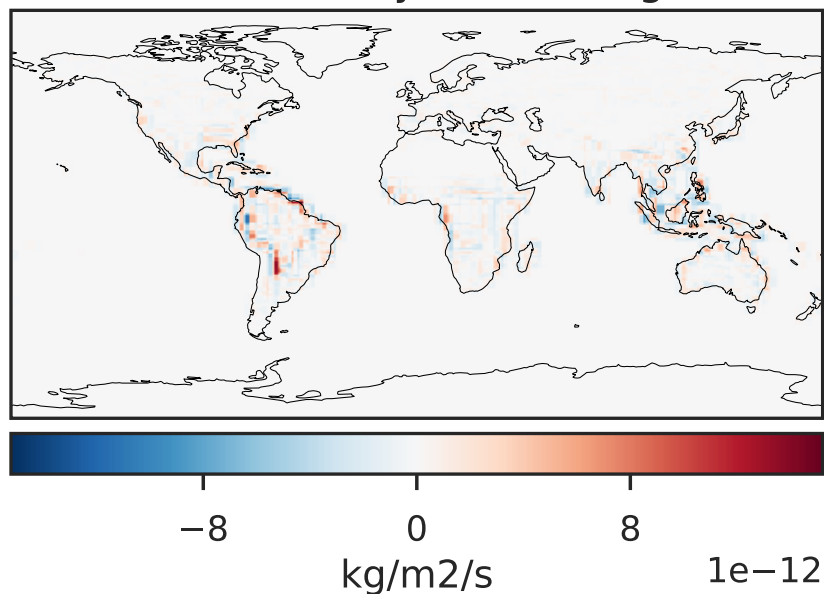
GCC\_14.2.0 (Ref)  
4.0x5.0



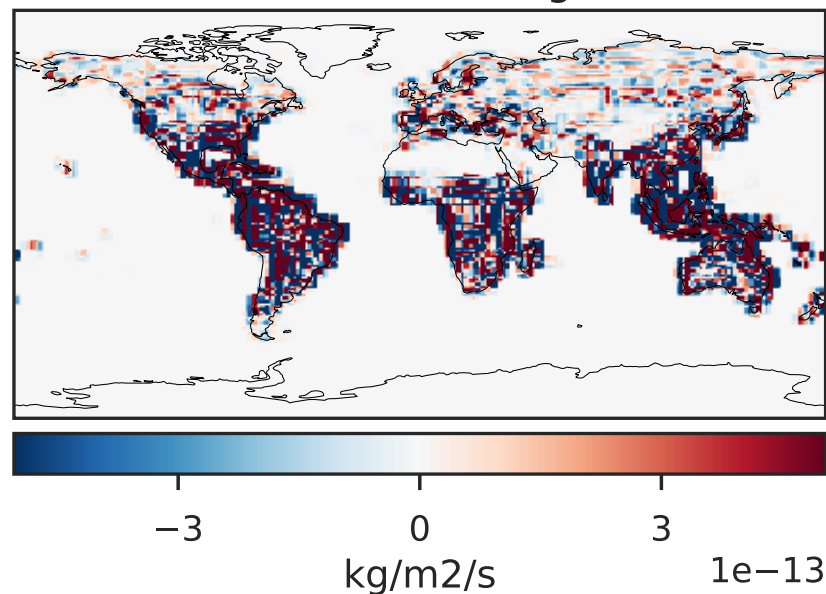
GCHP\_14.2.0 (Dev)  
c24



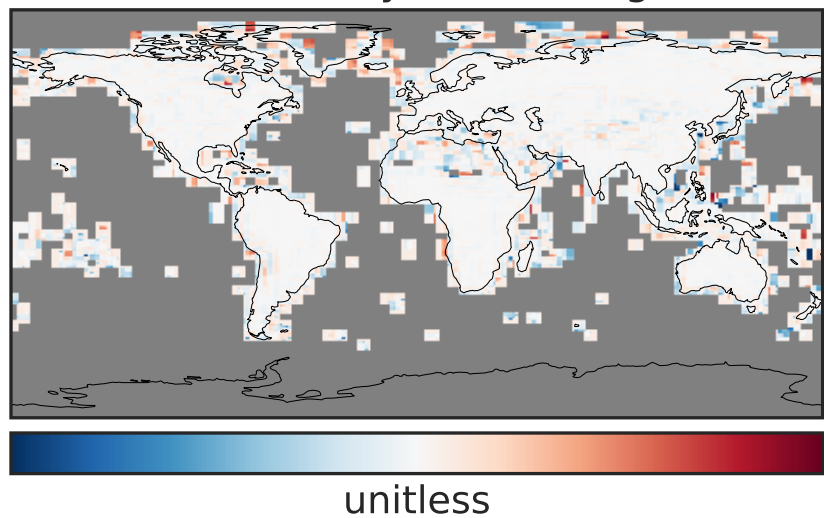
Difference (1x1.25)  
Dev - Ref, Dynamic Range



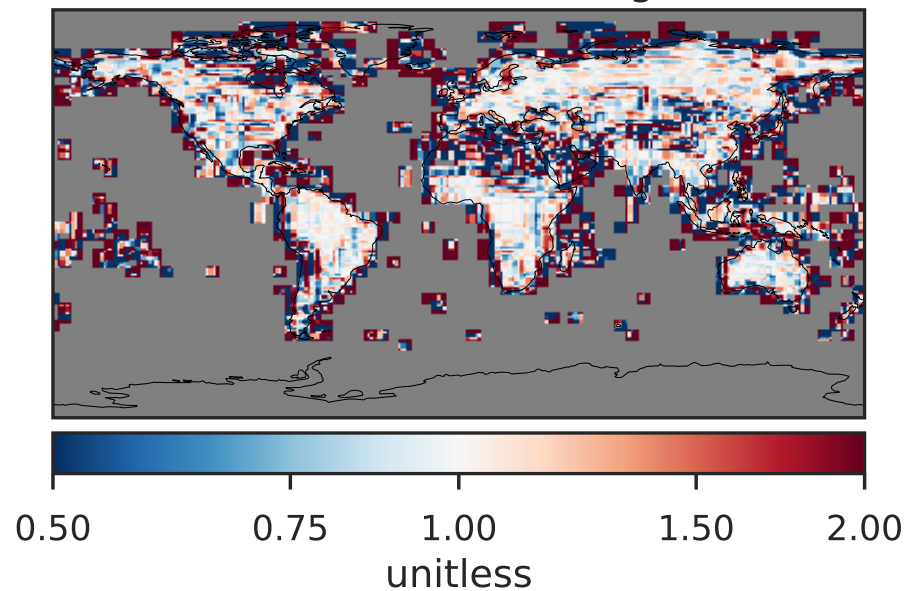
Difference (1x1.25)  
Dev - Ref, Restricted Range [5%,95%]



Ratio (1x1.25)  
Dev/Ref, Dynamic Range

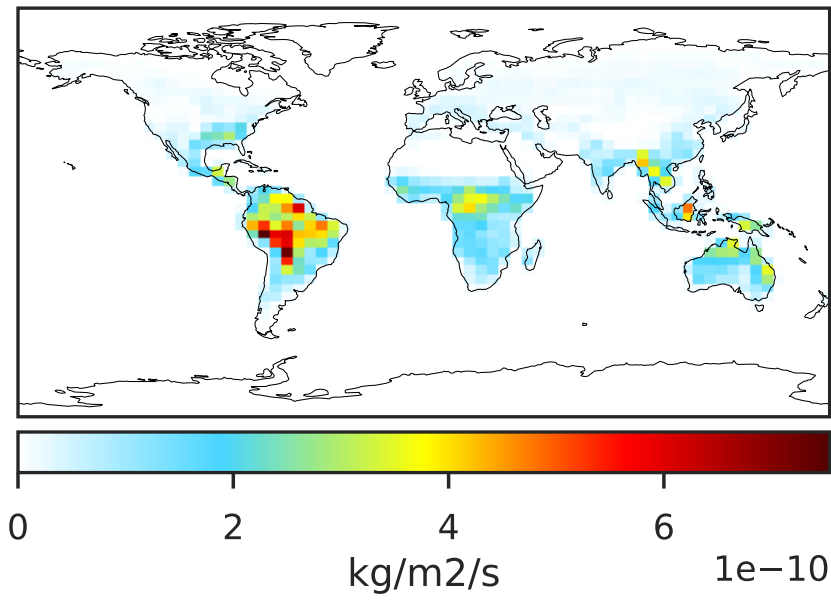


Ratio (1x1.25)  
Dev/Ref, Fixed Range

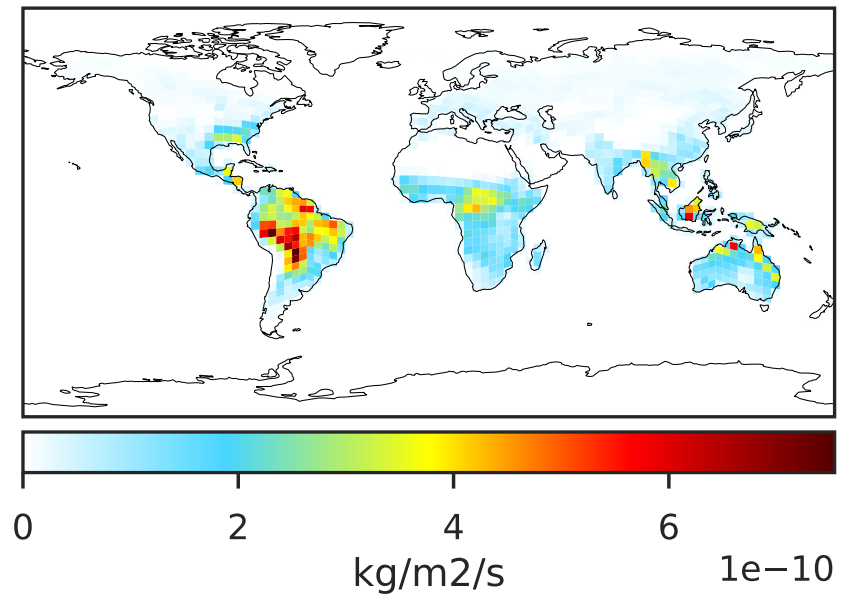


# EmisSOP\_Biogenic (AnnualMean)

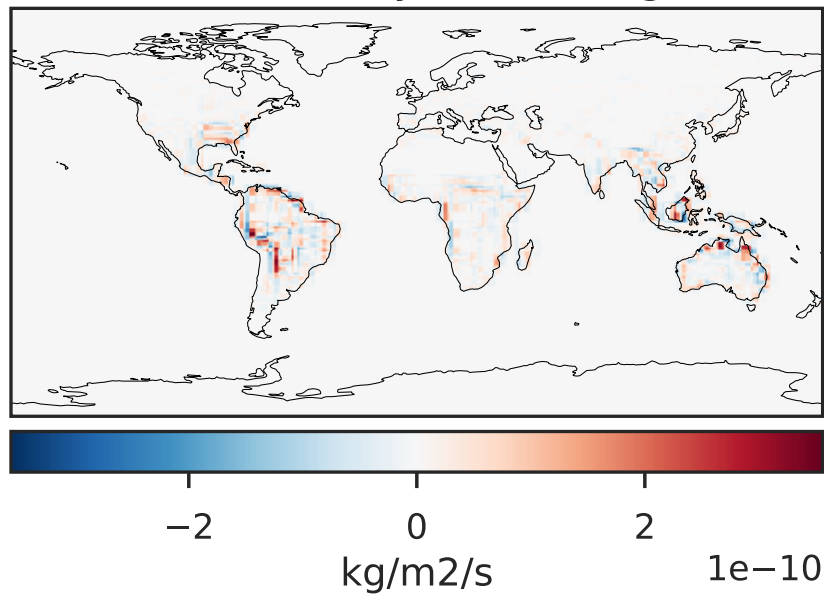
GCC\_14.2.0 (Ref)  
4.0x5.0



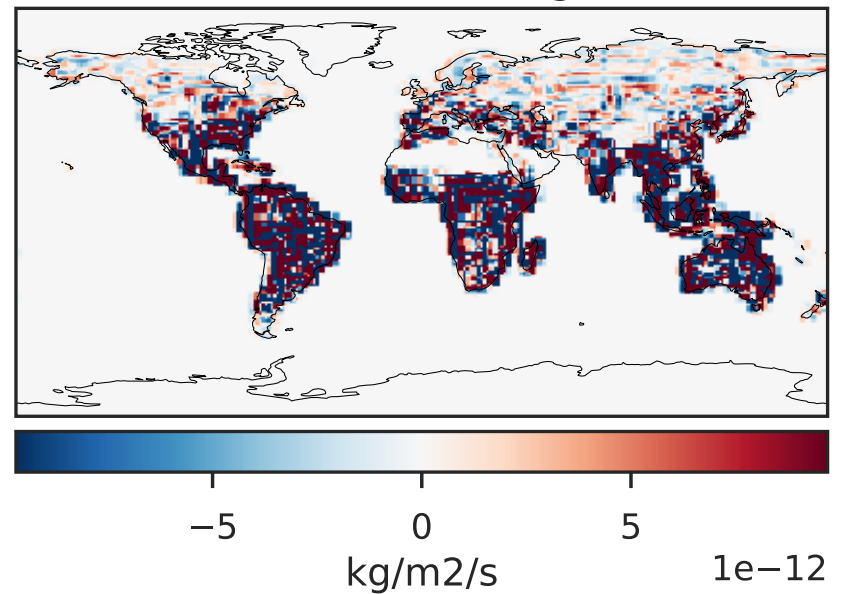
GCHP\_14.2.0 (Dev)  
c24



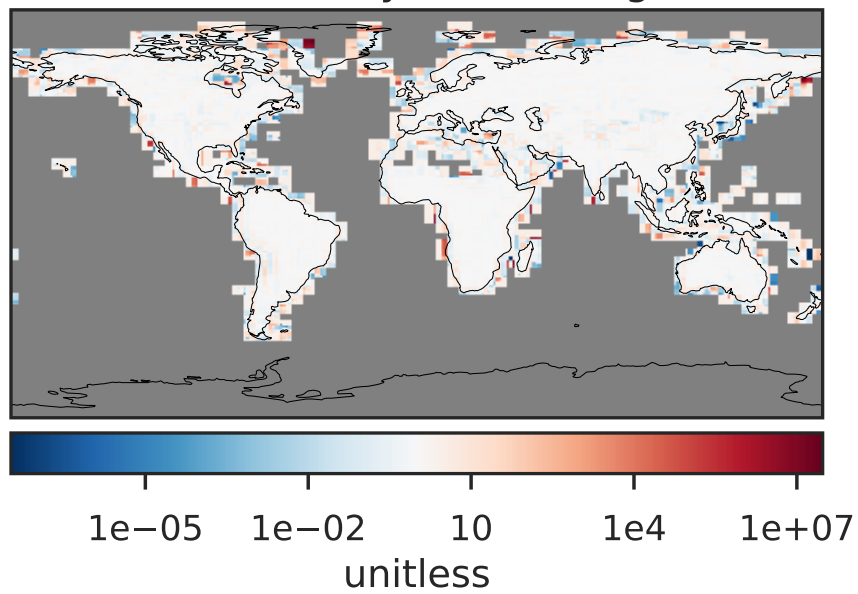
Difference (1x1.25)  
Dev - Ref, Dynamic Range



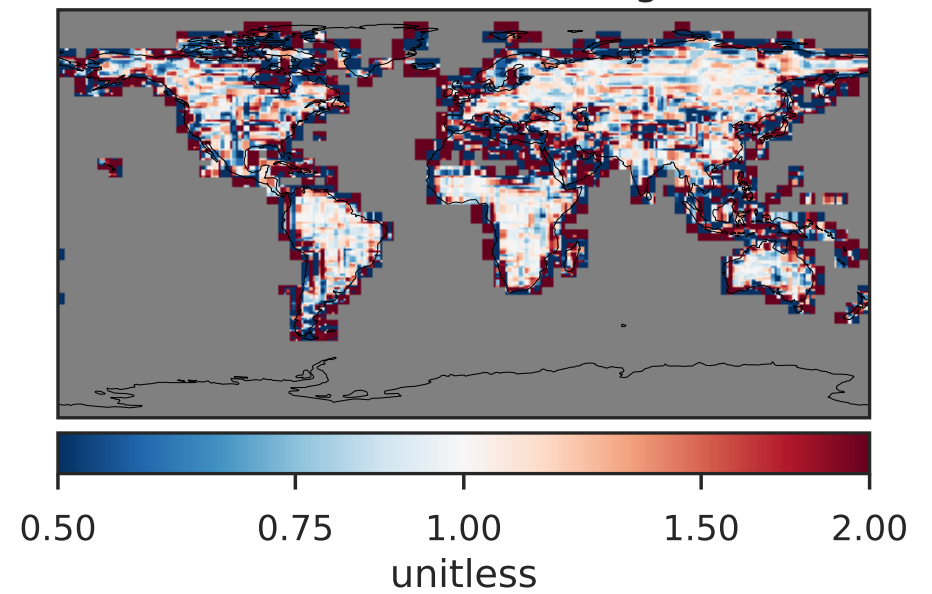
Difference (1x1.25)  
Dev - Ref, Restricted Range [5%,95%]



Ratio (1x1.25)  
Dev/Ref, Dynamic Range

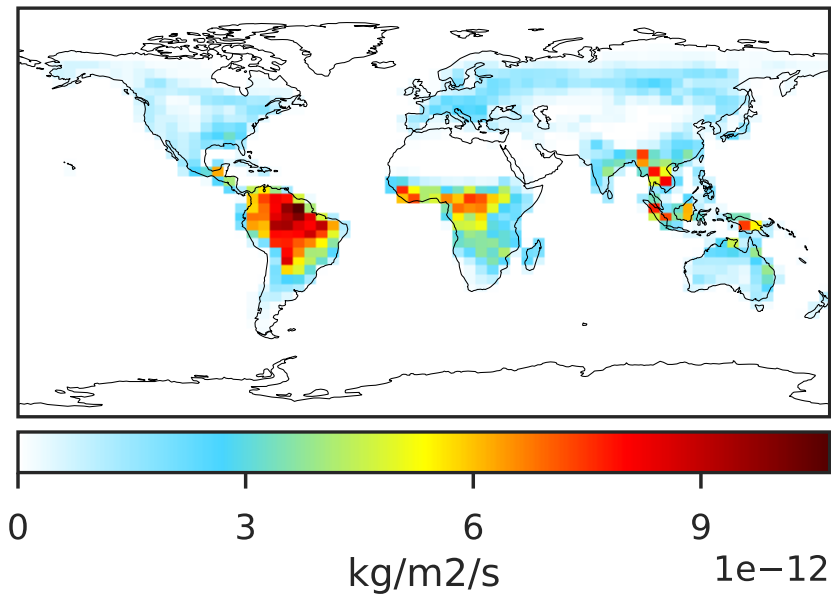


Ratio (1x1.25)  
Dev/Ref, Fixed Range

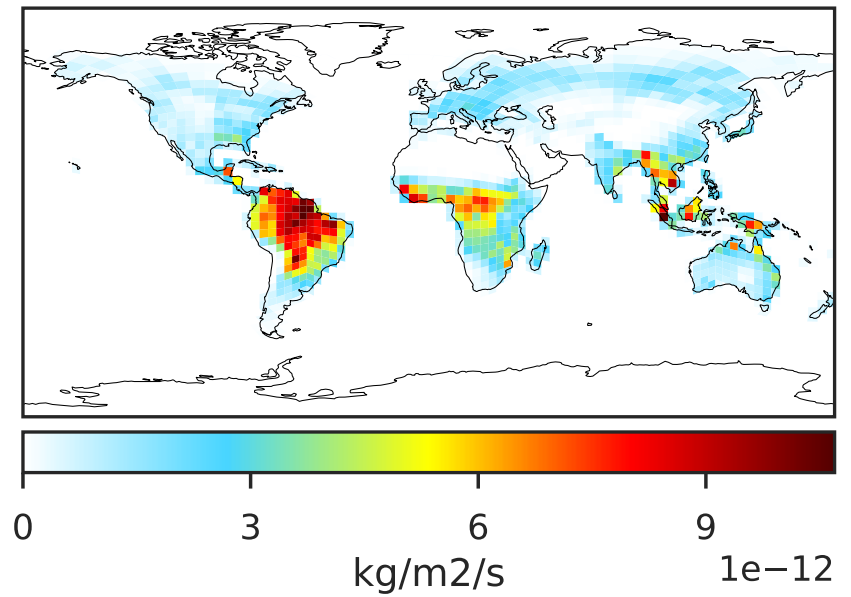


# EmisLIMO\_Biogenic (AnnualMean)

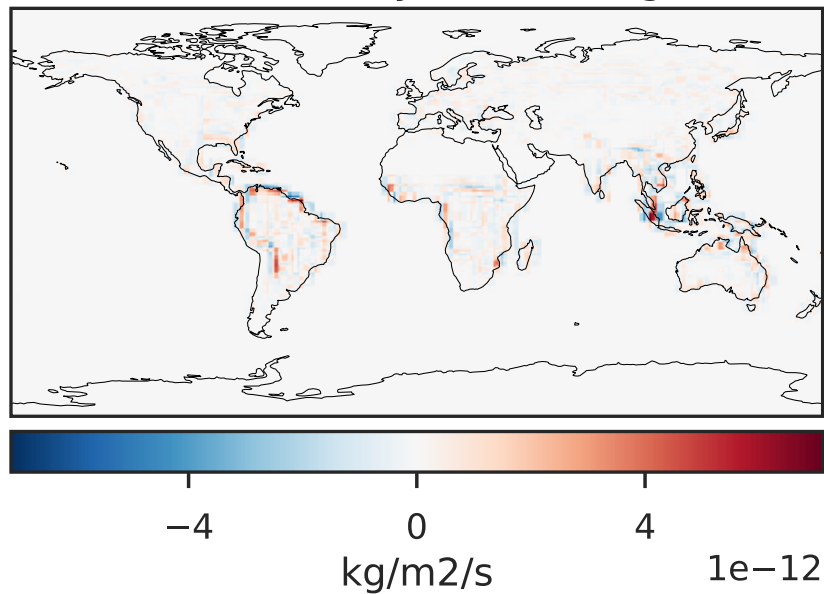
GCC\_14.2.0 (Ref)  
4.0x5.0



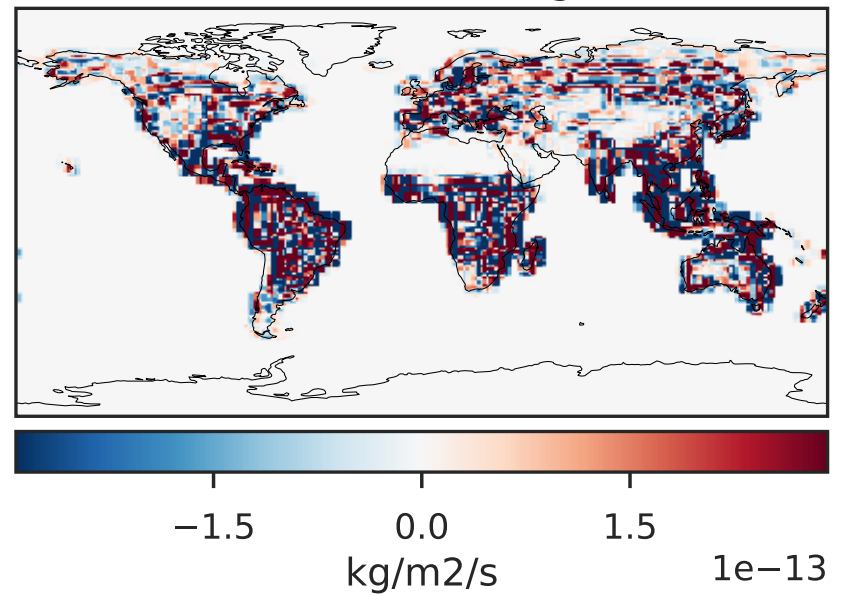
GCHP\_14.2.0 (Dev)  
c24



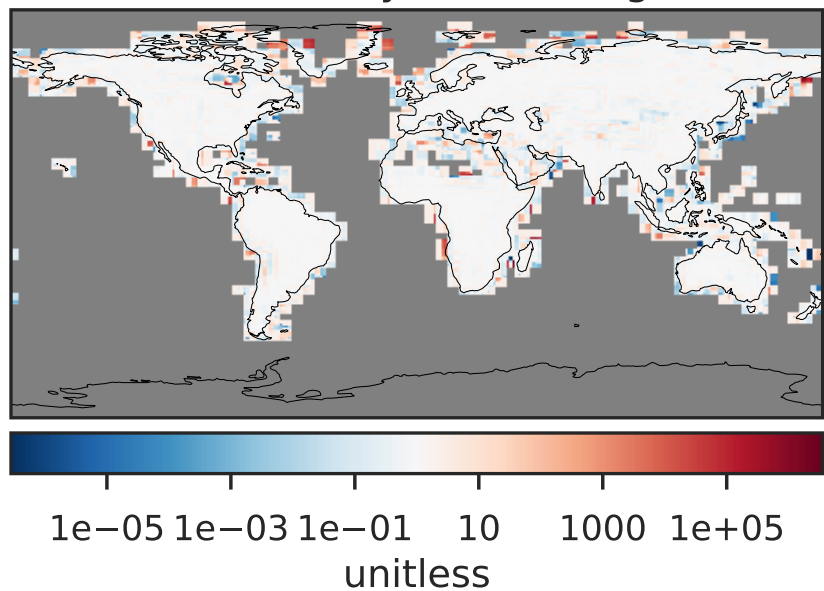
Difference (1x1.25)  
Dev - Ref, Dynamic Range



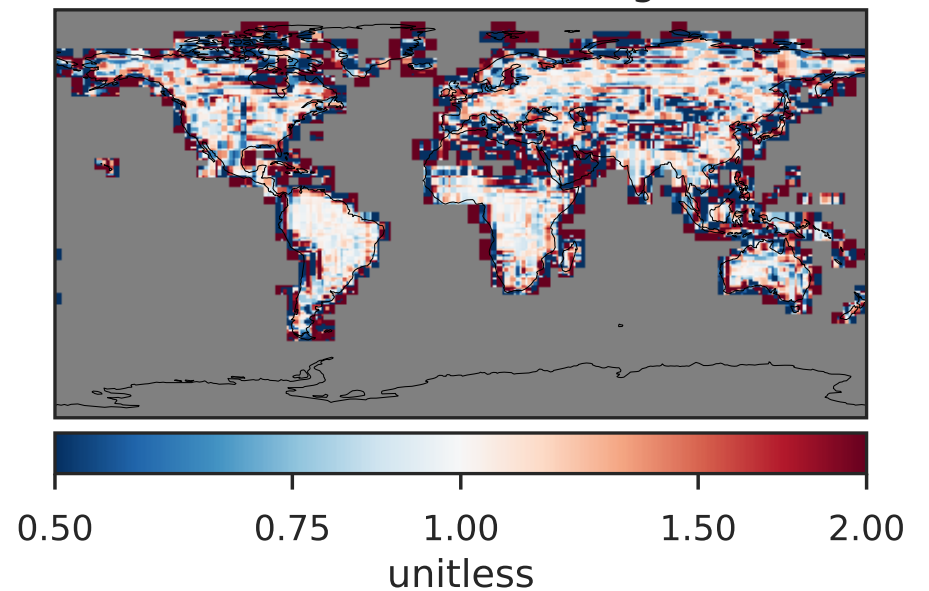
Difference (1x1.25)  
Dev - Ref, Restricted Range [5%,95%]



Ratio (1x1.25)  
Dev/Ref, Dynamic Range



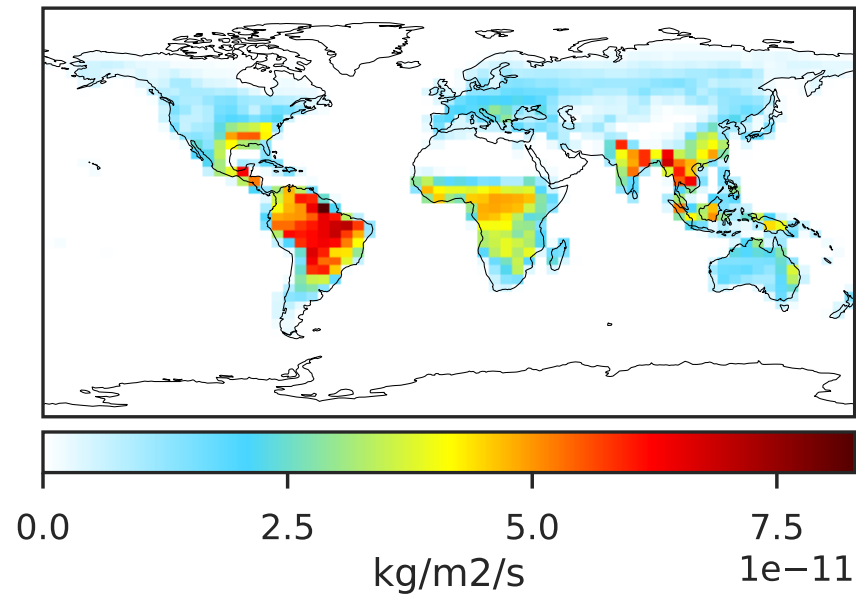
Ratio (1x1.25)  
Dev/Ref, Fixed Range



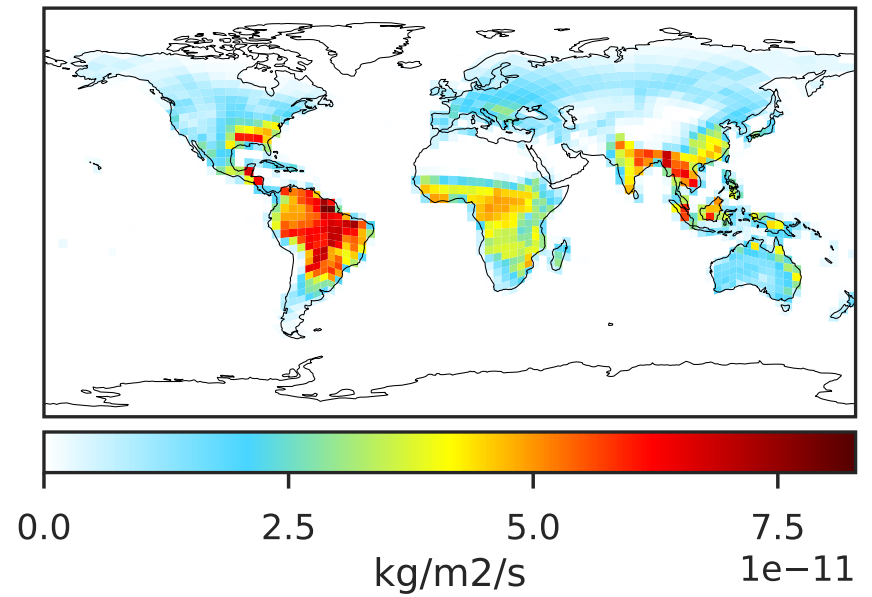


# EmisMOH\_Biogenic (AnnualMean)

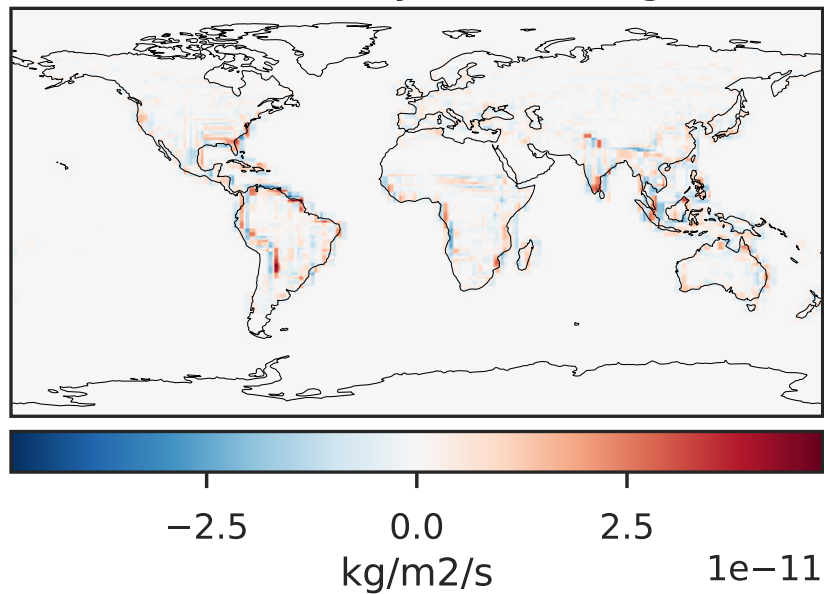
GCC\_14.2.0 (Ref)  
4.0x5.0



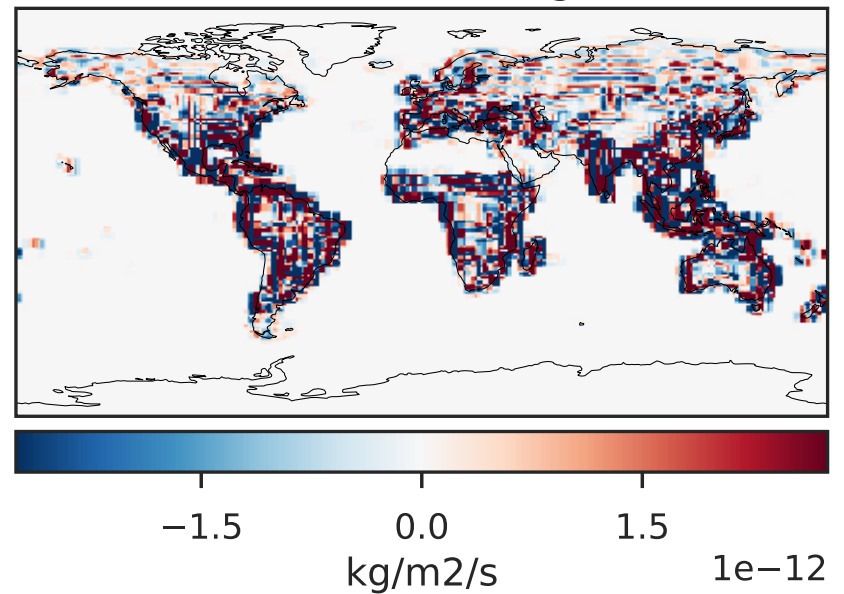
GCHP\_14.2.0 (Dev)  
c24



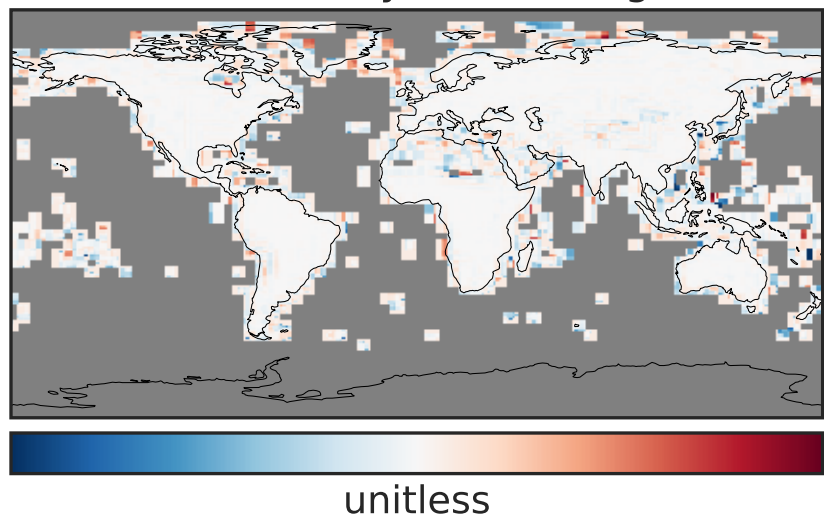
Difference (1x1.25)  
Dev - Ref, Dynamic Range



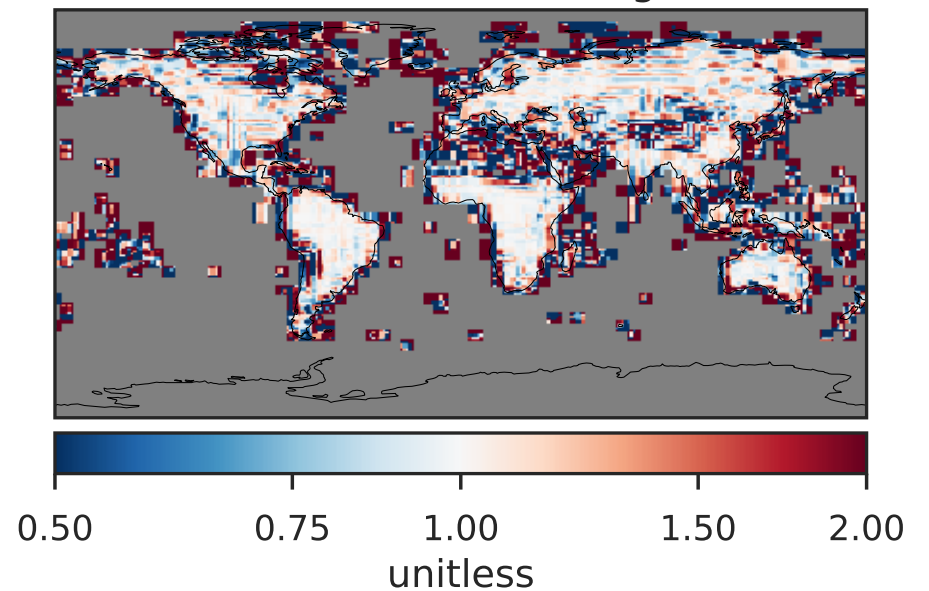
Difference (1x1.25)  
Dev - Ref, Restricted Range [5%,95%]



Ratio (1x1.25)  
Dev/Ref, Dynamic Range

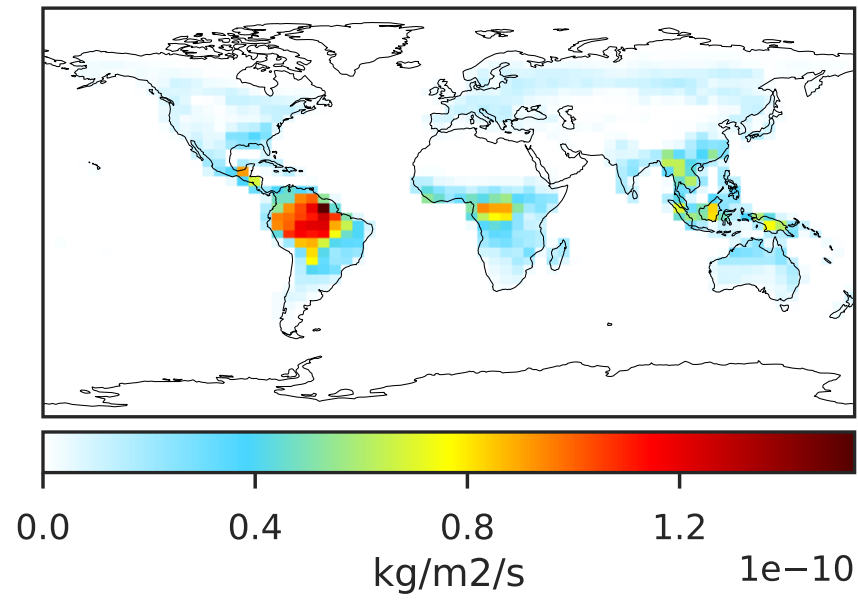


Ratio (1x1.25)  
Dev/Ref, Fixed Range

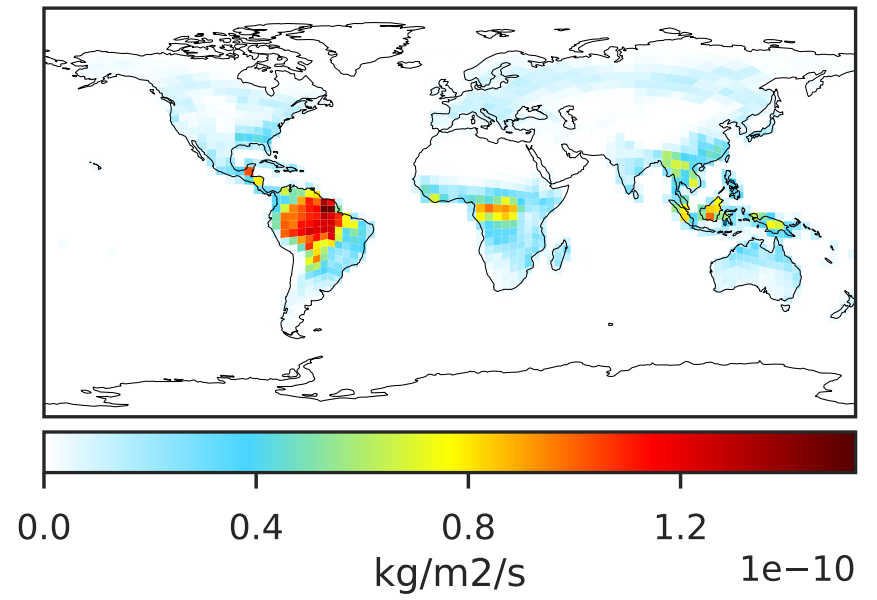


# EmisMTPA\_Biogenic (AnnualMean)

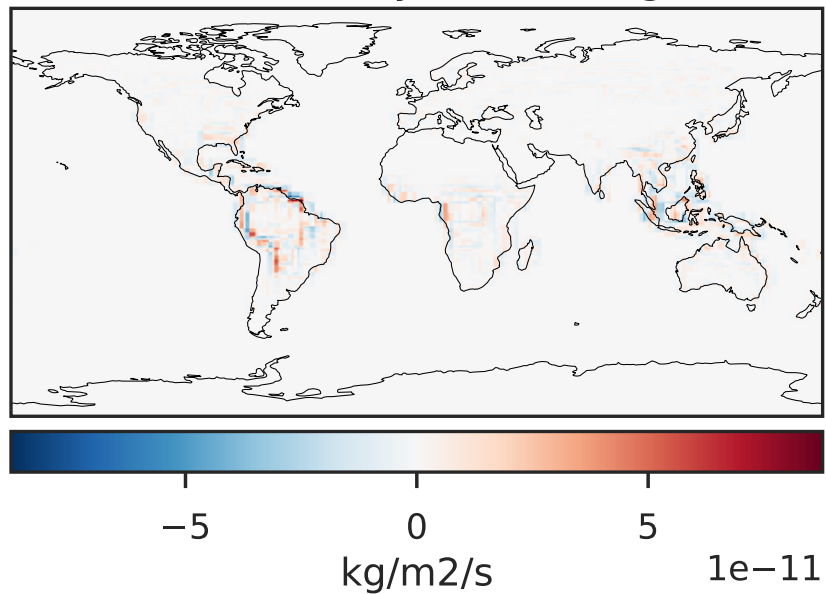
GCC\_14.2.0 (Ref)  
4.0x5.0



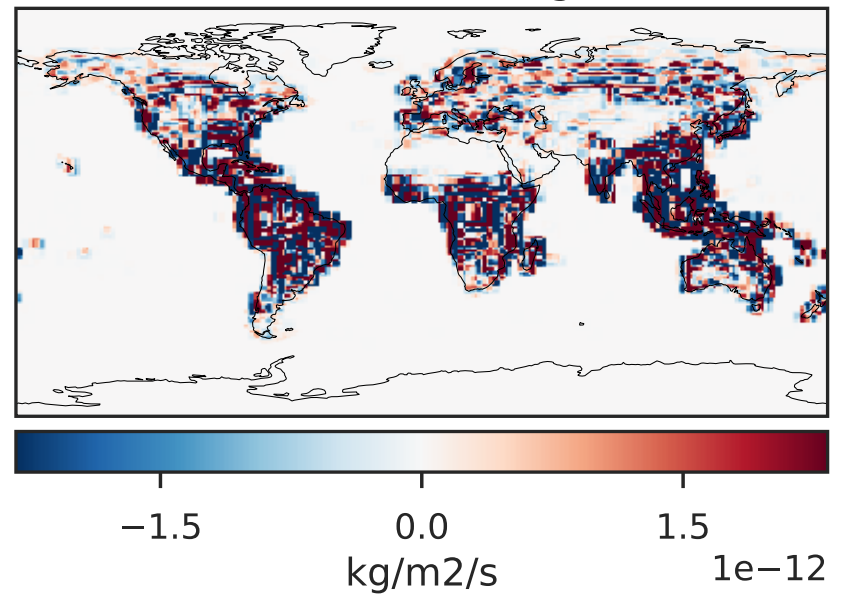
GCHP\_14.2.0 (Dev)  
c24



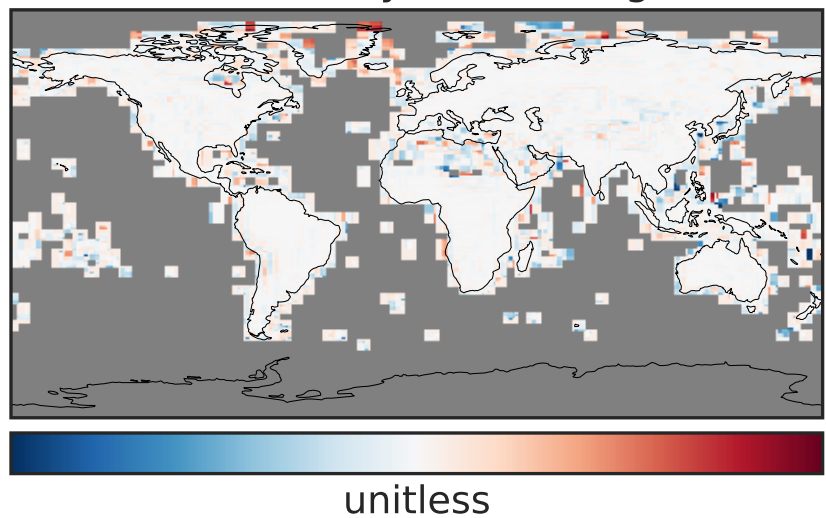
Difference (1x1.25)  
Dev - Ref, Dynamic Range



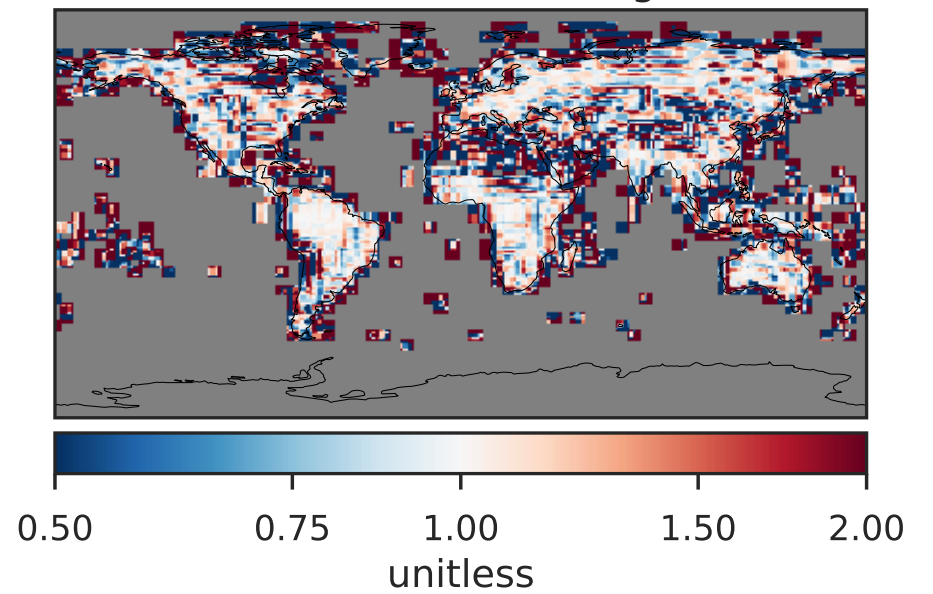
Difference (1x1.25)  
Dev - Ref, Restricted Range [5%,95%]



Ratio (1x1.25)  
Dev/Ref, Dynamic Range



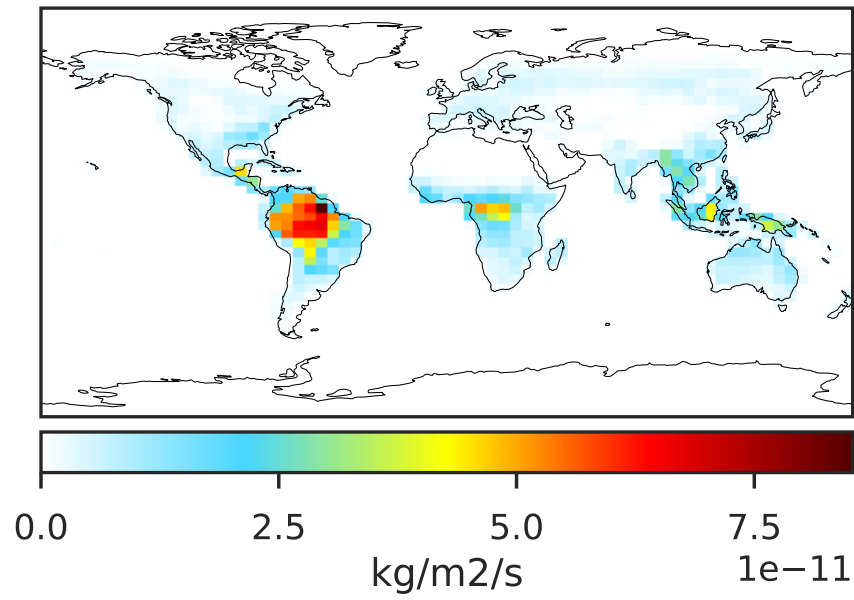
Ratio (1x1.25)  
Dev/Ref, Fixed Range



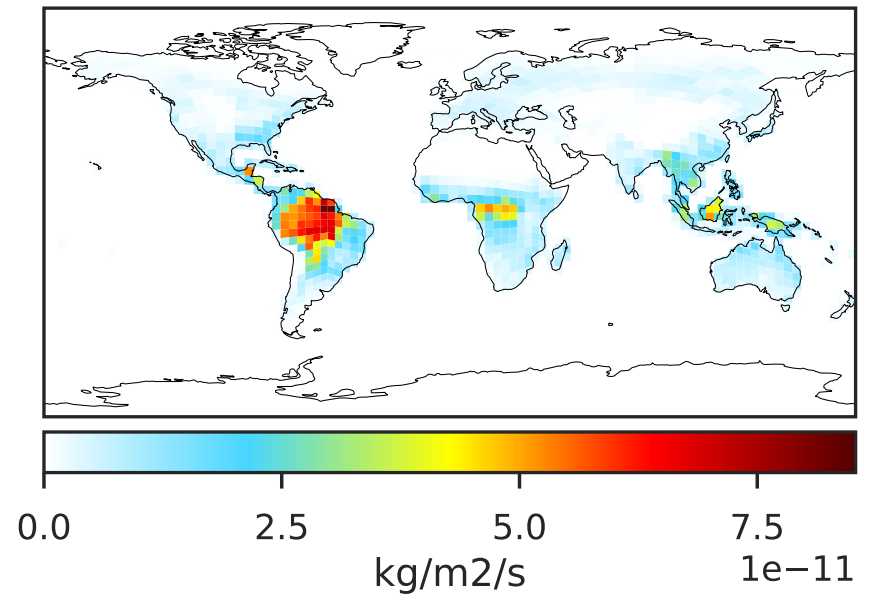


# EmisMTPO\_Biogenic (AnnualMean)

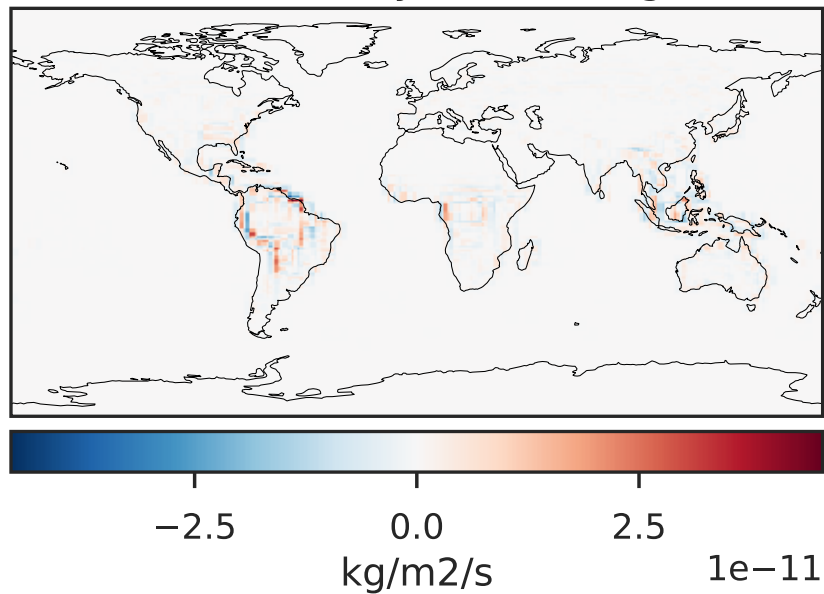
GCC\_14.2.0 (Ref)  
4.0x5.0



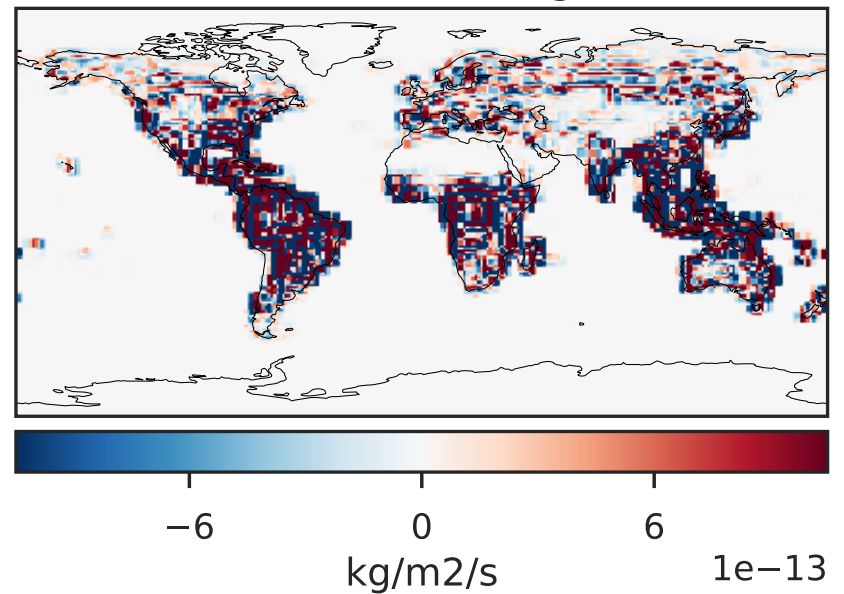
GCHP\_14.2.0 (Dev)  
c24



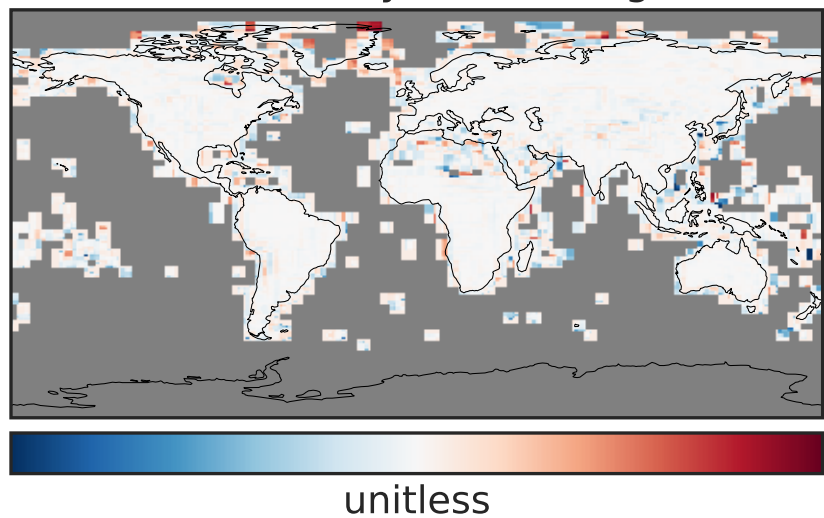
Difference (1x1.25)  
Dev - Ref, Dynamic Range



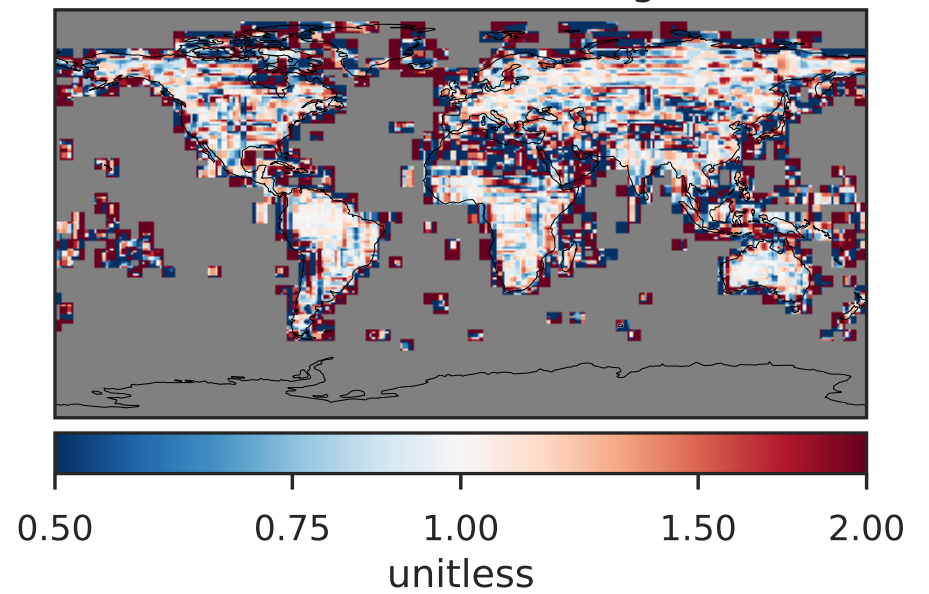
Difference (1x1.25)  
Dev - Ref, Restricted Range [5%,95%]



Ratio (1x1.25)  
Dev/Ref, Dynamic Range

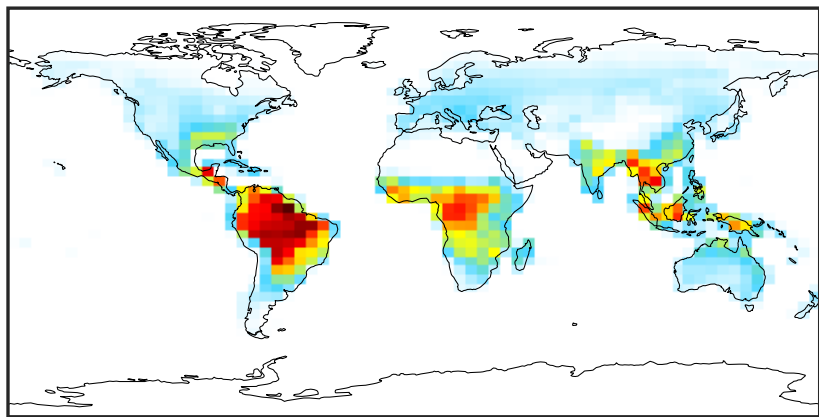


Ratio (1x1.25)  
Dev/Ref, Fixed Range



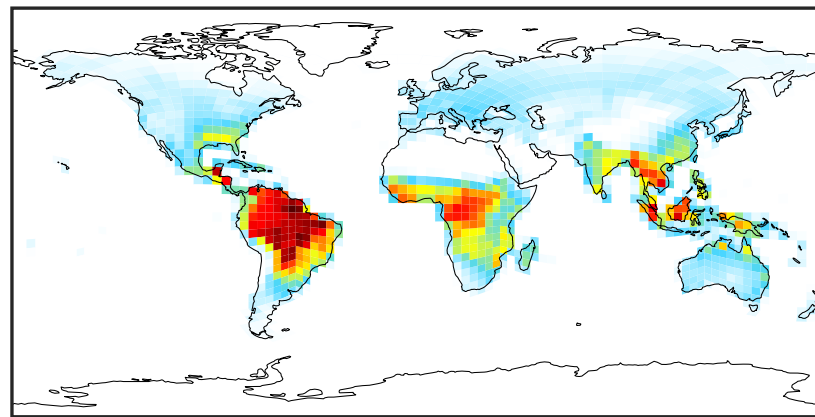
# EmisPRPE\_Biogenic (AnnualMean)

GCC\_14.2.0 (Ref)  
4.0x5.0



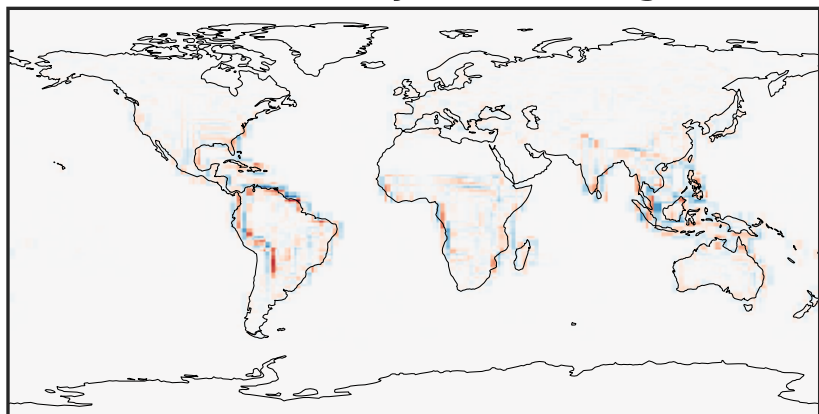
0.0 0.6 1.2 1.8  
kg/m<sup>2</sup>/s 1e-11

GCHP\_14.2.0 (Dev)  
c24



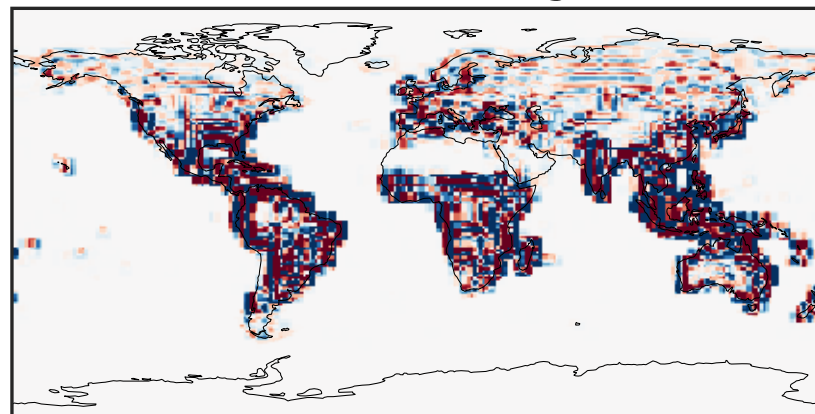
0.0 0.6 1.2 1.8  
kg/m<sup>2</sup>/s 1e-11

Difference (1x1.25)  
Dev - Ref, Dynamic Range



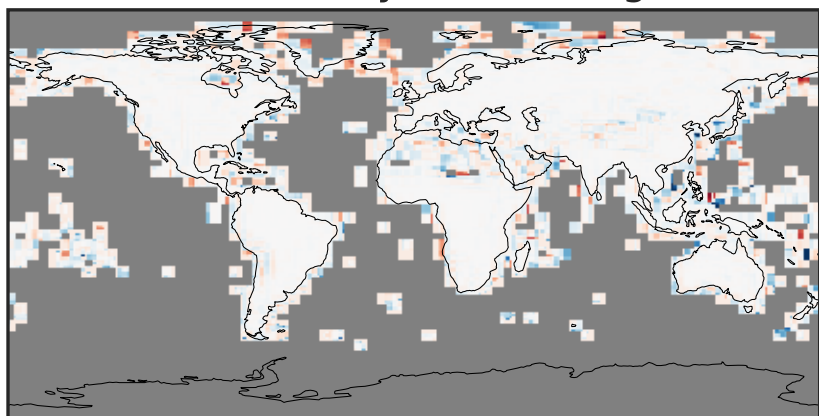
-8 0 8  
kg/m<sup>2</sup>/s 1e-12

Difference (1x1.25)  
Dev - Ref, Restricted Range [5%,95%]



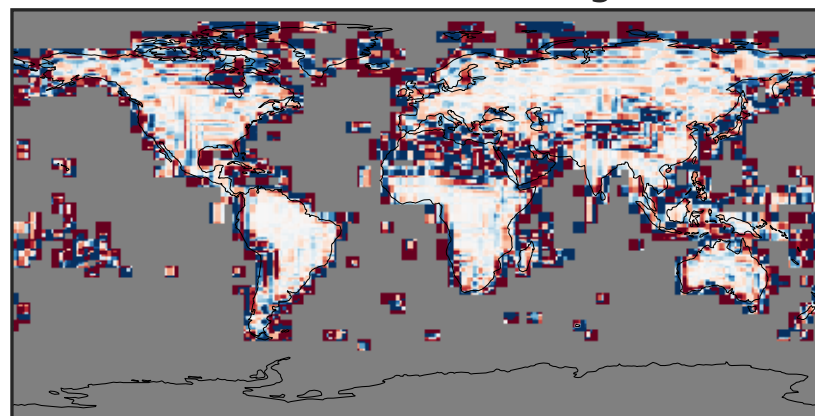
-4 0 4  
kg/m<sup>2</sup>/s 1e-13

Ratio (1x1.25)  
Dev/Ref, Dynamic Range



unitless

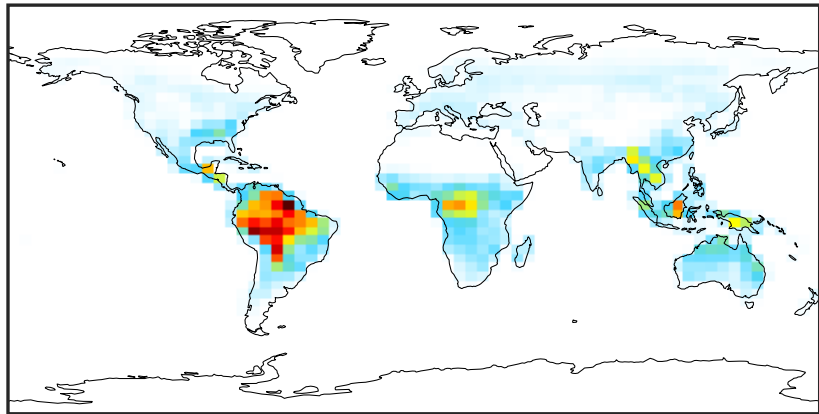
Ratio (1x1.25)  
Dev/Ref, Fixed Range



0.50 0.75 1.00 1.50 2.00  
unitless

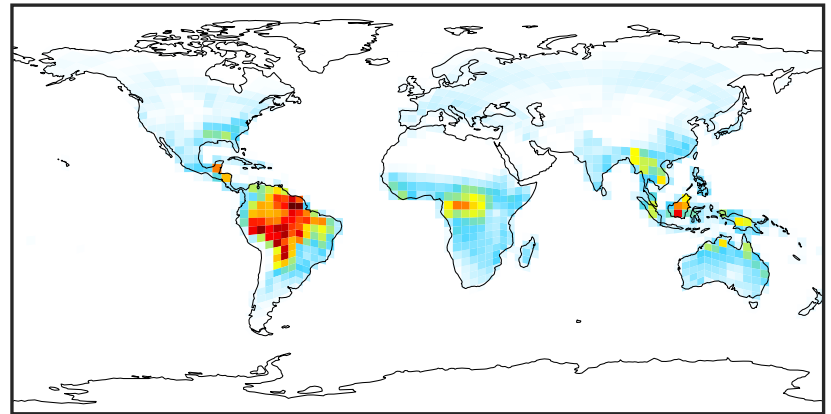
# EmisSOAP\_Biogenic (AnnualMean)

GCC\_14.2.0 (Ref)  
4.0x5.0



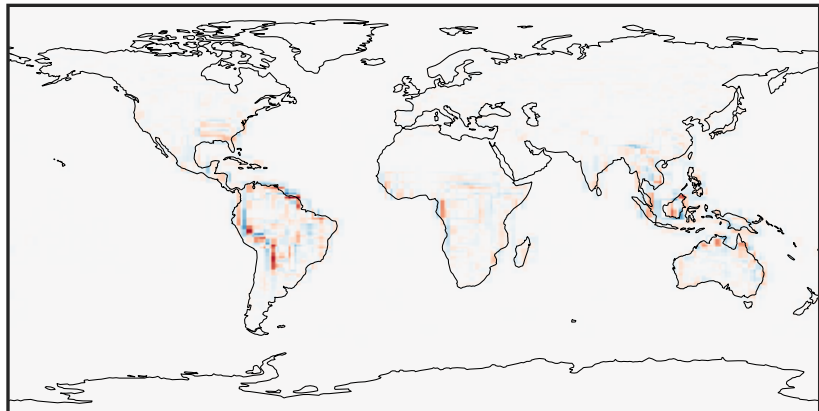
0.0 0.6 1.2 1.8  
kg/m<sup>2</sup>/s 1e-11

GCHP\_14.2.0 (Dev)  
c24



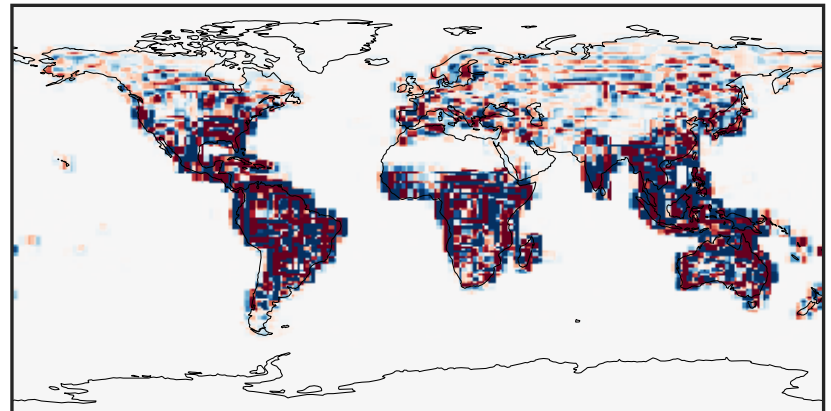
0.0 0.6 1.2 1.8  
kg/m<sup>2</sup>/s 1e-11

Difference (1x1.25)  
Dev - Ref, Dynamic Range



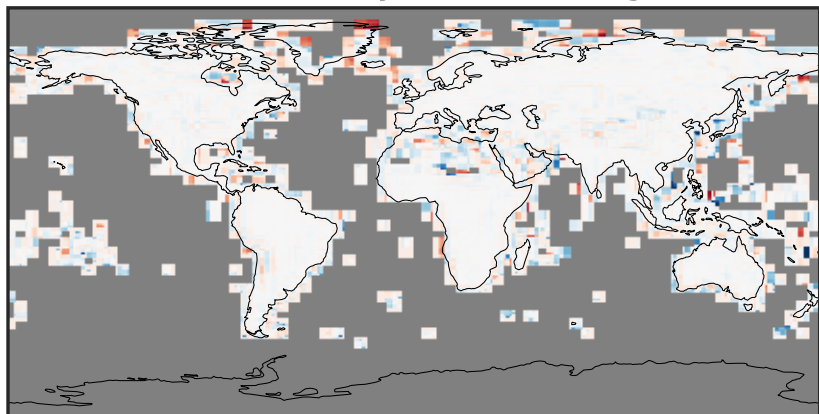
-8 0 8  
kg/m<sup>2</sup>/s 1e-12

Difference (1x1.25)  
Dev - Ref, Restricted Range [5%,95%]



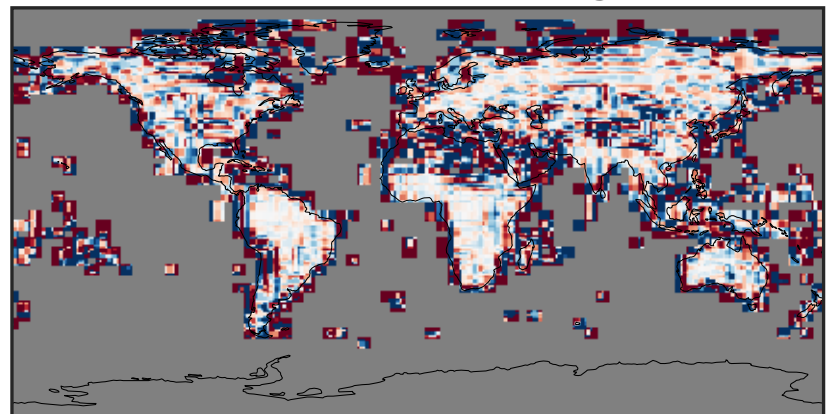
-2 0 2  
kg/m<sup>2</sup>/s 1e-13

Ratio (1x1.25)  
Dev/Ref, Dynamic Range



unitless

Ratio (1x1.25)  
Dev/Ref, Fixed Range

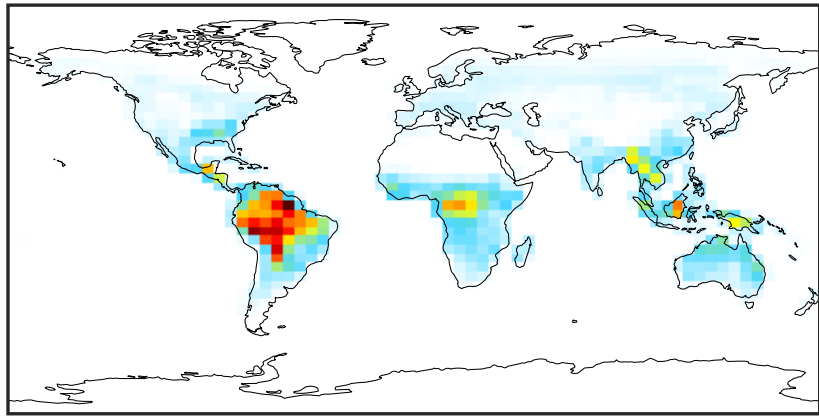


0.50 0.75 1.00 1.50 2.00  
unitless



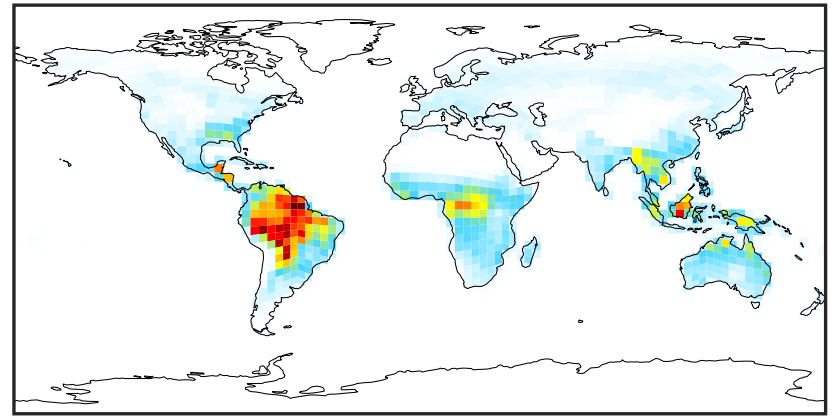
# EmisSOAS\_Biogenic (AnnualMean)

GCC\_14.2.0 (Ref)  
4.0x5.0



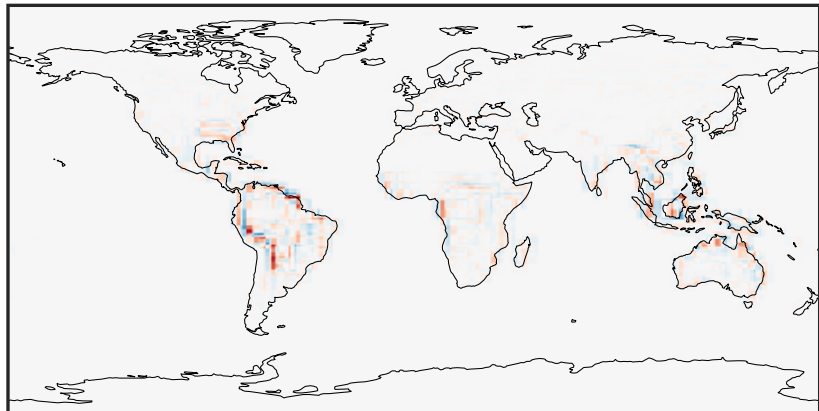
0.0 0.6 1.2 1.8  
kg/m<sup>2</sup>/s 1e-11

GCHP\_14.2.0 (Dev)  
c24



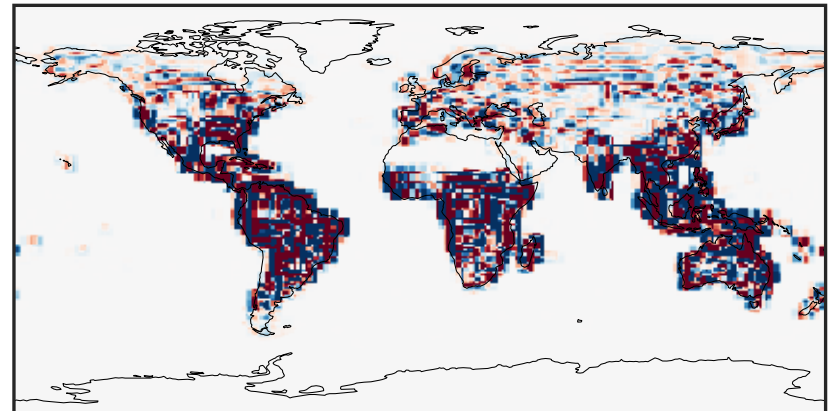
0.0 0.6 1.2 1.8  
kg/m<sup>2</sup>/s 1e-11

Difference (1x1.25)  
Dev - Ref, Dynamic Range



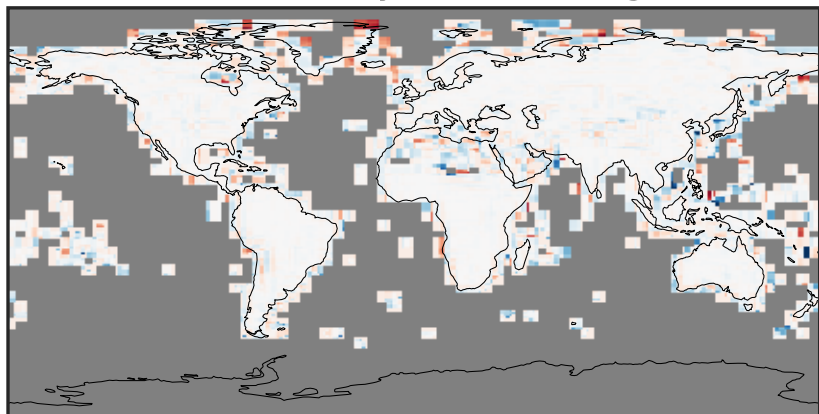
-8 0 8  
kg/m<sup>2</sup>/s 1e-12

Difference (1x1.25)  
Dev - Ref, Restricted Range [5%,95%]



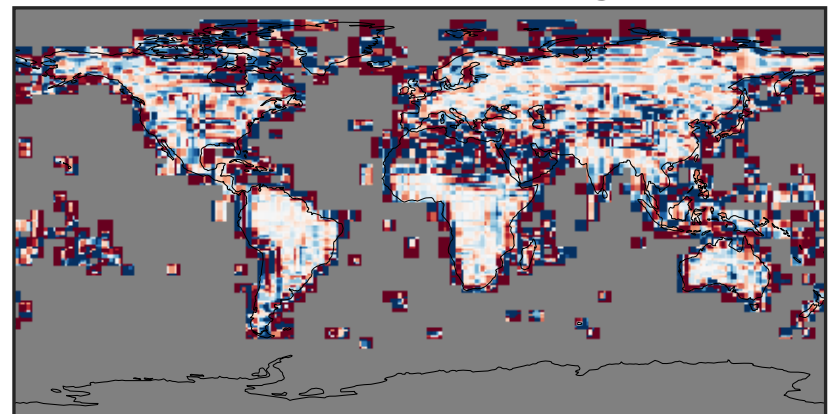
-2 0 2  
kg/m<sup>2</sup>/s 1e-13

Ratio (1x1.25)  
Dev/Ref, Dynamic Range



unitless

Ratio (1x1.25)  
Dev/Ref, Fixed Range



0.50 0.75 1.00 1.50 2.00  
unitless