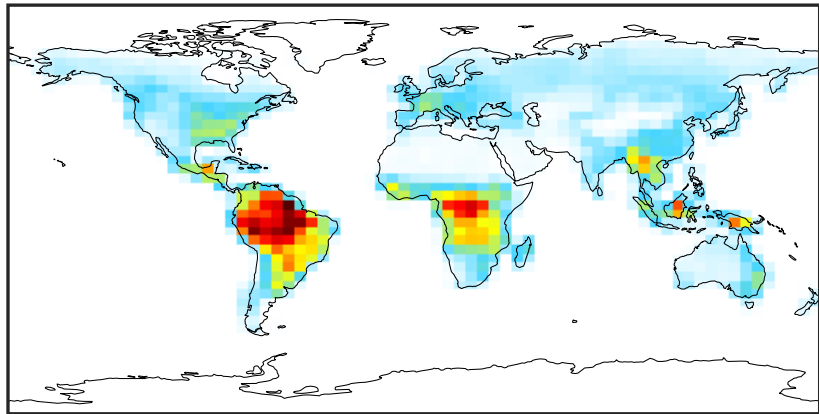


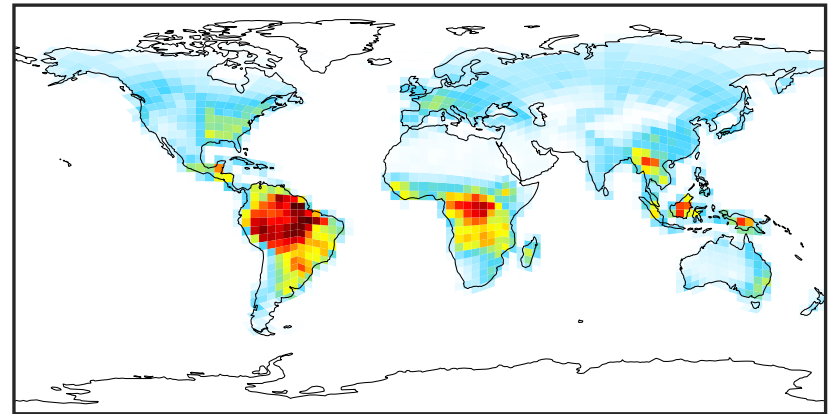
# EmisALD2\_PlantDecay (Oct2019)

GCC\_14.2.0 (Ref)  
4.0x5.0



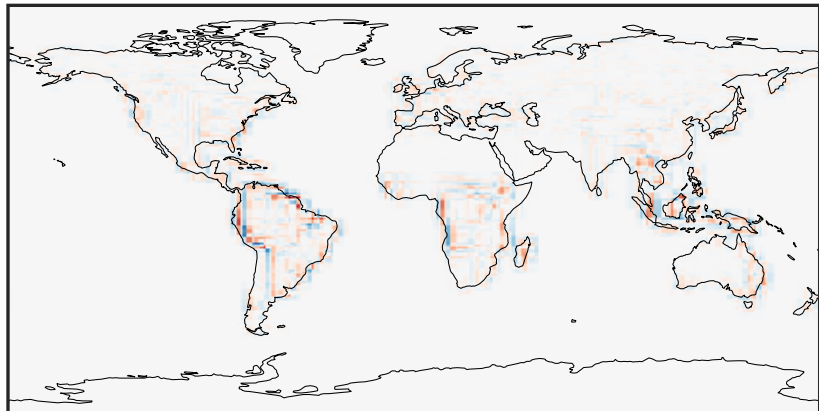
0.0 1.5 3.0 4.5  $10^{-12}$  kg/m<sup>2</sup>/s

GCHP\_14.2.0 (Dev)  
c24



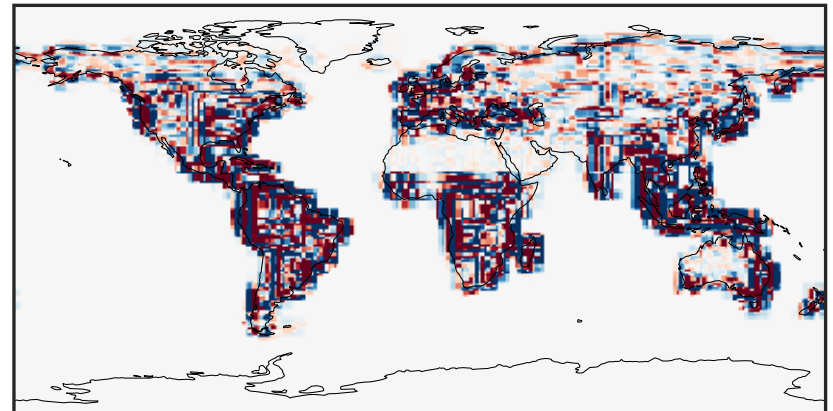
0.0 1.5 3.0 4.5  $10^{-12}$  kg/m<sup>2</sup>/s

Difference (1x1.25)  
Dev - Ref, Dynamic Range



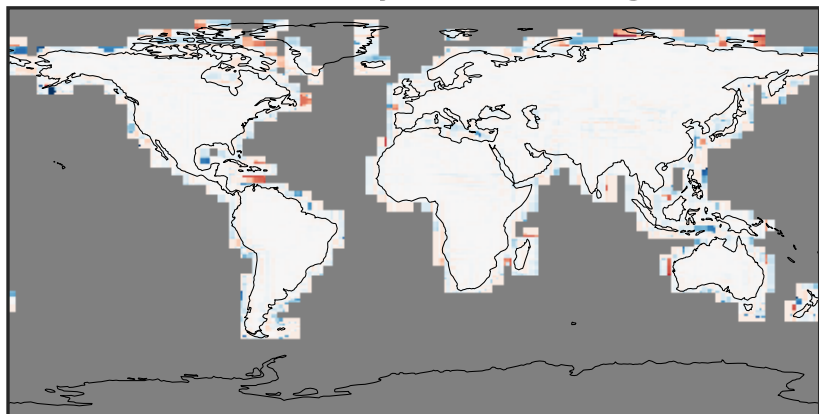
-1.5 0.0 1.5  $10^{-12}$  kg/m<sup>2</sup>/s

Difference (1x1.25)  
Dev - Ref, Restricted Range [5%,95%]



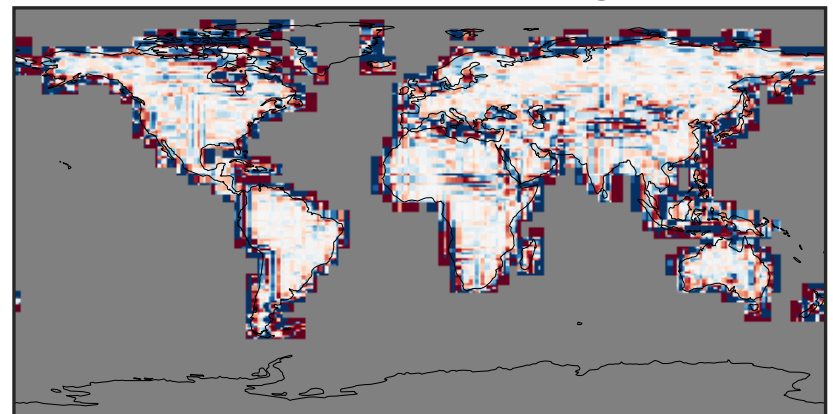
-1 0 1  $10^{-13}$  kg/m<sup>2</sup>/s

Ratio (1x1.25)  
Dev/Ref, Dynamic Range



unitless

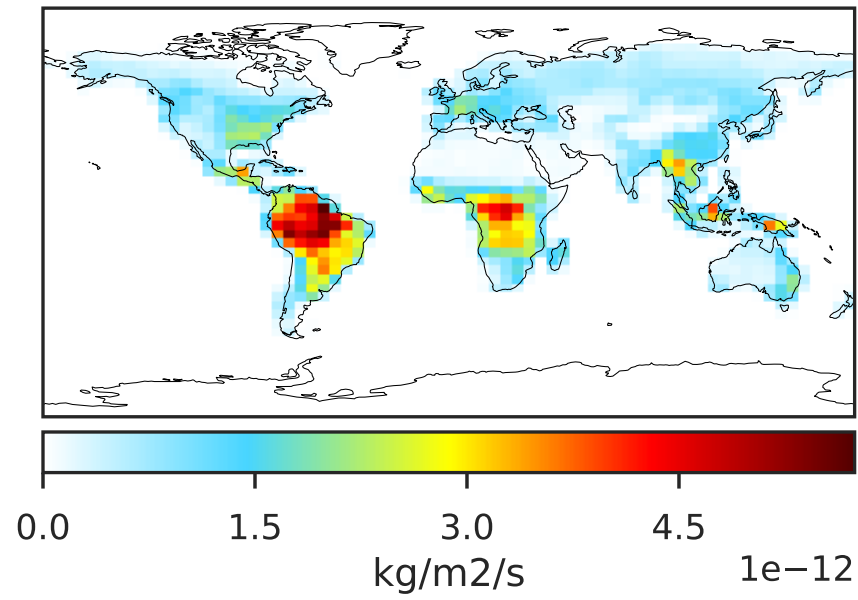
Ratio (1x1.25)  
Dev/Ref, Fixed Range



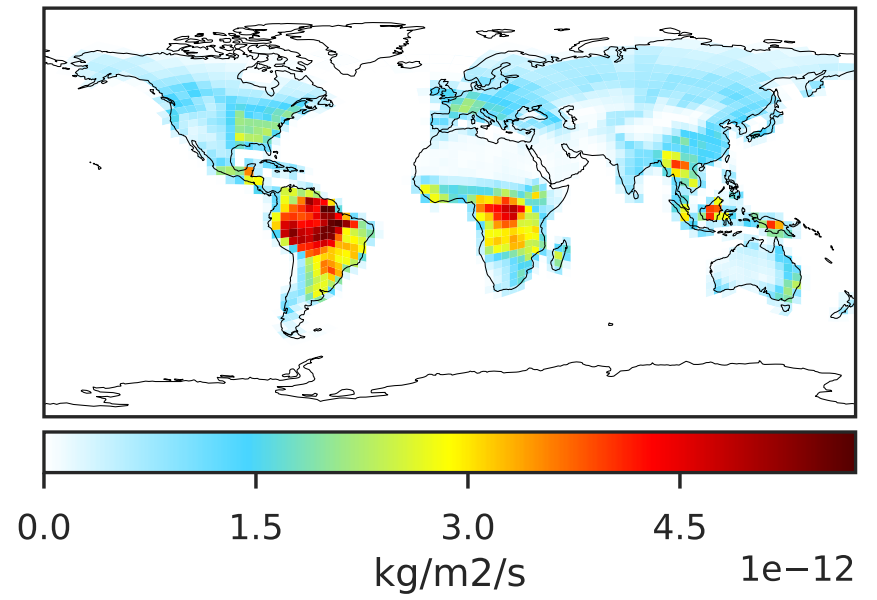
0.50 0.75 1.00 1.50 2.00 unitless

# EmisEOH\_PlantDecay (Oct2019)

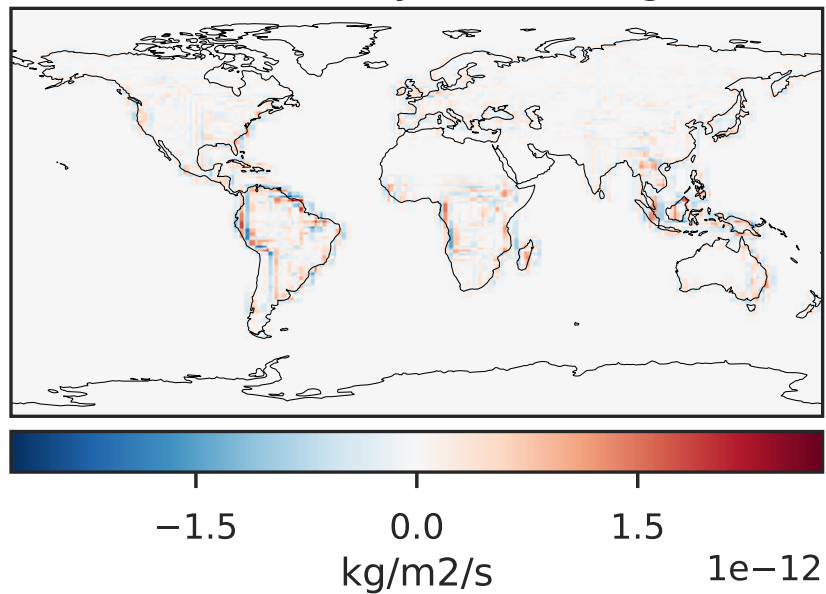
GCC\_14.2.0 (Ref)  
4.0x5.0



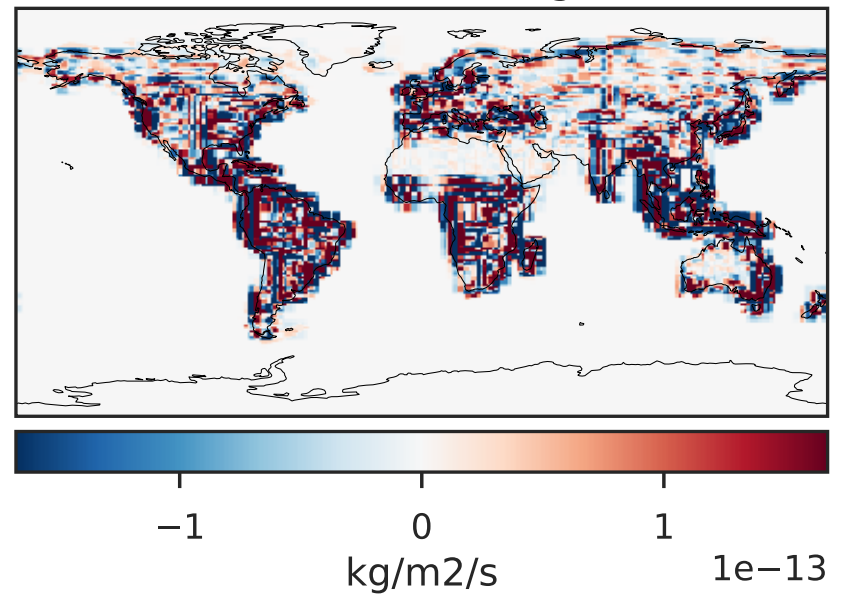
GCHP\_14.2.0 (Dev)  
c24



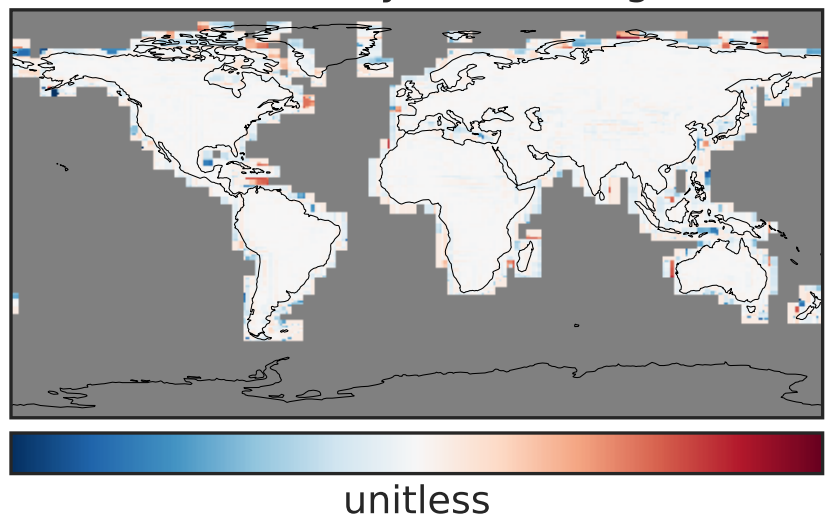
Difference (1x1.25)  
Dev - Ref, Dynamic Range



Difference (1x1.25)  
Dev - Ref, Restricted Range [5%,95%]



Ratio (1x1.25)  
Dev/Ref, Dynamic Range



Ratio (1x1.25)  
Dev/Ref, Fixed Range

