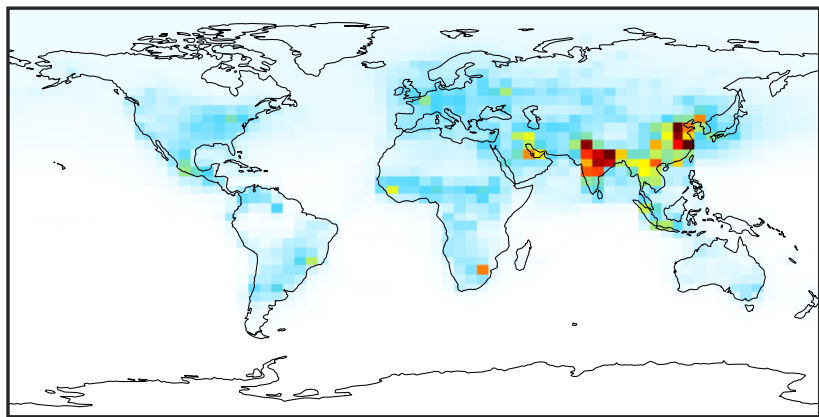


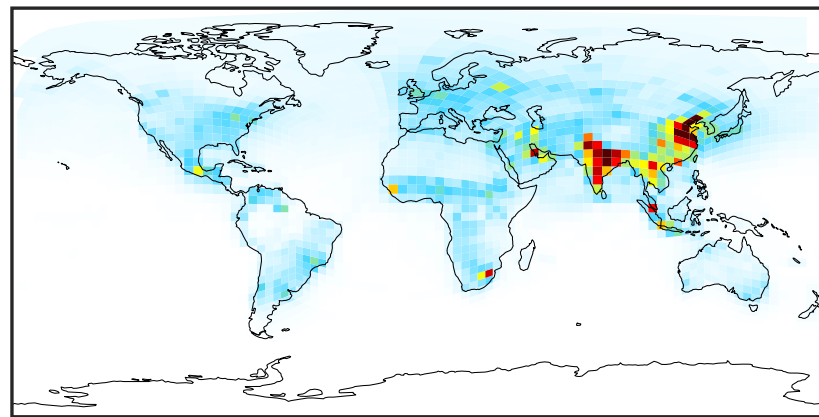
SpeciesConcVV_NOy (Apr2019)

GCC_14.2.0 (Ref)
4.0x5.0



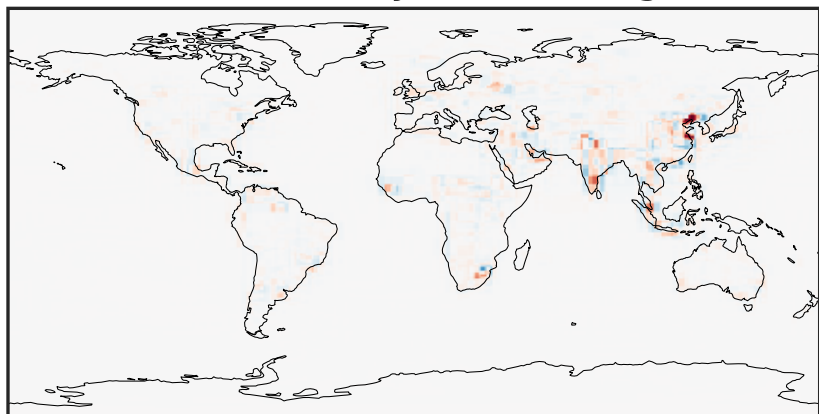
0.01 2.77 5.54 8.31 11.10
ppb

GCHP_14.2.0 (Dev)
c24



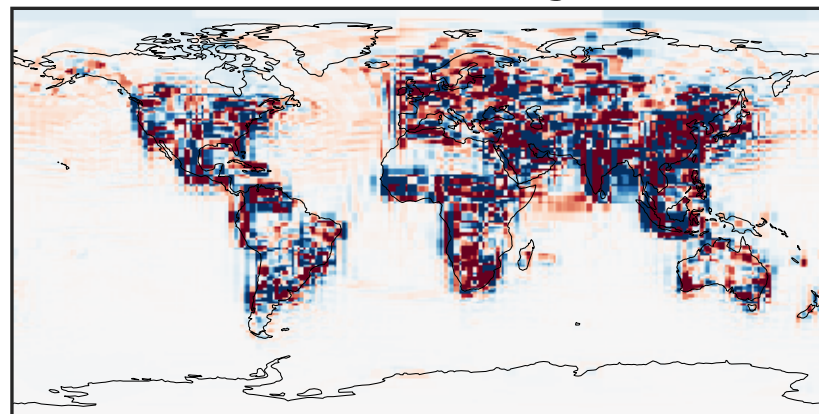
0.01 2.77 5.54 8.31 11.10
ppb

Difference (1x1.25)
Dev - Ref, Dynamic Range



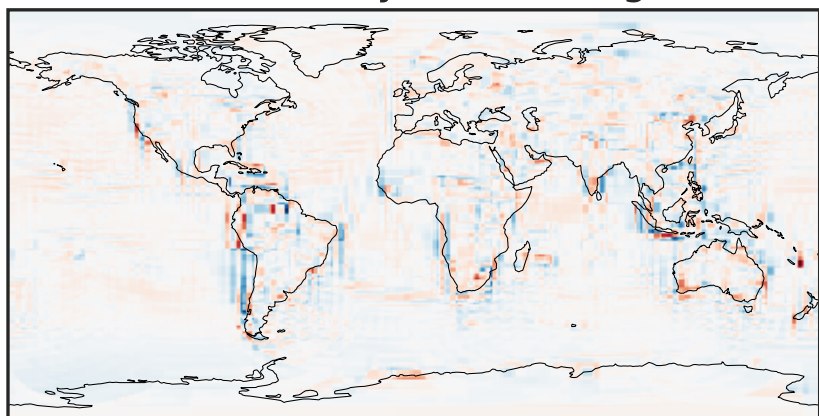
-8.17 -4.09 0.00 4.09 8.17
ppb

Difference (1x1.25)
Dev - Ref, Restricted Range [5%,95%]



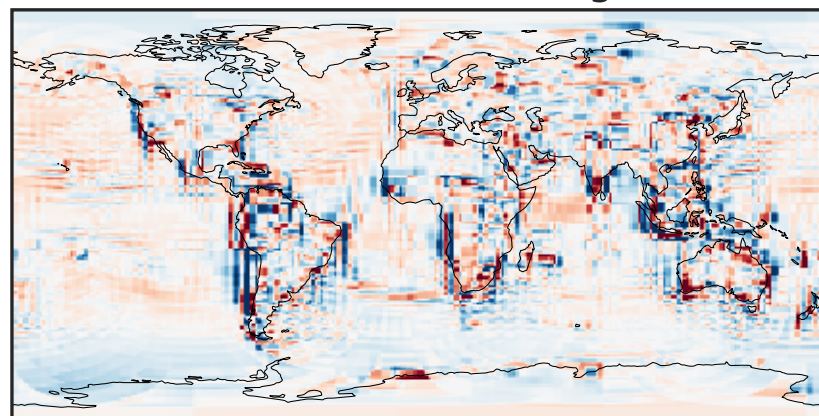
-0.2068 -0.1034 0.0000 0.1034 0.2068
ppb

Ratio (1x1.25)
Dev/Ref, Dynamic Range



0.134 0.567 1.000 4.226 7.451
unitless

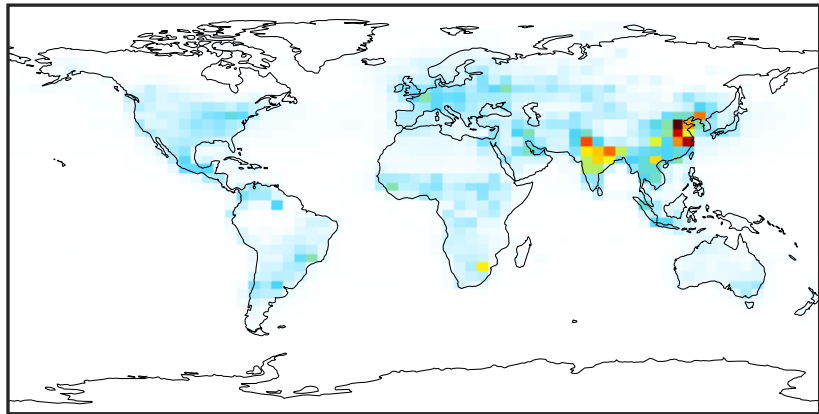
Ratio (1x1.25)
Dev/Ref, Fixed Range



0.50 0.75 1.00 1.50 2.00
unitless

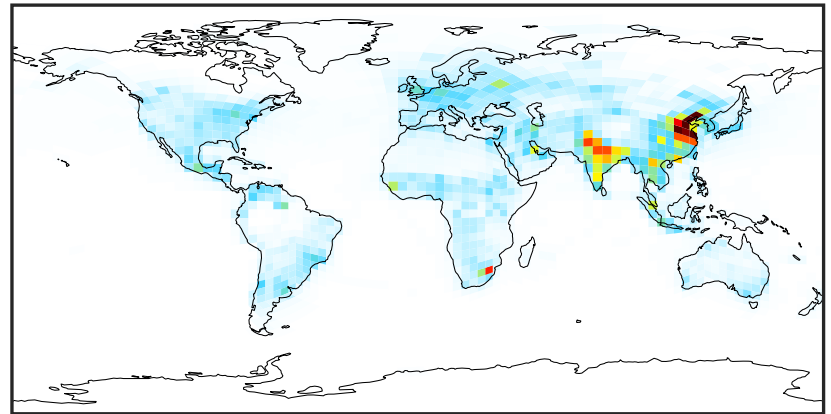
SpeciesConcVV_NOx (Apr2019)

GCC_14.2.0 (Ref)
4.0x5.0



0.000 2.158 4.316 6.475 8.633
ppb

GCHP_14.2.0 (Dev)
c24



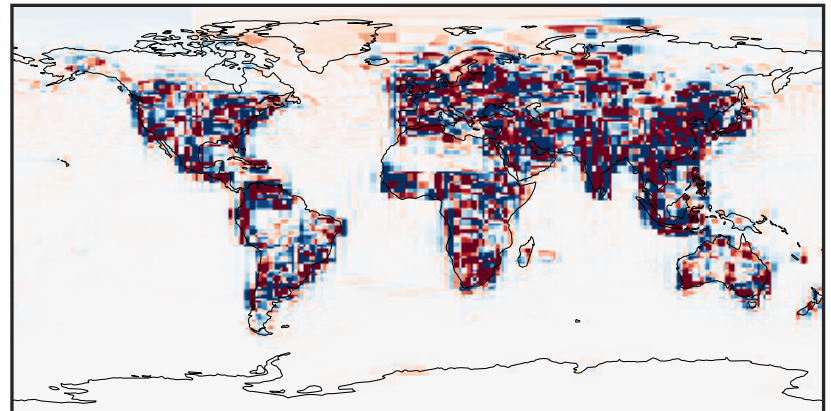
0.000 2.158 4.316 6.475 8.633
ppb

Difference (1x1.25)
Dev - Ref, Dynamic Range



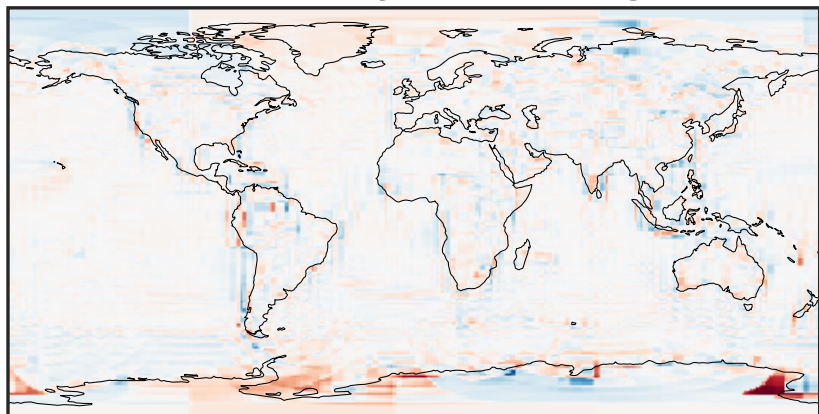
-7.63 -3.82 0.00 3.82 7.63
ppb

Difference (1x1.25)
Dev - Ref, Restricted Range [5%,95%]



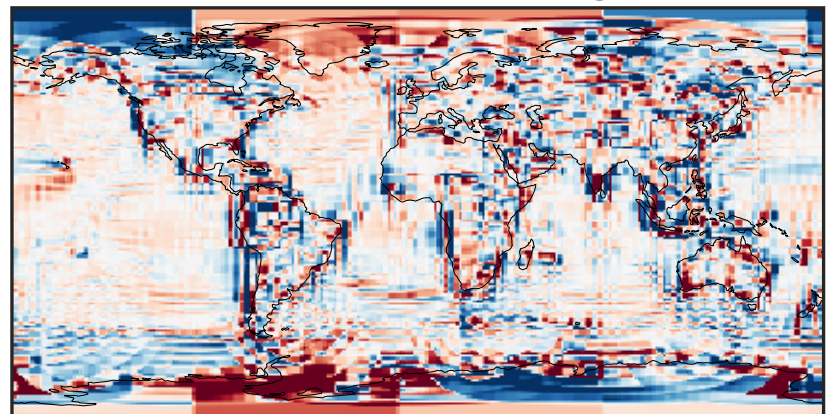
-0.1370 -0.0685 0.0000 0.0685 0.1370
ppb

Ratio (1x1.25)
Dev/Ref, Dynamic Range



1e-01 1 10
unitless

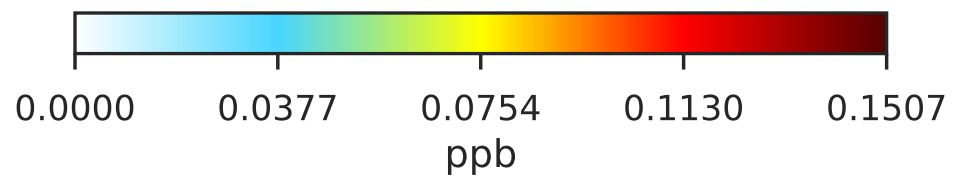
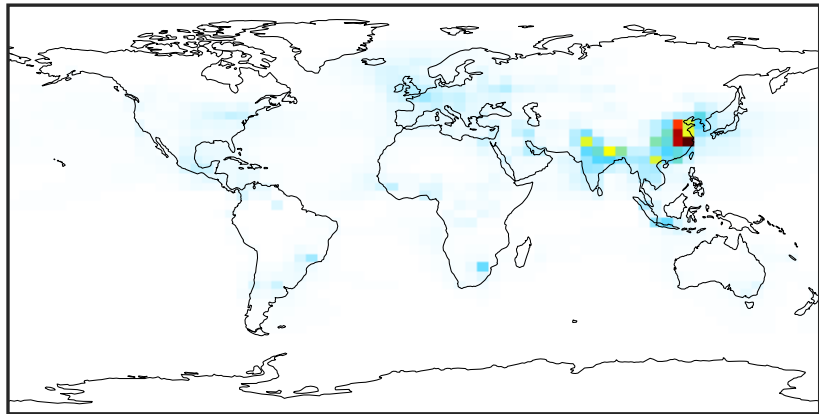
Ratio (1x1.25)
Dev/Ref, Fixed Range



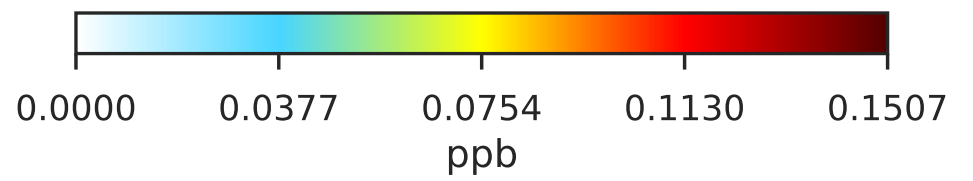
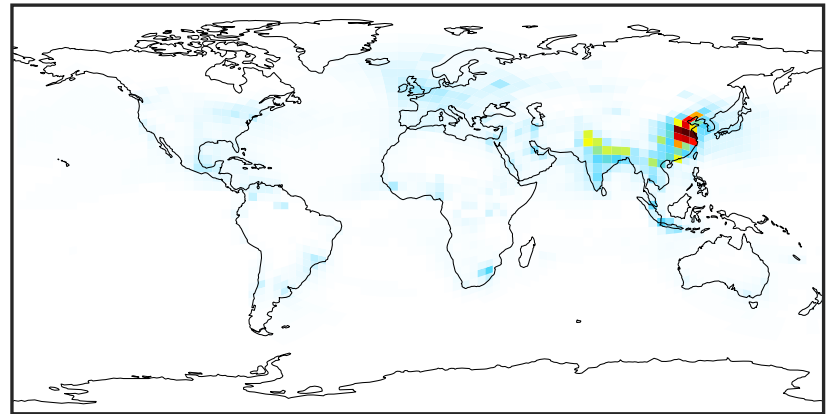
0.50 0.75 1.00 1.50 2.00
unitless

SpeciesConcVV_HNO2 (Apr2019)

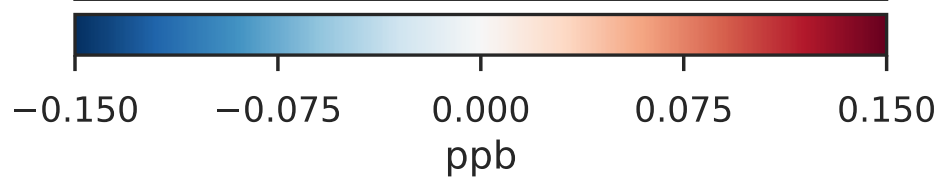
GCC_14.2.0 (Ref)
4.0x5.0



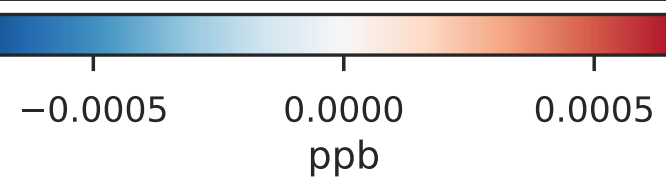
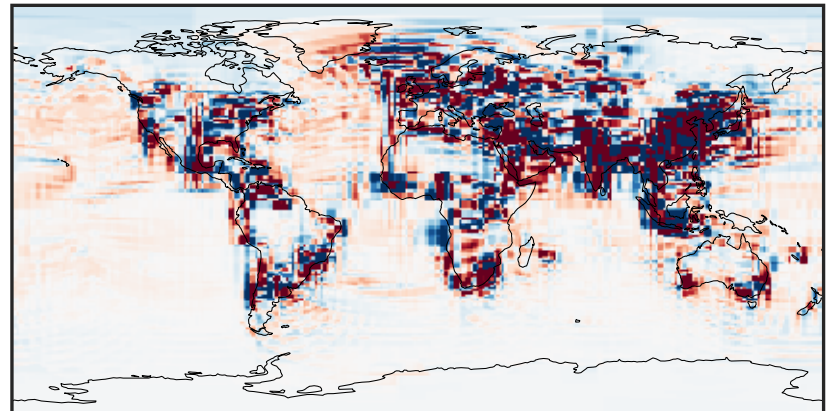
GCHP_14.2.0 (Dev)
c24



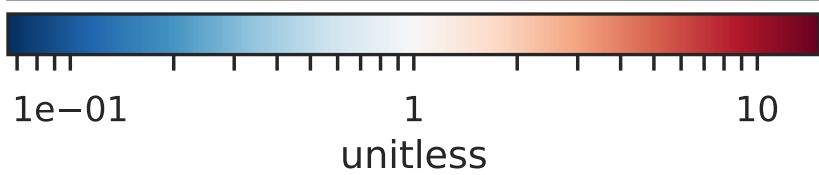
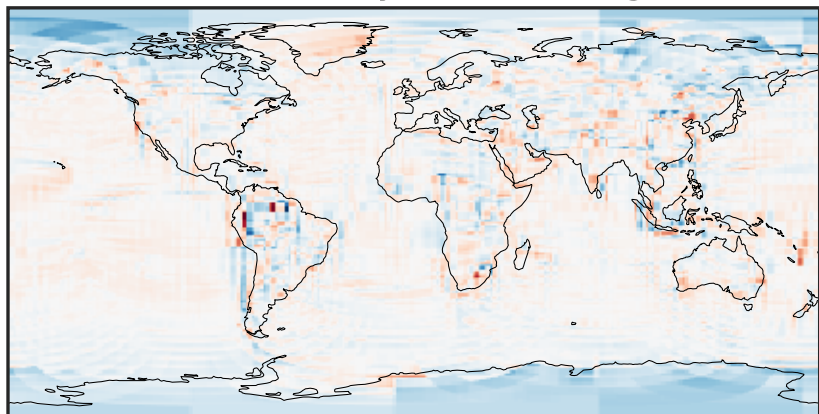
Difference (1x1.25)
Dev - Ref, Dynamic Range



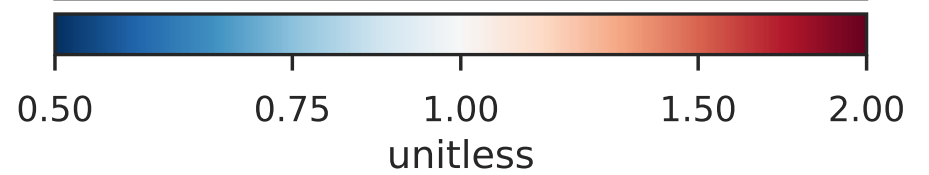
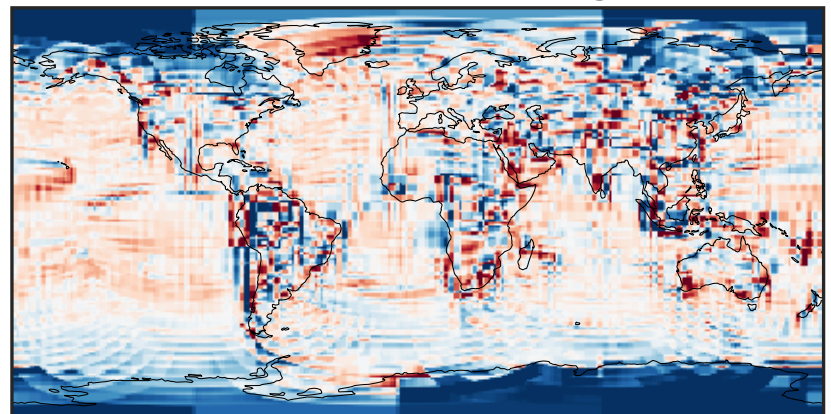
Difference (1x1.25)
Dev - Ref, Restricted Range [5%,95%]



Ratio (1x1.25)
Dev/Ref, Dynamic Range

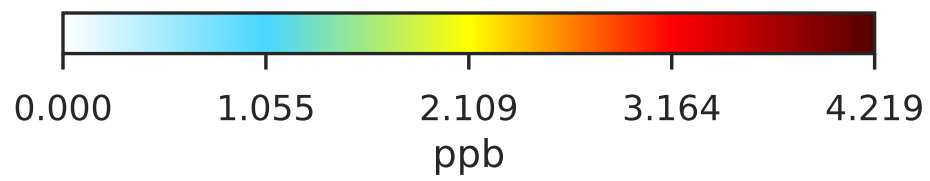
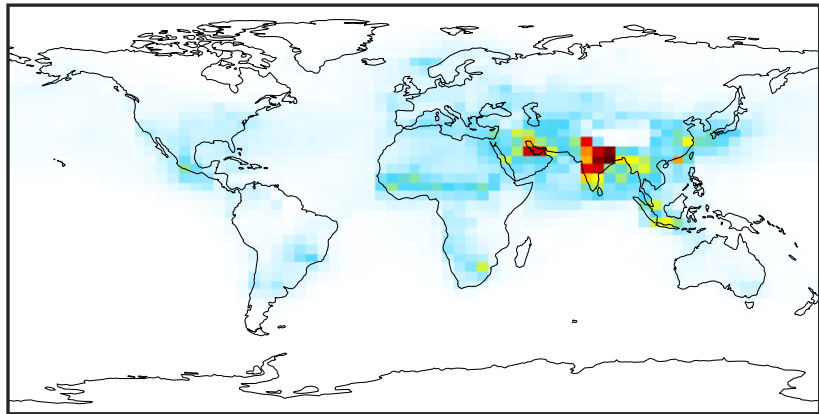


Ratio (1x1.25)
Dev/Ref, Fixed Range

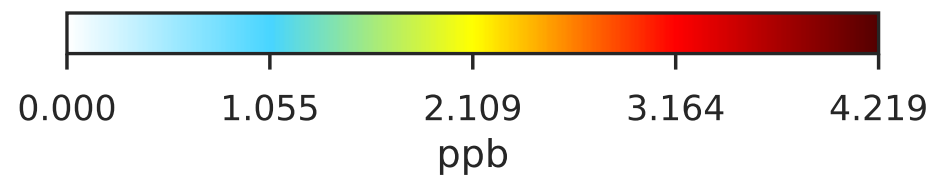
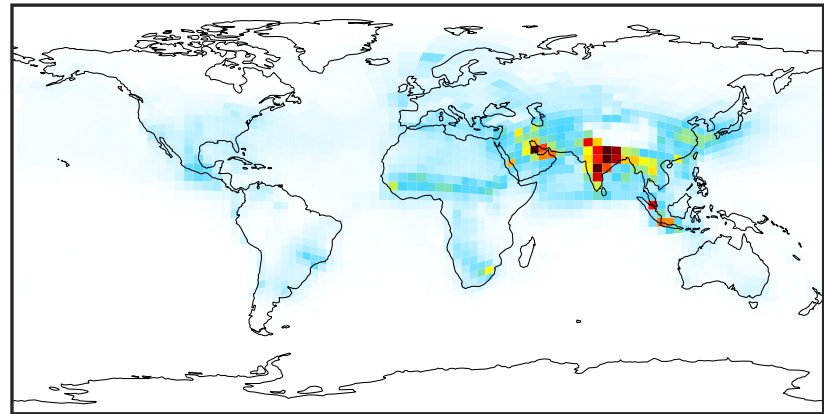


SpeciesConcVV_HNO3 (Apr2019)

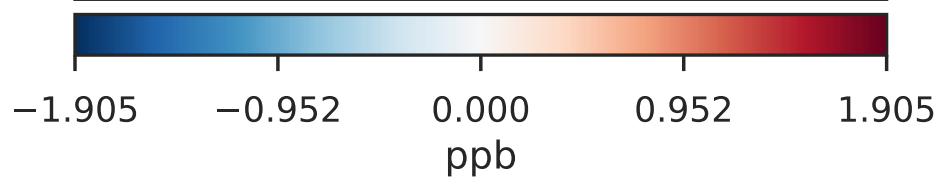
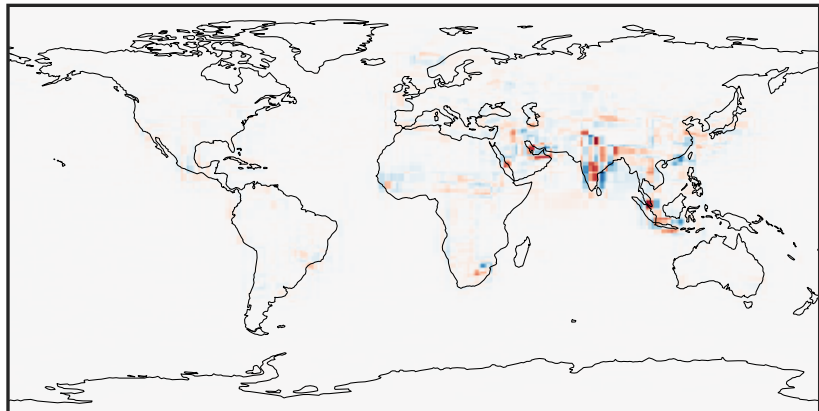
GCC_14.2.0 (Ref)
4.0x5.0



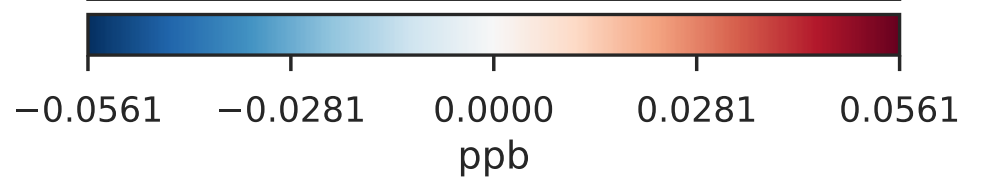
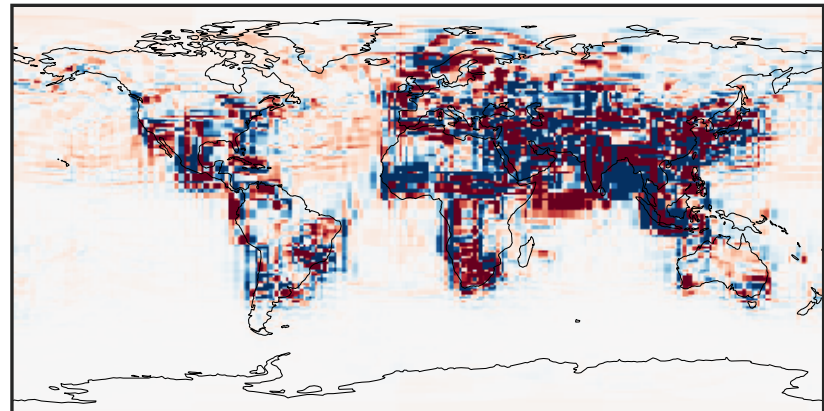
GCHP_14.2.0 (Dev)
c24



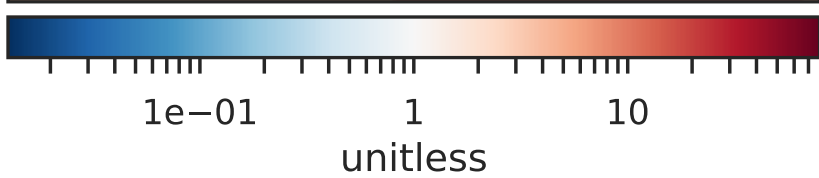
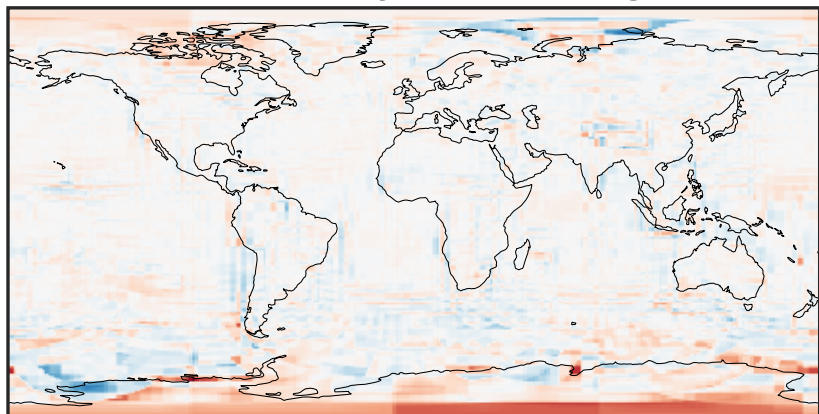
Difference (1x1.25)
Dev - Ref, Dynamic Range



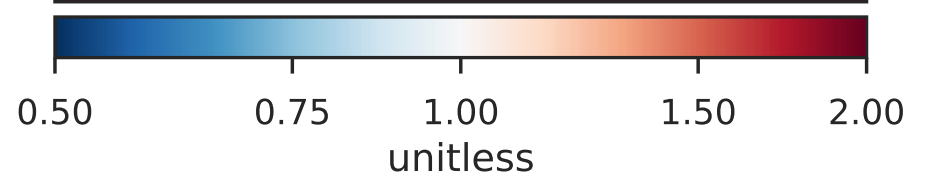
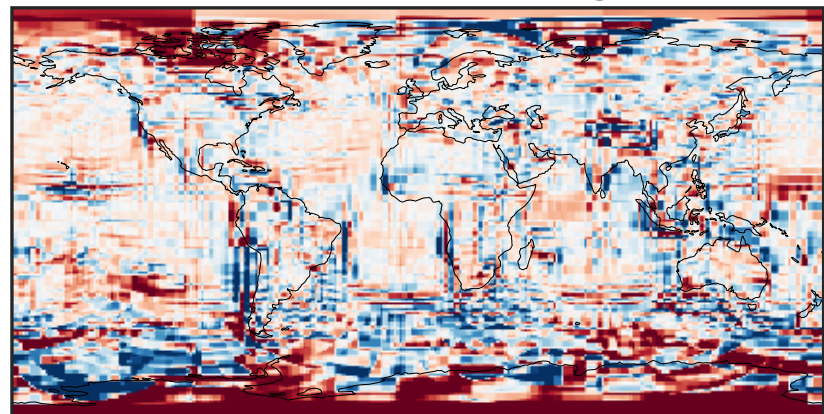
Difference (1x1.25)
Dev - Ref, Restricted Range [5%,95%]



Ratio (1x1.25)
Dev/Ref, Dynamic Range

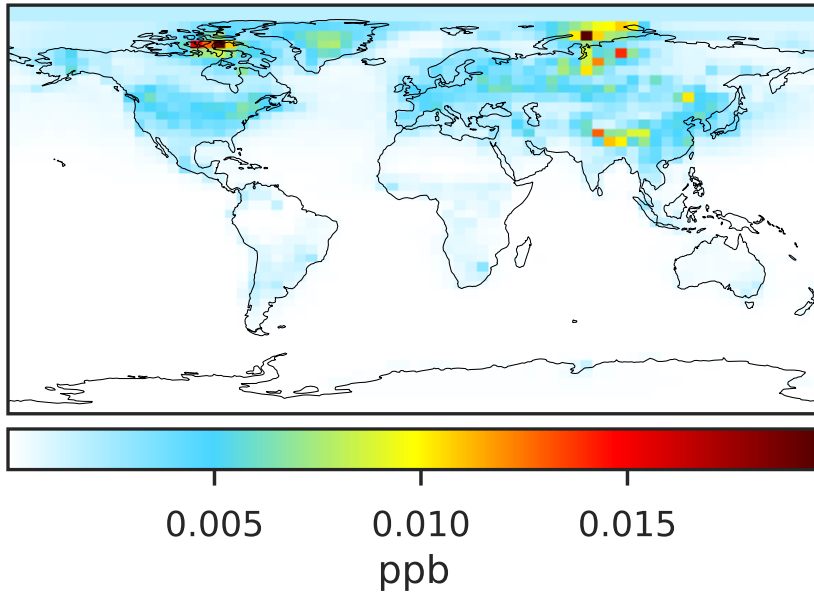


Ratio (1x1.25)
Dev/Ref, Fixed Range

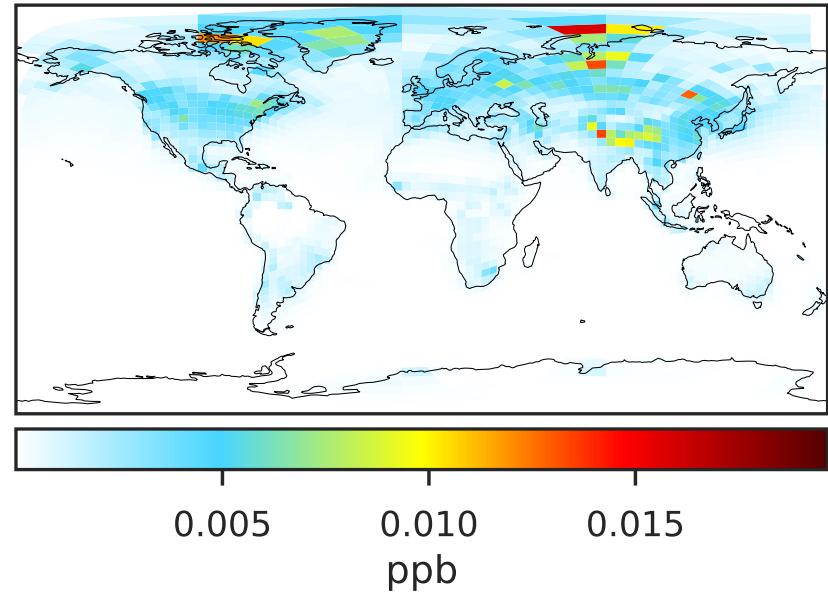


SpeciesConcVV_HNO4 (Apr2019)

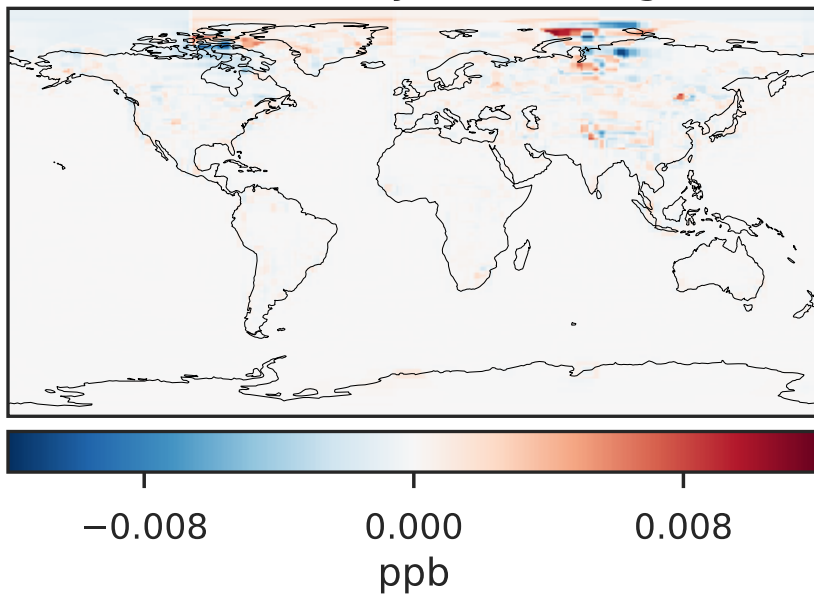
GCC_14.2.0 (Ref)
4.0x5.0



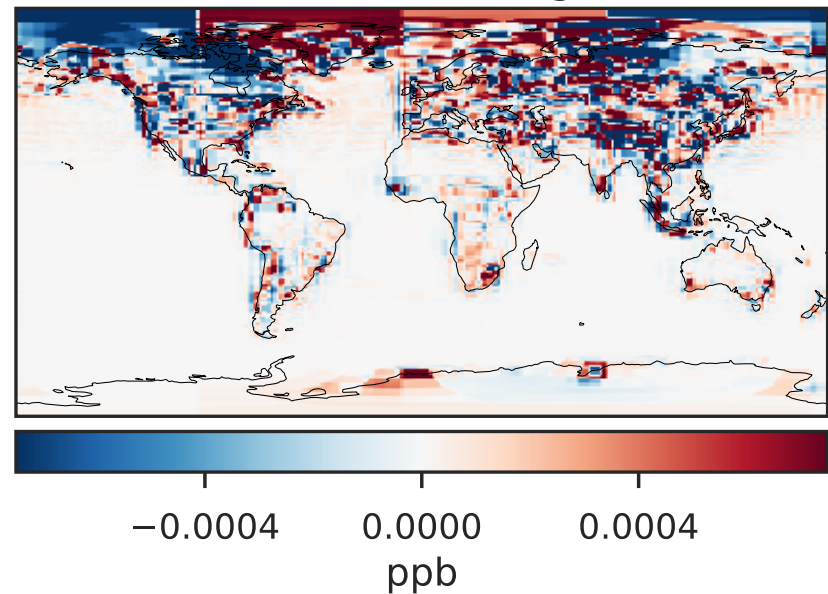
GCHP_14.2.0 (Dev)
c24



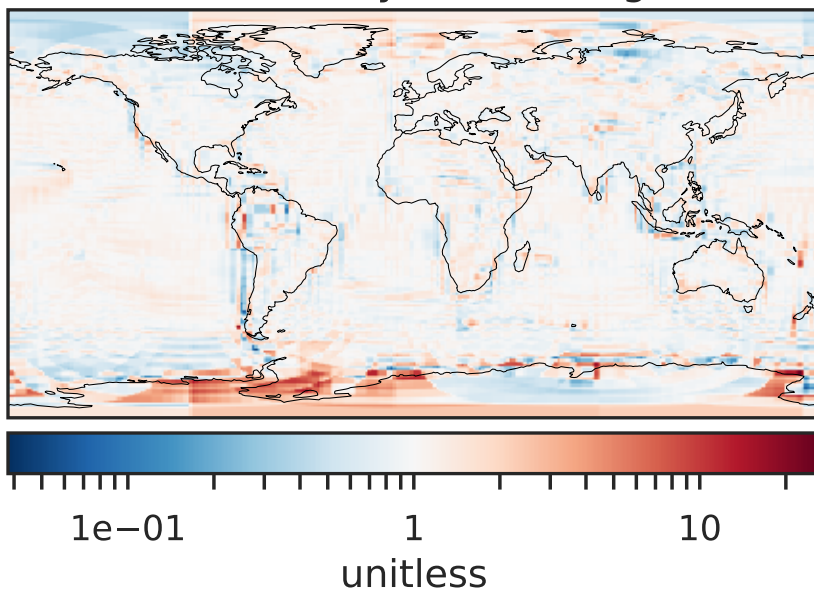
Difference (1x1.25)
Dev - Ref, Dynamic Range



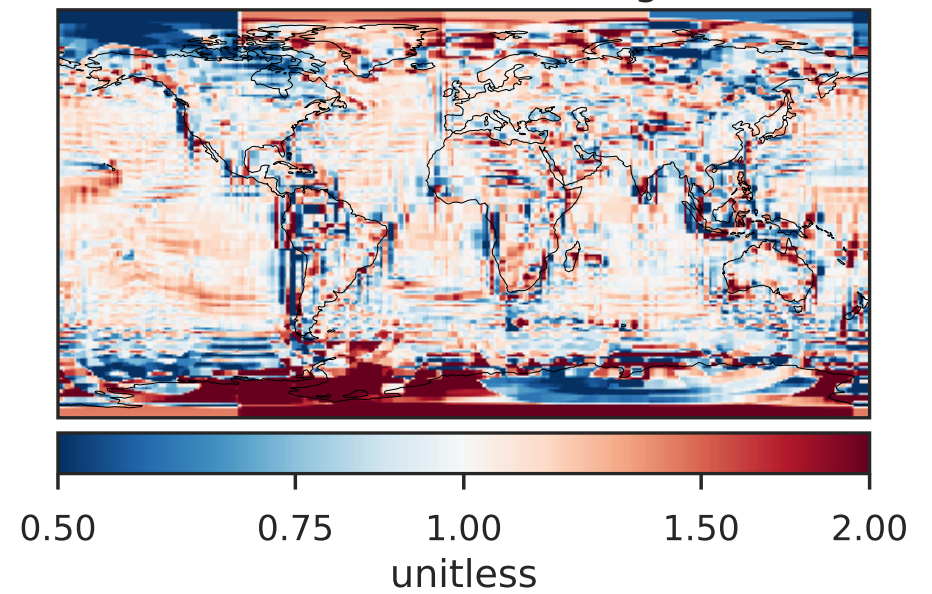
Difference (1x1.25)
Dev - Ref, Restricted Range [5%,95%]



Ratio (1x1.25)
Dev/Ref, Dynamic Range

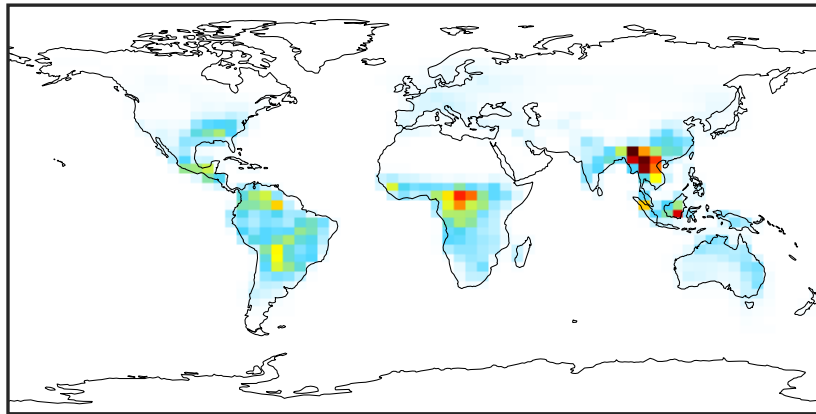


Ratio (1x1.25)
Dev/Ref, Fixed Range



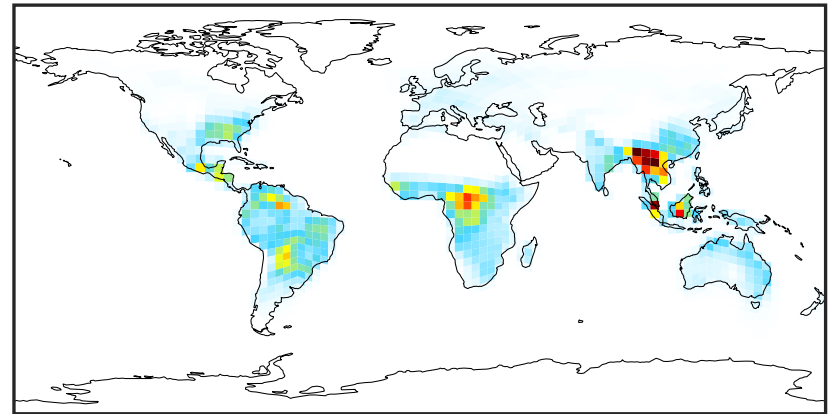
SpeciesConcVV_MPAN (Apr2019)

GCC_14.2.0 (Ref)
4.0x5.0



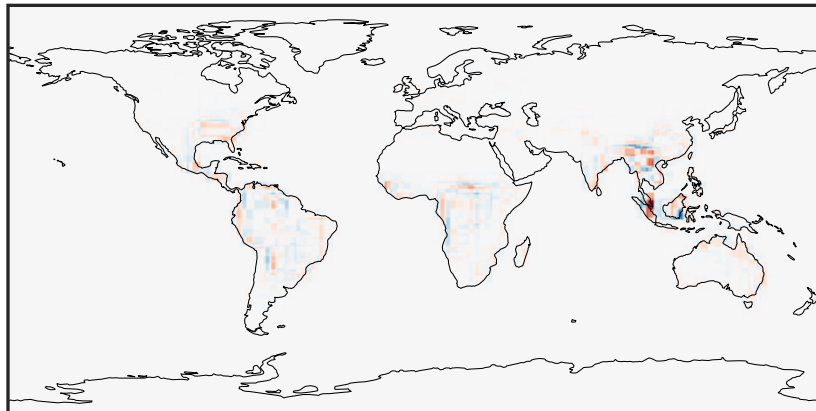
0.000 0.015 0.030
ppb

GCHP_14.2.0 (Dev)
c24



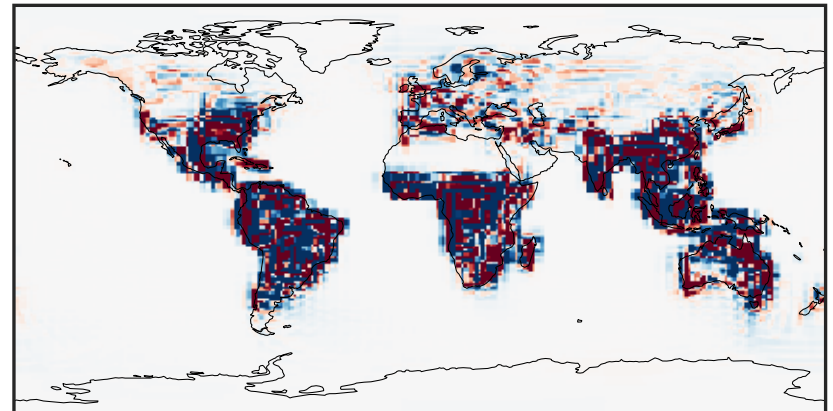
0.000 0.015 0.030
ppb

Difference (1x1.25)
Dev - Ref, Dynamic Range



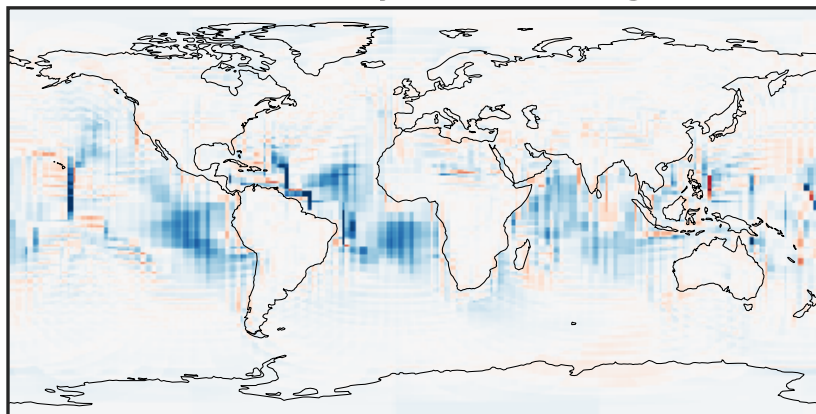
-0.015 0.000 0.015
ppb

Difference (1x1.25)
Dev - Ref, Restricted Range [5%,95%]



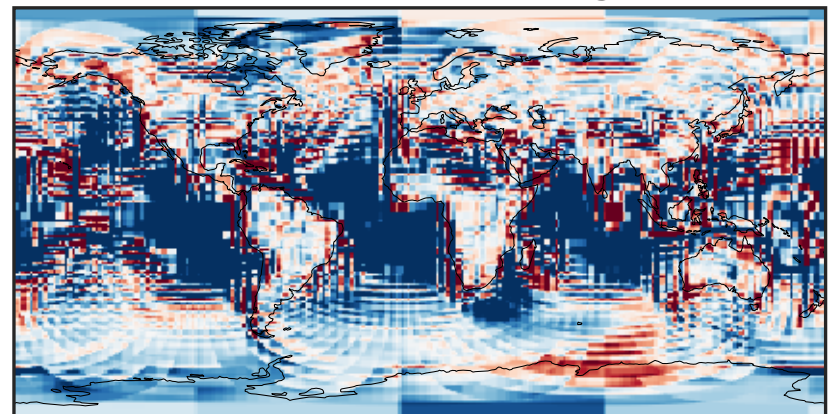
-0.00025 0.00000 0.00025
ppb

Ratio (1x1.25)
Dev/Ref, Dynamic Range



unitless

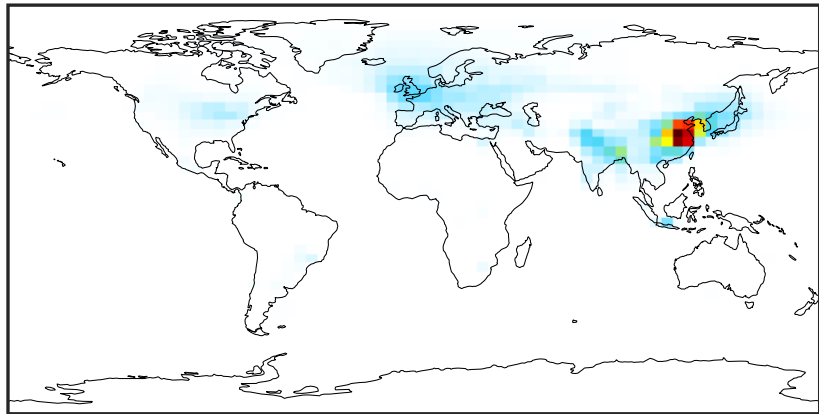
Ratio (1x1.25)
Dev/Ref, Fixed Range



0.50 0.75 1.00 1.50 2.00
unitless

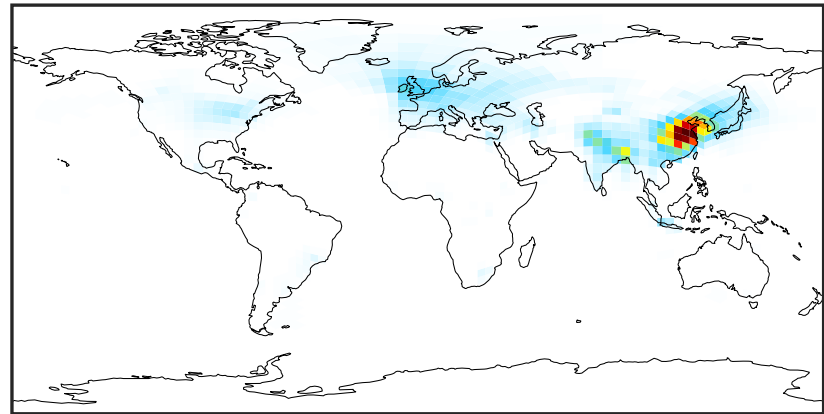
SpeciesConcVV_NIT (Apr2019)

GCC_14.2.0 (Ref)
4.0x5.0



0.00 2.83 5.66 8.49 11.32
ppb

GCHP_14.2.0 (Dev)
c24



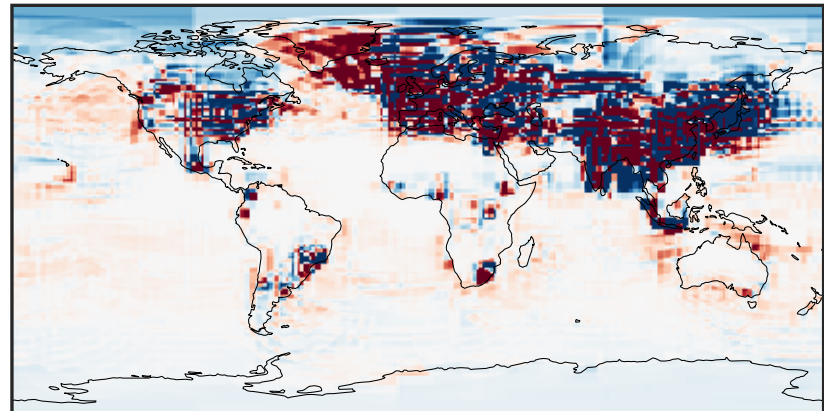
0.00 2.83 5.66 8.49 11.32
ppb

Difference (1x1.25)
Dev - Ref, Dynamic Range



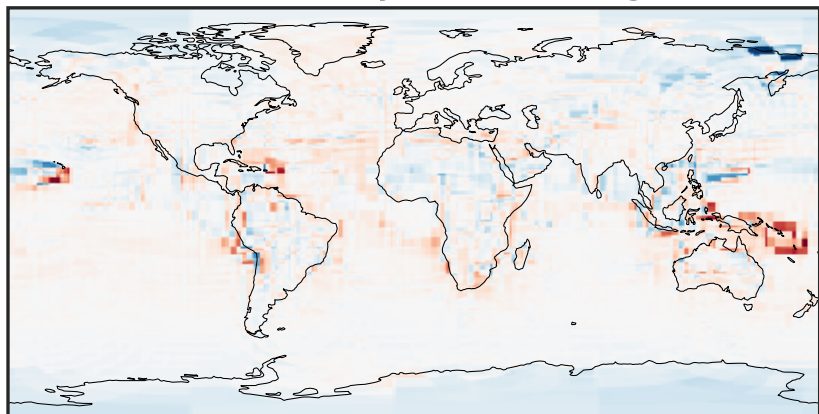
-5.73 -2.87 0.00 2.87 5.73
ppb

Difference (1x1.25)
Dev - Ref, Restricted Range [5%,95%]



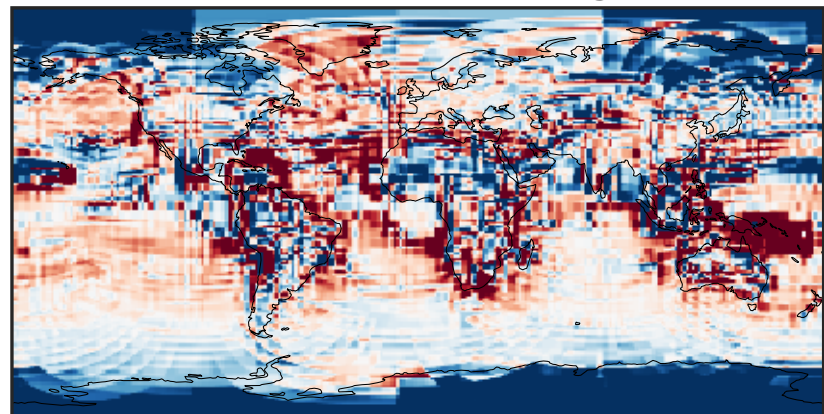
-0.025 0.000 0.025
ppb

Ratio (1x1.25)
Dev/Ref, Dynamic Range



1e-02 1e-01 1 10 100
unitless

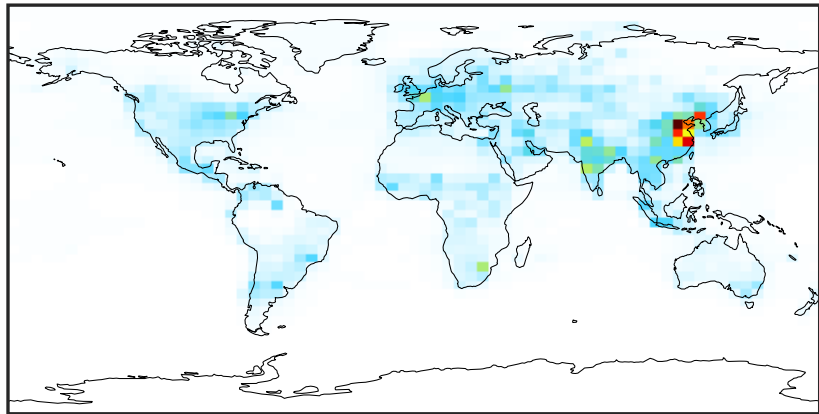
Ratio (1x1.25)
Dev/Ref, Fixed Range



0.50 0.75 1.00 1.50 2.00
unitless

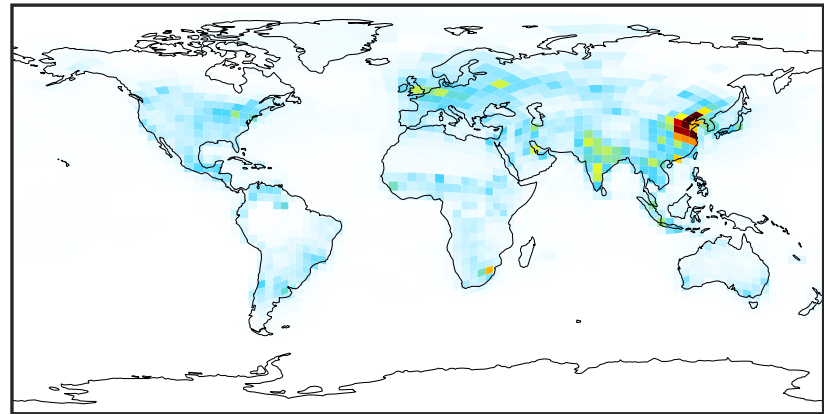
SpeciesConcVV_NO (Apr2019)

GCC_14.2.0 (Ref)
4.0x5.0



0.0000 0.1735 0.3470 0.5205 0.6940
ppb

GCHP_14.2.0 (Dev)
c24



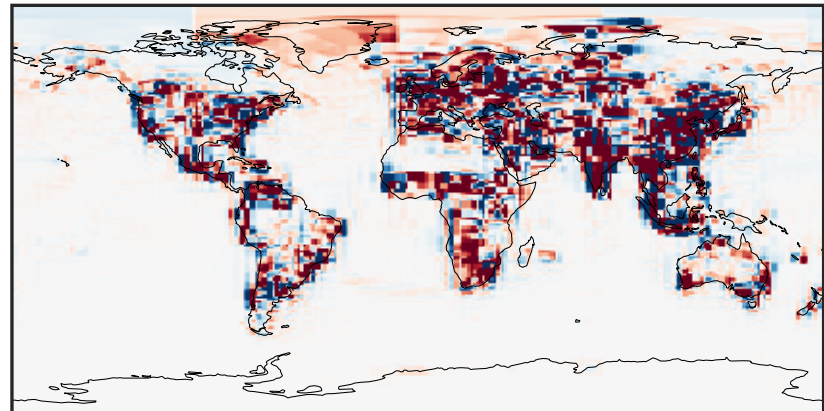
0.0000 0.1735 0.3470 0.5205 0.6940
ppb

Difference (1x1.25)
Dev - Ref, Dynamic Range



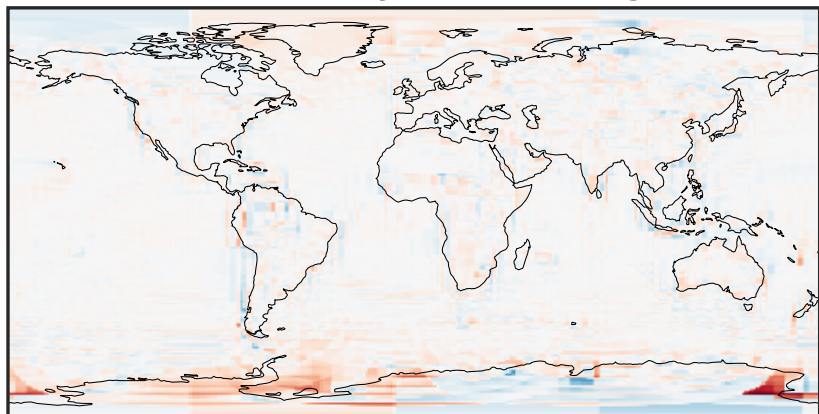
-0.695 -0.347 0.000 0.347 0.695
ppb

Difference (1x1.25)
Dev - Ref, Restricted Range [5%,95%]



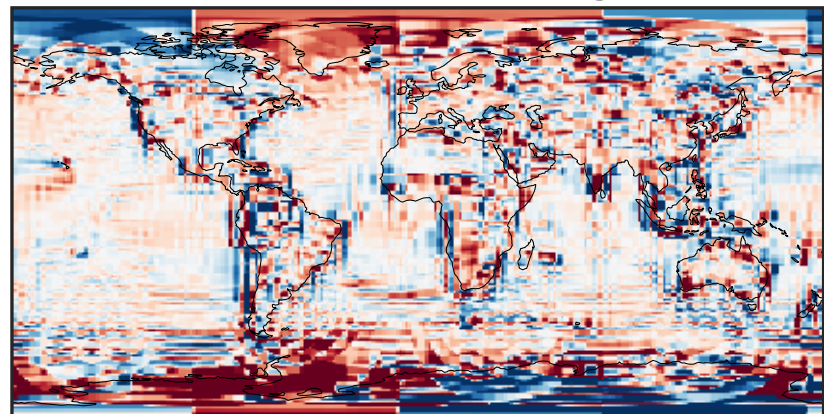
-0.008 0.000 0.008
ppb

Ratio (1x1.25)
Dev/Ref, Dynamic Range



1e-02 1e-01 1 10 100
unitless

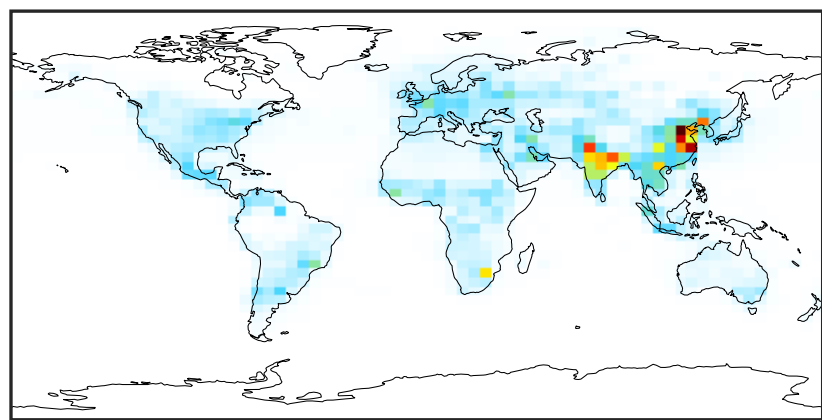
Ratio (1x1.25)
Dev/Ref, Fixed Range



0.50 0.75 1.00 1.50 2.00
unitless

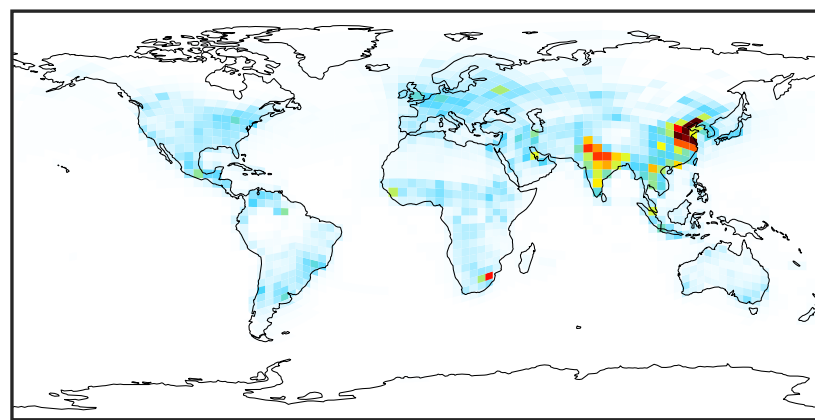
SpeciesConcVW_NO2 (Apr2019)

GCC_14.2.0 (Ref)
4.0x5.0



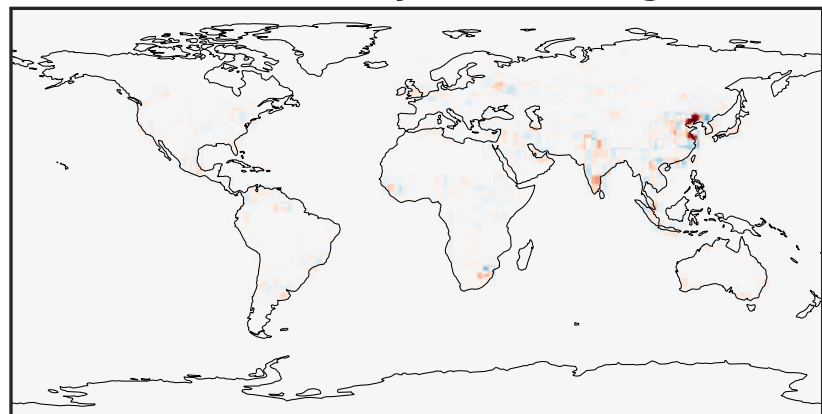
0.000 1.956 3.911 5.867 7.822
ppb

GCHP_14.2.0 (Dev)
c24



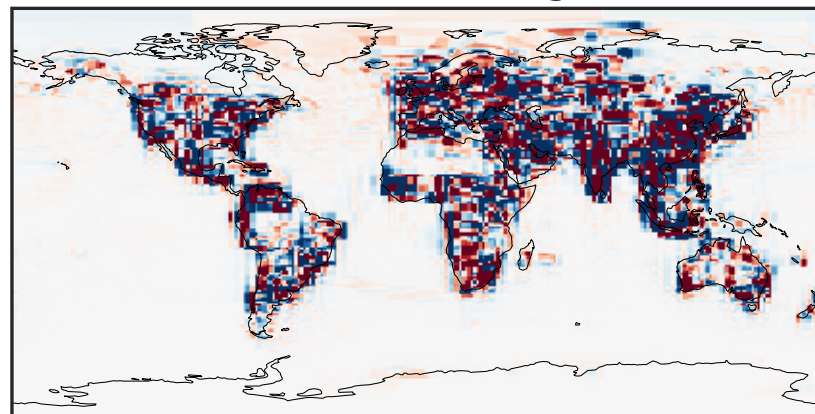
0.000 1.956 3.911 5.867 7.822
ppb

Difference (1x1.25)
Dev - Ref, Dynamic Range



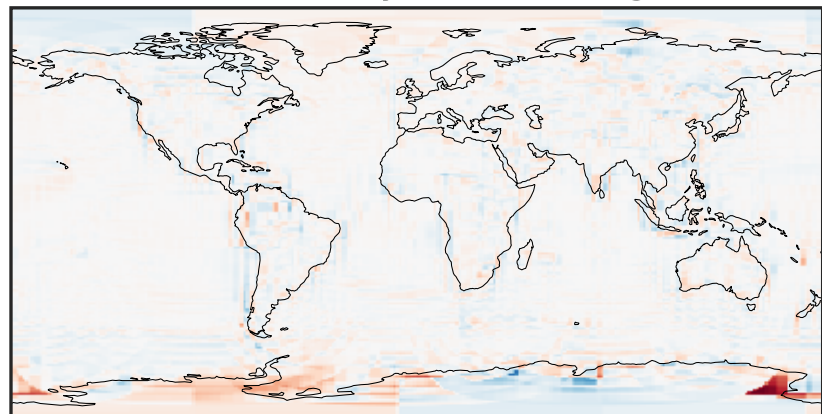
-6.88 -3.44 0.00 3.44 6.88
ppb

Difference (1x1.25)
Dev - Ref, Restricted Range [5%,95%]



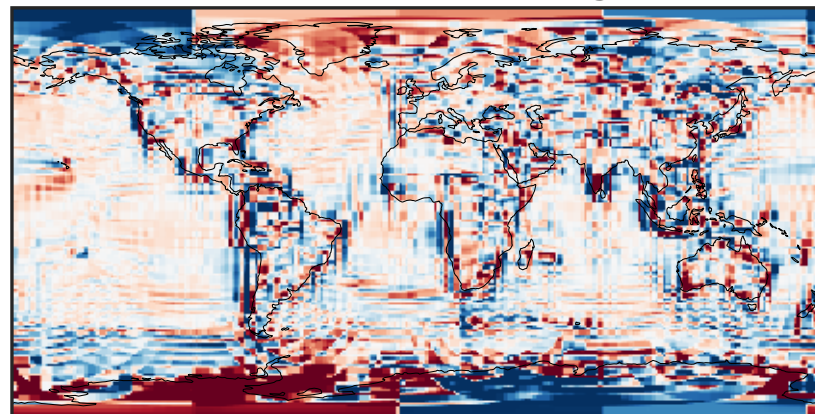
-0.1212 -0.0606 0.0000 0.0606 0.1212
ppb

Ratio (1x1.25)
Dev/Ref, Dynamic Range



1e-02 1e-01 1 10 100
unitless

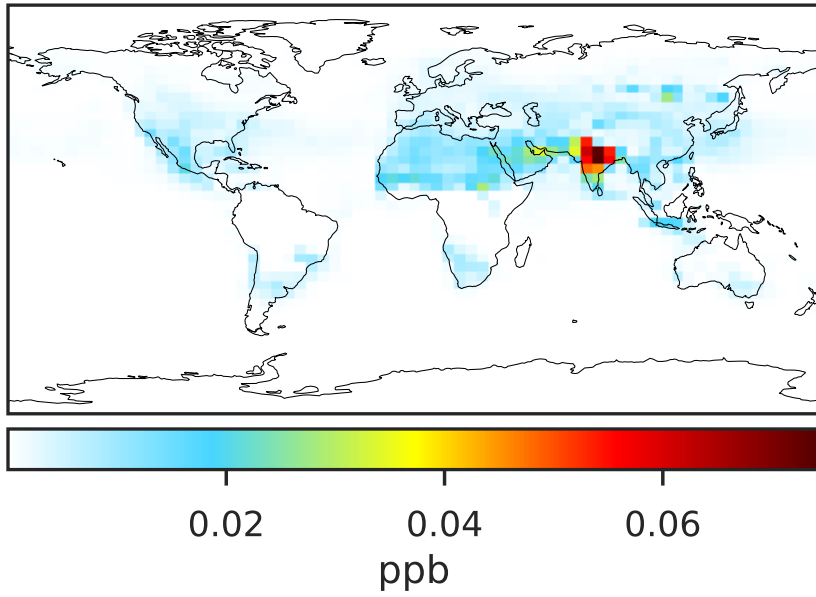
Ratio (1x1.25)
Dev/Ref, Fixed Range



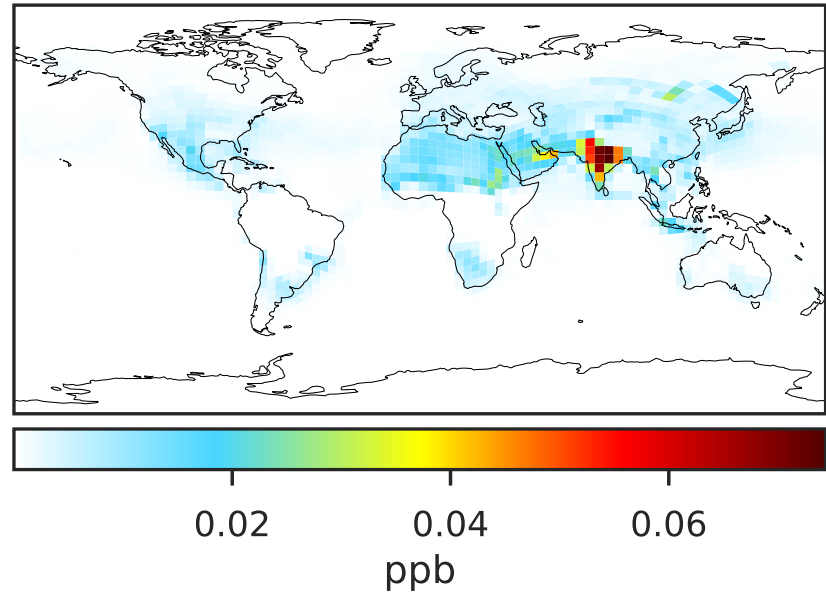
0.50 0.75 1.00 1.50 2.00
unitless

SpeciesConcVW_NO3 (Apr2019)

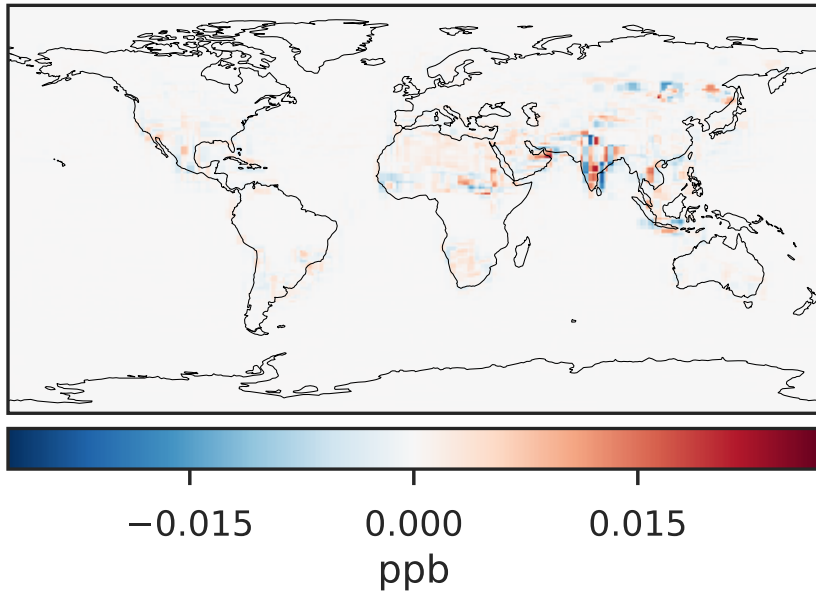
GCC_14.2.0 (Ref)
4.0x5.0



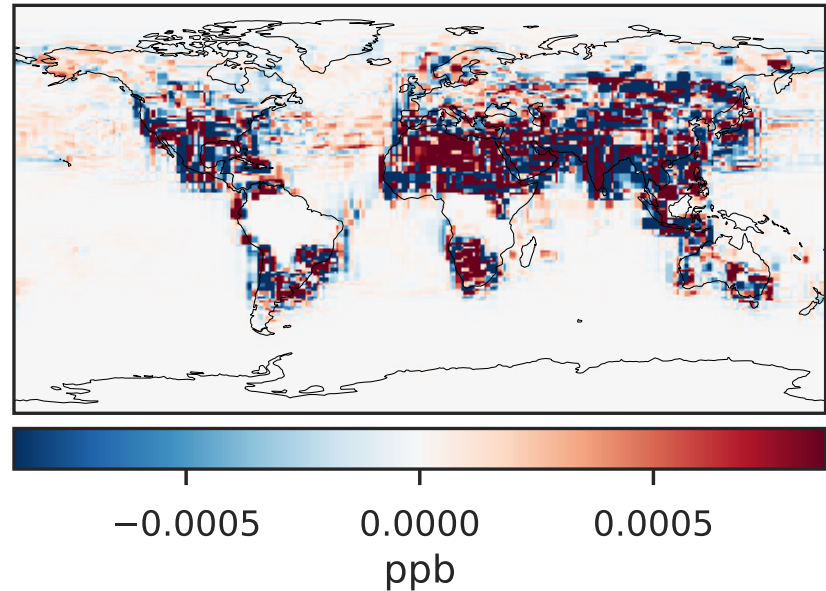
GCHP_14.2.0 (Dev)
c24



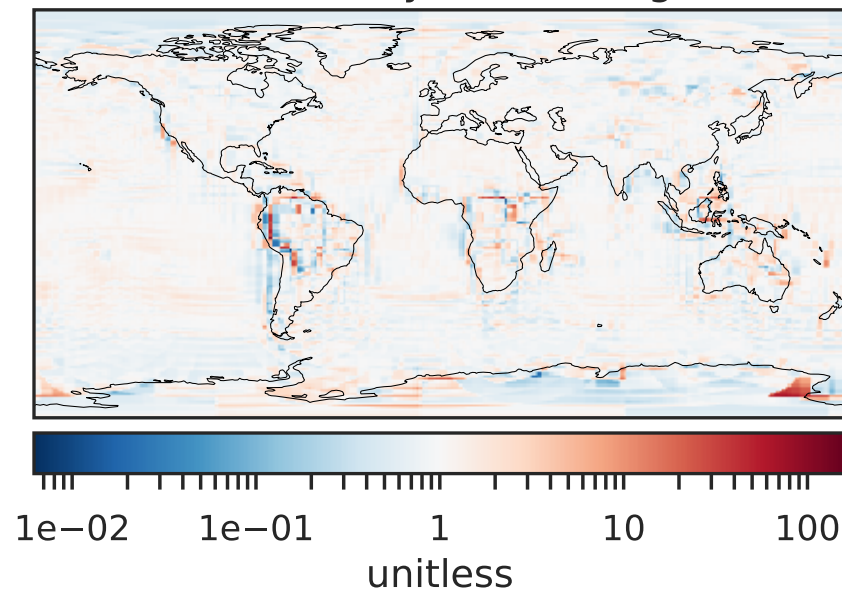
Difference (1x1.25)
Dev - Ref, Dynamic Range



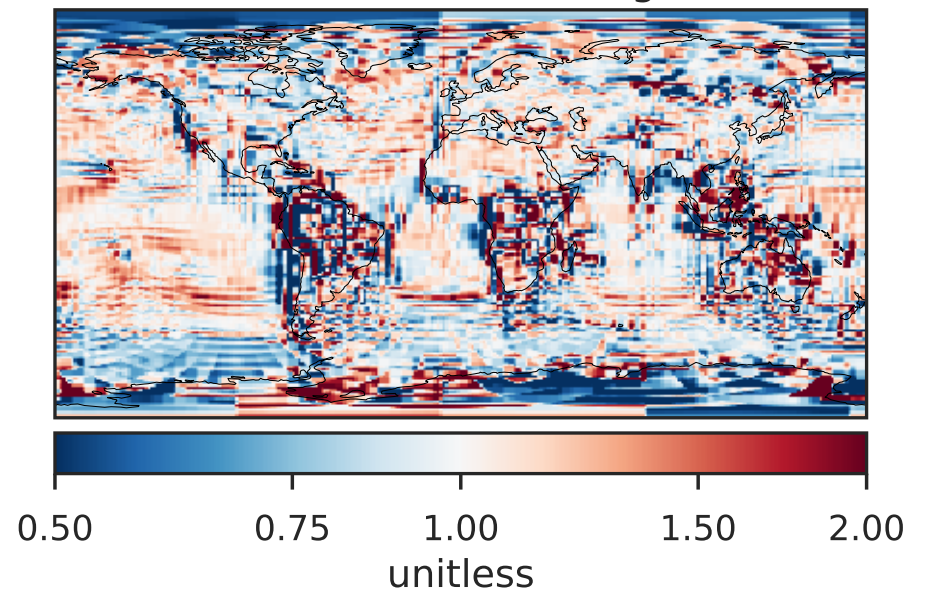
Difference (1x1.25)
Dev - Ref, Restricted Range [5%,95%]



Ratio (1x1.25)
Dev/Ref, Dynamic Range

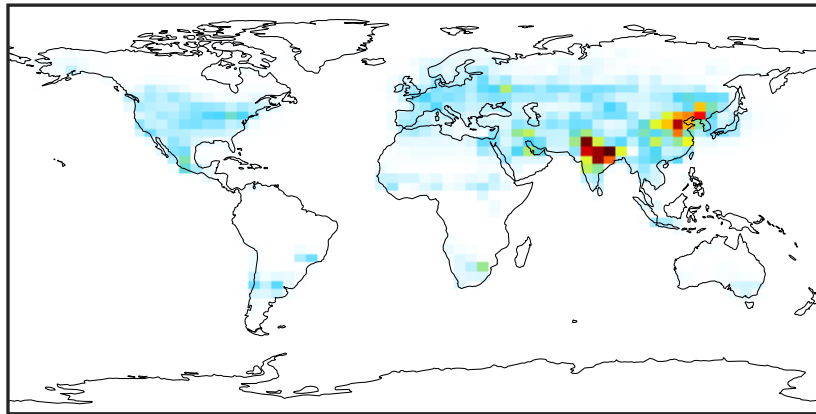


Ratio (1x1.25)
Dev/Ref, Fixed Range



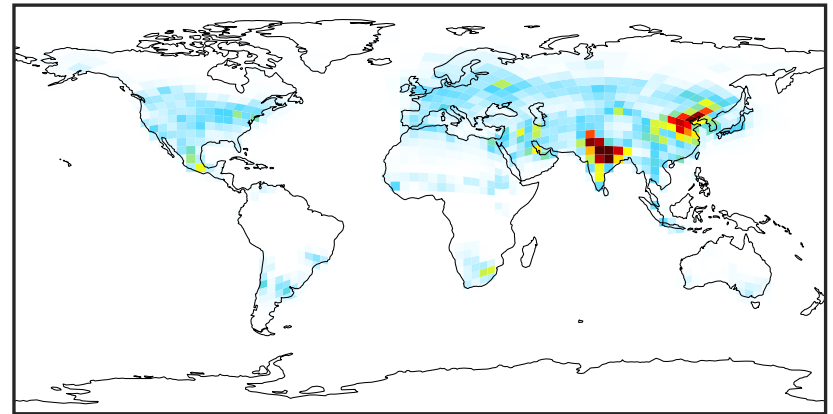
SpeciesConcVV_N2O5 (Apr2019)

GCC_14.2.0 (Ref)
4.0x5.0



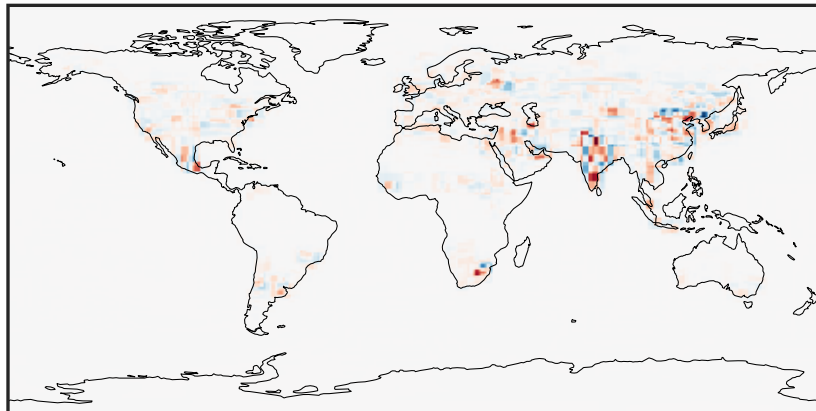
0.0000 0.0587 0.1175 0.1762 0.2350
ppb

GCHP_14.2.0 (Dev)
c24



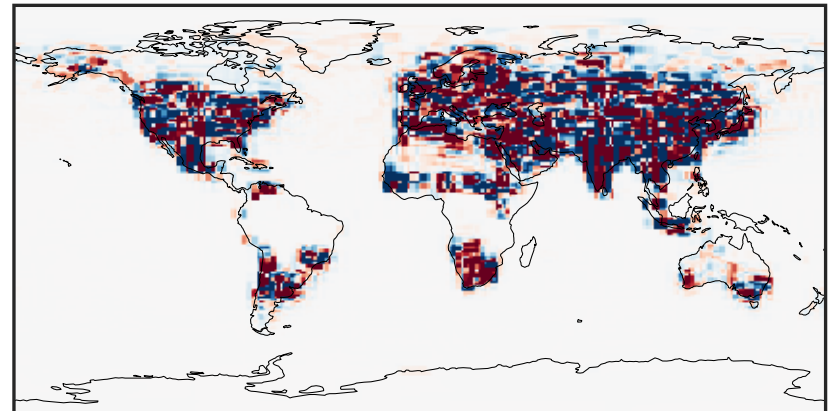
0.0000 0.0587 0.1175 0.1762 0.2350
ppb

Difference (1x1.25)
Dev - Ref, Dynamic Range



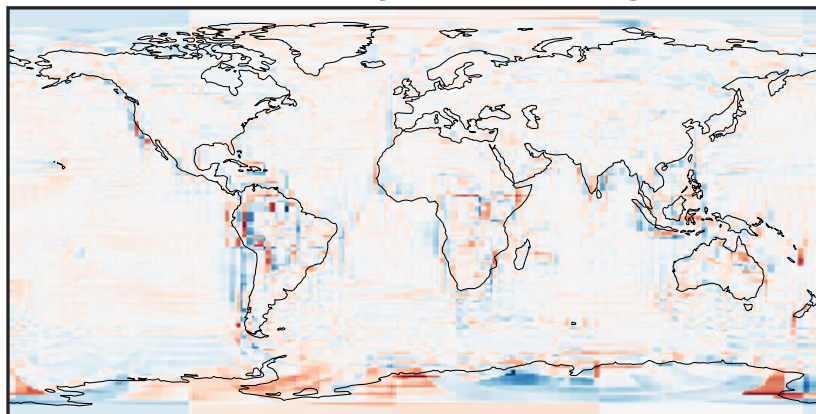
-0.1035 -0.0518 0.0000 0.0518 0.1035
ppb

Difference (1x1.25)
Dev - Ref, Restricted Range [5%,95%]



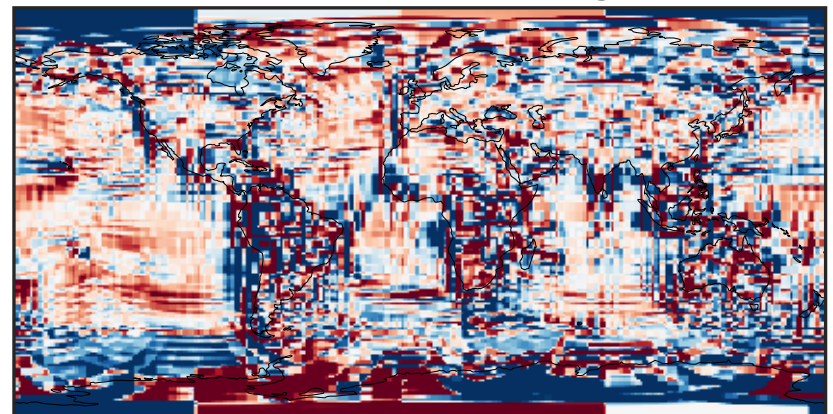
-0.002 0.000 0.002
ppb

Ratio (1x1.25)
Dev/Ref, Dynamic Range



1e-02 1e-01 1 10 100
unitless

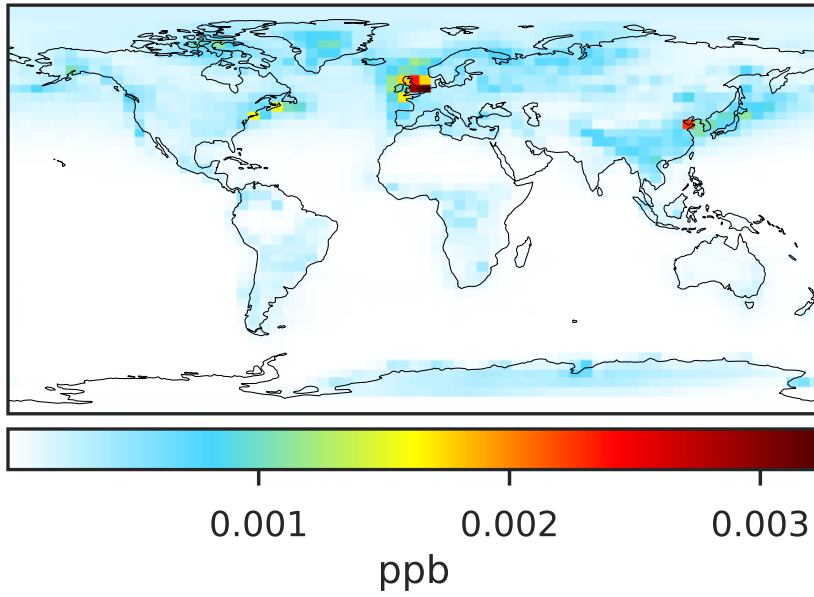
Ratio (1x1.25)
Dev/Ref, Fixed Range



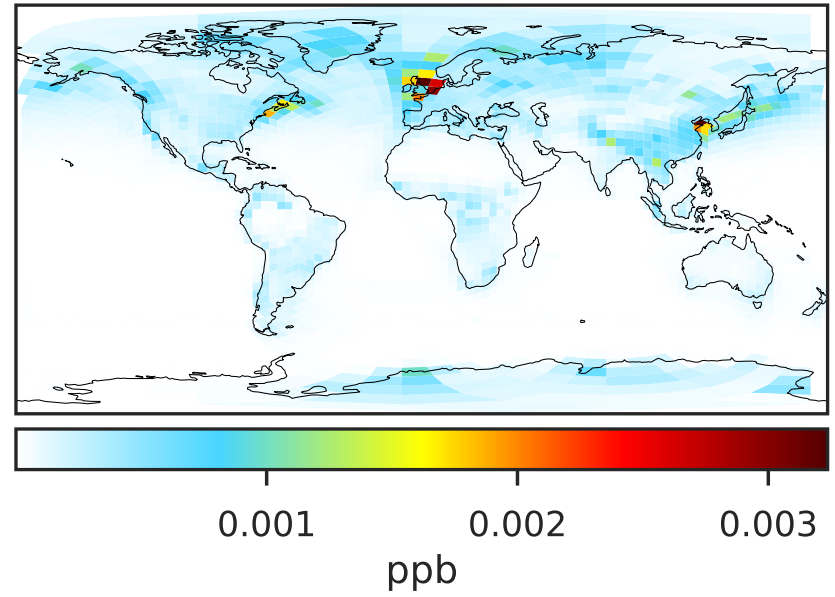
0.50 0.75 1.00 1.50 2.00
unitless

SpeciesConcVV_MPN (Apr2019)

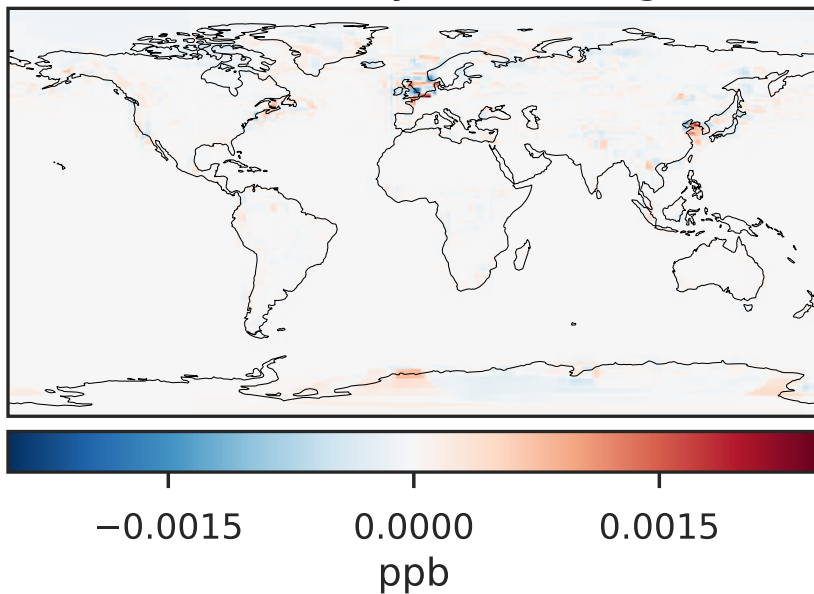
GCC_14.2.0 (Ref)
4.0x5.0



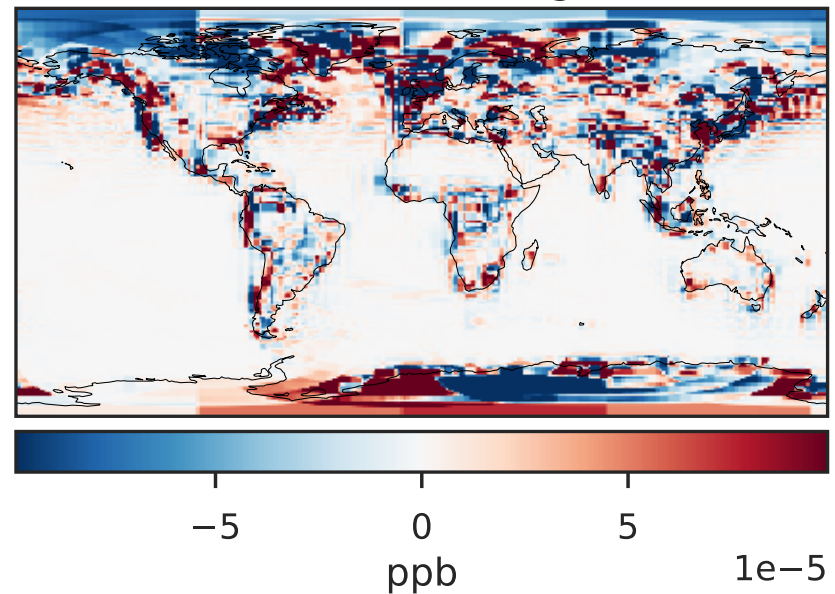
GCHP_14.2.0 (Dev)
c24



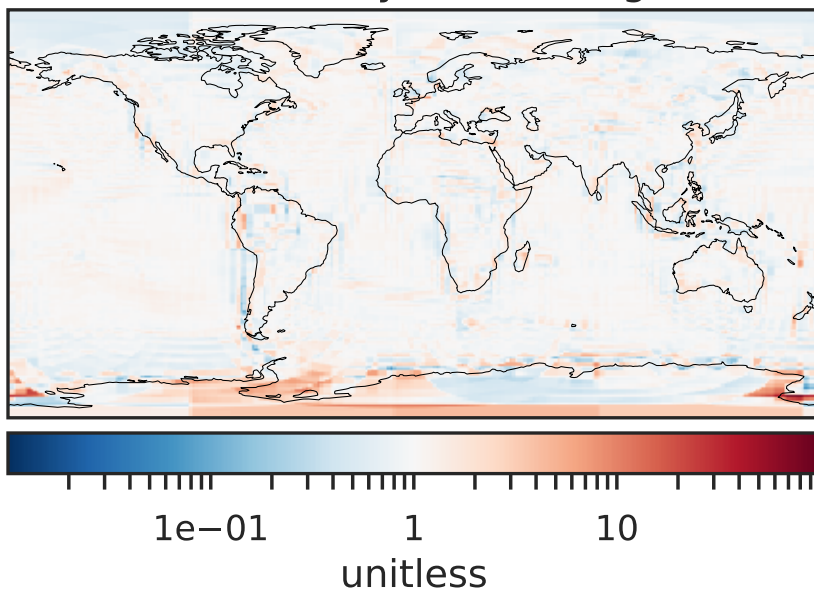
Difference (1x1.25)
Dev - Ref, Dynamic Range



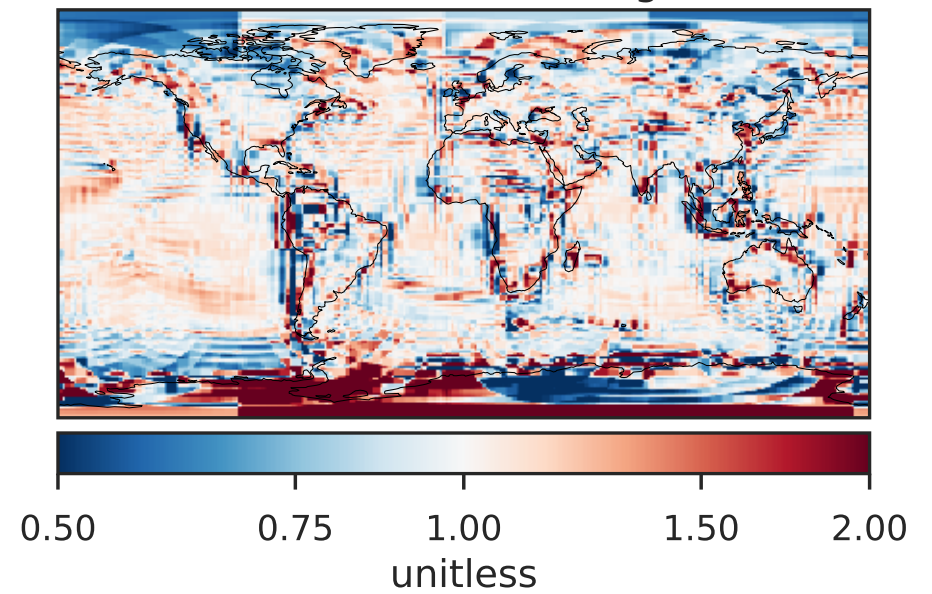
Difference (1x1.25)
Dev - Ref, Restricted Range [5%,95%]



Ratio (1x1.25)
Dev/Ref, Dynamic Range

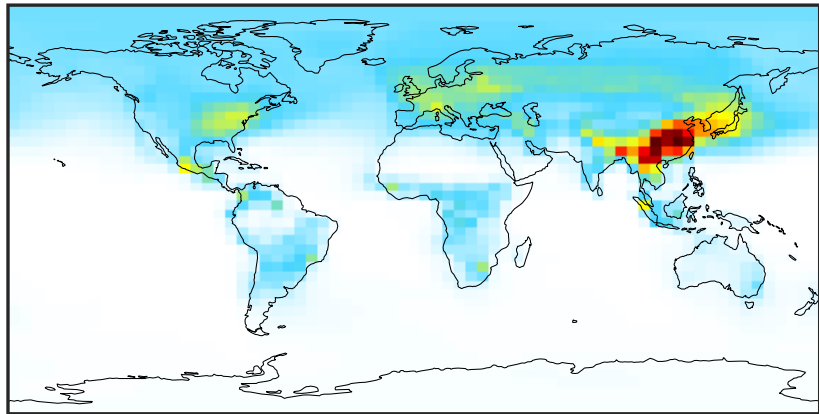


Ratio (1x1.25)
Dev/Ref, Fixed Range



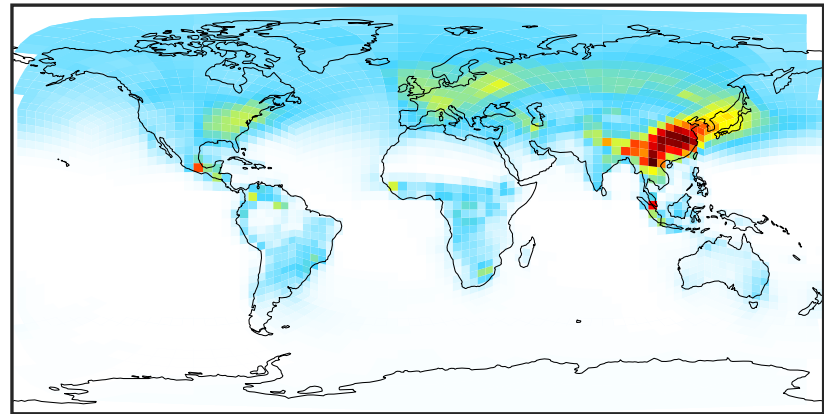
SpeciesConcVV_PAN (Apr2019)

GCC_14.2.0 (Ref)
4.0x5.0



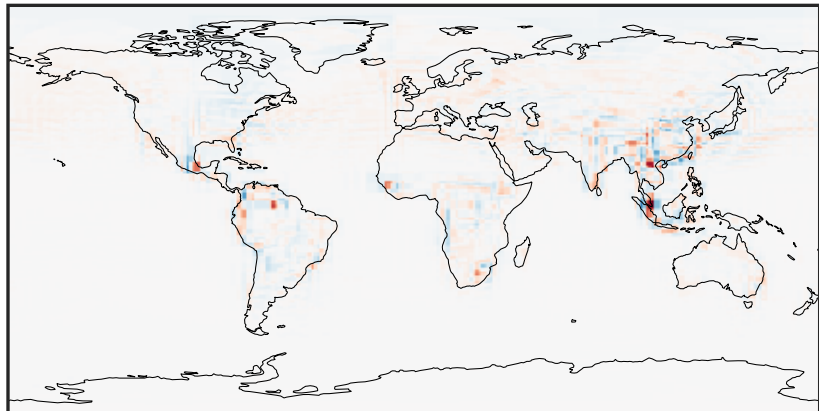
0.000 0.261 0.523 0.784 1.046
ppb

GCHP_14.2.0 (Dev)
c24



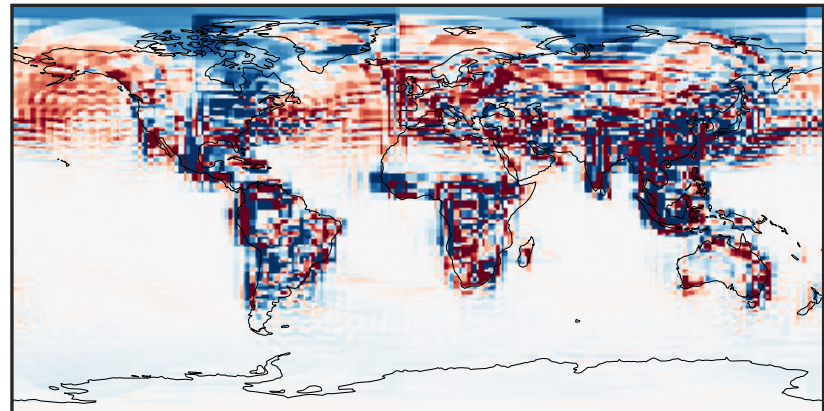
0.000 0.261 0.523 0.784 1.046
ppb

Difference (1x1.25)
Dev - Ref, Dynamic Range



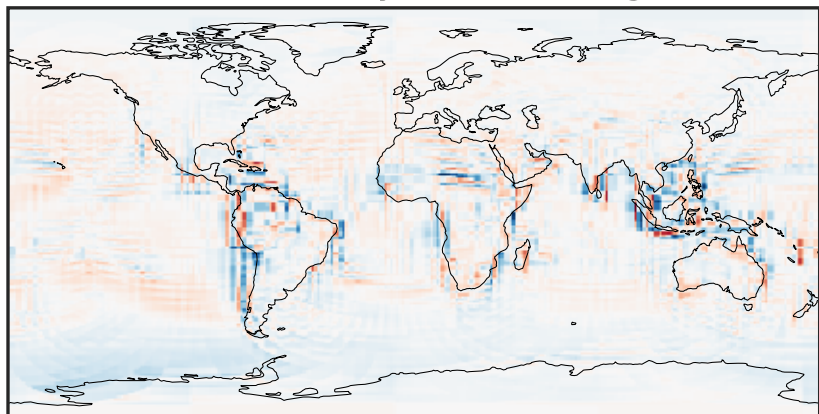
-0.4473 -0.2236 0.0000 0.2236 0.4473
ppb

Difference (1x1.25)
Dev - Ref, Restricted Range [5%,95%]



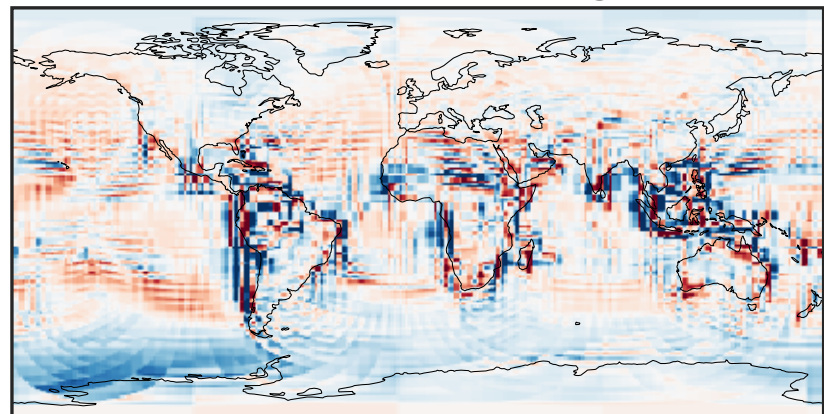
-0.015 0.000 0.015
ppb

Ratio (1x1.25)
Dev/Ref, Dynamic Range



0.129 0.565 1.000 4.375 7.751
unitless

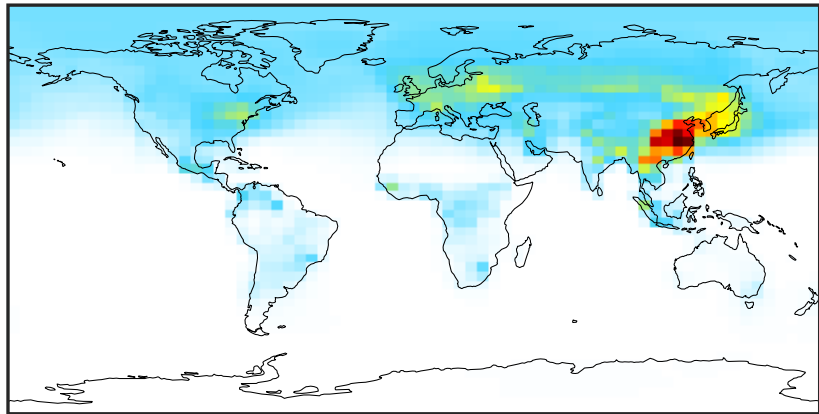
Ratio (1x1.25)
Dev/Ref, Fixed Range



0.50 0.75 1.00 1.50 2.00
unitless

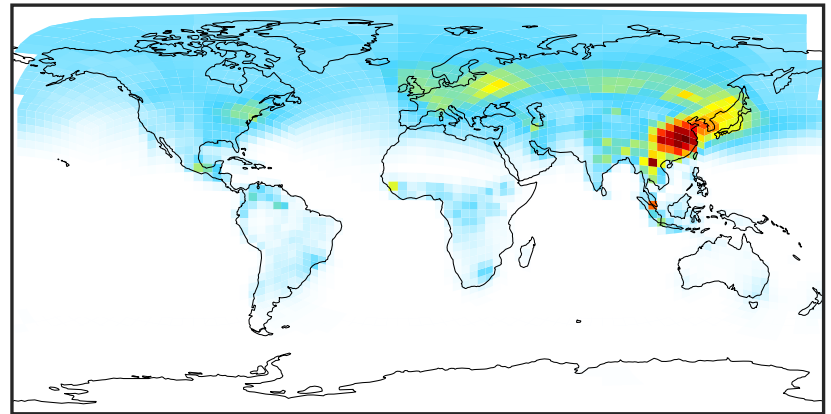
SpeciesConcVV_PPN (Apr2019)

GCC_14.2.0 (Ref)
4.0x5.0



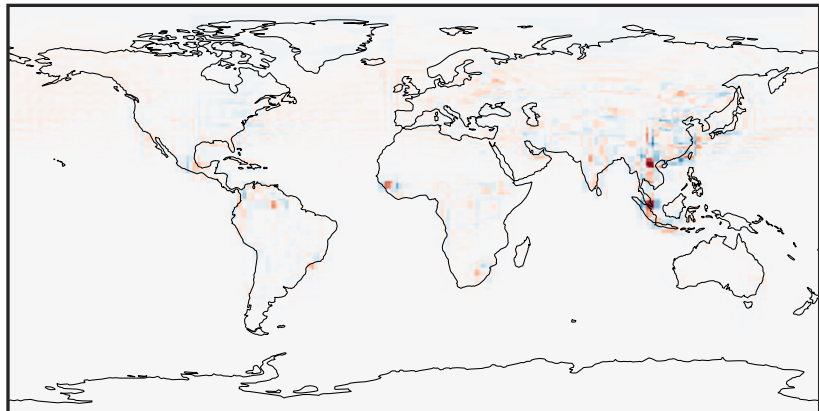
0.0000 0.0632 0.1264 0.1897 0.2529
ppb

GCHP_14.2.0 (Dev)
c24



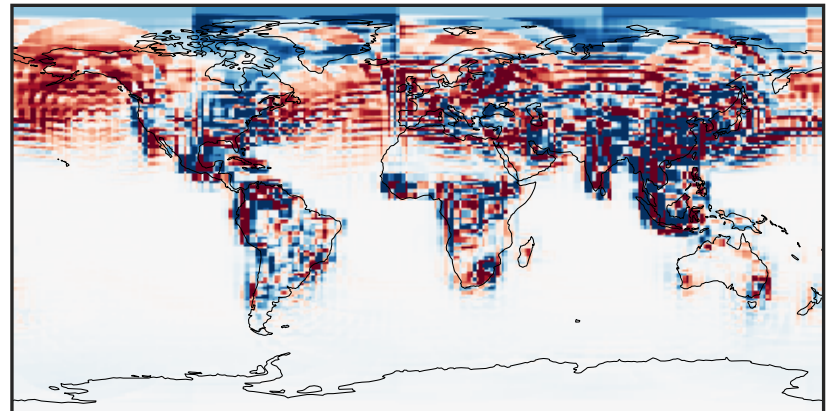
0.0000 0.0632 0.1264 0.1897 0.2529
ppb

Difference (1x1.25)
Dev - Ref, Dynamic Range



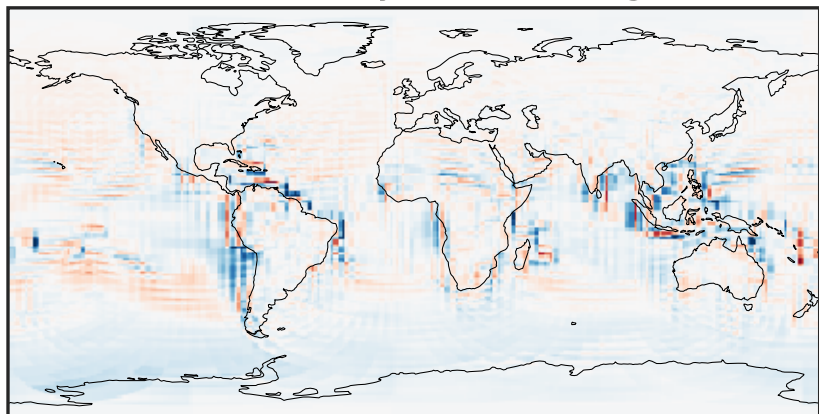
-0.104 -0.052 0.000 0.052 0.104
ppb

Difference (1x1.25)
Dev - Ref, Restricted Range [5%,95%]



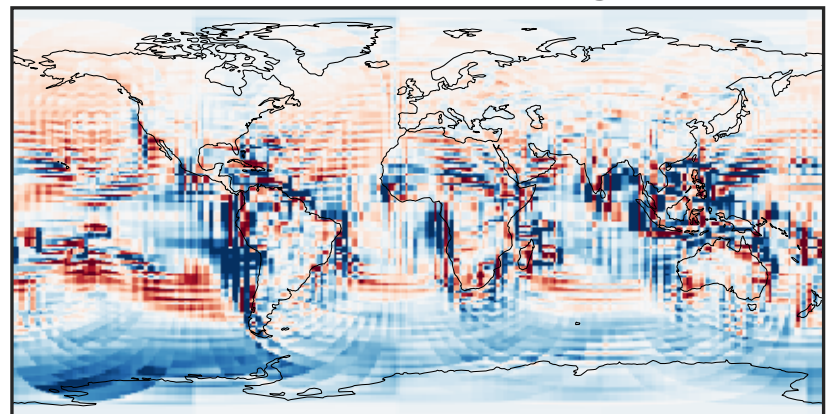
-0.0025 0.0000 0.0025
ppb

Ratio (1x1.25)
Dev/Ref, Dynamic Range



1e-01 1 10
unitless

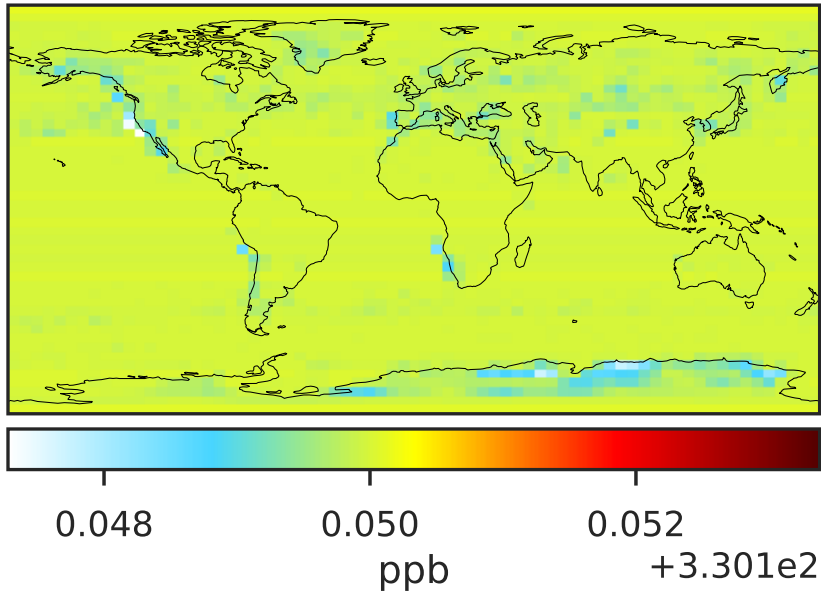
Ratio (1x1.25)
Dev/Ref, Fixed Range



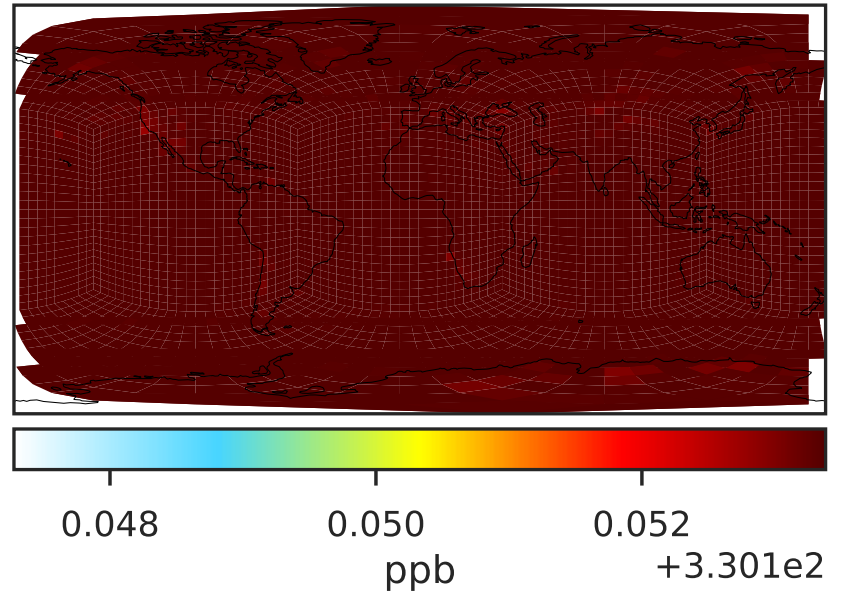
0.50 0.75 1.00 1.50 2.00
unitless

SpeciesConcVW_N2O (Apr2019)

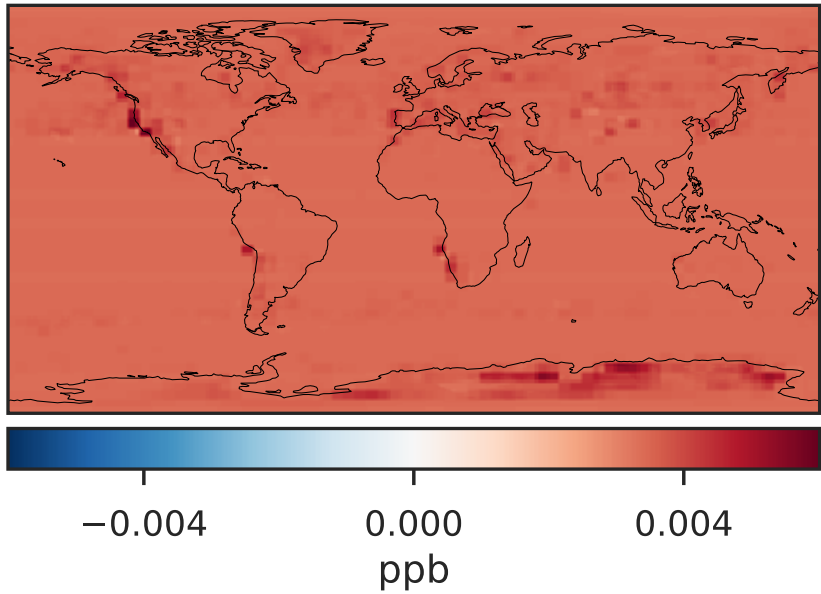
GCC_14.2.0 (Ref)
4.0x5.0



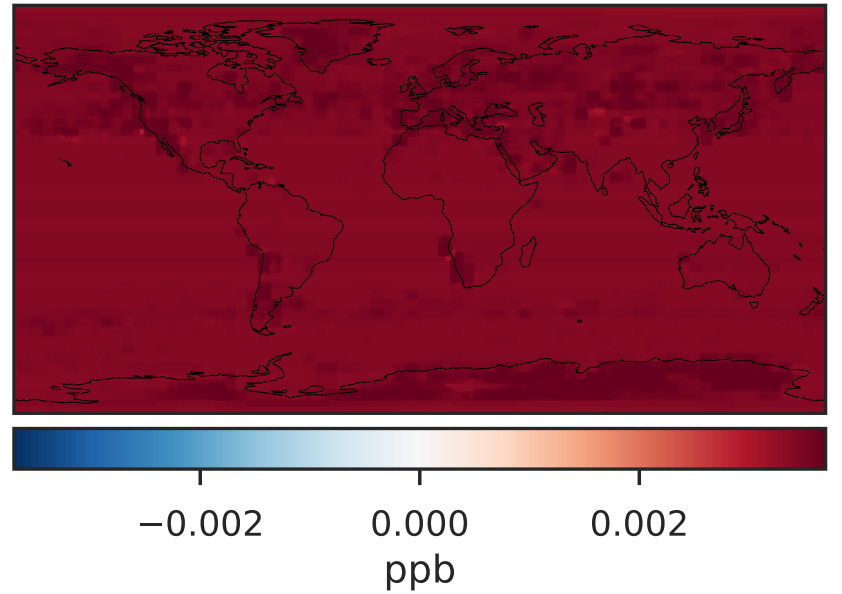
GCHP_14.2.0 (Dev)
c24



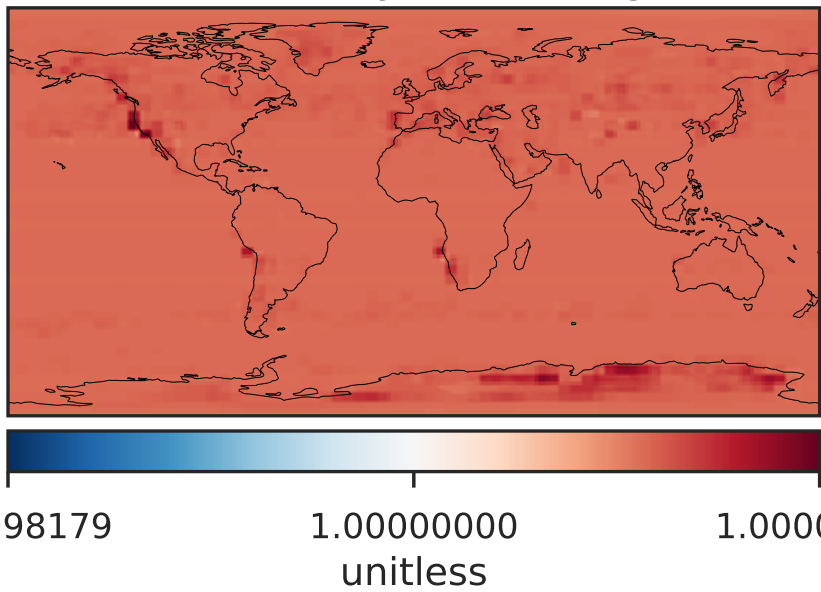
Difference (1x1.25)
Dev - Ref, Dynamic Range



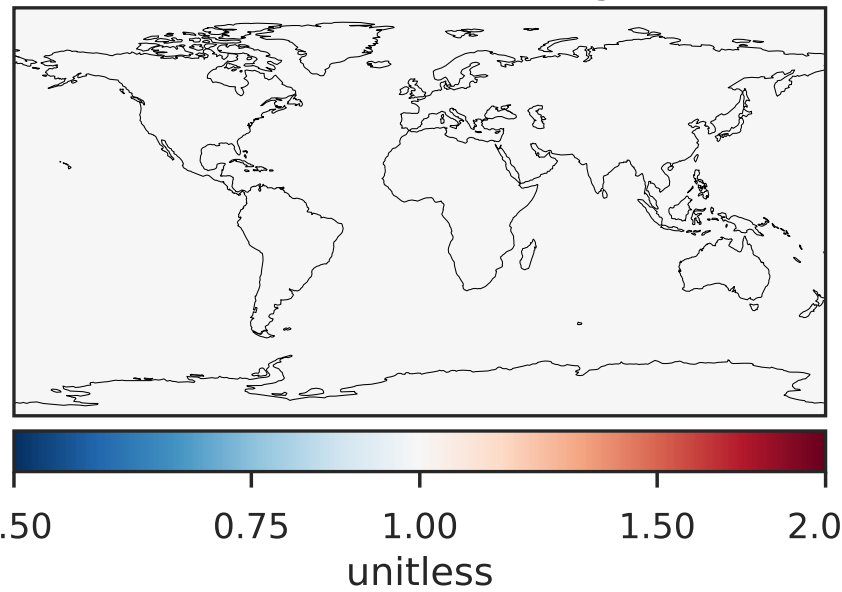
Difference (1x1.25)
Dev - Ref, Restricted Range [5%,95%]



Ratio (1x1.25)
Dev/Ref, Dynamic Range

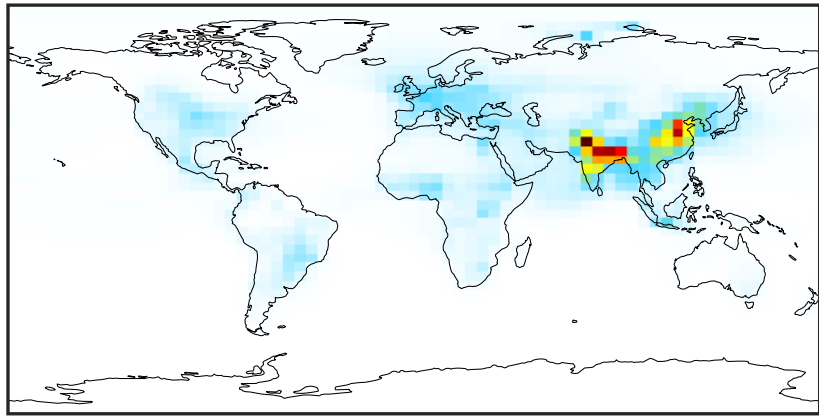


Ratio (1x1.25)
Dev/Ref, Fixed Range



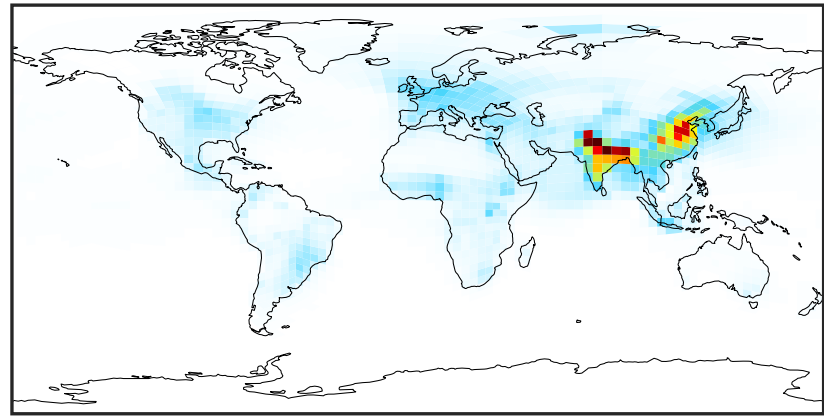
SpeciesConcVV_NHx (Apr2019)

GCC_14.2.0 (Ref)
4.0x5.0



0.00 11.26 22.51 33.77 45.03
ppb

GCHP_14.2.0 (Dev)
c24



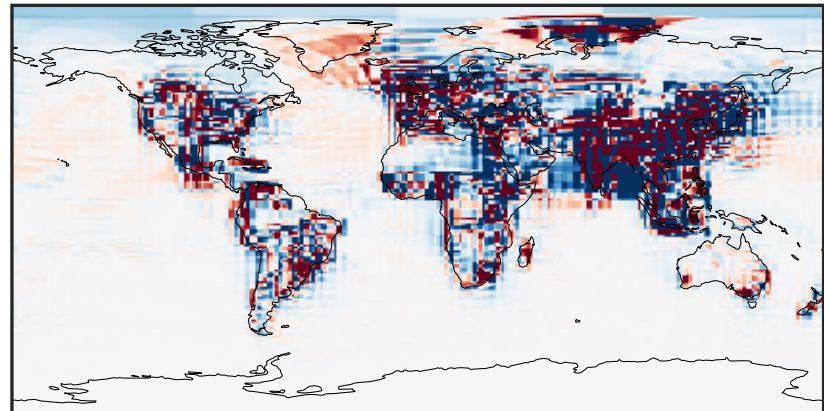
0.00 11.26 22.51 33.77 45.03
ppb

Difference (1x1.25)
Dev - Ref, Dynamic Range



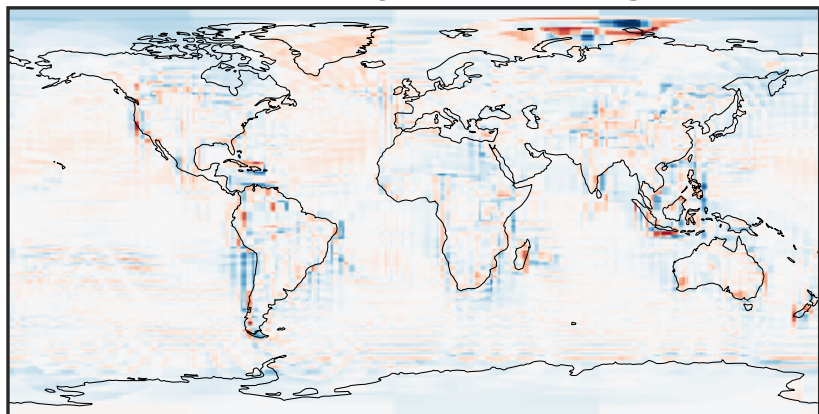
-21.33 -10.66 0.00 10.66 21.33
ppb

Difference (1x1.25)
Dev - Ref, Restricted Range [5%,95%]



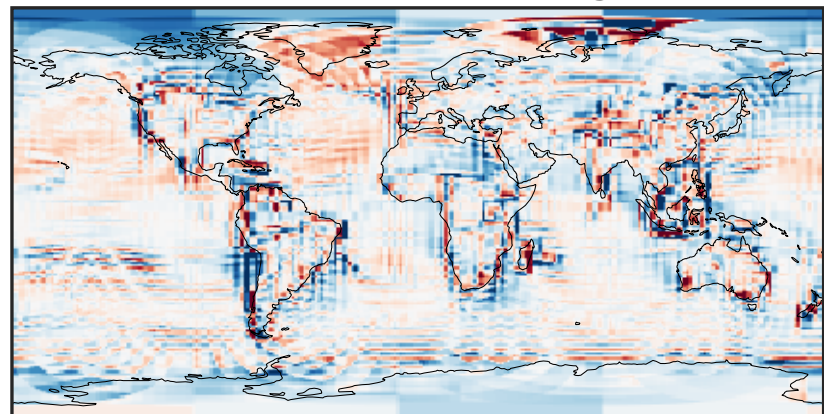
-0.4422 -0.2211 0.0000 0.2211 0.4422
ppb

Ratio (1x1.25)
Dev/Ref, Dynamic Range



0.145 0.573 1.000 3.942 6.884
unitless

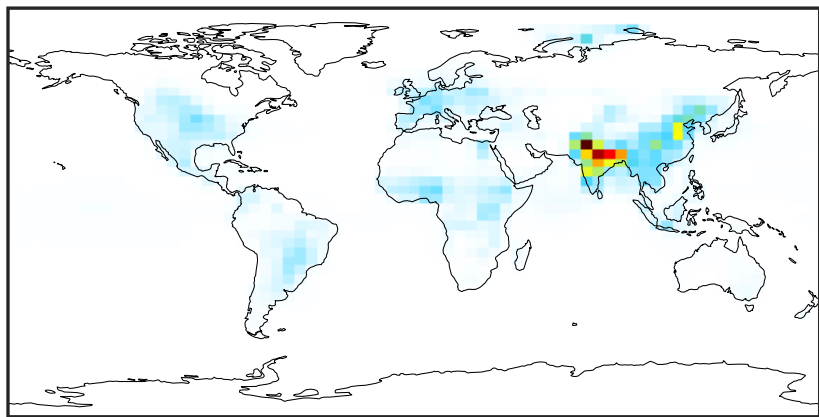
Ratio (1x1.25)
Dev/Ref, Fixed Range



0.50 0.75 1.00 1.50 2.00
unitless

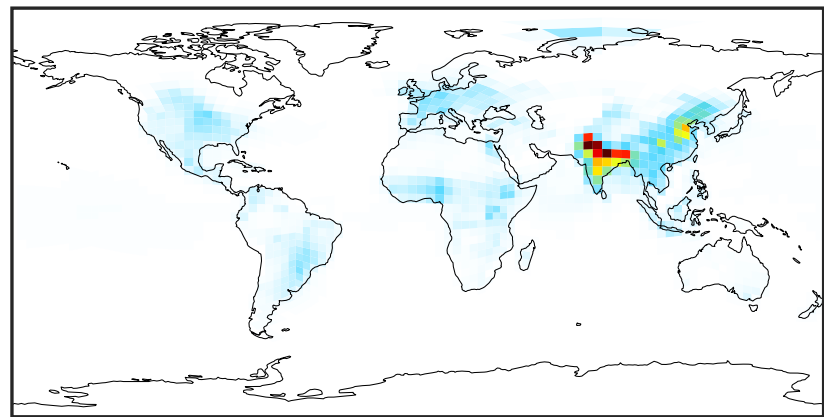
SpeciesConcVV_NH3 (Apr2019)

GCC_14.2.0 (Ref)
4.0x5.0



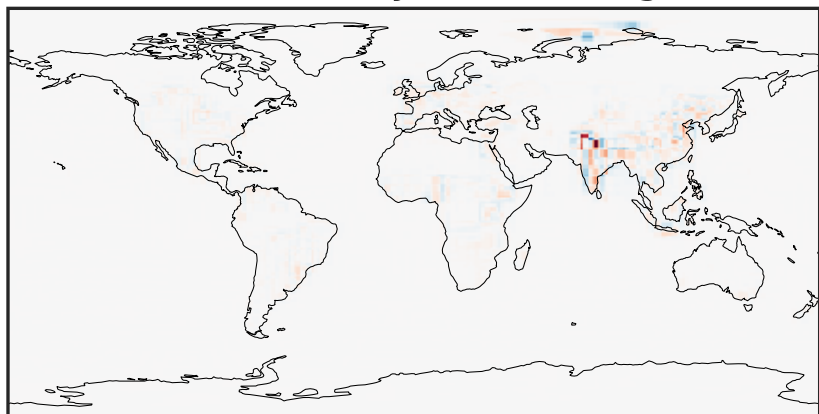
0.00 9.22 18.45 27.67 36.89
ppb

GCHP_14.2.0 (Dev)
c24



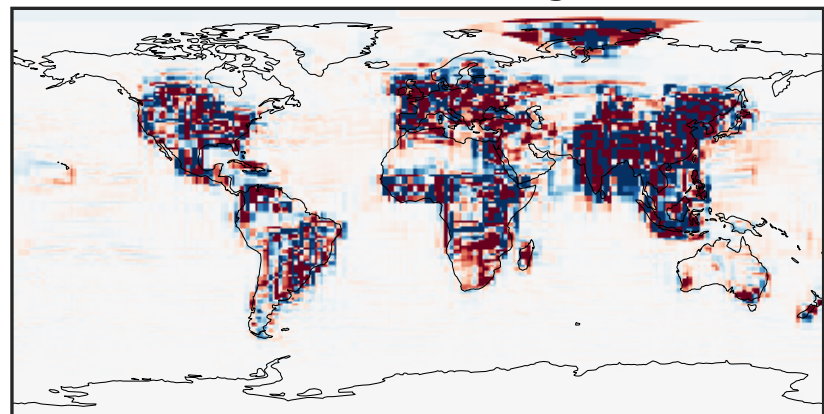
0.00 9.22 18.45 27.67 36.89
ppb

Difference (1x1.25)
Dev - Ref, Dynamic Range



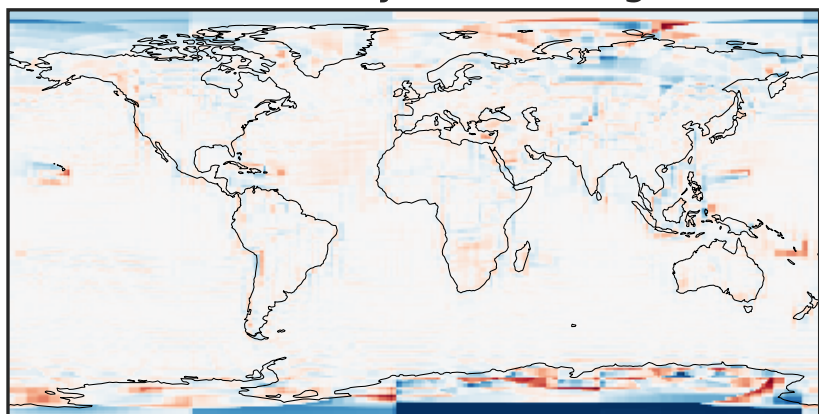
-17.84 -8.92 0.00 8.92 17.84
ppb

Difference (1x1.25)
Dev - Ref, Restricted Range [5%,95%]



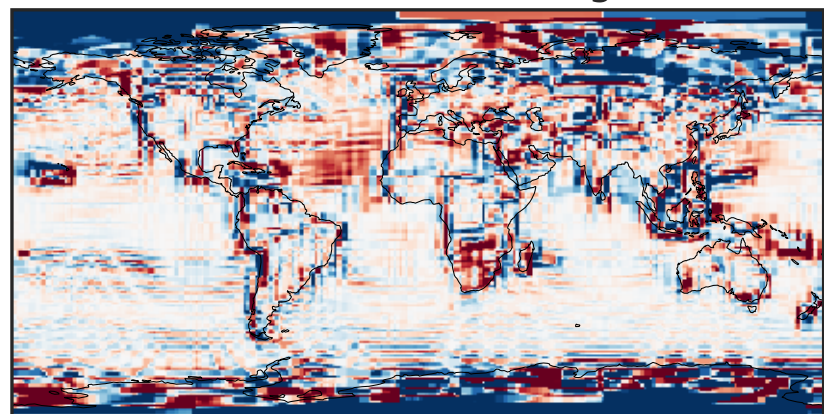
-0.2850 -0.1425 0.0000 0.1425 0.2850
ppb

Ratio (1x1.25)
Dev/Ref, Dynamic Range



1e-02 1e-01 1 10 100
unitless

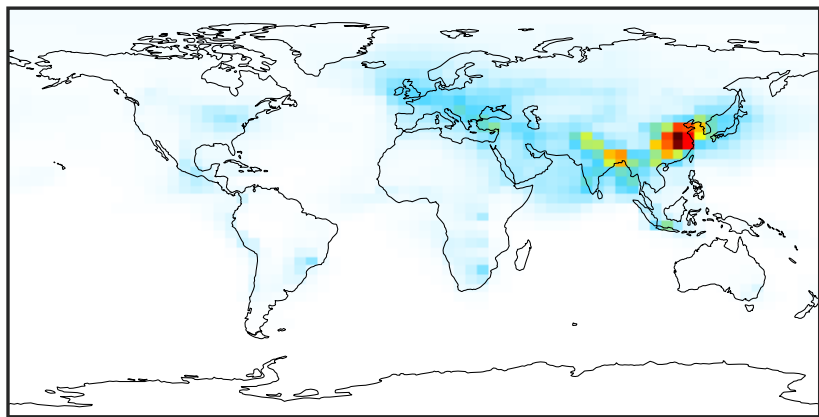
Ratio (1x1.25)
Dev/Ref, Fixed Range



0.50 0.75 1.00 1.50 2.00
unitless

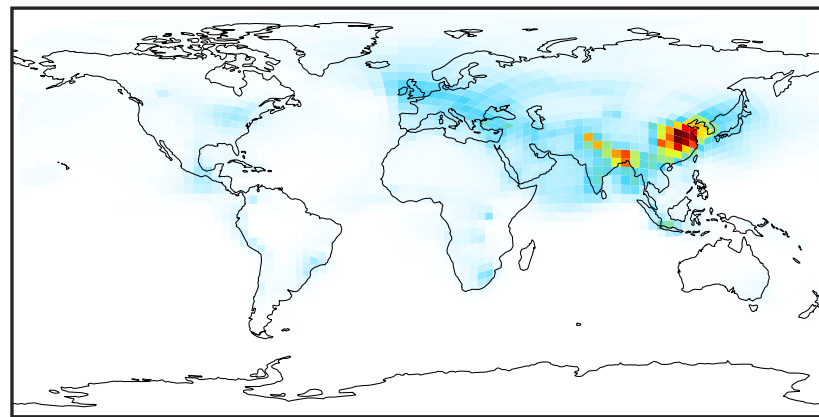
SpeciesConcVV_NH4 (Apr2019)

GCC_14.2.0 (Ref)
4.0x5.0



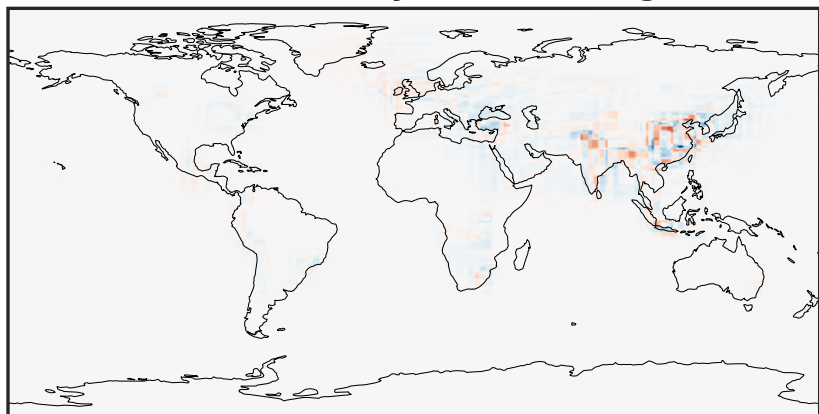
0.00 5.13 10.25 15.38 20.50
ppb

GCHP_14.2.0 (Dev)
c24



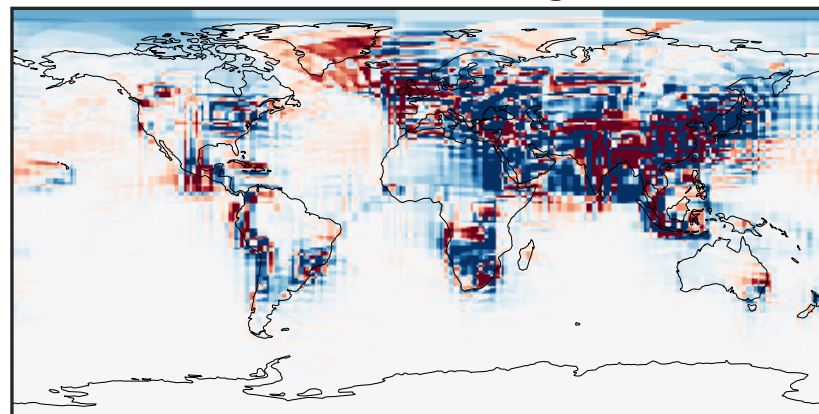
0.00 5.13 10.25 15.38 20.50
ppb

Difference (1x1.25)
Dev - Ref, Dynamic Range



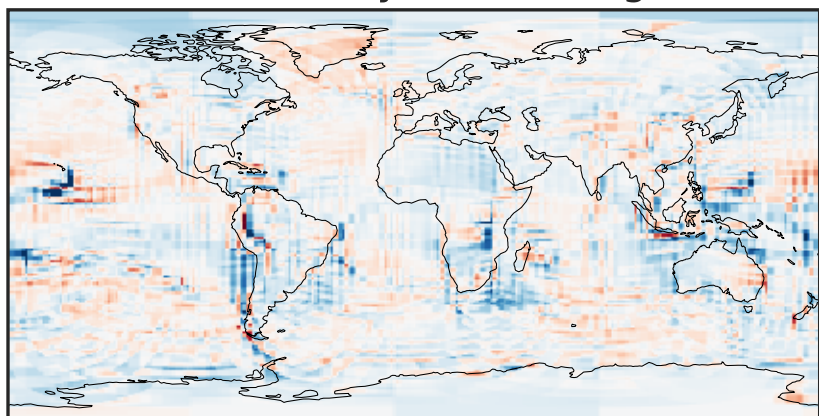
-8.16 -4.08 0.00 4.08 8.16
ppb

Difference (1x1.25)
Dev - Ref, Restricted Range [5%,95%]



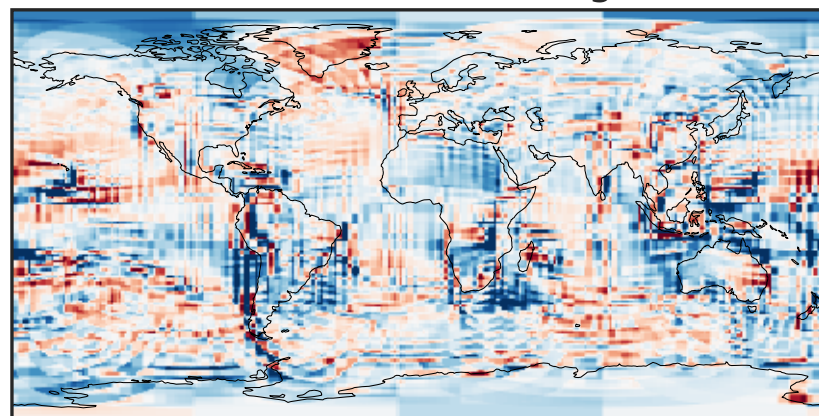
-0.2695 -0.1347 0.0000 0.1347 0.2695
ppb

Ratio (1x1.25)
Dev/Ref, Dynamic Range



0.194 0.597 1.000 3.083 5.166
unitless

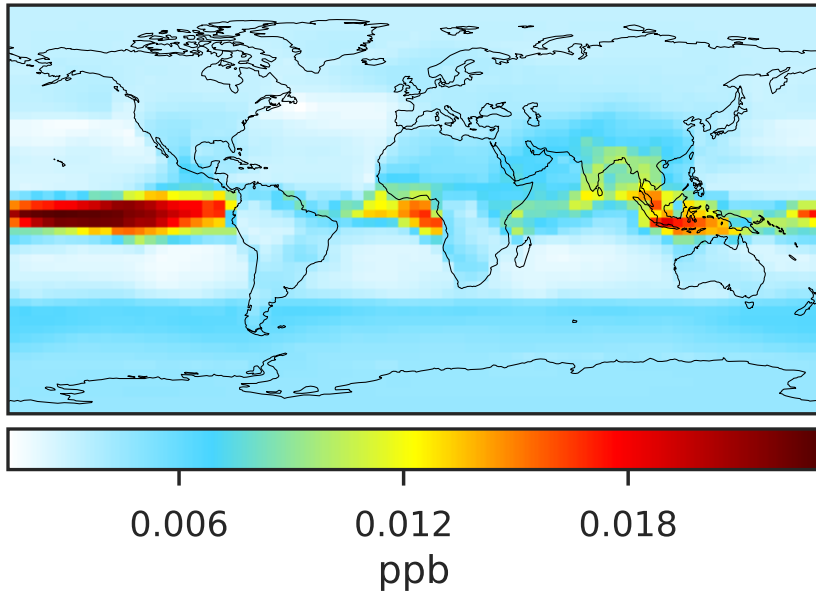
Ratio (1x1.25)
Dev/Ref, Fixed Range



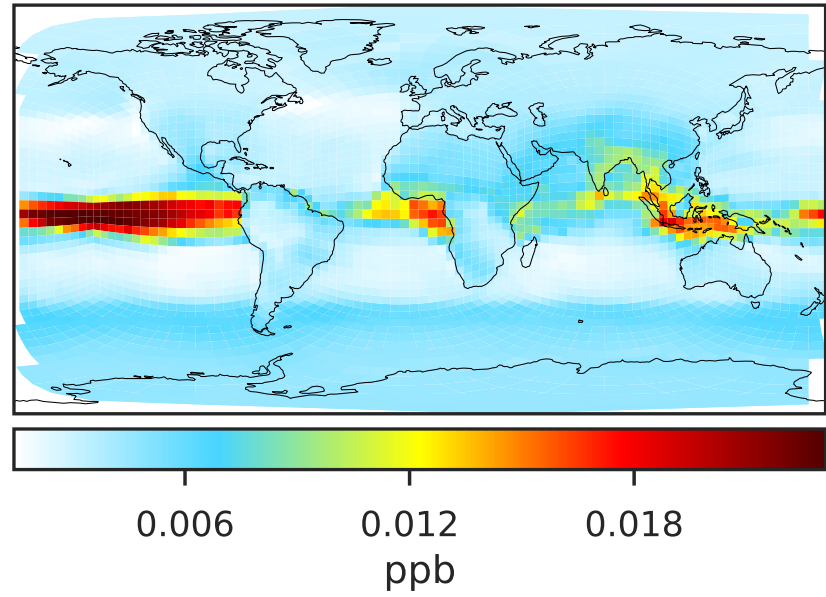
0.50 0.75 1.00 1.50 2.00
unitless

SpeciesConcVV_MENO3 (Apr2019)

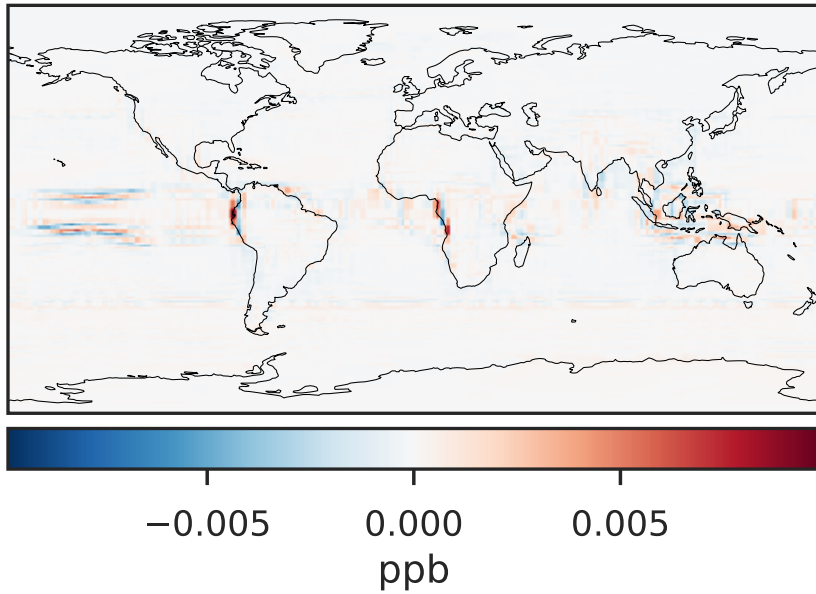
GCC_14.2.0 (Ref)
4.0x5.0



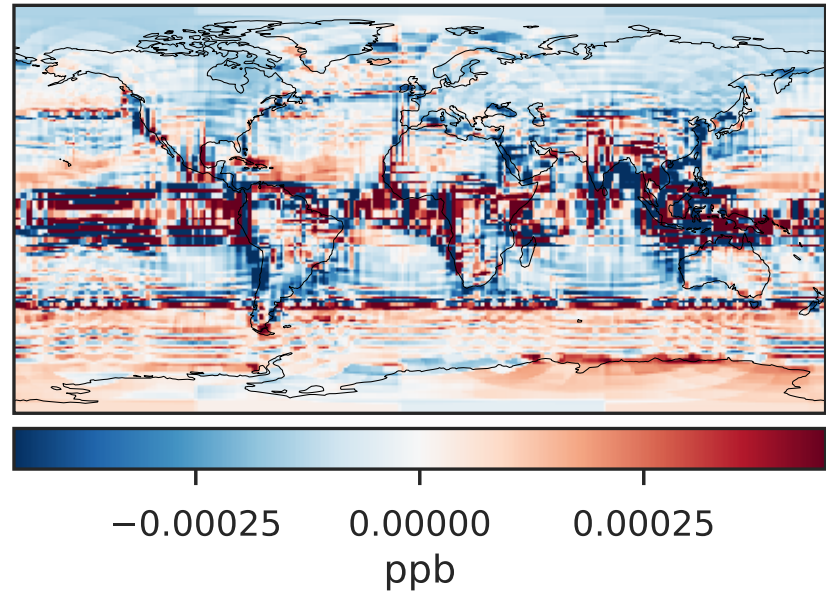
GCHP_14.2.0 (Dev)
c24



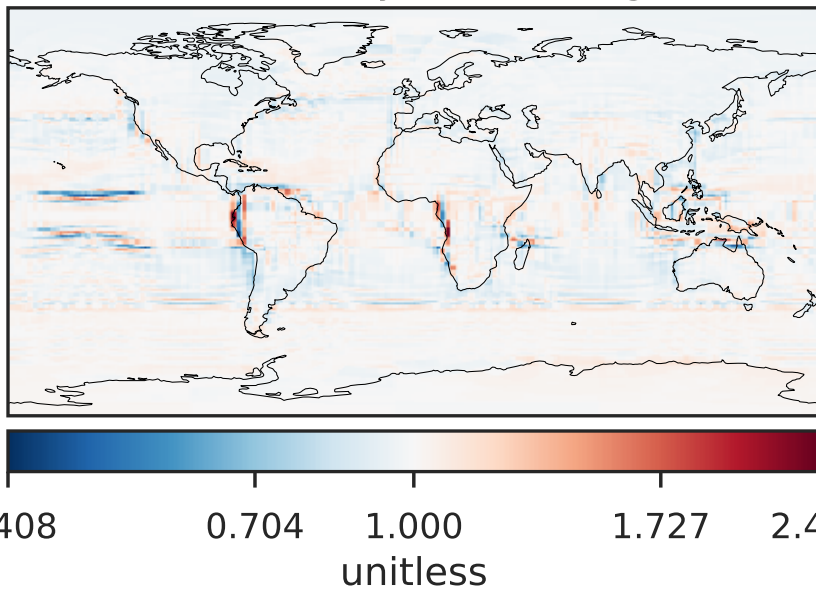
Difference (1x1.25)
Dev - Ref, Dynamic Range



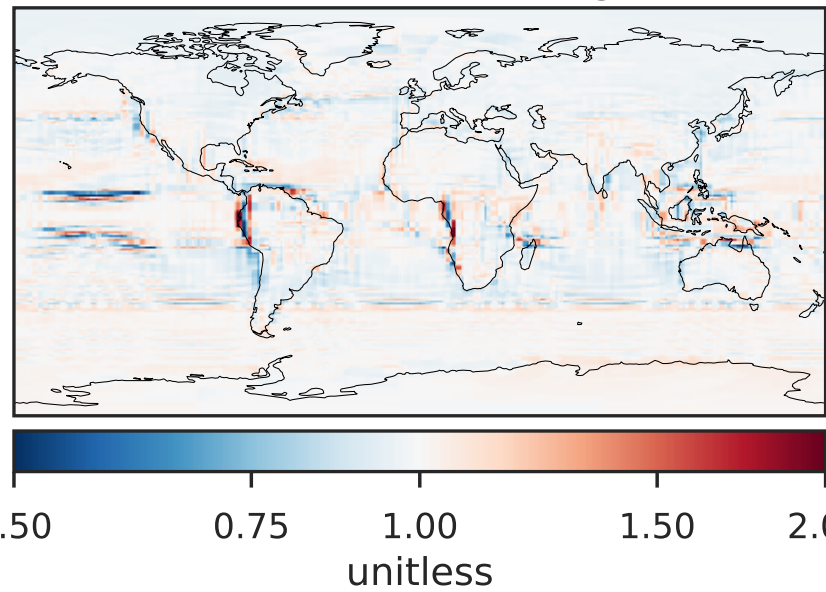
Difference (1x1.25)
Dev - Ref, Restricted Range [5%,95%]



Ratio (1x1.25)
Dev/Ref, Dynamic Range

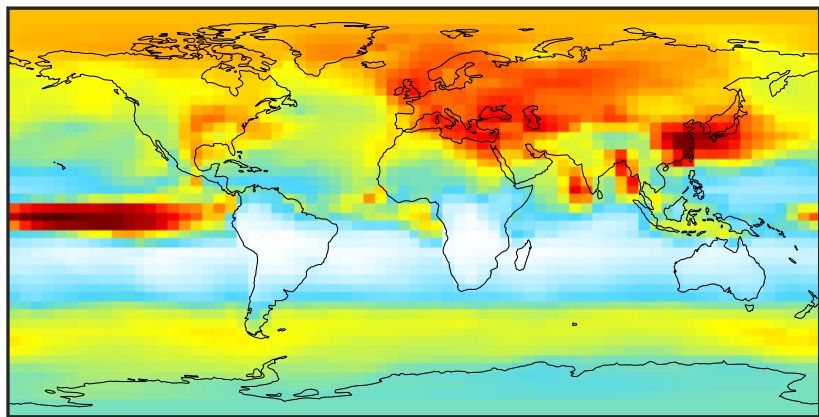


Ratio (1x1.25)
Dev/Ref, Fixed Range



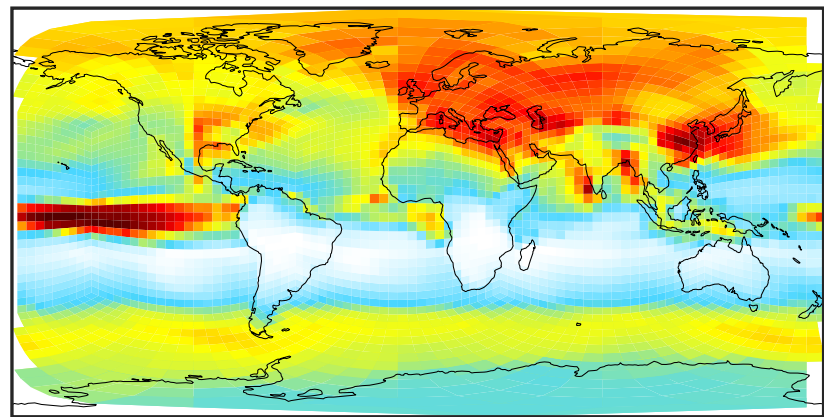
SpeciesConcVV_ETNO3 (Apr2019)

GCC_14.2.0 (Ref)
4.0x5.0



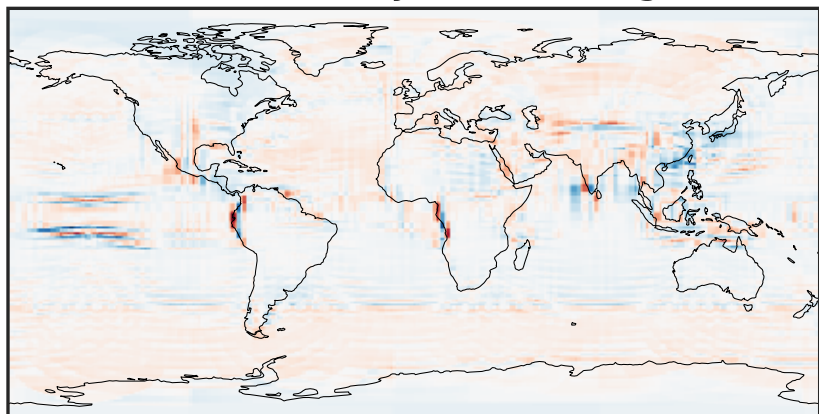
0.002 0.004 0.006 0.008
ppb

GCHP_14.2.0 (Dev)
c24



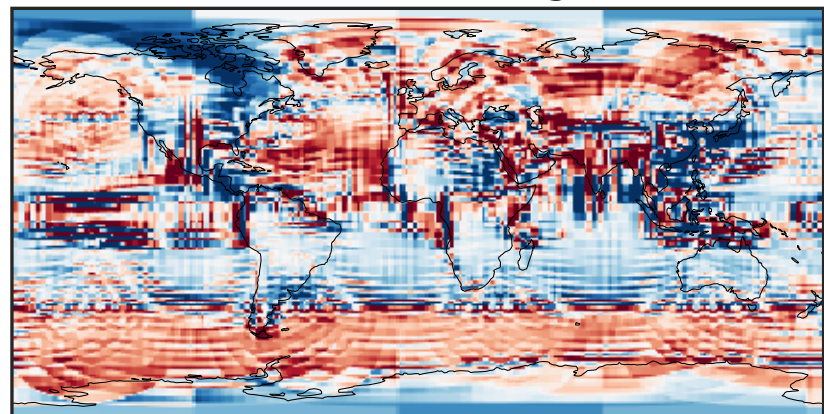
0.002 0.004 0.006 0.008
ppb

Difference (1x1.25)
Dev - Ref, Dynamic Range



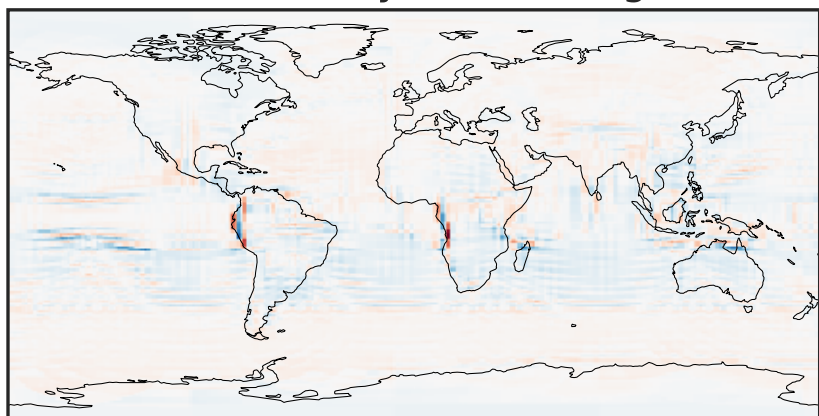
-0.0015 0.0000 0.0015
ppb

Difference (1x1.25)
Dev - Ref, Restricted Range [5%,95%]



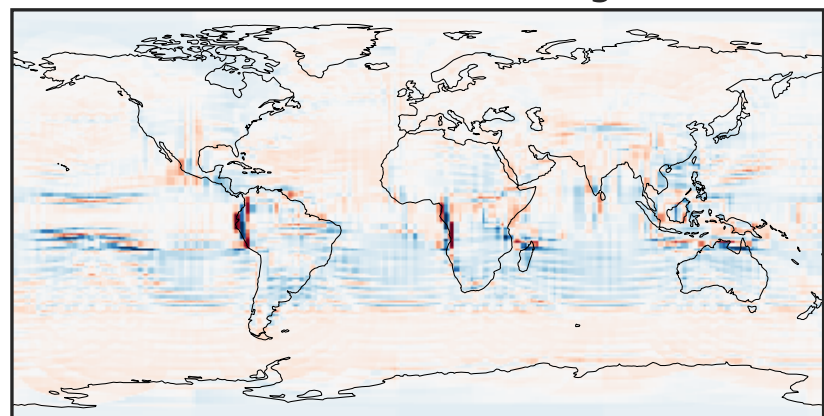
-0.0002 0.0000 0.0002
ppb

Ratio (1x1.25)
Dev/Ref, Dynamic Range



0.261 0.630 1.000 2.418 3.836
unitless

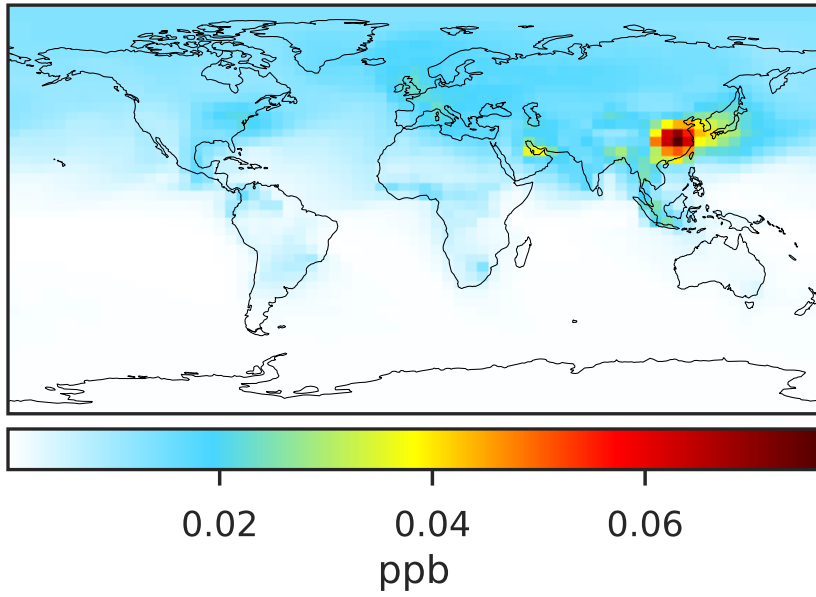
Ratio (1x1.25)
Dev/Ref, Fixed Range



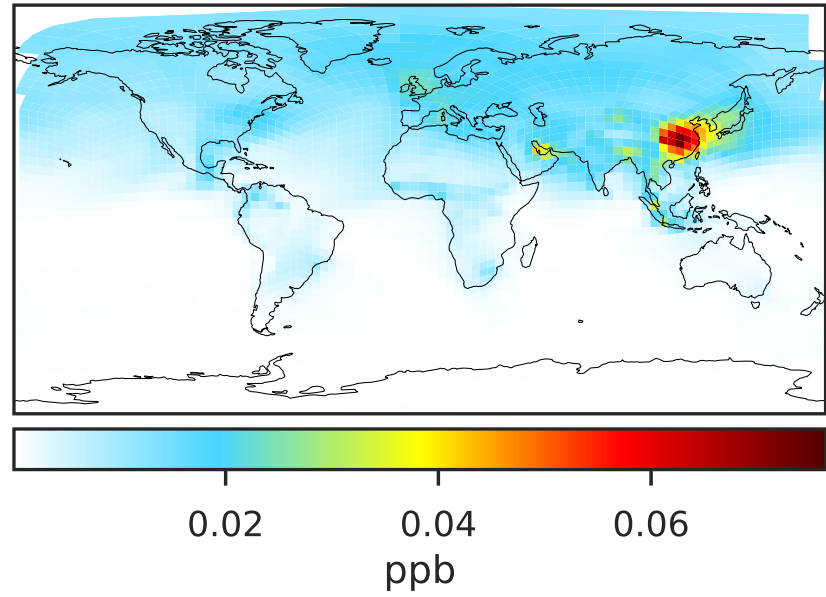
0.50 0.75 1.00 1.50 2.00
unitless

SpeciesConcVV_IPRNO3 (Apr2019)

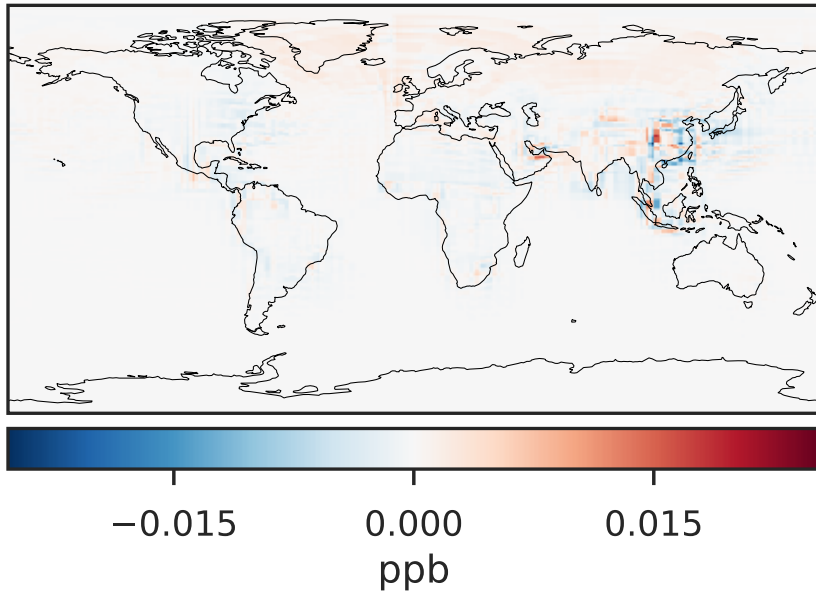
GCC_14.2.0 (Ref)
4.0x5.0



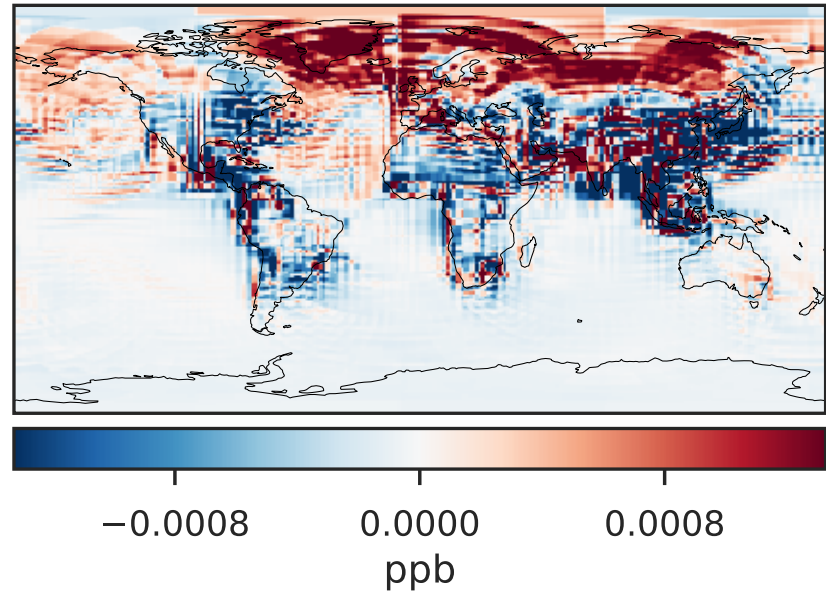
GCHP_14.2.0 (Dev)
c24



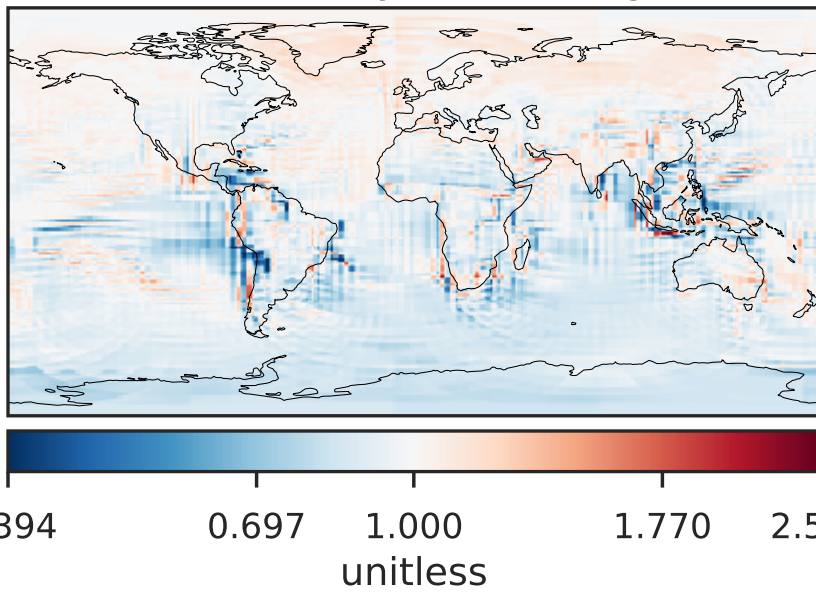
Difference (1x1.25)
Dev - Ref, Dynamic Range



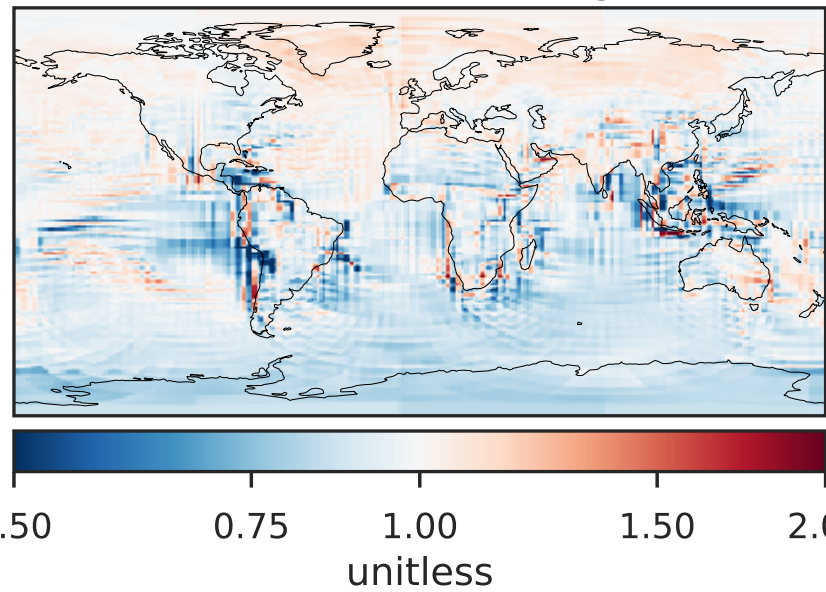
Difference (1x1.25)
Dev - Ref, Restricted Range [5%,95%]



Ratio (1x1.25)
Dev/Ref, Dynamic Range

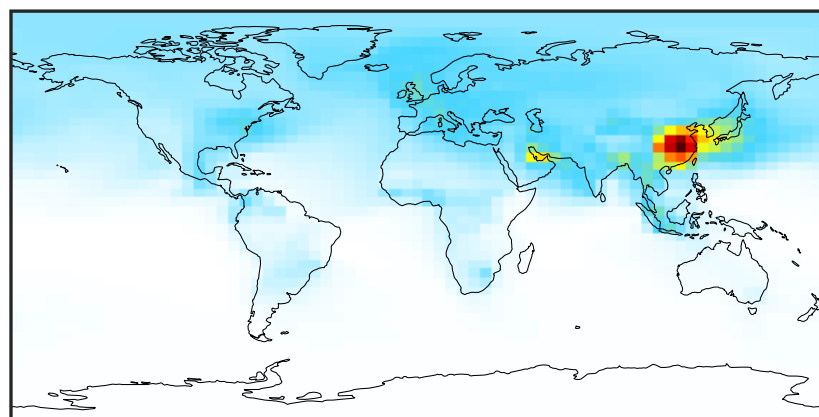


Ratio (1x1.25)
Dev/Ref, Fixed Range



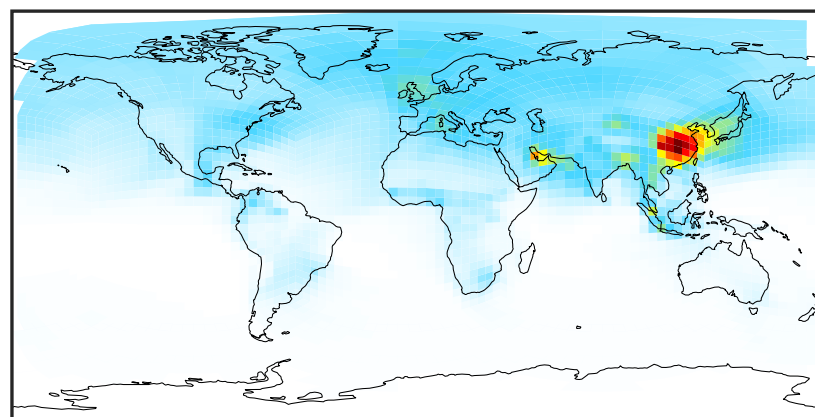
SpeciesConcVV_NPRNO3 (Apr2019)

GCC_14.2.0 (Ref)
4.0x5.0



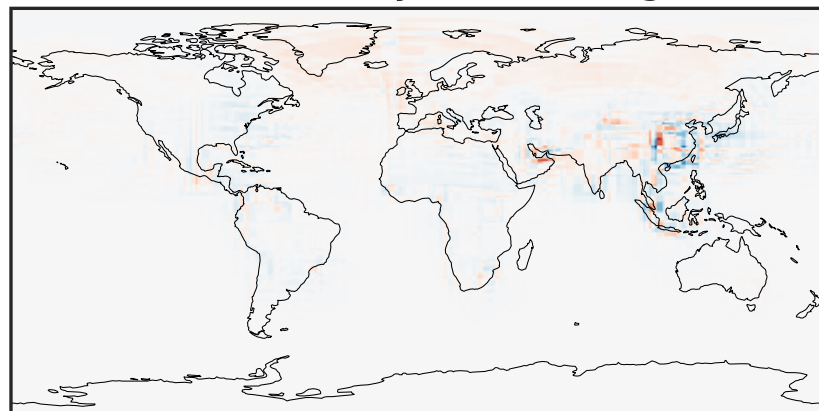
0.006 0.012 0.018
ppb

GCHP_14.2.0 (Dev)
c24



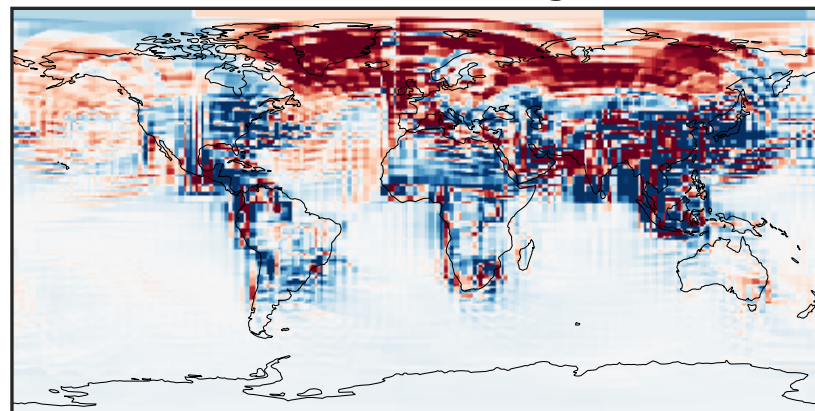
0.006 0.012 0.018
ppb

Difference (1x1.25)
Dev - Ref, Dynamic Range



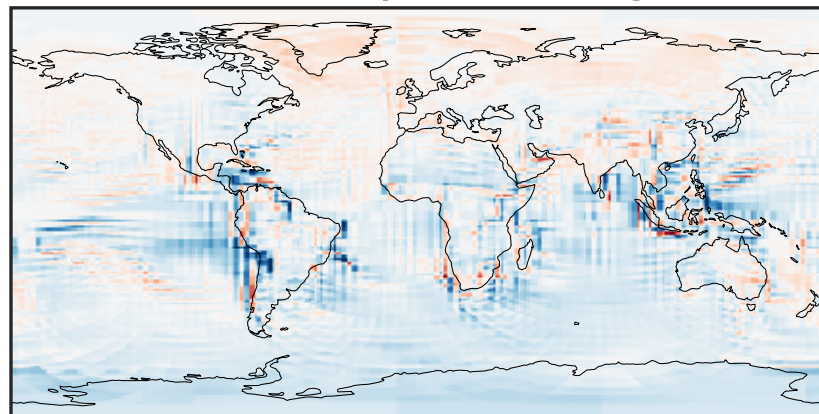
-0.004 0.000 0.004
ppb

Difference (1x1.25)
Dev - Ref, Restricted Range [5%,95%]



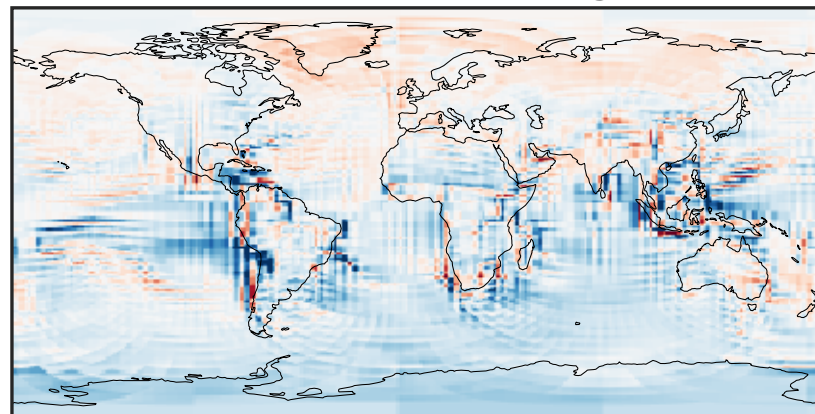
-0.0002 0.0000 0.0002
ppb

Ratio (1x1.25)
Dev/Ref, Dynamic Range



0.391 0.695 1.000 1.780 2.560
unitless

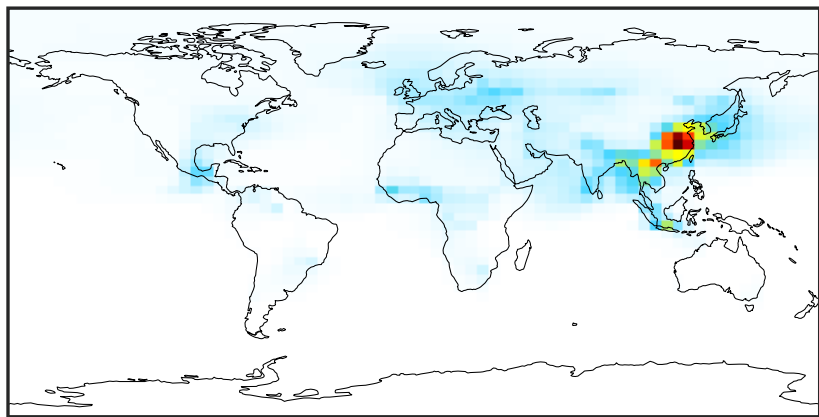
Ratio (1x1.25)
Dev/Ref, Fixed Range



0.50 0.75 1.00 1.50 2.00
unitless

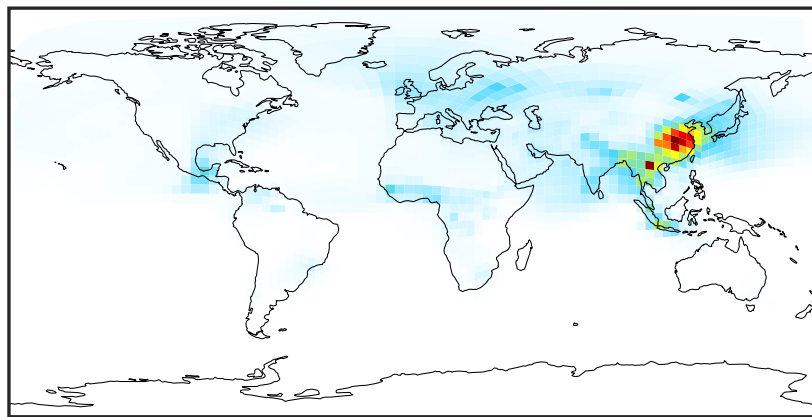
SpeciesConcVV_AONITA (Apr2019)

GCC_14.2.0 (Ref)
4.0x5.0



0.0000 0.0537 0.1073 0.1610 0.2147
ppb

GCHP_14.2.0 (Dev)
c24



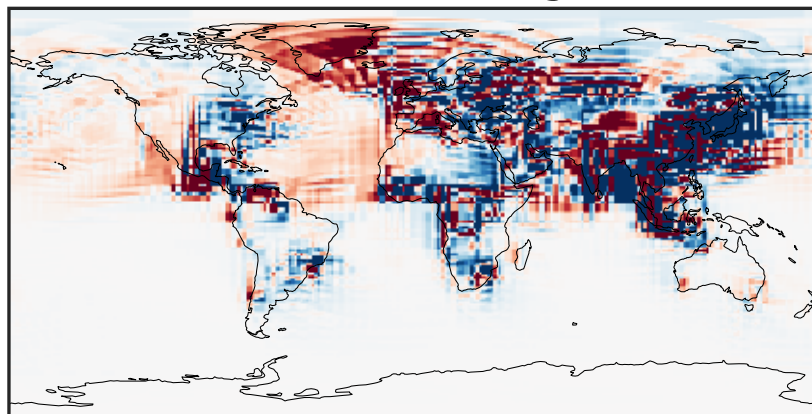
0.0000 0.0537 0.1073 0.1610 0.2147
ppb

Difference (1x1.25)
Dev - Ref, Dynamic Range



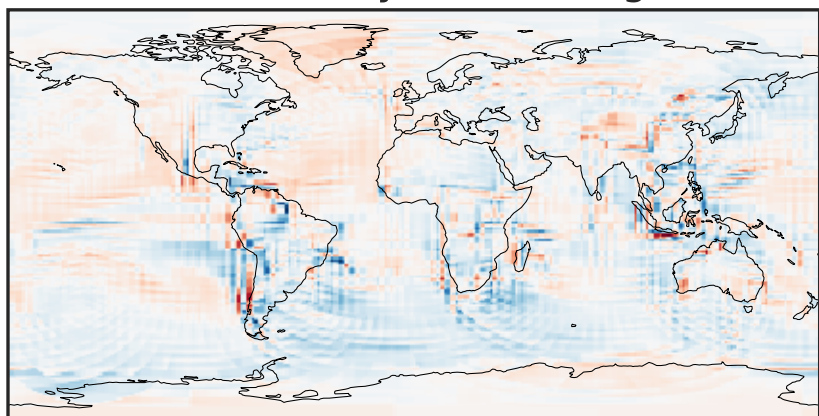
-0.0946 -0.0473 0.0000 0.0473 0.0946
ppb

Difference (1x1.25)
Dev - Ref, Restricted Range [5%,95%]



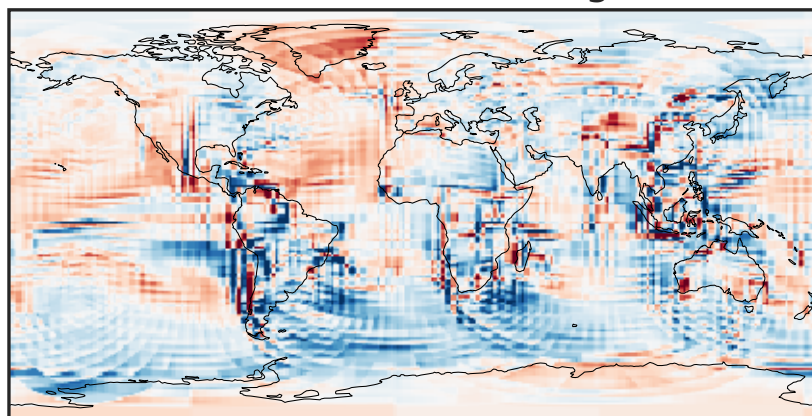
-0.001 0.000 0.001
ppb

Ratio (1x1.25)
Dev/Ref, Dynamic Range



0.195 0.597 1.000 3.065 5.130
unitless

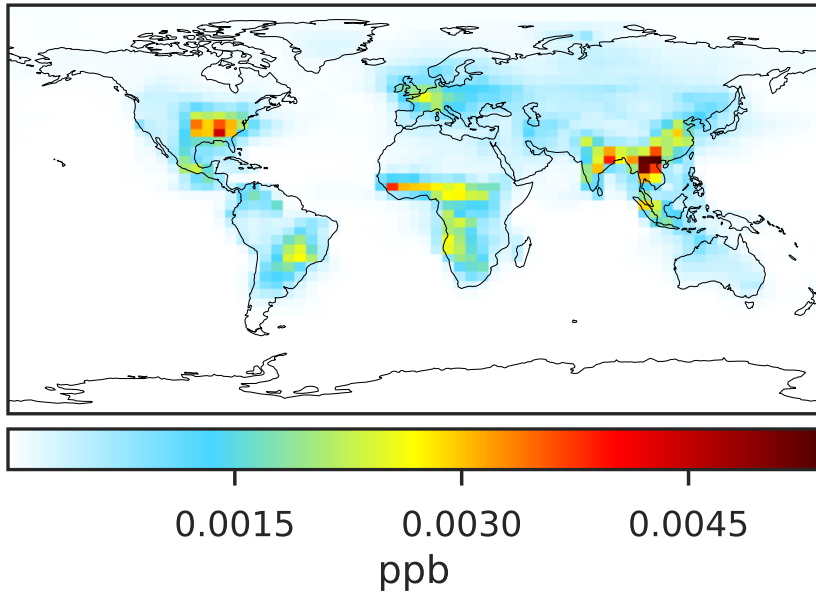
Ratio (1x1.25)
Dev/Ref, Fixed Range



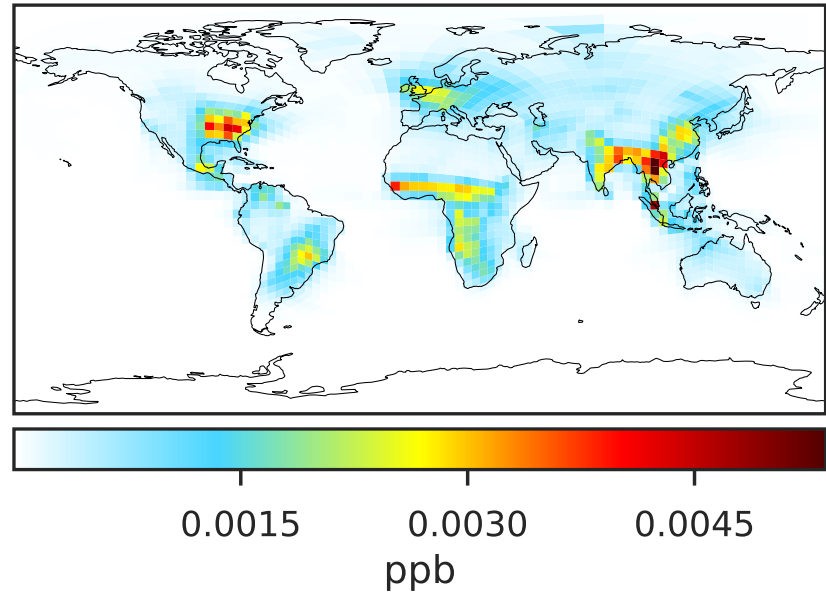
0.50 0.75 1.00 1.50 2.00
unitless

SpeciesConcVV_ETHN (Apr2019)

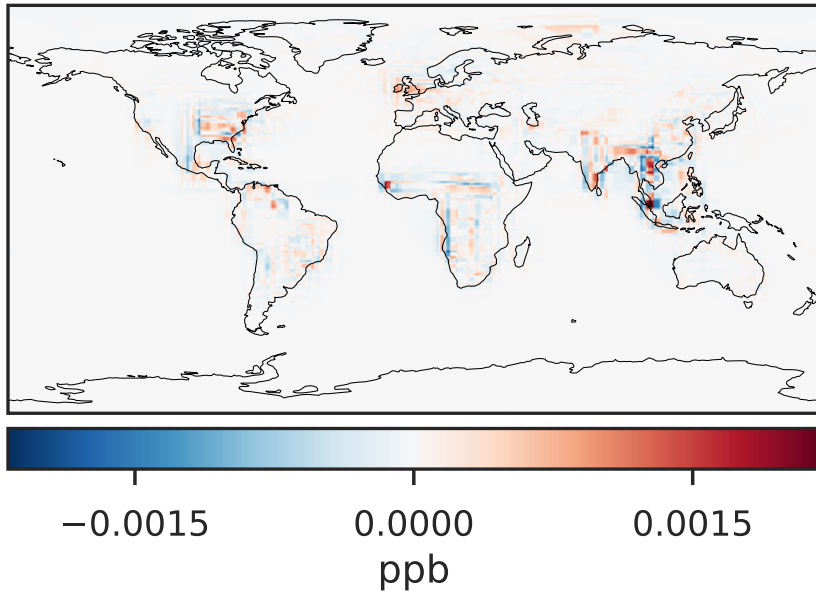
GCC_14.2.0 (Ref)
4.0x5.0



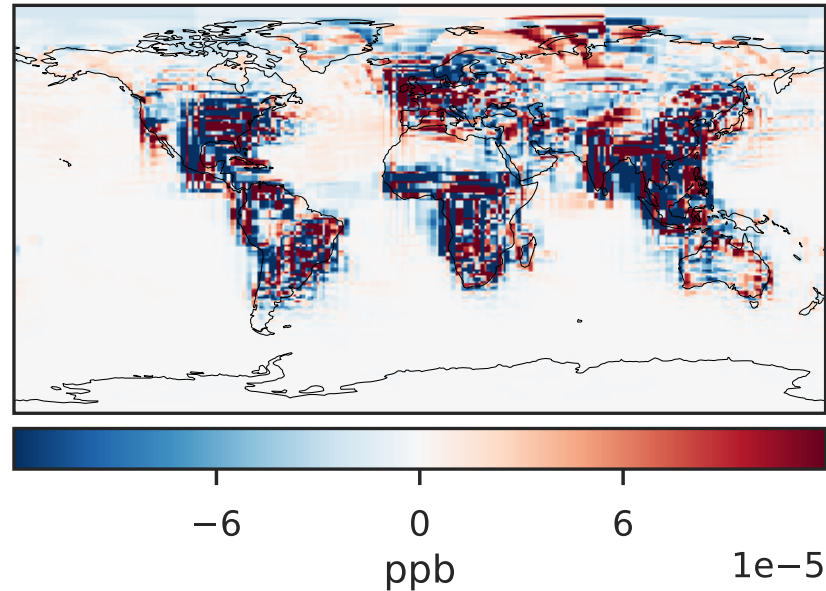
GCHP_14.2.0 (Dev)
c24



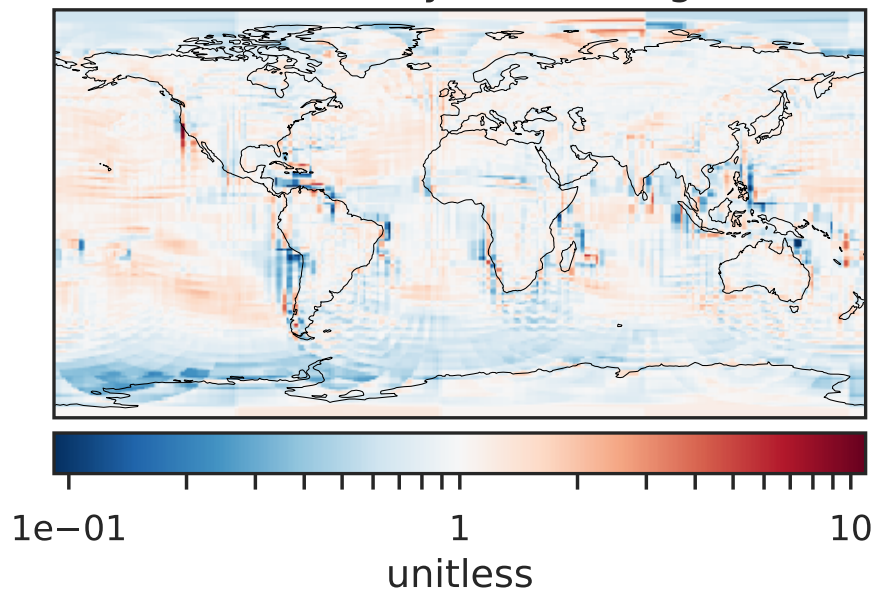
Difference (1x1.25)
Dev - Ref, Dynamic Range



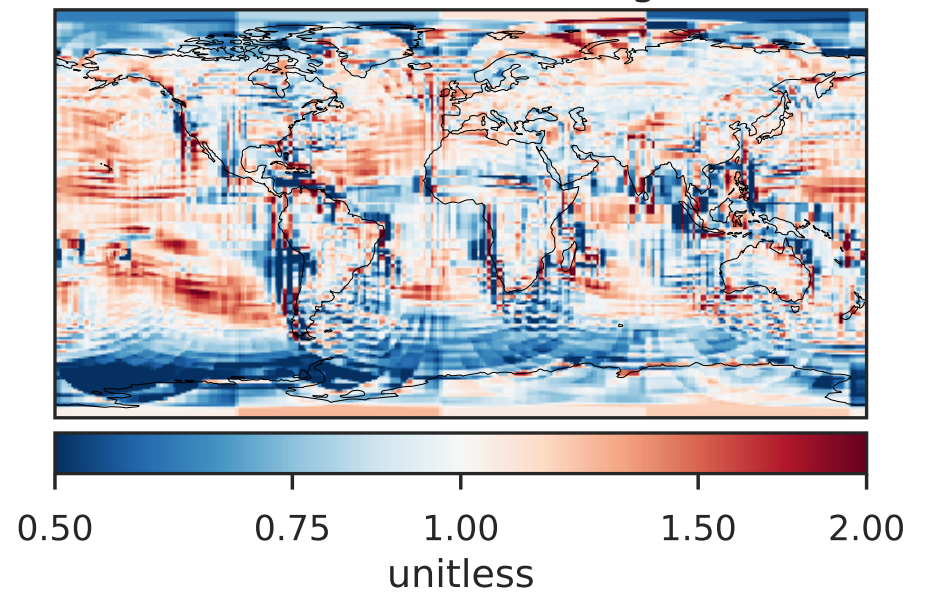
Difference (1x1.25)
Dev - Ref, Restricted Range [5%,95%]



Ratio (1x1.25)
Dev/Ref, Dynamic Range

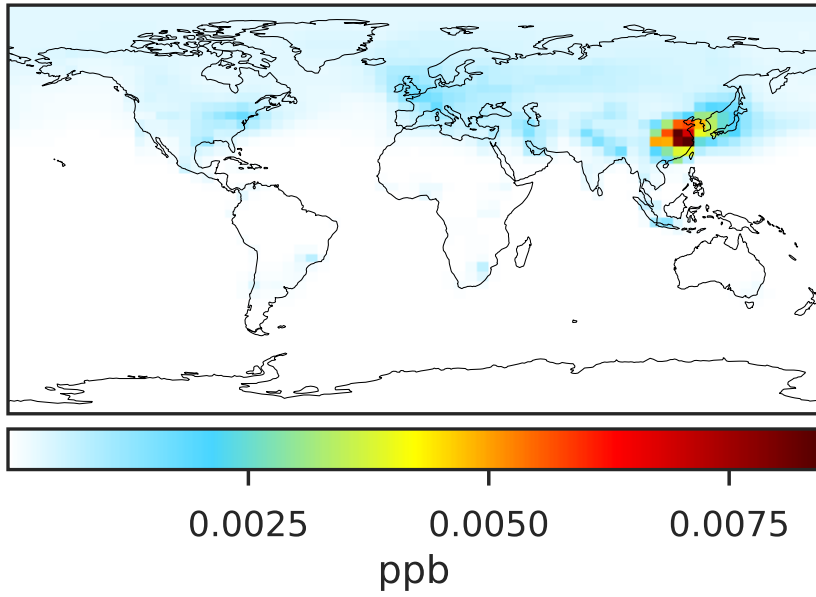


Ratio (1x1.25)
Dev/Ref, Fixed Range

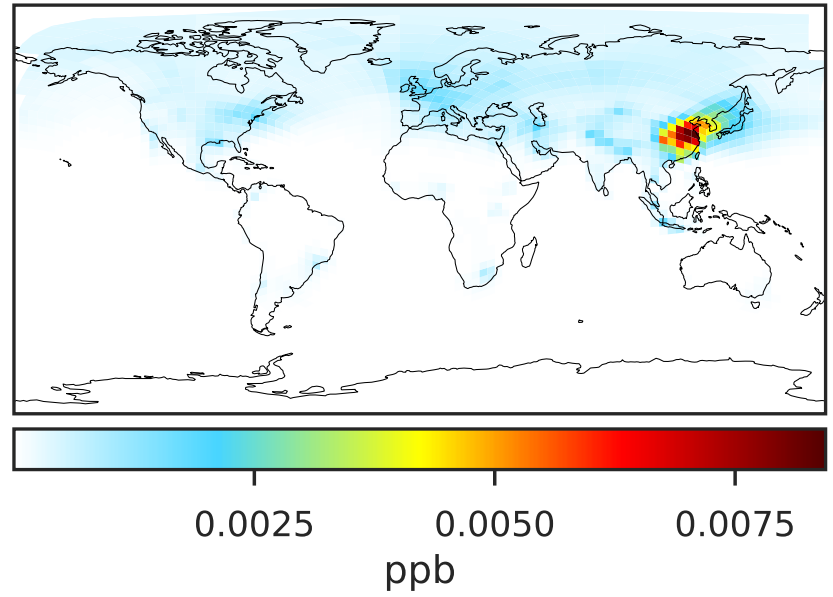


SpeciesConcVV_BZPAN (Apr2019)

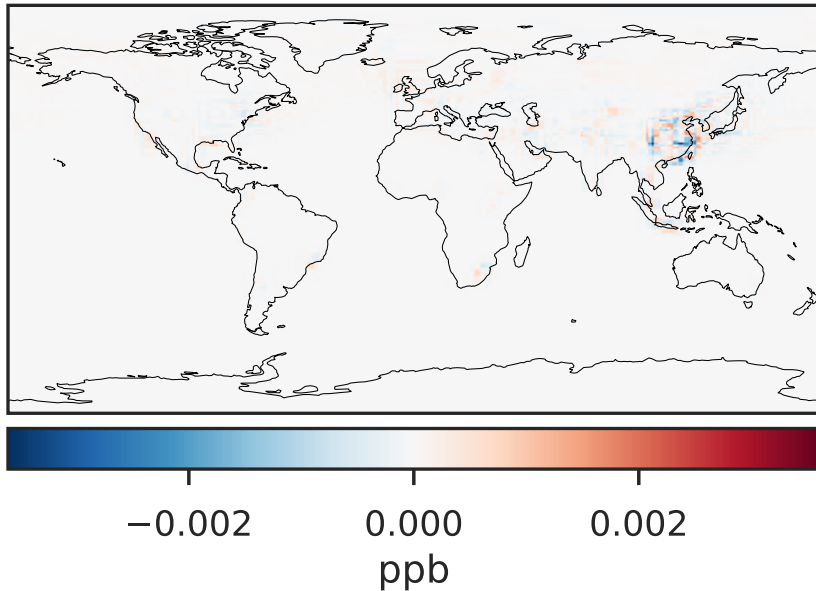
GCC_14.2.0 (Ref)
4.0x5.0



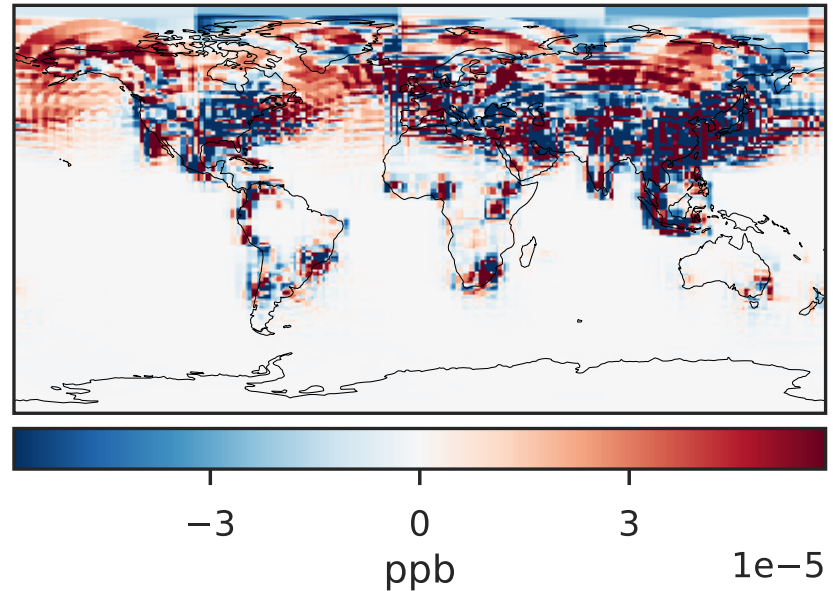
GCHP_14.2.0 (Dev)
c24



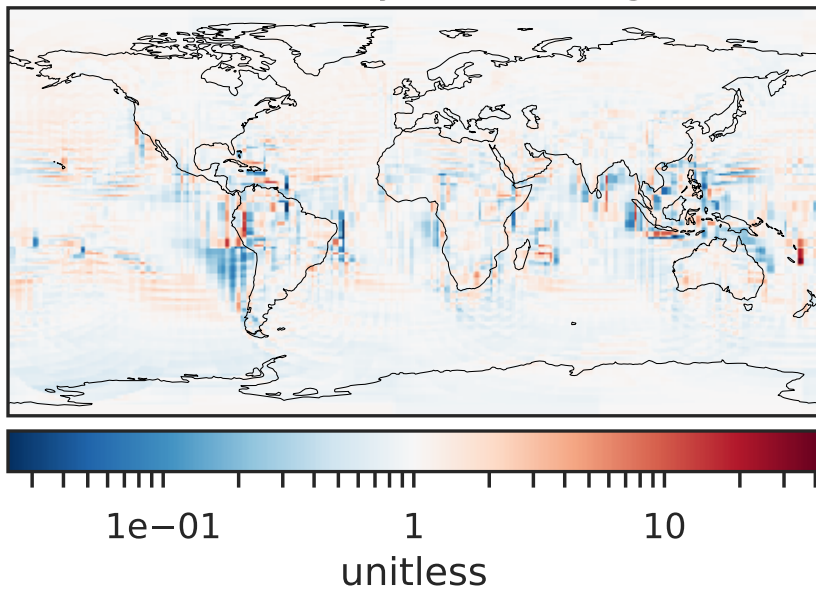
Difference (1x1.25)
Dev - Ref, Dynamic Range



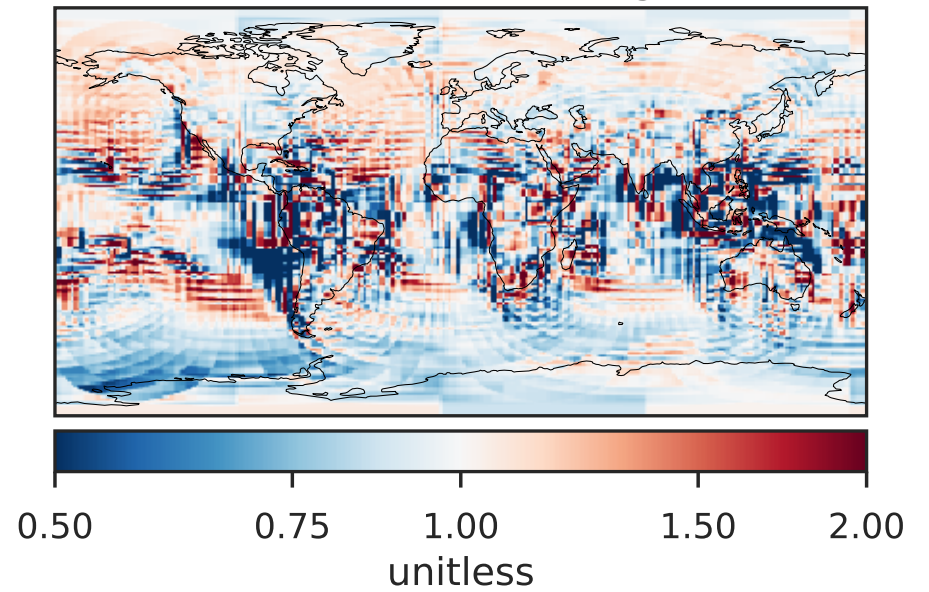
Difference (1x1.25)
Dev - Ref, Restricted Range [5%,95%]



Ratio (1x1.25)
Dev/Ref, Dynamic Range

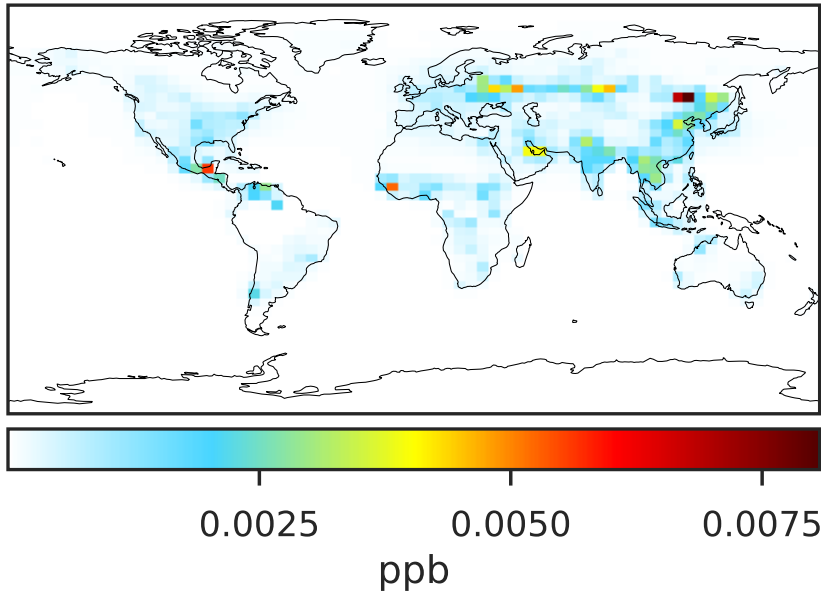


Ratio (1x1.25)
Dev/Ref, Fixed Range

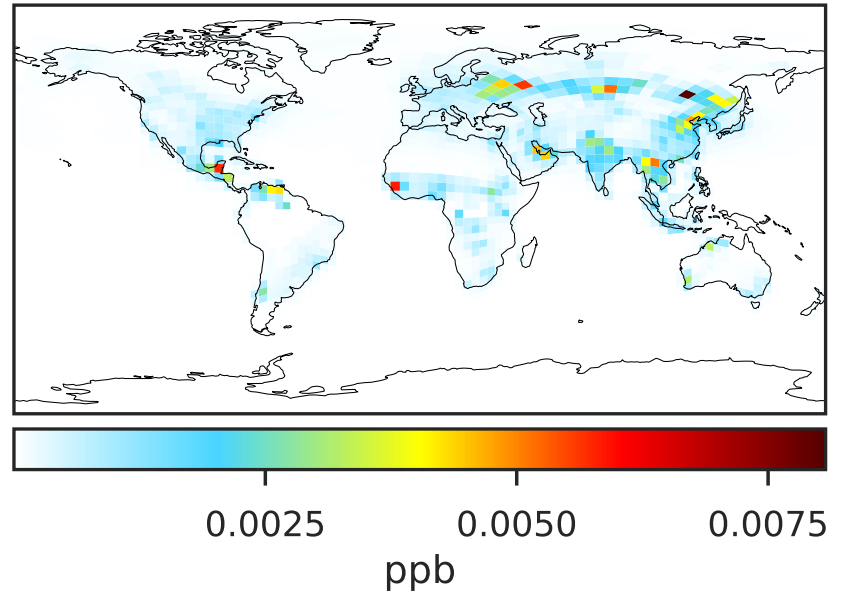


SpeciesConcVV_NPHEN (Apr2019)

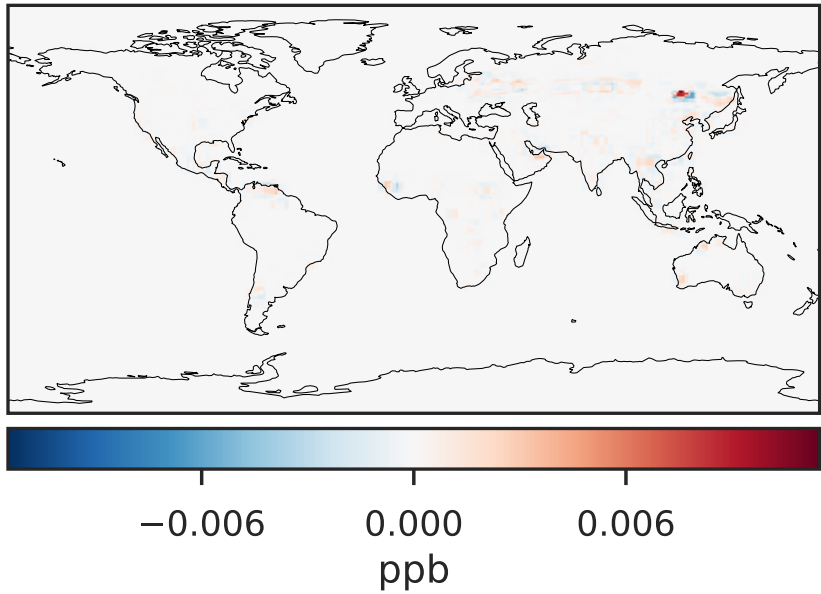
GCC_14.2.0 (Ref)
4.0x5.0



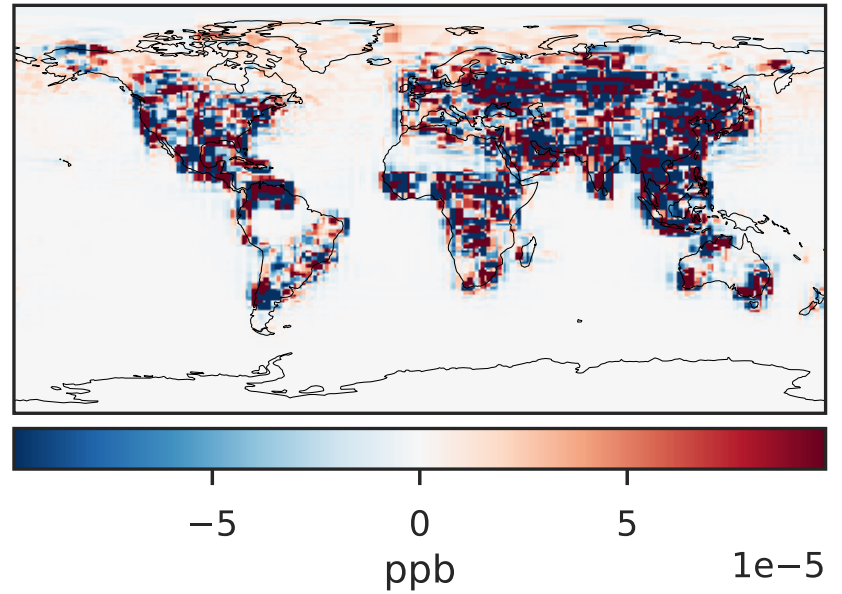
GCHP_14.2.0 (Dev)
c24



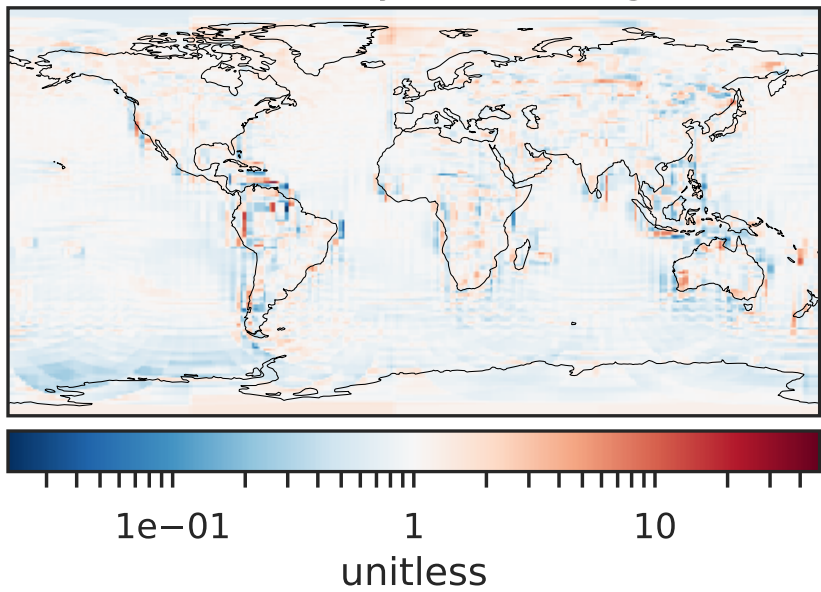
Difference (1x1.25)
Dev - Ref, Dynamic Range



Difference (1x1.25)
Dev - Ref, Restricted Range [5%,95%]



Ratio (1x1.25)
Dev/Ref, Dynamic Range



Ratio (1x1.25)
Dev/Ref, Fixed Range

