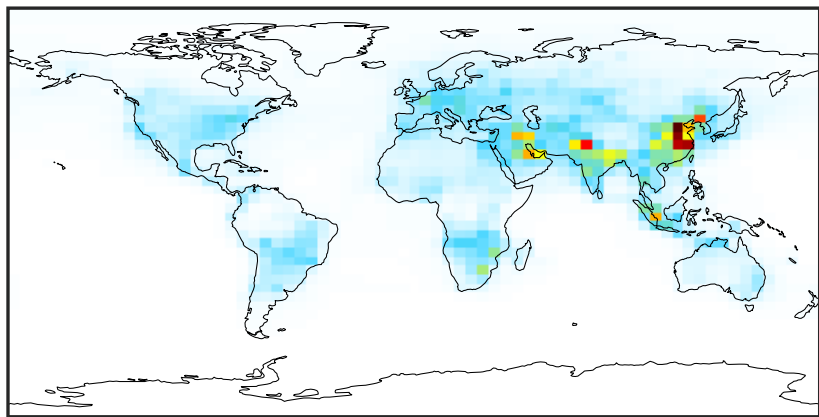


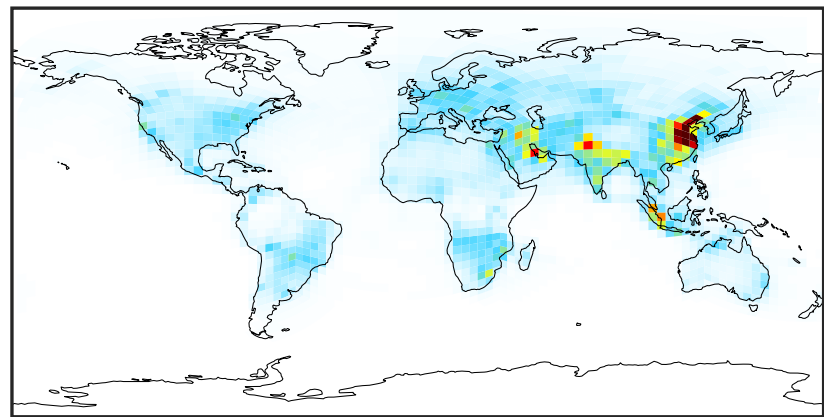
SpeciesConcVV_NOy (Oct2019)

GCC_14.2.0 (Ref)
4.0x5.0



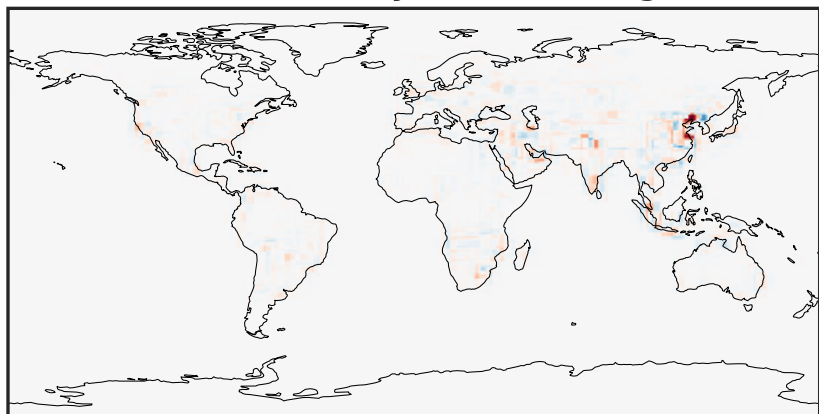
0.02 3.76 7.53 11.29 15.07
ppb

GCHP_14.2.0 (Dev)
c24



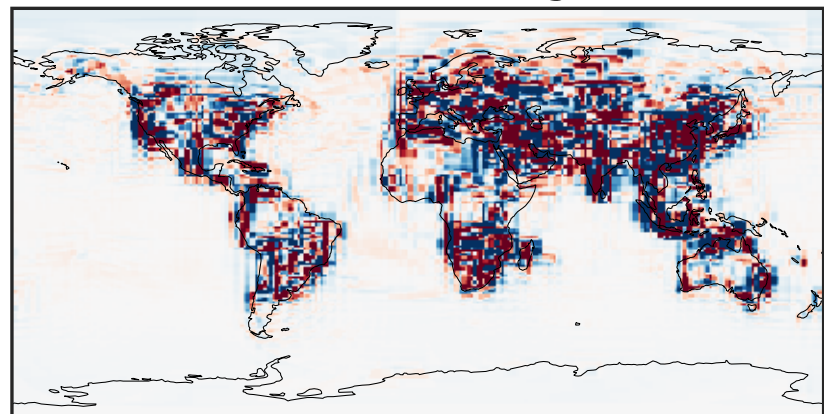
0.02 3.76 7.53 11.29 15.07
ppb

Difference (1x1.25)
Dev - Ref, Dynamic Range



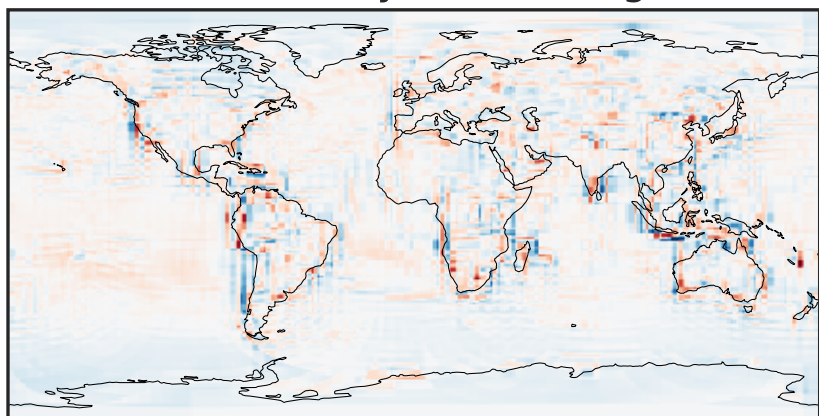
-10.71 -5.36 0.00 5.36 10.71
ppb

Difference (1x1.25)
Dev - Ref, Restricted Range [5%,95%]



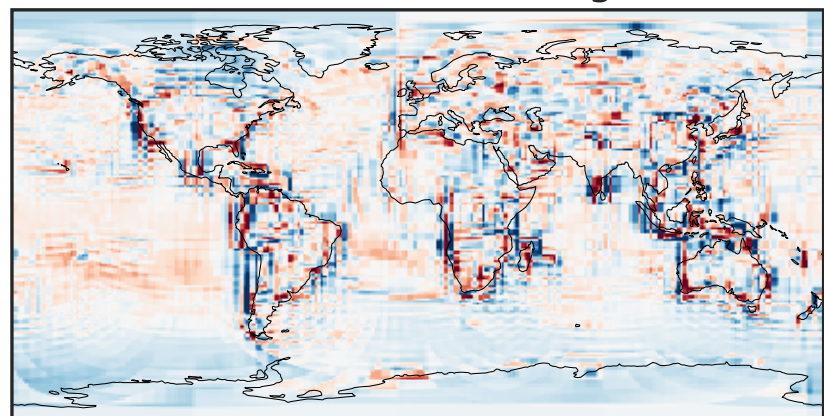
-0.2442 -0.1221 0.0000 0.1221 0.2442
ppb

Ratio (1x1.25)
Dev/Ref, Dynamic Range



0.204 0.602 1.000 2.949 4.898
unitless

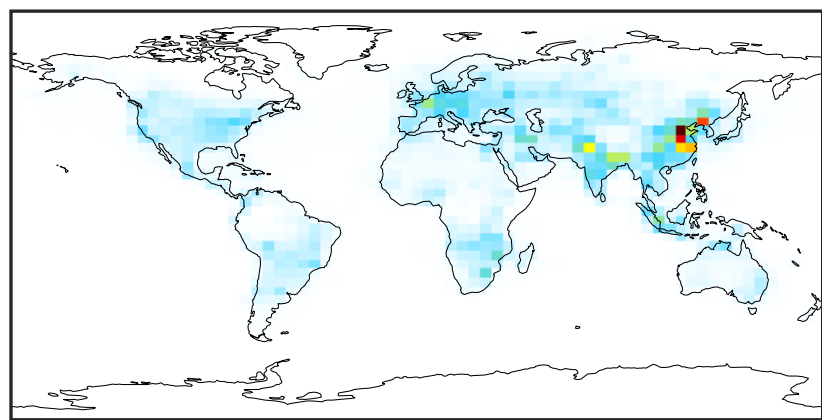
Ratio (1x1.25)
Dev/Ref, Fixed Range



0.50 0.75 1.00 1.50 2.00
unitless

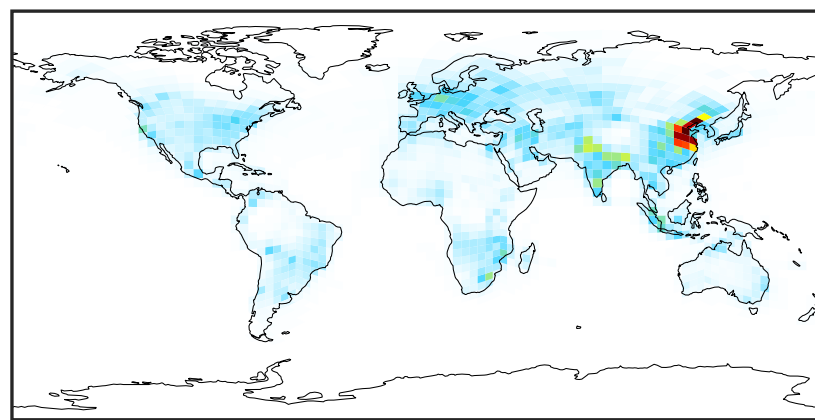
SpeciesConcVV_NOx (Oct2019)

GCC_14.2.0 (Ref)
4.0x5.0



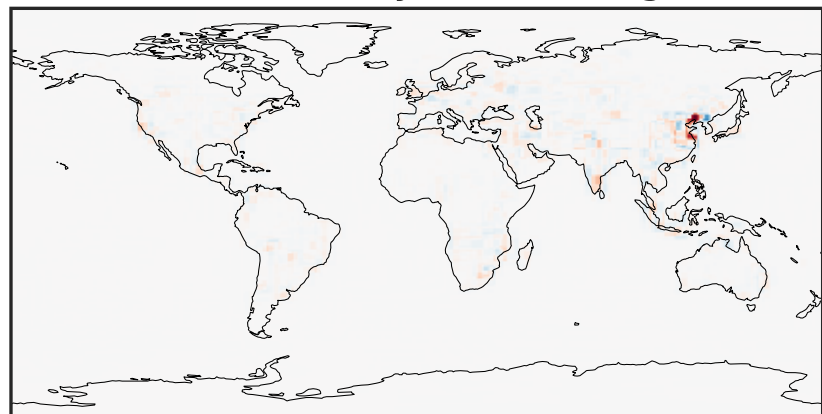
0.00 2.97 5.93 8.90 11.86
ppb

GCHP_14.2.0 (Dev)
c24



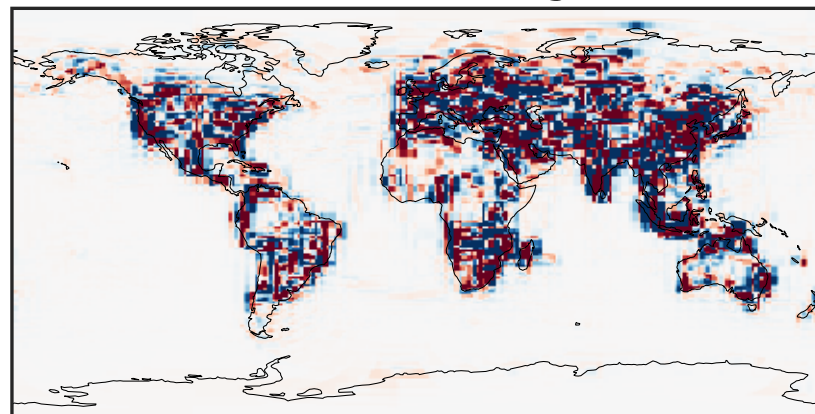
0.00 2.97 5.93 8.90 11.86
ppb

Difference (1x1.25)
Dev - Ref, Dynamic Range



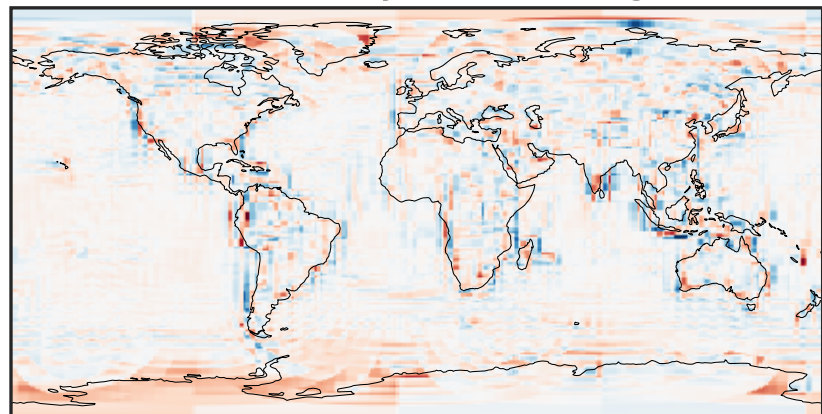
-9.73 -4.86 0.00 4.86 9.73
ppb

Difference (1x1.25)
Dev - Ref, Restricted Range [5%,95%]



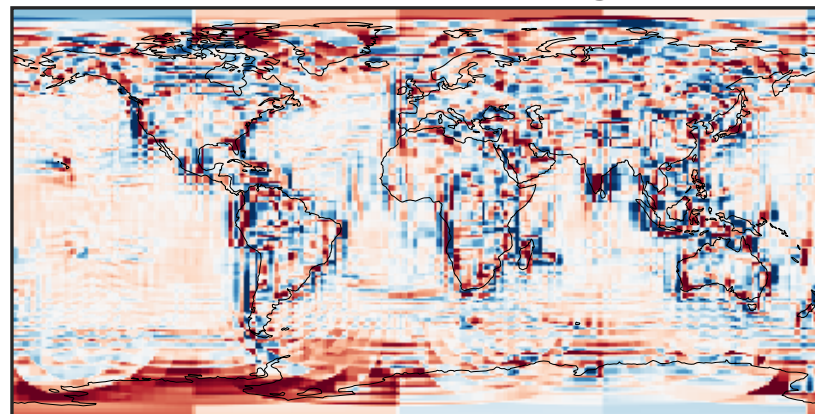
-0.1582 -0.0791 0.0000 0.0791 0.1582
ppb

Ratio (1x1.25)
Dev/Ref, Dynamic Range



0.116 0.558 1.000 4.818 8.636
unitless

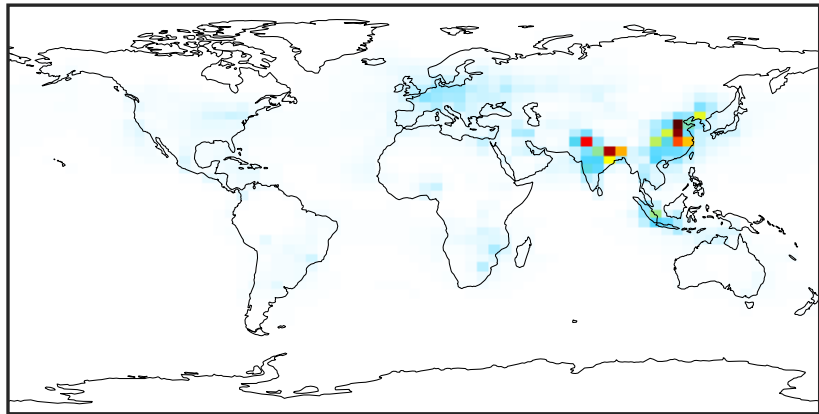
Ratio (1x1.25)
Dev/Ref, Fixed Range



0.50 0.75 1.00 1.50 2.00
unitless

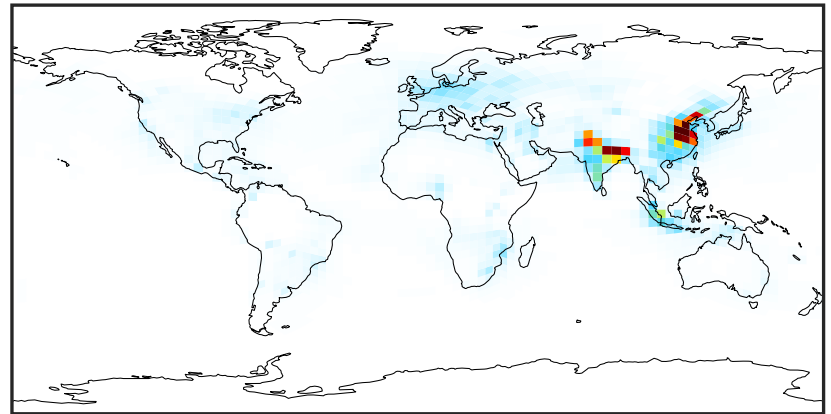
SpeciesConcVV_HNO2 (Oct2019)

GCC_14.2.0 (Ref)
4.0x5.0



0.000 0.045 0.090 0.135 0.180
ppb

GCHP_14.2.0 (Dev)
c24



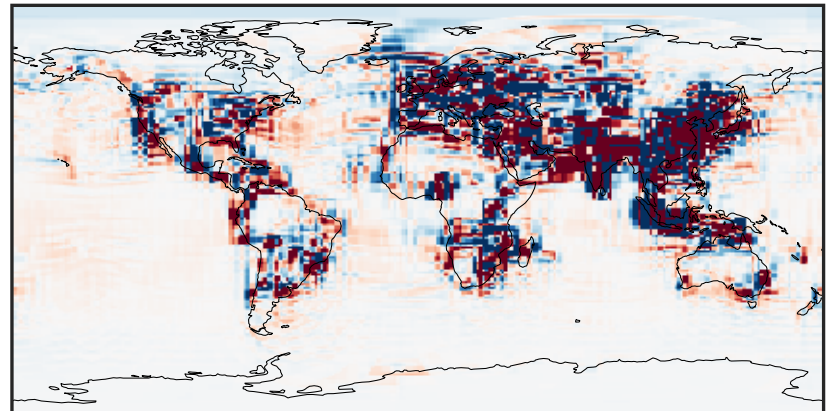
0.000 0.045 0.090 0.135 0.180
ppb

Difference (1x1.25)
Dev - Ref, Dynamic Range



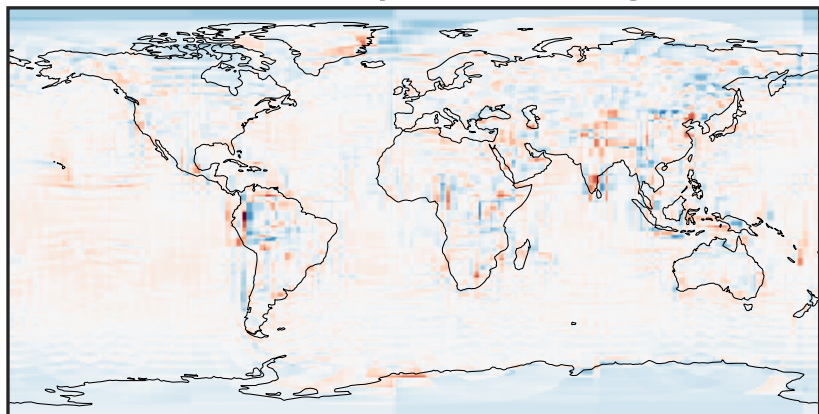
-0.1311 -0.0655 0.0000 0.0655 0.1311
ppb

Difference (1x1.25)
Dev - Ref, Restricted Range [5%,95%]



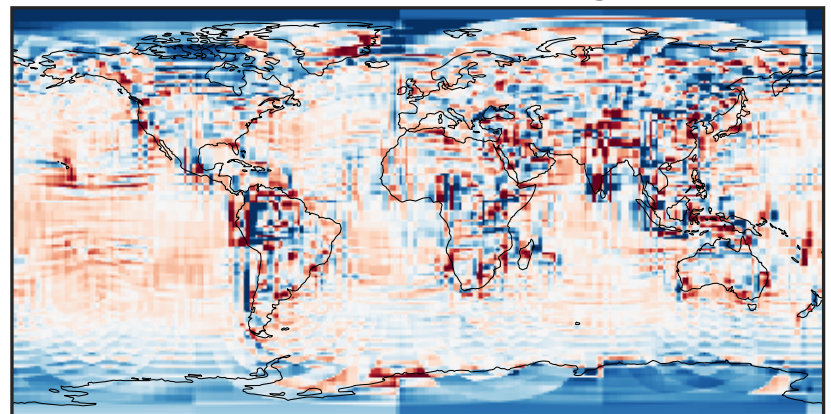
-0.0005 0.0000 0.0005
ppb

Ratio (1x1.25)
Dev/Ref, Dynamic Range



1e-01 1 10
unitless

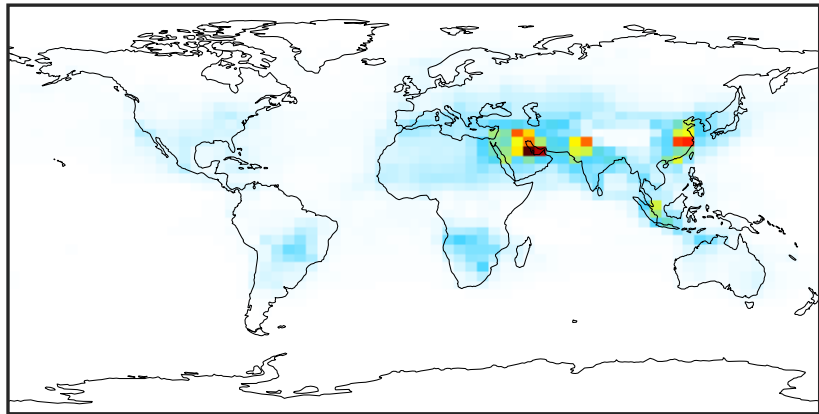
Ratio (1x1.25)
Dev/Ref, Fixed Range



0.50 0.75 1.00 1.50 2.00
unitless

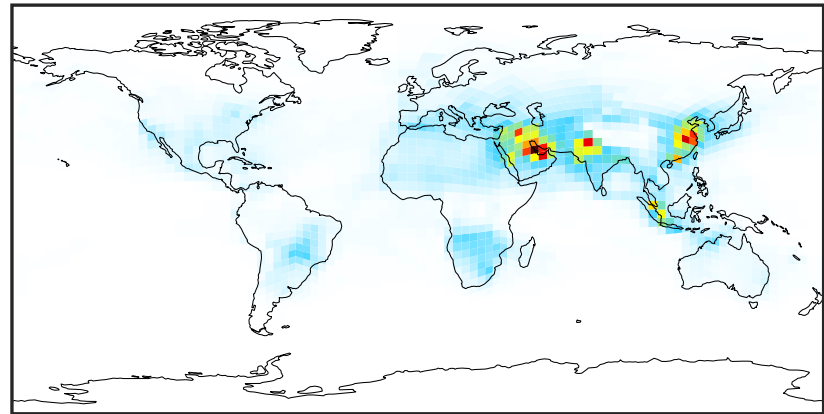
SpeciesConcVV_HNO3 (Oct2019)

GCC_14.2.0 (Ref)
4.0x5.0



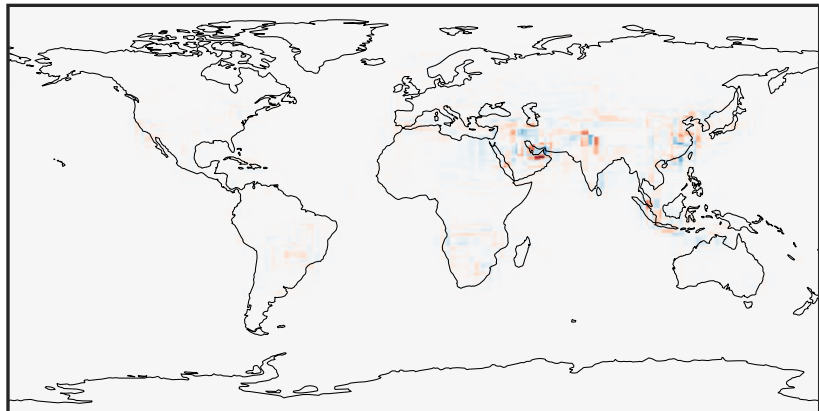
0.000 1.682 3.364 5.046 6.729
ppb

GCHP_14.2.0 (Dev)
c24



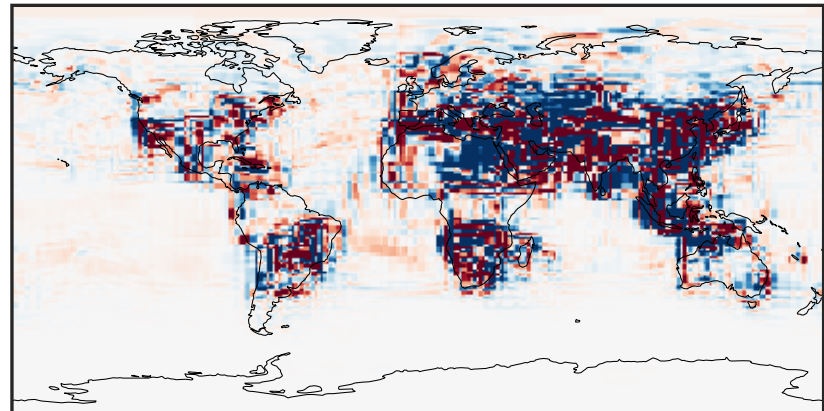
0.000 1.682 3.364 5.046 6.729
ppb

Difference (1x1.25)
Dev - Ref, Dynamic Range



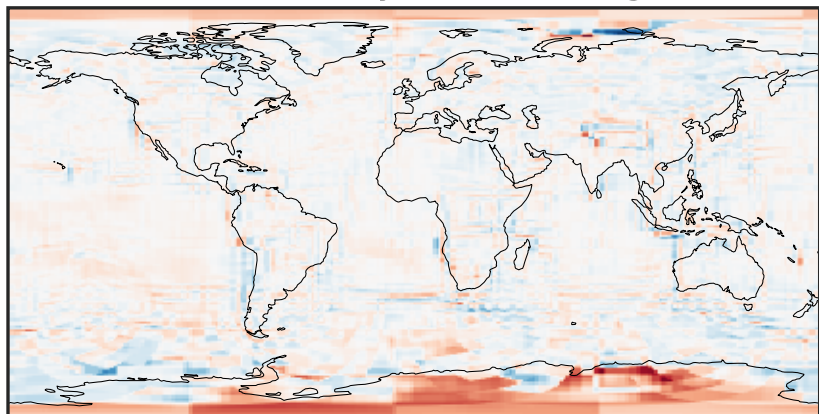
-3.570 -1.785 0.000 1.785 3.570
ppb

Difference (1x1.25)
Dev - Ref, Restricted Range [5%,95%]



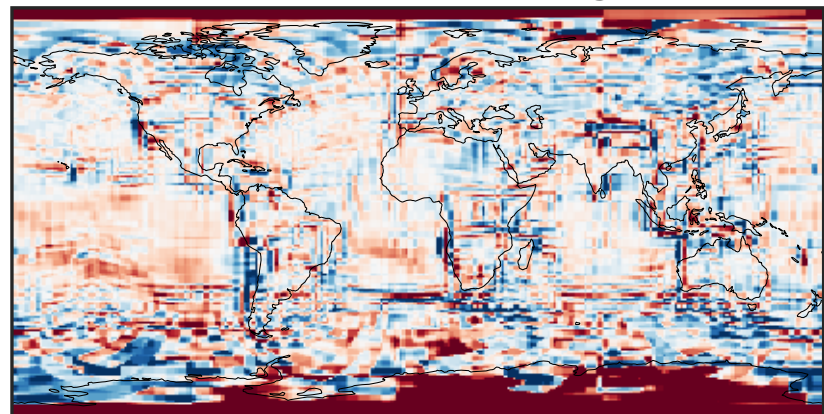
-0.0672 -0.0336 0.0000 0.0336 0.0672
ppb

Ratio (1x1.25)
Dev/Ref, Dynamic Range



1e-01 1 10
unitless

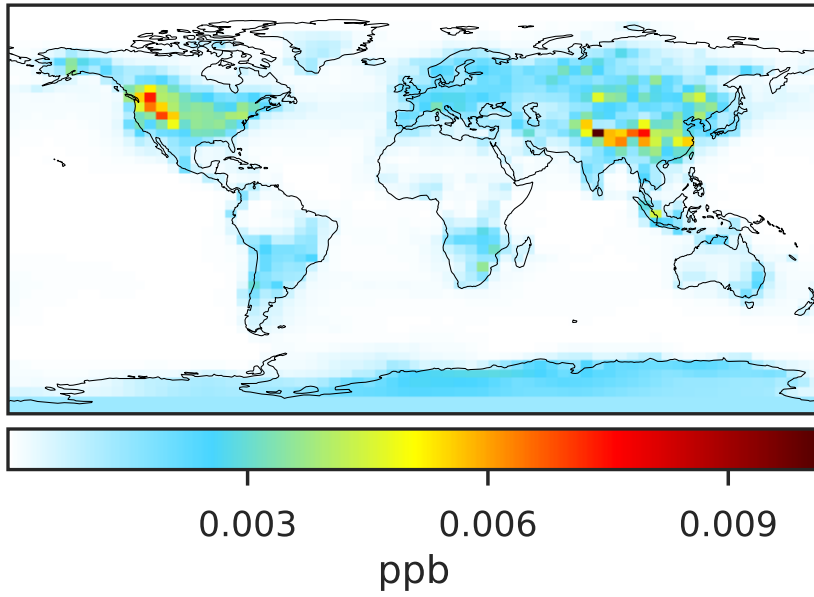
Ratio (1x1.25)
Dev/Ref, Fixed Range



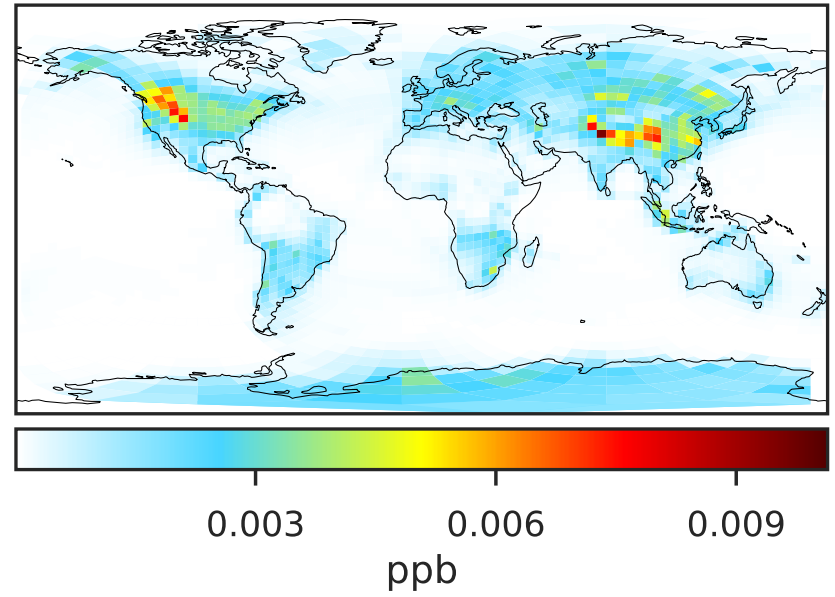
0.50 0.75 1.00 1.50 2.00
unitless

SpeciesConcVV_HNO4 (Oct2019)

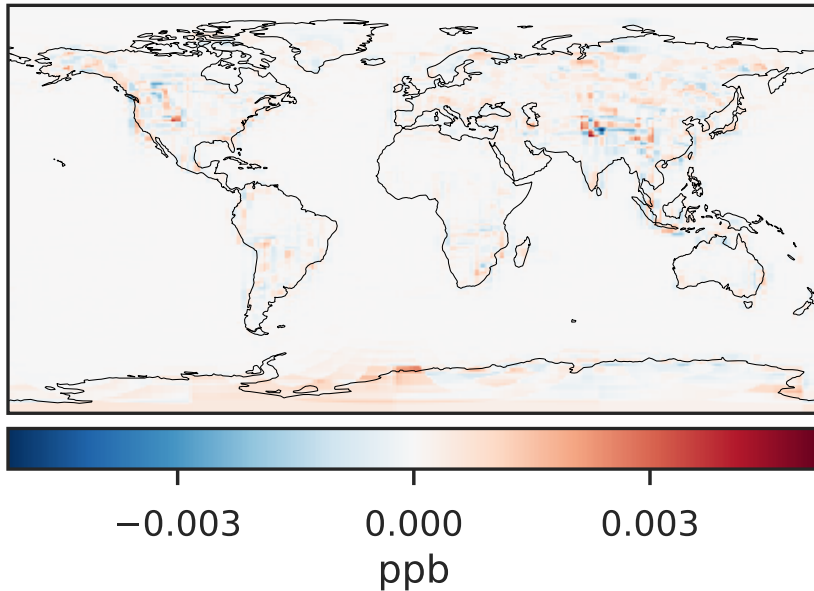
GCC_14.2.0 (Ref)
4.0x5.0



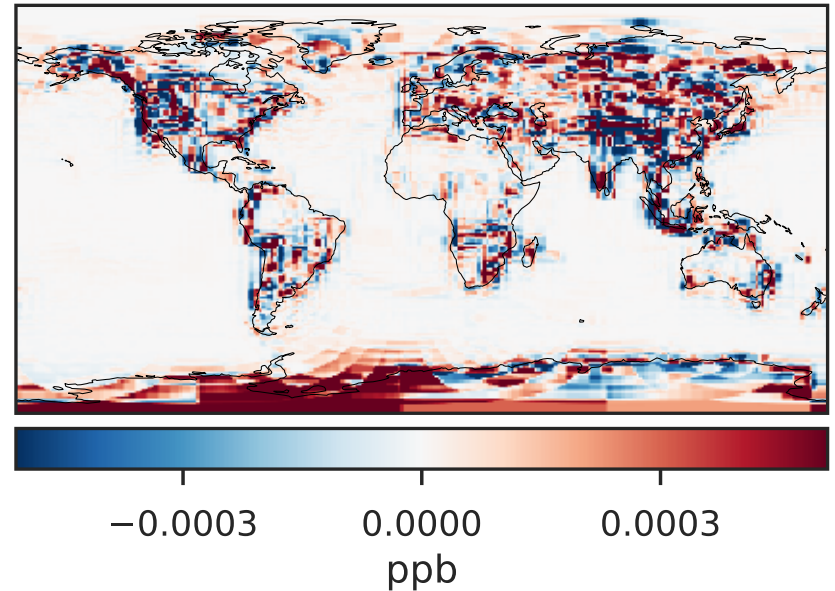
GCHP_14.2.0 (Dev)
c24



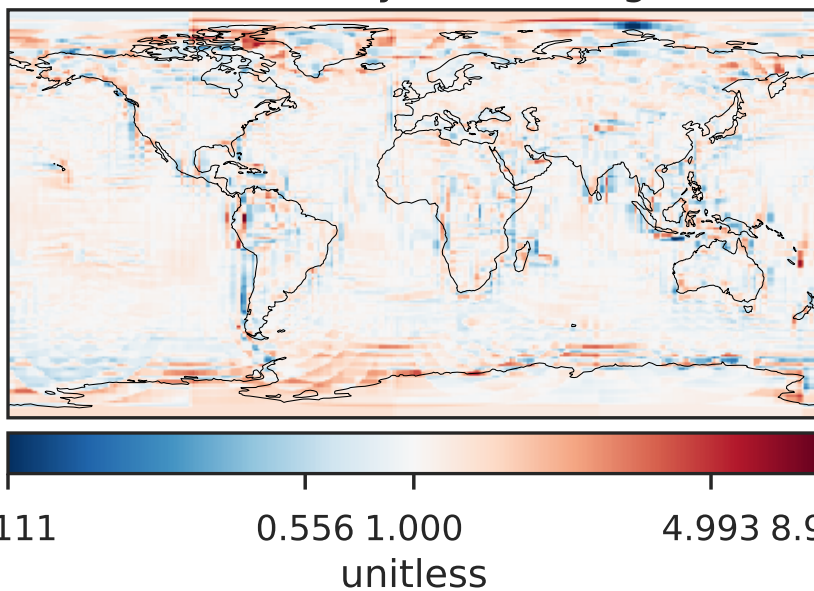
Difference (1x1.25)
Dev - Ref, Dynamic Range



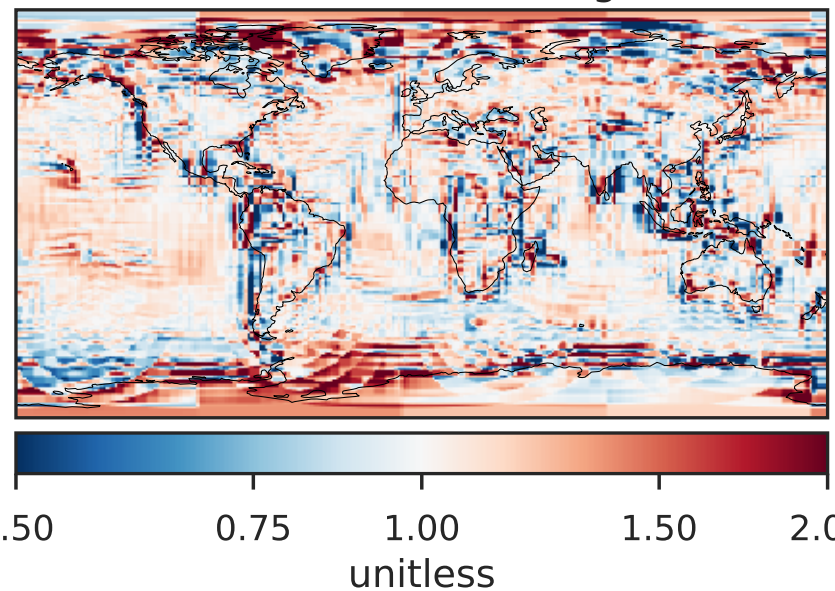
Difference (1x1.25)
Dev - Ref, Restricted Range [5%,95%]



Ratio (1x1.25)
Dev/Ref, Dynamic Range

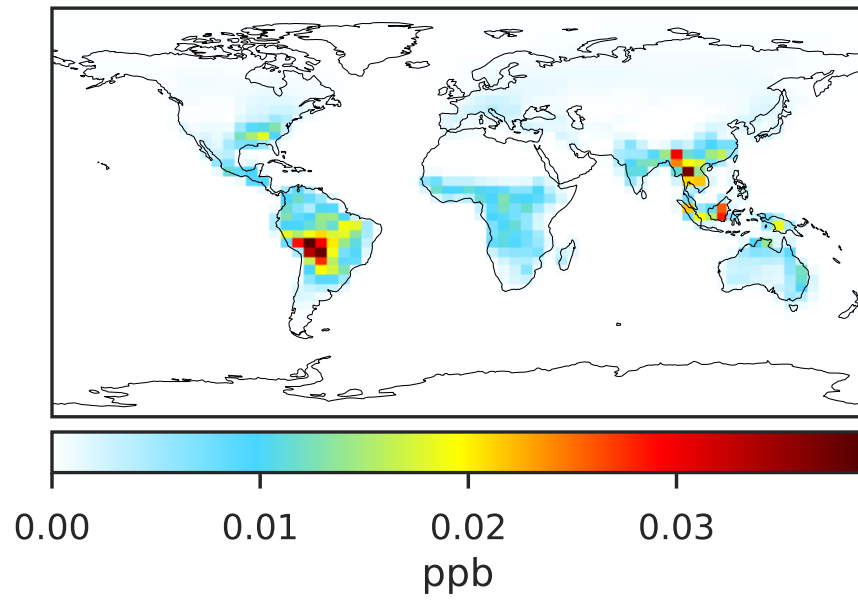


Ratio (1x1.25)
Dev/Ref, Fixed Range

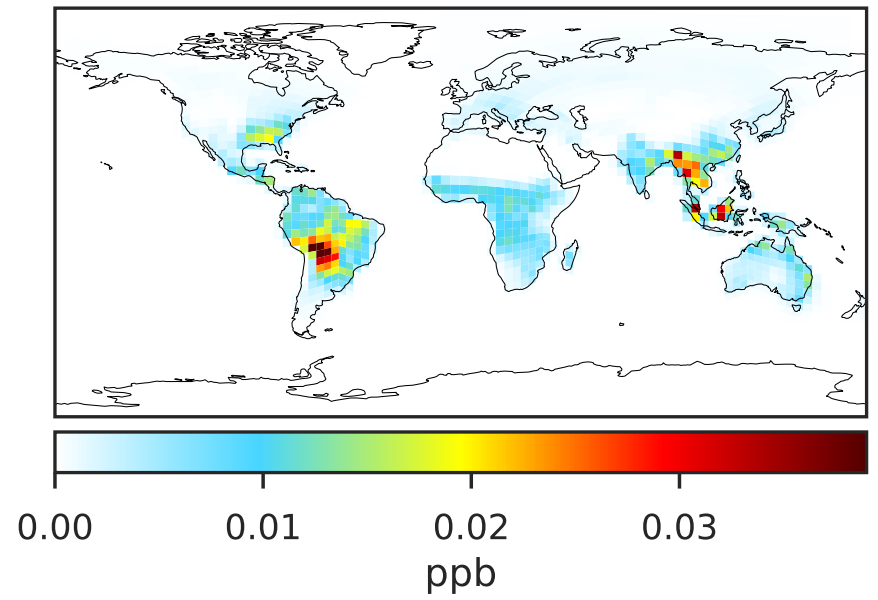


SpeciesConcVV_MPAN (Oct2019)

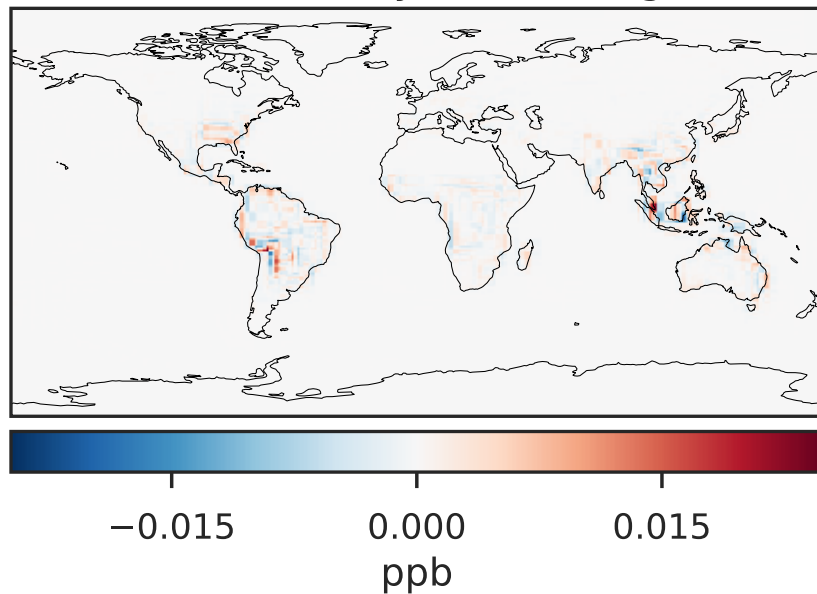
GCC_14.2.0 (Ref)
4.0x5.0



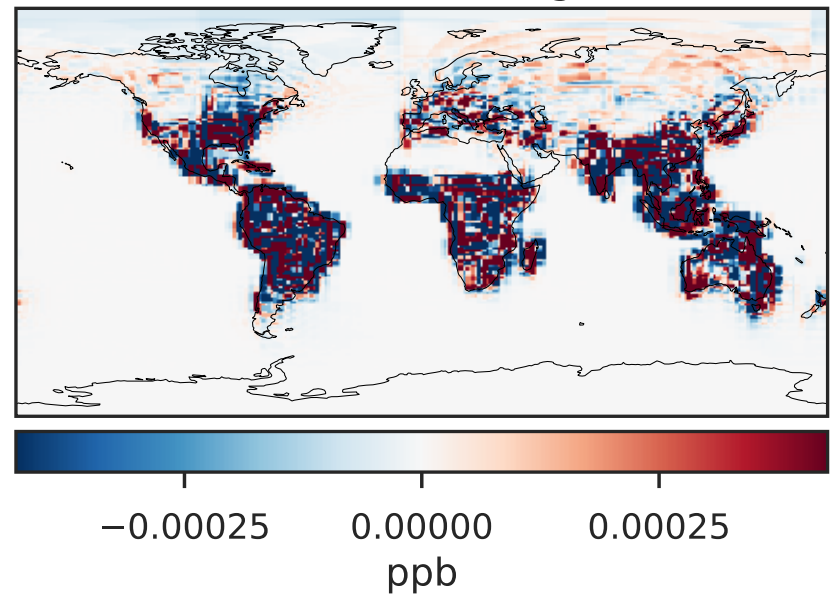
GCHP_14.2.0 (Dev)
c24



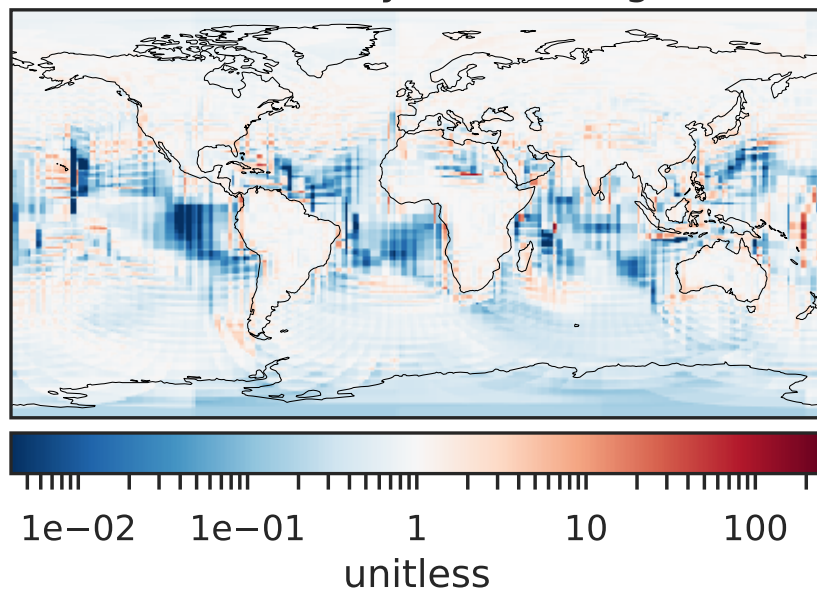
Difference (1x1.25)
Dev - Ref, Dynamic Range



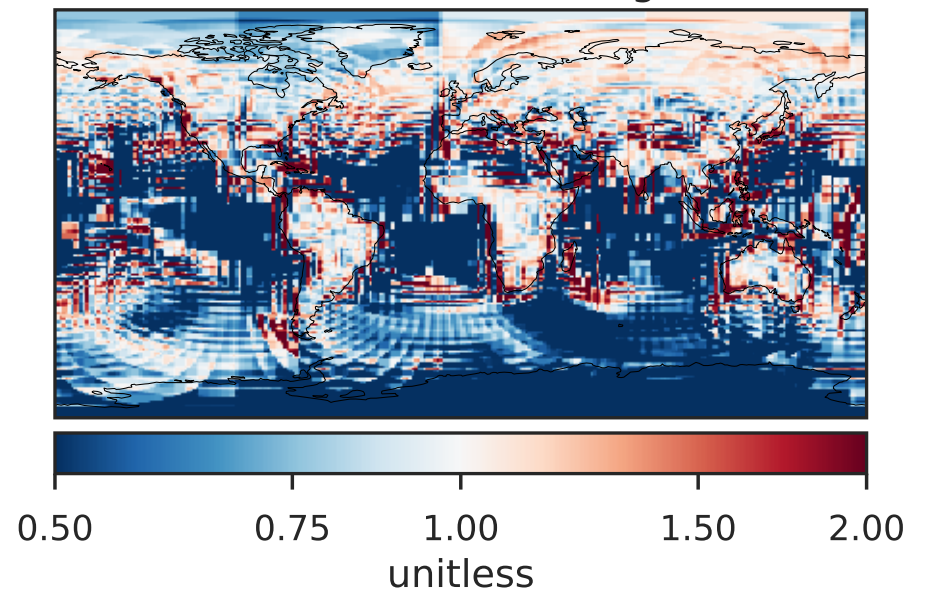
Difference (1x1.25)
Dev - Ref, Restricted Range [5%,95%]



Ratio (1x1.25)
Dev/Ref, Dynamic Range

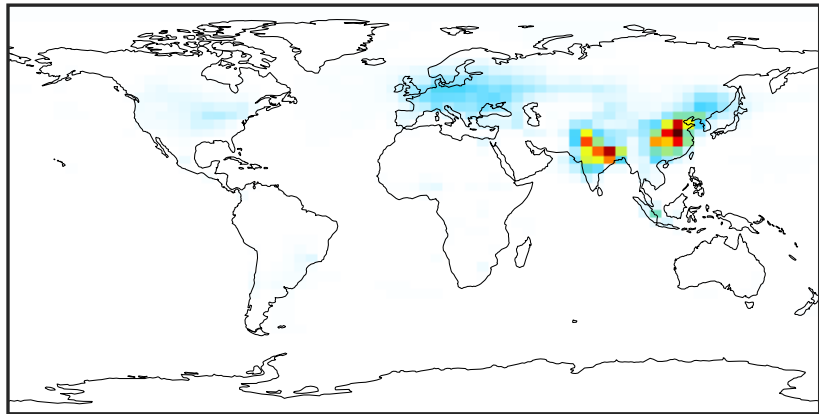


Ratio (1x1.25)
Dev/Ref, Fixed Range



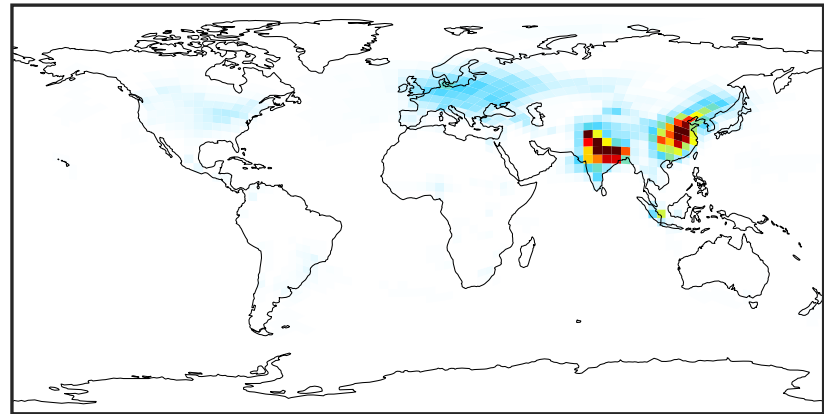
SpeciesConcVV_NIT (Oct2019)

GCC_14.2.0 (Ref)
4.0x5.0



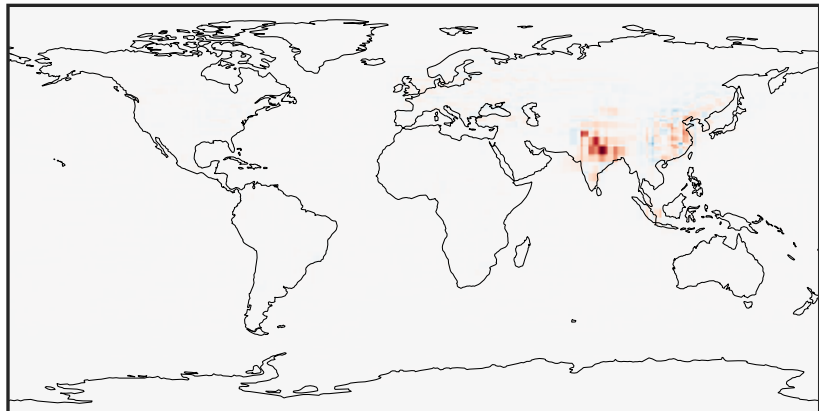
0.000 2.016 4.031 6.047 8.062
ppb

GCHP_14.2.0 (Dev)
c24



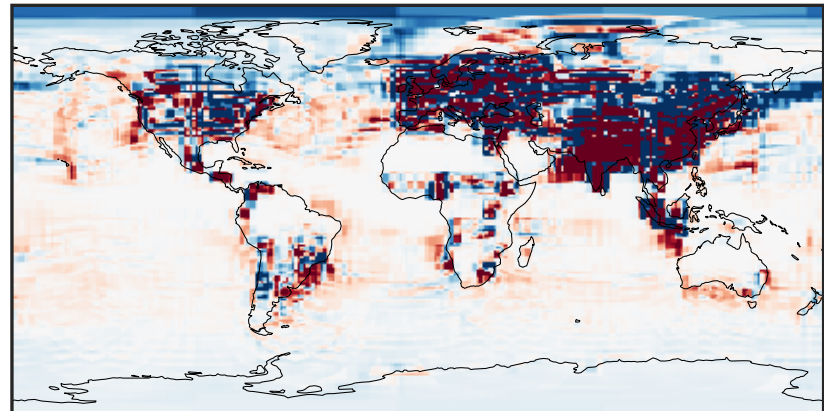
0.000 2.016 4.031 6.047 8.062
ppb

Difference (1x1.25)
Dev - Ref, Dynamic Range



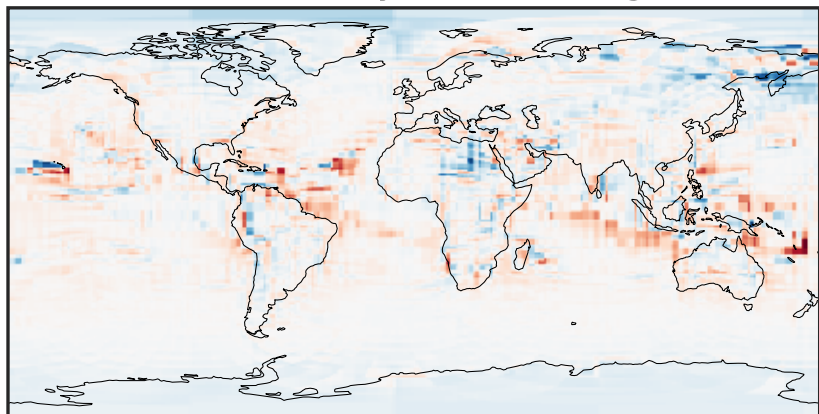
-6.77 -3.39 0.00 3.39 6.77
ppb

Difference (1x1.25)
Dev - Ref, Restricted Range [5%,95%]



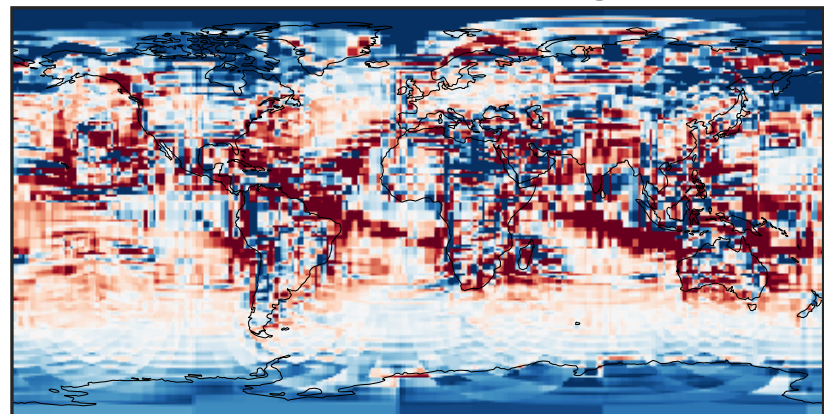
-0.02 0.00 0.02
ppb

Ratio (1x1.25)
Dev/Ref, Dynamic Range



1e-02 1e-01 1 10 100
unitless

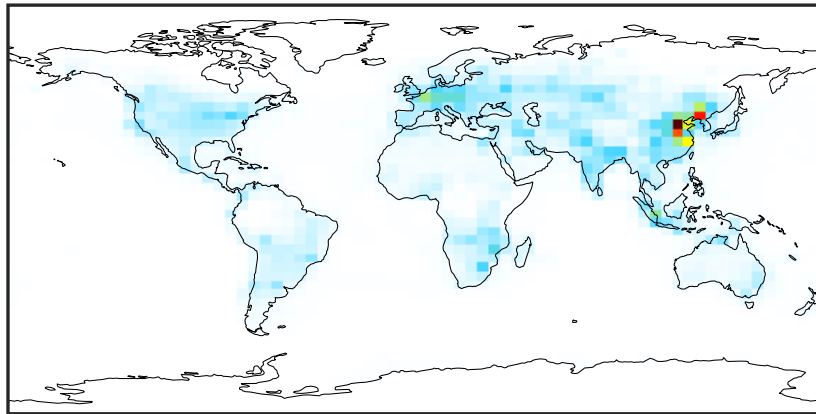
Ratio (1x1.25)
Dev/Ref, Fixed Range



0.50 0.75 1.00 1.50 2.00
unitless

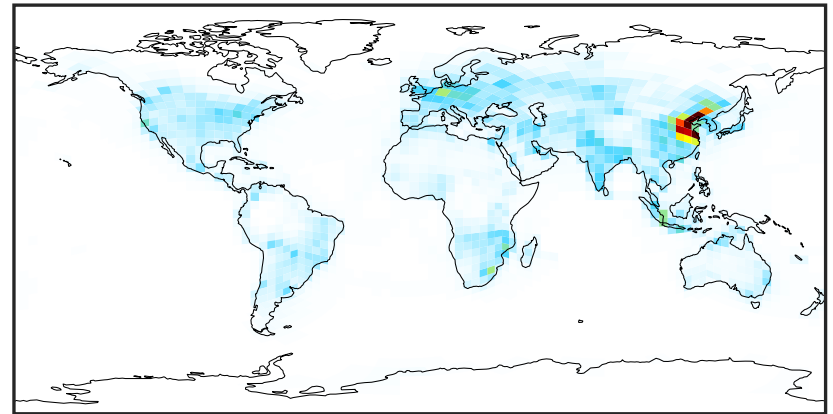
SpeciesConcVV_NO (Oct2019)

GCC_14.2.0 (Ref)
4.0x5.0



0.0000 0.2284 0.4569 0.6853 0.9138
ppb

GCHP_14.2.0 (Dev)
c24



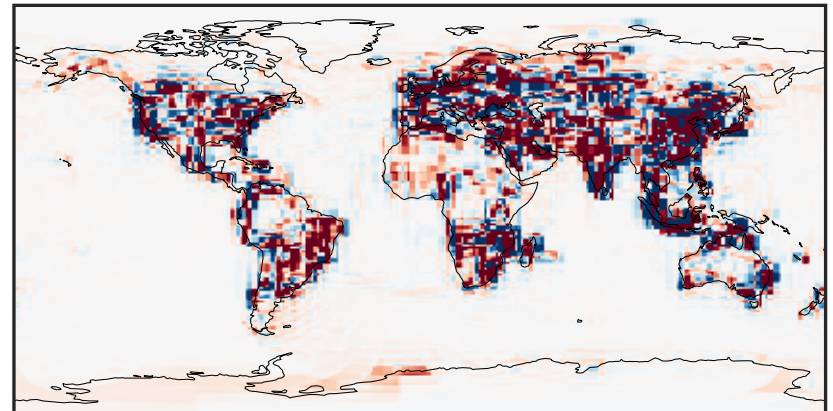
0.0000 0.2284 0.4569 0.6853 0.9138
ppb

Difference (1x1.25)
Dev - Ref, Dynamic Range



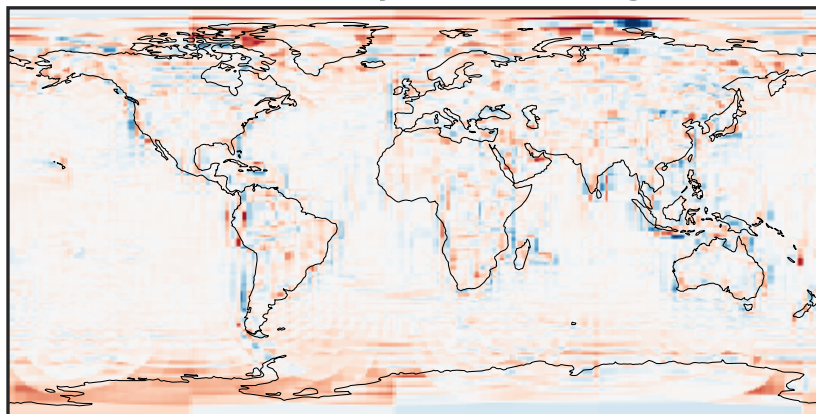
-1.029 -0.515 0.000 0.515 1.029
ppb

Difference (1x1.25)
Dev - Ref, Restricted Range [5%,95%]



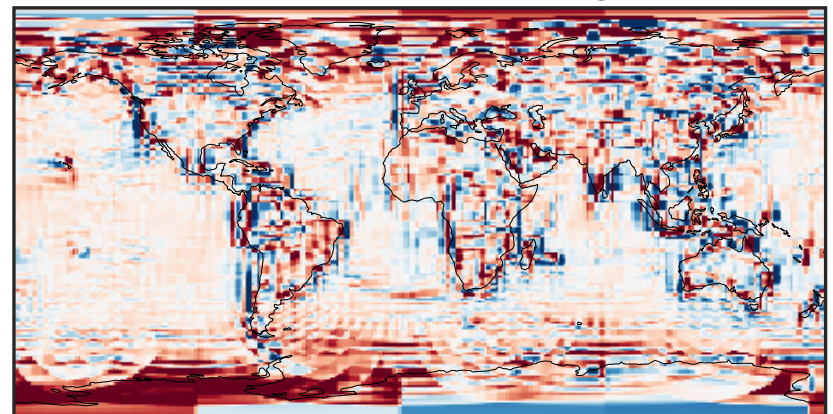
-0.008 0.000 0.008
ppb

Ratio (1x1.25)
Dev/Ref, Dynamic Range



1e-01 1 10
unitless

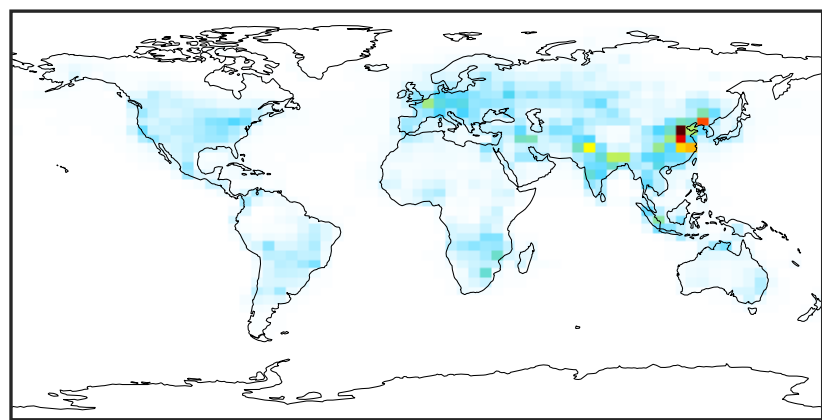
Ratio (1x1.25)
Dev/Ref, Fixed Range



0.50 0.75 1.00 1.50 2.00
unitless

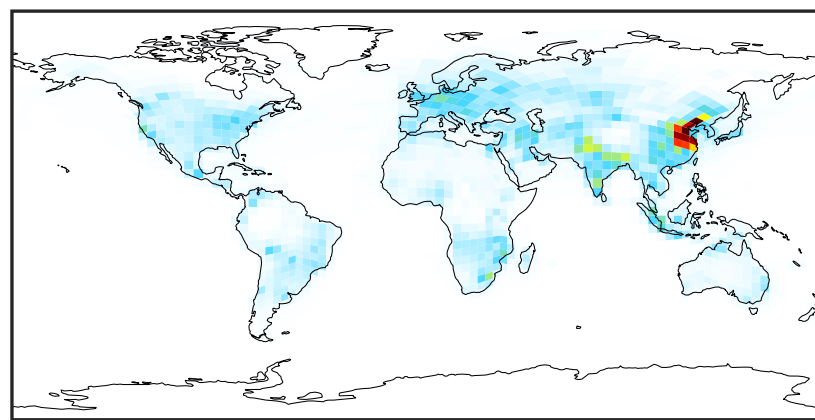
SpeciesConcVV_NO2 (Oct2019)

GCC_14.2.0 (Ref)
4.0x5.0



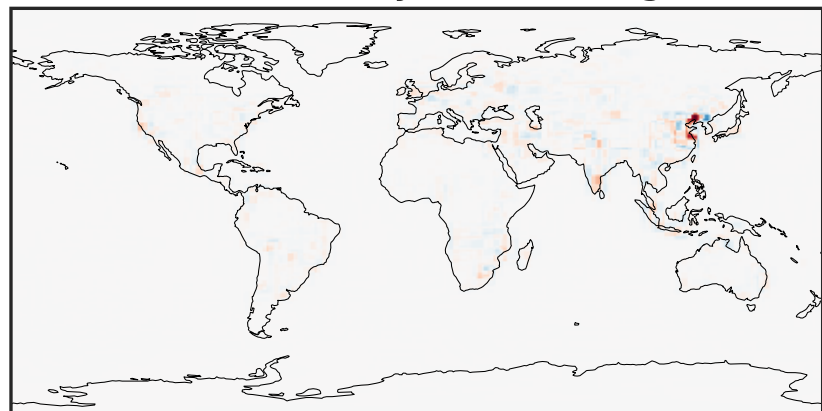
0.00 2.69 5.38 8.07 10.76
ppb

GCHP_14.2.0 (Dev)
c24



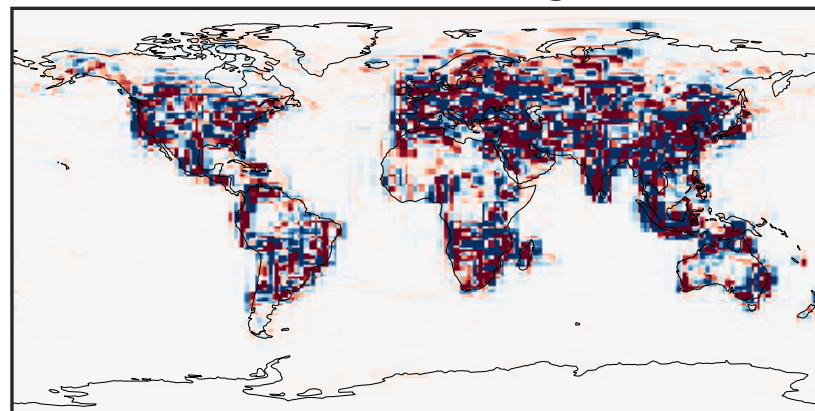
0.00 2.69 5.38 8.07 10.76
ppb

Difference (1x1.25)
Dev - Ref, Dynamic Range



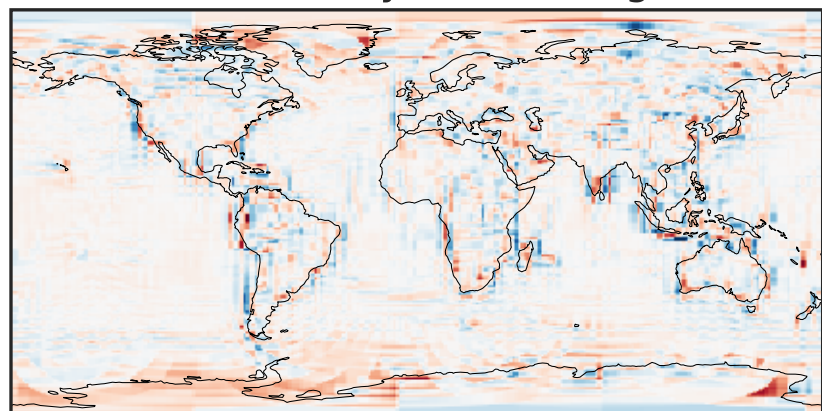
-8.58 -4.29 0.00 4.29 8.58
ppb

Difference (1x1.25)
Dev - Ref, Restricted Range [5%,95%]



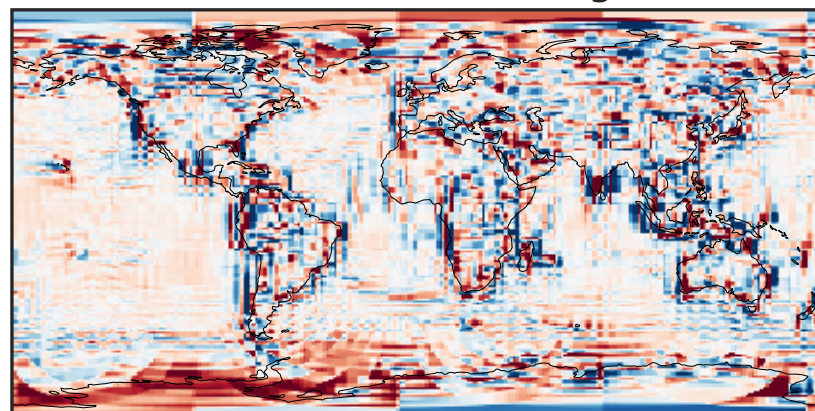
-0.1412 -0.0706 0.0000 0.0706 0.1412
ppb

Ratio (1x1.25)
Dev/Ref, Dynamic Range



0.116 0.558 1.000 4.808 8.616
unitless

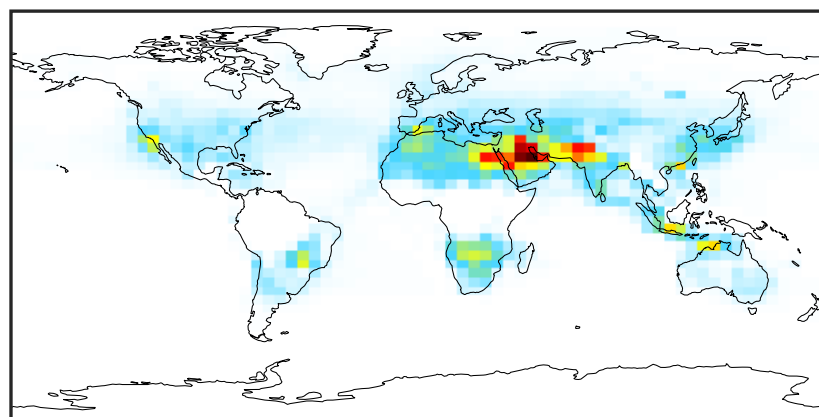
Ratio (1x1.25)
Dev/Ref, Fixed Range



0.50 0.75 1.00 1.50 2.00
unitless

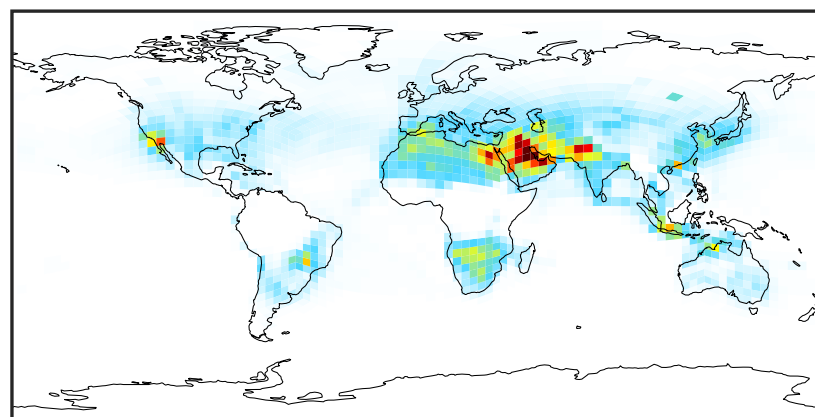
SpeciesConcVW_NO3 (Oct2019)

GCC_14.2.0 (Ref)
4.0x5.0



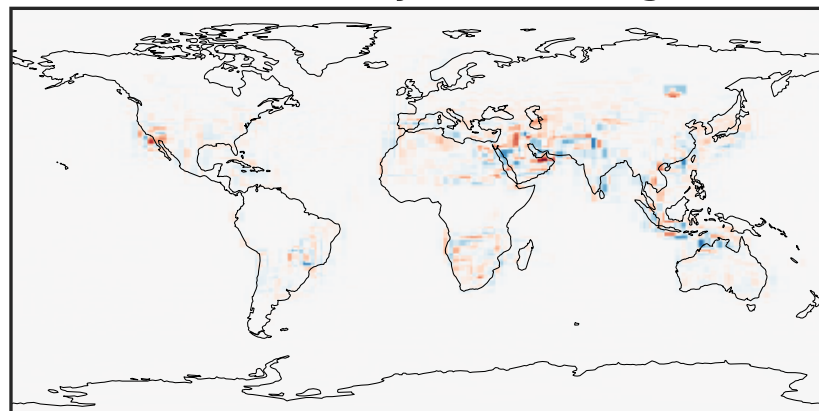
0.015 0.030 0.045
ppb

GCHP_14.2.0 (Dev)
c24



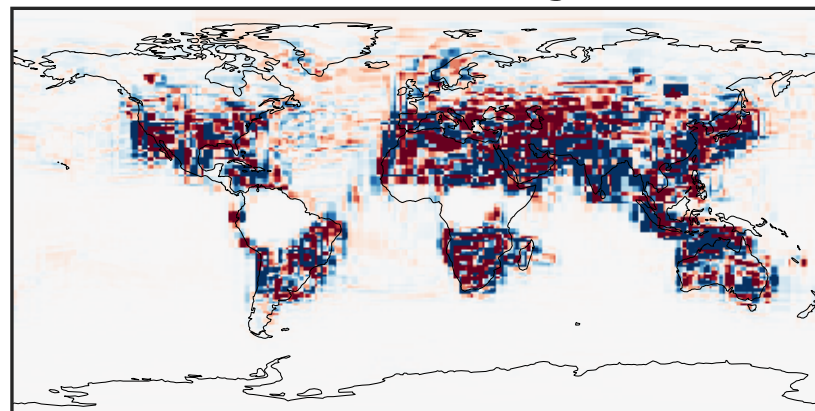
0.015 0.030 0.045
ppb

Difference (1x1.25)
Dev - Ref, Dynamic Range



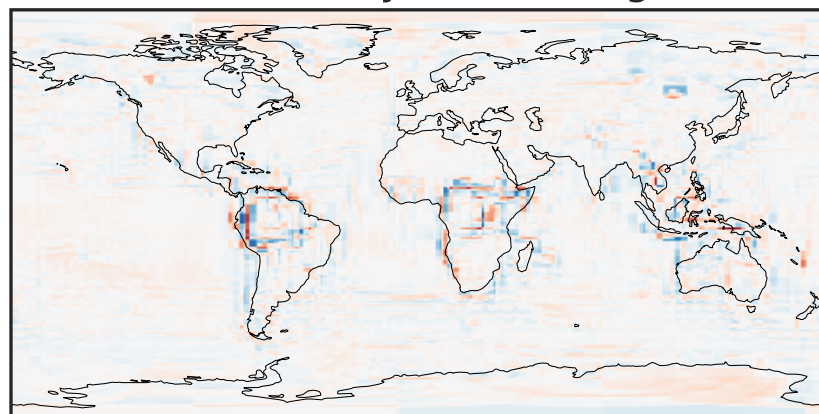
-0.015 0.000 0.015
ppb

Difference (1x1.25)
Dev - Ref, Restricted Range [5%,95%]



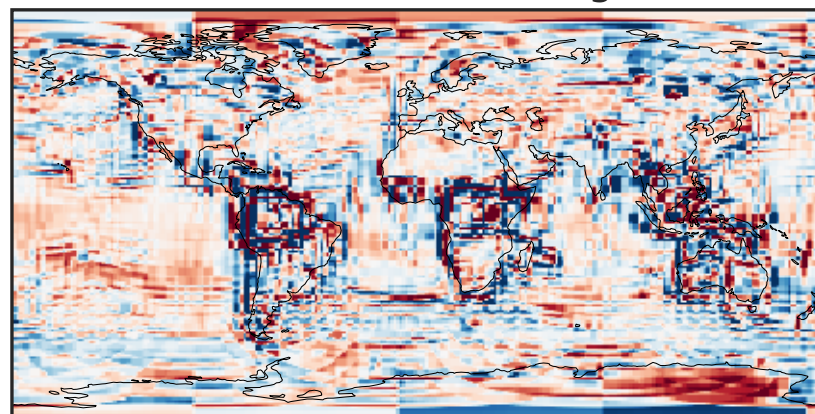
-0.0006 0.0000 0.0006
ppb

Ratio (1x1.25)
Dev/Ref, Dynamic Range



1e-02 1e-01 1 10 100
unitless

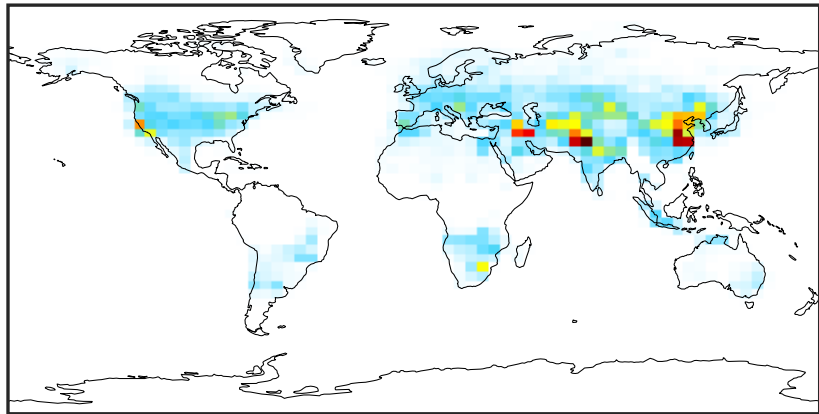
Ratio (1x1.25)
Dev/Ref, Fixed Range



0.50 0.75 1.00 1.50 2.00
unitless

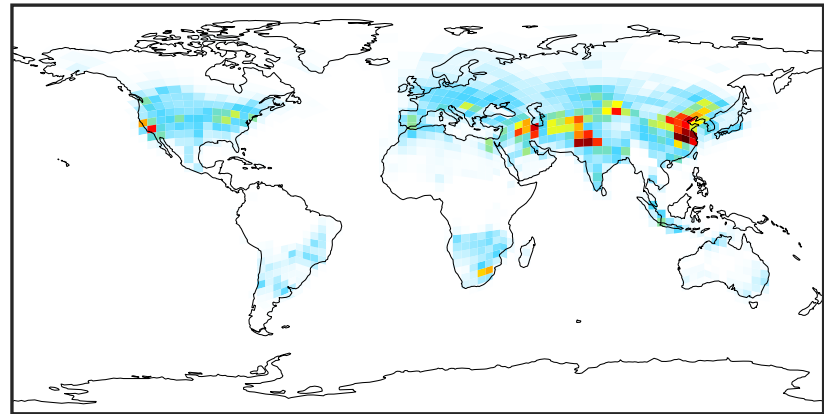
SpeciesConcVV_N2O5 (Oct2019)

GCC_14.2.0 (Ref)
4.0x5.0



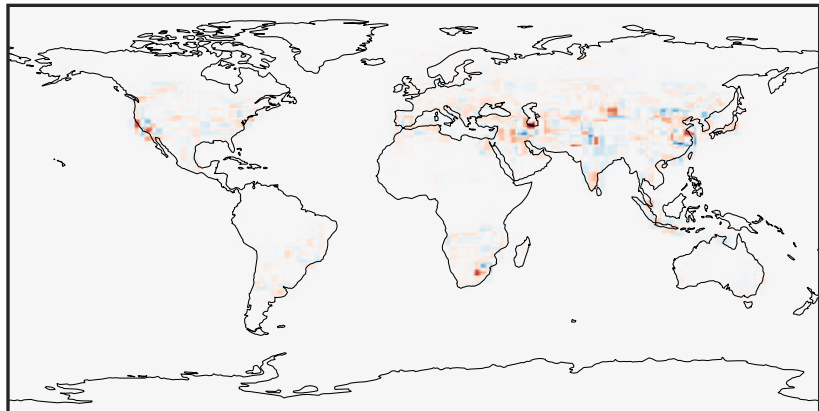
0.0000 0.0583 0.1166 0.1749 0.2332
ppb

GCHP_14.2.0 (Dev)
c24



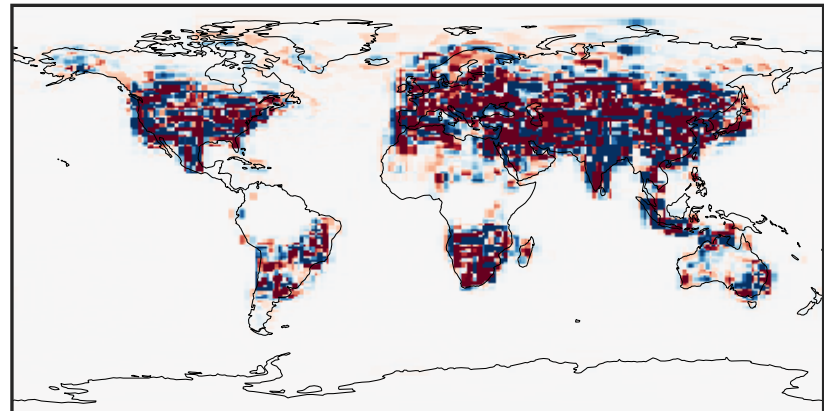
0.0000 0.0583 0.1166 0.1749 0.2332
ppb

Difference (1x1.25)
Dev - Ref, Dynamic Range



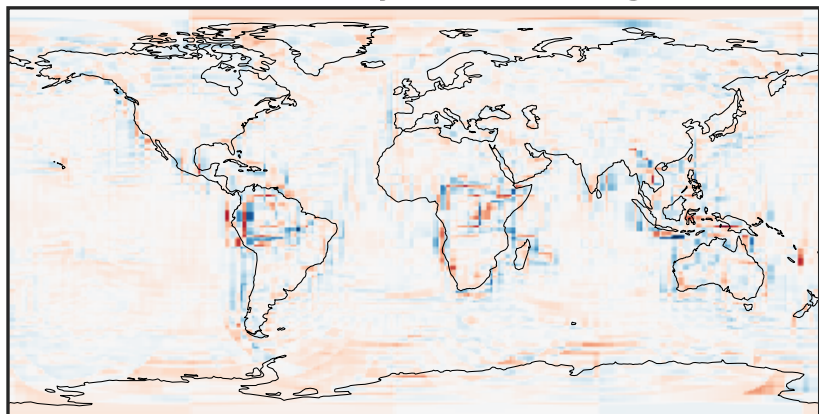
-0.1564 -0.0782 0.0000 0.0782 0.1564
ppb

Difference (1x1.25)
Dev - Ref, Restricted Range [5%,95%]



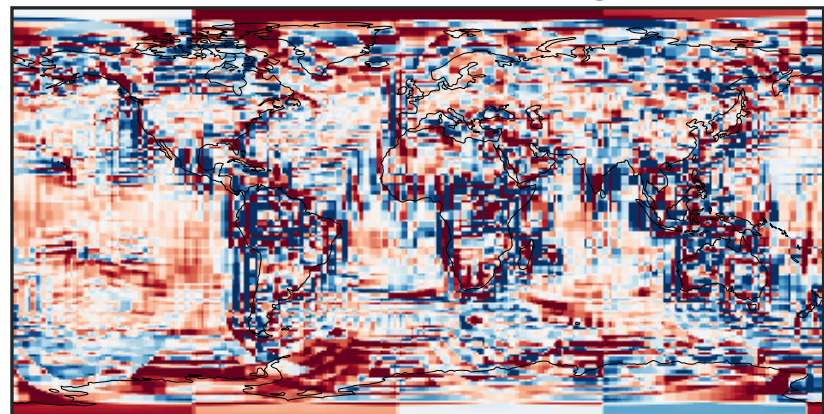
-0.0025 0.0000 0.0025
ppb

Ratio (1x1.25)
Dev/Ref, Dynamic Range



1e-02 1e-01 1 10 100
unitless

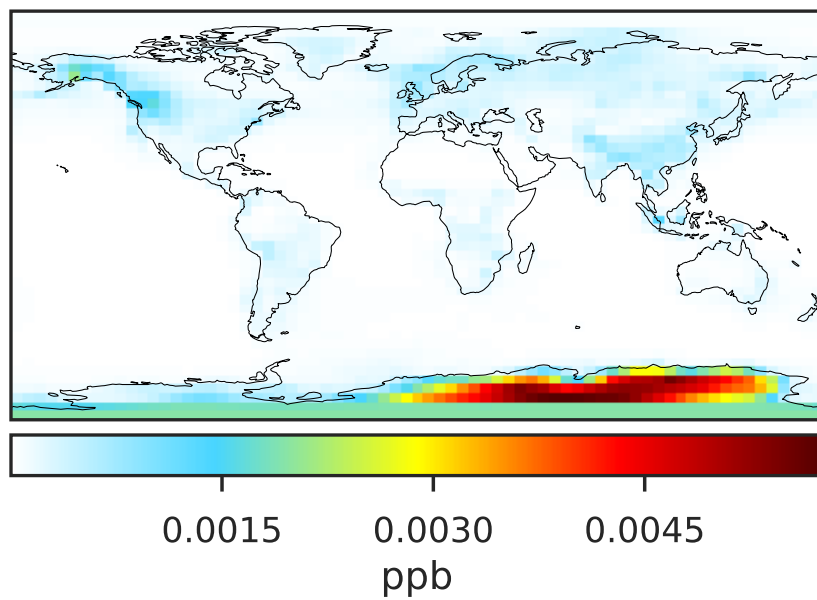
Ratio (1x1.25)
Dev/Ref, Fixed Range



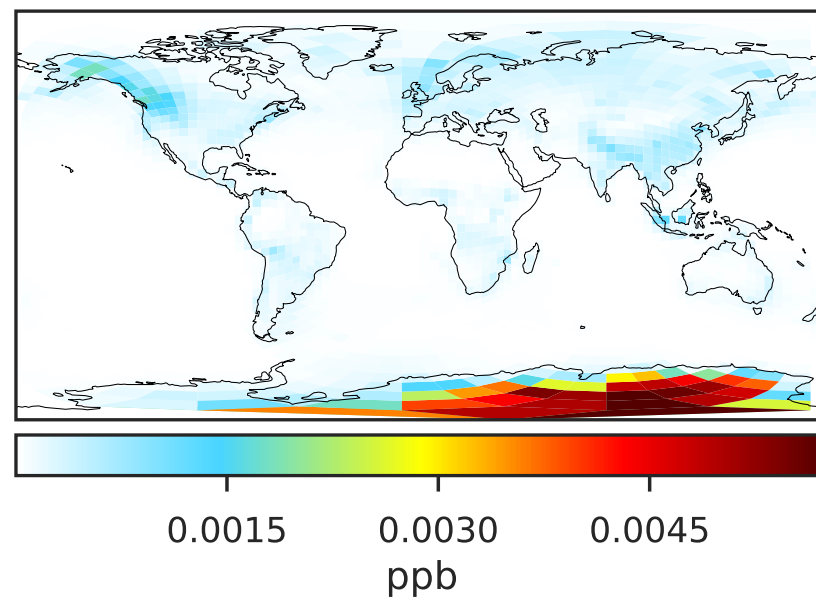
0.50 0.75 1.00 1.50 2.00
unitless

SpeciesConcVV_MPN (Oct2019)

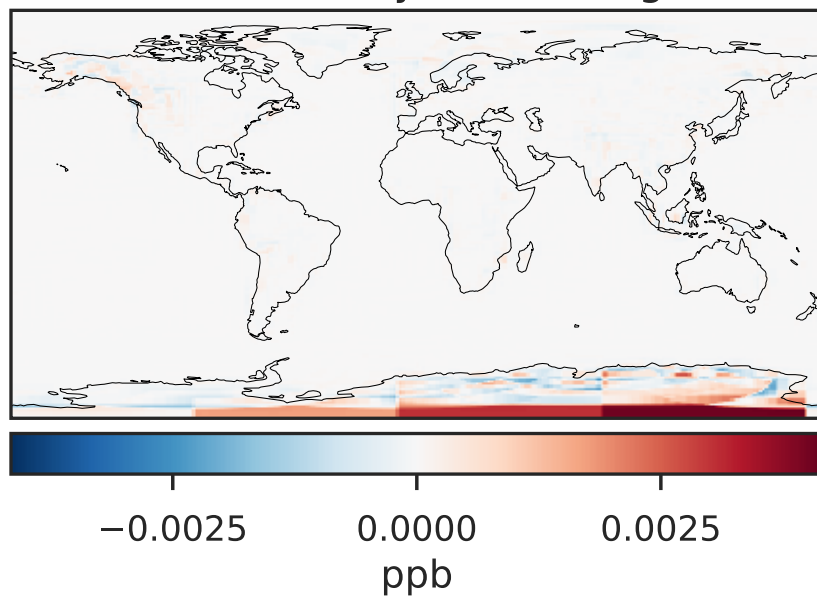
GCC_14.2.0 (Ref)
4.0x5.0



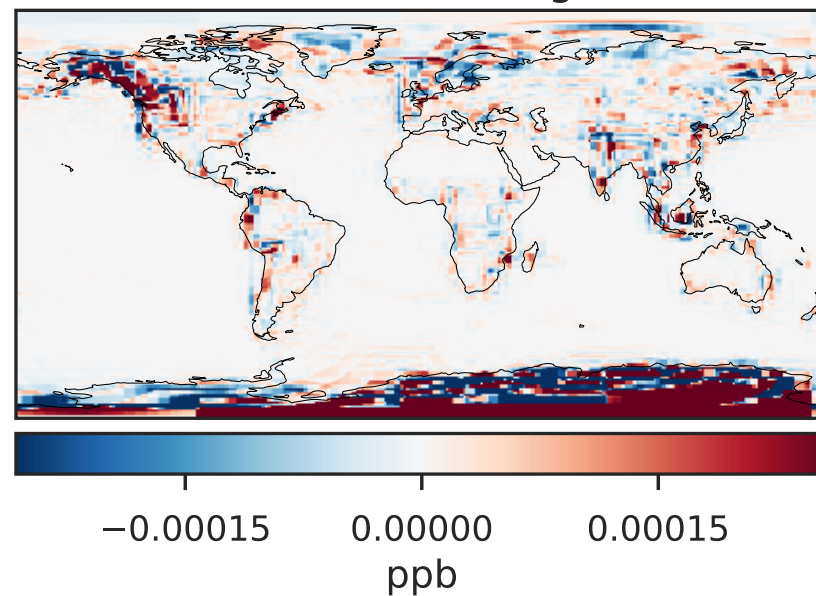
GCHP_14.2.0 (Dev)
c24



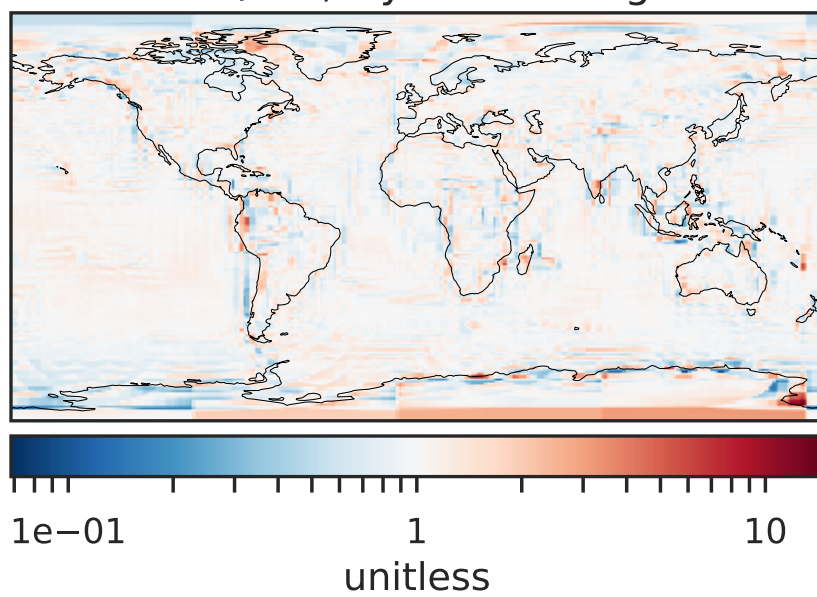
Difference (1x1.25)
Dev - Ref, Dynamic Range



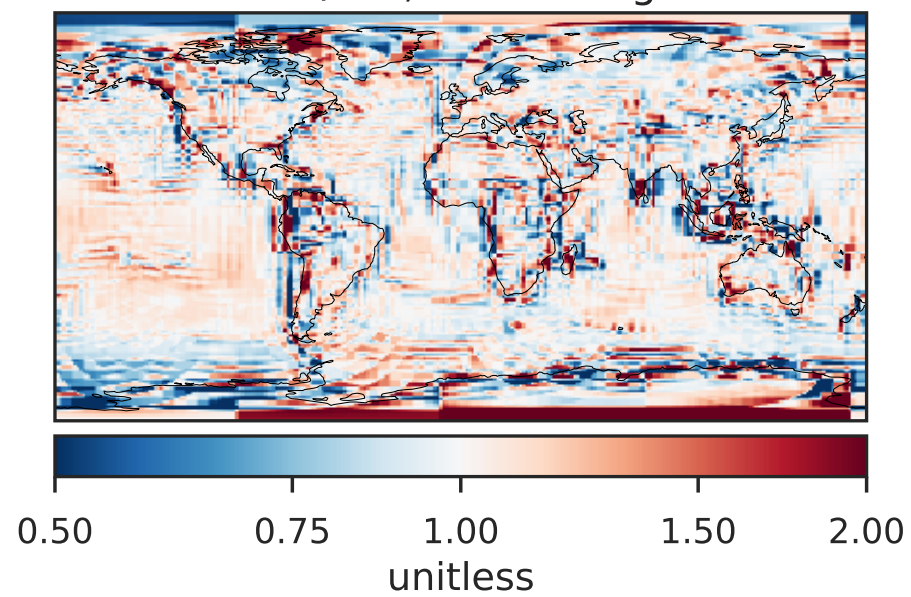
Difference (1x1.25)
Dev - Ref, Restricted Range [5%,95%]



Ratio (1x1.25)
Dev/Ref, Dynamic Range

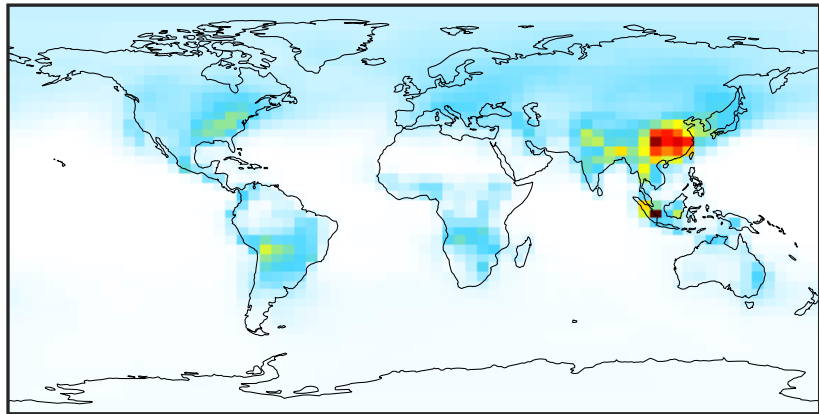


Ratio (1x1.25)
Dev/Ref, Fixed Range



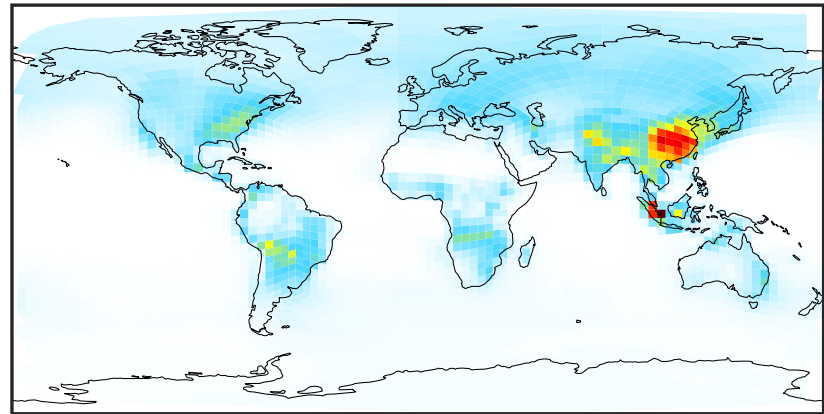
SpeciesConcVV_PAN (Oct2019)

GCC_14.2.0 (Ref)
4.0x5.0



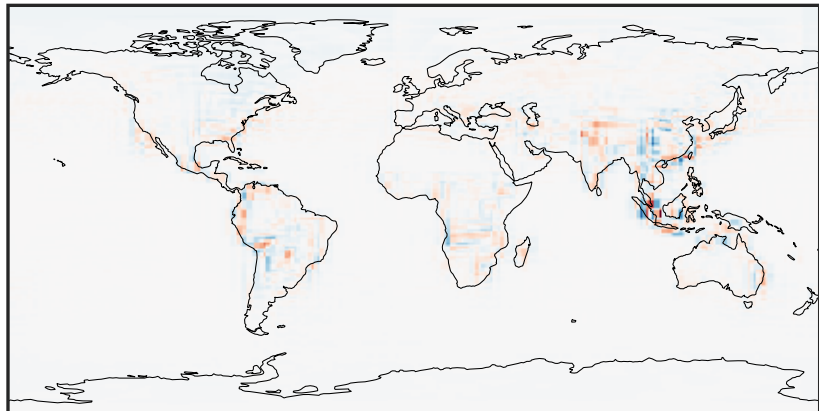
0.000 0.304 0.608 0.912 1.217
ppb

GCHP_14.2.0 (Dev)
c24



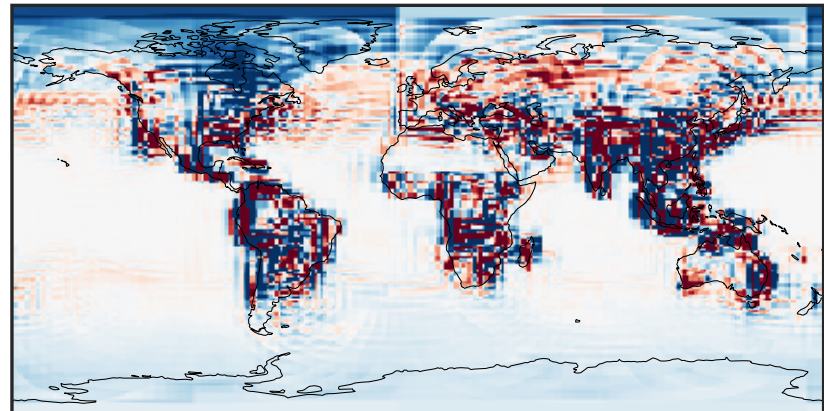
0.000 0.304 0.608 0.912 1.217
ppb

Difference (1x1.25)
Dev - Ref, Dynamic Range



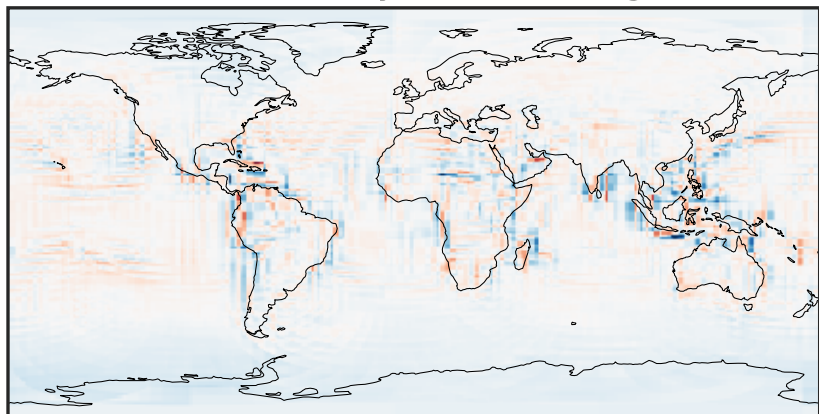
-0.474 -0.237 0.000 0.237 0.474
ppb

Difference (1x1.25)
Dev - Ref, Restricted Range [5%,95%]



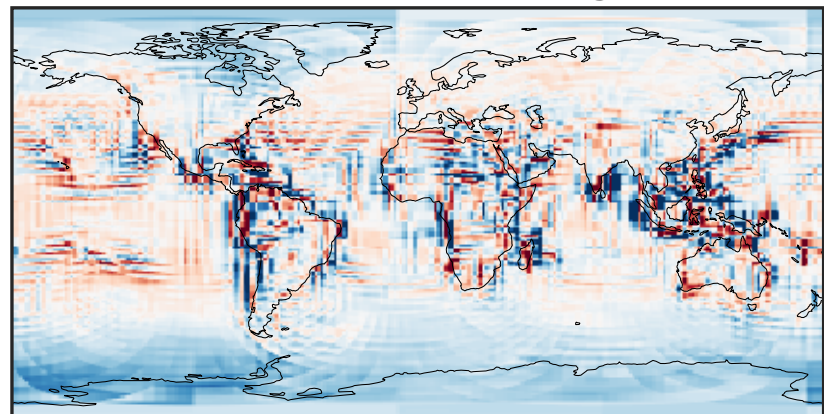
-0.015 0.000 0.015
ppb

Ratio (1x1.25)
Dev/Ref, Dynamic Range



1e-01 1 10
unitless

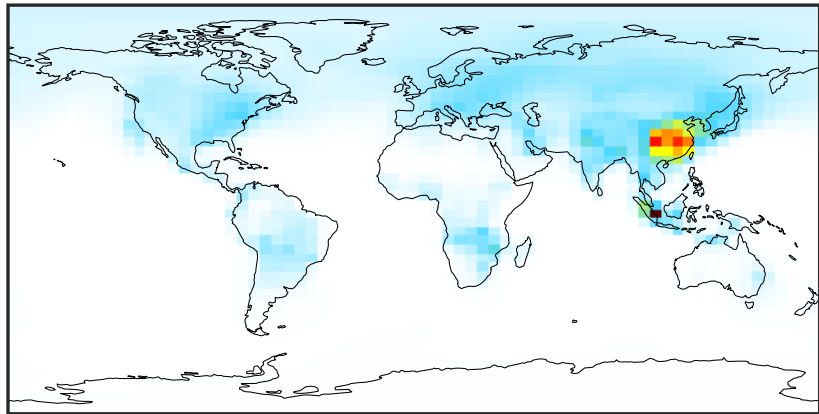
Ratio (1x1.25)
Dev/Ref, Fixed Range



0.50 0.75 1.00 1.50 2.00
unitless

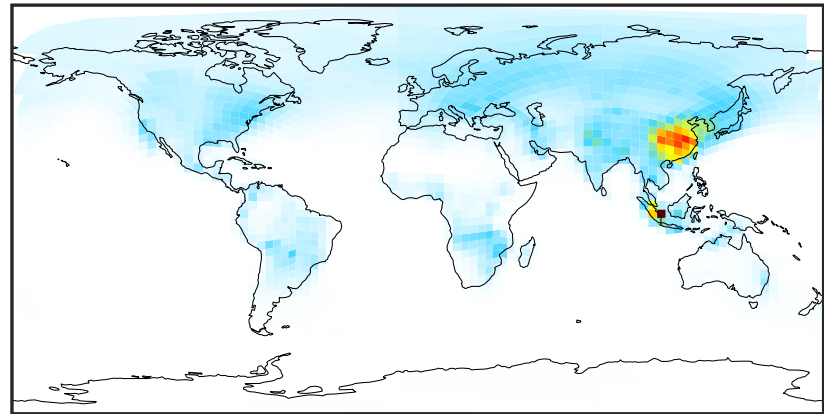
SpeciesConcVV_PPN (Oct2019)

GCC_14.2.0 (Ref)
4.0x5.0



0.0000 0.0941 0.1882 0.2822 0.3763
ppb

GCHP_14.2.0 (Dev)
c24



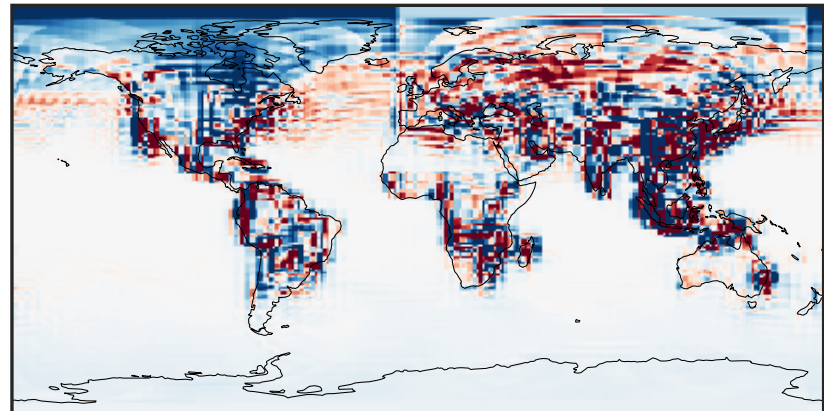
0.0000 0.0941 0.1882 0.2822 0.3763
ppb

Difference (1x1.25)
Dev - Ref, Dynamic Range



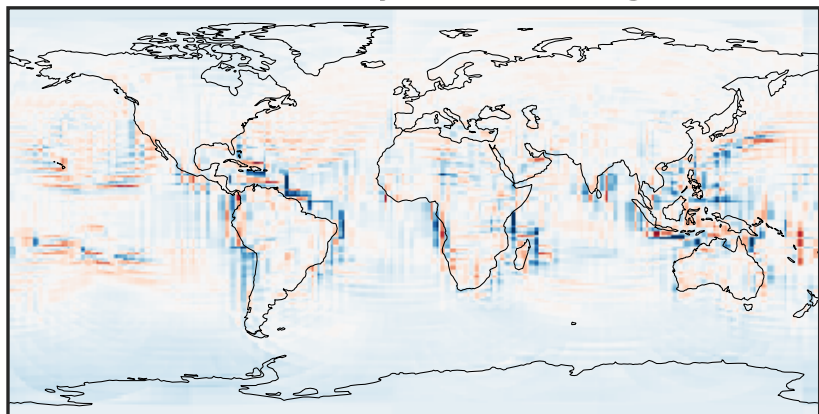
-0.1557 -0.0778 0.0000 0.0778 0.1557
ppb

Difference (1x1.25)
Dev - Ref, Restricted Range [5%,95%]



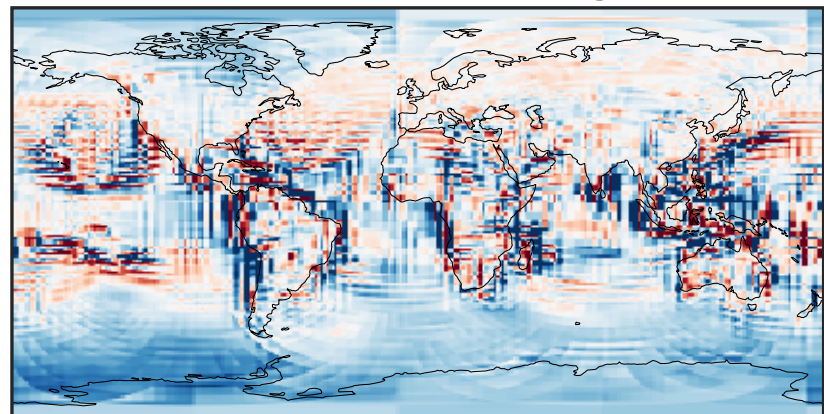
-0.003 0.000 0.003
ppb

Ratio (1x1.25)
Dev/Ref, Dynamic Range



1e-01 1 10
unitless

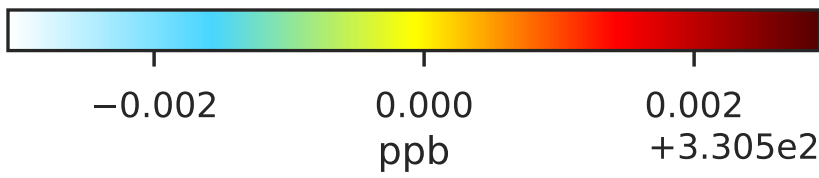
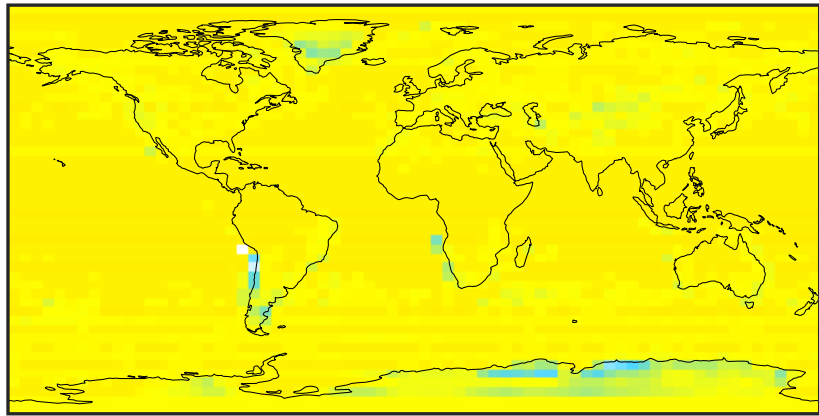
Ratio (1x1.25)
Dev/Ref, Fixed Range



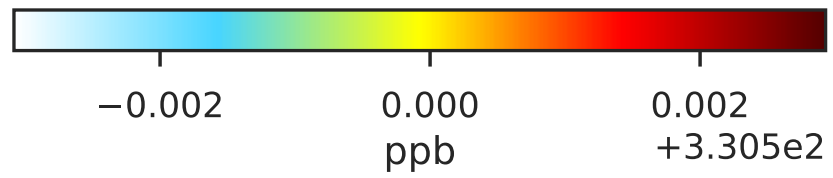
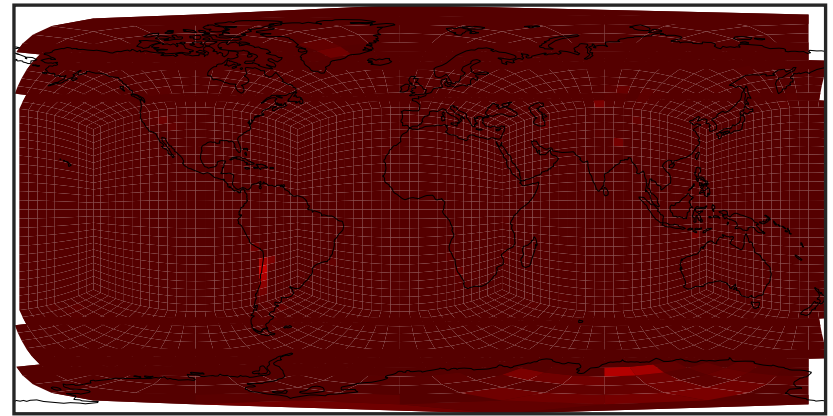
0.50 0.75 1.00 1.50 2.00
unitless

SpeciesConcVW_N2O (Oct2019)

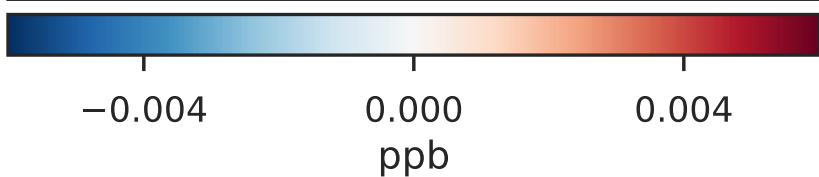
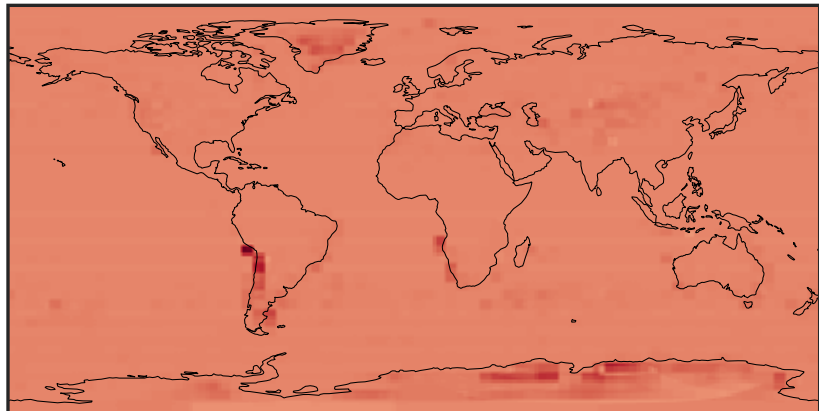
GCC_14.2.0 (Ref)
4.0x5.0



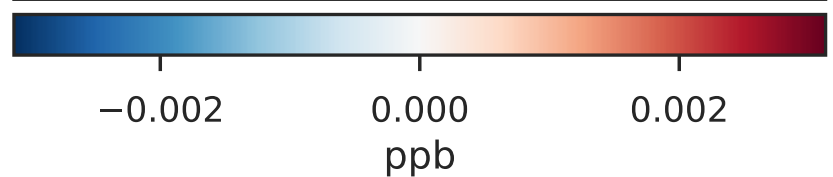
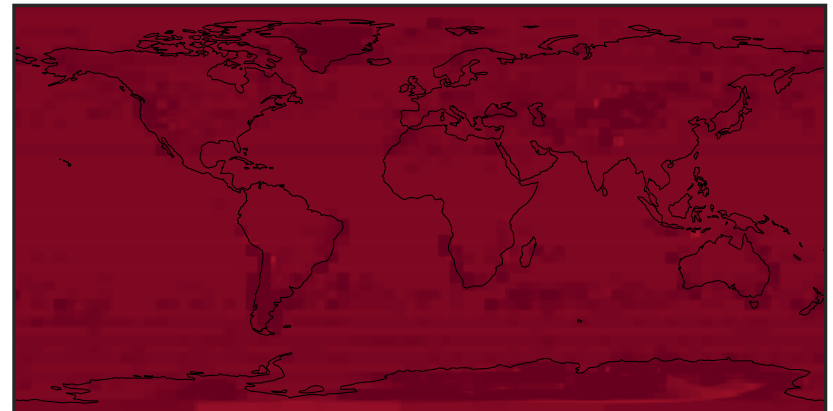
GCHP_14.2.0 (Dev)
c24



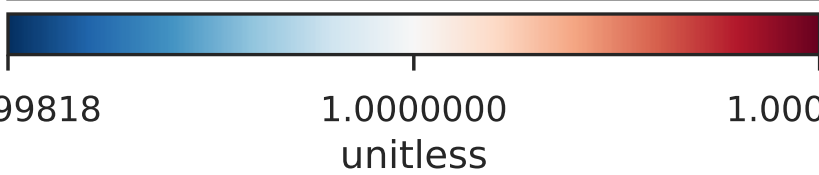
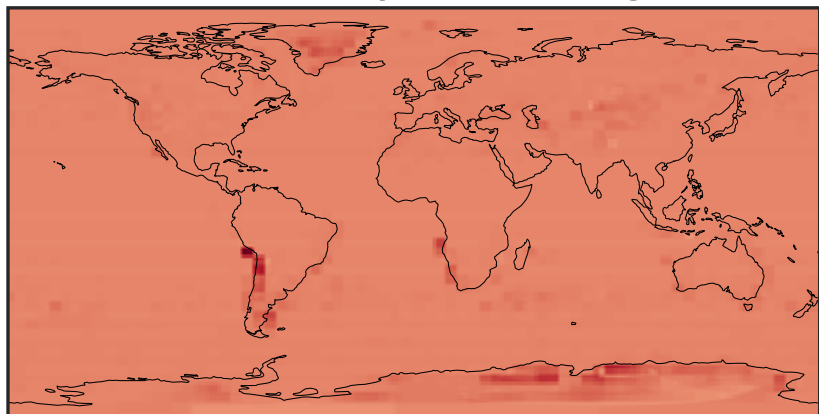
Difference (1x1.25)
Dev - Ref, Dynamic Range



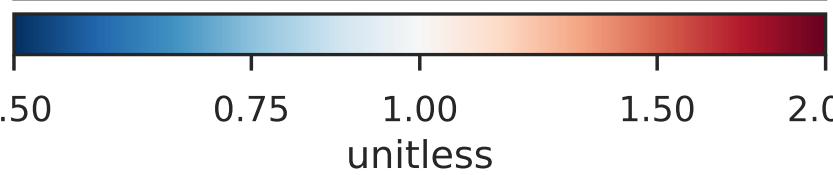
Difference (1x1.25)
Dev - Ref, Restricted Range [5%,95%]



Ratio (1x1.25)
Dev/Ref, Dynamic Range



Ratio (1x1.25)
Dev/Ref, Fixed Range



0.9999818

1.000000

1.0000182

unitless

0.50

0.75

1.00

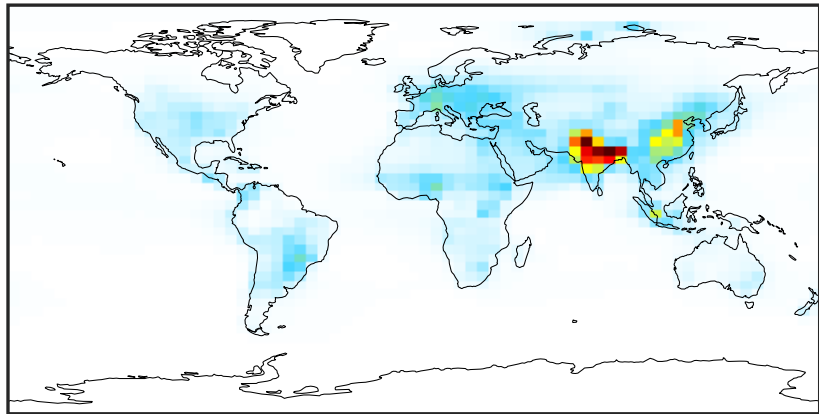
1.50

2.00

unitless

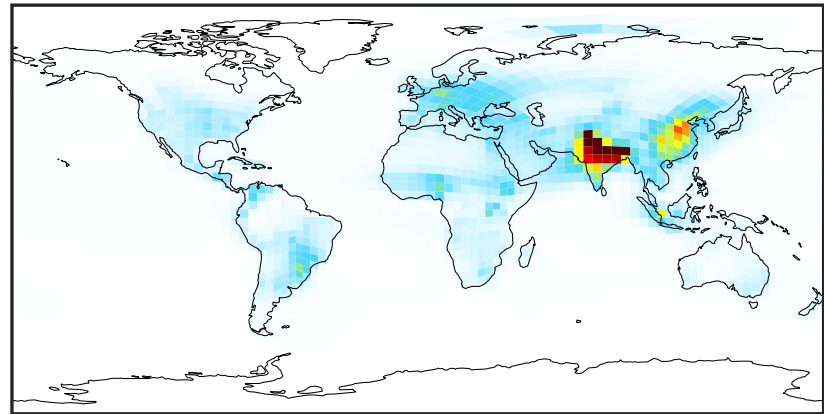
SpeciesConcVV_NHx (Oct2019)

GCC_14.2.0 (Ref)
4.0x5.0



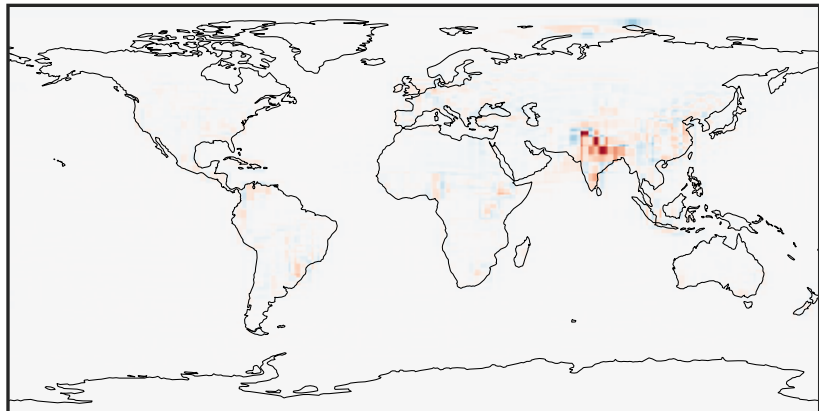
0.01 7.43 14.86 22.29 29.74
ppb

GCHP_14.2.0 (Dev)
c24



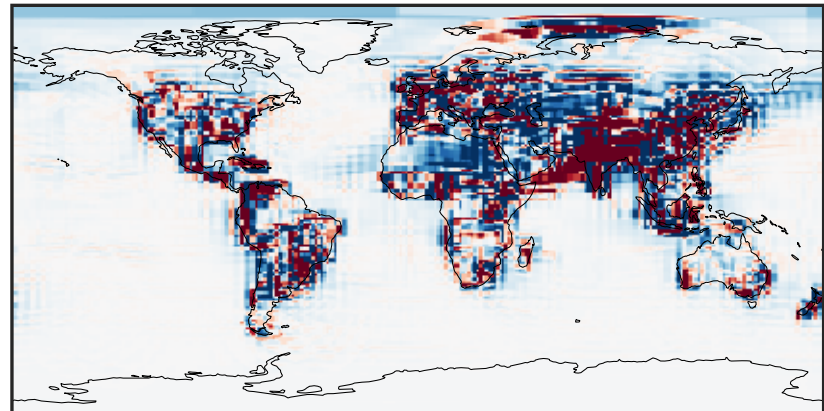
0.01 7.43 14.86 22.29 29.74
ppb

Difference (1x1.25)
Dev - Ref, Dynamic Range



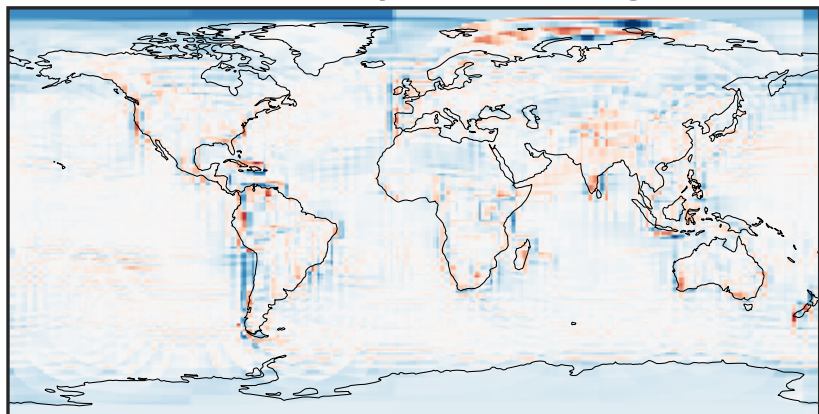
-17.04 -8.52 0.00 8.52 17.04
ppb

Difference (1x1.25)
Dev - Ref, Restricted Range [5%,95%]



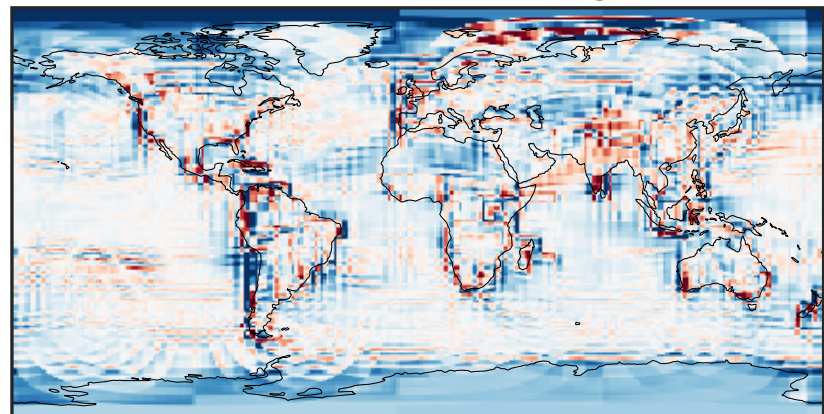
-0.4079 -0.2039 0.0000 0.2039 0.4079
ppb

Ratio (1x1.25)
Dev/Ref, Dynamic Range



0.150 0.575 1.000 3.838 6.675
unitless

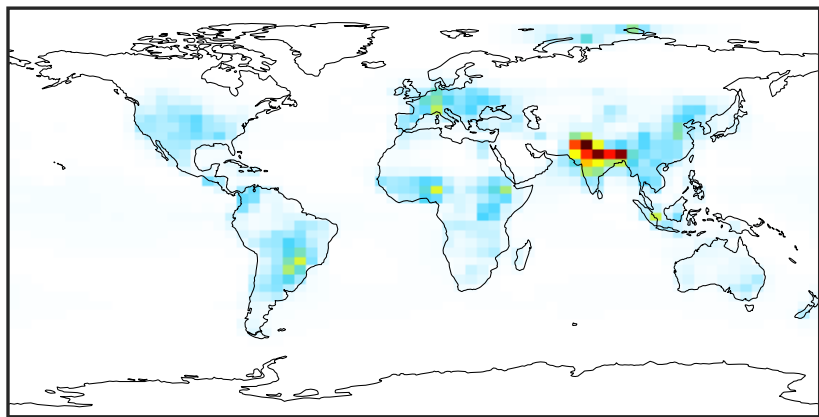
Ratio (1x1.25)
Dev/Ref, Fixed Range



0.50 0.75 1.00 1.50 2.00
unitless

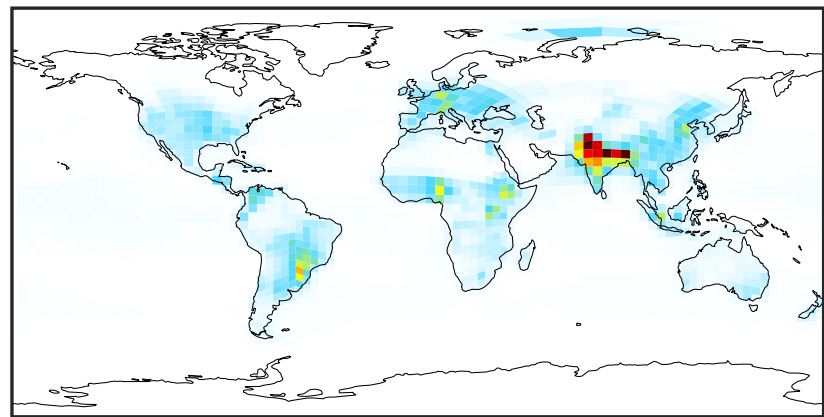
SpeciesConcVV_NH3 (Oct2019)

GCC_14.2.0 (Ref)
4.0x5.0



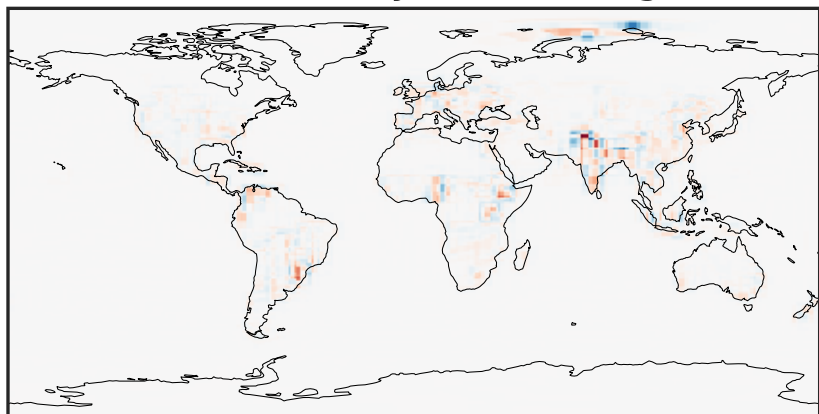
0.0 4.3 8.6 12.9 17.2
ppb

GCHP_14.2.0 (Dev)
c24



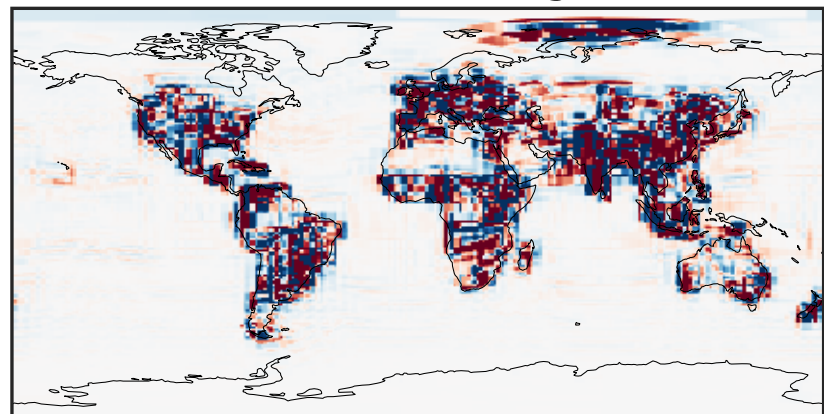
0.0 4.3 8.6 12.9 17.2
ppb

Difference (1x1.25)
Dev - Ref, Dynamic Range



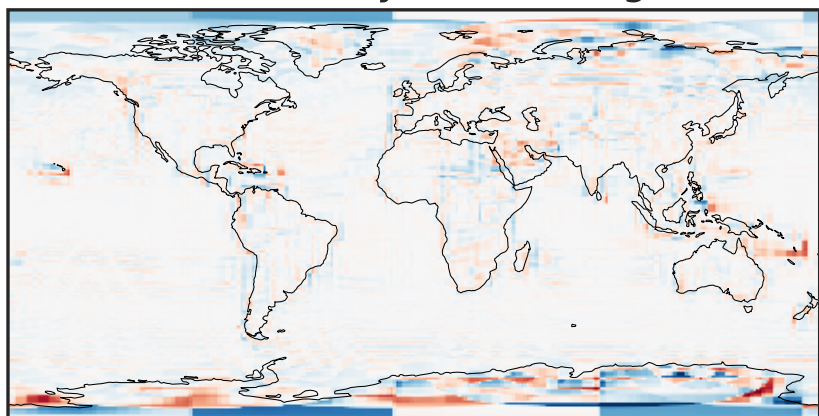
-8.08 -4.04 0.00 4.04 8.08
ppb

Difference (1x1.25)
Dev - Ref, Restricted Range [5%,95%]



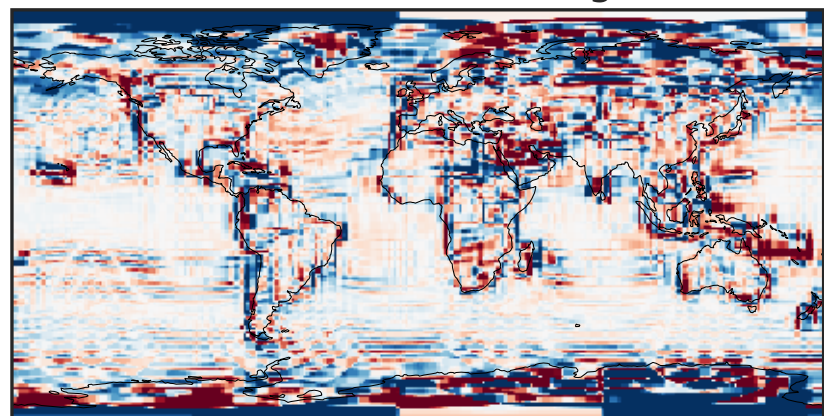
-0.2496 -0.1248 0.0000 0.1248 0.2496
ppb

Ratio (1x1.25)
Dev/Ref, Dynamic Range



1e-02 1e-01 1 10 100
unitless

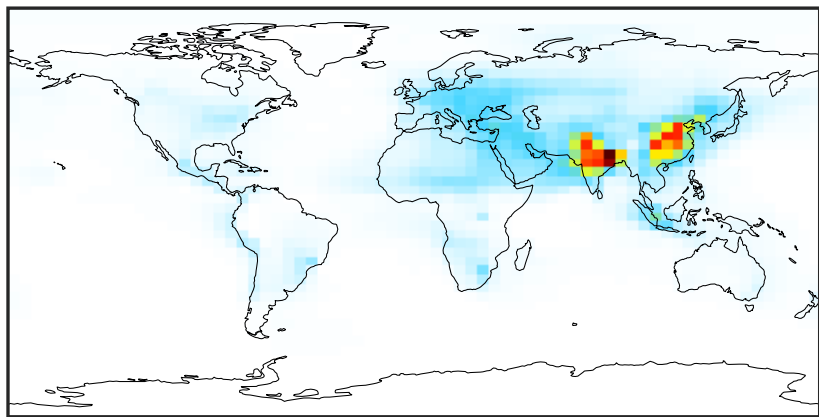
Ratio (1x1.25)
Dev/Ref, Fixed Range



0.50 0.75 1.00 1.50 2.00
unitless

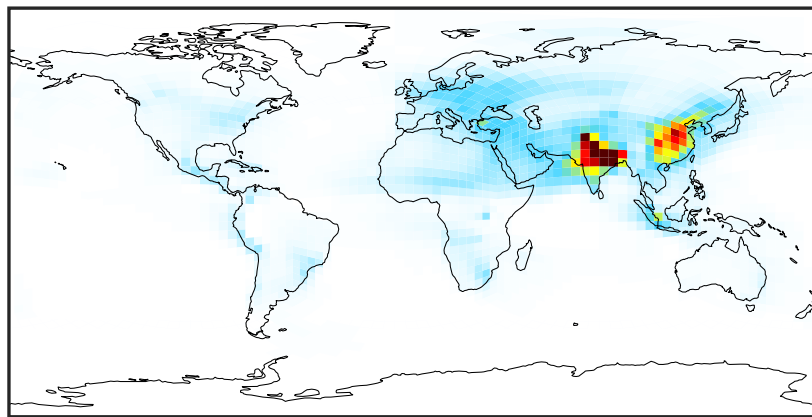
SpeciesConcVV_NH4 (Oct2019)

GCC_14.2.0 (Ref)
4.0x5.0



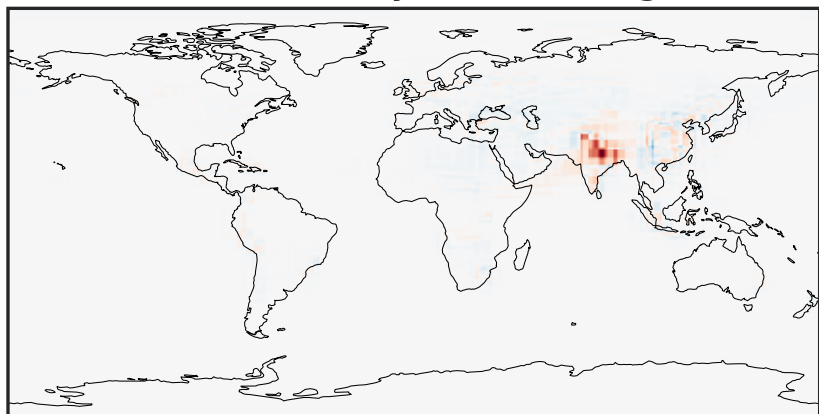
0.00 4.28 8.56 12.84 17.13
ppb

GCHP_14.2.0 (Dev)
c24



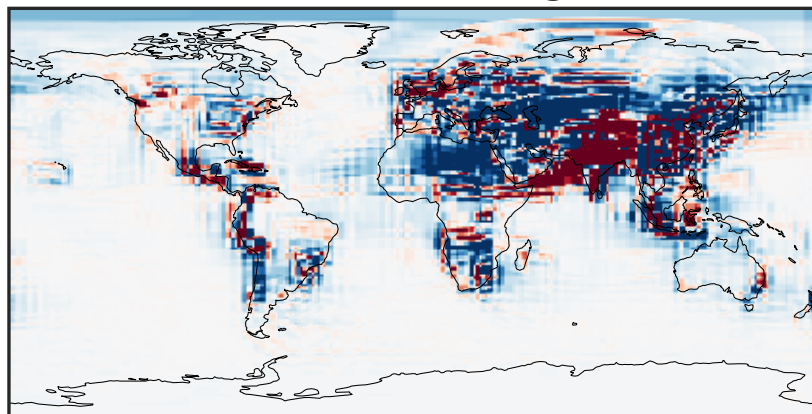
0.00 4.28 8.56 12.84 17.13
ppb

Difference (1x1.25)
Dev - Ref, Dynamic Range



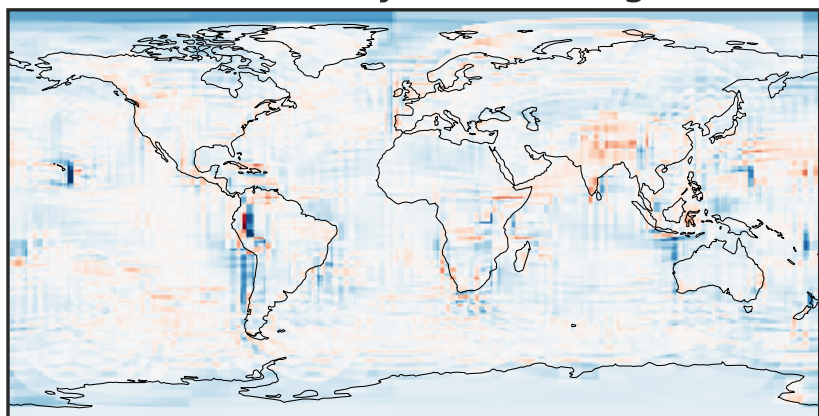
-13.11 -6.55 0.00 6.55 13.11
ppb

Difference (1x1.25)
Dev - Ref, Restricted Range [5%,95%]



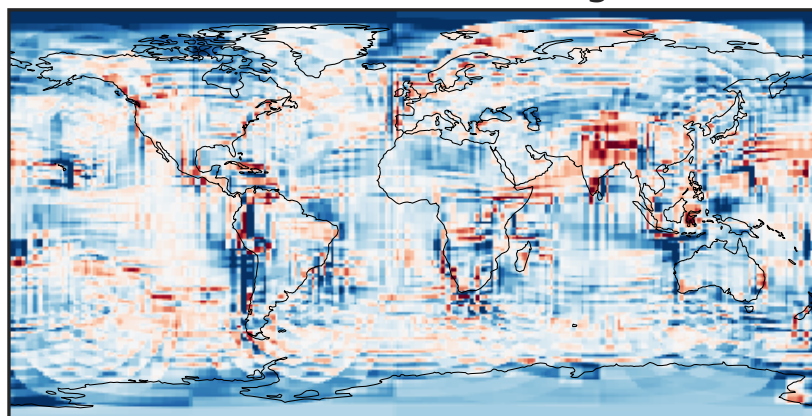
-0.2743 -0.1372 0.0000 0.1372 0.2743
ppb

Ratio (1x1.25)
Dev/Ref, Dynamic Range



0.121 0.560 1.000 4.638 8.277
unitless

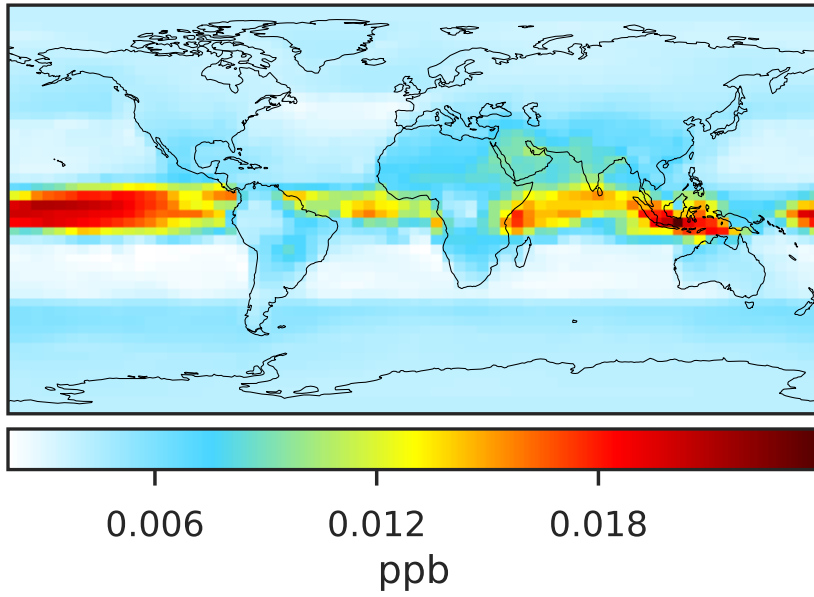
Ratio (1x1.25)
Dev/Ref, Fixed Range



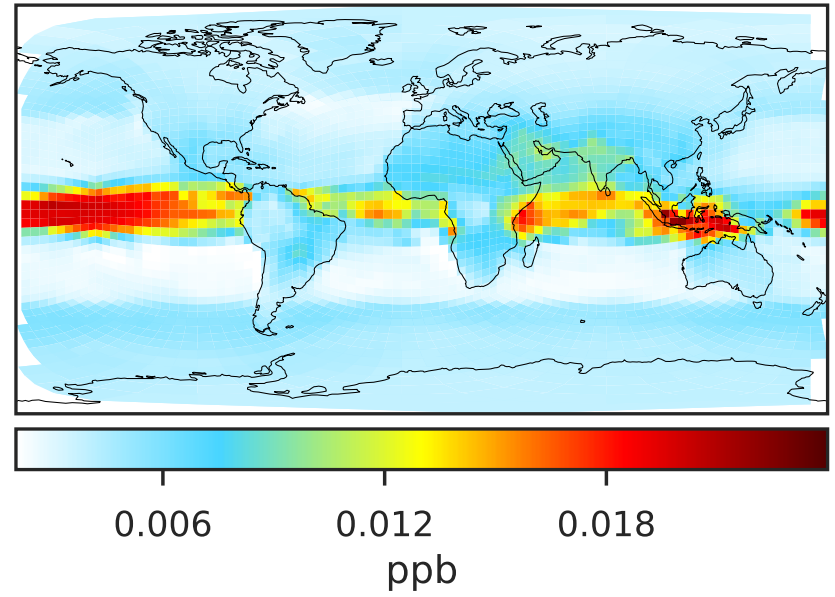
0.50 0.75 1.00 1.50 2.00
unitless

SpeciesConcVV_MENO3 (Oct2019)

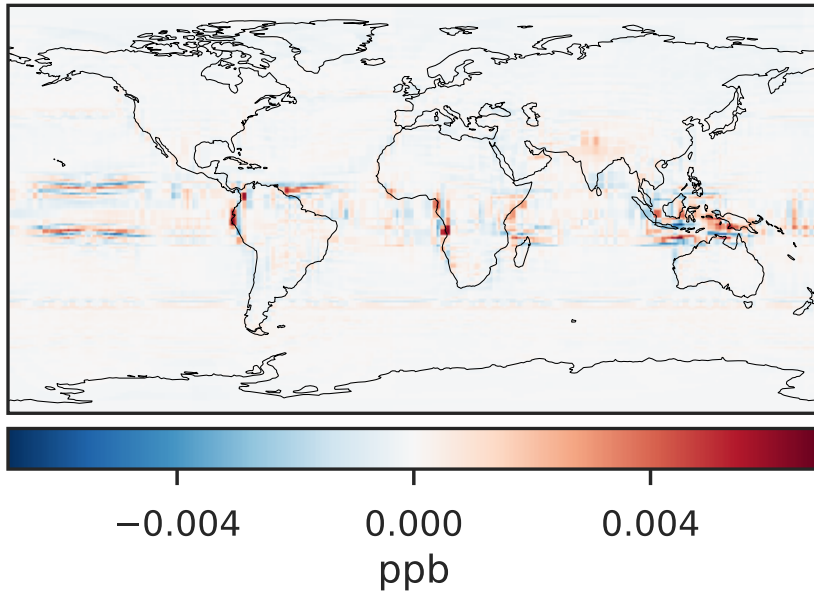
GCC_14.2.0 (Ref)
4.0x5.0



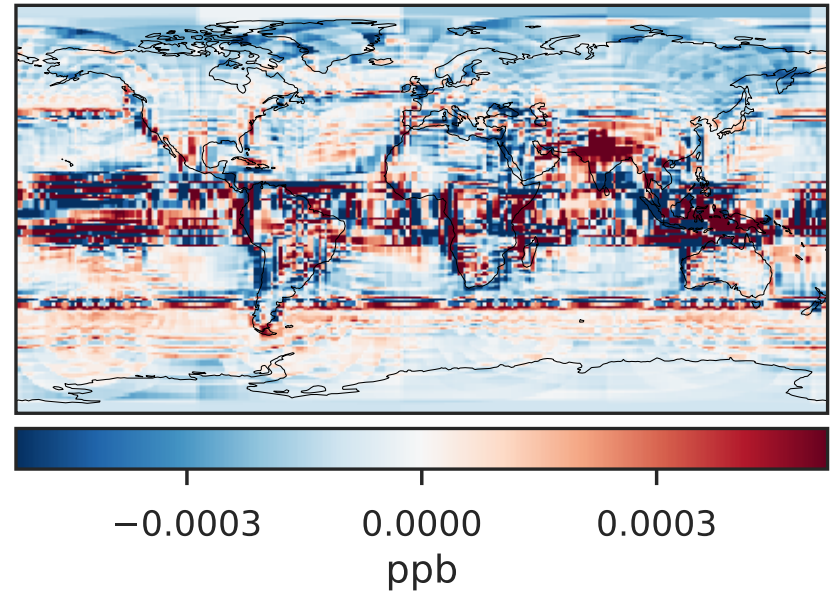
GCHP_14.2.0 (Dev)
c24



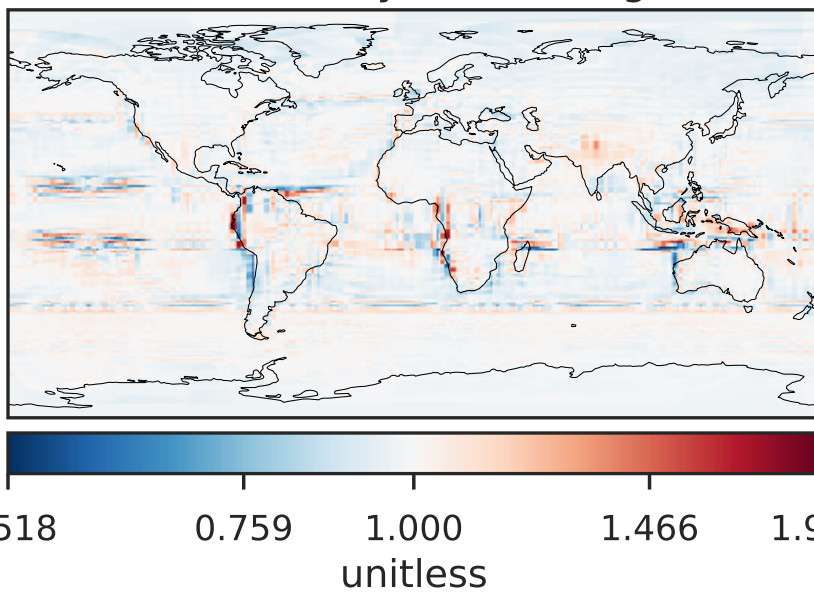
Difference (1x1.25)
Dev - Ref, Dynamic Range



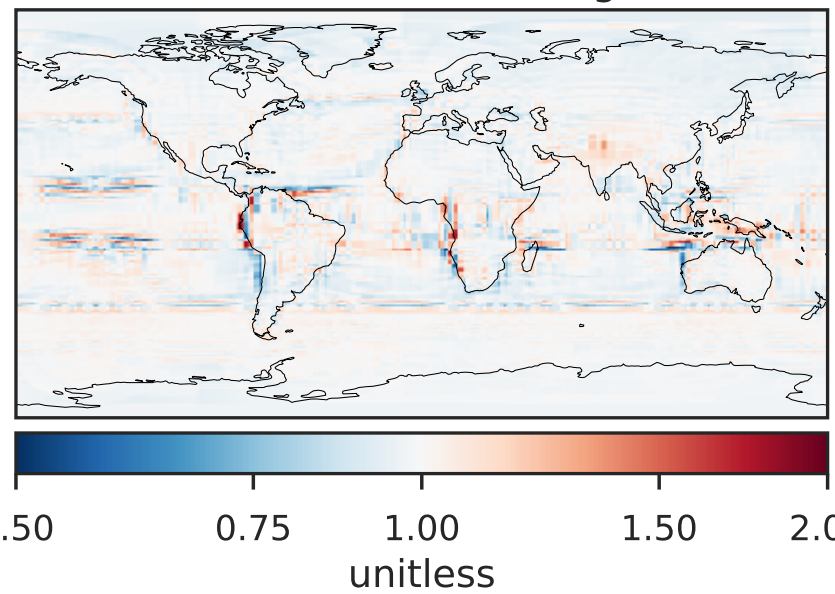
Difference (1x1.25)
Dev - Ref, Restricted Range [5%,95%]



Ratio (1x1.25)
Dev/Ref, Dynamic Range

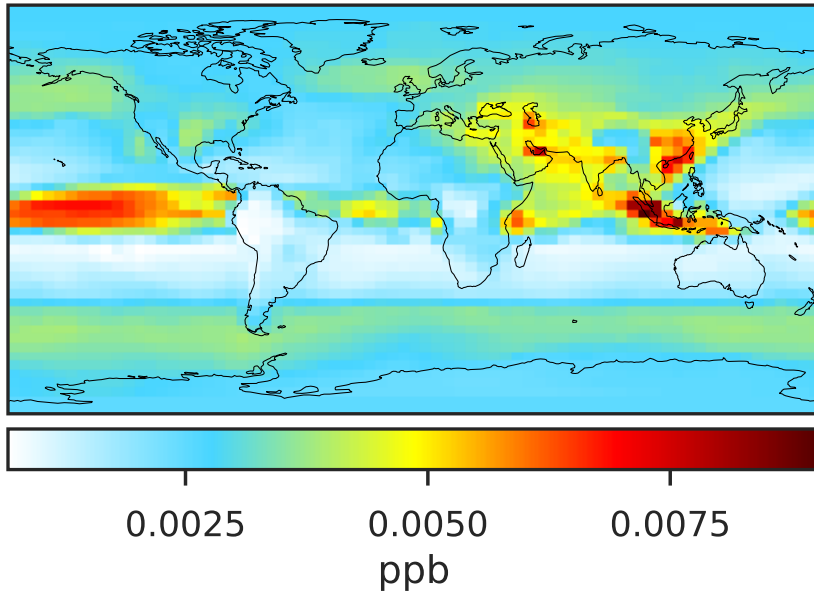


Ratio (1x1.25)
Dev/Ref, Fixed Range

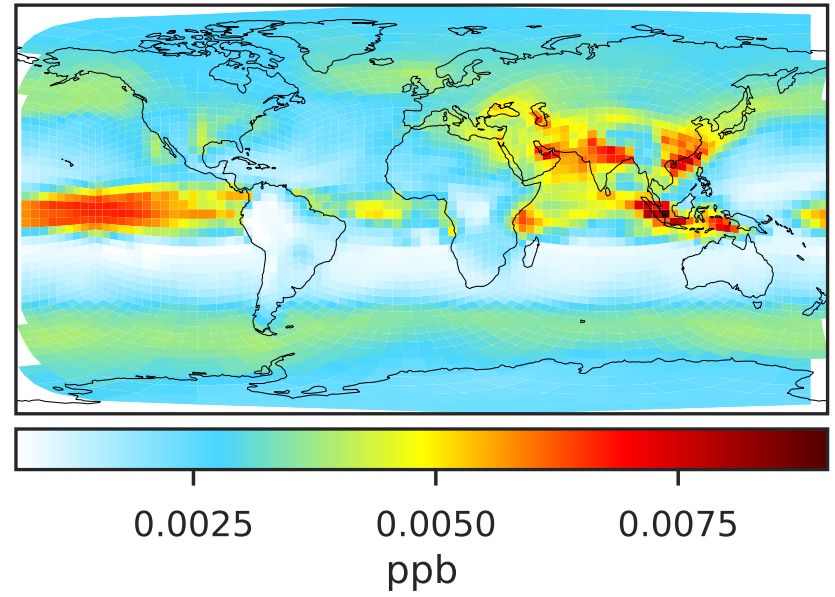


SpeciesConcVV_ETNO3 (Oct2019)

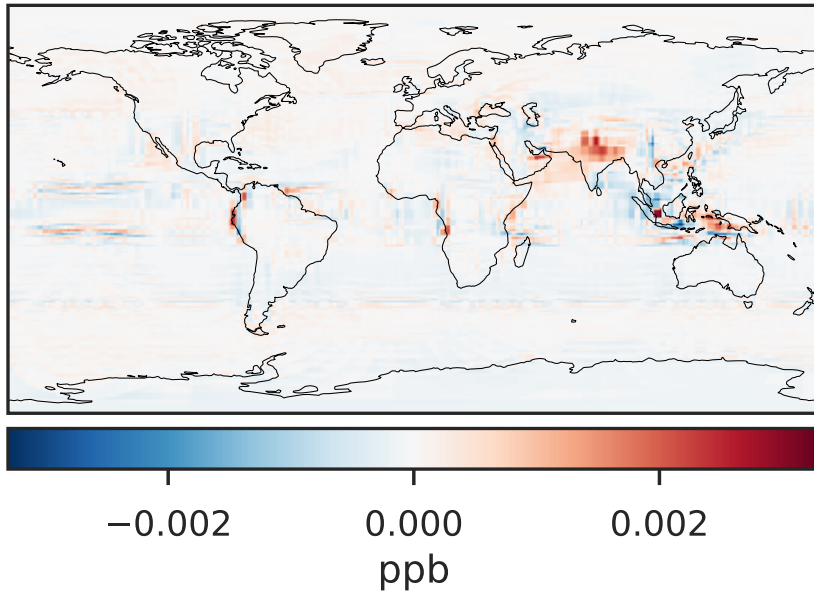
GCC_14.2.0 (Ref)
4.0x5.0



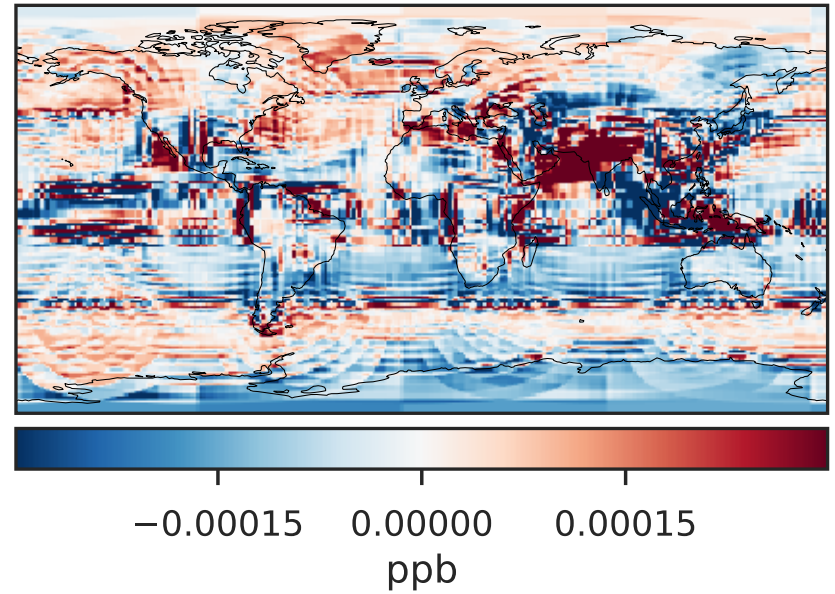
GCHP_14.2.0 (Dev)
c24



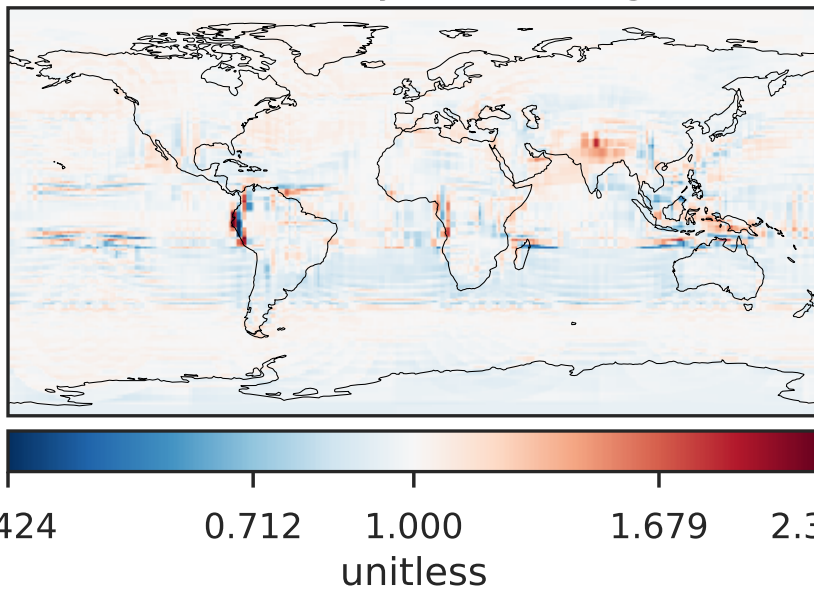
Difference (1x1.25)
Dev - Ref, Dynamic Range



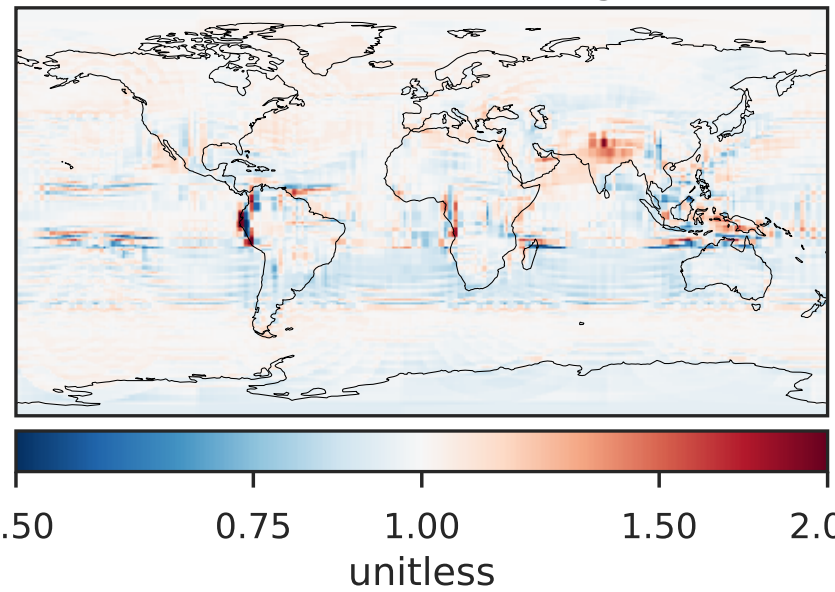
Difference (1x1.25)
Dev - Ref, Restricted Range [5%,95%]



Ratio (1x1.25)
Dev/Ref, Dynamic Range

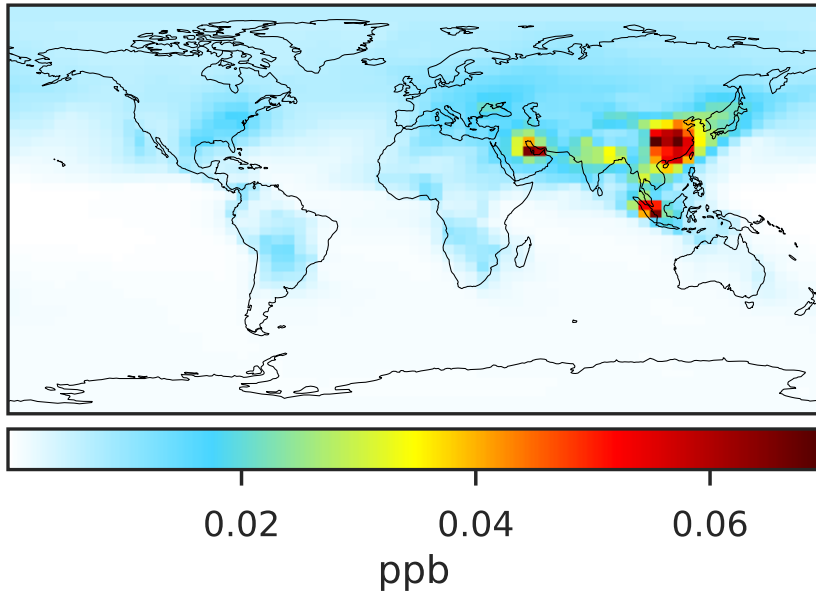


Ratio (1x1.25)
Dev/Ref, Fixed Range

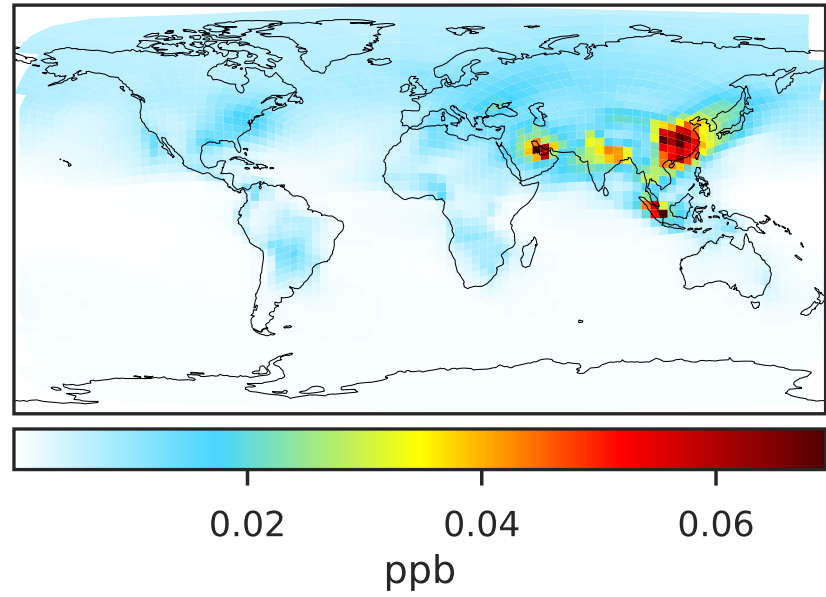


SpeciesConcVV_IPRNO3 (Oct2019)

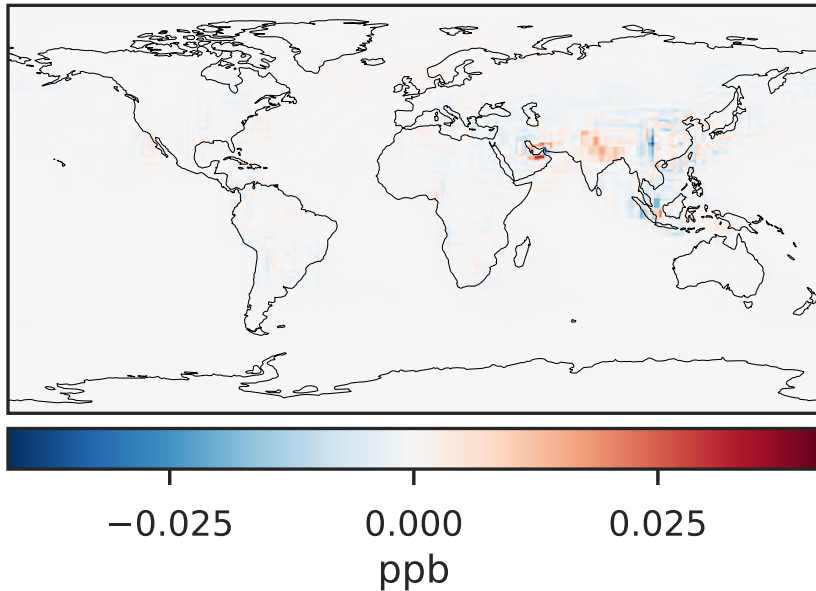
GCC_14.2.0 (Ref)
4.0x5.0



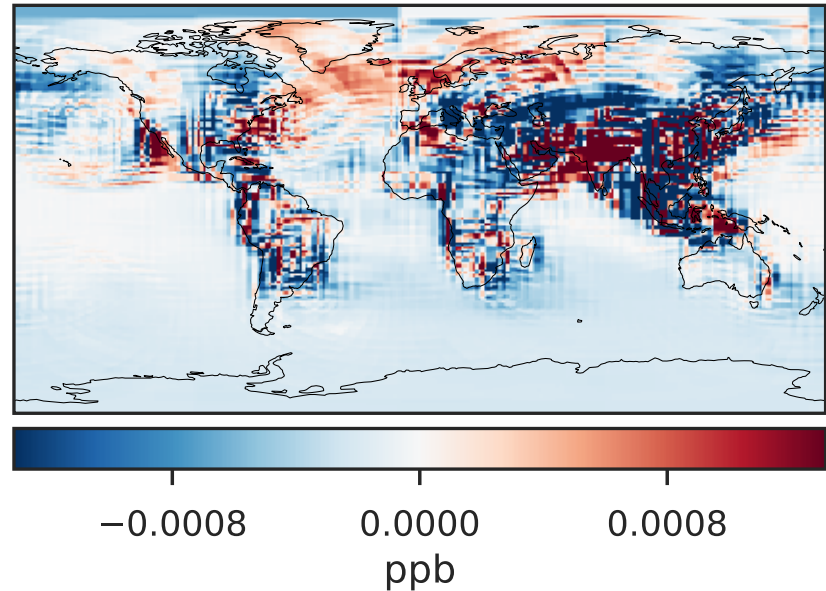
GCHP_14.2.0 (Dev)
c24



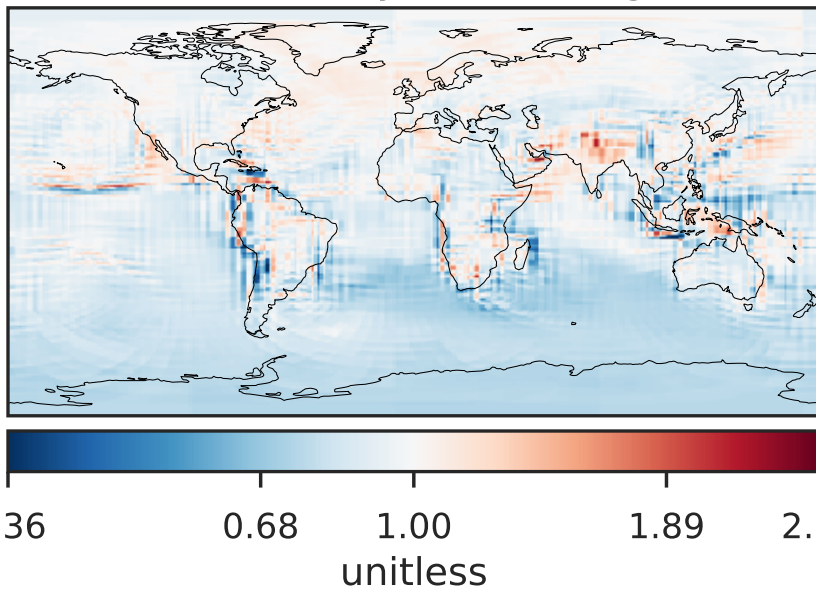
Difference (1x1.25)
Dev - Ref, Dynamic Range



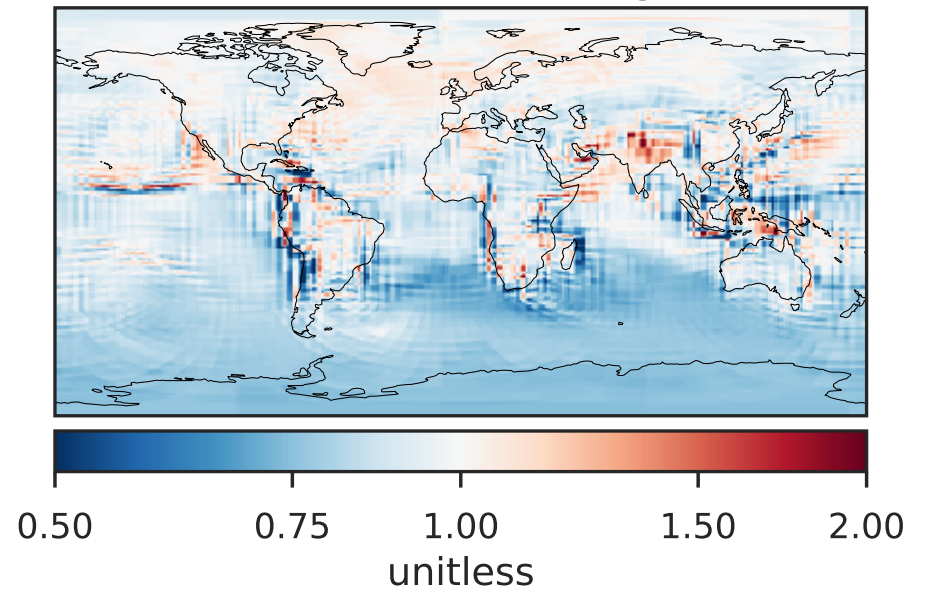
Difference (1x1.25)
Dev - Ref, Restricted Range [5%,95%]



Ratio (1x1.25)
Dev/Ref, Dynamic Range

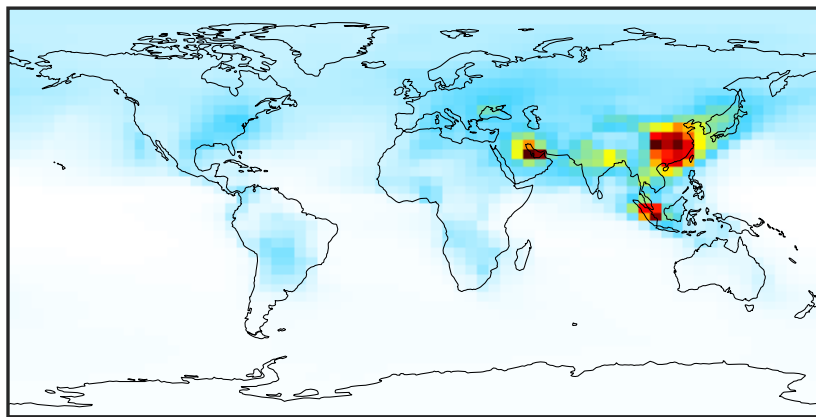


Ratio (1x1.25)
Dev/Ref, Fixed Range



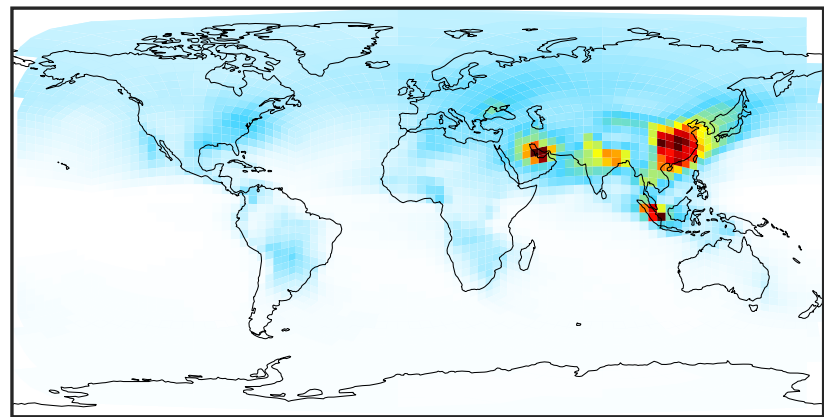
SpeciesConcVV_NPRNO3 (Oct2019)

GCC_14.2.0 (Ref)
4.0x5.0



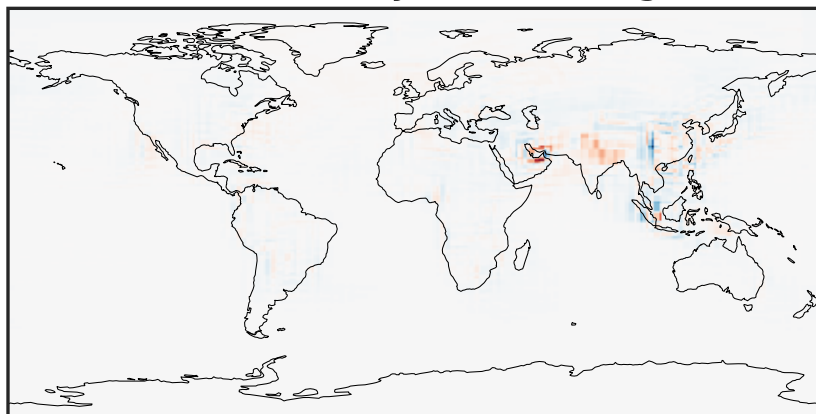
0.005 0.010 0.015
ppb

GCHP_14.2.0 (Dev)
c24



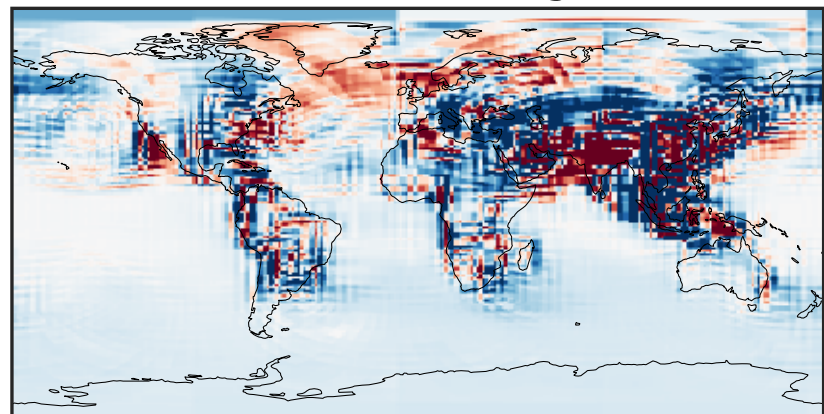
0.005 0.010 0.015
ppb

Difference (1x1.25)
Dev - Ref, Dynamic Range



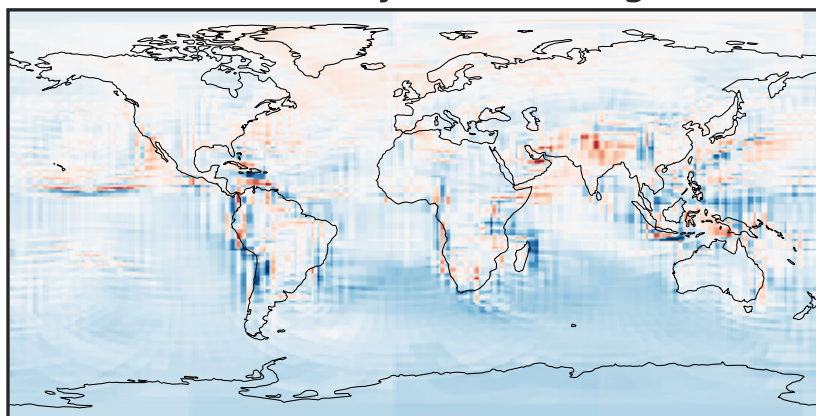
-0.006 0.000 0.006
ppb

Difference (1x1.25)
Dev - Ref, Restricted Range [5%,95%]



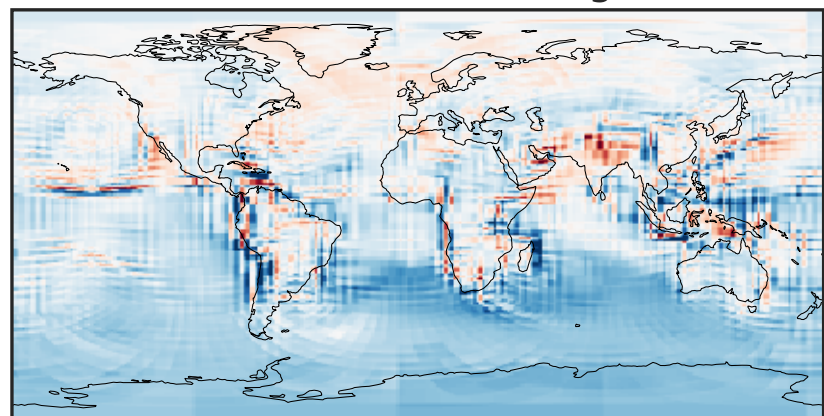
-0.0002 0.0000 0.0002
ppb

Ratio (1x1.25)
Dev/Ref, Dynamic Range



0.351 0.676 1.000 1.924 2.848
unitless

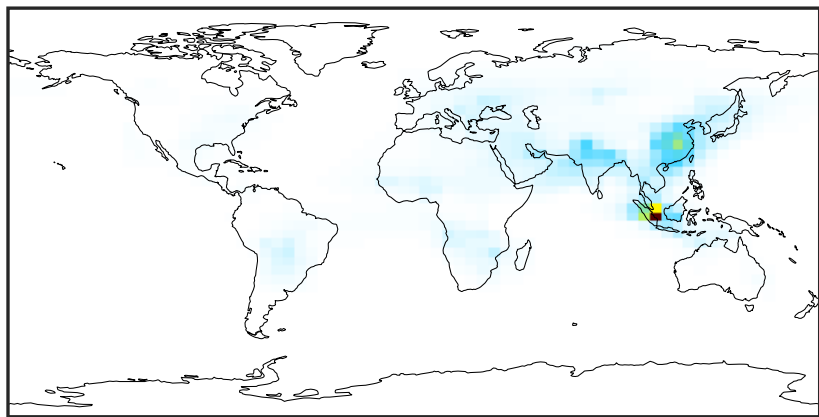
Ratio (1x1.25)
Dev/Ref, Fixed Range



0.50 0.75 1.00 1.50 2.00
unitless

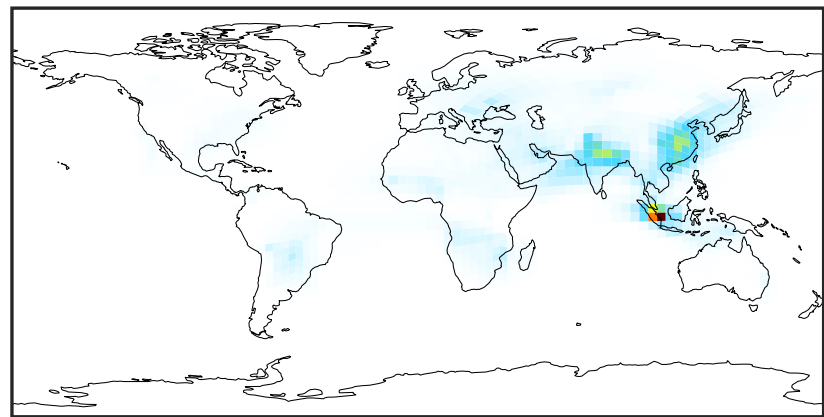
SpeciesConcVV_AONITA (Oct2019)

GCC_14.2.0 (Ref)
4.0x5.0



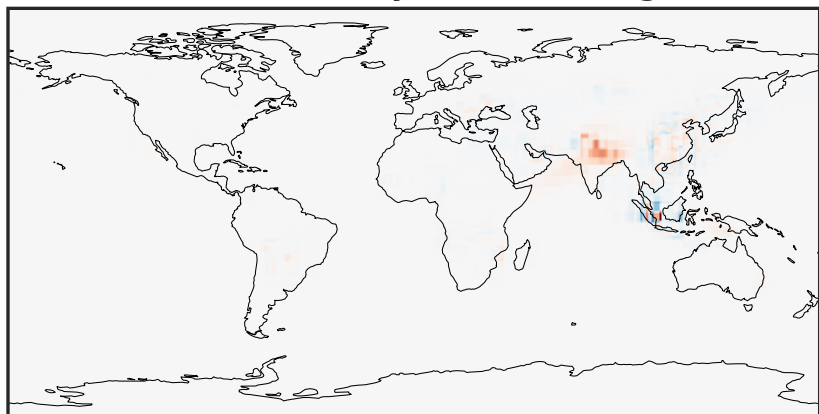
0.0000 0.1373 0.2746 0.4118 0.5491
ppb

GCHP_14.2.0 (Dev)
c24



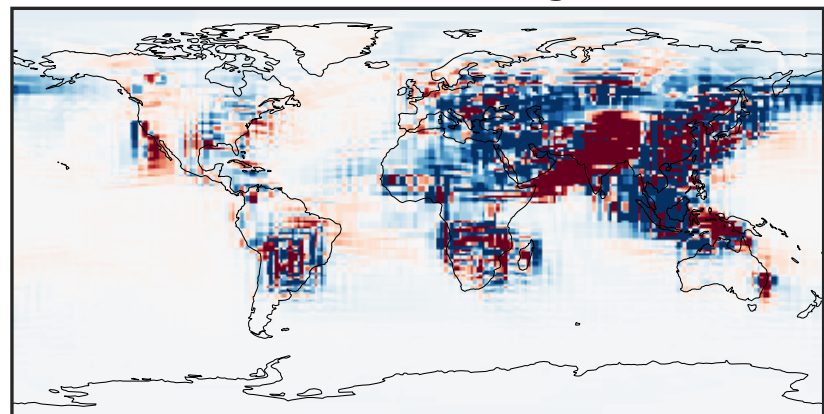
0.0000 0.1373 0.2746 0.4118 0.5491
ppb

Difference (1x1.25)
Dev - Ref, Dynamic Range



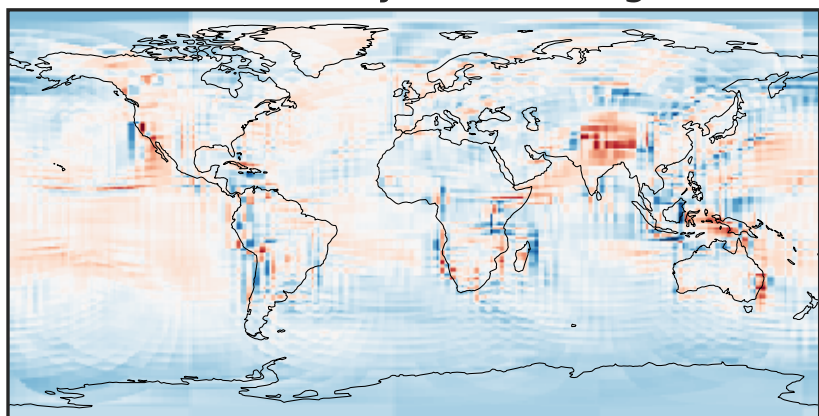
-0.2338 -0.1169 0.0000 0.1169 0.2338
ppb

Difference (1x1.25)
Dev - Ref, Restricted Range [5%,95%]



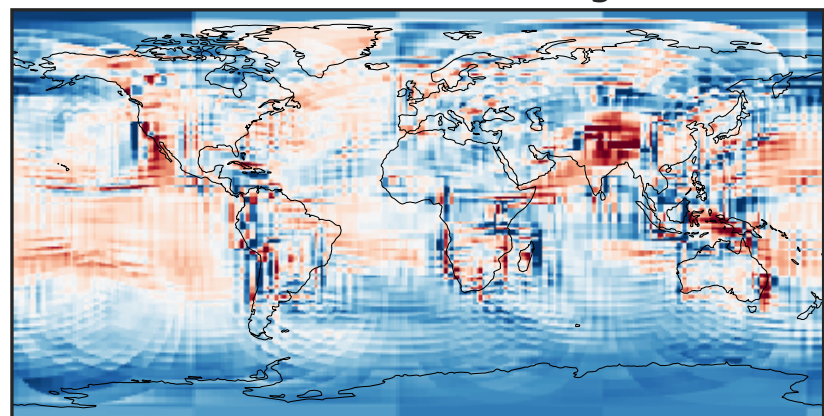
-0.0015 0.0000 0.0015
ppb

Ratio (1x1.25)
Dev/Ref, Dynamic Range



0.233 0.616 1.000 2.650 4.299
unitless

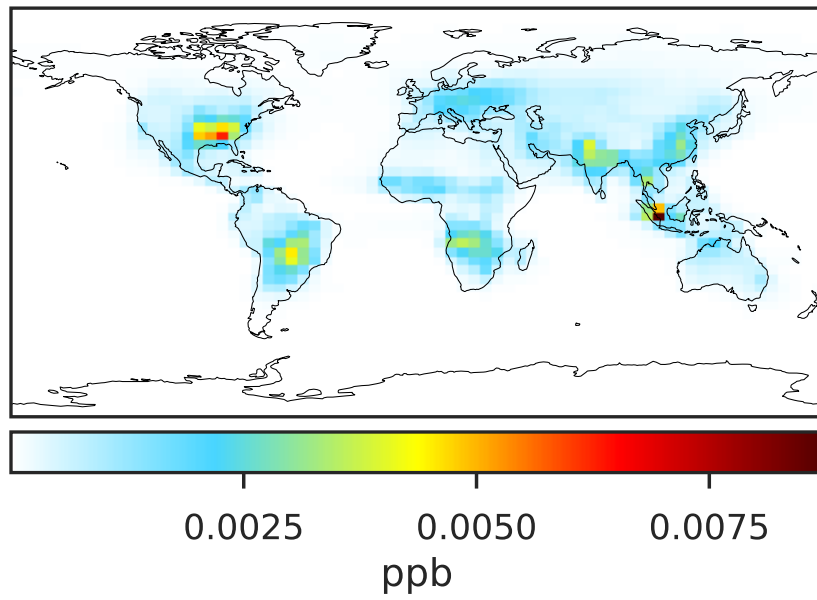
Ratio (1x1.25)
Dev/Ref, Fixed Range



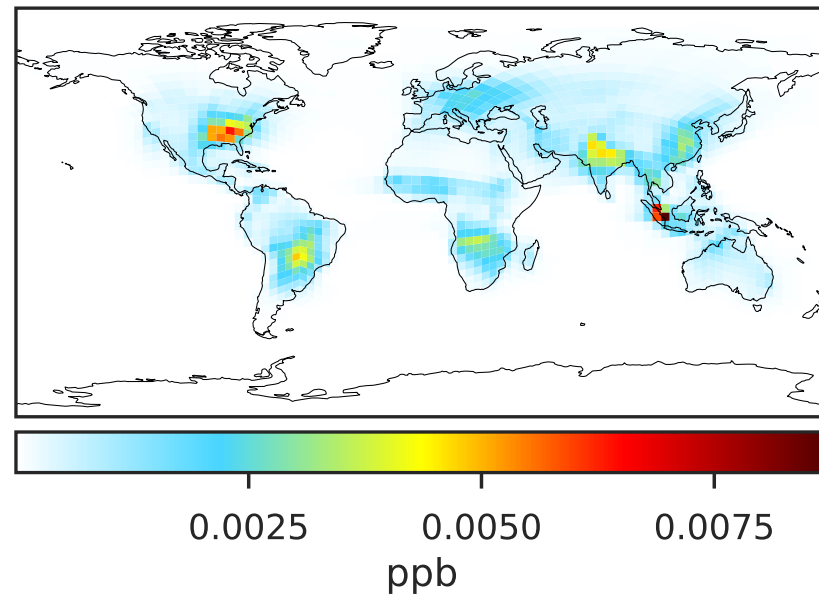
0.50 0.75 1.00 1.50 2.00
unitless

SpeciesConcVV_ETHN (Oct2019)

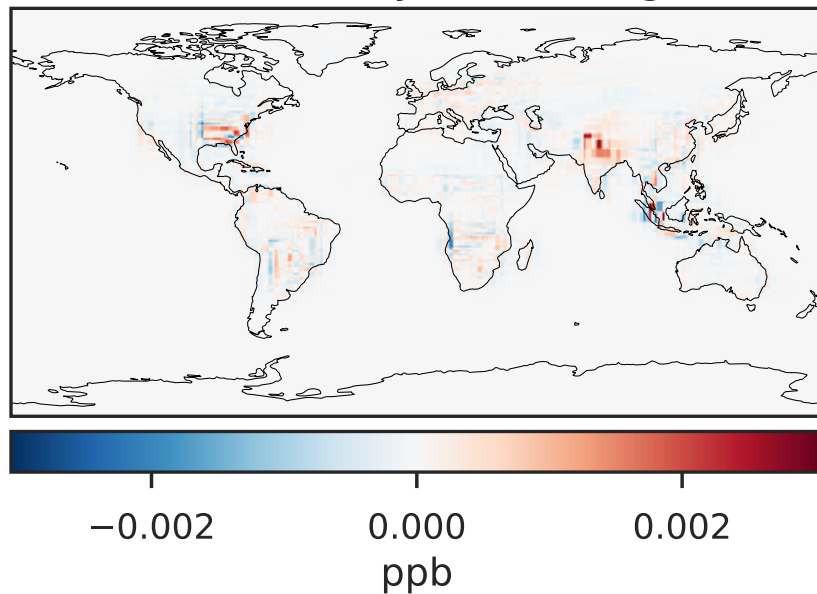
GCC_14.2.0 (Ref)
4.0x5.0



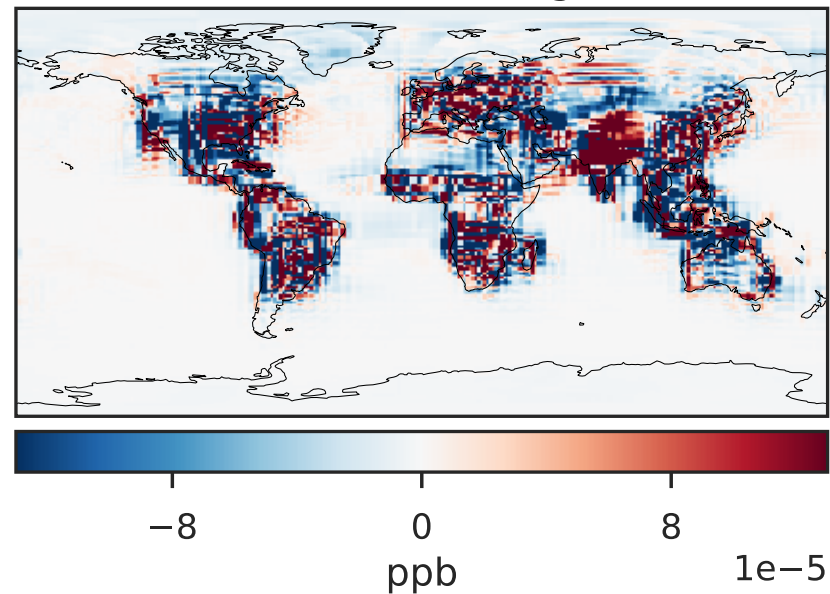
GCHP_14.2.0 (Dev)
c24



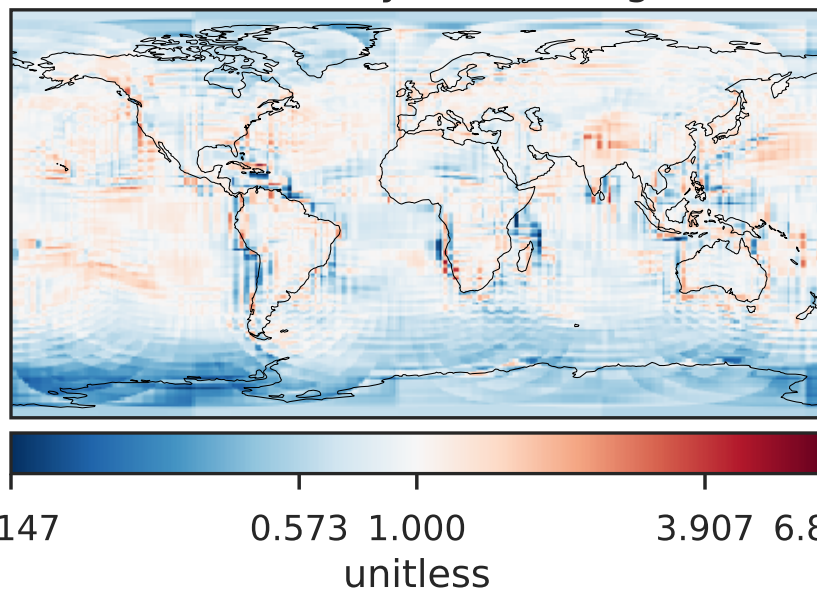
Difference (1x1.25)
Dev - Ref, Dynamic Range



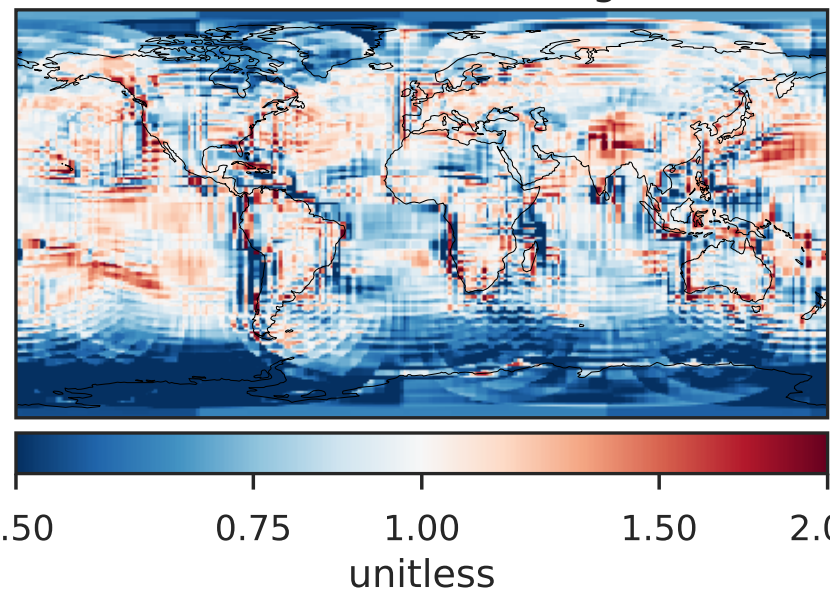
Difference (1x1.25)
Dev - Ref, Restricted Range [5%,95%]



Ratio (1x1.25)
Dev/Ref, Dynamic Range

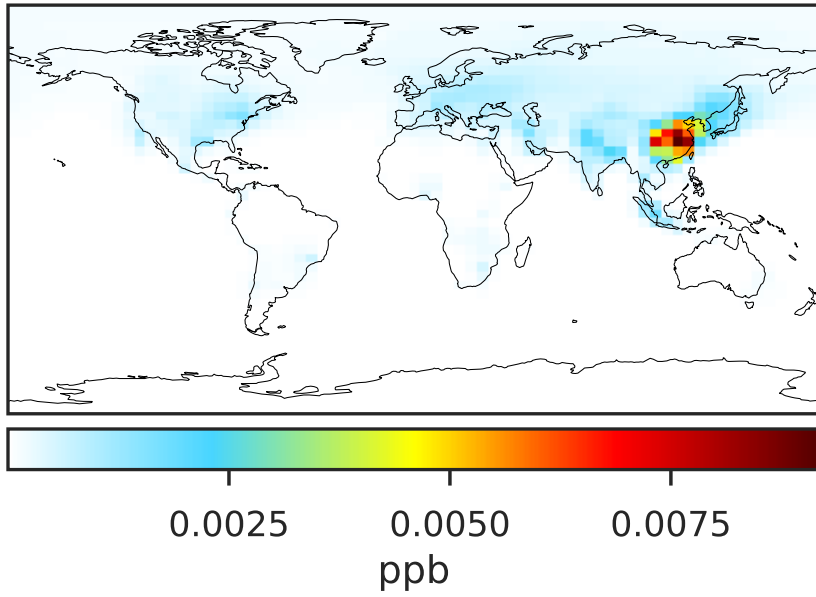


Ratio (1x1.25)
Dev/Ref, Fixed Range

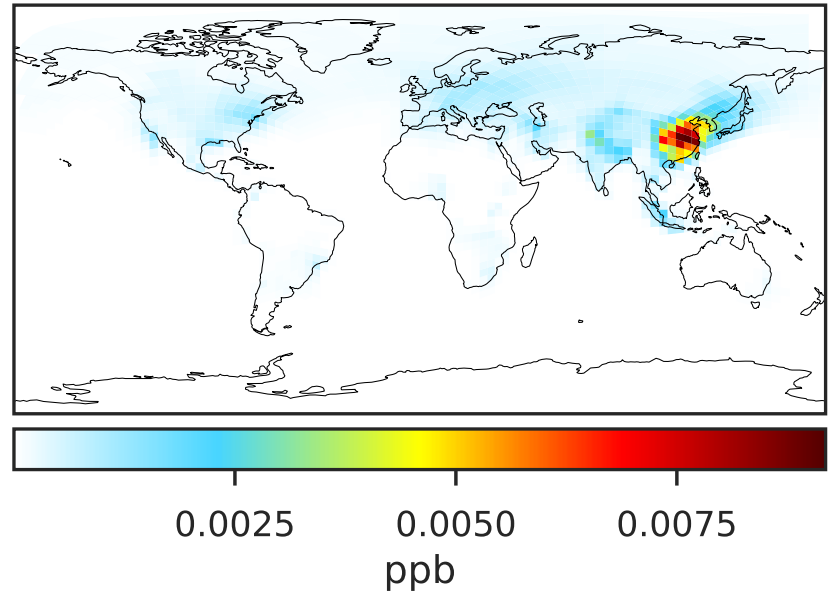


SpeciesConcVV_BZPAN (Oct2019)

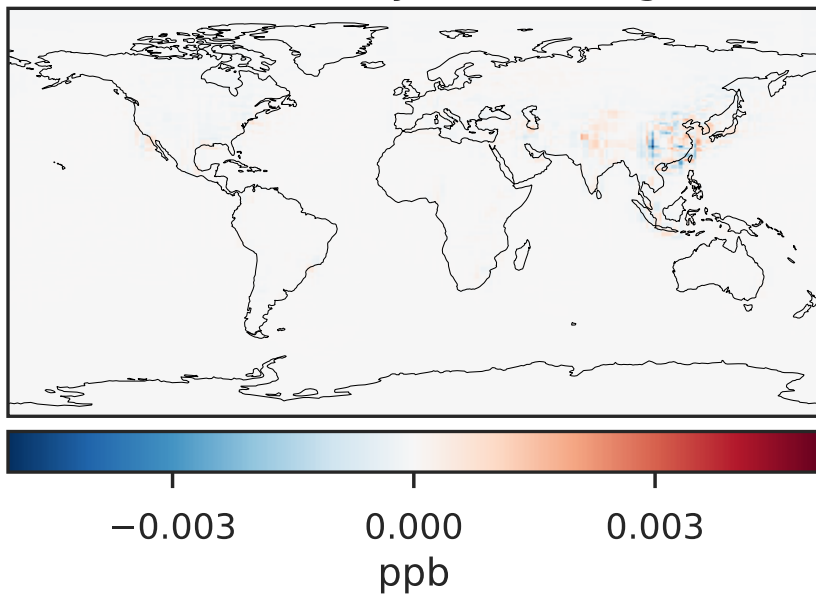
GCC_14.2.0 (Ref)
4.0x5.0



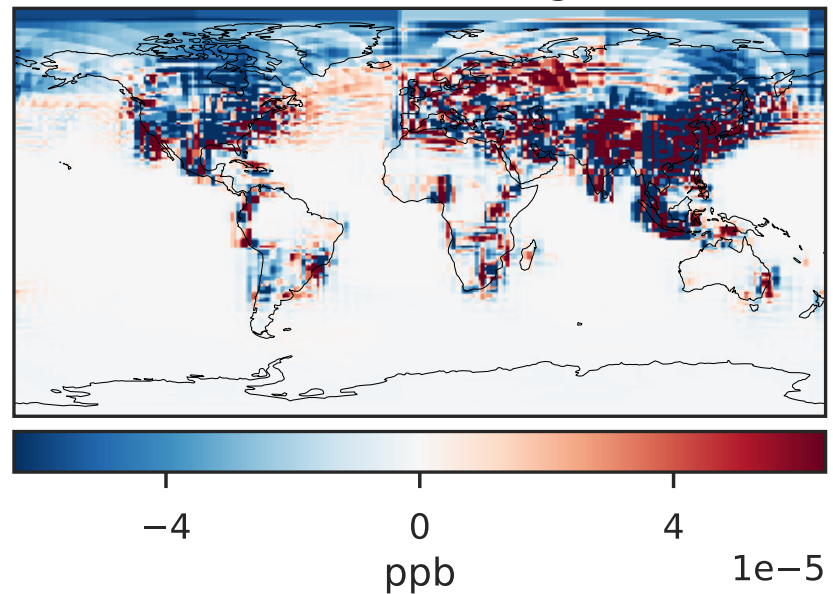
GCHP_14.2.0 (Dev)
c24



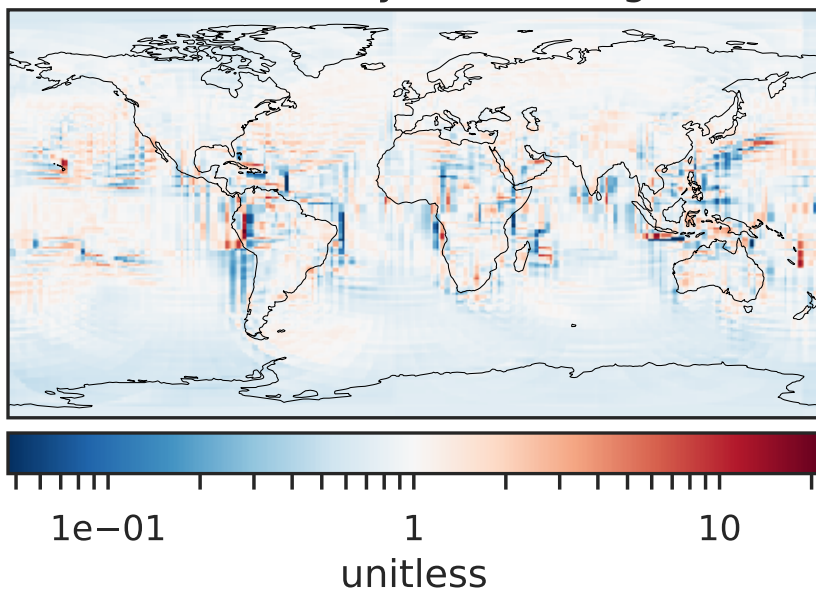
Difference (1x1.25)
Dev - Ref, Dynamic Range



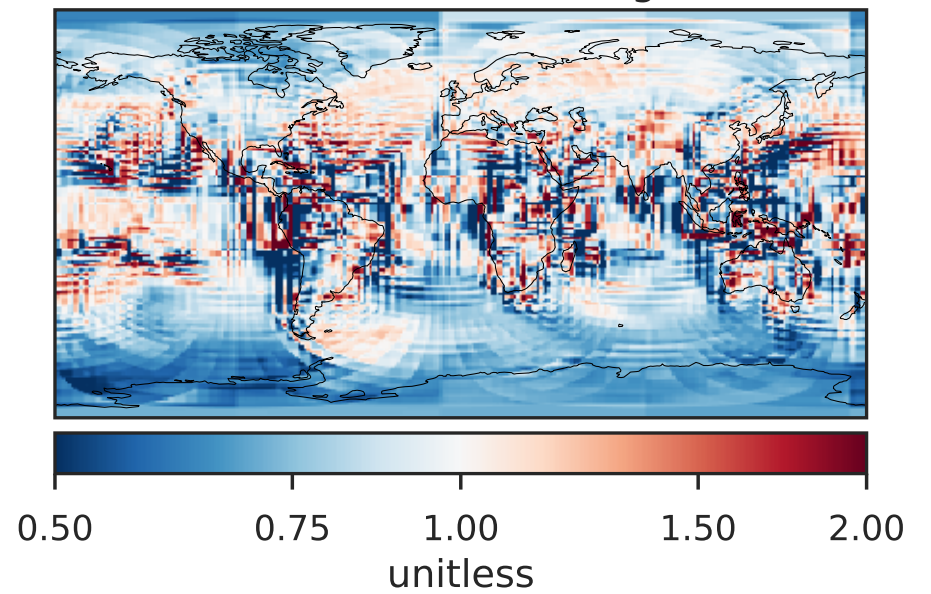
Difference (1x1.25)
Dev - Ref, Restricted Range [5%,95%]



Ratio (1x1.25)
Dev/Ref, Dynamic Range

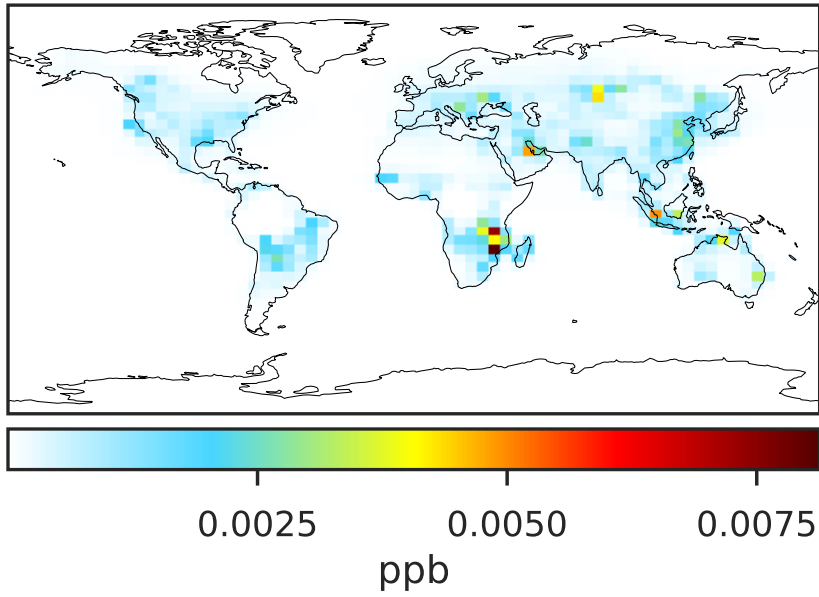


Ratio (1x1.25)
Dev/Ref, Fixed Range

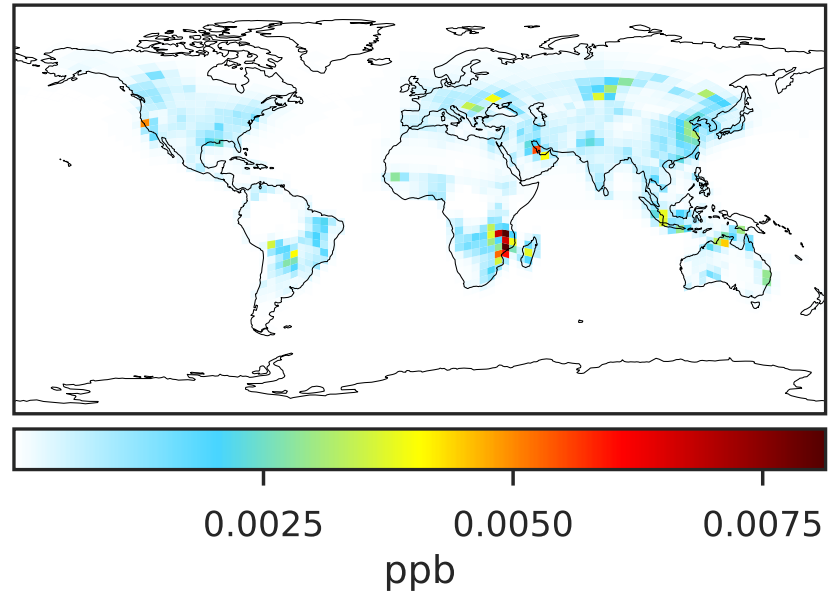


SpeciesConcVV_NPHEN (Oct2019)

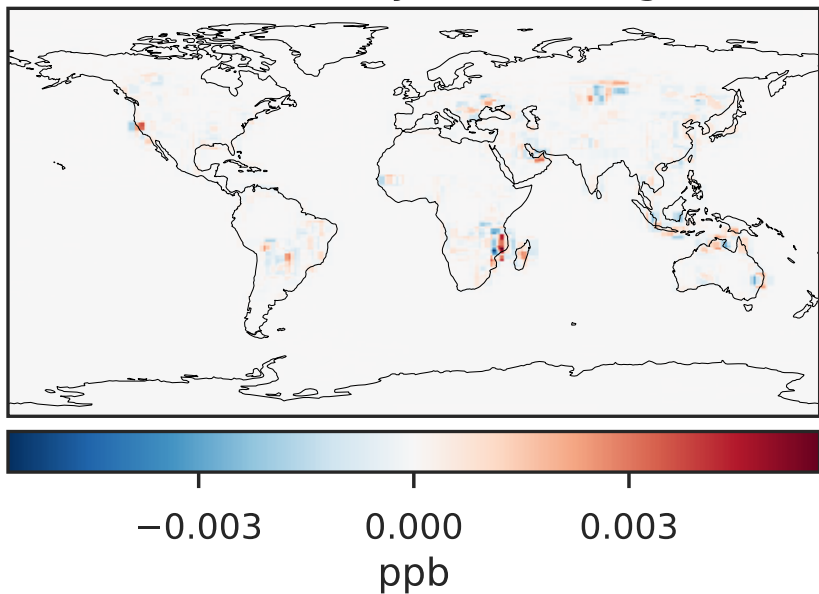
GCC_14.2.0 (Ref)
4.0x5.0



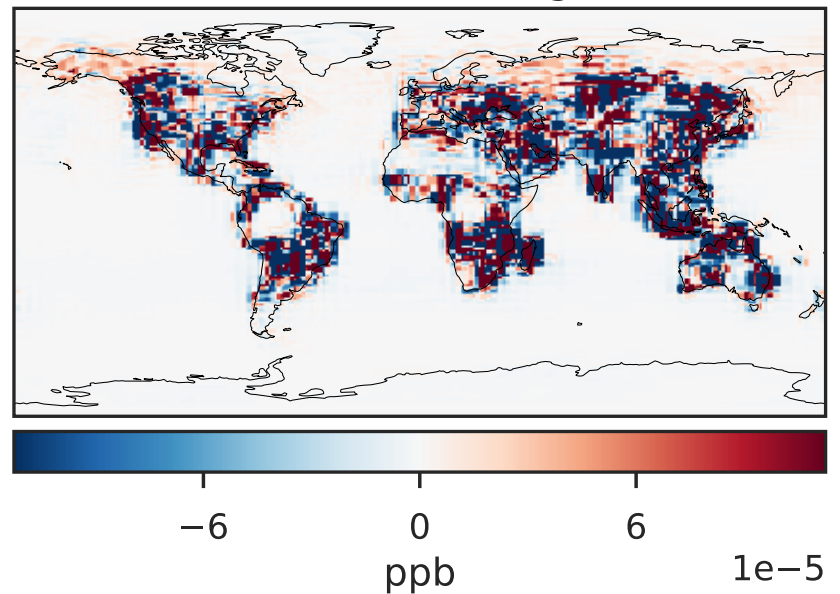
GCHP_14.2.0 (Dev)
c24



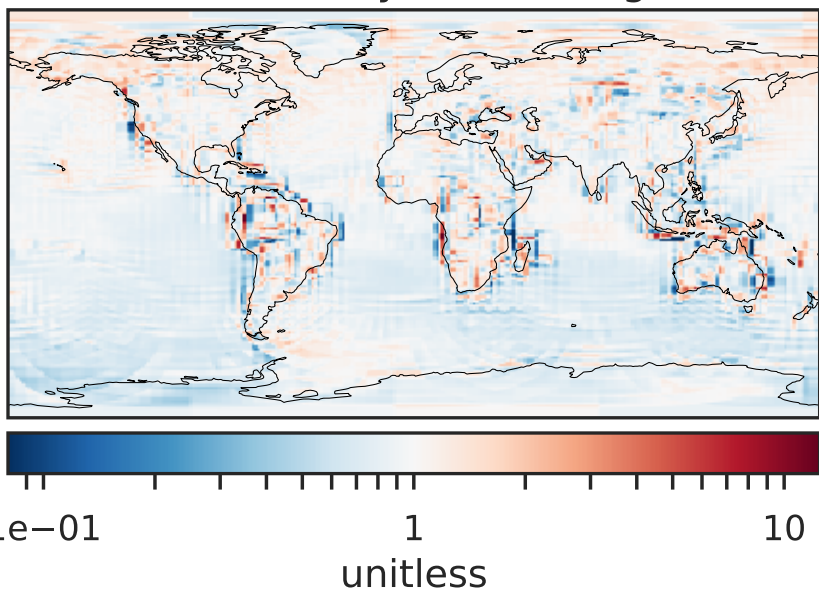
Difference (1x1.25)
Dev - Ref, Dynamic Range



Difference (1x1.25)
Dev - Ref, Restricted Range [5%,95%]



Ratio (1x1.25)
Dev/Ref, Dynamic Range



Ratio (1x1.25)
Dev/Ref, Fixed Range

