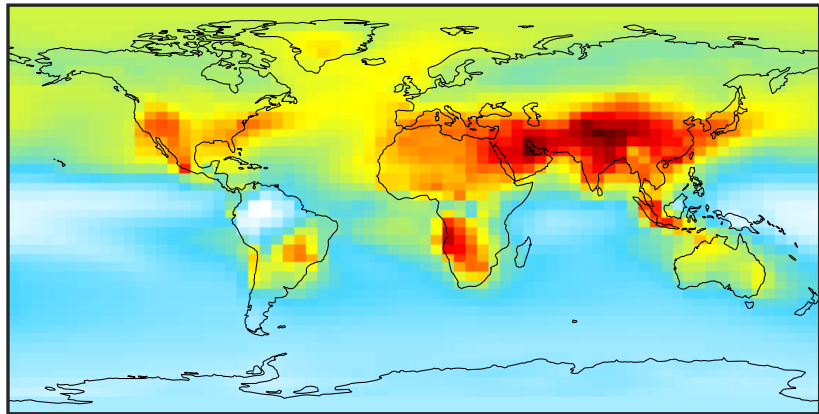


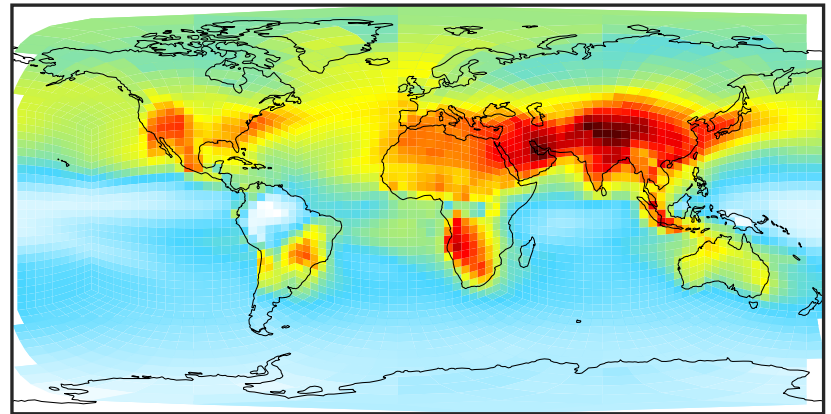
SpeciesConcVV_03 (AnnualMean)

GCC_14.2.0 (Ref)
4.0x5.0



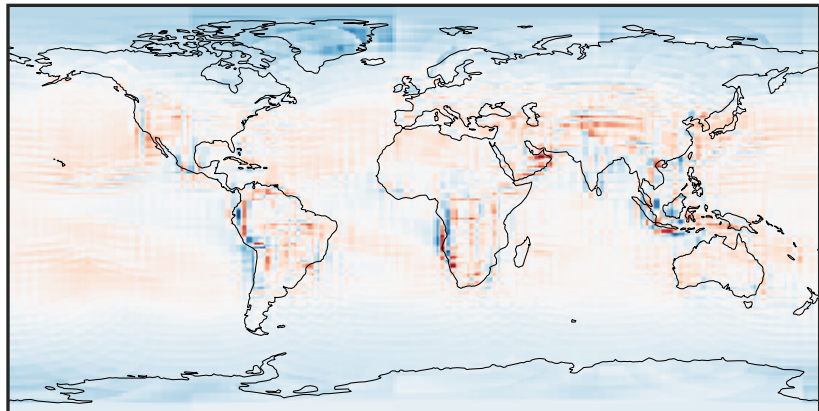
9.22 14.39 28.79 43.18 66.79
ppb

GCHP_14.2.0 (Dev)
c24



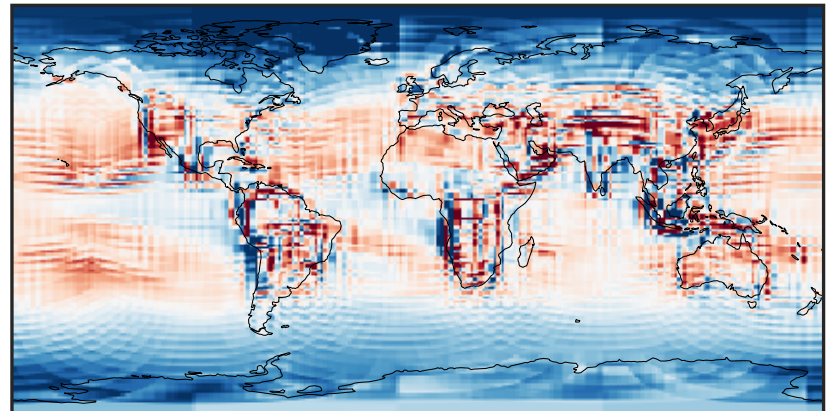
9.22 14.39 28.79 43.18 66.79
ppb

Difference (1x1.25)
Dev - Ref, Dynamic Range



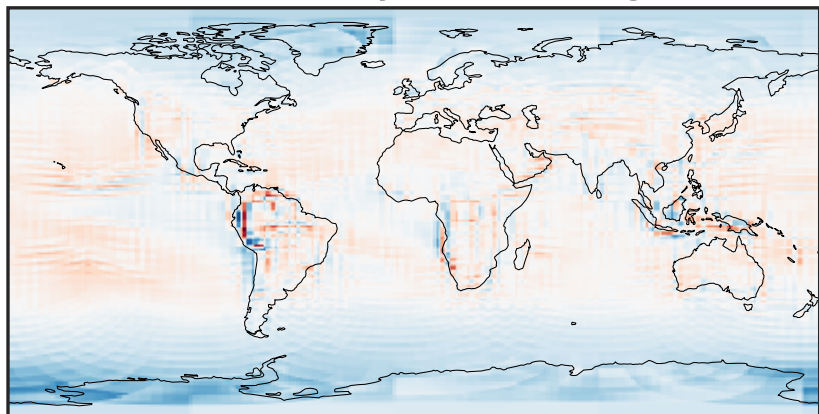
-13.2 -6.6 0.0 6.6 13.2
ppb

Difference (1x1.25)
Dev - Ref, Restricted Range [5%,95%]



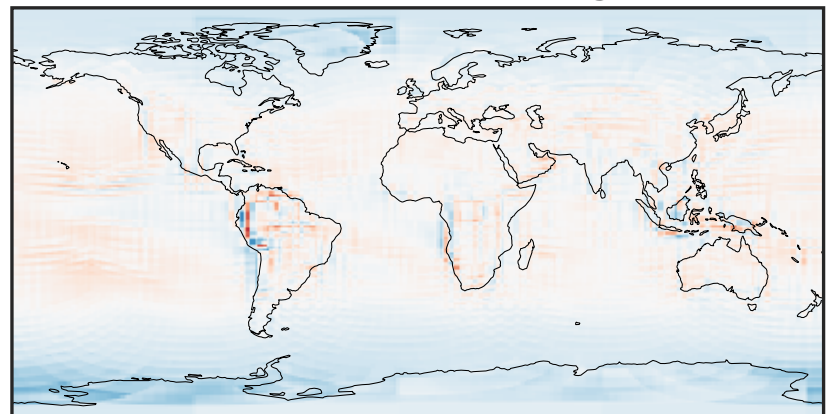
-3.838 -1.919 0.000 1.919 3.838
ppb

Ratio (1x1.25)
Dev/Ref, Dynamic Range



0.604 0.802 1.000 1.327 1.655
unitless

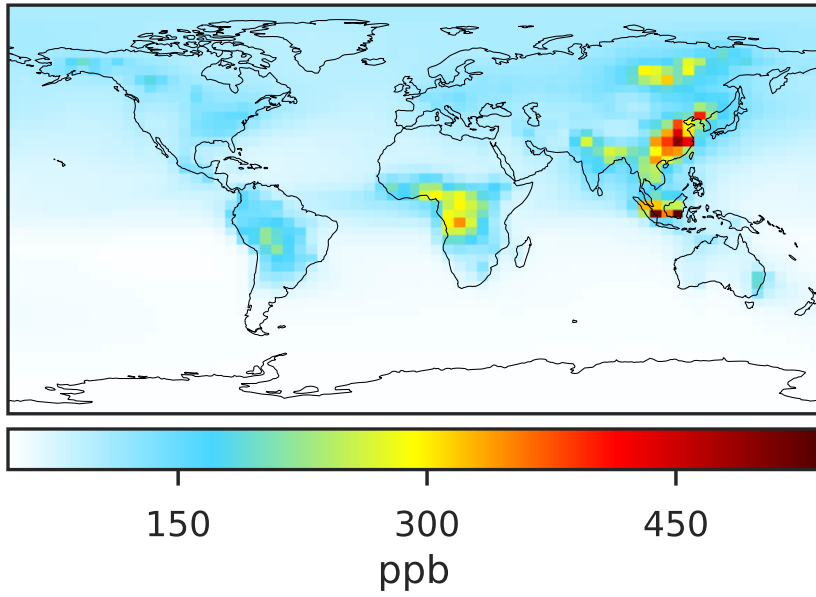
Ratio (1x1.25)
Dev/Ref, Fixed Range



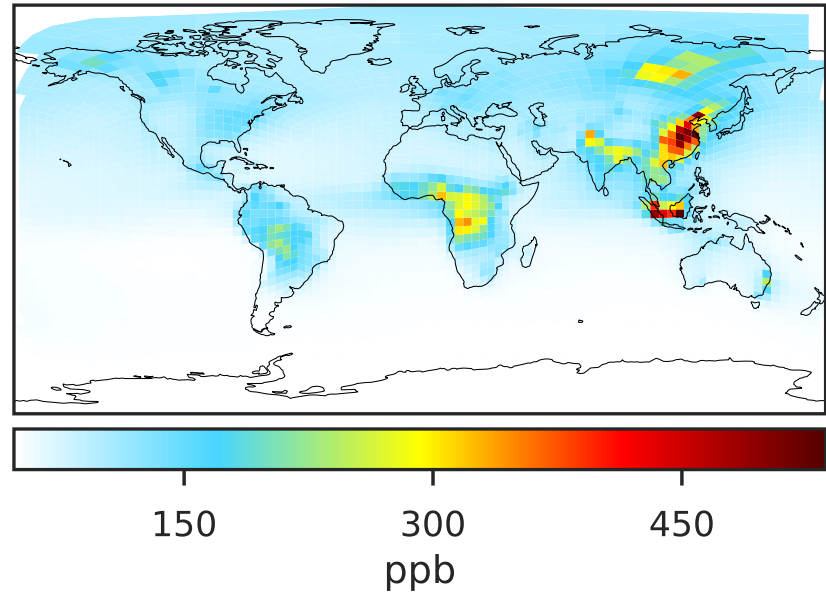
0.50 0.75 1.00 1.50 2.00
unitless

SpeciesConcVV_CO (AnnualMean)

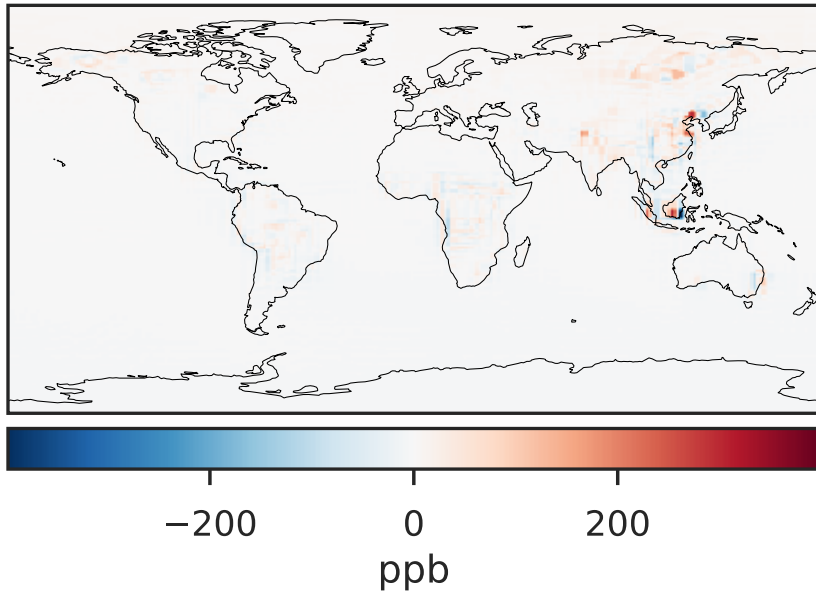
GCC_14.2.0 (Ref)
4.0x5.0



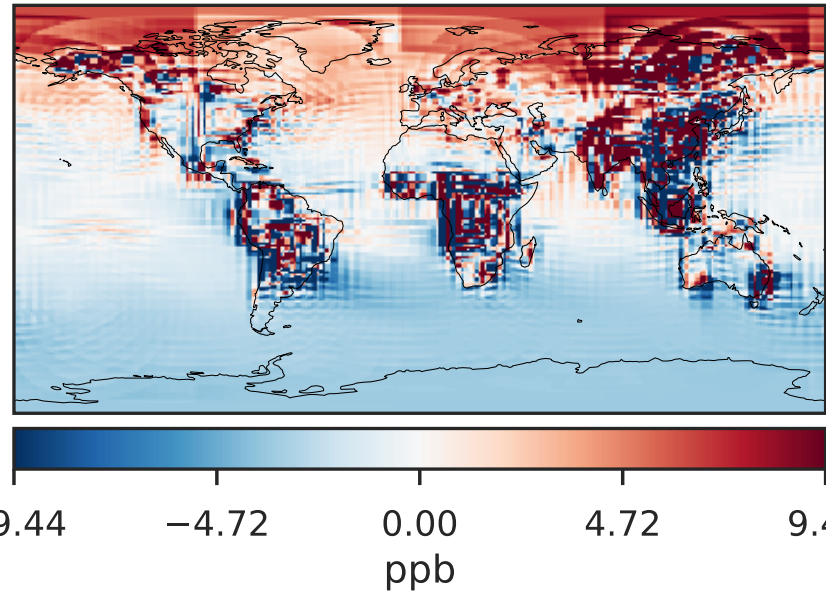
GCHP_14.2.0 (Dev)
c24



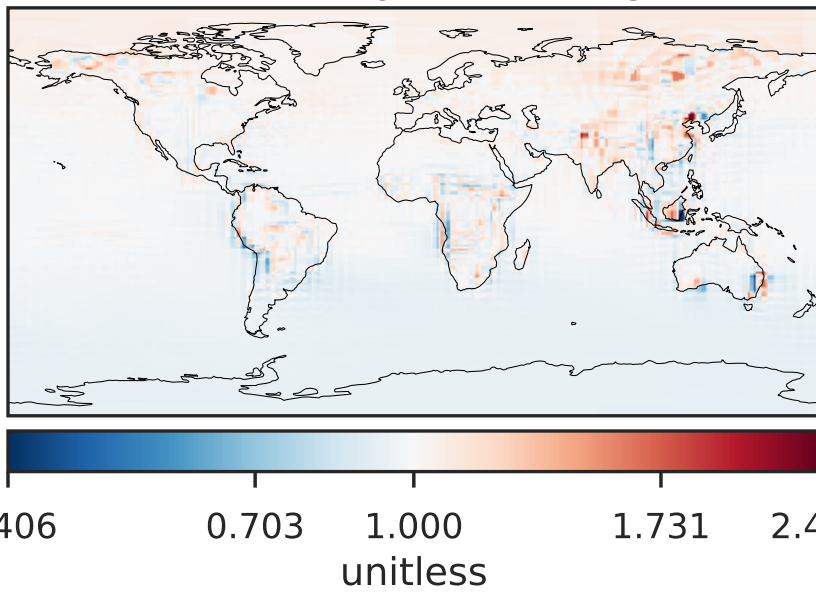
Difference (1x1.25)
Dev - Ref, Dynamic Range



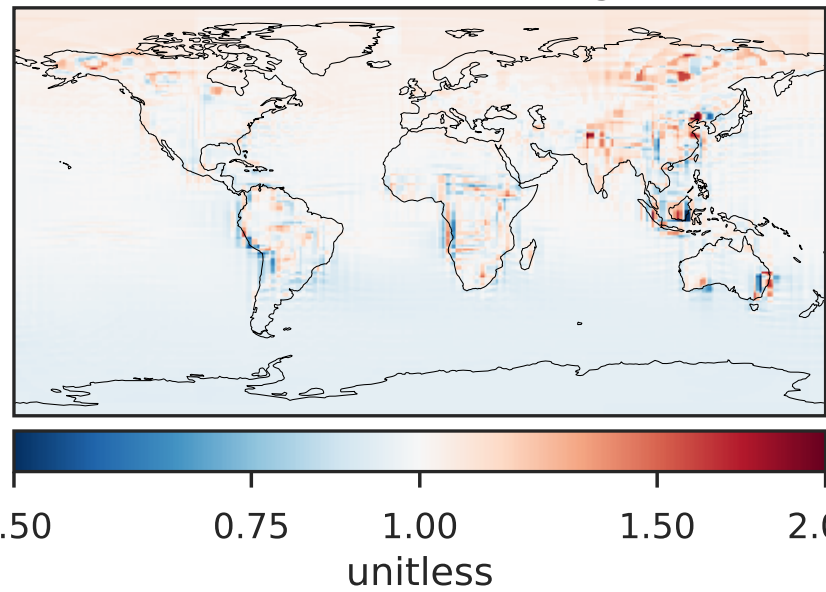
Difference (1x1.25)
Dev - Ref, Restricted Range [5%,95%]



Ratio (1x1.25)
Dev/Ref, Dynamic Range

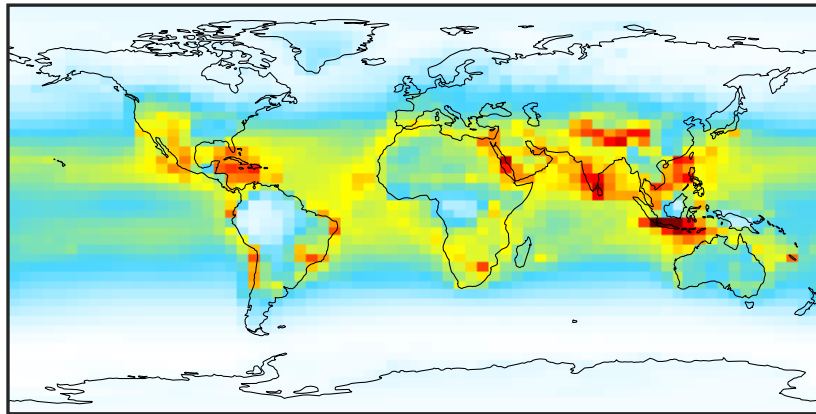


Ratio (1x1.25)
Dev/Ref, Fixed Range



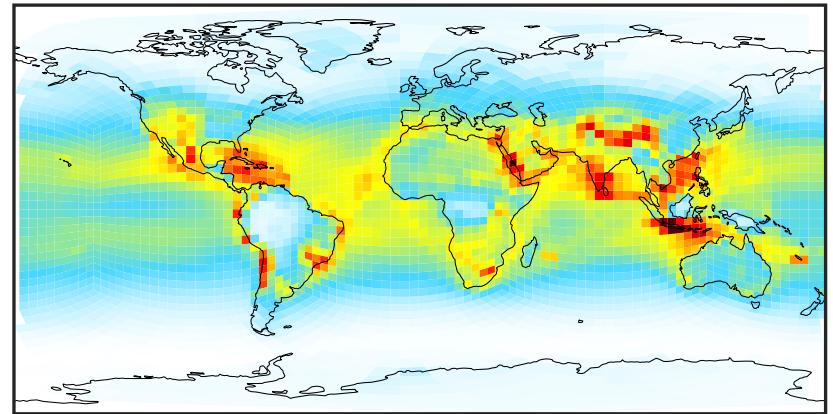
SpeciesConcVV_OH (AnnualMean)

GCC_14.2.0 (Ref)
4.0x5.0



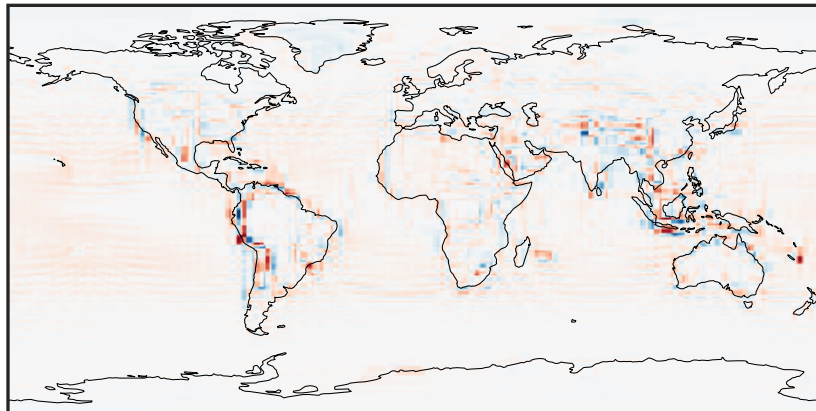
0.00005 0.00010 0.00015
ppb

GCHP_14.2.0 (Dev)
c24



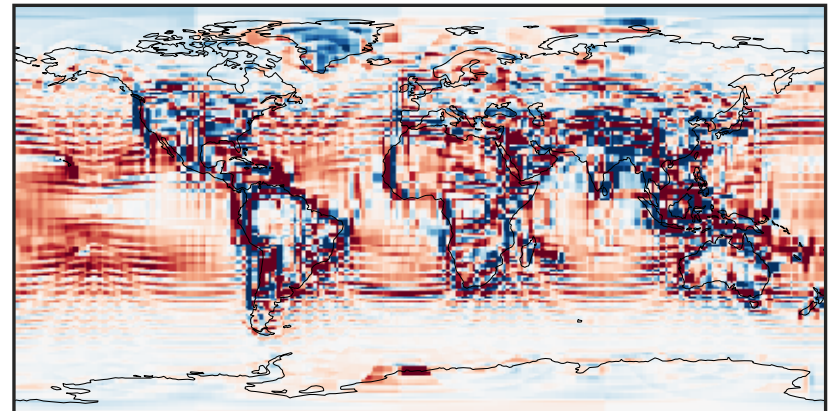
0.00005 0.00010 0.00015
ppb

Difference (1x1.25)
Dev - Ref, Dynamic Range



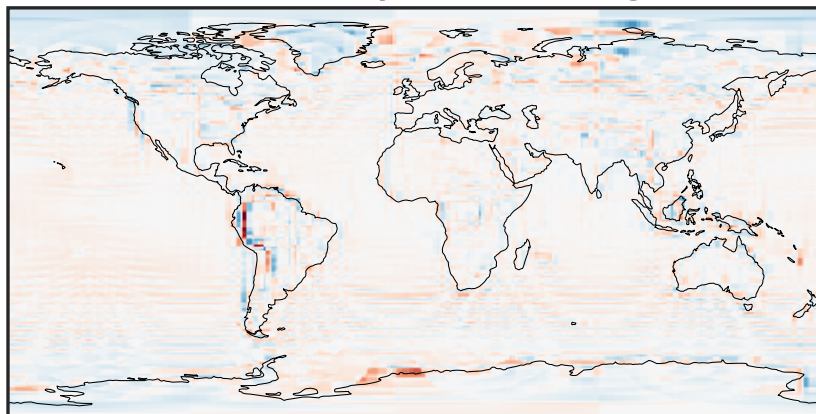
-4 0 4
ppb $1e-5$

Difference (1x1.25)
Dev - Ref, Restricted Range [5%,95%]



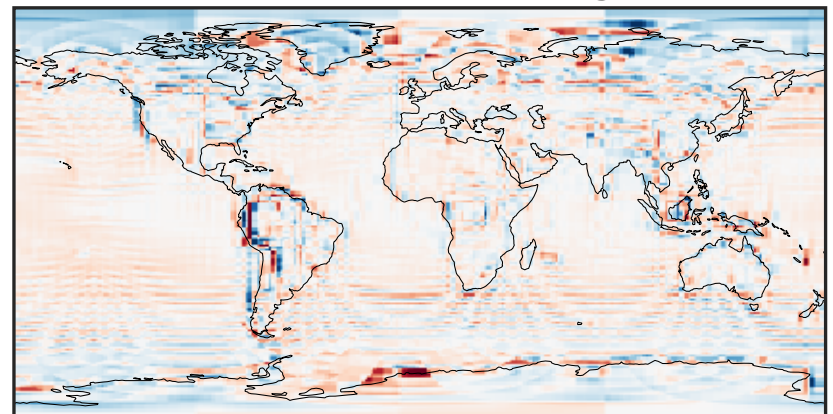
-4 0 4
ppb $1e-6$

Ratio (1x1.25)
Dev/Ref, Dynamic Range



0.265 0.632 1.000 2.387 3.774
unitless

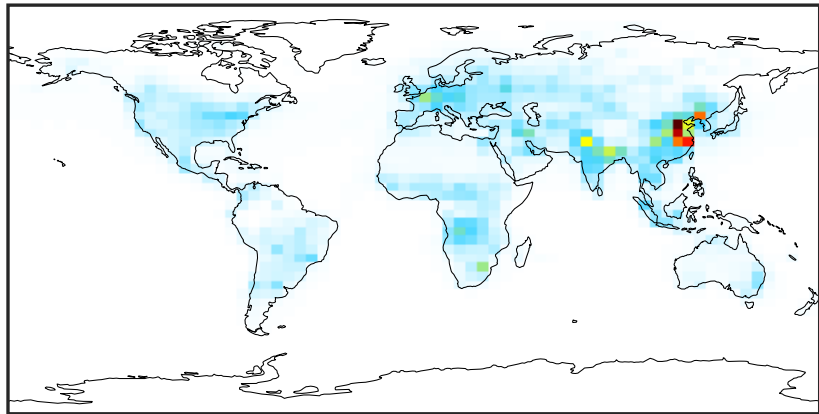
Ratio (1x1.25)
Dev/Ref, Fixed Range



0.50 0.75 1.00 1.50 2.00
unitless

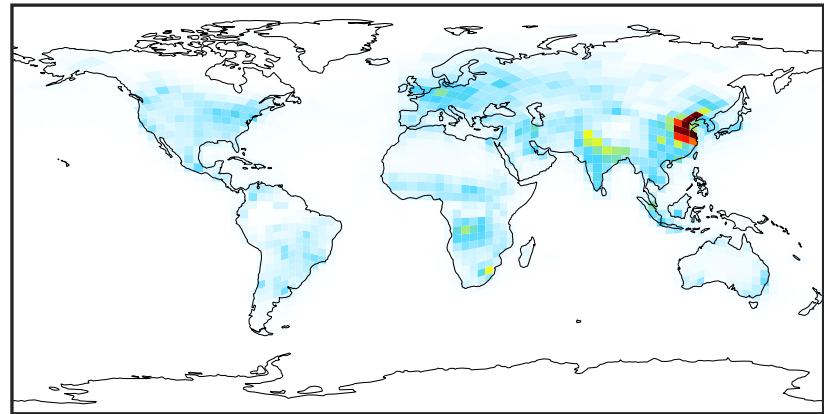
SpeciesConcVV_NOx (AnnualMean)

GCC_14.2.0 (Ref)
4.0x5.0



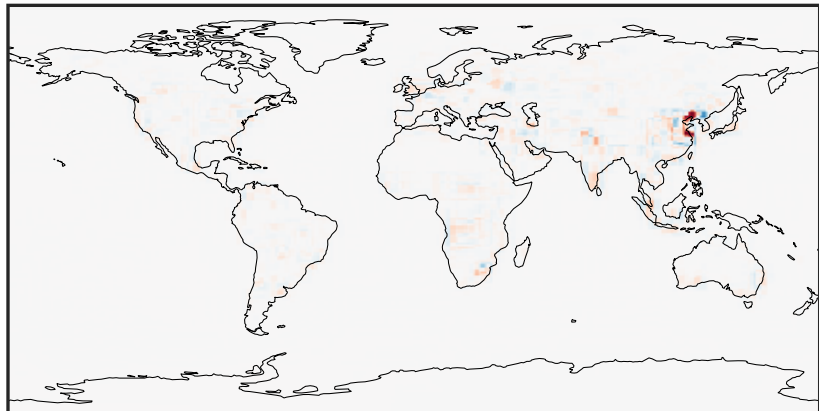
0.00 3.10 6.19 9.29 12.39
ppb

GCHP_14.2.0 (Dev)
c24



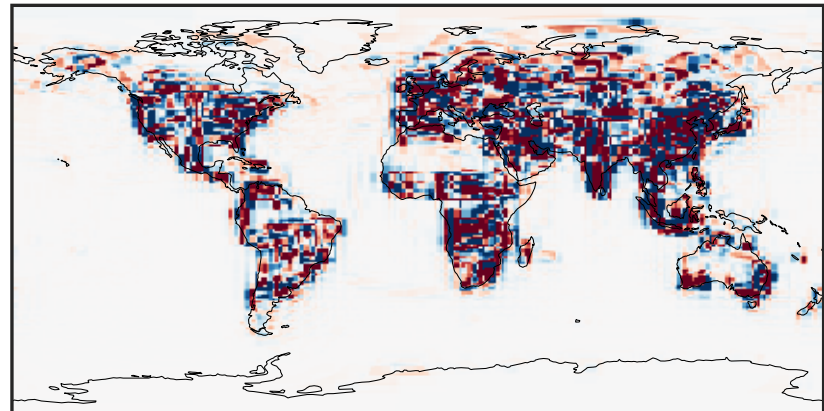
0.00 3.10 6.19 9.29 12.39
ppb

Difference (1x1.25)
Dev - Ref, Dynamic Range



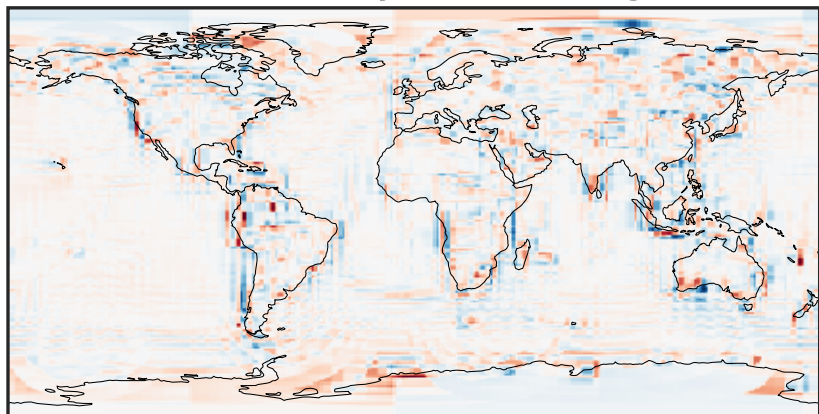
-9.13 -4.56 0.00 4.56 9.13
ppb

Difference (1x1.25)
Dev - Ref, Restricted Range [5%,95%]



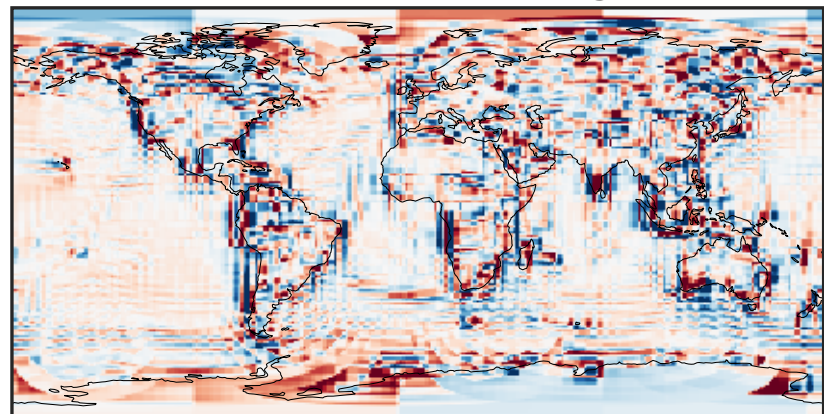
-0.1770 -0.0885 0.0000 0.0885 0.1770
ppb

Ratio (1x1.25)
Dev/Ref, Dynamic Range



0.119 0.559 1.000 4.716 8.432
unitless

Ratio (1x1.25)
Dev/Ref, Fixed Range



0.50 0.75 1.00 1.50 2.00
unitless