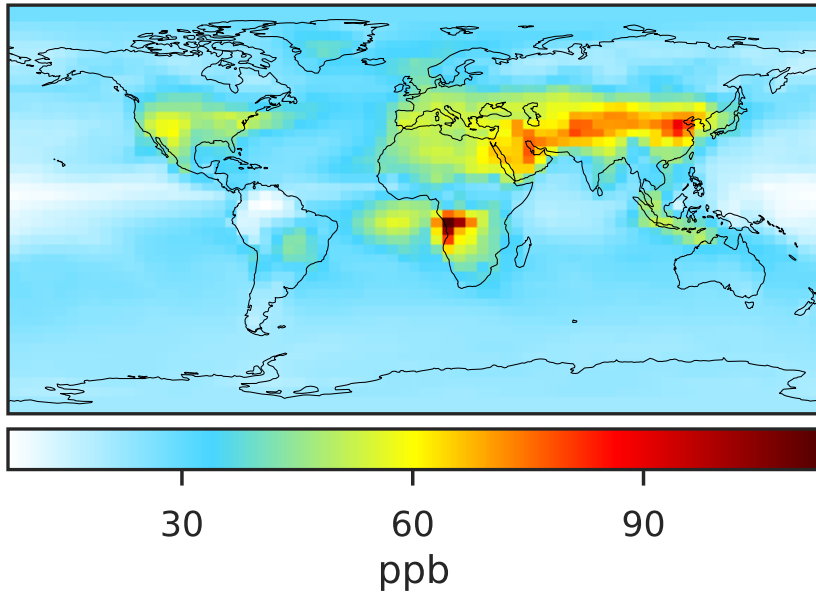
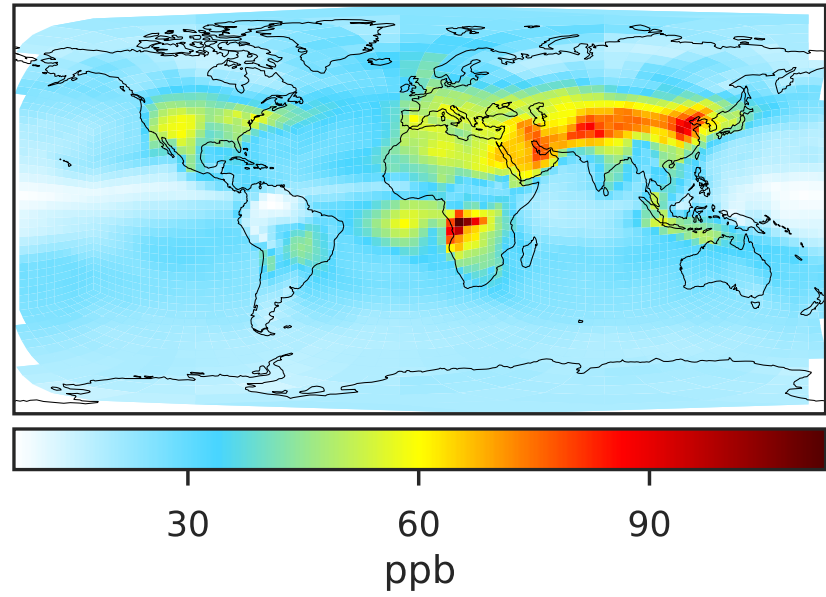


SpeciesConcVV_03 (Jul2019)

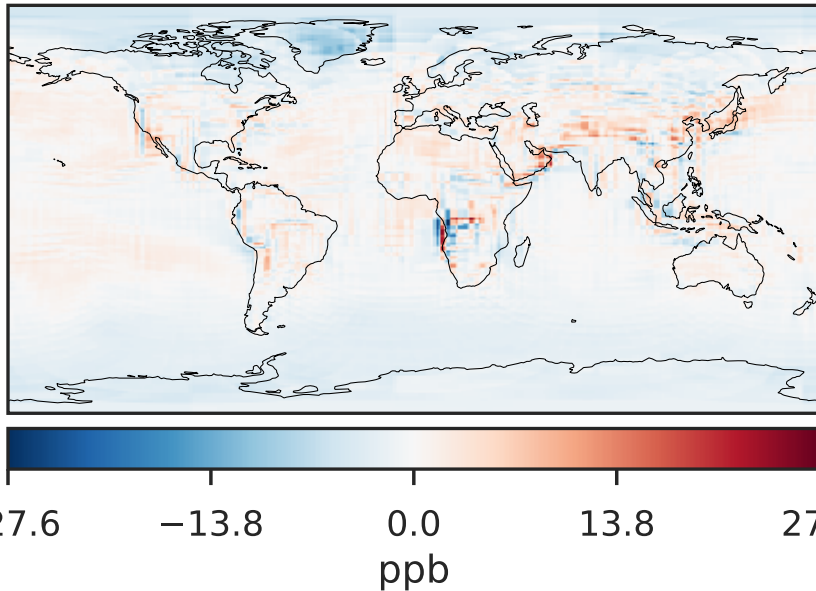
GCC_14.2.0 (Ref)
4.0x5.0



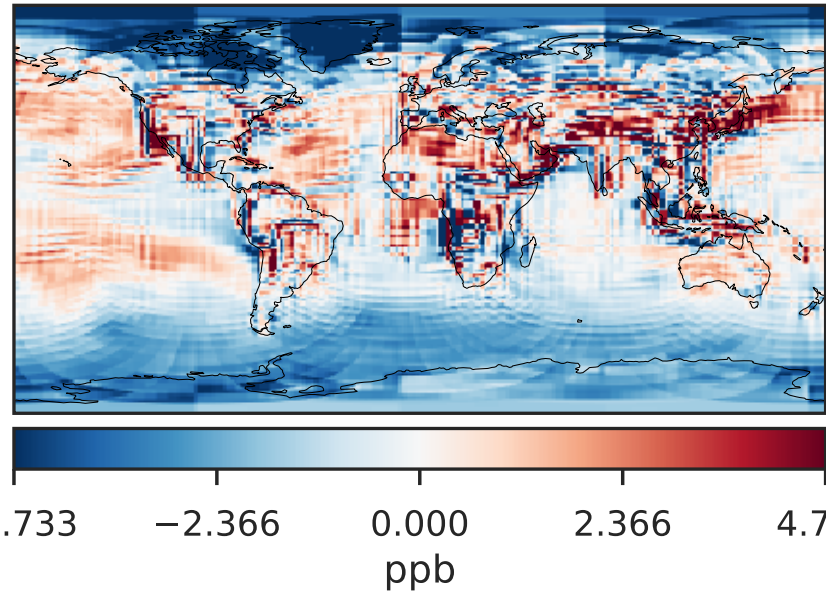
GCHP_14.2.0 (Dev)
c24



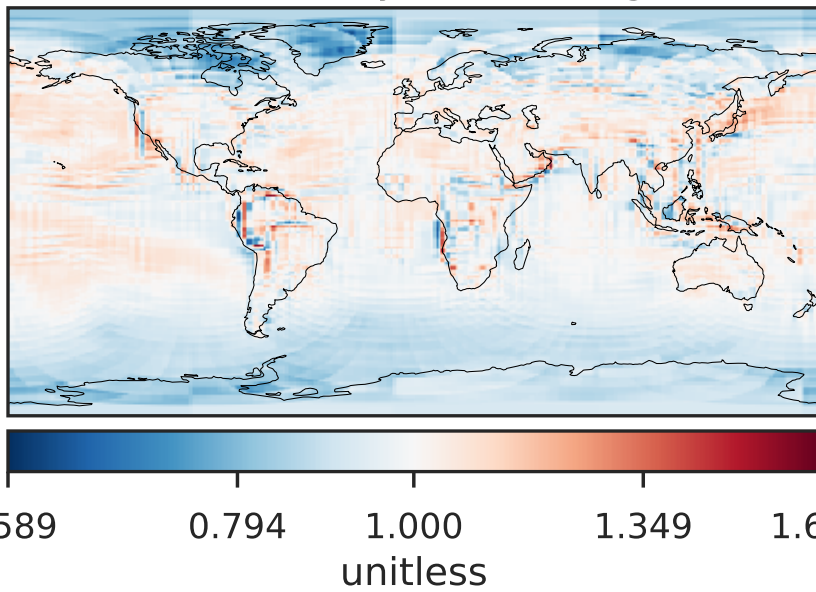
Difference (1x1.25)
Dev - Ref, Dynamic Range



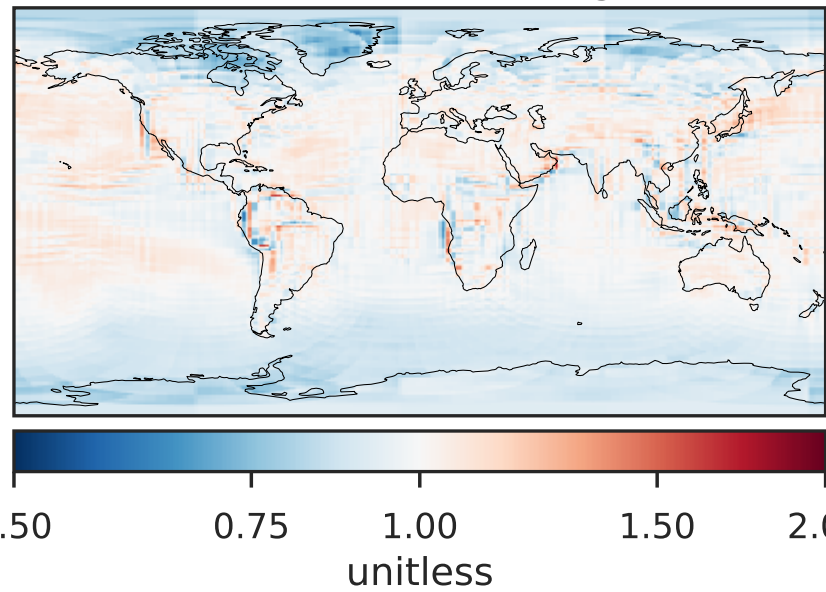
Difference (1x1.25)
Dev - Ref, Restricted Range [5%,95%]



Ratio (1x1.25)
Dev/Ref, Dynamic Range

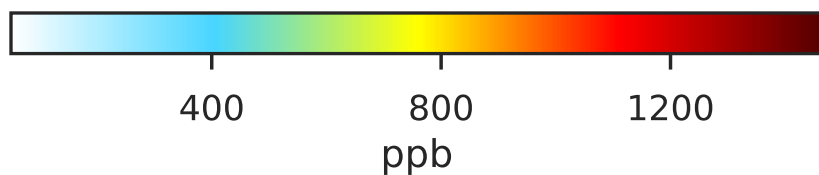
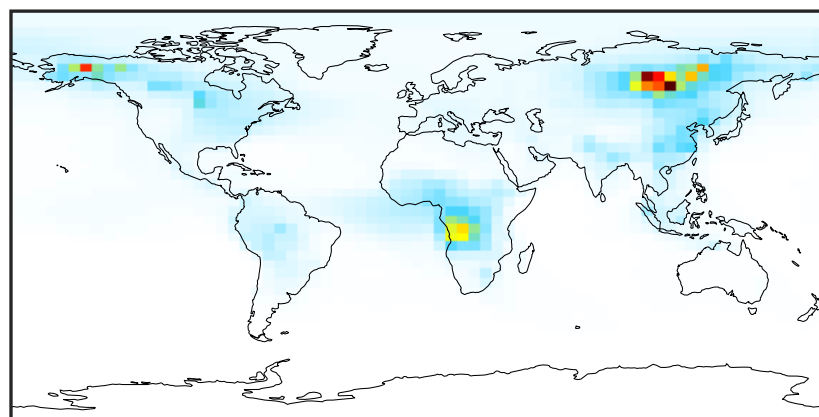


Ratio (1x1.25)
Dev/Ref, Fixed Range

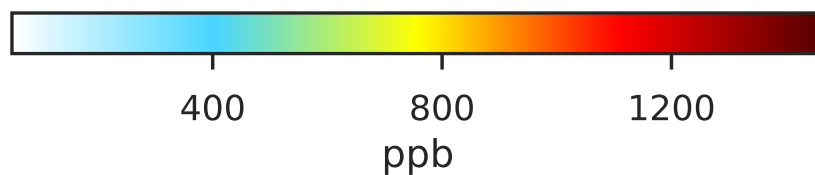
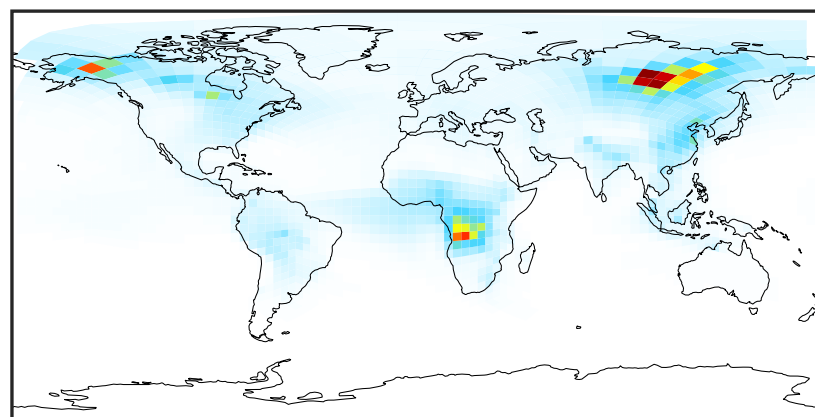


SpeciesConcVV_CO (Jul2019)

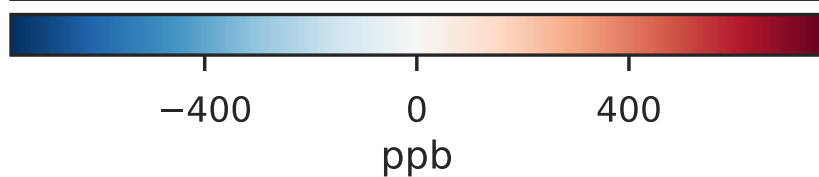
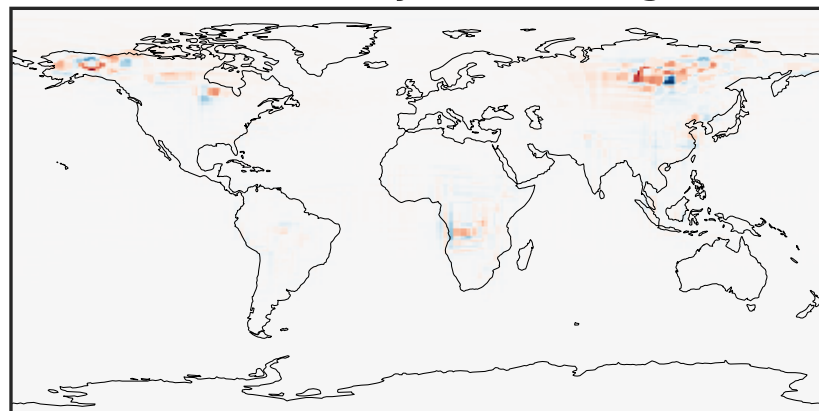
GCC_14.2.0 (Ref)
4.0x5.0



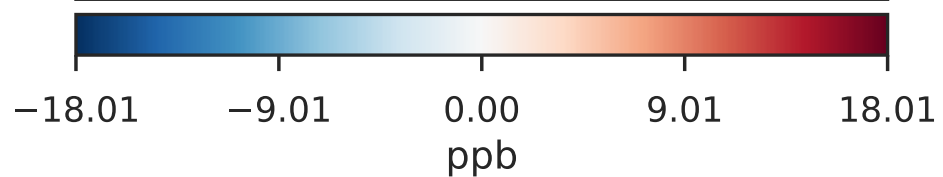
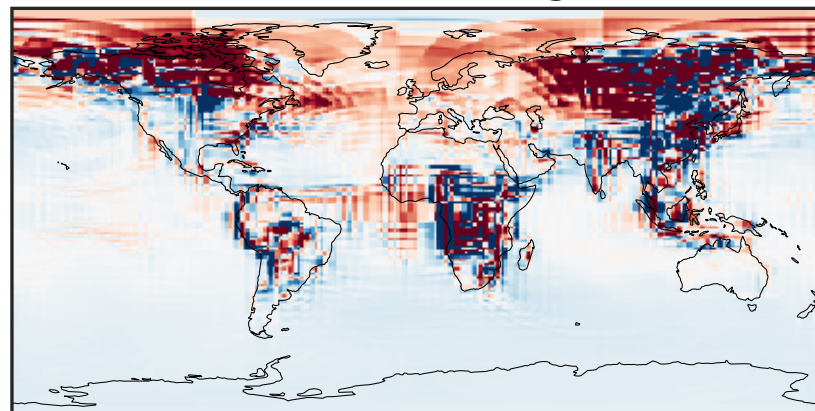
GCHP_14.2.0 (Dev)
c24



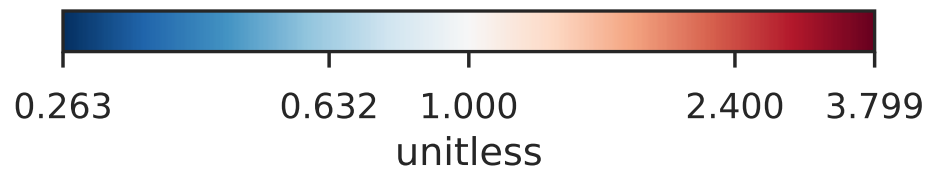
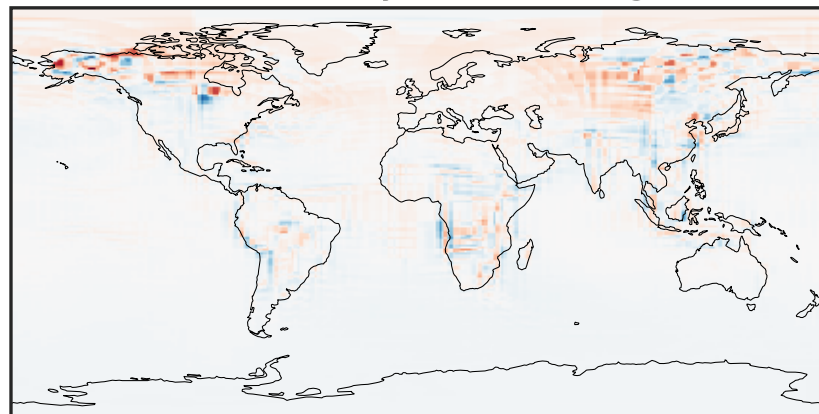
Difference (1x1.25)
Dev - Ref, Dynamic Range



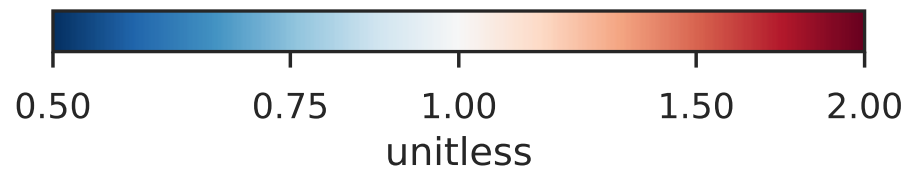
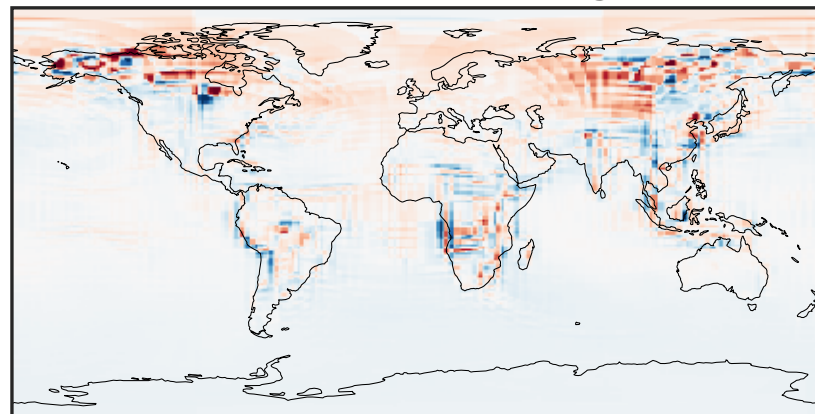
Difference (1x1.25)
Dev - Ref, Restricted Range [5%,95%]



Ratio (1x1.25)
Dev/Ref, Dynamic Range

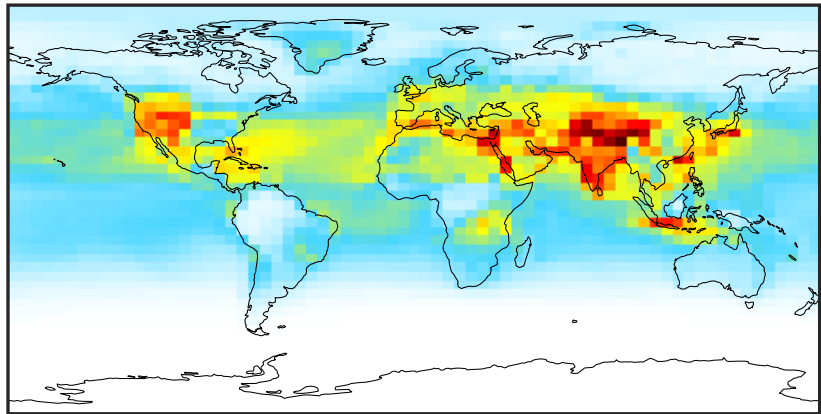


Ratio (1x1.25)
Dev/Ref, Fixed Range



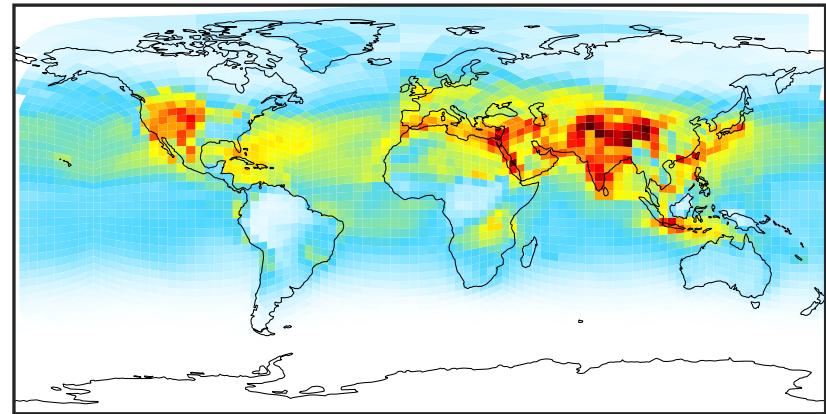
SpeciesConcVV_OH (Jul2019)

GCC_14.2.0 (Ref)
4.0x5.0



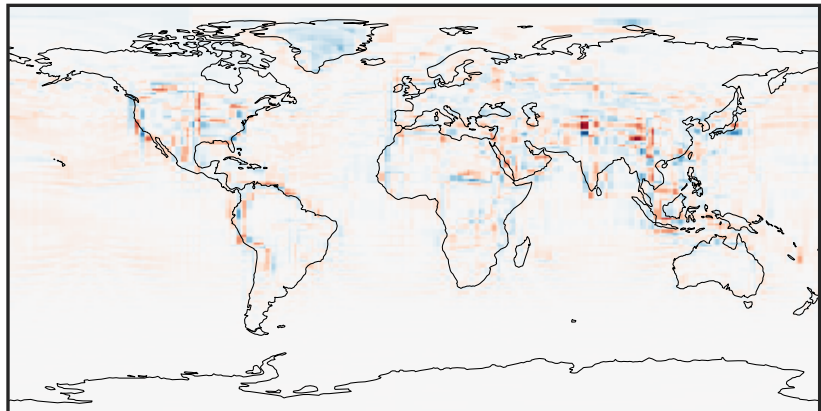
0.00008 0.00016 0.00024
ppb

GCHP_14.2.0 (Dev)
c24



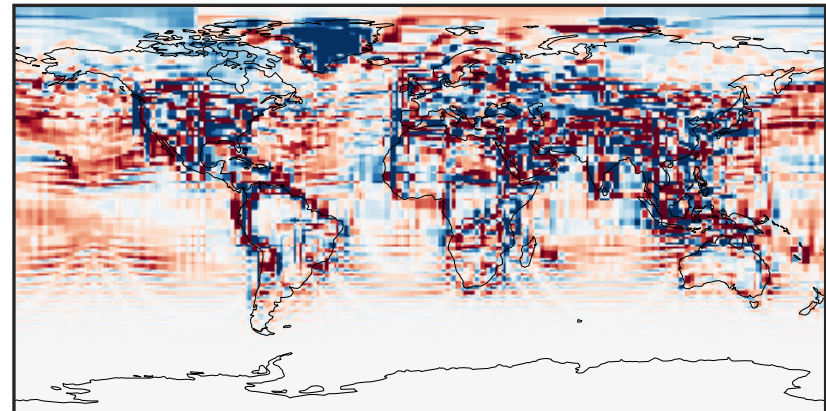
0.00008 0.00016 0.00024
ppb

Difference (1x1.25)
Dev - Ref, Dynamic Range



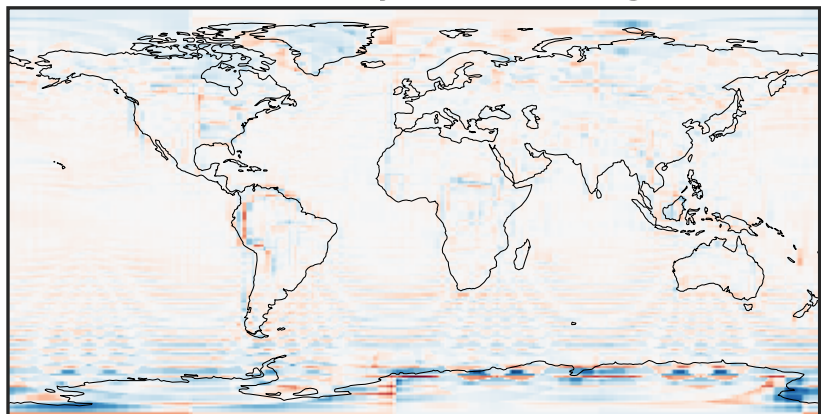
-5 0 5
ppb $1e-5$

Difference (1x1.25)
Dev - Ref, Restricted Range [5%,95%]



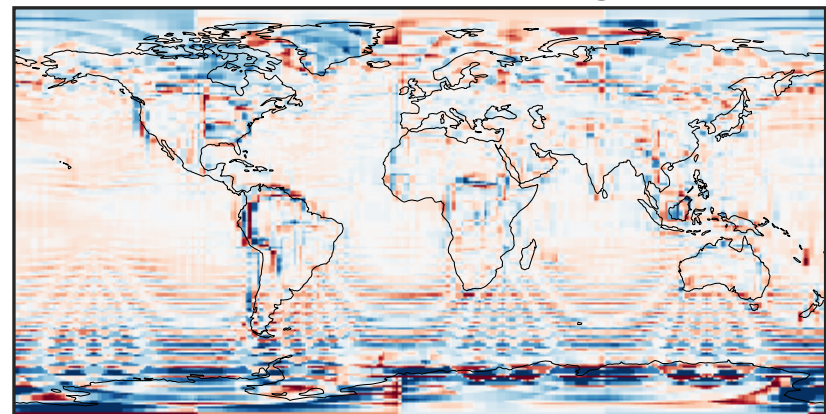
-6 0 6
ppb $1e-6$

Ratio (1x1.25)
Dev/Ref, Dynamic Range



0.128 0.564 1.000 4.411 7.823
unitless

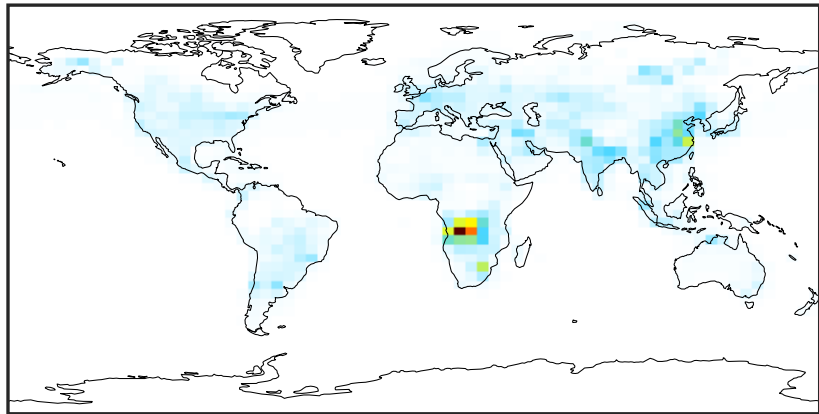
Ratio (1x1.25)
Dev/Ref, Fixed Range



0.50 0.75 1.00 1.50 2.00
unitless

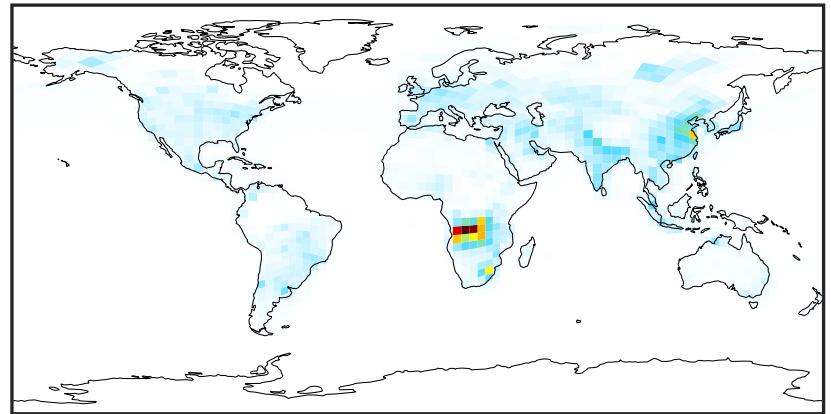
SpeciesConcVV_NOx (Jul2019)

GCC_14.2.0 (Ref)
4.0x5.0



0.00 4.83 9.67 14.50 19.33
ppb

GCHP_14.2.0 (Dev)
c24



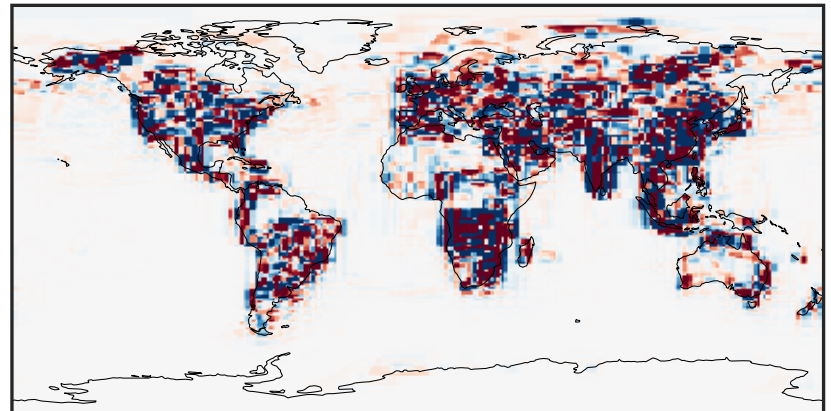
0.00 4.83 9.67 14.50 19.33
ppb

Difference (1x1.25)
Dev - Ref, Dynamic Range



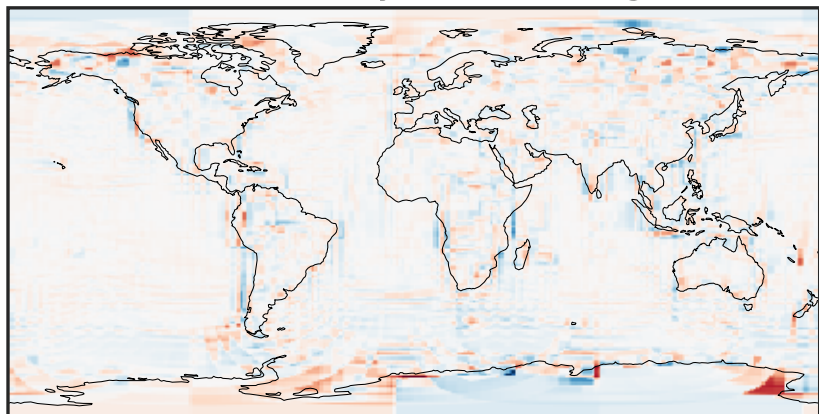
-13.32 -6.66 0.00 6.66 13.32
ppb

Difference (1x1.25)
Dev - Ref, Restricted Range [5%,95%]



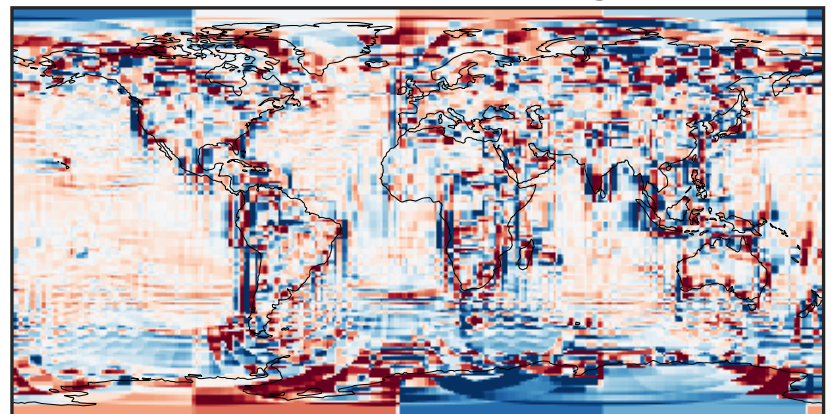
-0.1742 -0.0871 0.0000 0.0871 0.1742
ppb

Ratio (1x1.25)
Dev/Ref, Dynamic Range



1e-01 1 10
unitless

Ratio (1x1.25)
Dev/Ref, Fixed Range



0.50 0.75 1.00 1.50 2.00
unitless