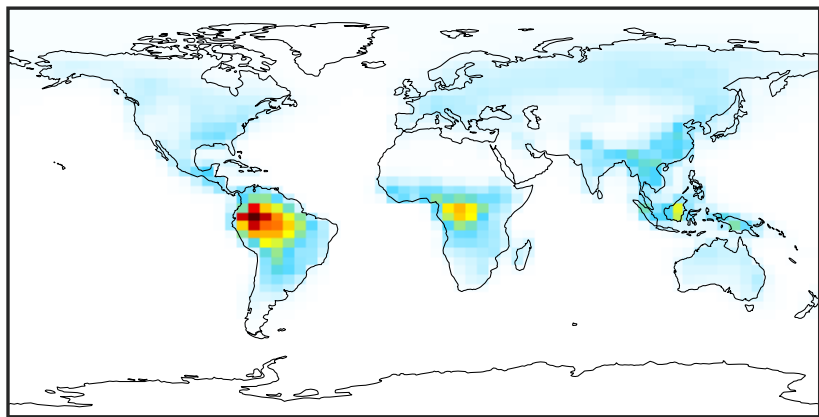


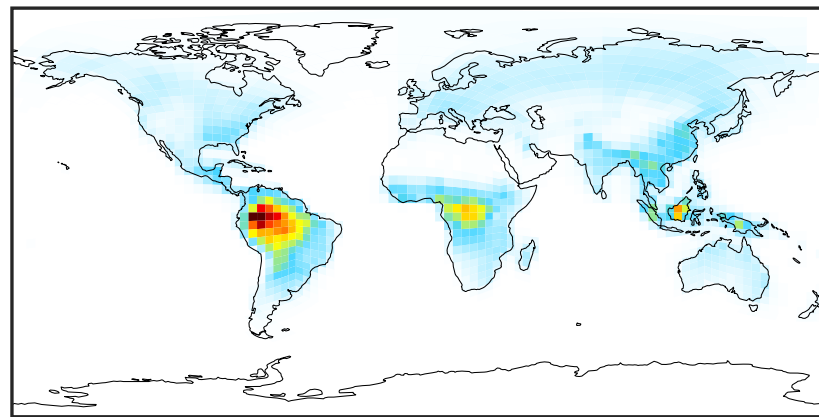
SpeciesConcVW_EOH (AnnualMean)

GCC_14.2.0 (Ref)
4.0x5.0



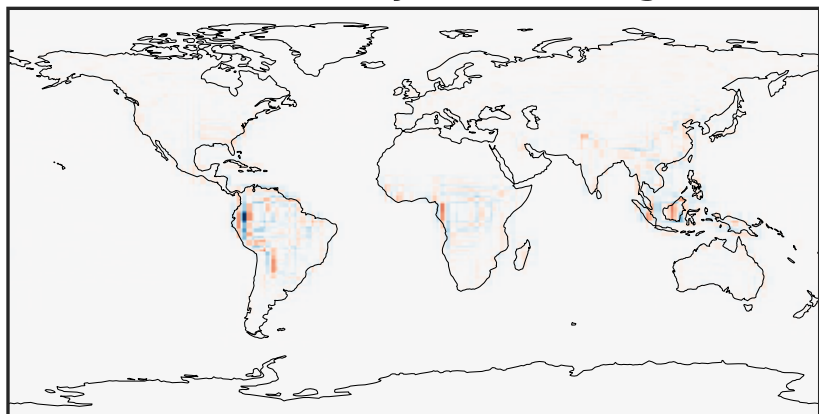
0.000 0.629 1.258 1.887 2.516
ppb

GCHP_14.2.0 (Dev)
c24



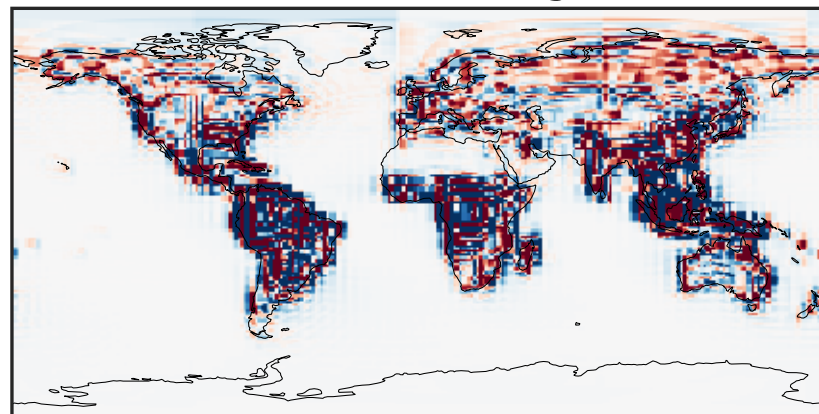
0.000 0.629 1.258 1.887 2.516
ppb

Difference (1x1.25)
Dev - Ref, Dynamic Range



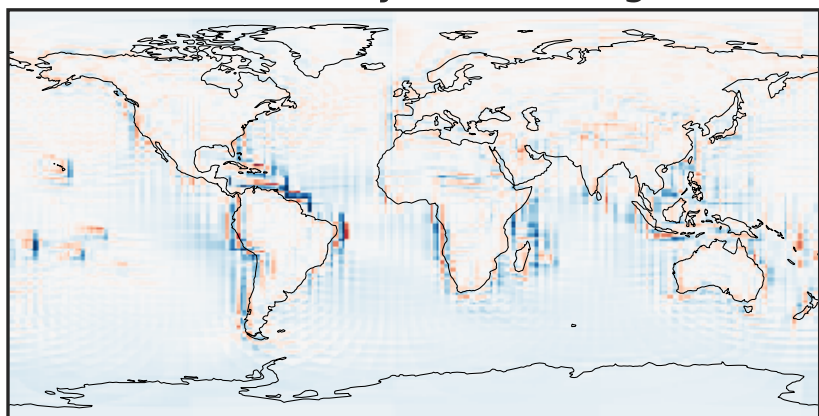
-1.061 -0.531 0.000 0.531 1.061
ppb

Difference (1x1.25)
Dev - Ref, Restricted Range [5%,95%]



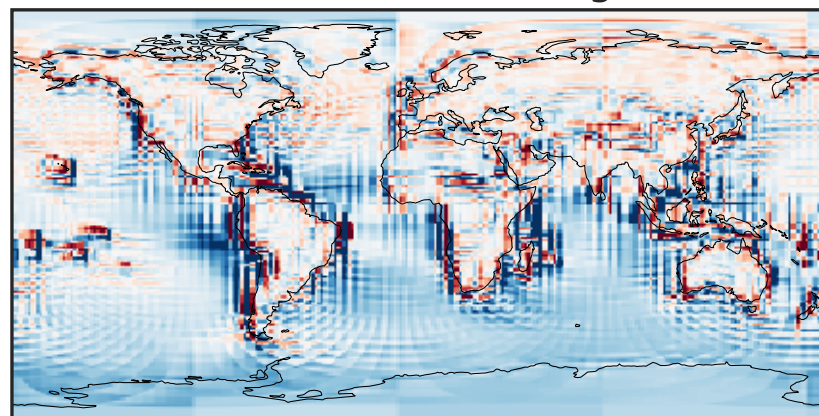
-0.015 0.000 0.015
ppb

Ratio (1x1.25)
Dev/Ref, Dynamic Range



1e-01 1 10
unitless

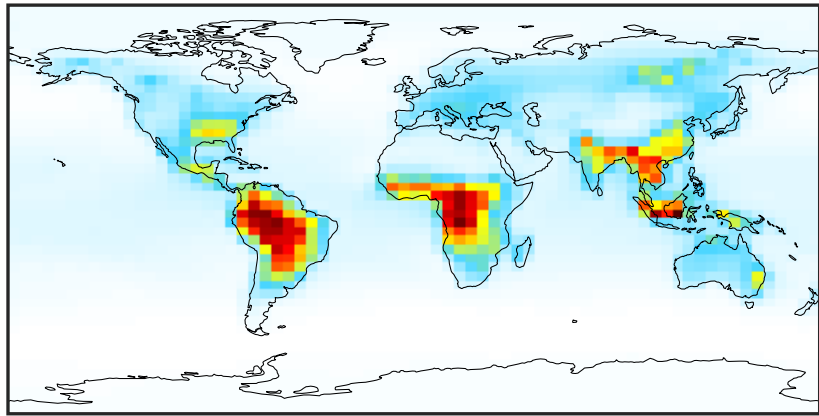
Ratio (1x1.25)
Dev/Ref, Fixed Range



0.50 0.75 1.00 1.50 2.00
unitless

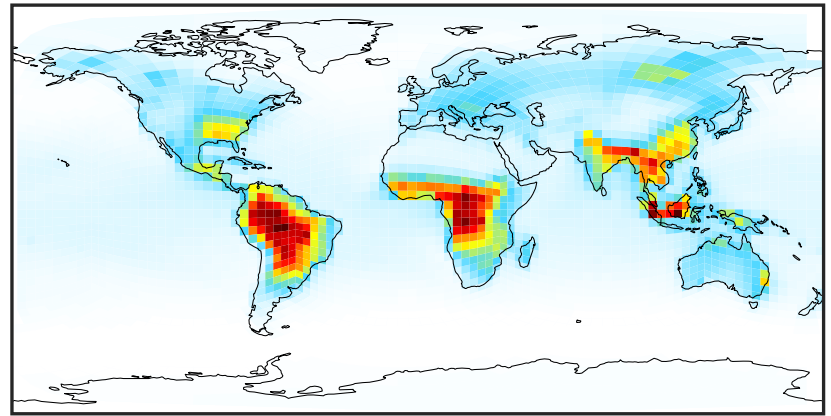
SpeciesConcVV_MOH (AnnualMean)

GCC_14.2.0 (Ref)
4.0x5.0



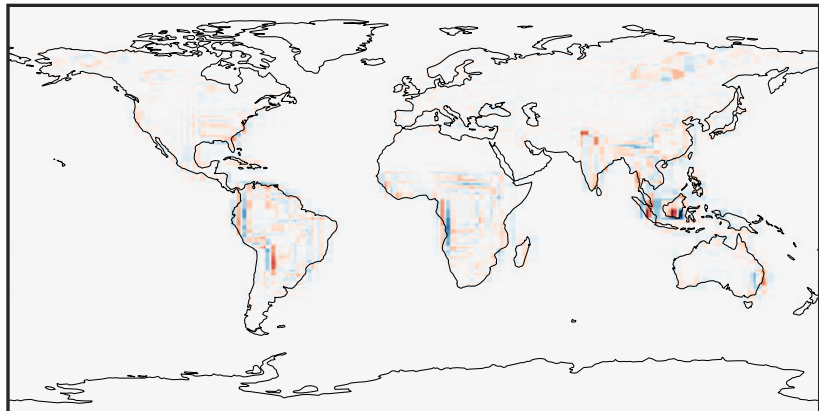
0.035 1.709 3.418 5.127 6.872
ppb

GCHP_14.2.0 (Dev)
c24



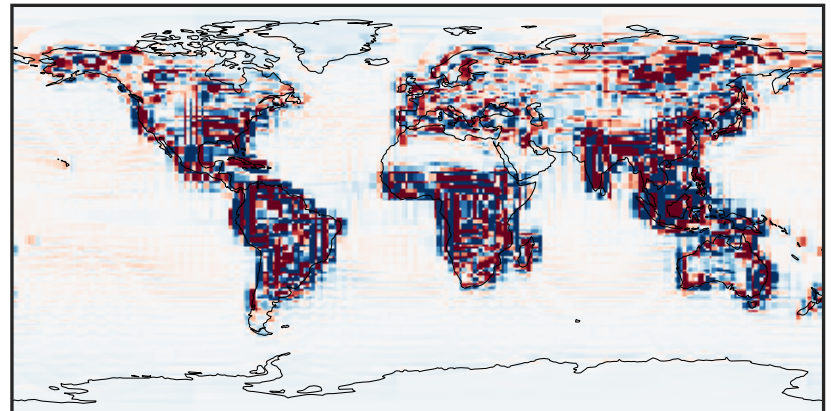
0.035 1.709 3.418 5.127 6.872
ppb

Difference (1x1.25)
Dev - Ref, Dynamic Range



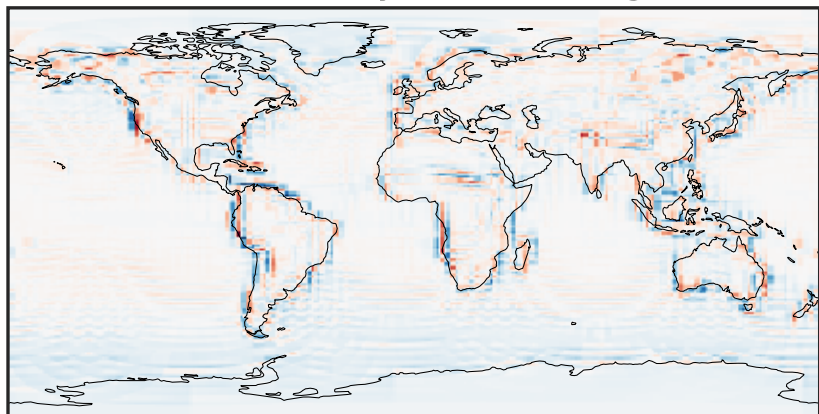
-3.592 -1.796 0.000 1.796 3.592
ppb

Difference (1x1.25)
Dev - Ref, Restricted Range [5%,95%]



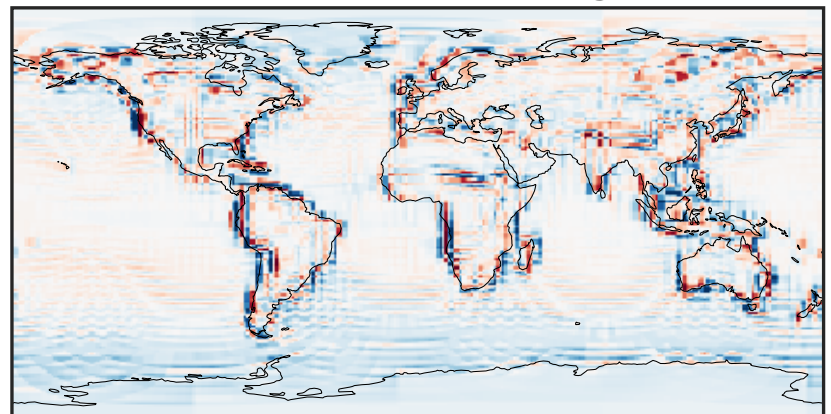
-0.18 -0.09 0.00 0.09 0.18
ppb

Ratio (1x1.25)
Dev/Ref, Dynamic Range



0.265 0.632 1.000 2.390 3.779
unitless

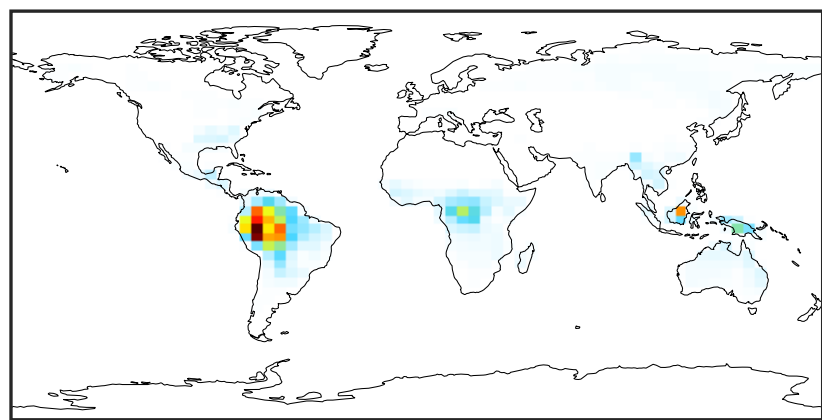
Ratio (1x1.25)
Dev/Ref, Fixed Range



0.50 0.75 1.00 1.50 2.00
unitless

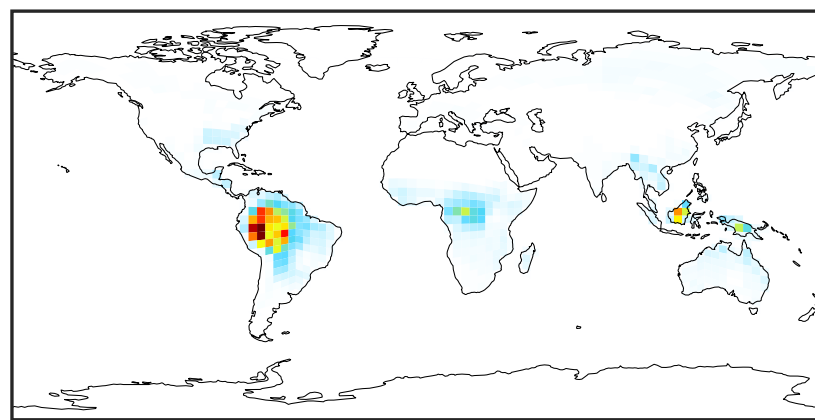
SpeciesConcVV_ISOP (AnnualMean)

GCC_14.2.0 (Ref)
4.0x5.0



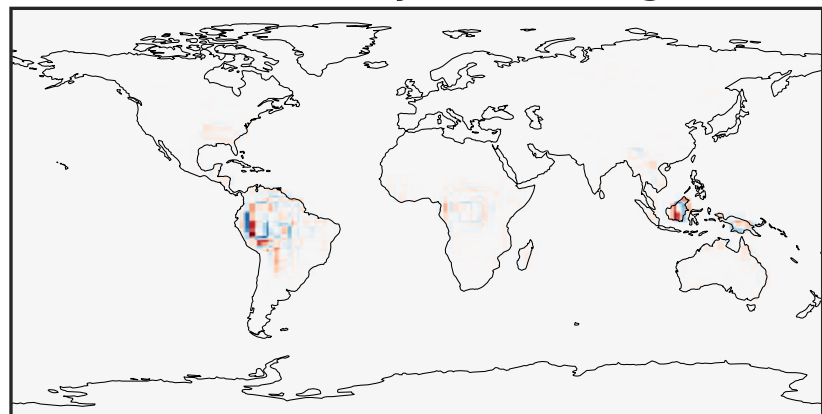
0.000 2.339 4.679 7.018 9.358
ppb

GCHP_14.2.0 (Dev)
c24



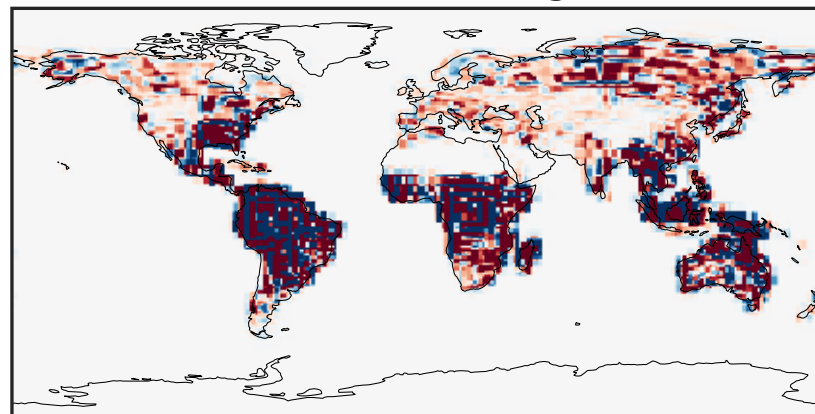
0.000 2.339 4.679 7.018 9.358
ppb

Difference (1x1.25)
Dev - Ref, Dynamic Range



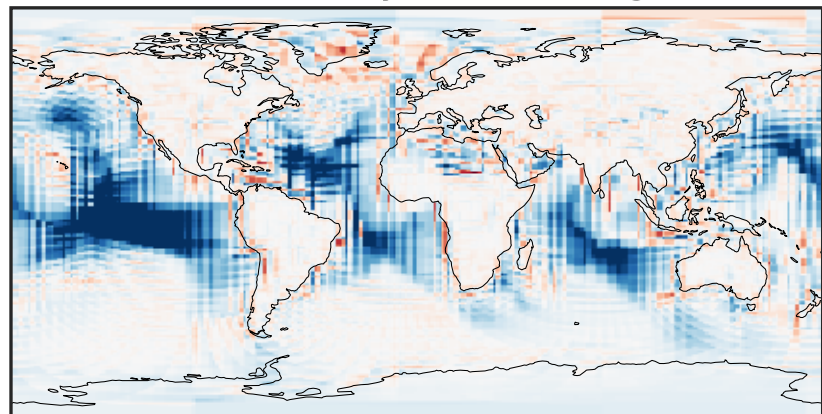
-3.948 -1.974 0.000 1.974 3.948
ppb

Difference (1x1.25)
Dev - Ref, Restricted Range [5%,95%]



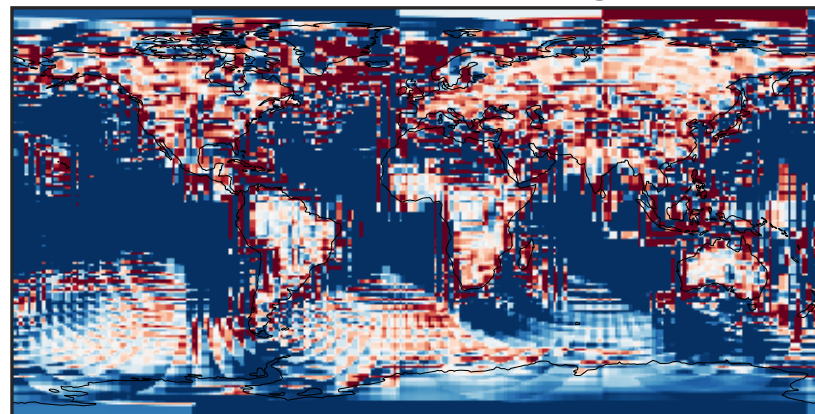
-0.015 0.000 0.015
ppb

Ratio (1x1.25)
Dev/Ref, Dynamic Range



unitless

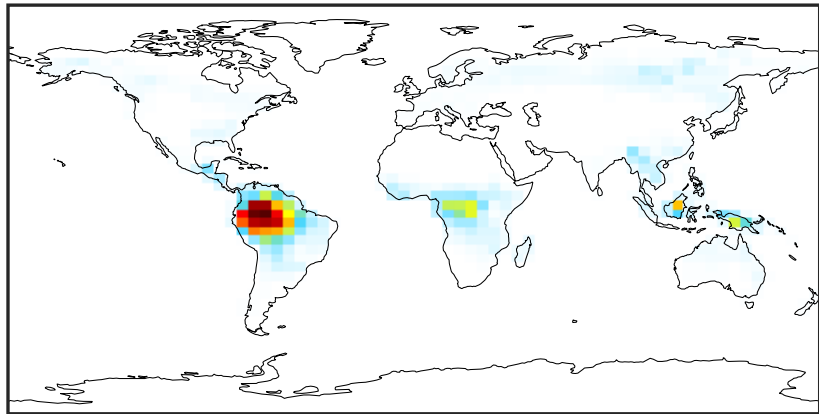
Ratio (1x1.25)
Dev/Ref, Fixed Range



0.50 0.75 1.00 1.50 2.00
unitless

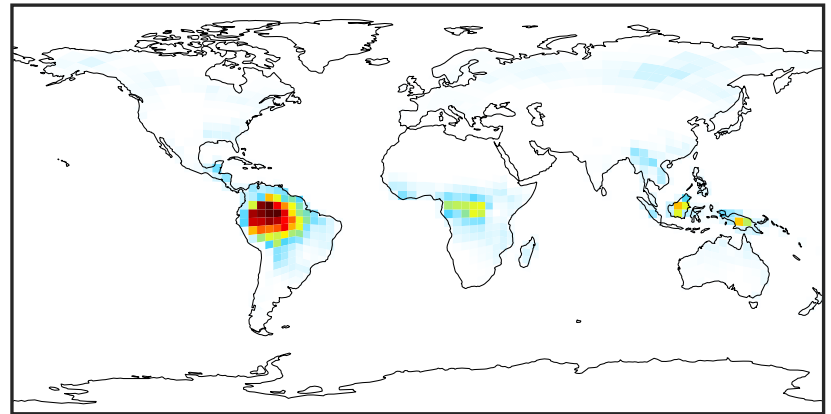
SpeciesConcVV_MTPA (AnnualMean)

GCC_14.2.0 (Ref)
4.0x5.0



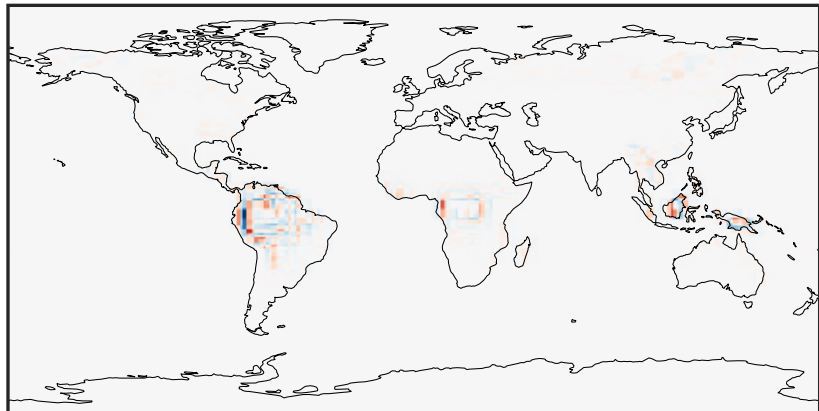
0.000 0.455 0.909 1.364 1.818
ppb

GCHP_14.2.0 (Dev)
c24



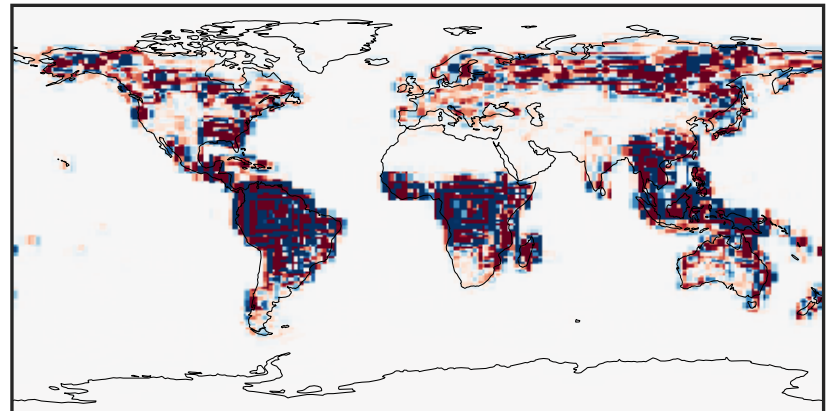
0.000 0.455 0.909 1.364 1.818
ppb

Difference (1x1.25)
Dev - Ref, Dynamic Range



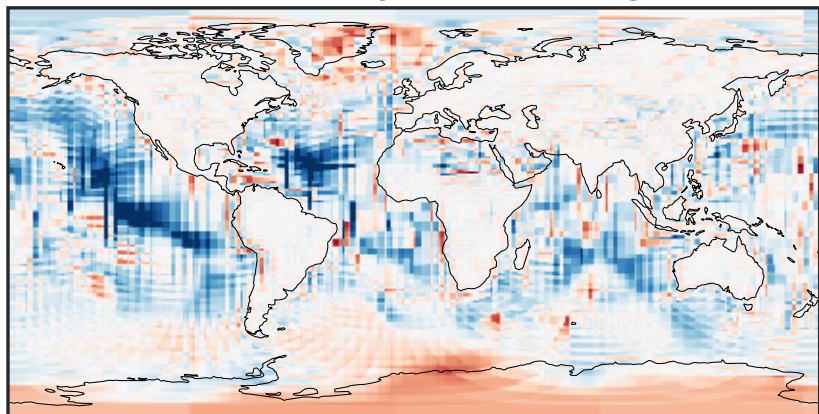
-0.808 -0.404 0.000 0.404 0.808
ppb

Difference (1x1.25)
Dev - Ref, Restricted Range [5%,95%]



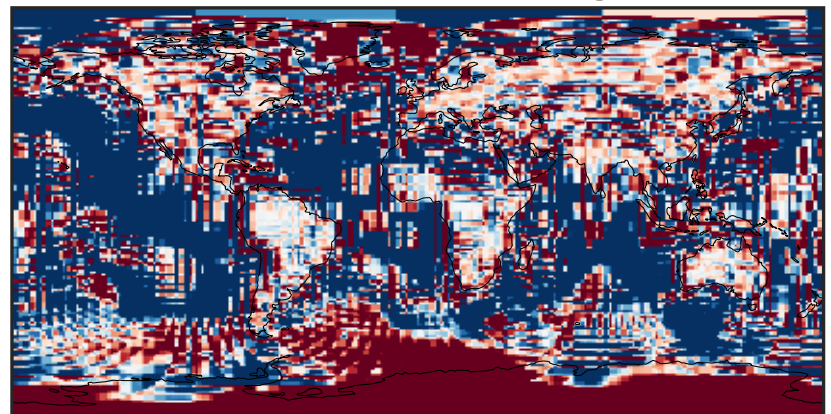
-0.004 0.000 0.004
ppb

Ratio (1x1.25)
Dev/Ref, Dynamic Range



unitless

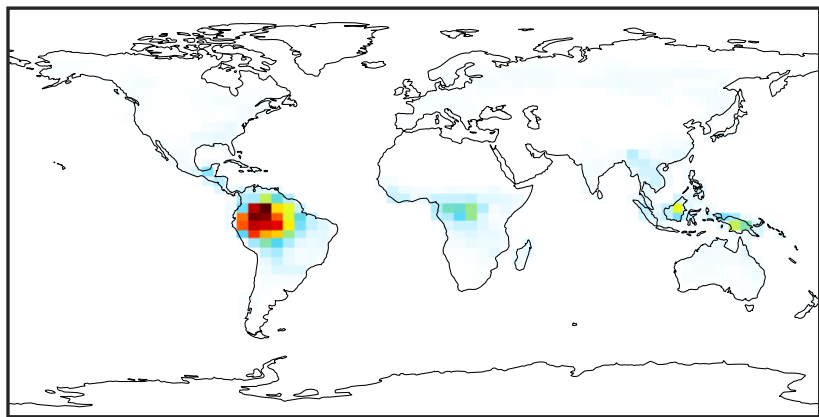
Ratio (1x1.25)
Dev/Ref, Fixed Range



0.50 0.75 1.00 1.50 2.00
unitless

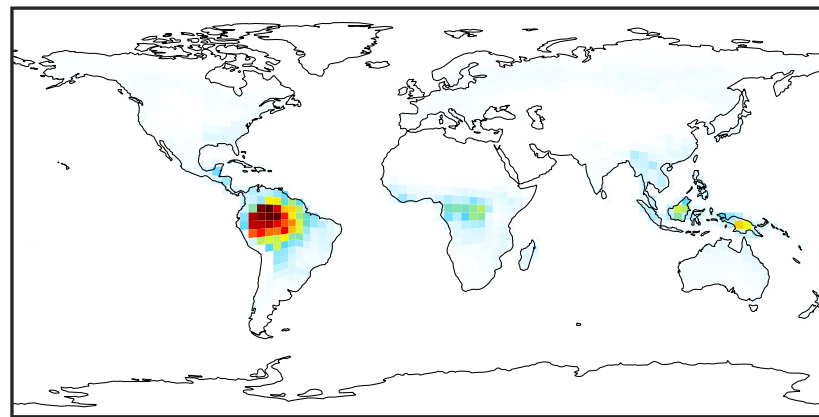
SpeciesConcVV_MTPO (AnnualMean)

GCC_14.2.0 (Ref)
4.0x5.0



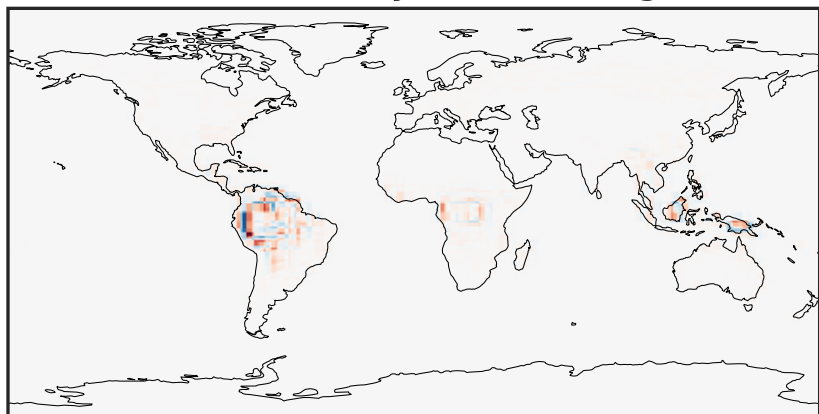
0.0000 0.0260 0.0519 0.0779 0.1039
ppb

GCHP_14.2.0 (Dev)
c24



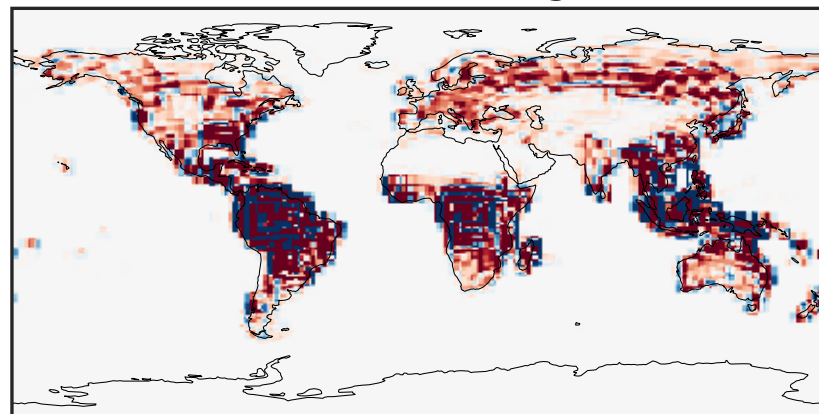
0.0000 0.0260 0.0519 0.0779 0.1039
ppb

Difference (1x1.25)
Dev - Ref, Dynamic Range



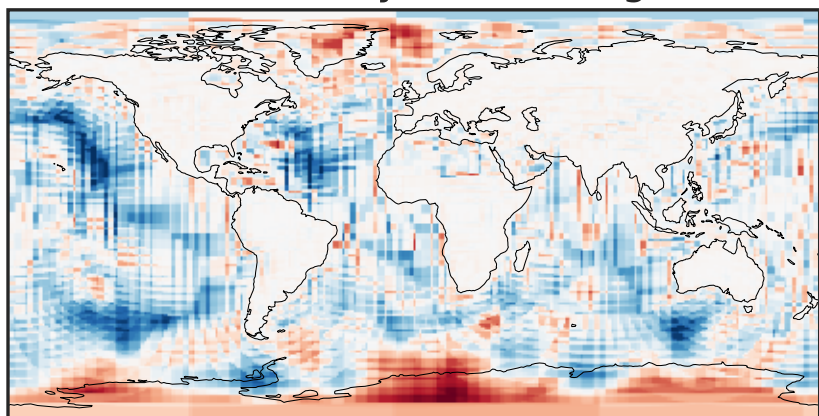
-0.025 0.000 0.025
ppb

Difference (1x1.25)
Dev - Ref, Restricted Range [5%,95%]



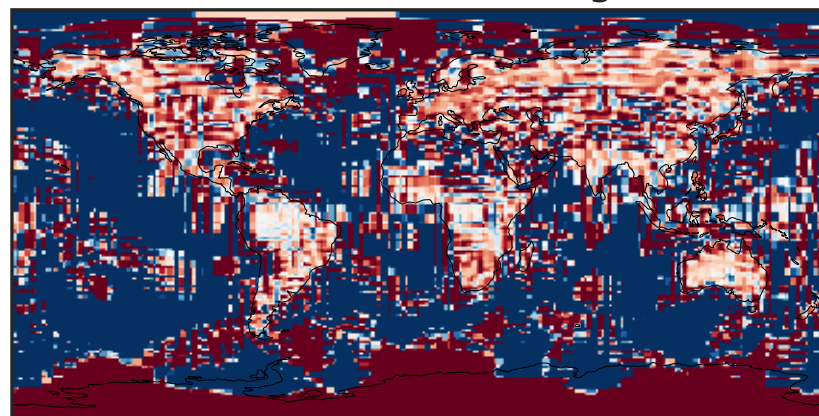
-0.0004 0.0000 0.0004
ppb

Ratio (1x1.25)
Dev/Ref, Dynamic Range



1e-05 1e-02 10 1e4 1e+07
unitless

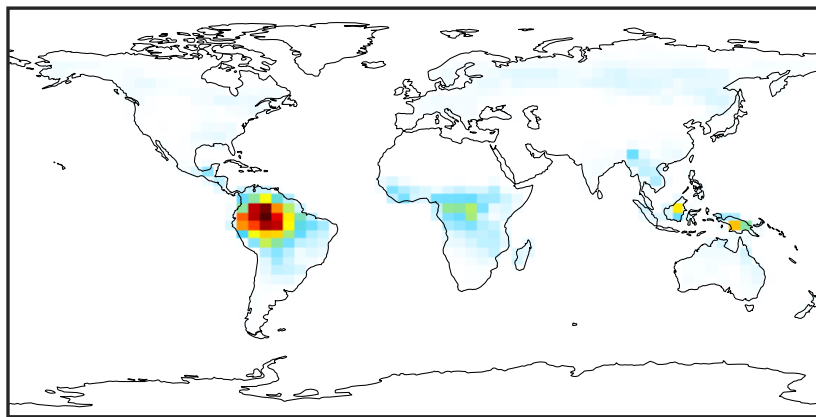
Ratio (1x1.25)
Dev/Ref, Fixed Range



0.50 0.75 1.00 1.50 2.00
unitless

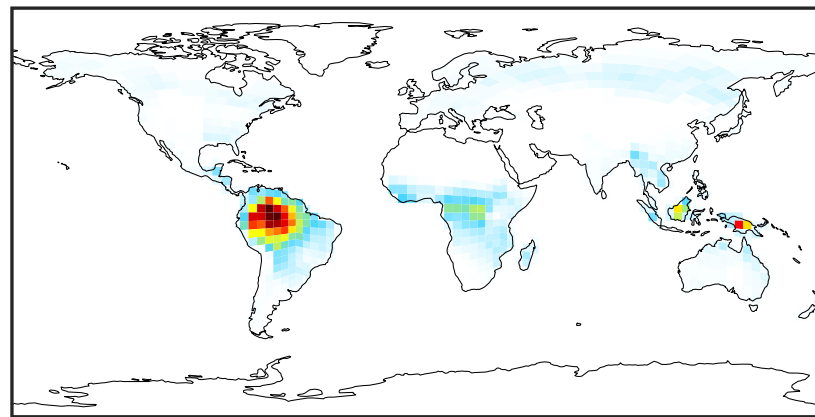
SpeciesConcVV_LIMO (AnnualMean)

GCC_14.2.0 (Ref)
4.0x5.0



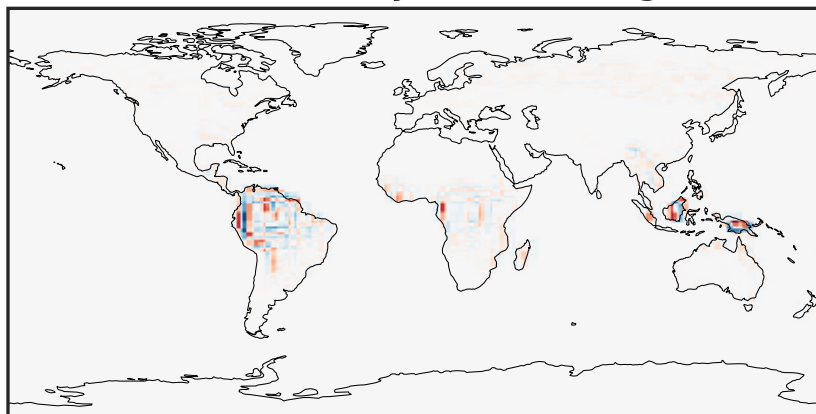
0.000 0.025 0.050 0.075
ppb

GCHP_14.2.0 (Dev)
c24



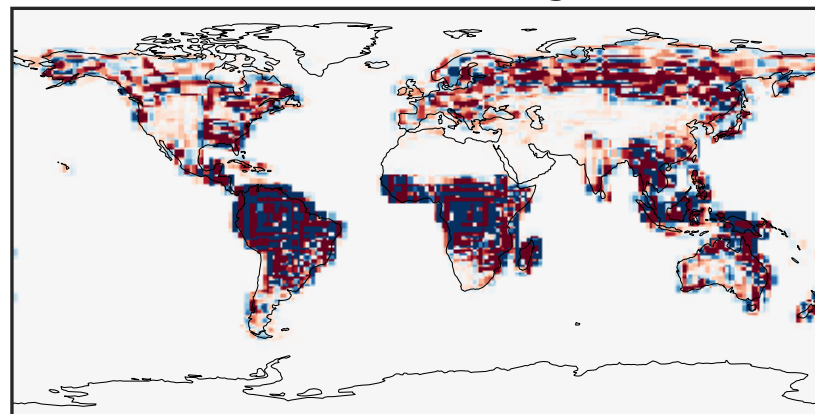
0.000 0.025 0.050 0.075
ppb

Difference (1x1.25)
Dev - Ref, Dynamic Range



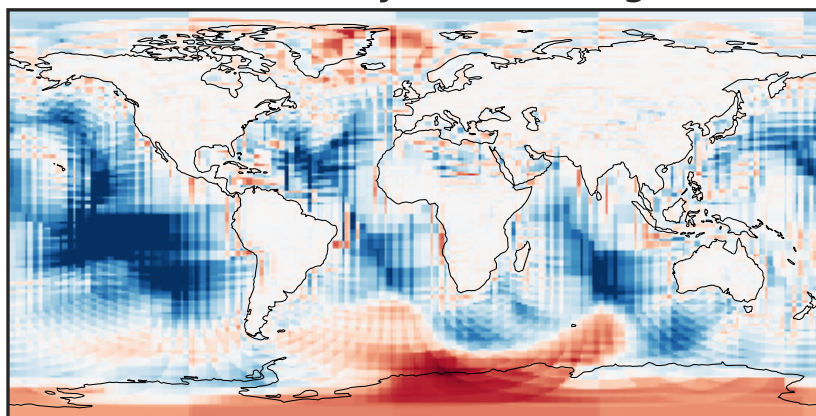
-0.02 0.00 0.02
ppb

Difference (1x1.25)
Dev - Ref, Restricted Range [5%,95%]



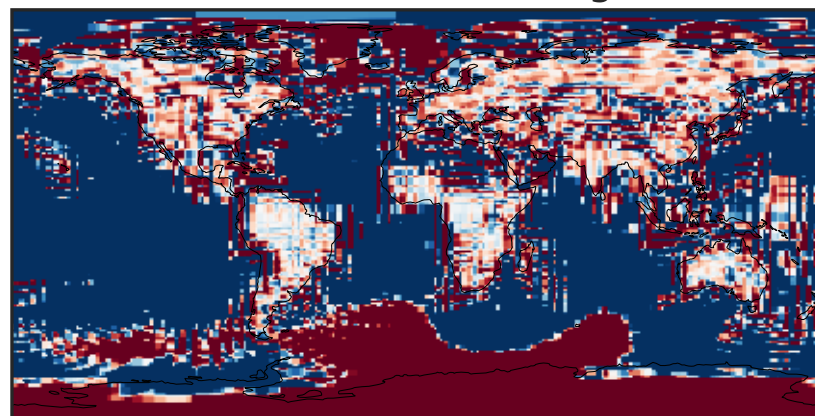
-0.0003 0.0000 0.0003
ppb

Ratio (1x1.25)
Dev/Ref, Dynamic Range



unitless

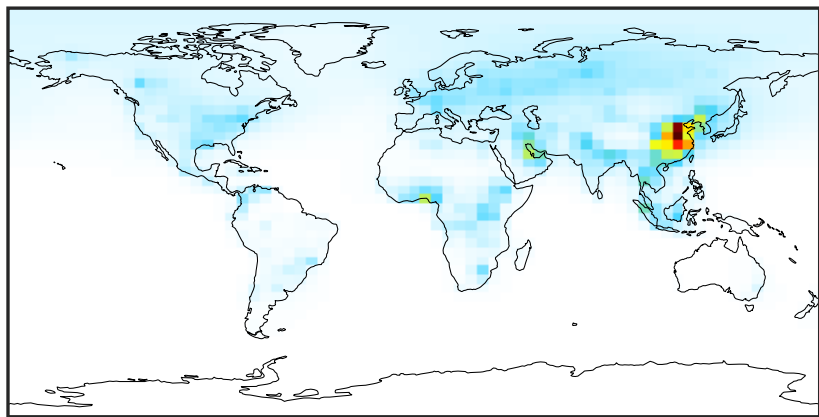
Ratio (1x1.25)
Dev/Ref, Fixed Range



0.50 0.75 1.00 1.50 2.00
unitless

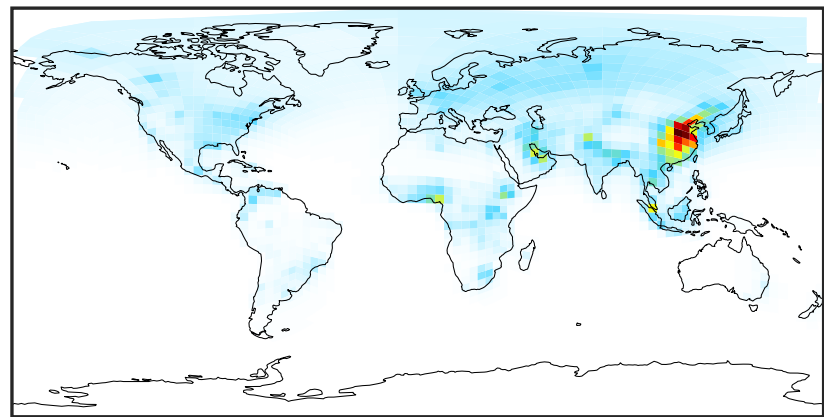
SpeciesConcVV_ALK4 (AnnualMean)

GCC_14.2.0 (Ref)
4.0x5.0



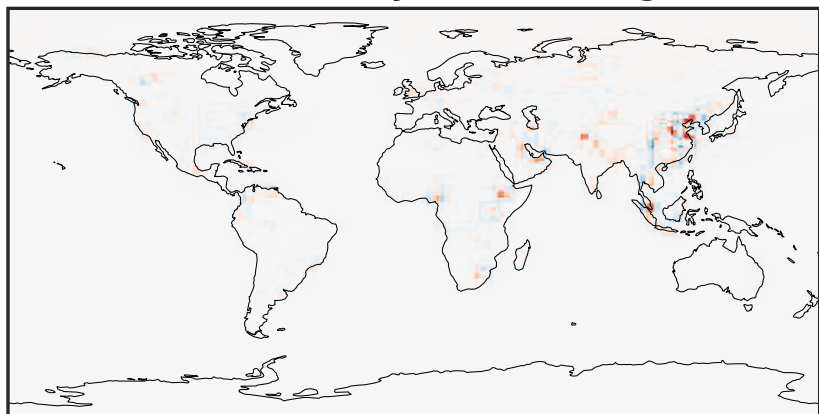
0.00 2.63 5.26 7.89 10.52
ppb

GCHP_14.2.0 (Dev)
c24



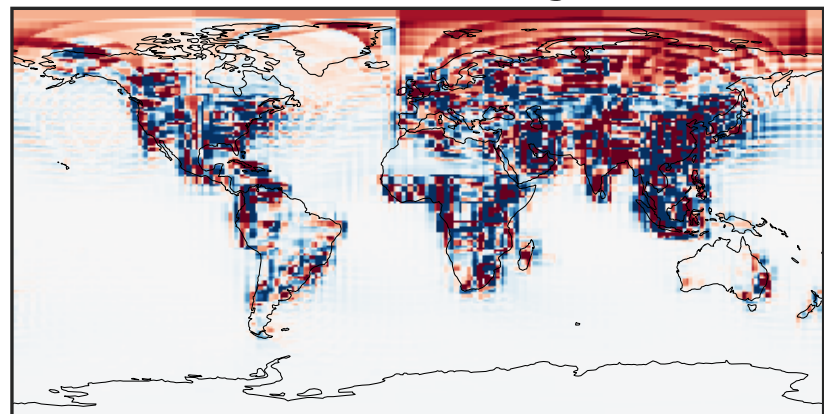
0.00 2.63 5.26 7.89 10.52
ppb

Difference (1x1.25)
Dev - Ref, Dynamic Range



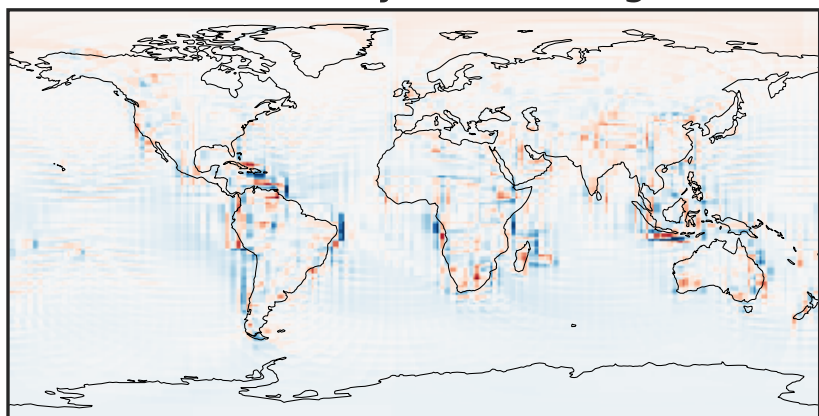
-4.930 -2.465 0.000 2.465 4.930
ppb

Difference (1x1.25)
Dev - Ref, Restricted Range [5%,95%]



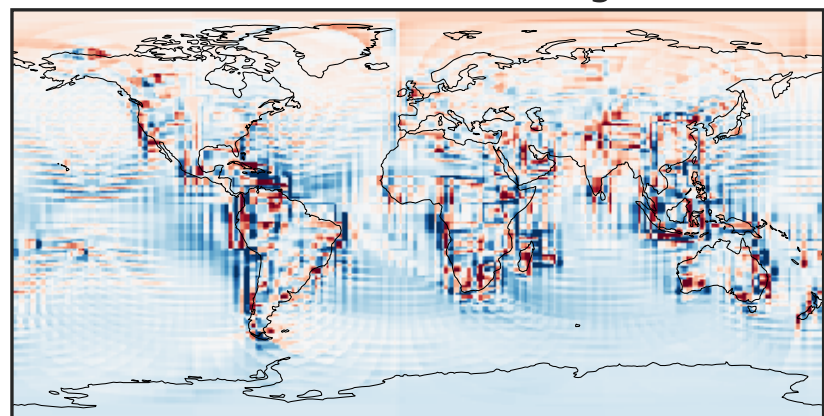
-0.1098 -0.0549 0.0000 0.0549 0.1098
ppb

Ratio (1x1.25)
Dev/Ref, Dynamic Range



0.123 0.562 1.000 4.556 8.113
unitless

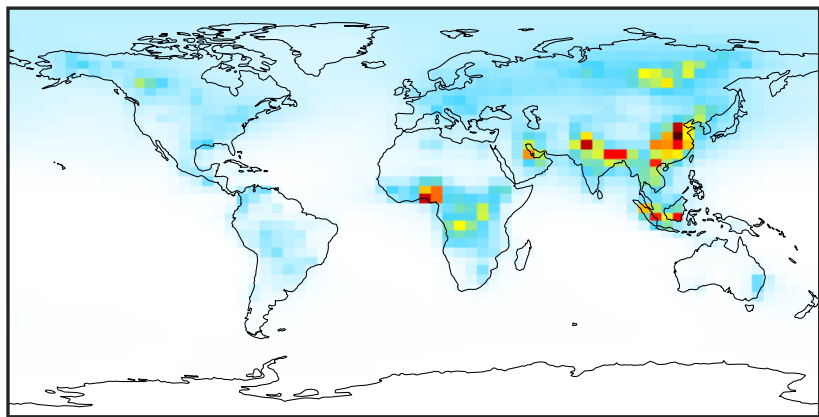
Ratio (1x1.25)
Dev/Ref, Fixed Range



0.50 0.75 1.00 1.50 2.00
unitless

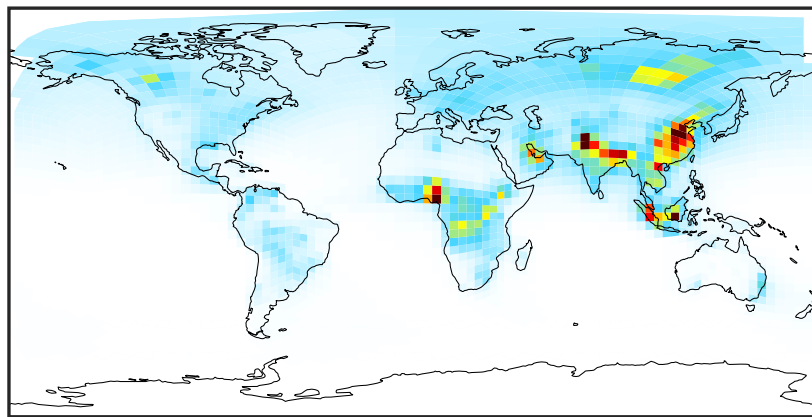
SpeciesConcVV_BENZ (AnnualMean)

GCC_14.2.0 (Ref)
4.0x5.0



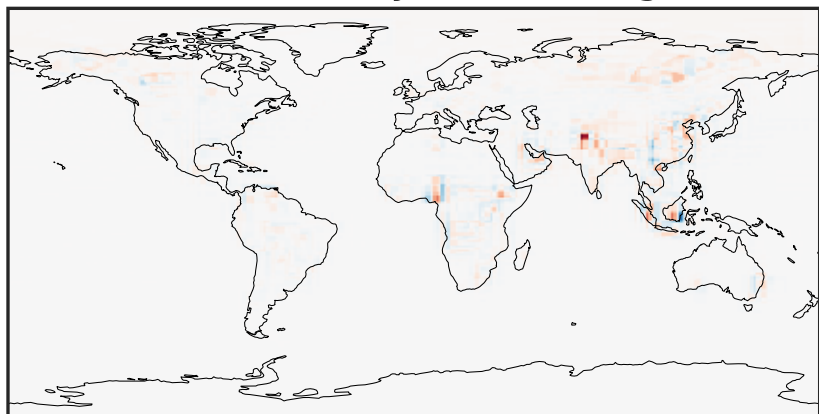
0.0007 0.1949 0.3899 0.5848 0.7805
ppb

GCHP_14.2.0 (Dev)
c24



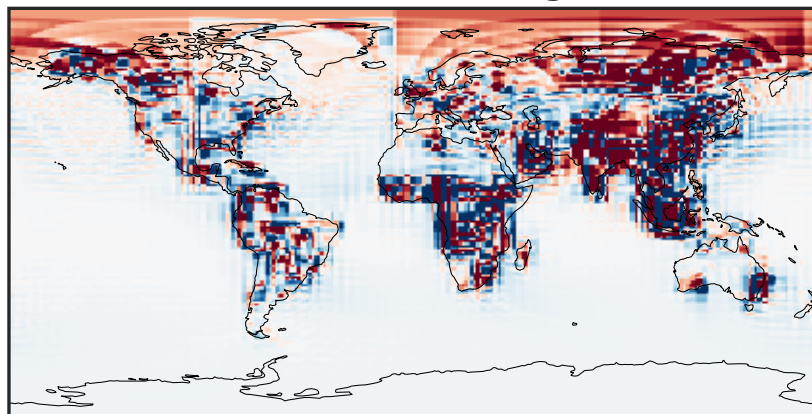
0.0007 0.1949 0.3899 0.5848 0.7805
ppb

Difference (1x1.25)
Dev - Ref, Dynamic Range



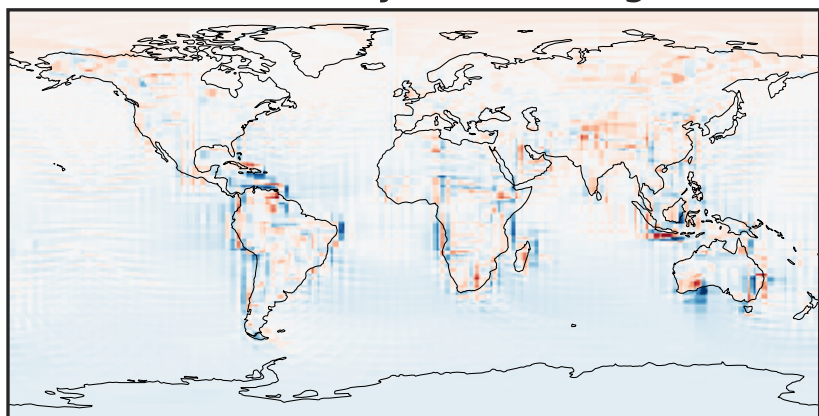
-0.637 -0.319 0.000 0.319 0.637
ppb

Difference (1x1.25)
Dev - Ref, Restricted Range [5%,95%]



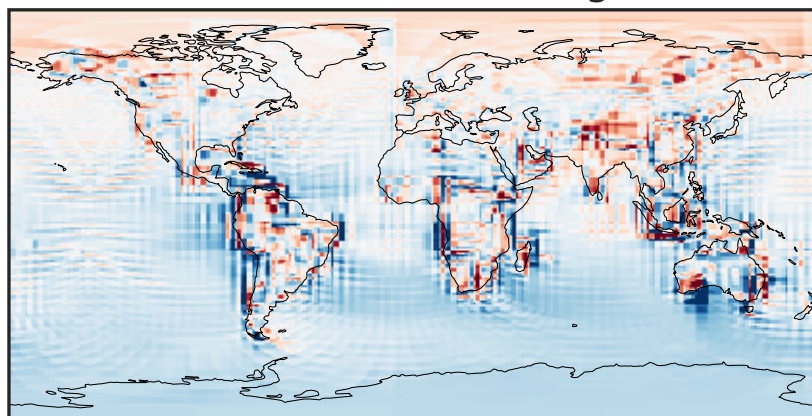
-0.01 0.00 0.01
ppb

Ratio (1x1.25)
Dev/Ref, Dynamic Range



0.185 0.592 1.000 3.209 5.418
unitless

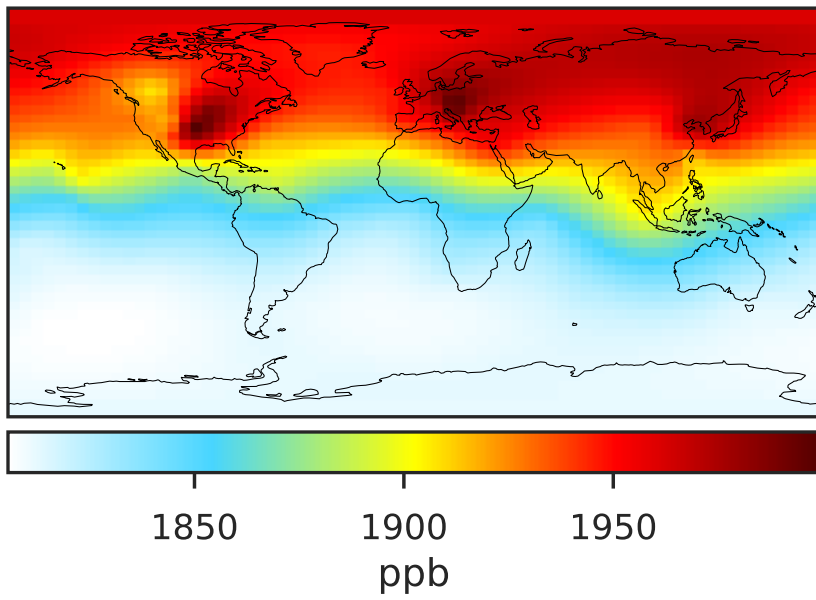
Ratio (1x1.25)
Dev/Ref, Fixed Range



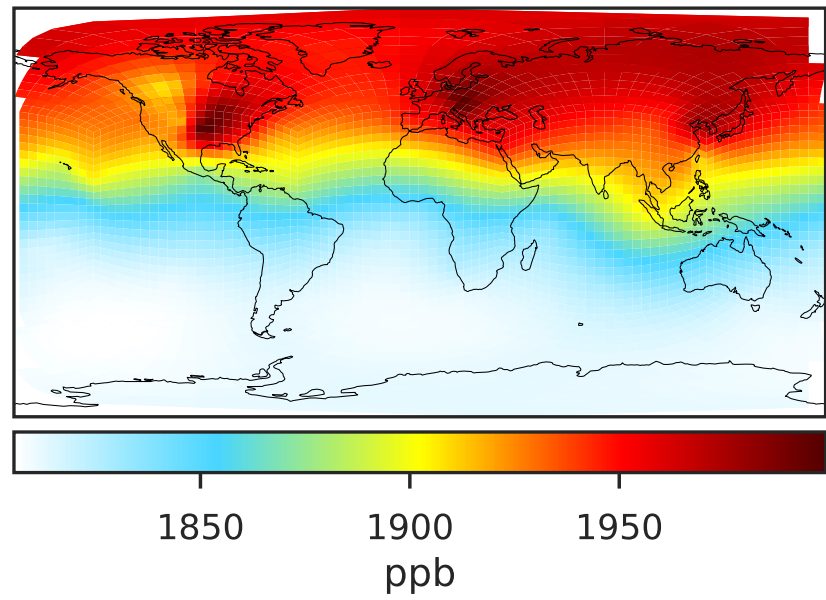
0.50 0.75 1.00 1.50 2.00
unitless

SpeciesConcVV_CH4 (AnnualMean)

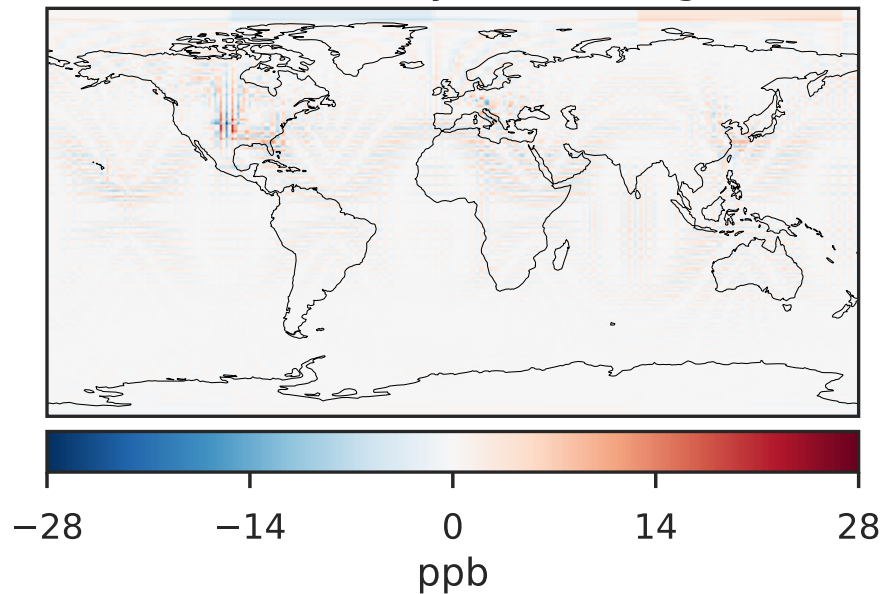
GCC_14.2.0 (Ref)
4.0x5.0



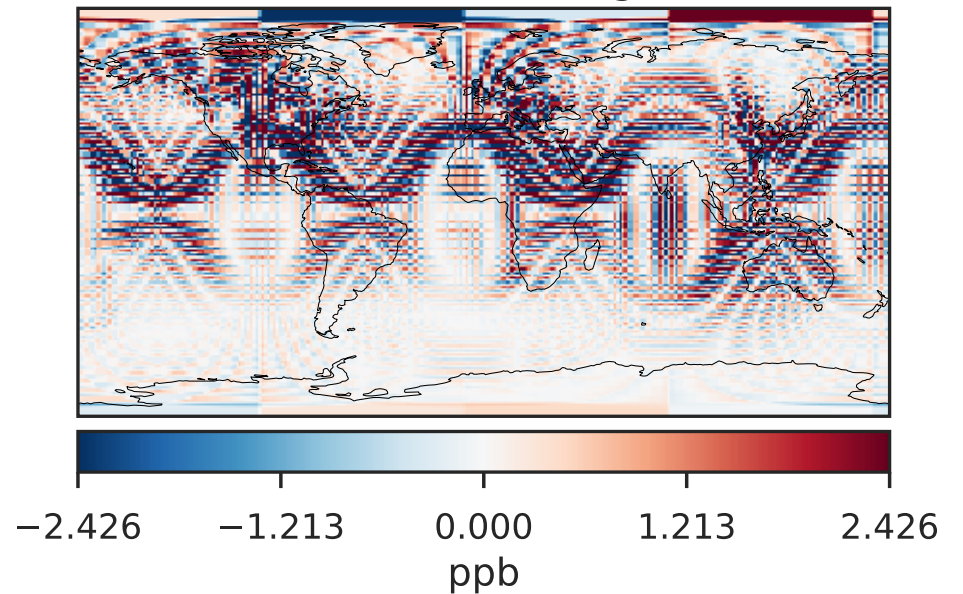
GCHP_14.2.0 (Dev)
c24



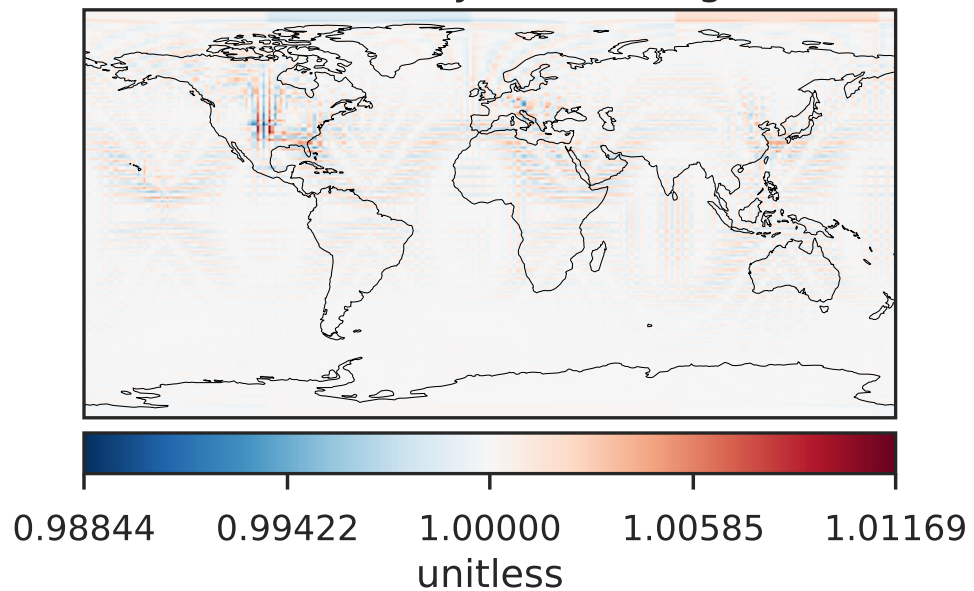
Difference (1x1.25)
Dev - Ref, Dynamic Range



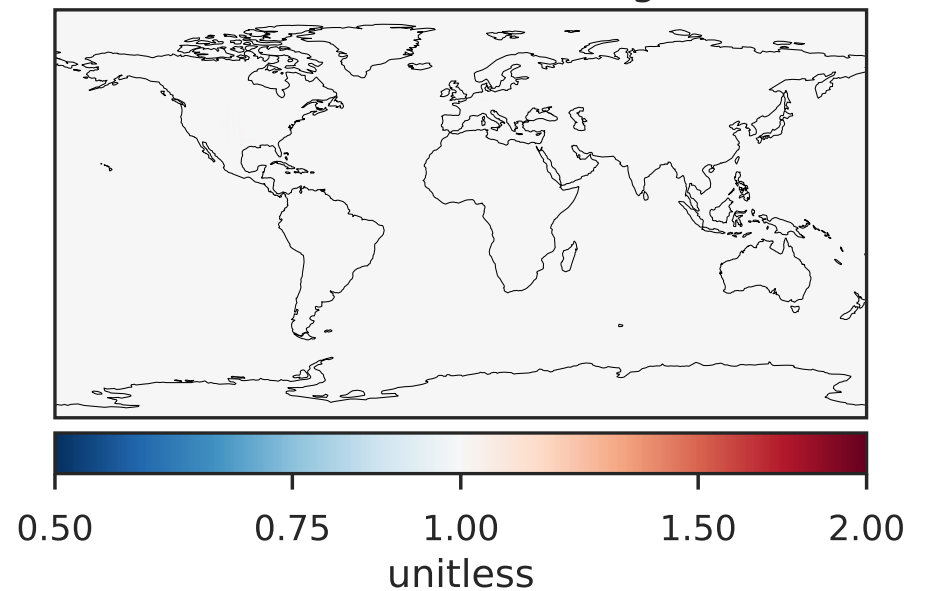
Difference (1x1.25)
Dev - Ref, Restricted Range [5%,95%]



Ratio (1x1.25)
Dev/Ref, Dynamic Range

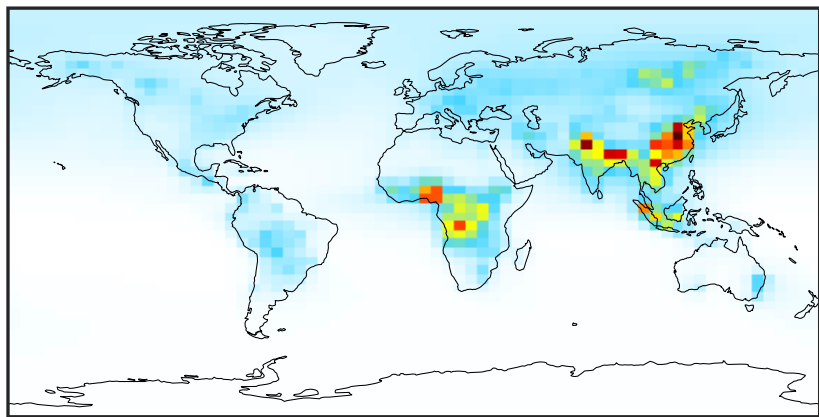


Ratio (1x1.25)
Dev/Ref, Fixed Range



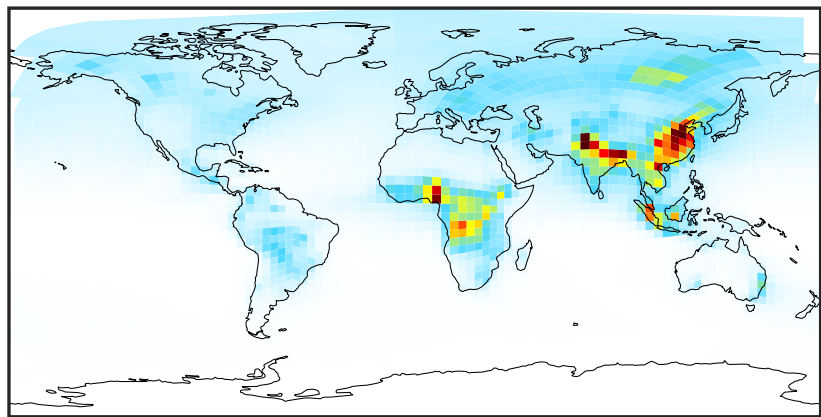
SpeciesConcVV_C2H2 (AnnualMean)

GCC_14.2.0 (Ref)
4.0x5.0



0.006 0.386 0.772 1.158 1.550
ppb

GCHP_14.2.0 (Dev)
c24



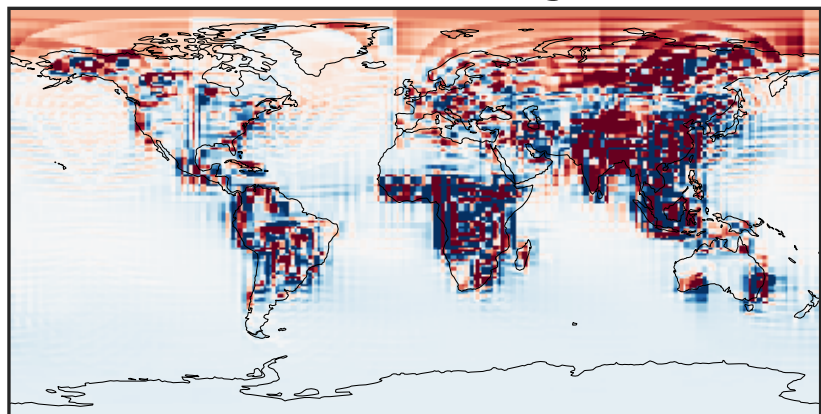
0.006 0.386 0.772 1.158 1.550
ppb

Difference (1x1.25)
Dev - Ref, Dynamic Range



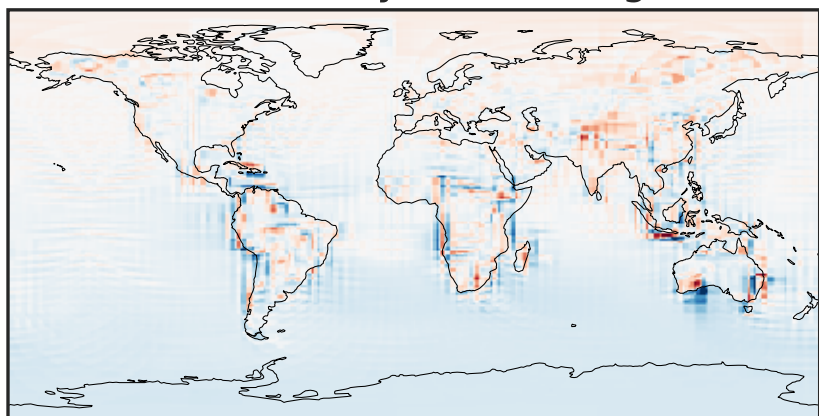
-1.34 -0.67 0.00 0.67 1.34
ppb

Difference (1x1.25)
Dev - Ref, Restricted Range [5%,95%]



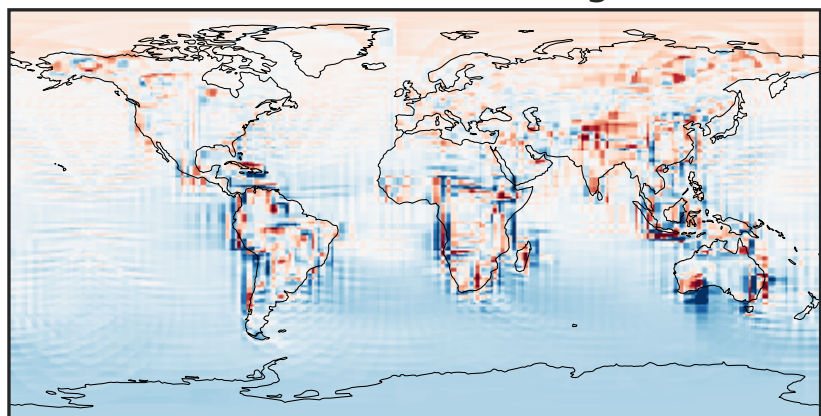
-0.015 0.000 0.015
ppb

Ratio (1x1.25)
Dev/Ref, Dynamic Range



0.265 0.633 1.000 2.385 3.770
unitless

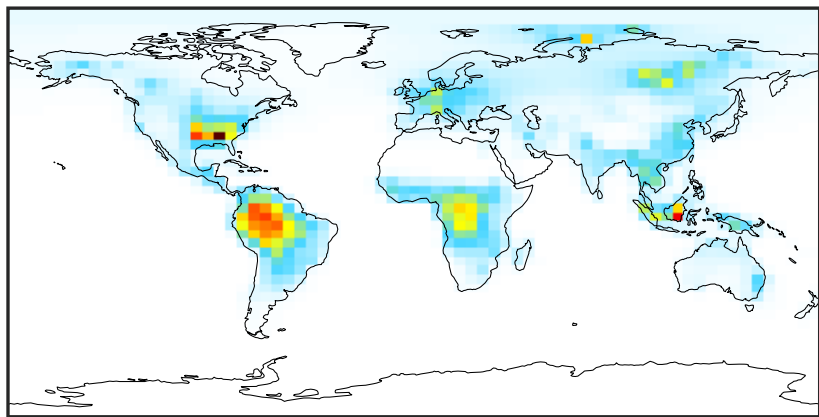
Ratio (1x1.25)
Dev/Ref, Fixed Range



0.50 0.75 1.00 1.50 2.00
unitless

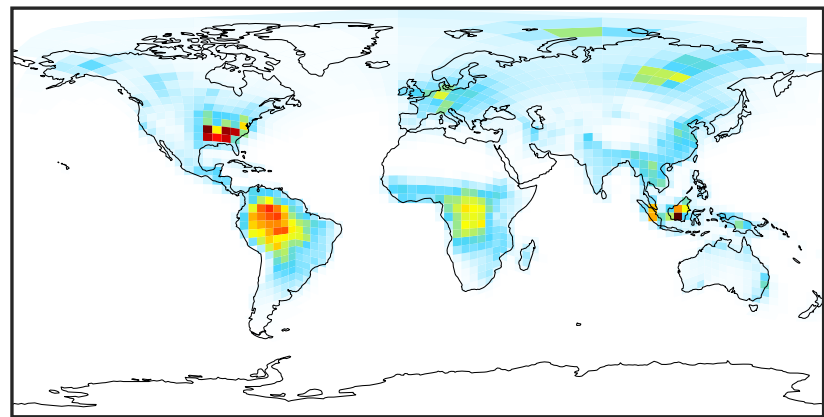
SpeciesConcVV_C2H4 (AnnualMean)

GCC_14.2.0 (Ref)
4.0x5.0



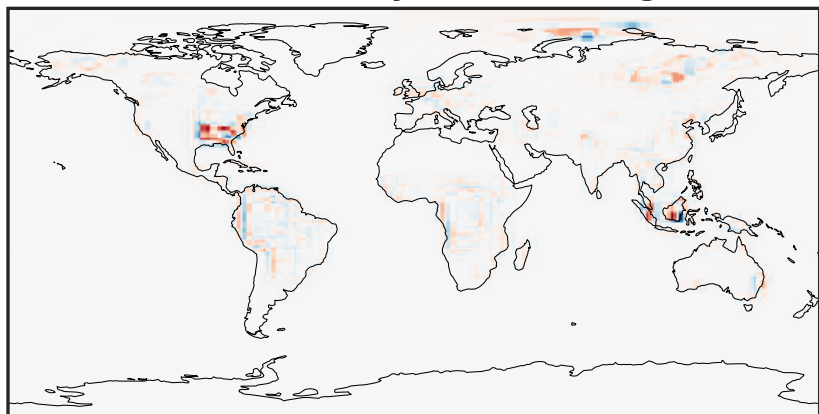
0.000 1.157 2.313 3.470 4.626
ppb

GCHP_14.2.0 (Dev)
c24



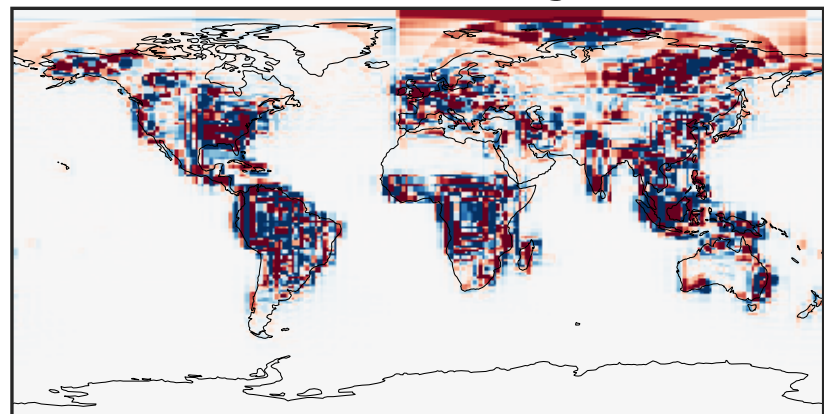
0.000 1.157 2.313 3.470 4.626
ppb

Difference (1x1.25)
Dev - Ref, Dynamic Range



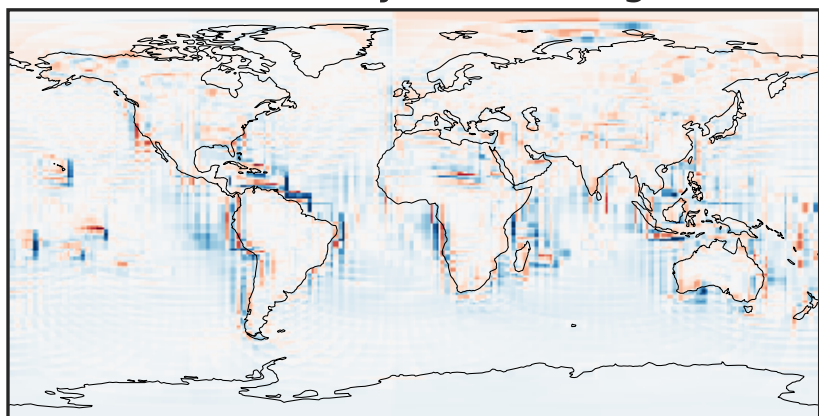
-2.68 -1.34 0.00 1.34 2.68
ppb

Difference (1x1.25)
Dev - Ref, Restricted Range [5%,95%]



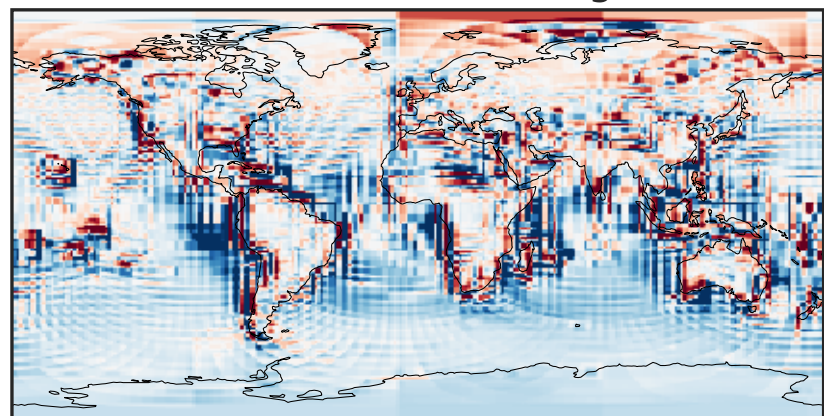
-0.0995 -0.0497 0.0000 0.0497 0.0995
ppb

Ratio (1x1.25)
Dev/Ref, Dynamic Range



1e-01 1 10
unitless

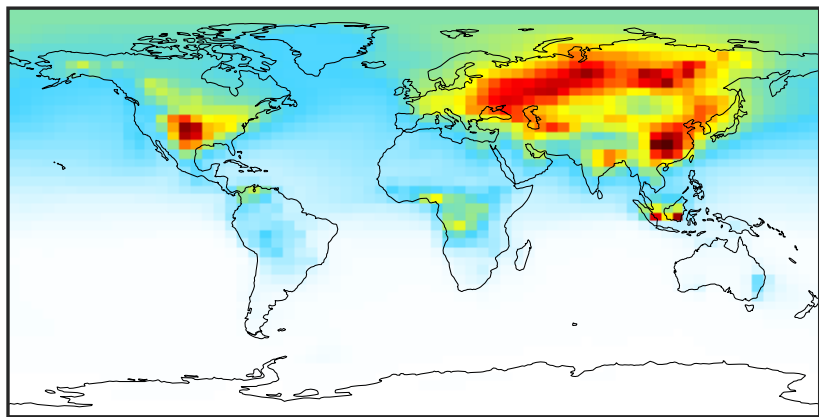
Ratio (1x1.25)
Dev/Ref, Fixed Range



0.50 0.75 1.00 1.50 2.00
unitless

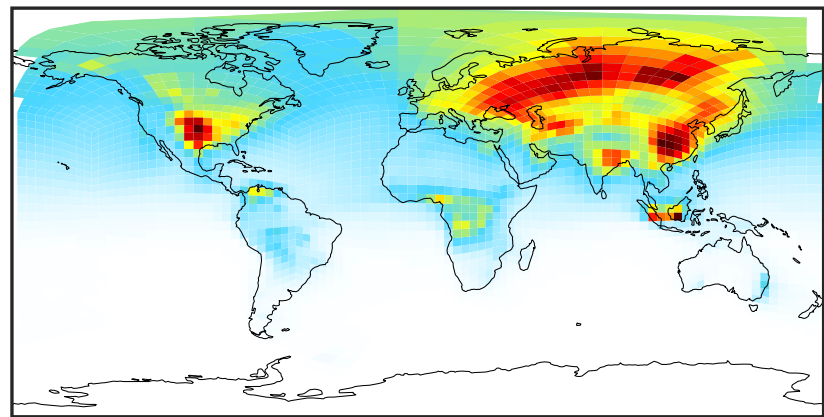
SpeciesConcVV_C2H6 (AnnualMean)

GCC_14.2.0 (Ref)
4.0x5.0



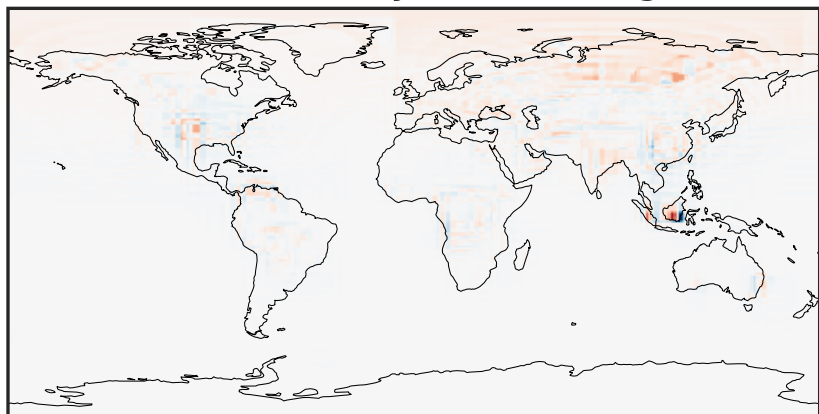
0.072 0.894 1.787 2.681 3.647
ppb

GCHP_14.2.0 (Dev)
c24



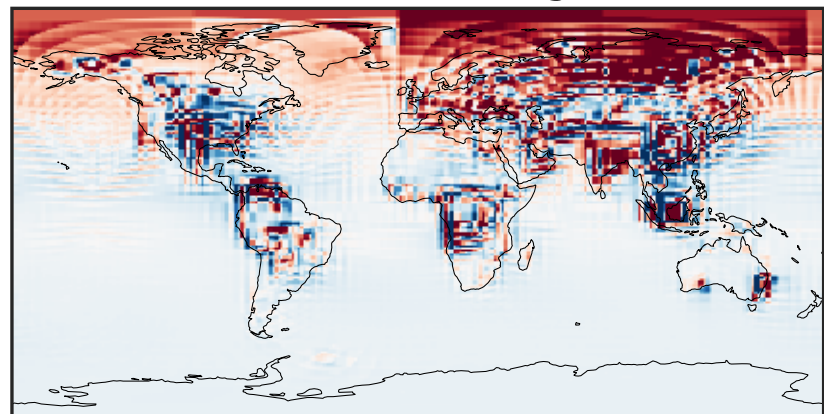
0.072 0.894 1.787 2.681 3.647
ppb

Difference (1x1.25)
Dev - Ref, Dynamic Range



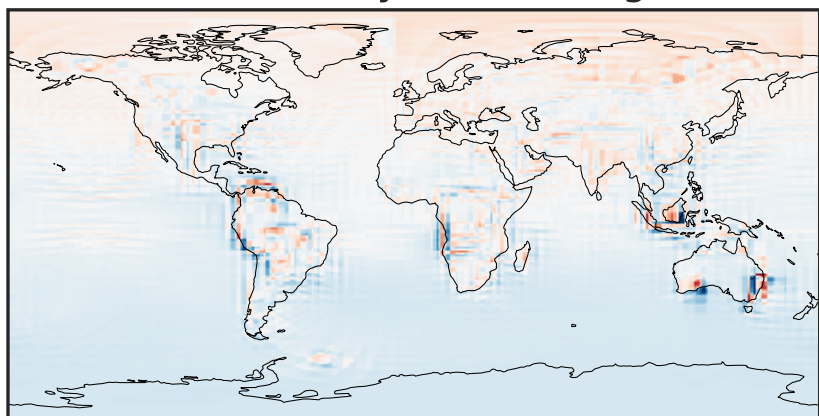
-2.457 -1.229 0.000 1.229 2.457
ppb

Difference (1x1.25)
Dev - Ref, Restricted Range [5%,95%]



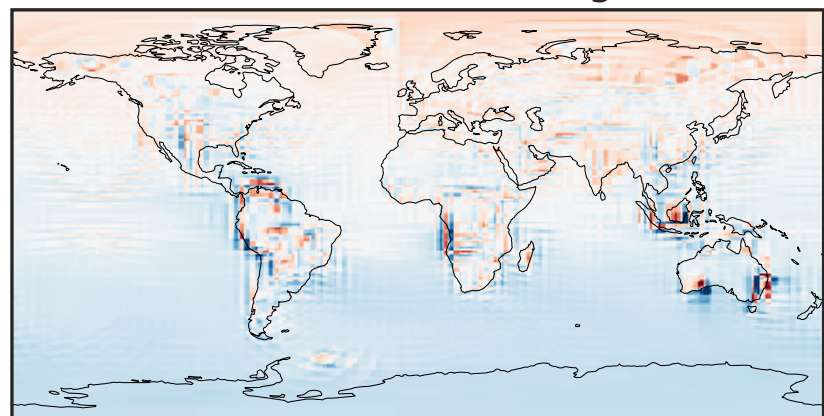
-0.1761 -0.0881 0.0000 0.0881 0.1761
ppb

Ratio (1x1.25)
Dev/Ref, Dynamic Range



0.392 0.696 1.000 1.776 2.552
unitless

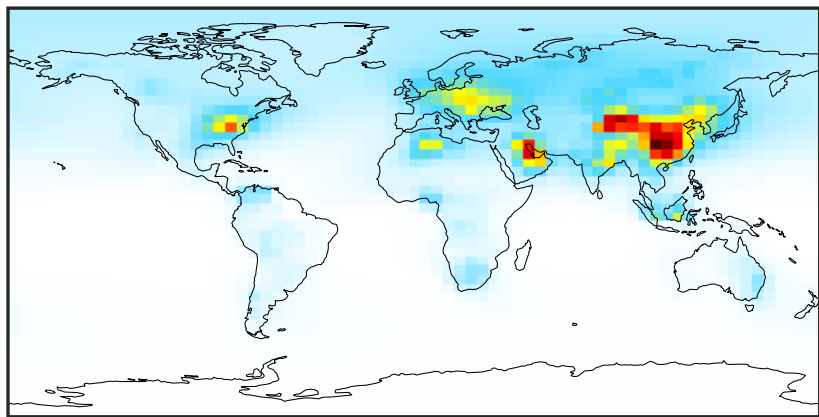
Ratio (1x1.25)
Dev/Ref, Fixed Range



0.50 0.75 1.00 1.50 2.00
unitless

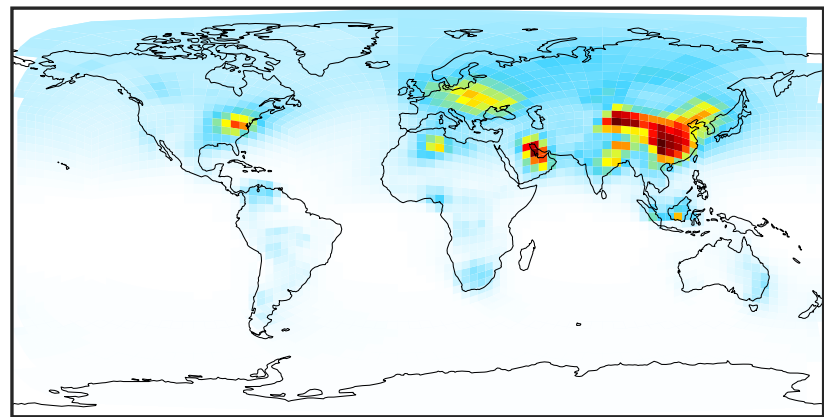
SpeciesConcVV_C3H8 (AnnualMean)

GCC_14.2.0 (Ref)
4.0x5.0



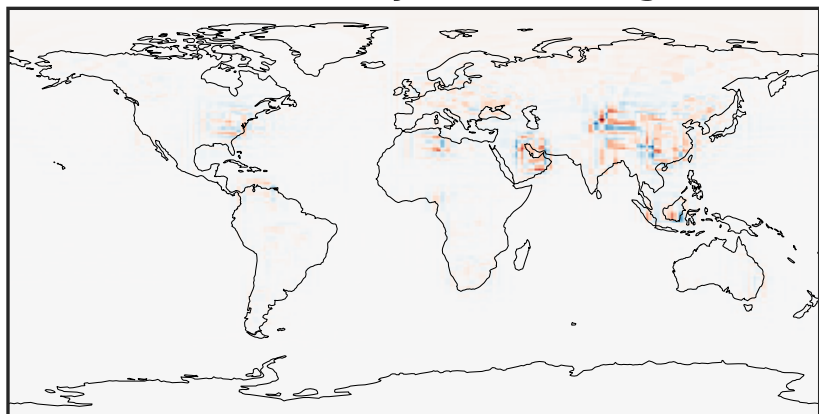
0.003 0.758 1.516 2.274 3.035
ppb

GCHP_14.2.0 (Dev)
c24



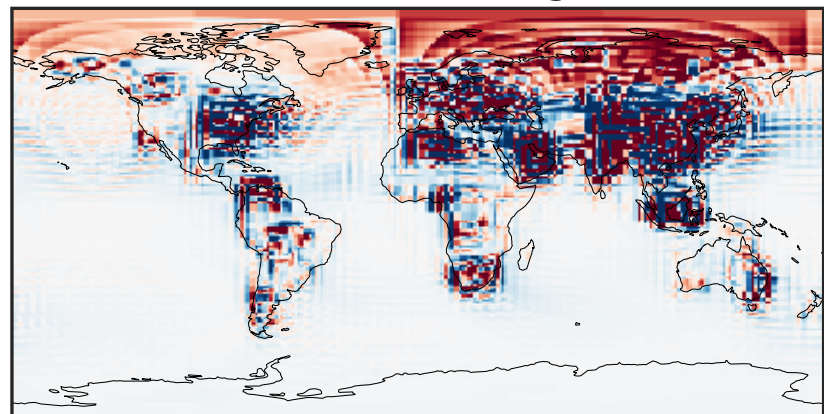
0.003 0.758 1.516 2.274 3.035
ppb

Difference (1x1.25)
Dev - Ref, Dynamic Range



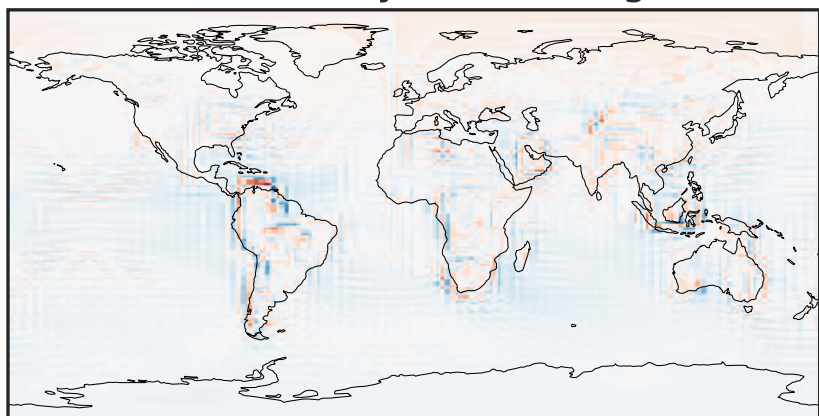
-1.353 -0.677 0.000 0.677 1.353
ppb

Difference (1x1.25)
Dev - Ref, Restricted Range [5%,95%]



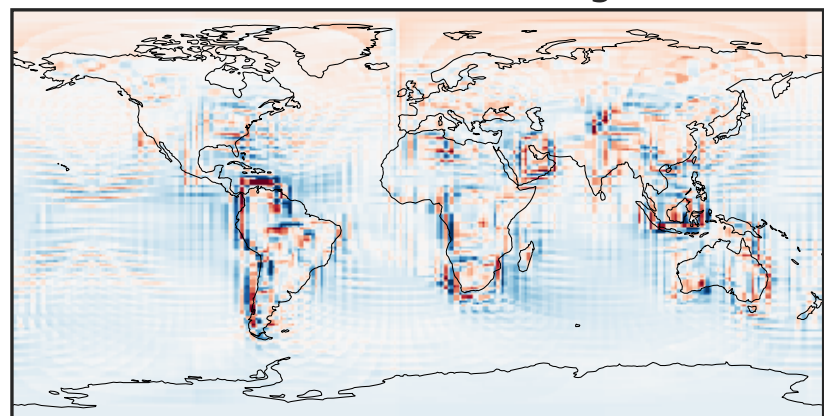
-0.052 -0.026 0.000 0.026 0.052
ppb

Ratio (1x1.25)
Dev/Ref, Dynamic Range



0.189 0.595 1.000 3.141 5.281
unitless

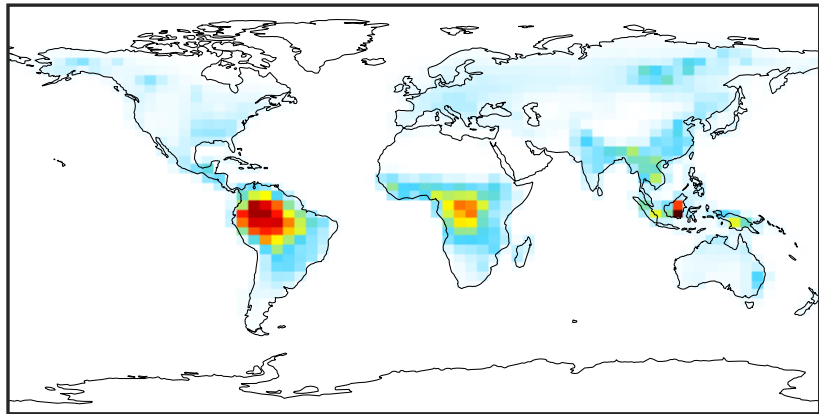
Ratio (1x1.25)
Dev/Ref, Fixed Range



0.50 0.75 1.00 1.50 2.00
unitless

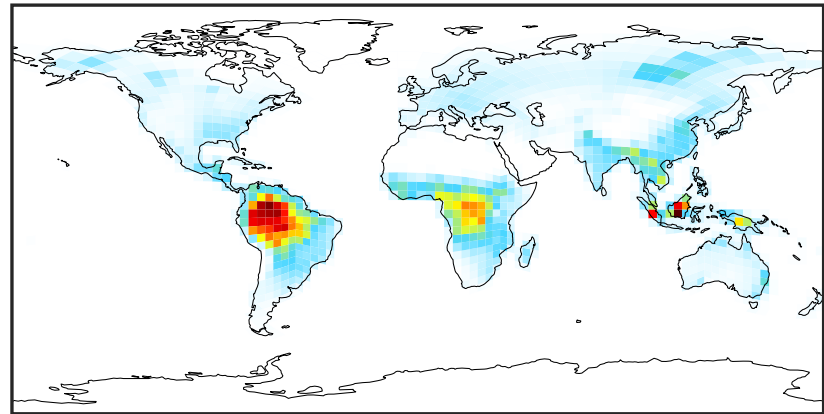
SpeciesConcVV_PRPE (AnnualMean)

GCC_14.2.0 (Ref)
4.0x5.0



0.000 0.561 1.122 1.683 2.244
ppb

GCHP_14.2.0 (Dev)
c24



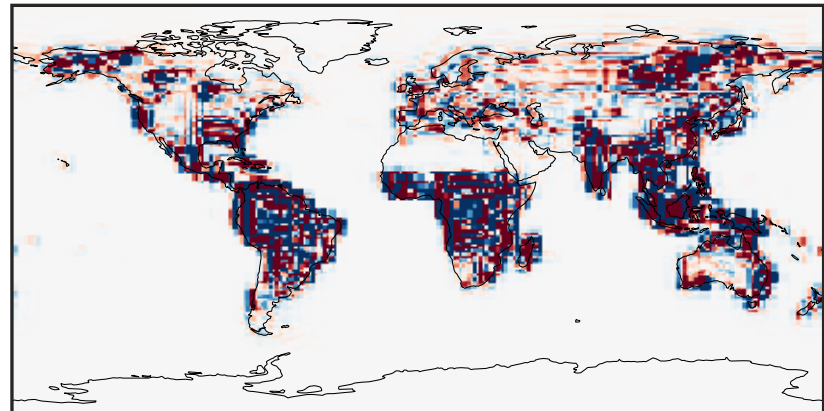
0.000 0.561 1.122 1.683 2.244
ppb

Difference (1x1.25)
Dev - Ref, Dynamic Range



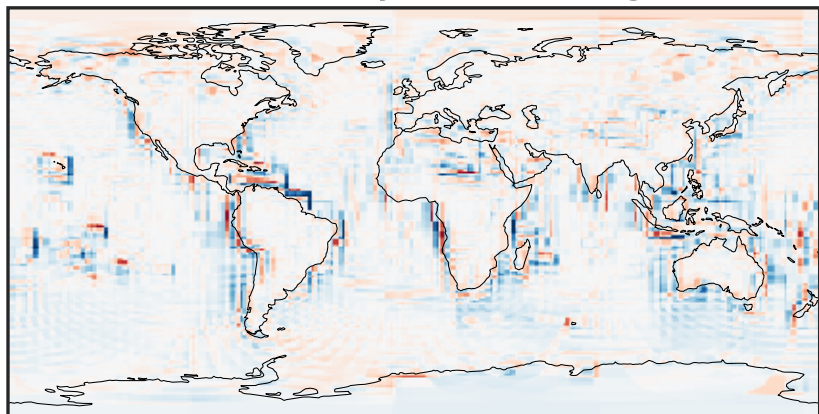
-2.436 -1.218 0.000 1.218 2.436
ppb

Difference (1x1.25)
Dev - Ref, Restricted Range [5%,95%]



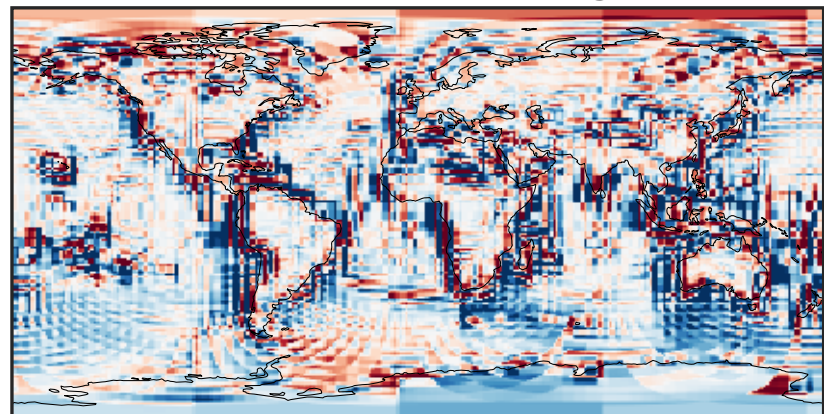
-0.02 0.00 0.02
ppb

Ratio (1x1.25)
Dev/Ref, Dynamic Range



1e-01 1 10
unitless

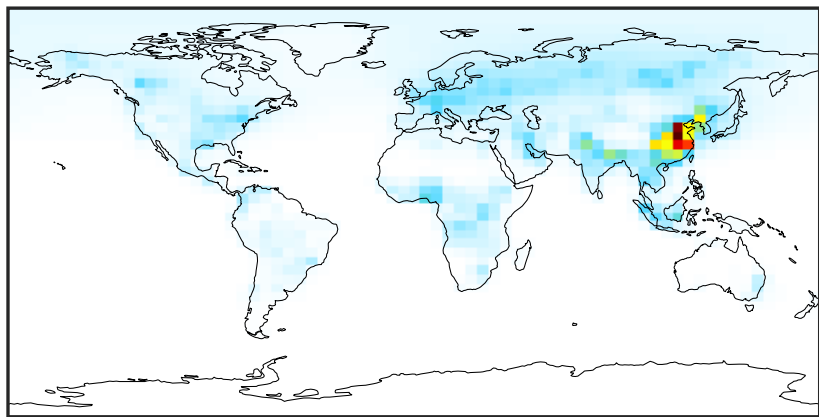
Ratio (1x1.25)
Dev/Ref, Fixed Range



0.50 0.75 1.00 1.50 2.00
unitless

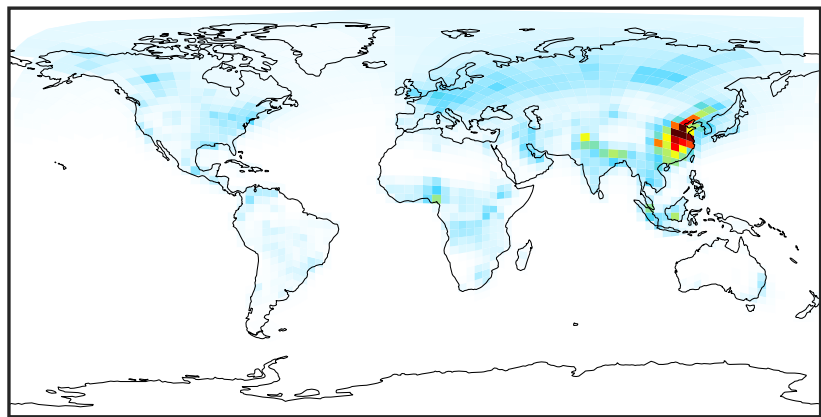
SpeciesConcVV_TOLU (AnnualMean)

GCC_14.2.0 (Ref)
4.0x5.0



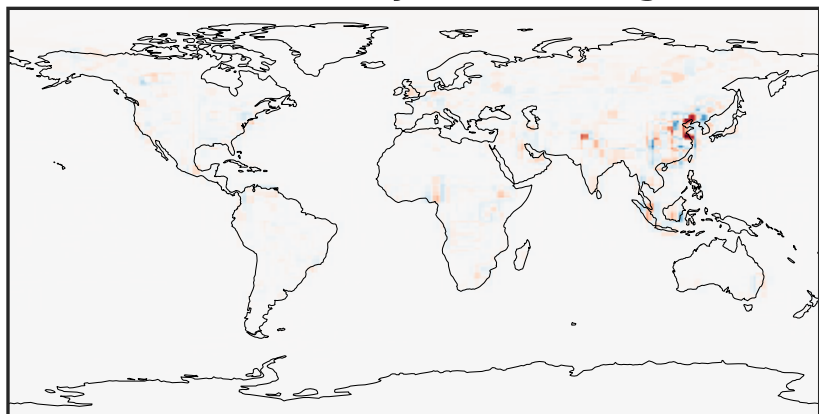
0.0000 0.2245 0.4491 0.6736 0.8981
ppb

GCHP_14.2.0 (Dev)
c24



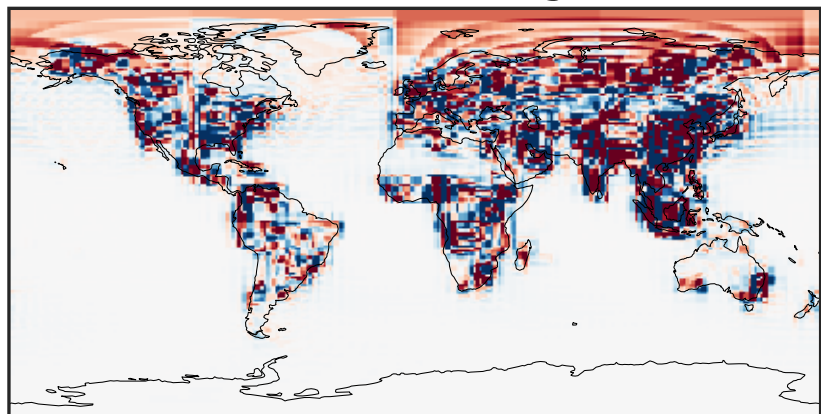
0.0000 0.2245 0.4491 0.6736 0.8981
ppb

Difference (1x1.25)
Dev - Ref, Dynamic Range



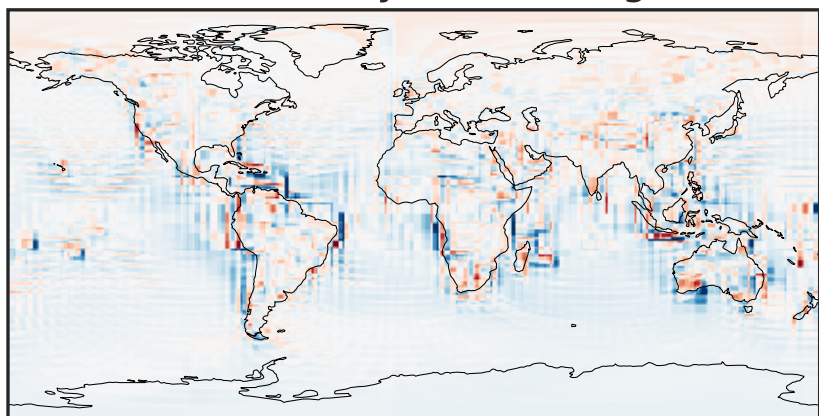
-0.4425 -0.2213 0.0000 0.2213 0.4425
ppb

Difference (1x1.25)
Dev - Ref, Restricted Range [5%,95%]



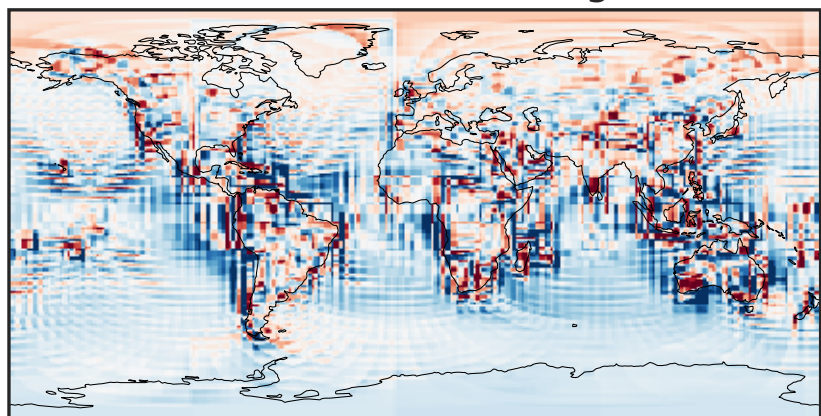
-0.006 0.000 0.006
ppb

Ratio (1x1.25)
Dev/Ref, Dynamic Range



0.118 0.559 1.000 4.729 8.458
unitless

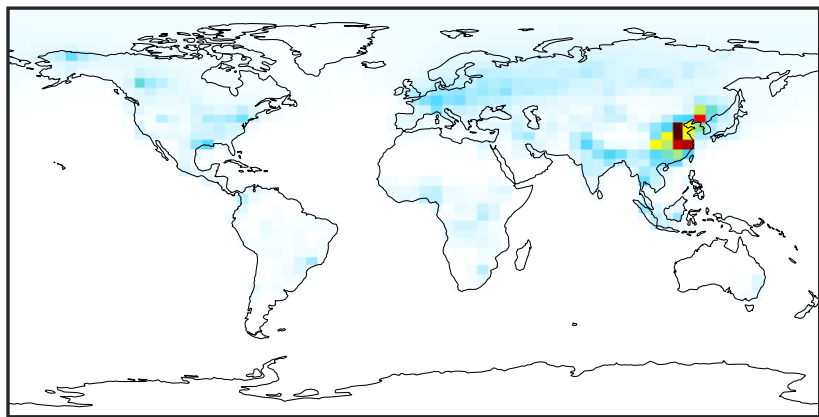
Ratio (1x1.25)
Dev/Ref, Fixed Range



0.50 0.75 1.00 1.50 2.00
unitless

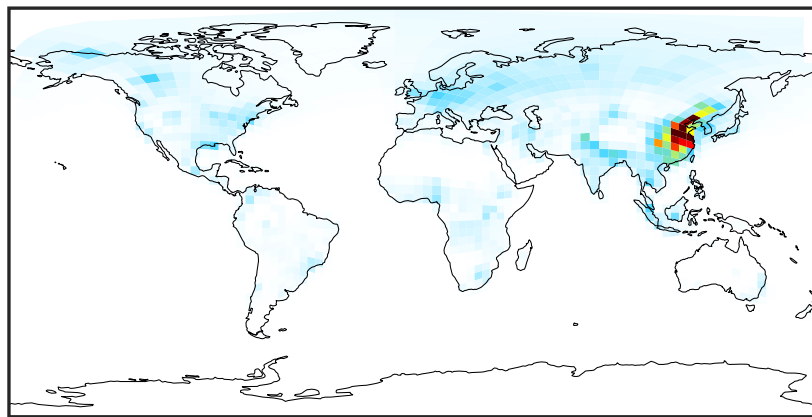
SpeciesConcVV_XYLE (AnnualMean)

GCC_14.2.0 (Ref)
4.0x5.0



0.0000 0.1758 0.3515 0.5273 0.7030
ppb

GCHP_14.2.0 (Dev)
c24



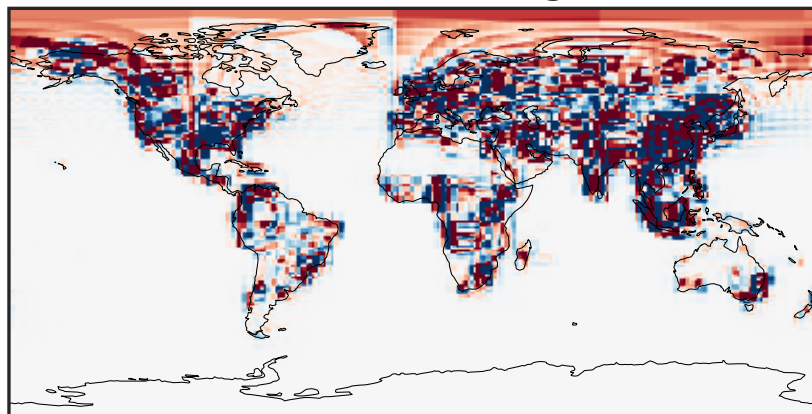
0.0000 0.1758 0.3515 0.5273 0.7030
ppb

Difference (1x1.25)
Dev - Ref, Dynamic Range



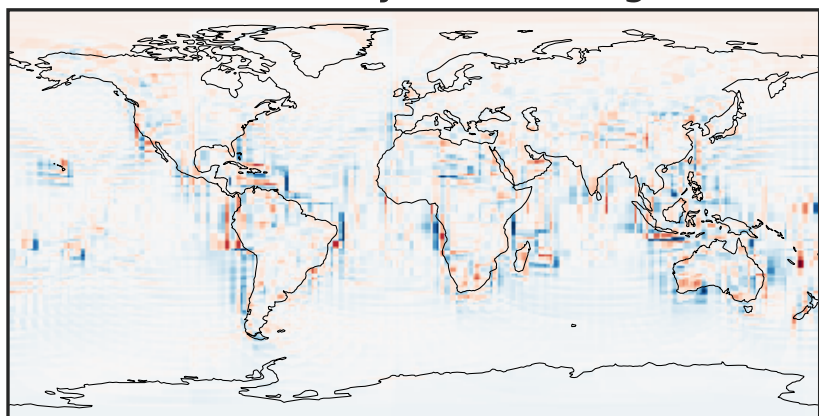
-0.555 -0.277 0.000 0.277 0.555
ppb

Difference (1x1.25)
Dev - Ref, Restricted Range [5%,95%]



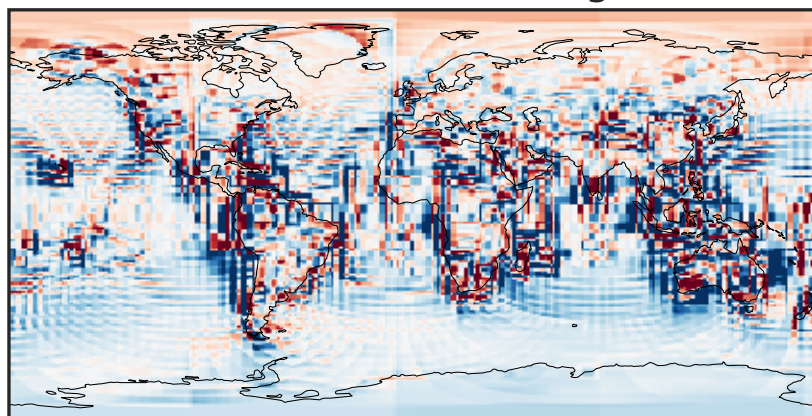
-0.003 0.000 0.003
ppb

Ratio (1x1.25)
Dev/Ref, Dynamic Range



1e-01 1 10
unitless

Ratio (1x1.25)
Dev/Ref, Fixed Range



0.50 0.75 1.00 1.50 2.00
unitless