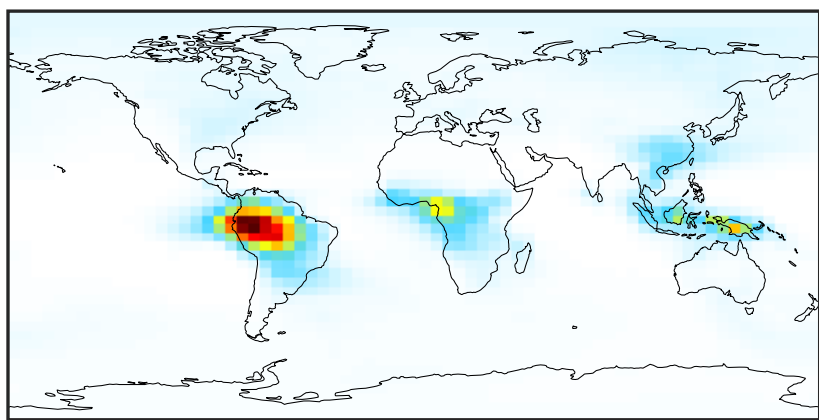


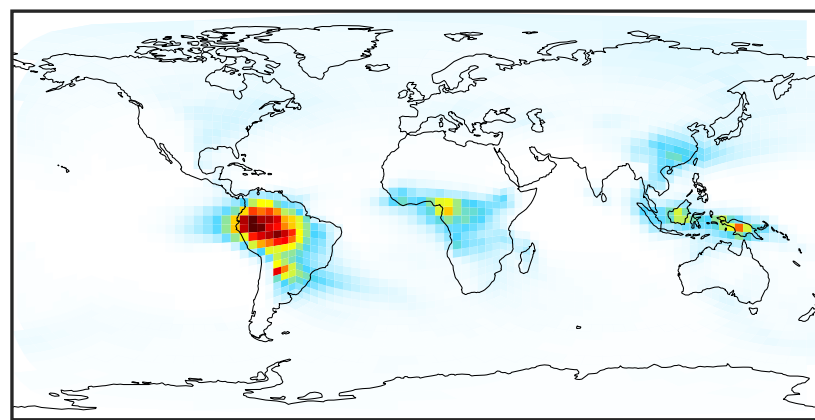
# SpeciesConcVW\_EOH (Apr2019)

GCC\_14.2.0 (Ref)  
4.0x5.0



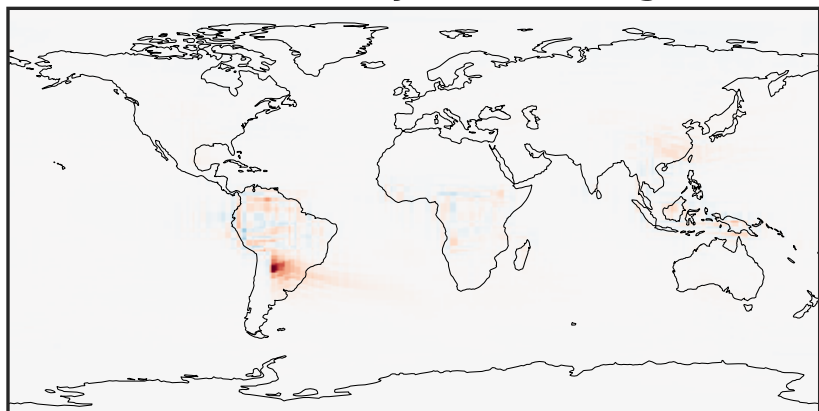
0.0001 0.0401 0.0803 0.1204 0.1607  
ppb

GCHP\_14.2.0 (Dev)  
c24



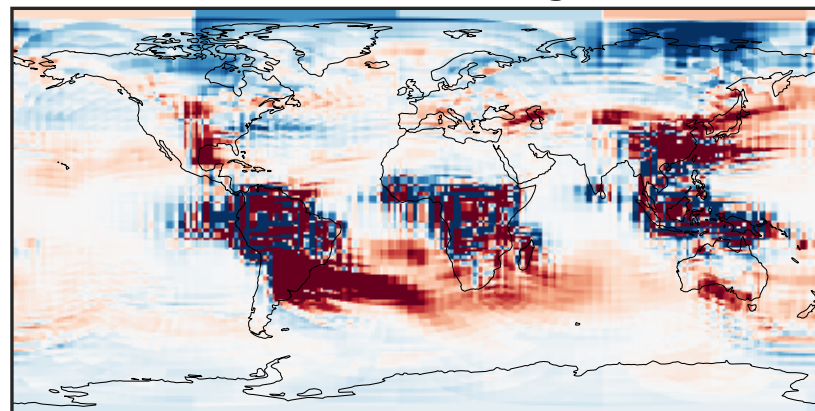
0.0001 0.0401 0.0803 0.1204 0.1607  
ppb

Difference (1x1.25)  
Dev - Ref, Dynamic Range



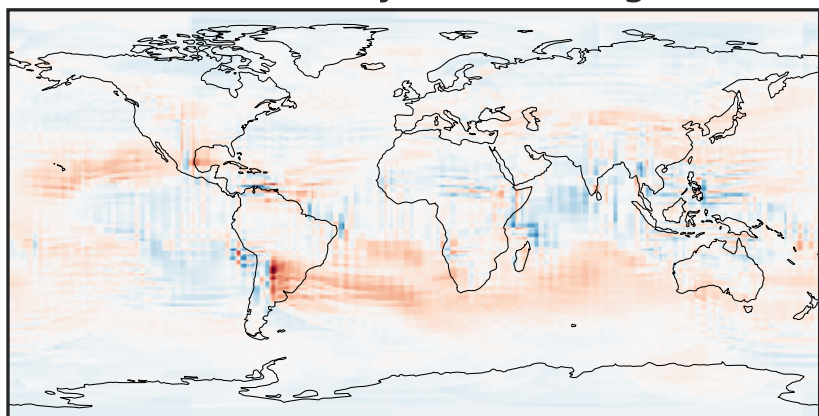
-0.1133 -0.0566 0.0000 0.0566 0.1133  
ppb

Difference (1x1.25)  
Dev - Ref, Restricted Range [5%,95%]



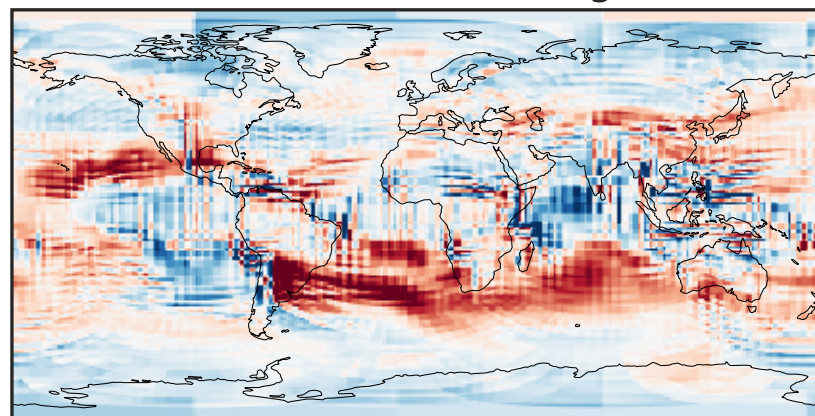
-0.001 0.000 0.001  
ppb

Ratio (1x1.25)  
Dev/Ref, Dynamic Range



1e-01 1 10  
unitless

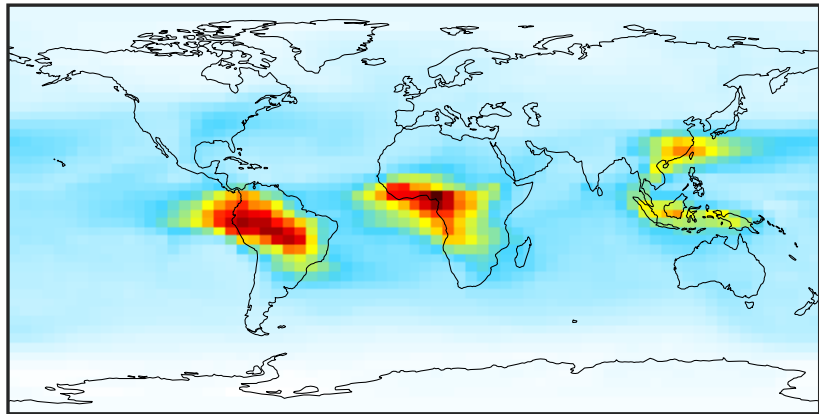
Ratio (1x1.25)  
Dev/Ref, Fixed Range



0.50 0.75 1.00 1.50 2.00  
unitless

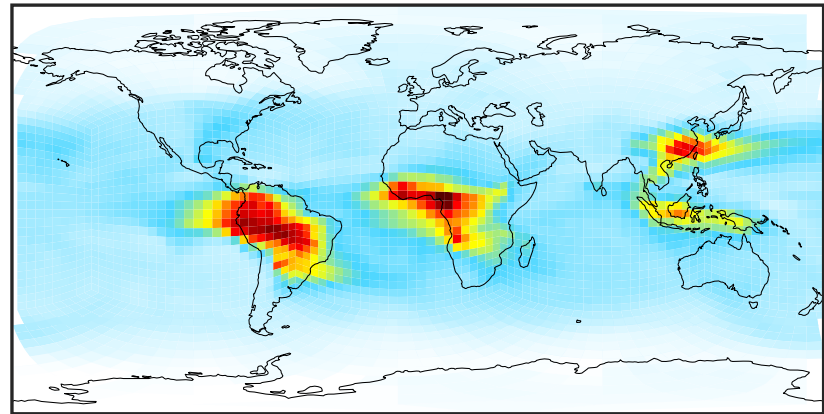
# SpeciesConcVV\_MOH (Apr2019)

GCC\_14.2.0 (Ref)  
4.0x5.0



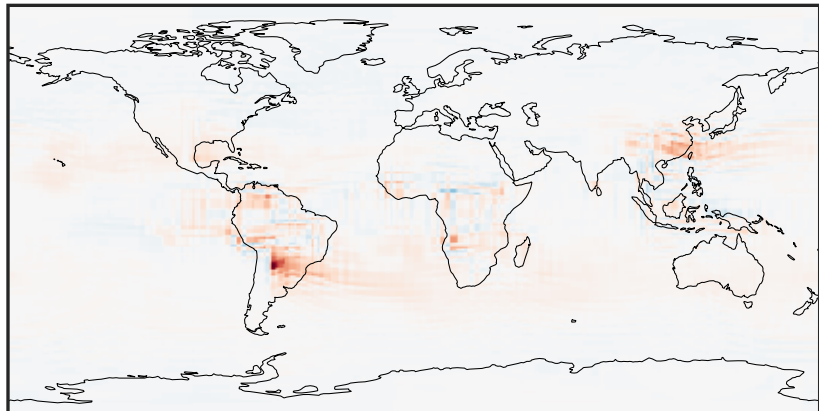
0.132 0.315 0.630 0.944 1.391  
ppb

GCHP\_14.2.0 (Dev)  
c24



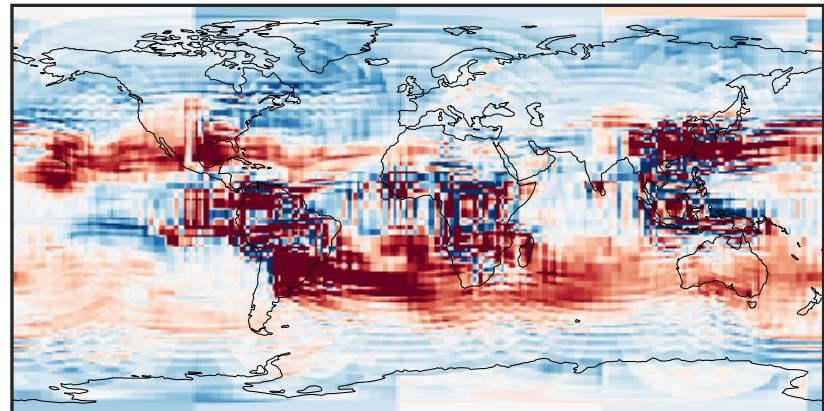
0.132 0.315 0.630 0.944 1.391  
ppb

Difference (1x1.25)  
Dev - Ref, Dynamic Range



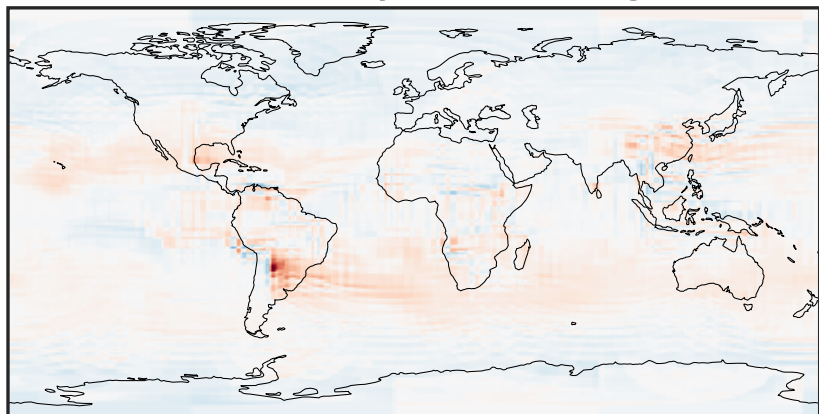
-0.631 -0.315 0.000 0.315 0.631  
ppb

Difference (1x1.25)  
Dev - Ref, Restricted Range [5%,95%]



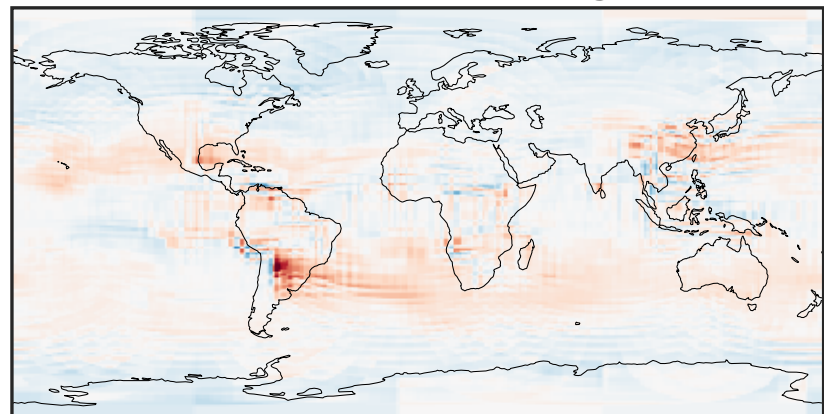
-0.025 0.000 0.025  
ppb

Ratio (1x1.25)  
Dev/Ref, Dynamic Range



0.371 0.685 1.000 1.848 2.696  
unitless

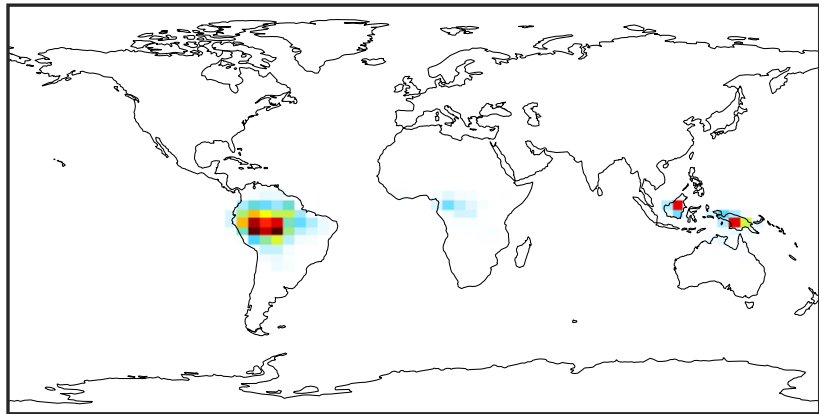
Ratio (1x1.25)  
Dev/Ref, Fixed Range



0.50 0.75 1.00 1.50 2.00  
unitless

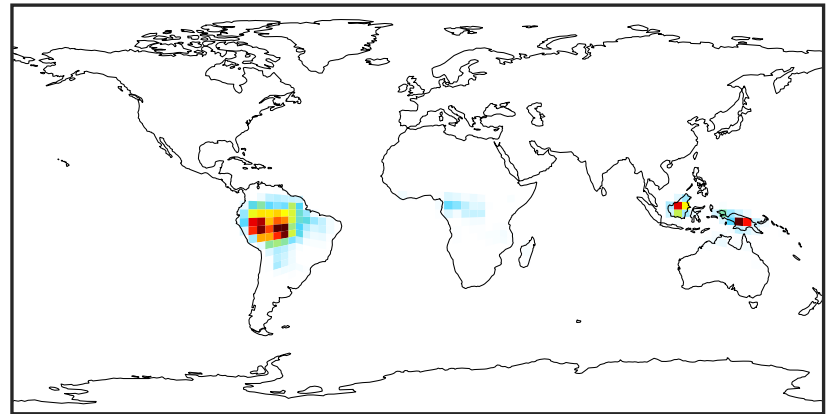
# SpeciesConcVV\_ISOP (Apr2019)

GCC\_14.2.0 (Ref)  
4.0x5.0



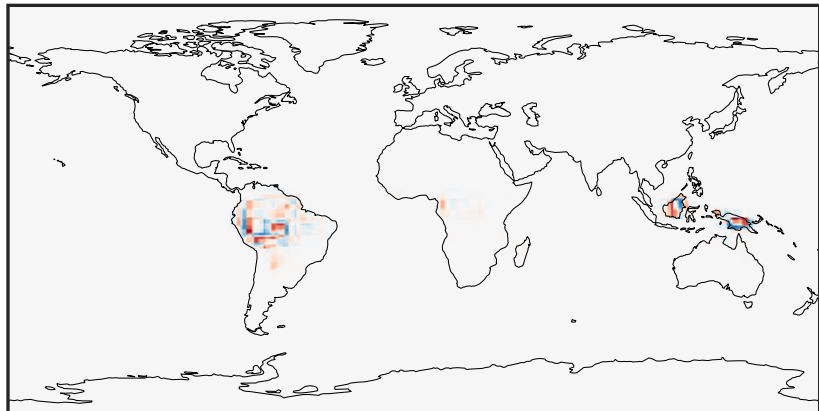
0.0000 0.0314 0.0629 0.0943 0.1258  
ppb

GCHP\_14.2.0 (Dev)  
c24



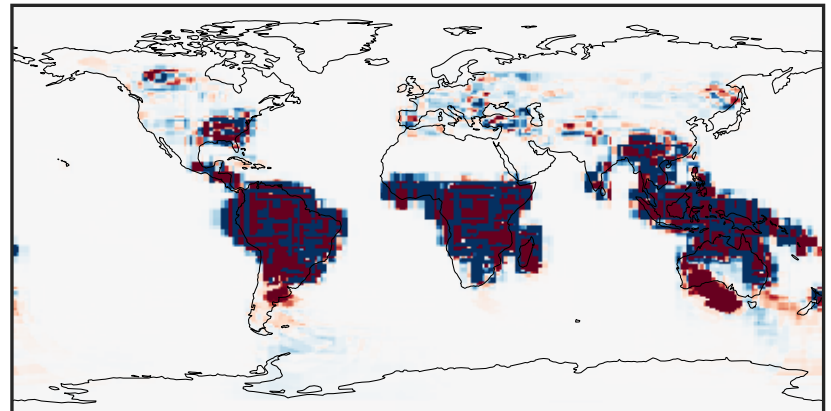
0.0000 0.0314 0.0629 0.0943 0.1258  
ppb

Difference (1x1.25)  
Dev - Ref, Dynamic Range



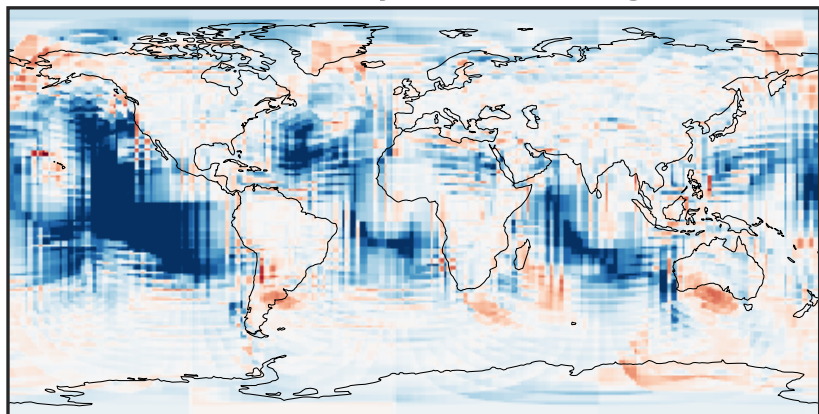
-0.0569 -0.0285 0.0000 0.0285 0.0569  
ppb

Difference (1x1.25)  
Dev - Ref, Restricted Range [5%,95%]



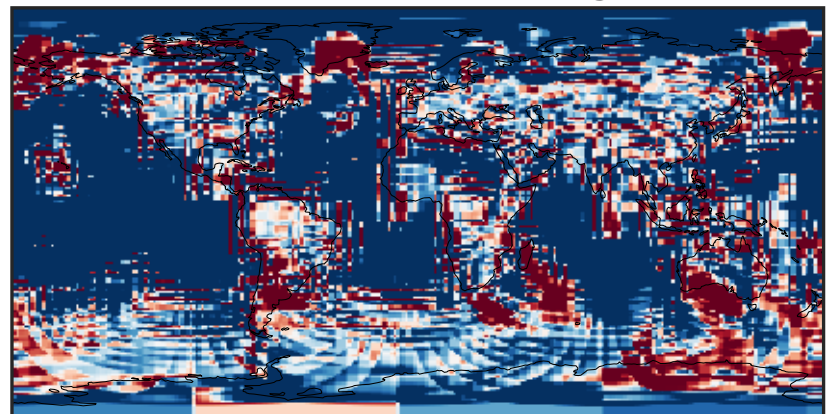
-2.5 0.0 2.5  
ppb 1e-6

Ratio (1x1.25)  
Dev/Ref, Dynamic Range



unitless

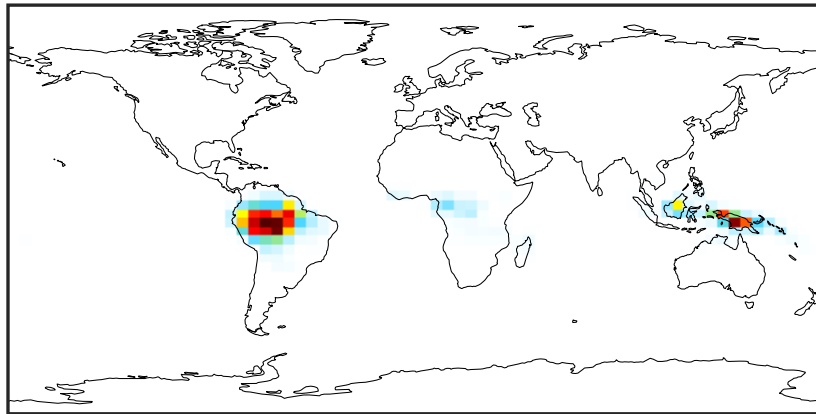
Ratio (1x1.25)  
Dev/Ref, Fixed Range



0.50 0.75 1.00 1.50 2.00  
unitless

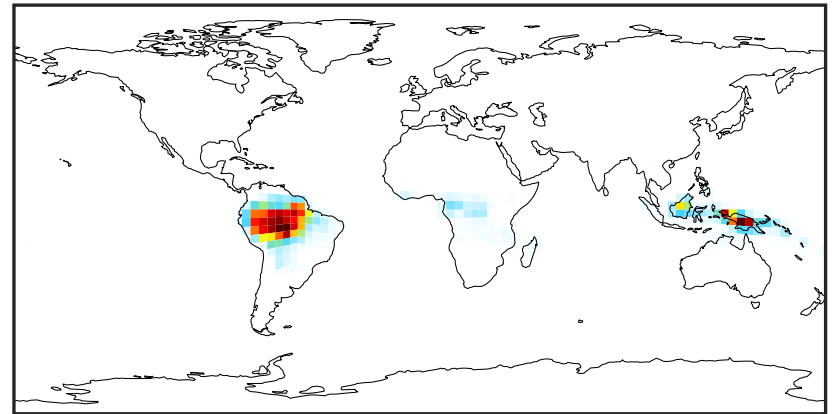
# SpeciesConcVV\_MTPA (Apr2019)

GCC\_14.2.0 (Ref)  
4.0x5.0



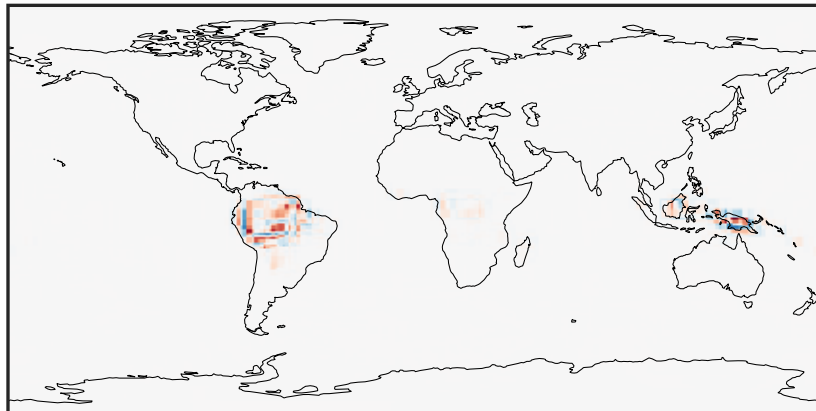
0.0000 0.0025 0.0050 0.0075  
ppb

GCHP\_14.2.0 (Dev)  
c24



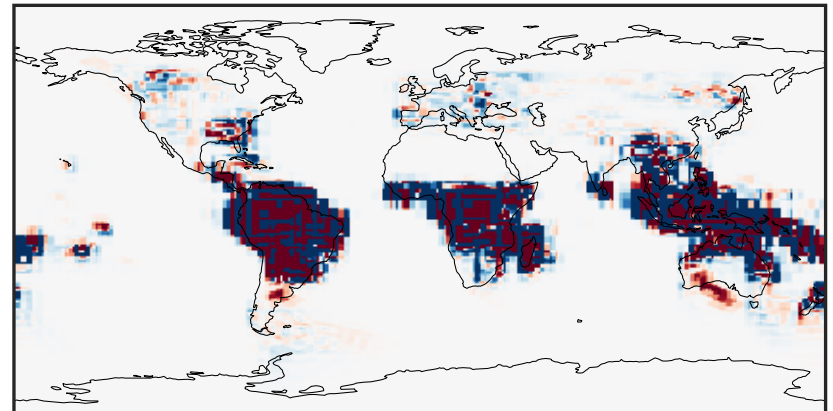
0.0000 0.0025 0.0050 0.0075  
ppb

Difference (1x1.25)  
Dev - Ref, Dynamic Range



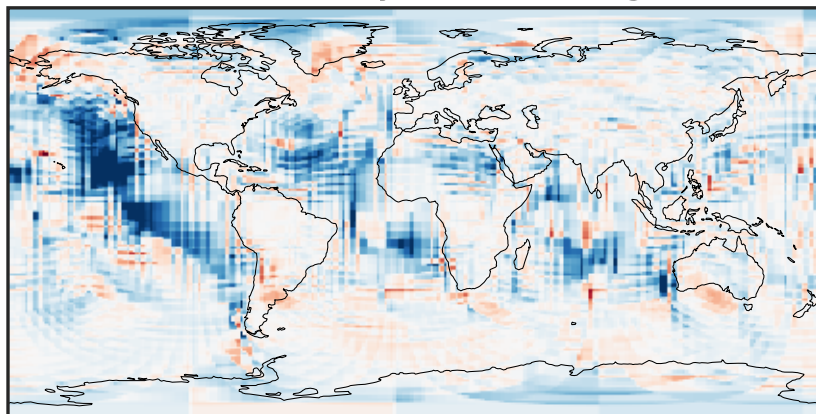
-0.002 0.000 0.002  
ppb

Difference (1x1.25)  
Dev - Ref, Restricted Range [5%,95%]



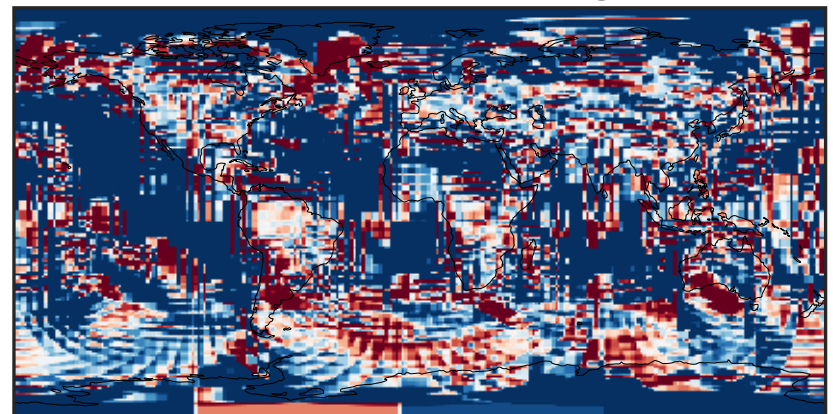
-1.5 0.0 1.5  
ppb 1e-6

Ratio (1x1.25)  
Dev/Ref, Dynamic Range



unitless

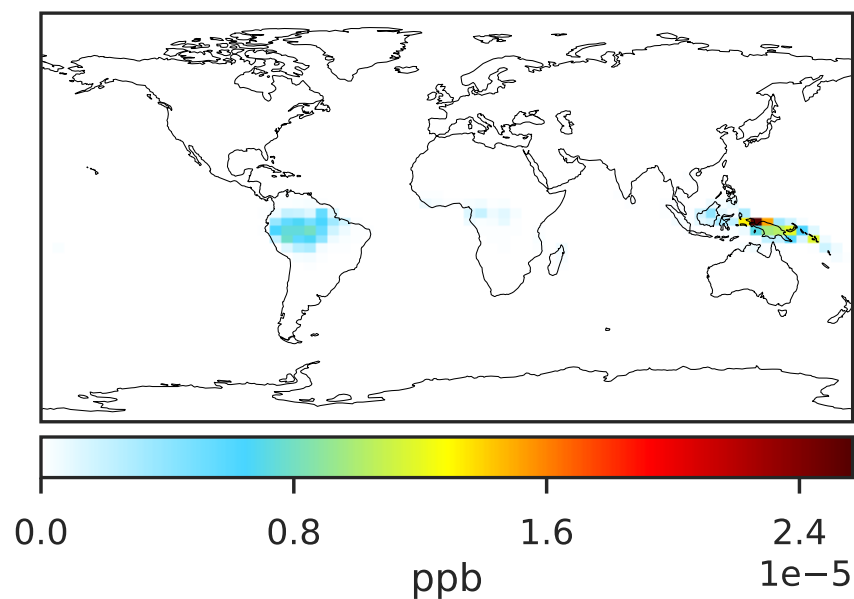
Ratio (1x1.25)  
Dev/Ref, Fixed Range



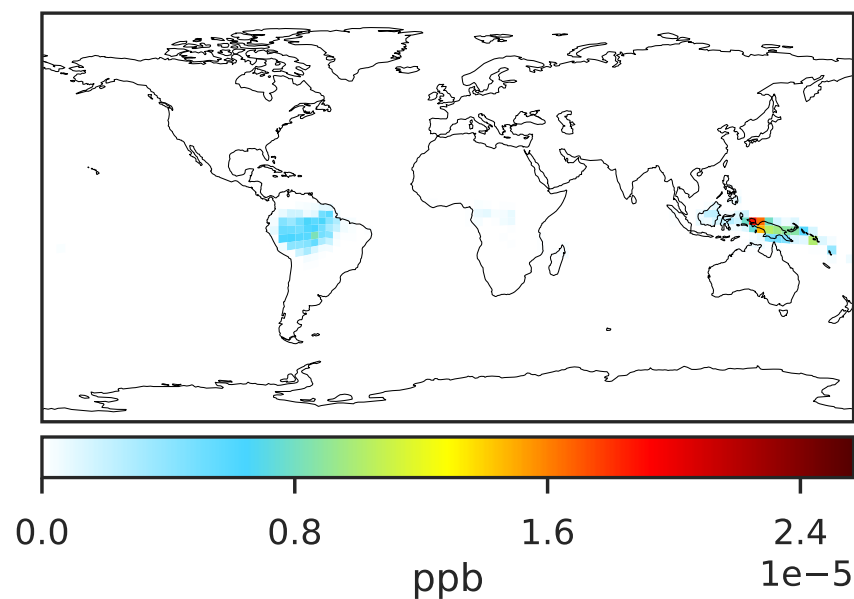
0.50 0.75 1.00 1.50 2.00  
unitless

# SpeciesConcVV\_MTPO (Apr2019)

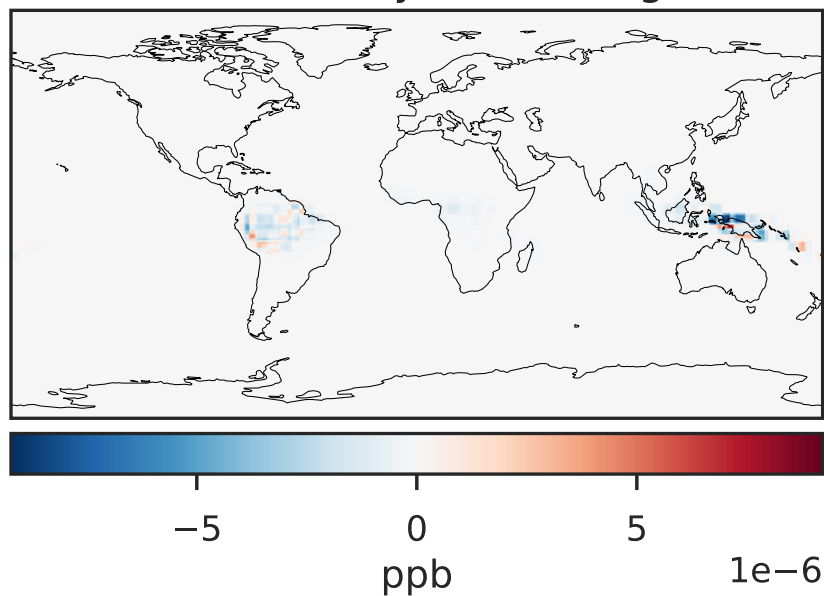
GCC\_14.2.0 (Ref)  
4.0x5.0



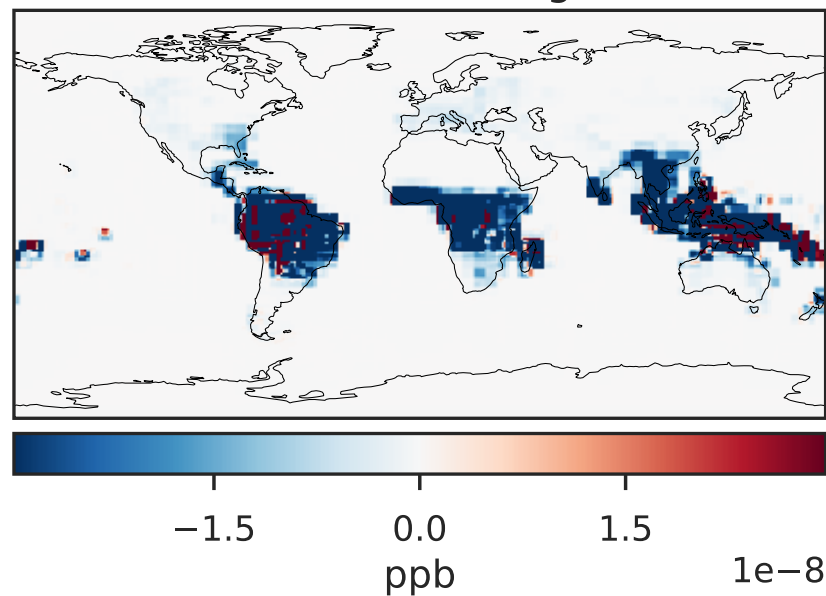
GCHP\_14.2.0 (Dev)  
c24



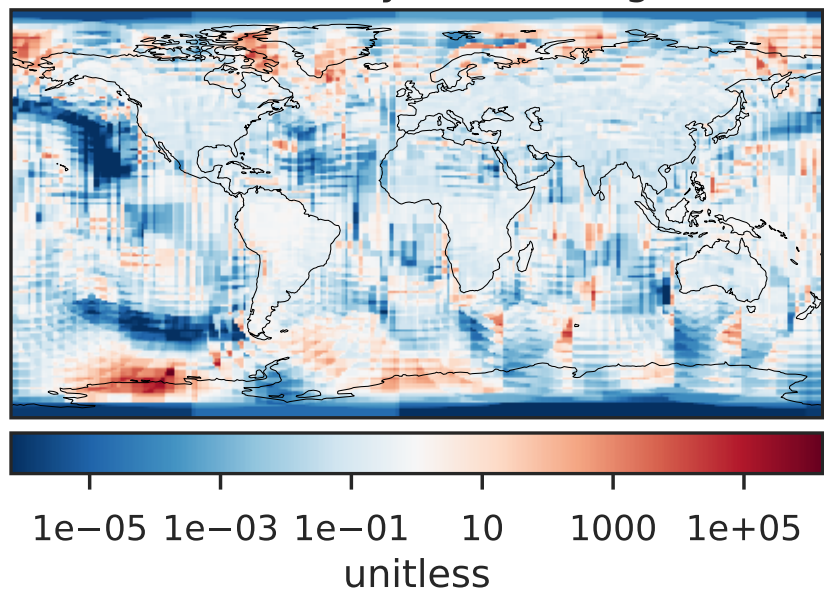
Difference (1x1.25)  
Dev - Ref, Dynamic Range



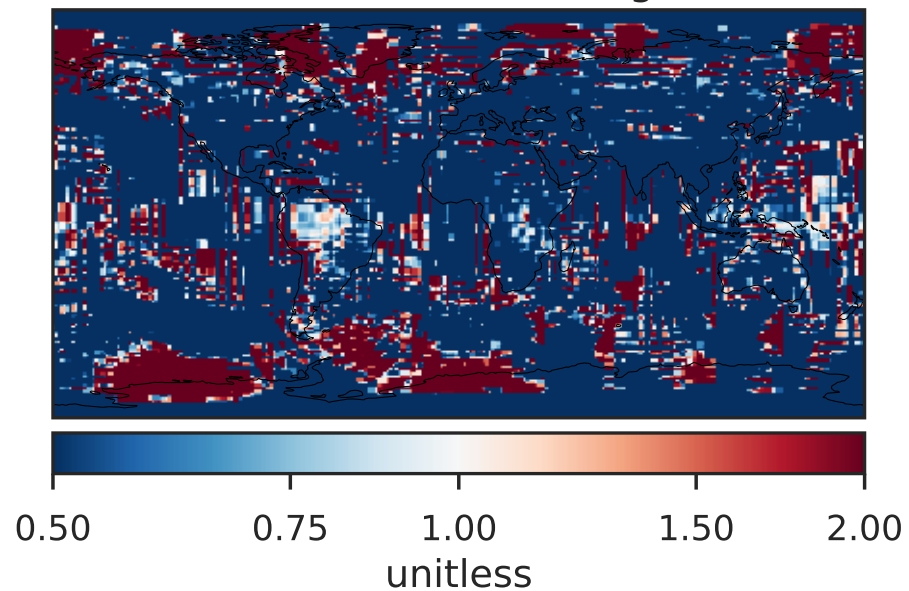
Difference (1x1.25)  
Dev - Ref, Restricted Range [5%,95%]



Ratio (1x1.25)  
Dev/Ref, Dynamic Range

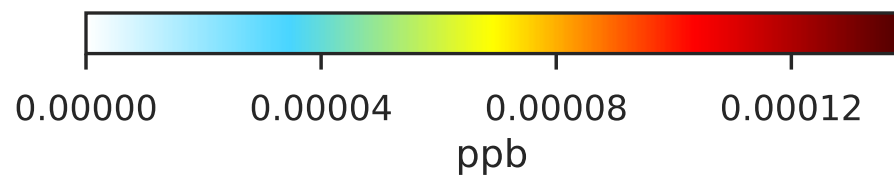
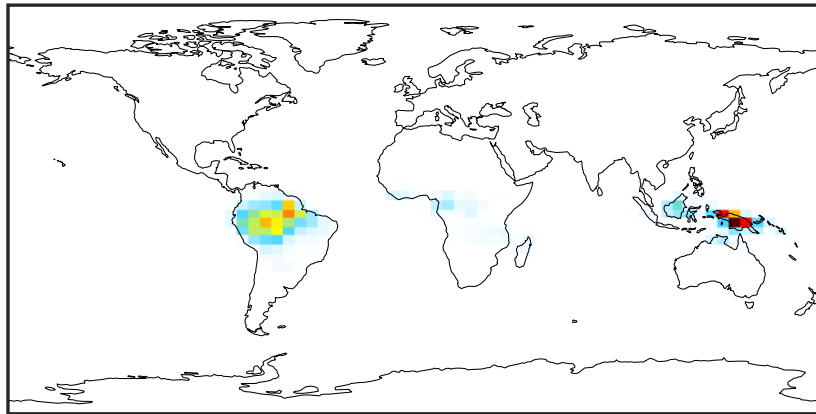


Ratio (1x1.25)  
Dev/Ref, Fixed Range

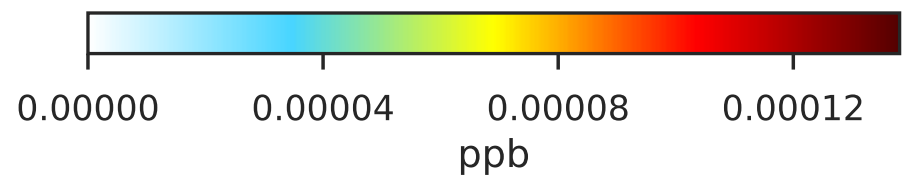
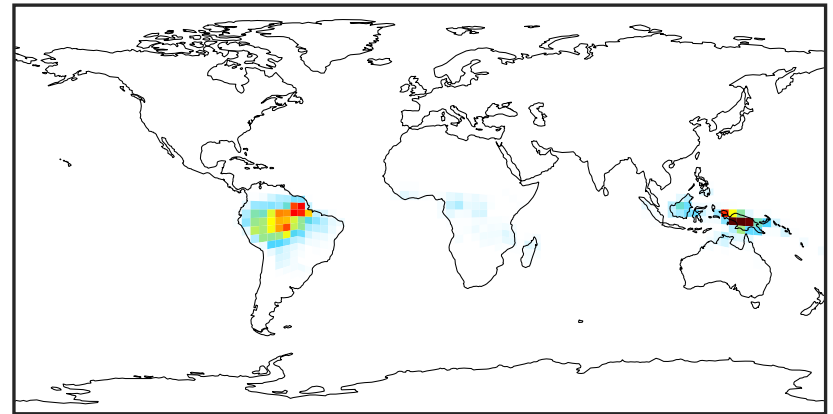


# SpeciesConcVV\_LIMO (Apr2019)

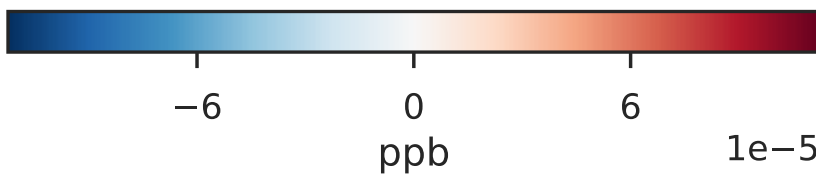
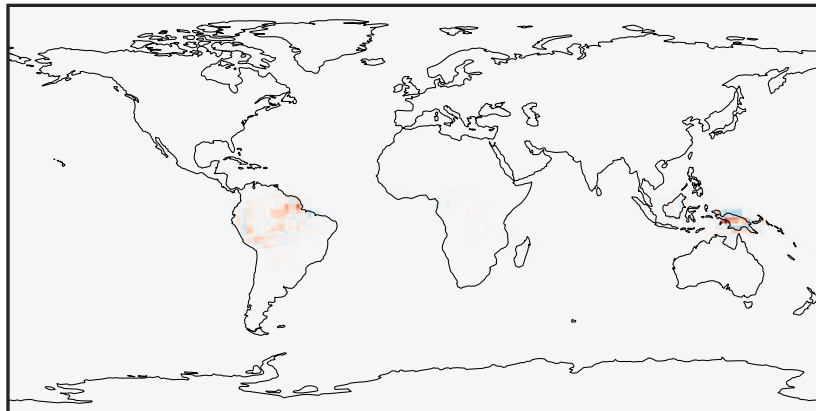
GCC\_14.2.0 (Ref)  
4.0x5.0



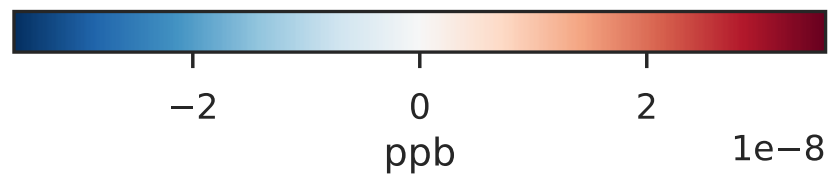
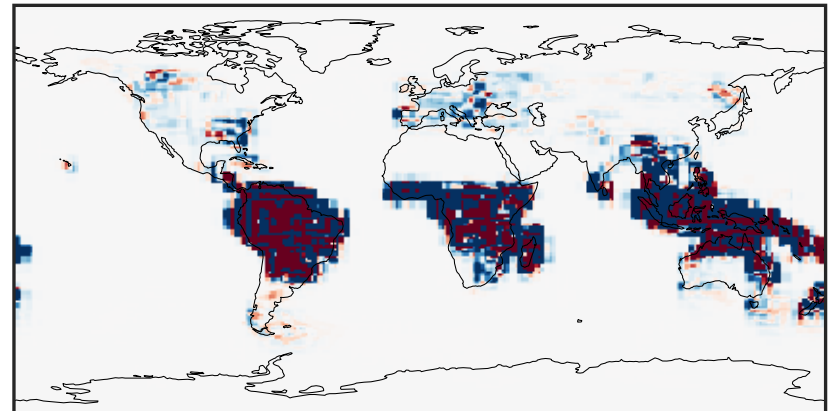
GCHP\_14.2.0 (Dev)  
c24



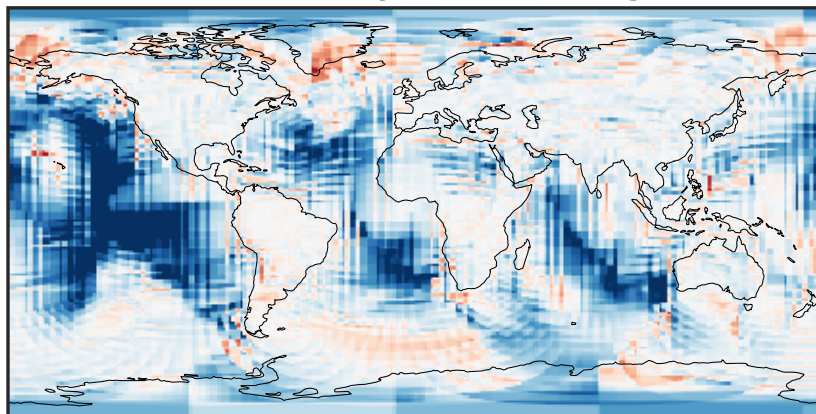
Difference (1x1.25)  
Dev - Ref, Dynamic Range



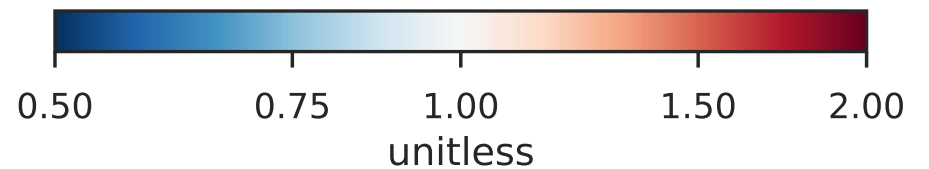
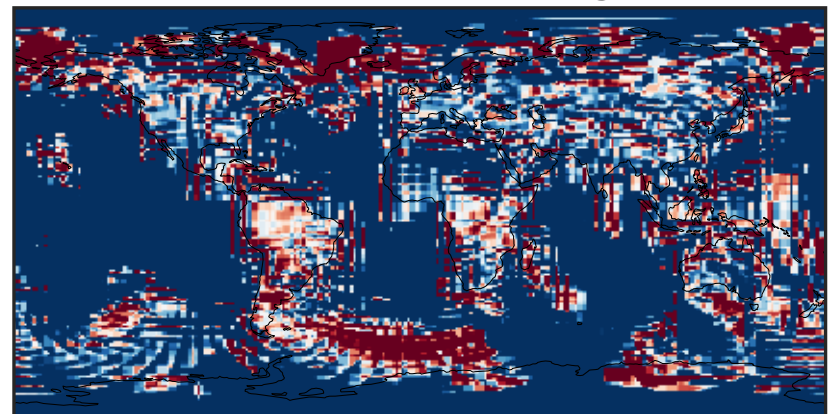
Difference (1x1.25)  
Dev - Ref, Restricted Range [5%,95%]



Ratio (1x1.25)  
Dev/Ref, Dynamic Range

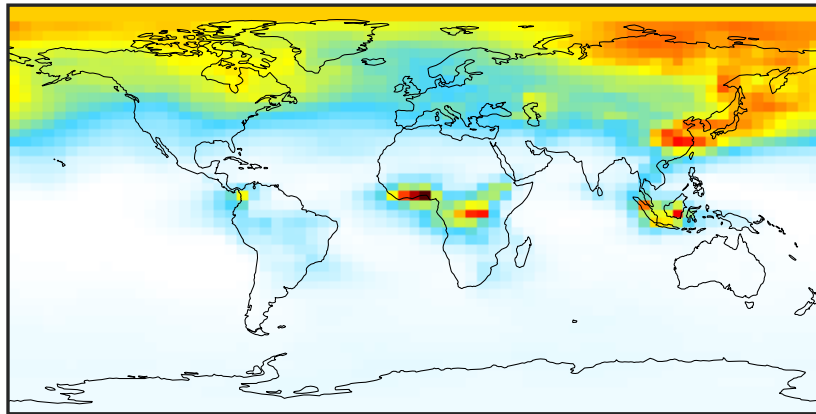


Ratio (1x1.25)  
Dev/Ref, Fixed Range



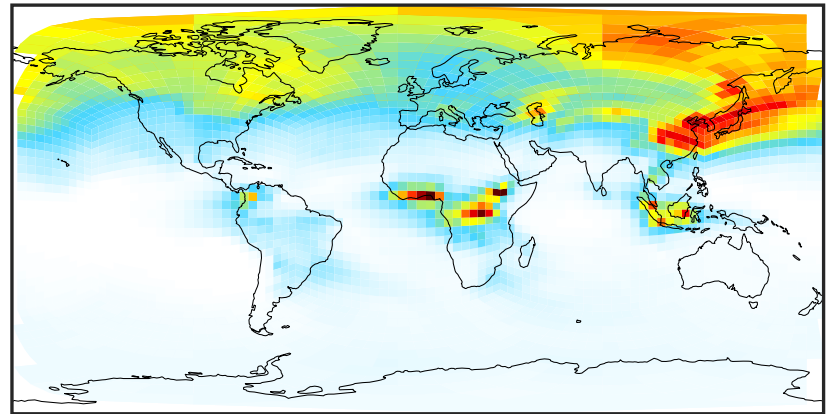
# SpeciesConcVV\_ALK4 (Apr2019)

GCC\_14.2.0 (Ref)  
4.0x5.0



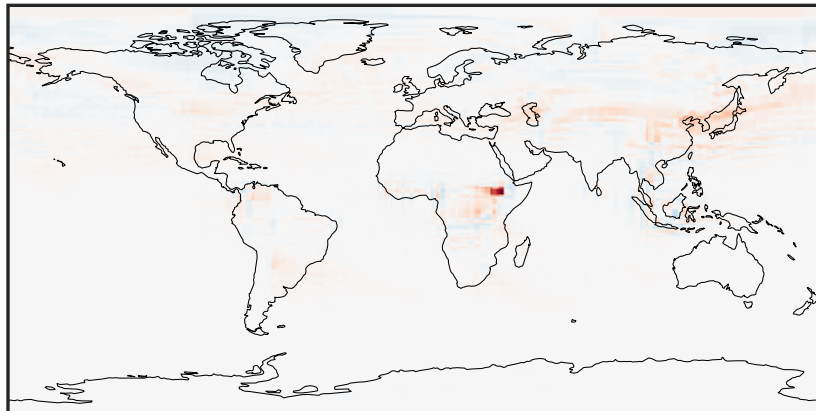
0.0005 0.0689 0.1378 0.2067 0.2761  
ppb

GCHP\_14.2.0 (Dev)  
c24



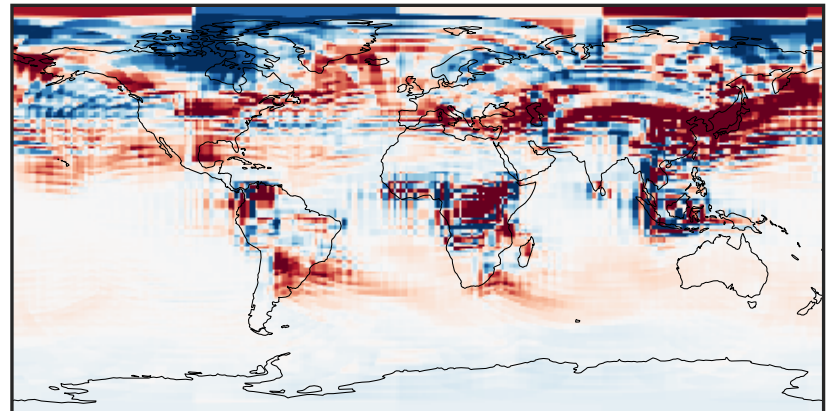
0.0005 0.0689 0.1378 0.2067 0.2761  
ppb

Difference (1x1.25)  
Dev - Ref, Dynamic Range



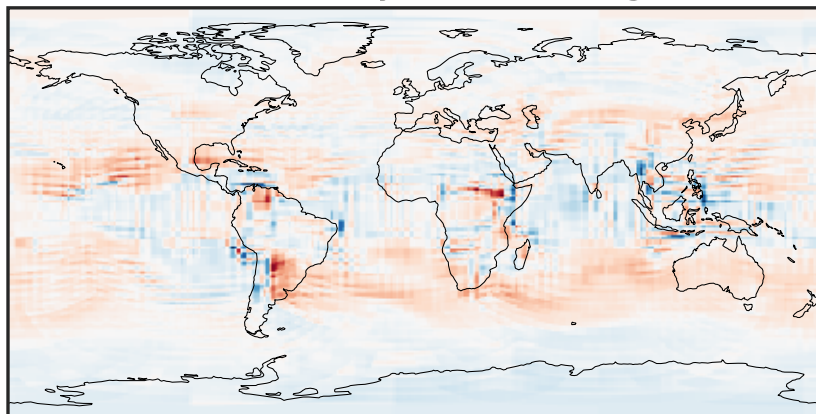
-0.2476 -0.1238 0.0000 0.1238 0.2476  
ppb

Difference (1x1.25)  
Dev - Ref, Restricted Range [5%,95%]



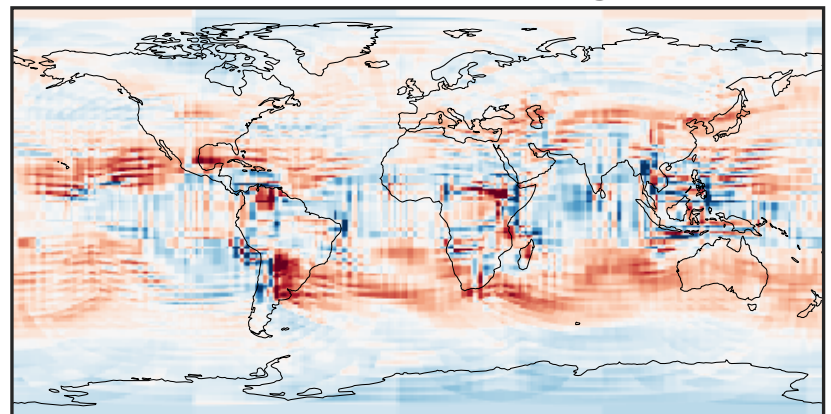
-0.008 0.000 0.008  
ppb

Ratio (1x1.25)  
Dev/Ref, Dynamic Range



0.244 0.622 1.000 2.547 4.094  
unitless

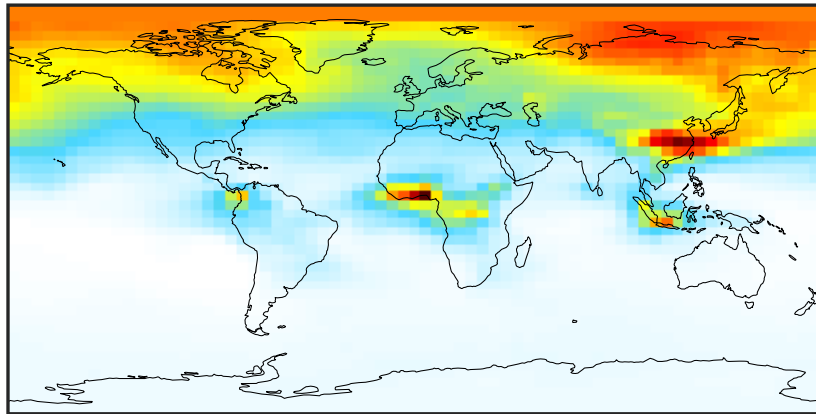
Ratio (1x1.25)  
Dev/Ref, Fixed Range



0.50 0.75 1.00 1.50 2.00  
unitless

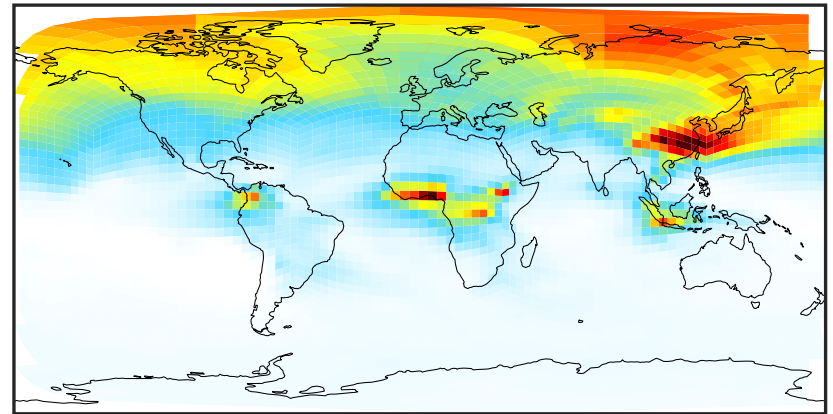
# SpeciesConcVV\_BENZ (Apr2019)

GCC\_14.2.0 (Ref)  
4.0x5.0



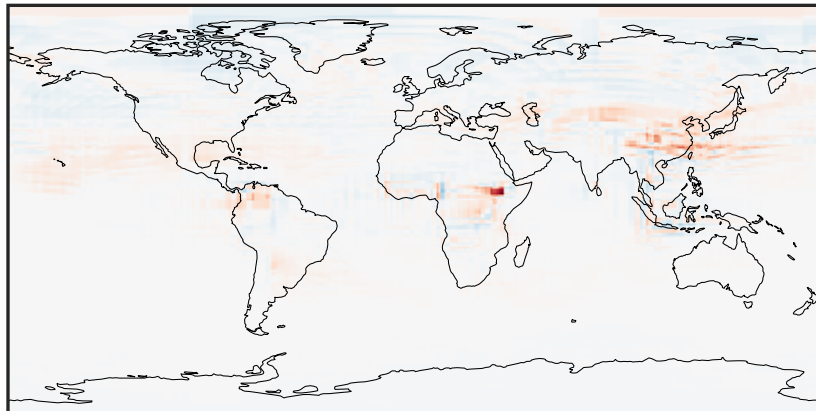
0.015 0.030 0.045  
ppb

GCHP\_14.2.0 (Dev)  
c24



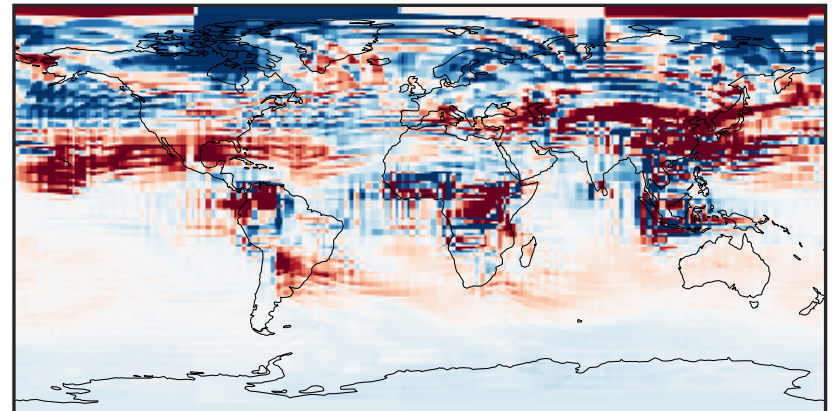
0.015 0.030 0.045  
ppb

Difference (1x1.25)  
Dev - Ref, Dynamic Range



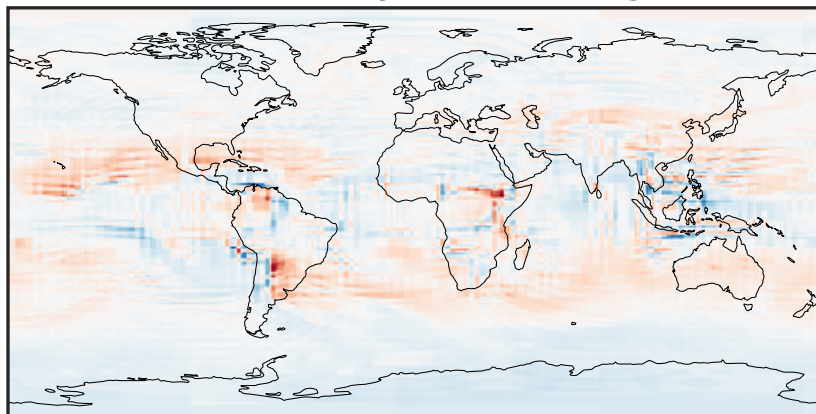
-0.015 0.000 0.015  
ppb

Difference (1x1.25)  
Dev - Ref, Restricted Range [5%,95%]



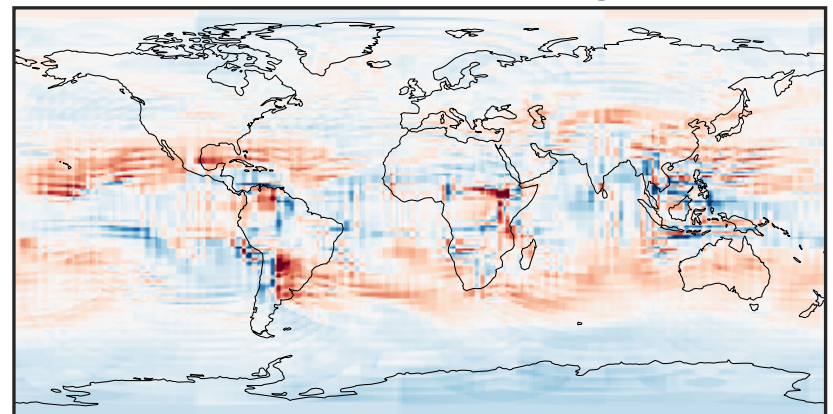
-0.001 0.000 0.001  
ppb

Ratio (1x1.25)  
Dev/Ref, Dynamic Range



0.296 0.648 1.000 2.191 3.382  
unitless

Ratio (1x1.25)  
Dev/Ref, Fixed Range

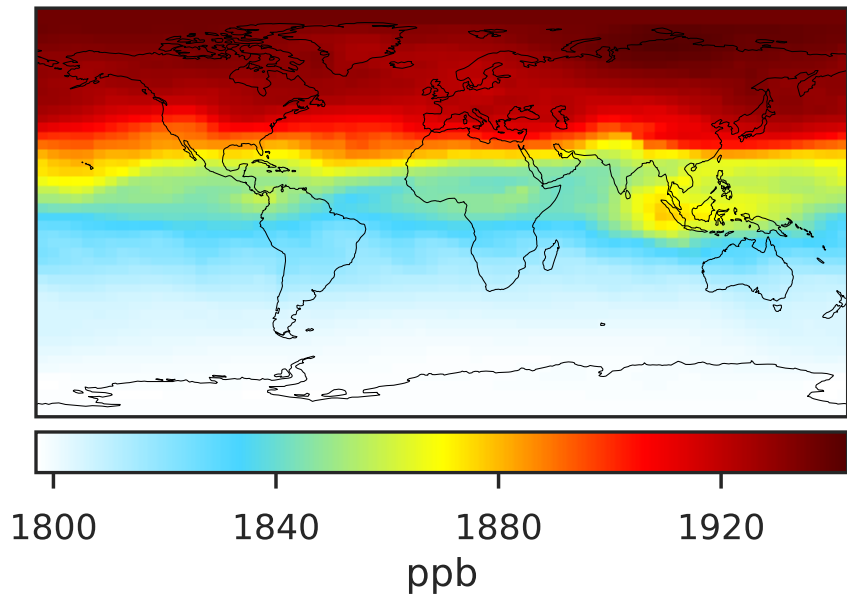


0.50 0.75 1.00 1.50 2.00  
unitless

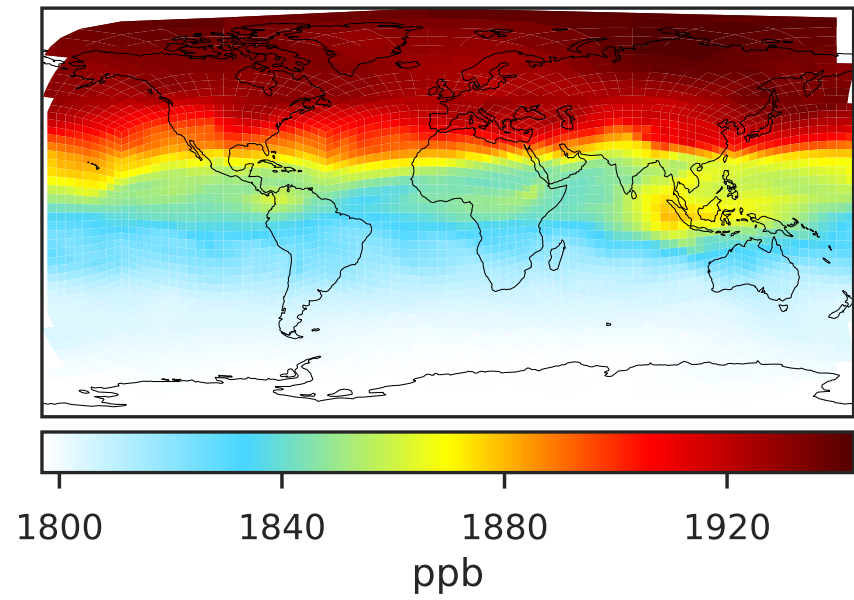


# SpeciesConcVV\_CH4 (Apr2019)

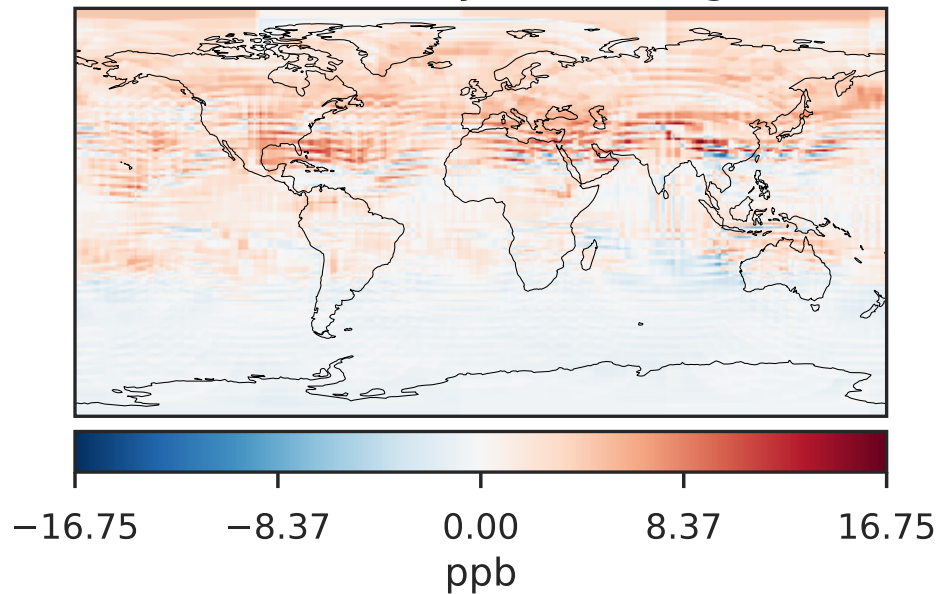
GCC\_14.2.0 (Ref)  
4.0x5.0



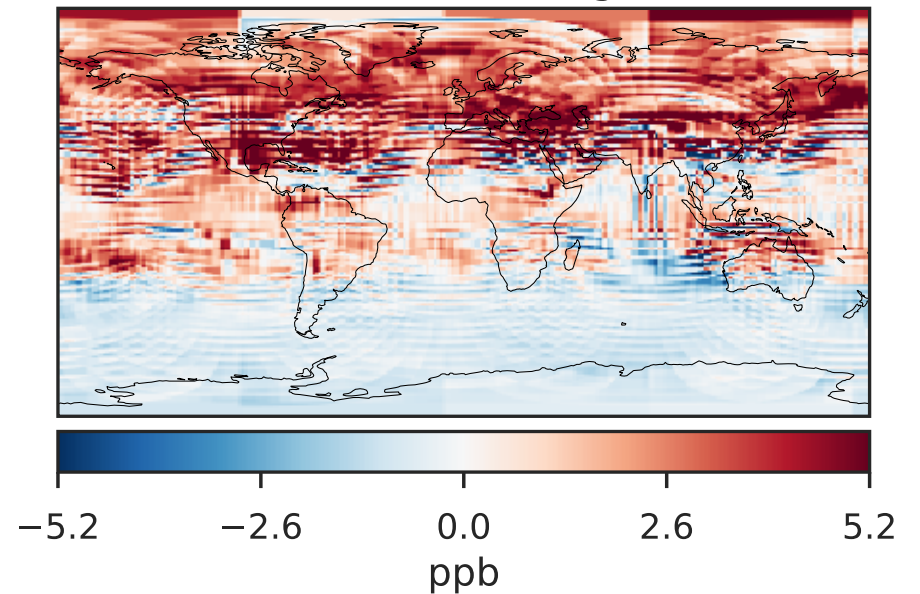
GCHP\_14.2.0 (Dev)  
c24



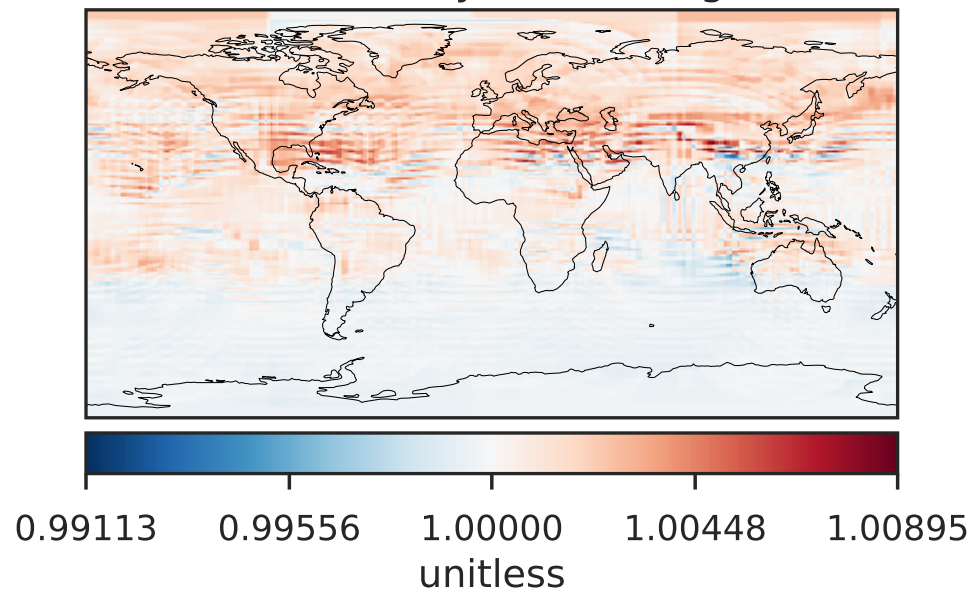
Difference (1x1.25)  
Dev - Ref, Dynamic Range



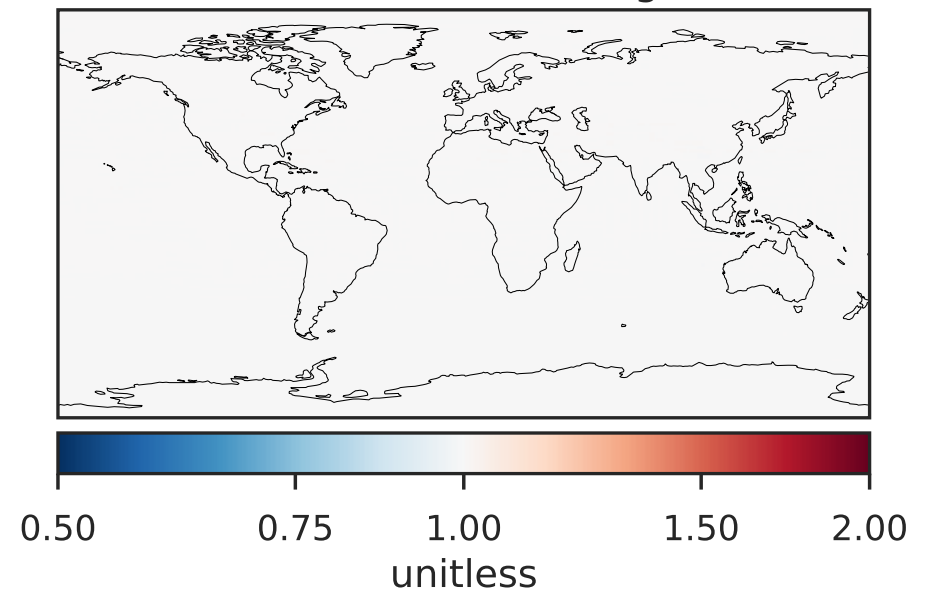
Difference (1x1.25)  
Dev - Ref, Restricted Range [5%,95%]



Ratio (1x1.25)  
Dev/Ref, Dynamic Range

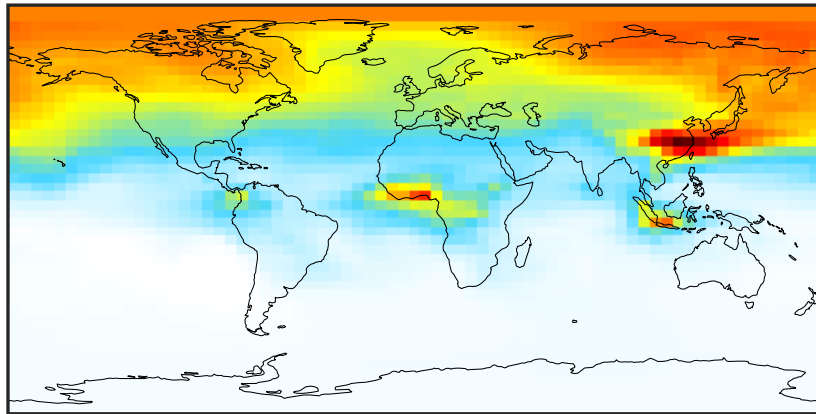


Ratio (1x1.25)  
Dev/Ref, Fixed Range



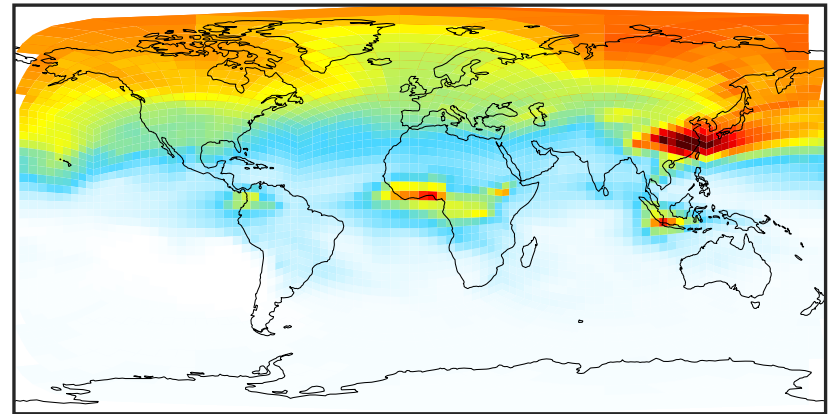
# SpeciesConcVV\_C2H2 (Apr2019)

GCC\_14.2.0 (Ref)  
4.0x5.0



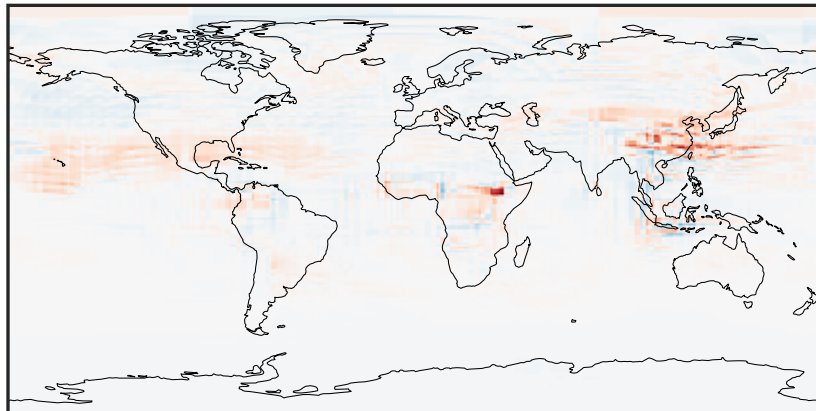
0.0046 0.0423 0.0846 0.1270 0.1738  
ppb

GCHP\_14.2.0 (Dev)  
c24



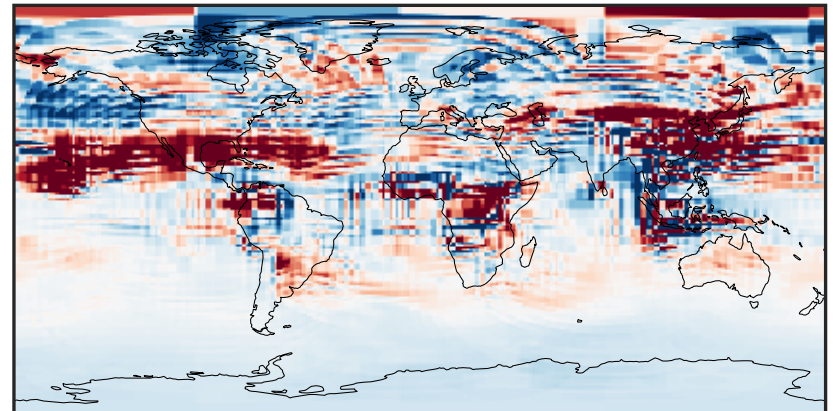
0.0046 0.0423 0.0846 0.1270 0.1738  
ppb

Difference (1x1.25)  
Dev - Ref, Dynamic Range



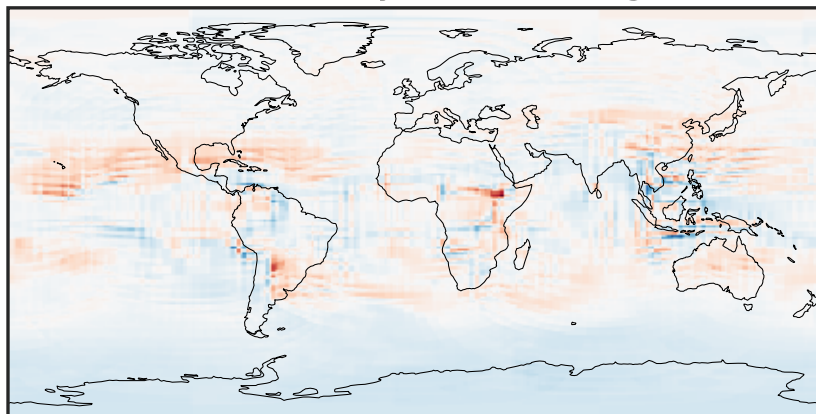
-0.0605 -0.0303 0.0000 0.0303 0.0605  
ppb

Difference (1x1.25)  
Dev - Ref, Restricted Range [5%,95%]



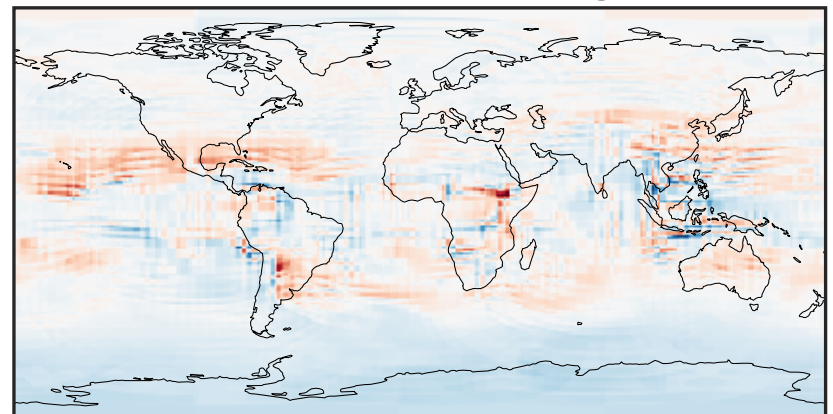
-0.003 0.000 0.003  
ppb

Ratio (1x1.25)  
Dev/Ref, Dynamic Range



0.410 0.705 1.000 1.719 2.437  
unitless

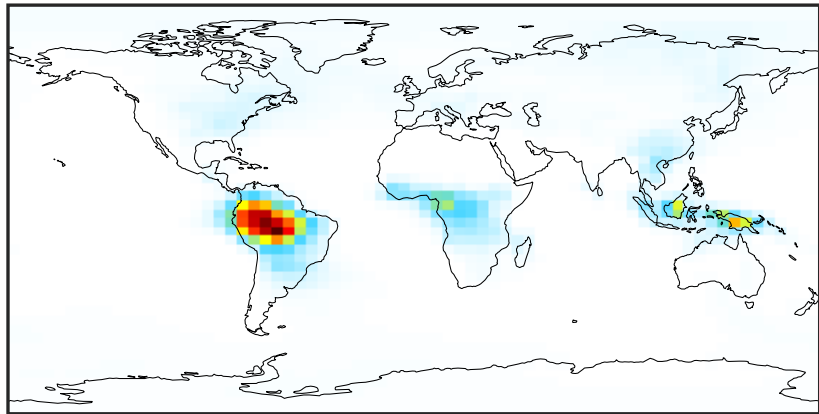
Ratio (1x1.25)  
Dev/Ref, Fixed Range



0.50 0.75 1.00 1.50 2.00  
unitless

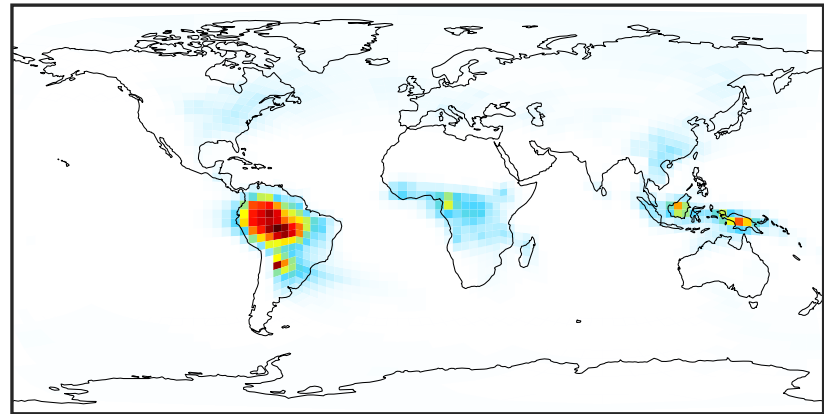
# SpeciesConcVV\_C2H4 (Apr2019)

GCC\_14.2.0 (Ref)  
4.0x5.0



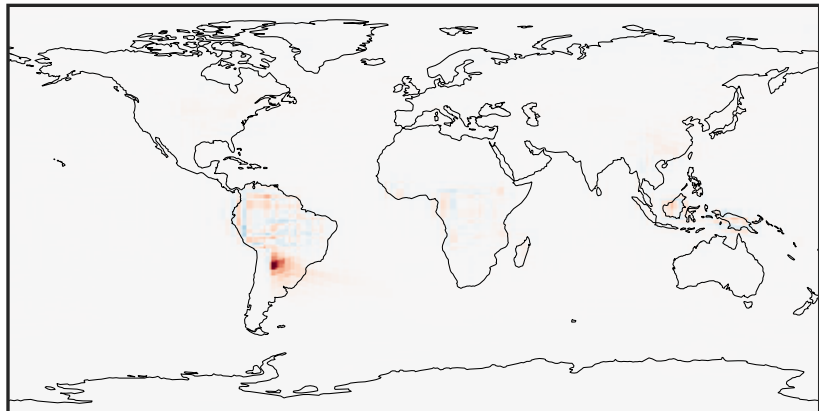
0.0000 0.0489 0.0978 0.1466 0.1955  
ppb

GCHP\_14.2.0 (Dev)  
c24



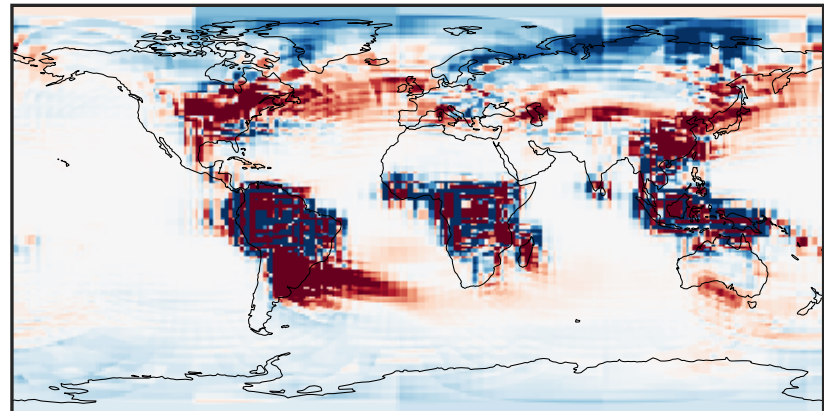
0.0000 0.0489 0.0978 0.1466 0.1955  
ppb

Difference (1x1.25)  
Dev - Ref, Dynamic Range



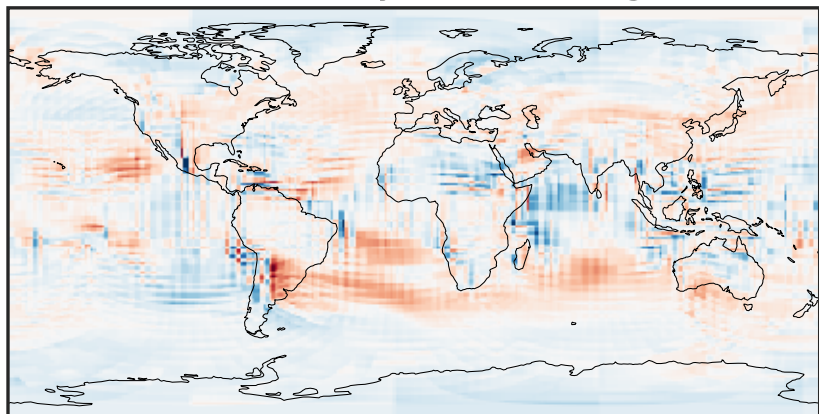
-0.1624 -0.0812 0.0000 0.0812 0.1624  
ppb

Difference (1x1.25)  
Dev - Ref, Restricted Range [5%,95%]



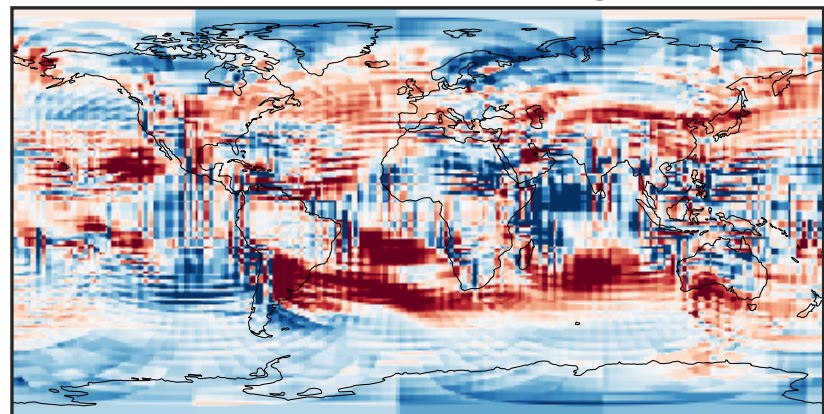
-0.001 0.000 0.001  
ppb

Ratio (1x1.25)  
Dev/Ref, Dynamic Range



1e-01 1 10  
unitless

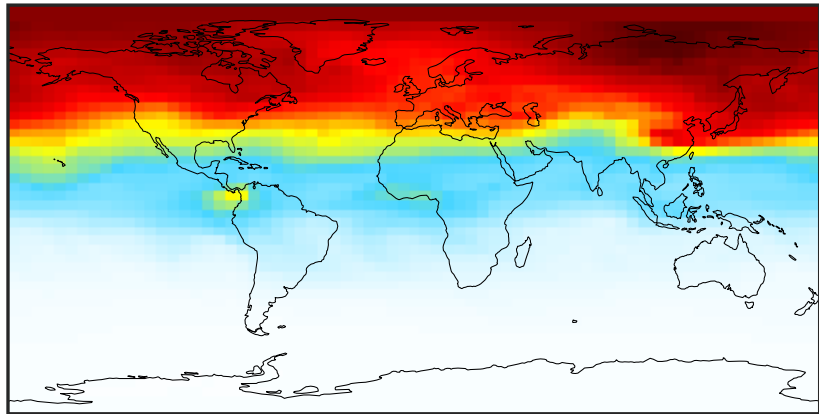
Ratio (1x1.25)  
Dev/Ref, Fixed Range



0.50 0.75 1.00 1.50 2.00  
unitless

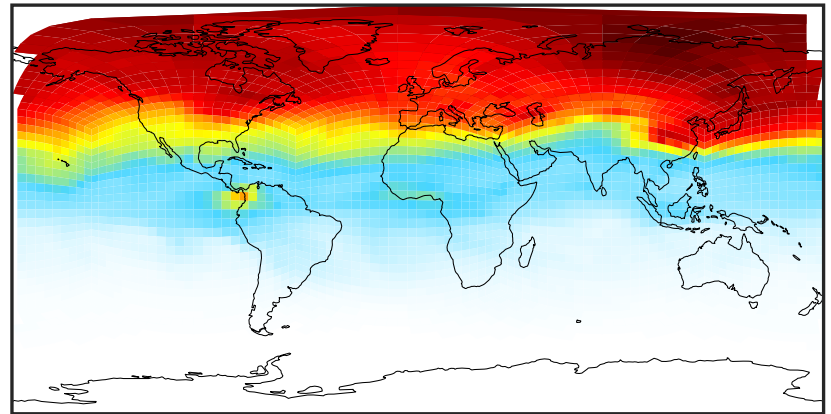
# SpeciesConcVV\_C2H6 (Apr2019)

GCC\_14.2.0 (Ref)  
4.0x5.0



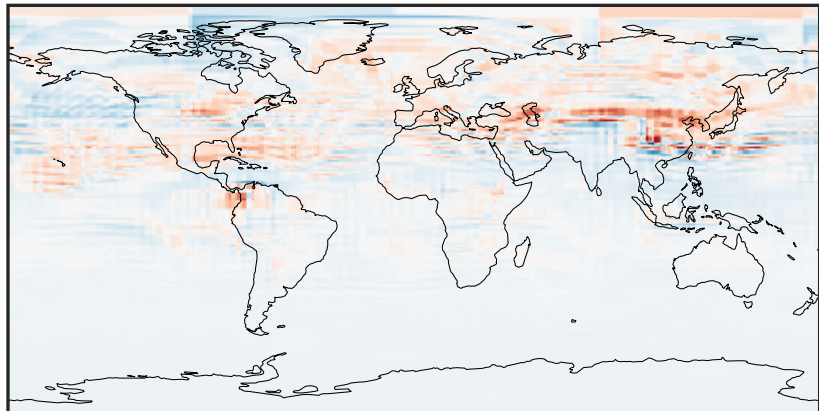
0.061 0.275 0.551 0.826 1.162  
ppb

GCHP\_14.2.0 (Dev)  
c24



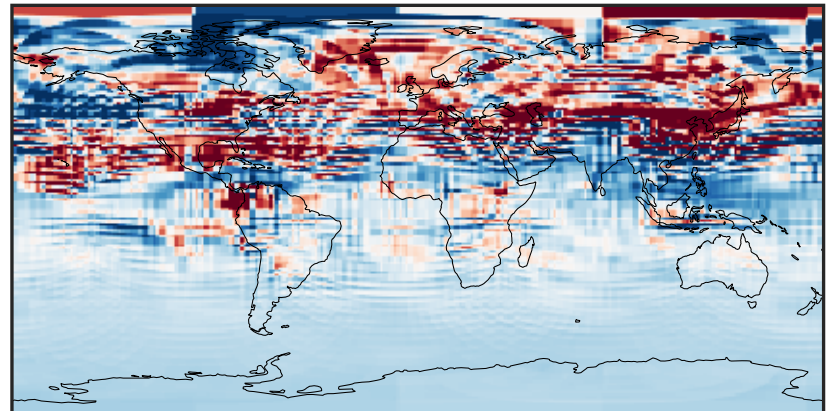
0.061 0.275 0.551 0.826 1.162  
ppb

Difference (1x1.25)  
Dev - Ref, Dynamic Range



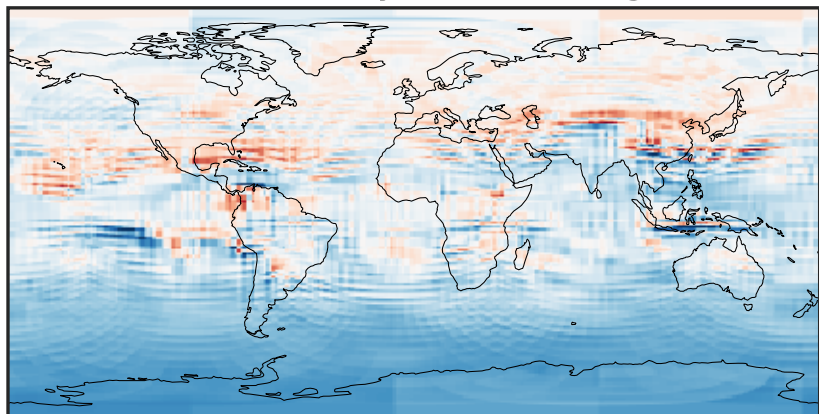
-0.1832 -0.0916 0.0000 0.0916 0.1832  
ppb

Difference (1x1.25)  
Dev - Ref, Restricted Range [5%,95%]



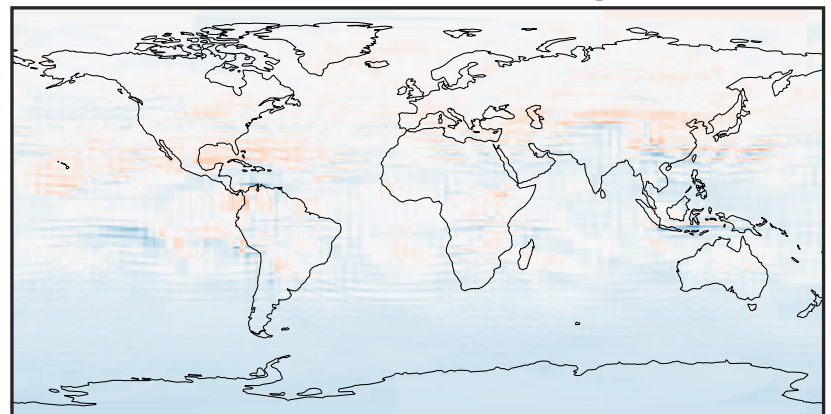
-0.02 0.00 0.02  
ppb

Ratio (1x1.25)  
Dev/Ref, Dynamic Range



0.7728 0.8864 1.0000 1.1470 1.2940  
unitless

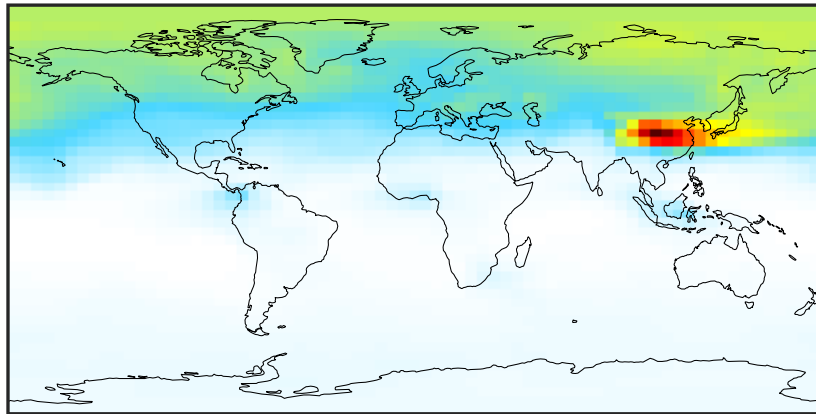
Ratio (1x1.25)  
Dev/Ref, Fixed Range



0.50 0.75 1.00 1.50 2.00  
unitless

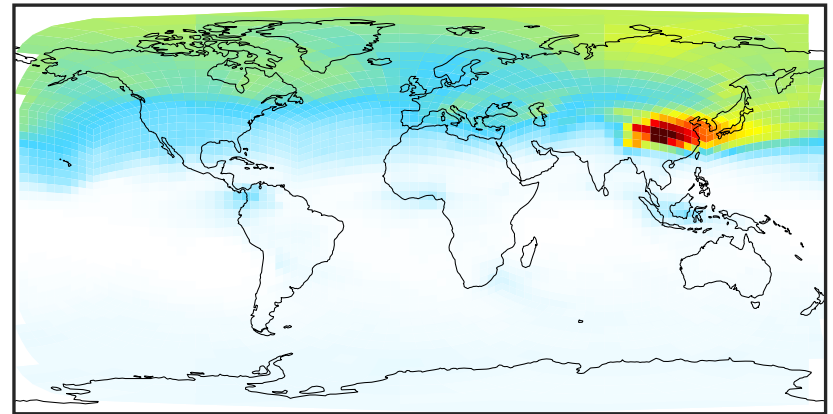
# SpeciesConcVV\_C3H8 (Apr2019)

GCC\_14.2.0 (Ref)  
4.0x5.0



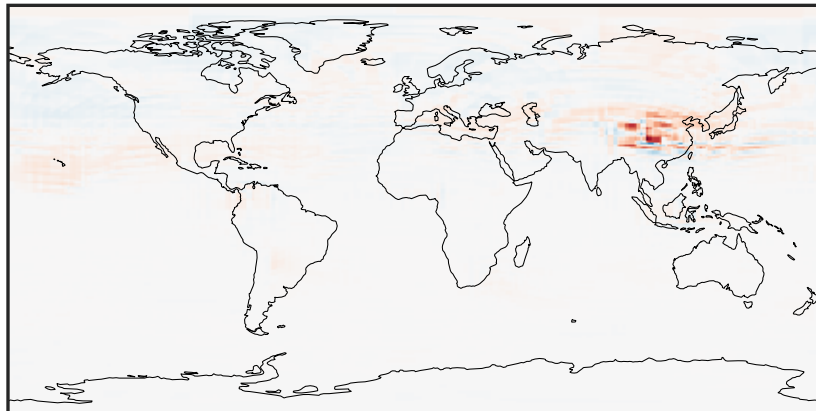
0.0022 0.1301 0.2603 0.3904 0.5227  
ppb

GCHP\_14.2.0 (Dev)  
c24



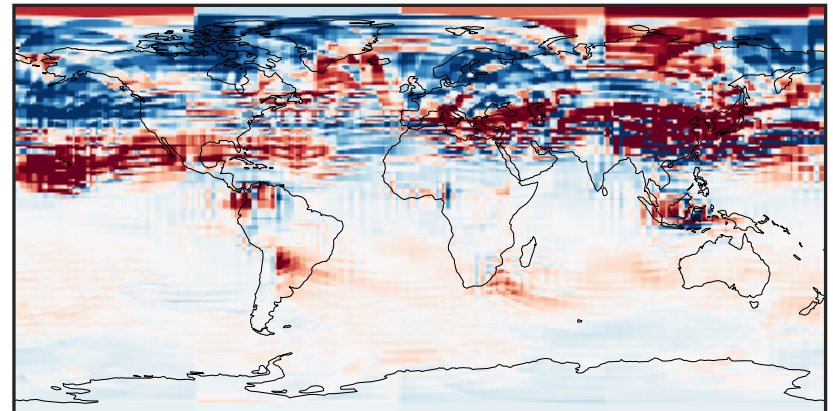
0.0022 0.1301 0.2603 0.3904 0.5227  
ppb

Difference (1x1.25)  
Dev - Ref, Dynamic Range



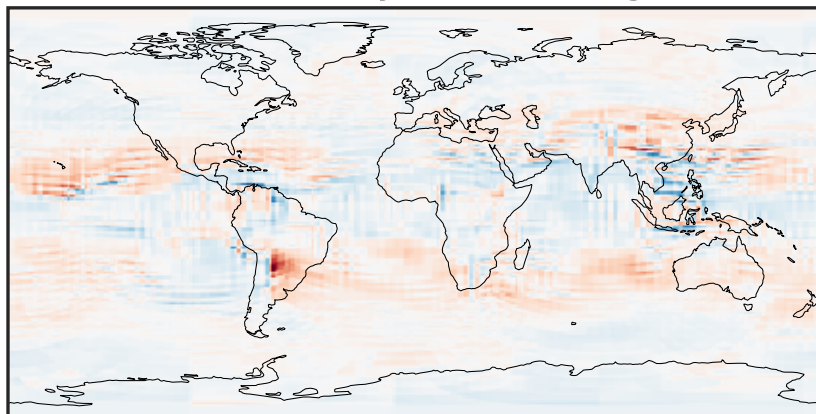
-0.2232 -0.1116 0.0000 0.1116 0.2232  
ppb

Difference (1x1.25)  
Dev - Ref, Restricted Range [5%,95%]



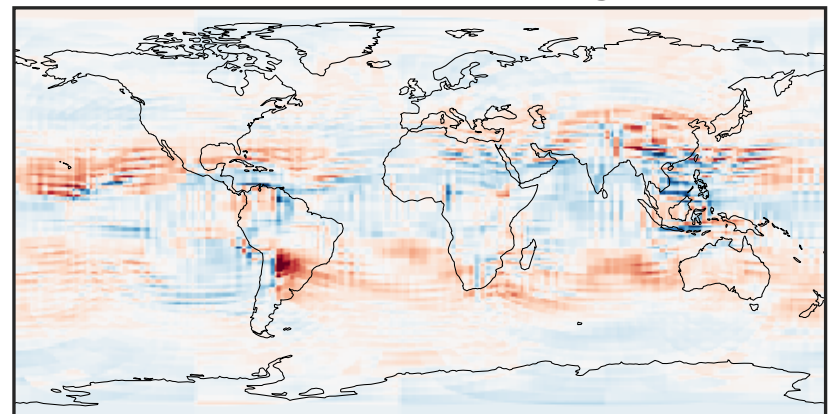
-0.006 0.000 0.006  
ppb

Ratio (1x1.25)  
Dev/Ref, Dynamic Range



0.34 0.67 1.00 1.97 2.94  
unitless

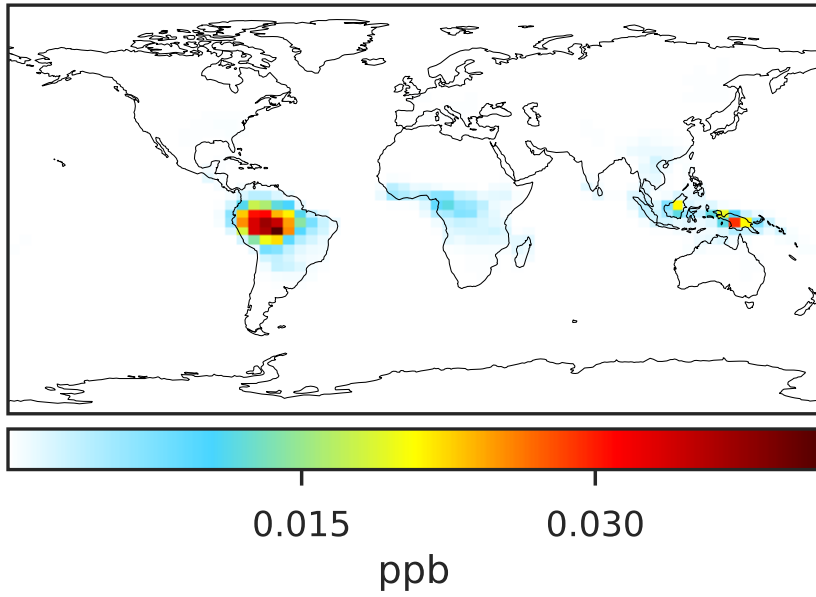
Ratio (1x1.25)  
Dev/Ref, Fixed Range



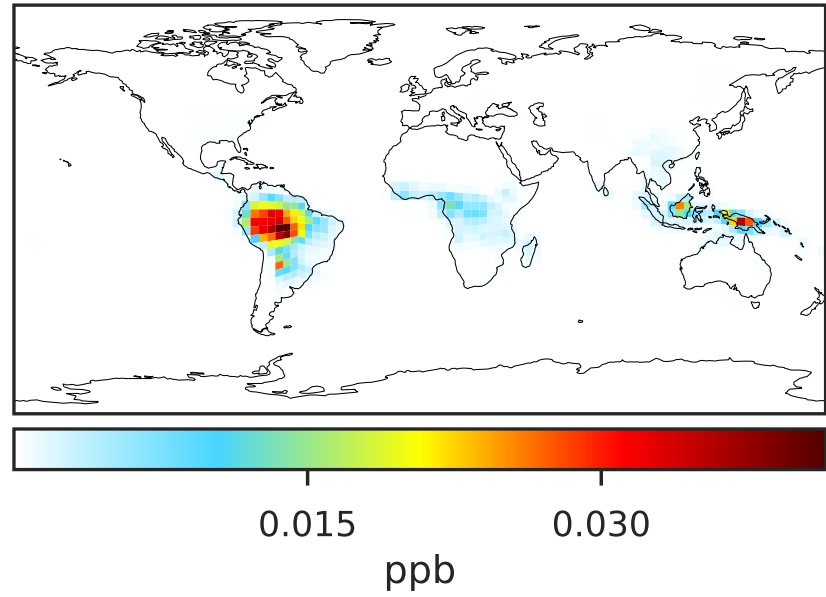
0.50 0.75 1.00 1.50 2.00  
unitless

# SpeciesConcVV\_PRPE (Apr2019)

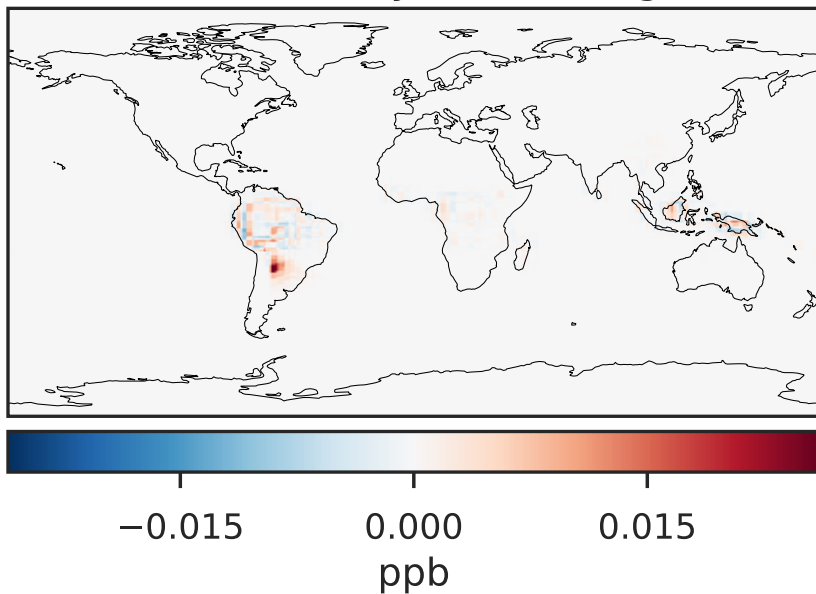
GCC\_14.2.0 (Ref)  
4.0x5.0



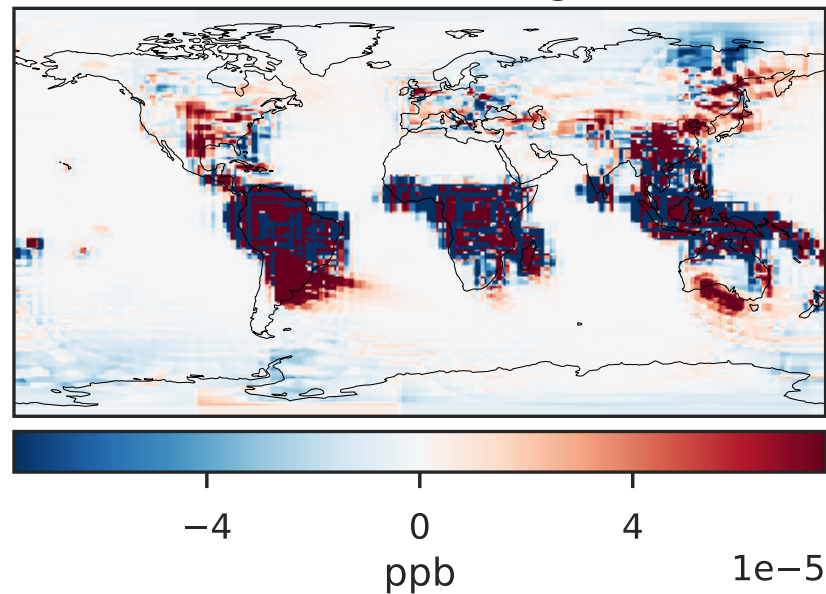
GCHP\_14.2.0 (Dev)  
c24



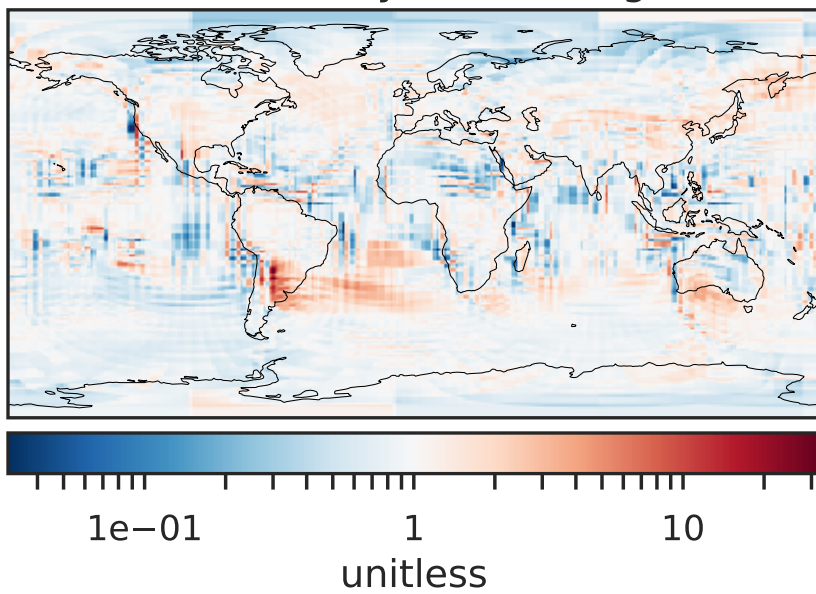
Difference (1x1.25)  
Dev - Ref, Dynamic Range



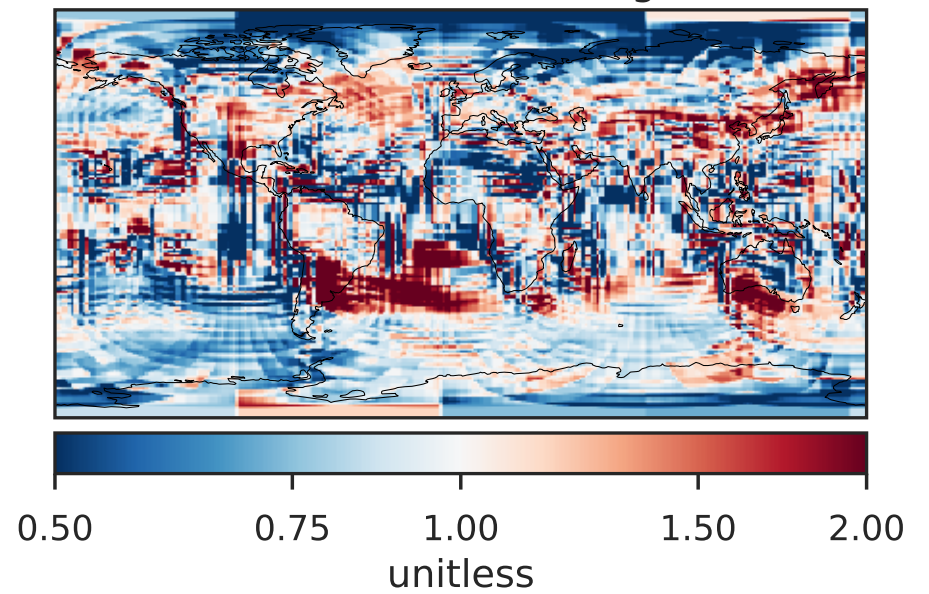
Difference (1x1.25)  
Dev - Ref, Restricted Range [5%,95%]



Ratio (1x1.25)  
Dev/Ref, Dynamic Range

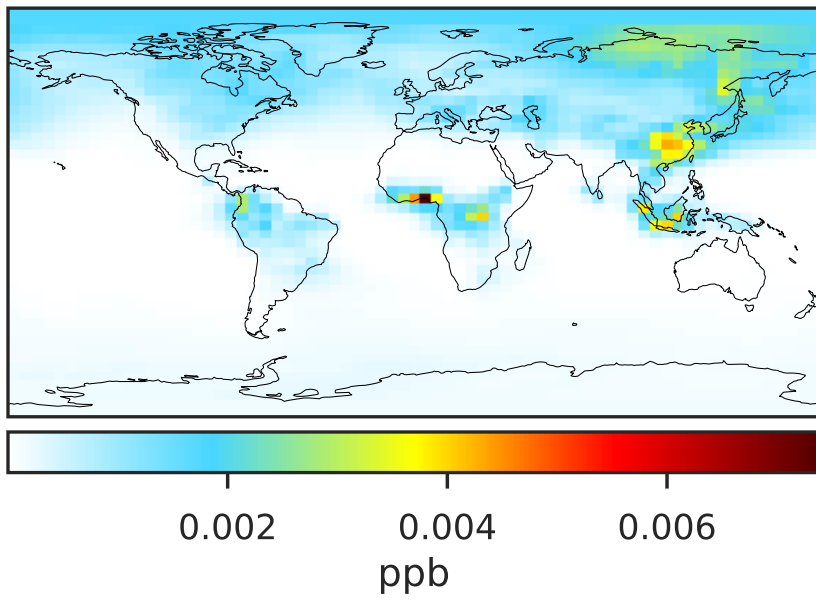


Ratio (1x1.25)  
Dev/Ref, Fixed Range

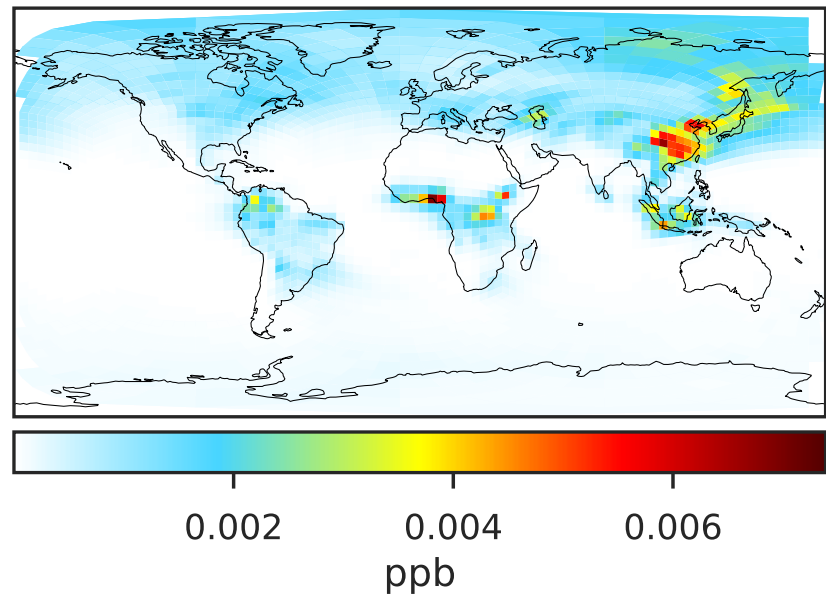


# SpeciesConcVV\_TOLU (Apr2019)

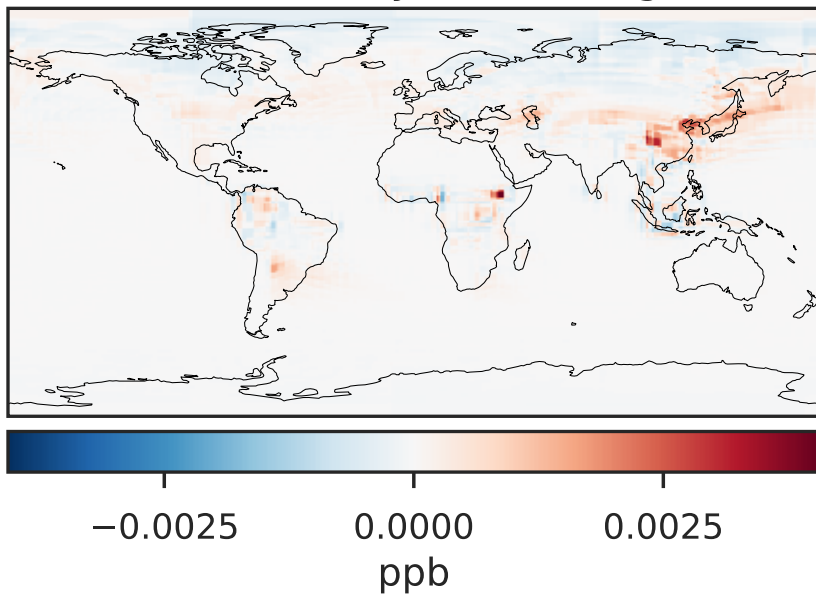
GCC\_14.2.0 (Ref)  
4.0x5.0



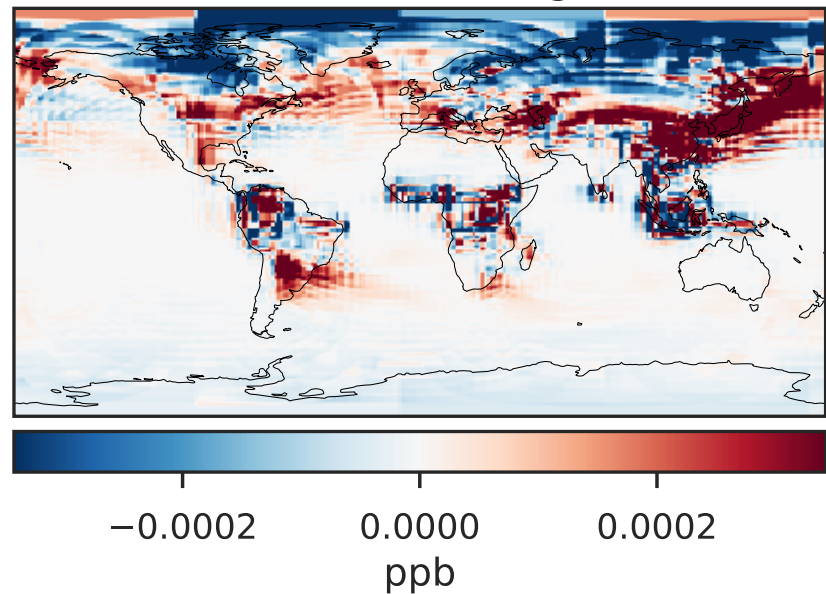
GCHP\_14.2.0 (Dev)  
c24



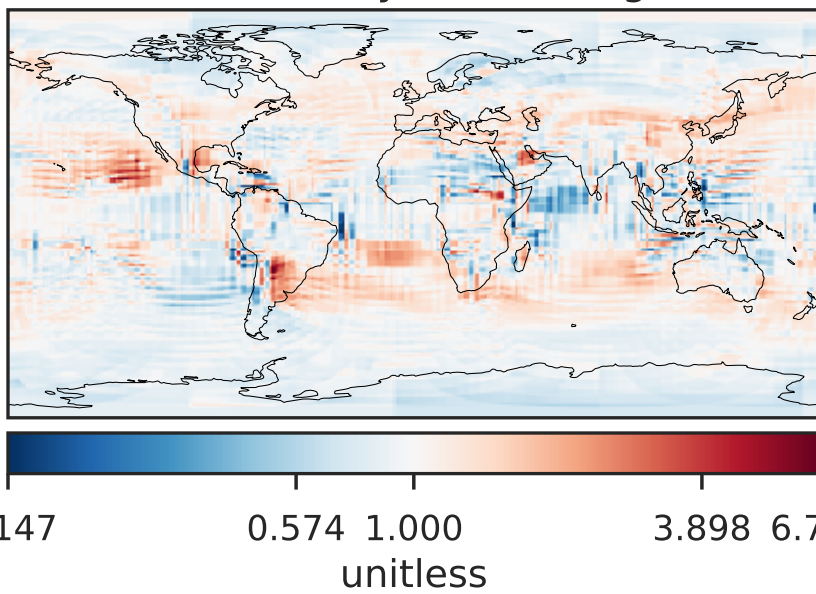
Difference (1x1.25)  
Dev - Ref, Dynamic Range



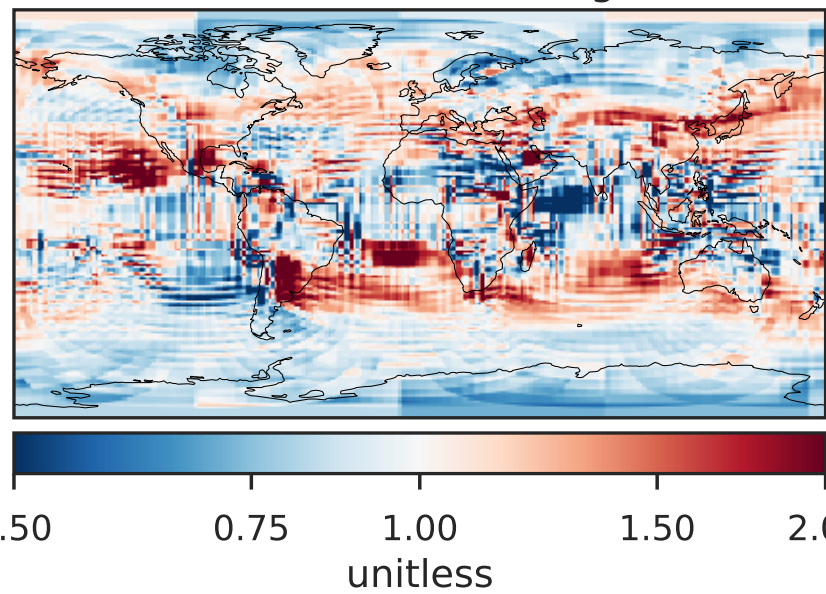
Difference (1x1.25)  
Dev - Ref, Restricted Range [5%,95%]



Ratio (1x1.25)  
Dev/Ref, Dynamic Range

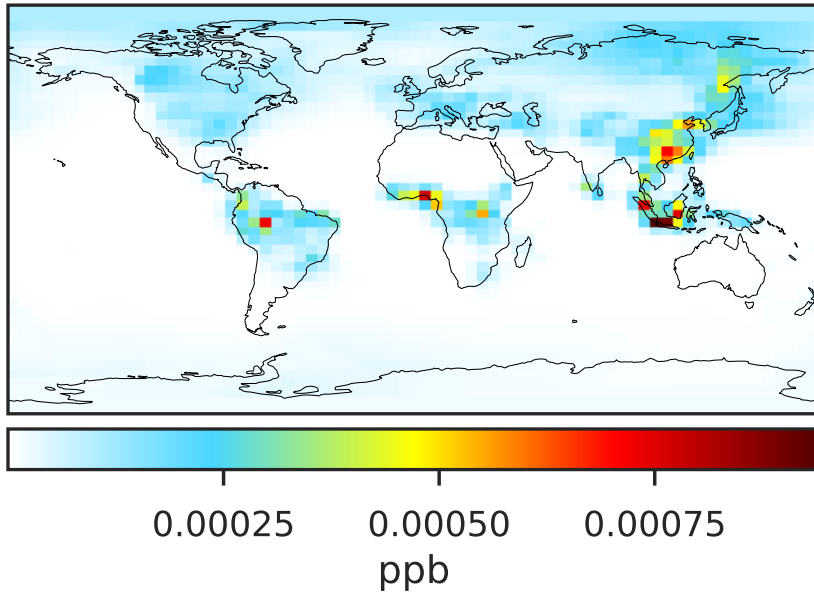


Ratio (1x1.25)  
Dev/Ref, Fixed Range

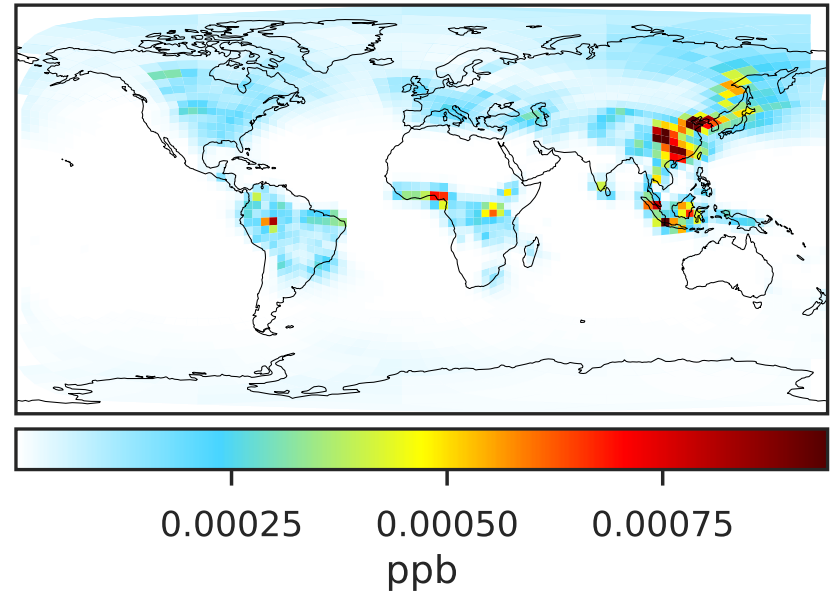


# SpeciesConcVV\_XYLE (Apr2019)

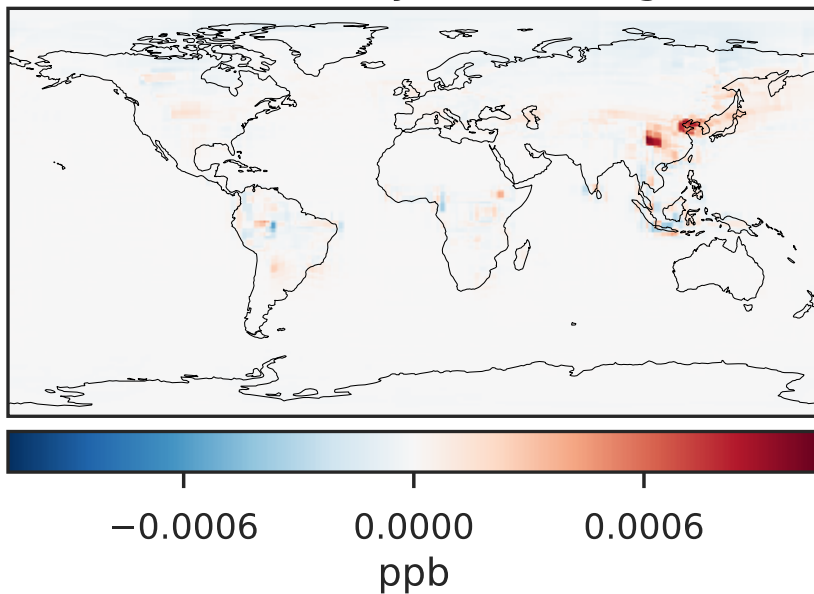
GCC\_14.2.0 (Ref)  
4.0x5.0



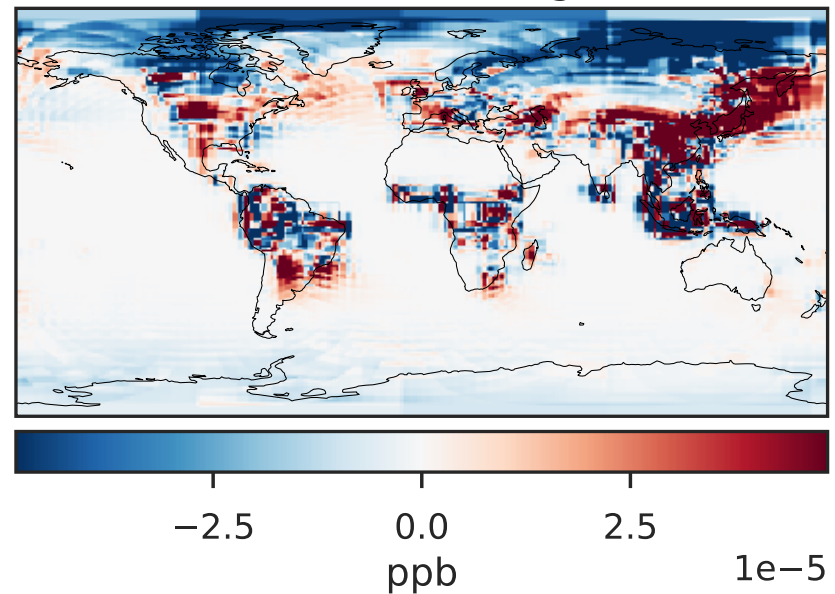
GCHP\_14.2.0 (Dev)  
c24



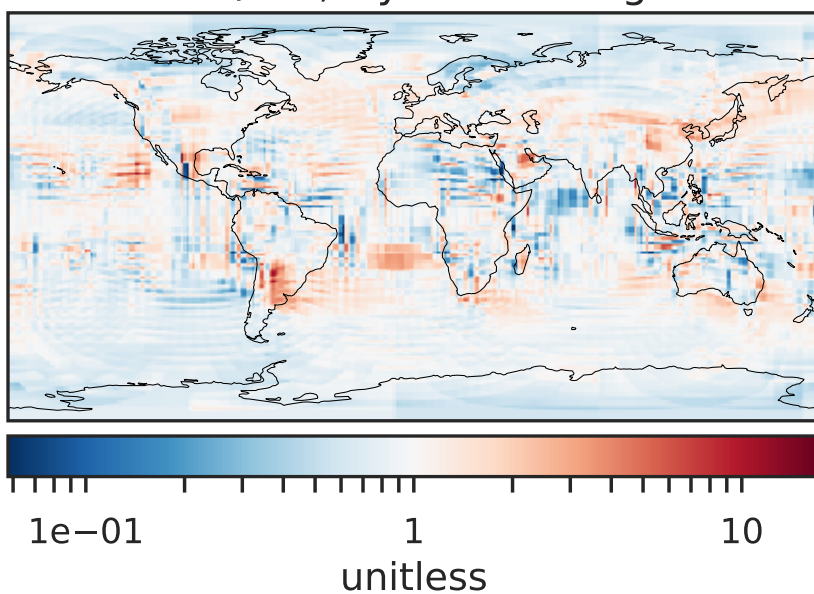
Difference (1x1.25)  
Dev - Ref, Dynamic Range



Difference (1x1.25)  
Dev - Ref, Restricted Range [5%,95%]



Ratio (1x1.25)  
Dev/Ref, Dynamic Range



Ratio (1x1.25)  
Dev/Ref, Fixed Range

