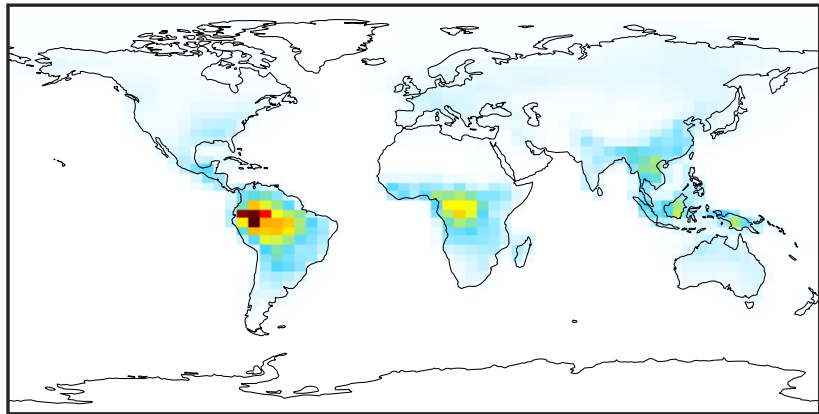


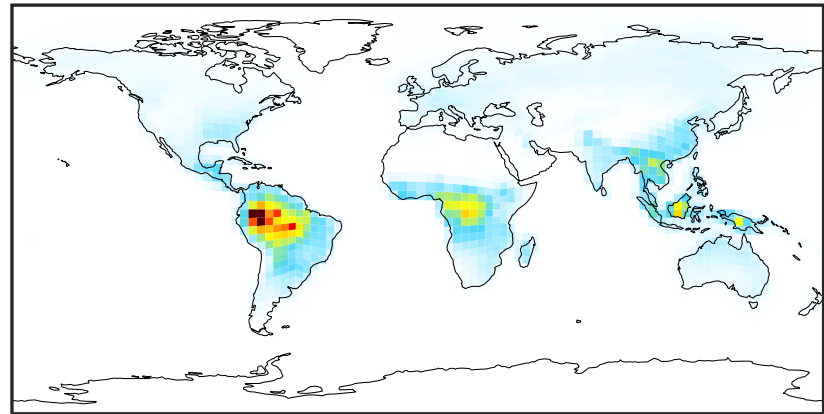
SpeciesConcVW_EOH (Apr2019)

GCC_14.2.0 (Ref)
4.0x5.0



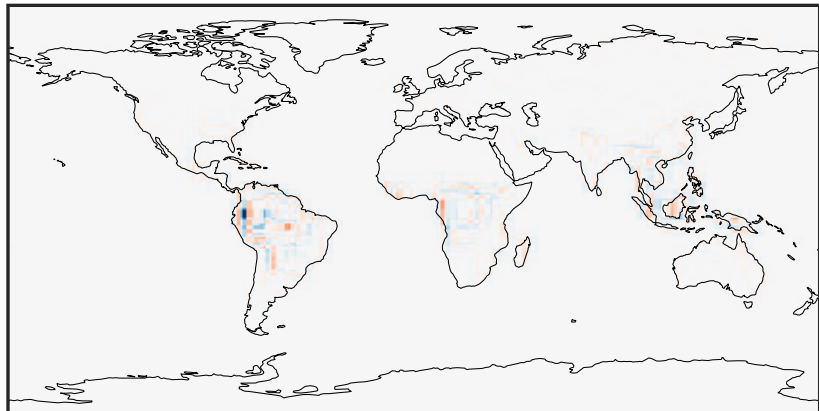
0.000 0.718 1.437 2.155 2.874
ppb

GCHP_14.2.0 (Dev)
c24



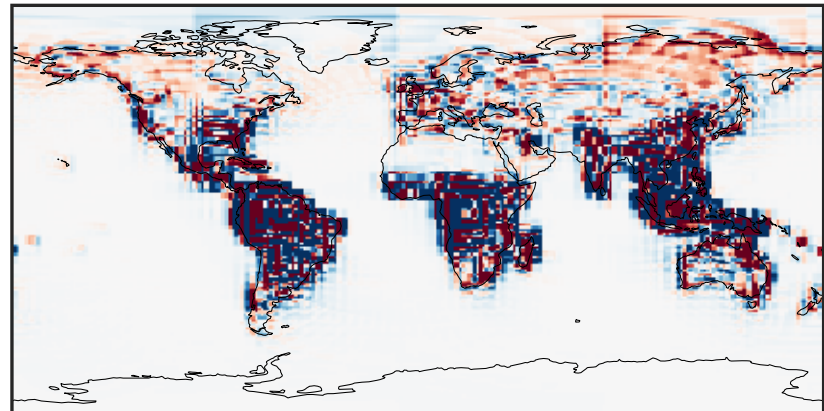
0.000 0.718 1.437 2.155 2.874
ppb

Difference (1x1.25)
Dev - Ref, Dynamic Range



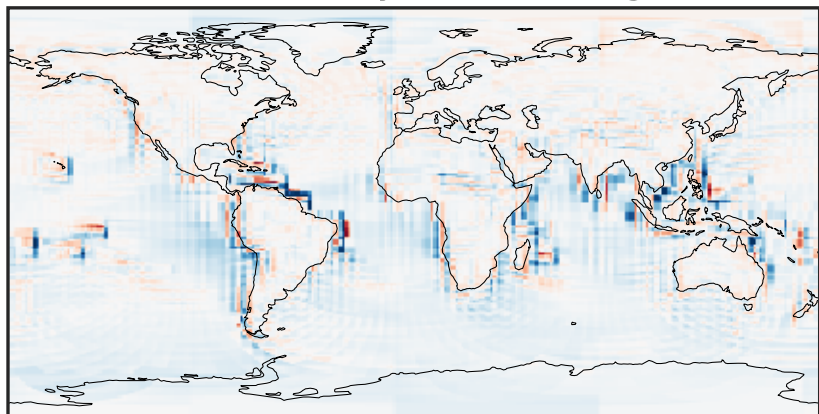
-1.527 -0.764 0.000 0.764 1.527
ppb

Difference (1x1.25)
Dev - Ref, Restricted Range [5%,95%]



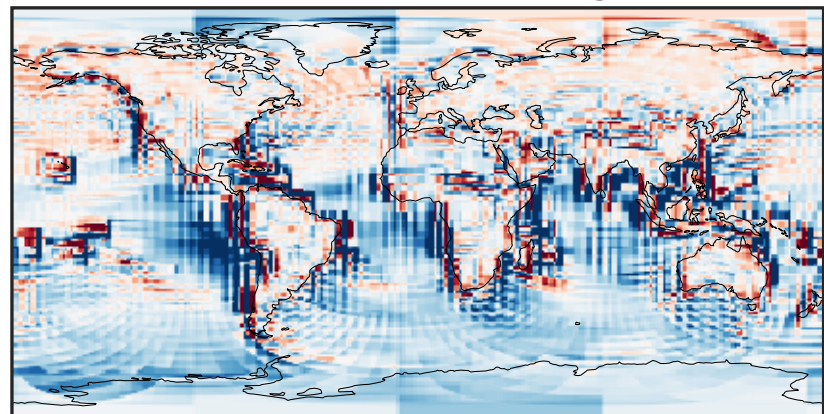
-0.015 0.000 0.015
ppb

Ratio (1x1.25)
Dev/Ref, Dynamic Range



1e-01 1 10
unitless

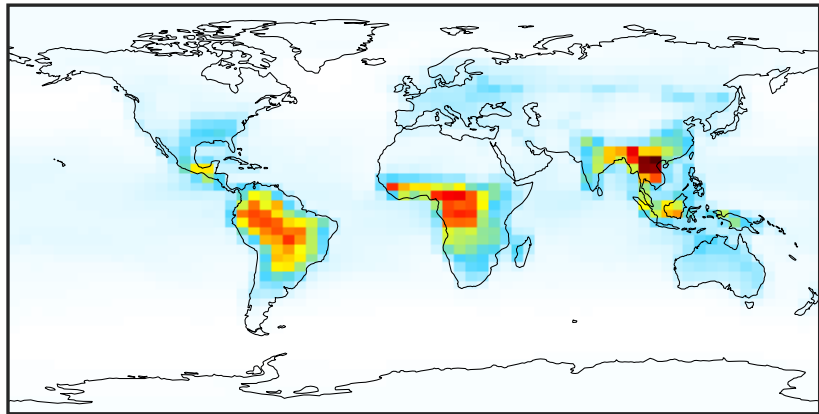
Ratio (1x1.25)
Dev/Ref, Fixed Range



0.50 0.75 1.00 1.50 2.00
unitless

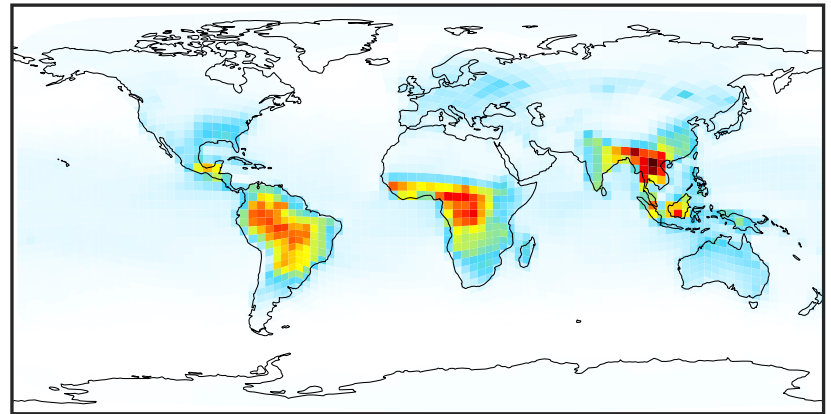
SpeciesConcVV_MOH (Apr2019)

GCC_14.2.0 (Ref)
4.0x5.0



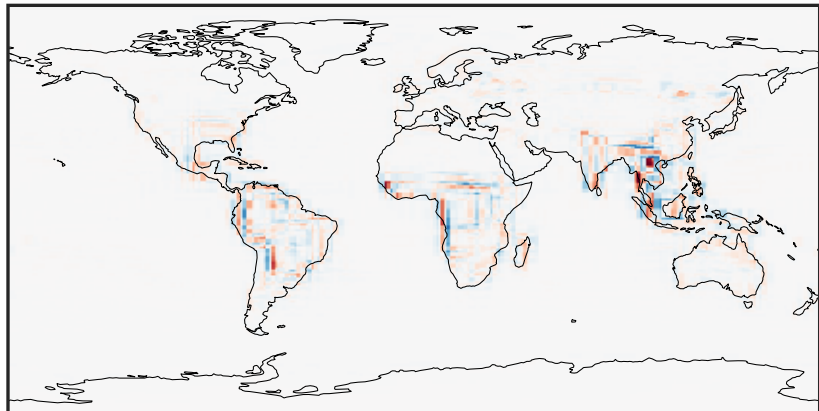
0.028 2.147 4.294 6.441 8.617
ppb

GCHP_14.2.0 (Dev)
c24



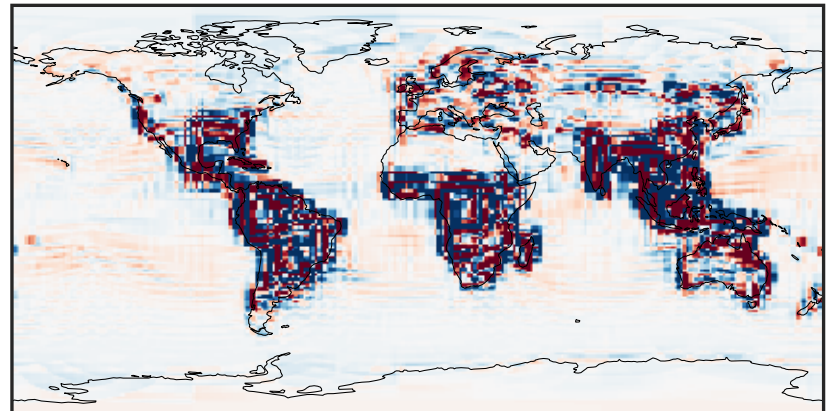
0.028 2.147 4.294 6.441 8.617
ppb

Difference (1x1.25)
Dev - Ref, Dynamic Range



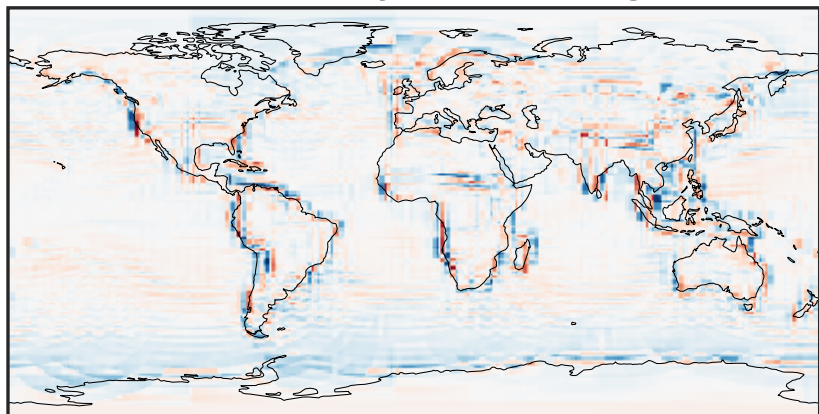
-3.182 -1.591 0.000 1.591 3.182
ppb

Difference (1x1.25)
Dev - Ref, Restricted Range [5%,95%]



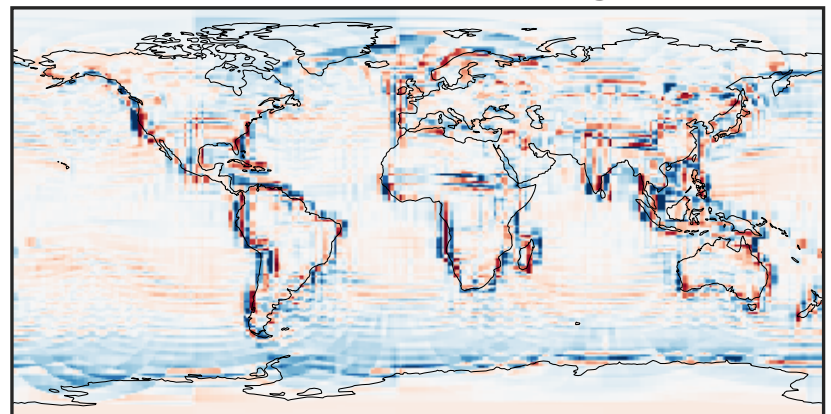
-0.154 -0.077 0.000 0.077 0.154
ppb

Ratio (1x1.25)
Dev/Ref, Dynamic Range



0.296 0.648 1.000 2.187 3.374
unitless

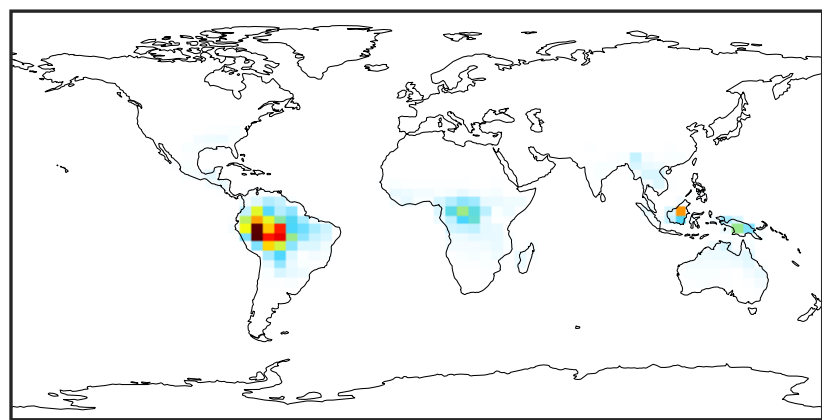
Ratio (1x1.25)
Dev/Ref, Fixed Range



0.50 0.75 1.00 1.50 2.00
unitless

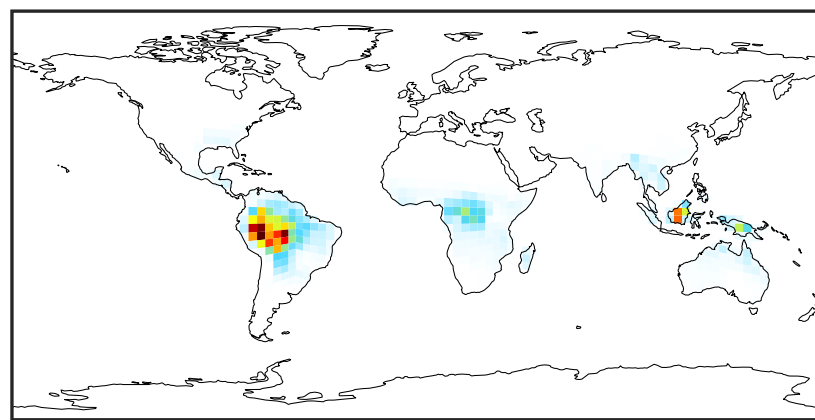
SpeciesConcVV_ISOP (Apr2019)

GCC_14.2.0 (Ref)
4.0x5.0



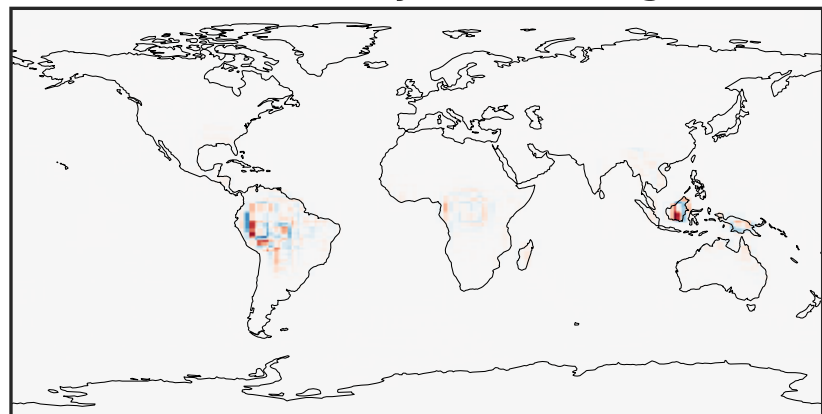
0.00 3.16 6.31 9.47 12.63
ppb

GCHP_14.2.0 (Dev)
c24



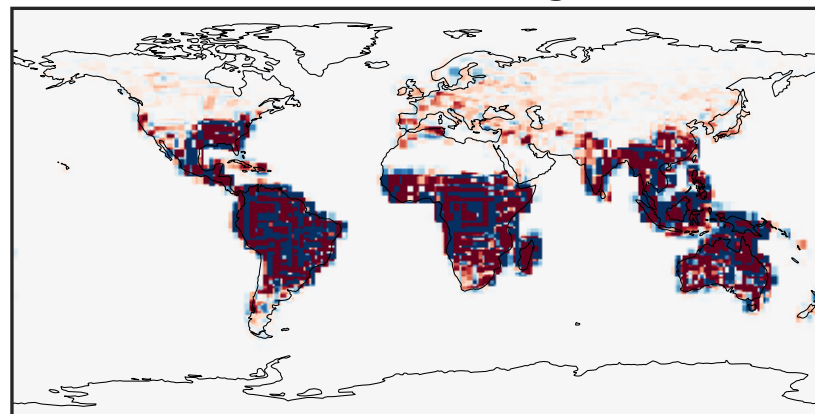
0.00 3.16 6.31 9.47 12.63
ppb

Difference (1x1.25)
Dev - Ref, Dynamic Range



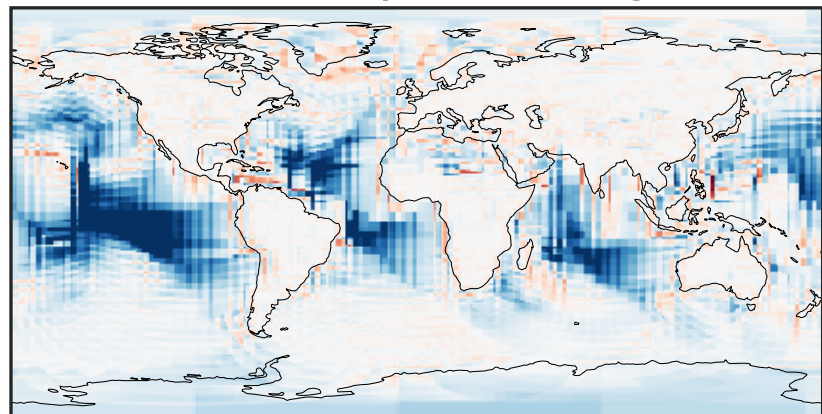
-6.13 -3.07 0.00 3.07 6.13
ppb

Difference (1x1.25)
Dev - Ref, Restricted Range [5%,95%]



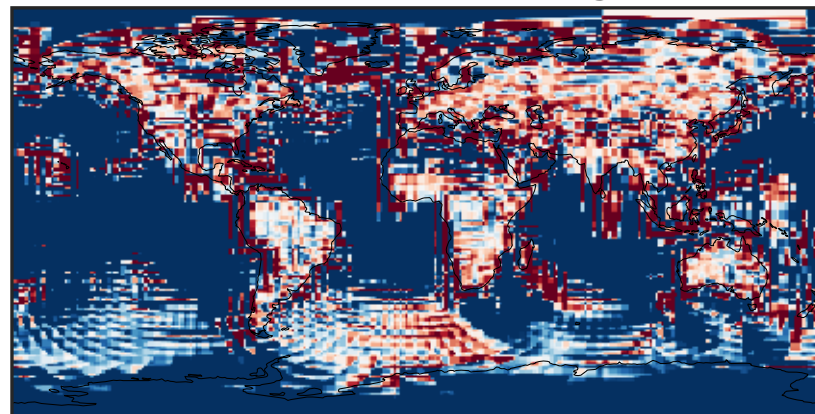
-0.008 0.000 0.008
ppb

Ratio (1x1.25)
Dev/Ref, Dynamic Range



unitless

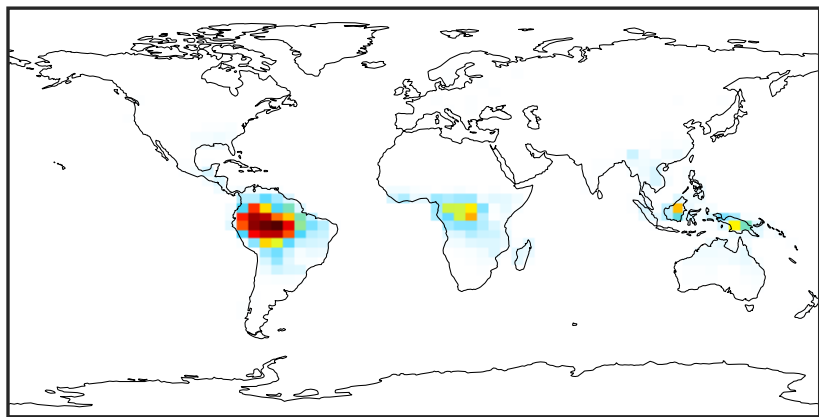
Ratio (1x1.25)
Dev/Ref, Fixed Range



0.50 0.75 1.00 1.50 2.00
unitless

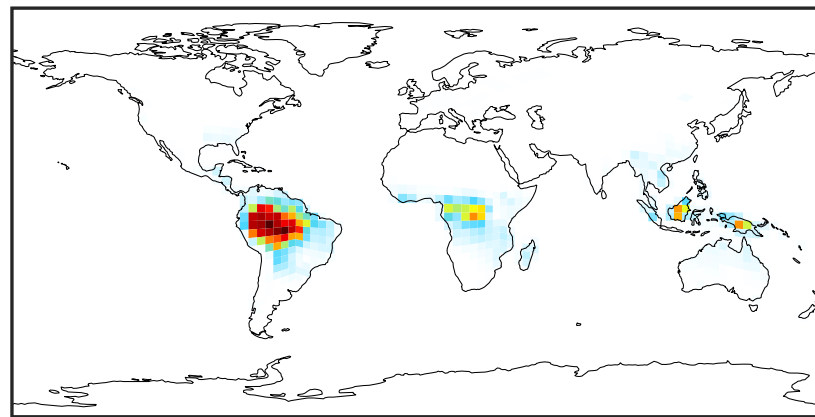
SpeciesConcVV_MTPA (Apr2019)

GCC_14.2.0 (Ref)
4.0x5.0



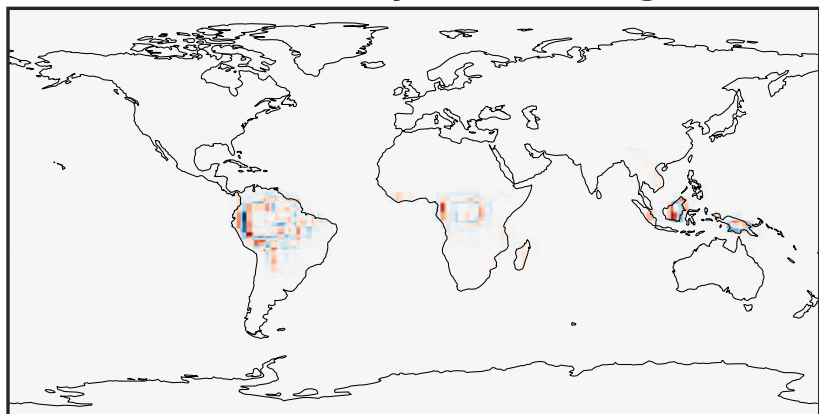
0.000 0.566 1.132 1.698 2.264
ppb

GCHP_14.2.0 (Dev)
c24



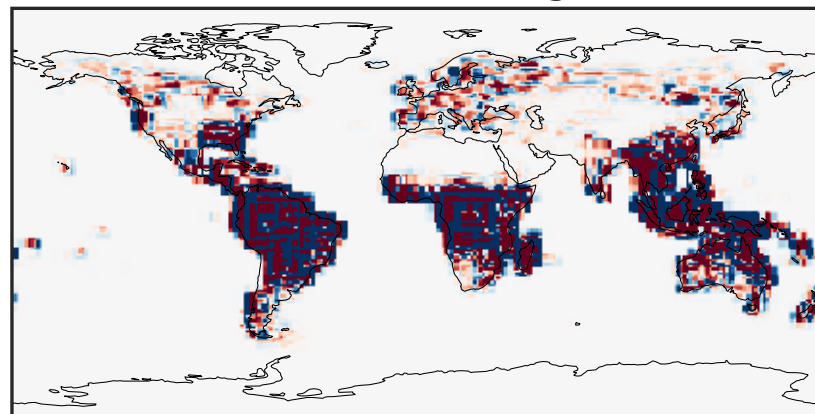
0.000 0.566 1.132 1.698 2.264
ppb

Difference (1x1.25)
Dev - Ref, Dynamic Range



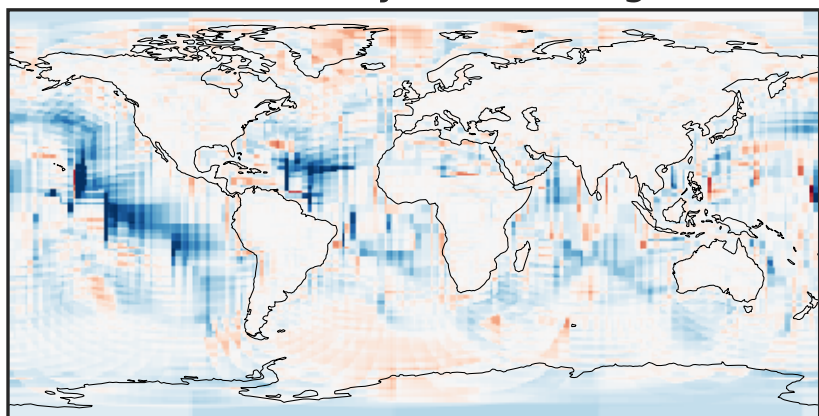
-0.965 -0.482 0.000 0.482 0.965
ppb

Difference (1x1.25)
Dev - Ref, Restricted Range [5%,95%]



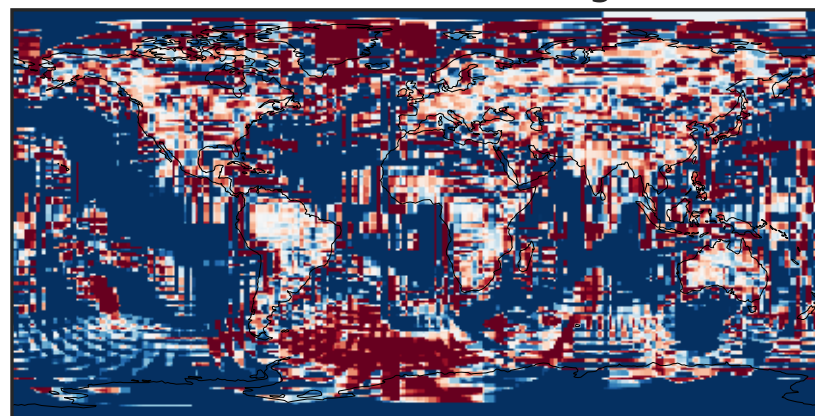
-0.002 0.000 0.002
ppb

Ratio (1x1.25)
Dev/Ref, Dynamic Range



unitless

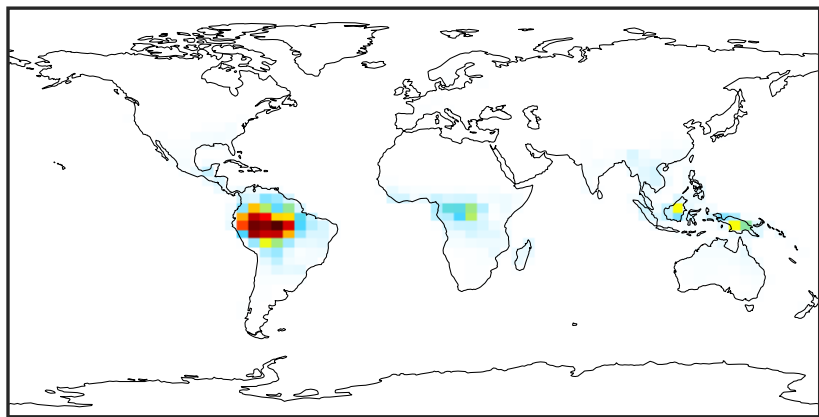
Ratio (1x1.25)
Dev/Ref, Fixed Range



0.50 0.75 1.00 1.50 2.00
unitless

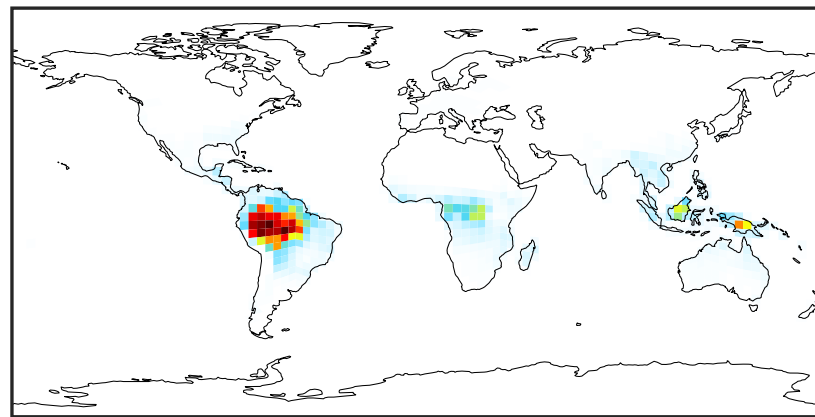
SpeciesConcVV_MTPO (Apr2019)

GCC_14.2.0 (Ref)
4.0x5.0



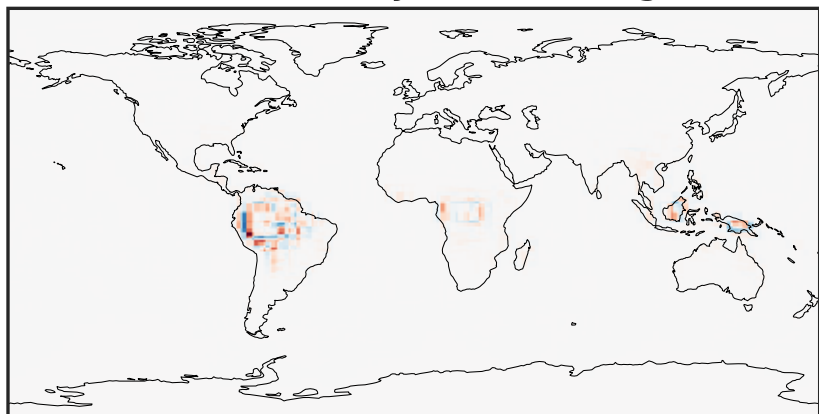
0.0000 0.0361 0.0721 0.1082 0.1442
ppb

GCHP_14.2.0 (Dev)
c24



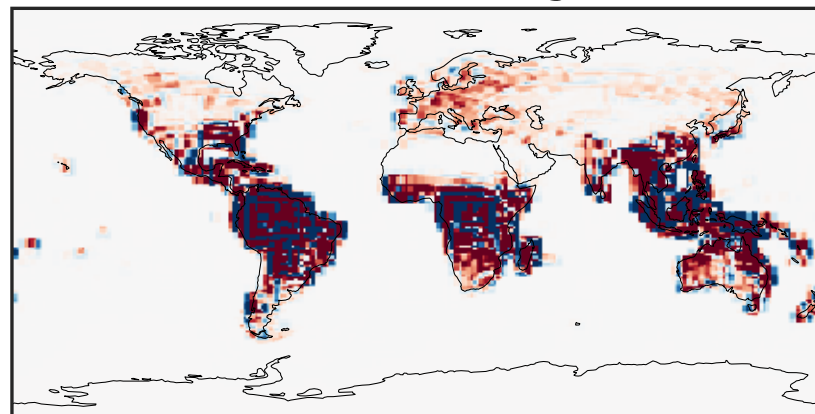
0.0000 0.0361 0.0721 0.1082 0.1442
ppb

Difference (1x1.25)
Dev - Ref, Dynamic Range



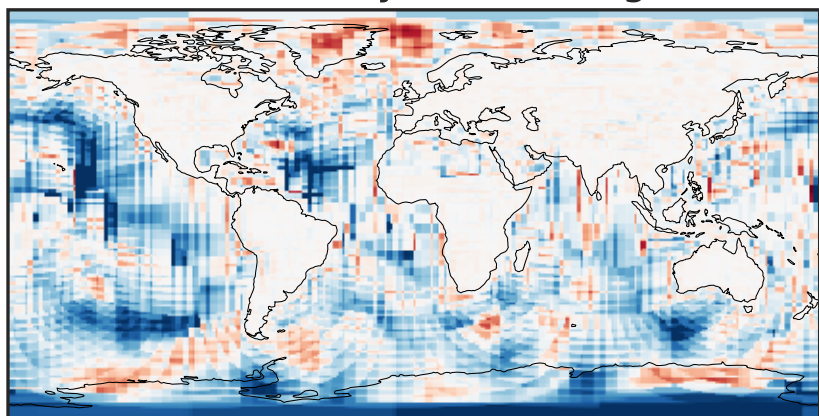
-0.0726 -0.0363 0.0000 0.0363 0.0726
ppb

Difference (1x1.25)
Dev - Ref, Restricted Range [5%,95%]



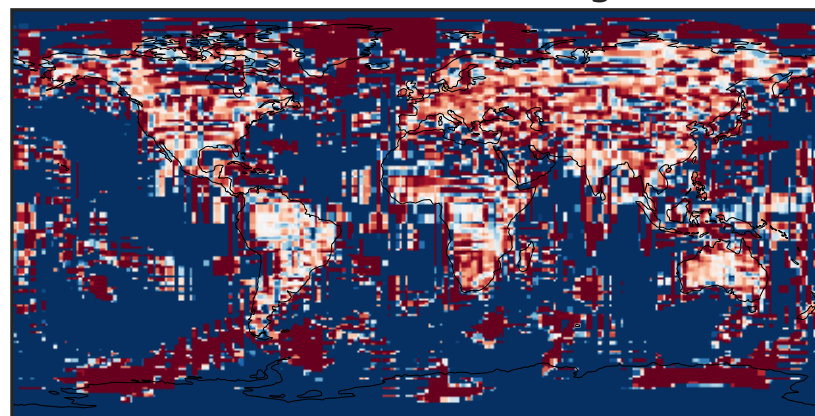
-0.00025 0.00000 0.00025
ppb

Ratio (1x1.25)
Dev/Ref, Dynamic Range



1e-05 1e-02 10 1e4 1e+07
unitless

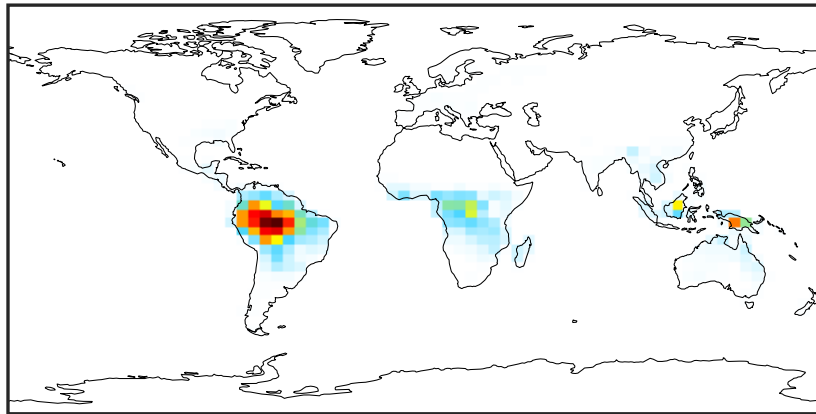
Ratio (1x1.25)
Dev/Ref, Fixed Range



0.50 0.75 1.00 1.50 2.00
unitless

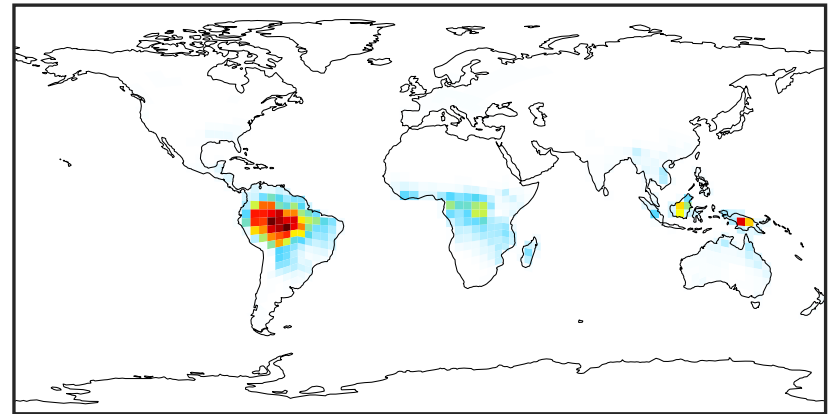
SpeciesConcVV_LIMO (Apr2019)

GCC_14.2.0 (Ref)
4.0x5.0



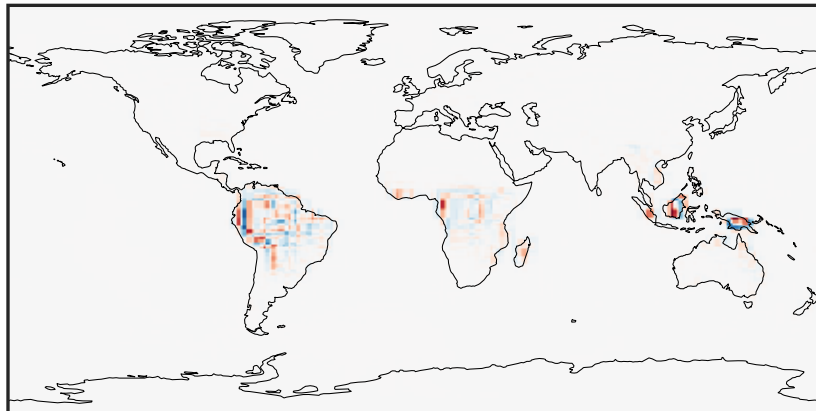
0.0000 0.0318 0.0636 0.0954 0.1272
ppb

GCHP_14.2.0 (Dev)
c24



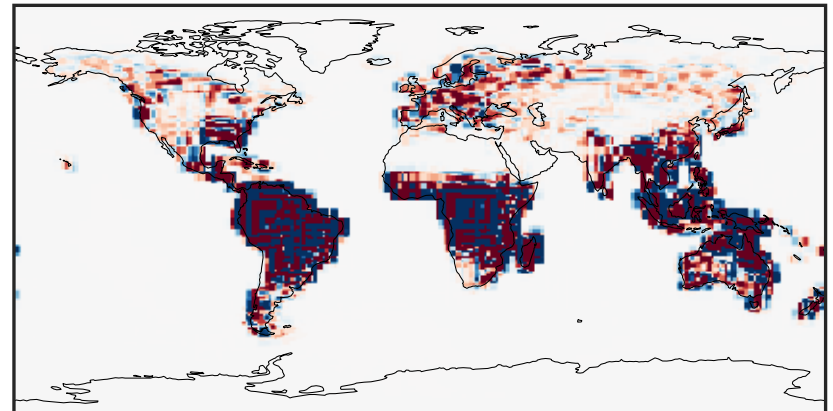
0.0000 0.0318 0.0636 0.0954 0.1272
ppb

Difference (1x1.25)
Dev - Ref, Dynamic Range



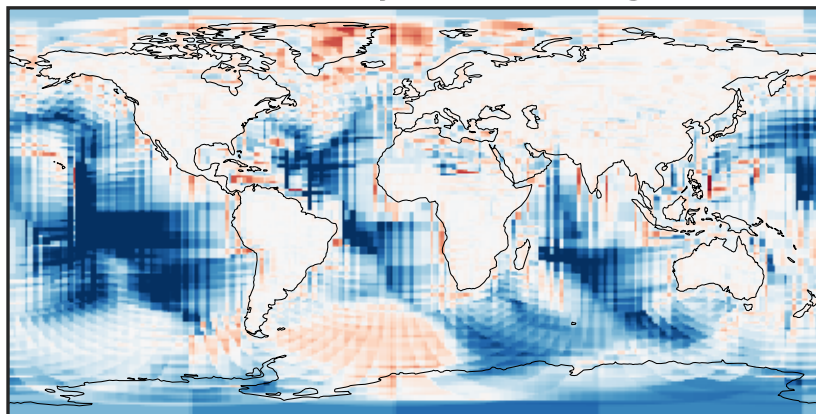
-0.025 0.000 0.025
ppb

Difference (1x1.25)
Dev - Ref, Restricted Range [5%,95%]



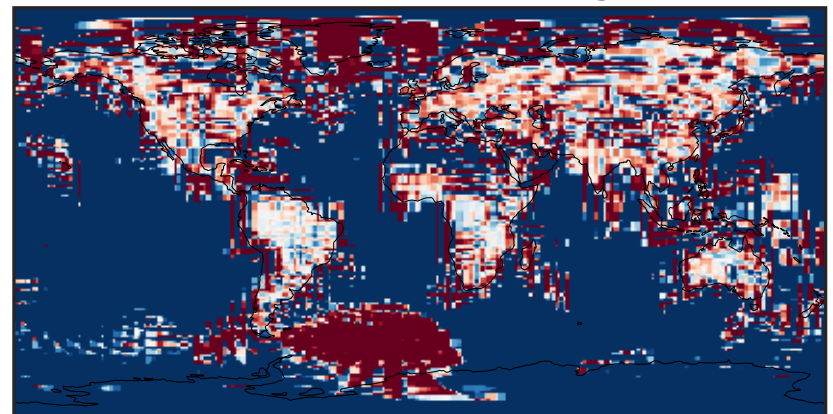
-0.00015 0.00000 0.00015
ppb

Ratio (1x1.25)
Dev/Ref, Dynamic Range



unitless

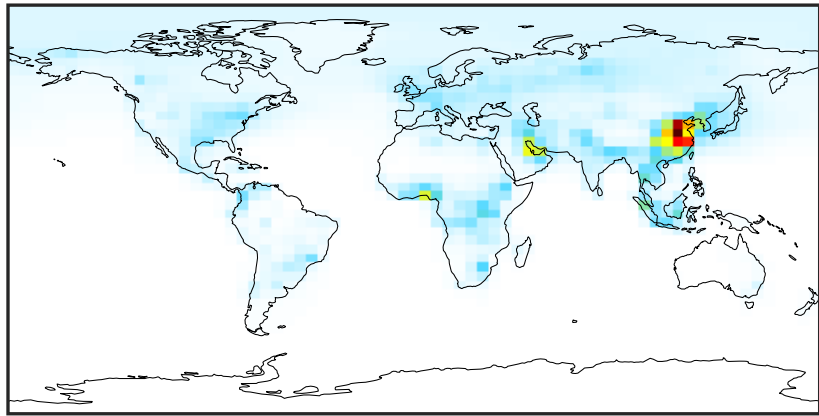
Ratio (1x1.25)
Dev/Ref, Fixed Range



0.50 0.75 1.00 1.50 2.00
unitless

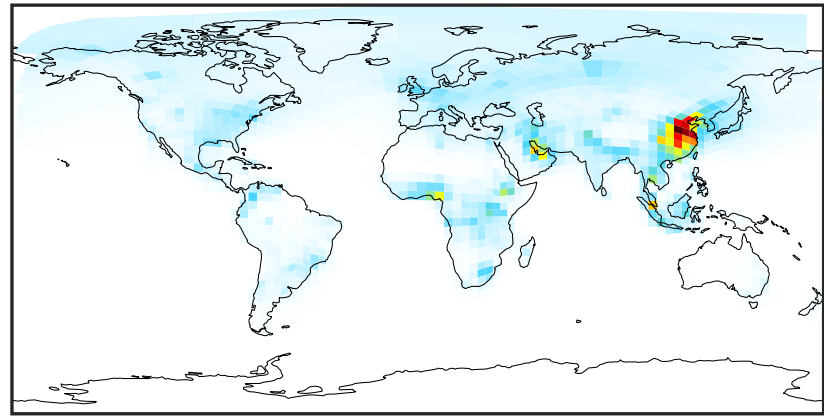
SpeciesConcVV_ALK4 (Apr2019)

GCC_14.2.0 (Ref)
4.0x5.0



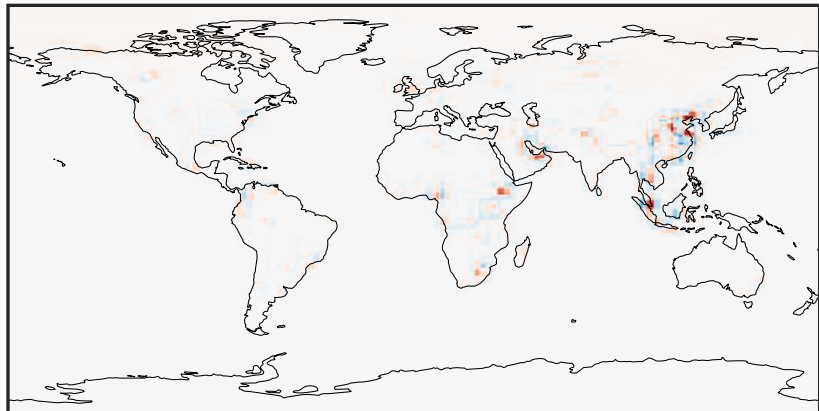
0.000 2.176 4.353 6.529 8.706
ppb

GCHP_14.2.0 (Dev)
c24



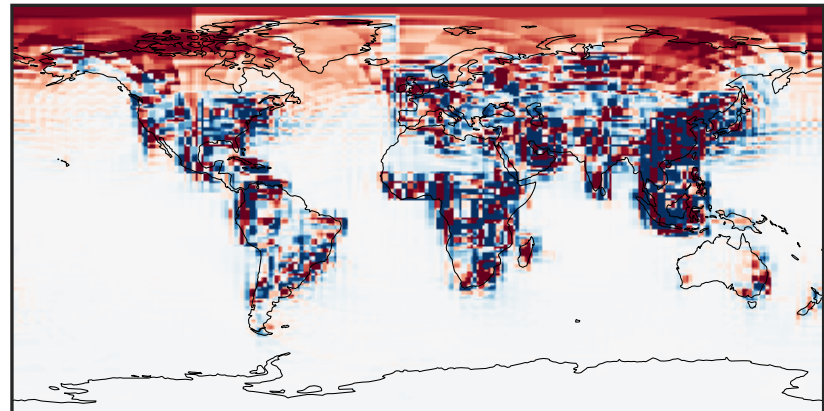
0.000 2.176 4.353 6.529 8.706
ppb

Difference (1x1.25)
Dev - Ref, Dynamic Range



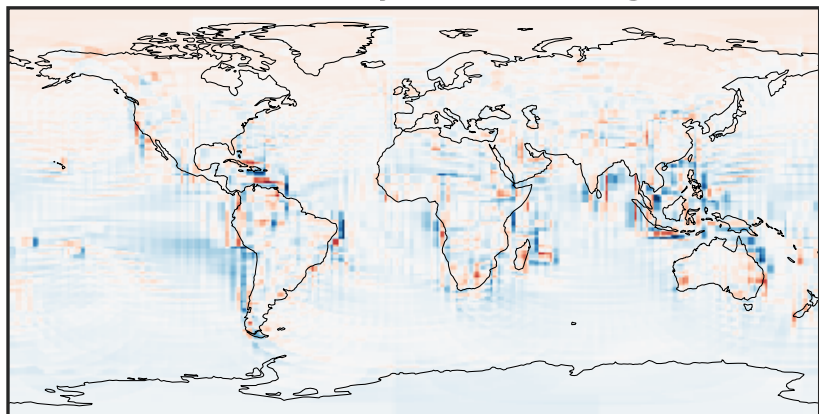
-3.937 -1.968 0.000 1.968 3.937
ppb

Difference (1x1.25)
Dev - Ref, Restricted Range [5%,95%]



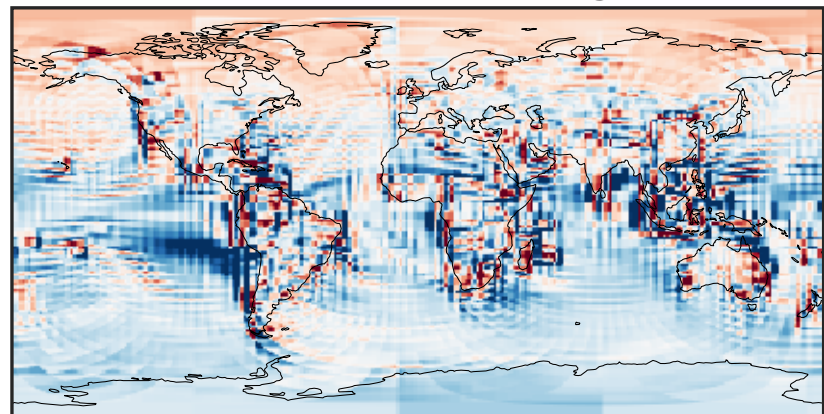
-0.1056 -0.0528 0.0000 0.0528 0.1056
ppb

Ratio (1x1.25)
Dev/Ref, Dynamic Range



1e-01 1 10
unitless

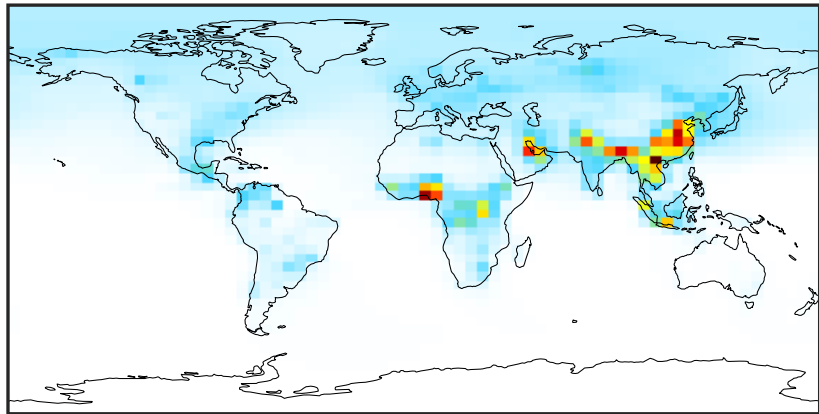
Ratio (1x1.25)
Dev/Ref, Fixed Range



0.50 0.75 1.00 1.50 2.00
unitless

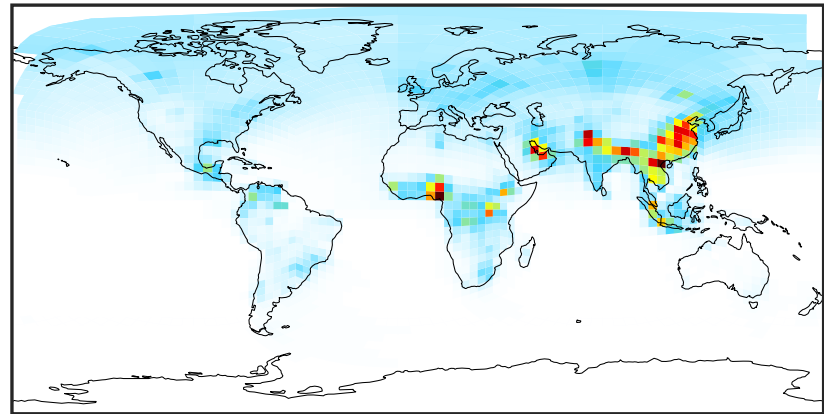
SpeciesConcVV_BENZ (Apr2019)

GCC_14.2.0 (Ref)
4.0x5.0



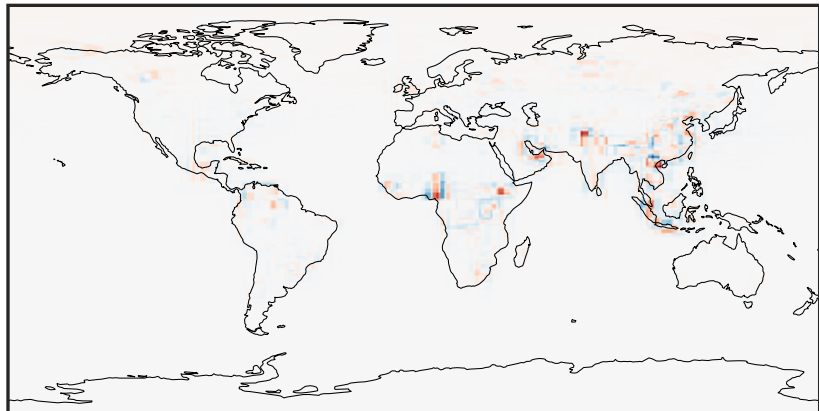
0.0002 0.1562 0.3123 0.4685 0.6249
ppb

GCHP_14.2.0 (Dev)
c24



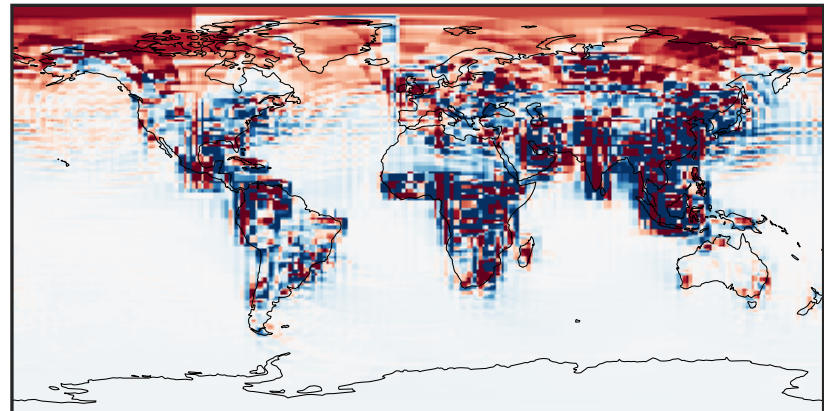
0.0002 0.1562 0.3123 0.4685 0.6249
ppb

Difference (1x1.25)
Dev - Ref, Dynamic Range



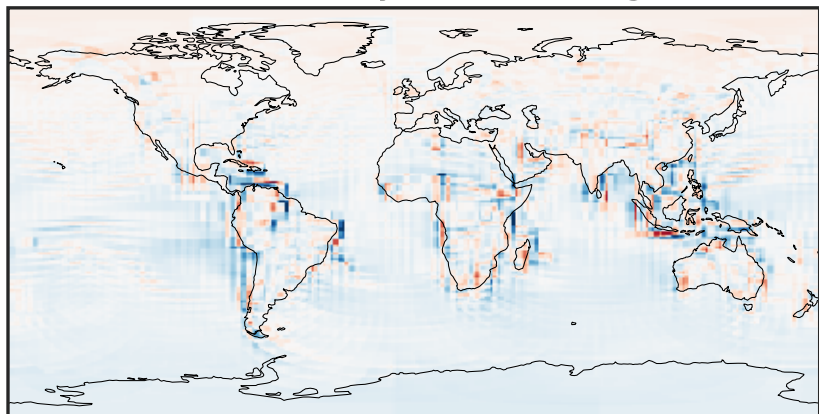
-0.376 -0.188 0.000 0.188 0.376
ppb

Difference (1x1.25)
Dev - Ref, Restricted Range [5%,95%]



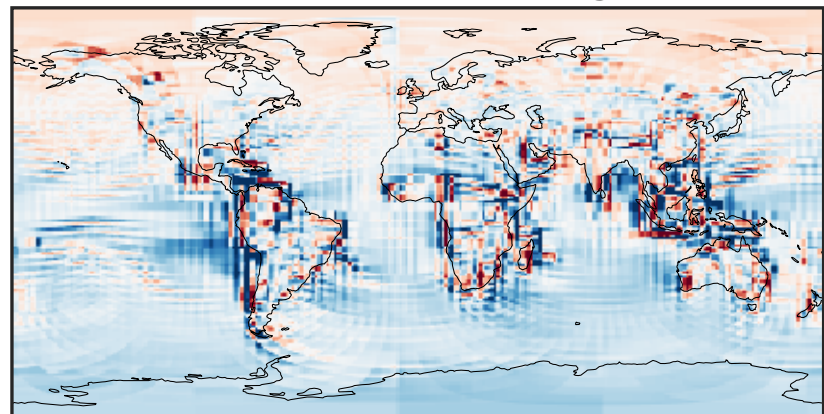
-0.005 0.000 0.005
ppb

Ratio (1x1.25)
Dev/Ref, Dynamic Range



0.141 0.571 1.000 4.035 7.070
unitless

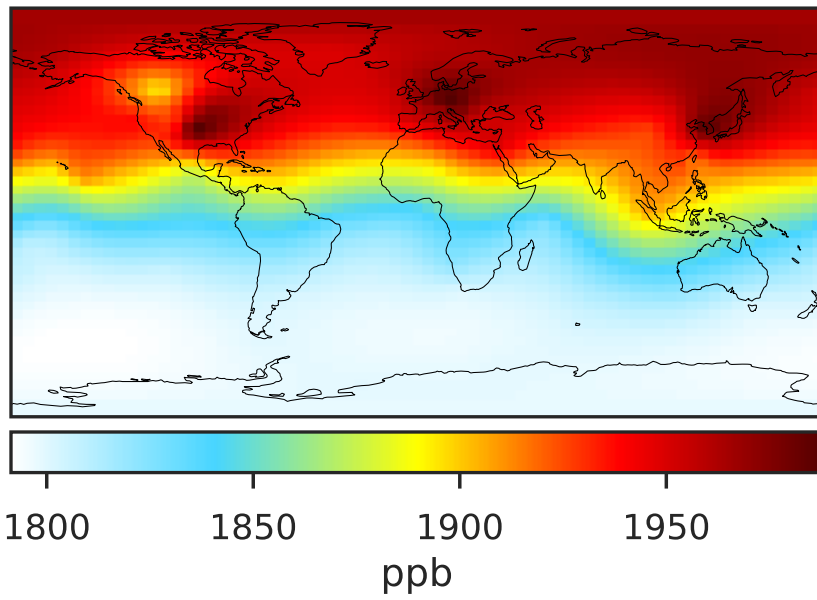
Ratio (1x1.25)
Dev/Ref, Fixed Range



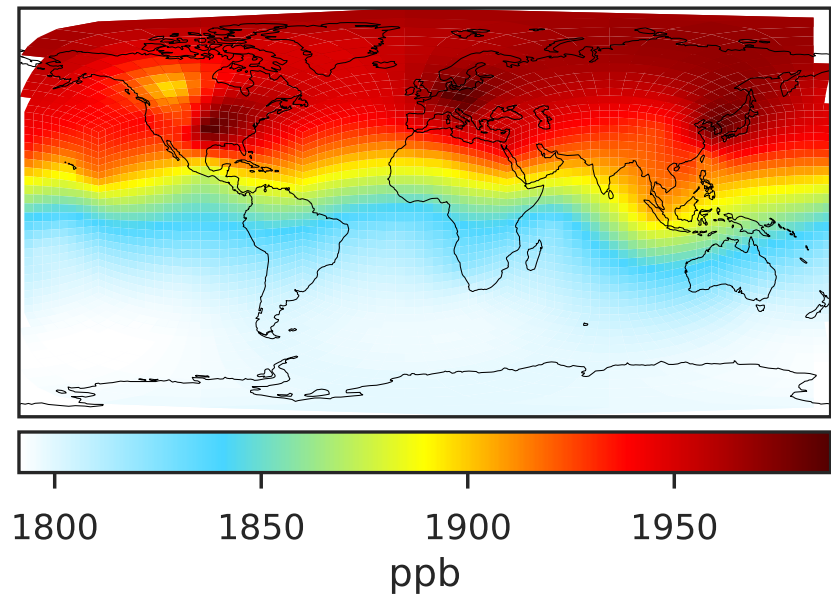
0.50 0.75 1.00 1.50 2.00
unitless

SpeciesConcVV_CH4 (Apr2019)

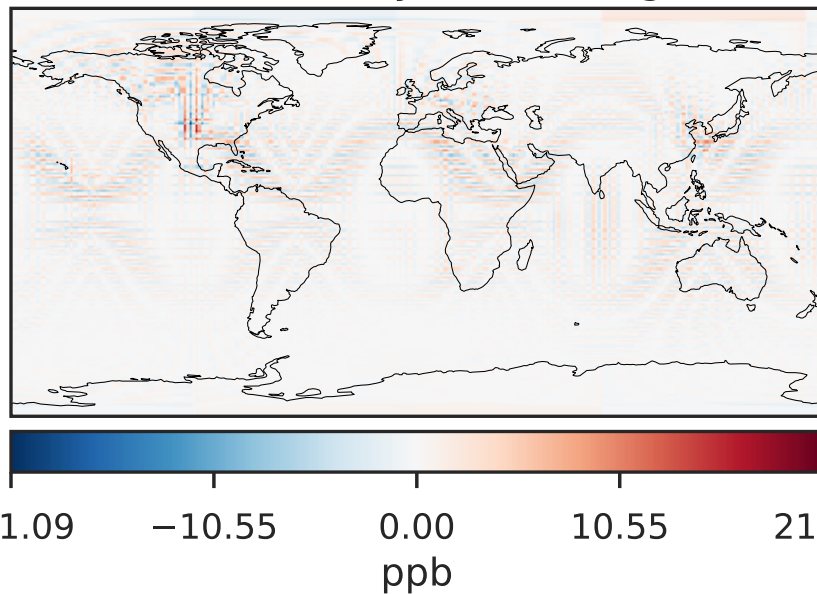
GCC_14.2.0 (Ref)
4.0x5.0



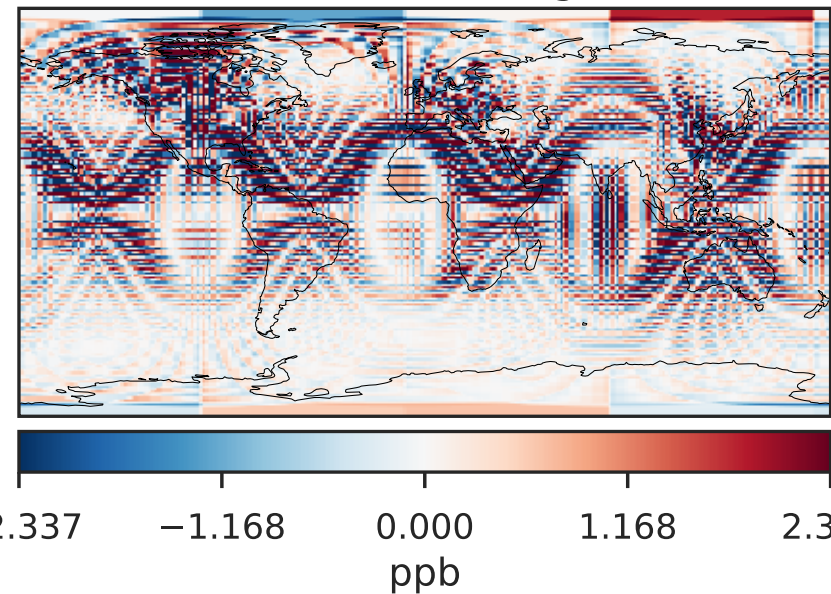
GCHP_14.2.0 (Dev)
c24



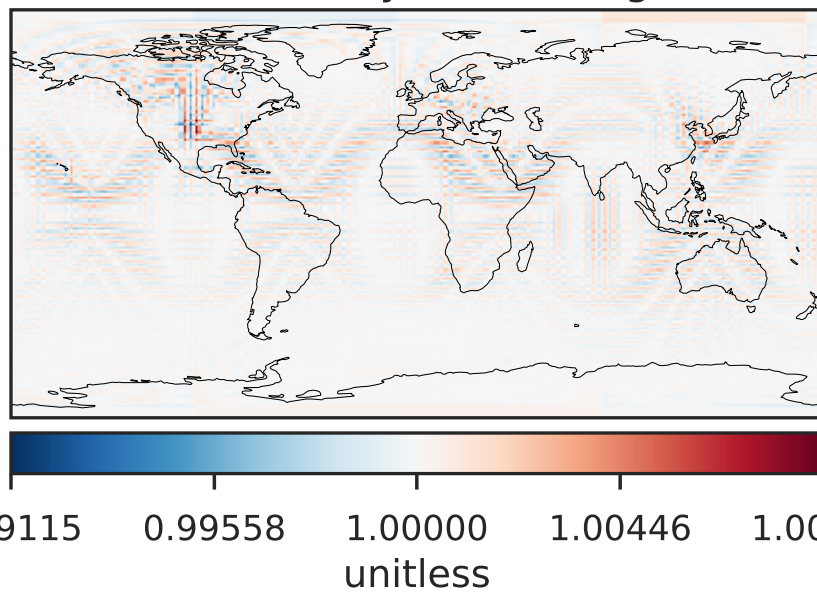
Difference (1x1.25)
Dev - Ref, Dynamic Range



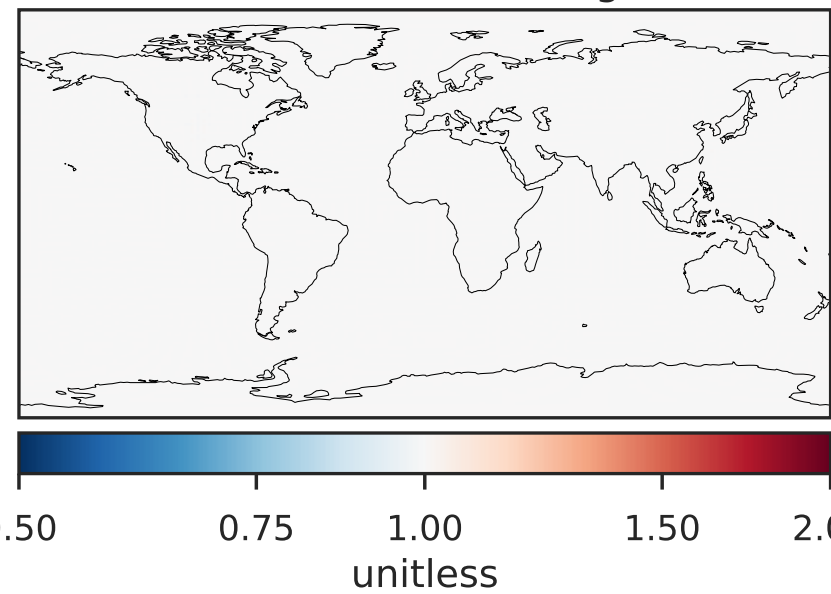
Difference (1x1.25)
Dev - Ref, Restricted Range [5%,95%]



Ratio (1x1.25)
Dev/Ref, Dynamic Range

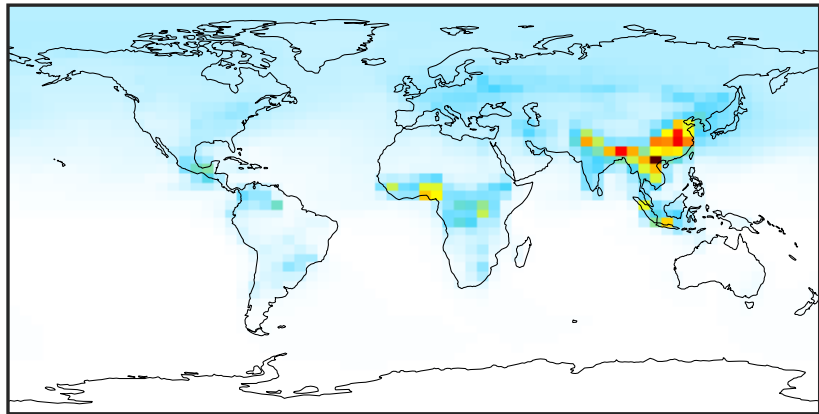


Ratio (1x1.25)
Dev/Ref, Fixed Range



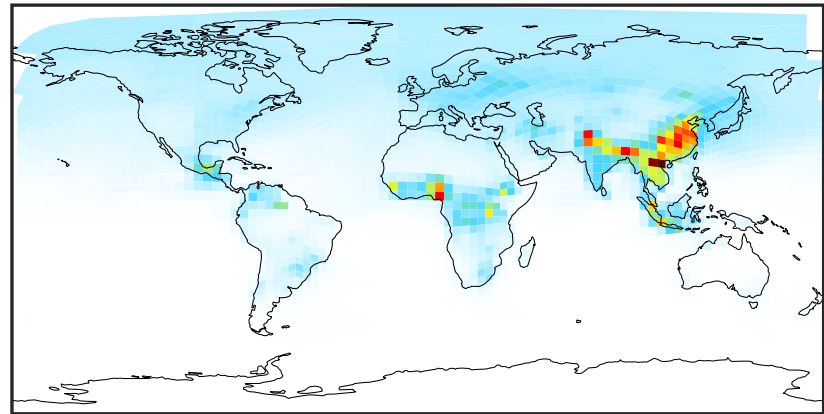
SpeciesConcVV_C2H2 (Apr2019)

GCC_14.2.0 (Ref)
4.0x5.0



0.003 0.378 0.755 1.133 1.513
ppb

GCHP_14.2.0 (Dev)
c24



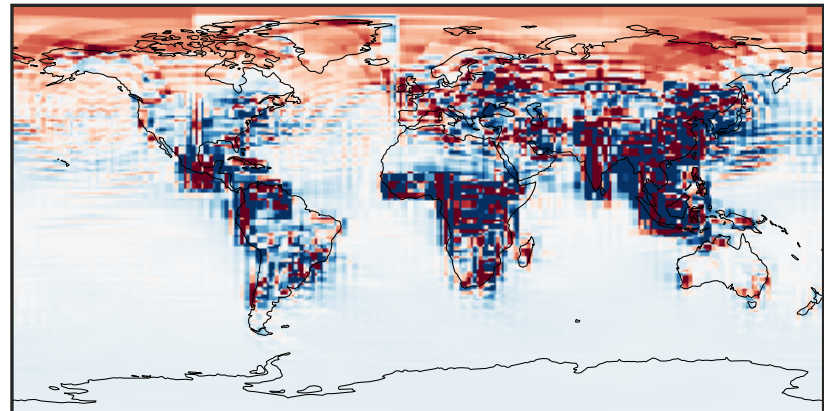
0.003 0.378 0.755 1.133 1.513
ppb

Difference (1x1.25)
Dev - Ref, Dynamic Range



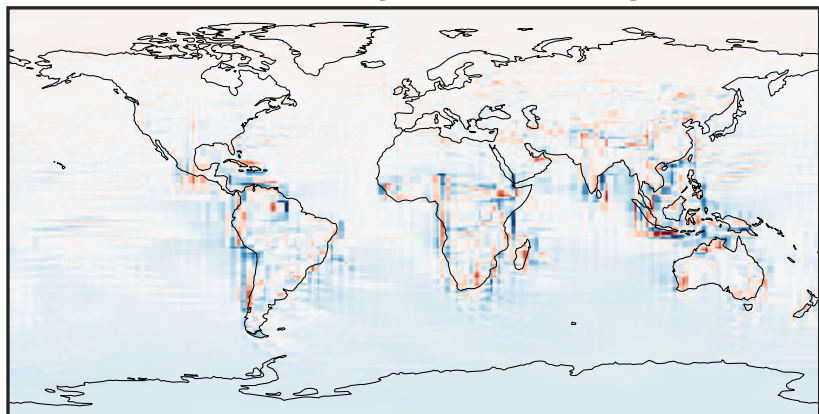
-0.851 -0.425 0.000 0.425 0.851
ppb

Difference (1x1.25)
Dev - Ref, Restricted Range [5%,95%]



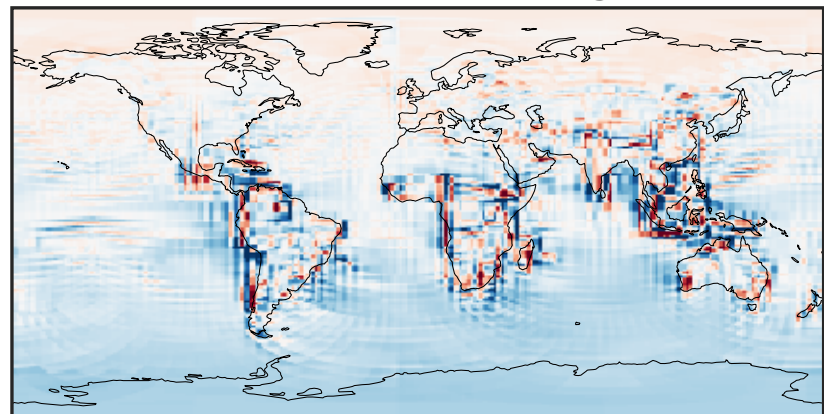
-0.01 0.00 0.01
ppb

Ratio (1x1.25)
Dev/Ref, Dynamic Range



0.223 0.611 1.000 2.746 4.492
unitless

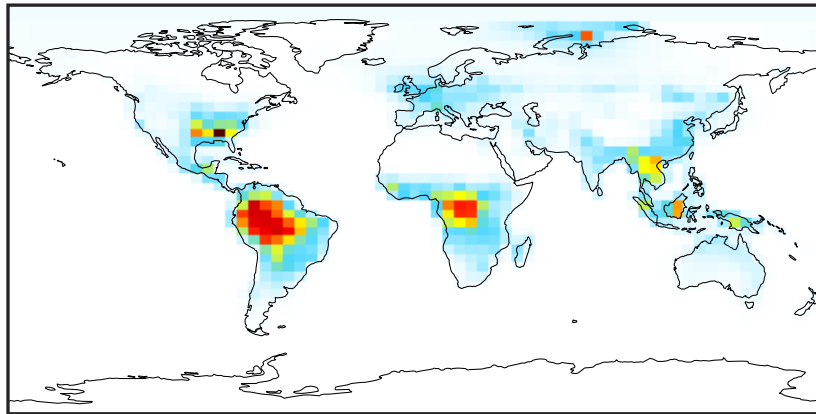
Ratio (1x1.25)
Dev/Ref, Fixed Range



0.50 0.75 1.00 1.50 2.00
unitless

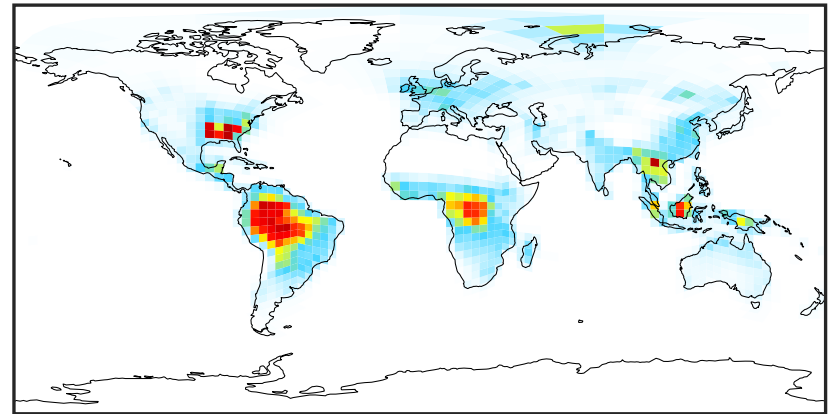
SpeciesConcVV_C2H4 (Apr2019)

GCC_14.2.0 (Ref)
4.0x5.0



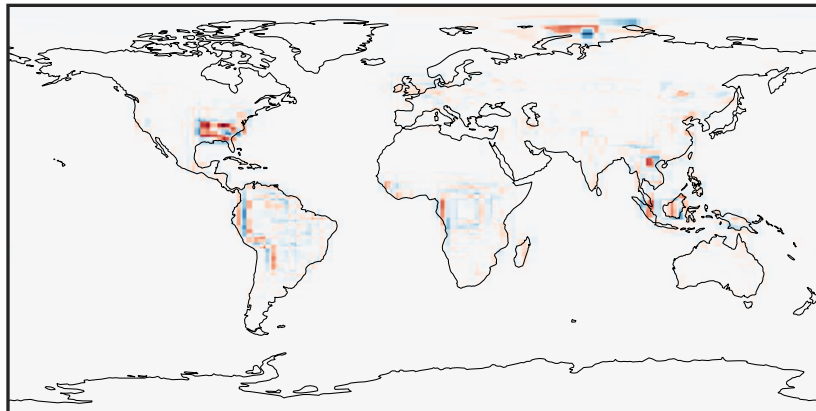
0.000 0.979 1.958 2.936 3.915
ppb

GCHP_14.2.0 (Dev)
c24



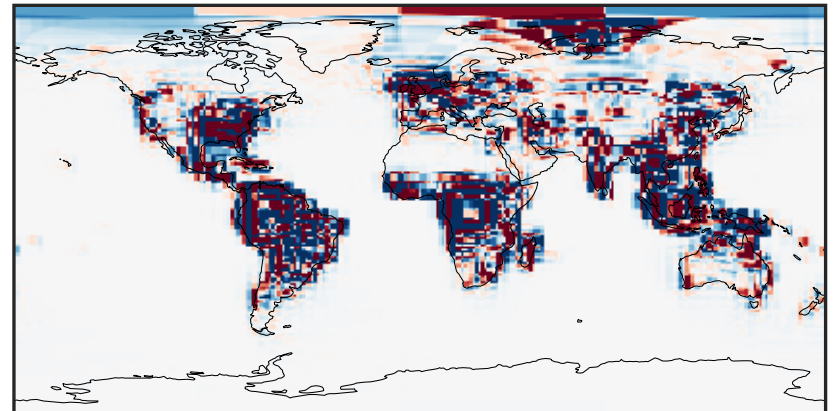
0.000 0.979 1.958 2.936 3.915
ppb

Difference (1x1.25)
Dev - Ref, Dynamic Range



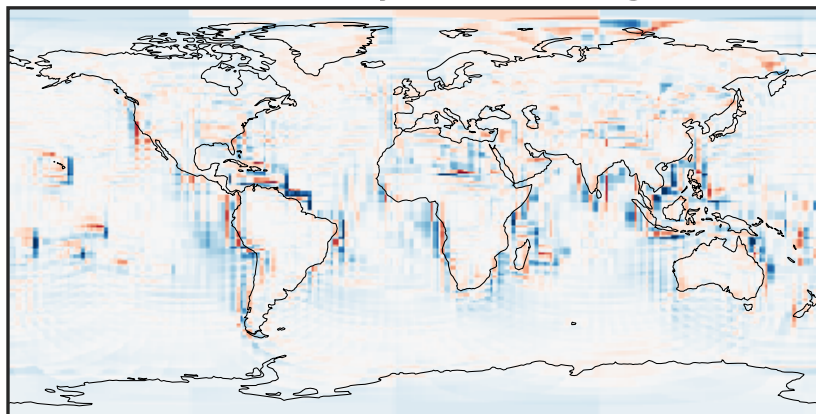
-2.008 -1.004 0.000 1.004 2.008
ppb

Difference (1x1.25)
Dev - Ref, Restricted Range [5%,95%]



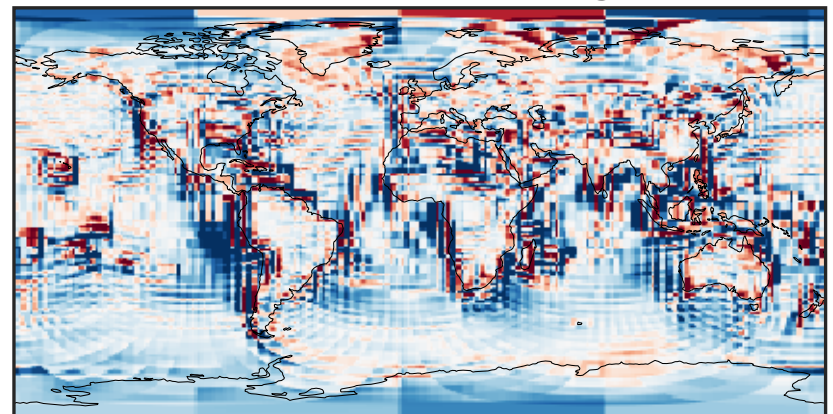
-0.0711 -0.0355 0.0000 0.0355 0.0711
ppb

Ratio (1x1.25)
Dev/Ref, Dynamic Range



1e-01 1 10
unitless

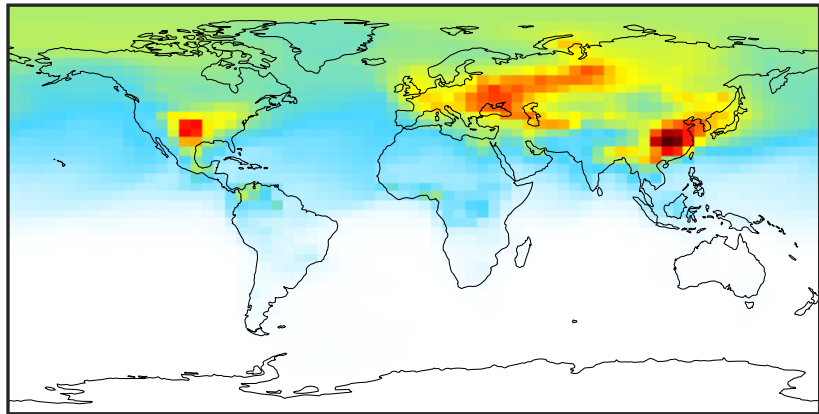
Ratio (1x1.25)
Dev/Ref, Fixed Range



0.50 0.75 1.00 1.50 2.00
unitless

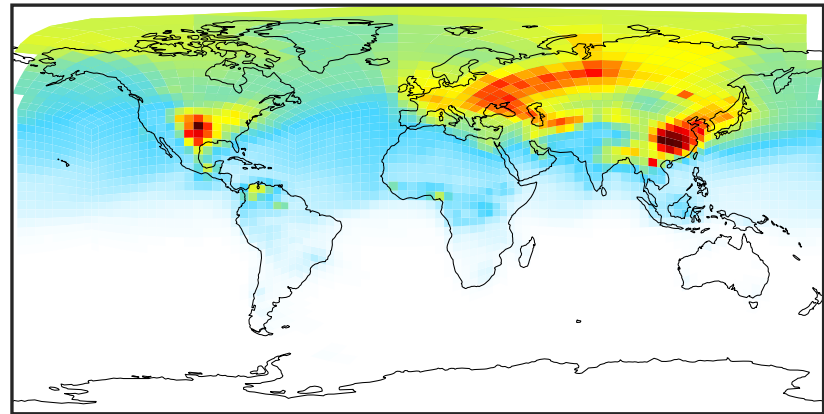
SpeciesConcVV_C2H6 (Apr2019)

GCC_14.2.0 (Ref)
4.0x5.0



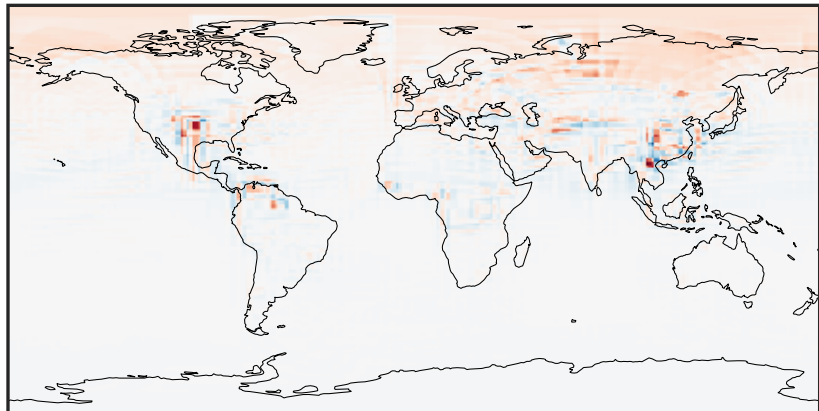
0.058 0.939 1.879 2.818 3.815
ppb

GCHP_14.2.0 (Dev)
c24



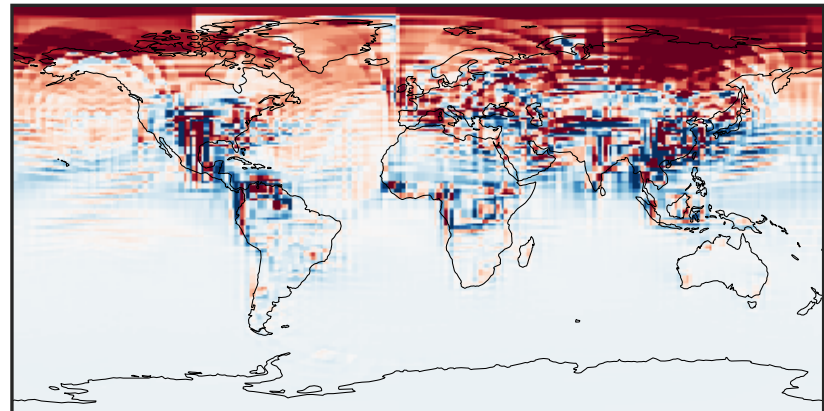
0.058 0.939 1.879 2.818 3.815
ppb

Difference (1x1.25)
Dev - Ref, Dynamic Range



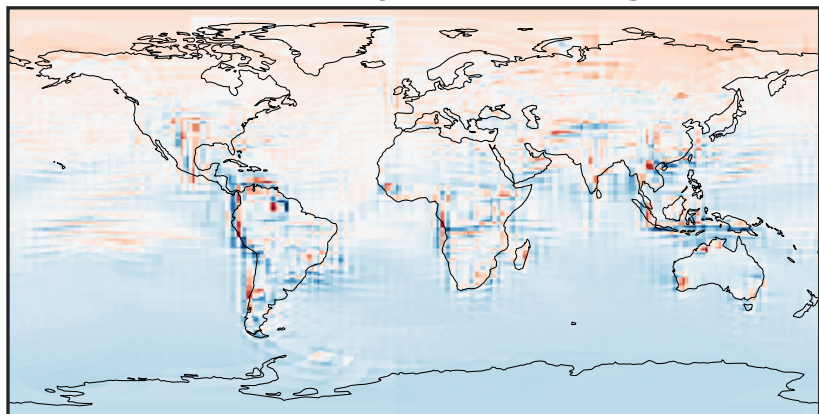
-1.199 -0.599 0.000 0.599 1.199
ppb

Difference (1x1.25)
Dev - Ref, Restricted Range [5%,95%]



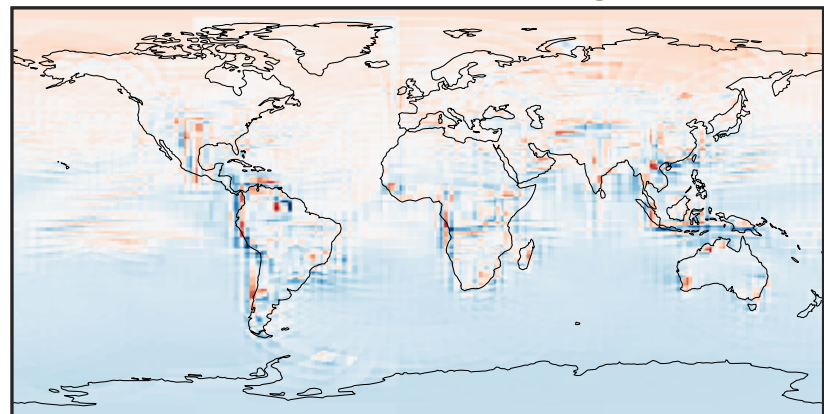
-0.1632 -0.0816 0.0000 0.0816 0.1632
ppb

Ratio (1x1.25)
Dev/Ref, Dynamic Range



0.538 0.769 1.000 1.429 1.858
unitless

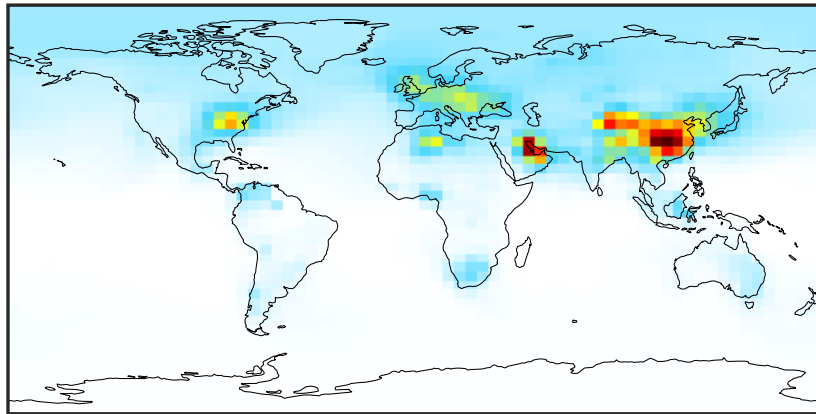
Ratio (1x1.25)
Dev/Ref, Fixed Range



0.50 0.75 1.00 1.50 2.00
unitless

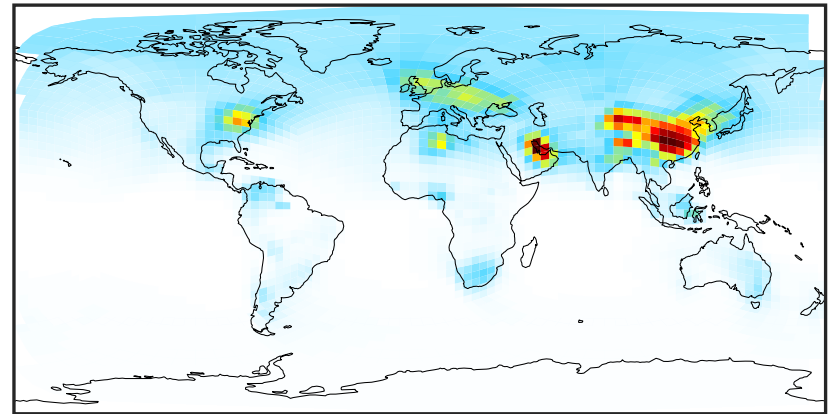
SpeciesConcVV_C3H8 (Apr2019)

GCC_14.2.0 (Ref)
4.0x5.0



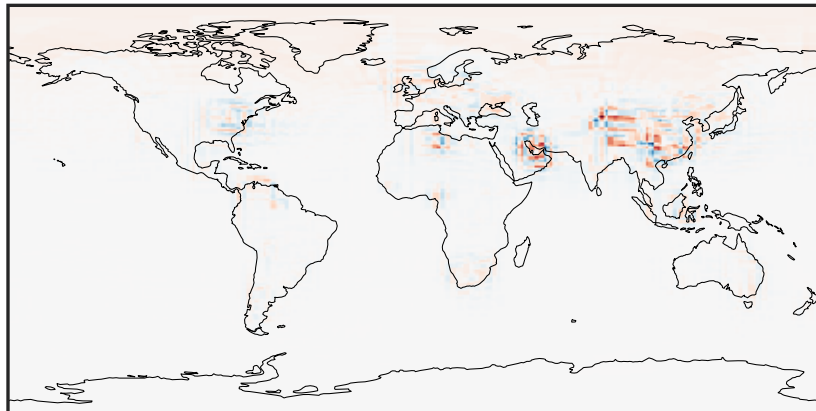
0.001 0.654 1.308 1.963 2.618
ppb

GCHP_14.2.0 (Dev)
c24



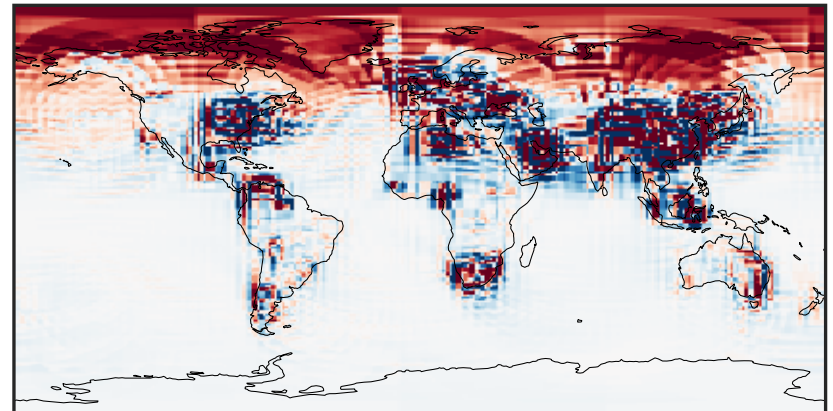
0.001 0.654 1.308 1.963 2.618
ppb

Difference (1x1.25)
Dev - Ref, Dynamic Range



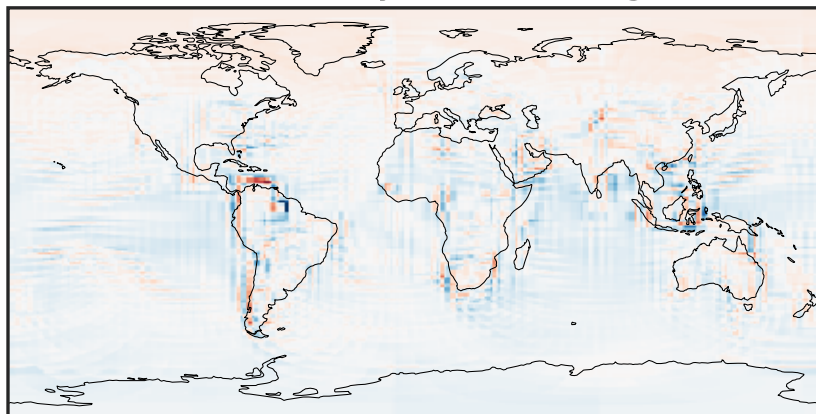
-1.04 -0.52 0.00 0.52 1.04
ppb

Difference (1x1.25)
Dev - Ref, Restricted Range [5%,95%]



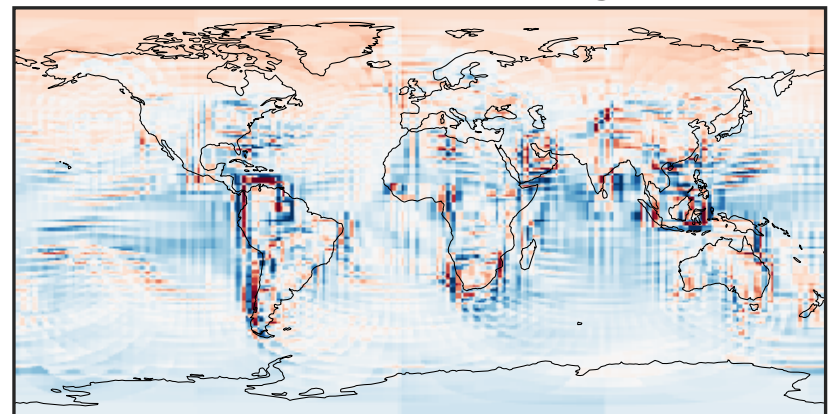
-0.0563 -0.0282 0.0000 0.0282 0.0563
ppb

Ratio (1x1.25)
Dev/Ref, Dynamic Range



0.164 0.582 1.000 3.556 6.112
unitless

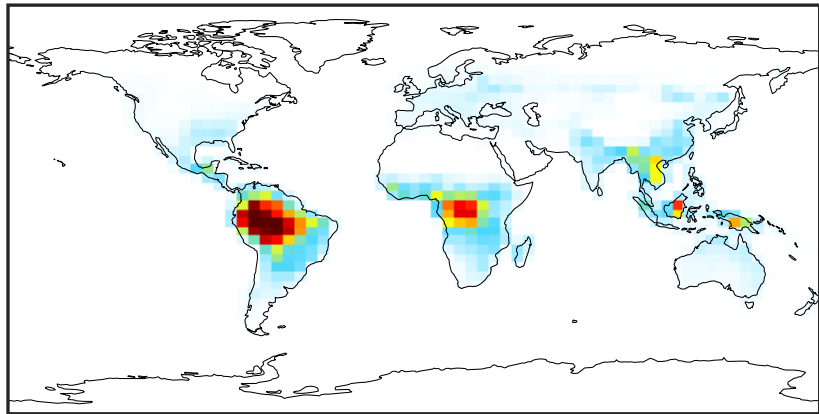
Ratio (1x1.25)
Dev/Ref, Fixed Range



0.50 0.75 1.00 1.50 2.00
unitless

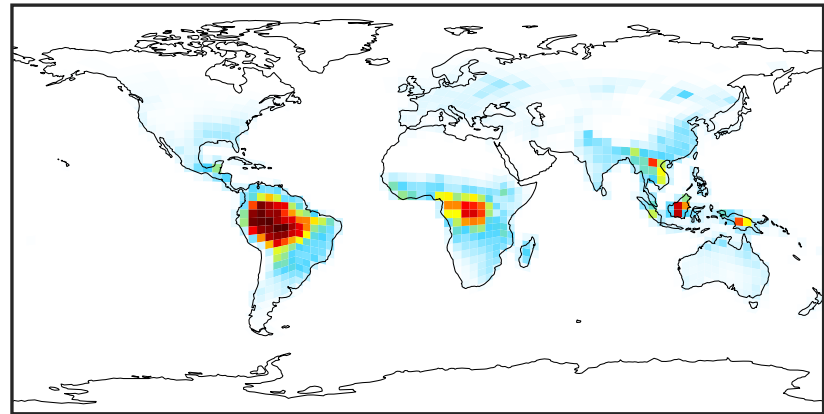
SpeciesConcVV_PRPE (Apr2019)

GCC_14.2.0 (Ref)
4.0x5.0



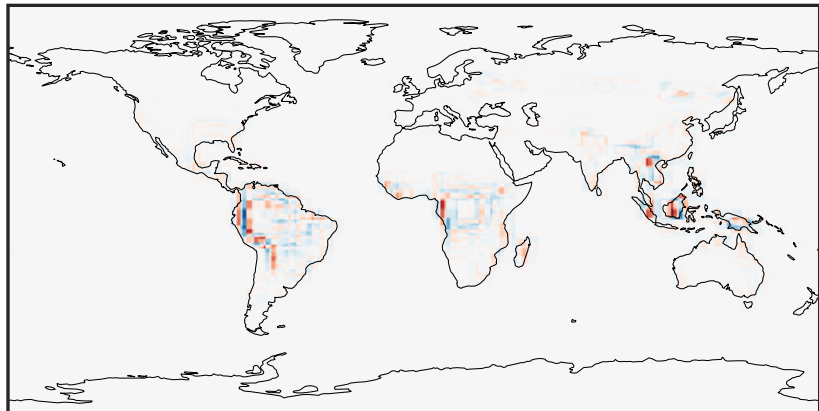
0.000 0.550 1.101 1.651 2.202
ppb

GCHP_14.2.0 (Dev)
c24



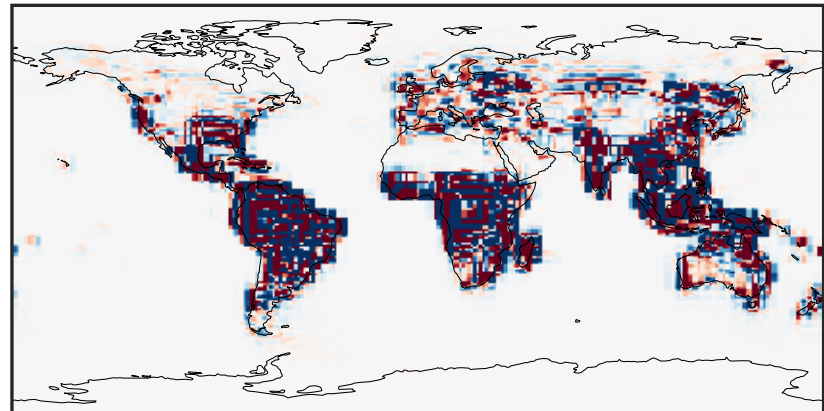
0.000 0.550 1.101 1.651 2.202
ppb

Difference (1x1.25)
Dev - Ref, Dynamic Range



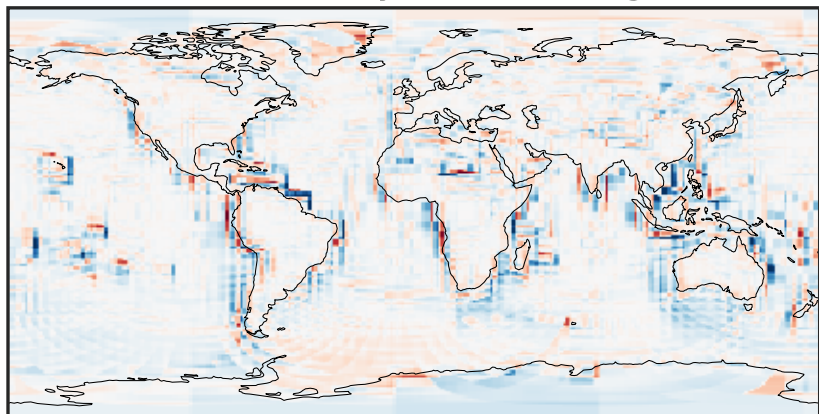
-1.068 -0.534 0.000 0.534 1.068
ppb

Difference (1x1.25)
Dev - Ref, Restricted Range [5%,95%]



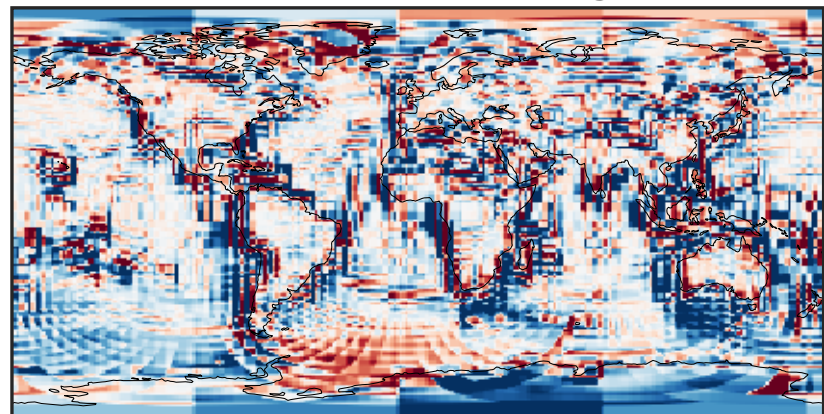
-0.015 0.000 0.015
ppb

Ratio (1x1.25)
Dev/Ref, Dynamic Range



1e-01 1 10
unitless

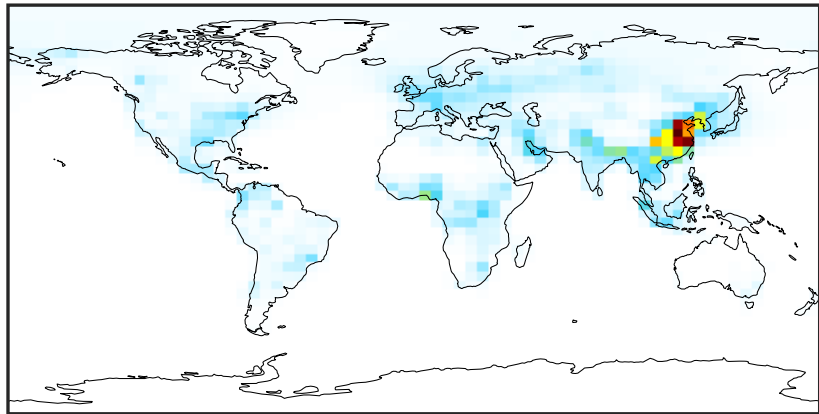
Ratio (1x1.25)
Dev/Ref, Fixed Range



0.50 0.75 1.00 1.50 2.00
unitless

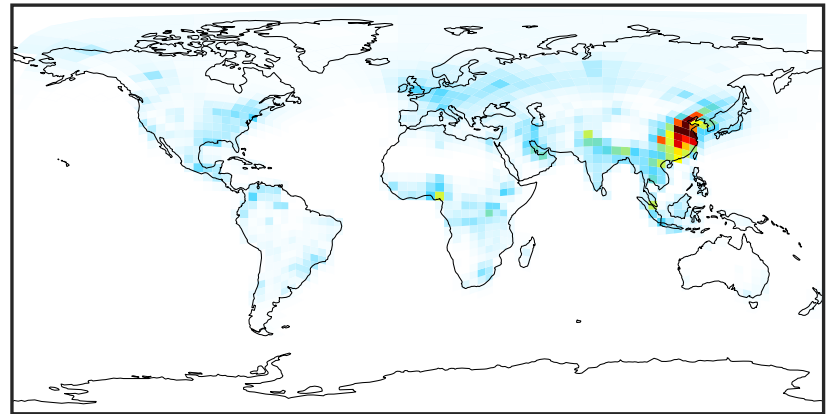
SpeciesConcVV_TOLU (Apr2019)

GCC_14.2.0 (Ref)
4.0x5.0



0.0000 0.1568 0.3135 0.4703 0.6270
ppb

GCHP_14.2.0 (Dev)
c24



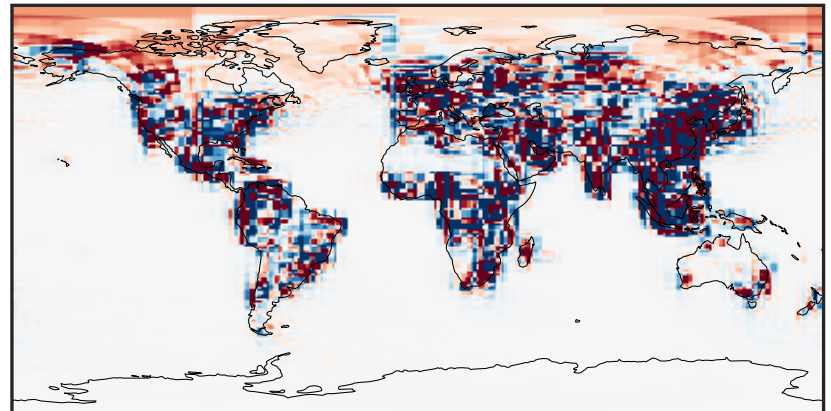
0.0000 0.1568 0.3135 0.4703 0.6270
ppb

Difference (1x1.25)
Dev - Ref, Dynamic Range



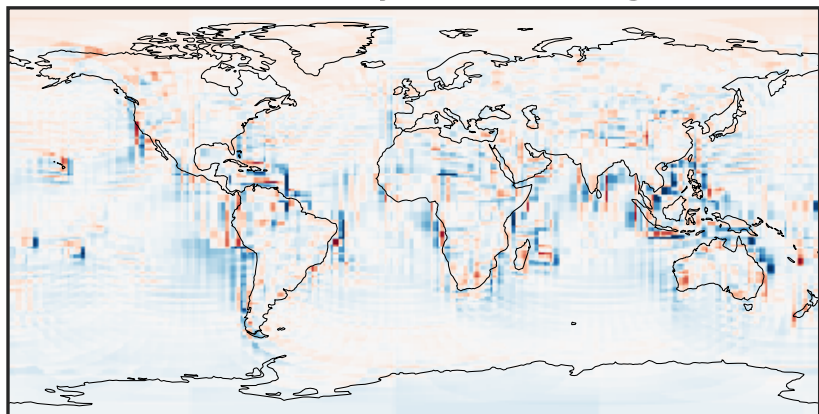
-0.3863 -0.1931 0.0000 0.1931 0.3863
ppb

Difference (1x1.25)
Dev - Ref, Restricted Range [5%,95%]



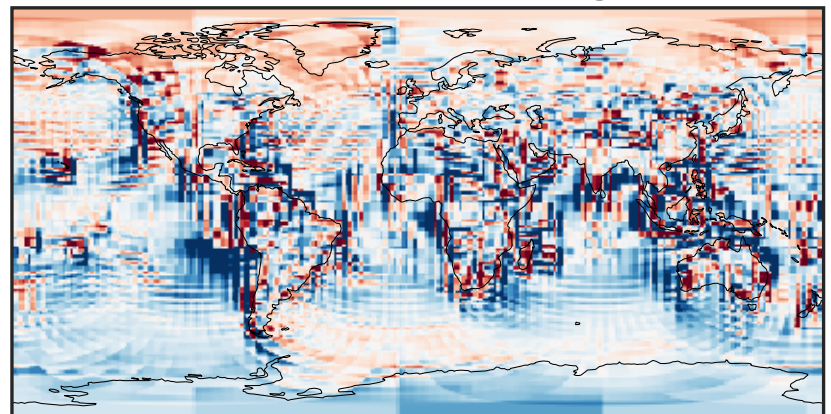
-0.004 0.000 0.004
ppb

Ratio (1x1.25)
Dev/Ref, Dynamic Range



1e-01 1 10
unitless

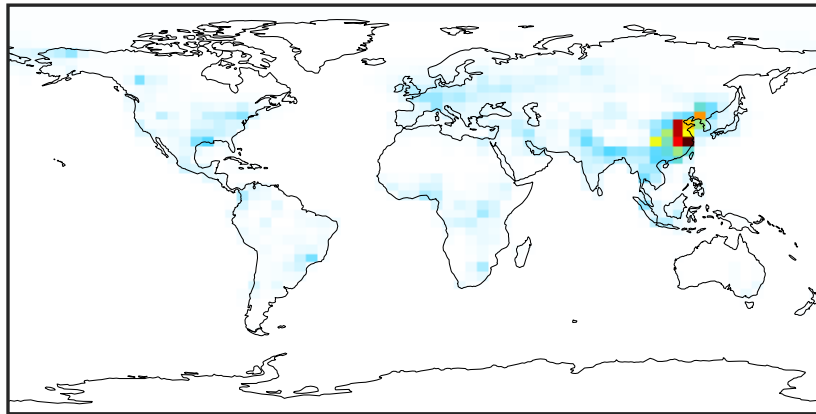
Ratio (1x1.25)
Dev/Ref, Fixed Range



0.50 0.75 1.00 1.50 2.00
unitless

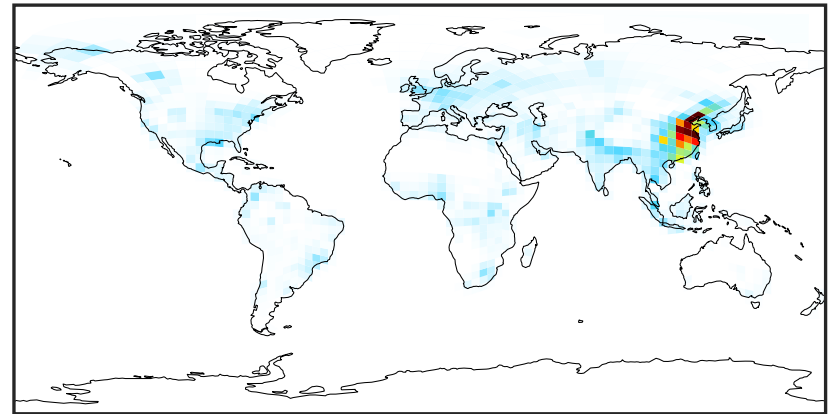
SpeciesConcVV_XYLE (Apr2019)

GCC_14.2.0 (Ref)
4.0x5.0



0.0000 0.1405 0.2809 0.4214 0.5618
ppb

GCHP_14.2.0 (Dev)
c24



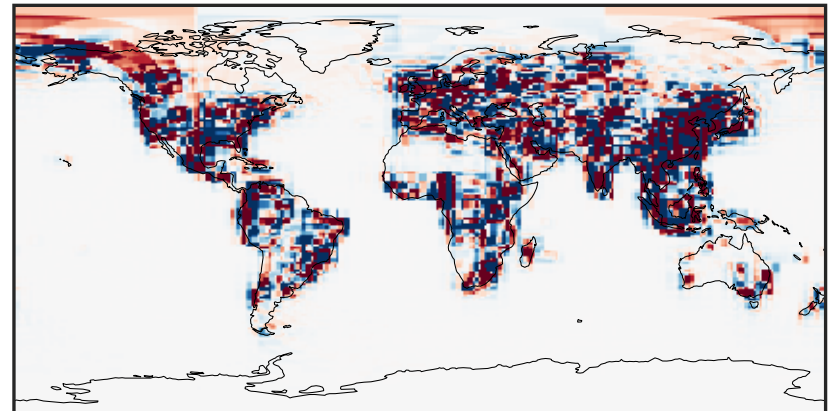
0.0000 0.1405 0.2809 0.4214 0.5618
ppb

Difference (1x1.25)
Dev - Ref, Dynamic Range



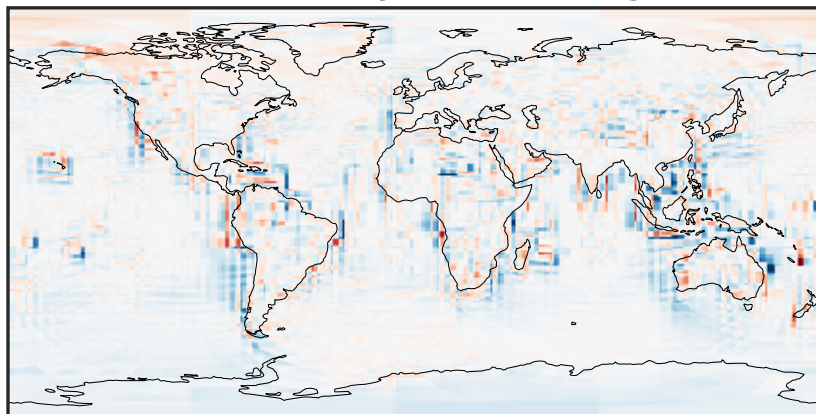
-0.4986 -0.2493 0.0000 0.2493 0.4986
ppb

Difference (1x1.25)
Dev - Ref, Restricted Range [5%,95%]



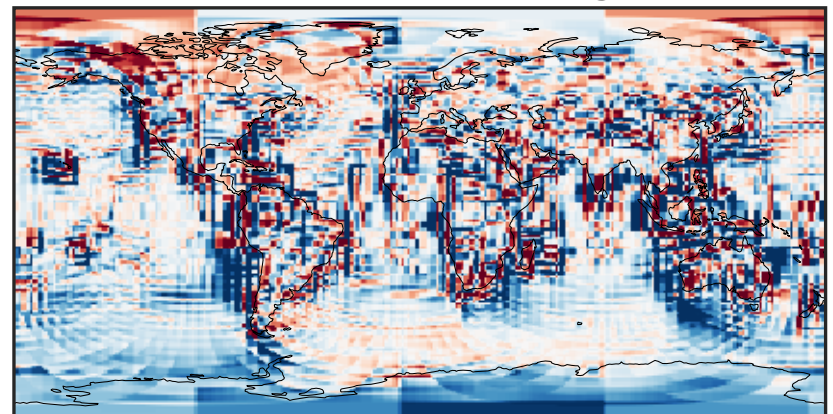
-0.002 0.000 0.002
ppb

Ratio (1x1.25)
Dev/Ref, Dynamic Range



1e-01 1 10
unitless

Ratio (1x1.25)
Dev/Ref, Fixed Range



0.50 0.75 1.00 1.50 2.00
unitless