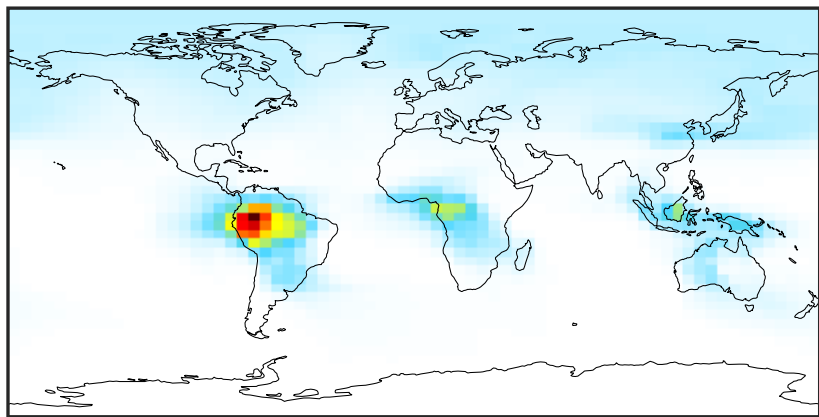


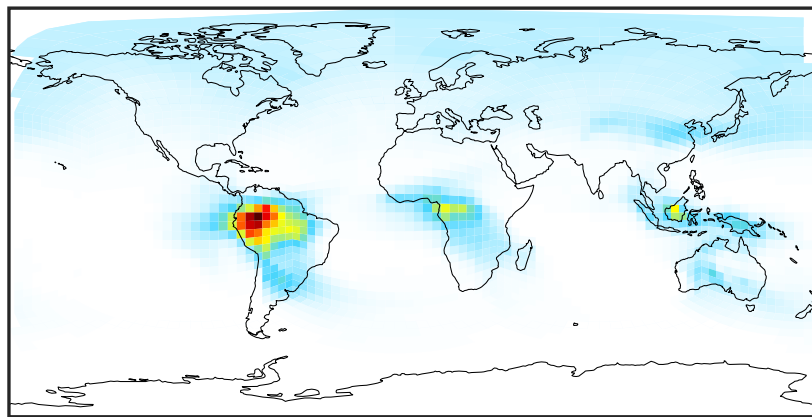
SpeciesConcVV_EOH (Jan2019)

GCC_14.2.0 (Ref)
4.0x5.0



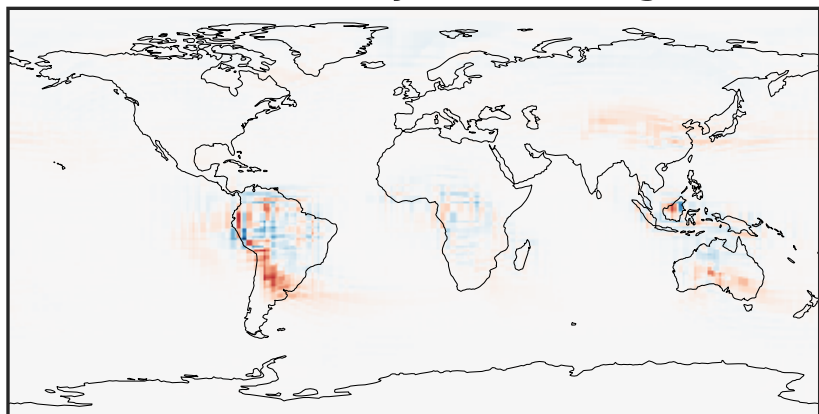
0.0001 0.0471 0.0943 0.1414 0.1886
ppb

GCHP_14.2.0 (Dev)
c24



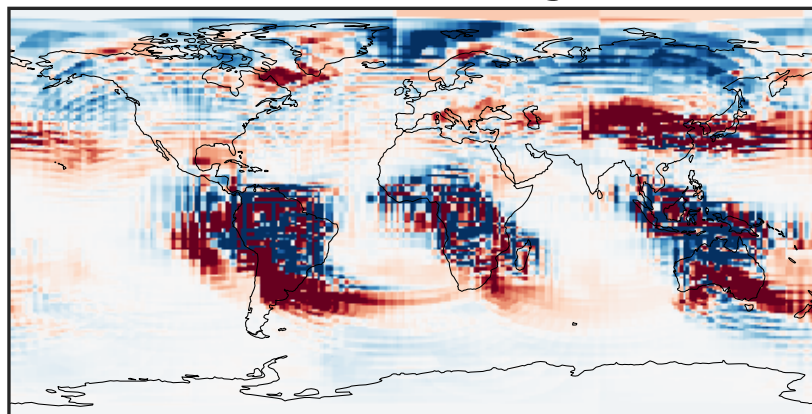
0.0001 0.0471 0.0943 0.1414 0.1886
ppb

Difference (1x1.25)
Dev - Ref, Dynamic Range



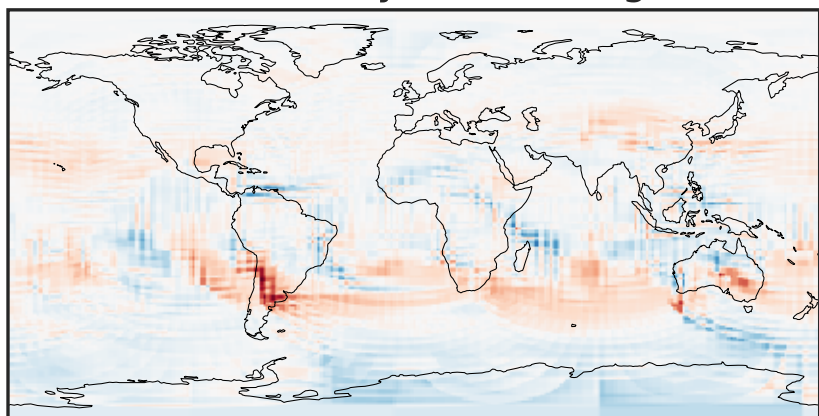
-0.0512 -0.0256 0.0000 0.0256 0.0512
ppb

Difference (1x1.25)
Dev - Ref, Restricted Range [5%,95%]



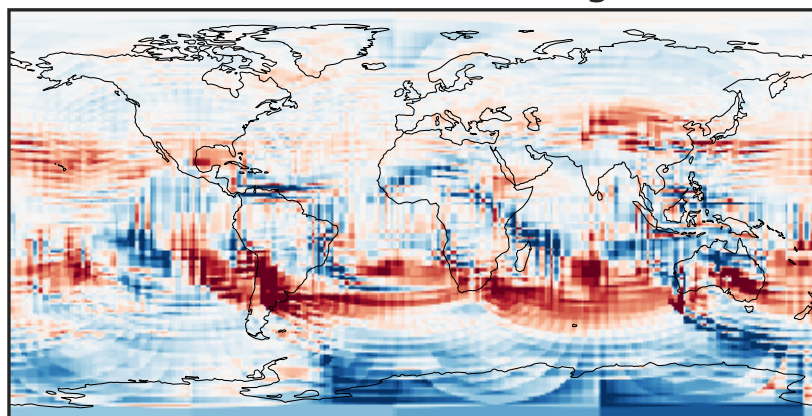
-0.0015 0.0000 0.0015
ppb

Ratio (1x1.25)
Dev/Ref, Dynamic Range



1e-01 1 10
unitless

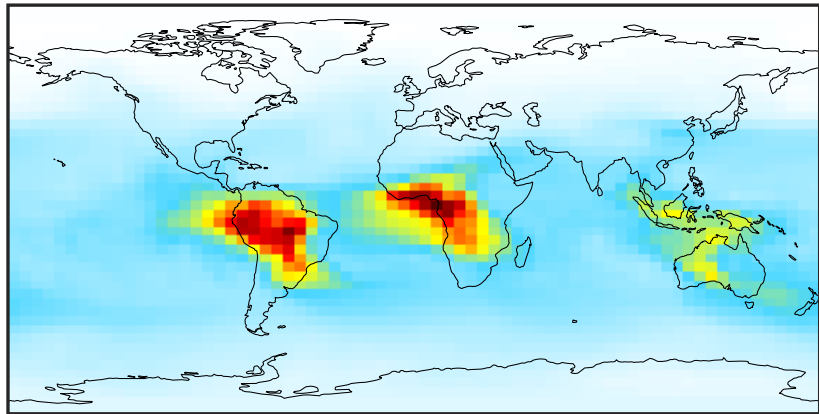
Ratio (1x1.25)
Dev/Ref, Fixed Range



0.50 0.75 1.00 1.50 2.00
unitless

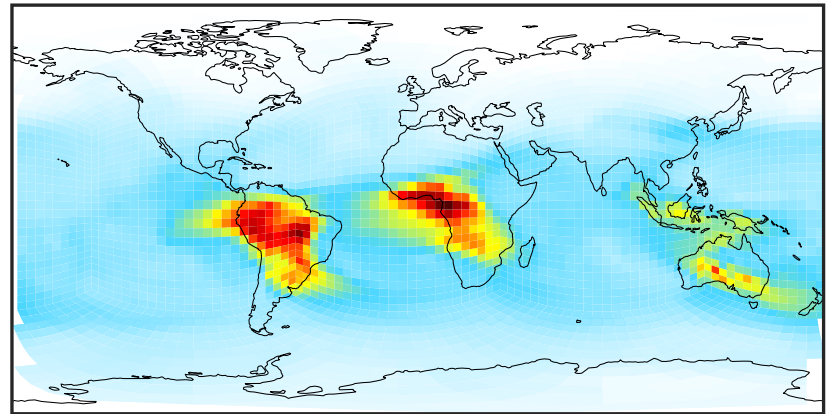
SpeciesConcVW_MOH (Jan2019)

GCC_14.2.0 (Ref)
4.0x5.0



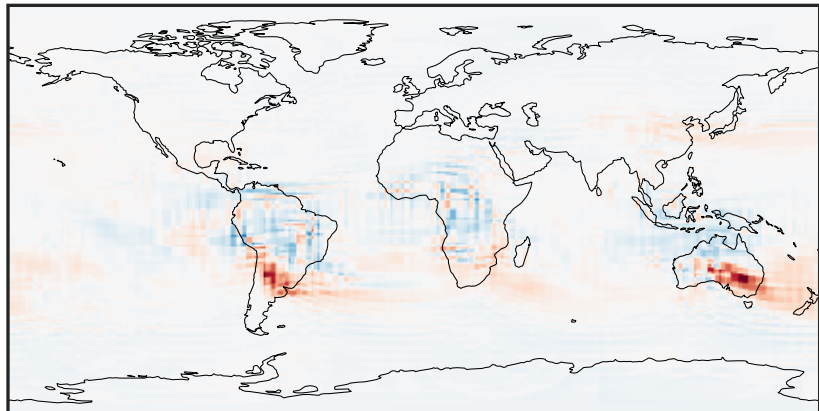
0.106 0.306 0.611 0.917 1.328
ppb

GCHP_14.2.0 (Dev)
c24



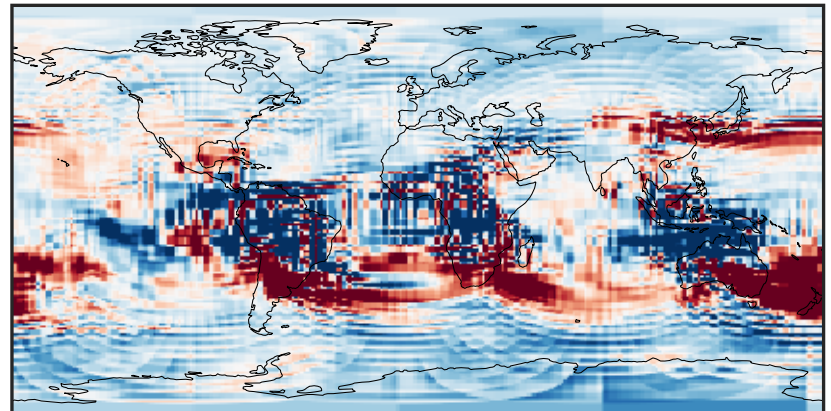
0.106 0.306 0.611 0.917 1.328
ppb

Difference (1x1.25)
Dev - Ref, Dynamic Range



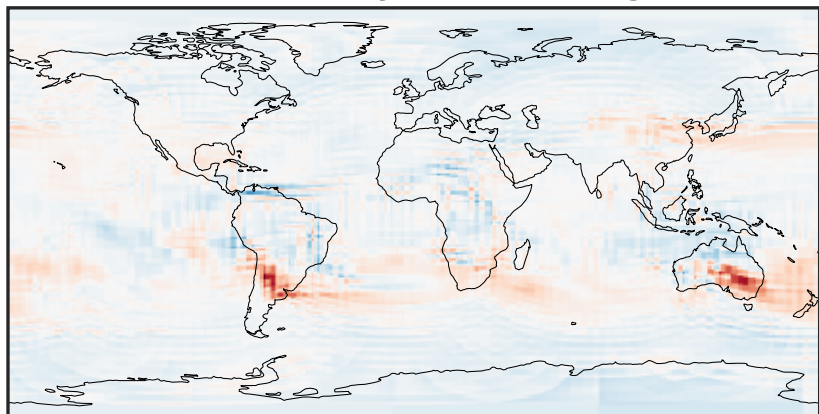
-0.3668 -0.1834 0.0000 0.1834 0.3668
ppb

Difference (1x1.25)
Dev - Ref, Restricted Range [5%,95%]



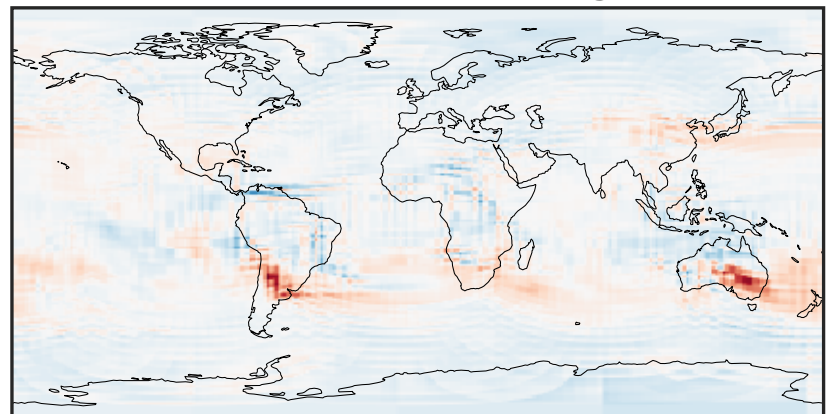
-0.02 0.00 0.02
ppb

Ratio (1x1.25)
Dev/Ref, Dynamic Range



0.484 0.742 1.000 1.532 2.064
unitless

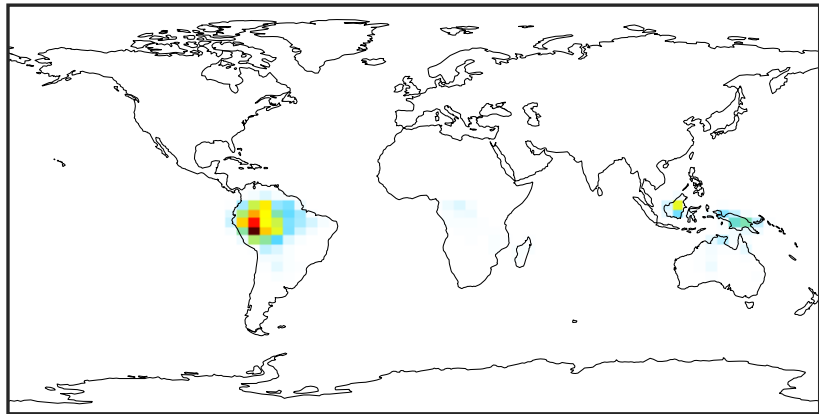
Ratio (1x1.25)
Dev/Ref, Fixed Range



0.50 0.75 1.00 1.50 2.00
unitless

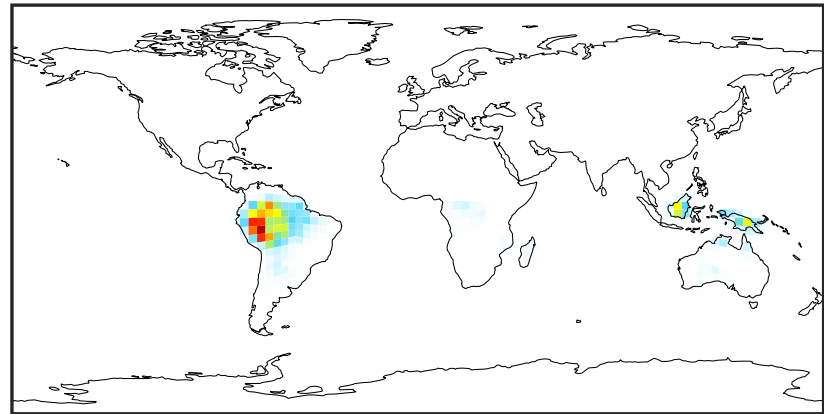
SpeciesConcVV_ISOP (Jan2019)

GCC_14.2.0 (Ref)
4.0x5.0



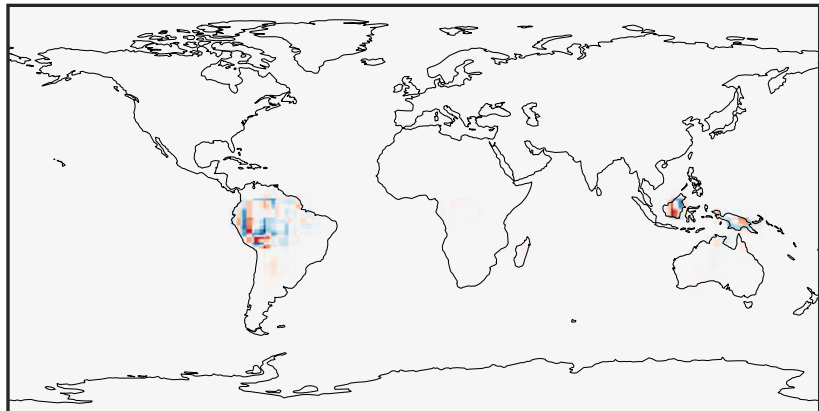
0.0000 0.0333 0.0667 0.1000 0.1333
ppb

GCHP_14.2.0 (Dev)
c24



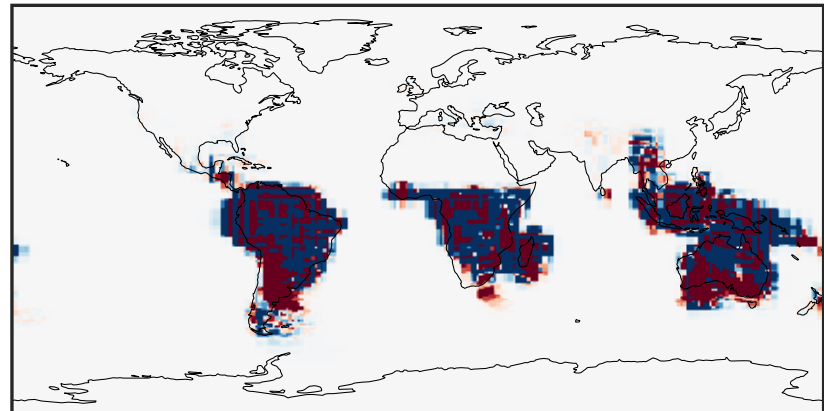
0.0000 0.0333 0.0667 0.1000 0.1333
ppb

Difference (1x1.25)
Dev - Ref, Dynamic Range



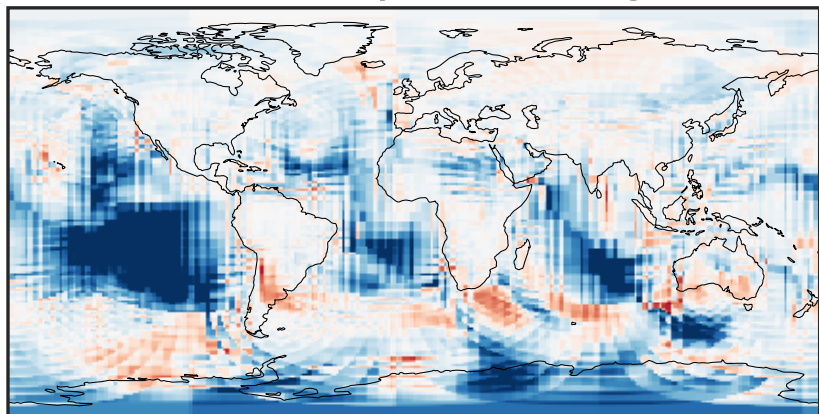
-0.025 0.000 0.025
ppb

Difference (1x1.25)
Dev - Ref, Restricted Range [5%,95%]



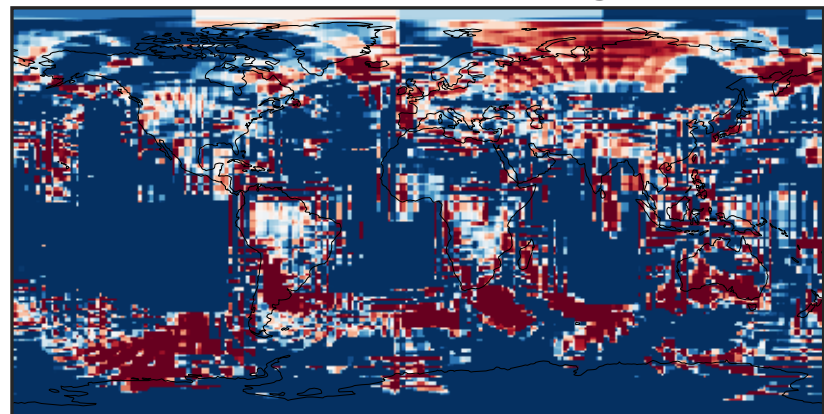
-4 0 4
ppb 1e-6

Ratio (1x1.25)
Dev/Ref, Dynamic Range



unitless

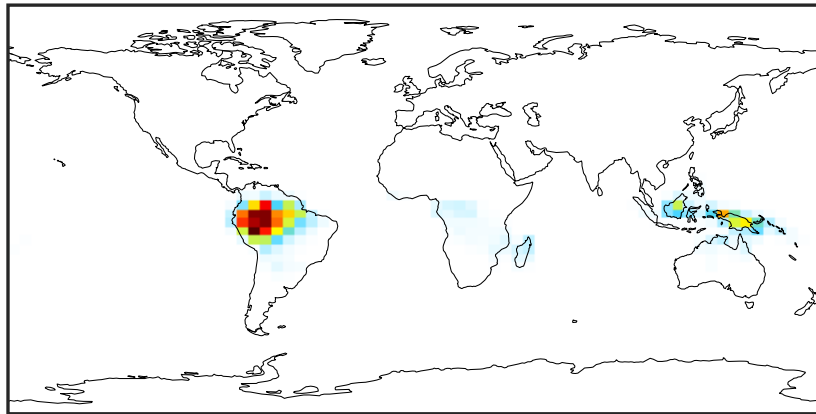
Ratio (1x1.25)
Dev/Ref, Fixed Range



0.50 0.75 1.00 1.50 2.00
unitless

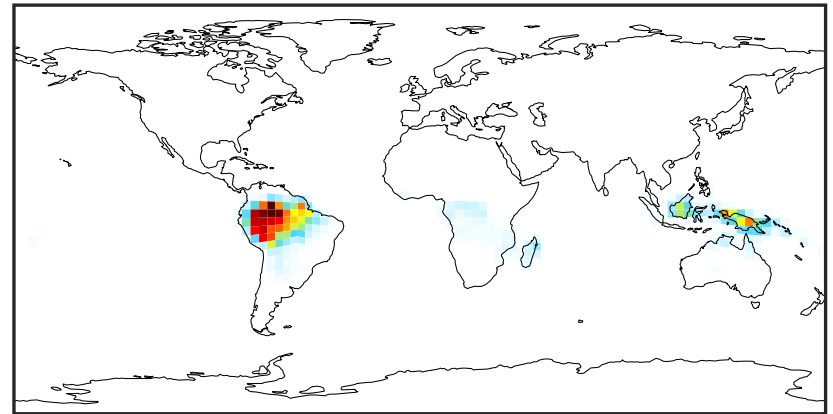
SpeciesConcVV_MTPA (Jan2019)

GCC_14.2.0 (Ref)
4.0x5.0



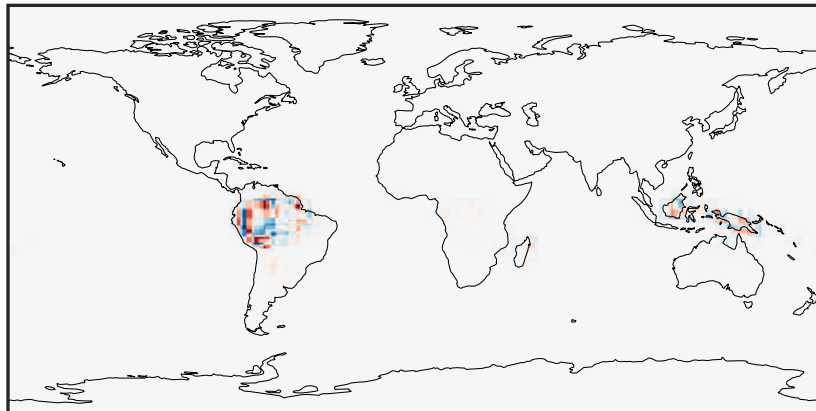
0.000 0.002 0.004 0.006
ppb

GCHP_14.2.0 (Dev)
c24



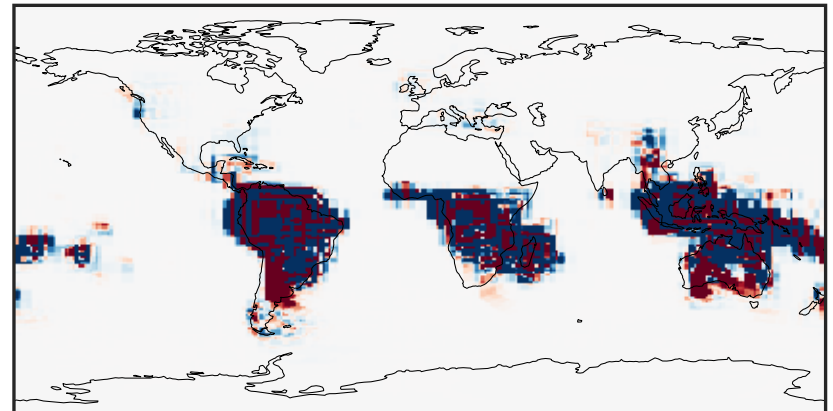
0.000 0.002 0.004 0.006
ppb

Difference (1x1.25)
Dev - Ref, Dynamic Range



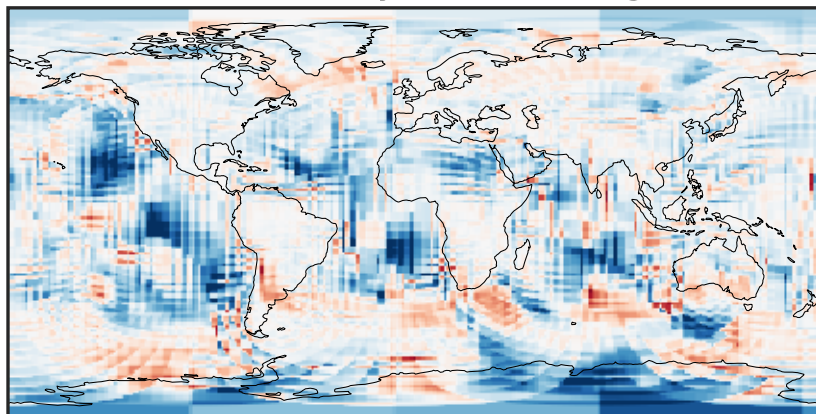
-0.0015 0.0000 0.0015
ppb

Difference (1x1.25)
Dev - Ref, Restricted Range [5%,95%]



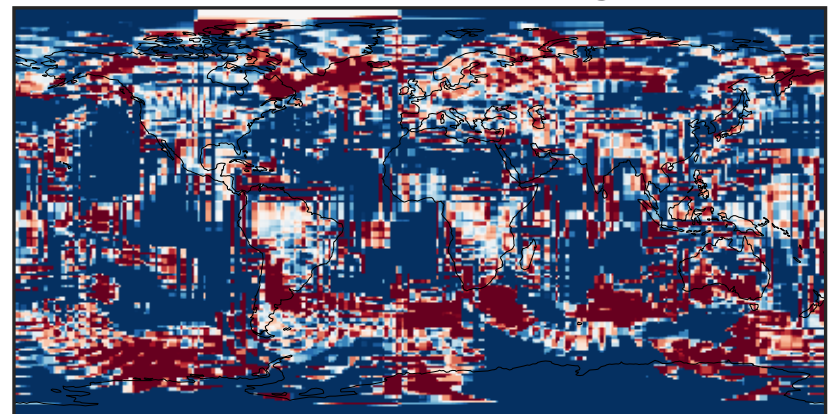
-1.5 0.0 1.5
ppb 1e-6

Ratio (1x1.25)
Dev/Ref, Dynamic Range



1e-02 1e-01 1 10 100
unitless

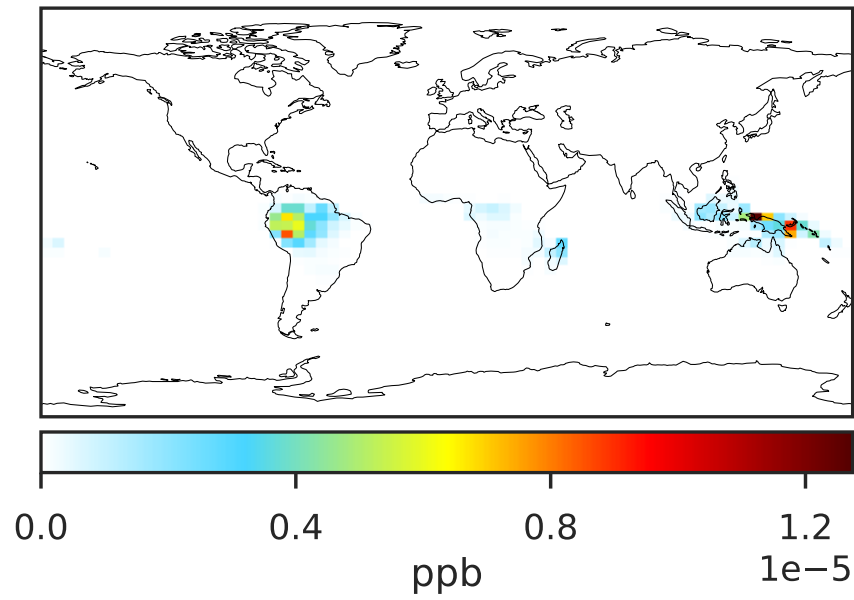
Ratio (1x1.25)
Dev/Ref, Fixed Range



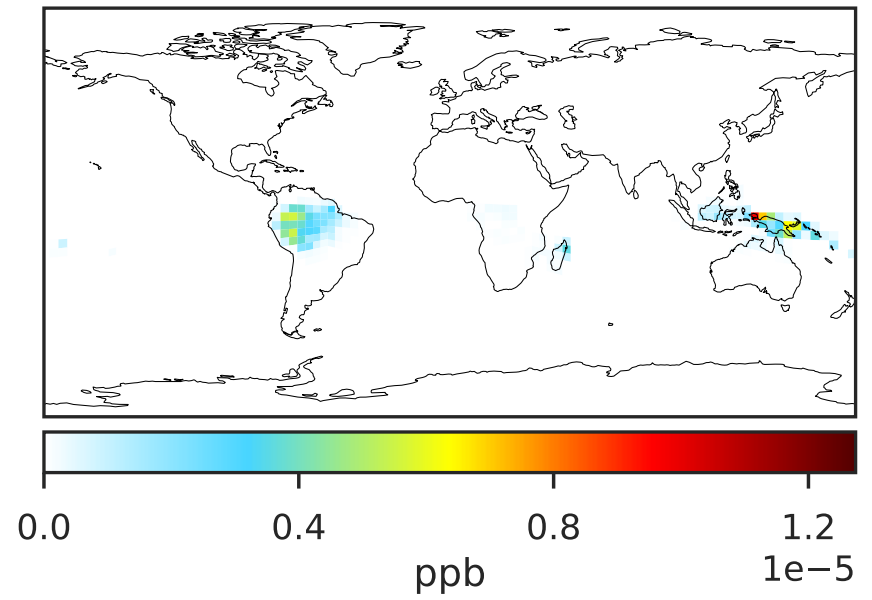
0.50 0.75 1.00 1.50 2.00
unitless

SpeciesConcVV_MTPO (Jan2019)

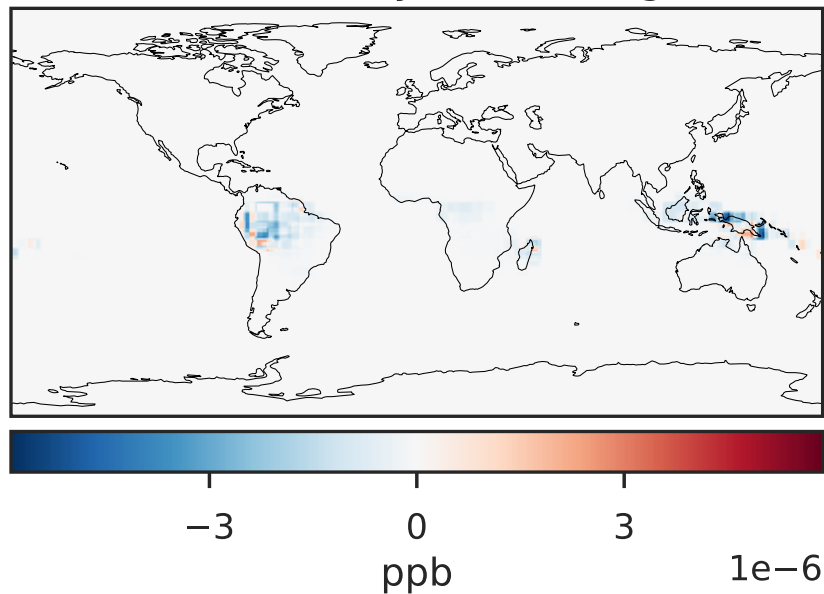
GCC_14.2.0 (Ref)
4.0x5.0



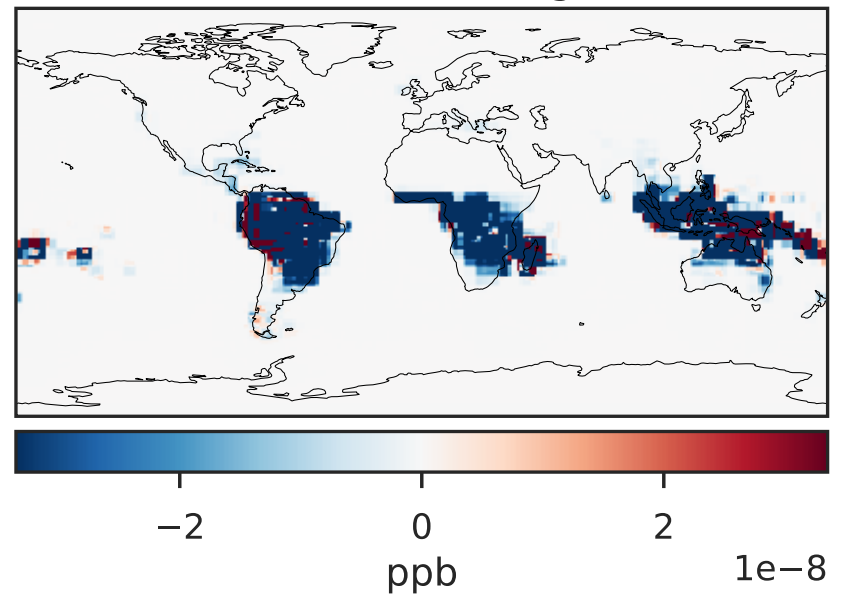
GCHP_14.2.0 (Dev)
c24



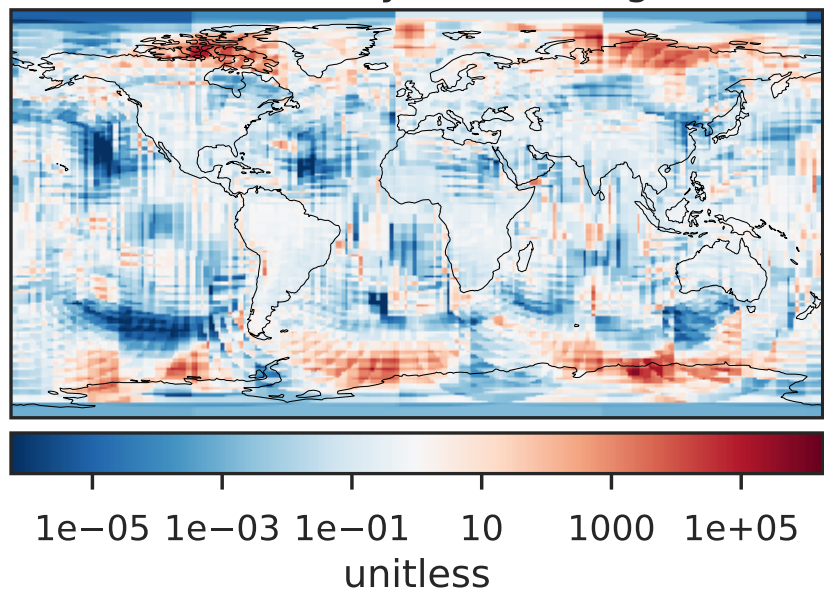
Difference (1x1.25)
Dev - Ref, Dynamic Range



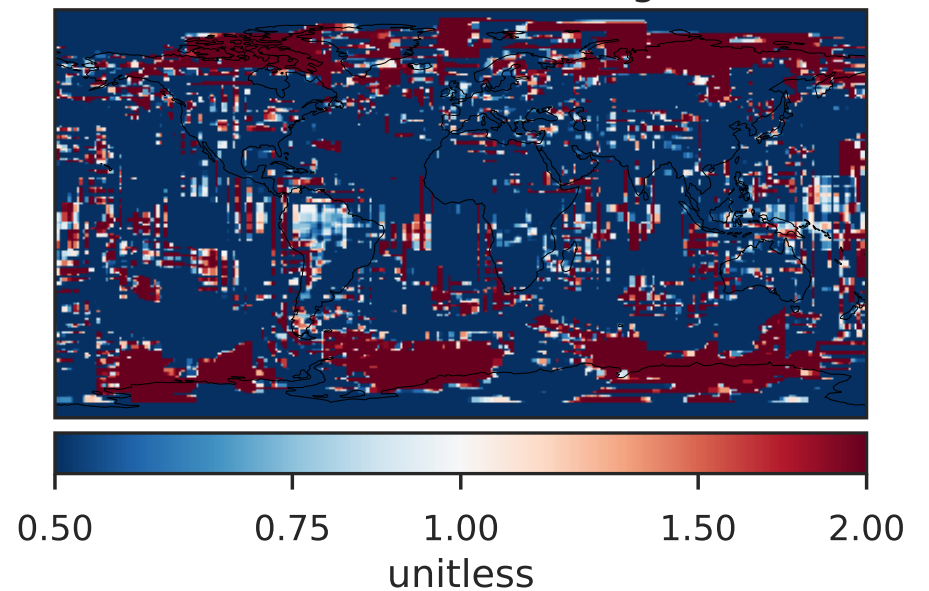
Difference (1x1.25)
Dev - Ref, Restricted Range [5%,95%]



Ratio (1x1.25)
Dev/Ref, Dynamic Range

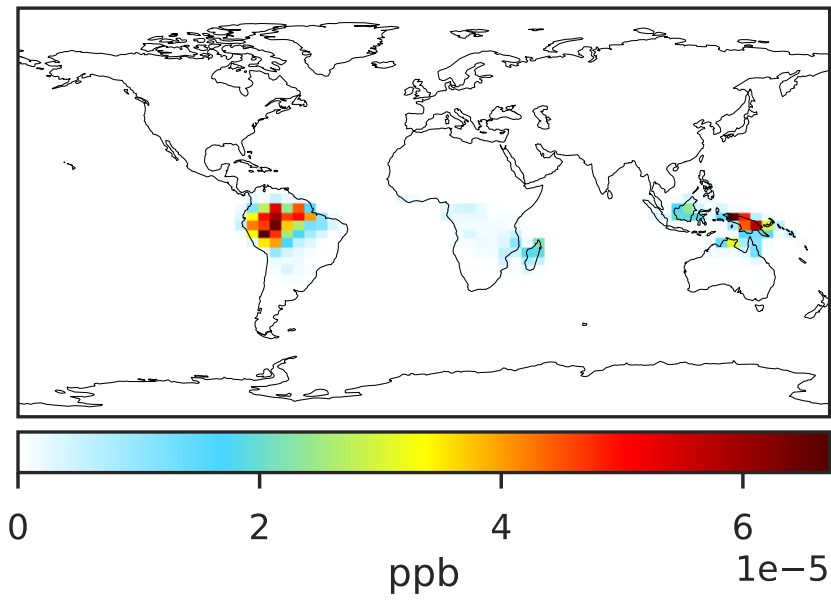


Ratio (1x1.25)
Dev/Ref, Fixed Range

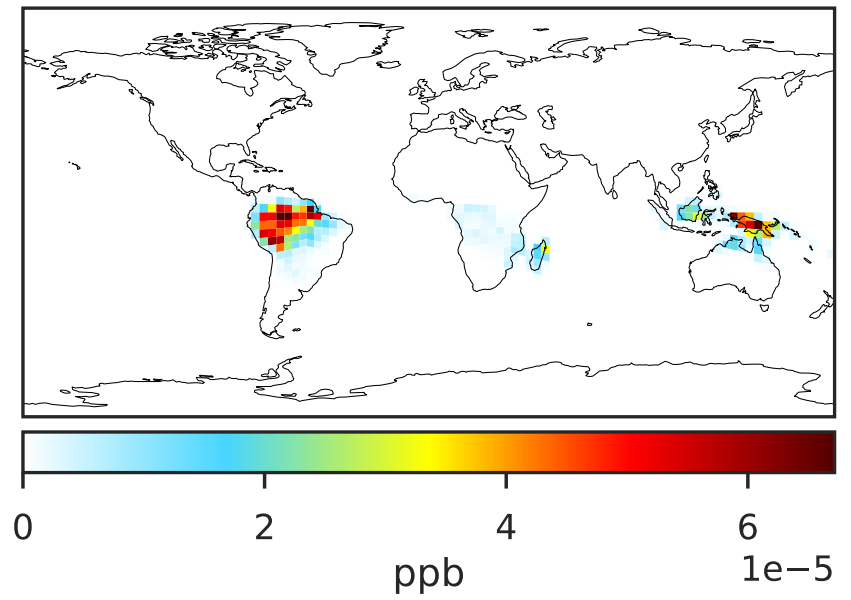


SpeciesConcVV_LIMO (Jan2019)

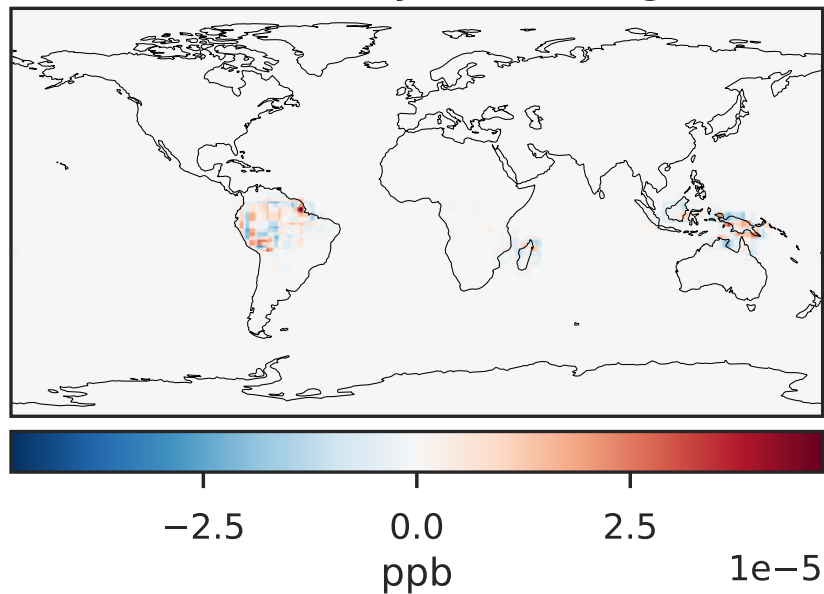
GCC_14.2.0 (Ref)
4.0x5.0



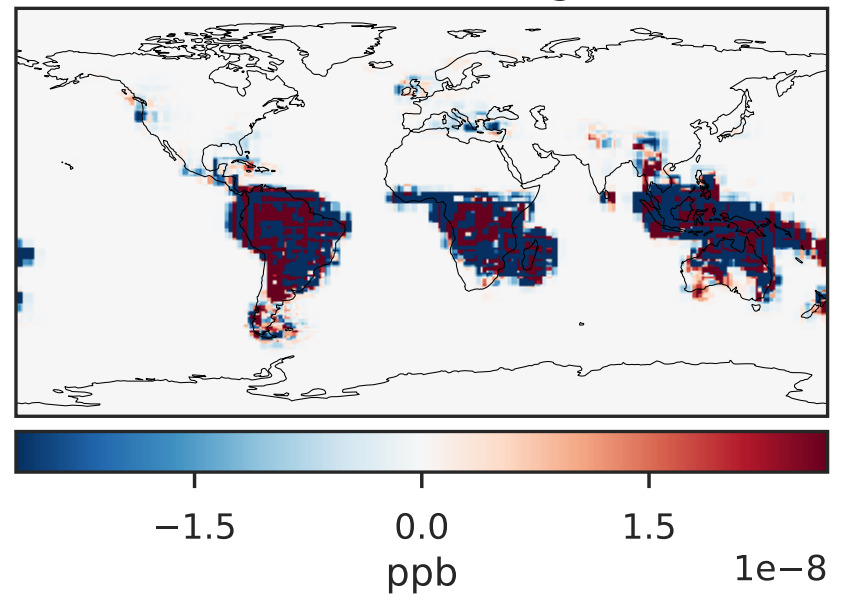
GCHP_14.2.0 (Dev)
c24



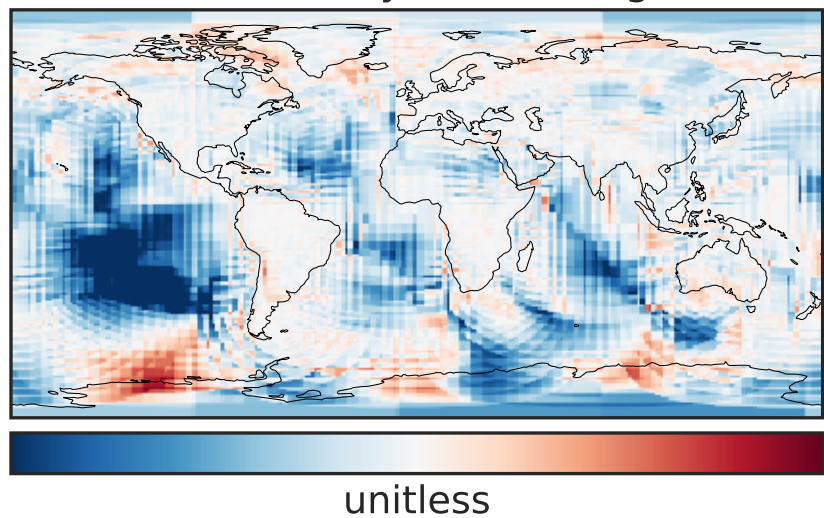
Difference (1x1.25)
Dev - Ref, Dynamic Range



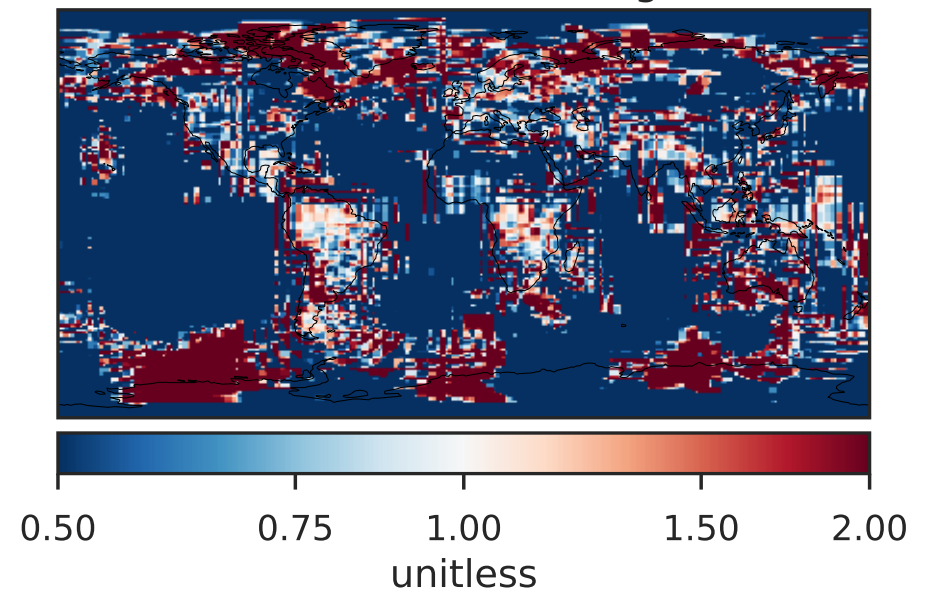
Difference (1x1.25)
Dev - Ref, Restricted Range [5%,95%]



Ratio (1x1.25)
Dev/Ref, Dynamic Range

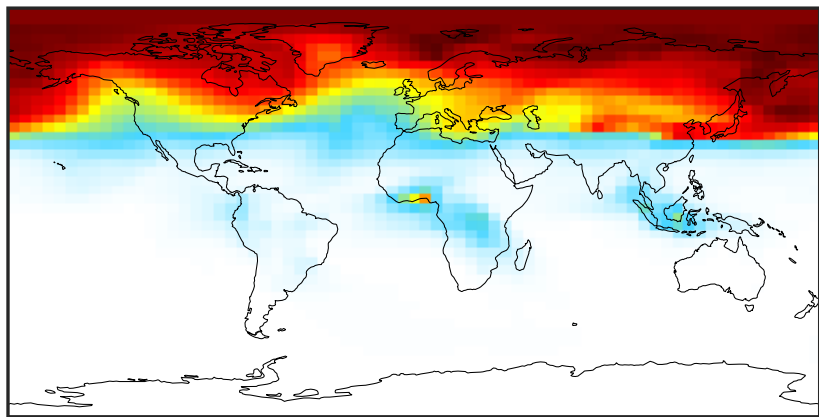


Ratio (1x1.25)
Dev/Ref, Fixed Range



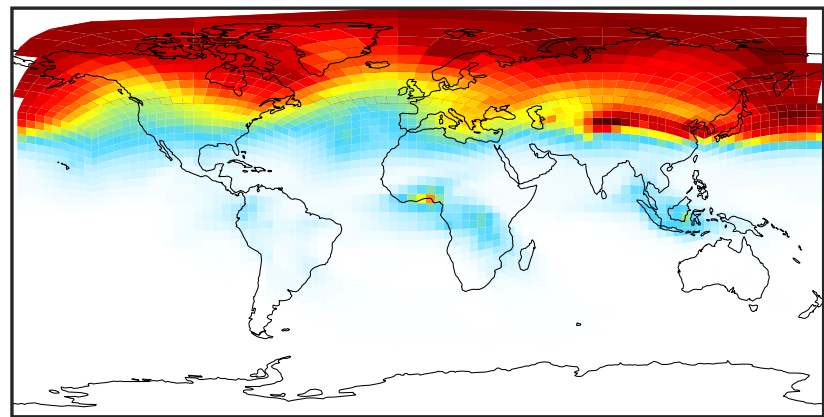
SpeciesConcVV_ALK4 (Jan2019)

GCC_14.2.0 (Ref)
4.0x5.0



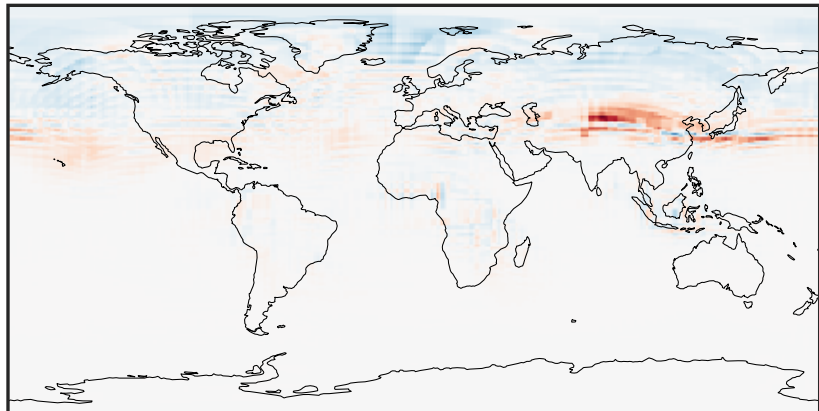
0.0002 0.1562 0.3123 0.4685 0.6249
ppb

GCHP_14.2.0 (Dev)
c24



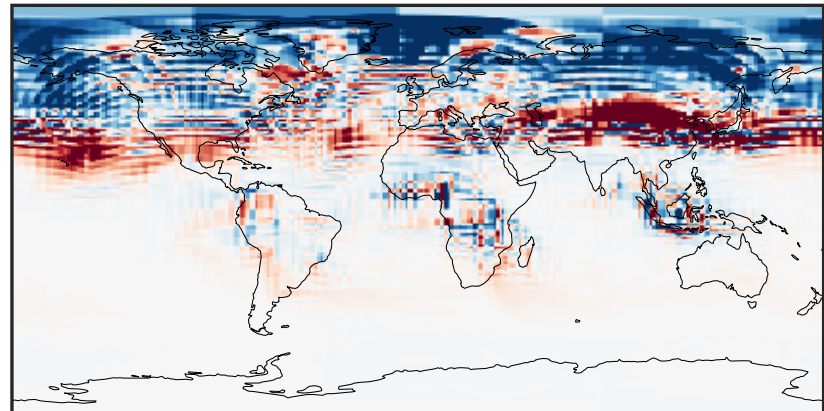
0.0002 0.1562 0.3123 0.4685 0.6249
ppb

Difference (1x1.25)
Dev - Ref, Dynamic Range



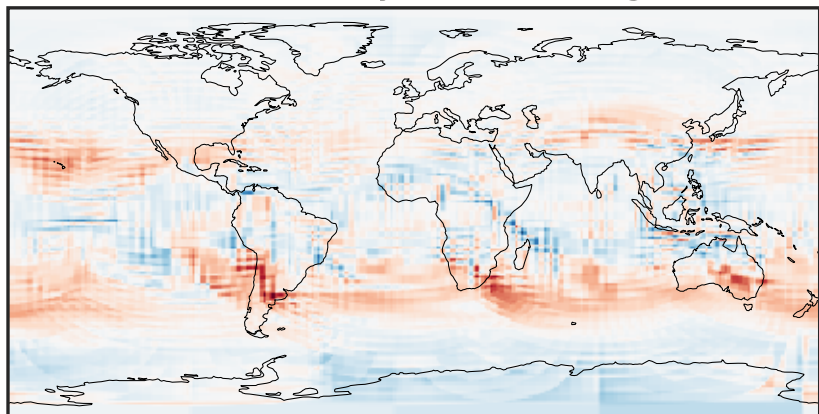
-0.2688 -0.1344 0.0000 0.1344 0.2688
ppb

Difference (1x1.25)
Dev - Ref, Restricted Range [5%,95%]



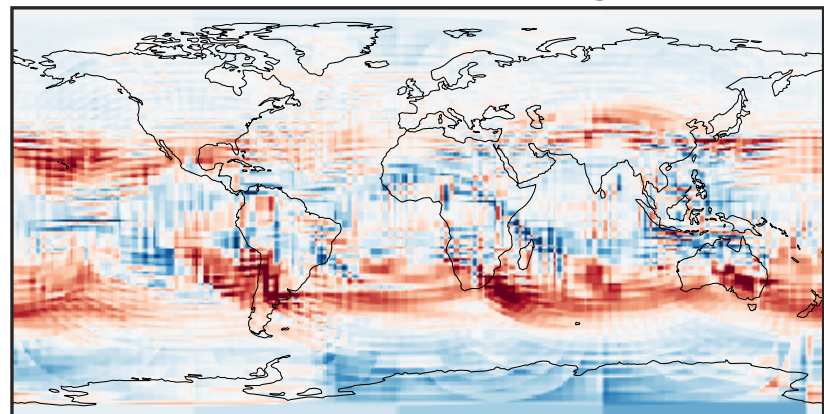
-0.02 0.00 0.02
ppb

Ratio (1x1.25)
Dev/Ref, Dynamic Range



0.250 0.625 1.000 2.497 3.993
unitless

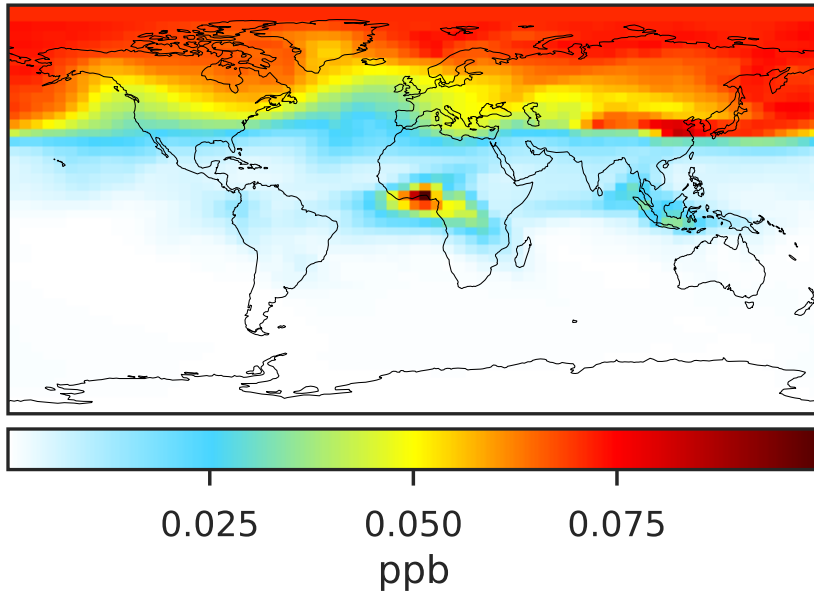
Ratio (1x1.25)
Dev/Ref, Fixed Range



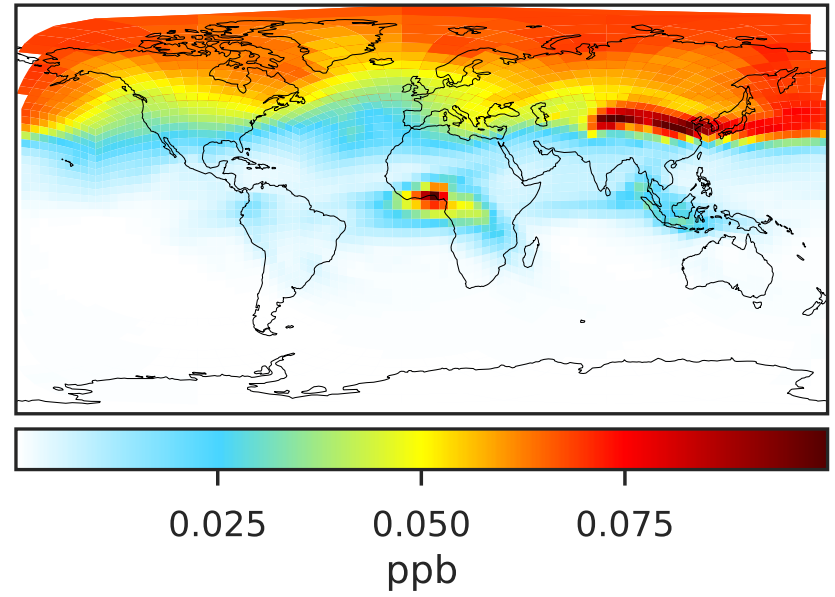
0.50 0.75 1.00 1.50 2.00
unitless

SpeciesConcVV_BENZ (Jan2019)

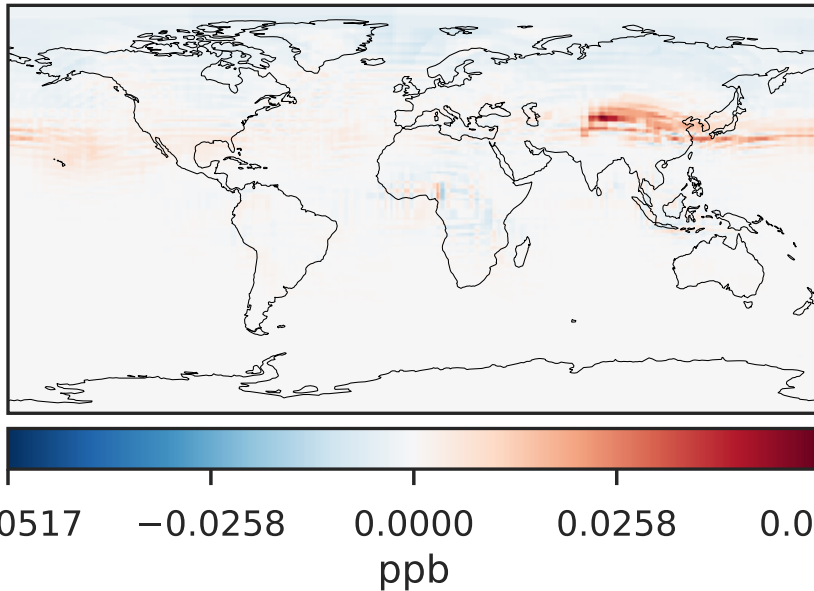
GCC_14.2.0 (Ref)
4.0x5.0



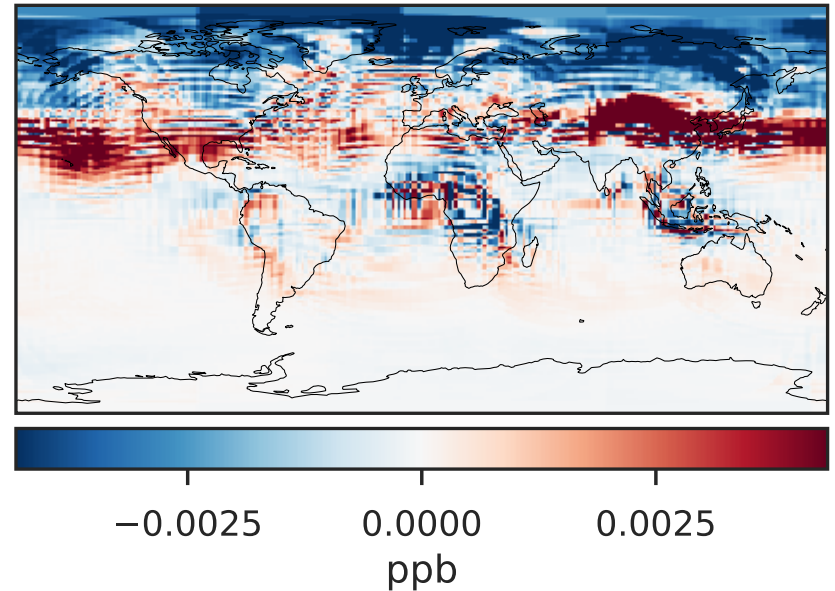
GCHP_14.2.0 (Dev)
c24



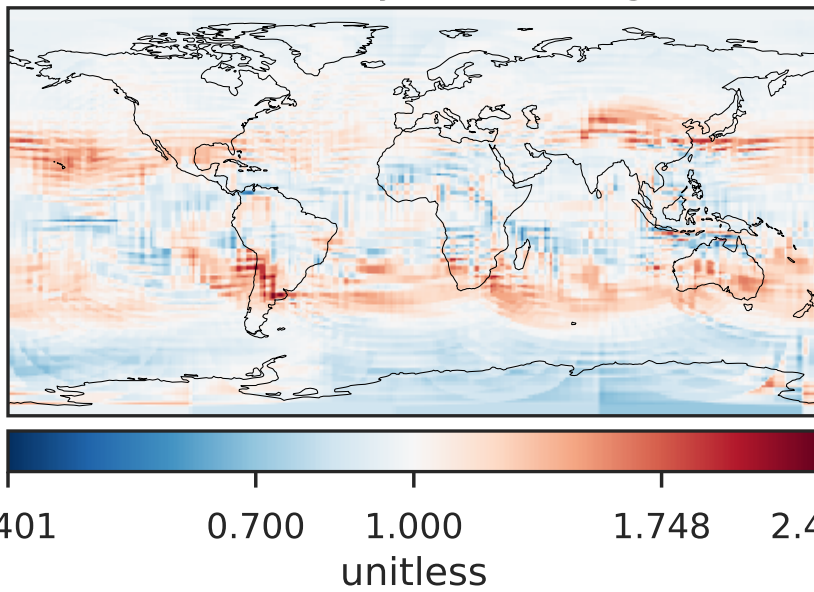
Difference (1x1.25)
Dev - Ref, Dynamic Range



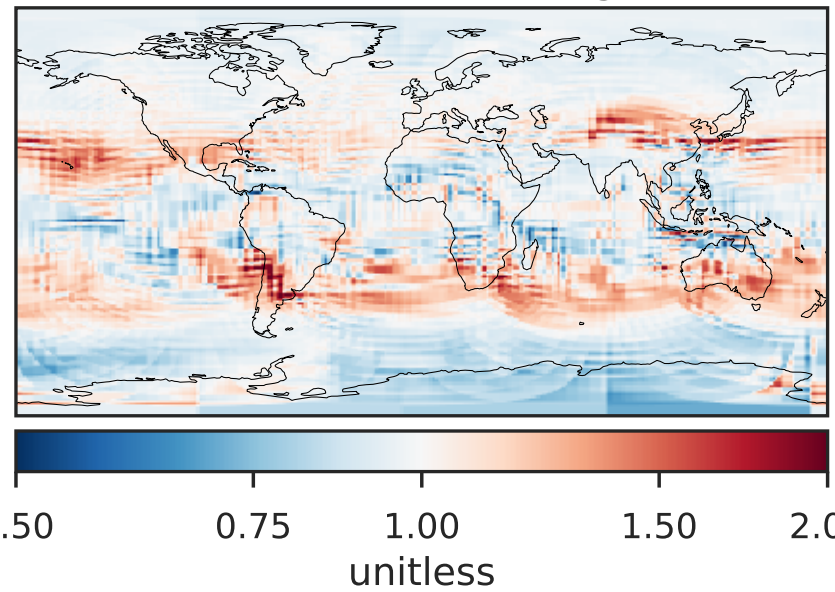
Difference (1x1.25)
Dev - Ref, Restricted Range [5%,95%]



Ratio (1x1.25)
Dev/Ref, Dynamic Range

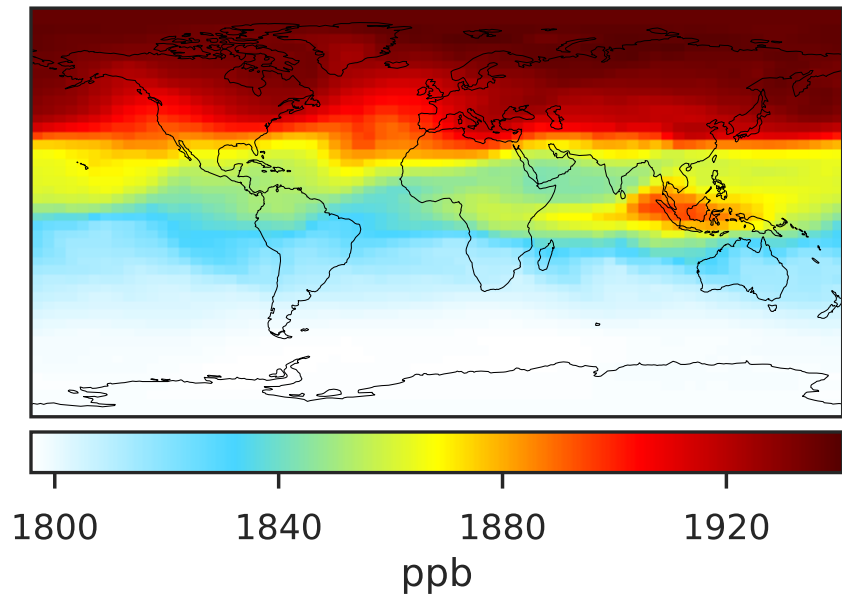


Ratio (1x1.25)
Dev/Ref, Fixed Range

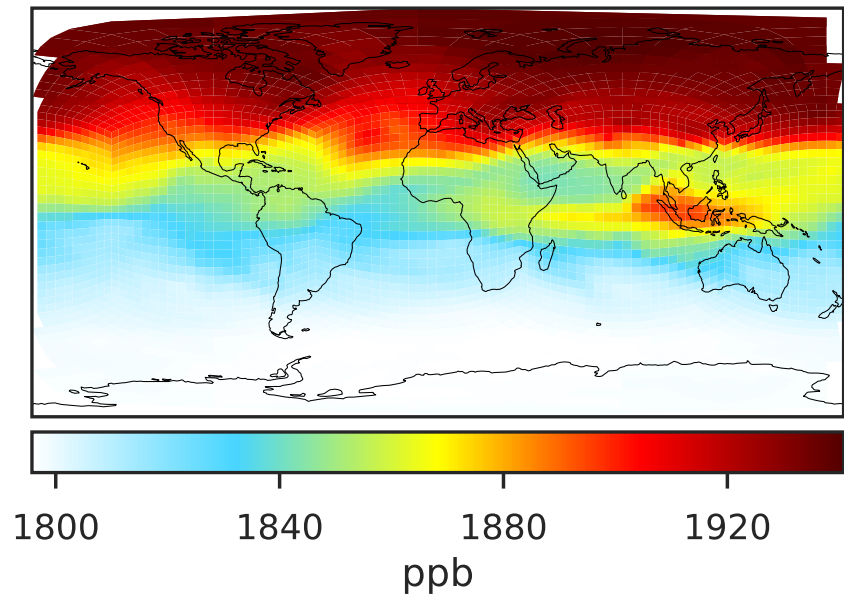


SpeciesConcVV_CH4 (Jan2019)

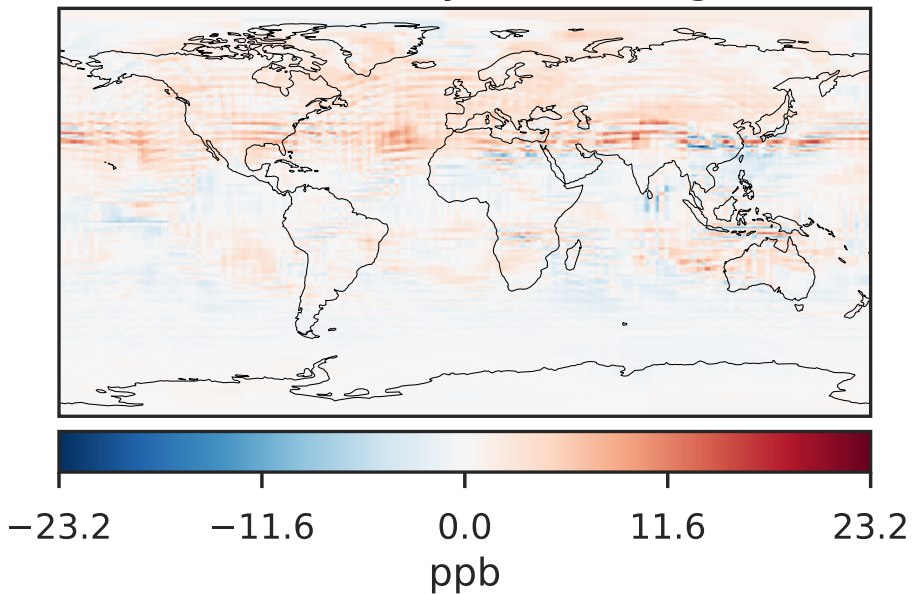
GCC_14.2.0 (Ref)
4.0x5.0



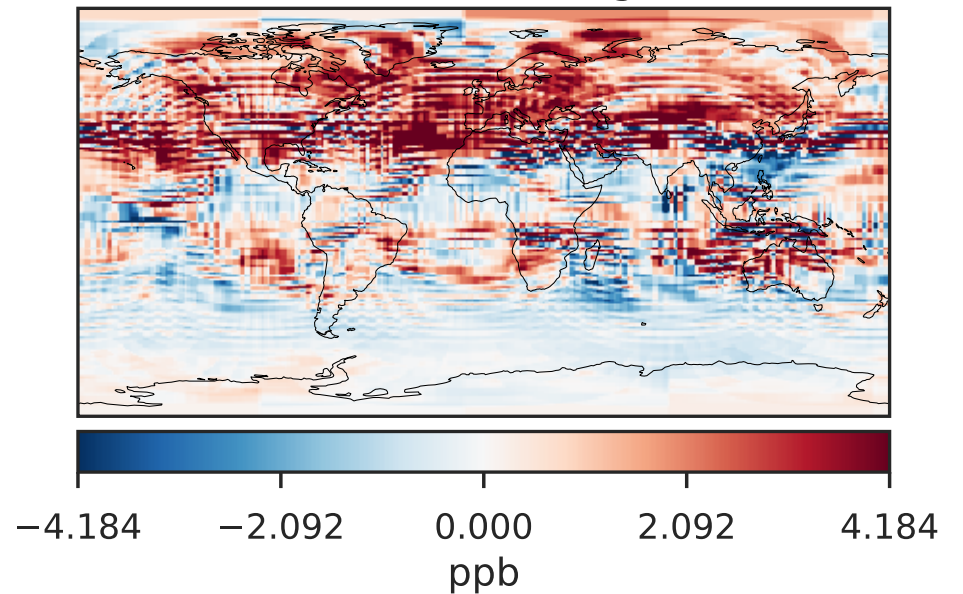
GCHP_14.2.0 (Dev)
c24



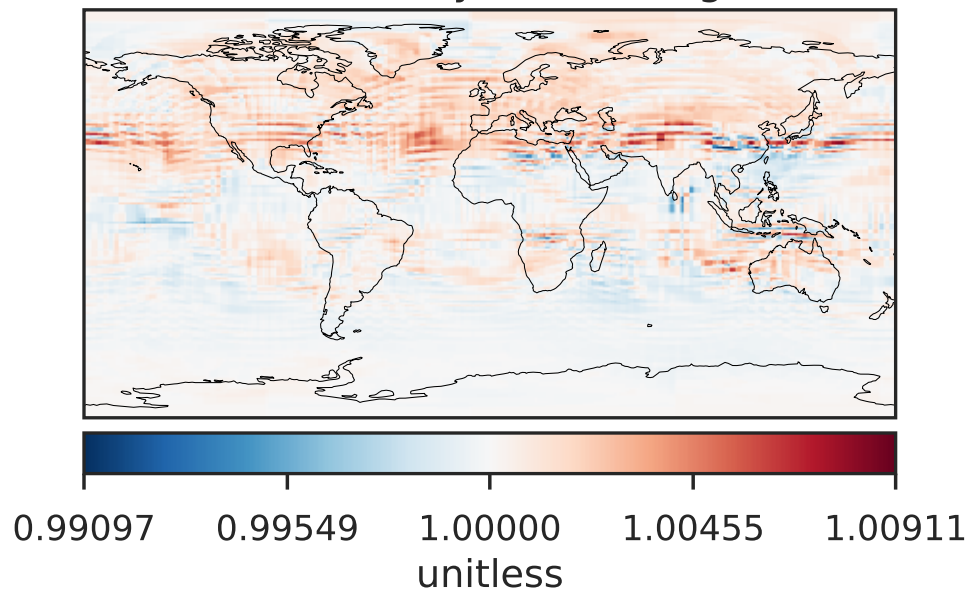
Difference (1x1.25)
Dev - Ref, Dynamic Range



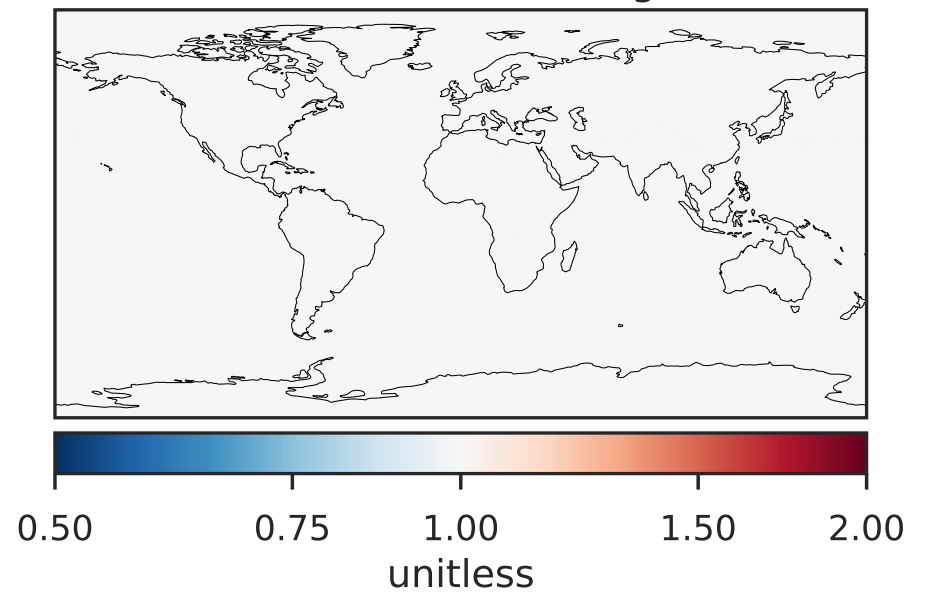
Difference (1x1.25)
Dev - Ref, Restricted Range [5%,95%]



Ratio (1x1.25)
Dev/Ref, Dynamic Range

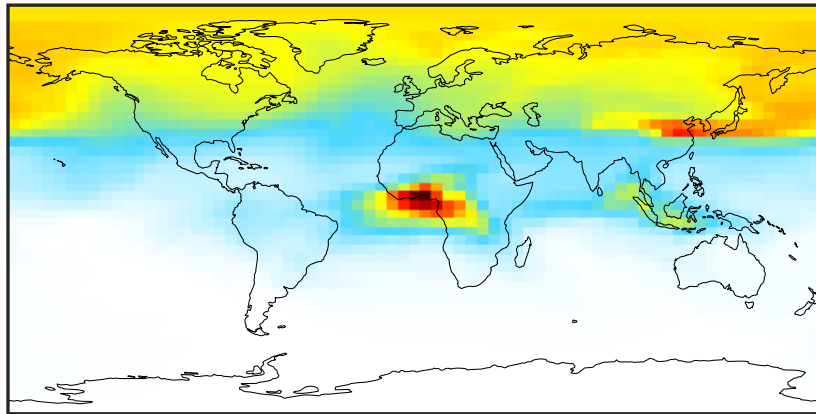


Ratio (1x1.25)
Dev/Ref, Fixed Range



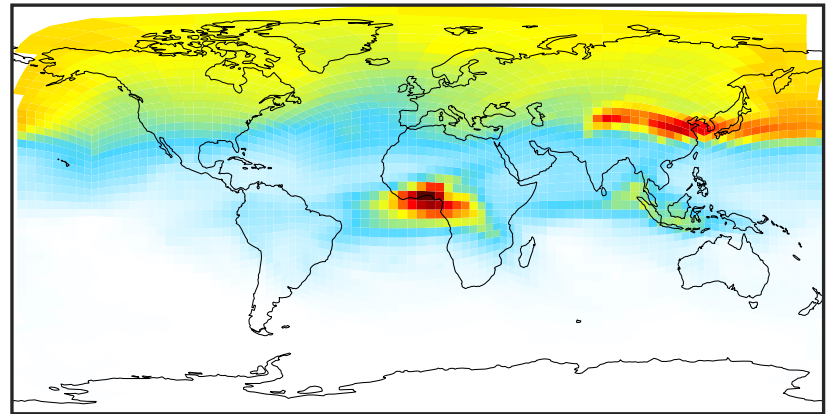
SpeciesConcVV_C2H2 (Jan2019)

GCC_14.2.0 (Ref)
4.0x5.0



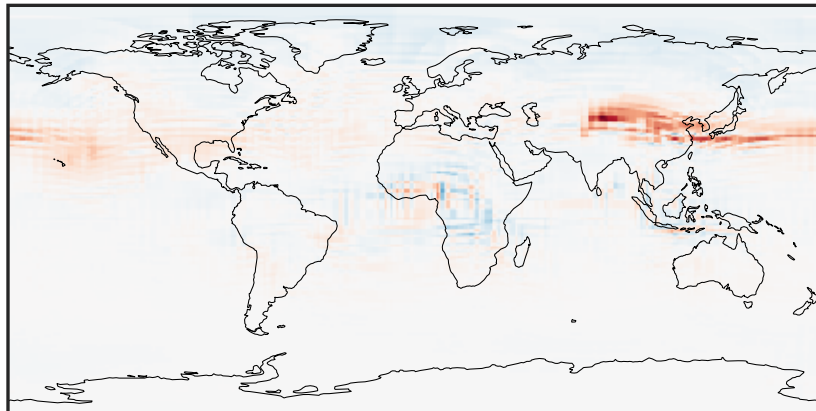
0.0033 0.0679 0.1357 0.2036 0.2747
ppb

GCHP_14.2.0 (Dev)
c24



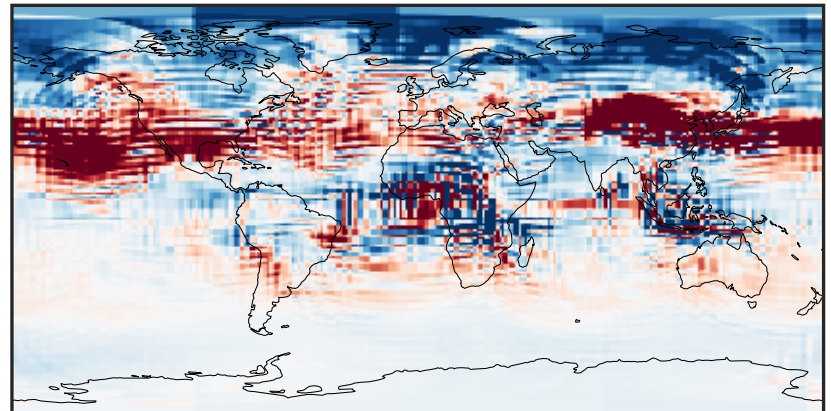
0.0033 0.0679 0.1357 0.2036 0.2747
ppb

Difference (1x1.25)
Dev - Ref, Dynamic Range



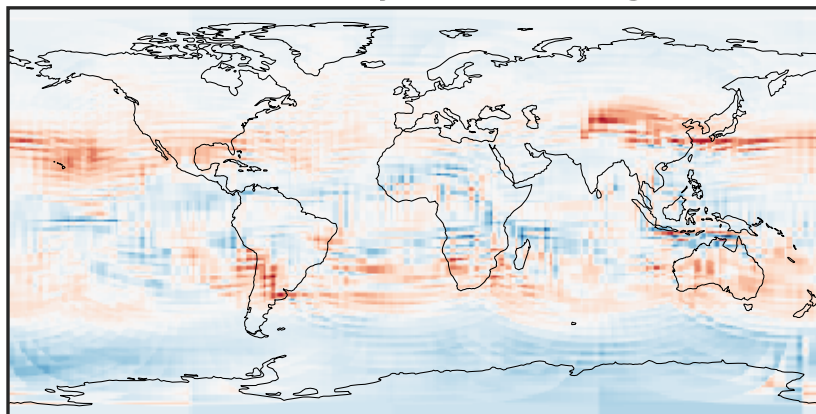
-0.0888 -0.0444 0.0000 0.0444 0.0888
ppb

Difference (1x1.25)
Dev - Ref, Restricted Range [5%,95%]



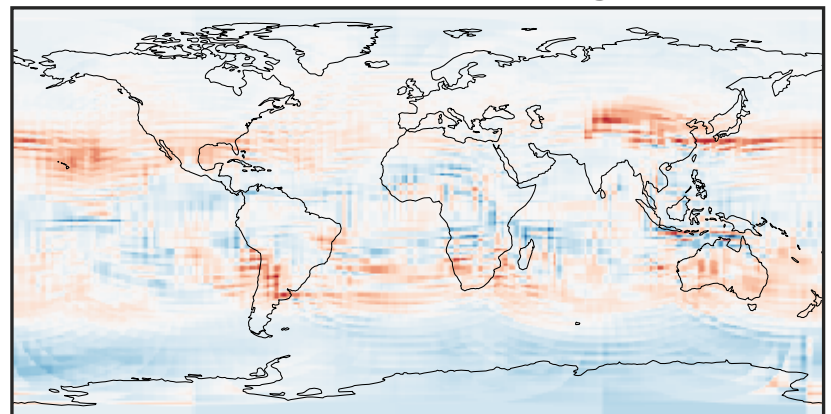
-0.004 0.000 0.004
ppb

Ratio (1x1.25)
Dev/Ref, Dynamic Range



0.526 0.763 1.000 1.451 1.902
unitless

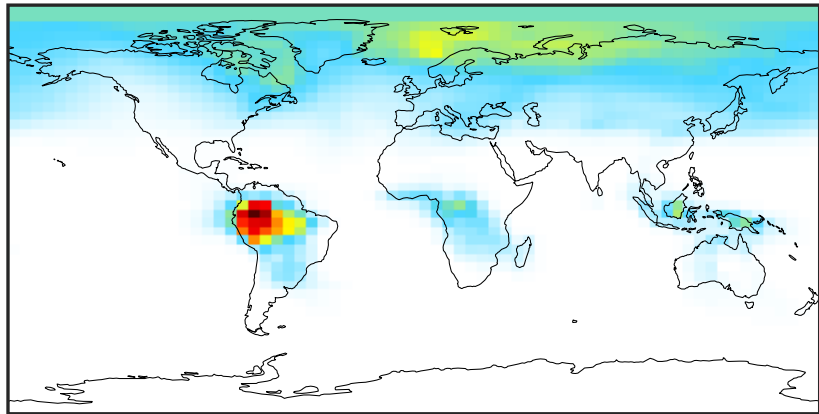
Ratio (1x1.25)
Dev/Ref, Fixed Range



0.50 0.75 1.00 1.50 2.00
unitless

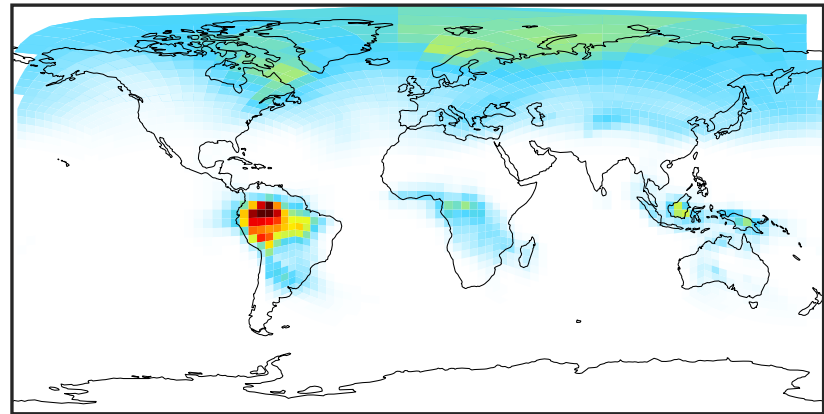
SpeciesConcVV_C2H4 (Jan2019)

GCC_14.2.0 (Ref)
4.0x5.0



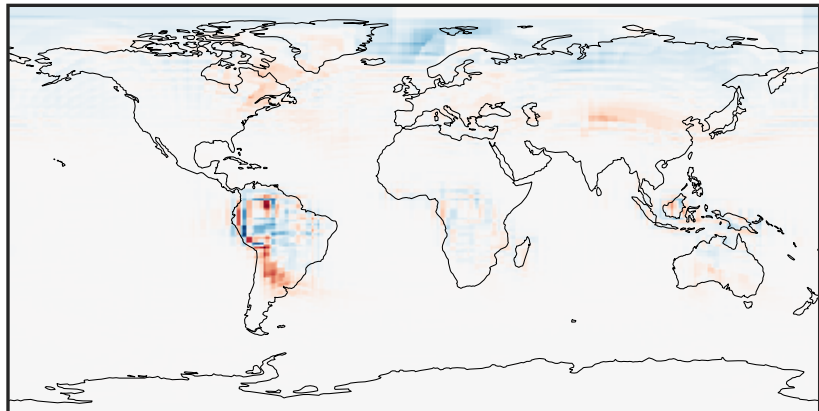
0.0000 0.0452 0.0903 0.1355 0.1806
ppb

GCHP_14.2.0 (Dev)
c24



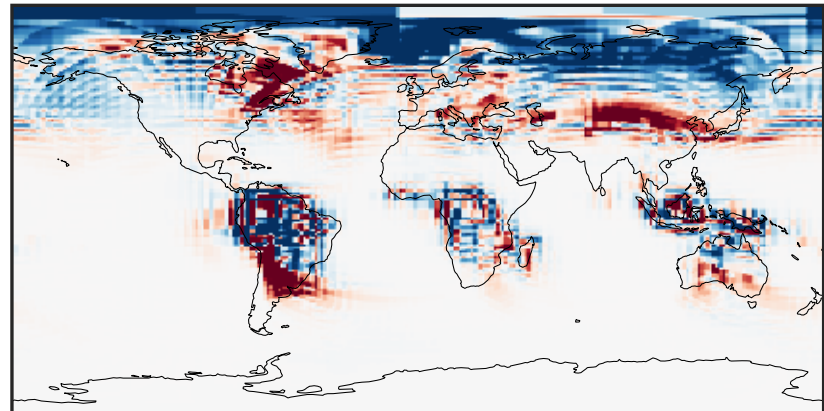
0.0000 0.0452 0.0903 0.1355 0.1806
ppb

Difference (1x1.25)
Dev - Ref, Dynamic Range



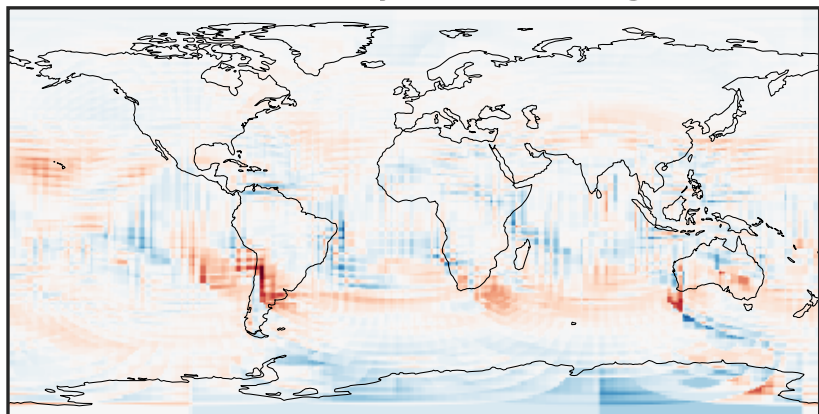
-0.0596 -0.0298 0.0000 0.0298 0.0596
ppb

Difference (1x1.25)
Dev - Ref, Restricted Range [5%,95%]



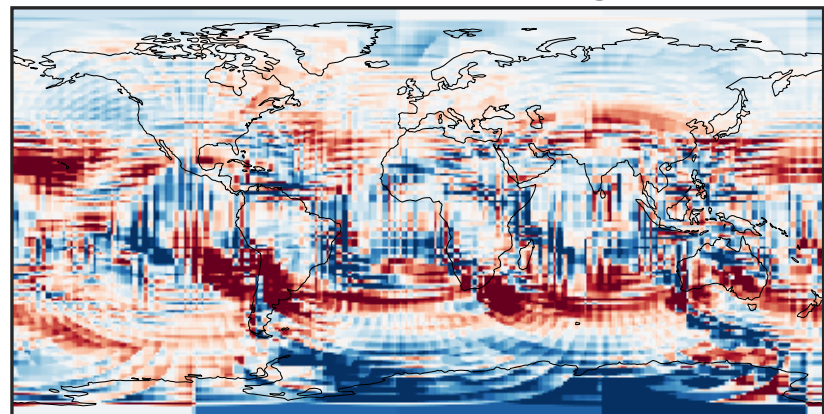
-0.004 0.000 0.004
ppb

Ratio (1x1.25)
Dev/Ref, Dynamic Range



1e-01 1 10
unitless

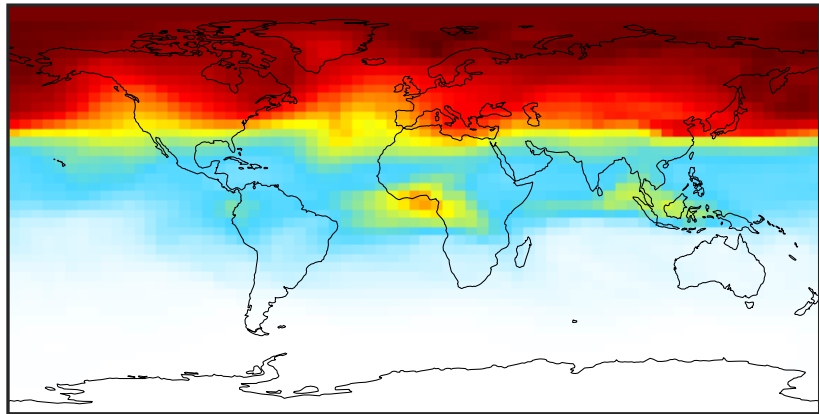
Ratio (1x1.25)
Dev/Ref, Fixed Range



0.50 0.75 1.00 1.50 2.00
unitless

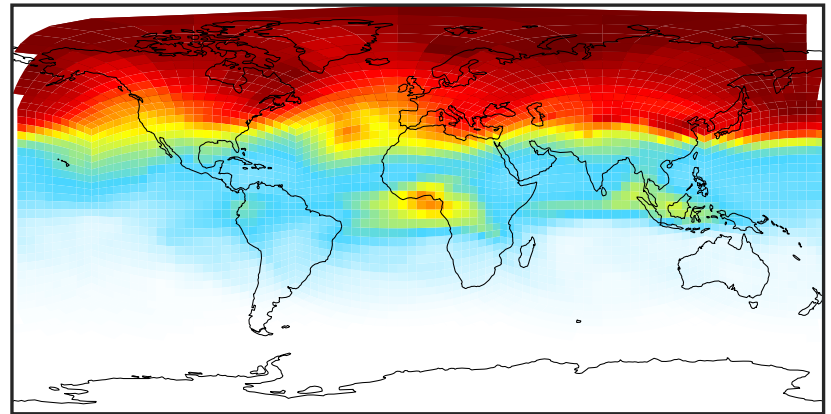
SpeciesConcVV_C2H6 (Jan2019)

GCC_14.2.0 (Ref)
4.0x5.0



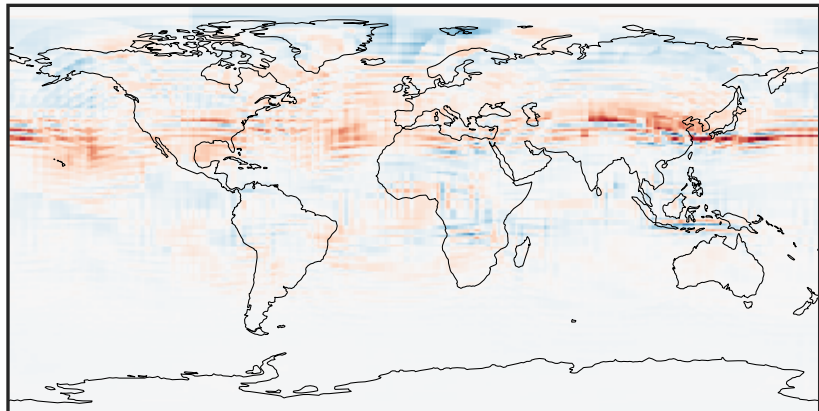
0.056 0.274 0.548 0.821 1.151
ppb

GCHP_14.2.0 (Dev)
c24



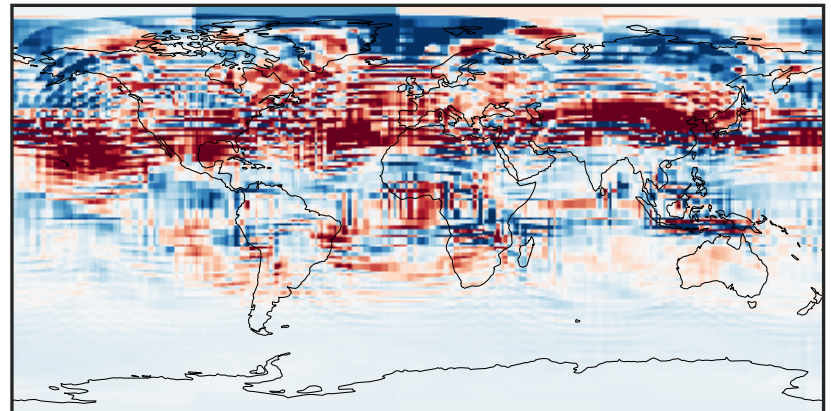
0.056 0.274 0.548 0.821 1.151
ppb

Difference (1x1.25)
Dev - Ref, Dynamic Range



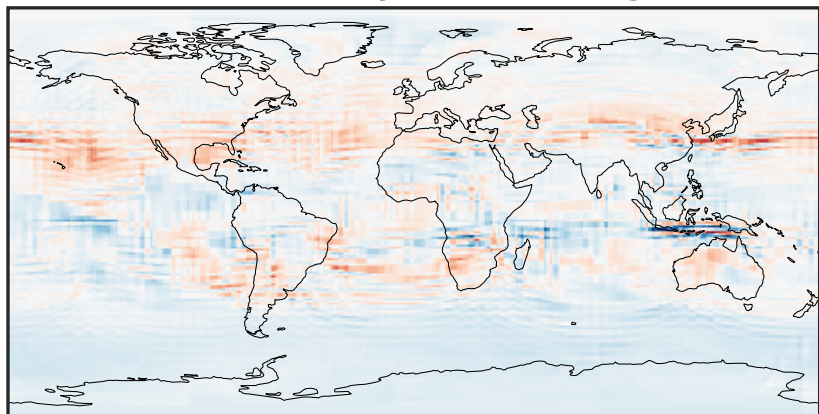
-0.1915 -0.0958 0.0000 0.0958 0.1915
ppb

Difference (1x1.25)
Dev - Ref, Restricted Range [5%,95%]



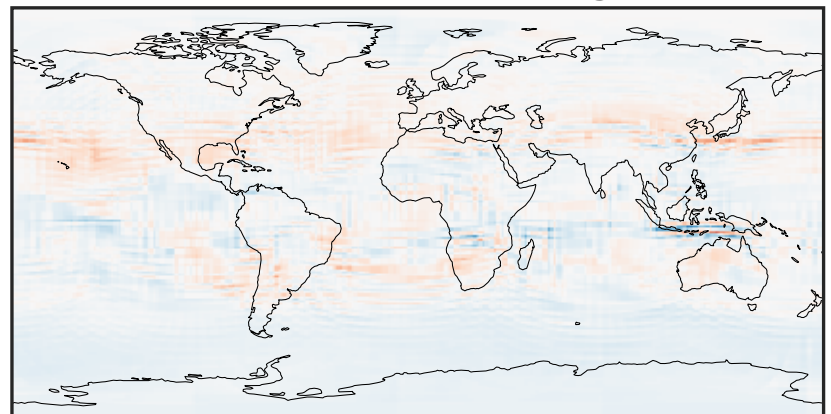
-0.02 0.00 0.02
ppb

Ratio (1x1.25)
Dev/Ref, Dynamic Range



0.6647 0.8323 1.0000 1.2523 1.5045
unitless

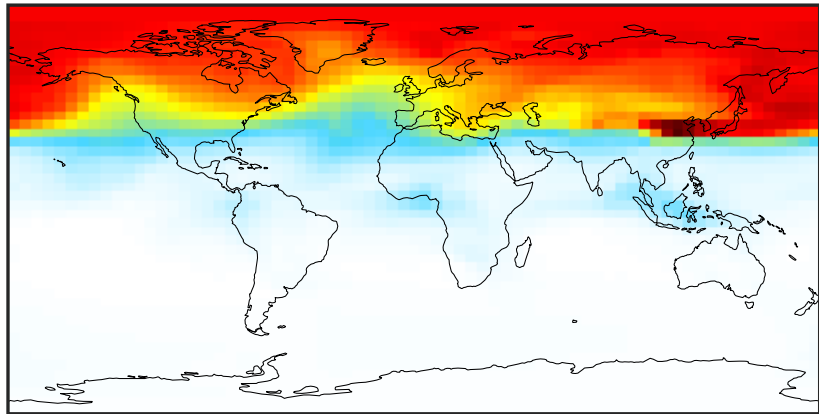
Ratio (1x1.25)
Dev/Ref, Fixed Range



0.50 0.75 1.00 1.50 2.00
unitless

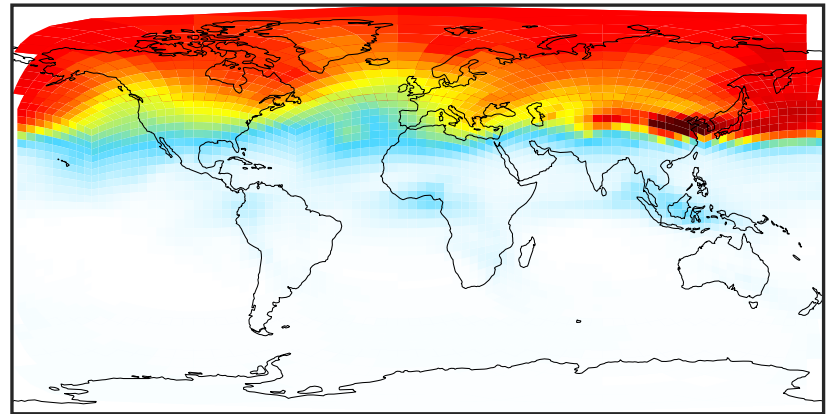
SpeciesConcVV_C3H8 (Jan2019)

GCC_14.2.0 (Ref)
4.0x5.0



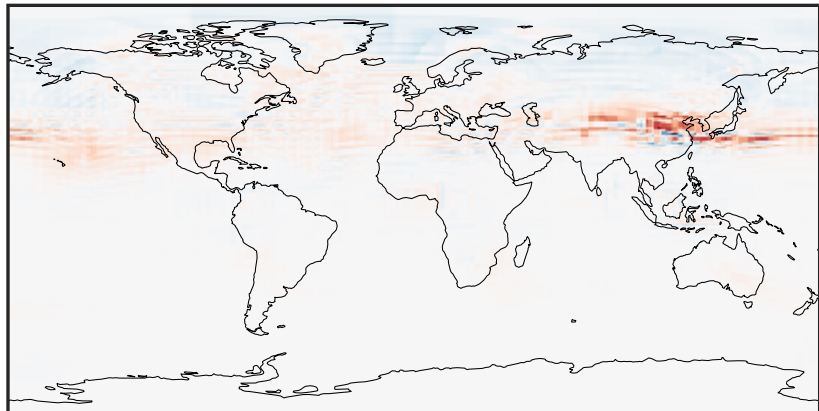
0.0016 0.1411 0.2822 0.4233 0.5660
ppb

GCHP_14.2.0 (Dev)
c24



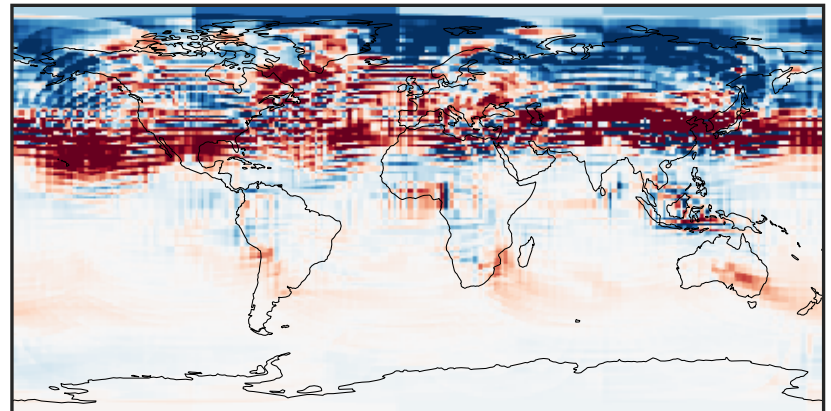
0.0016 0.1411 0.2822 0.4233 0.5660
ppb

Difference (1x1.25)
Dev - Ref, Dynamic Range



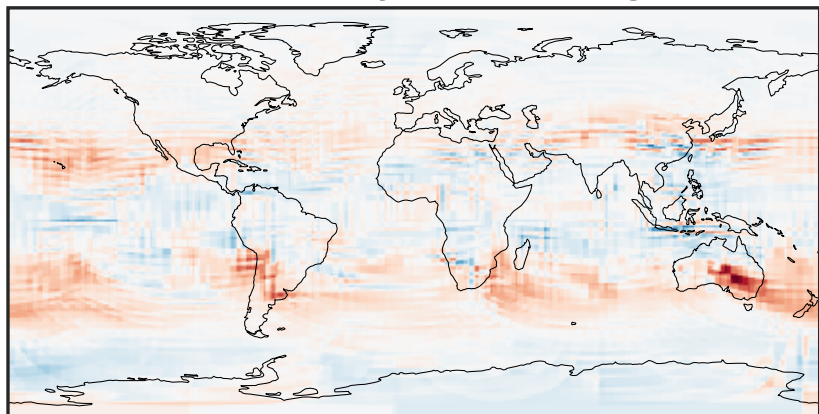
-0.2133 -0.1066 0.0000 0.1066 0.2133
ppb

Difference (1x1.25)
Dev - Ref, Restricted Range [5%,95%]



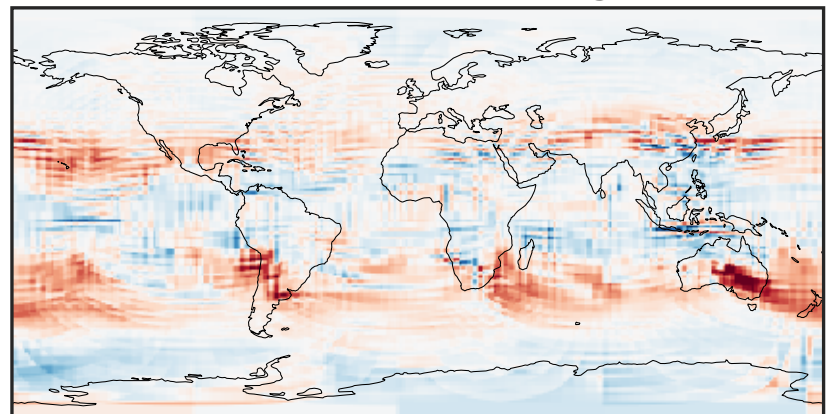
-0.008 0.000 0.008
ppb

Ratio (1x1.25)
Dev/Ref, Dynamic Range



0.345 0.673 1.000 1.948 2.896
unitless

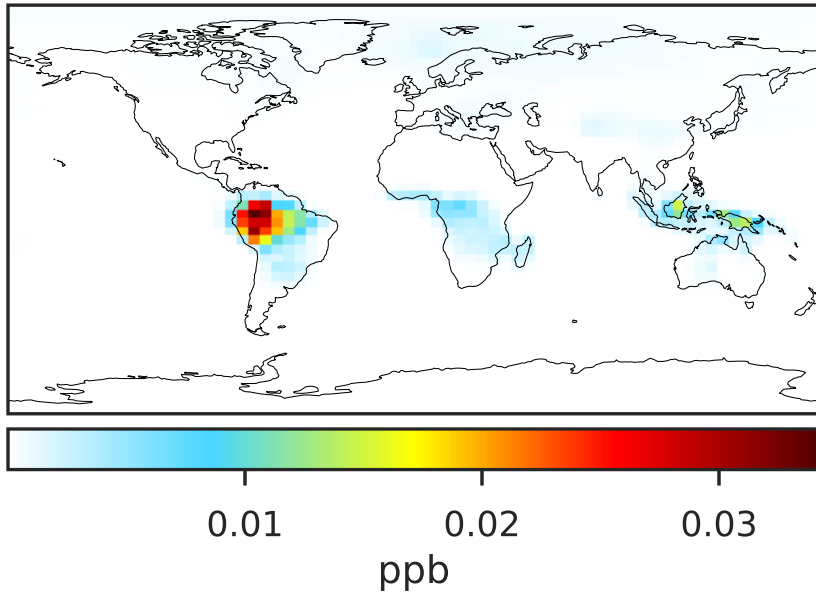
Ratio (1x1.25)
Dev/Ref, Fixed Range



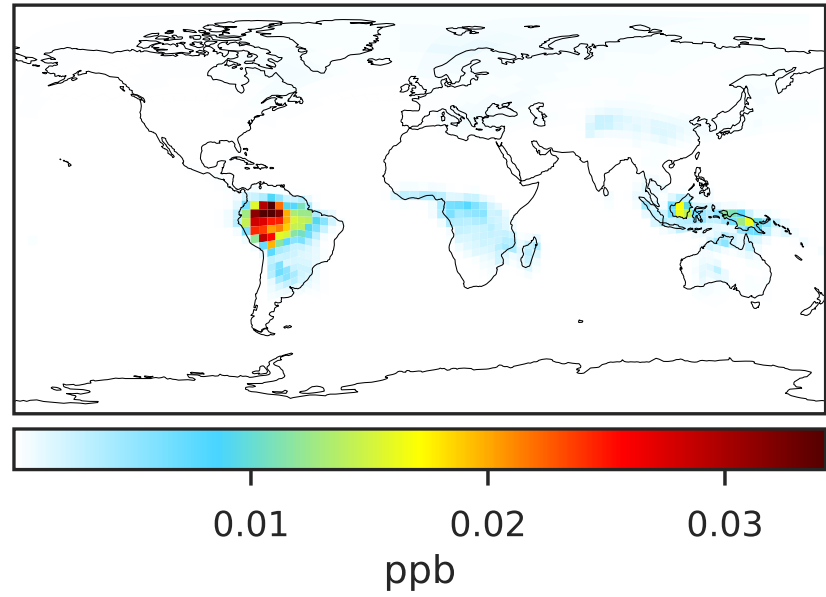
0.50 0.75 1.00 1.50 2.00
unitless

SpeciesConcVV_PRPE (Jan2019)

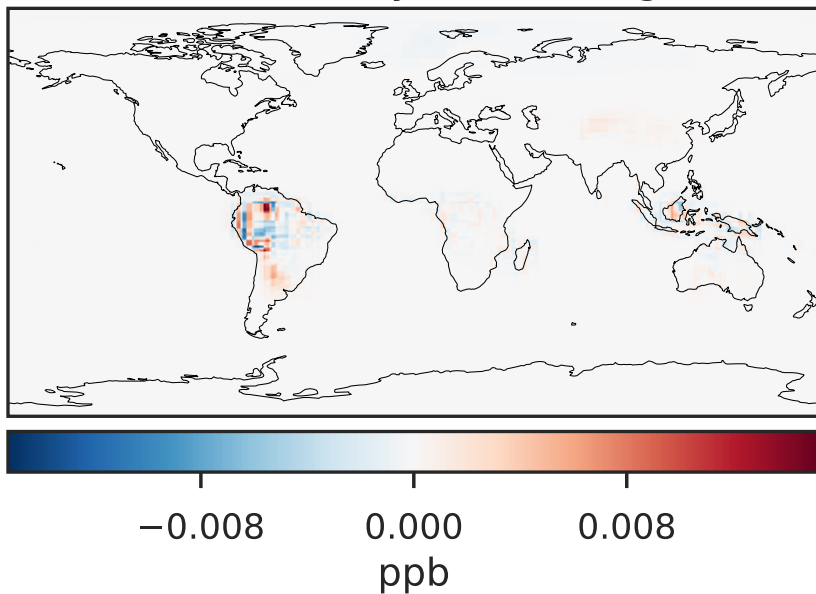
GCC_14.2.0 (Ref)
4.0x5.0



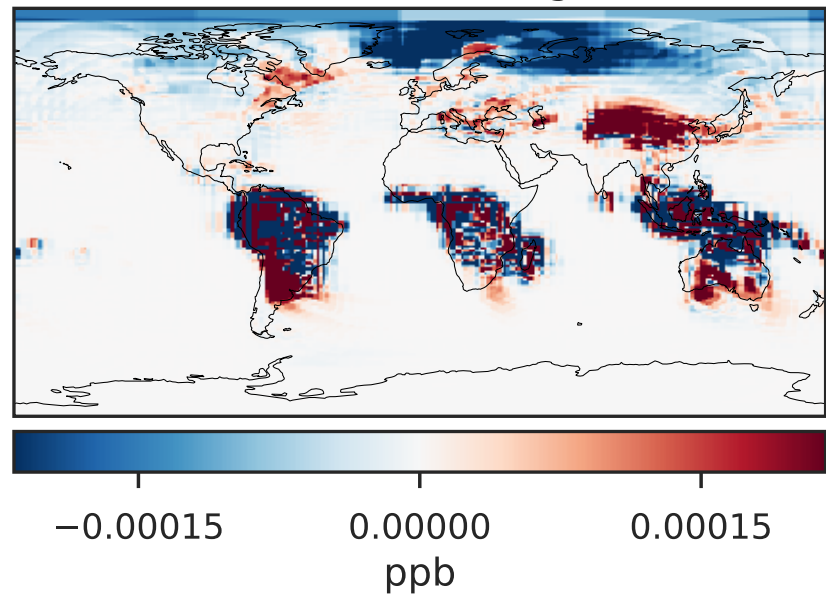
GCHP_14.2.0 (Dev)
c24



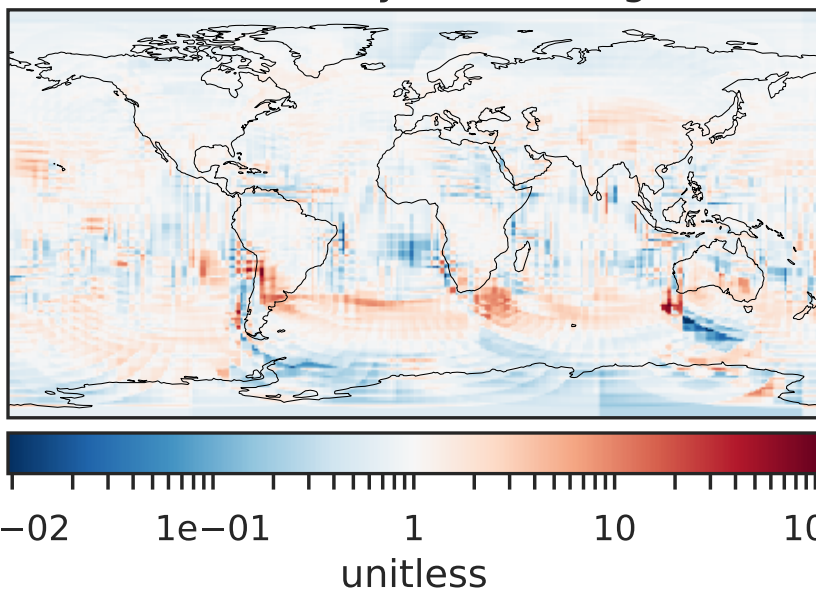
Difference (1x1.25)
Dev - Ref, Dynamic Range



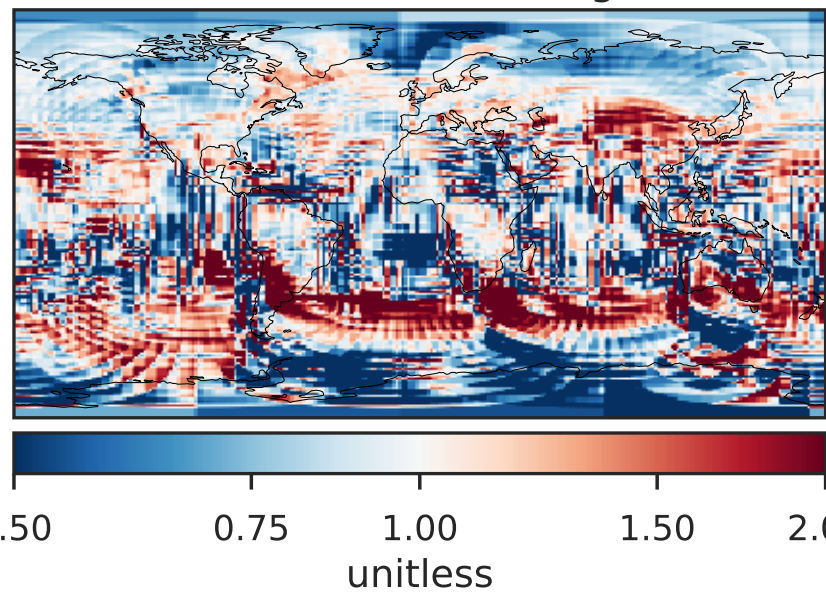
Difference (1x1.25)
Dev - Ref, Restricted Range [5%,95%]



Ratio (1x1.25)
Dev/Ref, Dynamic Range

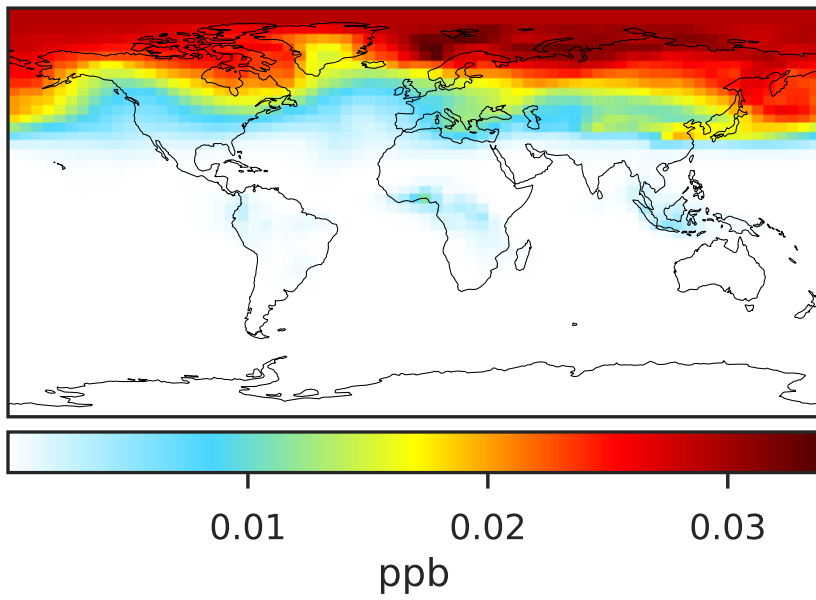


Ratio (1x1.25)
Dev/Ref, Fixed Range

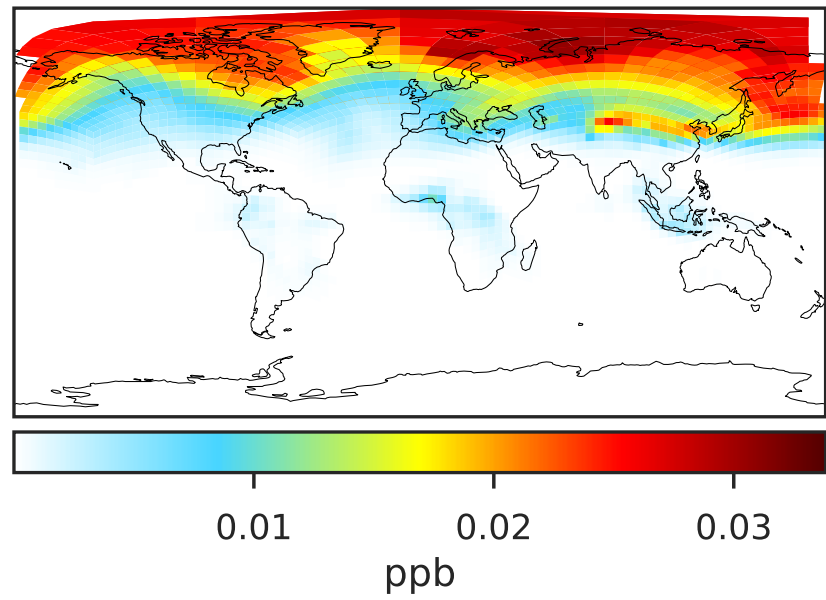


SpeciesConcVV_TOLU (Jan2019)

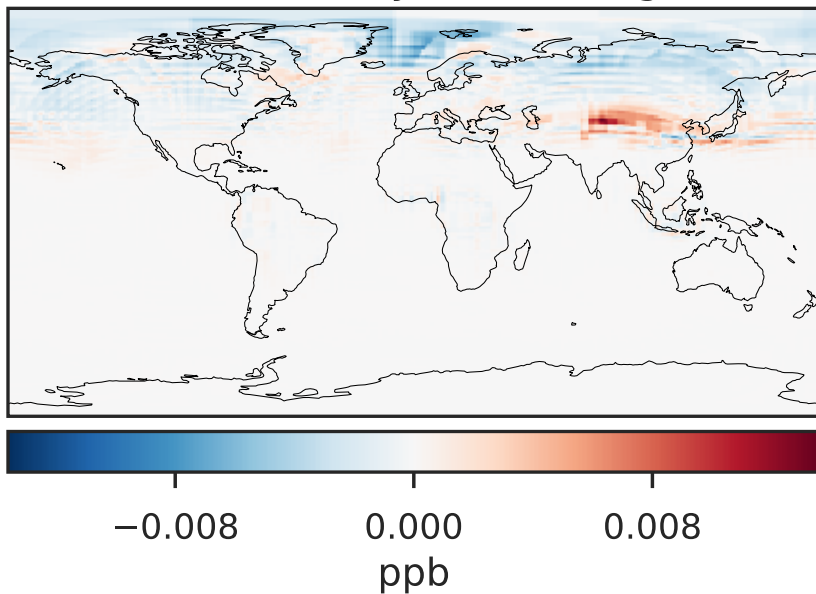
GCC_14.2.0 (Ref)
4.0x5.0



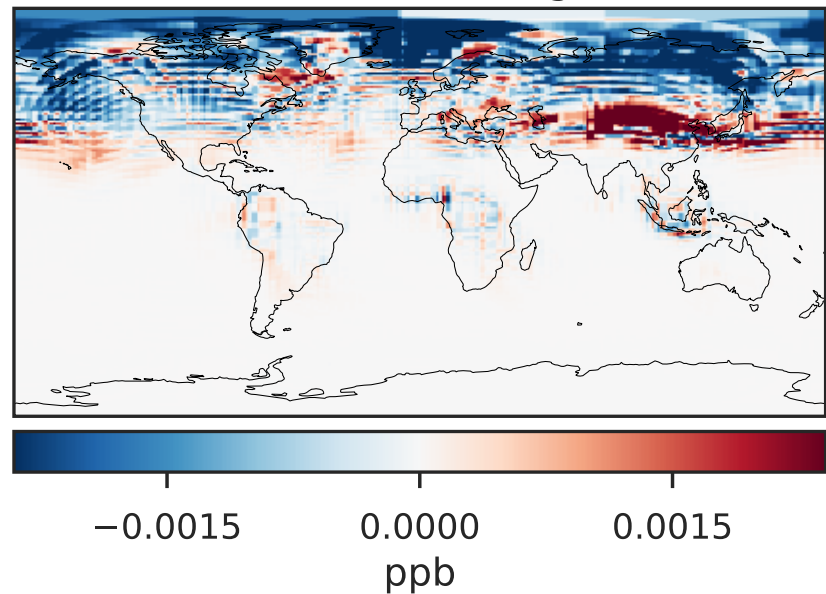
GCHP_14.2.0 (Dev)
c24



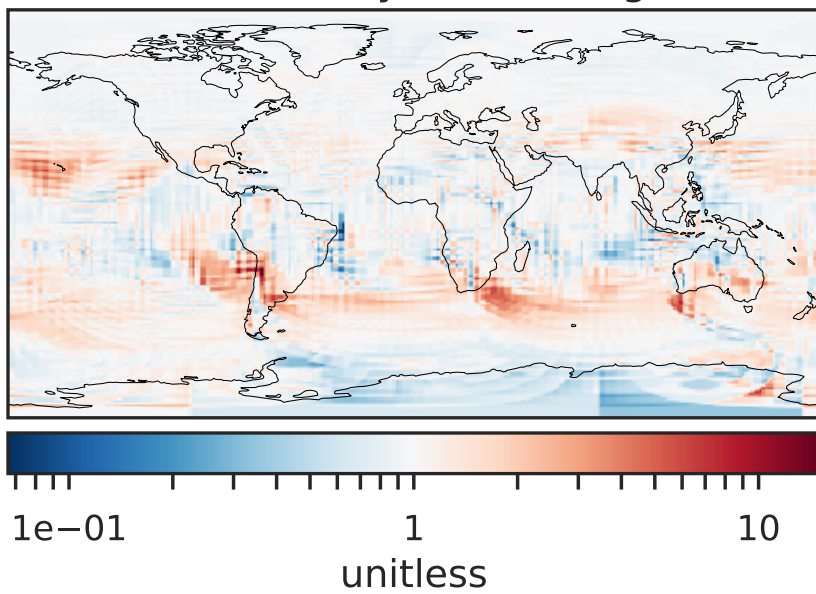
Difference (1x1.25)
Dev - Ref, Dynamic Range



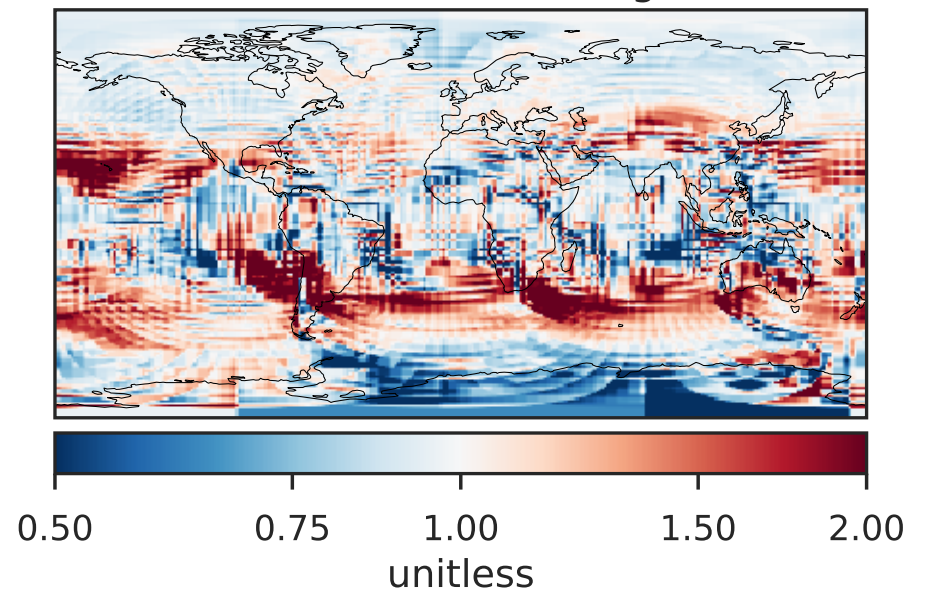
Difference (1x1.25)
Dev - Ref, Restricted Range [5%,95%]



Ratio (1x1.25)
Dev/Ref, Dynamic Range

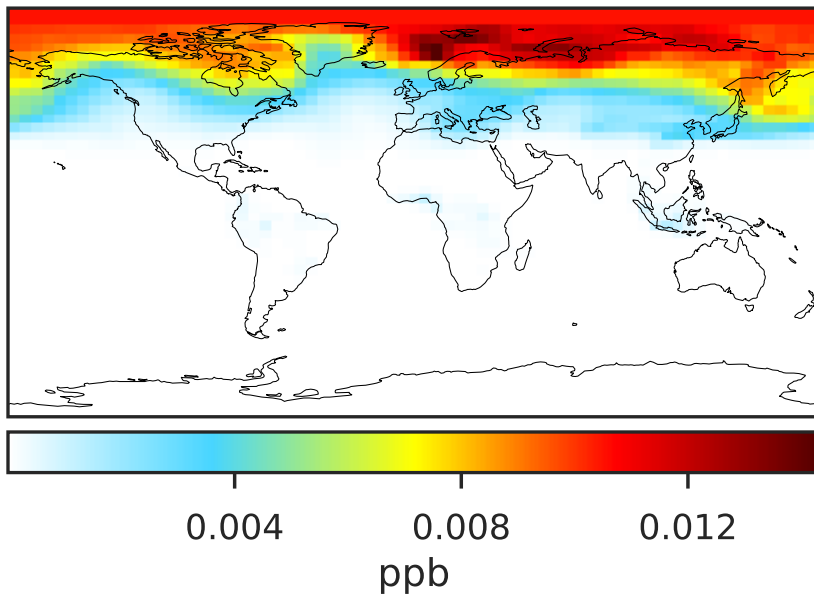


Ratio (1x1.25)
Dev/Ref, Fixed Range

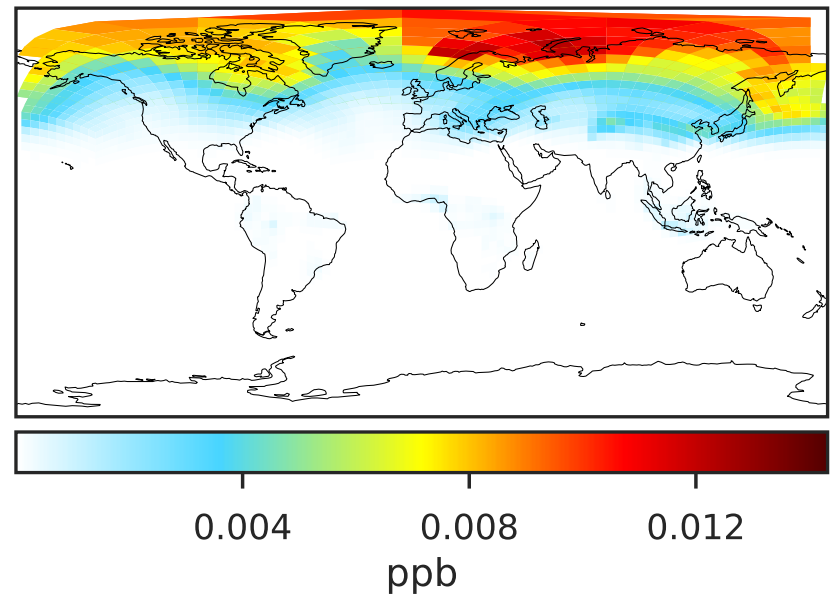


SpeciesConcVV_XYLE (Jan2019)

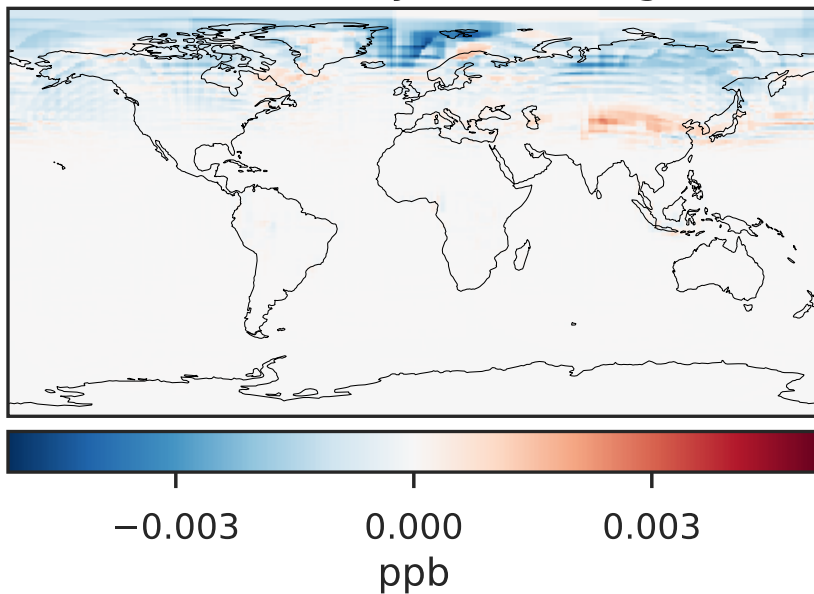
GCC_14.2.0 (Ref)
4.0x5.0



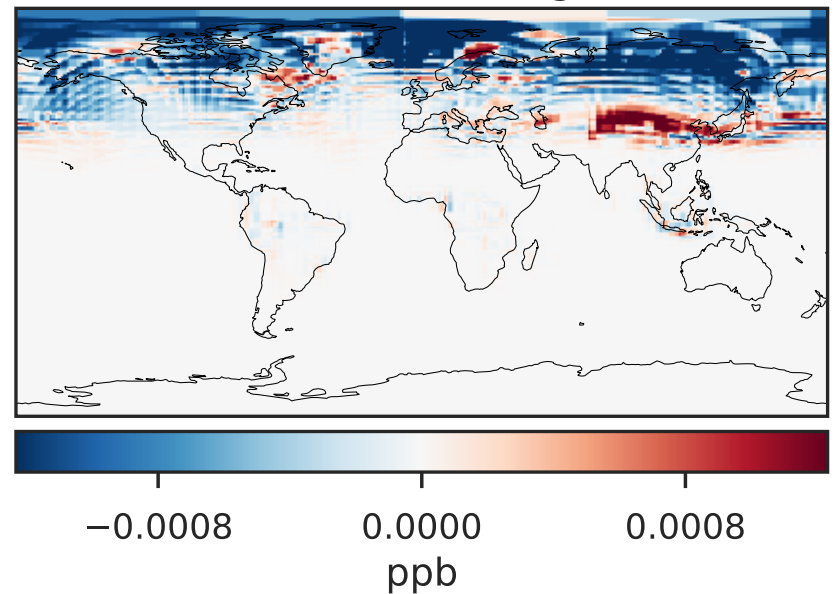
GCHP_14.2.0 (Dev)
c24



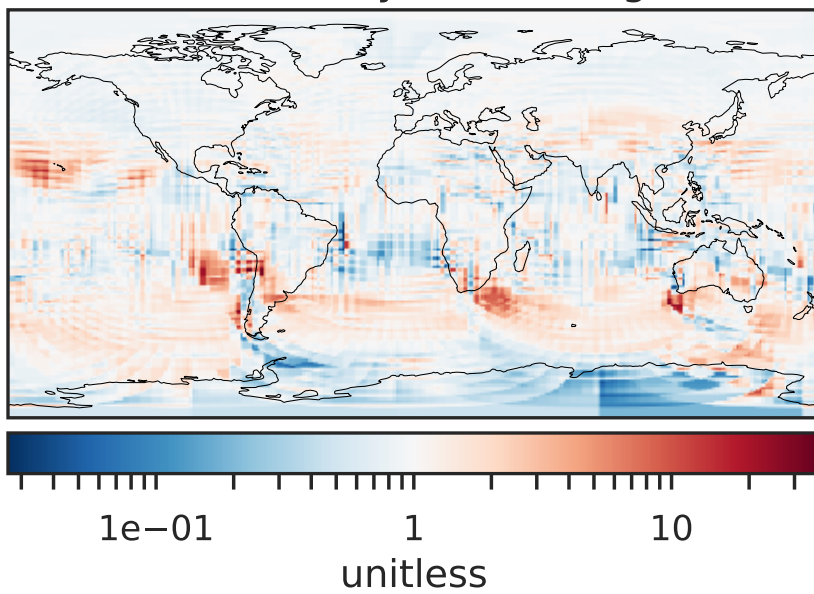
Difference (1x1.25)
Dev - Ref, Dynamic Range



Difference (1x1.25)
Dev - Ref, Restricted Range [5%,95%]



Ratio (1x1.25)
Dev/Ref, Dynamic Range



Ratio (1x1.25)
Dev/Ref, Fixed Range

