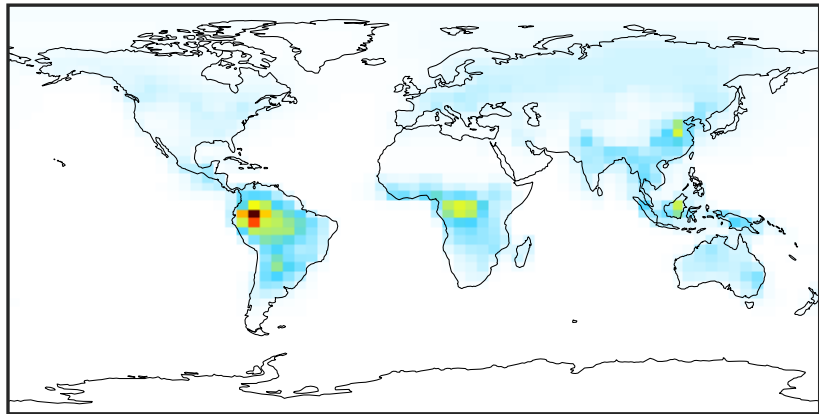


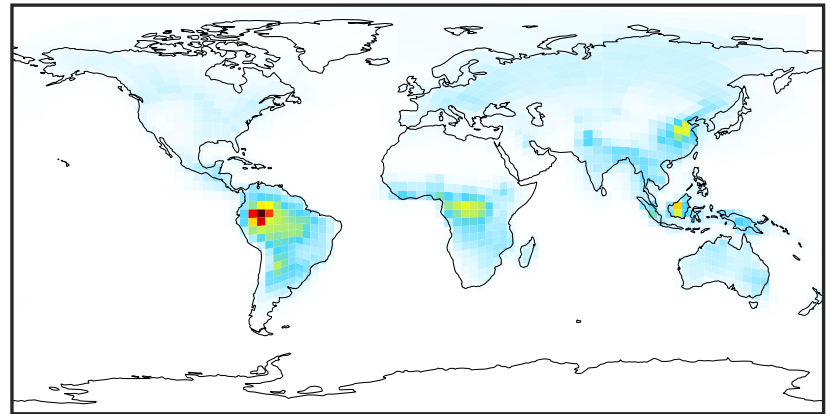
# SpeciesConcVV\_EOH (Jan2019)

GCC\_14.2.0 (Ref)  
4.0x5.0



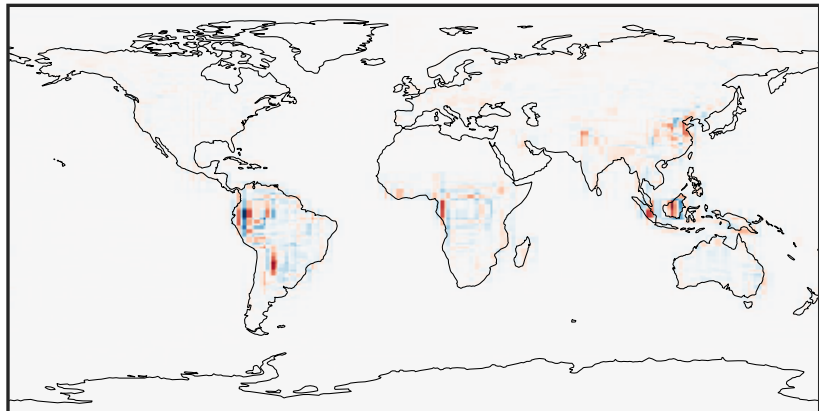
0.000 0.812 1.624 2.436 3.249  
ppb

GCHP\_14.2.0 (Dev)  
c24



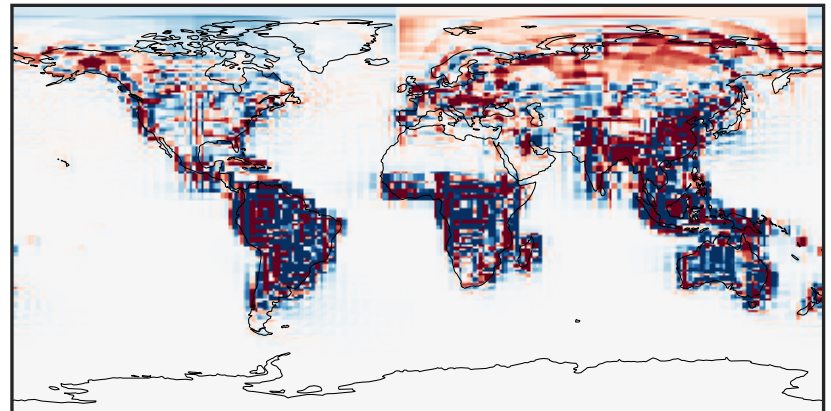
0.000 0.812 1.624 2.436 3.249  
ppb

Difference (1x1.25)  
Dev - Ref, Dynamic Range



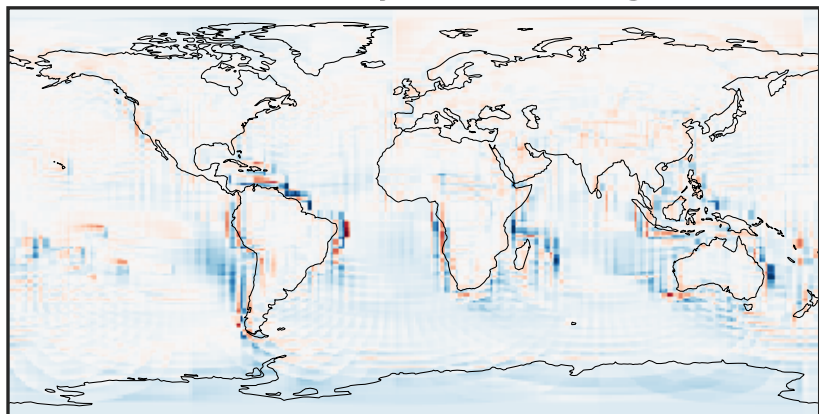
-0.887 -0.443 0.000 0.443 0.887  
ppb

Difference (1x1.25)  
Dev - Ref, Restricted Range [5%,95%]



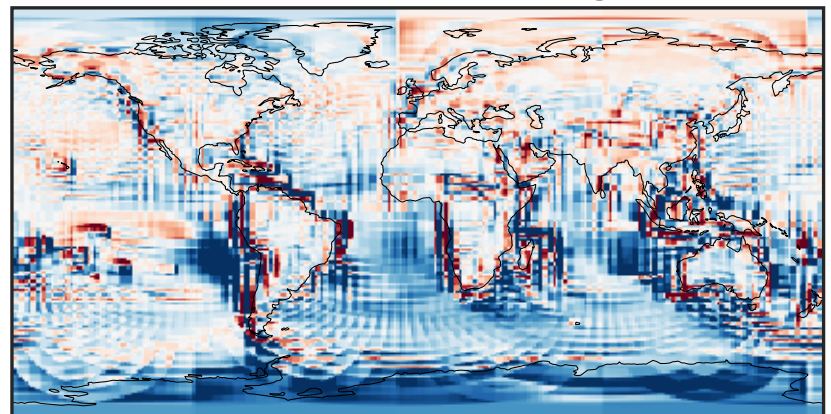
-0.02 0.00 0.02  
ppb

Ratio (1x1.25)  
Dev/Ref, Dynamic Range



1e-01 1 10  
unitless

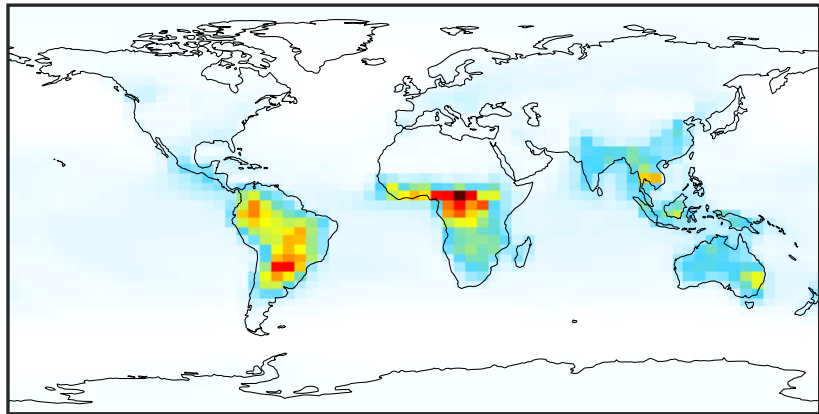
Ratio (1x1.25)  
Dev/Ref, Fixed Range



0.50 0.75 1.00 1.50 2.00  
unitless

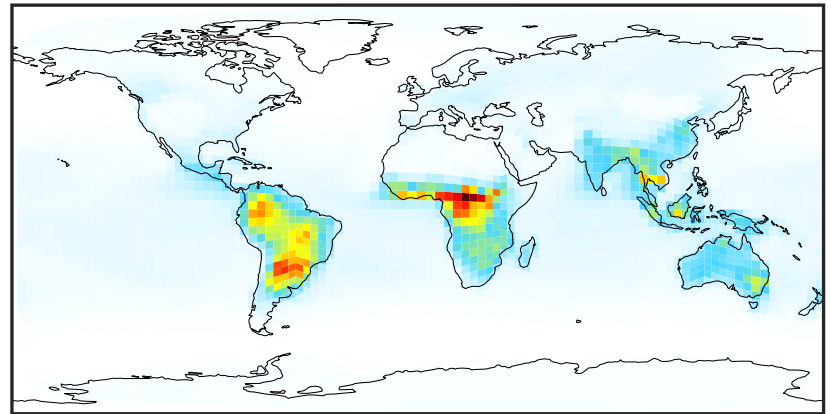
# SpeciesConcVW\_MOH (Jan2019)

GCC\_14.2.0 (Ref)  
4.0x5.0



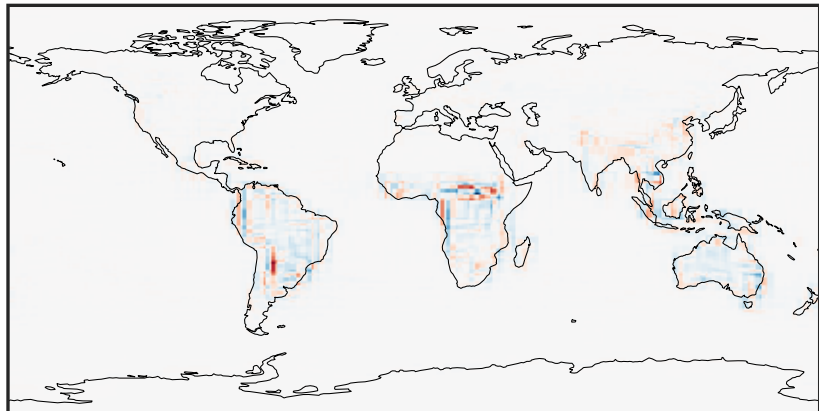
0.032 2.322 4.643 6.965 9.319  
ppb

GCHP\_14.2.0 (Dev)  
c24



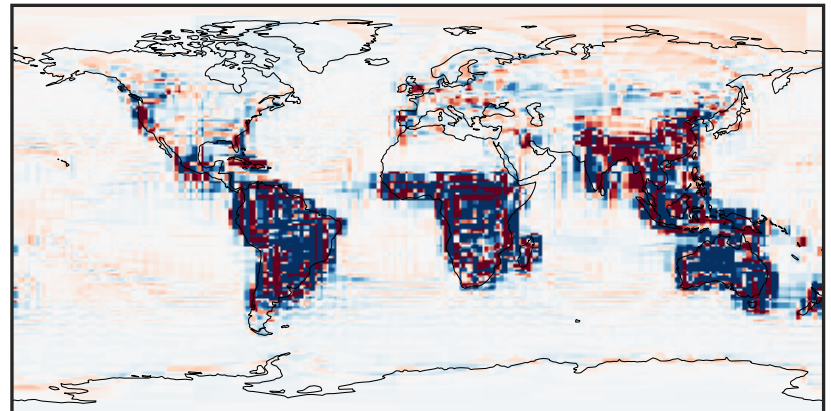
0.032 2.322 4.643 6.965 9.319  
ppb

Difference (1x1.25)  
Dev - Ref, Dynamic Range



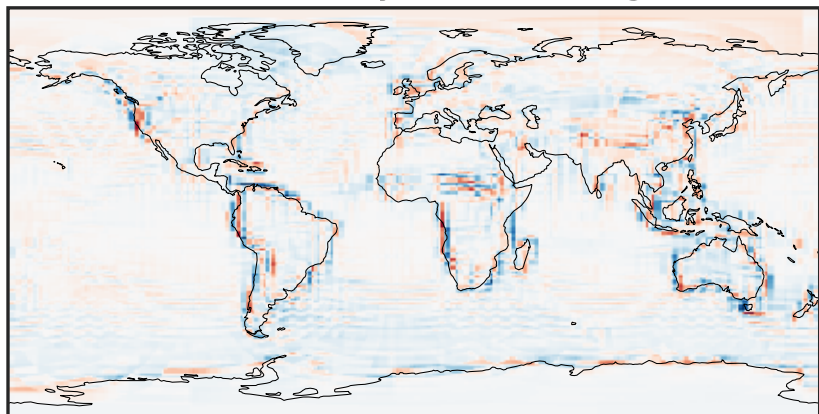
-3.808 -1.904 0.000 1.904 3.808  
ppb

Difference (1x1.25)  
Dev - Ref, Restricted Range [5%,95%]



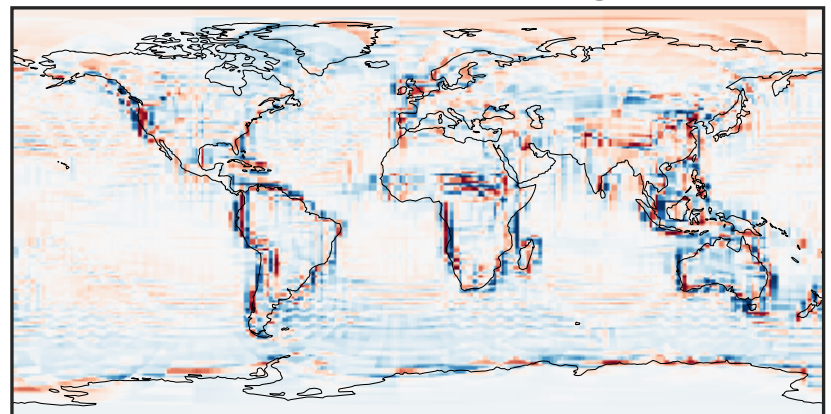
-0.1583 -0.0791 0.0000 0.0791 0.1583  
ppb

Ratio (1x1.25)  
Dev/Ref, Dynamic Range



0.288 0.644 1.000 2.237 3.473  
unitless

Ratio (1x1.25)  
Dev/Ref, Fixed Range

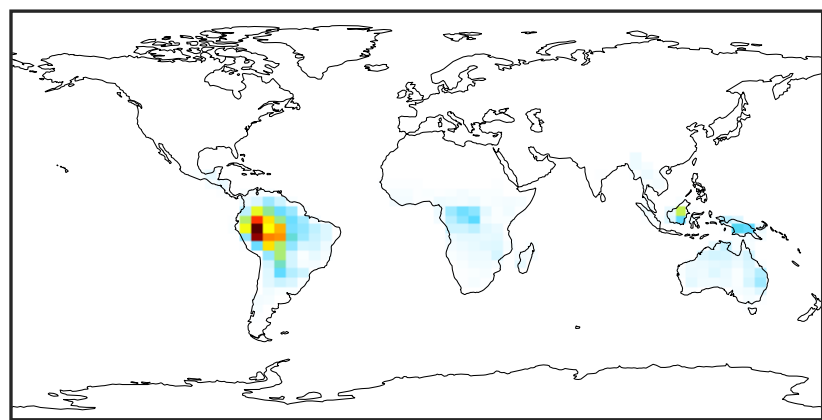


0.50 0.75 1.00 1.50 2.00  
unitless



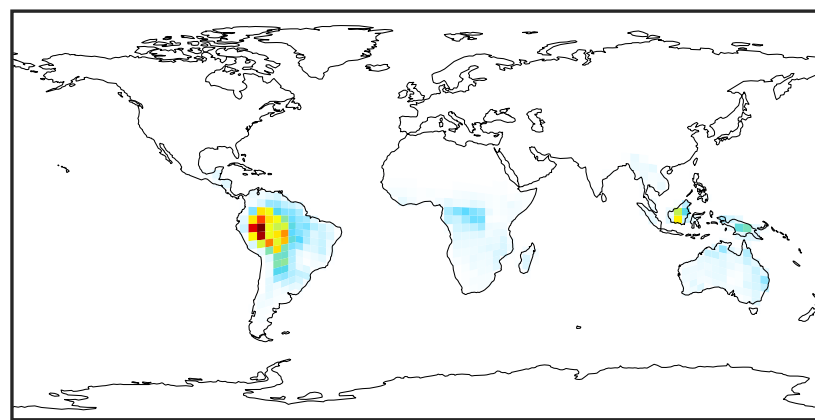
# SpeciesConcVV\_ISOP (Jan2019)

GCC\_14.2.0 (Ref)  
4.0x5.0



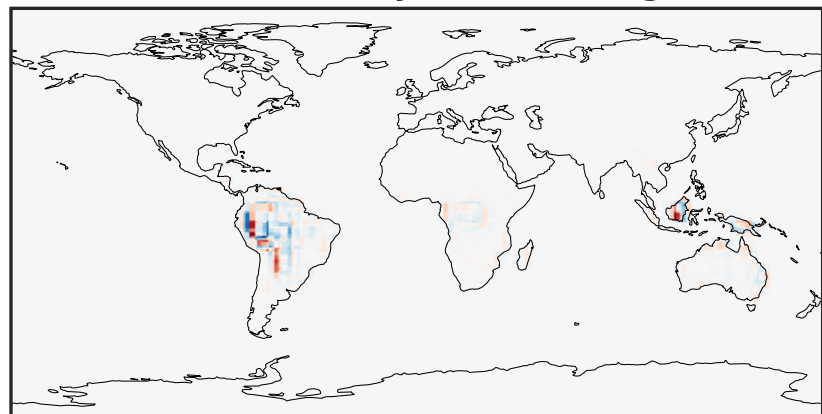
0.00 2.62 5.25 7.87 10.50  
ppb

GCHP\_14.2.0 (Dev)  
c24



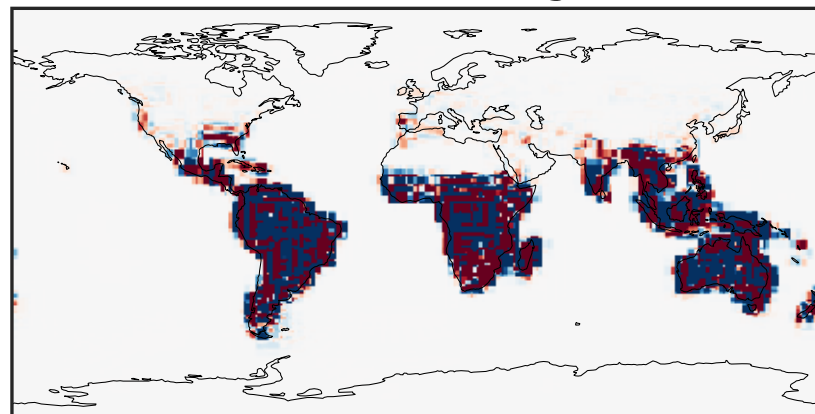
0.00 2.62 5.25 7.87 10.50  
ppb

Difference (1x1.25)  
Dev - Ref, Dynamic Range



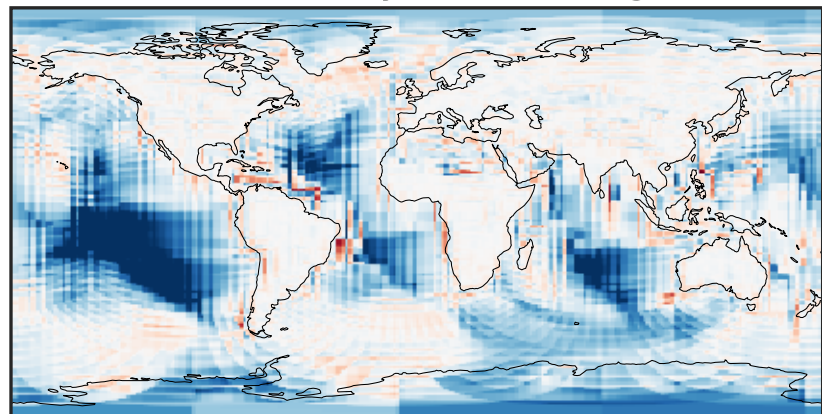
-3.993 -1.996 0.000 1.996 3.993  
ppb

Difference (1x1.25)  
Dev - Ref, Restricted Range [5%,95%]



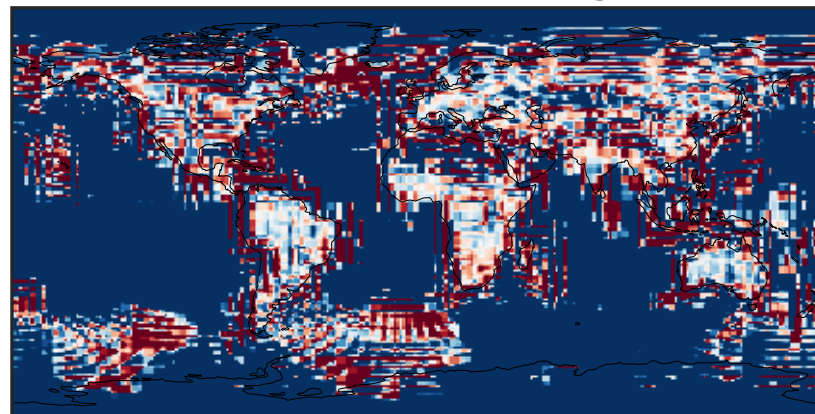
-0.003 0.000 0.003  
ppb

Ratio (1x1.25)  
Dev/Ref, Dynamic Range



unitless

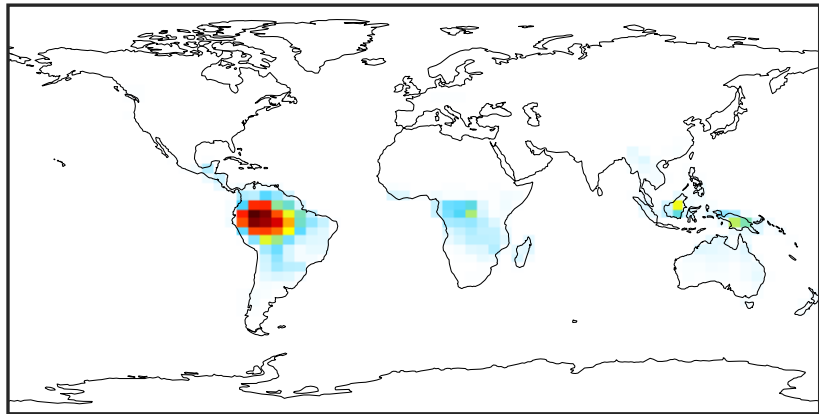
Ratio (1x1.25)  
Dev/Ref, Fixed Range



0.50 0.75 1.00 1.50 2.00  
unitless

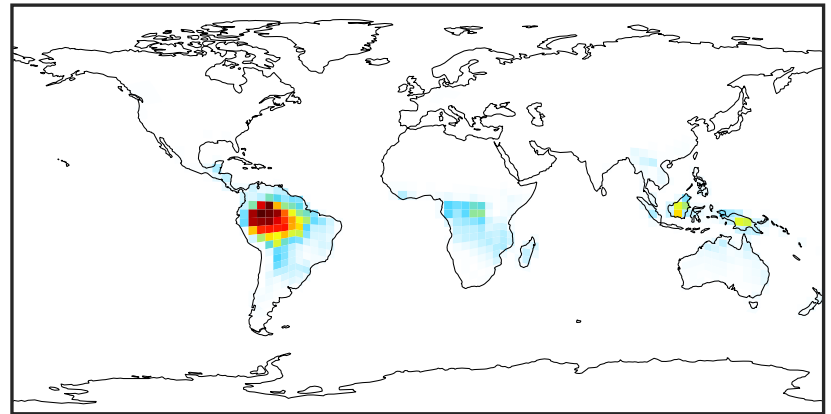
# SpeciesConcVV\_MTPA (Jan2019)

GCC\_14.2.0 (Ref)  
4.0x5.0



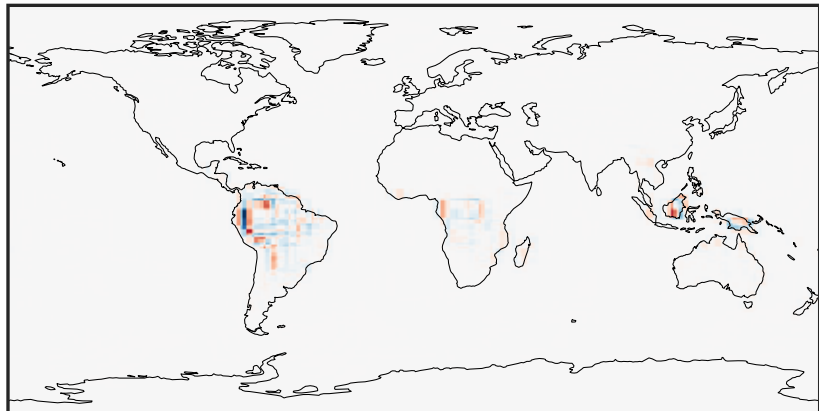
0.000 0.496 0.992 1.488 1.983  
ppb

GCHP\_14.2.0 (Dev)  
c24



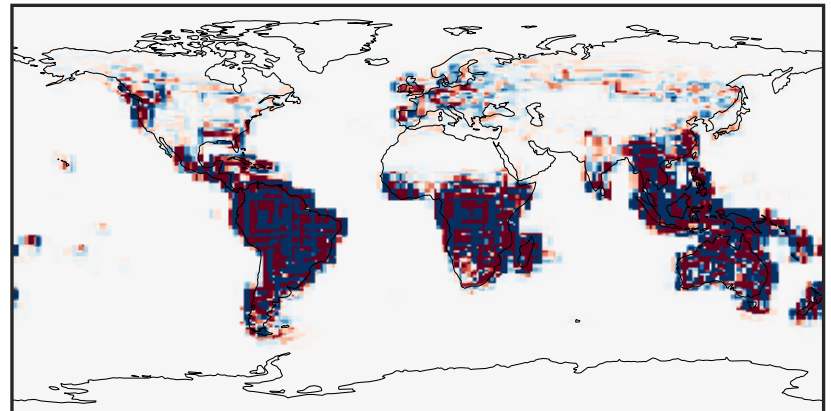
0.000 0.496 0.992 1.488 1.983  
ppb

Difference (1x1.25)  
Dev - Ref, Dynamic Range



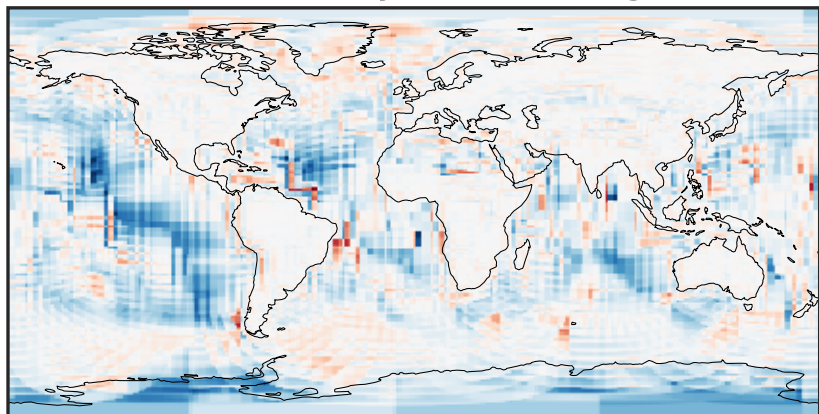
-0.86 -0.43 0.00 0.43 0.86  
ppb

Difference (1x1.25)  
Dev - Ref, Restricted Range [5%,95%]



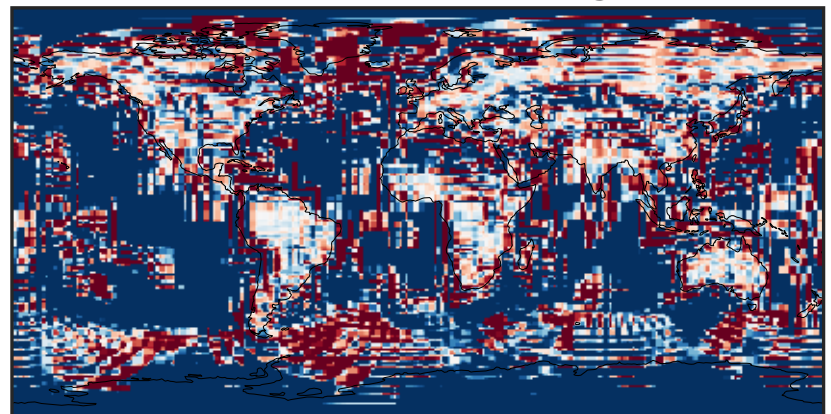
-0.0015 0.0000 0.0015  
ppb

Ratio (1x1.25)  
Dev/Ref, Dynamic Range



unitless

Ratio (1x1.25)  
Dev/Ref, Fixed Range

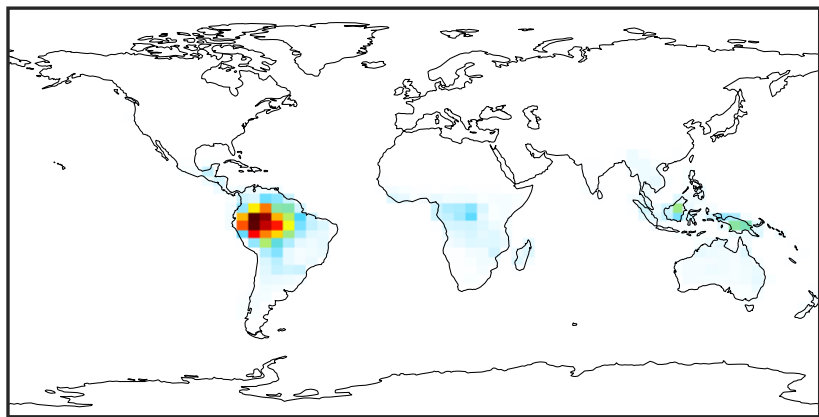


0.50 0.75 1.00 1.50 2.00  
unitless



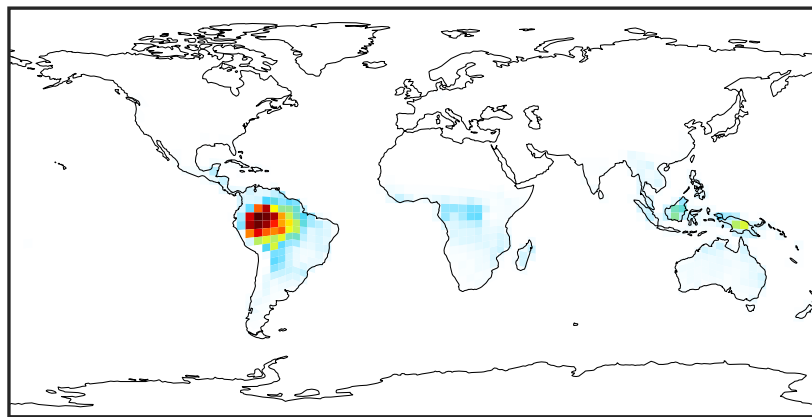
# SpeciesConcVV\_MTPO (Jan2019)

GCC\_14.2.0 (Ref)  
4.0x5.0



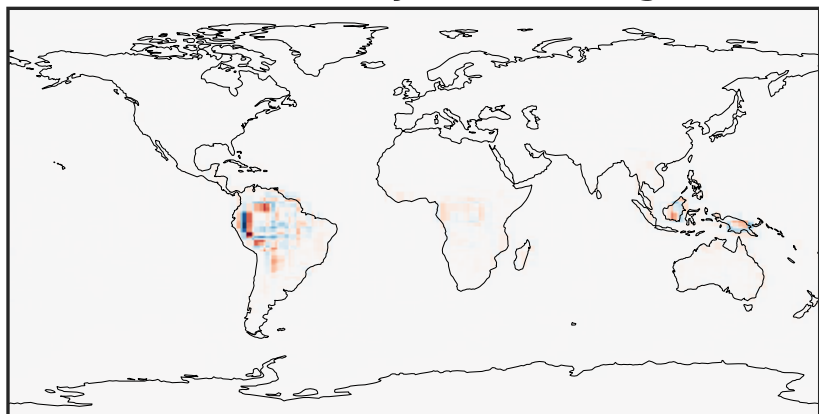
0.0000 0.0316 0.0632 0.0948 0.1264  
ppb

GCHP\_14.2.0 (Dev)  
c24



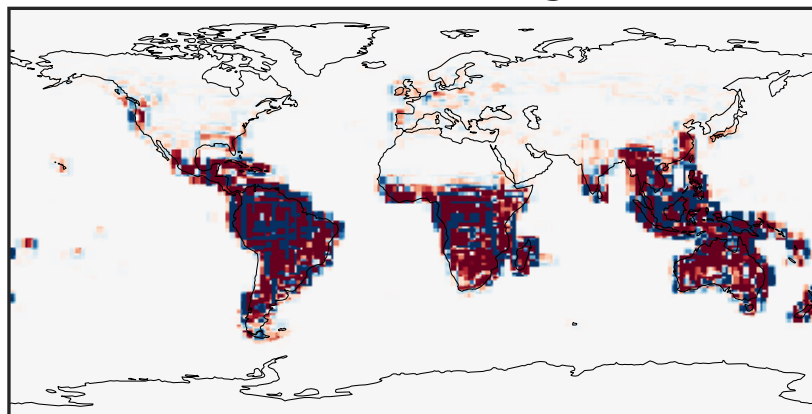
0.0000 0.0316 0.0632 0.0948 0.1264  
ppb

Difference (1x1.25)  
Dev - Ref, Dynamic Range



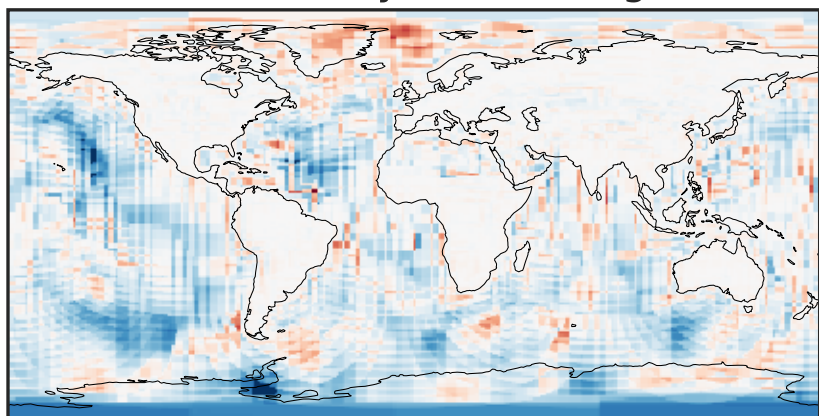
-0.0519 -0.0259 0.0000 0.0259 0.0519  
ppb

Difference (1x1.25)  
Dev - Ref, Restricted Range [5%,95%]



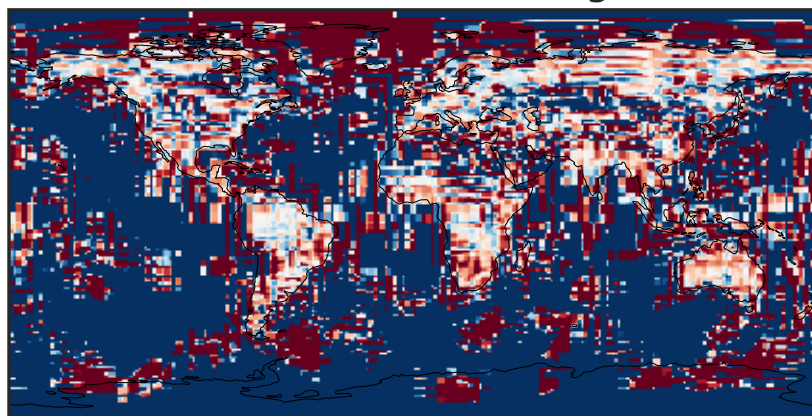
-0.0002 0.0000 0.0002  
ppb

Ratio (1x1.25)  
Dev/Ref, Dynamic Range



1e-07 1e-04 1e-01 100 1e+05 1e+08  
unitless

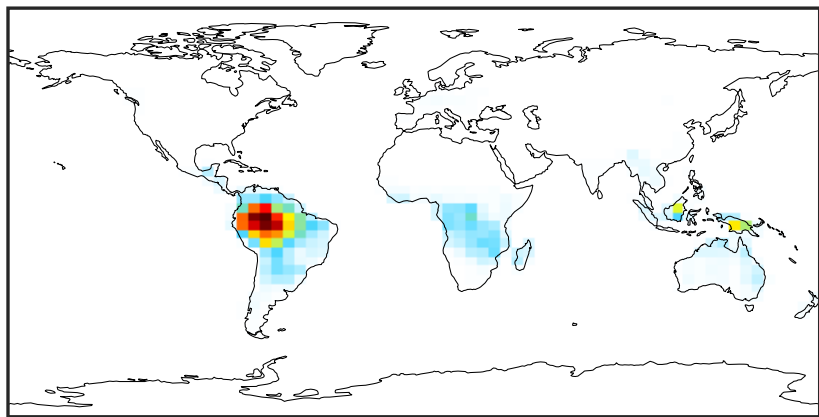
Ratio (1x1.25)  
Dev/Ref, Fixed Range



0.50 0.75 1.00 1.50 2.00  
unitless

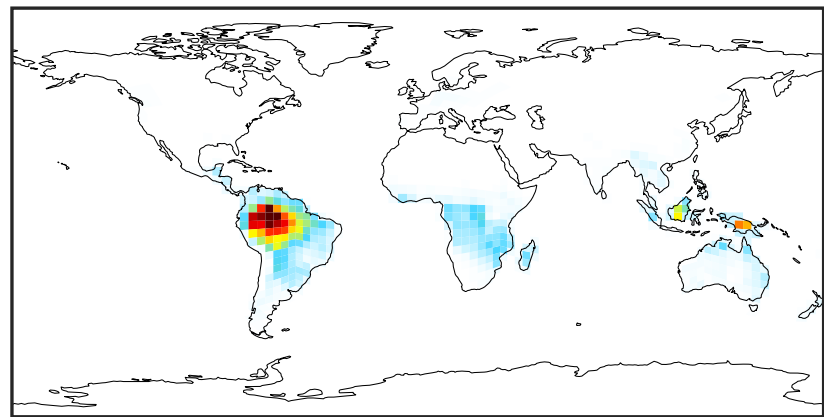
# SpeciesConcVV\_LIMO (Jan2019)

GCC\_14.2.0 (Ref)  
4.0x5.0



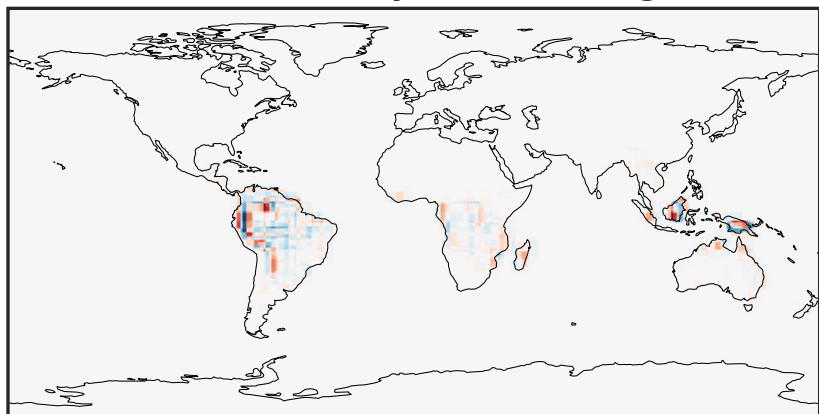
0.0000 0.0255 0.0510 0.0765 0.1020  
ppb

GCHP\_14.2.0 (Dev)  
c24



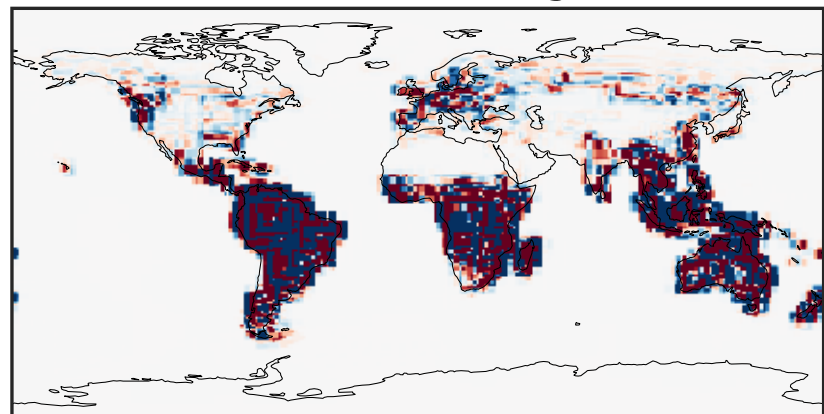
0.0000 0.0255 0.0510 0.0765 0.1020  
ppb

Difference (1x1.25)  
Dev - Ref, Dynamic Range



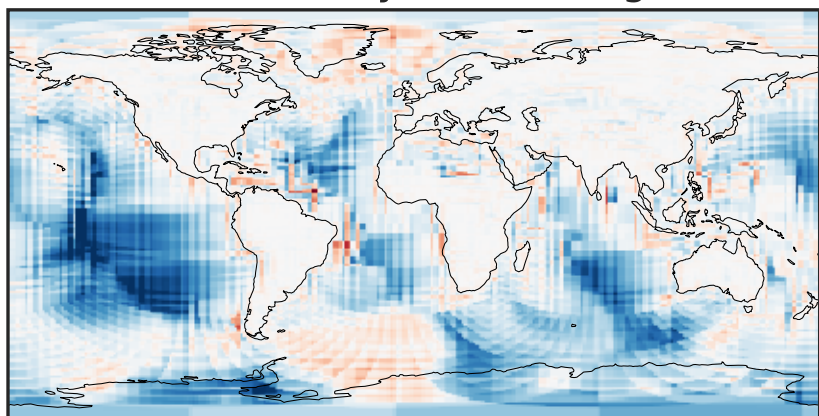
-0.02 0.00 0.02  
ppb

Difference (1x1.25)  
Dev - Ref, Restricted Range [5%,95%]



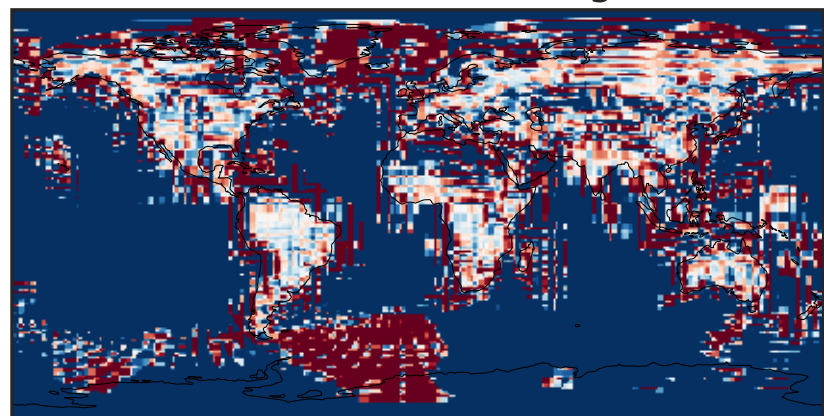
-8 0 8  
ppb 1e-5

Ratio (1x1.25)  
Dev/Ref, Dynamic Range



1e-05 1e-02 10 1e4 1e+07  
unitless

Ratio (1x1.25)  
Dev/Ref, Fixed Range

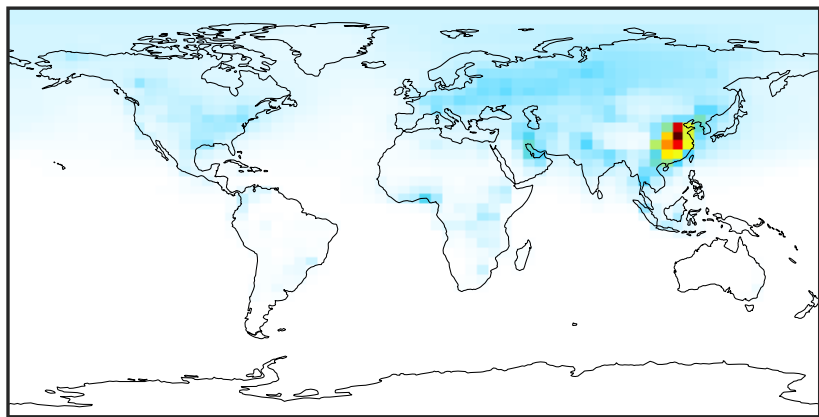


0.50 0.75 1.00 1.50 2.00  
unitless



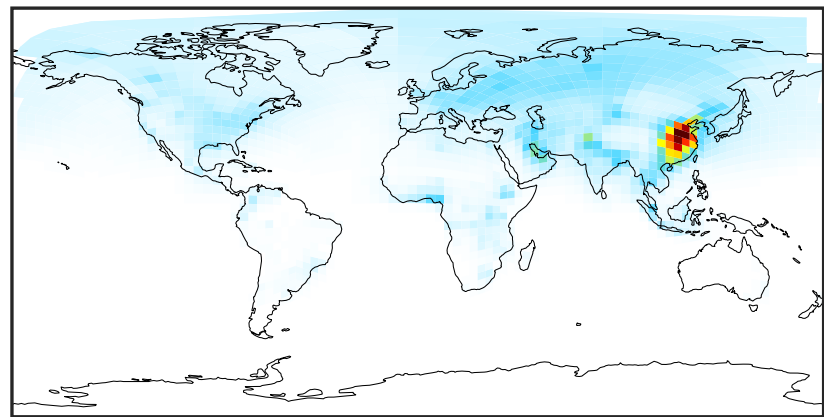
# SpeciesConcVV\_ALK4 (Jan2019)

GCC\_14.2.0 (Ref)  
4.0x5.0



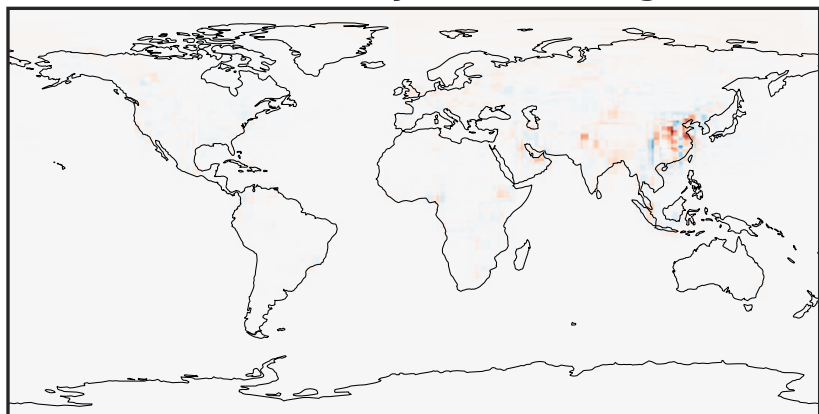
0.00 5.04 10.08 15.12 20.16  
ppb

GCHP\_14.2.0 (Dev)  
c24



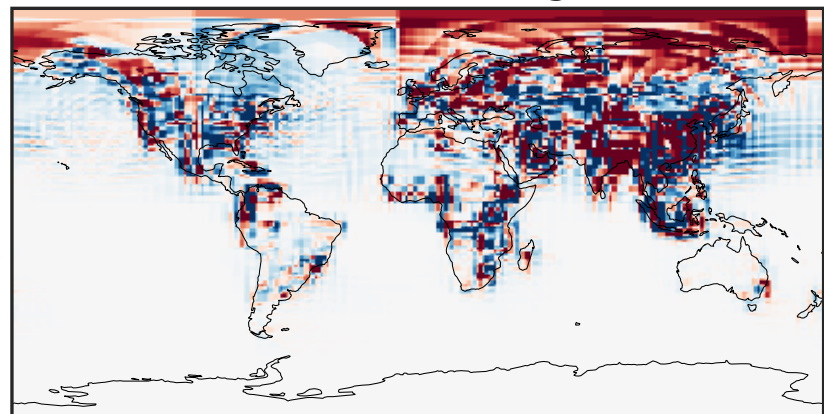
0.00 5.04 10.08 15.12 20.16  
ppb

Difference (1x1.25)  
Dev - Ref, Dynamic Range



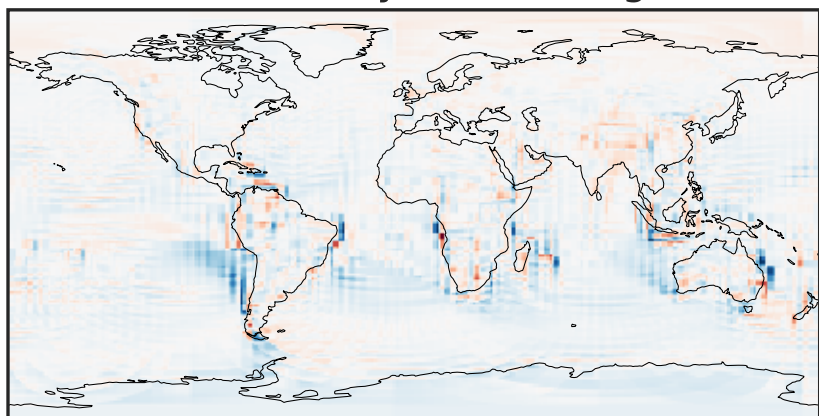
-10.29 -5.15 0.00 5.15 10.29  
ppb

Difference (1x1.25)  
Dev - Ref, Restricted Range [5%,95%]



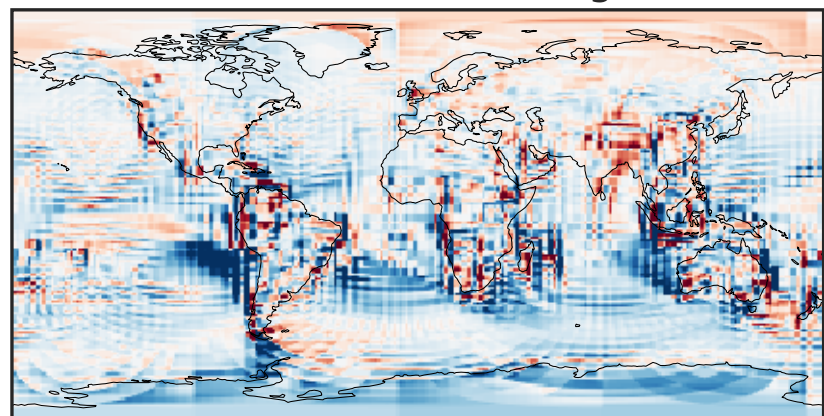
-0.2348 -0.1174 0.0000 0.1174 0.2348  
ppb

Ratio (1x1.25)  
Dev/Ref, Dynamic Range



1e-01 1 10  
unitless

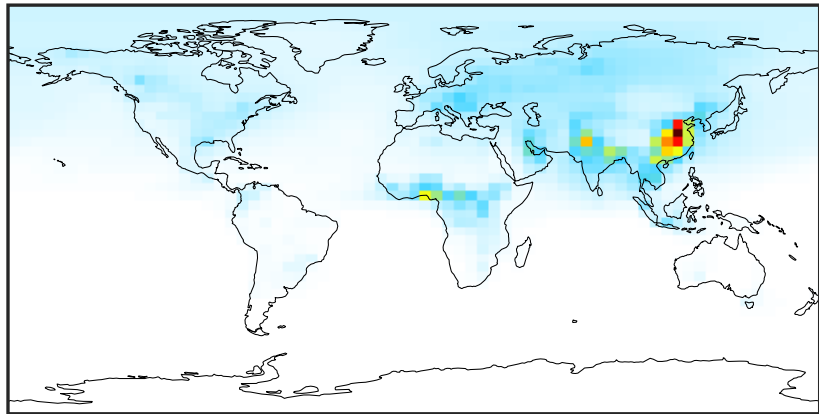
Ratio (1x1.25)  
Dev/Ref, Fixed Range



0.50 0.75 1.00 1.50 2.00  
unitless

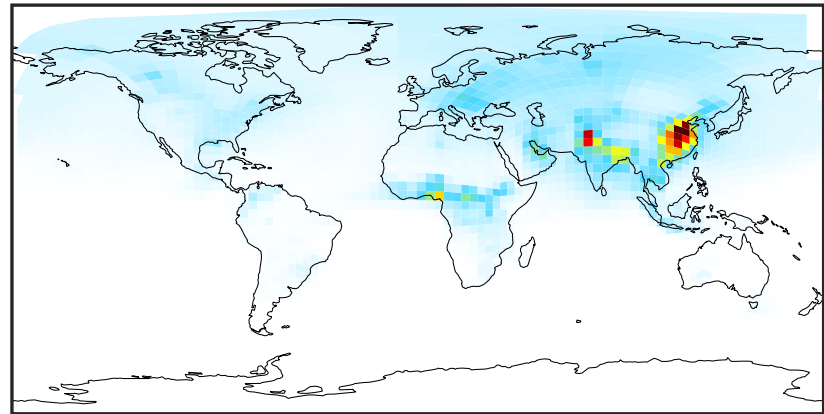
# SpeciesConcVV\_BENZ (Jan2019)

GCC\_14.2.0 (Ref)  
4.0x5.0



0.000 0.487 0.975 1.462 1.949  
ppb

GCHP\_14.2.0 (Dev)  
c24



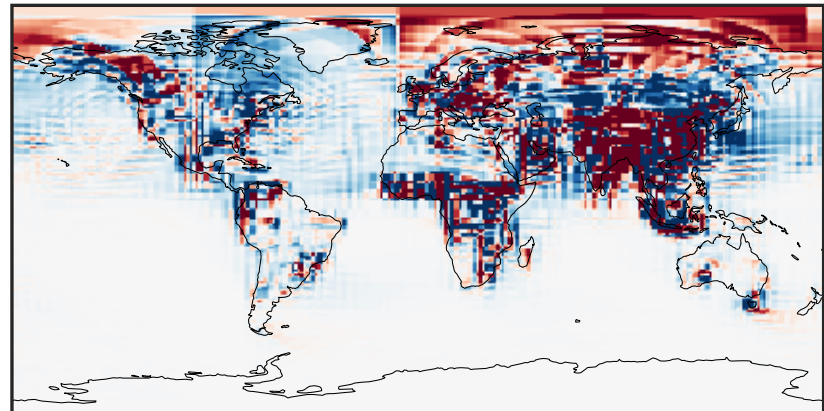
0.000 0.487 0.975 1.462 1.949  
ppb

Difference (1x1.25)  
Dev - Ref, Dynamic Range



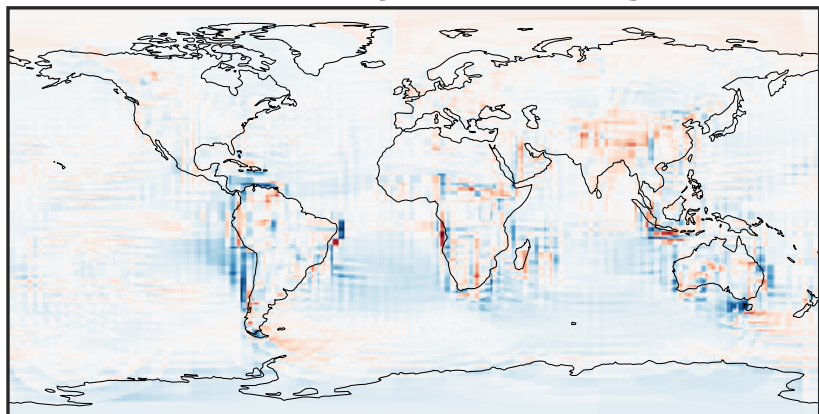
-1.090 -0.545 0.000 0.545 1.090  
ppb

Difference (1x1.25)  
Dev - Ref, Restricted Range [5%,95%]



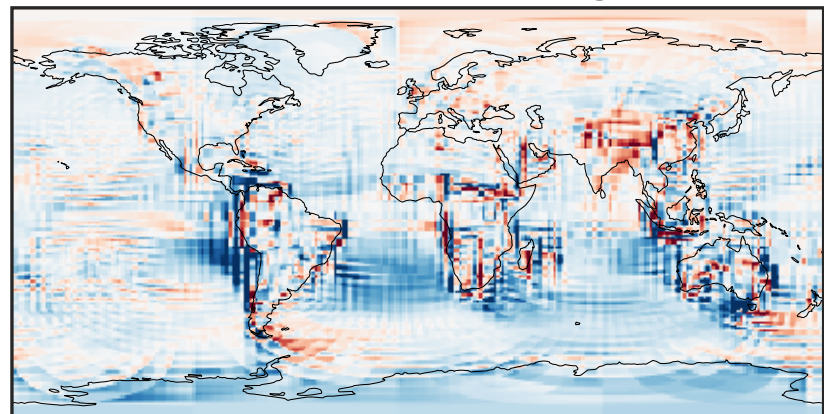
-0.01 0.00 0.01  
ppb

Ratio (1x1.25)  
Dev/Ref, Dynamic Range



0.158 0.579 1.000 3.670 6.341  
unitless

Ratio (1x1.25)  
Dev/Ref, Fixed Range

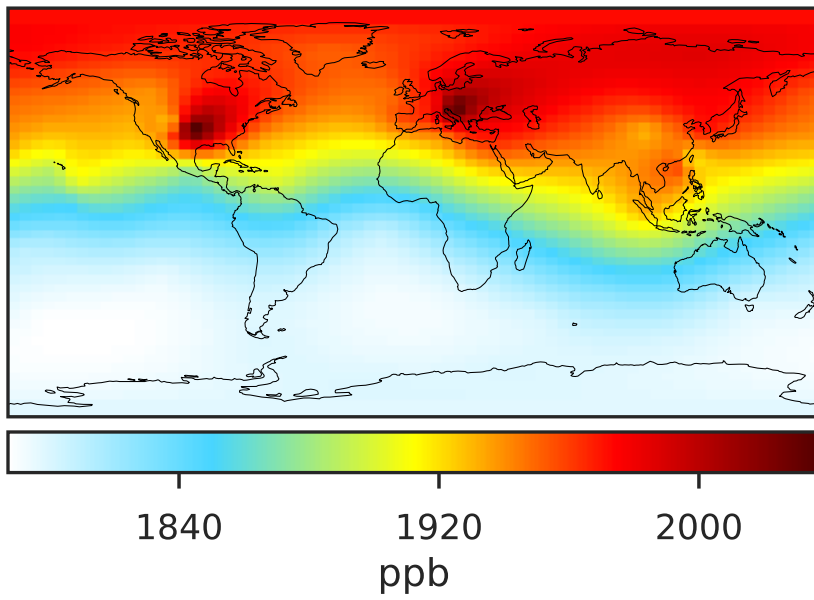


0.50 0.75 1.00 1.50 2.00  
unitless

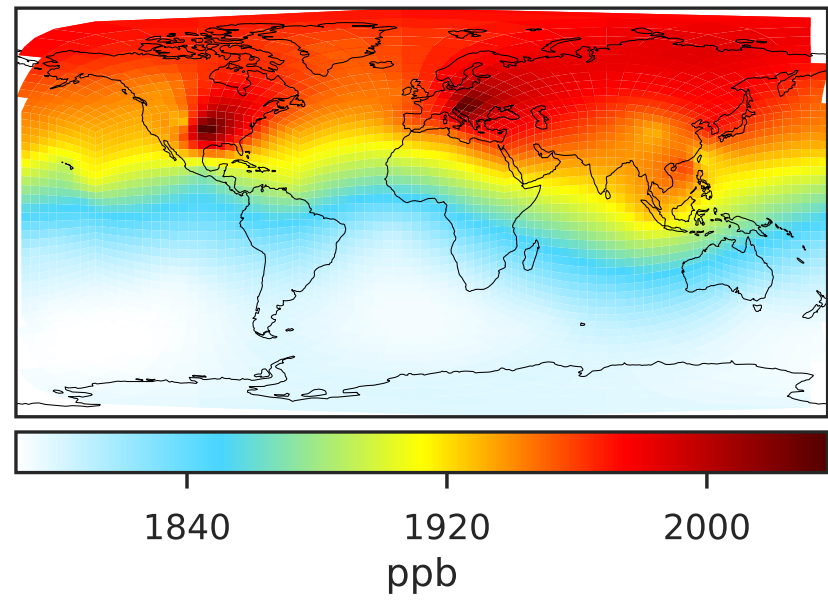


# SpeciesConcVV\_CH4 (Jan2019)

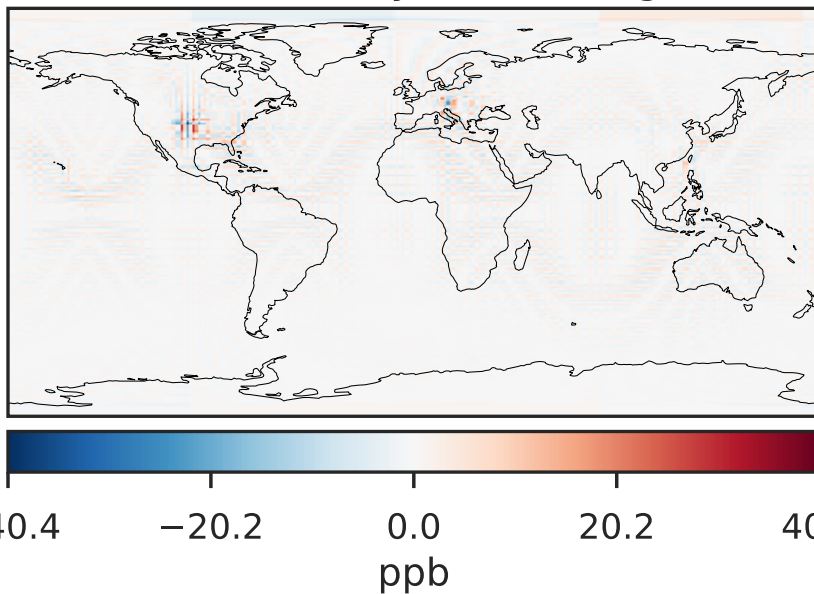
GCC\_14.2.0 (Ref)  
4.0x5.0



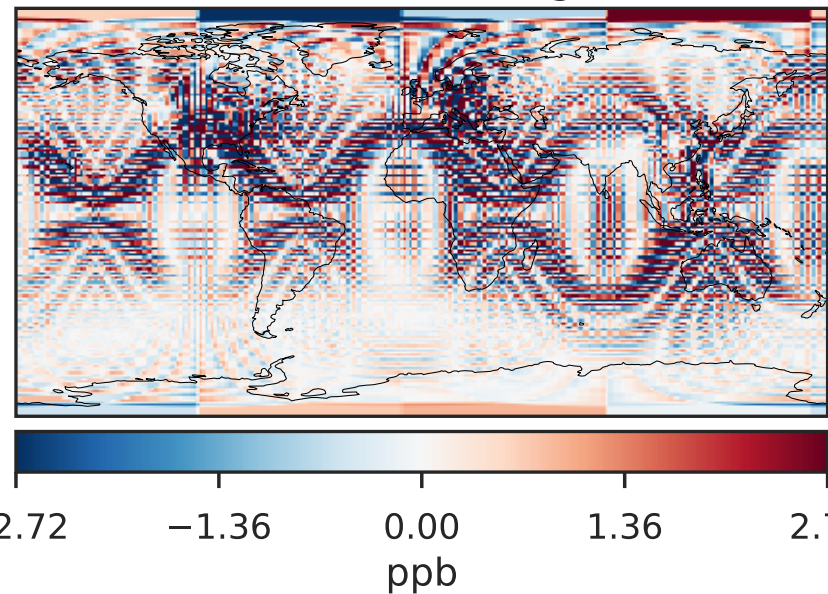
GCHP\_14.2.0 (Dev)  
c24



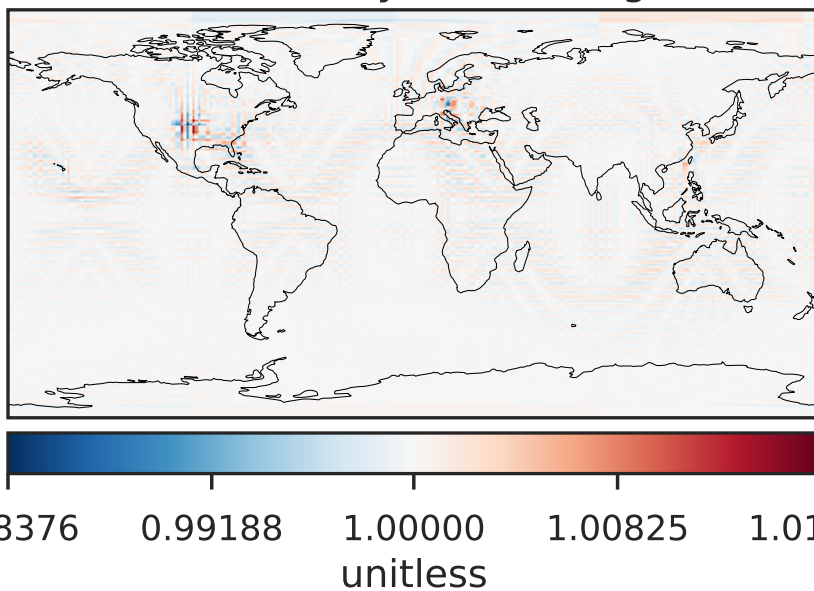
Difference (1x1.25)  
Dev - Ref, Dynamic Range



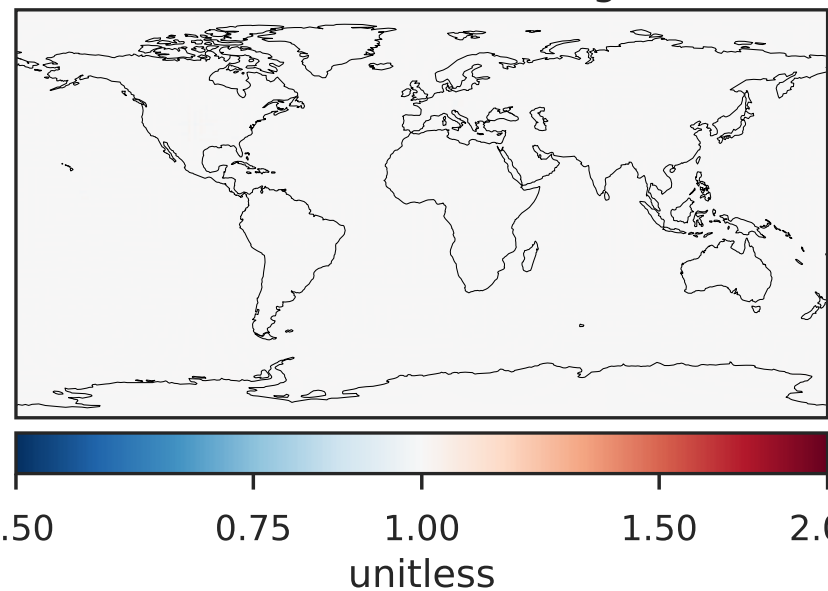
Difference (1x1.25)  
Dev - Ref, Restricted Range [5%,95%]



Ratio (1x1.25)  
Dev/Ref, Dynamic Range

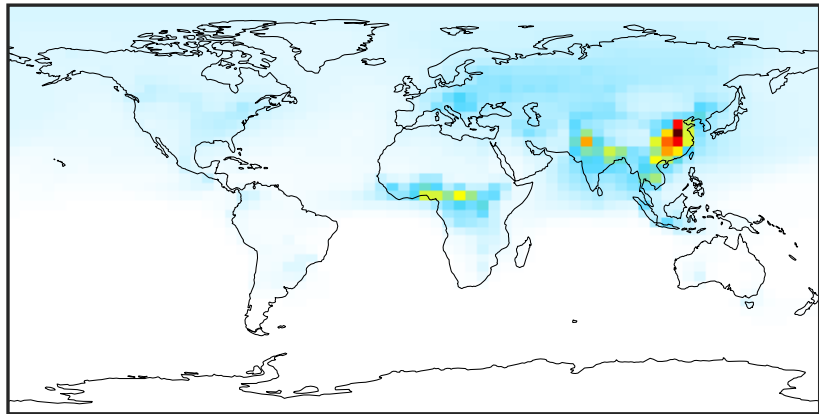


Ratio (1x1.25)  
Dev/Ref, Fixed Range



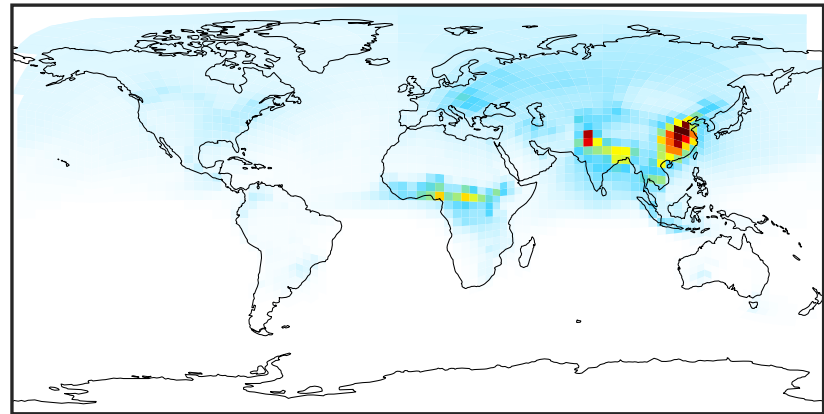
# SpeciesConcVV\_C2H2 (Jan2019)

GCC\_14.2.0 (Ref)  
4.0x5.0



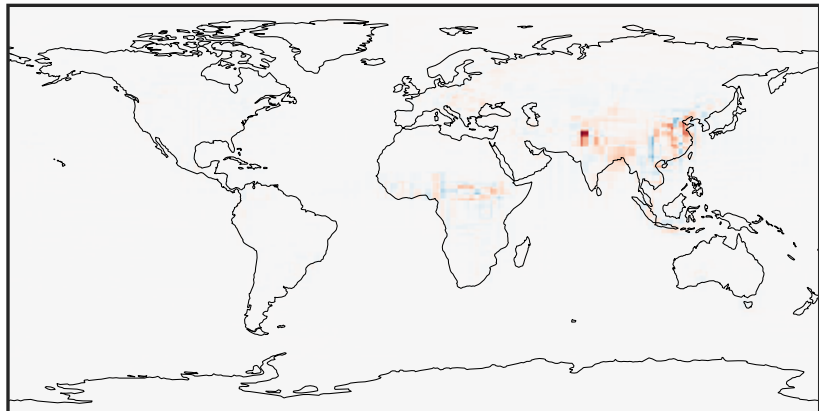
0.002 0.940 1.881 2.821 3.763  
ppb

GCHP\_14.2.0 (Dev)  
c24



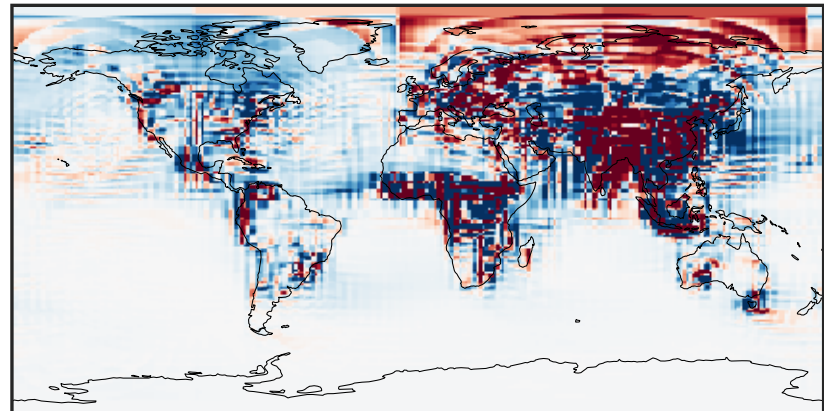
0.002 0.940 1.881 2.821 3.763  
ppb

Difference (1x1.25)  
Dev - Ref, Dynamic Range



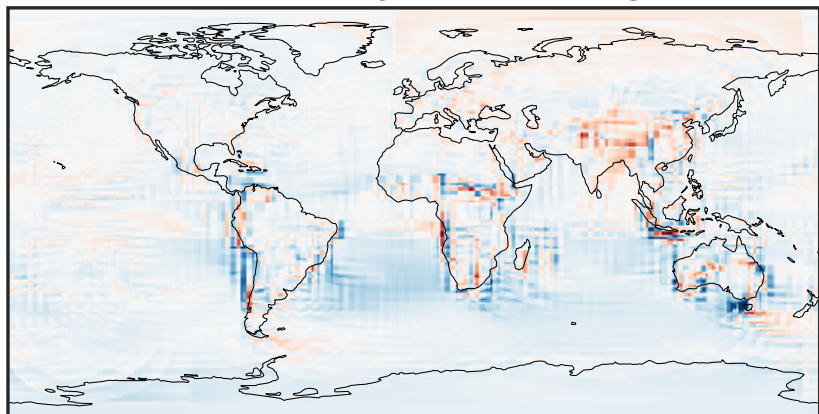
-2.219 -1.109 0.000 1.109 2.219  
ppb

Difference (1x1.25)  
Dev - Ref, Restricted Range [5%,95%]



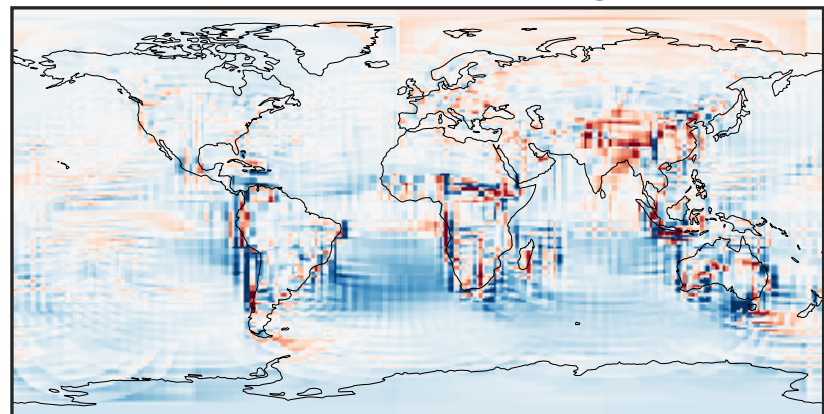
-0.015 0.000 0.015  
ppb

Ratio (1x1.25)  
Dev/Ref, Dynamic Range



0.263 0.631 1.000 2.404 3.809  
unitless

Ratio (1x1.25)  
Dev/Ref, Fixed Range

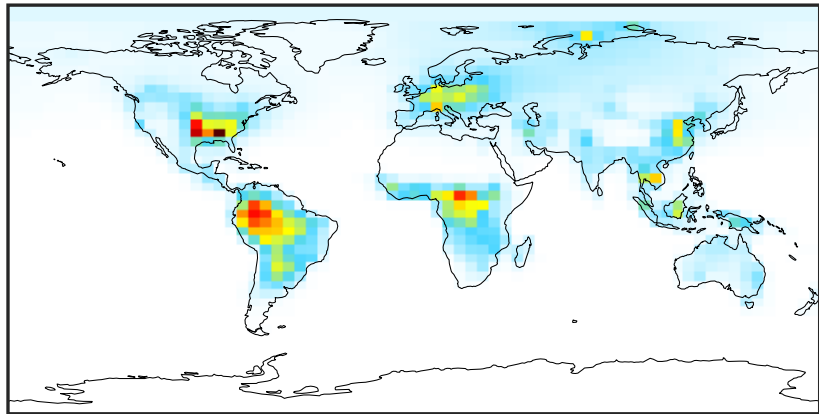


0.50 0.75 1.00 1.50 2.00  
unitless



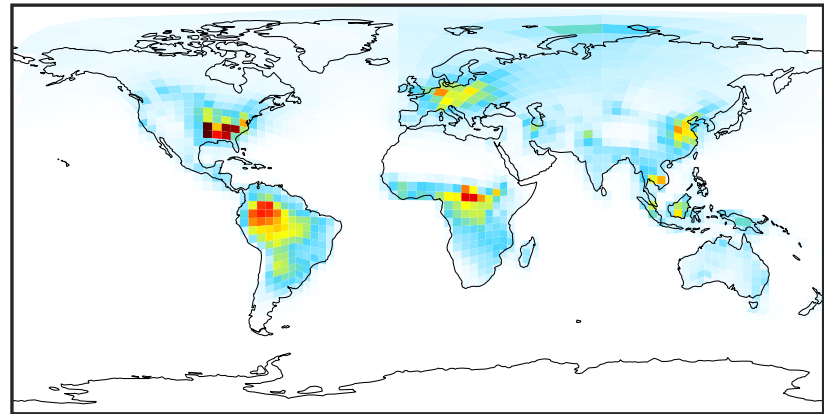
# SpeciesConcVV\_C2H4 (Jan2019)

GCC\_14.2.0 (Ref)  
4.0x5.0



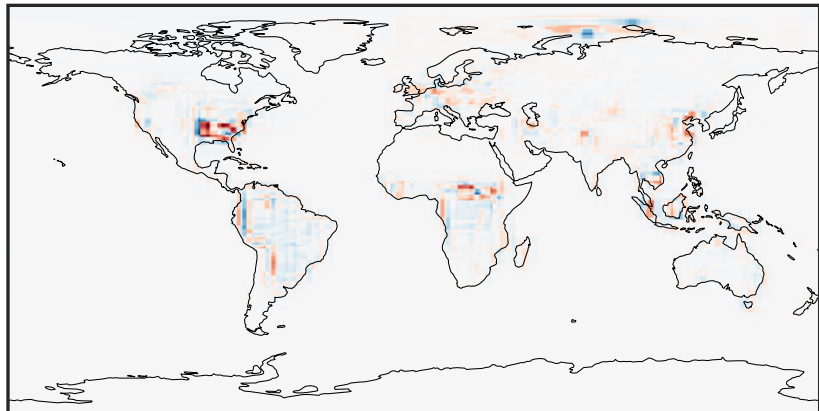
0.000 1.066 2.133 3.199 4.266  
ppb

GCHP\_14.2.0 (Dev)  
c24



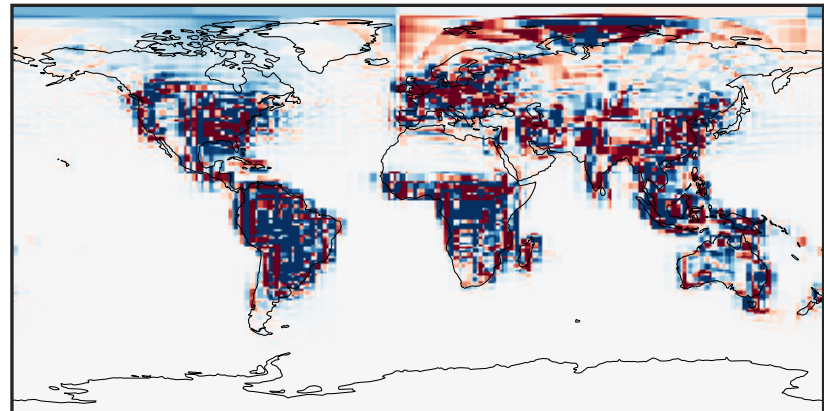
0.000 1.066 2.133 3.199 4.266  
ppb

Difference (1x1.25)  
Dev - Ref, Dynamic Range



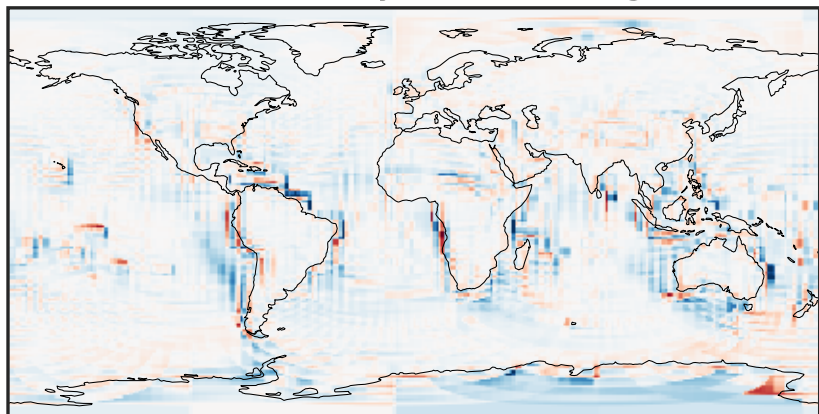
-2.113 -1.057 0.000 1.057 2.113  
ppb

Difference (1x1.25)  
Dev - Ref, Restricted Range [5%,95%]



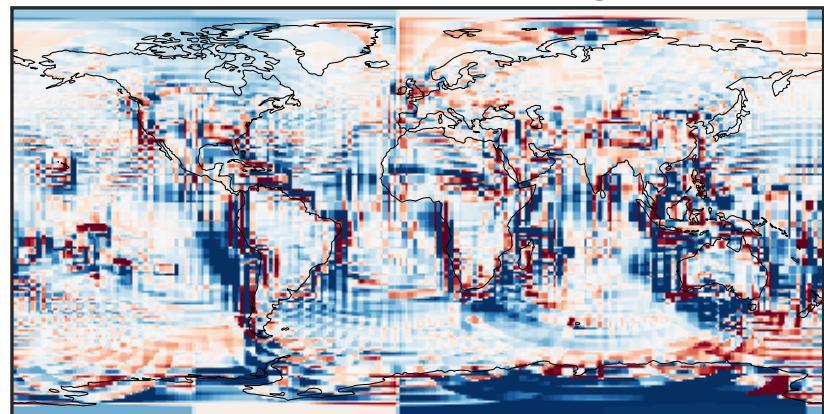
-0.0884 -0.0442 0.0000 0.0442 0.0884  
ppb

Ratio (1x1.25)  
Dev/Ref, Dynamic Range



1e-01 1 10  
unitless

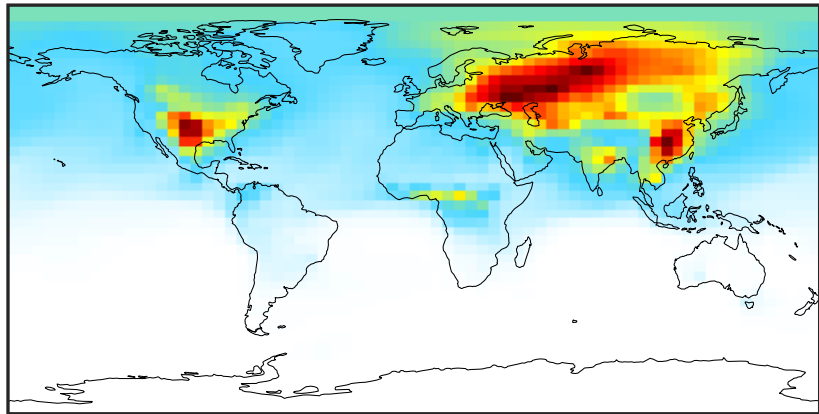
Ratio (1x1.25)  
Dev/Ref, Fixed Range



0.50 0.75 1.00 1.50 2.00  
unitless

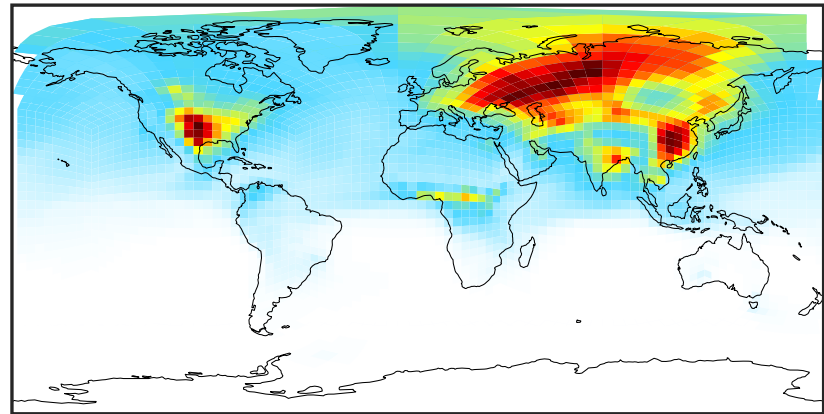
# SpeciesConcVV\_C2H6 (Jan2019)

GCC\_14.2.0 (Ref)  
4.0x5.0



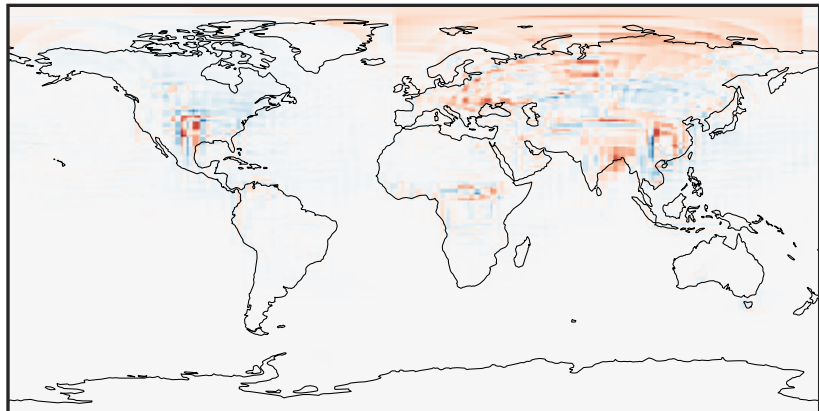
0.048 1.378 2.756 4.134 5.560  
ppb

GCHP\_14.2.0 (Dev)  
c24



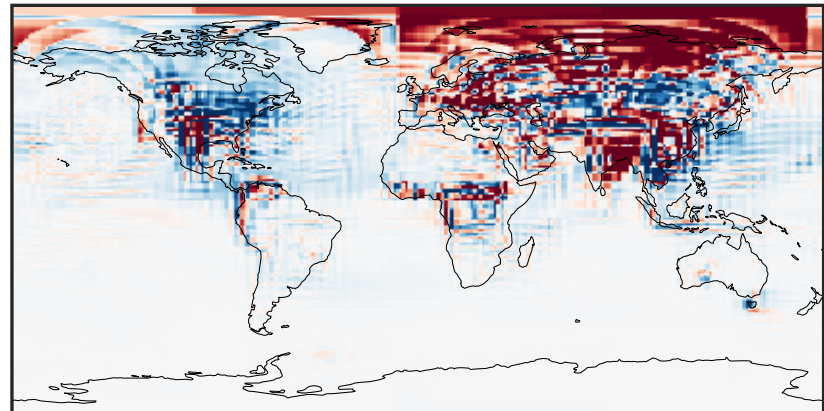
0.048 1.378 2.756 4.134 5.560  
ppb

Difference (1x1.25)  
Dev - Ref, Dynamic Range



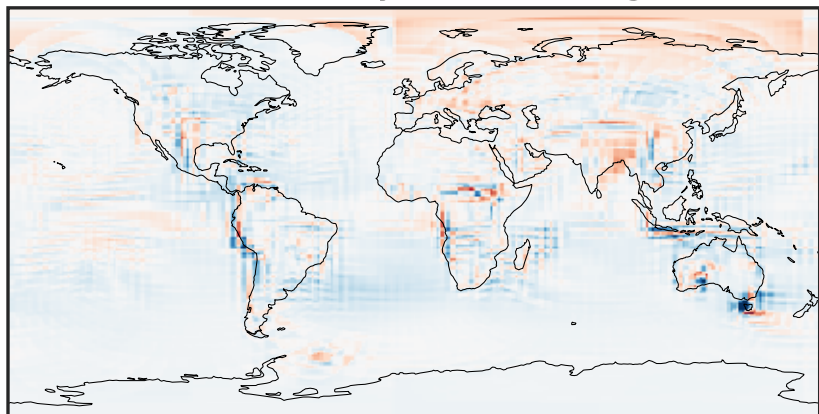
-1.888 -0.944 0.000 0.944 1.888  
ppb

Difference (1x1.25)  
Dev - Ref, Restricted Range [5%,95%]



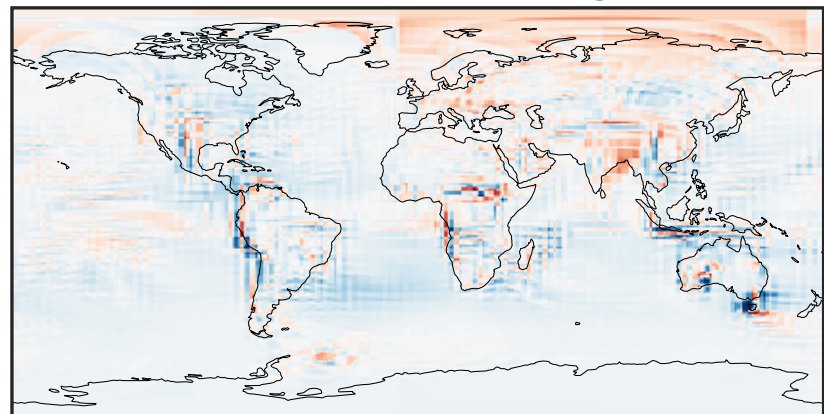
-0.2763 -0.1382 0.0000 0.1382 0.2763  
ppb

Ratio (1x1.25)  
Dev/Ref, Dynamic Range



0.431 0.715 1.000 1.661 2.322  
unitless

Ratio (1x1.25)  
Dev/Ref, Fixed Range

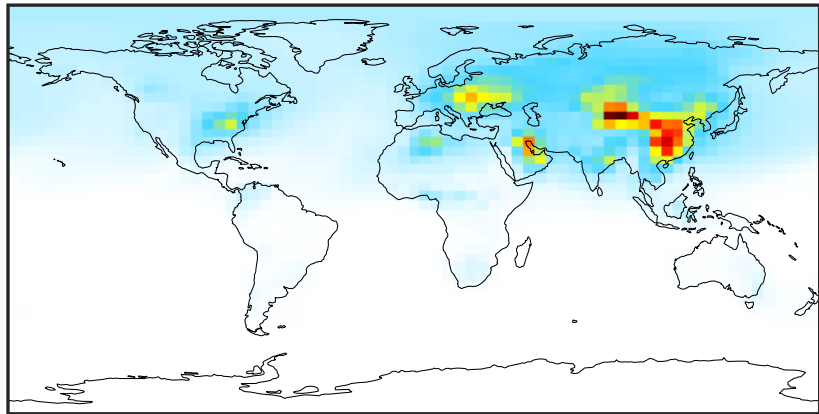


0.50 0.75 1.00 1.50 2.00  
unitless



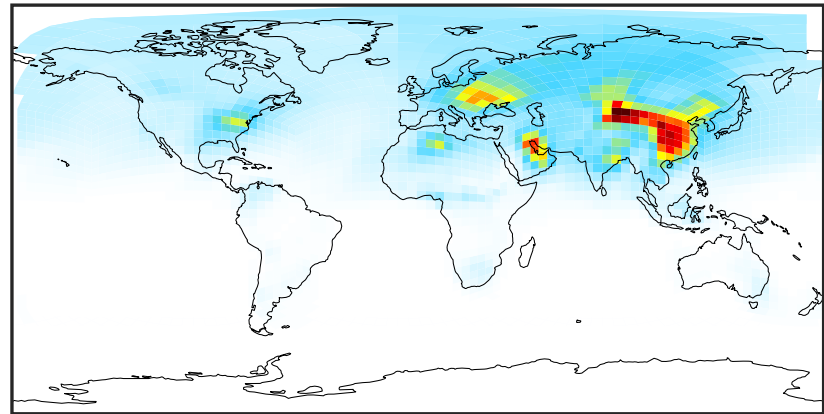
# SpeciesConcVV\_C3H8 (Jan2019)

GCC\_14.2.0 (Ref)  
4.0x5.0



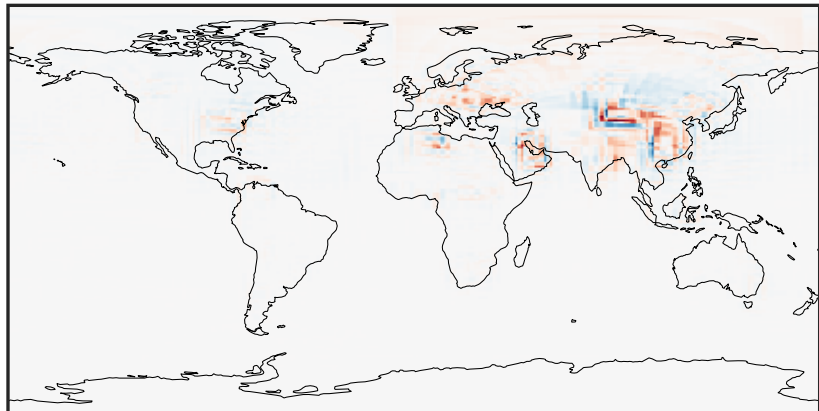
0.001 1.532 3.064 4.596 6.129  
ppb

GCHP\_14.2.0 (Dev)  
c24



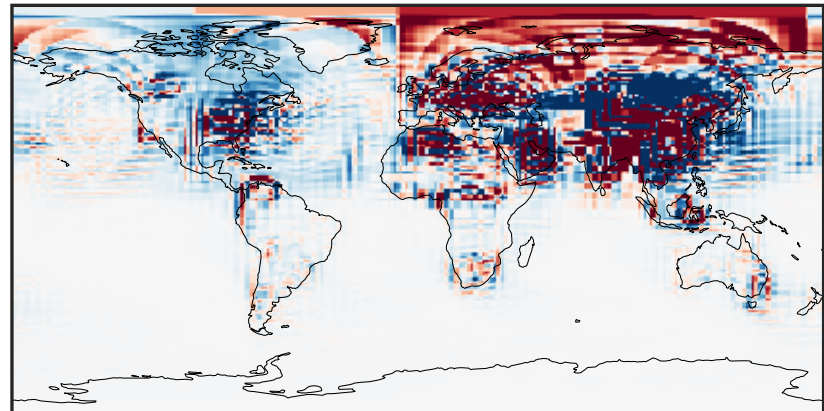
0.001 1.532 3.064 4.596 6.129  
ppb

Difference (1x1.25)  
Dev - Ref, Dynamic Range



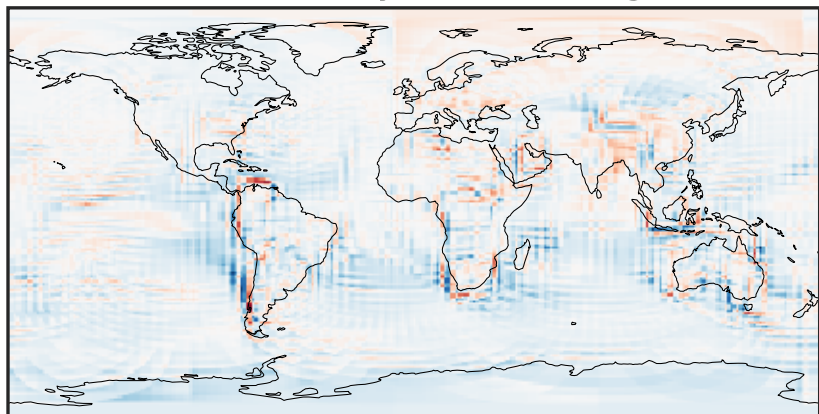
-2.277 -1.139 0.000 1.139 2.277  
ppb

Difference (1x1.25)  
Dev - Ref, Restricted Range [5%,95%]



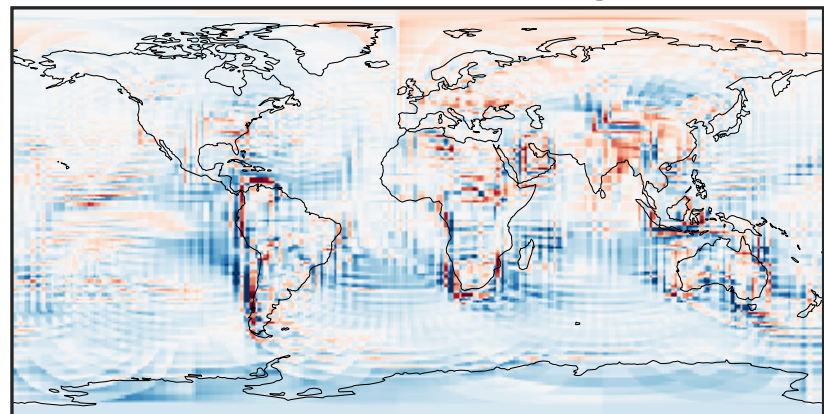
-0.0939 -0.0469 0.0000 0.0469 0.0939  
ppb

Ratio (1x1.25)  
Dev/Ref, Dynamic Range



0.282 0.641 1.000 2.276 3.552  
unitless

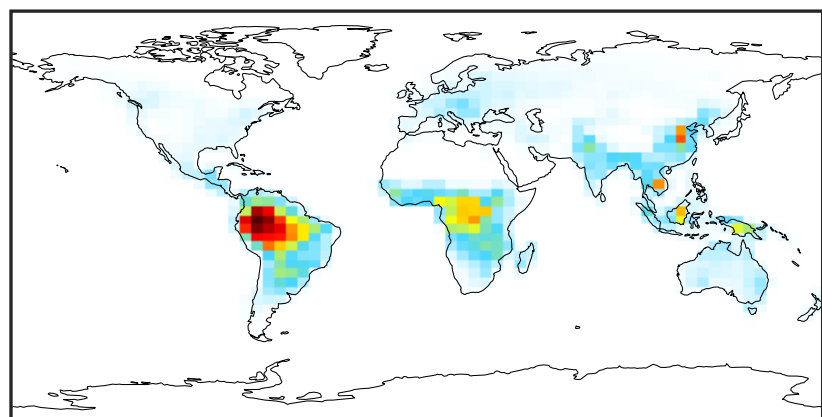
Ratio (1x1.25)  
Dev/Ref, Fixed Range



0.50 0.75 1.00 1.50 2.00  
unitless

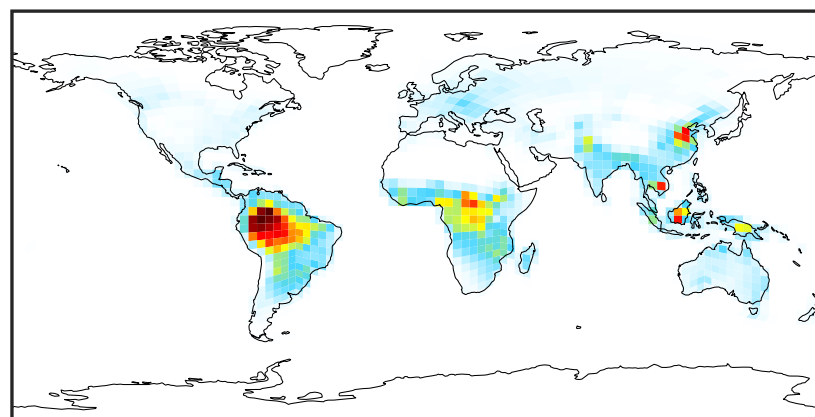
# SpeciesConcVV\_PRPE (Jan2019)

GCC\_14.2.0 (Ref)  
4.0x5.0



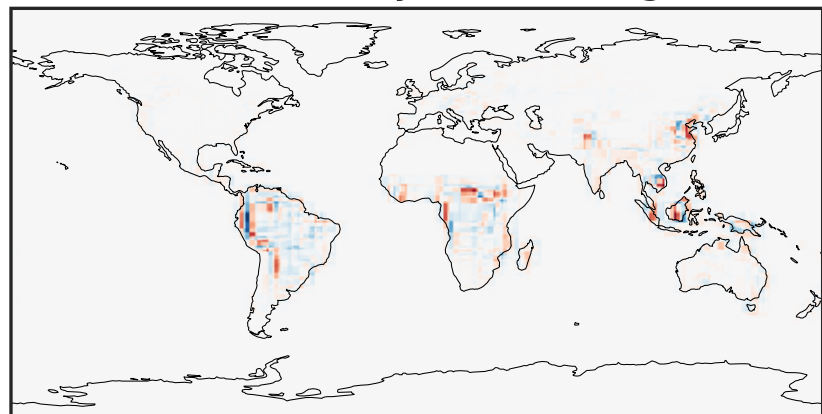
0.000 0.527 1.054 1.580 2.107  
ppb

GCHP\_14.2.0 (Dev)  
c24



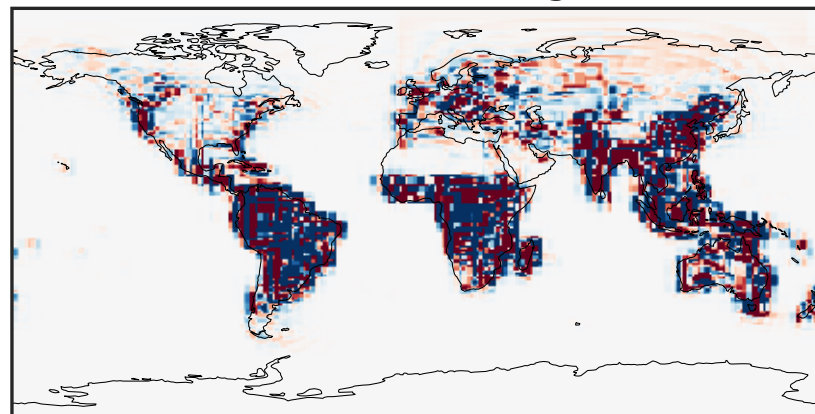
0.000 0.527 1.054 1.580 2.107  
ppb

Difference (1x1.25)  
Dev - Ref, Dynamic Range



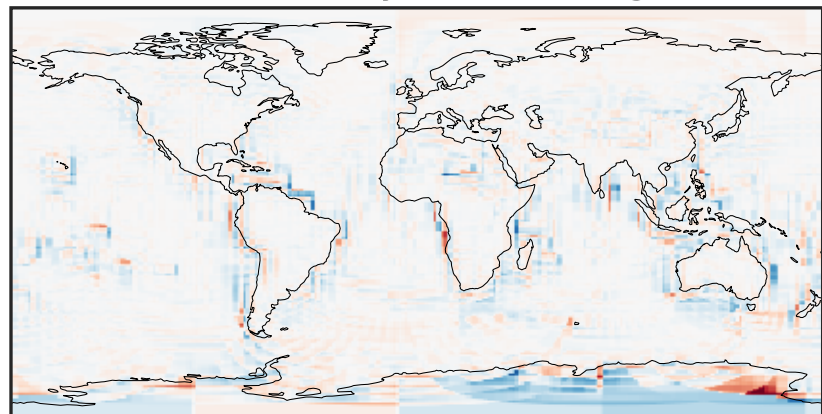
-0.905 -0.453 0.000 0.453 0.905  
ppb

Difference (1x1.25)  
Dev - Ref, Restricted Range [5%,95%]



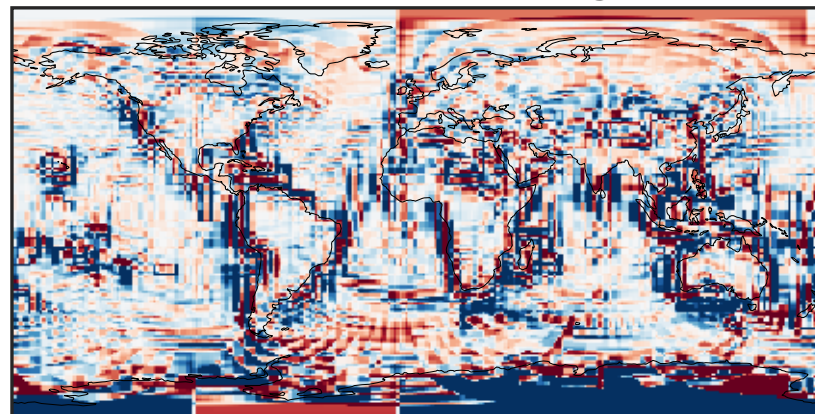
-0.015 0.000 0.015  
ppb

Ratio (1x1.25)  
Dev/Ref, Dynamic Range



unitless

Ratio (1x1.25)  
Dev/Ref, Fixed Range

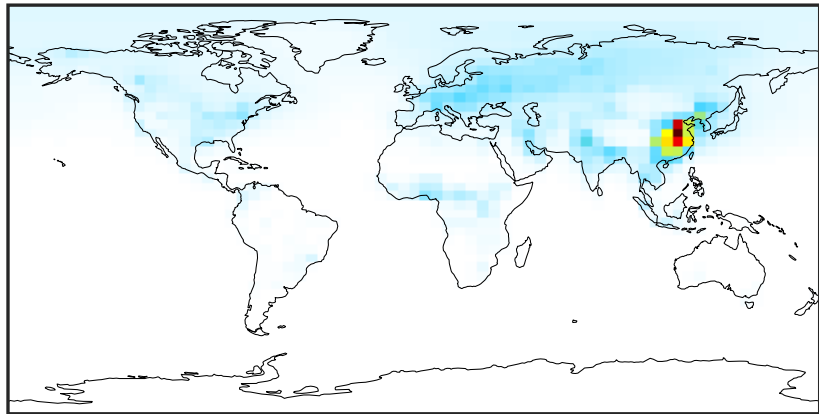


0.50 0.75 1.00 1.50 2.00  
unitless



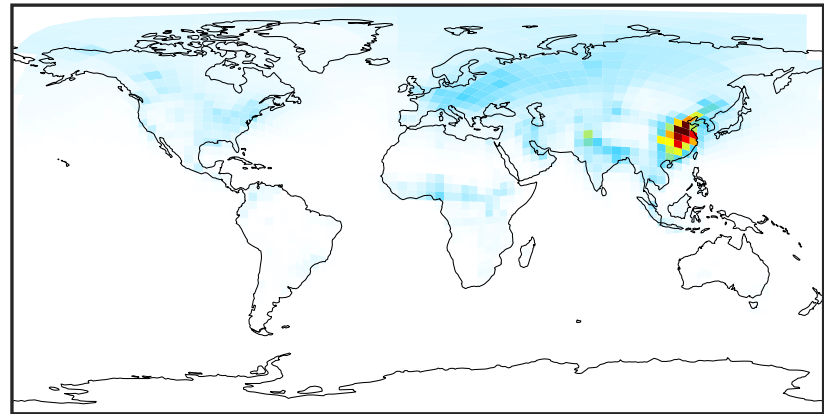
# SpeciesConcVV\_TOLU (Jan2019)

GCC\_14.2.0 (Ref)  
4.0x5.0



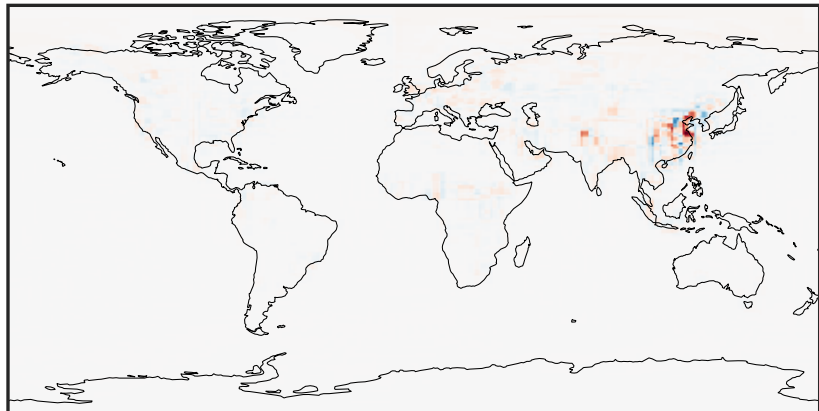
0.000 0.494 0.988 1.483 1.977  
ppb

GCHP\_14.2.0 (Dev)  
c24



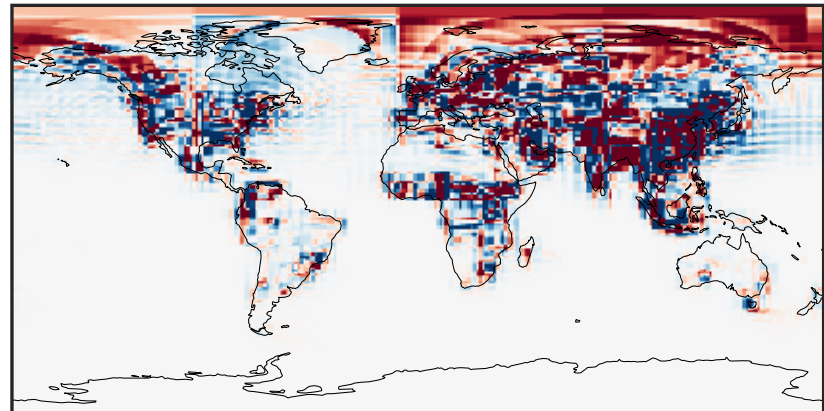
0.000 0.494 0.988 1.483 1.977  
ppb

Difference (1x1.25)  
Dev - Ref, Dynamic Range



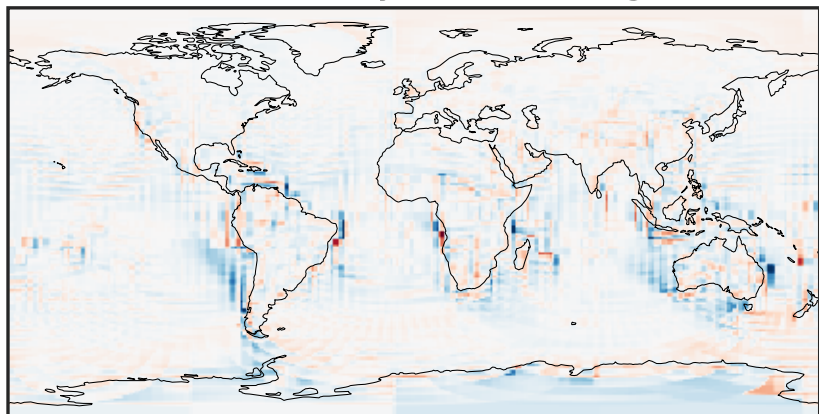
-0.889 -0.445 0.000 0.445 0.889  
ppb

Difference (1x1.25)  
Dev - Ref, Restricted Range [5%,95%]



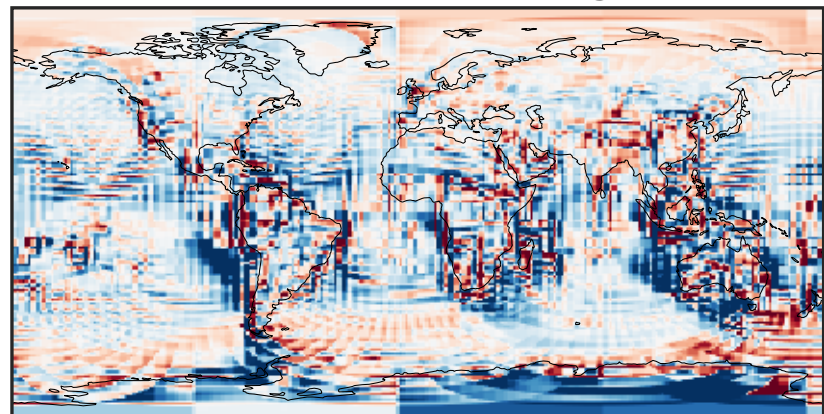
-0.01 0.00 0.01  
ppb

Ratio (1x1.25)  
Dev/Ref, Dynamic Range



1e-01 1 10  
unitless

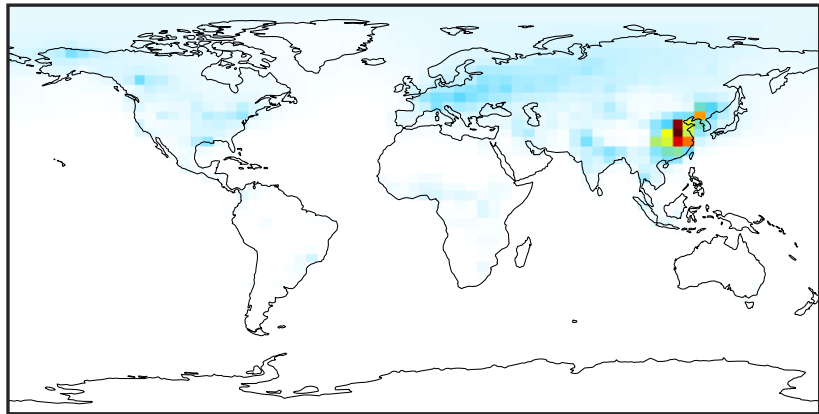
Ratio (1x1.25)  
Dev/Ref, Fixed Range



0.50 0.75 1.00 1.50 2.00  
unitless

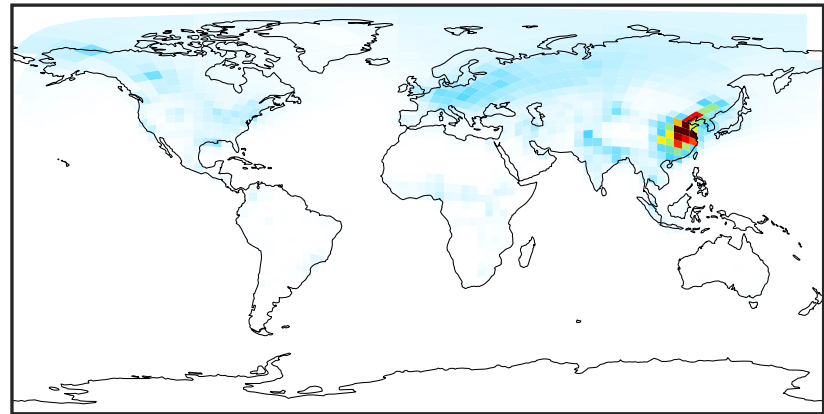
# SpeciesConcVV\_XYLE (Jan2019)

GCC\_14.2.0 (Ref)  
4.0x5.0



0.000 0.367 0.734 1.101 1.468  
ppb

GCHP\_14.2.0 (Dev)  
c24



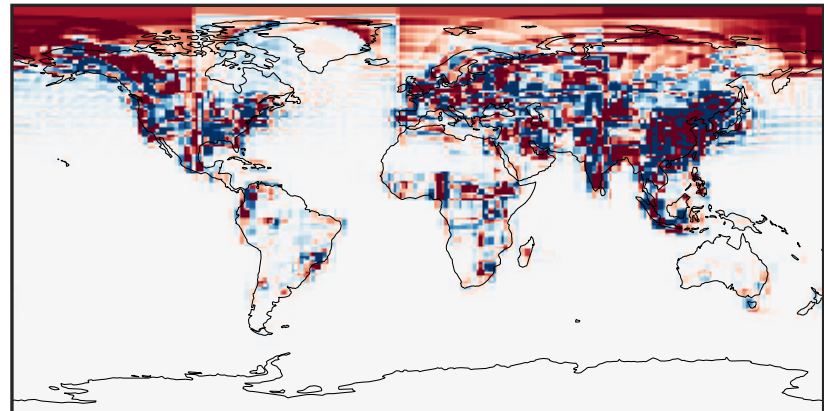
0.000 0.367 0.734 1.101 1.468  
ppb

Difference (1x1.25)  
Dev - Ref, Dynamic Range



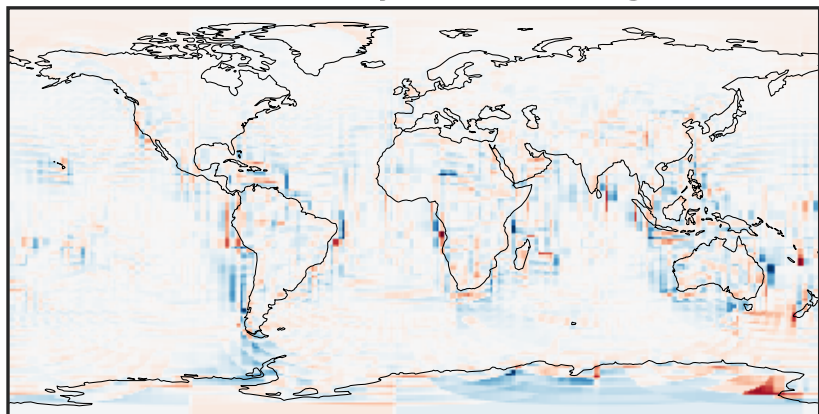
-1.0 -0.5 0.0 0.5 1.0  
ppb

Difference (1x1.25)  
Dev - Ref, Restricted Range [5%,95%]



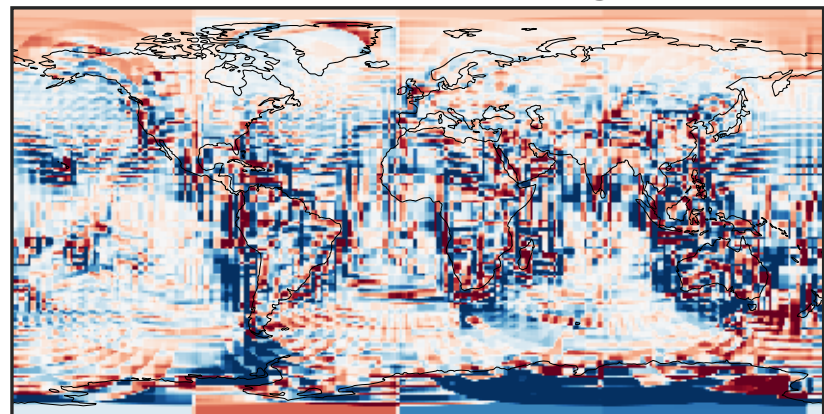
-0.008 0.000 0.008  
ppb

Ratio (1x1.25)  
Dev/Ref, Dynamic Range



1e-01 1 10  
unitless

Ratio (1x1.25)  
Dev/Ref, Fixed Range



0.50 0.75 1.00 1.50 2.00  
unitless