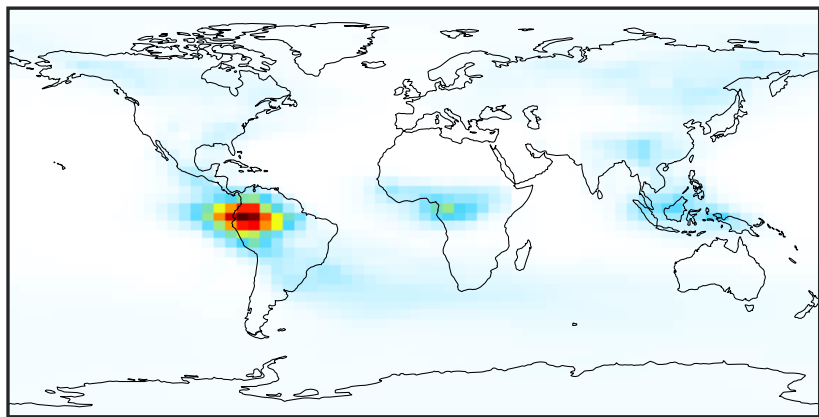


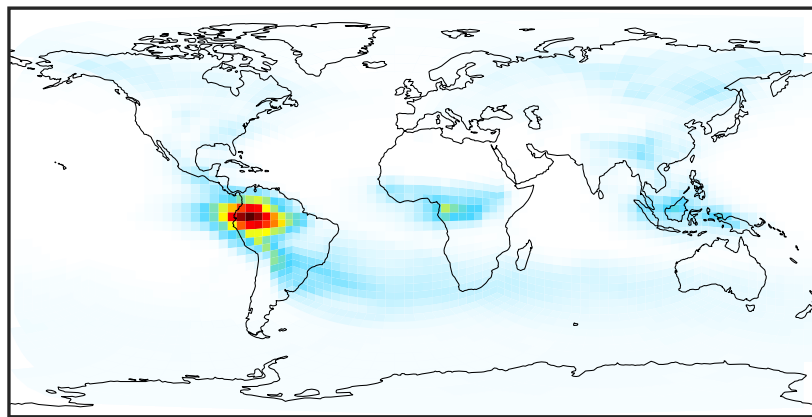
SpeciesConcVV_EOH (Jul2019)

GCC_14.2.0 (Ref)
4.0x5.0



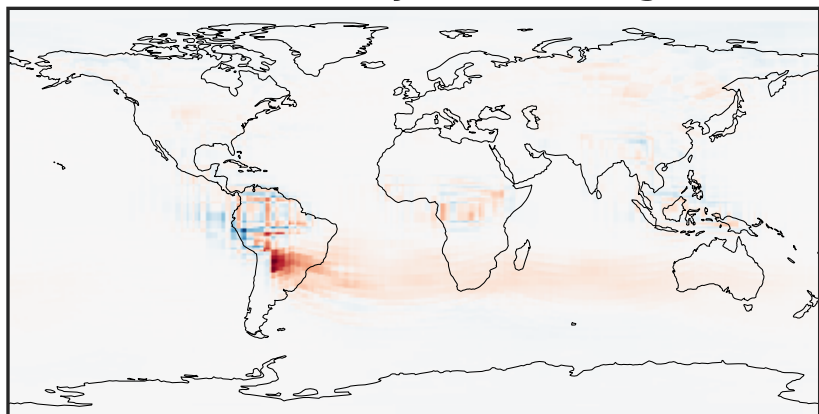
0.0000 0.0638 0.1276 0.1913 0.2552
ppb

GCHP_14.2.0 (Dev)
c24



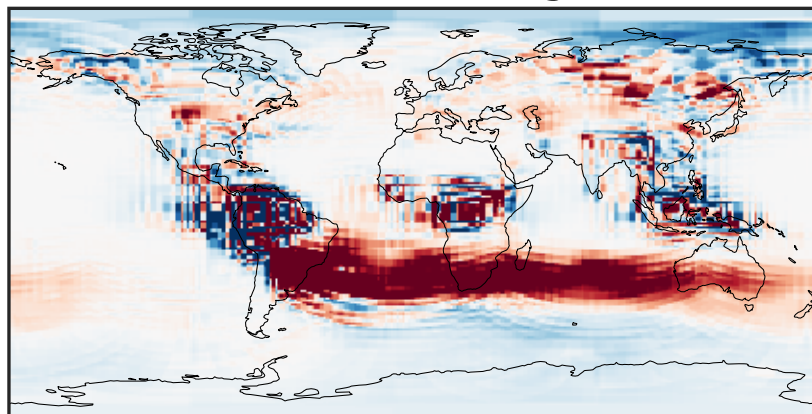
0.0000 0.0638 0.1276 0.1913 0.2552
ppb

Difference (1x1.25)
Dev - Ref, Dynamic Range



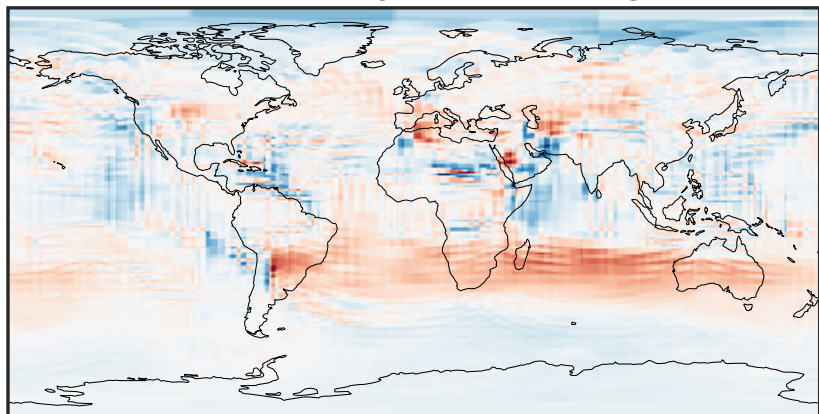
-0.0652 -0.0326 0.0000 0.0326 0.0652
ppb

Difference (1x1.25)
Dev - Ref, Restricted Range [5%,95%]



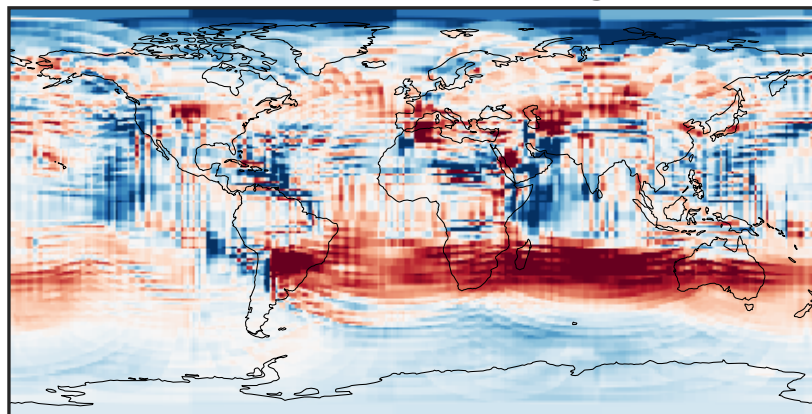
-0.003 0.000 0.003
ppb

Ratio (1x1.25)
Dev/Ref, Dynamic Range



0.145 0.573 1.000 3.947 6.893
unitless

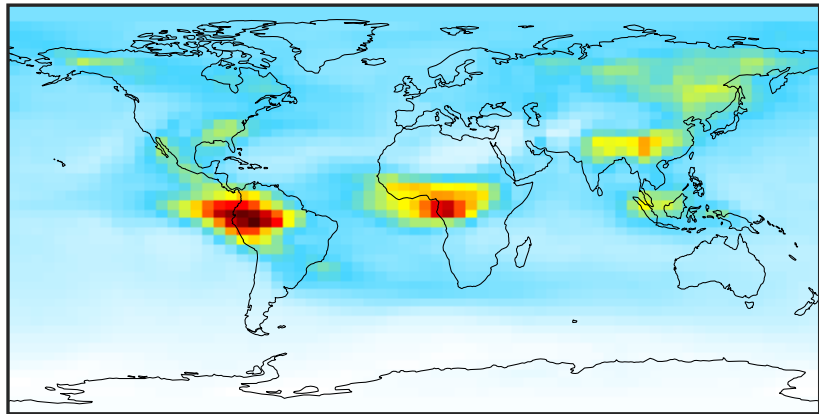
Ratio (1x1.25)
Dev/Ref, Fixed Range



0.50 0.75 1.00 1.50 2.00
unitless

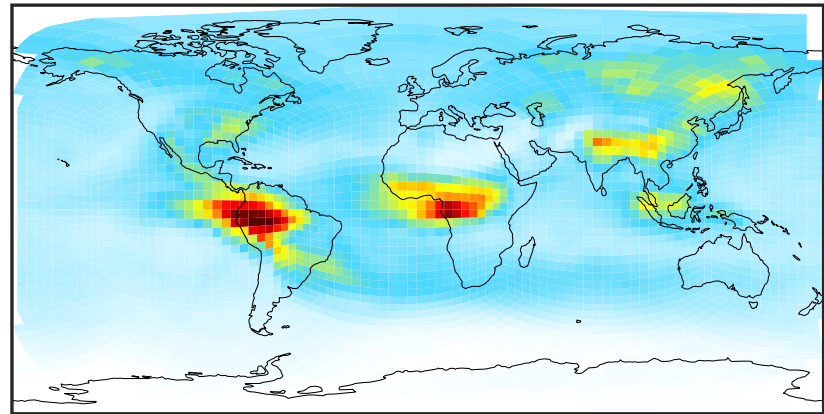
SpeciesConcVV_MOH (Jul2019)

GCC_14.2.0 (Ref)
4.0x5.0



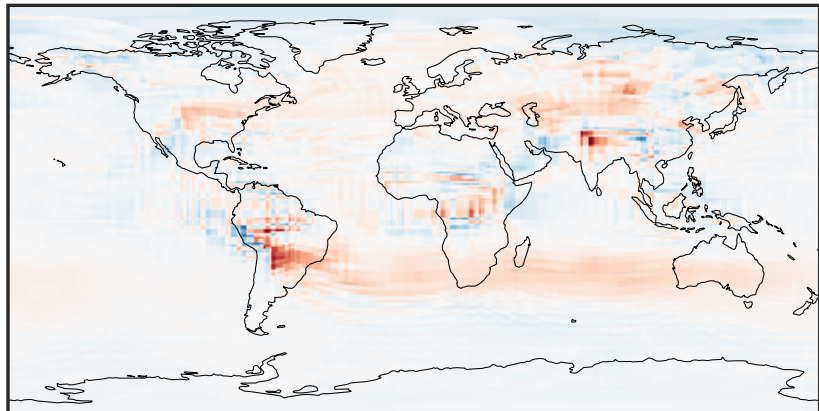
0.111 0.382 0.765 1.147 1.640
ppb

GCHP_14.2.0 (Dev)
c24



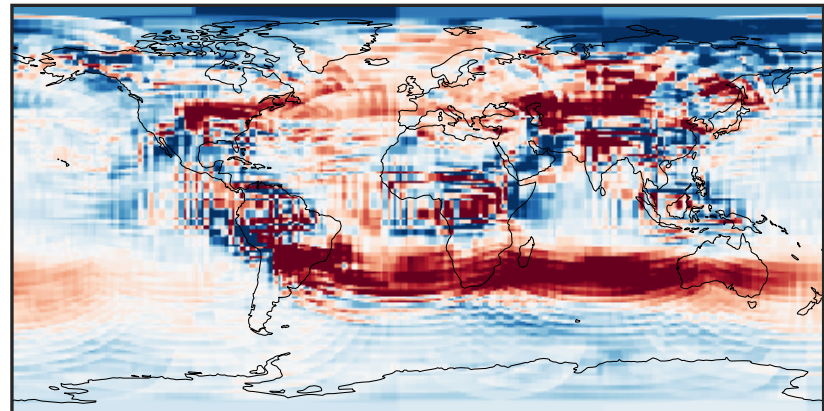
0.111 0.382 0.765 1.147 1.640
ppb

Difference (1x1.25)
Dev - Ref, Dynamic Range



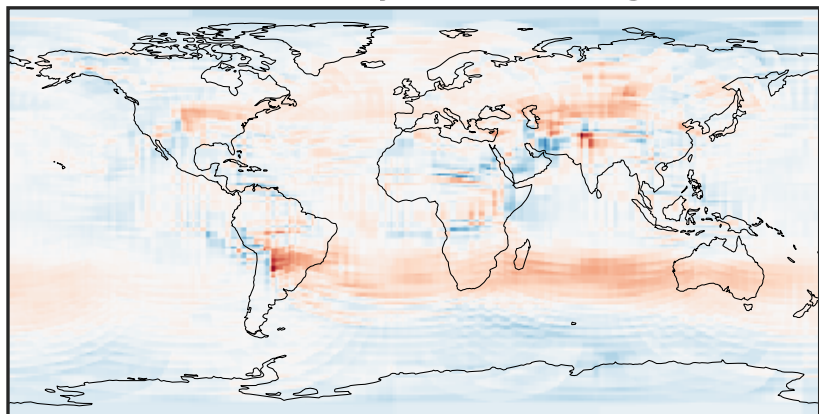
-0.4222 -0.2111 0.0000 0.2111 0.4222
ppb

Difference (1x1.25)
Dev - Ref, Restricted Range [5%,95%]



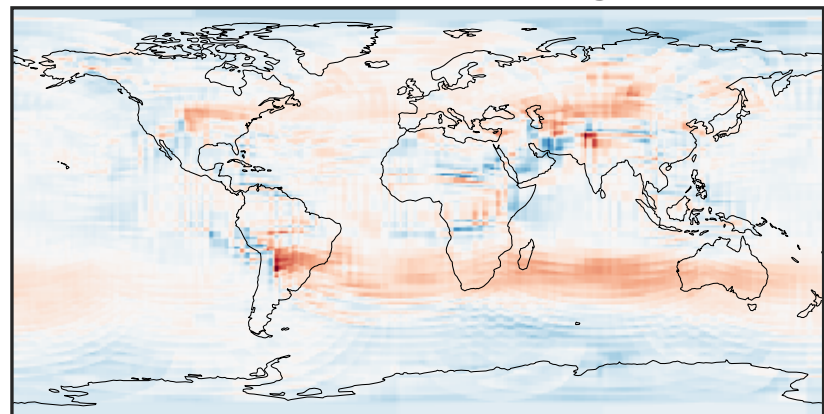
-0.0652 -0.0326 0.0000 0.0326 0.0652
ppb

Ratio (1x1.25)
Dev/Ref, Dynamic Range



0.463 0.731 1.000 1.580 2.160
unitless

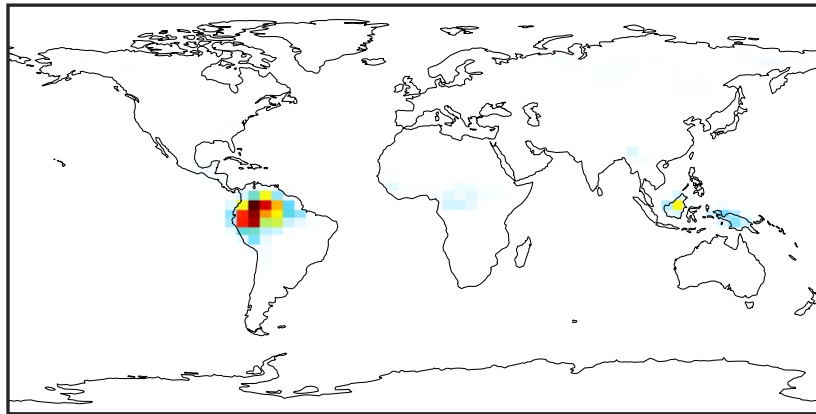
Ratio (1x1.25)
Dev/Ref, Fixed Range



0.50 0.75 1.00 1.50 2.00
unitless

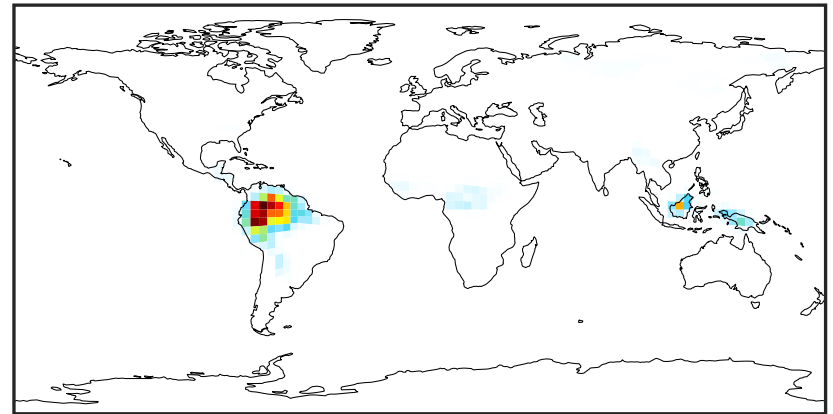
SpeciesConcVV_ISOP (Jul2019)

GCC_14.2.0 (Ref)
4.0x5.0



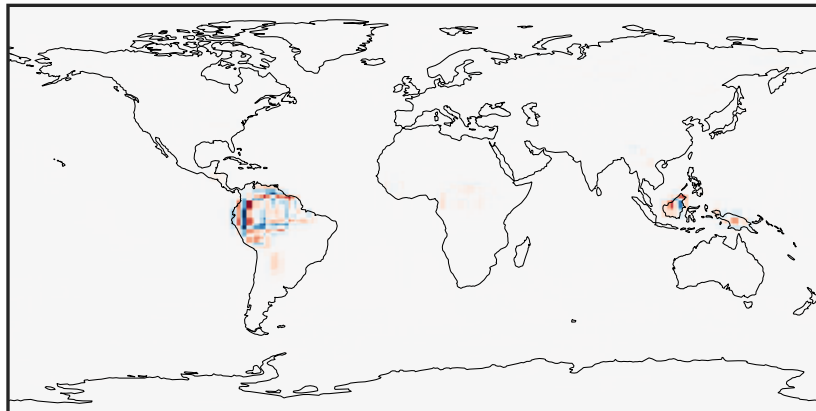
0.0000 0.0315 0.0629 0.0944 0.1258
ppb

GCHP_14.2.0 (Dev)
c24



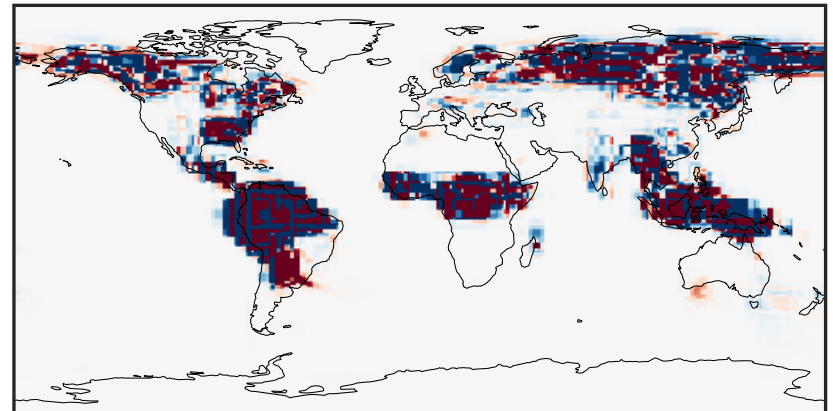
0.0000 0.0315 0.0629 0.0944 0.1258
ppb

Difference (1x1.25)
Dev - Ref, Dynamic Range



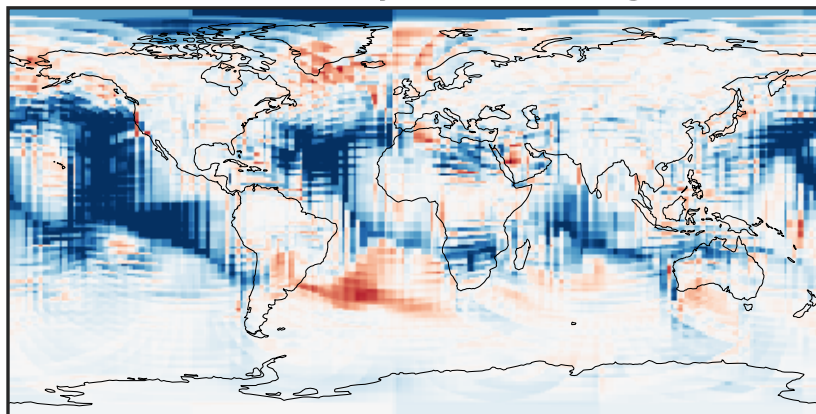
-0.025 0.000 0.025
ppb

Difference (1x1.25)
Dev - Ref, Restricted Range [5%,95%]



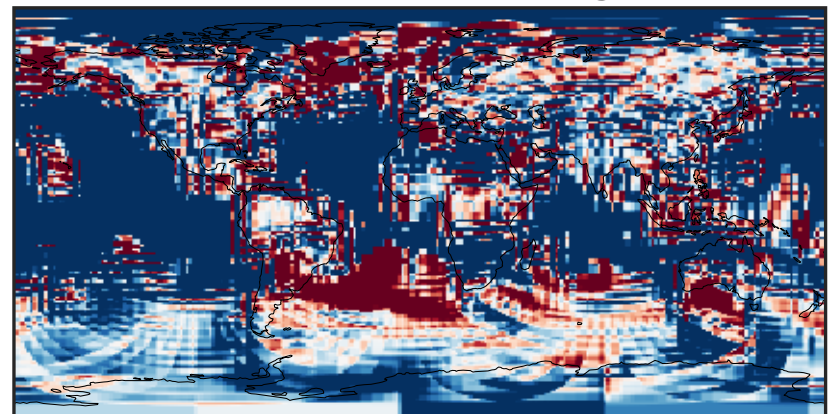
-2 0 2
ppb 1e-5

Ratio (1x1.25)
Dev/Ref, Dynamic Range



1e-02 1e-01 1 10 100
unitless

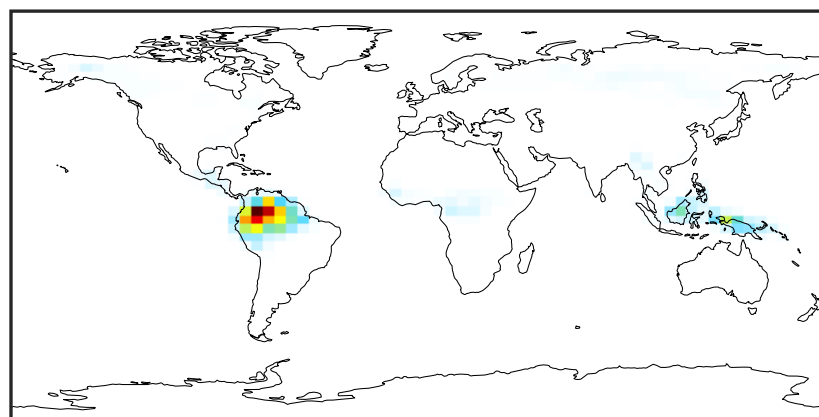
Ratio (1x1.25)
Dev/Ref, Fixed Range



0.50 0.75 1.00 1.50 2.00
unitless

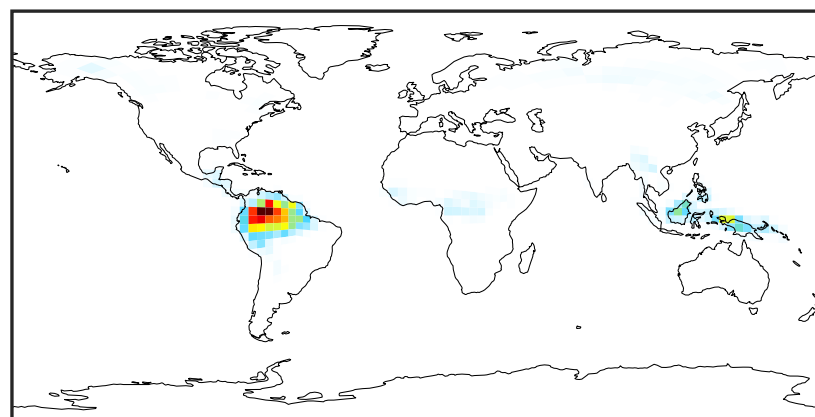
SpeciesConcVV_MTPA (Jul2019)

GCC_14.2.0 (Ref)
4.0x5.0



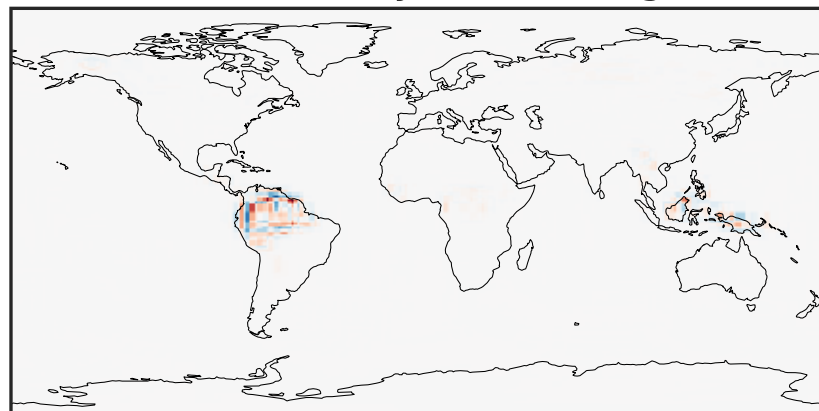
0.0000 0.0025 0.0050 0.0075
ppb

GCHP_14.2.0 (Dev)
c24



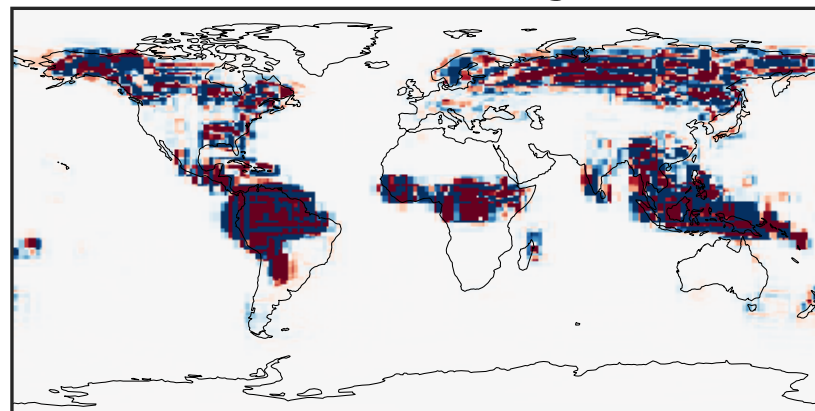
0.0000 0.0025 0.0050 0.0075
ppb

Difference (1x1.25)
Dev - Ref, Dynamic Range



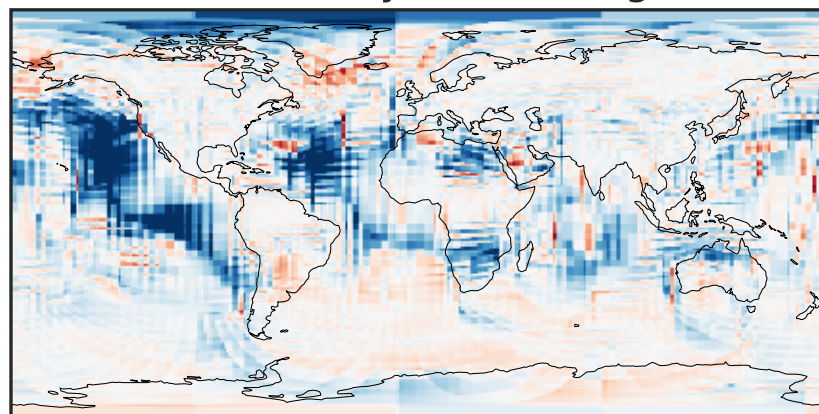
-0.002 0.000 0.002
ppb

Difference (1x1.25)
Dev - Ref, Restricted Range [5%,95%]



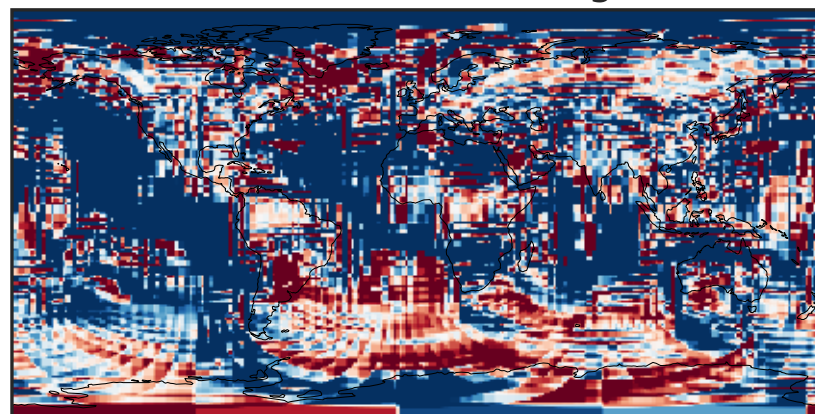
-5 0 5
ppb 1e-6

Ratio (1x1.25)
Dev/Ref, Dynamic Range



1e-02 1e-01 1 10 100
unitless

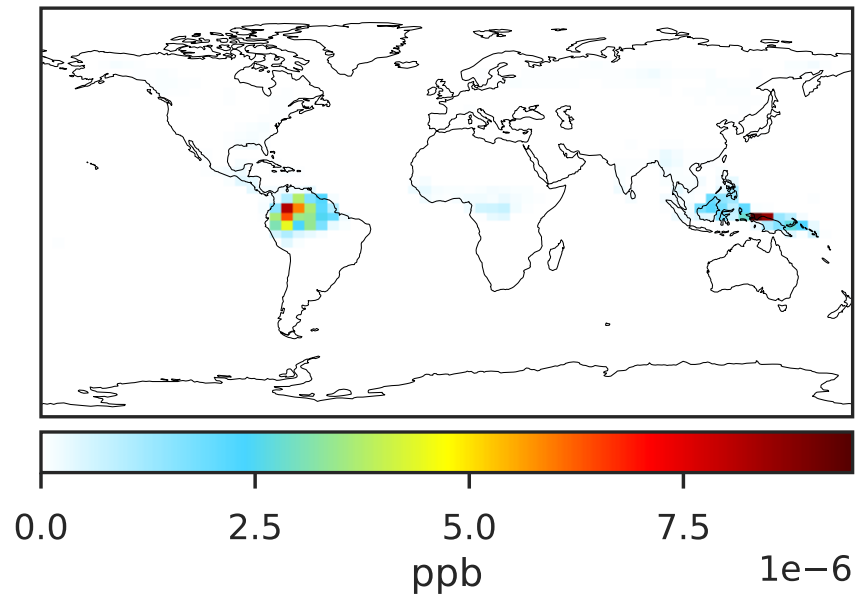
Ratio (1x1.25)
Dev/Ref, Fixed Range



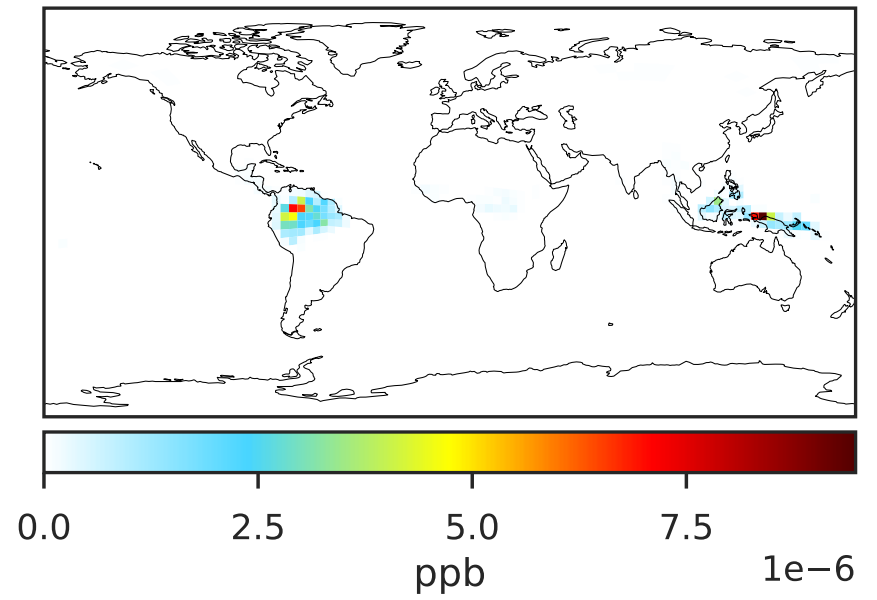
0.50 0.75 1.00 1.50 2.00
unitless

SpeciesConcVV_MTPO (Jul2019)

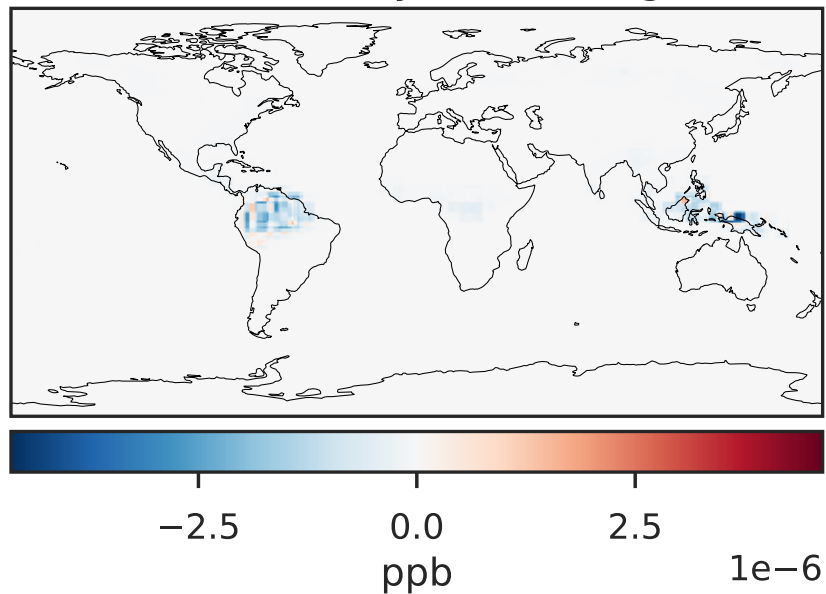
GCC_14.2.0 (Ref)
4.0x5.0



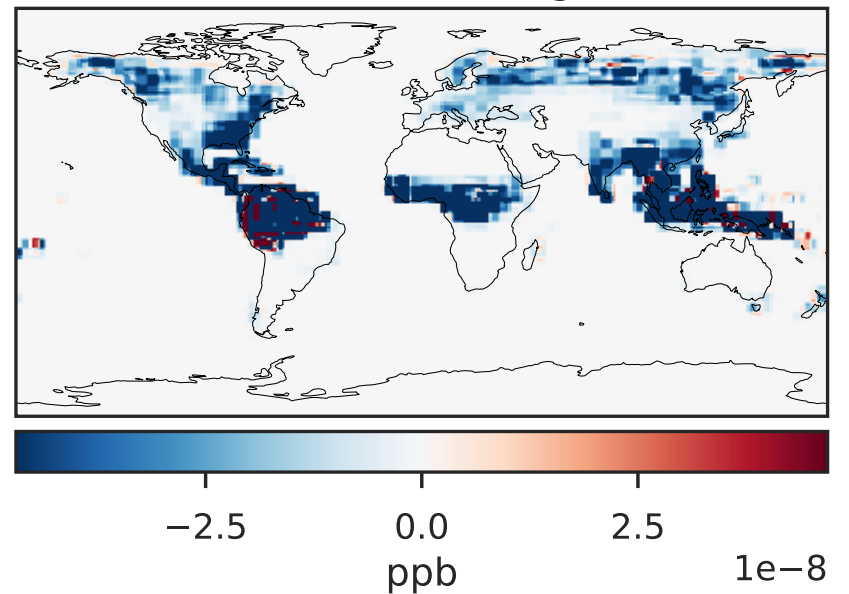
GCHP_14.2.0 (Dev)
c24



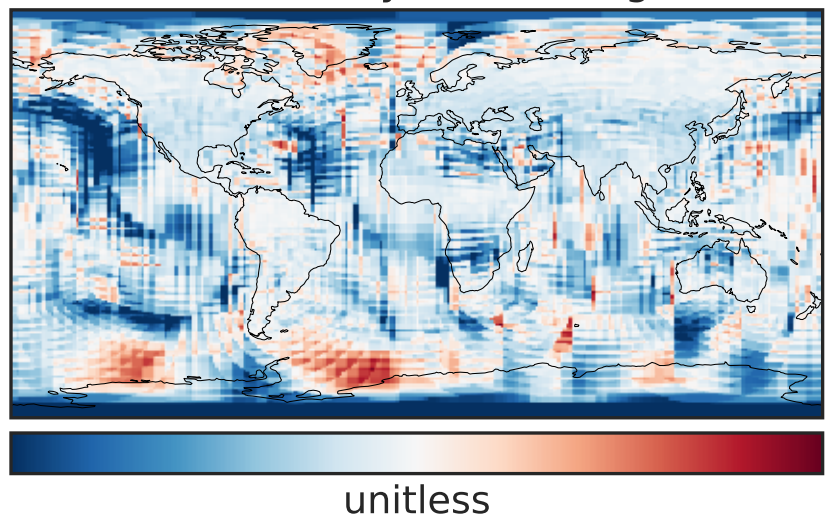
Difference (1x1.25)
Dev - Ref, Dynamic Range



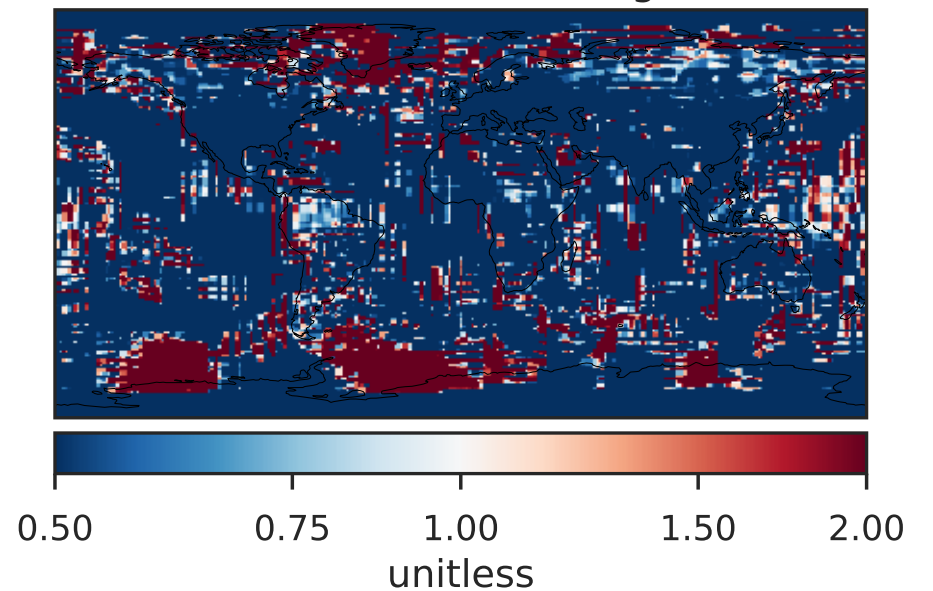
Difference (1x1.25)
Dev - Ref, Restricted Range [5%,95%]



Ratio (1x1.25)
Dev/Ref, Dynamic Range

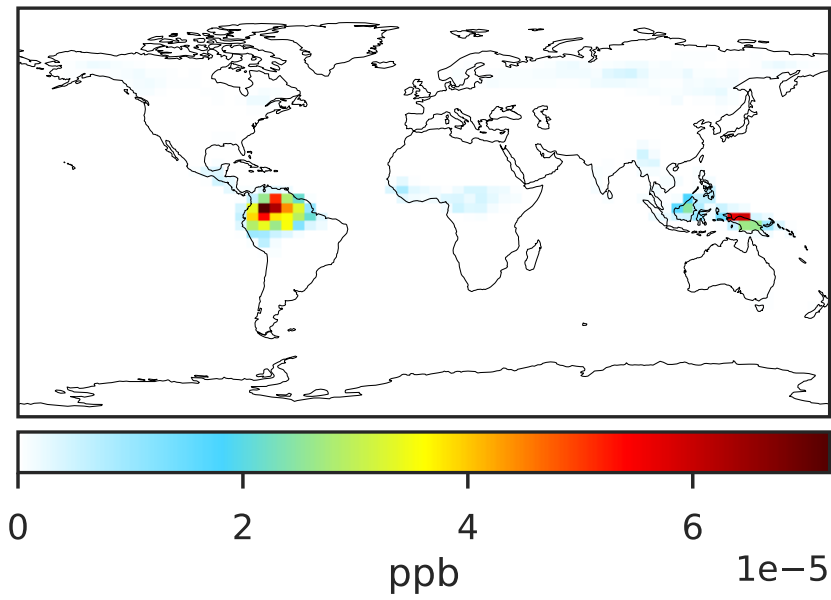


Ratio (1x1.25)
Dev/Ref, Fixed Range

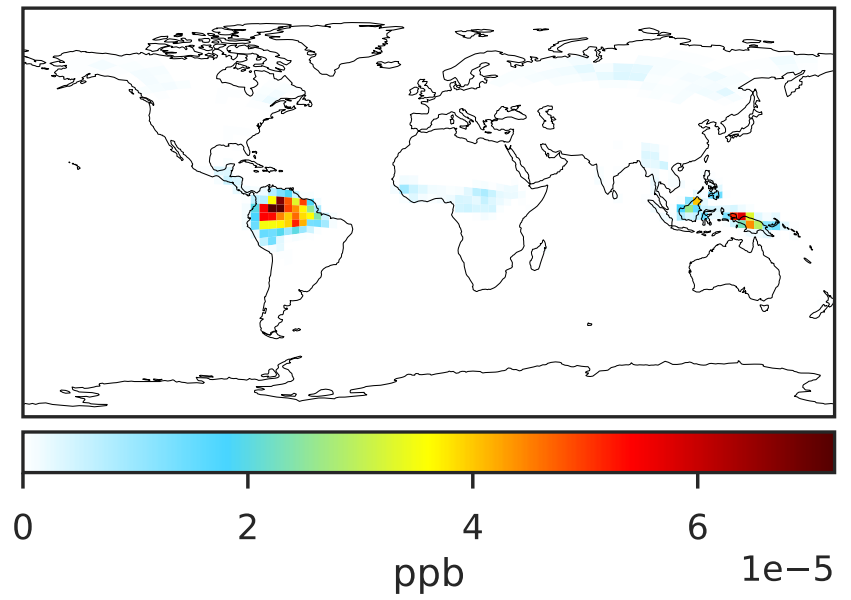


SpeciesConcVV_LIMO (Jul2019)

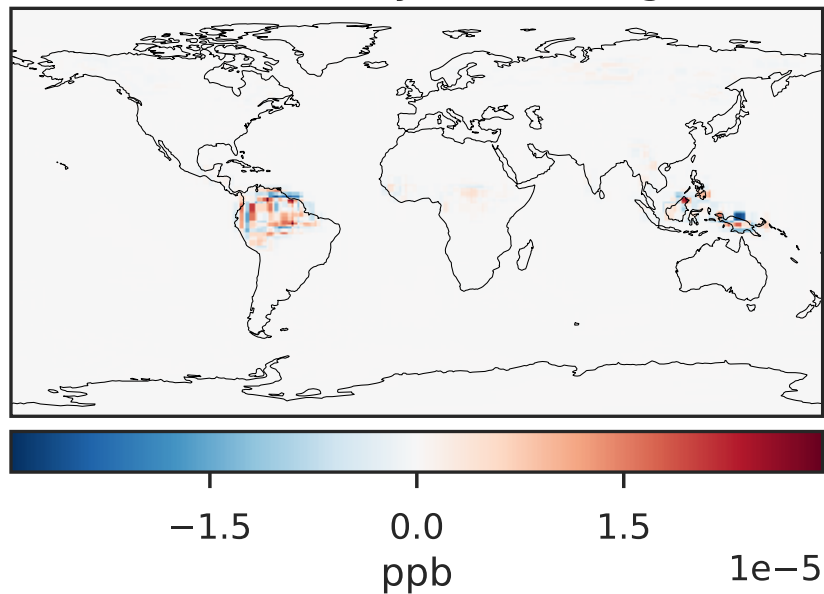
GCC_14.2.0 (Ref)
4.0x5.0



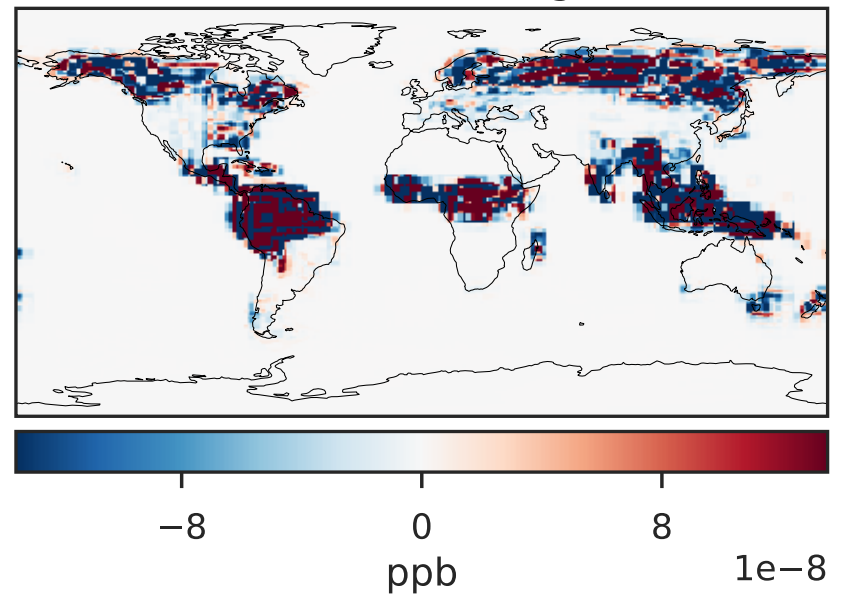
GCHP_14.2.0 (Dev)
c24



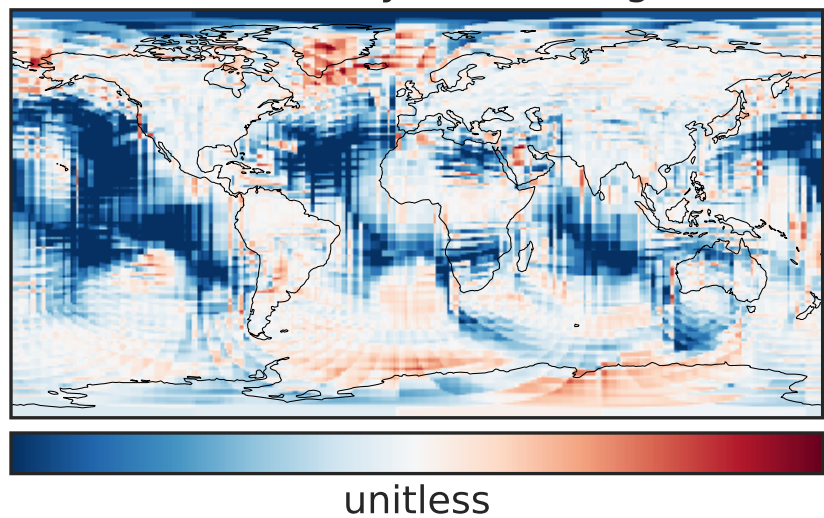
Difference (1x1.25)
Dev - Ref, Dynamic Range



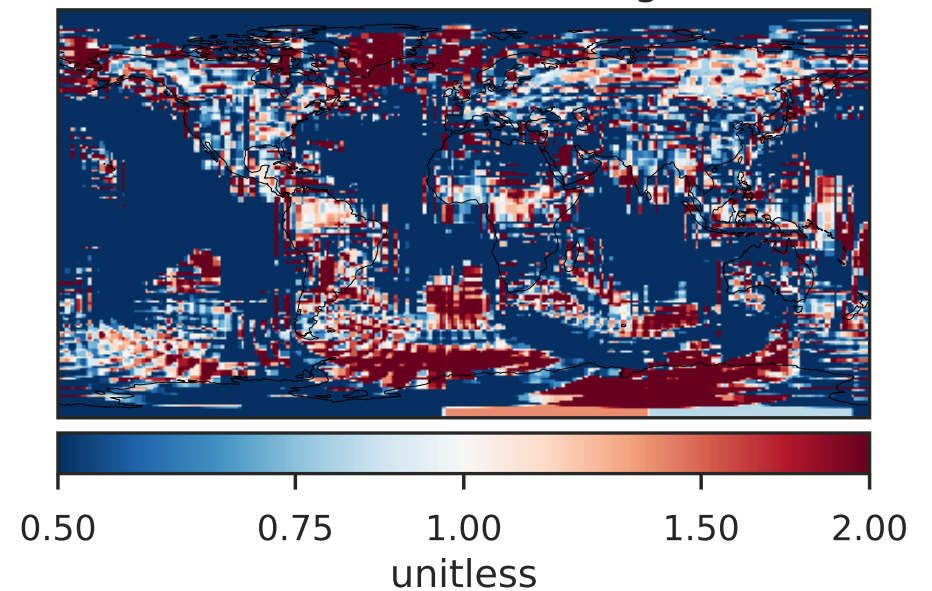
Difference (1x1.25)
Dev - Ref, Restricted Range [5%,95%]



Ratio (1x1.25)
Dev/Ref, Dynamic Range

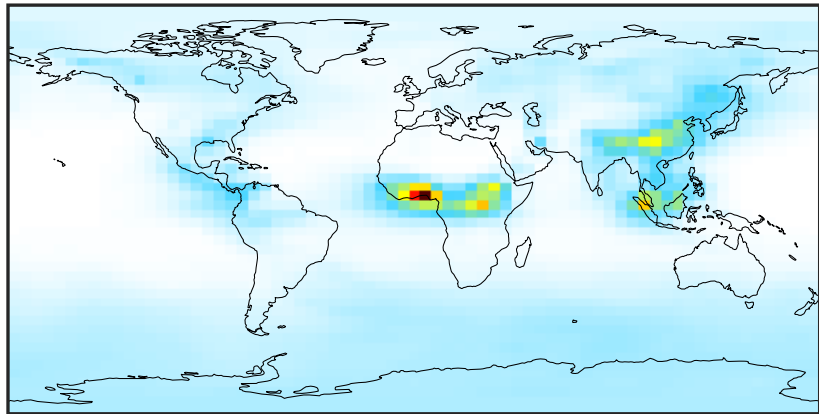


Ratio (1x1.25)
Dev/Ref, Fixed Range



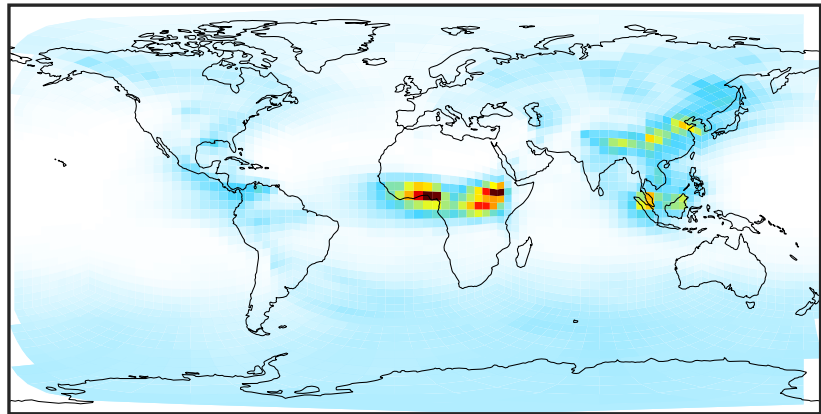
SpeciesConcVV_ALK4 (Jul2019)

GCC_14.2.0 (Ref)
4.0x5.0



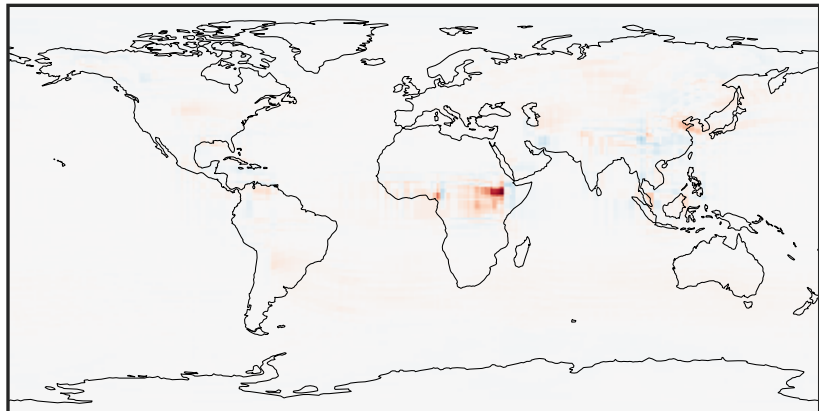
0.0003 0.0900 0.1799 0.2699 0.3602
ppb

GCHP_14.2.0 (Dev)
c24



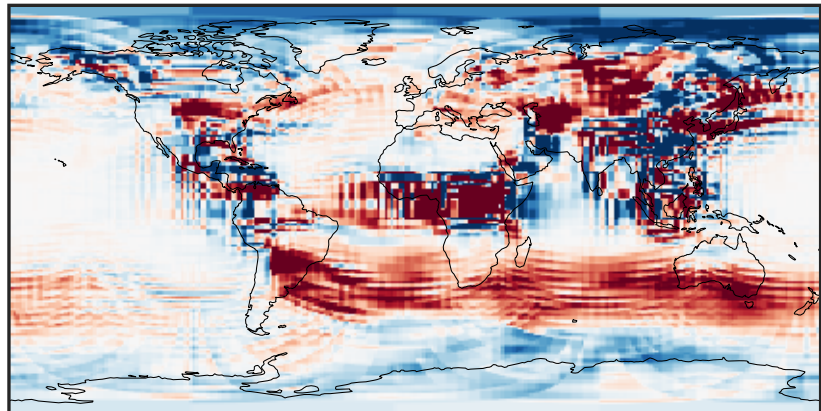
0.0003 0.0900 0.1799 0.2699 0.3602
ppb

Difference (1x1.25)
Dev - Ref, Dynamic Range



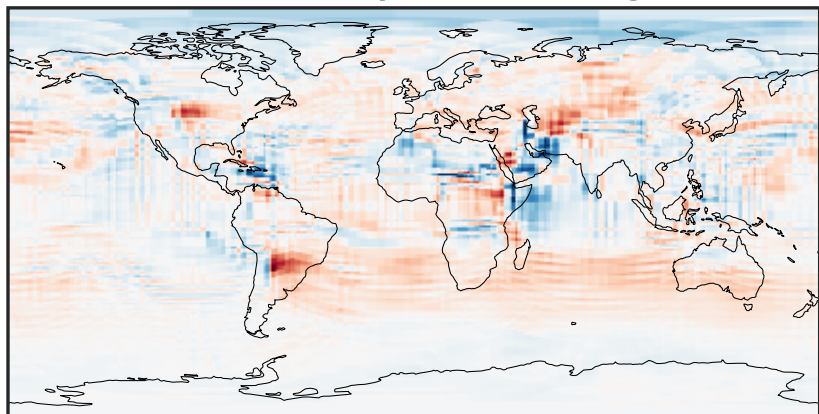
-0.2708 -0.1354 0.0000 0.1354 0.2708
ppb

Difference (1x1.25)
Dev - Ref, Restricted Range [5%,95%]



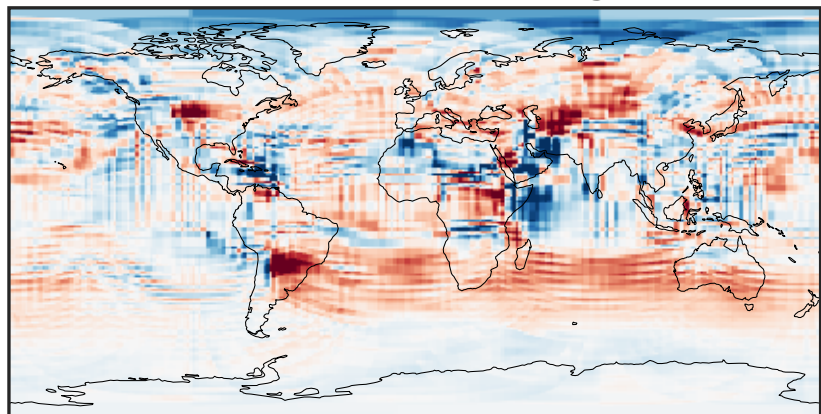
-0.004 0.000 0.004
ppb

Ratio (1x1.25)
Dev/Ref, Dynamic Range



0.238 0.619 1.000 2.601 4.203
unitless

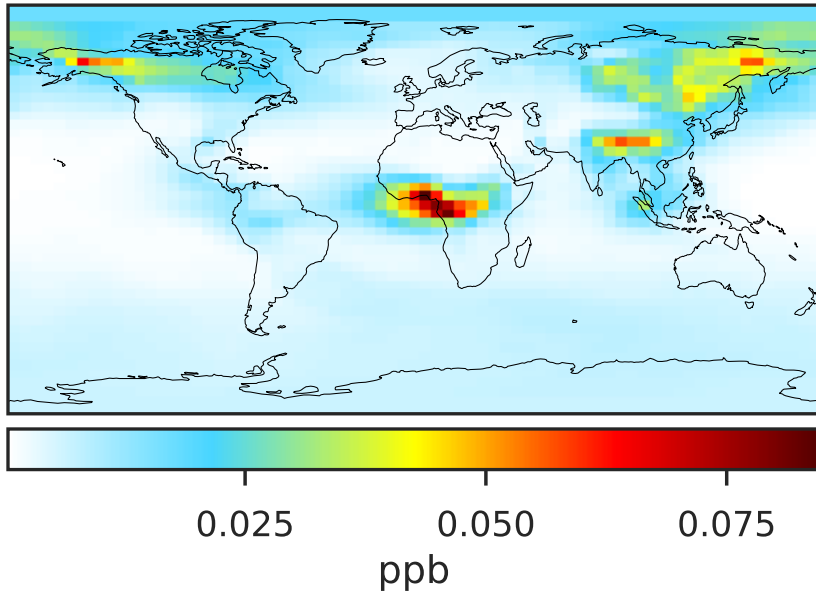
Ratio (1x1.25)
Dev/Ref, Fixed Range



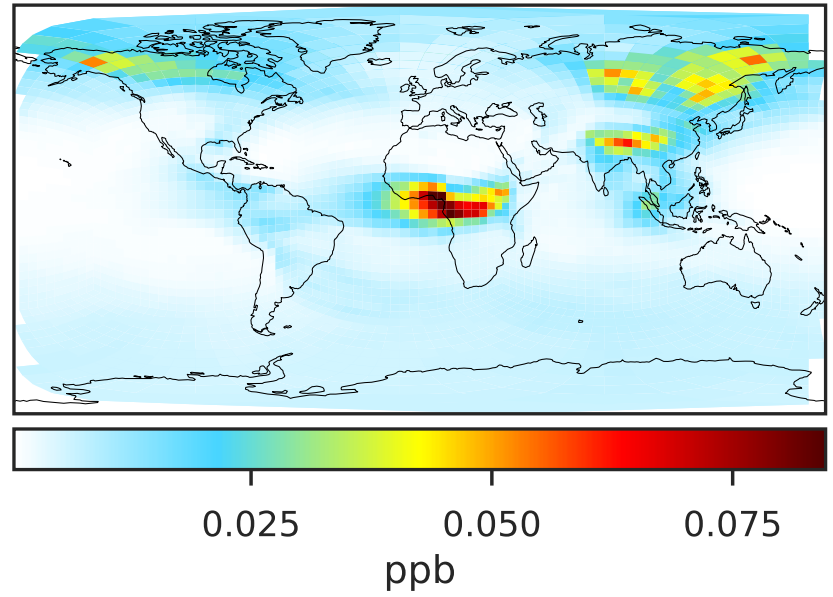
0.50 0.75 1.00 1.50 2.00
unitless

SpeciesConcVV_BENZ (Jul2019)

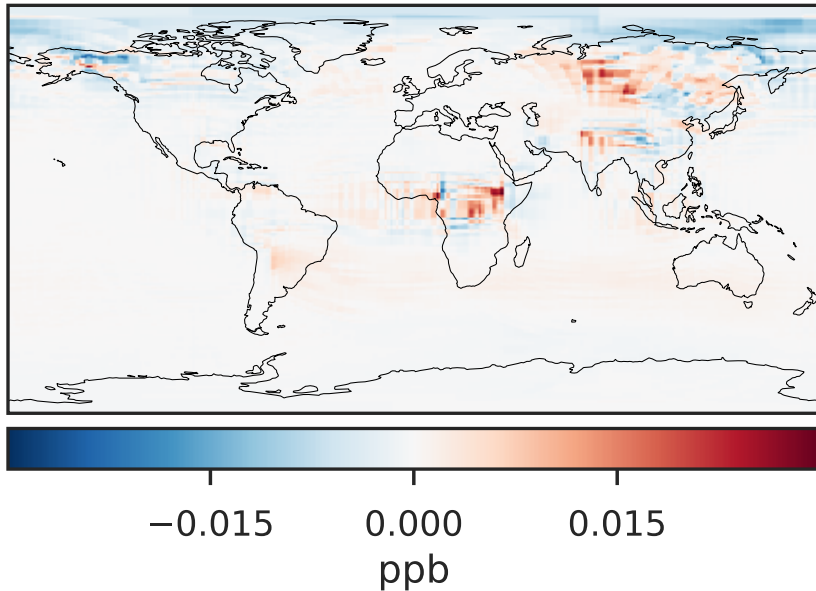
GCC_14.2.0 (Ref)
4.0x5.0



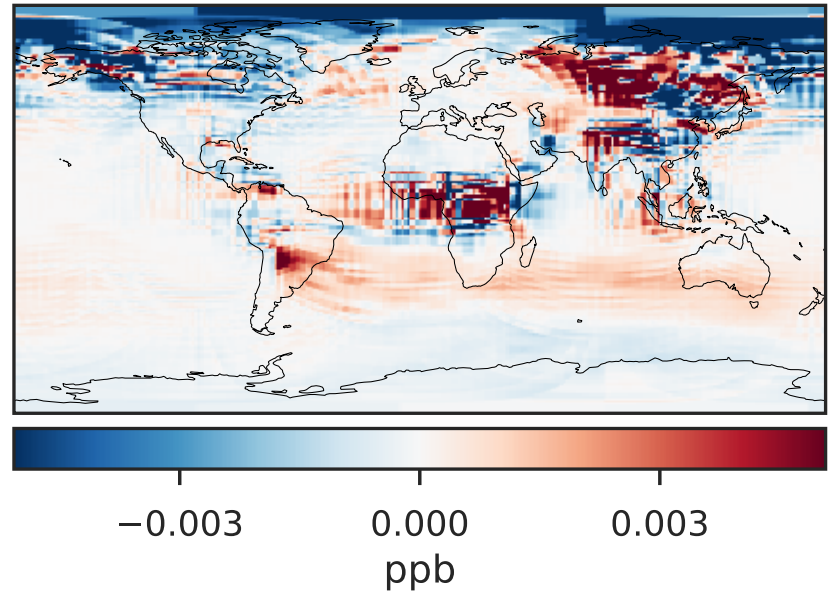
GCHP_14.2.0 (Dev)
c24



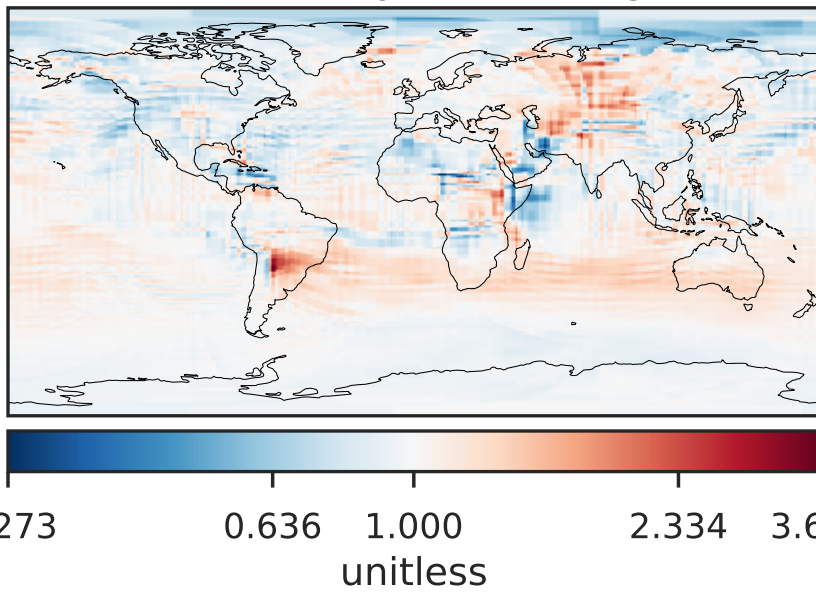
Difference (1x1.25)
Dev - Ref, Dynamic Range



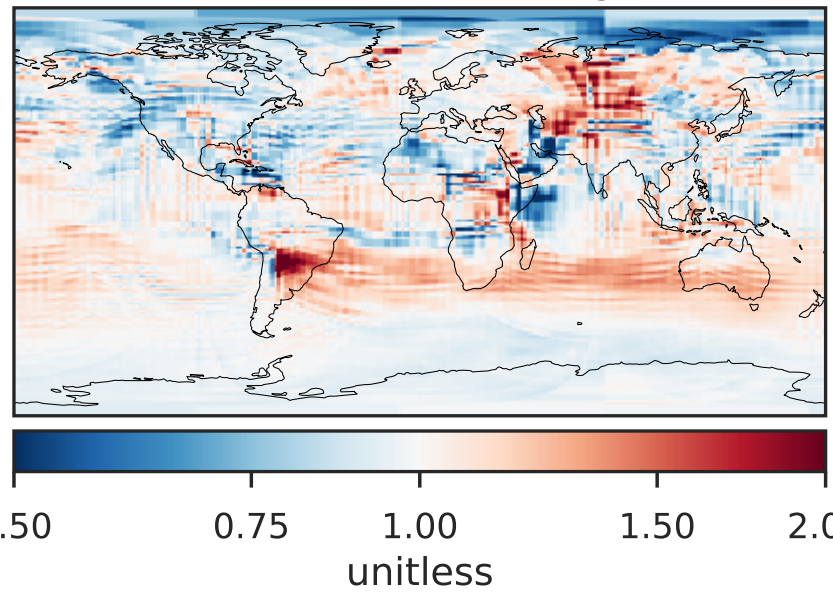
Difference (1x1.25)
Dev - Ref, Restricted Range [5%,95%]



Ratio (1x1.25)
Dev/Ref, Dynamic Range

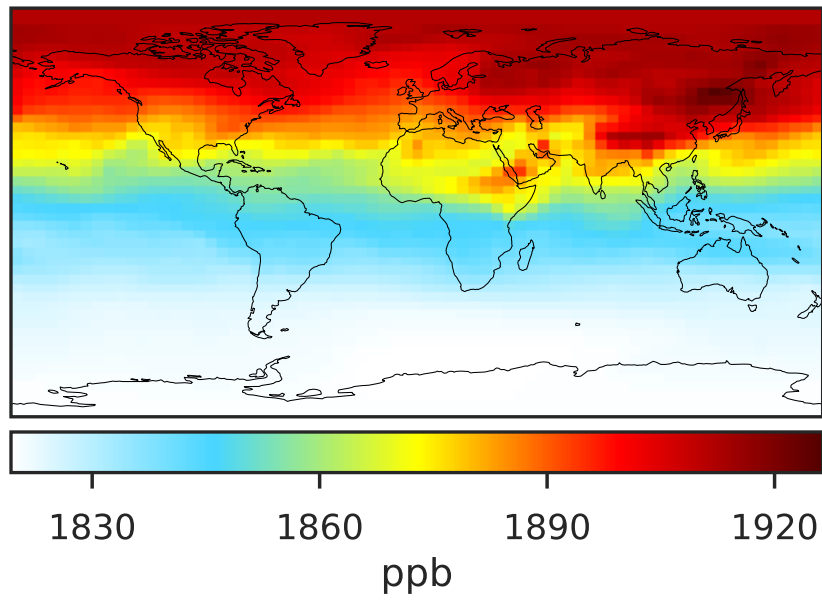


Ratio (1x1.25)
Dev/Ref, Fixed Range

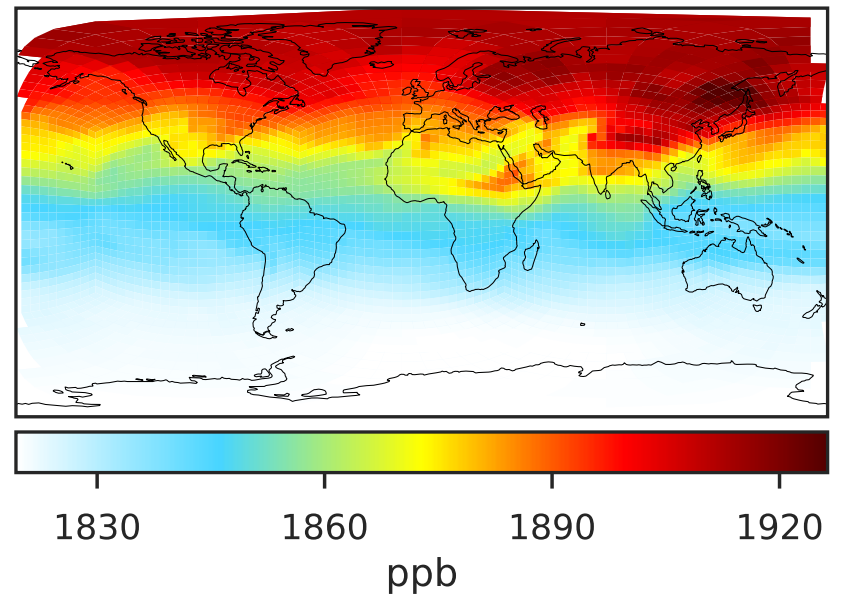


SpeciesConcVV_CH4 (Jul2019)

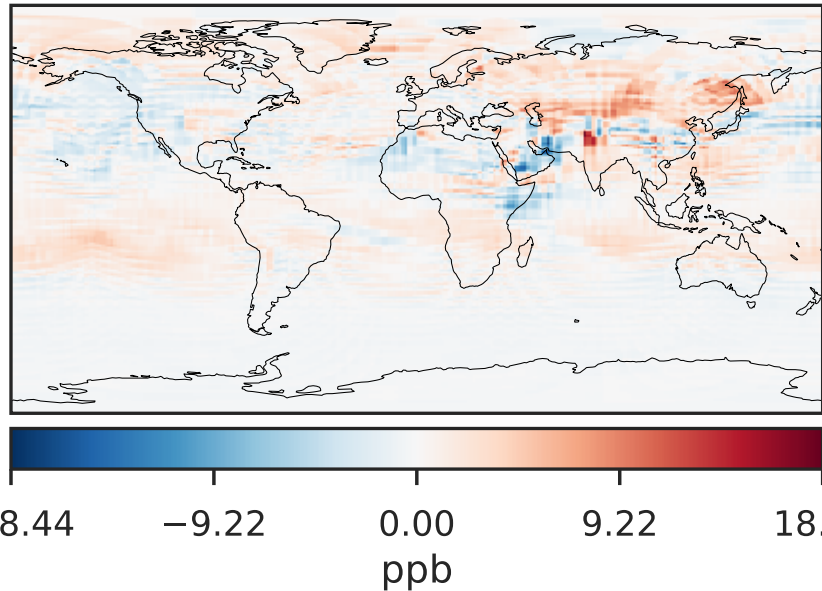
GCC_14.2.0 (Ref)
4.0x5.0



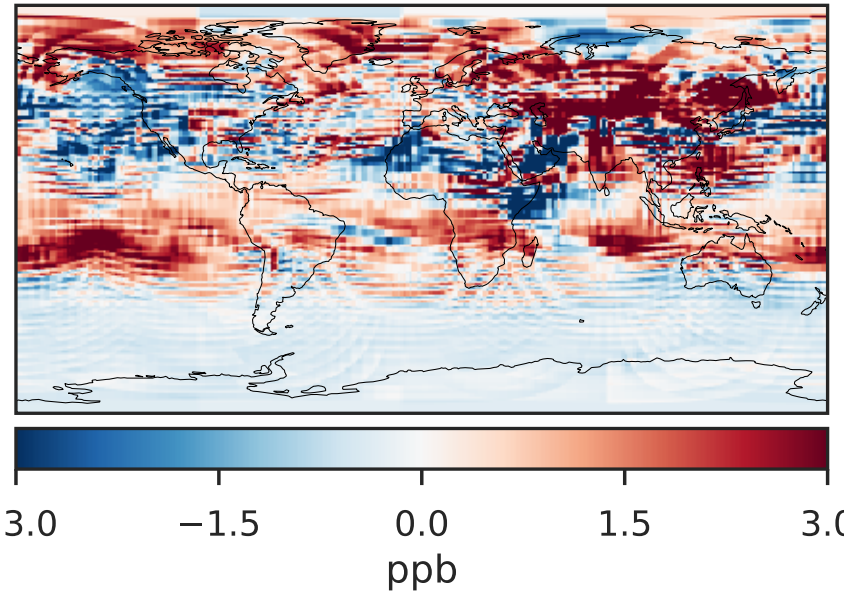
GCHP_14.2.0 (Dev)
c24



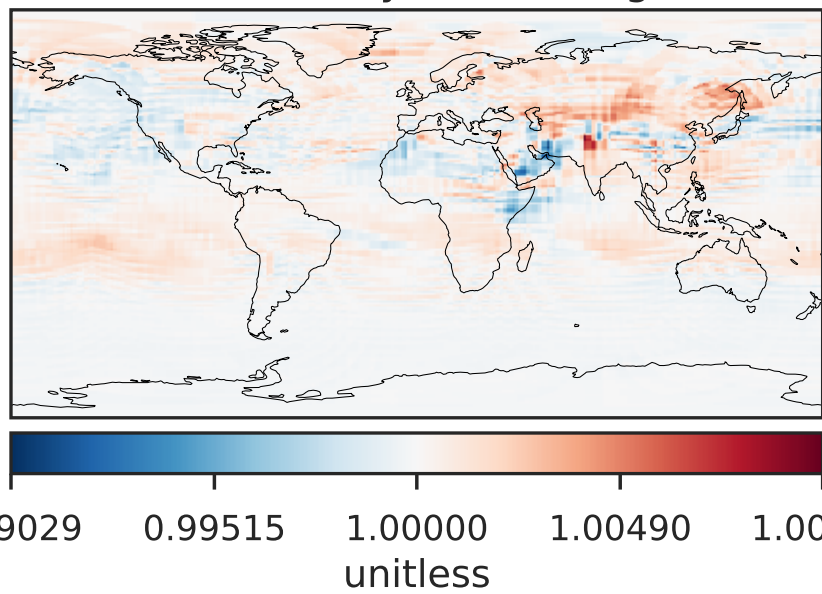
Difference (1x1.25)
Dev - Ref, Dynamic Range



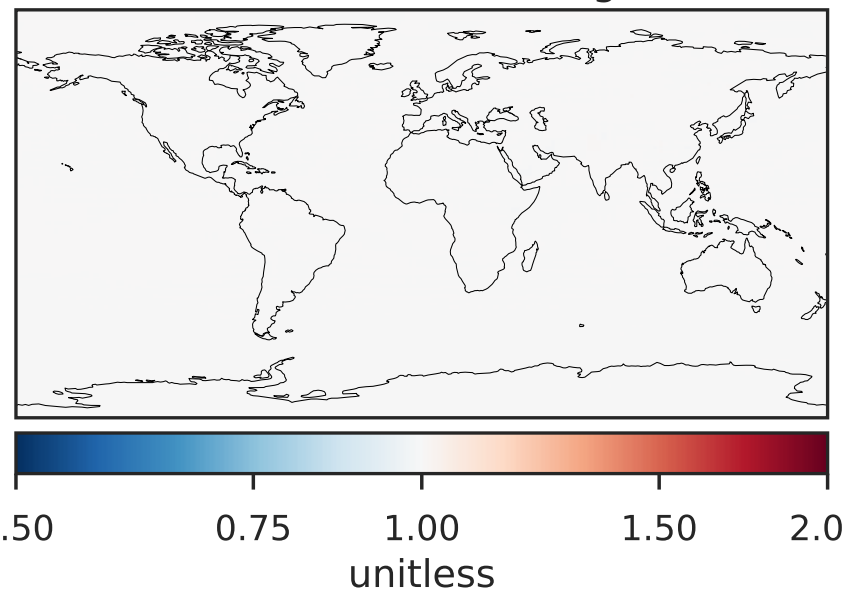
Difference (1x1.25)
Dev - Ref, Restricted Range [5%,95%]



Ratio (1x1.25)
Dev/Ref, Dynamic Range

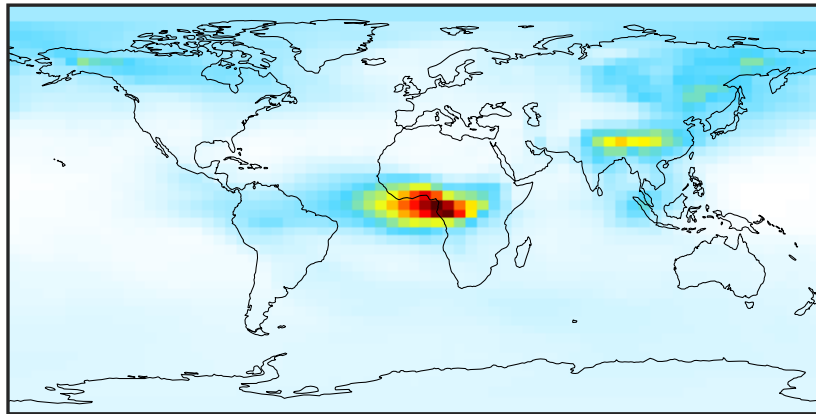


Ratio (1x1.25)
Dev/Ref, Fixed Range



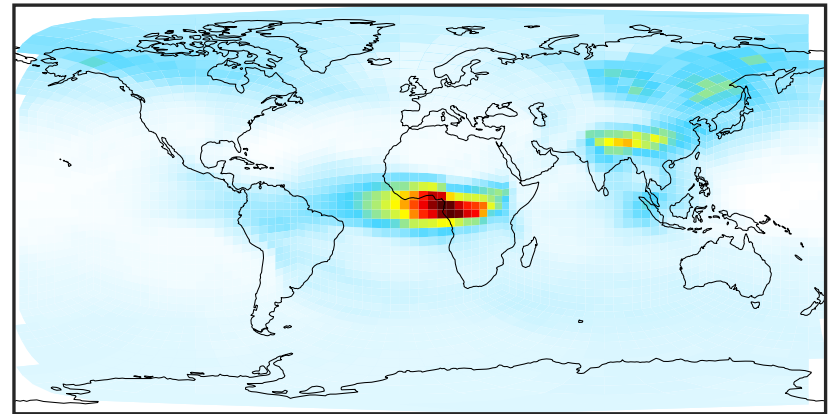
SpeciesConcVW_C2H2 (Jul2019)

GCC_14.2.0 (Ref)
4.0x5.0



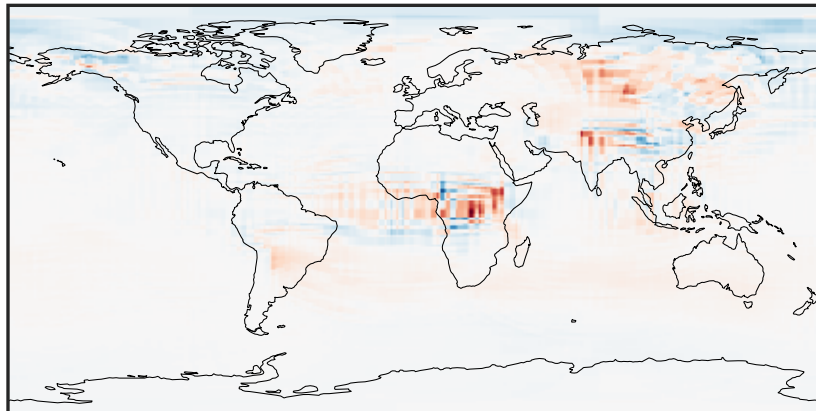
0.0047 0.0824 0.1648 0.2473 0.3344
ppb

GCHP_14.2.0 (Dev)
c24



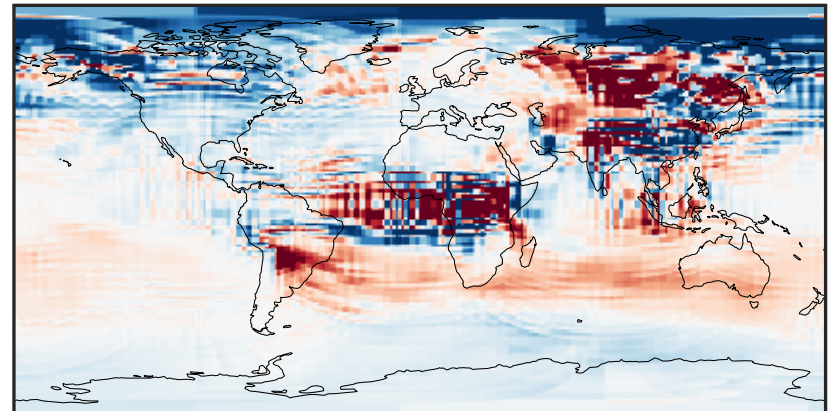
0.0047 0.0824 0.1648 0.2473 0.3344
ppb

Difference (1x1.25)
Dev - Ref, Dynamic Range



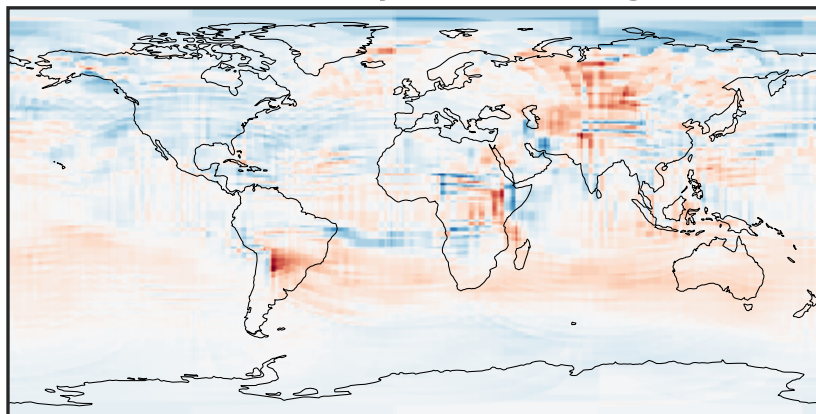
-0.0789 -0.0395 0.0000 0.0395 0.0789
ppb

Difference (1x1.25)
Dev - Ref, Restricted Range [5%,95%]



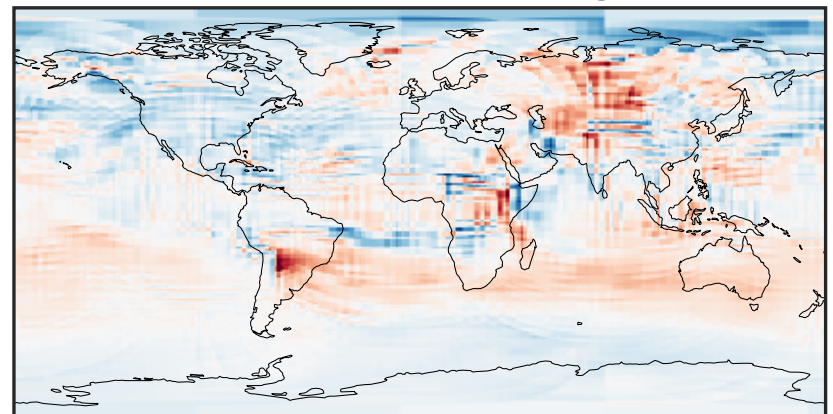
-0.005 0.000 0.005
ppb

Ratio (1x1.25)
Dev/Ref, Dynamic Range



0.411 0.706 1.000 1.716 2.432
unitless

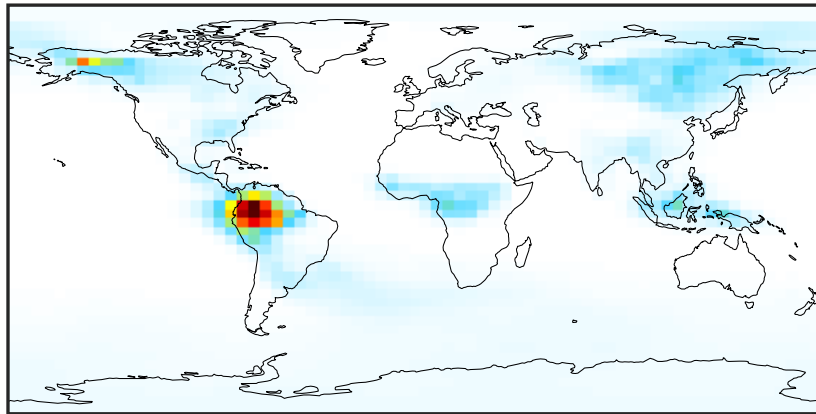
Ratio (1x1.25)
Dev/Ref, Fixed Range



0.50 0.75 1.00 1.50 2.00
unitless

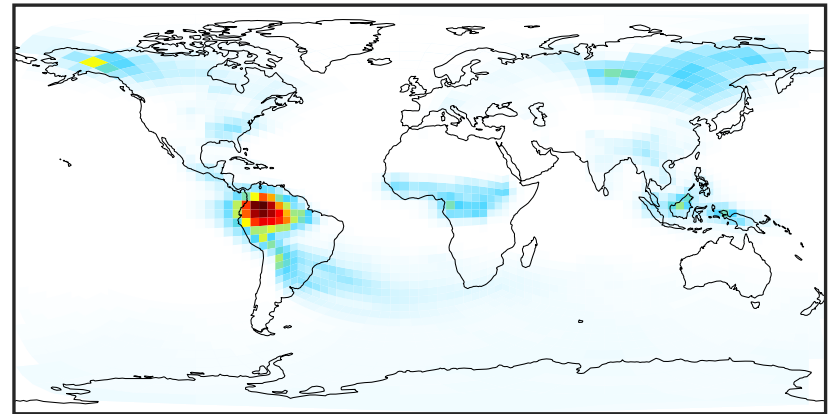
SpeciesConcVW_C2H4 (Jul2019)

GCC_14.2.0 (Ref)
4.0x5.0



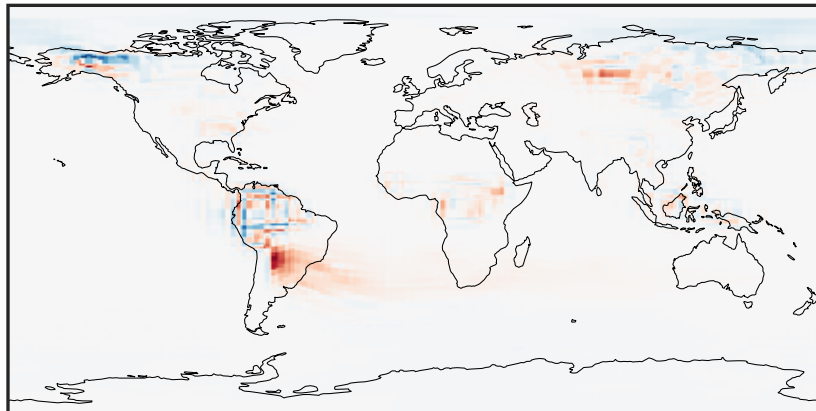
0.0000 0.0645 0.1289 0.1934 0.2578
ppb

GCHP_14.2.0 (Dev)
c24



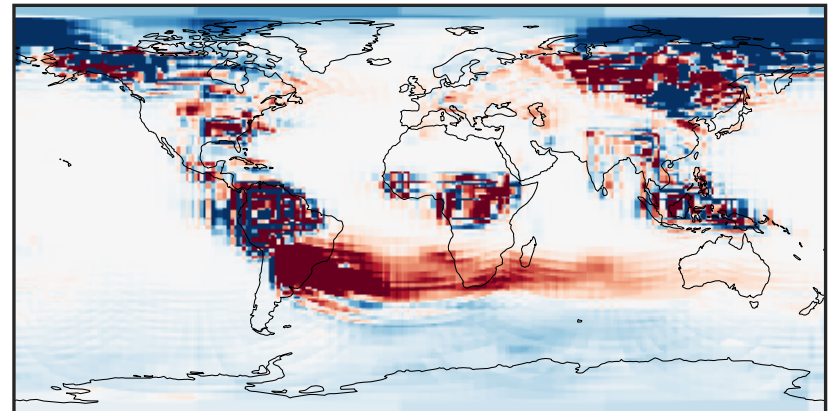
0.0000 0.0645 0.1289 0.1934 0.2578
ppb

Difference (1x1.25)
Dev - Ref, Dynamic Range



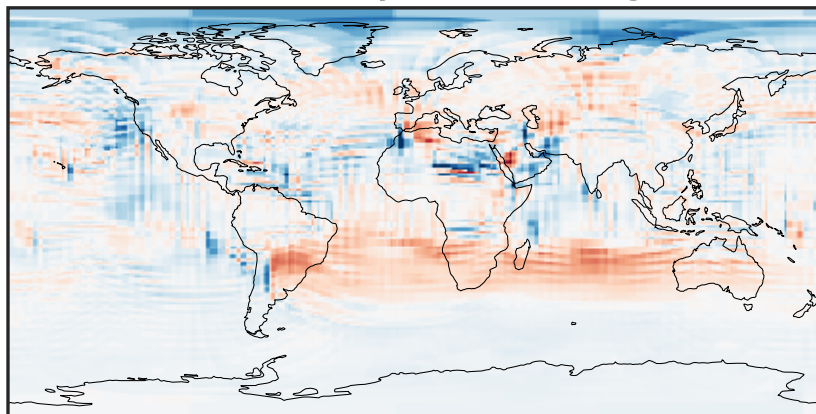
-0.0890 -0.0445 0.0000 0.0445 0.0890
ppb

Difference (1x1.25)
Dev - Ref, Restricted Range [5%,95%]



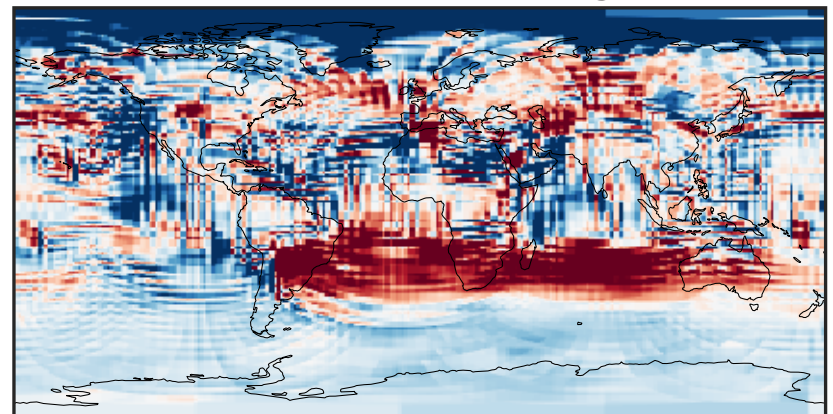
-0.0025 0.0000 0.0025
ppb

Ratio (1x1.25)
Dev/Ref, Dynamic Range



1e-01 1 10
unitless

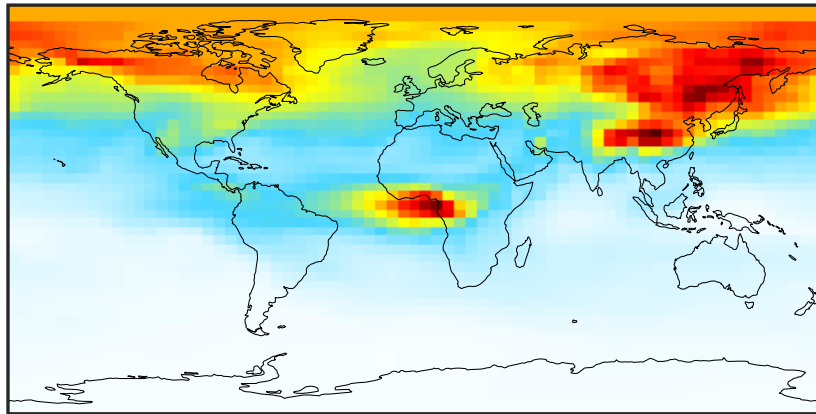
Ratio (1x1.25)
Dev/Ref, Fixed Range



0.50 0.75 1.00 1.50 2.00
unitless

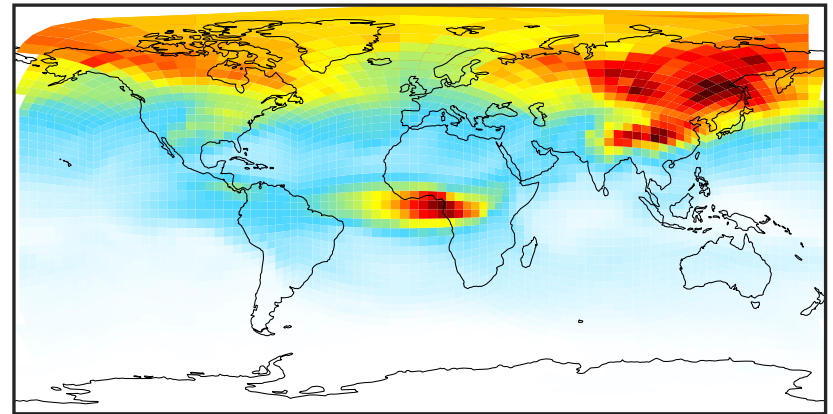
SpeciesConcVW_C2H6 (Jul2019)

GCC_14.2.0 (Ref)
4.0x5.0



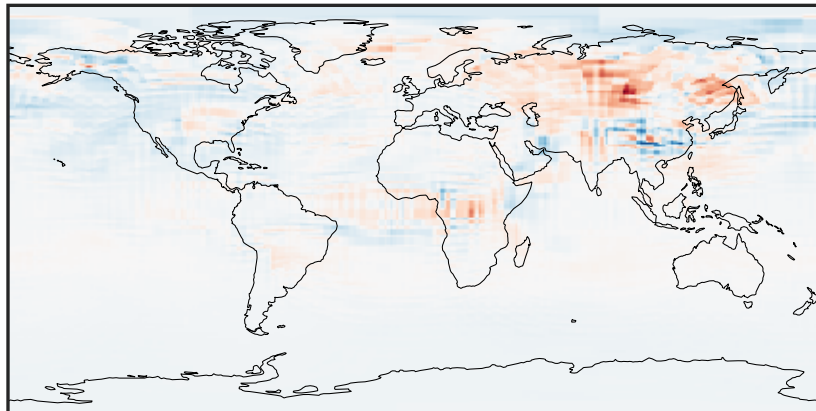
0.08850.2051 0.4101 0.6152 0.9088
ppb

GCHP_14.2.0 (Dev)
c24



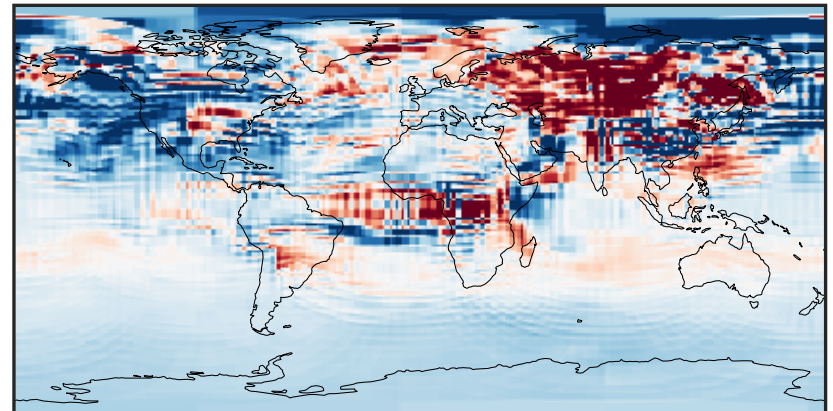
0.08850.2051 0.4101 0.6152 0.9088
ppb

Difference (1x1.25)
Dev - Ref, Dynamic Range



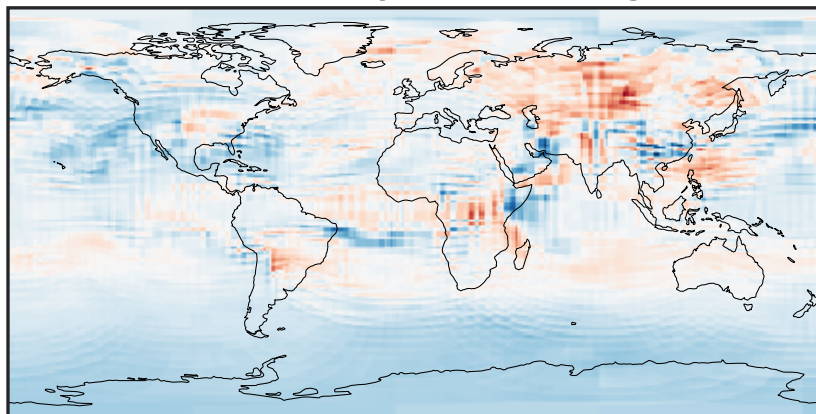
-0.2791 -0.1396 0.0000 0.1396 0.2791
ppb

Difference (1x1.25)
Dev - Ref, Restricted Range [5%,95%]



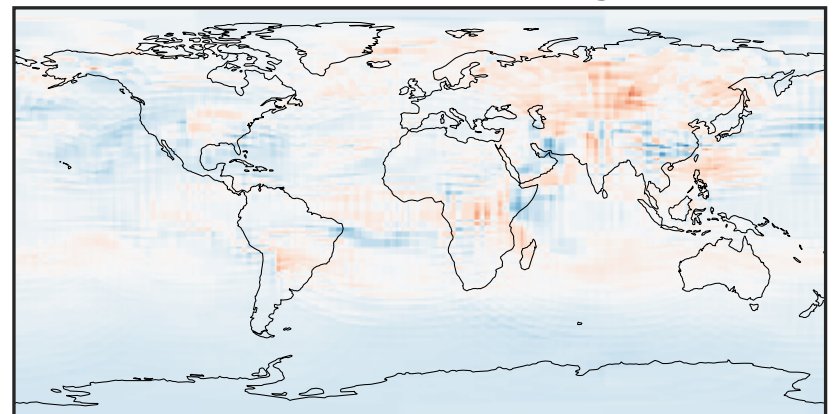
-0.025 0.000 0.025
ppb

Ratio (1x1.25)
Dev/Ref, Dynamic Range



0.6726 0.8363 1.0000 1.2434 1.4868
unitless

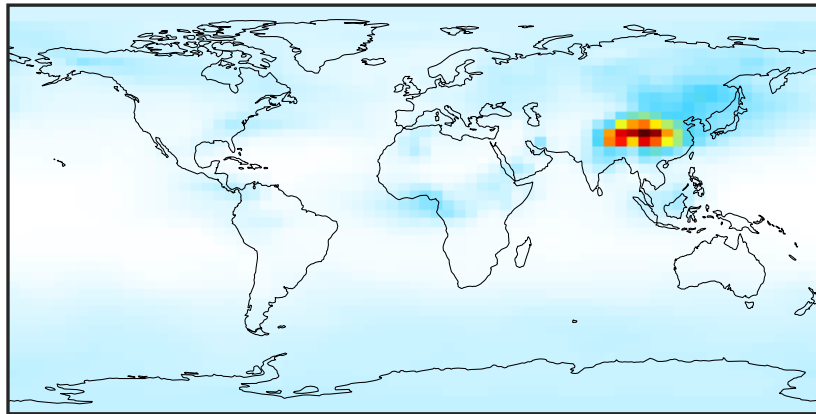
Ratio (1x1.25)
Dev/Ref, Fixed Range



0.50 0.75 1.00 1.50 2.00
unitless

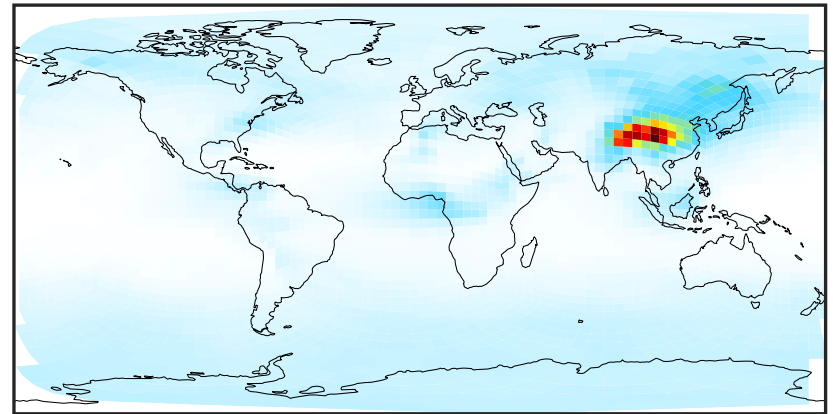
SpeciesConcVW_C3H8 (Jul2019)

GCC_14.2.0 (Ref)
4.0x5.0



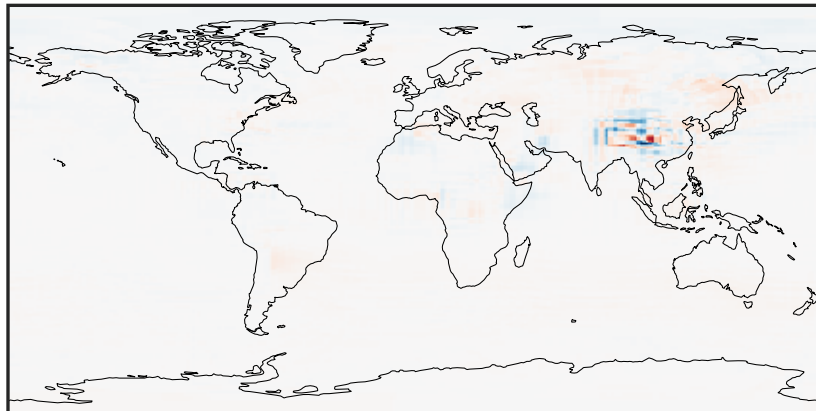
0.0025 0.1301 0.2603 0.3904 0.5231
ppb

GCHP_14.2.0 (Dev)
c24



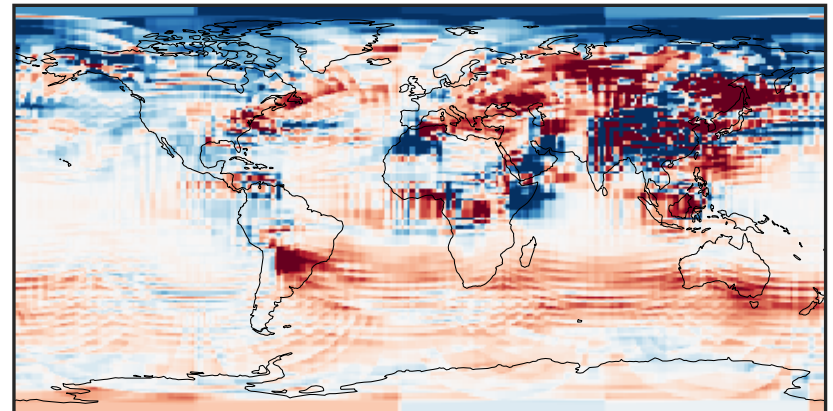
0.0025 0.1301 0.2603 0.3904 0.5231
ppb

Difference (1x1.25)
Dev - Ref, Dynamic Range



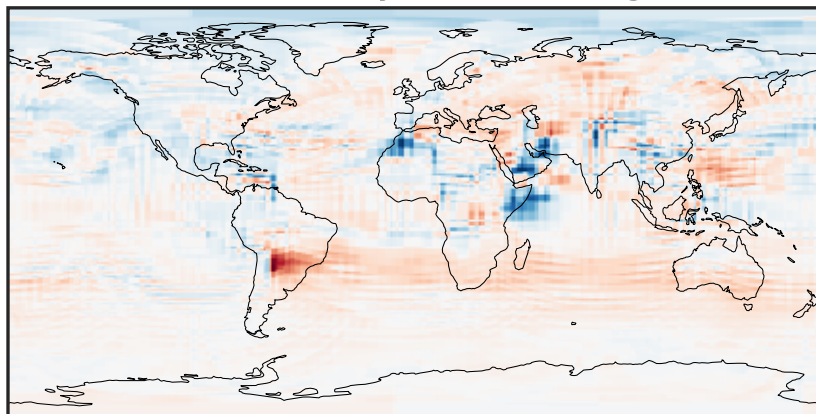
-0.228 -0.114 0.000 0.114 0.228
ppb

Difference (1x1.25)
Dev - Ref, Restricted Range [5%,95%]



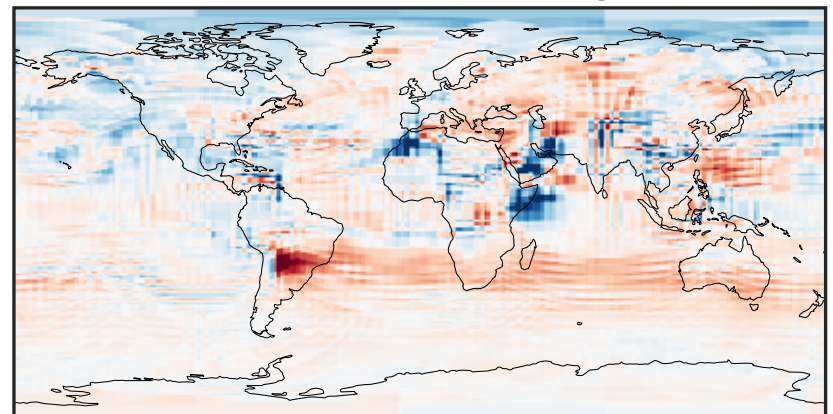
-0.004 0.000 0.004
ppb

Ratio (1x1.25)
Dev/Ref, Dynamic Range



0.348 0.674 1.000 1.935 2.871
unitless

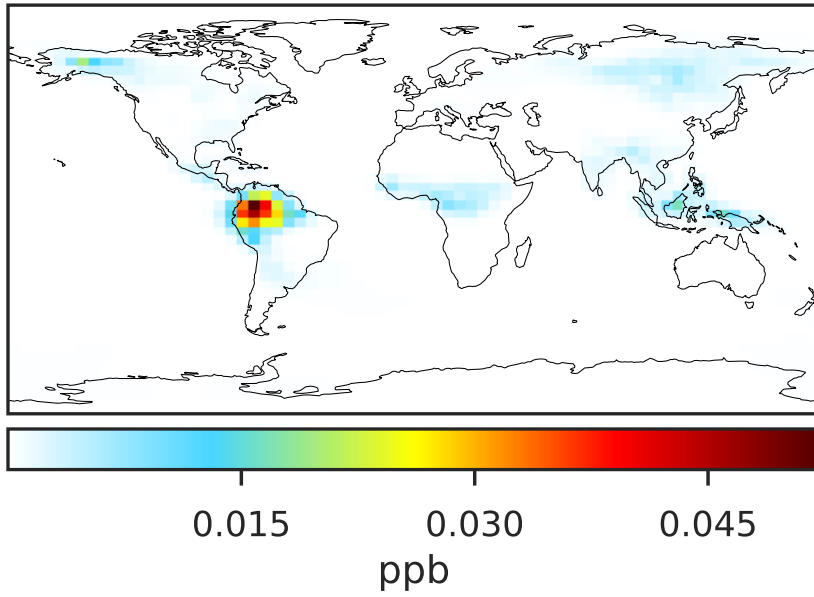
Ratio (1x1.25)
Dev/Ref, Fixed Range



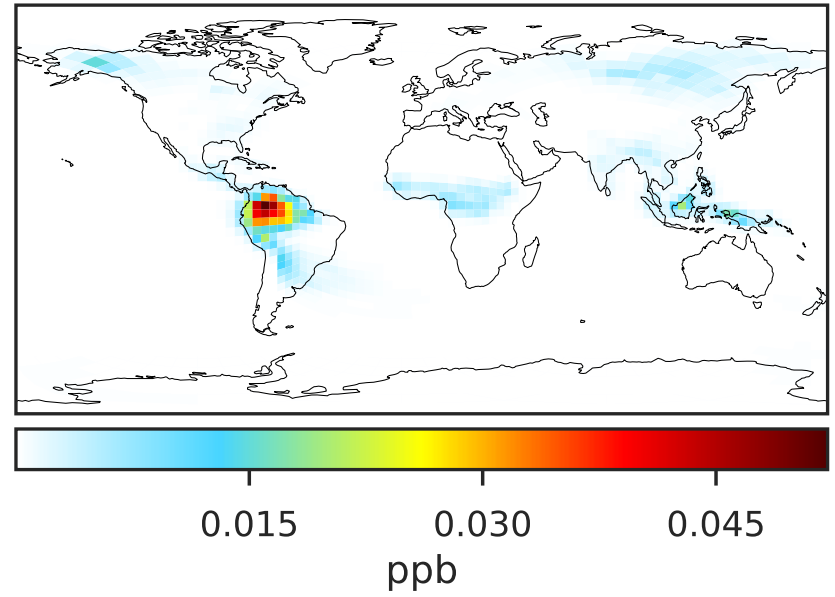
0.50 0.75 1.00 1.50 2.00
unitless

SpeciesConcVV_PRPE (Jul2019)

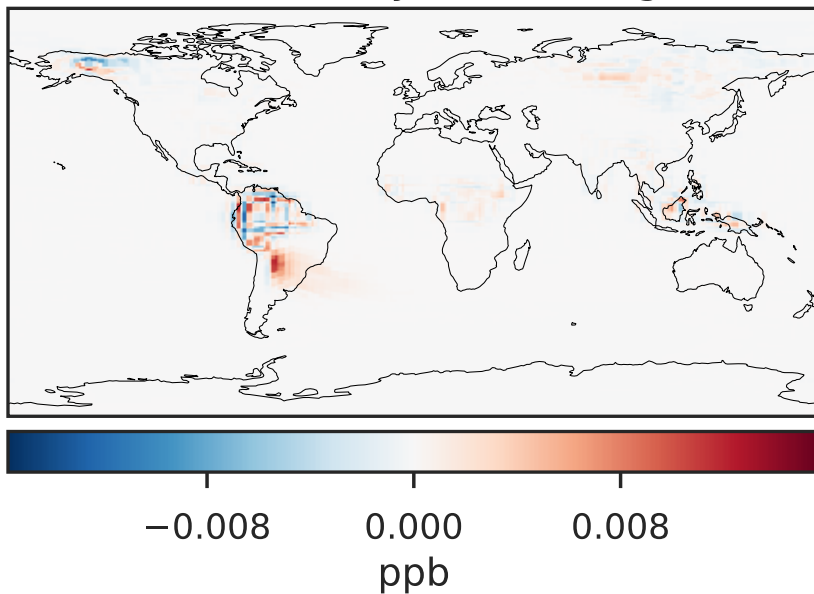
GCC_14.2.0 (Ref)
4.0x5.0



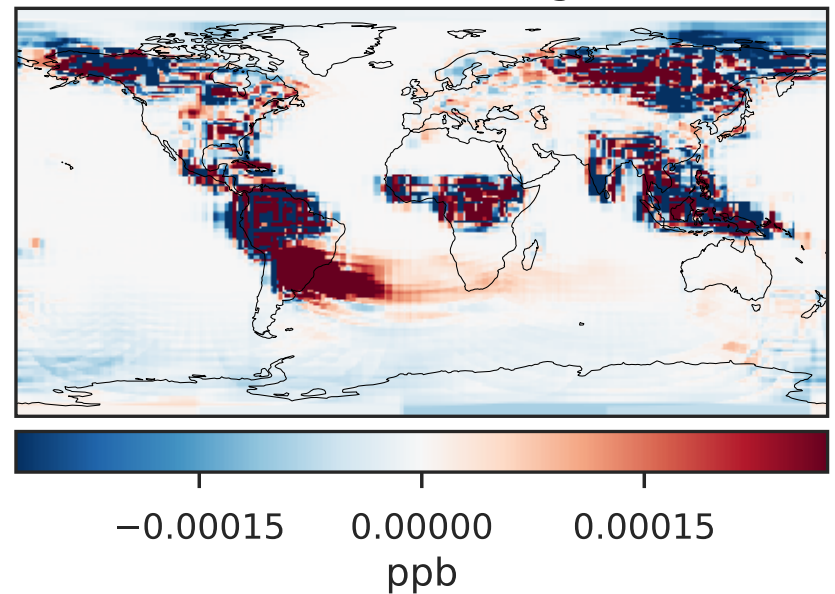
GCHP_14.2.0 (Dev)
c24



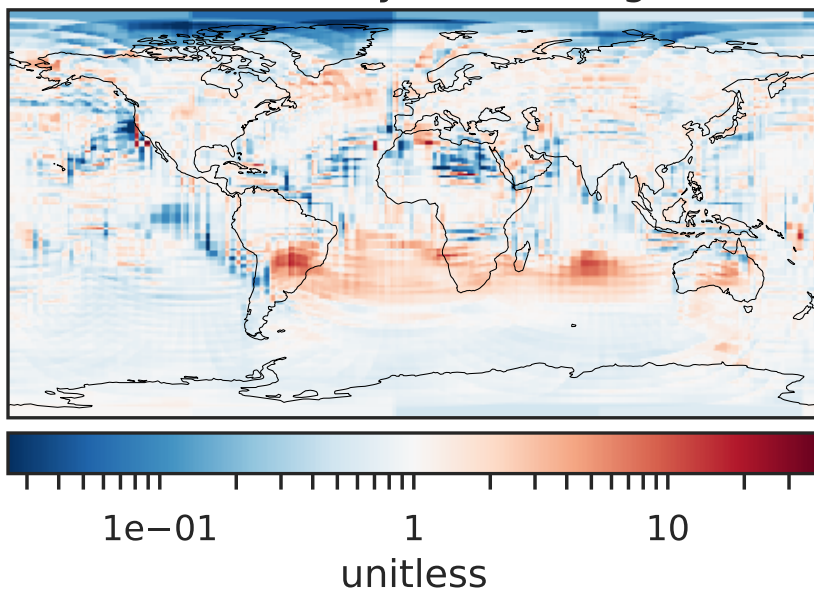
Difference (1x1.25)
Dev - Ref, Dynamic Range



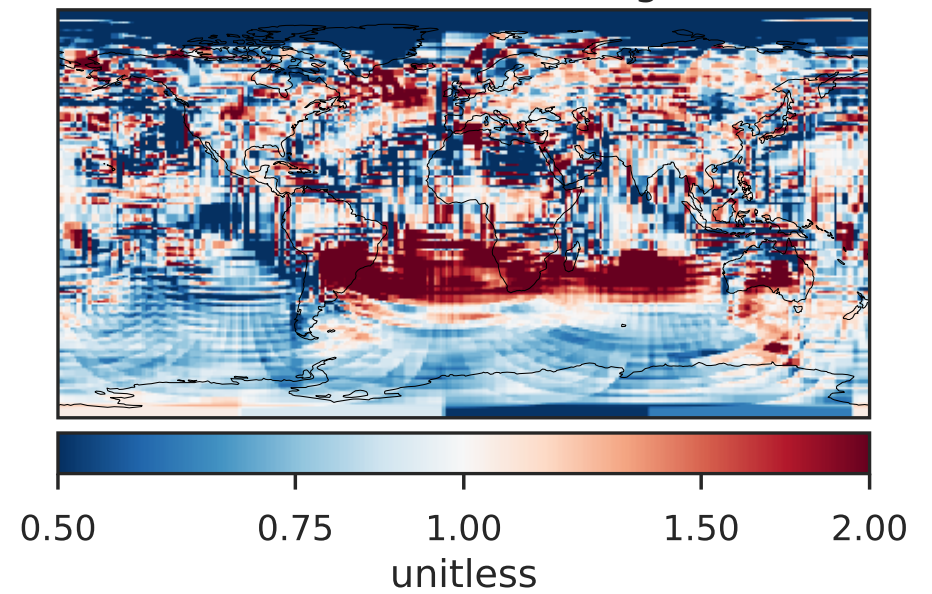
Difference (1x1.25)
Dev - Ref, Restricted Range [5%,95%]



Ratio (1x1.25)
Dev/Ref, Dynamic Range

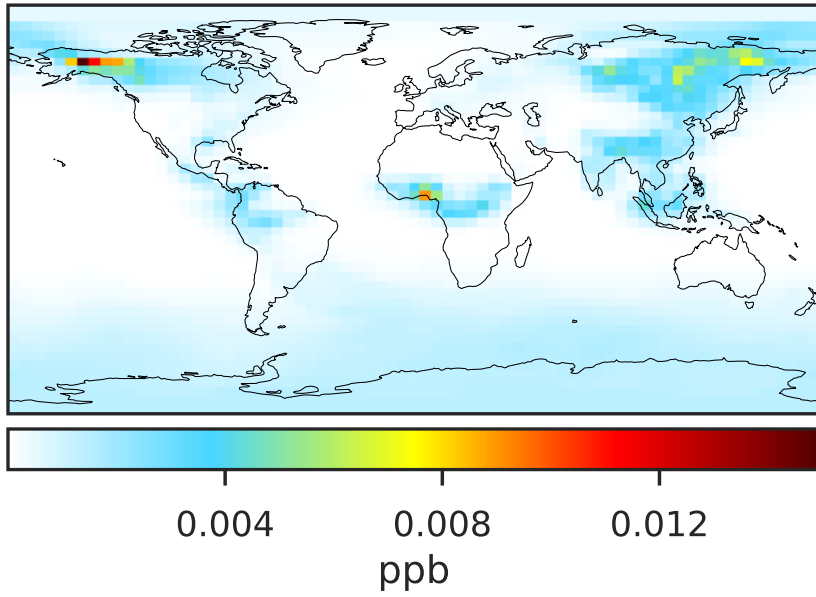


Ratio (1x1.25)
Dev/Ref, Fixed Range

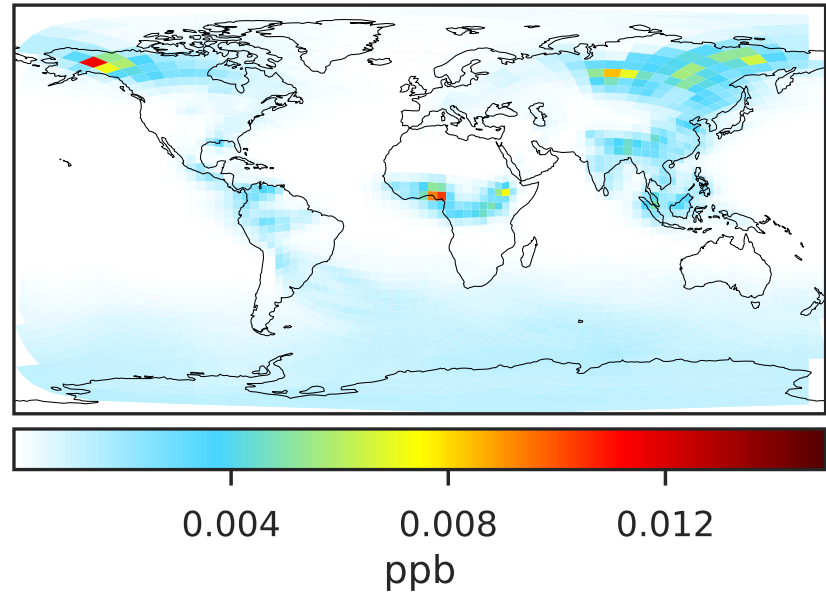


SpeciesConcVV_TOLU (Jul2019)

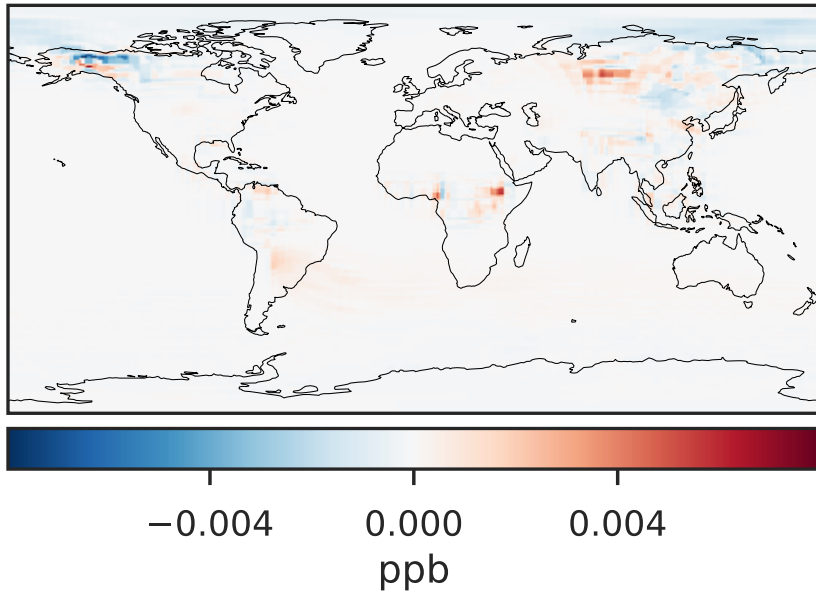
GCC_14.2.0 (Ref)
4.0x5.0



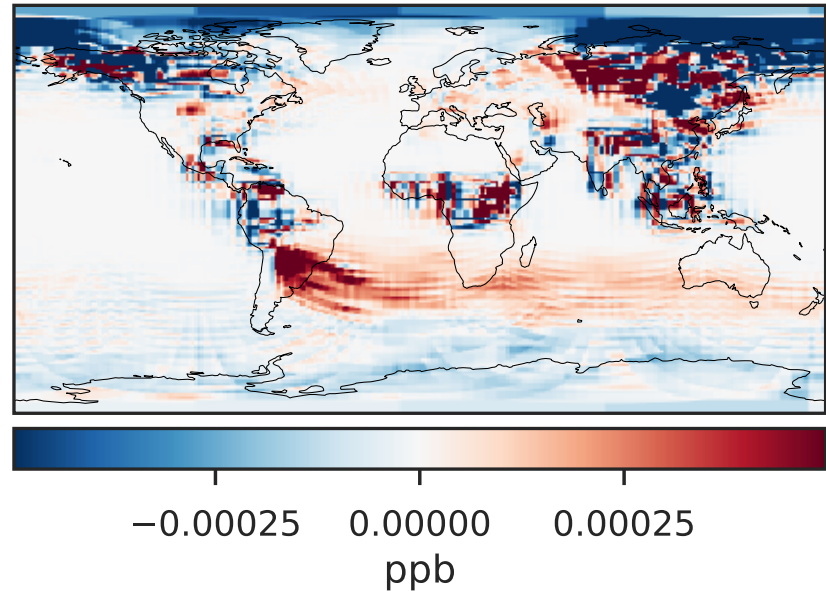
GCHP_14.2.0 (Dev)
c24



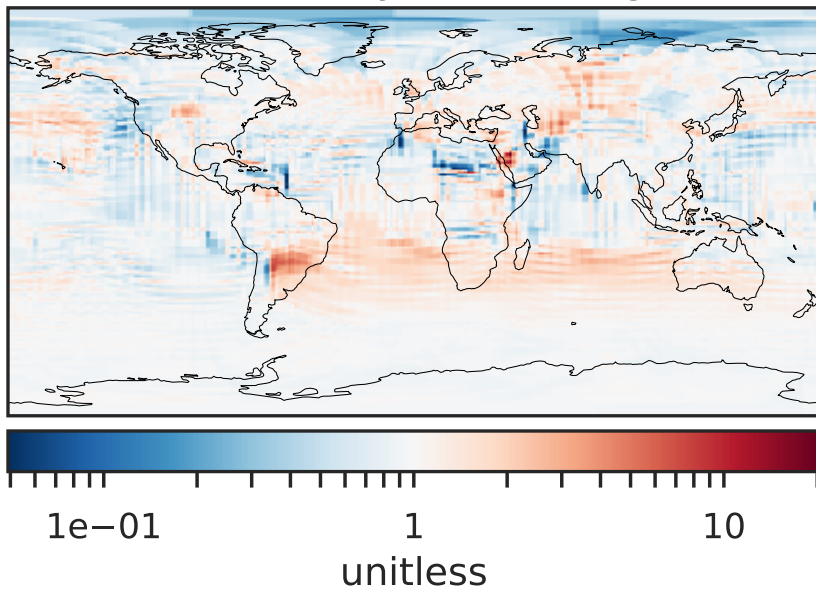
Difference (1x1.25)
Dev - Ref, Dynamic Range



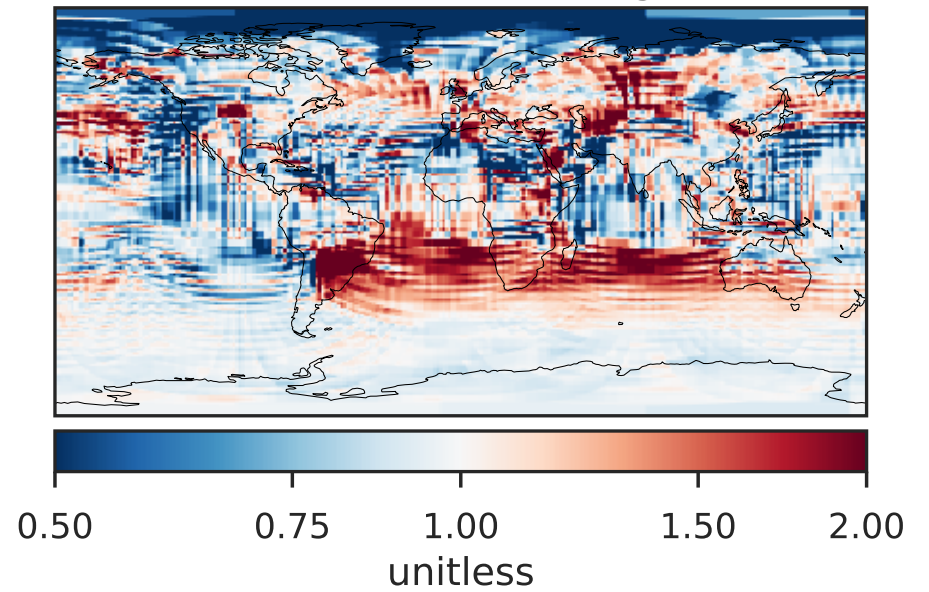
Difference (1x1.25)
Dev - Ref, Restricted Range [5%,95%]



Ratio (1x1.25)
Dev/Ref, Dynamic Range

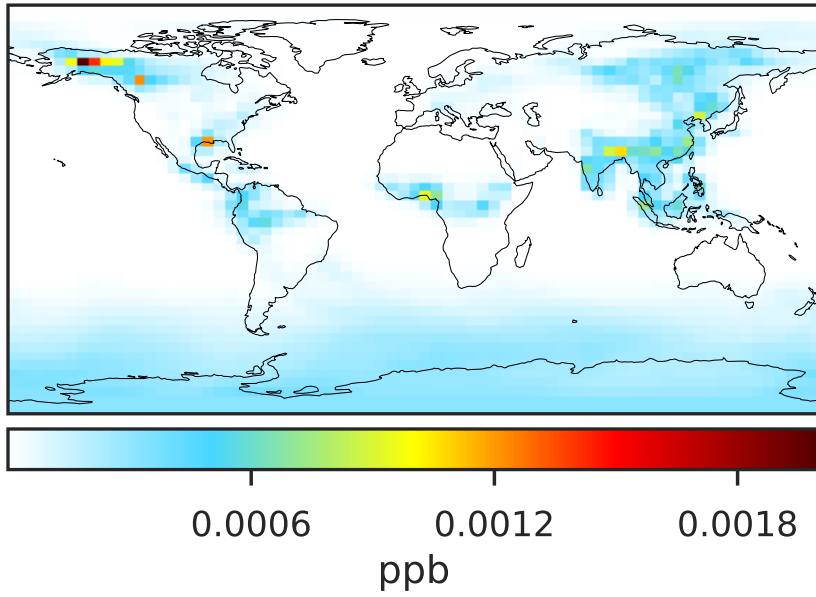


Ratio (1x1.25)
Dev/Ref, Fixed Range

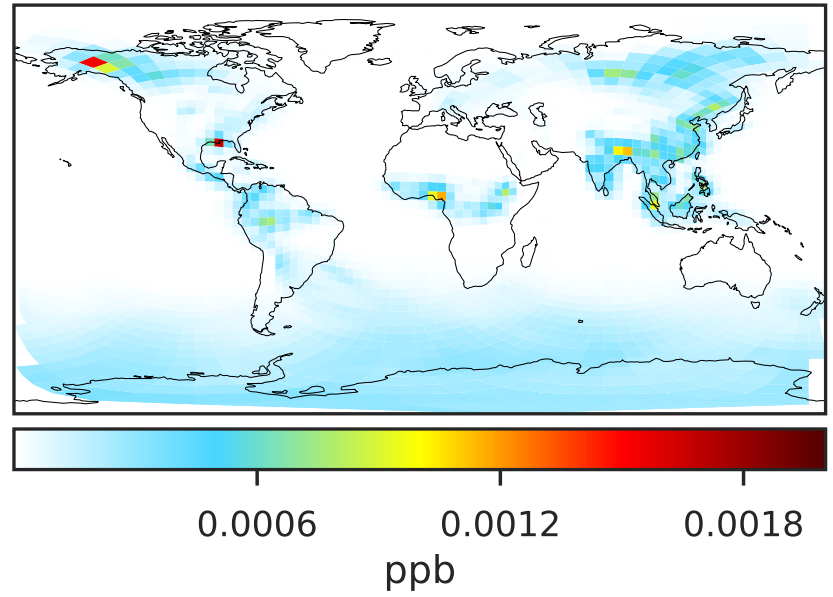


SpeciesConcVV_XYLE (Jul2019)

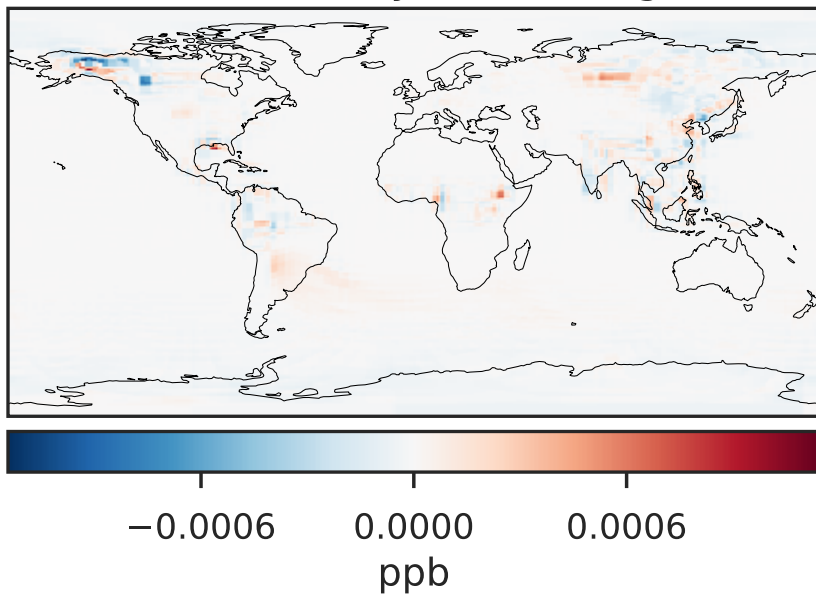
GCC_14.2.0 (Ref)
4.0x5.0



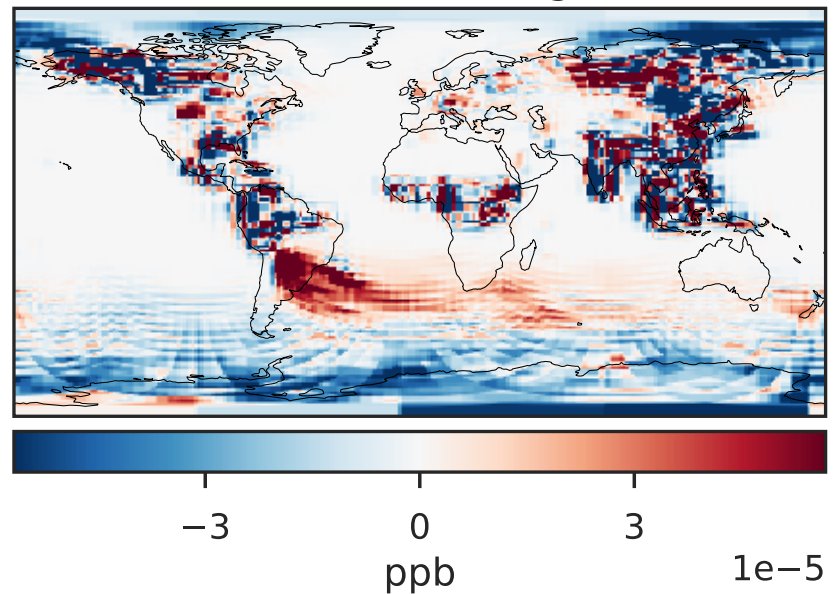
GCHP_14.2.0 (Dev)
c24



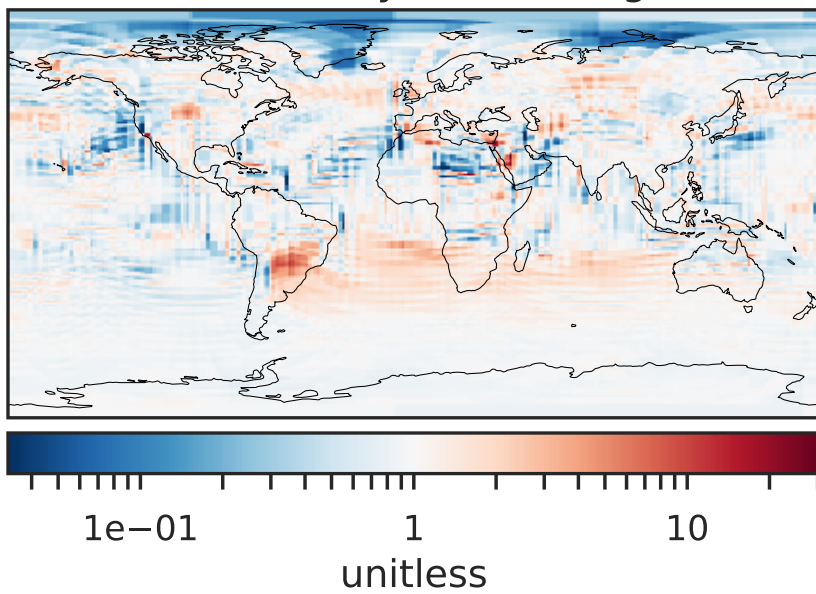
Difference (1x1.25)
Dev - Ref, Dynamic Range



Difference (1x1.25)
Dev - Ref, Restricted Range [5%,95%]



Ratio (1x1.25)
Dev/Ref, Dynamic Range



Ratio (1x1.25)
Dev/Ref, Fixed Range

