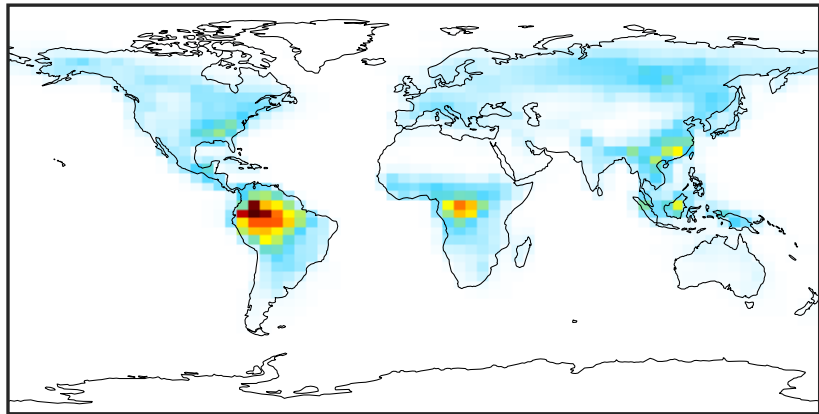


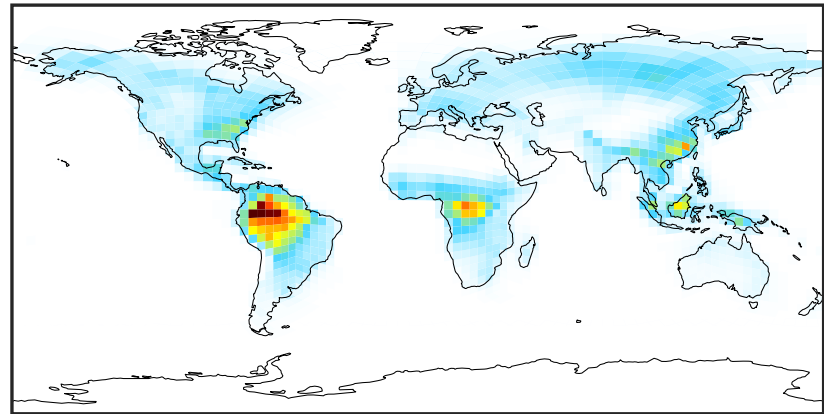
SpeciesConcVV_EOH (Jul2019)

GCC_14.2.0 (Ref)
4.0x5.0



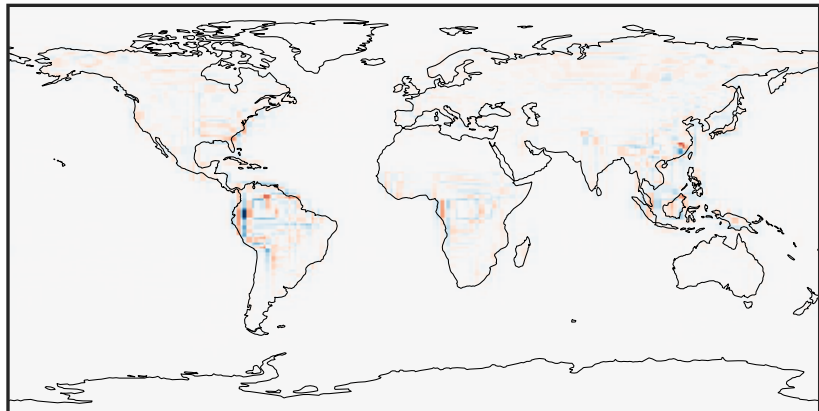
0.000 0.601 1.202 1.803 2.404
ppb

GCHP_14.2.0 (Dev)
c24



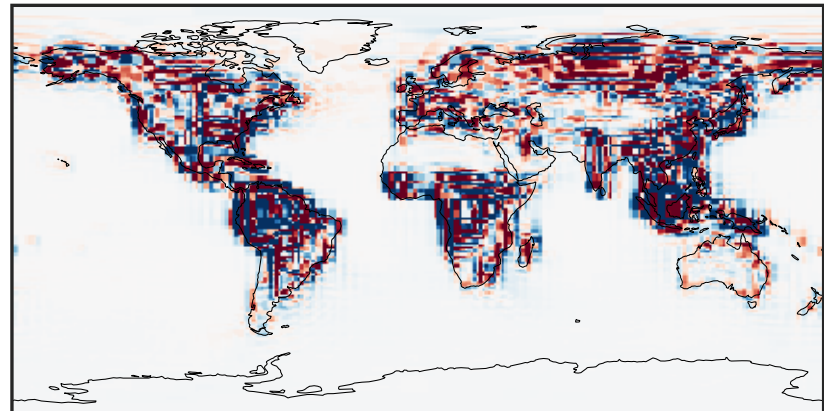
0.000 0.601 1.202 1.803 2.404
ppb

Difference (1x1.25)
Dev - Ref, Dynamic Range



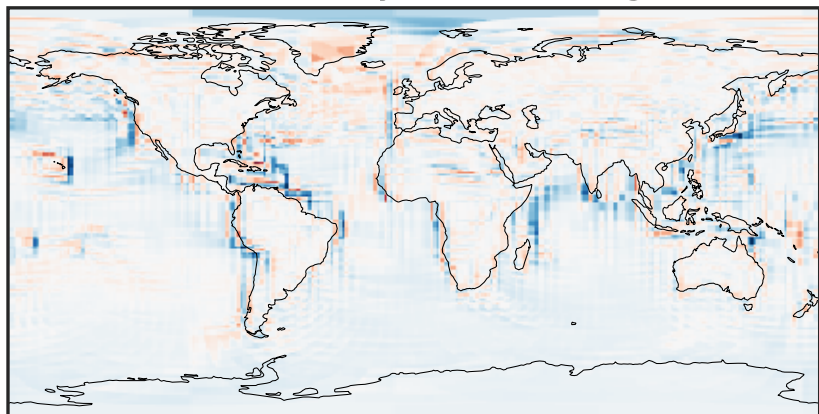
-1.009 -0.504 0.000 0.504 1.009
ppb

Difference (1x1.25)
Dev - Ref, Restricted Range [5%,95%]



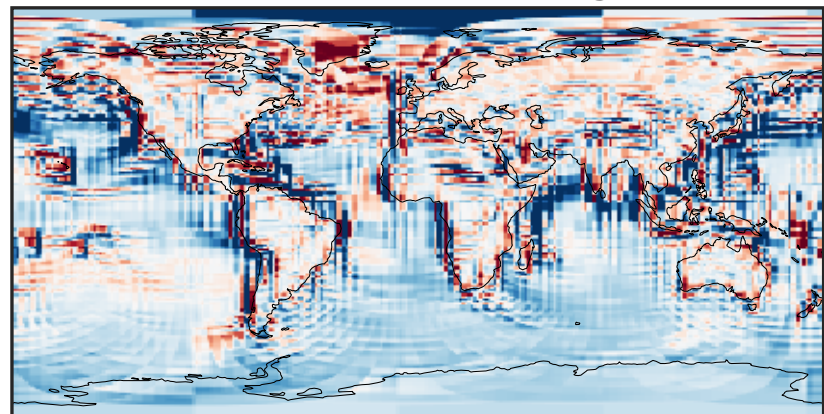
-0.025 0.000 0.025
ppb

Ratio (1x1.25)
Dev/Ref, Dynamic Range



1e-01 1 10
unitless

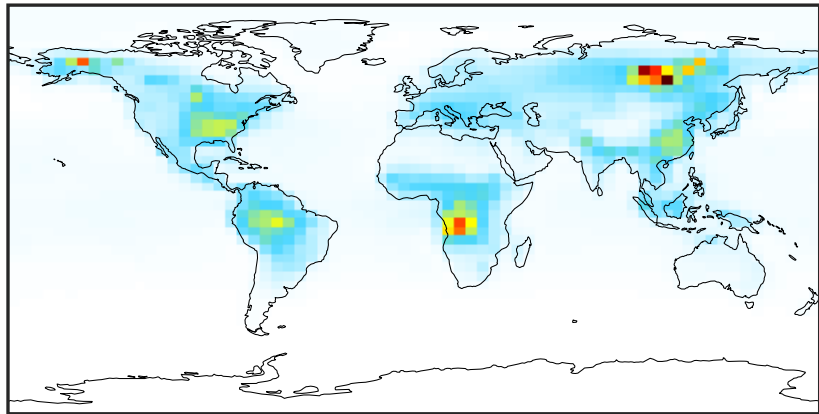
Ratio (1x1.25)
Dev/Ref, Fixed Range



0.50 0.75 1.00 1.50 2.00
unitless

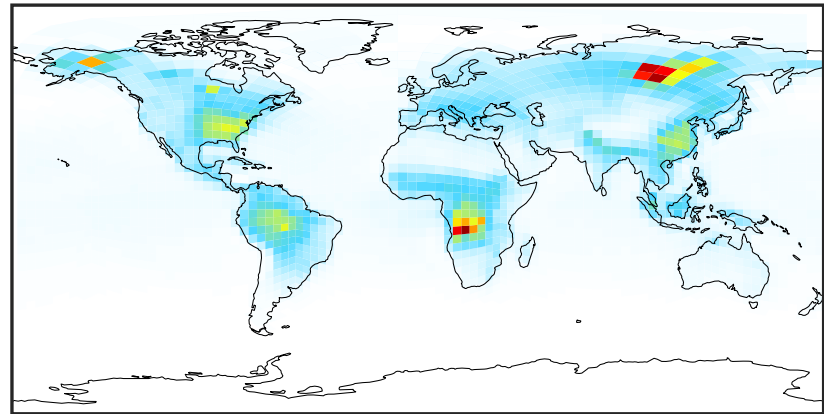
SpeciesConcVV_MOH (Jul2019)

GCC_14.2.0 (Ref)
4.0x5.0



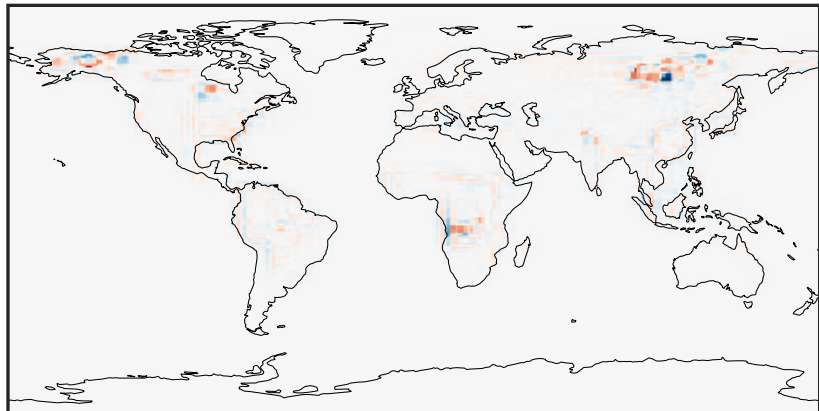
0.02 4.47 8.94 13.41 17.91
ppb

GCHP_14.2.0 (Dev)
c24



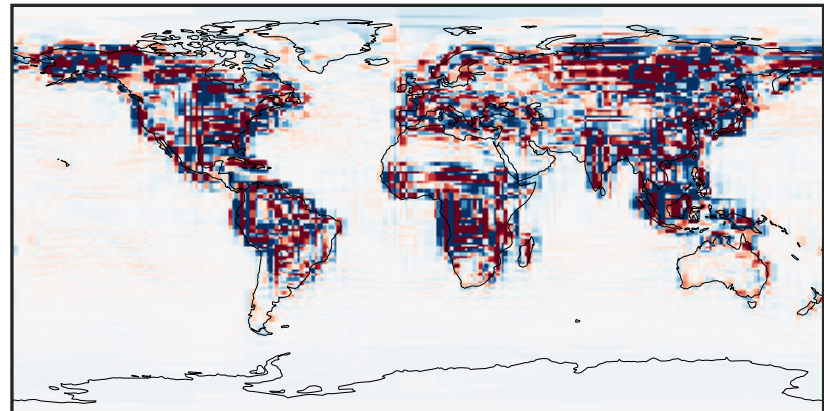
0.02 4.47 8.94 13.41 17.91
ppb

Difference (1x1.25)
Dev - Ref, Dynamic Range



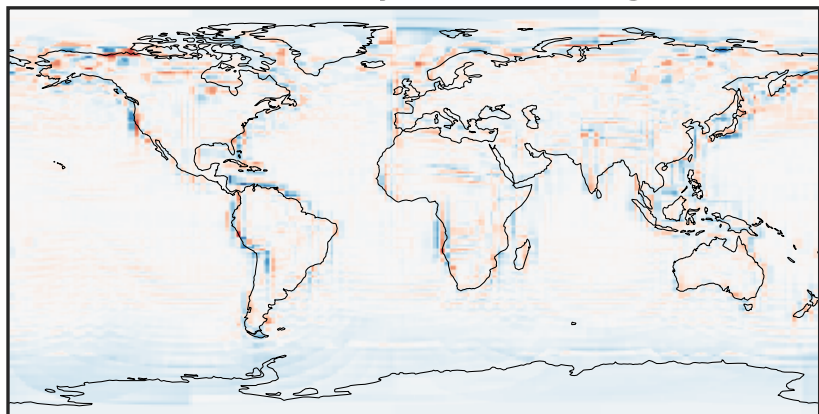
-9.83 -4.92 0.00 4.92 9.83
ppb

Difference (1x1.25)
Dev - Ref, Restricted Range [5%,95%]



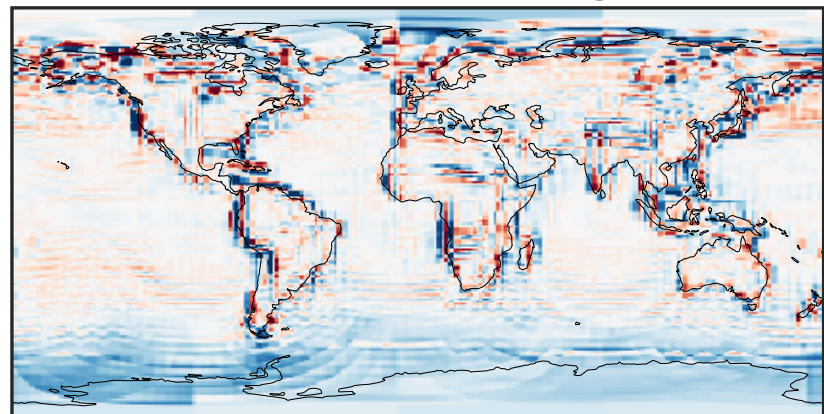
-0.3272 -0.1636 0.0000 0.1636 0.3272
ppb

Ratio (1x1.25)
Dev/Ref, Dynamic Range



0.127 0.563 1.000 4.438 7.877
unitless

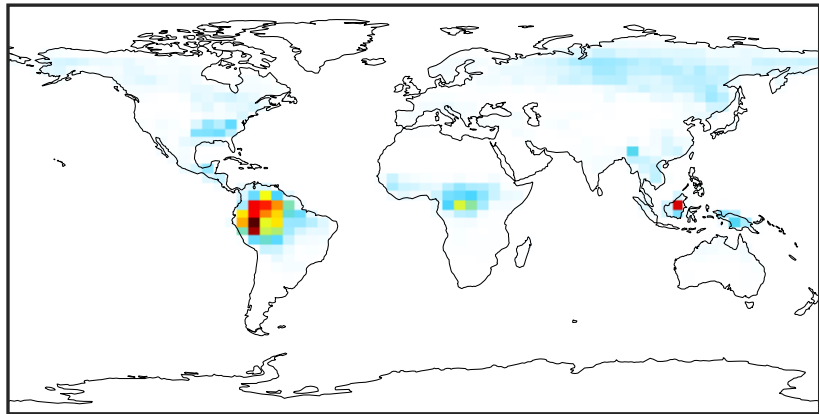
Ratio (1x1.25)
Dev/Ref, Fixed Range



0.50 0.75 1.00 1.50 2.00
unitless

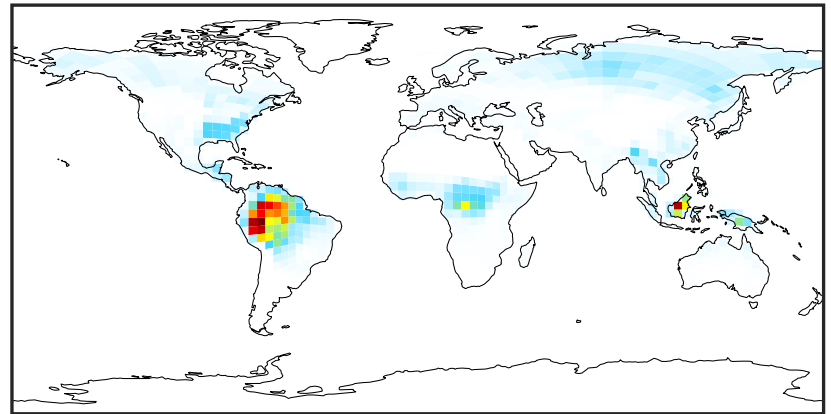
SpeciesConcVV_ISOP (Jul2019)

GCC_14.2.0 (Ref)
4.0x5.0



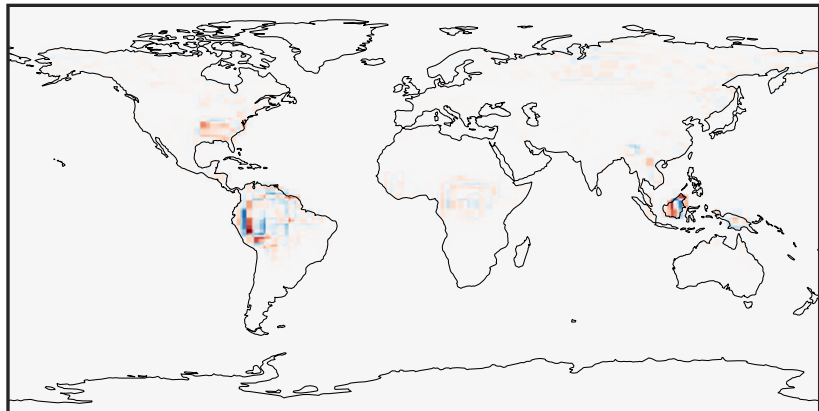
0.000 1.827 3.654 5.480 7.307
ppb

GCHP_14.2.0 (Dev)
c24



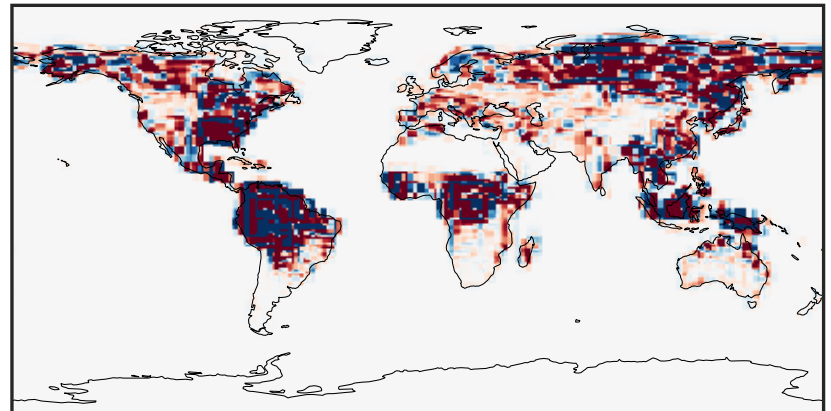
0.000 1.827 3.654 5.480 7.307
ppb

Difference (1x1.25)
Dev - Ref, Dynamic Range



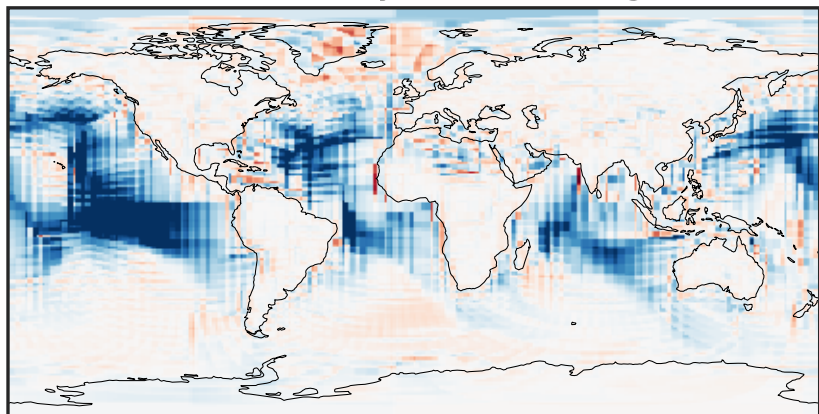
-3.391 -1.695 0.000 1.695 3.391
ppb

Difference (1x1.25)
Dev - Ref, Restricted Range [5%,95%]



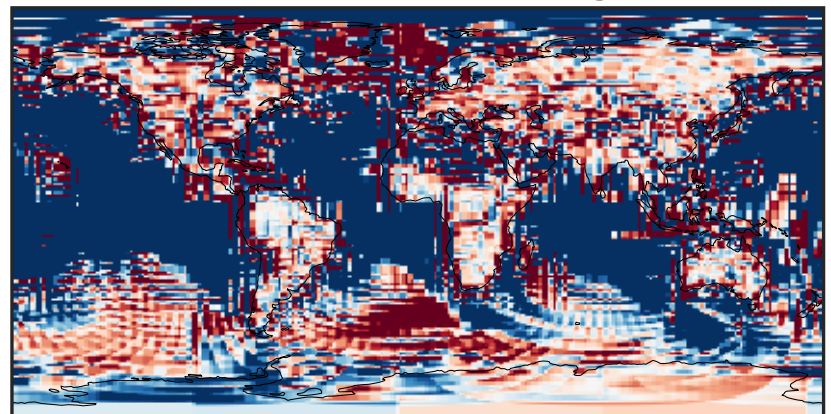
-0.0592 -0.0296 0.0000 0.0296 0.0592
ppb

Ratio (1x1.25)
Dev/Ref, Dynamic Range



unitless

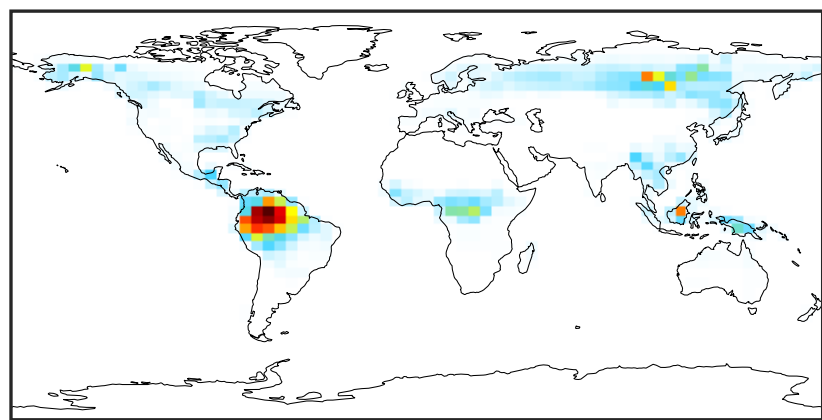
Ratio (1x1.25)
Dev/Ref, Fixed Range



0.50 0.75 1.00 1.50 2.00
unitless

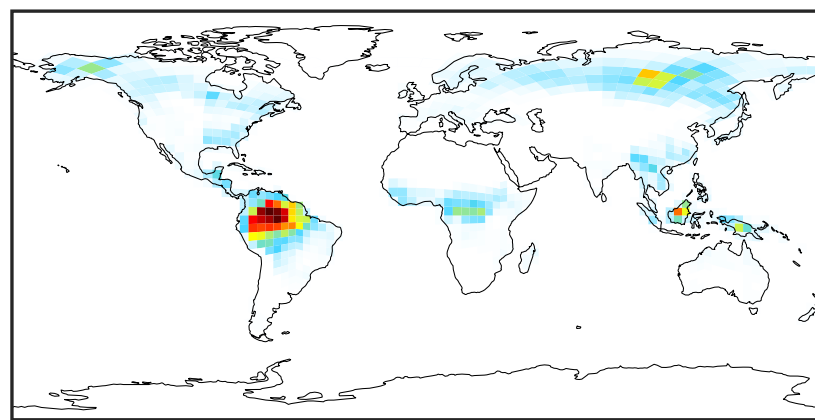
SpeciesConcVV_MTPA (Jul2019)

GCC_14.2.0 (Ref)
4.0x5.0



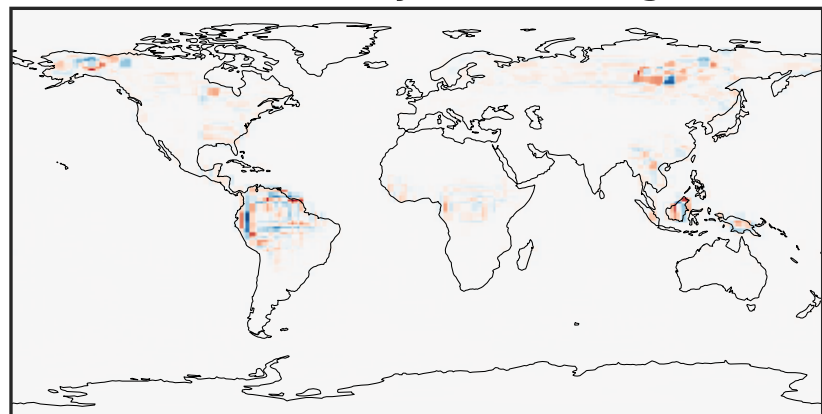
0.000 0.414 0.828 1.242 1.656
ppb

GCHP_14.2.0 (Dev)
c24



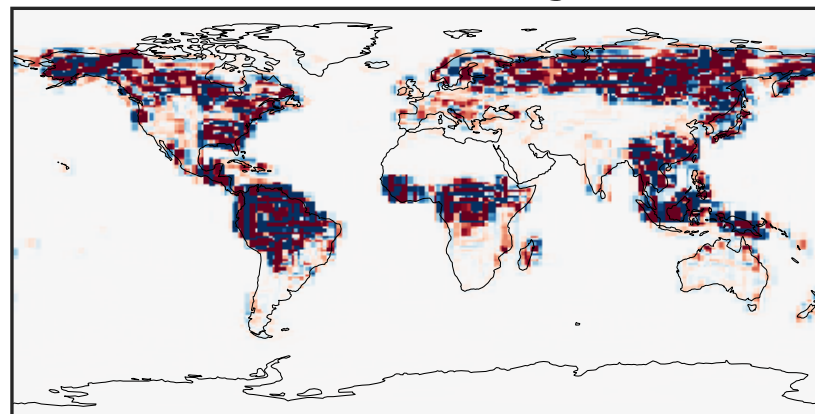
0.000 0.414 0.828 1.242 1.656
ppb

Difference (1x1.25)
Dev - Ref, Dynamic Range



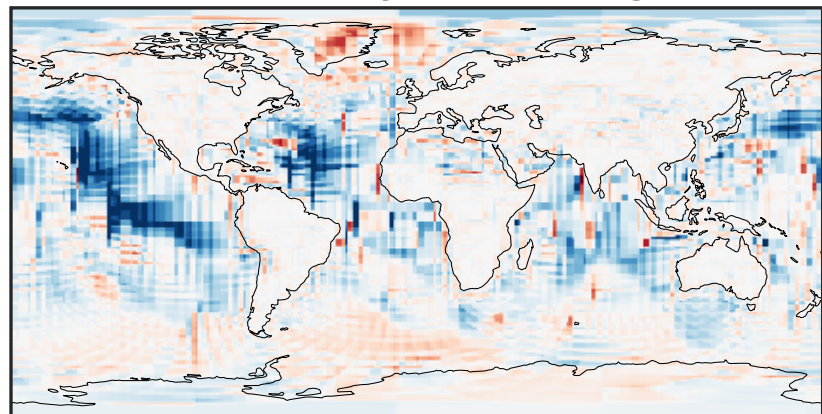
-0.682 -0.341 0.000 0.341 0.682
ppb

Difference (1x1.25)
Dev - Ref, Restricted Range [5%,95%]



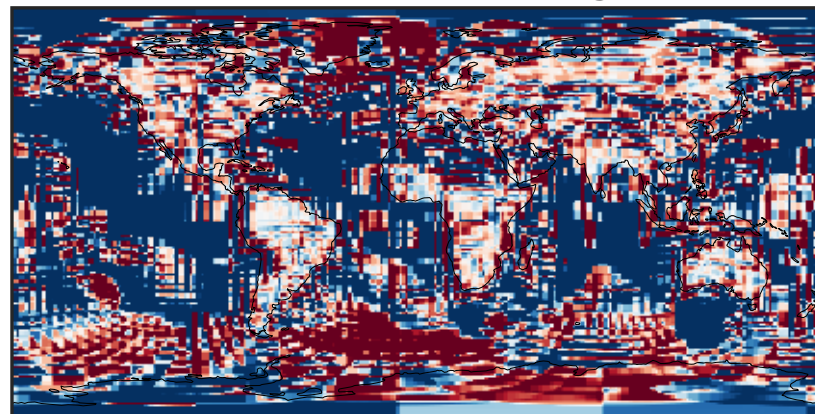
-0.01 0.00 0.01
ppb

Ratio (1x1.25)
Dev/Ref, Dynamic Range



unitless

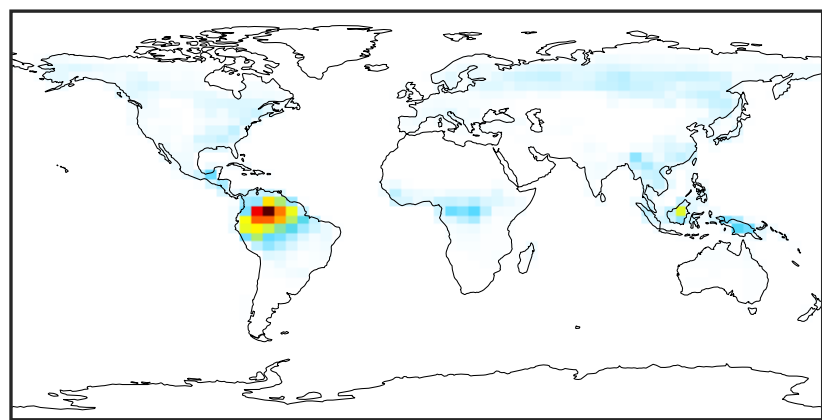
Ratio (1x1.25)
Dev/Ref, Fixed Range



0.50 0.75 1.00 1.50 2.00
unitless

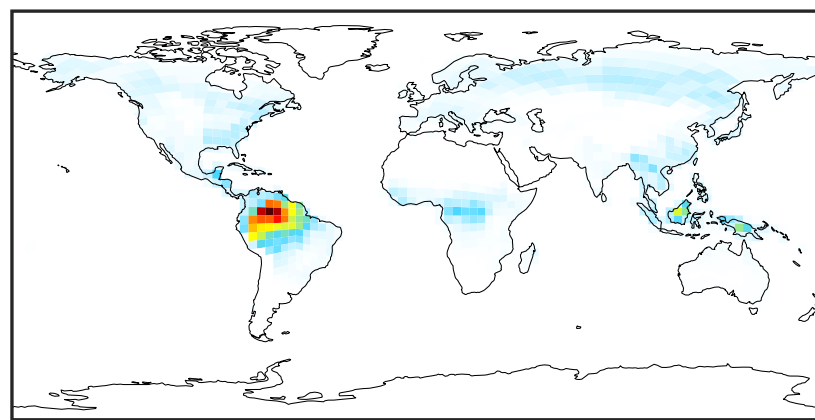
SpeciesConcVV_MTPO (Jul2019)

GCC_14.2.0 (Ref)
4.0x5.0



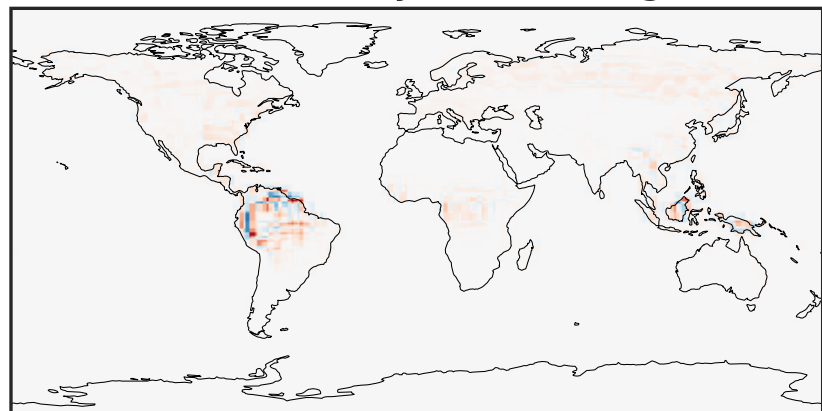
0.0000 0.0258 0.0515 0.0773 0.1030
ppb

GCHP_14.2.0 (Dev)
c24



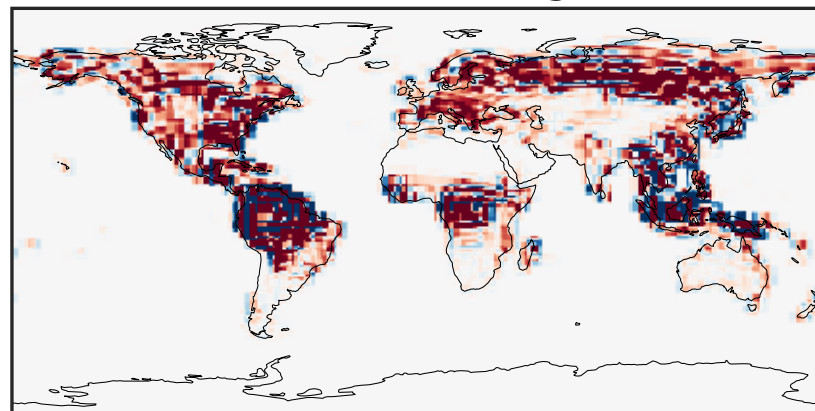
0.0000 0.0258 0.0515 0.0773 0.1030
ppb

Difference (1x1.25)
Dev - Ref, Dynamic Range



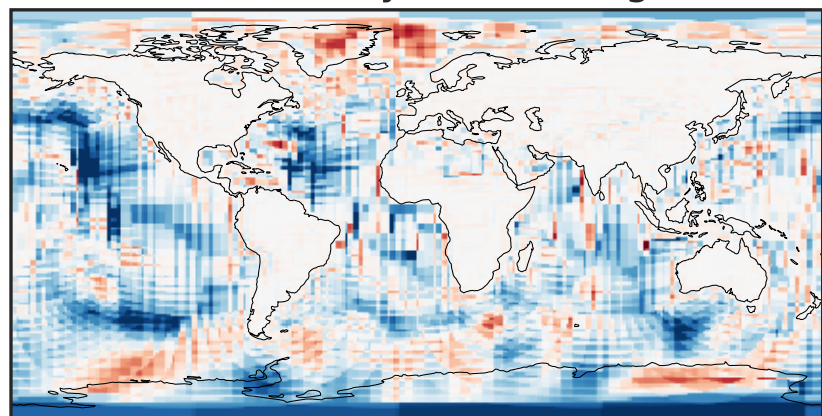
-0.02 0.00 0.02
ppb

Difference (1x1.25)
Dev - Ref, Restricted Range [5%,95%]



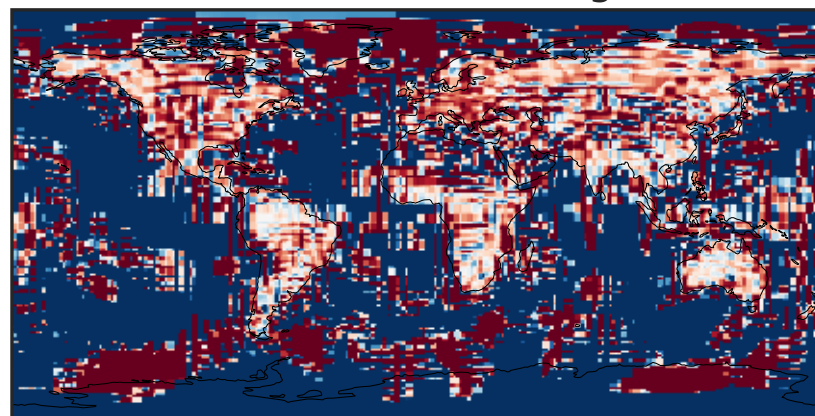
-0.0008 0.0000 0.0008
ppb

Ratio (1x1.25)
Dev/Ref, Dynamic Range



1e-05 1e-02 10 1e4 1e+07
unitless

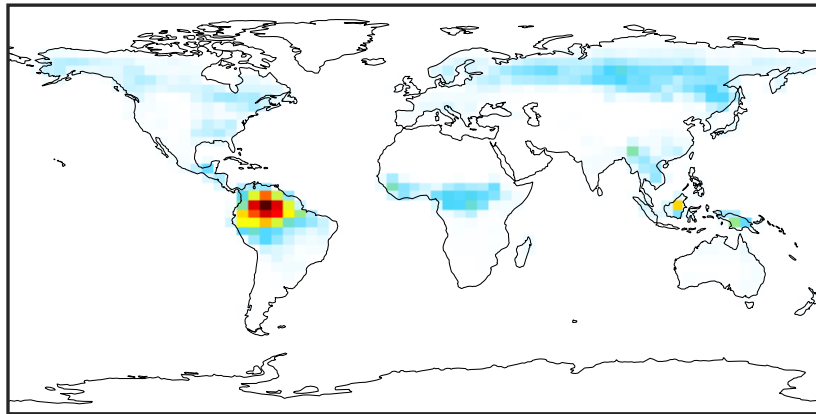
Ratio (1x1.25)
Dev/Ref, Fixed Range



0.50 0.75 1.00 1.50 2.00
unitless

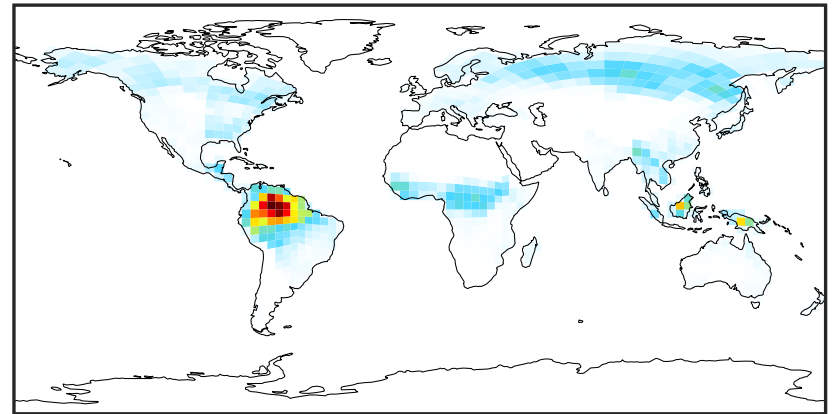
SpeciesConcVV_LIMO (Jul2019)

GCC_14.2.0 (Ref)
4.0x5.0



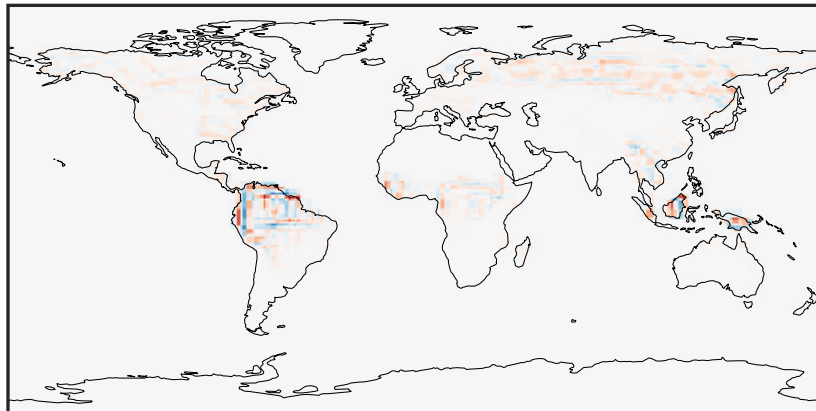
0.000 0.025 0.050 0.075
ppb

GCHP_14.2.0 (Dev)
c24



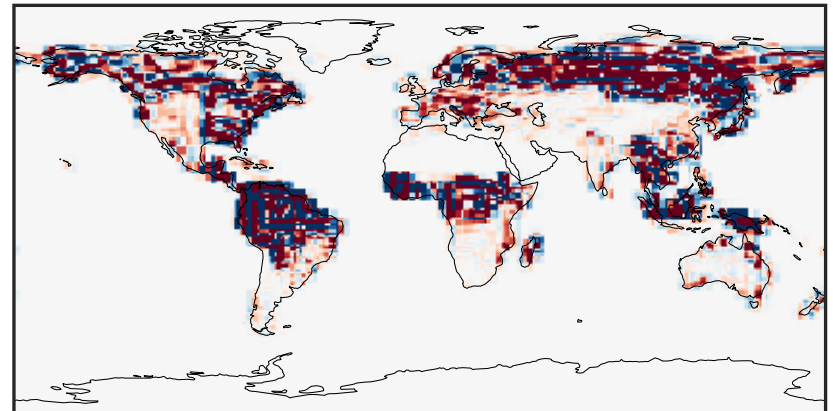
0.000 0.025 0.050 0.075
ppb

Difference (1x1.25)
Dev - Ref, Dynamic Range



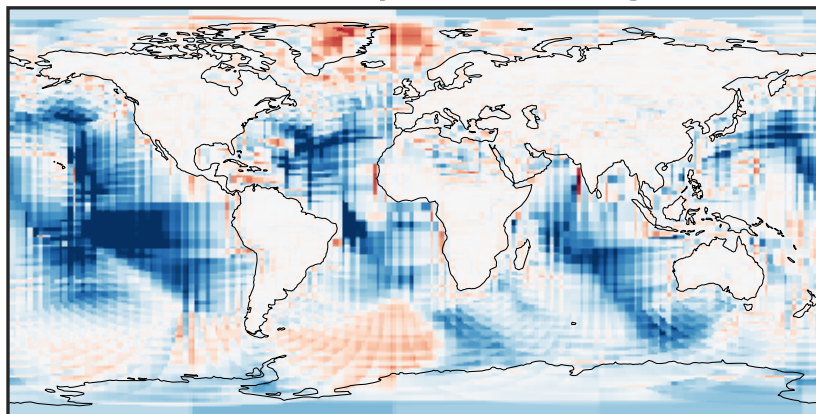
-0.02 0.00 0.02
ppb

Difference (1x1.25)
Dev - Ref, Restricted Range [5%,95%]



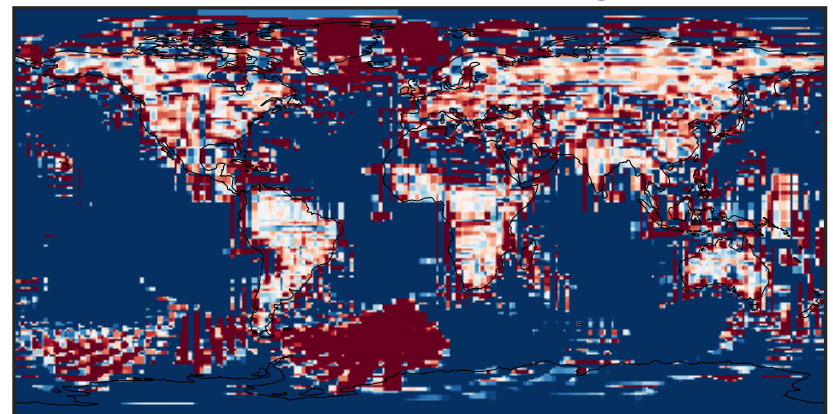
-0.0006 0.0000 0.0006
ppb

Ratio (1x1.25)
Dev/Ref, Dynamic Range



unitless

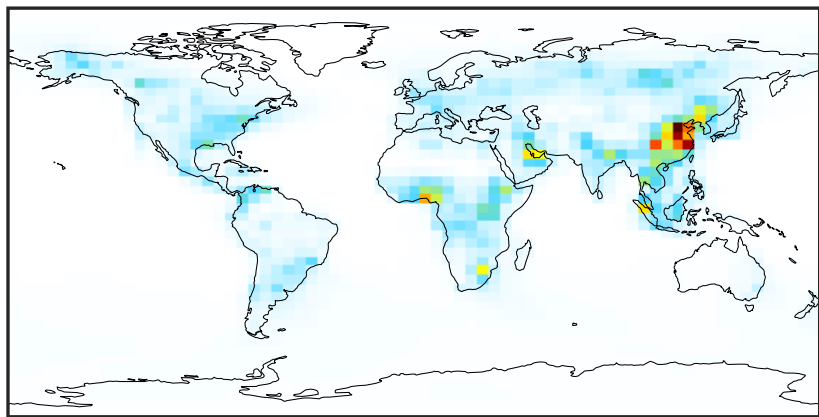
Ratio (1x1.25)
Dev/Ref, Fixed Range



0.50 0.75 1.00 1.50 2.00
unitless

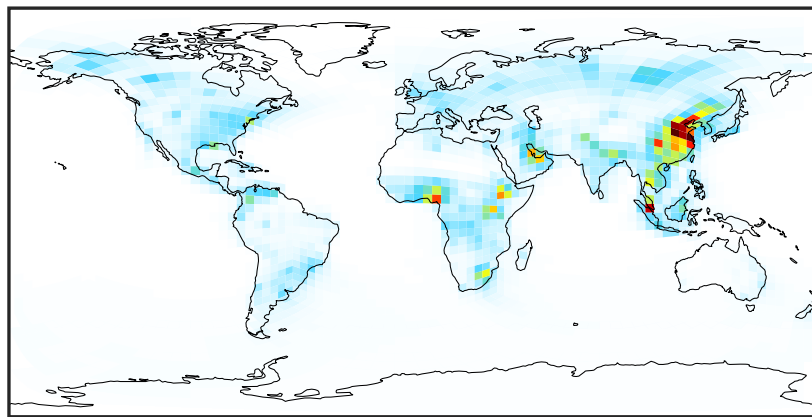
SpeciesConcVV_ALK4 (Jul2019)

GCC_14.2.0 (Ref)
4.0x5.0



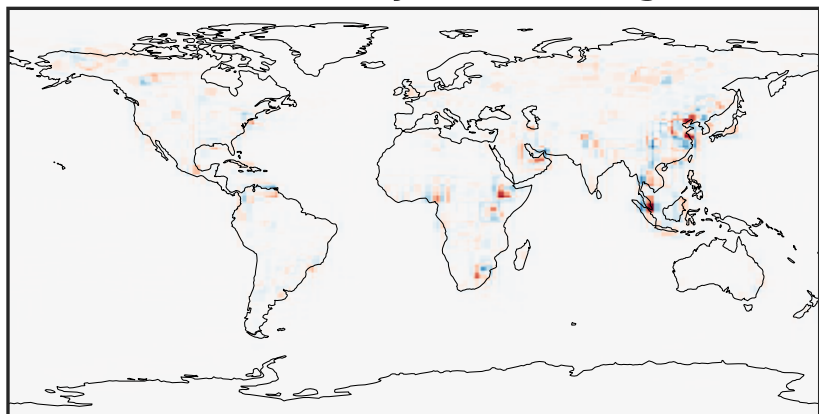
0.000 1.496 2.992 4.489 5.985
ppb

GCHP_14.2.0 (Dev)
c24



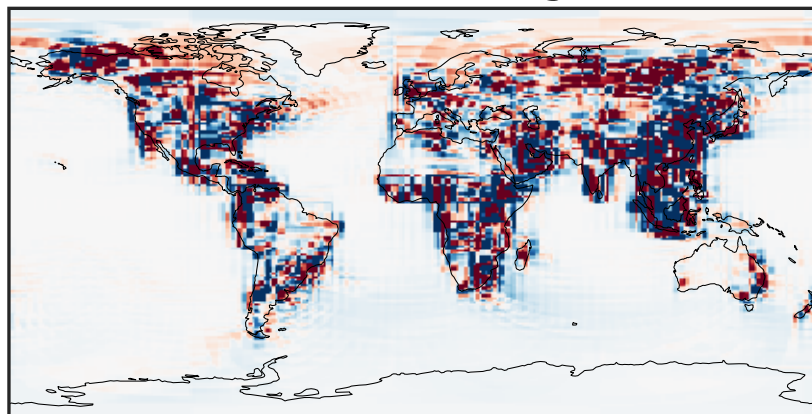
0.000 1.496 2.992 4.489 5.985
ppb

Difference (1x1.25)
Dev - Ref, Dynamic Range



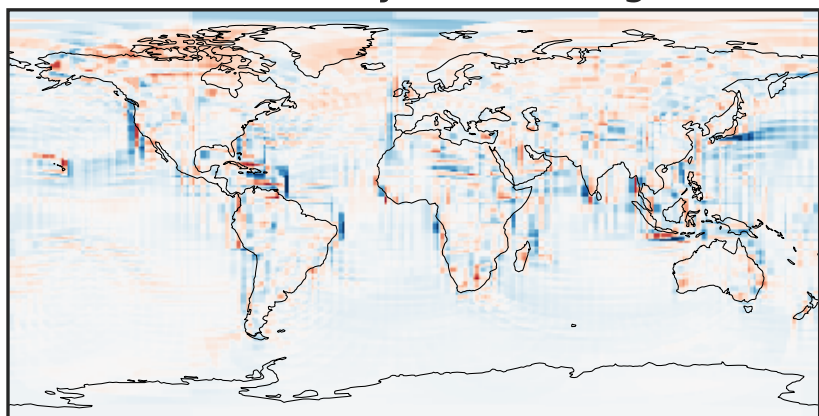
-3.005 -1.503 0.000 1.503 3.005
ppb

Difference (1x1.25)
Dev - Ref, Restricted Range [5%,95%]



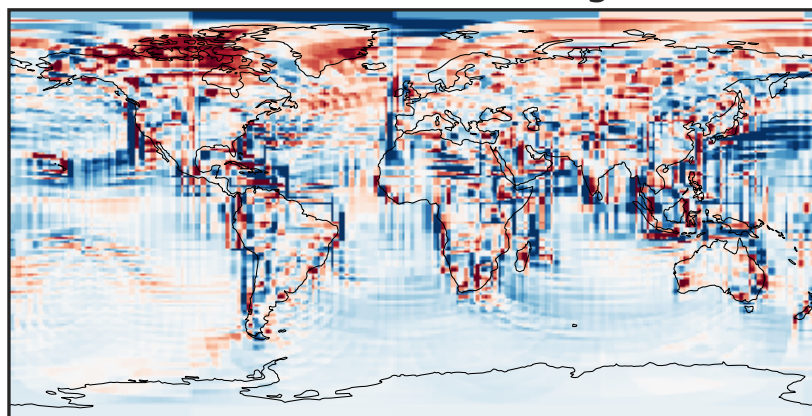
-0.0970 -0.0485 0.0000 0.0485 0.0970
ppb

Ratio (1x1.25)
Dev/Ref, Dynamic Range



0.102 0.551 1.000 5.402 9.805
unitless

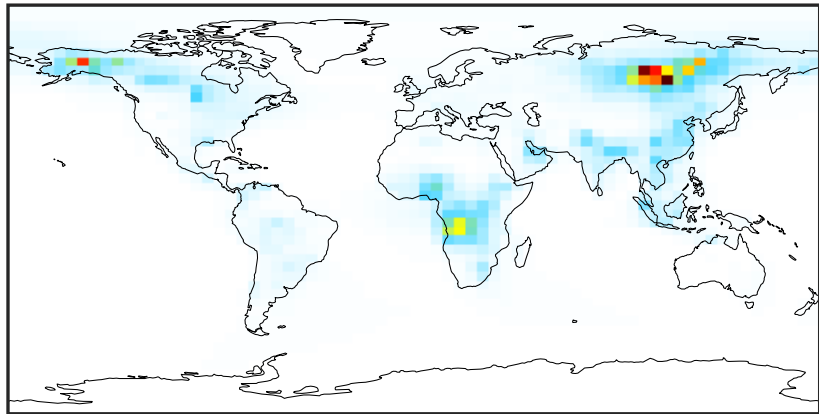
Ratio (1x1.25)
Dev/Ref, Fixed Range



0.50 0.75 1.00 1.50 2.00
unitless

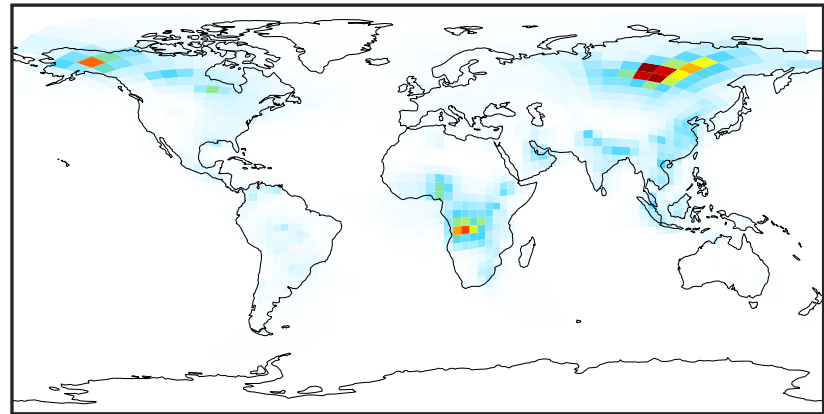
SpeciesConcVV_BENZ (Jul2019)

GCC_14.2.0 (Ref)
4.0x5.0



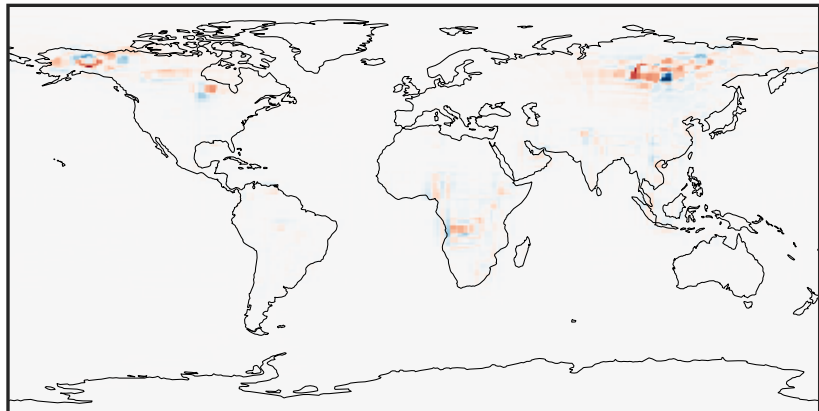
0.000 0.529 1.058 1.587 2.116
ppb

GCHP_14.2.0 (Dev)
c24



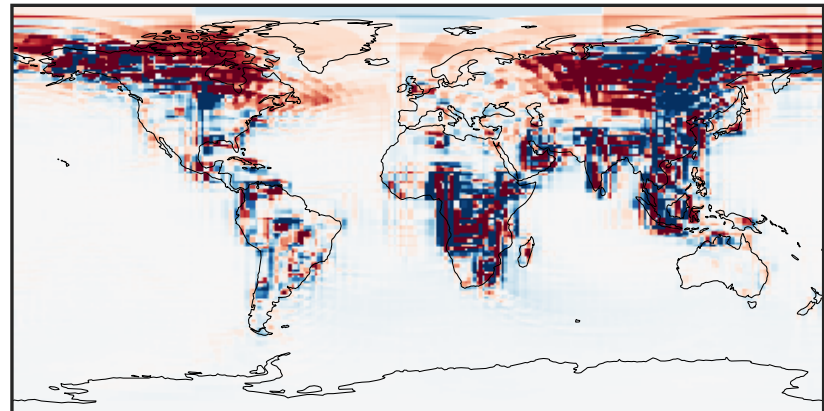
0.000 0.529 1.058 1.587 2.116
ppb

Difference (1x1.25)
Dev - Ref, Dynamic Range



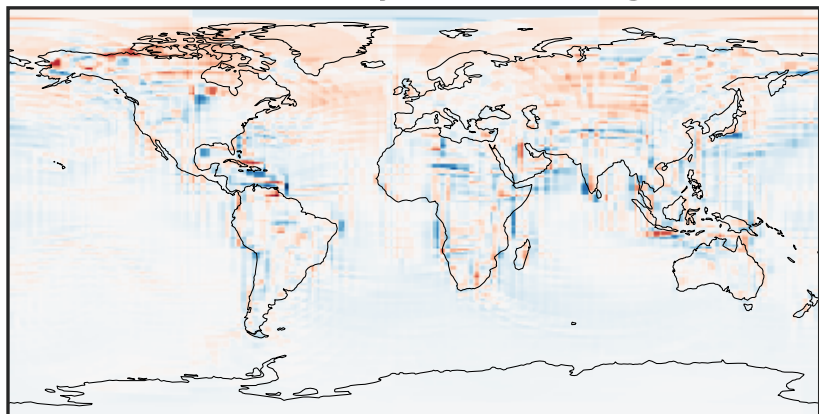
-1.212 -0.606 0.000 0.606 1.212
ppb

Difference (1x1.25)
Dev - Ref, Restricted Range [5%,95%]



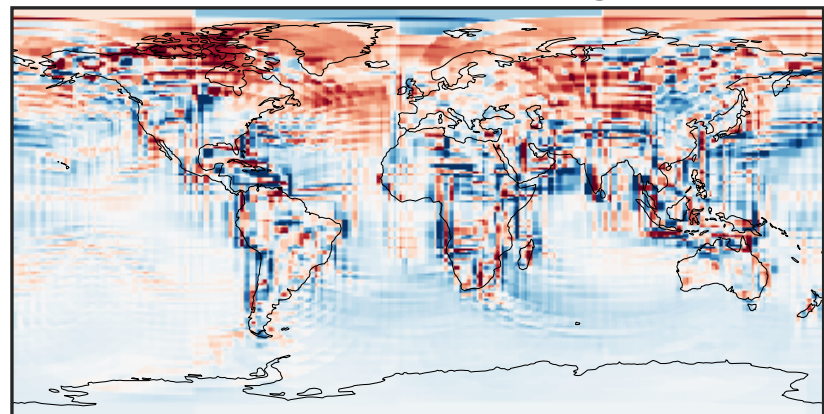
-0.015 0.000 0.015
ppb

Ratio (1x1.25)
Dev/Ref, Dynamic Range



0.110 0.555 1.000 5.050 9.099
unitless

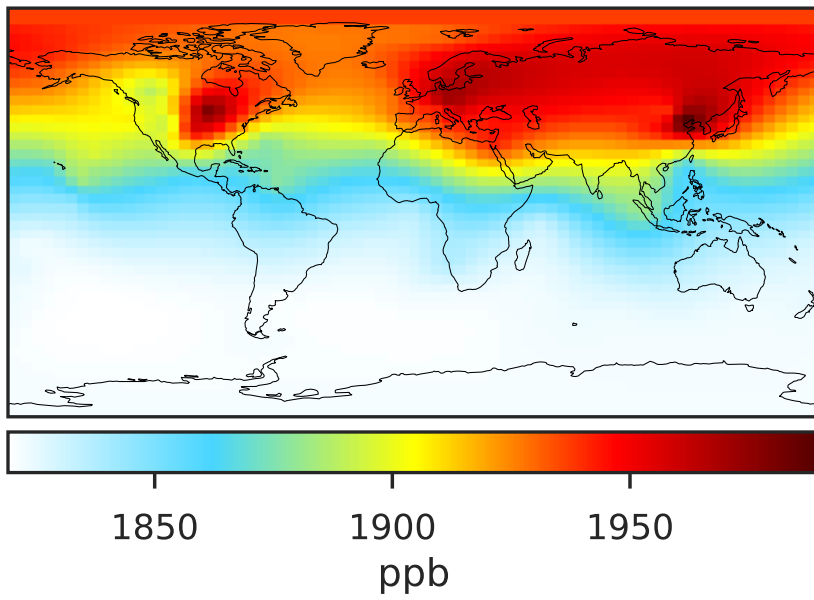
Ratio (1x1.25)
Dev/Ref, Fixed Range



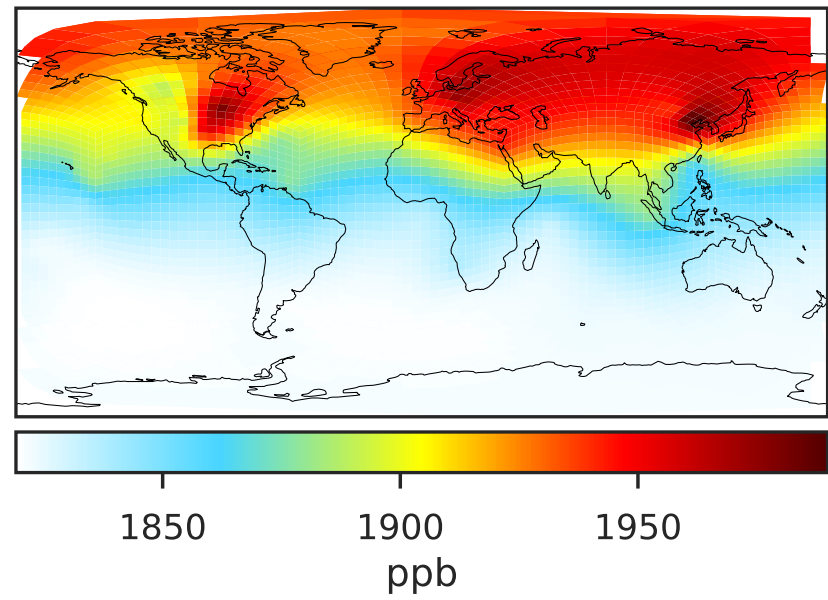
0.50 0.75 1.00 1.50 2.00
unitless

SpeciesConcVV_CH4 (Jul2019)

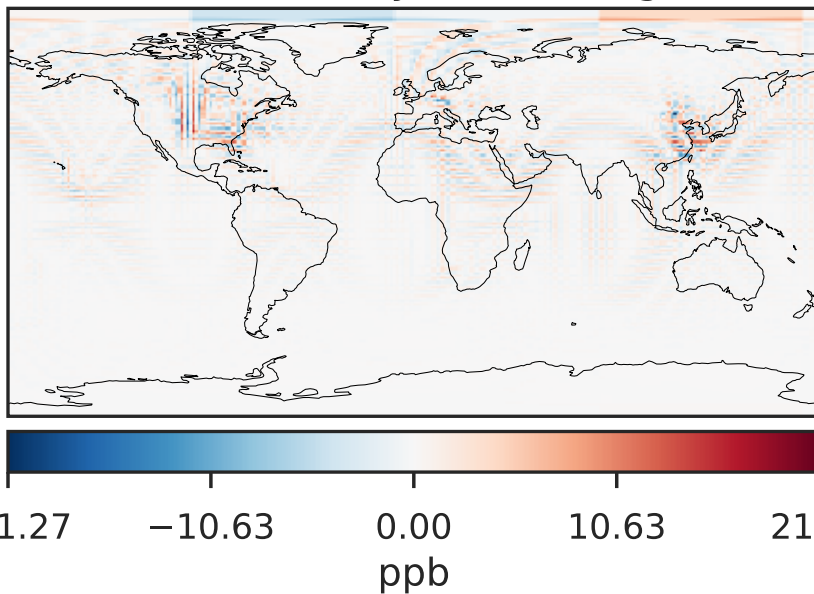
GCC_14.2.0 (Ref)
4.0x5.0



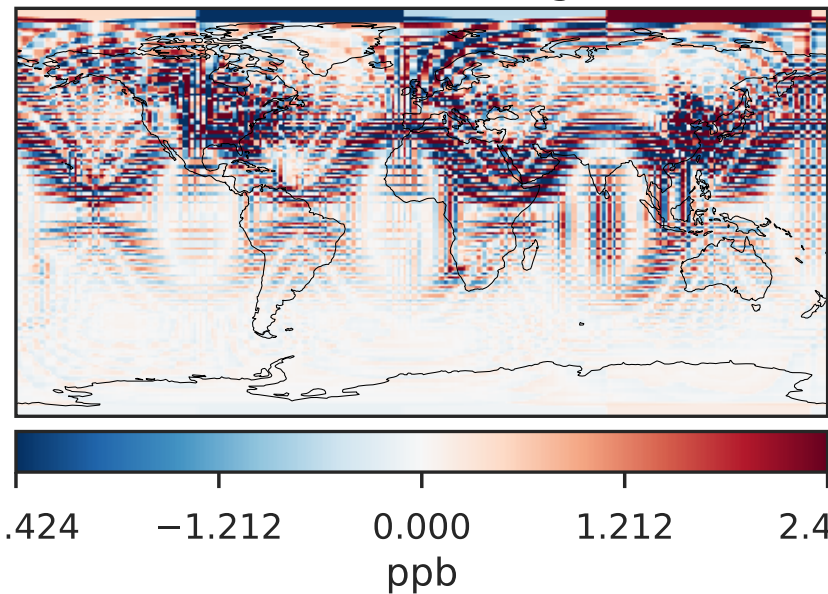
GCHP_14.2.0 (Dev)
c24



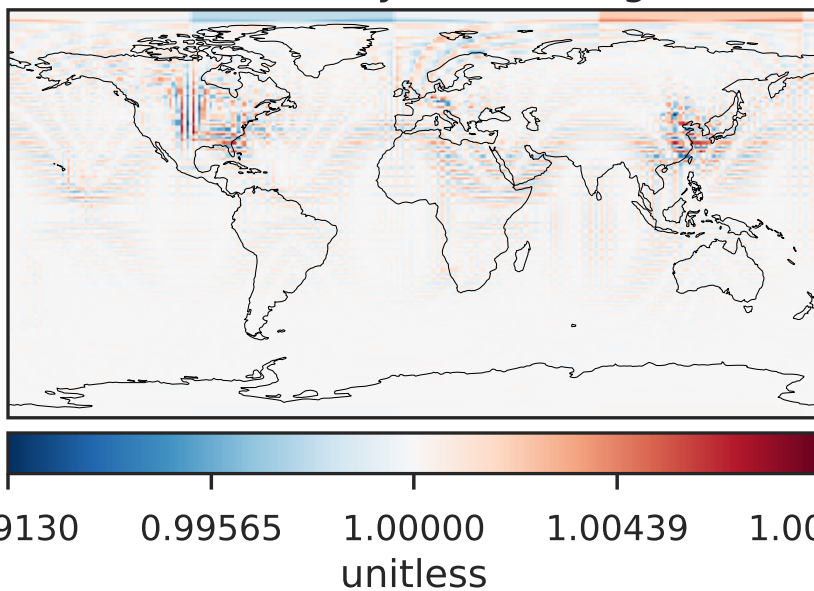
Difference (1x1.25)
Dev - Ref, Dynamic Range



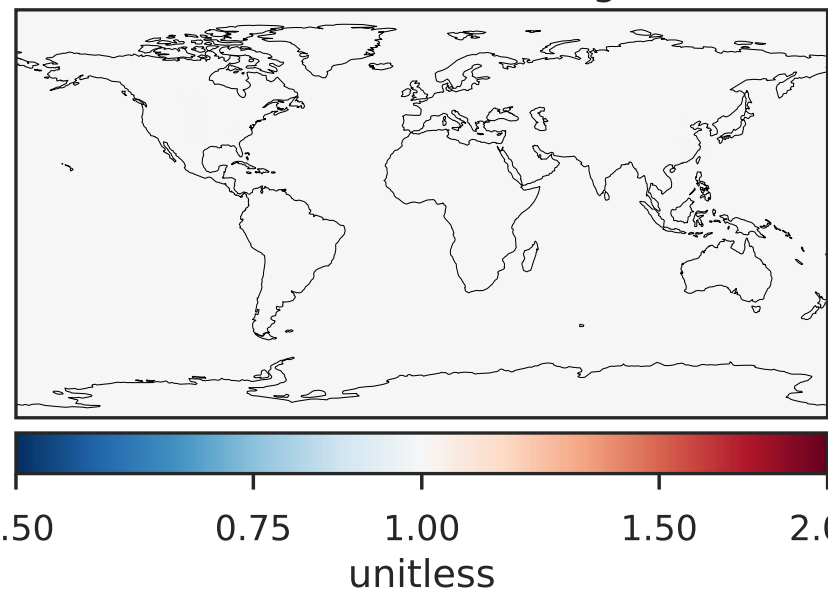
Difference (1x1.25)
Dev - Ref, Restricted Range [5%,95%]



Ratio (1x1.25)
Dev/Ref, Dynamic Range

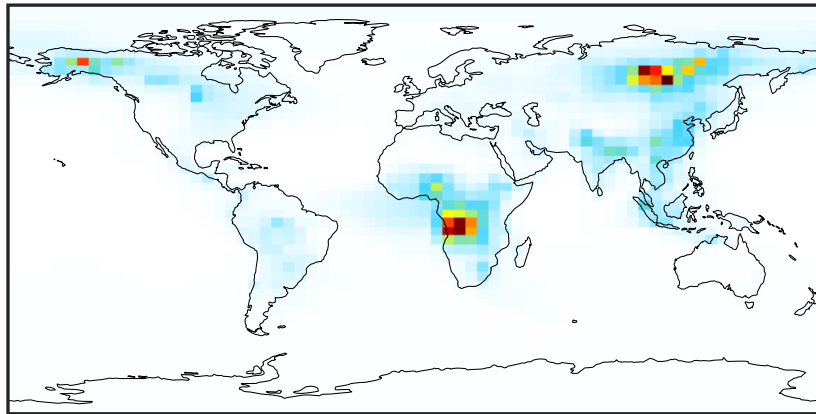


Ratio (1x1.25)
Dev/Ref, Fixed Range



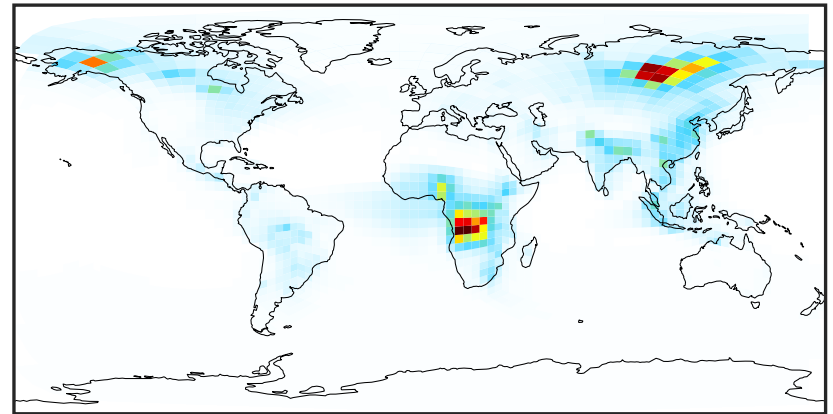
SpeciesConcVW_C2H2 (Jul2019)

GCC_14.2.0 (Ref)
4.0x5.0



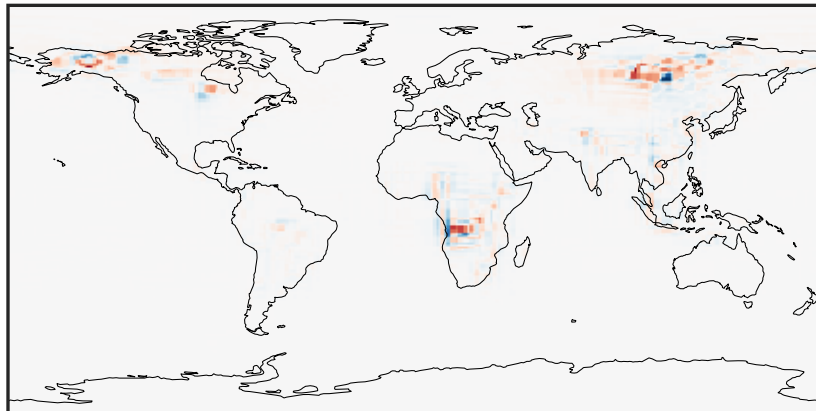
0.003 0.795 1.589 2.384 3.182
ppb

GCHP_14.2.0 (Dev)
c24



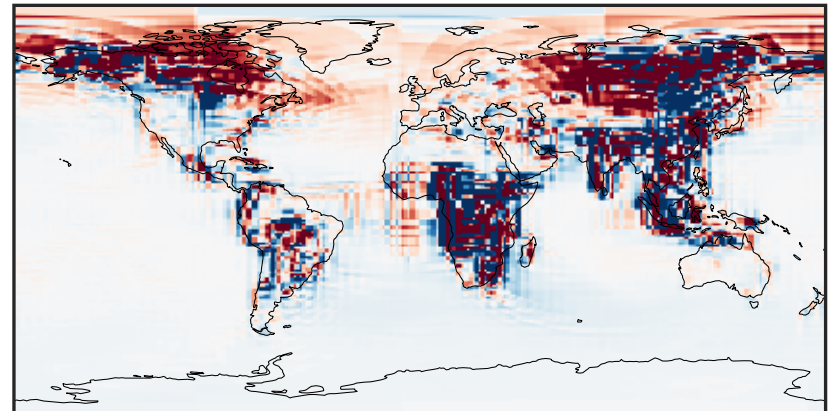
0.003 0.795 1.589 2.384 3.182
ppb

Difference (1x1.25)
Dev - Ref, Dynamic Range



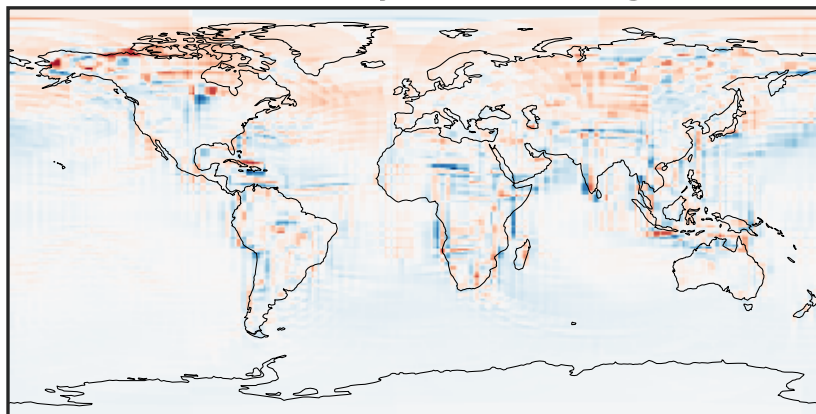
-1.788 -0.894 0.000 0.894 1.788
ppb

Difference (1x1.25)
Dev - Ref, Restricted Range [5%,95%]



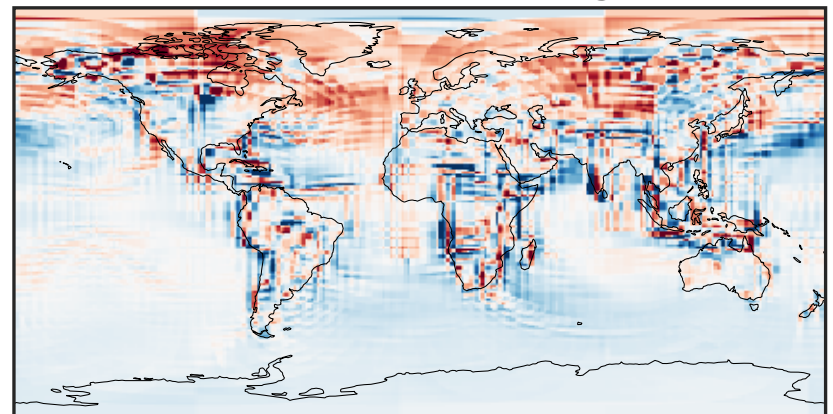
-0.02 0.00 0.02
ppb

Ratio (1x1.25)
Dev/Ref, Dynamic Range



0.163 0.581 1.000 3.568 6.135
unitless

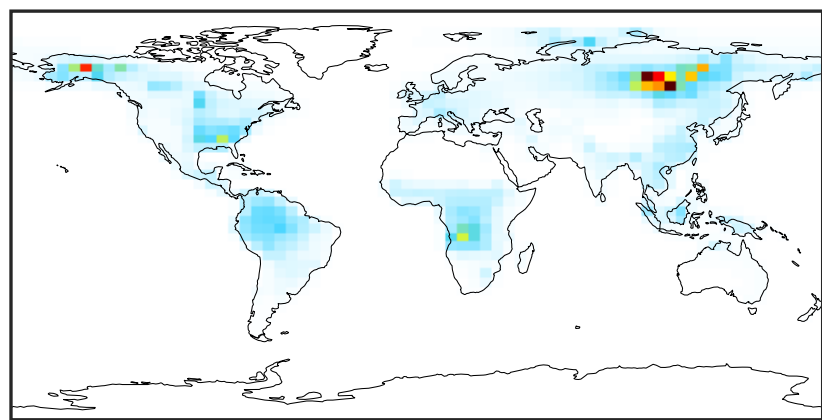
Ratio (1x1.25)
Dev/Ref, Fixed Range



0.50 0.75 1.00 1.50 2.00
unitless

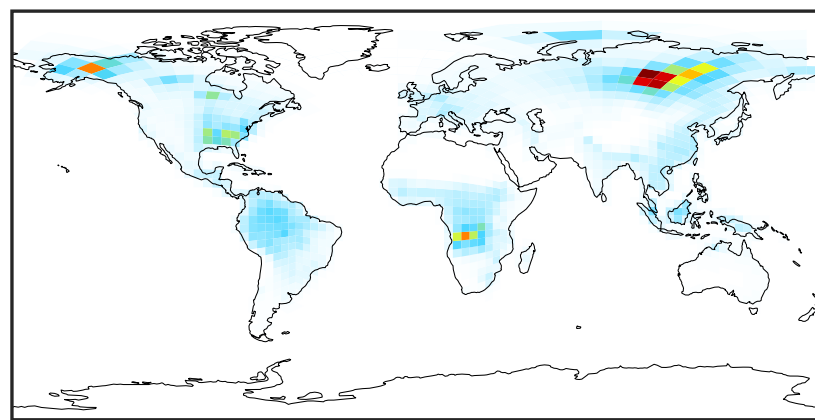
SpeciesConcVW_C2H4 (Jul2019)

GCC_14.2.0 (Ref)
4.0x5.0



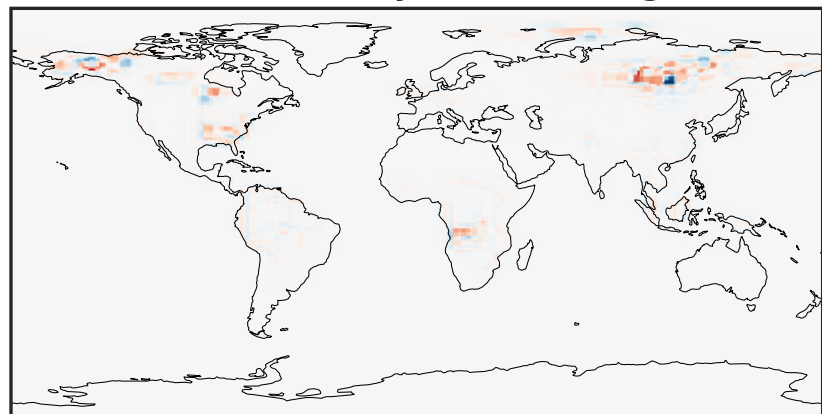
0.00 3.40 6.81 10.21 13.62
ppb

GCHP_14.2.0 (Dev)
c24



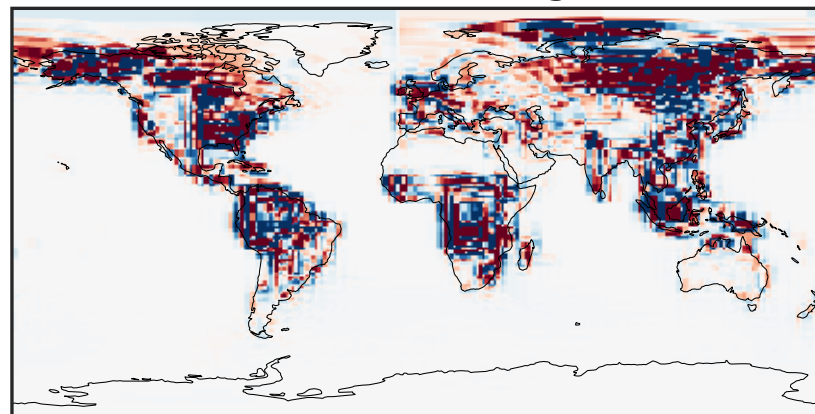
0.00 3.40 6.81 10.21 13.62
ppb

Difference (1x1.25)
Dev - Ref, Dynamic Range



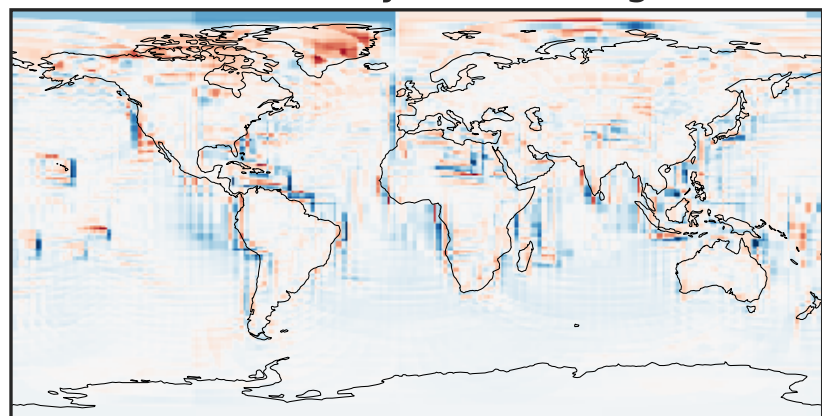
-8.22 -4.11 0.00 4.11 8.22
ppb

Difference (1x1.25)
Dev - Ref, Restricted Range [5%,95%]



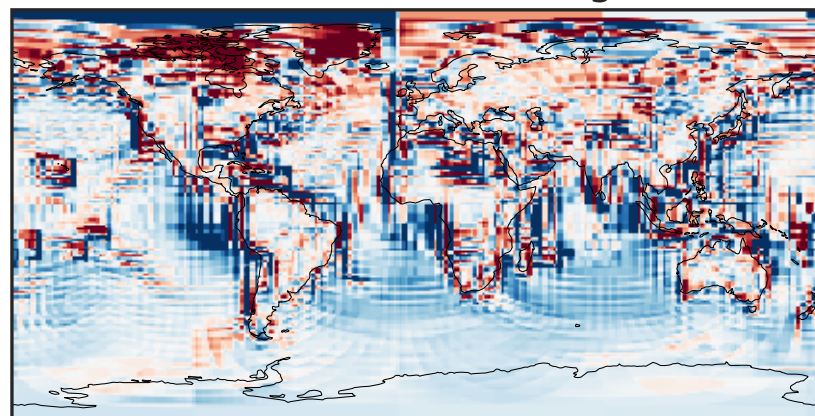
-0.1470 -0.0735 0.0000 0.0735 0.1470
ppb

Ratio (1x1.25)
Dev/Ref, Dynamic Range



1e-01 1 10
unitless

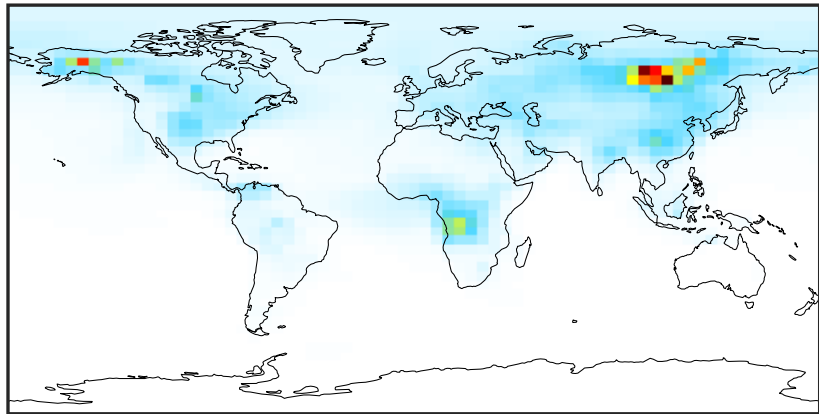
Ratio (1x1.25)
Dev/Ref, Fixed Range



0.50 0.75 1.00 1.50 2.00
unitless

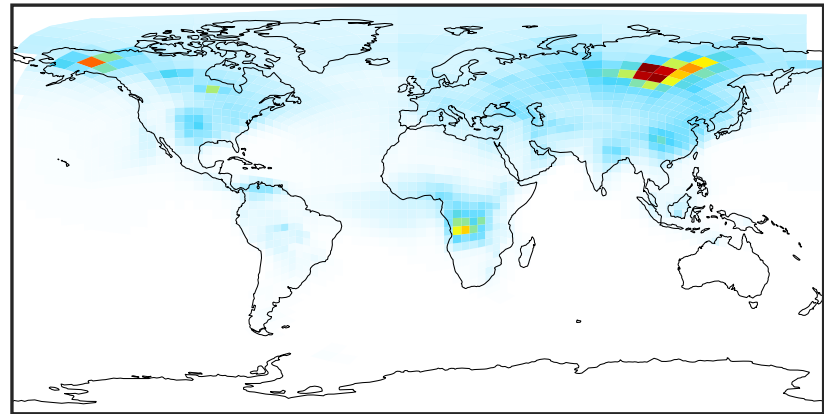
SpeciesConcVW_C2H6 (Jul2019)

GCC_14.2.0 (Ref)
4.0x5.0



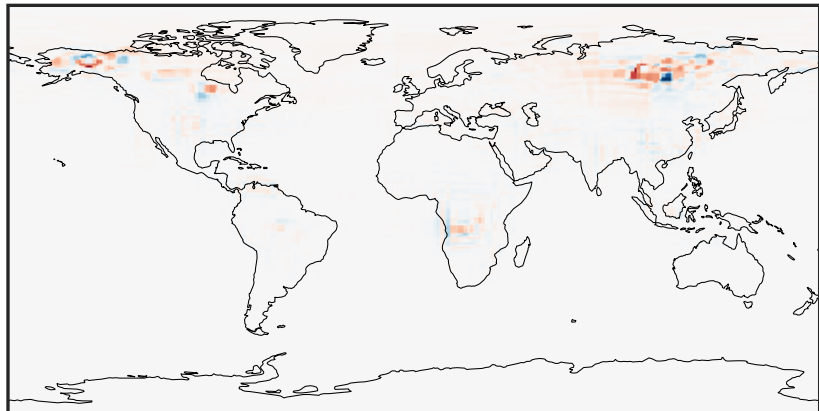
0.08 2.56 5.12 7.68 10.32
ppb

GCHP_14.2.0 (Dev)
c24



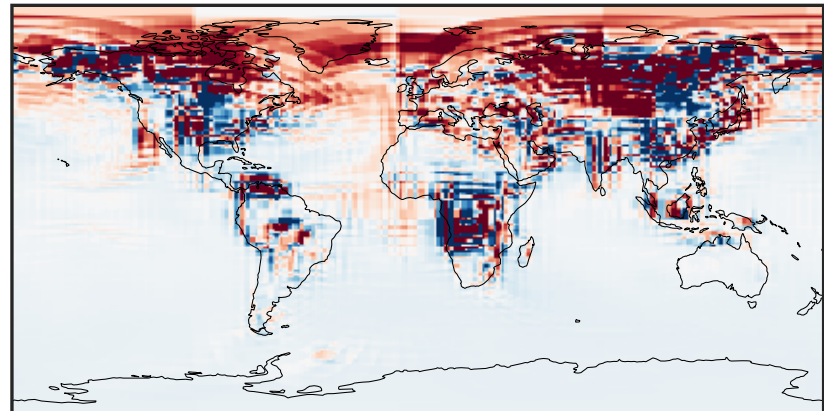
0.08 2.56 5.12 7.68 10.32
ppb

Difference (1x1.25)
Dev - Ref, Dynamic Range



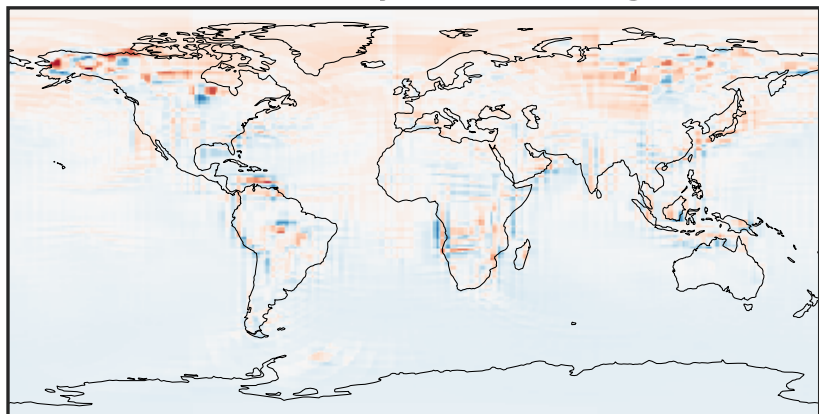
-5.39 -2.69 0.00 2.69 5.39
ppb

Difference (1x1.25)
Dev - Ref, Restricted Range [5%,95%]



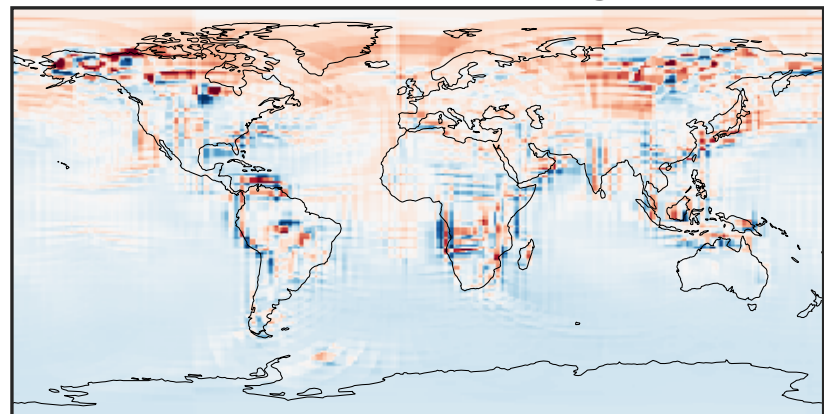
-0.1596 -0.0798 0.0000 0.0798 0.1596
ppb

Ratio (1x1.25)
Dev/Ref, Dynamic Range



0.240 0.620 1.000 2.581 4.163
unitless

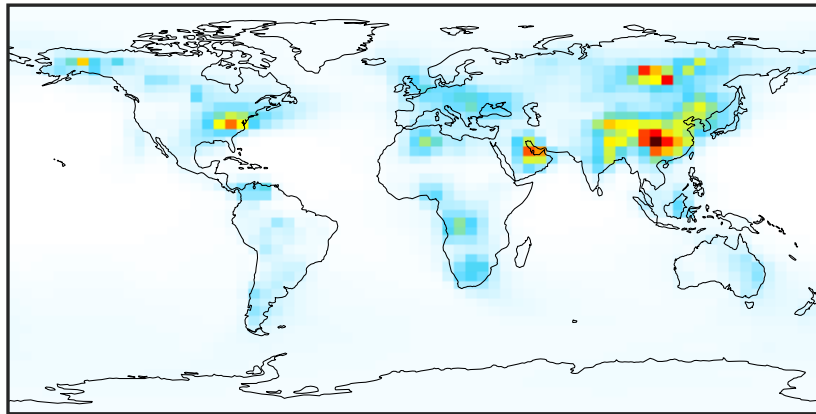
Ratio (1x1.25)
Dev/Ref, Fixed Range



0.50 0.75 1.00 1.50 2.00
unitless

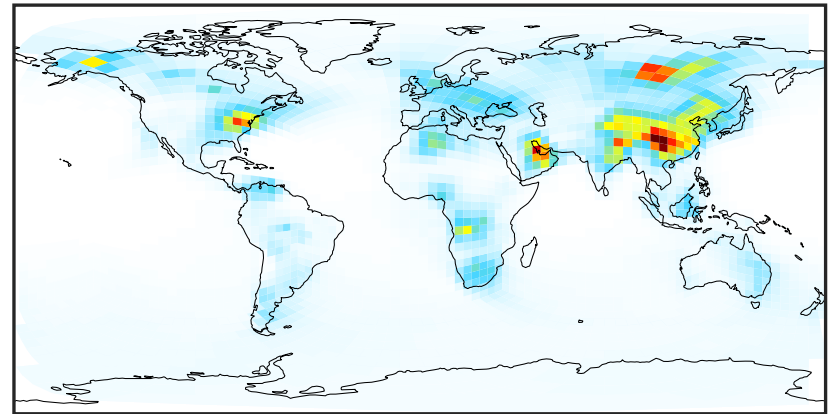
SpeciesConcVW_C3H8 (Jul2019)

GCC_14.2.0 (Ref)
4.0x5.0



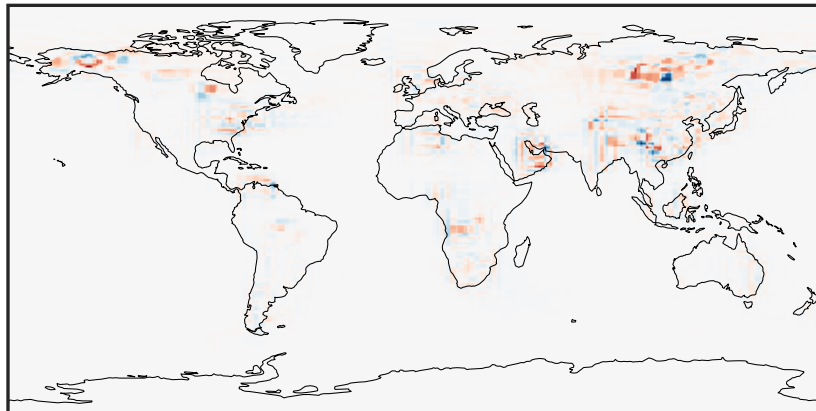
0.001 0.645 1.290 1.936 2.582
ppb

GCHP_14.2.0 (Dev)
c24



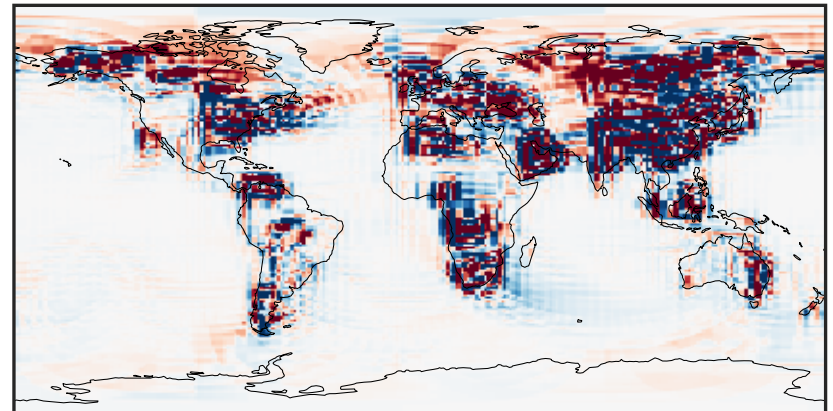
0.001 0.645 1.290 1.936 2.582
ppb

Difference (1x1.25)
Dev - Ref, Dynamic Range



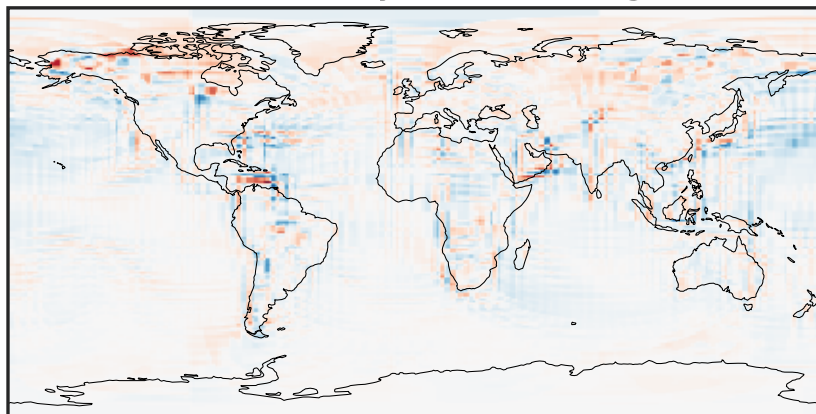
-1.132 -0.566 0.000 0.566 1.132
ppb

Difference (1x1.25)
Dev - Ref, Restricted Range [5%,95%]



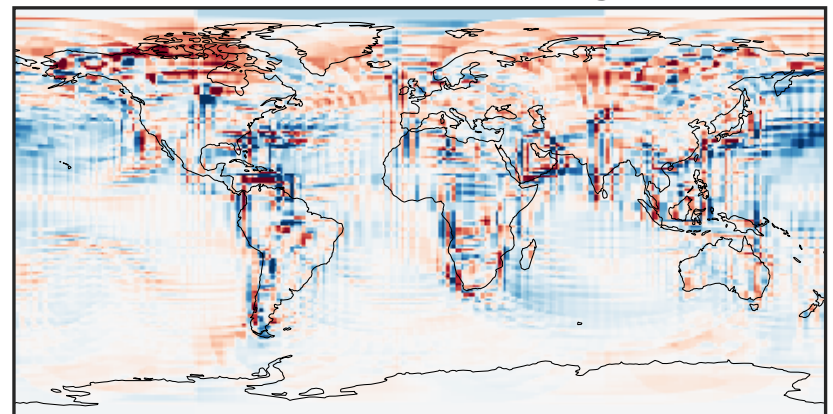
-0.050 -0.025 0.000 0.025 0.050
ppb

Ratio (1x1.25)
Dev/Ref, Dynamic Range



0.129 0.565 1.000 4.374 7.747
unitless

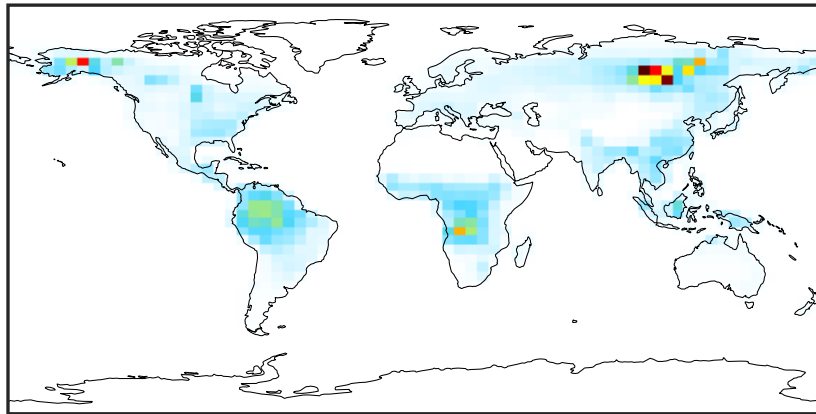
Ratio (1x1.25)
Dev/Ref, Fixed Range



0.50 0.75 1.00 1.50 2.00
unitless

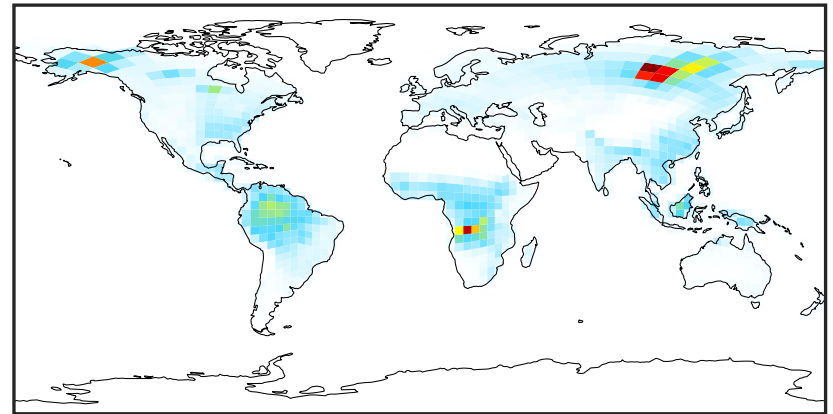
SpeciesConcVV_PRPE (Jul2019)

GCC_14.2.0 (Ref)
4.0x5.0



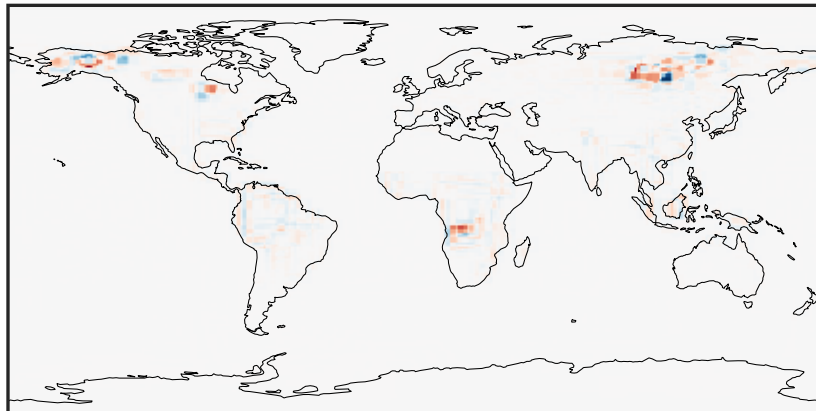
0.000 1.218 2.436 3.653 4.871
ppb

GCHP_14.2.0 (Dev)
c24



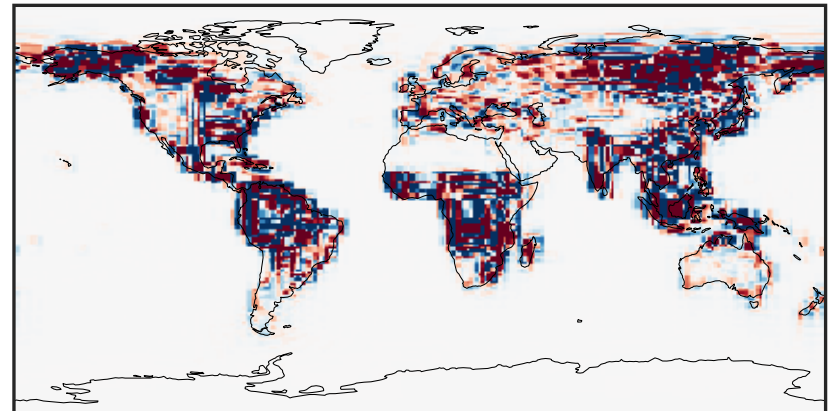
0.000 1.218 2.436 3.653 4.871
ppb

Difference (1x1.25)
Dev - Ref, Dynamic Range



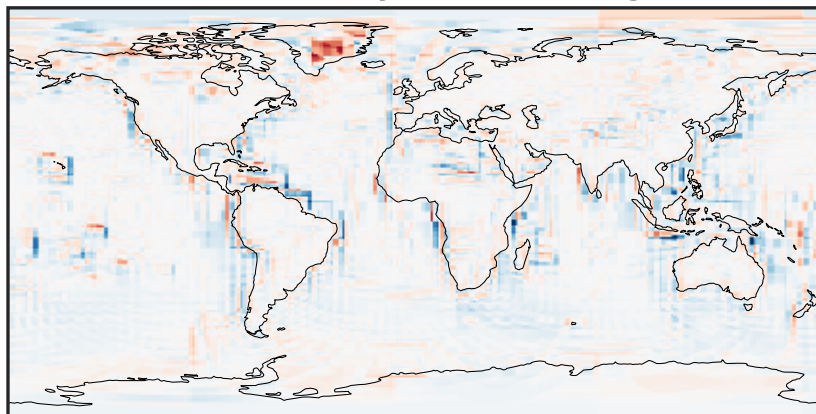
-2.951 -1.476 0.000 1.476 2.951
ppb

Difference (1x1.25)
Dev - Ref, Restricted Range [5%,95%]



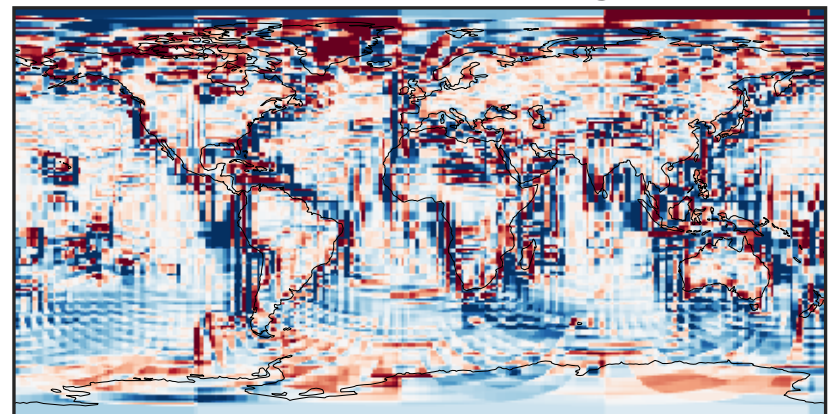
-0.0527 -0.0263 0.0000 0.0263 0.0527
ppb

Ratio (1x1.25)
Dev/Ref, Dynamic Range



1e-02 1e-01 1 10 100
unitless

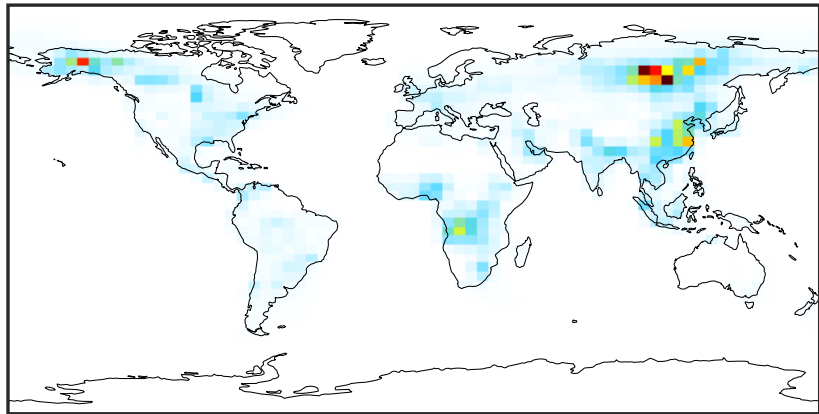
Ratio (1x1.25)
Dev/Ref, Fixed Range



0.50 0.75 1.00 1.50 2.00
unitless

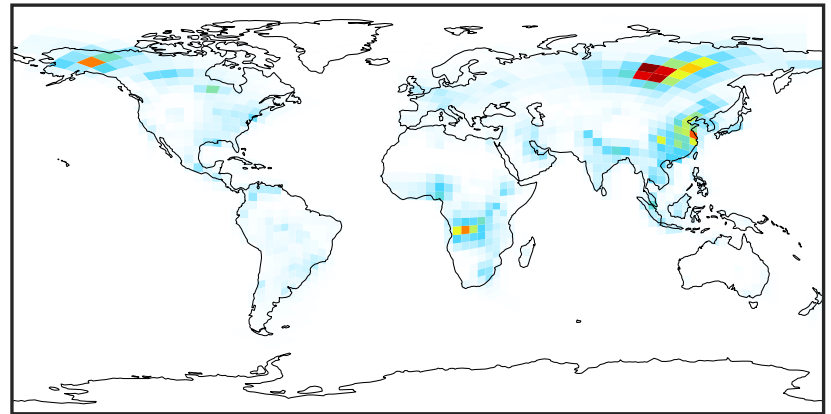
SpeciesConcVV_TOLU (Jul2019)

GCC_14.2.0 (Ref)
4.0x5.0



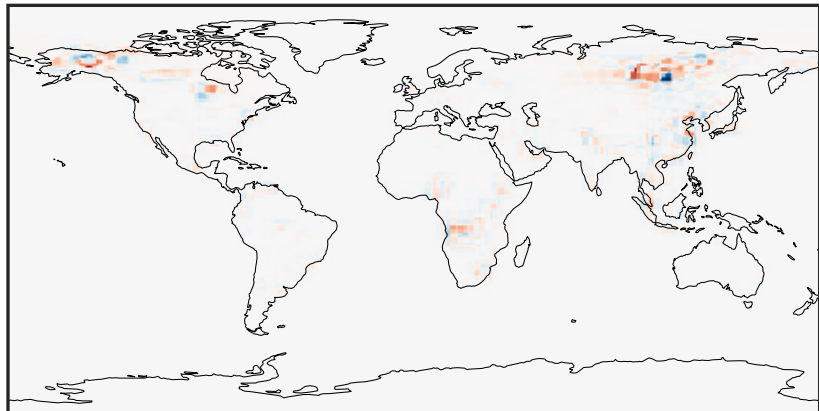
0.0000 0.2442 0.4884 0.7326 0.9768
ppb

GCHP_14.2.0 (Dev)
c24



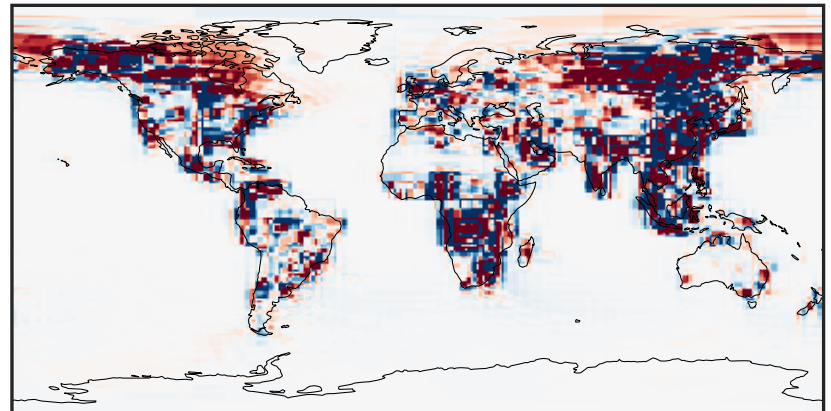
0.0000 0.2442 0.4884 0.7326 0.9768
ppb

Difference (1x1.25)
Dev - Ref, Dynamic Range



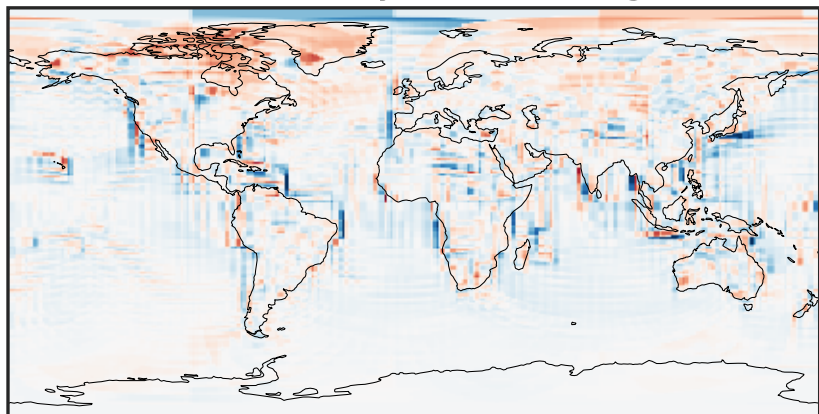
-0.599 -0.299 0.000 0.299 0.599
ppb

Difference (1x1.25)
Dev - Ref, Restricted Range [5%,95%]



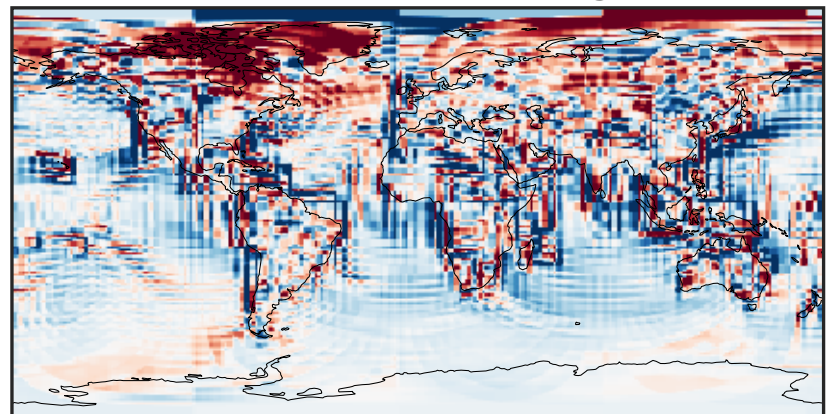
-0.006 0.000 0.006
ppb

Ratio (1x1.25)
Dev/Ref, Dynamic Range



1e-01 1 10
unitless

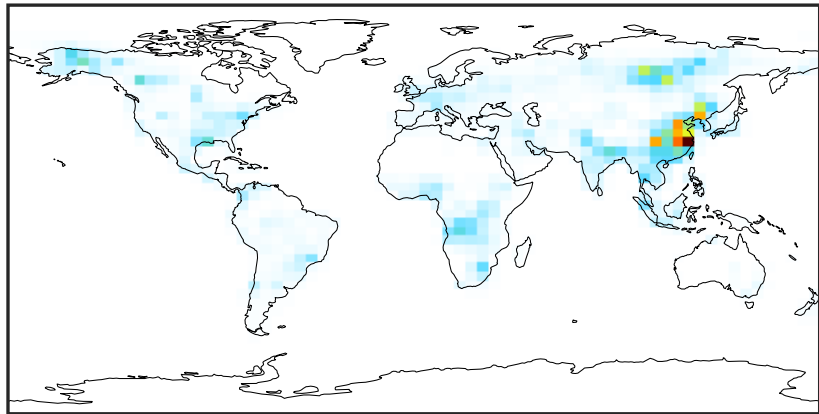
Ratio (1x1.25)
Dev/Ref, Fixed Range



0.50 0.75 1.00 1.50 2.00
unitless

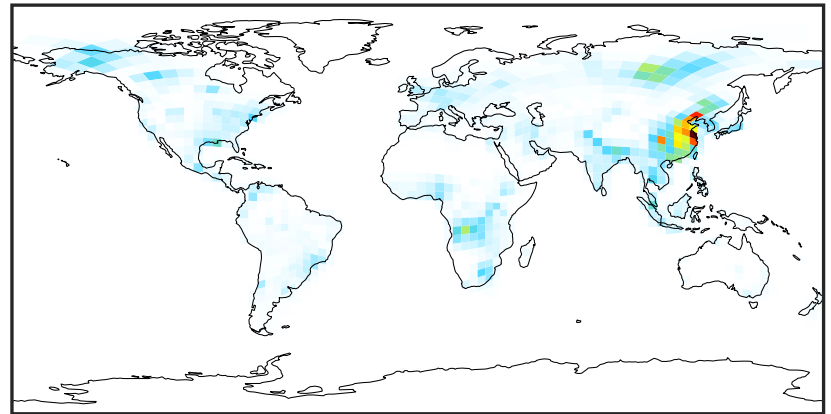
SpeciesConcVV_XYLE (Jul2019)

GCC_14.2.0 (Ref)
4.0x5.0



0.0000 0.1358 0.2716 0.4073 0.5431
ppb

GCHP_14.2.0 (Dev)
c24



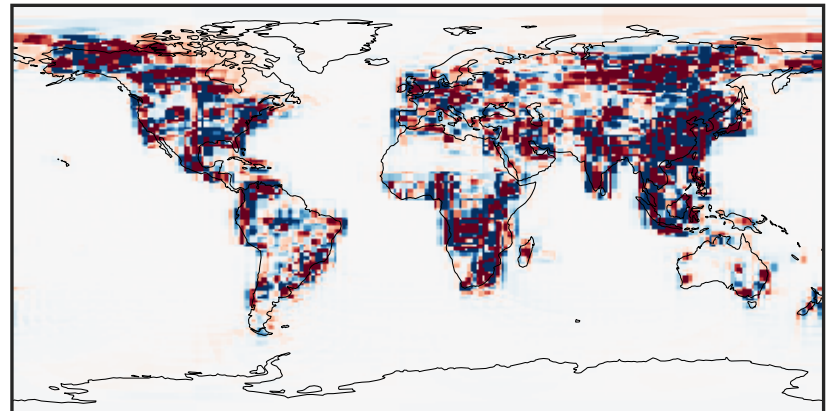
0.0000 0.1358 0.2716 0.4073 0.5431
ppb

Difference (1x1.25)
Dev - Ref, Dynamic Range



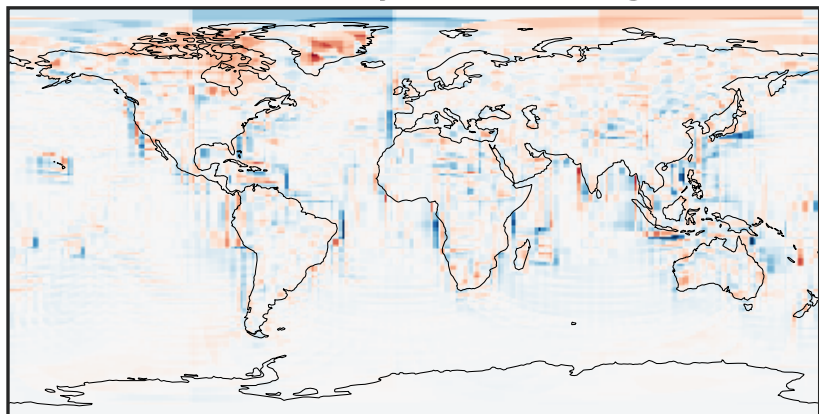
-0.4124 -0.2062 0.0000 0.2062 0.4124
ppb

Difference (1x1.25)
Dev - Ref, Restricted Range [5%,95%]



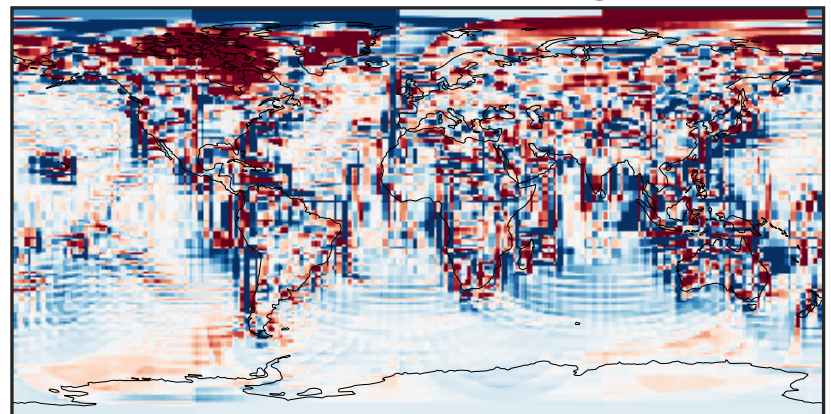
-0.003 0.000 0.003
ppb

Ratio (1x1.25)
Dev/Ref, Dynamic Range



1e-01 1 10
unitless

Ratio (1x1.25)
Dev/Ref, Fixed Range



0.50 0.75 1.00 1.50 2.00
unitless