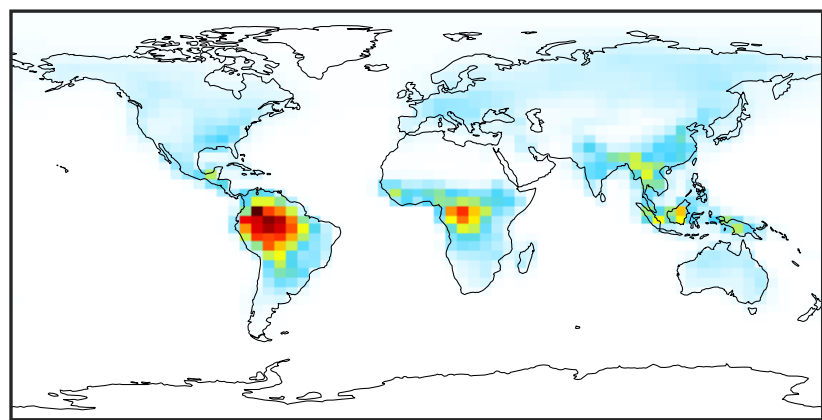


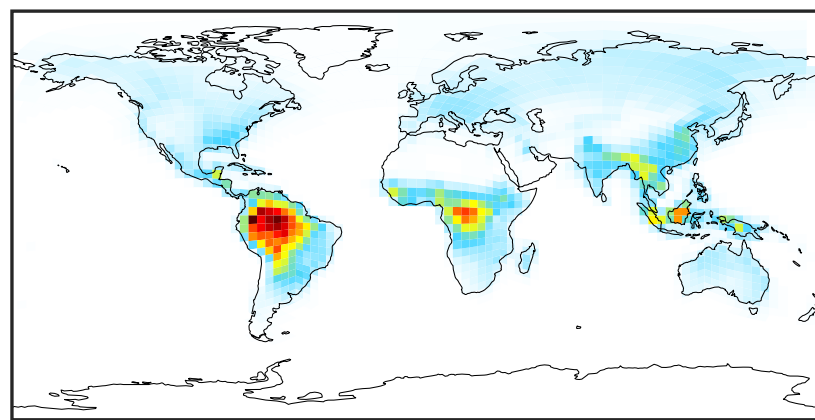
SpeciesConcVW_EOH (Oct2019)

GCC_14.2.0 (Ref)
4.0x5.0



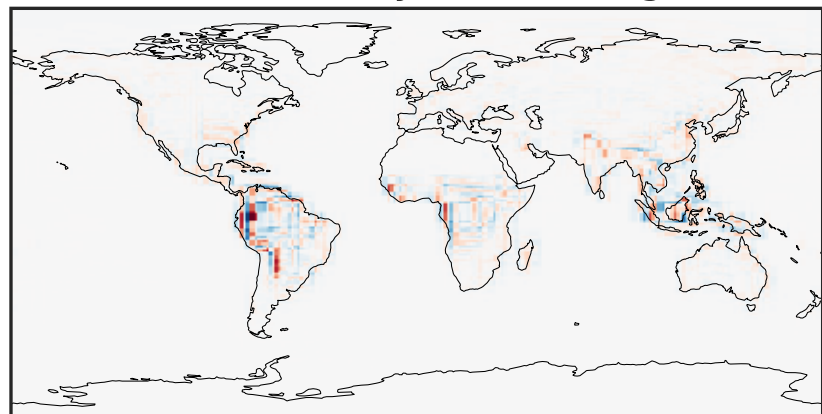
0.000 0.500 1.001 1.501 2.002
ppb

GCHP_14.2.0 (Dev)
c24



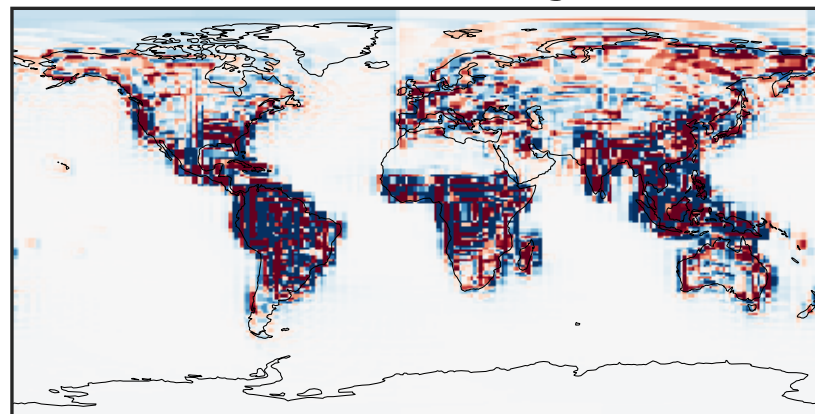
0.000 0.500 1.001 1.501 2.002
ppb

Difference (1x1.25)
Dev - Ref, Dynamic Range



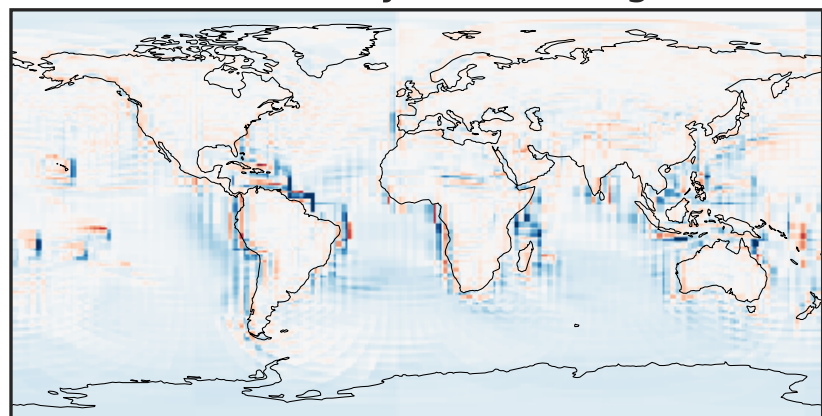
-0.646 -0.323 0.000 0.323 0.646
ppb

Difference (1x1.25)
Dev - Ref, Restricted Range [5%,95%]



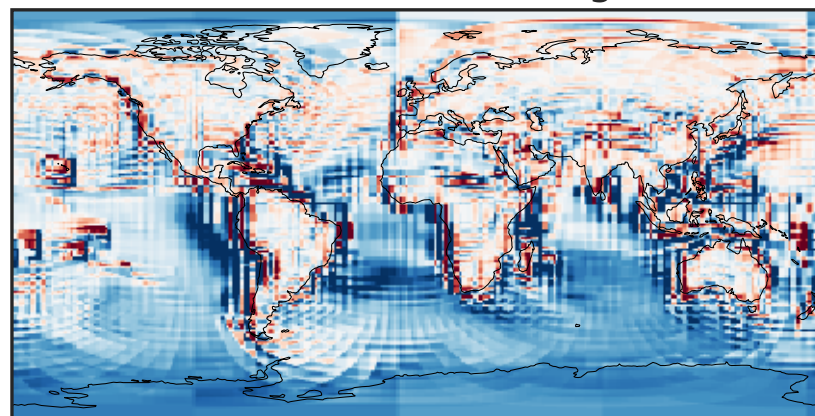
-0.015 0.000 0.015
ppb

Ratio (1x1.25)
Dev/Ref, Dynamic Range



1e-01 1 10
unitless

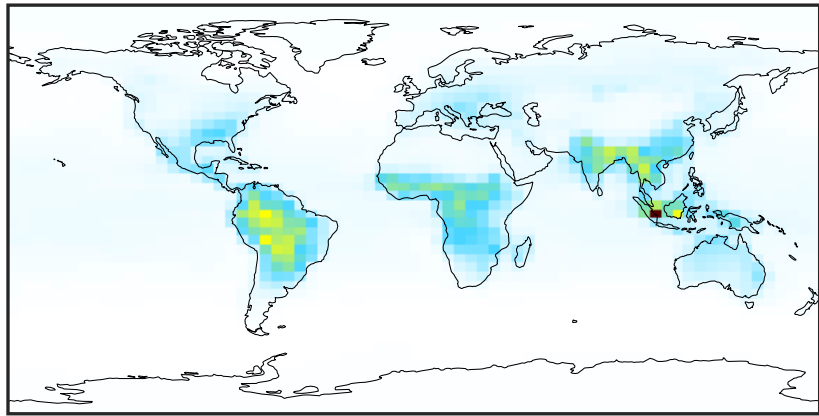
Ratio (1x1.25)
Dev/Ref, Fixed Range



0.50 0.75 1.00 1.50 2.00
unitless

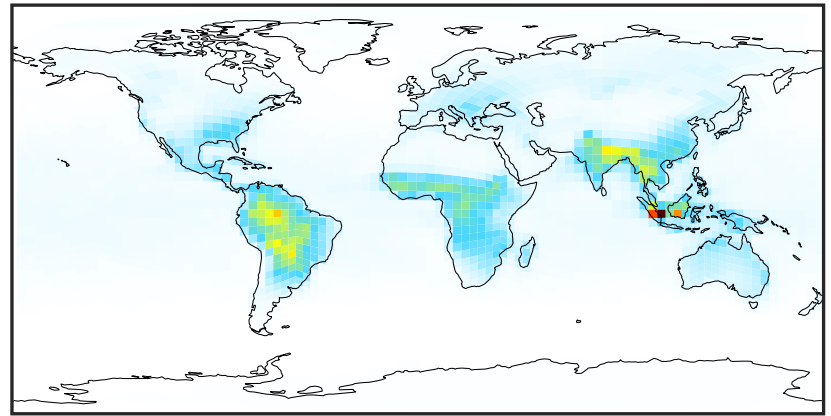
SpeciesConcVV_MOH (Oct2019)

GCC_14.2.0 (Ref)
4.0x5.0



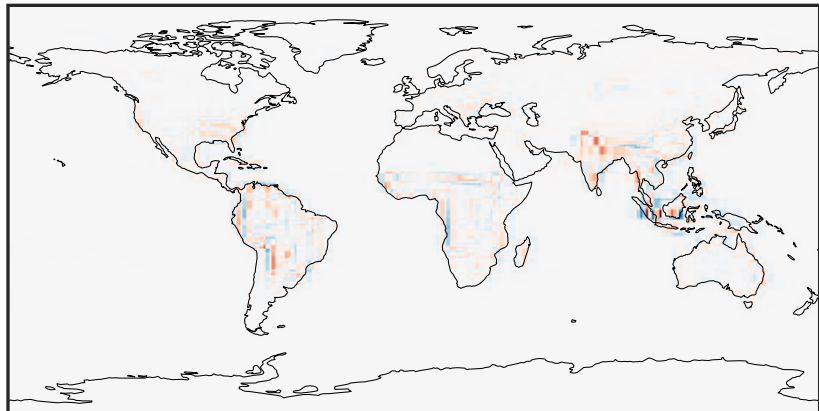
0.03 3.58 7.15 10.73 14.34
ppb

GCHP_14.2.0 (Dev)
c24



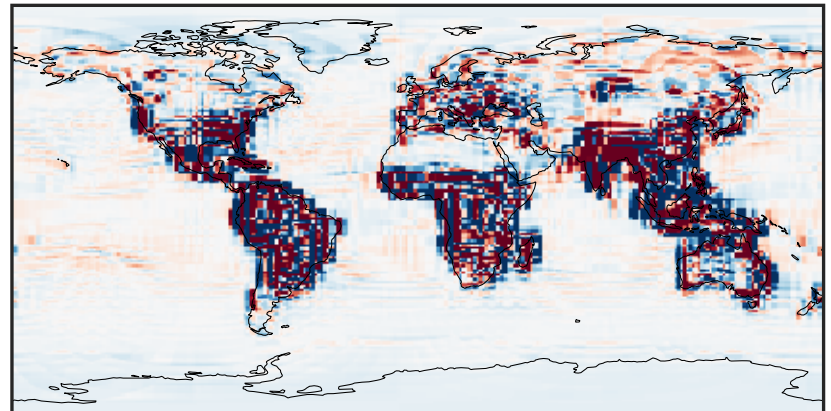
0.03 3.58 7.15 10.73 14.34
ppb

Difference (1x1.25)
Dev - Ref, Dynamic Range



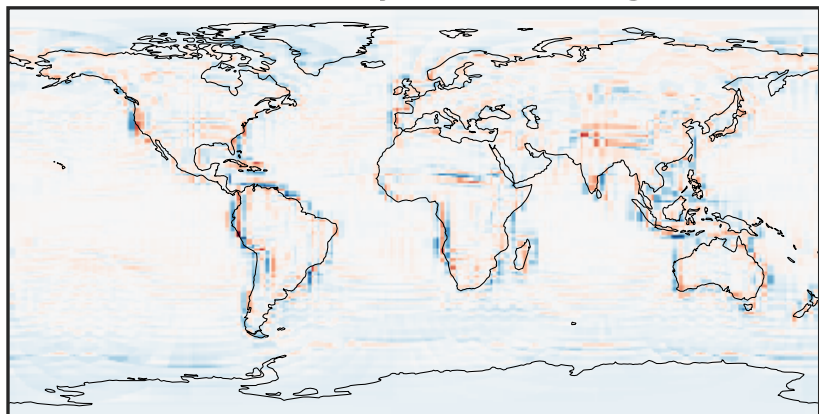
-4.864 -2.432 0.000 2.432 4.864
ppb

Difference (1x1.25)
Dev - Ref, Restricted Range [5%,95%]



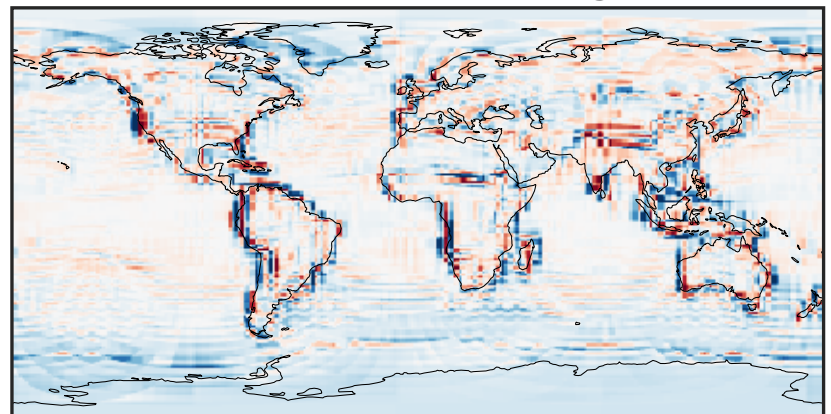
-0.1523 -0.0762 0.0000 0.0762 0.1523
ppb

Ratio (1x1.25)
Dev/Ref, Dynamic Range



0.211 0.605 1.000 2.873 4.745
unitless

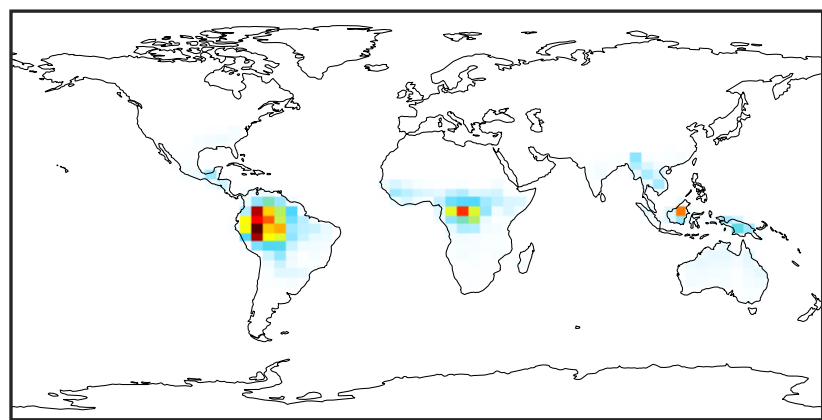
Ratio (1x1.25)
Dev/Ref, Fixed Range



0.50 0.75 1.00 1.50 2.00
unitless

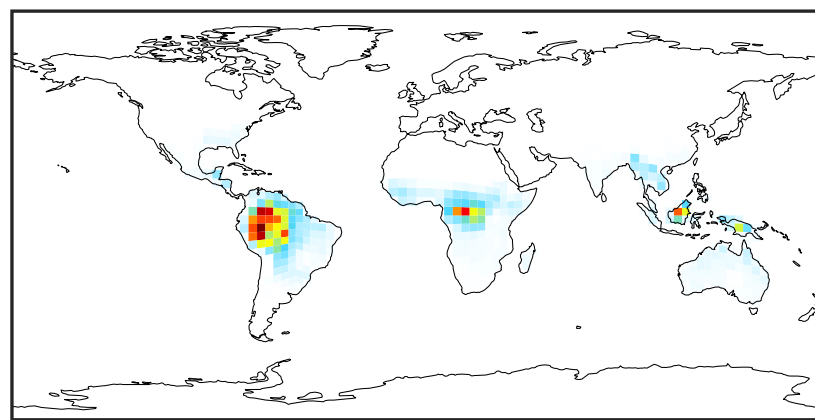
SpeciesConcVV_ISOP (Oct2019)

GCC_14.2.0 (Ref)
4.0x5.0



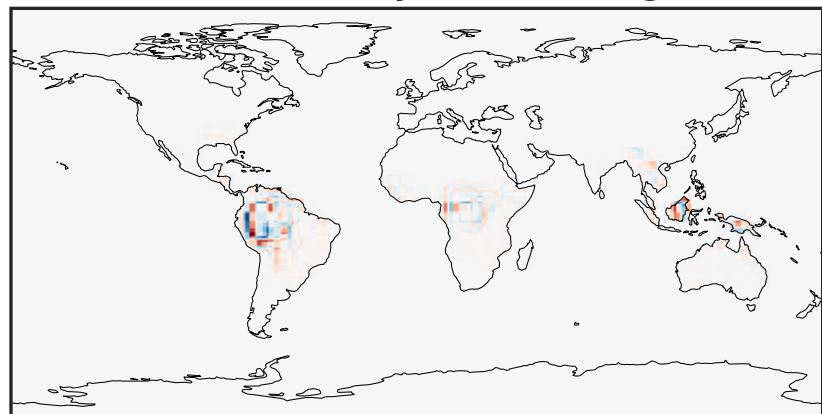
0.000 2.262 4.524 6.785 9.047
ppb

GCHP_14.2.0 (Dev)
c24



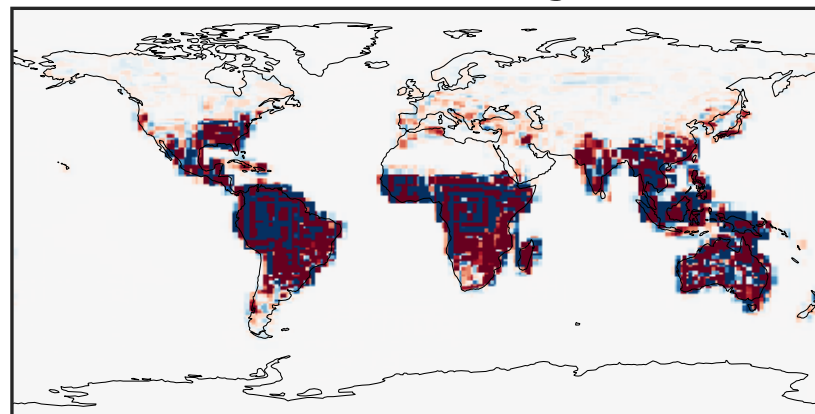
0.000 2.262 4.524 6.785 9.047
ppb

Difference (1x1.25)
Dev - Ref, Dynamic Range



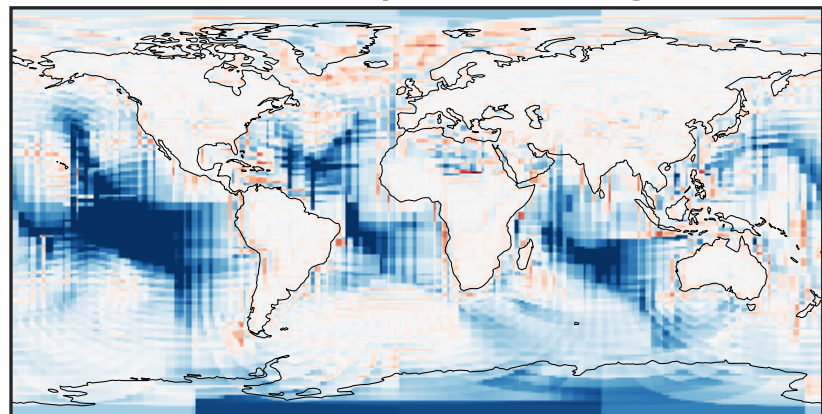
-3.689 -1.844 0.000 1.844 3.689
ppb

Difference (1x1.25)
Dev - Ref, Restricted Range [5%,95%]



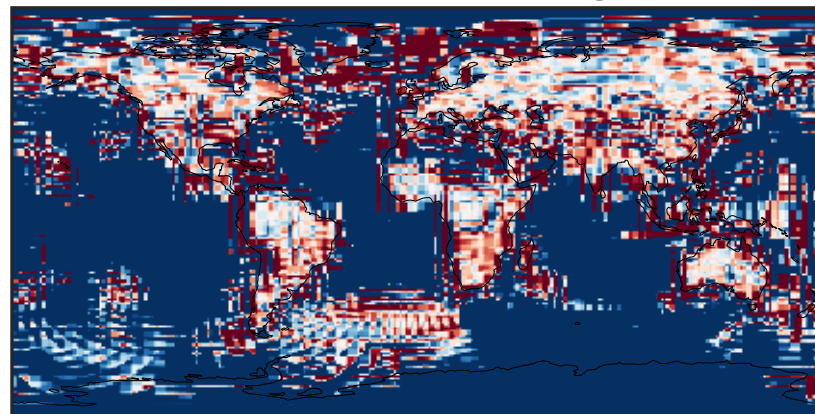
-0.008 0.000 0.008
ppb

Ratio (1x1.25)
Dev/Ref, Dynamic Range



unitless

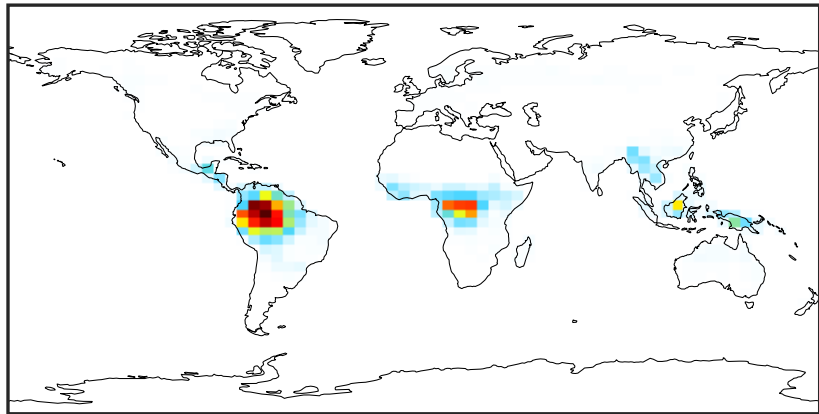
Ratio (1x1.25)
Dev/Ref, Fixed Range



0.50 0.75 1.00 1.50 2.00
unitless

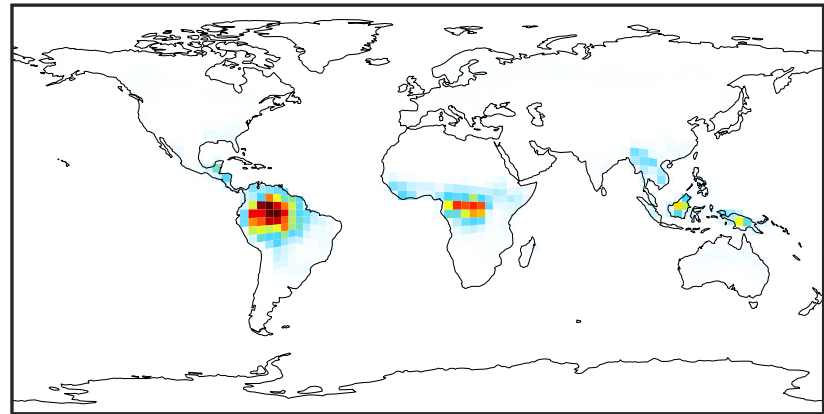
SpeciesConcVV_MTPA (Oct2019)

GCC_14.2.0 (Ref)
4.0x5.0



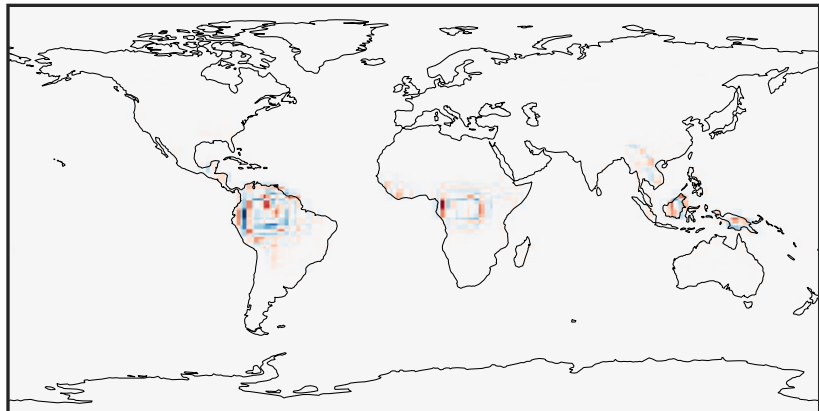
0.000 0.495 0.989 1.484 1.979
ppb

GCHP_14.2.0 (Dev)
c24



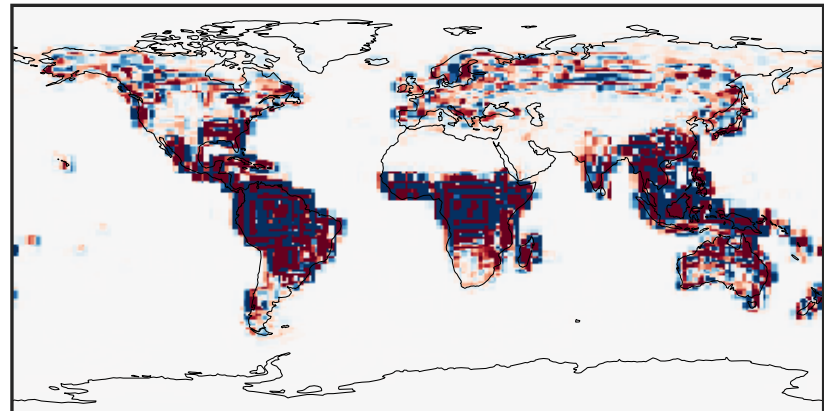
0.000 0.495 0.989 1.484 1.979
ppb

Difference (1x1.25)
Dev - Ref, Dynamic Range



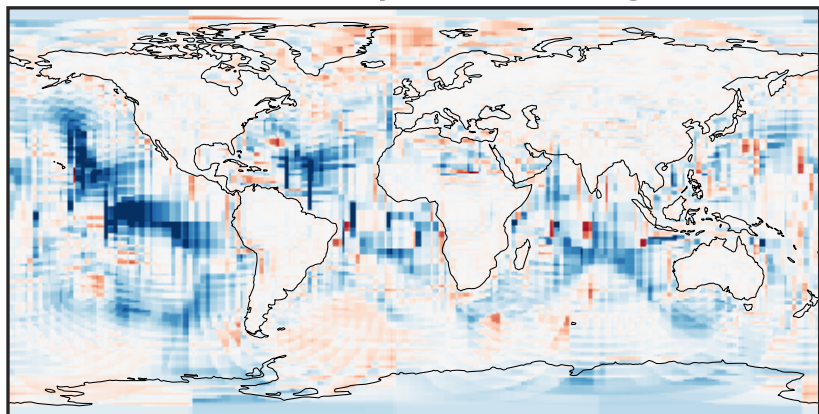
-0.78 -0.39 0.00 0.39 0.78
ppb

Difference (1x1.25)
Dev - Ref, Restricted Range [5%,95%]



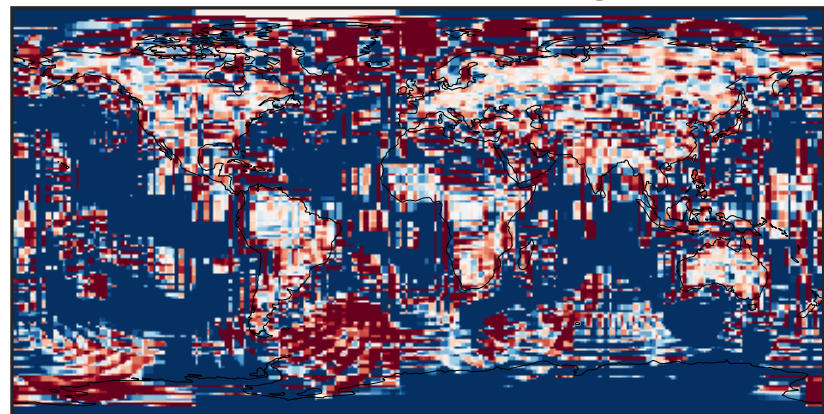
-0.002 0.000 0.002
ppb

Ratio (1x1.25)
Dev/Ref, Dynamic Range



unitless

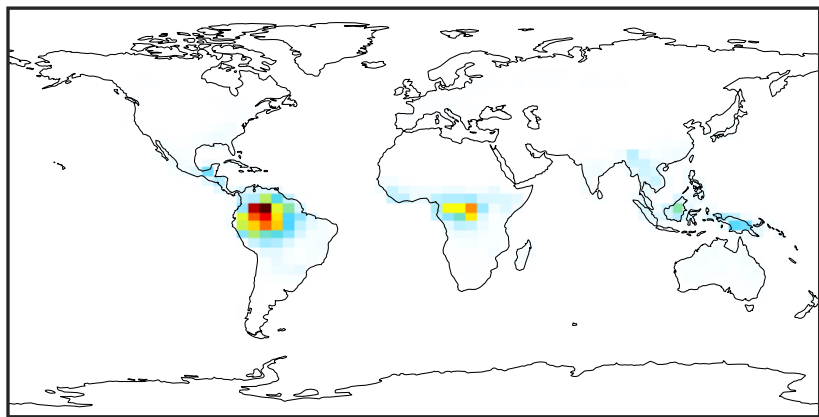
Ratio (1x1.25)
Dev/Ref, Fixed Range



0.50 0.75 1.00 1.50 2.00
unitless

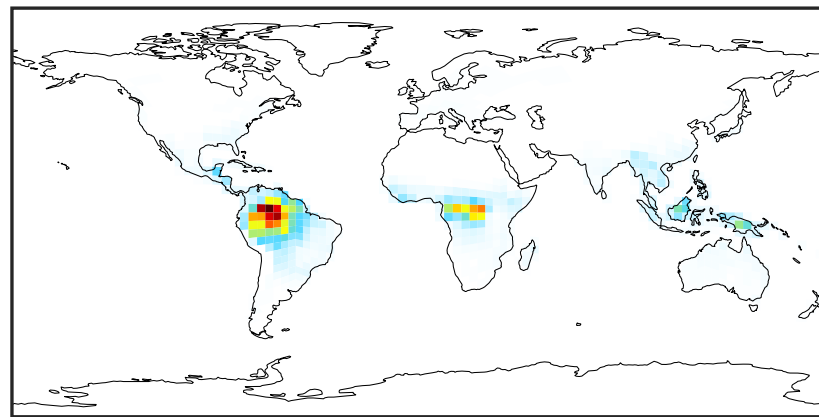
SpeciesConcVV_MTPO (Oct2019)

GCC_14.2.0 (Ref)
4.0x5.0



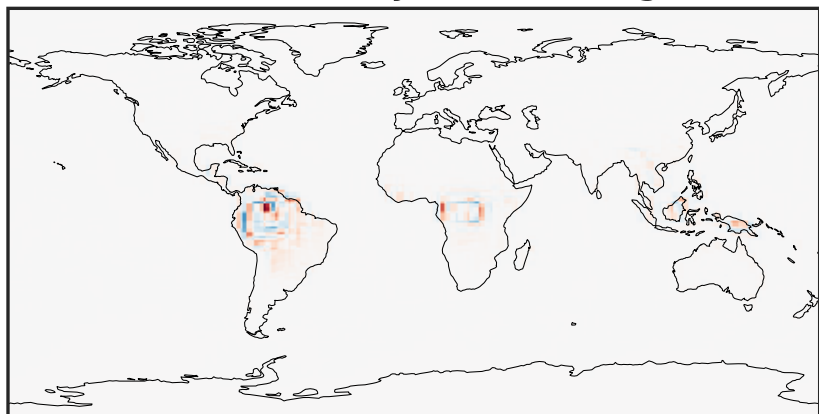
0.0000 0.0336 0.0671 0.1007 0.1343
ppb

GCHP_14.2.0 (Dev)
c24



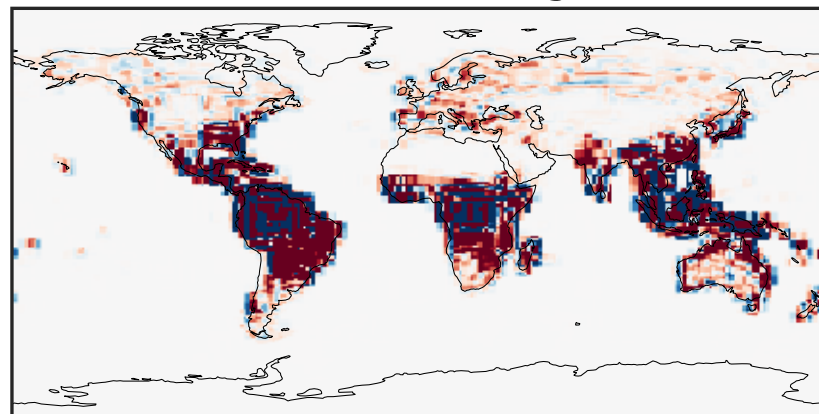
0.0000 0.0336 0.0671 0.1007 0.1343
ppb

Difference (1x1.25)
Dev - Ref, Dynamic Range



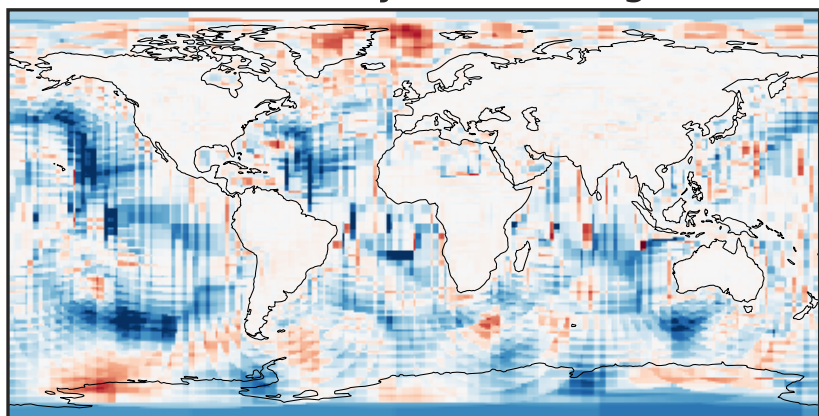
-0.0613 -0.0306 0.0000 0.0306 0.0613
ppb

Difference (1x1.25)
Dev - Ref, Restricted Range [5%,95%]



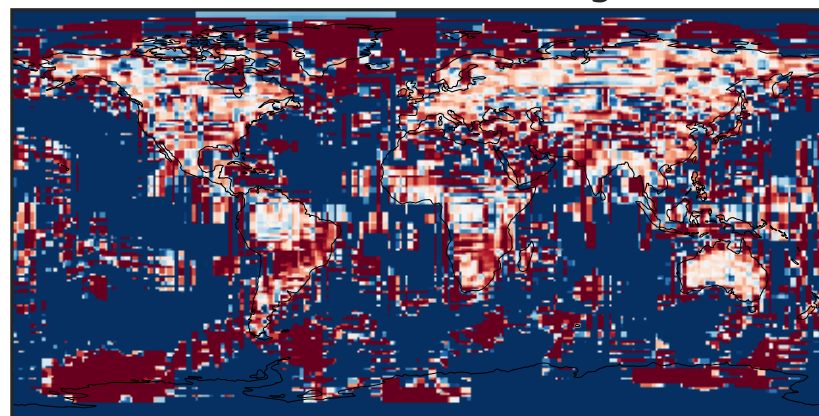
-0.00025 0.00000 0.00025
ppb

Ratio (1x1.25)
Dev/Ref, Dynamic Range



1e-05 1e-02 10 1e4 1e+07
unitless

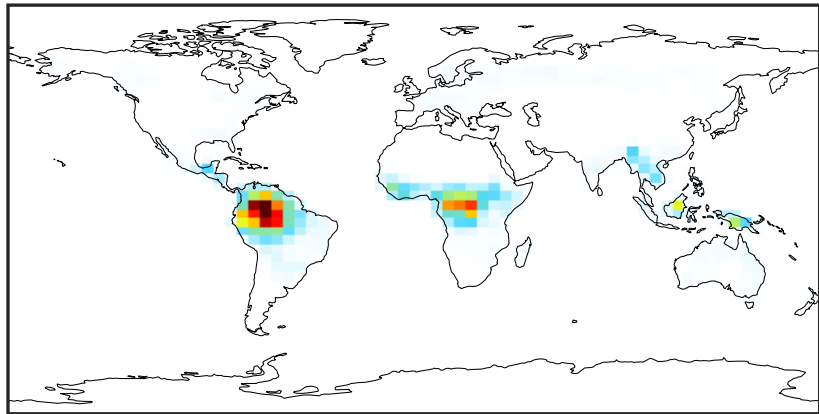
Ratio (1x1.25)
Dev/Ref, Fixed Range



0.50 0.75 1.00 1.50 2.00
unitless

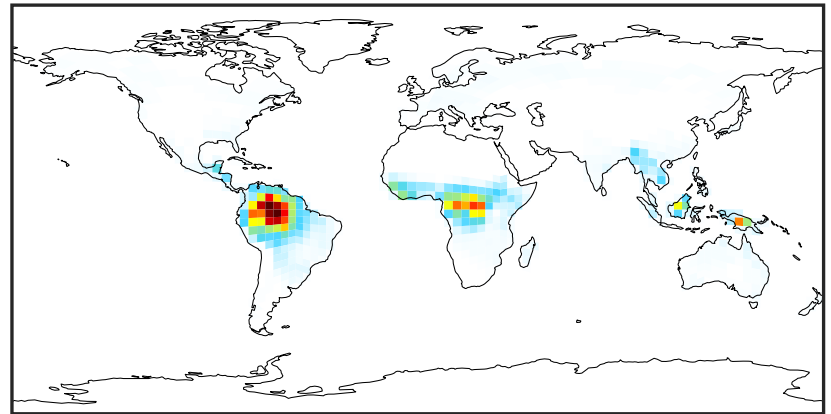
SpeciesConcVV_LIMO (Oct2019)

GCC_14.2.0 (Ref)
4.0x5.0



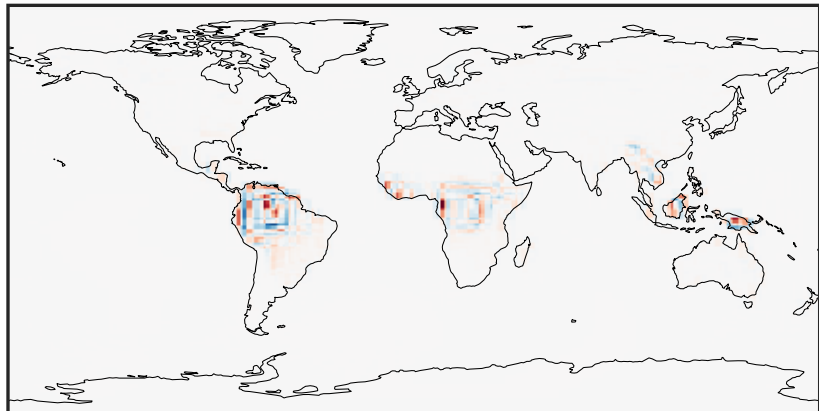
0.000 0.026 0.052 0.078 0.104
ppb

GCHP_14.2.0 (Dev)
c24



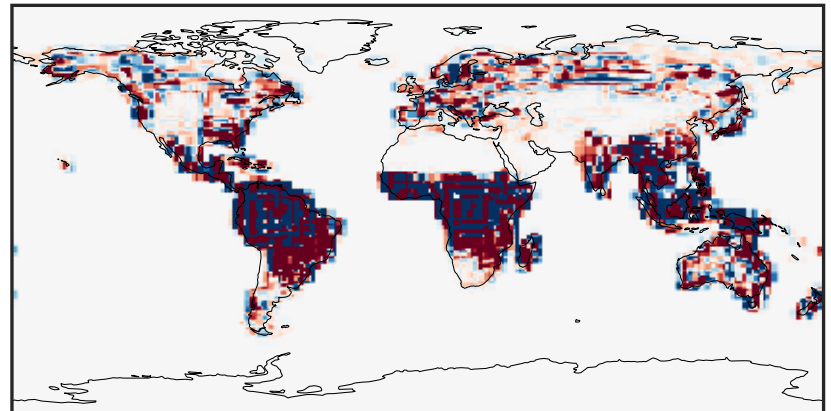
0.000 0.026 0.052 0.078 0.104
ppb

Difference (1x1.25)
Dev - Ref, Dynamic Range



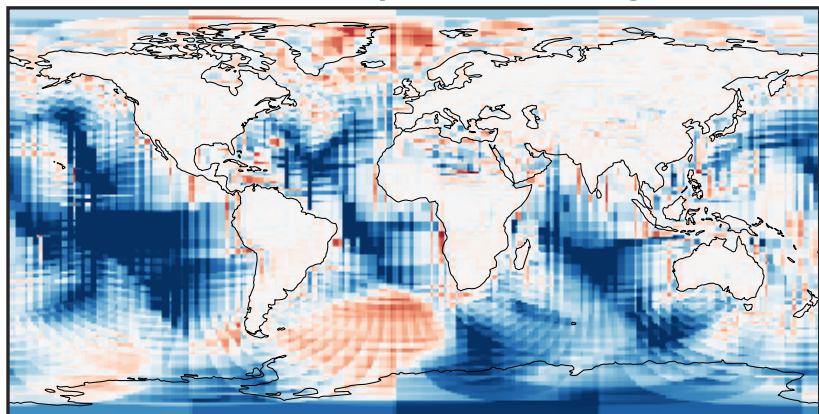
-0.02 0.00 0.02
ppb

Difference (1x1.25)
Dev - Ref, Restricted Range [5%,95%]



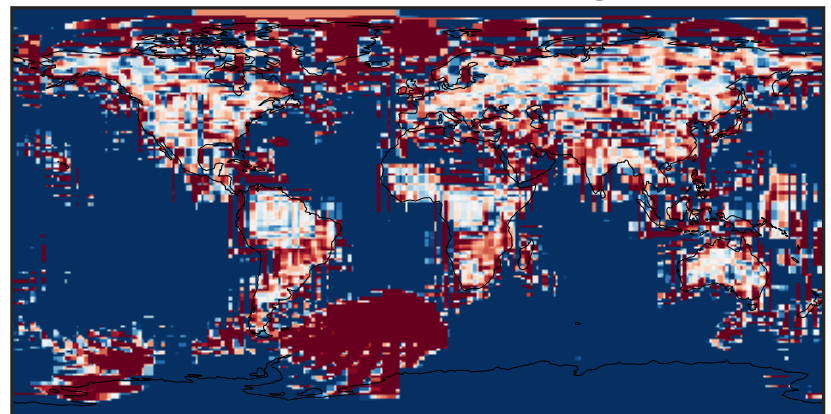
-0.0002 0.0000 0.0002
ppb

Ratio (1x1.25)
Dev/Ref, Dynamic Range



unitless

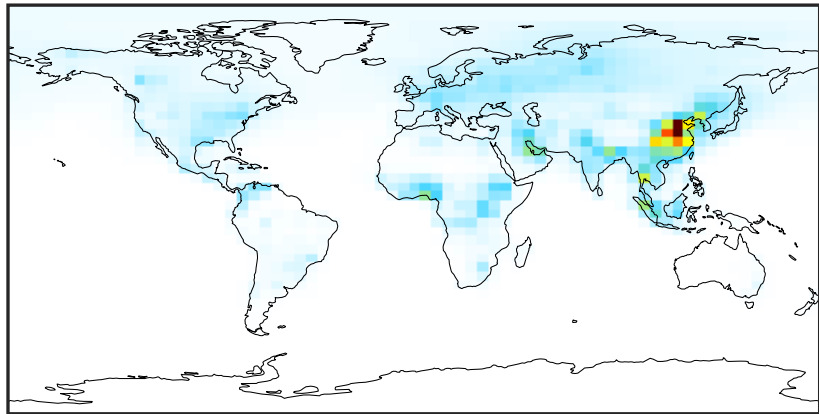
Ratio (1x1.25)
Dev/Ref, Fixed Range



0.50 0.75 1.00 1.50 2.00
unitless

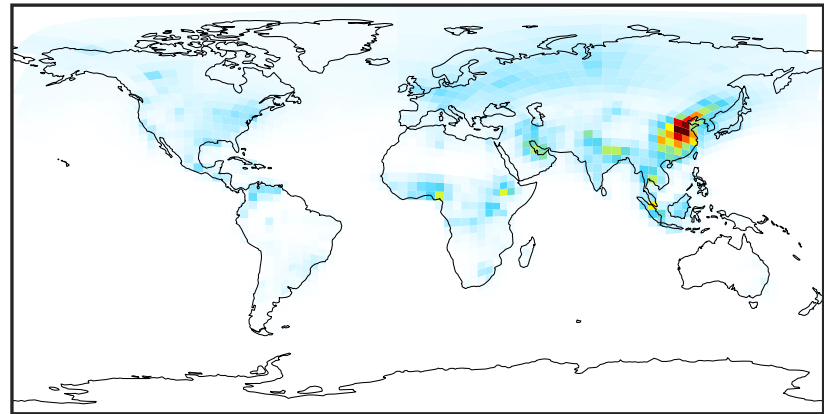
SpeciesConcVV_ALK4 (Oct2019)

GCC_14.2.0 (Ref)
4.0x5.0



0.00 2.75 5.49 8.24 10.98
ppb

GCHP_14.2.0 (Dev)
c24



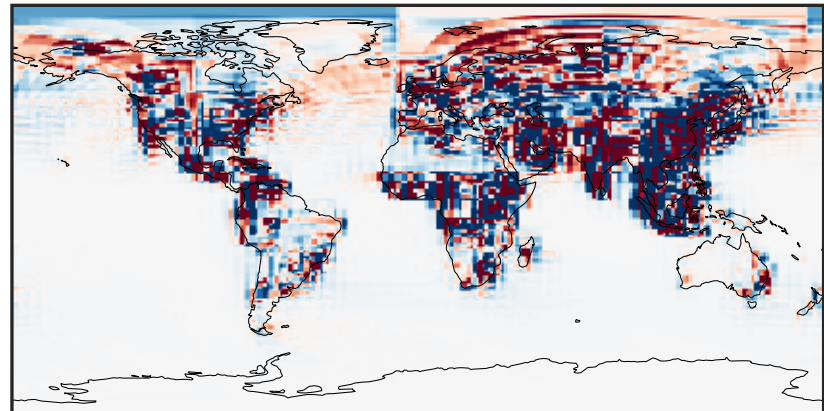
0.00 2.75 5.49 8.24 10.98
ppb

Difference (1x1.25)
Dev - Ref, Dynamic Range



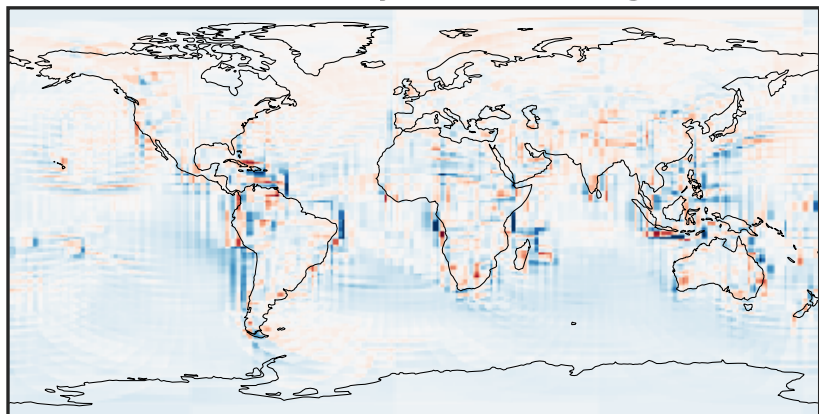
-5.84 -2.92 0.00 2.92 5.84
ppb

Difference (1x1.25)
Dev - Ref, Restricted Range [5%,95%]



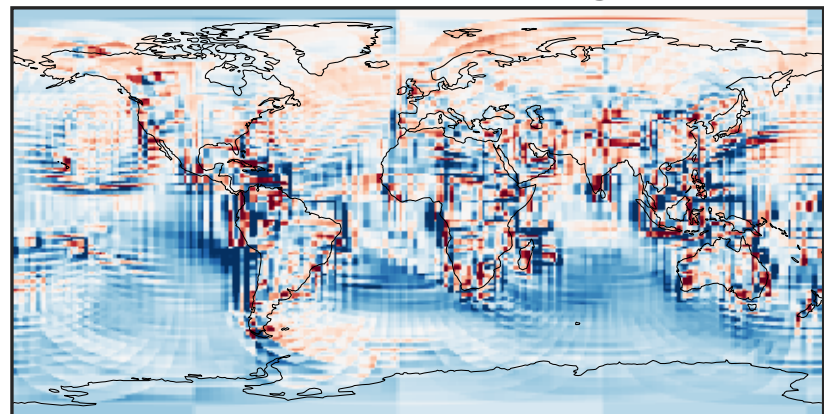
-0.1064 -0.0532 0.0000 0.0532 0.1064
ppb

Ratio (1x1.25)
Dev/Ref, Dynamic Range



0.101 0.551 1.000 5.433 9.866
unitless

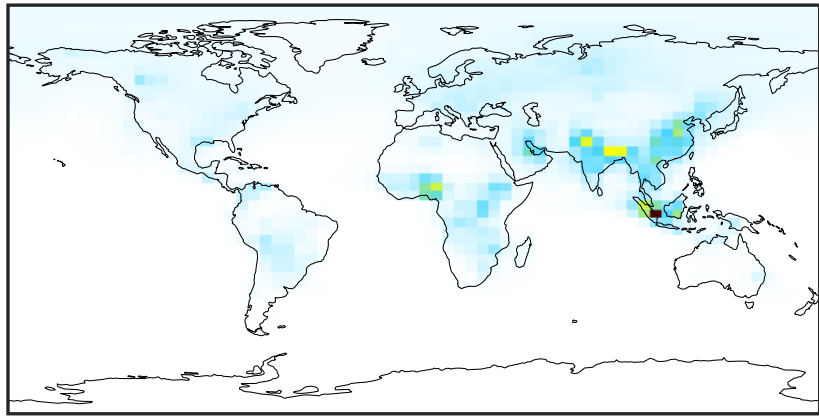
Ratio (1x1.25)
Dev/Ref, Fixed Range



0.50 0.75 1.00 1.50 2.00
unitless

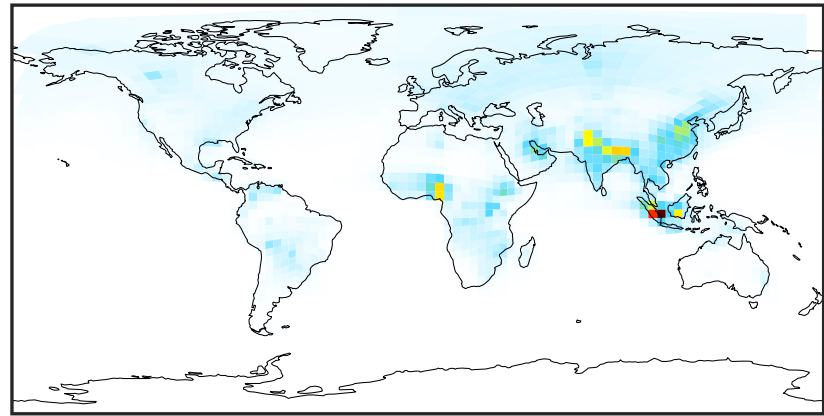
SpeciesConcVV_BENZ (Oct2019)

GCC_14.2.0 (Ref)
4.0x5.0



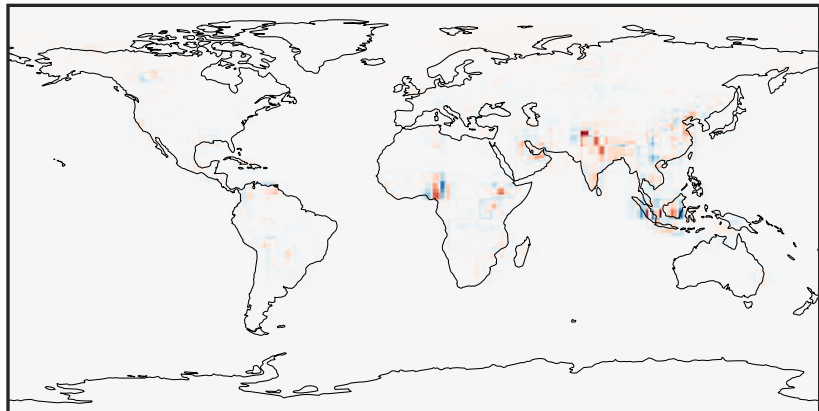
0.000 0.401 0.802 1.203 1.604
ppb

GCHP_14.2.0 (Dev)
c24



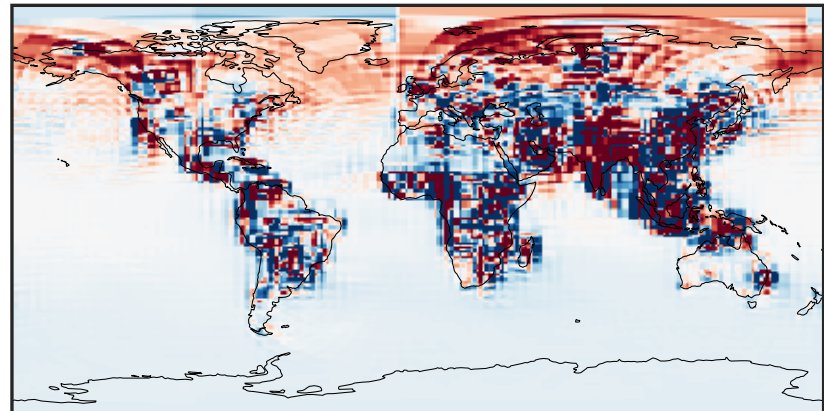
0.000 0.401 0.802 1.203 1.604
ppb

Difference (1x1.25)
Dev - Ref, Dynamic Range



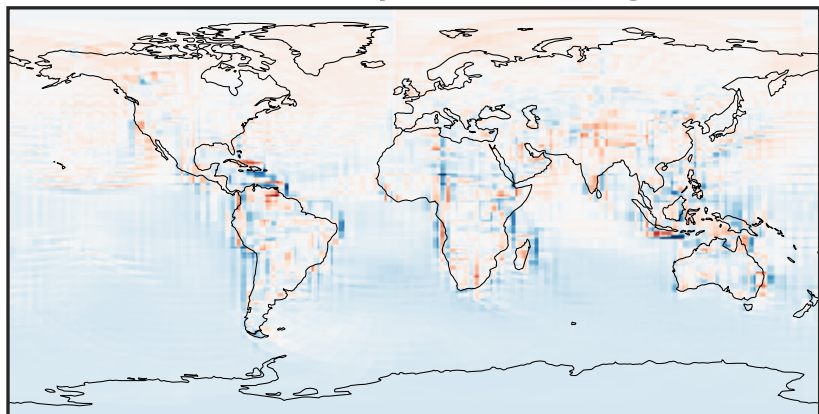
-0.567 -0.284 0.000 0.284 0.567
ppb

Difference (1x1.25)
Dev - Ref, Restricted Range [5%,95%]



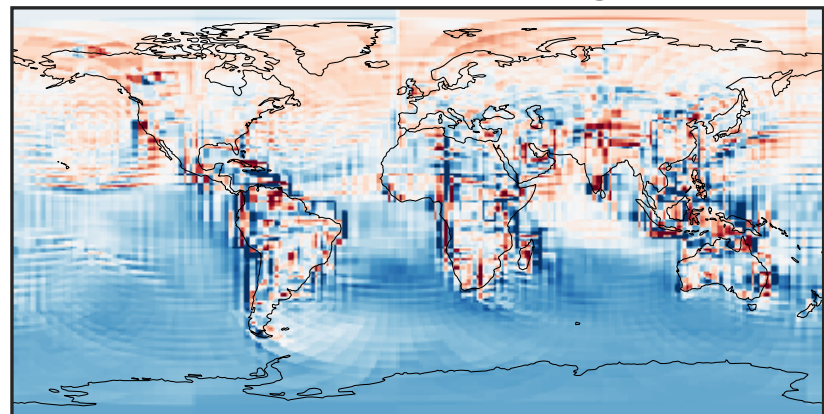
-0.008 0.000 0.008
ppb

Ratio (1x1.25)
Dev/Ref, Dynamic Range



0.117 0.558 1.000 4.774 8.548
unitless

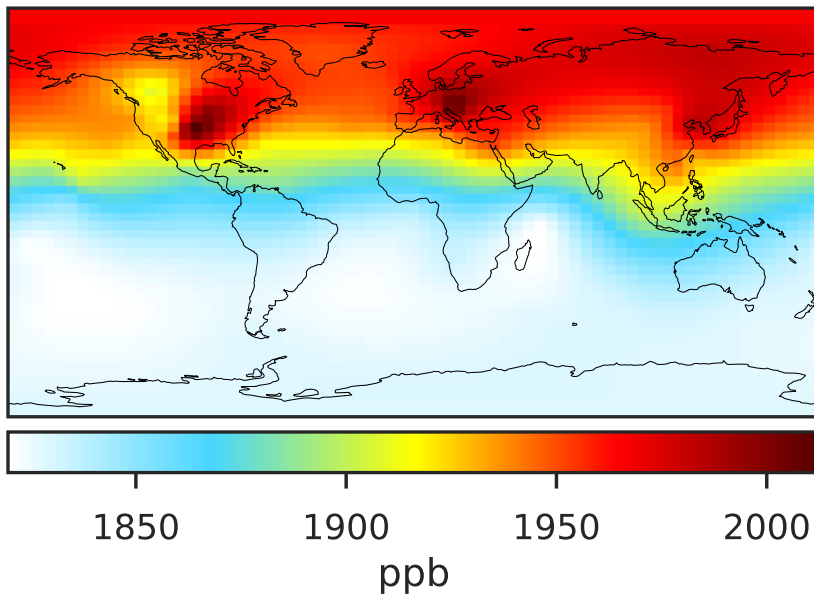
Ratio (1x1.25)
Dev/Ref, Fixed Range



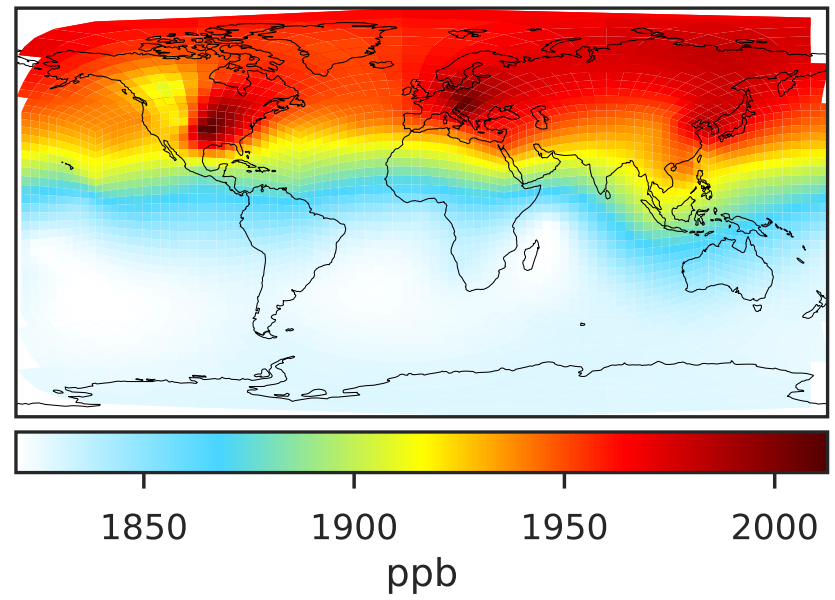
0.50 0.75 1.00 1.50 2.00
unitless

SpeciesConcVV_CH4 (Oct2019)

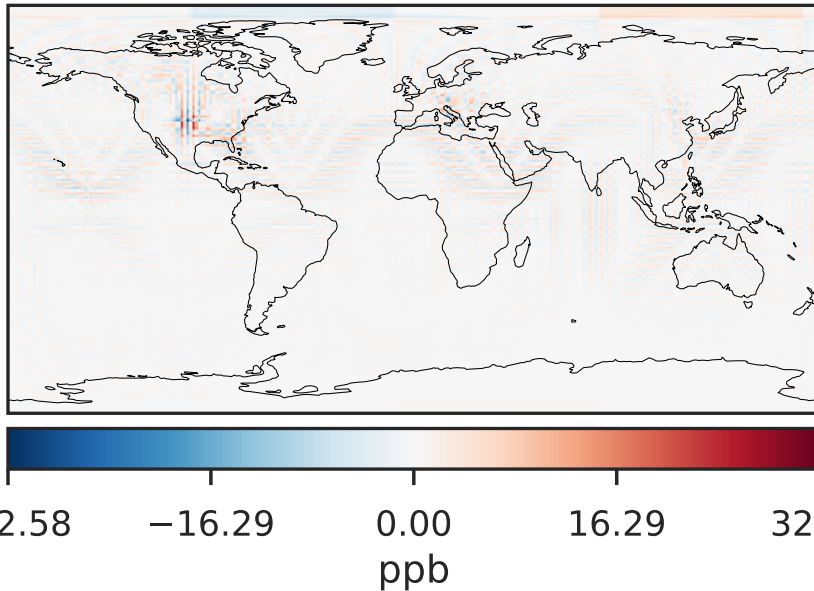
GCC_14.2.0 (Ref)
4.0x5.0



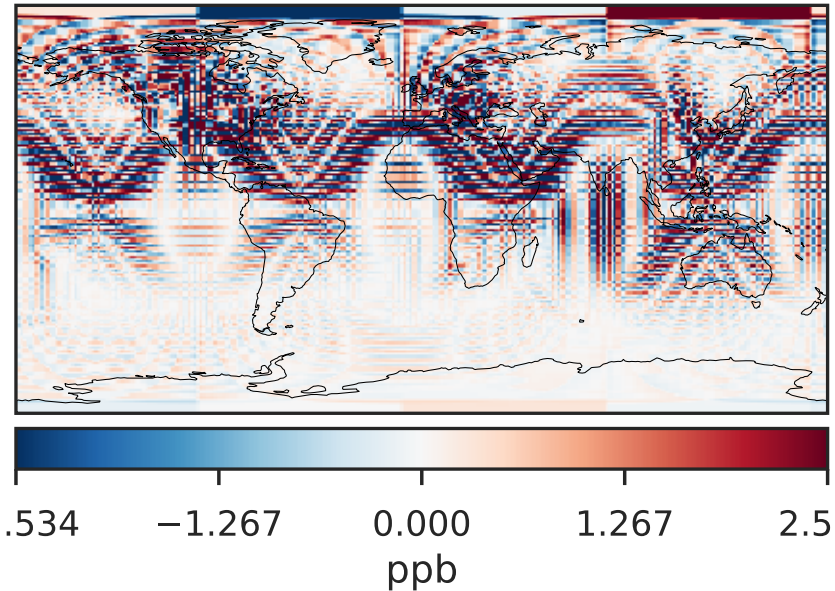
GCHP_14.2.0 (Dev)
c24



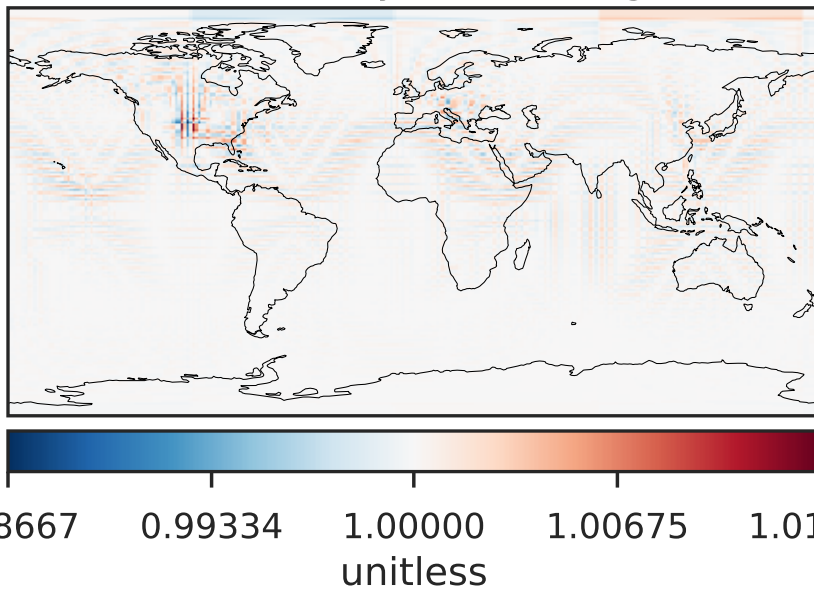
Difference (1x1.25)
Dev - Ref, Dynamic Range



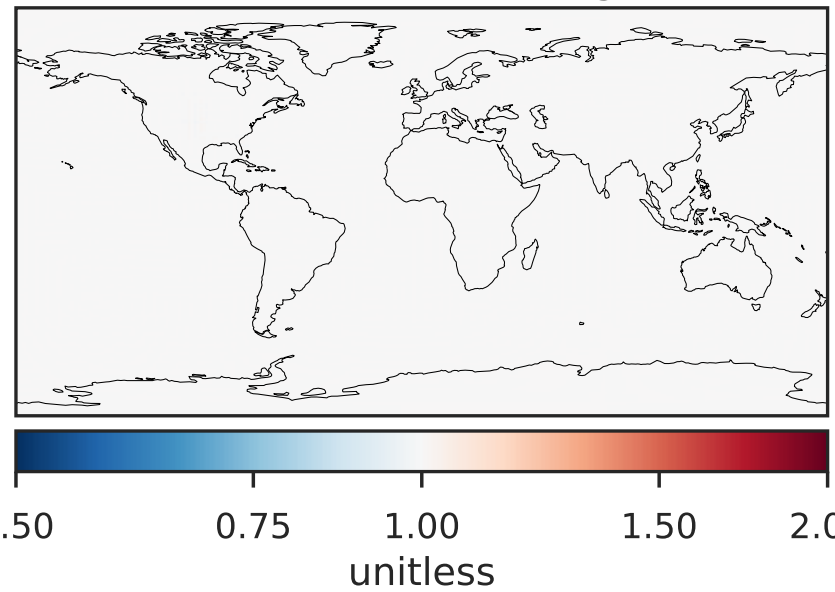
Difference (1x1.25)
Dev - Ref, Restricted Range [5%,95%]



Ratio (1x1.25)
Dev/Ref, Dynamic Range

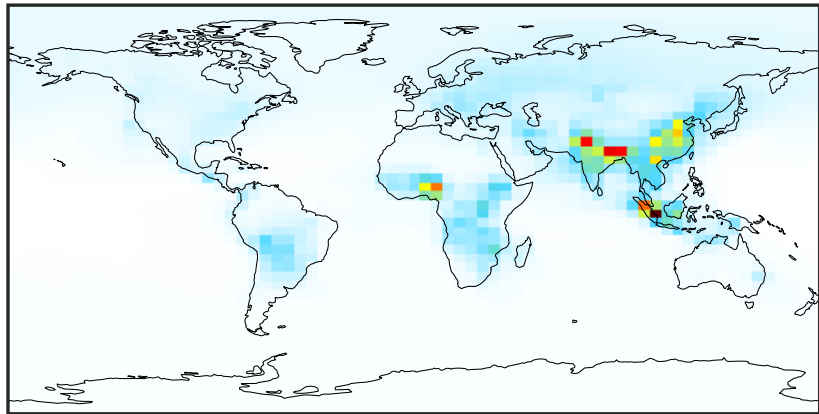


Ratio (1x1.25)
Dev/Ref, Fixed Range



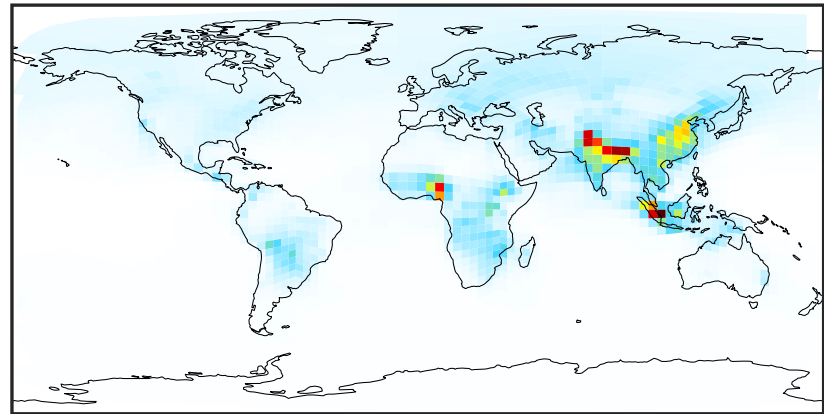
SpeciesConcVV_C2H2 (Oct2019)

GCC_14.2.0 (Ref)
4.0x5.0



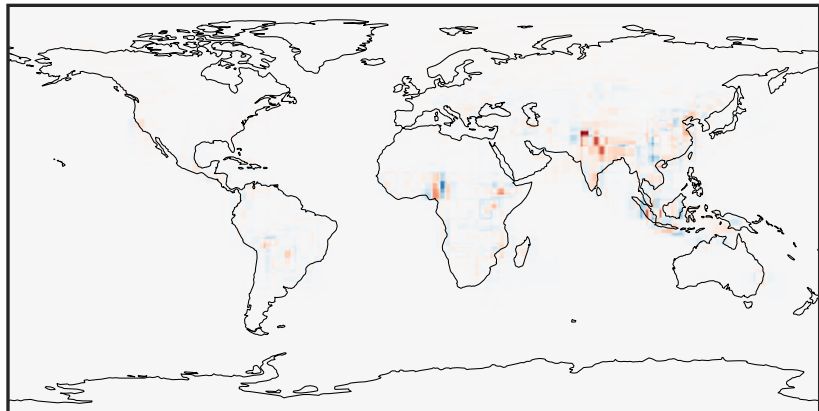
0.003 0.546 1.092 1.638 2.187
ppb

GCHP_14.2.0 (Dev)
c24



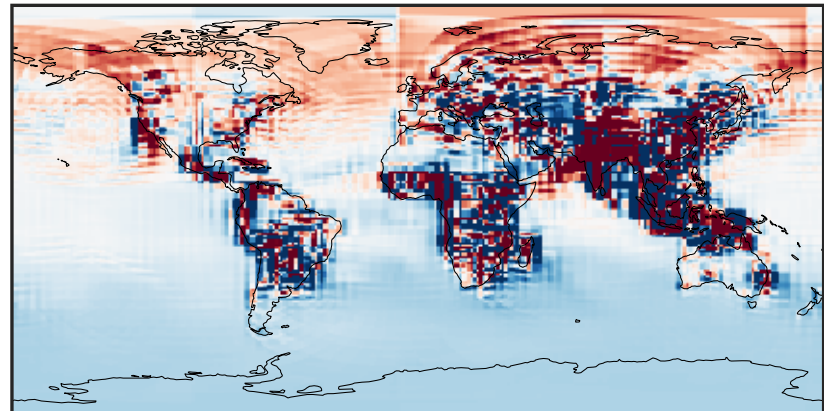
0.003 0.546 1.092 1.638 2.187
ppb

Difference (1x1.25)
Dev - Ref, Dynamic Range



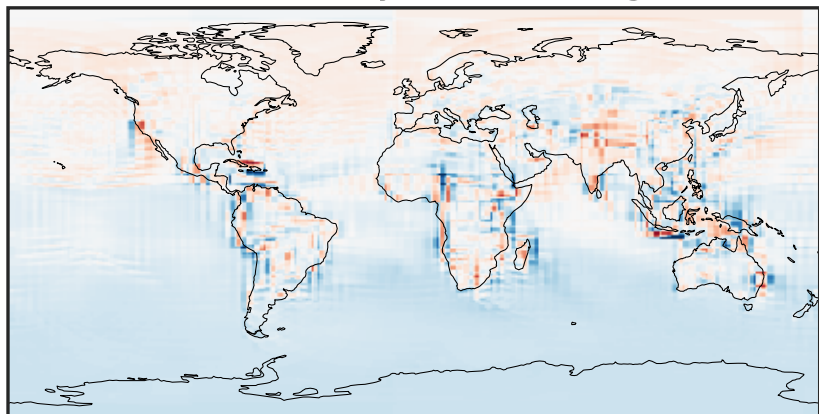
-1.193 -0.596 0.000 0.596 1.193
ppb

Difference (1x1.25)
Dev - Ref, Restricted Range [5%,95%]



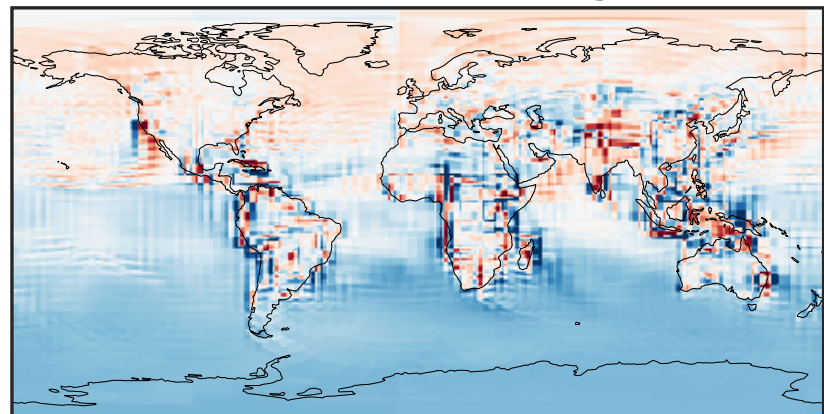
-0.015 0.000 0.015
ppb

Ratio (1x1.25)
Dev/Ref, Dynamic Range



0.237 0.618 1.000 2.611 4.222
unitless

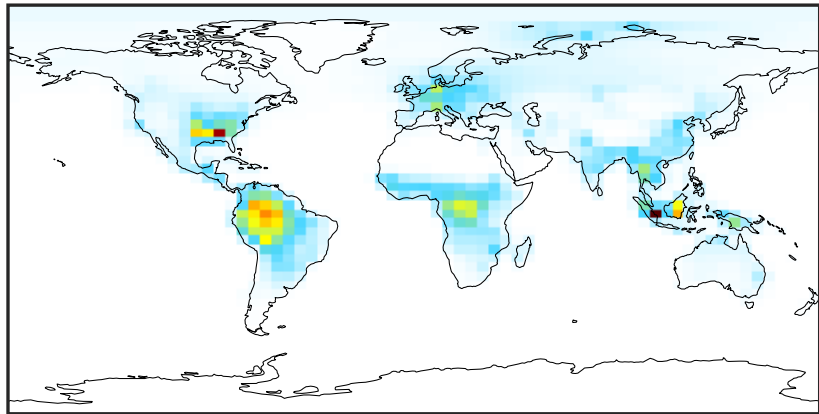
Ratio (1x1.25)
Dev/Ref, Fixed Range



0.50 0.75 1.00 1.50 2.00
unitless

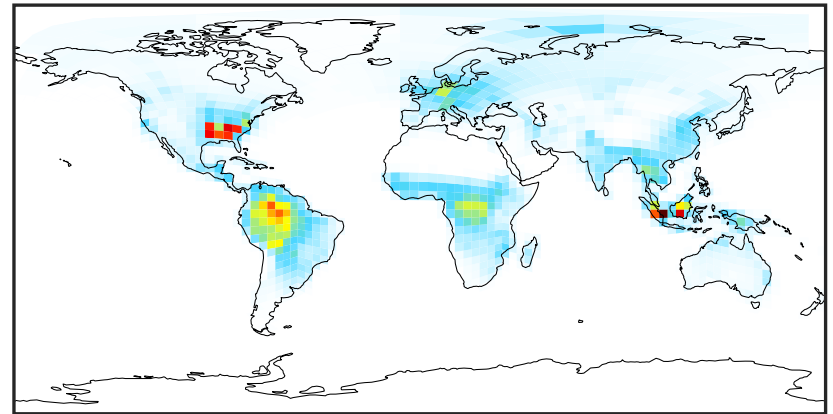
SpeciesConcVV_C2H4 (Oct2019)

GCC_14.2.0 (Ref)
4.0x5.0



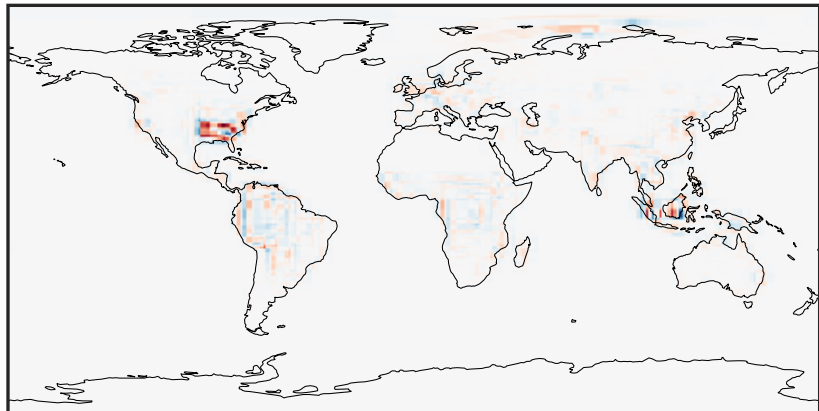
0.000 1.408 2.817 4.225 5.633
ppb

GCHP_14.2.0 (Dev)
c24



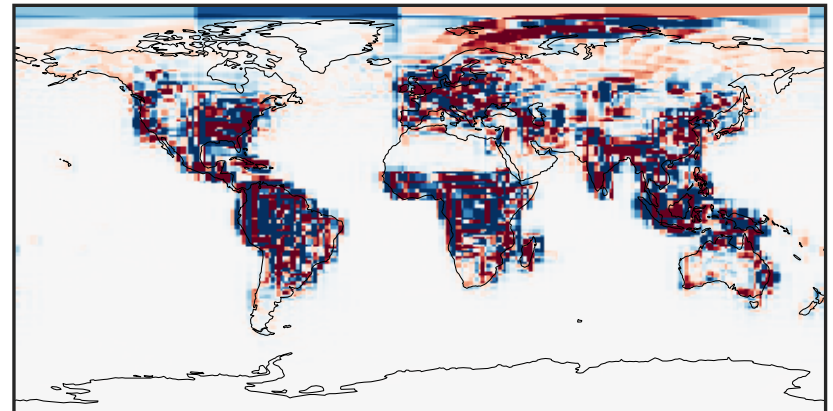
0.000 1.408 2.817 4.225 5.633
ppb

Difference (1x1.25)
Dev - Ref, Dynamic Range



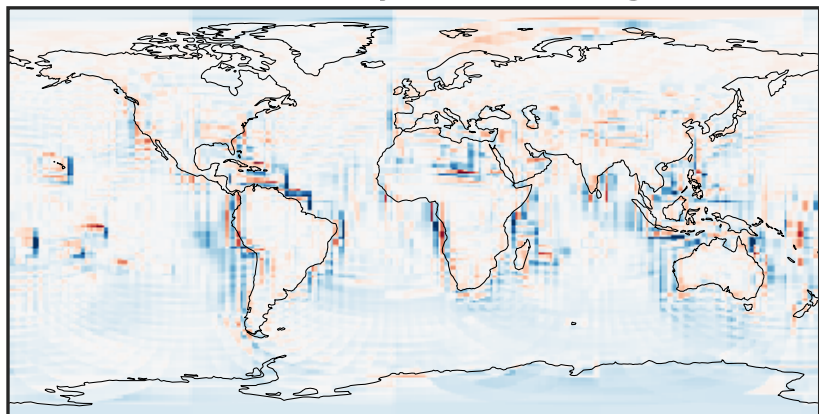
-2.715 -1.357 0.000 1.357 2.715
ppb

Difference (1x1.25)
Dev - Ref, Restricted Range [5%,95%]



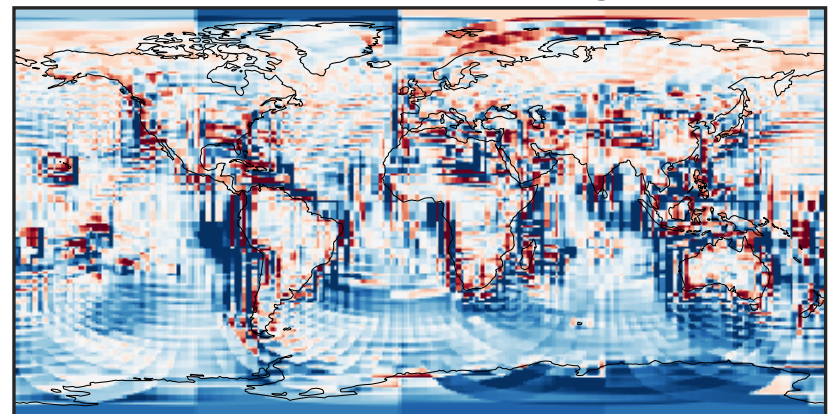
-0.0795 -0.0398 0.0000 0.0398 0.0795
ppb

Ratio (1x1.25)
Dev/Ref, Dynamic Range



1e-01 1 10
unitless

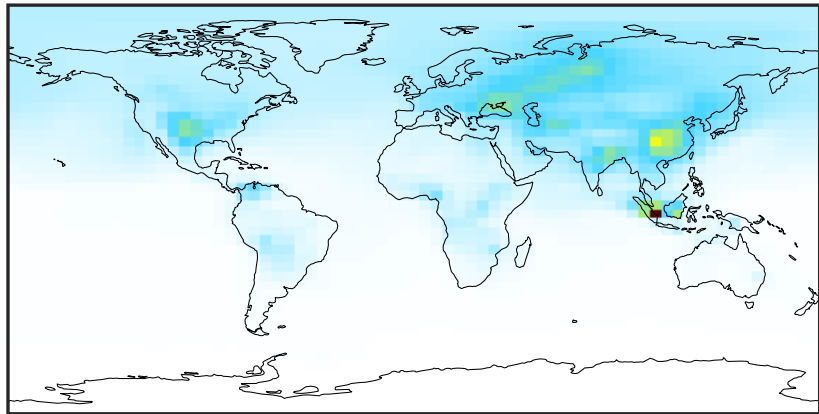
Ratio (1x1.25)
Dev/Ref, Fixed Range



0.50 0.75 1.00 1.50 2.00
unitless

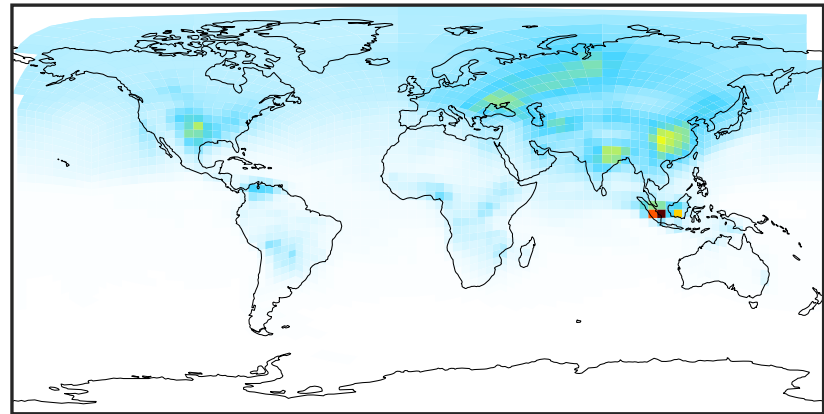
SpeciesConcVV_C2H6 (Oct2019)

GCC_14.2.0 (Ref)
4.0x5.0



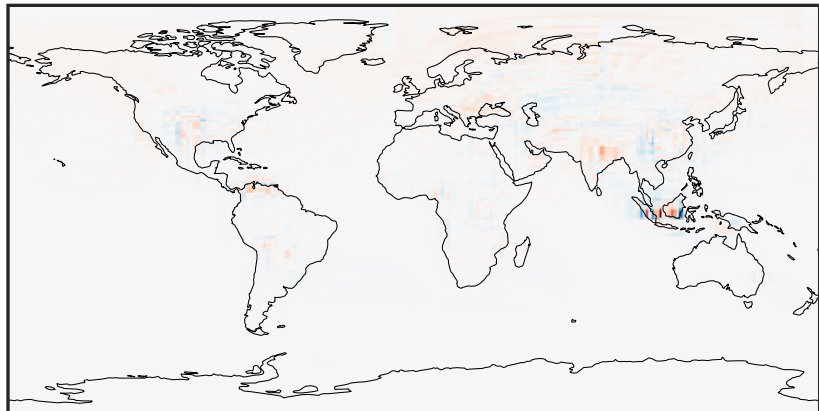
0.077 2.150 4.301 6.451 8.679
ppb

GCHP_14.2.0 (Dev)
c24



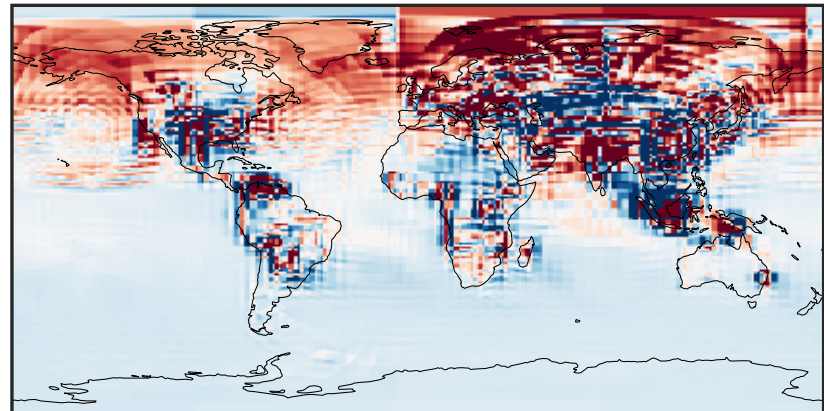
0.077 2.150 4.301 6.451 8.679
ppb

Difference (1x1.25)
Dev - Ref, Dynamic Range



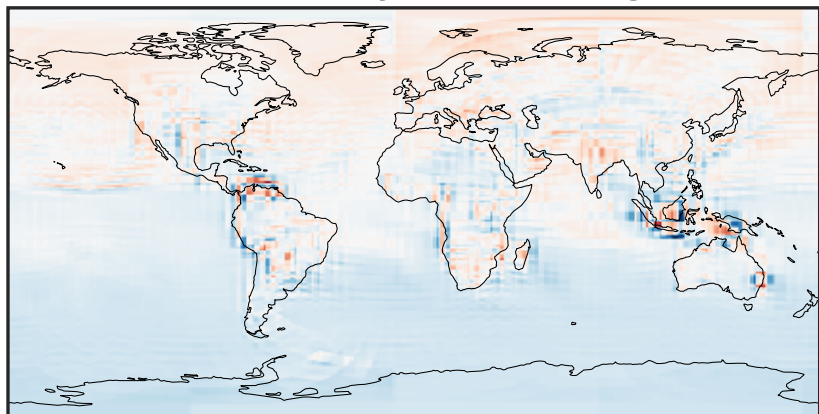
-3.430 -1.715 0.000 1.715 3.430
ppb

Difference (1x1.25)
Dev - Ref, Restricted Range [5%,95%]



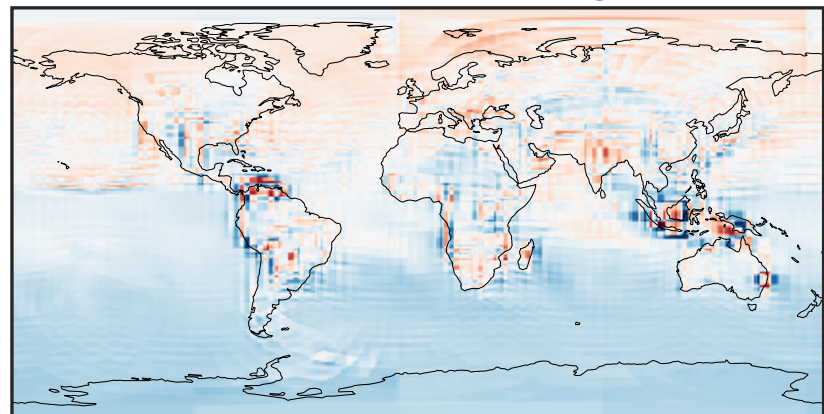
-0.1244 -0.0622 0.0000 0.0622 0.1244
ppb

Ratio (1x1.25)
Dev/Ref, Dynamic Range



0.365 0.683 1.000 1.870 2.740
unitless

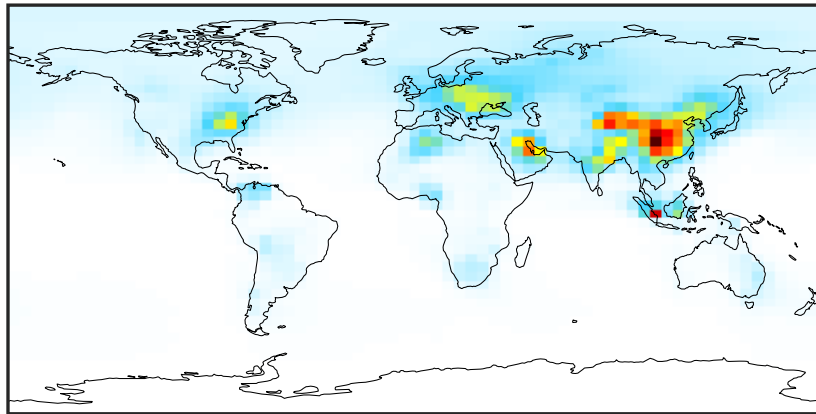
Ratio (1x1.25)
Dev/Ref, Fixed Range



0.50 0.75 1.00 1.50 2.00
unitless

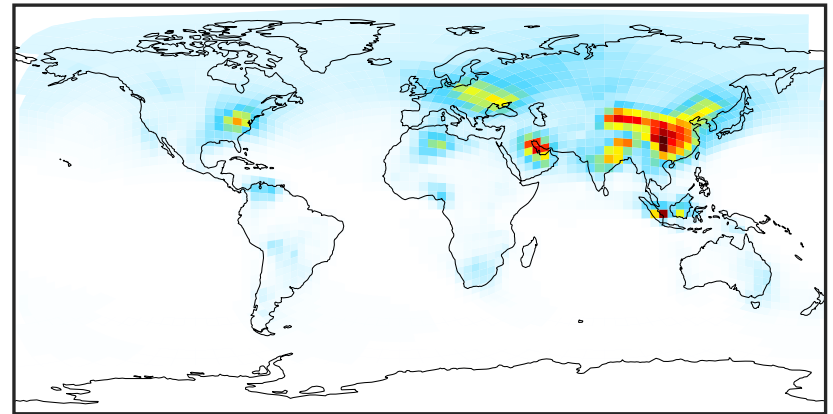
SpeciesConcVV_C3H8 (Oct2019)

GCC_14.2.0 (Ref)
4.0x5.0



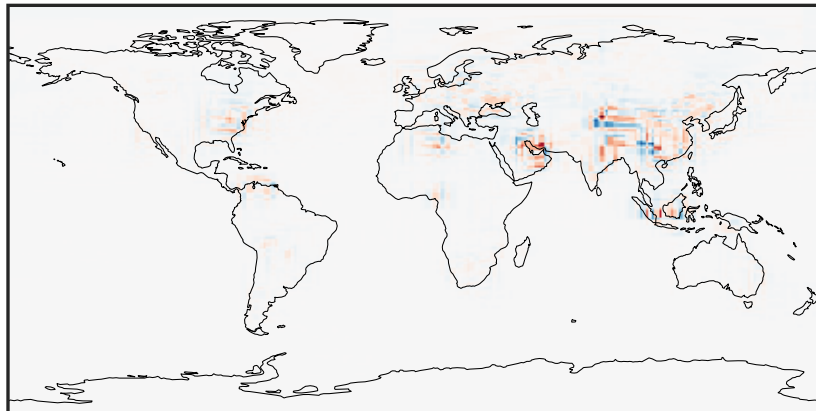
0.001 0.904 1.808 2.712 3.617
ppb

GCHP_14.2.0 (Dev)
c24



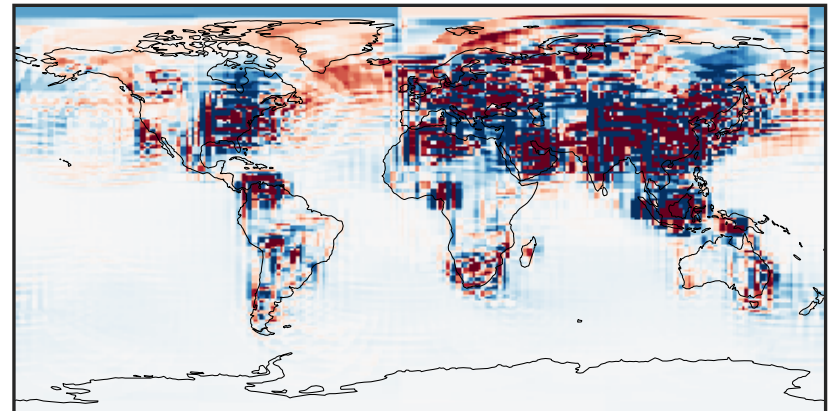
0.001 0.904 1.808 2.712 3.617
ppb

Difference (1x1.25)
Dev - Ref, Dynamic Range



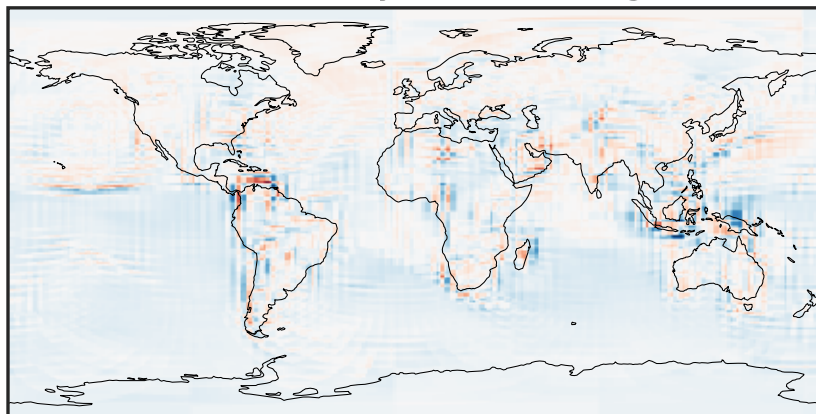
-1.487 -0.743 0.000 0.743 1.487
ppb

Difference (1x1.25)
Dev - Ref, Restricted Range [5%,95%]



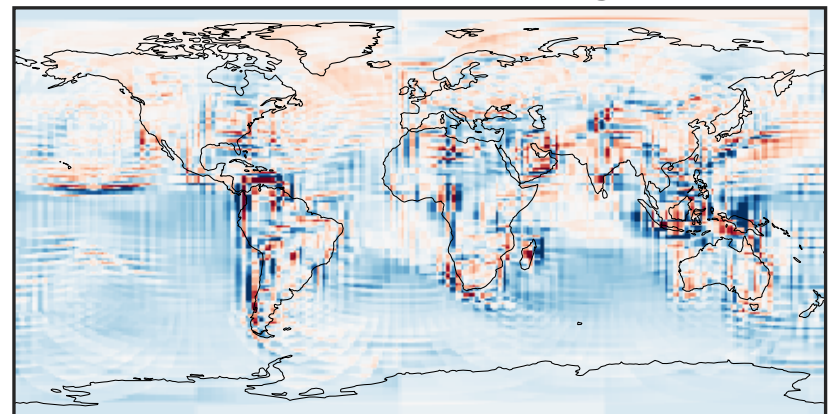
-0.025 0.000 0.025
ppb

Ratio (1x1.25)
Dev/Ref, Dynamic Range



0.172 0.586 1.000 3.412 5.824
unitless

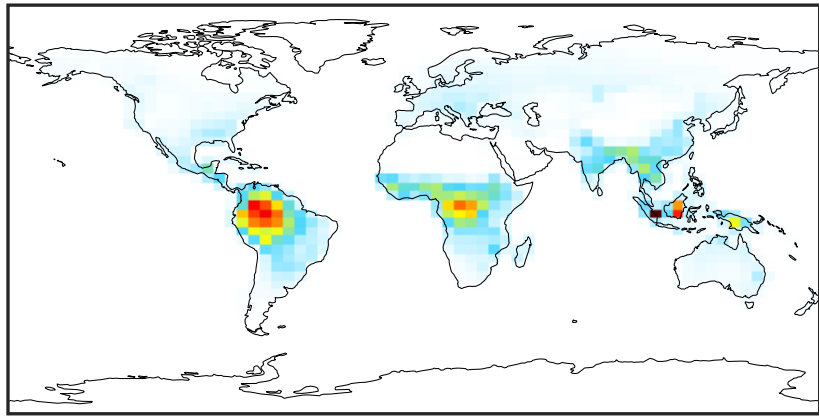
Ratio (1x1.25)
Dev/Ref, Fixed Range



0.50 0.75 1.00 1.50 2.00
unitless

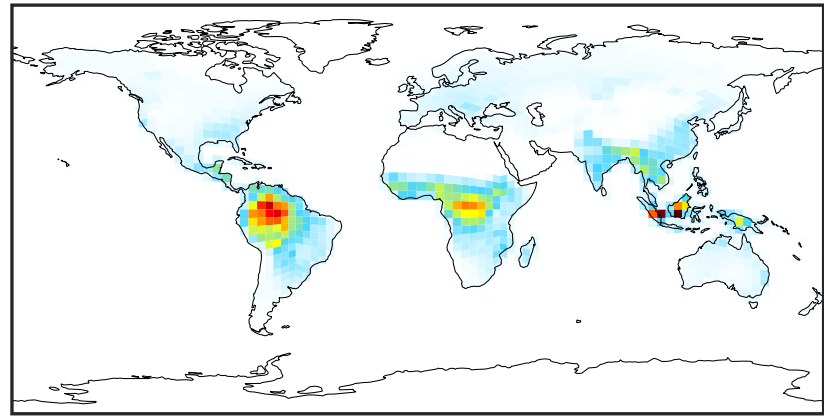
SpeciesConcVV_PRPE (Oct2019)

GCC_14.2.0 (Ref)
4.0x5.0



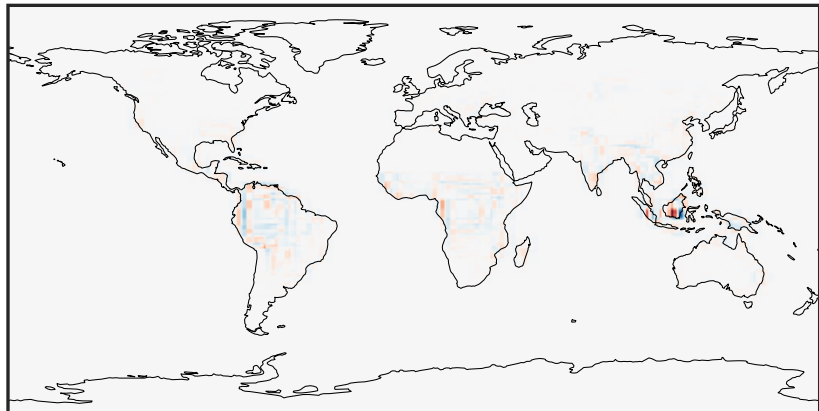
0.000 0.691 1.382 2.074 2.765
ppb

GCHP_14.2.0 (Dev)
c24



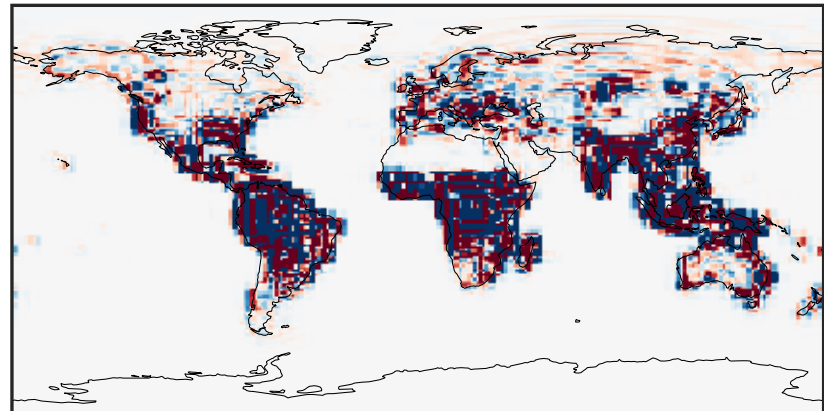
0.000 0.691 1.382 2.074 2.765
ppb

Difference (1x1.25)
Dev - Ref, Dynamic Range



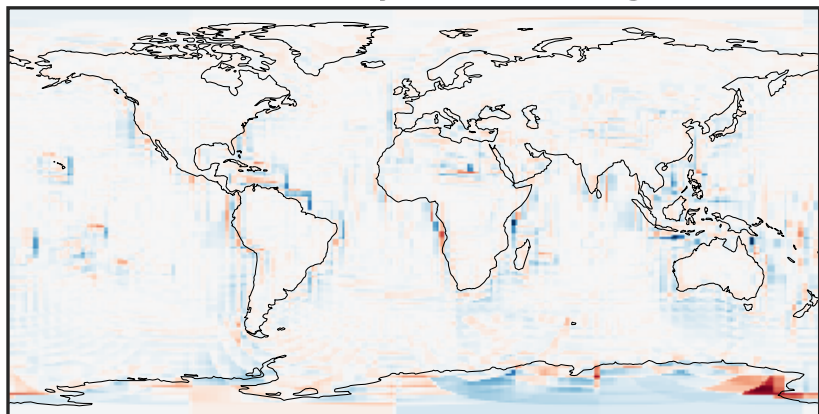
-2.050 -1.025 0.000 1.025 2.050
ppb

Difference (1x1.25)
Dev - Ref, Restricted Range [5%,95%]



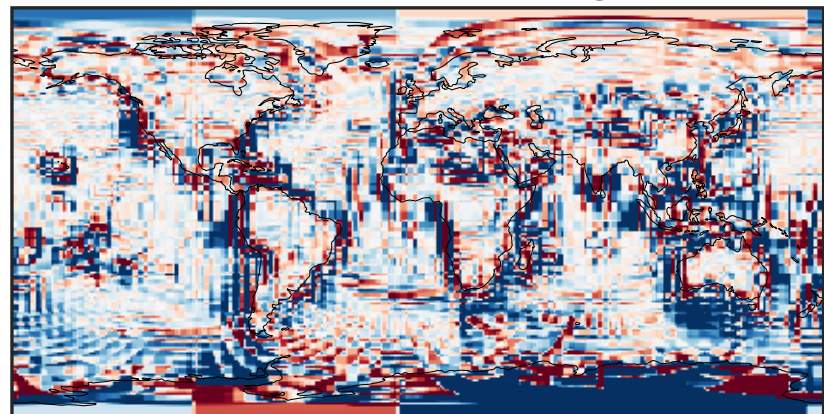
-0.015 0.000 0.015
ppb

Ratio (1x1.25)
Dev/Ref, Dynamic Range



unitless

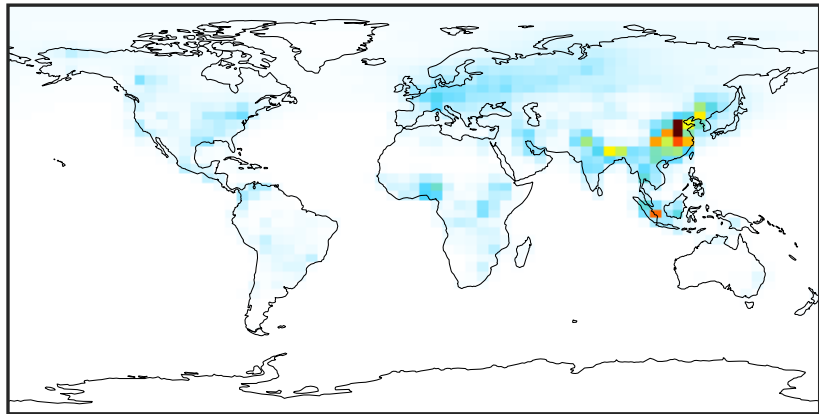
Ratio (1x1.25)
Dev/Ref, Fixed Range



0.50 0.75 1.00 1.50 2.00
unitless

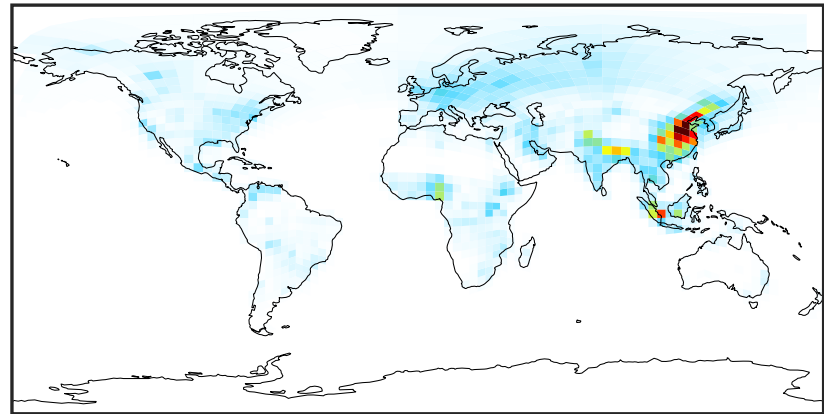
SpeciesConcVV_TOLU (Oct2019)

GCC_14.2.0 (Ref)
4.0x5.0



0.0000 0.2157 0.4314 0.6470 0.8627
ppb

GCHP_14.2.0 (Dev)
c24



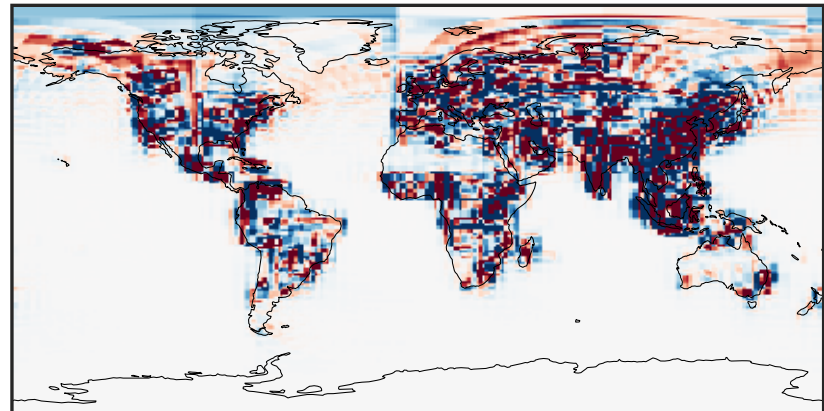
0.0000 0.2157 0.4314 0.6470 0.8627
ppb

Difference (1x1.25)
Dev - Ref, Dynamic Range



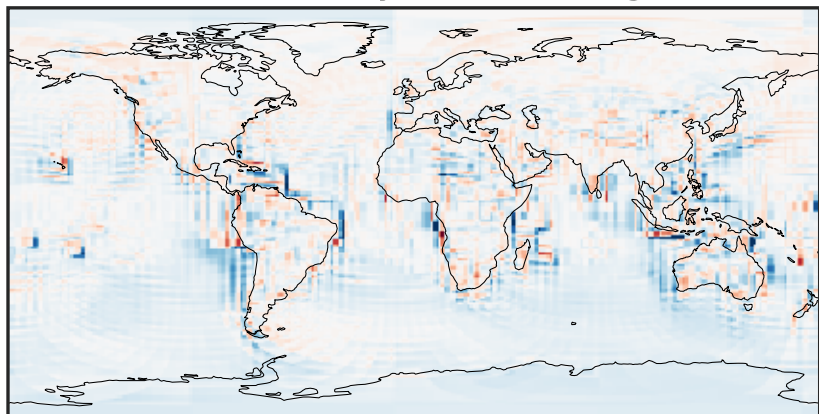
-0.448 -0.224 0.000 0.224 0.448
ppb

Difference (1x1.25)
Dev - Ref, Restricted Range [5%,95%]



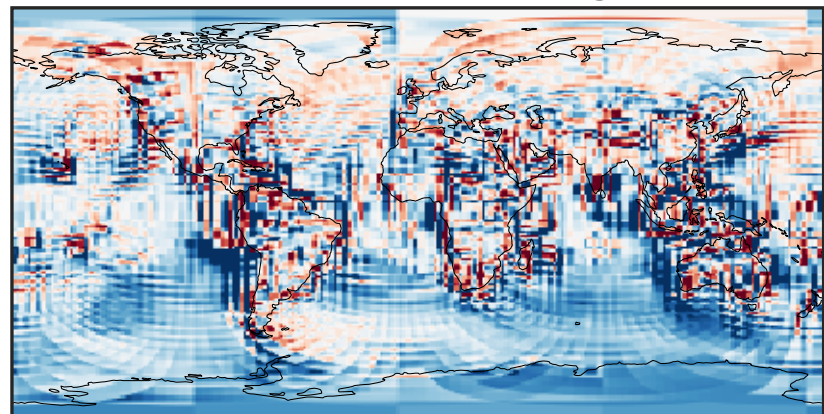
-0.005 0.000 0.005
ppb

Ratio (1x1.25)
Dev/Ref, Dynamic Range



1e-01 1 10
unitless

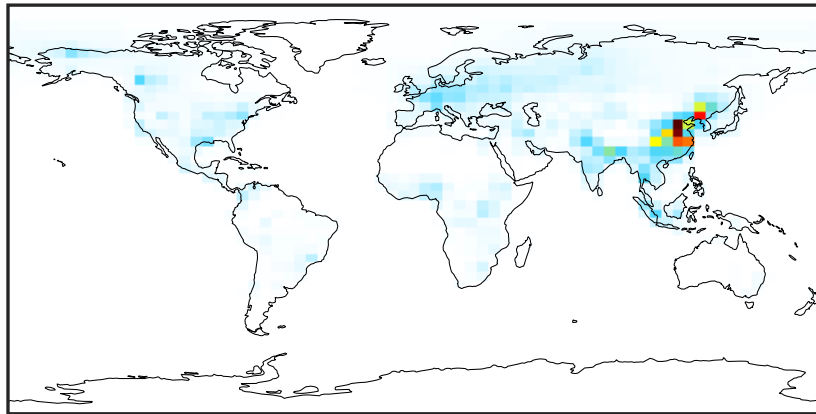
Ratio (1x1.25)
Dev/Ref, Fixed Range



0.50 0.75 1.00 1.50 2.00
unitless

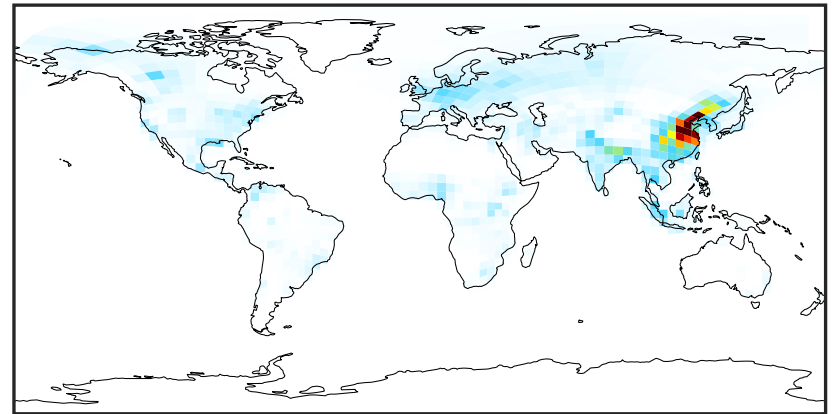
SpeciesConcVV_XYLE (Oct2019)

GCC_14.2.0 (Ref)
4.0x5.0



0.0000 0.1819 0.3637 0.5456 0.7274
ppb

GCHP_14.2.0 (Dev)
c24



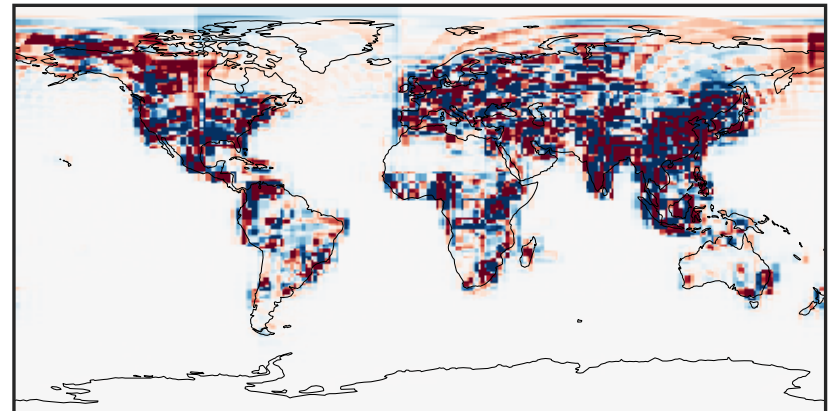
0.0000 0.1819 0.3637 0.5456 0.7274
ppb

Difference (1x1.25)
Dev - Ref, Dynamic Range



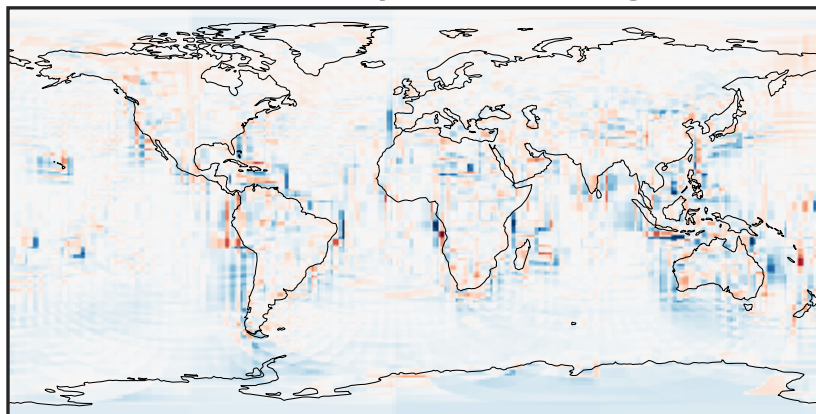
-0.626 -0.313 0.000 0.313 0.626
ppb

Difference (1x1.25)
Dev - Ref, Restricted Range [5%,95%]



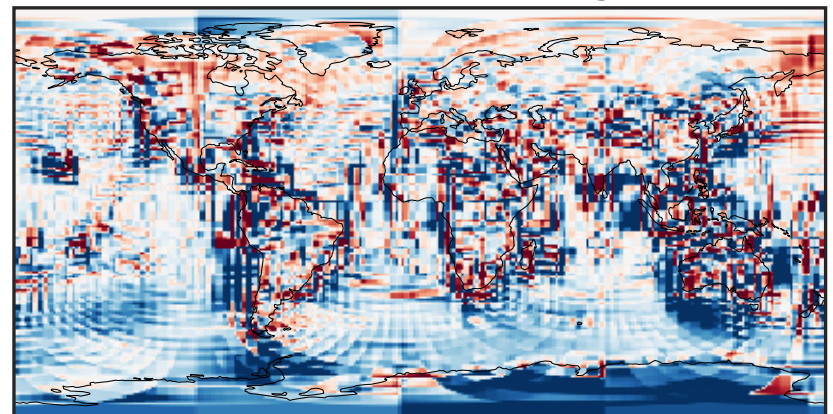
-0.003 0.000 0.003
ppb

Ratio (1x1.25)
Dev/Ref, Dynamic Range



1e-01 1 10
unitless

Ratio (1x1.25)
Dev/Ref, Fixed Range



0.50 0.75 1.00 1.50 2.00
unitless