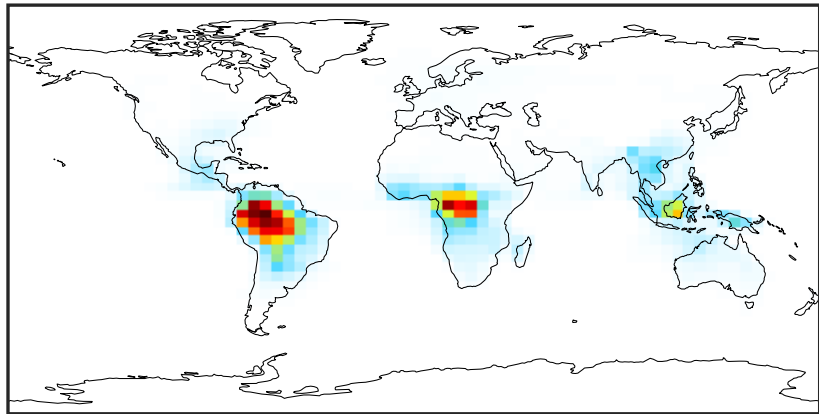


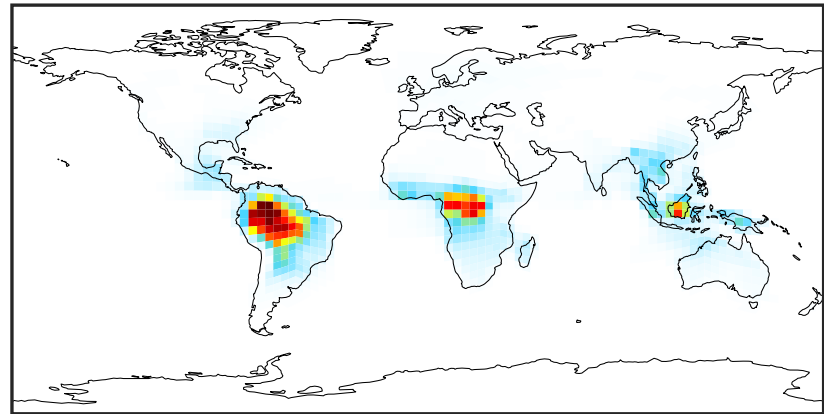
SpeciesConcVV_TSOA0 (Apr2019)

GCC_14.2.0 (Ref)
4.0x5.0



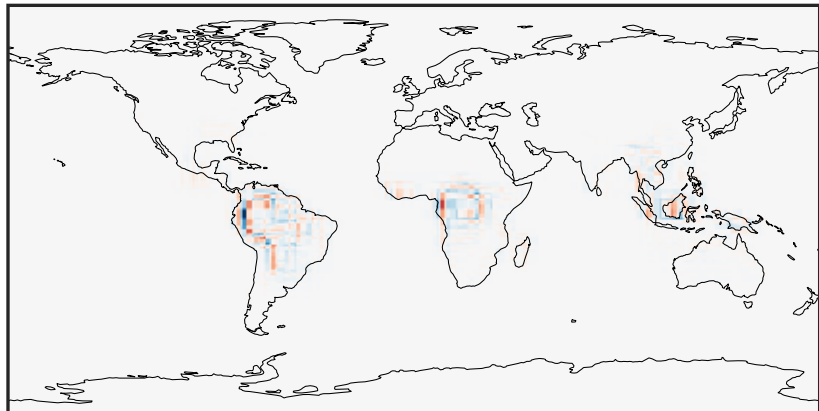
0.000 0.517 1.034 1.551 2.067
µg/m3

GCHP_14.2.0 (Dev)
c24



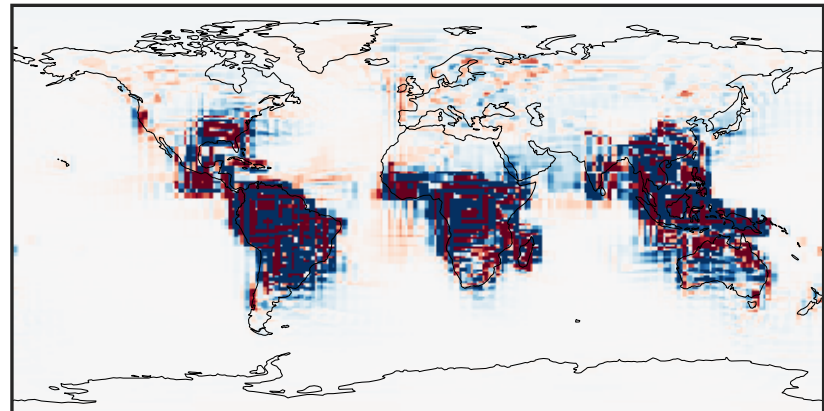
0.000 0.517 1.034 1.551 2.067
µg/m3

Difference (1x1.25)
Dev - Ref, Dynamic Range



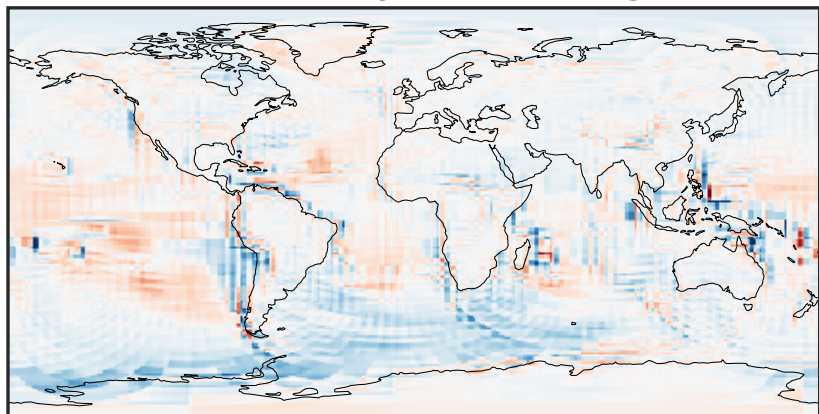
-0.973 -0.487 0.000 0.487 0.973
µg/m3

Difference (1x1.25)
Dev - Ref, Restricted Range [5%,95%]



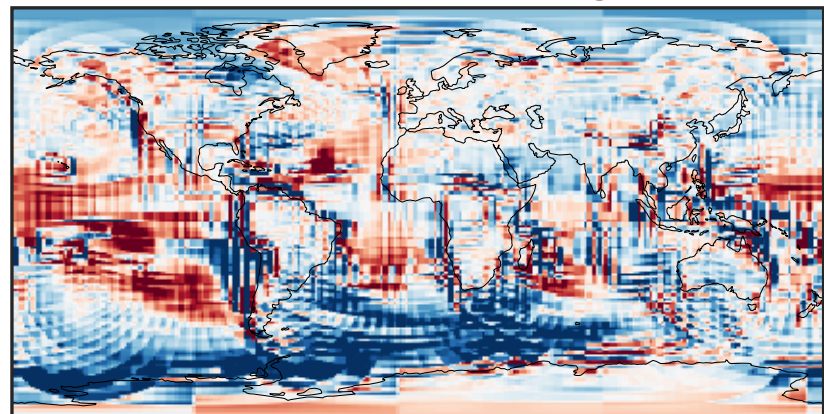
-0.005 0.000 0.005
µg/m3

Ratio (1x1.25)
Dev/Ref, Dynamic Range



1e-01 1 10
unitless

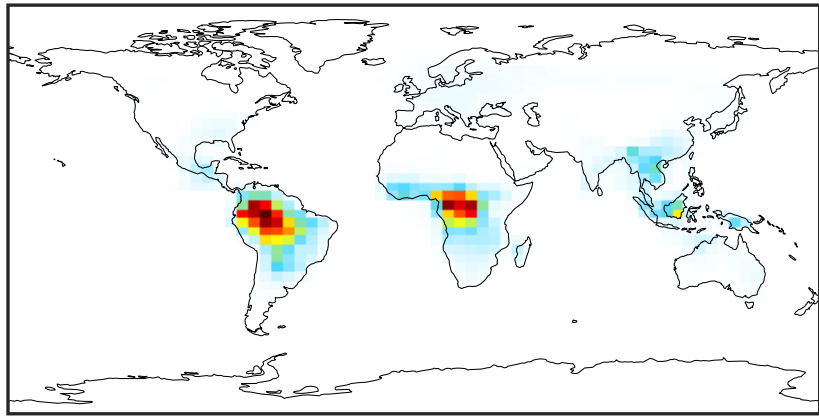
Ratio (1x1.25)
Dev/Ref, Fixed Range



0.50 0.75 1.00 1.50 2.00
unitless

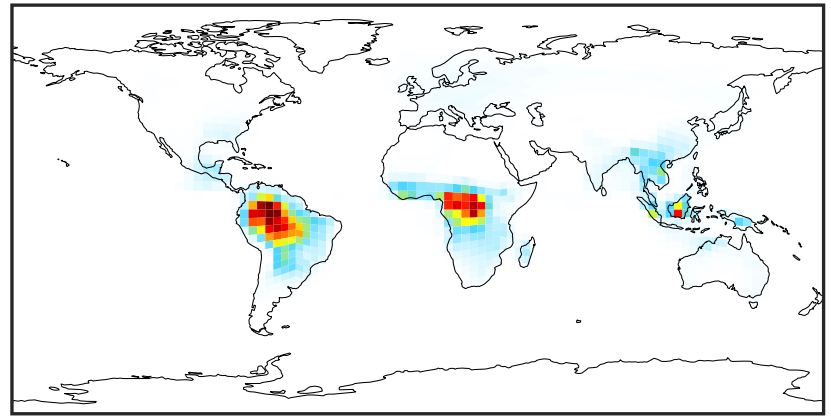
SpeciesConcVV_TSOA1 (Apr2019)

GCC_14.2.0 (Ref)
4.0x5.0



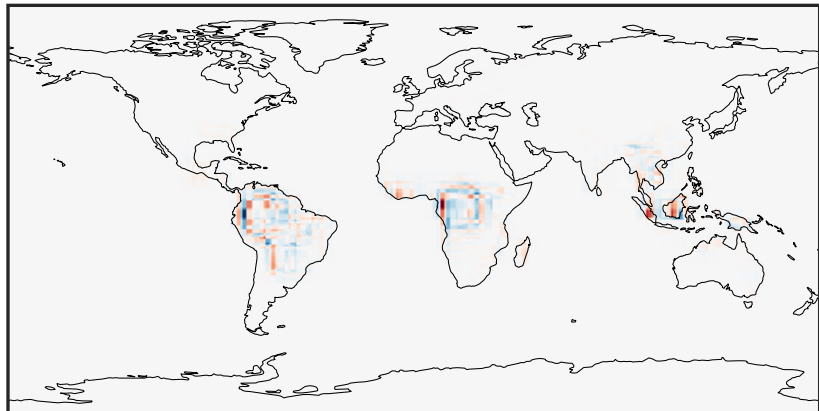
0.0000 0.2026 0.4052 0.6078 0.8104
 $\mu\text{g}/\text{m}^3$

GCHP_14.2.0 (Dev)
c24



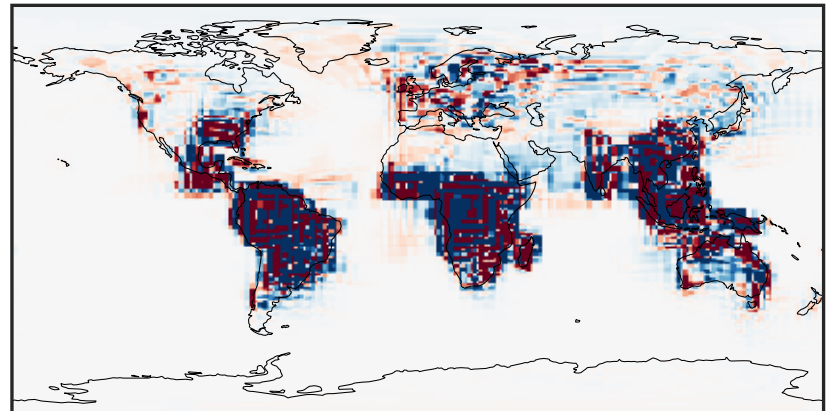
0.0000 0.2026 0.4052 0.6078 0.8104
 $\mu\text{g}/\text{m}^3$

Difference (1x1.25)
Dev - Ref, Dynamic Range



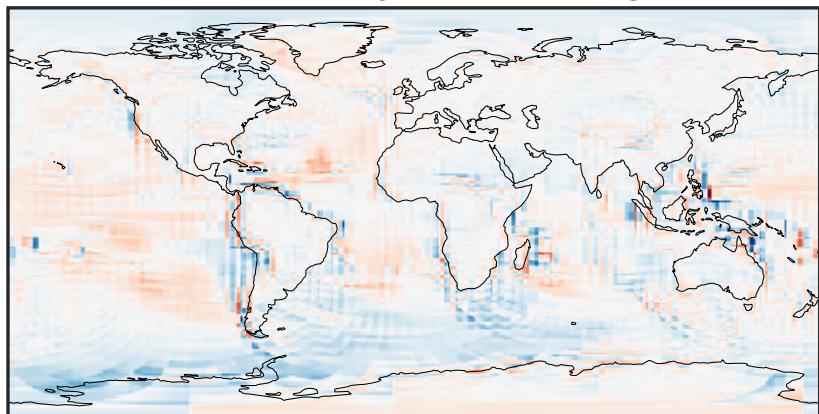
-0.364 -0.182 0.000 0.182 0.364
 $\mu\text{g}/\text{m}^3$

Difference (1x1.25)
Dev - Ref, Restricted Range [5%,95%]



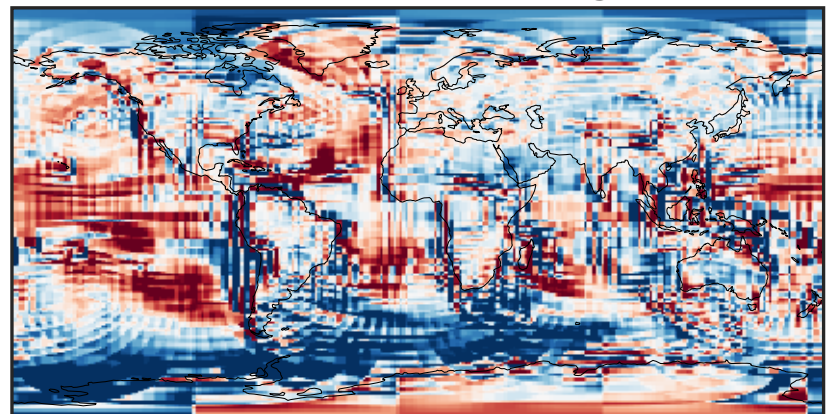
-0.0015 0.0000 0.0015
 $\mu\text{g}/\text{m}^3$

Ratio (1x1.25)
Dev/Ref, Dynamic Range



1e-01 1 10
unitless

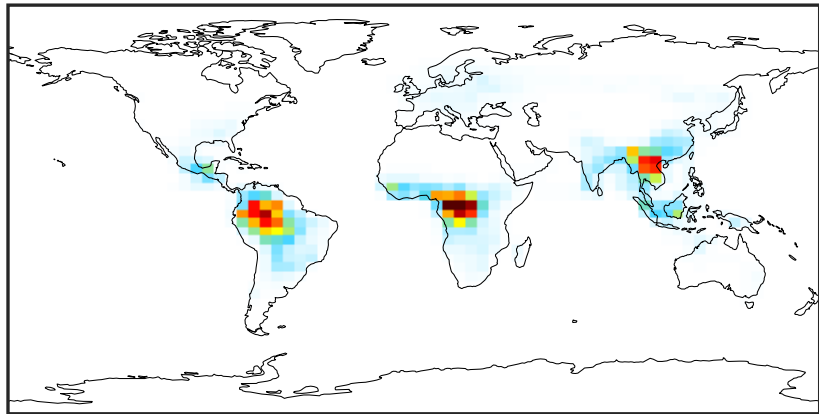
Ratio (1x1.25)
Dev/Ref, Fixed Range



0.50 0.75 1.00 1.50 2.00
unitless

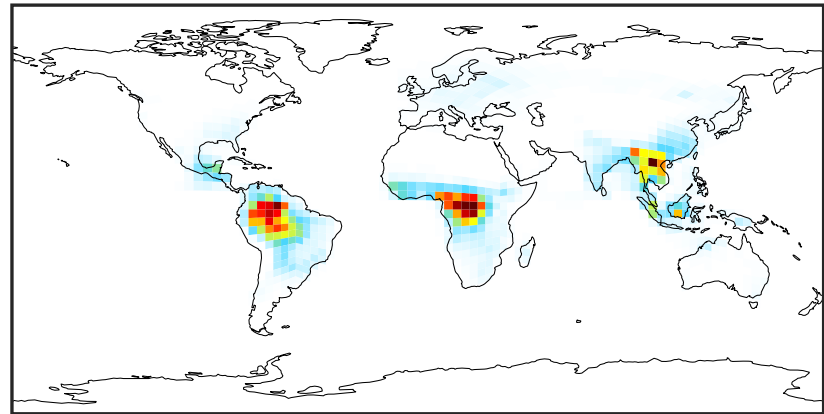
SpeciesConcVV_TSOA2 (Apr2019)

GCC_14.2.0 (Ref)
4.0x5.0



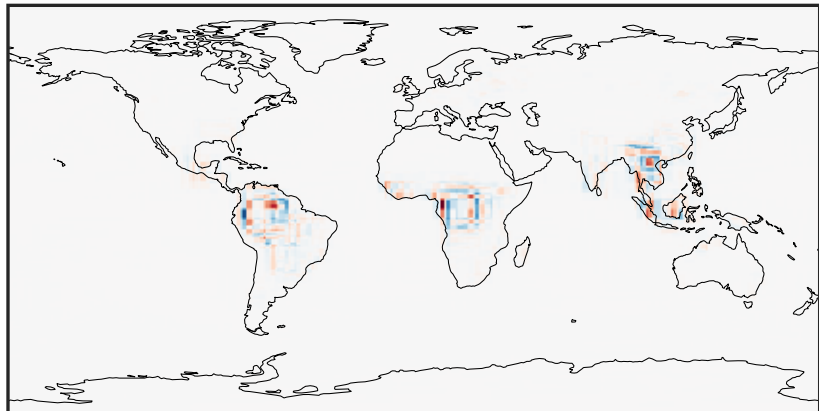
0.000 0.653 1.306 1.959 2.612
µg/m3

GCHP_14.2.0 (Dev)
c24



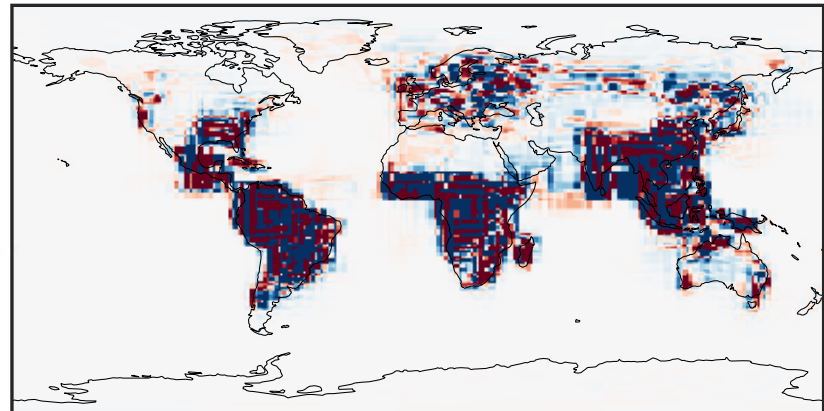
0.000 0.653 1.306 1.959 2.612
µg/m3

Difference (1x1.25)
Dev - Ref, Dynamic Range



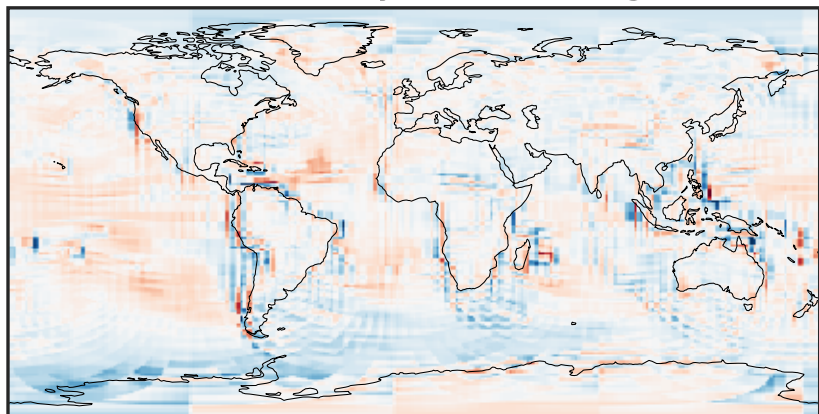
-1.227 -0.613 0.000 0.613 1.227
µg/m3

Difference (1x1.25)
Dev - Ref, Restricted Range [5%,95%]



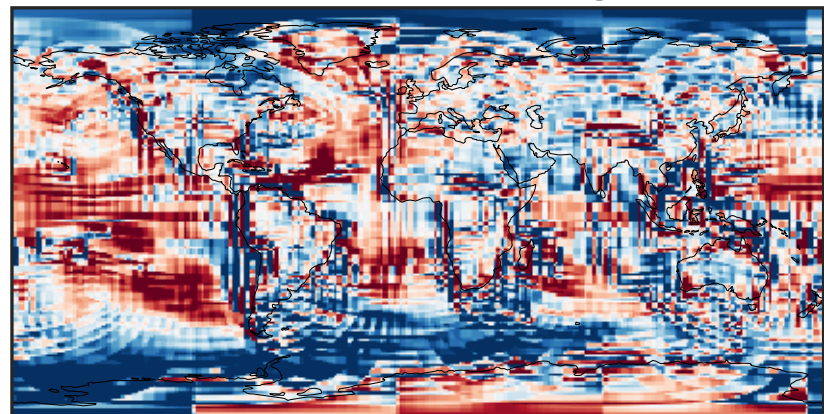
-0.005 0.000 0.005
µg/m3

Ratio (1x1.25)
Dev/Ref, Dynamic Range



1e-01 1 10
unitless

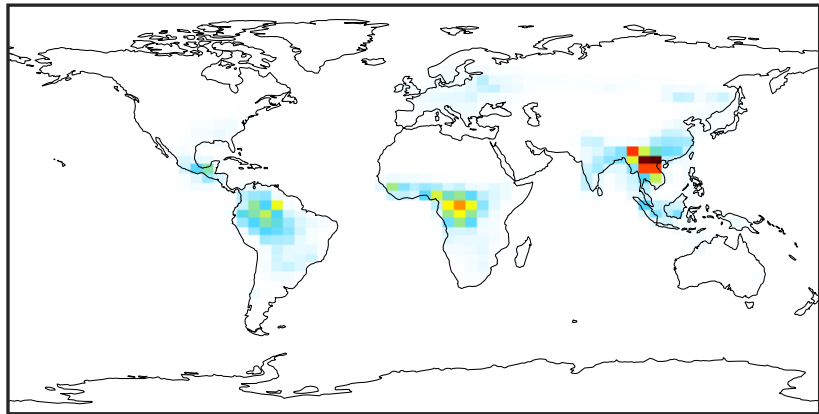
Ratio (1x1.25)
Dev/Ref, Fixed Range



0.50 0.75 1.00 1.50 2.00
unitless

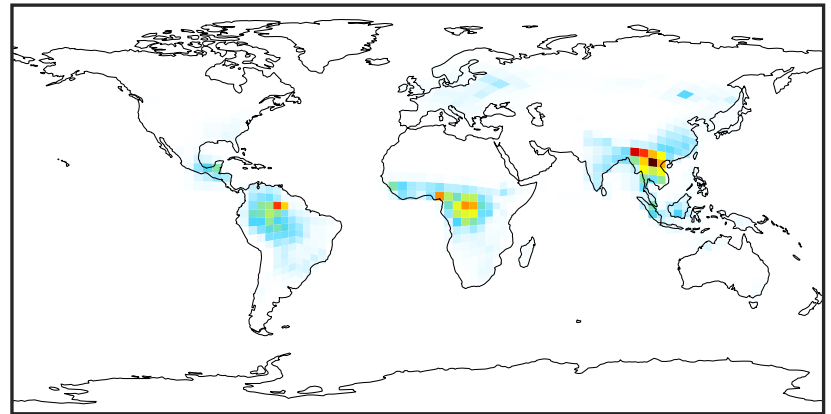
SpeciesConcVV_TSOA3 (Apr2019)

GCC_14.2.0 (Ref)
4.0x5.0



0.000 0.262 0.525 0.787 1.049
µg/m3

GCHP_14.2.0 (Dev)
c24



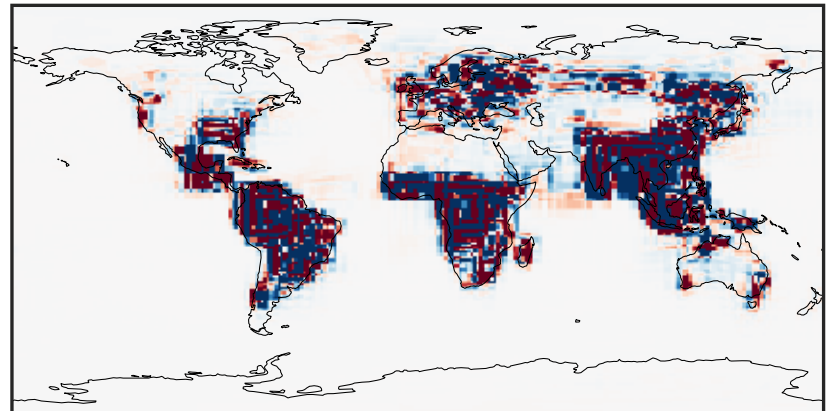
0.000 0.262 0.525 0.787 1.049
µg/m3

Difference (1x1.25)
Dev - Ref, Dynamic Range



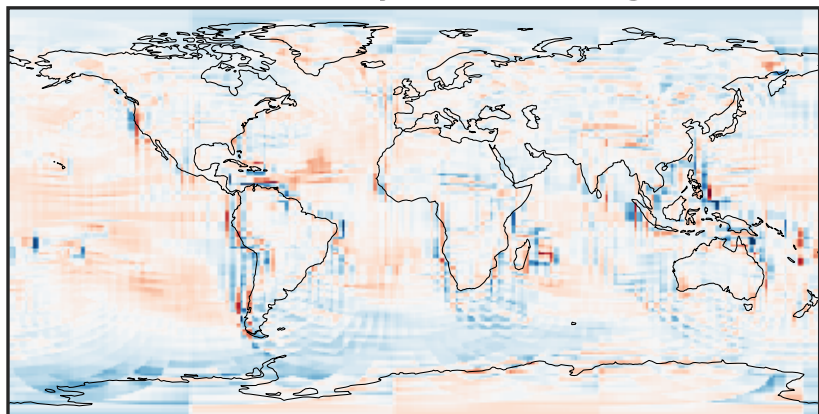
-0.837 -0.418 0.000 0.418 0.837
µg/m3

Difference (1x1.25)
Dev - Ref, Restricted Range [5%,95%]



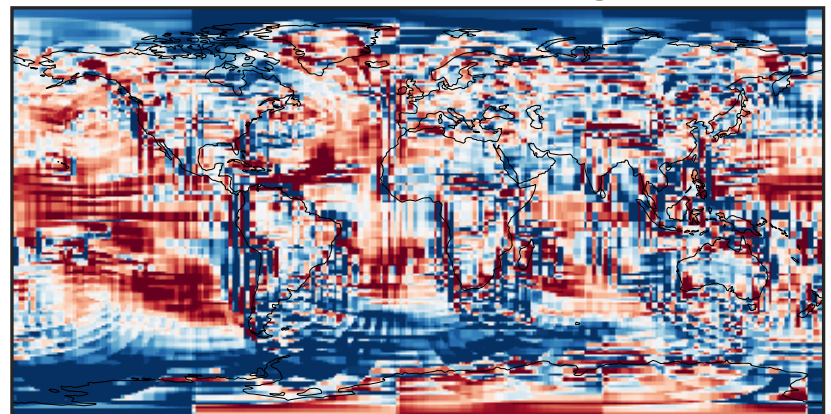
-0.0015 0.0000 0.0015
µg/m3

Ratio (1x1.25)
Dev/Ref, Dynamic Range



1e-01 1 10
unitless

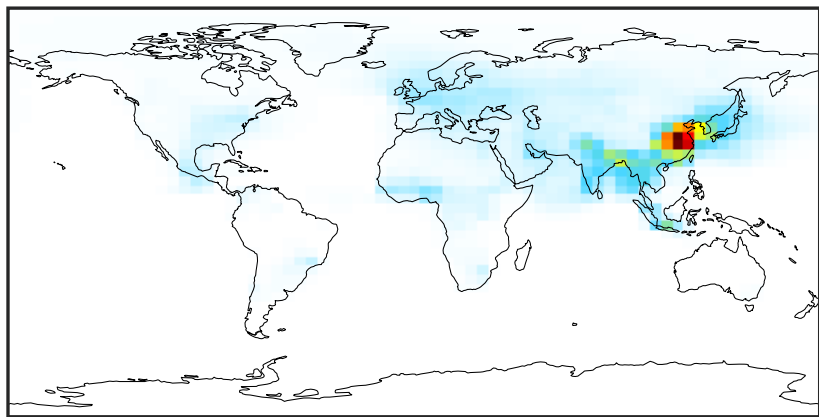
Ratio (1x1.25)
Dev/Ref, Fixed Range



0.50 0.75 1.00 1.50 2.00
unitless

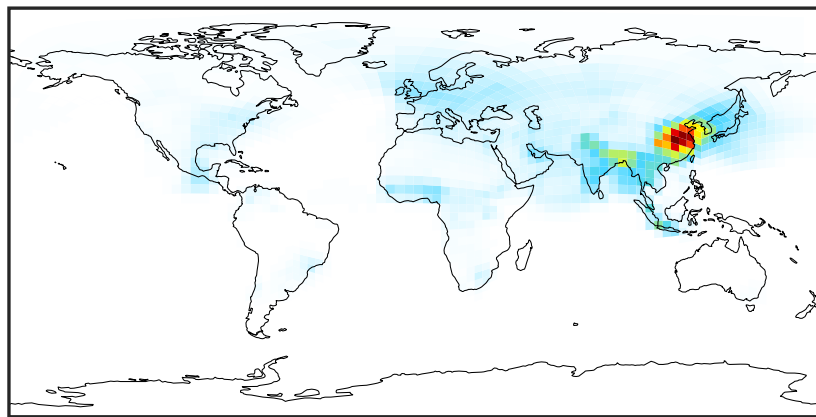
SpeciesConcVV_ASOA1 (Apr2019)

GCC_14.2.0 (Ref)
4.0x5.0



0.0000 0.0372 0.0744 0.1117 0.1489
µg/m3

GCHP_14.2.0 (Dev)
c24



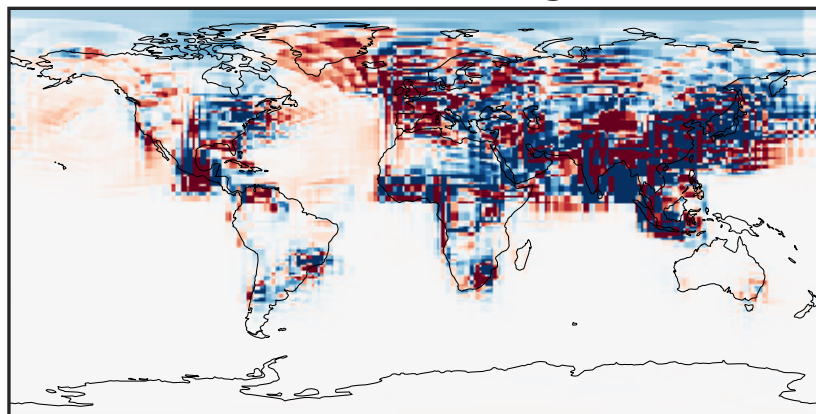
0.0000 0.0372 0.0744 0.1117 0.1489
µg/m3

Difference (1x1.25)
Dev - Ref, Dynamic Range



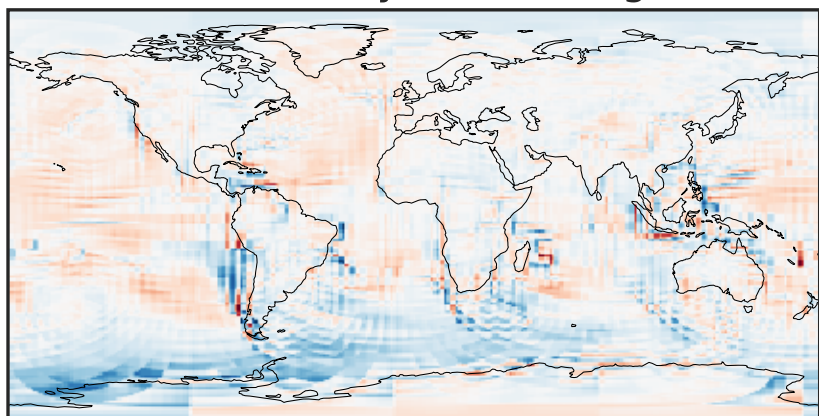
-0.0644 -0.0322 0.0000 0.0322 0.0644
µg/m3

Difference (1x1.25)
Dev - Ref, Restricted Range [5%,95%]



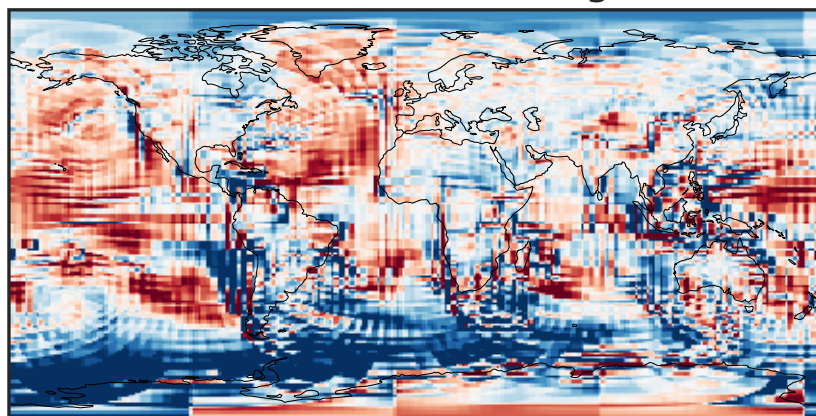
-0.0006 0.0000 0.0006
µg/m3

Ratio (1x1.25)
Dev/Ref, Dynamic Range



1e-01 1 10
unitless

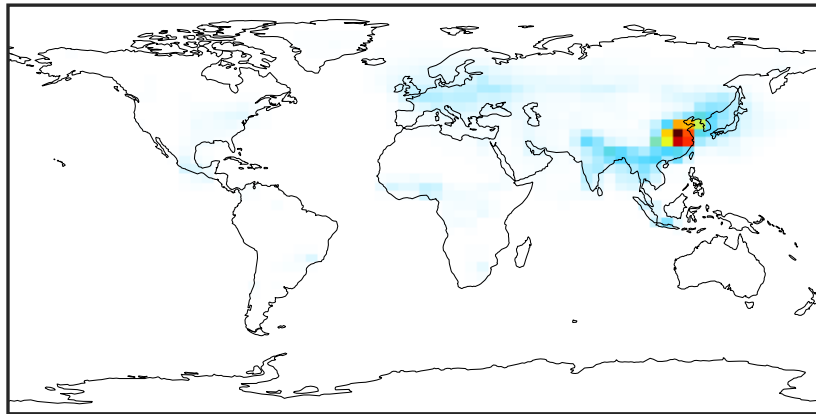
Ratio (1x1.25)
Dev/Ref, Fixed Range



0.50 0.75 1.00 1.50 2.00
unitless

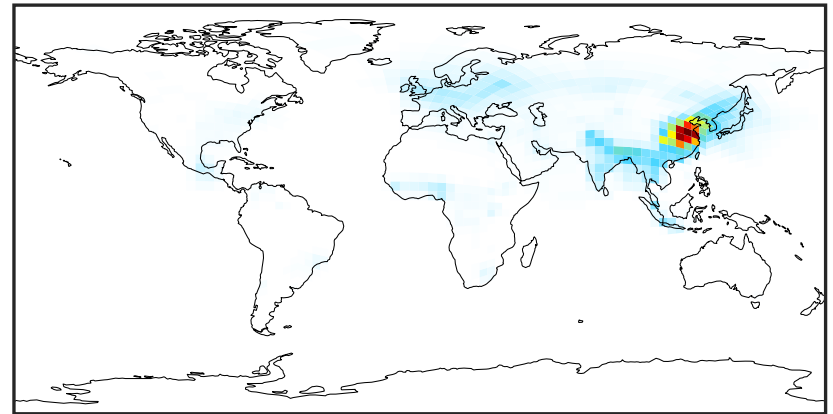
SpeciesConcVV_ASOA2 (Apr2019)

GCC_14.2.0 (Ref)
4.0x5.0



0.0000 0.0310 0.0619 0.0929 0.1239
µg/m3

GCHP_14.2.0 (Dev)
c24



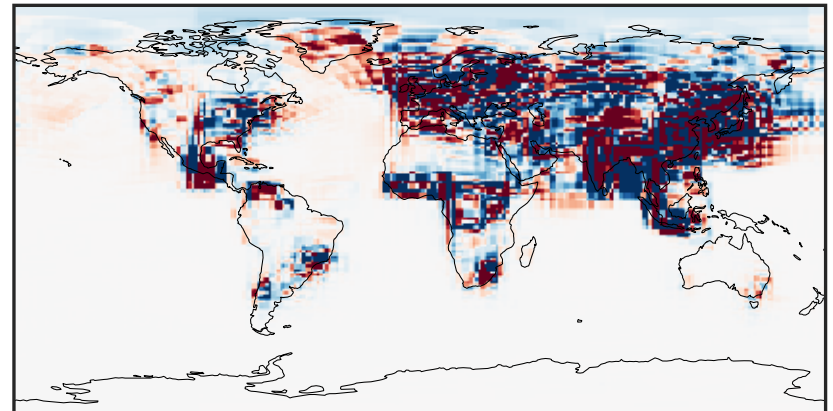
0.0000 0.0310 0.0619 0.0929 0.1239
µg/m3

Difference (1x1.25)
Dev - Ref, Dynamic Range



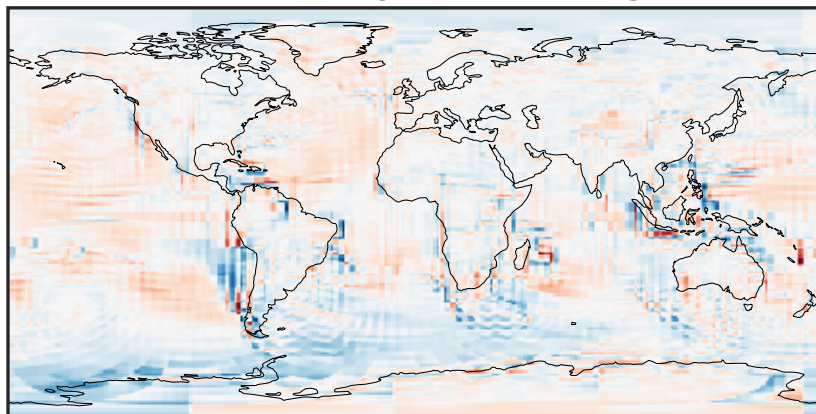
-0.0589 -0.0294 0.0000 0.0294 0.0589
µg/m3

Difference (1x1.25)
Dev - Ref, Restricted Range [5%,95%]



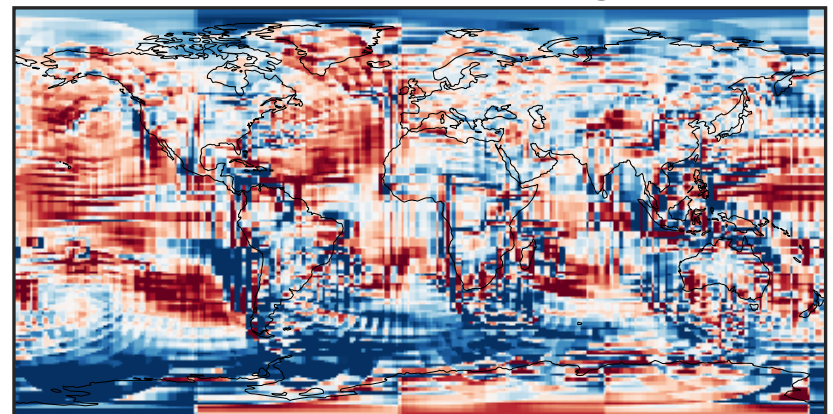
-0.0002 0.0000 0.0002
µg/m3

Ratio (1x1.25)
Dev/Ref, Dynamic Range



1e-01 1 10
unitless

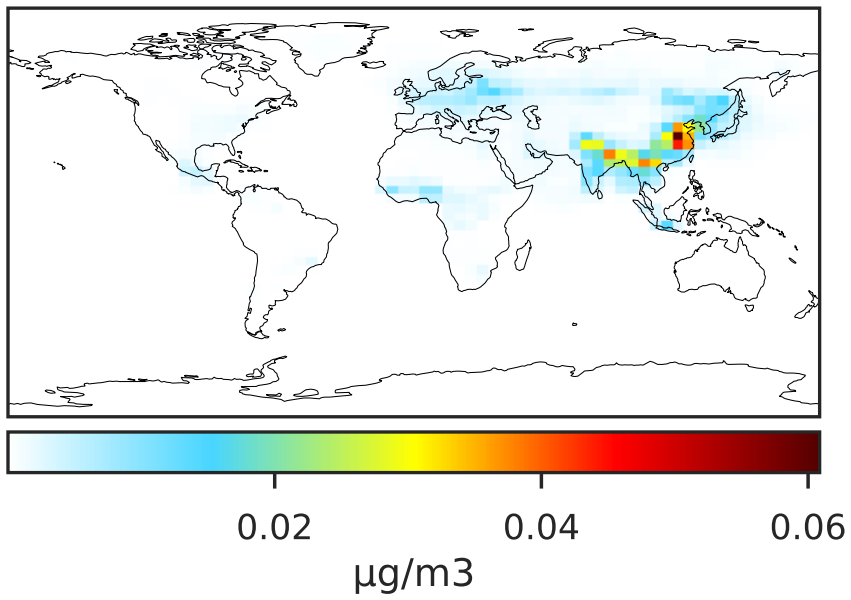
Ratio (1x1.25)
Dev/Ref, Fixed Range



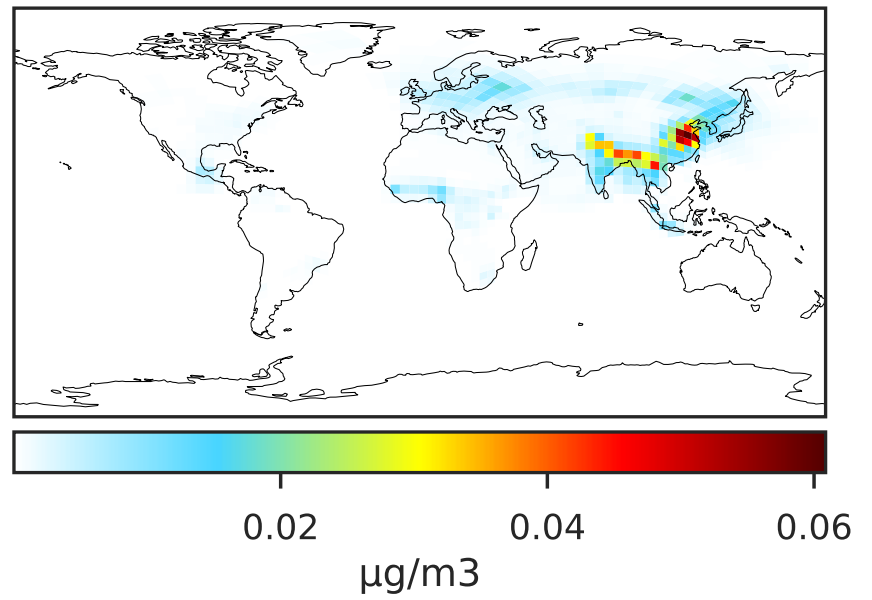
0.50 0.75 1.00 1.50 2.00
unitless

SpeciesConcVV_ASOA3 (Apr2019)

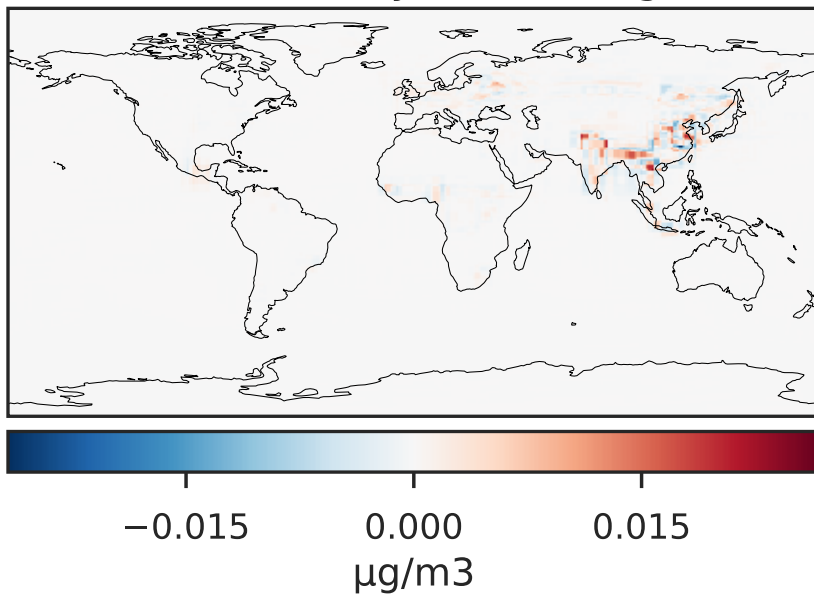
GCC_14.2.0 (Ref)
4.0x5.0



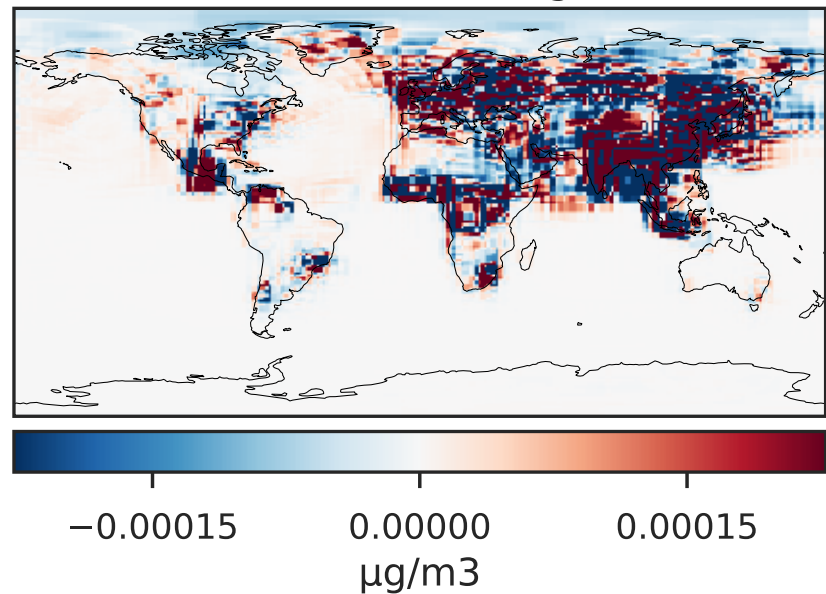
GCHP_14.2.0 (Dev)
c24



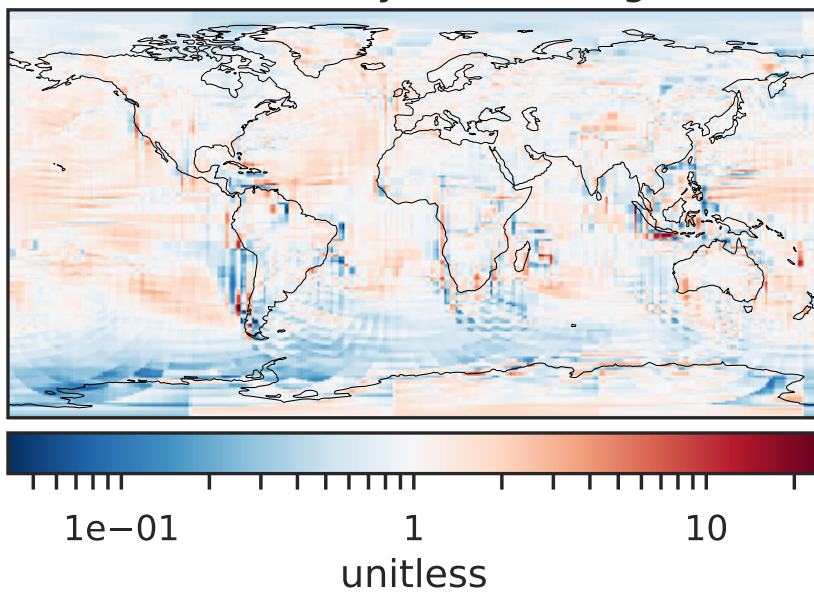
Difference (1x1.25)
Dev - Ref, Dynamic Range



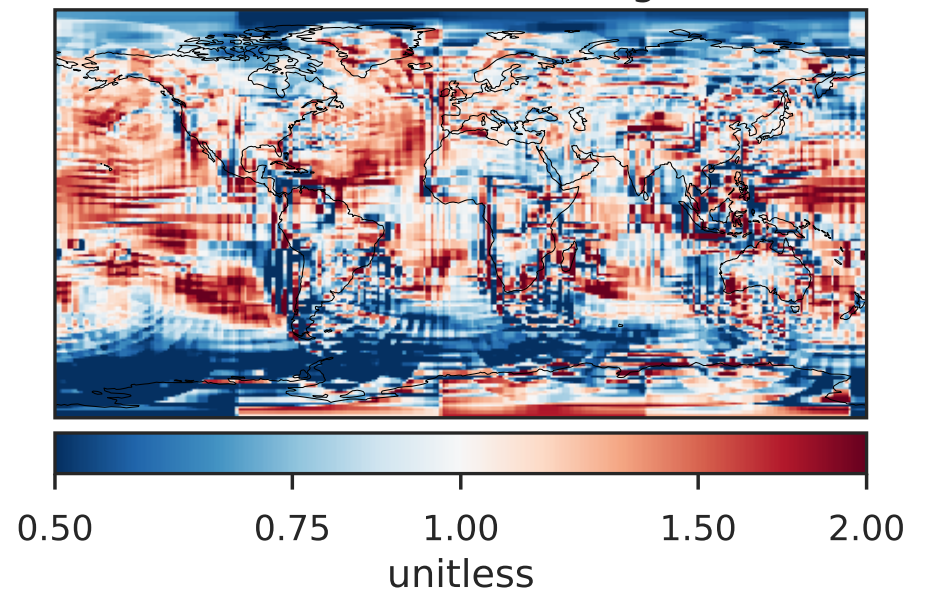
Difference (1x1.25)
Dev - Ref, Restricted Range [5%,95%]



Ratio (1x1.25)
Dev/Ref, Dynamic Range

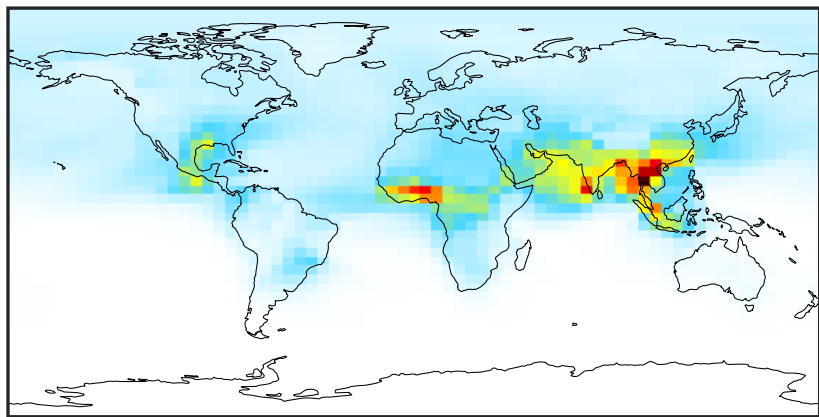


Ratio (1x1.25)
Dev/Ref, Fixed Range



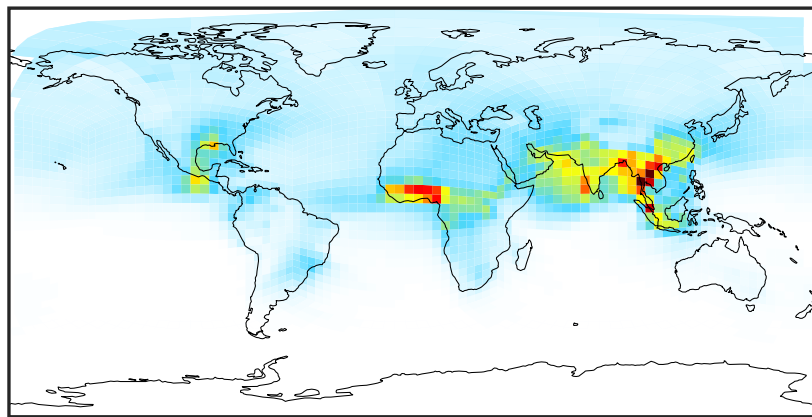
SpeciesConcVV_ASOAN (Apr2019)

GCC_14.2.0 (Ref)
4.0x5.0



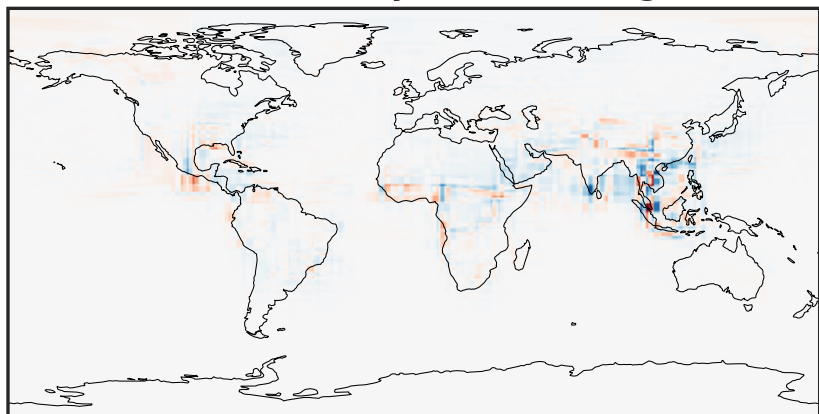
0.0002 0.0652 0.1304 0.1957 0.2611
 $\mu\text{g}/\text{m}^3$

GCHP_14.2.0 (Dev)
c24



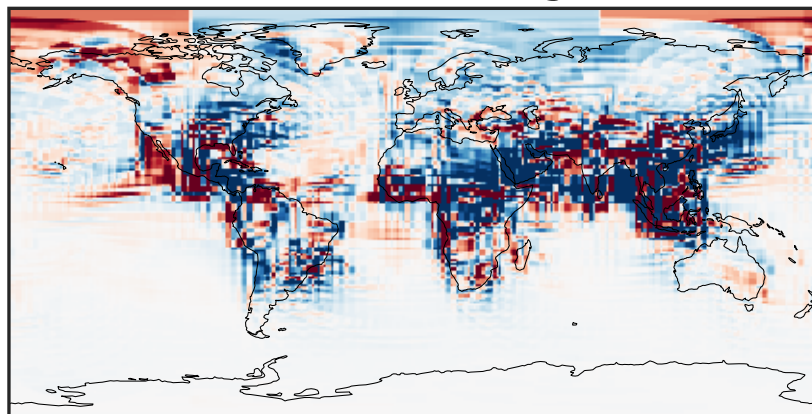
0.0002 0.0652 0.1304 0.1957 0.2611
 $\mu\text{g}/\text{m}^3$

Difference (1x1.25)
Dev - Ref, Dynamic Range



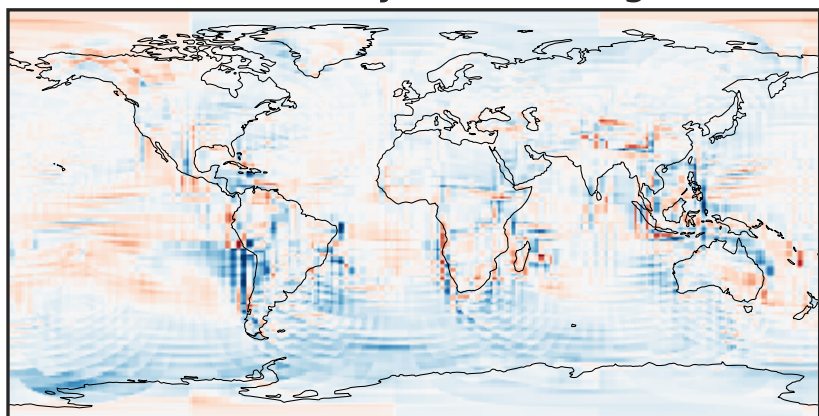
-0.0894 -0.0447 0.0000 0.0447 0.0894
 $\mu\text{g}/\text{m}^3$

Difference (1x1.25)
Dev - Ref, Restricted Range [5%,95%]



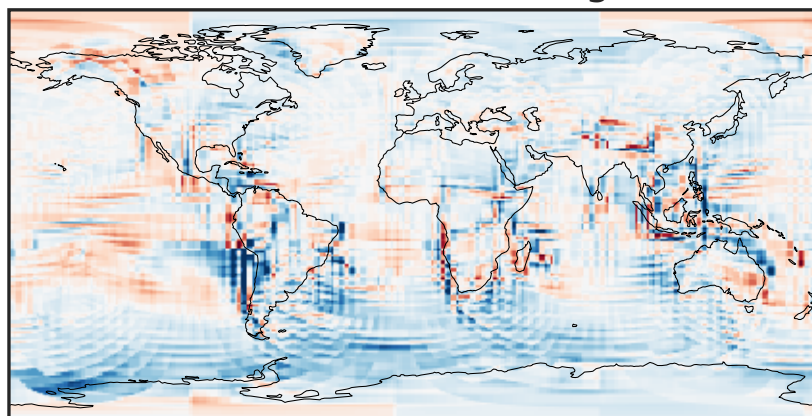
-0.0025 0.0000 0.0025
 $\mu\text{g}/\text{m}^3$

Ratio (1x1.25)
Dev/Ref, Dynamic Range



0.378 0.689 1.000 1.823 2.647
unitless

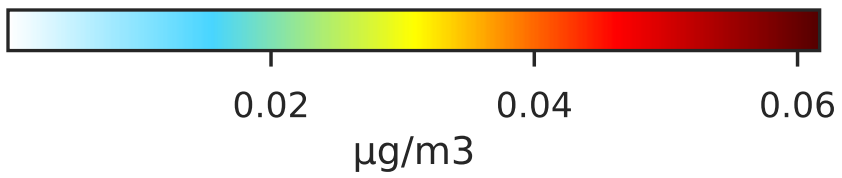
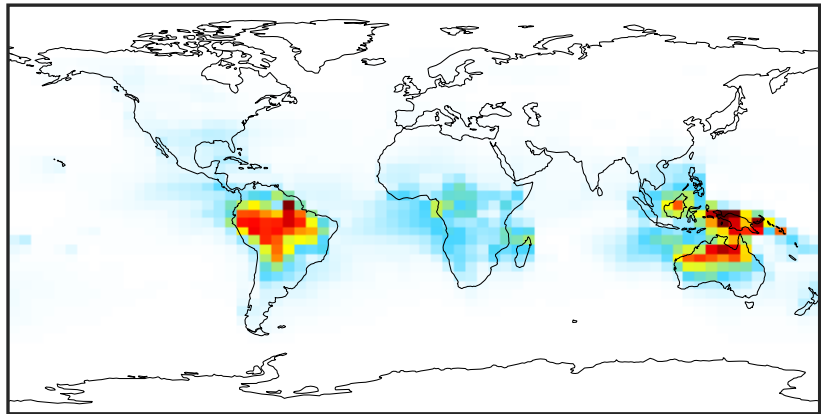
Ratio (1x1.25)
Dev/Ref, Fixed Range



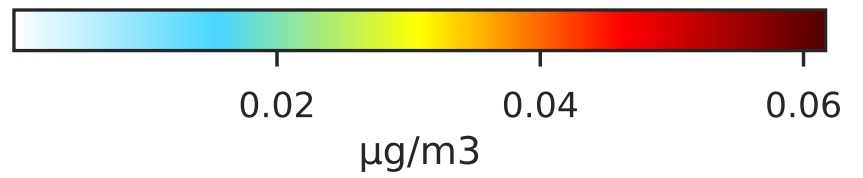
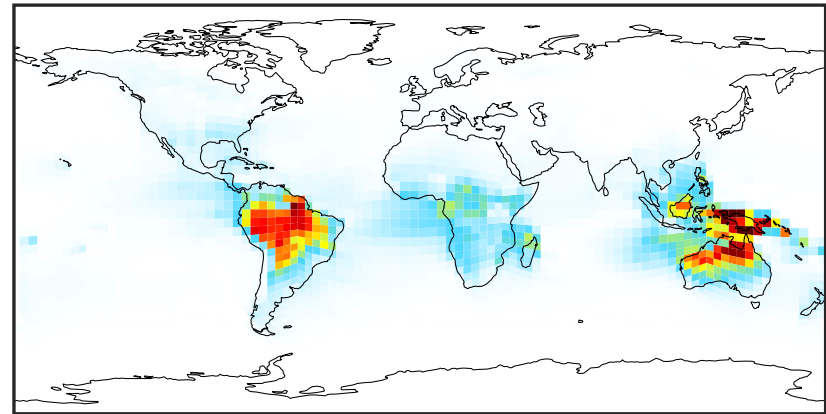
0.50 0.75 1.00 1.50 2.00
unitless

SpeciesConcVV_TSOG0 (Apr2019)

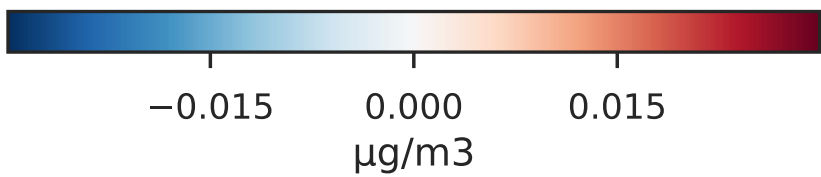
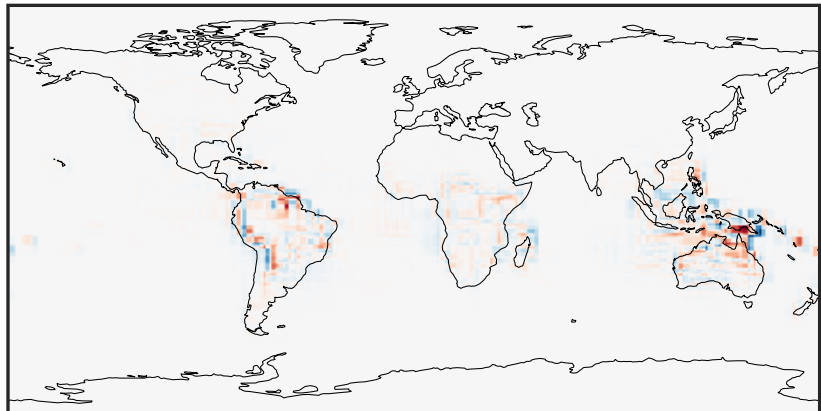
GCC_14.2.0 (Ref)
4.0x5.0



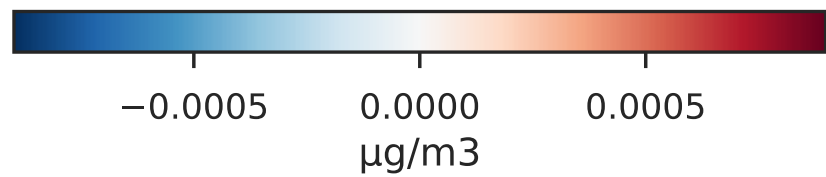
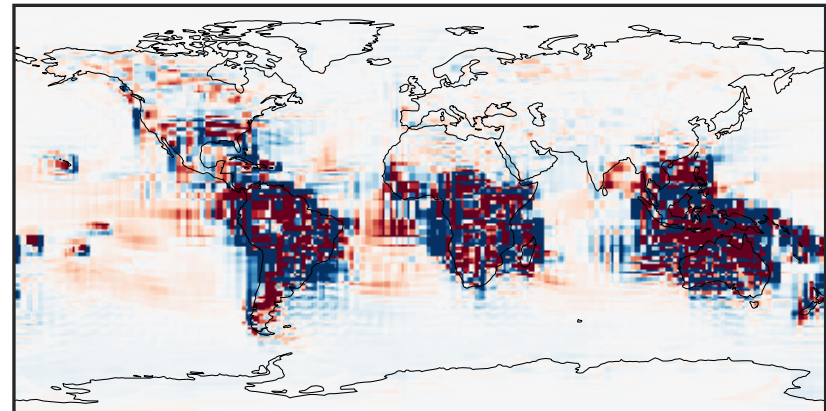
GCHP_14.2.0 (Dev)
c24



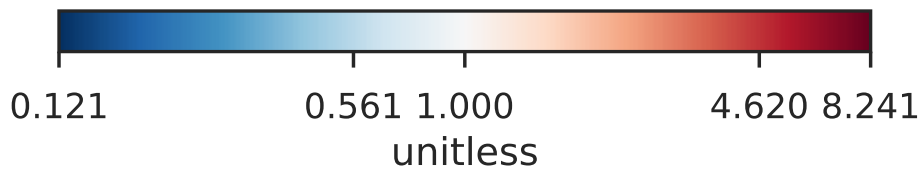
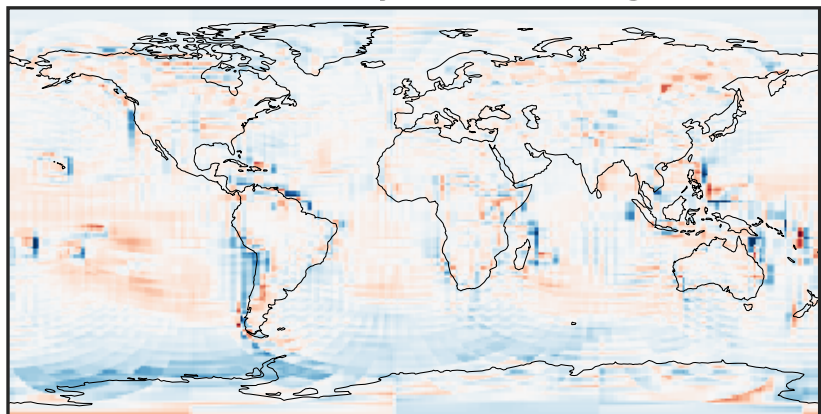
Difference (1x1.25)
Dev - Ref, Dynamic Range



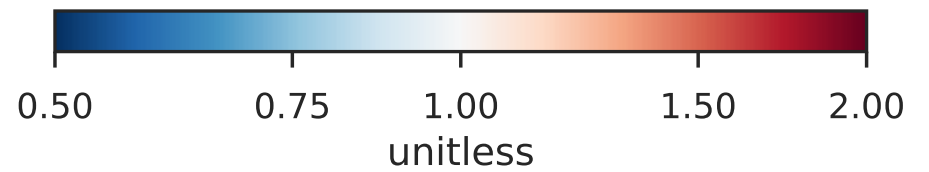
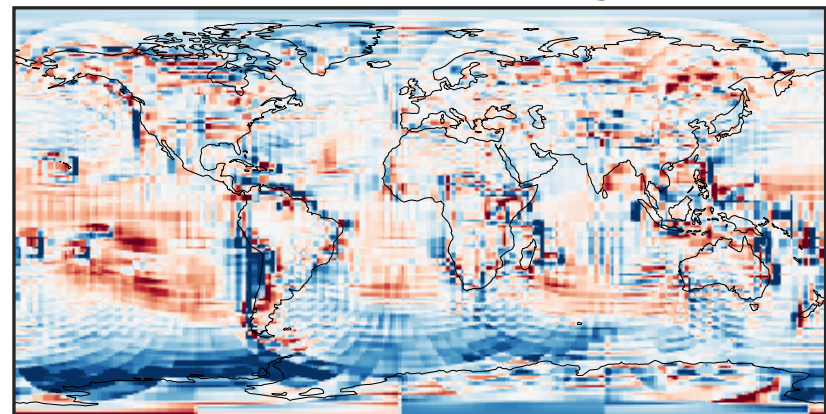
Difference (1x1.25)
Dev - Ref, Restricted Range [5%,95%]



Ratio (1x1.25)
Dev/Ref, Dynamic Range

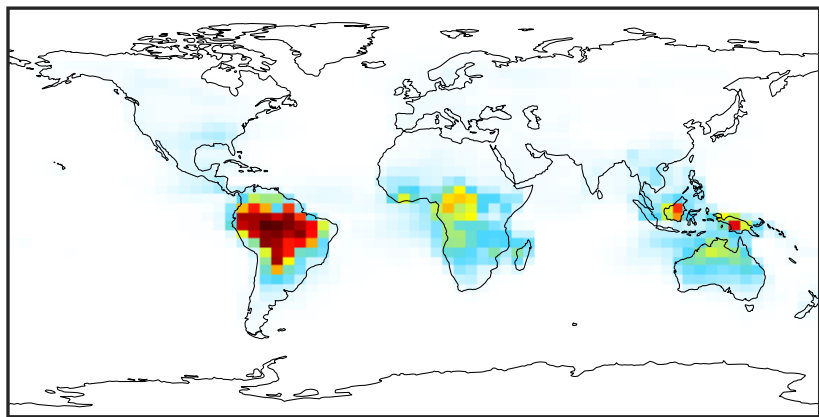


Ratio (1x1.25)
Dev/Ref, Fixed Range



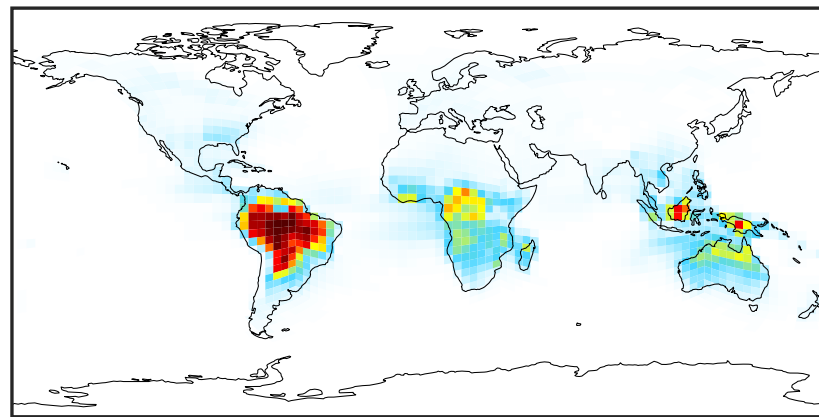
SpeciesConcVV_TSOG1 (Apr2019)

GCC_14.2.0 (Ref)
4.0x5.0



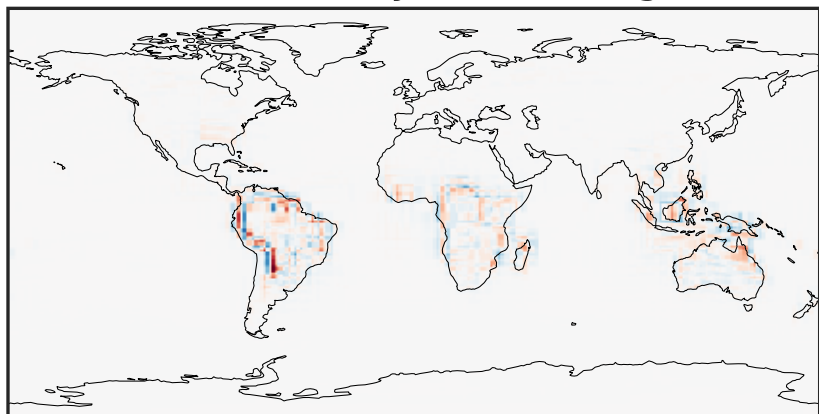
0.0000 0.0383 0.0765 0.1148 0.1530
 $\mu\text{g}/\text{m}^3$

GCHP_14.2.0 (Dev)
c24



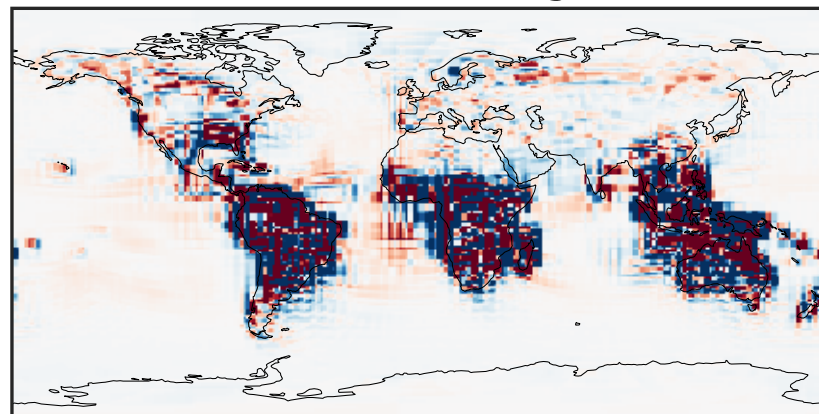
0.0000 0.0383 0.0765 0.1148 0.1530
 $\mu\text{g}/\text{m}^3$

Difference (1x1.25)
Dev - Ref, Dynamic Range



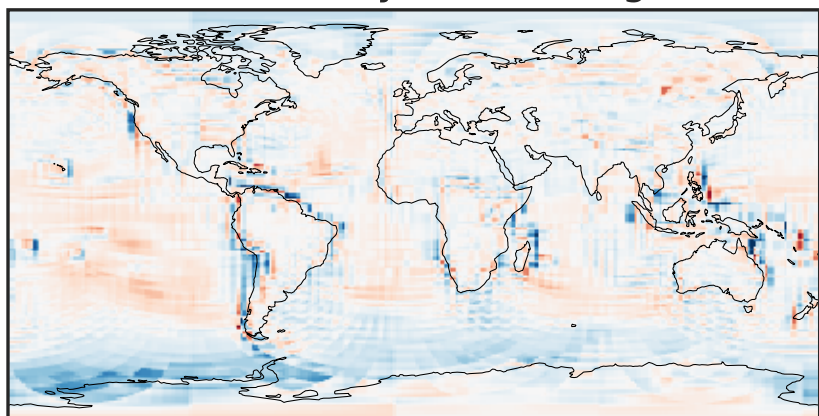
-0.0722 -0.0361 0.0000 0.0361 0.0722
 $\mu\text{g}/\text{m}^3$

Difference (1x1.25)
Dev - Ref, Restricted Range [5%,95%]



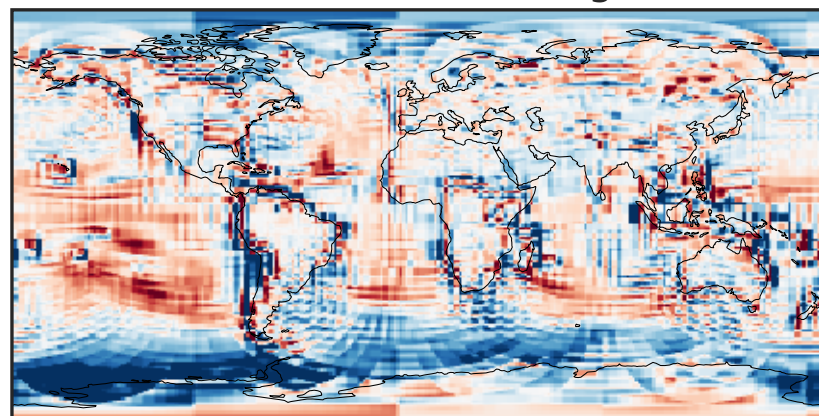
-0.0008 0.0000 0.0008
 $\mu\text{g}/\text{m}^3$

Ratio (1x1.25)
Dev/Ref, Dynamic Range



1e-01 1 10
unitless

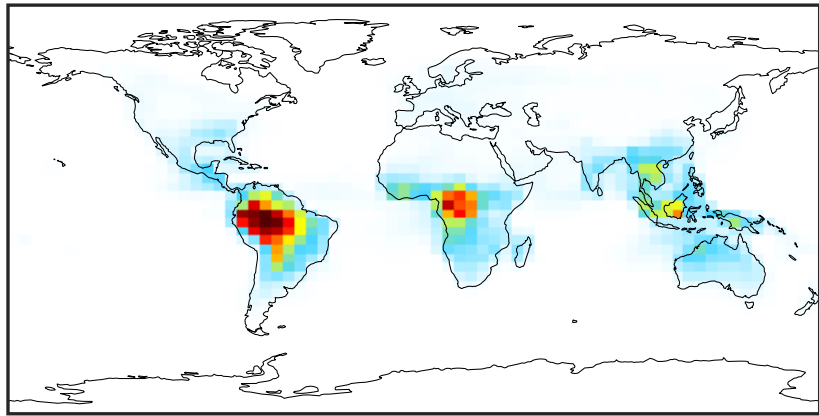
Ratio (1x1.25)
Dev/Ref, Fixed Range



0.50 0.75 1.00 1.50 2.00
unitless

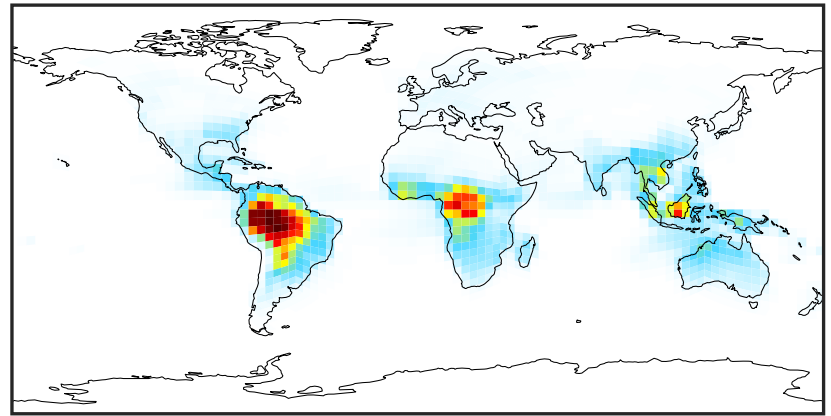
SpeciesConcVV_TSOG2 (Apr2019)

GCC_14.2.0 (Ref)
4.0x5.0



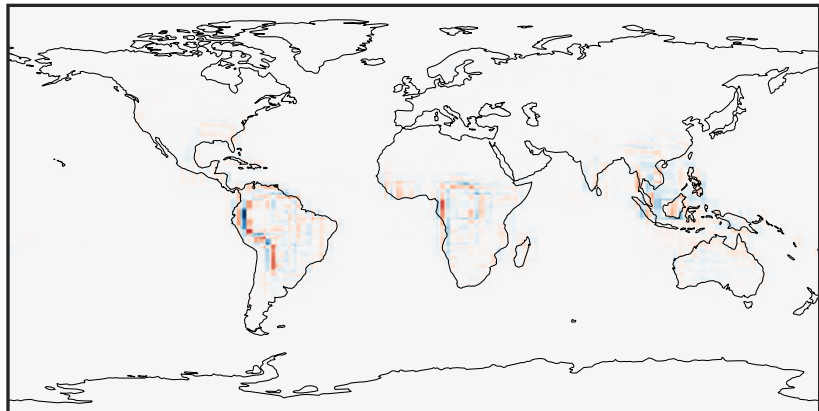
0.000 0.863 1.726 2.589 3.452
µg/m3

GCHP_14.2.0 (Dev)
c24



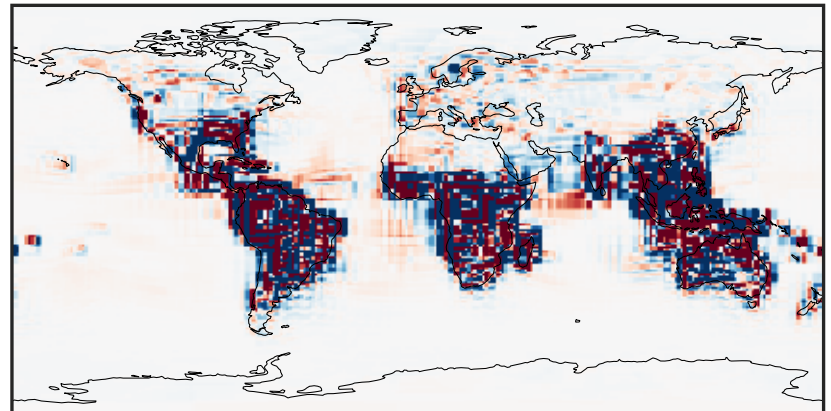
0.000 0.863 1.726 2.589 3.452
µg/m3

Difference (1x1.25)
Dev - Ref, Dynamic Range



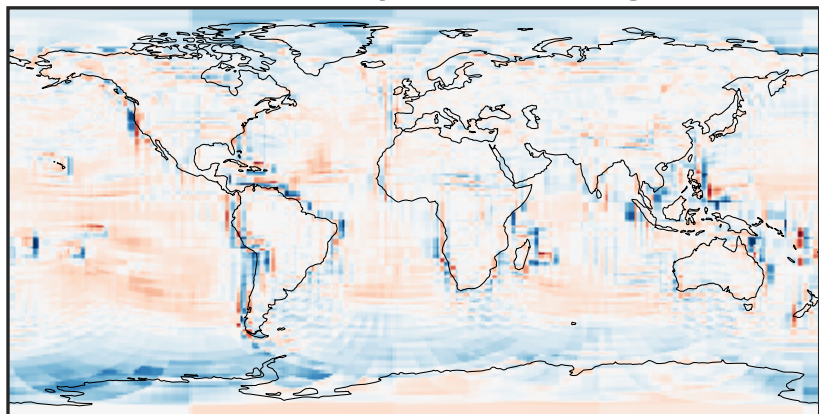
-1.686 -0.843 0.000 0.843 1.686
µg/m3

Difference (1x1.25)
Dev - Ref, Restricted Range [5%,95%]



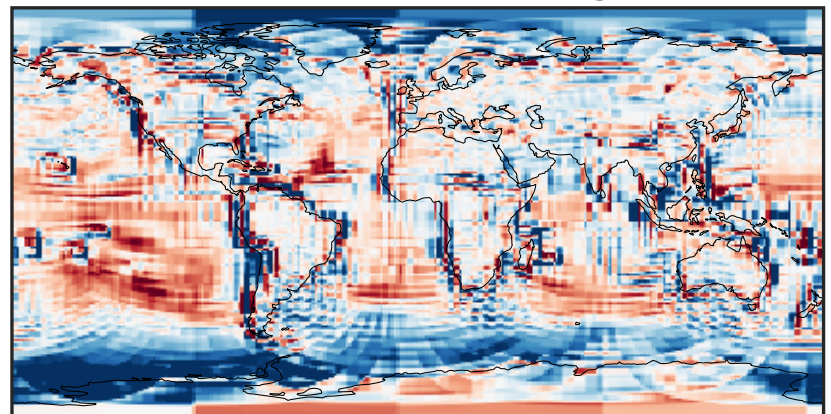
-0.02 0.00 0.02
µg/m3

Ratio (1x1.25)
Dev/Ref, Dynamic Range



0.10 0.55 1.00 5.46 9.92
unitless

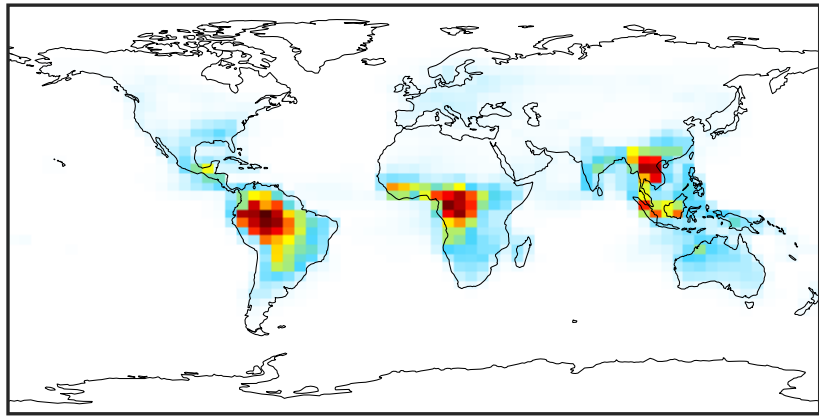
Ratio (1x1.25)
Dev/Ref, Fixed Range



0.50 0.75 1.00 1.50 2.00
unitless

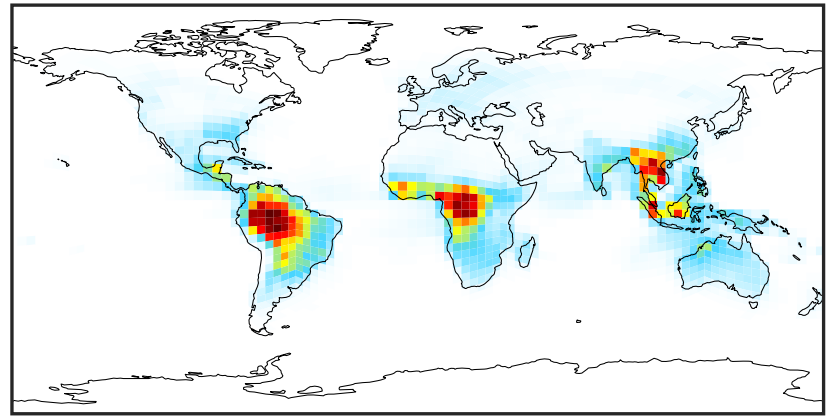
SpeciesConcVV_TSOG3 (Apr2019)

GCC_14.2.0 (Ref)
4.0x5.0



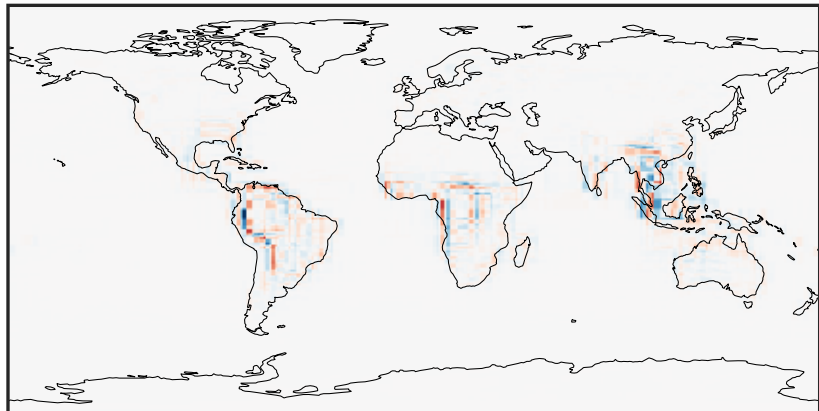
0.000 1.506 3.012 4.518 6.025
µg/m3

GCHP_14.2.0 (Dev)
c24



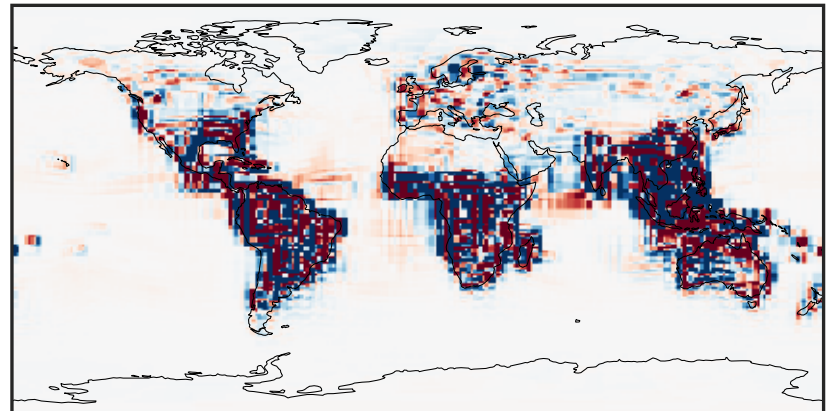
0.000 1.506 3.012 4.518 6.025
µg/m3

Difference (1x1.25)
Dev - Ref, Dynamic Range



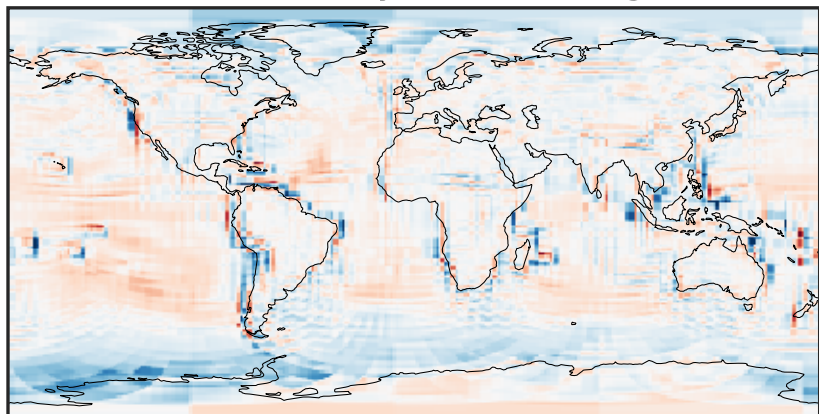
-2.837 -1.418 0.000 1.418 2.837
µg/m3

Difference (1x1.25)
Dev - Ref, Restricted Range [5%,95%]



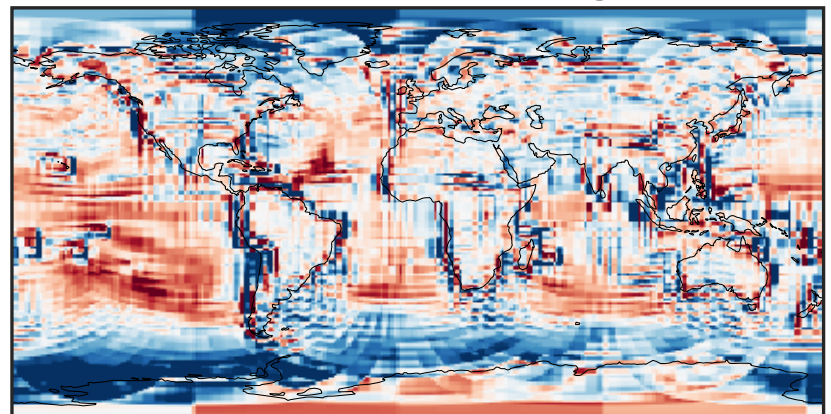
-0.0835 -0.0417 0.0000 0.0417 0.0835
µg/m3

Ratio (1x1.25)
Dev/Ref, Dynamic Range



1e-01 1 10
unitless

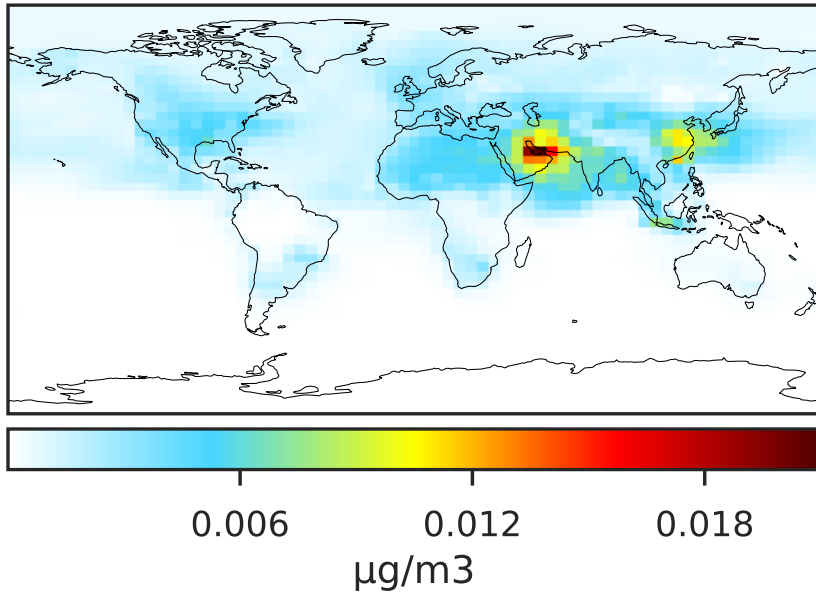
Ratio (1x1.25)
Dev/Ref, Fixed Range



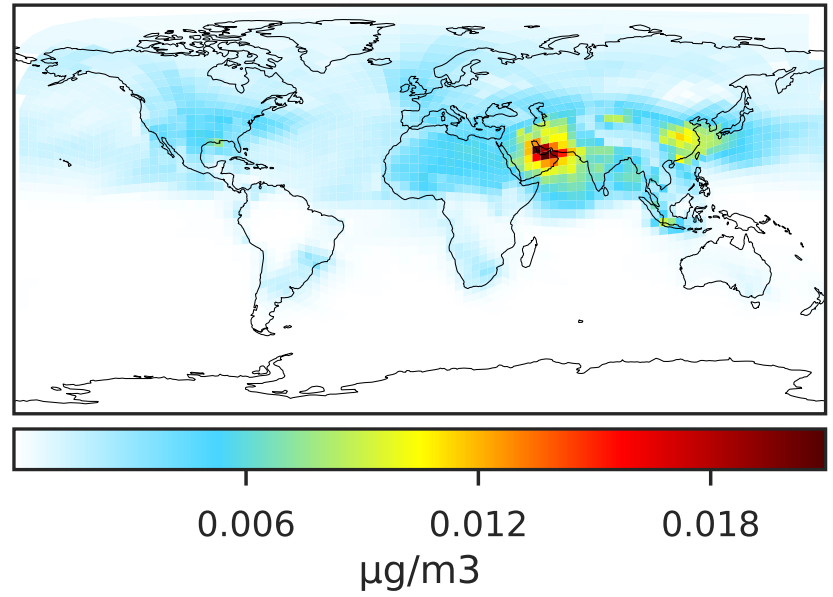
0.50 0.75 1.00 1.50 2.00
unitless

SpeciesConcVV_ASOG1 (Apr2019)

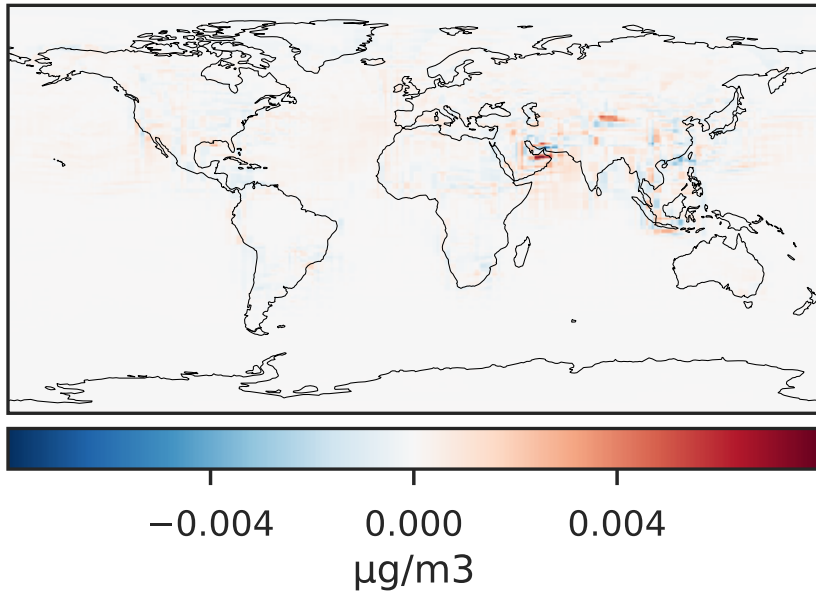
GCC_14.2.0 (Ref)
4.0x5.0



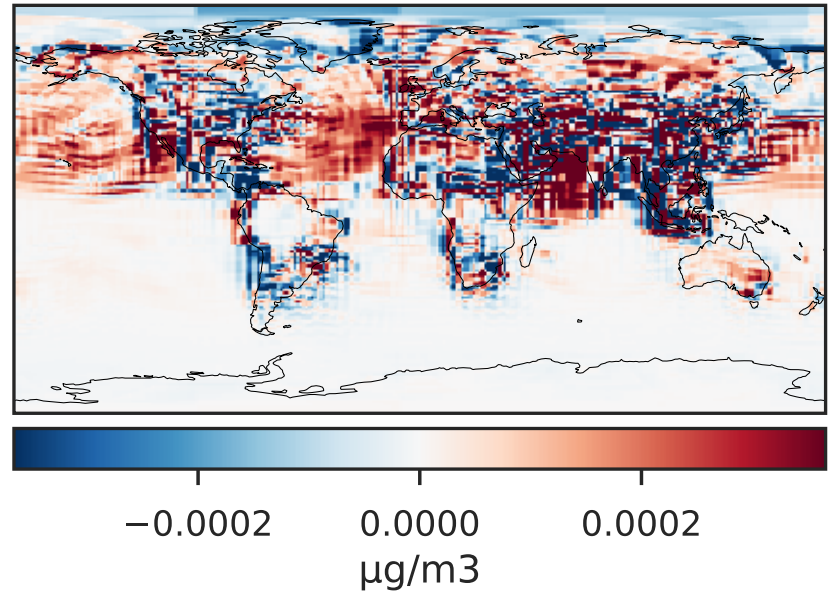
GCHP_14.2.0 (Dev)
c24



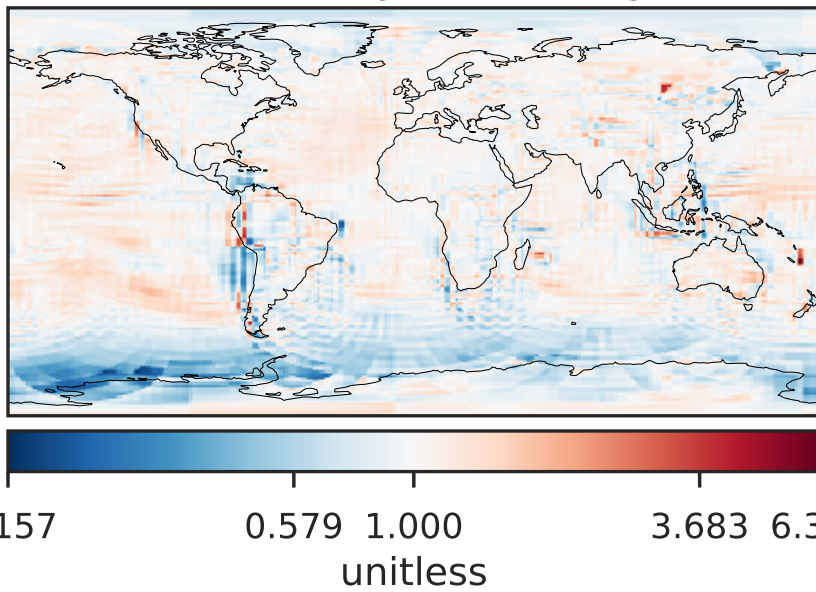
Difference (1x1.25)
Dev - Ref, Dynamic Range



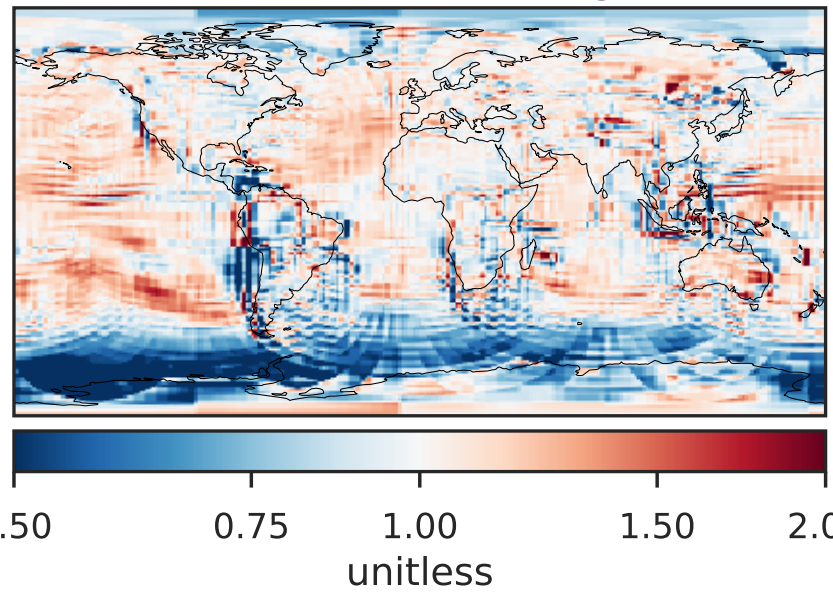
Difference (1x1.25)
Dev - Ref, Restricted Range [5%,95%]



Ratio (1x1.25)
Dev/Ref, Dynamic Range

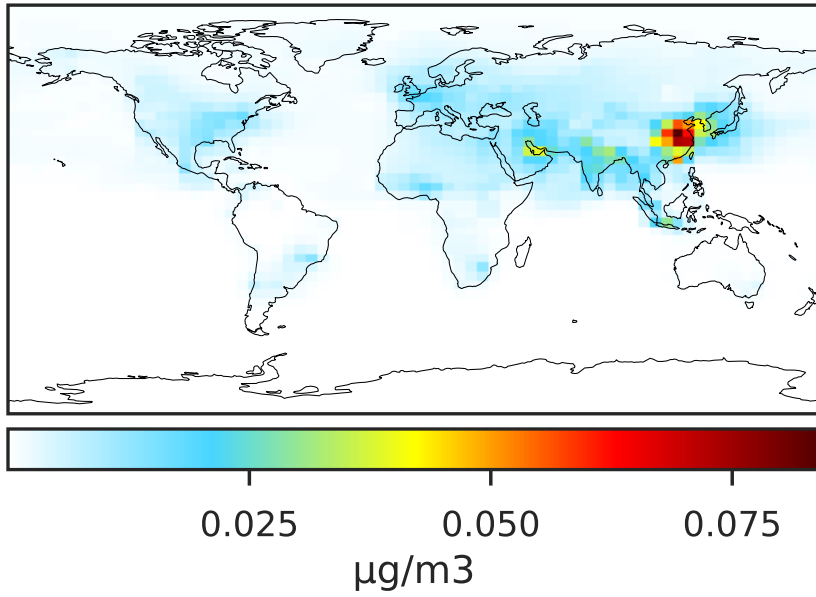


Ratio (1x1.25)
Dev/Ref, Fixed Range

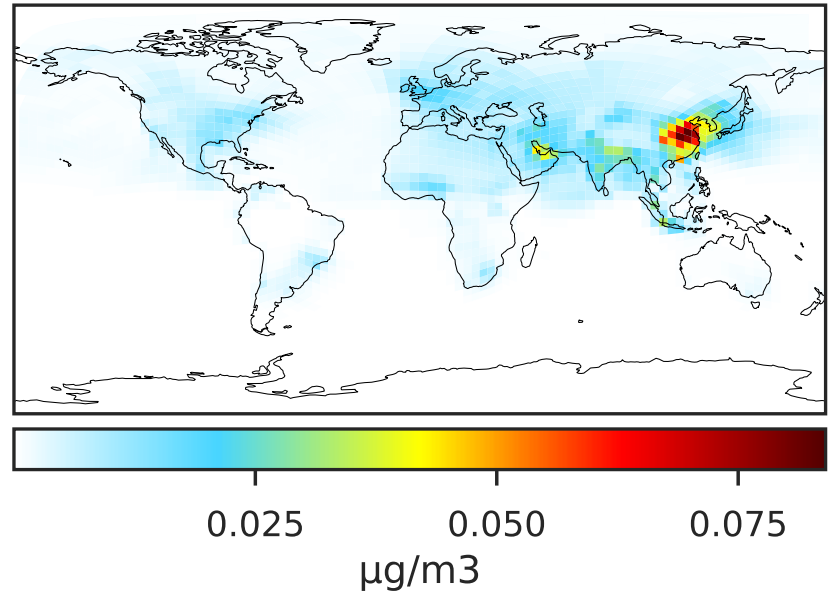


SpeciesConcVV_ASOG2 (Apr2019)

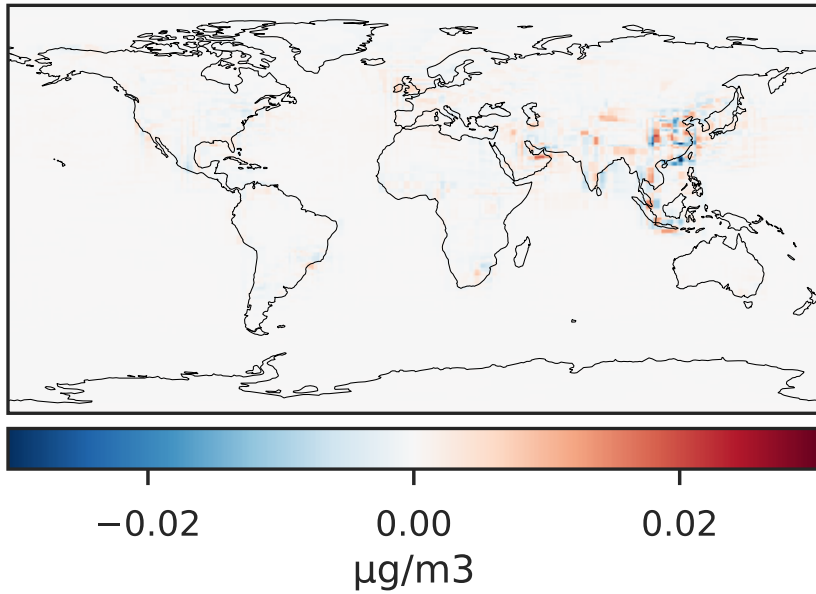
GCC_14.2.0 (Ref)
4.0x5.0



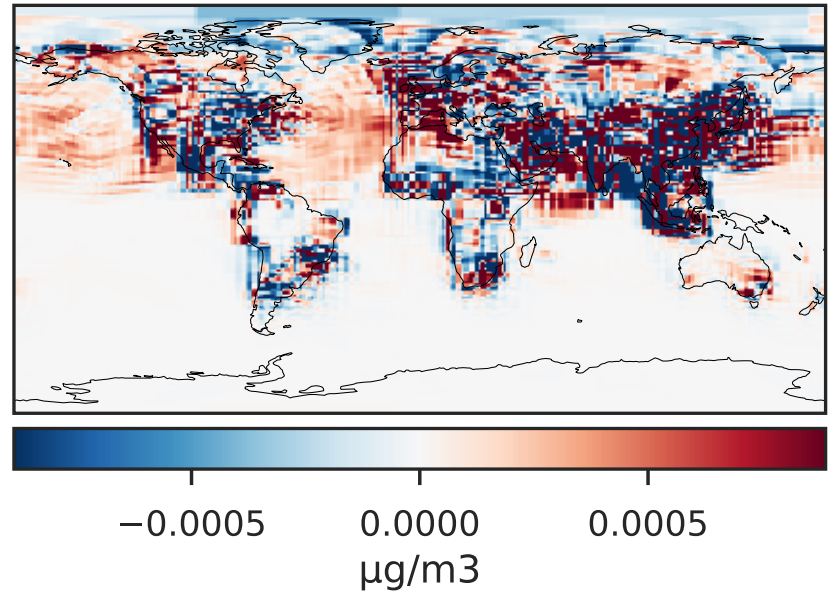
GCHP_14.2.0 (Dev)
c24



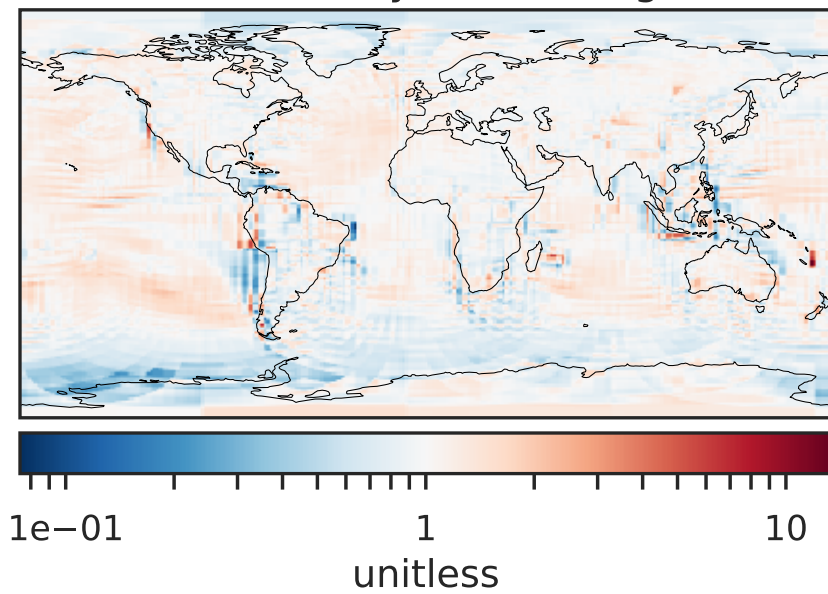
Difference (1x1.25)
Dev - Ref, Dynamic Range



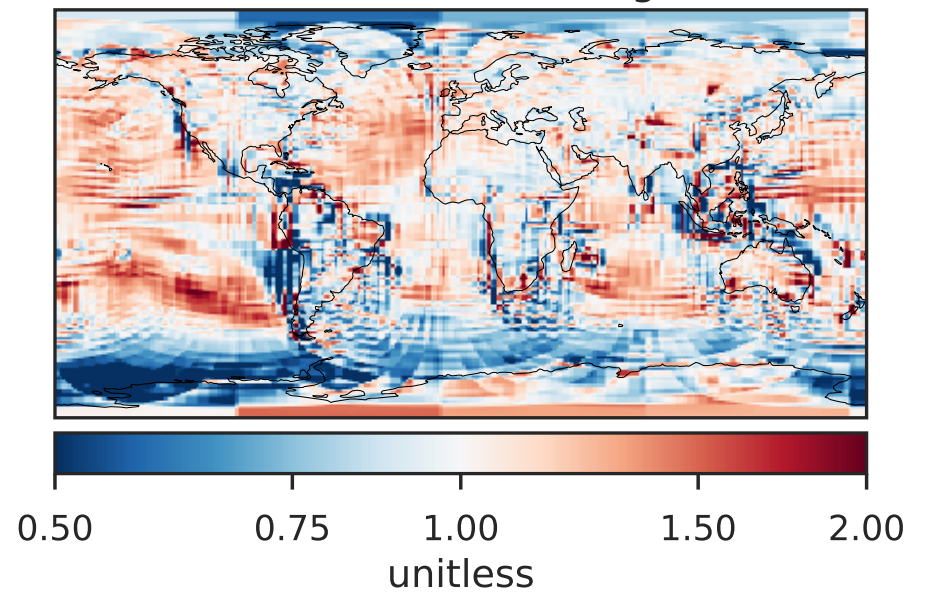
Difference (1x1.25)
Dev - Ref, Restricted Range [5%,95%]



Ratio (1x1.25)
Dev/Ref, Dynamic Range

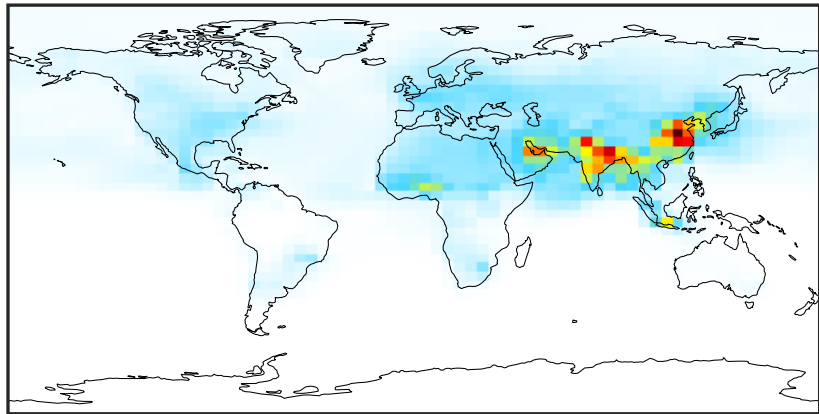


Ratio (1x1.25)
Dev/Ref, Fixed Range



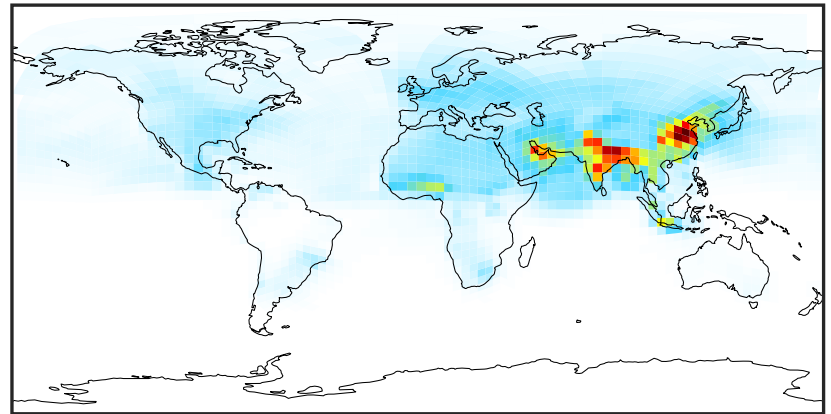
SpeciesConcVV_ASOG3 (Apr2019)

GCC_14.2.0 (Ref)
4.0x5.0



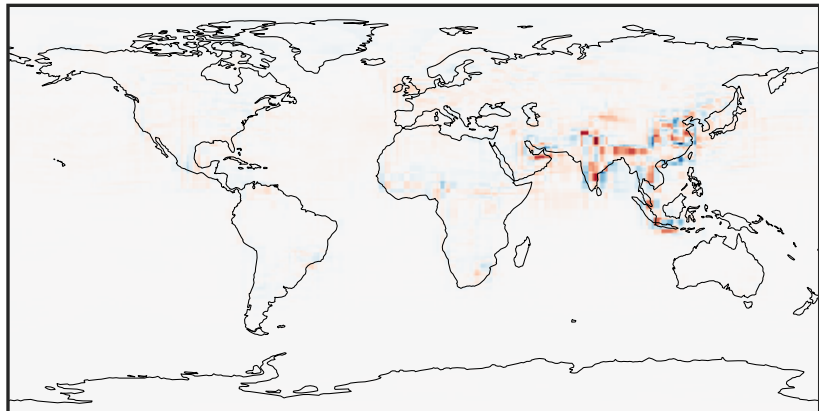
0.0000 0.0956 0.1912 0.2868 0.3825
 $\mu\text{g}/\text{m}^3$

GCHP_14.2.0 (Dev)
c24



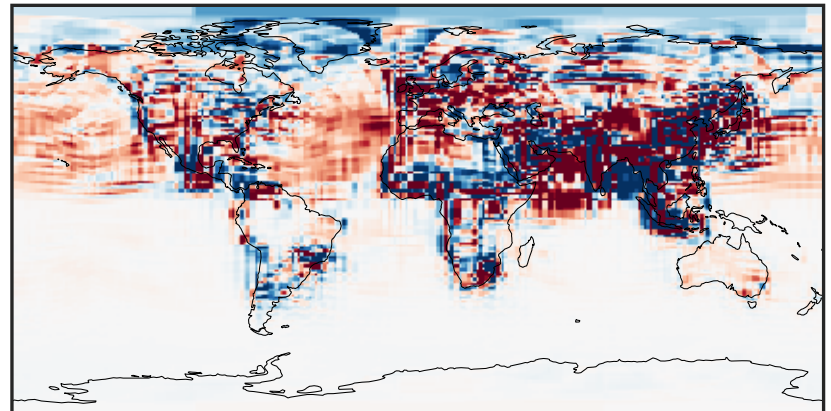
0.0000 0.0956 0.1912 0.2868 0.3825
 $\mu\text{g}/\text{m}^3$

Difference (1x1.25)
Dev - Ref, Dynamic Range



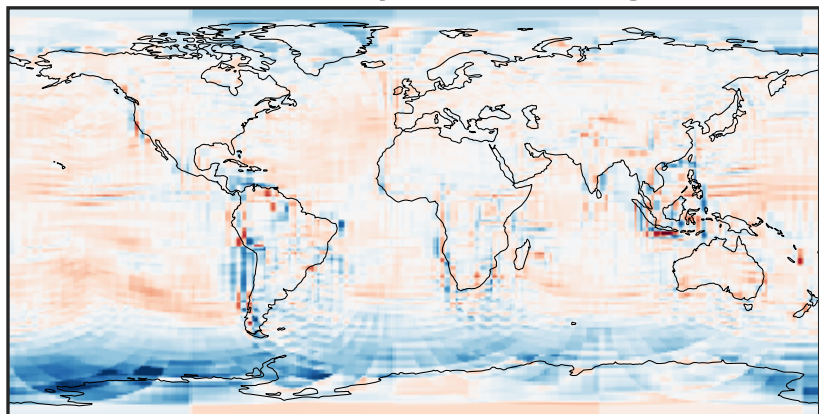
-0.1303 -0.0652 0.0000 0.0652 0.1303
 $\mu\text{g}/\text{m}^3$

Difference (1x1.25)
Dev - Ref, Restricted Range [5%,95%]



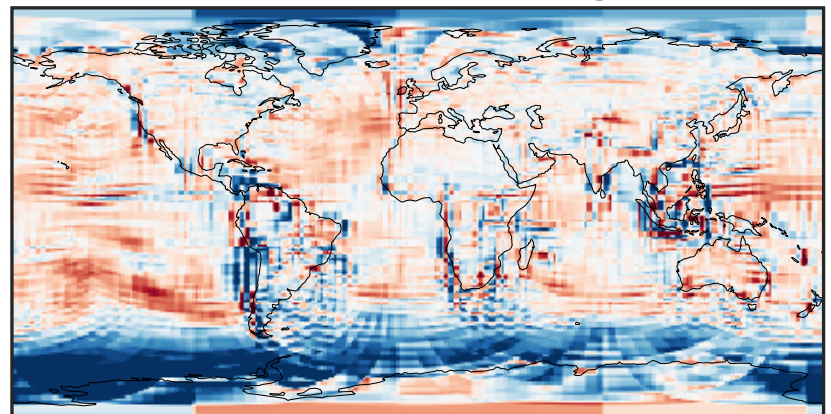
-0.003 0.000 0.003
 $\mu\text{g}/\text{m}^3$

Ratio (1x1.25)
Dev/Ref, Dynamic Range



0.200 0.600 1.000 3.002 5.003
unitless

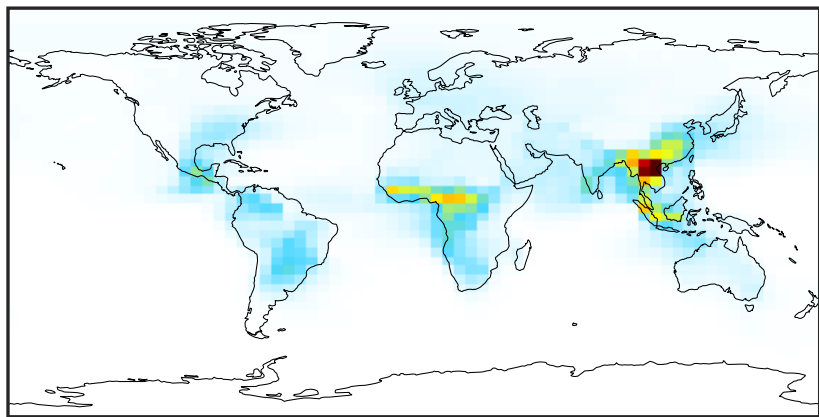
Ratio (1x1.25)
Dev/Ref, Fixed Range



0.50 0.75 1.00 1.50 2.00
unitless

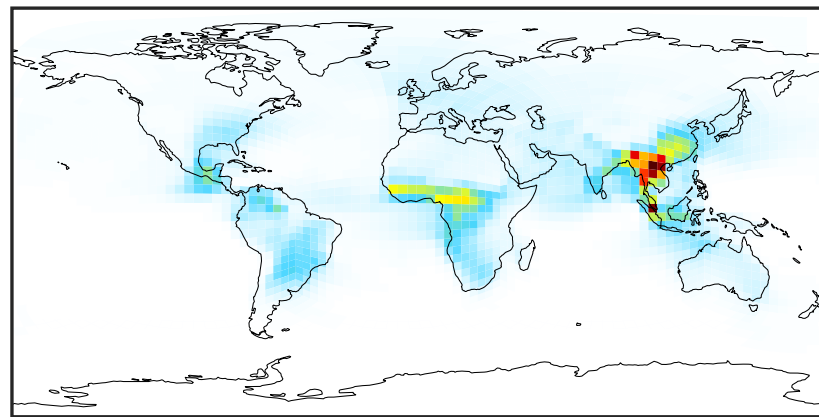
SpeciesConcVV_INDIOL (Apr2019)

GCC_14.2.0 (Ref)
4.0x5.0



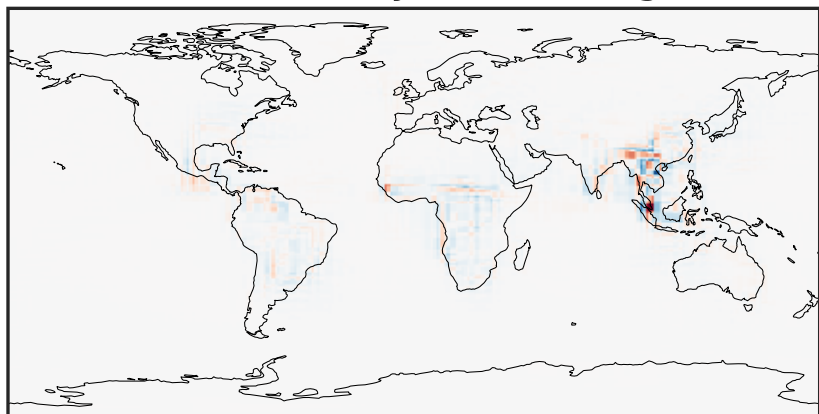
0.001 2.394 4.789 7.183 9.579
 $\mu\text{g}/\text{m}^3$

GCHP_14.2.0 (Dev)
c24



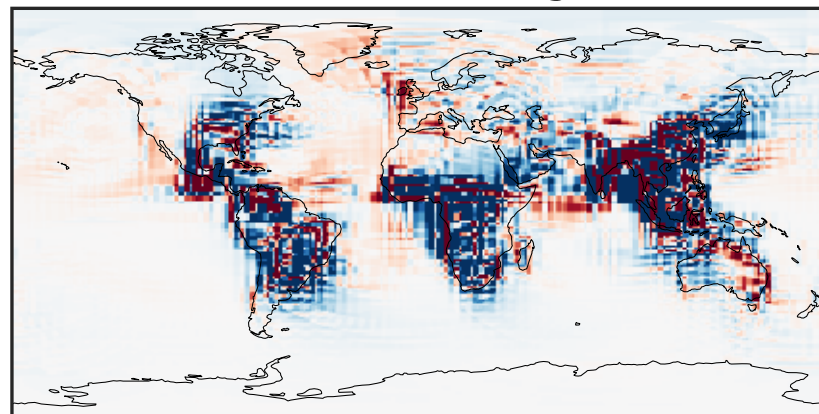
0.001 2.394 4.789 7.183 9.579
 $\mu\text{g}/\text{m}^3$

Difference (1x1.25)
Dev - Ref, Dynamic Range



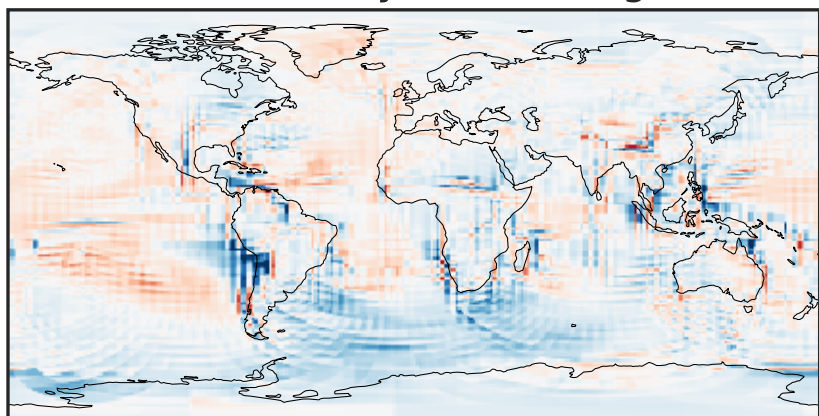
-4.525 -2.263 0.000 2.263 4.525
 $\mu\text{g}/\text{m}^3$

Difference (1x1.25)
Dev - Ref, Restricted Range [5%,95%]



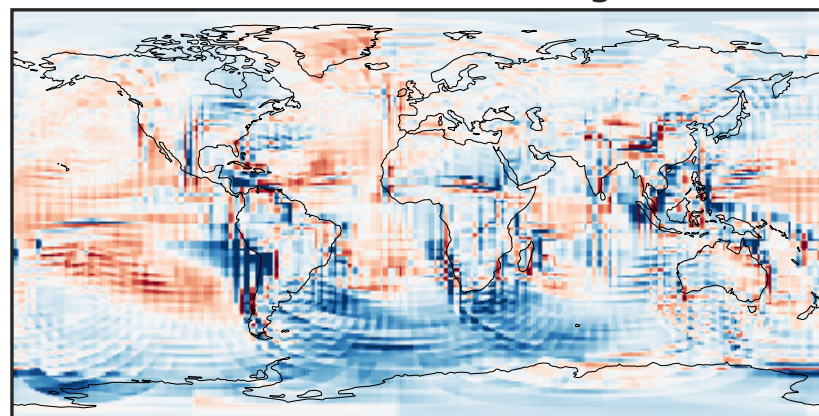
-0.1294 -0.0647 0.0000 0.0647 0.1294
 $\mu\text{g}/\text{m}^3$

Ratio (1x1.25)
Dev/Ref, Dynamic Range



0.263 0.631 1.000 2.402 3.803
unitless

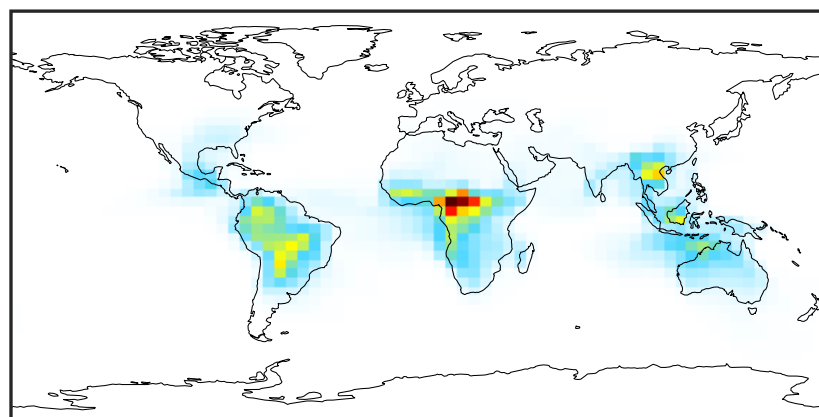
Ratio (1x1.25)
Dev/Ref, Fixed Range



0.50 0.75 1.00 1.50 2.00
unitless

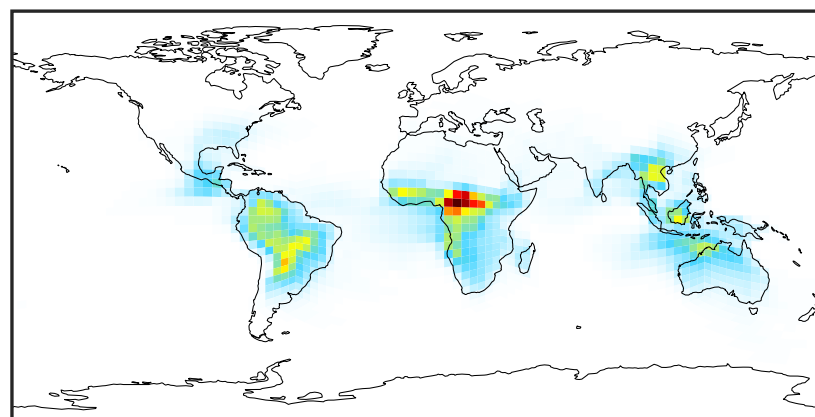
SpeciesConcVV_LVCOA (Apr2019)

GCC_14.2.0 (Ref)
4.0x5.0



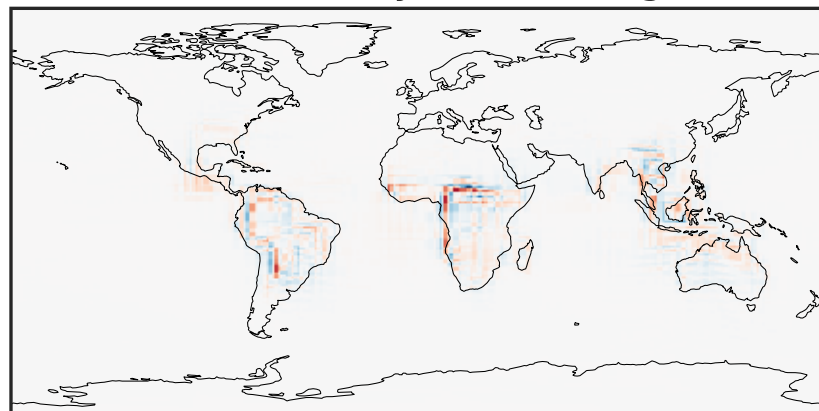
0.0001 0.0692 0.1383 0.2075 0.2767
 $\mu\text{g}/\text{m}^3$

GCHP_14.2.0 (Dev)
c24



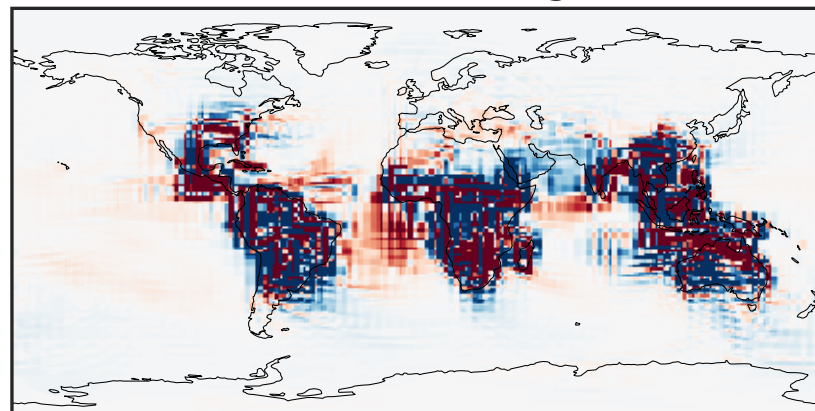
0.0001 0.0692 0.1383 0.2075 0.2767
 $\mu\text{g}/\text{m}^3$

Difference (1x1.25)
Dev - Ref, Dynamic Range



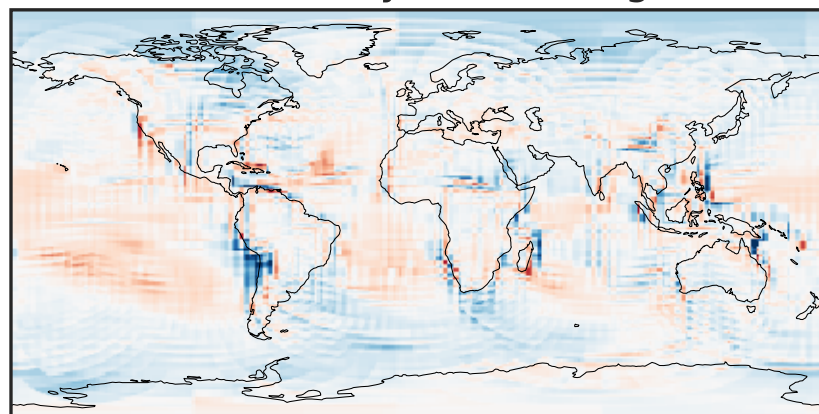
-0.0951 -0.0476 0.0000 0.0476 0.0951
 $\mu\text{g}/\text{m}^3$

Difference (1x1.25)
Dev - Ref, Restricted Range [5%,95%]



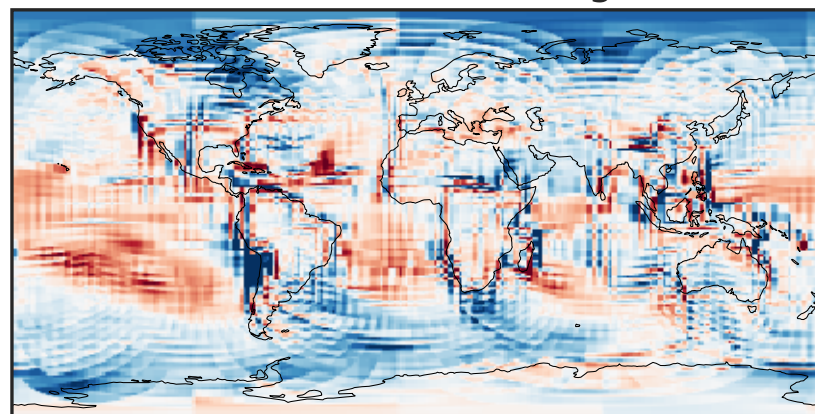
-0.0015 0.0000 0.0015
 $\mu\text{g}/\text{m}^3$

Ratio (1x1.25)
Dev/Ref, Dynamic Range



0.168 0.584 1.000 3.469 5.938
unitless

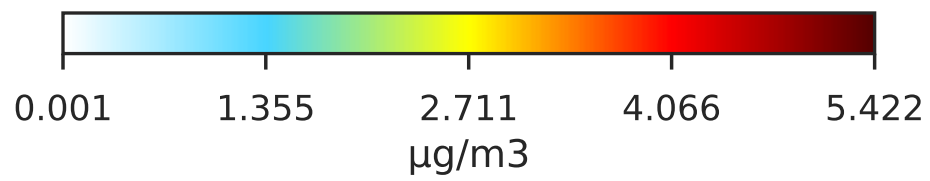
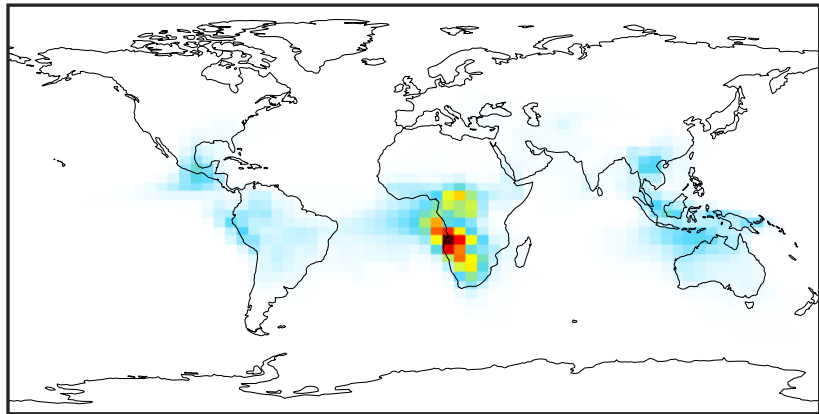
Ratio (1x1.25)
Dev/Ref, Fixed Range



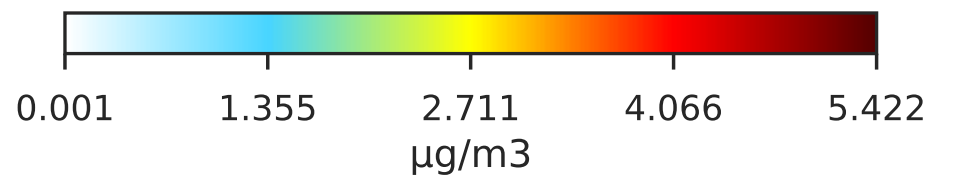
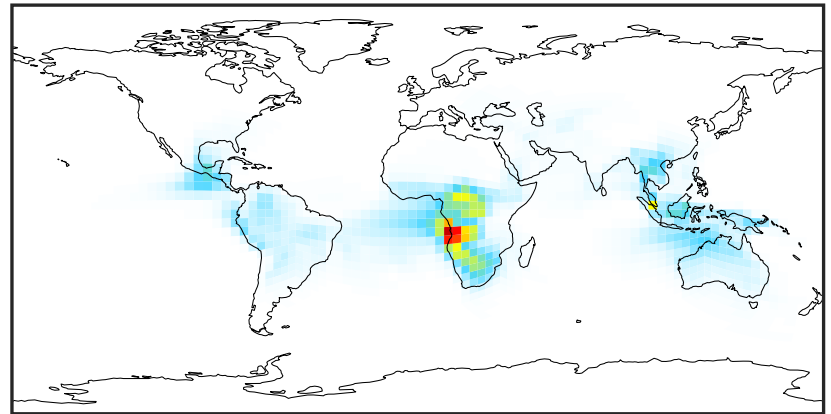
0.50 0.75 1.00 1.50 2.00
unitless

SpeciesConcVV_SOAIE (Apr2019)

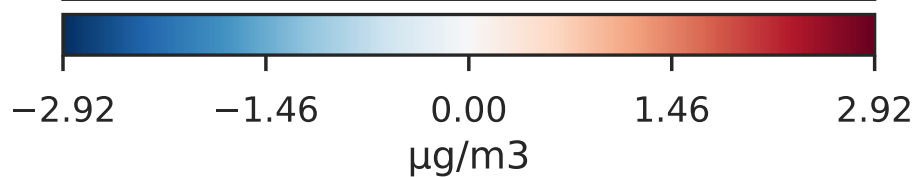
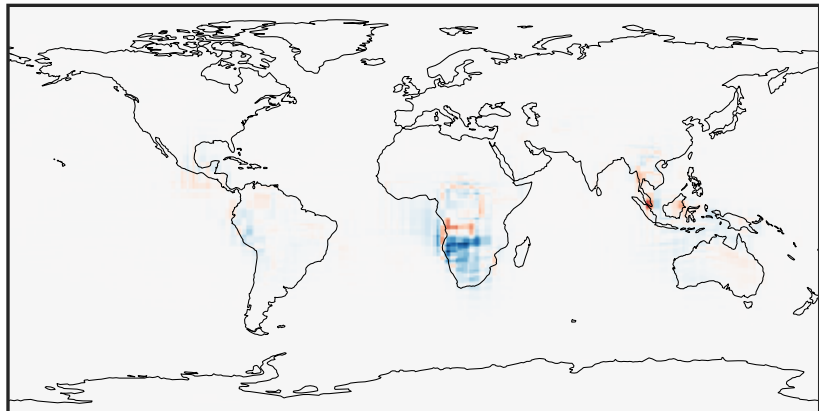
GCC_14.2.0 (Ref)
4.0x5.0



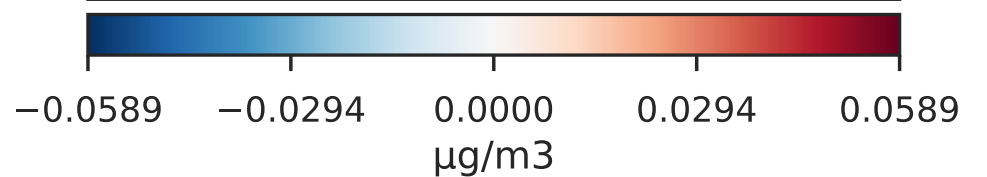
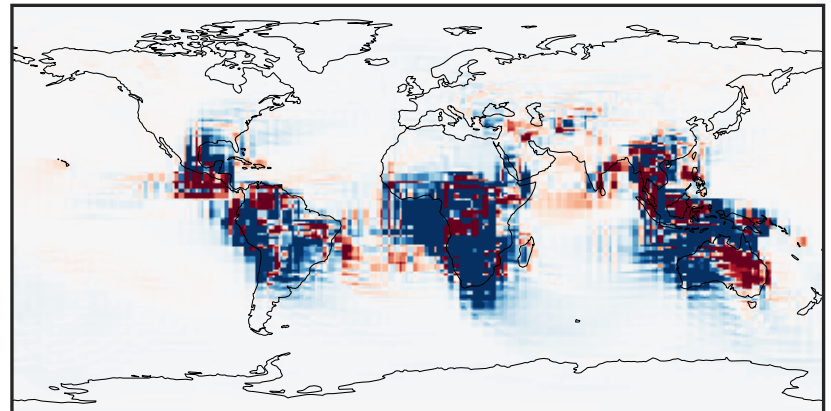
GCHP_14.2.0 (Dev)
c24



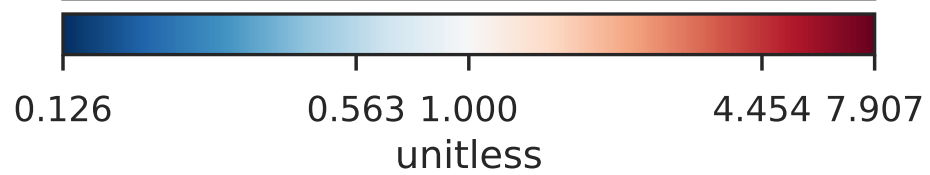
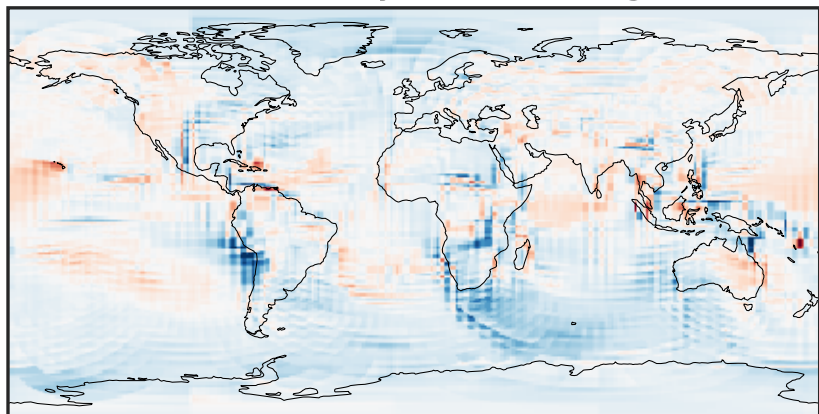
Difference (1x1.25)
Dev - Ref, Dynamic Range



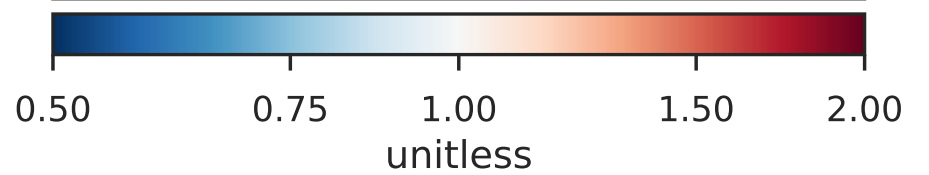
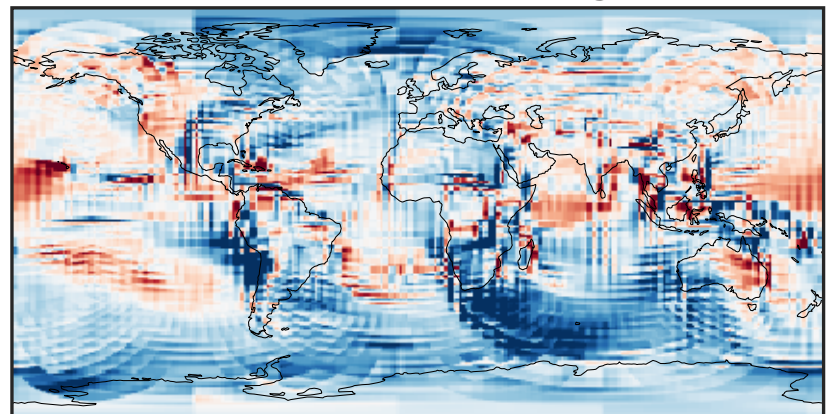
Difference (1x1.25)
Dev - Ref, Restricted Range [5%,95%]



Ratio (1x1.25)
Dev/Ref, Dynamic Range

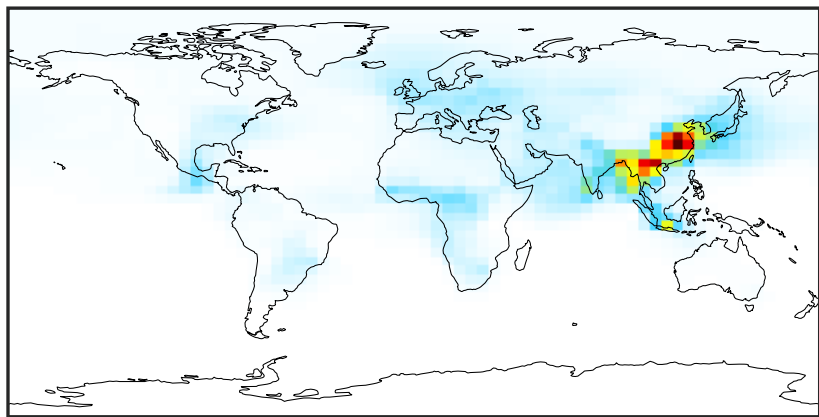


Ratio (1x1.25)
Dev/Ref, Fixed Range



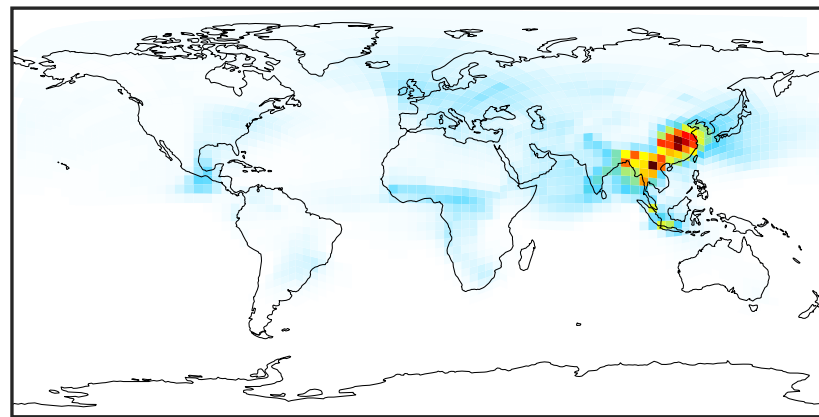
SpeciesConcVV_SOAGX (Apr2019)

GCC_14.2.0 (Ref)
4.0x5.0



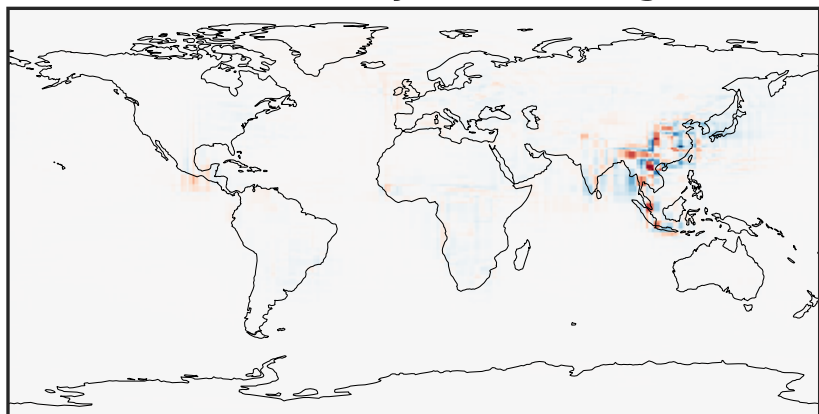
0.000 0.300 0.601 0.901 1.201
µg/m3

GCHP_14.2.0 (Dev)
c24



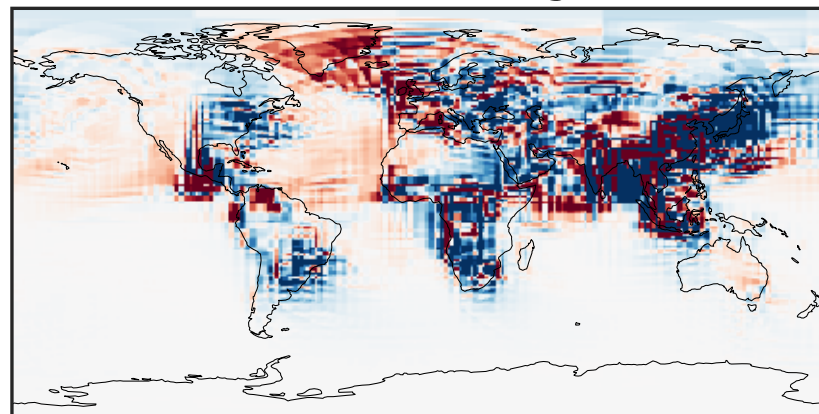
0.000 0.300 0.601 0.901 1.201
µg/m3

Difference (1x1.25)
Dev - Ref, Dynamic Range



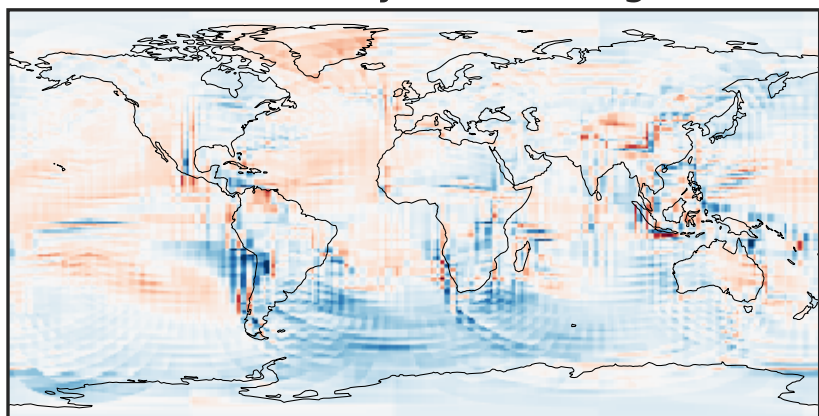
-0.4431 -0.2216 0.0000 0.2216 0.4431
µg/m3

Difference (1x1.25)
Dev - Ref, Restricted Range [5%,95%]



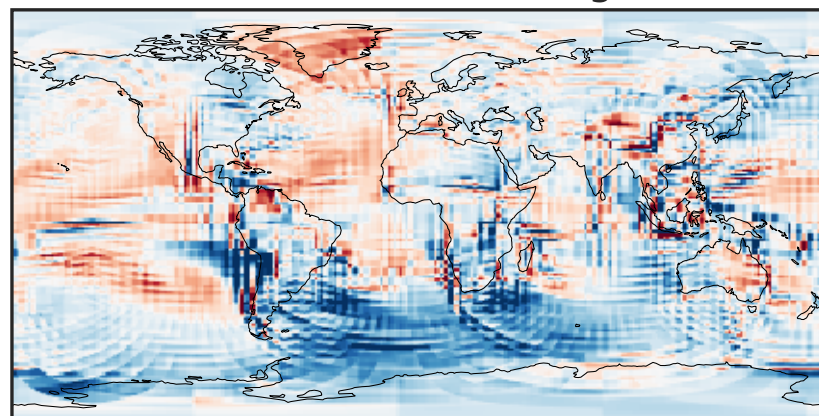
-0.006 0.000 0.006
µg/m3

Ratio (1x1.25)
Dev/Ref, Dynamic Range



0.247 0.624 1.000 2.520 4.041
unitless

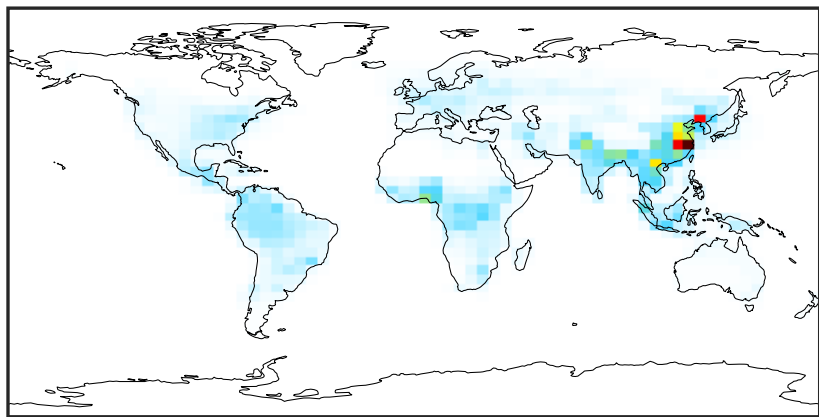
Ratio (1x1.25)
Dev/Ref, Fixed Range



0.50 0.75 1.00 1.50 2.00
unitless

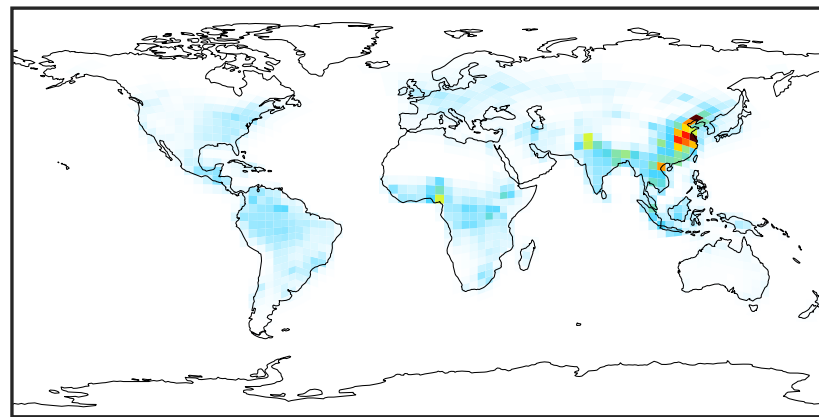
SpeciesConcVV_SOAP (Apr2019)

GCC_14.2.0 (Ref)
4.0x5.0



0.00 3.01 6.02 9.04 12.05
µg/m³

GCHP_14.2.0 (Dev)
c24



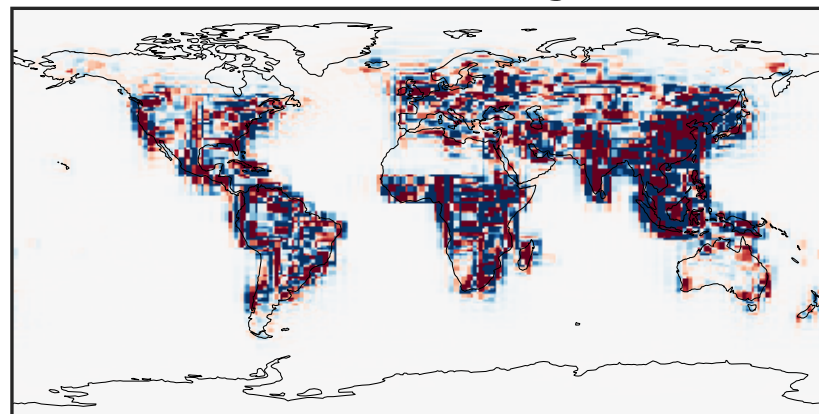
0.00 3.01 6.02 9.04 12.05
µg/m³

Difference (1x1.25)
Dev - Ref, Dynamic Range



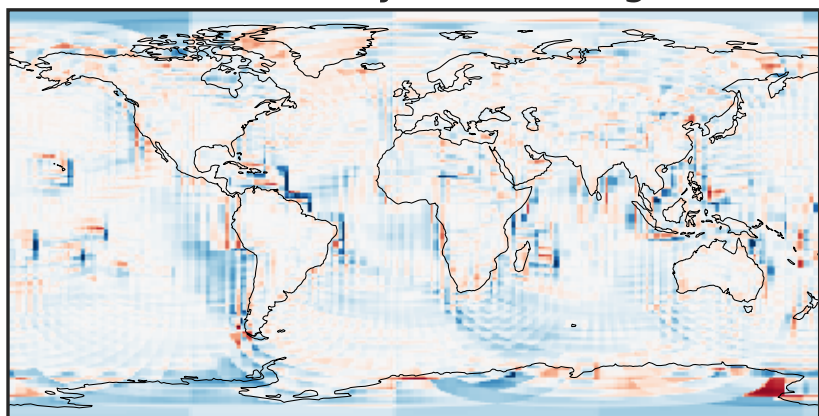
-13.44 -6.72 0.00 6.72 13.44
µg/m³

Difference (1x1.25)
Dev - Ref, Restricted Range [5%,95%]



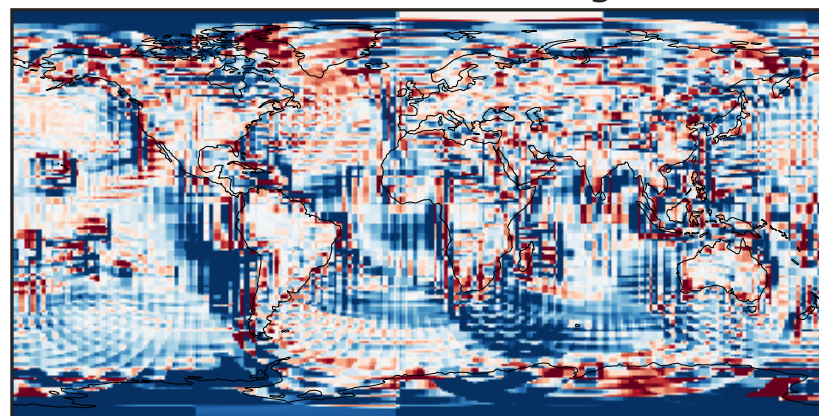
-0.0982 -0.0491 0.0000 0.0491 0.0982
µg/m³

Ratio (1x1.25)
Dev/Ref, Dynamic Range



1e-01 1 10
unitless

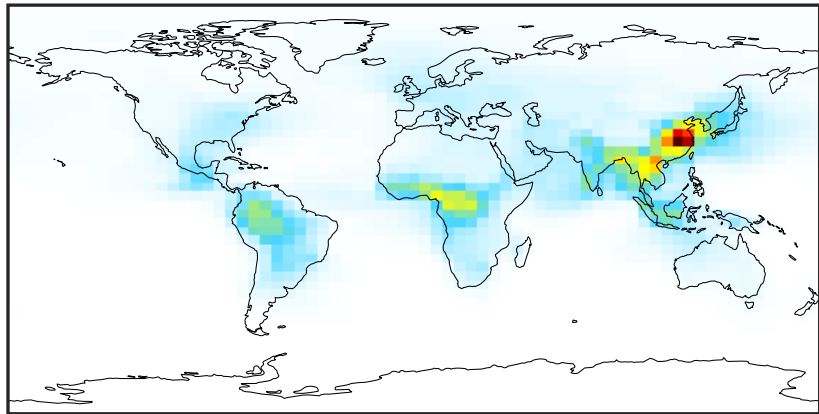
Ratio (1x1.25)
Dev/Ref, Fixed Range



0.50 0.75 1.00 1.50 2.00
unitless

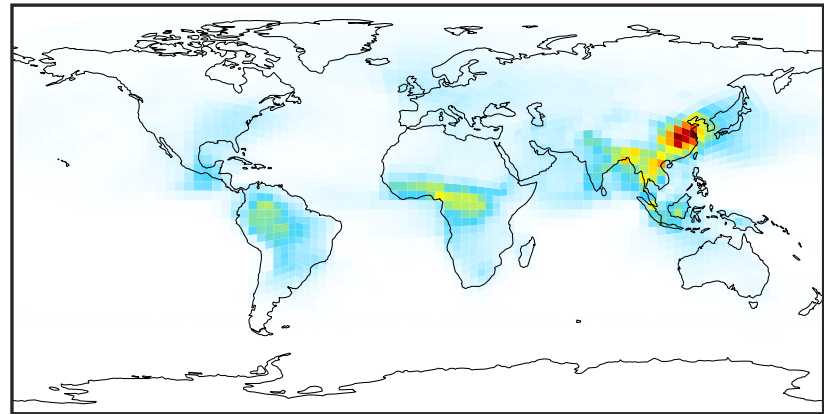
SpeciesConcVV_SOAS (Apr2019)

GCC_14.2.0 (Ref)
4.0x5.0



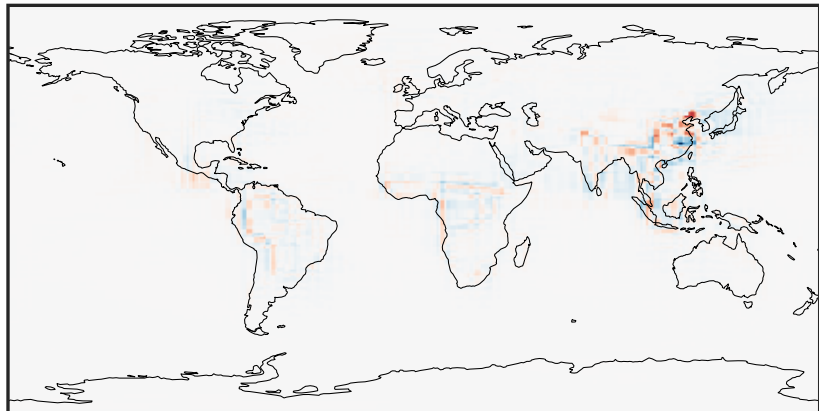
0.00 3.55 7.10 10.64 14.20
 $\mu\text{g}/\text{m}^3$

GCHP_14.2.0 (Dev)
c24



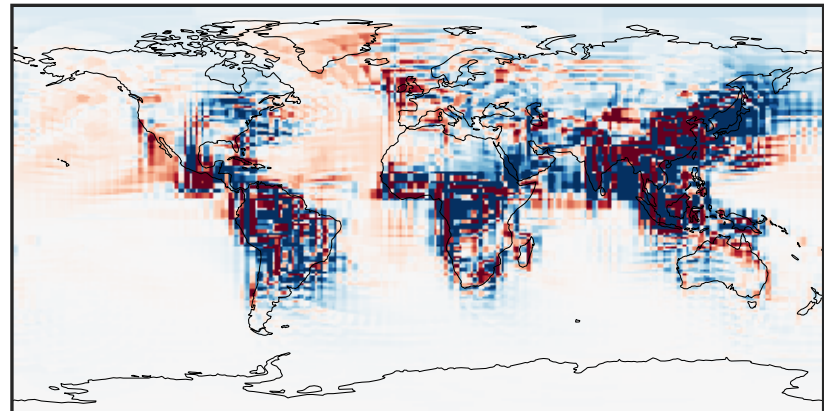
0.00 3.55 7.10 10.64 14.20
 $\mu\text{g}/\text{m}^3$

Difference (1x1.25)
Dev - Ref, Dynamic Range



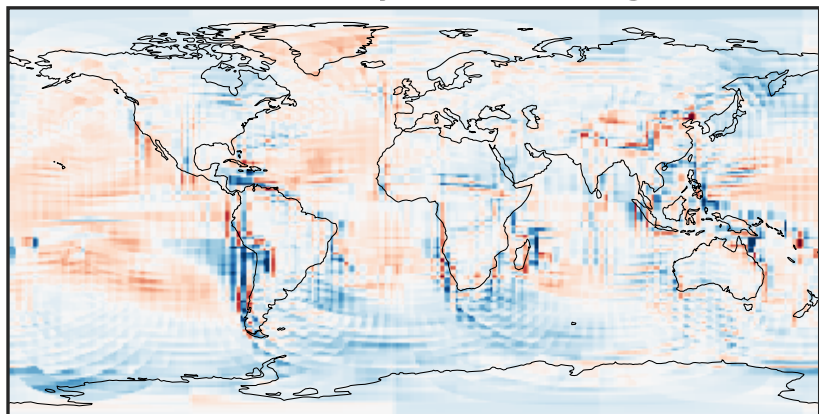
-6.04 -3.02 0.00 3.02 6.04
 $\mu\text{g}/\text{m}^3$

Difference (1x1.25)
Dev - Ref, Restricted Range [5%,95%]



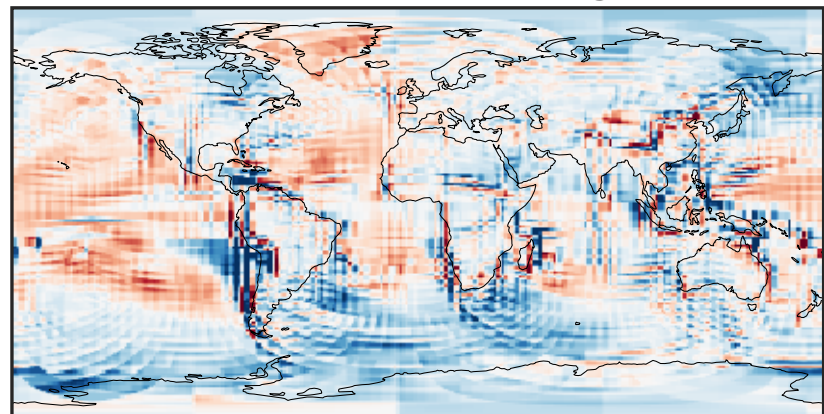
-0.1915 -0.0958 0.0000 0.0958 0.1915
 $\mu\text{g}/\text{m}^3$

Ratio (1x1.25)
Dev/Ref, Dynamic Range



0.315 0.657 1.000 2.088 3.176
unitless

Ratio (1x1.25)
Dev/Ref, Fixed Range



0.50 0.75 1.00 1.50 2.00
unitless