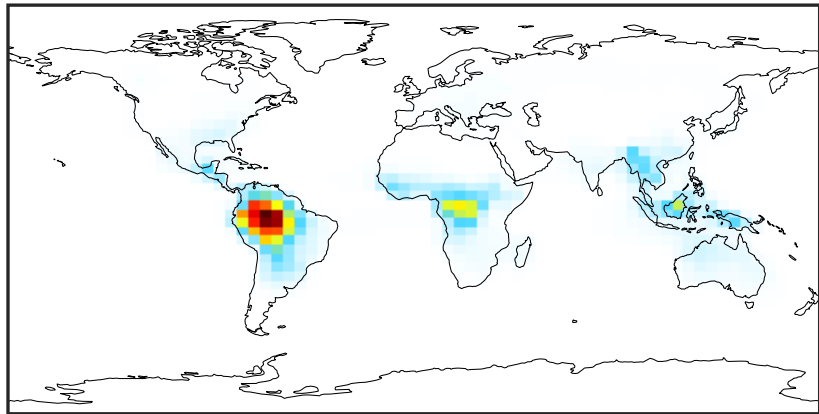


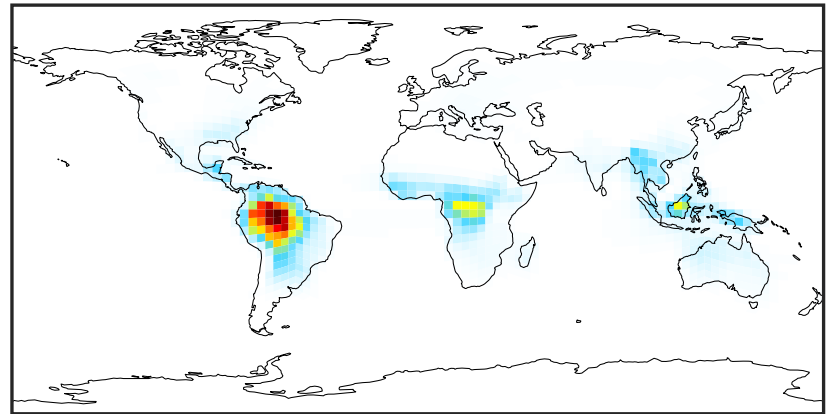
SpeciesConcVV_TSOA0 (Oct2019)

GCC_14.2.0 (Ref)
4.0x5.0



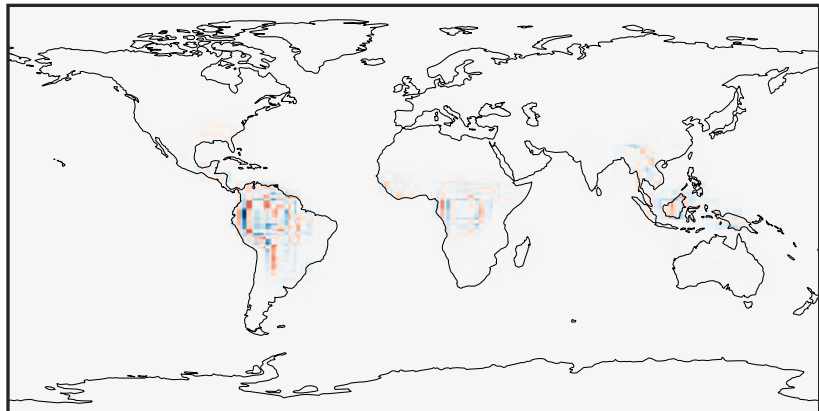
0.000 0.671 1.341 2.012 2.682
µg/m3

GCHP_14.2.0 (Dev)
c24



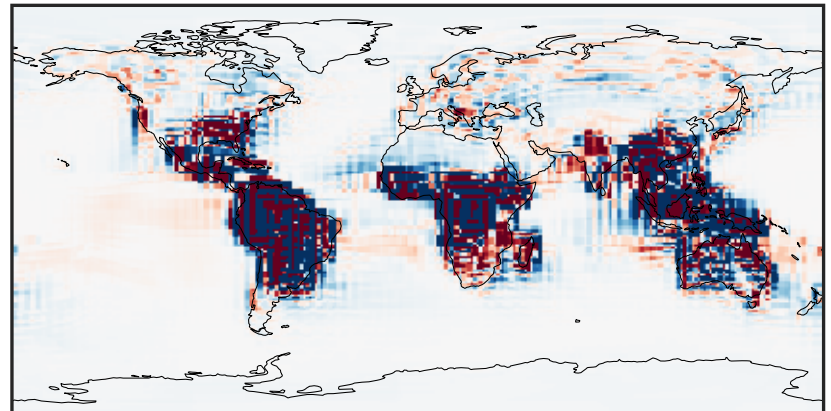
0.000 0.671 1.341 2.012 2.682
µg/m3

Difference (1x1.25)
Dev - Ref, Dynamic Range



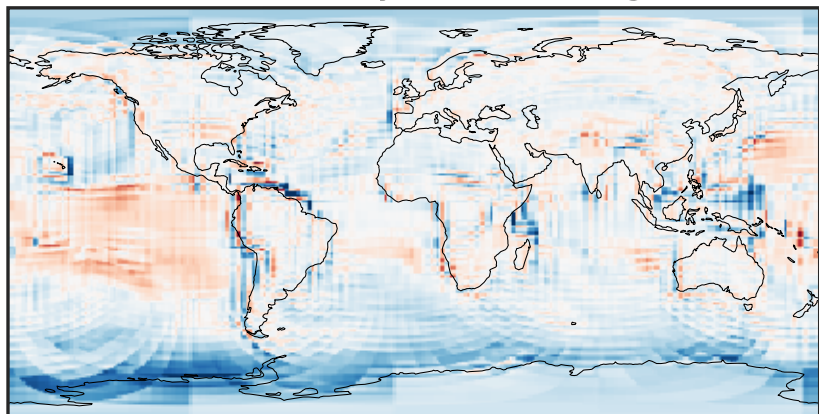
-0.916 -0.458 0.000 0.458 0.916
µg/m3

Difference (1x1.25)
Dev - Ref, Restricted Range [5%,95%]



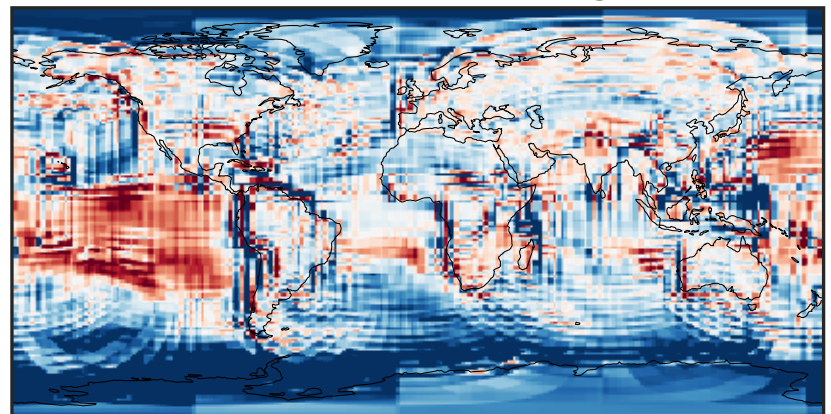
-0.005 0.000 0.005
µg/m3

Ratio (1x1.25)
Dev/Ref, Dynamic Range



0.108 0.554 1.000 5.122 9.244
unitless

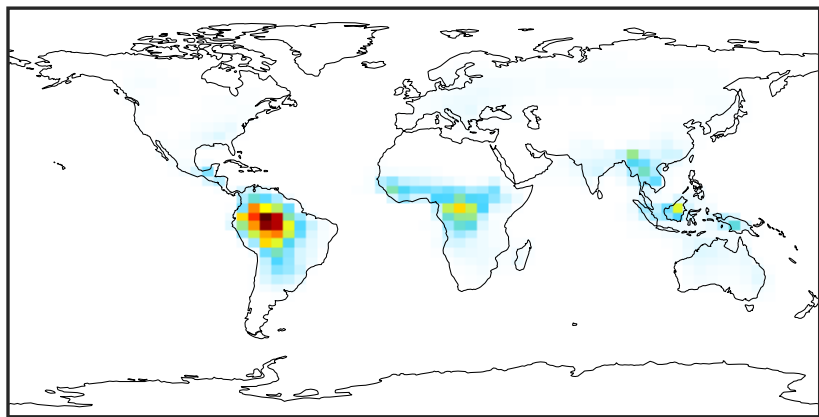
Ratio (1x1.25)
Dev/Ref, Fixed Range



0.50 0.75 1.00 1.50 2.00
unitless

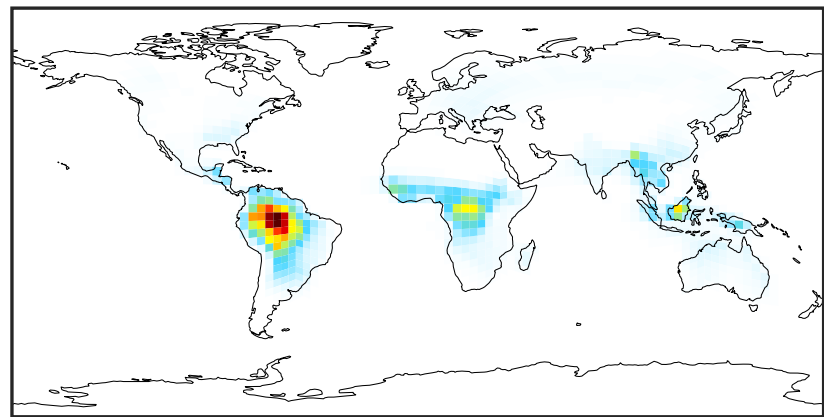
SpeciesConcVV_TSOA1 (Oct2019)

GCC_14.2.0 (Ref)
4.0x5.0



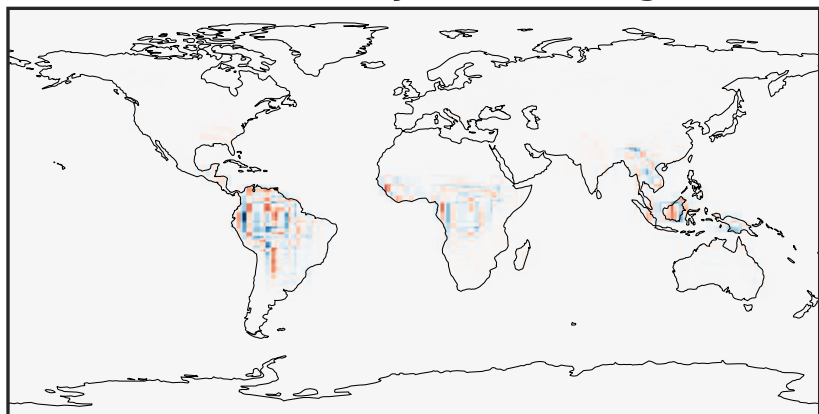
0.000 0.265 0.530 0.796 1.061
µg/m3

GCHP_14.2.0 (Dev)
c24



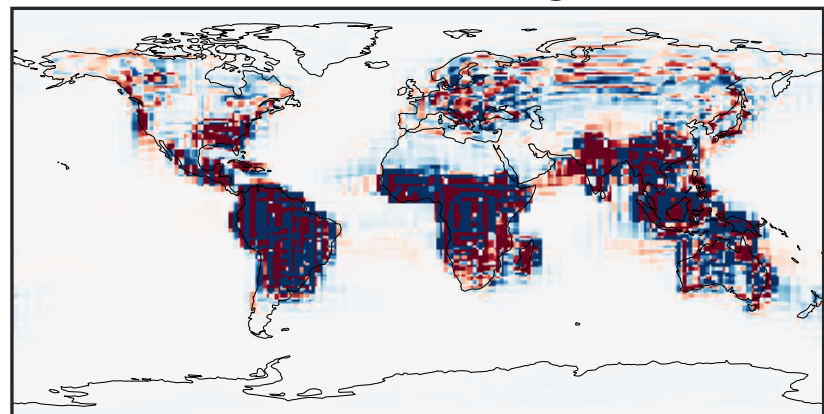
0.000 0.265 0.530 0.796 1.061
µg/m3

Difference (1x1.25)
Dev - Ref, Dynamic Range



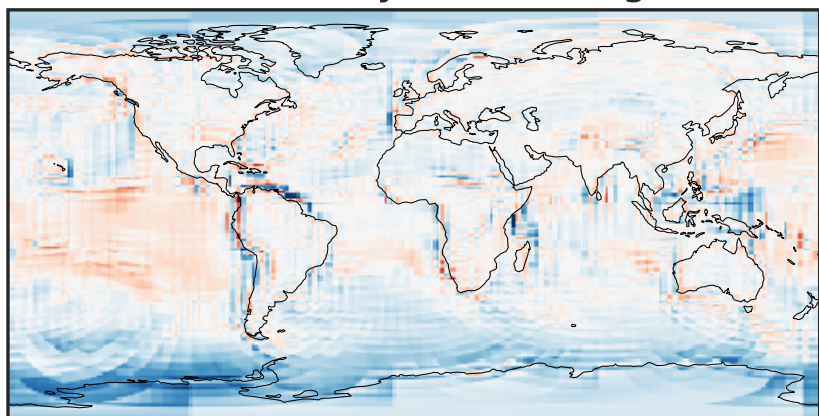
-0.3383 -0.1691 0.0000 0.1691 0.3383
µg/m3

Difference (1x1.25)
Dev - Ref, Restricted Range [5%,95%]



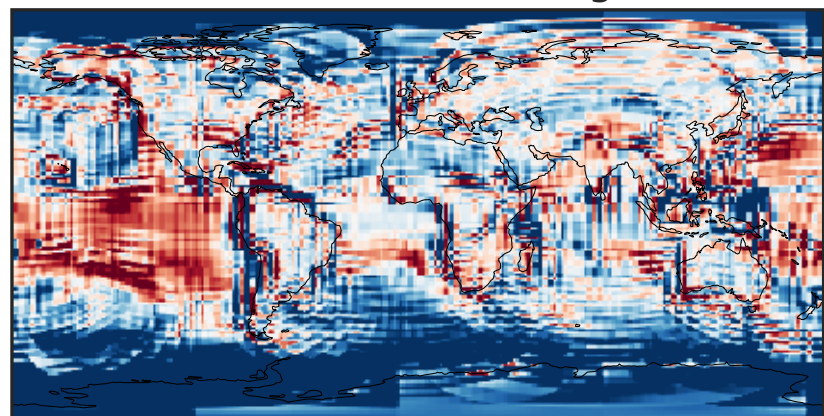
-0.002 0.000 0.002
µg/m3

Ratio (1x1.25)
Dev/Ref, Dynamic Range



1e-01 1 10
unitless

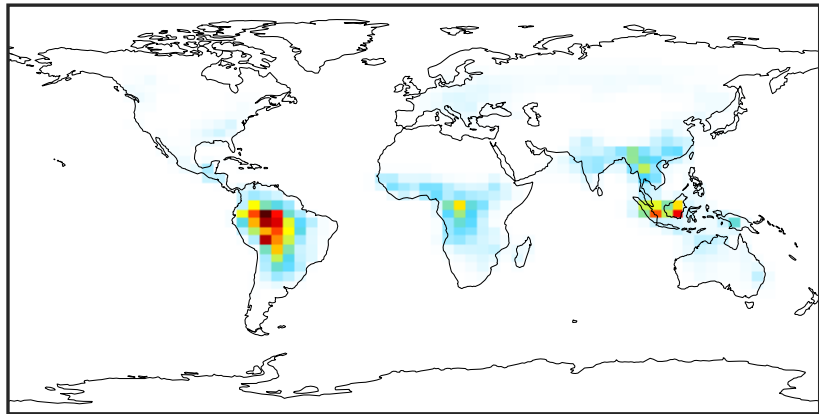
Ratio (1x1.25)
Dev/Ref, Fixed Range



0.50 0.75 1.00 1.50 2.00
unitless

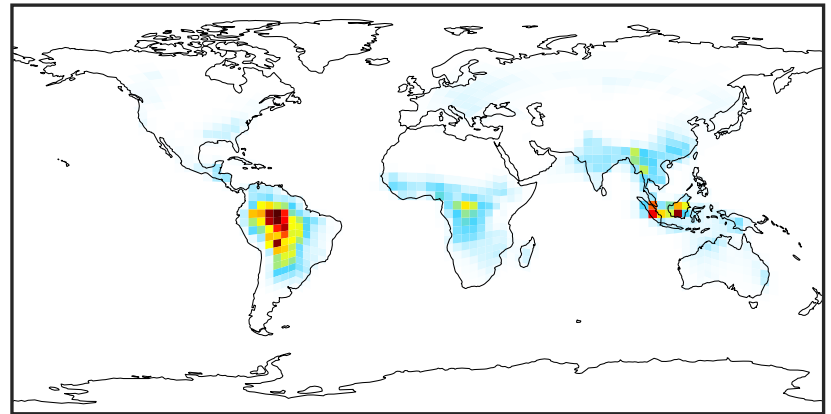
SpeciesConcVV_TSOA2 (Oct2019)

GCC_14.2.0 (Ref)
4.0x5.0



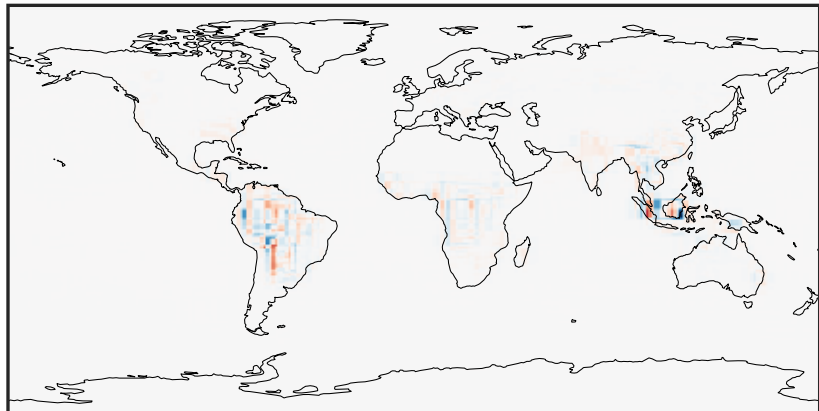
0.000 0.754 1.508 2.262 3.016
µg/m3

GCHP_14.2.0 (Dev)
c24



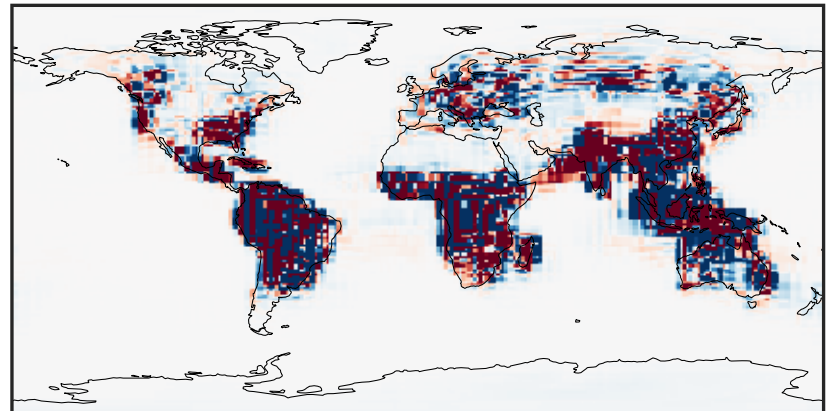
0.000 0.754 1.508 2.262 3.016
µg/m3

Difference (1x1.25)
Dev - Ref, Dynamic Range



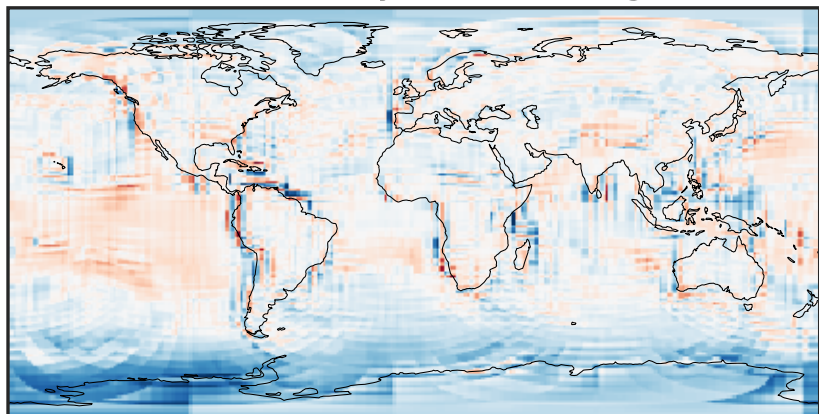
-1.648 -0.824 0.000 0.824 1.648
µg/m3

Difference (1x1.25)
Dev - Ref, Restricted Range [5%,95%]



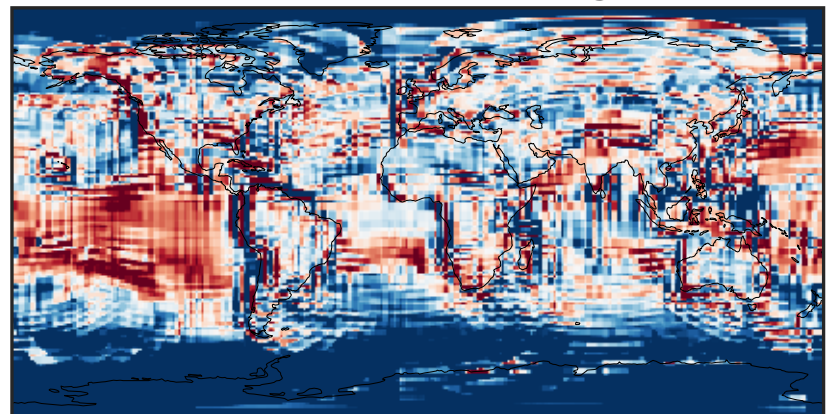
-0.008 0.000 0.008
µg/m3

Ratio (1x1.25)
Dev/Ref, Dynamic Range



1e-01 1 10
unitless

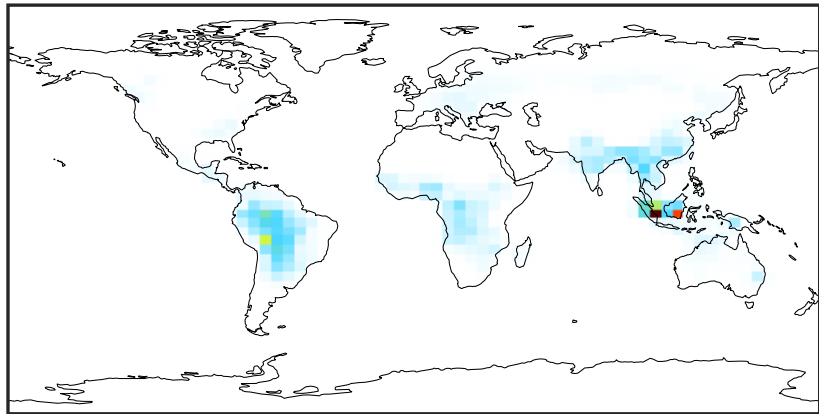
Ratio (1x1.25)
Dev/Ref, Fixed Range



0.50 0.75 1.00 1.50 2.00
unitless

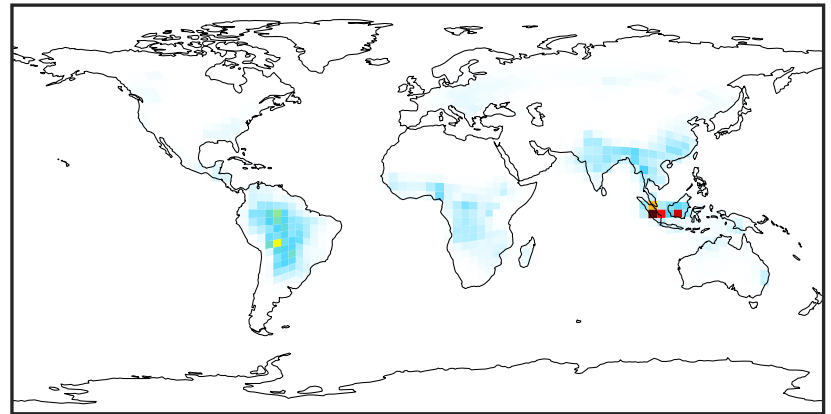
SpeciesConcVV_TSOA3 (Oct2019)

GCC_14.2.0 (Ref)
4.0x5.0



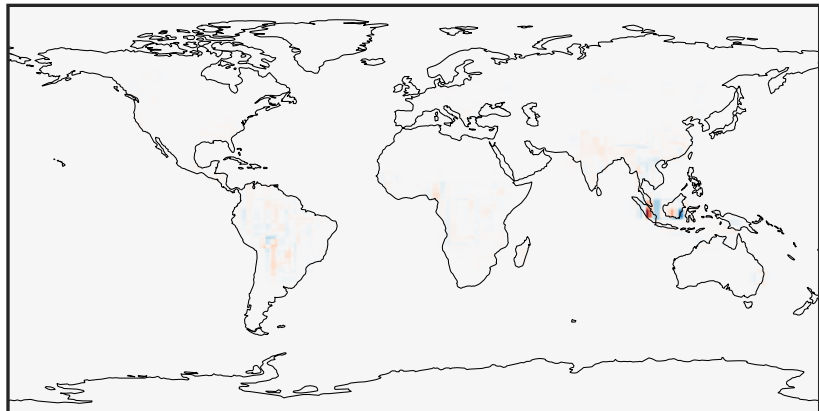
0.000 0.432 0.863 1.295 1.727
µg/m3

GCHP_14.2.0 (Dev)
c24



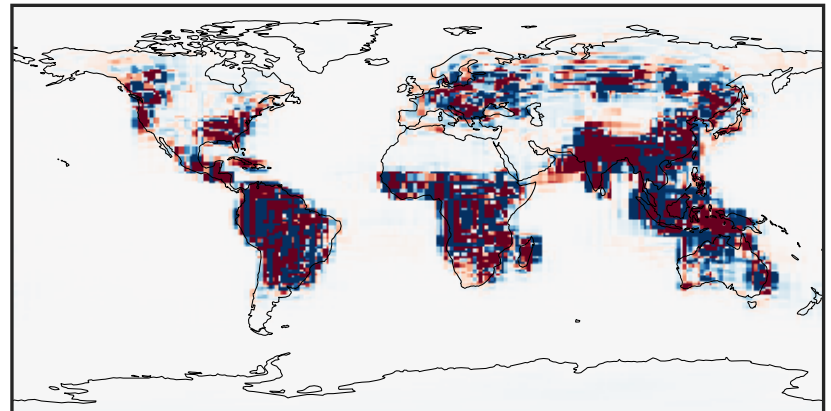
0.000 0.432 0.863 1.295 1.727
µg/m3

Difference (1x1.25)
Dev - Ref, Dynamic Range



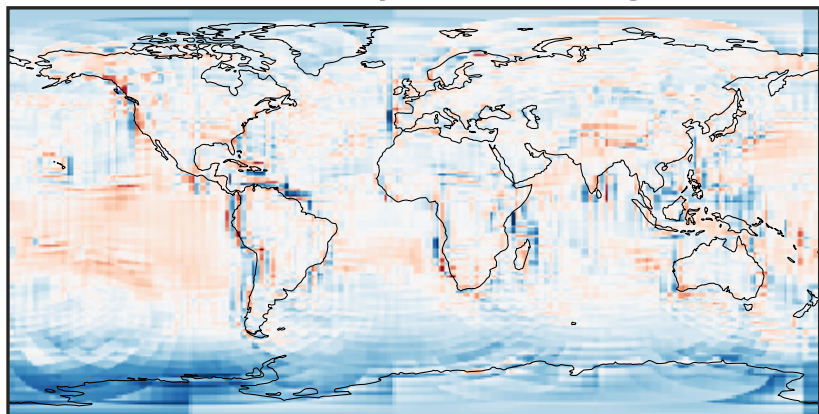
-1.461 -0.731 0.000 0.731 1.461
µg/m3

Difference (1x1.25)
Dev - Ref, Restricted Range [5%,95%]



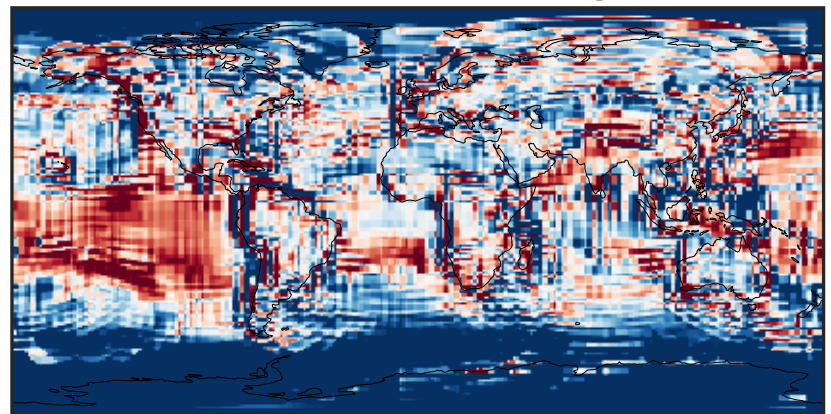
-0.0025 0.0000 0.0025
µg/m3

Ratio (1x1.25)
Dev/Ref, Dynamic Range



1e-01 1 10
unitless

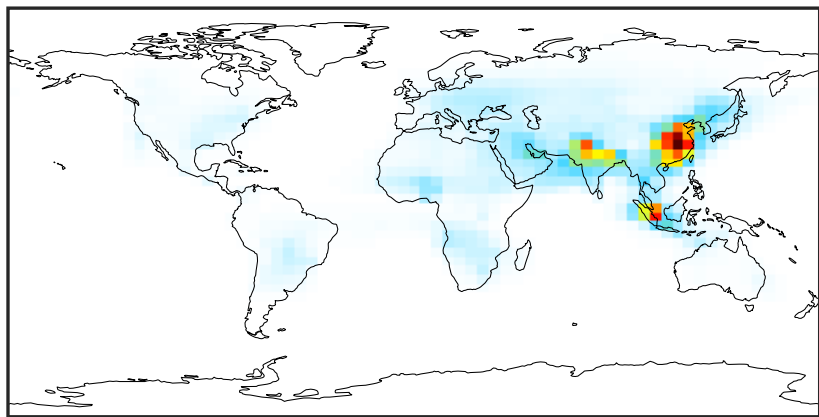
Ratio (1x1.25)
Dev/Ref, Fixed Range



0.50 0.75 1.00 1.50 2.00
unitless

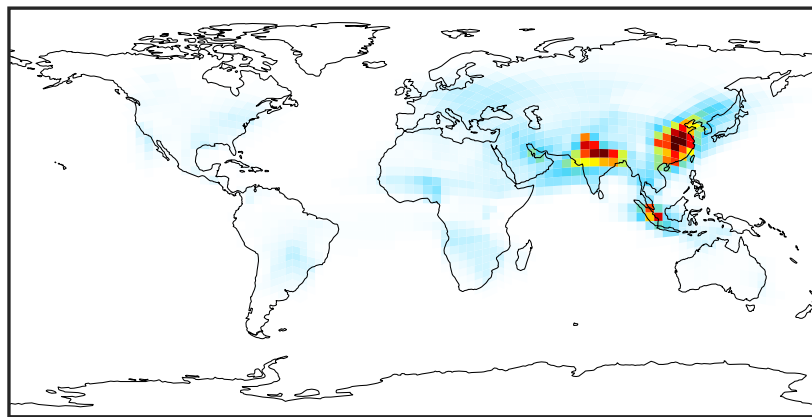
SpeciesConcVV_ASOA1 (Oct2019)

GCC_14.2.0 (Ref)
4.0x5.0



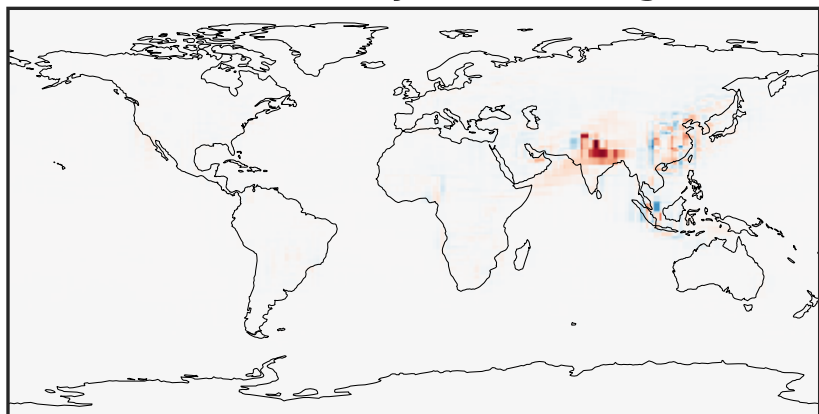
0.0000 0.0370 0.0741 0.1111 0.1481
 $\mu\text{g}/\text{m}^3$

GCHP_14.2.0 (Dev)
c24



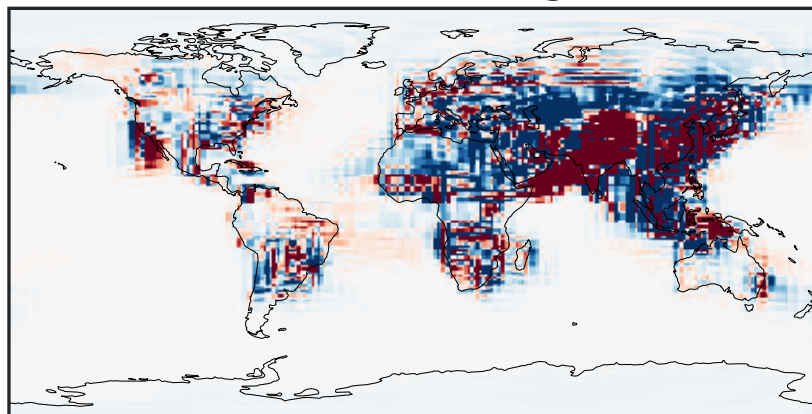
0.0000 0.0370 0.0741 0.1111 0.1481
 $\mu\text{g}/\text{m}^3$

Difference (1x1.25)
Dev - Ref, Dynamic Range



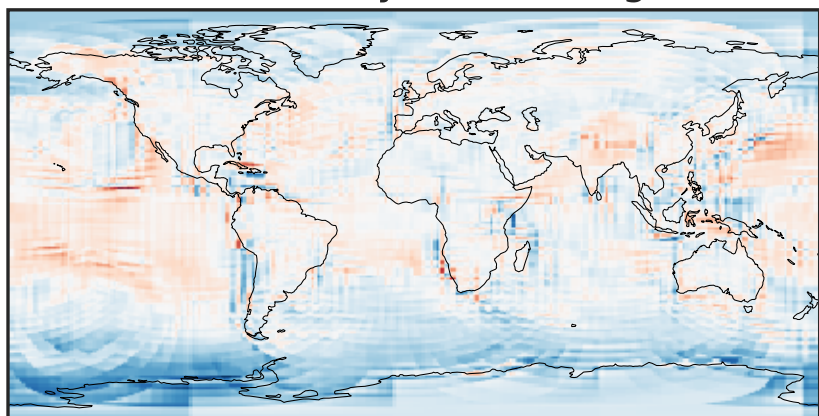
-0.0746 -0.0373 0.0000 0.0373 0.0746
 $\mu\text{g}/\text{m}^3$

Difference (1x1.25)
Dev - Ref, Restricted Range [5%,95%]



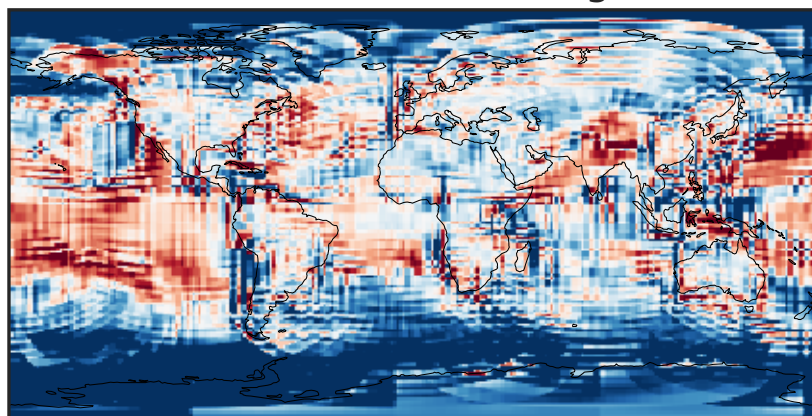
-0.0006 0.0000 0.0006
 $\mu\text{g}/\text{m}^3$

Ratio (1x1.25)
Dev/Ref, Dynamic Range



1e-01 1 10
unitless

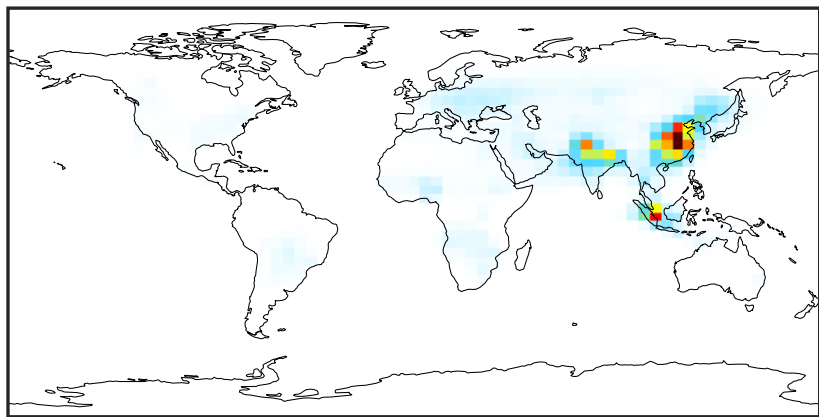
Ratio (1x1.25)
Dev/Ref, Fixed Range



0.50 0.75 1.00 1.50 2.00
unitless

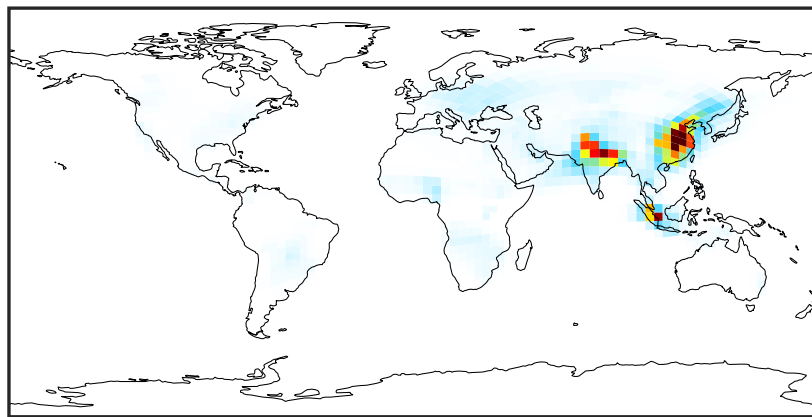
SpeciesConcVV_ASOA2 (Oct2019)

GCC_14.2.0 (Ref)
4.0x5.0



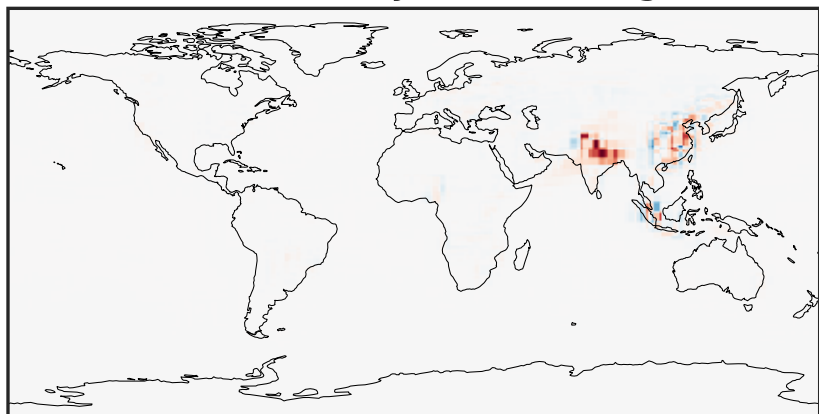
0.0000 0.0309 0.0618 0.0928 0.1237
 $\mu\text{g}/\text{m}^3$

GCHP_14.2.0 (Dev)
c24



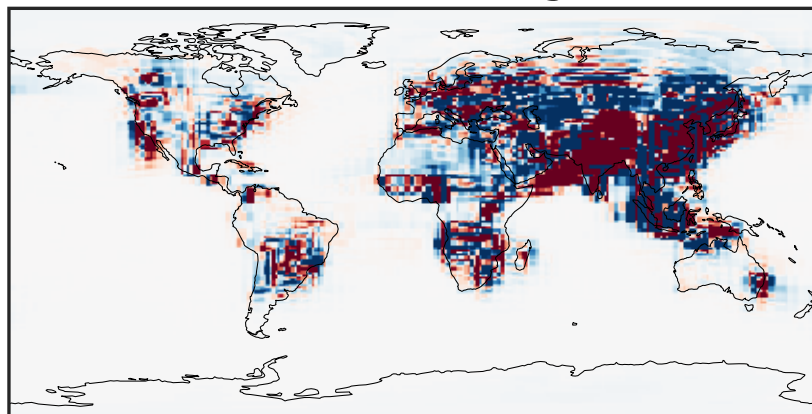
0.0000 0.0309 0.0618 0.0928 0.1237
 $\mu\text{g}/\text{m}^3$

Difference (1x1.25)
Dev - Ref, Dynamic Range



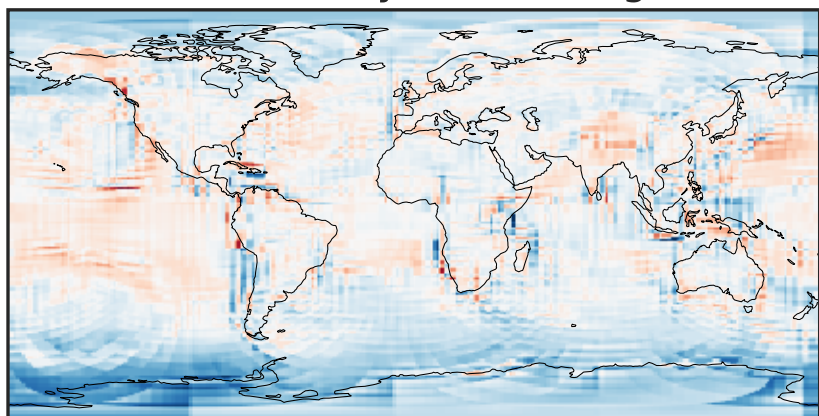
-0.0628 -0.0314 0.0000 0.0314 0.0628
 $\mu\text{g}/\text{m}^3$

Difference (1x1.25)
Dev - Ref, Restricted Range [5%,95%]



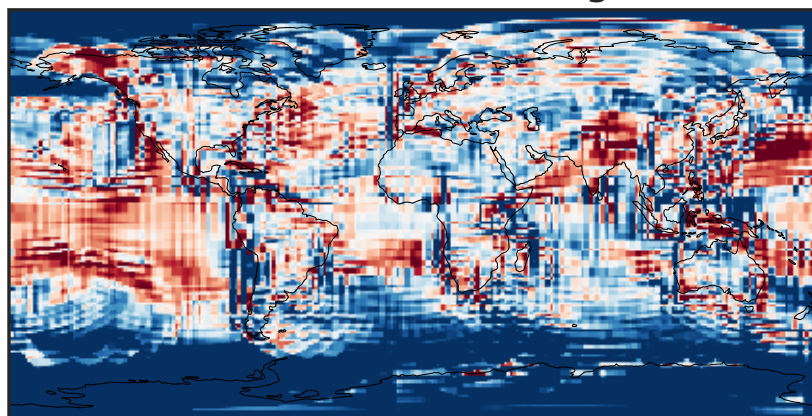
-0.00025 0.00000 0.00025
 $\mu\text{g}/\text{m}^3$

Ratio (1x1.25)
Dev/Ref, Dynamic Range



1e-01 1 10
unitless

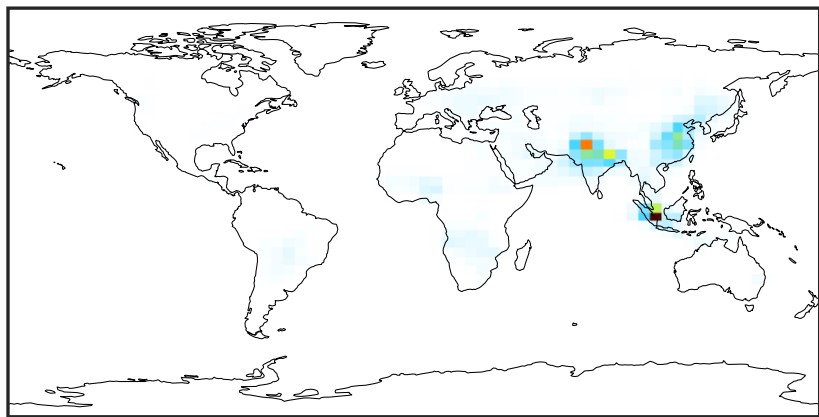
Ratio (1x1.25)
Dev/Ref, Fixed Range



0.50 0.75 1.00 1.50 2.00
unitless

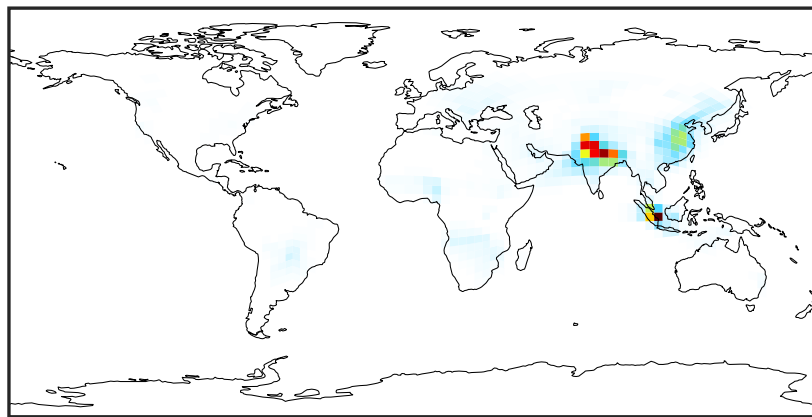
SpeciesConcVV_ASOA3 (Oct2019)

GCC_14.2.0 (Ref)
4.0x5.0



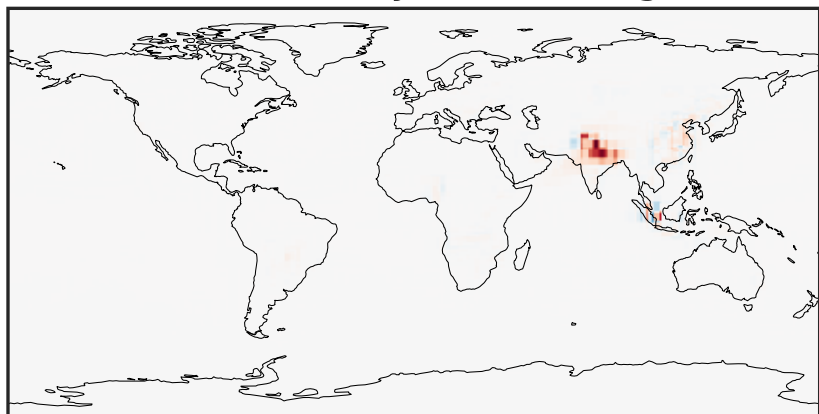
0.0000 0.0425 0.0849 0.1274 0.1699
 $\mu\text{g}/\text{m}^3$

GCHP_14.2.0 (Dev)
c24



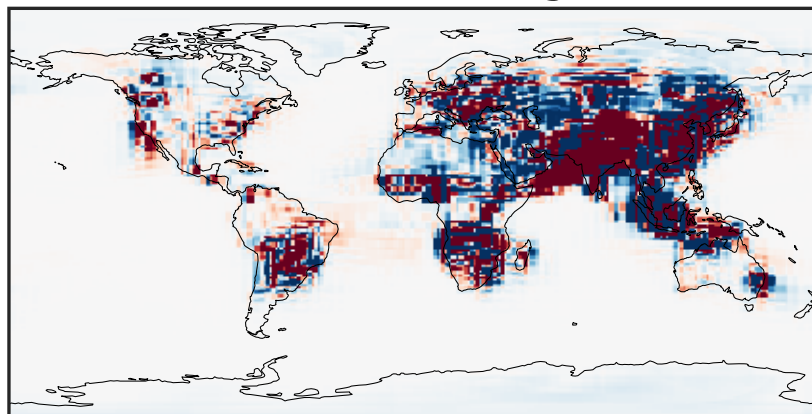
0.0000 0.0425 0.0849 0.1274 0.1699
 $\mu\text{g}/\text{m}^3$

Difference (1x1.25)
Dev - Ref, Dynamic Range



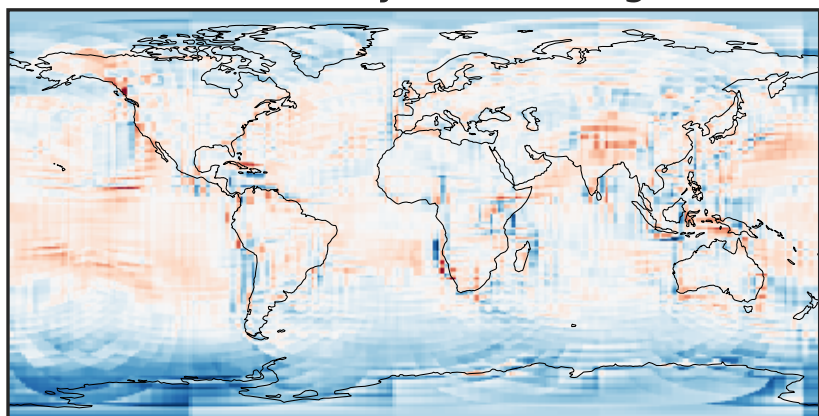
-0.1041 -0.0521 0.0000 0.0521 0.1041
 $\mu\text{g}/\text{m}^3$

Difference (1x1.25)
Dev - Ref, Restricted Range [5%,95%]



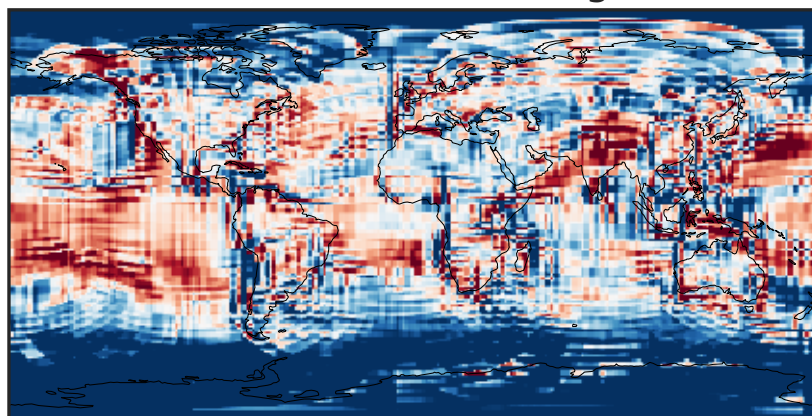
-0.00015 0.00000 0.00015
 $\mu\text{g}/\text{m}^3$

Ratio (1x1.25)
Dev/Ref, Dynamic Range



1e-01 1 10
unitless

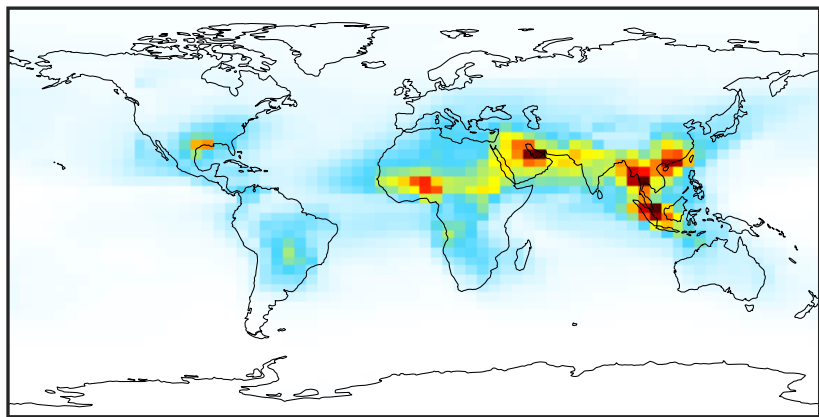
Ratio (1x1.25)
Dev/Ref, Fixed Range



0.50 0.75 1.00 1.50 2.00
unitless

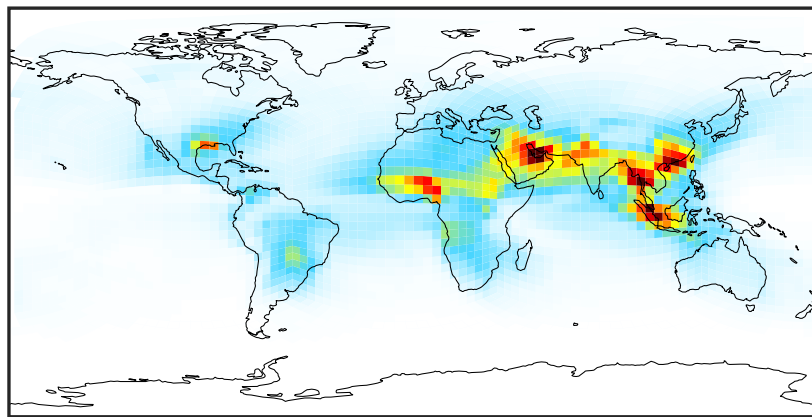
SpeciesConcVV_ASOAN (Oct2019)

GCC_14.2.0 (Ref)
4.0x5.0



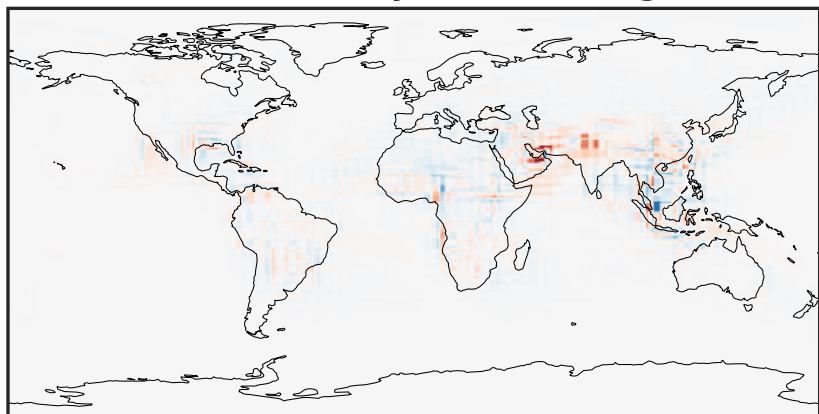
0.0010 0.0595 0.1190 0.1785 0.2389
 $\mu\text{g}/\text{m}^3$

GCHP_14.2.0 (Dev)
c24



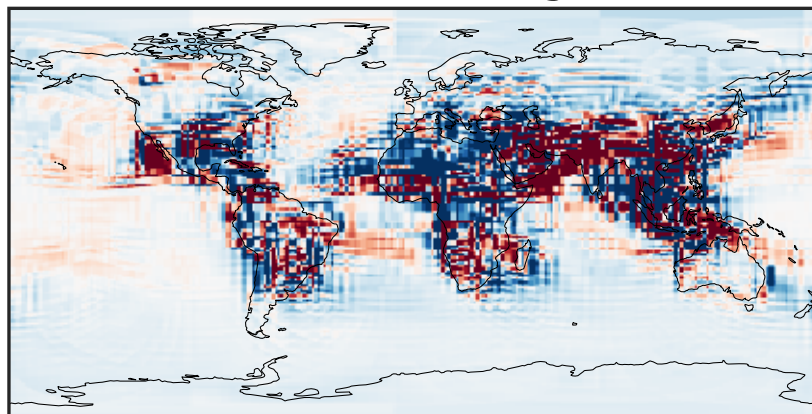
0.0010 0.0595 0.1190 0.1785 0.2389
 $\mu\text{g}/\text{m}^3$

Difference (1x1.25)
Dev - Ref, Dynamic Range



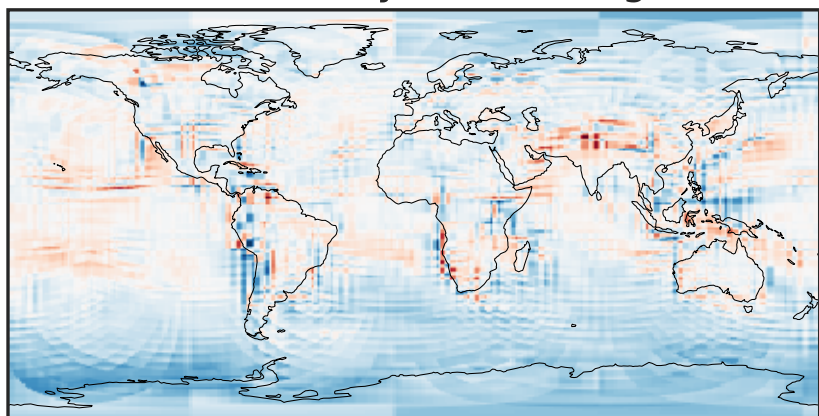
-0.1149 -0.0575 0.0000 0.0575 0.1149
 $\mu\text{g}/\text{m}^3$

Difference (1x1.25)
Dev - Ref, Restricted Range [5%,95%]



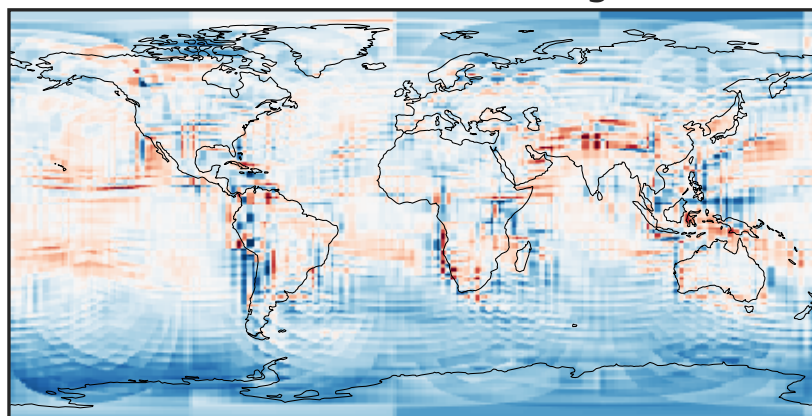
-0.0025 0.0000 0.0025
 $\mu\text{g}/\text{m}^3$

Ratio (1x1.25)
Dev/Ref, Dynamic Range



0.389 0.694 1.000 1.786 2.572
unitless

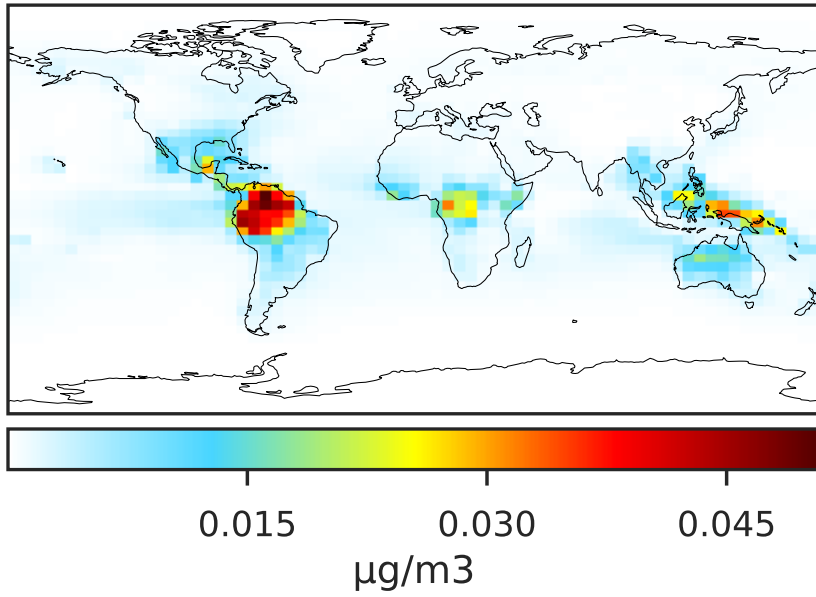
Ratio (1x1.25)
Dev/Ref, Fixed Range



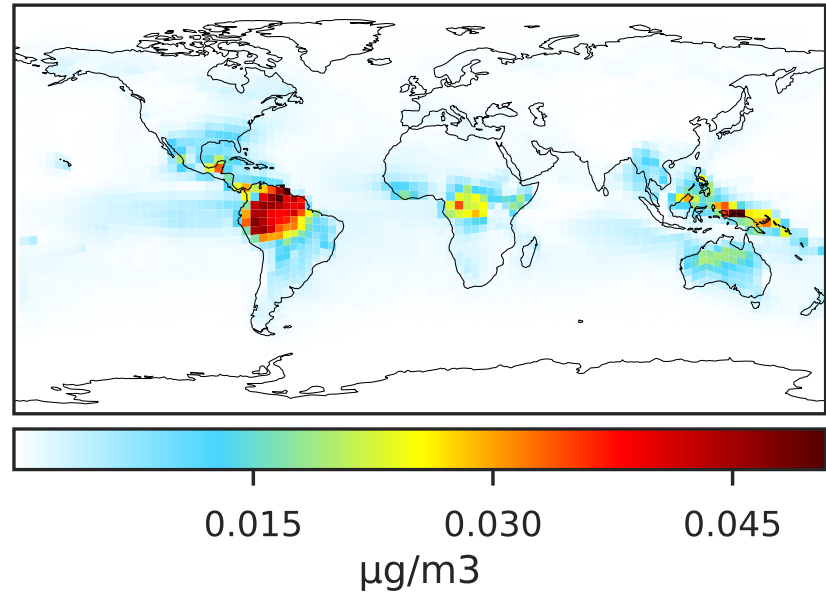
0.50 0.75 1.00 1.50 2.00
unitless

SpeciesConcVV_TSOG0 (Oct2019)

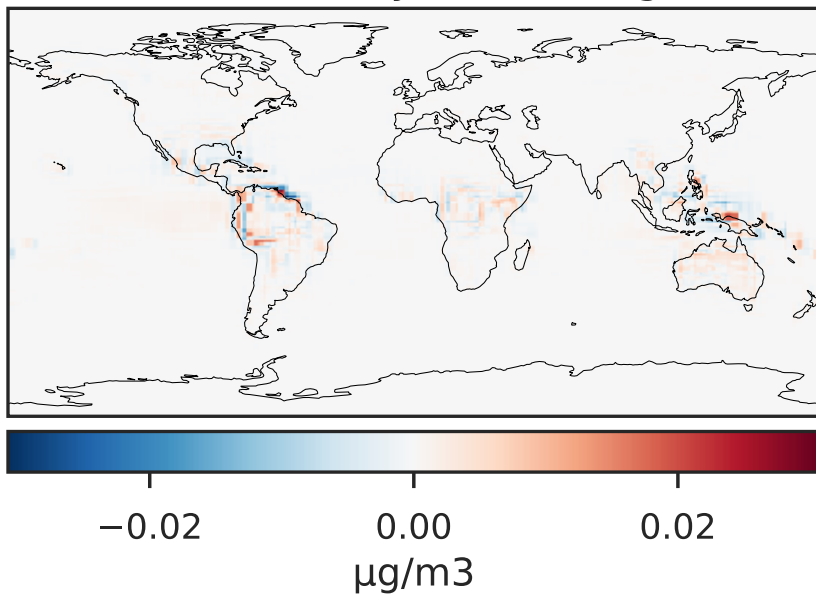
GCC_14.2.0 (Ref)
4.0x5.0



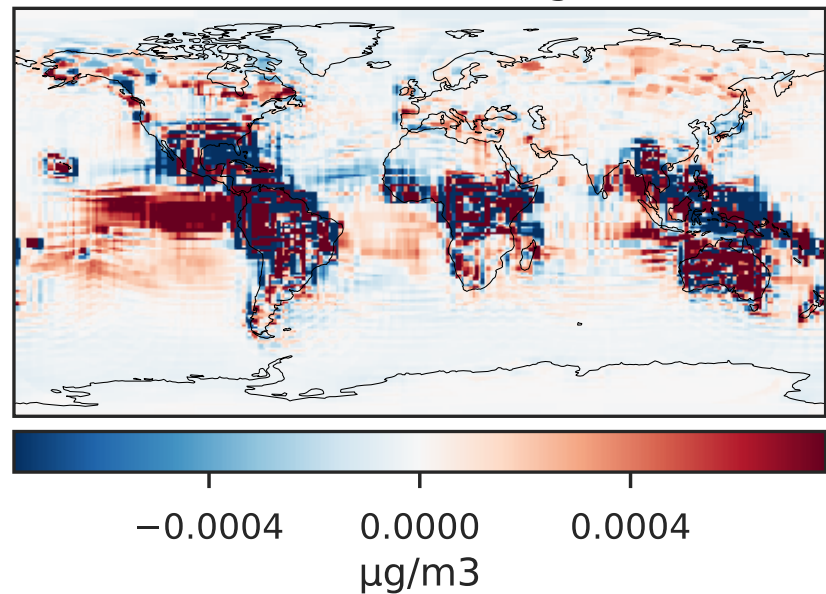
GCHP_14.2.0 (Dev)
c24



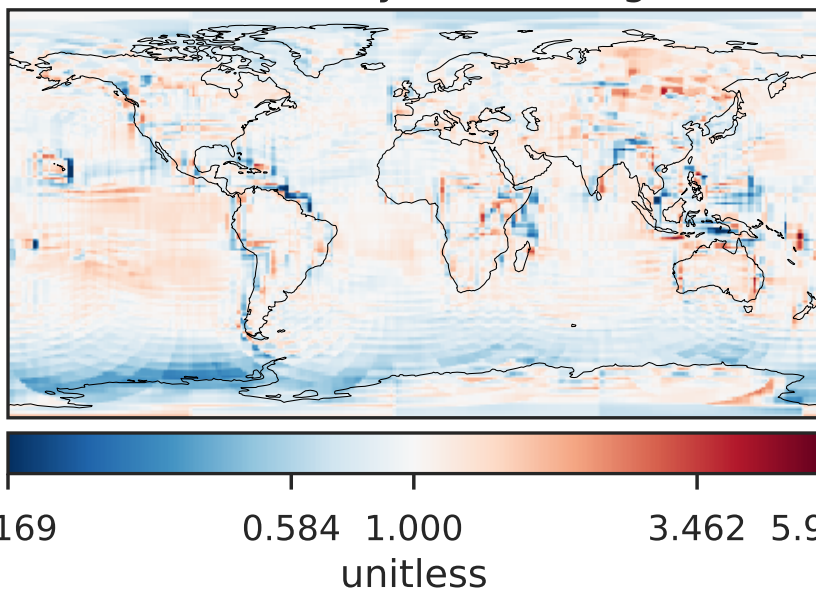
Difference (1x1.25)
Dev - Ref, Dynamic Range



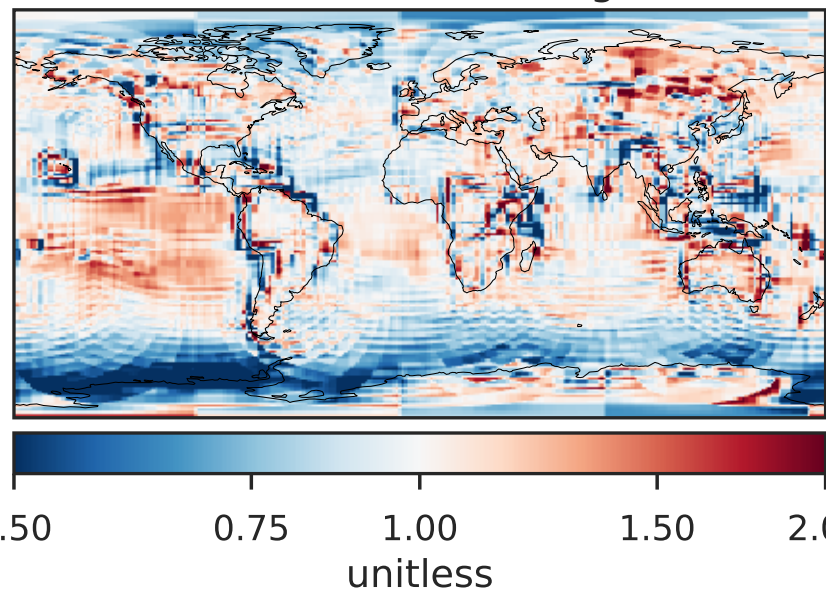
Difference (1x1.25)
Dev - Ref, Restricted Range [5%,95%]



Ratio (1x1.25)
Dev/Ref, Dynamic Range

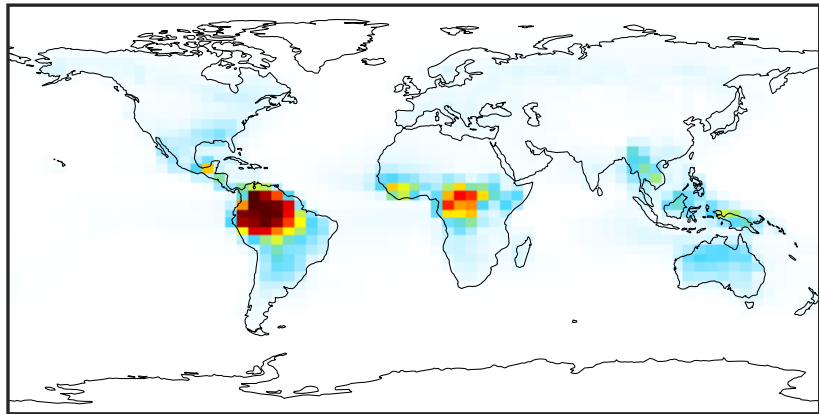


Ratio (1x1.25)
Dev/Ref, Fixed Range



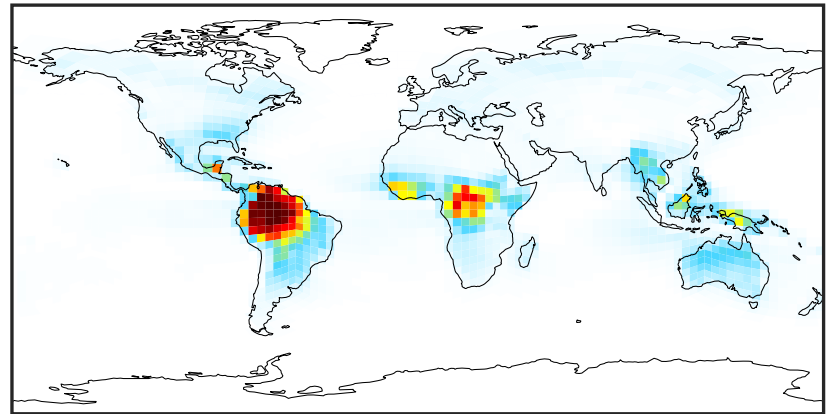
SpeciesConcVV_TSOG1 (Oct2019)

GCC_14.2.0 (Ref)
4.0x5.0



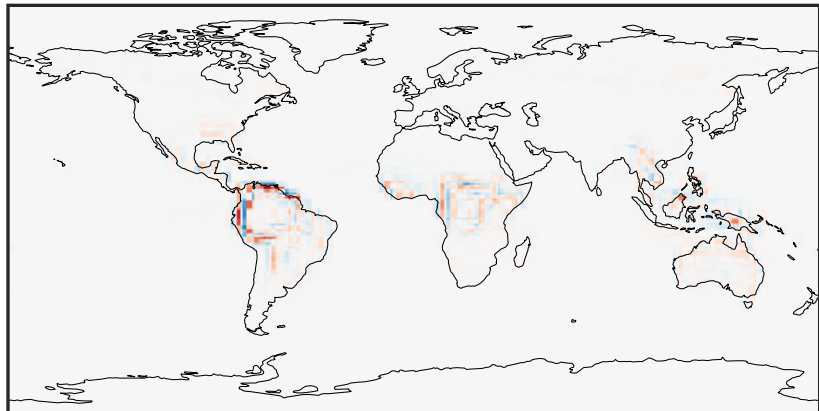
0.0000 0.0361 0.0721 0.1082 0.1443
 $\mu\text{g}/\text{m}^3$

GCHP_14.2.0 (Dev)
c24



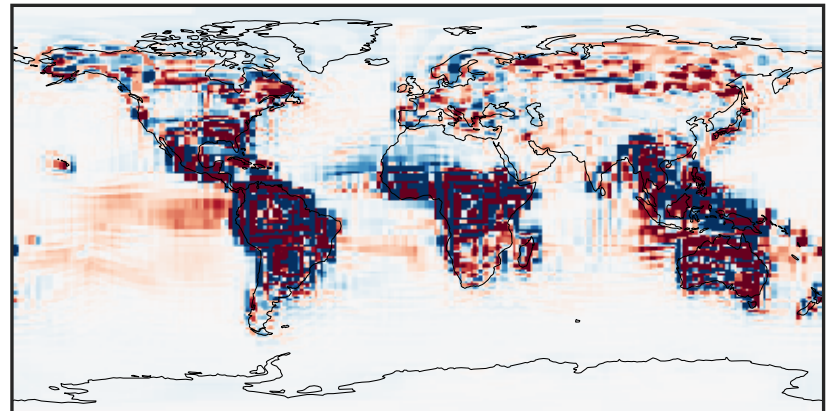
0.0000 0.0361 0.0721 0.1082 0.1443
 $\mu\text{g}/\text{m}^3$

Difference (1x1.25)
Dev - Ref, Dynamic Range



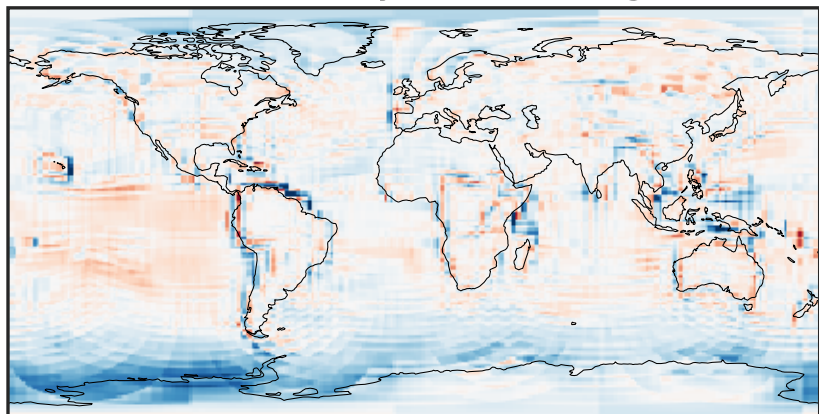
-0.0738 -0.0369 0.0000 0.0369 0.0738
 $\mu\text{g}/\text{m}^3$

Difference (1x1.25)
Dev - Ref, Restricted Range [5%,95%]



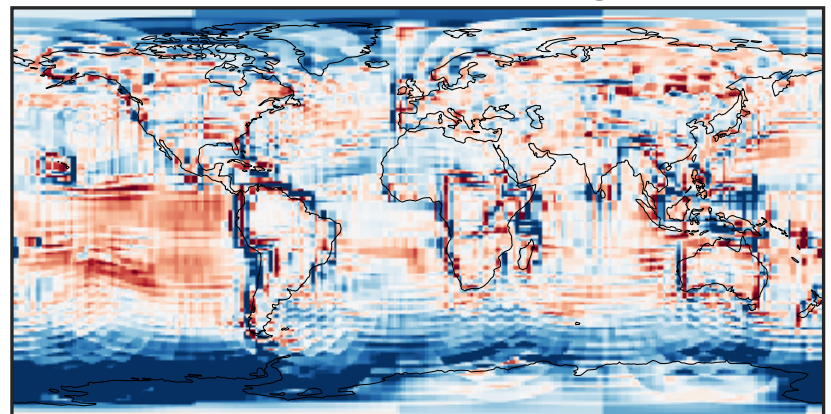
-0.0008 0.0000 0.0008
 $\mu\text{g}/\text{m}^3$

Ratio (1x1.25)
Dev/Ref, Dynamic Range



0.137 0.569 1.000 4.145 7.289
unitless

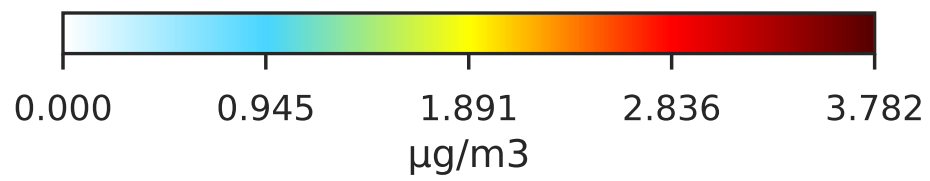
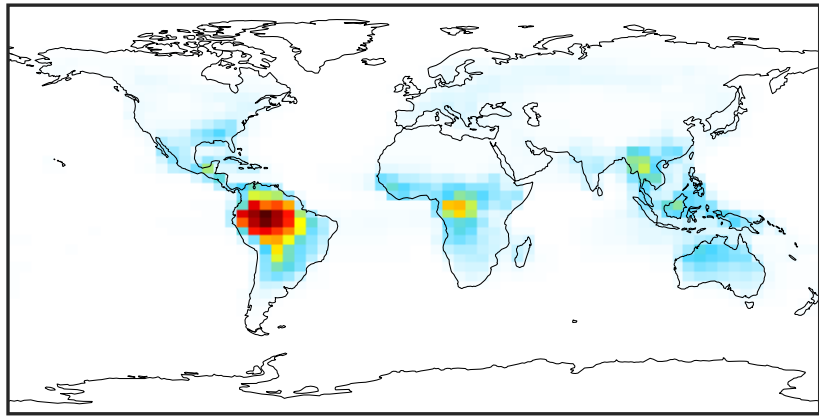
Ratio (1x1.25)
Dev/Ref, Fixed Range



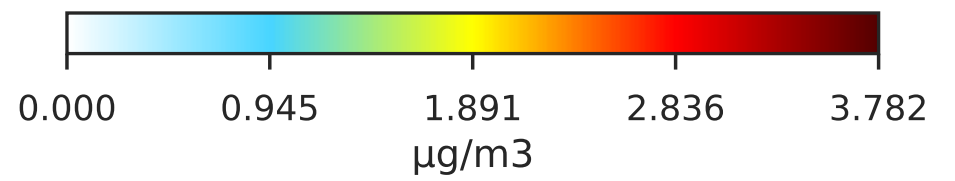
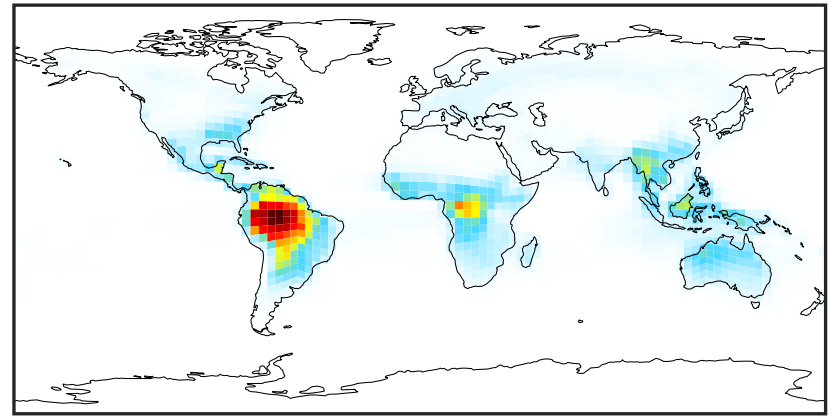
0.50 0.75 1.00 1.50 2.00
unitless

SpeciesConcVV_TSOG2 (Oct2019)

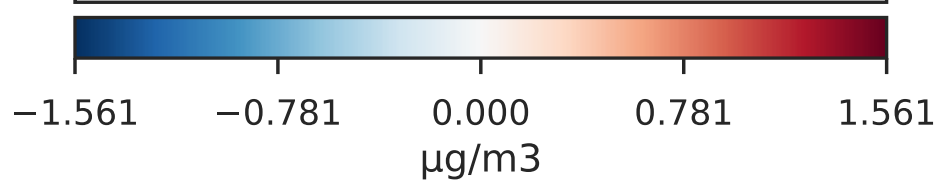
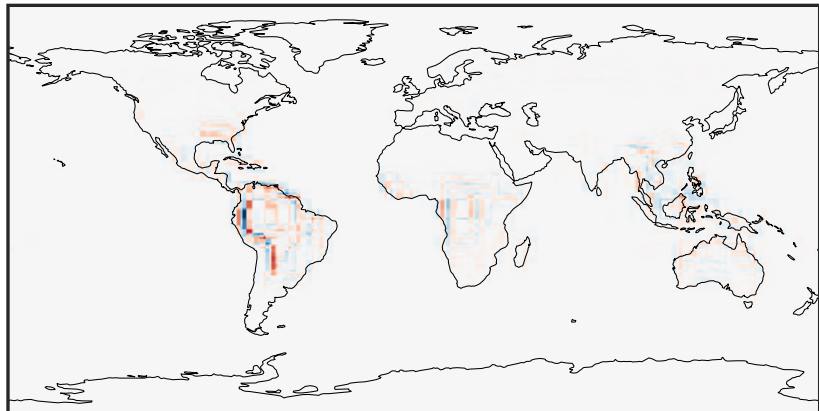
GCC_14.2.0 (Ref)
4.0x5.0



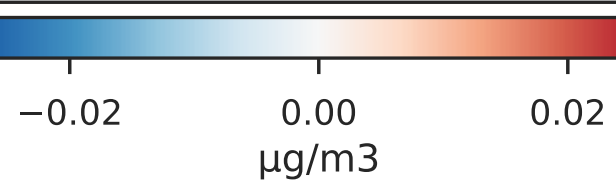
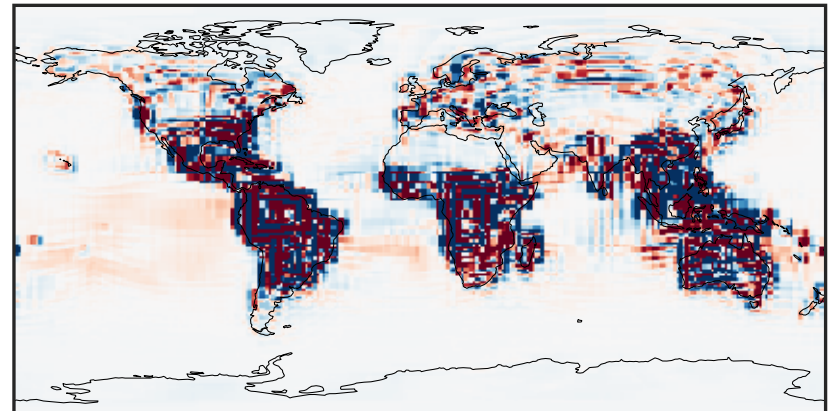
GCHP_14.2.0 (Dev)
c24



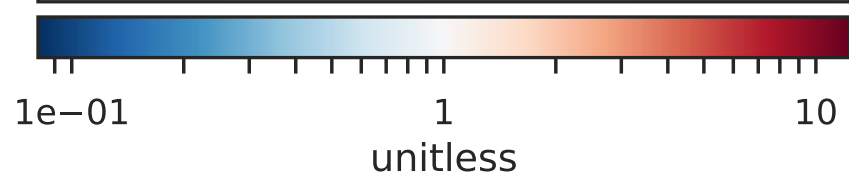
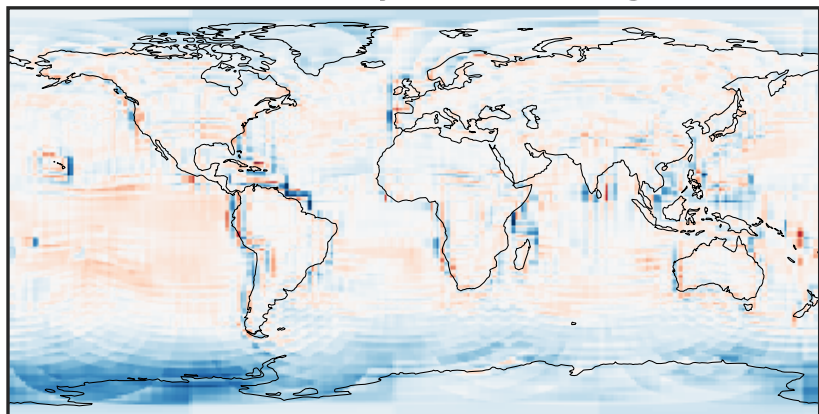
Difference (1x1.25)
Dev - Ref, Dynamic Range



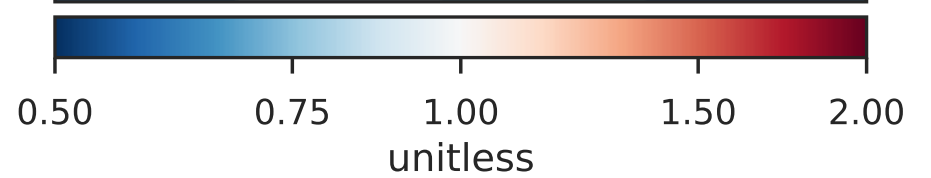
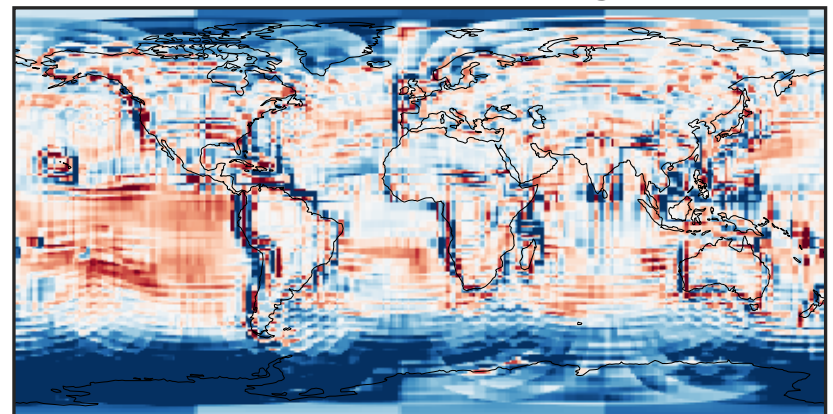
Difference (1x1.25)
Dev - Ref, Restricted Range [5%,95%]



Ratio (1x1.25)
Dev/Ref, Dynamic Range

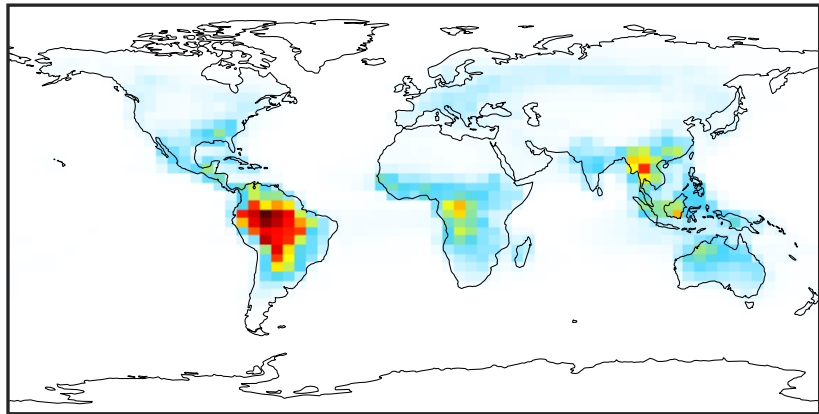


Ratio (1x1.25)
Dev/Ref, Fixed Range



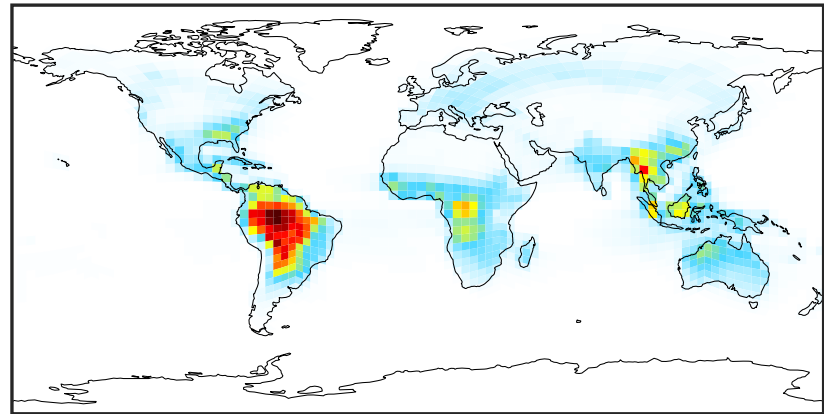
SpeciesConcVV_TSOG3 (Oct2019)

GCC_14.2.0 (Ref)
4.0x5.0



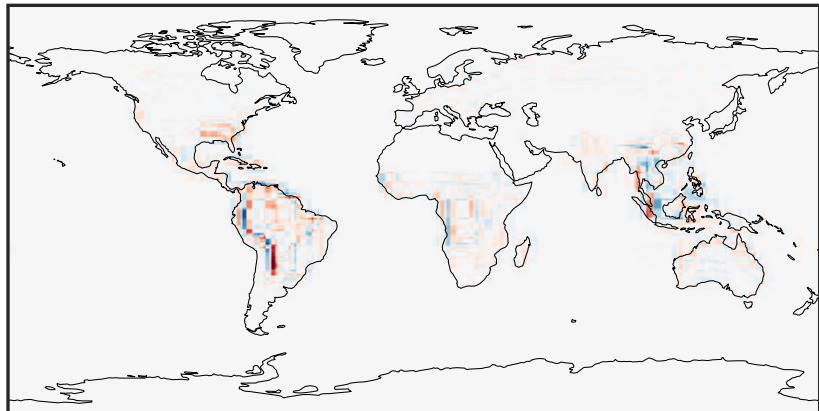
0.001 1.632 3.264 4.896 6.529
 $\mu\text{g}/\text{m}^3$

GCHP_14.2.0 (Dev)
c24



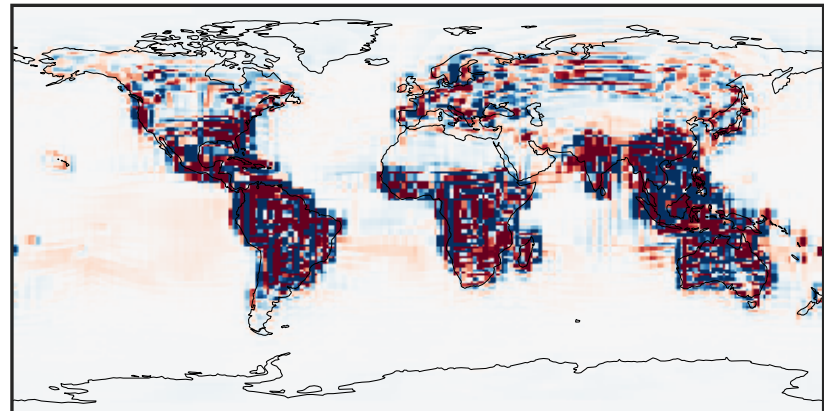
0.001 1.632 3.264 4.896 6.529
 $\mu\text{g}/\text{m}^3$

Difference (1x1.25)
Dev - Ref, Dynamic Range



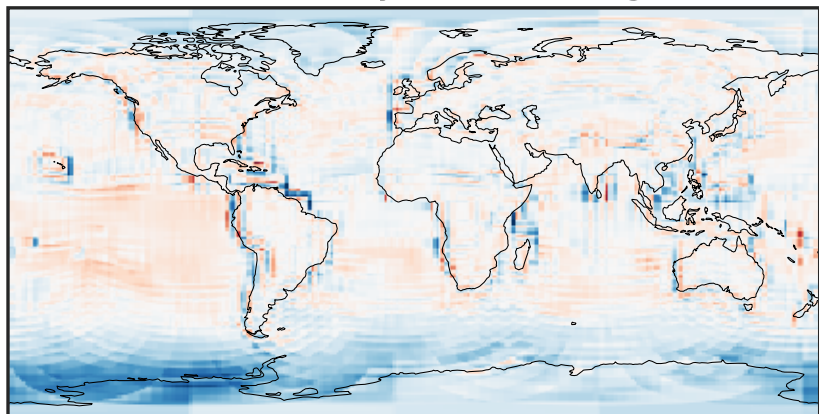
-2.684 -1.342 0.000 1.342 2.684
 $\mu\text{g}/\text{m}^3$

Difference (1x1.25)
Dev - Ref, Restricted Range [5%,95%]



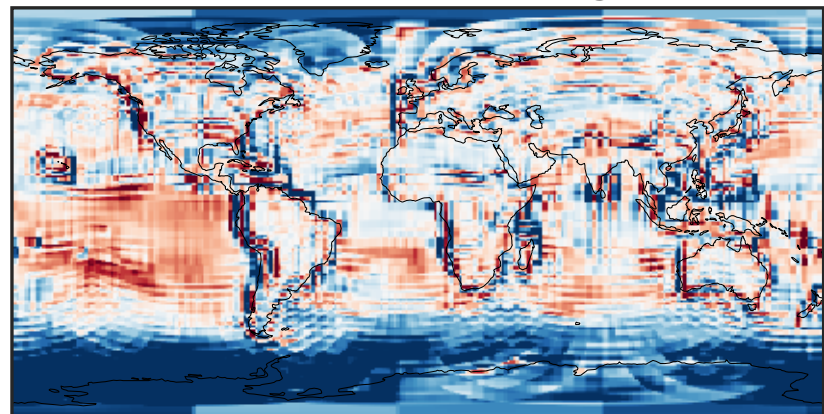
-0.0905 -0.0452 0.0000 0.0452 0.0905
 $\mu\text{g}/\text{m}^3$

Ratio (1x1.25)
Dev/Ref, Dynamic Range



1e-01 1 10
unitless

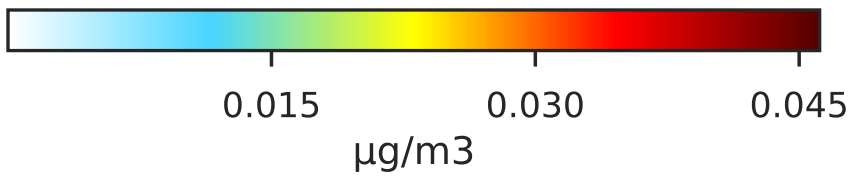
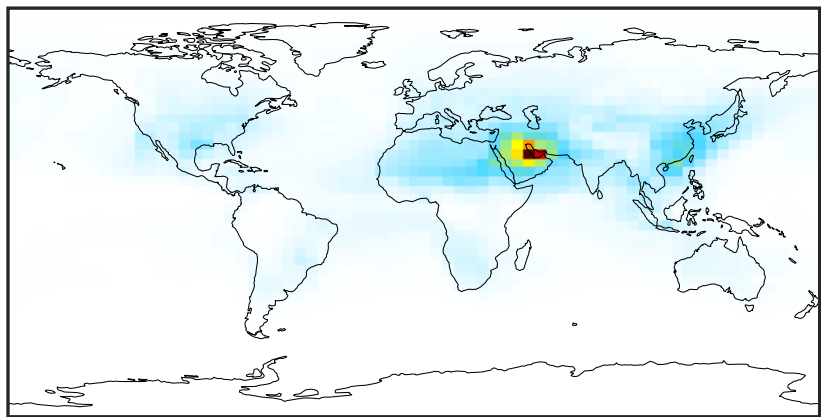
Ratio (1x1.25)
Dev/Ref, Fixed Range



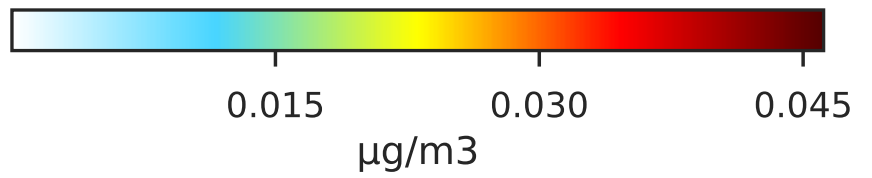
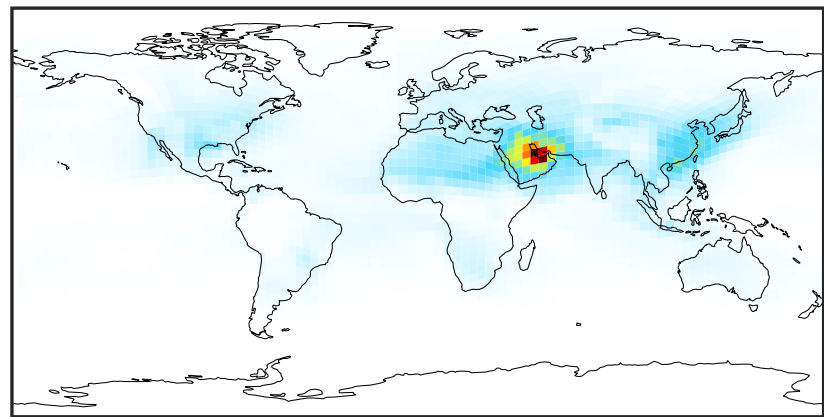
0.50 0.75 1.00 1.50 2.00
unitless

SpeciesConcVV_ASOG1 (Oct2019)

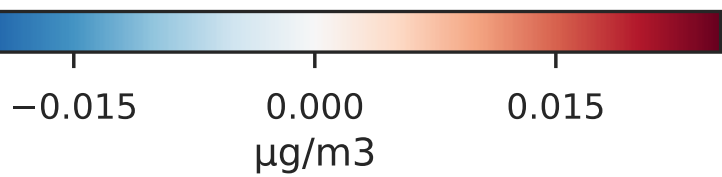
GCC_14.2.0 (Ref)
4.0x5.0



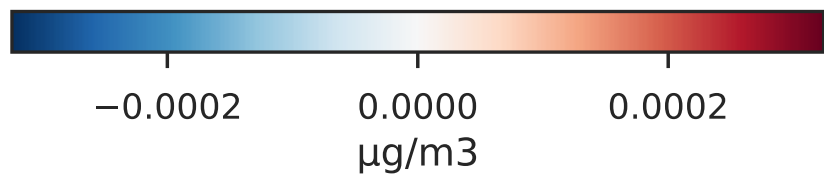
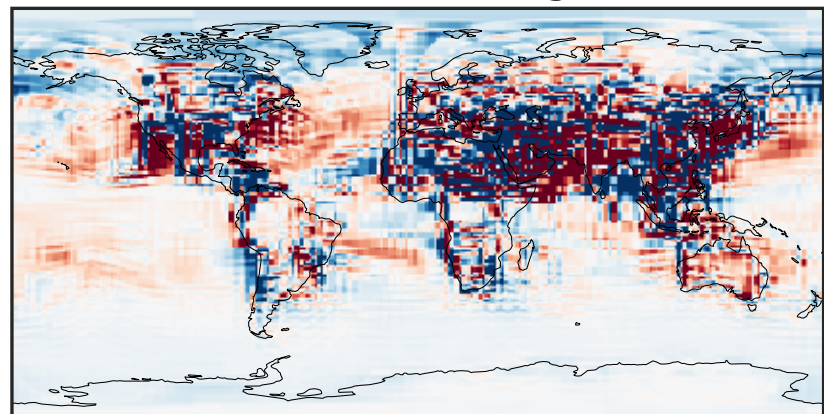
GCHP_14.2.0 (Dev)
c24



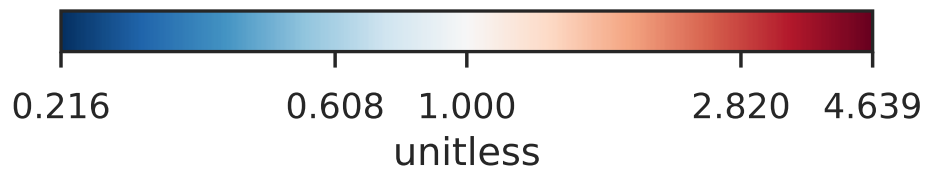
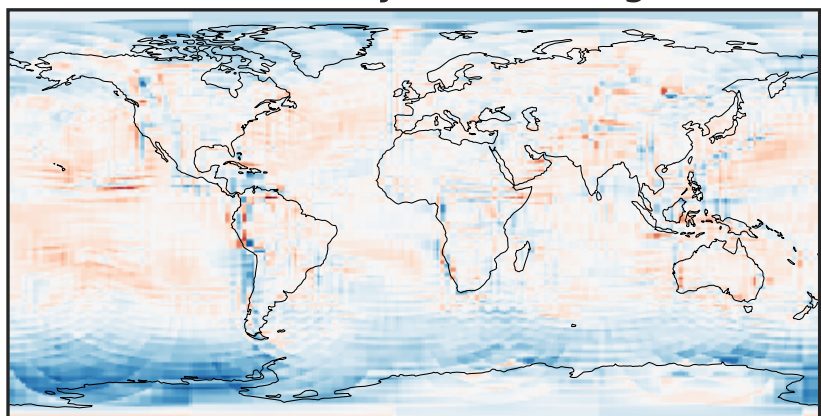
Difference (1x1.25)
Dev - Ref, Dynamic Range



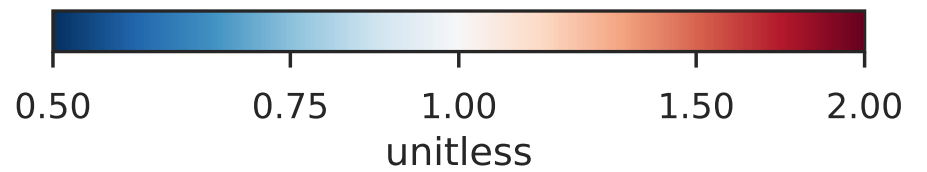
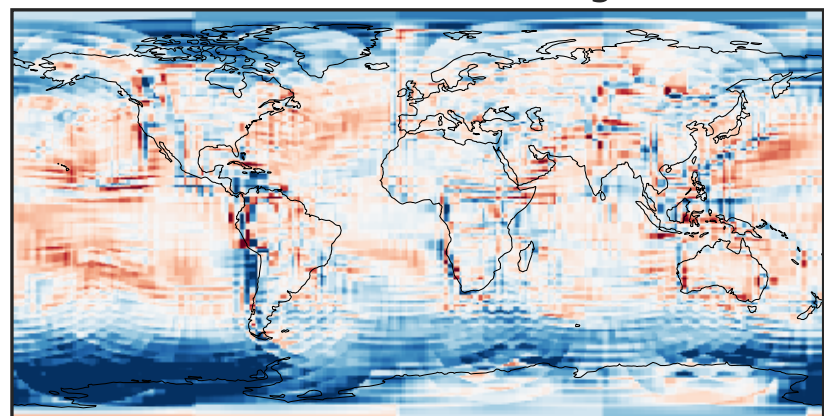
Difference (1x1.25)
Dev - Ref, Restricted Range [5%,95%]



Ratio (1x1.25)
Dev/Ref, Dynamic Range

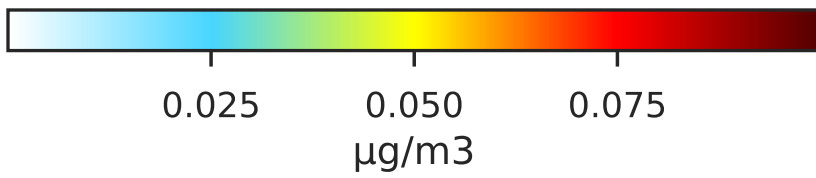
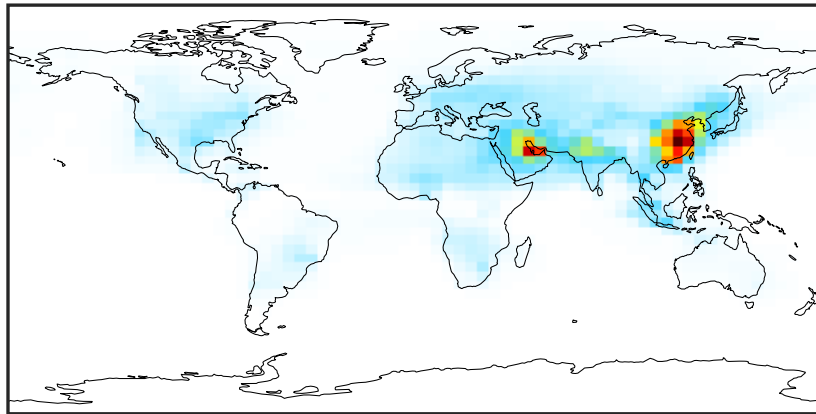


Ratio (1x1.25)
Dev/Ref, Fixed Range

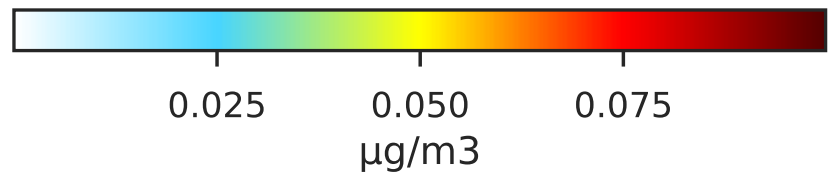
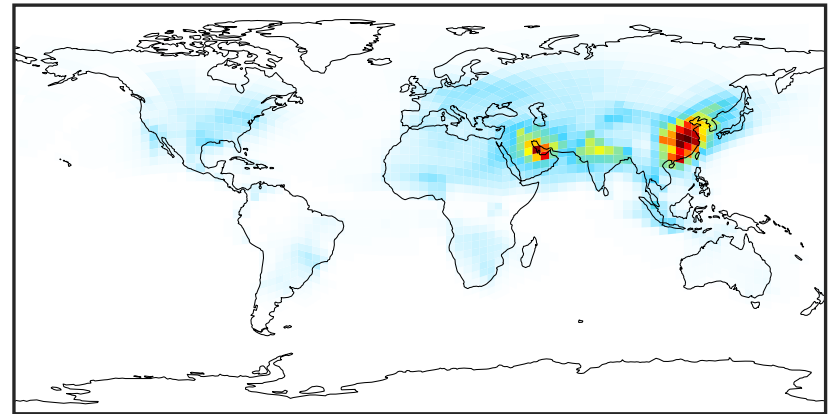


SpeciesConcVV_ASOG2 (Oct2019)

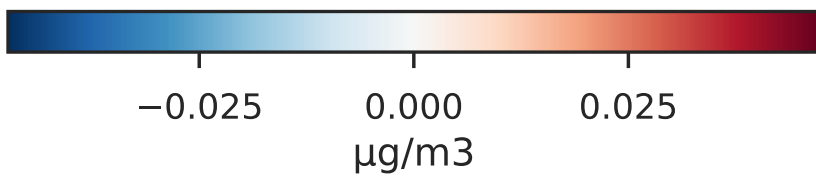
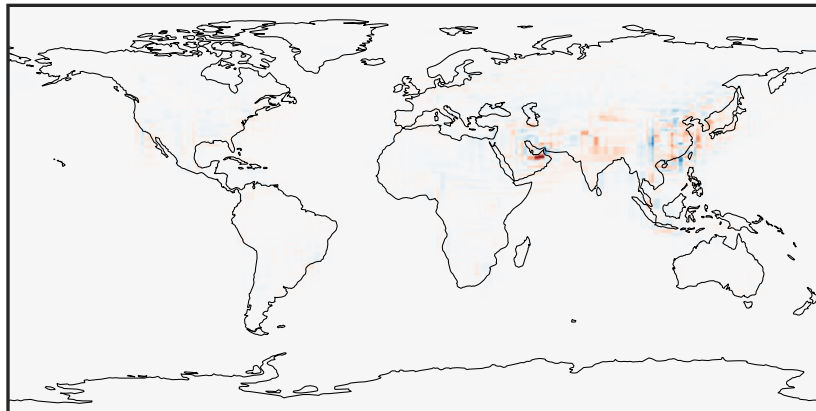
GCC_14.2.0 (Ref)
4.0x5.0



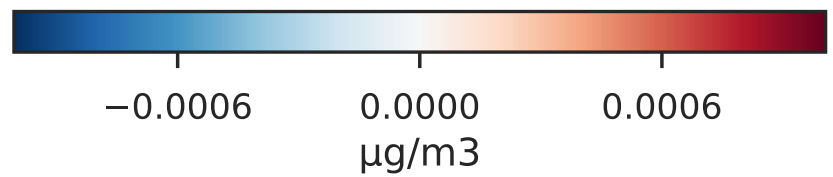
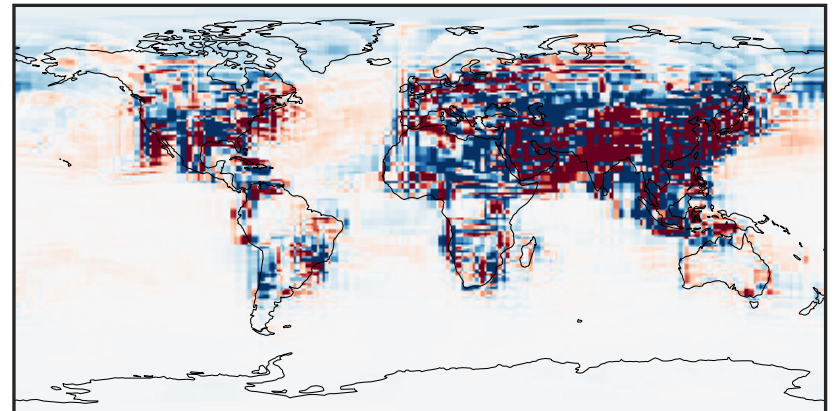
GCHP_14.2.0 (Dev)
c24



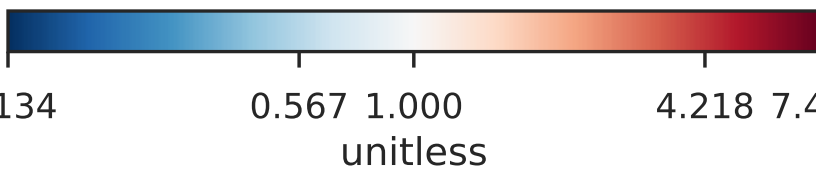
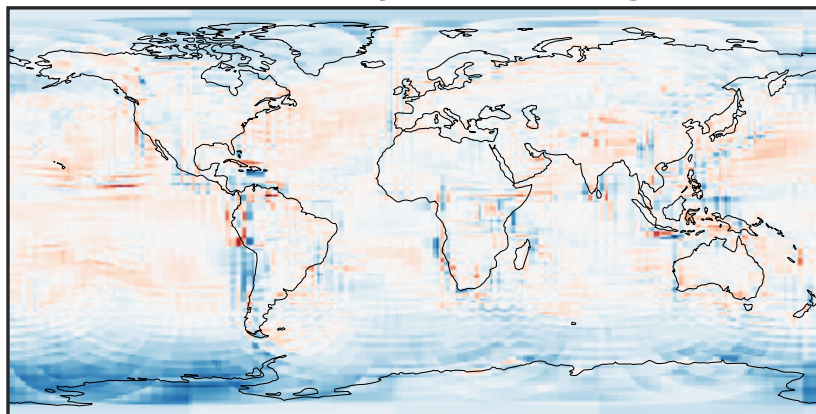
Difference (1x1.25)
Dev - Ref, Dynamic Range



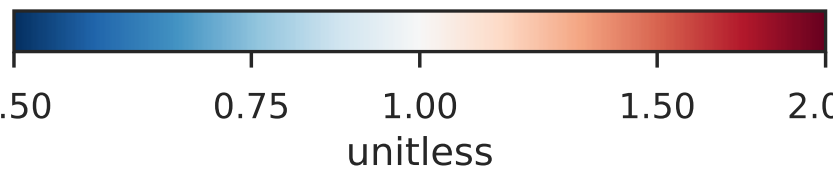
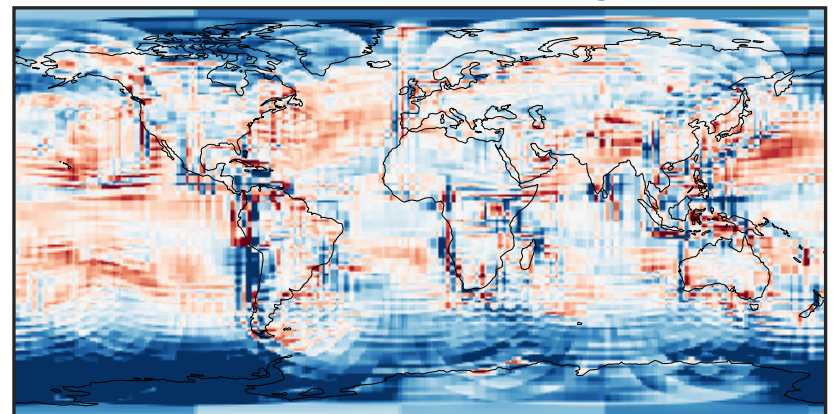
Difference (1x1.25)
Dev - Ref, Restricted Range [5%,95%]



Ratio (1x1.25)
Dev/Ref, Dynamic Range

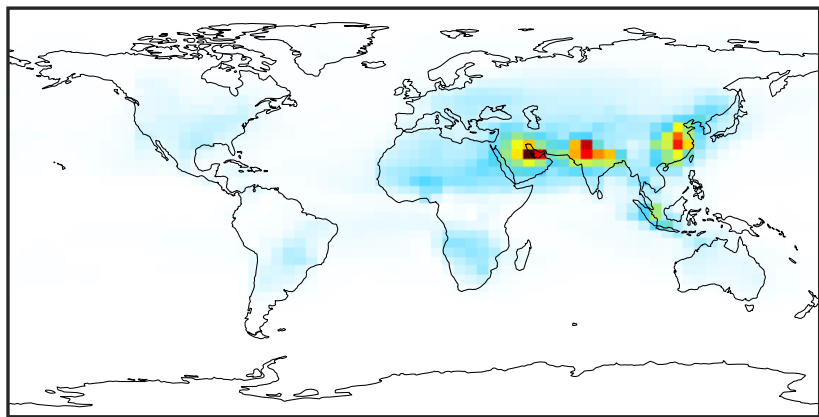


Ratio (1x1.25)
Dev/Ref, Fixed Range



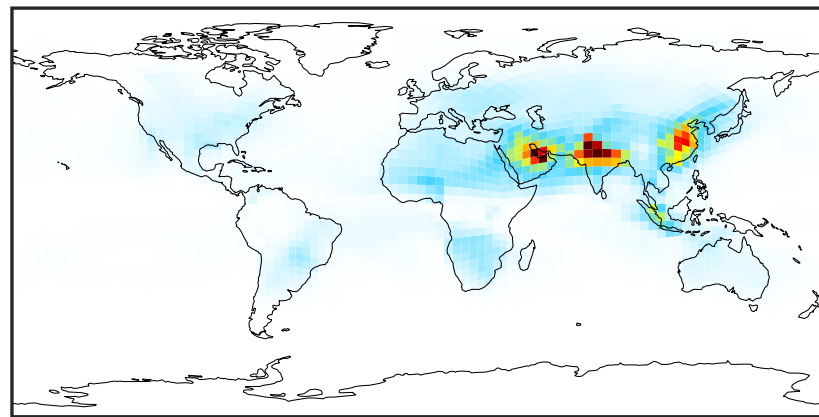
SpeciesConcVV_ASOG3 (Oct2019)

GCC_14.2.0 (Ref)
4.0x5.0



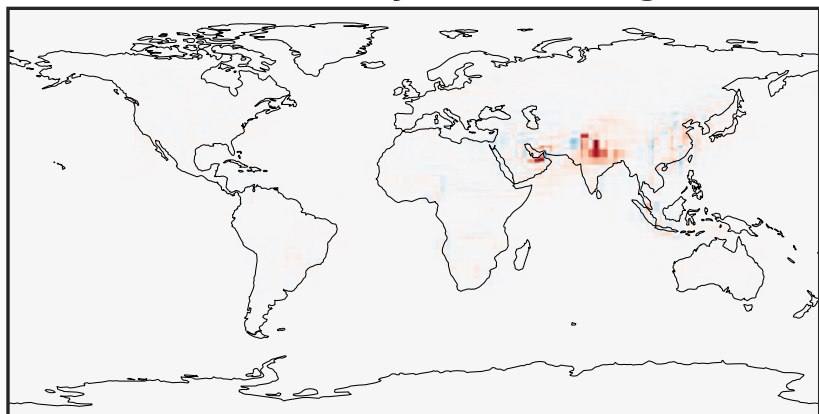
0.0002 0.1406 0.2812 0.4218 0.5626
 $\mu\text{g}/\text{m}^3$

GCHP_14.2.0 (Dev)
c24



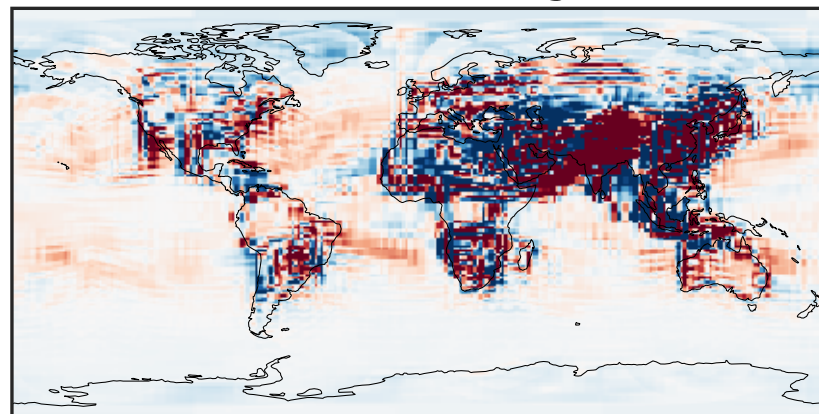
0.0002 0.1406 0.2812 0.4218 0.5626
 $\mu\text{g}/\text{m}^3$

Difference (1x1.25)
Dev - Ref, Dynamic Range



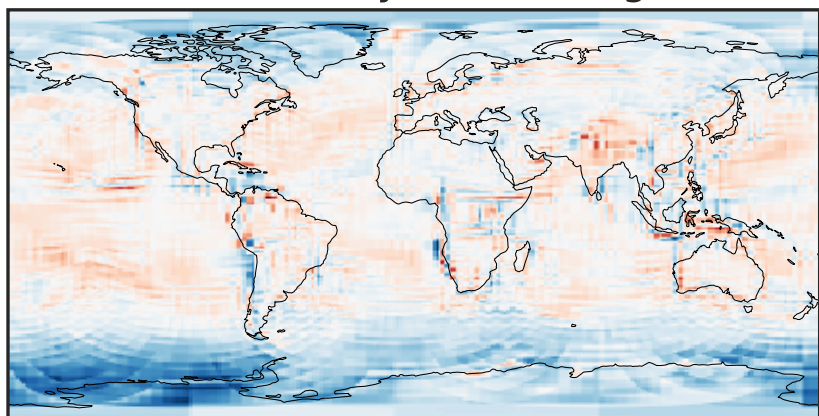
-0.3322 -0.1661 0.0000 0.1661 0.3322
 $\mu\text{g}/\text{m}^3$

Difference (1x1.25)
Dev - Ref, Restricted Range [5%,95%]



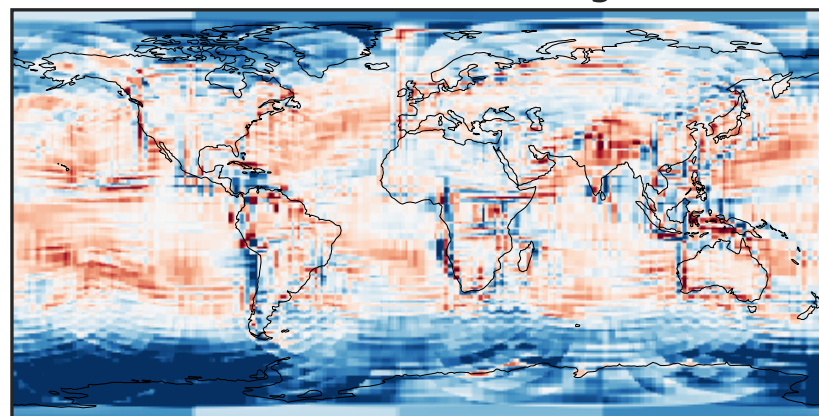
-0.003 0.000 0.003
 $\mu\text{g}/\text{m}^3$

Ratio (1x1.25)
Dev/Ref, Dynamic Range



0.217 0.609 1.000 2.802 4.604
unitless

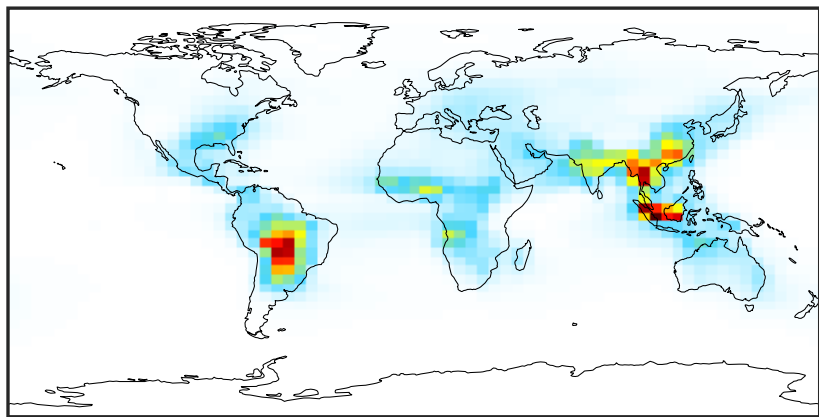
Ratio (1x1.25)
Dev/Ref, Fixed Range



0.50 0.75 1.00 1.50 2.00
unitless

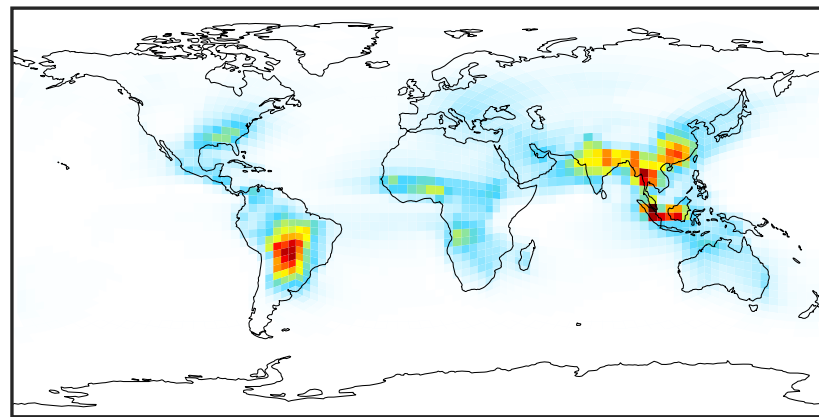
SpeciesConcVV_INDIOL (Oct2019)

GCC_14.2.0 (Ref)
4.0x5.0



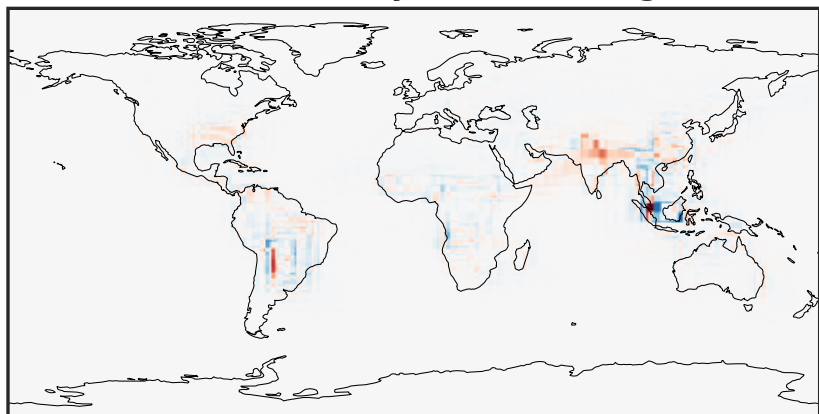
0.002 1.868 3.736 5.604 7.474
 $\mu\text{g}/\text{m}^3$

GCHP_14.2.0 (Dev)
c24



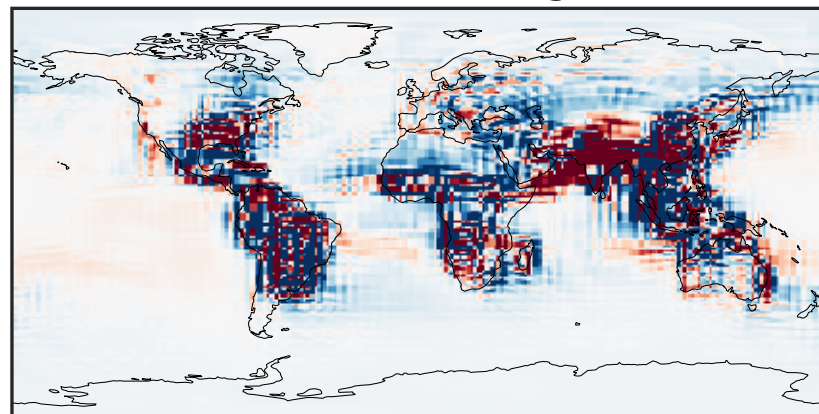
0.002 1.868 3.736 5.604 7.474
 $\mu\text{g}/\text{m}^3$

Difference (1x1.25)
Dev - Ref, Dynamic Range



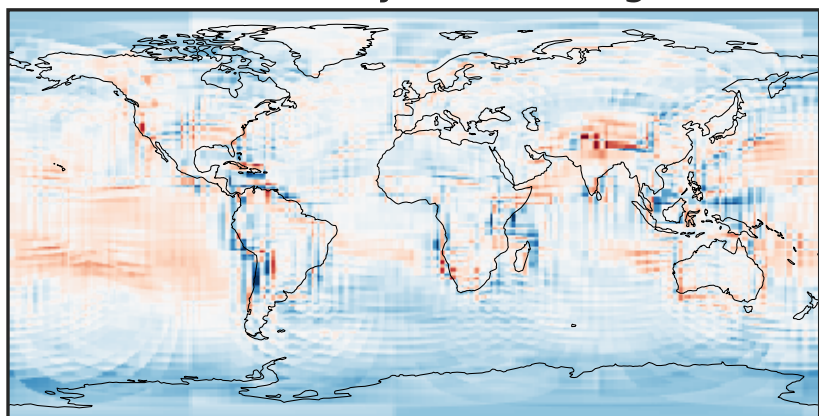
-3.749 -1.875 0.000 1.875 3.749
 $\mu\text{g}/\text{m}^3$

Difference (1x1.25)
Dev - Ref, Restricted Range [5%,95%]



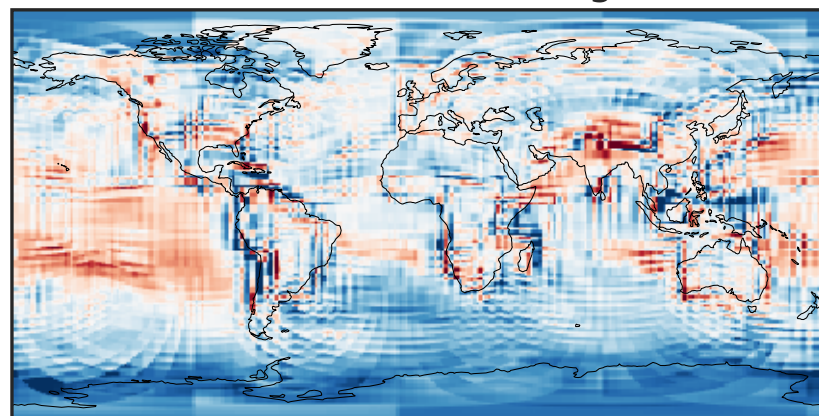
-0.126 -0.063 0.000 0.063 0.126
 $\mu\text{g}/\text{m}^3$

Ratio (1x1.25)
Dev/Ref, Dynamic Range



0.273 0.636 1.000 2.332 3.664
unitless

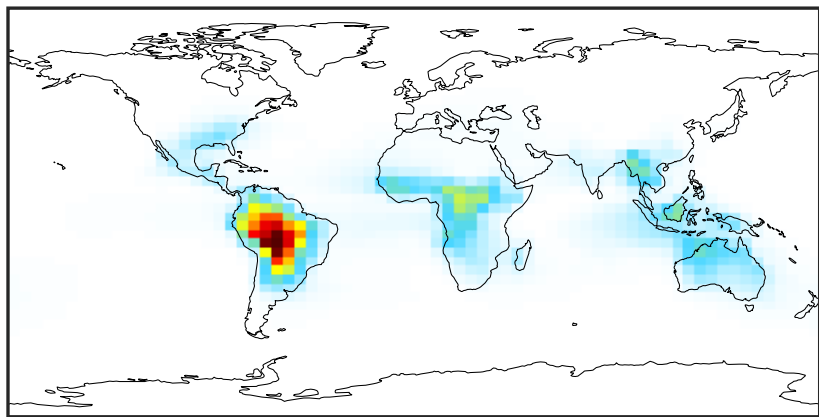
Ratio (1x1.25)
Dev/Ref, Fixed Range



0.50 0.75 1.00 1.50 2.00
unitless

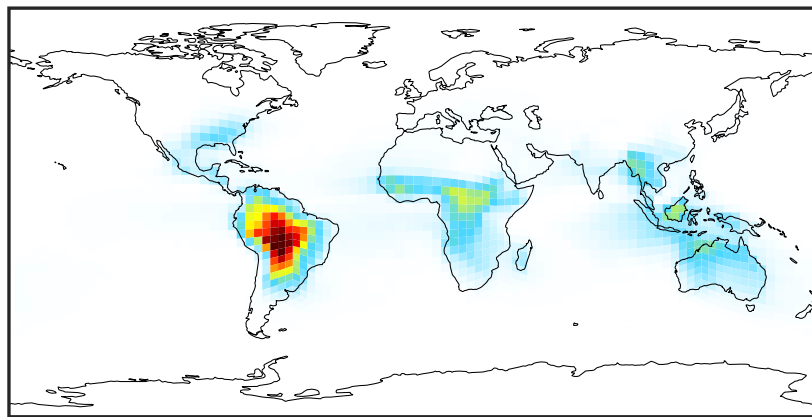
SpeciesConcVV_LVOCOA (Oct2019)

GCC_14.2.0 (Ref)
4.0x5.0



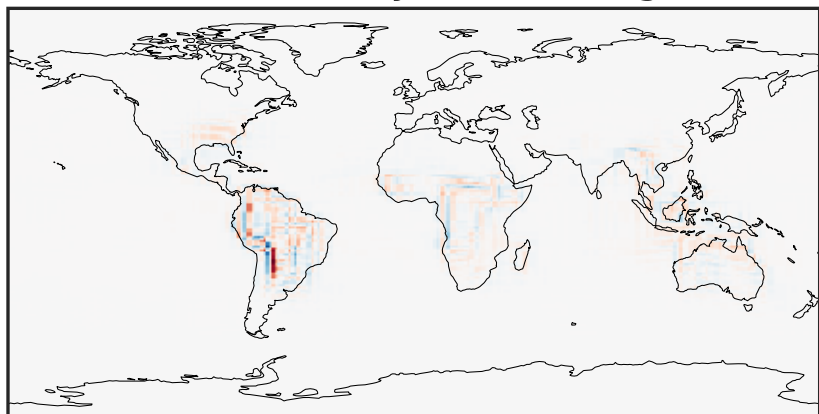
0.0001 0.0707 0.1413 0.2120 0.2827
 $\mu\text{g}/\text{m}^3$

GCHP_14.2.0 (Dev)
c24



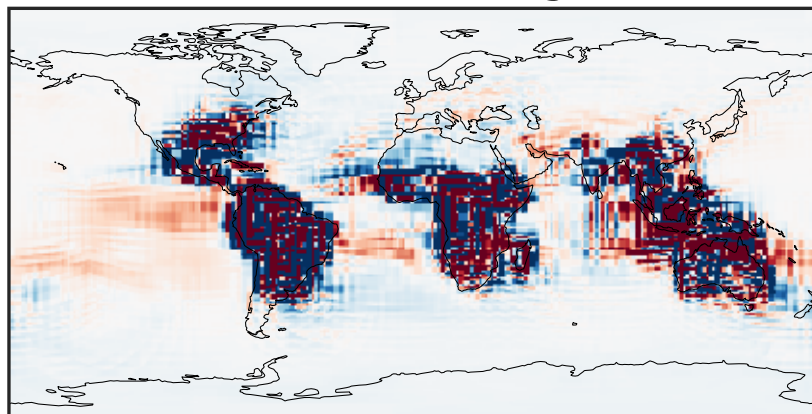
0.0001 0.0707 0.1413 0.2120 0.2827
 $\mu\text{g}/\text{m}^3$

Difference (1x1.25)
Dev - Ref, Dynamic Range



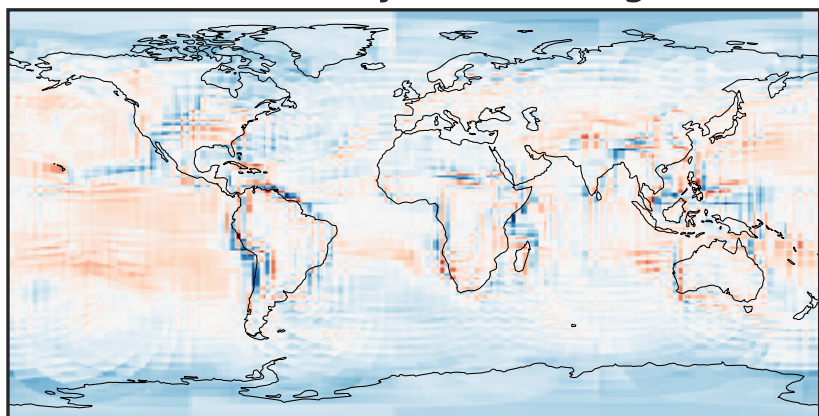
-0.114 -0.057 0.000 0.057 0.114
 $\mu\text{g}/\text{m}^3$

Difference (1x1.25)
Dev - Ref, Restricted Range [5%,95%]



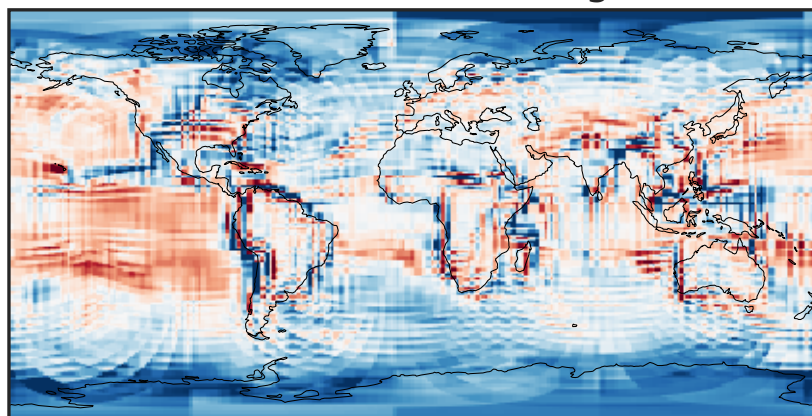
-0.0015 0.0000 0.0015
 $\mu\text{g}/\text{m}^3$

Ratio (1x1.25)
Dev/Ref, Dynamic Range



0.190 0.595 1.000 3.138 5.275
unitless

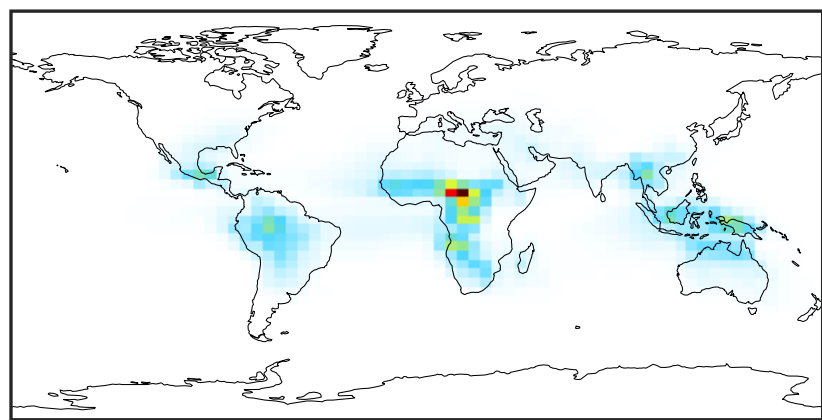
Ratio (1x1.25)
Dev/Ref, Fixed Range



0.50 0.75 1.00 1.50 2.00
unitless

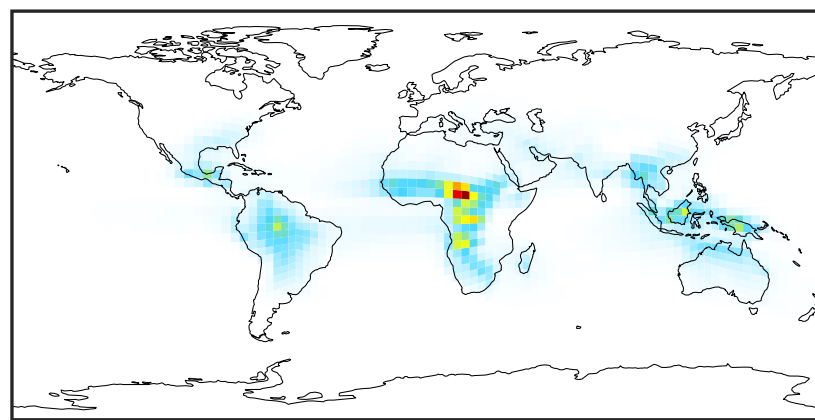
SpeciesConcVV_SOAIE (Oct2019)

GCC_14.2.0 (Ref)
4.0x5.0



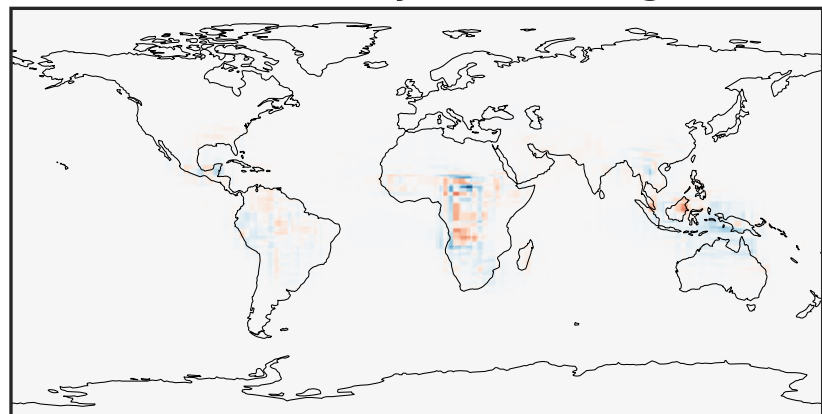
0.001 1.156 2.312 3.468 4.625
 $\mu\text{g}/\text{m}^3$

GCHP_14.2.0 (Dev)
c24



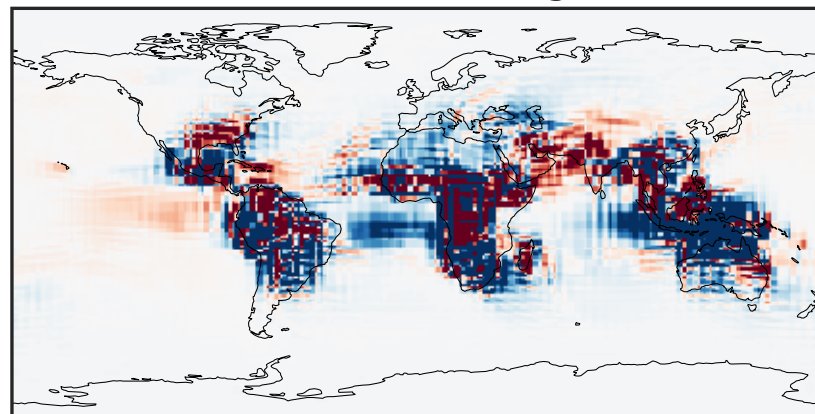
0.001 1.156 2.312 3.468 4.625
 $\mu\text{g}/\text{m}^3$

Difference (1x1.25)
Dev - Ref, Dynamic Range



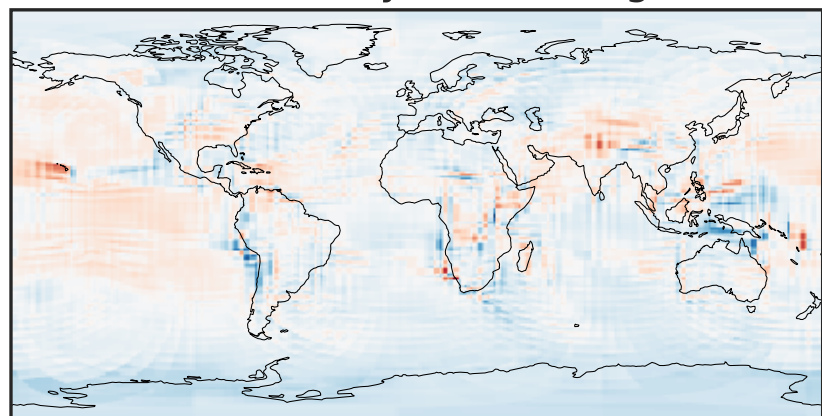
-2.242 -1.121 0.000 1.121 2.242
 $\mu\text{g}/\text{m}^3$

Difference (1x1.25)
Dev - Ref, Restricted Range [5%,95%]



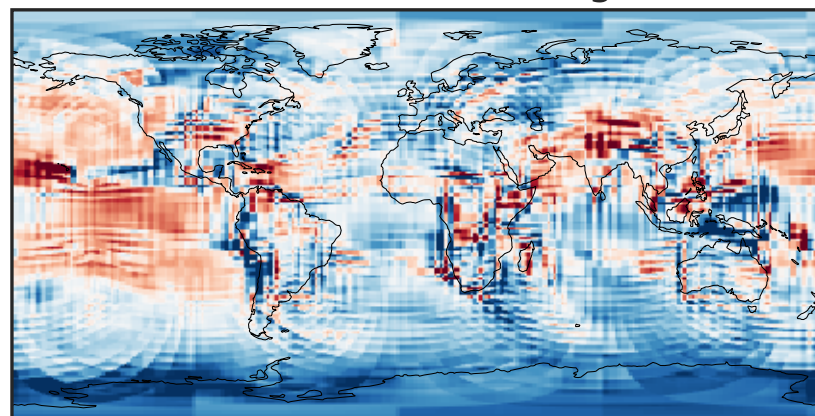
-0.025 0.000 0.025
 $\mu\text{g}/\text{m}^3$

Ratio (1x1.25)
Dev/Ref, Dynamic Range



1e-01 1 10
unitless

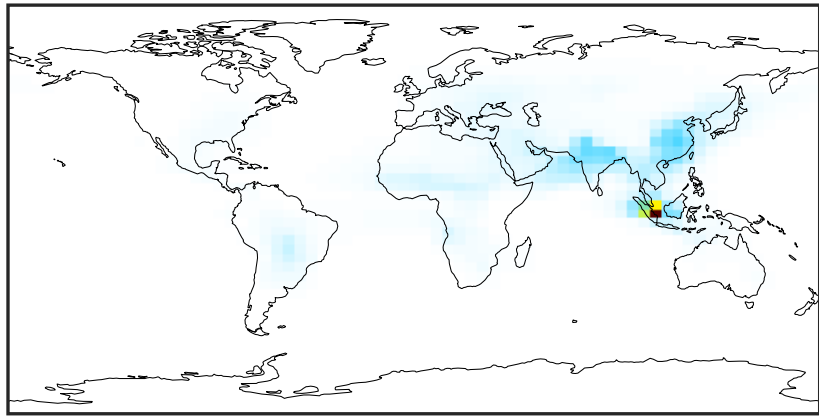
Ratio (1x1.25)
Dev/Ref, Fixed Range



0.50 0.75 1.00 1.50 2.00
unitless

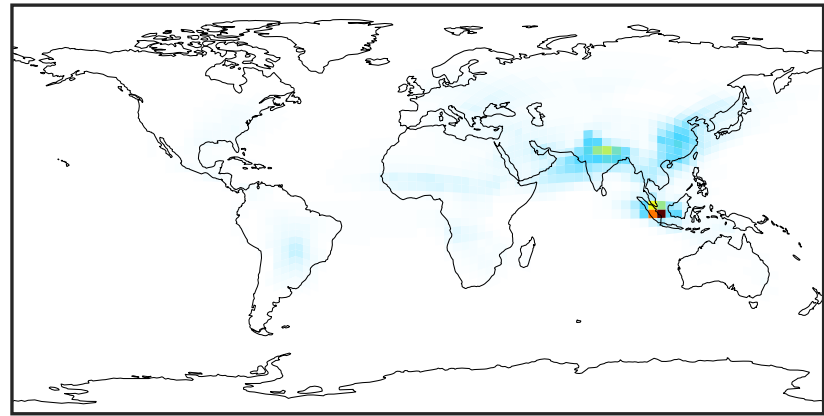
SpeciesConcVV_SOAGX (Oct2019)

GCC_14.2.0 (Ref)
4.0x5.0



0.000 0.958 1.916 2.874 3.833
 $\mu\text{g}/\text{m}^3$

GCHP_14.2.0 (Dev)
c24



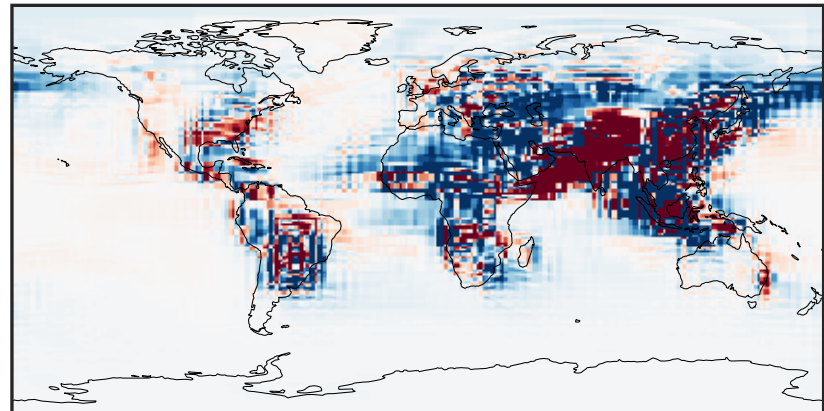
0.000 0.958 1.916 2.874 3.833
 $\mu\text{g}/\text{m}^3$

Difference (1x1.25)
Dev - Ref, Dynamic Range



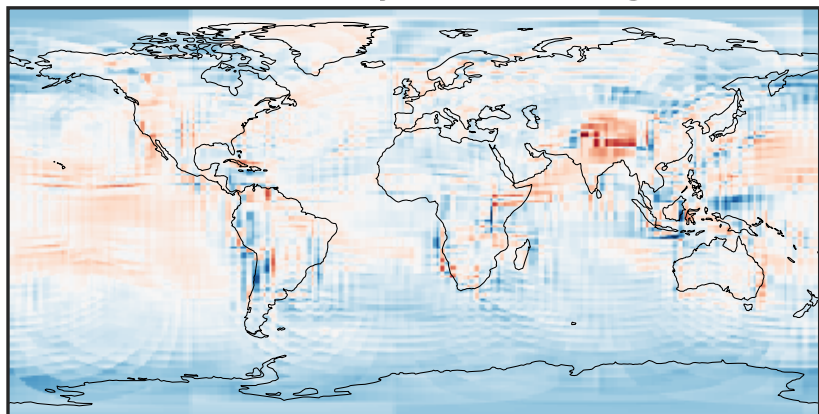
-1.927 -0.964 0.000 0.964 1.927
 $\mu\text{g}/\text{m}^3$

Difference (1x1.25)
Dev - Ref, Restricted Range [5%,95%]



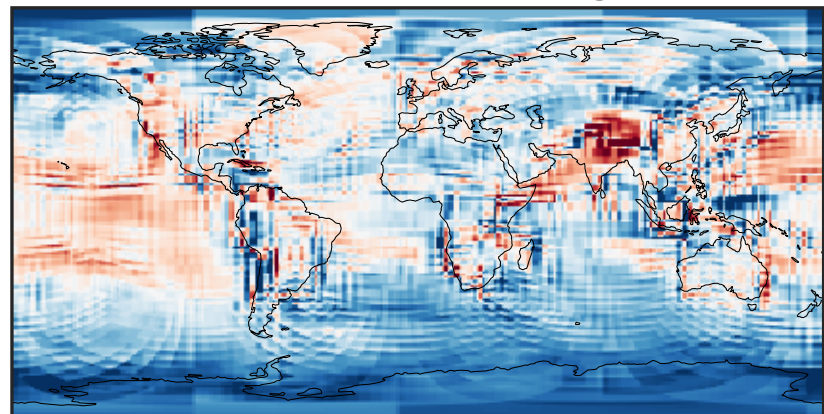
-0.008 0.000 0.008
 $\mu\text{g}/\text{m}^3$

Ratio (1x1.25)
Dev/Ref, Dynamic Range



0.210 0.605 1.000 2.879 4.759
unitless

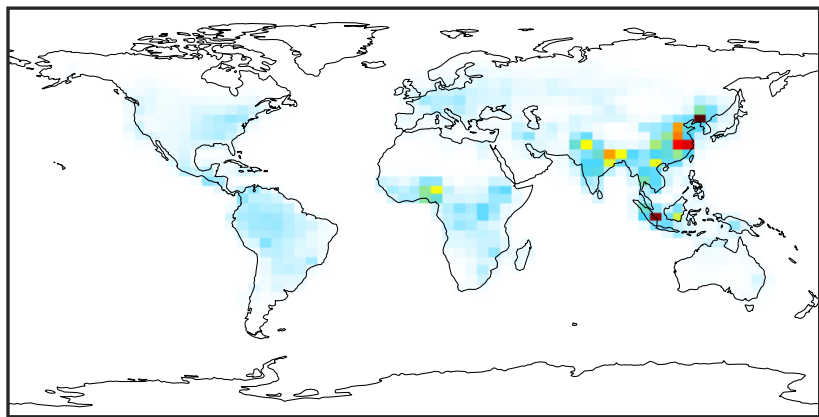
Ratio (1x1.25)
Dev/Ref, Fixed Range



0.50 0.75 1.00 1.50 2.00
unitless

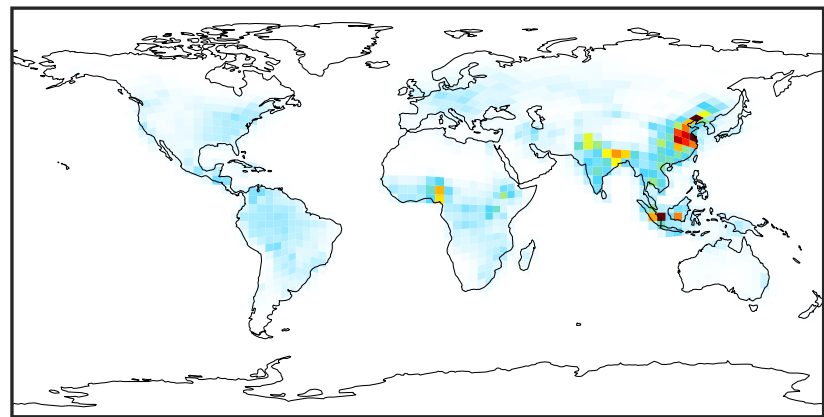
SpeciesConcVV_SOAP (Oct2019)

GCC_14.2.0 (Ref)
4.0x5.0



0.00 3.14 6.28 9.42 12.56
 $\mu\text{g}/\text{m}^3$

GCHP_14.2.0 (Dev)
c24



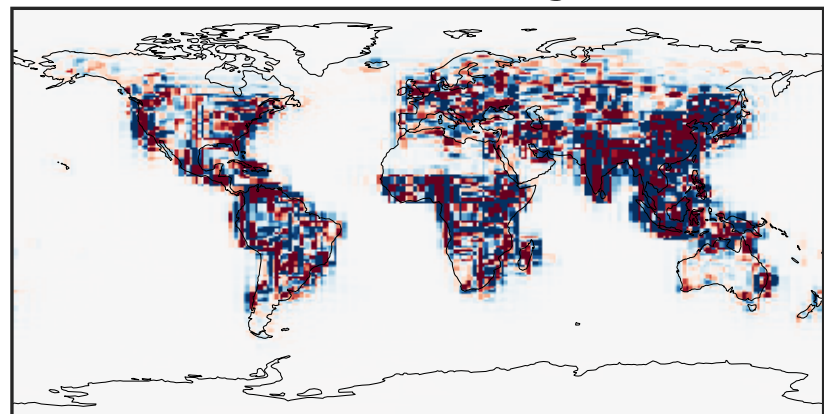
0.00 3.14 6.28 9.42 12.56
 $\mu\text{g}/\text{m}^3$

Difference (1x1.25)
Dev - Ref, Dynamic Range



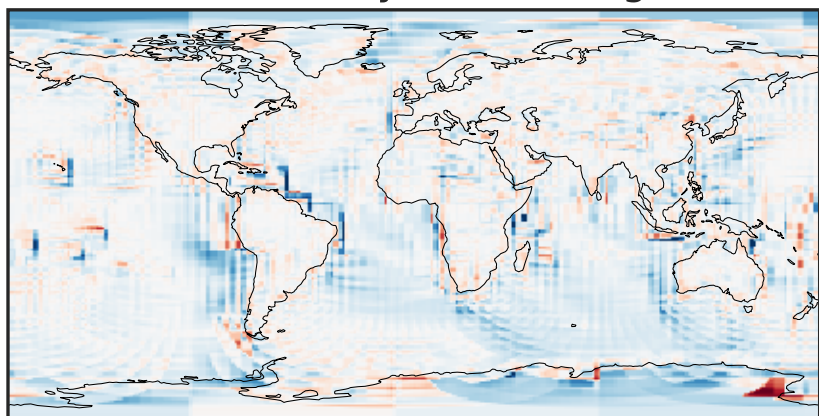
-16.62 -8.31 0.00 8.31 16.62
 $\mu\text{g}/\text{m}^3$

Difference (1x1.25)
Dev - Ref, Restricted Range [5%,95%]



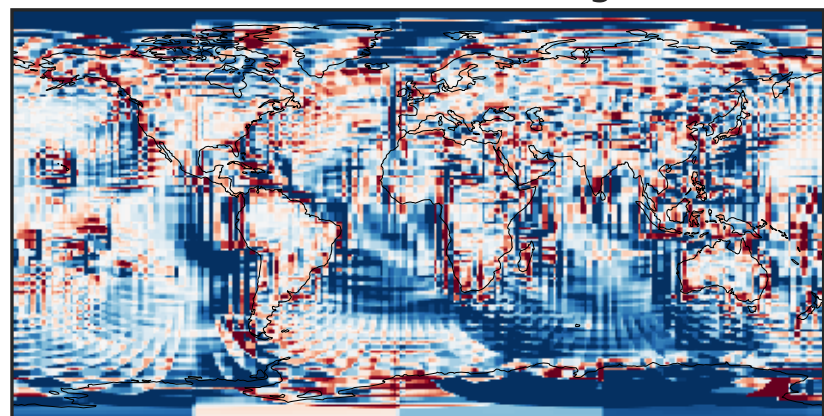
-0.1096 -0.0548 0.0000 0.0548 0.1096
 $\mu\text{g}/\text{m}^3$

Ratio (1x1.25)
Dev/Ref, Dynamic Range



1e-01 1 10
unitless

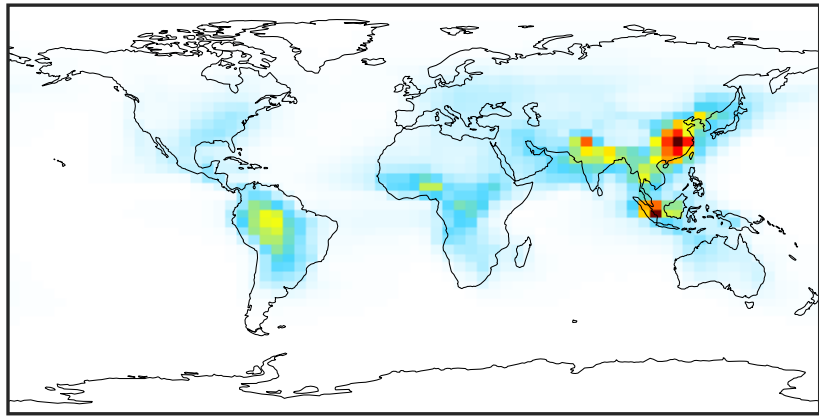
Ratio (1x1.25)
Dev/Ref, Fixed Range



0.50 0.75 1.00 1.50 2.00
unitless

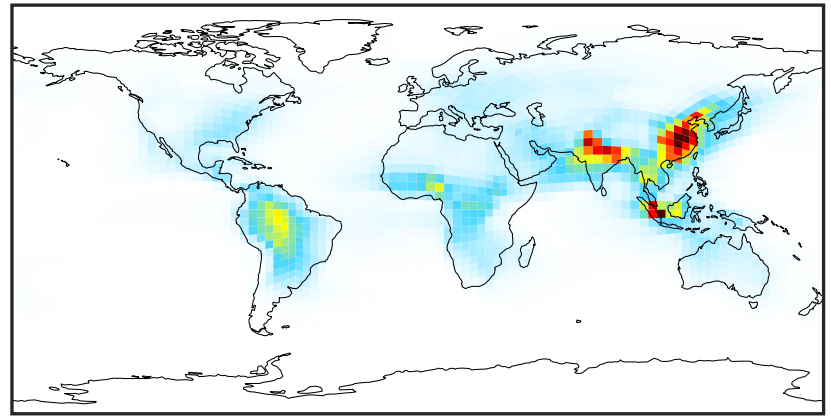
SpeciesConcVV_SOAS (Oct2019)

GCC_14.2.0 (Ref)
4.0x5.0



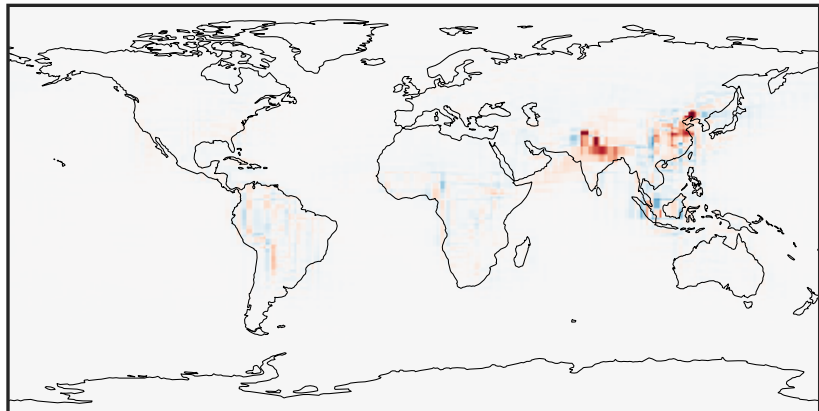
0.01 3.61 7.22 10.83 14.45
 $\mu\text{g}/\text{m}^3$

GCHP_14.2.0 (Dev)
c24



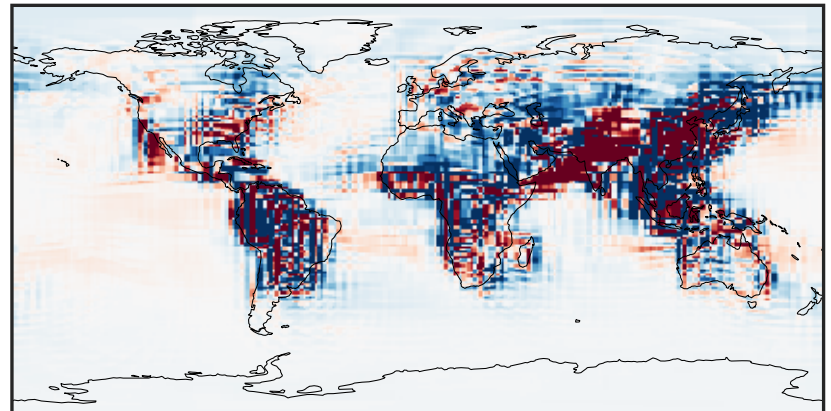
0.01 3.61 7.22 10.83 14.45
 $\mu\text{g}/\text{m}^3$

Difference (1x1.25)
Dev - Ref, Dynamic Range



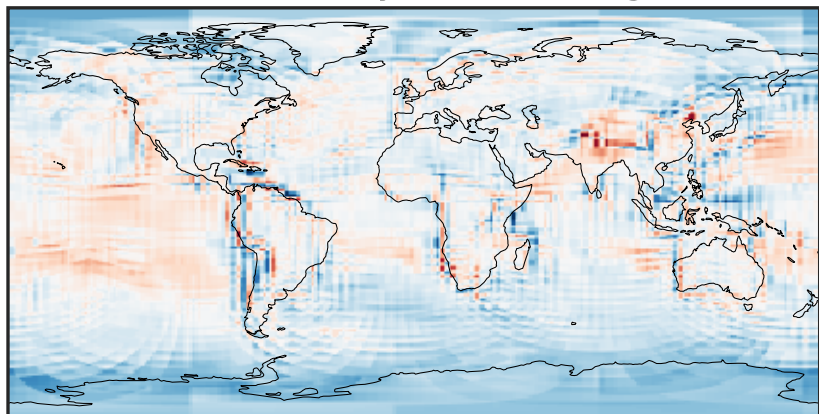
-7.13 -3.57 0.00 3.57 7.13
 $\mu\text{g}/\text{m}^3$

Difference (1x1.25)
Dev - Ref, Restricted Range [5%,95%]



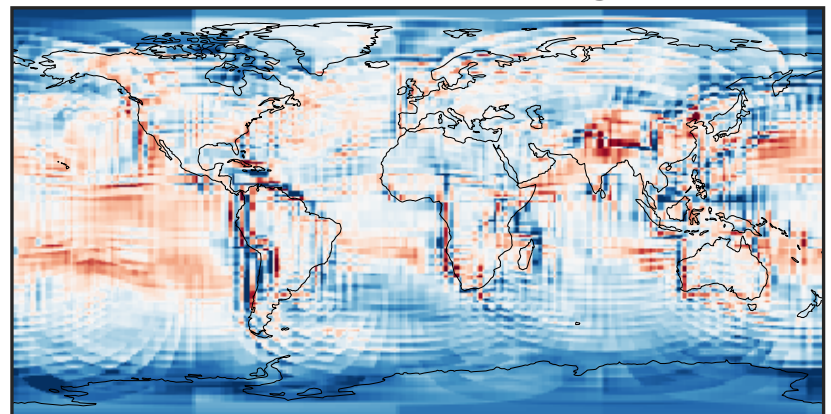
-0.2038 -0.1019 0.0000 0.1019 0.2038
 $\mu\text{g}/\text{m}^3$

Ratio (1x1.25)
Dev/Ref, Dynamic Range



0.278 0.639 1.000 2.296 3.592
unitless

Ratio (1x1.25)
Dev/Ref, Fixed Range



0.50 0.75 1.00 1.50 2.00
unitless