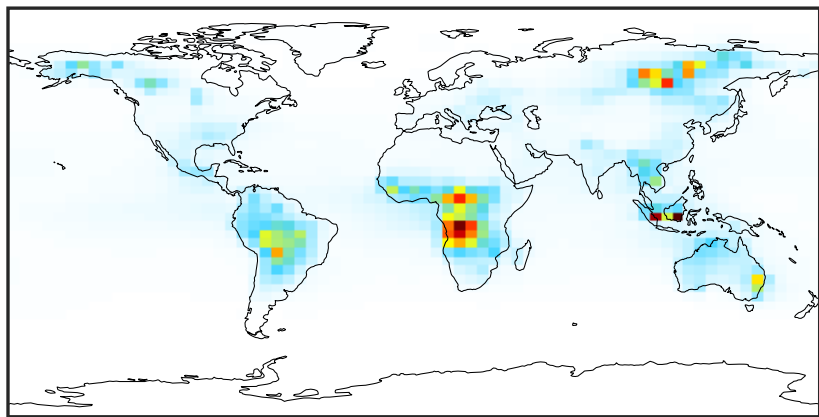


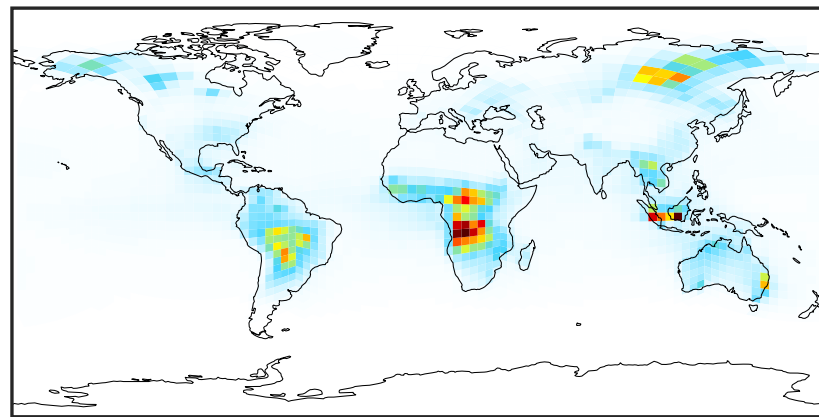
SpeciesConcVV_ACTA (AnnualMean)

GCC_14.2.0 (Ref)
4.0x5.0



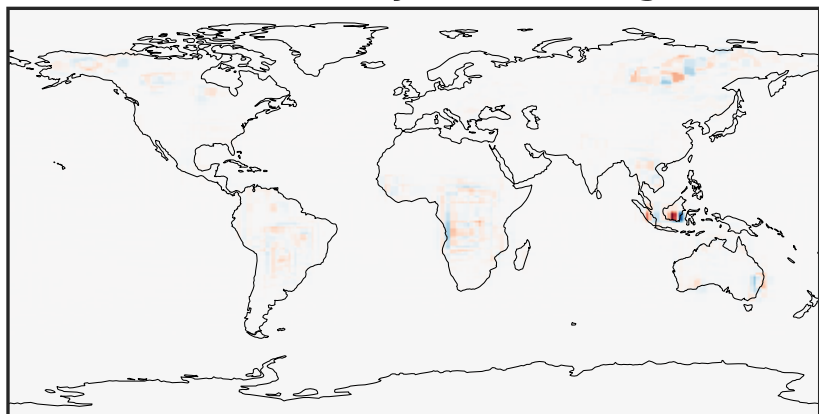
0.002 0.612 1.224 1.836 2.450
ppb

GCHP_14.2.0 (Dev)
c24



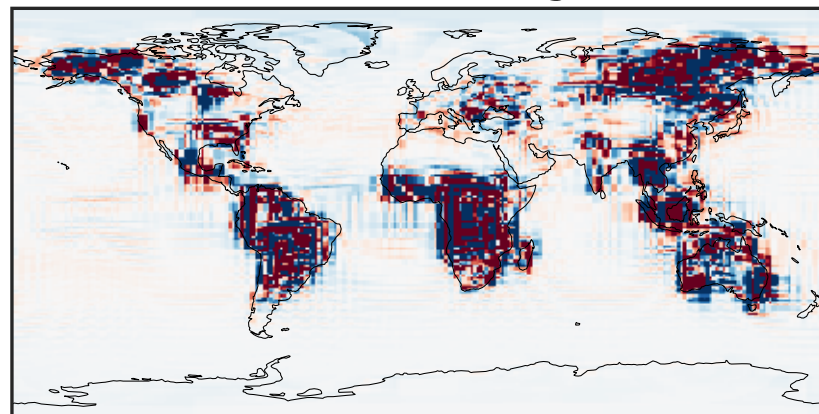
0.002 0.612 1.224 1.836 2.450
ppb

Difference (1x1.25)
Dev - Ref, Dynamic Range



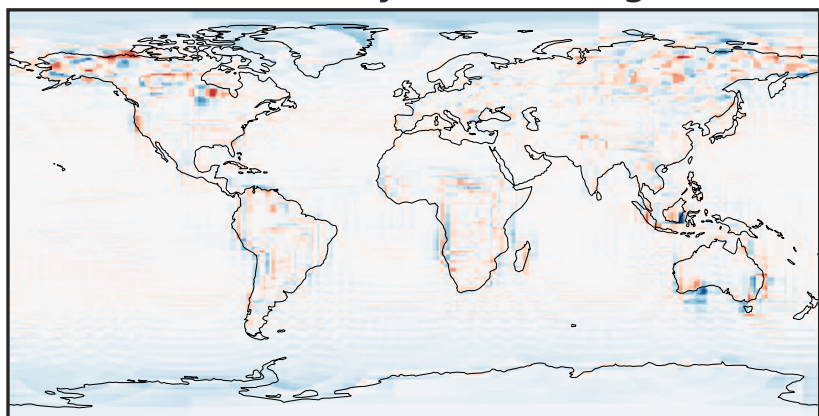
-2.627 -1.314 0.000 1.314 2.627
ppb

Difference (1x1.25)
Dev - Ref, Restricted Range [5%,95%]



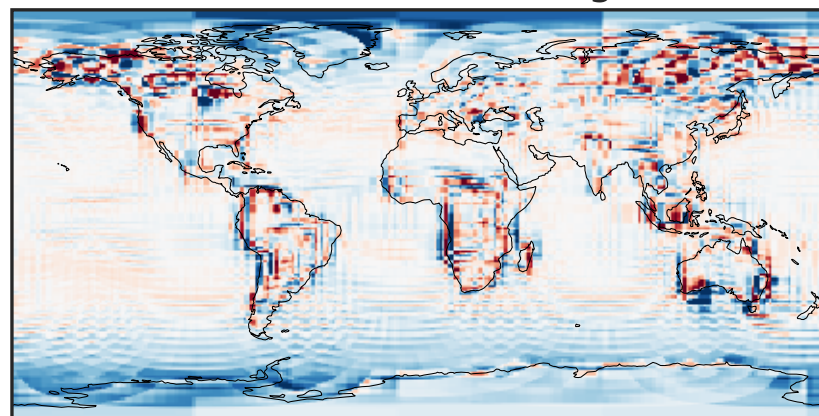
-0.015 0.000 0.015
ppb

Ratio (1x1.25)
Dev/Ref, Dynamic Range



0.106 0.553 1.000 5.206 9.412
unitless

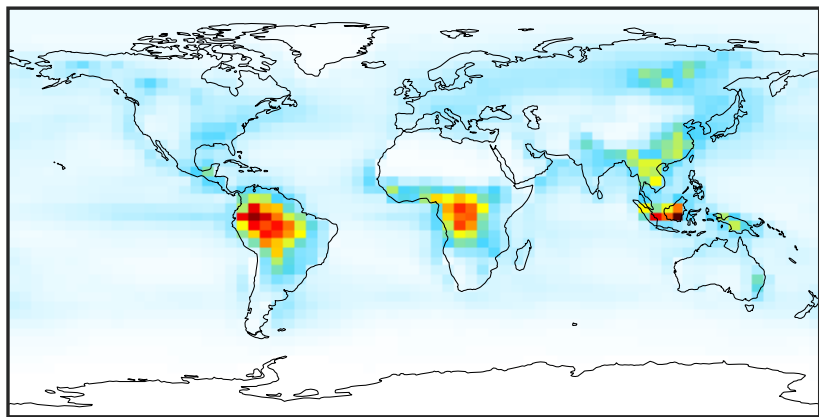
Ratio (1x1.25)
Dev/Ref, Fixed Range



0.50 0.75 1.00 1.50 2.00
unitless

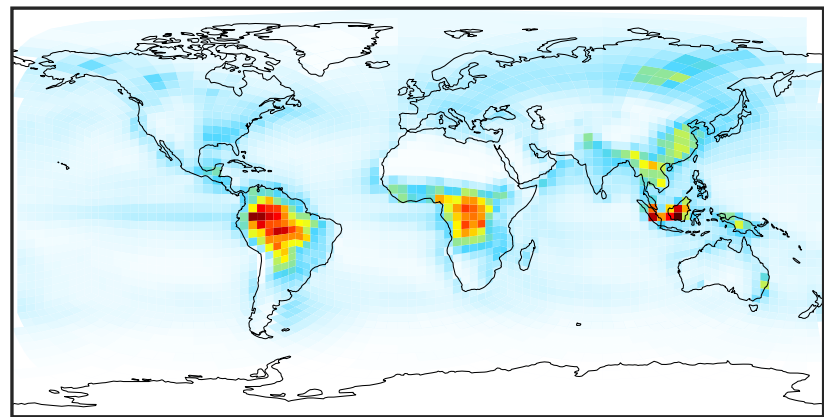
SpeciesConcVW_ALD2 (AnnualMean)

GCC_14.2.0 (Ref)
4.0x5.0



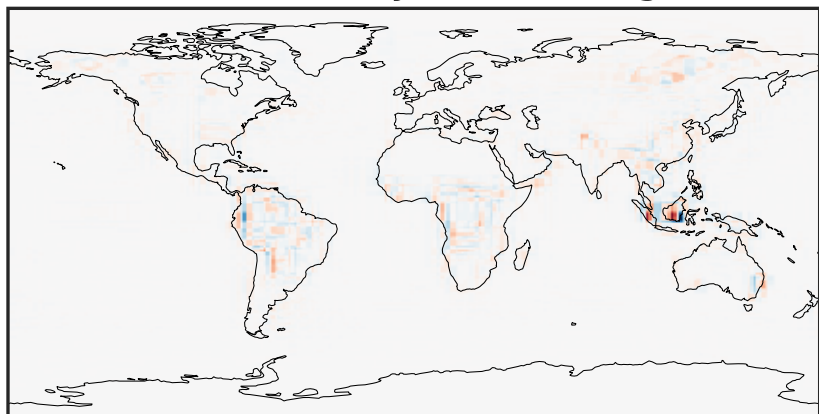
0.003 0.723 1.445 2.168 2.894
ppb

GCHP_14.2.0 (Dev)
c24



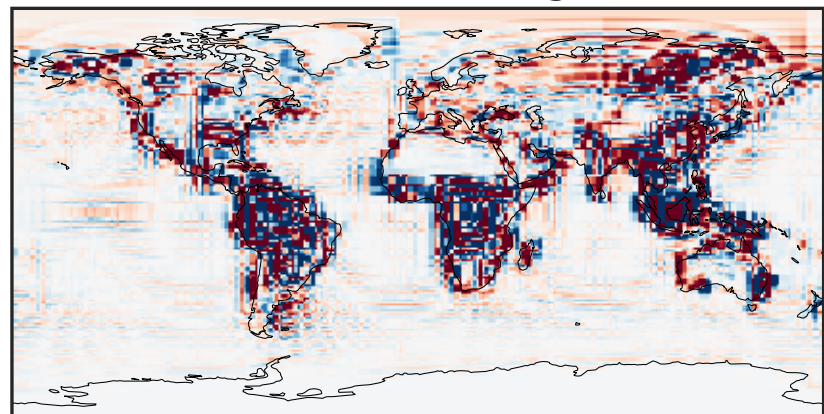
0.003 0.723 1.445 2.168 2.894
ppb

Difference (1x1.25)
Dev - Ref, Dynamic Range



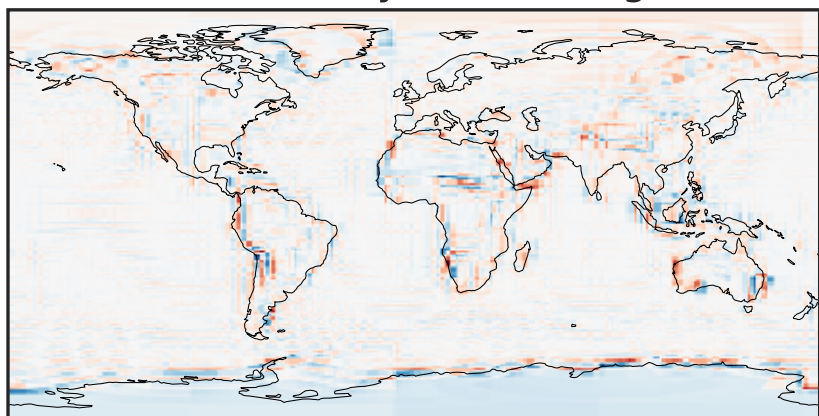
-1.813 -0.906 0.000 0.906 1.813
ppb

Difference (1x1.25)
Dev - Ref, Restricted Range [5%,95%]



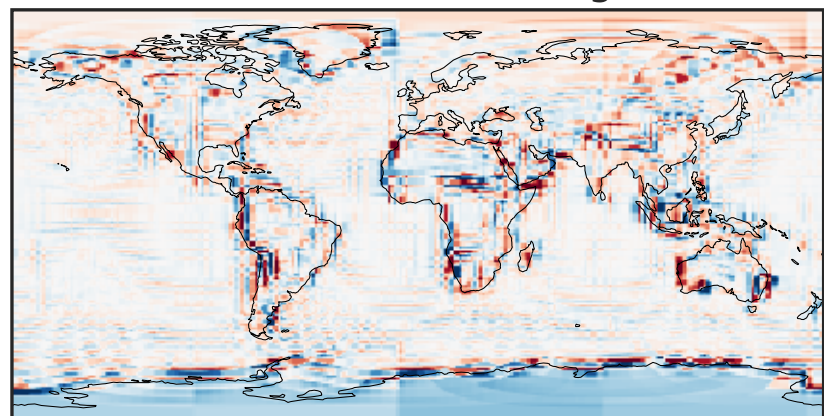
-0.0611 -0.0305 0.0000 0.0305 0.0611
ppb

Ratio (1x1.25)
Dev/Ref, Dynamic Range



0.211 0.606 1.000 2.869 4.739
unitless

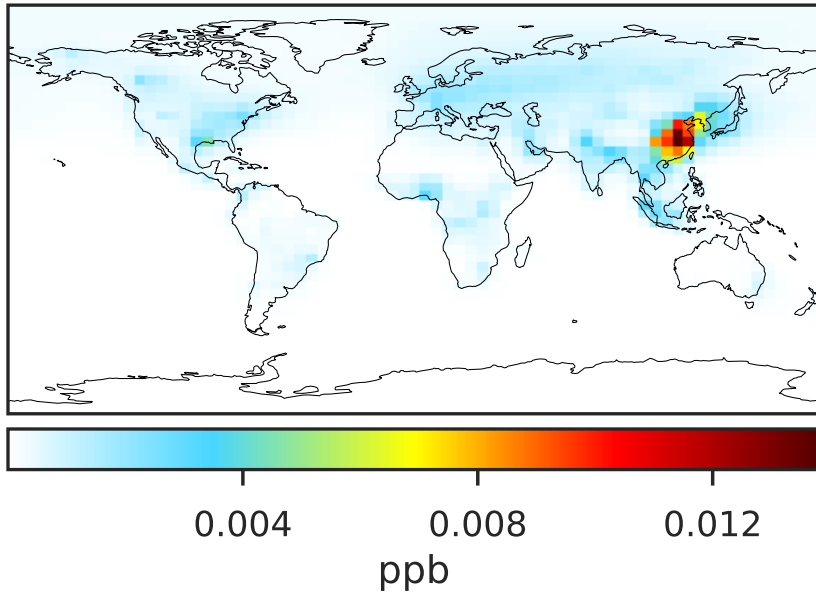
Ratio (1x1.25)
Dev/Ref, Fixed Range



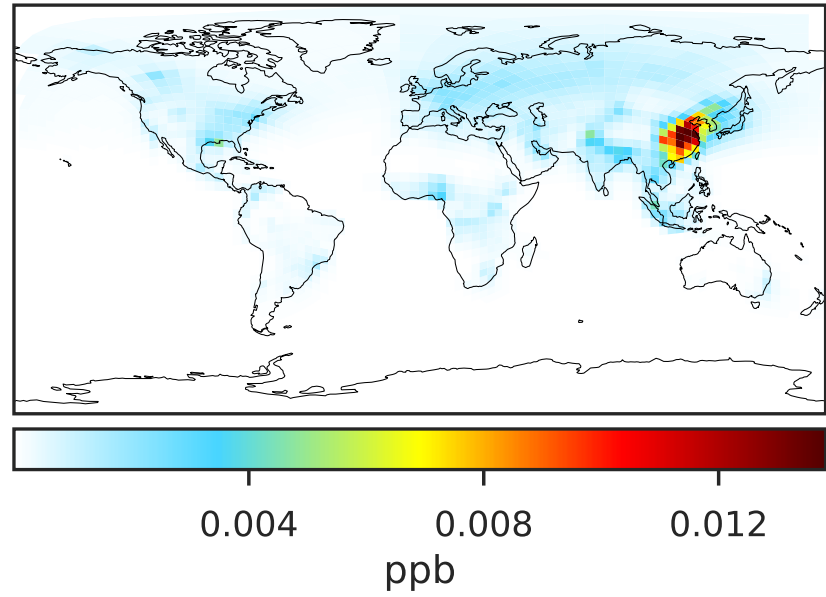
0.50 0.75 1.00 1.50 2.00
unitless

SpeciesConcVV_BALD (AnnualMean)

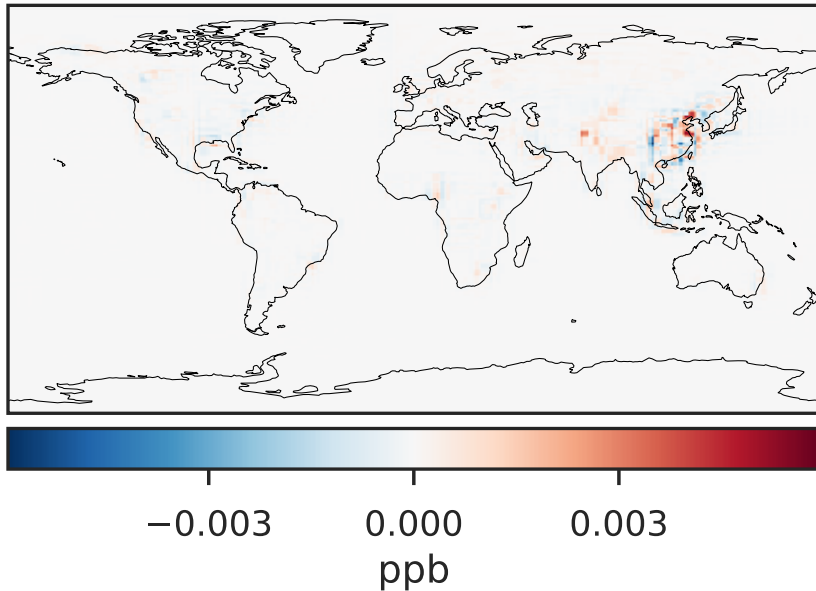
GCC_14.2.0 (Ref)
4.0x5.0



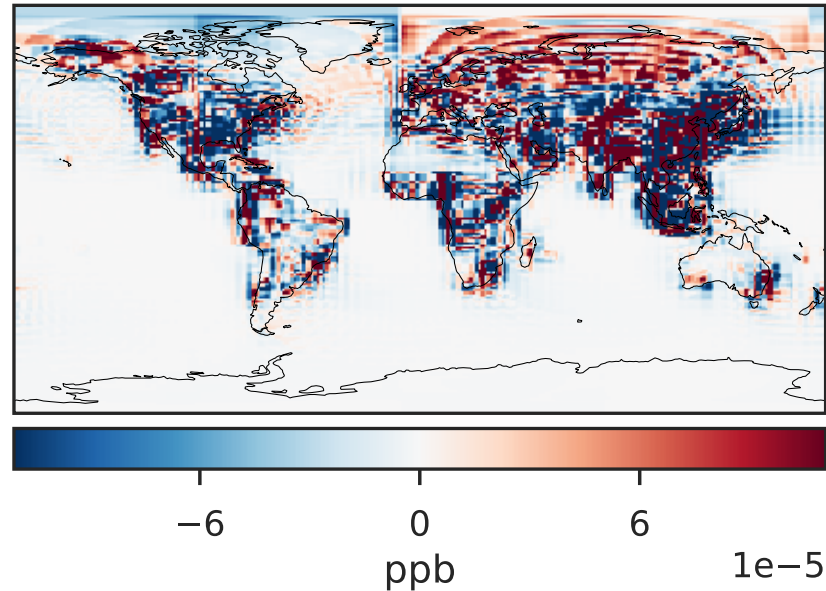
GCHP_14.2.0 (Dev)
c24



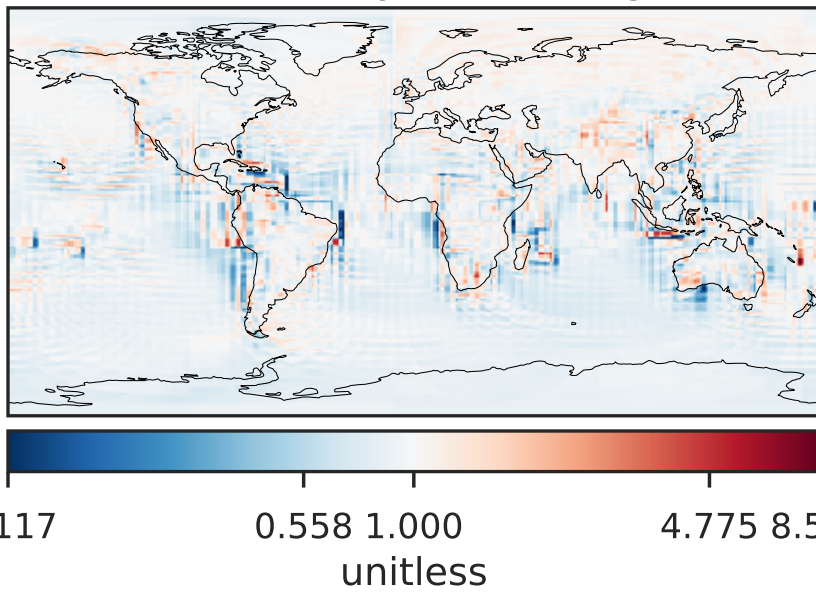
Difference (1x1.25)
Dev - Ref, Dynamic Range



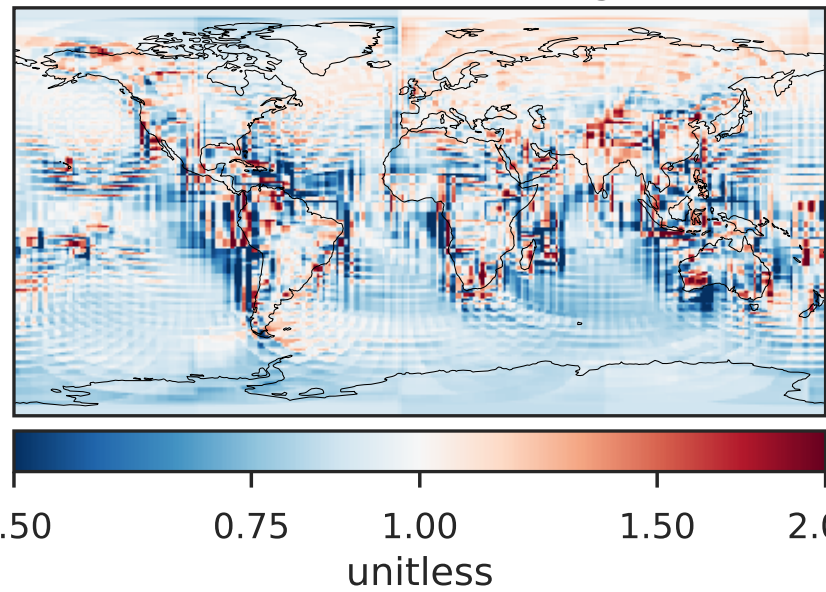
Difference (1x1.25)
Dev - Ref, Restricted Range [5%,95%]



Ratio (1x1.25)
Dev/Ref, Dynamic Range

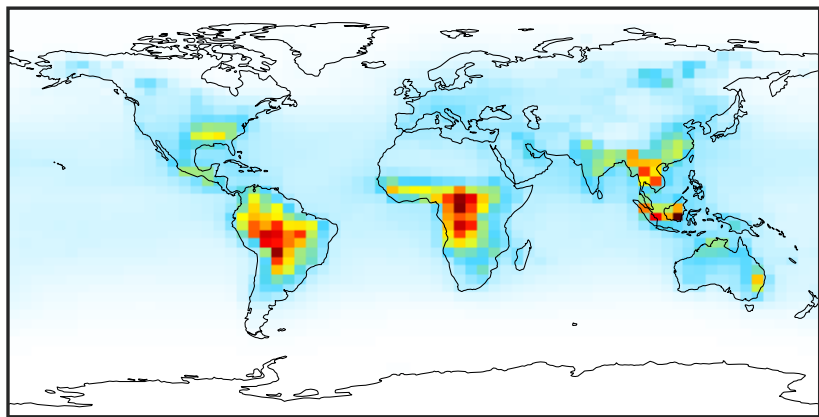


Ratio (1x1.25)
Dev/Ref, Fixed Range



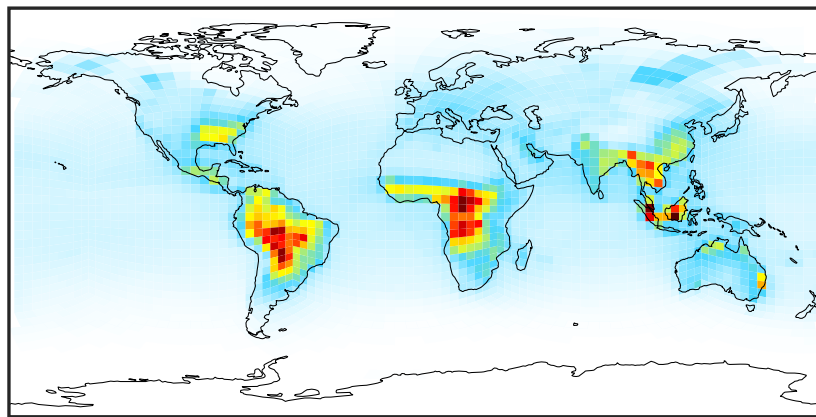
SpeciesConcVV_CH2O (AnnualMean)

GCC_14.2.0 (Ref)
4.0x5.0



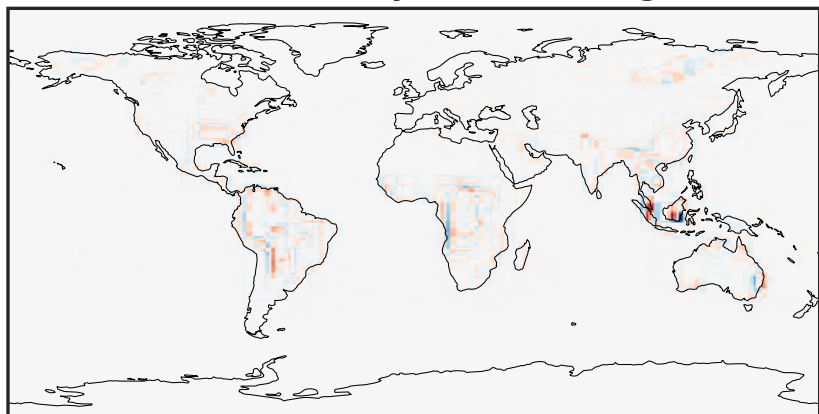
0.023 1.348 2.695 4.043 5.413
ppb

GCHP_14.2.0 (Dev)
c24



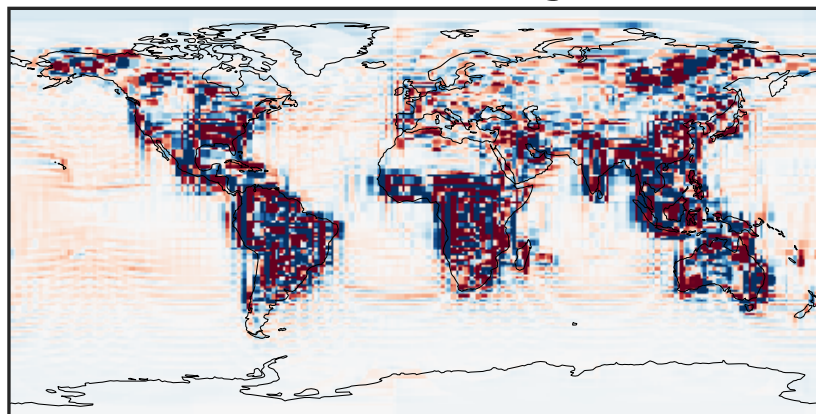
0.023 1.348 2.695 4.043 5.413
ppb

Difference (1x1.25)
Dev - Ref, Dynamic Range



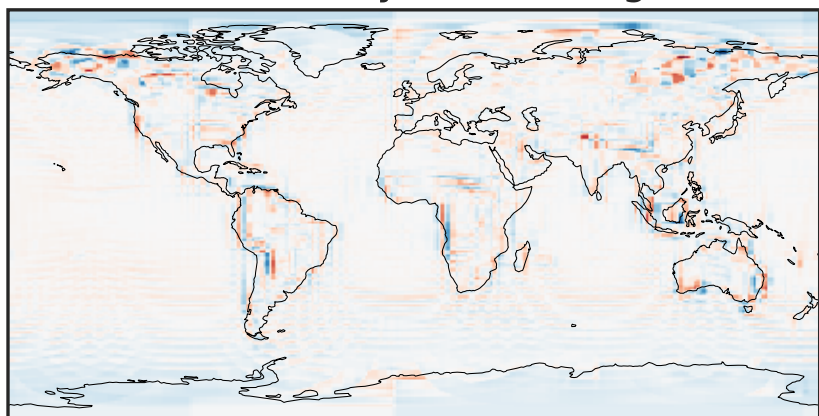
-3.308 -1.654 0.000 1.654 3.308
ppb

Difference (1x1.25)
Dev - Ref, Restricted Range [5%,95%]



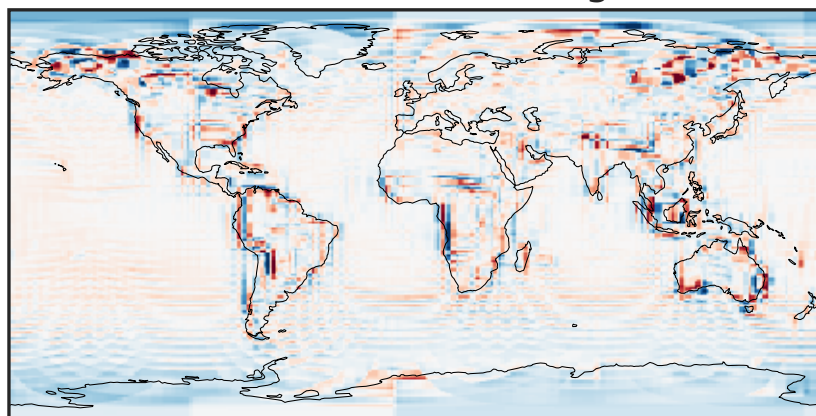
-0.0994 -0.0497 0.0000 0.0497 0.0994
ppb

Ratio (1x1.25)
Dev/Ref, Dynamic Range



0.265 0.633 1.000 2.384 3.768
unitless

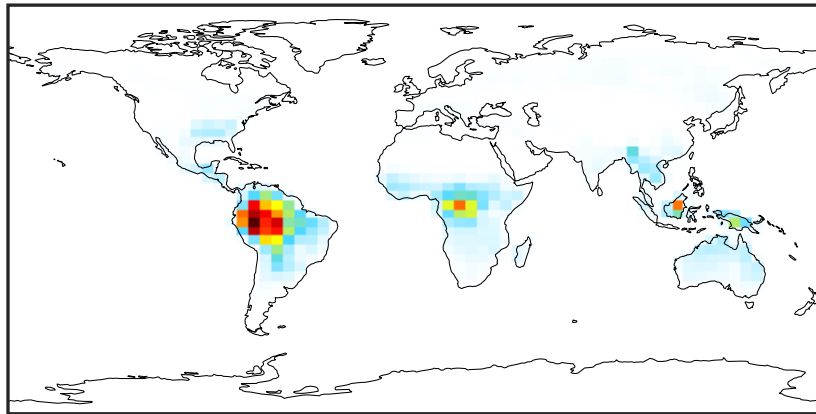
Ratio (1x1.25)
Dev/Ref, Fixed Range



0.50 0.75 1.00 1.50 2.00
unitless

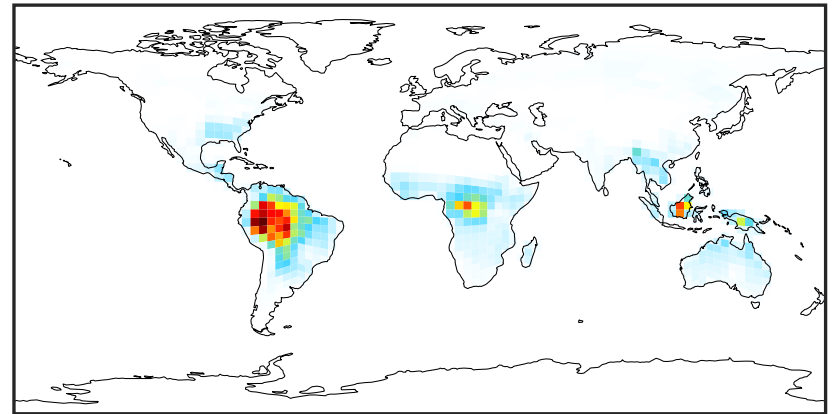
SpeciesConcVV_HPALDs (AnnualMean)

GCC_14.2.0 (Ref)
4.0x5.0



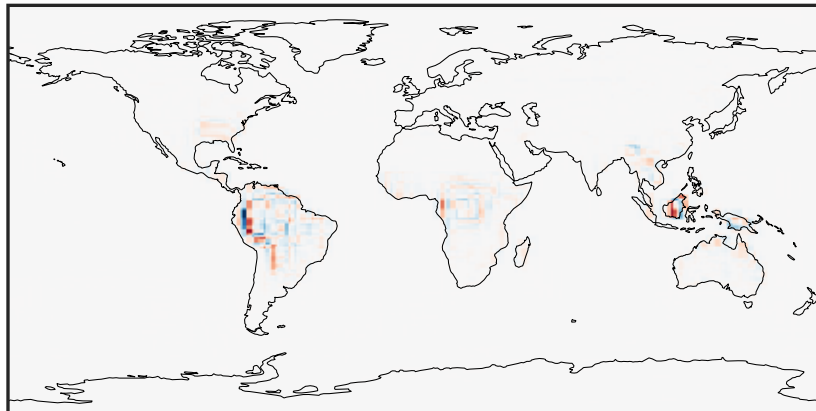
0.0000 0.0834 0.1668 0.2501 0.3335
ppb

GCHP_14.2.0 (Dev)
c24



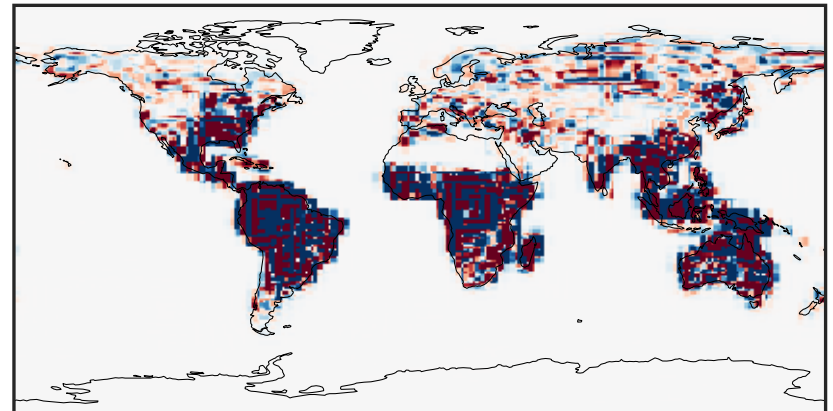
0.0000 0.0834 0.1668 0.2501 0.3335
ppb

Difference (1x1.25)
Dev - Ref, Dynamic Range



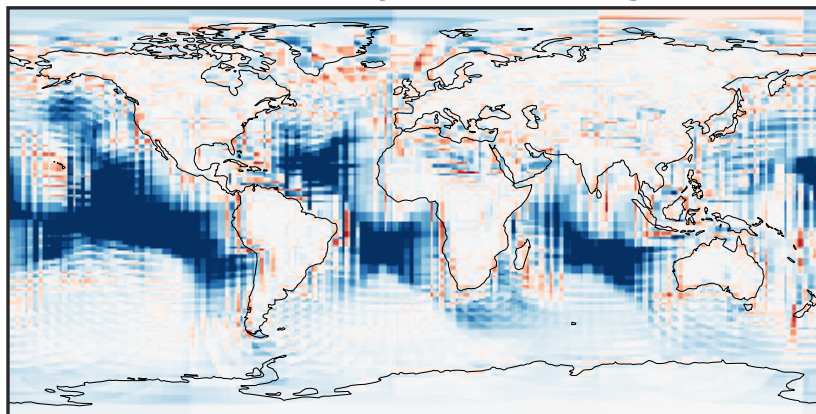
-0.1541 -0.0771 0.0000 0.0771 0.1541
ppb

Difference (1x1.25)
Dev - Ref, Restricted Range [5%,95%]



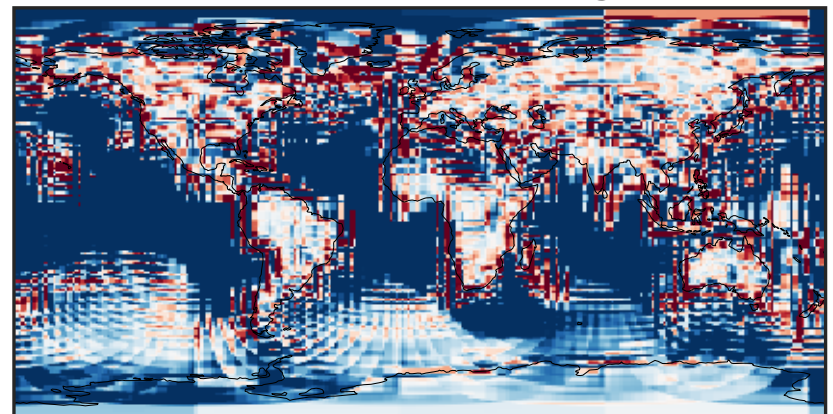
-0.0006 0.0000 0.0006
ppb

Ratio (1x1.25)
Dev/Ref, Dynamic Range



1e-01 1 10
unitless

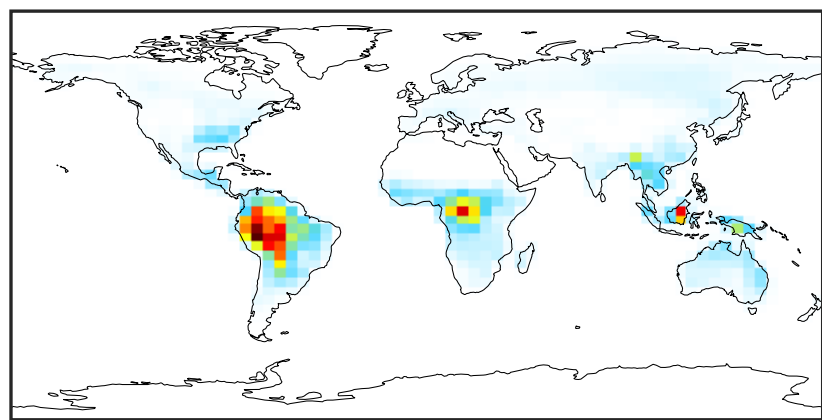
Ratio (1x1.25)
Dev/Ref, Fixed Range



0.50 0.75 1.00 1.50 2.00
unitless

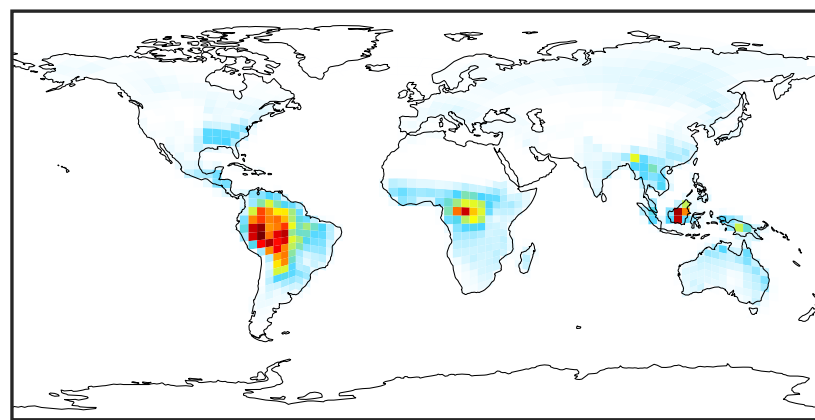
SpeciesConcVV_MACR (AnnualMean)

GCC_14.2.0 (Ref)
4.0x5.0



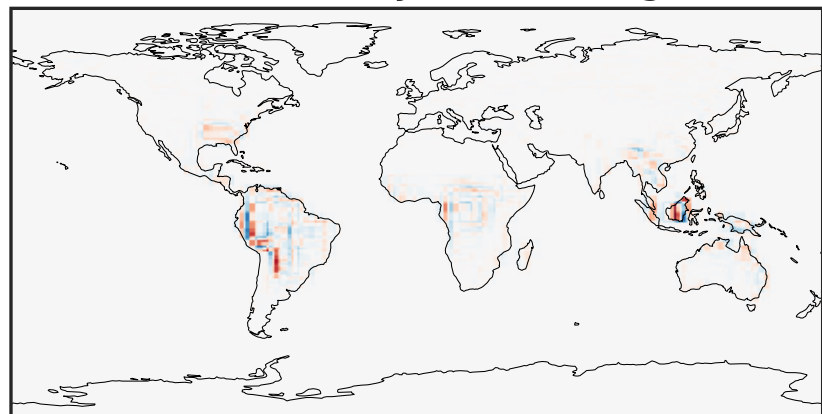
0.000 0.284 0.568 0.852 1.136
ppb

GCHP_14.2.0 (Dev)
c24



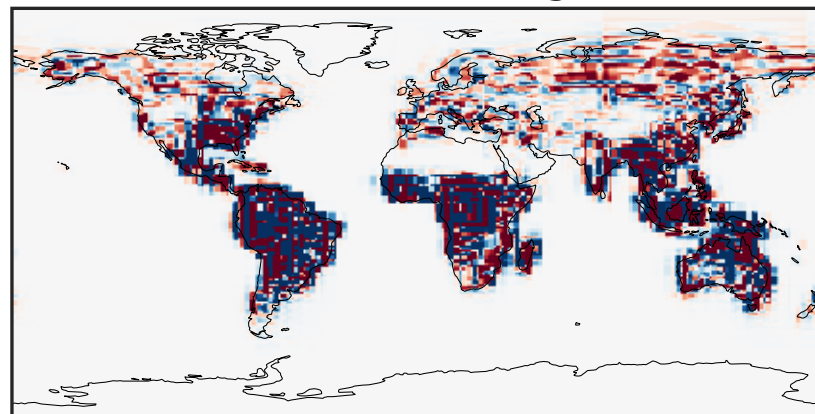
0.000 0.284 0.568 0.852 1.136
ppb

Difference (1x1.25)
Dev - Ref, Dynamic Range



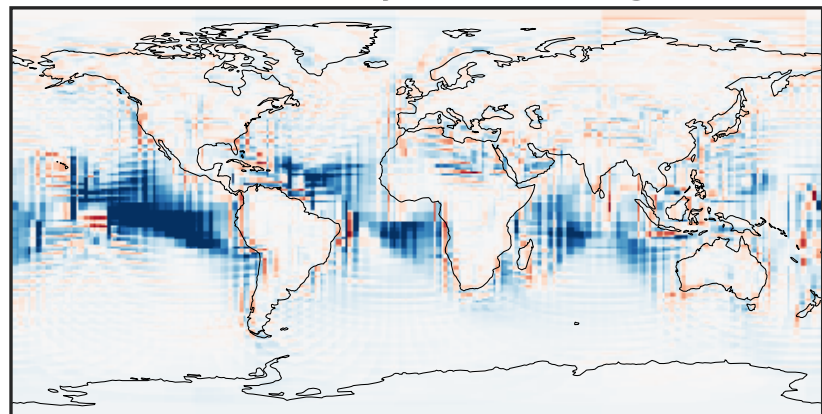
-0.526 -0.263 0.000 0.263 0.526
ppb

Difference (1x1.25)
Dev - Ref, Restricted Range [5%,95%]



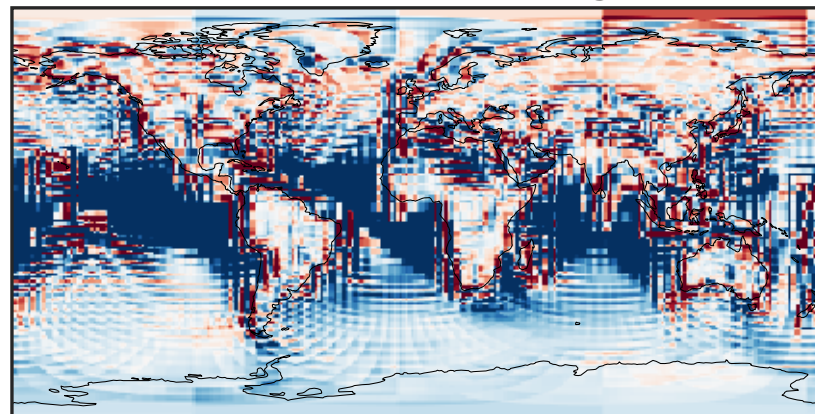
-0.004 0.000 0.004
ppb

Ratio (1x1.25)
Dev/Ref, Dynamic Range



1e-01 1 10
unitless

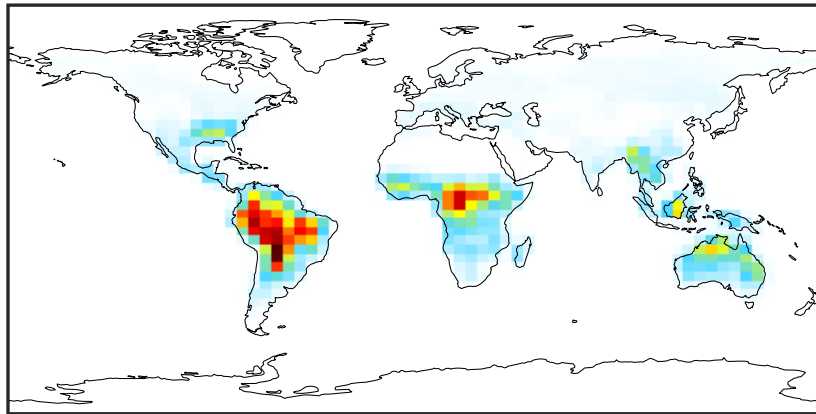
Ratio (1x1.25)
Dev/Ref, Fixed Range



0.50 0.75 1.00 1.50 2.00
unitless

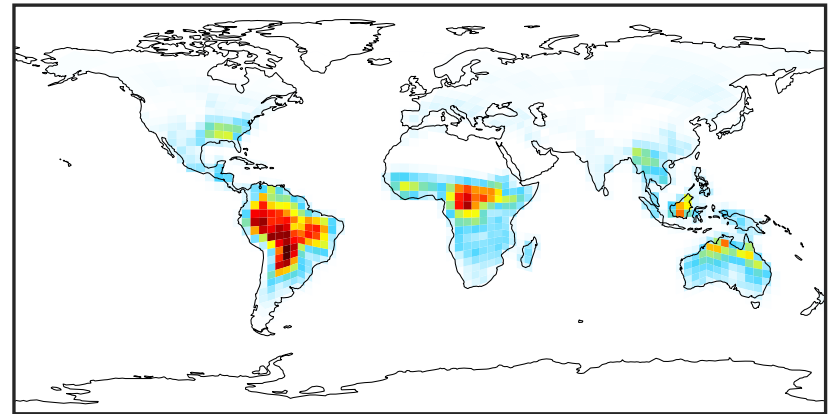
SpeciesConcVV_IEPOX (AnnualMean)

GCC_14.2.0 (Ref)
4.0x5.0



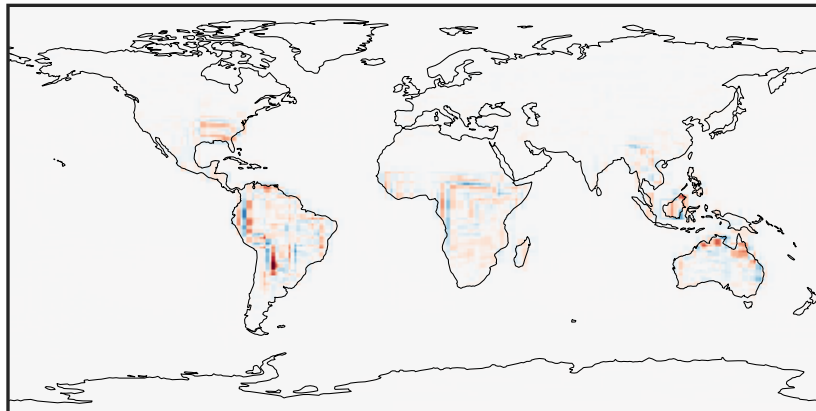
0.0000 0.1957 0.3914 0.5871 0.7828
ppb

GCHP_14.2.0 (Dev)
c24



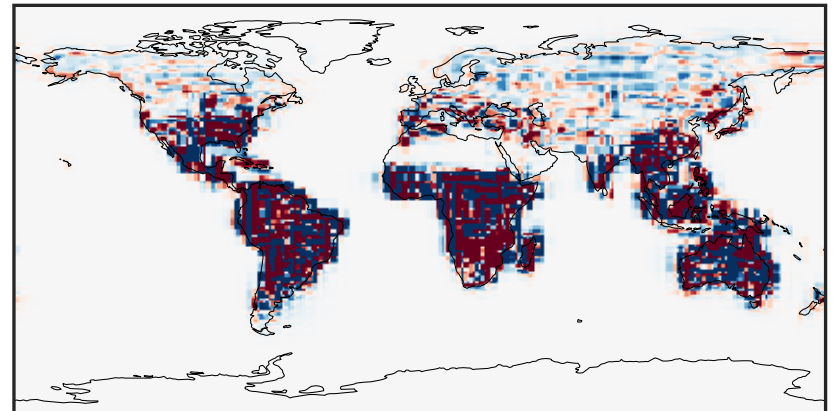
0.0000 0.1957 0.3914 0.5871 0.7828
ppb

Difference (1x1.25)
Dev - Ref, Dynamic Range



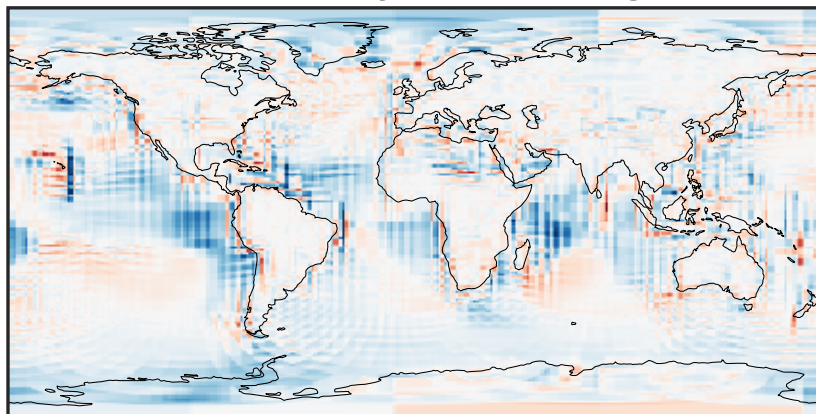
-0.3977 -0.1988 0.0000 0.1988 0.3977
ppb

Difference (1x1.25)
Dev - Ref, Restricted Range [5%,95%]



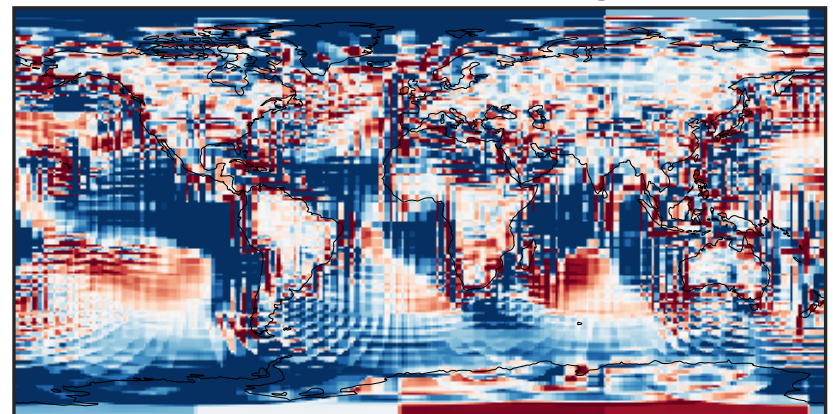
-0.004 0.000 0.004
ppb

Ratio (1x1.25)
Dev/Ref, Dynamic Range



1e-01 1 10
unitless

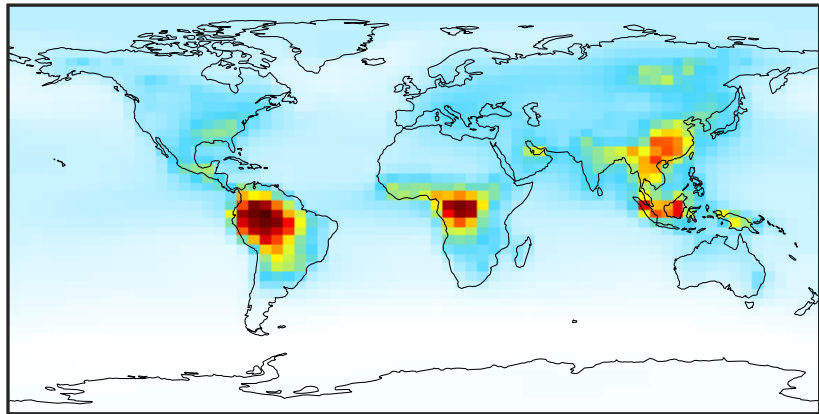
Ratio (1x1.25)
Dev/Ref, Fixed Range



0.50 0.75 1.00 1.50 2.00
unitless

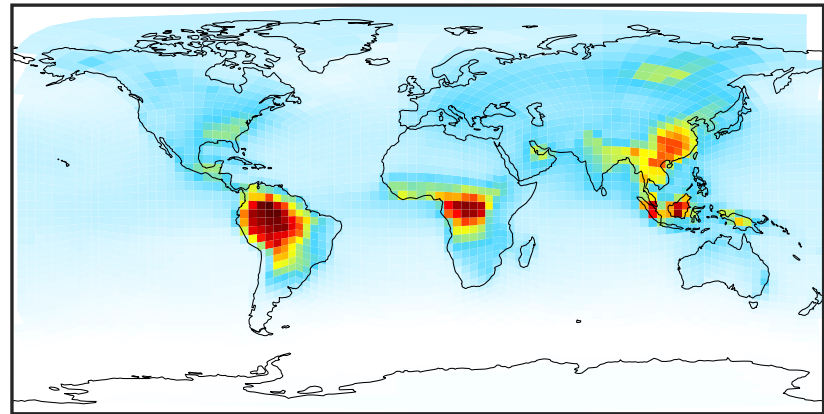
SpeciesConcVV_ACET (AnnualMean)

GCC_14.2.0 (Ref)
4.0x5.0



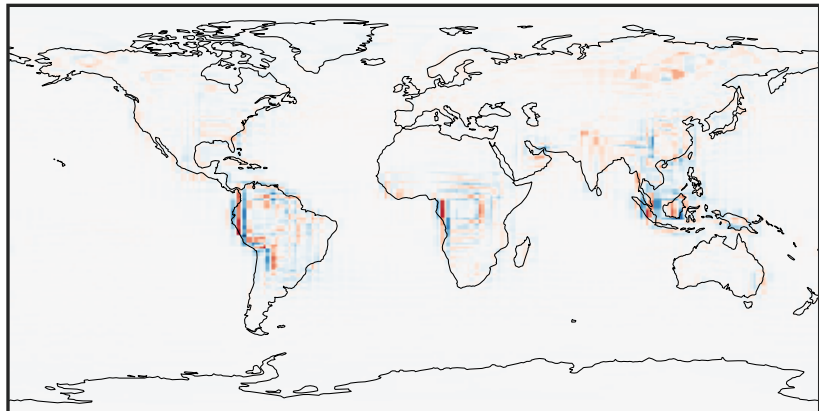
0.138 1.351 2.702 4.054 5.542
ppb

GCHP_14.2.0 (Dev)
c24



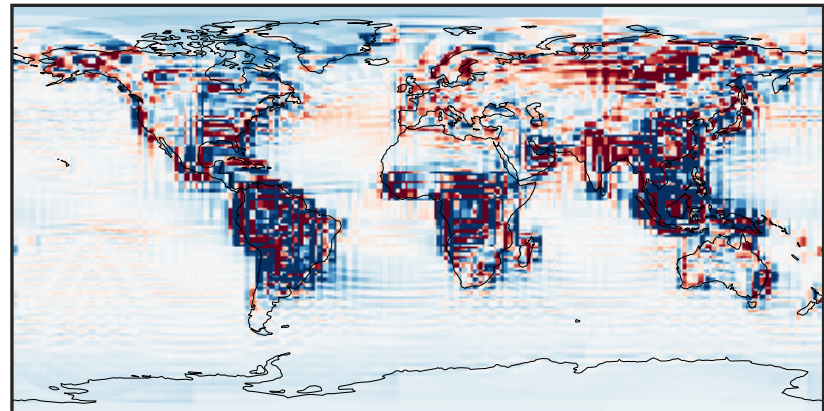
0.138 1.351 2.702 4.054 5.542
ppb

Difference (1x1.25)
Dev - Ref, Dynamic Range



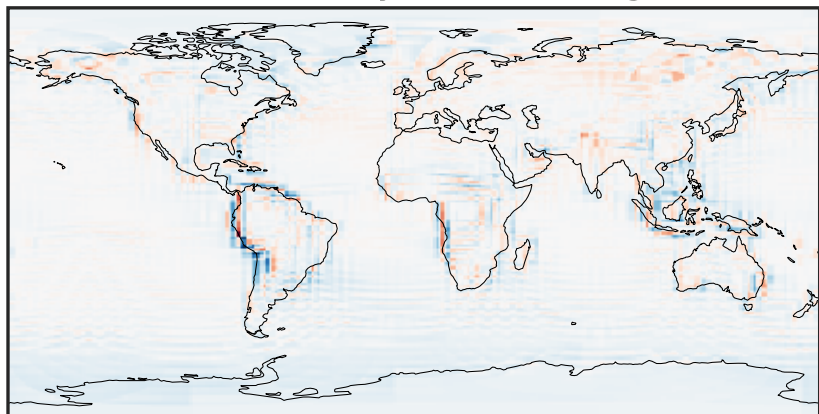
-1.846 -0.923 0.000 0.923 1.846
ppb

Difference (1x1.25)
Dev - Ref, Restricted Range [5%,95%]



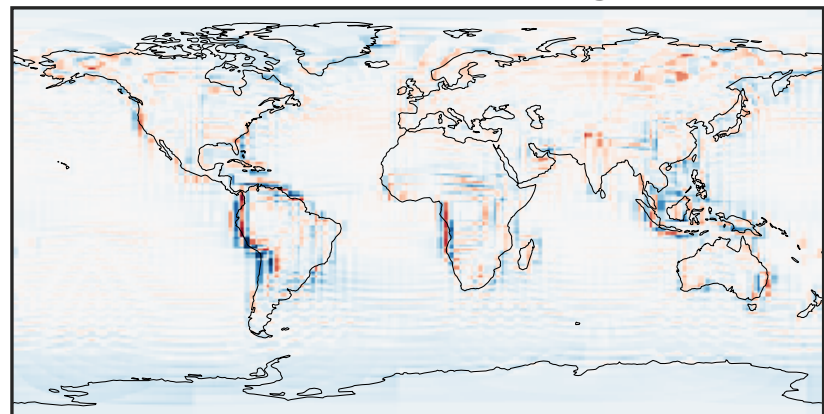
-0.1150 -0.0575 0.0000 0.0575 0.1150
ppb

Ratio (1x1.25)
Dev/Ref, Dynamic Range



0.366 0.683 1.000 1.866 2.732
unitless

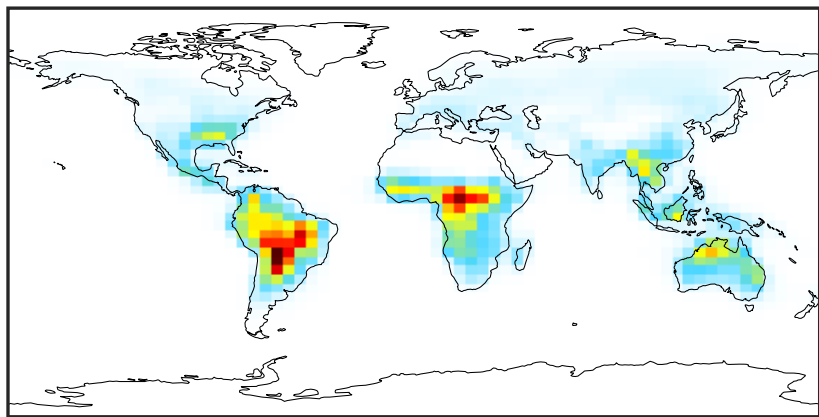
Ratio (1x1.25)
Dev/Ref, Fixed Range



0.50 0.75 1.00 1.50 2.00
unitless

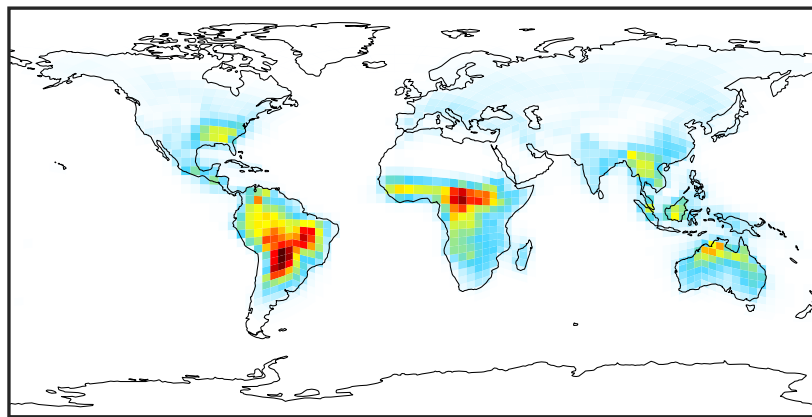
SpeciesConcVV_HAC (AnnualMean)

GCC_14.2.0 (Ref)
4.0x5.0



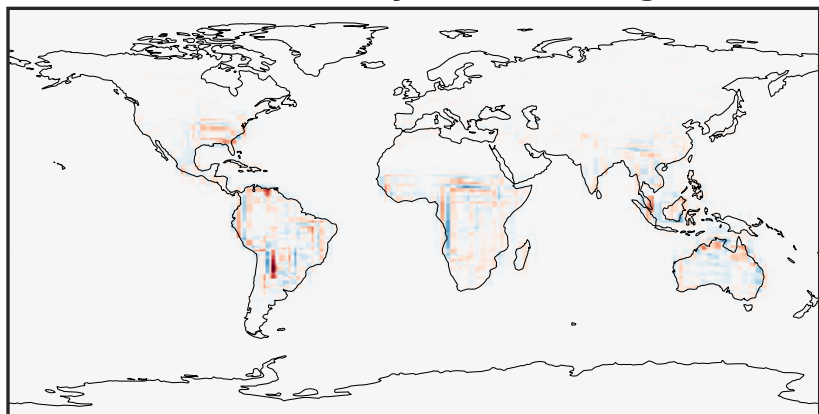
0.0000 0.1728 0.3455 0.5183 0.6910
ppb

GCHP_14.2.0 (Dev)
c24



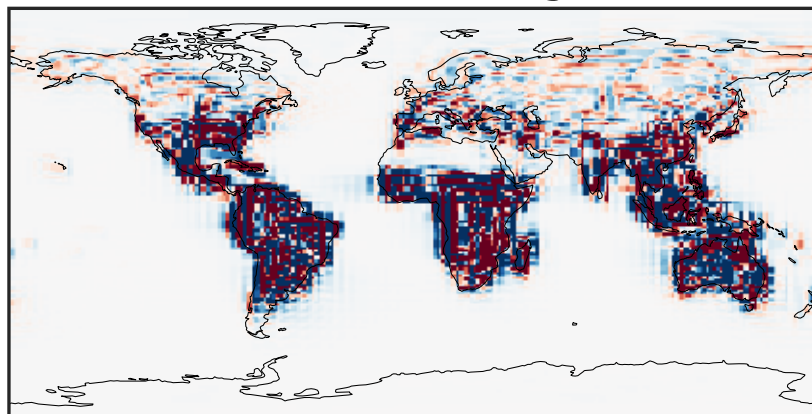
0.0000 0.1728 0.3455 0.5183 0.6910
ppb

Difference (1x1.25)
Dev - Ref, Dynamic Range



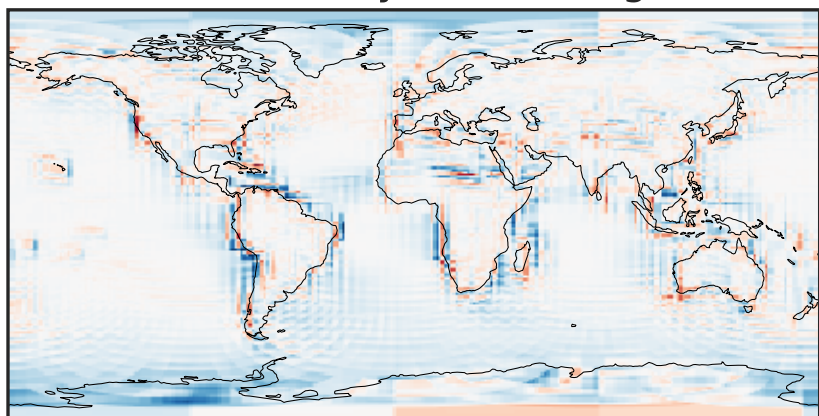
-0.2998 -0.1499 0.0000 0.1499 0.2998
ppb

Difference (1x1.25)
Dev - Ref, Restricted Range [5%,95%]



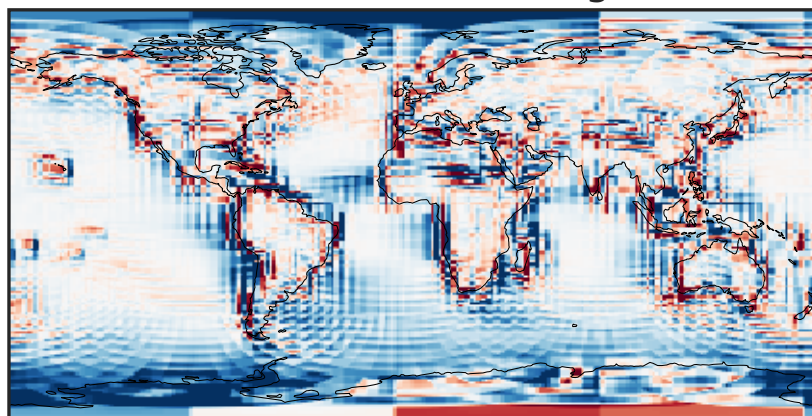
-0.005 0.000 0.005
ppb

Ratio (1x1.25)
Dev/Ref, Dynamic Range



0.111 0.556 1.000 4.993 8.987
unitless

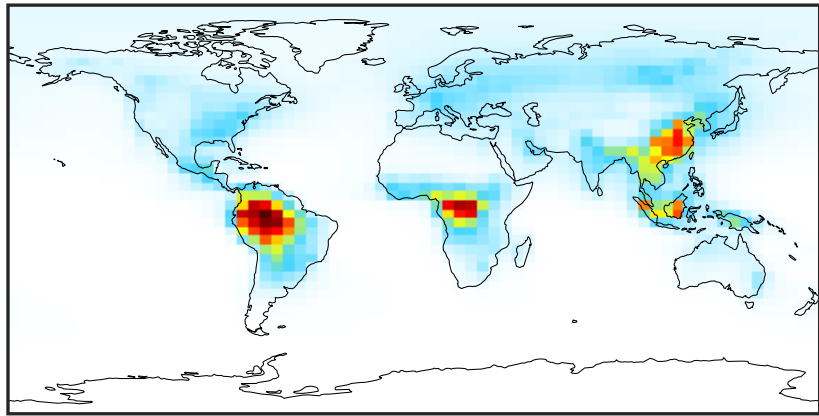
Ratio (1x1.25)
Dev/Ref, Fixed Range



0.50 0.75 1.00 1.50 2.00
unitless

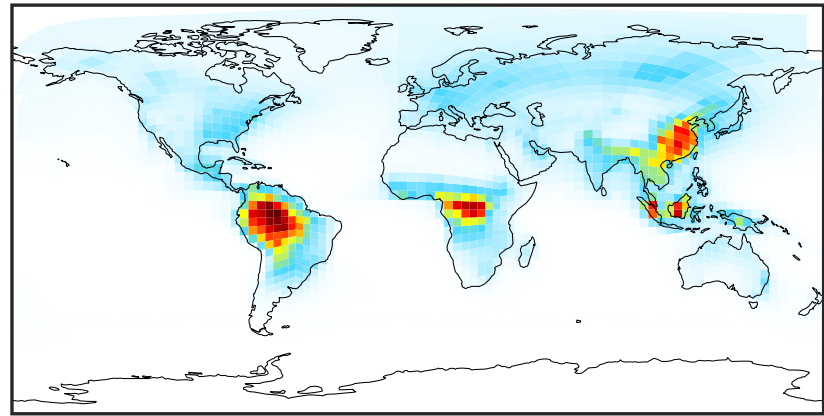
SpeciesConcVW_MEK (AnnualMean)

GCC_14.2.0 (Ref)
4.0x5.0



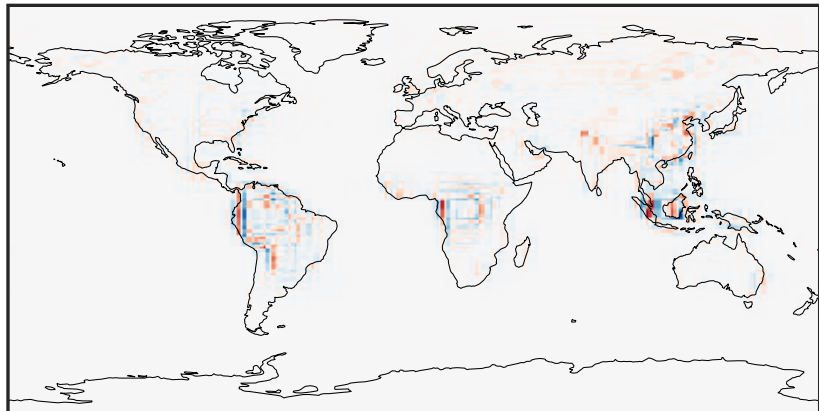
0.000 0.461 0.921 1.382 1.843
ppb

GCHP_14.2.0 (Dev)
c24



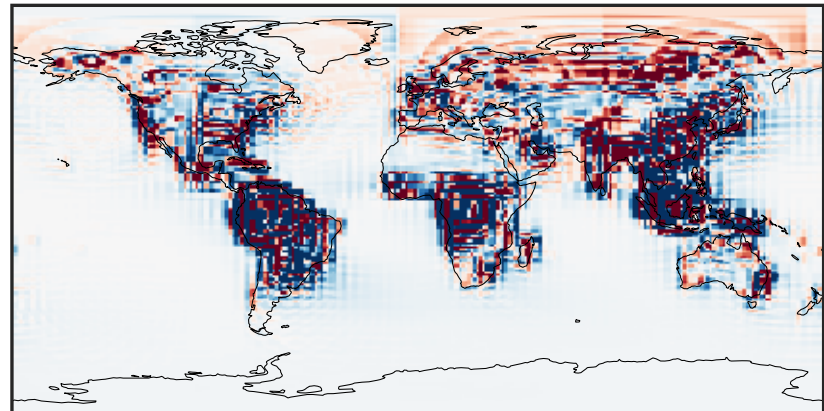
0.000 0.461 0.921 1.382 1.843
ppb

Difference (1x1.25)
Dev - Ref, Dynamic Range



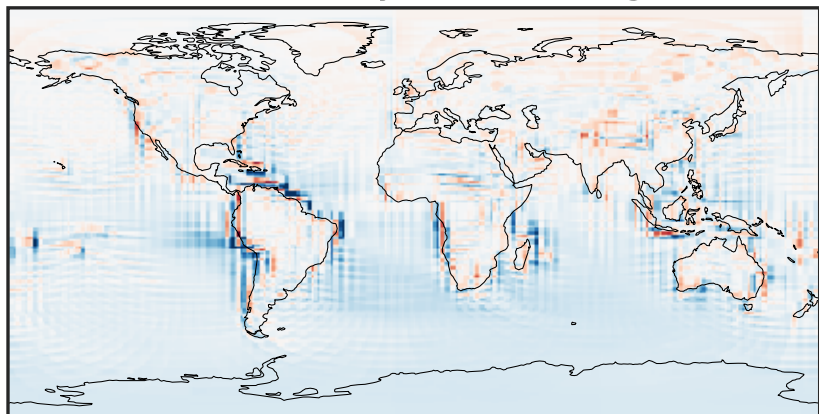
-0.666 -0.333 0.000 0.333 0.666
ppb

Difference (1x1.25)
Dev - Ref, Restricted Range [5%,95%]



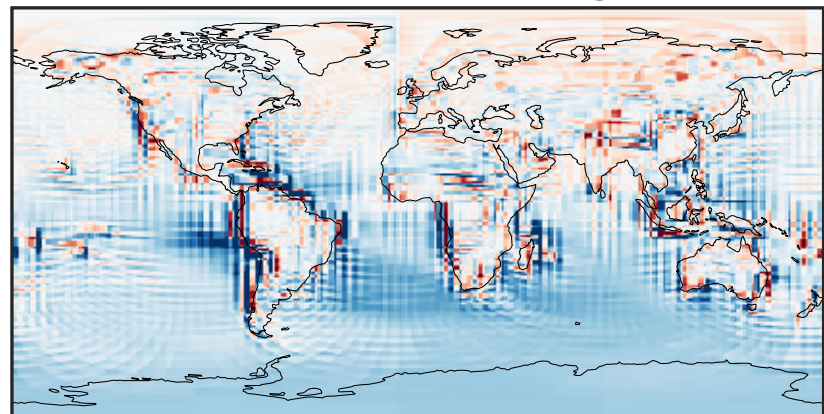
-0.02 0.00 0.02
ppb

Ratio (1x1.25)
Dev/Ref, Dynamic Range



0.215 0.608 1.000 2.824 4.647
unitless

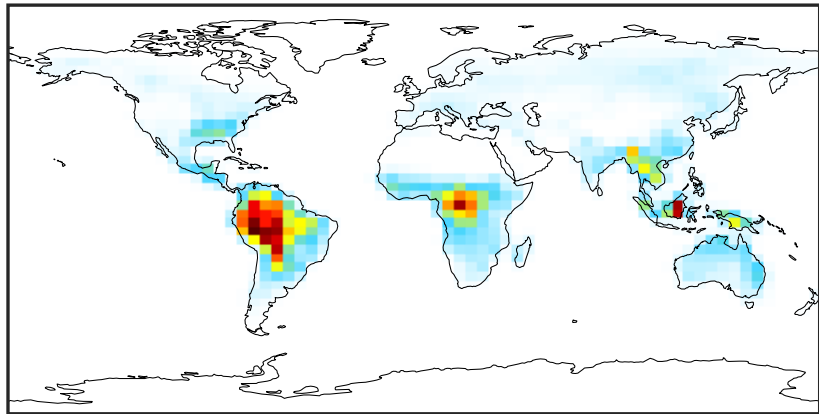
Ratio (1x1.25)
Dev/Ref, Fixed Range



0.50 0.75 1.00 1.50 2.00
unitless

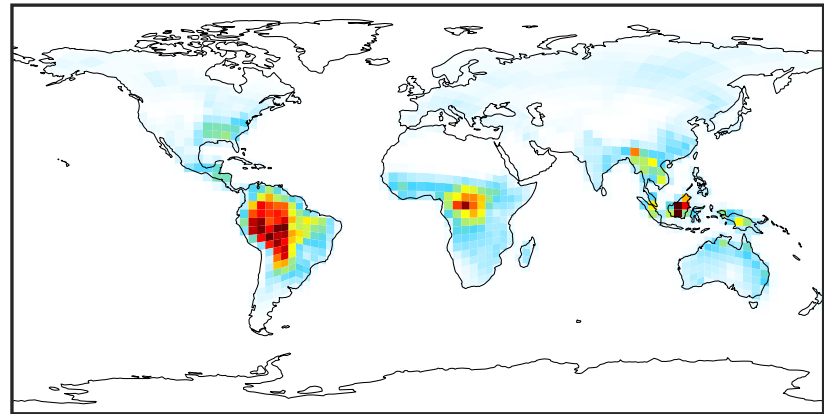
SpeciesConcVW_MVK (AnnualMean)

GCC_14.2.0 (Ref)
4.0x5.0



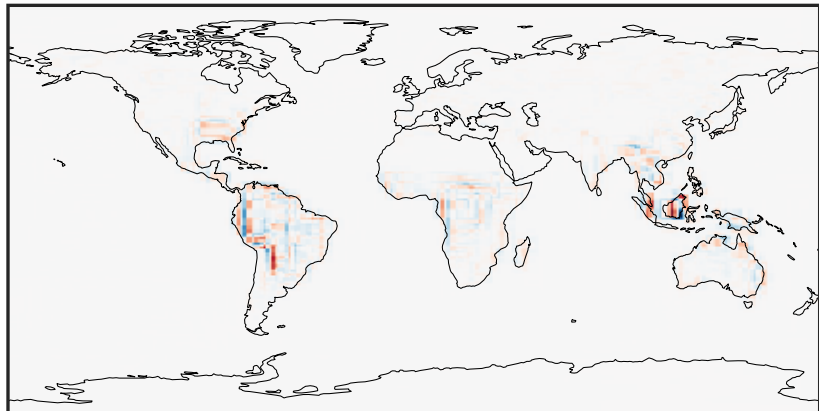
0.000 0.406 0.811 1.217 1.622
ppb

GCHP_14.2.0 (Dev)
c24



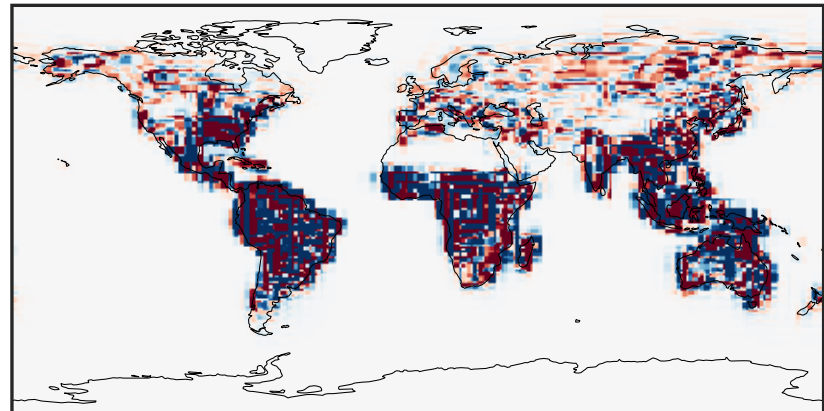
0.000 0.406 0.811 1.217 1.622
ppb

Difference (1x1.25)
Dev - Ref, Dynamic Range



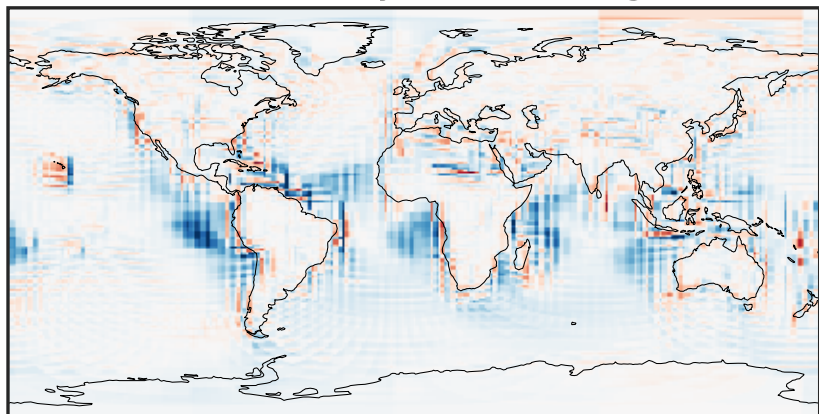
-0.88 -0.44 0.00 0.44 0.88
ppb

Difference (1x1.25)
Dev - Ref, Restricted Range [5%,95%]



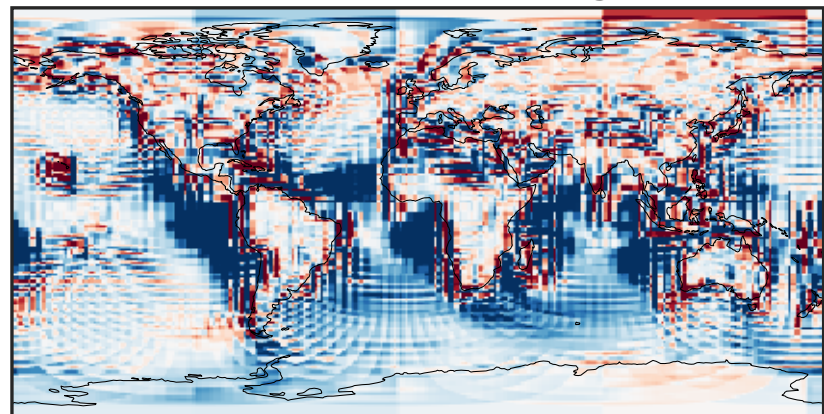
-0.01 0.00 0.01
ppb

Ratio (1x1.25)
Dev/Ref, Dynamic Range



1e-01 1 10
unitless

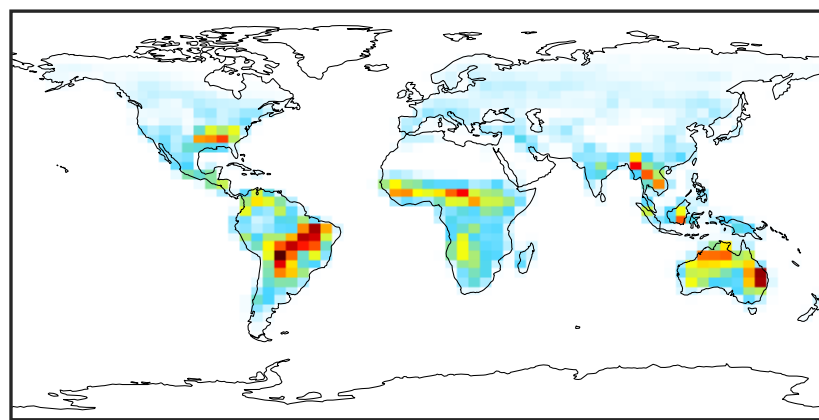
Ratio (1x1.25)
Dev/Ref, Fixed Range



0.50 0.75 1.00 1.50 2.00
unitless

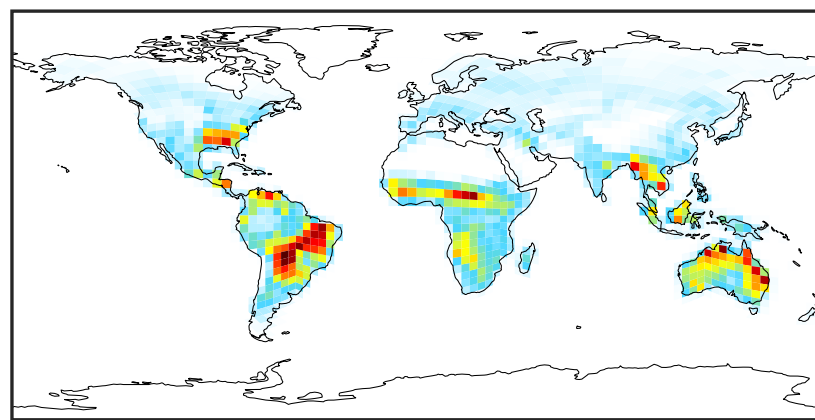
SpeciesConcVV_ISOPN (AnnualMean)

GCC_14.2.0 (Ref)
4.0x5.0



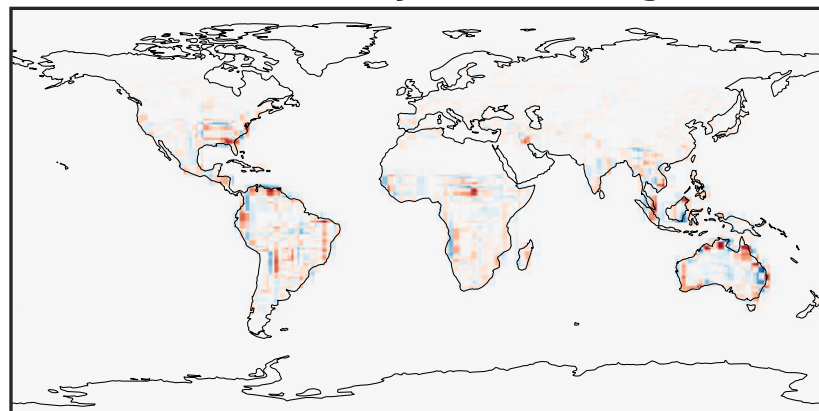
0.000 0.008 0.016 0.024
ppb

GCHP_14.2.0 (Dev)
c24



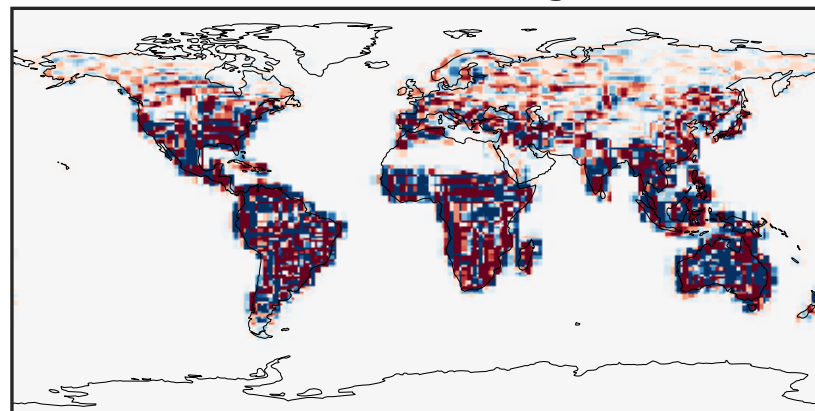
0.000 0.008 0.016 0.024
ppb

Difference (1x1.25)
Dev - Ref, Dynamic Range



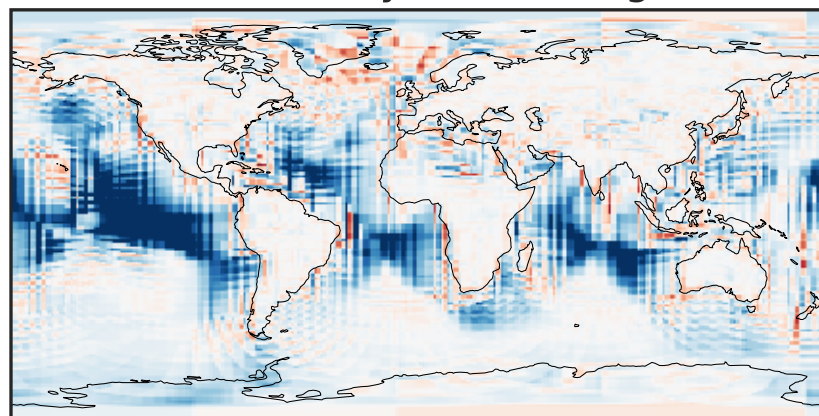
-0.008 0.000 0.008
ppb

Difference (1x1.25)
Dev - Ref, Restricted Range [5%,95%]



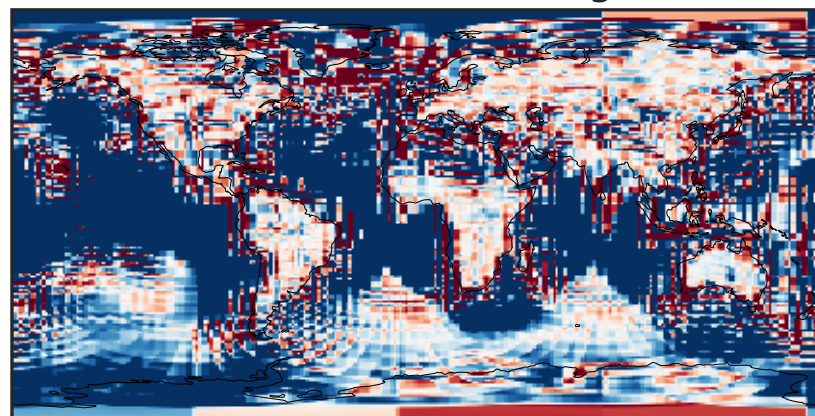
-0.0004 0.0000 0.0004
ppb

Ratio (1x1.25)
Dev/Ref, Dynamic Range



1e-02 1e-01 1 10 100
unitless

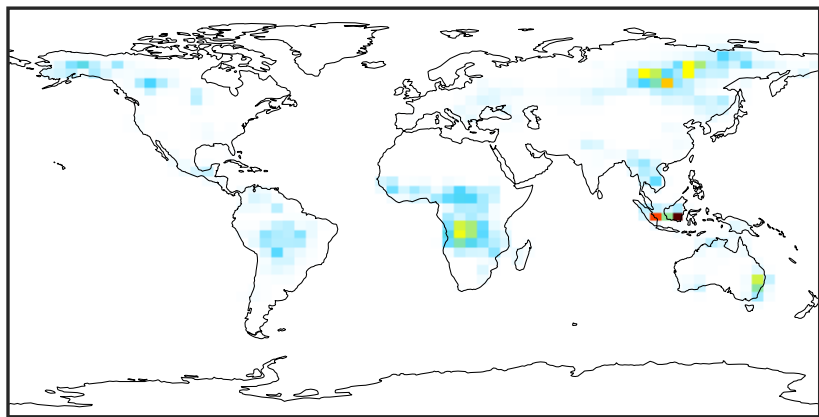
Ratio (1x1.25)
Dev/Ref, Fixed Range



0.50 0.75 1.00 1.50 2.00
unitless

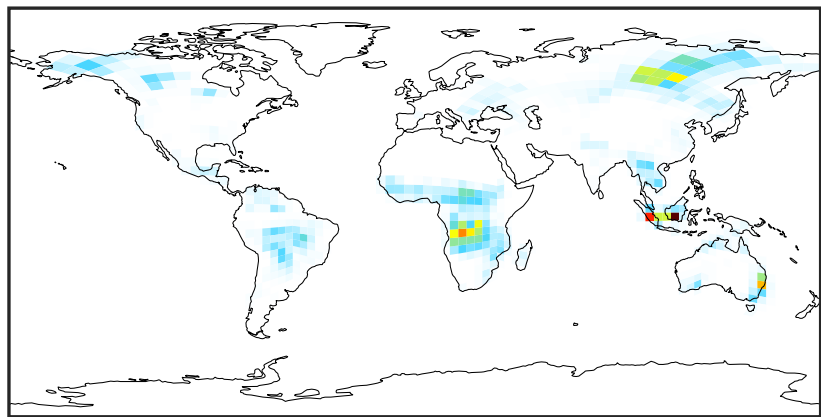
SpeciesConcVW_FURA (AnnualMean)

GCC_14.2.0 (Ref)
4.0x5.0



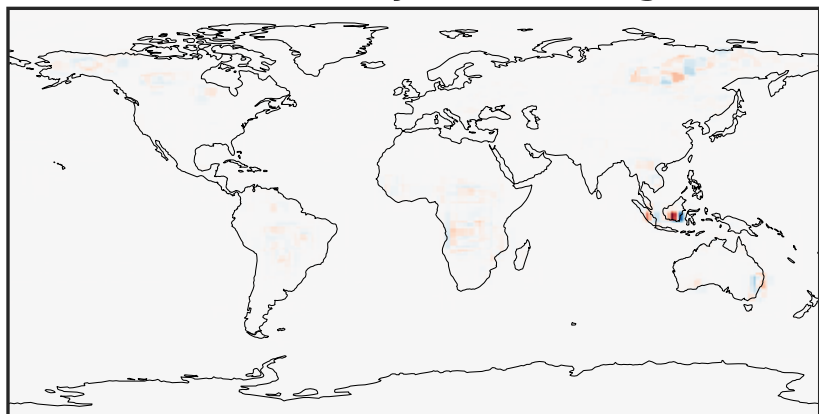
0.0000 0.1195 0.2390 0.3586 0.4781
ppb

GCHP_14.2.0 (Dev)
c24



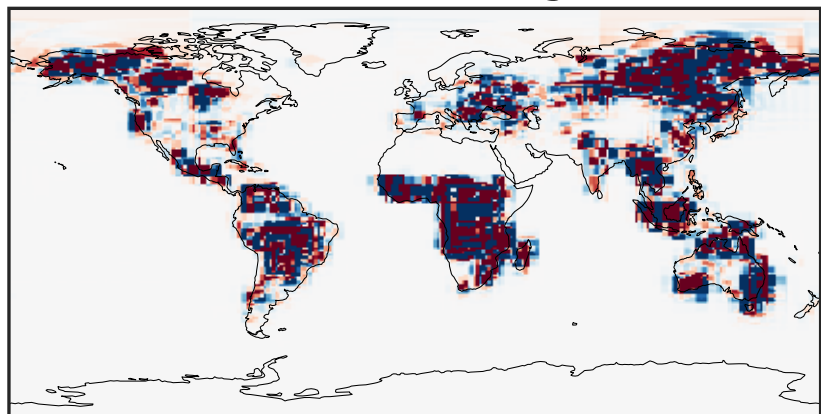
0.0000 0.1195 0.2390 0.3586 0.4781
ppb

Difference (1x1.25)
Dev - Ref, Dynamic Range



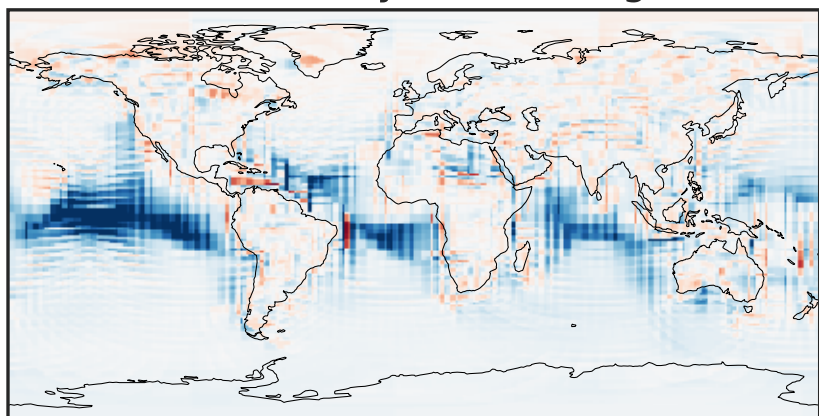
-0.571 -0.286 0.000 0.286 0.571
ppb

Difference (1x1.25)
Dev - Ref, Restricted Range [5%,95%]



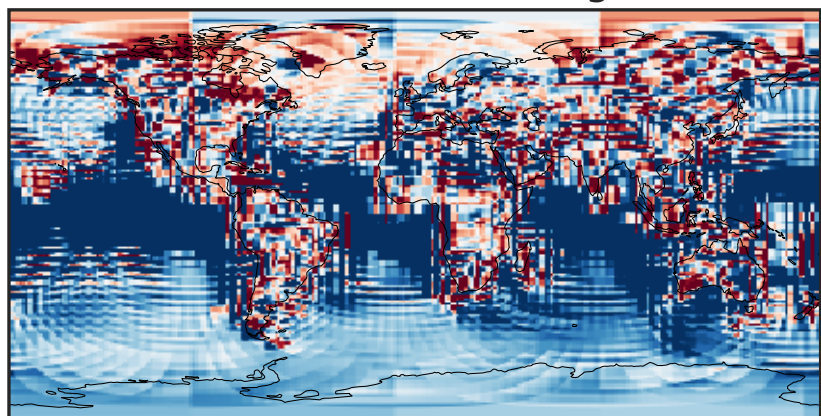
-0.0015 0.0000 0.0015
ppb

Ratio (1x1.25)
Dev/Ref, Dynamic Range



1e-02 1e-01 1 10 100
unitless

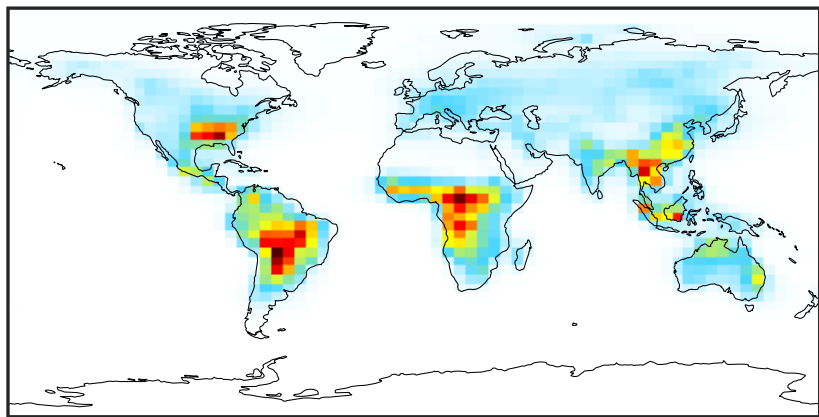
Ratio (1x1.25)
Dev/Ref, Fixed Range



0.50 0.75 1.00 1.50 2.00
unitless

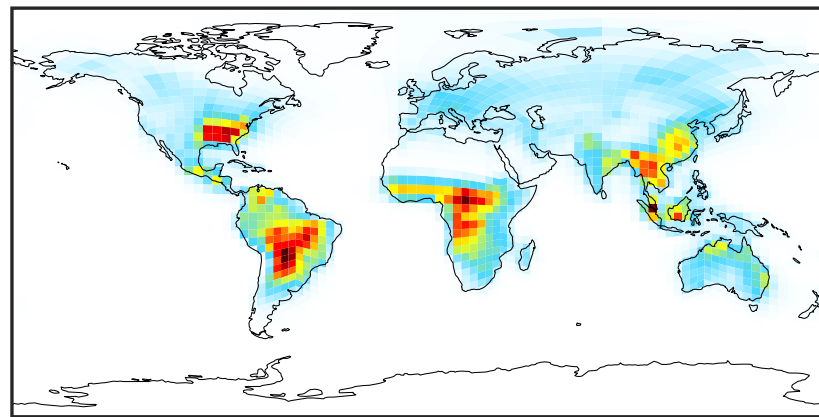
SpeciesConcVV_GLYC (AnnualMean)

GCC_14.2.0 (Ref)
4.0x5.0



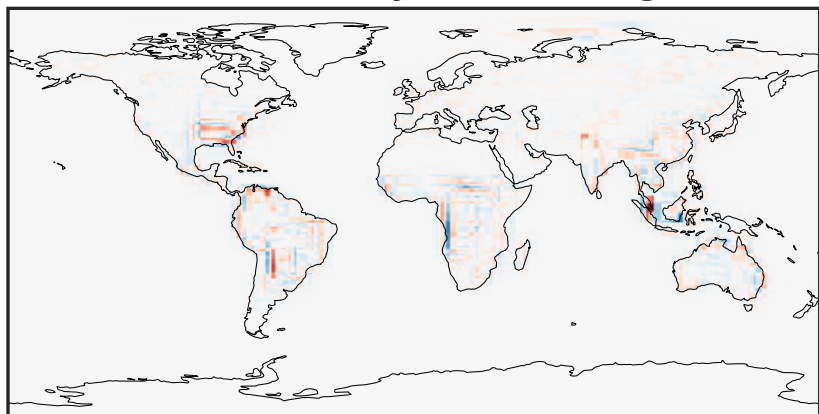
0.0000 0.1643 0.3286 0.4929 0.6573
ppb

GCHP_14.2.0 (Dev)
c24



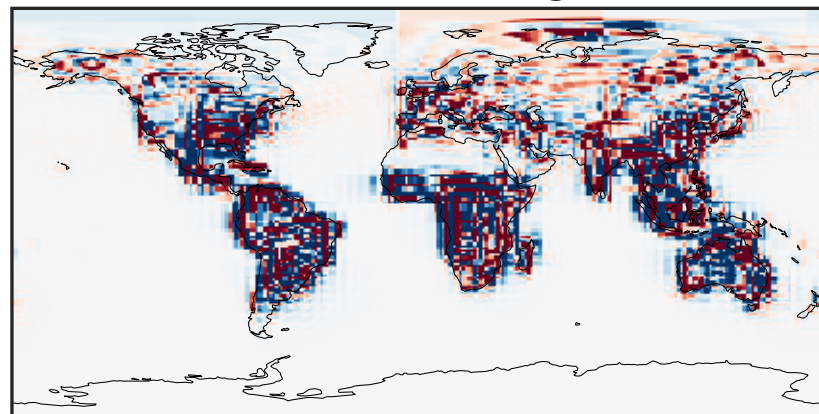
0.0000 0.1643 0.3286 0.4929 0.6573
ppb

Difference (1x1.25)
Dev - Ref, Dynamic Range



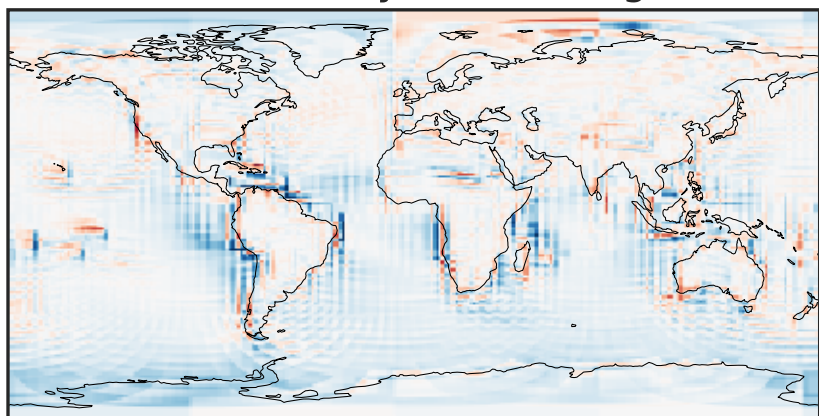
-0.3453 -0.1726 0.0000 0.1726 0.3453
ppb

Difference (1x1.25)
Dev - Ref, Restricted Range [5%,95%]



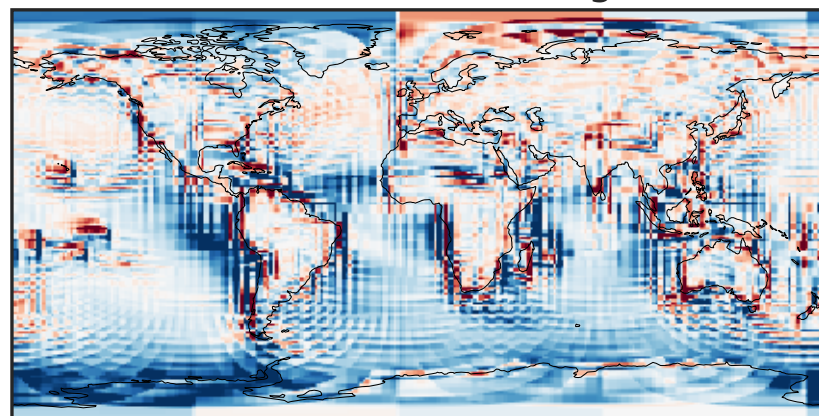
-0.008 0.000 0.008
ppb

Ratio (1x1.25)
Dev/Ref, Dynamic Range



0.112 0.556 1.000 4.958 8.917
unitless

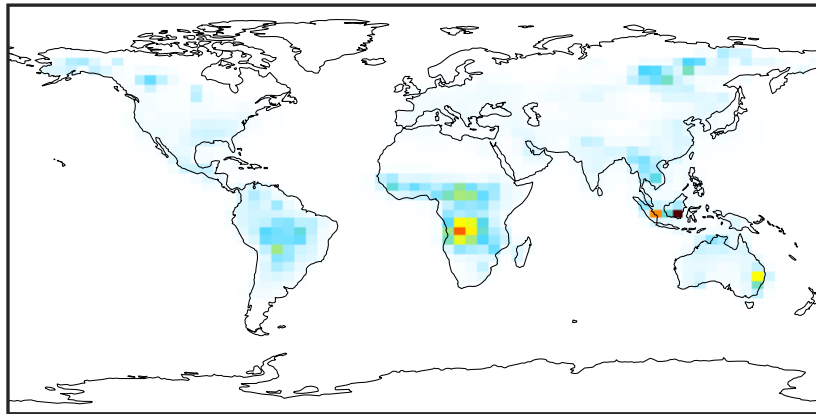
Ratio (1x1.25)
Dev/Ref, Fixed Range



0.50 0.75 1.00 1.50 2.00
unitless

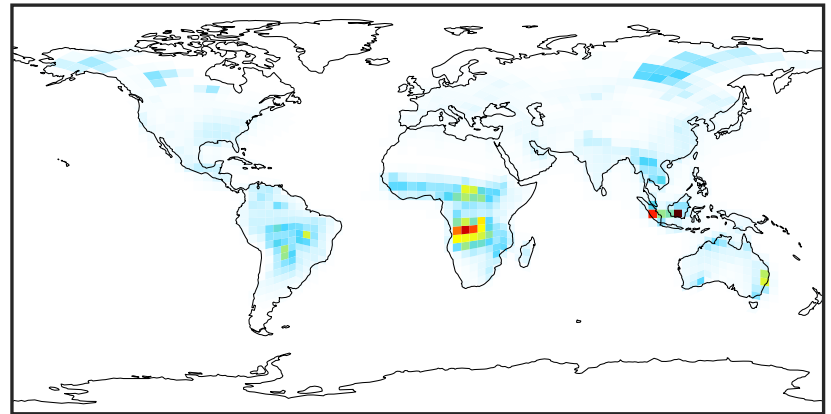
SpeciesConcVV_GLYX (AnnualMean)

GCC_14.2.0 (Ref)
4.0x5.0



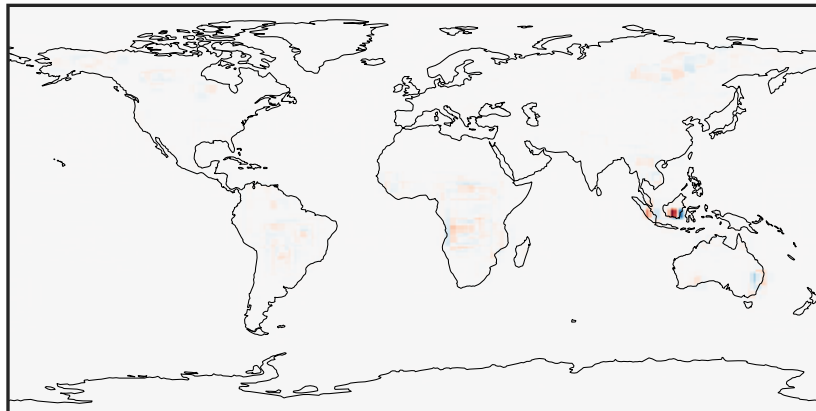
0.0000 0.0807 0.1614 0.2421 0.3229
ppb

GCHP_14.2.0 (Dev)
c24



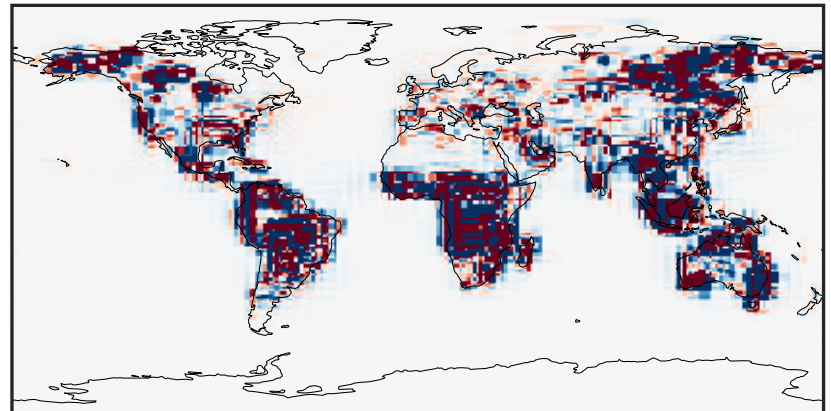
0.0000 0.0807 0.1614 0.2421 0.3229
ppb

Difference (1x1.25)
Dev - Ref, Dynamic Range



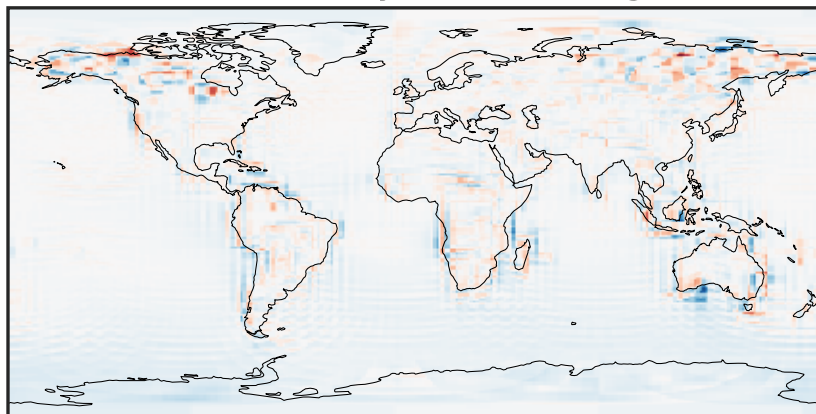
-0.4231 -0.2115 0.0000 0.2115 0.4231
ppb

Difference (1x1.25)
Dev - Ref, Restricted Range [5%,95%]



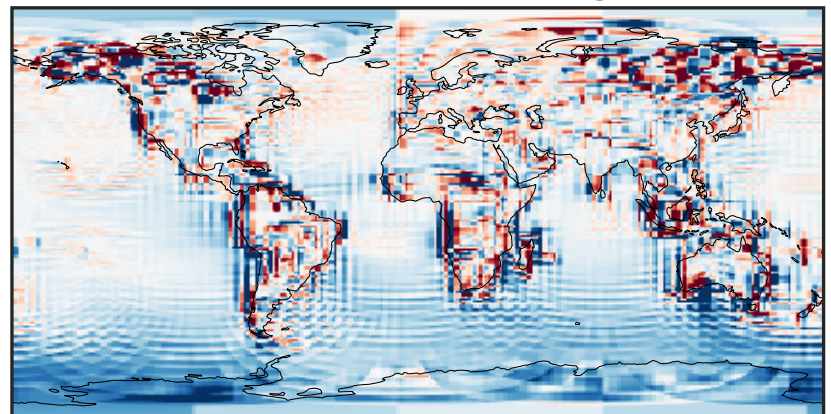
-0.0015 0.0000 0.0015
ppb

Ratio (1x1.25)
Dev/Ref, Dynamic Range



1e-01 1 10
unitless

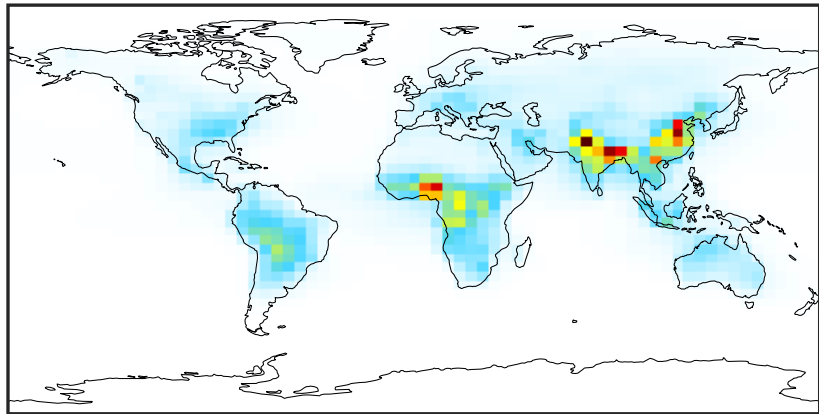
Ratio (1x1.25)
Dev/Ref, Fixed Range



0.50 0.75 1.00 1.50 2.00
unitless

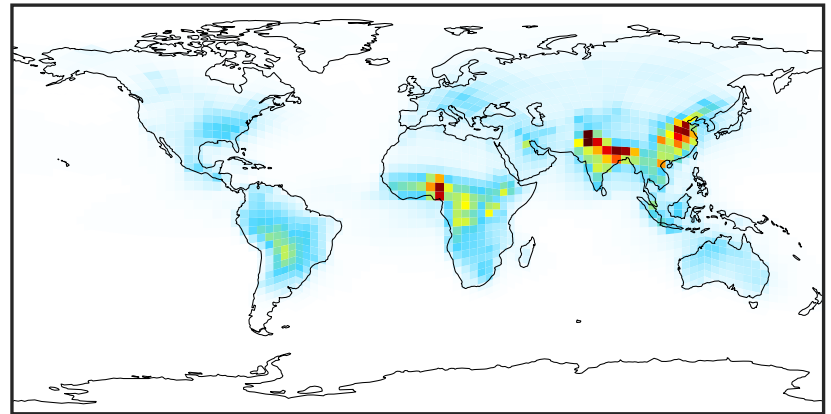
SpeciesConcVV_HCOOH (AnnualMean)

GCC_14.2.0 (Ref)
4.0x5.0



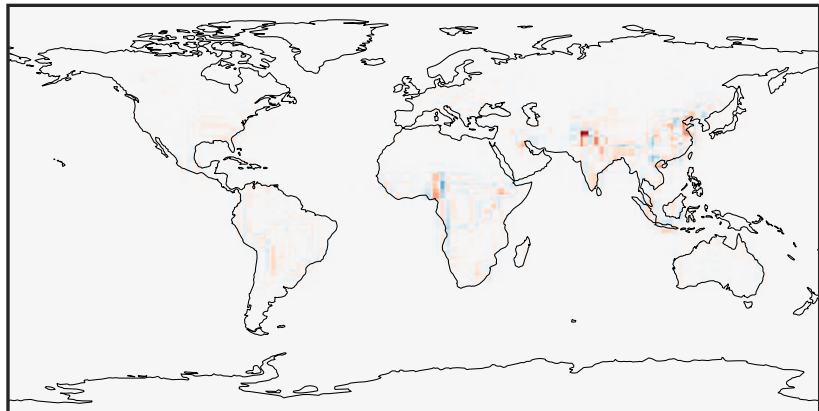
0.001 0.626 1.252 1.878 2.505
ppb

GCHP_14.2.0 (Dev)
c24



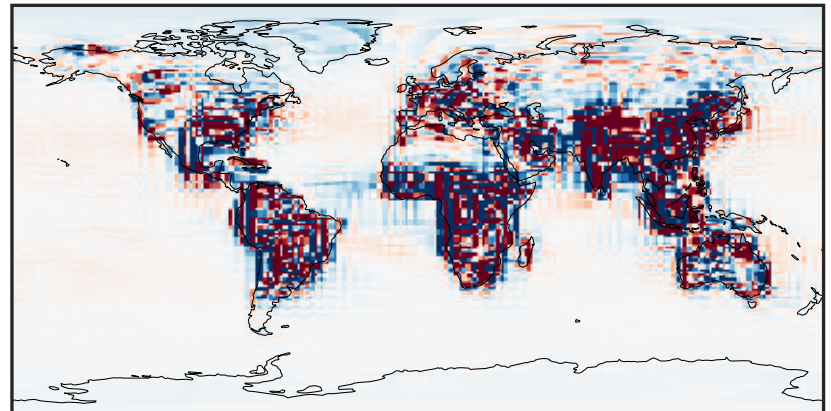
0.001 0.626 1.252 1.878 2.505
ppb

Difference (1x1.25)
Dev - Ref, Dynamic Range



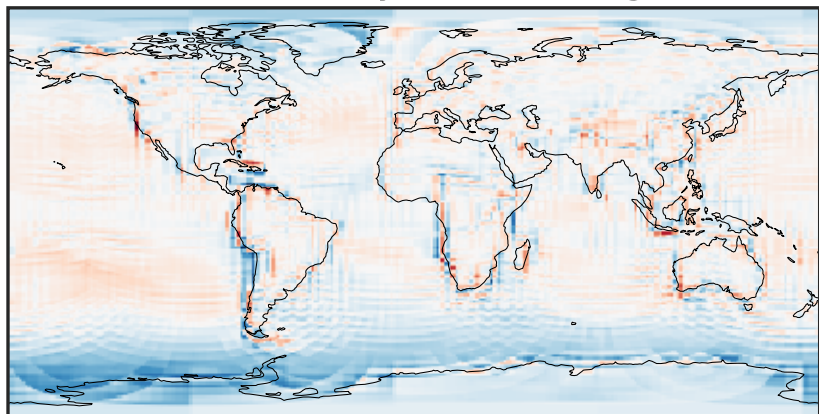
-1.750 -0.875 0.000 0.875 1.750
ppb

Difference (1x1.25)
Dev - Ref, Restricted Range [5%,95%]



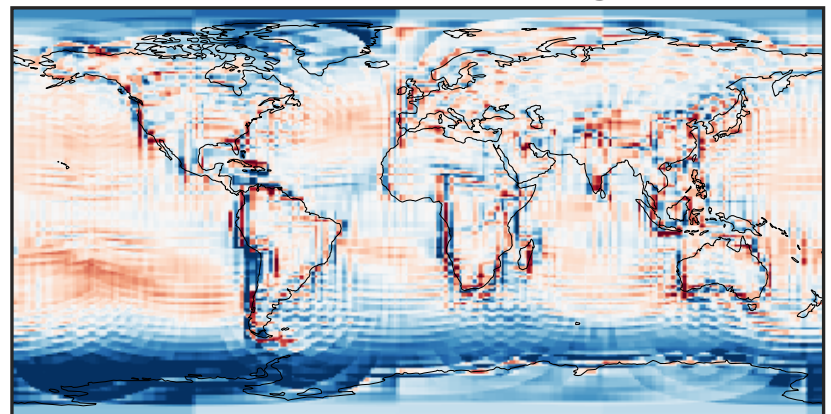
-0.02 0.00 0.02
ppb

Ratio (1x1.25)
Dev/Ref, Dynamic Range



0.195 0.598 1.000 3.058 5.117
unitless

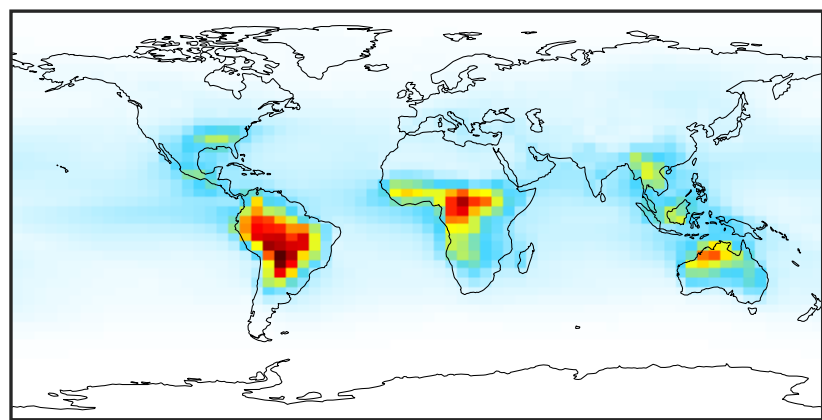
Ratio (1x1.25)
Dev/Ref, Fixed Range



0.50 0.75 1.00 1.50 2.00
unitless

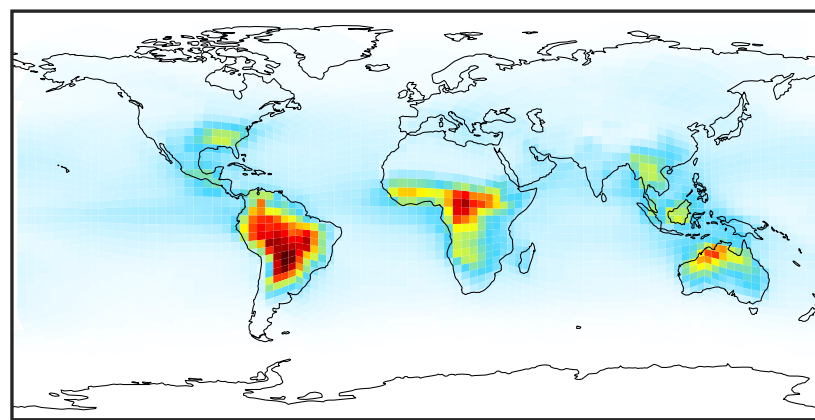
SpeciesConcVV_MAP (AnnualMean)

GCC_14.2.0 (Ref)
4.0x5.0



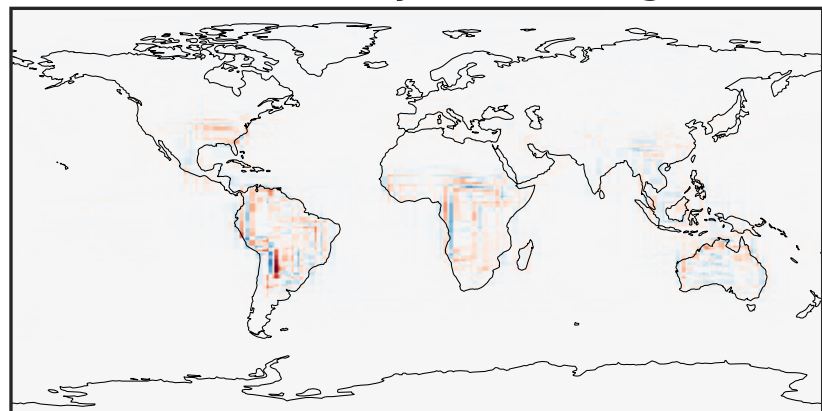
0.0017 0.1702 0.3404 0.5106 0.6825
ppb

GCHP_14.2.0 (Dev)
c24



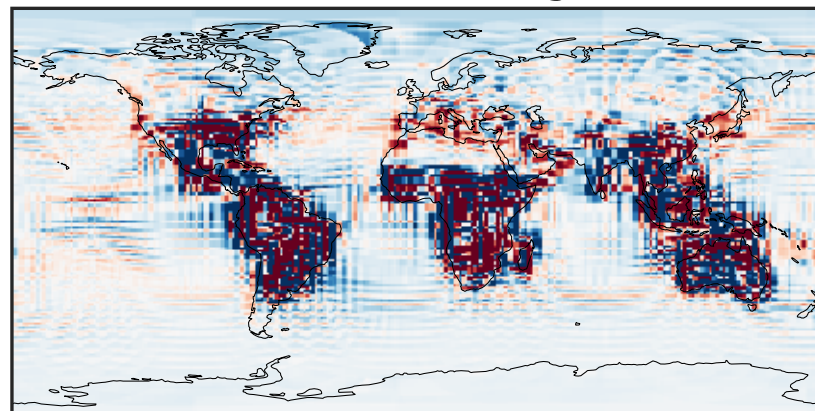
0.0017 0.1702 0.3404 0.5106 0.6825
ppb

Difference (1x1.25)
Dev - Ref, Dynamic Range



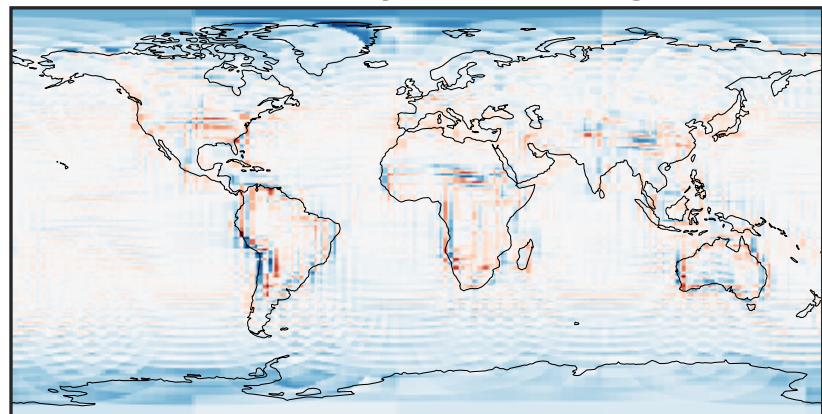
-0.2668 -0.1334 0.0000 0.1334 0.2668
ppb

Difference (1x1.25)
Dev - Ref, Restricted Range [5%,95%]



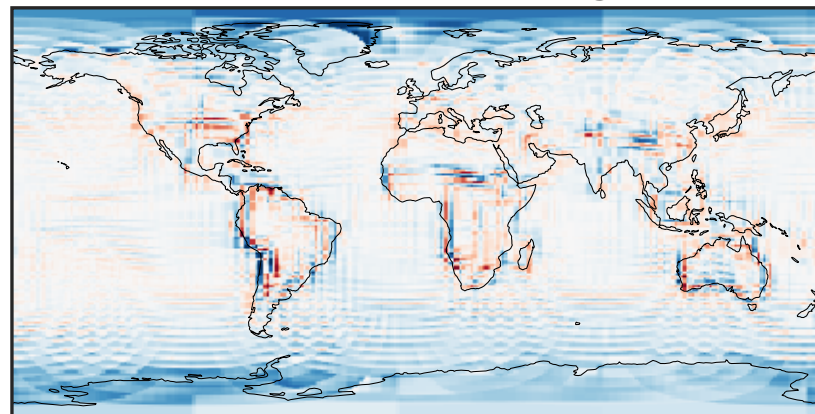
-0.005 0.000 0.005
ppb

Ratio (1x1.25)
Dev/Ref, Dynamic Range



0.410 0.705 1.000 1.720 2.440
unitless

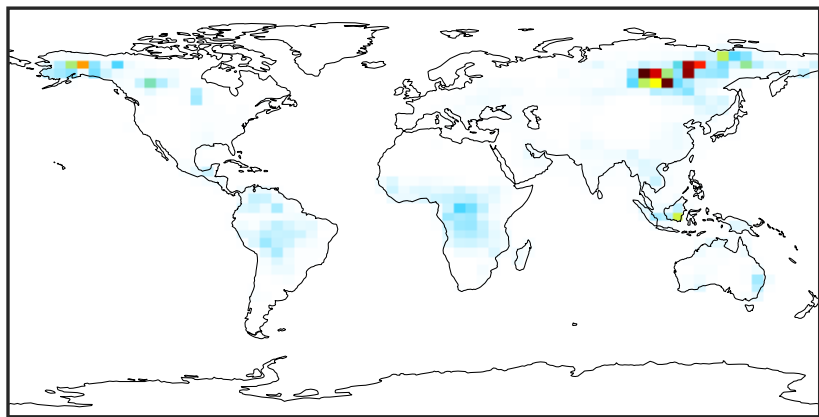
Ratio (1x1.25)
Dev/Ref, Fixed Range



0.50 0.75 1.00 1.50 2.00
unitless

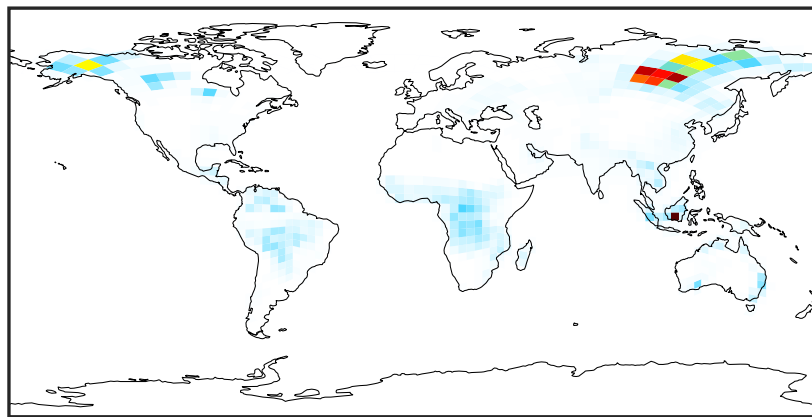
SpeciesConcVV_PHEN (AnnualMean)

GCC_14.2.0 (Ref)
4.0x5.0



0.0000 0.0269 0.0538 0.0807 0.1076
ppb

GCHP_14.2.0 (Dev)
c24



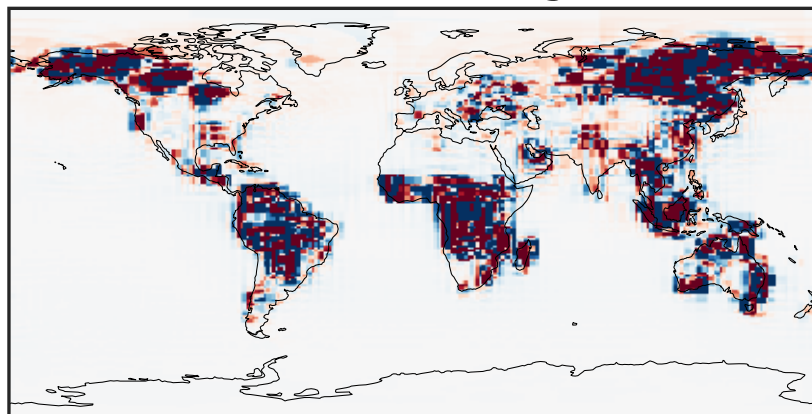
0.0000 0.0269 0.0538 0.0807 0.1076
ppb

Difference (1x1.25)
Dev - Ref, Dynamic Range



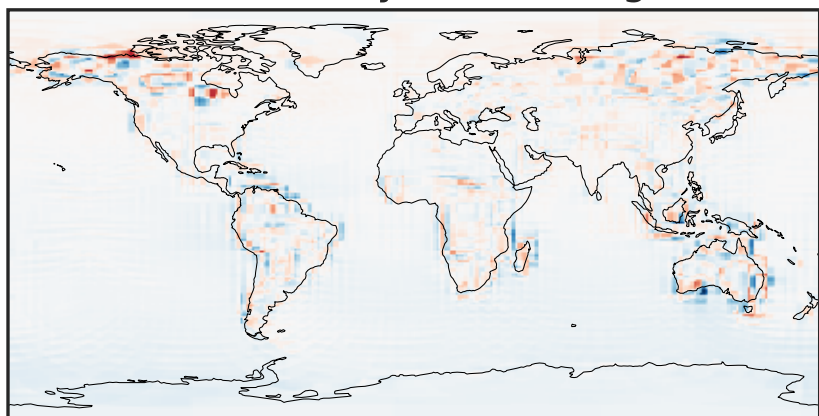
-0.0997 -0.0498 0.0000 0.0498 0.0997
ppb

Difference (1x1.25)
Dev - Ref, Restricted Range [5%,95%]



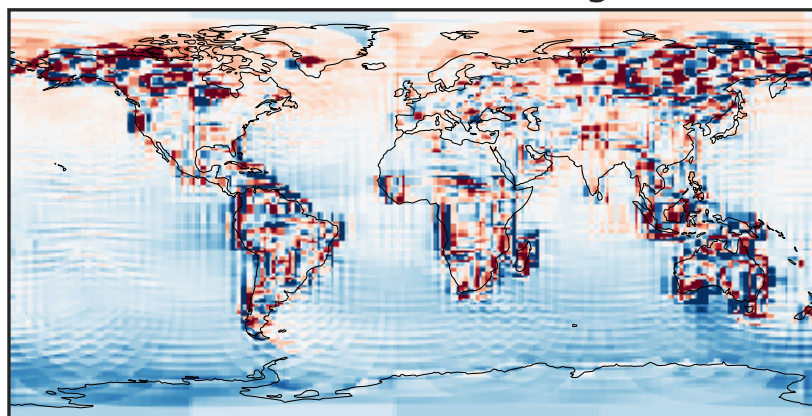
-0.00025 0.00000 0.00025
ppb

Ratio (1x1.25)
Dev/Ref, Dynamic Range



1e-01 1 10
unitless

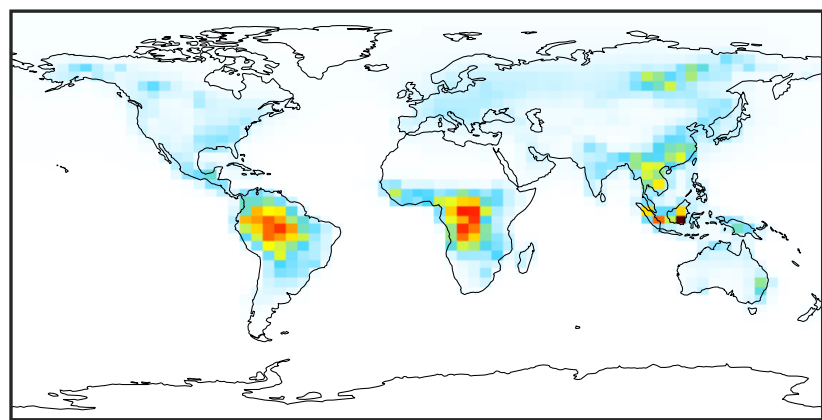
Ratio (1x1.25)
Dev/Ref, Fixed Range



0.50 0.75 1.00 1.50 2.00
unitless

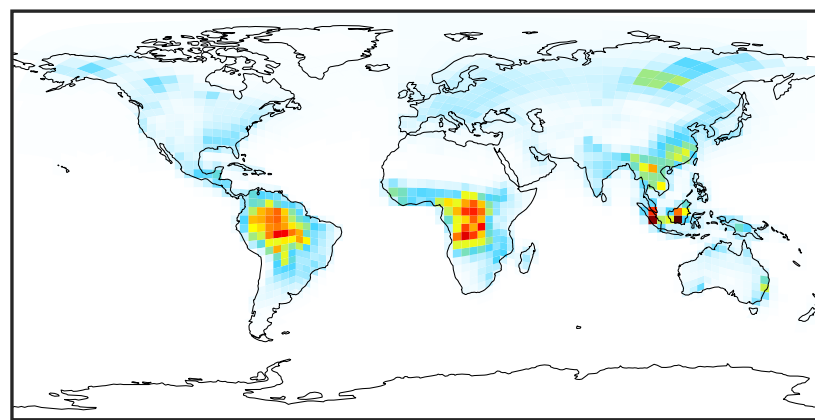
SpeciesConcVV_RCHO (AnnualMean)

GCC_14.2.0 (Ref)
4.0x5.0



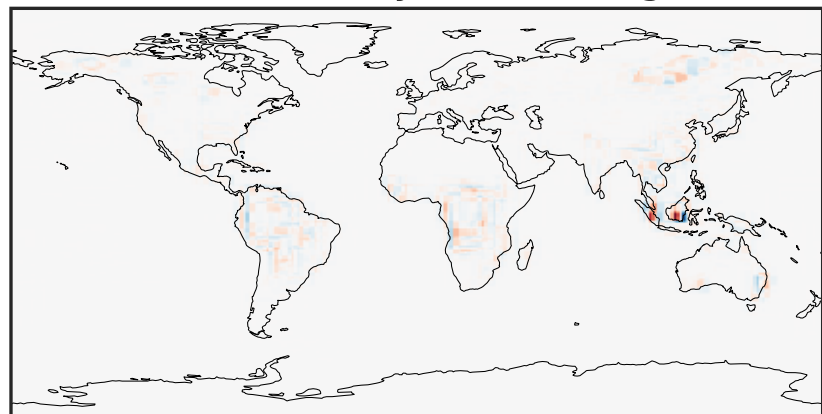
0.000 0.349 0.698 1.047 1.396
ppb

GCHP_14.2.0 (Dev)
c24



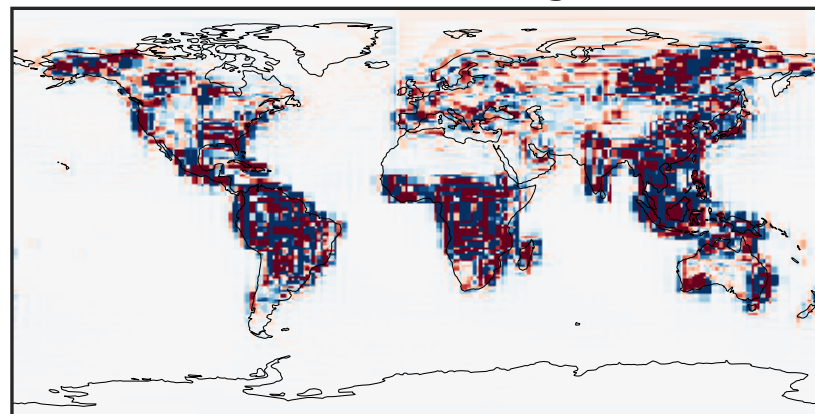
0.000 0.349 0.698 1.047 1.396
ppb

Difference (1x1.25)
Dev - Ref, Dynamic Range



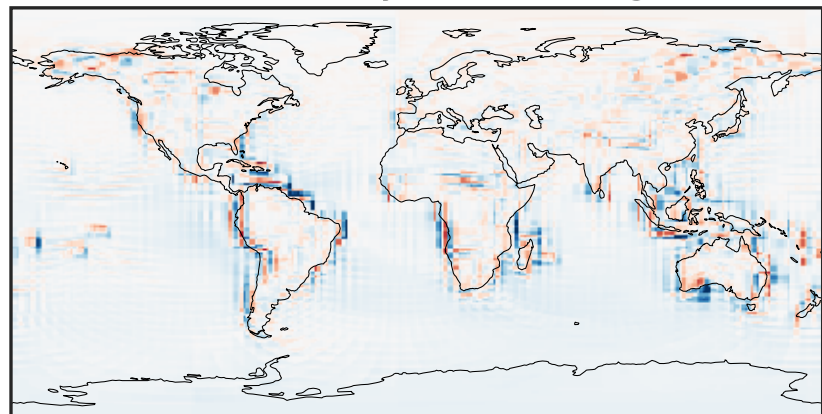
-1.241 -0.621 0.000 0.621 1.241
ppb

Difference (1x1.25)
Dev - Ref, Restricted Range [5%,95%]



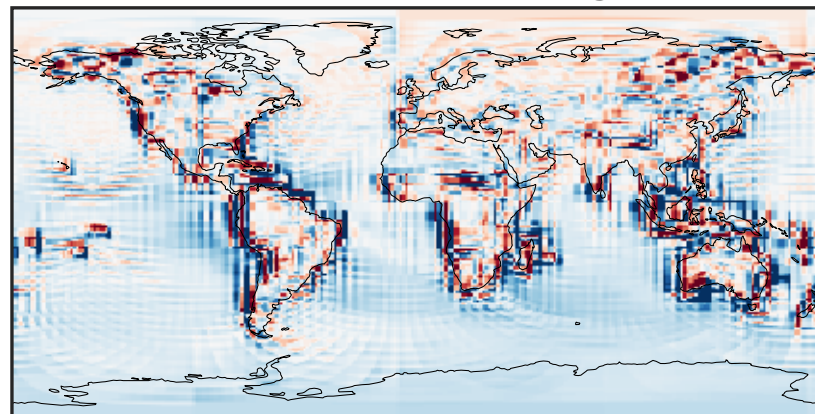
-0.015 0.000 0.015
ppb

Ratio (1x1.25)
Dev/Ref, Dynamic Range



1e-01 1 10
unitless

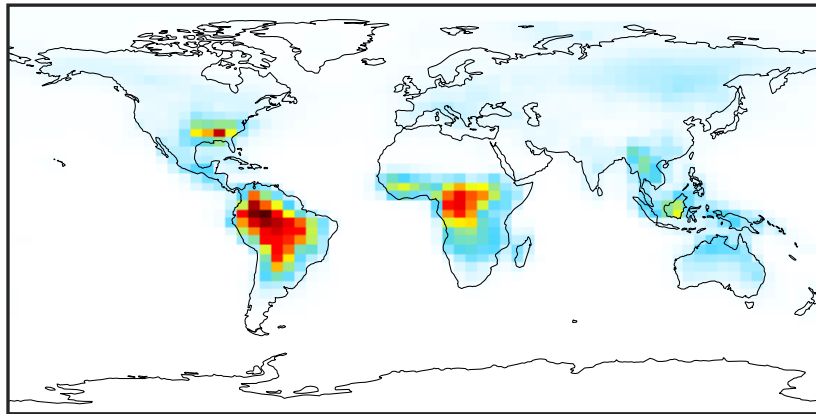
Ratio (1x1.25)
Dev/Ref, Fixed Range



0.50 0.75 1.00 1.50 2.00
unitless

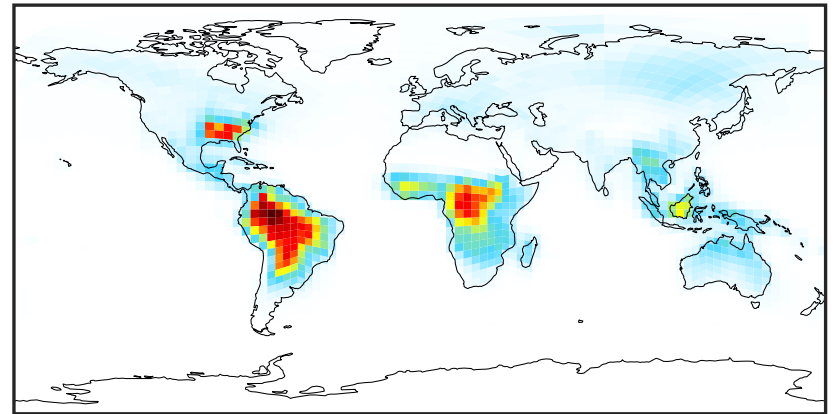
SpeciesConcVV_ETHP (AnnualMean)

GCC_14.2.0 (Ref)
4.0x5.0



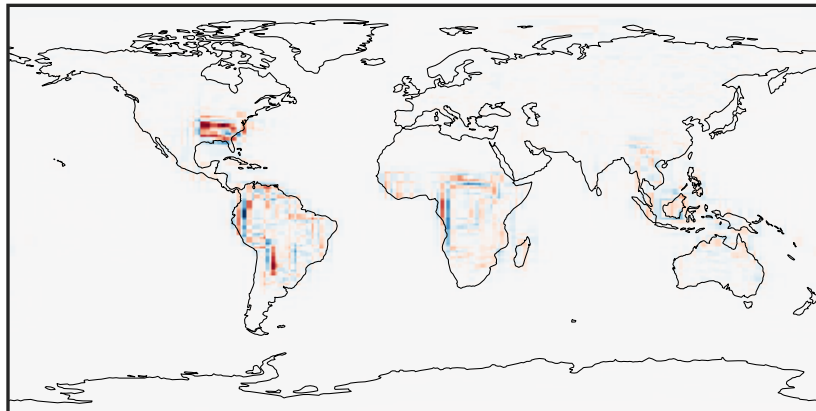
0.0000 0.0436 0.0871 0.1307 0.1743
ppb

GCHP_14.2.0 (Dev)
c24



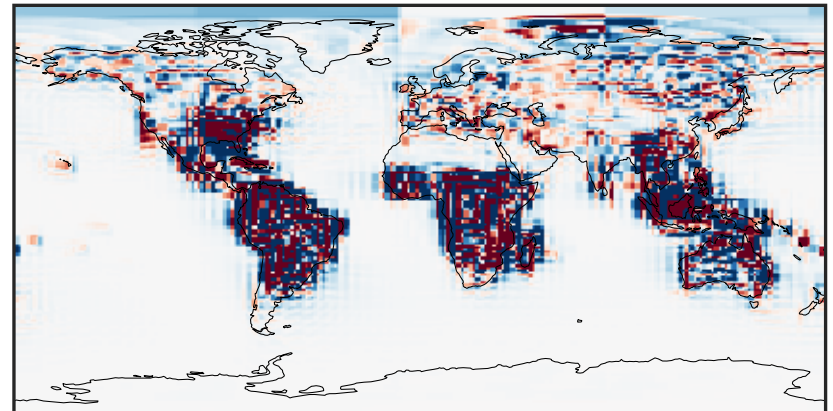
0.0000 0.0436 0.0871 0.1307 0.1743
ppb

Difference (1x1.25)
Dev - Ref, Dynamic Range



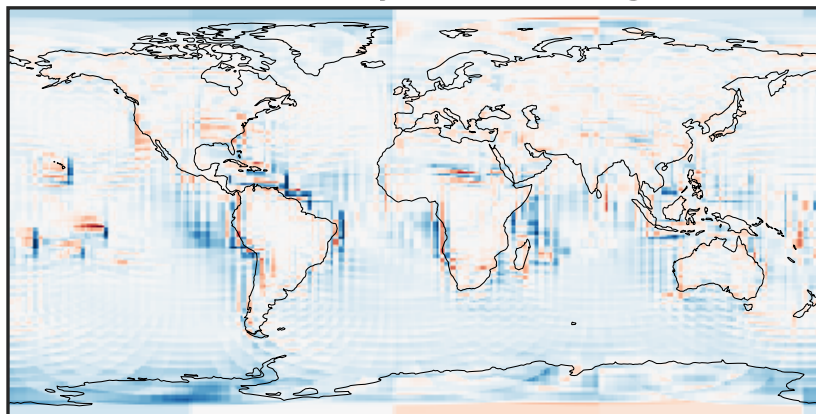
-0.0663 -0.0331 0.0000 0.0331 0.0663
ppb

Difference (1x1.25)
Dev - Ref, Restricted Range [5%,95%]



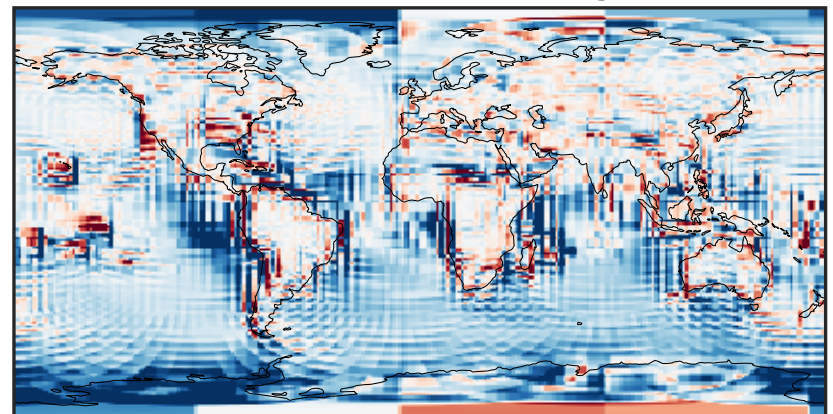
-0.0015 0.0000 0.0015
ppb

Ratio (1x1.25)
Dev/Ref, Dynamic Range



0.113 0.557 1.000 4.913 8.826
unitless

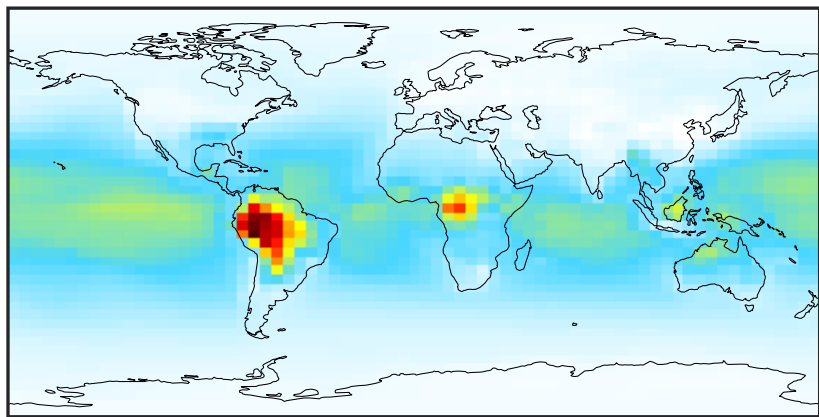
Ratio (1x1.25)
Dev/Ref, Fixed Range



0.50 0.75 1.00 1.50 2.00
unitless

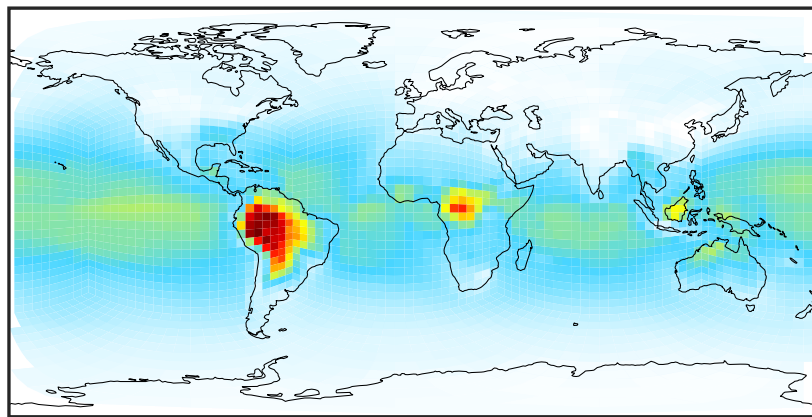
SpeciesConcVV_MP (AnnualMean)

GCC_14.2.0 (Ref)
4.0x5.0



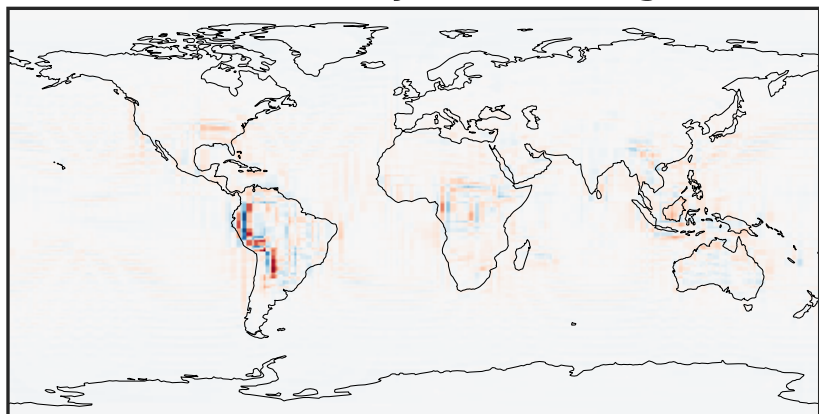
0.082 0.581 1.162 1.743 2.406
ppb

GCHP_14.2.0 (Dev)
c24



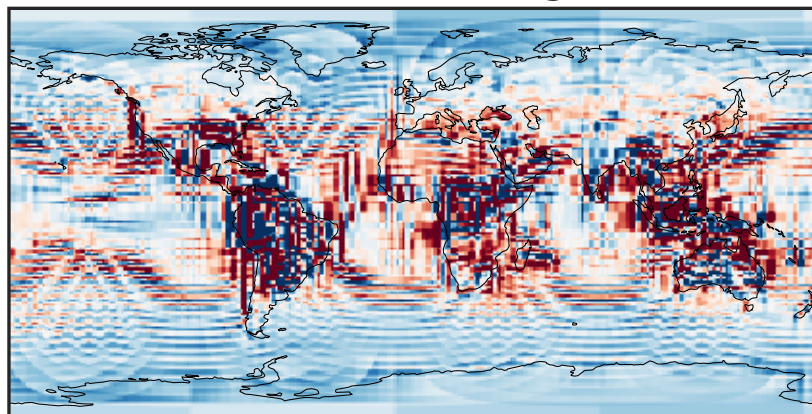
0.082 0.581 1.162 1.743 2.406
ppb

Difference (1x1.25)
Dev - Ref, Dynamic Range



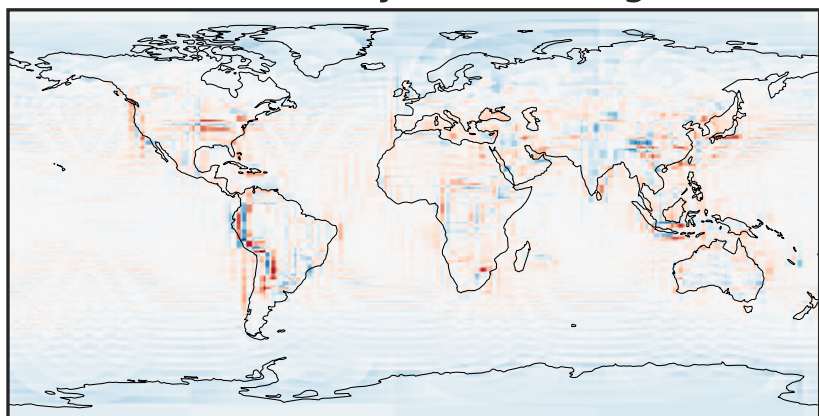
-0.769 -0.385 0.000 0.385 0.769
ppb

Difference (1x1.25)
Dev - Ref, Restricted Range [5%,95%]



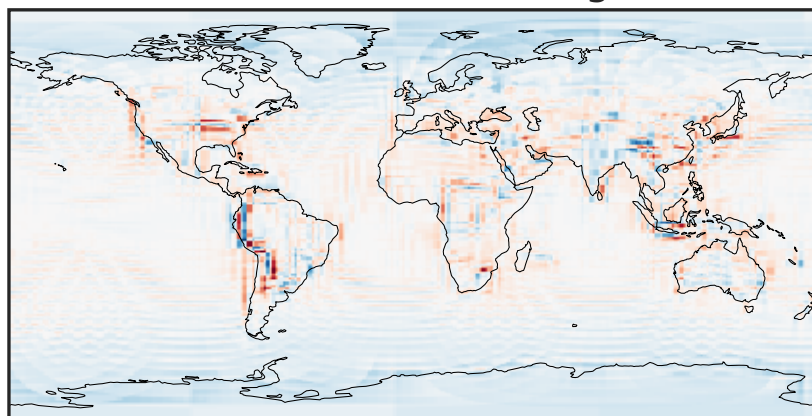
-0.025 0.000 0.025
ppb

Ratio (1x1.25)
Dev/Ref, Dynamic Range



0.450 0.725 1.000 1.610 2.221
unitless

Ratio (1x1.25)
Dev/Ref, Fixed Range



0.50 0.75 1.00 1.50 2.00
unitless