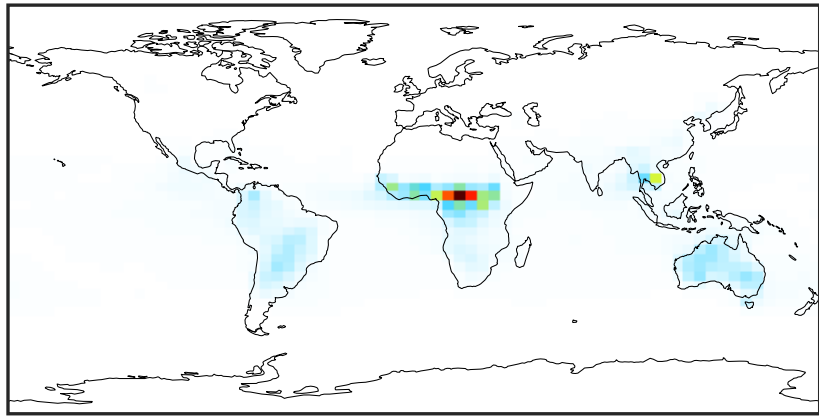


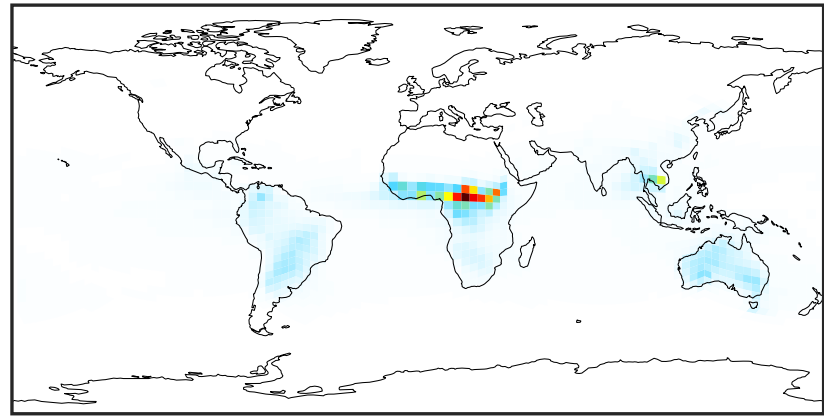
SpeciesConcVV_ACTA (Jan2019)

GCC_14.2.0 (Ref)
4.0x5.0



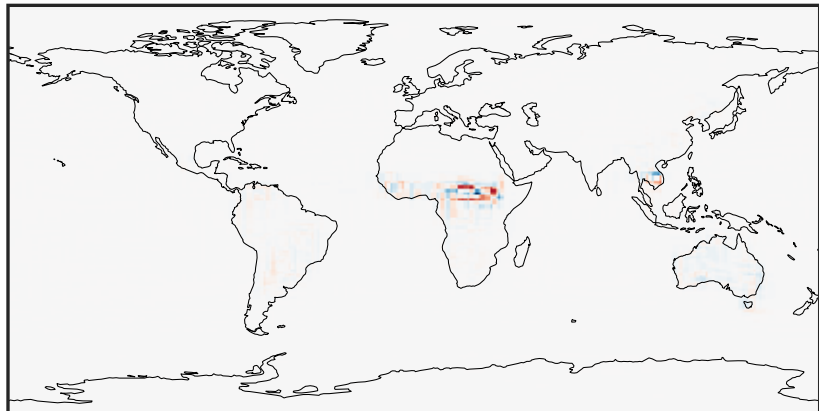
0.001 1.413 2.827 4.240 5.655
ppb

GCHP_14.2.0 (Dev)
c24



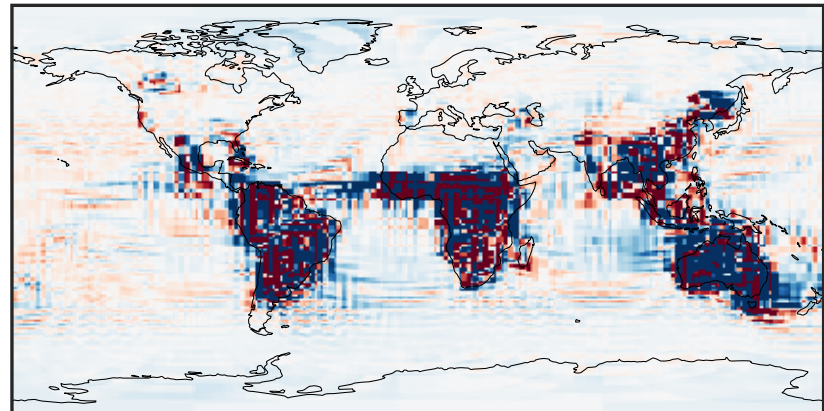
0.001 1.413 2.827 4.240 5.655
ppb

Difference (1x1.25)
Dev - Ref, Dynamic Range



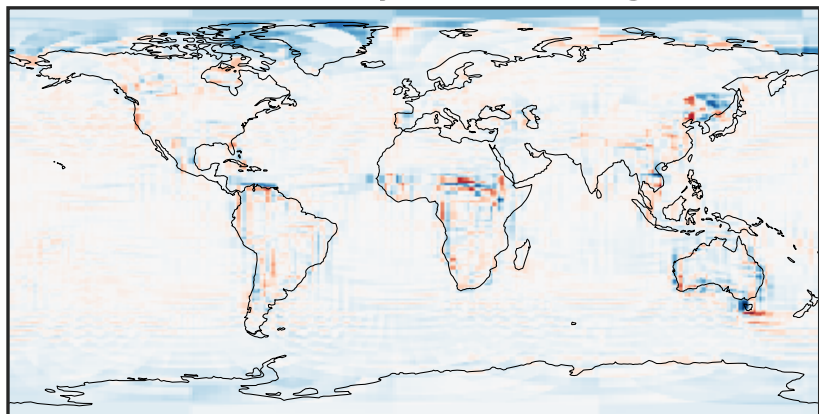
-2.579 -1.289 0.000 1.289 2.579
ppb

Difference (1x1.25)
Dev - Ref, Restricted Range [5%,95%]



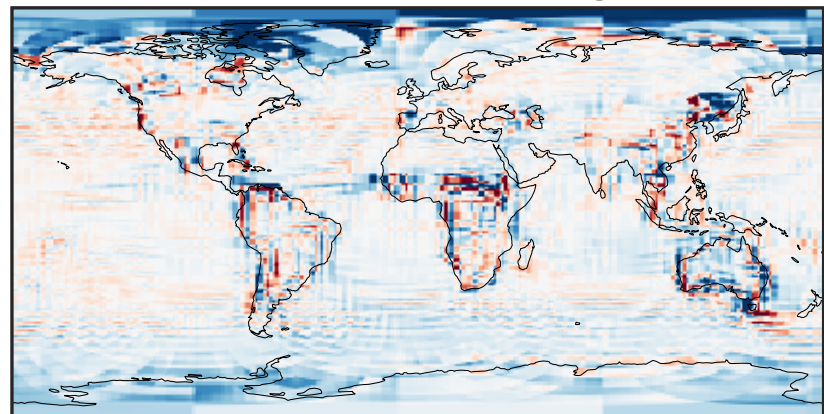
-0.006 0.000 0.006
ppb

Ratio (1x1.25)
Dev/Ref, Dynamic Range



0.180 0.590 1.000 3.275 5.550
unitless

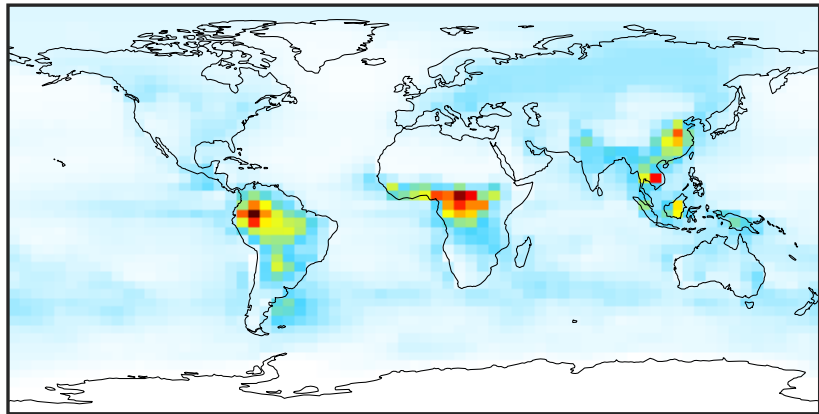
Ratio (1x1.25)
Dev/Ref, Fixed Range



0.50 0.75 1.00 1.50 2.00
unitless

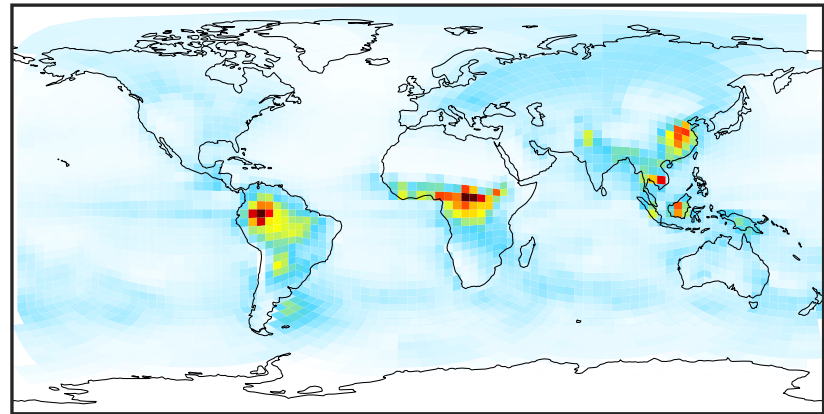
SpeciesConcVV_ALD2 (Jan2019)

GCC_14.2.0 (Ref)
4.0x5.0



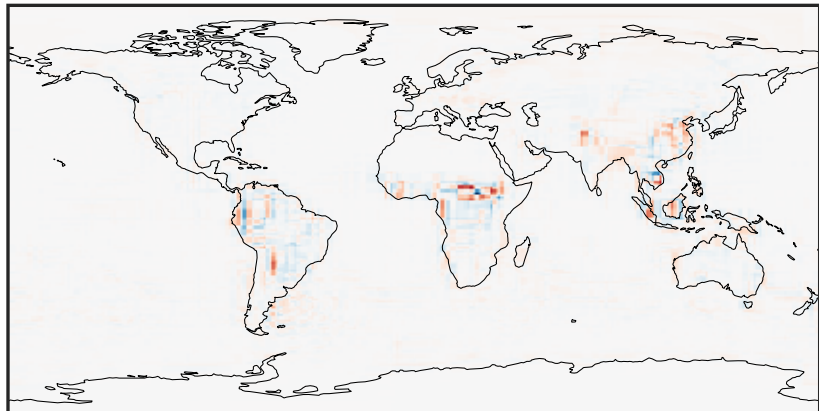
0.000 0.791 1.582 2.373 3.164
ppb

GCHP_14.2.0 (Dev)
c24



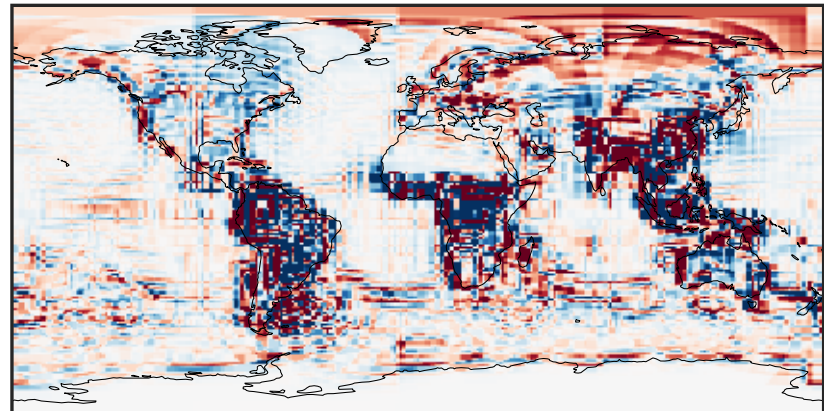
0.000 0.791 1.582 2.373 3.164
ppb

Difference (1x1.25)
Dev - Ref, Dynamic Range



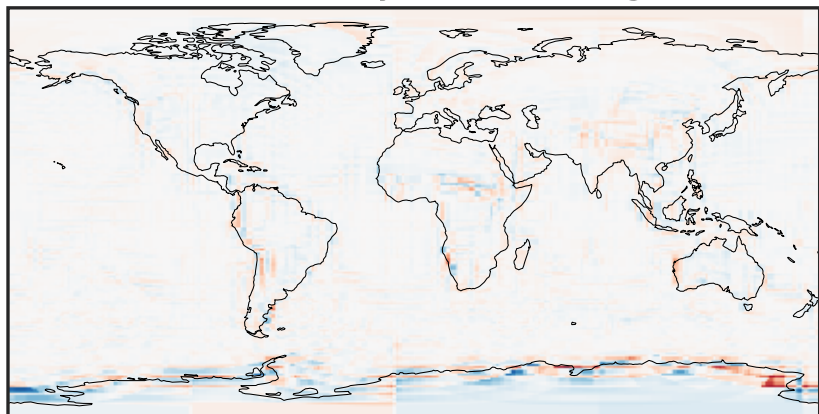
-1.543 -0.771 0.000 0.771 1.543
ppb

Difference (1x1.25)
Dev - Ref, Restricted Range [5%,95%]



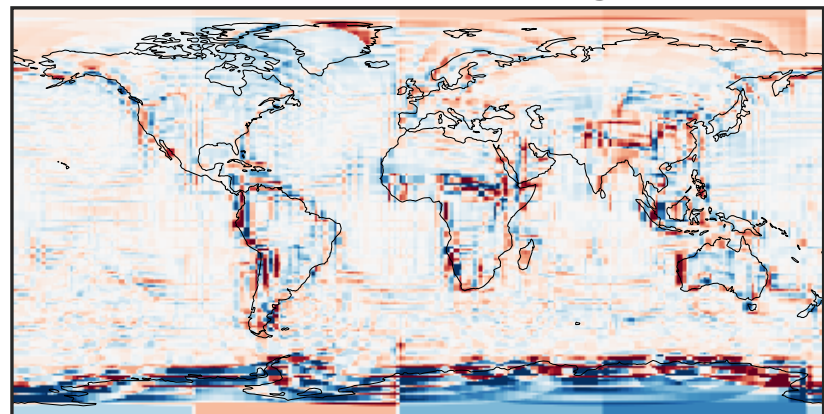
-0.0589 -0.0294 0.0000 0.0294 0.0589
ppb

Ratio (1x1.25)
Dev/Ref, Dynamic Range



1e-01 1 10
unitless

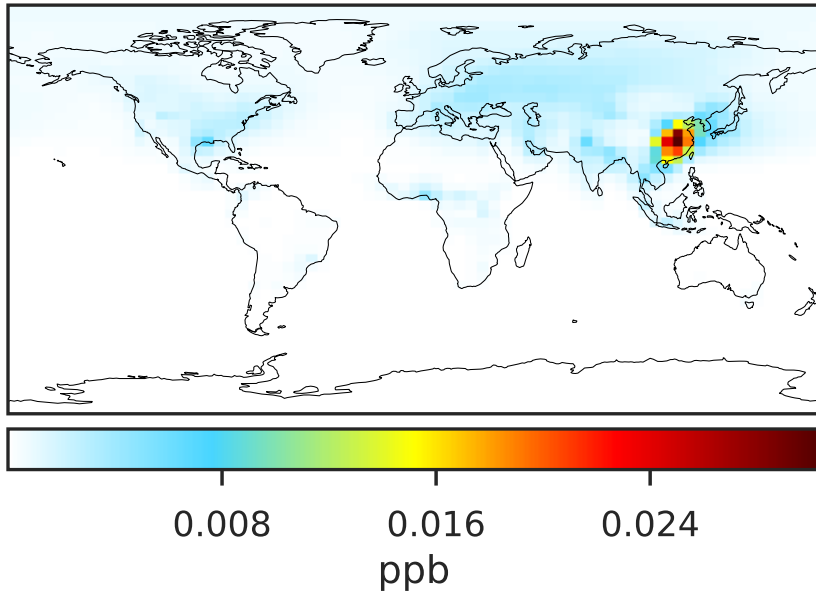
Ratio (1x1.25)
Dev/Ref, Fixed Range



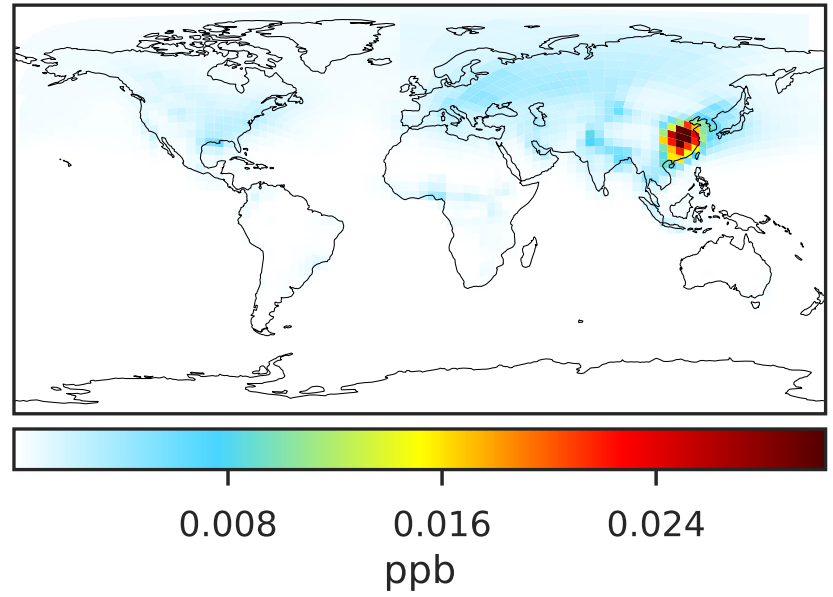
0.50 0.75 1.00 1.50 2.00
unitless

SpeciesConcVV_BALD (Jan2019)

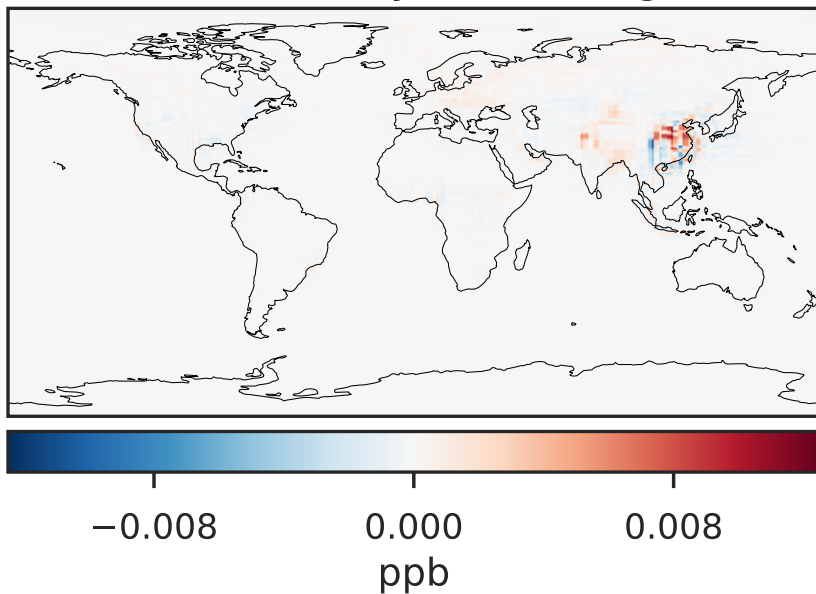
GCC_14.2.0 (Ref)
4.0x5.0



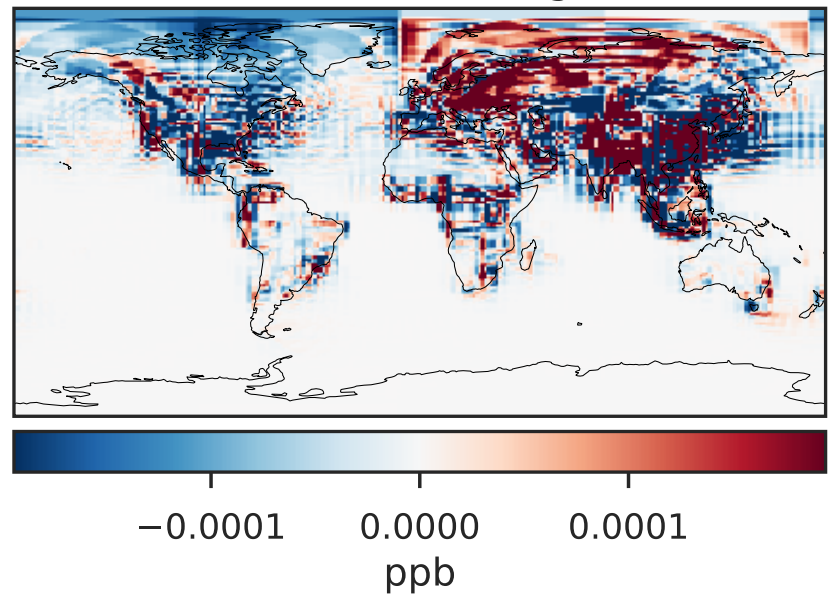
GCHP_14.2.0 (Dev)
c24



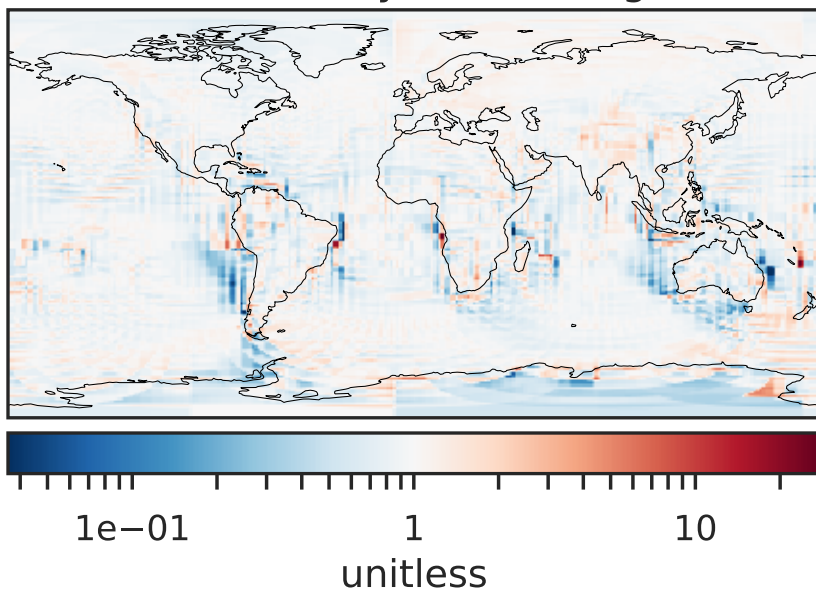
Difference (1x1.25)
Dev - Ref, Dynamic Range



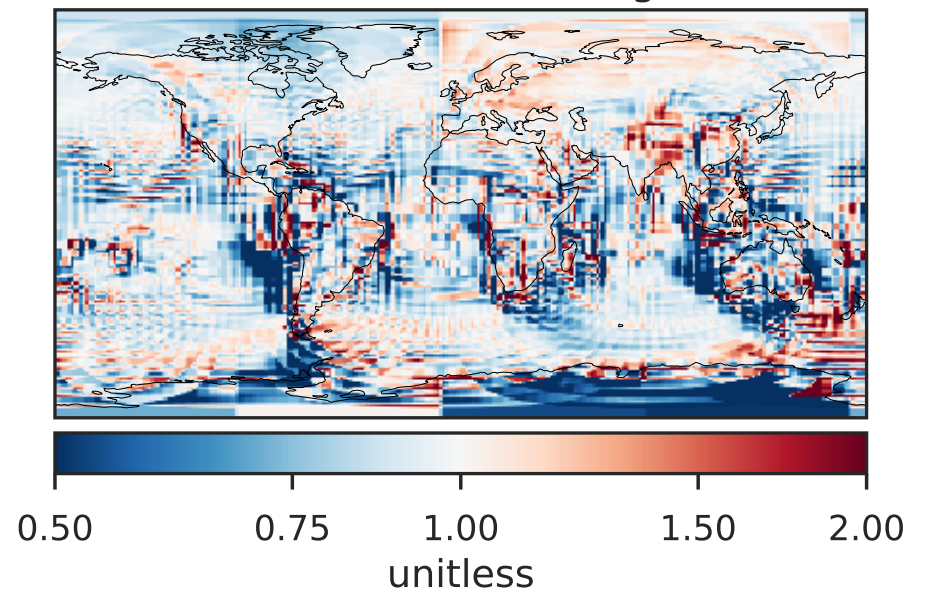
Difference (1x1.25)
Dev - Ref, Restricted Range [5%,95%]



Ratio (1x1.25)
Dev/Ref, Dynamic Range

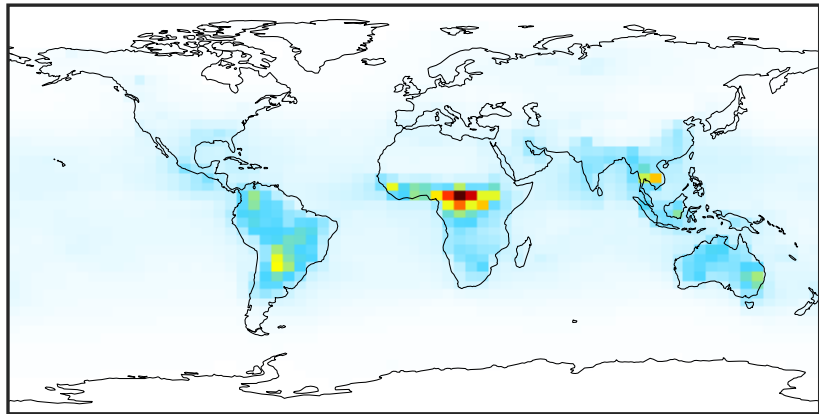


Ratio (1x1.25)
Dev/Ref, Fixed Range



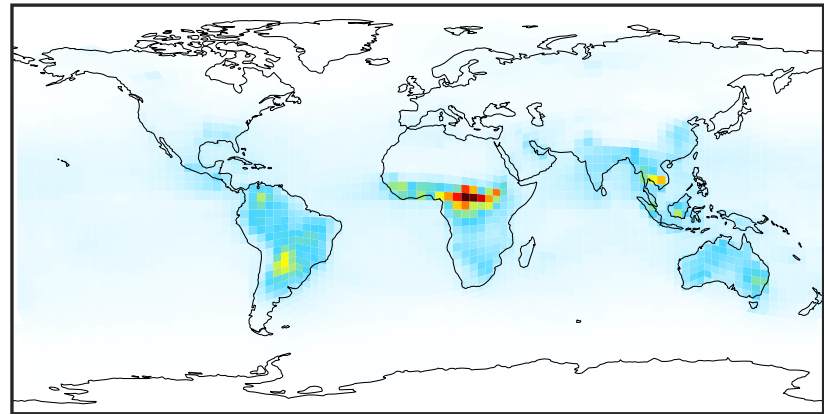
SpeciesConcVV_CH20 (Jan2019)

GCC_14.2.0 (Ref)
4.0x5.0



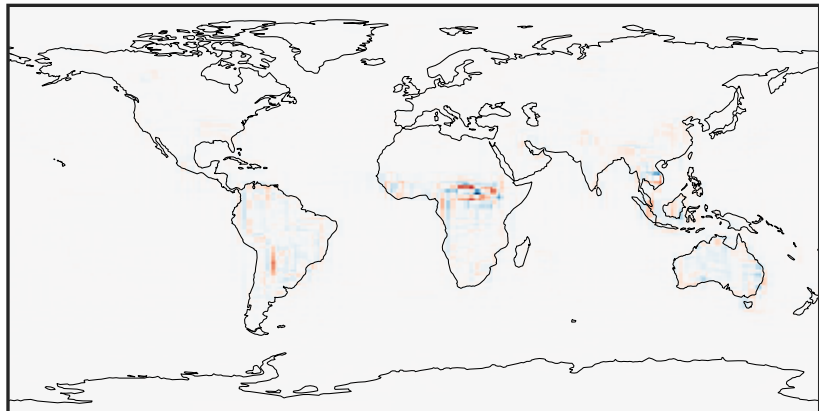
0.013 2.340 4.679 7.019 9.372
ppb

GCHP_14.2.0 (Dev)
c24



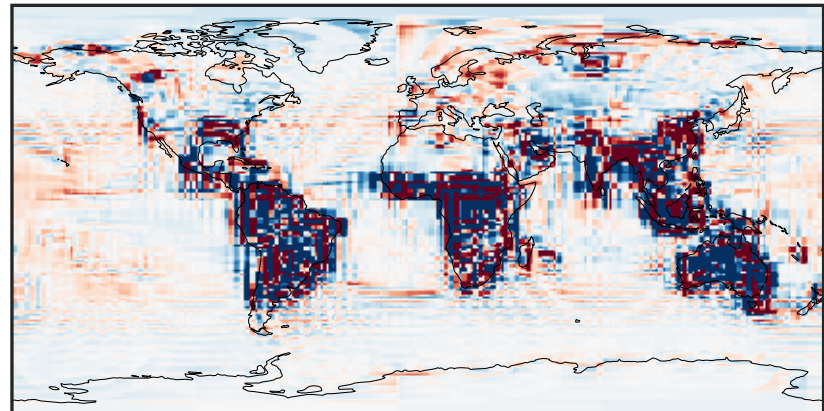
0.013 2.340 4.679 7.019 9.372
ppb

Difference (1x1.25)
Dev - Ref, Dynamic Range



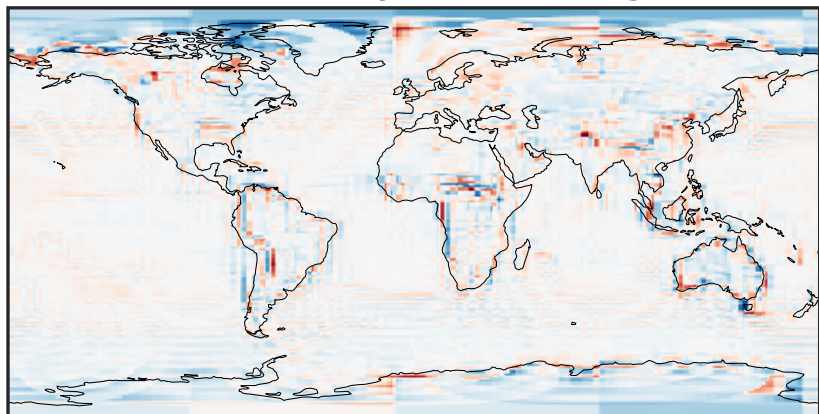
-4.445 -2.222 0.000 2.222 4.445
ppb

Difference (1x1.25)
Dev - Ref, Restricted Range [5%,95%]



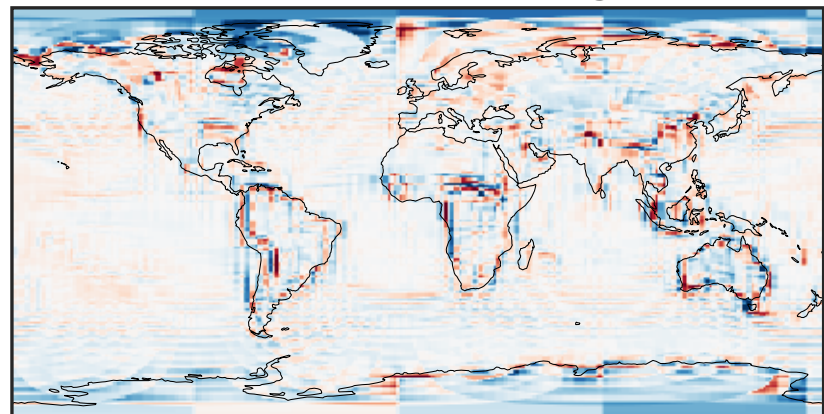
-0.0843 -0.0422 0.0000 0.0422 0.0843
ppb

Ratio (1x1.25)
Dev/Ref, Dynamic Range



0.354 0.677 1.000 1.912 2.823
unitless

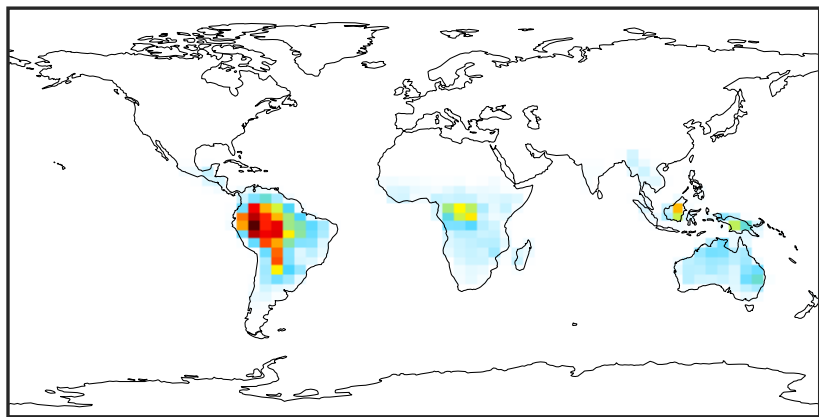
Ratio (1x1.25)
Dev/Ref, Fixed Range



0.50 0.75 1.00 1.50 2.00
unitless

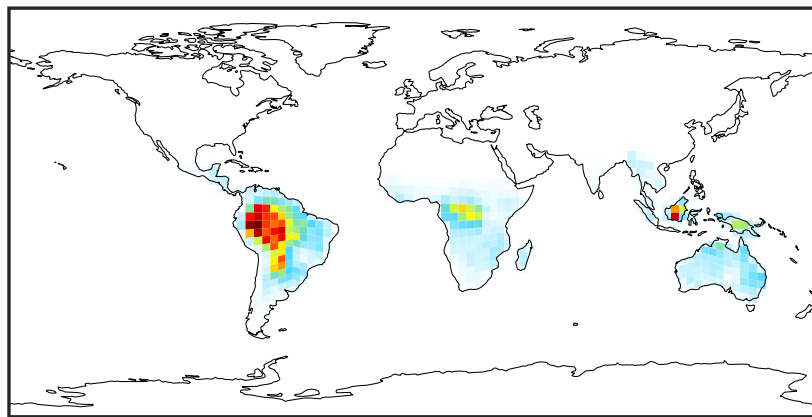
SpeciesConcVW_HPALDs (Jan2019)

GCC_14.2.0 (Ref)
4.0x5.0



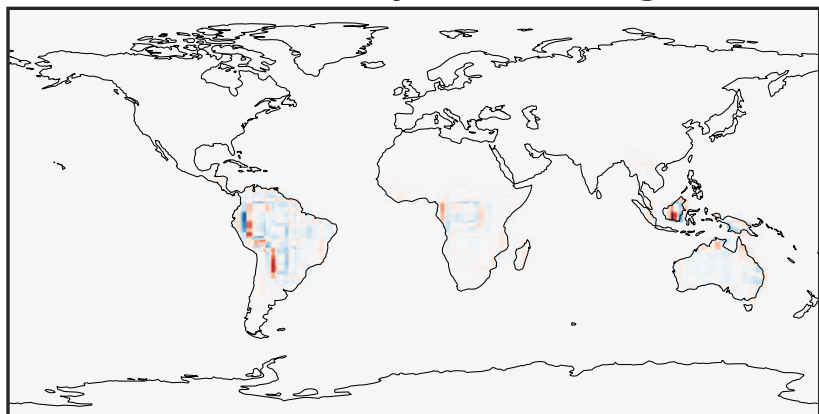
0.0000 0.0773 0.1546 0.2319 0.3093
ppb

GCHP_14.2.0 (Dev)
c24



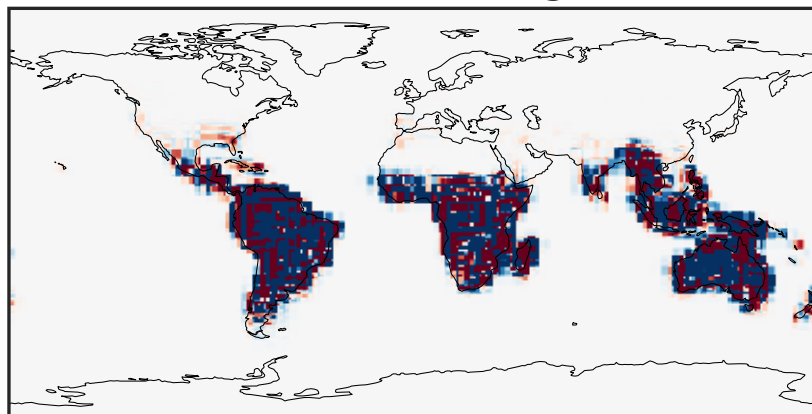
0.0000 0.0773 0.1546 0.2319 0.3093
ppb

Difference (1x1.25)
Dev - Ref, Dynamic Range



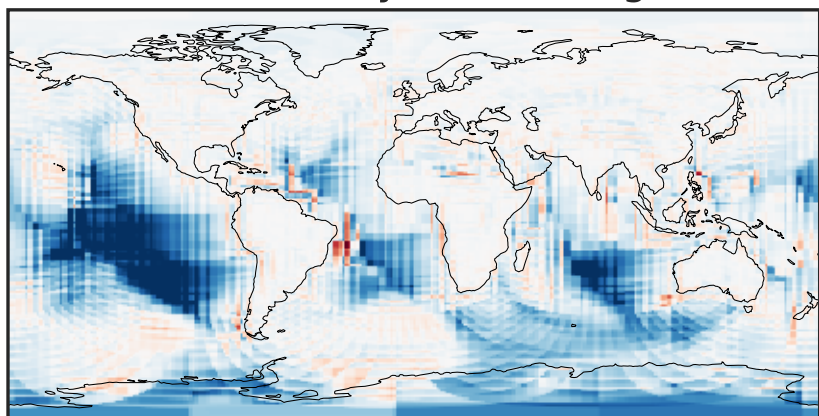
-0.1755 -0.0878 0.0000 0.0878 0.1755
ppb

Difference (1x1.25)
Dev - Ref, Restricted Range [5%,95%]



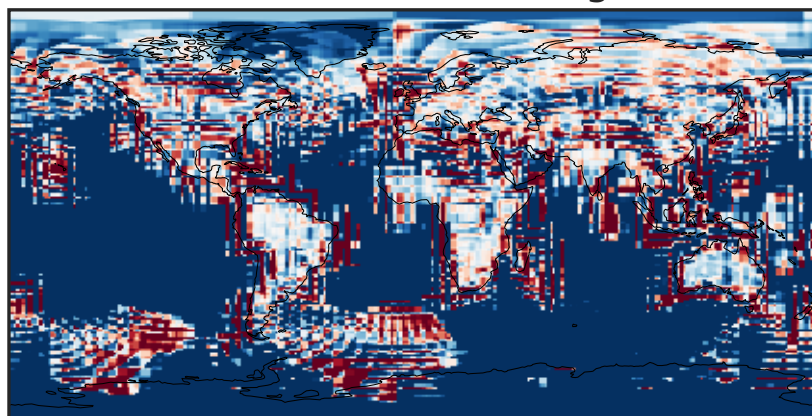
-0.0004 0.0000 0.0004
ppb

Ratio (1x1.25)
Dev/Ref, Dynamic Range



unitless

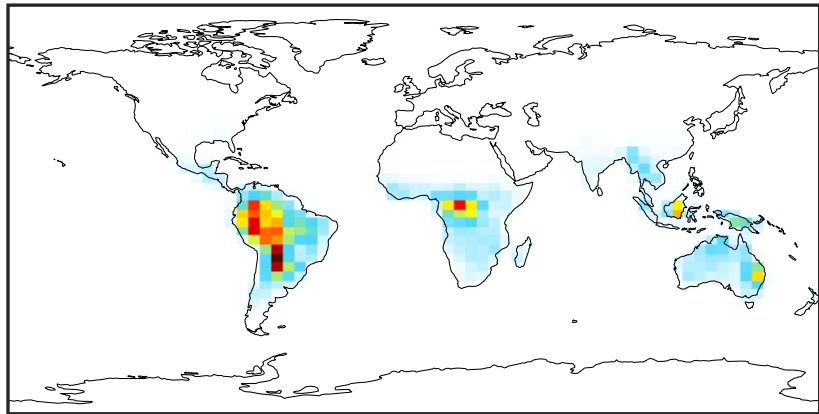
Ratio (1x1.25)
Dev/Ref, Fixed Range



0.50 0.75 1.00 1.50 2.00
unitless

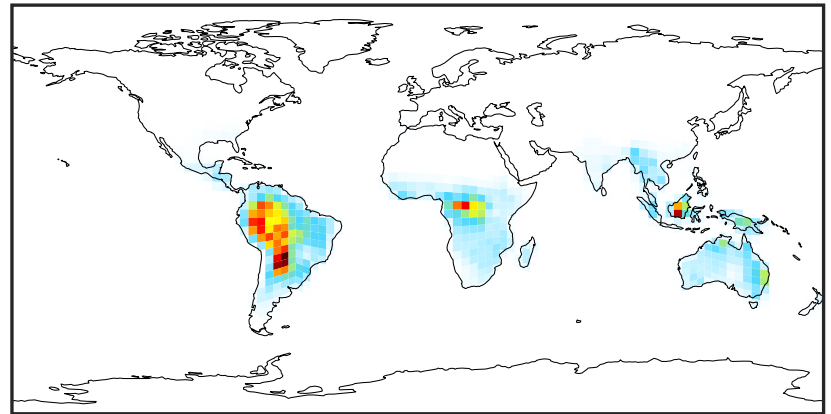
SpeciesConcVV_MACR (Jan2019)

GCC_14.2.0 (Ref)
4.0x5.0



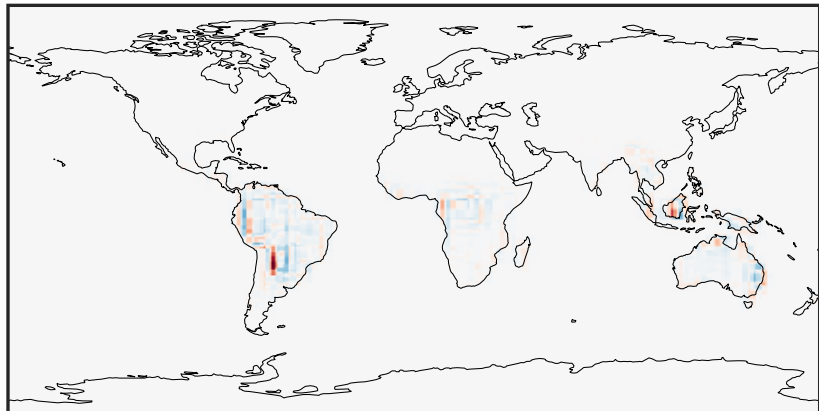
0.000 0.276 0.552 0.829 1.105
ppb

GCHP_14.2.0 (Dev)
c24



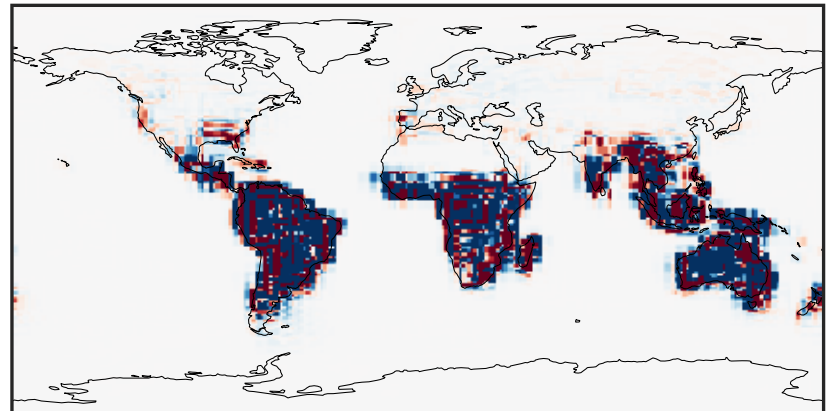
0.000 0.276 0.552 0.829 1.105
ppb

Difference (1x1.25)
Dev - Ref, Dynamic Range



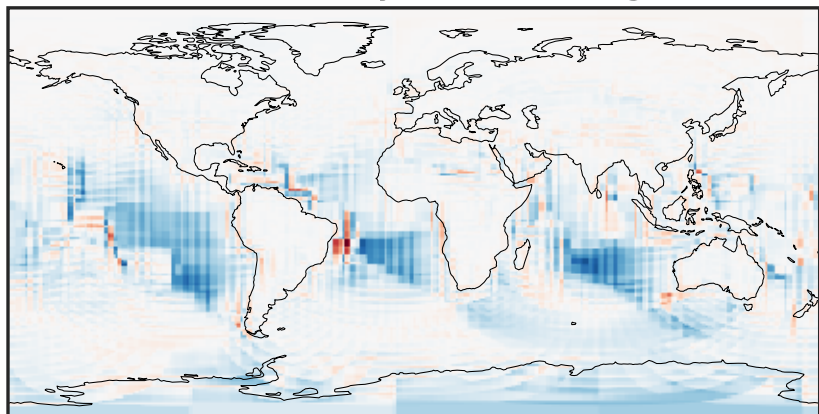
-0.711 -0.355 0.000 0.355 0.711
ppb

Difference (1x1.25)
Dev - Ref, Restricted Range [5%,95%]



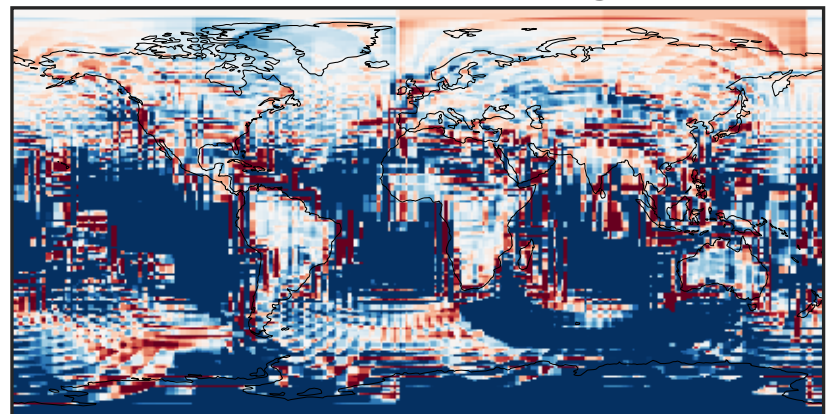
-0.004 0.000 0.004
ppb

Ratio (1x1.25)
Dev/Ref, Dynamic Range



unitless

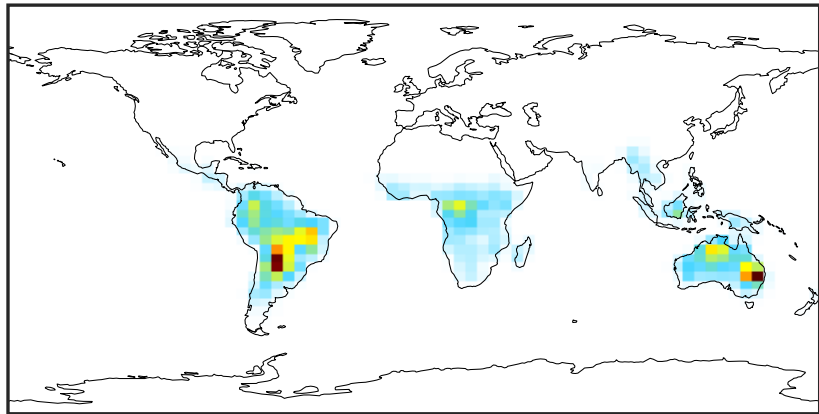
Ratio (1x1.25)
Dev/Ref, Fixed Range



0.50 0.75 1.00 1.50 2.00
unitless

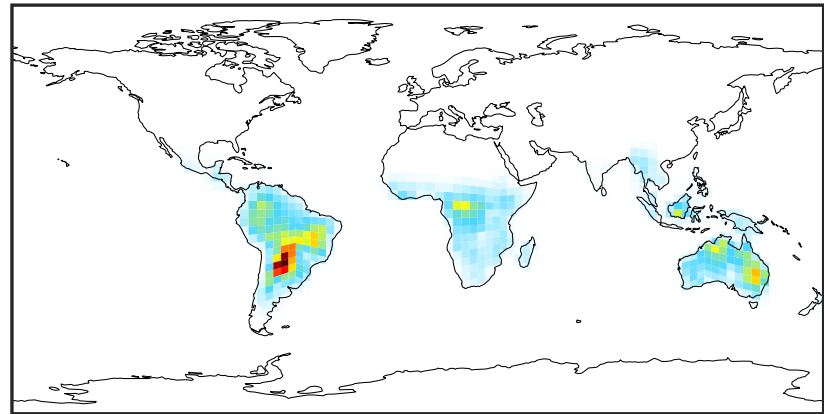
SpeciesConcVV_IEPOX (Jan2019)

GCC_14.2.0 (Ref)
4.0x5.0



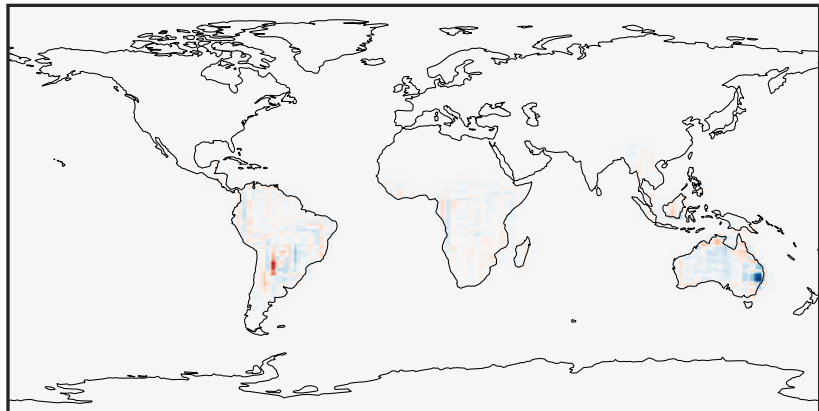
0.000 0.341 0.682 1.023 1.364
ppb

GCHP_14.2.0 (Dev)
c24



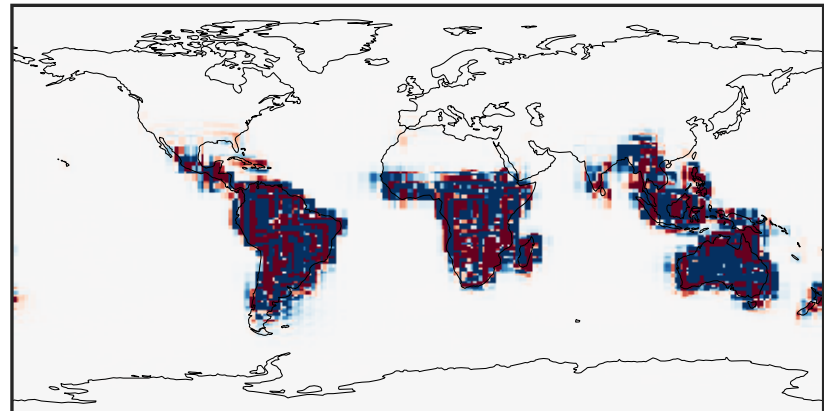
0.000 0.341 0.682 1.023 1.364
ppb

Difference (1x1.25)
Dev - Ref, Dynamic Range



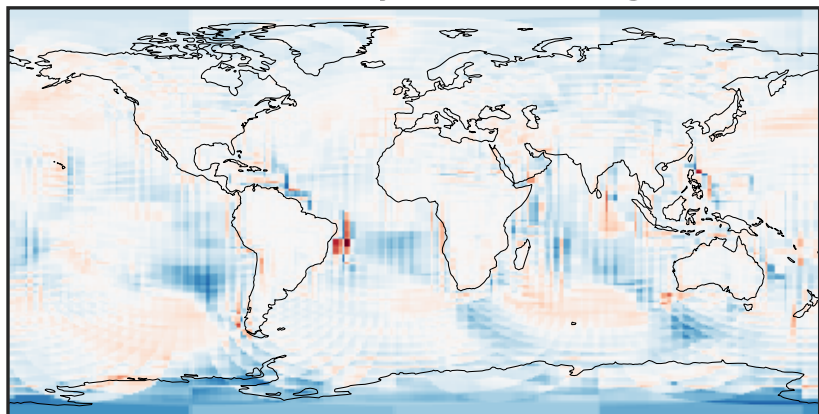
-0.964 -0.482 0.000 0.482 0.964
ppb

Difference (1x1.25)
Dev - Ref, Restricted Range [5%,95%]



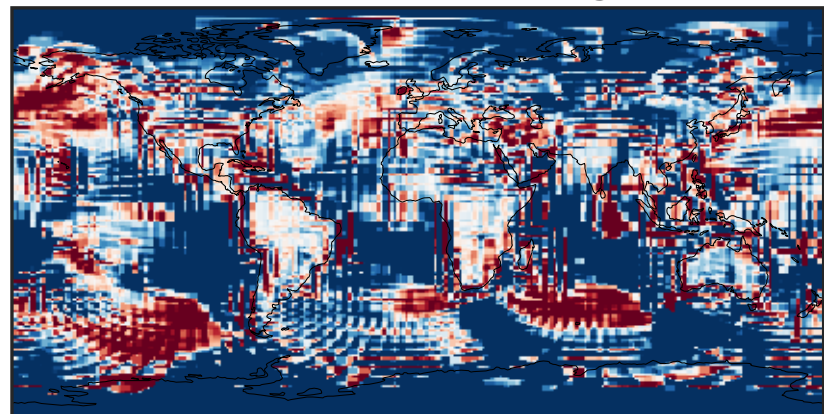
-0.004 0.000 0.004
ppb

Ratio (1x1.25)
Dev/Ref, Dynamic Range



unitless

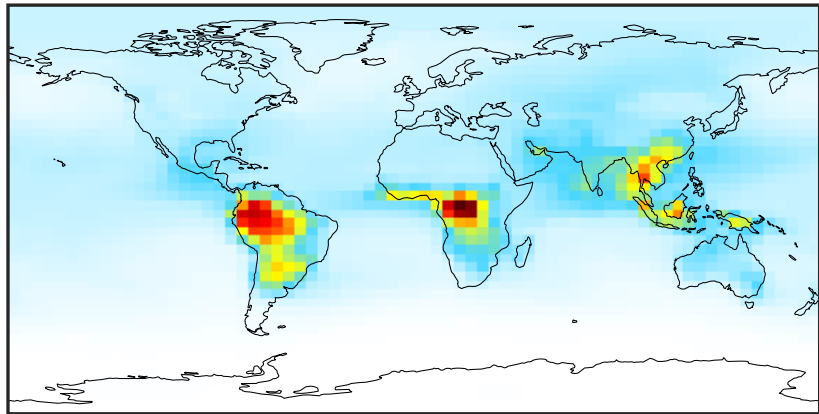
Ratio (1x1.25)
Dev/Ref, Fixed Range



0.50 0.75 1.00 1.50 2.00
unitless

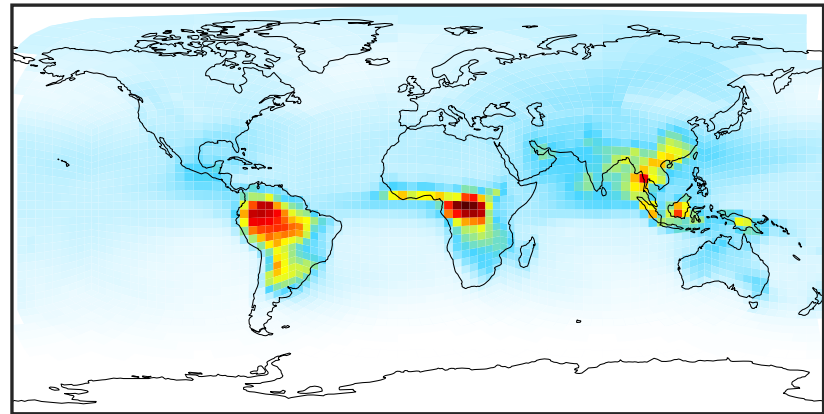
SpeciesConcVV_ACET (Jan2019)

GCC_14.2.0 (Ref)
4.0x5.0



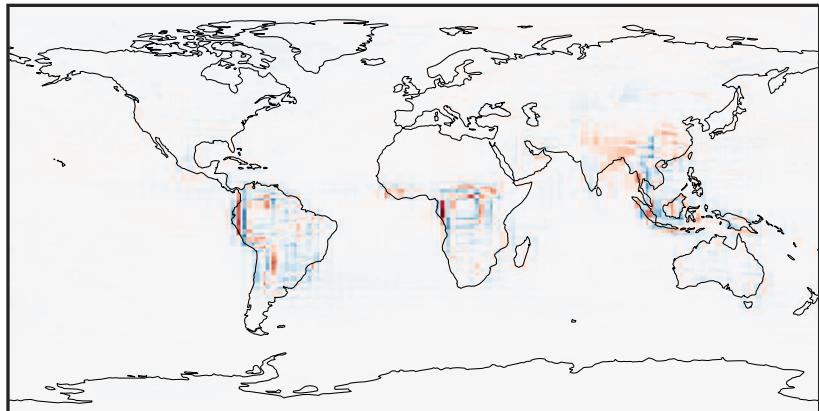
0.098 1.475 2.950 4.425 5.997
ppb

GCHP_14.2.0 (Dev)
c24



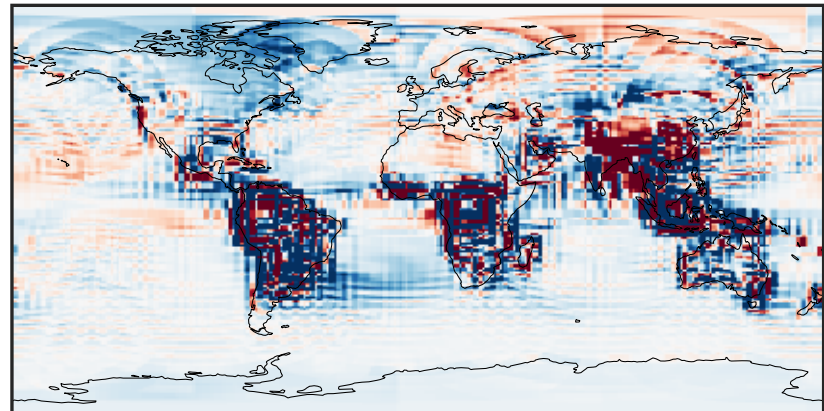
0.098 1.475 2.950 4.425 5.997
ppb

Difference (1x1.25)
Dev - Ref, Dynamic Range



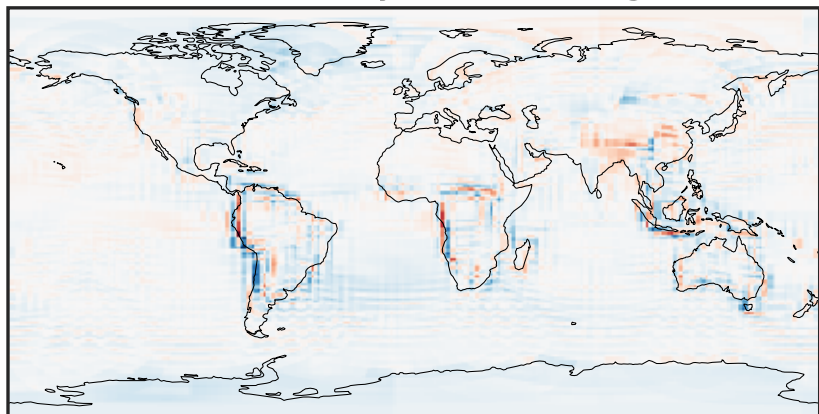
-1.794 -0.897 0.000 0.897 1.794
ppb

Difference (1x1.25)
Dev - Ref, Restricted Range [5%,95%]



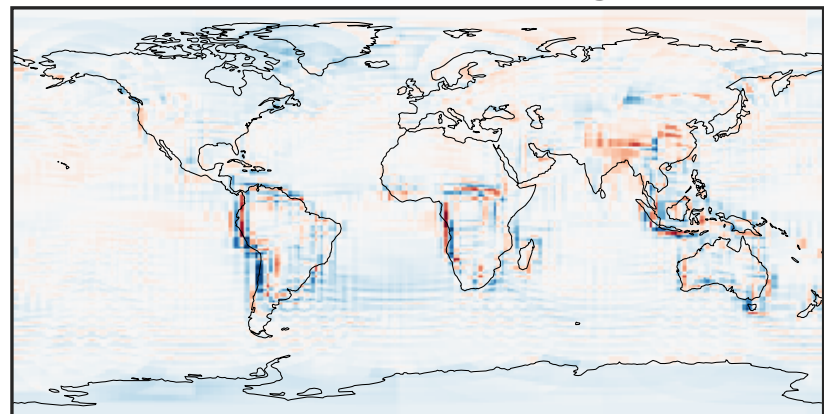
-0.1011 -0.0506 0.0000 0.0506 0.1011
ppb

Ratio (1x1.25)
Dev/Ref, Dynamic Range



0.407 0.704 1.000 1.728 2.457
unitless

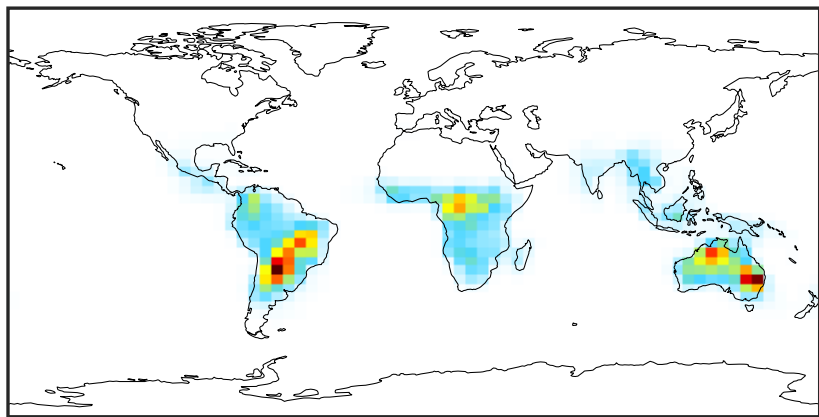
Ratio (1x1.25)
Dev/Ref, Fixed Range



0.50 0.75 1.00 1.50 2.00
unitless

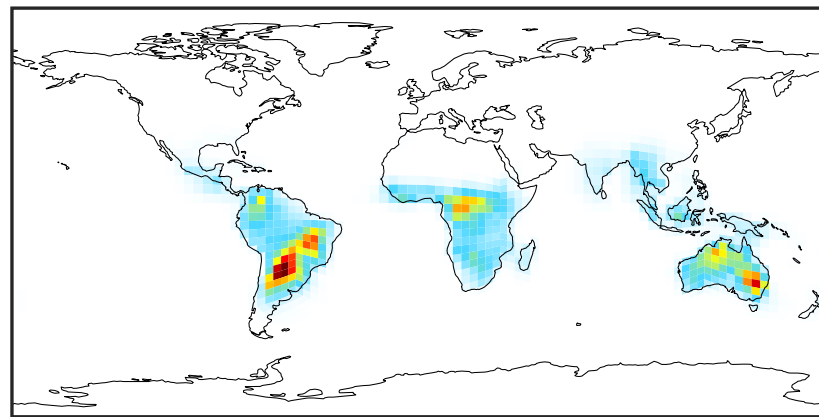
SpeciesConcVV_HAC (Jan2019)

GCC_14.2.0 (Ref)
4.0x5.0



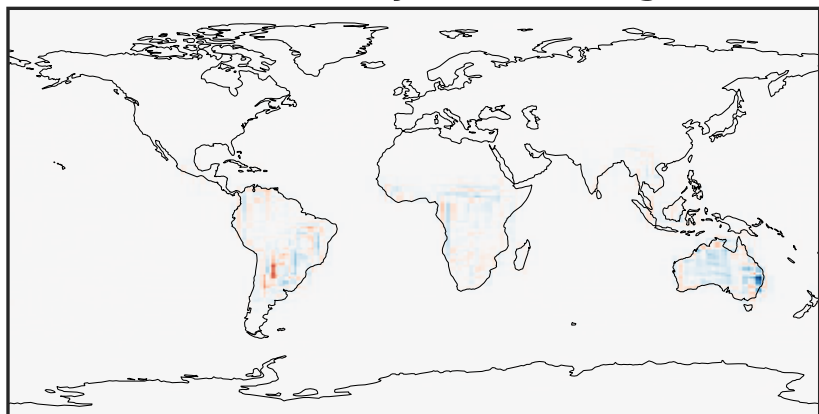
0.000 0.253 0.507 0.760 1.014
ppb

GCHP_14.2.0 (Dev)
c24



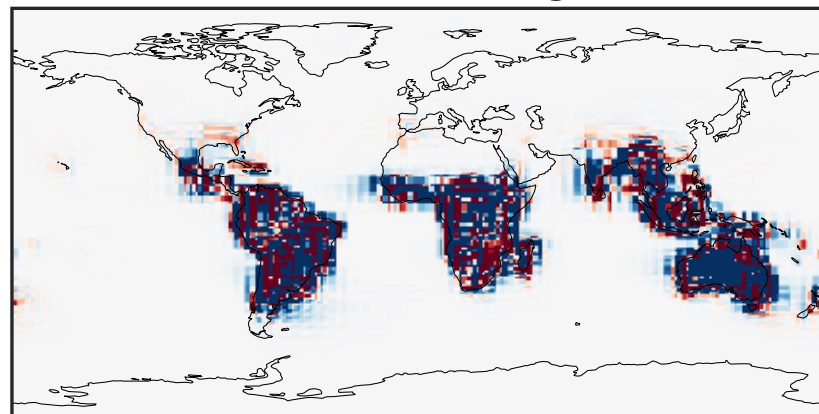
0.000 0.253 0.507 0.760 1.014
ppb

Difference (1x1.25)
Dev - Ref, Dynamic Range



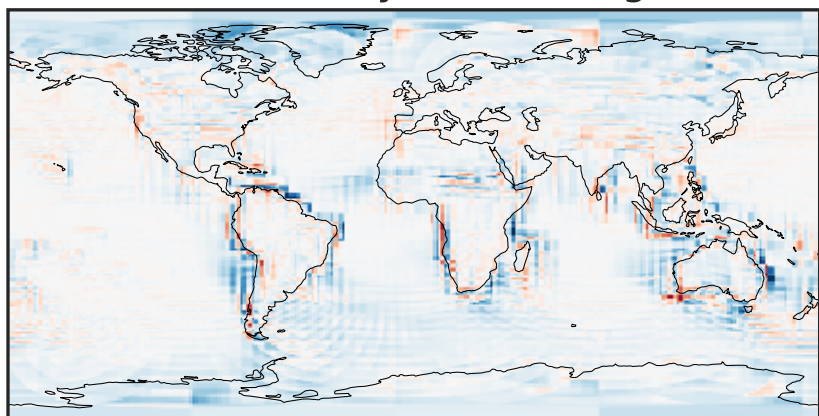
-0.687 -0.343 0.000 0.343 0.687
ppb

Difference (1x1.25)
Dev - Ref, Restricted Range [5%,95%]



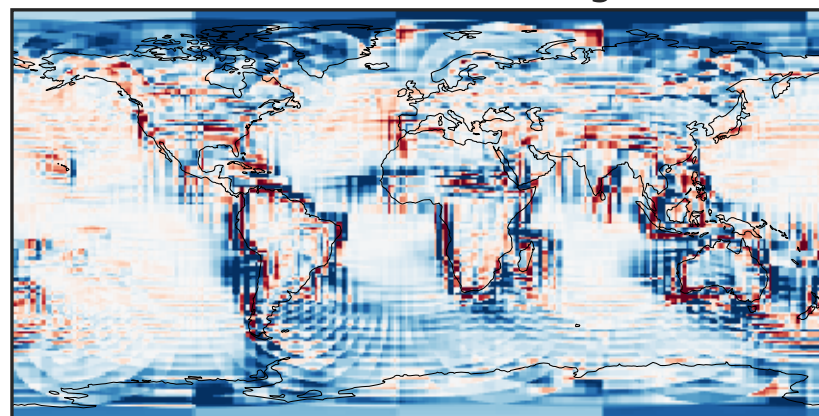
-0.005 0.000 0.005
ppb

Ratio (1x1.25)
Dev/Ref, Dynamic Range



1e-01 1 10
unitless

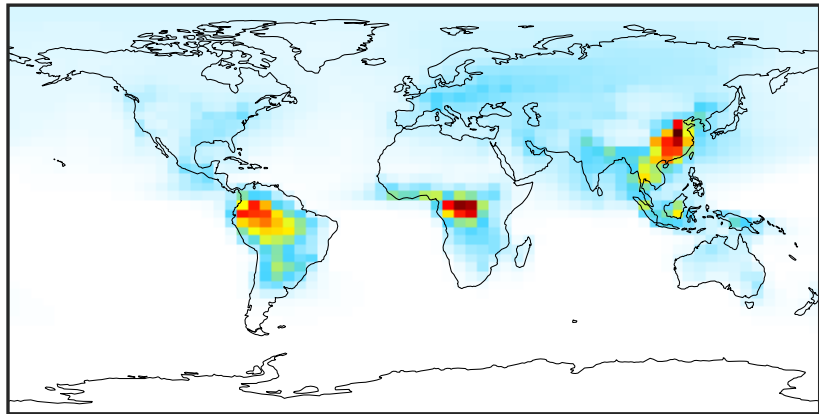
Ratio (1x1.25)
Dev/Ref, Fixed Range



0.50 0.75 1.00 1.50 2.00
unitless

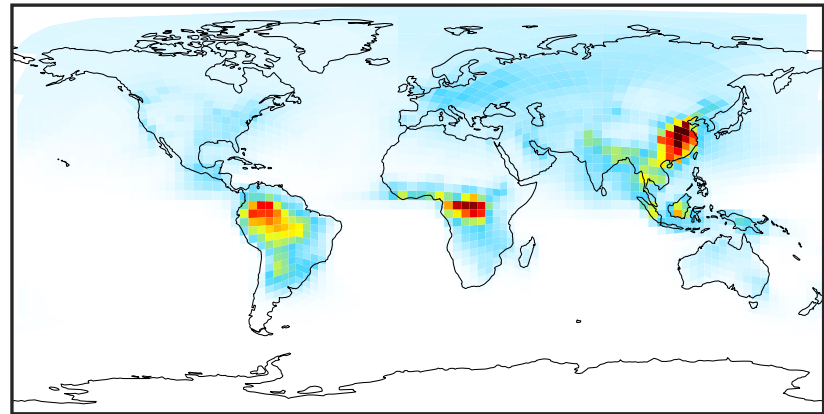
SpeciesConcVV_MEK (Jan2019)

GCC_14.2.0 (Ref)
4.0x5.0



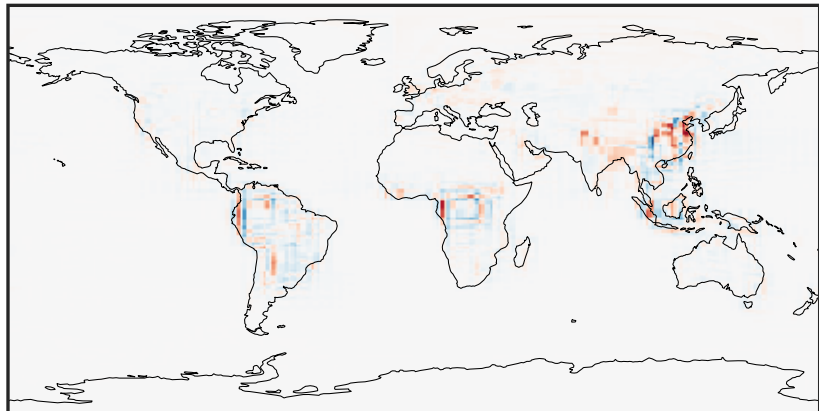
0.000 0.507 1.015 1.522 2.029
ppb

GCHP_14.2.0 (Dev)
c24



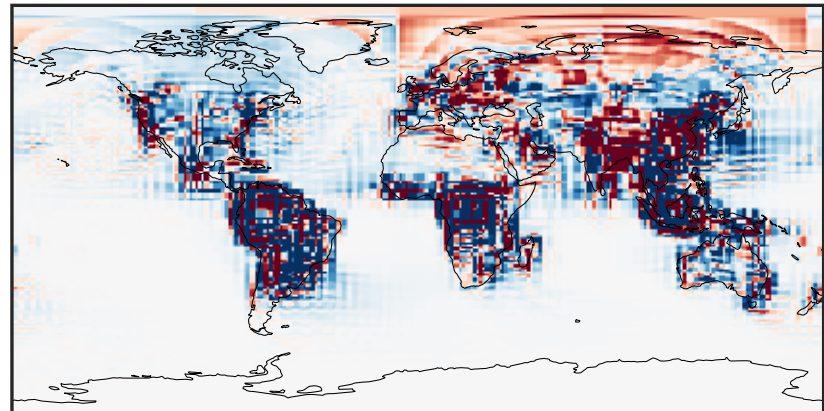
0.000 0.507 1.015 1.522 2.029
ppb

Difference (1x1.25)
Dev - Ref, Dynamic Range



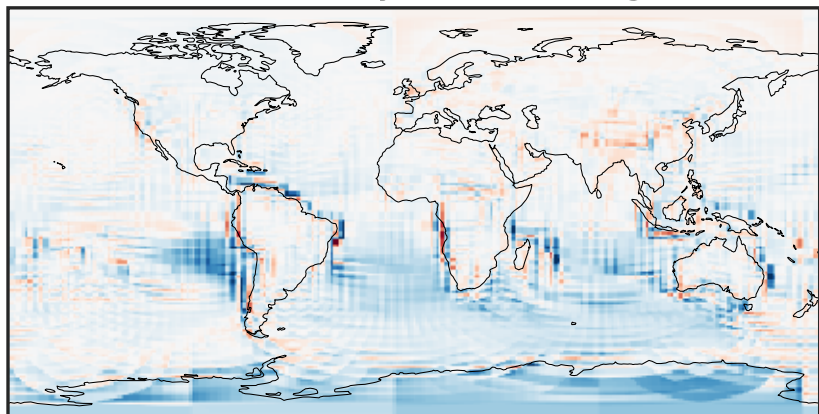
-0.823 -0.411 0.000 0.411 0.823
ppb

Difference (1x1.25)
Dev - Ref, Restricted Range [5%,95%]



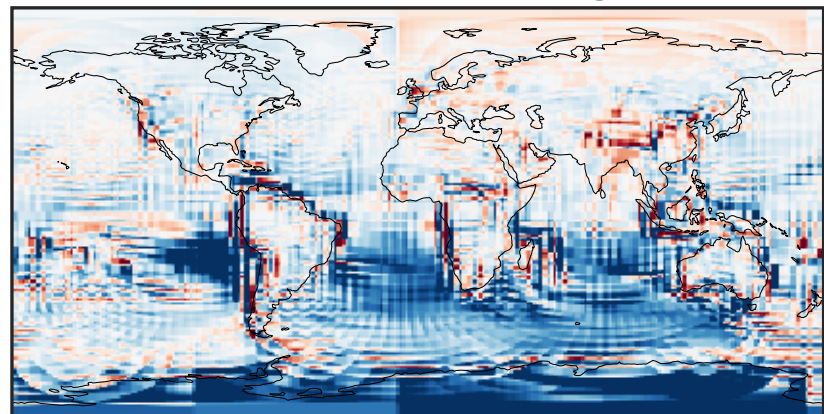
-0.02 0.00 0.02
ppb

Ratio (1x1.25)
Dev/Ref, Dynamic Range



0.134 0.567 1.000 4.224 7.448
unitless

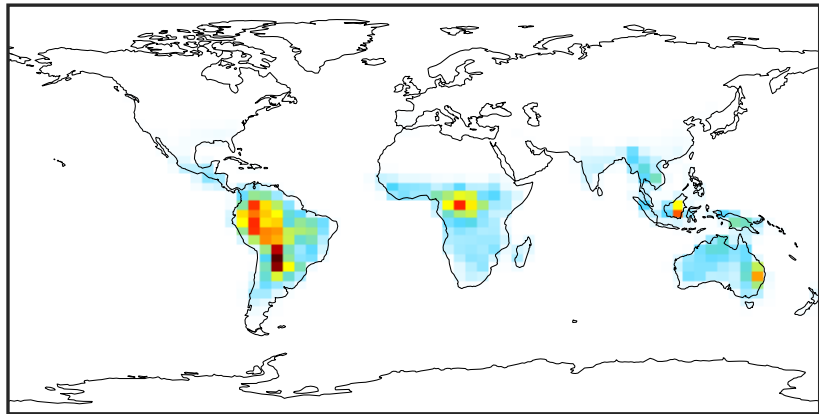
Ratio (1x1.25)
Dev/Ref, Fixed Range



0.50 0.75 1.00 1.50 2.00
unitless

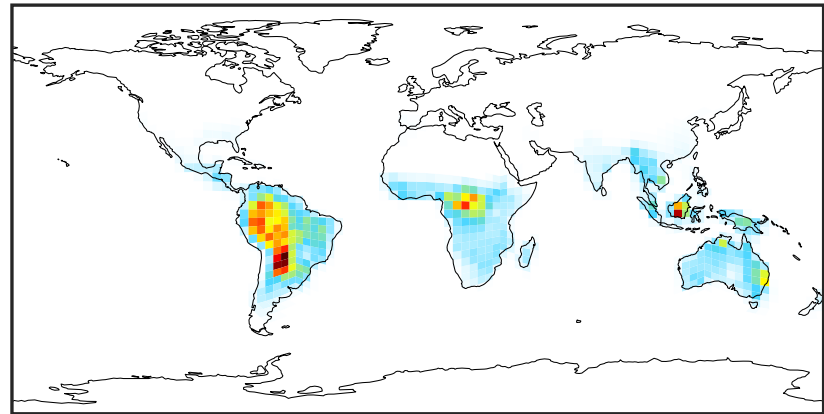
SpeciesConcVV_MVK (Jan2019)

GCC_14.2.0 (Ref)
4.0x5.0



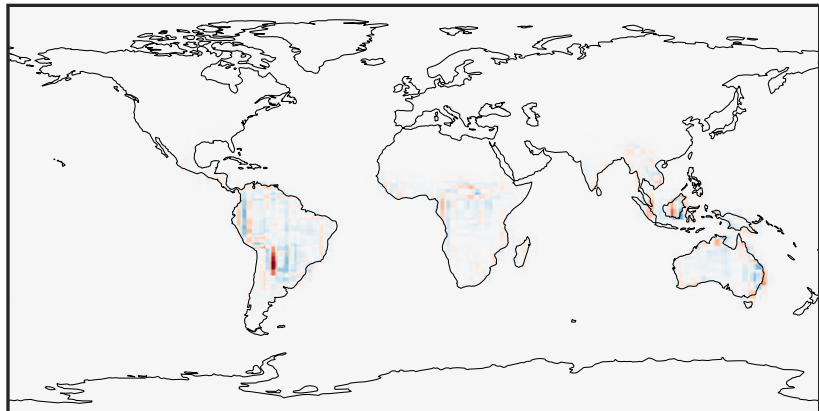
0.000 0.472 0.943 1.415 1.886
ppb

GCHP_14.2.0 (Dev)
c24



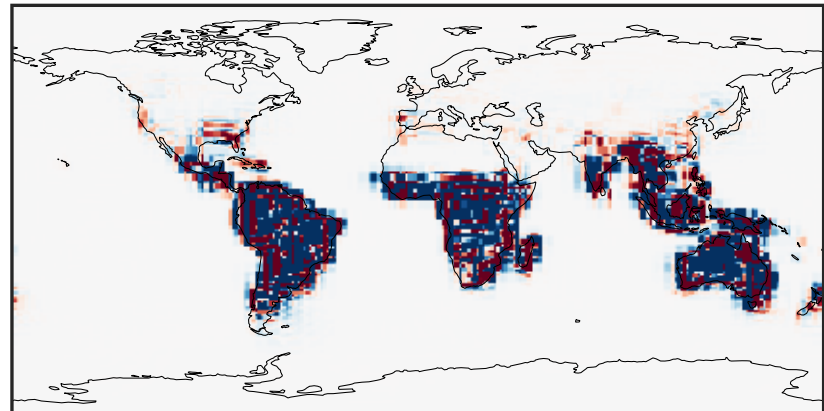
0.000 0.472 0.943 1.415 1.886
ppb

Difference (1x1.25)
Dev - Ref, Dynamic Range



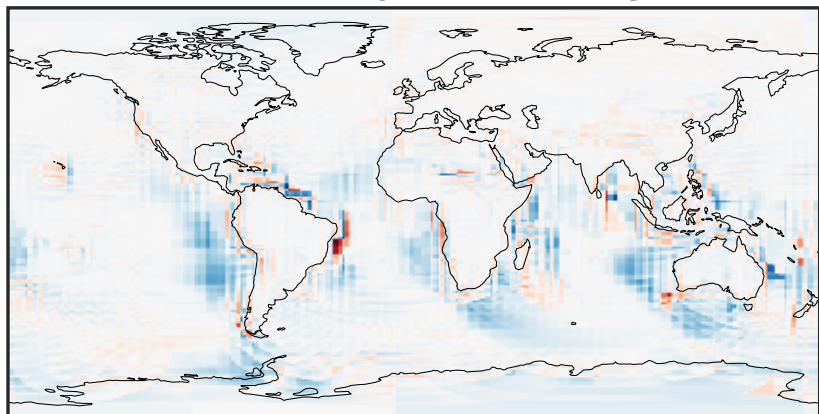
-1.178 -0.589 0.000 0.589 1.178
ppb

Difference (1x1.25)
Dev - Ref, Restricted Range [5%,95%]



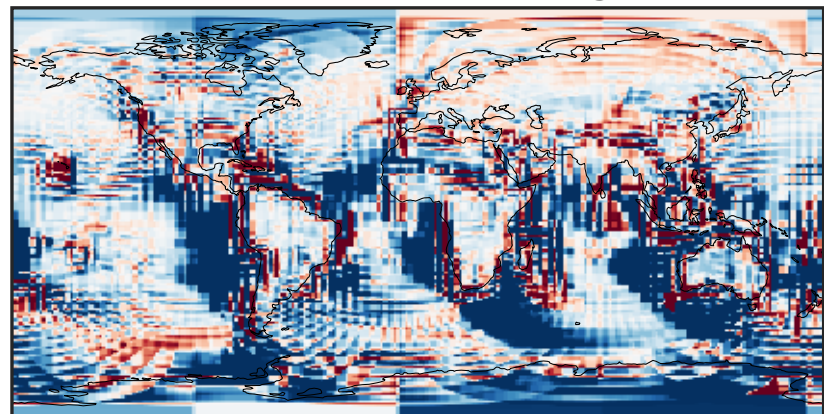
-0.01 0.00 0.01
ppb

Ratio (1x1.25)
Dev/Ref, Dynamic Range



unitless

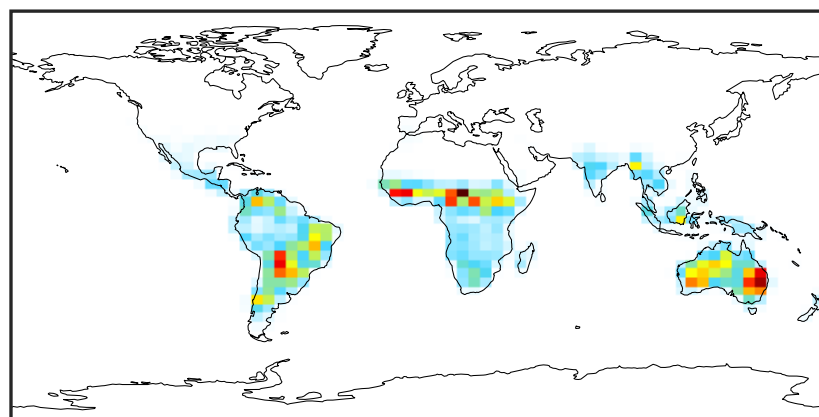
Ratio (1x1.25)
Dev/Ref, Fixed Range



0.50 0.75 1.00 1.50 2.00
unitless

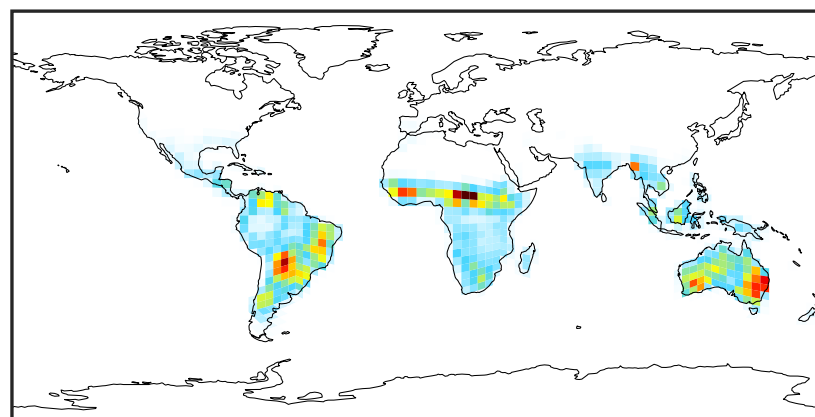
SpeciesConcVV_ISOPN (Jan2019)

GCC_14.2.0 (Ref)
4.0x5.0



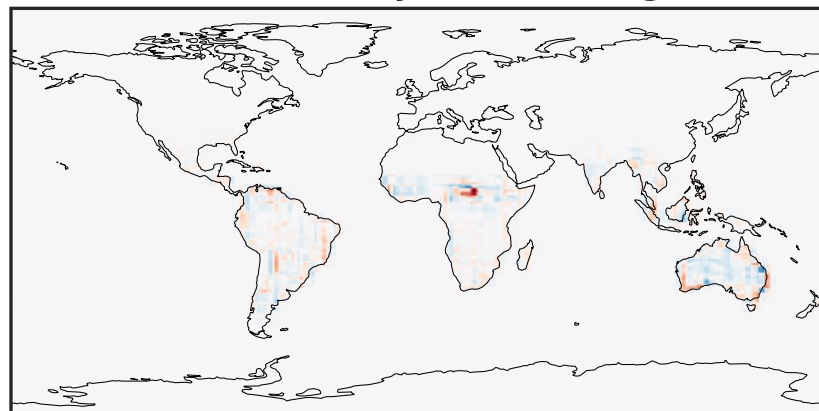
0.000 0.015 0.030
ppb

GCHP_14.2.0 (Dev)
c24



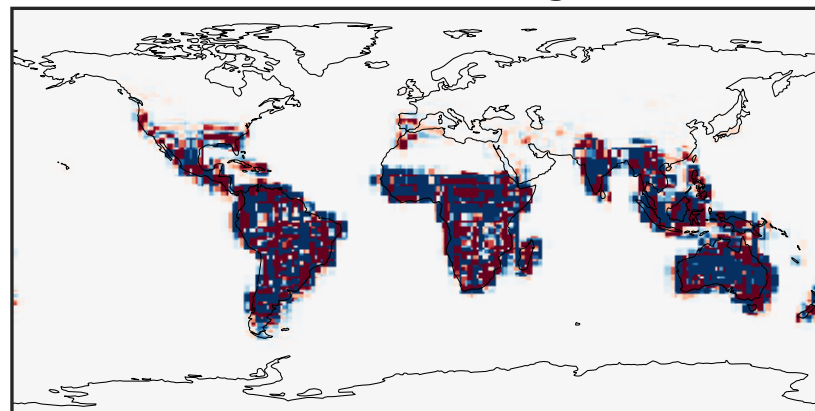
0.000 0.015 0.030
ppb

Difference (1x1.25)
Dev - Ref, Dynamic Range



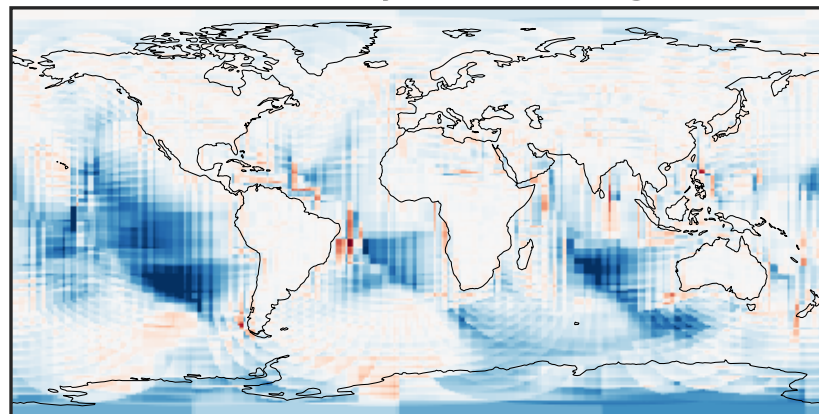
-0.02 0.00 0.02
ppb

Difference (1x1.25)
Dev - Ref, Restricted Range [5%,95%]



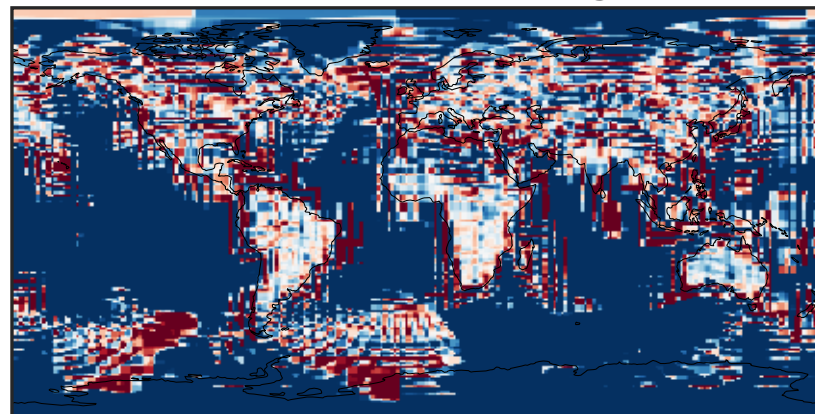
-0.00025 0.00000 0.00025
ppb

Ratio (1x1.25)
Dev/Ref, Dynamic Range



unitless

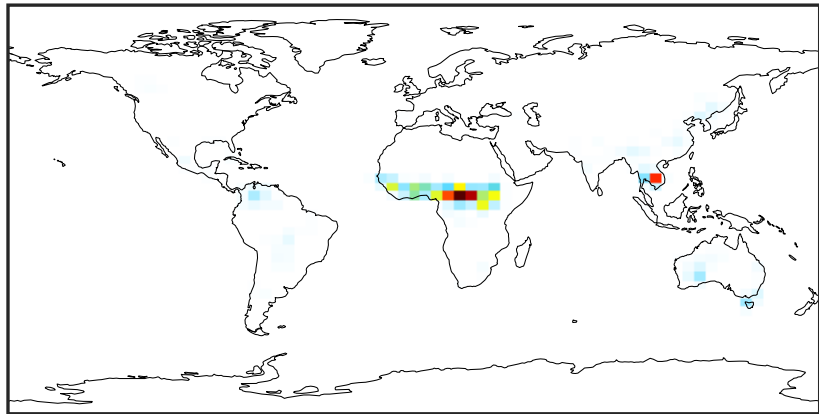
Ratio (1x1.25)
Dev/Ref, Fixed Range



0.50 0.75 1.00 1.50 2.00
unitless

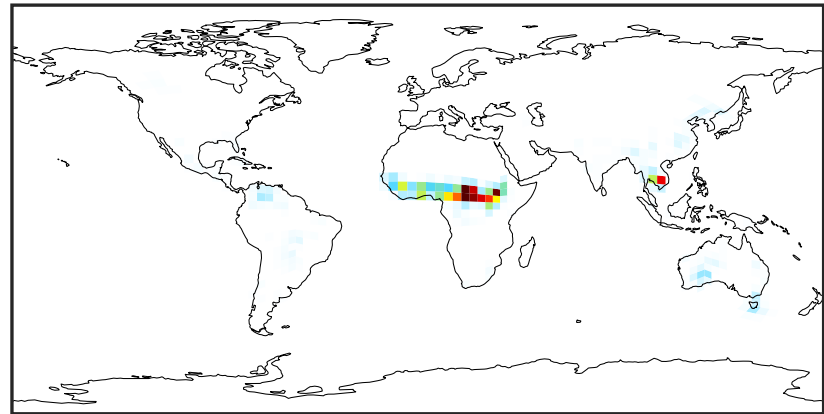
SpeciesConcVV_FURA (Jan2019)

GCC_14.2.0 (Ref)
4.0x5.0



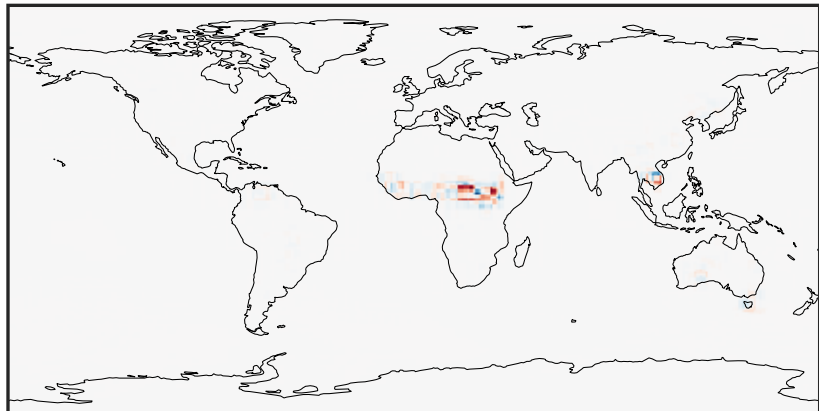
0.0000 0.1299 0.2597 0.3896 0.5194
ppb

GCHP_14.2.0 (Dev)
c24



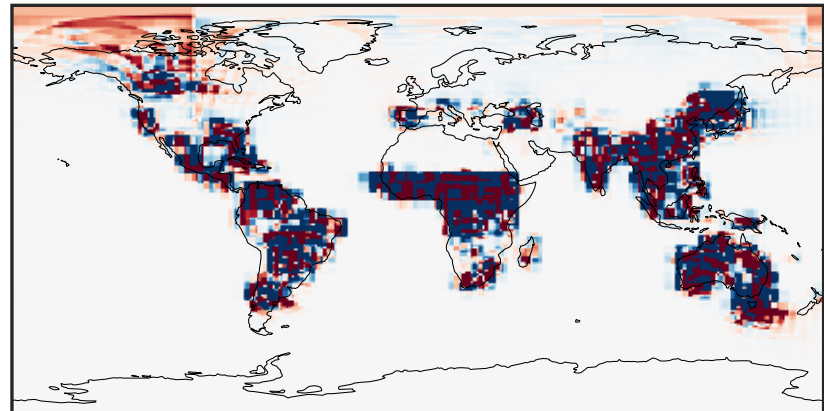
0.0000 0.1299 0.2597 0.3896 0.5194
ppb

Difference (1x1.25)
Dev - Ref, Dynamic Range



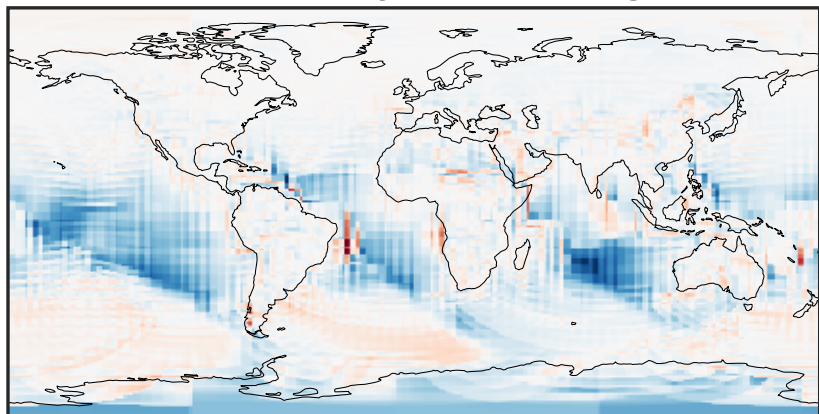
-0.3578 -0.1789 0.0000 0.1789 0.3578
ppb

Difference (1x1.25)
Dev - Ref, Restricted Range [5%,95%]



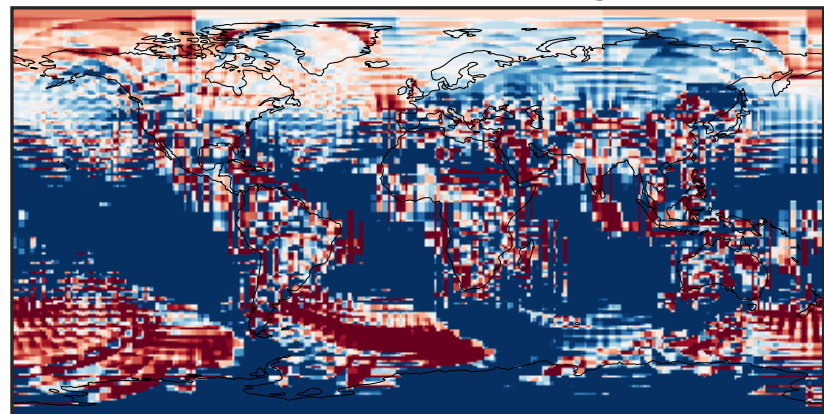
-0.00015 0.00000 0.00015
ppb

Ratio (1x1.25)
Dev/Ref, Dynamic Range



unitless

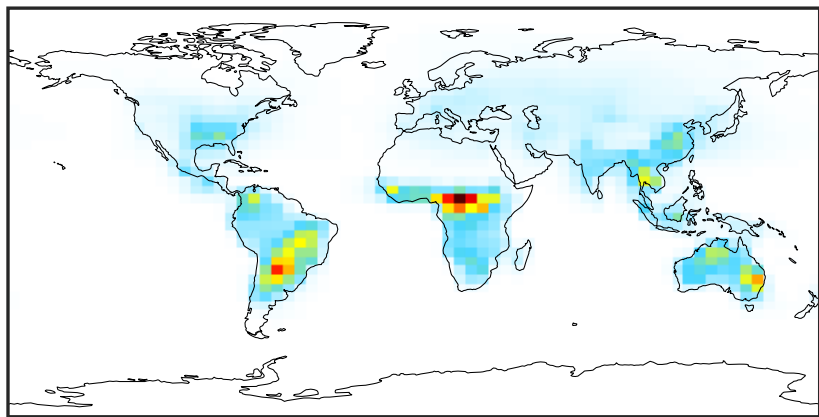
Ratio (1x1.25)
Dev/Ref, Fixed Range



0.50 0.75 1.00 1.50 2.00
unitless

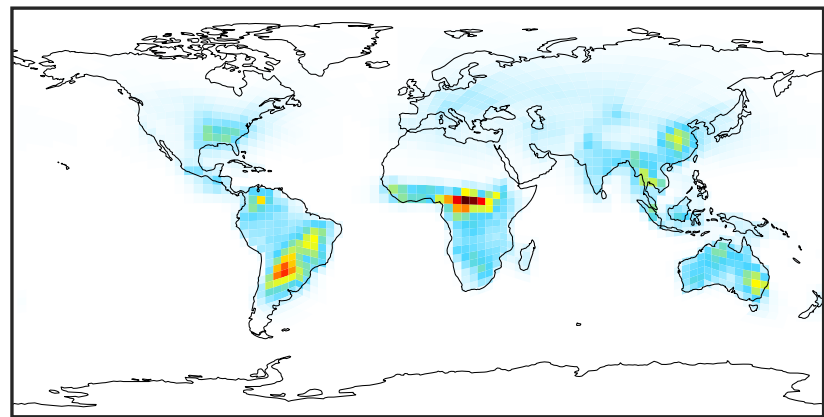
SpeciesConcVV_GLYC (Jan2019)

GCC_14.2.0 (Ref)
4.0x5.0



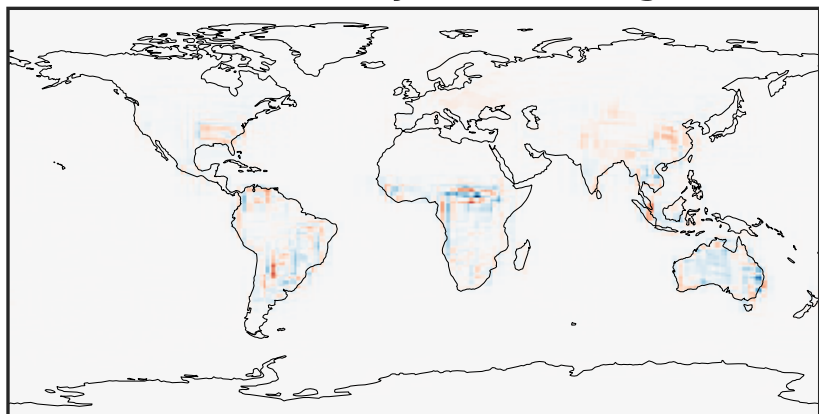
0.000 0.264 0.528 0.793 1.057
ppb

GCHP_14.2.0 (Dev)
c24



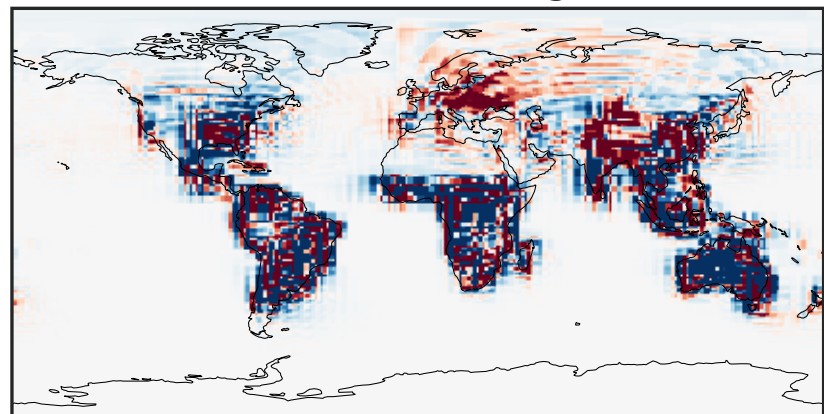
0.000 0.264 0.528 0.793 1.057
ppb

Difference (1x1.25)
Dev - Ref, Dynamic Range



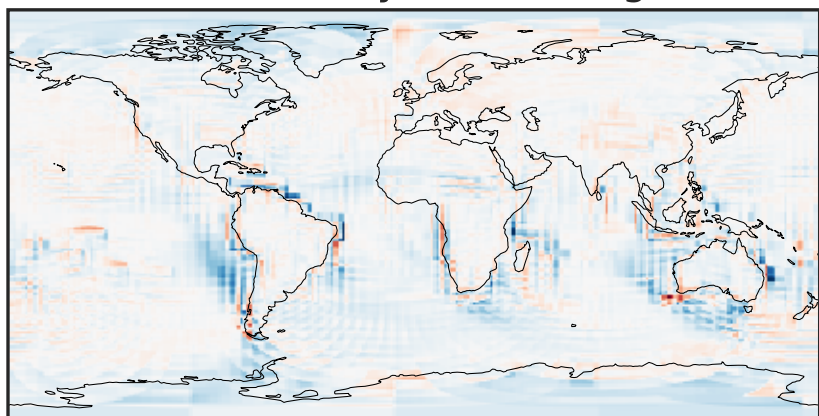
-0.4707 -0.2354 0.0000 0.2354 0.4707
ppb

Difference (1x1.25)
Dev - Ref, Restricted Range [5%,95%]



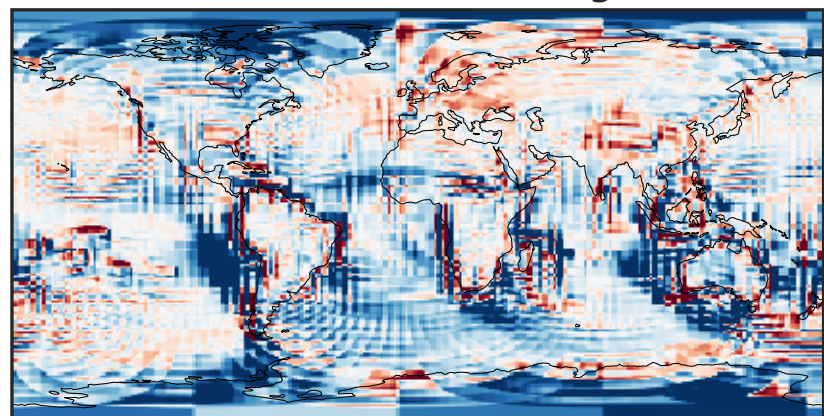
-0.008 0.000 0.008
ppb

Ratio (1x1.25)
Dev/Ref, Dynamic Range



1e-01 1 10
unitless

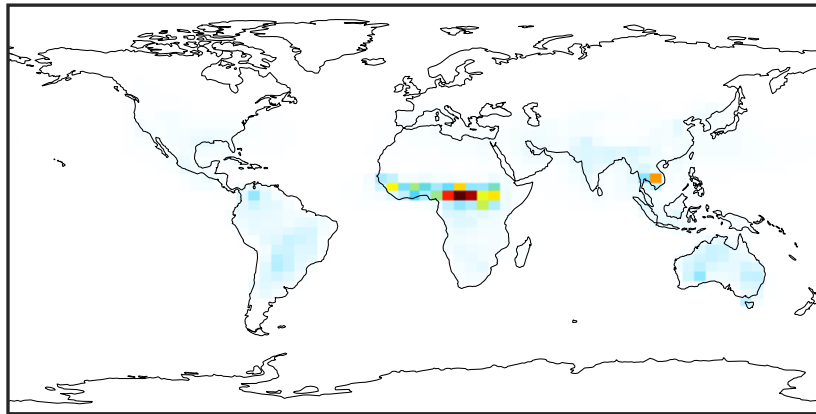
Ratio (1x1.25)
Dev/Ref, Fixed Range



0.50 0.75 1.00 1.50 2.00
unitless

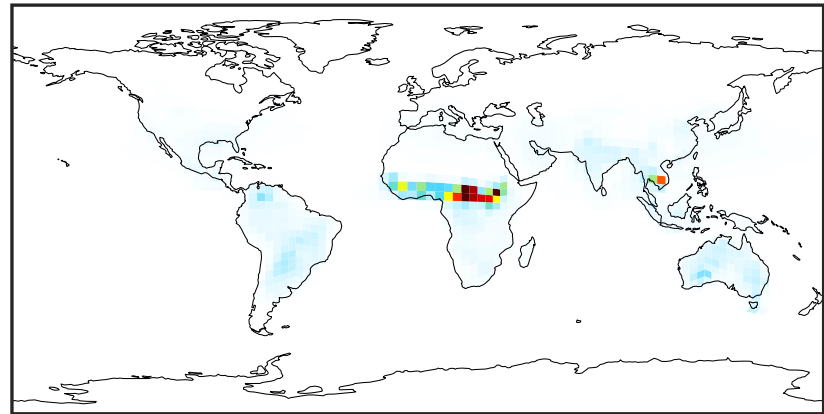
SpeciesConcVV_GLYX (Jan2019)

GCC_14.2.0 (Ref)
4.0x5.0



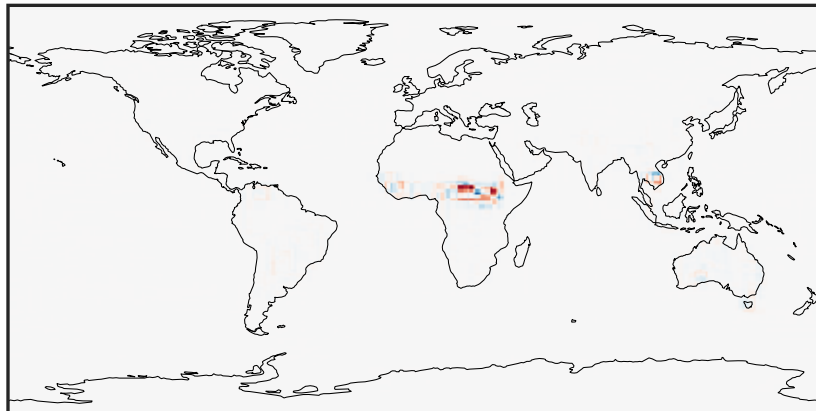
0.0000 0.1113 0.2226 0.3339 0.4452
ppb

GCHP_14.2.0 (Dev)
c24



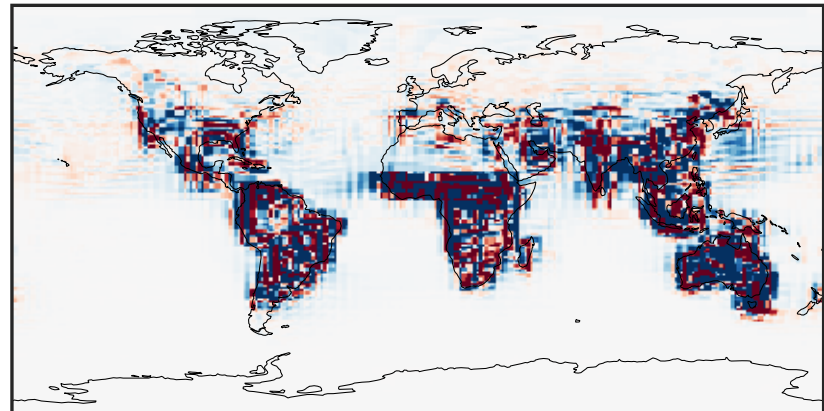
0.0000 0.1113 0.2226 0.3339 0.4452
ppb

Difference (1x1.25)
Dev - Ref, Dynamic Range



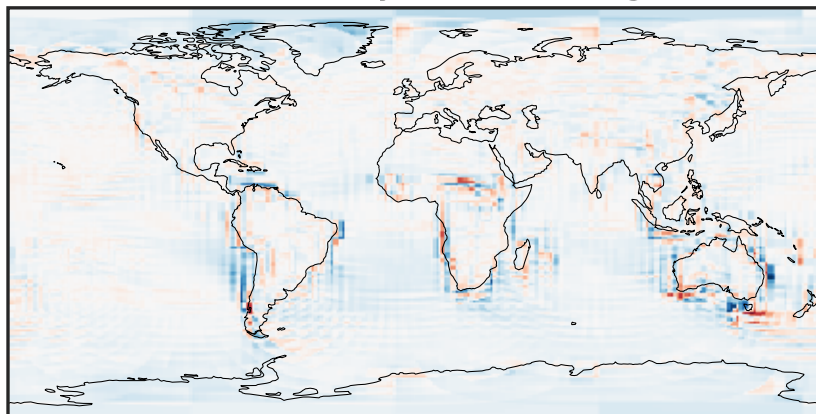
-0.3205 -0.1602 0.0000 0.1602 0.3205
ppb

Difference (1x1.25)
Dev - Ref, Restricted Range [5%,95%]



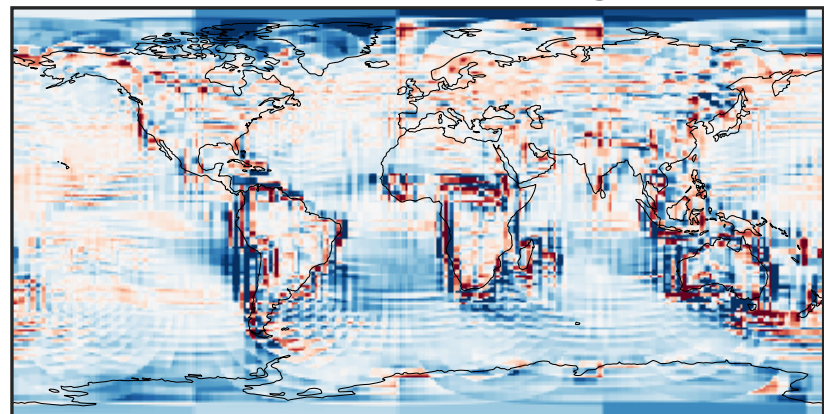
-0.0006 0.0000 0.0006
ppb

Ratio (1x1.25)
Dev/Ref, Dynamic Range



1e-01 1 10
unitless

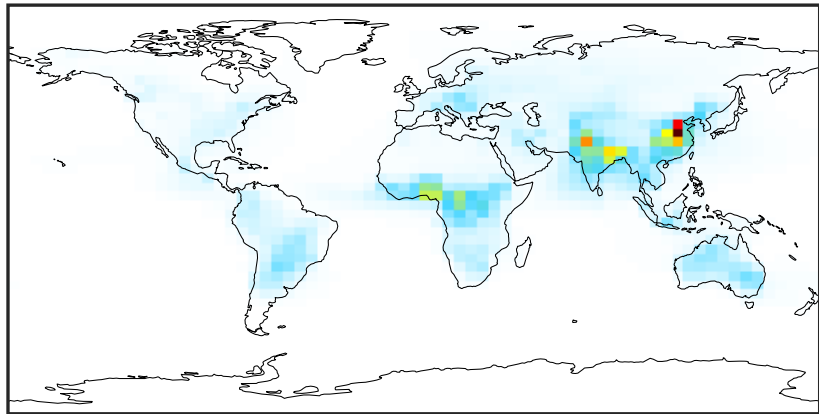
Ratio (1x1.25)
Dev/Ref, Fixed Range



0.50 0.75 1.00 1.50 2.00
unitless

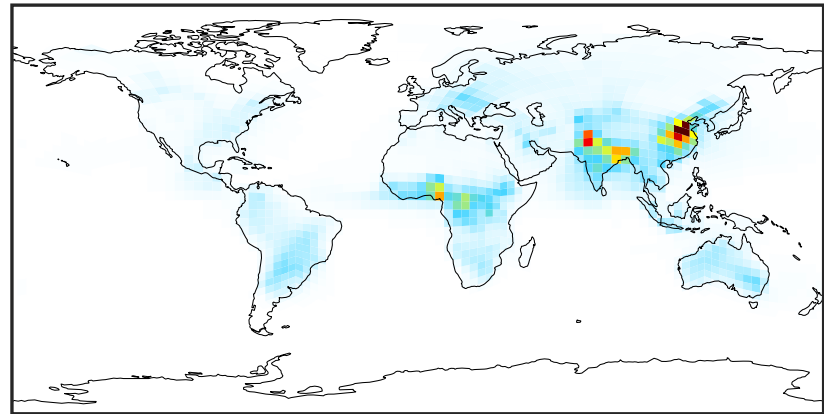
SpeciesConcVV_HCOOH (Jan2019)

GCC_14.2.0 (Ref)
4.0x5.0



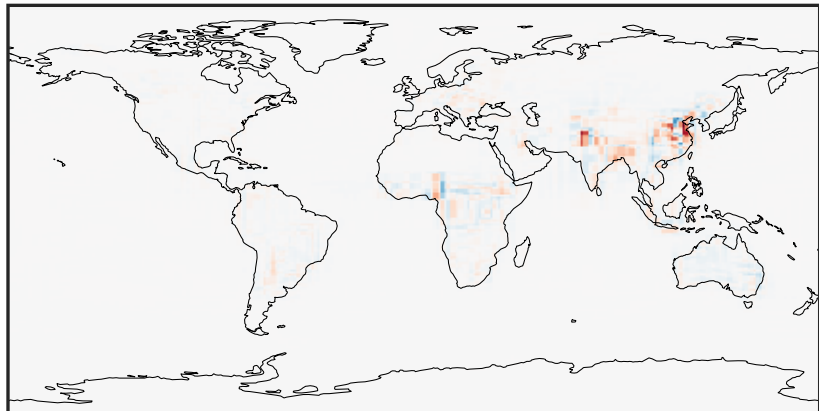
0.000 1.298 2.596 3.894 5.192
ppb

GCHP_14.2.0 (Dev)
c24



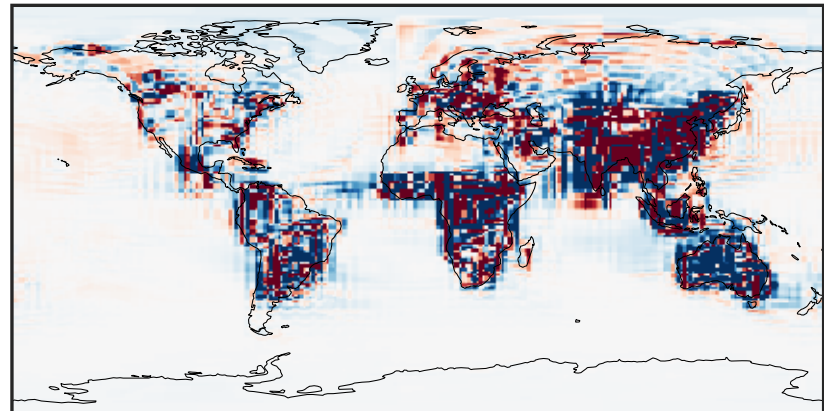
0.000 1.298 2.596 3.894 5.192
ppb

Difference (1x1.25)
Dev - Ref, Dynamic Range



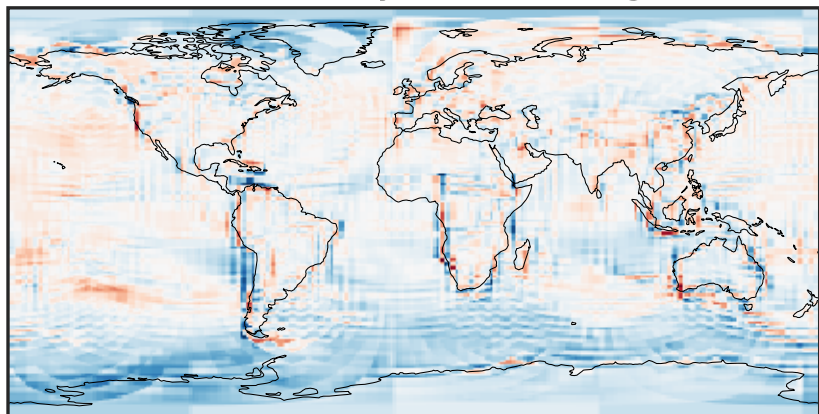
-2.357 -1.179 0.000 1.179 2.357
ppb

Difference (1x1.25)
Dev - Ref, Restricted Range [5%,95%]



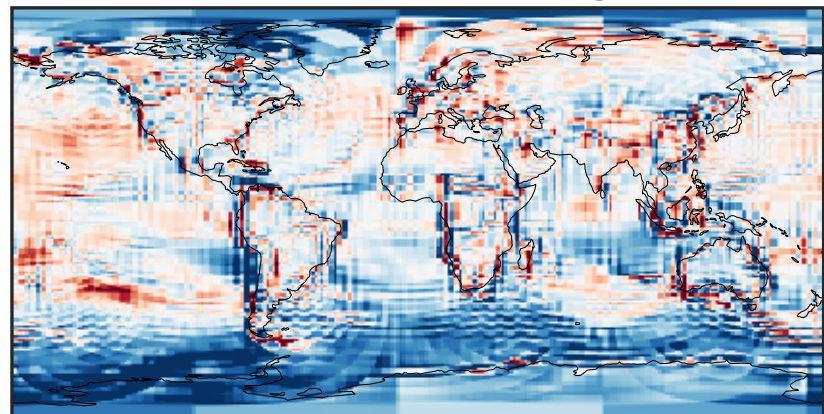
-0.025 0.000 0.025
ppb

Ratio (1x1.25)
Dev/Ref, Dynamic Range



0.192 0.596 1.000 3.102 5.204
unitless

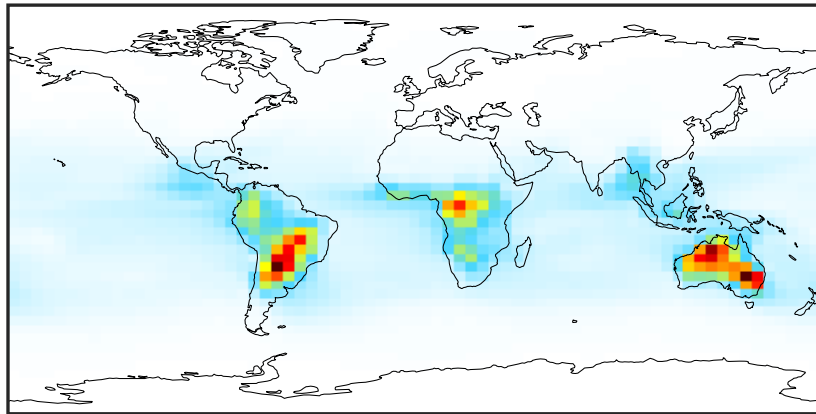
Ratio (1x1.25)
Dev/Ref, Fixed Range



0.50 0.75 1.00 1.50 2.00
unitless

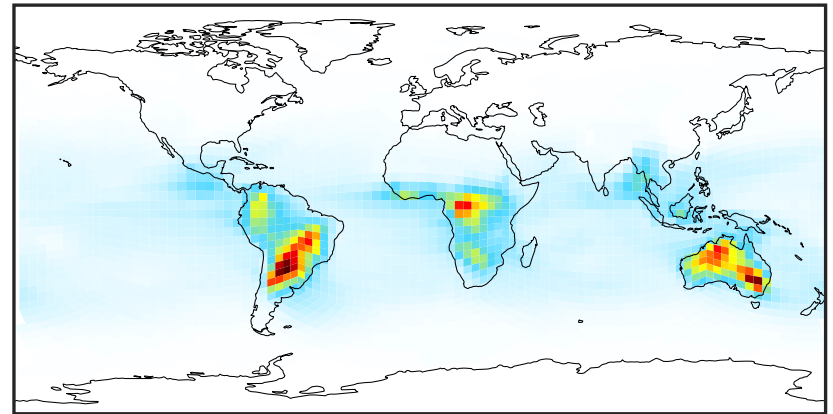
SpeciesConcVV_MAP (Jan2019)

GCC_14.2.0 (Ref)
4.0x5.0



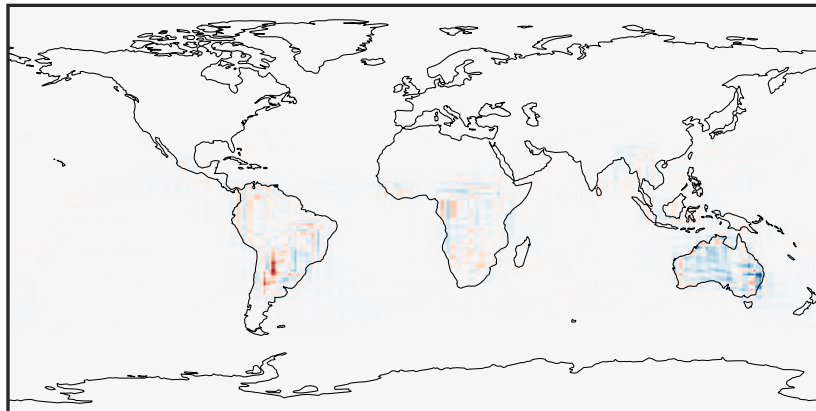
0.0009 0.2416 0.4832 0.7249 0.9674
ppb

GCHP_14.2.0 (Dev)
c24



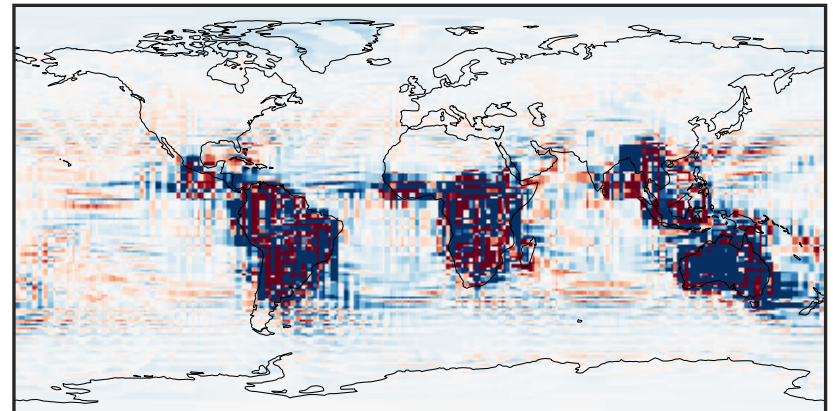
0.0009 0.2416 0.4832 0.7249 0.9674
ppb

Difference (1x1.25)
Dev - Ref, Dynamic Range



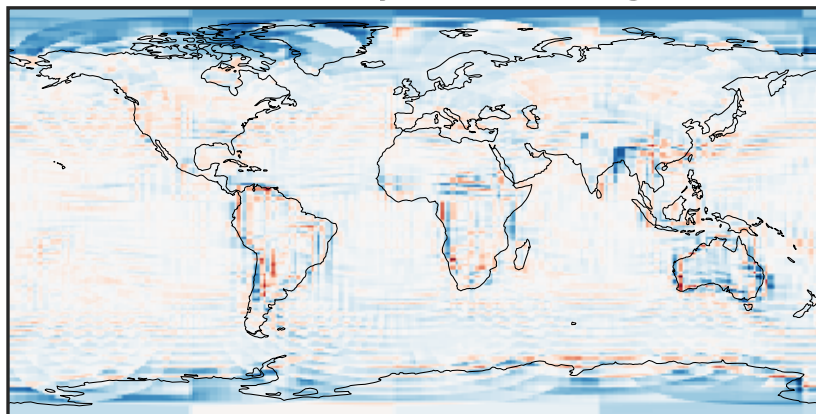
-0.529 -0.265 0.000 0.265 0.529
ppb

Difference (1x1.25)
Dev - Ref, Restricted Range [5%,95%]



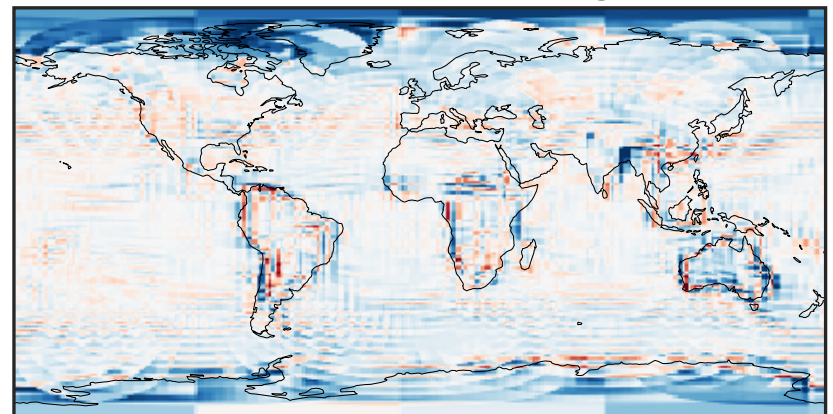
-0.006 0.000 0.006
ppb

Ratio (1x1.25)
Dev/Ref, Dynamic Range



0.382 0.691 1.000 1.810 2.621
unitless

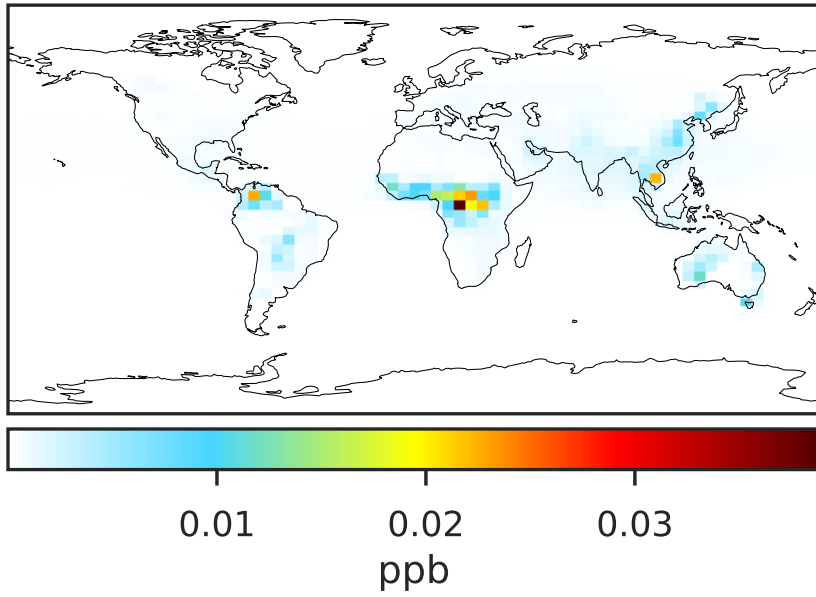
Ratio (1x1.25)
Dev/Ref, Fixed Range



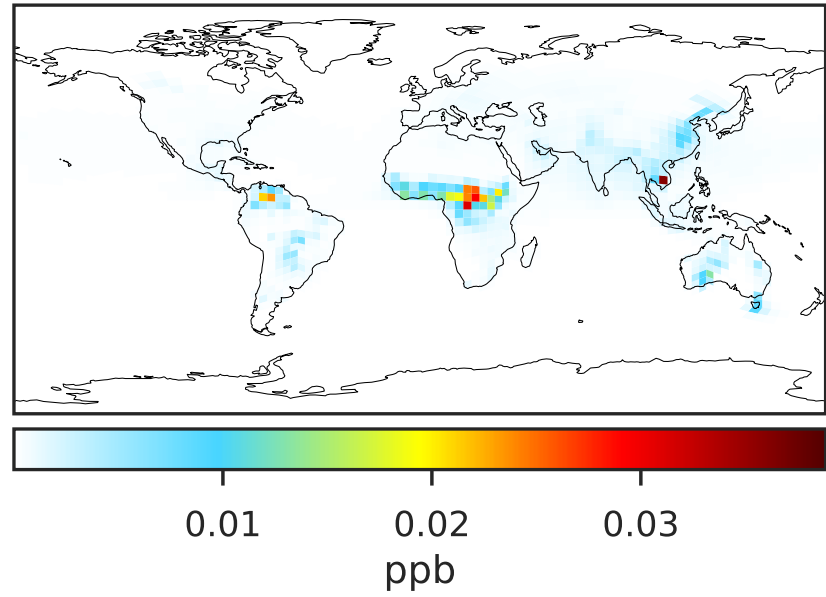
0.50 0.75 1.00 1.50 2.00
unitless

SpeciesConcVV_PHEN (Jan2019)

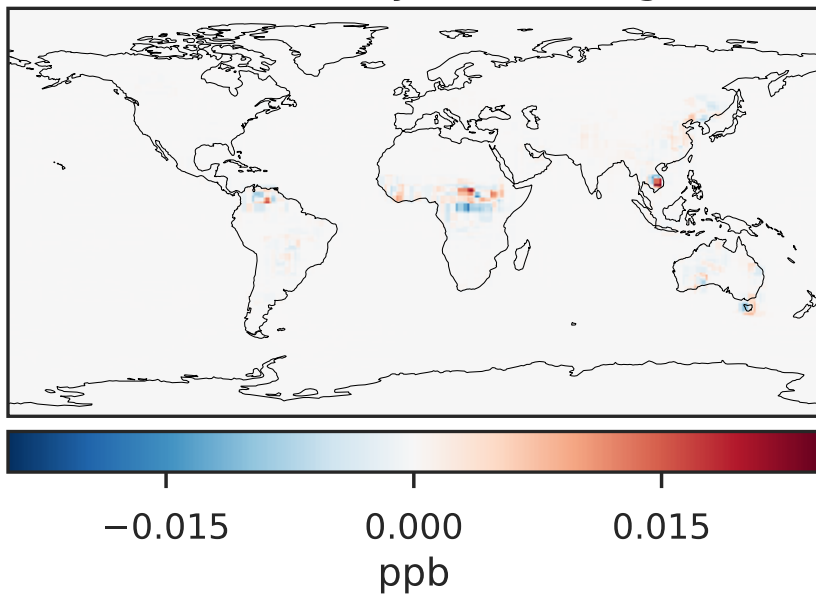
GCC_14.2.0 (Ref)
4.0x5.0



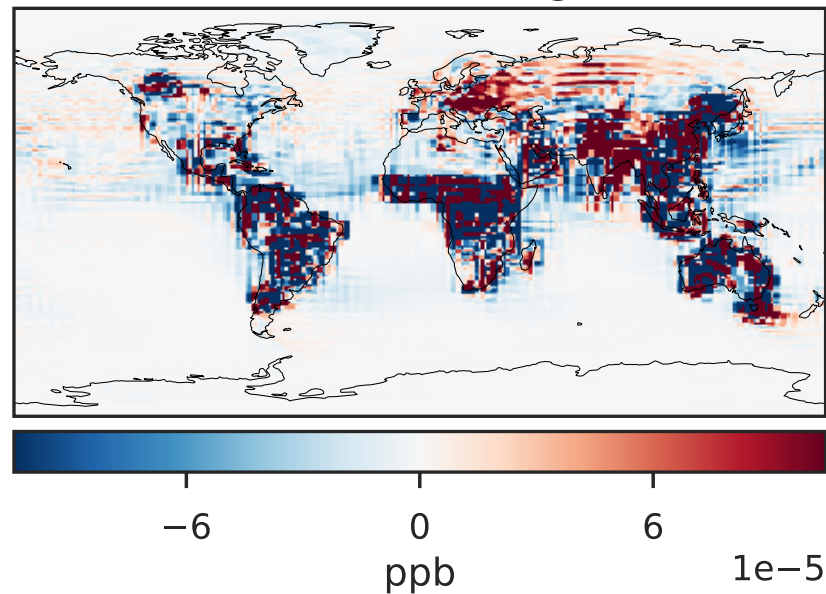
GCHP_14.2.0 (Dev)
c24



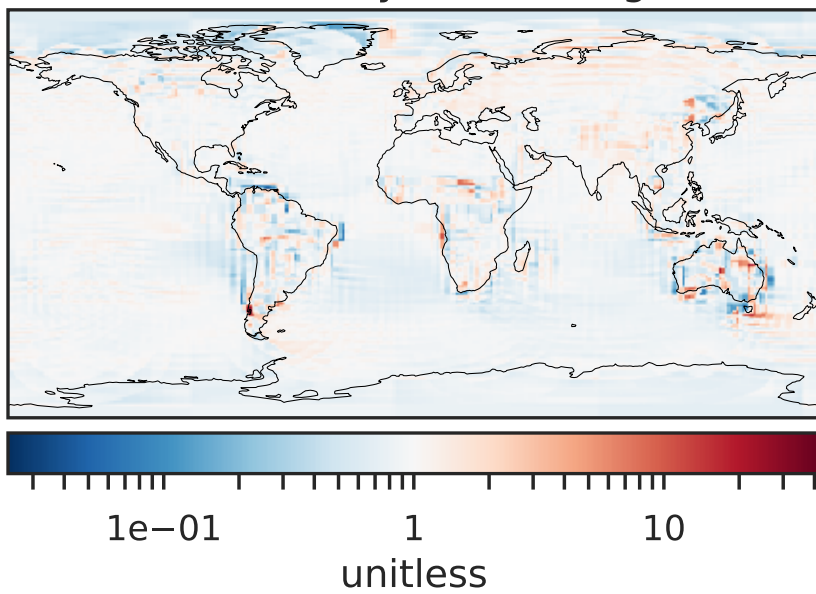
Difference (1x1.25)
Dev - Ref, Dynamic Range



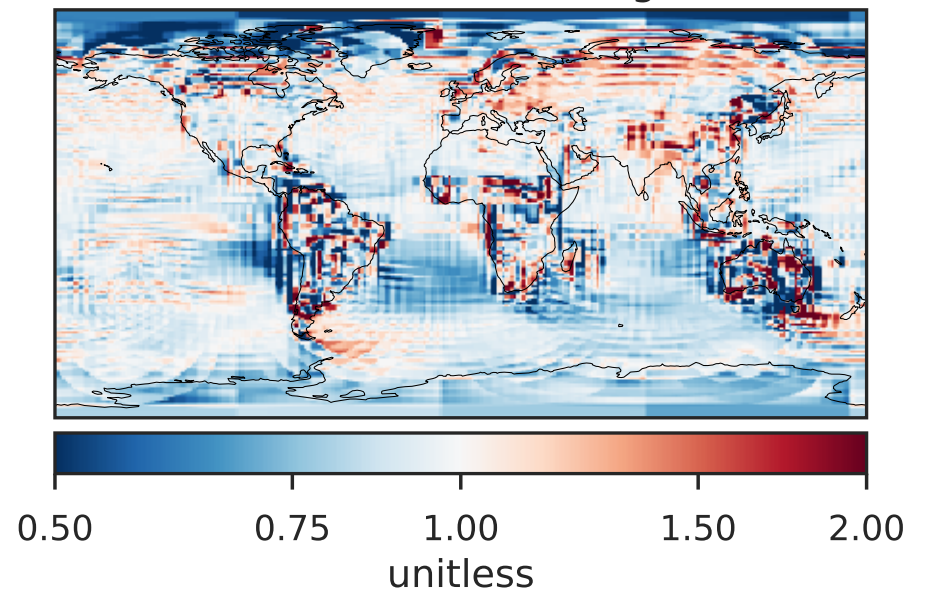
Difference (1x1.25)
Dev - Ref, Restricted Range [5%,95%]



Ratio (1x1.25)
Dev/Ref, Dynamic Range

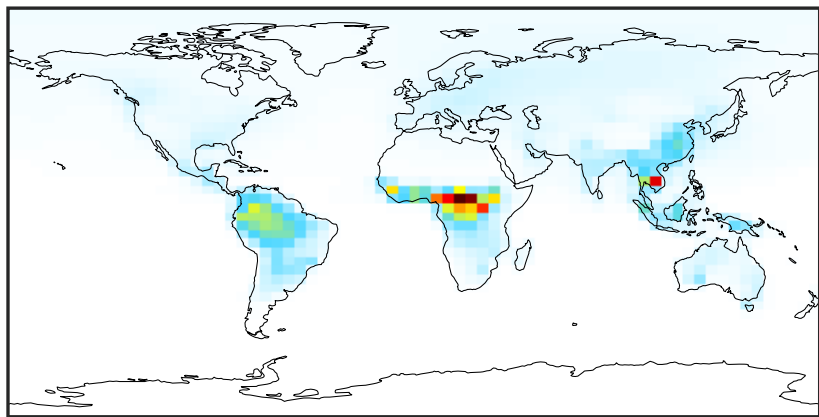


Ratio (1x1.25)
Dev/Ref, Fixed Range



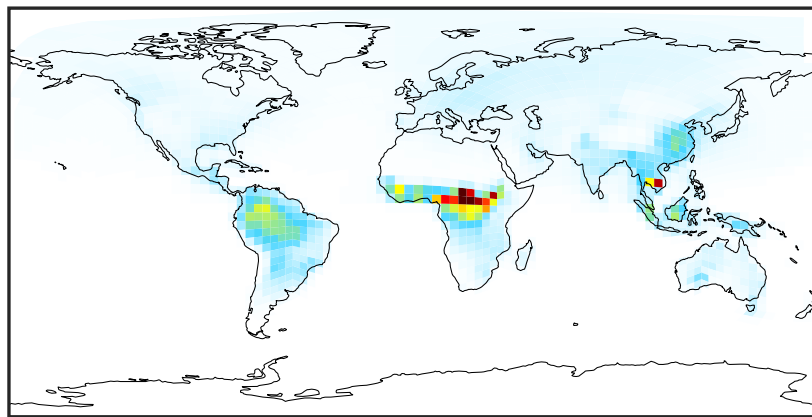
SpeciesConcVV_RCHO (Jan2019)

GCC_14.2.0 (Ref)
4.0x5.0



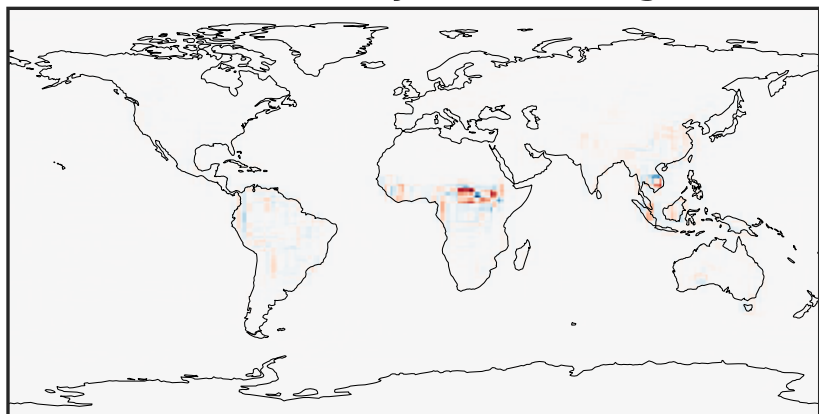
0.000 0.464 0.927 1.391 1.854
ppb

GCHP_14.2.0 (Dev)
c24



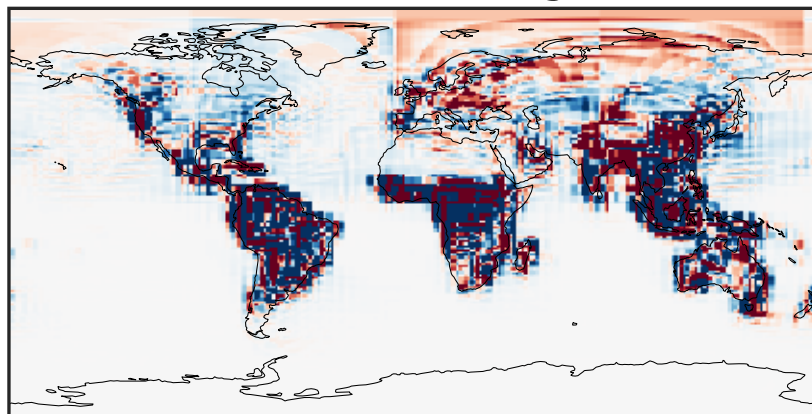
0.000 0.464 0.927 1.391 1.854
ppb

Difference (1x1.25)
Dev - Ref, Dynamic Range



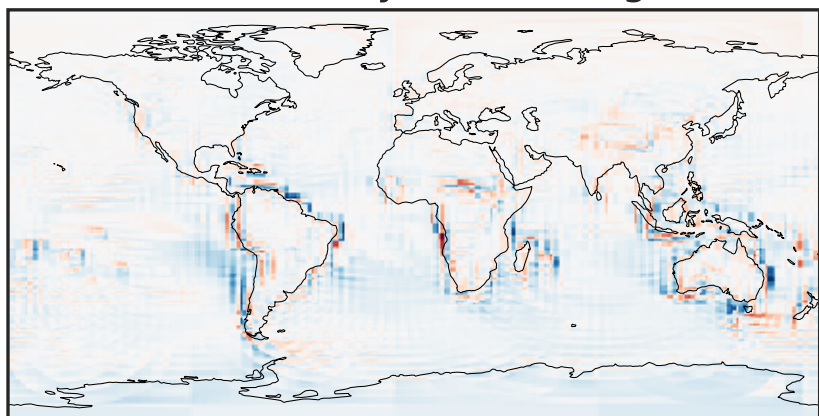
-1.231 -0.615 0.000 0.615 1.231
ppb

Difference (1x1.25)
Dev - Ref, Restricted Range [5%,95%]



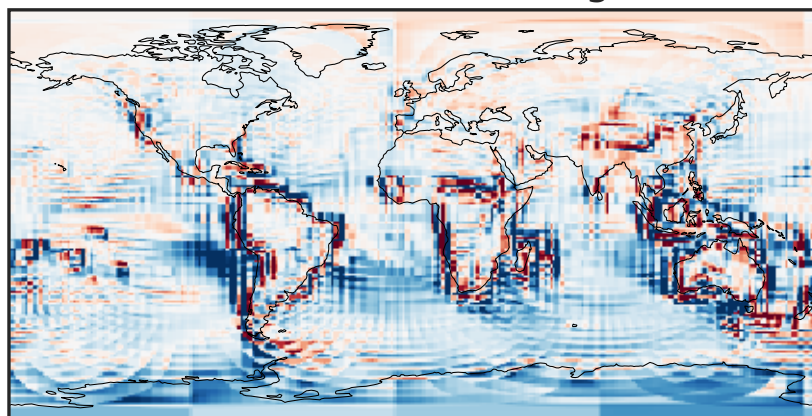
-0.008 0.000 0.008
ppb

Ratio (1x1.25)
Dev/Ref, Dynamic Range



1e-01 1 10
unitless

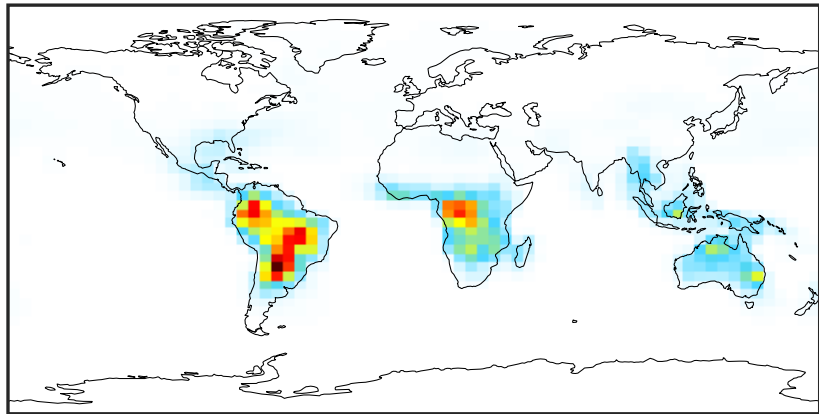
Ratio (1x1.25)
Dev/Ref, Fixed Range



0.50 0.75 1.00 1.50 2.00
unitless

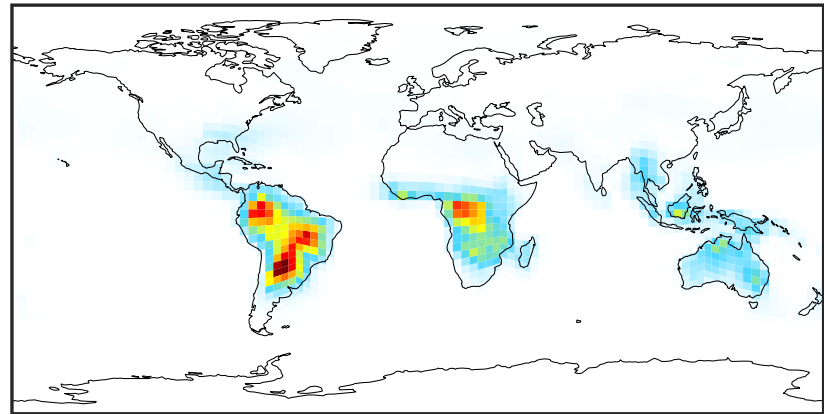
SpeciesConcVV_ETHP (Jan2019)

GCC_14.2.0 (Ref)
4.0x5.0



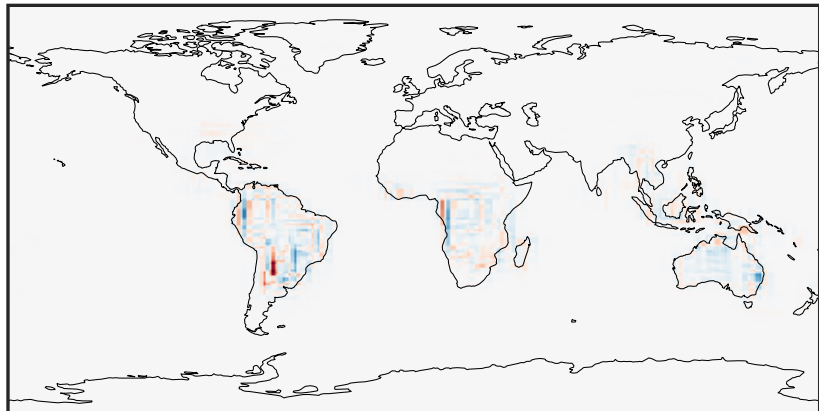
0.0000 0.0503 0.1005 0.1508 0.2010
ppb

GCHP_14.2.0 (Dev)
c24



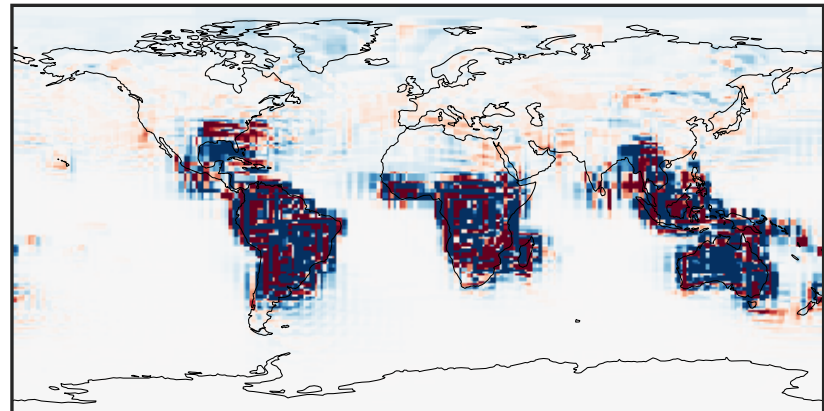
0.0000 0.0503 0.1005 0.1508 0.2010
ppb

Difference (1x1.25)
Dev - Ref, Dynamic Range



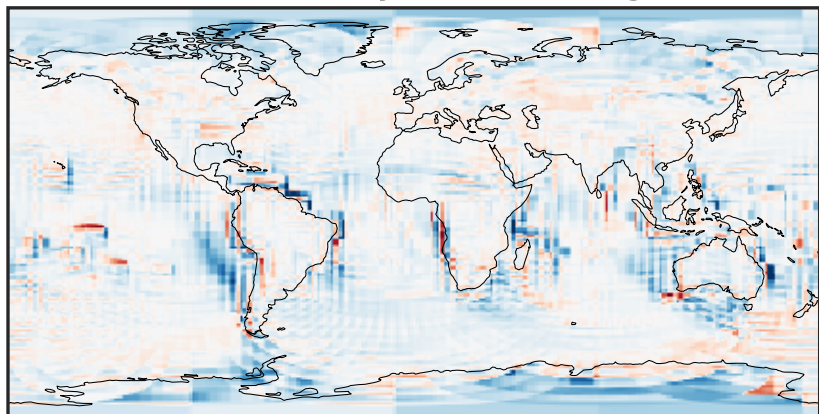
-0.0939 -0.0469 0.0000 0.0469 0.0939
ppb

Difference (1x1.25)
Dev - Ref, Restricted Range [5%,95%]



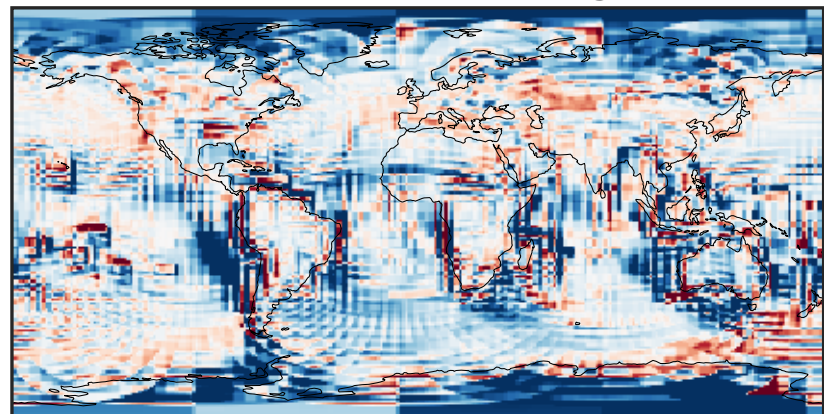
-0.0015 0.0000 0.0015
ppb

Ratio (1x1.25)
Dev/Ref, Dynamic Range



1e-01 1 10
unitless

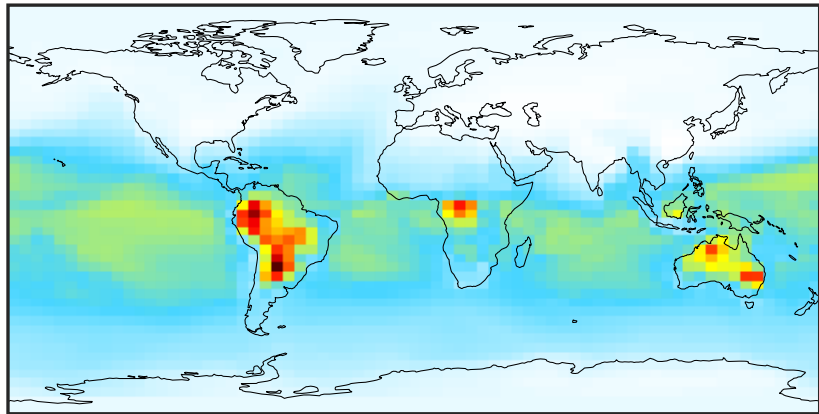
Ratio (1x1.25)
Dev/Ref, Fixed Range



0.50 0.75 1.00 1.50 2.00
unitless

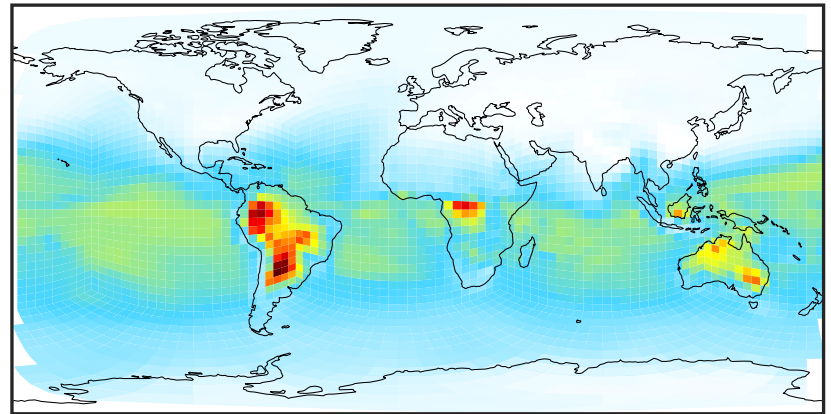
SpeciesConcVV_MP (Jan2019)

GCC_14.2.0 (Ref)
4.0x5.0



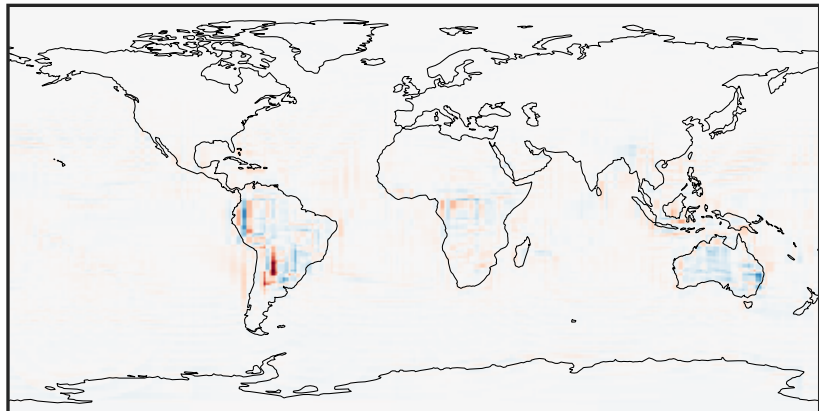
0.022 0.596 1.192 1.788 2.406
ppb

GCHP_14.2.0 (Dev)
c24



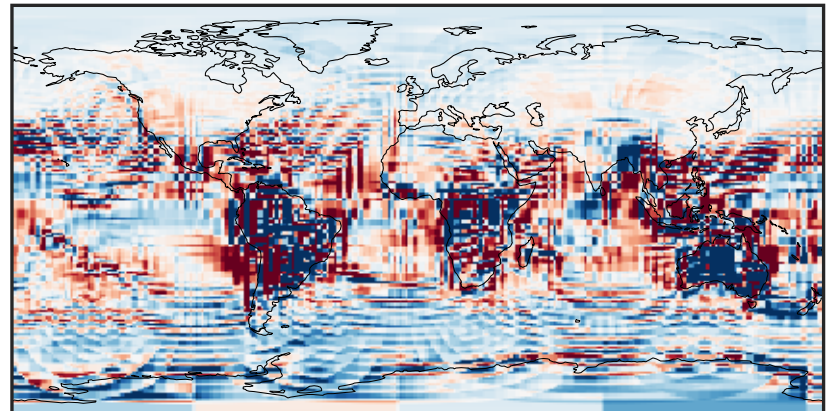
0.022 0.596 1.192 1.788 2.406
ppb

Difference (1x1.25)
Dev - Ref, Dynamic Range



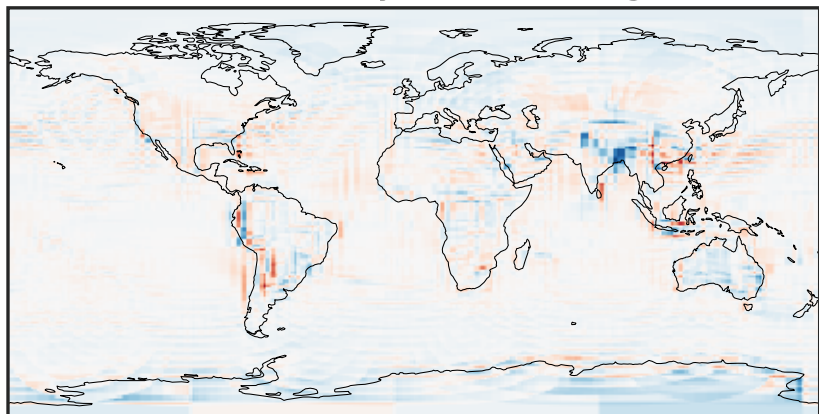
-1.118 -0.559 0.000 0.559 1.118
ppb

Difference (1x1.25)
Dev - Ref, Restricted Range [5%,95%]



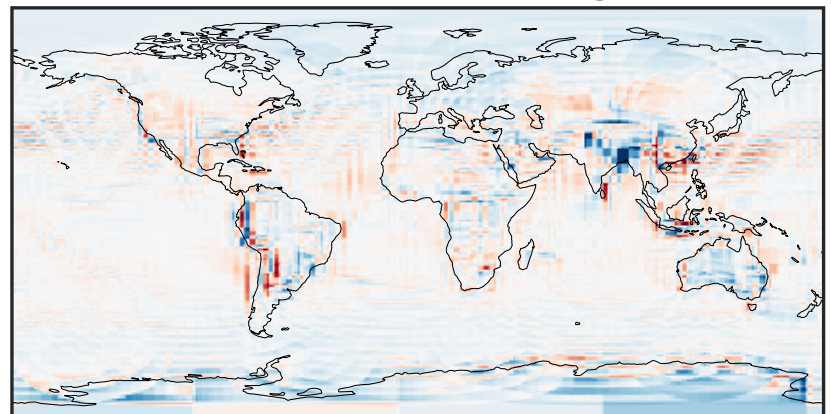
-0.025 0.000 0.025
ppb

Ratio (1x1.25)
Dev/Ref, Dynamic Range



0.350 0.675 1.000 1.928 2.856
unitless

Ratio (1x1.25)
Dev/Ref, Fixed Range



0.50 0.75 1.00 1.50 2.00
unitless