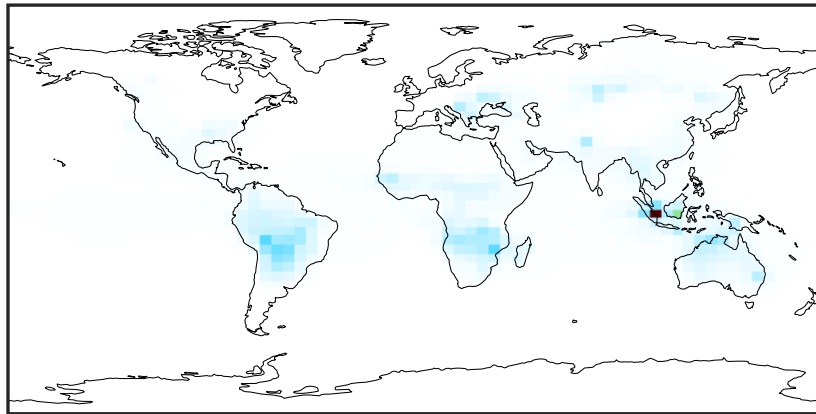


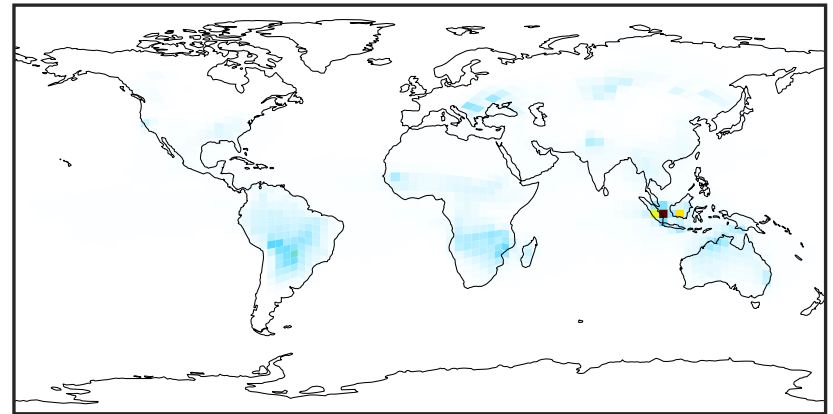
SpeciesConcVV_ACTA (Oct2019)

GCC_14.2.0 (Ref)
4.0x5.0



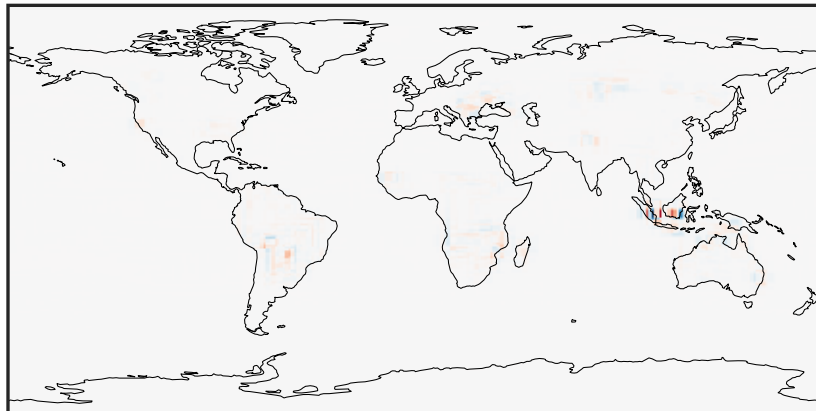
0.002 1.890 3.779 5.669 7.560
ppb

GCHP_14.2.0 (Dev)
c24



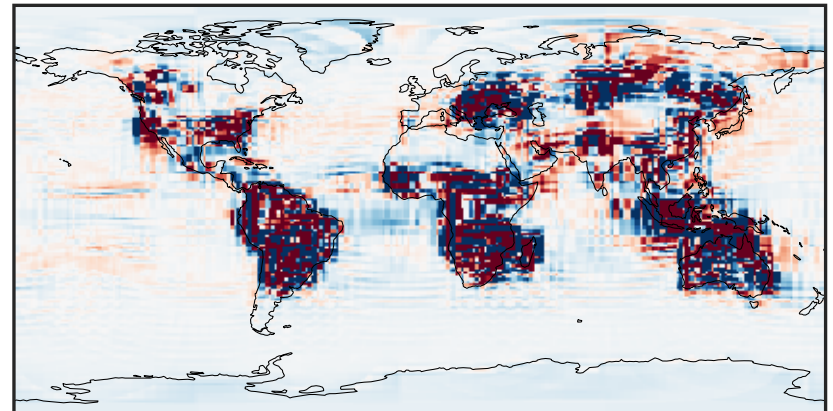
0.002 1.890 3.779 5.669 7.560
ppb

Difference (1x1.25)
Dev - Ref, Dynamic Range



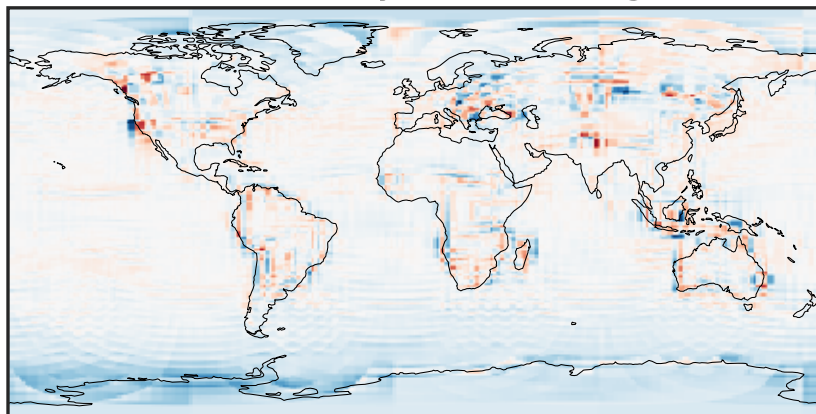
-3.441 -1.721 0.000 1.721 3.441
ppb

Difference (1x1.25)
Dev - Ref, Restricted Range [5%,95%]



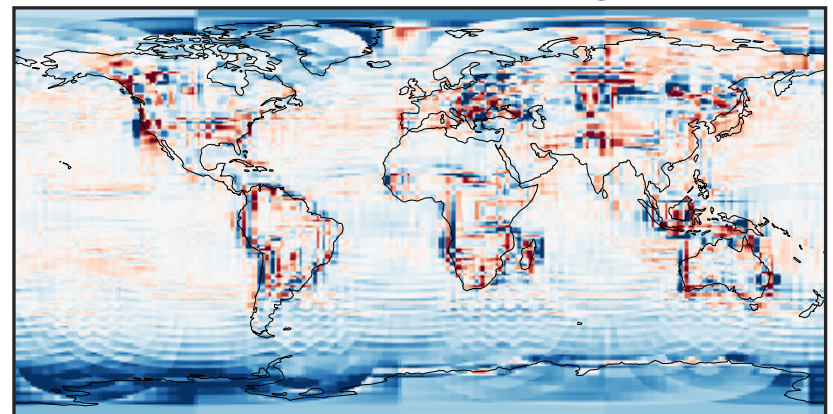
-0.01 0.00 0.01
ppb

Ratio (1x1.25)
Dev/Ref, Dynamic Range



0.161 0.581 1.000 3.597 6.194
unitless

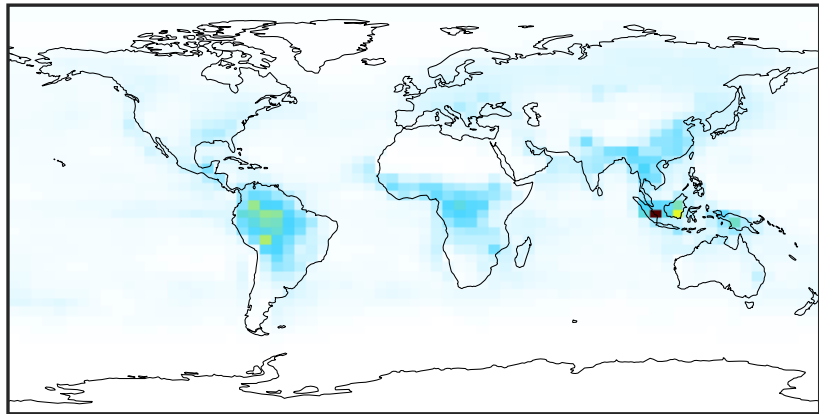
Ratio (1x1.25)
Dev/Ref, Fixed Range



0.50 0.75 1.00 1.50 2.00
unitless

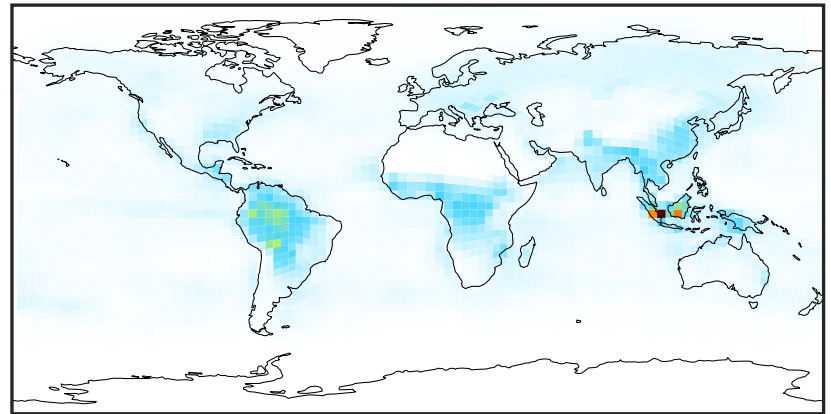
SpeciesConcVV_ALD2 (Oct2019)

GCC_14.2.0 (Ref)
4.0x5.0



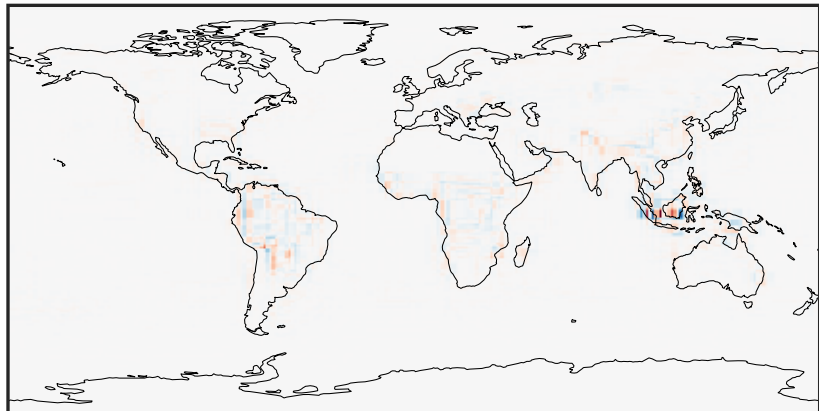
0.001 1.528 3.056 4.583 6.112
ppb

GCHP_14.2.0 (Dev)
c24



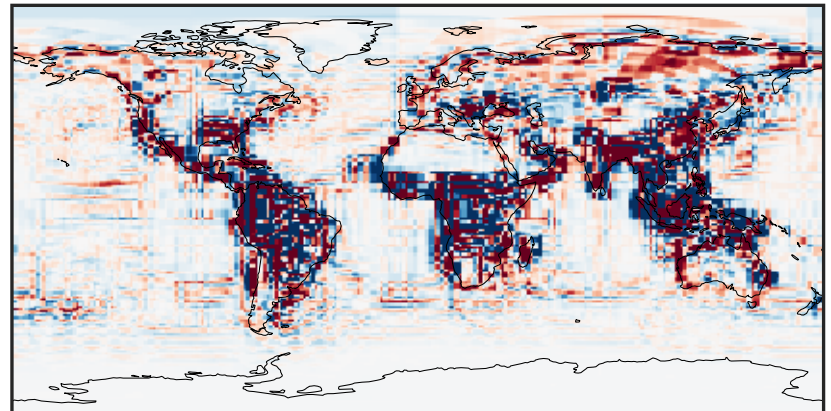
0.001 1.528 3.056 4.583 6.112
ppb

Difference (1x1.25)
Dev - Ref, Dynamic Range



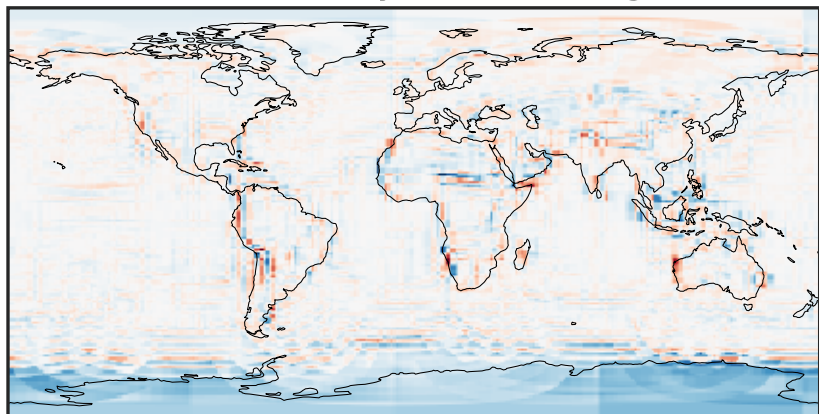
-2.303 -1.152 0.000 1.152 2.303
ppb

Difference (1x1.25)
Dev - Ref, Restricted Range [5%,95%]



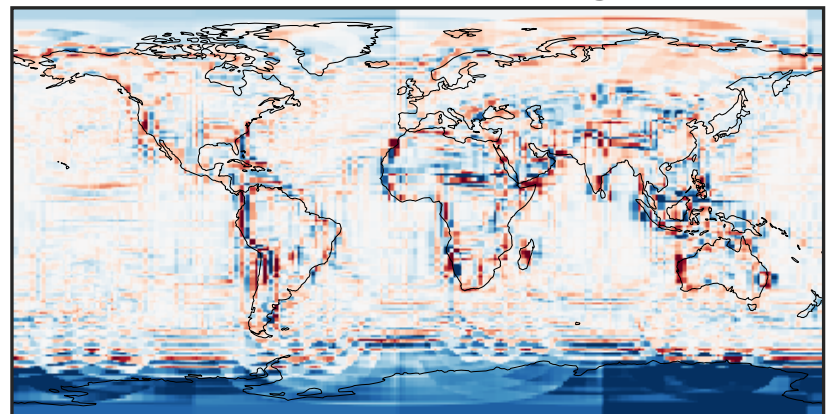
-0.0501 -0.0251 0.0000 0.0251 0.0501
ppb

Ratio (1x1.25)
Dev/Ref, Dynamic Range



0.182 0.591 1.000 3.245 5.489
unitless

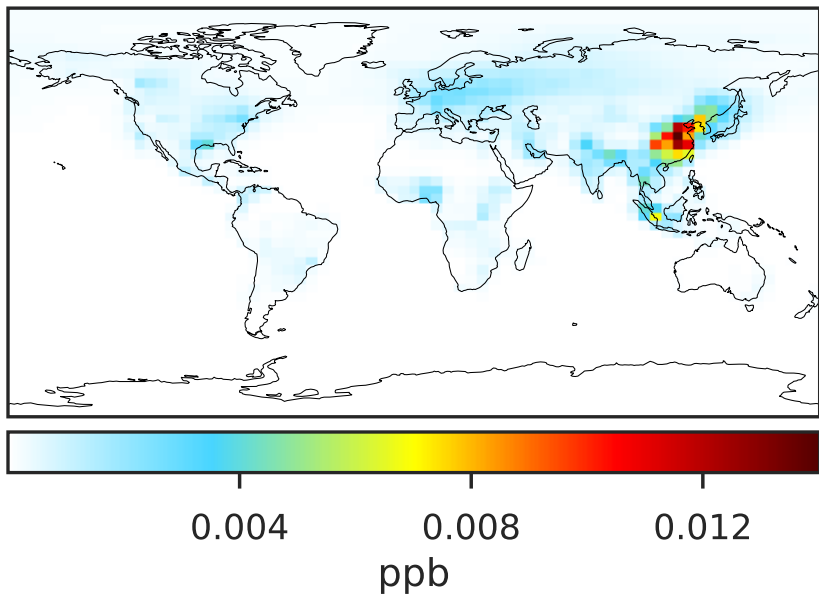
Ratio (1x1.25)
Dev/Ref, Fixed Range



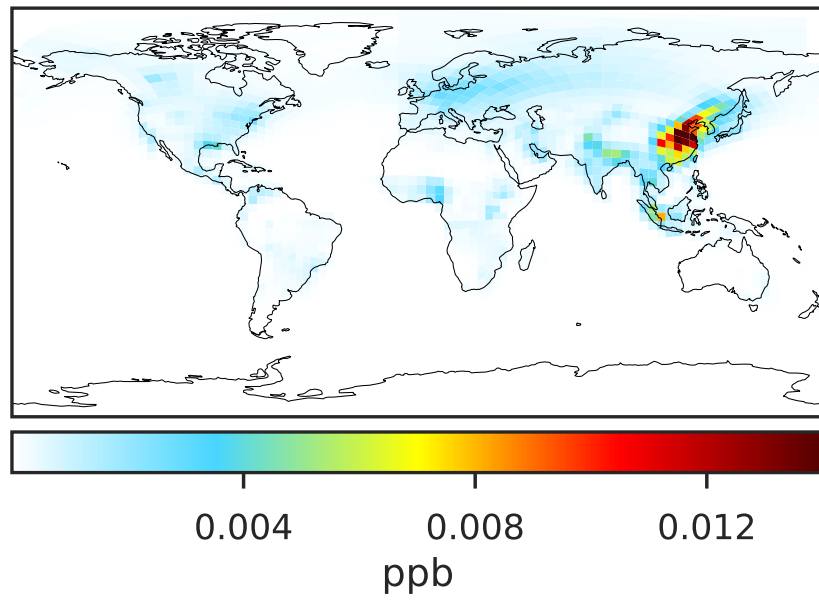
0.50 0.75 1.00 1.50 2.00
unitless

SpeciesConcVV_BALD (Oct2019)

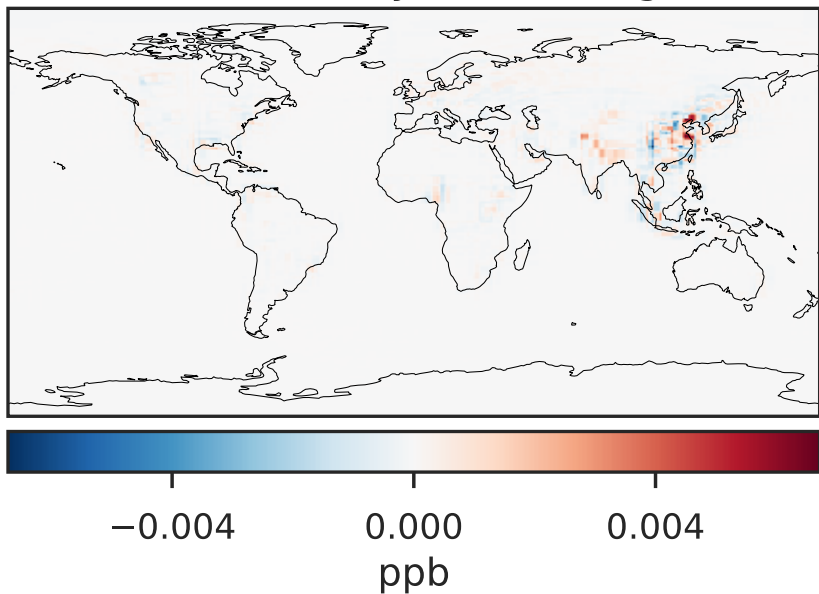
GCC_14.2.0 (Ref)
4.0x5.0



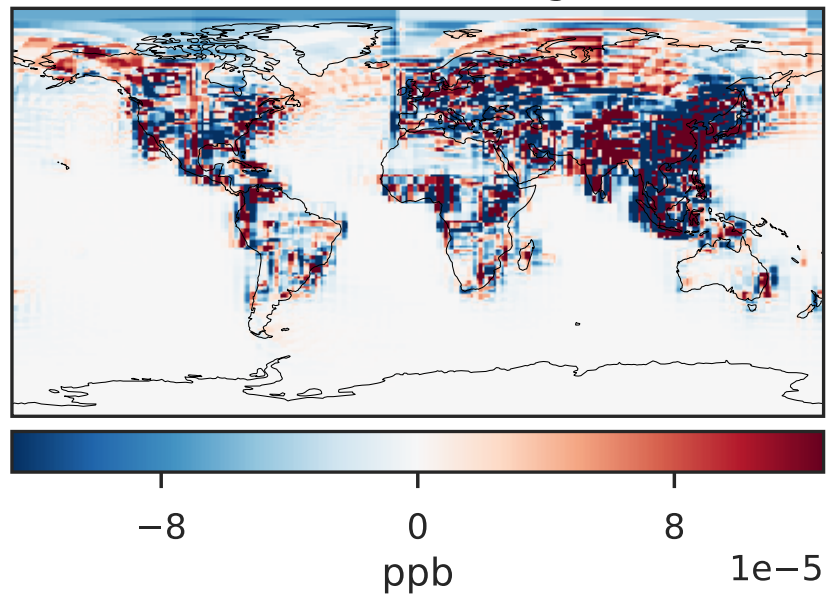
GCHP_14.2.0 (Dev)
c24



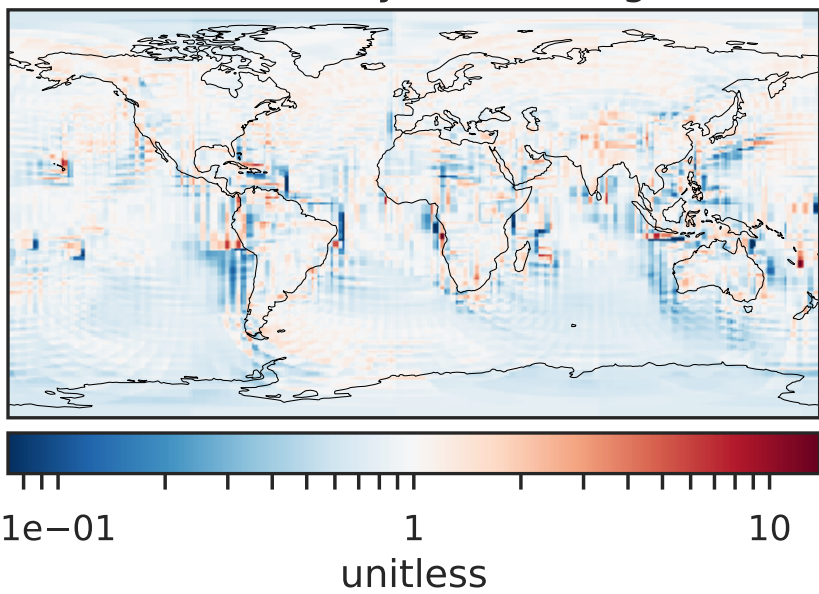
Difference (1x1.25)
Dev - Ref, Dynamic Range



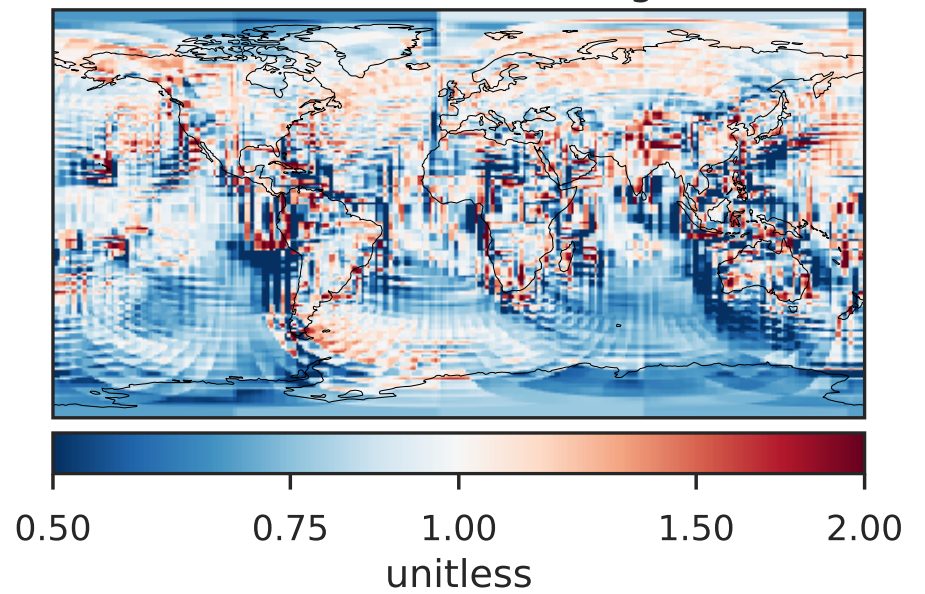
Difference (1x1.25)
Dev - Ref, Restricted Range [5%,95%]



Ratio (1x1.25)
Dev/Ref, Dynamic Range

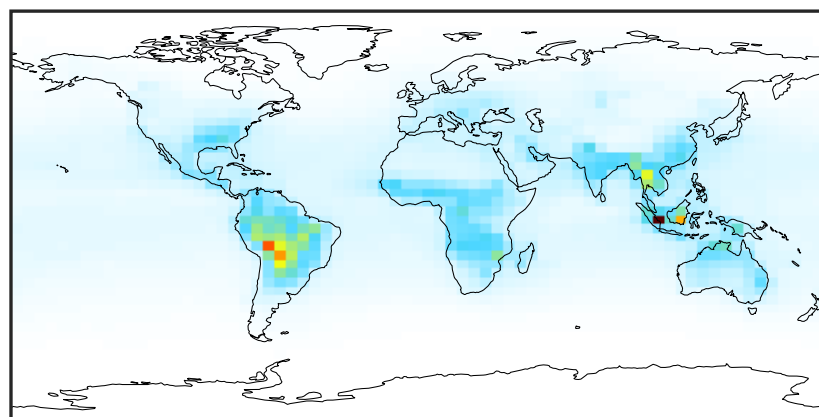


Ratio (1x1.25)
Dev/Ref, Fixed Range



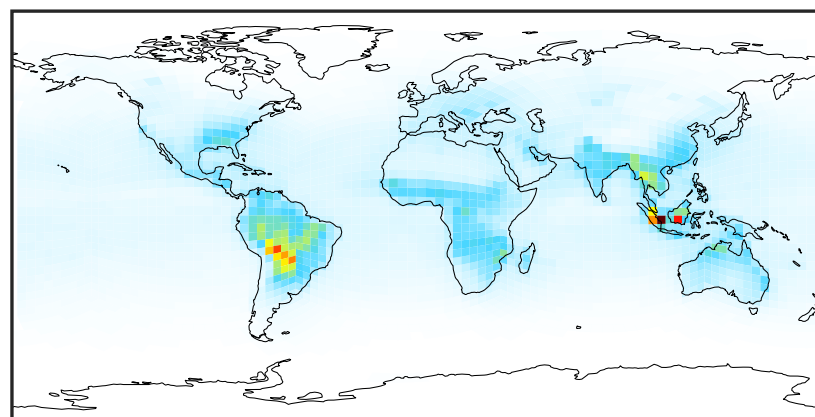
SpeciesConcVV_CH20 (Oct2019)

GCC_14.2.0 (Ref)
4.0x5.0



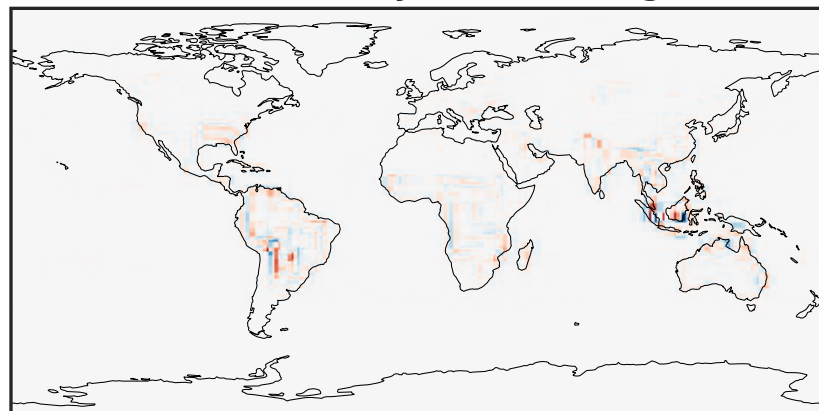
0.017 2.419 4.838 7.257 9.693
ppb

GCHP_14.2.0 (Dev)
c24



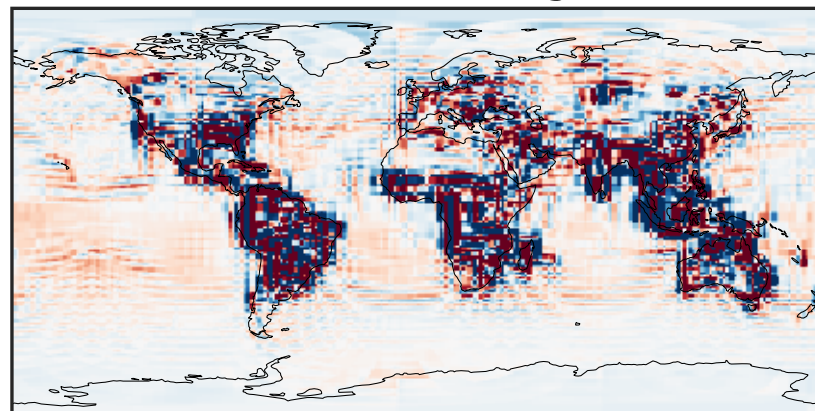
0.017 2.419 4.838 7.257 9.693
ppb

Difference (1x1.25)
Dev - Ref, Dynamic Range



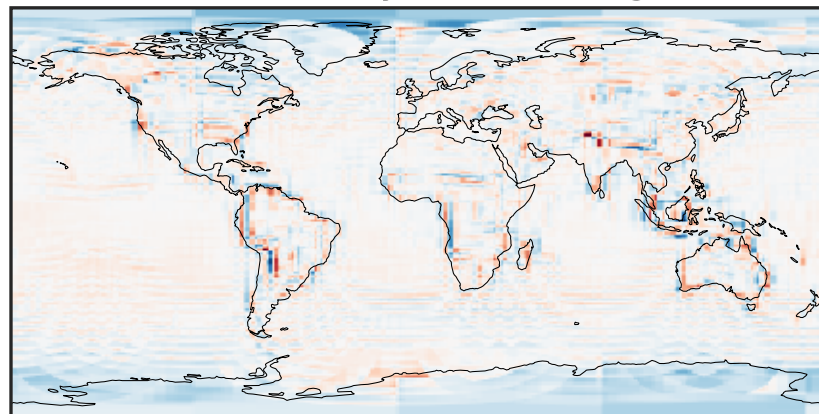
-3.364 -1.682 0.000 1.682 3.364
ppb

Difference (1x1.25)
Dev - Ref, Restricted Range [5%,95%]



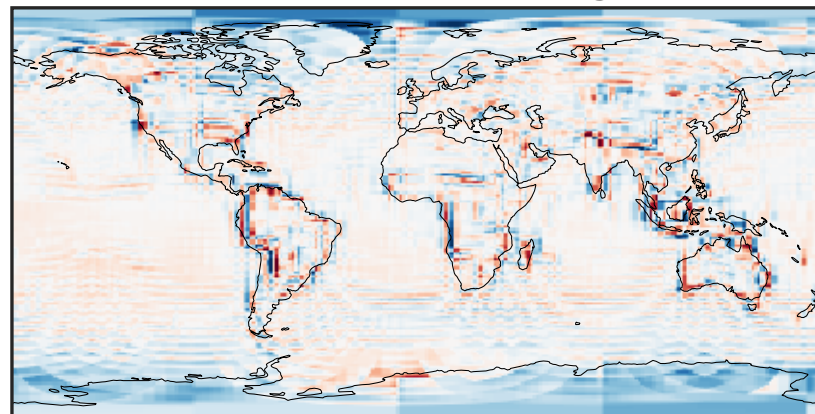
-0.0871 -0.0436 0.0000 0.0436 0.0871
ppb

Ratio (1x1.25)
Dev/Ref, Dynamic Range



0.333 0.667 1.000 2.001 3.001
unitless

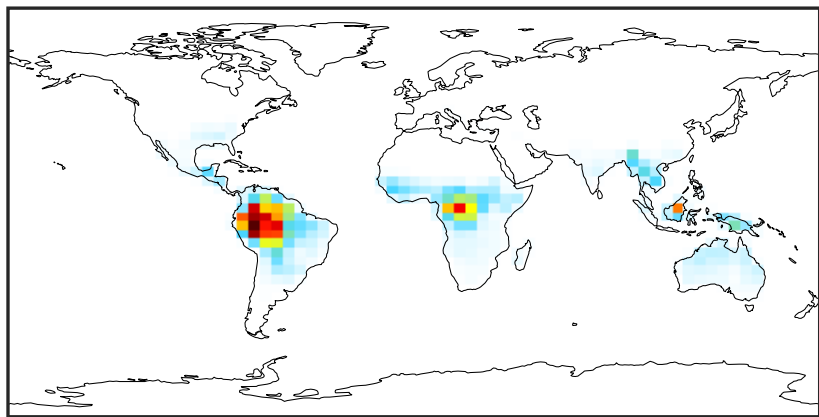
Ratio (1x1.25)
Dev/Ref, Fixed Range



0.50 0.75 1.00 1.50 2.00
unitless

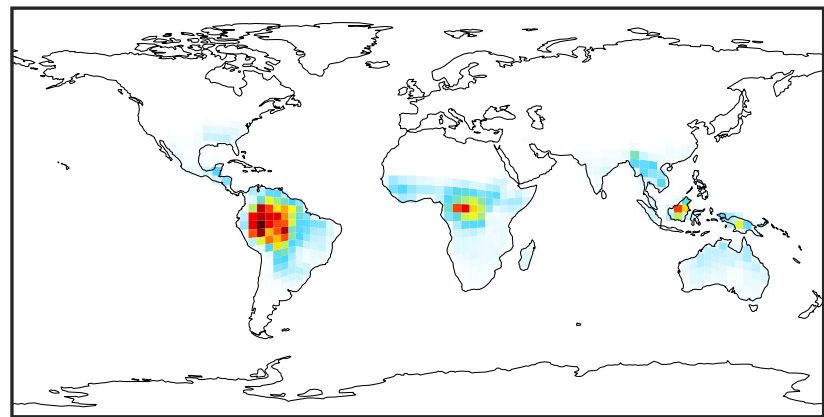
SpeciesConcVV_HPALDs (Oct2019)

GCC_14.2.0 (Ref)
4.0x5.0



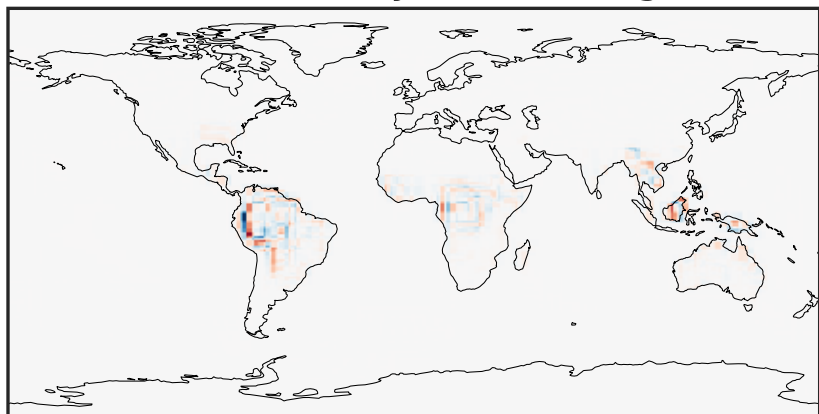
0.0000 0.0842 0.1684 0.2527 0.3369
ppb

GCHP_14.2.0 (Dev)
c24



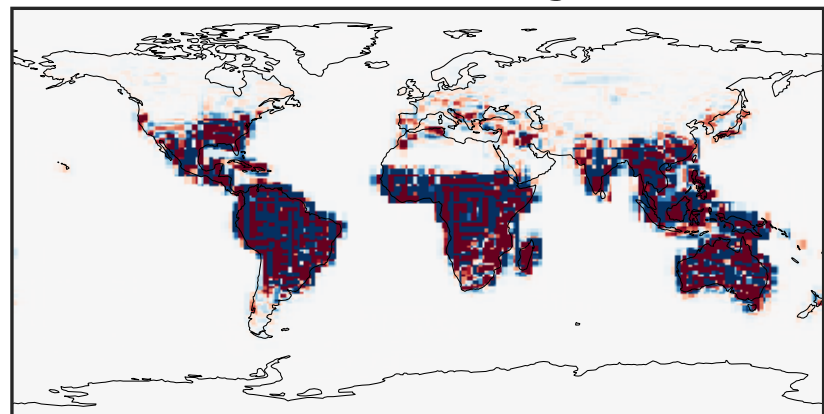
0.0000 0.0842 0.1684 0.2527 0.3369
ppb

Difference (1x1.25)
Dev - Ref, Dynamic Range



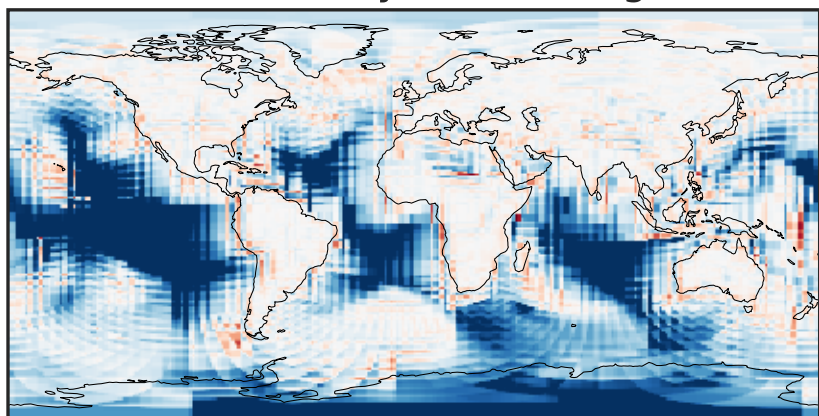
-0.1630 -0.0815 0.0000 0.0815 0.1630
ppb

Difference (1x1.25)
Dev - Ref, Restricted Range [5%,95%]



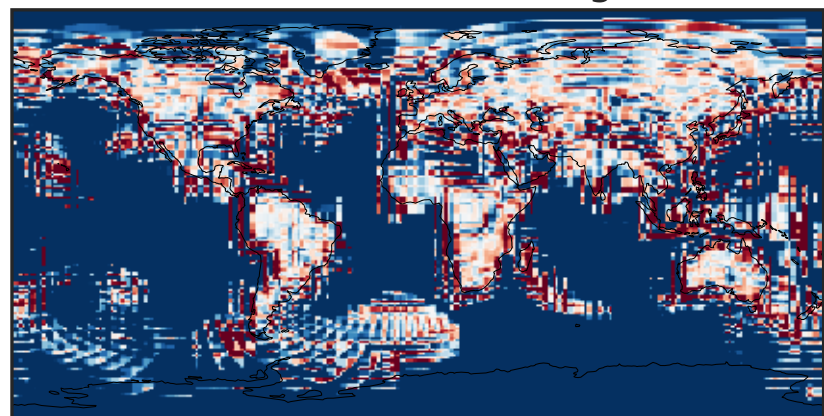
-0.0004 0.0000 0.0004
ppb

Ratio (1x1.25)
Dev/Ref, Dynamic Range



1e-02 1e-01 1 10 100
unitless

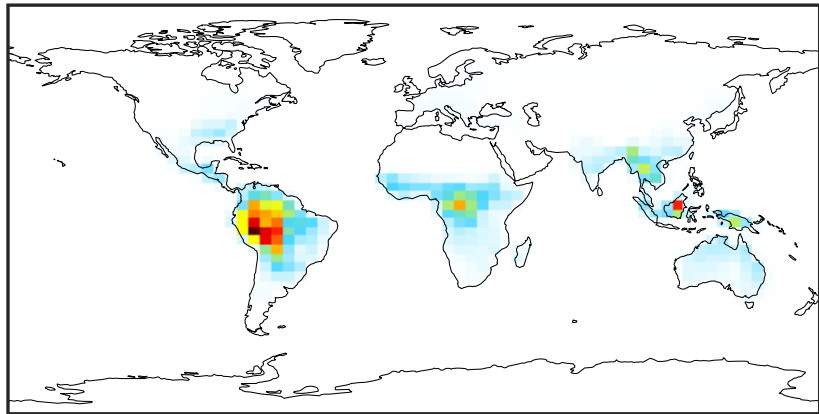
Ratio (1x1.25)
Dev/Ref, Fixed Range



0.50 0.75 1.00 1.50 2.00
unitless

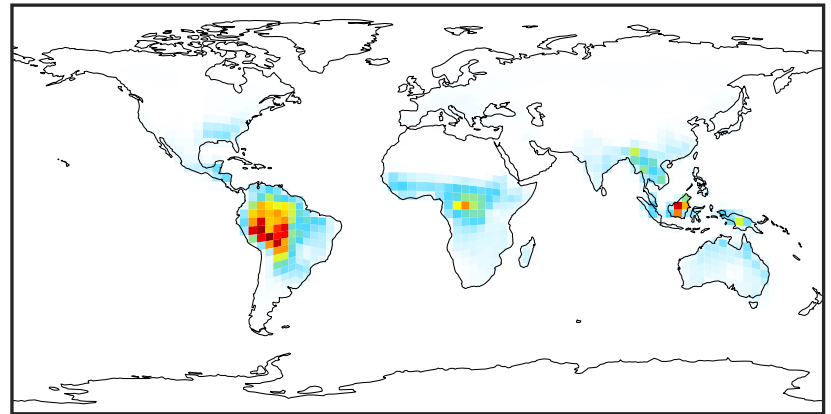
SpeciesConcVV_MACR (Oct2019)

GCC_14.2.0 (Ref)
4.0x5.0



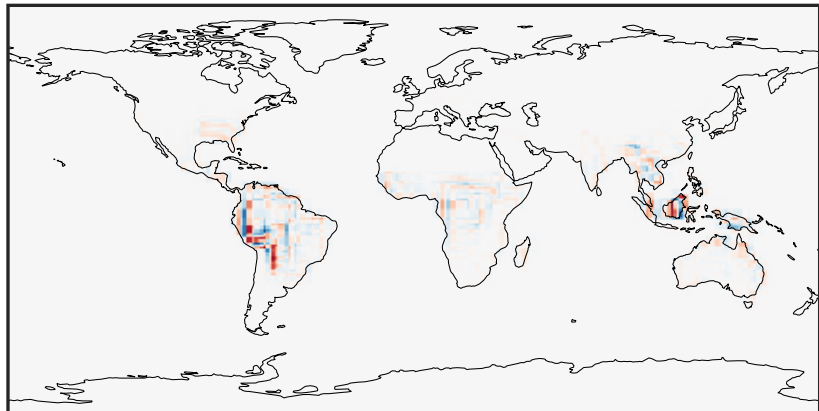
0.000 0.338 0.677 1.015 1.353
ppb

GCHP_14.2.0 (Dev)
c24



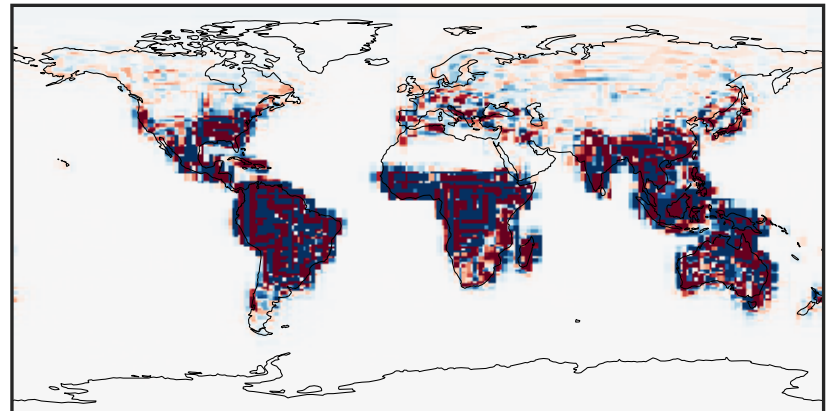
0.000 0.338 0.677 1.015 1.353
ppb

Difference (1x1.25)
Dev - Ref, Dynamic Range



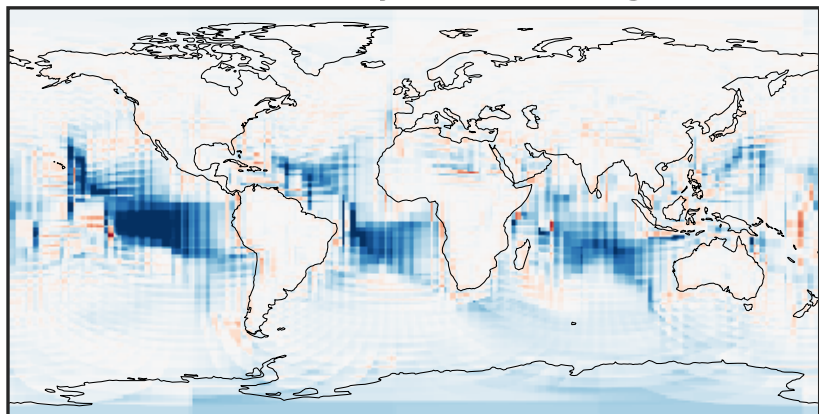
-0.517 -0.258 0.000 0.258 0.517
ppb

Difference (1x1.25)
Dev - Ref, Restricted Range [5%,95%]



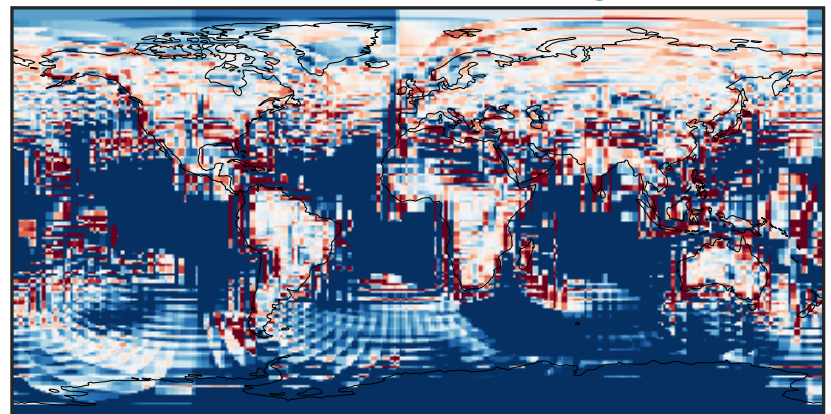
-0.0025 0.0000 0.0025
ppb

Ratio (1x1.25)
Dev/Ref, Dynamic Range



unitless

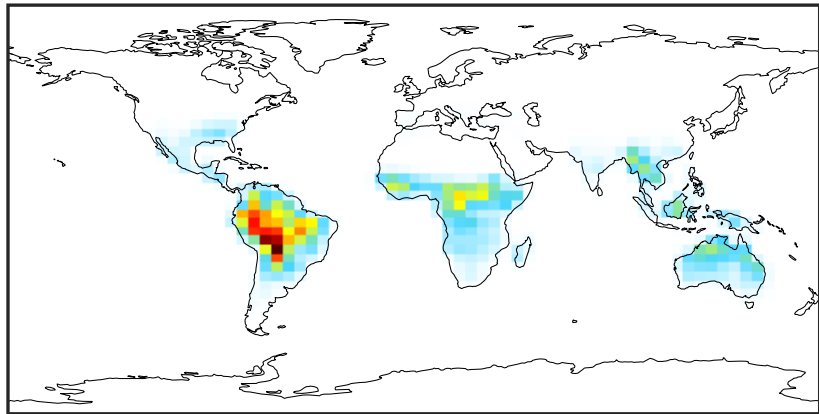
Ratio (1x1.25)
Dev/Ref, Fixed Range



0.50 0.75 1.00 1.50 2.00
unitless

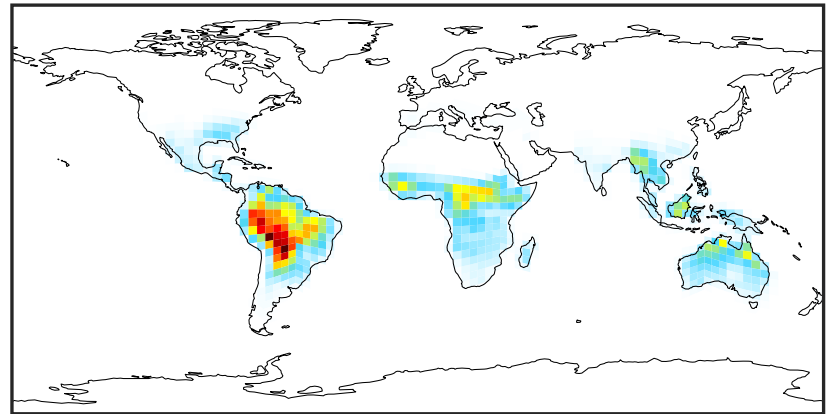
SpeciesConcVV_IEPOX (Oct2019)

GCC_14.2.0 (Ref)
4.0x5.0



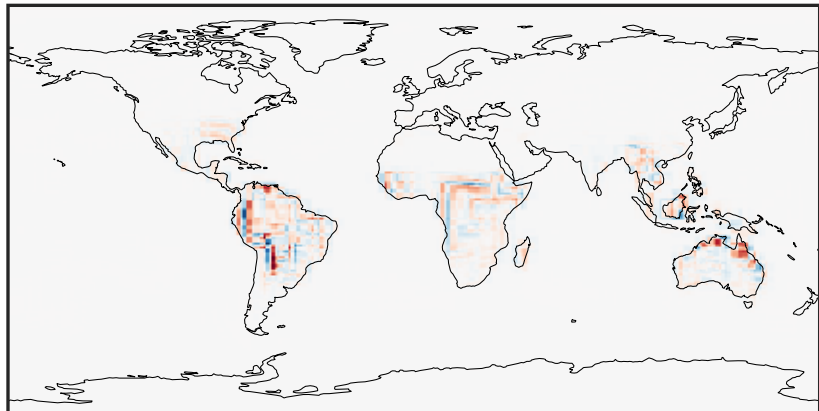
0.000 0.278 0.556 0.834 1.112
ppb

GCHP_14.2.0 (Dev)
c24



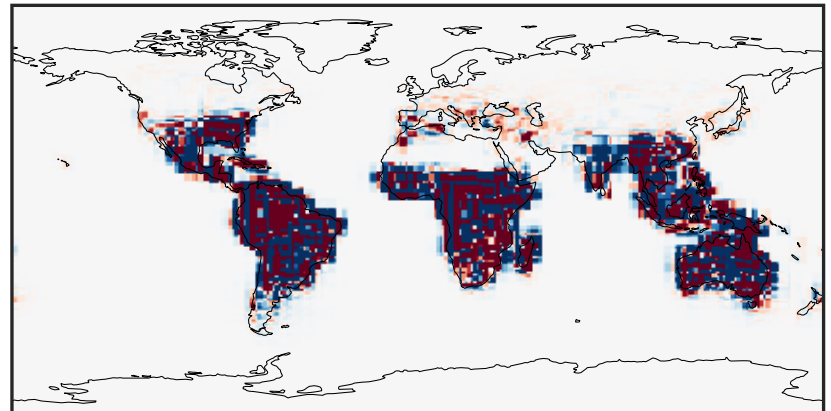
0.000 0.278 0.556 0.834 1.112
ppb

Difference (1x1.25)
Dev - Ref, Dynamic Range



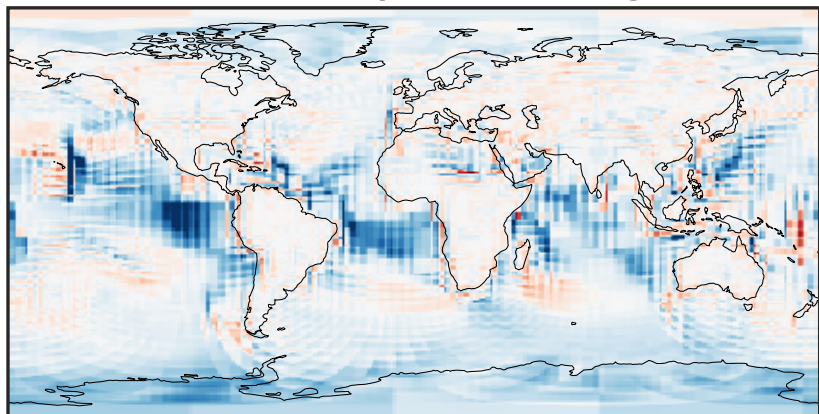
-0.3964 -0.1982 0.0000 0.1982 0.3964
ppb

Difference (1x1.25)
Dev - Ref, Restricted Range [5%,95%]



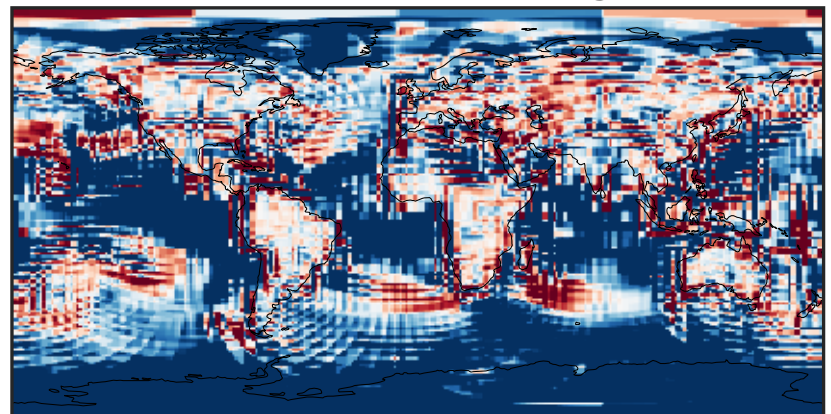
-0.003 0.000 0.003
ppb

Ratio (1x1.25)
Dev/Ref, Dynamic Range



1e-02 1e-01 1 10 100
unitless

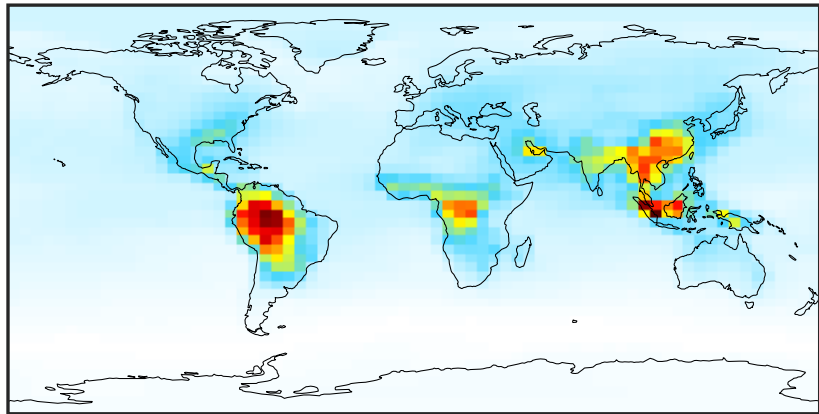
Ratio (1x1.25)
Dev/Ref, Fixed Range



0.50 0.75 1.00 1.50 2.00
unitless

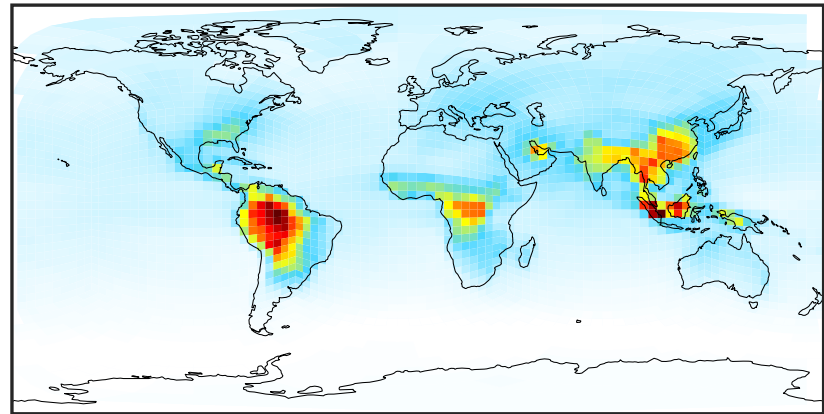
SpeciesConcVV_ACET (Oct2019)

GCC_14.2.0 (Ref)
4.0x5.0



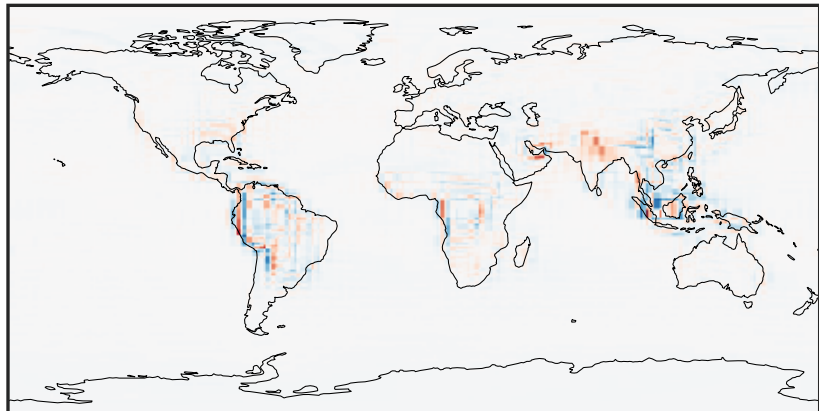
0.133 1.602 3.205 4.807 6.542
ppb

GCHP_14.2.0 (Dev)
c24



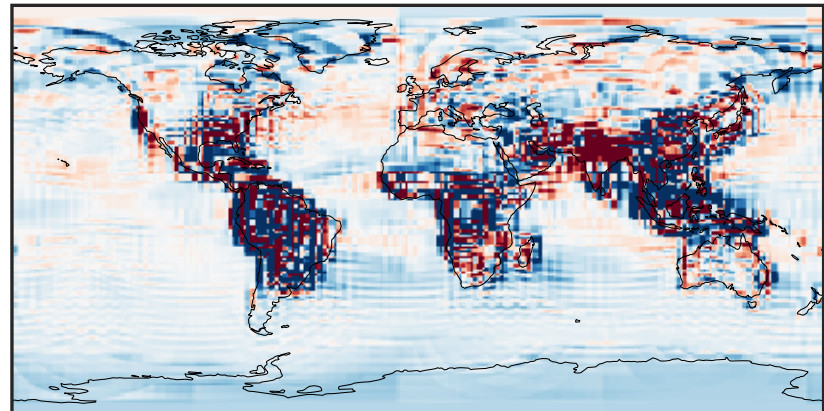
0.133 1.602 3.205 4.807 6.542
ppb

Difference (1x1.25)
Dev - Ref, Dynamic Range



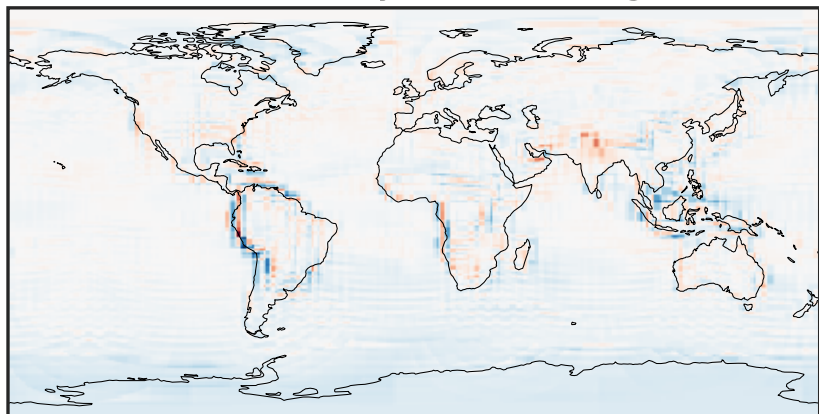
-2.353 -1.177 0.000 1.177 2.353
ppb

Difference (1x1.25)
Dev - Ref, Restricted Range [5%,95%]



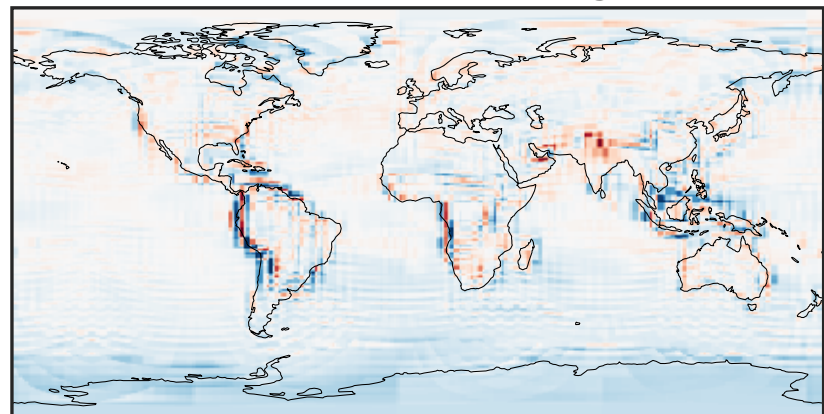
-0.1181 -0.0591 0.0000 0.0591 0.1181
ppb

Ratio (1x1.25)
Dev/Ref, Dynamic Range



0.300 0.650 1.000 2.164 3.329
unitless

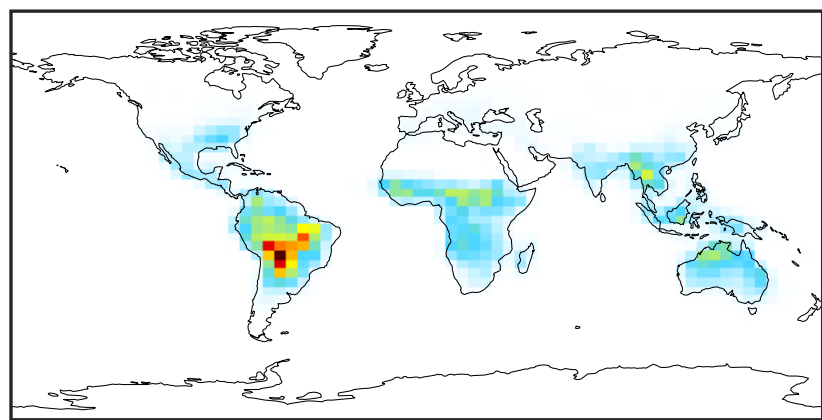
Ratio (1x1.25)
Dev/Ref, Fixed Range



0.50 0.75 1.00 1.50 2.00
unitless

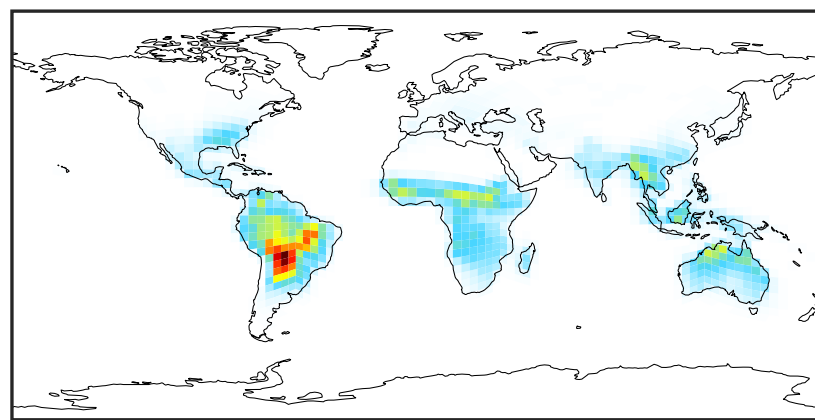
SpeciesConcVV_HAC (Oct2019)

GCC_14.2.0 (Ref)
4.0x5.0



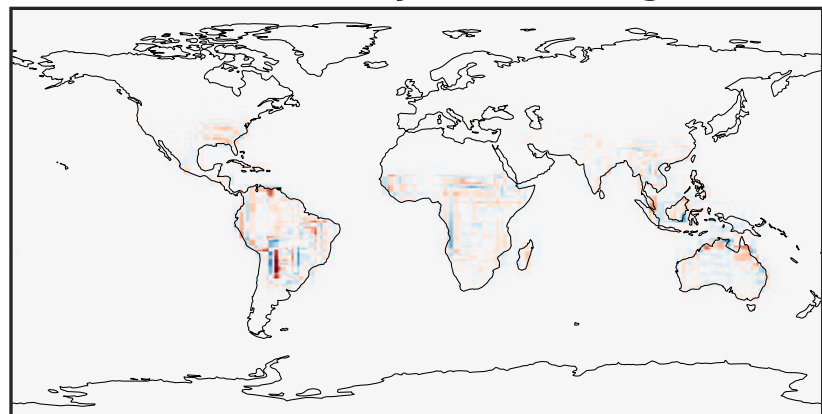
0.00 0.26 0.52 0.78 1.04
ppb

GCHP_14.2.0 (Dev)
c24



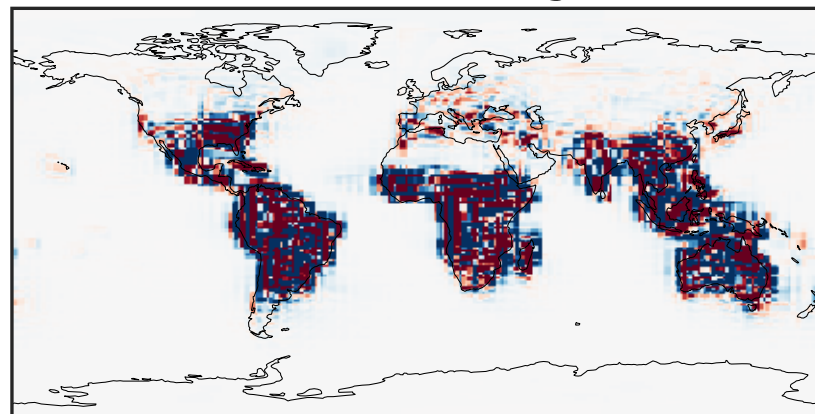
0.00 0.26 0.52 0.78 1.04
ppb

Difference (1x1.25)
Dev - Ref, Dynamic Range



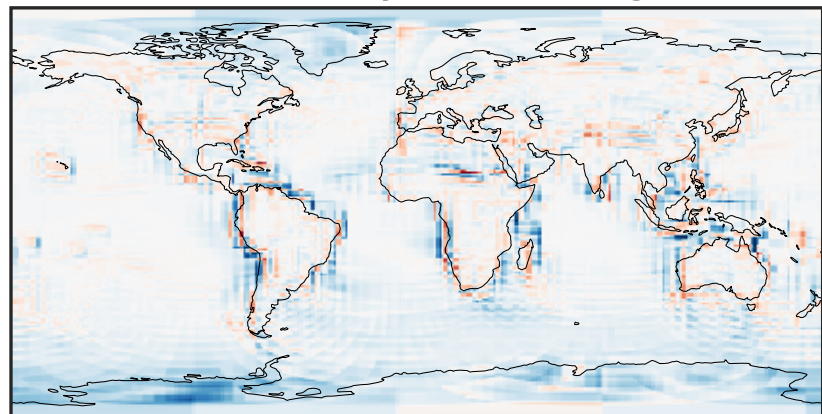
-0.3754 -0.1877 0.0000 0.1877 0.3754
ppb

Difference (1x1.25)
Dev - Ref, Restricted Range [5%,95%]



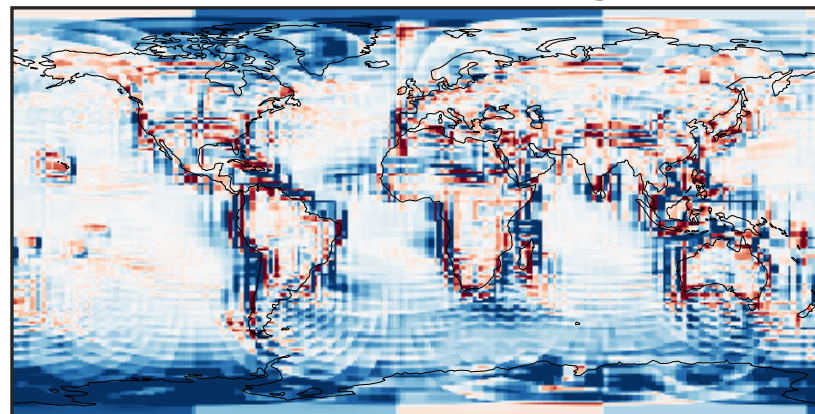
-0.005 0.000 0.005
ppb

Ratio (1x1.25)
Dev/Ref, Dynamic Range



1e-01 1 10
unitless

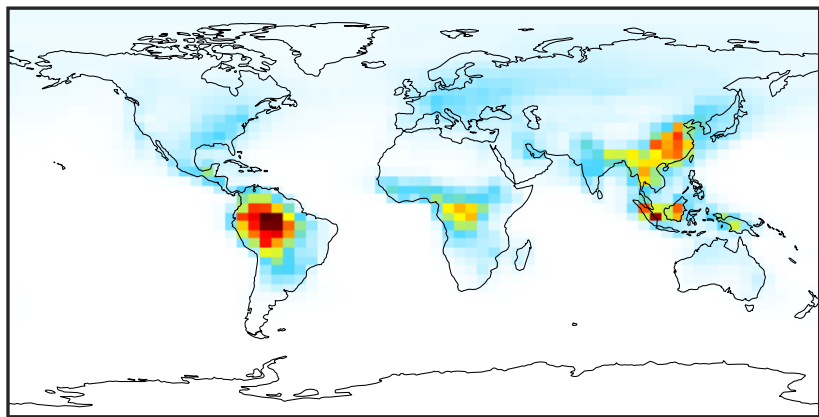
Ratio (1x1.25)
Dev/Ref, Fixed Range



0.50 0.75 1.00 1.50 2.00
unitless

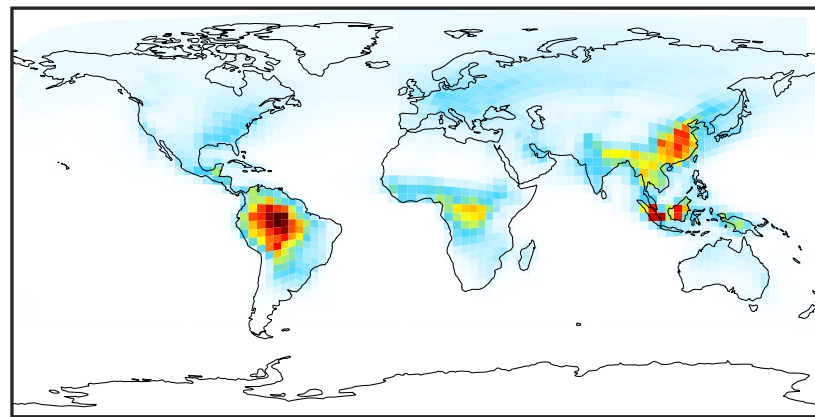
SpeciesConcVV_MEK (Oct2019)

GCC_14.2.0 (Ref)
4.0x5.0



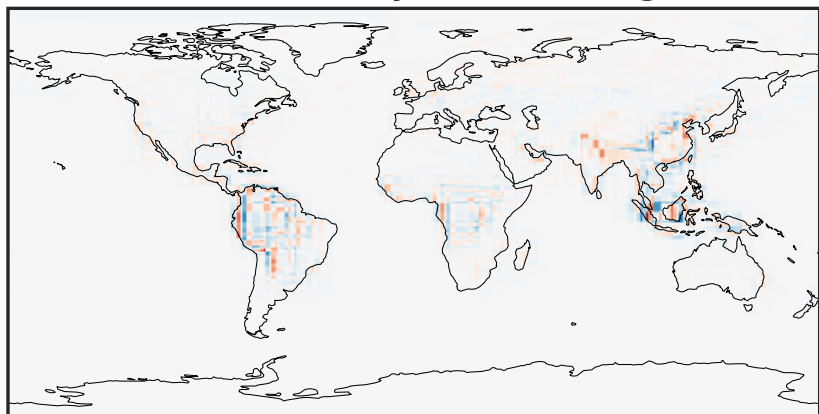
0.000 0.501 1.002 1.502 2.003
ppb

GCHP_14.2.0 (Dev)
c24



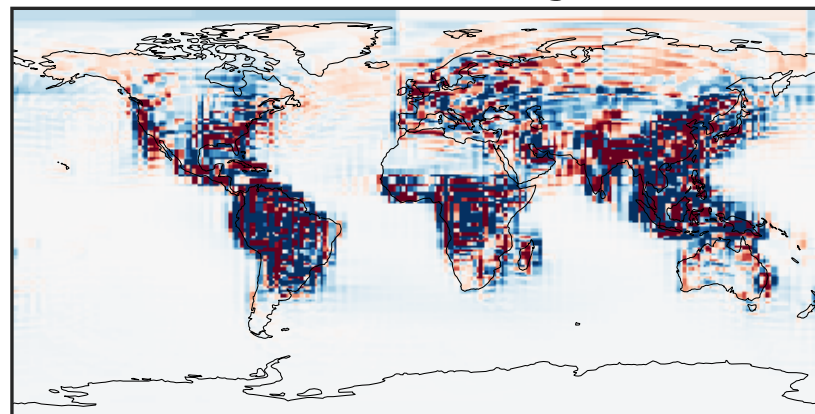
0.000 0.501 1.002 1.502 2.003
ppb

Difference (1x1.25)
Dev - Ref, Dynamic Range



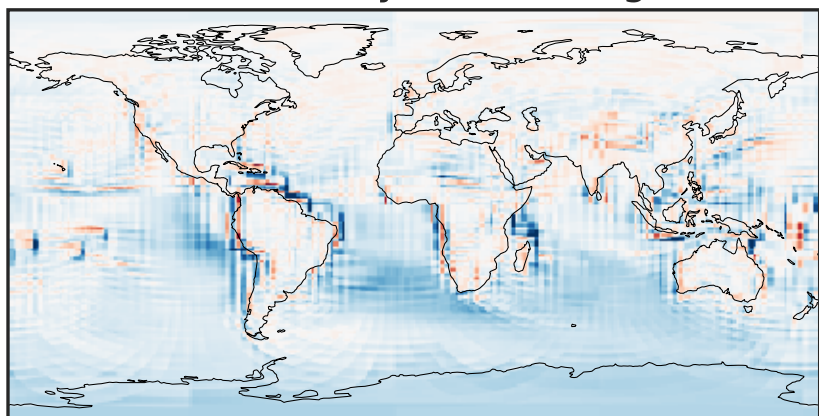
-0.795 -0.397 0.000 0.397 0.795
ppb

Difference (1x1.25)
Dev - Ref, Restricted Range [5%,95%]



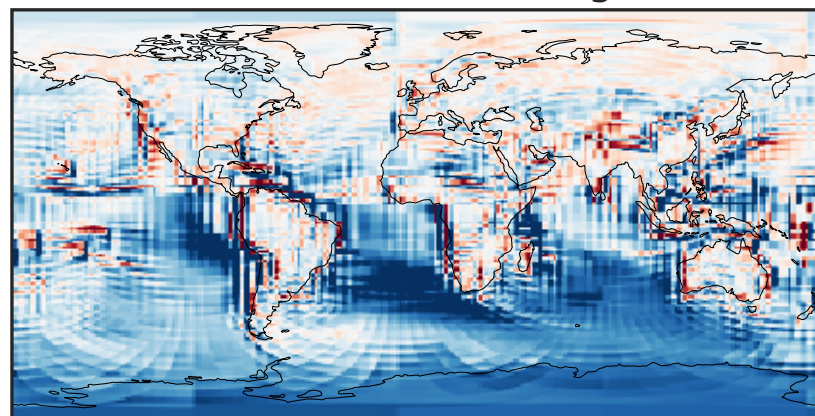
-0.02 0.00 0.02
ppb

Ratio (1x1.25)
Dev/Ref, Dynamic Range



0.145 0.573 1.000 3.941 6.882
unitless

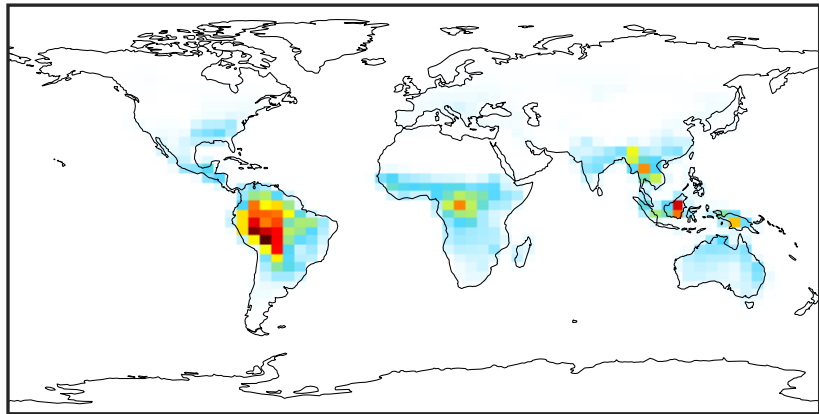
Ratio (1x1.25)
Dev/Ref, Fixed Range



0.50 0.75 1.00 1.50 2.00
unitless

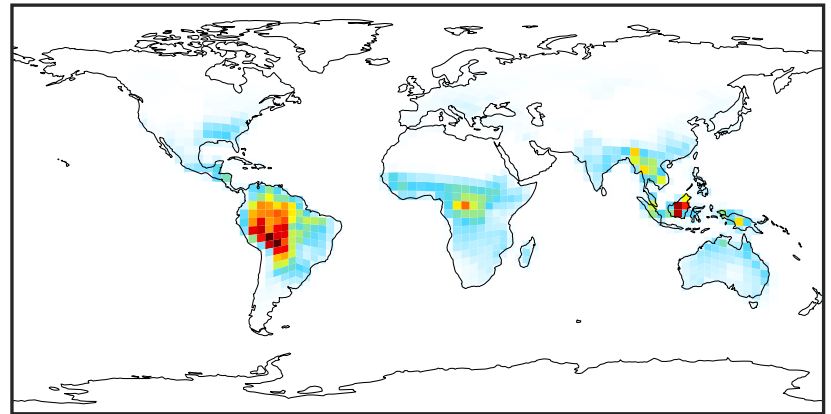
SpeciesConcVW_MVK (Oct2019)

GCC_14.2.0 (Ref)
4.0x5.0



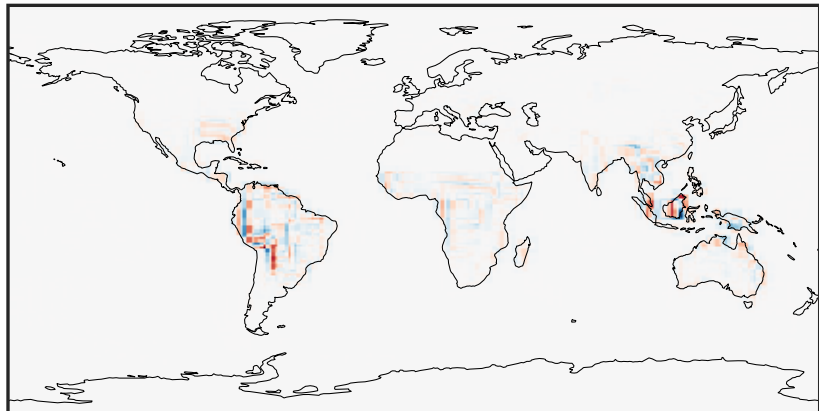
0.000 0.493 0.986 1.479 1.973
ppb

GCHP_14.2.0 (Dev)
c24



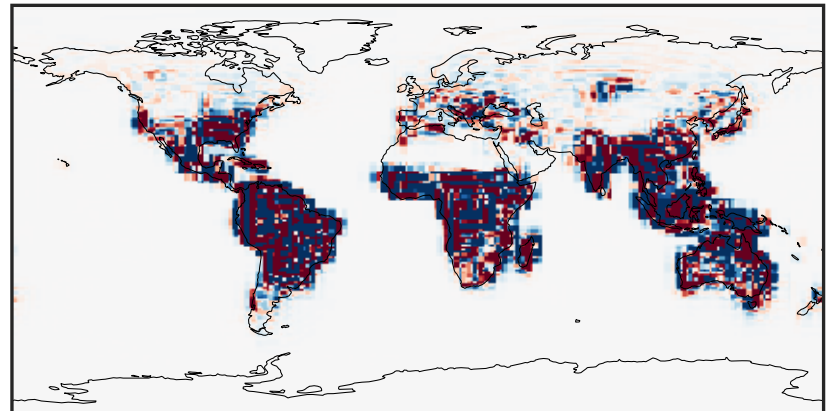
0.000 0.493 0.986 1.479 1.973
ppb

Difference (1x1.25)
Dev - Ref, Dynamic Range



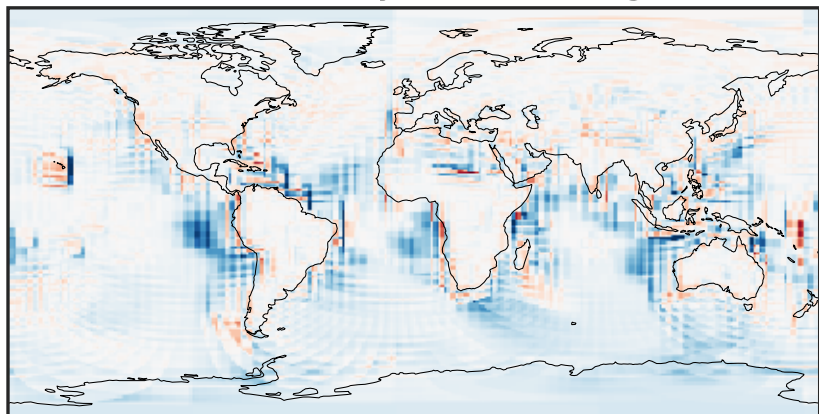
-0.946 -0.473 0.000 0.473 0.946
ppb

Difference (1x1.25)
Dev - Ref, Restricted Range [5%,95%]



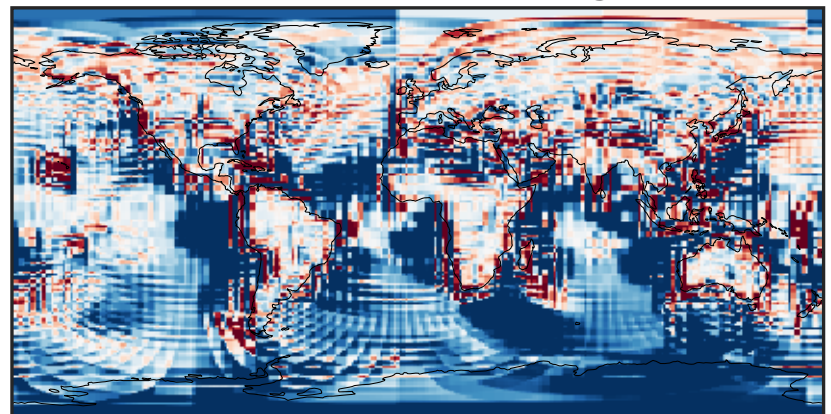
-0.008 0.000 0.008
ppb

Ratio (1x1.25)
Dev/Ref, Dynamic Range



1e-02 1e-01 1 10 100
unitless

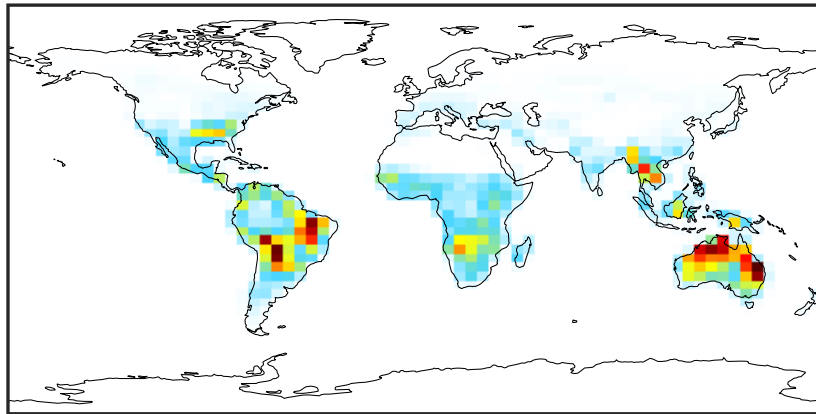
Ratio (1x1.25)
Dev/Ref, Fixed Range



0.50 0.75 1.00 1.50 2.00
unitless

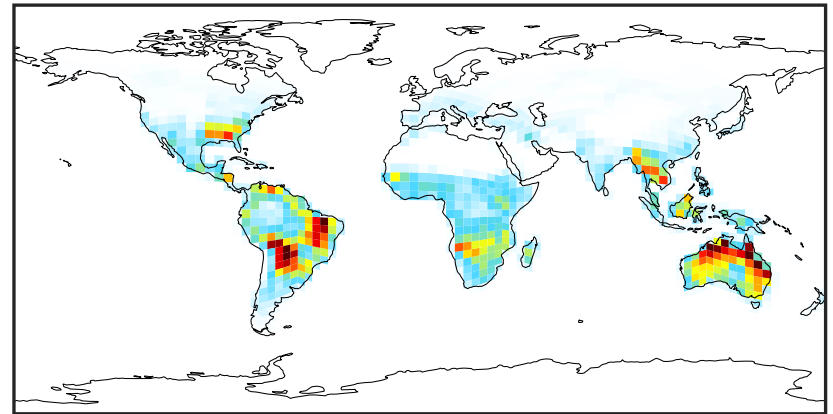
SpeciesConcVV_ISOPN (Oct2019)

GCC_14.2.0 (Ref)
4.0x5.0



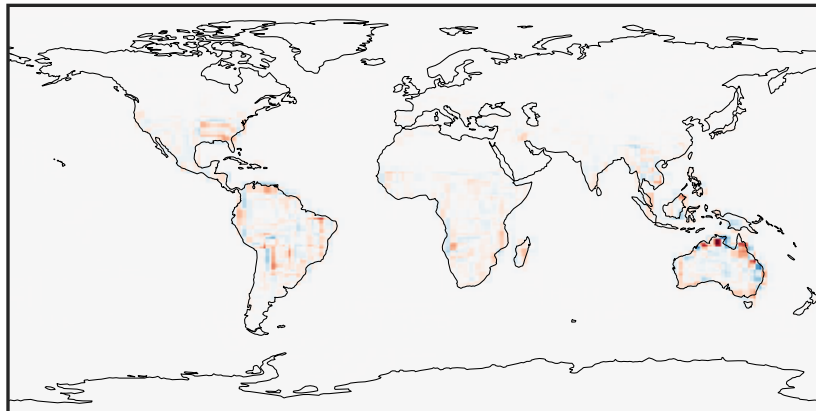
0.000 0.008 0.016 0.024
ppb

GCHP_14.2.0 (Dev)
c24



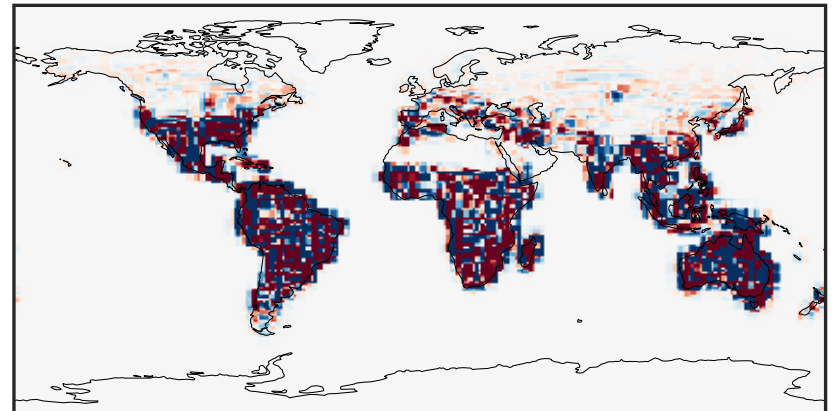
0.000 0.008 0.016 0.024
ppb

Difference (1x1.25)
Dev - Ref, Dynamic Range



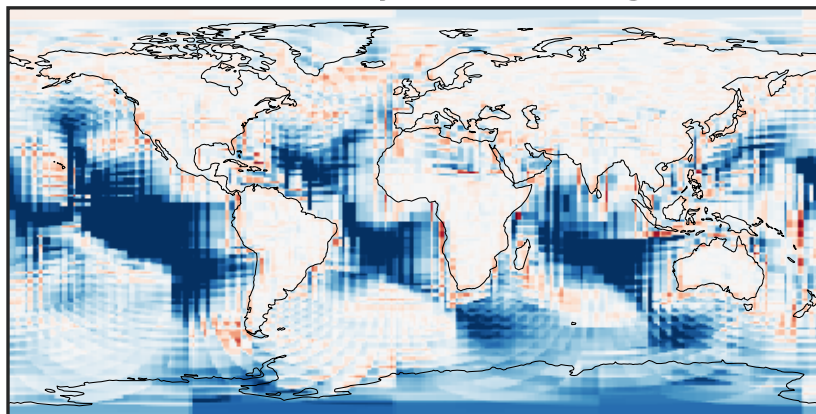
-0.015 0.000 0.015
ppb

Difference (1x1.25)
Dev - Ref, Restricted Range [5%,95%]



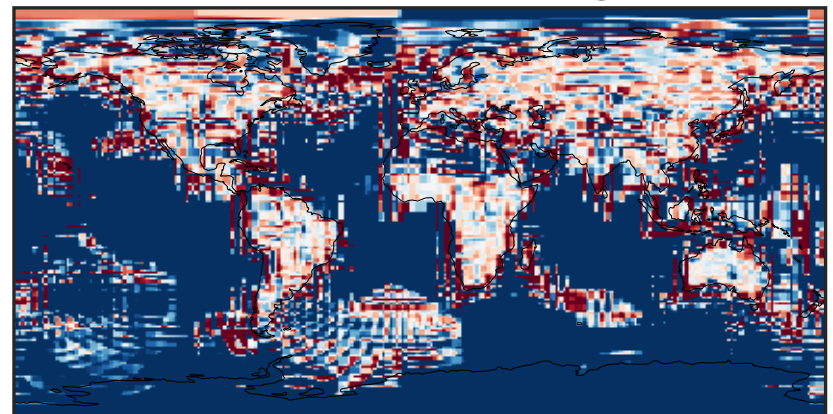
-0.0003 0.0000 0.0003
ppb

Ratio (1x1.25)
Dev/Ref, Dynamic Range



1e-02 1e-01 1 10 100
unitless

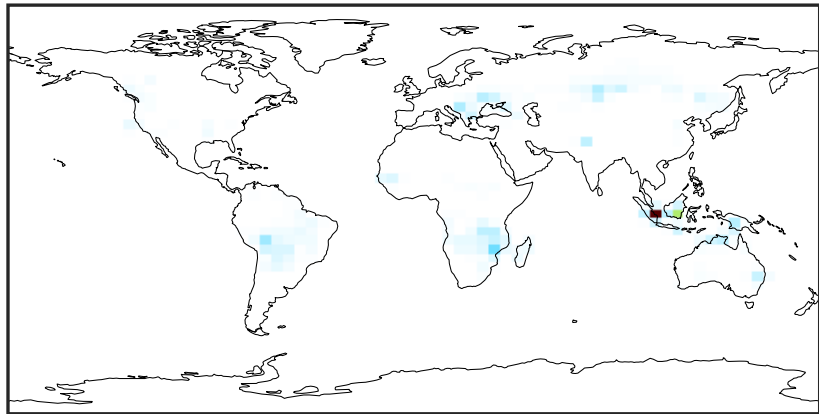
Ratio (1x1.25)
Dev/Ref, Fixed Range



0.50 0.75 1.00 1.50 2.00
unitless

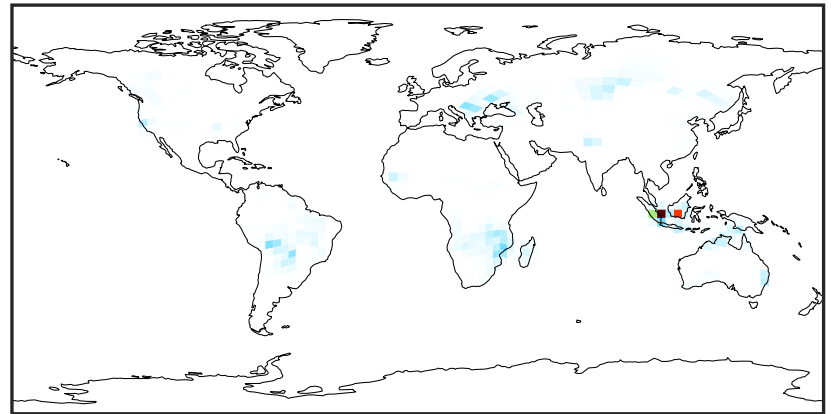
SpeciesConcVV_FURA (Oct2019)

GCC_14.2.0 (Ref)
4.0x5.0



0.000 0.284 0.567 0.851 1.134
ppb

GCHP_14.2.0 (Dev)
c24



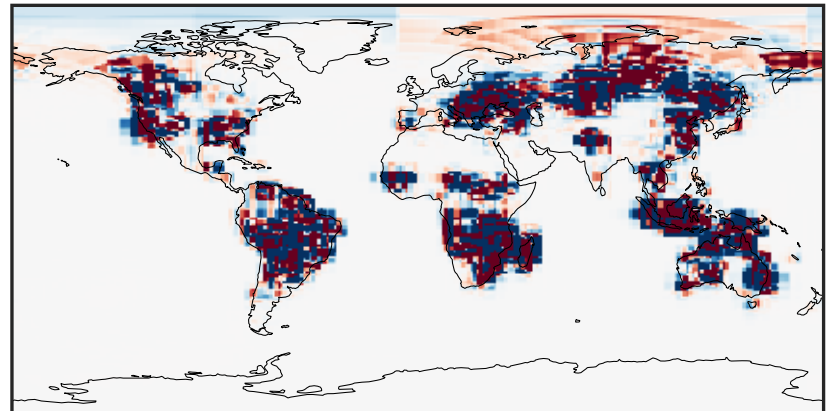
0.000 0.284 0.567 0.851 1.134
ppb

Difference (1x1.25)
Dev - Ref, Dynamic Range



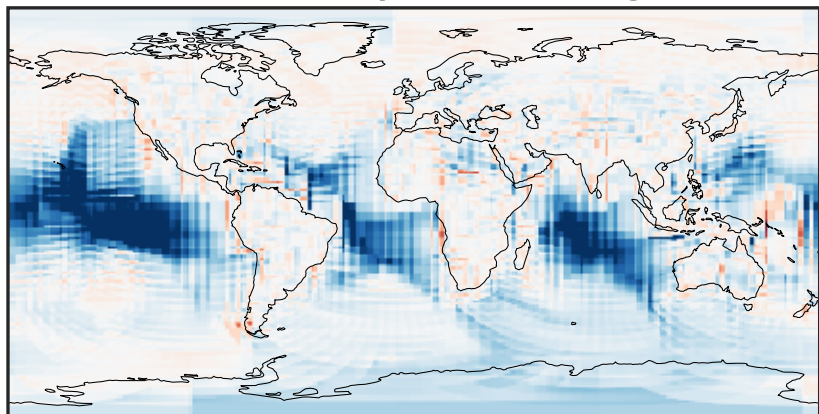
-0.604 -0.302 0.000 0.302 0.604
ppb

Difference (1x1.25)
Dev - Ref, Restricted Range [5%,95%]



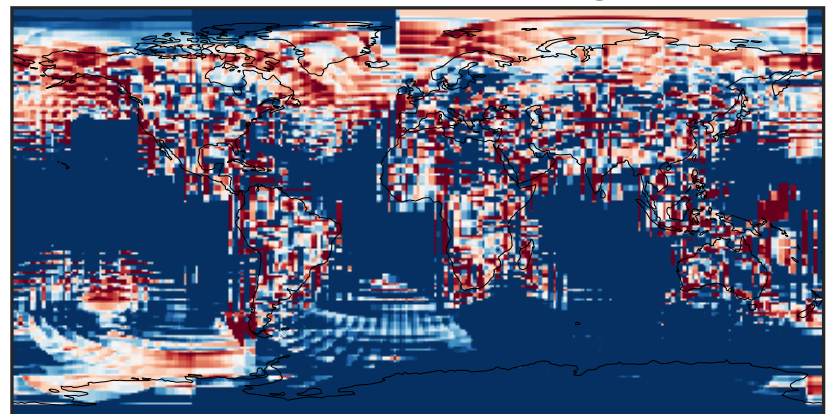
-0.0006 0.0000 0.0006
ppb

Ratio (1x1.25)
Dev/Ref, Dynamic Range



unitless

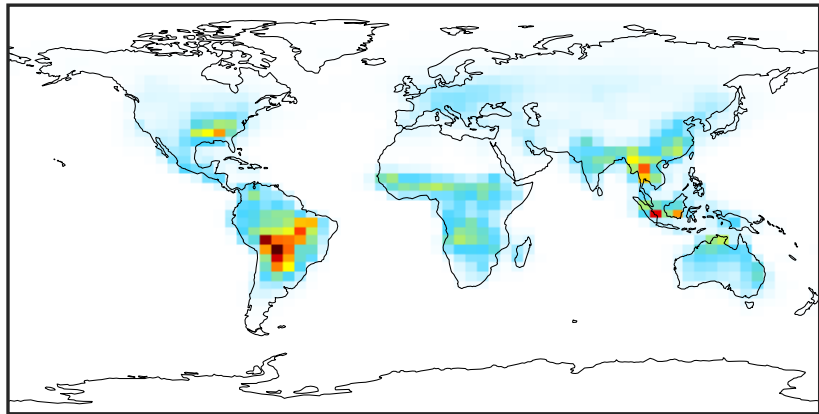
Ratio (1x1.25)
Dev/Ref, Fixed Range



0.50 0.75 1.00 1.50 2.00
unitless

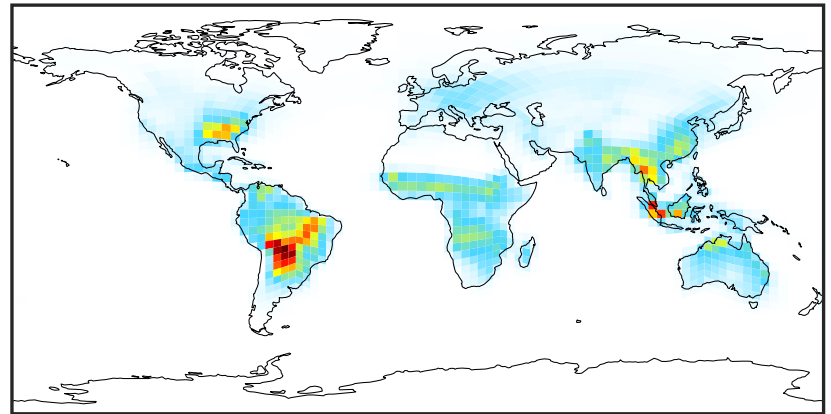
SpeciesConcVV_GLYC (Oct2019)

GCC_14.2.0 (Ref)
4.0x5.0



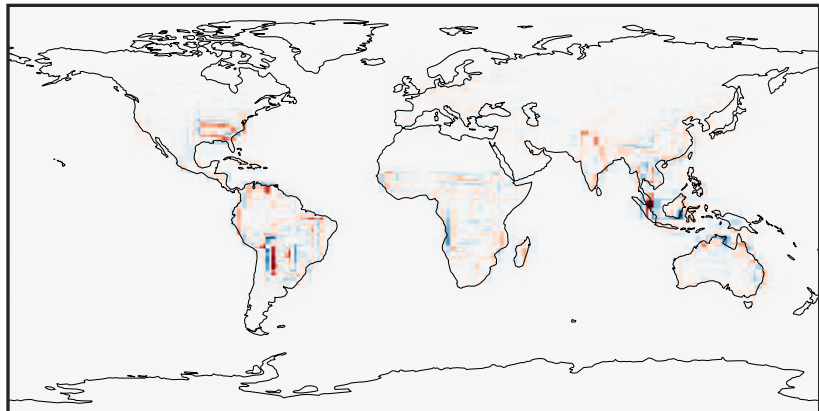
0.0000 0.2315 0.4629 0.6944 0.9258
ppb

GCHP_14.2.0 (Dev)
c24



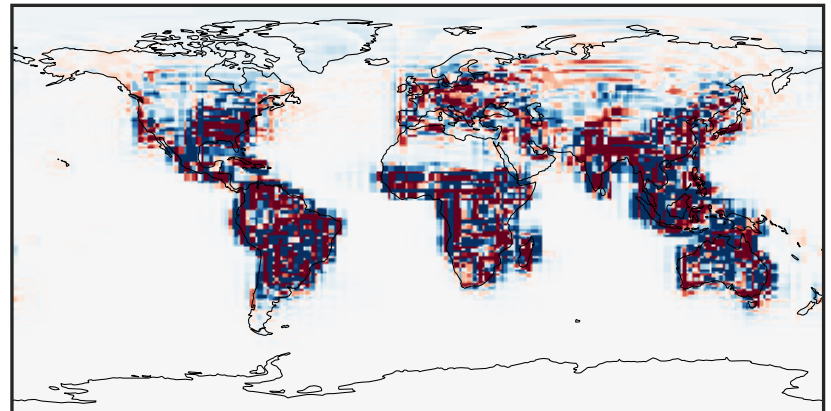
0.0000 0.2315 0.4629 0.6944 0.9258
ppb

Difference (1x1.25)
Dev - Ref, Dynamic Range



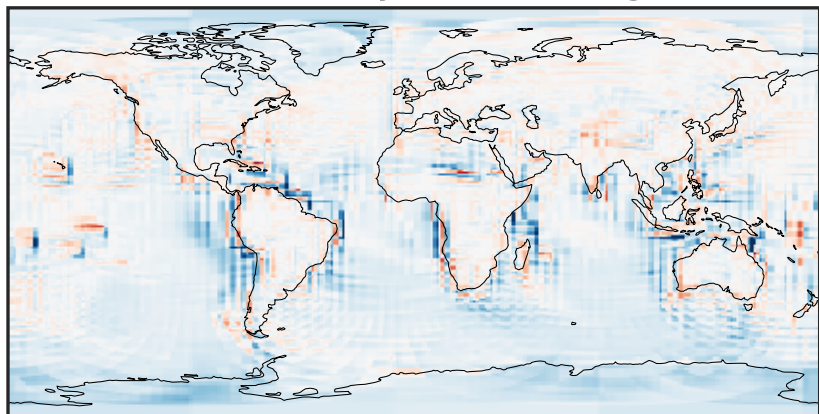
-0.3425 -0.1713 0.0000 0.1713 0.3425
ppb

Difference (1x1.25)
Dev - Ref, Restricted Range [5%,95%]



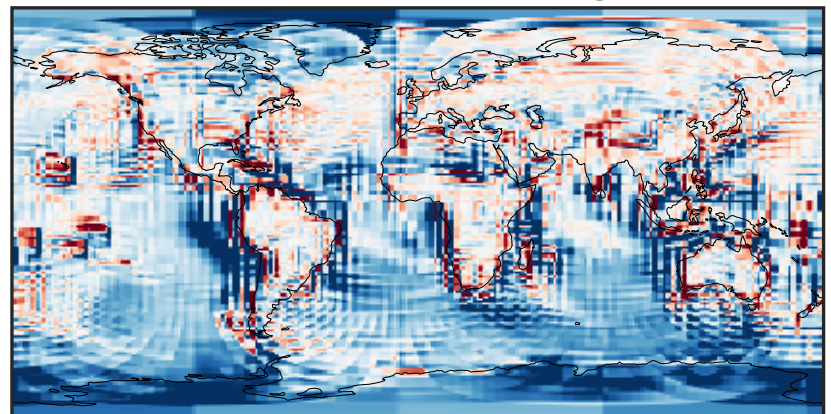
-0.008 0.000 0.008
ppb

Ratio (1x1.25)
Dev/Ref, Dynamic Range



1e-01 1 10
unitless

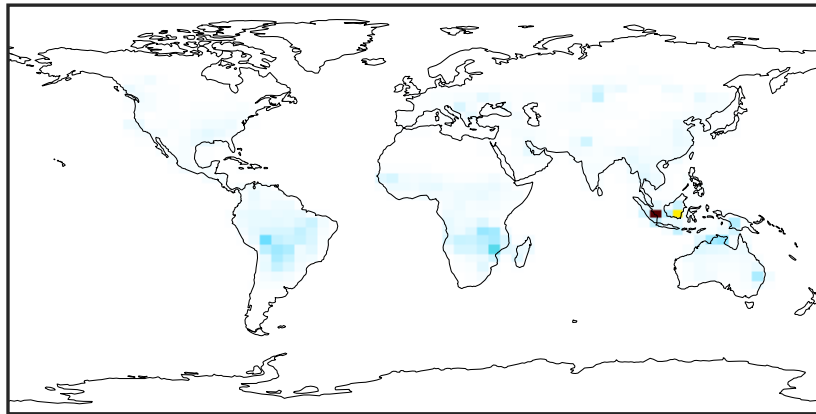
Ratio (1x1.25)
Dev/Ref, Fixed Range



0.50 0.75 1.00 1.50 2.00
unitless

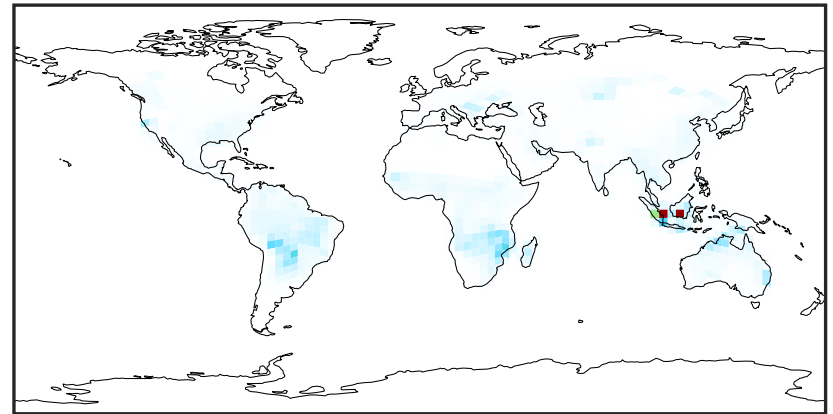
SpeciesConcVV_GLYX (Oct2019)

GCC_14.2.0 (Ref)
4.0x5.0



0.0000 0.1680 0.3361 0.5041 0.6722
ppb

GCHP_14.2.0 (Dev)
c24



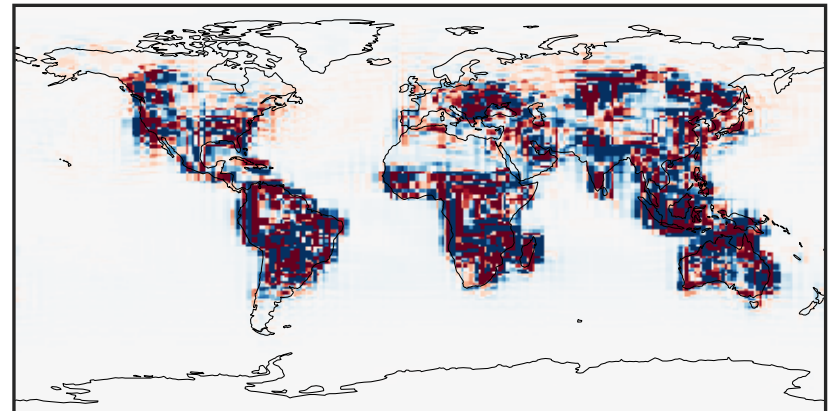
0.0000 0.1680 0.3361 0.5041 0.6722
ppb

Difference (1x1.25)
Dev - Ref, Dynamic Range



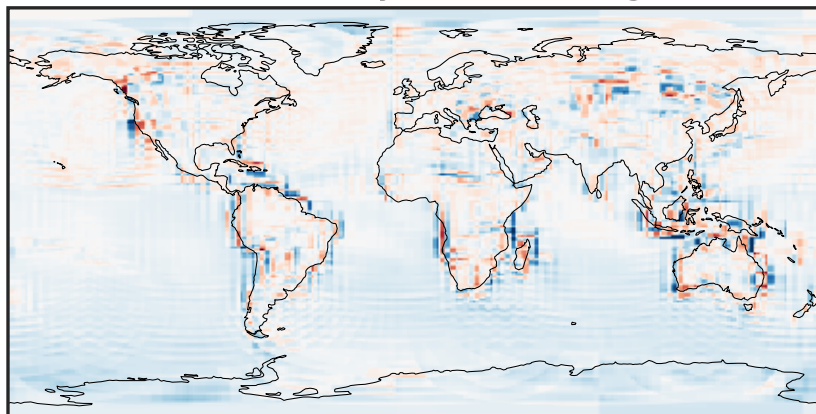
-0.3990 -0.1995 0.0000 0.1995 0.3990
ppb

Difference (1x1.25)
Dev - Ref, Restricted Range [5%,95%]



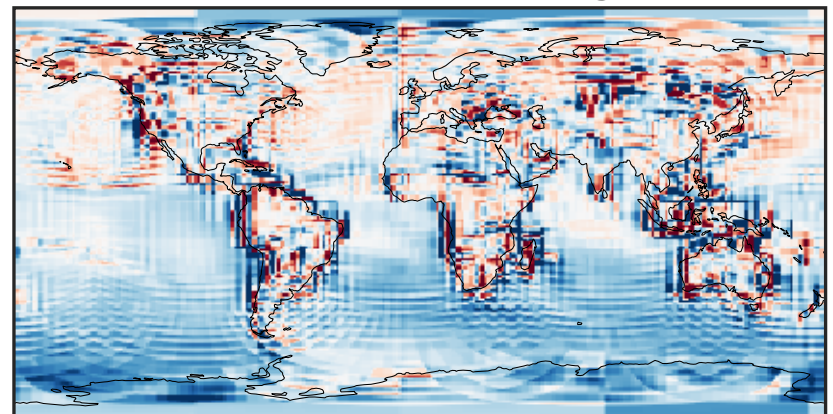
-0.0008 0.0000 0.0008
ppb

Ratio (1x1.25)
Dev/Ref, Dynamic Range



0.109 0.555 1.000 5.085 9.169
unitless

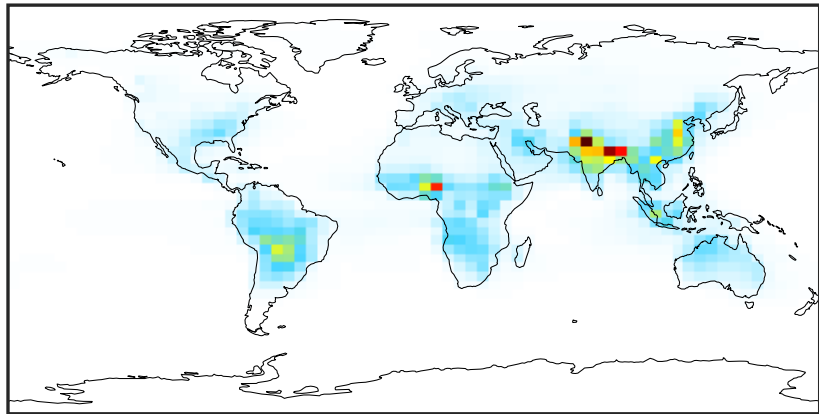
Ratio (1x1.25)
Dev/Ref, Fixed Range



0.50 0.75 1.00 1.50 2.00
unitless

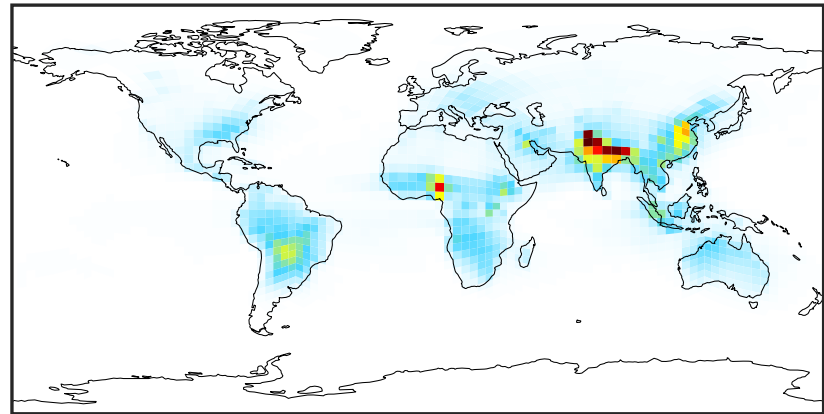
SpeciesConcVV_HCOOH (Oct2019)

GCC_14.2.0 (Ref)
4.0x5.0



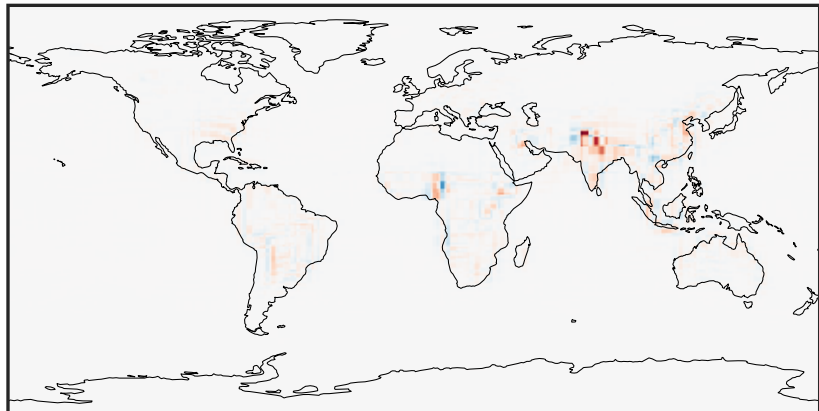
0.001 0.782 1.564 2.345 3.128
ppb

GCHP_14.2.0 (Dev)
c24



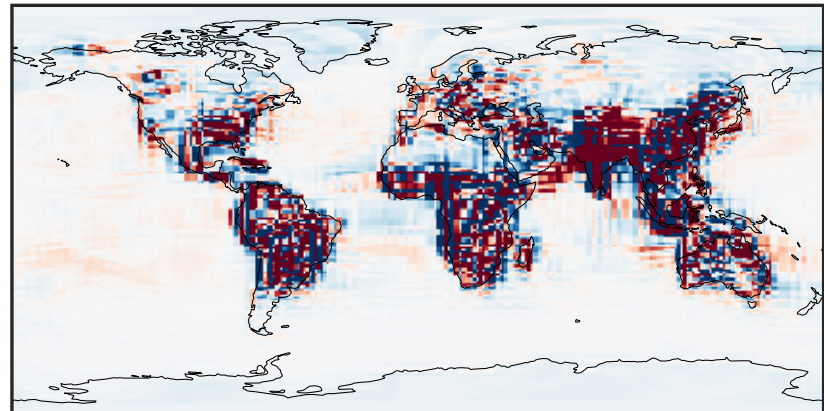
0.001 0.782 1.564 2.345 3.128
ppb

Difference (1x1.25)
Dev - Ref, Dynamic Range



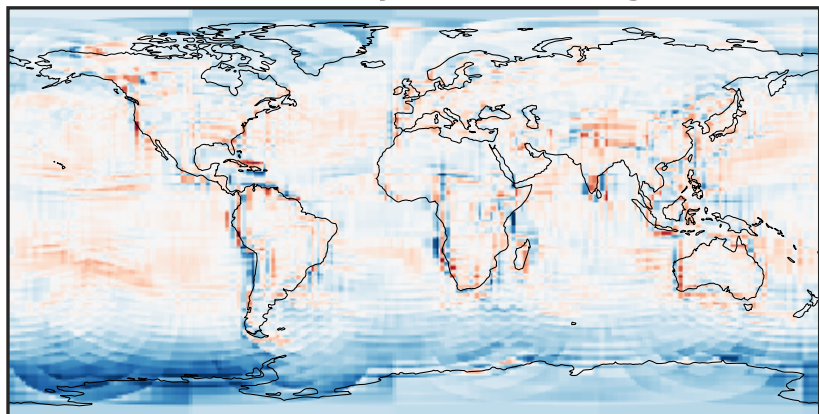
-2.025 -1.013 0.000 1.013 2.025
ppb

Difference (1x1.25)
Dev - Ref, Restricted Range [5%,95%]



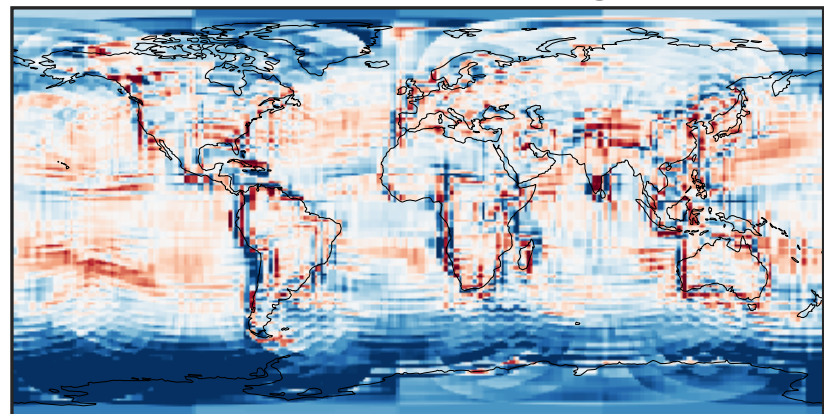
-0.02 0.00 0.02
ppb

Ratio (1x1.25)
Dev/Ref, Dynamic Range



0.206 0.603 1.000 2.928 4.855
unitless

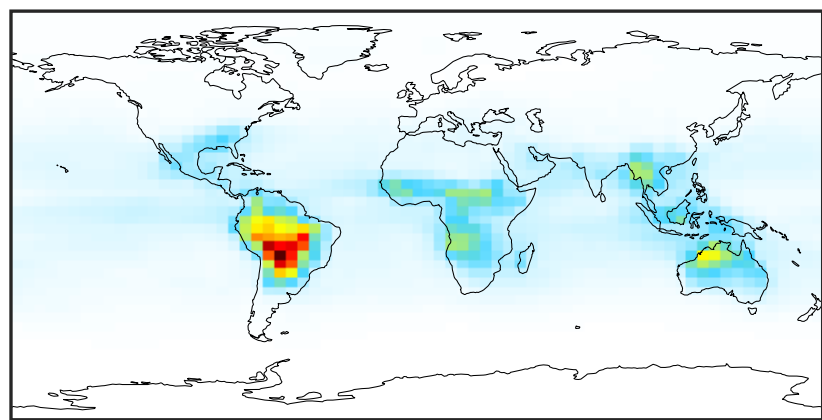
Ratio (1x1.25)
Dev/Ref, Fixed Range



0.50 0.75 1.00 1.50 2.00
unitless

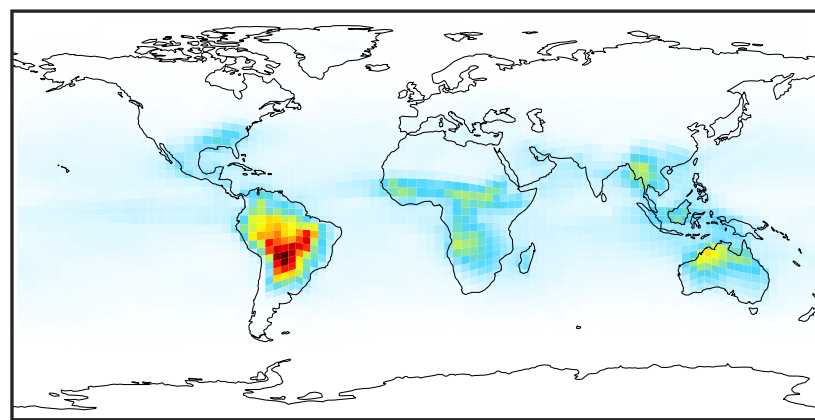
SpeciesConcVV_MAP (Oct2019)

GCC_14.2.0 (Ref)
4.0x5.0



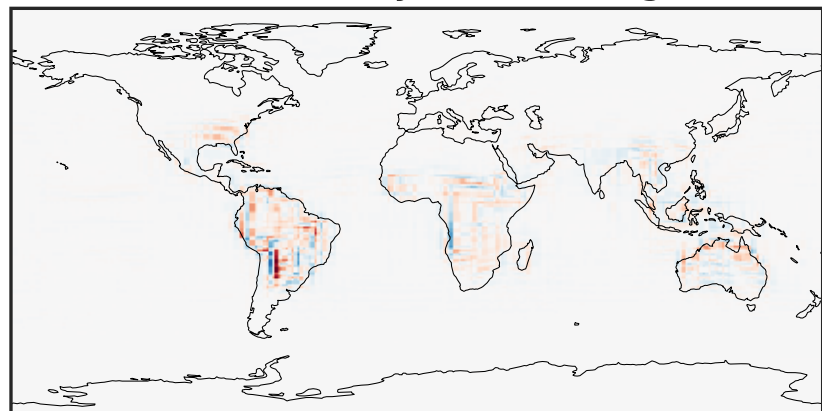
0.001 0.261 0.521 0.782 1.043
ppb

GCHP_14.2.0 (Dev)
c24



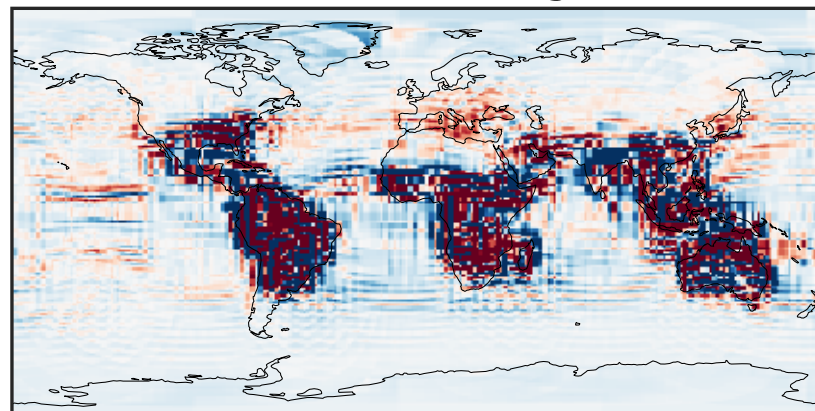
0.001 0.261 0.521 0.782 1.043
ppb

Difference (1x1.25)
Dev - Ref, Dynamic Range



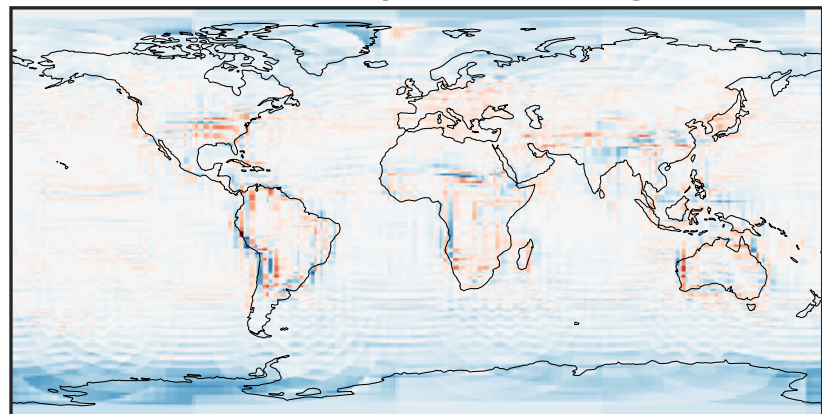
-0.3369 -0.1684 0.0000 0.1684 0.3369
ppb

Difference (1x1.25)
Dev - Ref, Restricted Range [5%,95%]



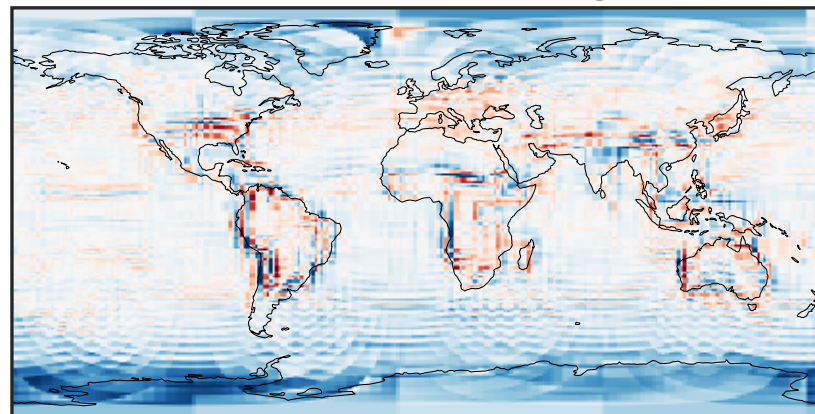
-0.005 0.000 0.005
ppb

Ratio (1x1.25)
Dev/Ref, Dynamic Range



0.290 0.645 1.000 2.222 3.445
unitless

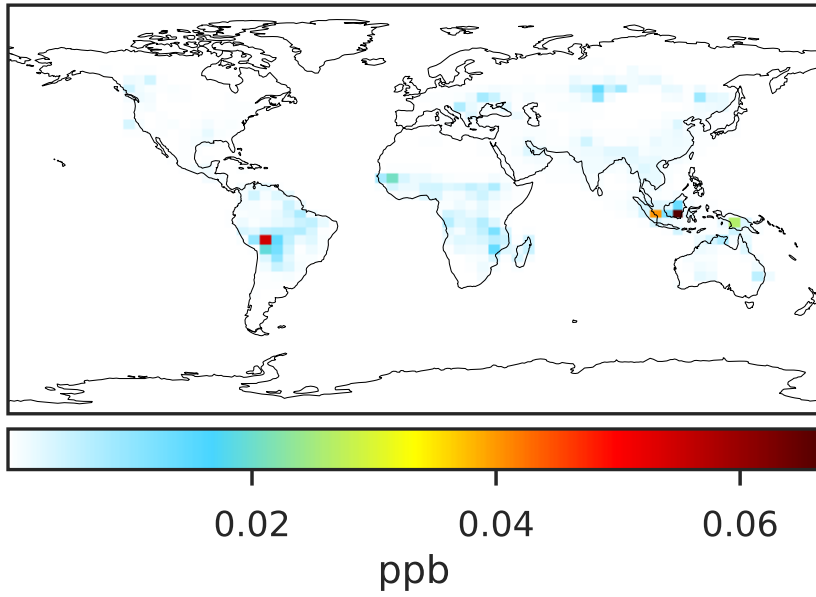
Ratio (1x1.25)
Dev/Ref, Fixed Range



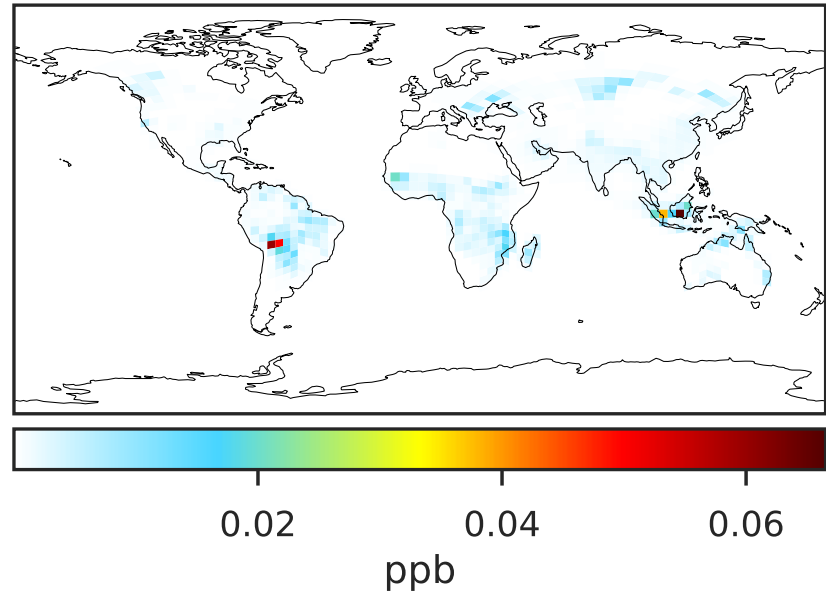
0.50 0.75 1.00 1.50 2.00
unitless

SpeciesConcVV_PHEN (Oct2019)

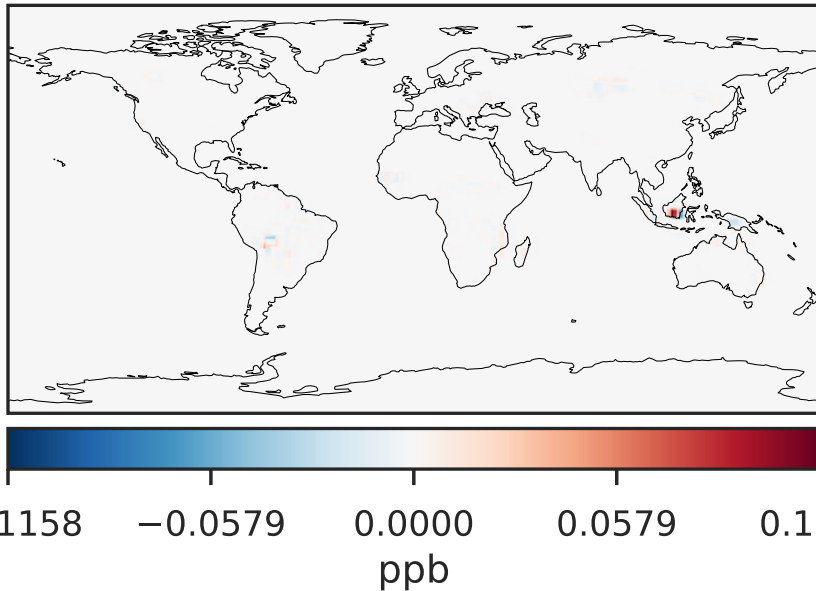
GCC_14.2.0 (Ref)
4.0x5.0



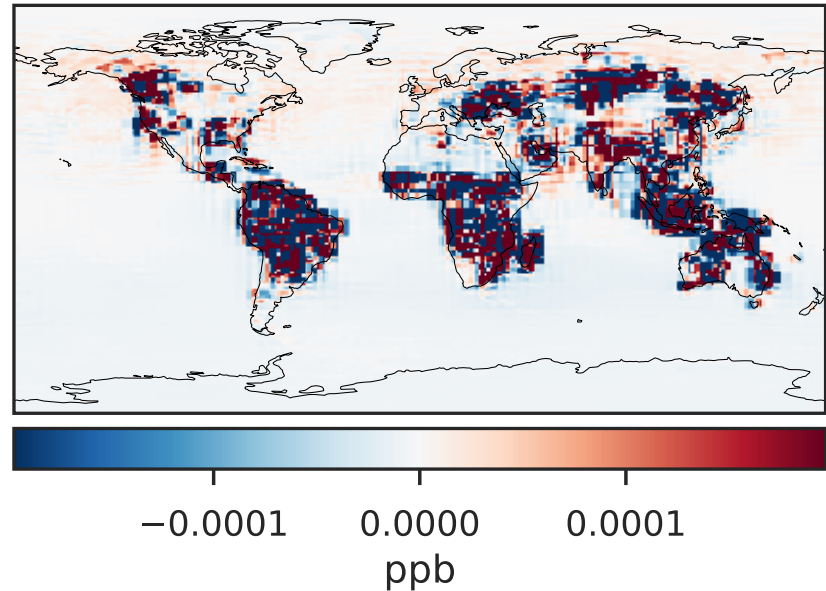
GCHP_14.2.0 (Dev)
c24



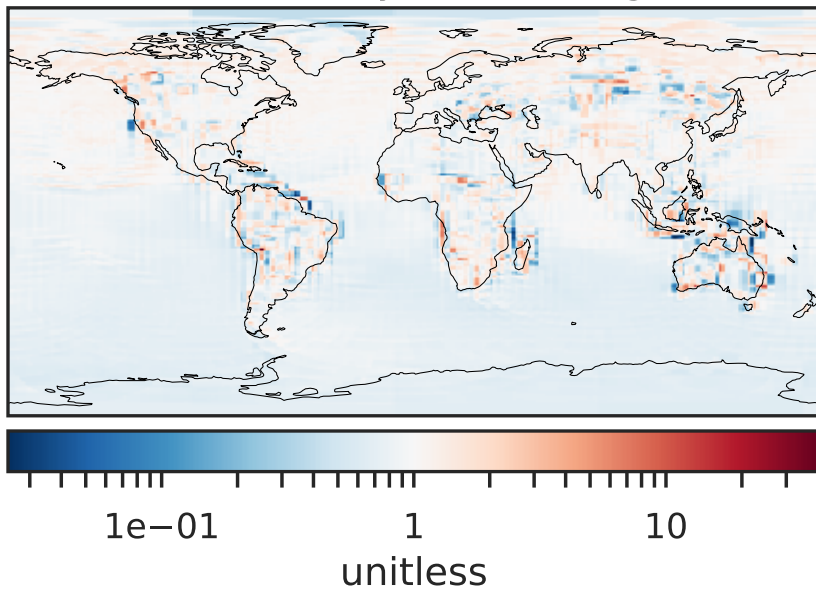
Difference (1x1.25)
Dev - Ref, Dynamic Range



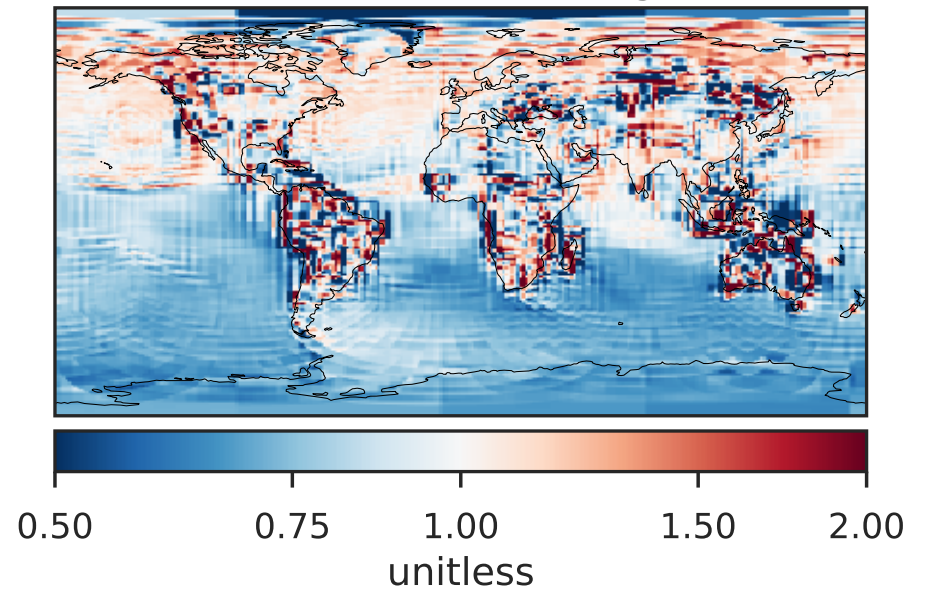
Difference (1x1.25)
Dev - Ref, Restricted Range [5%,95%]



Ratio (1x1.25)
Dev/Ref, Dynamic Range

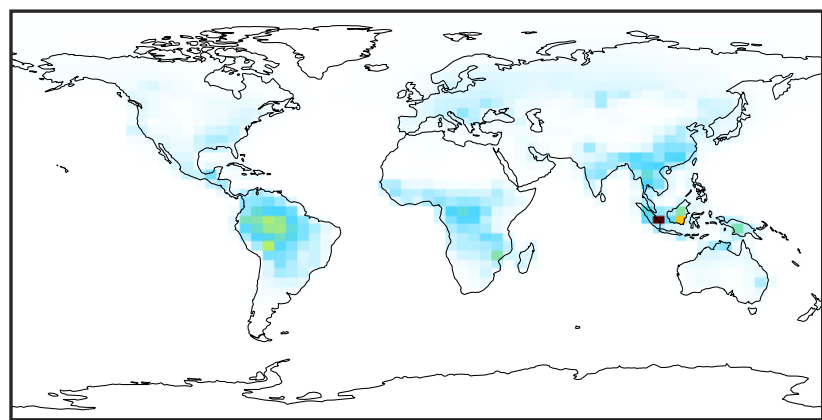


Ratio (1x1.25)
Dev/Ref, Fixed Range



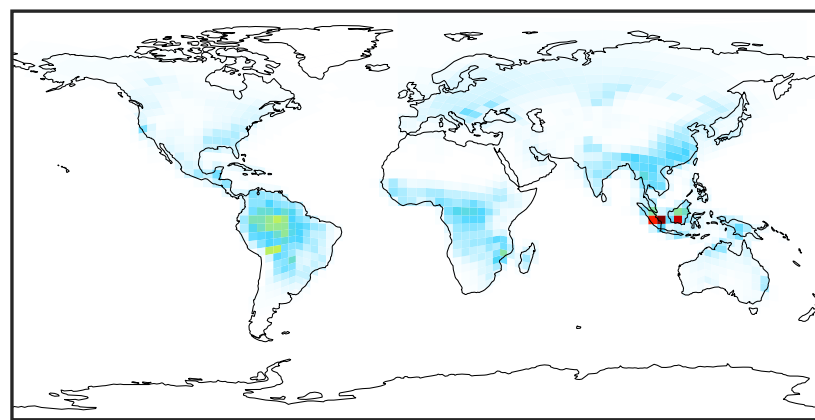
SpeciesConcVV_RCHO (Oct2019)

GCC_14.2.0 (Ref)
4.0x5.0



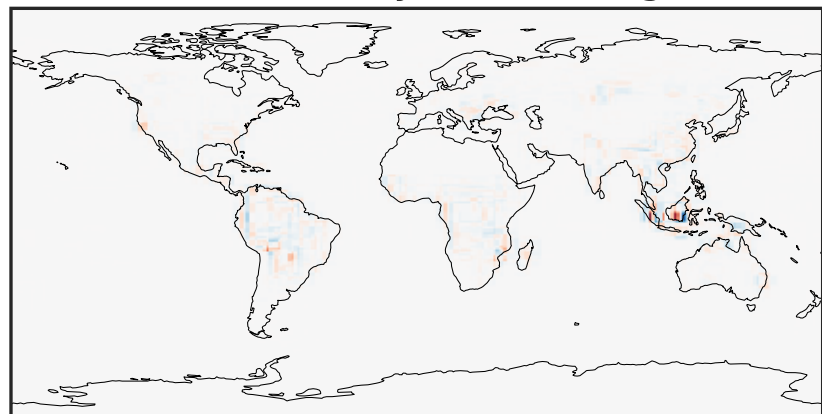
0.000 0.605 1.210 1.815 2.420
ppb

GCHP_14.2.0 (Dev)
c24



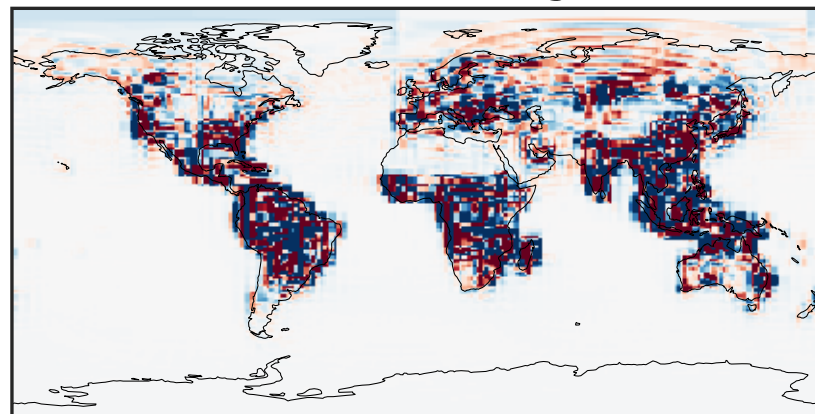
0.000 0.605 1.210 1.815 2.420
ppb

Difference (1x1.25)
Dev - Ref, Dynamic Range



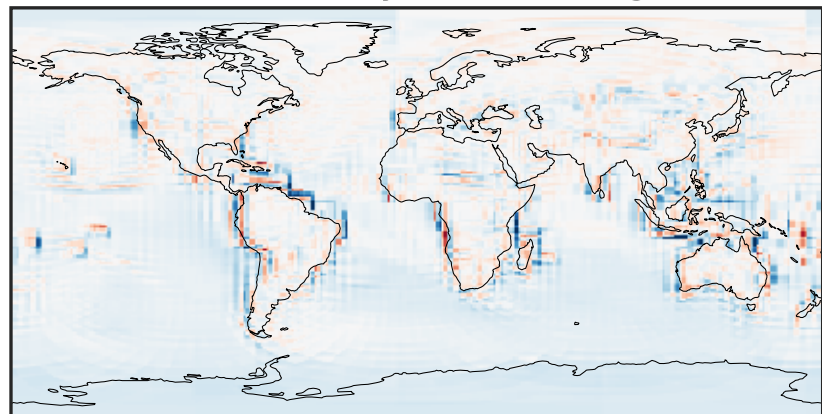
-1.233 -0.617 0.000 0.617 1.233
ppb

Difference (1x1.25)
Dev - Ref, Restricted Range [5%,95%]



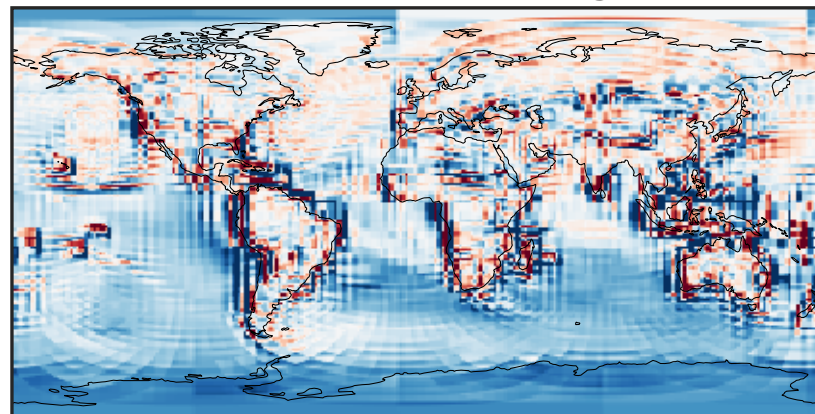
-0.01 0.00 0.01
ppb

Ratio (1x1.25)
Dev/Ref, Dynamic Range



1e-01 1 10
unitless

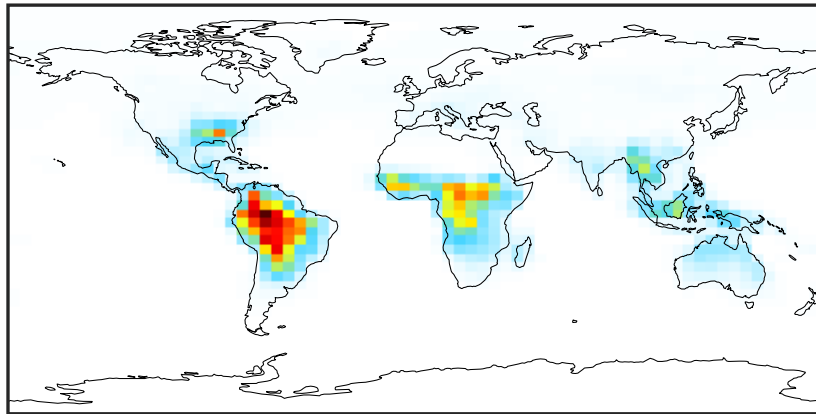
Ratio (1x1.25)
Dev/Ref, Fixed Range



0.50 0.75 1.00 1.50 2.00
unitless

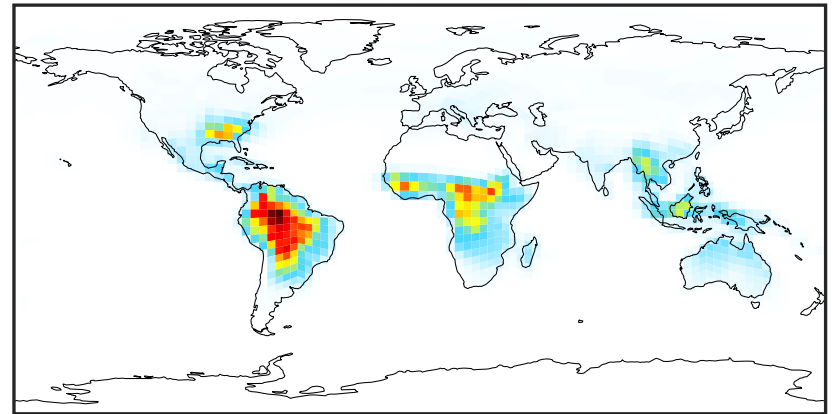
SpeciesConcVV_ETHP (Oct2019)

GCC_14.2.0 (Ref)
4.0x5.0



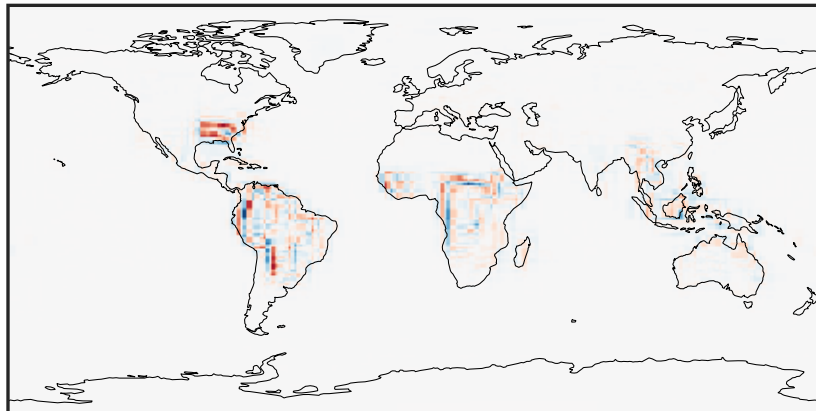
0.0000 0.0541 0.1081 0.1622 0.2163
ppb

GCHP_14.2.0 (Dev)
c24



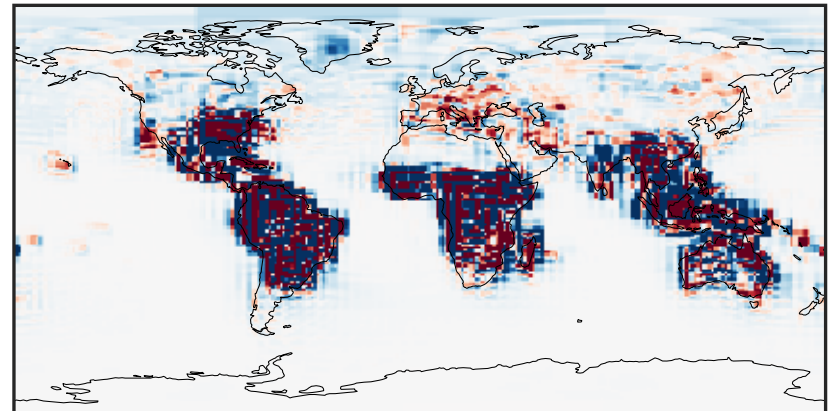
0.0000 0.0541 0.1081 0.1622 0.2163
ppb

Difference (1x1.25)
Dev - Ref, Dynamic Range



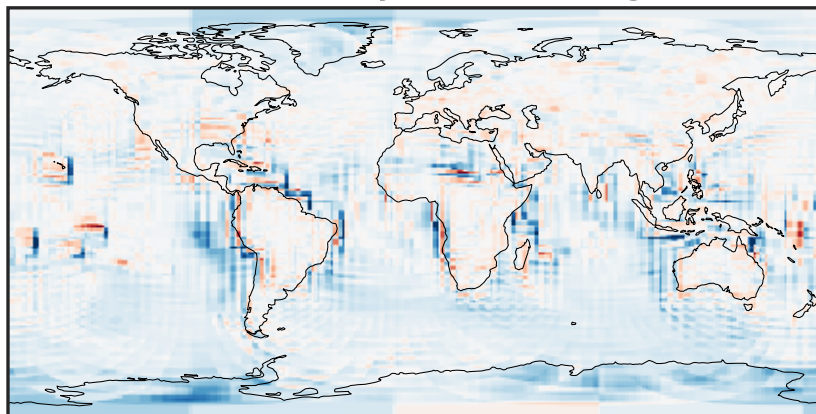
-0.0769 -0.0385 0.0000 0.0385 0.0769
ppb

Difference (1x1.25)
Dev - Ref, Restricted Range [5%,95%]



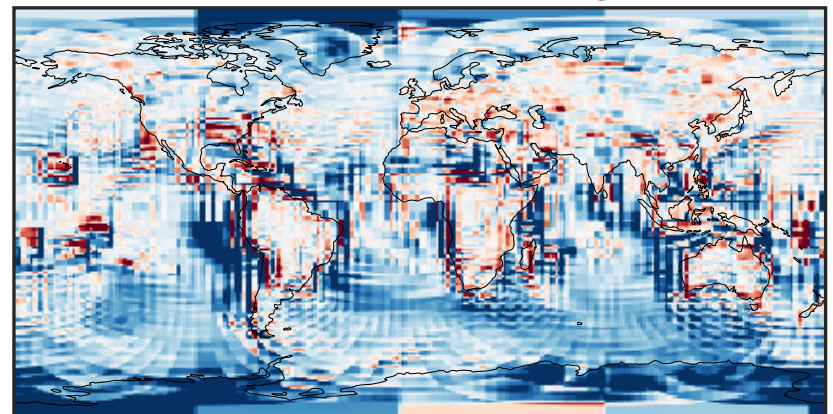
-0.001 0.000 0.001
ppb

Ratio (1x1.25)
Dev/Ref, Dynamic Range



1e-01 1 10
unitless

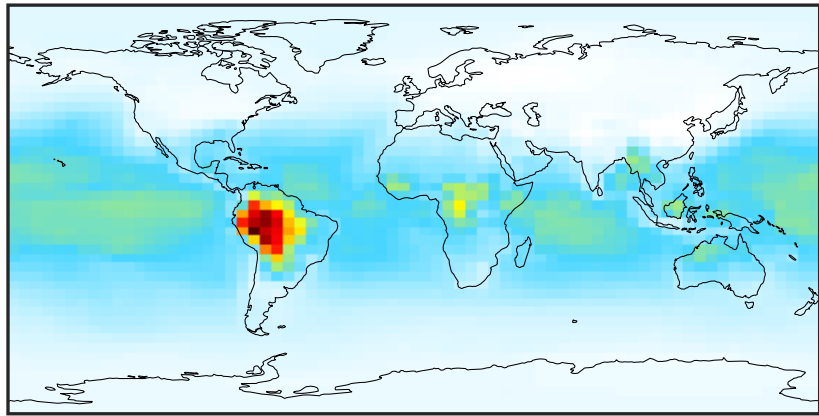
Ratio (1x1.25)
Dev/Ref, Fixed Range



0.50 0.75 1.00 1.50 2.00
unitless

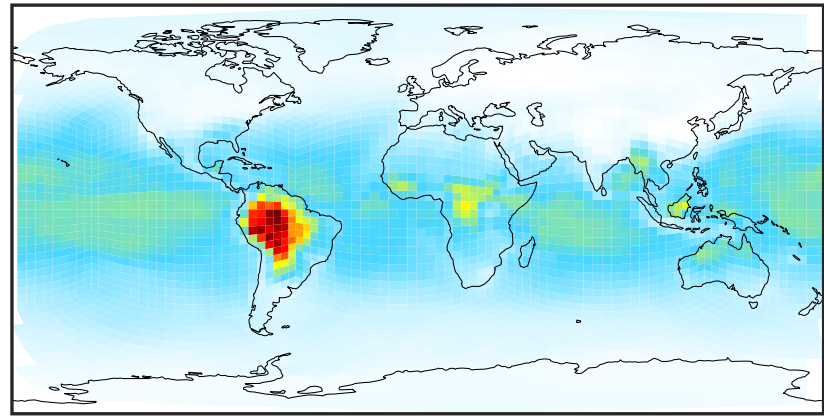
SpeciesConcVV_MP (Oct2019)

GCC_14.2.0 (Ref)
4.0x5.0



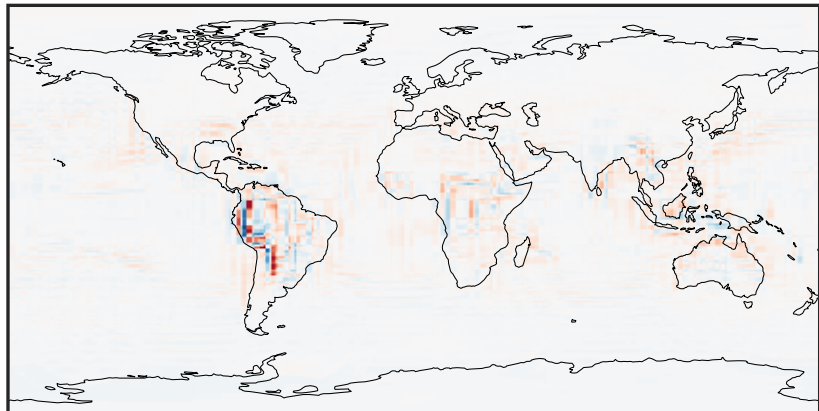
0.041 0.691 1.382 2.073 2.806
ppb

GCHP_14.2.0 (Dev)
c24



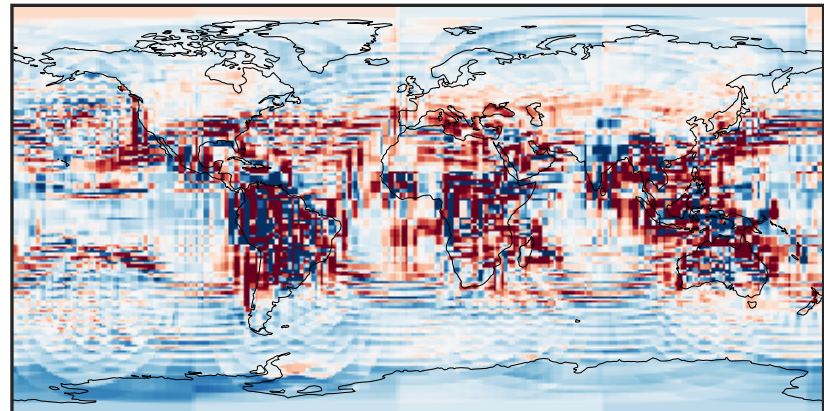
0.041 0.691 1.382 2.073 2.806
ppb

Difference (1x1.25)
Dev - Ref, Dynamic Range



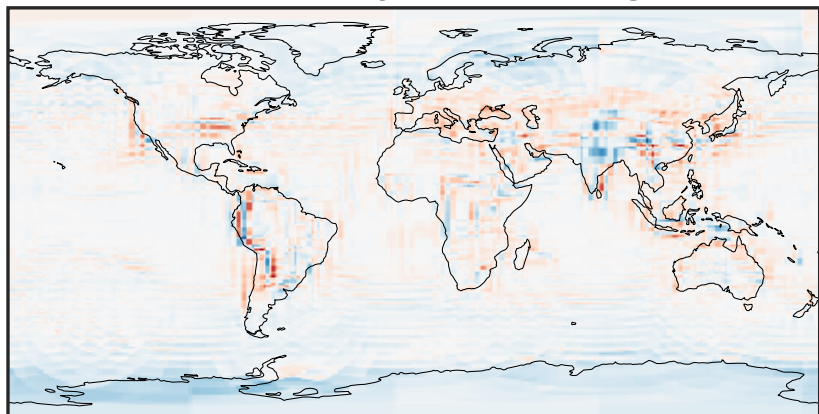
-0.86 -0.43 0.00 0.43 0.86
ppb

Difference (1x1.25)
Dev - Ref, Restricted Range [5%,95%]



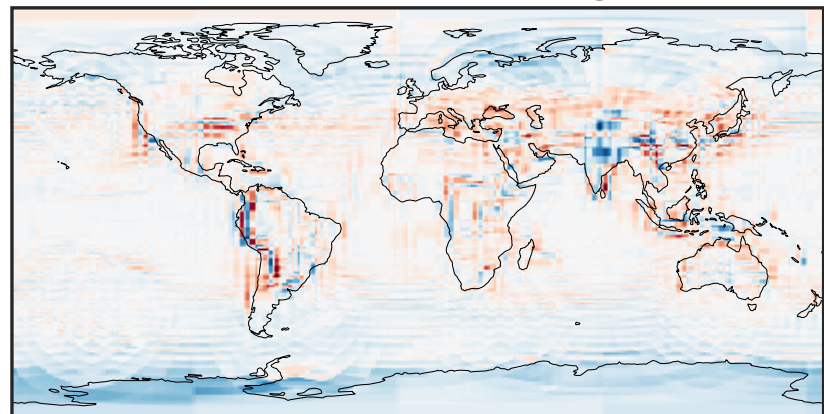
-0.0506 -0.0253 0.0000 0.0253 0.0506
ppb

Ratio (1x1.25)
Dev/Ref, Dynamic Range



0.367 0.683 1.000 1.864 2.727
unitless

Ratio (1x1.25)
Dev/Ref, Fixed Range



0.50 0.75 1.00 1.50 2.00
unitless