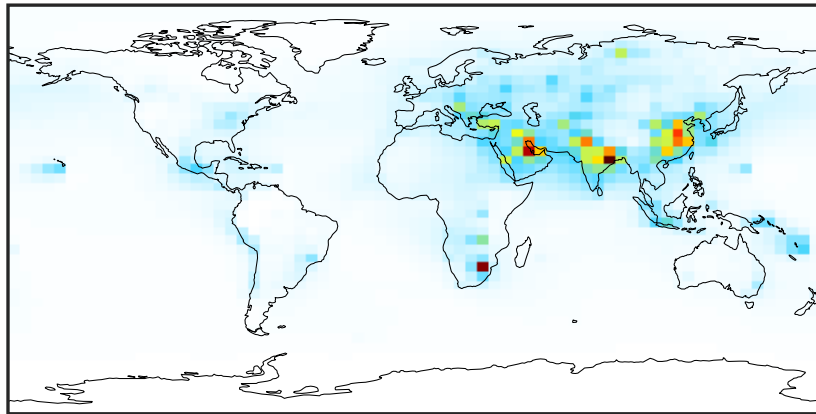


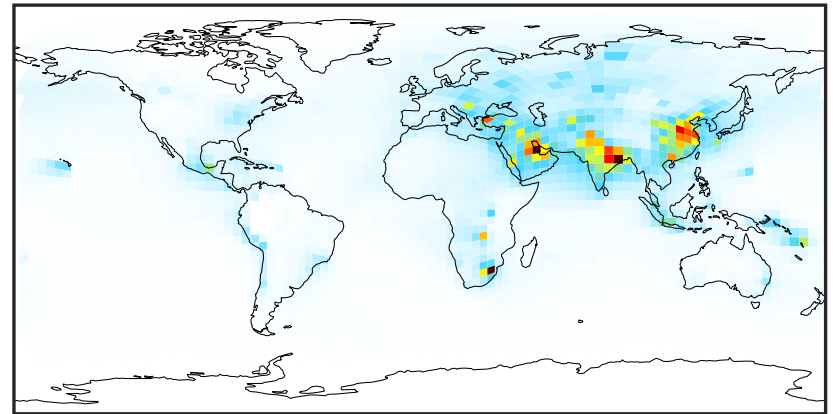
SpeciesConcVV_SOx (AnnualMean)

GCC_14.2.0 (Ref)
4.0x5.0



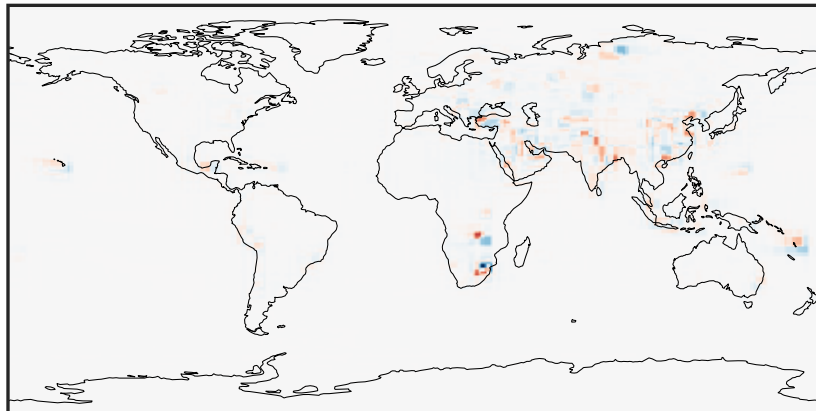
0.04 2.71 5.41 8.12 10.86
ppb

GCHP_14.2.0 (Dev)
c24



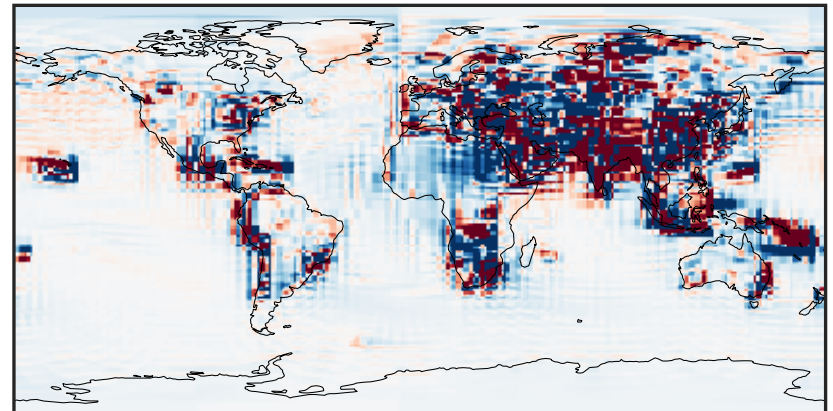
0.04 2.71 5.41 8.12 10.86
ppb

Difference (1x1.25)
Dev - Ref, Dynamic Range



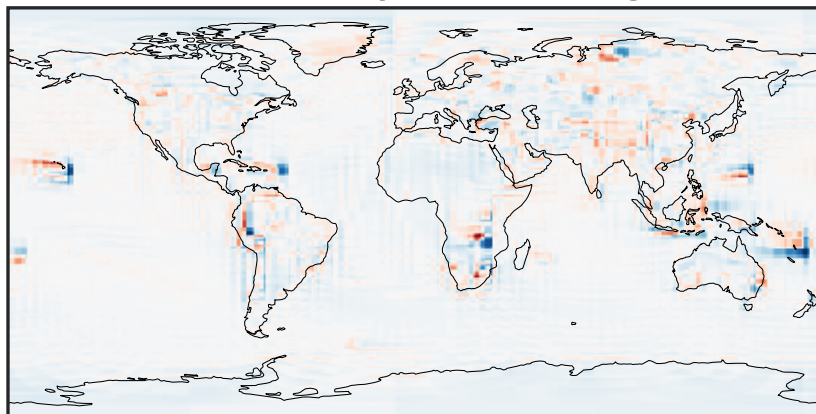
-7.57 -3.79 0.00 3.79 7.57
ppb

Difference (1x1.25)
Dev - Ref, Restricted Range [5%,95%]



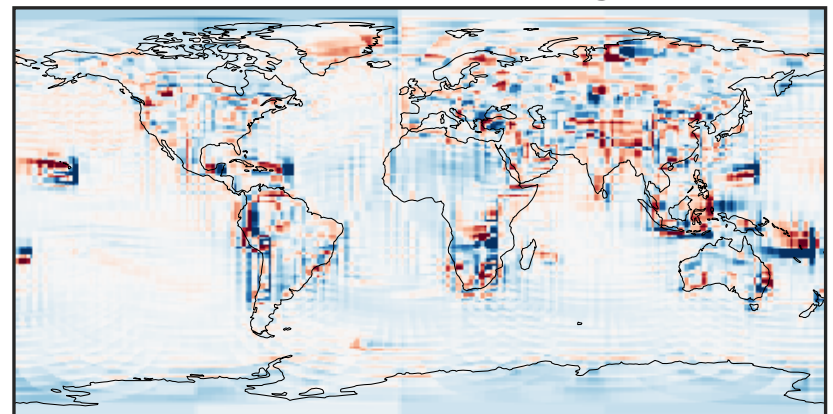
-0.142 -0.071 0.000 0.071 0.142
ppb

Ratio (1x1.25)
Dev/Ref, Dynamic Range



0.115 0.558 1.000 4.834 8.669
unitless

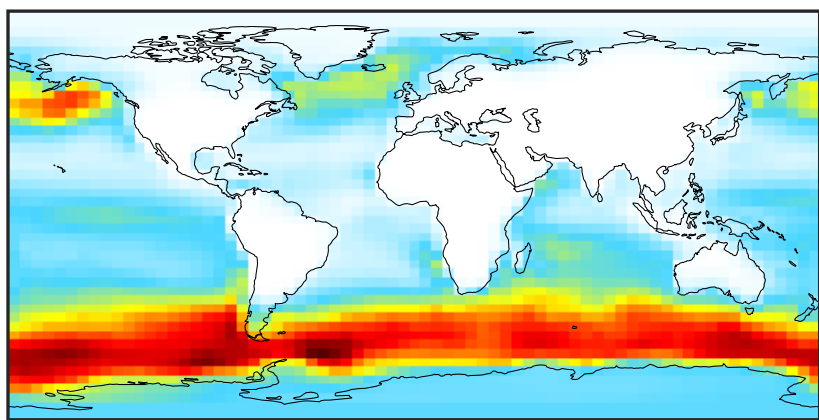
Ratio (1x1.25)
Dev/Ref, Fixed Range



0.50 0.75 1.00 1.50 2.00
unitless

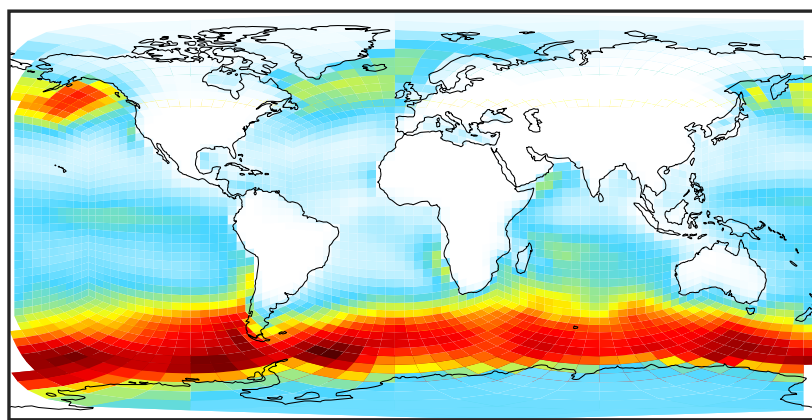
SpeciesConcVV_DMS (AnnualMean)

GCC_14.2.0 (Ref)
4.0x5.0



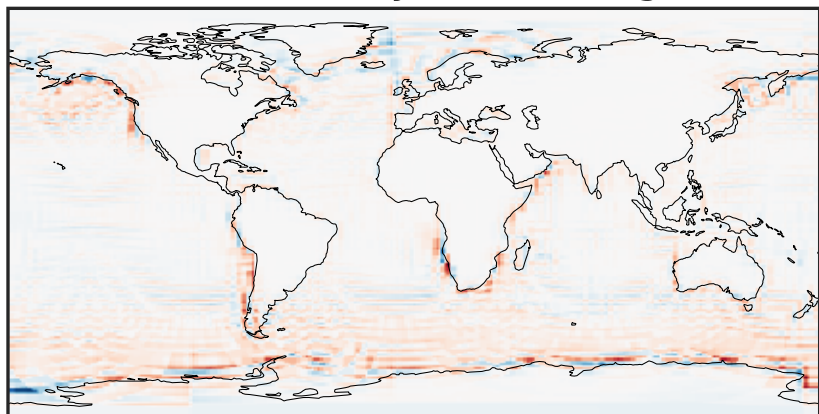
0.0000 0.0993 0.1987 0.2980 0.3973
ppb

GCHP_14.2.0 (Dev)
c24



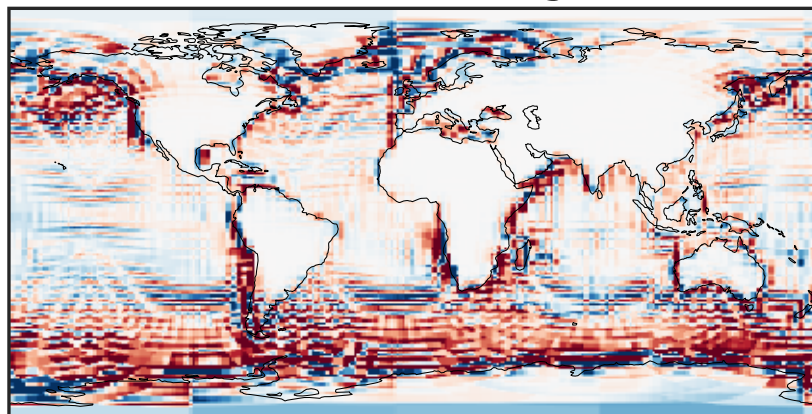
0.0000 0.0993 0.1987 0.2980 0.3973
ppb

Difference (1x1.25)
Dev - Ref, Dynamic Range



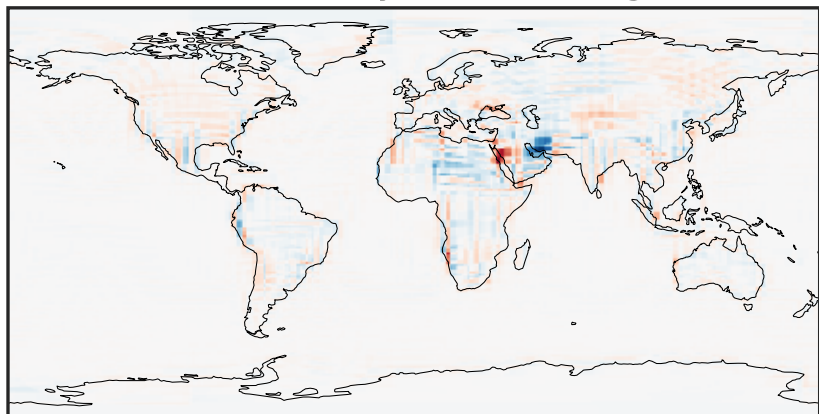
-0.1428 -0.0714 0.0000 0.0714 0.1428
ppb

Difference (1x1.25)
Dev - Ref, Restricted Range [5%,95%]



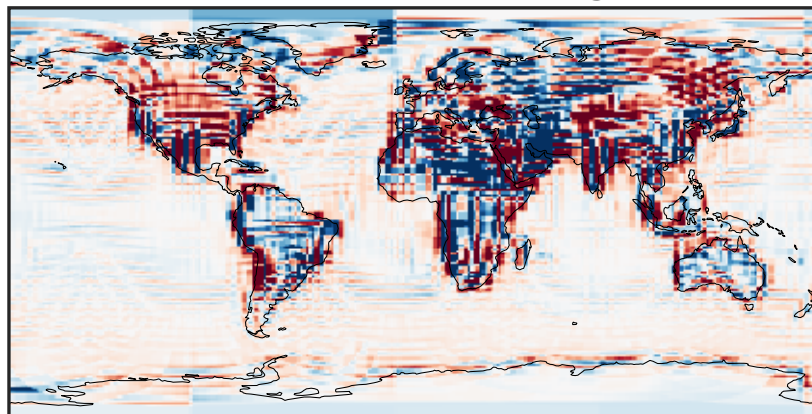
-0.015 0.000 0.015
ppb

Ratio (1x1.25)
Dev/Ref, Dynamic Range



unitless

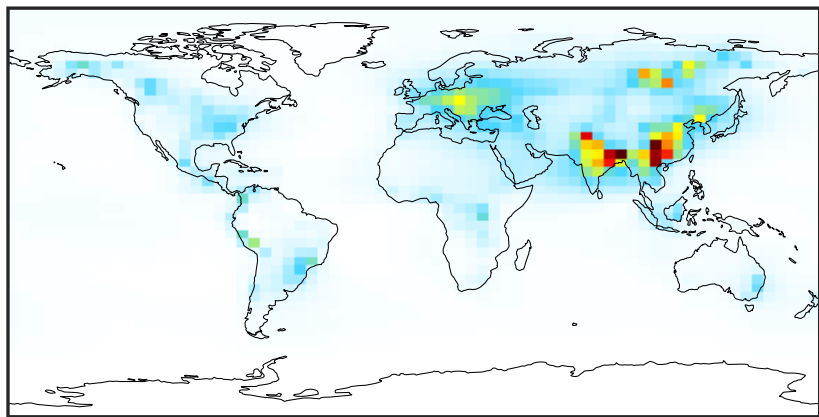
Ratio (1x1.25)
Dev/Ref, Fixed Range



0.50 0.75 1.00 1.50 2.00
unitless

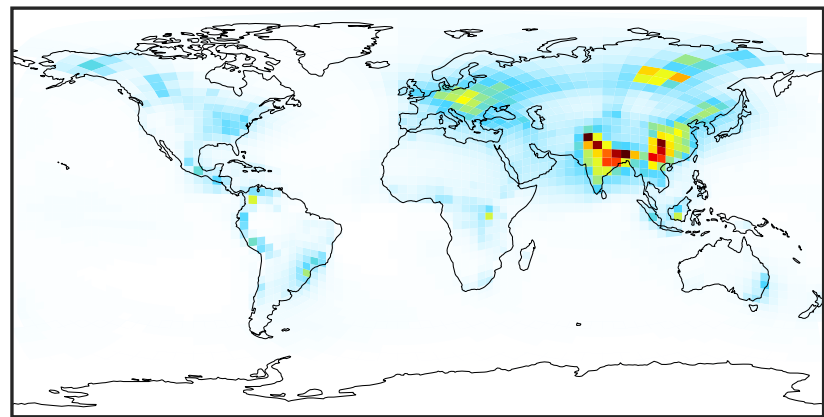
SpeciesConcVV_HMS (AnnualMean)

GCC_14.2.0 (Ref)
4.0x5.0



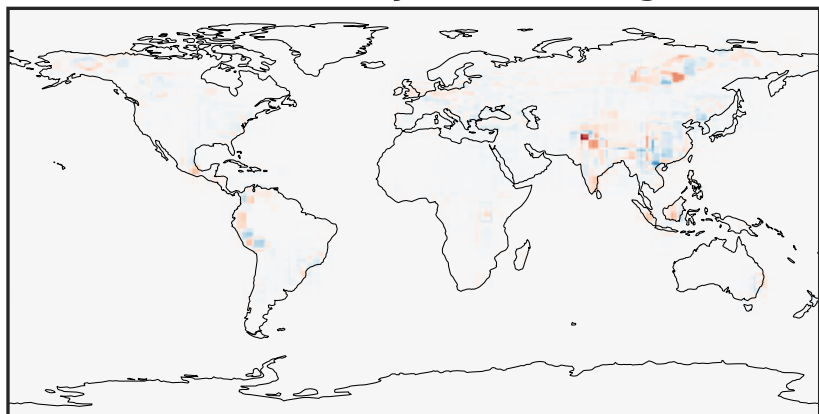
0.0005 0.1272 0.2544 0.3815 0.5092
ppb

GCHP_14.2.0 (Dev)
c24



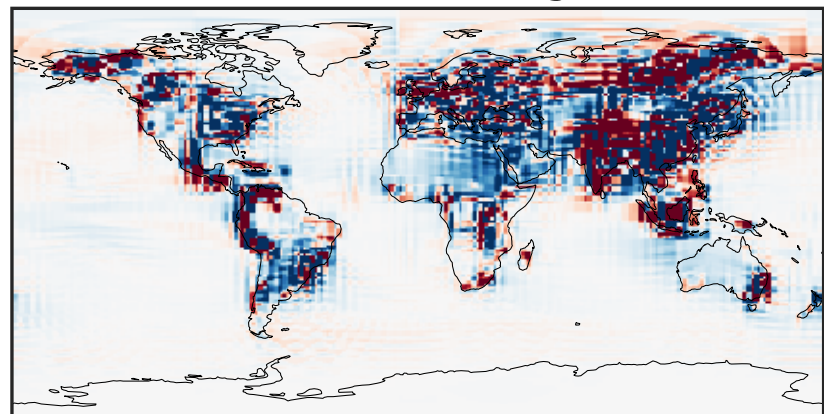
0.0005 0.1272 0.2544 0.3815 0.5092
ppb

Difference (1x1.25)
Dev - Ref, Dynamic Range



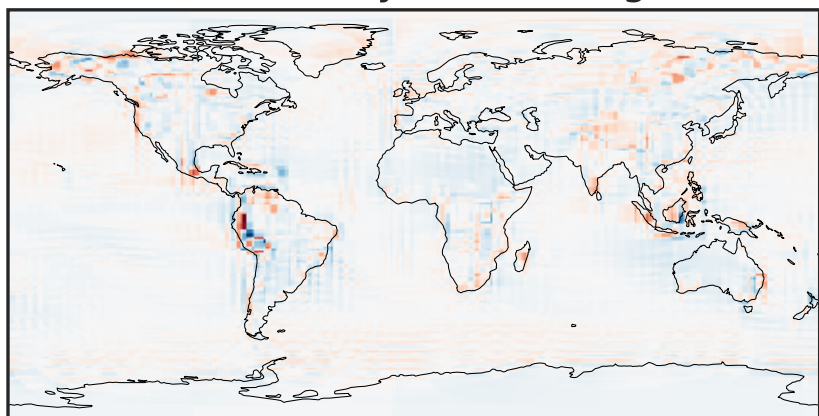
-0.4030 -0.2015 0.0000 0.2015 0.4030
ppb

Difference (1x1.25)
Dev - Ref, Restricted Range [5%,95%]



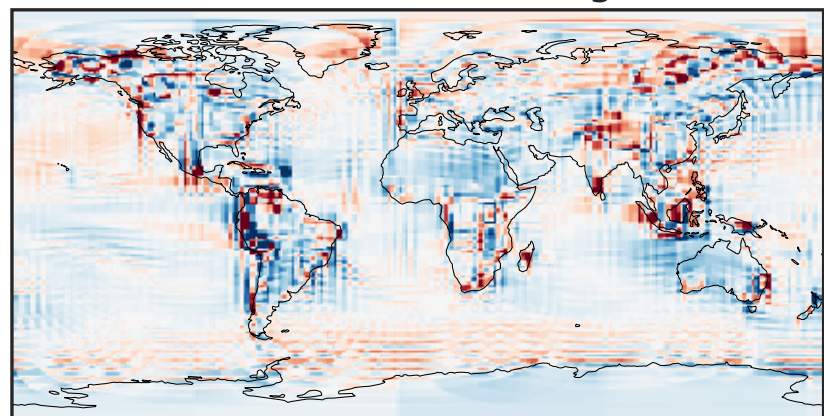
-0.005 0.000 0.005
ppb

Ratio (1x1.25)
Dev/Ref, Dynamic Range



1e-01 1 10
unitless

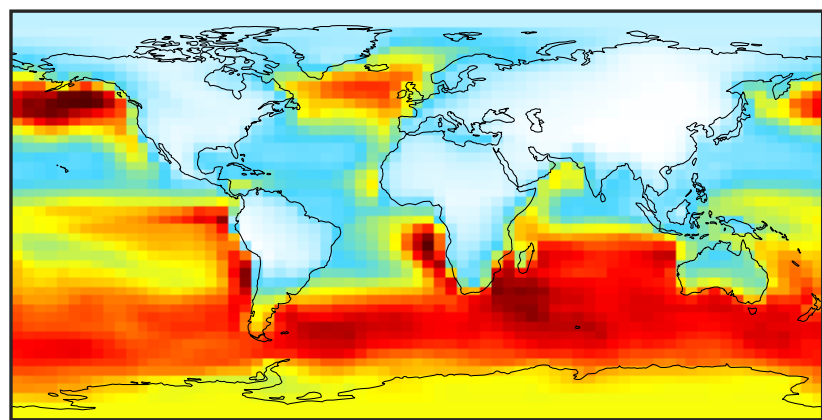
Ratio (1x1.25)
Dev/Ref, Fixed Range



0.50 0.75 1.00 1.50 2.00
unitless

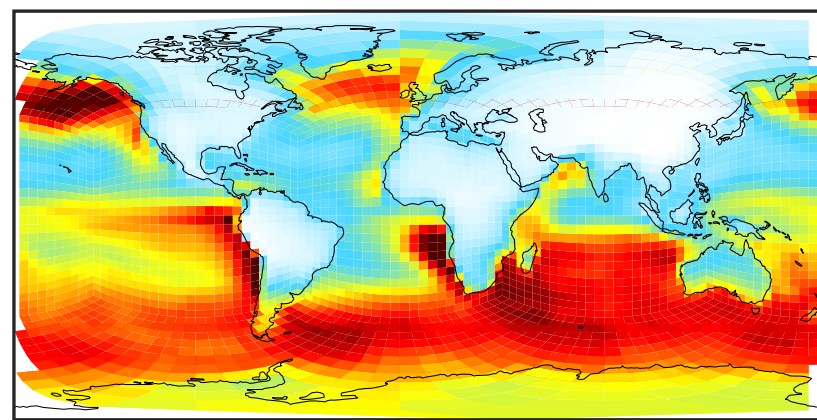
SpeciesConcVW_MSA (AnnualMean)

GCC_14.2.0 (Ref)
4.0x5.0



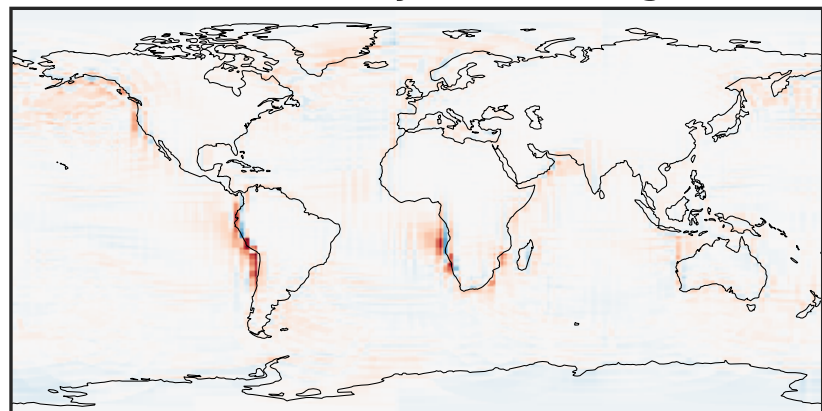
0.006 0.012 0.018 0.024
ppb

GCHP_14.2.0 (Dev)
c24



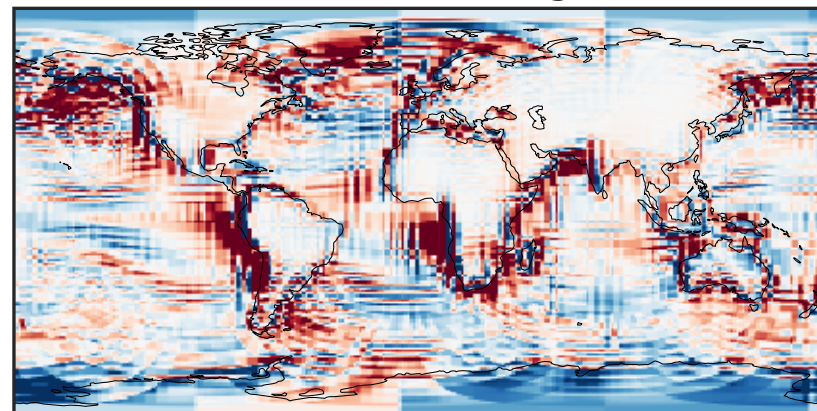
0.006 0.012 0.018 0.024
ppb

Difference (1x1.25)
Dev - Ref, Dynamic Range



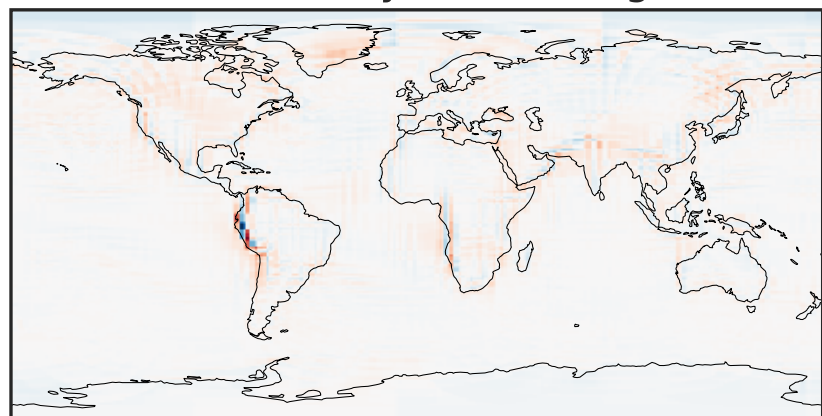
-0.008 0.000 0.008
ppb

Difference (1x1.25)
Dev - Ref, Restricted Range [5%,95%]



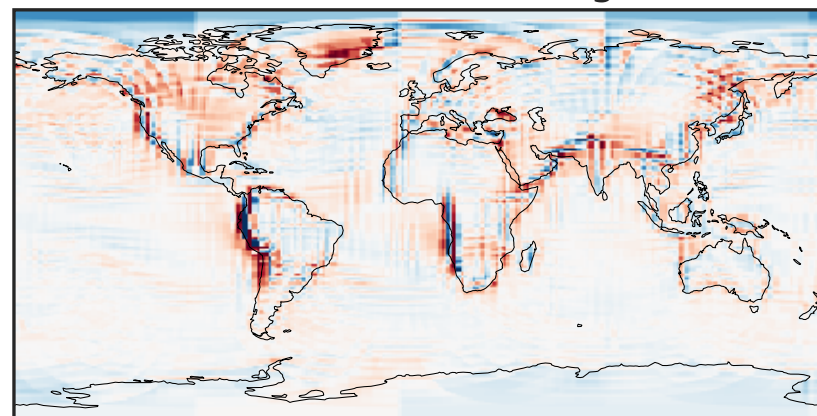
-0.0008 0.0000 0.0008
ppb

Ratio (1x1.25)
Dev/Ref, Dynamic Range



1e-01 1 10
unitless

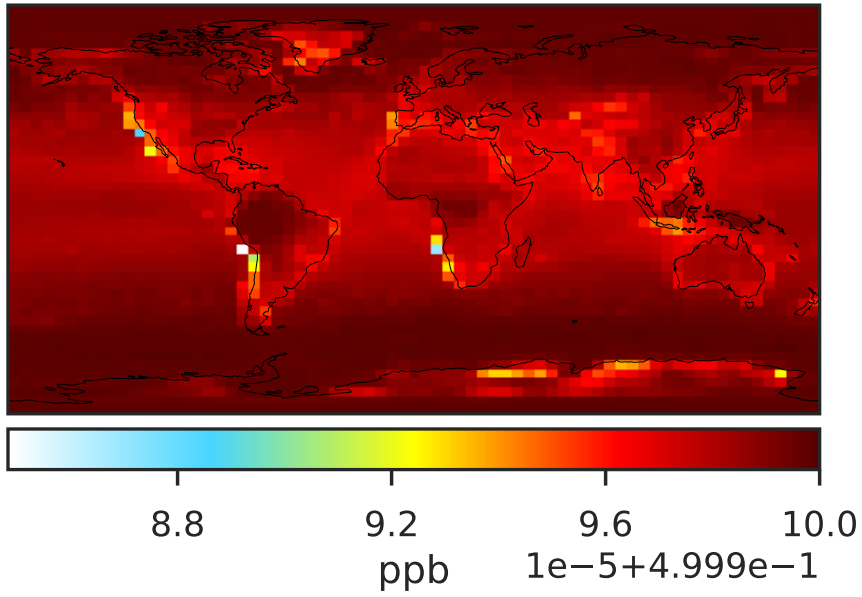
Ratio (1x1.25)
Dev/Ref, Fixed Range



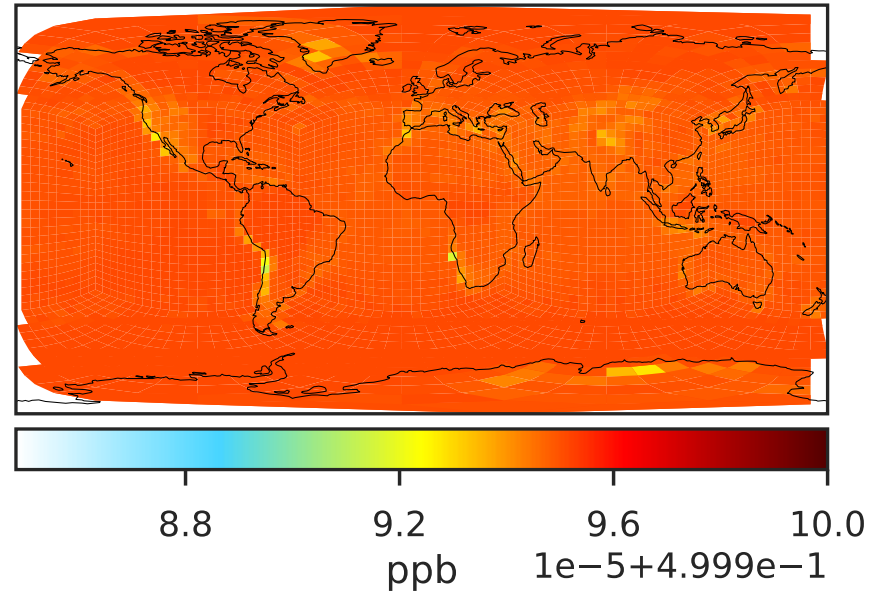
0.50 0.75 1.00 1.50 2.00
unitless

SpeciesConcVV_OCS (AnnualMean)

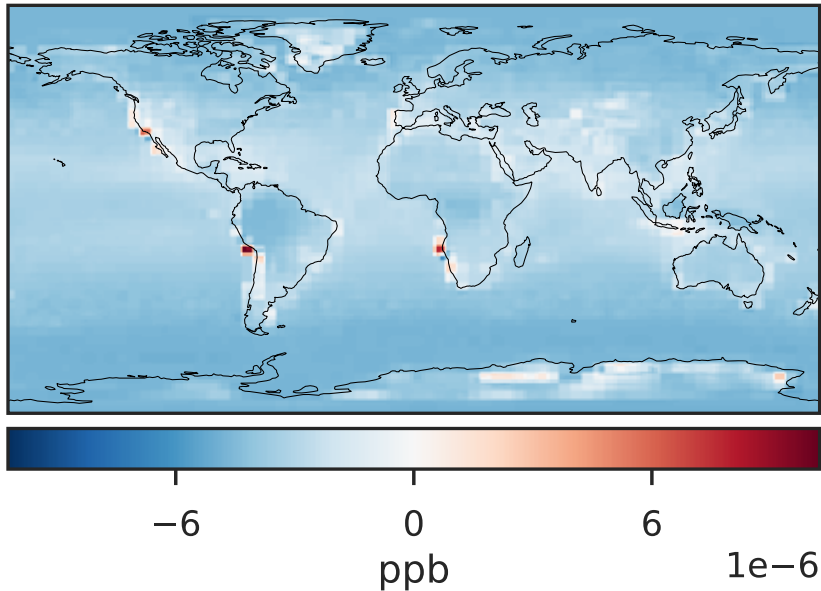
GCC_14.2.0 (Ref)
4.0x5.0



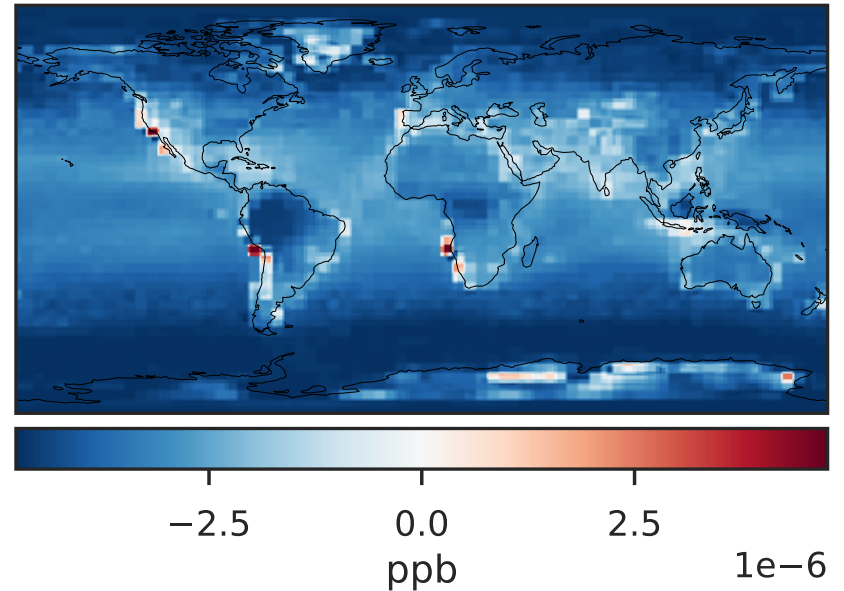
GCHP_14.2.0 (Dev)
c24



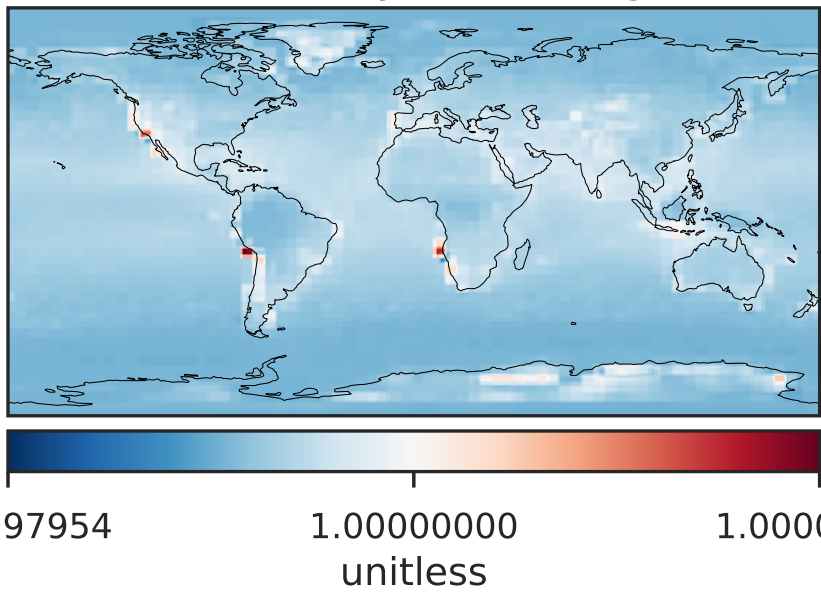
Difference (1x1.25)
Dev - Ref, Dynamic Range



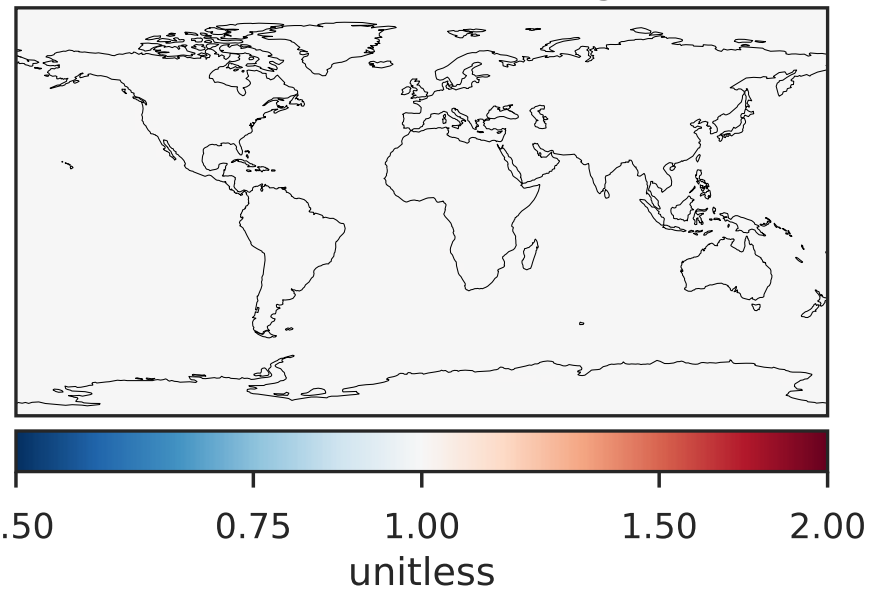
Difference (1x1.25)
Dev - Ref, Restricted Range [5%,95%]



Ratio (1x1.25)
Dev/Ref, Dynamic Range

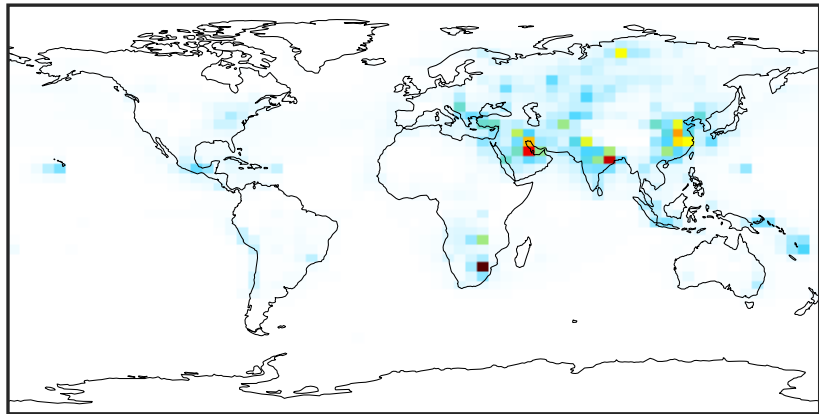


Ratio (1x1.25)
Dev/Ref, Fixed Range



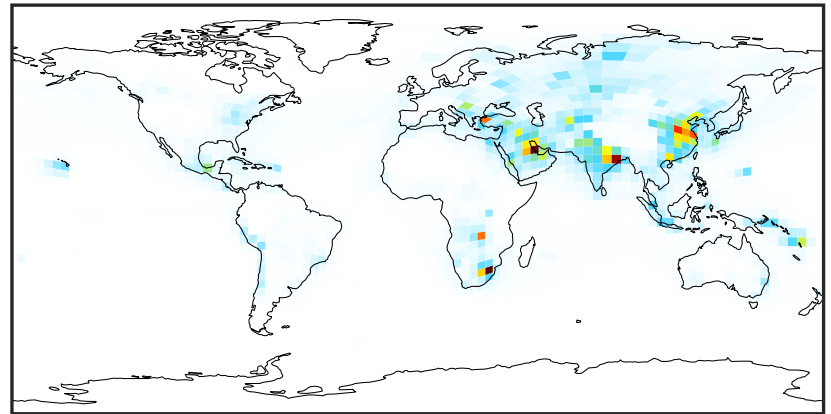
SpeciesConcVV_SO2 (AnnualMean)

GCC_14.2.0 (Ref)
4.0x5.0



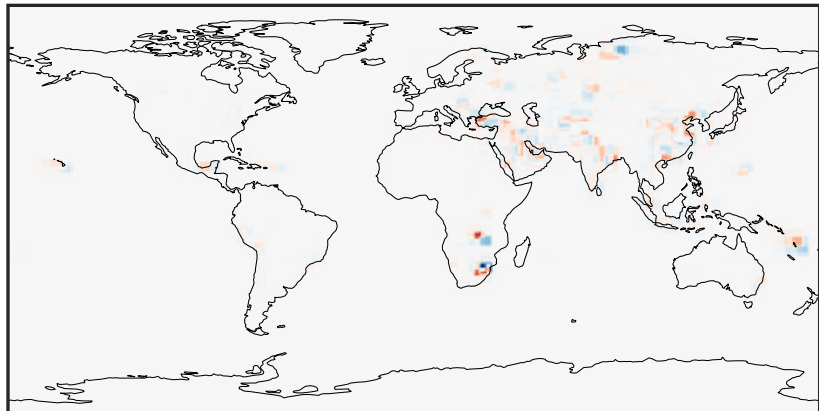
0.003 2.024 4.047 6.071 8.097
ppb

GCHP_14.2.0 (Dev)
c24



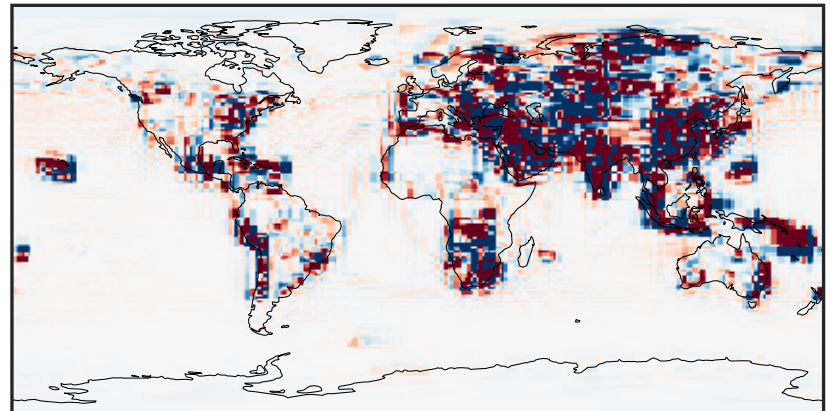
0.003 2.024 4.047 6.071 8.097
ppb

Difference (1x1.25)
Dev - Ref, Dynamic Range



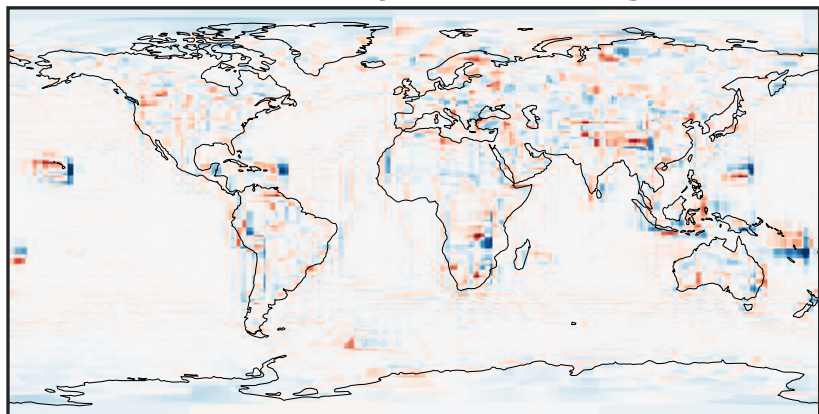
-6.49 -3.24 0.00 3.24 6.49
ppb

Difference (1x1.25)
Dev - Ref, Restricted Range [5%,95%]



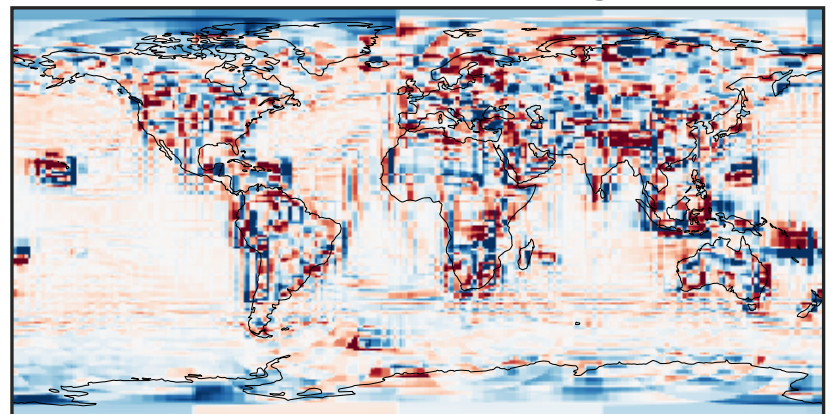
-0.0827 -0.0413 0.0000 0.0413 0.0827
ppb

Ratio (1x1.25)
Dev/Ref, Dynamic Range



1e-01 1 10
unitless

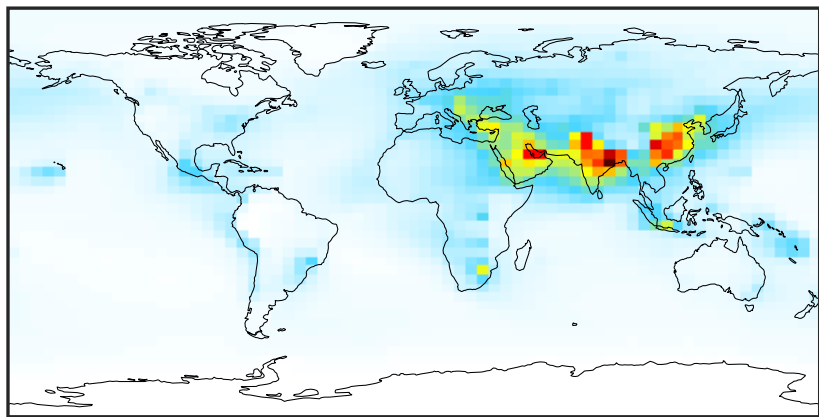
Ratio (1x1.25)
Dev/Ref, Fixed Range



0.50 0.75 1.00 1.50 2.00
unitless

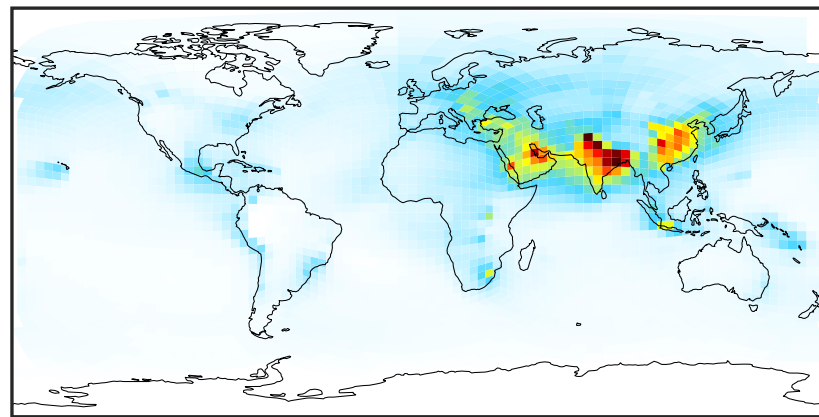
SpeciesConcVV_SO4 (AnnualMean)

GCC_14.2.0 (Ref)
4.0x5.0



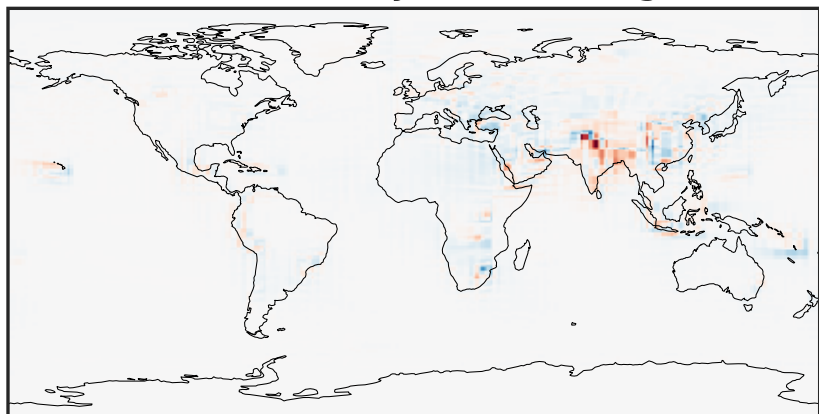
0.035 1.012 2.024 3.036 4.083
ppb

GCHP_14.2.0 (Dev)
c24



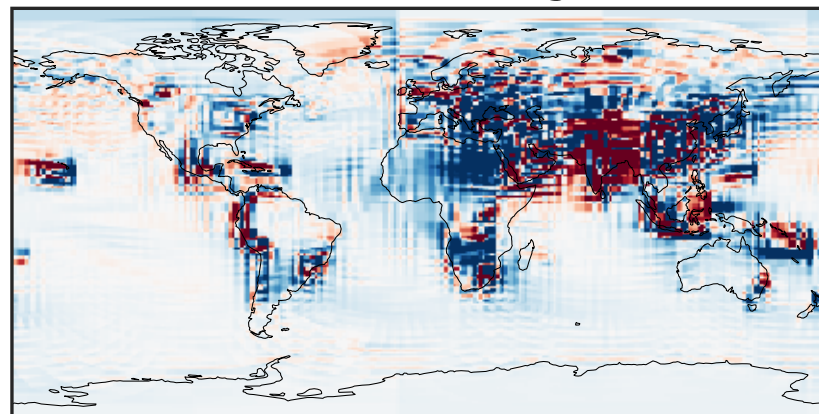
0.035 1.012 2.024 3.036 4.083
ppb

Difference (1x1.25)
Dev - Ref, Dynamic Range



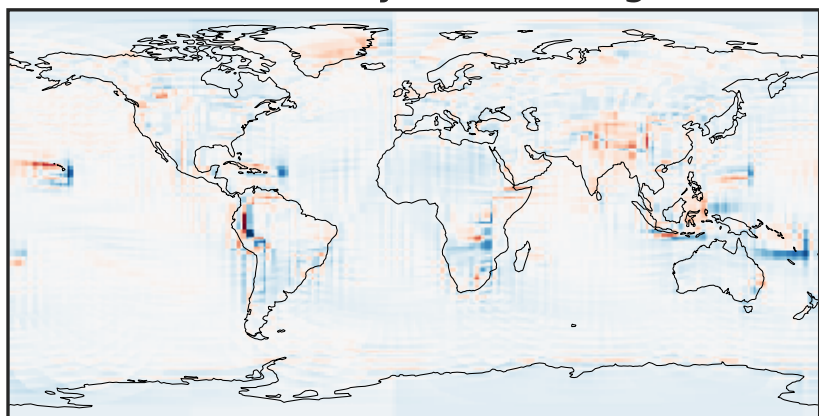
-1.847 -0.924 0.000 0.924 1.847
ppb

Difference (1x1.25)
Dev - Ref, Restricted Range [5%,95%]



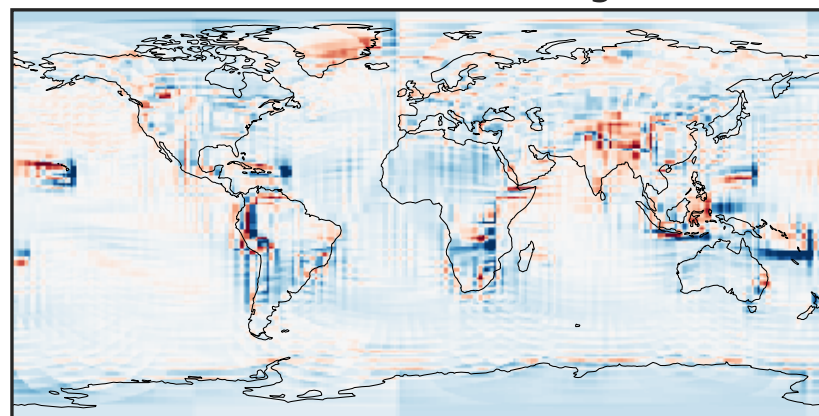
-0.090 -0.045 0.000 0.045 0.090
ppb

Ratio (1x1.25)
Dev/Ref, Dynamic Range



0.239 0.619 1.000 2.593 4.187
unitless

Ratio (1x1.25)
Dev/Ref, Fixed Range



0.50 0.75 1.00 1.50 2.00
unitless