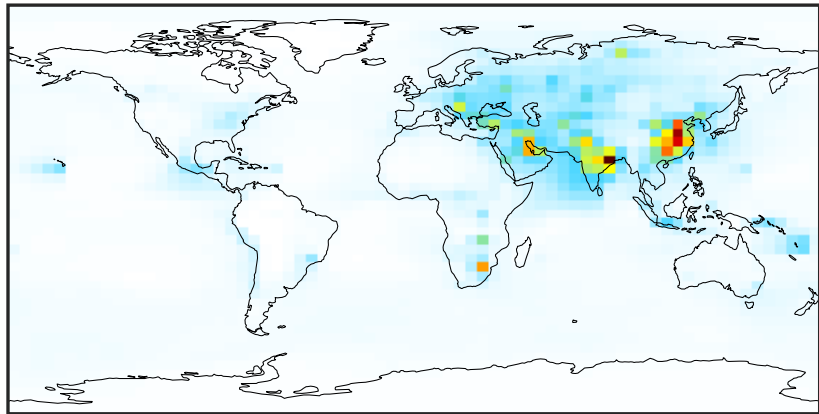


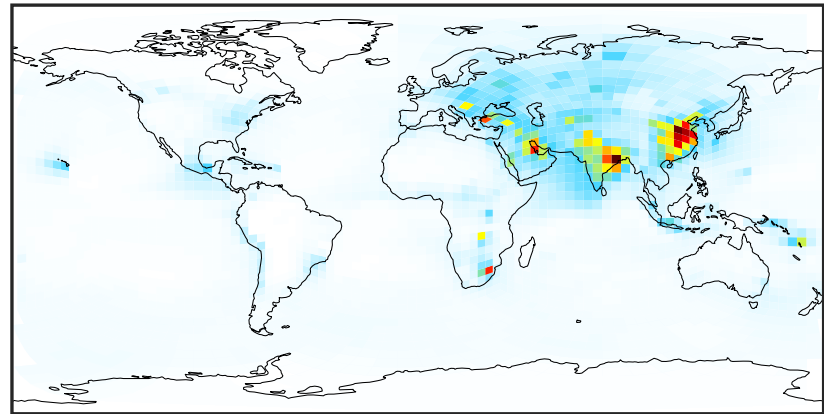
SpeciesConcVV_SOx (Jan2019)

GCC_14.2.0 (Ref)
4.0x5.0



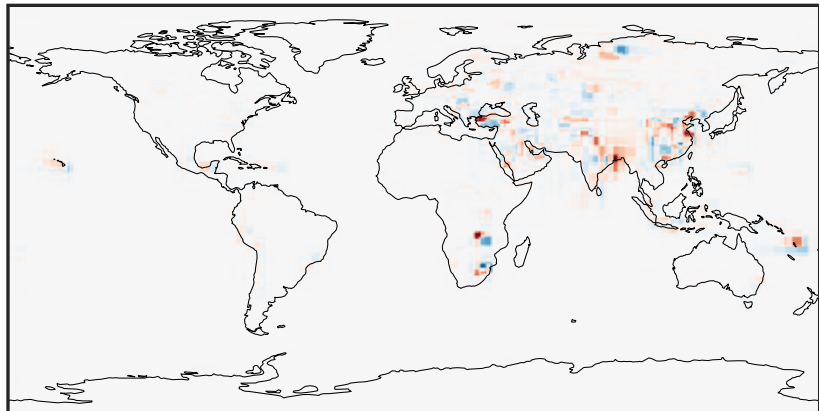
0.04 3.43 6.86 10.29 13.76
ppb

GCHP_14.2.0 (Dev)
c24



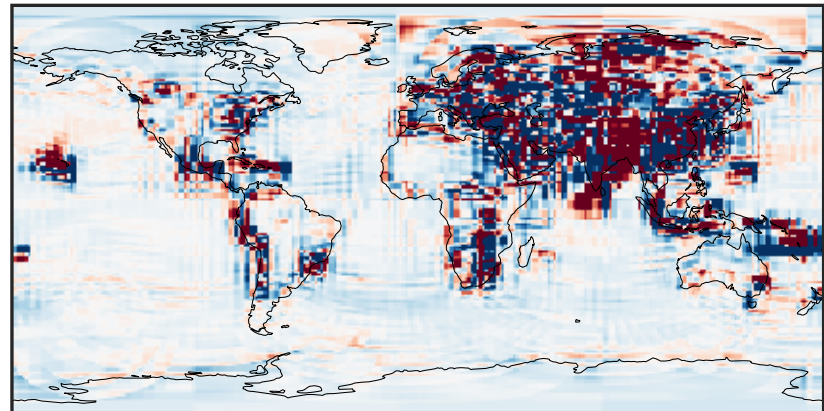
0.04 3.43 6.86 10.29 13.76
ppb

Difference (1x1.25)
Dev - Ref, Dynamic Range



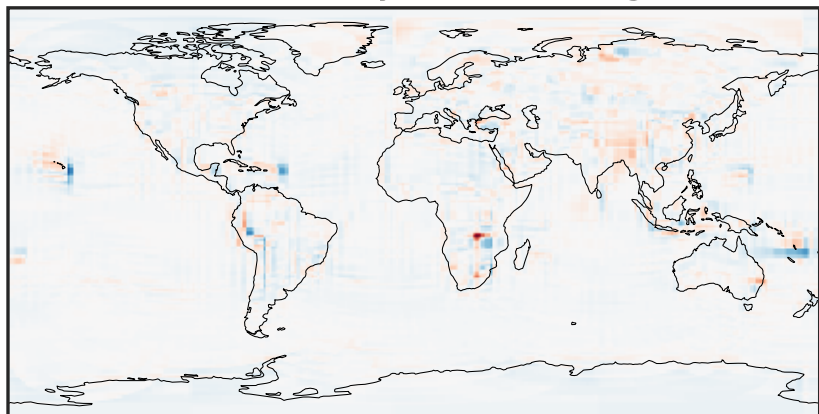
-6.77 -3.39 0.00 3.39 6.77
ppb

Difference (1x1.25)
Dev - Ref, Restricted Range [5%,95%]



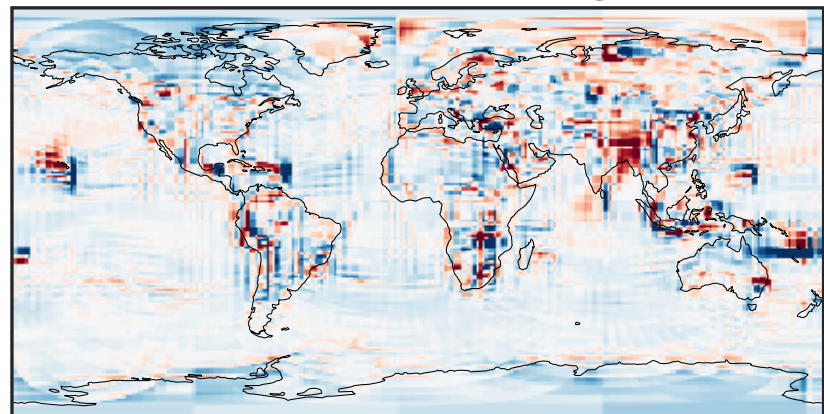
-0.1523 -0.0761 0.0000 0.0761 0.1523
ppb

Ratio (1x1.25)
Dev/Ref, Dynamic Range



1e-01 1 10
unitless

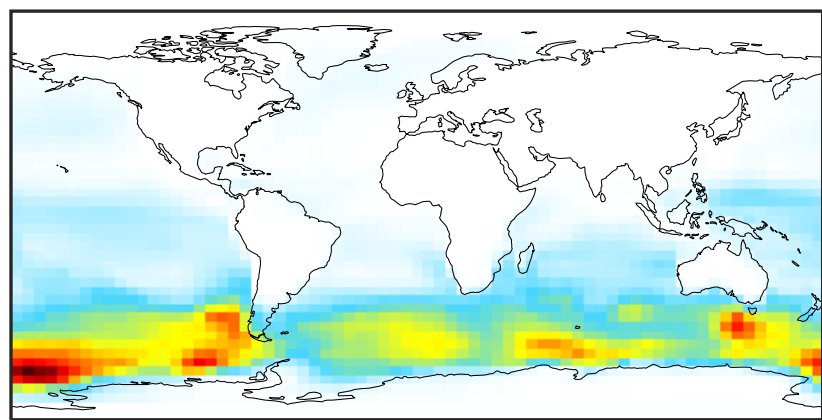
Ratio (1x1.25)
Dev/Ref, Fixed Range



0.50 0.75 1.00 1.50 2.00
unitless

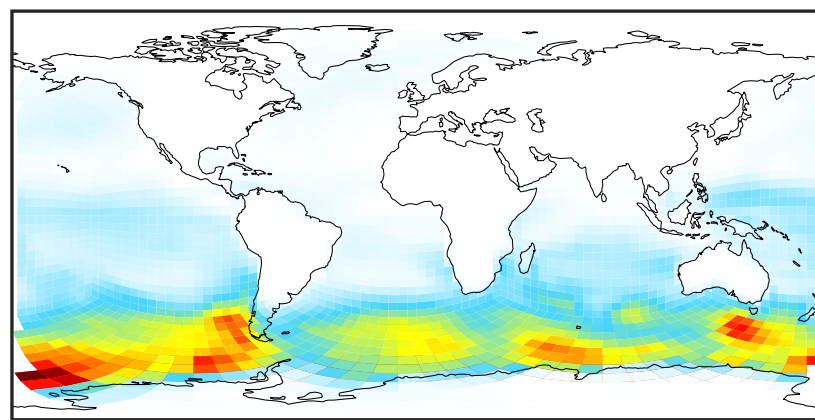
SpeciesConcVV_DMS (Jan2019)

GCC_14.2.0 (Ref)
4.0x5.0



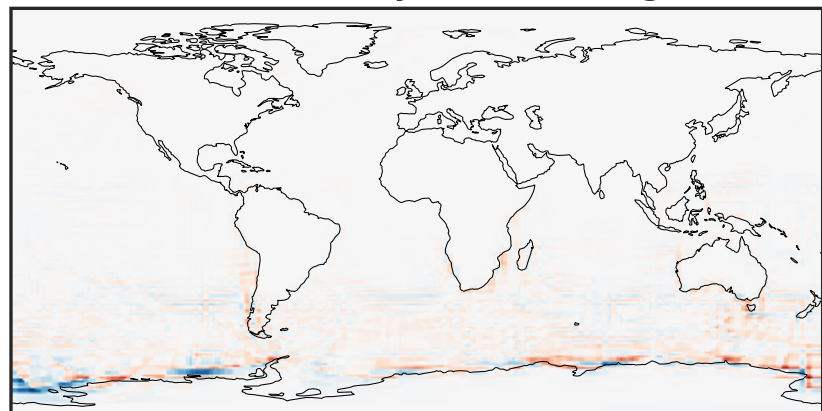
0.000 0.372 0.744 1.117 1.489
ppb

GCHP_14.2.0 (Dev)
c24



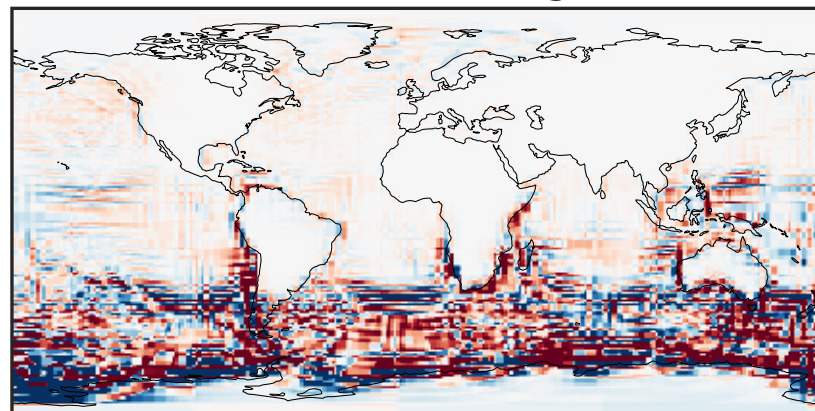
0.000 0.372 0.744 1.117 1.489
ppb

Difference (1x1.25)
Dev - Ref, Dynamic Range



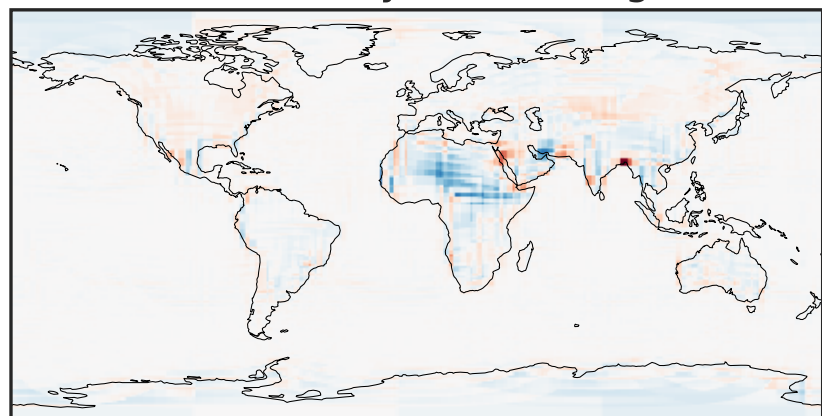
-0.646 -0.323 0.000 0.323 0.646
ppb

Difference (1x1.25)
Dev - Ref, Restricted Range [5%,95%]



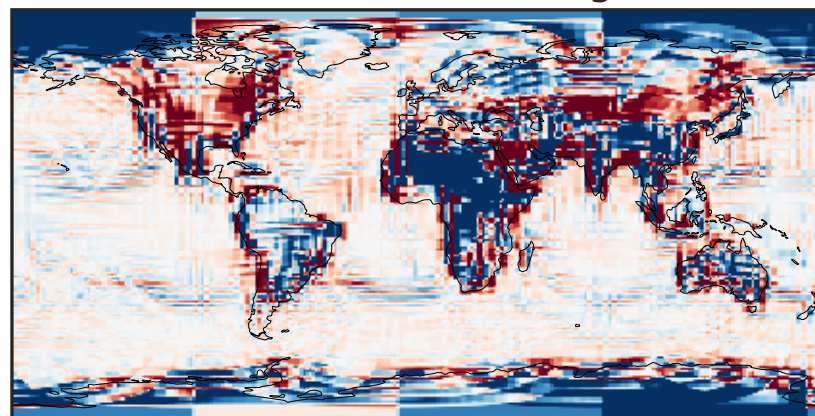
-0.025 0.000 0.025
ppb

Ratio (1x1.25)
Dev/Ref, Dynamic Range



unitless

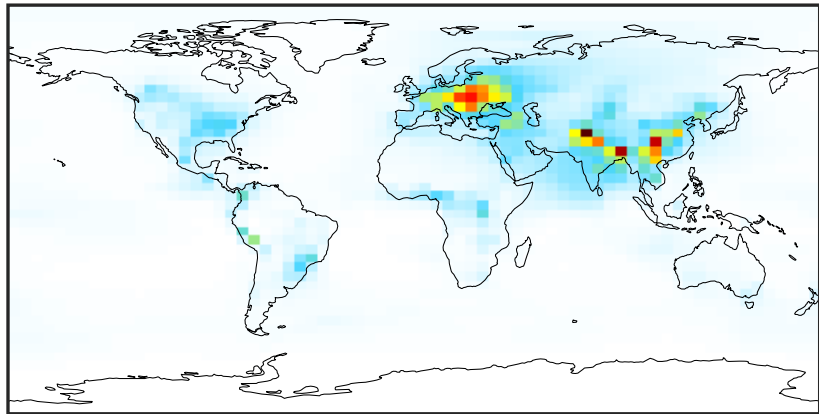
Ratio (1x1.25)
Dev/Ref, Fixed Range



0.50 0.75 1.00 1.50 2.00
unitless

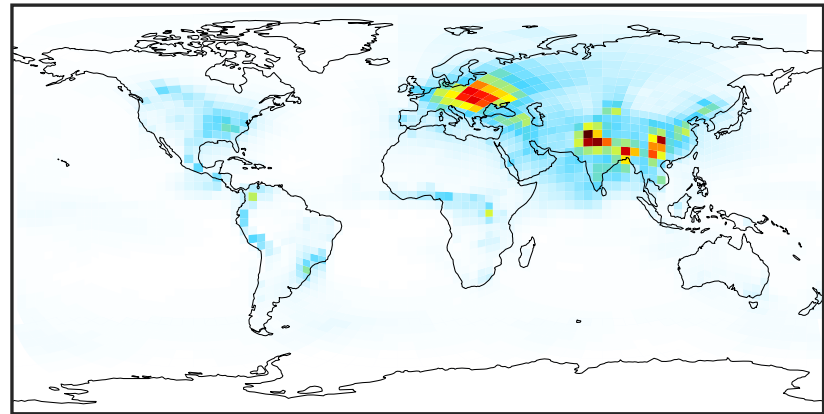
SpeciesConcVV_HMS (Jan2019)

GCC_14.2.0 (Ref)
4.0x5.0



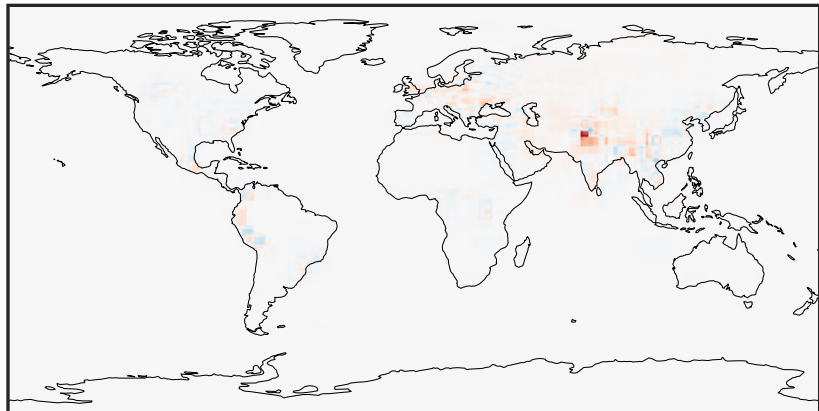
0.0004 0.1432 0.2864 0.4296 0.5733
ppb

GCHP_14.2.0 (Dev)
c24



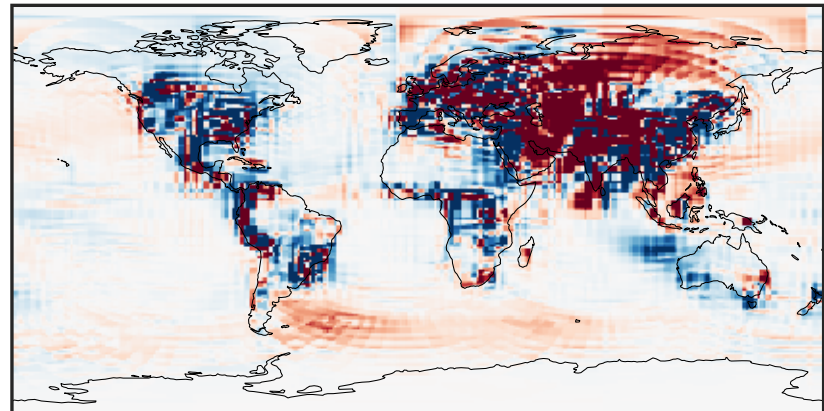
0.0004 0.1432 0.2864 0.4296 0.5733
ppb

Difference (1x1.25)
Dev - Ref, Dynamic Range



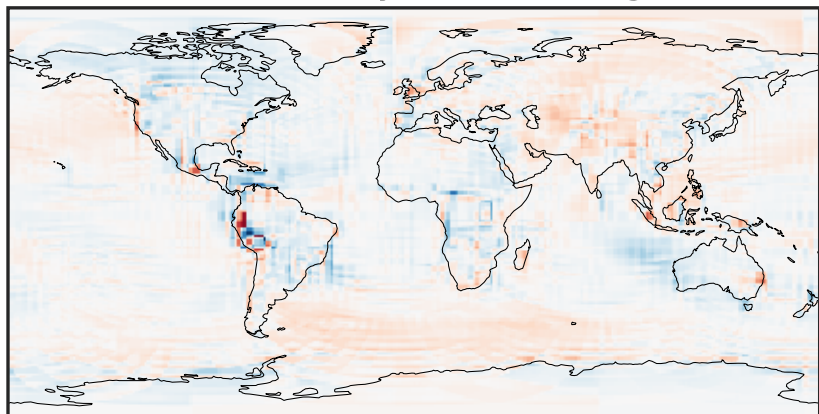
-0.607 -0.304 0.000 0.304 0.607
ppb

Difference (1x1.25)
Dev - Ref, Restricted Range [5%,95%]



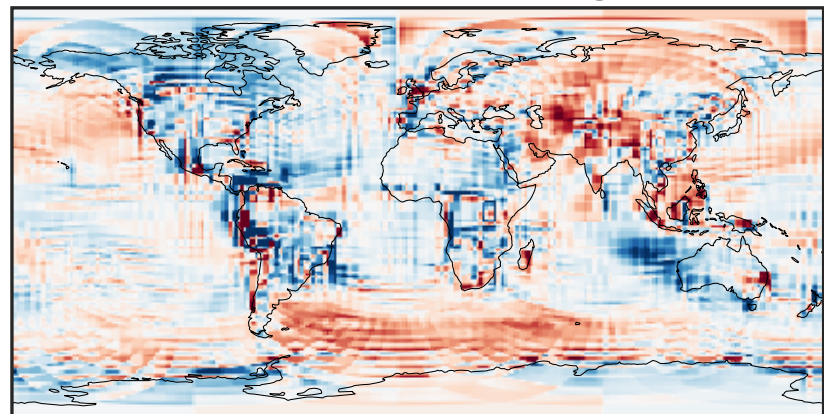
-0.005 0.000 0.005
ppb

Ratio (1x1.25)
Dev/Ref, Dynamic Range



1e-01 1 10
unitless

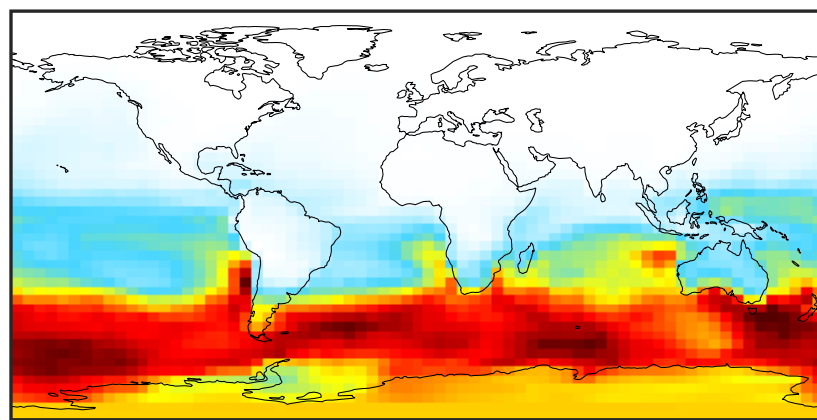
Ratio (1x1.25)
Dev/Ref, Fixed Range



0.50 0.75 1.00 1.50 2.00
unitless

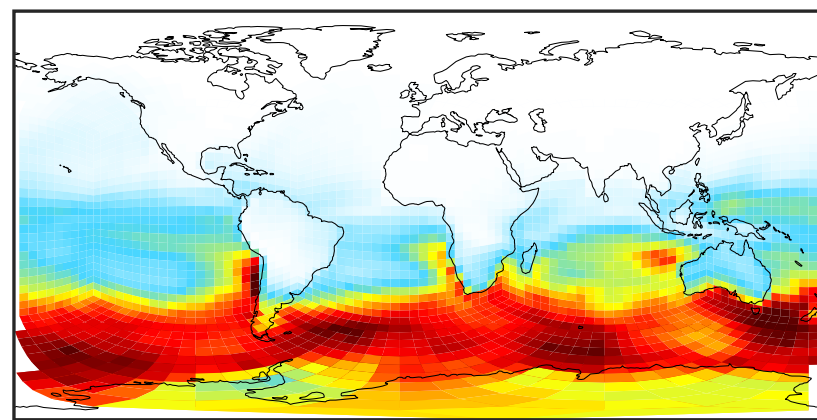
SpeciesConcVV_MSA (Jan2019)

GCC_14.2.0 (Ref)
4.0x5.0



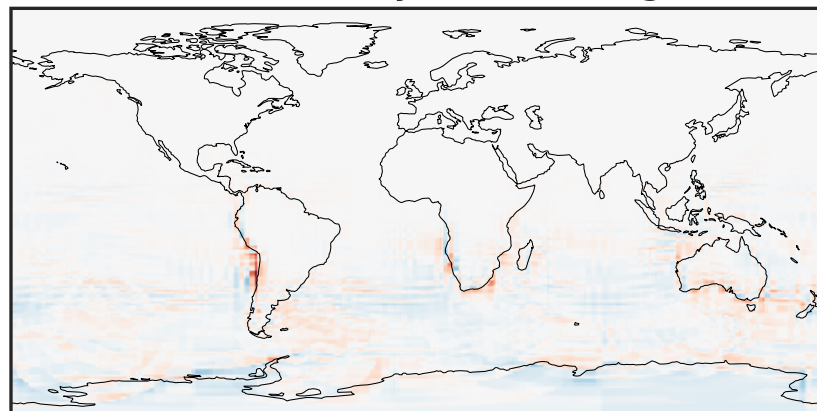
0.02 0.04 0.06
ppb

GCHP_14.2.0 (Dev)
c24



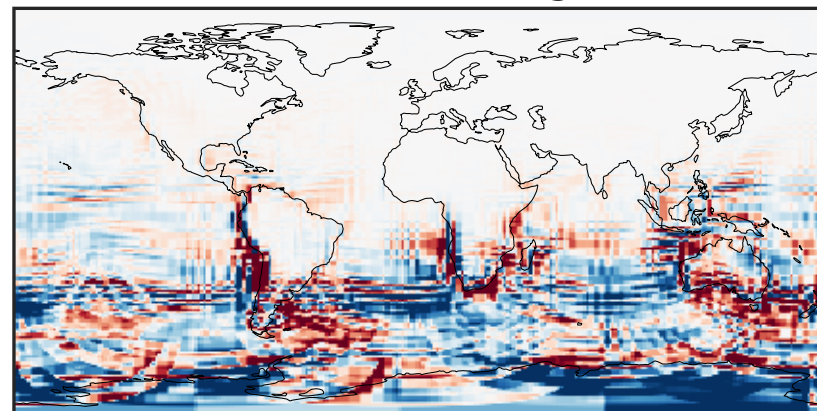
0.02 0.04 0.06
ppb

Difference (1x1.25)
Dev - Ref, Dynamic Range



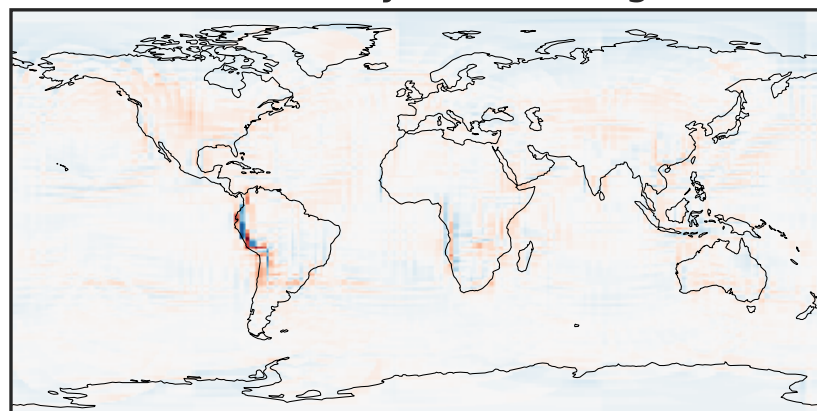
-0.025 0.000 0.025
ppb

Difference (1x1.25)
Dev - Ref, Restricted Range [5%,95%]



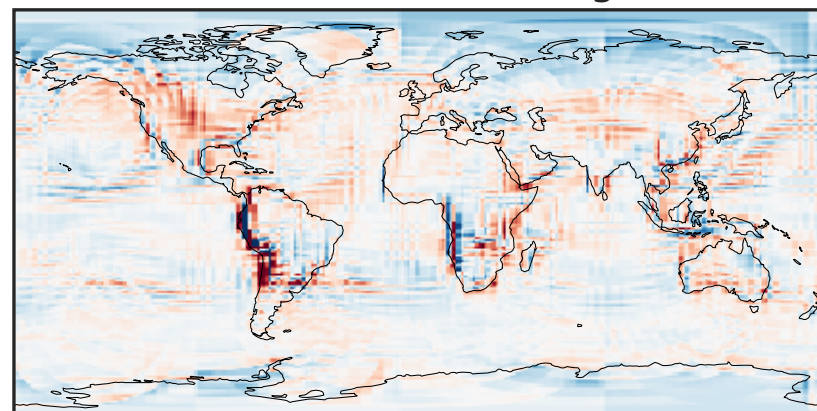
-0.0025 0.0000 0.0025
ppb

Ratio (1x1.25)
Dev/Ref, Dynamic Range



0.103 0.551 1.000 5.372 9.745
unitless

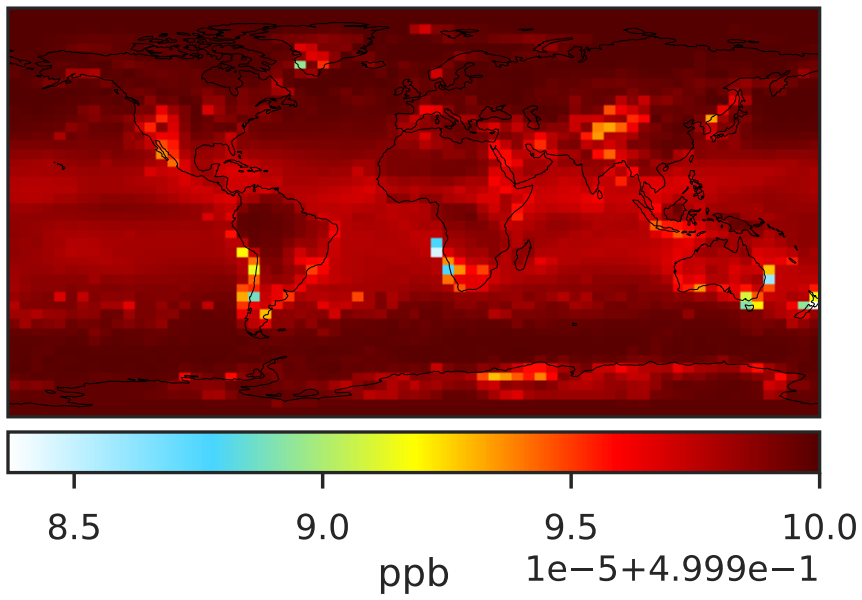
Ratio (1x1.25)
Dev/Ref, Fixed Range



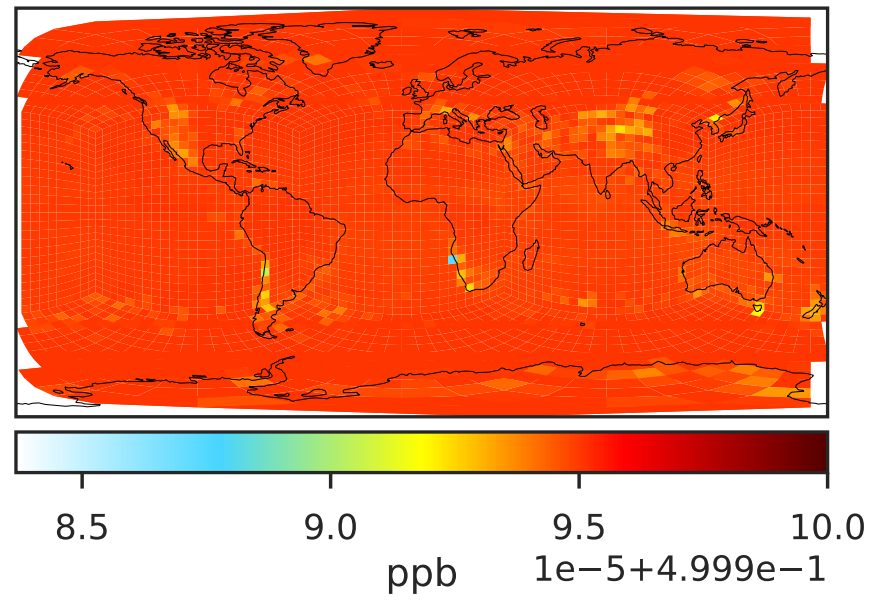
0.50 0.75 1.00 1.50 2.00
unitless

SpeciesConcVV_OCS (Jan2019)

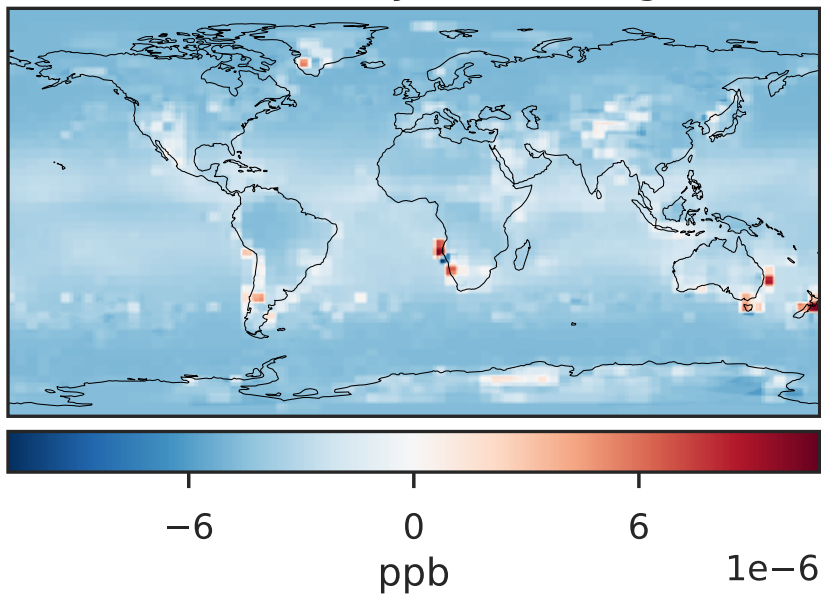
GCC_14.2.0 (Ref)
4.0x5.0



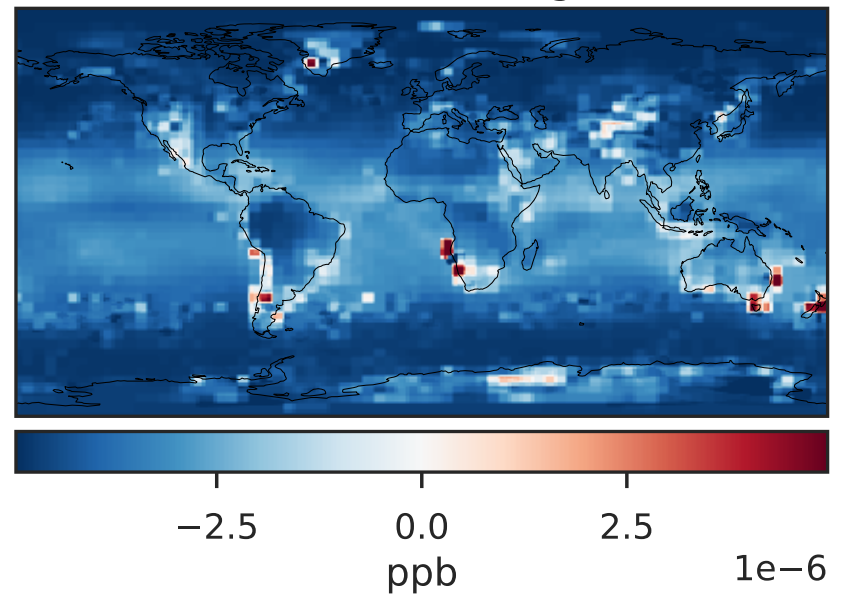
GCHP_14.2.0 (Dev)
c24



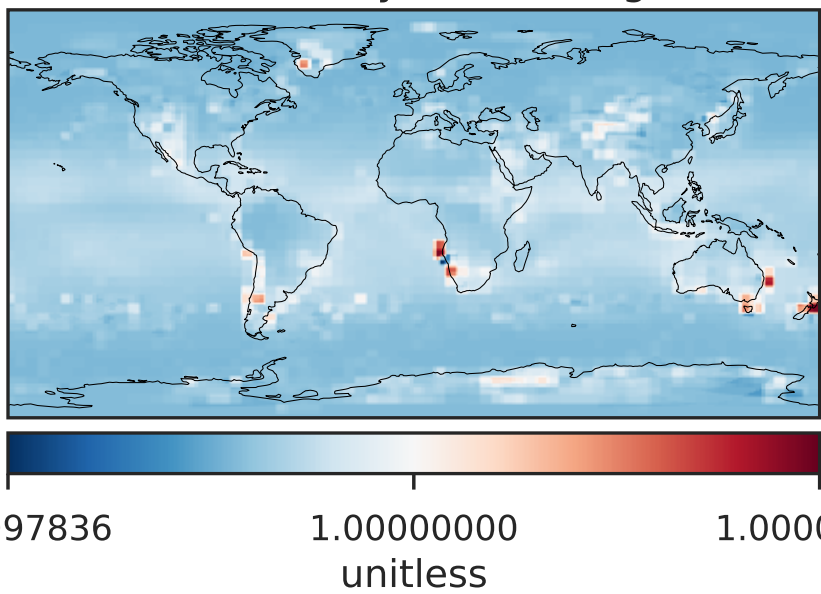
Difference (1x1.25)
Dev - Ref, Dynamic Range



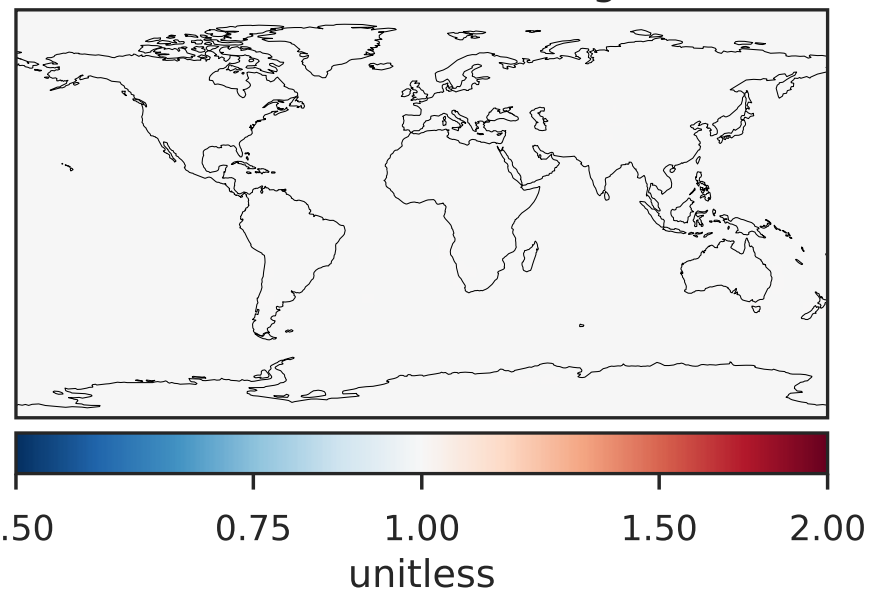
Difference (1x1.25)
Dev - Ref, Restricted Range [5%,95%]



Ratio (1x1.25)
Dev/Ref, Dynamic Range

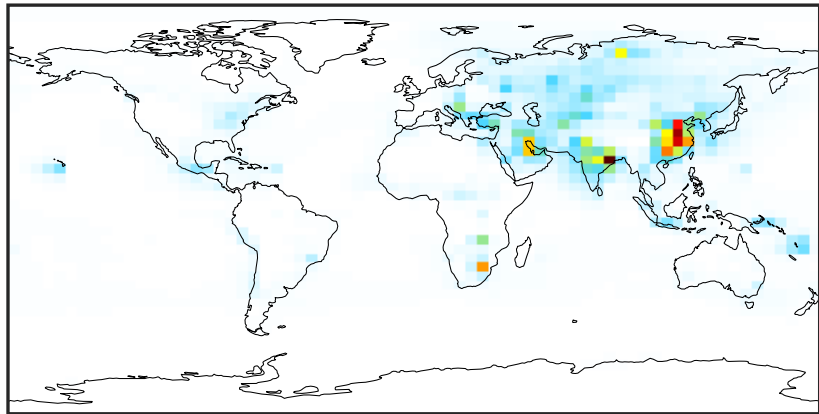


Ratio (1x1.25)
Dev/Ref, Fixed Range



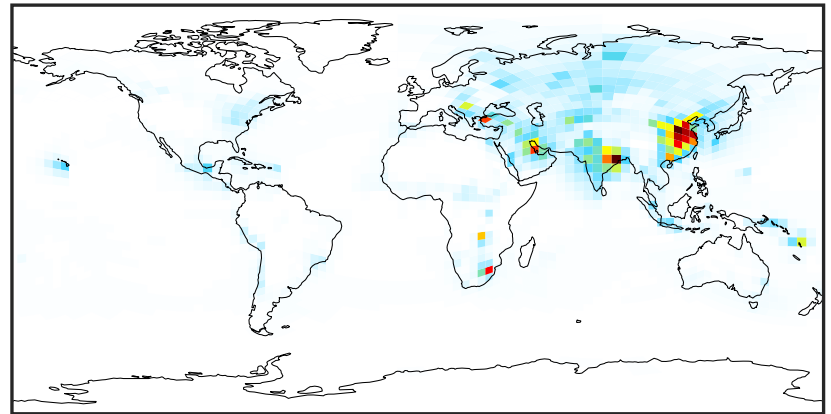
SpeciesConcVV_SO2 (Jan2019)

GCC_14.2.0 (Ref)
4.0x5.0



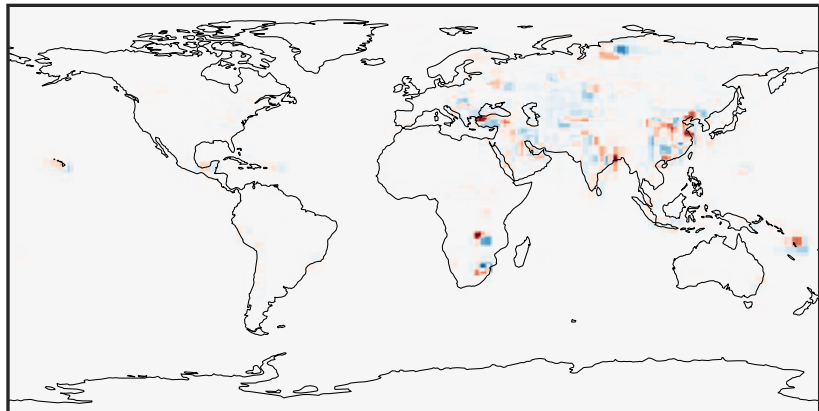
0.00 2.59 5.18 7.77 10.36
ppb

GCHP_14.2.0 (Dev)
c24



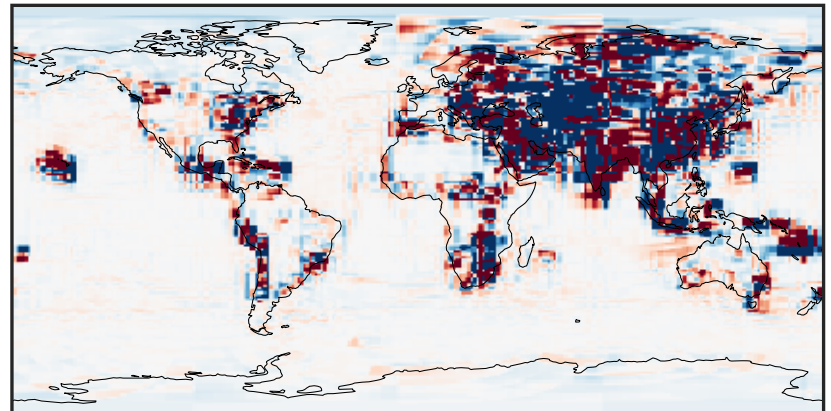
0.00 2.59 5.18 7.77 10.36
ppb

Difference (1x1.25)
Dev - Ref, Dynamic Range



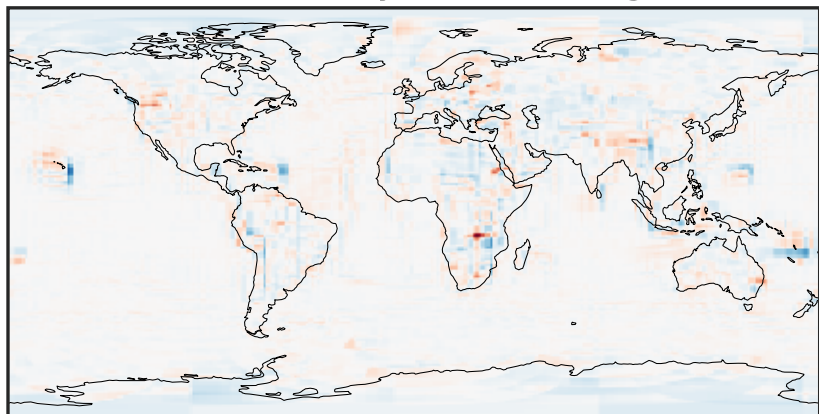
-5.73 -2.86 0.00 2.86 5.73
ppb

Difference (1x1.25)
Dev - Ref, Restricted Range [5%,95%]



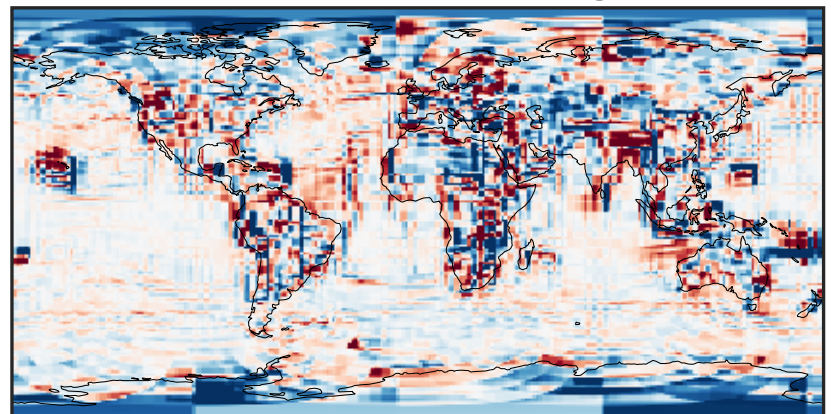
-0.1090 -0.0545 0.0000 0.0545 0.1090
ppb

Ratio (1x1.25)
Dev/Ref, Dynamic Range



1e-02 1e-01 1 10 100
unitless

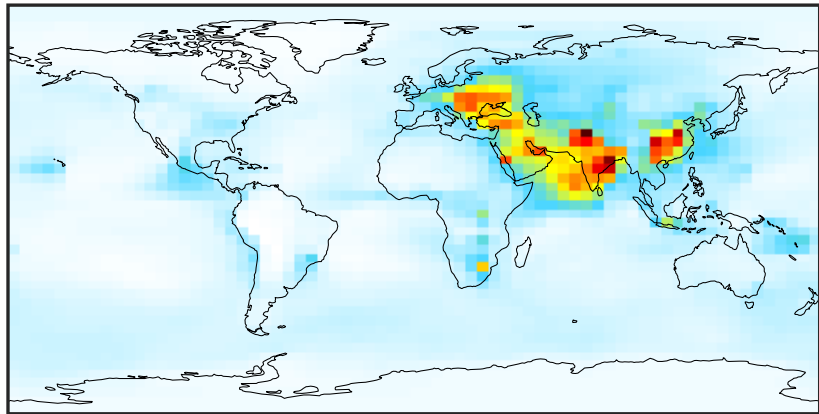
Ratio (1x1.25)
Dev/Ref, Fixed Range



0.50 0.75 1.00 1.50 2.00
unitless

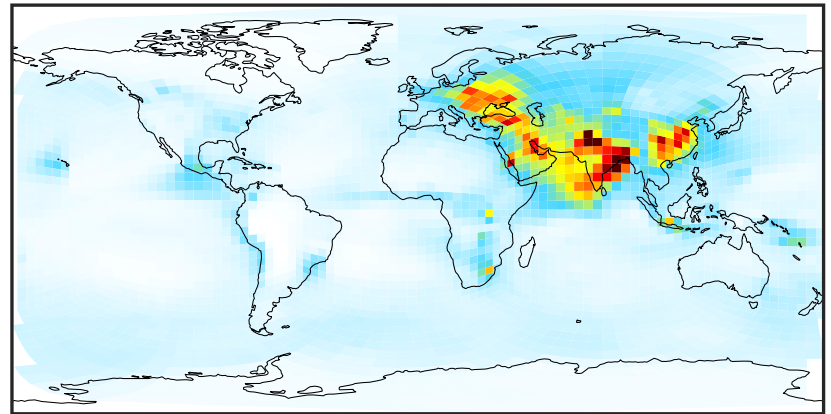
SpeciesConcVV_SO4 (Jan2019)

GCC_14.2.0 (Ref)
4.0x5.0



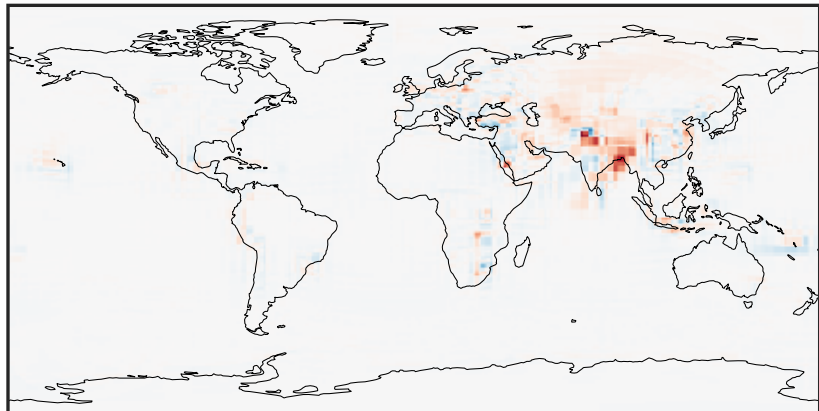
0.029 0.910 1.820 2.729 3.668
ppb

GCHP_14.2.0 (Dev)
c24



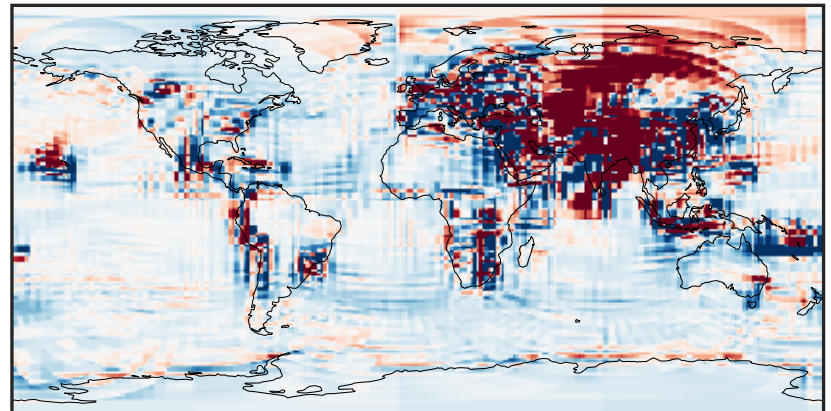
0.029 0.910 1.820 2.729 3.668
ppb

Difference (1x1.25)
Dev - Ref, Dynamic Range



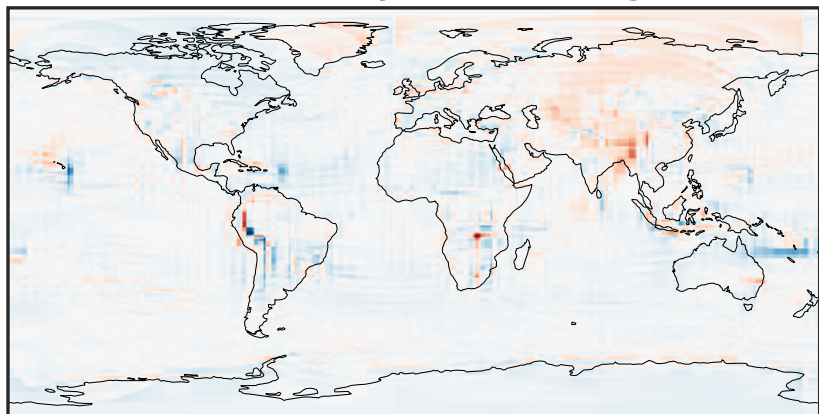
-2.314 -1.157 0.000 1.157 2.314
ppb

Difference (1x1.25)
Dev - Ref, Restricted Range [5%,95%]



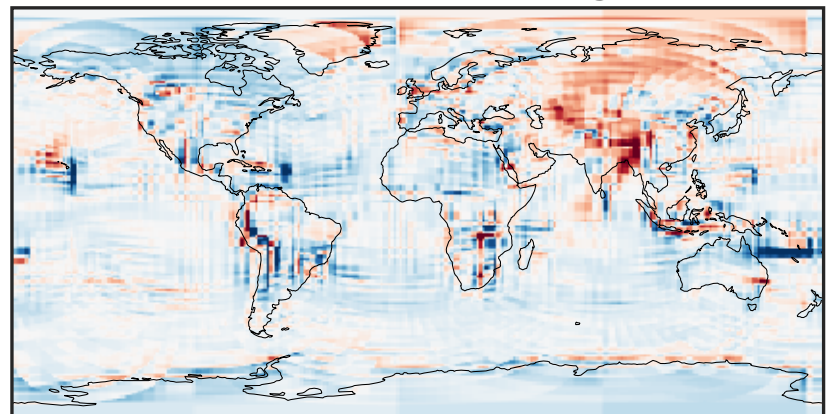
-0.0951 -0.0475 0.0000 0.0475 0.0951
ppb

Ratio (1x1.25)
Dev/Ref, Dynamic Range



0.136 0.568 1.000 4.174 7.347
unitless

Ratio (1x1.25)
Dev/Ref, Fixed Range



0.50 0.75 1.00 1.50 2.00
unitless