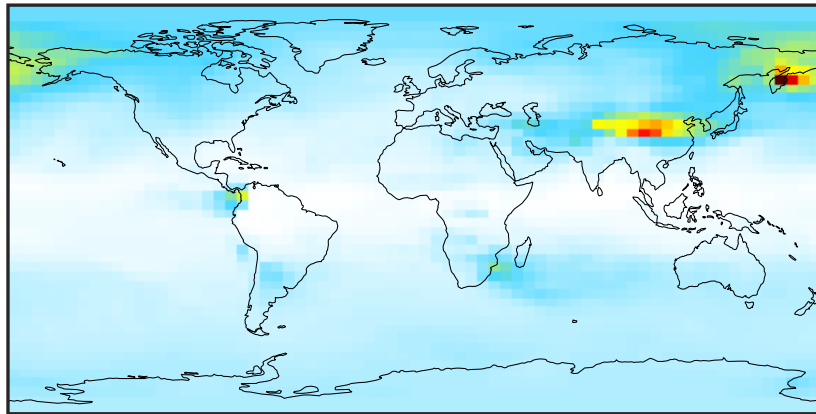


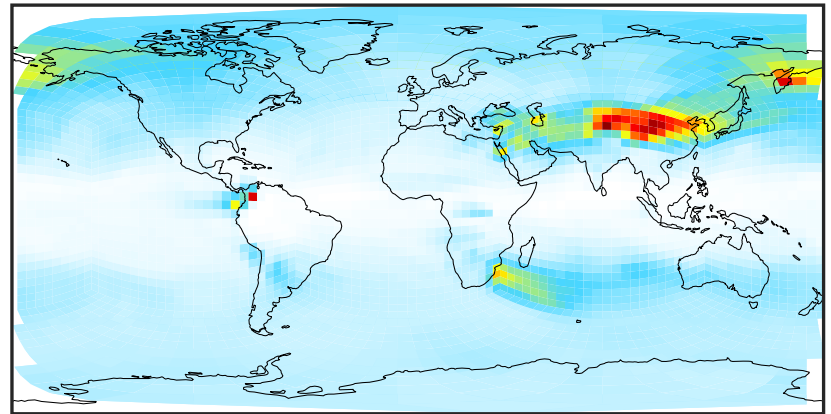
# SpeciesConcVV\_SOx (Oct2019)

GCC\_14.2.0 (Ref)  
4.0x5.0



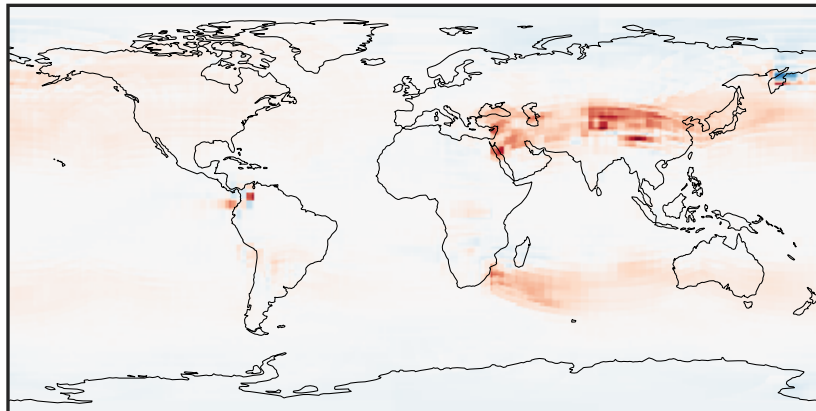
0.0018 0.0880 0.1760 0.2640 0.3538  
ppb

GCHP\_14.2.0 (Dev)  
c24



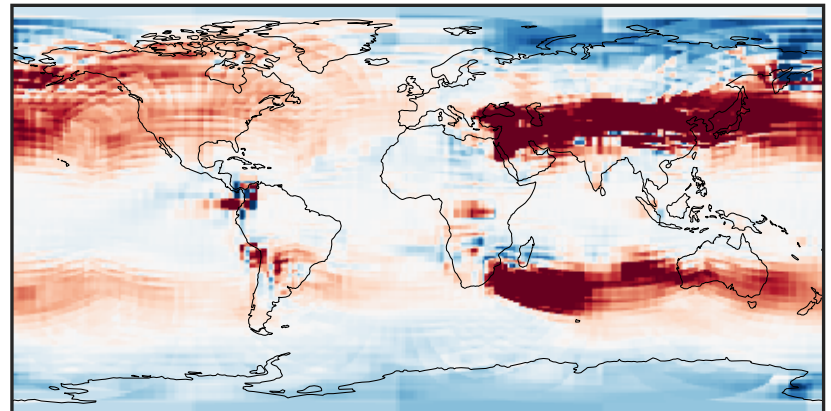
0.0018 0.0880 0.1760 0.2640 0.3538  
ppb

Difference (1x1.25)  
Dev - Ref, Dynamic Range



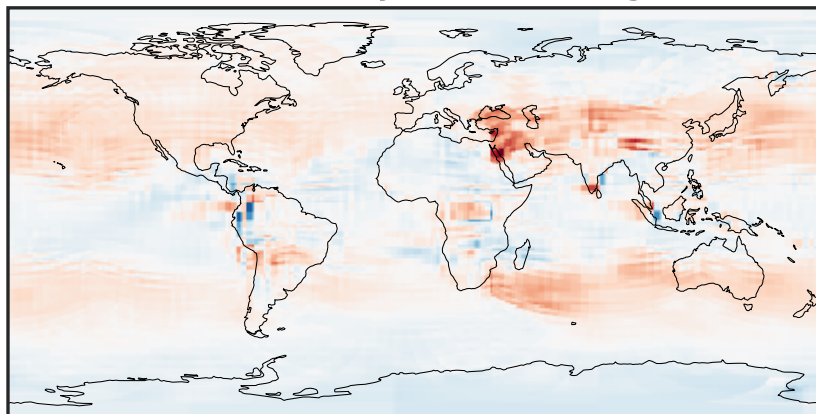
-0.1946 -0.0973 0.0000 0.0973 0.1946  
ppb

Difference (1x1.25)  
Dev - Ref, Restricted Range [5%,95%]



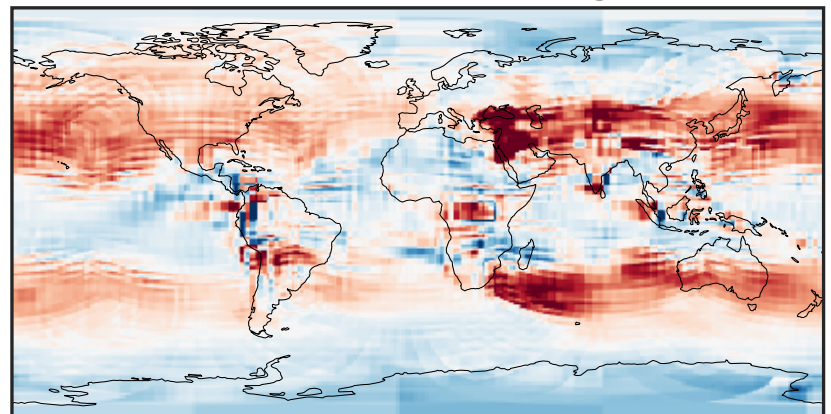
-0.015 0.000 0.015  
ppb

Ratio (1x1.25)  
Dev/Ref, Dynamic Range



0.152 0.576 1.000 3.798 6.596  
unitless

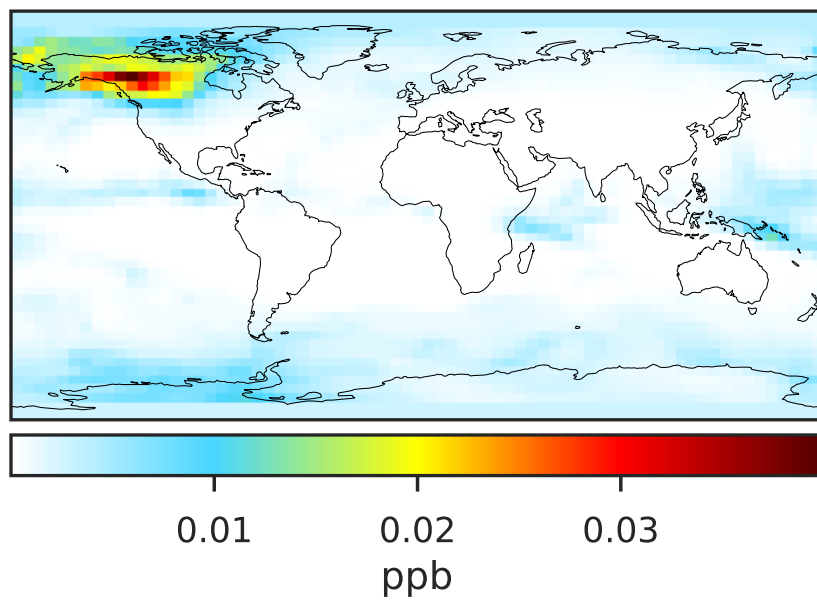
Ratio (1x1.25)  
Dev/Ref, Fixed Range



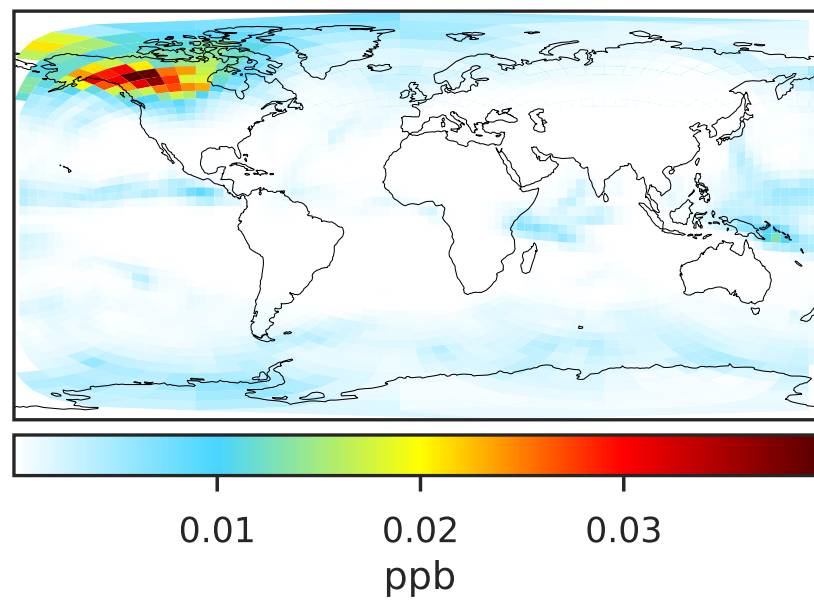
0.50 0.75 1.00 1.50 2.00  
unitless

# SpeciesConcVV\_DMS (Oct2019)

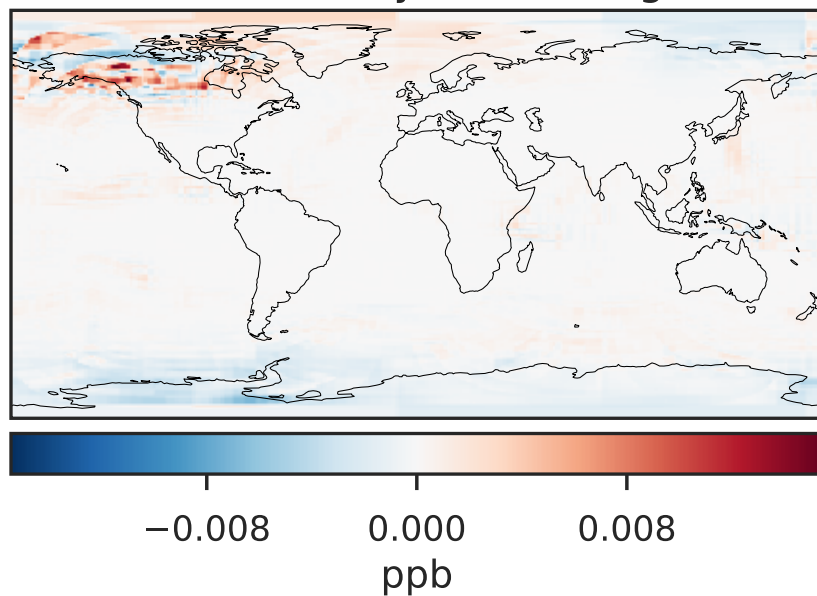
GCC\_14.2.0 (Ref)  
4.0x5.0



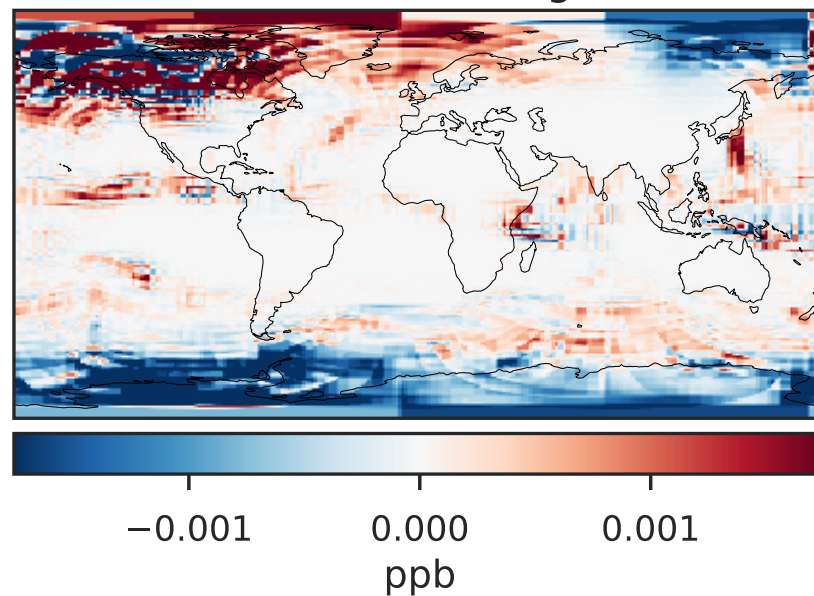
GCHP\_14.2.0 (Dev)  
c24



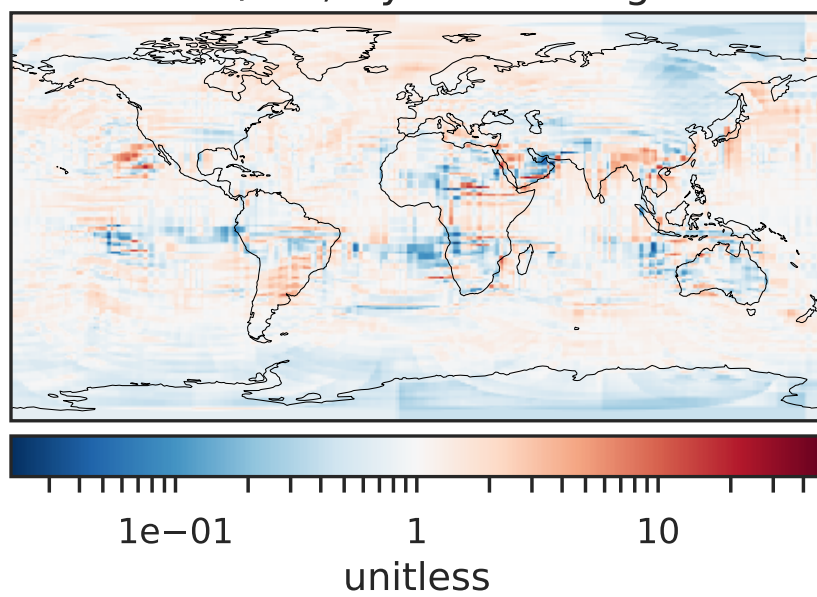
Difference (1x1.25)  
Dev - Ref, Dynamic Range



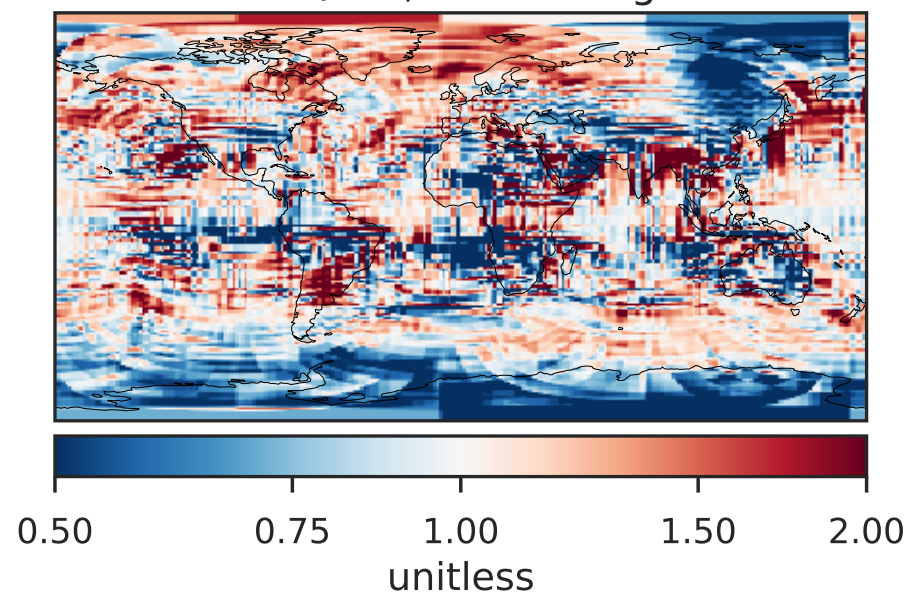
Difference (1x1.25)  
Dev - Ref, Restricted Range [5%,95%]



Ratio (1x1.25)  
Dev/Ref, Dynamic Range



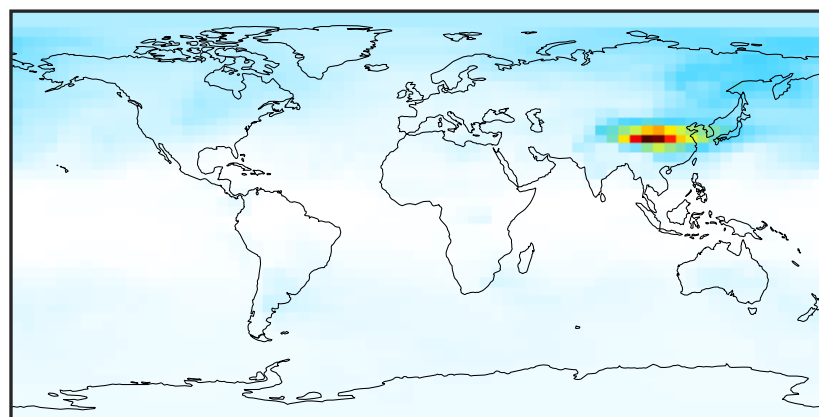
Ratio (1x1.25)  
Dev/Ref, Fixed Range





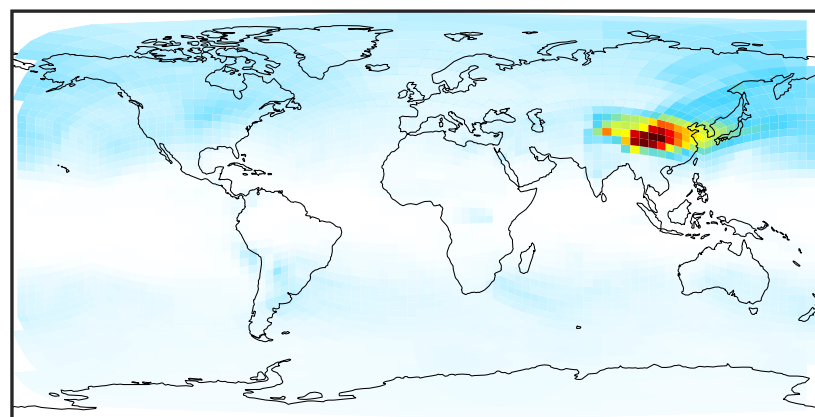
# SpeciesConcVV\_HMS (Oct2019)

GCC\_14.2.0 (Ref)  
4.0x5.0



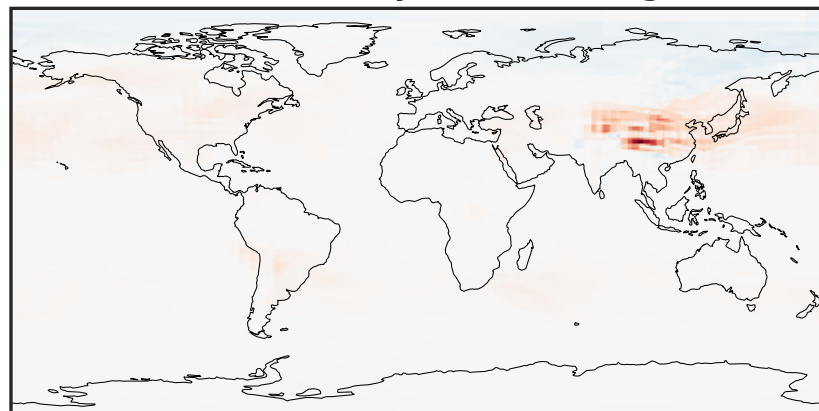
0.006 0.012 0.018  
ppb

GCHP\_14.2.0 (Dev)  
c24



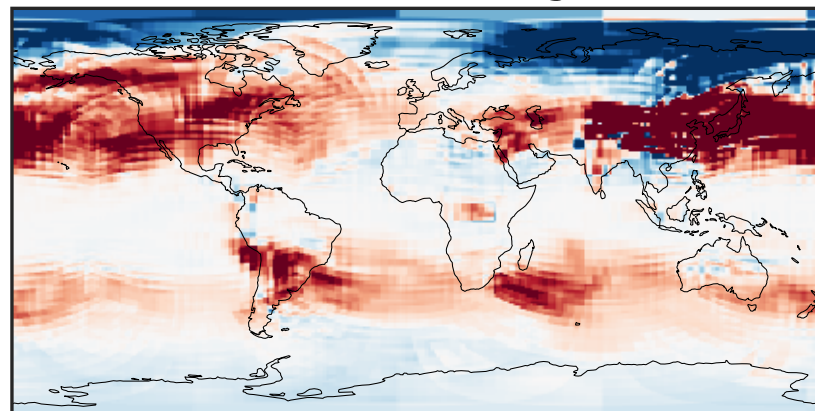
0.006 0.012 0.018  
ppb

Difference (1x1.25)  
Dev - Ref, Dynamic Range



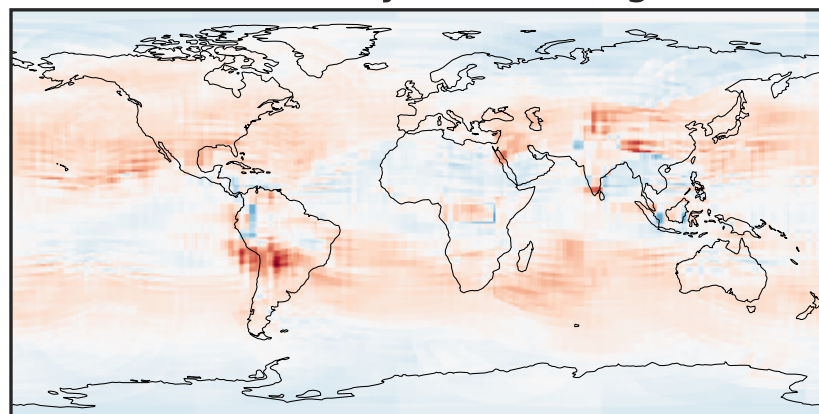
-0.01 0.00 0.01  
ppb

Difference (1x1.25)  
Dev - Ref, Restricted Range [5%,95%]



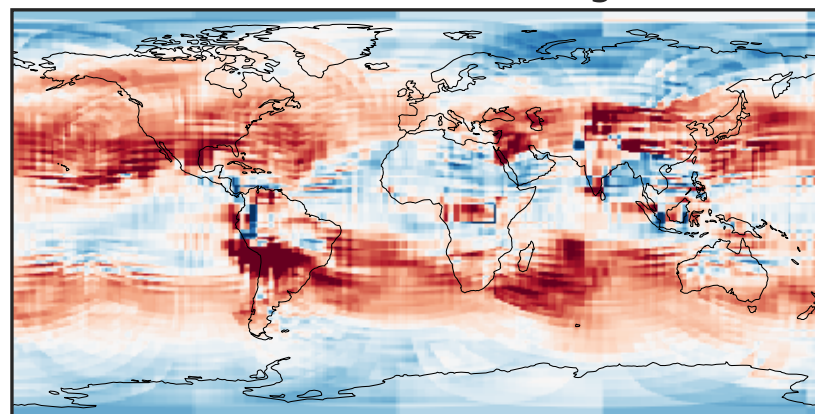
-0.0004 0.0000 0.0004  
ppb

Ratio (1x1.25)  
Dev/Ref, Dynamic Range



0.108 0.554 1.000 5.141 9.282  
unitless

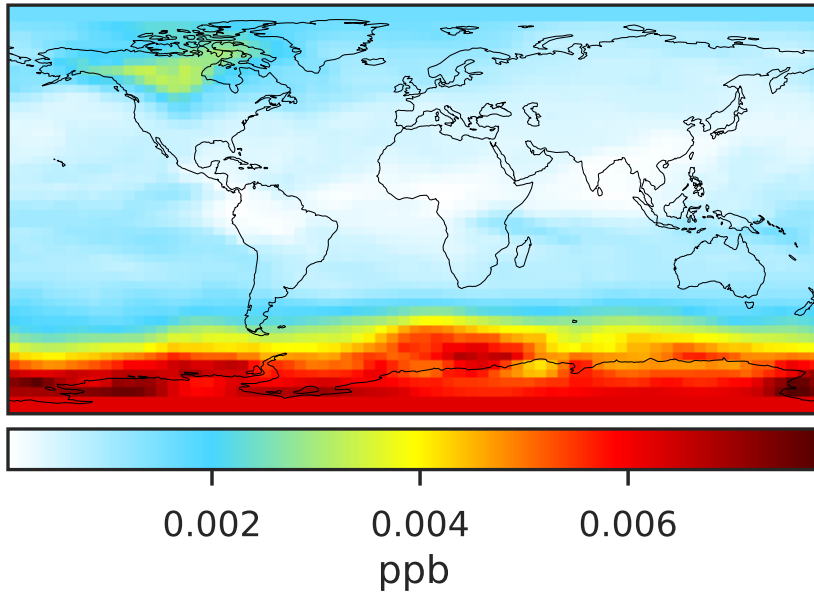
Ratio (1x1.25)  
Dev/Ref, Fixed Range



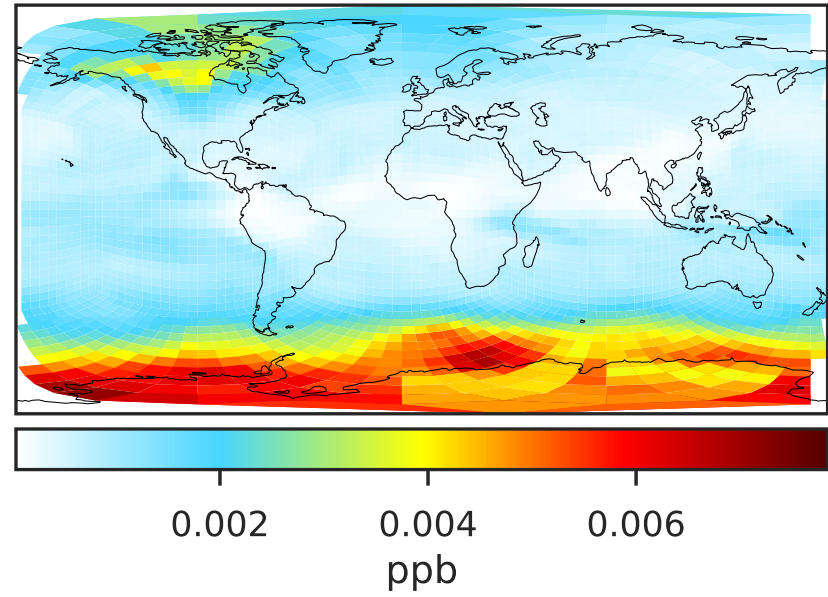
0.50 0.75 1.00 1.50 2.00  
unitless

# SpeciesConcVW\_MSA (Oct2019)

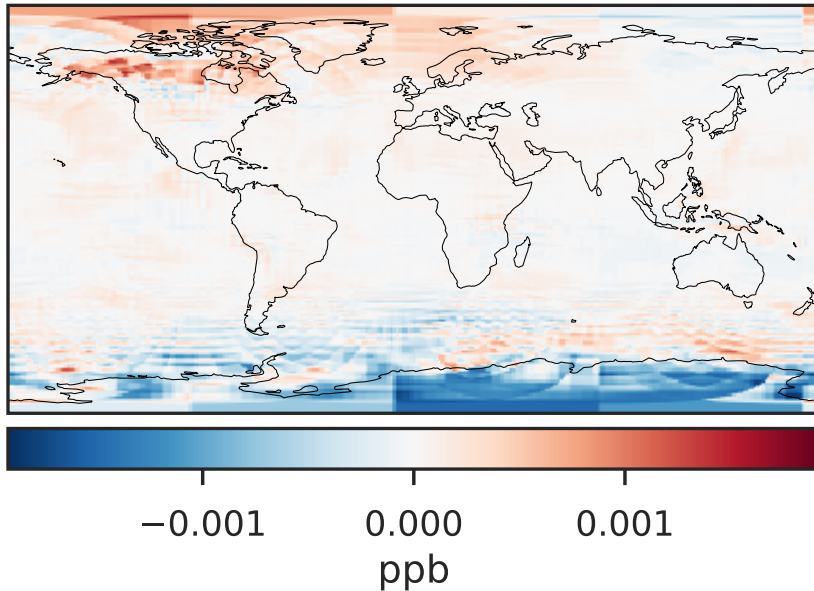
GCC\_14.2.0 (Ref)  
4.0x5.0



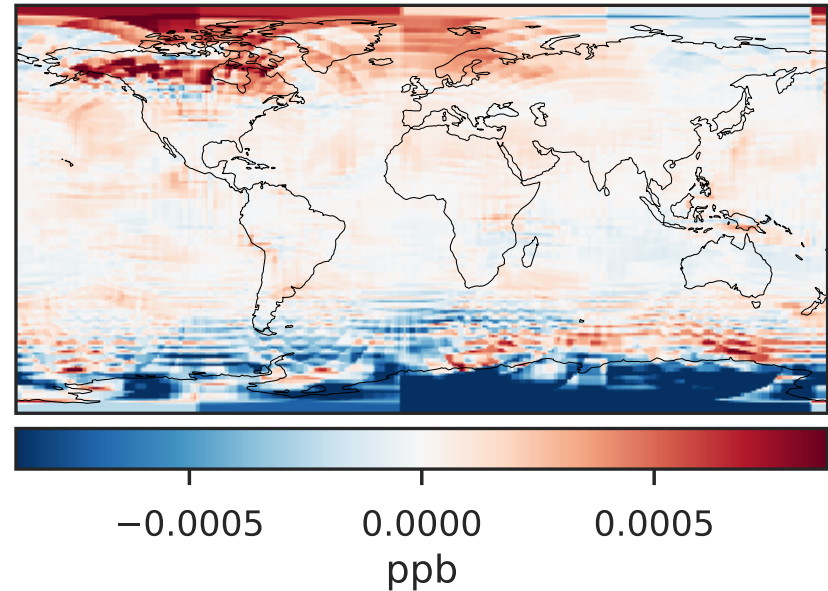
GCHP\_14.2.0 (Dev)  
c24



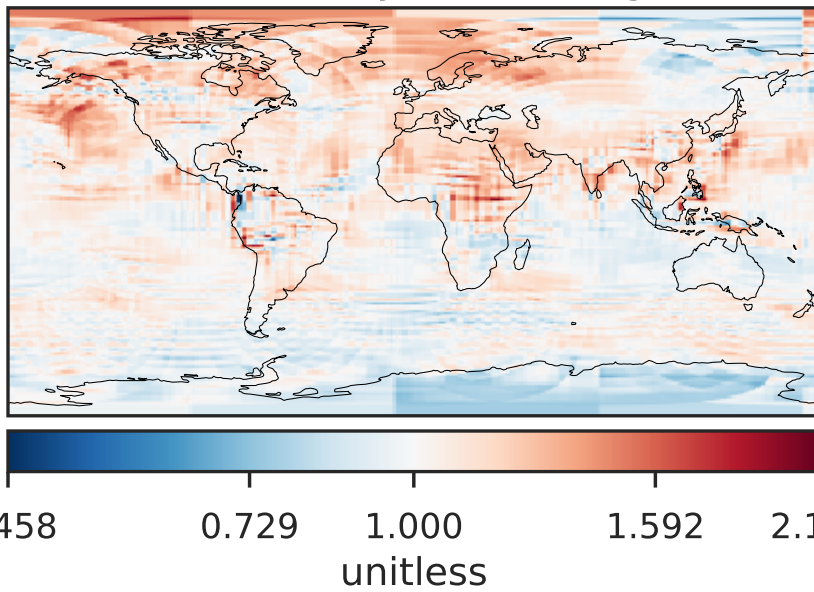
Difference (1x1.25)  
Dev - Ref, Dynamic Range



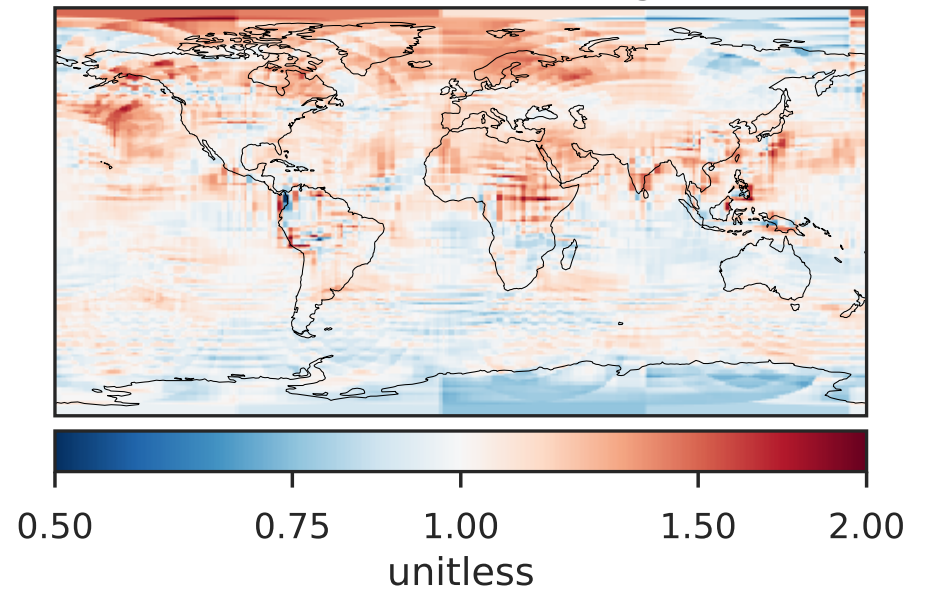
Difference (1x1.25)  
Dev - Ref, Restricted Range [5%,95%]



Ratio (1x1.25)  
Dev/Ref, Dynamic Range



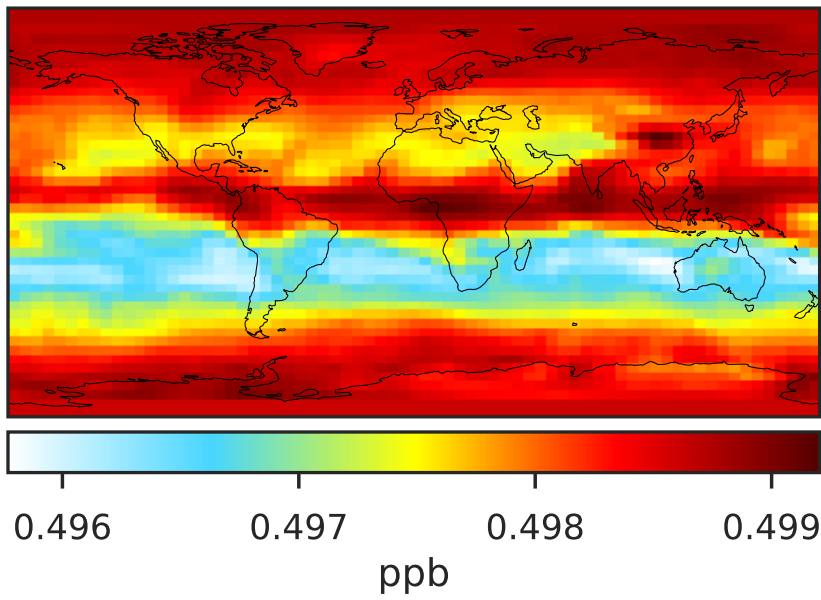
Ratio (1x1.25)  
Dev/Ref, Fixed Range



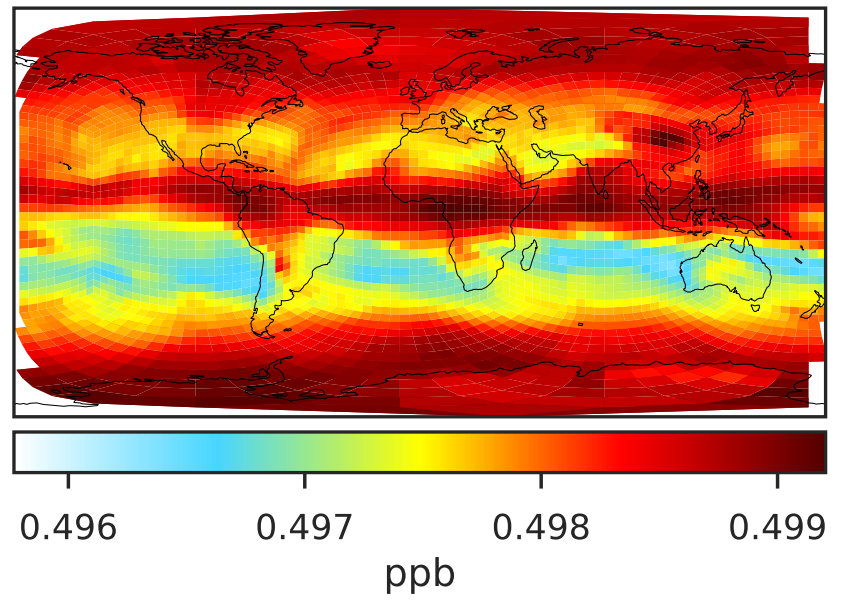


# SpeciesConcVV\_OCS (Oct2019)

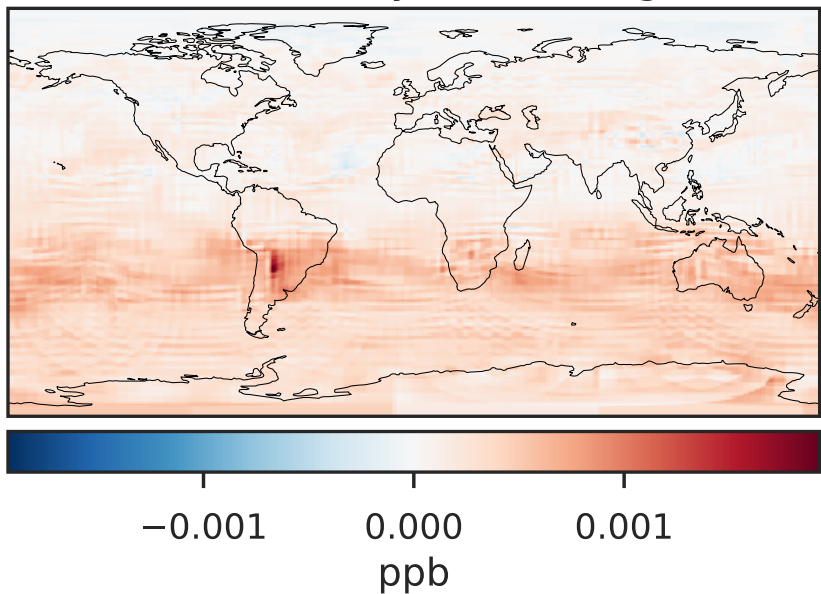
GCC\_14.2.0 (Ref)  
4.0x5.0



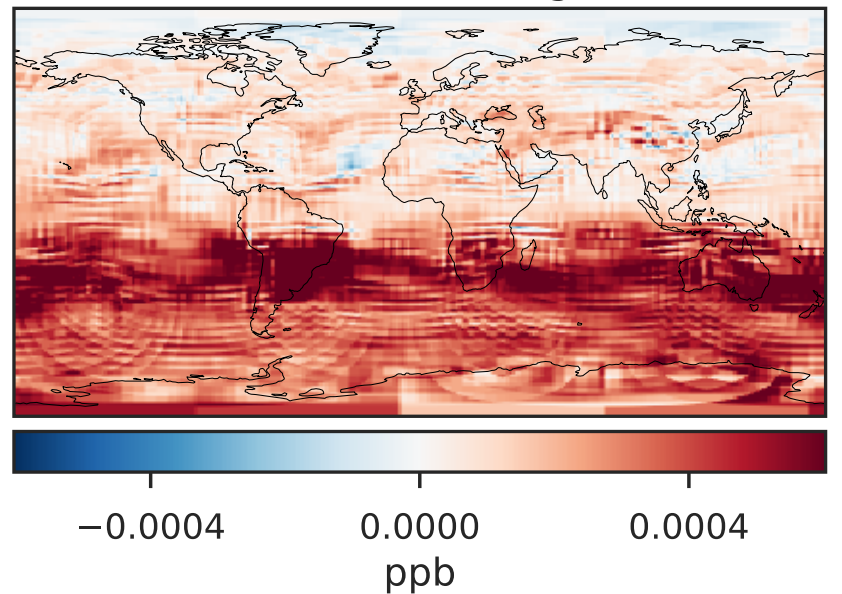
GCHP\_14.2.0 (Dev)  
c24



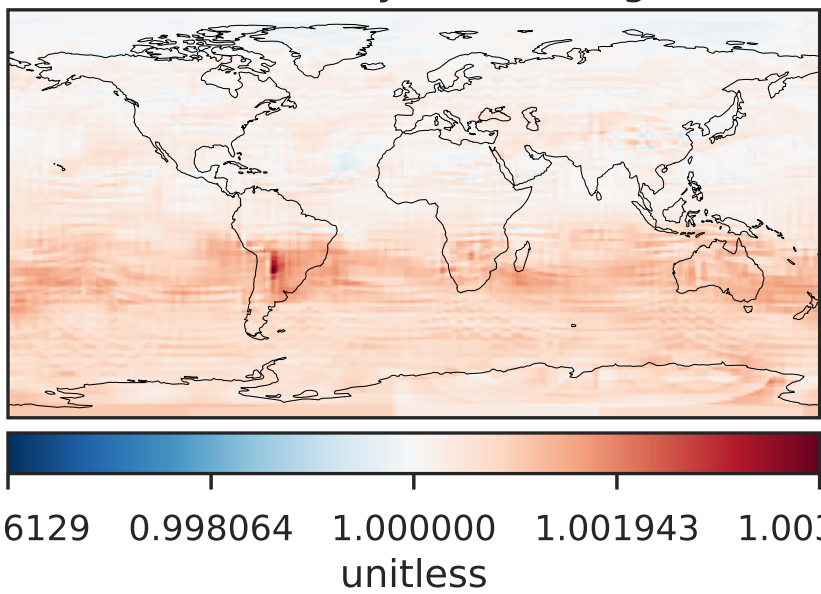
Difference (1x1.25)  
Dev - Ref, Dynamic Range



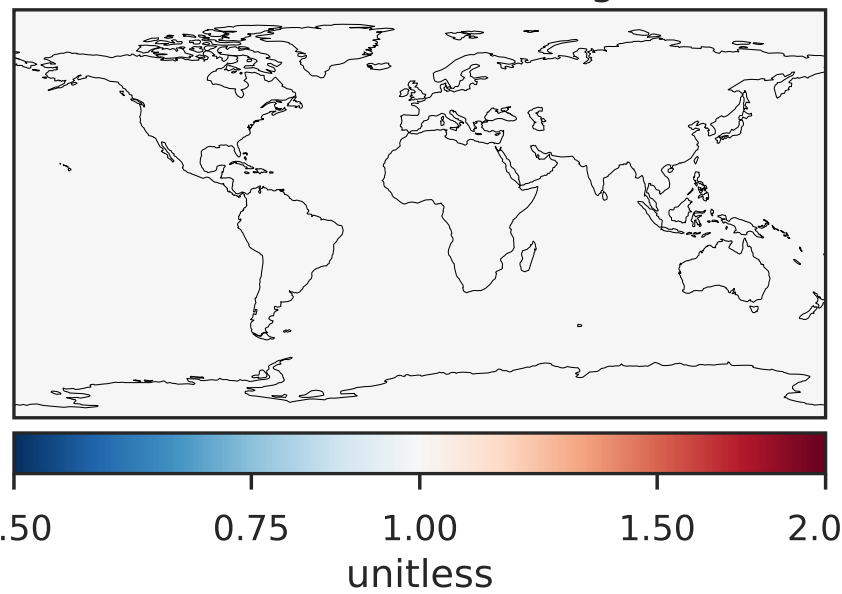
Difference (1x1.25)  
Dev - Ref, Restricted Range [5%,95%]



Ratio (1x1.25)  
Dev/Ref, Dynamic Range



Ratio (1x1.25)  
Dev/Ref, Fixed Range

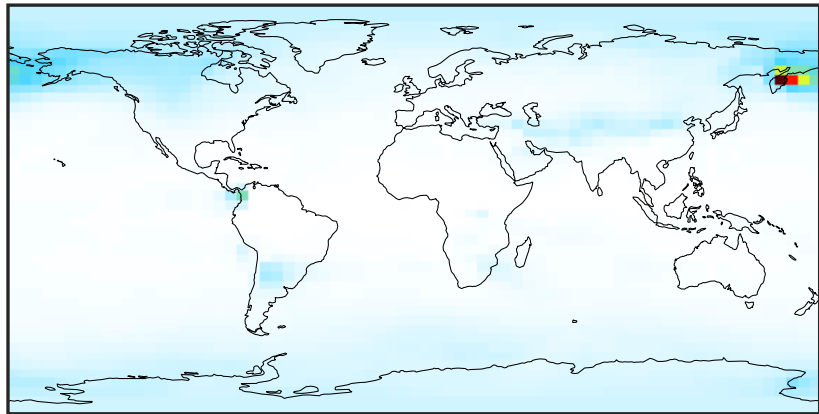


0.996129 0.998064 1.000000 1.001943 1.003887  
unitless

0.50 0.75 1.00 1.50 2.00  
unitless

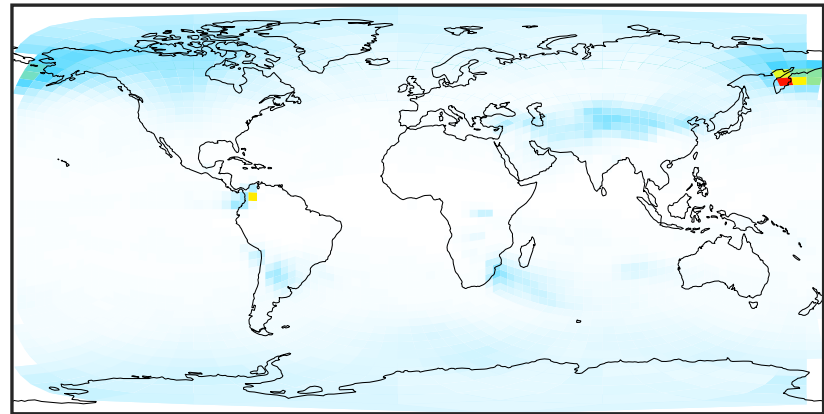
# SpeciesConcVV\_SO2 (Oct2019)

GCC\_14.2.0 (Ref)  
4.0x5.0



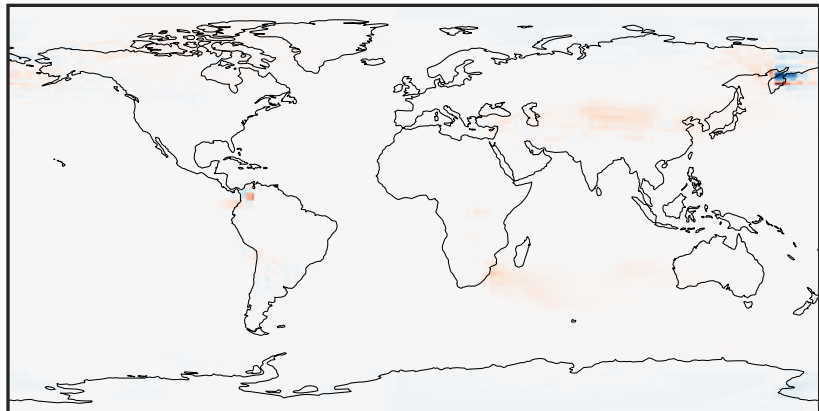
0.0000 0.0644 0.1287 0.1931 0.2575  
ppb

GCHP\_14.2.0 (Dev)  
c24



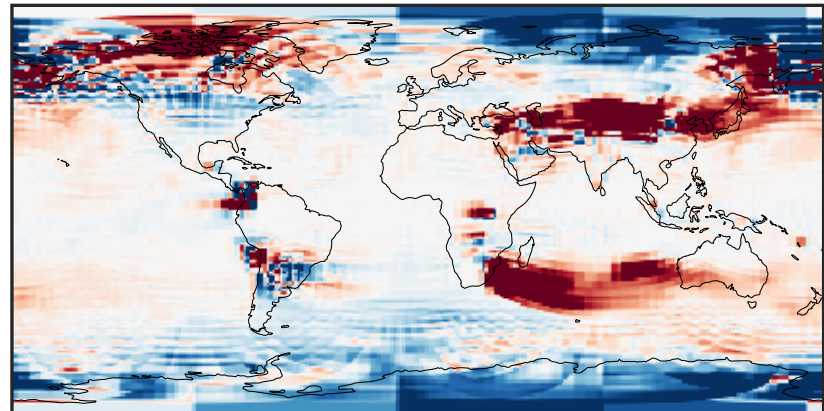
0.0000 0.0644 0.1287 0.1931 0.2575  
ppb

Difference (1x1.25)  
Dev - Ref, Dynamic Range



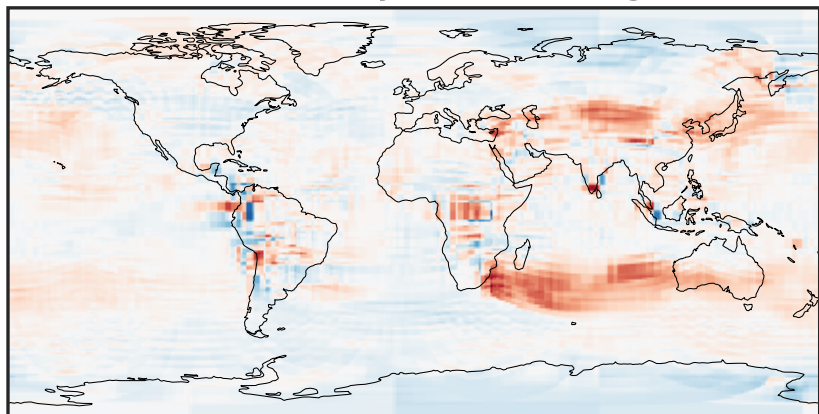
-0.152 -0.076 0.000 0.076 0.152  
ppb

Difference (1x1.25)  
Dev - Ref, Restricted Range [5%,95%]



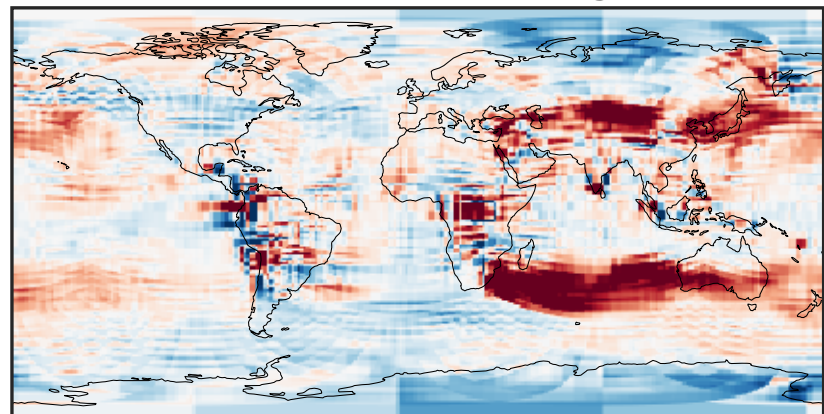
-0.0025 0.0000 0.0025  
ppb

Ratio (1x1.25)  
Dev/Ref, Dynamic Range



0.147 0.573 1.000 3.912 6.823  
unitless

Ratio (1x1.25)  
Dev/Ref, Fixed Range

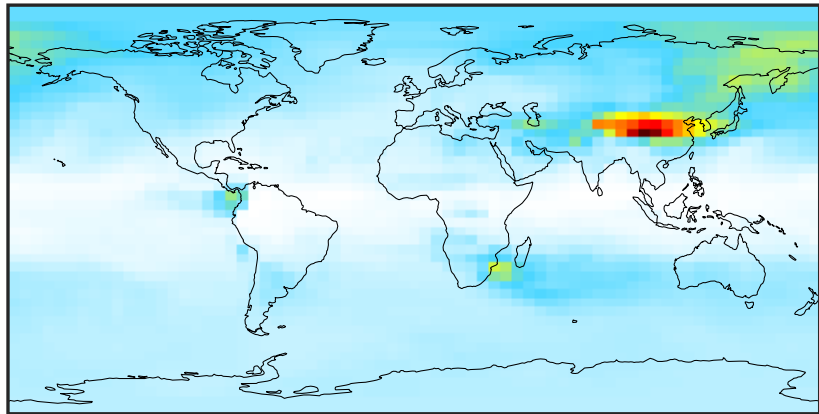


0.50 0.75 1.00 1.50 2.00  
unitless



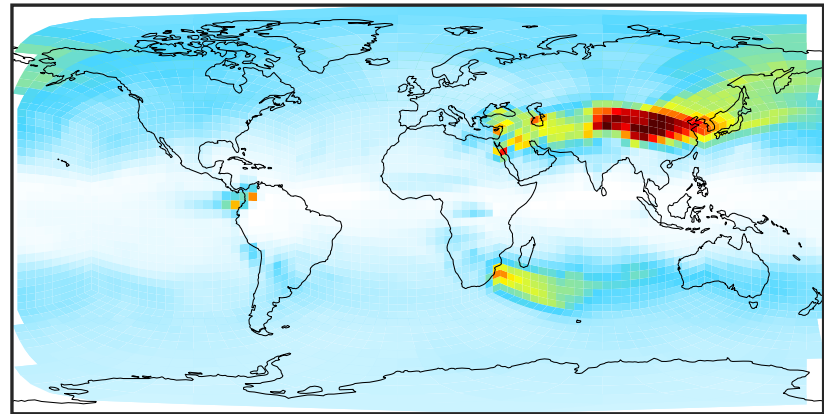
# SpeciesConcVV\_SO4 (Oct2019)

GCC\_14.2.0 (Ref)  
4.0x5.0



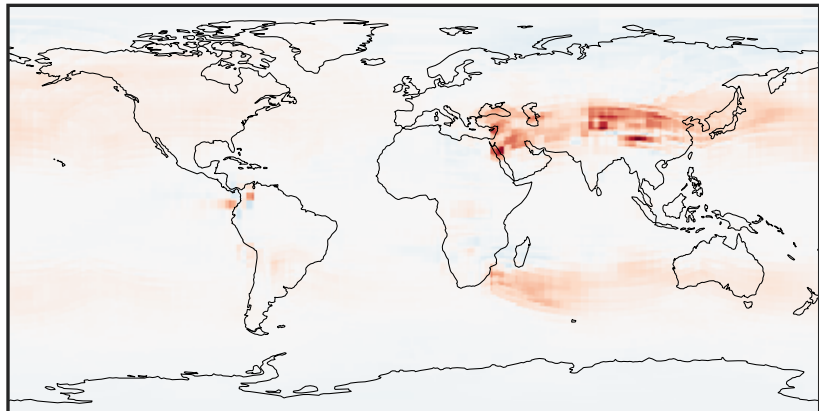
0.0017 0.0609 0.1218 0.1828 0.2453  
ppb

GCHP\_14.2.0 (Dev)  
c24



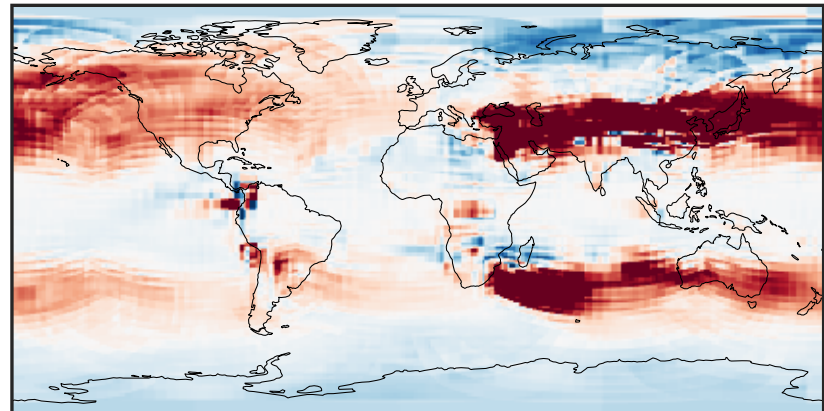
0.0017 0.0609 0.1218 0.1828 0.2453  
ppb

Difference (1x1.25)  
Dev - Ref, Dynamic Range



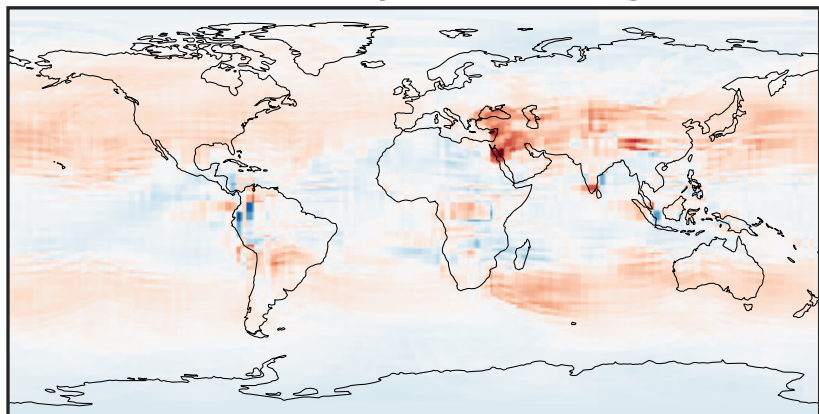
-0.1728 -0.0864 0.0000 0.0864 0.1728  
ppb

Difference (1x1.25)  
Dev - Ref, Restricted Range [5%,95%]



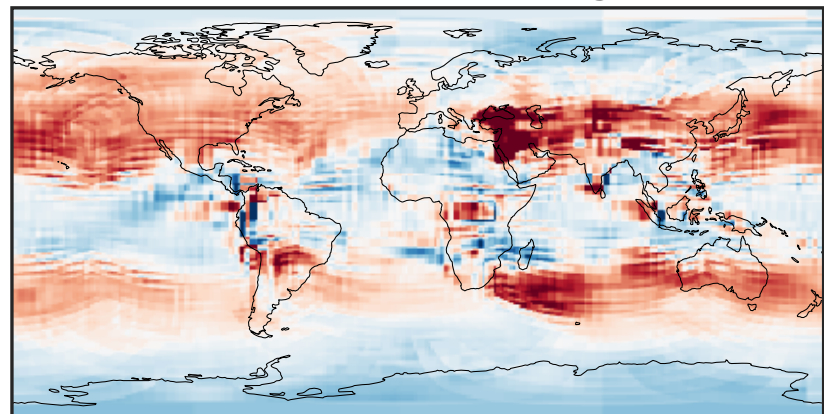
-0.015 0.000 0.015  
ppb

Ratio (1x1.25)  
Dev/Ref, Dynamic Range



0.142 0.571 1.000 4.025 7.050  
unitless

Ratio (1x1.25)  
Dev/Ref, Fixed Range



0.50 0.75 1.00 1.50 2.00  
unitless