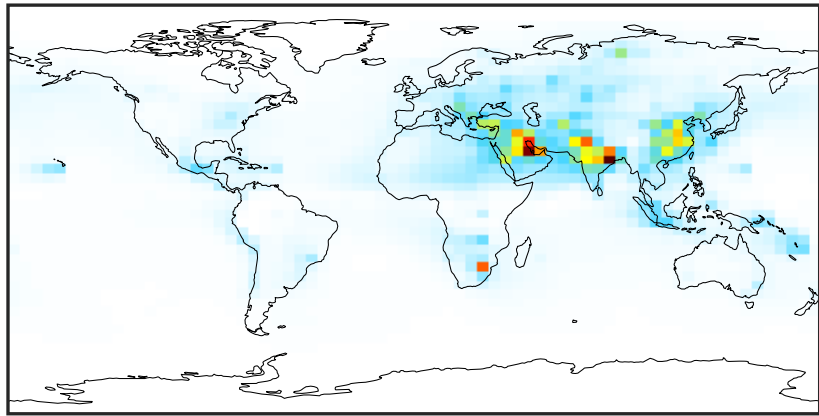


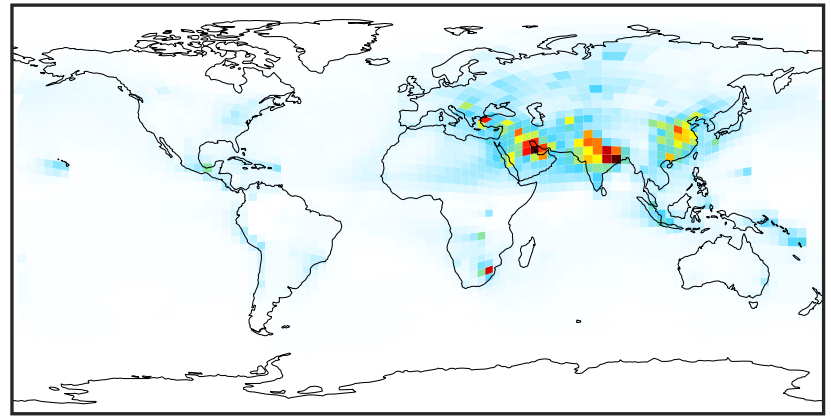
SpeciesConcVV_SOx (Oct2019)

GCC_14.2.0 (Ref)
4.0x5.0



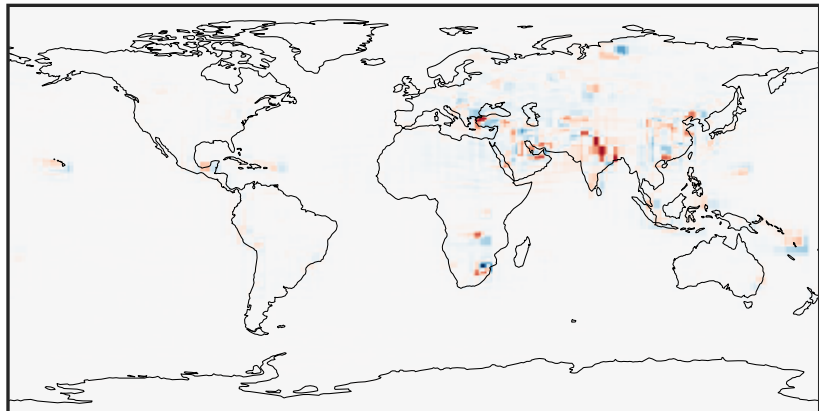
0.03 3.10 6.21 9.31 12.44
ppb

GCHP_14.2.0 (Dev)
c24



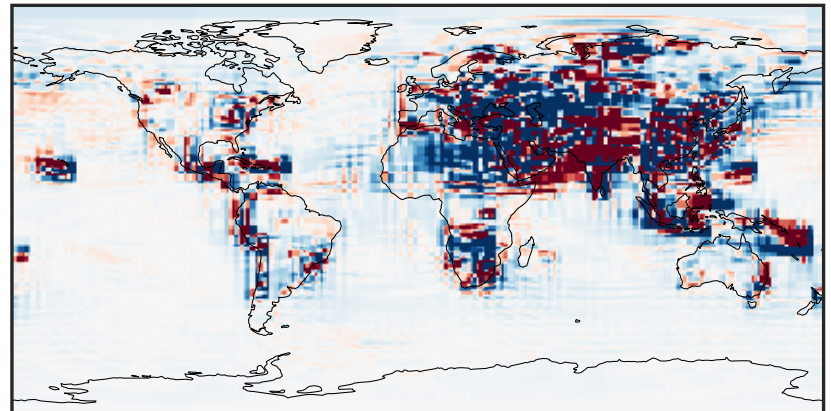
0.03 3.10 6.21 9.31 12.44
ppb

Difference (1x1.25)
Dev - Ref, Dynamic Range



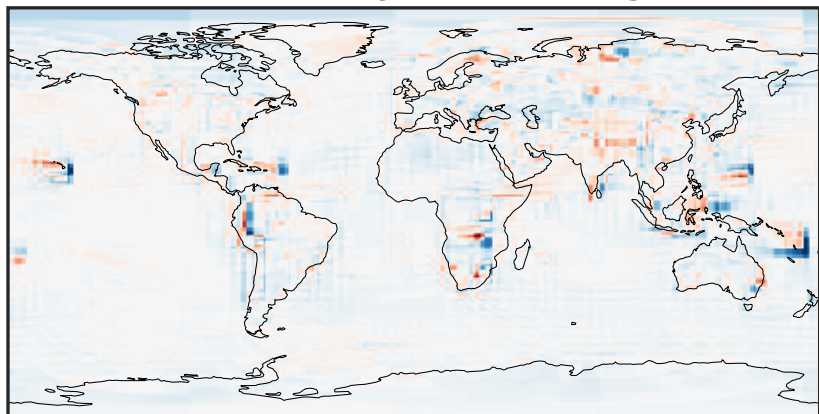
-6.17 -3.08 0.00 3.08 6.17
ppb

Difference (1x1.25)
Dev - Ref, Restricted Range [5%,95%]



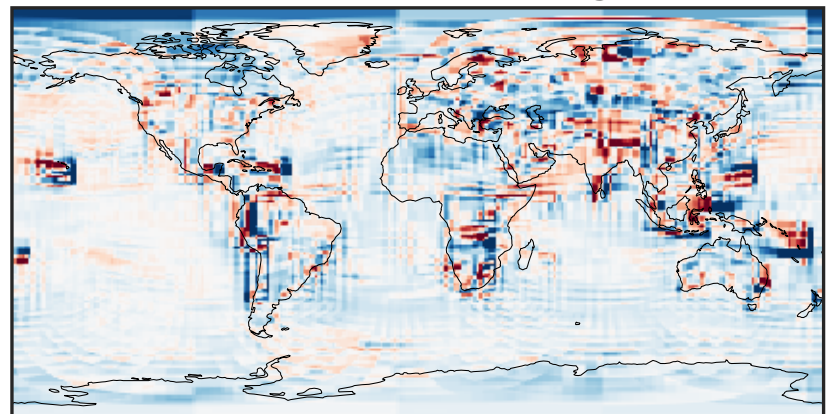
-0.178 -0.089 0.000 0.089 0.178
ppb

Ratio (1x1.25)
Dev/Ref, Dynamic Range



1e-01 1 10
unitless

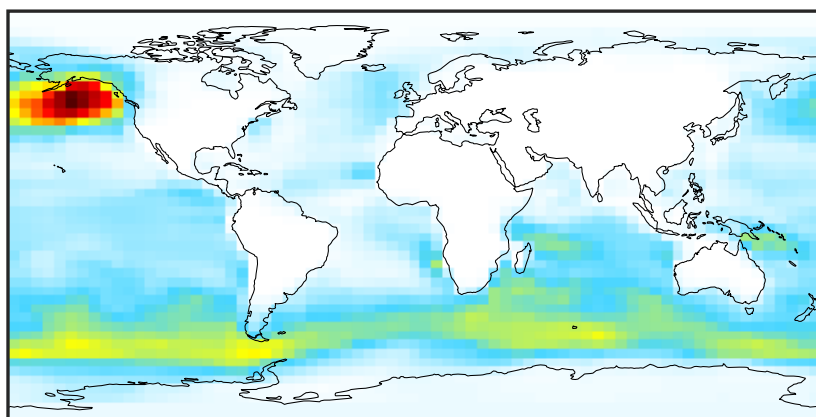
Ratio (1x1.25)
Dev/Ref, Fixed Range



0.50 0.75 1.00 1.50 2.00
unitless

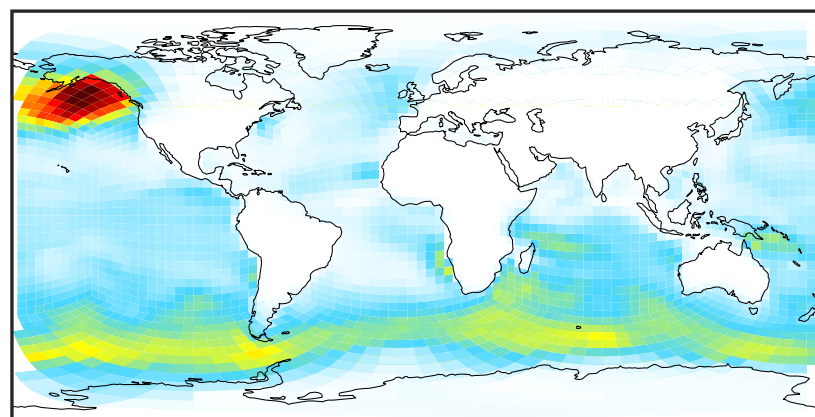
SpeciesConcVV_DMS (Oct2019)

GCC_14.2.0 (Ref)
4.0x5.0



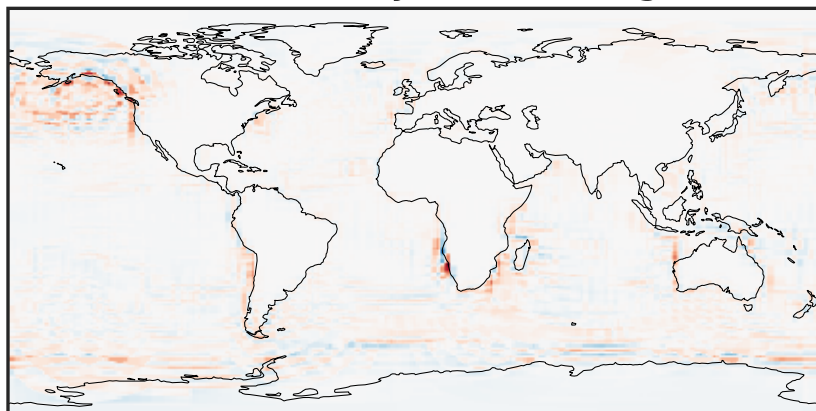
0.0000 0.1137 0.2274 0.3411 0.4548
ppb

GCHP_14.2.0 (Dev)
c24



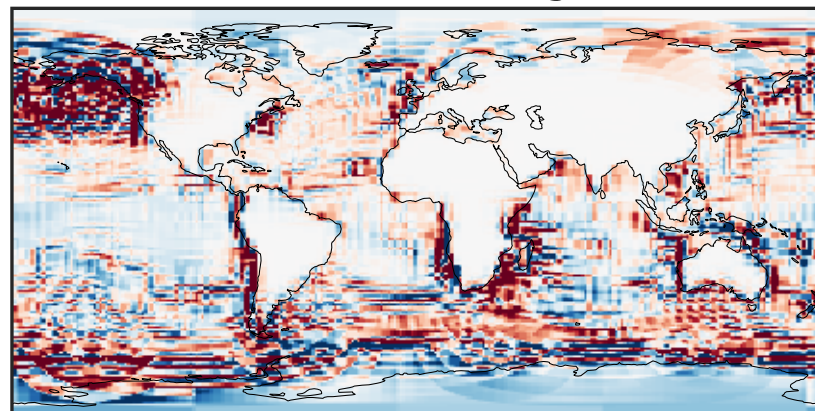
0.0000 0.1137 0.2274 0.3411 0.4548
ppb

Difference (1x1.25)
Dev - Ref, Dynamic Range



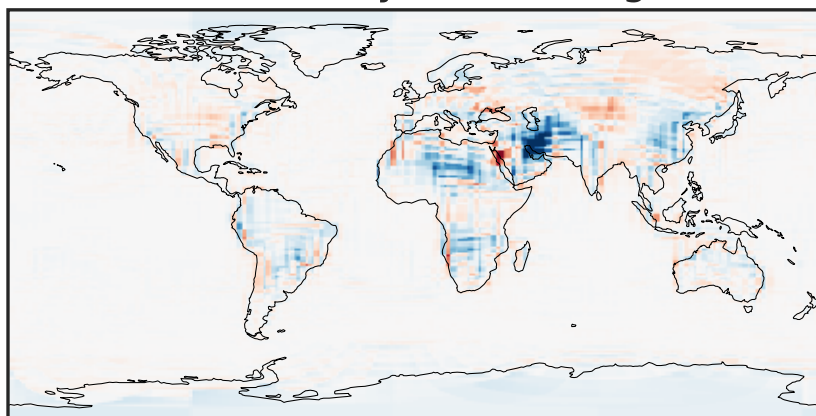
-0.1685 -0.0843 0.0000 0.0843 0.1685
ppb

Difference (1x1.25)
Dev - Ref, Restricted Range [5%,95%]



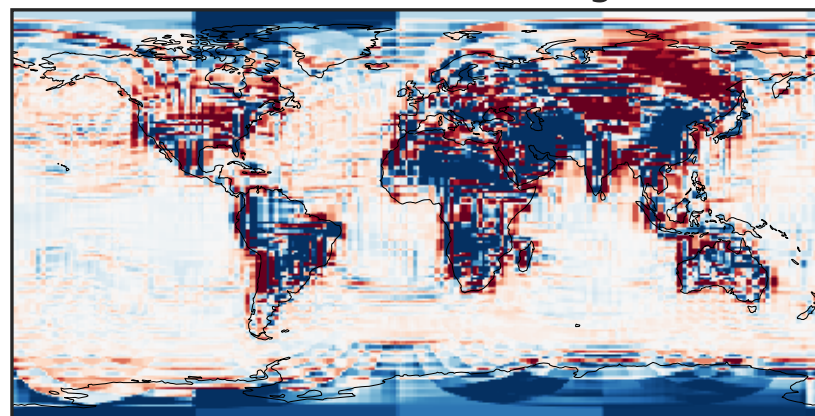
-0.008 0.000 0.008
ppb

Ratio (1x1.25)
Dev/Ref, Dynamic Range



unitless

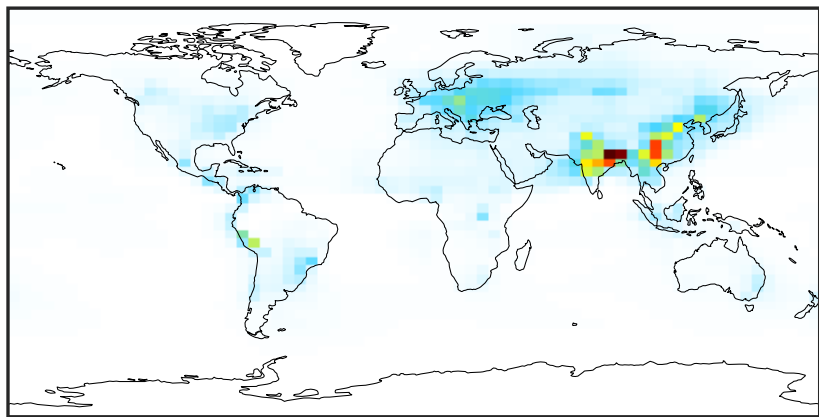
Ratio (1x1.25)
Dev/Ref, Fixed Range



0.50 0.75 1.00 1.50 2.00
unitless

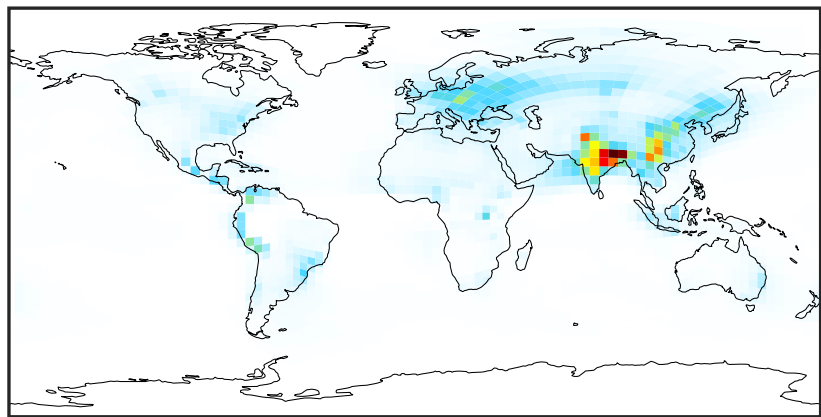
SpeciesConcVV_HMS (Oct2019)

GCC_14.2.0 (Ref)
4.0x5.0



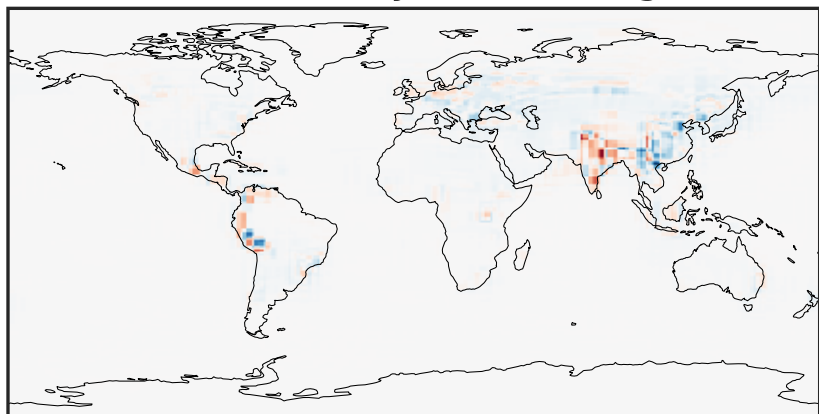
0.0006 0.1824 0.3647 0.5471 0.7300
ppb

GCHP_14.2.0 (Dev)
c24



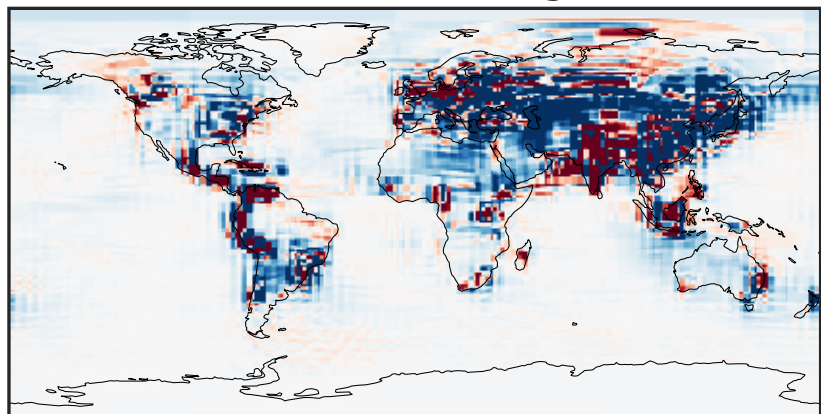
0.0006 0.1824 0.3647 0.5471 0.7300
ppb

Difference (1x1.25)
Dev - Ref, Dynamic Range



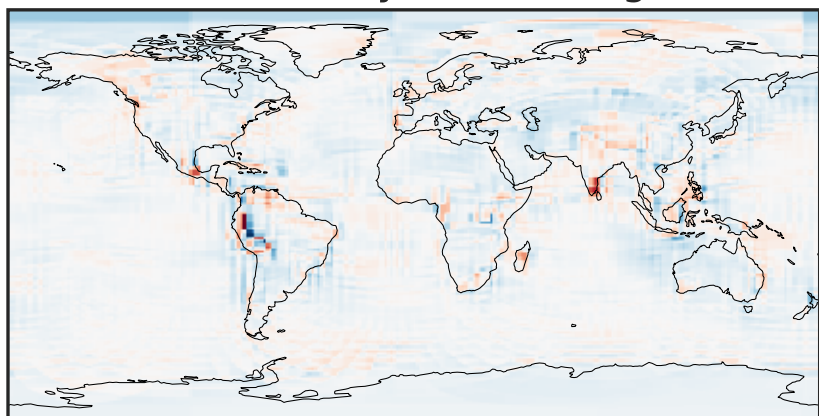
-0.3097 -0.1549 0.0000 0.1549 0.3097
ppb

Difference (1x1.25)
Dev - Ref, Restricted Range [5%,95%]



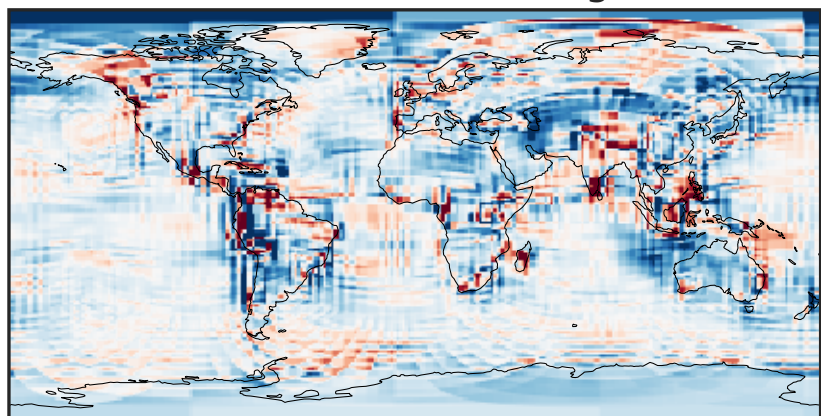
-0.006 0.000 0.006
ppb

Ratio (1x1.25)
Dev/Ref, Dynamic Range



1e-01 1 10
unitless

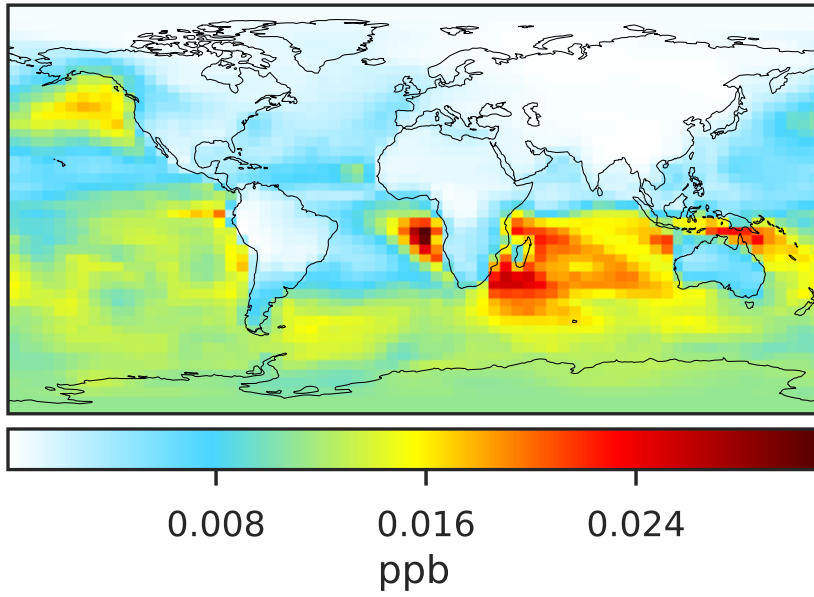
Ratio (1x1.25)
Dev/Ref, Fixed Range



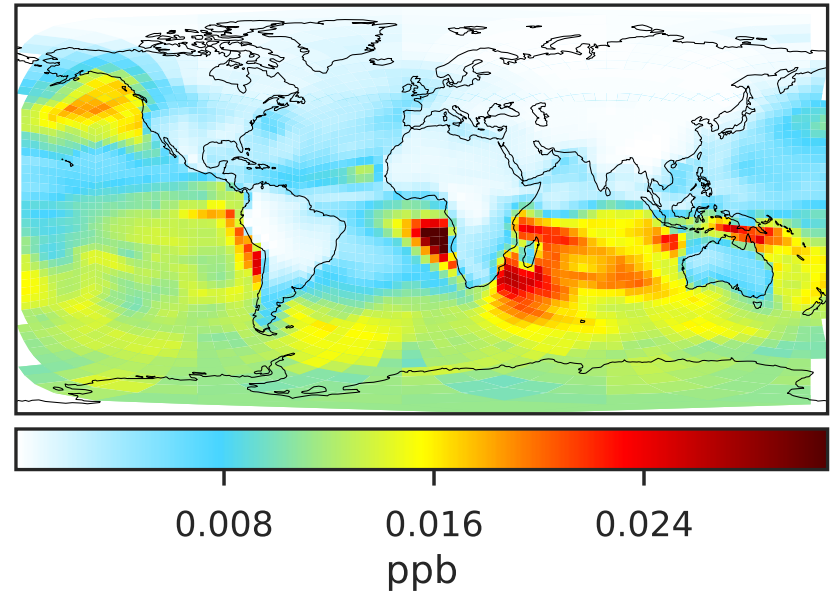
0.50 0.75 1.00 1.50 2.00
unitless

SpeciesConcVW_MSA (Oct2019)

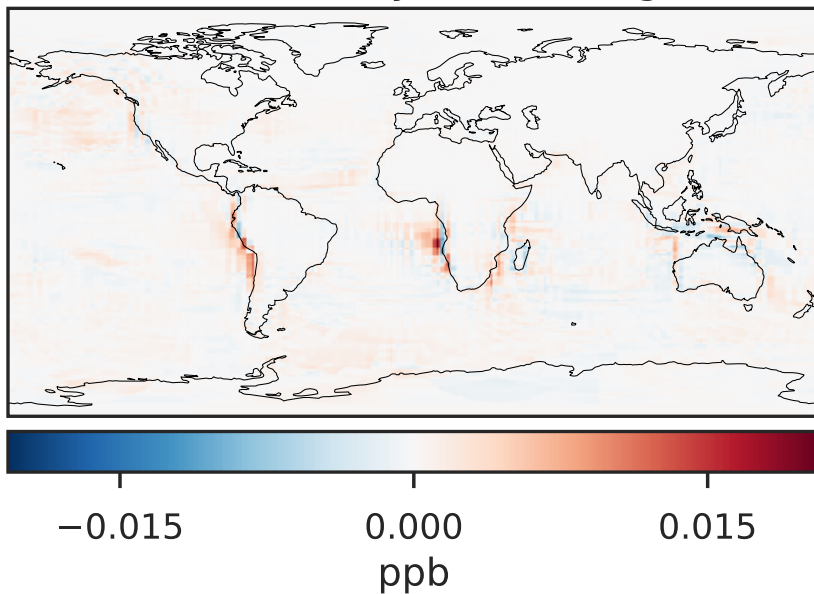
GCC_14.2.0 (Ref)
4.0x5.0



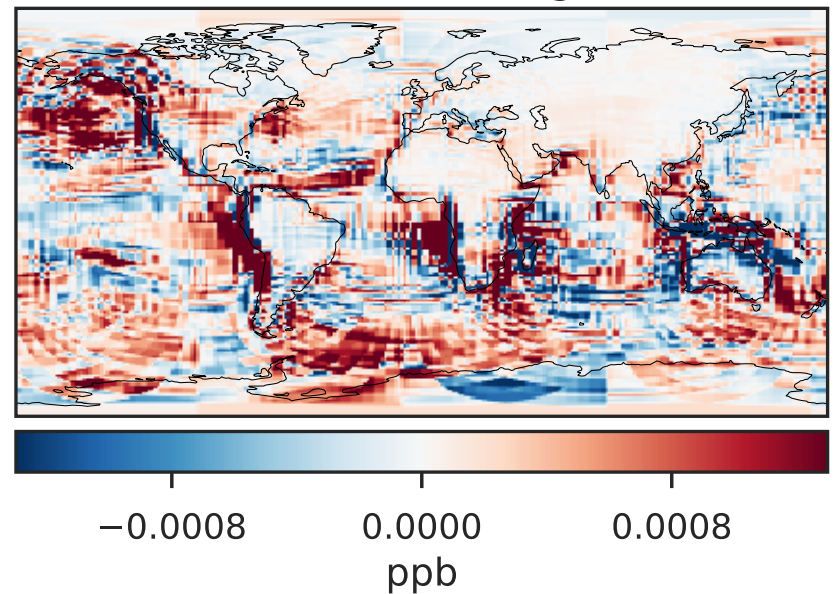
GCHP_14.2.0 (Dev)
c24



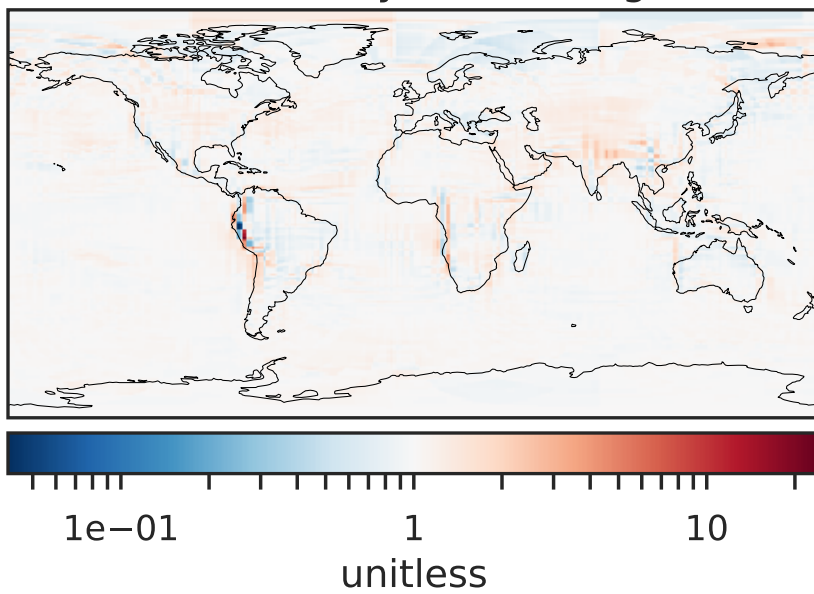
Difference (1x1.25)
Dev - Ref, Dynamic Range



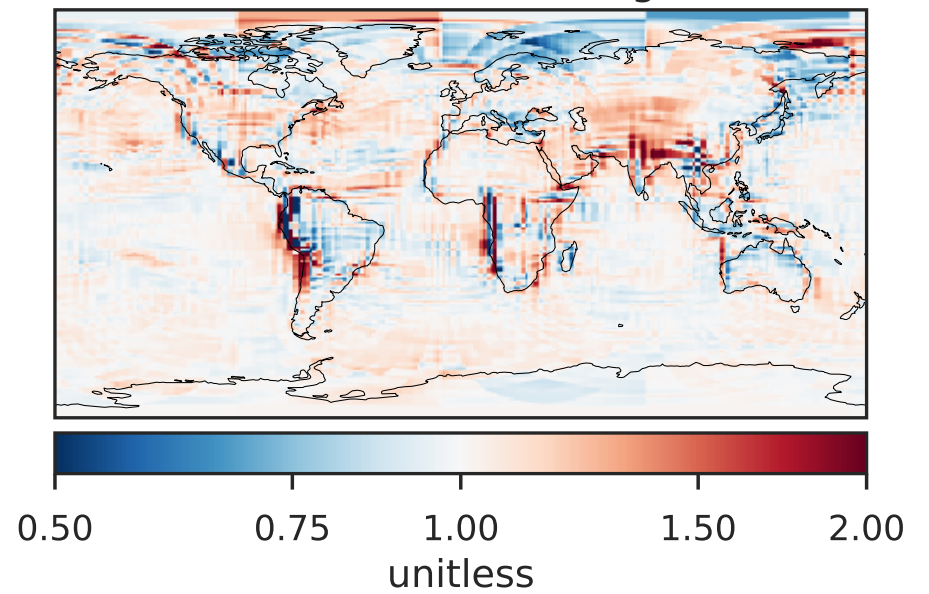
Difference (1x1.25)
Dev - Ref, Restricted Range [5%,95%]



Ratio (1x1.25)
Dev/Ref, Dynamic Range

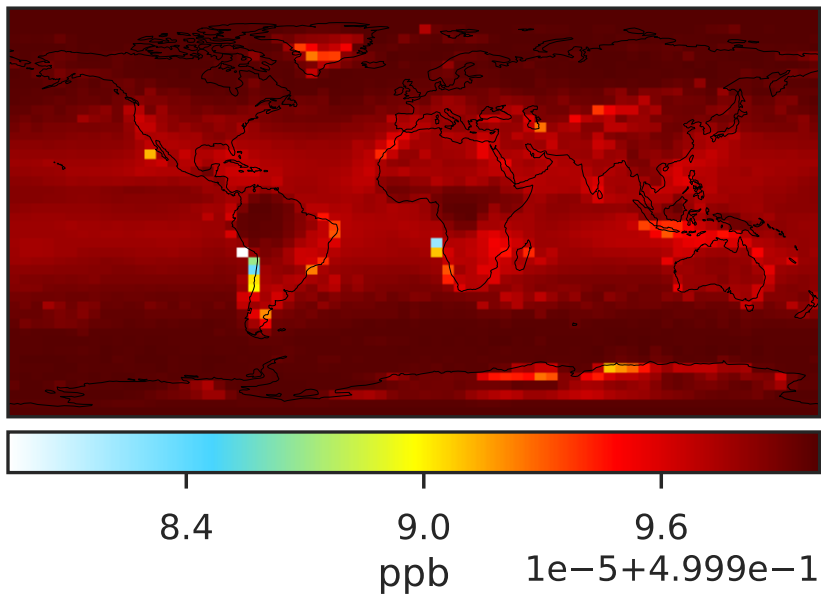


Ratio (1x1.25)
Dev/Ref, Fixed Range

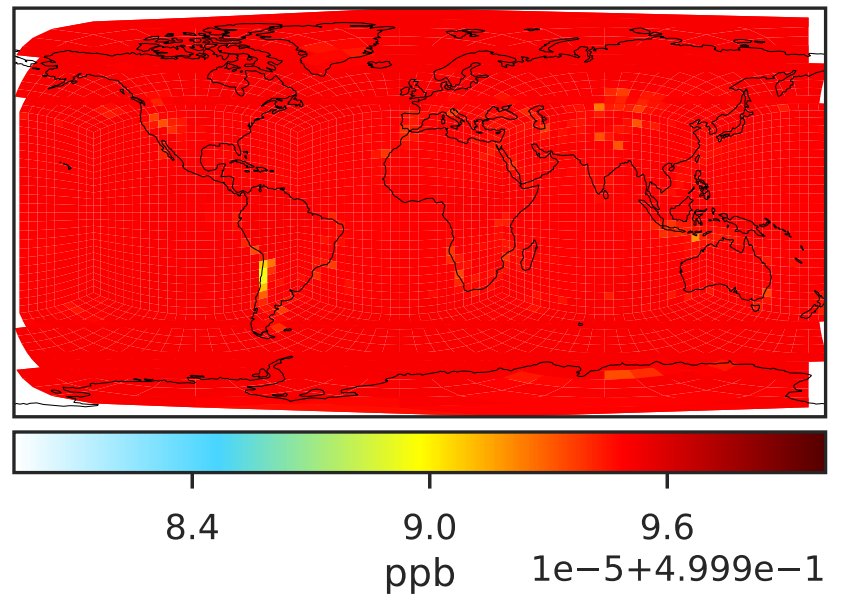


SpeciesConcVV_OCS (Oct2019)

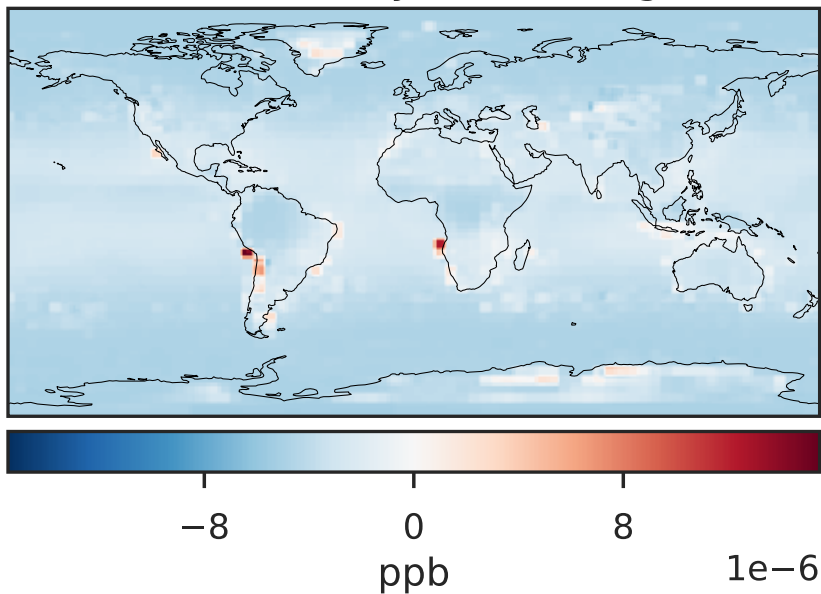
GCC_14.2.0 (Ref)
4.0x5.0



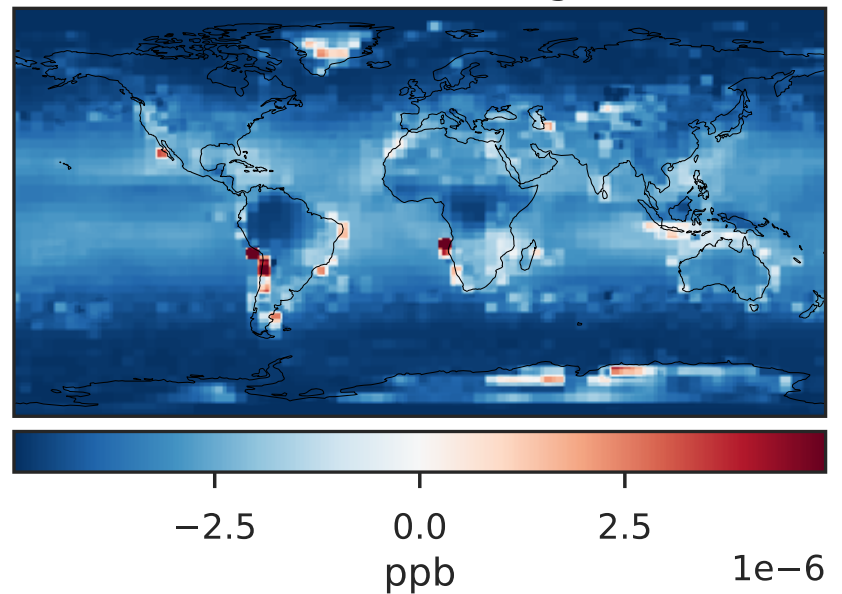
GCHP_14.2.0 (Dev)
c24



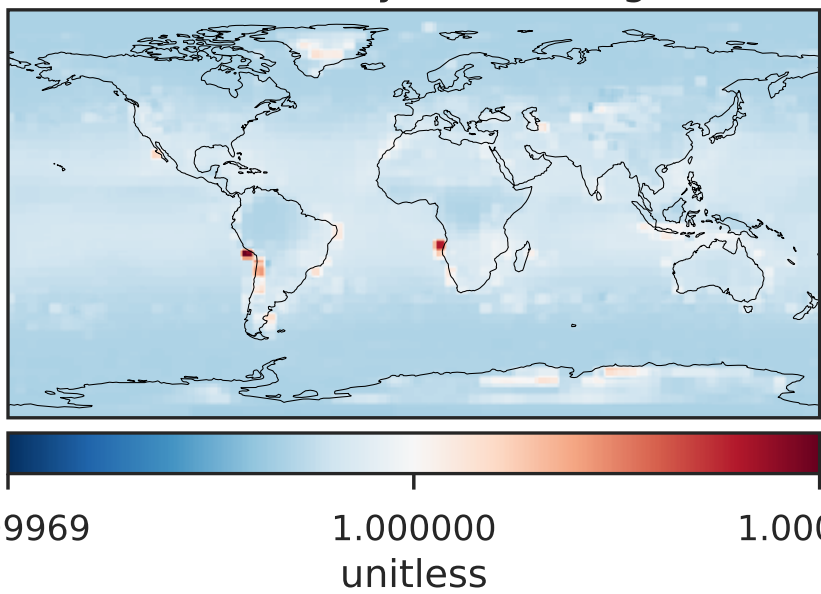
Difference (1x1.25)
Dev - Ref, Dynamic Range



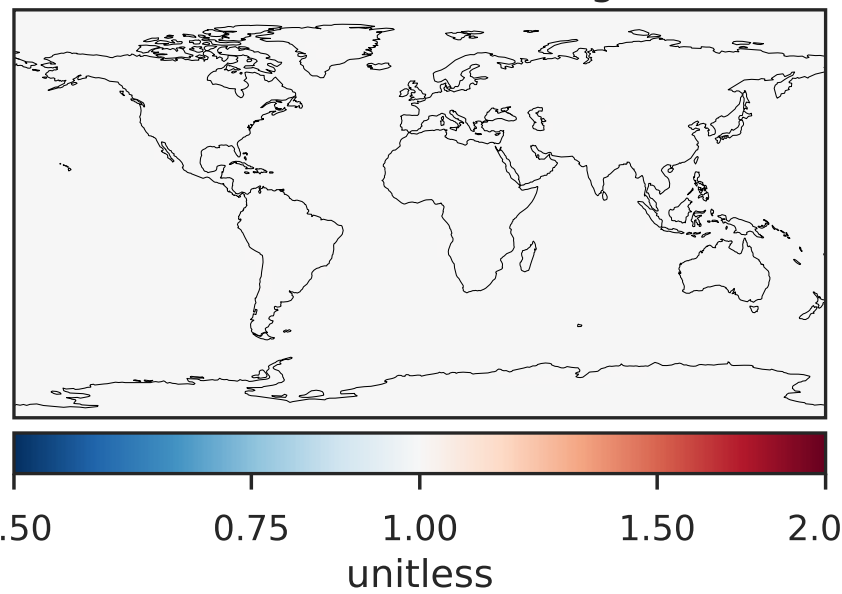
Difference (1x1.25)
Dev - Ref, Restricted Range [5%,95%]



Ratio (1x1.25)
Dev/Ref, Dynamic Range

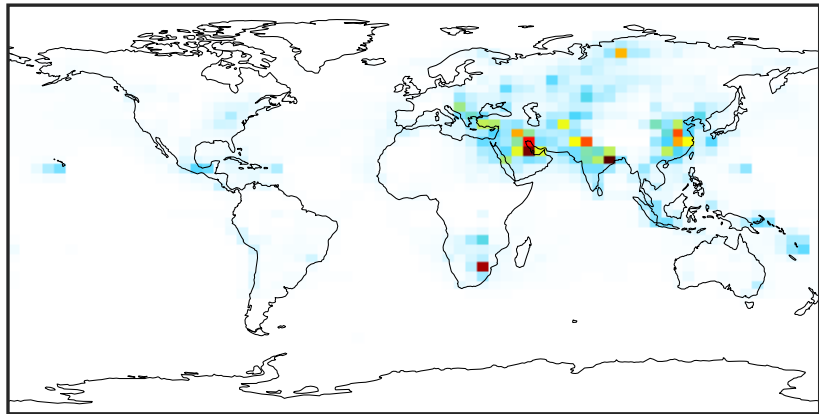


Ratio (1x1.25)
Dev/Ref, Fixed Range



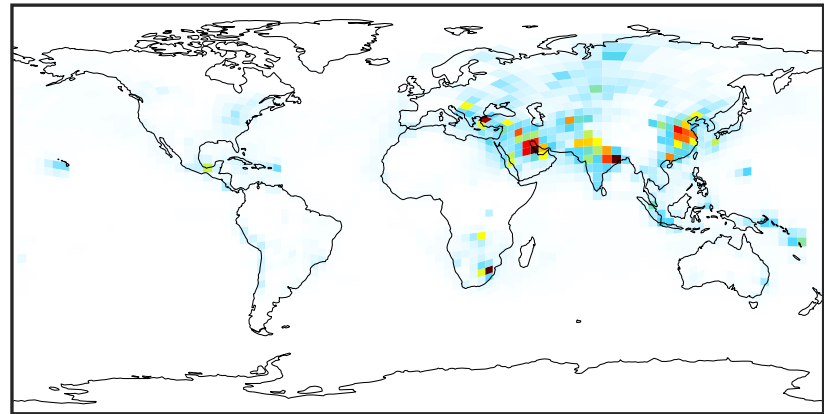
SpeciesConcVV_SO2 (Oct2019)

GCC_14.2.0 (Ref)
4.0x5.0



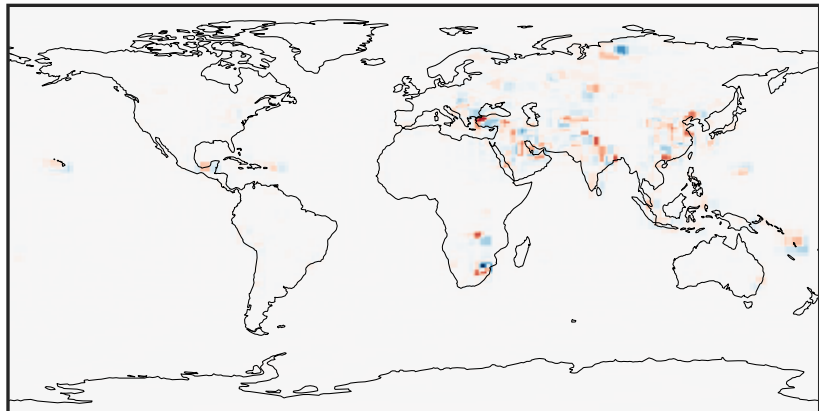
0.000 1.832 3.663 5.495 7.327
ppb

GCHP_14.2.0 (Dev)
c24



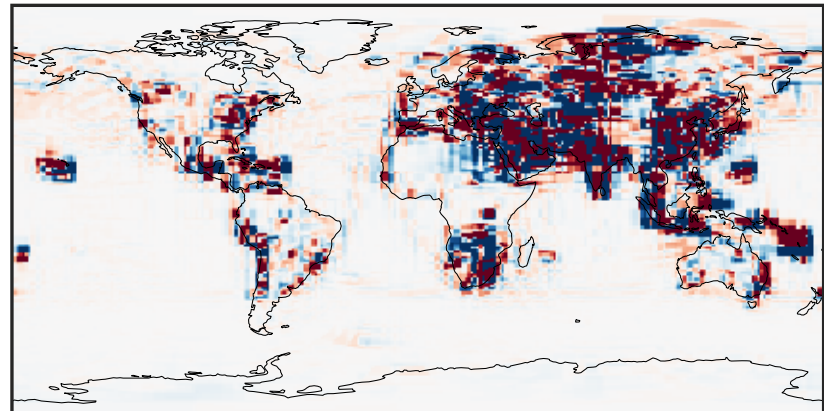
0.000 1.832 3.663 5.495 7.327
ppb

Difference (1x1.25)
Dev - Ref, Dynamic Range



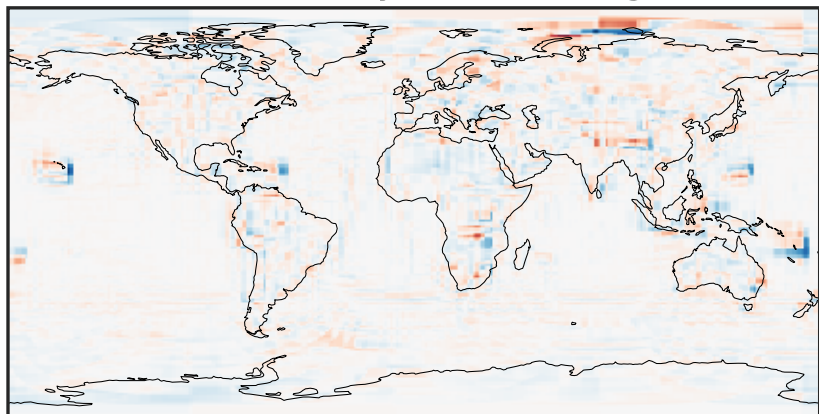
-5.24 -2.62 0.00 2.62 5.24
ppb

Difference (1x1.25)
Dev - Ref, Restricted Range [5%,95%]



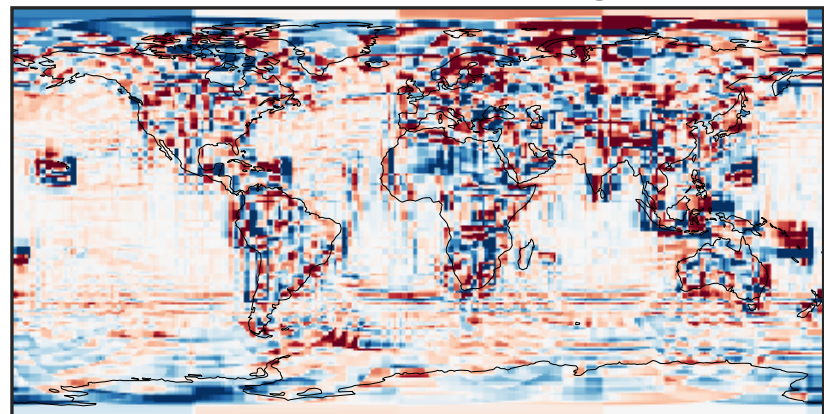
-0.0885 -0.0443 0.0000 0.0443 0.0885
ppb

Ratio (1x1.25)
Dev/Ref, Dynamic Range



1e-02 1e-01 1 10 100
unitless

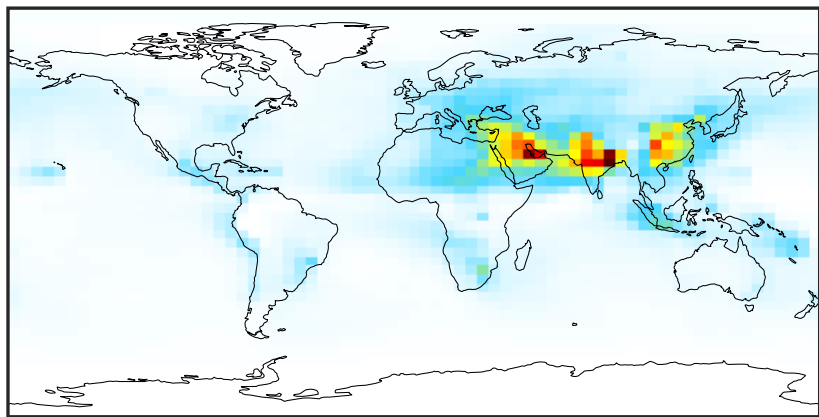
Ratio (1x1.25)
Dev/Ref, Fixed Range



0.50 0.75 1.00 1.50 2.00
unitless

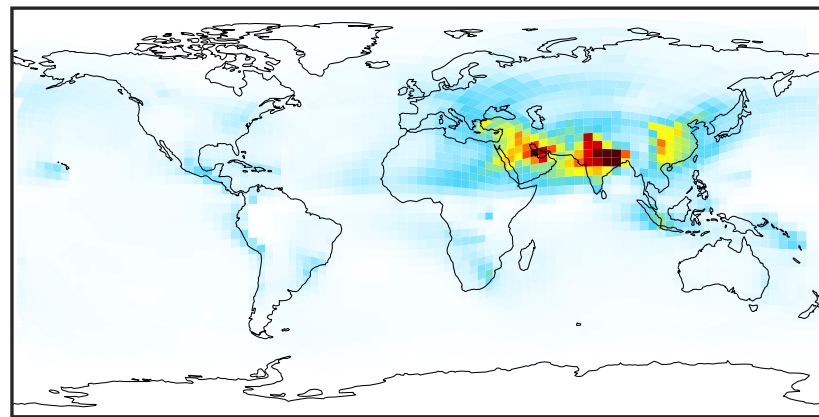
SpeciesConcVV_SO4 (Oct2019)

GCC_14.2.0 (Ref)
4.0x5.0



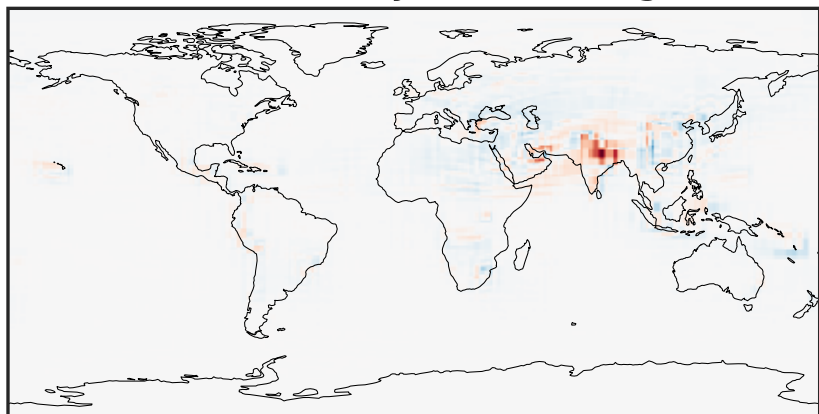
0.026 1.272 2.545 3.817 5.115
ppb

GCHP_14.2.0 (Dev)
c24



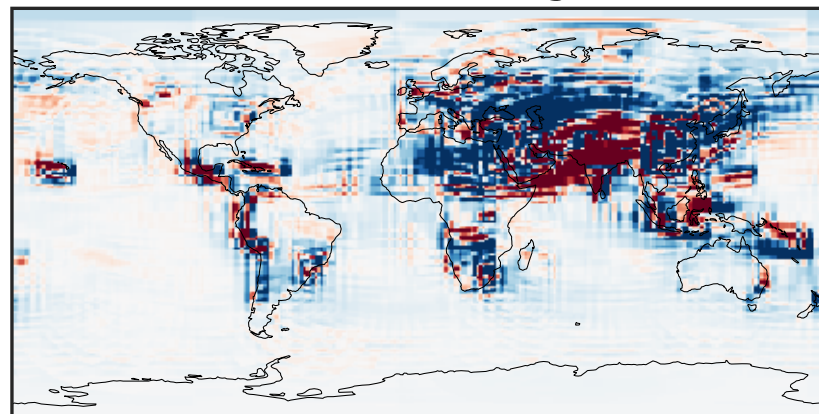
0.026 1.272 2.545 3.817 5.115
ppb

Difference (1x1.25)
Dev - Ref, Dynamic Range



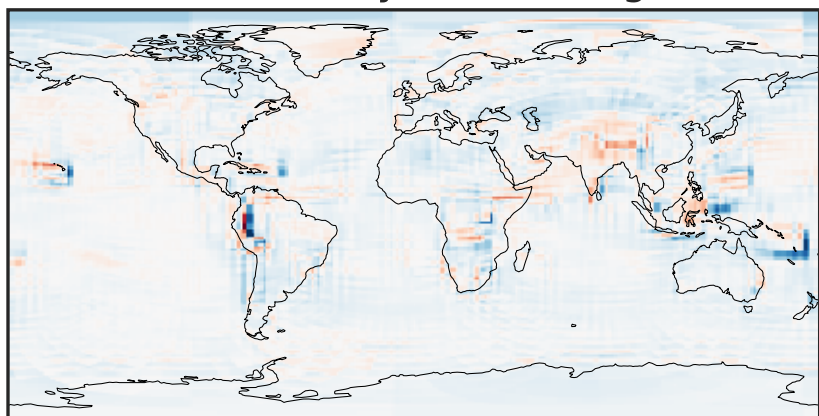
-3.049 -1.525 0.000 1.525 3.049
ppb

Difference (1x1.25)
Dev - Ref, Restricted Range [5%,95%]



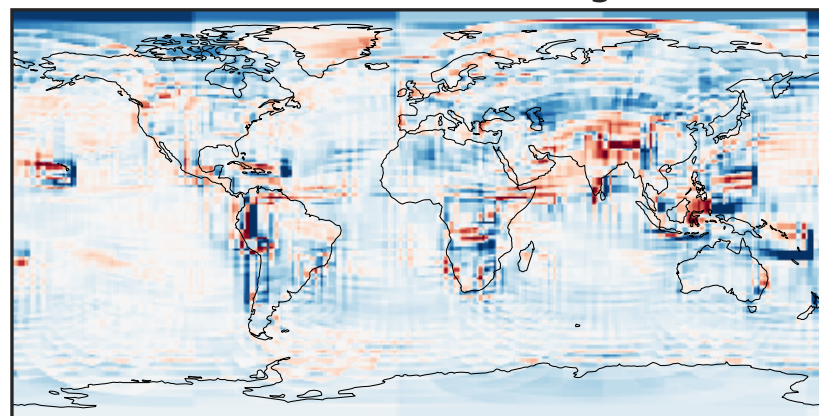
-0.1263 -0.0632 0.0000 0.0632 0.1263
ppb

Ratio (1x1.25)
Dev/Ref, Dynamic Range



0.140 0.570 1.000 4.076 7.151
unitless

Ratio (1x1.25)
Dev/Ref, Fixed Range



0.50 0.75 1.00 1.50 2.00
unitless