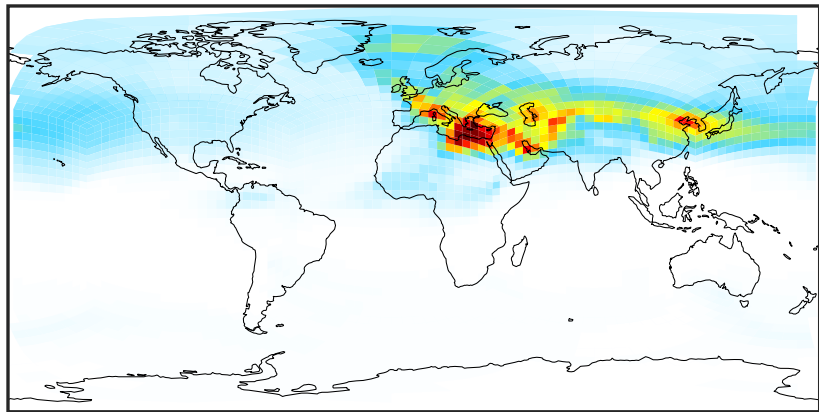


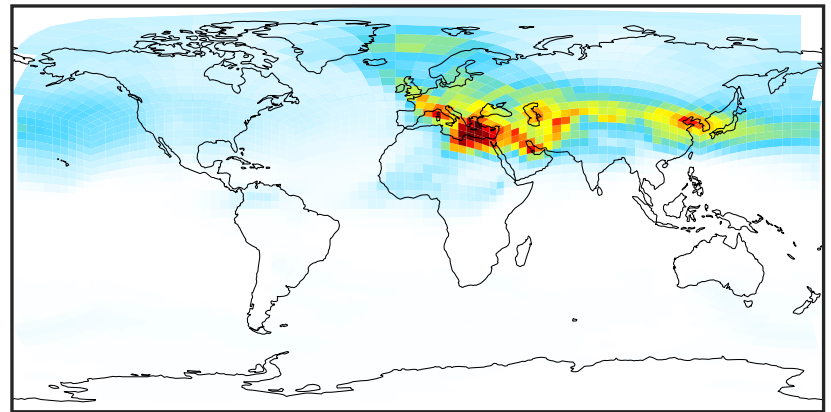
# SpeciesConcVW\_DST1 (Apr2019)

GCHP\_14.0.0 (Ref)  
c24



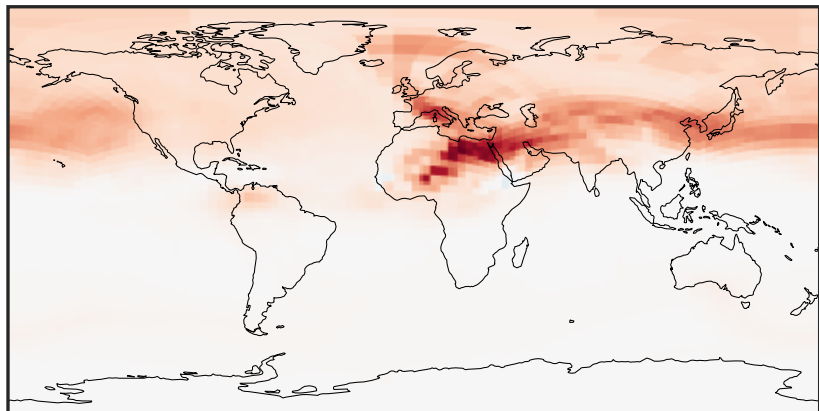
0.000 1.186 2.372 3.558 4.744  
 $\mu\text{g}/\text{m}^3$

GCHP\_14.2.0 (Dev)  
c24



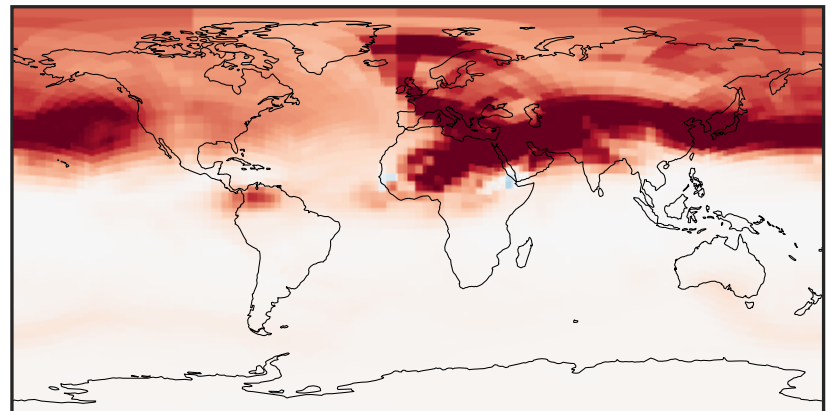
0.000 1.186 2.372 3.558 4.744  
 $\mu\text{g}/\text{m}^3$

Difference (1x1.25)  
Dev - Ref, Dynamic Range



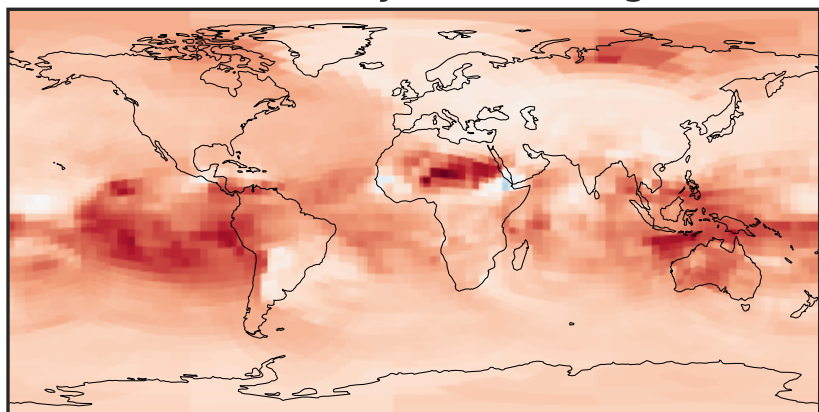
-0.01 0.00 0.01  
 $\mu\text{g}/\text{m}^3$

Difference (1x1.25)  
Dev - Ref, Restricted Range [5%,95%]



-0.004 0.000 0.004  
 $\mu\text{g}/\text{m}^3$

Ratio (1x1.25)  
Dev/Ref, Dynamic Range



0.97042 0.98521 1.00000 1.01524 1.03049  
unitless

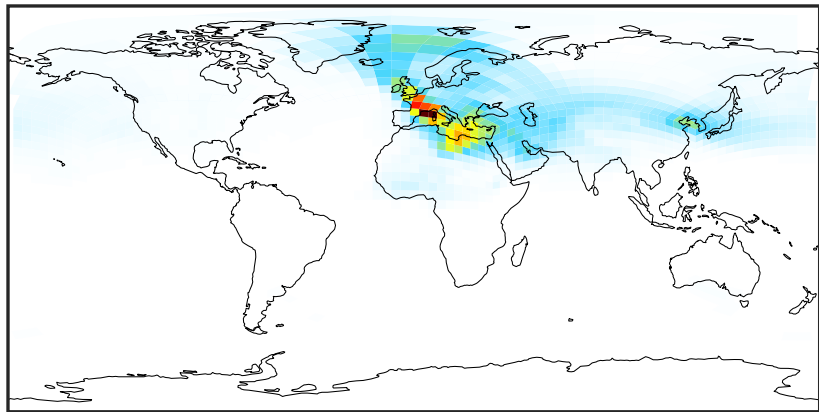
Ratio (1x1.25)  
Dev/Ref, Fixed Range



0.50 0.75 1.00 1.50 2.00  
unitless

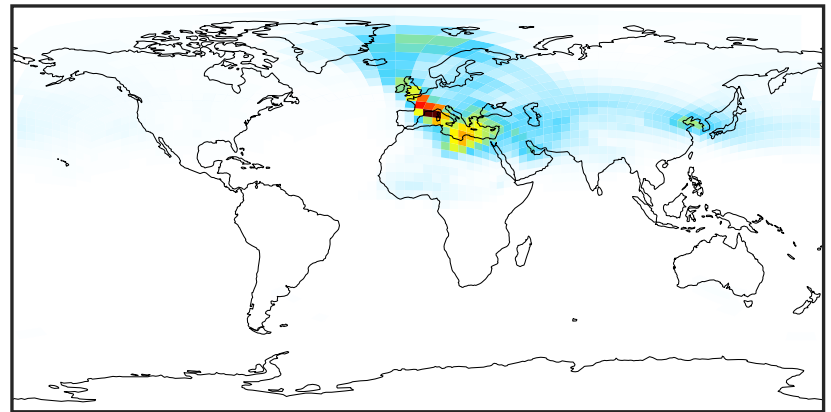
# SpeciesConcVW\_DST2 (Apr2019)

GCHP\_14.0.0 (Ref)  
c24



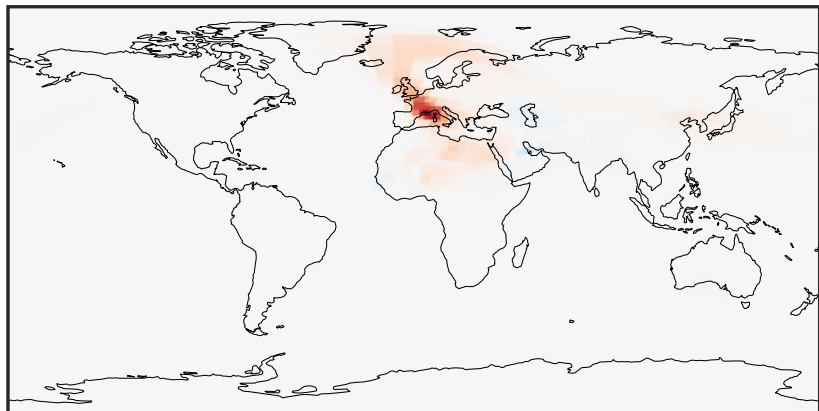
0.000 1.153 2.306 3.459 4.612  
 $\mu\text{g}/\text{m}^3$

GCHP\_14.2.0 (Dev)  
c24



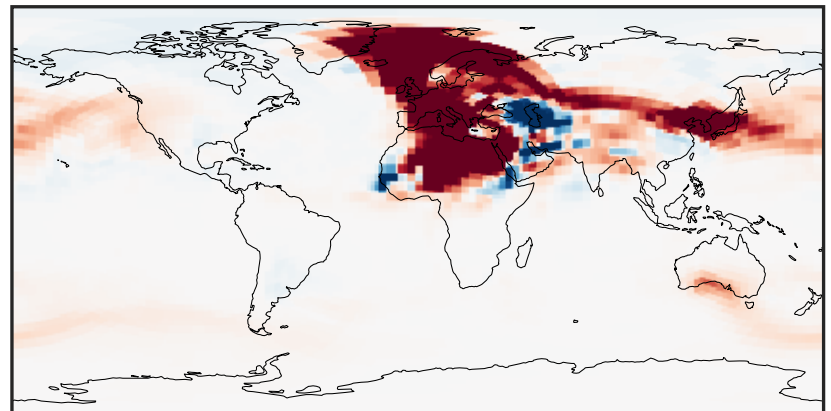
0.000 1.153 2.306 3.459 4.612  
 $\mu\text{g}/\text{m}^3$

Difference (1x1.25)  
Dev - Ref, Dynamic Range



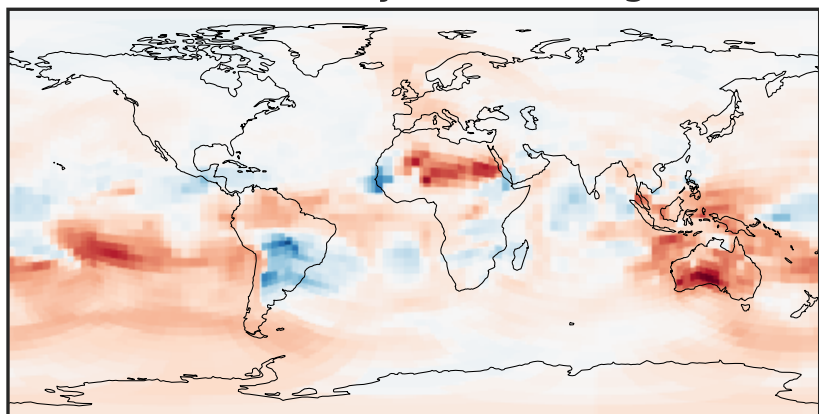
-0.02 0.00 0.02  
 $\mu\text{g}/\text{m}^3$

Difference (1x1.25)  
Dev - Ref, Restricted Range [5%,95%]



-0.0005 0.0000 0.0005  
 $\mu\text{g}/\text{m}^3$

Ratio (1x1.25)  
Dev/Ref, Dynamic Range



0.97149 0.98575 1.00000 1.01467 1.02935  
unitless

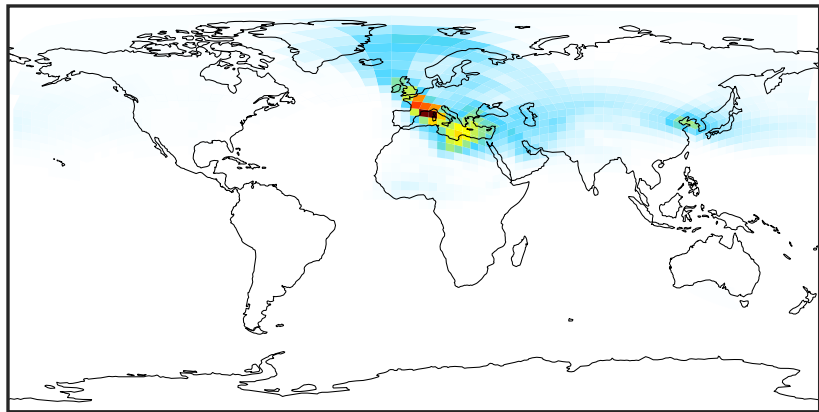
Ratio (1x1.25)  
Dev/Ref, Fixed Range



0.50 0.75 1.00 1.50 2.00  
unitless

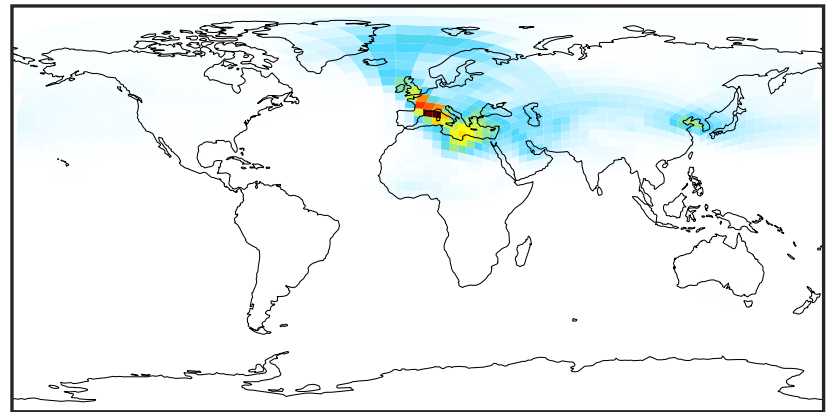
# SpeciesConcVV\_DST3 (Apr2019)

GCHP\_14.0.0 (Ref)  
c24



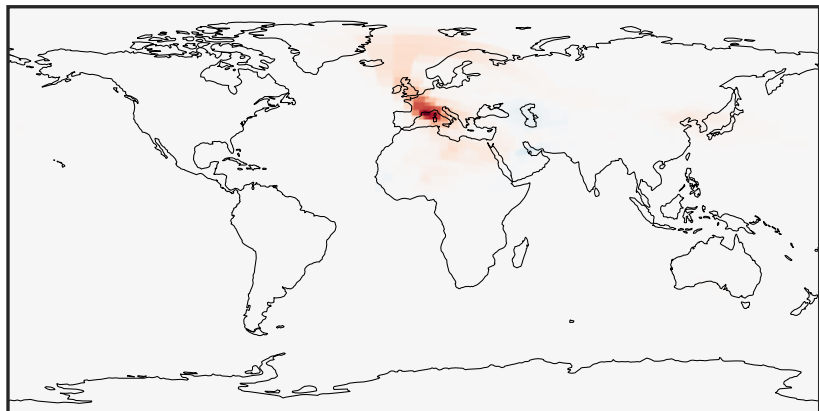
0.00 1.78 3.56 5.34 7.12  
 $\mu\text{g}/\text{m}^3$

GCHP\_14.2.0 (Dev)  
c24



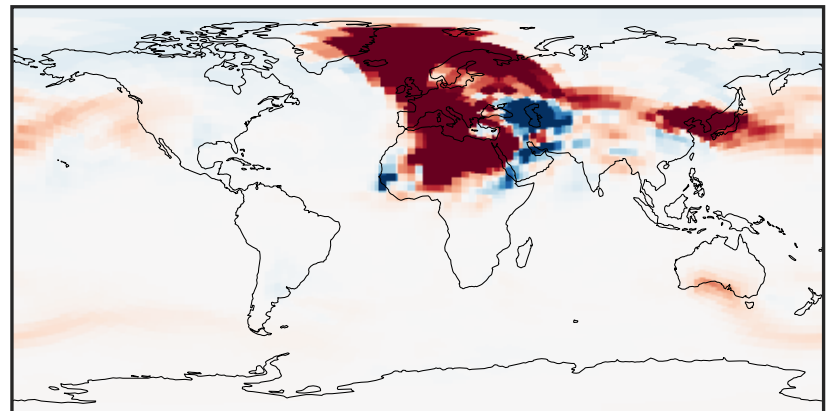
0.00 1.78 3.56 5.34 7.12  
 $\mu\text{g}/\text{m}^3$

Difference (1x1.25)  
Dev - Ref, Dynamic Range



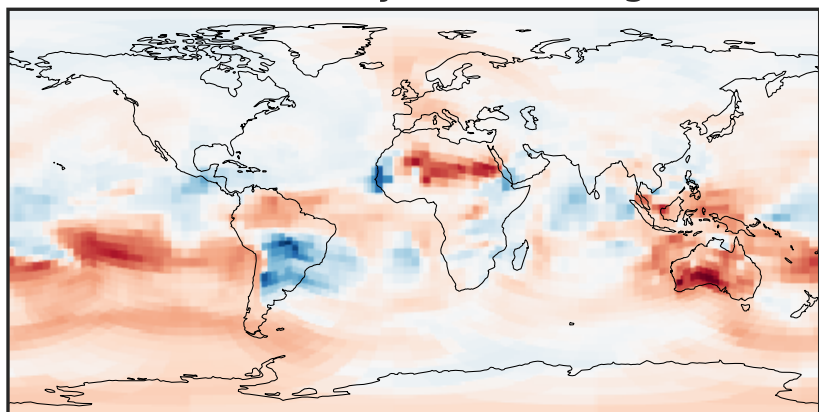
-0.0535 -0.0267 0.0000 0.0267 0.0535  
 $\mu\text{g}/\text{m}^3$

Difference (1x1.25)  
Dev - Ref, Restricted Range [5%,95%]



-0.0008 0.0000 0.0008  
 $\mu\text{g}/\text{m}^3$

Ratio (1x1.25)  
Dev/Ref, Dynamic Range



0.97350 0.98675 1.00000 1.01361 1.02723  
unitless

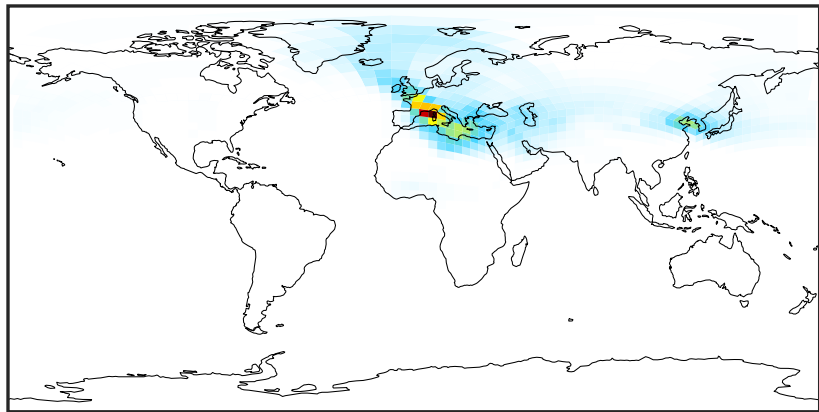
Ratio (1x1.25)  
Dev/Ref, Fixed Range



0.50 0.75 1.00 1.50 2.00  
unitless

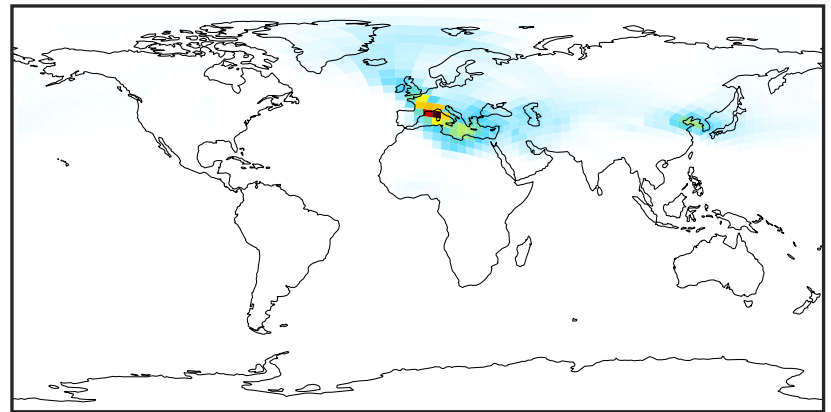
# SpeciesConcVW\_DST4 (Apr2019)

GCHP\_14.0.0 (Ref)  
c24



0.000 1.156 2.313 3.469 4.625  
 $\mu\text{g}/\text{m}^3$

GCHP\_14.2.0 (Dev)  
c24



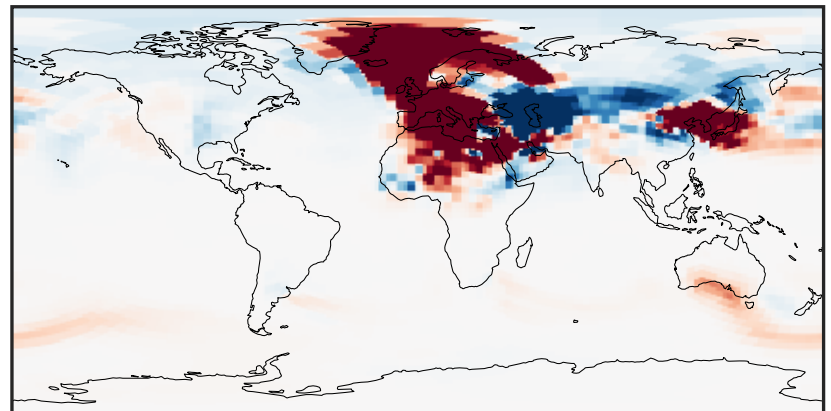
0.000 1.156 2.313 3.469 4.625  
 $\mu\text{g}/\text{m}^3$

Difference (1x1.25)  
Dev - Ref, Dynamic Range



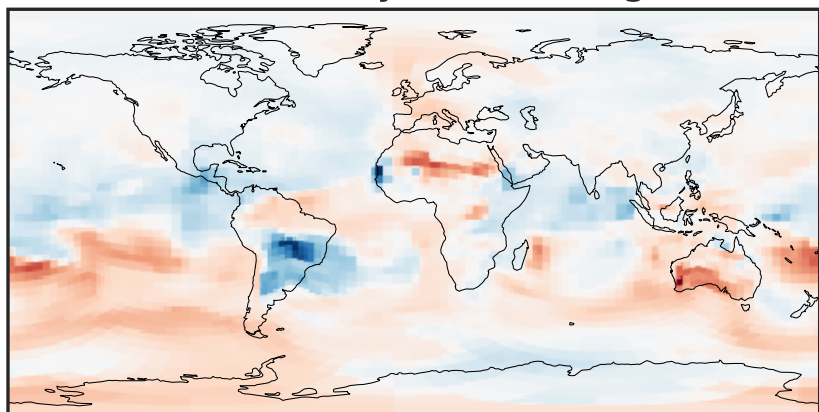
-0.02 0.00 0.02  
 $\mu\text{g}/\text{m}^3$

Difference (1x1.25)  
Dev - Ref, Restricted Range [5%,95%]



-0.00015 0.00000 0.00015  
 $\mu\text{g}/\text{m}^3$

Ratio (1x1.25)  
Dev/Ref, Dynamic Range



0.96353 0.98176 1.00000 1.01893 1.03785  
unitless

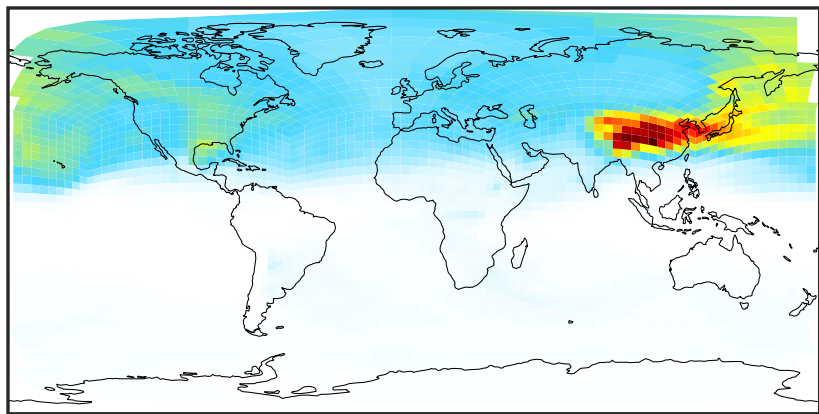
Ratio (1x1.25)  
Dev/Ref, Fixed Range



0.50 0.75 1.00 1.50 2.00  
unitless

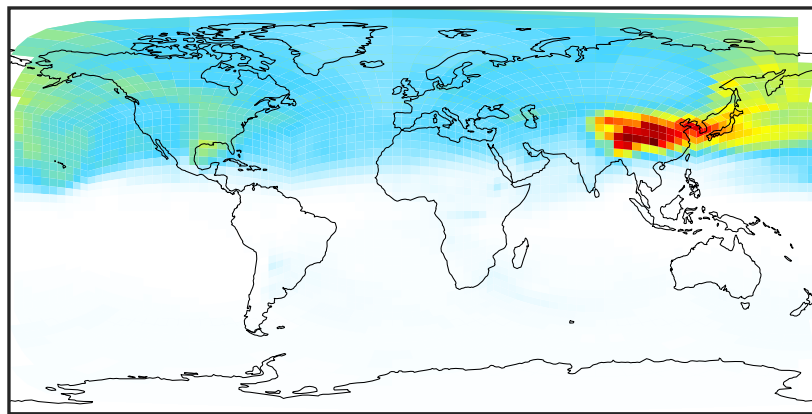
# SpeciesConcVV\_NH4 (Apr2019)

GCHP\_14.0.0 (Ref)  
c24



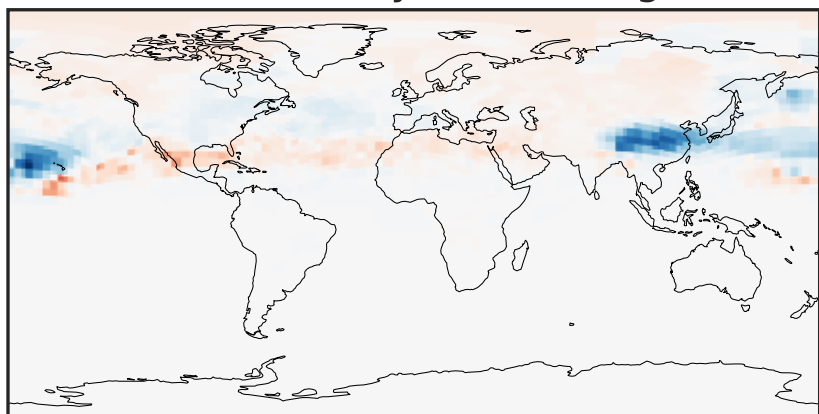
0.0001 0.1049 0.2098 0.3147 0.4196  
 $\mu\text{g}/\text{m}^3$

GCHP\_14.2.0 (Dev)  
c24



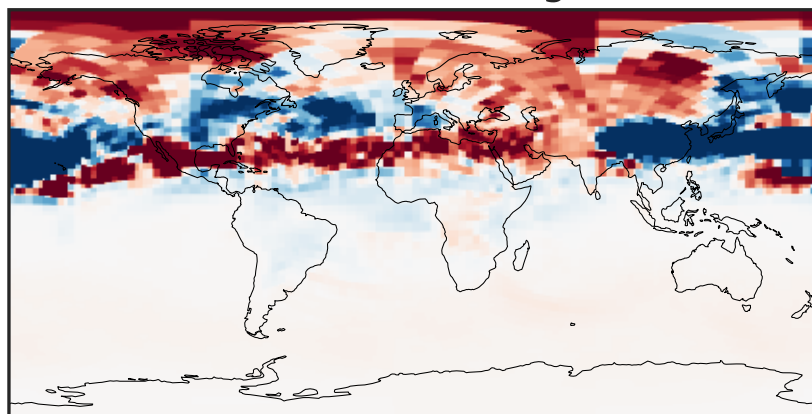
0.0001 0.1049 0.2098 0.3147 0.4196  
 $\mu\text{g}/\text{m}^3$

Difference (1x1.25)  
Dev - Ref, Dynamic Range



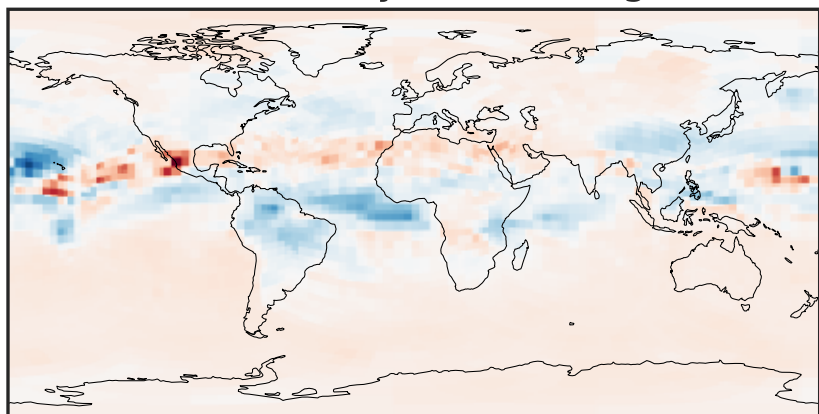
-0.015 0.000 0.015  
 $\mu\text{g}/\text{m}^3$

Difference (1x1.25)  
Dev - Ref, Restricted Range [5%,95%]



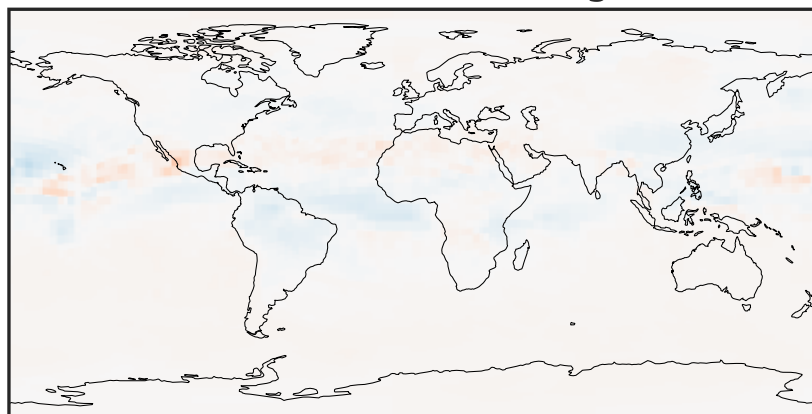
-0.001 0.000 0.001  
 $\mu\text{g}/\text{m}^3$

Ratio (1x1.25)  
Dev/Ref, Dynamic Range



0.8334 0.9167 1.0000 1.0999 1.1999  
unitless

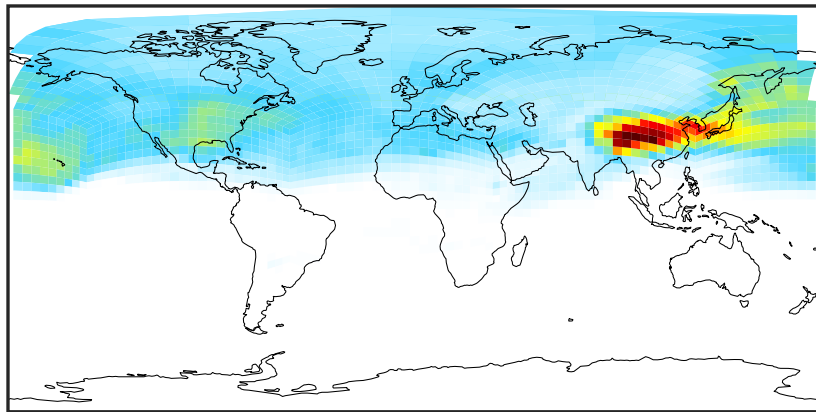
Ratio (1x1.25)  
Dev/Ref, Fixed Range



0.50 0.75 1.00 1.50 2.00  
unitless

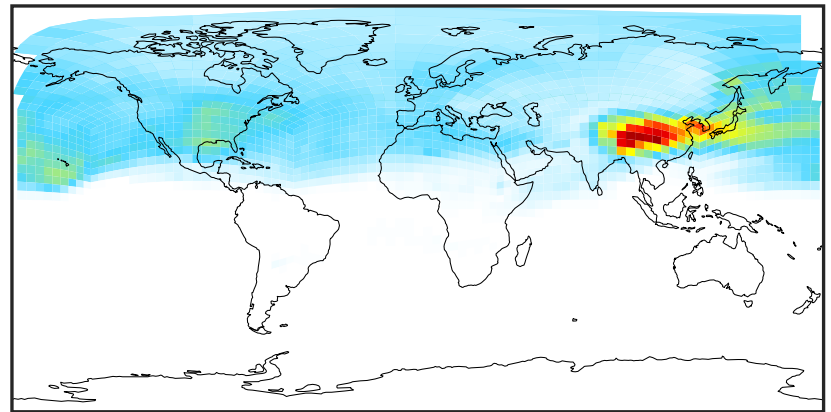
# SpeciesConcVV\_NIT (Apr2019)

GCHP\_14.0.0 (Ref)  
c24



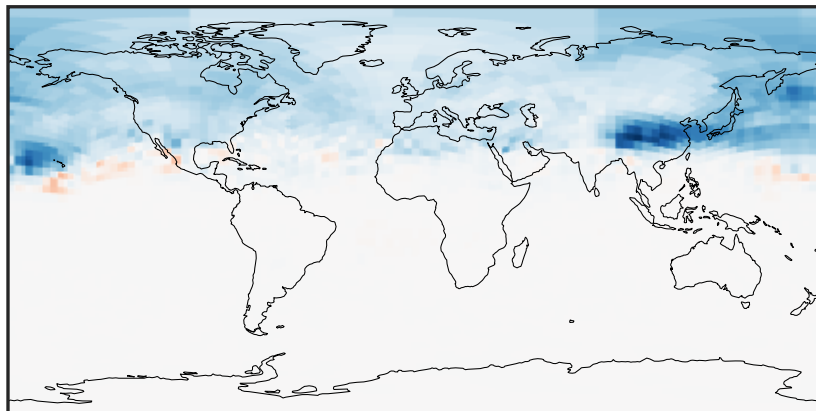
0.0000 0.1948 0.3897 0.5845 0.7793  
µg/m3

GCHP\_14.2.0 (Dev)  
c24



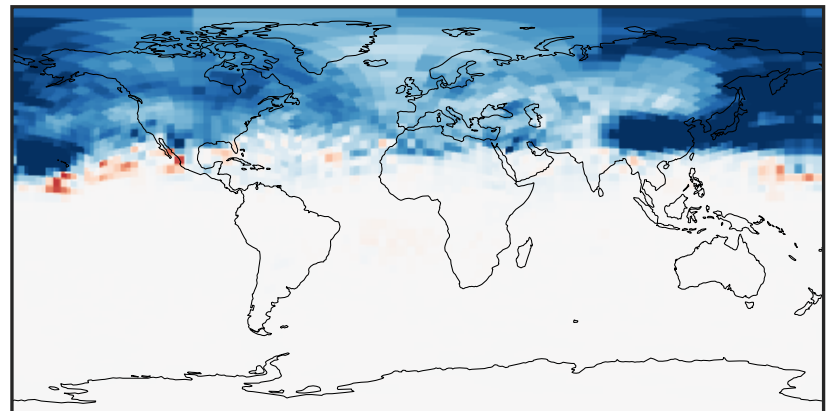
0.0000 0.1948 0.3897 0.5845 0.7793  
µg/m3

Difference (1x1.25)  
Dev - Ref, Dynamic Range



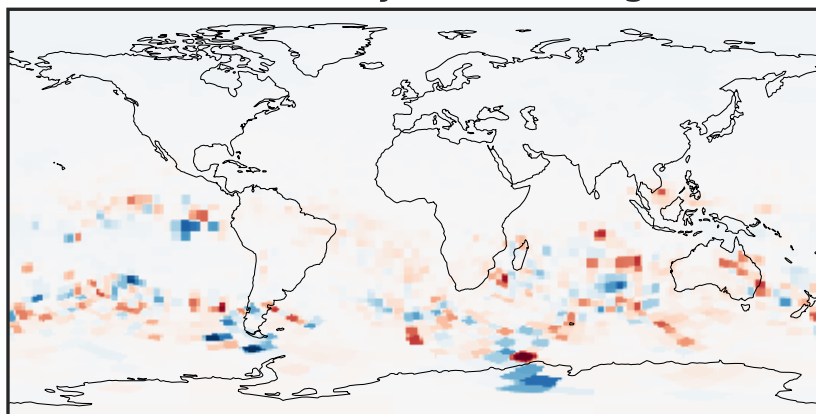
-0.0955 -0.0478 0.0000 0.0478 0.0955  
µg/m3

Difference (1x1.25)  
Dev - Ref, Restricted Range [5%,95%]



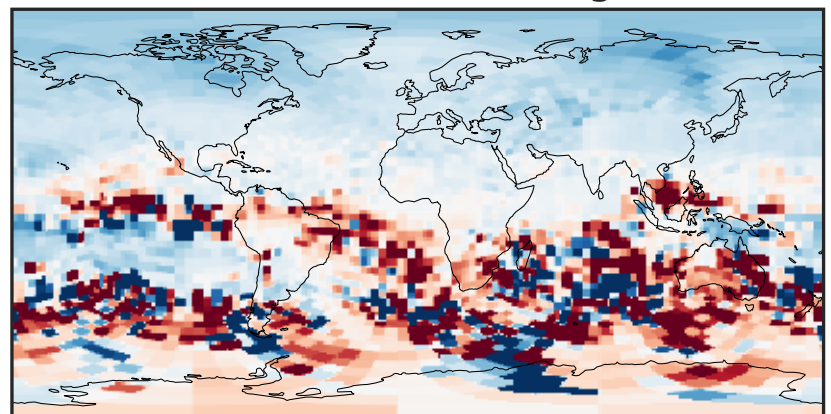
-0.025 0.000 0.025  
µg/m3

Ratio (1x1.25)  
Dev/Ref, Dynamic Range



unitless

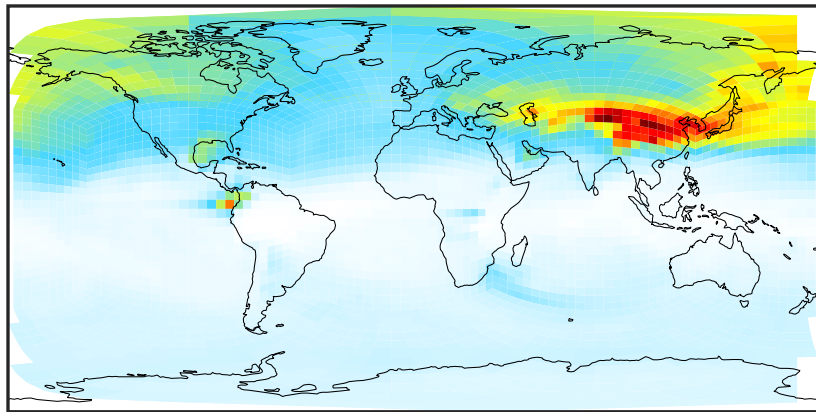
Ratio (1x1.25)  
Dev/Ref, Fixed Range



0.50 0.75 1.00 1.50 2.00  
unitless

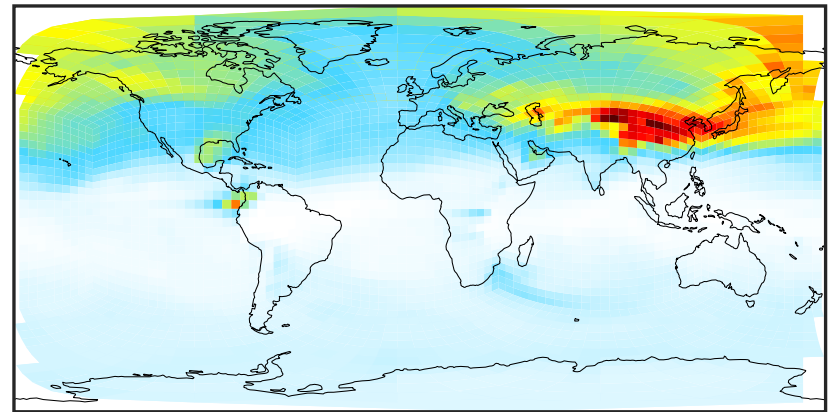
# SpeciesConcVV\_SO4 (Apr2019)

GCHP\_14.0.0 (Ref)  
c24



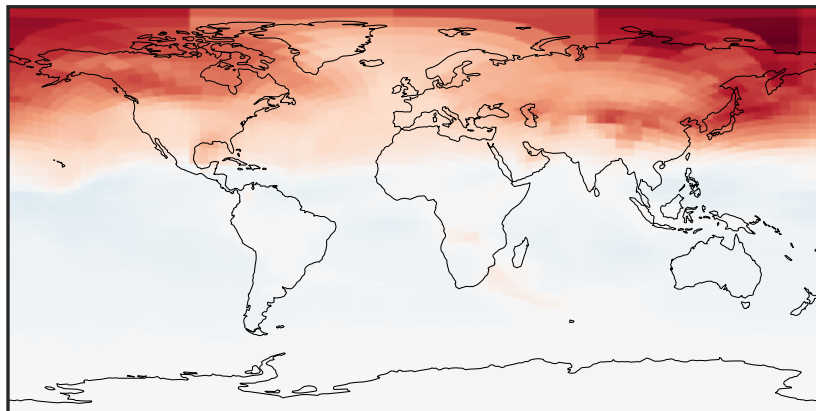
0.0036 0.1459 0.2919 0.4378 0.5874  
 $\mu\text{g}/\text{m}^3$

GCHP\_14.2.0 (Dev)  
c24



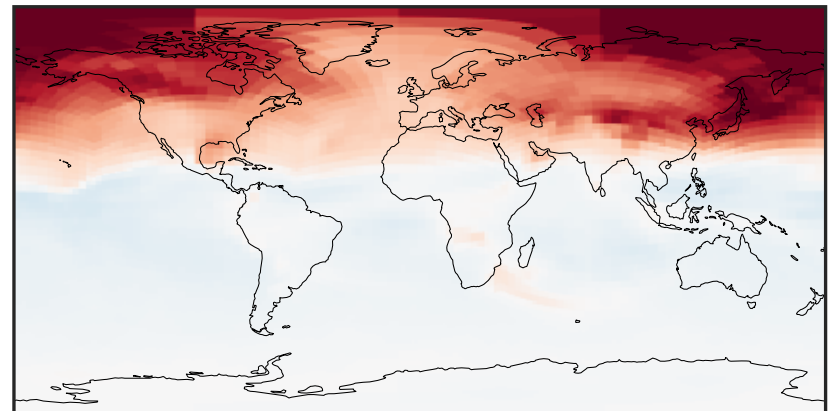
0.0036 0.1459 0.2919 0.4378 0.5874  
 $\mu\text{g}/\text{m}^3$

Difference (1x1.25)  
Dev - Ref, Dynamic Range



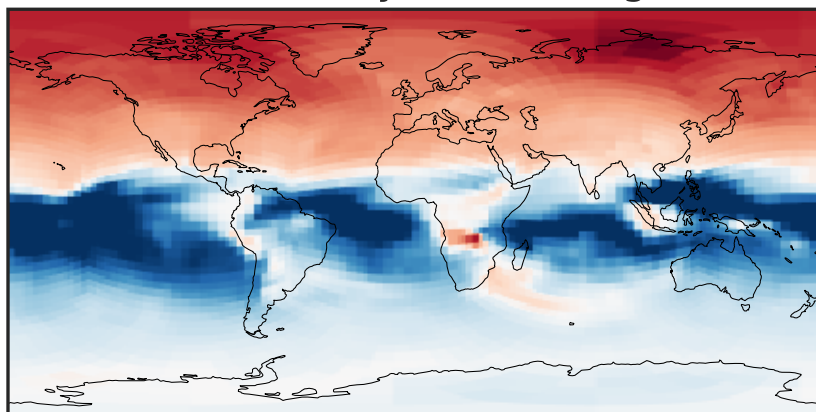
-0.02 0.00 0.02  
 $\mu\text{g}/\text{m}^3$

Difference (1x1.25)  
Dev - Ref, Restricted Range [5%,95%]



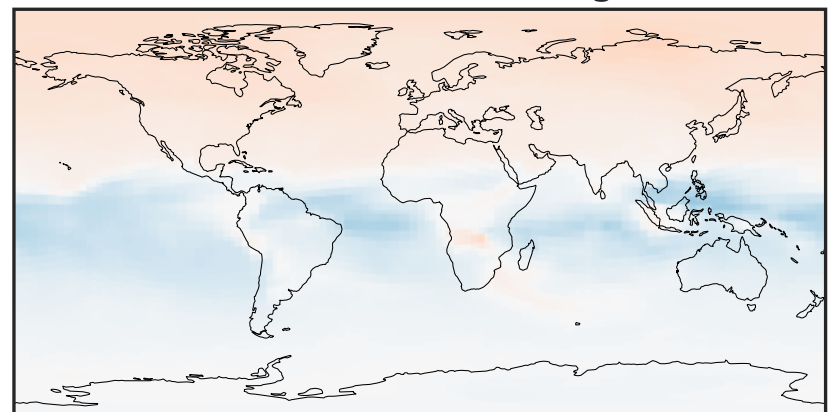
-0.015 0.000 0.015  
 $\mu\text{g}/\text{m}^3$

Ratio (1x1.25)  
Dev/Ref, Dynamic Range



0.8634 0.9317 1.0000 1.0791 1.1582  
unitless

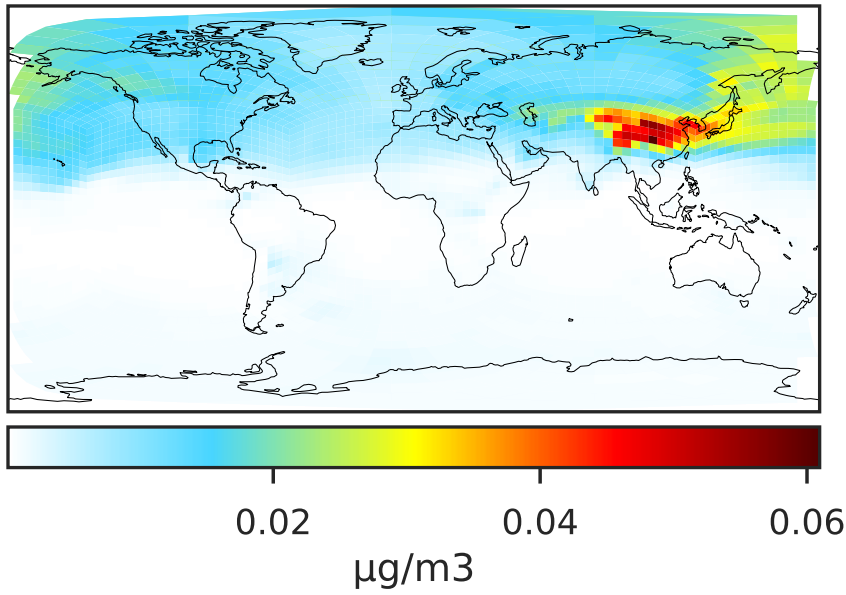
Ratio (1x1.25)  
Dev/Ref, Fixed Range



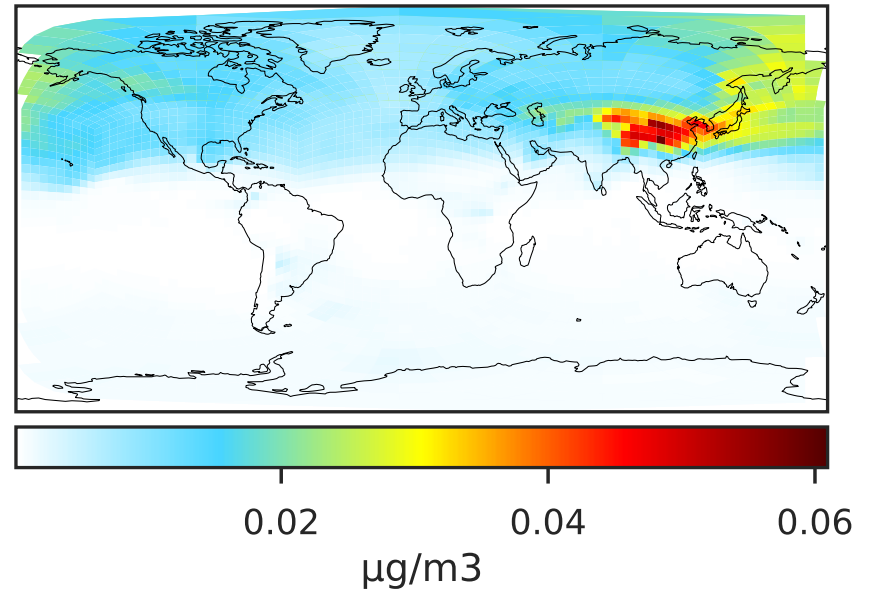
0.50 0.75 1.00 1.50 2.00  
unitless

# SpeciesConcVV\_HMS (Apr2019)

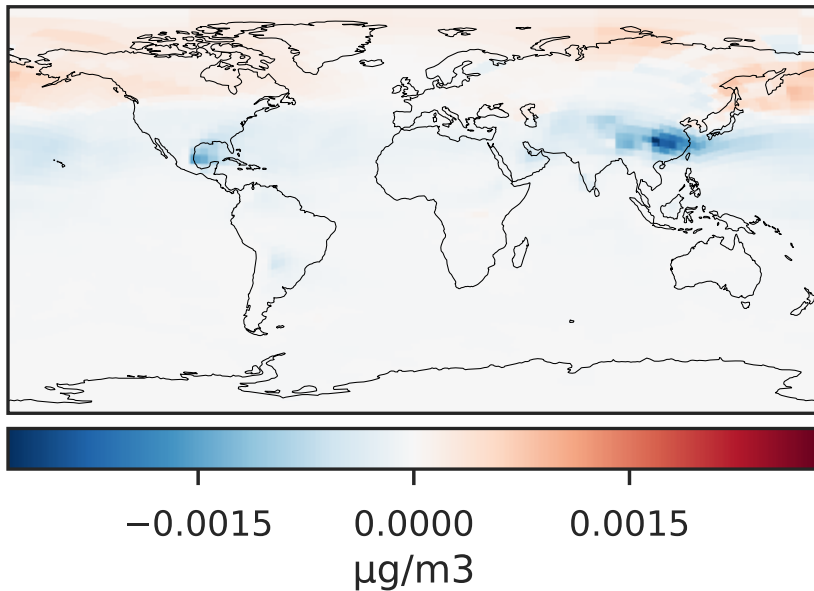
GCHP\_14.0.0 (Ref)  
c24



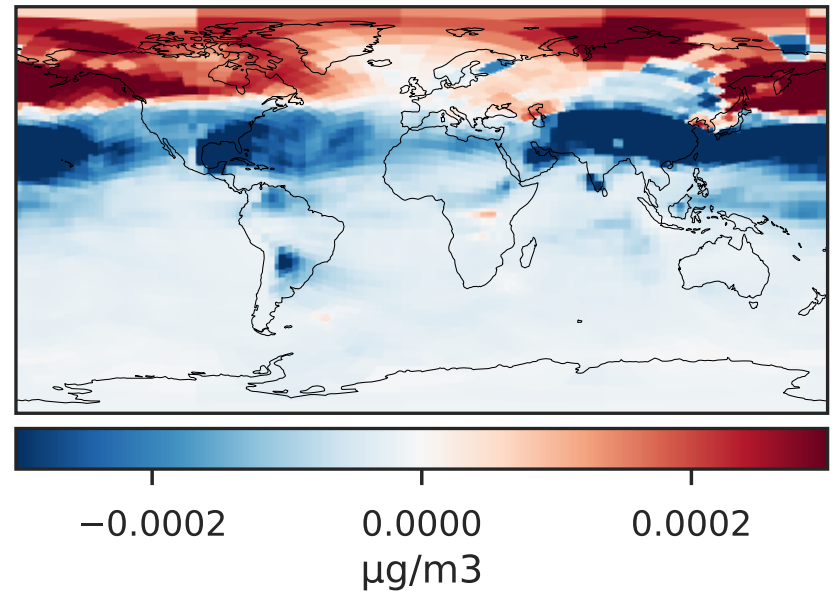
GCHP\_14.2.0 (Dev)  
c24



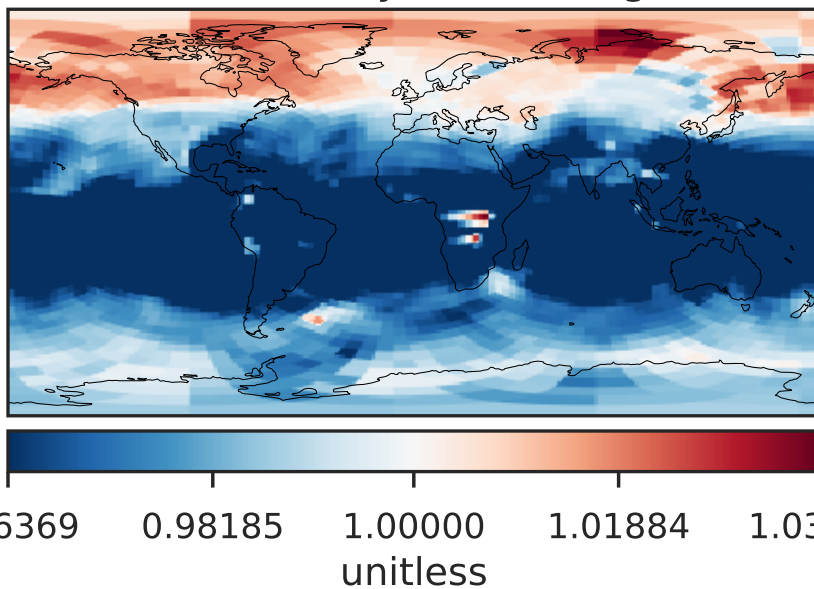
Difference (1x1.25)  
Dev - Ref, Dynamic Range



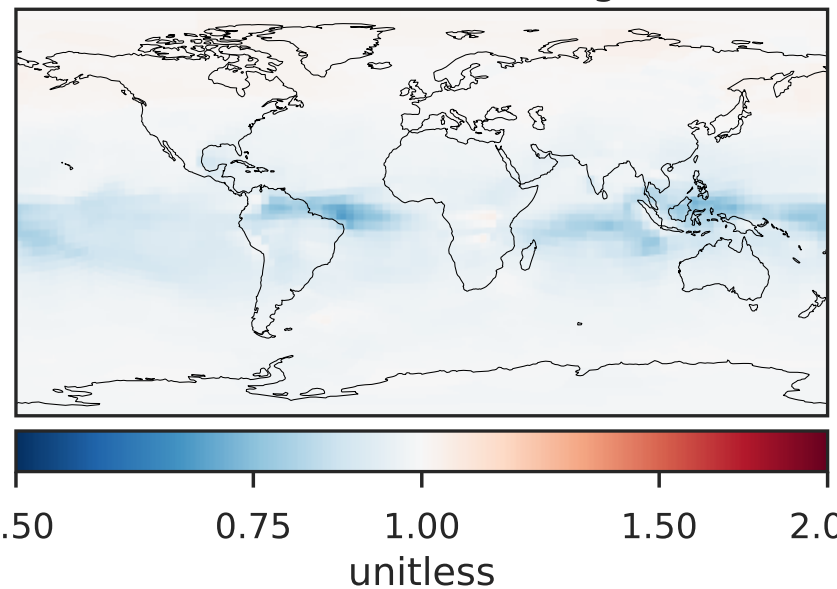
Difference (1x1.25)  
Dev - Ref, Restricted Range [5%,95%]



Ratio (1x1.25)  
Dev/Ref, Dynamic Range



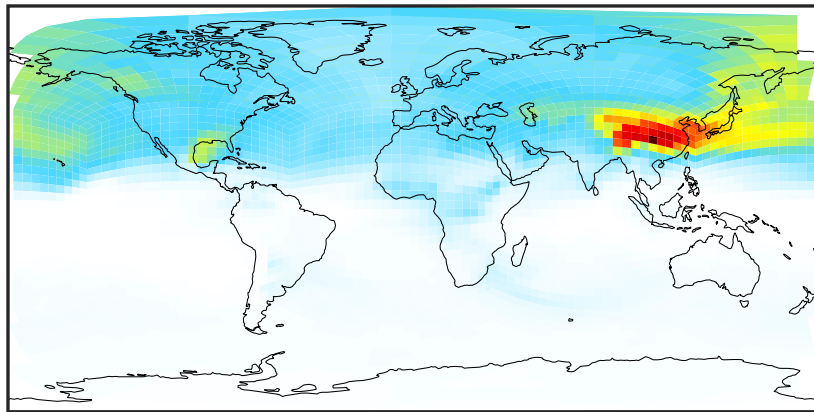
Ratio (1x1.25)  
Dev/Ref, Fixed Range





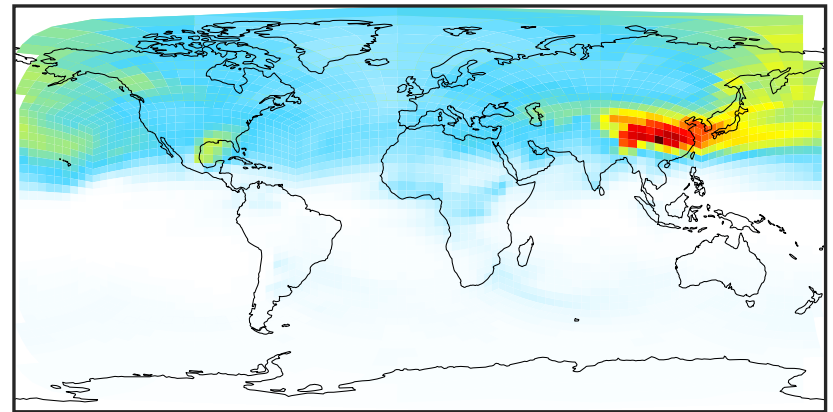
# SpeciesConcVV\_BCPI (Apr2019)

GCHP\_14.0.0 (Ref)  
c24



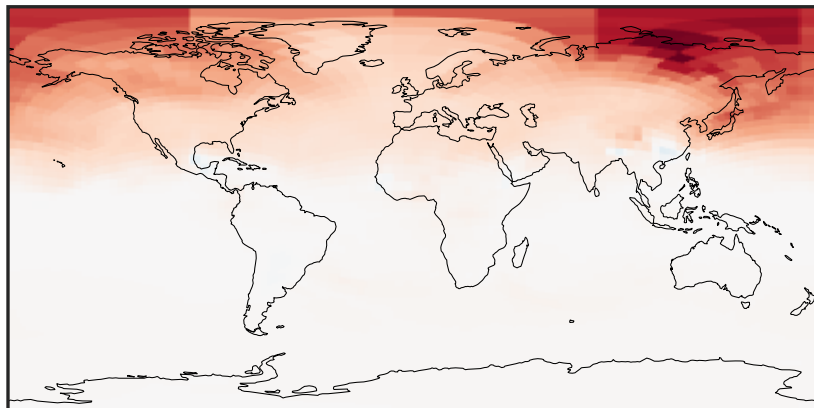
0.015 0.030  
µg/m3

GCHP\_14.2.0 (Dev)  
c24



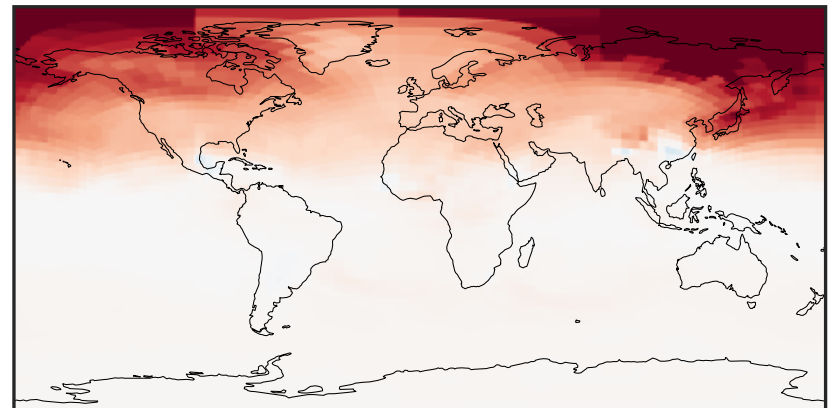
0.015 0.030  
µg/m3

Difference (1x1.25)  
Dev - Ref, Dynamic Range



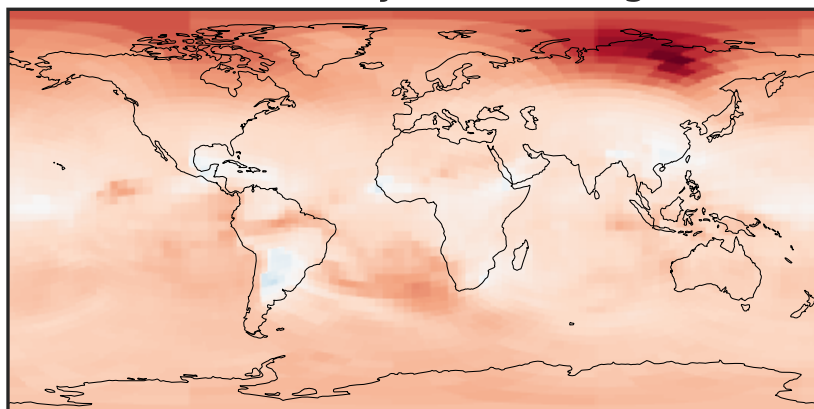
-0.0004 0.0000 0.0004  
µg/m3

Difference (1x1.25)  
Dev - Ref, Restricted Range [5%,95%]



-0.00025 0.00000 0.00025  
µg/m3

Ratio (1x1.25)  
Dev/Ref, Dynamic Range



0.9383 0.9692 1.0000 1.0329 1.0657  
unitless

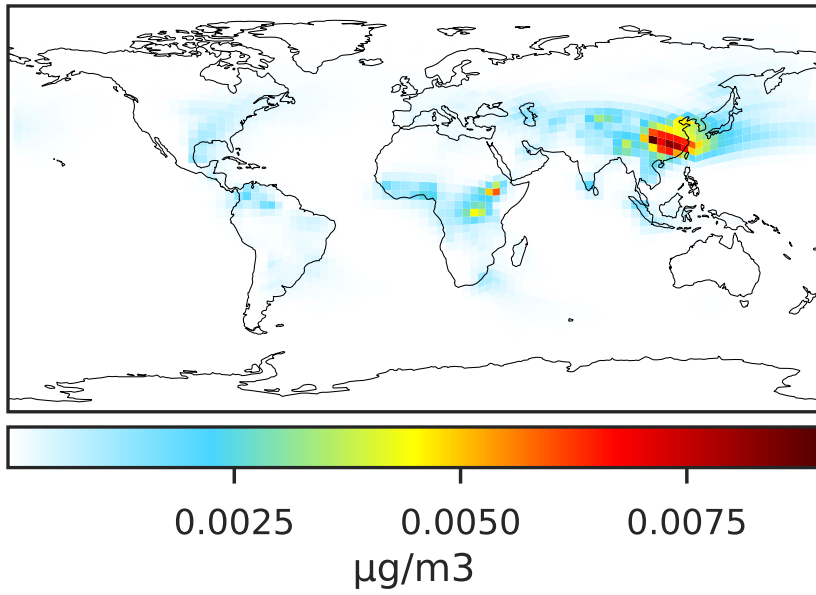
Ratio (1x1.25)  
Dev/Ref, Fixed Range



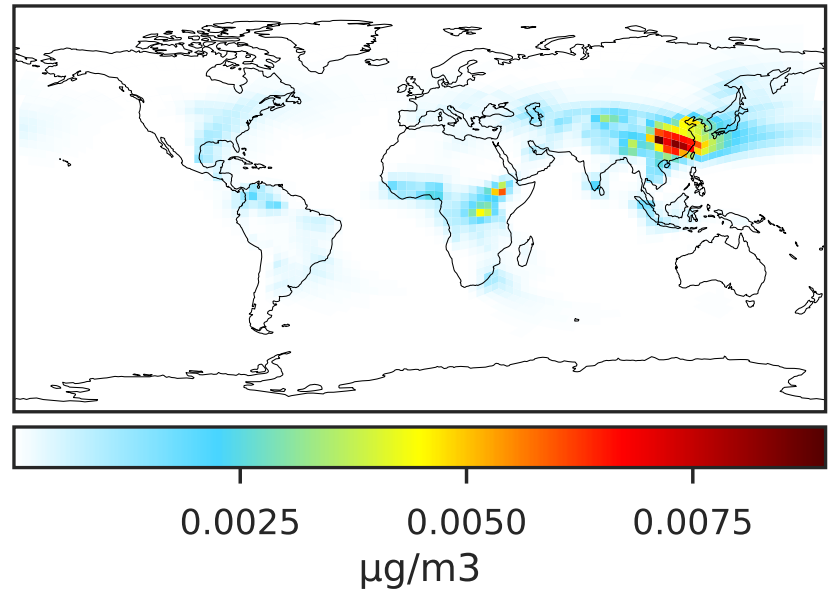
0.50 0.75 1.00 1.50 2.00  
unitless

# SpeciesConcVV\_BCPO (Apr2019)

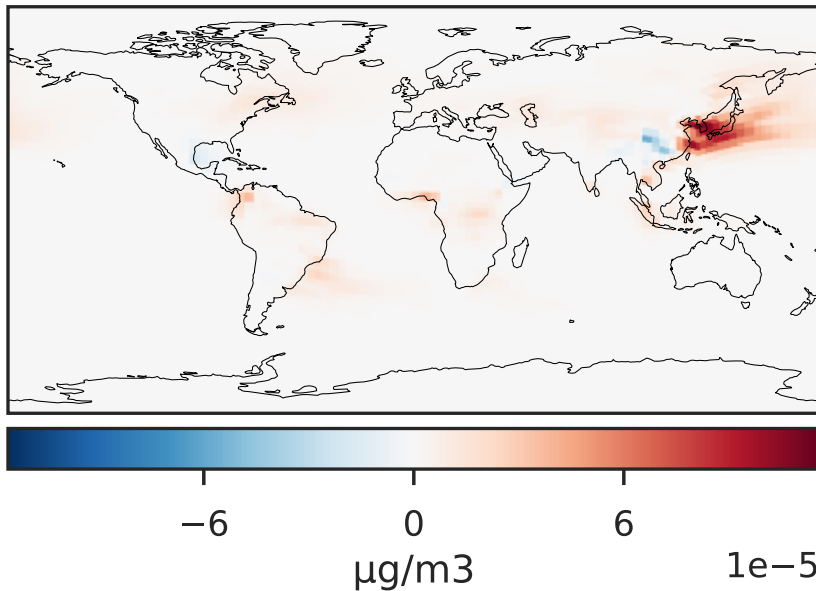
GCHP\_14.0.0 (Ref)  
c24



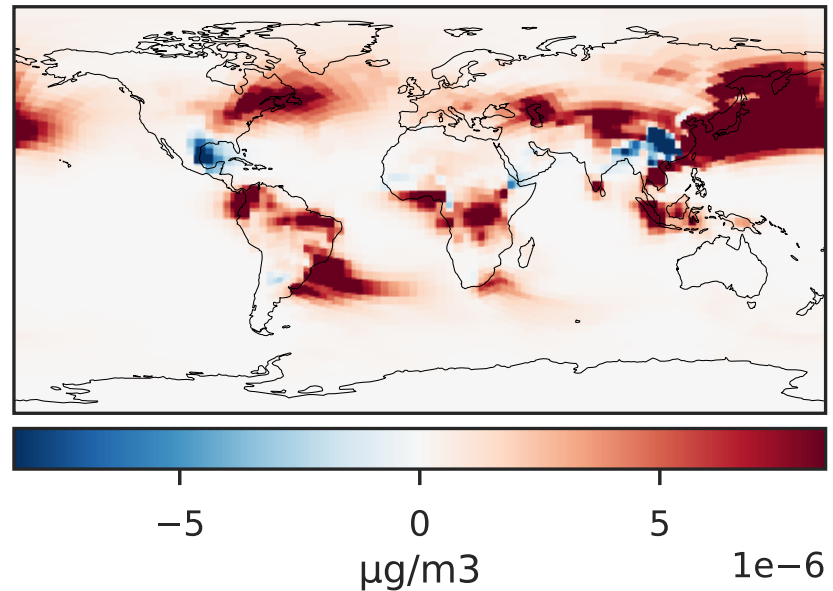
GCHP\_14.2.0 (Dev)  
c24



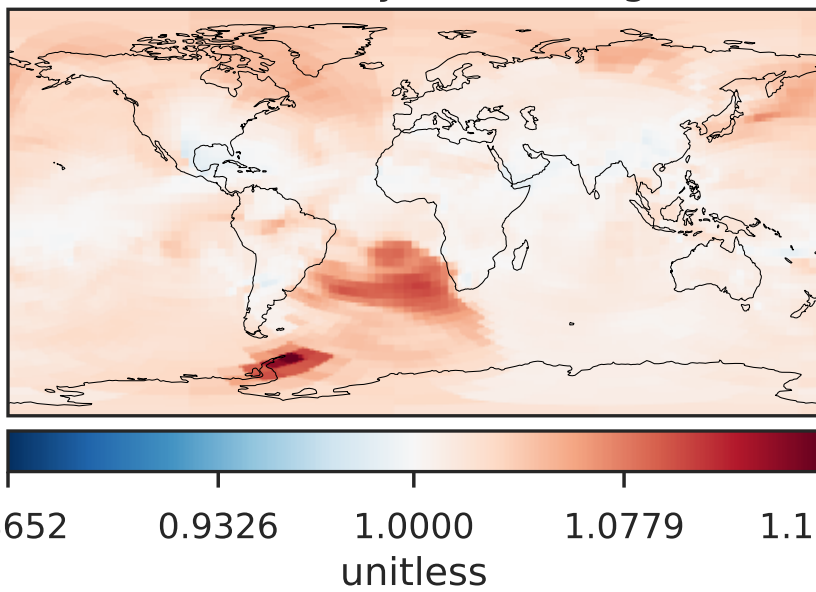
Difference (1x1.25)  
Dev - Ref, Dynamic Range



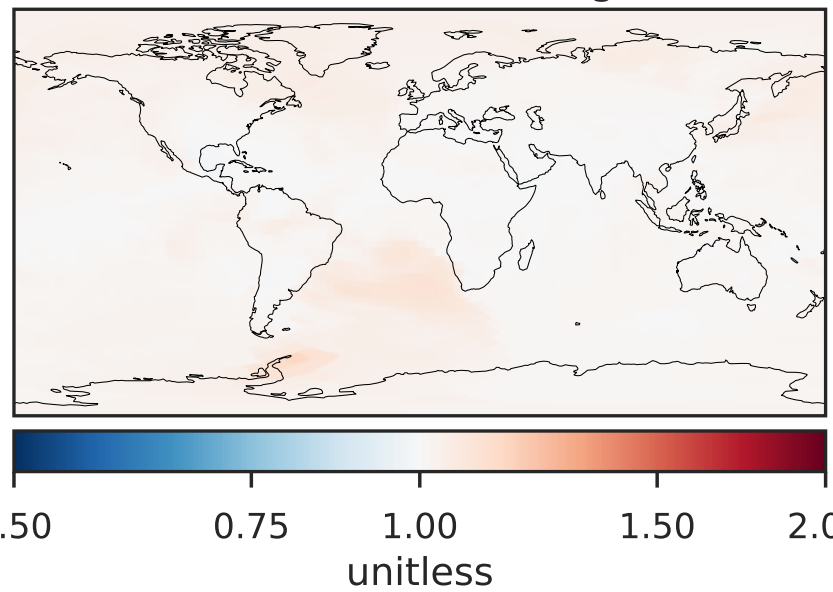
Difference (1x1.25)  
Dev - Ref, Restricted Range [5%,95%]



Ratio (1x1.25)  
Dev/Ref, Dynamic Range

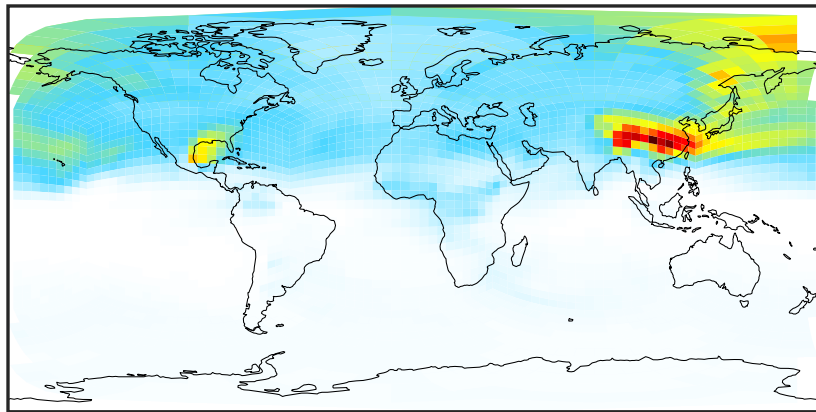


Ratio (1x1.25)  
Dev/Ref, Fixed Range



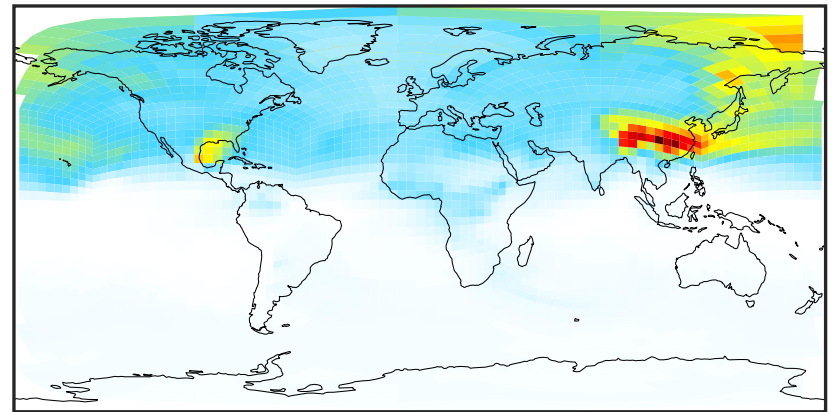
# SpeciesConcVV\_OCPI (Apr2019)

GCHP\_14.0.0 (Ref)  
c24



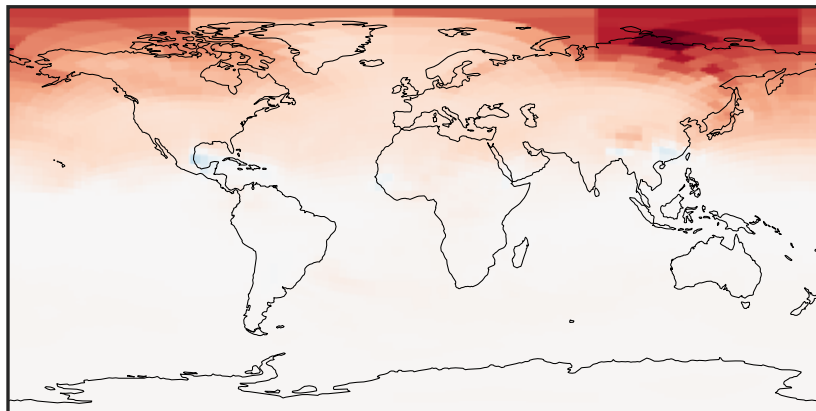
0.0000 0.0343 0.0685 0.1028 0.1371  
 $\mu\text{g}/\text{m}^3$

GCHP\_14.2.0 (Dev)  
c24



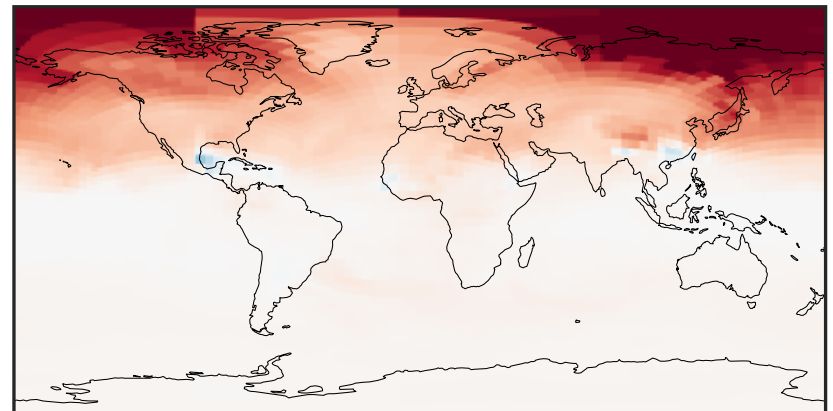
0.0000 0.0343 0.0685 0.1028 0.1371  
 $\mu\text{g}/\text{m}^3$

Difference (1x1.25)  
Dev - Ref, Dynamic Range



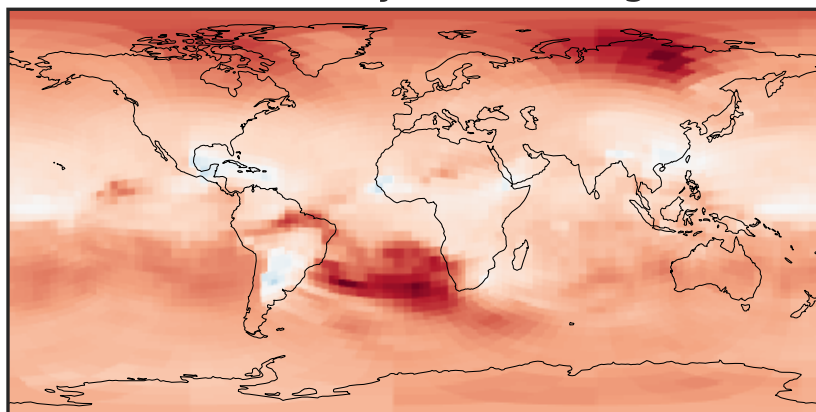
-0.001 0.000 0.001  
 $\mu\text{g}/\text{m}^3$

Difference (1x1.25)  
Dev - Ref, Restricted Range [5%,95%]



-0.0006 0.0000 0.0006  
 $\mu\text{g}/\text{m}^3$

Ratio (1x1.25)  
Dev/Ref, Dynamic Range



0.95664 0.97832 1.00000 1.02266 1.04533  
unitless

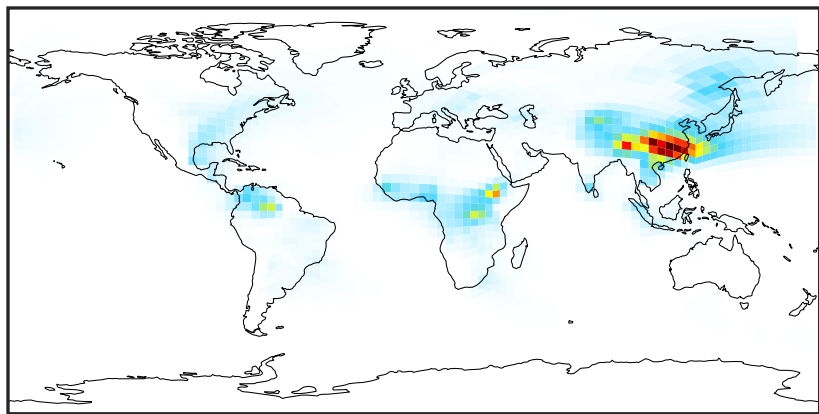
Ratio (1x1.25)  
Dev/Ref, Fixed Range



0.50 0.75 1.00 1.50 2.00  
unitless

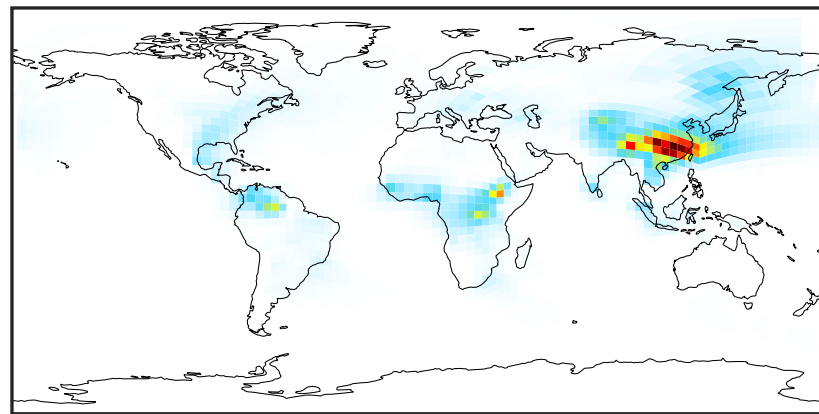
# SpeciesConcVV\_OCPO (Apr2019)

GCHP\_14.0.0 (Ref)  
c24



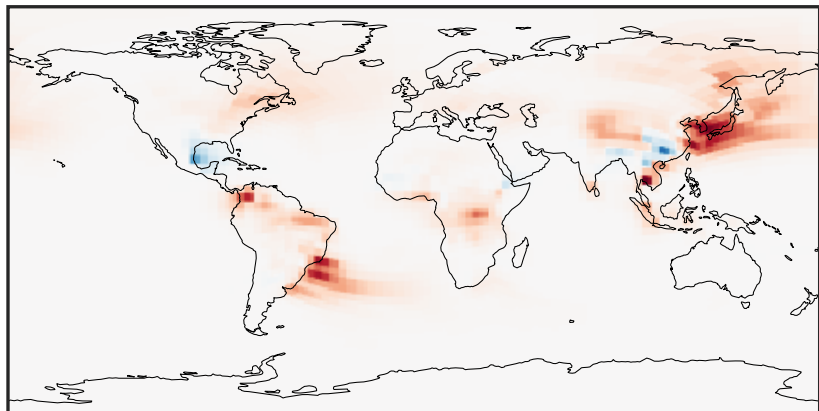
0.006 0.012 0.018  
µg/m<sup>3</sup>

GCHP\_14.2.0 (Dev)  
c24



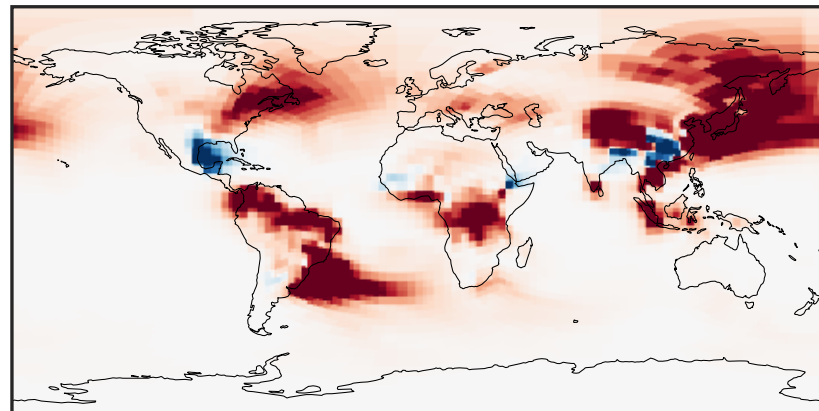
0.006 0.012 0.018  
µg/m<sup>3</sup>

Difference (1x1.25)  
Dev - Ref, Dynamic Range



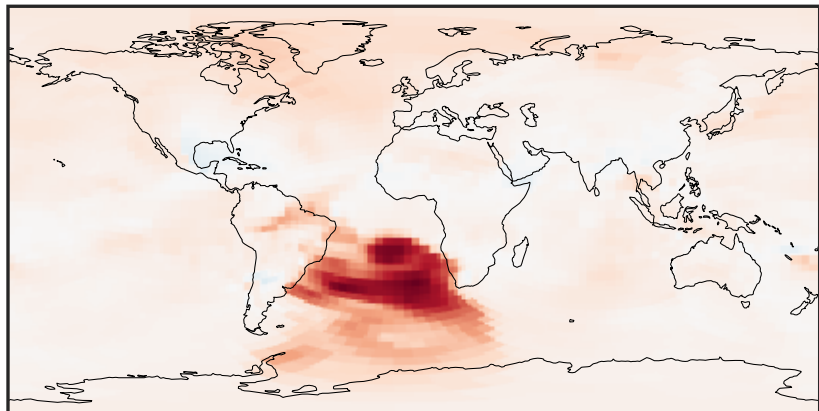
-5 0 5  
µg/m<sup>3</sup> 1e-5

Difference (1x1.25)  
Dev - Ref, Restricted Range [5%,95%]



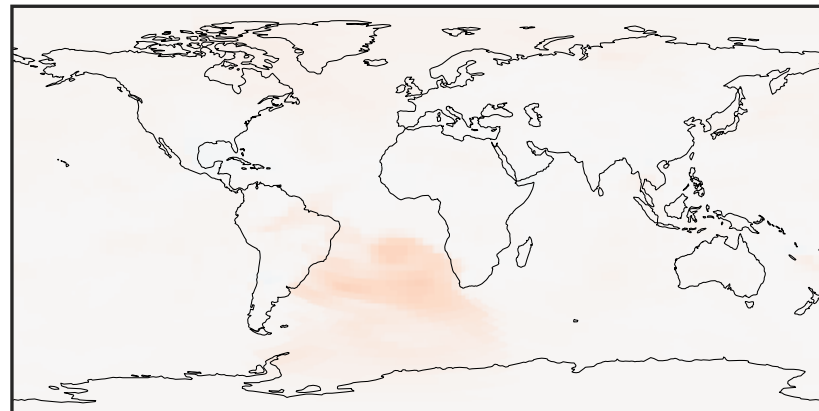
-8 0 8  
µg/m<sup>3</sup> 1e-6

Ratio (1x1.25)  
Dev/Ref, Dynamic Range



0.8538 0.9269 1.0000 1.0856 1.1712  
unitless

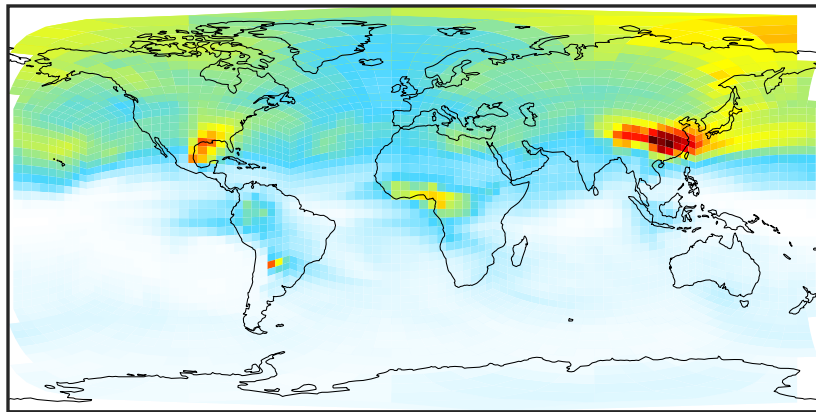
Ratio (1x1.25)  
Dev/Ref, Fixed Range



0.50 0.75 1.00 1.50 2.00  
unitless

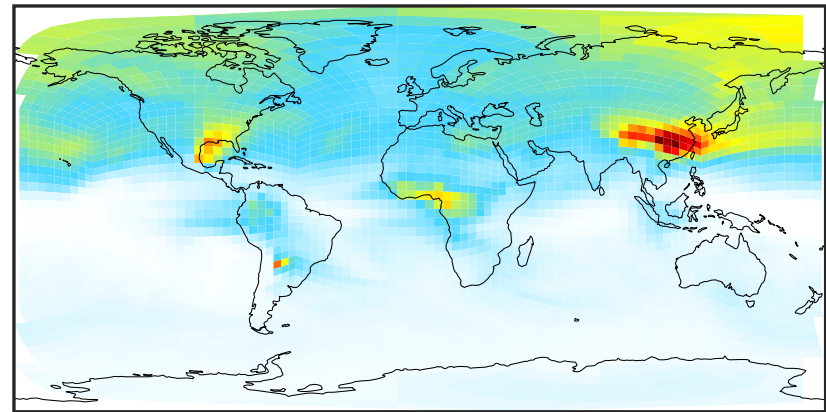
# SpeciesConcVV\_Complex\_SOA (Apr2019)

GCHP\_14.0.0 (Ref)  
c24



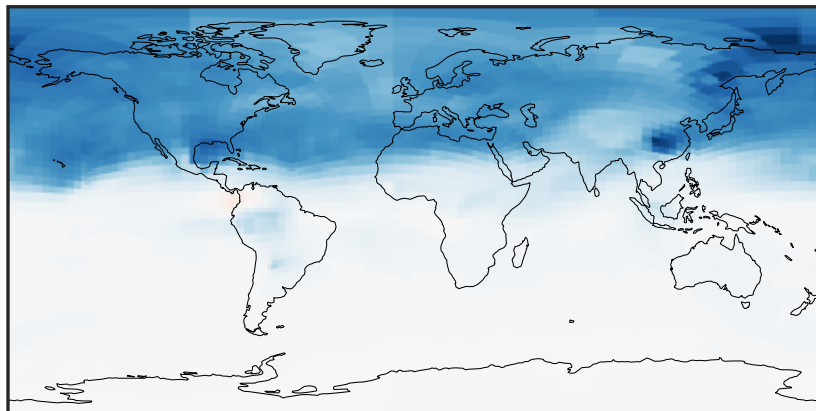
0.015 0.030 0.045  
µg/m<sup>3</sup>

GCHP\_14.2.0 (Dev)  
c24



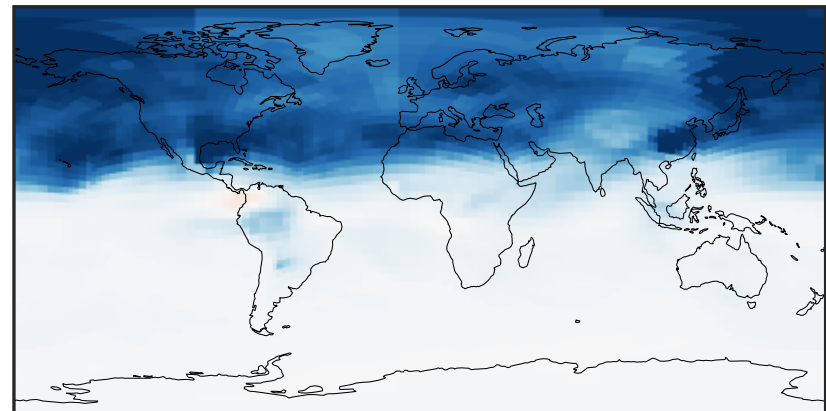
0.015 0.030 0.045  
µg/m<sup>3</sup>

Difference (1x1.25)  
Dev - Ref, Dynamic Range



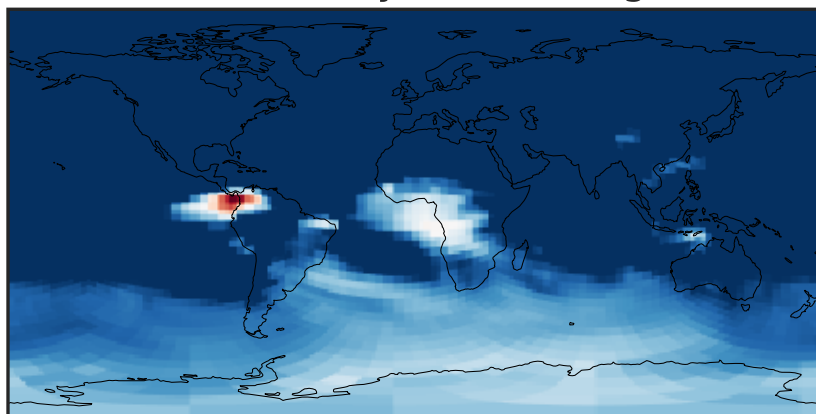
-0.002 0.000 0.002  
µg/m<sup>3</sup>

Difference (1x1.25)  
Dev - Ref, Restricted Range [5%,95%]



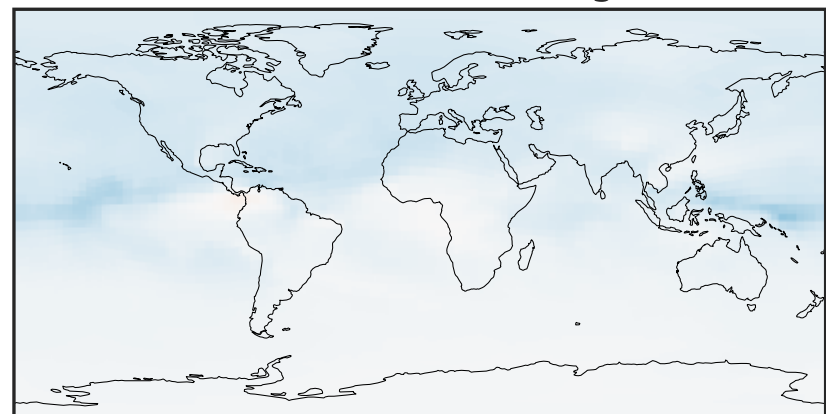
-0.0015 0.0000 0.0015  
µg/m<sup>3</sup>

Ratio (1x1.25)  
Dev/Ref, Dynamic Range



0.96443 0.98221 1.00000 1.01844 1.03689  
unitless

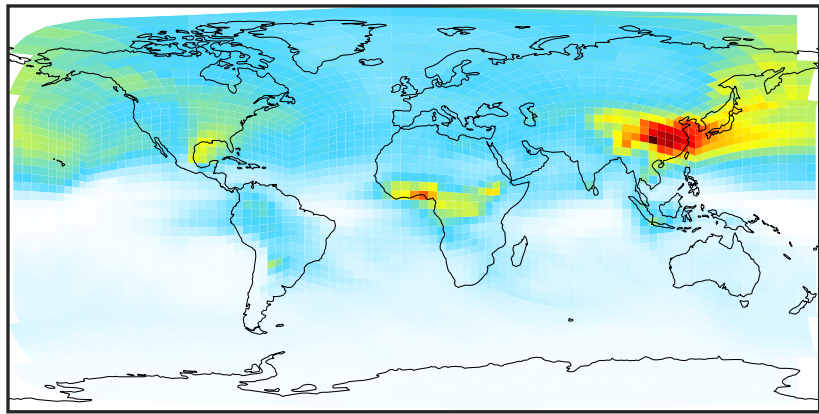
Ratio (1x1.25)  
Dev/Ref, Fixed Range



0.50 0.75 1.00 1.50 2.00  
unitless

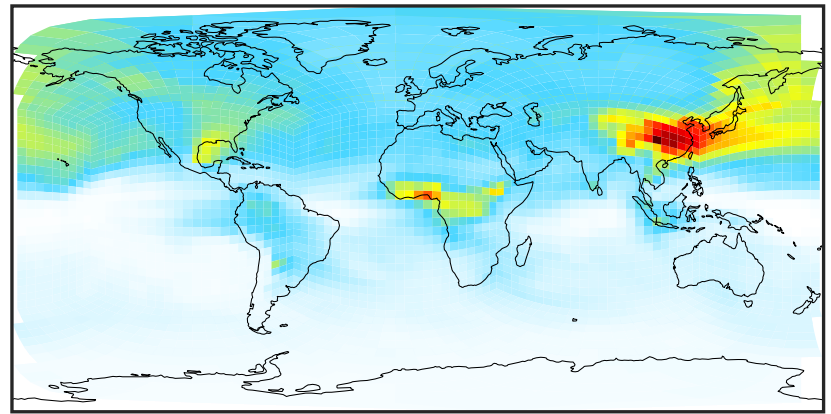
# SpeciesConcVV\_Simple\_SOA (Apr2019)

GCHP\_14.0.0 (Ref)  
c24



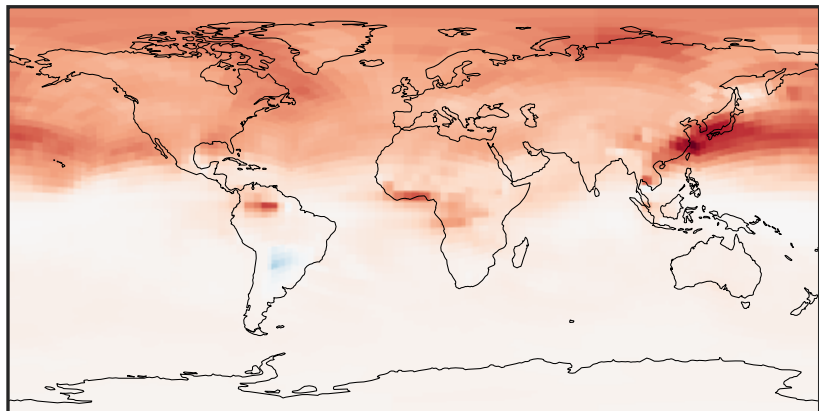
0.001 0.121 0.242 0.363 0.485  
 $\mu\text{g}/\text{m}^3$

GCHP\_14.2.0 (Dev)  
c24



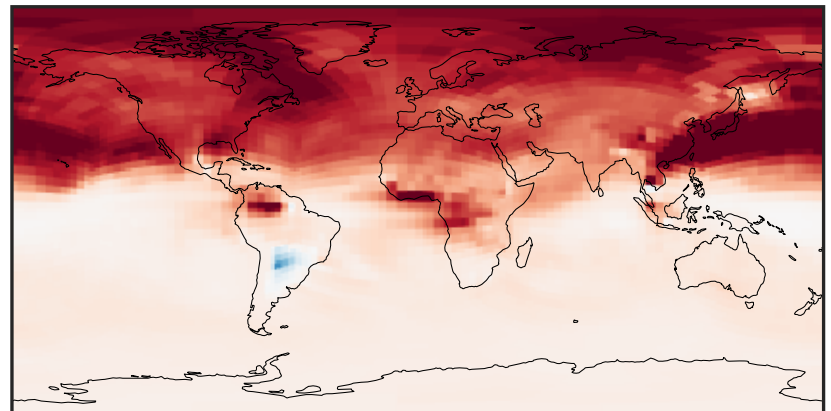
0.001 0.121 0.242 0.363 0.485  
 $\mu\text{g}/\text{m}^3$

Difference (1x1.25)  
Dev - Ref, Dynamic Range



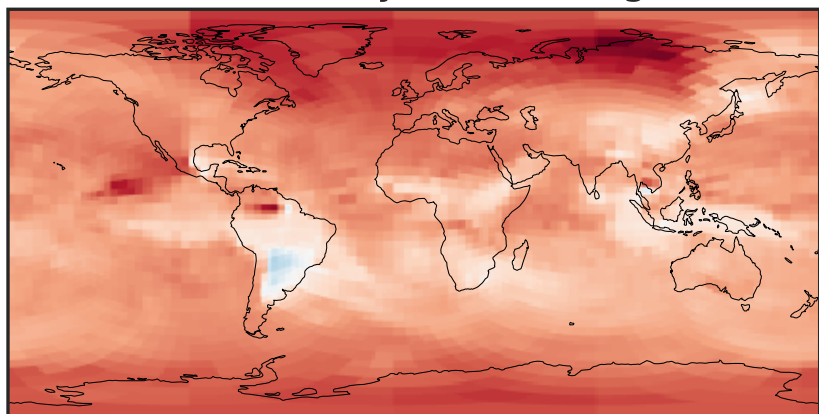
-0.0025 0.0000 0.0025  
 $\mu\text{g}/\text{m}^3$

Difference (1x1.25)  
Dev - Ref, Restricted Range [5%,95%]



-0.0015 0.0000 0.0015  
 $\mu\text{g}/\text{m}^3$

Ratio (1x1.25)  
Dev/Ref, Dynamic Range



0.97266 0.98633 1.00000 1.01405 1.02810  
unitless

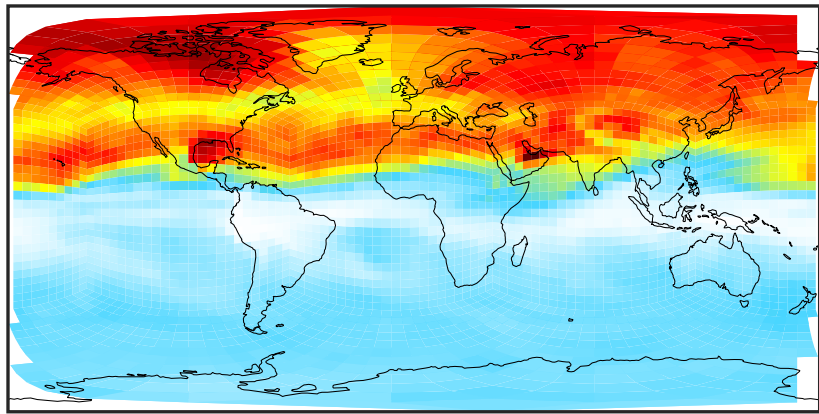
Ratio (1x1.25)  
Dev/Ref, Fixed Range



0.50 0.75 1.00 1.50 2.00  
unitless

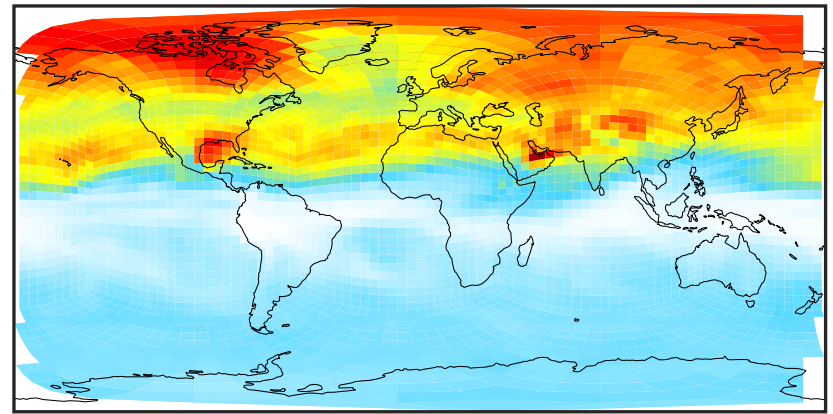
# SpeciesConcVV\_AERI (Apr2019)

GCHP\_14.0.0 (Ref)  
c24



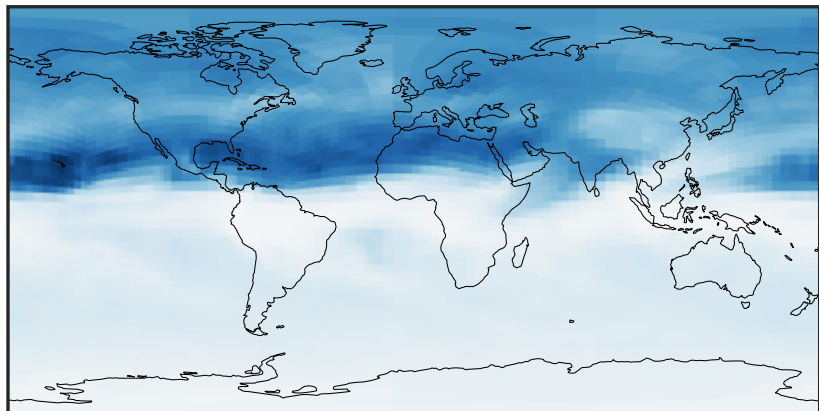
0.0004 0.0008 0.0012  
 $\mu\text{g}/\text{m}^3$

GCHP\_14.2.0 (Dev)  
c24



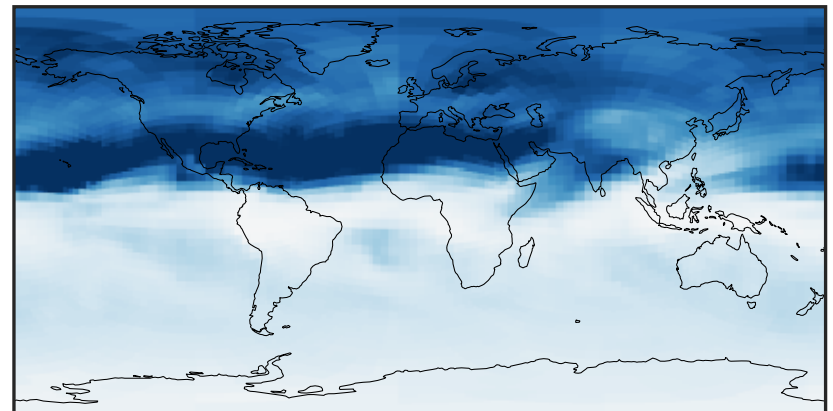
0.0004 0.0008 0.0012  
 $\mu\text{g}/\text{m}^3$

Difference (1x1.25)  
Dev - Ref, Dynamic Range



-0.0001 0.0000 0.0001  
 $\mu\text{g}/\text{m}^3$

Difference (1x1.25)  
Dev - Ref, Restricted Range [5%,95%]



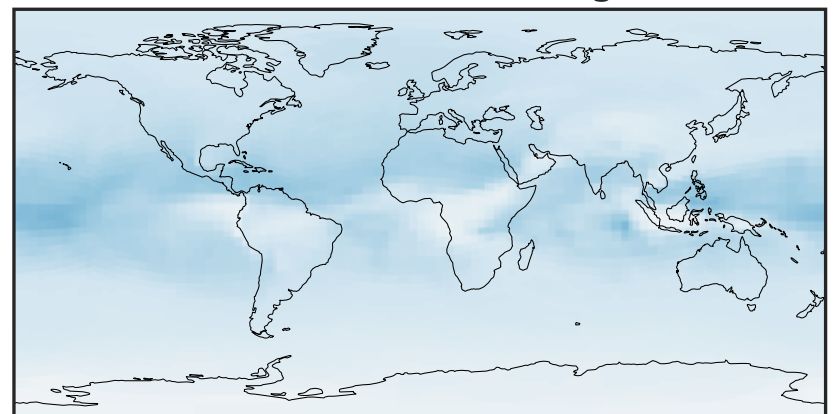
-8 0 8  
 $\mu\text{g}/\text{m}^3$   $1\text{e}-5$

Ratio (1x1.25)  
Dev/Ref, Dynamic Range



0.97401 0.98700 1.00000 1.01334 1.02669  
unitless

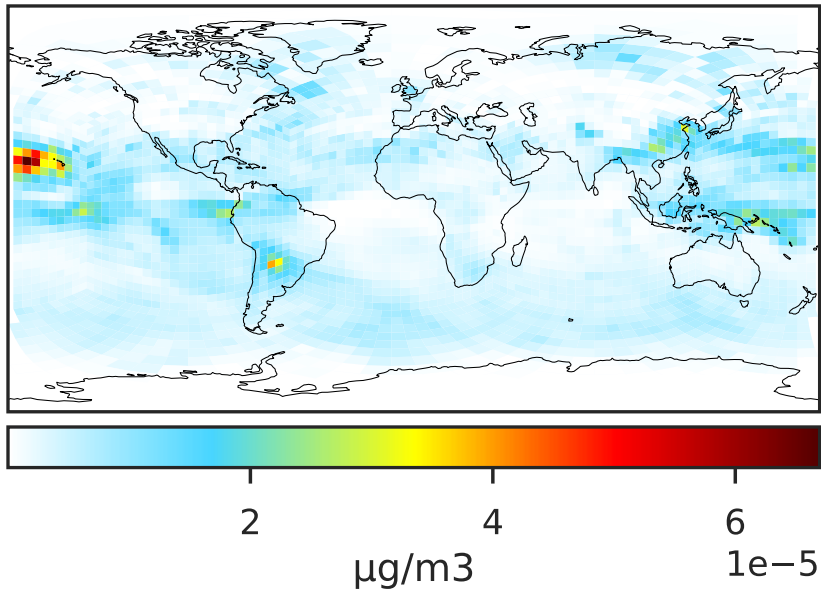
Ratio (1x1.25)  
Dev/Ref, Fixed Range



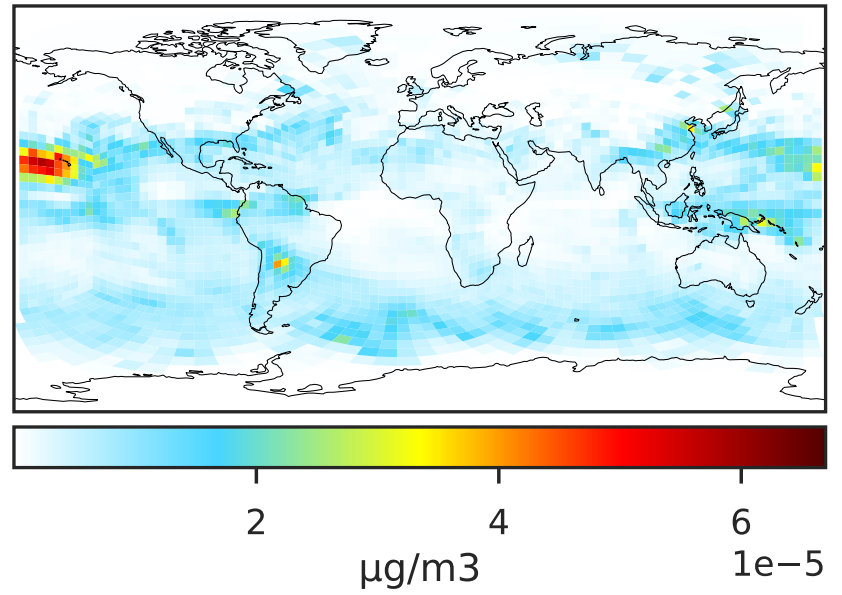
0.50 0.75 1.00 1.50 2.00  
unitless

# SpeciesConcVV\_BrSALA (Apr2019)

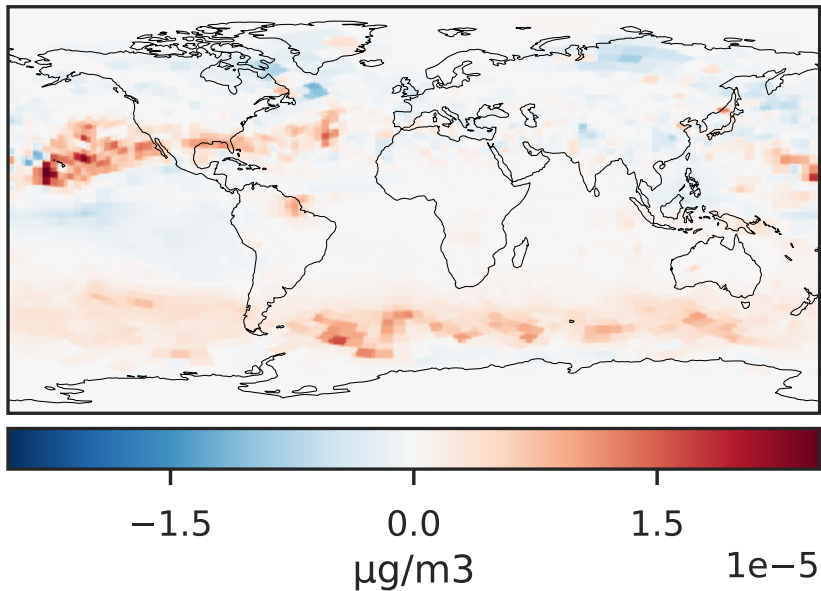
GCHP\_14.0.0 (Ref)  
c24



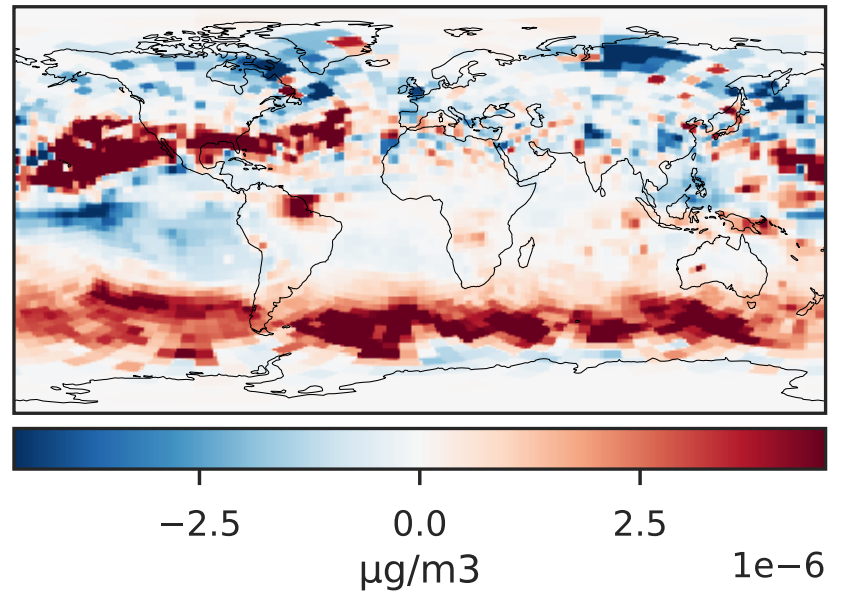
GCHP\_14.2.0 (Dev)  
c24



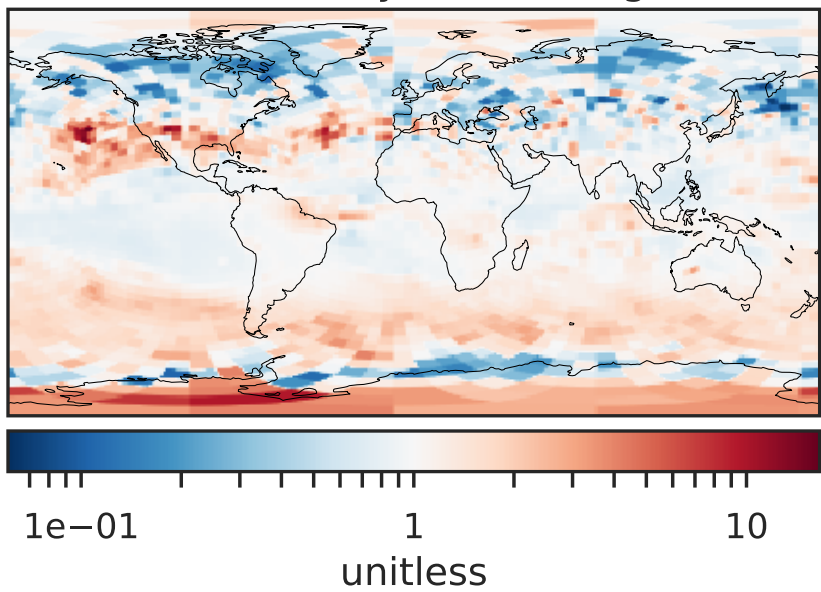
Difference (1x1.25)  
Dev - Ref, Dynamic Range



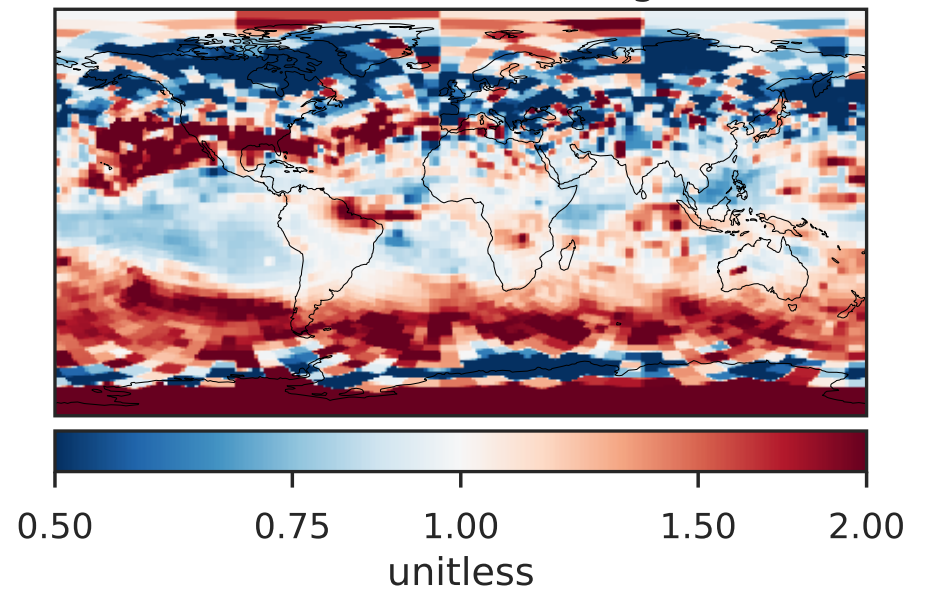
Difference (1x1.25)  
Dev - Ref, Restricted Range [5%,95%]



Ratio (1x1.25)  
Dev/Ref, Dynamic Range



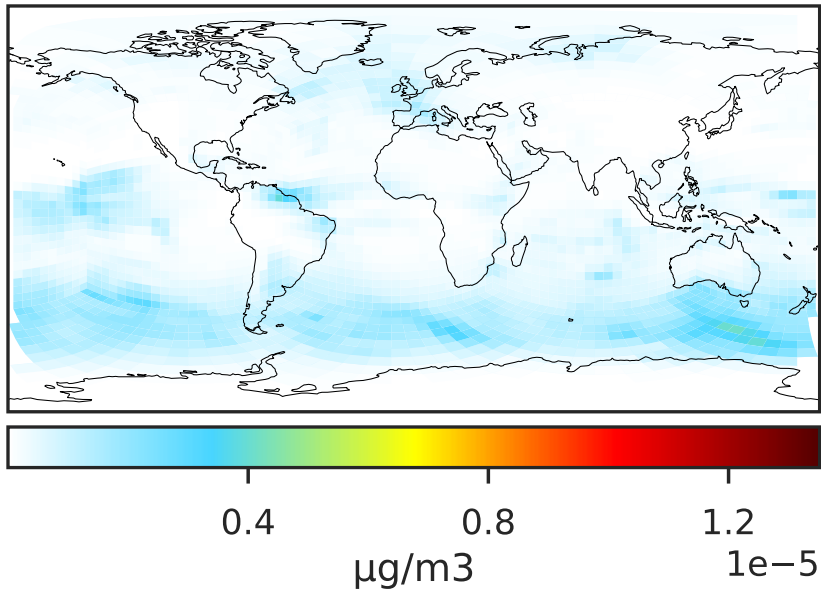
Ratio (1x1.25)  
Dev/Ref, Fixed Range



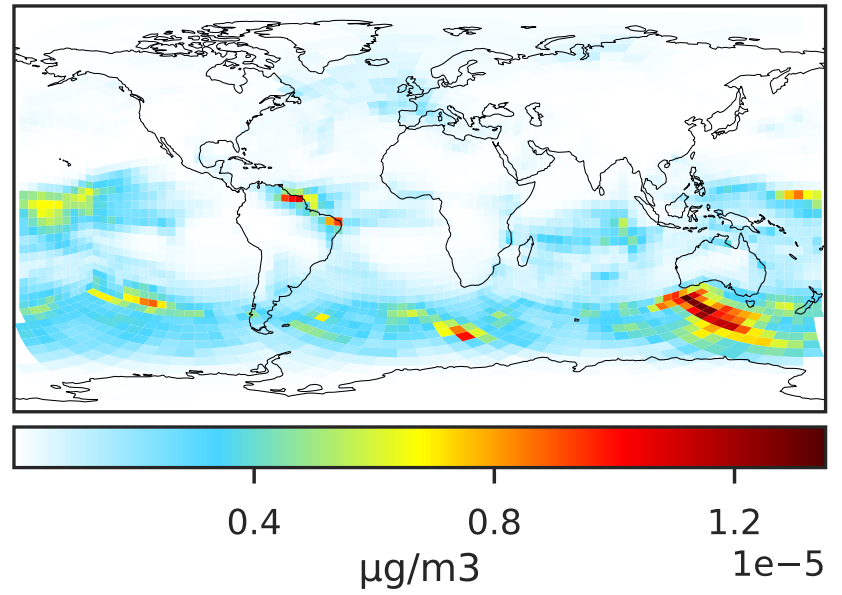


# SpeciesConcVV\_BrSALC (Apr2019)

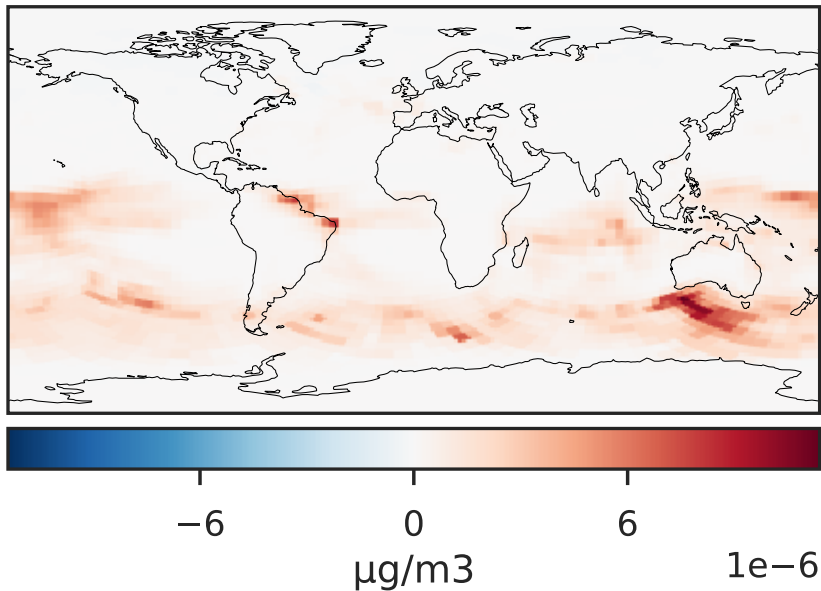
GCHP\_14.0.0 (Ref)  
c24



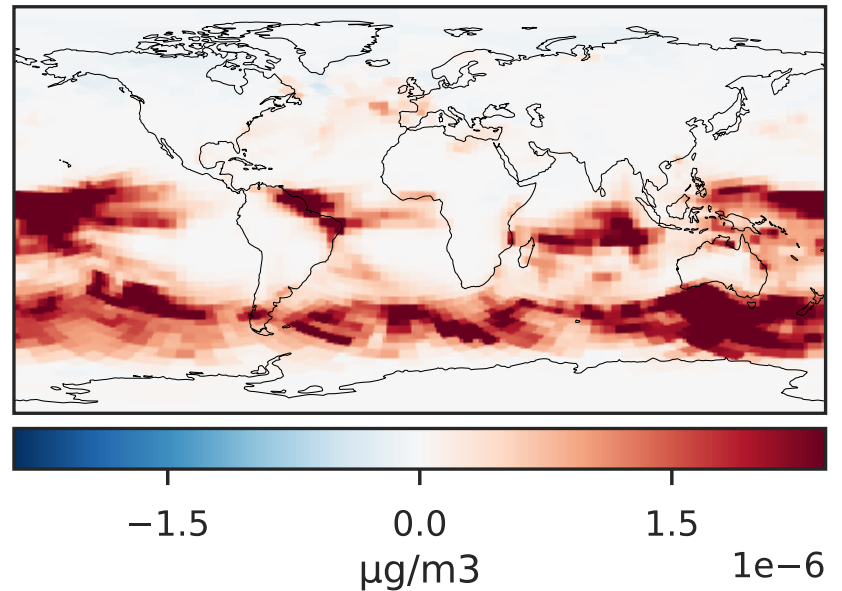
GCHP\_14.2.0 (Dev)  
c24



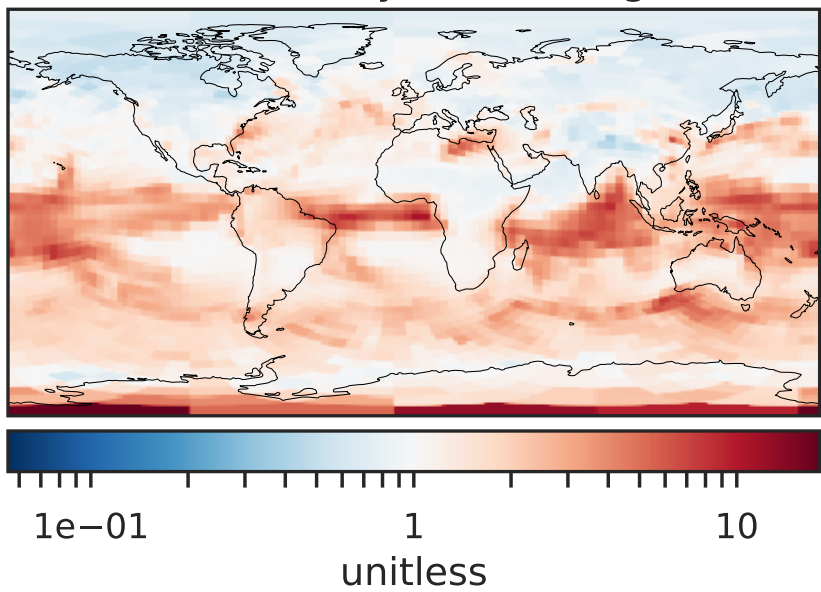
Difference (1x1.25)  
Dev - Ref, Dynamic Range



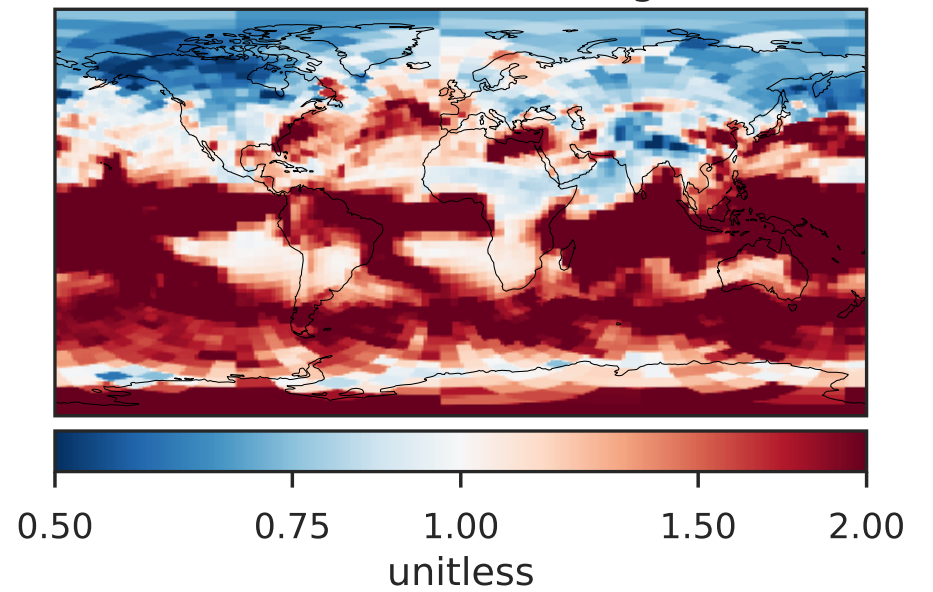
Difference (1x1.25)  
Dev - Ref, Restricted Range [5%,95%]



Ratio (1x1.25)  
Dev/Ref, Dynamic Range

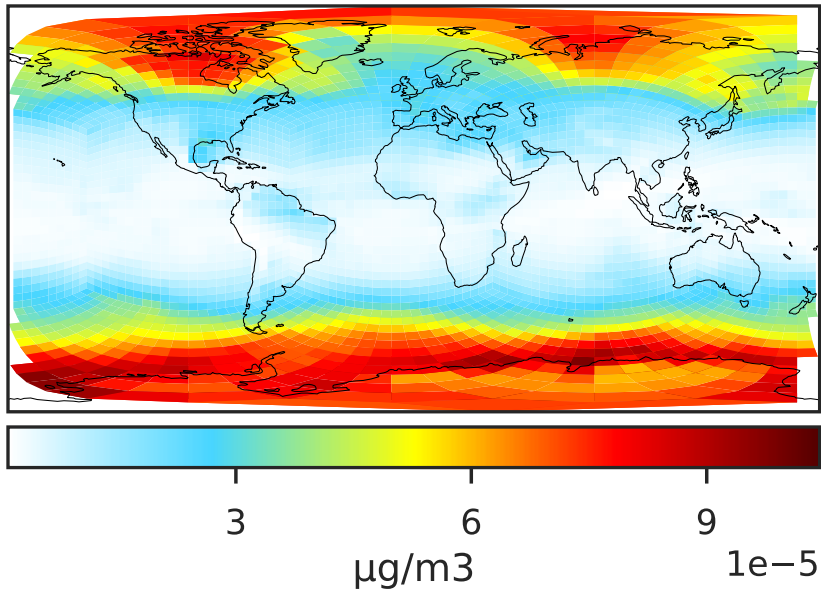


Ratio (1x1.25)  
Dev/Ref, Fixed Range

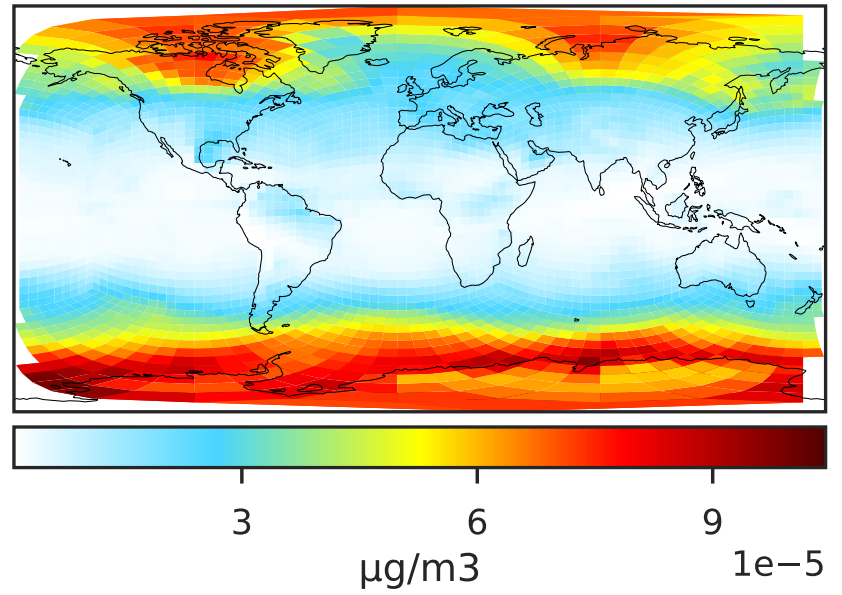


# SpeciesConcVV\_ISALA (Apr2019)

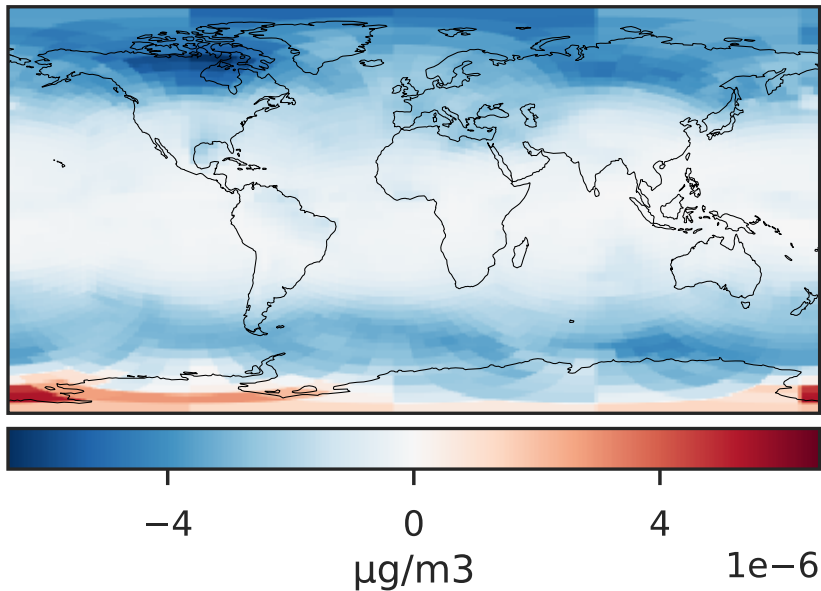
GCHP\_14.0.0 (Ref)  
c24



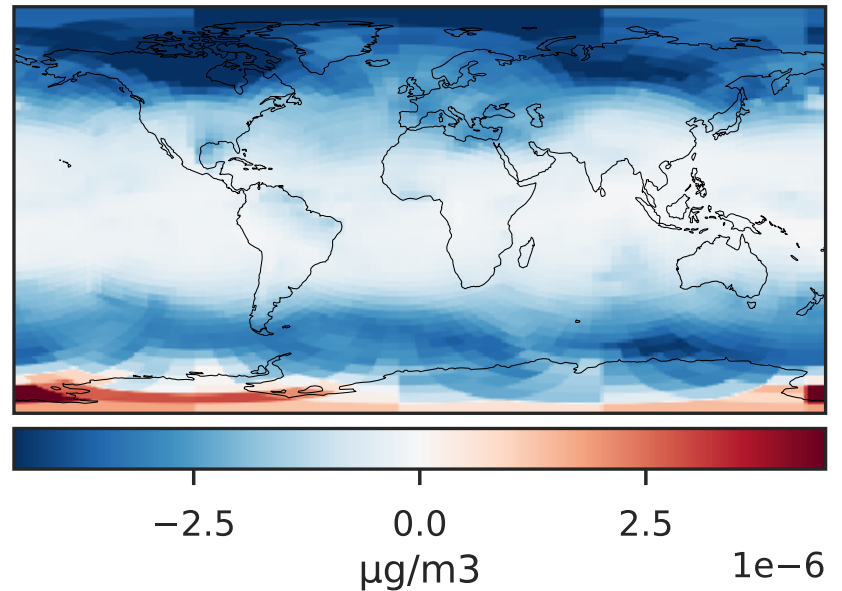
GCHP\_14.2.0 (Dev)  
c24



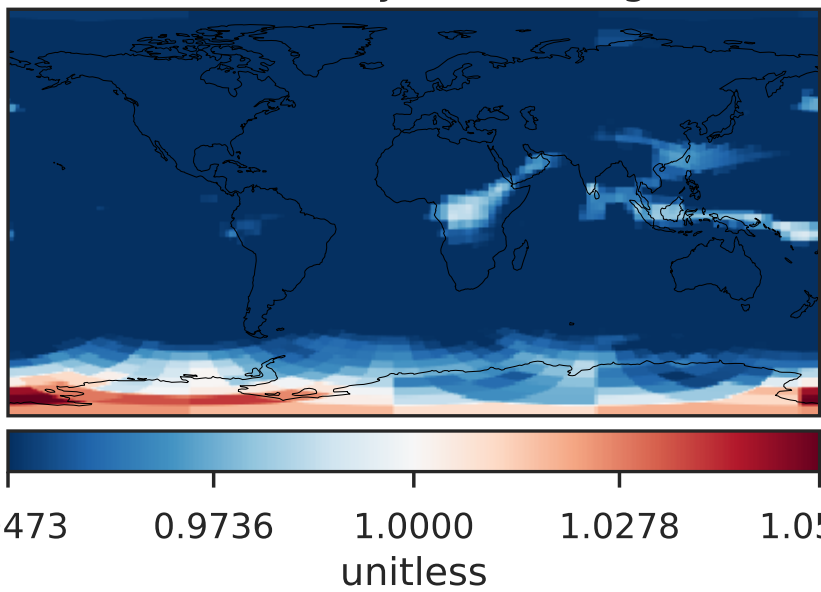
Difference (1x1.25)  
Dev - Ref, Dynamic Range



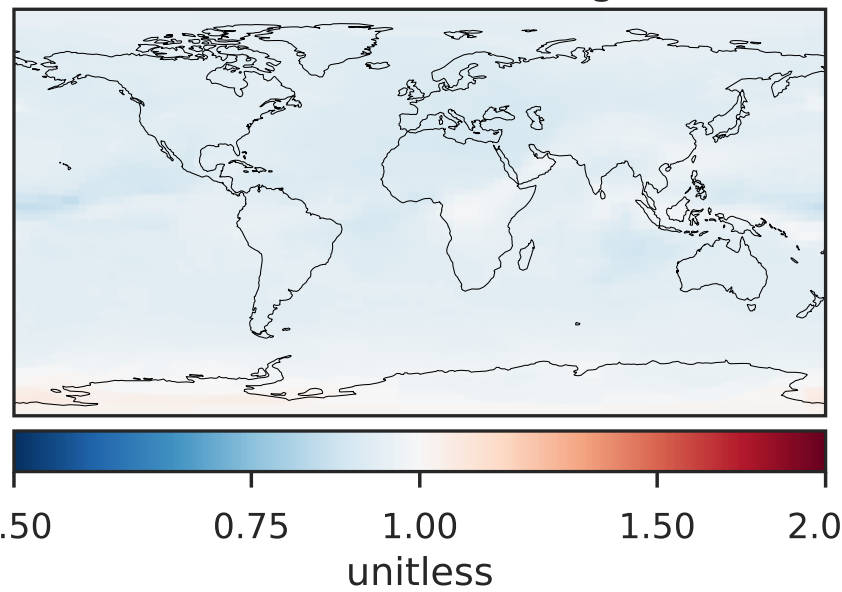
Difference (1x1.25)  
Dev - Ref, Restricted Range [5%,95%]



Ratio (1x1.25)  
Dev/Ref, Dynamic Range

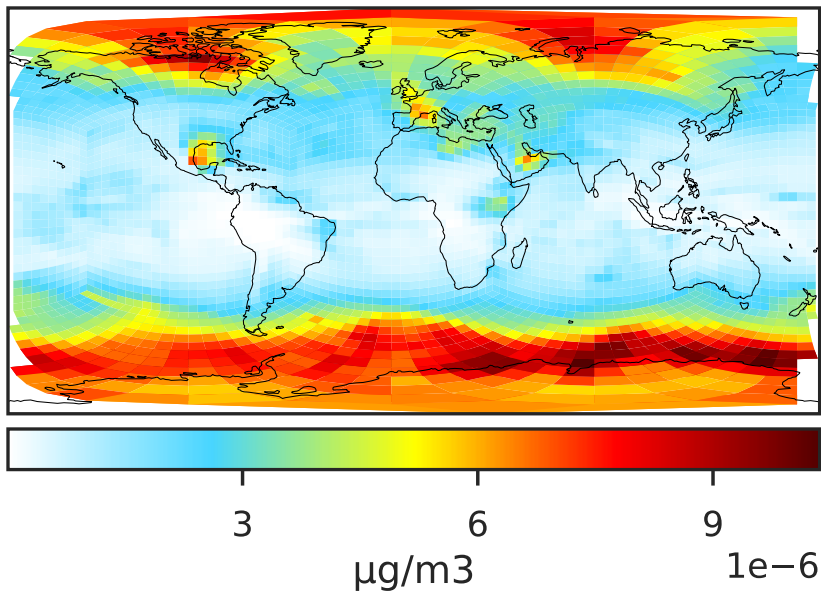


Ratio (1x1.25)  
Dev/Ref, Fixed Range

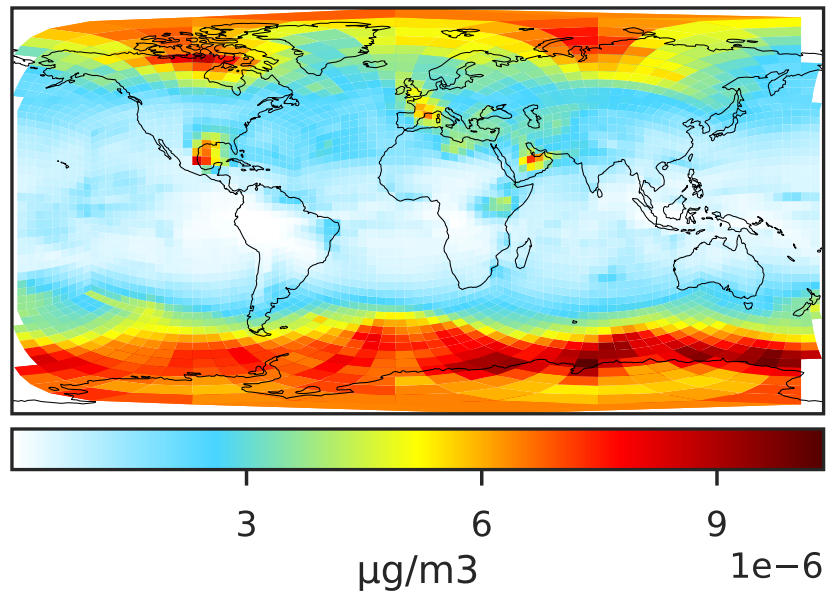


# SpeciesConcVV\_ISALC (Apr2019)

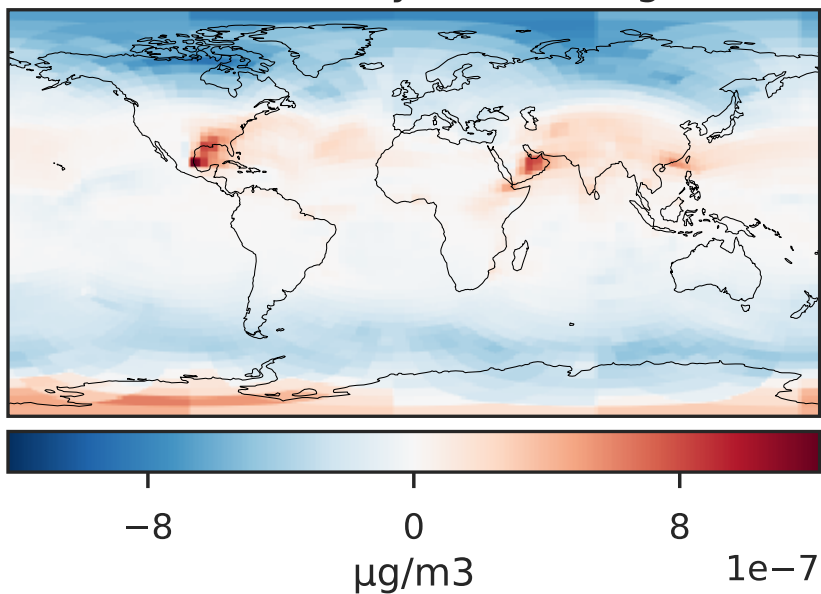
GCHP\_14.0.0 (Ref)  
c24



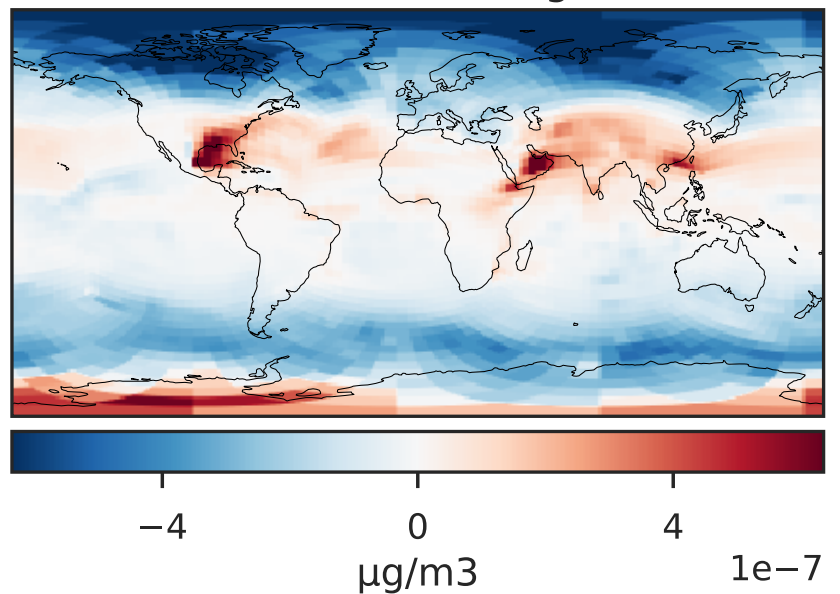
GCHP\_14.2.0 (Dev)  
c24



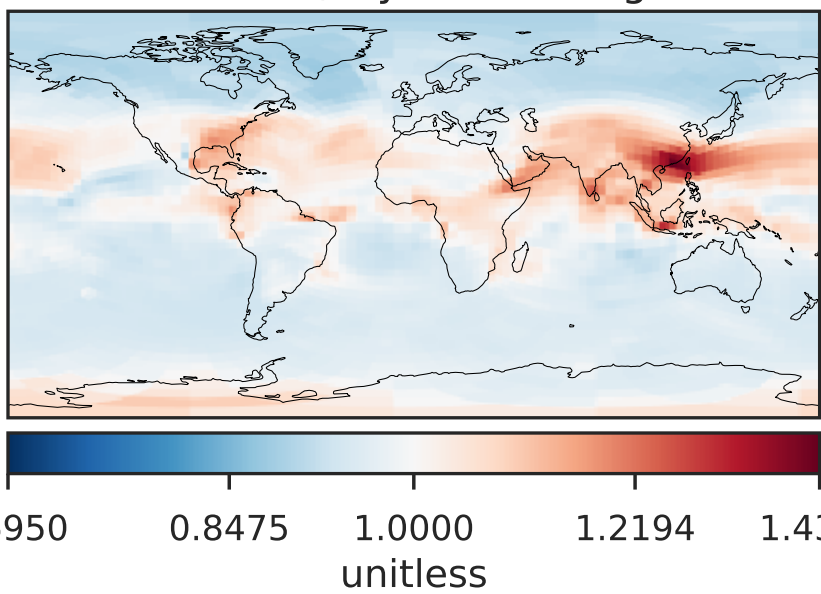
Difference (1x1.25)  
Dev - Ref, Dynamic Range



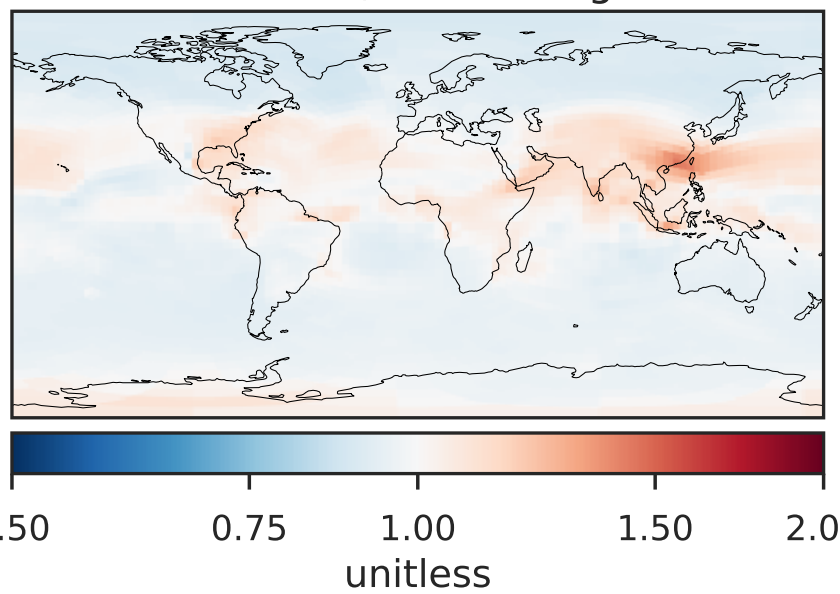
Difference (1x1.25)  
Dev - Ref, Restricted Range [5%,95%]



Ratio (1x1.25)  
Dev/Ref, Dynamic Range

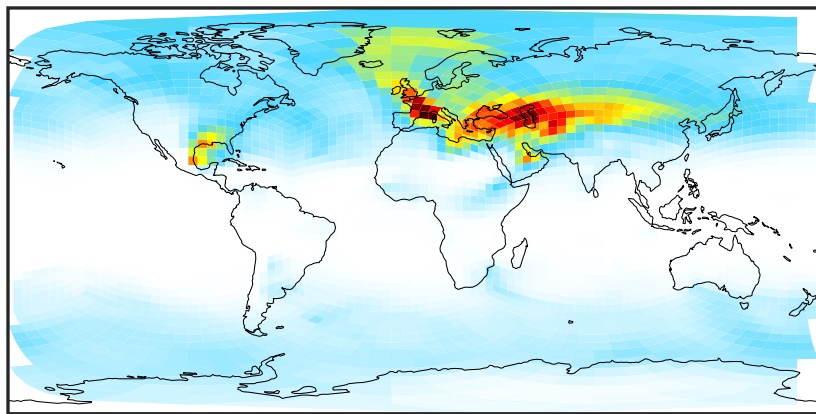


Ratio (1x1.25)  
Dev/Ref, Fixed Range



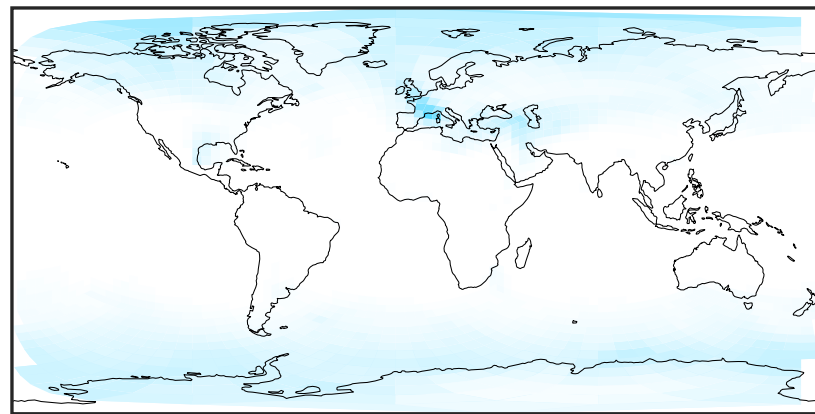
# SpeciesConcVV\_NITs (Apr2019)

GCHP\_14.0.0 (Ref)  
c24



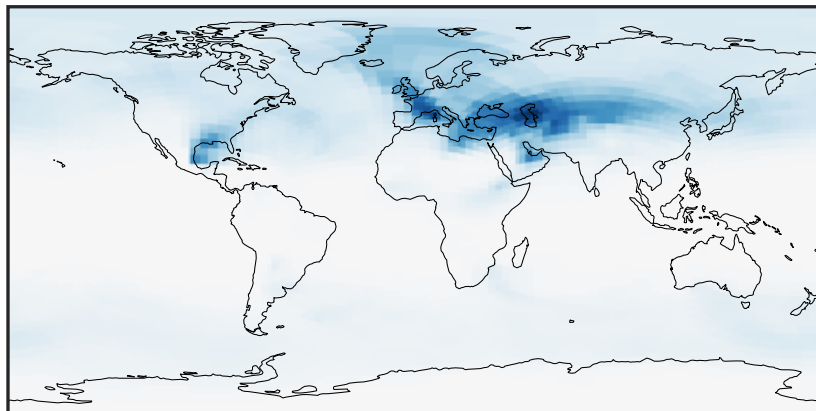
0.0015 0.0030 0.0045  
µg/m3

GCHP\_14.2.0 (Dev)  
c24



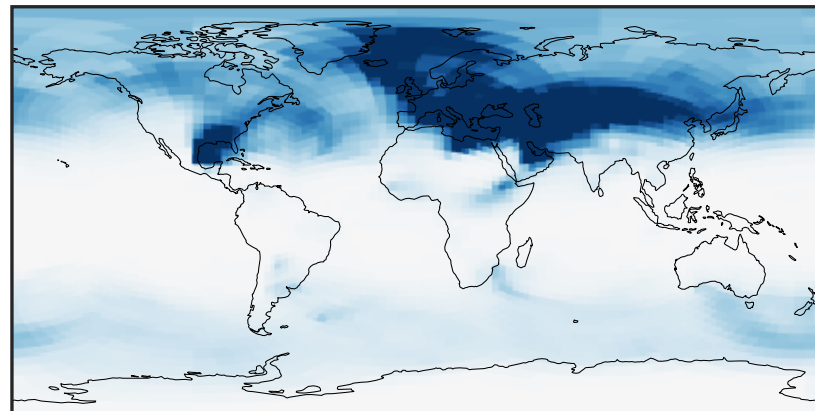
0.0015 0.0030 0.0045  
µg/m3

Difference (1x1.25)  
Dev - Ref, Dynamic Range



-0.003 0.000 0.003  
µg/m3

Difference (1x1.25)  
Dev - Ref, Restricted Range [5%,95%]



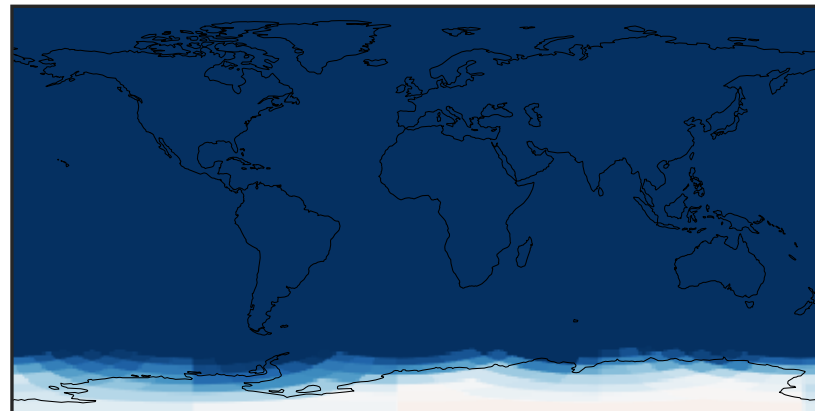
-0.001 0.000 0.001  
µg/m3

Ratio (1x1.25)  
Dev/Ref, Dynamic Range



0.97294 0.98647 1.00000 1.01391 1.02782  
unitless

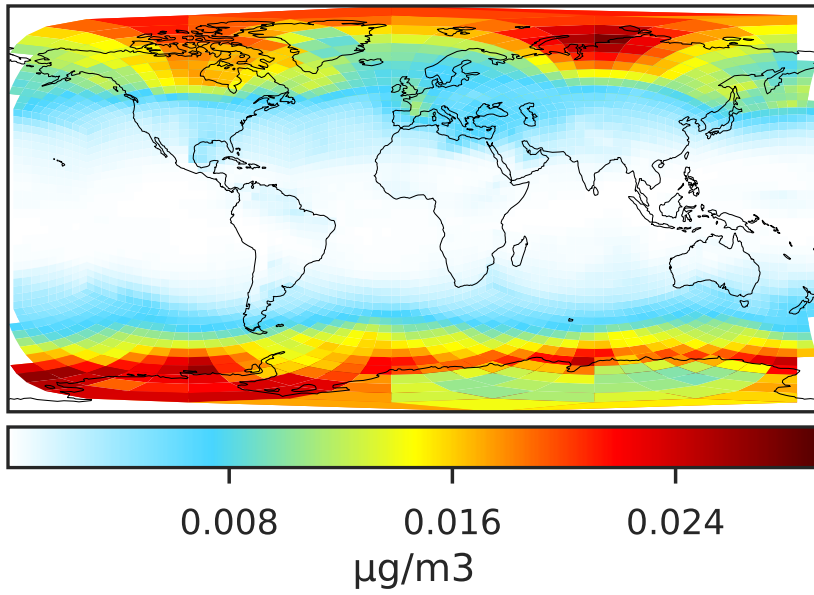
Ratio (1x1.25)  
Dev/Ref, Fixed Range



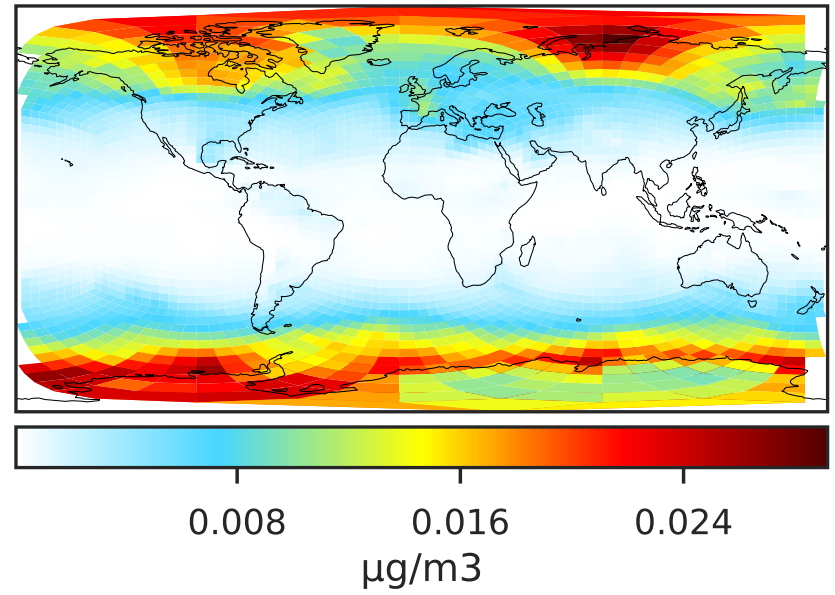
0.50 0.75 1.00 1.50 2.00  
unitless

# SpeciesConcVV\_SALA (Apr2019)

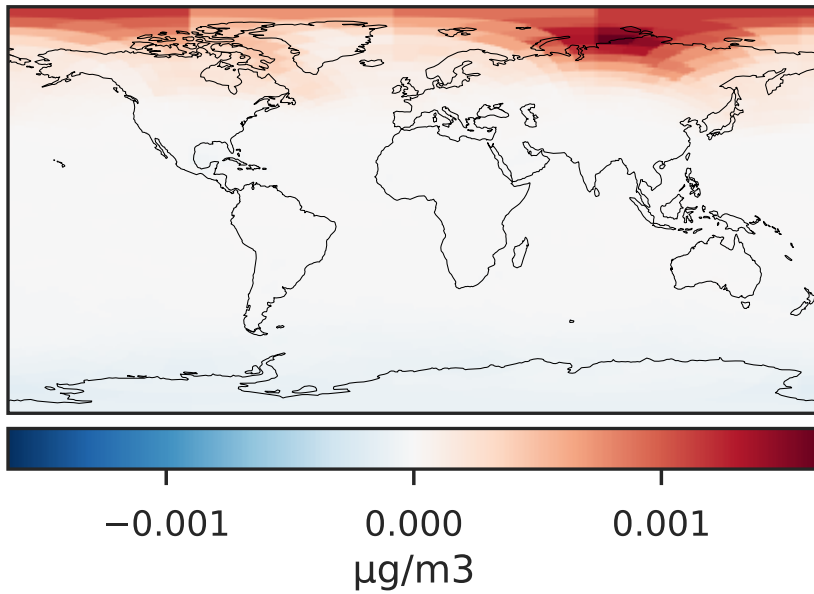
GCHP\_14.0.0 (Ref)  
c24



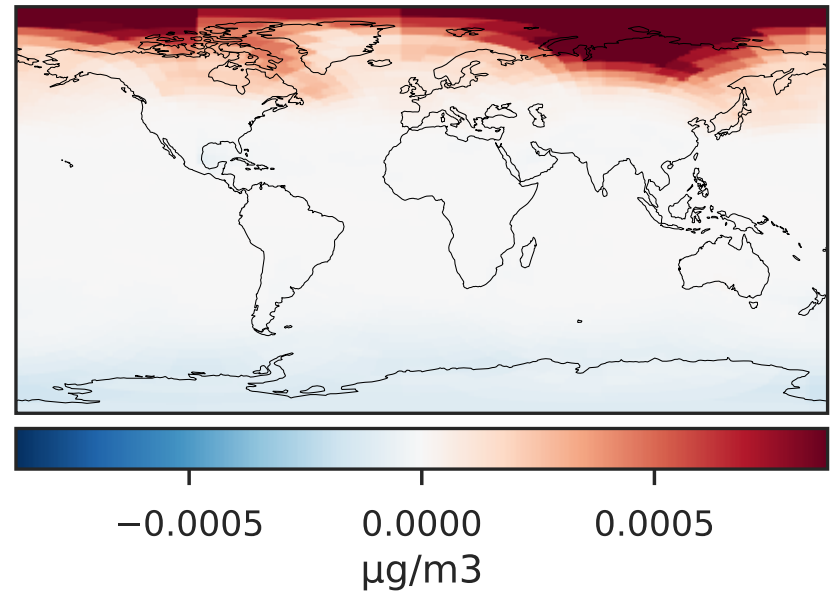
GCHP\_14.2.0 (Dev)  
c24



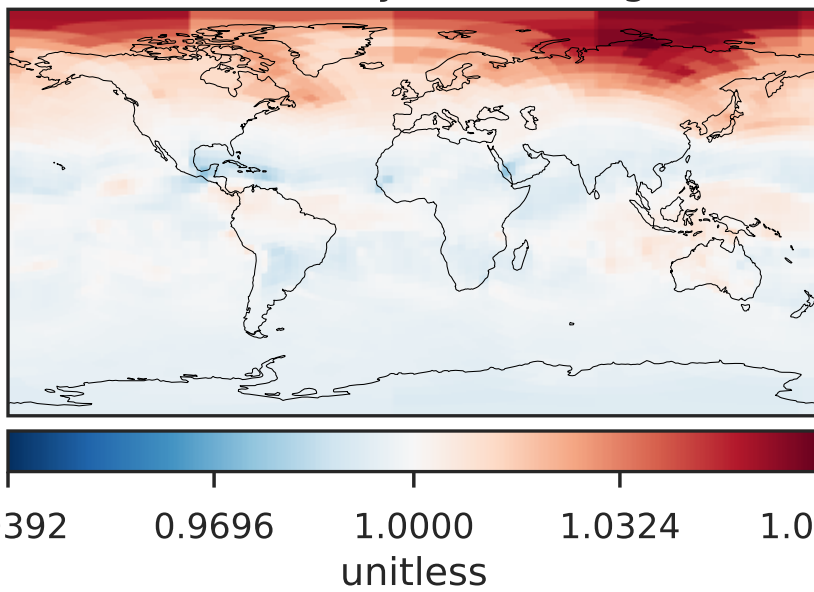
Difference (1x1.25)  
Dev - Ref, Dynamic Range



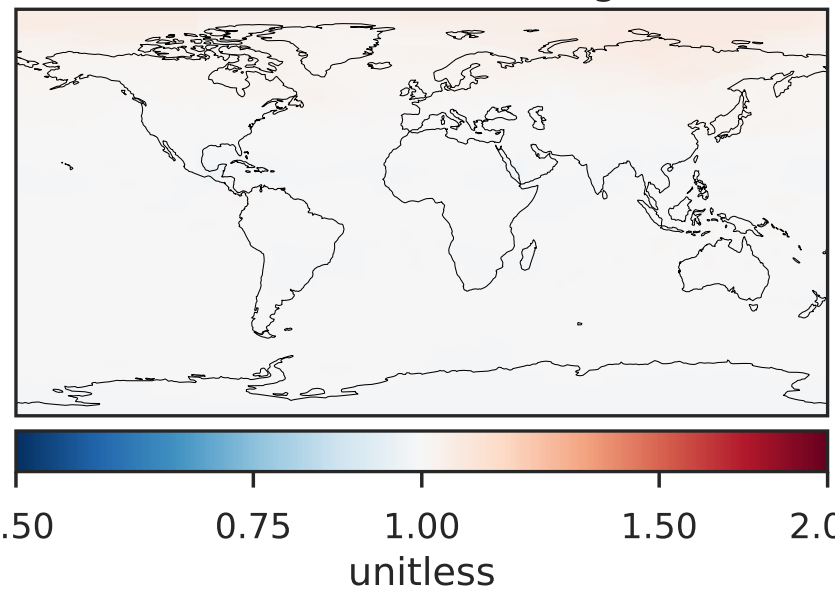
Difference (1x1.25)  
Dev - Ref, Restricted Range [5%,95%]



Ratio (1x1.25)  
Dev/Ref, Dynamic Range

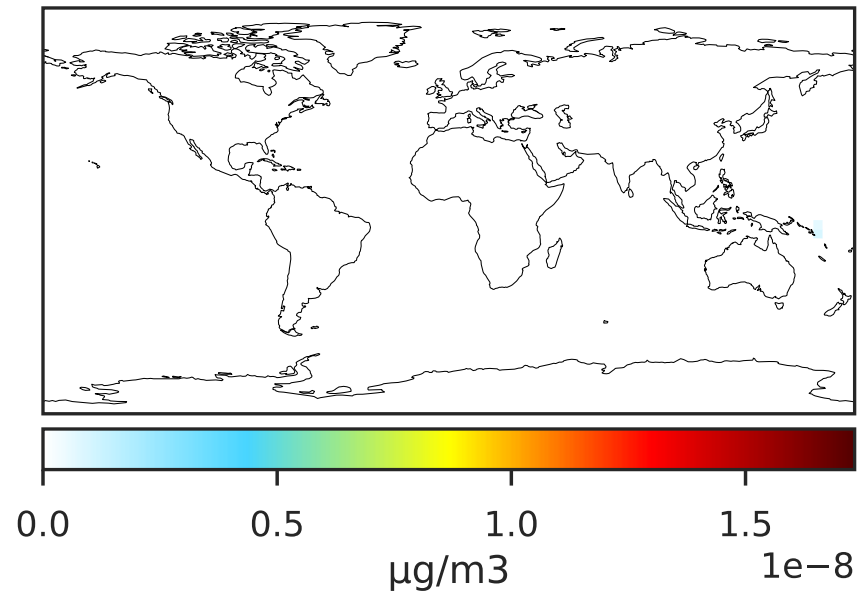


Ratio (1x1.25)  
Dev/Ref, Fixed Range

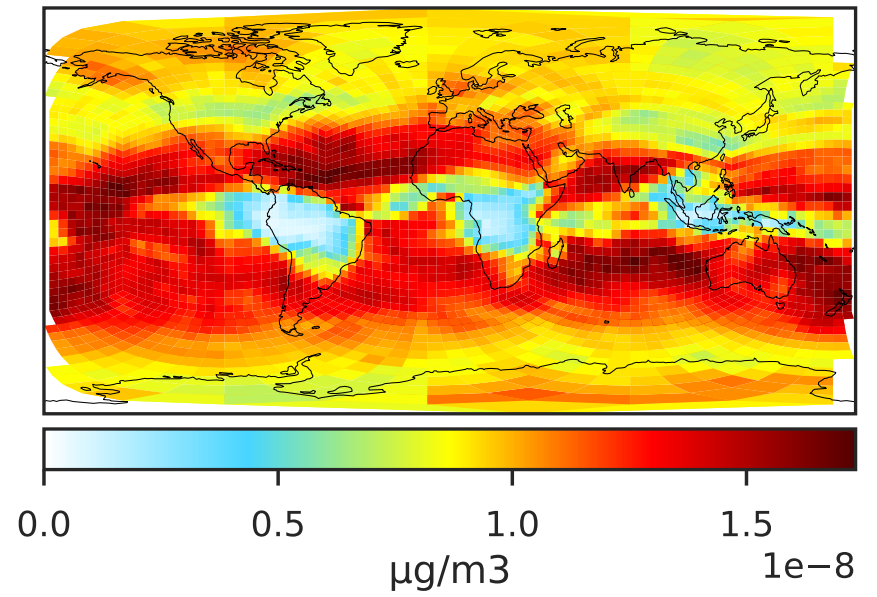


# SpeciesConcVV\_SALAAL (Apr2019)

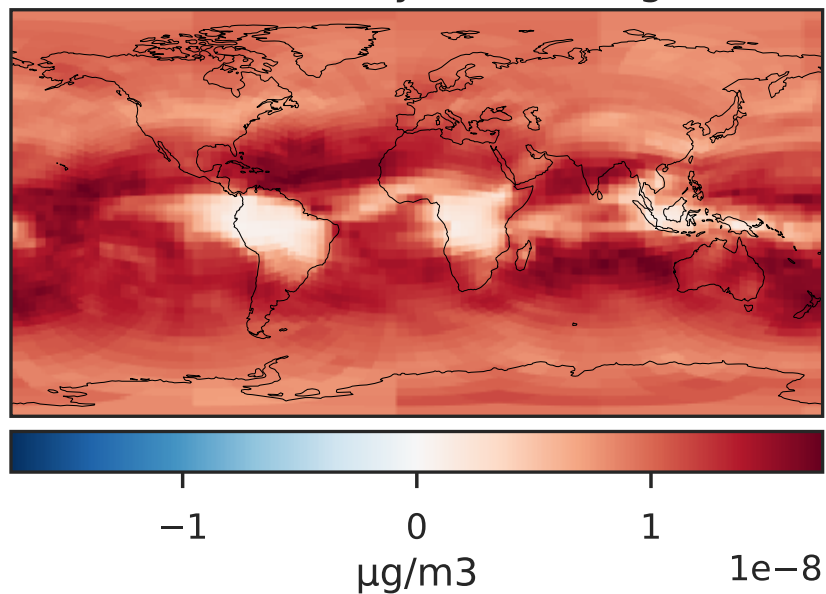
GCHP\_14.0.0 (Ref)  
c24



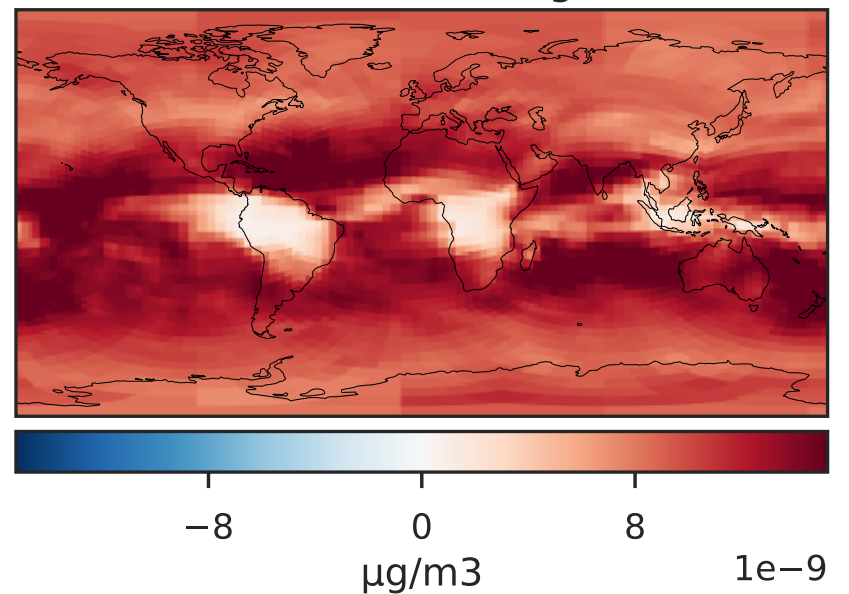
GCHP\_14.2.0 (Dev)  
c24



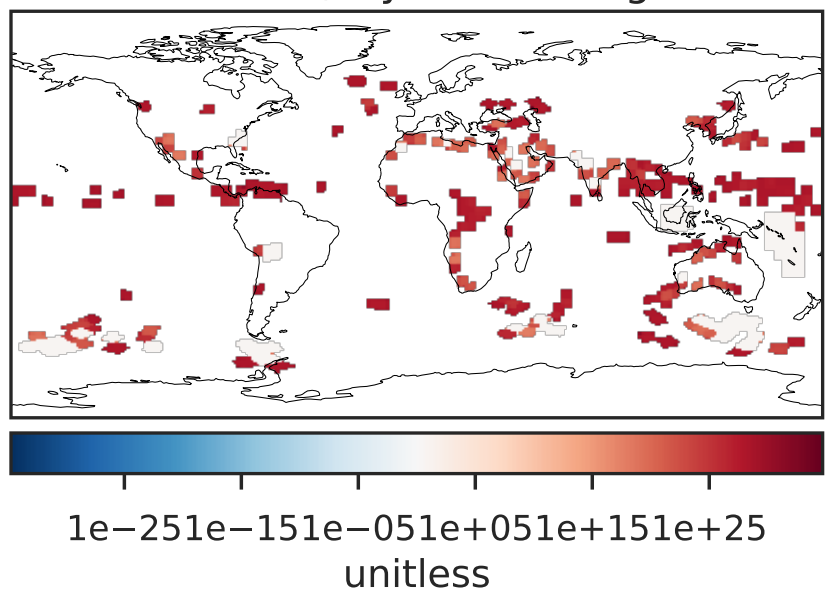
Difference (1x1.25)  
Dev - Ref, Dynamic Range



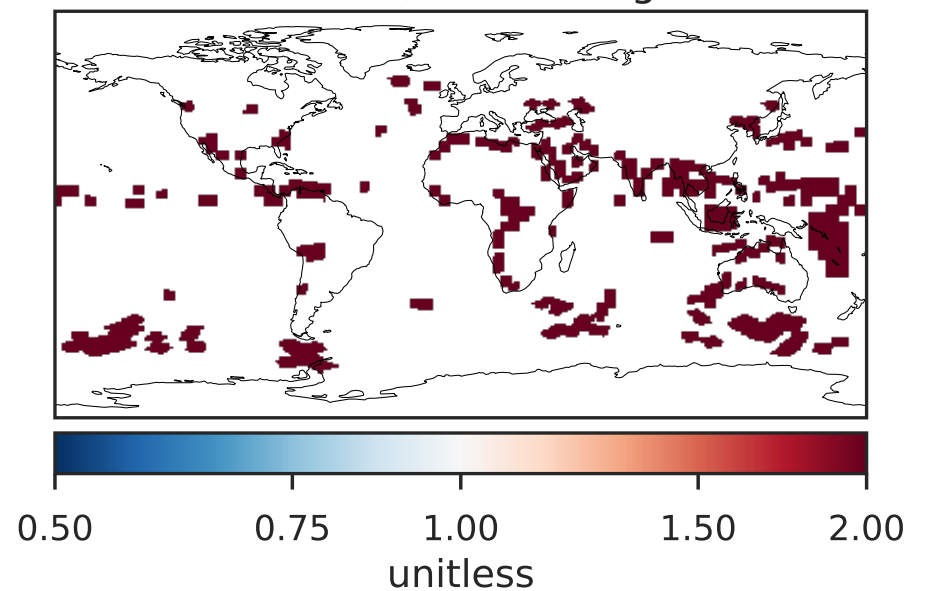
Difference (1x1.25)  
Dev - Ref, Restricted Range [5%,95%]



Ratio (1x1.25)  
Dev/Ref, Dynamic Range

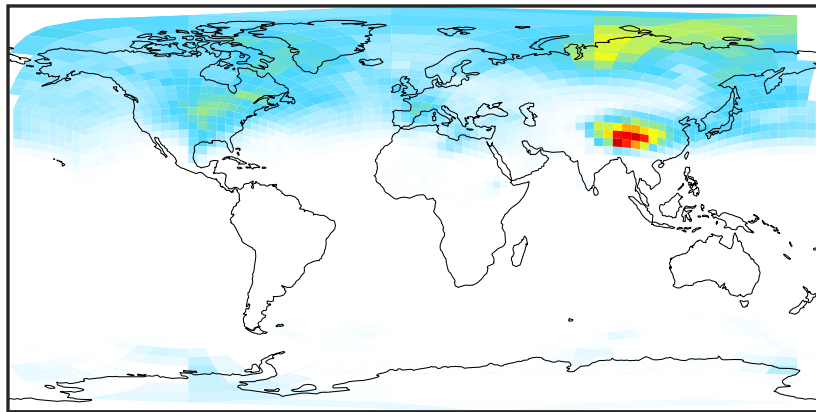


Ratio (1x1.25)  
Dev/Ref, Fixed Range



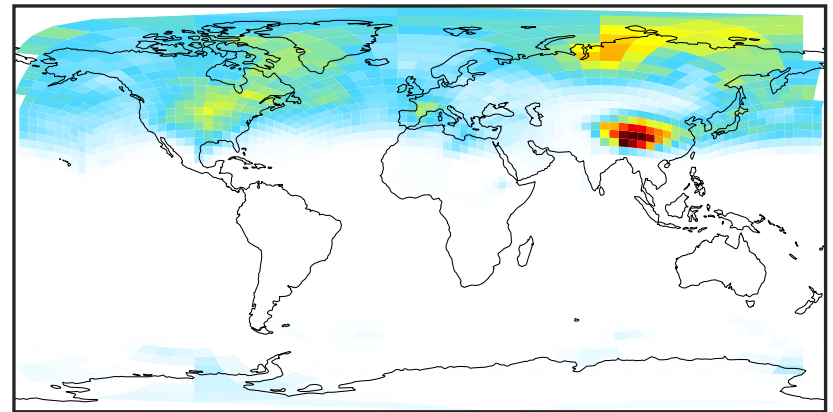
# SpeciesConcVV\_SALACL (Apr2019)

GCHP\_14.0.0 (Ref)  
c24



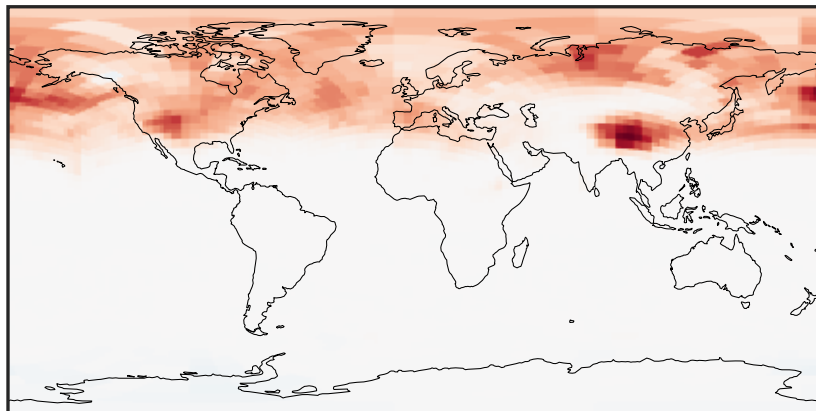
0.000 0.005 0.010 0.015  
µg/m<sup>3</sup>

GCHP\_14.2.0 (Dev)  
c24



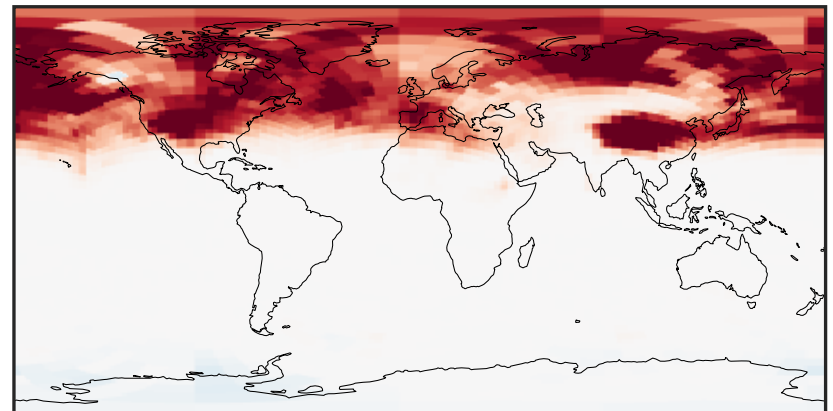
0.000 0.005 0.010 0.015  
µg/m<sup>3</sup>

Difference (1x1.25)  
Dev - Ref, Dynamic Range



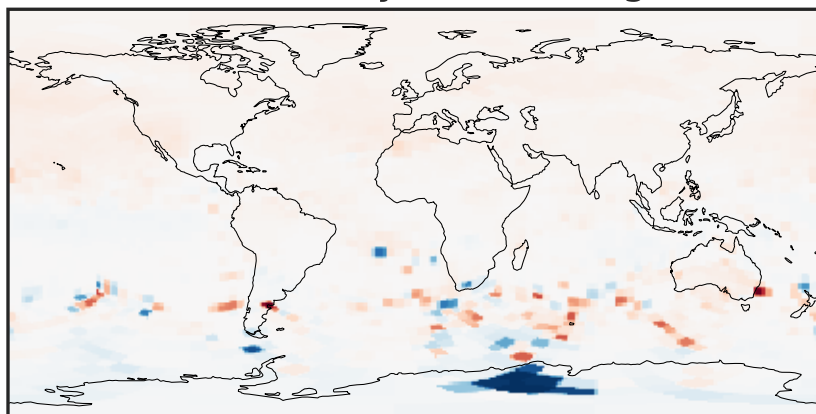
-0.002 0.000 0.002  
µg/m<sup>3</sup>

Difference (1x1.25)  
Dev - Ref, Restricted Range [5%,95%]



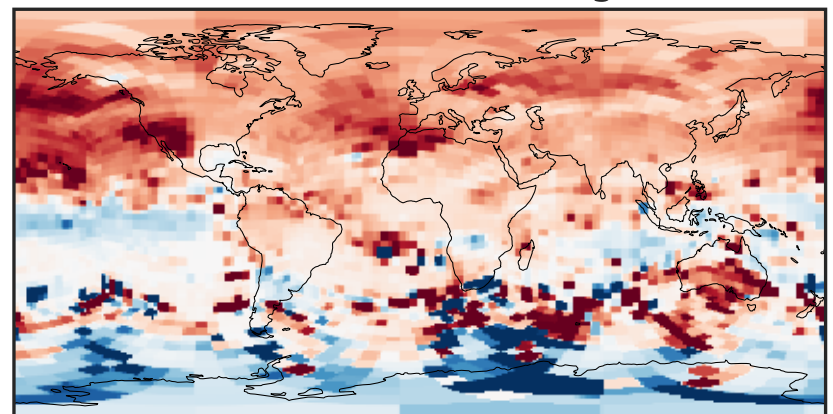
-0.0008 0.0000 0.0008  
µg/m<sup>3</sup>

Ratio (1x1.25)  
Dev/Ref, Dynamic Range



unitless

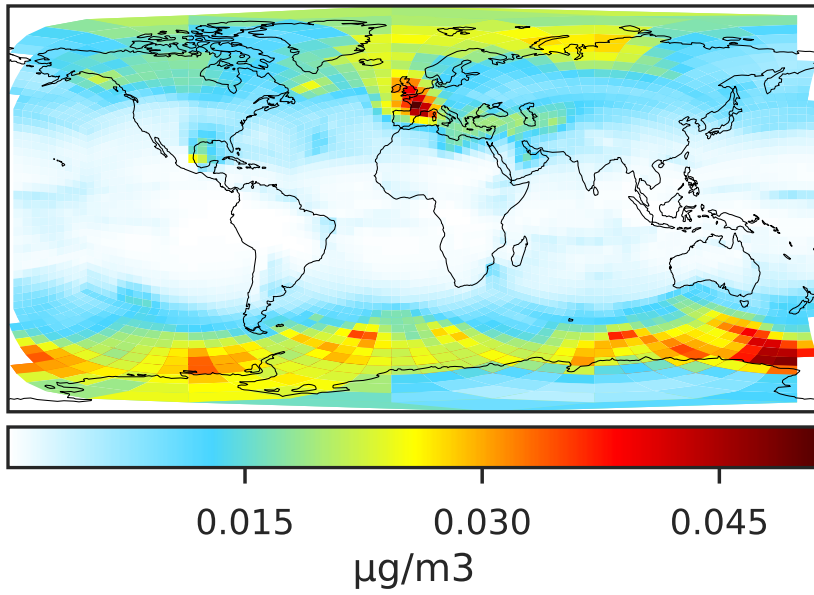
Ratio (1x1.25)  
Dev/Ref, Fixed Range



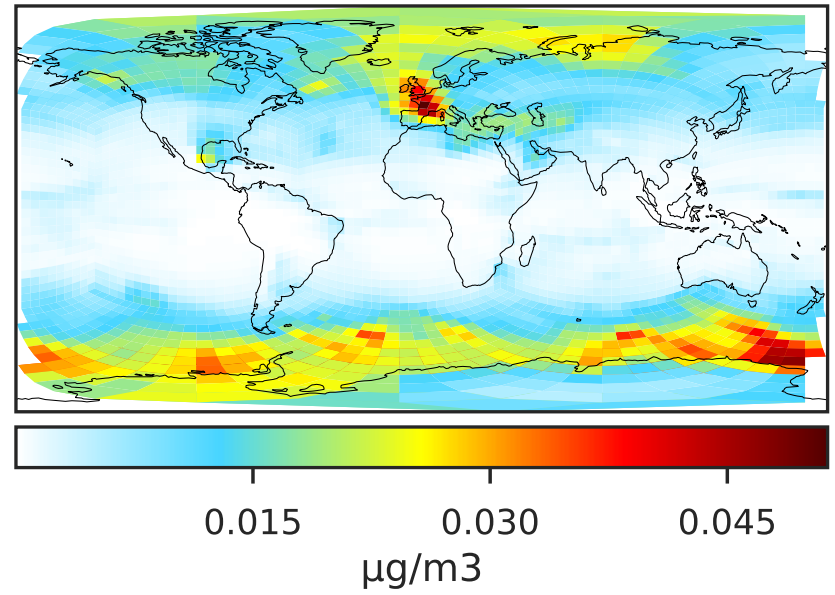
0.50 0.75 1.00 1.50 2.00  
unitless

# SpeciesConcVV\_SALC (Apr2019)

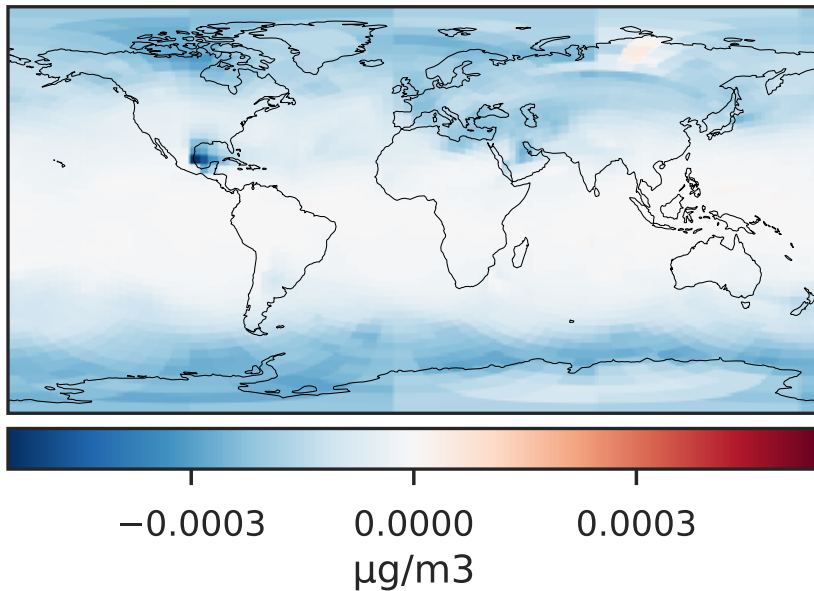
GCHP\_14.0.0 (Ref)  
c24



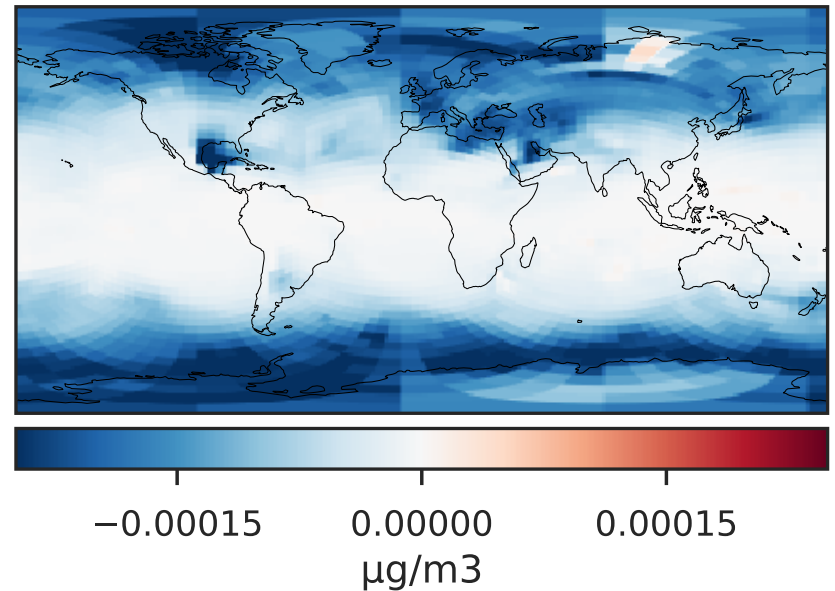
GCHP\_14.2.0 (Dev)  
c24



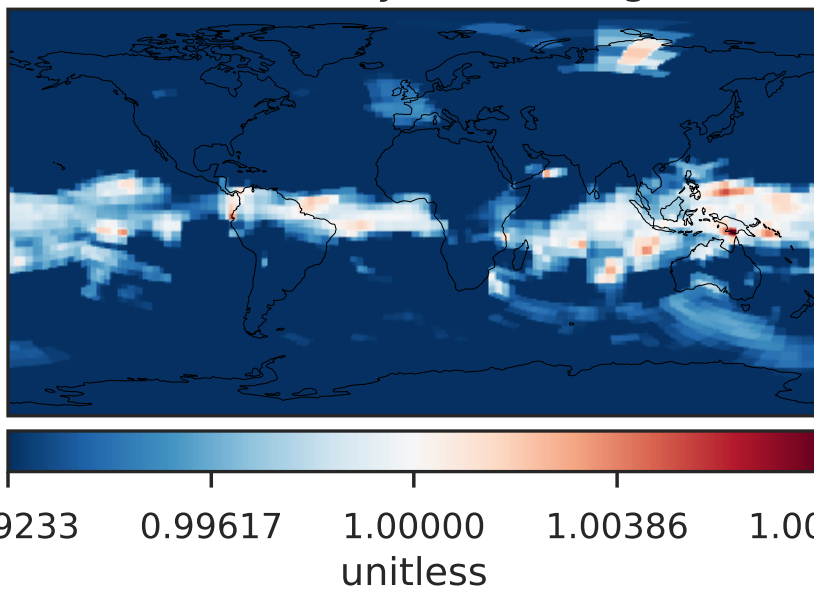
Difference (1x1.25)  
Dev - Ref, Dynamic Range



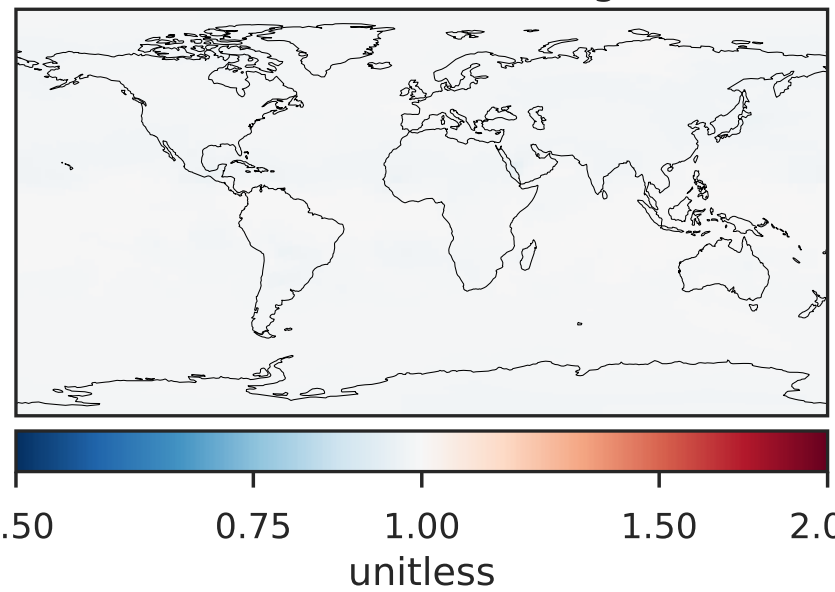
Difference (1x1.25)  
Dev - Ref, Restricted Range [5%,95%]



Ratio (1x1.25)  
Dev/Ref, Dynamic Range



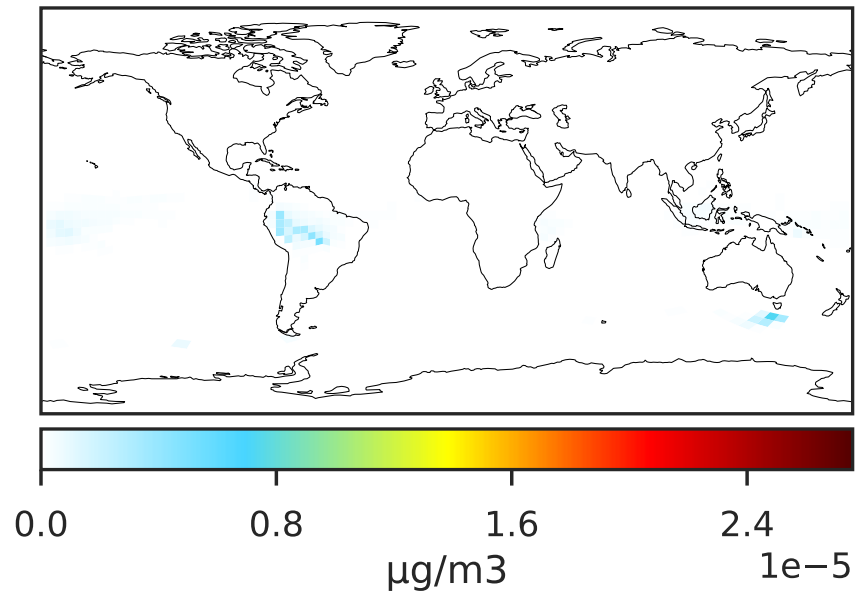
Ratio (1x1.25)  
Dev/Ref, Fixed Range



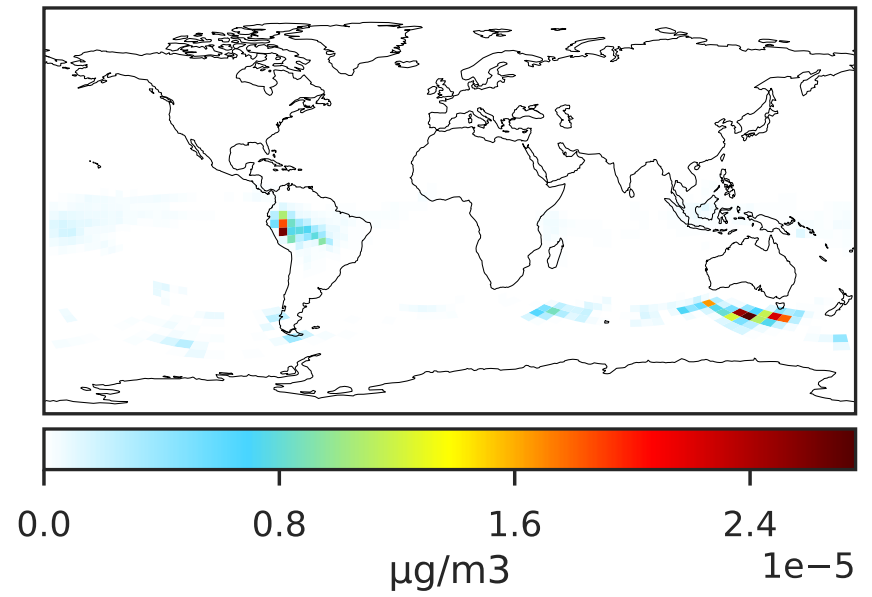


# SpeciesConcVV\_SALCAL (Apr2019)

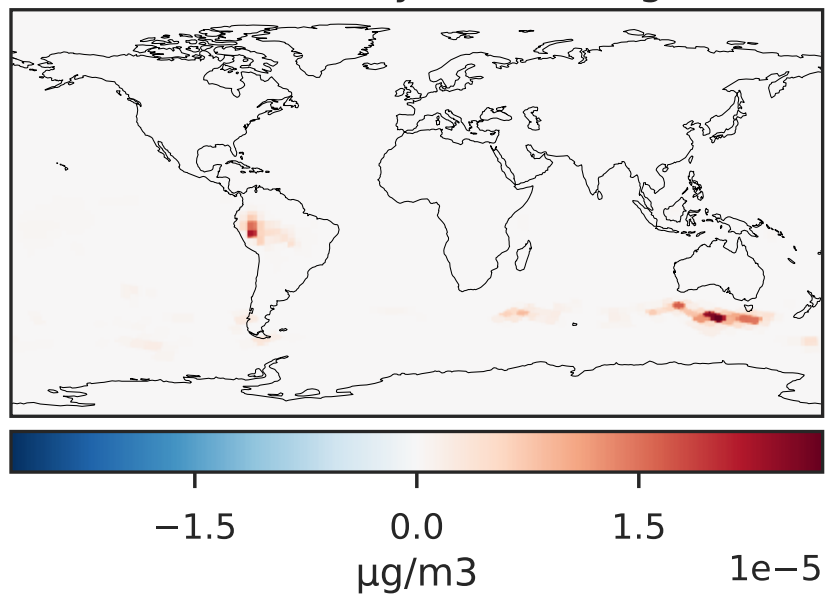
GCHP\_14.0.0 (Ref)  
c24



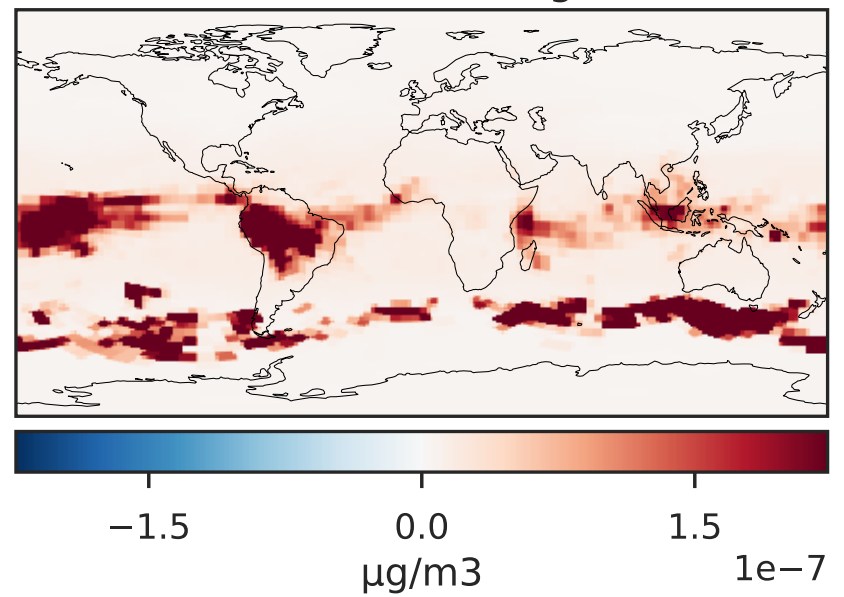
GCHP\_14.2.0 (Dev)  
c24



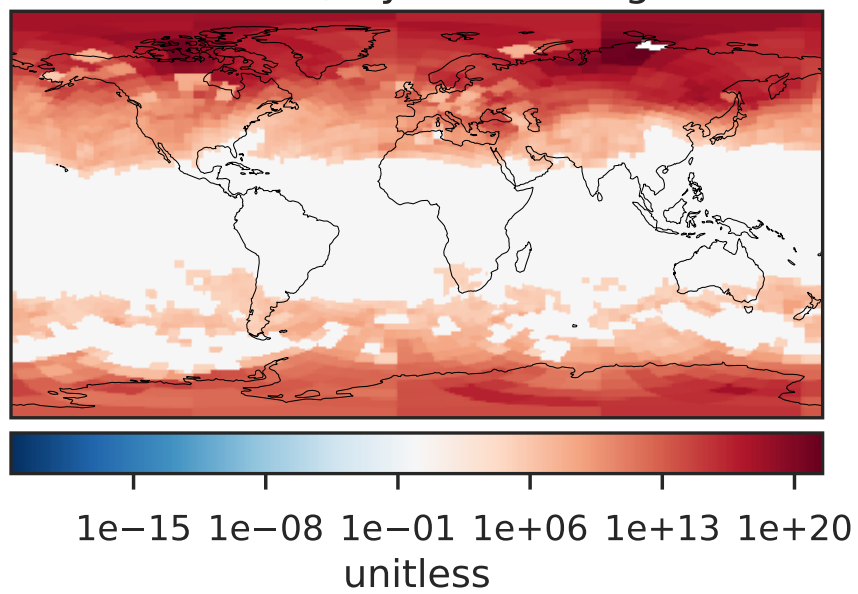
Difference (1x1.25)  
Dev - Ref, Dynamic Range



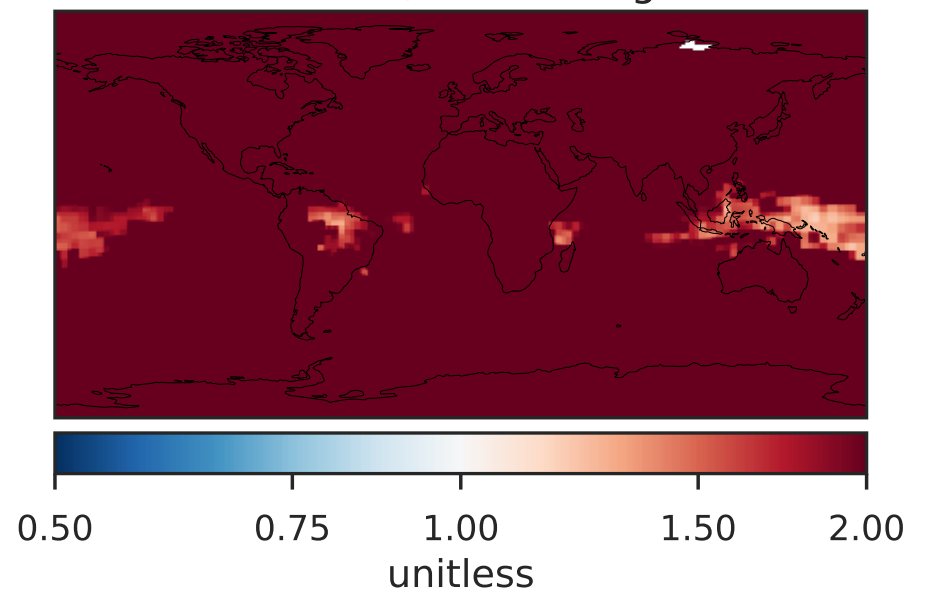
Difference (1x1.25)  
Dev - Ref, Restricted Range [5%,95%]



Ratio (1x1.25)  
Dev/Ref, Dynamic Range

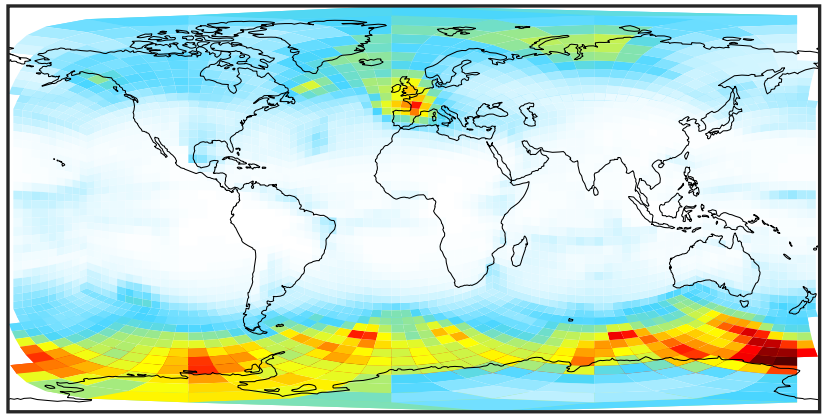


Ratio (1x1.25)  
Dev/Ref, Fixed Range



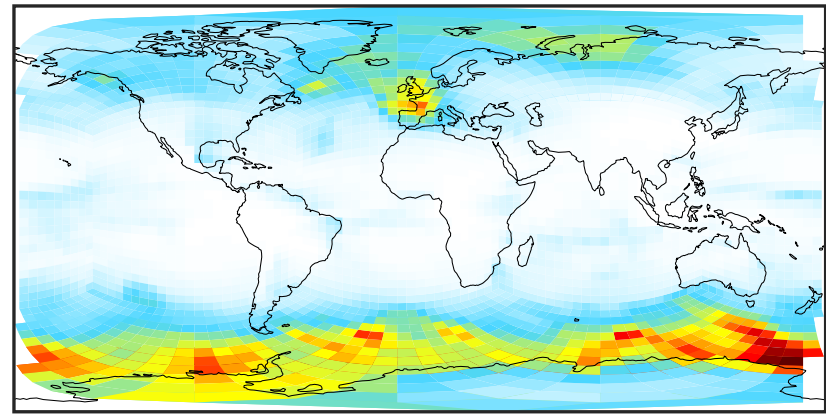
# SpeciesConcVV\_SALCCL (Apr2019)

GCHP\_14.0.0 (Ref)  
c24



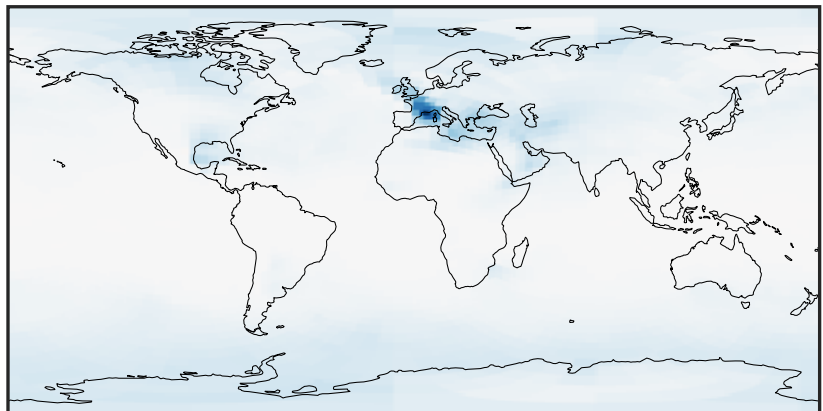
0.008 0.016 0.024  
µg/m3

GCHP\_14.2.0 (Dev)  
c24



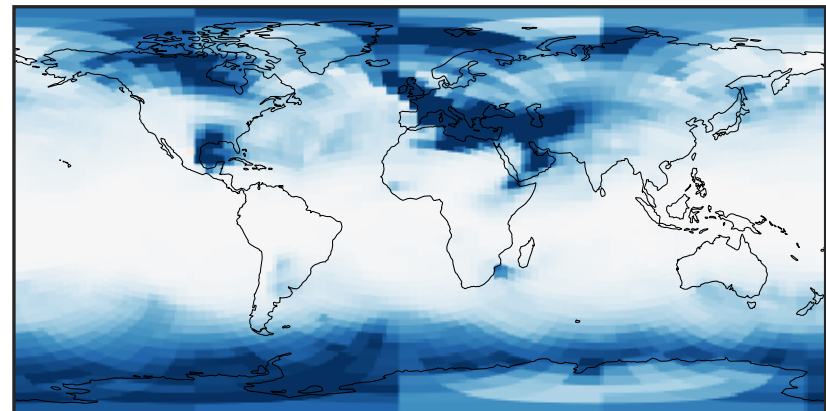
0.008 0.016 0.024  
µg/m3

Difference (1x1.25)  
Dev - Ref, Dynamic Range



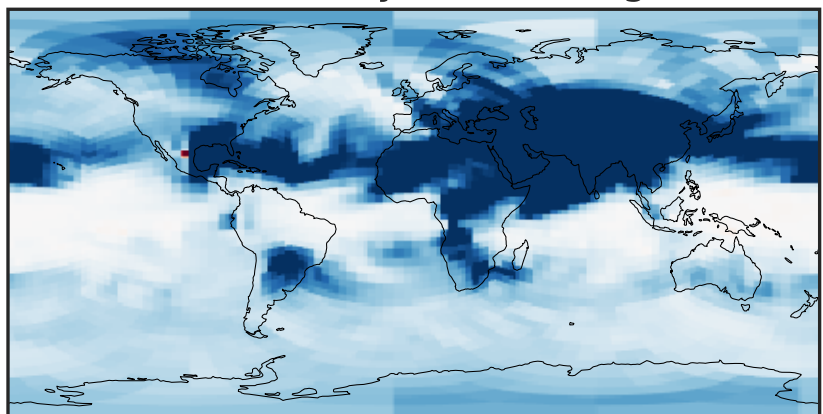
-0.0015 0.0000 0.0015  
µg/m3

Difference (1x1.25)  
Dev - Ref, Restricted Range [5%,95%]



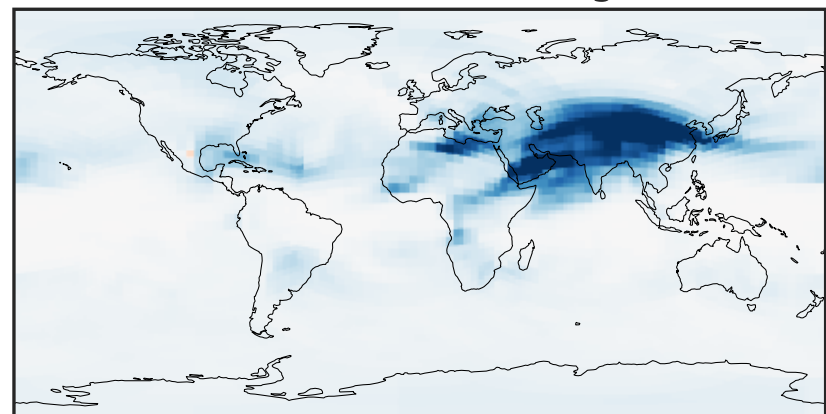
-0.00025 0.00000 0.00025  
µg/m3

Ratio (1x1.25)  
Dev/Ref, Dynamic Range



0.8768 0.9384 1.0000 1.0702 1.1405  
unitless

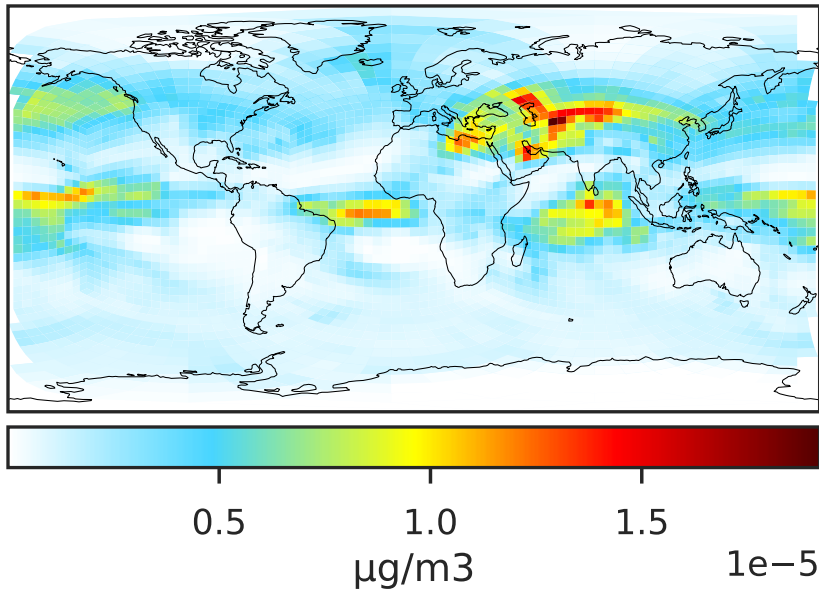
Ratio (1x1.25)  
Dev/Ref, Fixed Range



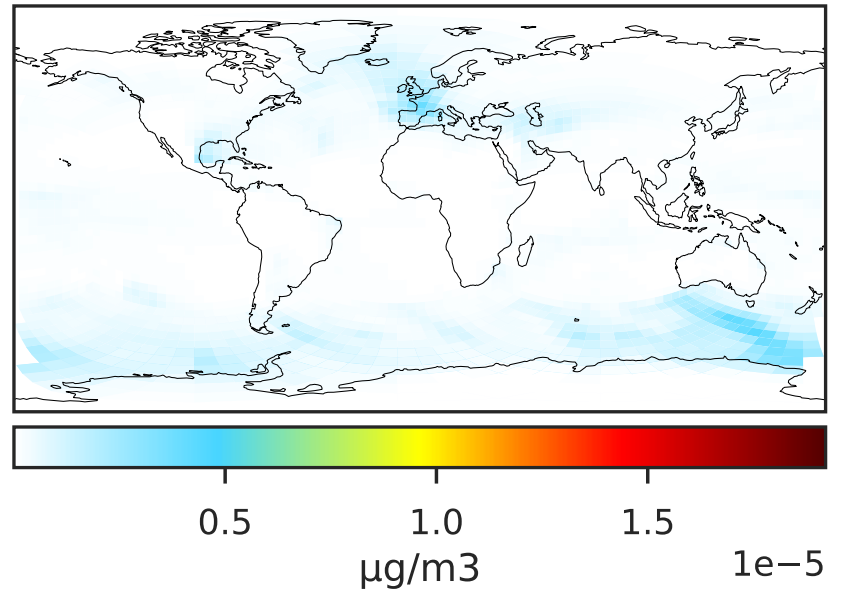
0.50 0.75 1.00 1.50 2.00  
unitless

# SpeciesConcVV\_SO4s (Apr2019)

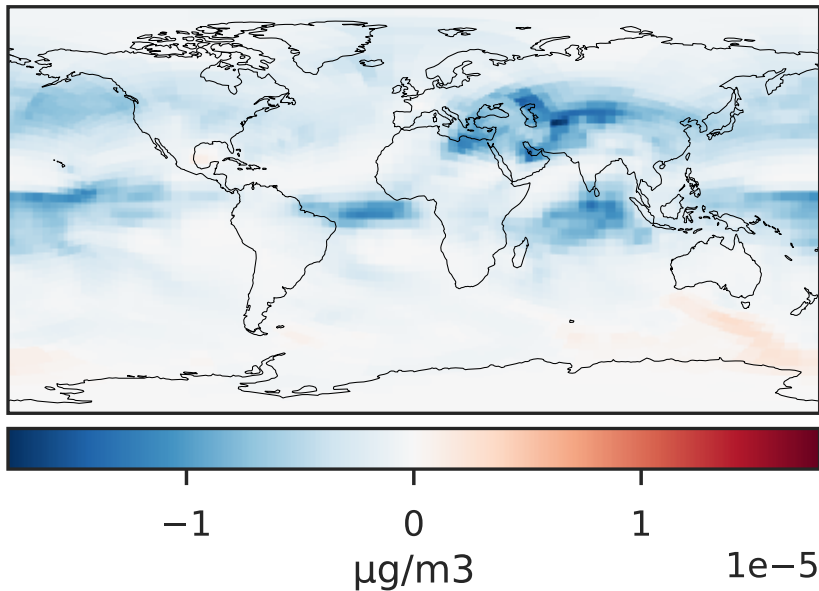
GCHP\_14.0.0 (Ref)  
c24



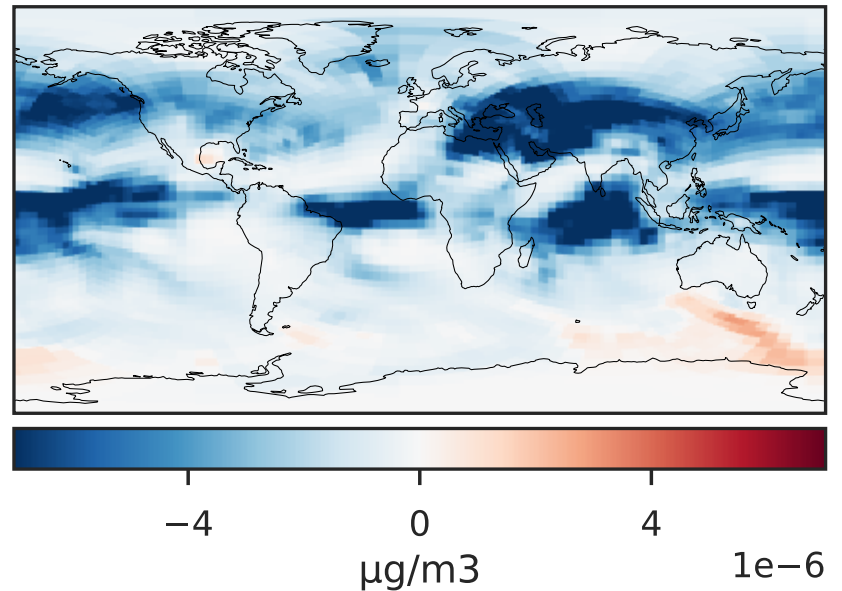
GCHP\_14.2.0 (Dev)  
c24



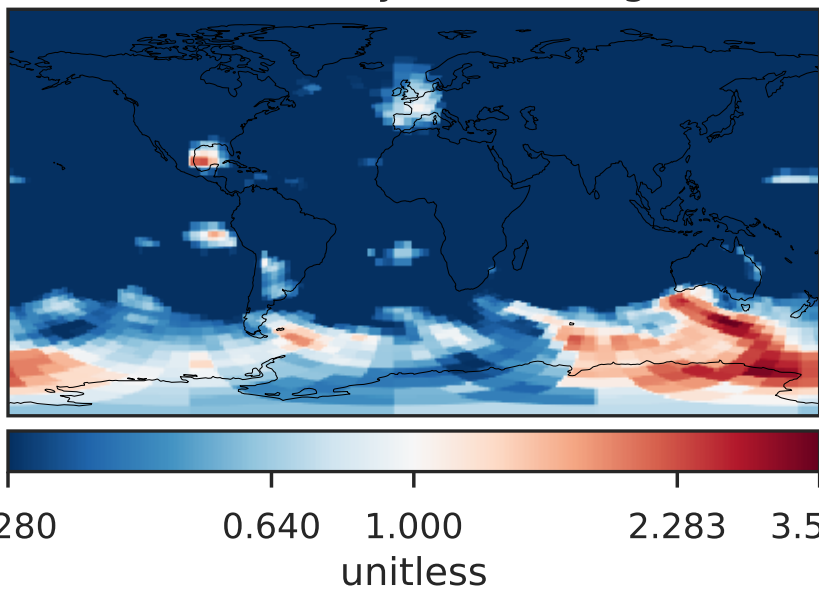
Difference (1x1.25)  
Dev - Ref, Dynamic Range



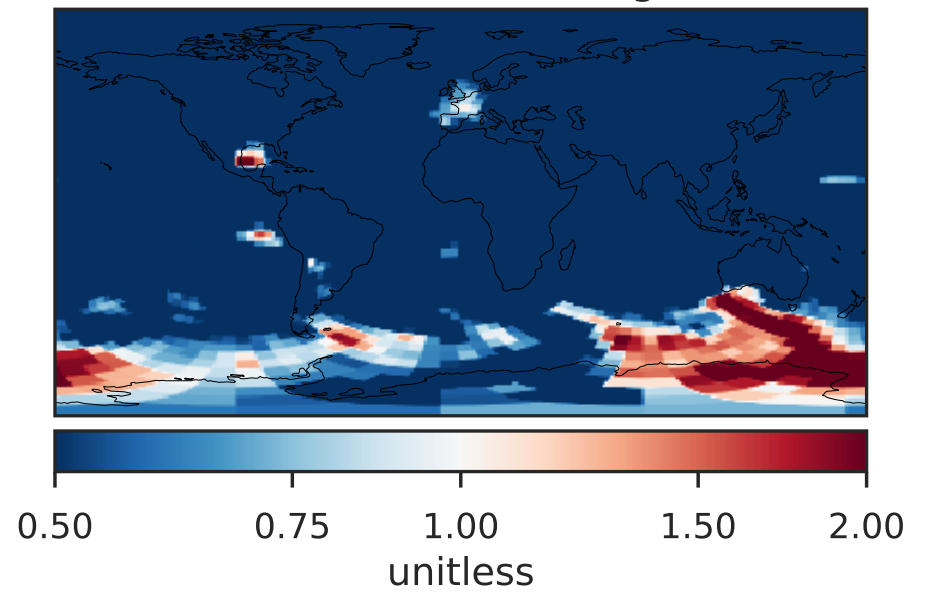
Difference (1x1.25)  
Dev - Ref, Restricted Range [5%,95%]



Ratio (1x1.25)  
Dev/Ref, Dynamic Range

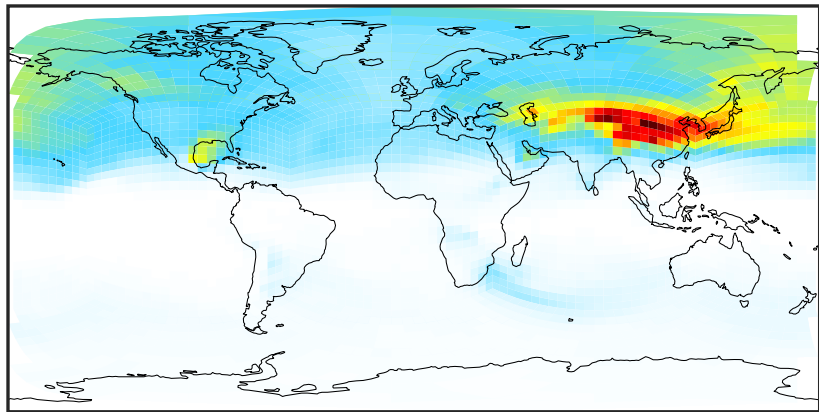


Ratio (1x1.25)  
Dev/Ref, Fixed Range



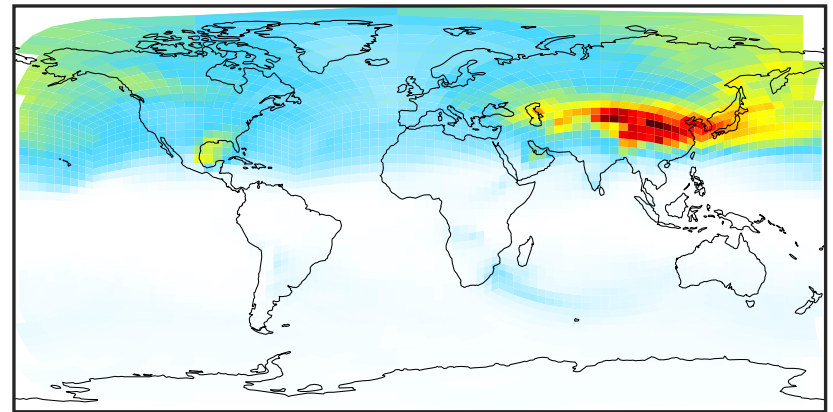
# SpeciesConcVV\_pFe (Apr2019)

GCHP\_14.0.0 (Ref)  
c24



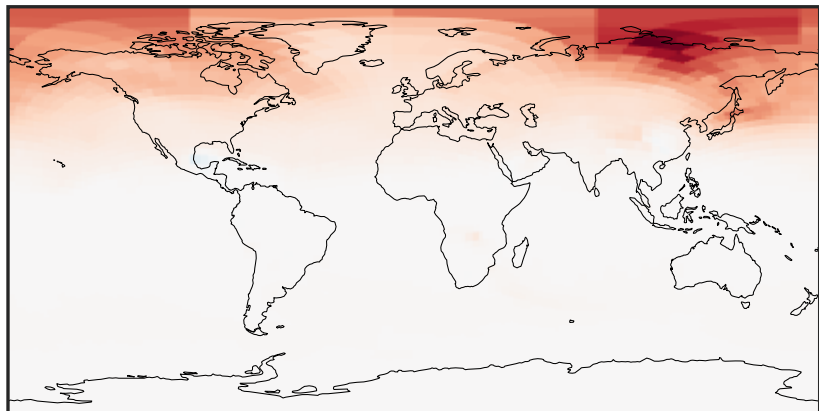
0.00015 0.00030 0.00045  
μg/m3

GCHP\_14.2.0 (Dev)  
c24



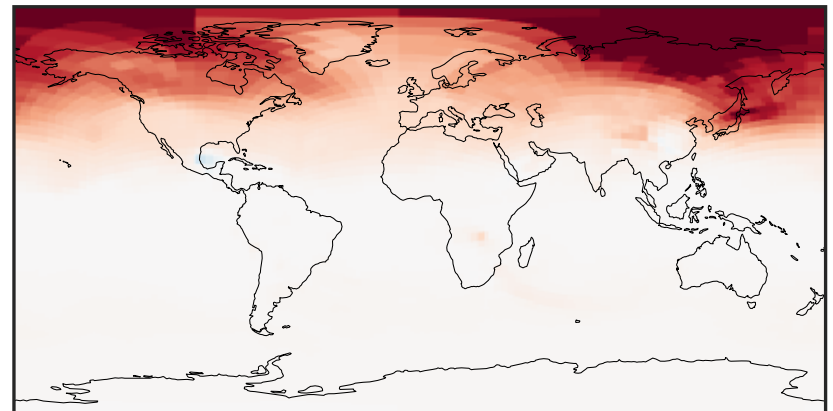
0.00015 0.00030 0.00045  
μg/m3

Difference (1x1.25)  
Dev - Ref, Dynamic Range



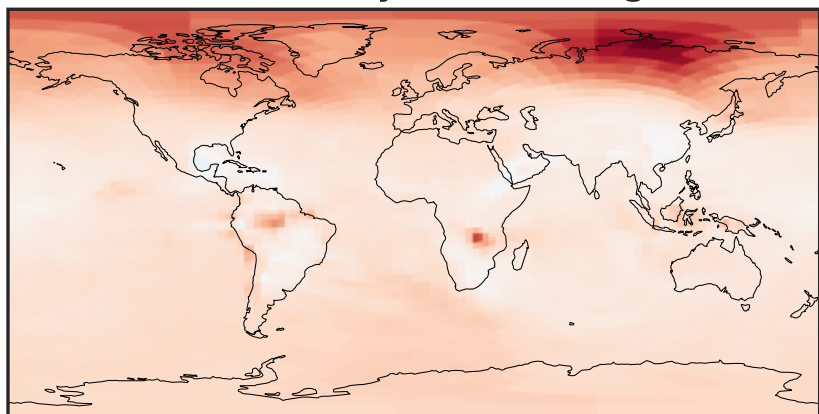
-1.5 0.0 1.5  
μg/m3 1e-5

Difference (1x1.25)  
Dev - Ref, Restricted Range [5%,95%]



-8 0 8  
μg/m3 1e-6

Ratio (1x1.25)  
Dev/Ref, Dynamic Range



0.8666 0.9333 1.0000 1.0770 1.1539  
unitless

Ratio (1x1.25)  
Dev/Ref, Fixed Range



0.50 0.75 1.00 1.50 2.00  
unitless