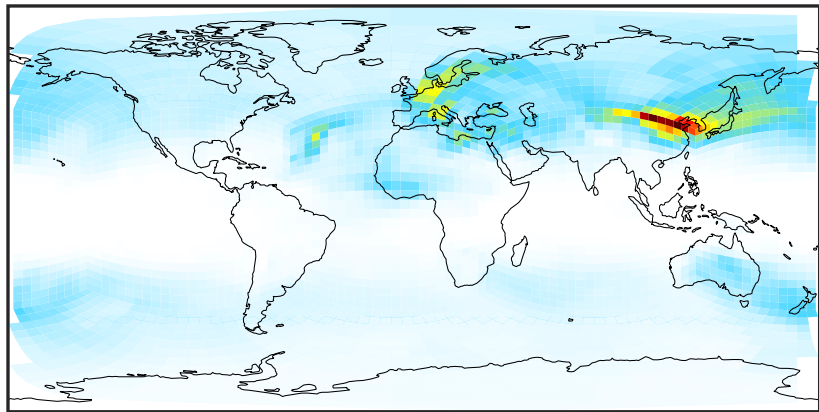


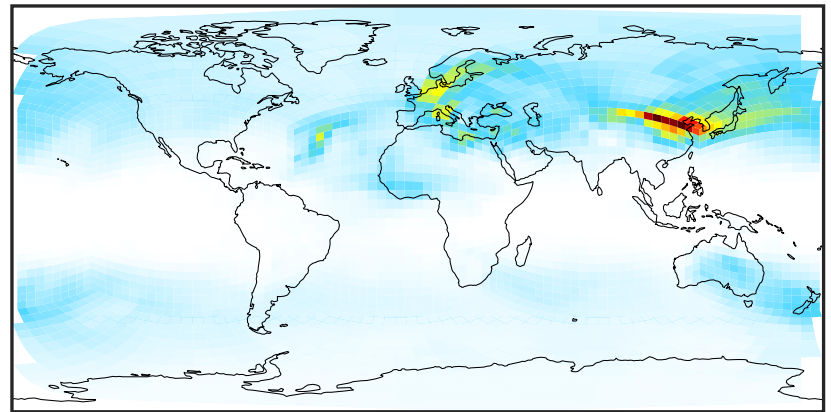
SpeciesConcVW_DST1 (Oct2019)

GCHP_14.0.0 (Ref)
c24



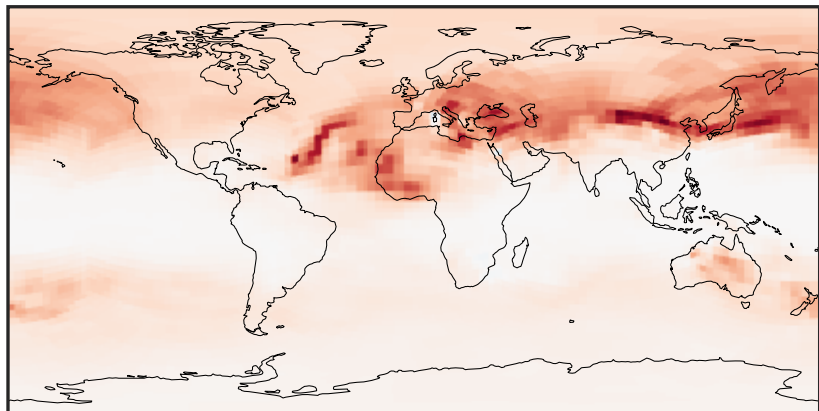
0.000 0.317 0.634 0.951 1.268
 $\mu\text{g}/\text{m}^3$

GCHP_14.2.0 (Dev)
c24



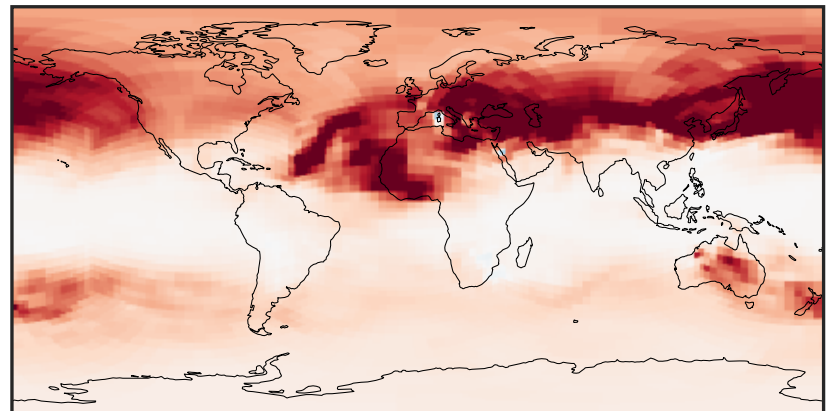
0.000 0.317 0.634 0.951 1.268
 $\mu\text{g}/\text{m}^3$

Difference (1x1.25)
Dev - Ref, Dynamic Range



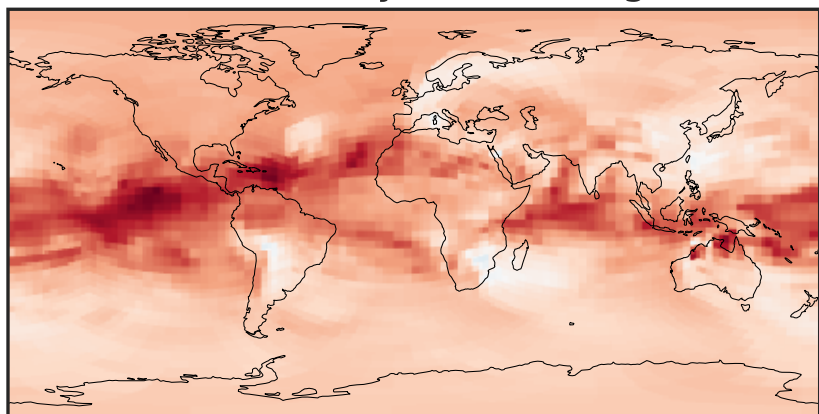
-0.002 0.000 0.002
 $\mu\text{g}/\text{m}^3$

Difference (1x1.25)
Dev - Ref, Restricted Range [5%,95%]



-0.0008 0.0000 0.0008
 $\mu\text{g}/\text{m}^3$

Ratio (1x1.25)
Dev/Ref, Dynamic Range



0.97854 0.98927 1.00000 1.01097 1.02194
unitless

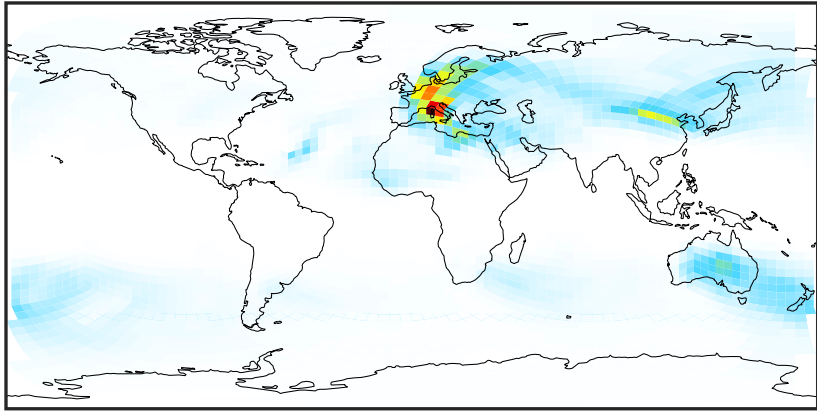
Ratio (1x1.25)
Dev/Ref, Fixed Range



0.50 0.75 1.00 1.50 2.00
unitless

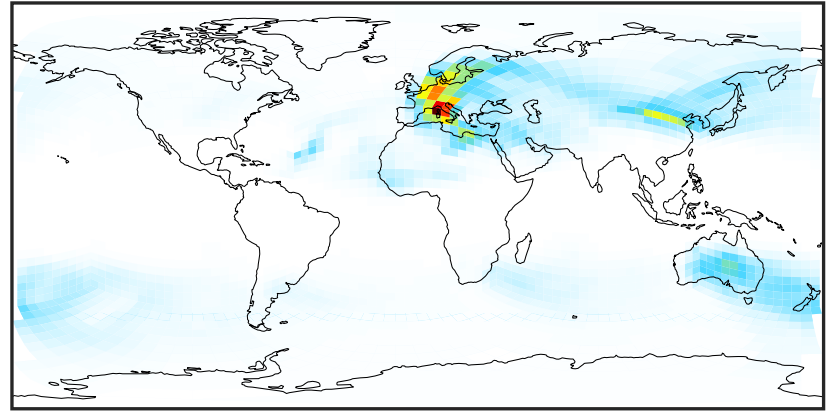
SpeciesConcVV_DST2 (Oct2019)

GCHP_14.0.0 (Ref)
c24



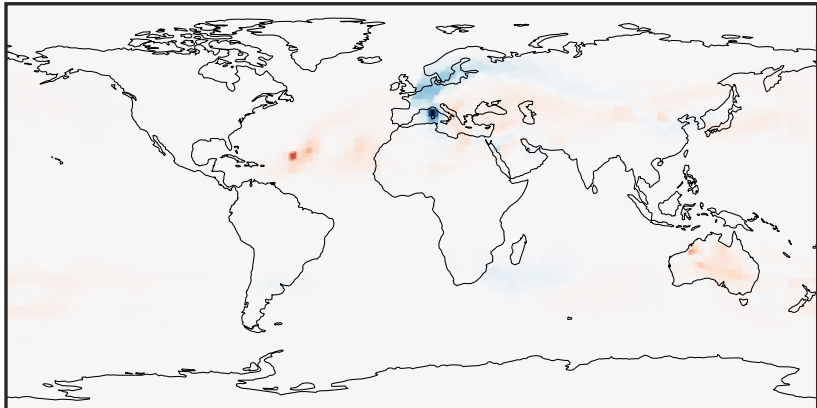
0.0000 0.2063 0.4127 0.6190 0.8254
µg/m³

GCHP_14.2.0 (Dev)
c24



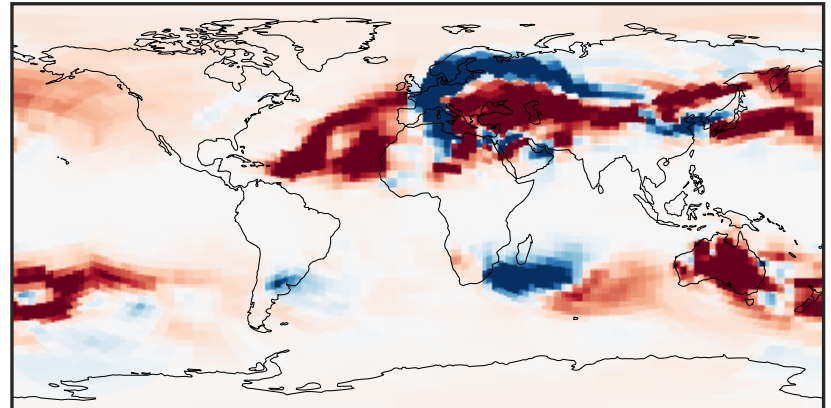
0.0000 0.2063 0.4127 0.6190 0.8254
µg/m³

Difference (1x1.25)
Dev - Ref, Dynamic Range



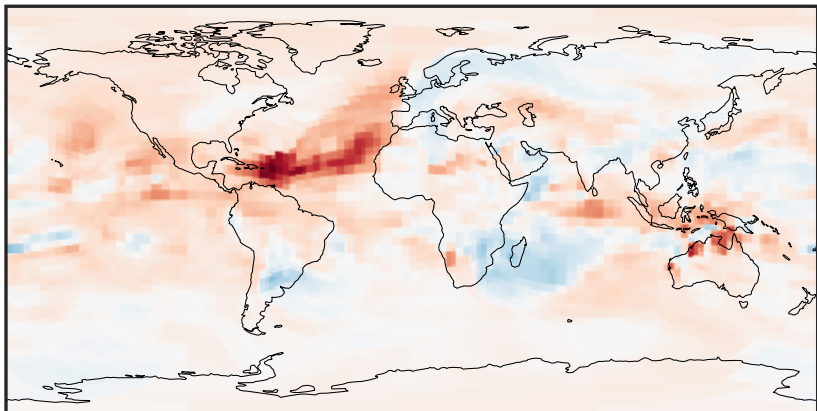
-0.0025 0.0000 0.0025
µg/m³

Difference (1x1.25)
Dev - Ref, Restricted Range [5%,95%]



-8 0 8
µg/m³ 1e-5

Ratio (1x1.25)
Dev/Ref, Dynamic Range



0.97570 0.98785 1.00000 1.01245 1.02491
unitless

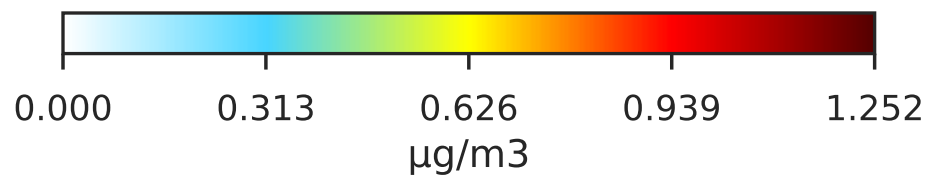
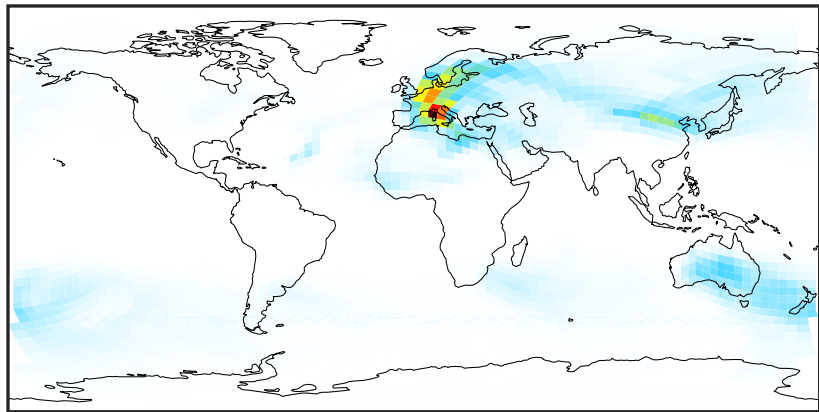
Ratio (1x1.25)
Dev/Ref, Fixed Range



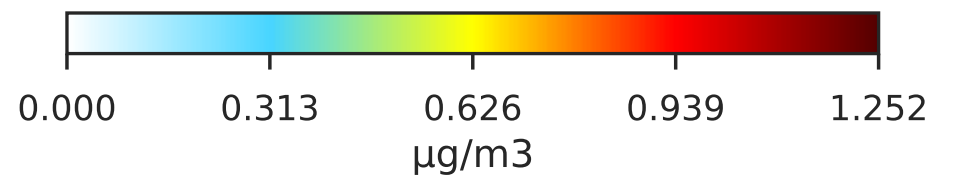
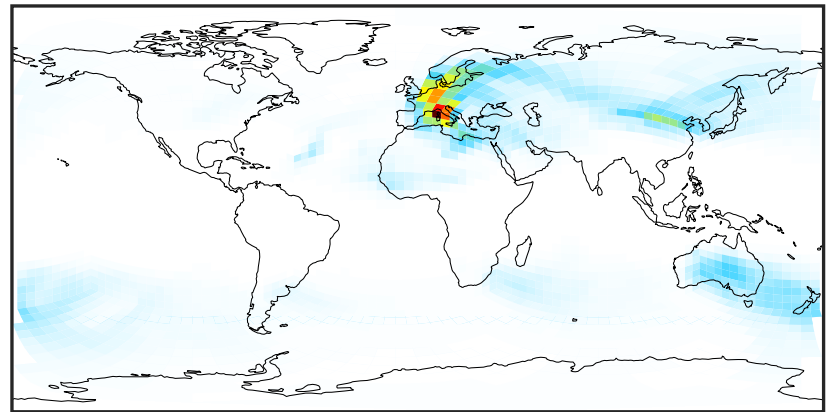
0.50 0.75 1.00 1.50 2.00
unitless

SpeciesConcVV_DST3 (Oct2019)

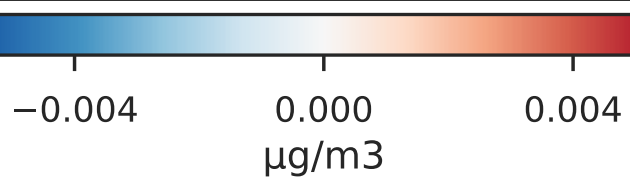
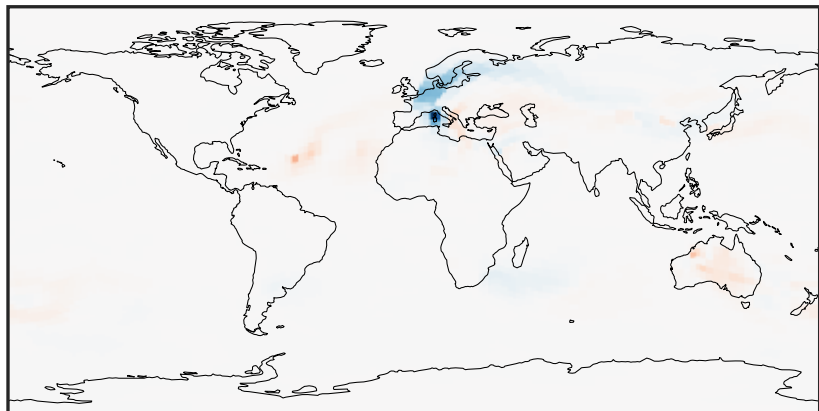
GCHP_14.0.0 (Ref)
c24



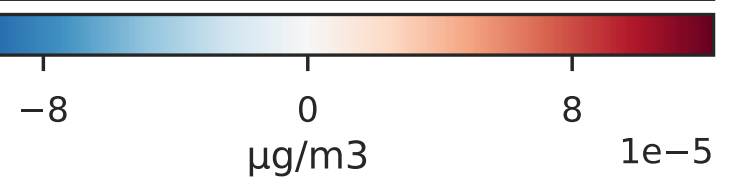
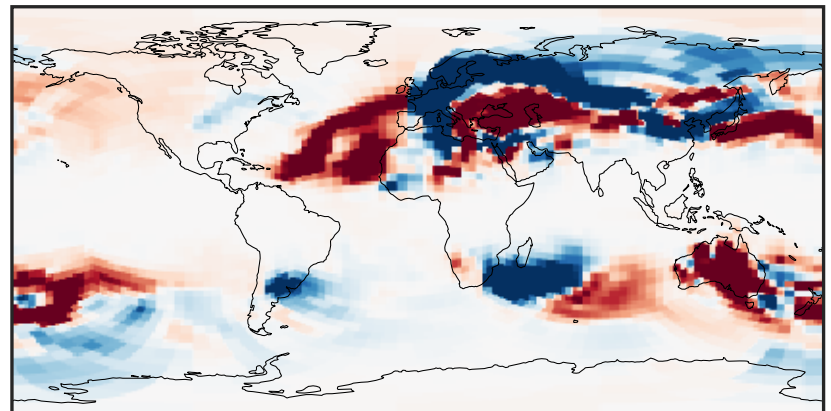
GCHP_14.2.0 (Dev)
c24



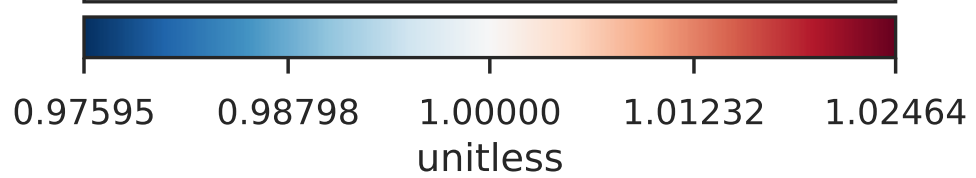
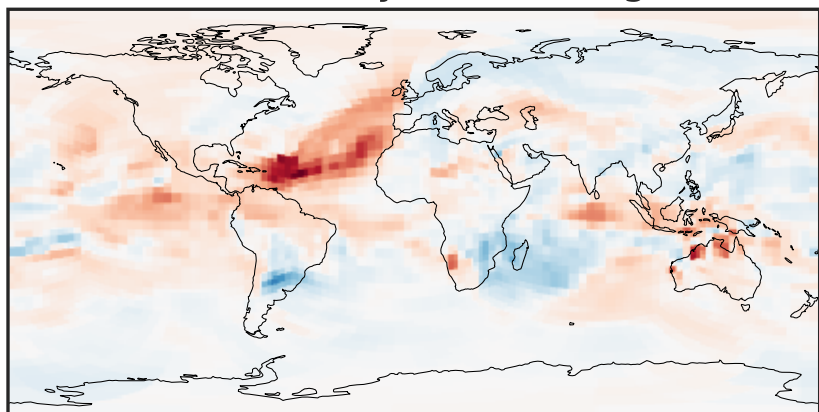
Difference (1x1.25)
Dev - Ref, Dynamic Range



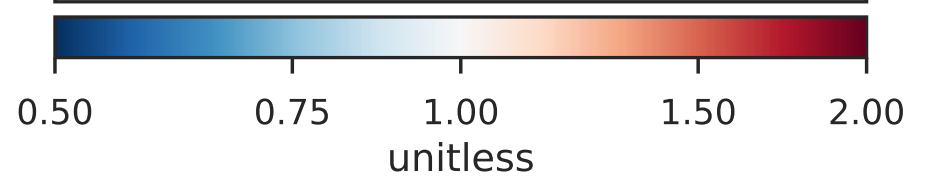
Difference (1x1.25)
Dev - Ref, Restricted Range [5%,95%]



Ratio (1x1.25)
Dev/Ref, Dynamic Range

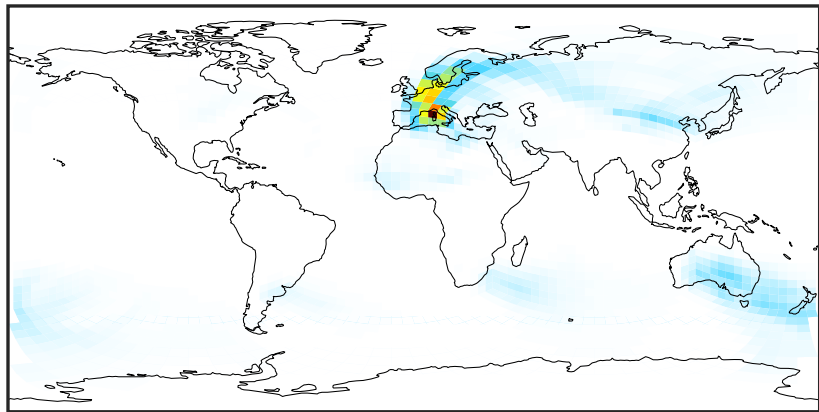


Ratio (1x1.25)
Dev/Ref, Fixed Range



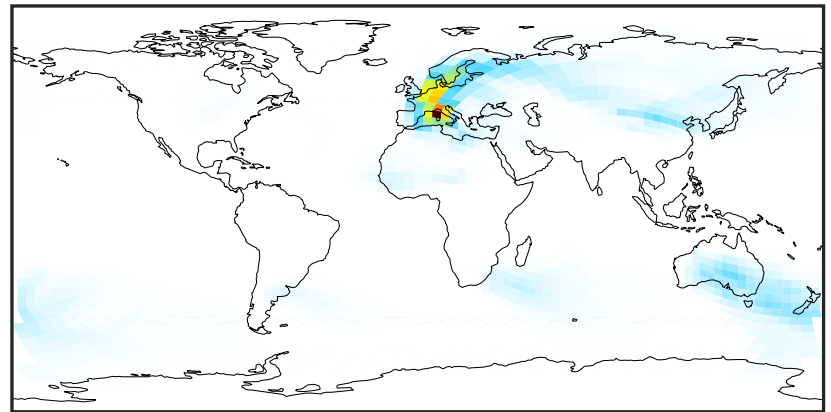
SpeciesConcVW_DST4 (Oct2019)

GCHP_14.0.0 (Ref)
c24



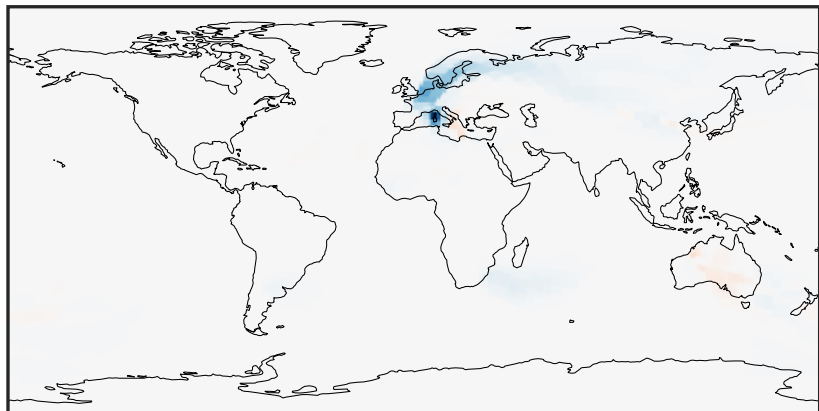
0.0000 0.1827 0.3654 0.5482 0.7309
 $\mu\text{g}/\text{m}^3$

GCHP_14.2.0 (Dev)
c24



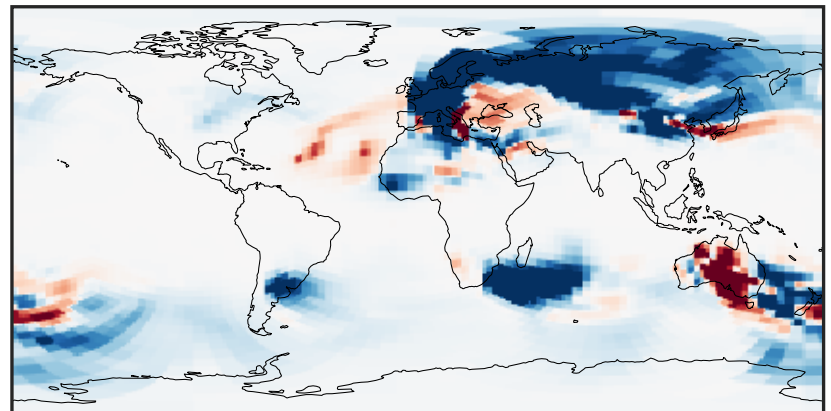
0.0000 0.1827 0.3654 0.5482 0.7309
 $\mu\text{g}/\text{m}^3$

Difference (1x1.25)
Dev - Ref, Dynamic Range



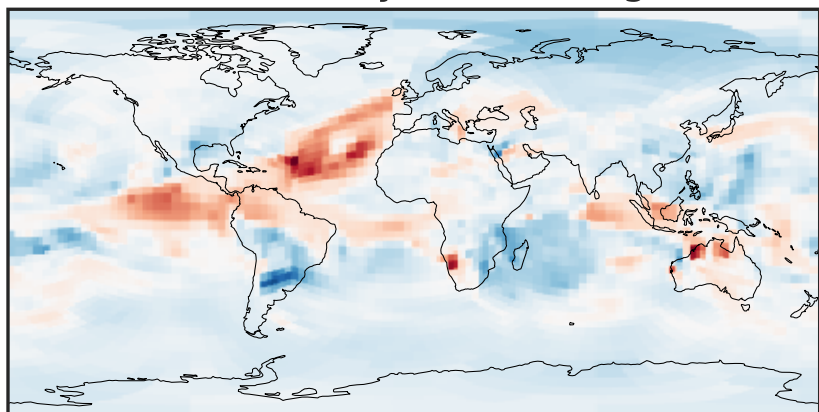
-0.002 0.000 0.002
 $\mu\text{g}/\text{m}^3$

Difference (1x1.25)
Dev - Ref, Restricted Range [5%,95%]



-5 0 5
 $\mu\text{g}/\text{m}^3$ $1\text{e}-5$

Ratio (1x1.25)
Dev/Ref, Dynamic Range



0.97534 0.98767 1.00000 1.01264 1.02529
unitless

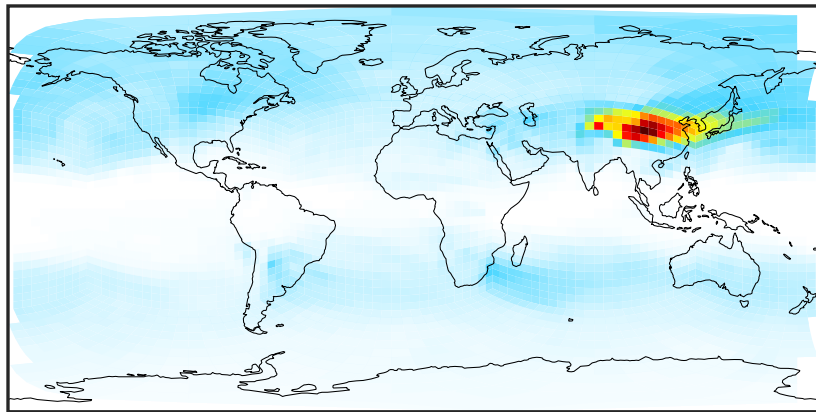
Ratio (1x1.25)
Dev/Ref, Fixed Range



0.50 0.75 1.00 1.50 2.00
unitless

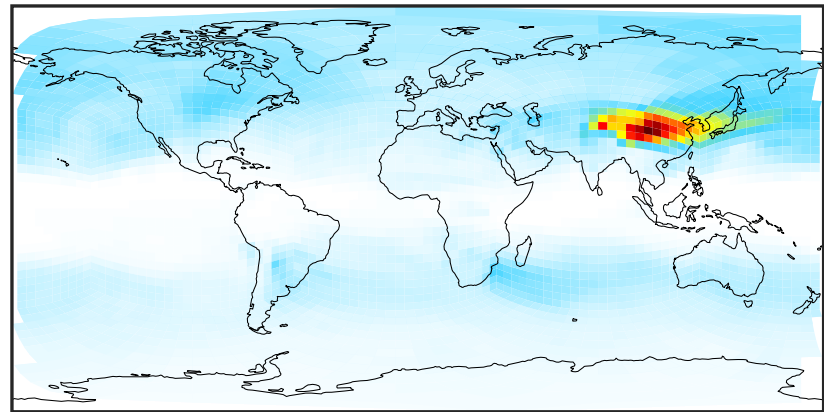
SpeciesConcVV_NH4 (Oct2019)

GCHP_14.0.0 (Ref)
c24



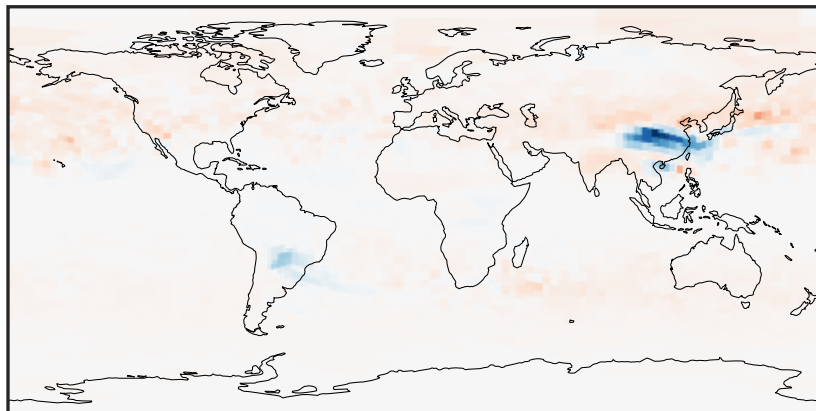
0.0002 0.1025 0.2051 0.3076 0.4103
µg/m3

GCHP_14.2.0 (Dev)
c24



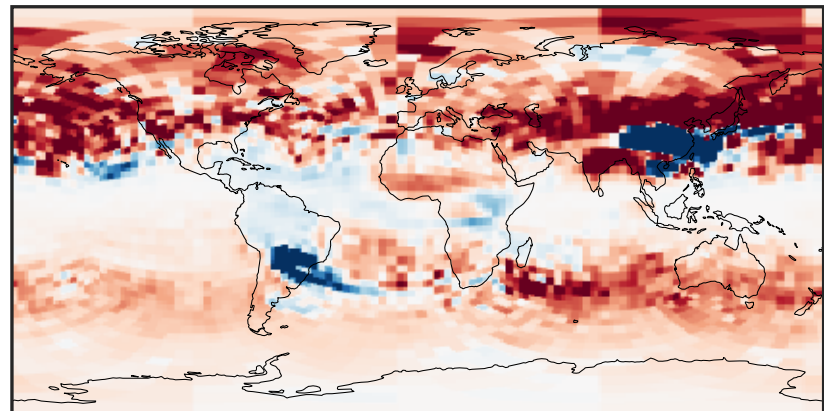
0.0002 0.1025 0.2051 0.3076 0.4103
µg/m3

Difference (1x1.25)
Dev - Ref, Dynamic Range



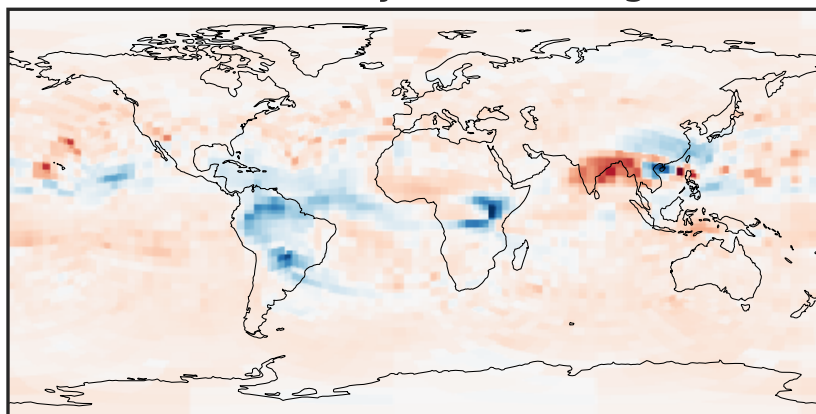
-0.005 0.000 0.005
µg/m3

Difference (1x1.25)
Dev - Ref, Restricted Range [5%,95%]



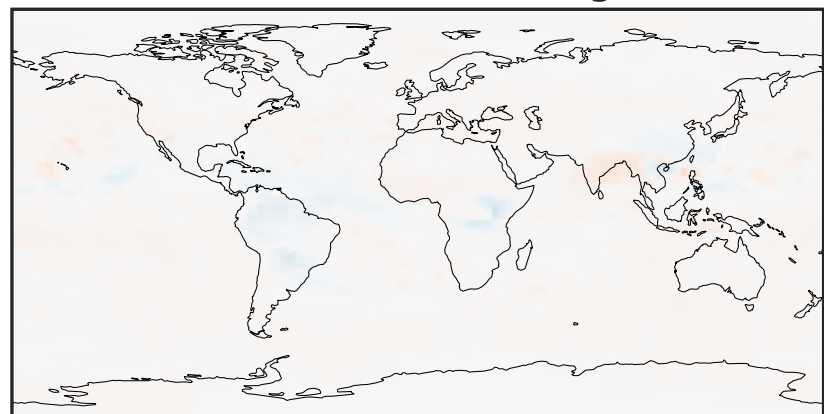
-0.0004 0.0000 0.0004
µg/m3

Ratio (1x1.25)
Dev/Ref, Dynamic Range



0.8953 0.9476 1.0000 1.0585 1.1170
unitless

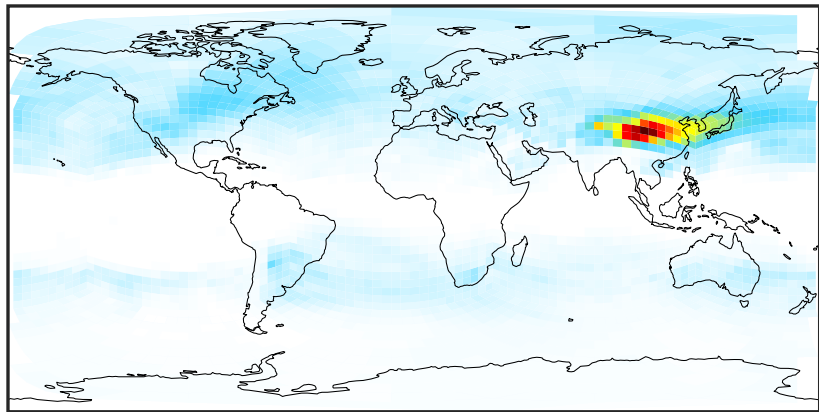
Ratio (1x1.25)
Dev/Ref, Fixed Range



0.50 0.75 1.00 1.50 2.00
unitless

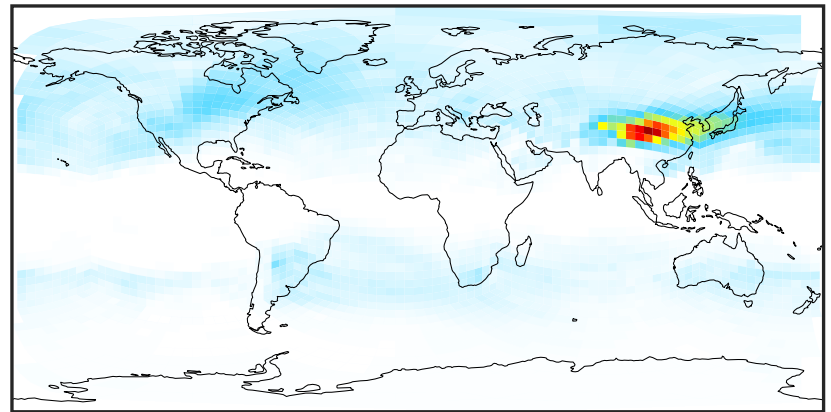
SpeciesConcVV_NIT (Oct2019)

GCHP_14.0.0 (Ref)
c24



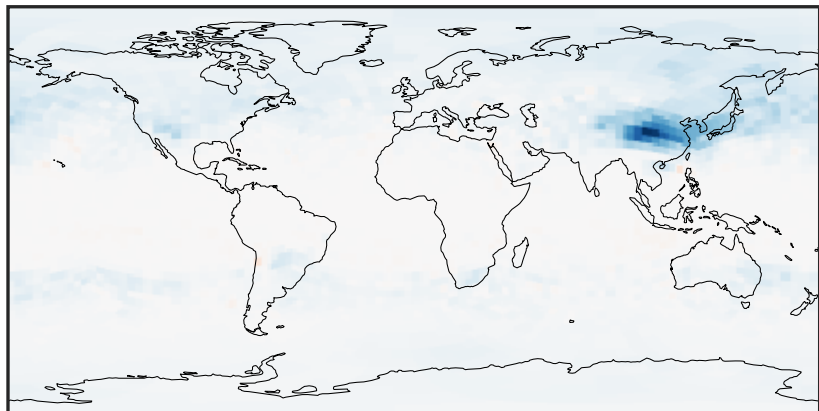
0.0000 0.1912 0.3824 0.5736 0.7649
µg/m3

GCHP_14.2.0 (Dev)
c24



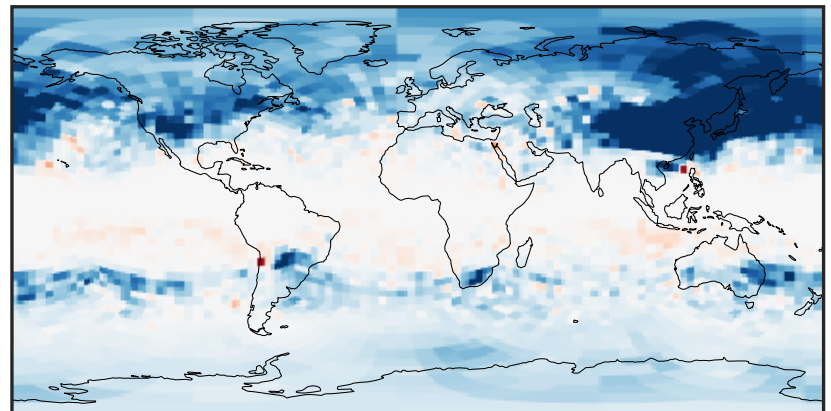
0.0000 0.1912 0.3824 0.5736 0.7649
µg/m3

Difference (1x1.25)
Dev - Ref, Dynamic Range



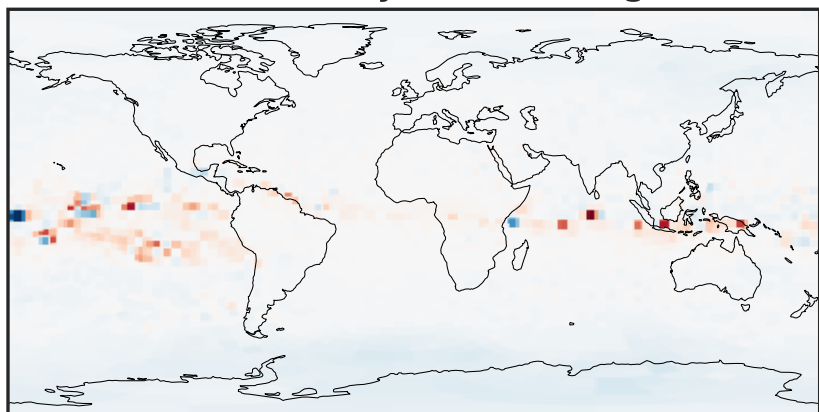
-0.0825 -0.0413 0.0000 0.0413 0.0825
µg/m3

Difference (1x1.25)
Dev - Ref, Restricted Range [5%,95%]



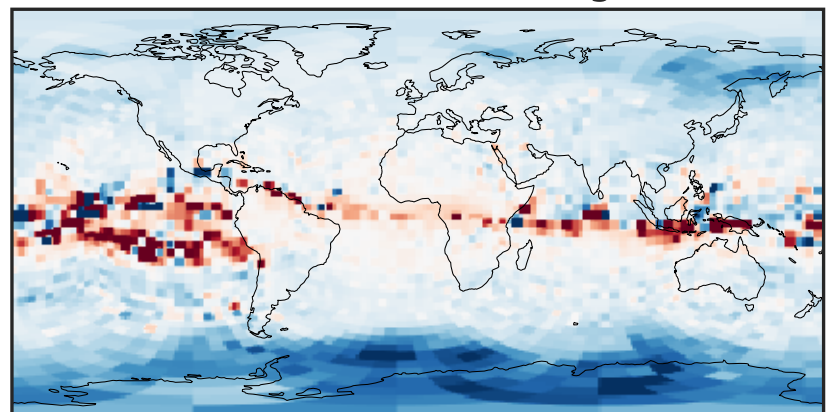
-0.008 0.000 0.008
µg/m3

Ratio (1x1.25)
Dev/Ref, Dynamic Range



1e-02 1e-01 1 10 100
unitless

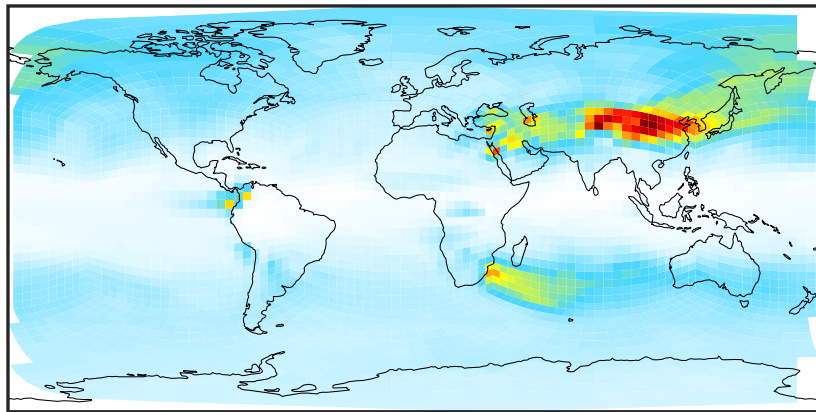
Ratio (1x1.25)
Dev/Ref, Fixed Range



0.50 0.75 1.00 1.50 2.00
unitless

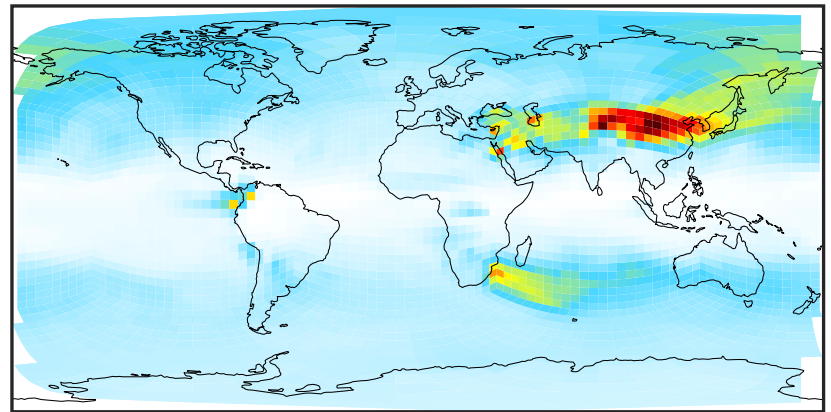
SpeciesConcVV_SO4 (Oct2019)

GCHP_14.0.0 (Ref)
c24



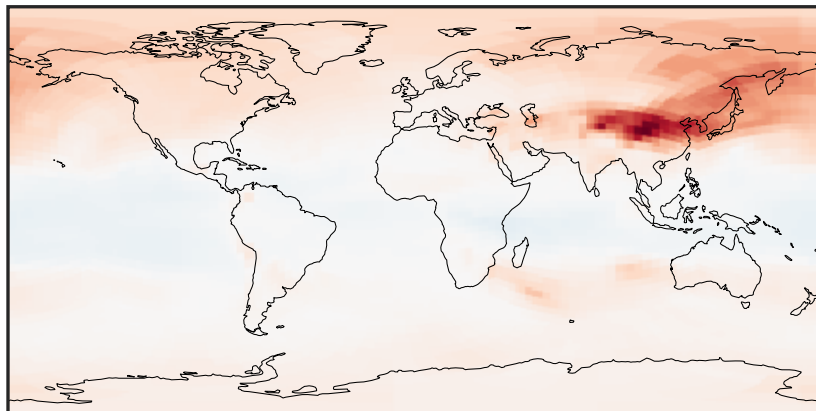
0.0032 0.1398 0.2797 0.4195 0.5626
 $\mu\text{g}/\text{m}^3$

GCHP_14.2.0 (Dev)
c24



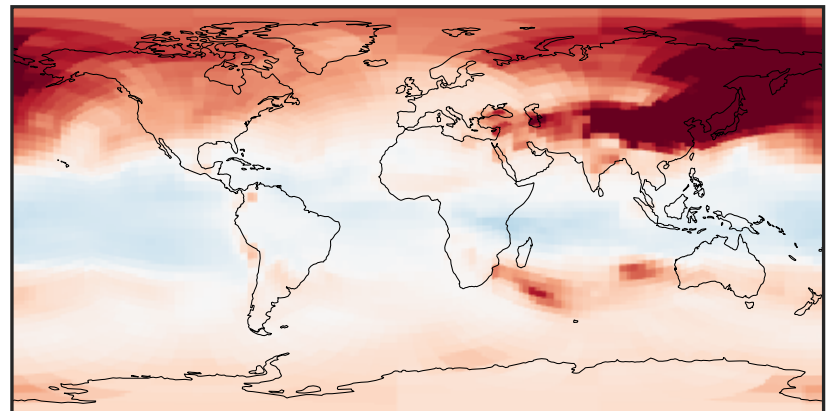
0.0032 0.1398 0.2797 0.4195 0.5626
 $\mu\text{g}/\text{m}^3$

Difference (1x1.25)
Dev - Ref, Dynamic Range



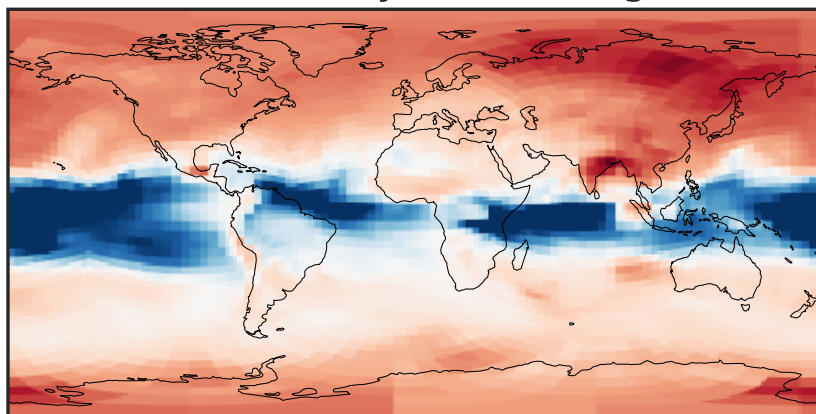
-0.02 0.00 0.02
 $\mu\text{g}/\text{m}^3$

Difference (1x1.25)
Dev - Ref, Restricted Range [5%,95%]



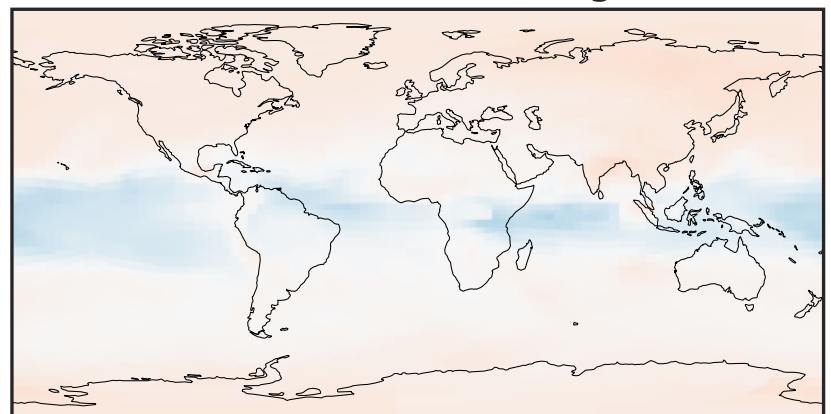
-0.008 0.000 0.008
 $\mu\text{g}/\text{m}^3$

Ratio (1x1.25)
Dev/Ref, Dynamic Range



0.8849 0.9425 1.0000 1.0650 1.1301
unitless

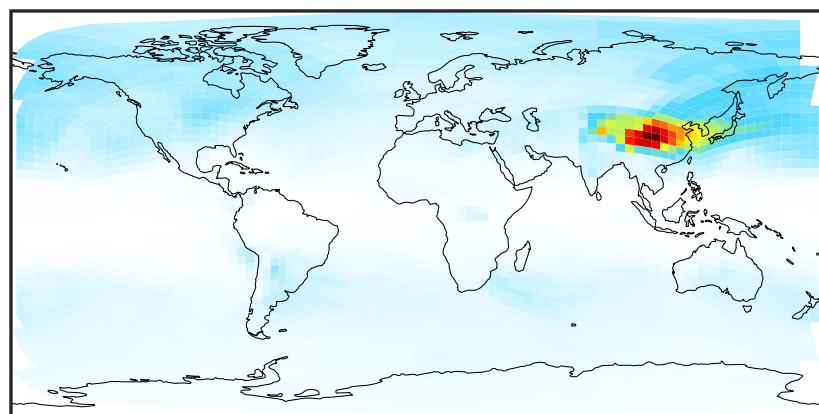
Ratio (1x1.25)
Dev/Ref, Fixed Range



0.50 0.75 1.00 1.50 2.00
unitless

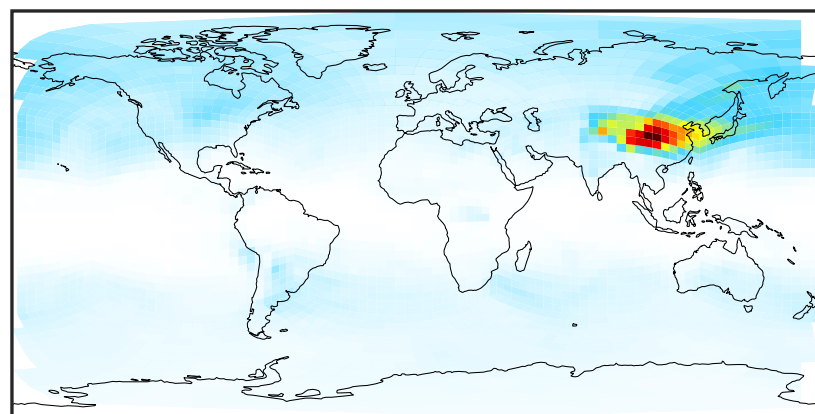
SpeciesConcVV_HMS (Oct2019)

GCHP_14.0.0 (Ref)
c24



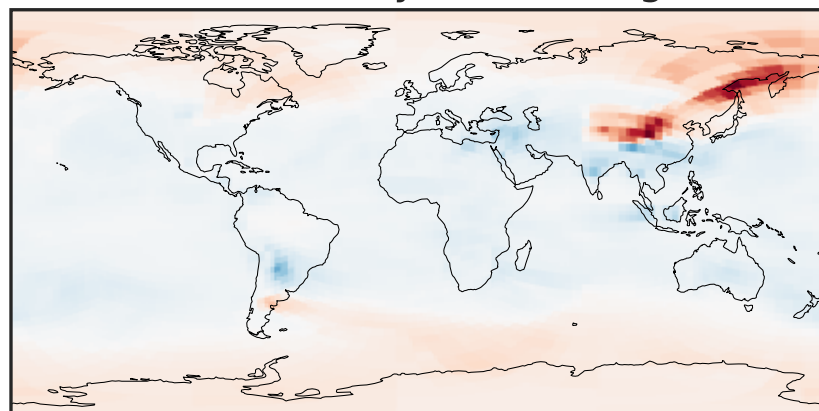
0.015 0.030 0.045
 $\mu\text{g}/\text{m}^3$

GCHP_14.2.0 (Dev)
c24



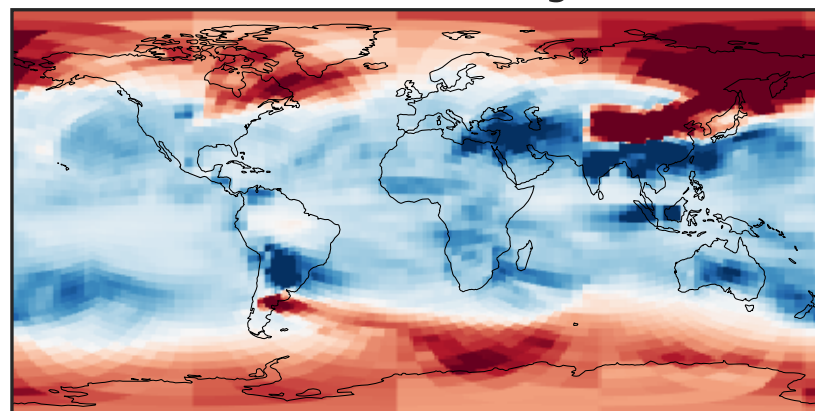
0.015 0.030 0.045
 $\mu\text{g}/\text{m}^3$

Difference (1x1.25)
Dev - Ref, Dynamic Range



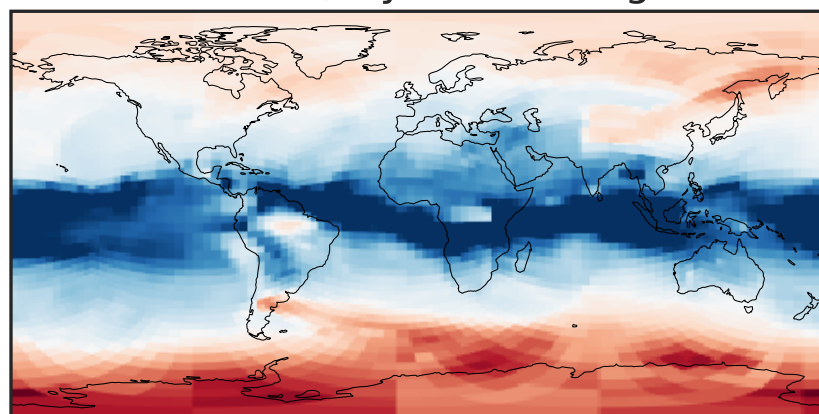
-0.0008 0.0000 0.0008
 $\mu\text{g}/\text{m}^3$

Difference (1x1.25)
Dev - Ref, Restricted Range [5%,95%]



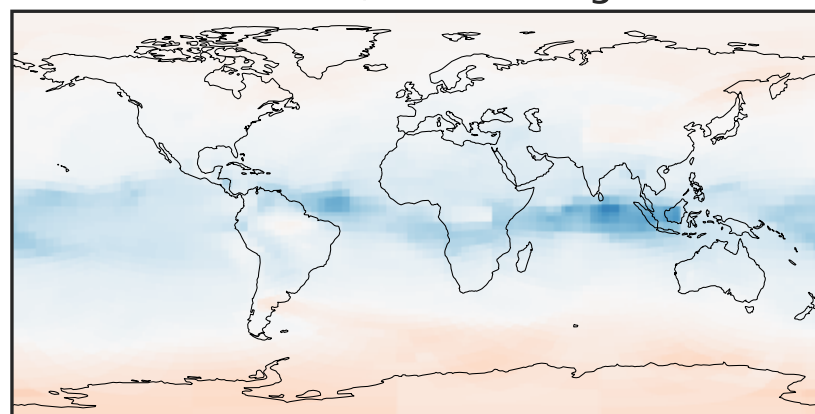
-0.00015 0.00000 0.00015
 $\mu\text{g}/\text{m}^3$

Ratio (1x1.25)
Dev/Ref, Dynamic Range



0.8551 0.9276 1.0000 1.0847 1.1694
unitless

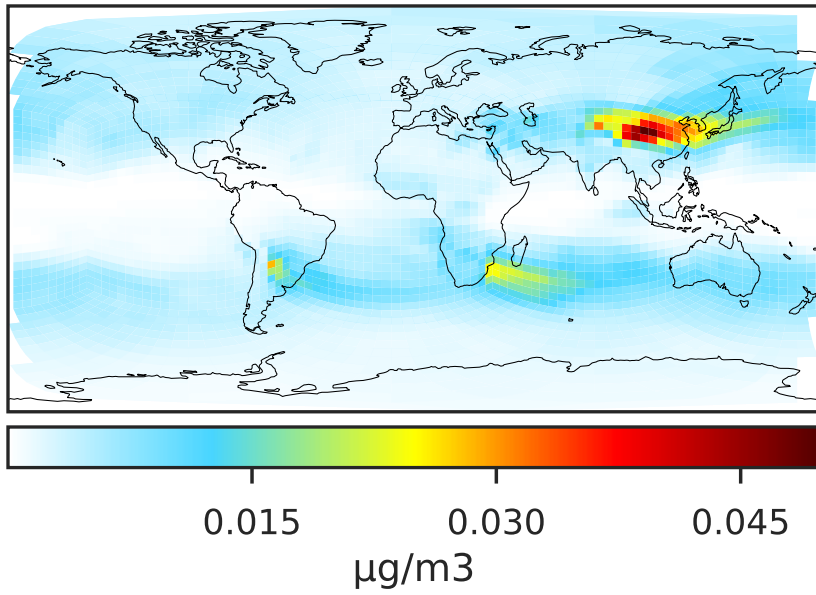
Ratio (1x1.25)
Dev/Ref, Fixed Range



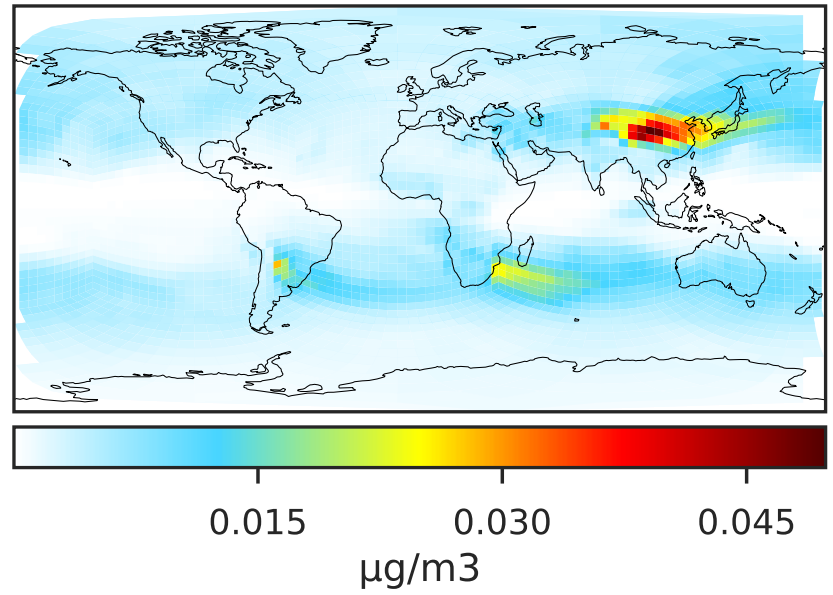
0.50 0.75 1.00 1.50 2.00
unitless

SpeciesConcVV_BCPI (Oct2019)

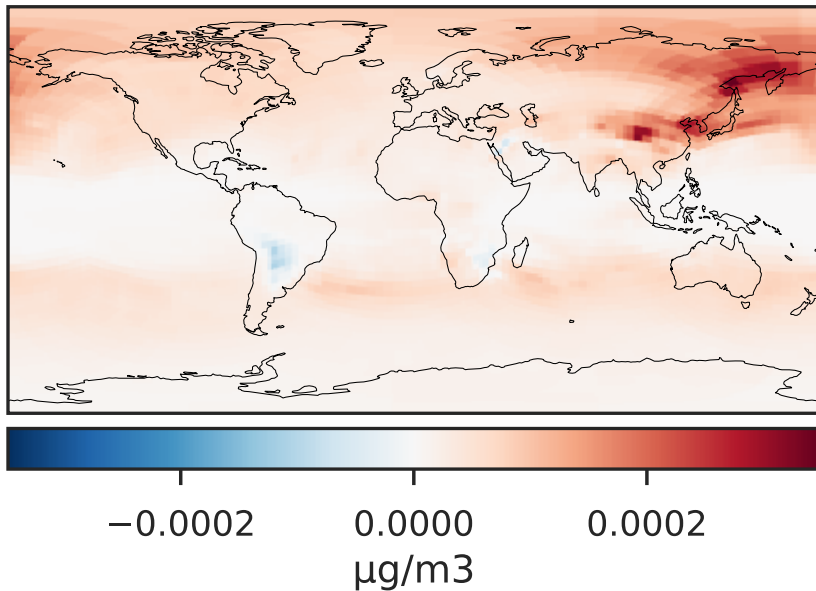
GCHP_14.0.0 (Ref)
c24



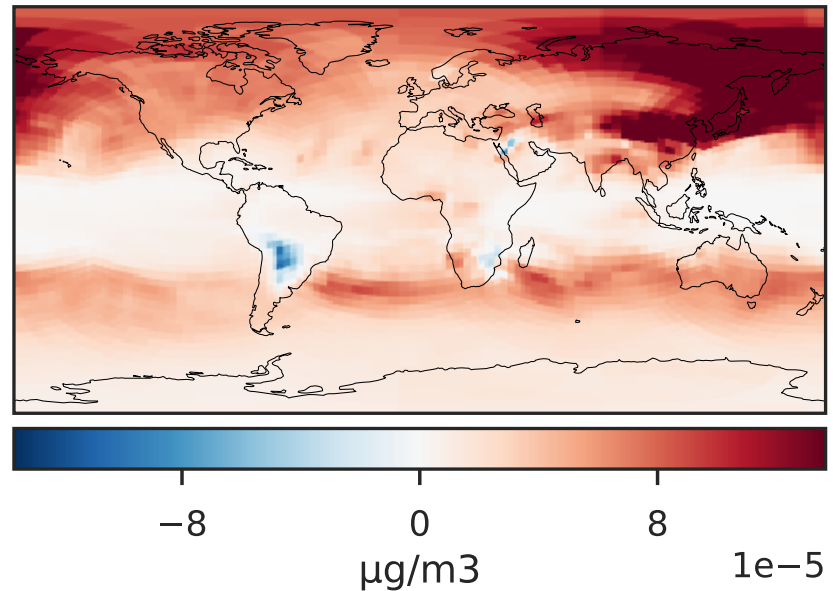
GCHP_14.2.0 (Dev)
c24



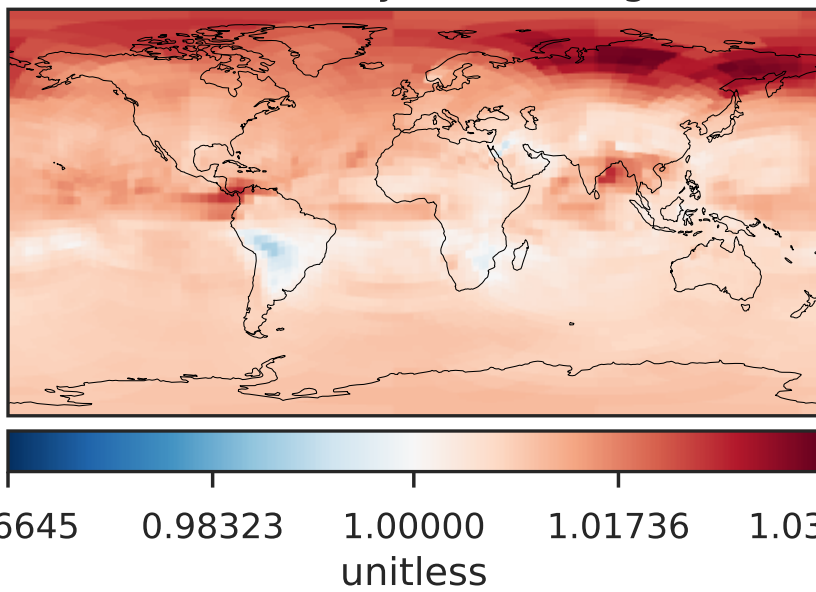
Difference (1x1.25)
Dev - Ref, Dynamic Range



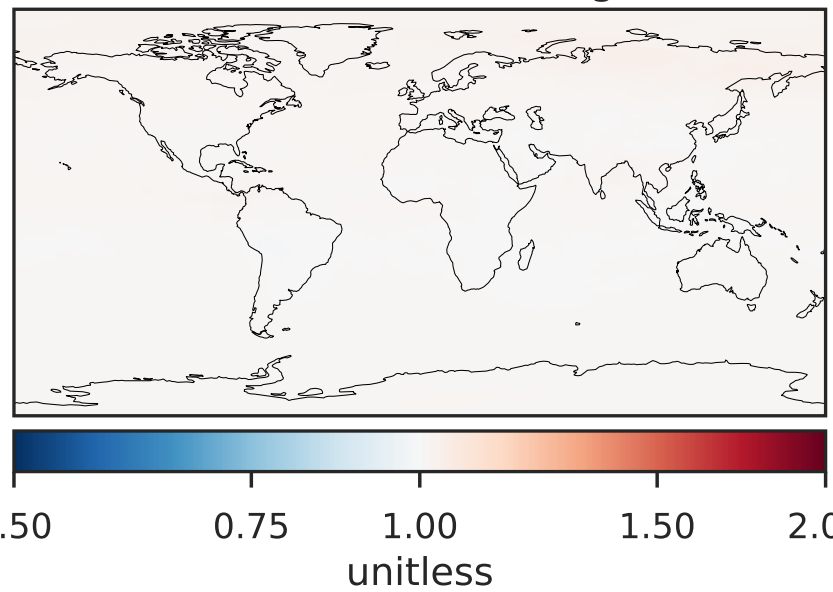
Difference (1x1.25)
Dev - Ref, Restricted Range [5%,95%]



Ratio (1x1.25)
Dev/Ref, Dynamic Range

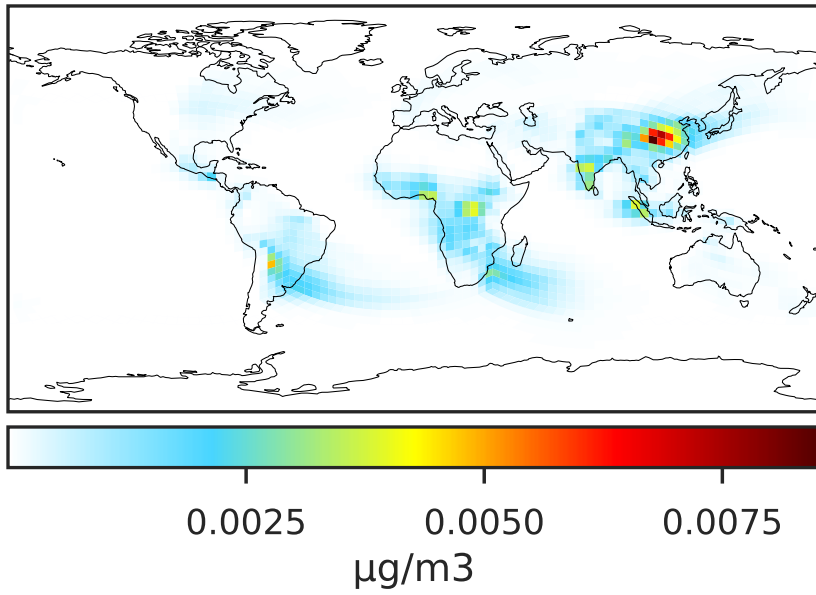


Ratio (1x1.25)
Dev/Ref, Fixed Range

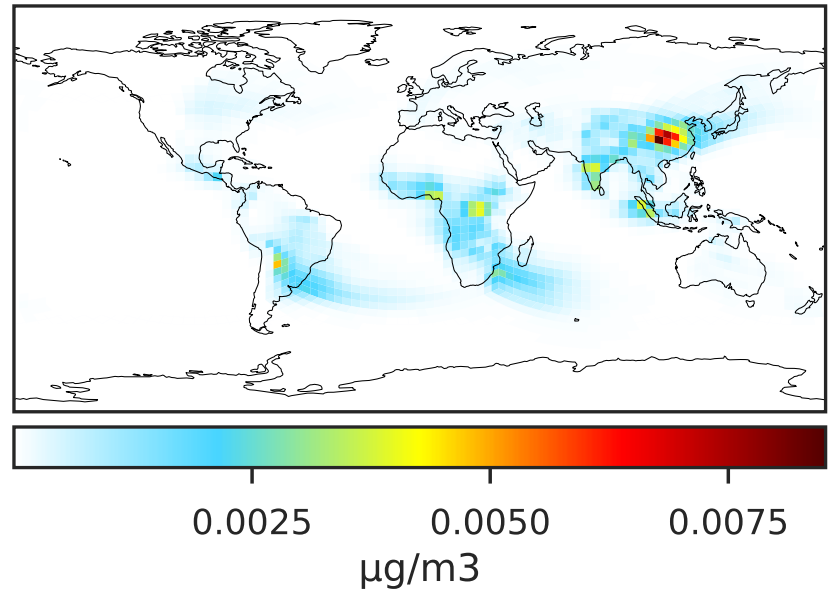


SpeciesConcVV_BCPO (Oct2019)

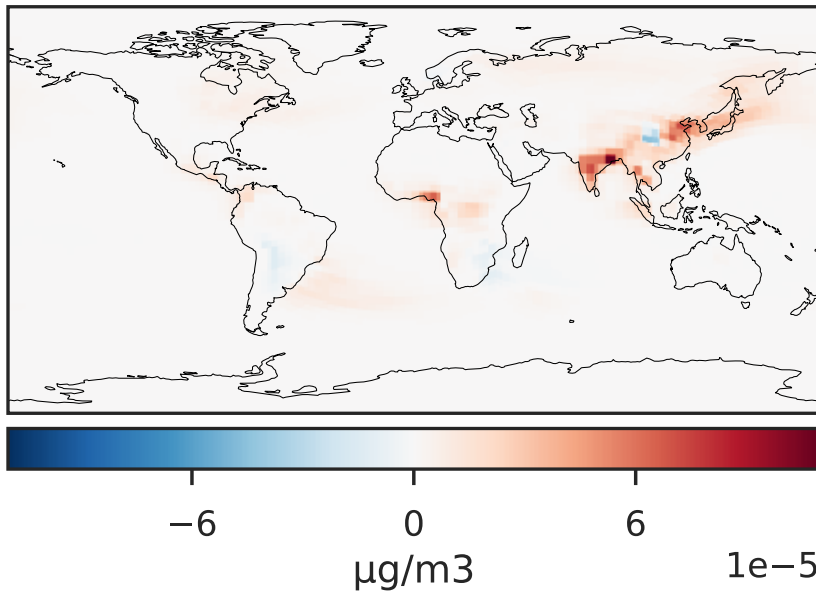
GCHP_14.0.0 (Ref)
c24



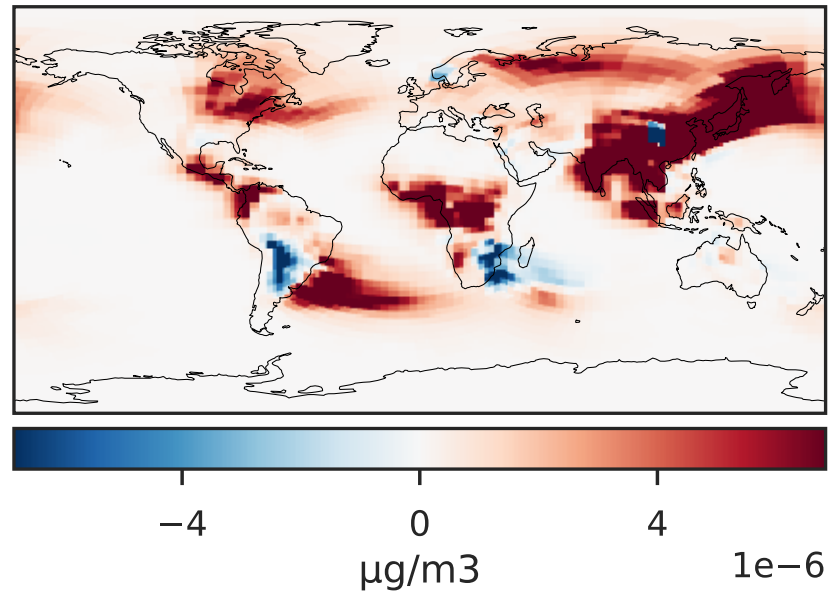
GCHP_14.2.0 (Dev)
c24



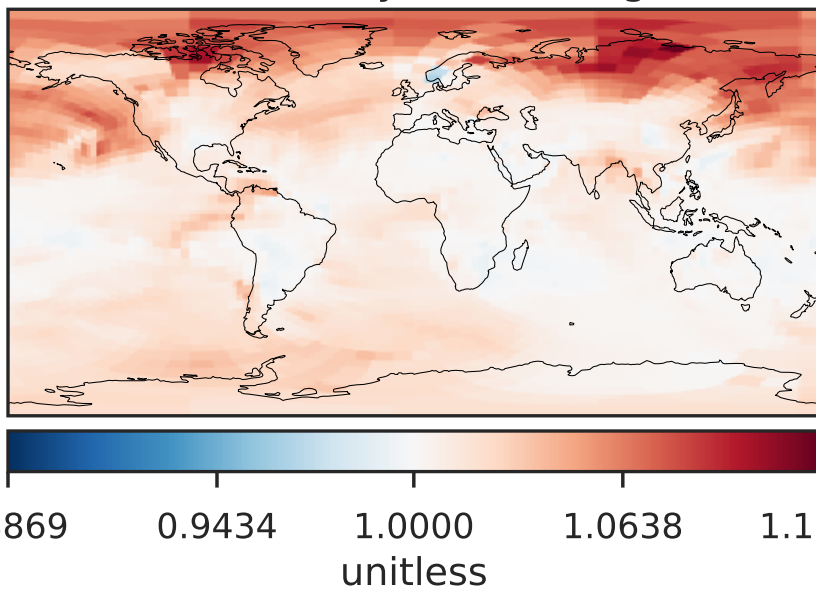
Difference (1x1.25)
Dev - Ref, Dynamic Range



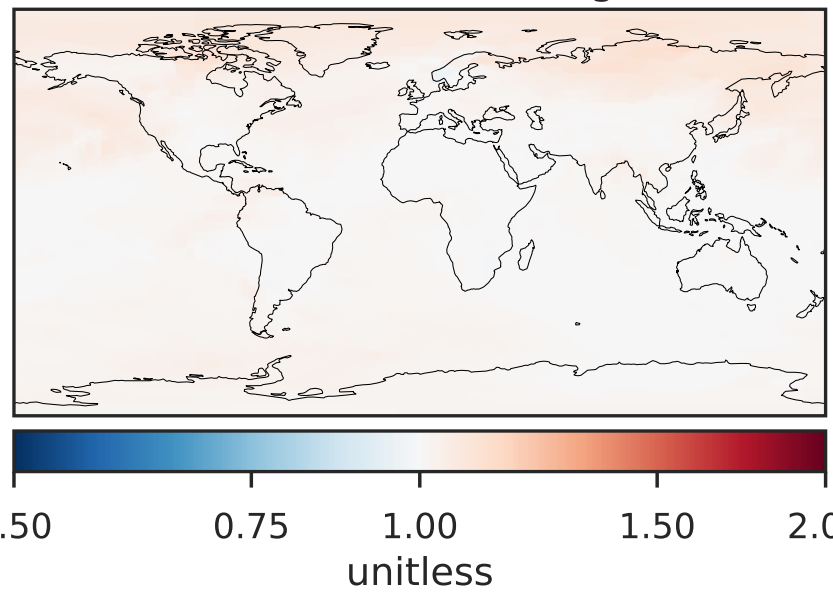
Difference (1x1.25)
Dev - Ref, Restricted Range [5%,95%]



Ratio (1x1.25)
Dev/Ref, Dynamic Range

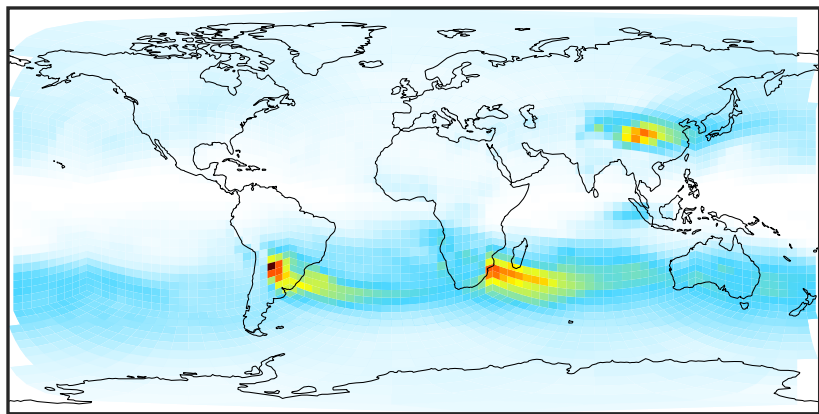


Ratio (1x1.25)
Dev/Ref, Fixed Range



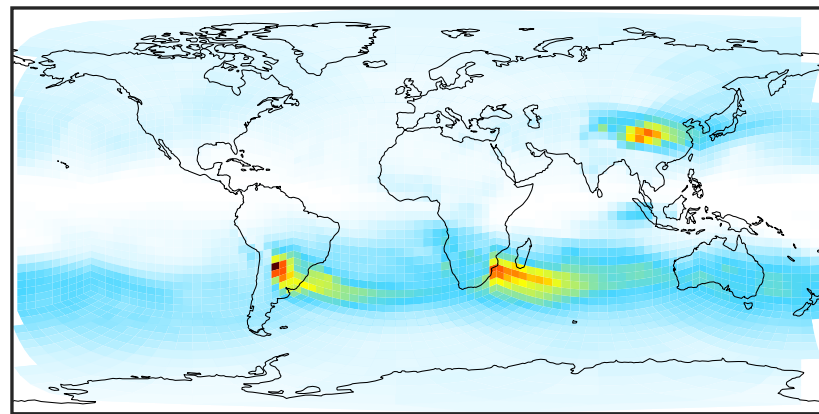
SpeciesConcVV_OCPI (Oct2019)

GCHP_14.0.0 (Ref)
c24



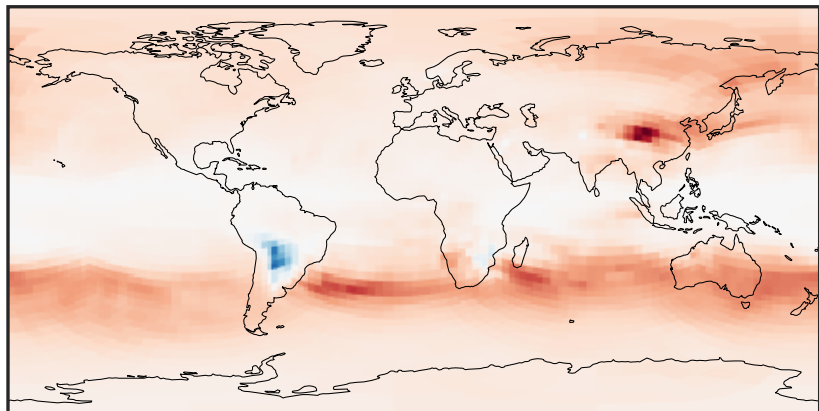
0.0001 0.0523 0.1046 0.1569 0.2093
 $\mu\text{g}/\text{m}^3$

GCHP_14.2.0 (Dev)
c24



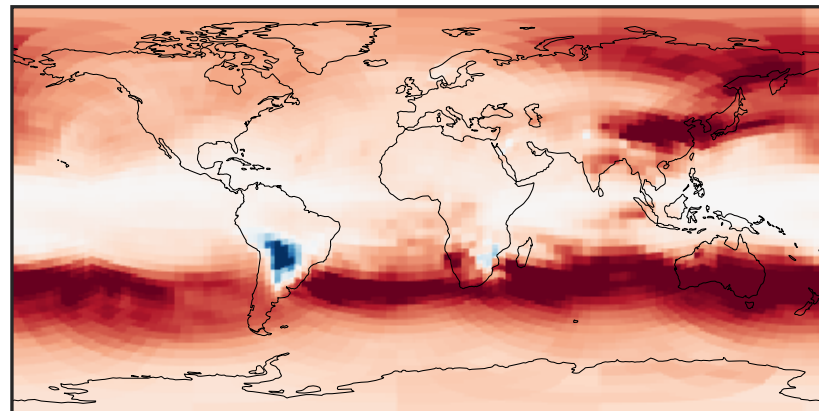
0.0001 0.0523 0.1046 0.1569 0.2093
 $\mu\text{g}/\text{m}^3$

Difference (1x1.25)
Dev - Ref, Dynamic Range



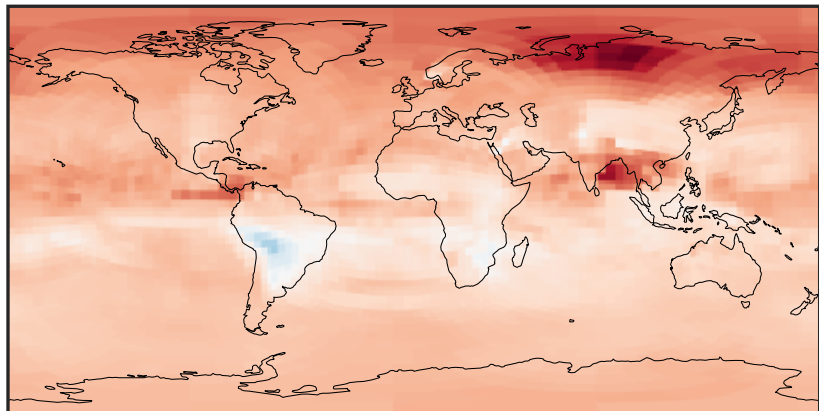
-0.0005 0.0000 0.0005
 $\mu\text{g}/\text{m}^3$

Difference (1x1.25)
Dev - Ref, Restricted Range [5%,95%]



-0.0002 0.0000 0.0002
 $\mu\text{g}/\text{m}^3$

Ratio (1x1.25)
Dev/Ref, Dynamic Range



0.96644 0.98322 1.00000 1.01736 1.03472
unitless

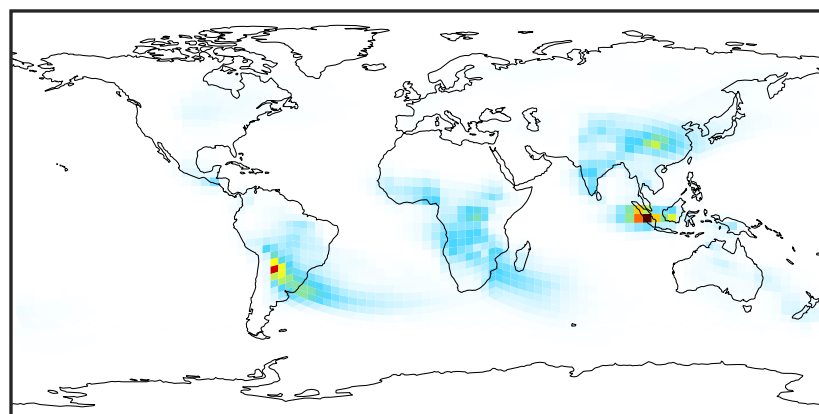
Ratio (1x1.25)
Dev/Ref, Fixed Range



0.50 0.75 1.00 1.50 2.00
unitless

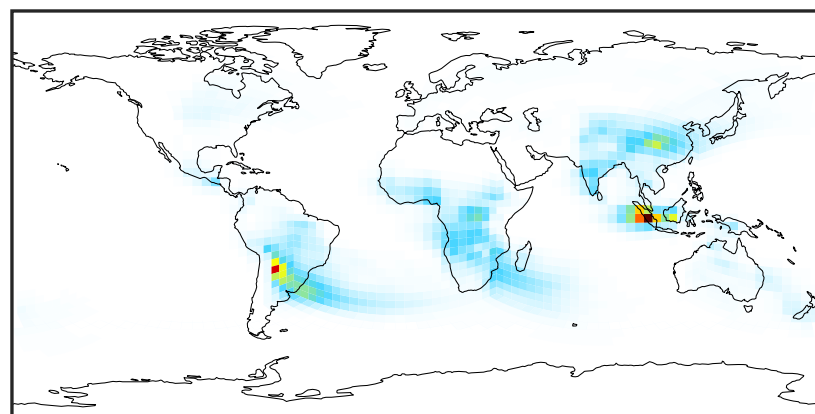
SpeciesConcVV_OCPO (Oct2019)

GCHP_14.0.0 (Ref)
c24



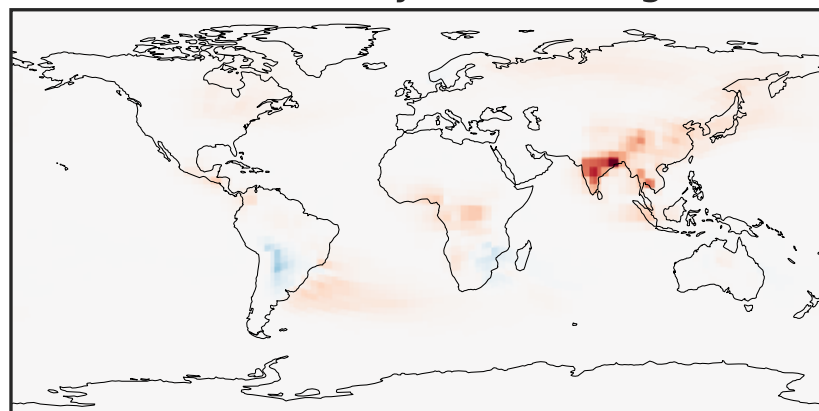
0.008 0.016 0.024
 $\mu\text{g}/\text{m}^3$

GCHP_14.2.0 (Dev)
c24



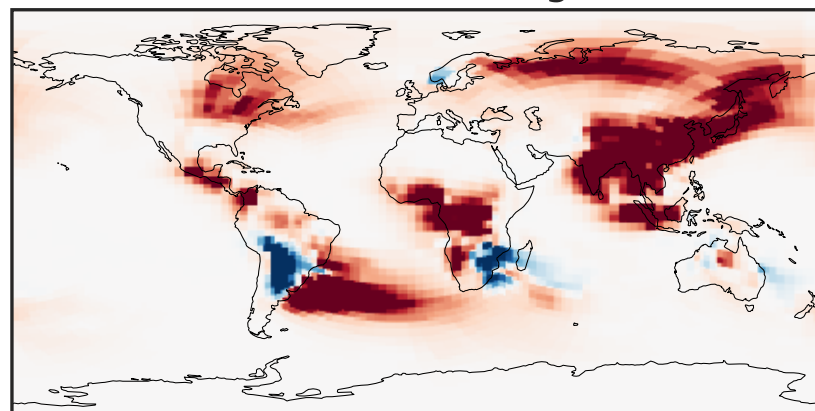
0.008 0.016 0.024
 $\mu\text{g}/\text{m}^3$

Difference (1x1.25)
Dev - Ref, Dynamic Range



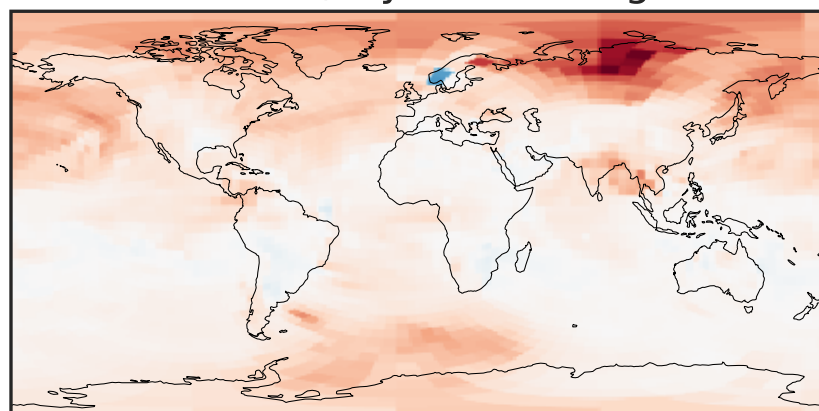
-0.00015 0.00000 0.00015
 $\mu\text{g}/\text{m}^3$

Difference (1x1.25)
Dev - Ref, Restricted Range [5%,95%]



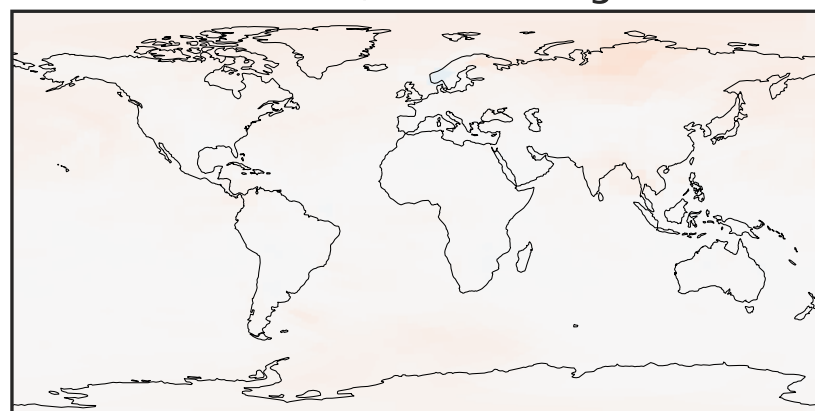
-8 0 8
 $\mu\text{g}/\text{m}^3$ $1\text{e}-6$

Ratio (1x1.25)
Dev/Ref, Dynamic Range



0.9035 0.9518 1.0000 1.0534 1.1068
unitless

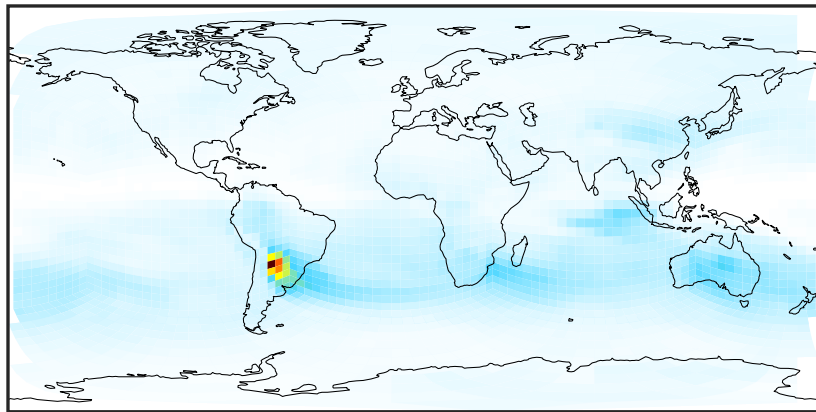
Ratio (1x1.25)
Dev/Ref, Fixed Range



0.50 0.75 1.00 1.50 2.00
unitless

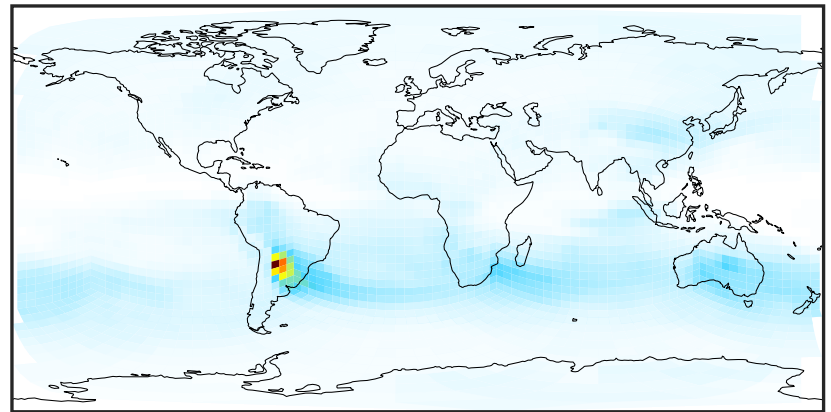
SpeciesConcVV_Complex_SOA (Oct2019)

GCHP_14.0.0 (Ref)
c24



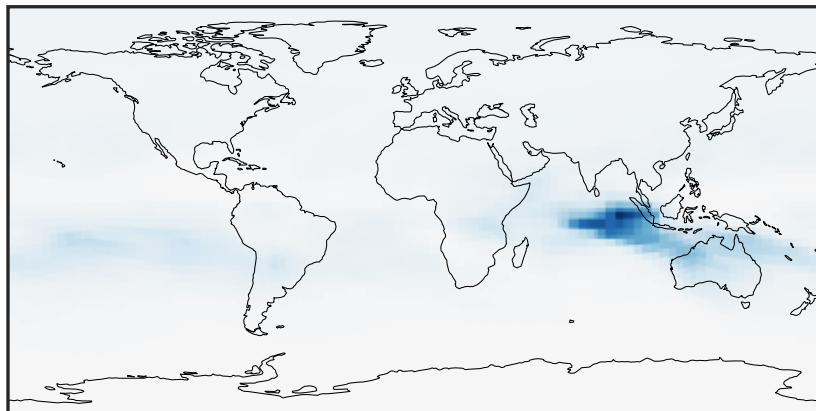
0.0001 0.0804 0.1608 0.2412 0.3218
 $\mu\text{g}/\text{m}^3$

GCHP_14.2.0 (Dev)
c24



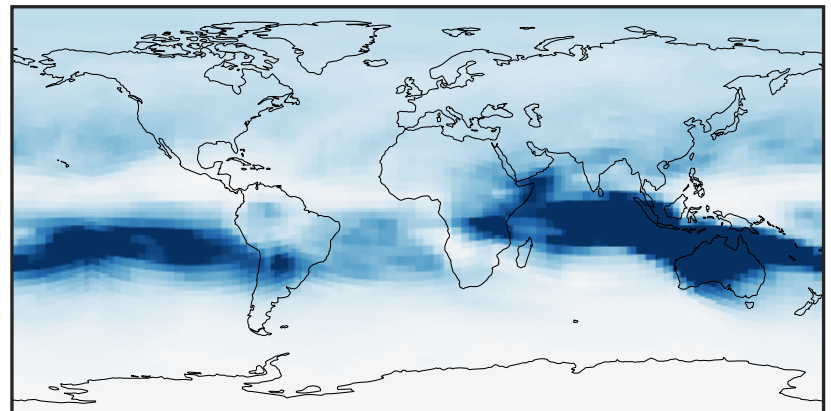
0.0001 0.0804 0.1608 0.2412 0.3218
 $\mu\text{g}/\text{m}^3$

Difference (1x1.25)
Dev - Ref, Dynamic Range



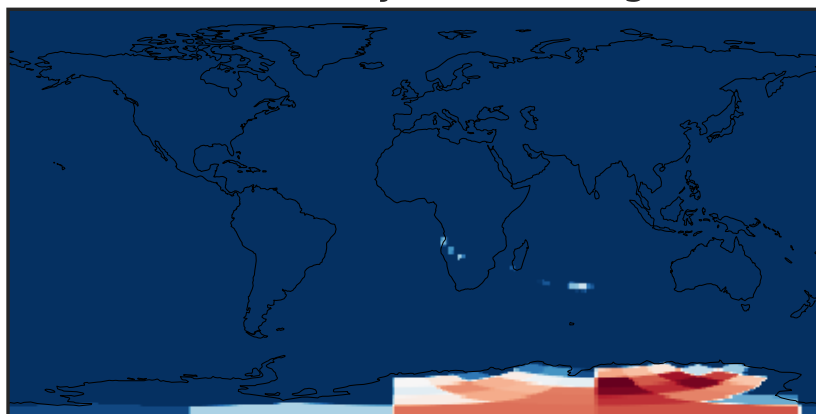
-0.02 0.00 0.02
 $\mu\text{g}/\text{m}^3$

Difference (1x1.25)
Dev - Ref, Restricted Range [5%,95%]



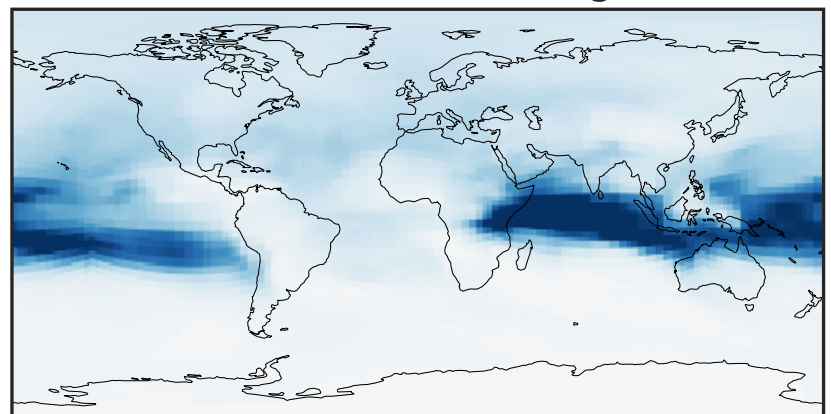
-0.0025 0.0000 0.0025
 $\mu\text{g}/\text{m}^3$

Ratio (1x1.25)
Dev/Ref, Dynamic Range



0.99358 0.99679 1.00000 1.00323 1.00646
unitless

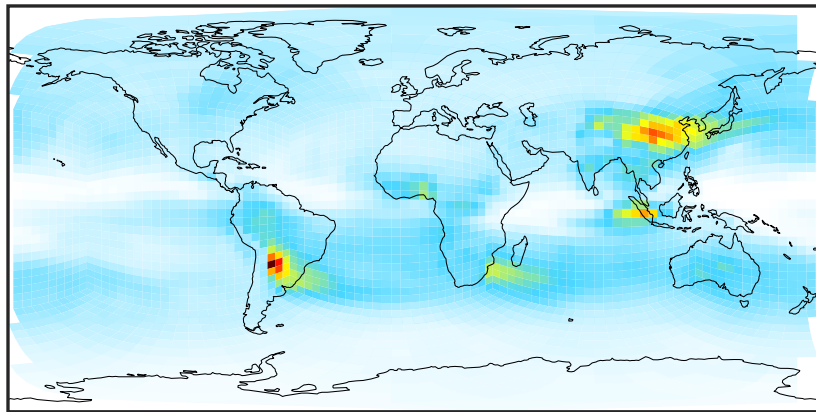
Ratio (1x1.25)
Dev/Ref, Fixed Range



0.50 0.75 1.00 1.50 2.00
unitless

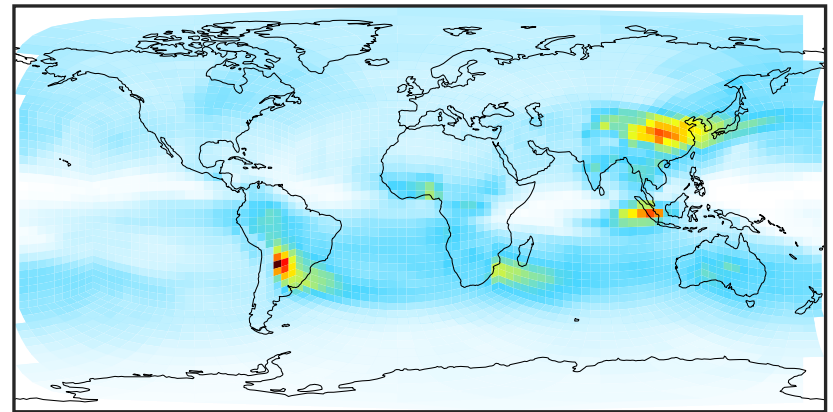
SpeciesConcVV_Simple_SOA (Oct2019)

GCHP_14.0.0 (Ref)
c24



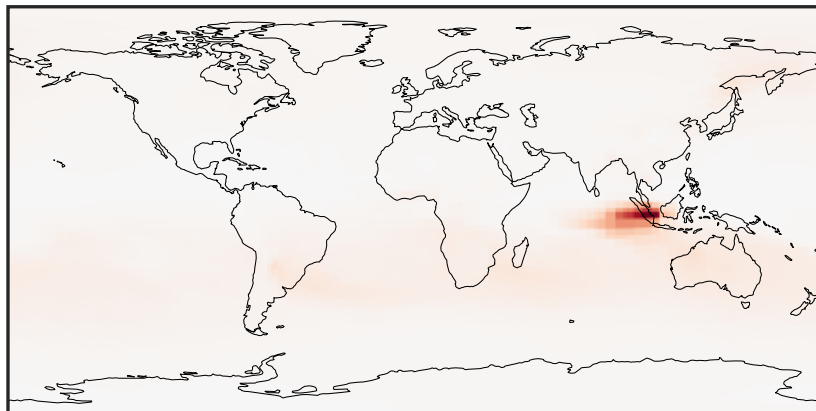
0.0012 0.1611 0.3222 0.4834 0.6457
 $\mu\text{g}/\text{m}^3$

GCHP_14.2.0 (Dev)
c24



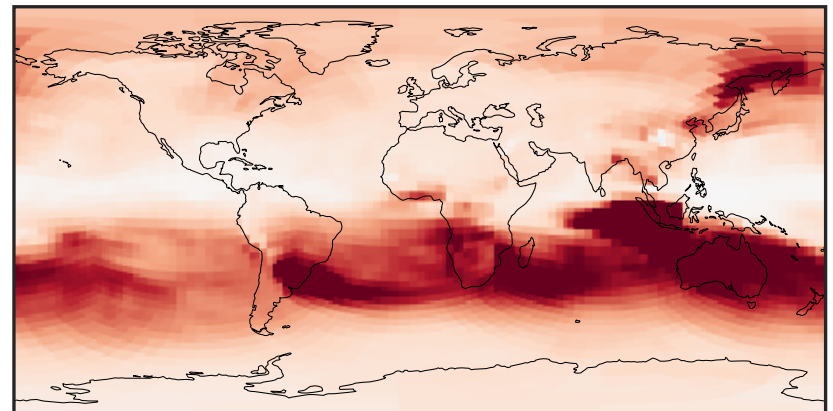
0.0012 0.1611 0.3222 0.4834 0.6457
 $\mu\text{g}/\text{m}^3$

Difference (1x1.25)
Dev - Ref, Dynamic Range



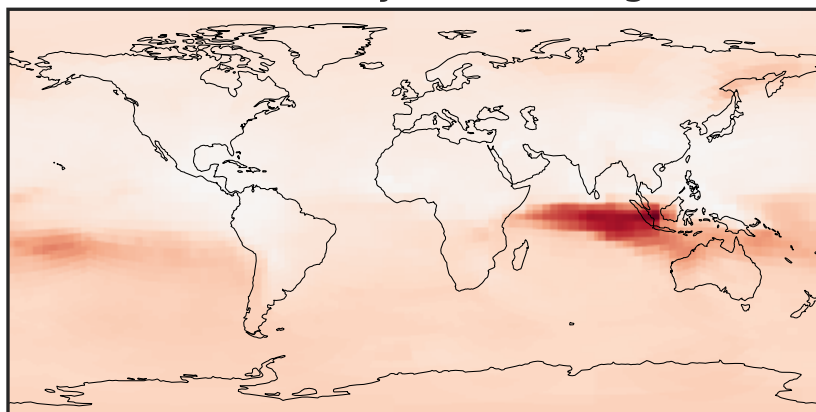
-0.050 -0.025 0.000 0.025 0.050
 $\mu\text{g}/\text{m}^3$

Difference (1x1.25)
Dev - Ref, Restricted Range [5%,95%]



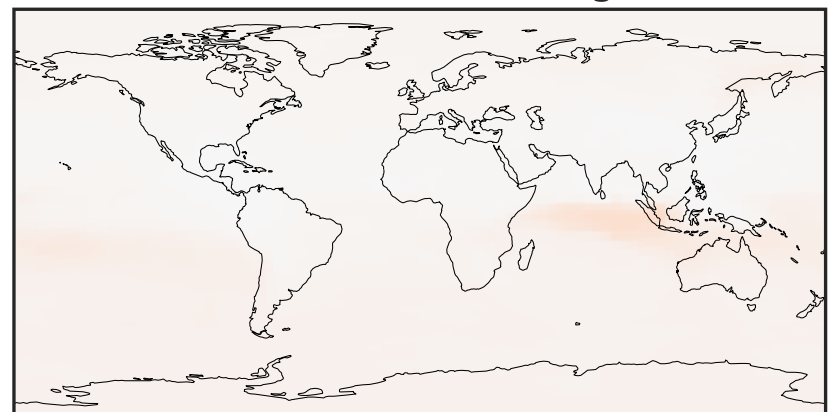
-0.002 0.000 0.002
 $\mu\text{g}/\text{m}^3$

Ratio (1x1.25)
Dev/Ref, Dynamic Range



0.8759 0.9380 1.0000 1.0708 1.1416
unitless

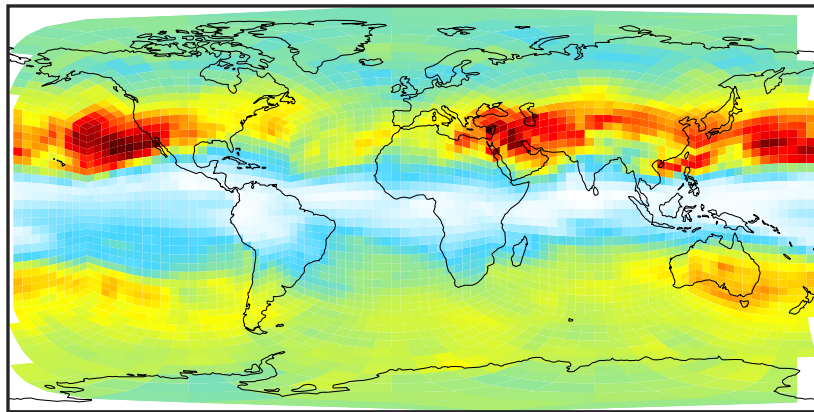
Ratio (1x1.25)
Dev/Ref, Fixed Range



0.50 0.75 1.00 1.50 2.00
unitless

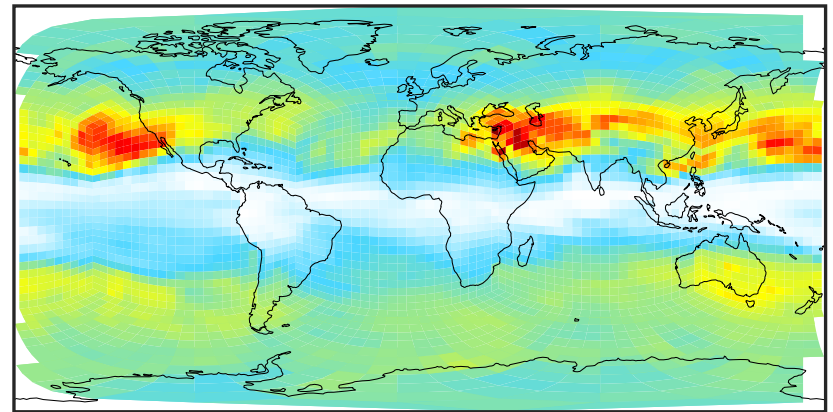
SpeciesConcVV_AERI (Oct2019)

GCHP_14.0.0 (Ref)
c24



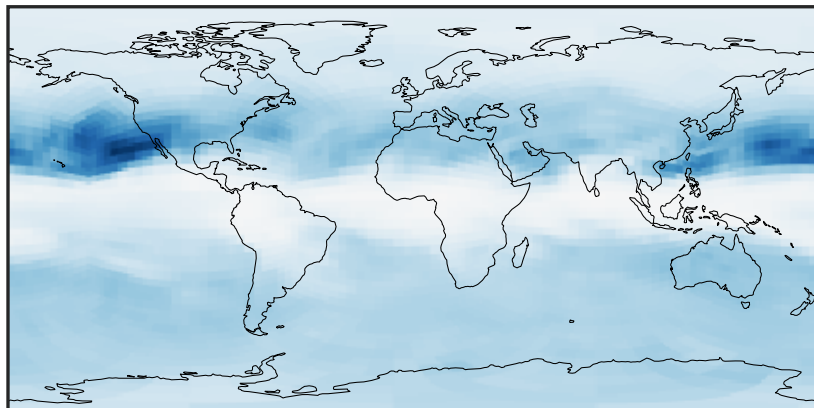
0.0004 0.0008 0.0012
 $\mu\text{g}/\text{m}^3$

GCHP_14.2.0 (Dev)
c24



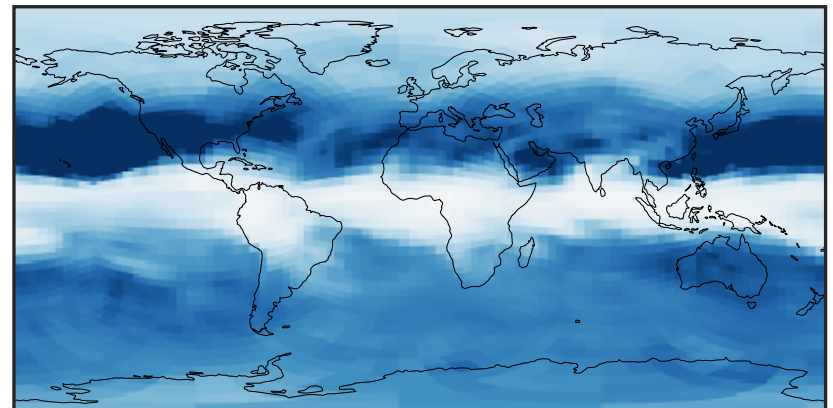
0.0004 0.0008 0.0012
 $\mu\text{g}/\text{m}^3$

Difference (1x1.25)
Dev - Ref, Dynamic Range



-0.0002 0.0000 0.0002
 $\mu\text{g}/\text{m}^3$

Difference (1x1.25)
Dev - Ref, Restricted Range [5%,95%]



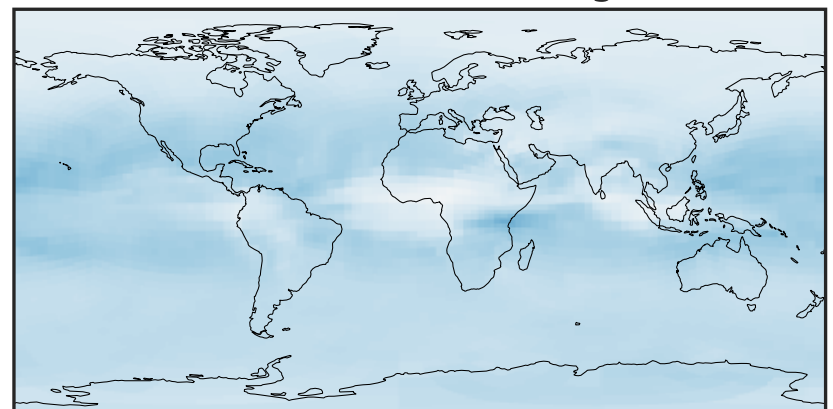
-8 0 8
 $\mu\text{g}/\text{m}^3$ $1\text{e}-5$

Ratio (1x1.25)
Dev/Ref, Dynamic Range



0.97978 0.98989 1.00000 1.01032 1.02064
unitless

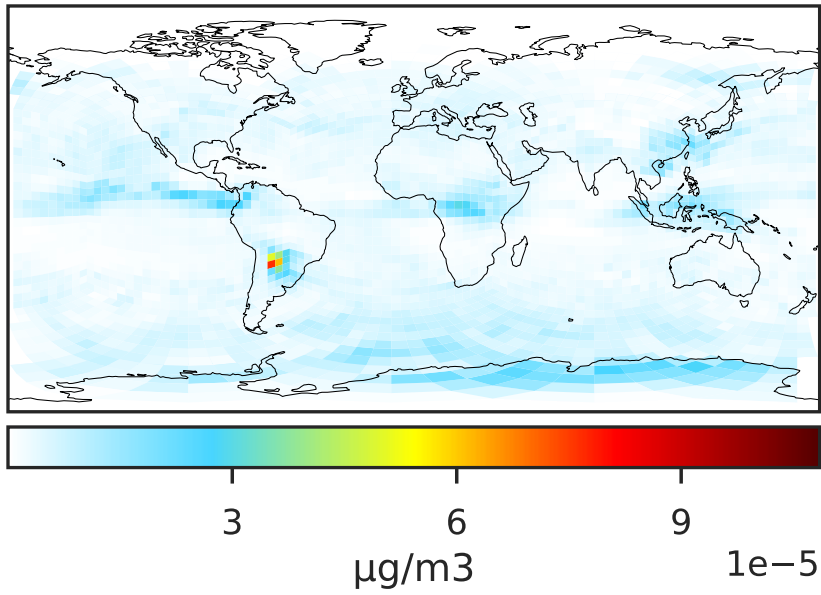
Ratio (1x1.25)
Dev/Ref, Fixed Range



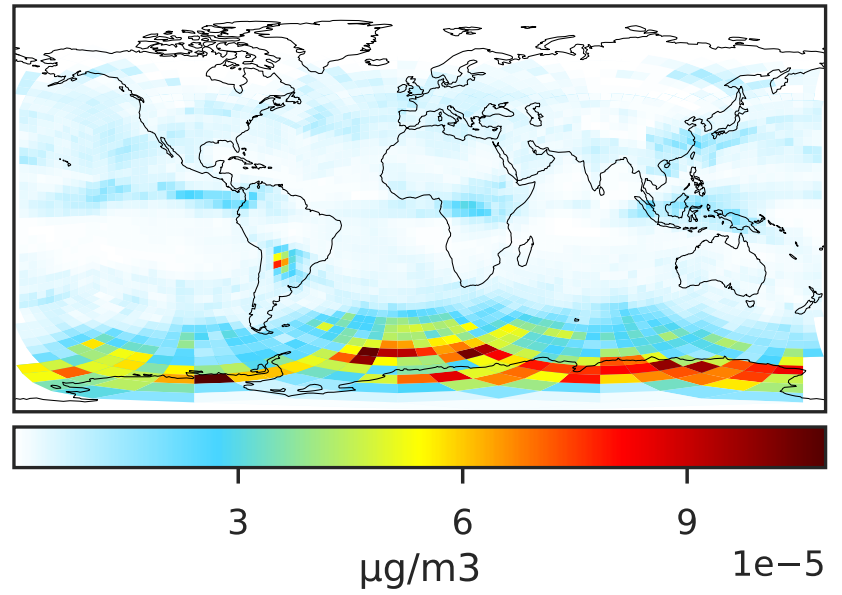
0.50 0.75 1.00 1.50 2.00
unitless

SpeciesConcVV_BrSALA (Oct2019)

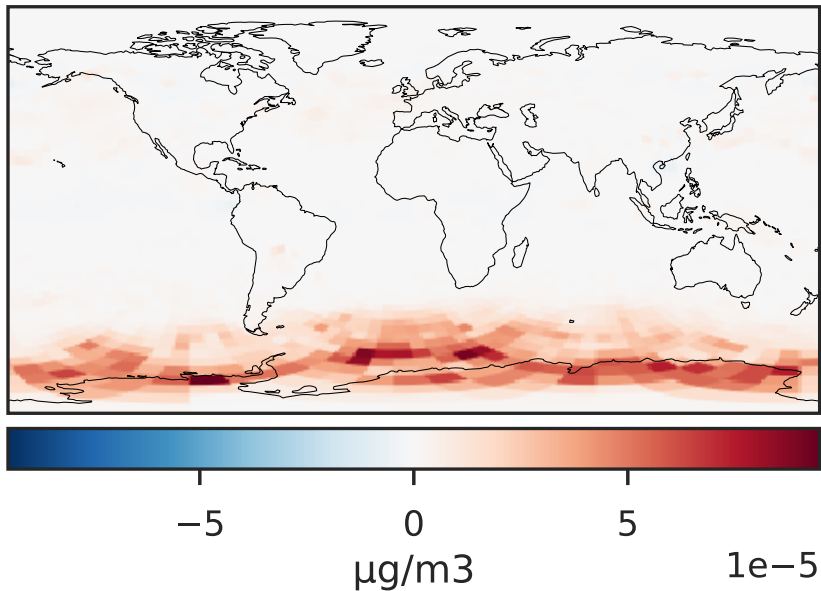
GCHP_14.0.0 (Ref)
c24



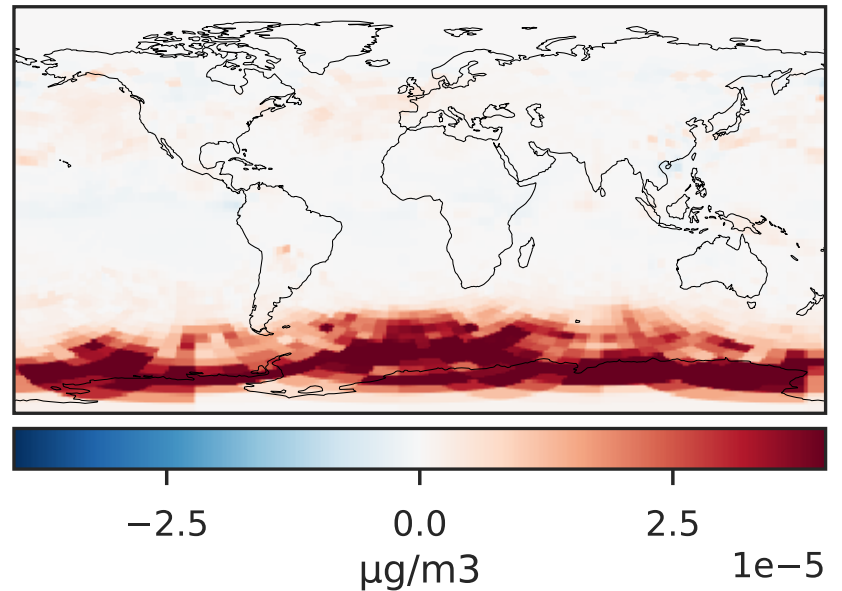
GCHP_14.2.0 (Dev)
c24



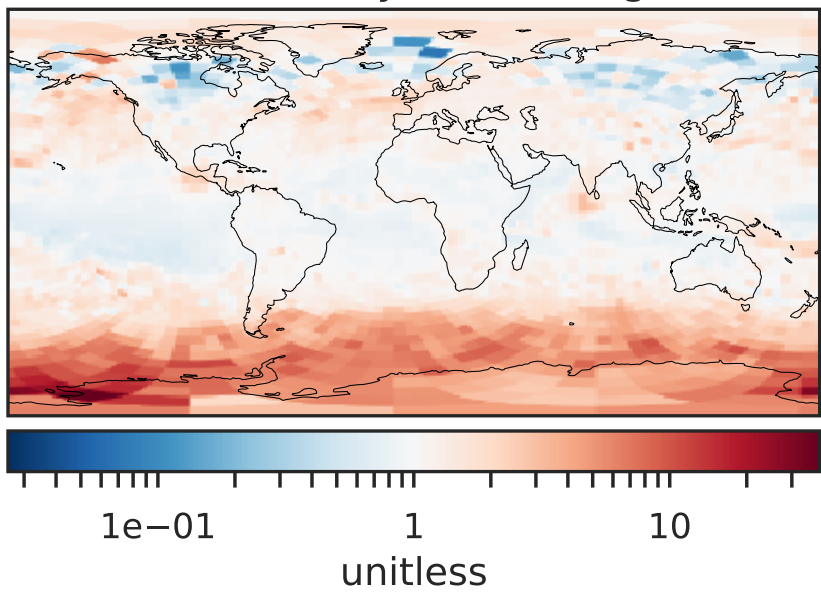
Difference (1x1.25)
Dev - Ref, Dynamic Range



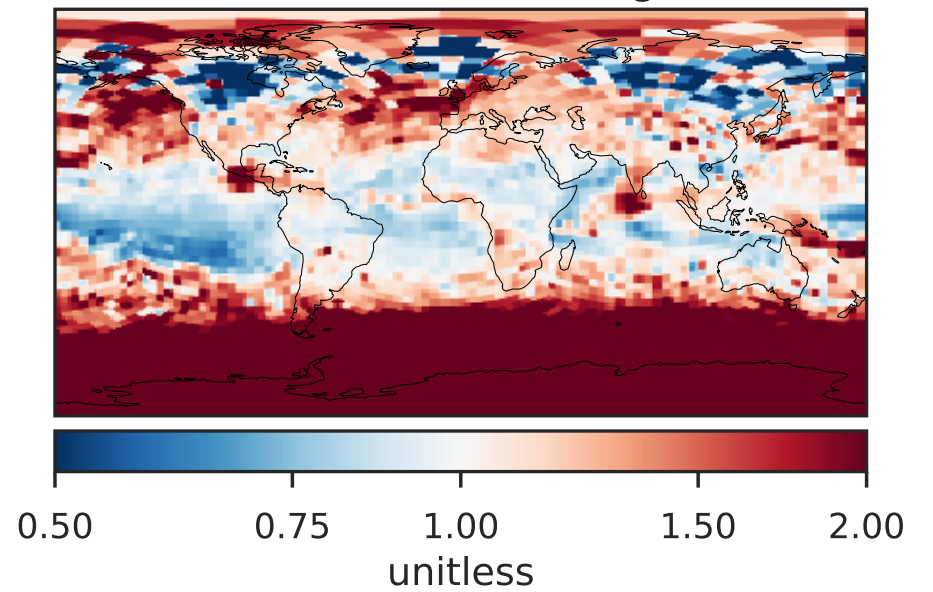
Difference (1x1.25)
Dev - Ref, Restricted Range [5%,95%]



Ratio (1x1.25)
Dev/Ref, Dynamic Range

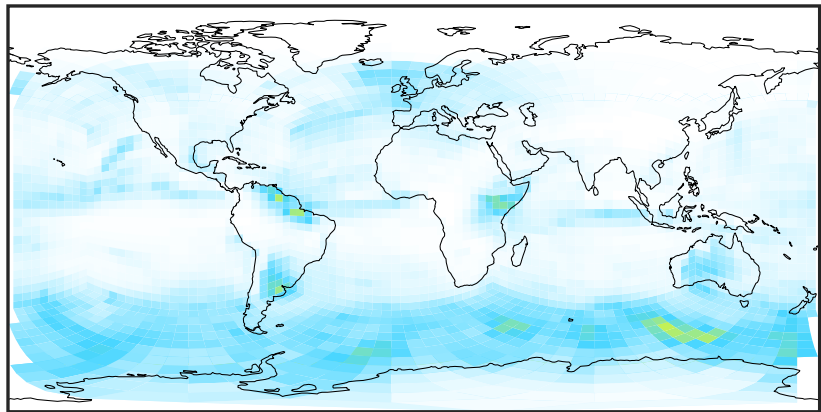


Ratio (1x1.25)
Dev/Ref, Fixed Range



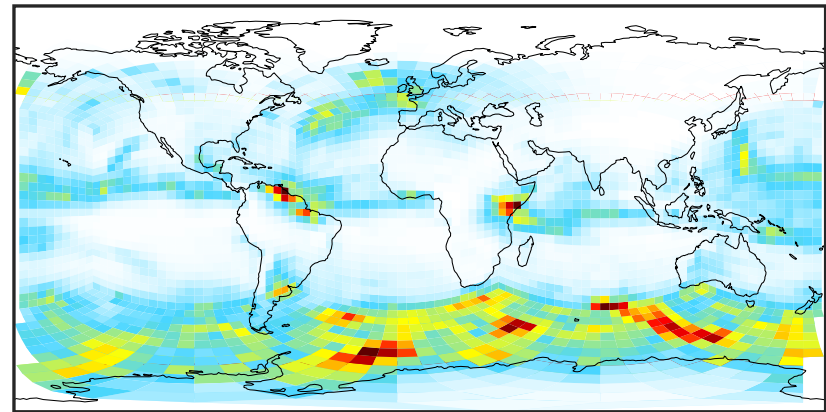
SpeciesConcVV_BrSALC (Oct2019)

GCHP_14.0.0 (Ref)
c24



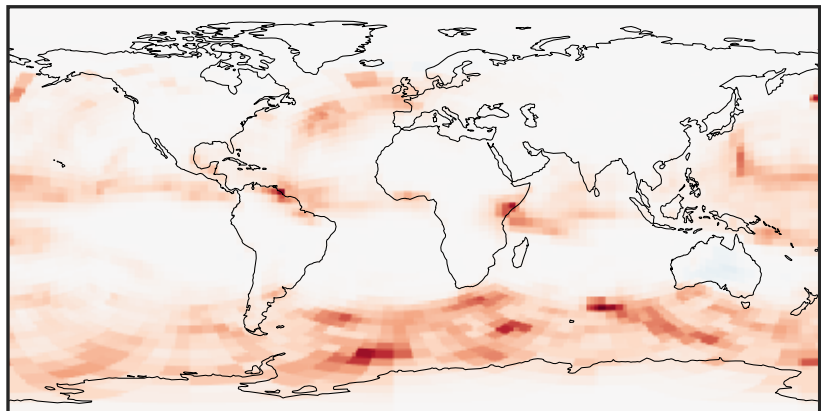
2.5 5.0 7.5
 $\mu\text{g}/\text{m}^3$ $1\text{e}-6$

GCHP_14.2.0 (Dev)
c24



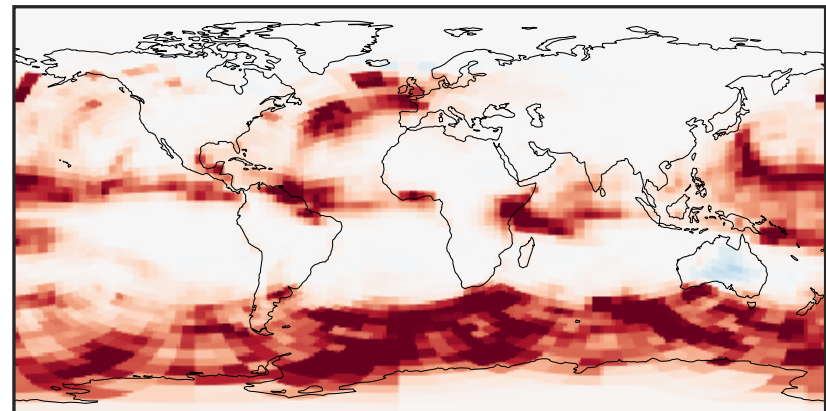
2.5 5.0 7.5
 $\mu\text{g}/\text{m}^3$ $1\text{e}-6$

Difference (1x1.25)
Dev - Ref, Dynamic Range



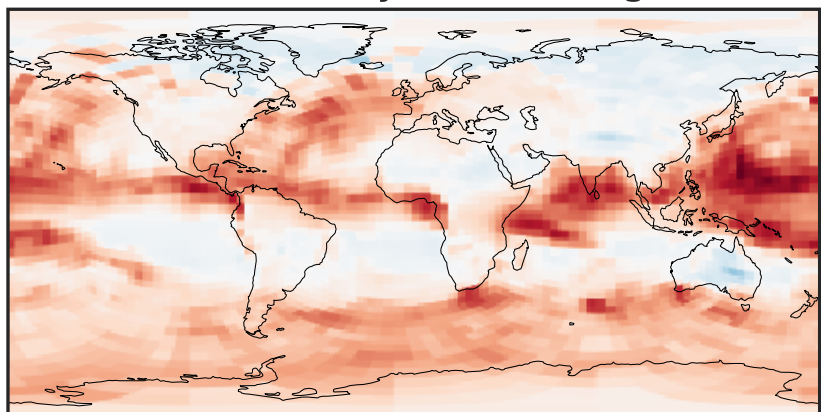
-4 0 4
 $\mu\text{g}/\text{m}^3$ $1\text{e}-6$

Difference (1x1.25)
Dev - Ref, Restricted Range [5%,95%]



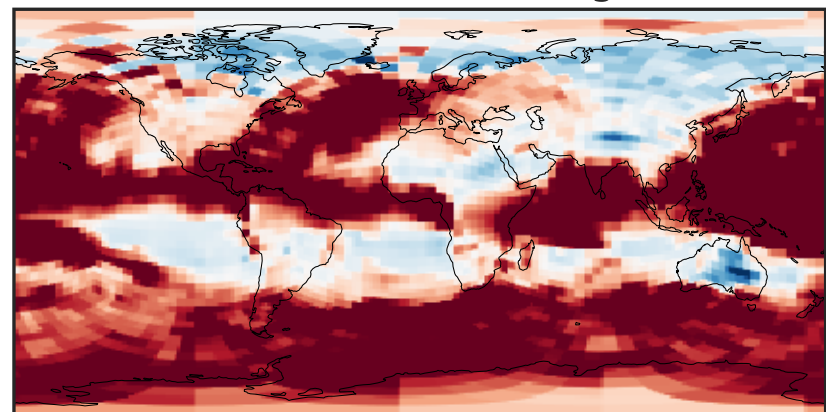
-1.5 0.0 1.5
 $\mu\text{g}/\text{m}^3$ $1\text{e}-6$

Ratio (1x1.25)
Dev/Ref, Dynamic Range



1e-01 1 10
unitless

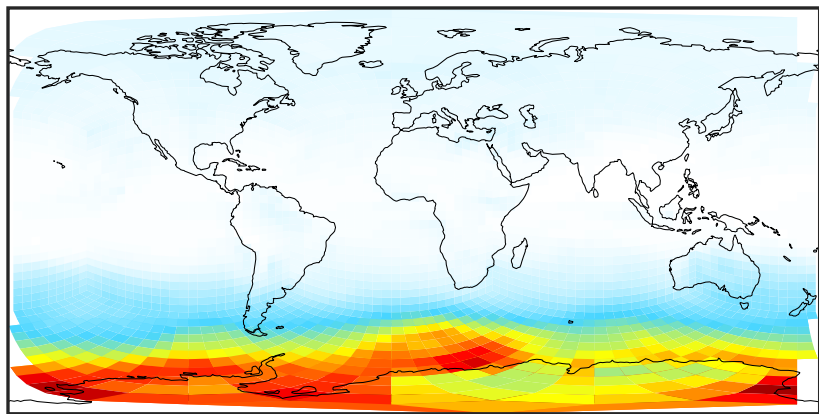
Ratio (1x1.25)
Dev/Ref, Fixed Range



0.50 0.75 1.00 1.50 2.00
unitless

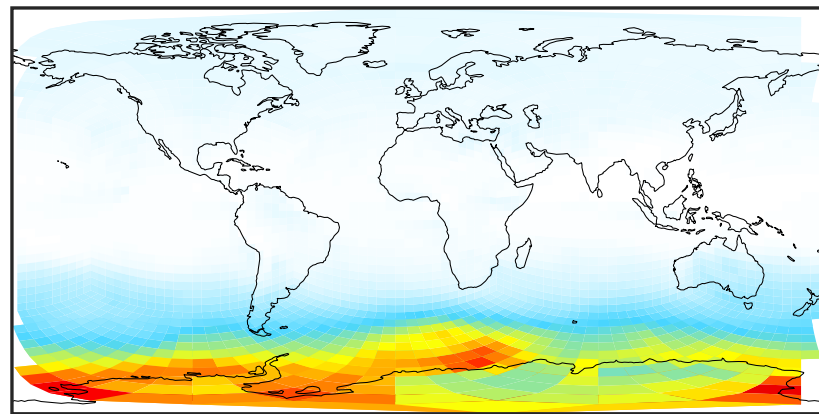
SpeciesConcVV_ISALA (Oct2019)

GCHP_14.0.0 (Ref)
c24



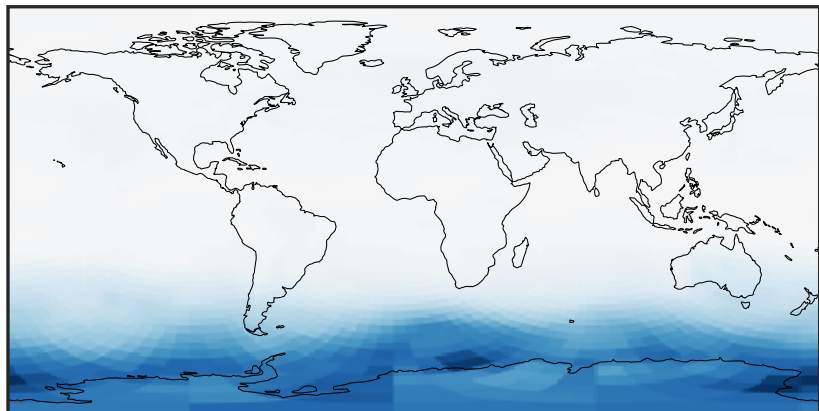
0.00015 0.00030 0.00045
 $\mu\text{g}/\text{m}^3$

GCHP_14.2.0 (Dev)
c24



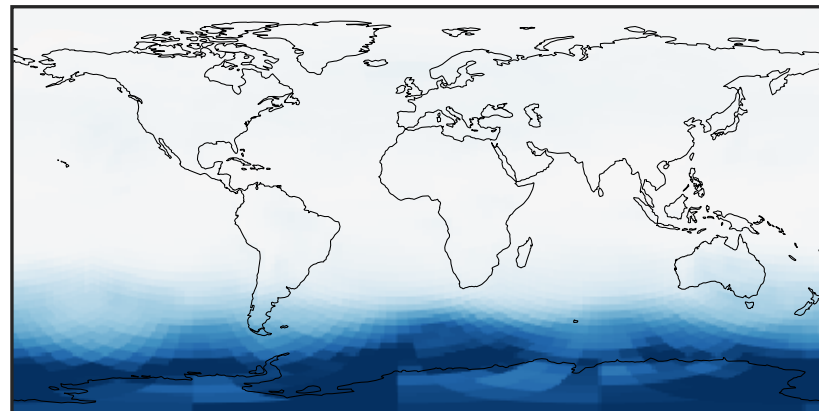
0.00015 0.00030 0.00045
 $\mu\text{g}/\text{m}^3$

Difference (1x1.25)
Dev - Ref, Dynamic Range



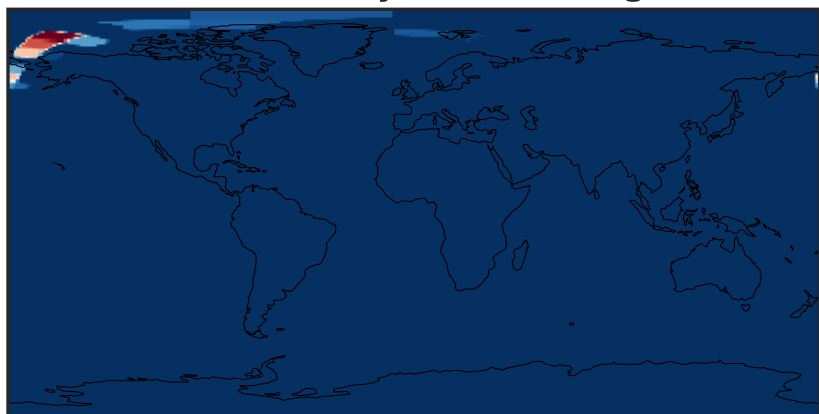
-2.5 0.0 2.5
 $\mu\text{g}/\text{m}^3$ $1\text{e}-5$

Difference (1x1.25)
Dev - Ref, Restricted Range [5%,95%]



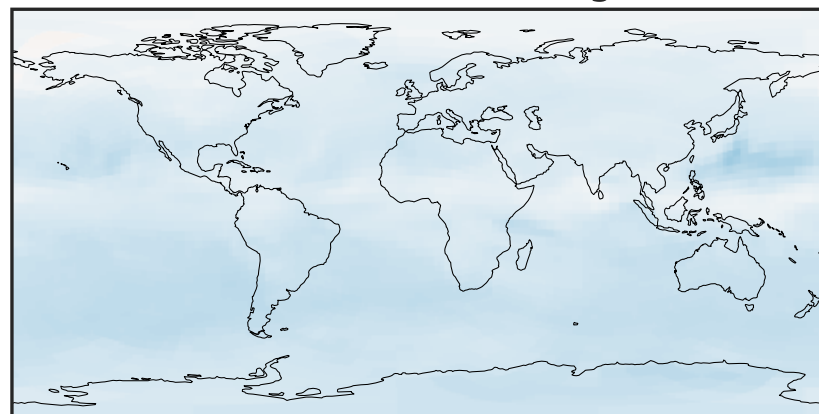
-2 0 2
 $\mu\text{g}/\text{m}^3$ $1\text{e}-5$

Ratio (1x1.25)
Dev/Ref, Dynamic Range



0.97970 0.98985 1.00000 1.01036 1.02072
unitless

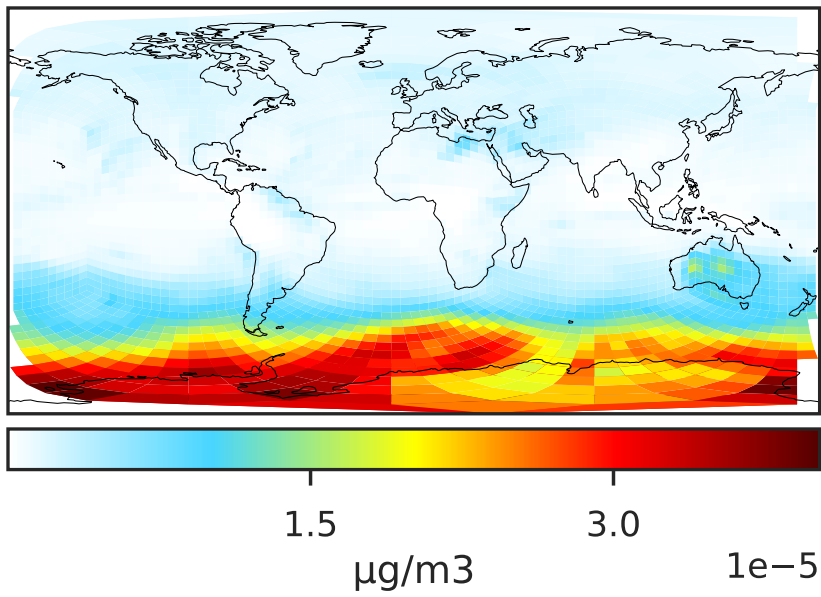
Ratio (1x1.25)
Dev/Ref, Fixed Range



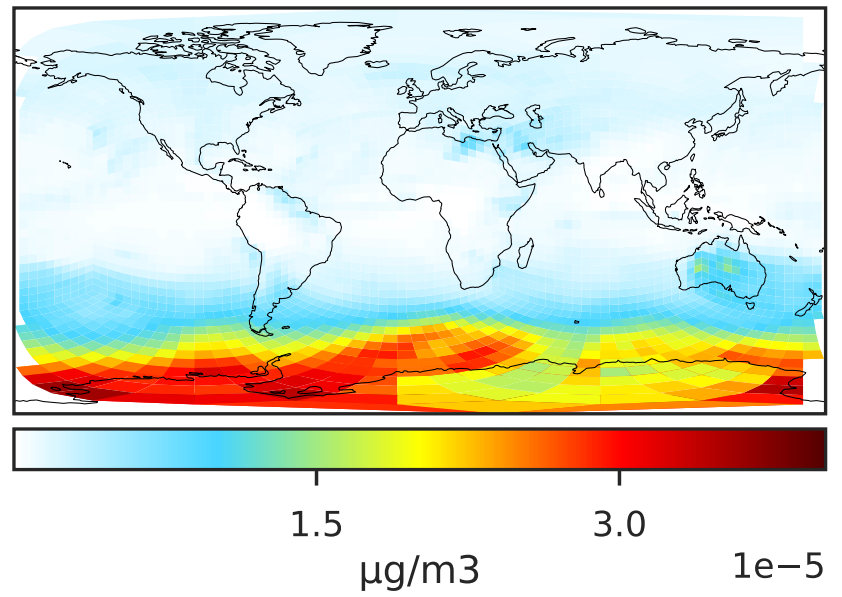
0.50 0.75 1.00 1.50 2.00
unitless

SpeciesConcVV_ISALC (Oct2019)

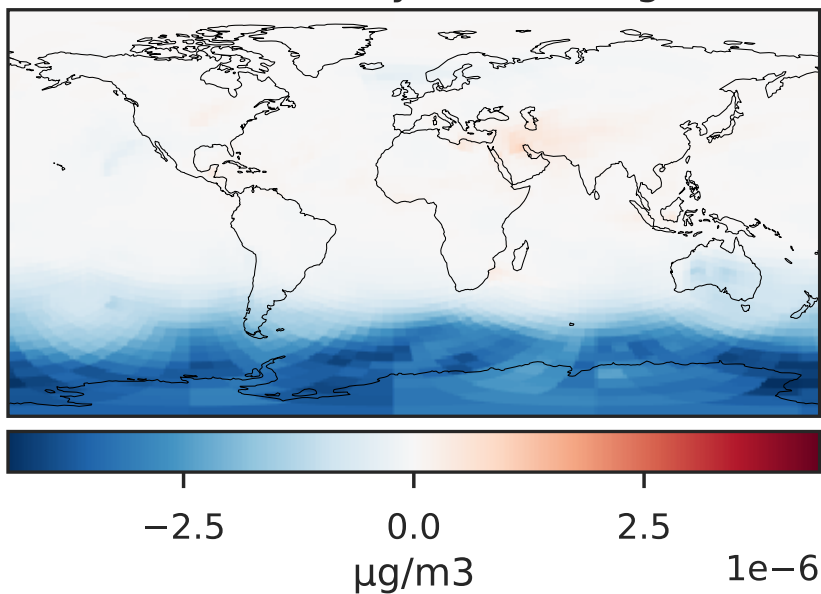
GCHP_14.0.0 (Ref)
c24



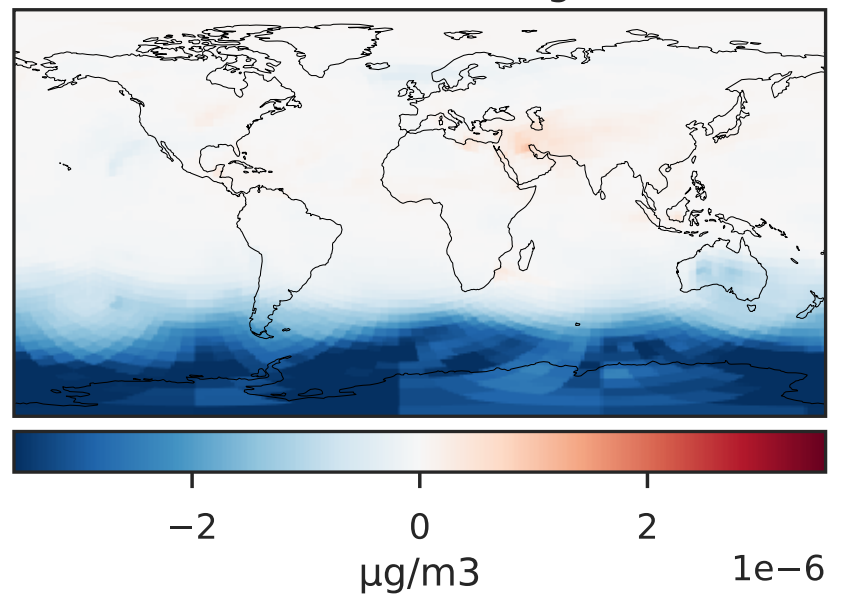
GCHP_14.2.0 (Dev)
c24



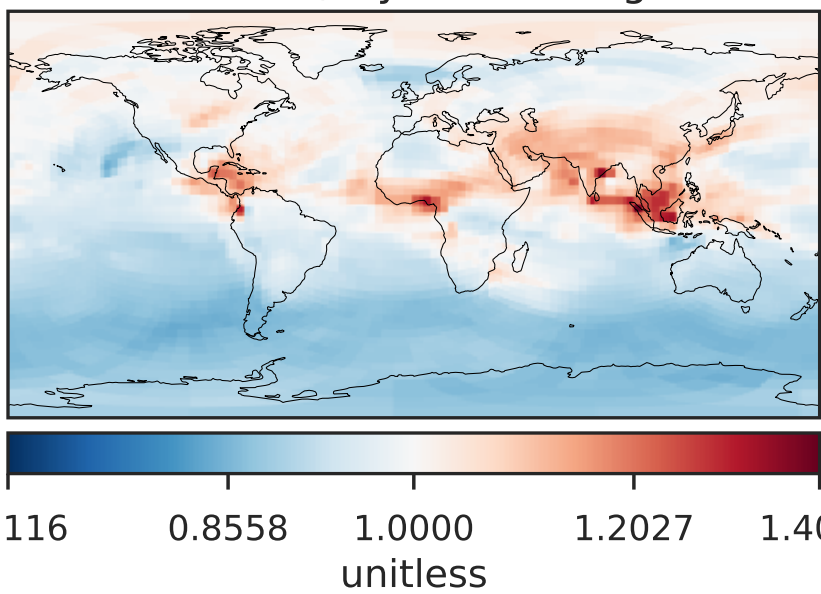
Difference (1x1.25)
Dev - Ref, Dynamic Range



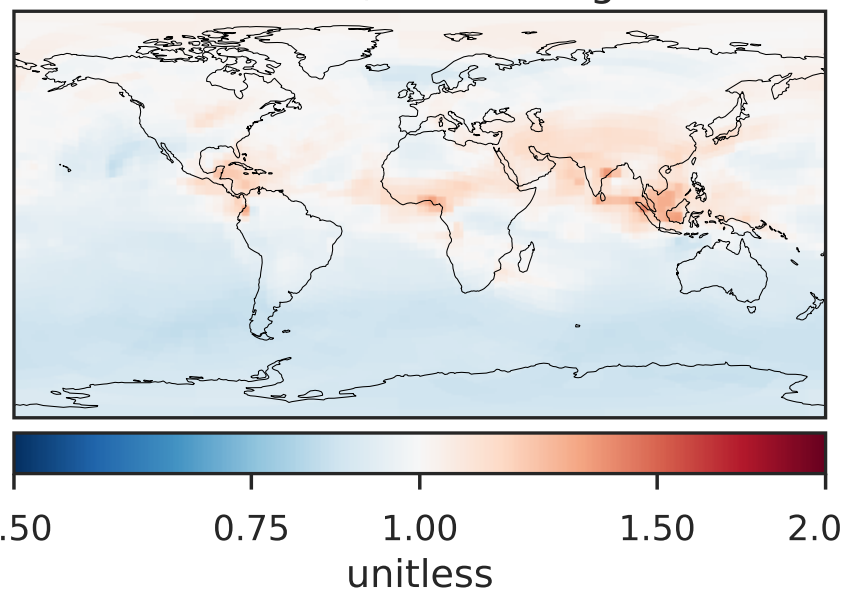
Difference (1x1.25)
Dev - Ref, Restricted Range [5%,95%]



Ratio (1x1.25)
Dev/Ref, Dynamic Range

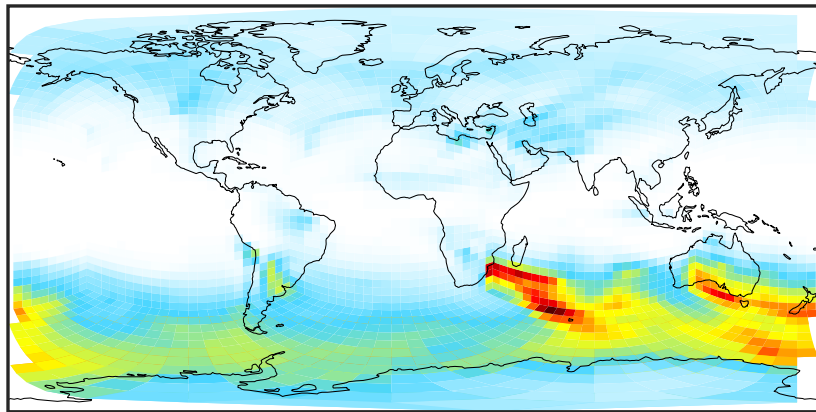


Ratio (1x1.25)
Dev/Ref, Fixed Range



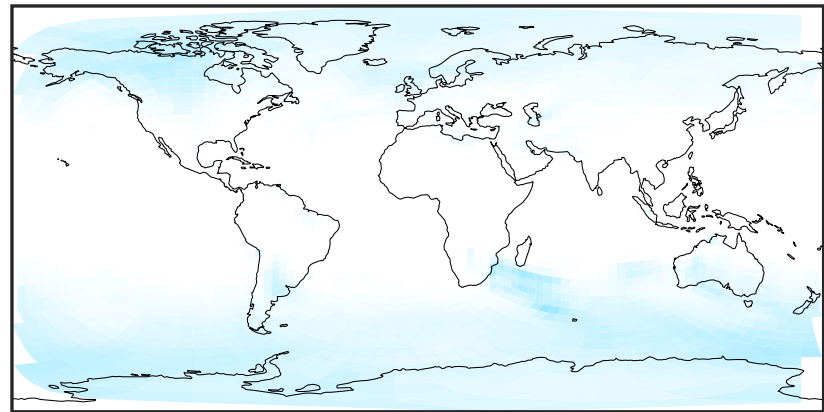
SpeciesConcVV_NITs (Oct2019)

GCHP_14.0.0 (Ref)
c24



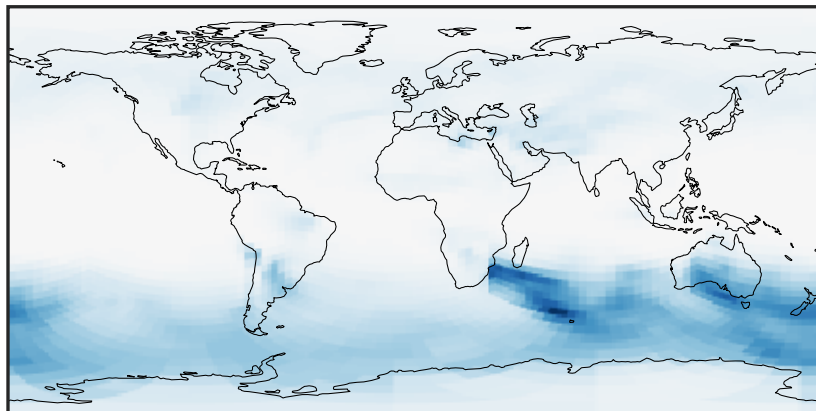
0.0015 0.0030 0.0045
 $\mu\text{g}/\text{m}^3$

GCHP_14.2.0 (Dev)
c24



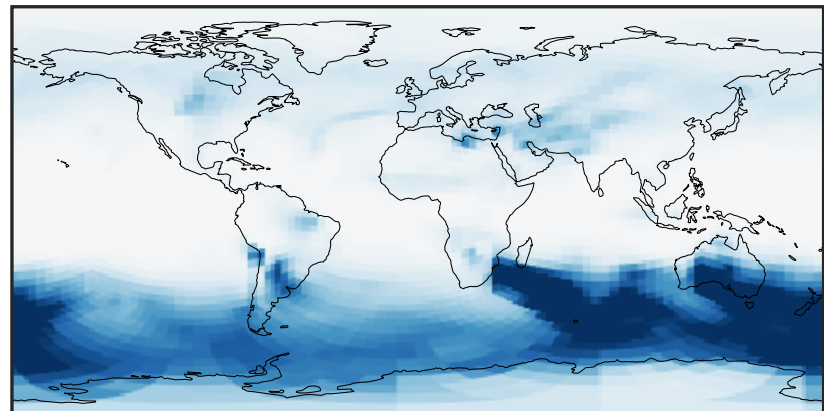
0.0015 0.0030 0.0045
 $\mu\text{g}/\text{m}^3$

Difference (1x1.25)
Dev - Ref, Dynamic Range



-0.0025 0.0000 0.0025
 $\mu\text{g}/\text{m}^3$

Difference (1x1.25)
Dev - Ref, Restricted Range [5%,95%]



-0.0015 0.0000 0.0015
 $\mu\text{g}/\text{m}^3$

Ratio (1x1.25)
Dev/Ref, Dynamic Range



0.7593 0.8796 1.0000 1.1585 1.3171
unitless

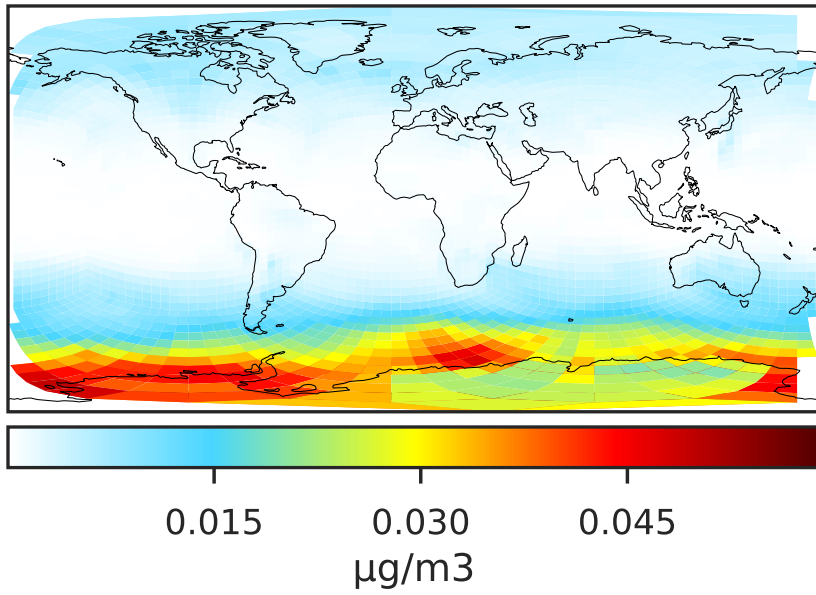
Ratio (1x1.25)
Dev/Ref, Fixed Range



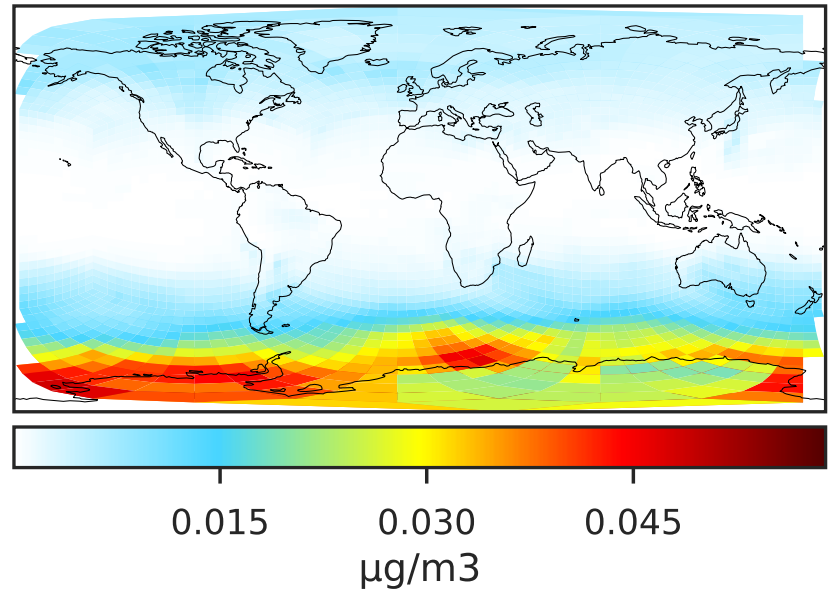
0.50 0.75 1.00 1.50 2.00
unitless

SpeciesConcVV_SALA (Oct2019)

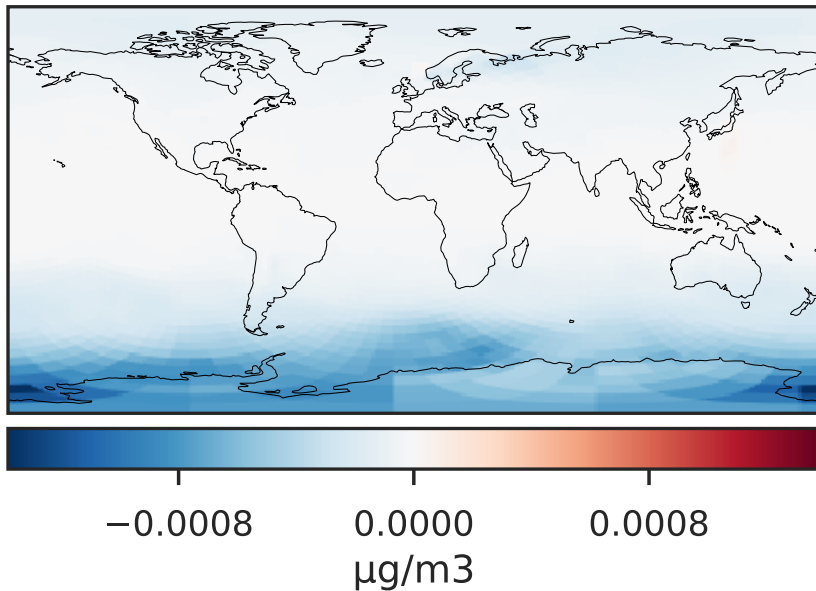
GCHP_14.0.0 (Ref)
c24



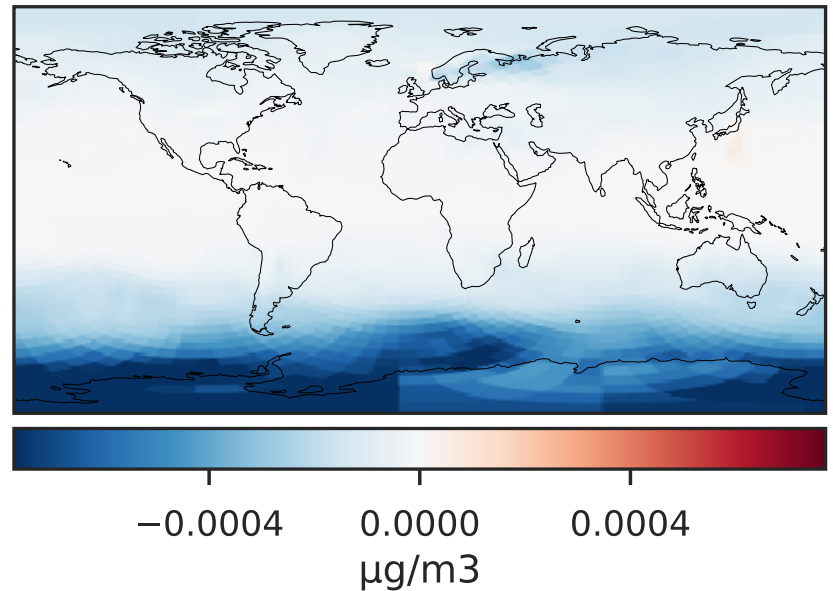
GCHP_14.2.0 (Dev)
c24



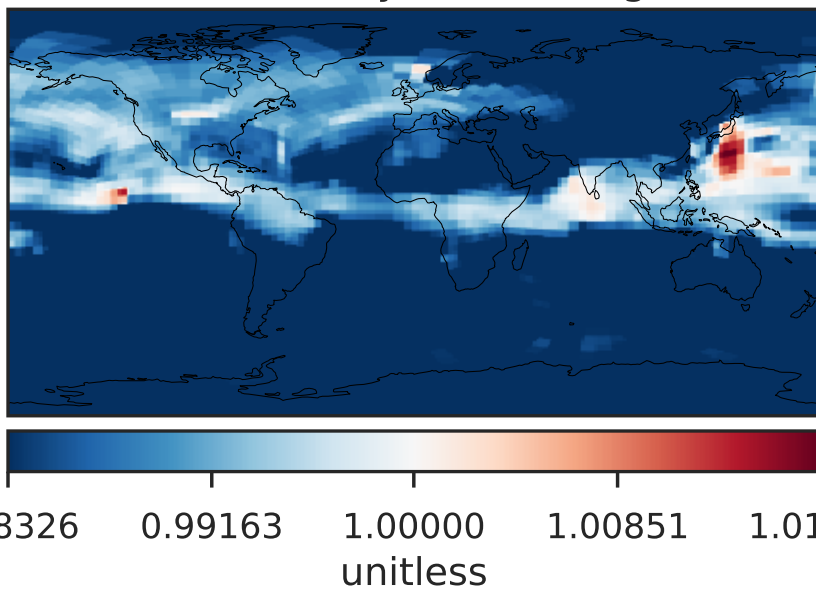
Difference (1x1.25)
Dev - Ref, Dynamic Range



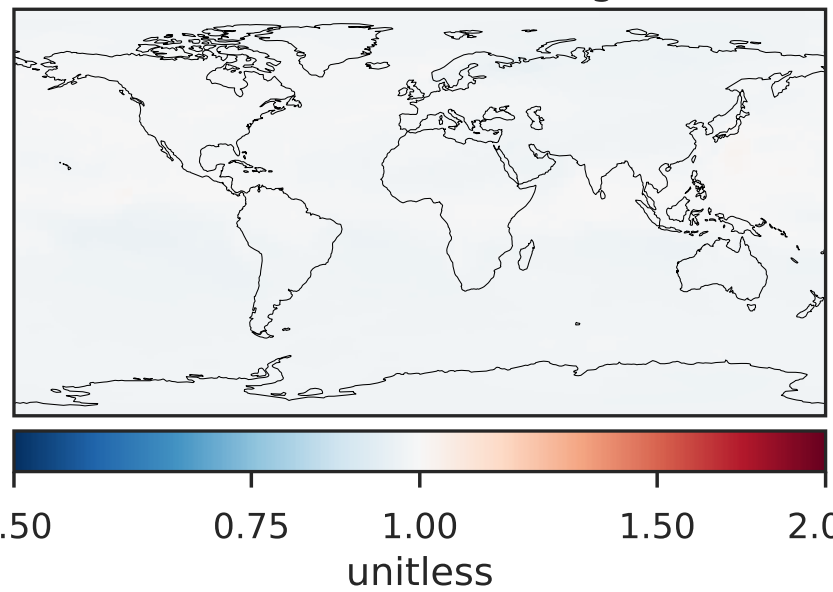
Difference (1x1.25)
Dev - Ref, Restricted Range [5%,95%]



Ratio (1x1.25)
Dev/Ref, Dynamic Range

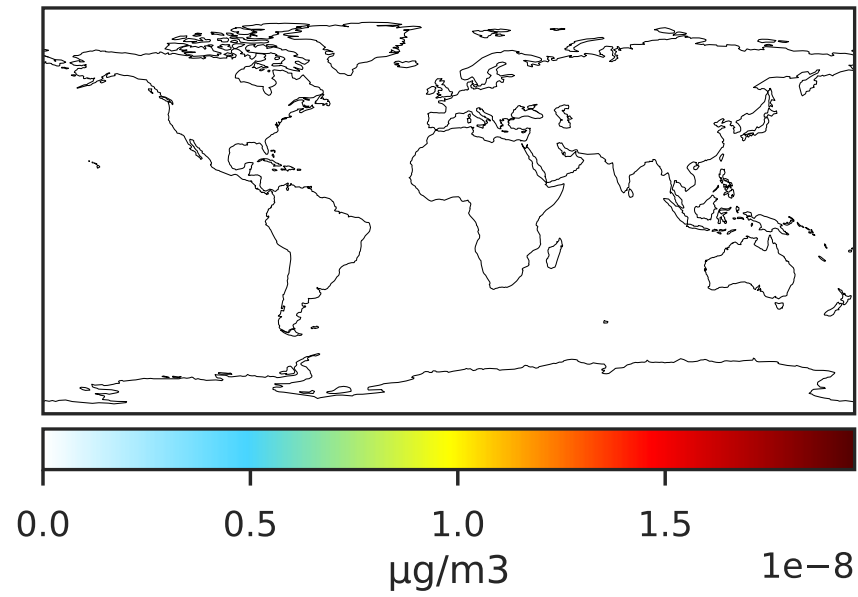


Ratio (1x1.25)
Dev/Ref, Fixed Range

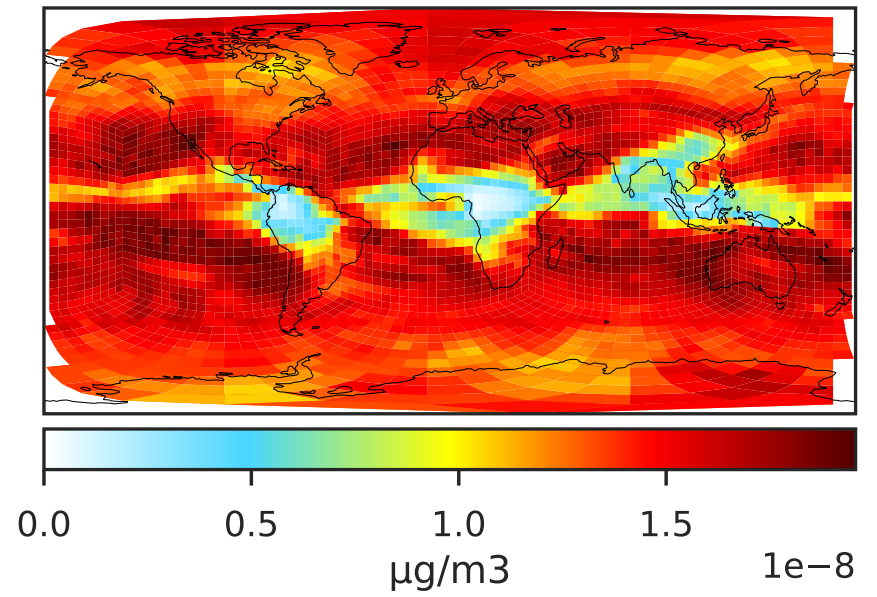


SpeciesConcVV_SALAAL (Oct2019)

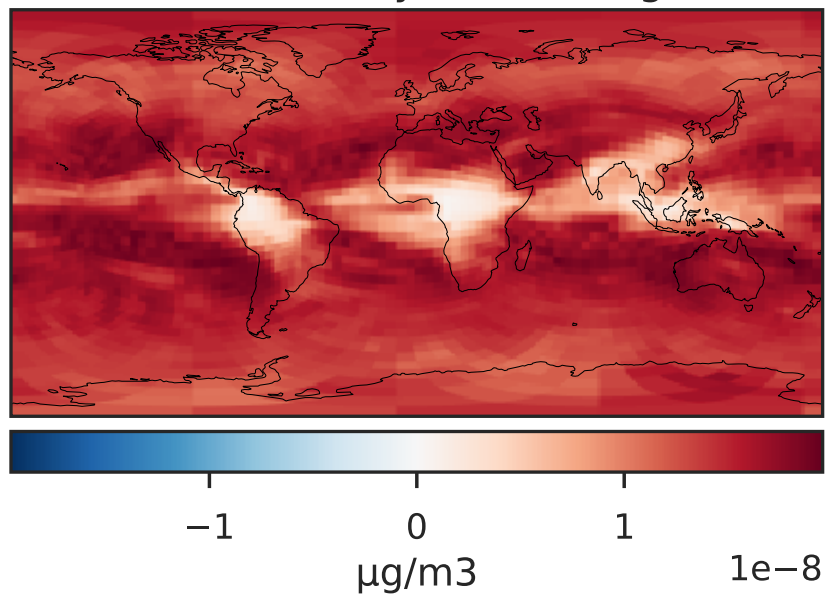
GCHP_14.0.0 (Ref)
c24



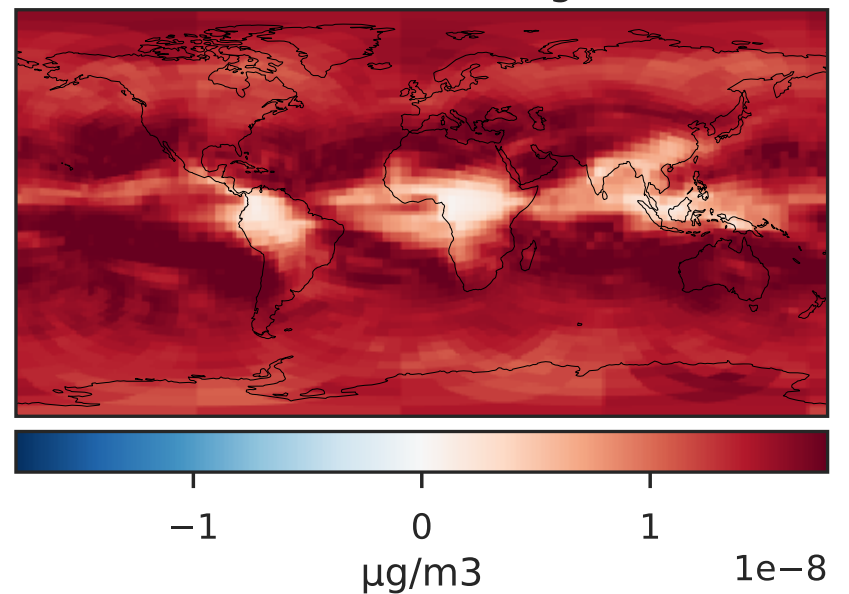
GCHP_14.2.0 (Dev)
c24



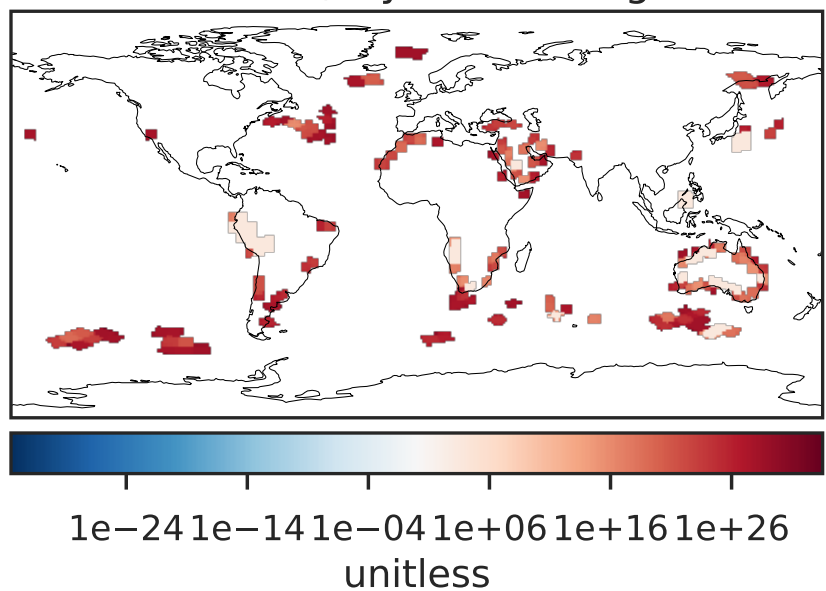
Difference (1x1.25)
Dev - Ref, Dynamic Range



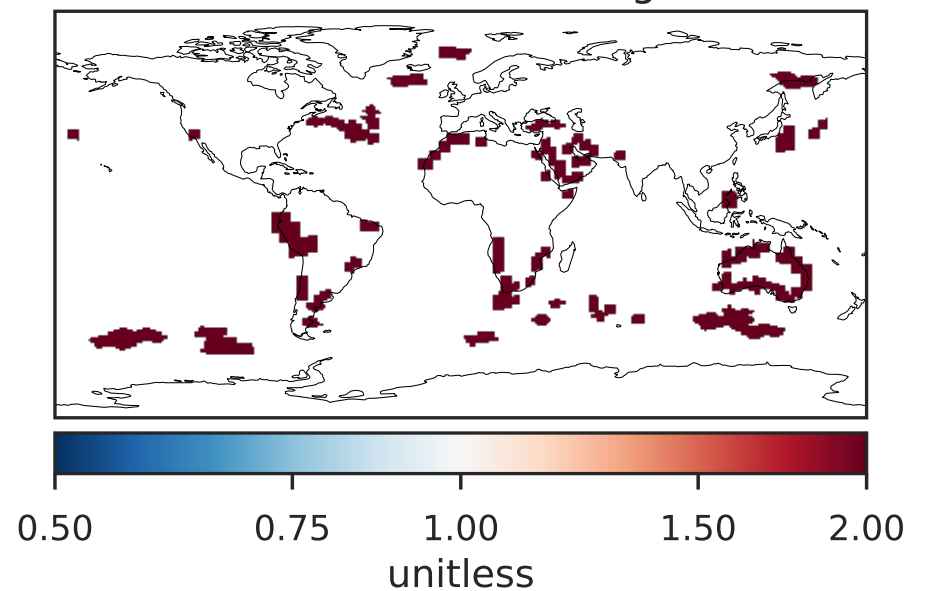
Difference (1x1.25)
Dev - Ref, Restricted Range [5%,95%]



Ratio (1x1.25)
Dev/Ref, Dynamic Range

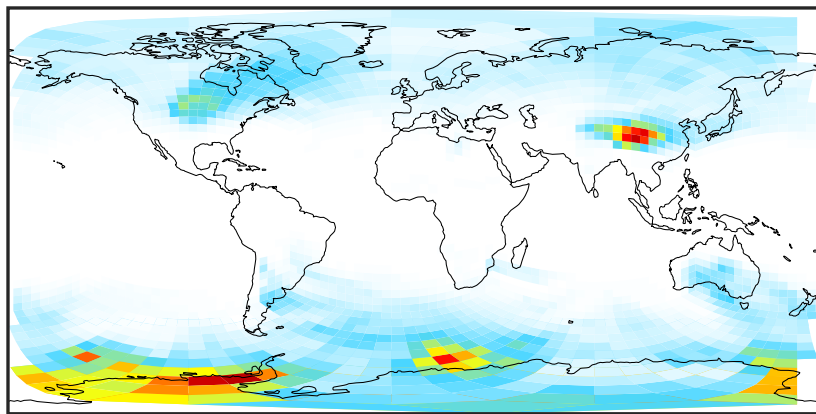


Ratio (1x1.25)
Dev/Ref, Fixed Range



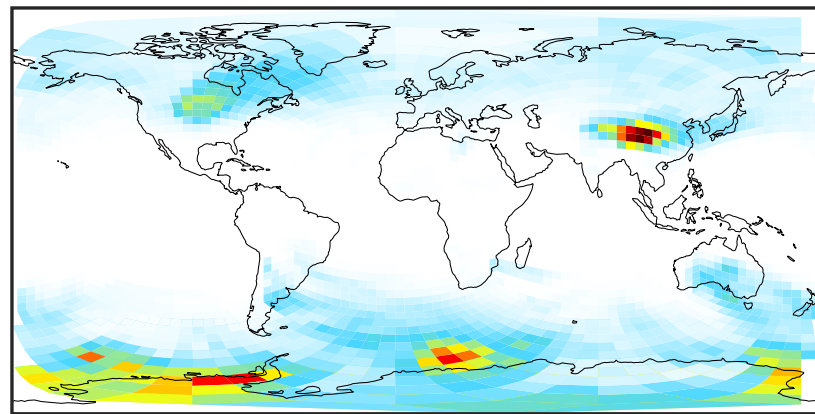
SpeciesConcVV_SALACL (Oct2019)

GCHP_14.0.0 (Ref)
c24



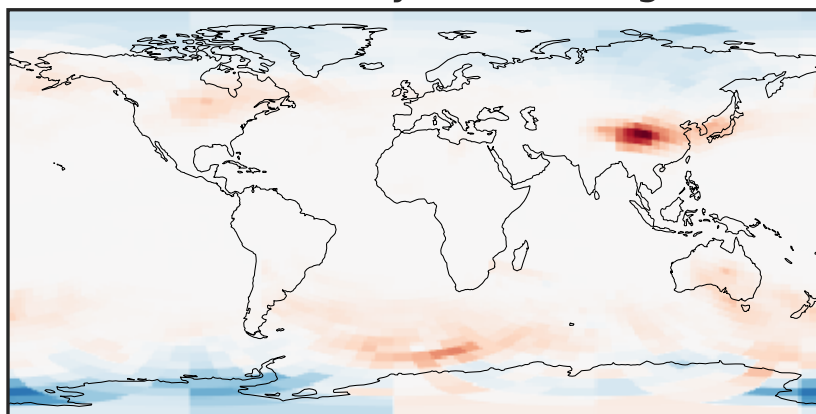
0.000 0.002 0.004 0.006
 $\mu\text{g}/\text{m}^3$

GCHP_14.2.0 (Dev)
c24



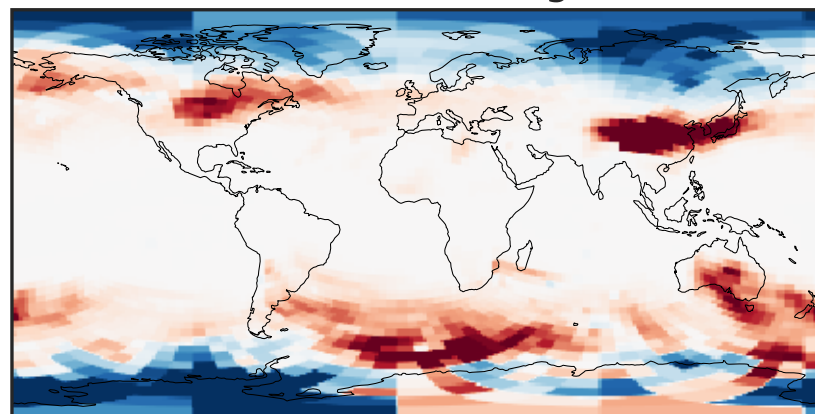
0.000 0.002 0.004 0.006
 $\mu\text{g}/\text{m}^3$

Difference (1x1.25)
Dev - Ref, Dynamic Range



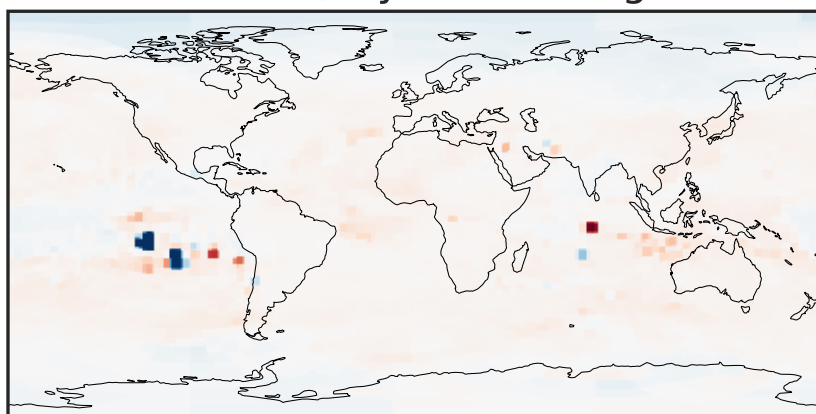
-0.001 0.000 0.001
 $\mu\text{g}/\text{m}^3$

Difference (1x1.25)
Dev - Ref, Restricted Range [5%,95%]



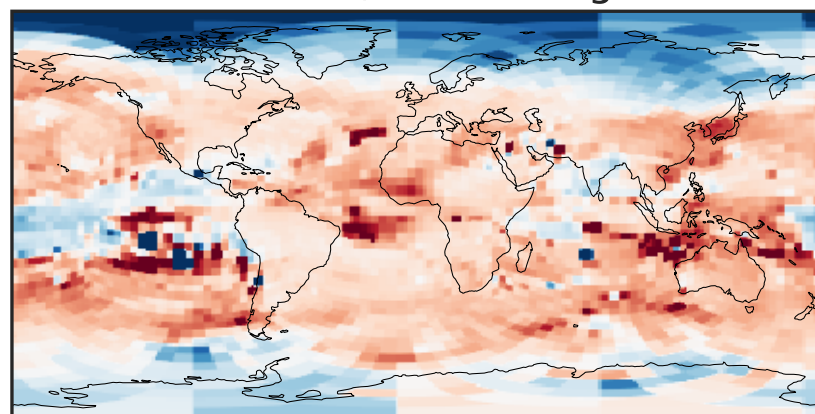
-0.0002 0.0000 0.0002
 $\mu\text{g}/\text{m}^3$

Ratio (1x1.25)
Dev/Ref, Dynamic Range



1e-02 1e-01 1 10 100
unitless

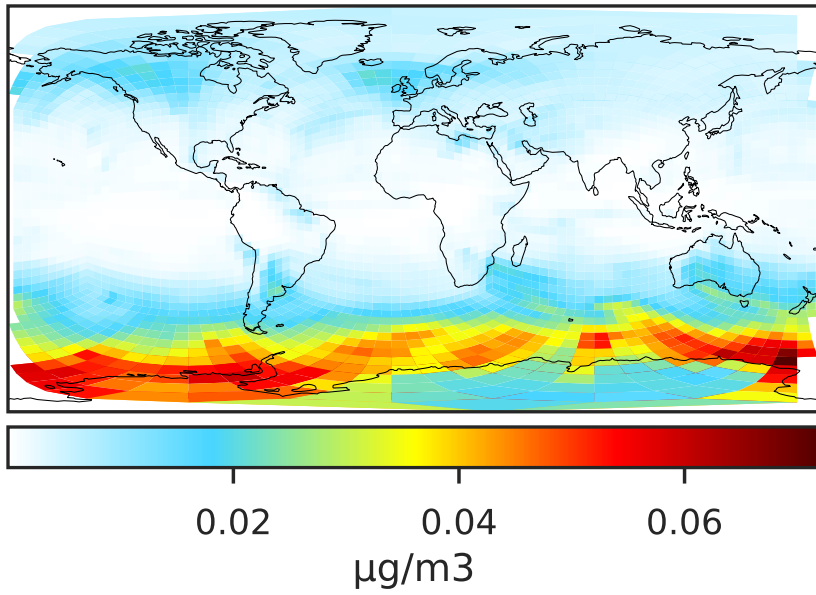
Ratio (1x1.25)
Dev/Ref, Fixed Range



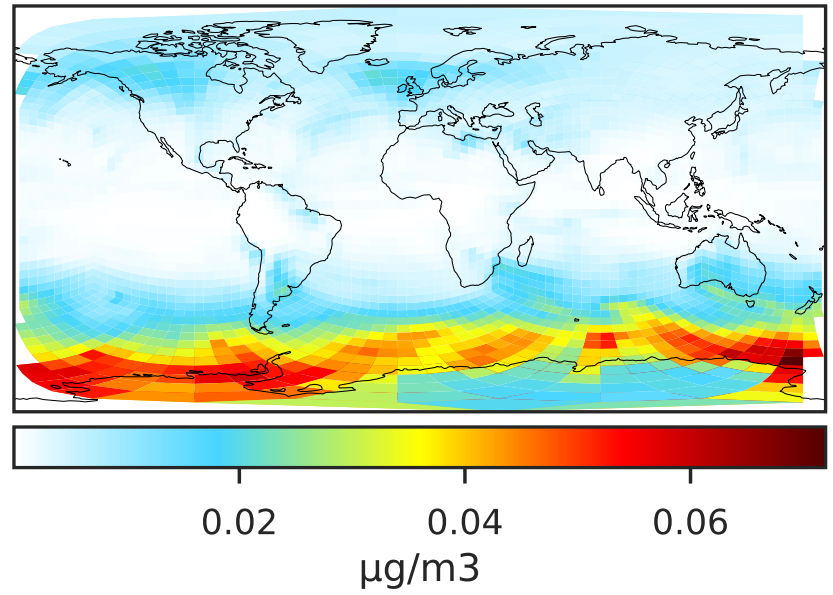
0.50 0.75 1.00 1.50 2.00
unitless

SpeciesConcVV_SALC (Oct2019)

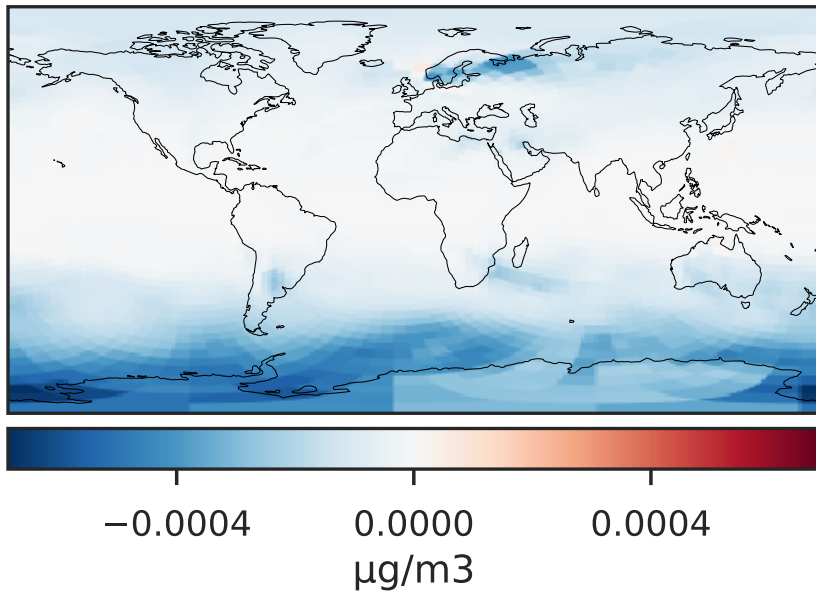
GCHP_14.0.0 (Ref)
c24



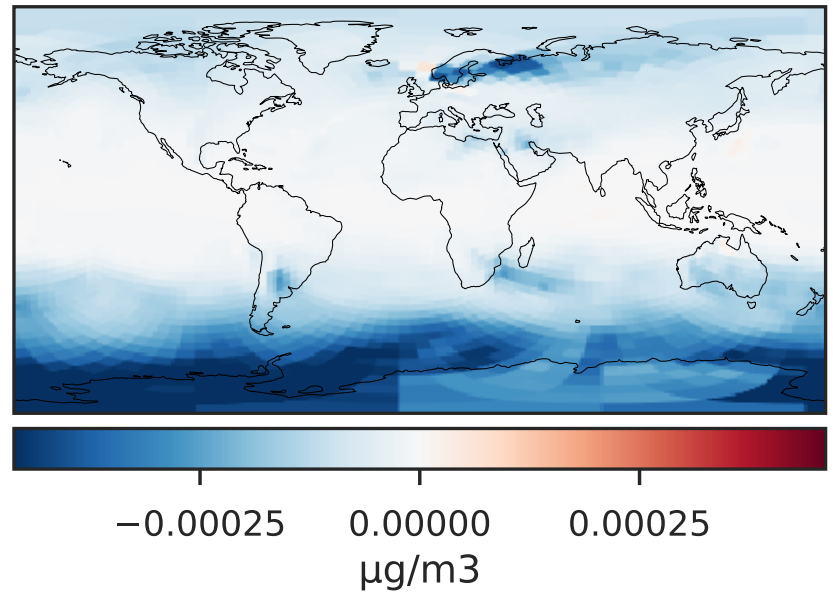
GCHP_14.2.0 (Dev)
c24



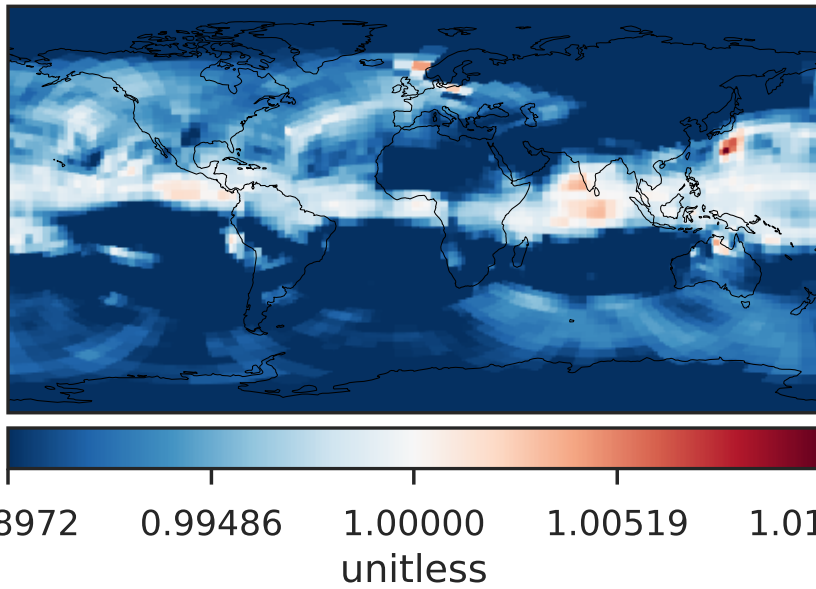
Difference (1x1.25)
Dev - Ref, Dynamic Range



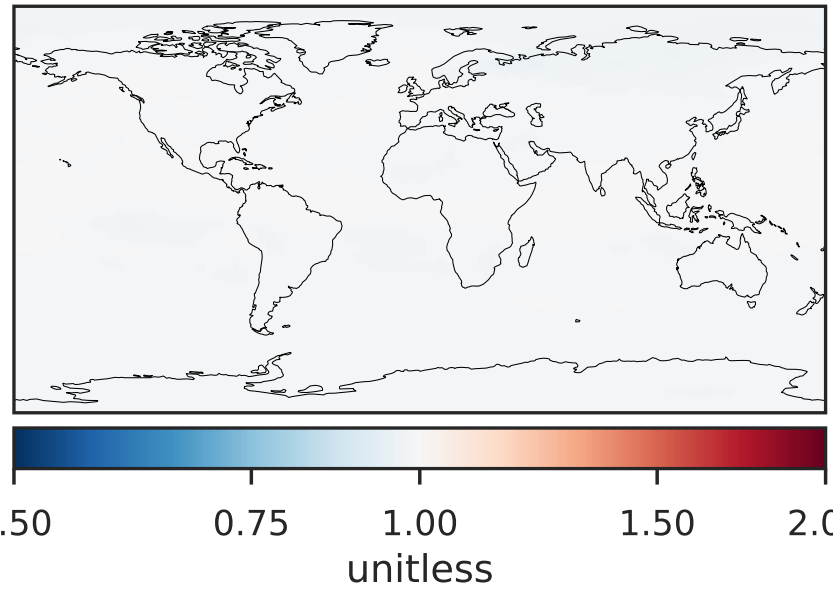
Difference (1x1.25)
Dev - Ref, Restricted Range [5%,95%]



Ratio (1x1.25)
Dev/Ref, Dynamic Range

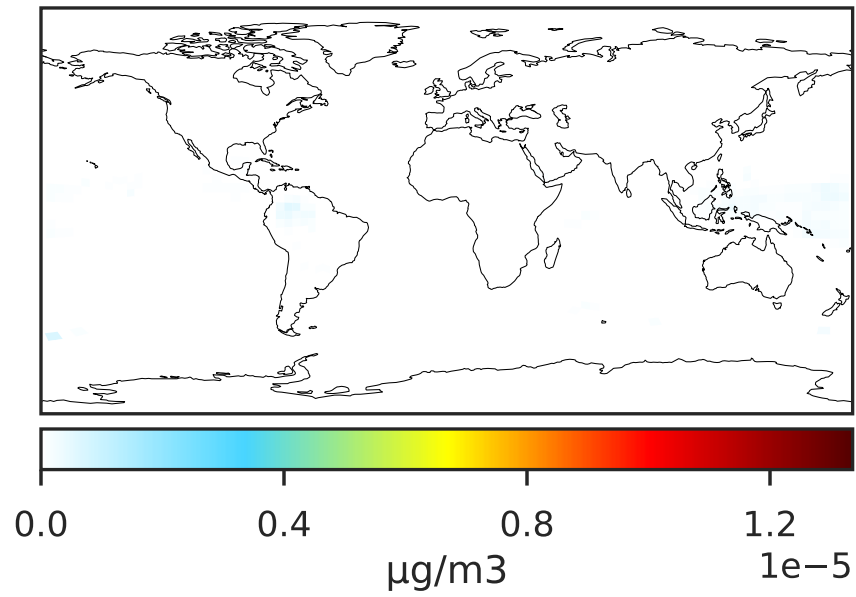


Ratio (1x1.25)
Dev/Ref, Fixed Range

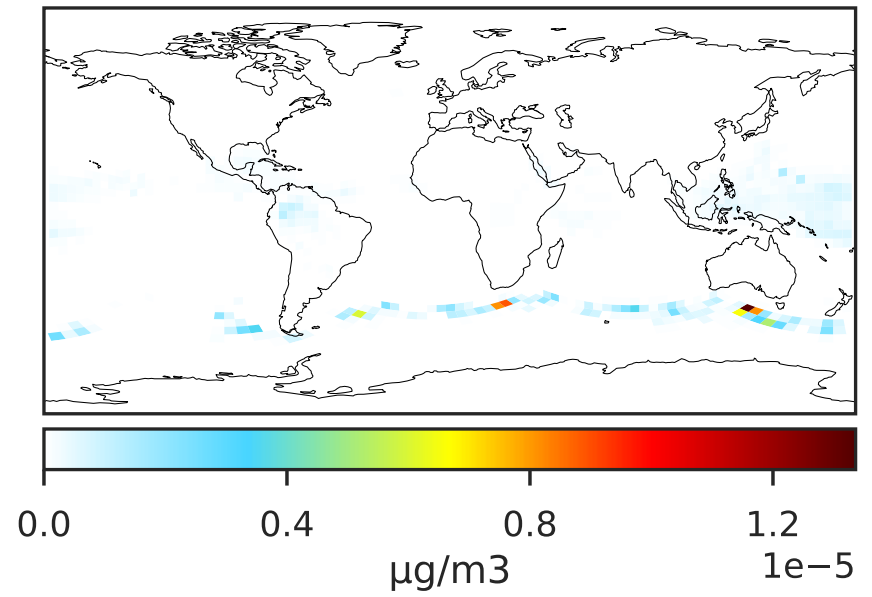


SpeciesConcVV_SALCAL (Oct2019)

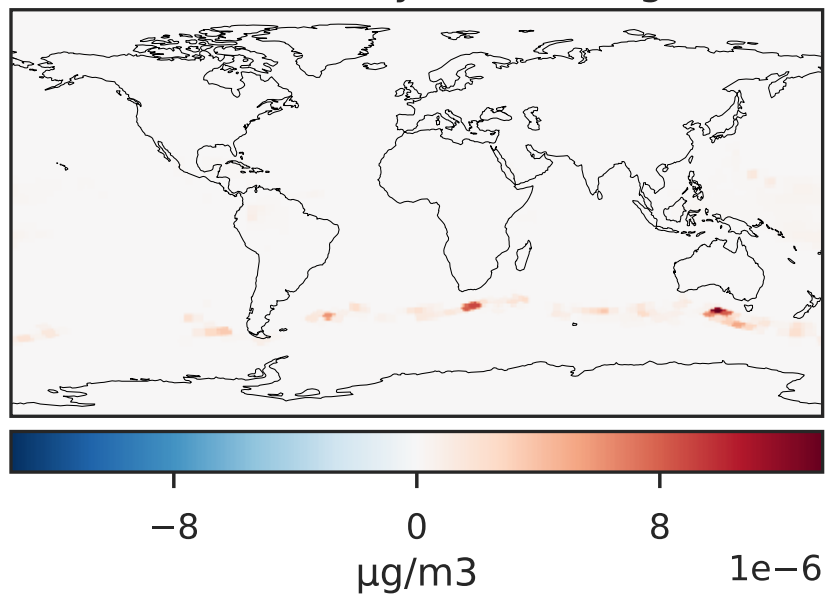
GCHP_14.0.0 (Ref)
c24



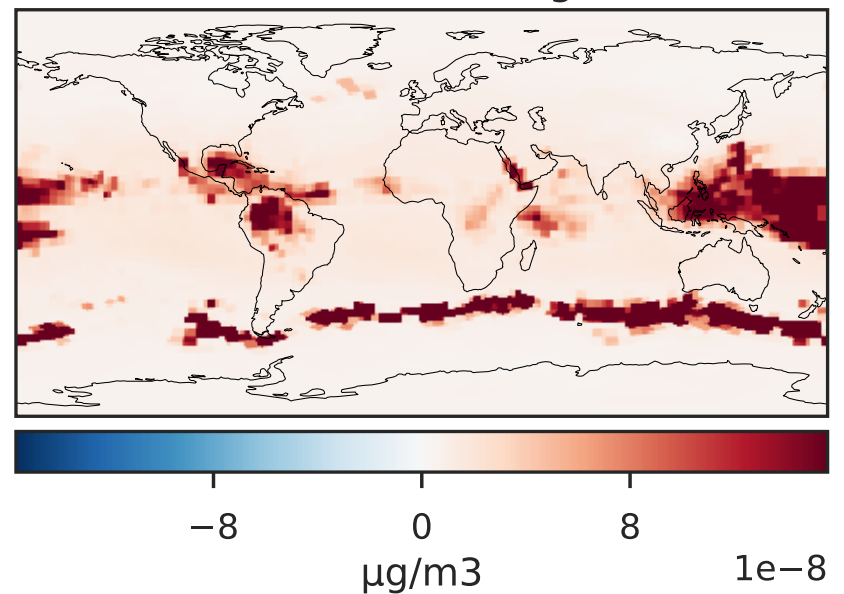
GCHP_14.2.0 (Dev)
c24



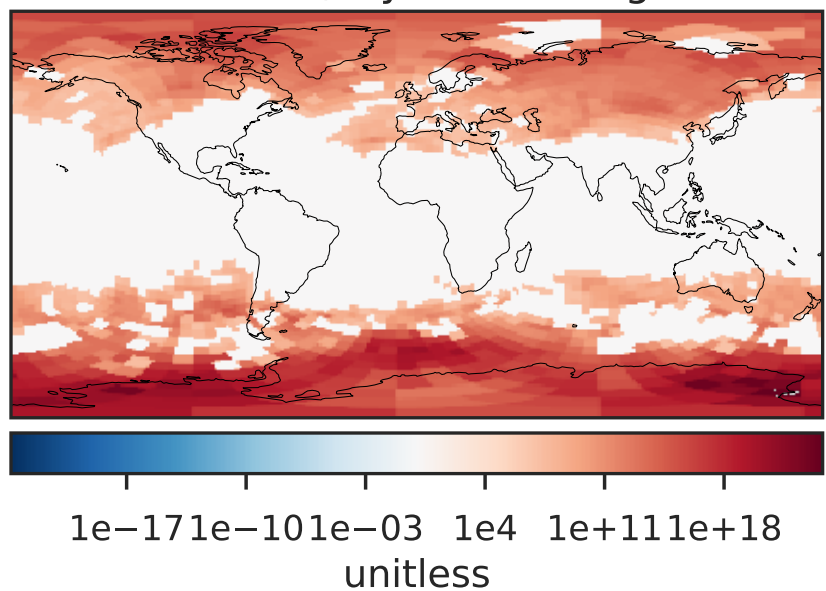
Difference (1x1.25)
Dev - Ref, Dynamic Range



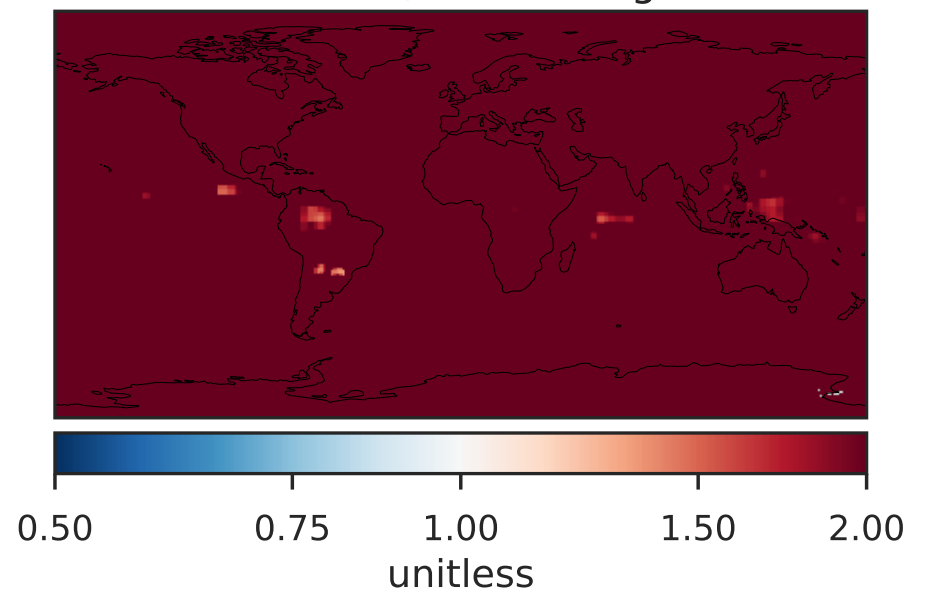
Difference (1x1.25)
Dev - Ref, Restricted Range [5%,95%]



Ratio (1x1.25)
Dev/Ref, Dynamic Range

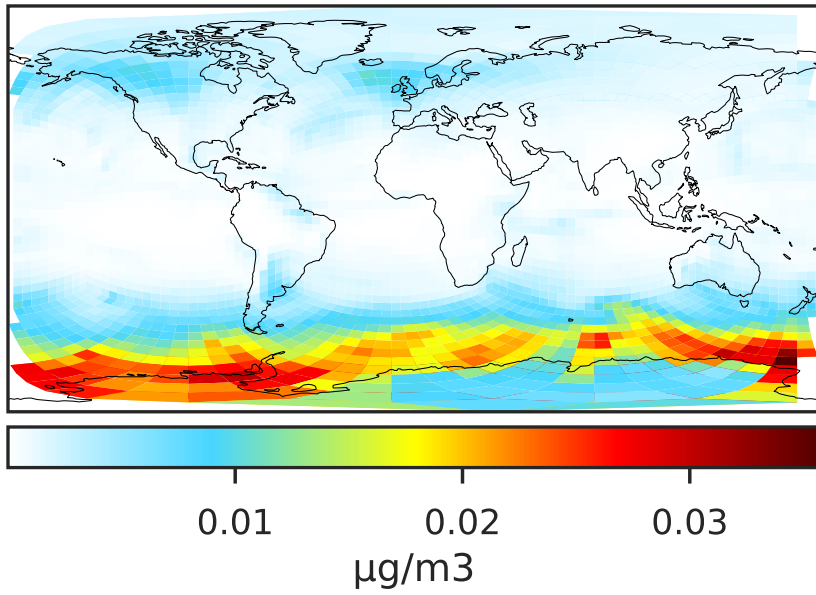


Ratio (1x1.25)
Dev/Ref, Fixed Range

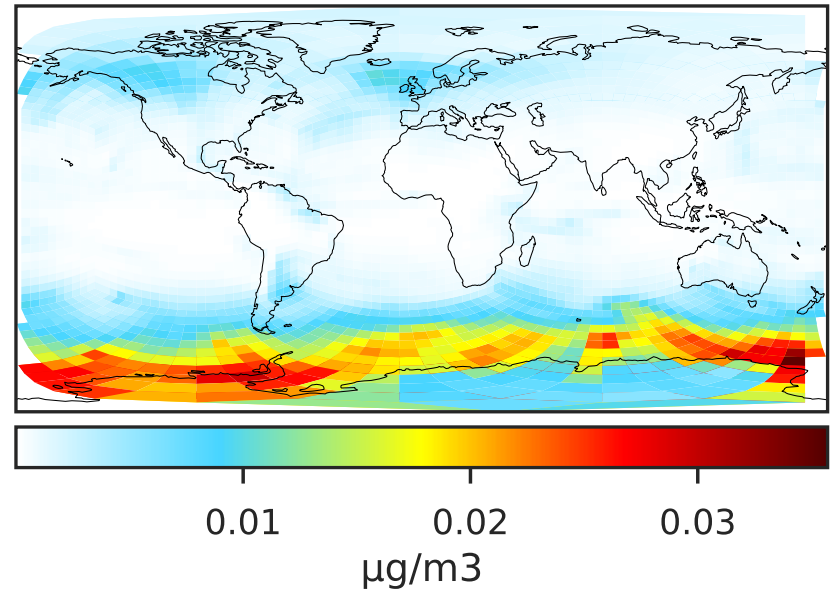


SpeciesConcVV_SALCCL (Oct2019)

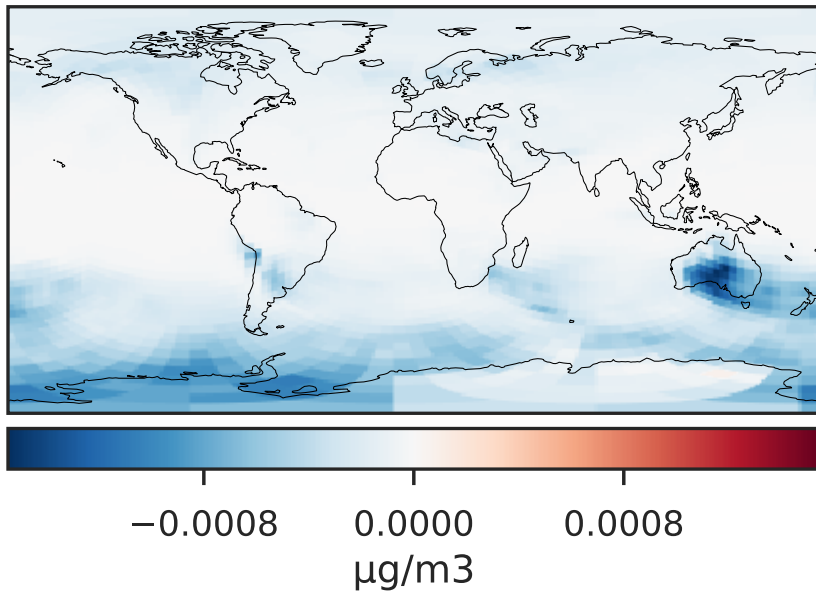
GCHP_14.0.0 (Ref)
c24



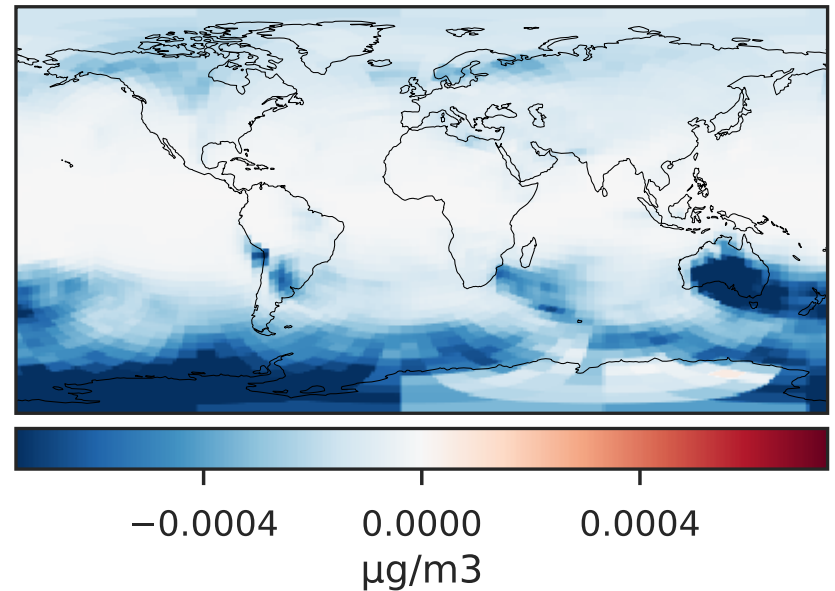
GCHP_14.2.0 (Dev)
c24



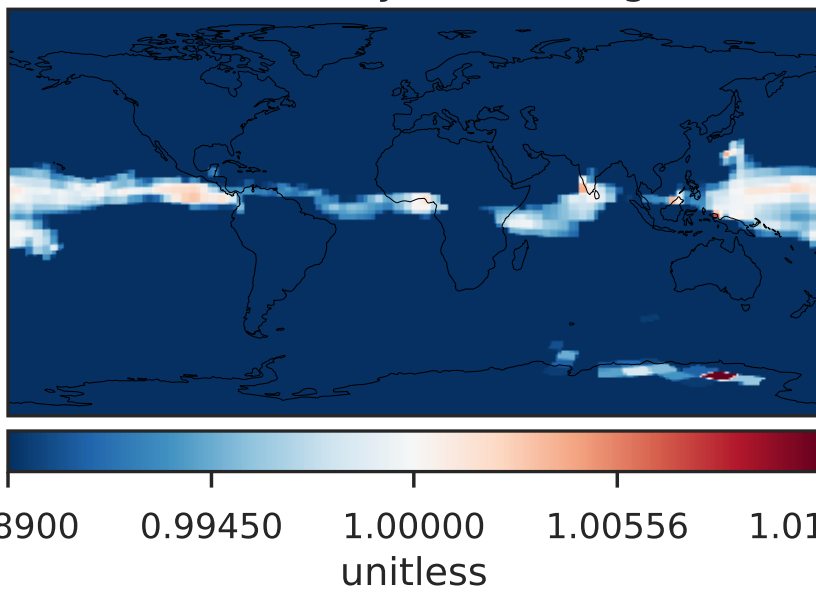
Difference (1x1.25)
Dev - Ref, Dynamic Range



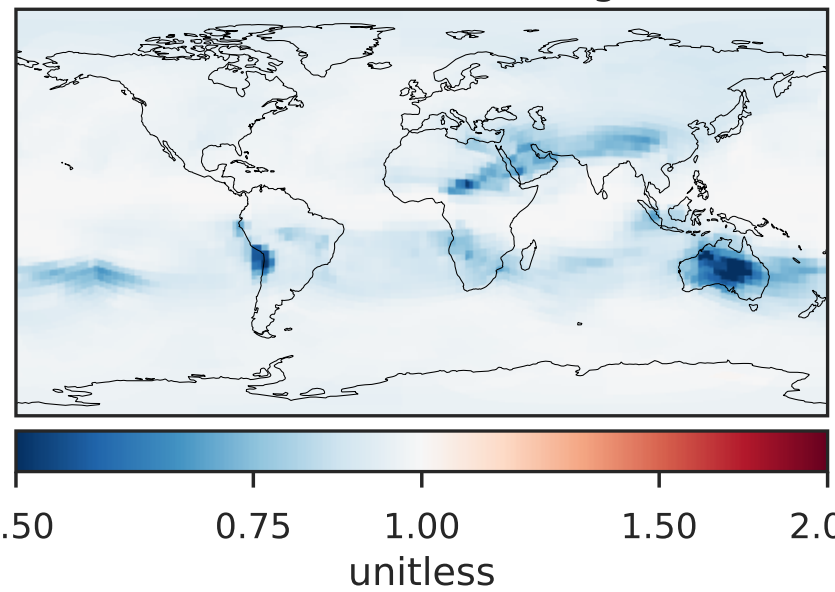
Difference (1x1.25)
Dev - Ref, Restricted Range [5%,95%]



Ratio (1x1.25)
Dev/Ref, Dynamic Range

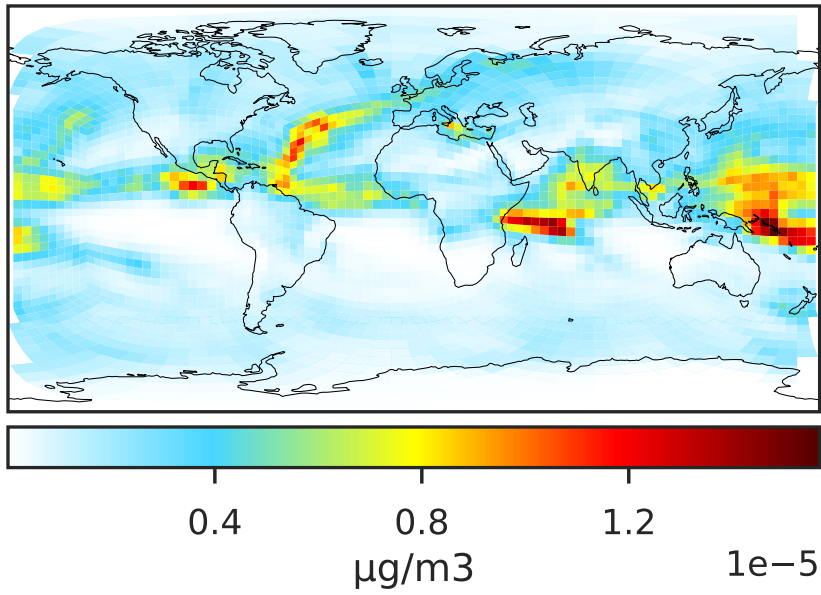


Ratio (1x1.25)
Dev/Ref, Fixed Range

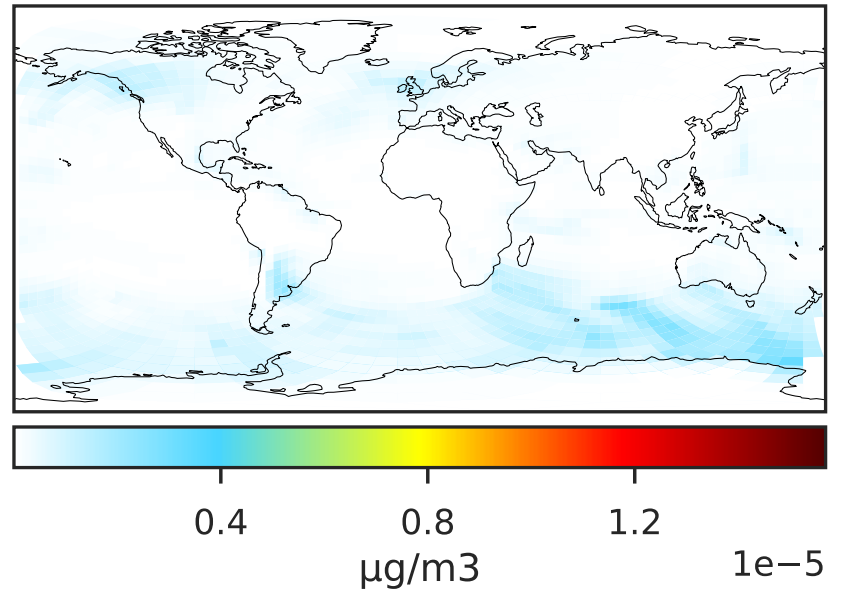


SpeciesConcVV_SO4s (Oct2019)

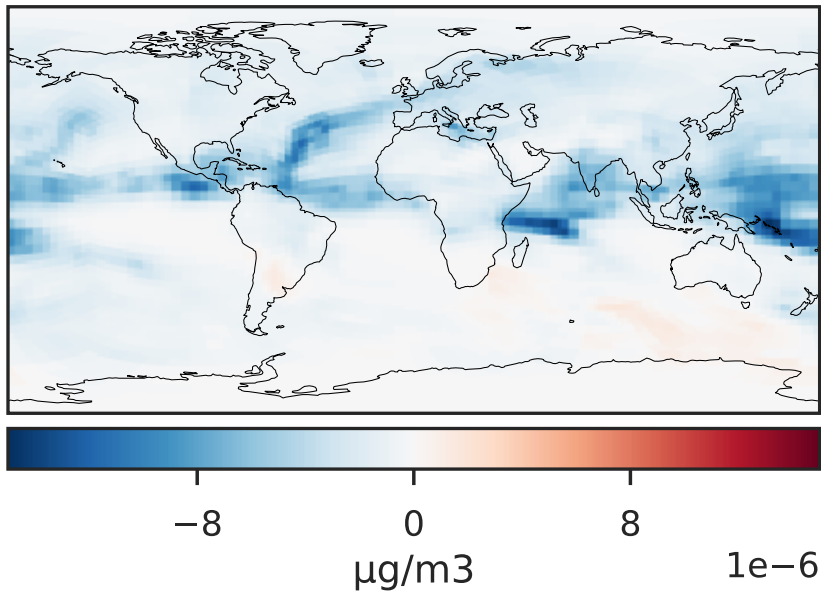
GCHP_14.0.0 (Ref)
c24



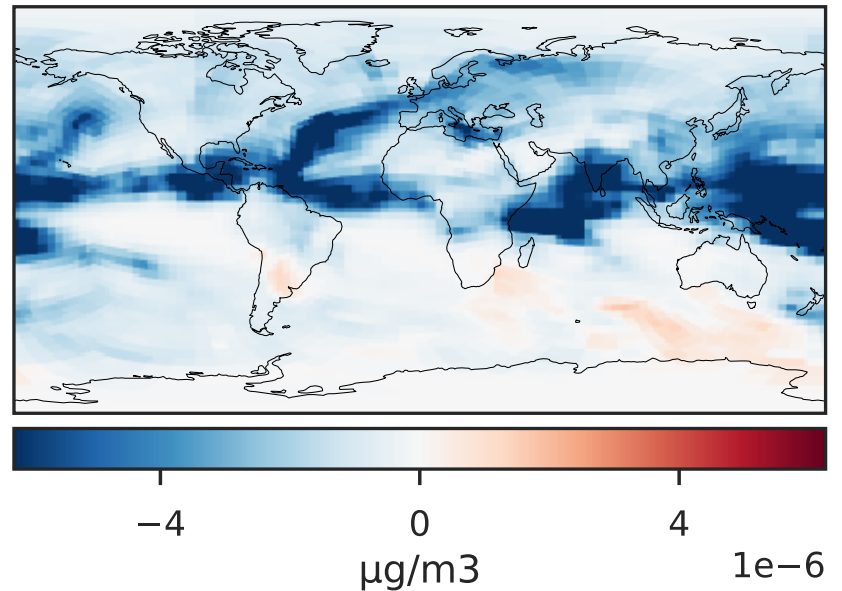
GCHP_14.2.0 (Dev)
c24



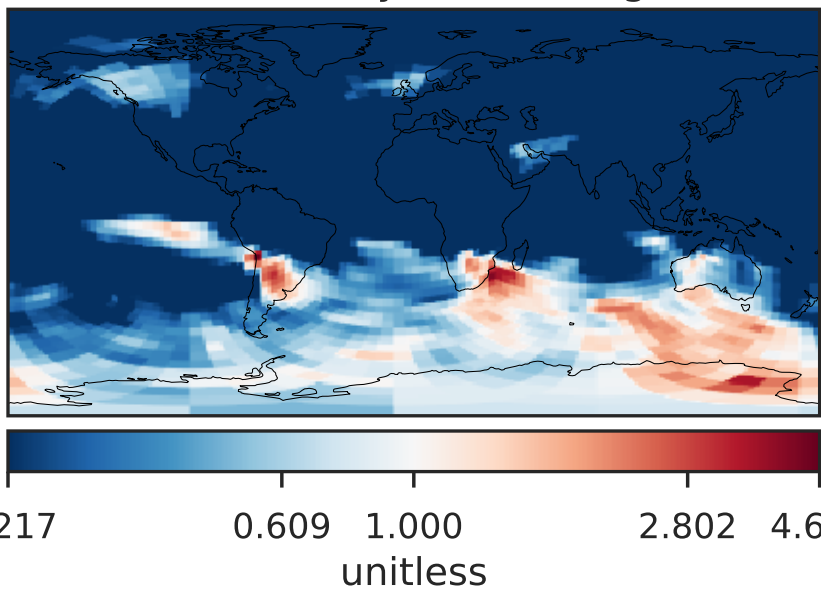
Difference (1x1.25)
Dev - Ref, Dynamic Range



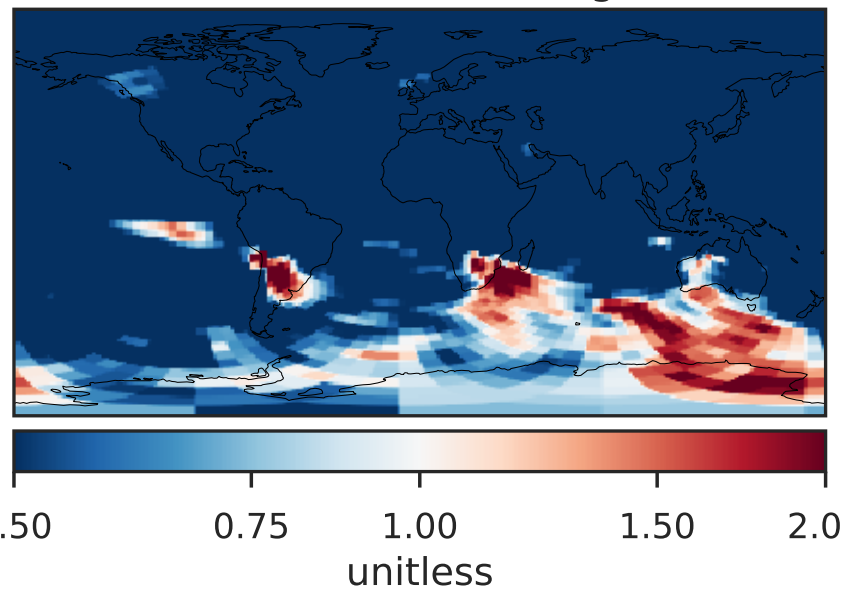
Difference (1x1.25)
Dev - Ref, Restricted Range [5%,95%]



Ratio (1x1.25)
Dev/Ref, Dynamic Range

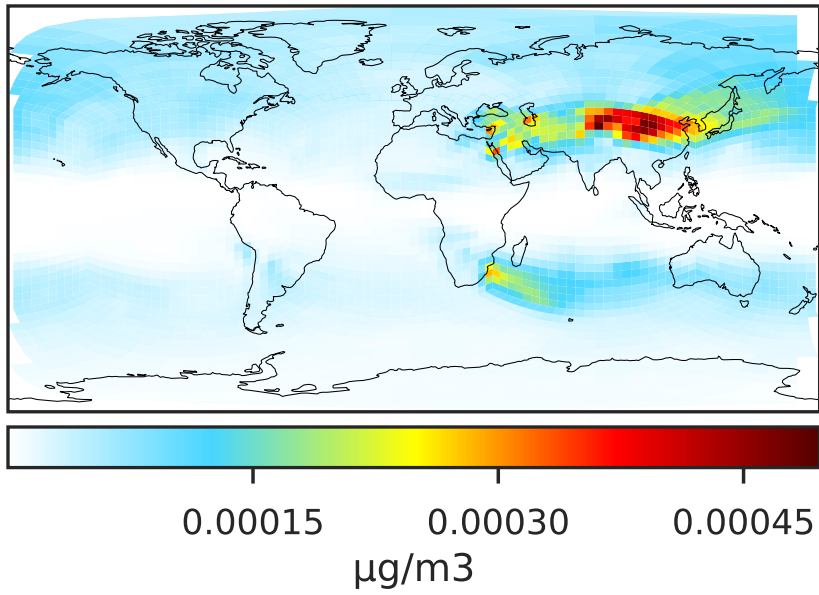


Ratio (1x1.25)
Dev/Ref, Fixed Range

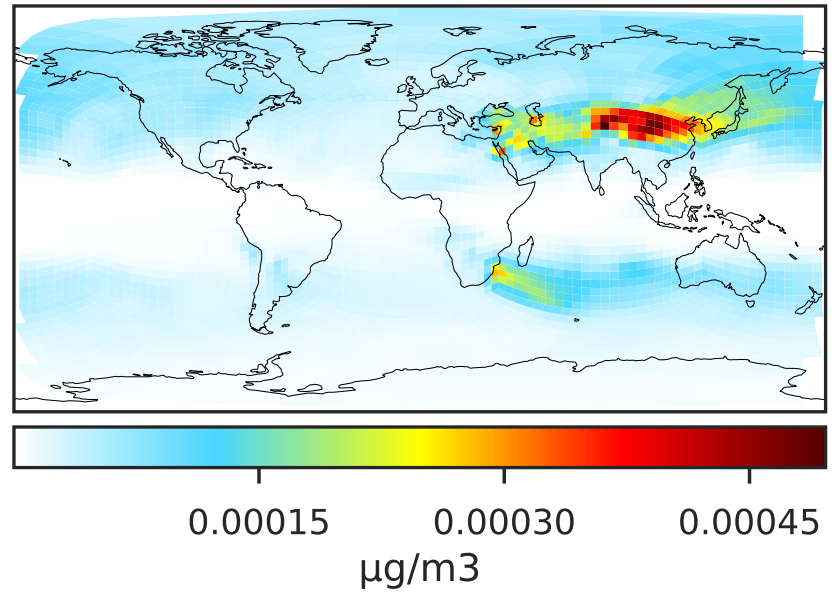


SpeciesConcVV_pFe (Oct2019)

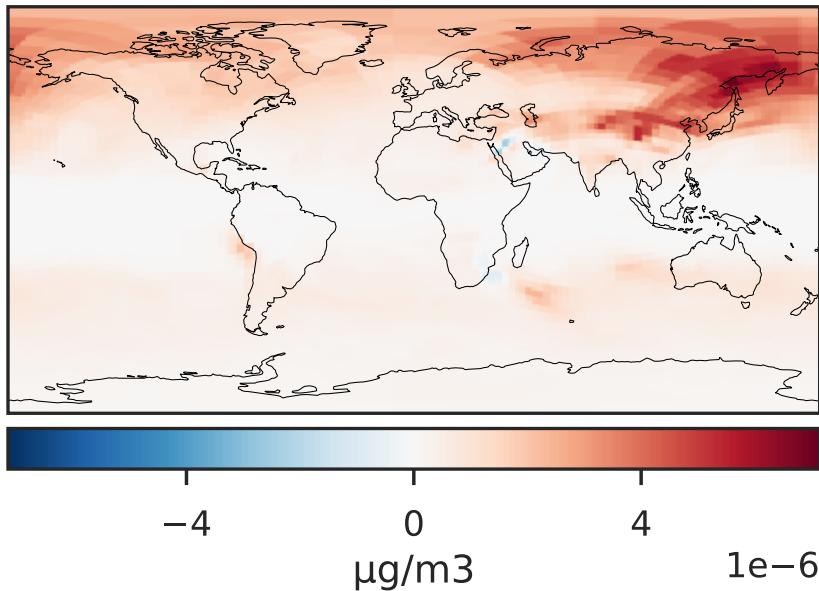
GCHP_14.0.0 (Ref)
c24



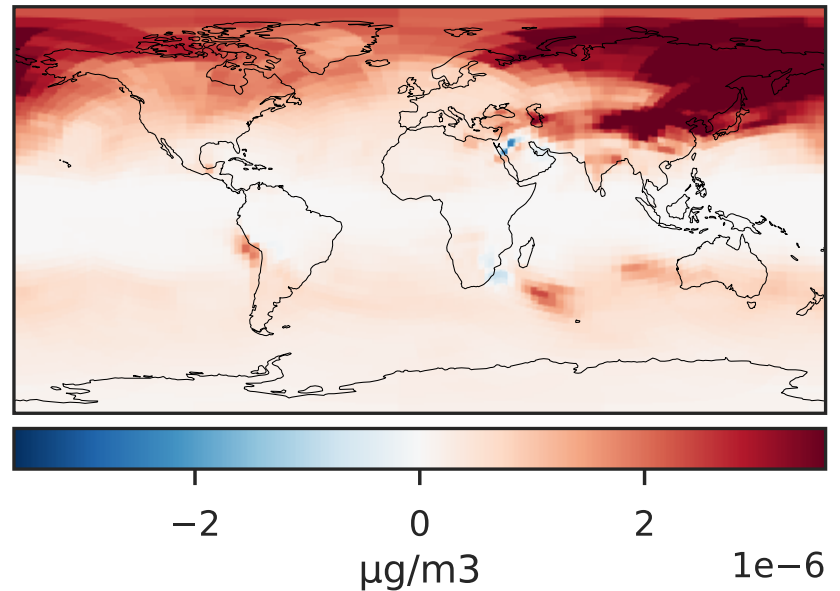
GCHP_14.2.0 (Dev)
c24



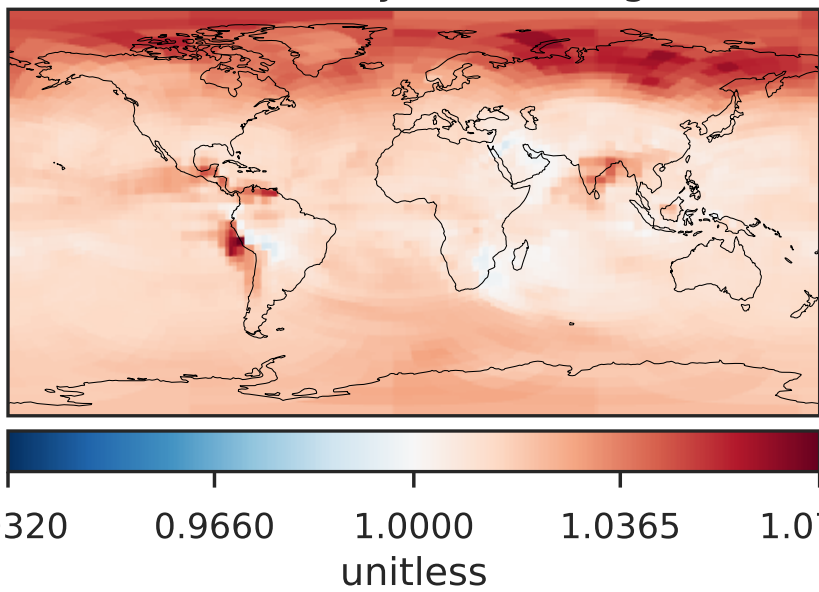
Difference (1x1.25)
Dev - Ref, Dynamic Range



Difference (1x1.25)
Dev - Ref, Restricted Range [5%,95%]



Ratio (1x1.25)
Dev/Ref, Dynamic Range



Ratio (1x1.25)
Dev/Ref, Fixed Range

