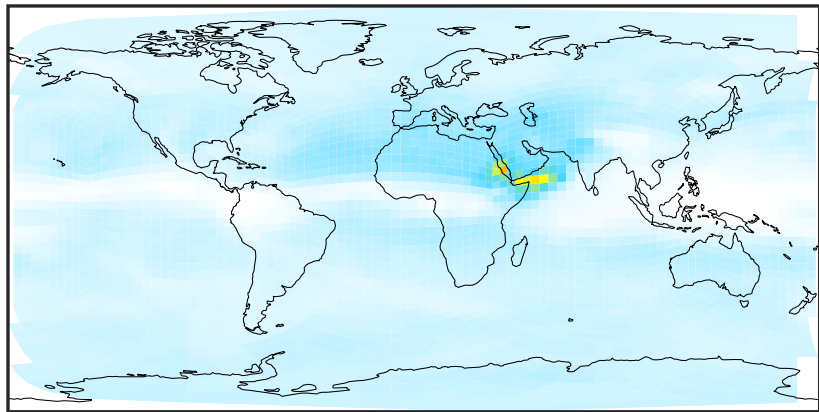


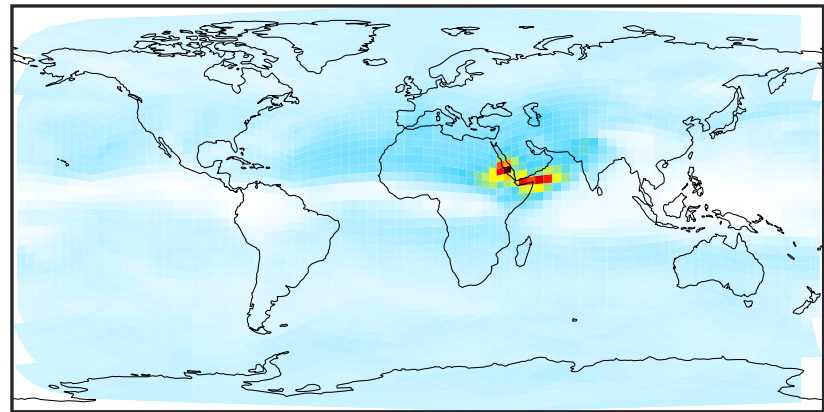
SpeciesConcVV_Cly (Jul2019)

GCHP_14.0.0 (Ref)
c24



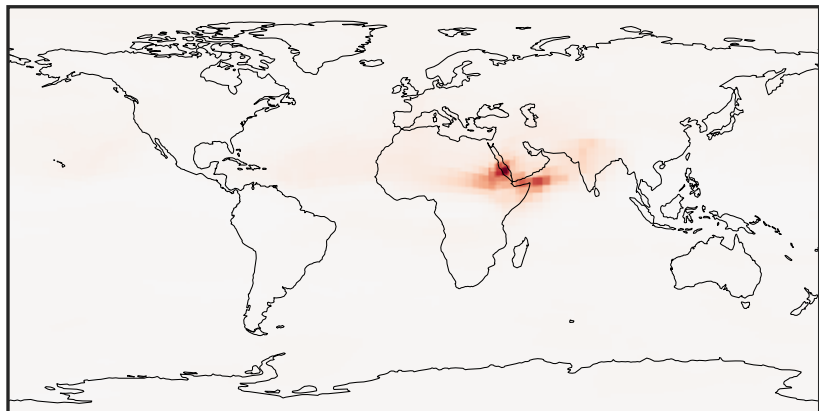
0.0104 0.0633 0.1267 0.1900 0.2638
ppb

GCHP_14.2.0 (Dev)
c24



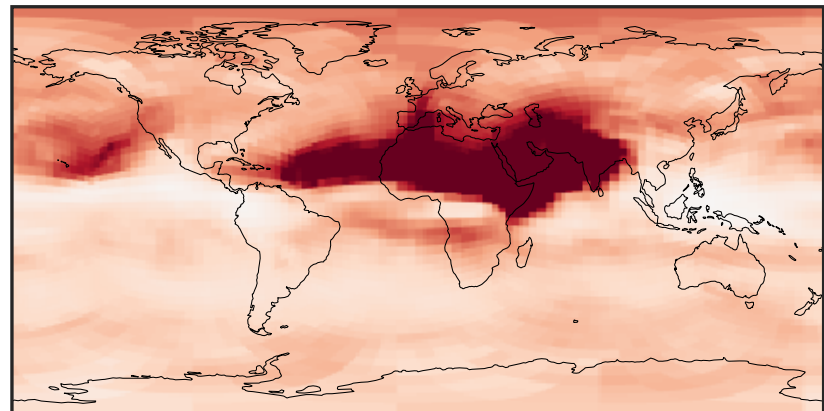
0.0104 0.0633 0.1267 0.1900 0.2638
ppb

Difference (1x1.25)
Dev - Ref, Dynamic Range



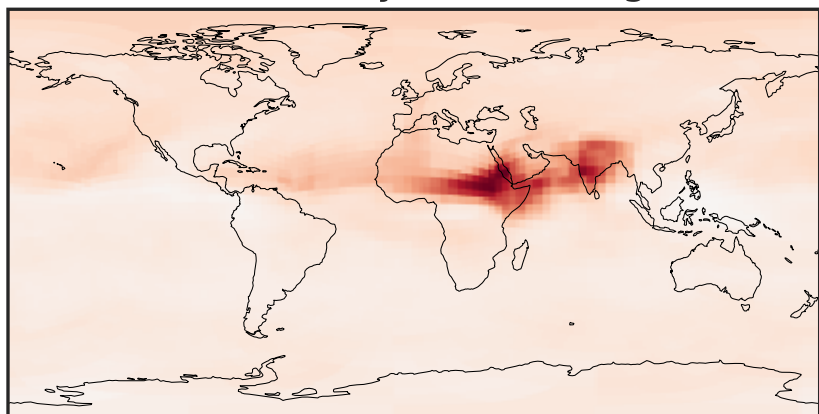
-0.1091 -0.0545 0.0000 0.0545 0.1091
ppb

Difference (1x1.25)
Dev - Ref, Restricted Range [5%,95%]



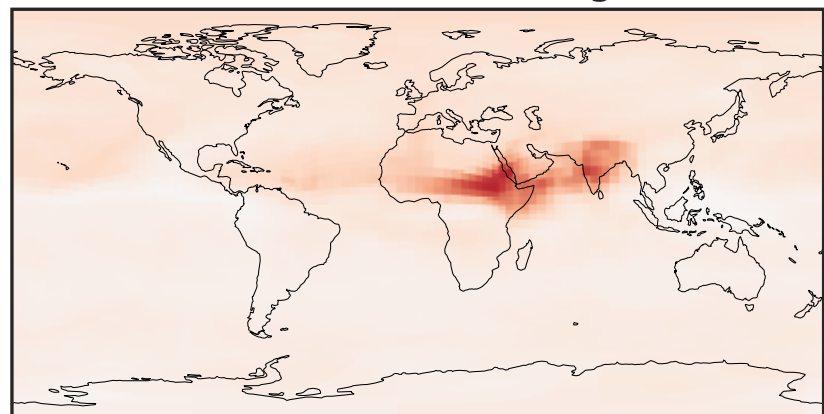
-0.004 0.000 0.004
ppb

Ratio (1x1.25)
Dev/Ref, Dynamic Range



0.586 0.793 1.000 1.353 1.705
unitless

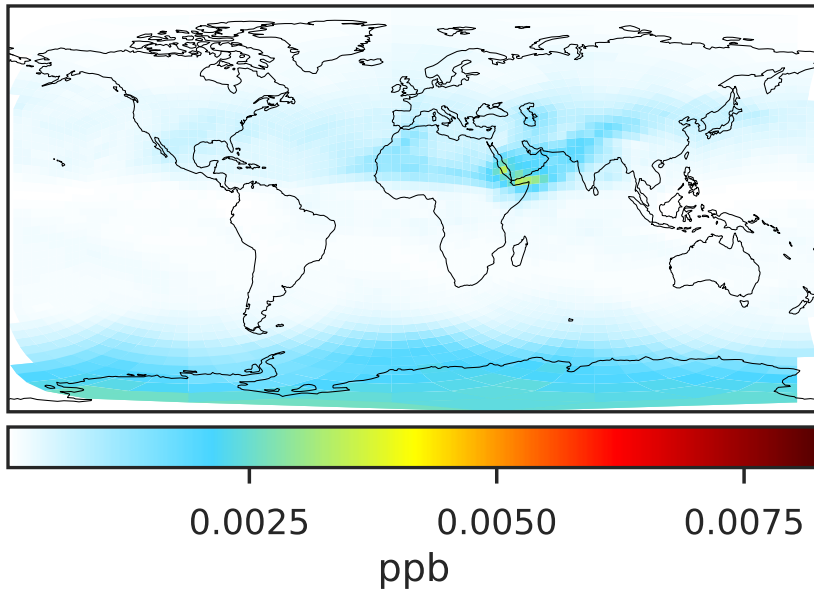
Ratio (1x1.25)
Dev/Ref, Fixed Range



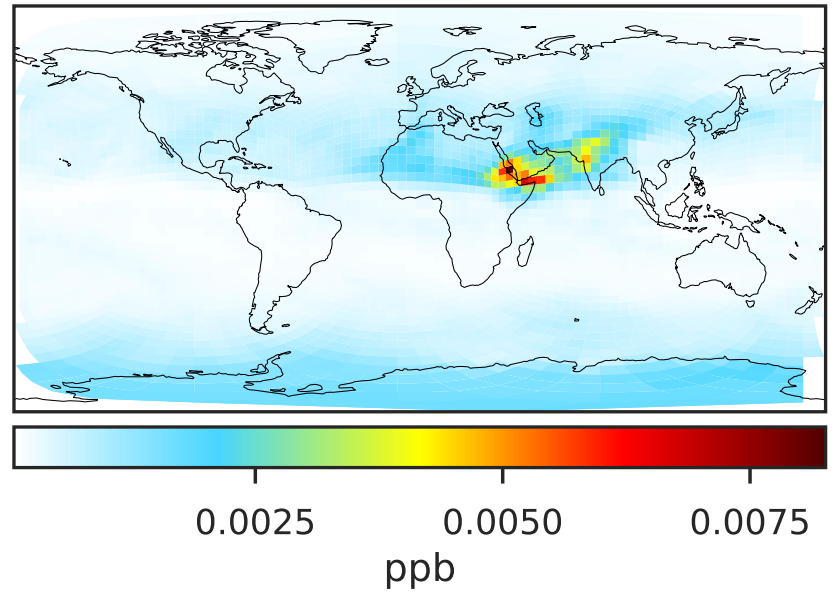
0.50 0.75 1.00 1.50 2.00
unitless

SpeciesConcVV_CIOx (Jul2019)

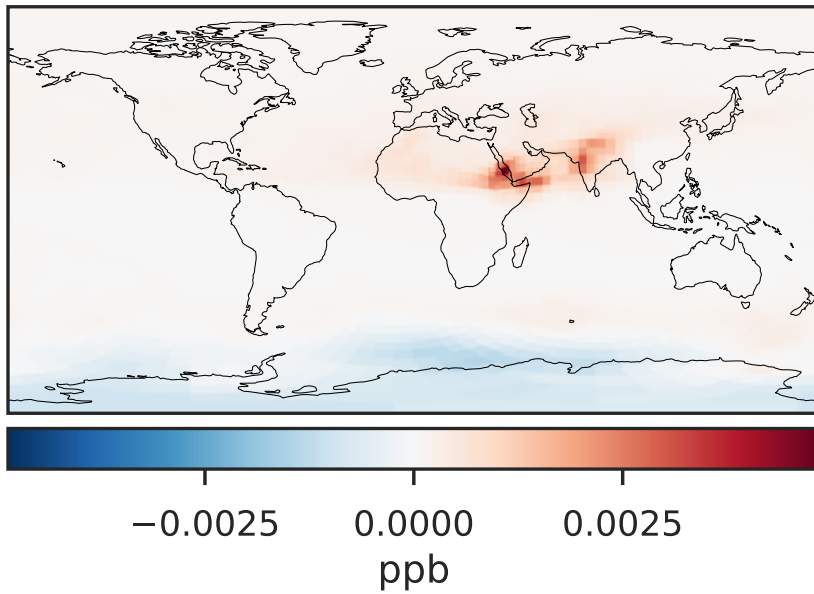
GCHP_14.0.0 (Ref)
c24



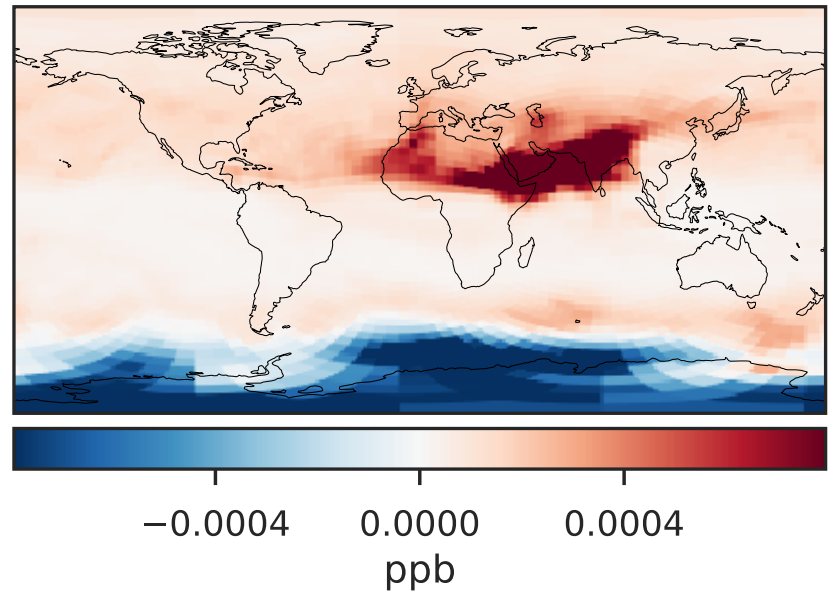
GCHP_14.2.0 (Dev)
c24



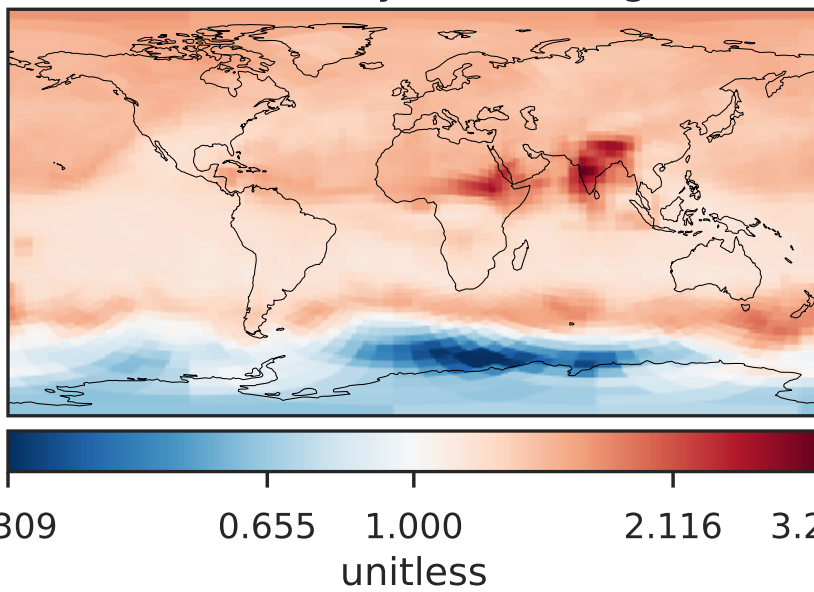
Difference (1x1.25)
Dev - Ref, Dynamic Range



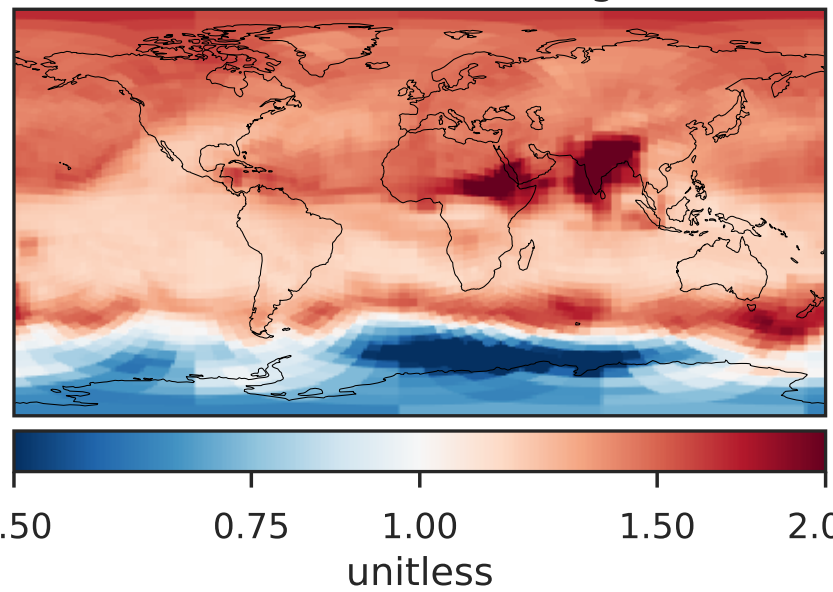
Difference (1x1.25)
Dev - Ref, Restricted Range [5%,95%]



Ratio (1x1.25)
Dev/Ref, Dynamic Range



Ratio (1x1.25)
Dev/Ref, Fixed Range

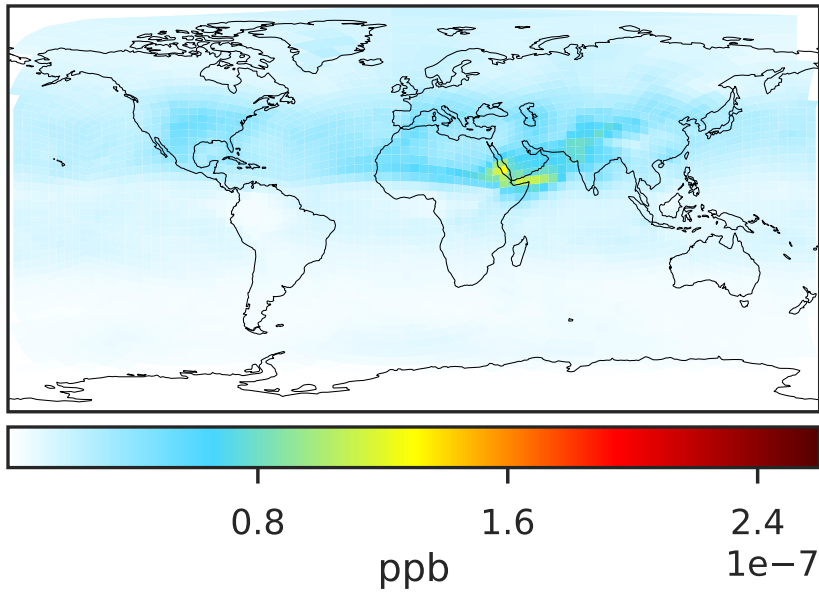


0.309 0.655 1.000 2.116 3.232
unitless

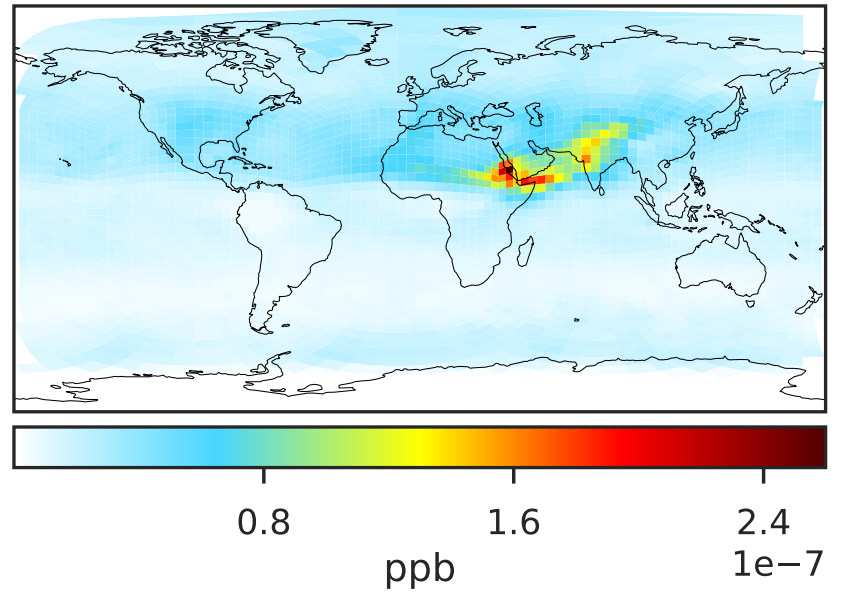
0.50 0.75 1.00 1.50 2.00
unitless

SpeciesConcVV_CI (Jul2019)

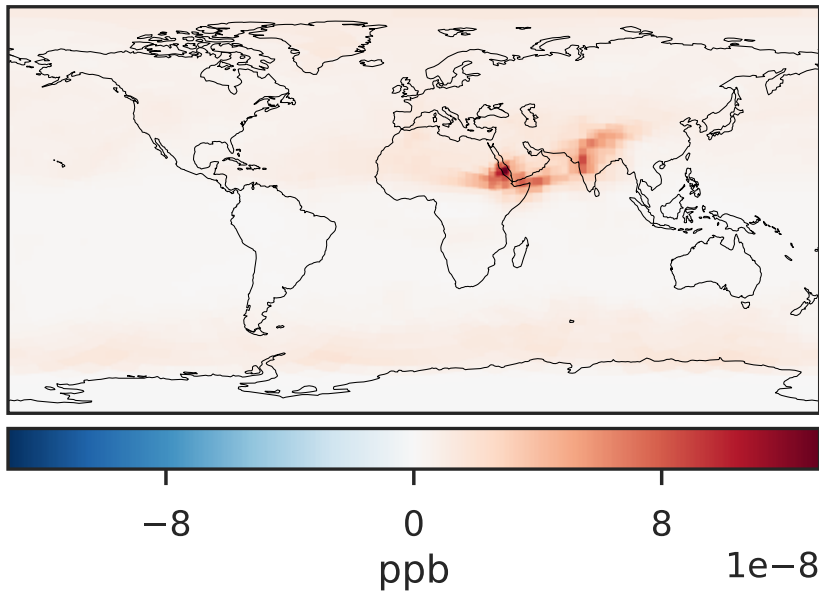
GCHP_14.0.0 (Ref)
c24



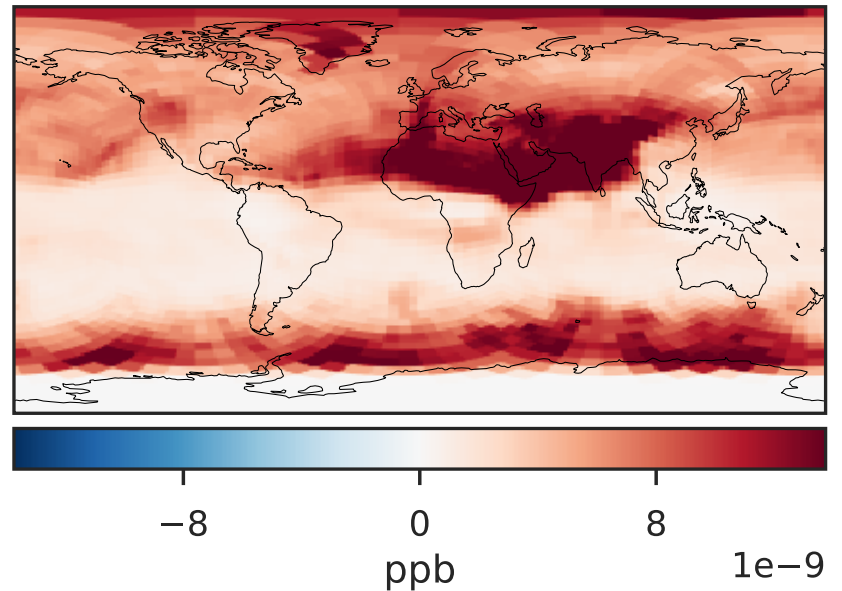
GCHP_14.2.0 (Dev)
c24



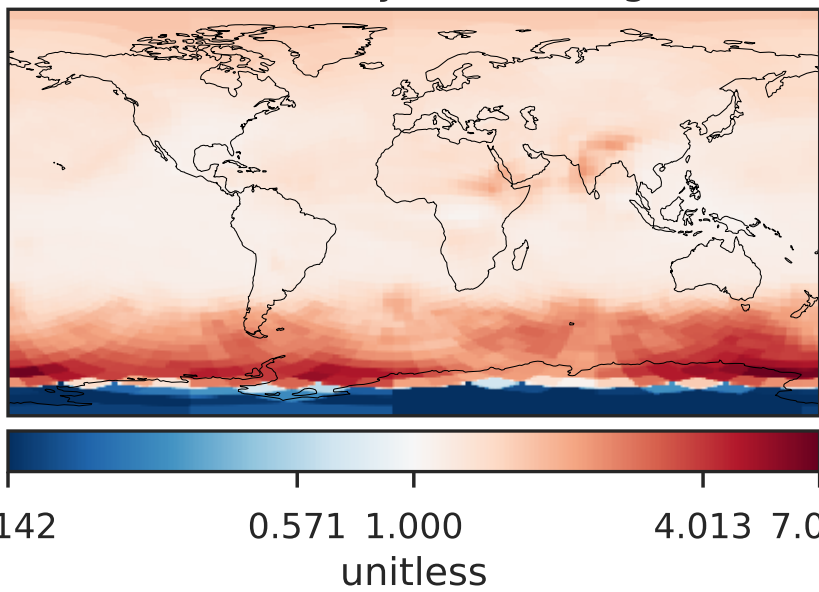
Difference (1x1.25)
Dev - Ref, Dynamic Range



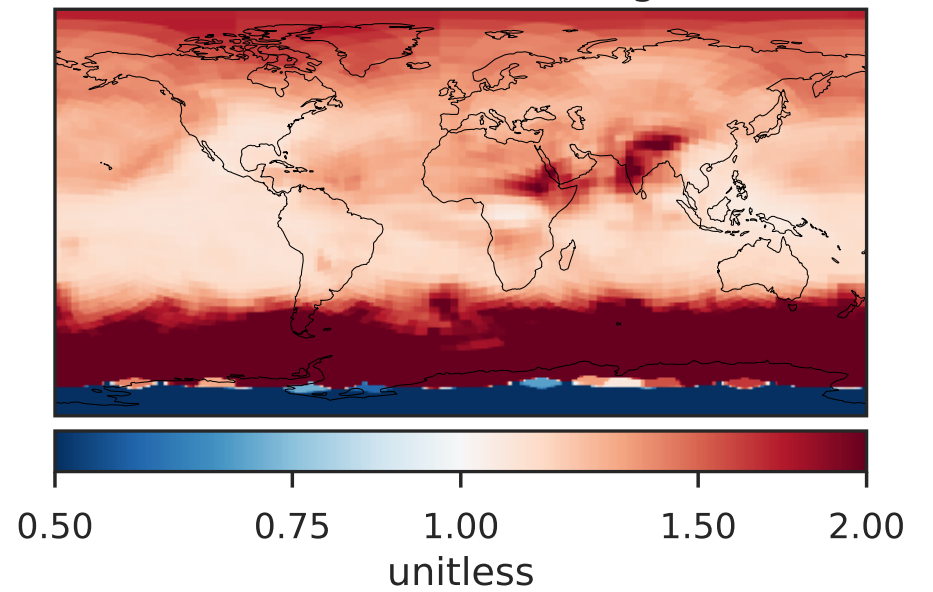
Difference (1x1.25)
Dev - Ref, Restricted Range [5%,95%]



Ratio (1x1.25)
Dev/Ref, Dynamic Range

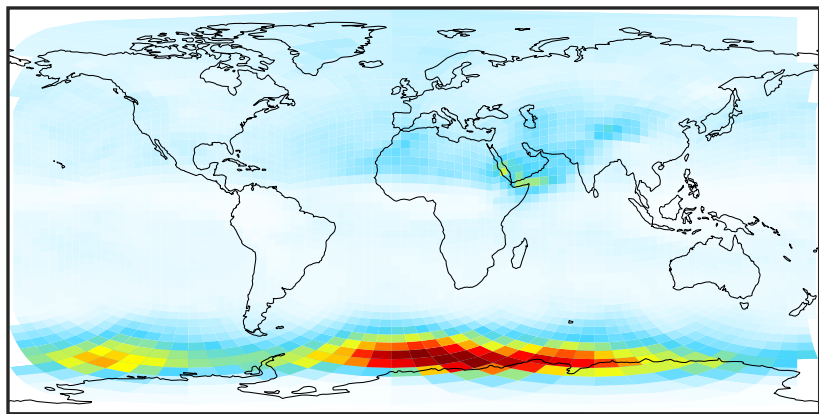


Ratio (1x1.25)
Dev/Ref, Fixed Range



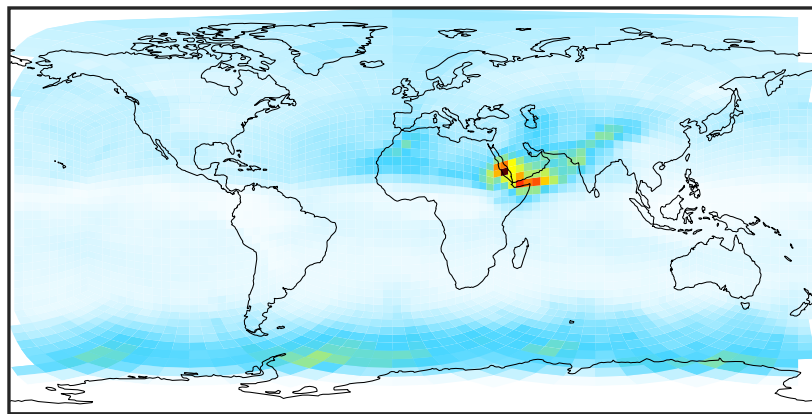
SpeciesConcVV_CIO (Jul2019)

GCHP_14.0.0 (Ref)
c24



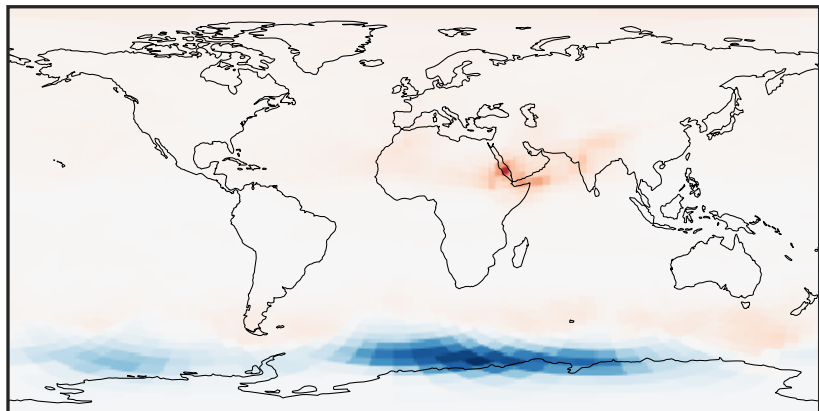
0.00015 0.00030
ppb

GCHP_14.2.0 (Dev)
c24



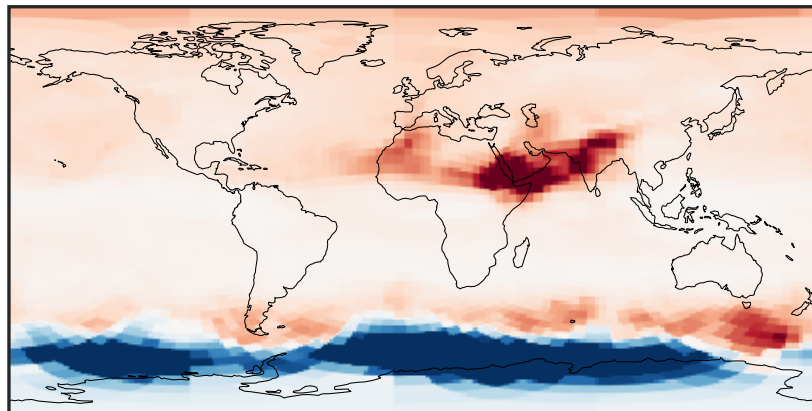
0.00015 0.00030
ppb

Difference (1x1.25)
Dev - Ref, Dynamic Range



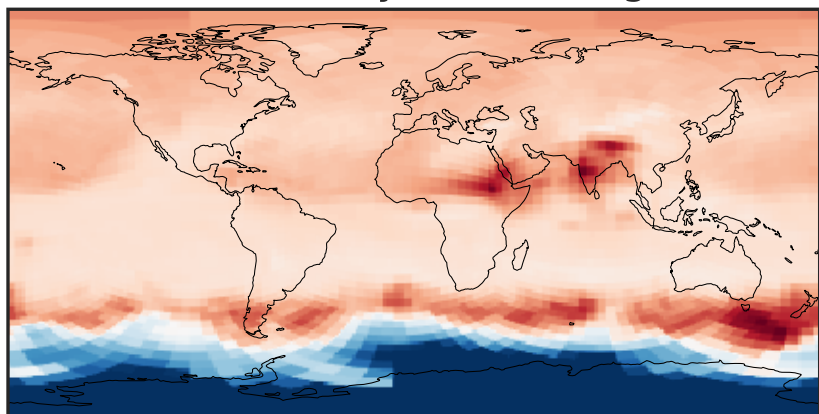
-0.0002 0.0000 0.0002
ppb

Difference (1x1.25)
Dev - Ref, Restricted Range [5%,95%]



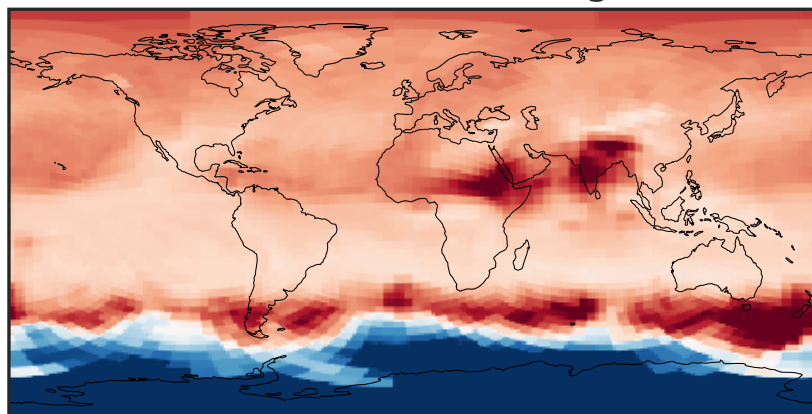
-3 0 3
ppb $1e-5$

Ratio (1x1.25)
Dev/Ref, Dynamic Range



0.364 0.682 1.000 1.873 2.746
unitless

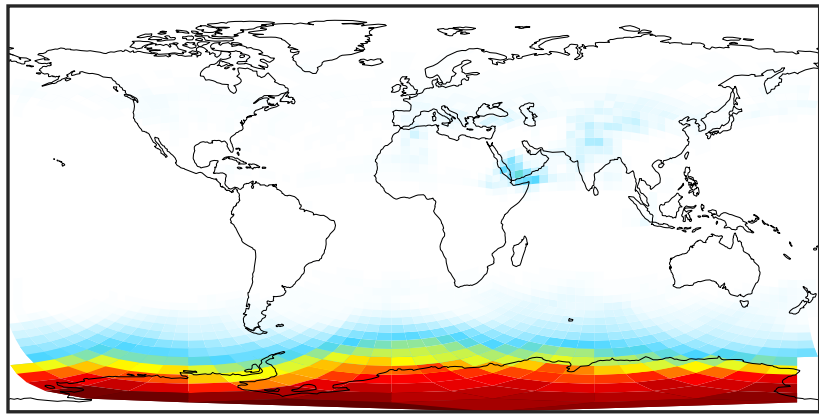
Ratio (1x1.25)
Dev/Ref, Fixed Range



0.50 0.75 1.00 1.50 2.00
unitless

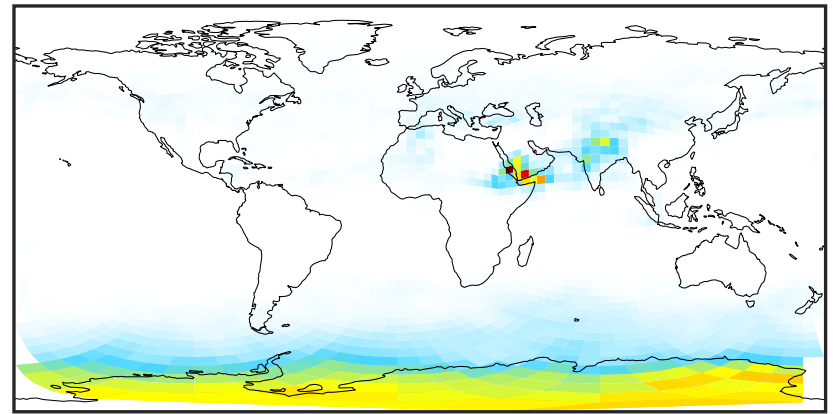
SpeciesConcVV_Cl2 (Jul2019)

GCHP_14.0.0 (Ref)
c24



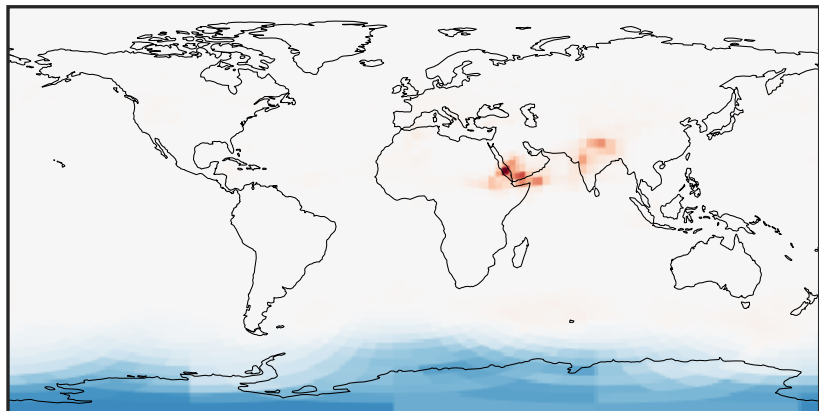
0.0004 0.0008 0.0012
ppb

GCHP_14.2.0 (Dev)
c24



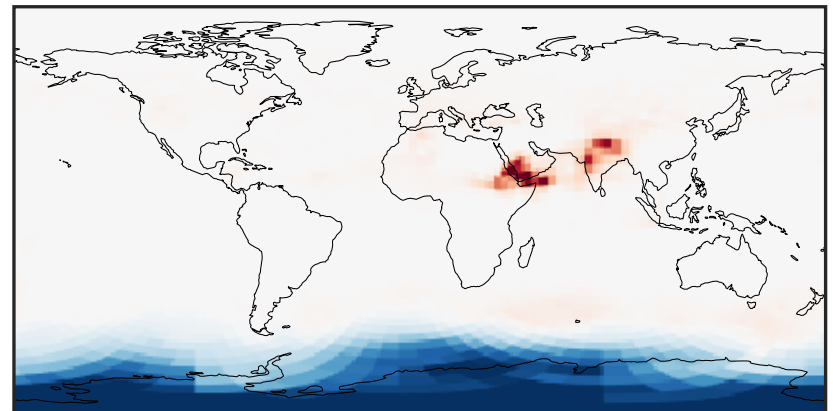
0.0004 0.0008 0.0012
ppb

Difference (1x1.25)
Dev - Ref, Dynamic Range



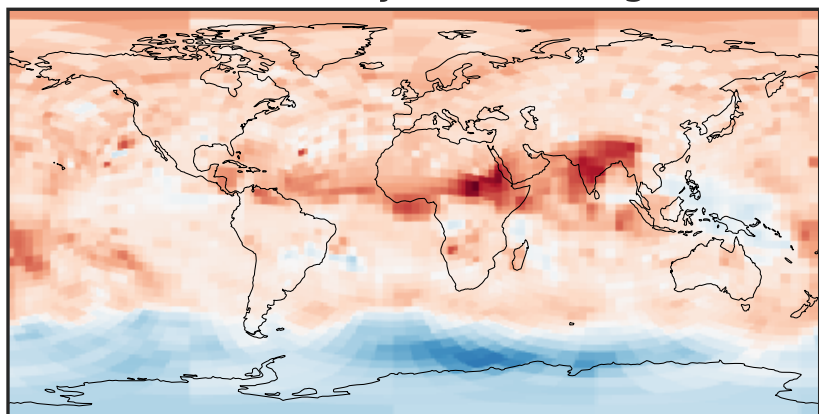
-0.0005 0.0000 0.0005
ppb

Difference (1x1.25)
Dev - Ref, Restricted Range [5%,95%]



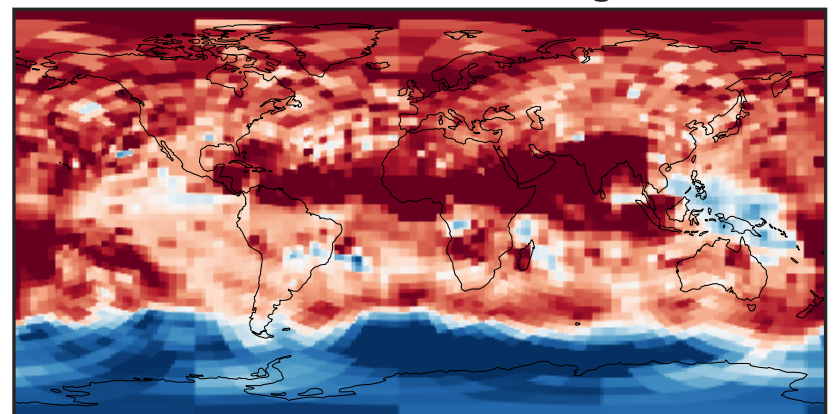
-0.00025 0.0000 0.00025
ppb

Ratio (1x1.25)
Dev/Ref, Dynamic Range



0.113 0.557 1.000 4.913 8.825
unitless

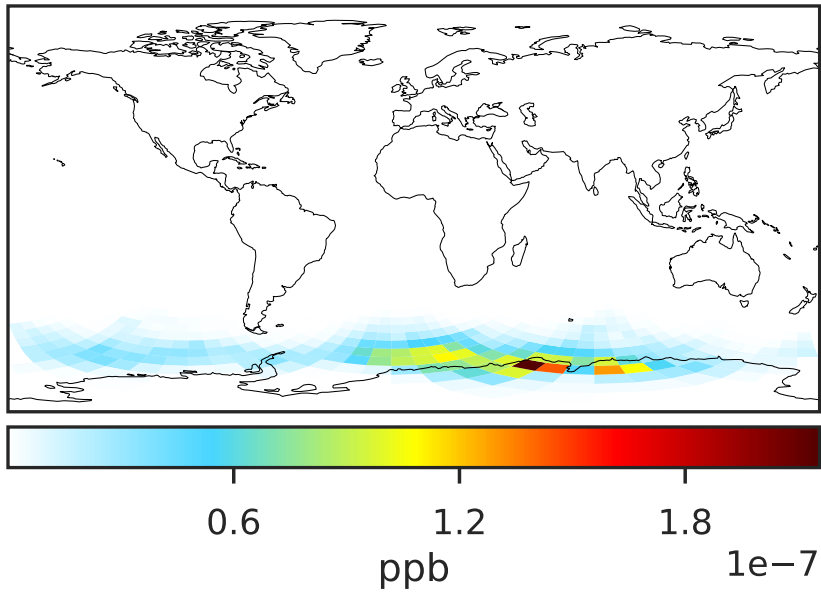
Ratio (1x1.25)
Dev/Ref, Fixed Range



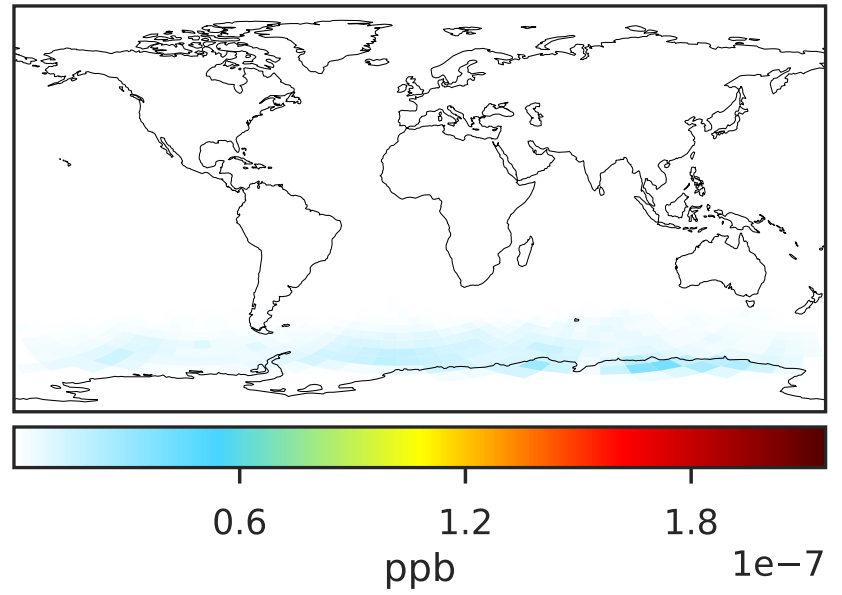
0.50 0.75 1.00 1.50 2.00
unitless

SpeciesConcVV_Cl2O2 (Jul2019)

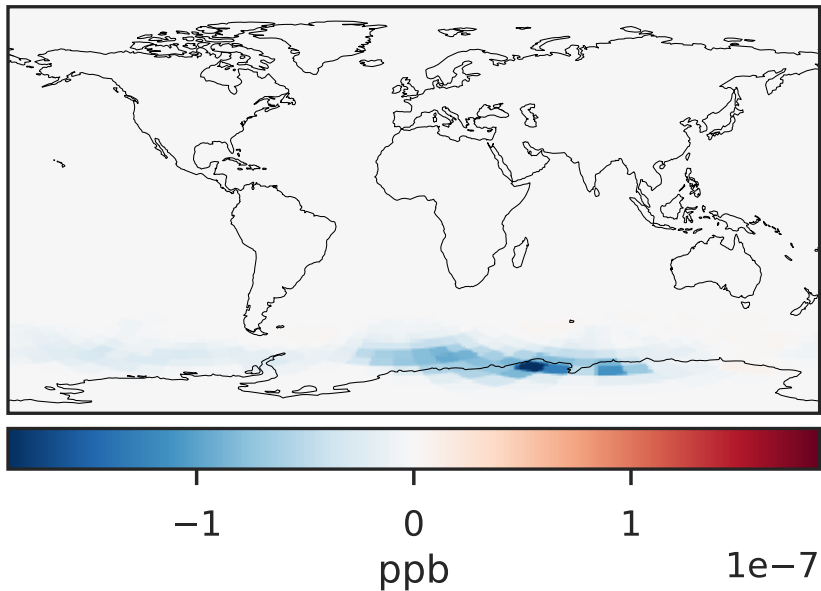
GCHP_14.0.0 (Ref)
c24



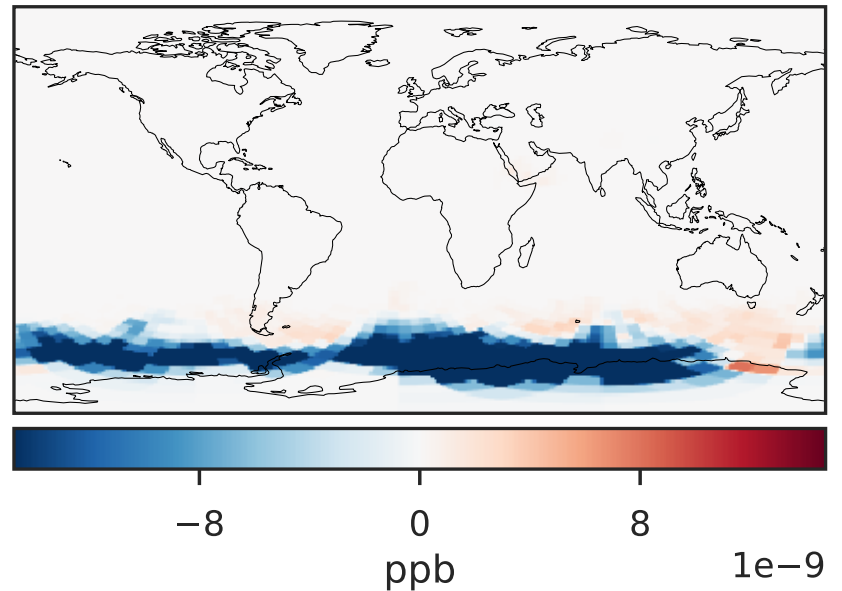
GCHP_14.2.0 (Dev)
c24



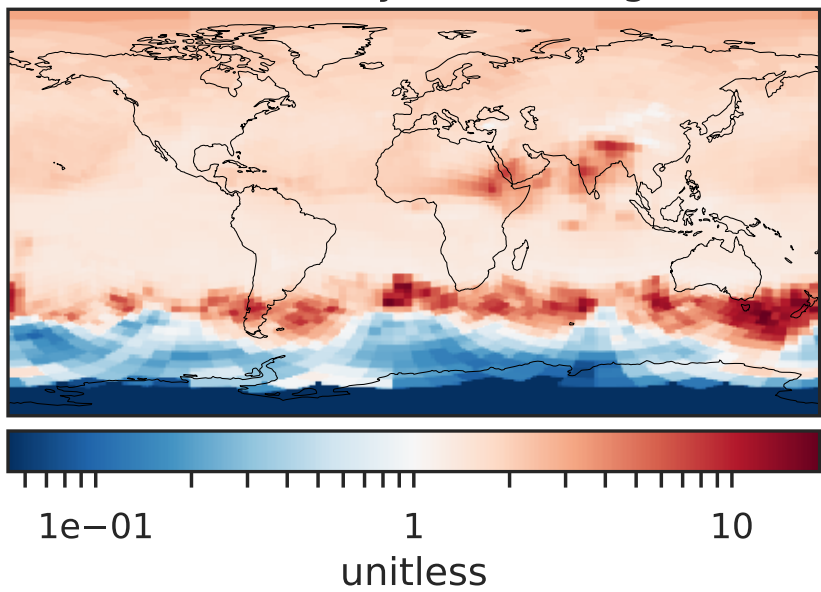
Difference (1x1.25)
Dev - Ref, Dynamic Range



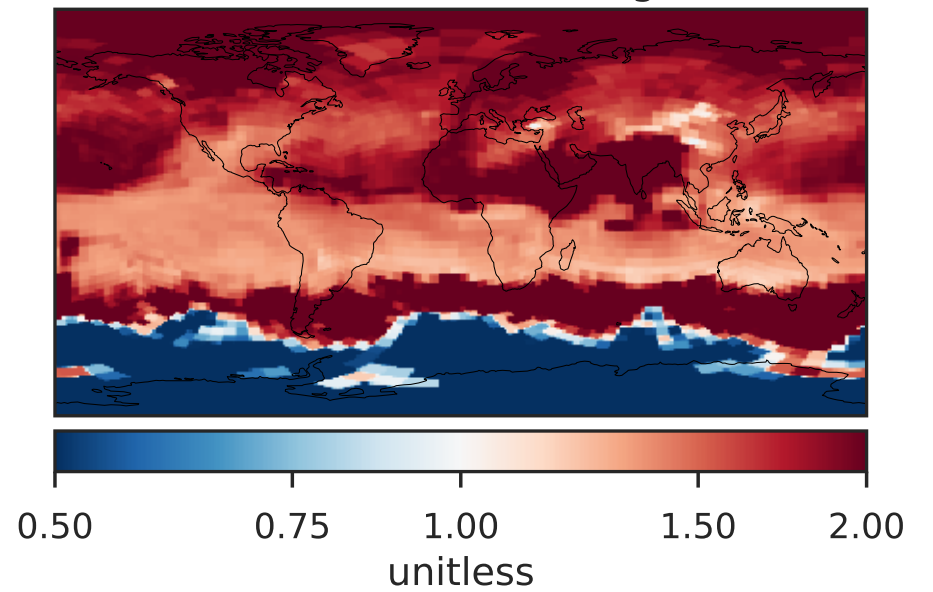
Difference (1x1.25)
Dev - Ref, Restricted Range [5%,95%]



Ratio (1x1.25)
Dev/Ref, Dynamic Range

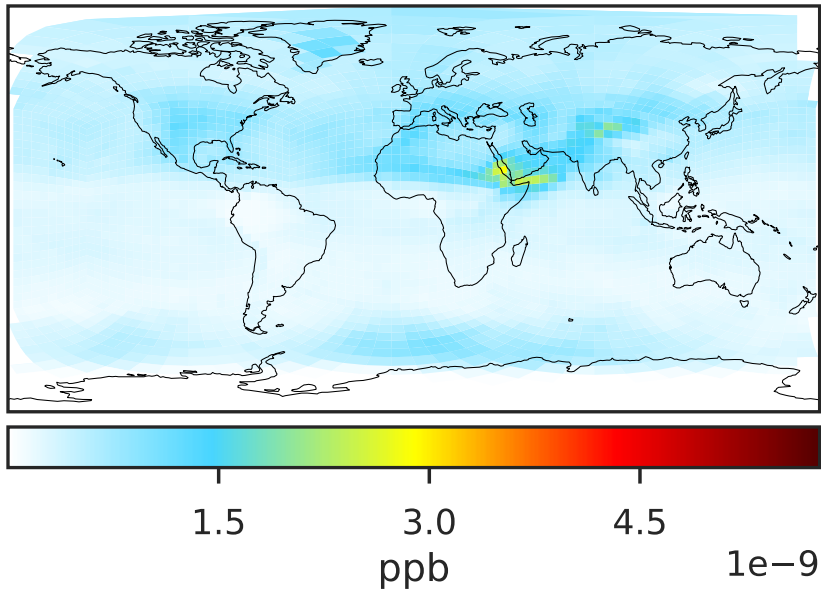


Ratio (1x1.25)
Dev/Ref, Fixed Range

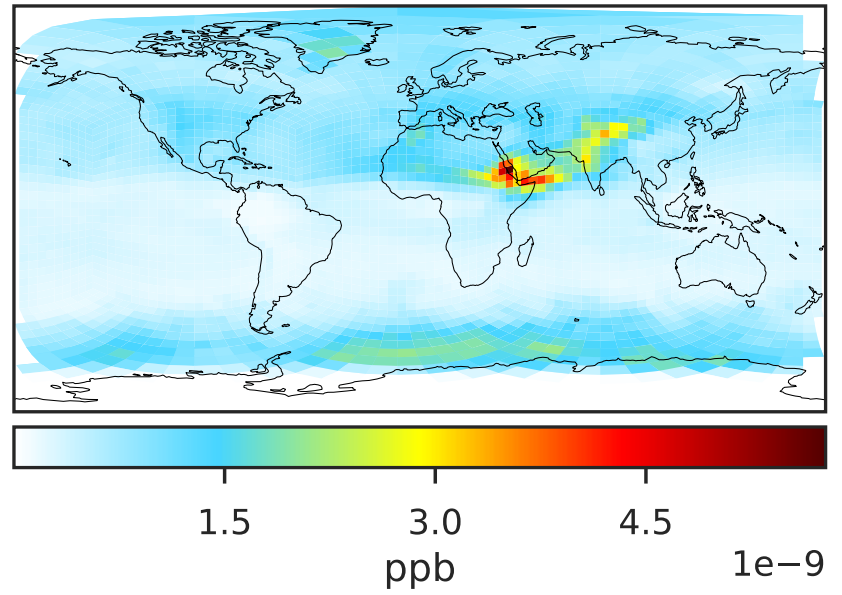


SpeciesConcVV_C100 (Jul2019)

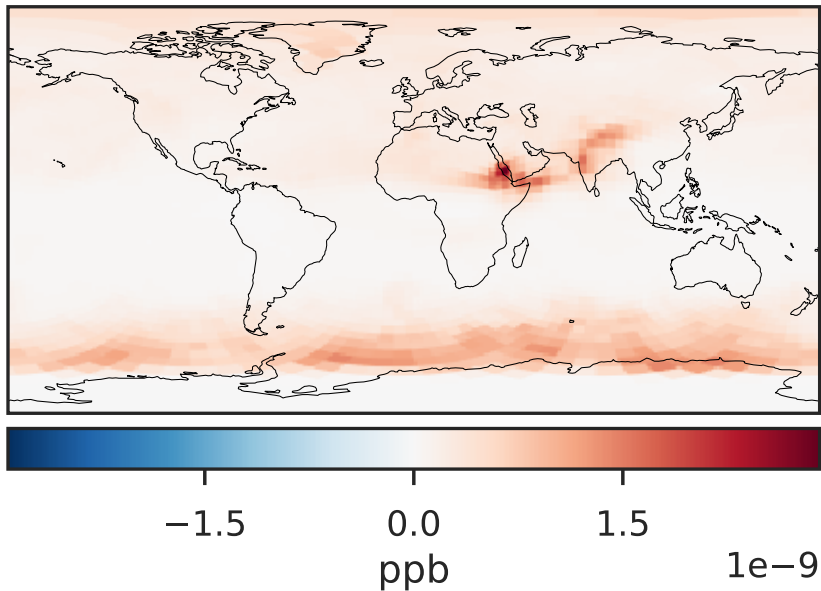
GCHP_14.0.0 (Ref)
c24



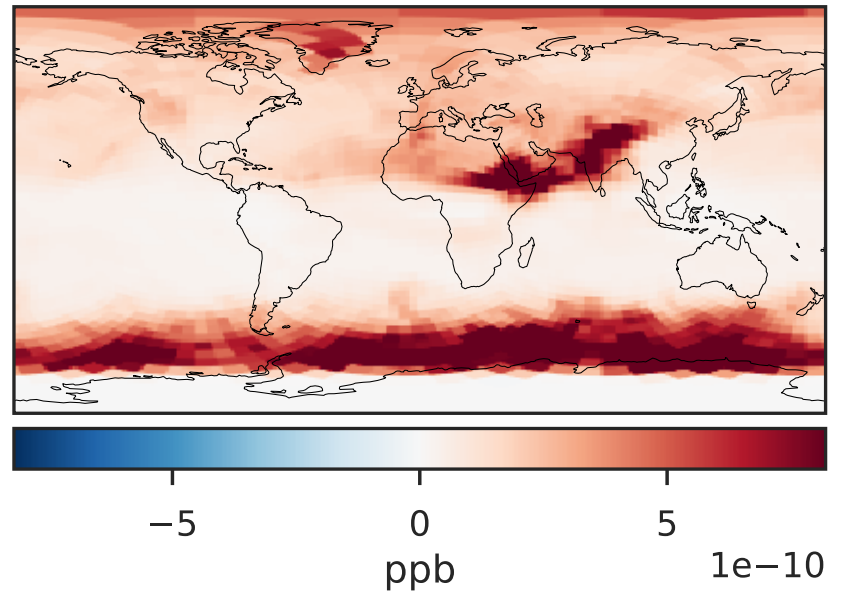
GCHP_14.2.0 (Dev)
c24



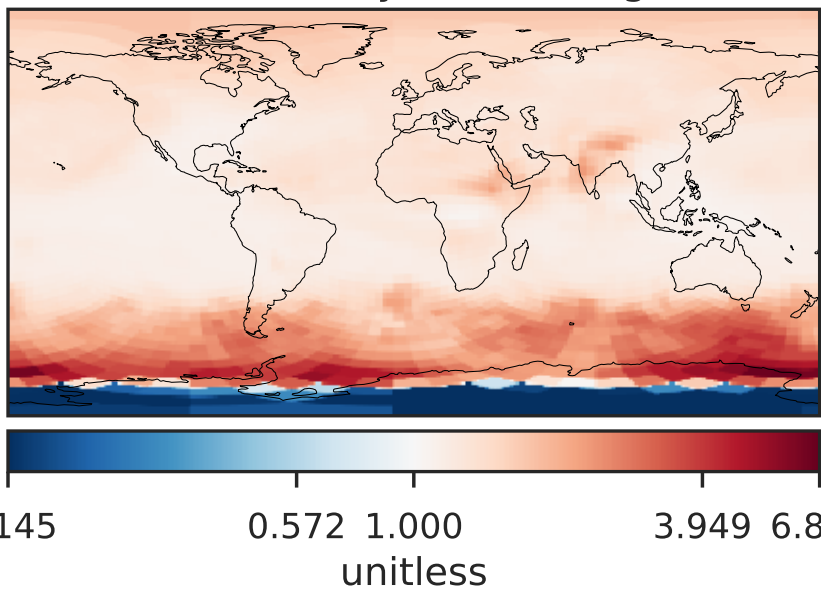
Difference (1x1.25)
Dev - Ref, Dynamic Range



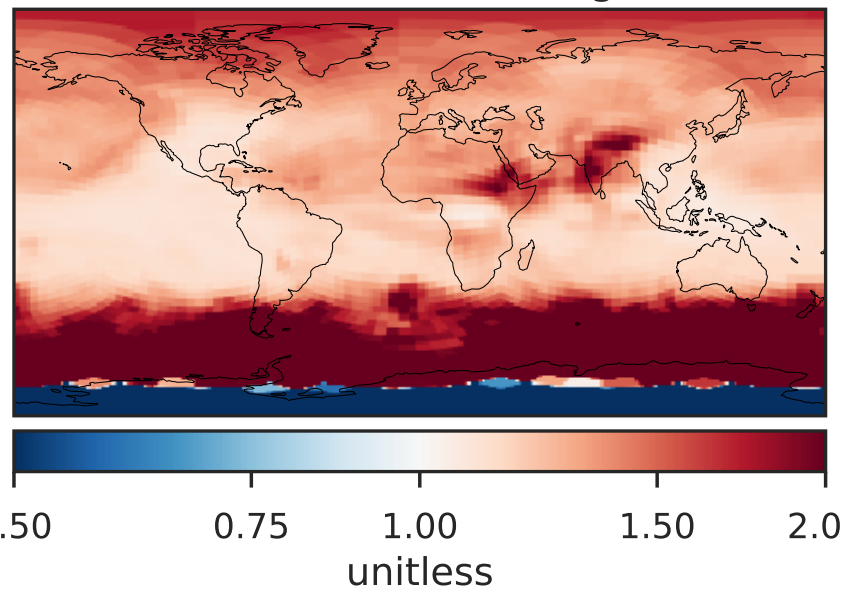
Difference (1x1.25)
Dev - Ref, Restricted Range [5%,95%]



Ratio (1x1.25)
Dev/Ref, Dynamic Range

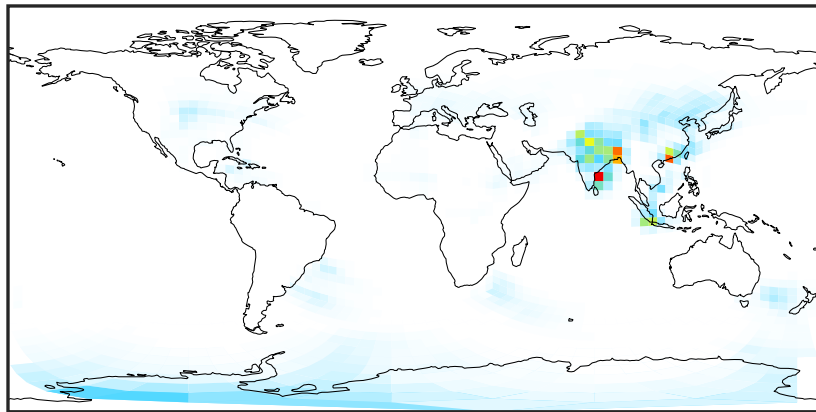


Ratio (1x1.25)
Dev/Ref, Fixed Range



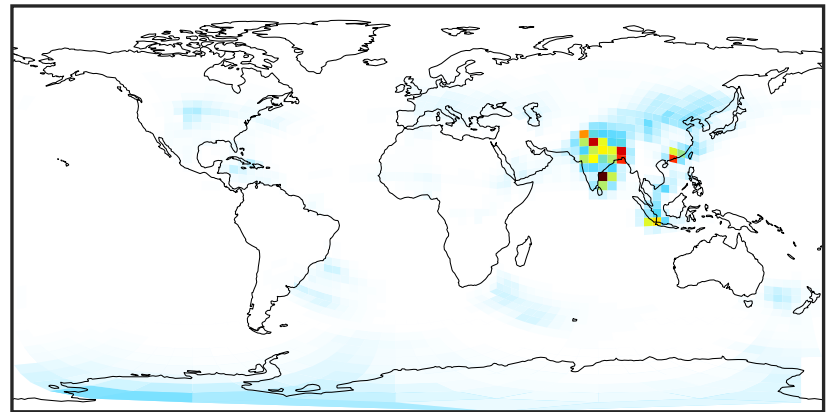
SpeciesConcVV_CINO2 (Jul2019)

GCHP_14.0.0 (Ref)
c24



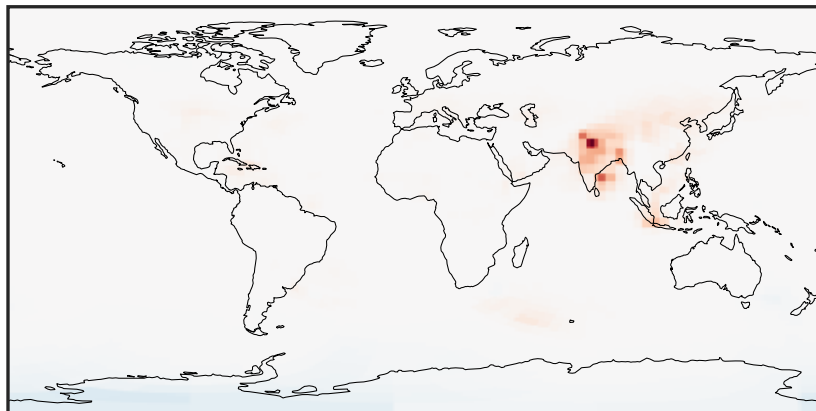
0.00015 0.00030
ppb

GCHP_14.2.0 (Dev)
c24



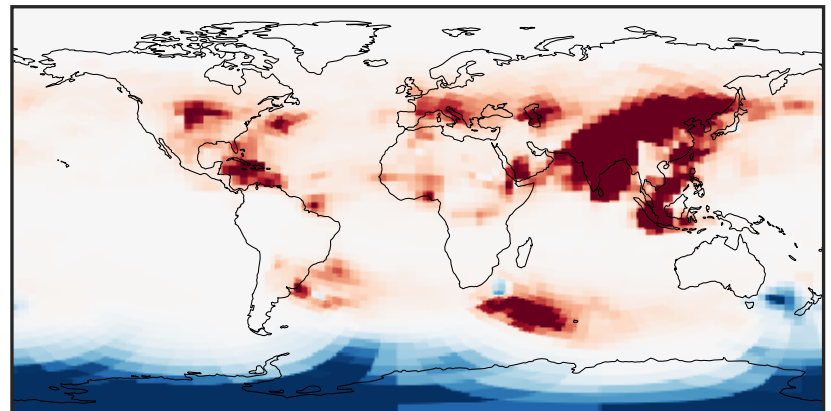
0.00015 0.00030
ppb

Difference (1x1.25)
Dev - Ref, Dynamic Range



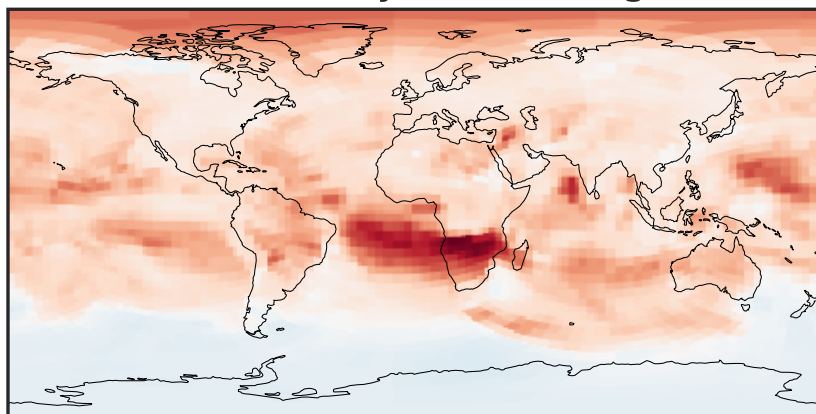
-0.0001 0.0000 0.0001
ppb

Difference (1x1.25)
Dev - Ref, Restricted Range [5%,95%]



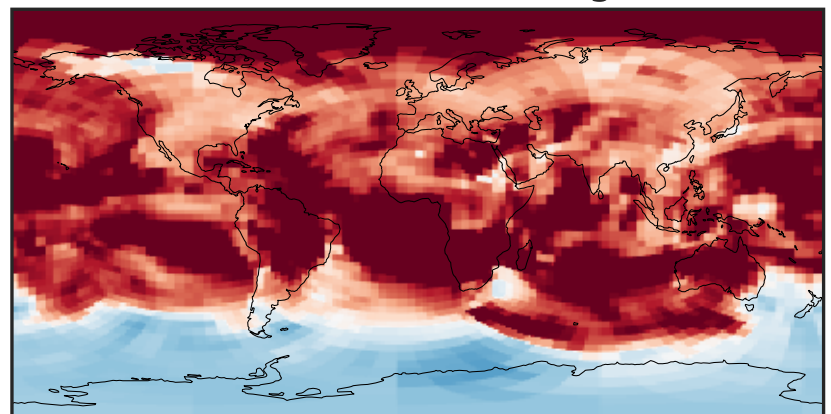
-3 0 3
ppb 1e-6

Ratio (1x1.25)
Dev/Ref, Dynamic Range



1e-01 1 10
unitless

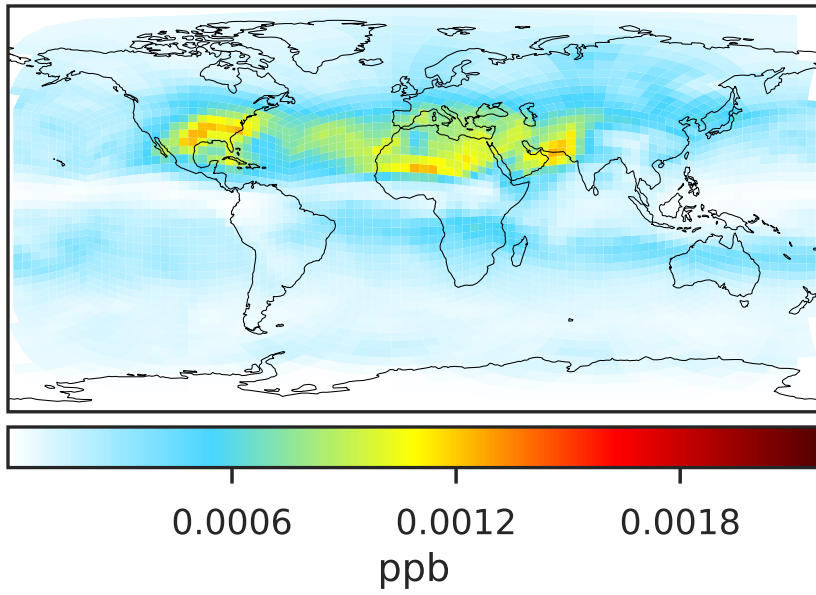
Ratio (1x1.25)
Dev/Ref, Fixed Range



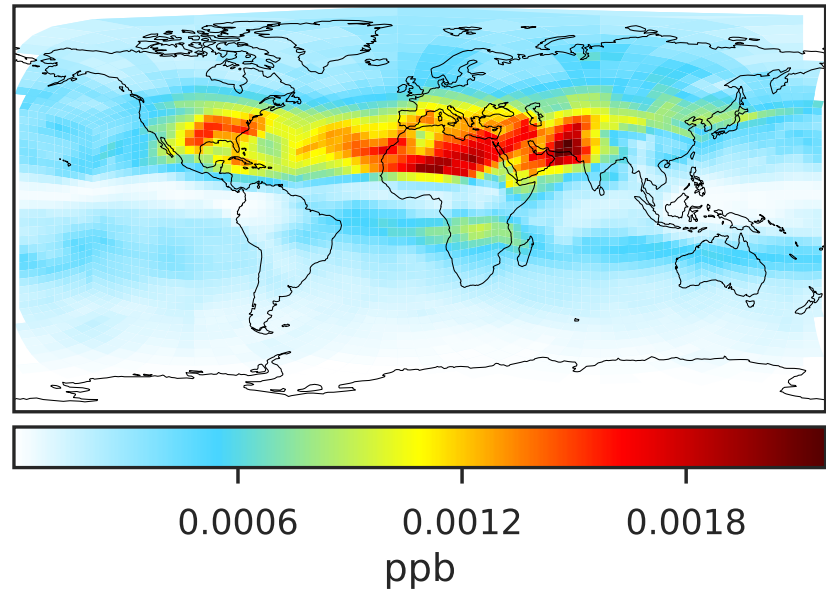
0.50 0.75 1.00 1.50 2.00
unitless

SpeciesConcVV_CINO3 (Jul2019)

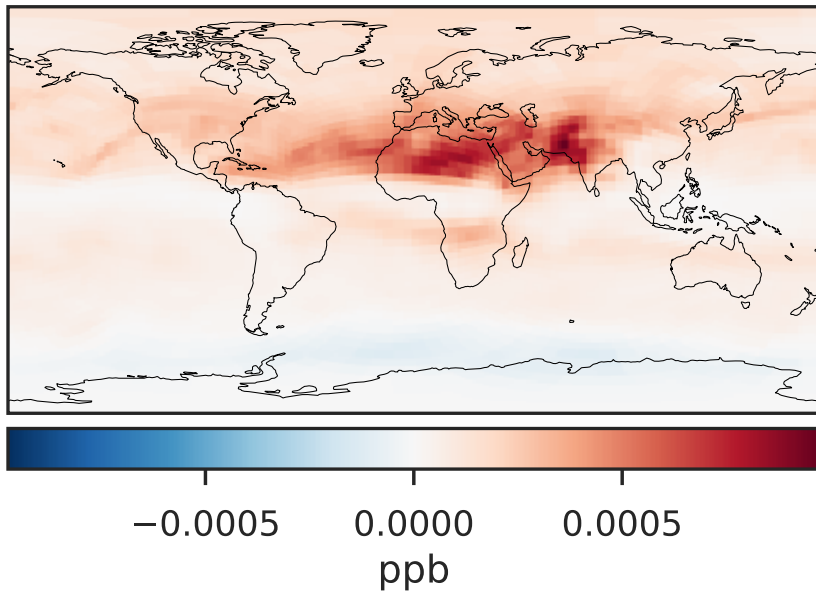
GCHP_14.0.0 (Ref)
c24



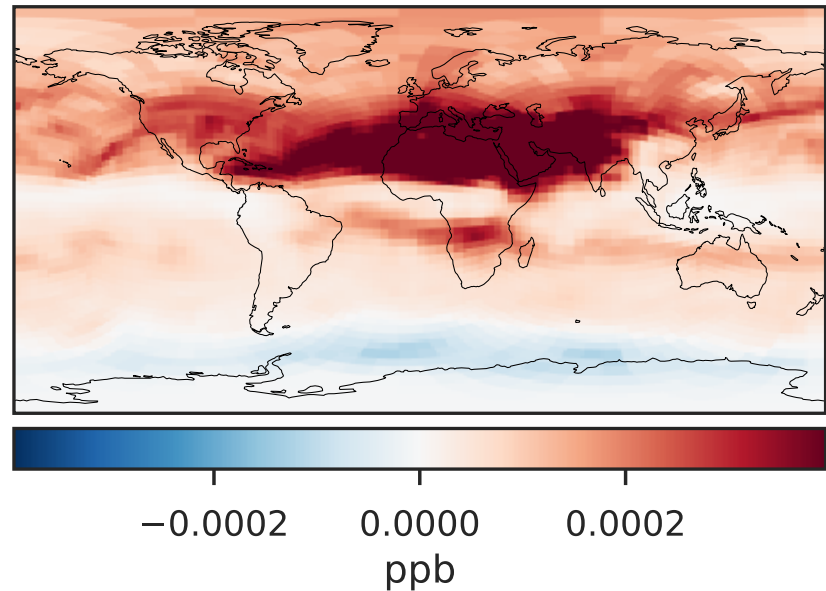
GCHP_14.2.0 (Dev)
c24



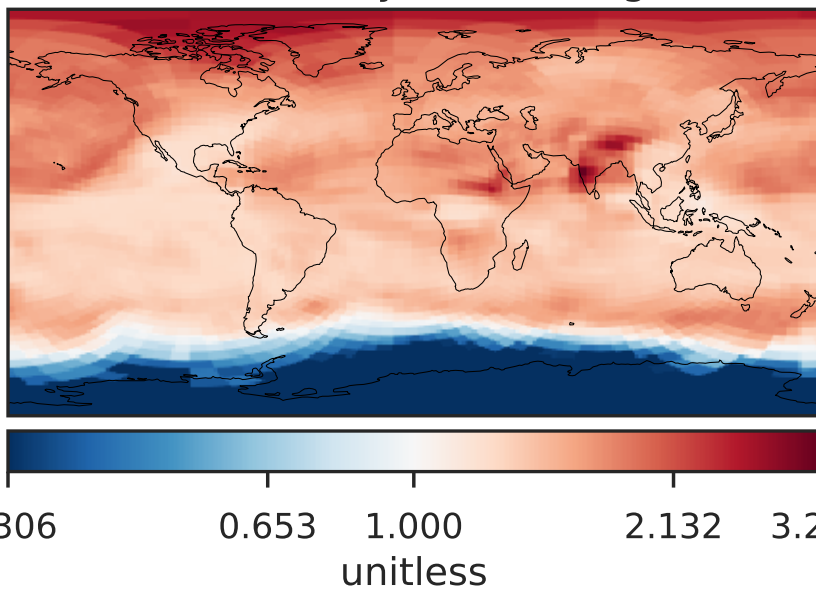
Difference (1x1.25)
Dev - Ref, Dynamic Range



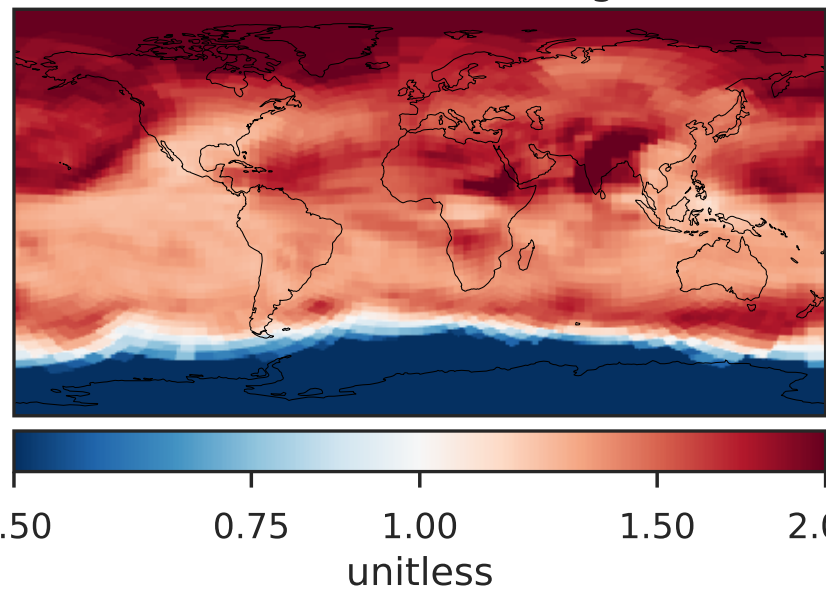
Difference (1x1.25)
Dev - Ref, Restricted Range [5%,95%]



Ratio (1x1.25)
Dev/Ref, Dynamic Range

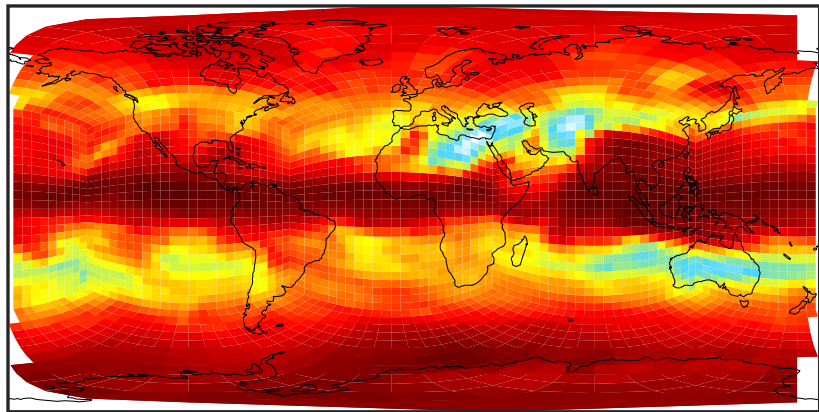


Ratio (1x1.25)
Dev/Ref, Fixed Range



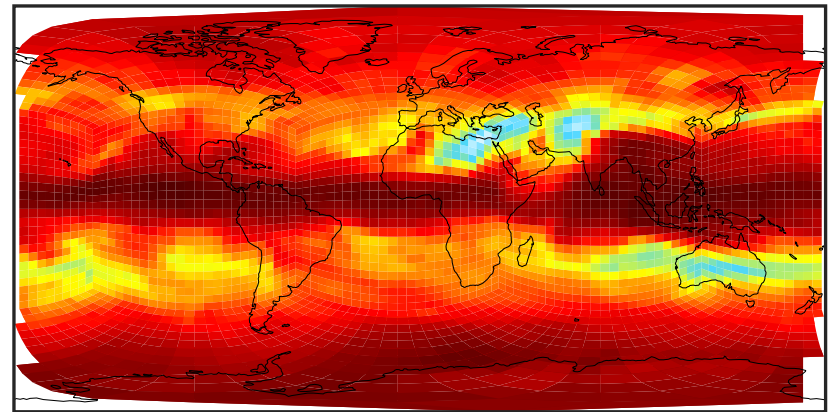
SpeciesConcVV_CCl4 (Jul2019)

GCHP_14.0.0 (Ref)
c24



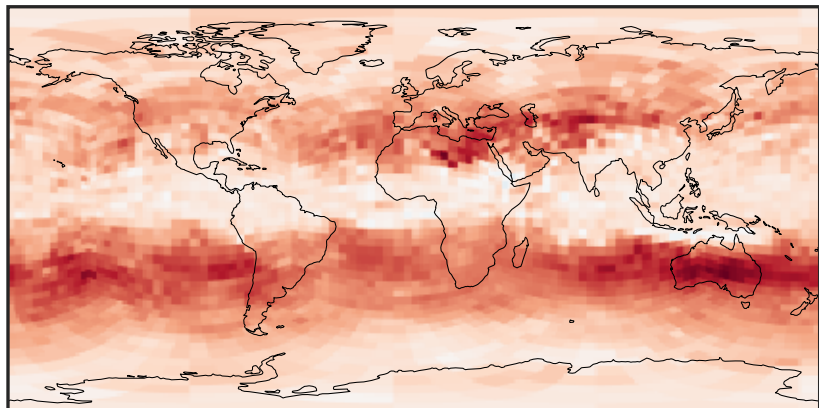
0.07675 0.07690 0.07705
ppb

GCHP_14.2.0 (Dev)
c24



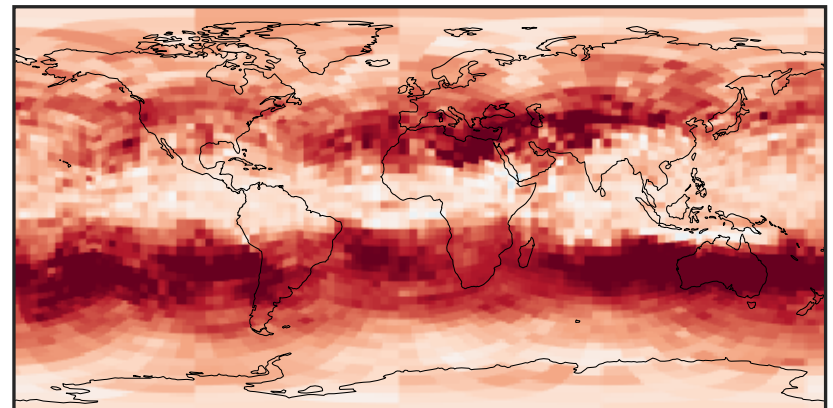
0.07675 0.07690 0.07705
ppb

Difference (1x1.25)
Dev - Ref, Dynamic Range



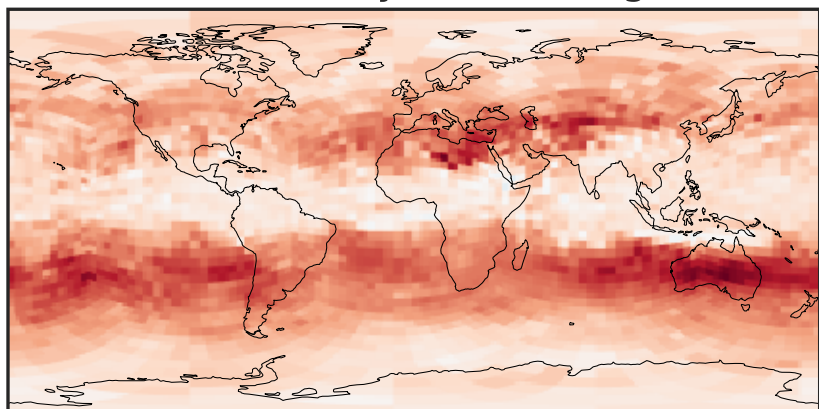
-1.5 0.0 1.5
ppb 1e-5

Difference (1x1.25)
Dev - Ref, Restricted Range [5%,95%]



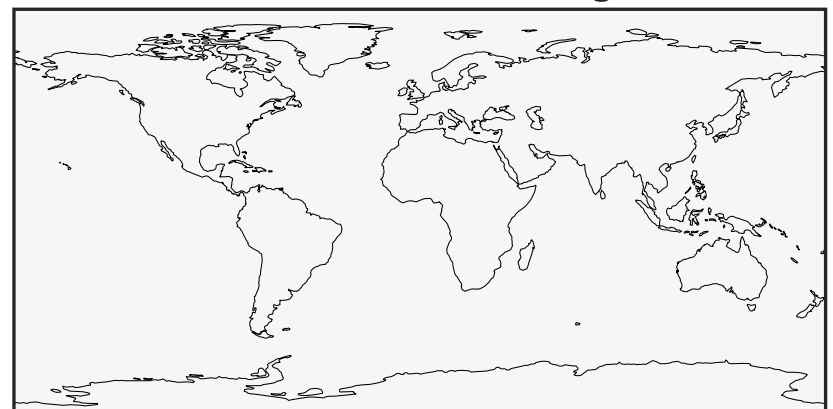
-1 0 1
ppb 1e-5

Ratio (1x1.25)
Dev/Ref, Dynamic Range



0.999613 1.000000 1.000387
unitless

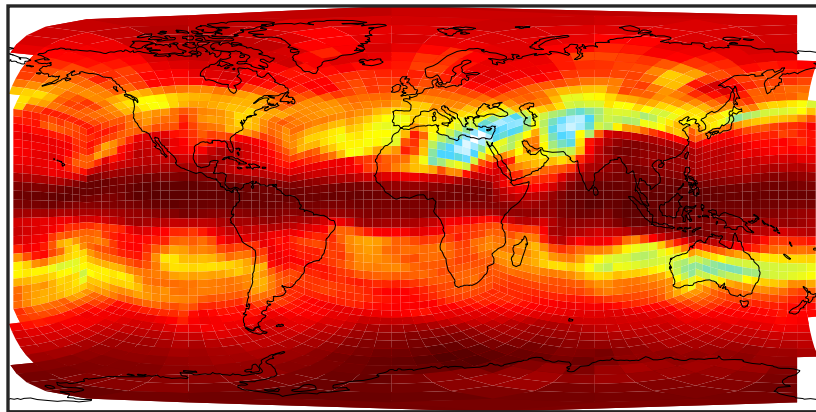
Ratio (1x1.25)
Dev/Ref, Fixed Range



0.50 0.75 1.00 1.50 2.00
unitless

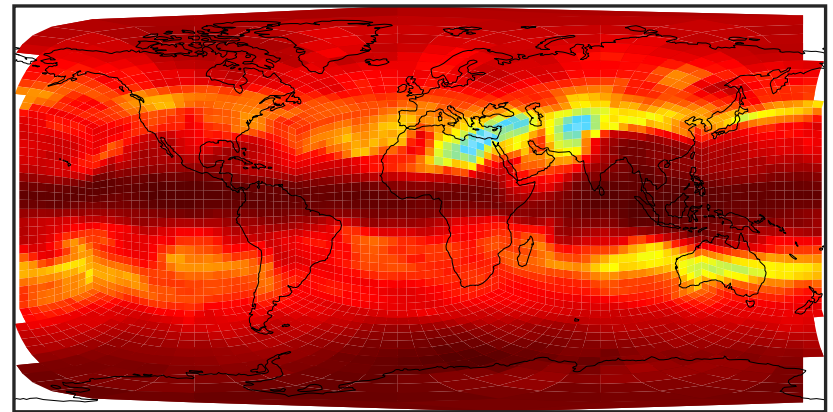
SpeciesConcVV_CFCs (Jul2019)

GCHP_14.0.0 (Ref)
c24



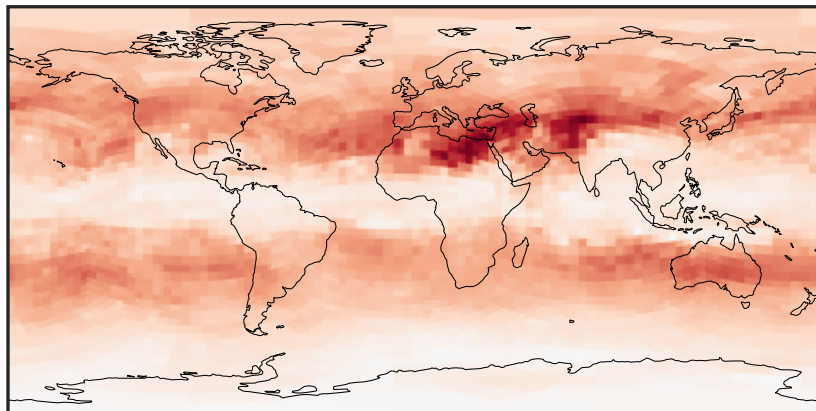
0.8144 0.8152 0.8160 0.8168
ppb

GCHP_14.2.0 (Dev)
c24



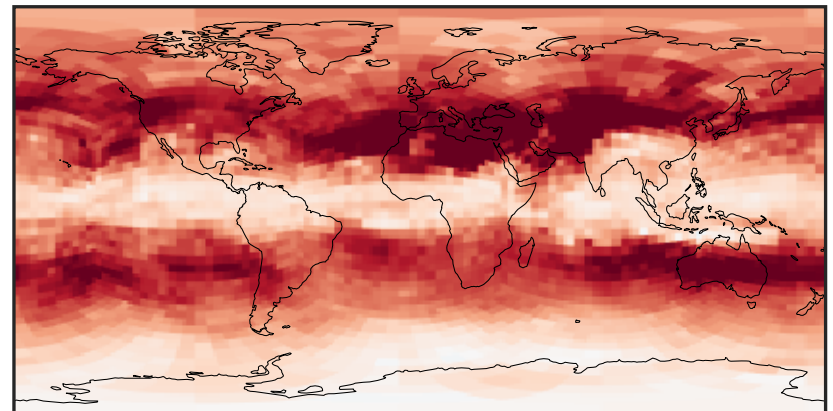
0.8144 0.8152 0.8160 0.8168
ppb

Difference (1x1.25)
Dev - Ref, Dynamic Range



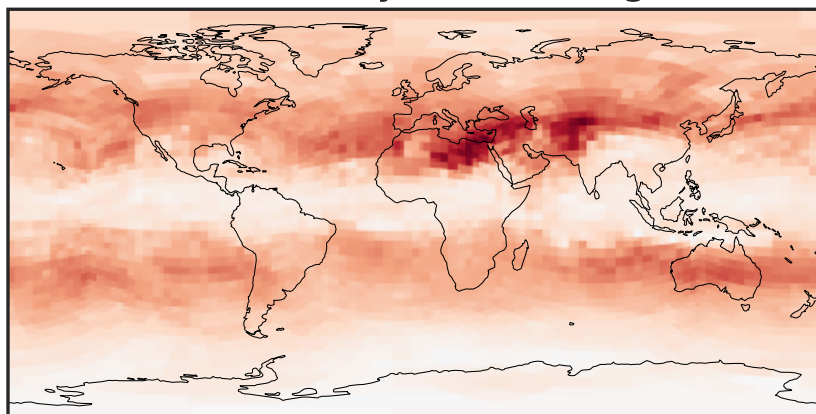
-0.0002 0.0000 0.0002
ppb

Difference (1x1.25)
Dev - Ref, Restricted Range [5%,95%]



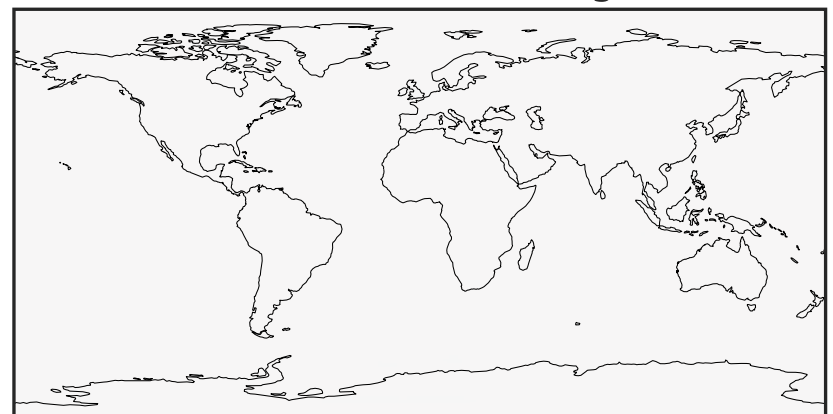
-0.00015 0.00000 0.00015
ppb

Ratio (1x1.25)
Dev/Ref, Dynamic Range



0.9995116 1.000000 1.0004887
unitless

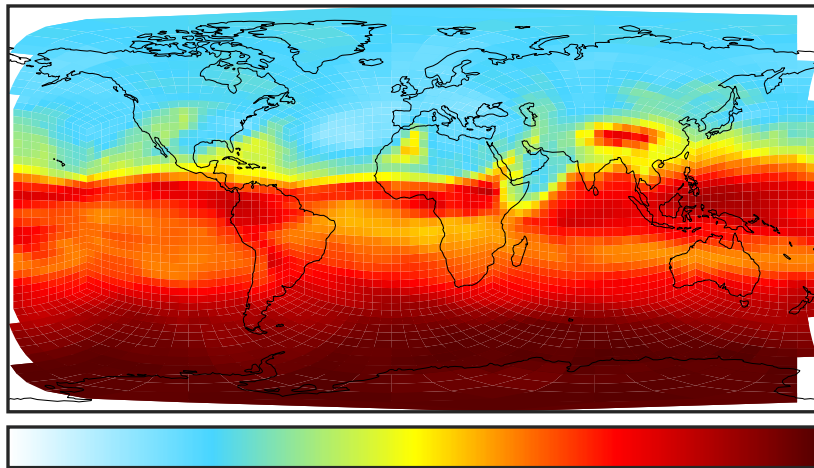
Ratio (1x1.25)
Dev/Ref, Fixed Range



0.50 0.75 1.00 1.50 2.00
unitless

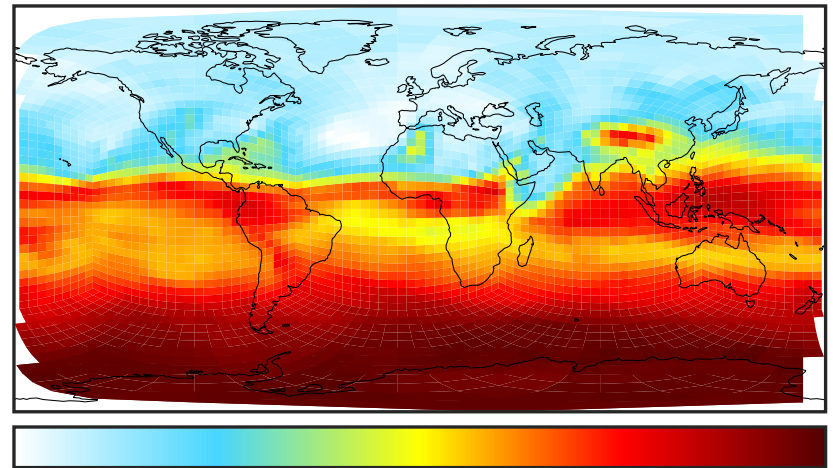
SpeciesConcVV_CH3Cl (Jul2019)

GCHP_14.0.0 (Ref)
c24



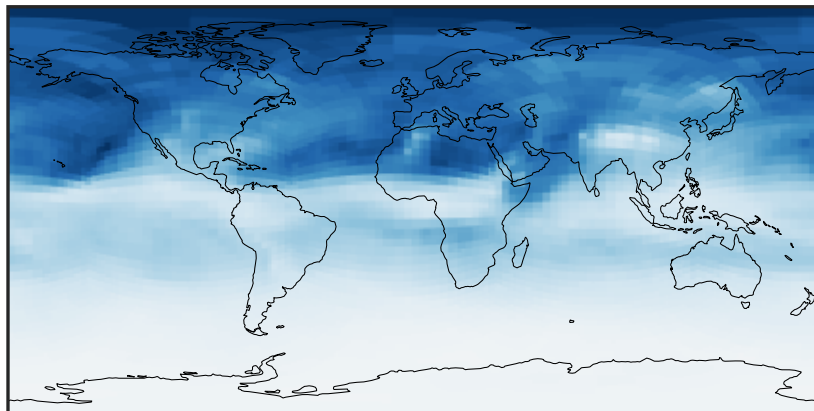
0.510 0.525
ppb

GCHP_14.2.0 (Dev)
c24



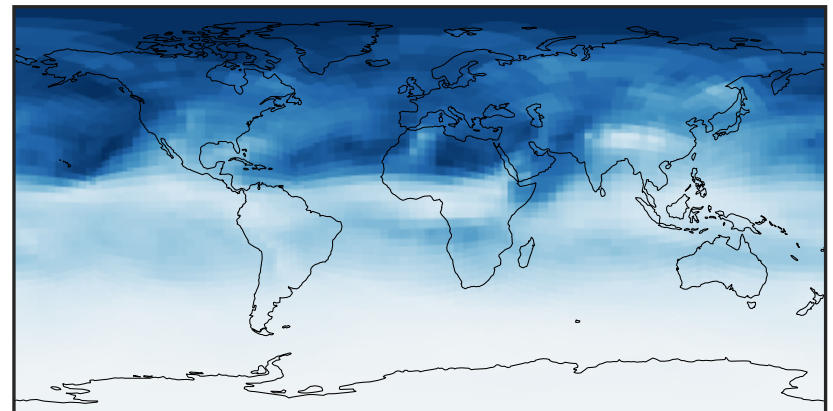
0.510 0.525
ppb

Difference (1x1.25)
Dev - Ref, Dynamic Range



-0.004 0.000 0.004
ppb

Difference (1x1.25)
Dev - Ref, Restricted Range [5%,95%]



-0.004 0.000 0.004
ppb

Ratio (1x1.25)
Dev/Ref, Dynamic Range



0.9995074 1.000000 1.0004929
unitless

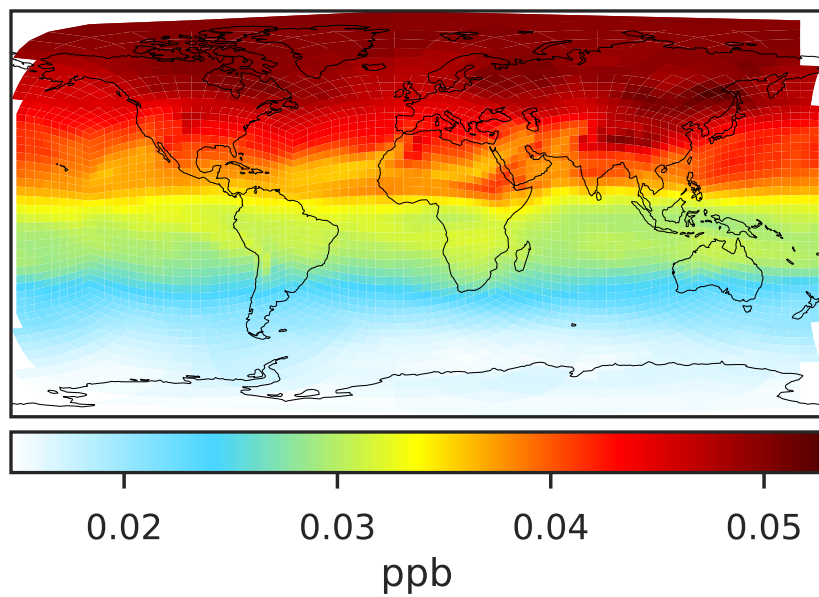
Ratio (1x1.25)
Dev/Ref, Fixed Range



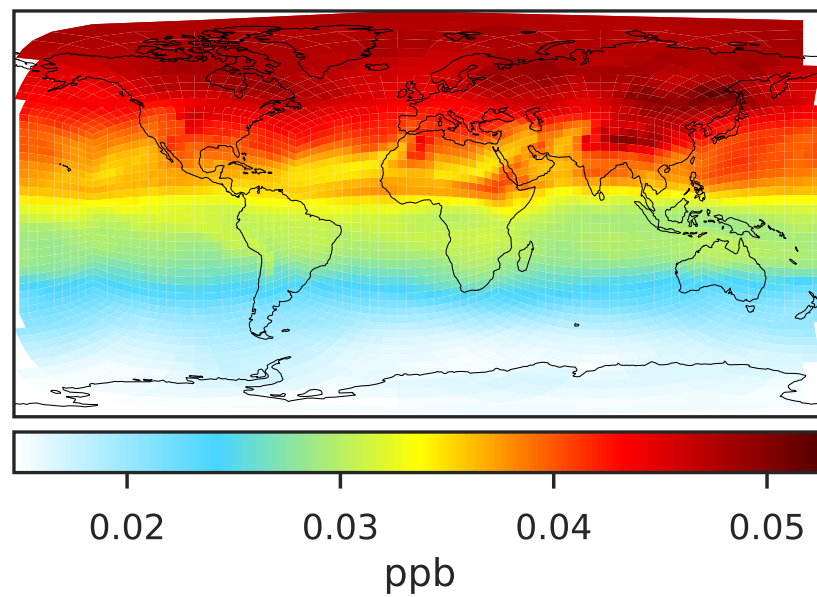
0.50 0.75 1.00 1.50 2.00
unitless

SpeciesConcVV_CH2Cl2 (Jul2019)

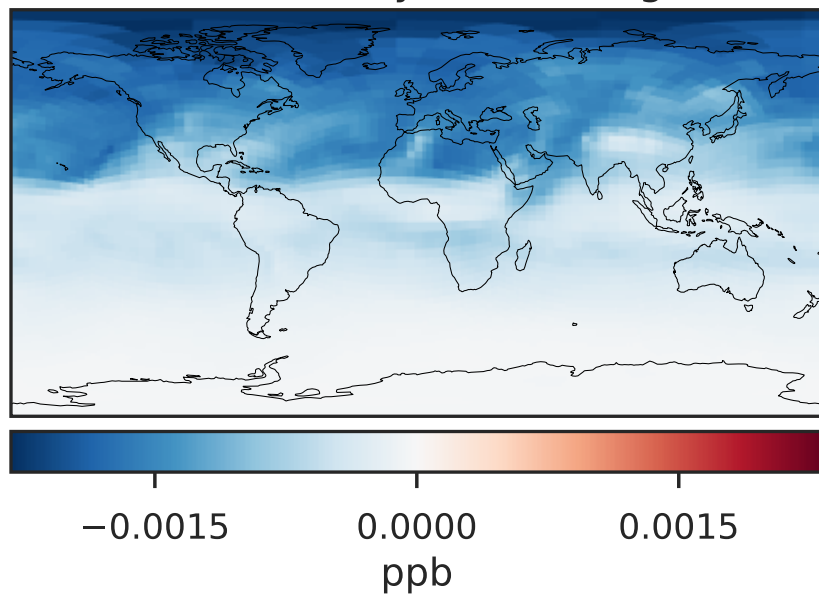
GCHP_14.0.0 (Ref)
c24



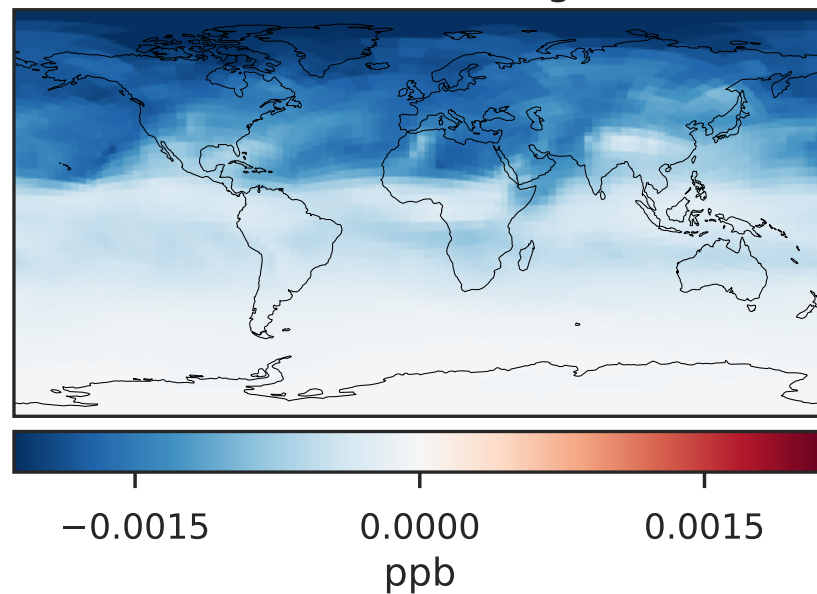
GCHP_14.2.0 (Dev)
c24



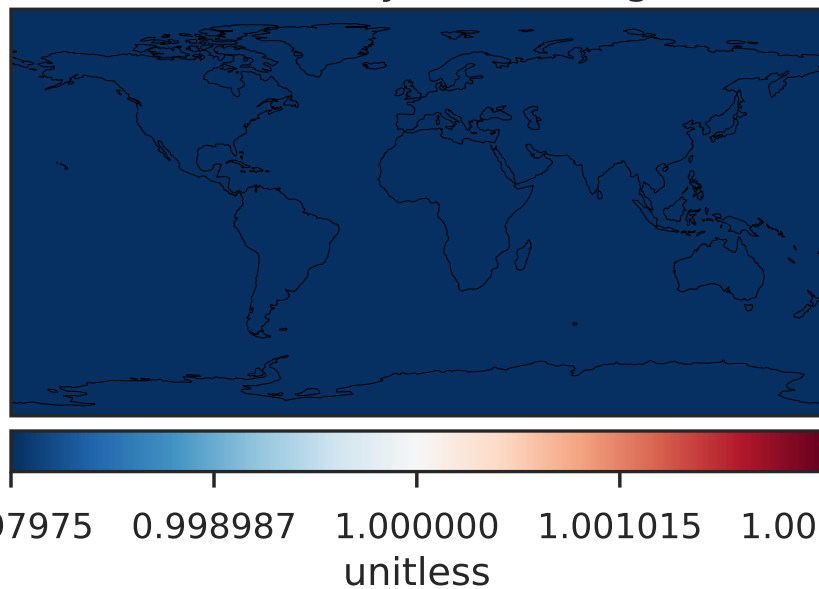
Difference (1x1.25)
Dev - Ref, Dynamic Range



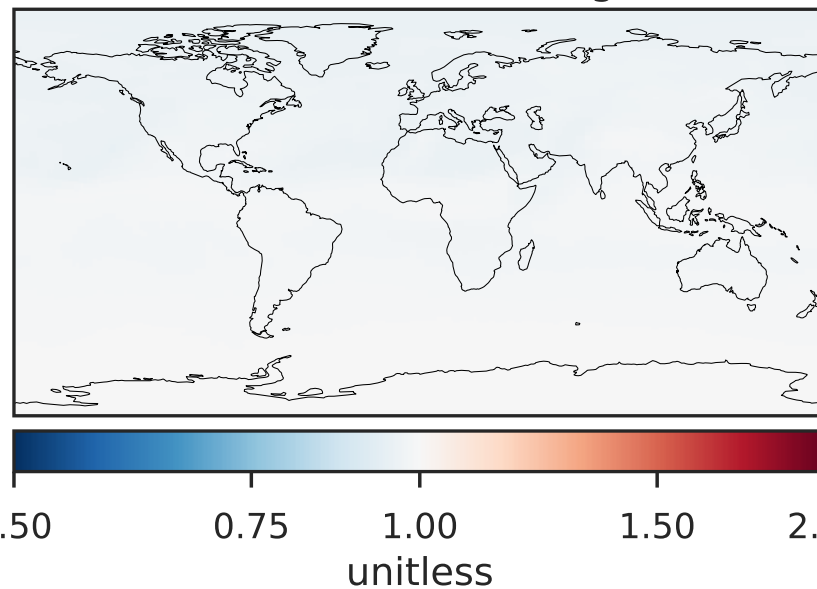
Difference (1x1.25)
Dev - Ref, Restricted Range [5%,95%]



Ratio (1x1.25)
Dev/Ref, Dynamic Range

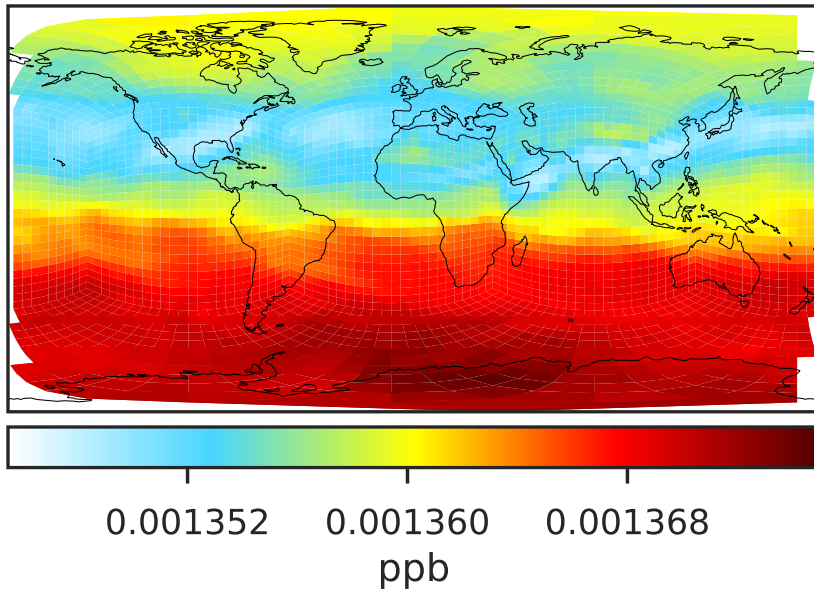


Ratio (1x1.25)
Dev/Ref, Fixed Range

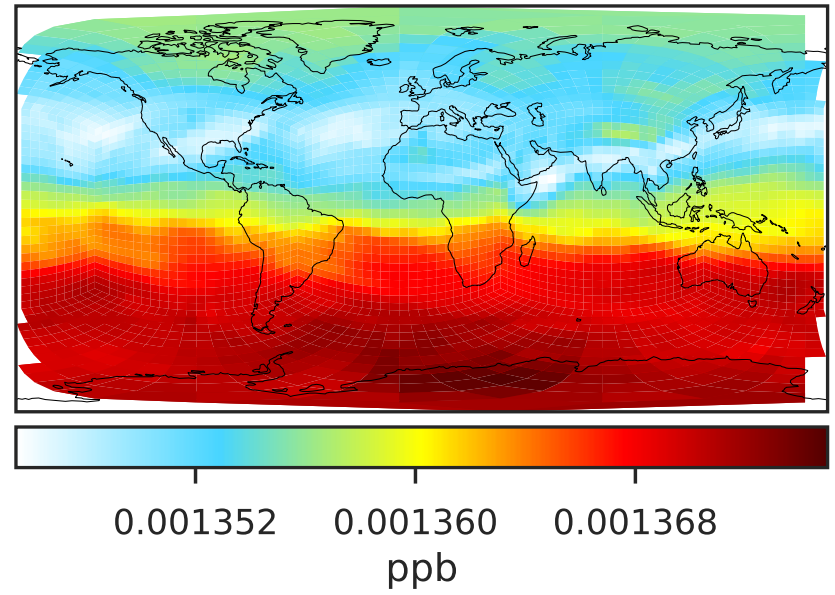


SpeciesConcVV_CH3CCI3 (Jul2019)

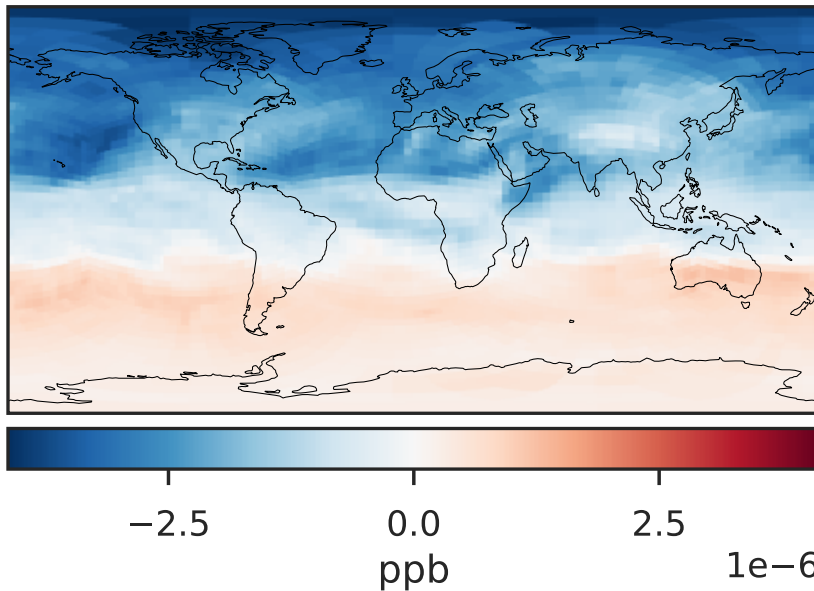
GCHP_14.0.0 (Ref)
c24



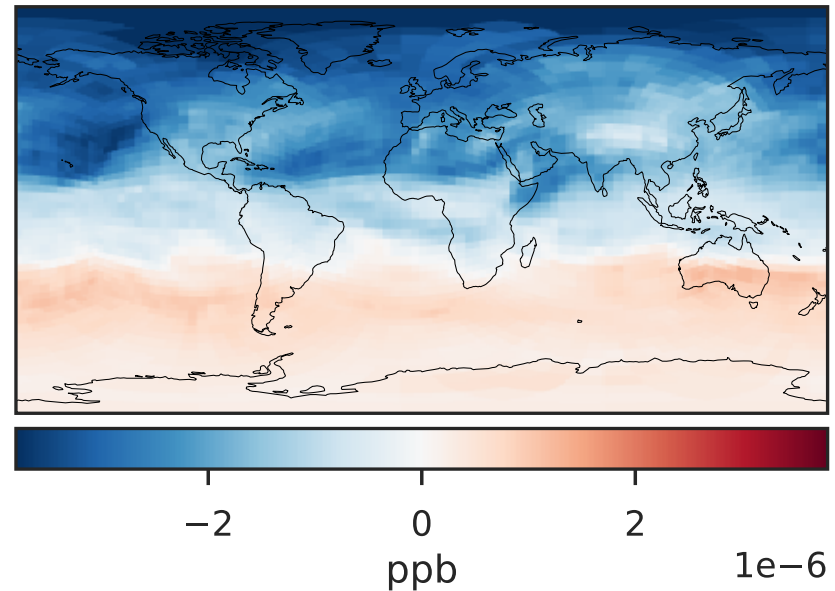
GCHP_14.2.0 (Dev)
c24



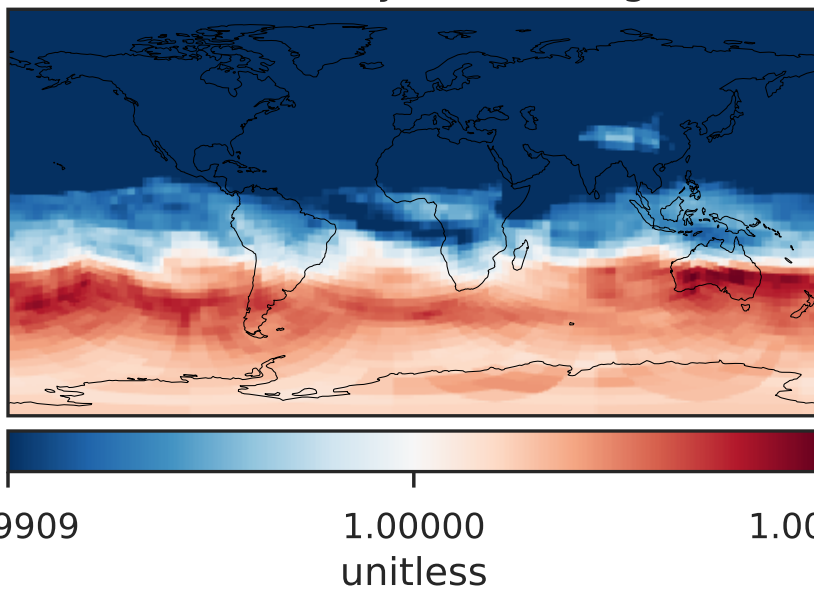
Difference (1x1.25)
Dev - Ref, Dynamic Range



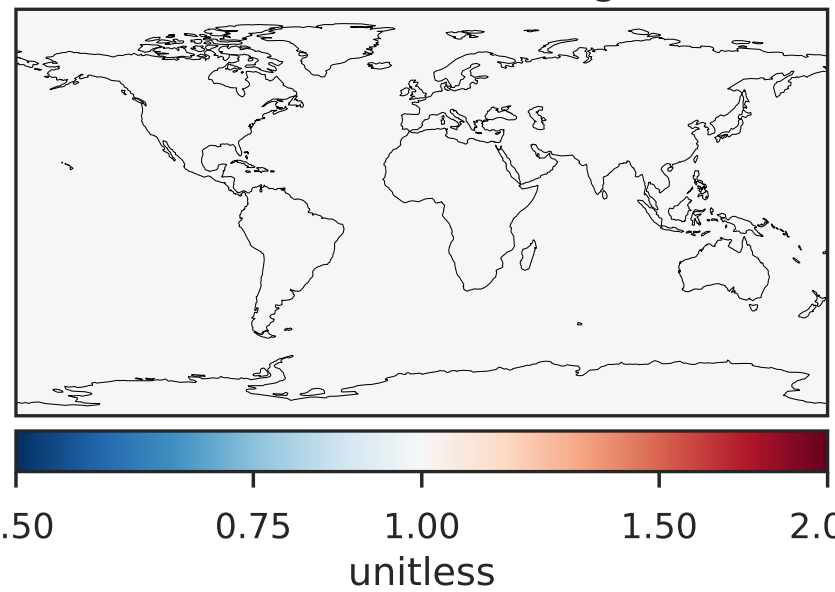
Difference (1x1.25)
Dev - Ref, Restricted Range [5%,95%]



Ratio (1x1.25)
Dev/Ref, Dynamic Range

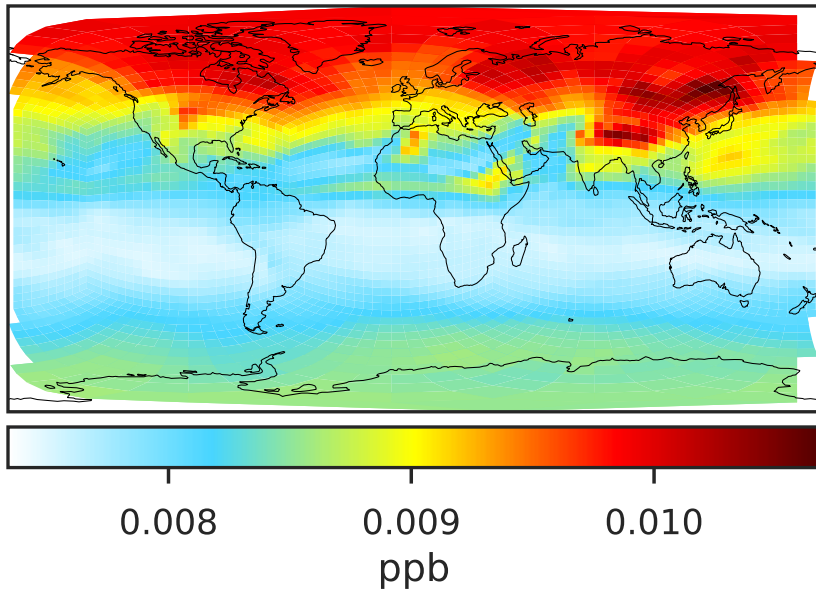


Ratio (1x1.25)
Dev/Ref, Fixed Range

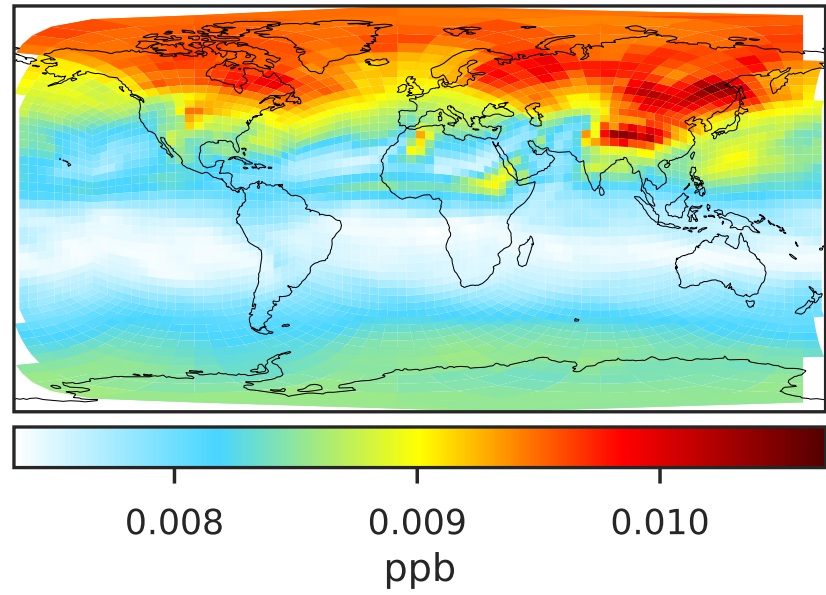


SpeciesConcVV_CHCl3 (Jul2019)

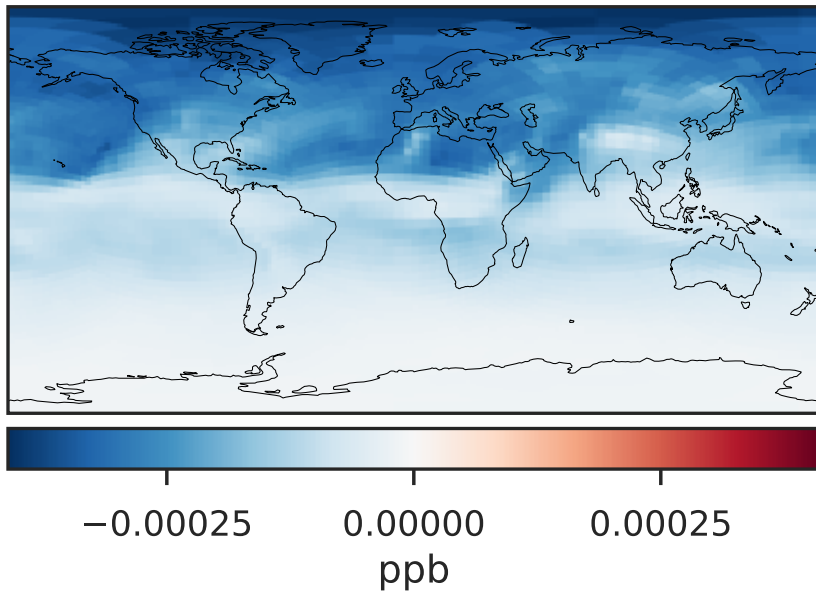
GCHP_14.0.0 (Ref)
c24



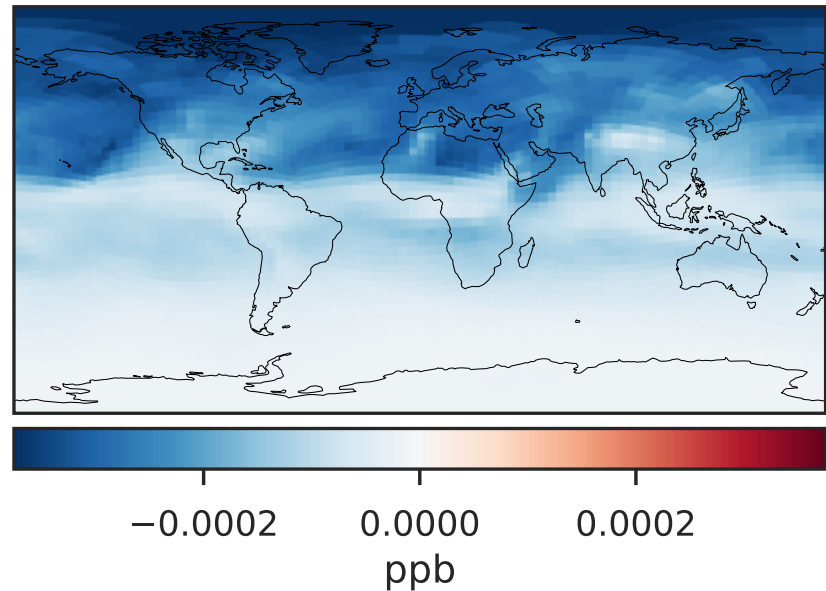
GCHP_14.2.0 (Dev)
c24



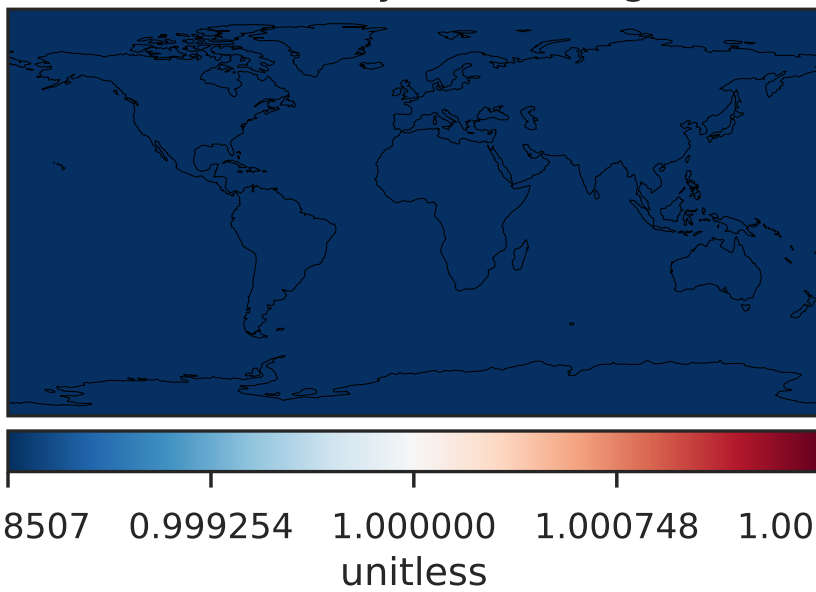
Difference (1x1.25)
Dev - Ref, Dynamic Range



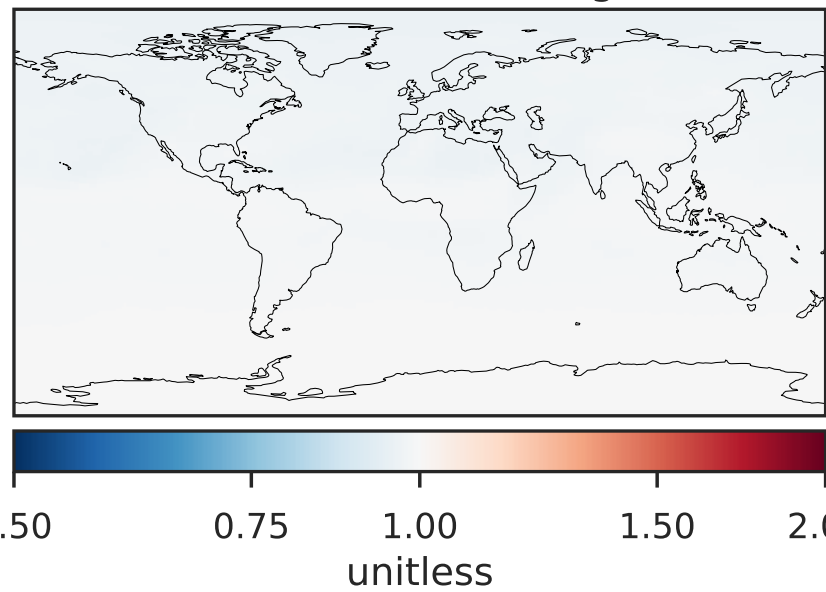
Difference (1x1.25)
Dev - Ref, Restricted Range [5%,95%]



Ratio (1x1.25)
Dev/Ref, Dynamic Range

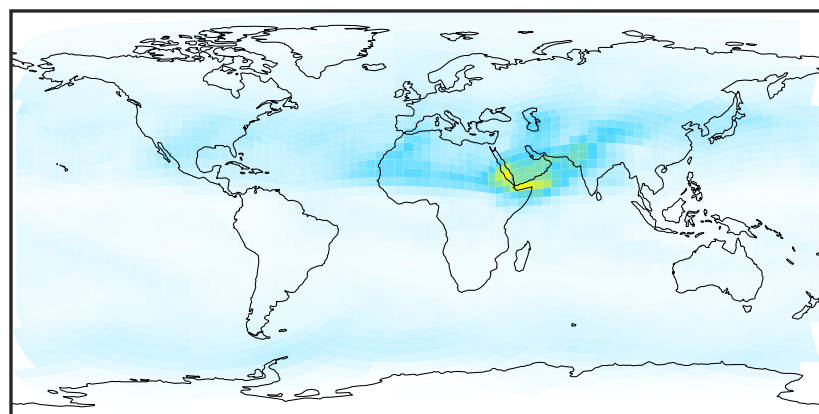


Ratio (1x1.25)
Dev/Ref, Fixed Range



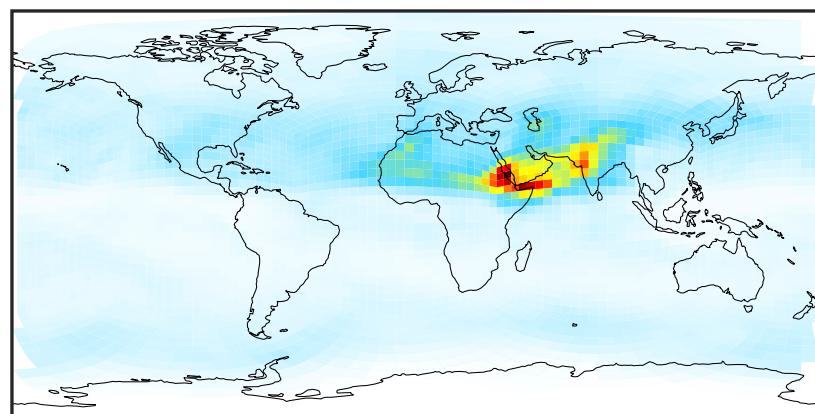
SpeciesConcVV_HOCl (Jul2019)

GCHP_14.0.0 (Ref)
c24



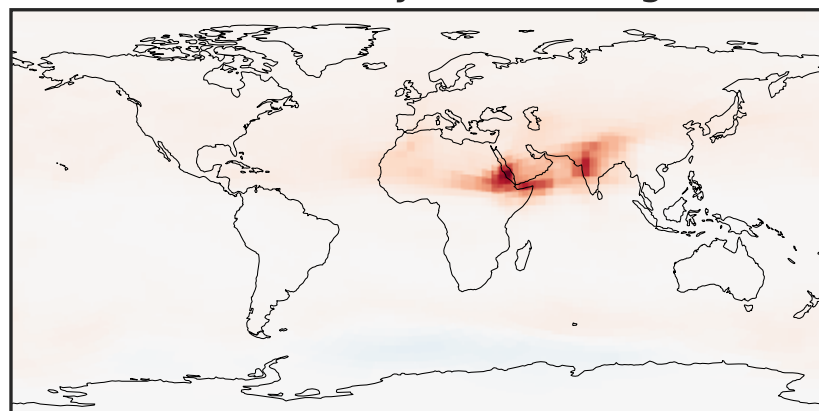
0.0015 0.0030 0.0045
ppb

GCHP_14.2.0 (Dev)
c24



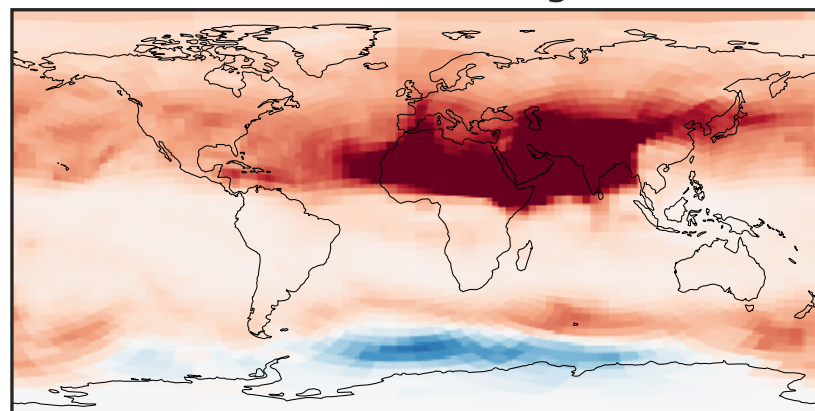
0.0015 0.0030 0.0045
ppb

Difference (1x1.25)
Dev - Ref, Dynamic Range



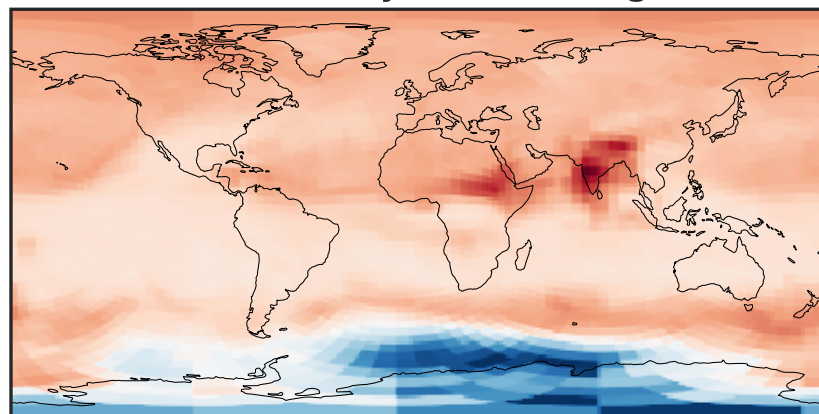
-0.0015 0.0000 0.0015
ppb

Difference (1x1.25)
Dev - Ref, Restricted Range [5%,95%]



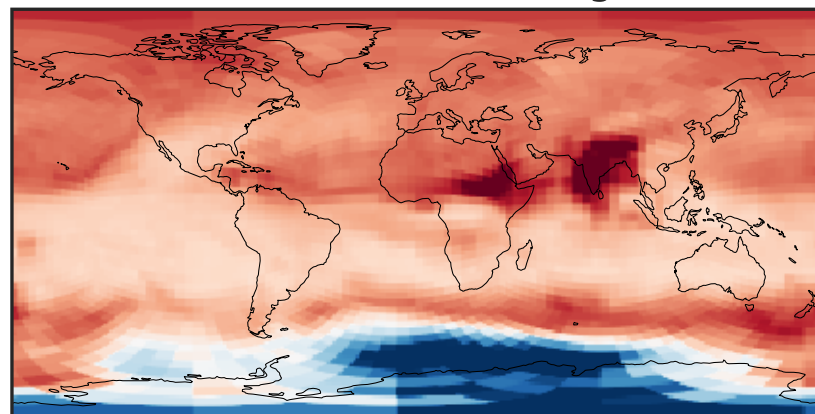
-0.0002 0.0000 0.0002
ppb

Ratio (1x1.25)
Dev/Ref, Dynamic Range



0.329 0.664 1.000 2.021 3.042
unitless

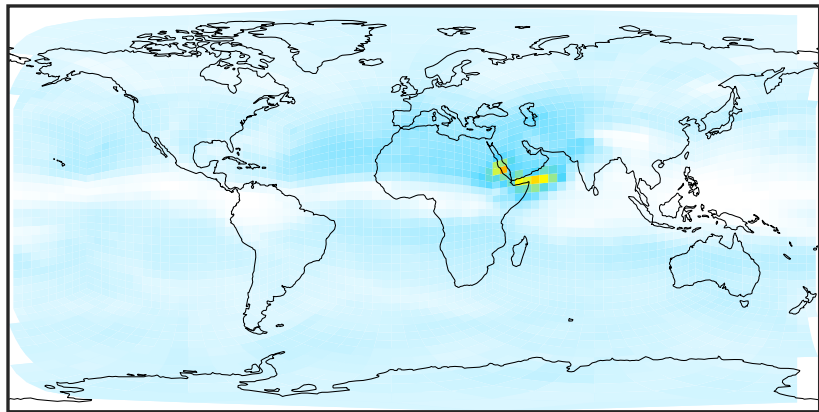
Ratio (1x1.25)
Dev/Ref, Fixed Range



0.50 0.75 1.00 1.50 2.00
unitless

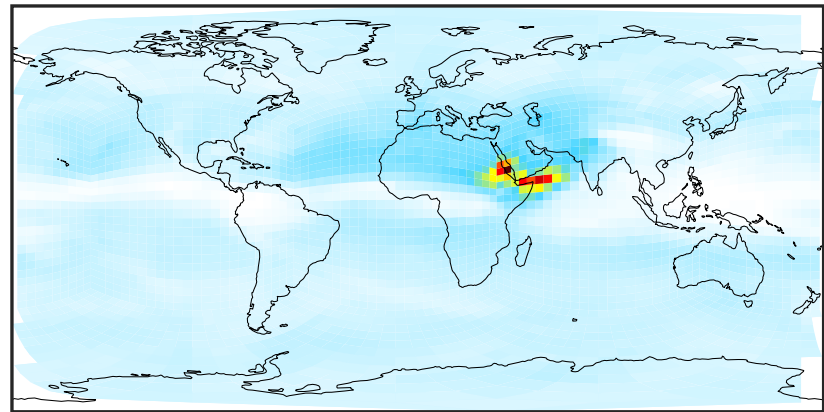
SpeciesConcVV_HCl (Jul2019)

GCHP_14.0.0 (Ref)
c24



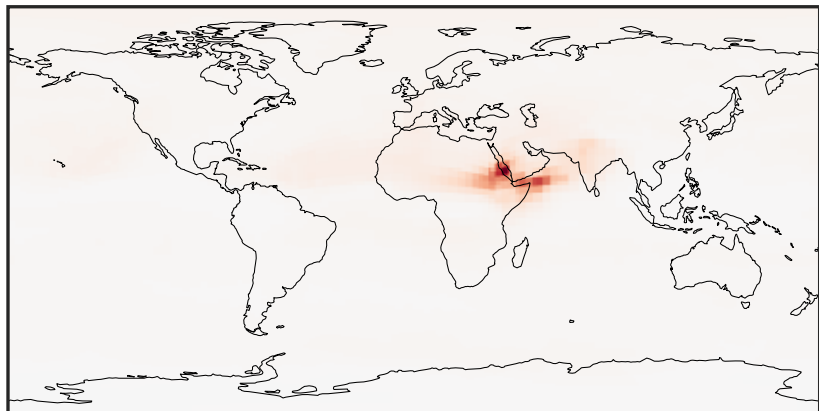
0.0021 0.0608 0.1217 0.1825 0.2455
ppb

GCHP_14.2.0 (Dev)
c24



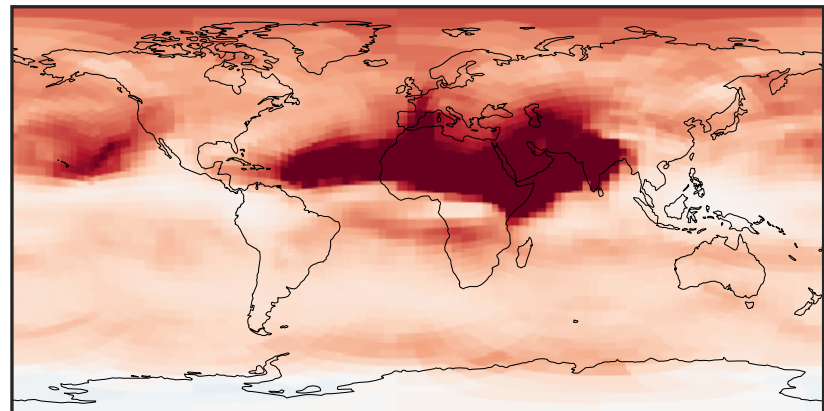
0.0021 0.0608 0.1217 0.1825 0.2455
ppb

Difference (1x1.25)
Dev - Ref, Dynamic Range



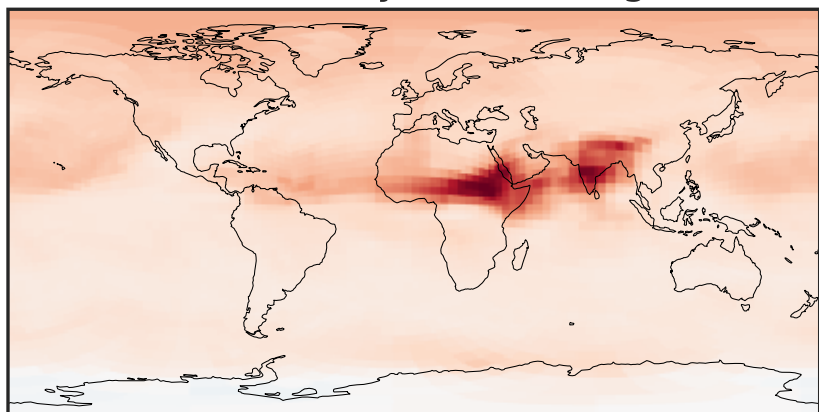
-0.1038 -0.0519 0.0000 0.0519 0.1038
ppb

Difference (1x1.25)
Dev - Ref, Restricted Range [5%,95%]



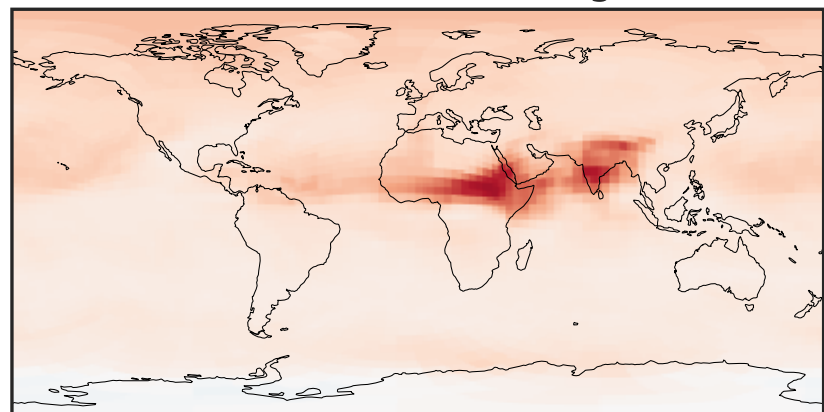
-0.003 0.000 0.003
ppb

Ratio (1x1.25)
Dev/Ref, Dynamic Range



0.557 0.779 1.000 1.397 1.794
unitless

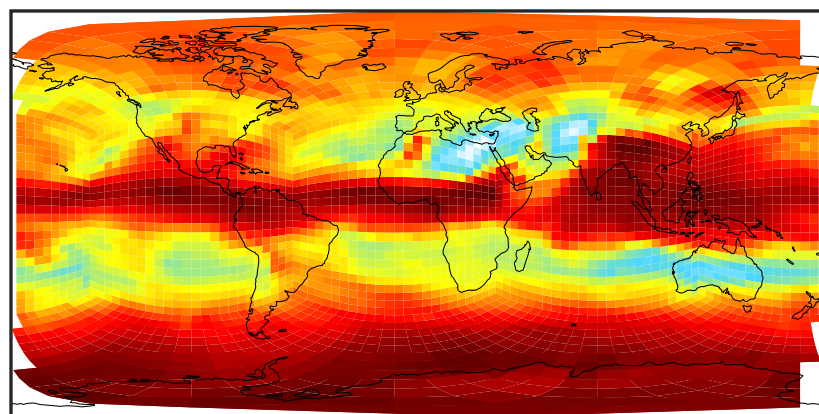
Ratio (1x1.25)
Dev/Ref, Fixed Range



0.50 0.75 1.00 1.50 2.00
unitless

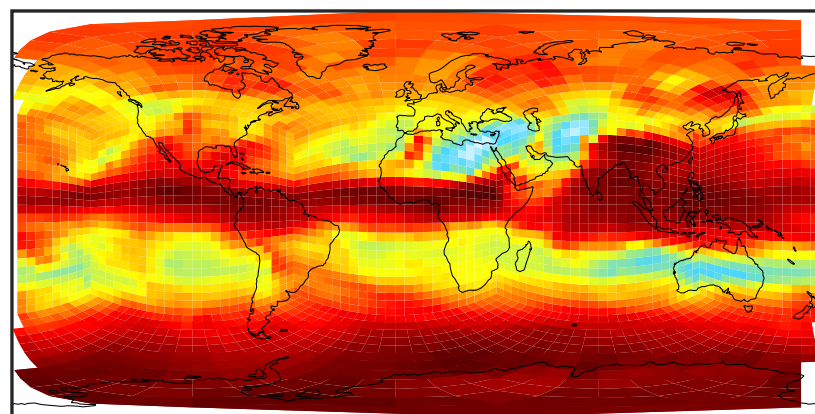
SpeciesConcVV_Halons (Jul2019)

GCHP_14.0.0 (Ref)
c24



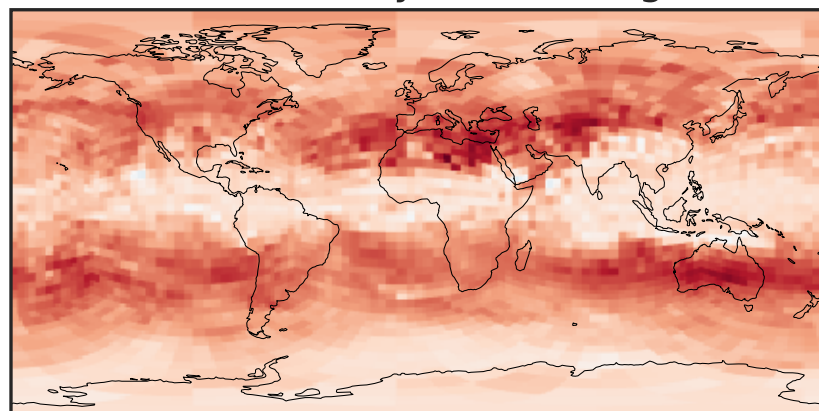
0.006910 0.006925 0.006940
ppb

GCHP_14.2.0 (Dev)
c24



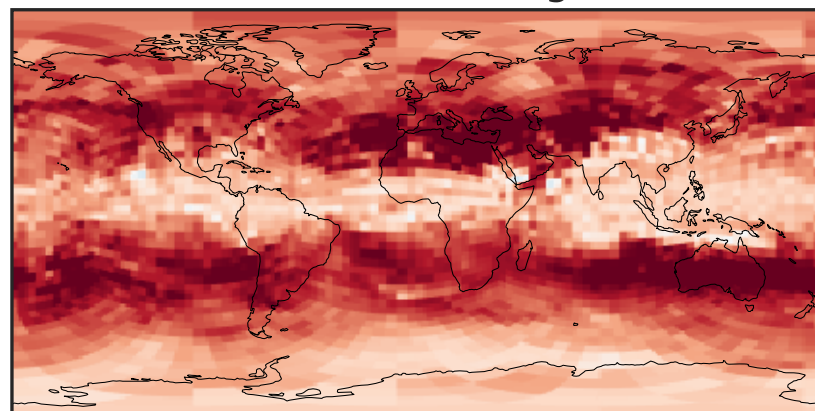
0.006910 0.006925 0.006940
ppb

Difference (1x1.25)
Dev - Ref, Dynamic Range



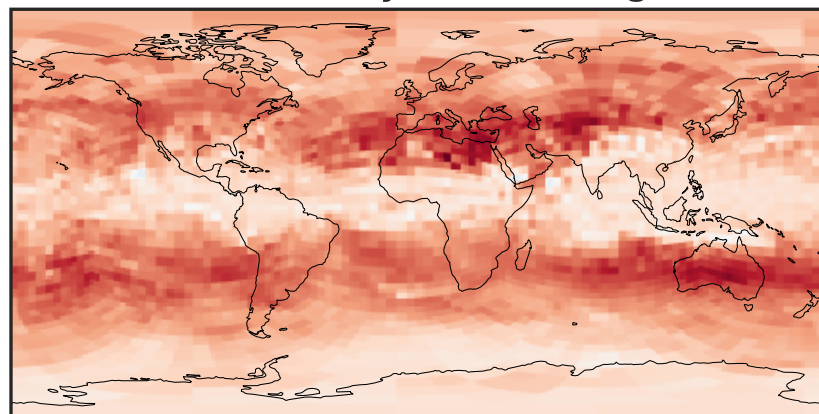
-2 0 2
ppb $1e-6$

Difference (1x1.25)
Dev - Ref, Restricted Range [5%,95%]



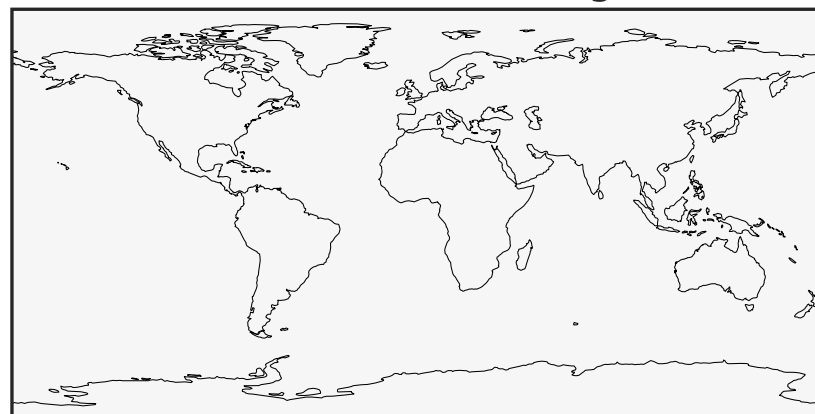
-1 0 1
ppb $1e-6$

Ratio (1x1.25)
Dev/Ref, Dynamic Range



0.9995637 1.000000 1.0004365
unitless

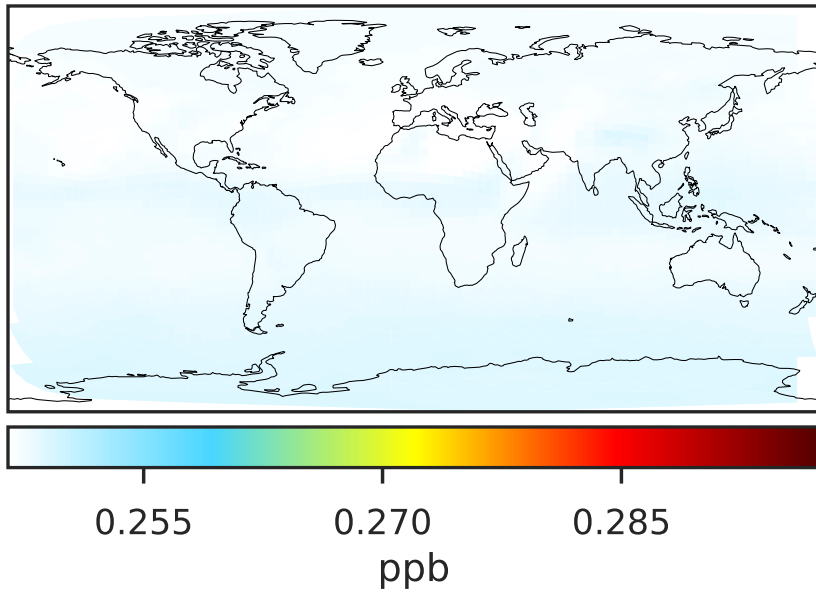
Ratio (1x1.25)
Dev/Ref, Fixed Range



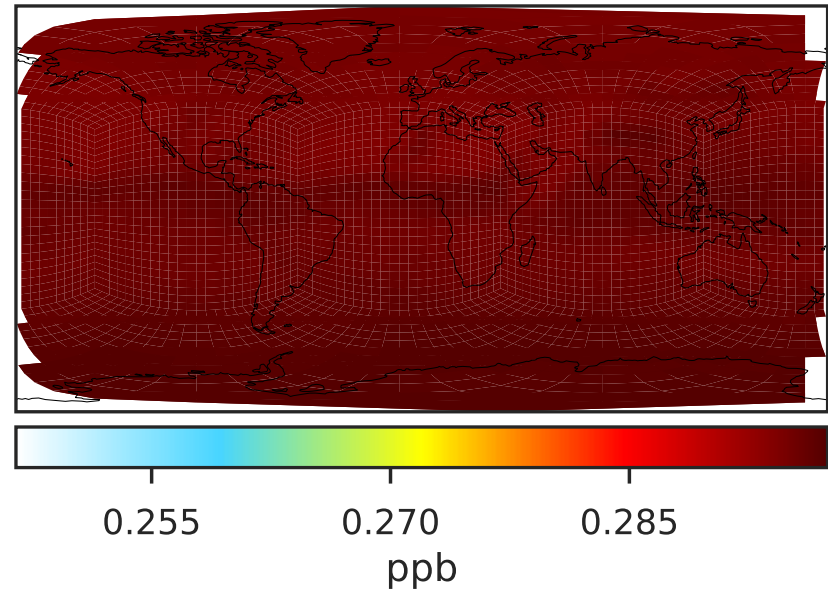
0.50 0.75 1.00 1.50 2.00
unitless

SpeciesConcVV_HCFCs (Jul2019)

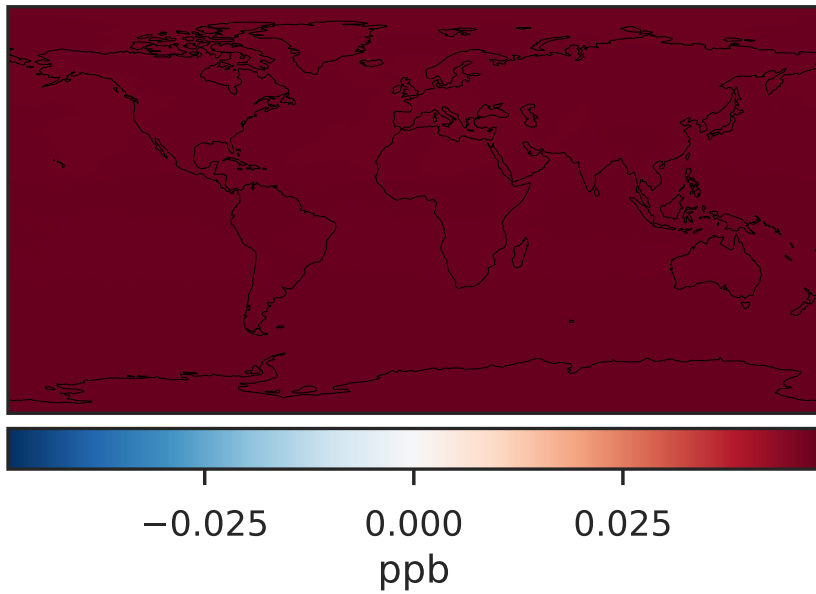
GCHP_14.0.0 (Ref)
c24



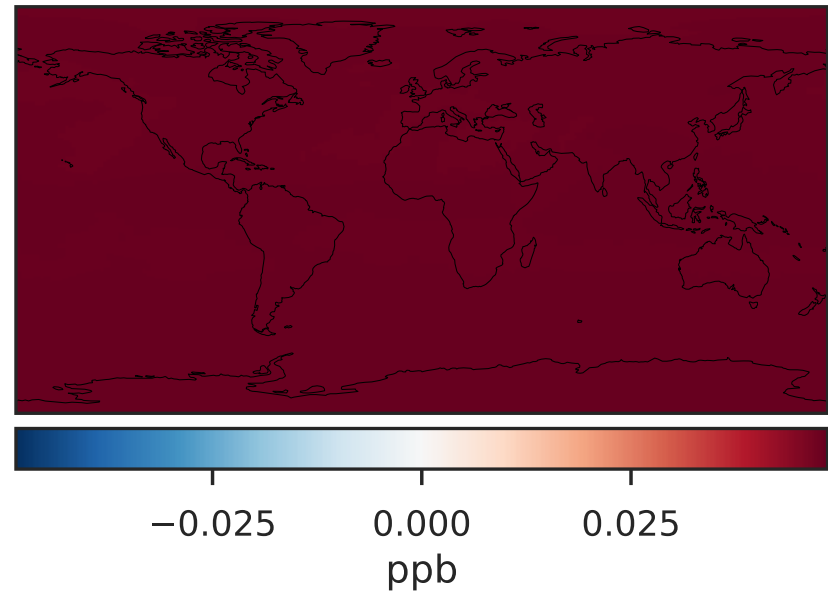
GCHP_14.2.0 (Dev)
c24



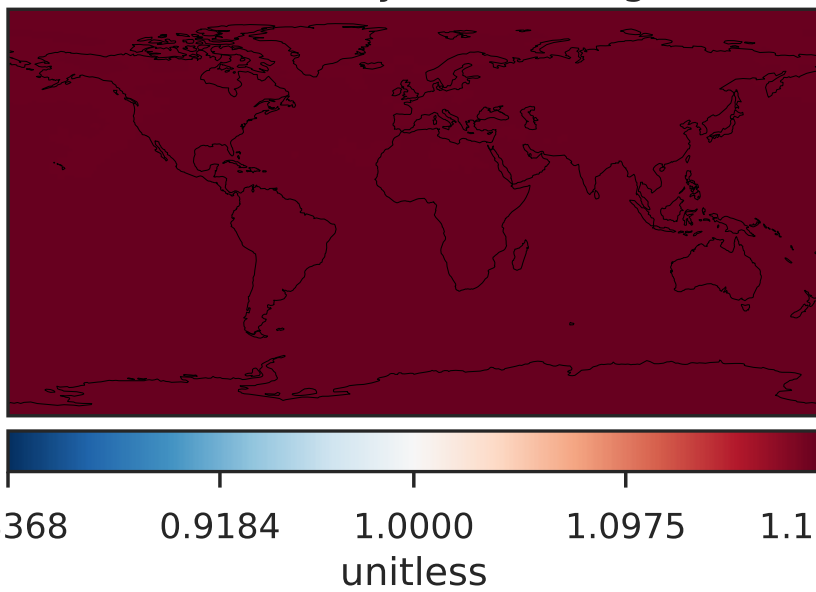
Difference (1x1.25)
Dev - Ref, Dynamic Range



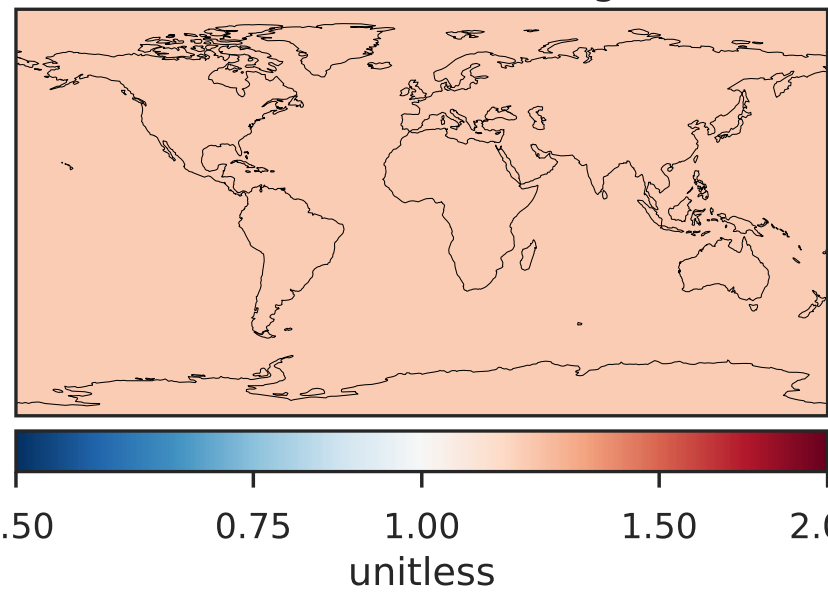
Difference (1x1.25)
Dev - Ref, Restricted Range [5%,95%]



Ratio (1x1.25)
Dev/Ref, Dynamic Range

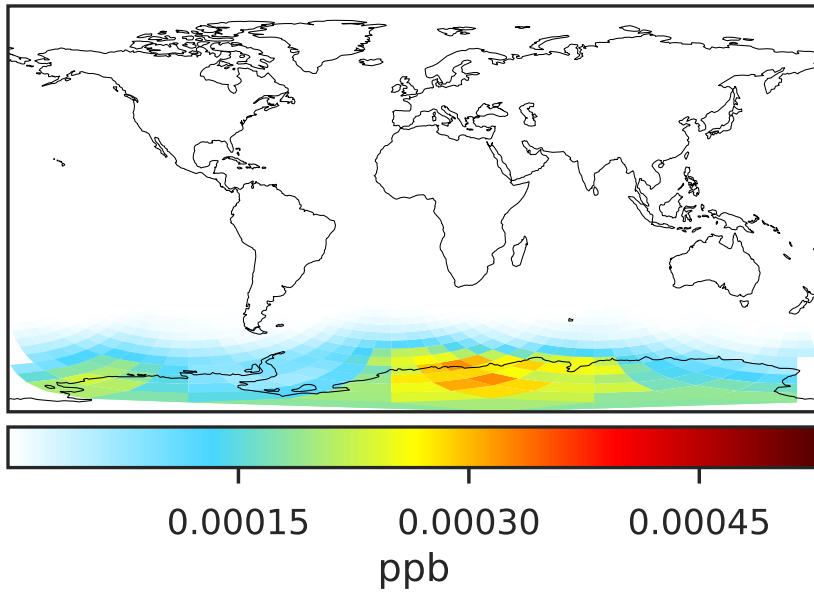


Ratio (1x1.25)
Dev/Ref, Fixed Range

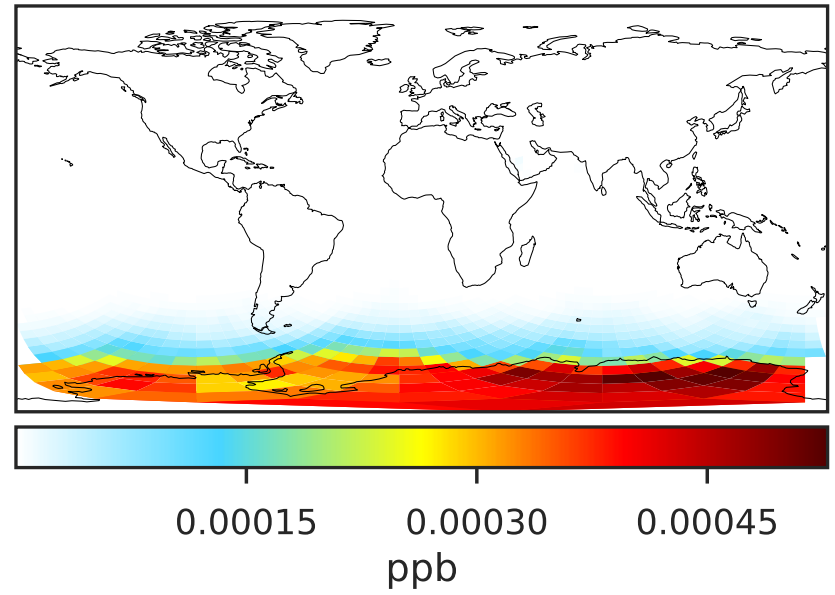


SpeciesConcVV_OCIO (Jul2019)

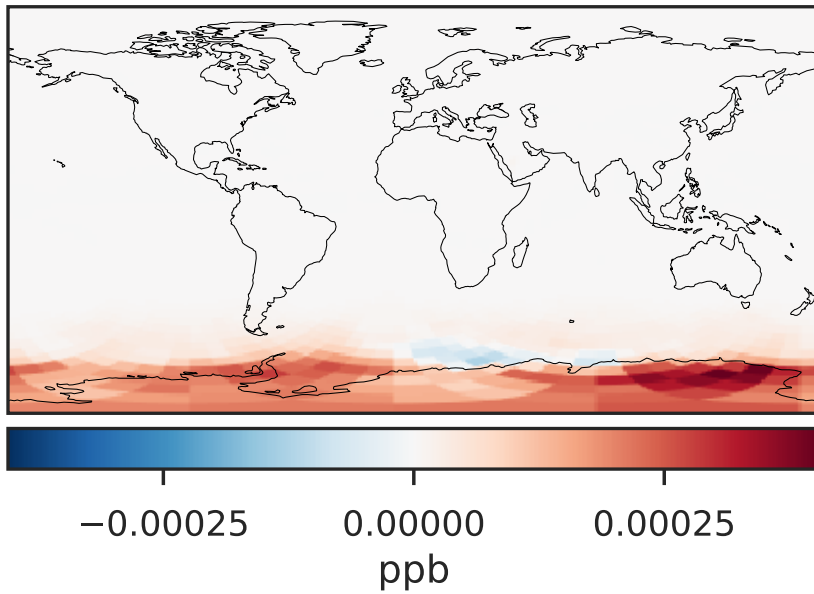
GCHP_14.0.0 (Ref)
c24



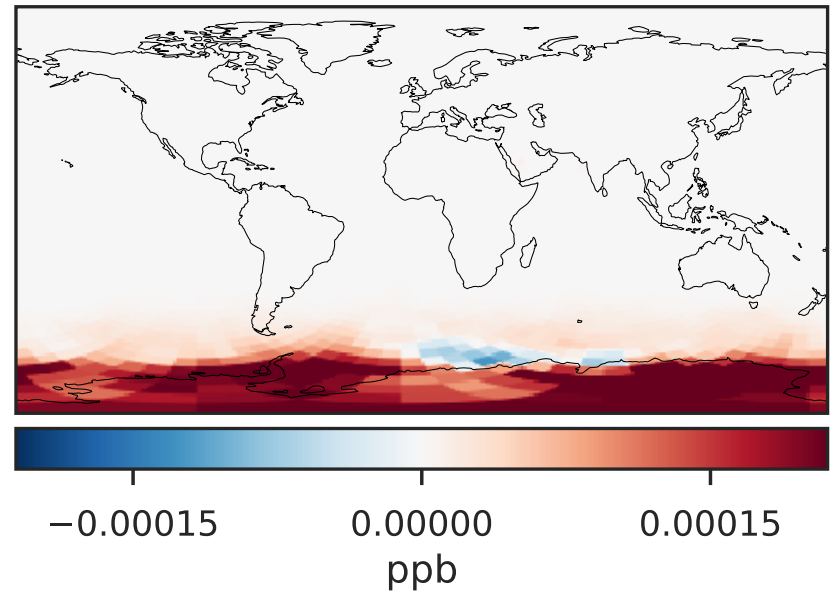
GCHP_14.2.0 (Dev)
c24



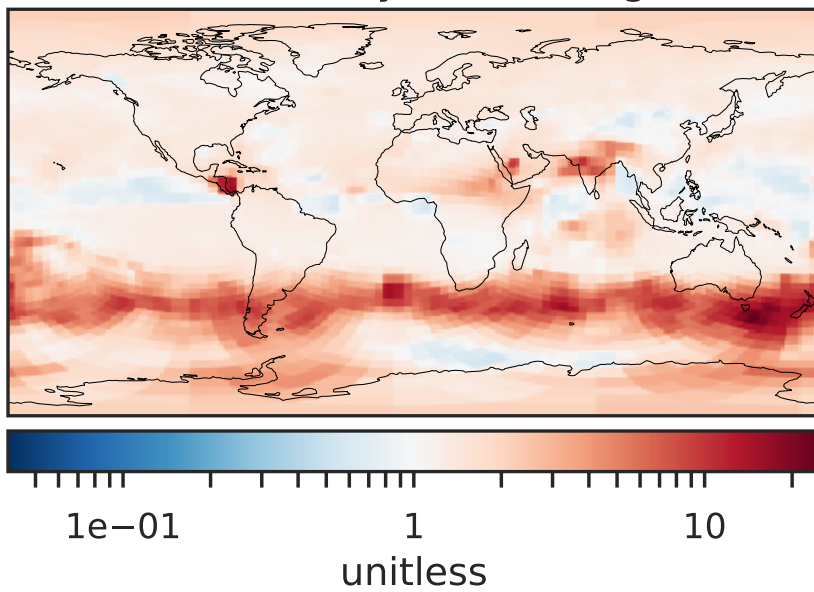
Difference (1x1.25)
Dev - Ref, Dynamic Range



Difference (1x1.25)
Dev - Ref, Restricted Range [5%,95%]



Ratio (1x1.25)
Dev/Ref, Dynamic Range



Ratio (1x1.25)
Dev/Ref, Fixed Range

