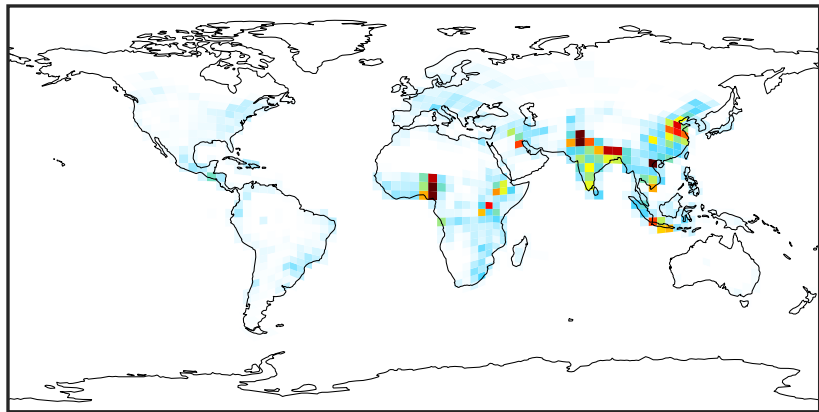


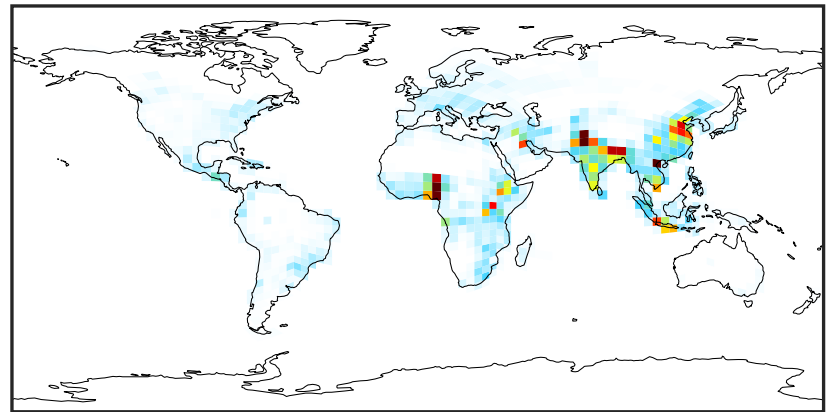
EmisALD2_Anthro (AnnualMean)

GCHP_14.0.0 (Ref)
c24



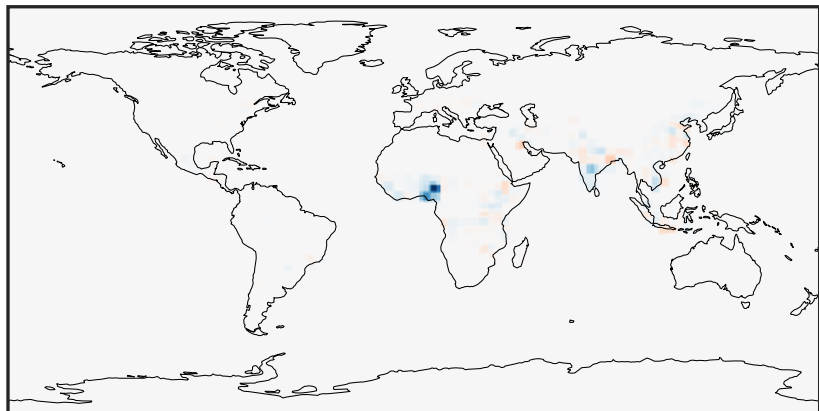
0.0 1.5 3.0 4.5
kg/m2/s $1e-12$

GCHP_14.2.0 (Dev)
c24



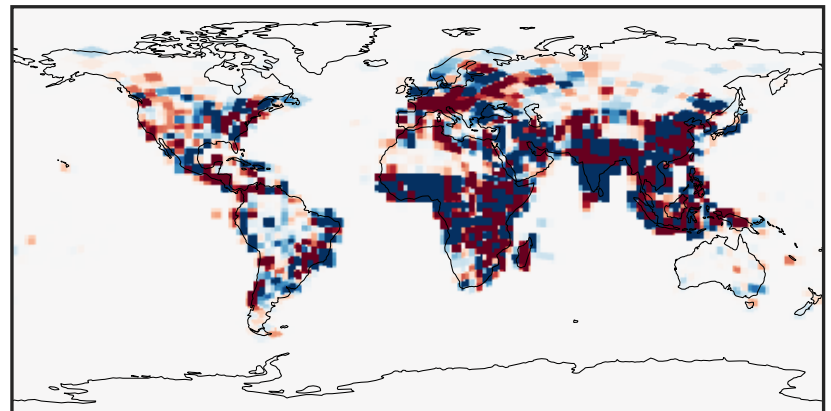
0.0 1.5 3.0 4.5
kg/m2/s $1e-12$

Difference (1x1.25)
Dev - Ref, Dynamic Range



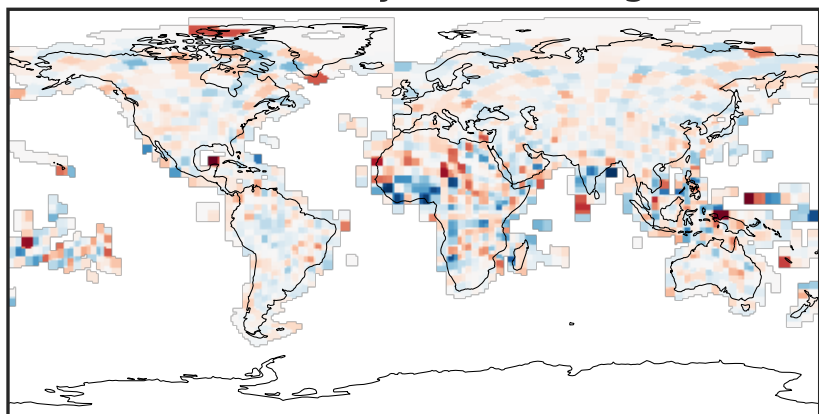
-1.5 0.0 1.5
kg/m2/s $1e-16$

Difference (1x1.25)
Dev - Ref, Restricted Range [5%,95%]



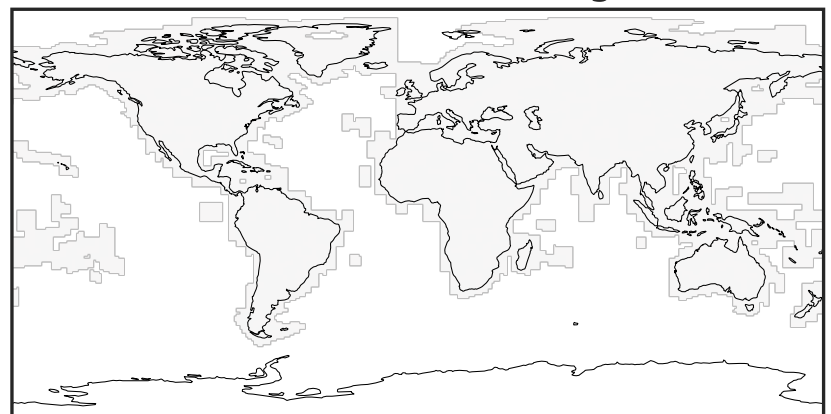
-3 0 3
kg/m2/s $1e-19$

Ratio (1x1.25)
Dev/Ref, Dynamic Range



0.99995103 1.0000000 1.00004897
unitless

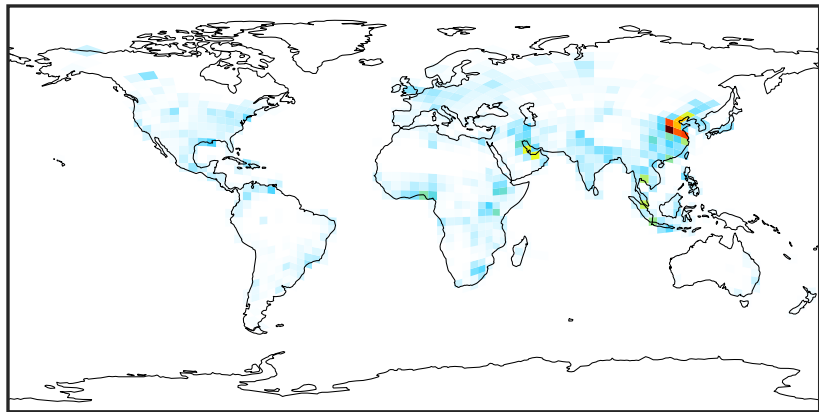
Ratio (1x1.25)
Dev/Ref, Fixed Range



0.50 0.75 1.00 1.50 2.00
unitless

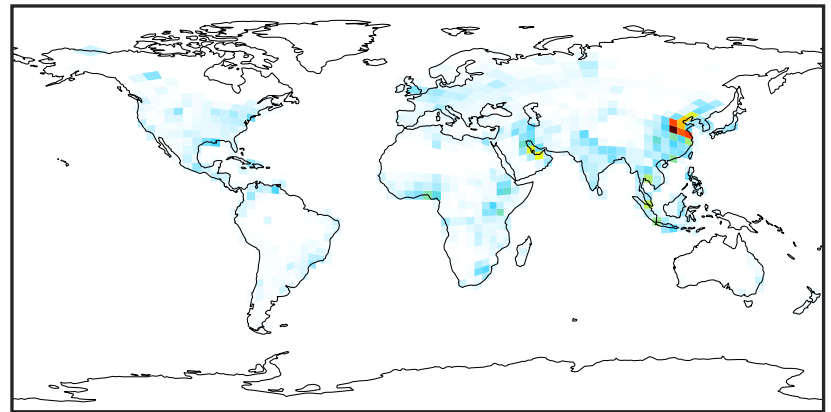
EmisALK4_Anthro (AnnualMean)

GCHP_14.0.0 (Ref)
c24



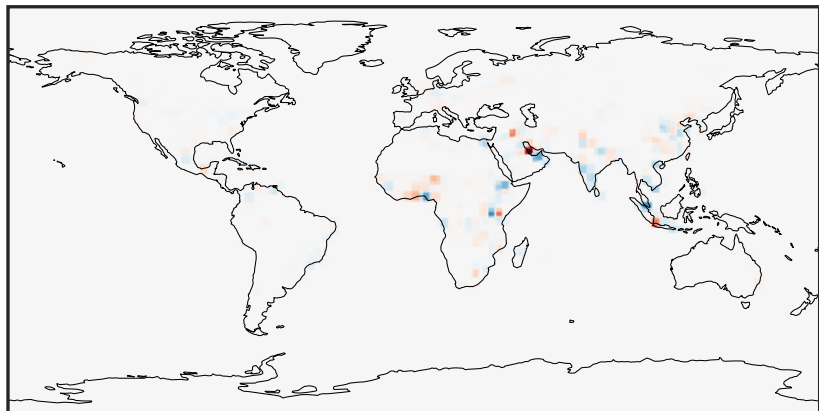
0.0 0.8 1.6 2.4
kg/m²/s 1e-10

GCHP_14.2.0 (Dev)
c24



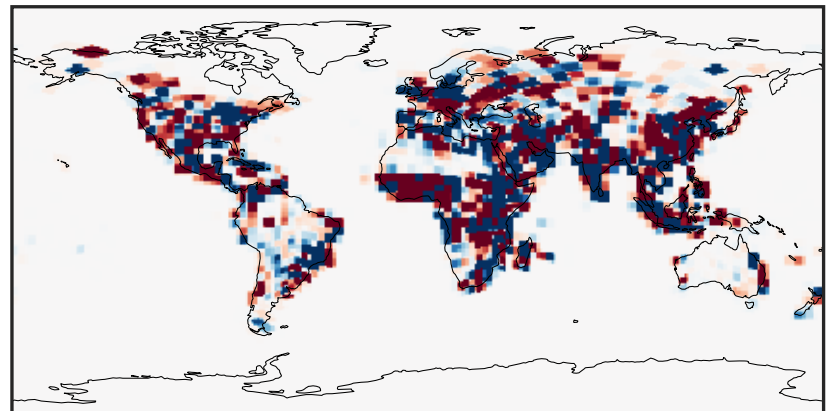
0.0 0.8 1.6 2.4
kg/m²/s 1e-10

Difference (1x1.25)
Dev - Ref, Dynamic Range



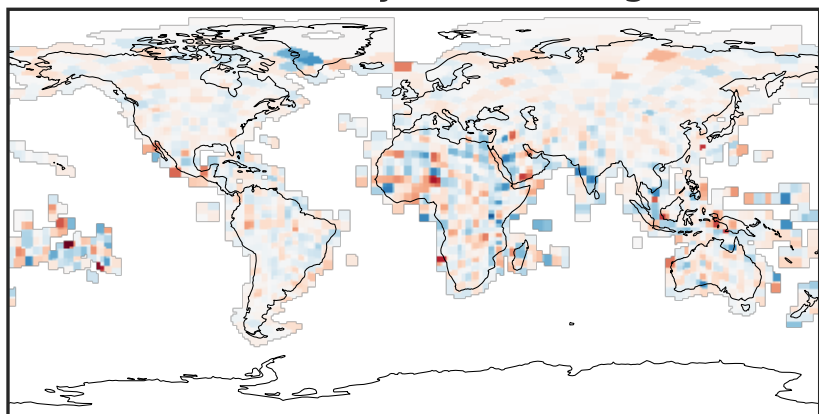
-2 0 2
kg/m²/s 1e-15

Difference (1x1.25)
Dev - Ref, Restricted Range [5%,95%]



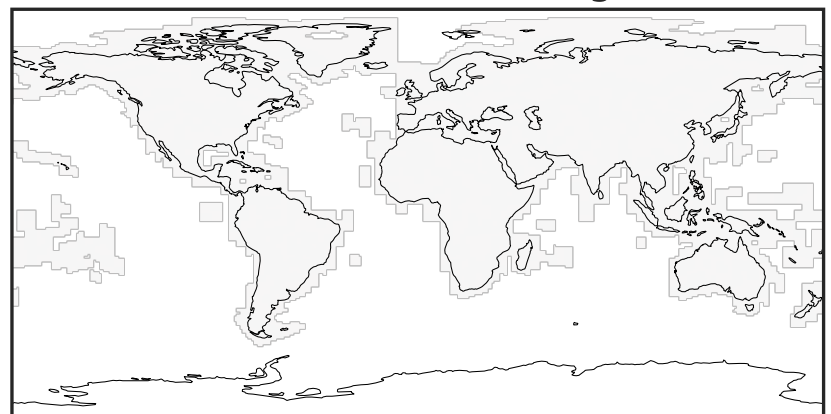
-1.5 0.0 1.5
kg/m²/s 1e-17

Ratio (1x1.25)
Dev/Ref, Dynamic Range



0.9999399 1.000000 1.0000601
unitless

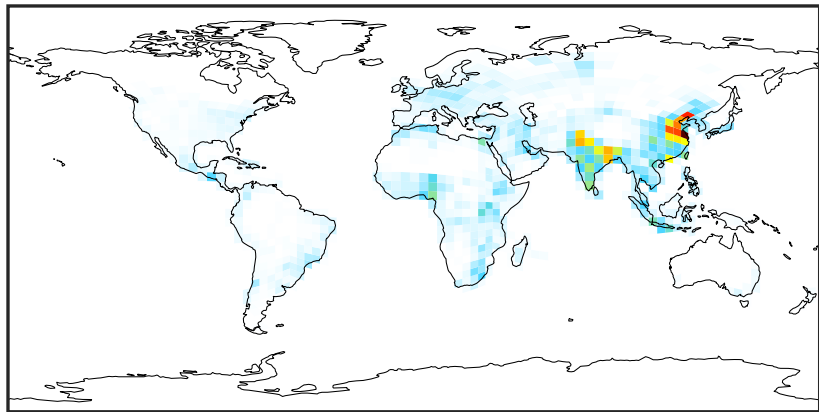
Ratio (1x1.25)
Dev/Ref, Fixed Range



0.50 0.75 1.00 1.50 2.00
unitless

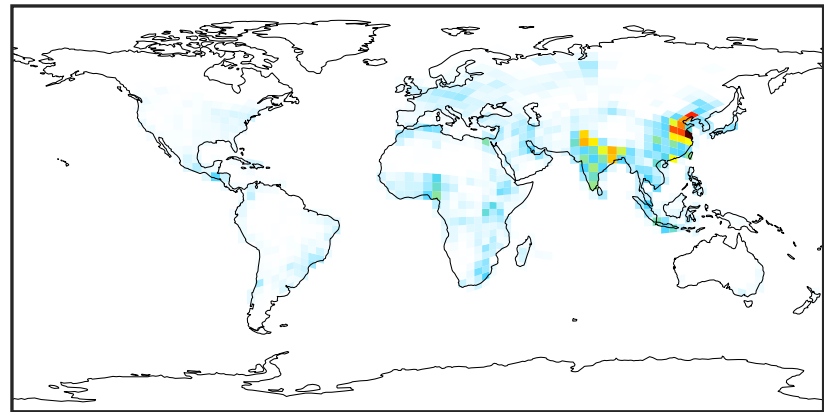
EmisBCPI_Anthro (AnnualMean)

GCHP_14.0.0 (Ref)
c24



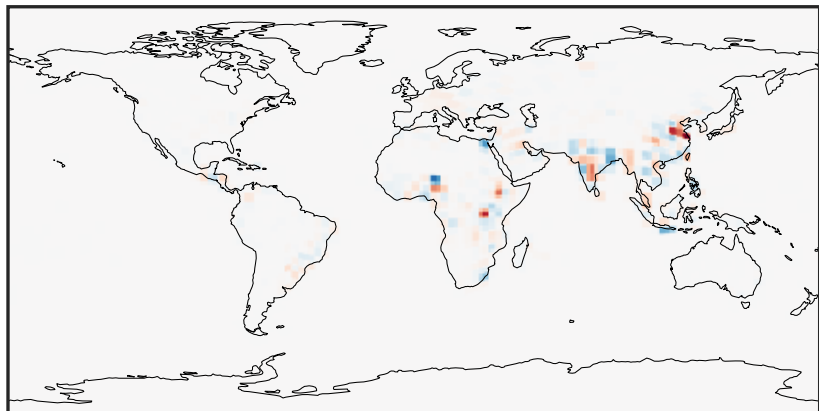
0.0 1.5 3.0 4.5
kg/m²/s 1e-12

GCHP_14.2.0 (Dev)
c24



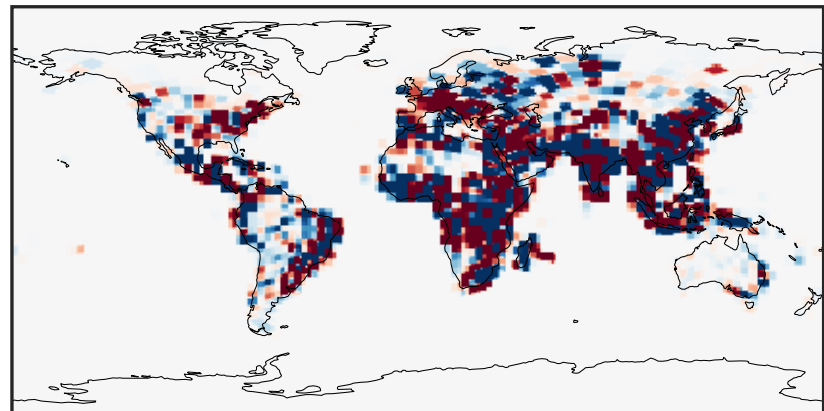
0.0 1.5 3.0 4.5
kg/m²/s 1e-12

Difference (1x1.25)
Dev - Ref, Dynamic Range



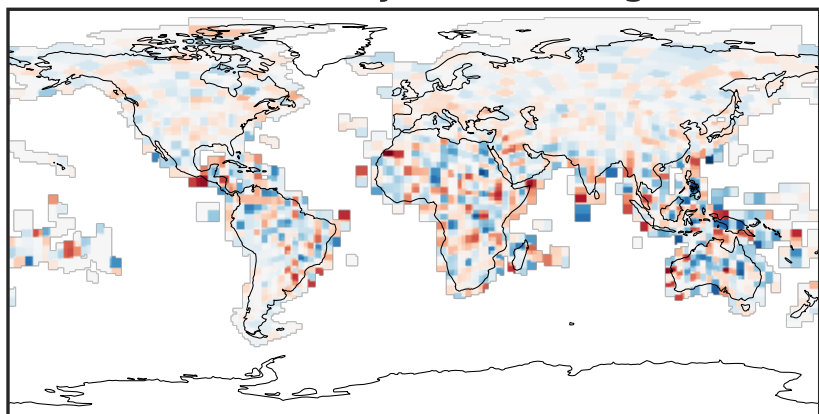
-8 0 8
kg/m²/s 1e-17

Difference (1x1.25)
Dev - Ref, Restricted Range [5%,95%]



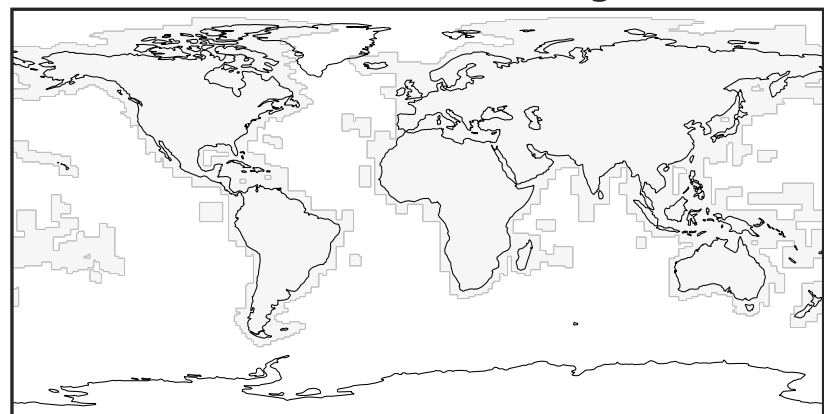
-8 0 8
kg/m²/s 1e-19

Ratio (1x1.25)
Dev/Ref, Dynamic Range



0.9998948 1.000000 1.0001052
unitless

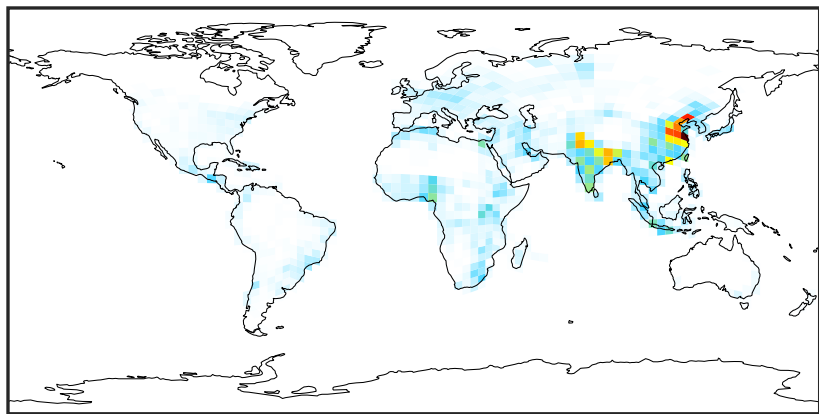
Ratio (1x1.25)
Dev/Ref, Fixed Range



0.50 0.75 1.00 1.50 2.00
unitless

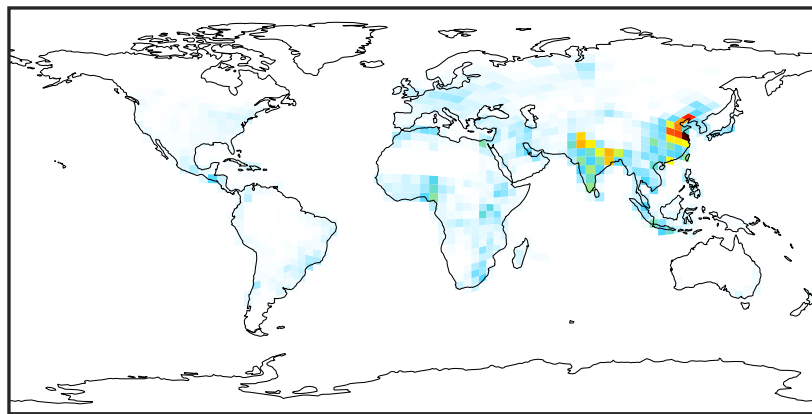
EmisBCPO_Anthro (AnnualMean)

GCHP_14.0.0 (Ref)
c24



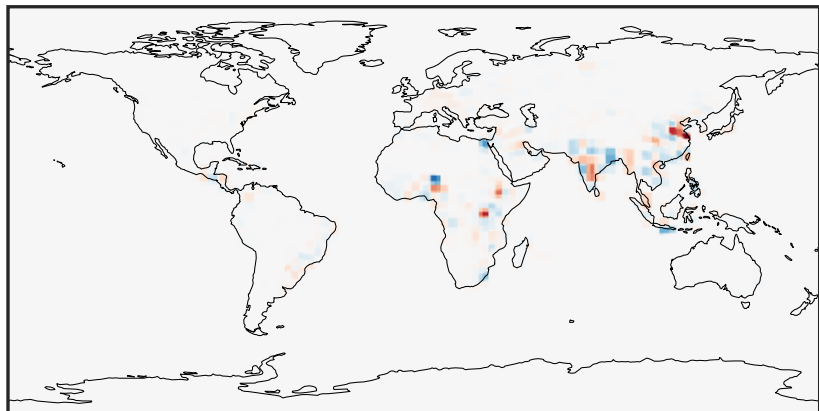
0.0 0.5 1.0 1.5 $1e-11$
kg/m²/s

GCHP_14.2.0 (Dev)
c24



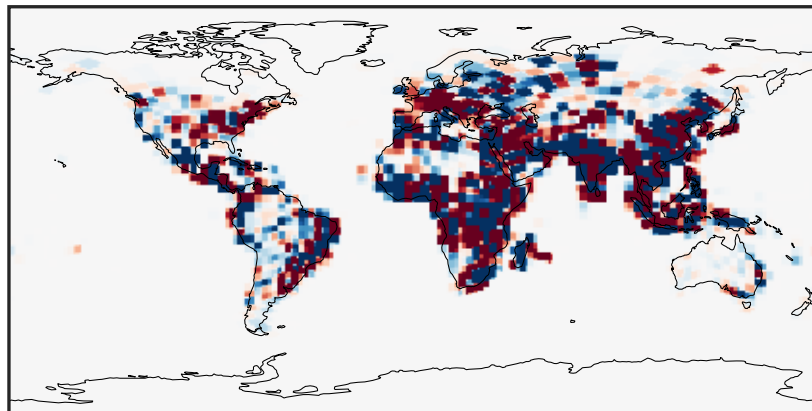
0.0 0.5 1.0 1.5 $1e-11$
kg/m²/s

Difference (1x1.25)
Dev - Ref, Dynamic Range



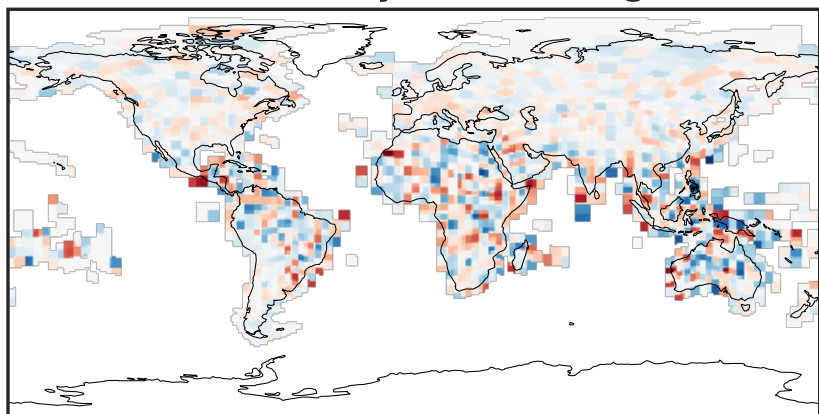
-3 0 3 $1e-16$
kg/m²/s

Difference (1x1.25)
Dev - Ref, Restricted Range [5%,95%]



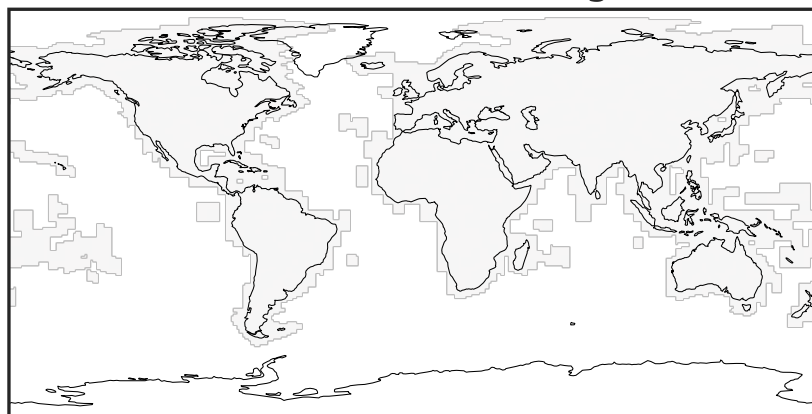
-2.5 0.0 2.5 $1e-18$
kg/m²/s

Ratio (1x1.25)
Dev/Ref, Dynamic Range



0.9998948 1.000000 1.0001052
unitless

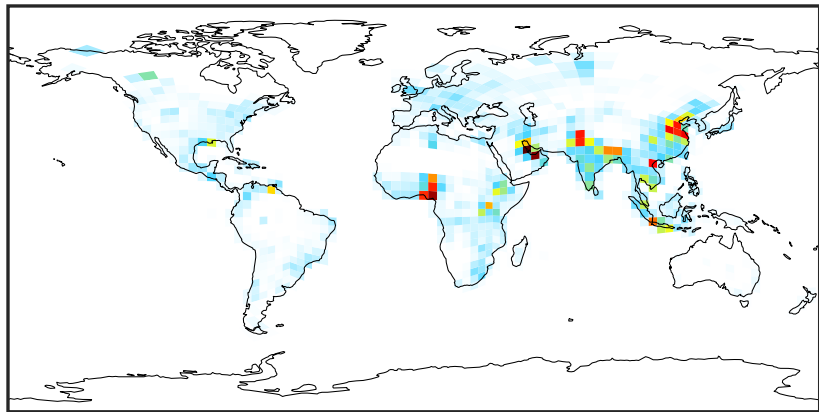
Ratio (1x1.25)
Dev/Ref, Fixed Range



0.50 0.75 1.00 1.50 2.00
unitless

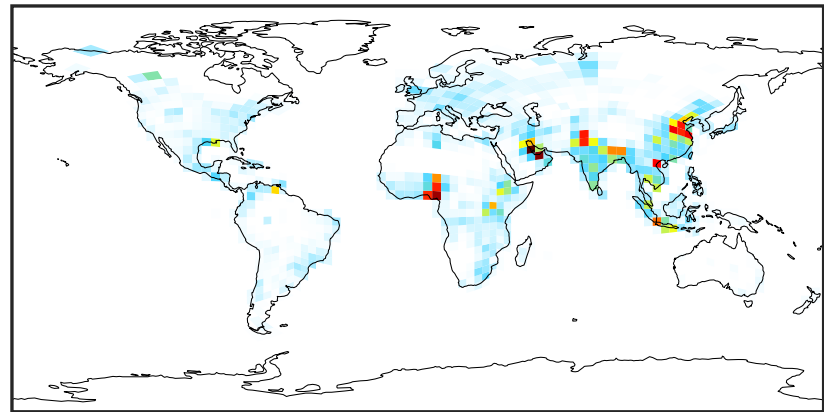
EmisBENZ_Anthro (AnnualMean)

GCHP_14.0.0 (Ref)
c24



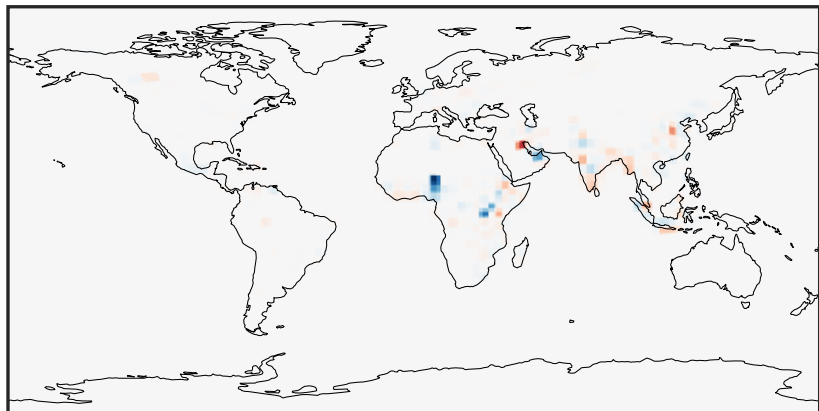
0.0 0.5 1.0 1.5
kg/m²/s 1e-11

GCHP_14.2.0 (Dev)
c24



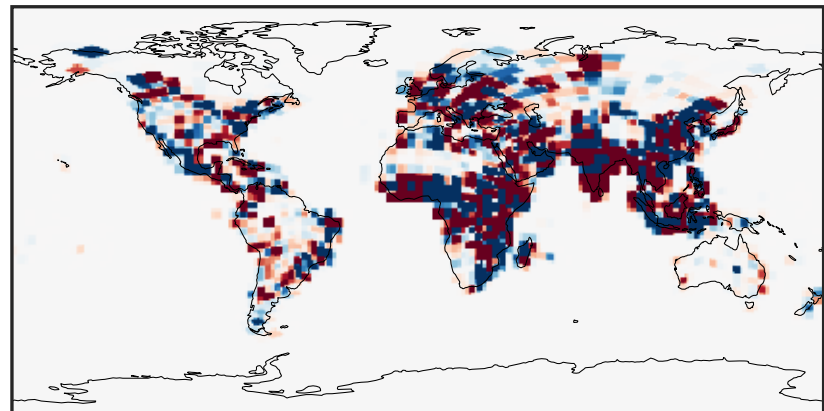
0.0 0.5 1.0 1.5
kg/m²/s 1e-11

Difference (1x1.25)
Dev - Ref, Dynamic Range



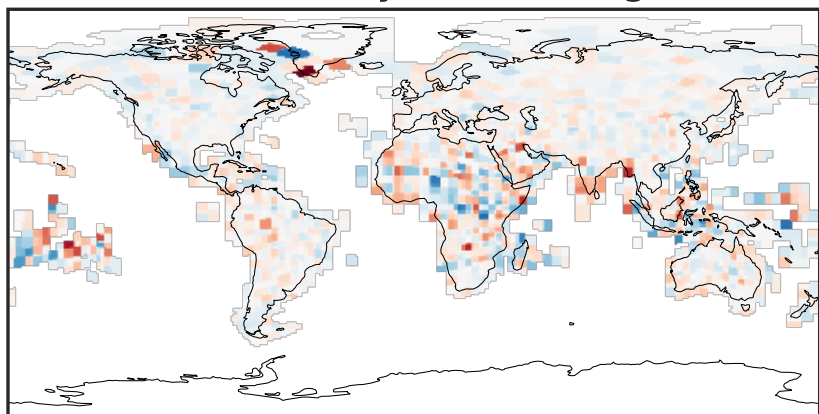
-3 0 3
kg/m²/s 1e-16

Difference (1x1.25)
Dev - Ref, Restricted Range [5%,95%]



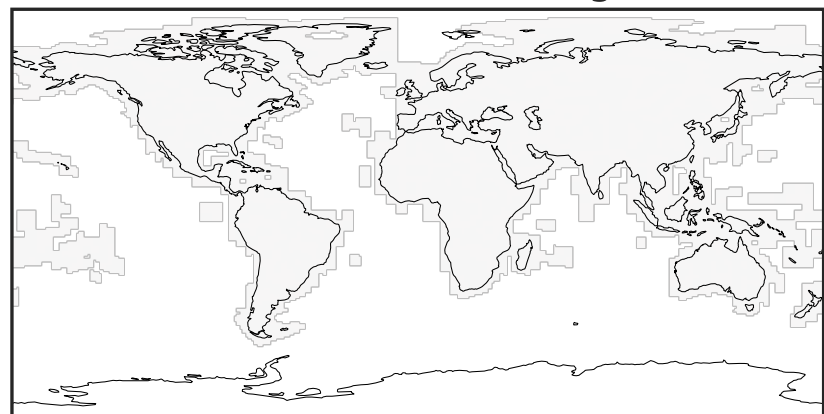
-1.5 0.0 1.5
kg/m²/s 1e-18

Ratio (1x1.25)
Dev/Ref, Dynamic Range



0.9999355 1.000000 1.0000646
unitless

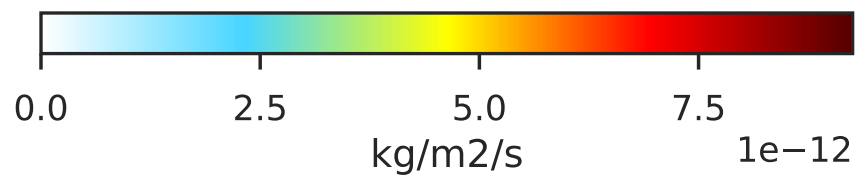
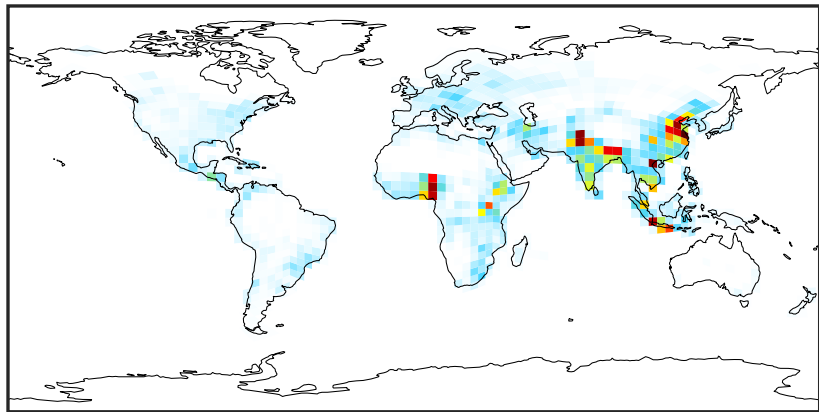
Ratio (1x1.25)
Dev/Ref, Fixed Range



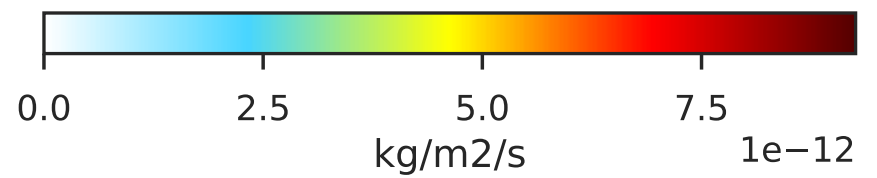
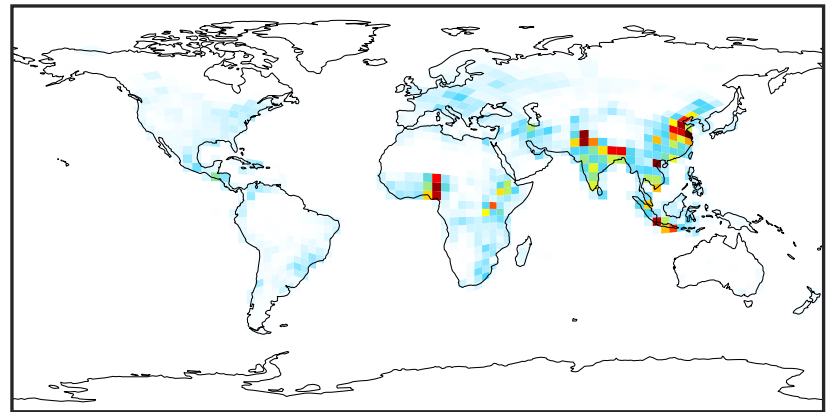
0.50 0.75 1.00 1.50 2.00
unitless

EmisC2H2_Anthro (AnnualMean)

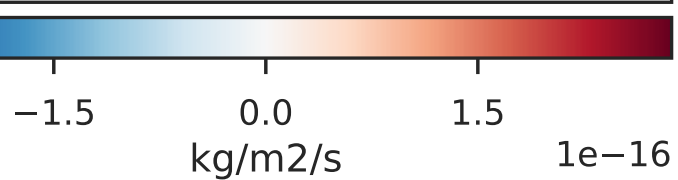
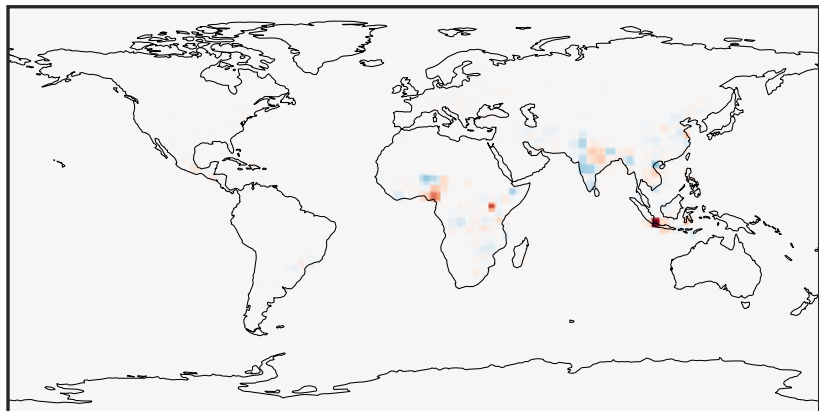
GCHP_14.0.0 (Ref)
c24



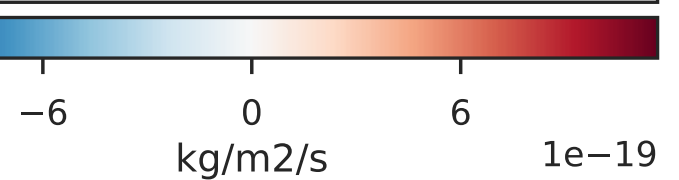
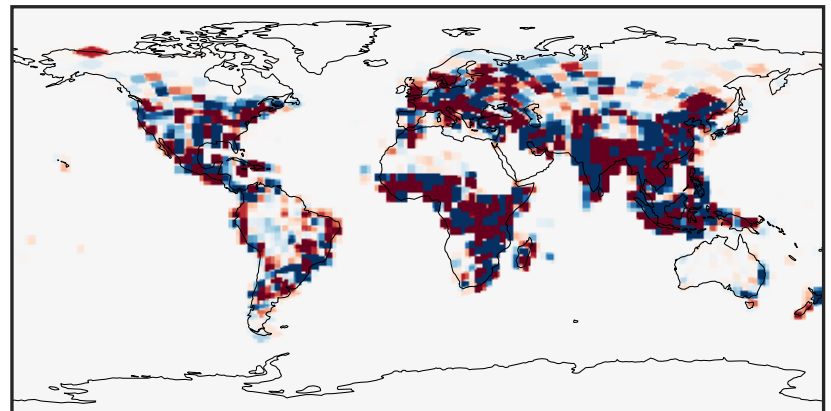
GCHP_14.2.0 (Dev)
c24



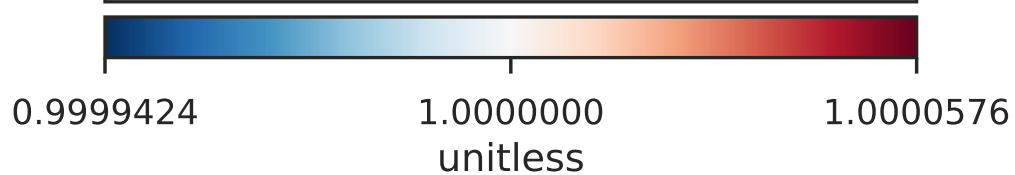
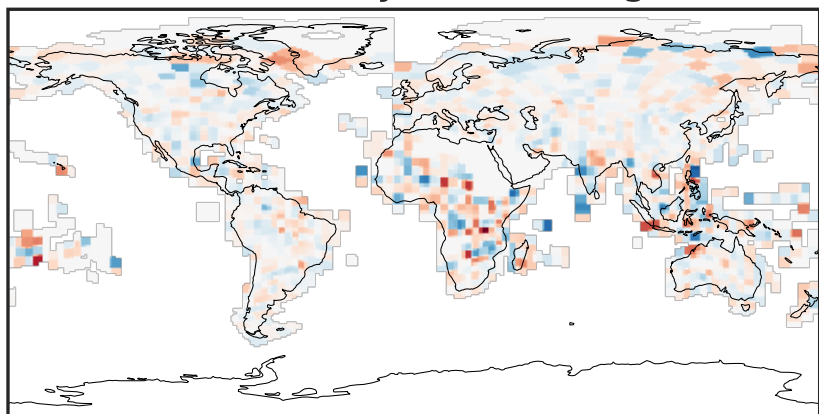
Difference (1x1.25)
Dev - Ref, Dynamic Range



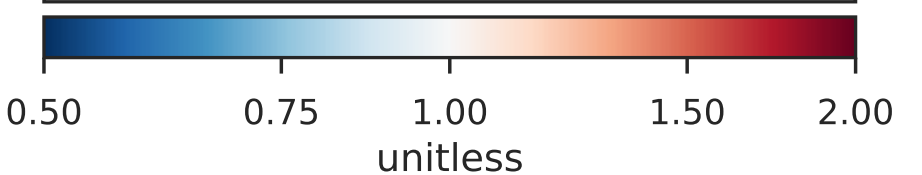
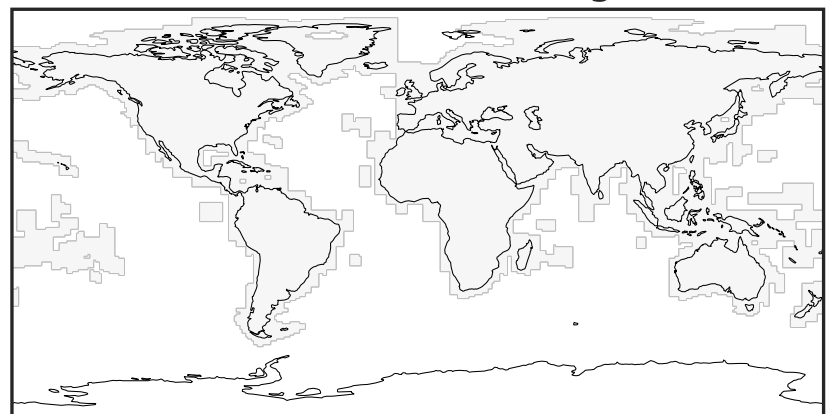
Difference (1x1.25)
Dev - Ref, Restricted Range [5%,95%]



Ratio (1x1.25)
Dev/Ref, Dynamic Range

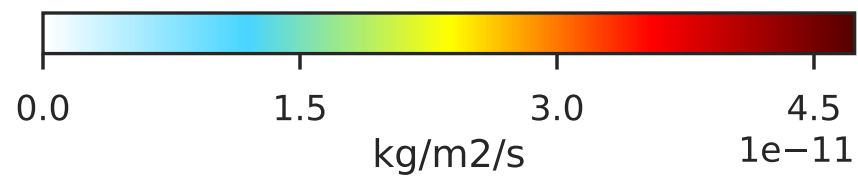
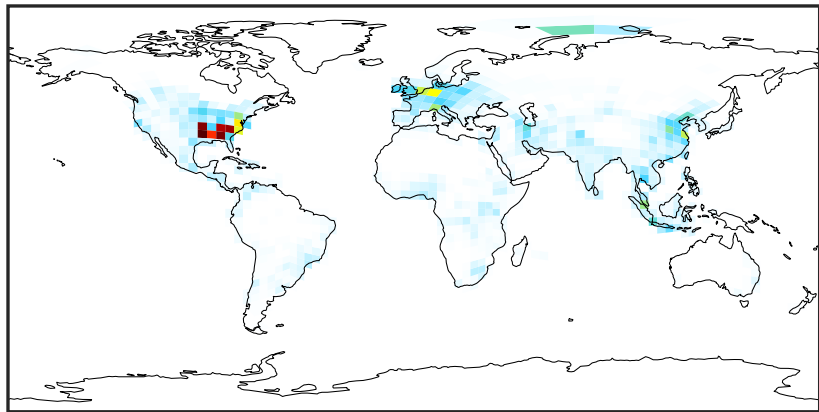


Ratio (1x1.25)
Dev/Ref, Fixed Range

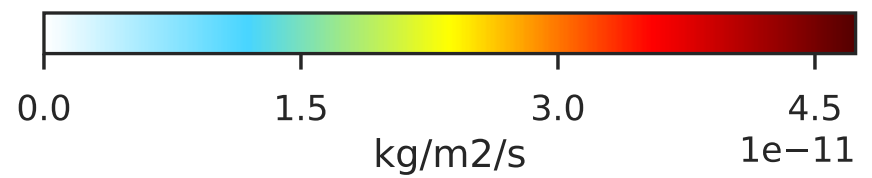
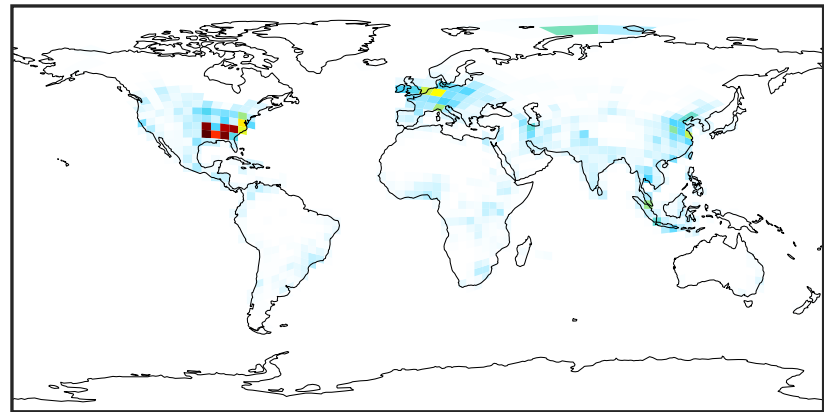


EmisC2H4_Anthro (AnnualMean)

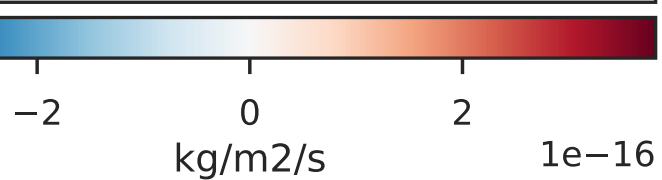
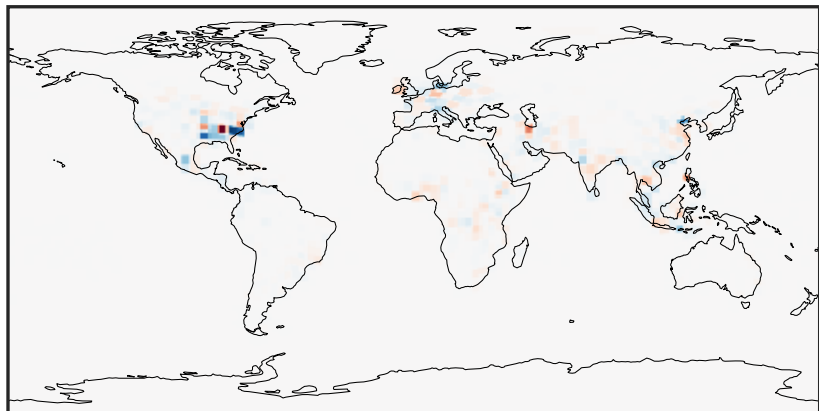
GCHP_14.0.0 (Ref)
c24



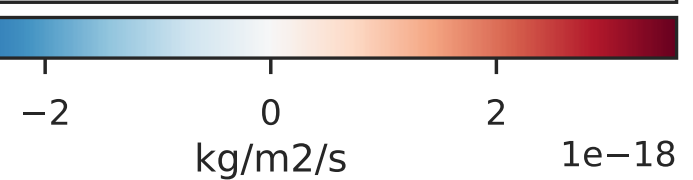
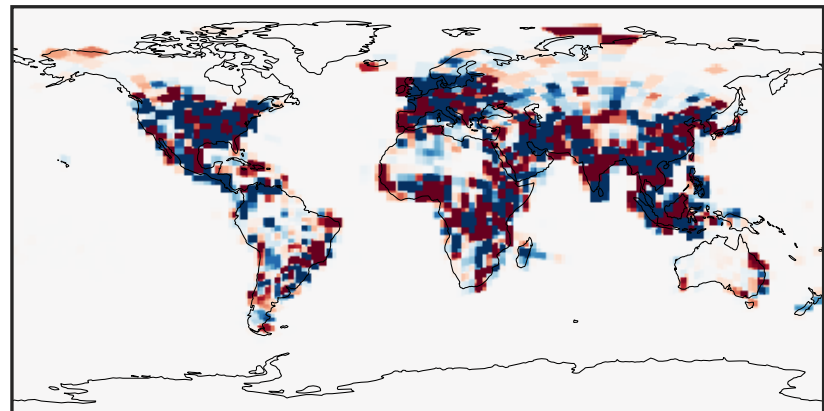
GCHP_14.2.0 (Dev)
c24



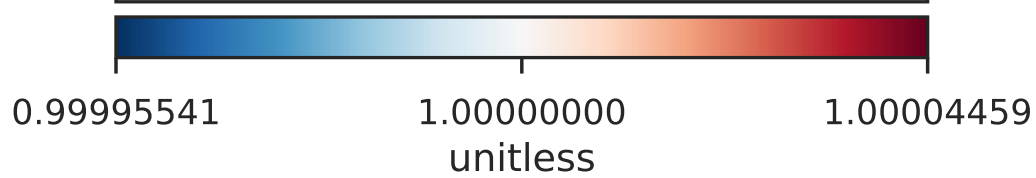
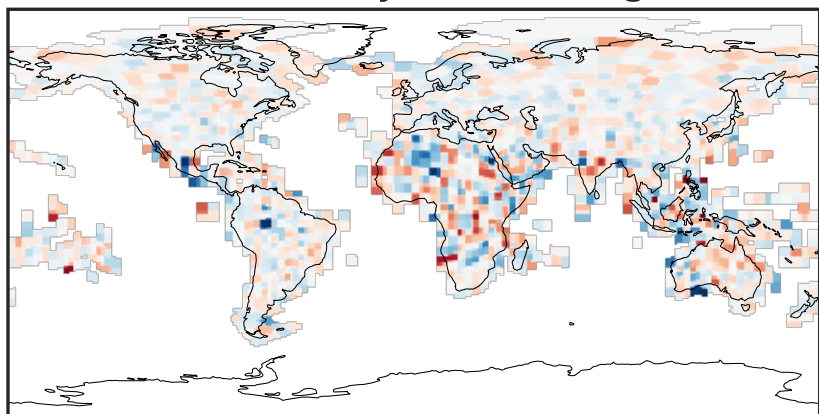
Difference (1x1.25)
Dev - Ref, Dynamic Range



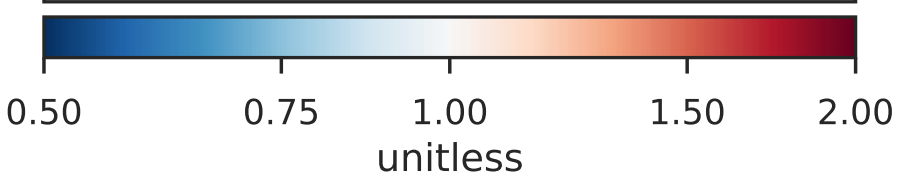
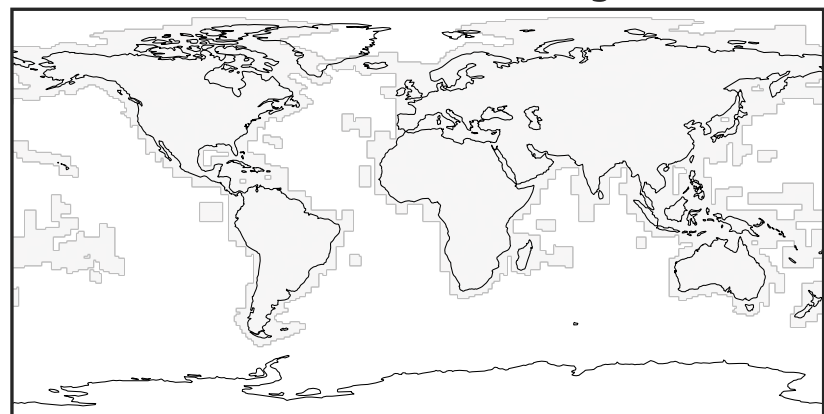
Difference (1x1.25)
Dev - Ref, Restricted Range [5%,95%]



Ratio (1x1.25)
Dev/Ref, Dynamic Range

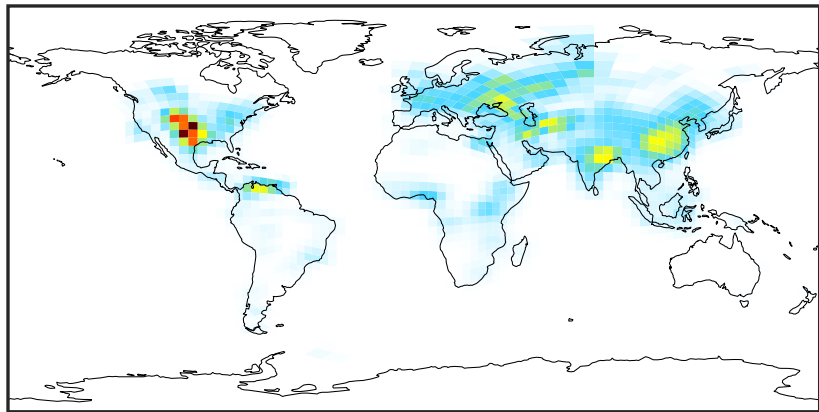


Ratio (1x1.25)
Dev/Ref, Fixed Range



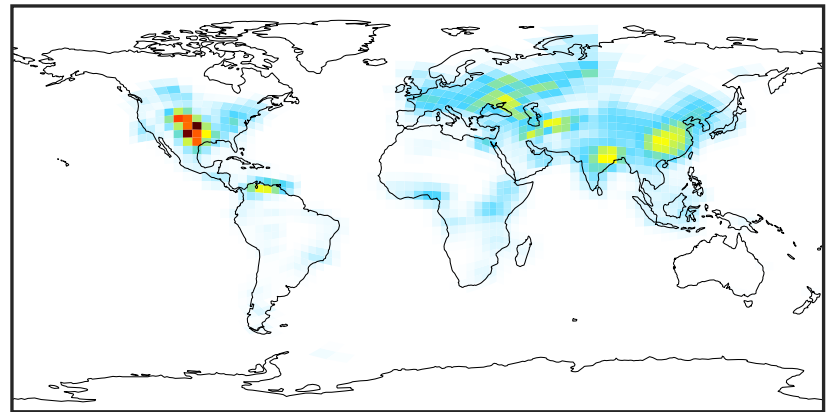
EmisC2H6_Anthro (AnnualMean)

GCHP_14.0.0 (Ref)
c24



0.0 0.6 1.2 1.8
kg/m²/s 1e-11

GCHP_14.2.0 (Dev)
c24



0.0 0.6 1.2 1.8
kg/m²/s 1e-11

Difference (1x1.25)
Dev - Ref, Dynamic Range



Zero throughout domain
kg/m²/s

Difference (1x1.25)
Dev - Ref, Restricted Range [5%,95%]



Zero throughout domain
kg/m²/s

Ratio (1x1.25)
Dev/Ref, Dynamic Range



Ref and Dev equal throughout domain
unitless

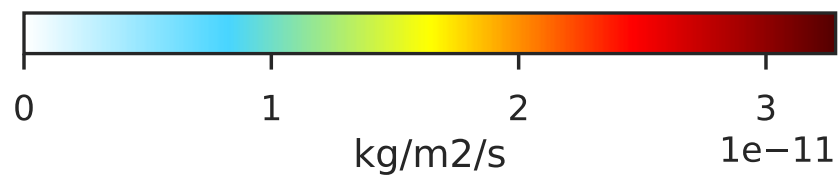
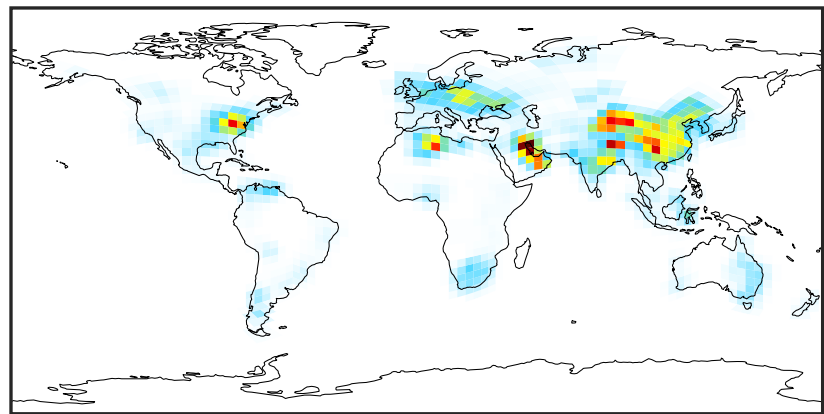
Ratio (1x1.25)
Dev/Ref, Fixed Range



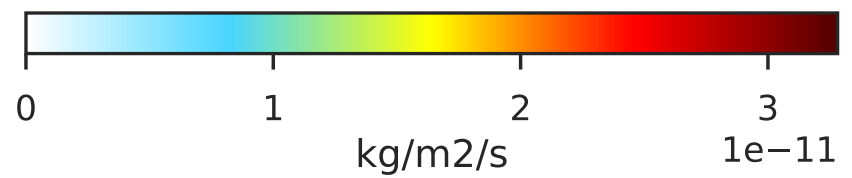
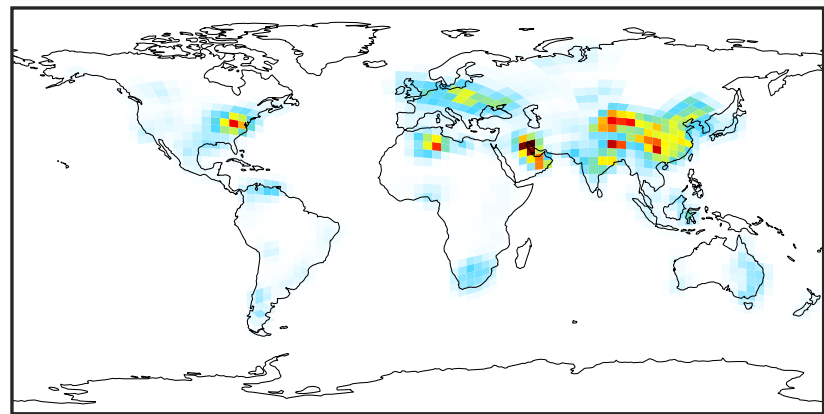
Ref and Dev equal throughout domain
unitless

EmisC3H8_Anthro (AnnualMean)

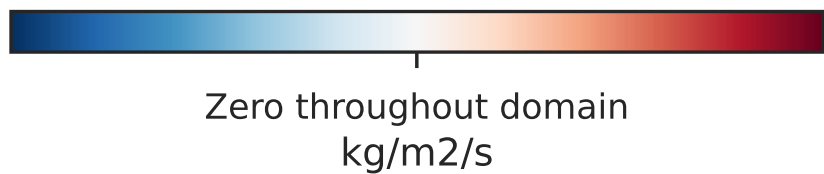
GCHP_14.0.0 (Ref)
c24



GCHP_14.2.0 (Dev)
c24

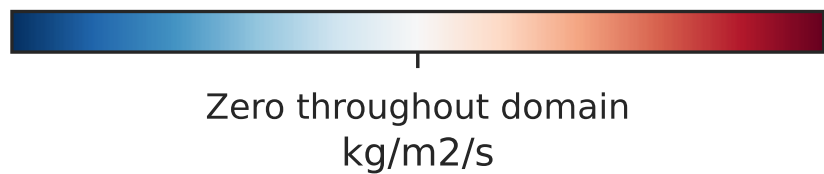
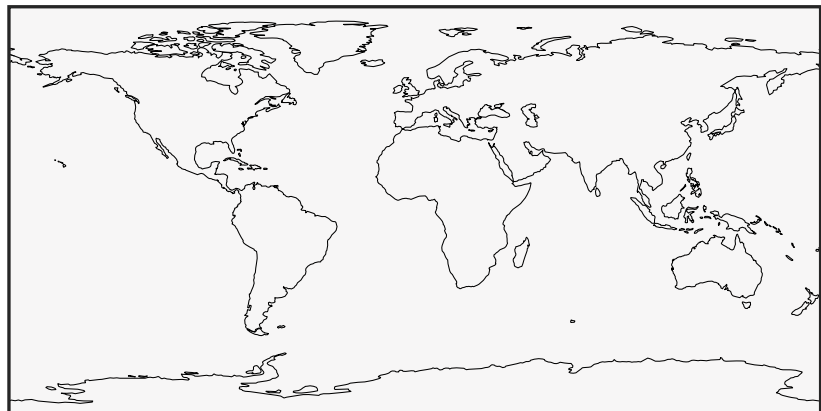


Difference (1x1.25)
Dev - Ref, Dynamic Range



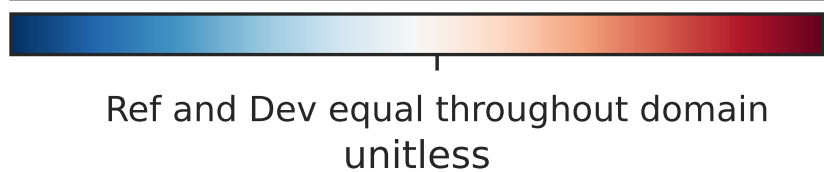
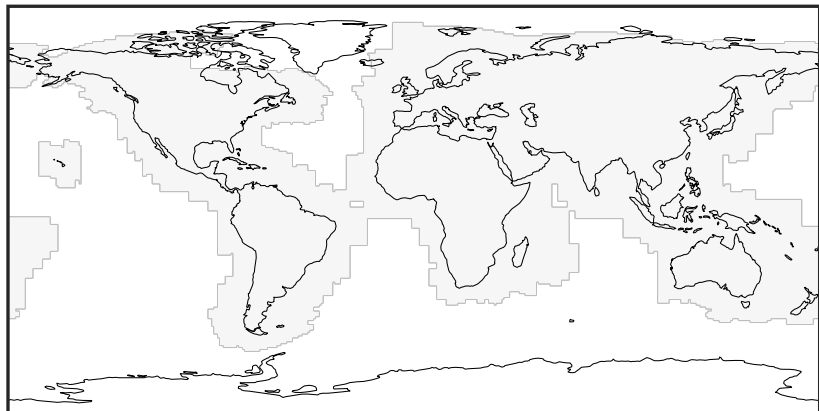
Zero throughout domain
kg/m2/s

Difference (1x1.25)
Dev - Ref, Restricted Range [5%,95%]



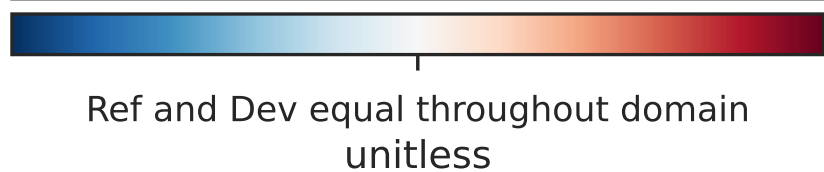
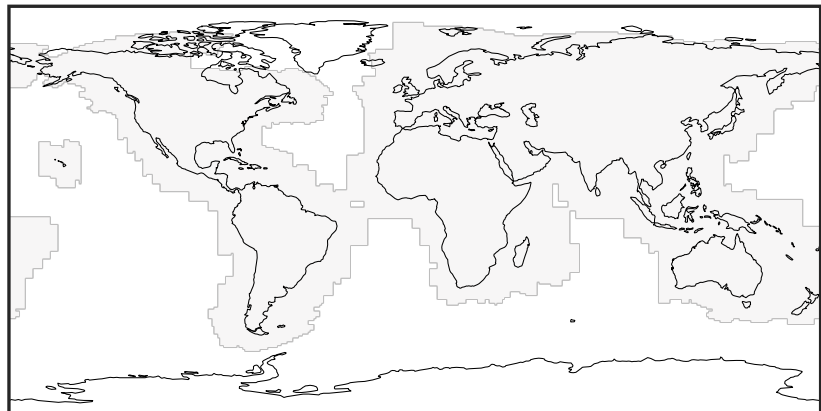
Zero throughout domain
kg/m2/s

Ratio (1x1.25)
Dev/Ref, Dynamic Range



Ref and Dev equal throughout domain
unitless

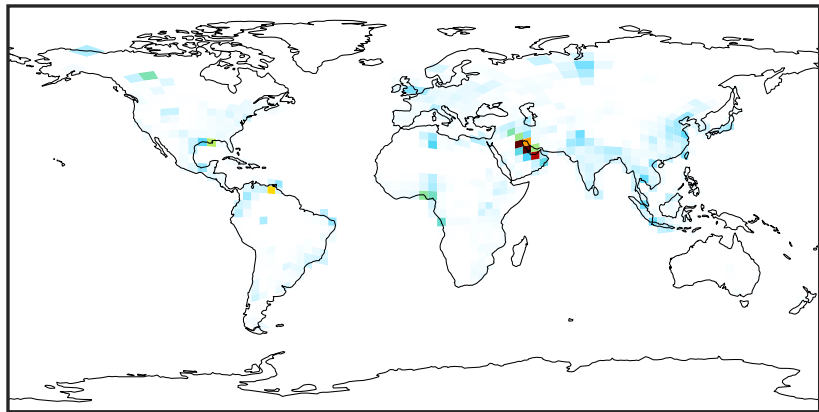
Ratio (1x1.25)
Dev/Ref, Fixed Range



Ref and Dev equal throughout domain
unitless

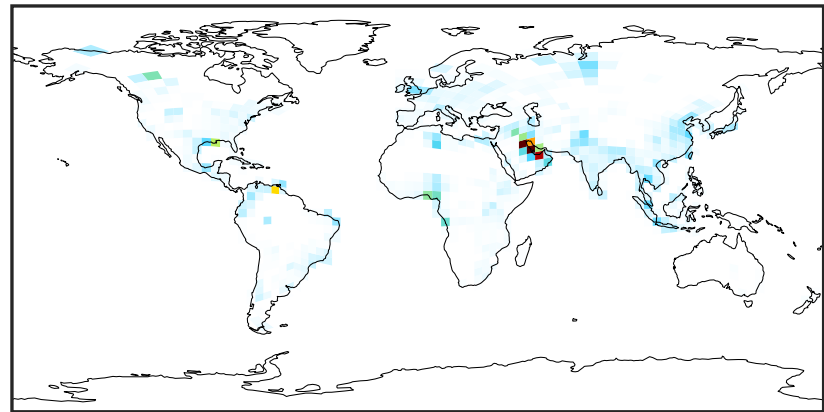
EmisCH2O_Anthro (AnnualMean)

GCHP_14.0.0 (Ref)
c24



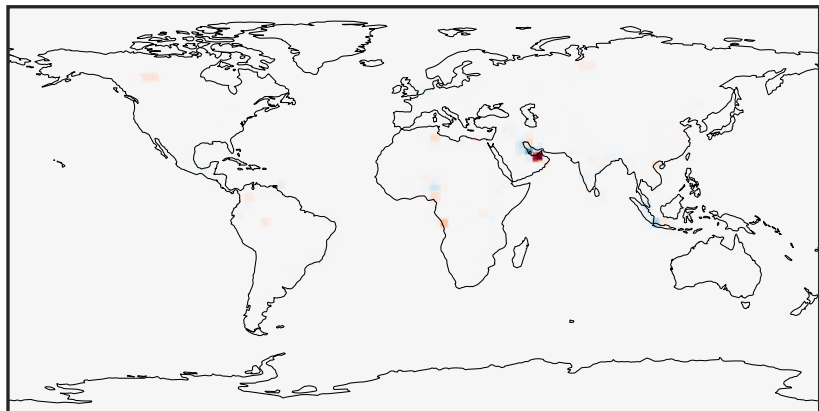
0.0 0.5 1.0 1.5
kg/m2/s 1e-11

GCHP_14.2.0 (Dev)
c24



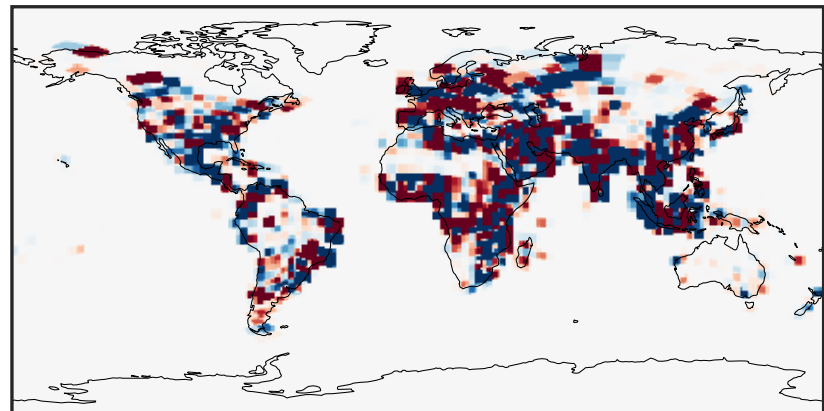
0.0 0.5 1.0 1.5
kg/m2/s 1e-11

Difference (1x1.25)
Dev - Ref, Dynamic Range



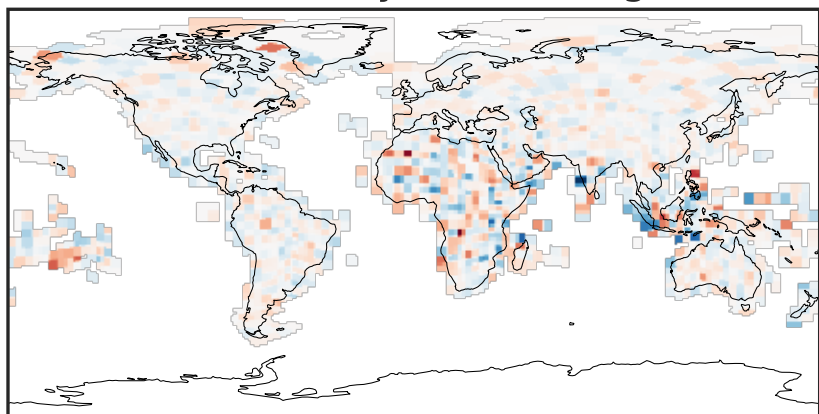
-2 0 2
kg/m2/s 1e-16

Difference (1x1.25)
Dev - Ref, Restricted Range [5%,95%]



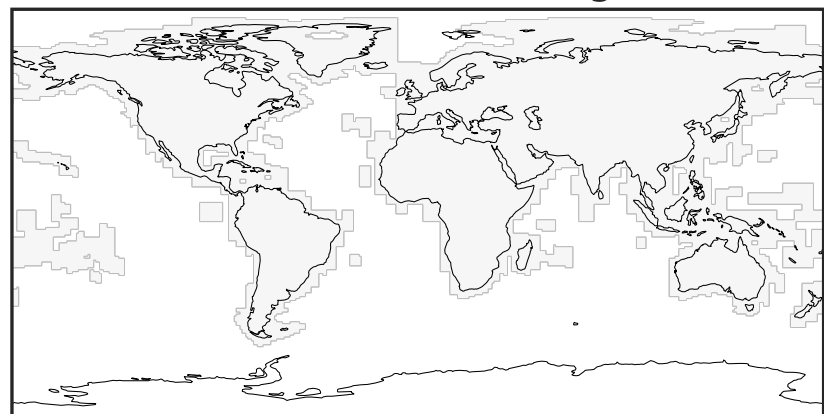
-4 0 4
kg/m2/s 1e-19

Ratio (1x1.25)
Dev/Ref, Dynamic Range



0.9999357 1.000000 1.0000643
unitless

Ratio (1x1.25)
Dev/Ref, Fixed Range



0.50 0.75 1.00 1.50 2.00
unitless

EmisCO2_Anthro (AnnualMean)

GCHP_14.0.0 (Ref)
c24



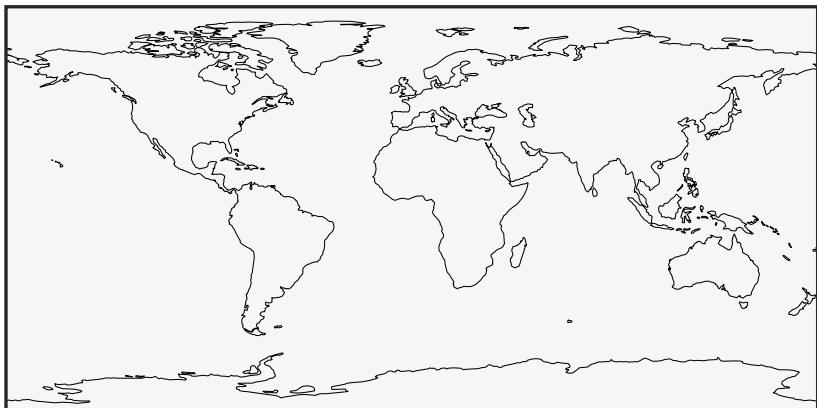
Zero throughout domain
kg/m2/s

GCHP_14.2.0 (Dev)
c24



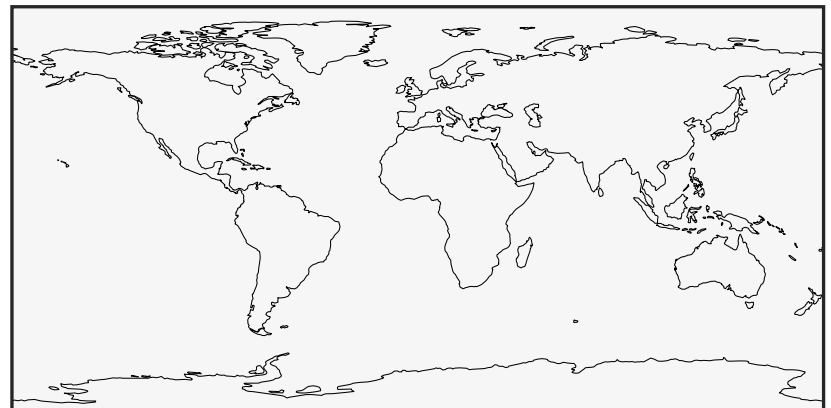
Zero throughout domain
kg/m2/s

Difference (1x1.25)
Dev - Ref, Dynamic Range



Zero throughout domain
kg/m2/s

Difference (1x1.25)
Dev - Ref, Restricted Range [5%,95%]



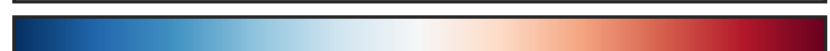
Zero throughout domain
kg/m2/s

Ratio (1x1.25)
Dev/Ref, Dynamic Range



Undefined throughout domain
unitless

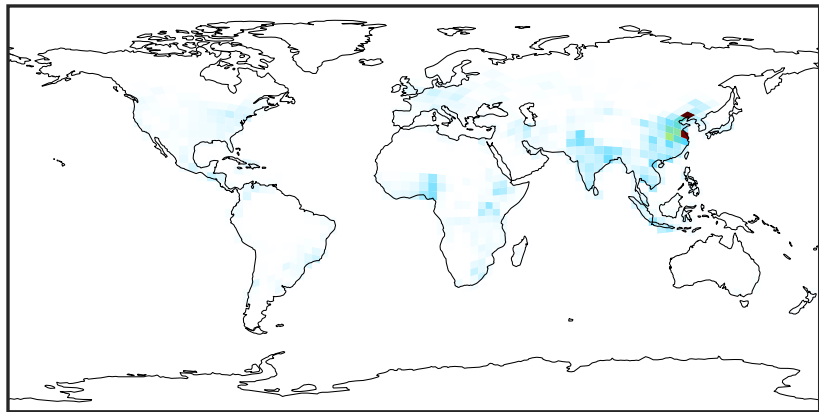
Ratio (1x1.25)
Dev/Ref, Fixed Range



Undefined throughout domain
unitless

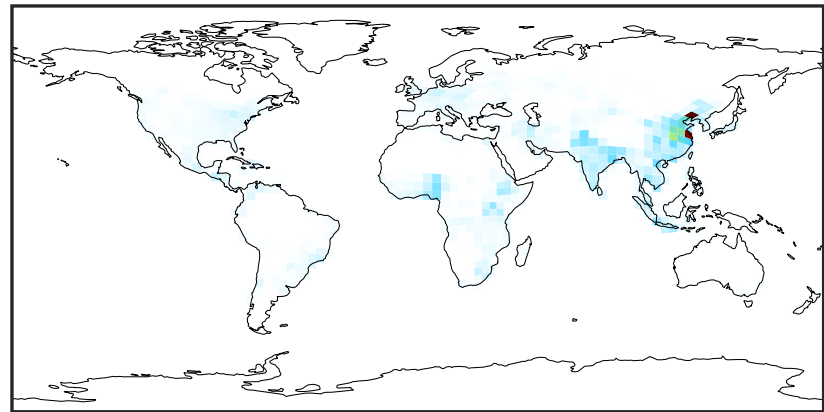
EmisCO_Anthro (AnnualMean)

GCHP_14.0.0 (Ref)
c24



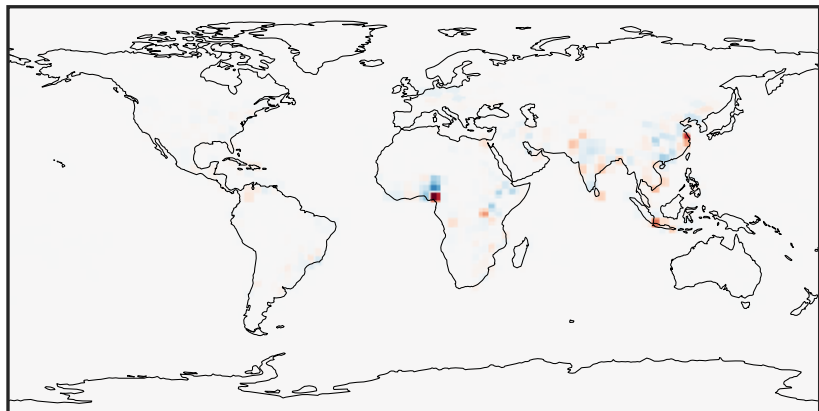
0.0 1.5 3.0 4.5
kg/m²/s 1e-9

GCHP_14.2.0 (Dev)
c24



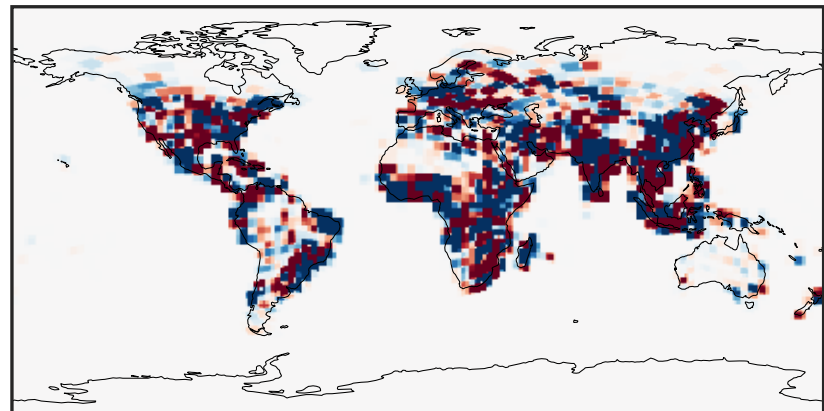
0.0 1.5 3.0 4.5
kg/m²/s 1e-9

Difference (1x1.25)
Dev - Ref, Dynamic Range



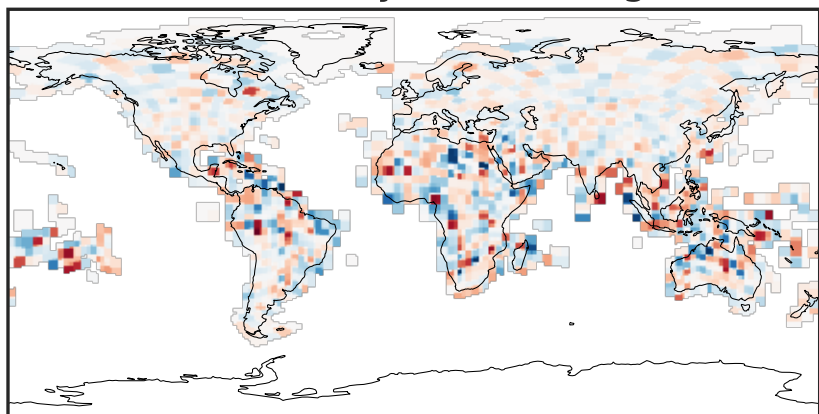
-2 0 2
kg/m²/s 1e-14

Difference (1x1.25)
Dev - Ref, Restricted Range [5%,95%]



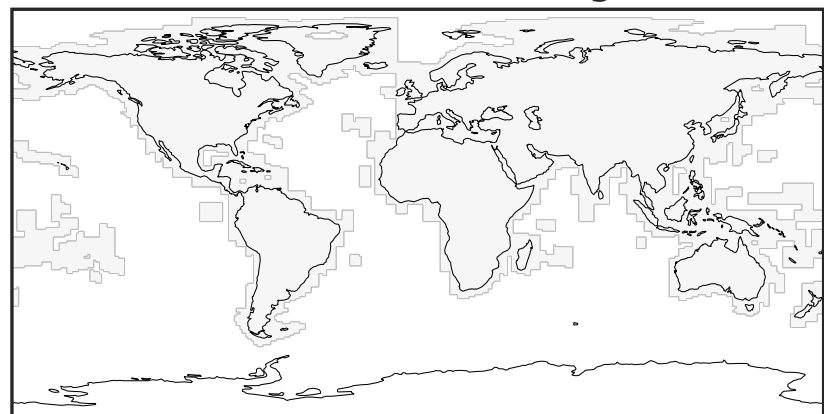
-1.5 0.0 1.5
kg/m²/s 1e-16

Ratio (1x1.25)
Dev/Ref, Dynamic Range



0.99995249 1.00000000 1.00004751
unitless

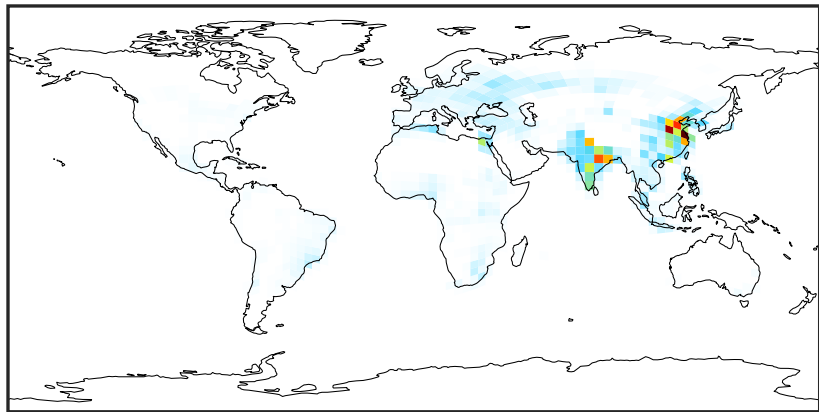
Ratio (1x1.25)
Dev/Ref, Fixed Range



0.50 0.75 1.00 1.50 2.00
unitless

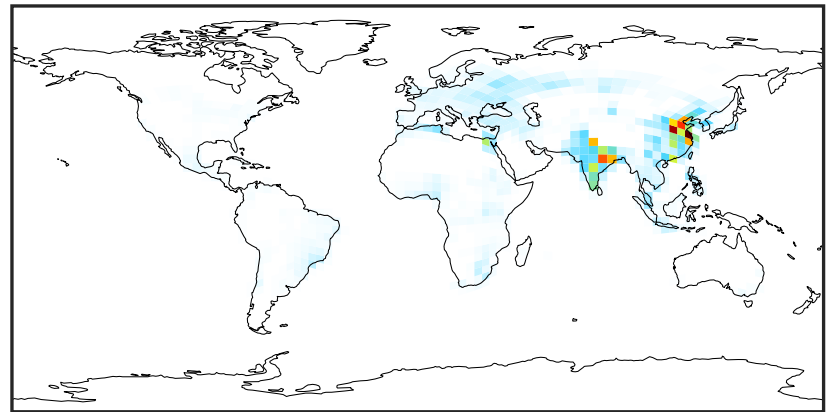
EmisDST1_Anthro (AnnualMean)

GCHP_14.0.0 (Ref)
c24



0.0 2.5 5.0 7.5 $1e-11$
kg/m²/s

GCHP_14.2.0 (Dev)
c24



0.0 2.5 5.0 7.5 $1e-11$
kg/m²/s

Difference (1x1.25)
Dev - Ref, Dynamic Range



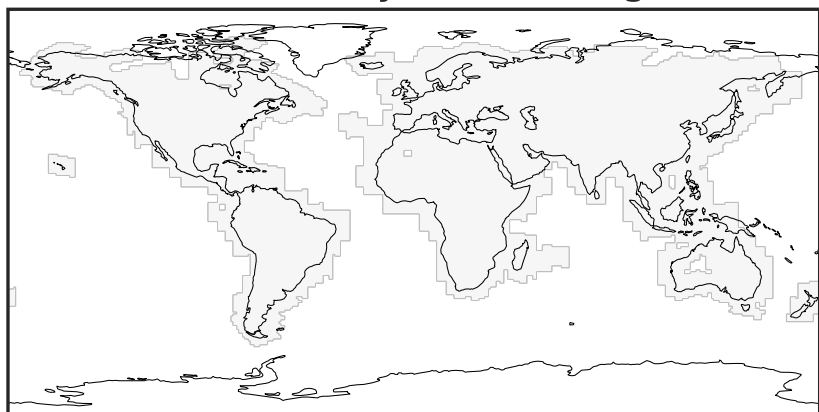
Zero throughout domain
kg/m²/s

Difference (1x1.25)
Dev - Ref, Restricted Range [5%,95%]



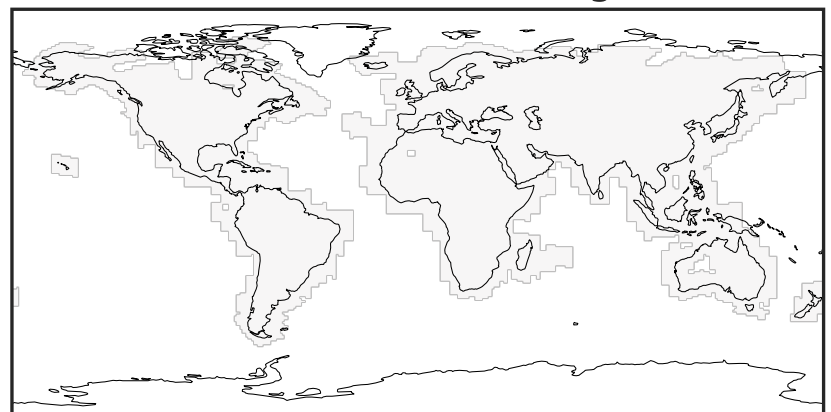
Zero throughout domain
kg/m²/s

Ratio (1x1.25)
Dev/Ref, Dynamic Range



Ref and Dev equal throughout domain
unitless

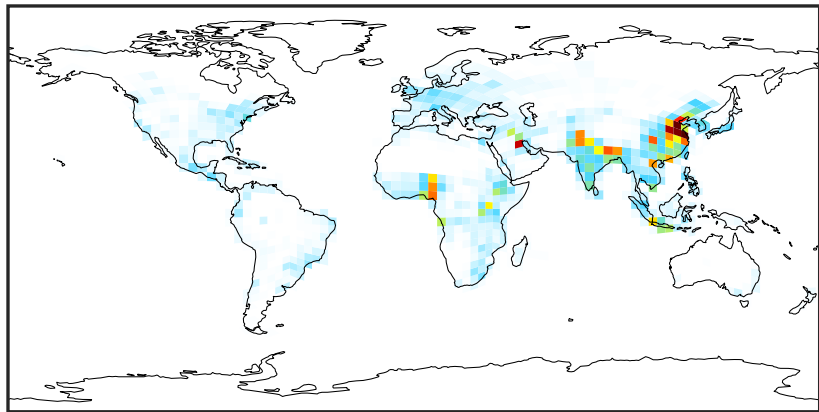
Ratio (1x1.25)
Dev/Ref, Fixed Range



Ref and Dev equal throughout domain
unitless

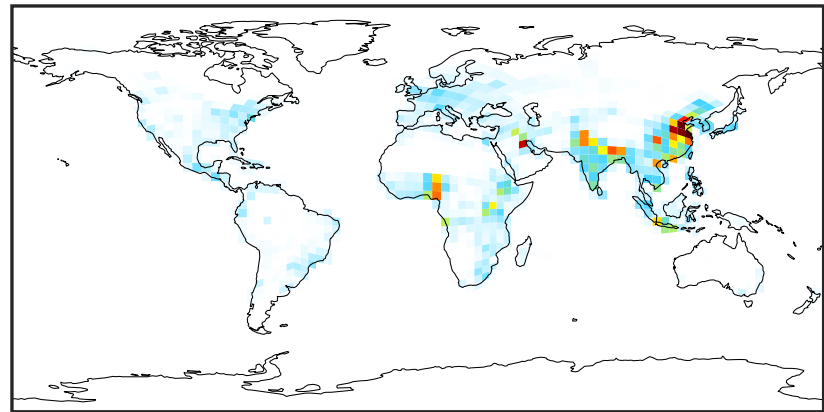
EmisEOH_Anthro (AnnualMean)

GCHP_14.0.0 (Ref)
c24



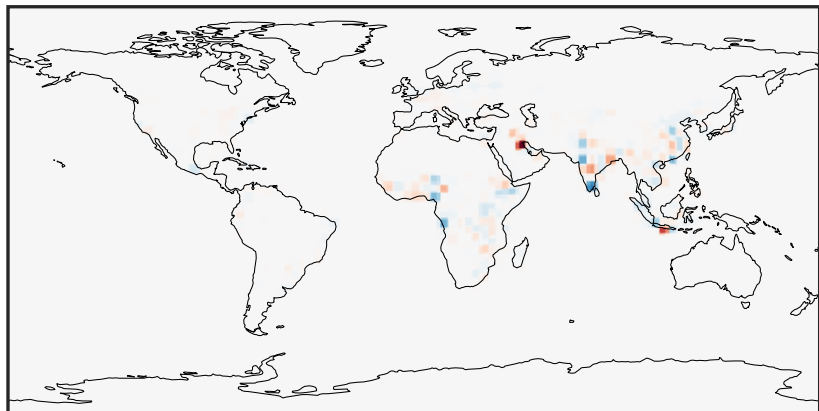
0.0 2.5 5.0 7.5
kg/m2/s $1e-12$

GCHP_14.2.0 (Dev)
c24



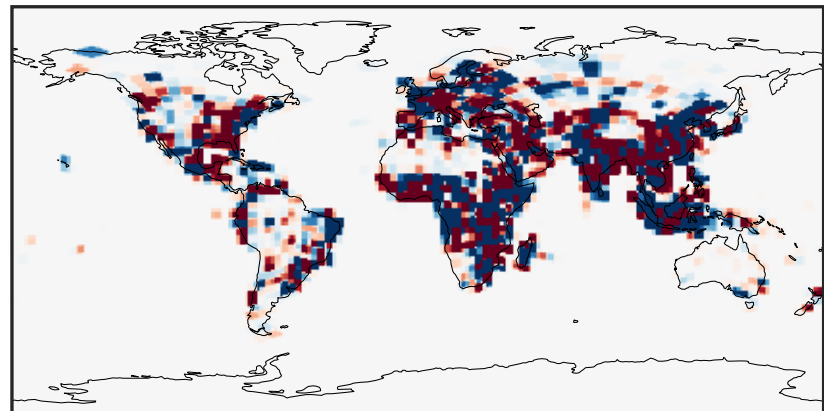
0.0 2.5 5.0 7.5
kg/m2/s $1e-12$

Difference (1x1.25)
Dev - Ref, Dynamic Range



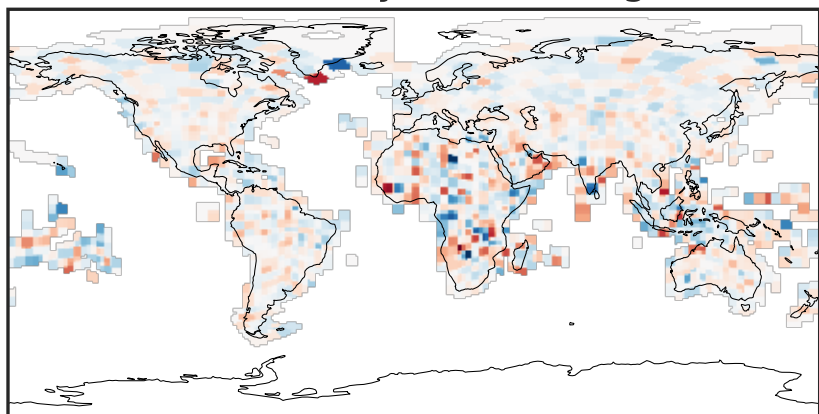
-1 0 1
kg/m2/s $1e-16$

Difference (1x1.25)
Dev - Ref, Restricted Range [5%,95%]



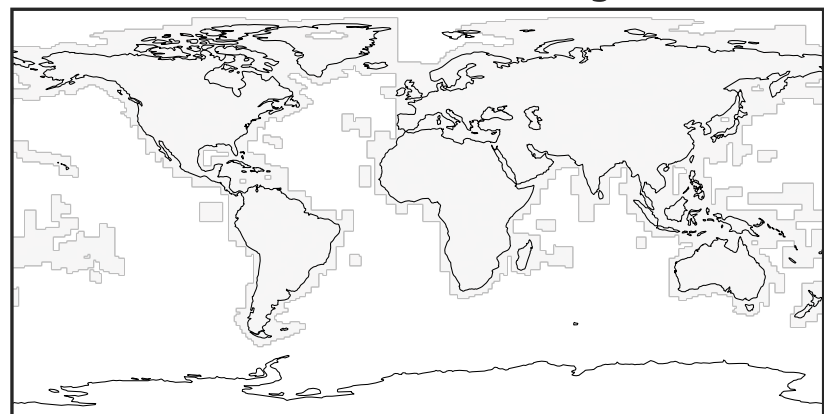
-5 0 5
kg/m2/s $1e-19$

Ratio (1x1.25)
Dev/Ref, Dynamic Range



0.9999431 1.000000 1.0000569
unitless

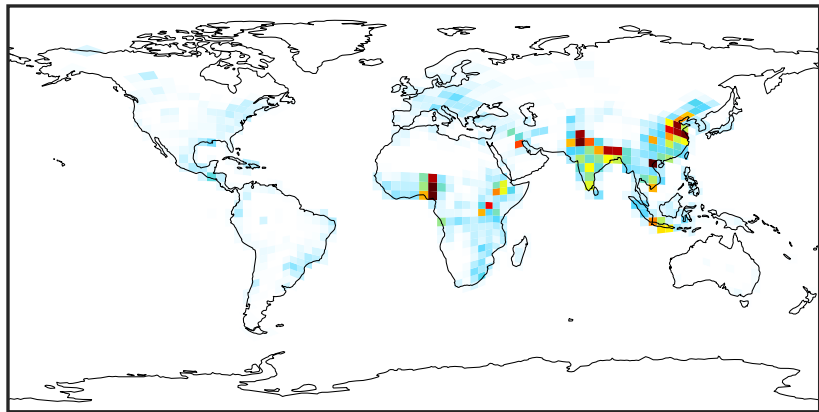
Ratio (1x1.25)
Dev/Ref, Fixed Range



0.50 0.75 1.00 1.50 2.00
unitless

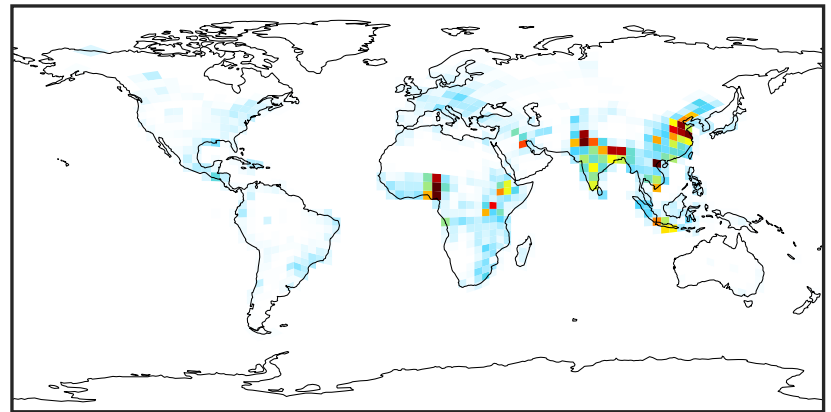
EmisHCOOH_Anthro (AnnualMean)

GCHP_14.0.0 (Ref)
c24



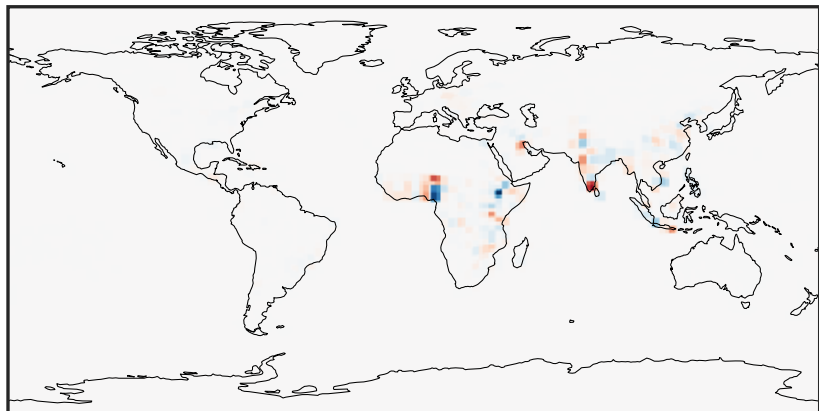
0.0 0.8 1.6 2.4
kg/m²/s 1e-11

GCHP_14.2.0 (Dev)
c24



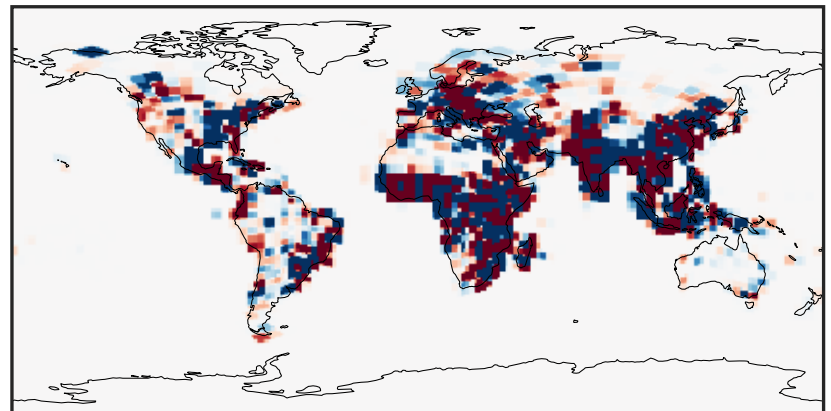
0.0 0.8 1.6 2.4
kg/m²/s 1e-11

Difference (1x1.25)
Dev - Ref, Dynamic Range



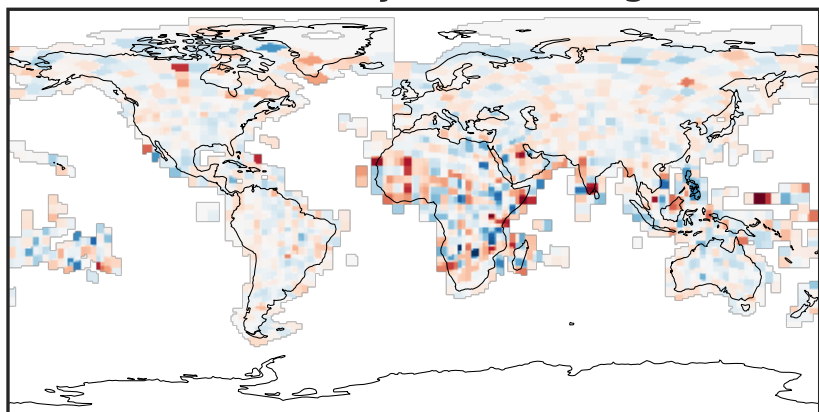
-4 0 4
kg/m²/s 1e-16

Difference (1x1.25)
Dev - Ref, Restricted Range [5%,95%]



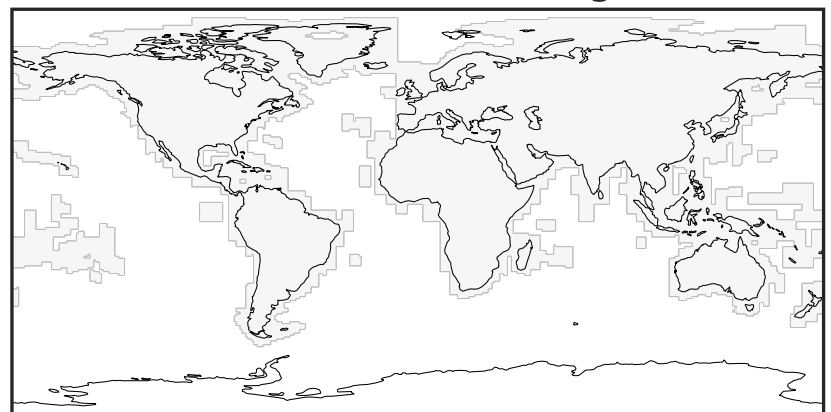
-1.5 0.0 1.5
kg/m²/s 1e-18

Ratio (1x1.25)
Dev/Ref, Dynamic Range



0.9999458 1.000000 1.0000542
unitless

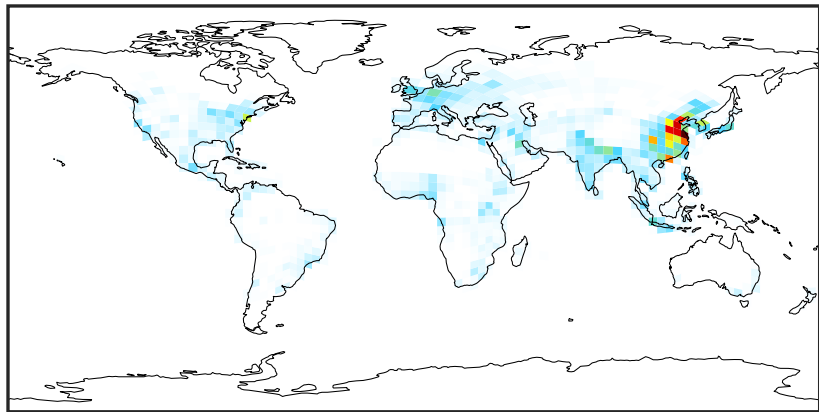
Ratio (1x1.25)
Dev/Ref, Fixed Range



0.50 0.75 1.00 1.50 2.00
unitless

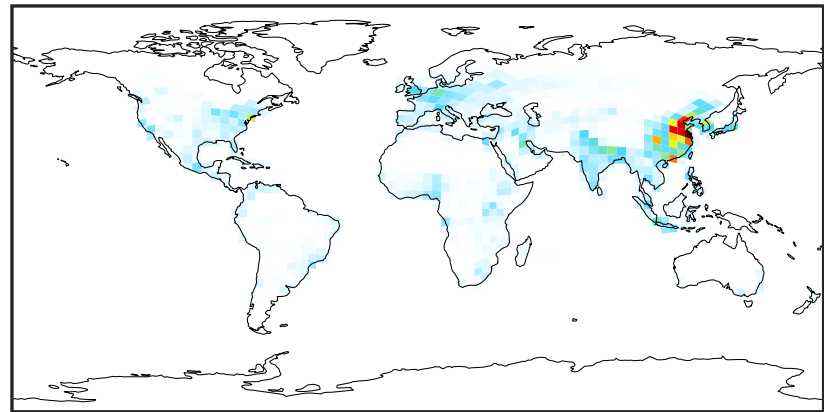
EmisMEK_Anthro (AnnualMean)

GCHP_14.0.0 (Ref)
c24



0.0 0.6 1.2 1.8
kg/m²/s 1e-11

GCHP_14.2.0 (Dev)
c24



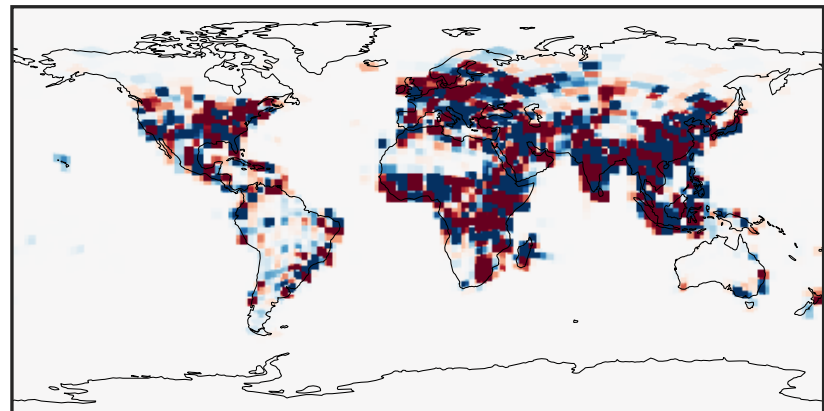
0.0 0.6 1.2 1.8
kg/m²/s 1e-11

Difference (1x1.25)
Dev - Ref, Dynamic Range



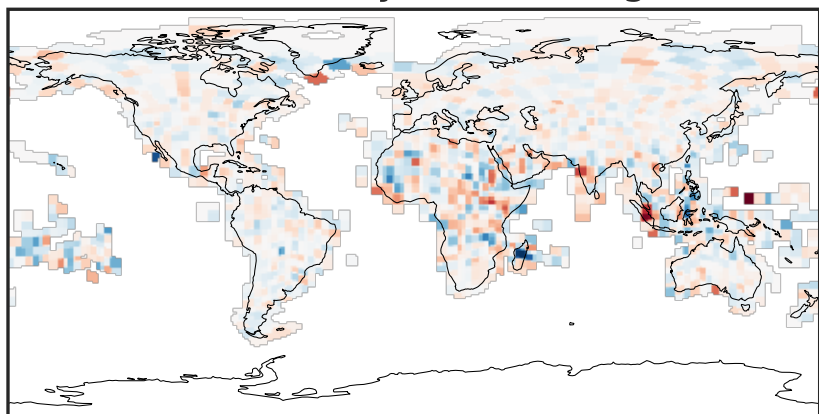
-1.5 0.0 1.5
kg/m²/s 1e-16

Difference (1x1.25)
Dev - Ref, Restricted Range [5%,95%]



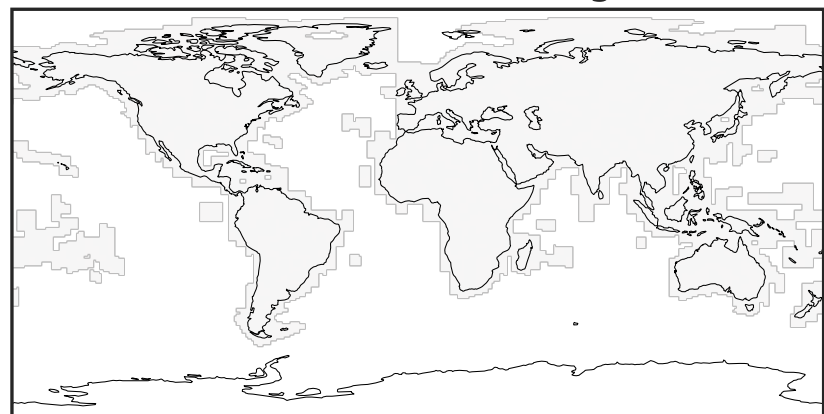
-8 0 8
kg/m²/s 1e-19

Ratio (1x1.25)
Dev/Ref, Dynamic Range



0.9999345 1.000000 1.0000655
unitless

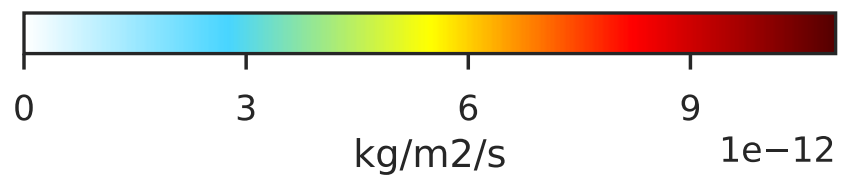
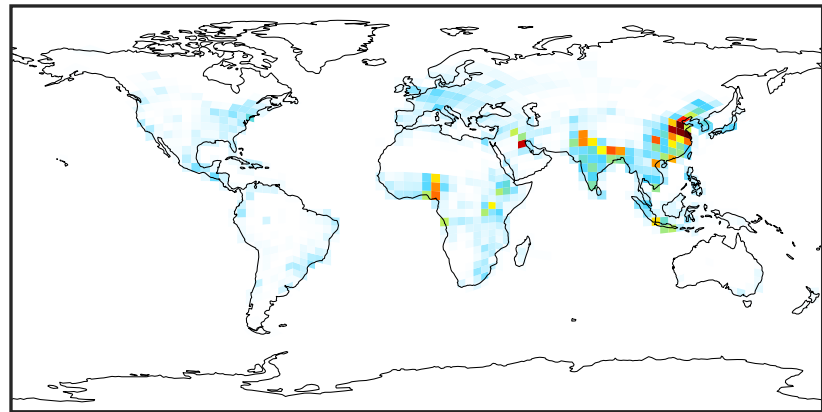
Ratio (1x1.25)
Dev/Ref, Fixed Range



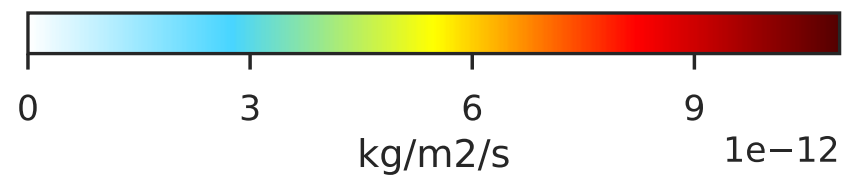
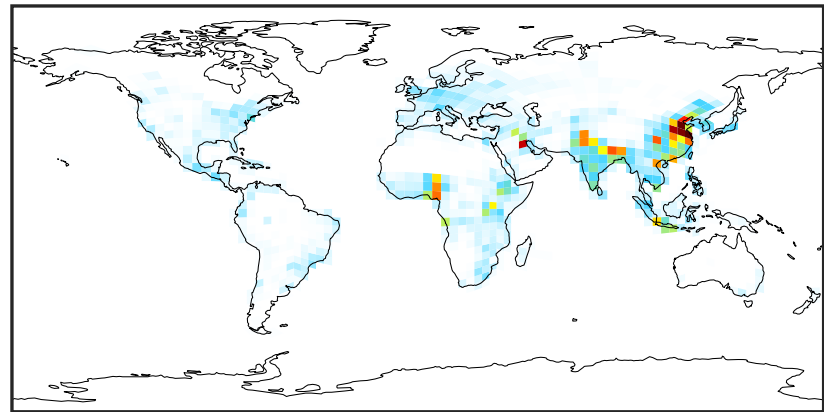
0.50 0.75 1.00 1.50 2.00
unitless

EmisMOH_Anthro (AnnualMean)

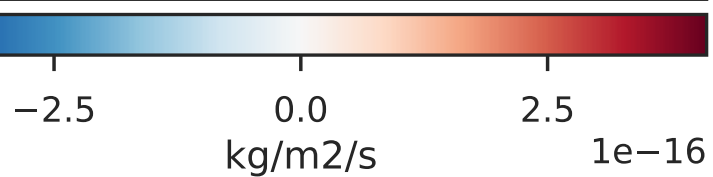
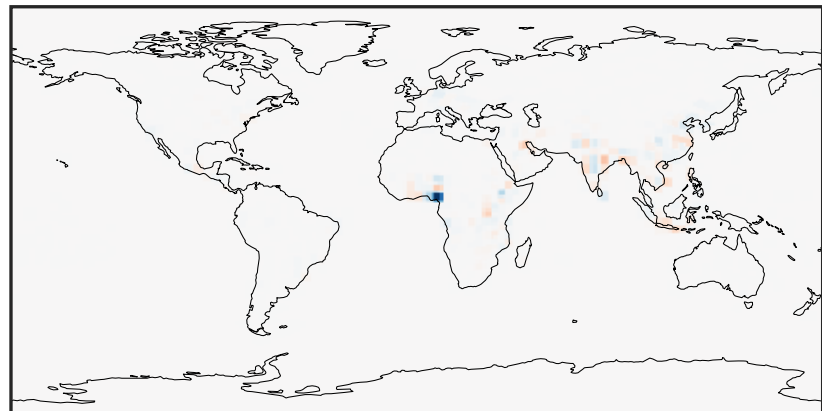
GCHP_14.0.0 (Ref)
c24



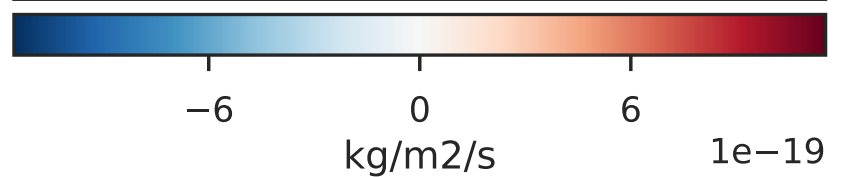
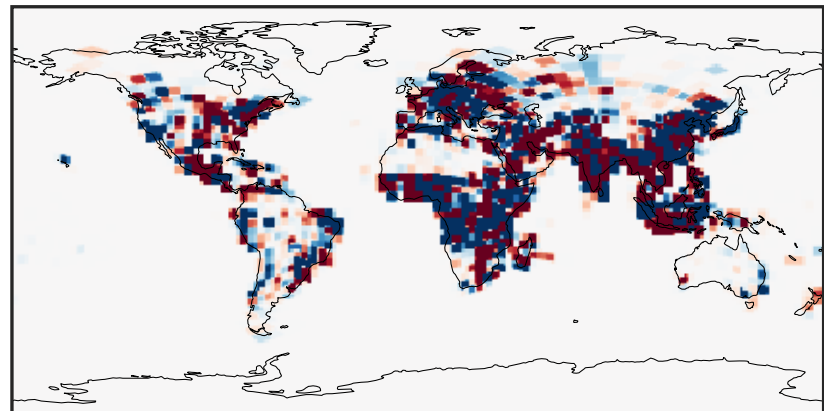
GCHP_14.2.0 (Dev)
c24



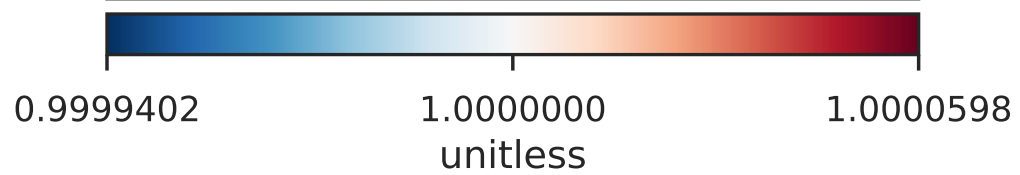
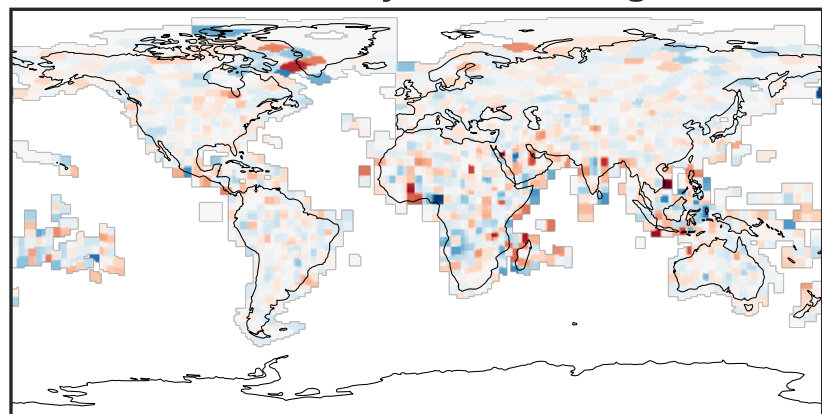
Difference (1x1.25)
Dev - Ref, Dynamic Range



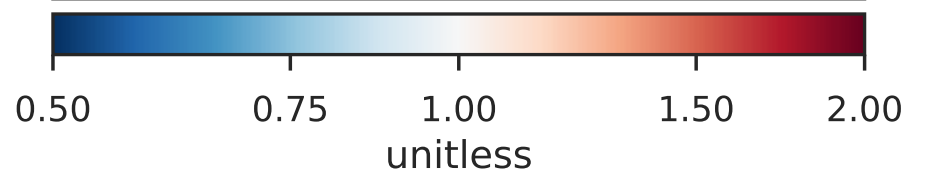
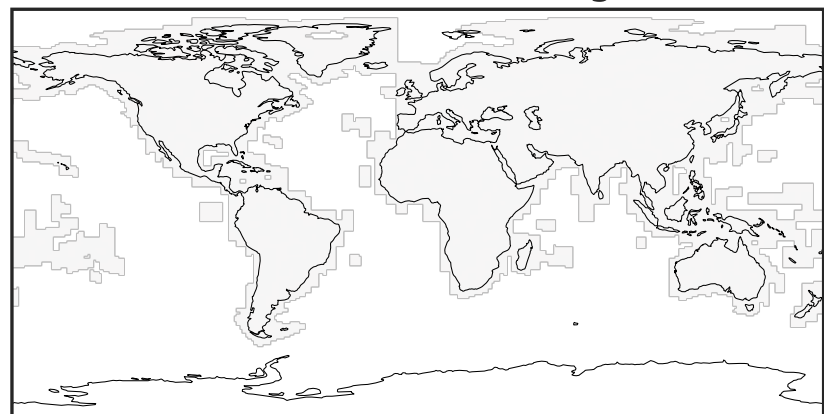
Difference (1x1.25)
Dev - Ref, Restricted Range [5%,95%]



Ratio (1x1.25)
Dev/Ref, Dynamic Range



Ratio (1x1.25)
Dev/Ref, Fixed Range



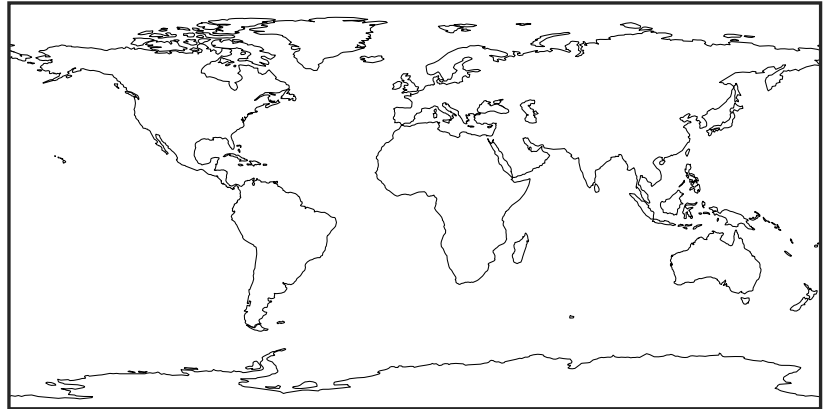
EmisNAP_Anthro (AnnualMean)

GCHP_14.0.0 (Ref)
c24



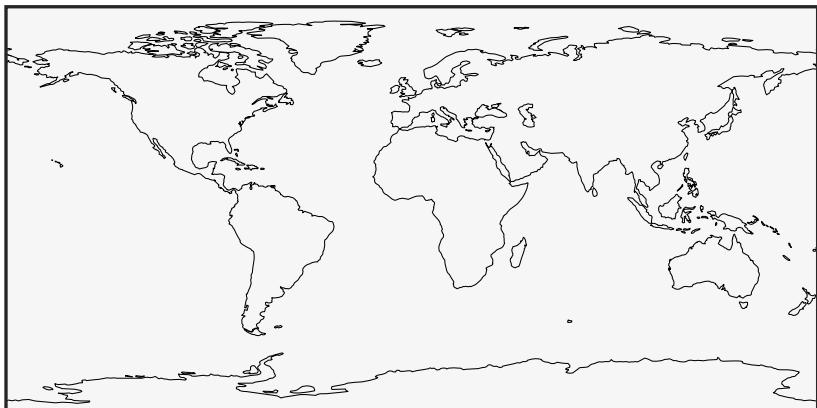
Zero throughout domain
kg/m²/s

GCHP_14.2.0 (Dev)
c24



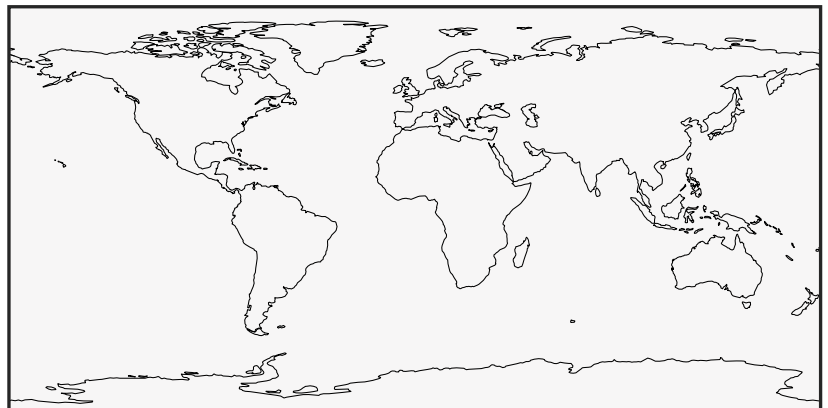
Zero throughout domain
kg/m²/s

Difference (1x1.25)
Dev - Ref, Dynamic Range



Zero throughout domain
kg/m²/s

Difference (1x1.25)
Dev - Ref, Restricted Range [5%,95%]



Zero throughout domain
kg/m²/s

Ratio (1x1.25)
Dev/Ref, Dynamic Range



Undefined throughout domain
unitless

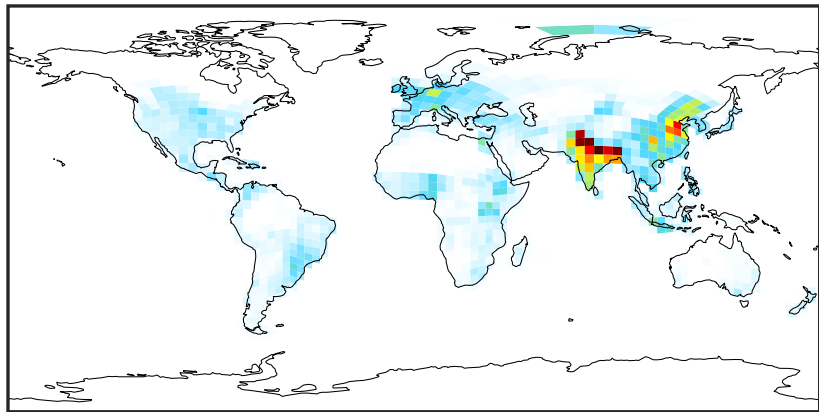
Ratio (1x1.25)
Dev/Ref, Fixed Range



Undefined throughout domain
unitless

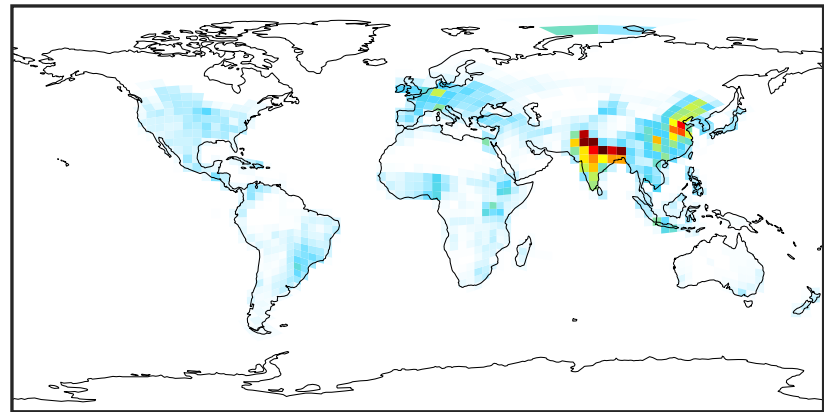
EmisNH3_Anthro (AnnualMean)

GCHP_14.0.0 (Ref)
c24



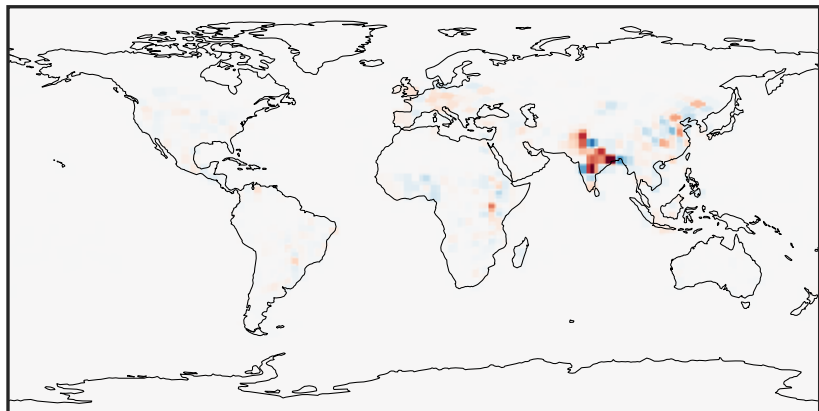
0.0 0.5 1.0 1.5
kg/m²/s 1e-10

GCHP_14.2.0 (Dev)
c24



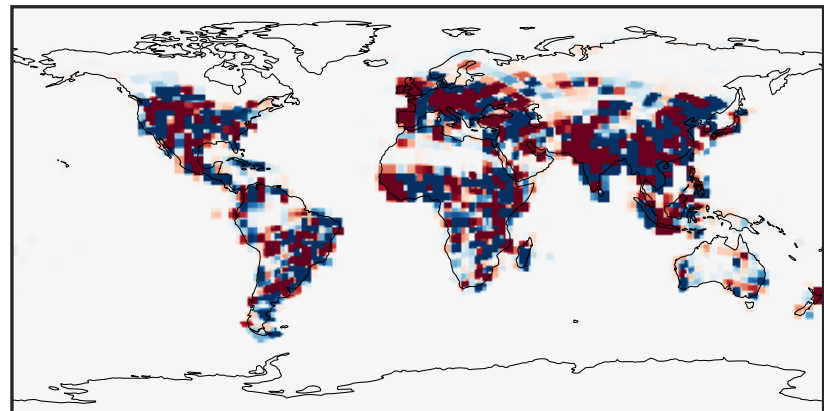
0.0 0.5 1.0 1.5
kg/m²/s 1e-10

Difference (1x1.25)
Dev - Ref, Dynamic Range



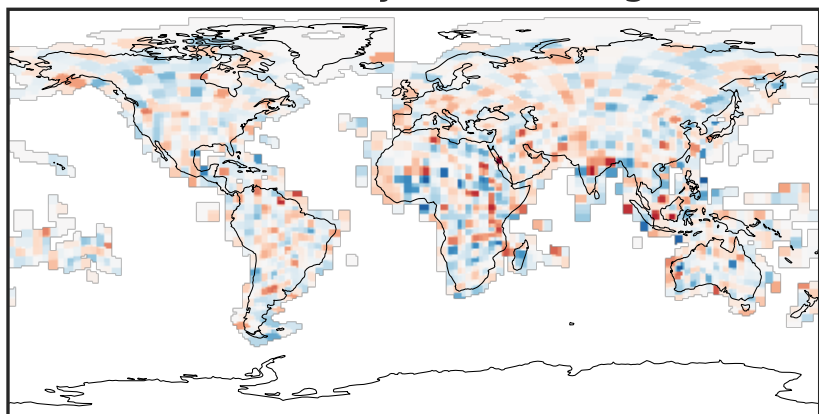
-3 0 3
kg/m²/s 1e-15

Difference (1x1.25)
Dev - Ref, Restricted Range [5%,95%]



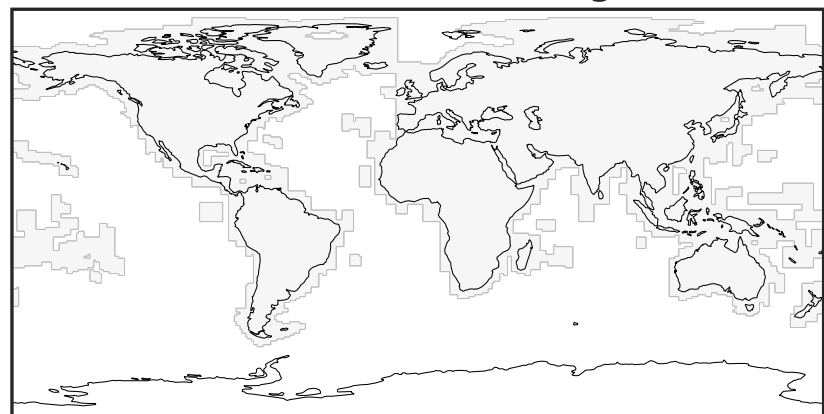
-3 0 3
kg/m²/s 1e-17

Ratio (1x1.25)
Dev/Ref, Dynamic Range



0.9999302 1.000000 1.0000698
unitless

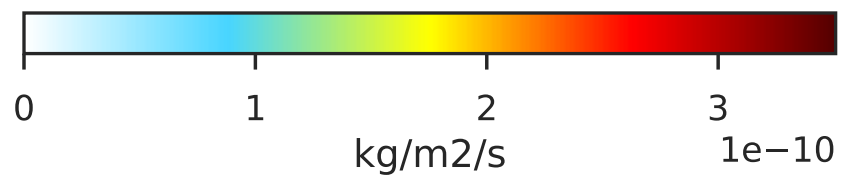
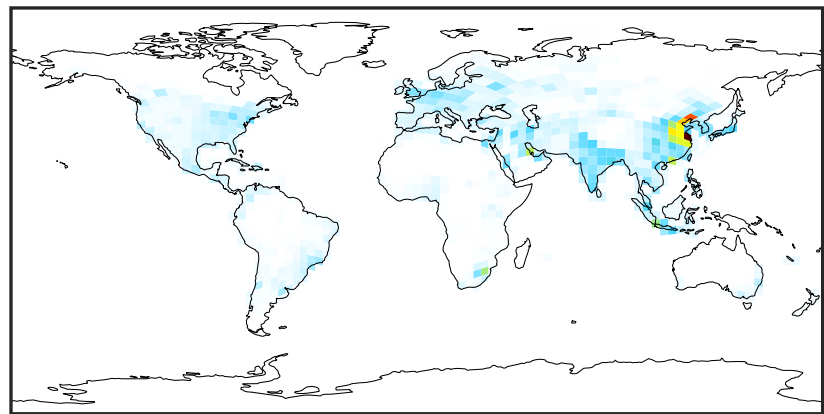
Ratio (1x1.25)
Dev/Ref, Fixed Range



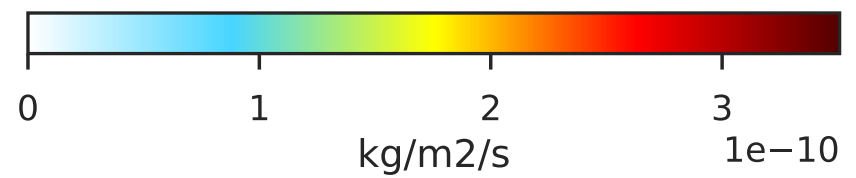
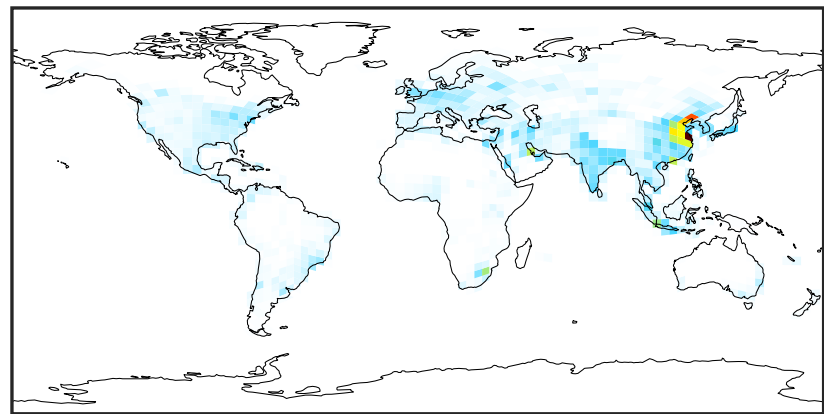
0.50 0.75 1.00 1.50 2.00
unitless

EmisNO_Anthro (AnnualMean)

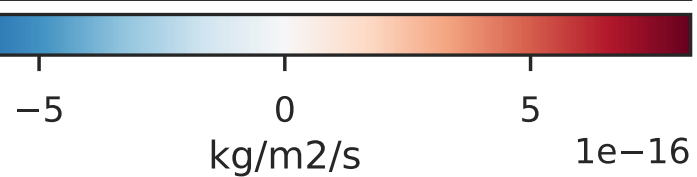
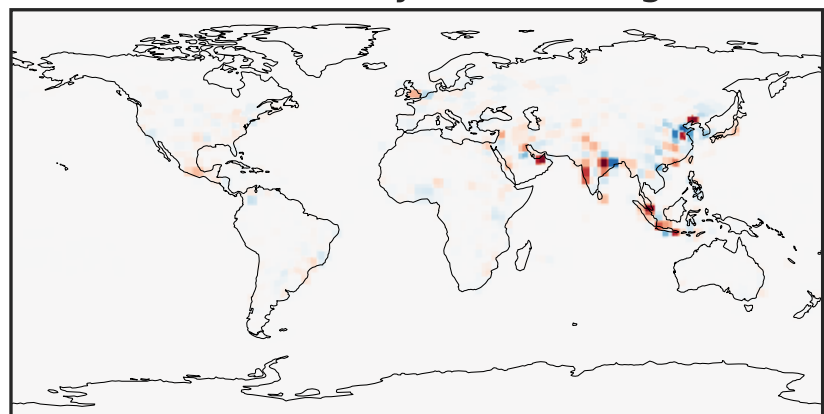
GCHP_14.0.0 (Ref)
c24



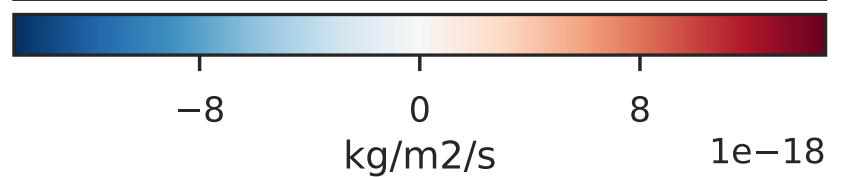
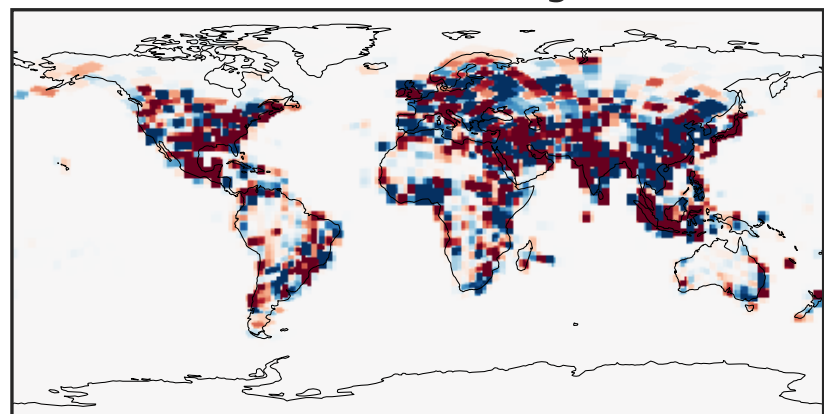
GCHP_14.2.0 (Dev)
c24



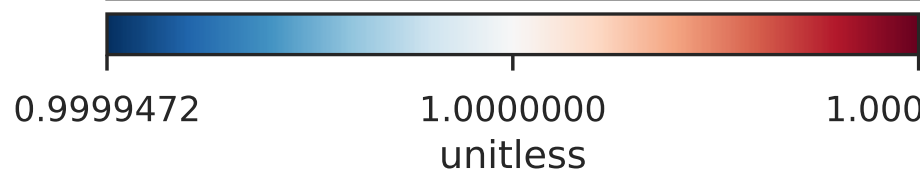
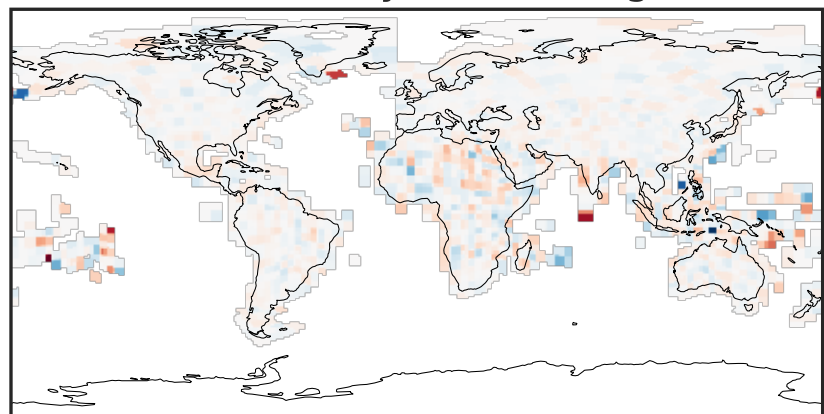
Difference (1x1.25)
Dev - Ref, Dynamic Range



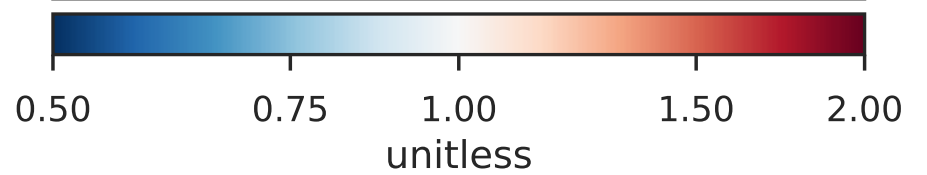
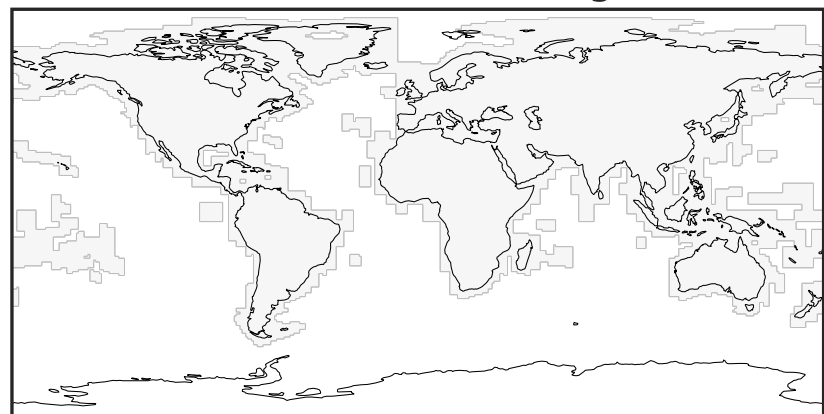
Difference (1x1.25)
Dev - Ref, Restricted Range [5%,95%]



Ratio (1x1.25)
Dev/Ref, Dynamic Range

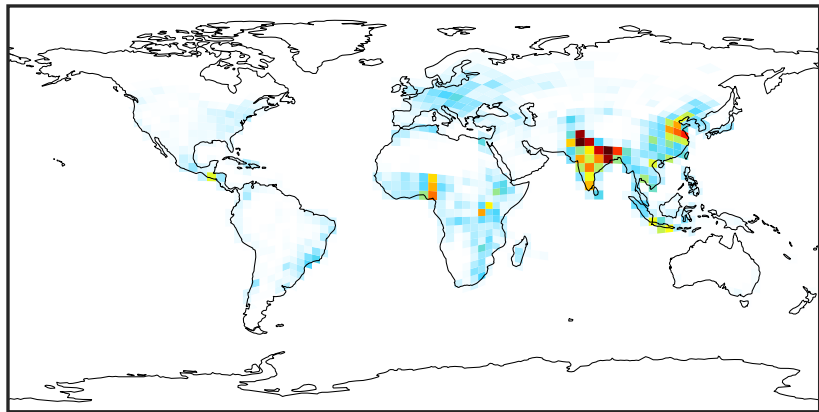


Ratio (1x1.25)
Dev/Ref, Fixed Range



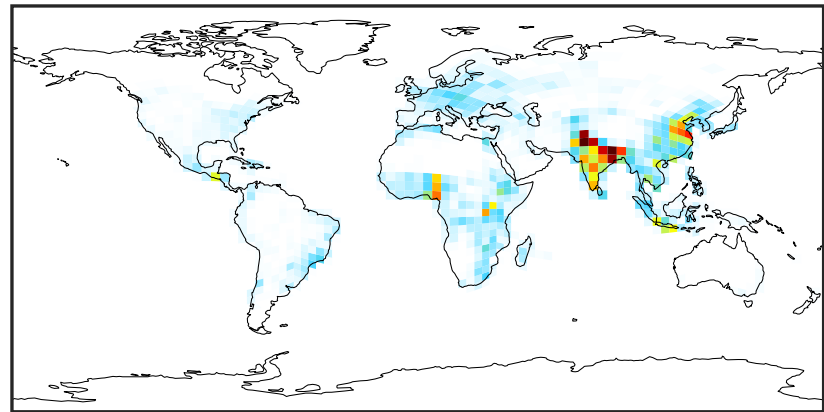
EmisOCPI_Anthro (AnnualMean)

GCHP_14.0.0 (Ref)
c24



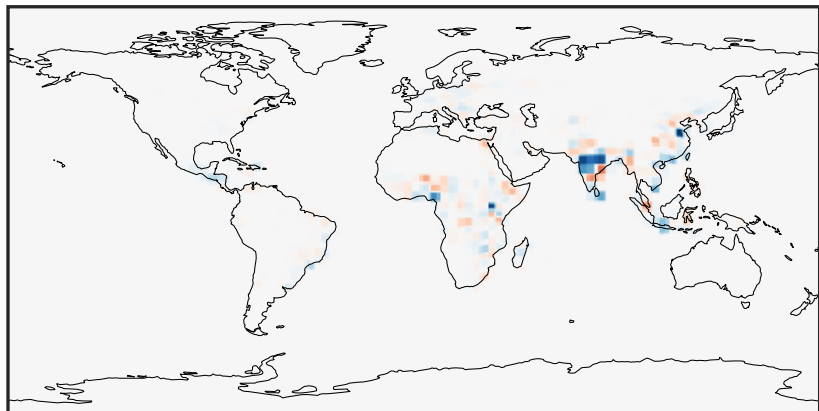
0.0 0.6 1.2 1.8
kg/m²/s 1e-11

GCHP_14.2.0 (Dev)
c24



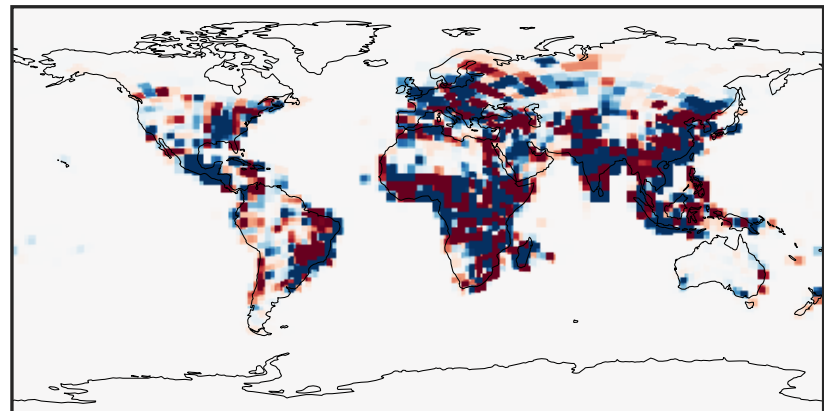
0.0 0.6 1.2 1.8
kg/m²/s 1e-11

Difference (1x1.25)
Dev - Ref, Dynamic Range



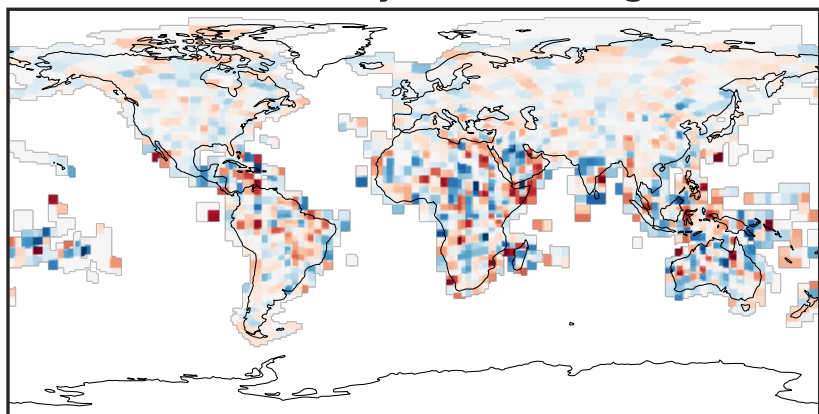
-4 0 4
kg/m²/s 1e-16

Difference (1x1.25)
Dev - Ref, Restricted Range [5%,95%]



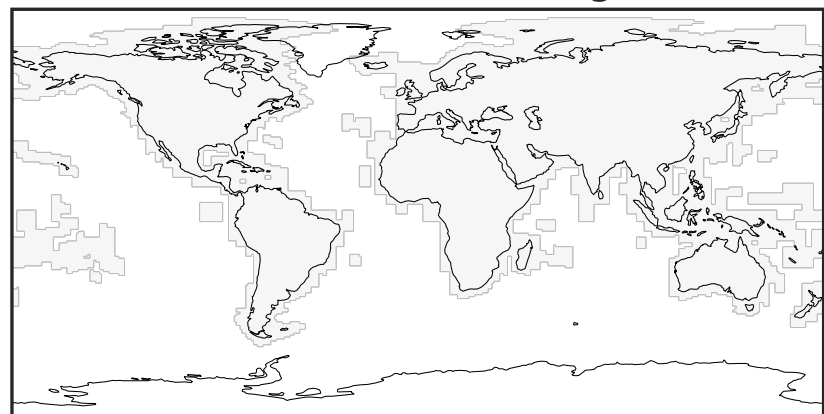
-4 0 4
kg/m²/s 1e-18

Ratio (1x1.25)
Dev/Ref, Dynamic Range



0.999913 1.000000 1.000087
unitless

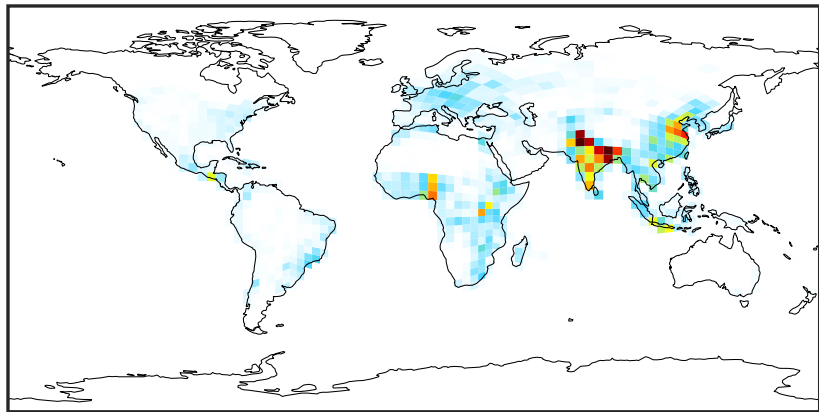
Ratio (1x1.25)
Dev/Ref, Fixed Range



0.50 0.75 1.00 1.50 2.00
unitless

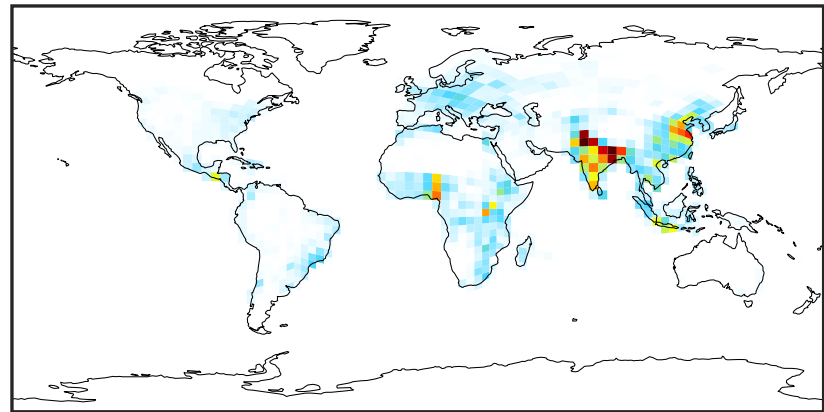
EmisOCPO_Anthro (AnnualMean)

GCHP_14.0.0 (Ref)
c24



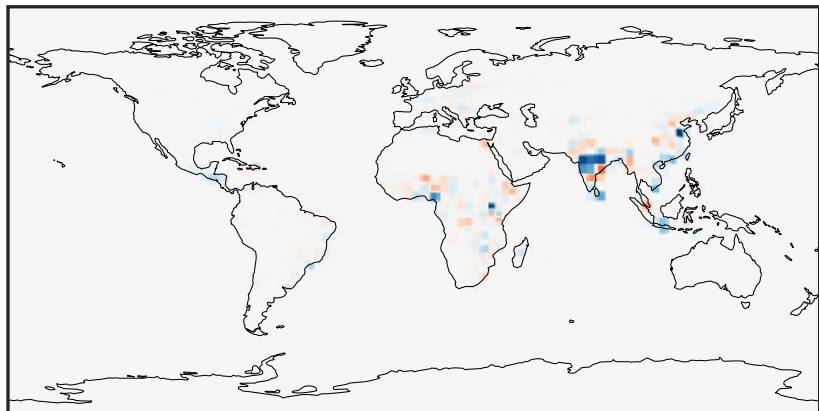
0.0 0.6 1.2 1.8
kg/m²/s 1e-11

GCHP_14.2.0 (Dev)
c24



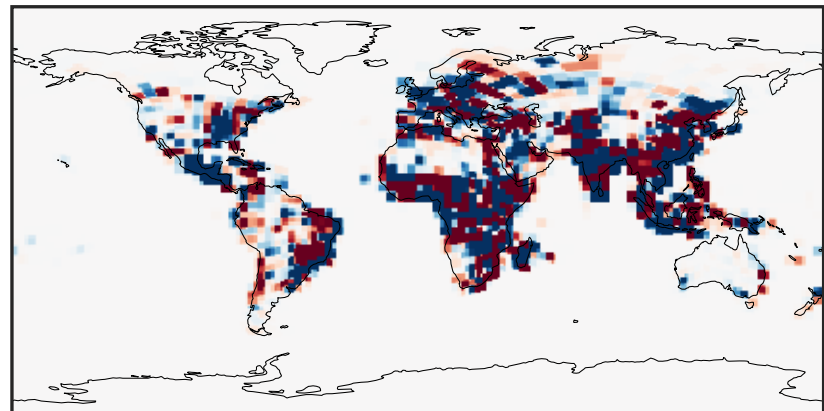
0.0 0.6 1.2 1.8
kg/m²/s 1e-11

Difference (1x1.25)
Dev - Ref, Dynamic Range



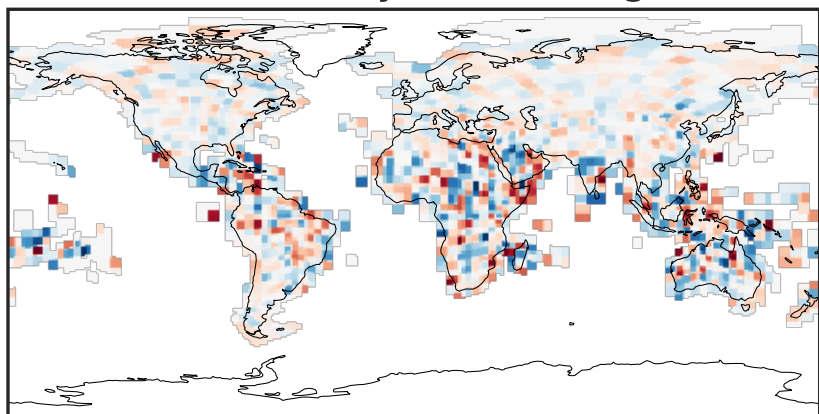
-4 0 4
kg/m²/s 1e-16

Difference (1x1.25)
Dev - Ref, Restricted Range [5%,95%]



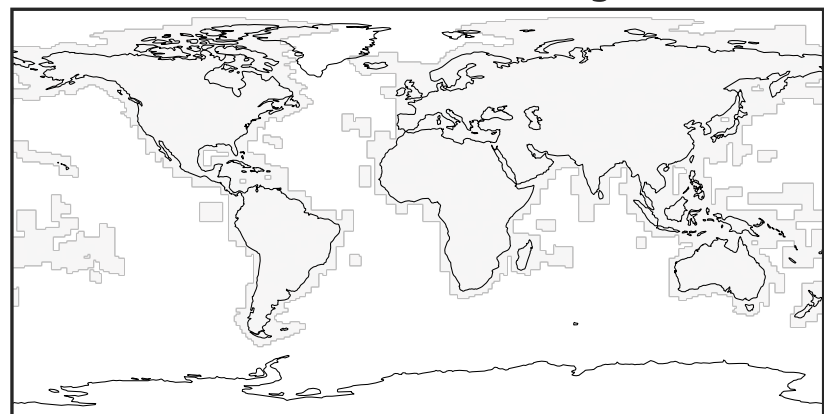
-4 0 4
kg/m²/s 1e-18

Ratio (1x1.25)
Dev/Ref, Dynamic Range



0.999913 1.000000 1.000087
unitless

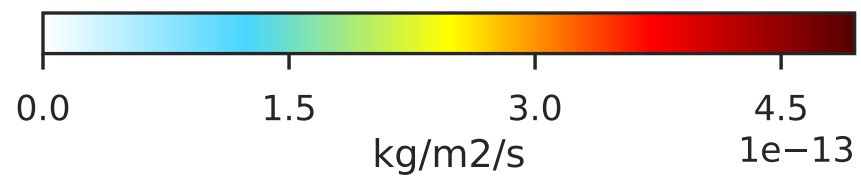
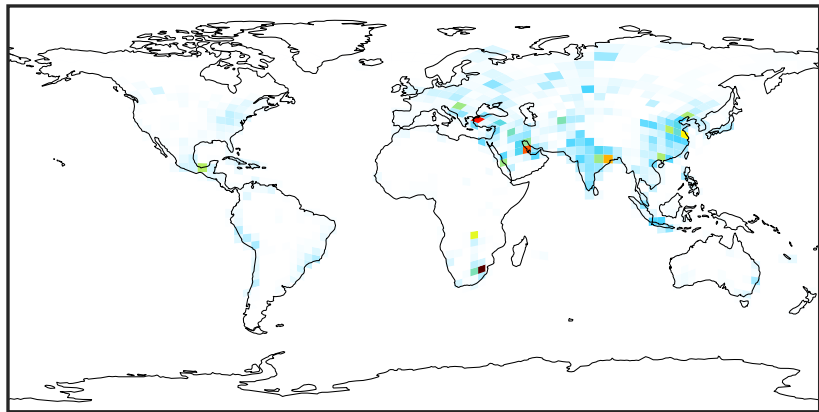
Ratio (1x1.25)
Dev/Ref, Fixed Range



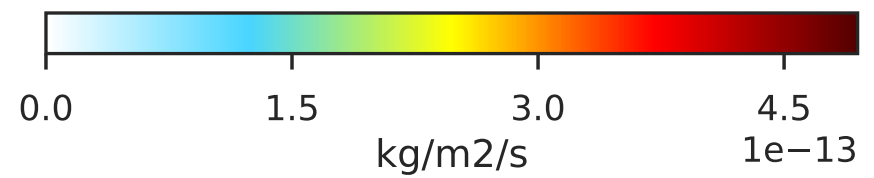
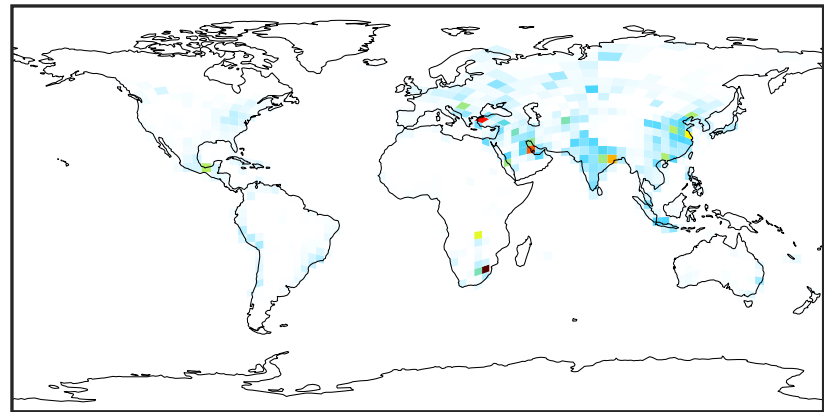
0.50 0.75 1.00 1.50 2.00
unitless

EmispFe_Anthro (AnnualMean)

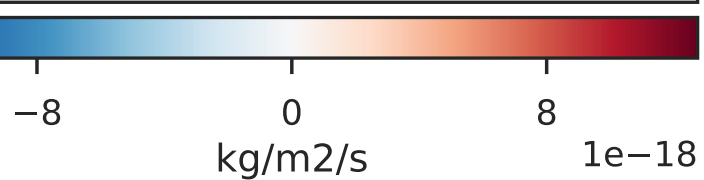
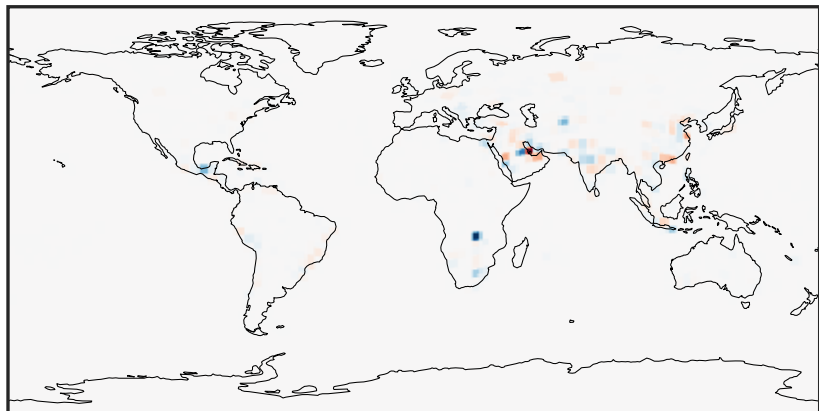
GCHP_14.0.0 (Ref)
c24



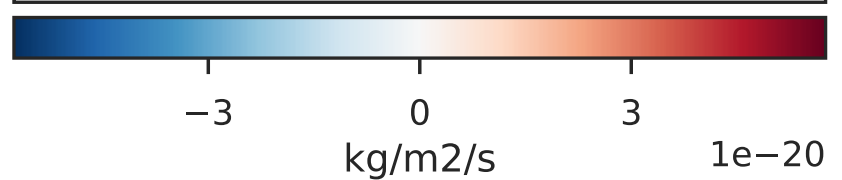
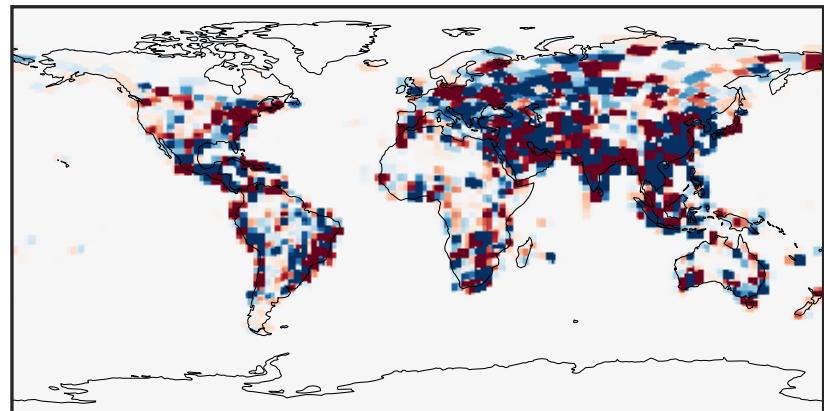
GCHP_14.2.0 (Dev)
c24



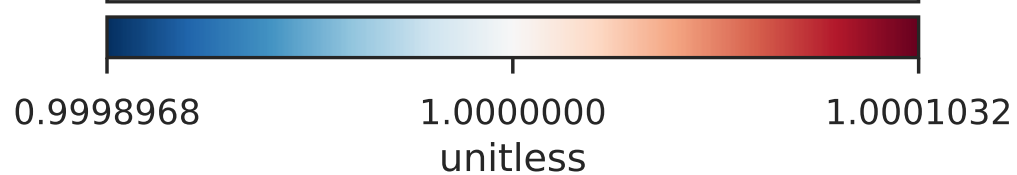
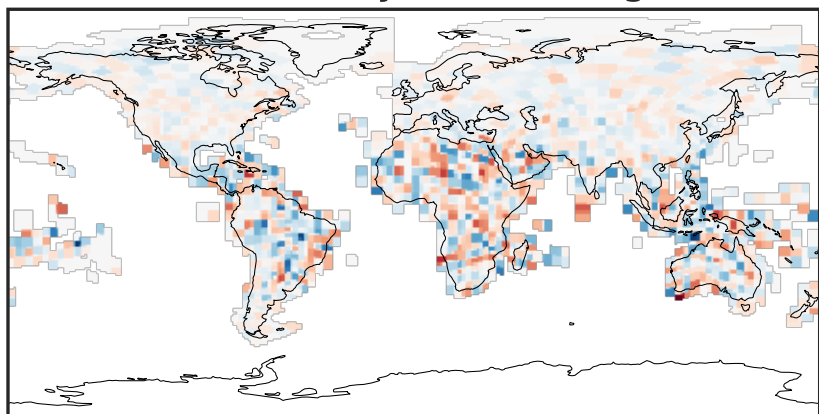
Difference (1x1.25)
Dev - Ref, Dynamic Range



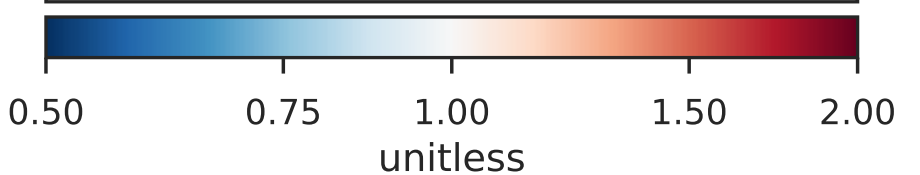
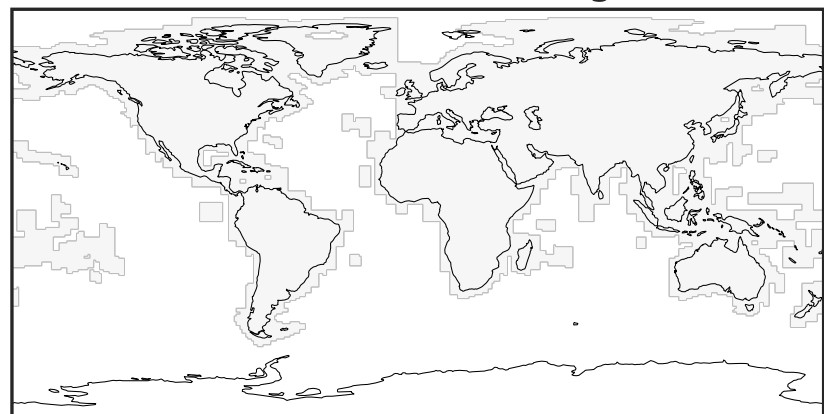
Difference (1x1.25)
Dev - Ref, Restricted Range [5%,95%]



Ratio (1x1.25)
Dev/Ref, Dynamic Range



Ratio (1x1.25)
Dev/Ref, Fixed Range



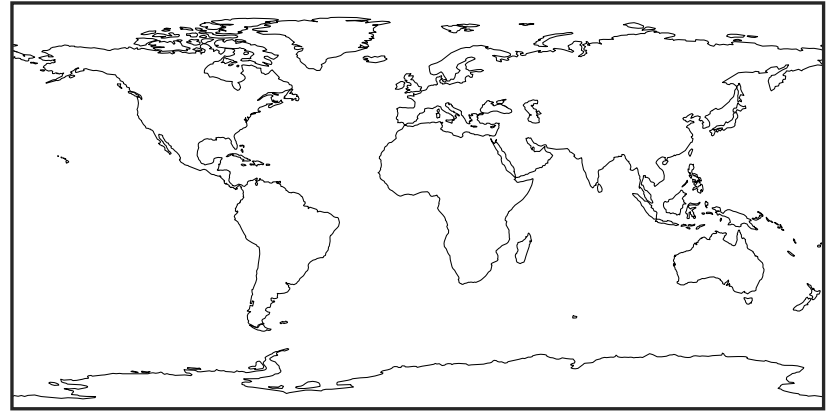
EmisPOG1_Anthro (AnnualMean)

GCHP_14.0.0 (Ref)
c24



Zero throughout domain
kg/m²/s

GCHP_14.2.0 (Dev)
c24



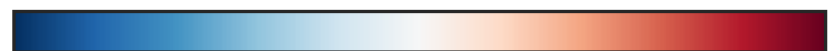
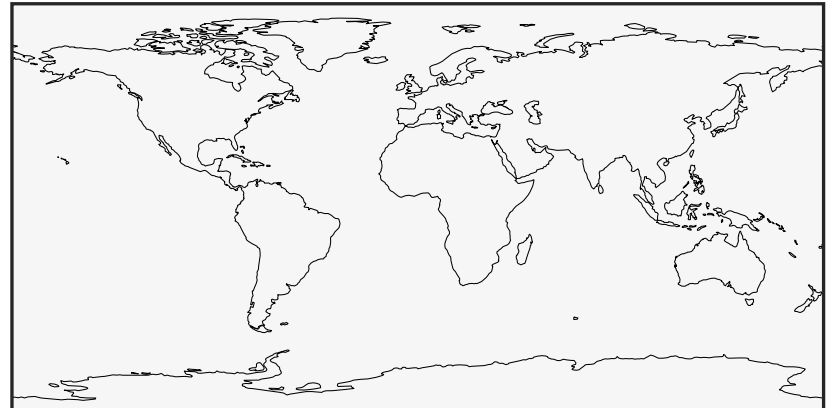
Zero throughout domain
kg/m²/s

Difference (1x1.25)
Dev - Ref, Dynamic Range



Zero throughout domain
kg/m²/s

Difference (1x1.25)
Dev - Ref, Restricted Range [5%,95%]



Zero throughout domain
kg/m²/s

Ratio (1x1.25)
Dev/Ref, Dynamic Range



Undefined throughout domain
unitless

Ratio (1x1.25)
Dev/Ref, Fixed Range



Undefined throughout domain
unitless

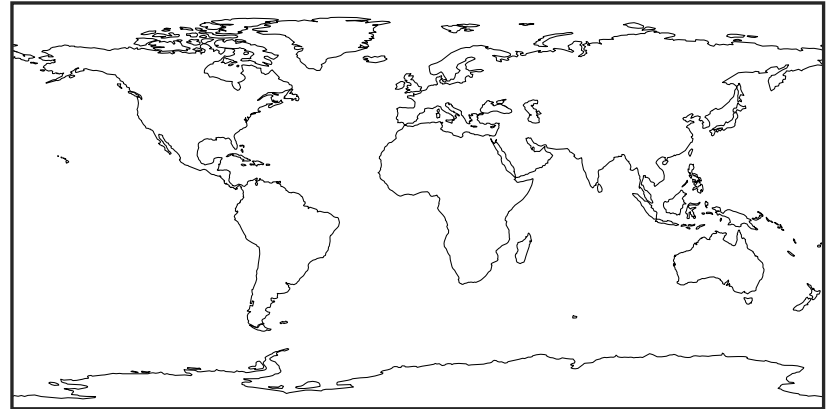
EmisPOG2_Anthro (AnnualMean)

GCHP_14.0.0 (Ref)
c24



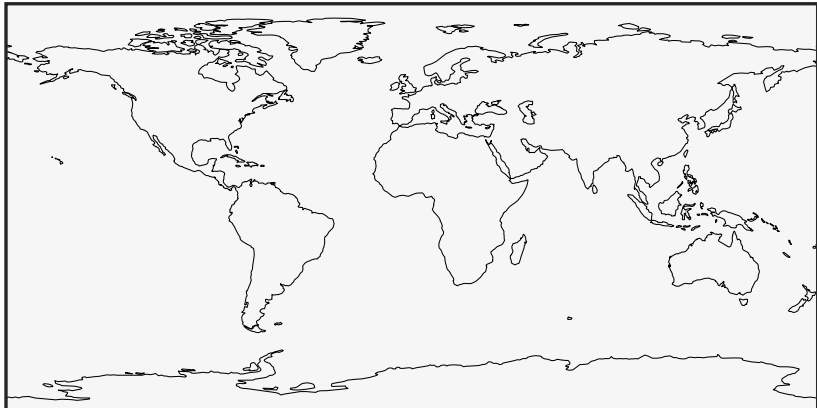
Zero throughout domain
kg/m²/s

GCHP_14.2.0 (Dev)
c24



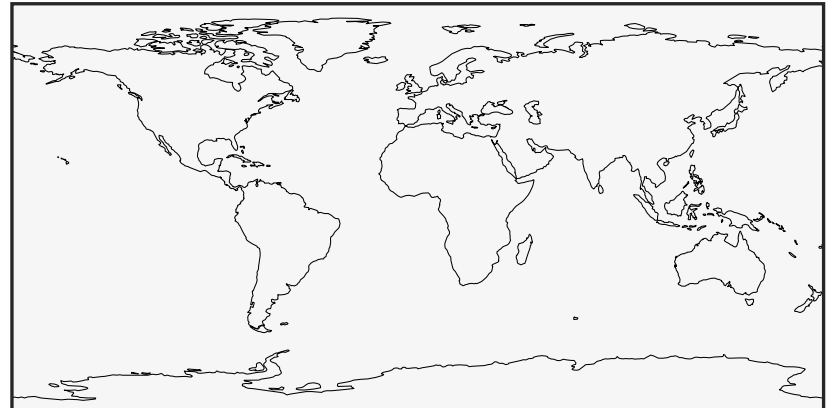
Zero throughout domain
kg/m²/s

Difference (1x1.25)
Dev - Ref, Dynamic Range



Zero throughout domain
kg/m²/s

Difference (1x1.25)
Dev - Ref, Restricted Range [5%,95%]



Zero throughout domain
kg/m²/s

Ratio (1x1.25)
Dev/Ref, Dynamic Range



Undefined throughout domain
unitless

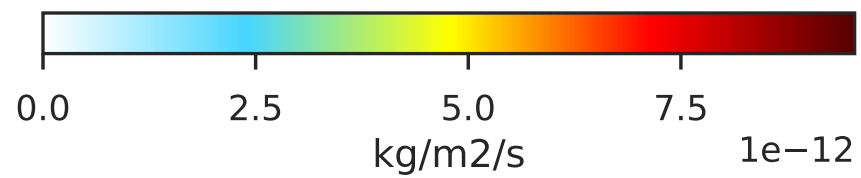
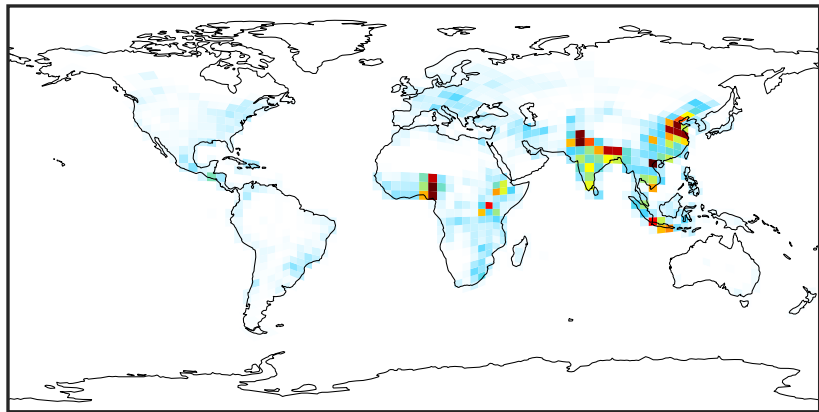
Ratio (1x1.25)
Dev/Ref, Fixed Range



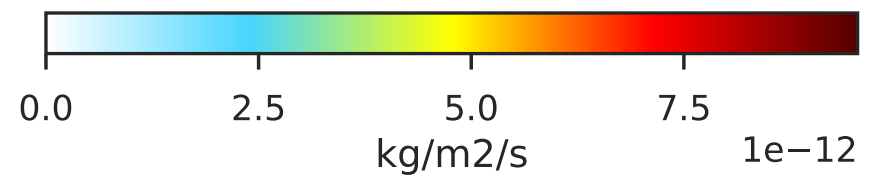
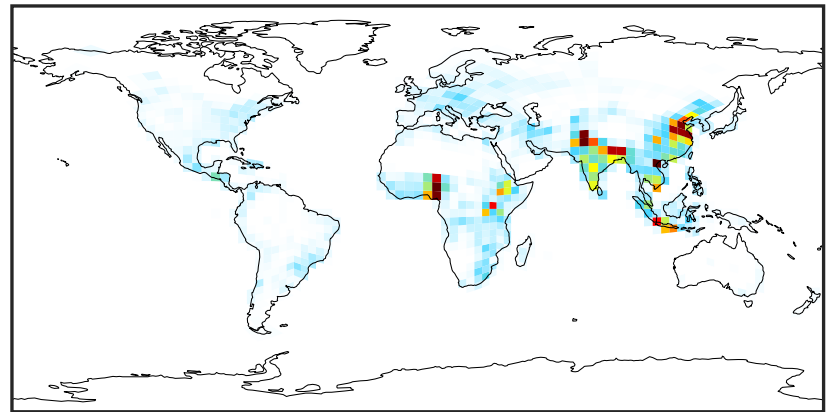
Undefined throughout domain
unitless

EmisPRPE_Anthro (AnnualMean)

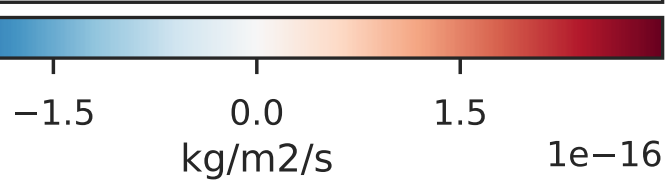
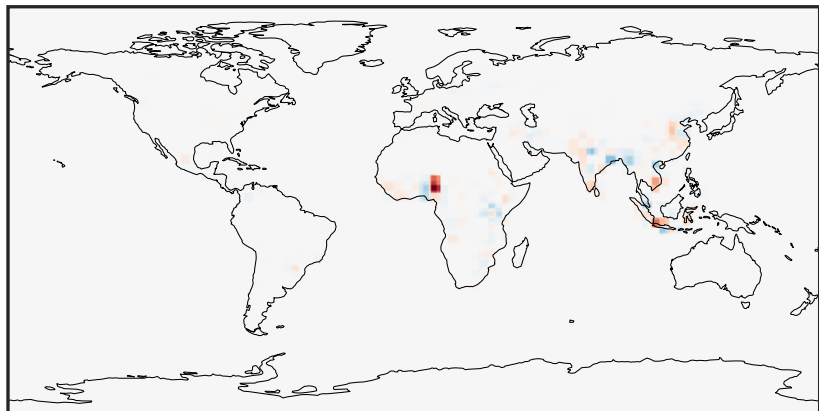
GCHP_14.0.0 (Ref)
c24



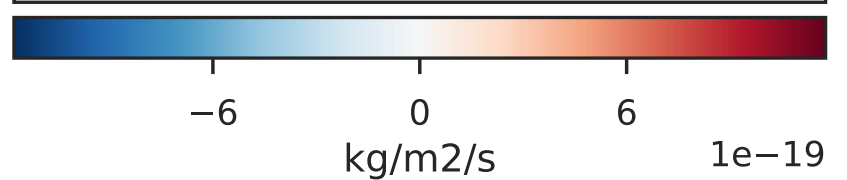
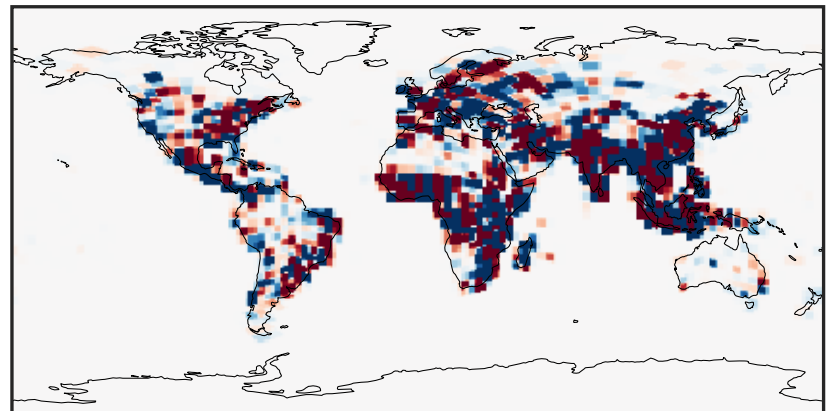
GCHP_14.2.0 (Dev)
c24



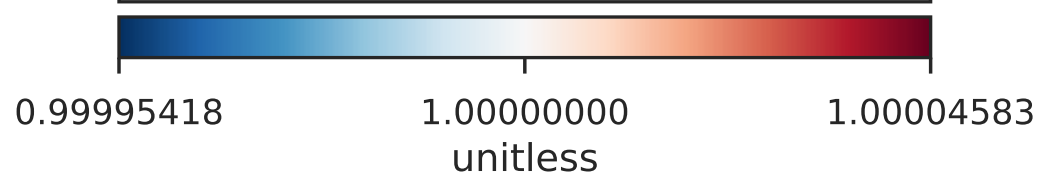
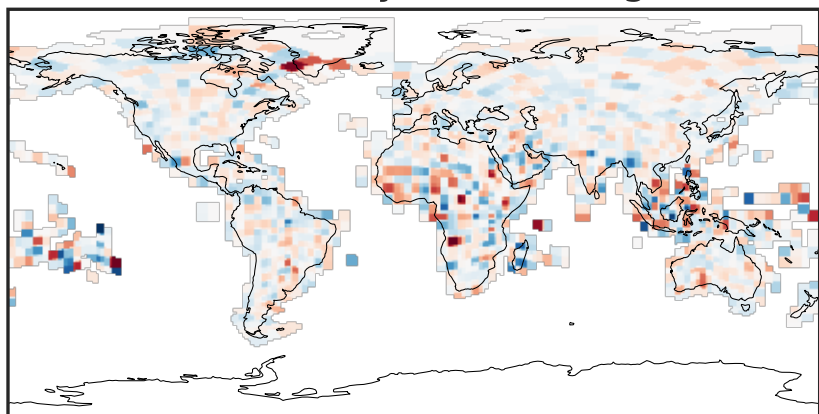
Difference (1x1.25)
Dev - Ref, Dynamic Range



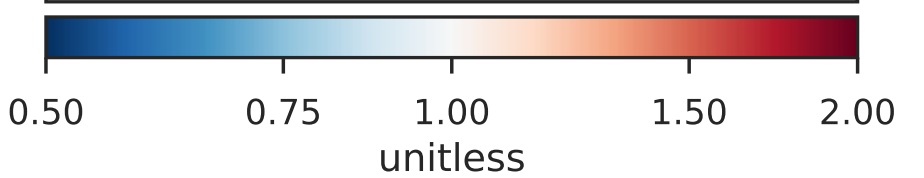
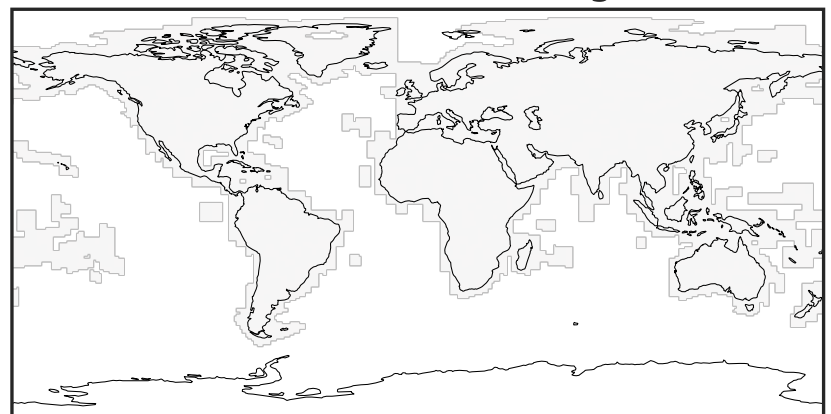
Difference (1x1.25)
Dev - Ref, Restricted Range [5%,95%]



Ratio (1x1.25)
Dev/Ref, Dynamic Range

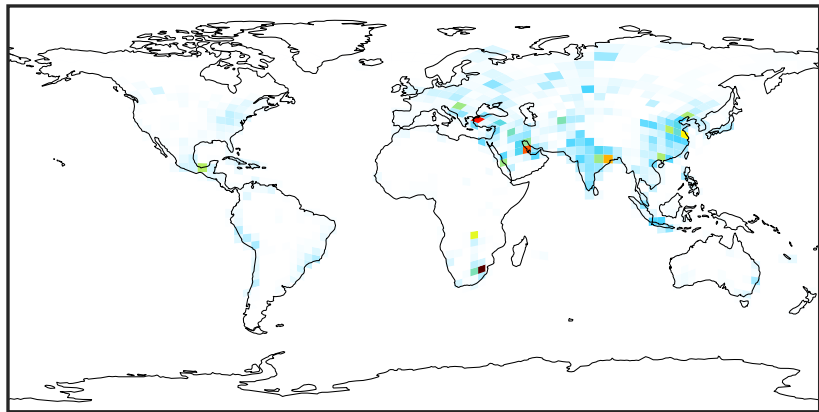


Ratio (1x1.25)
Dev/Ref, Fixed Range



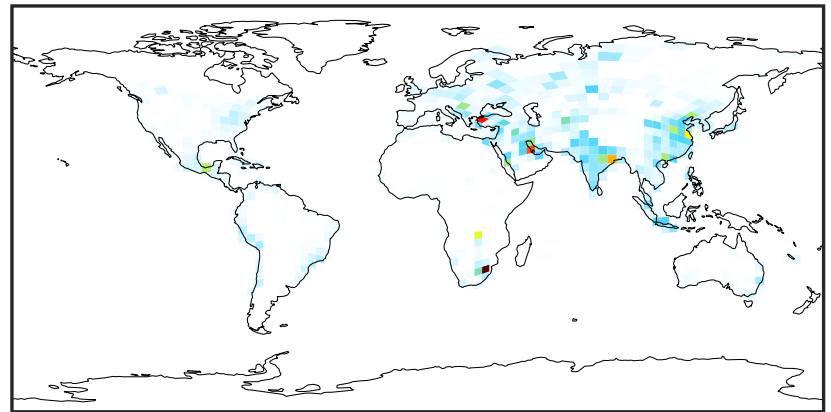
EmisSO2_Anthro (AnnualMean)

GCHP_14.0.0 (Ref)
c24



0.0 1.5 3.0 4.5
kg/m2/s $1e-10$

GCHP_14.2.0 (Dev)
c24



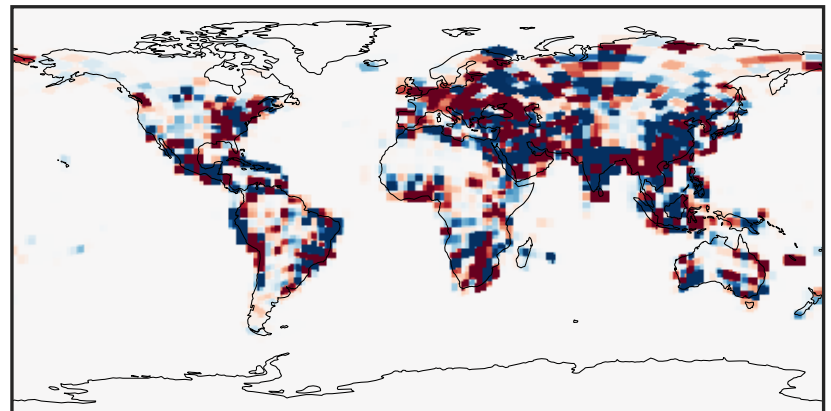
0.0 1.5 3.0 4.5
kg/m2/s $1e-10$

Difference (1x1.25)
Dev - Ref, Dynamic Range



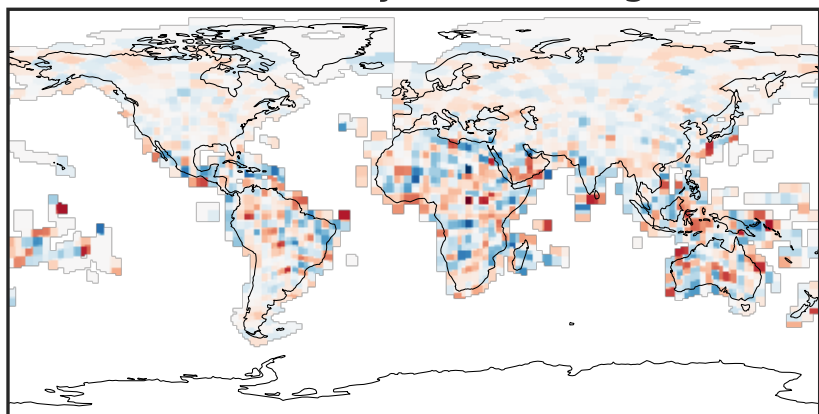
-1.5 0.0 1.5
kg/m2/s $1e-14$

Difference (1x1.25)
Dev - Ref, Restricted Range [5%,95%]



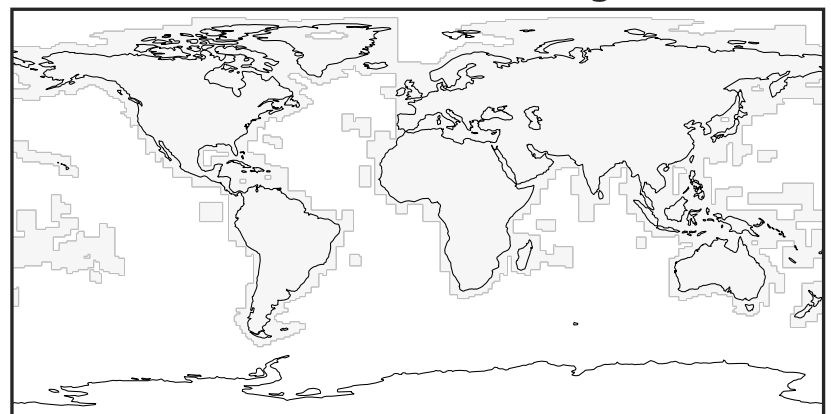
-3 0 3
kg/m2/s $1e-17$

Ratio (1x1.25)
Dev/Ref, Dynamic Range



0.9999075 1.000000 1.0000925
unitless

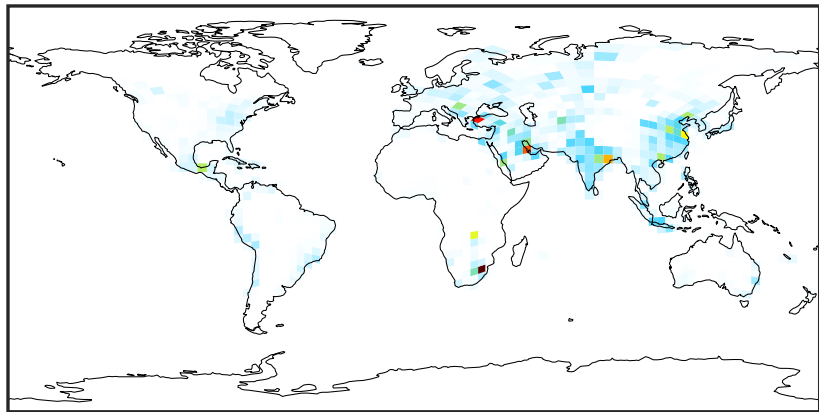
Ratio (1x1.25)
Dev/Ref, Fixed Range



0.50 0.75 1.00 1.50 2.00
unitless

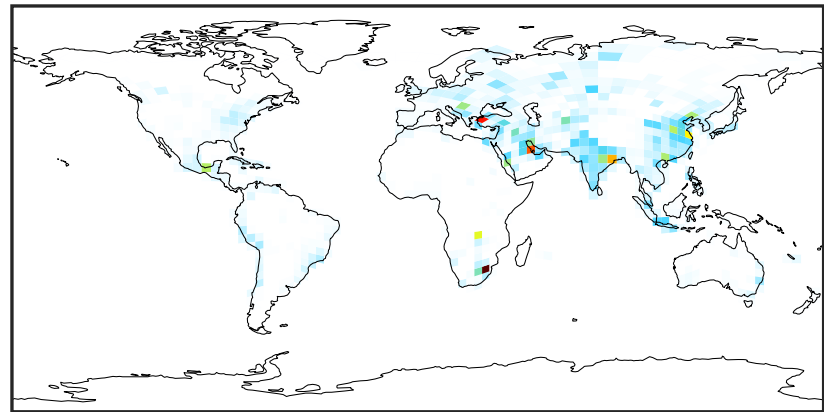
EmisSO4_Anthro (AnnualMean)

GCHP_14.0.0 (Ref)
c24



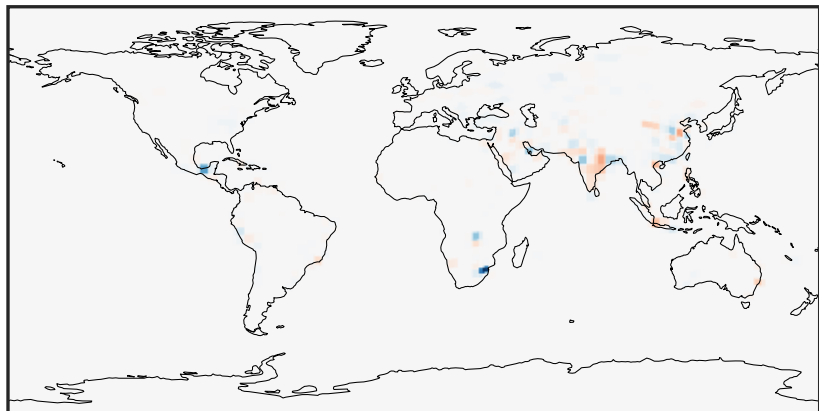
0.0 0.4 0.8 1.2 10^{-11}
kg/m²/s

GCHP_14.2.0 (Dev)
c24



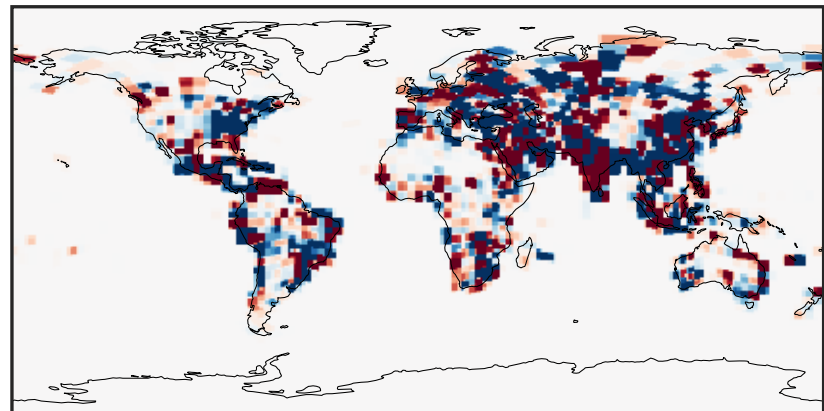
0.0 0.4 0.8 1.2 10^{-11}
kg/m²/s

Difference (1x1.25)
Dev - Ref, Dynamic Range



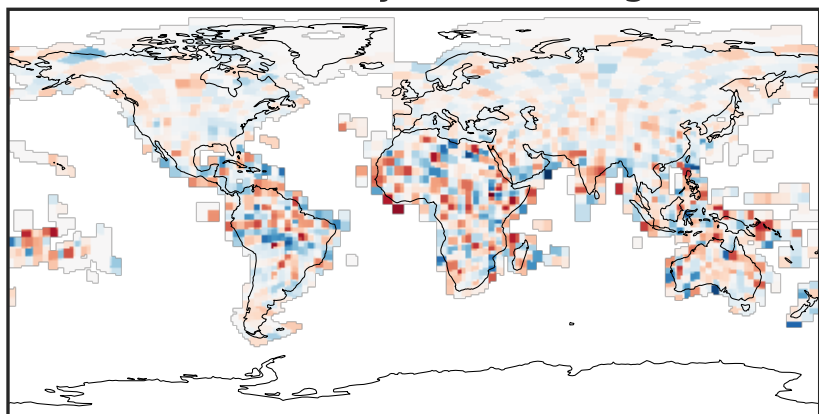
-2.5 0.0 2.5 10^{-16}
kg/m²/s

Difference (1x1.25)
Dev - Ref, Restricted Range [5%,95%]



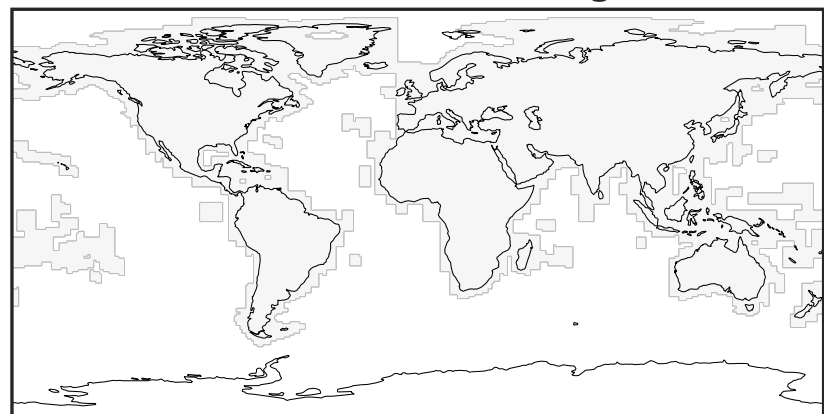
-1 0 1 10^{-18}
kg/m²/s

Ratio (1x1.25)
Dev/Ref, Dynamic Range



0.999912 1.000000 1.000088
unitless

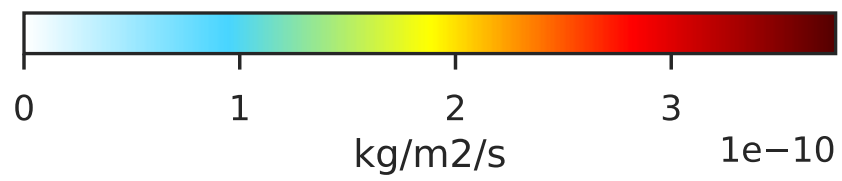
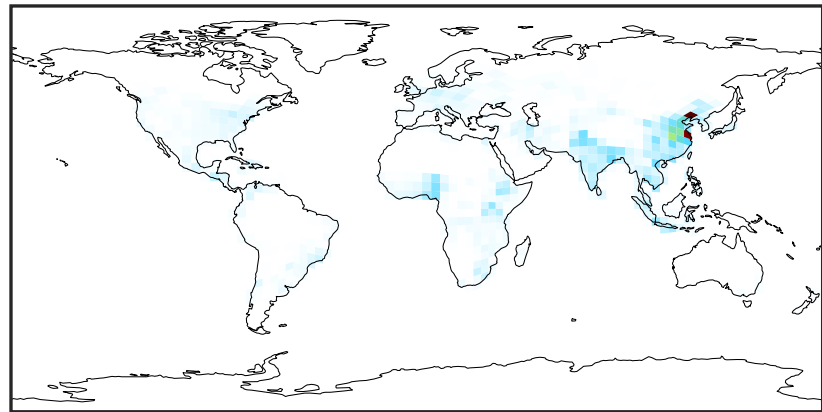
Ratio (1x1.25)
Dev/Ref, Fixed Range



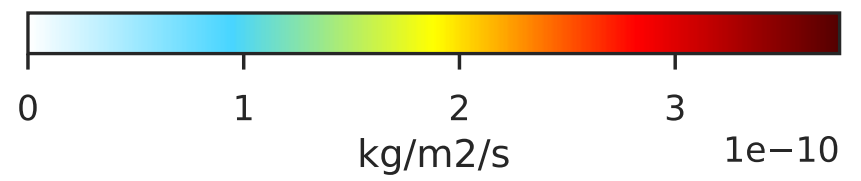
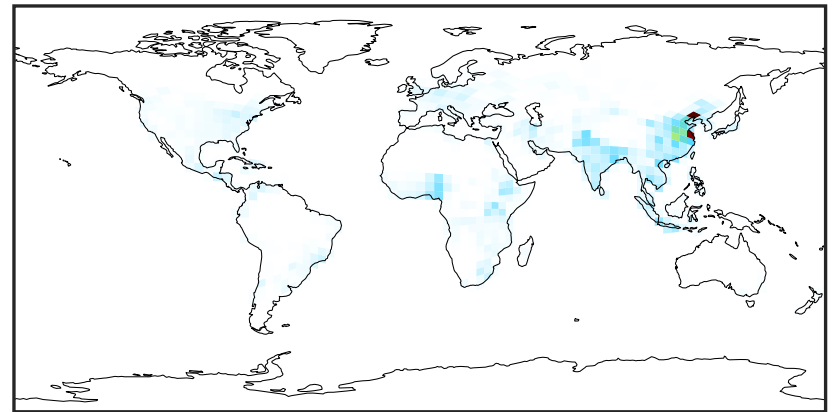
0.50 0.75 1.00 1.50 2.00
unitless

EmisSOAP_Anthro (AnnualMean)

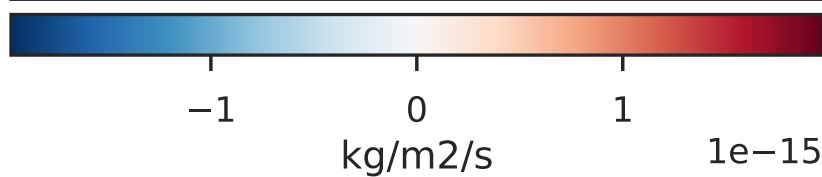
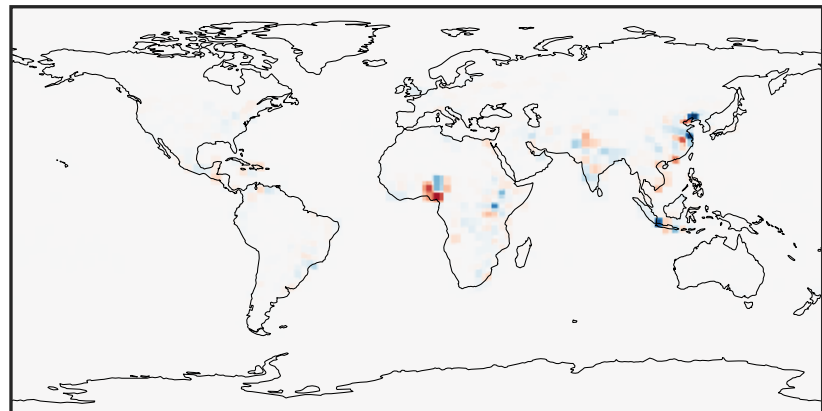
GCHP_14.0.0 (Ref)
c24



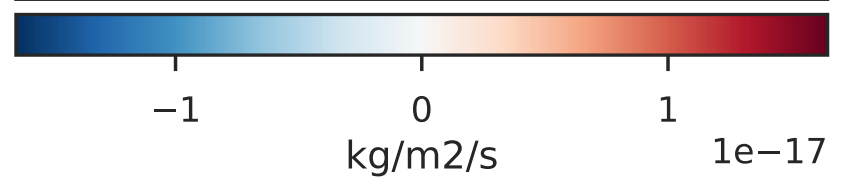
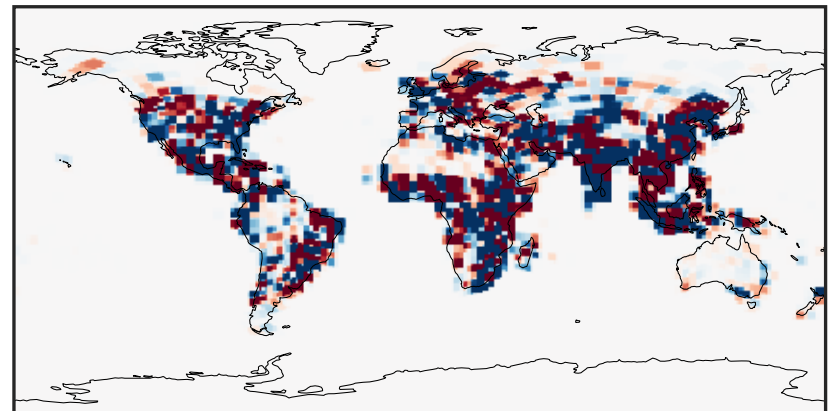
GCHP_14.2.0 (Dev)
c24



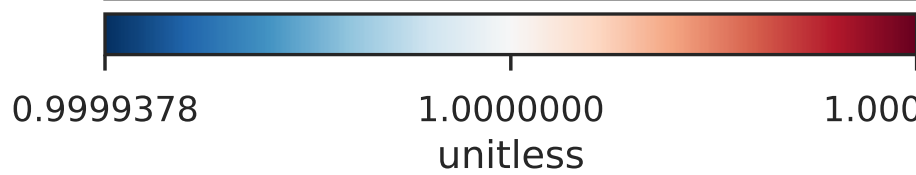
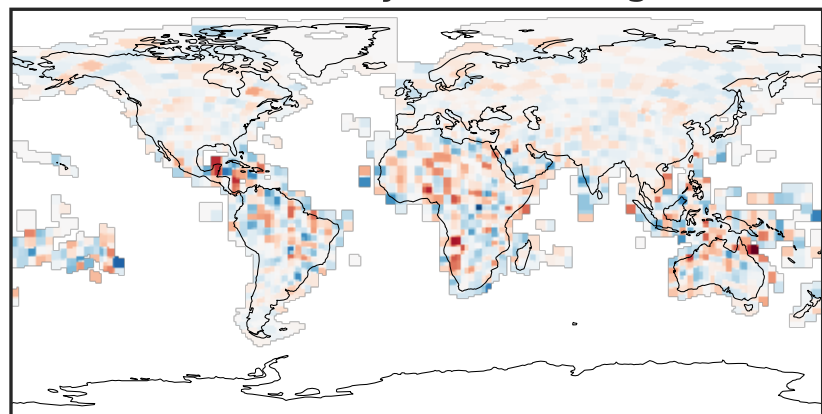
Difference (1x1.25)
Dev - Ref, Dynamic Range



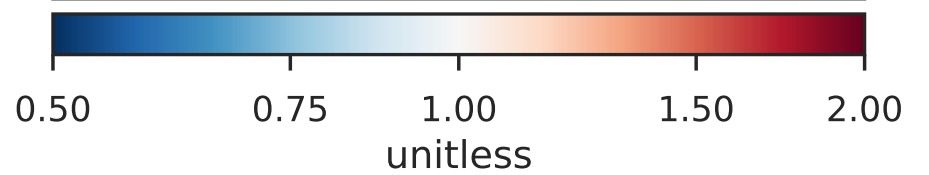
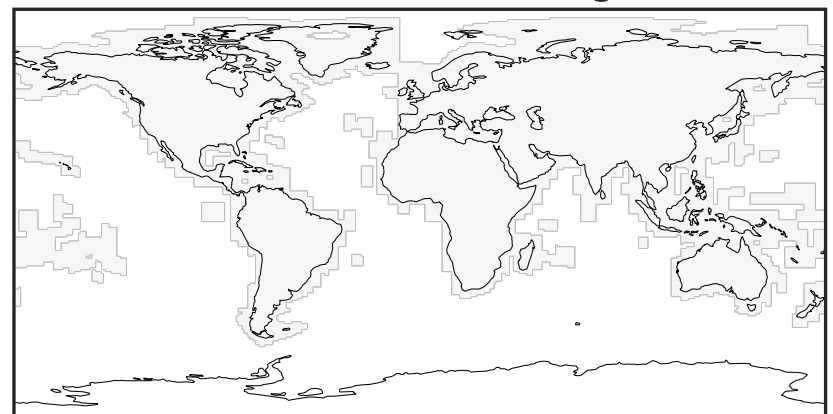
Difference (1x1.25)
Dev - Ref, Restricted Range [5%,95%]



Ratio (1x1.25)
Dev/Ref, Dynamic Range

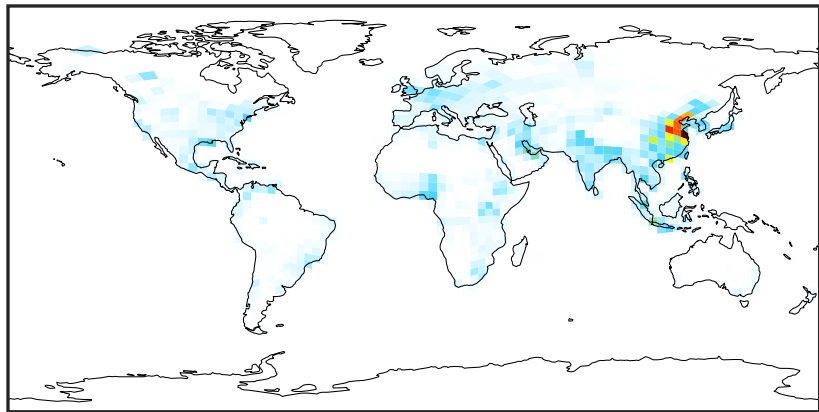


Ratio (1x1.25)
Dev/Ref, Fixed Range



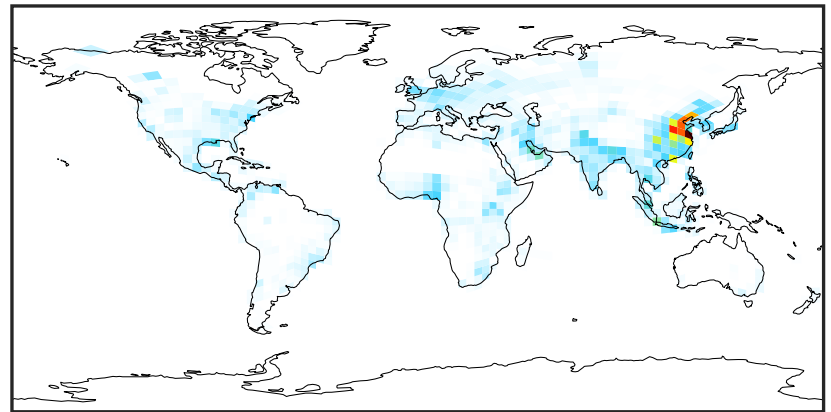
EmisTOLU_Anthro (AnnualMean)

GCHP_14.0.0 (Ref)
c24



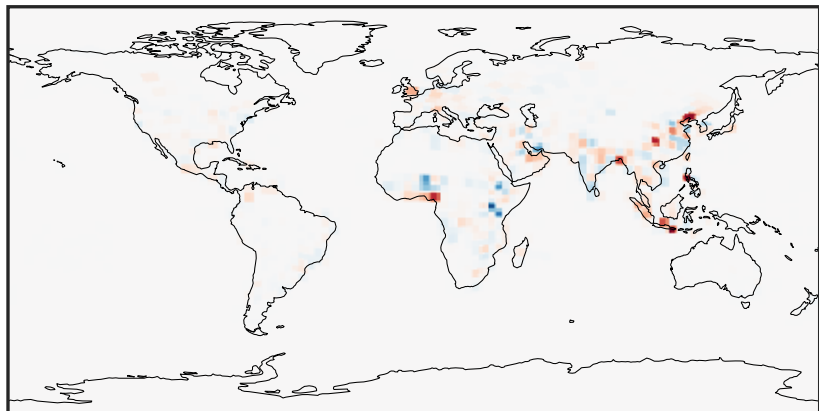
0.0 1.5 3.0
kg/m2/s 1e-11

GCHP_14.2.0 (Dev)
c24



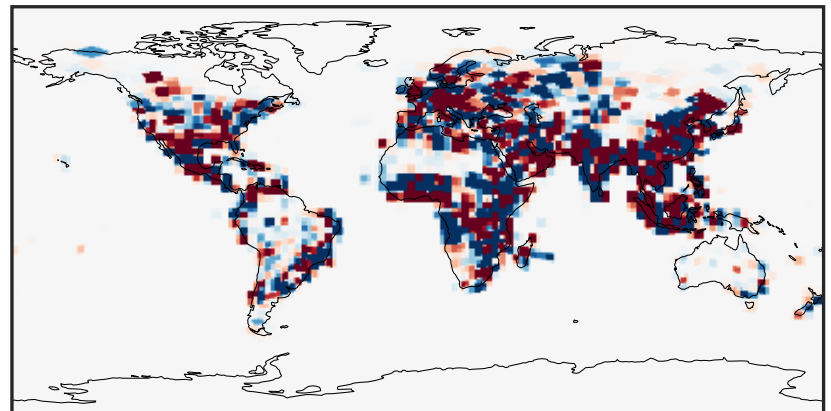
0.0 1.5 3.0
kg/m2/s 1e-11

Difference (1x1.25)
Dev - Ref, Dynamic Range



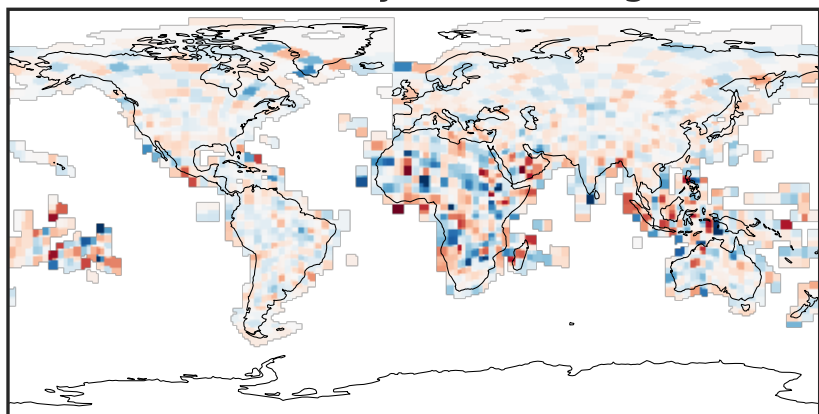
-1.5 0.0 1.5
kg/m2/s 1e-16

Difference (1x1.25)
Dev - Ref, Restricted Range [5%,95%]



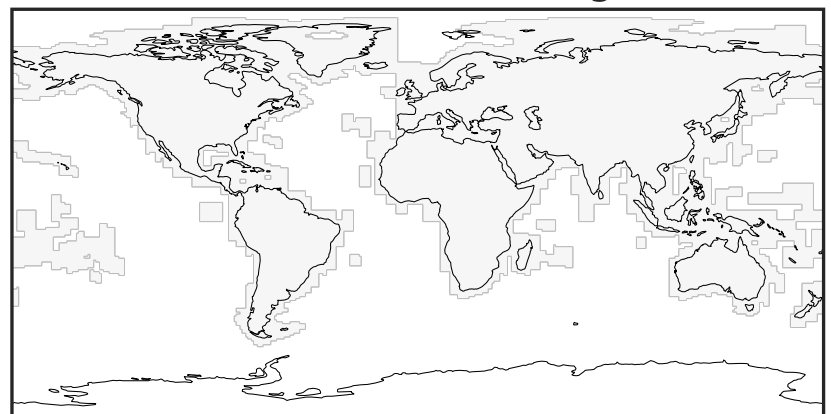
-2 0 2
kg/m2/s 1e-18

Ratio (1x1.25)
Dev/Ref, Dynamic Range



0.99995728 1.00000000 1.00004272
unitless

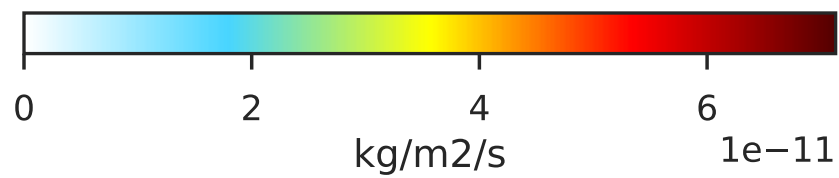
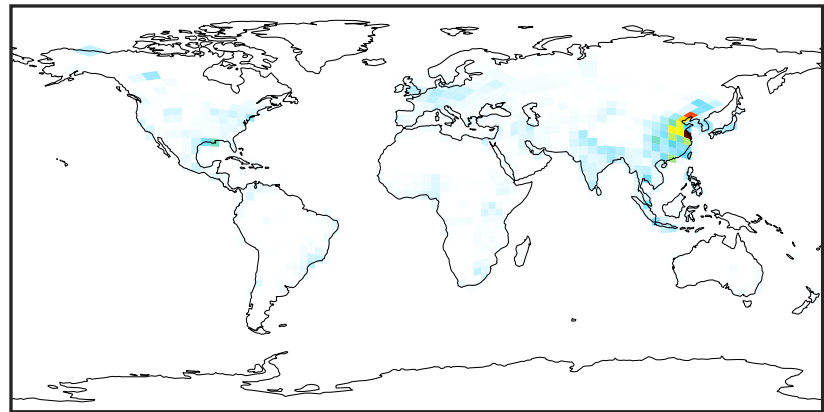
Ratio (1x1.25)
Dev/Ref, Fixed Range



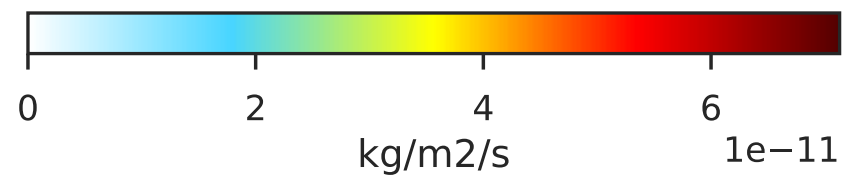
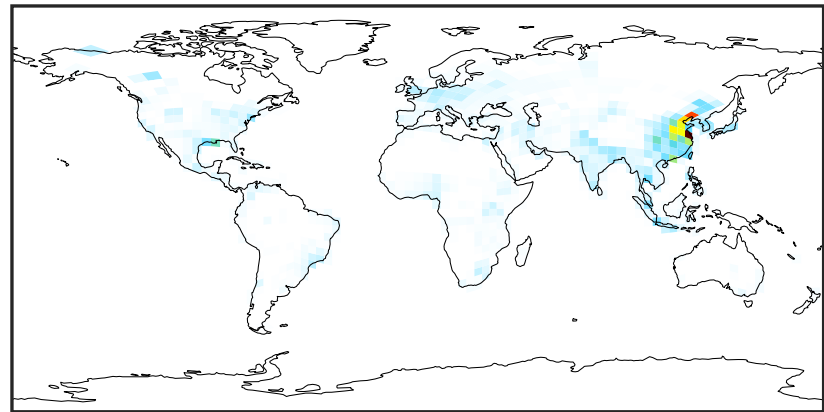
0.50 0.75 1.00 1.50 2.00
unitless

EmisXYLE_Anthro (AnnualMean)

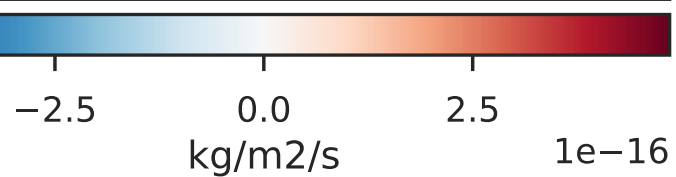
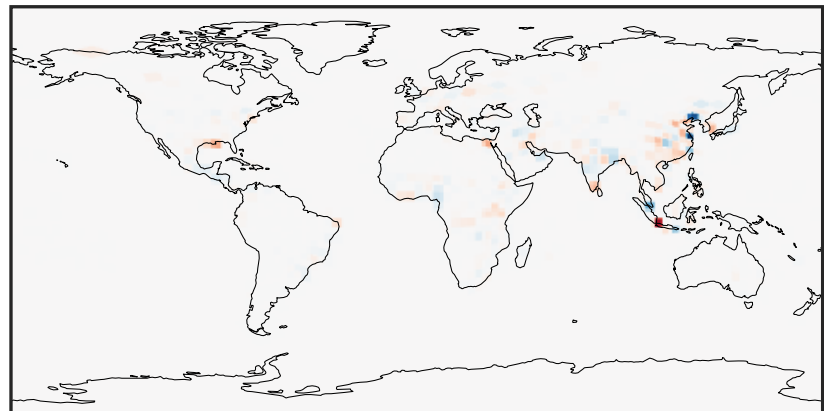
GCHP_14.0.0 (Ref)
c24



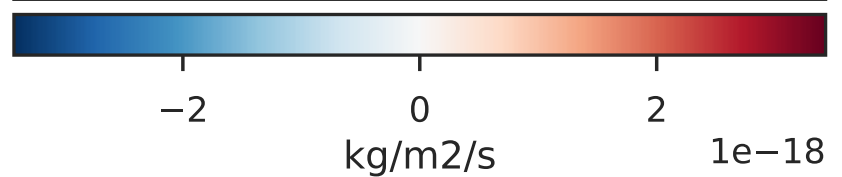
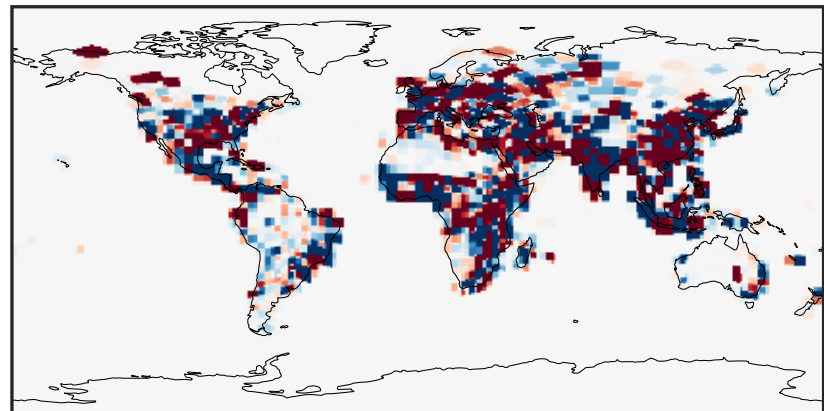
GCHP_14.2.0 (Dev)
c24



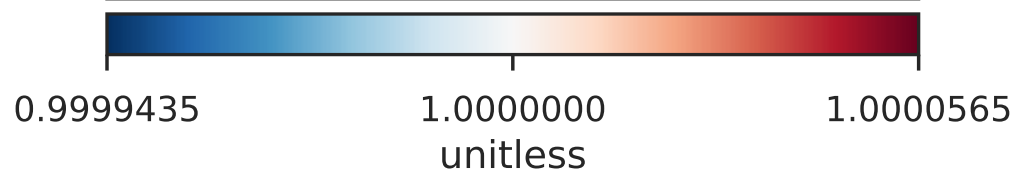
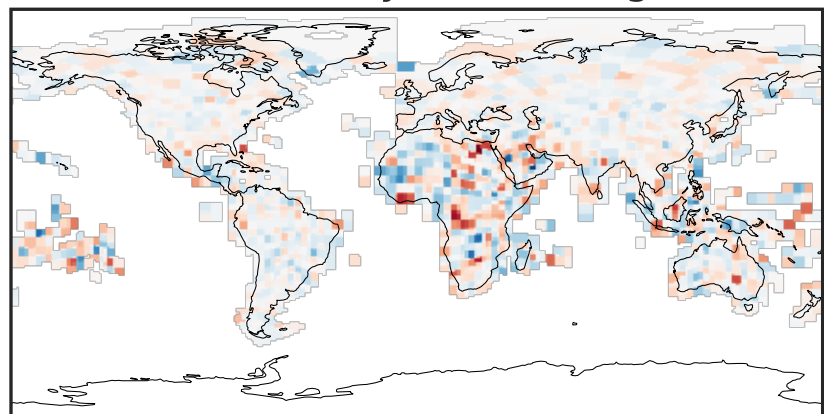
Difference (1x1.25)
Dev - Ref, Dynamic Range



Difference (1x1.25)
Dev - Ref, Restricted Range [5%,95%]



Ratio (1x1.25)
Dev/Ref, Dynamic Range



Ratio (1x1.25)
Dev/Ref, Fixed Range

