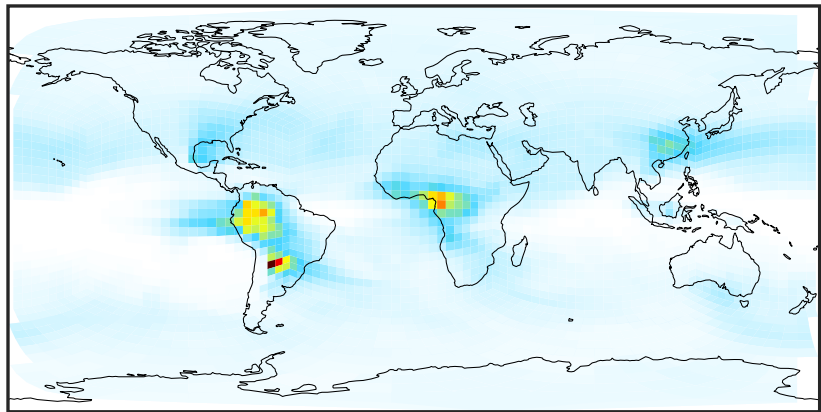


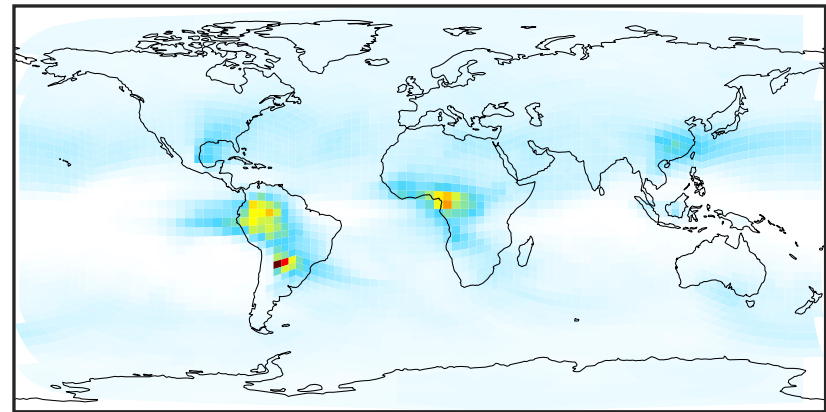
SpeciesConcVV_TSOA0 (Apr2019)

GCHP_14.0.0 (Ref)
c24



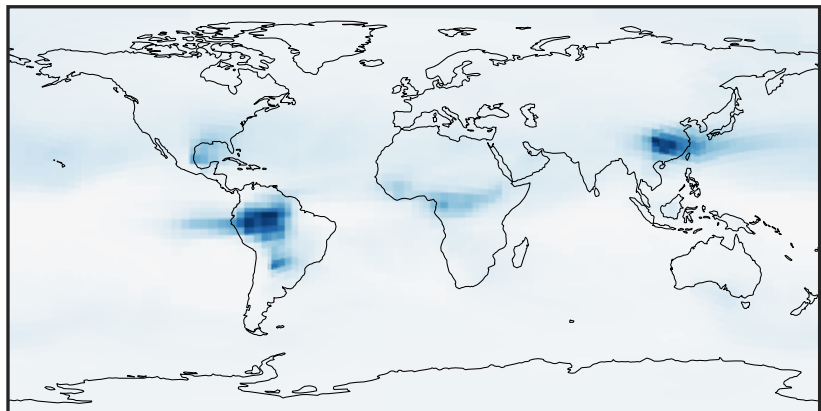
0.008 0.016 0.024
 $\mu\text{g}/\text{m}^3$

GCHP_14.2.0 (Dev)
c24



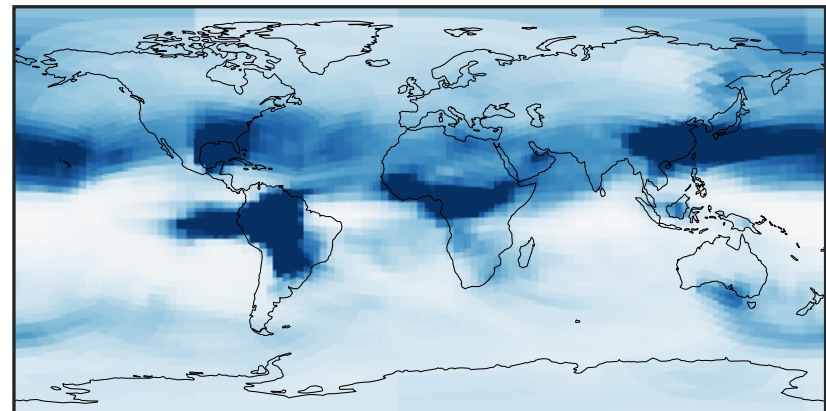
0.008 0.016 0.024
 $\mu\text{g}/\text{m}^3$

Difference (1x1.25)
Dev - Ref, Dynamic Range



-0.0005 0.0000 0.0005
 $\mu\text{g}/\text{m}^3$

Difference (1x1.25)
Dev - Ref, Restricted Range [5%,95%]



-0.0001 0.0000 0.0001
 $\mu\text{g}/\text{m}^3$

Ratio (1x1.25)
Dev/Ref, Dynamic Range



0.99195 0.99598 1.00000 1.00406 1.00811
unitless

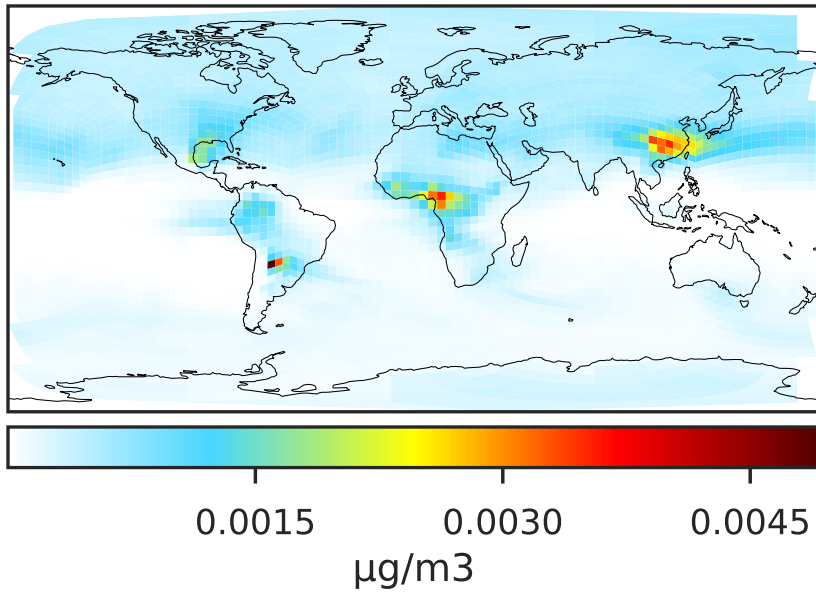
Ratio (1x1.25)
Dev/Ref, Fixed Range



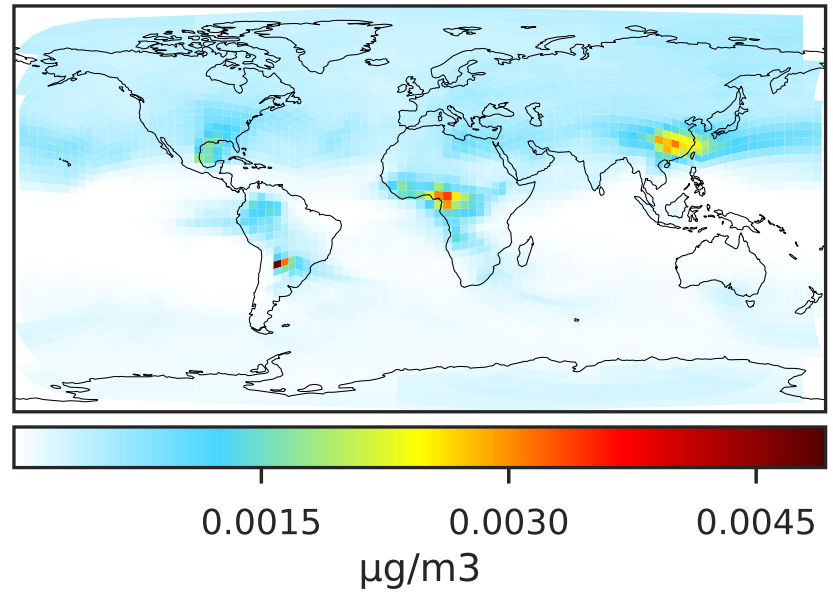
0.50 0.75 1.00 1.50 2.00
unitless

SpeciesConcVV_TSOA1 (Apr2019)

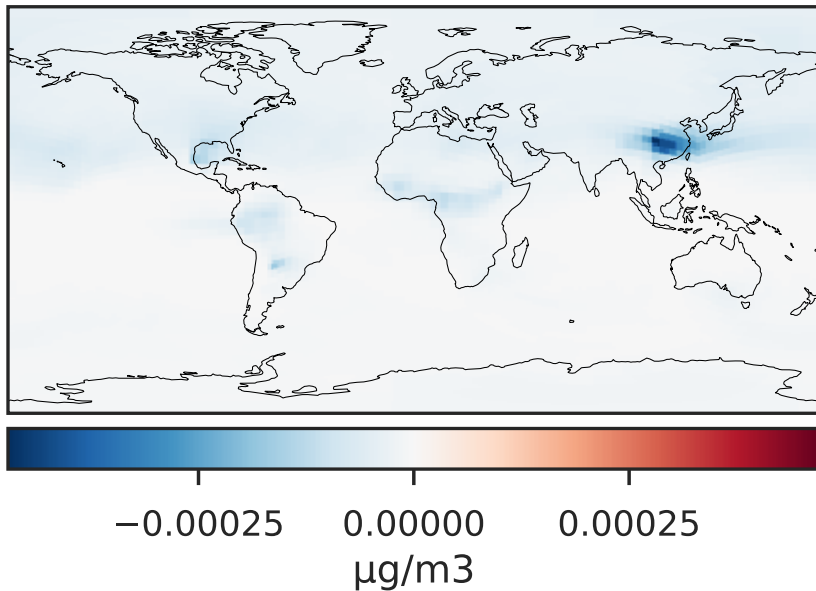
GCHP_14.0.0 (Ref)
c24



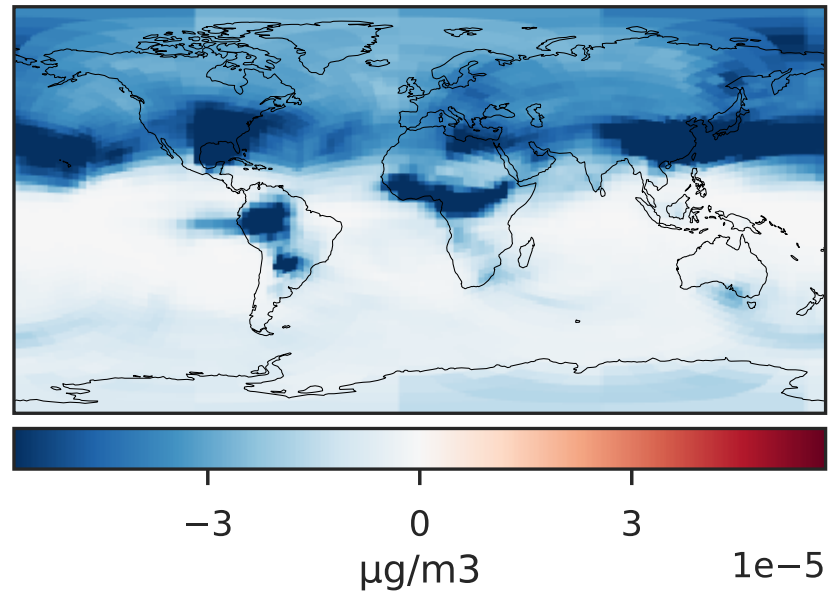
GCHP_14.2.0 (Dev)
c24



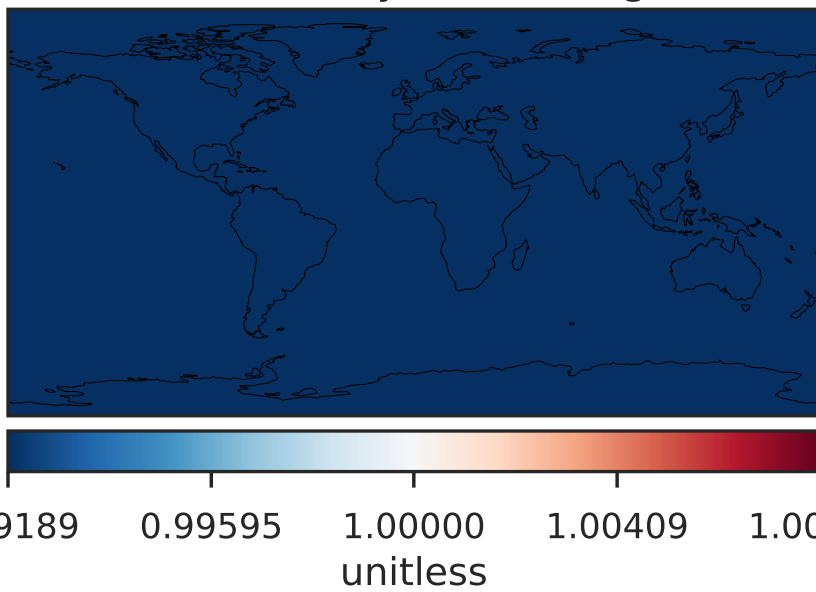
Difference (1x1.25)
Dev - Ref, Dynamic Range



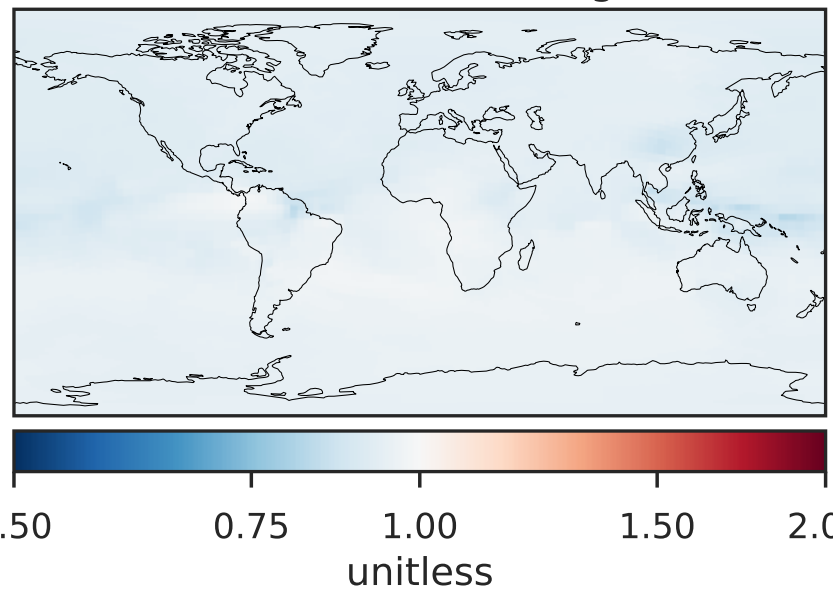
Difference (1x1.25)
Dev - Ref, Restricted Range [5%,95%]



Ratio (1x1.25)
Dev/Ref, Dynamic Range

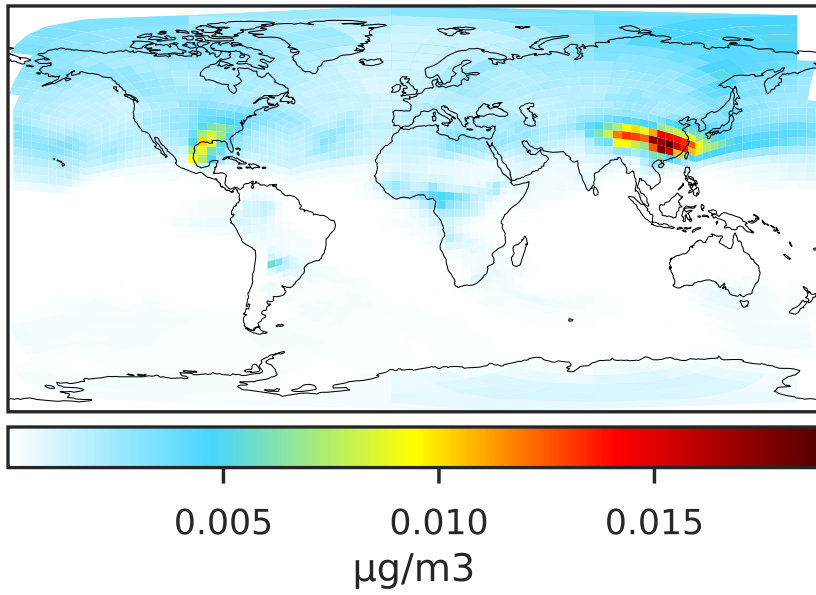


Ratio (1x1.25)
Dev/Ref, Fixed Range

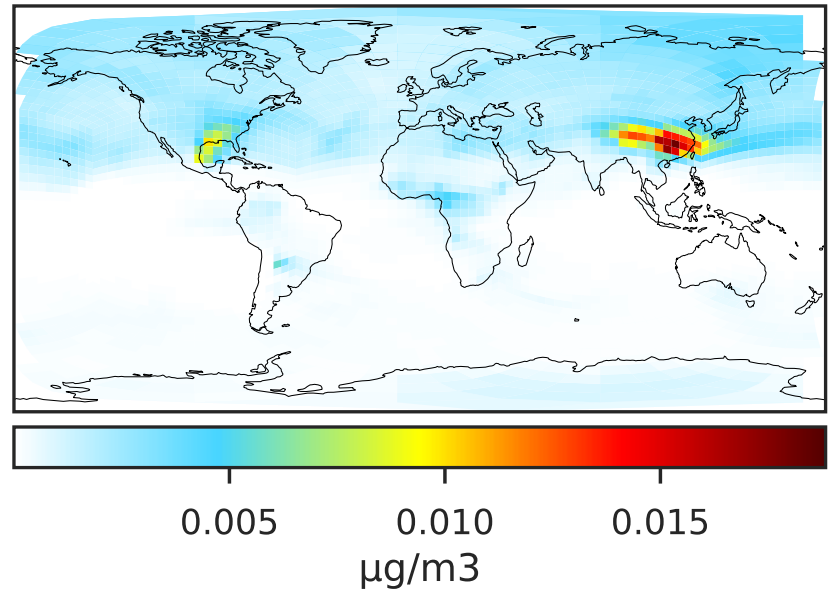


SpeciesConcVV_TSOA2 (Apr2019)

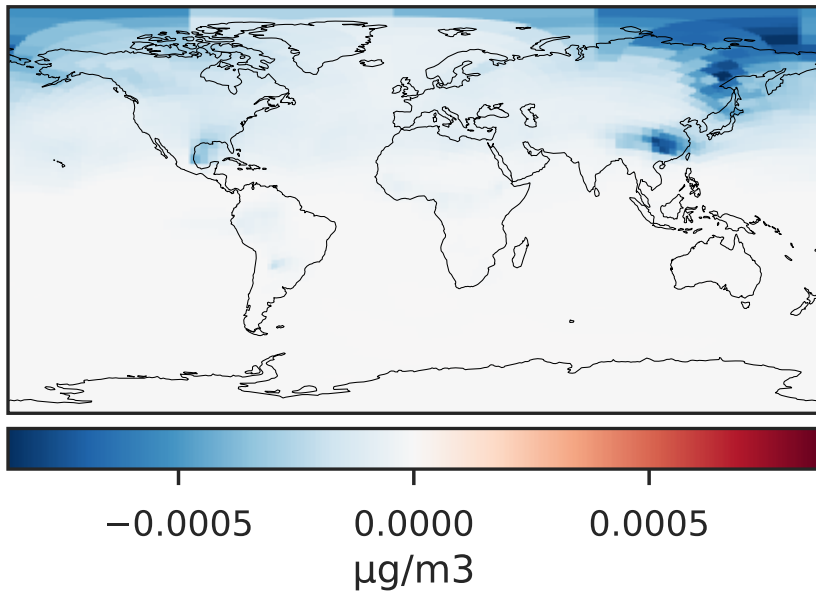
GCHP_14.0.0 (Ref)
c24



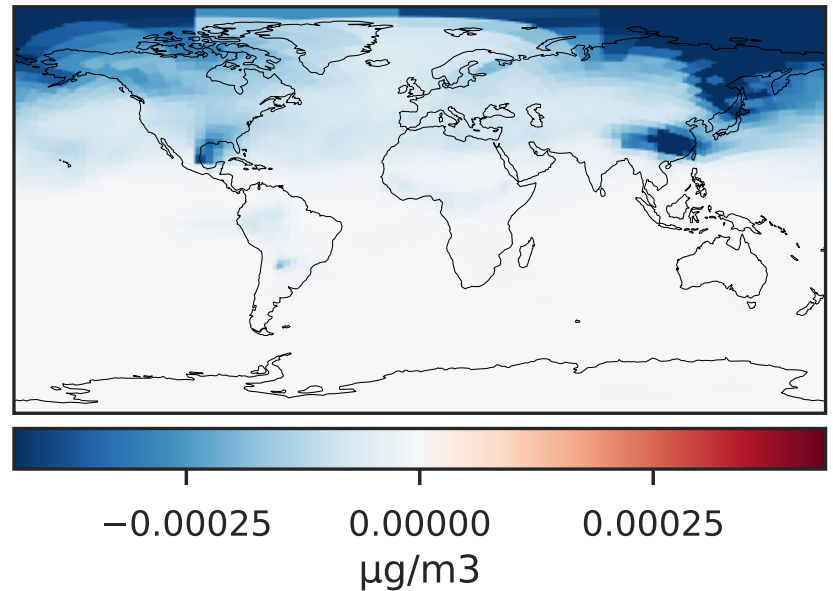
GCHP_14.2.0 (Dev)
c24



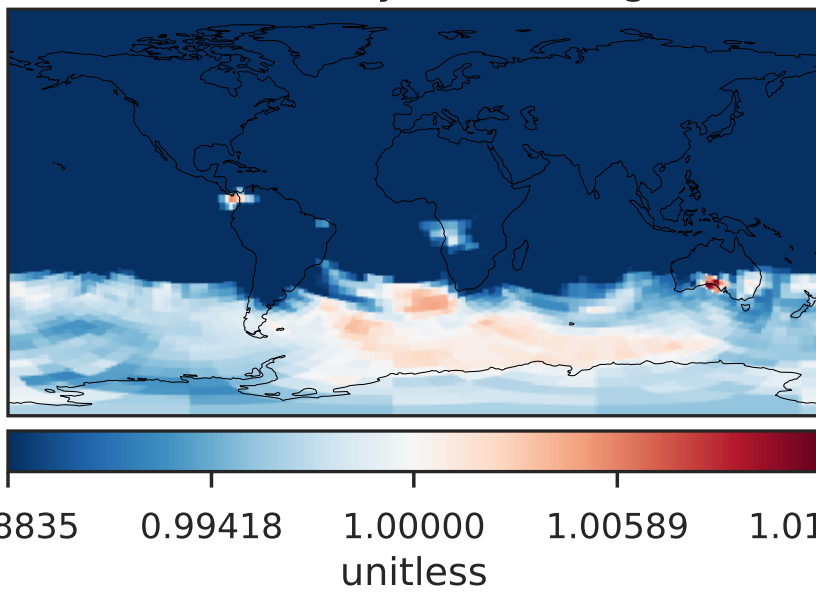
Difference (1x1.25)
Dev - Ref, Dynamic Range



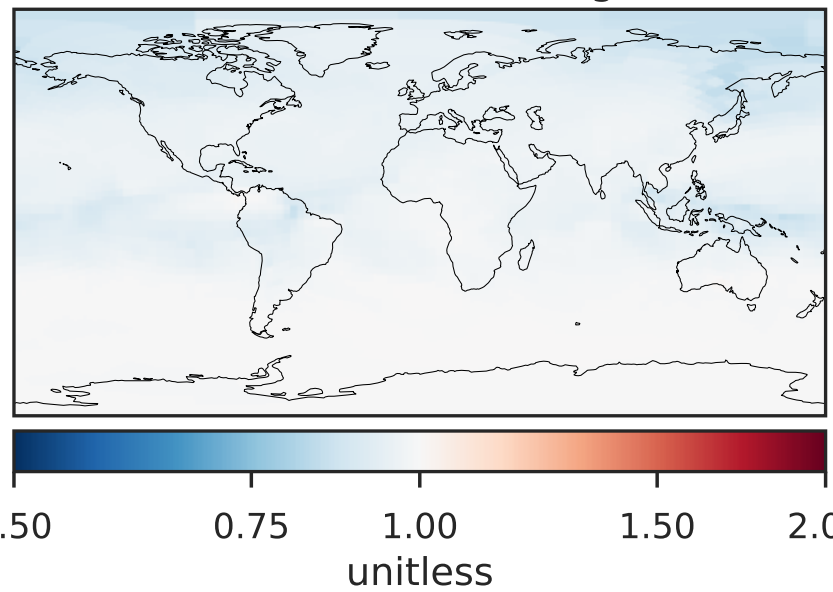
Difference (1x1.25)
Dev - Ref, Restricted Range [5%,95%]



Ratio (1x1.25)
Dev/Ref, Dynamic Range



Ratio (1x1.25)
Dev/Ref, Fixed Range

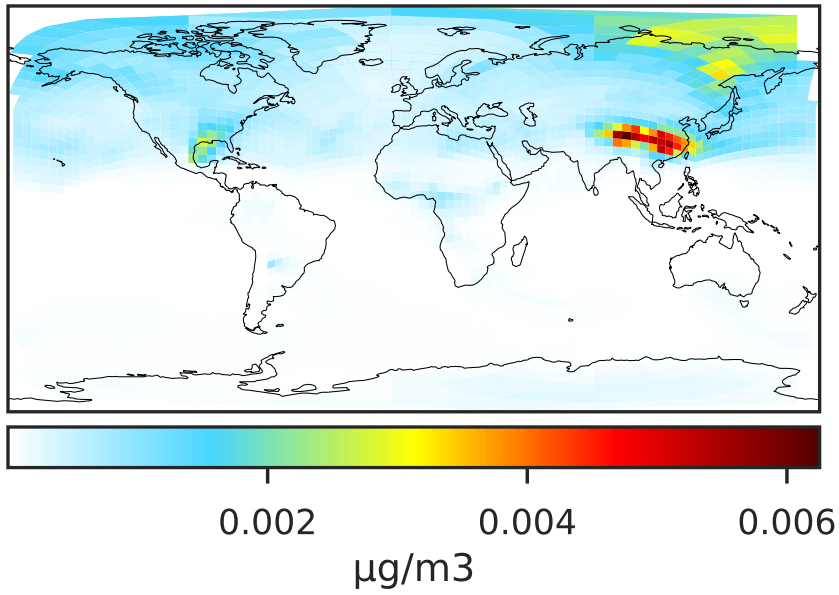


0.98835 0.99418 1.00000 1.00589 1.01179
unitless

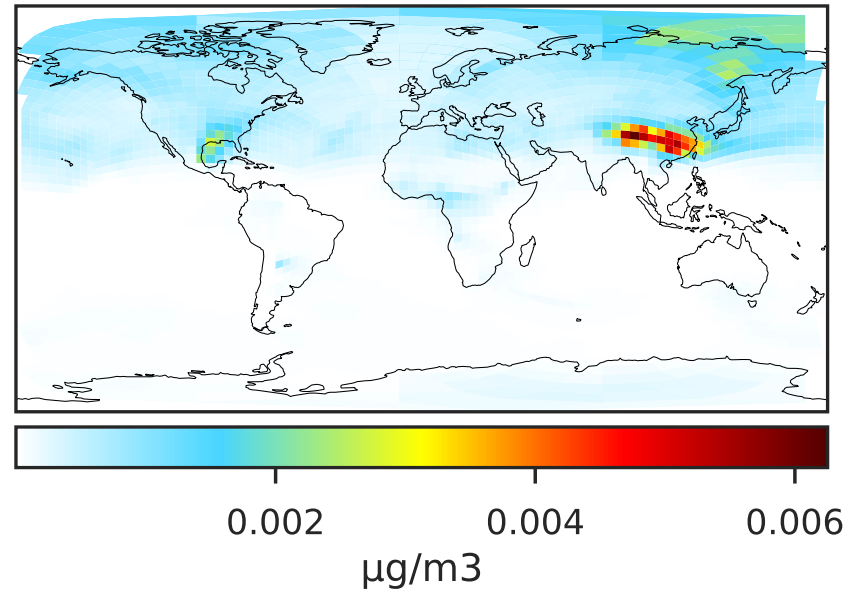
0.50 0.75 1.00 1.50 2.00
unitless

SpeciesConcVV_TSOA3 (Apr2019)

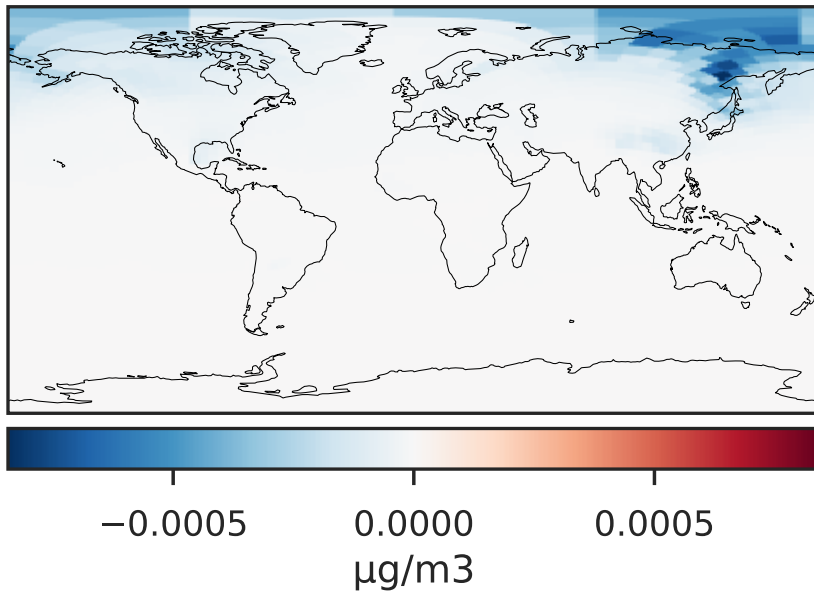
GCHP_14.0.0 (Ref)
c24



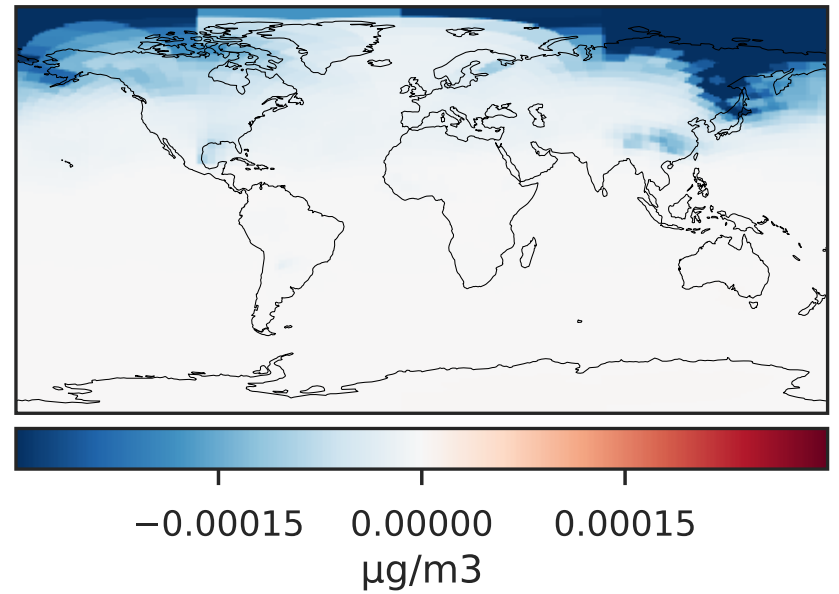
GCHP_14.2.0 (Dev)
c24



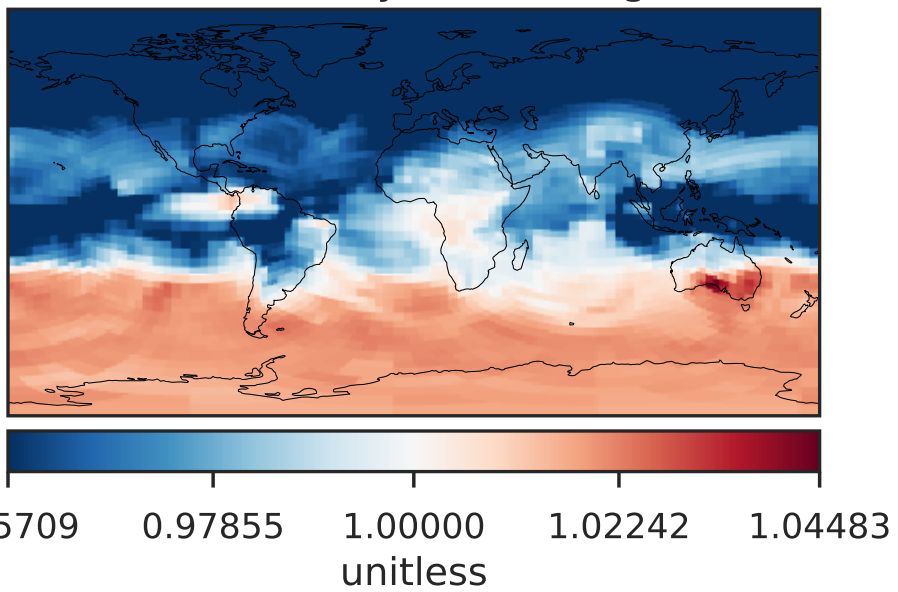
Difference (1x1.25)
Dev - Ref, Dynamic Range



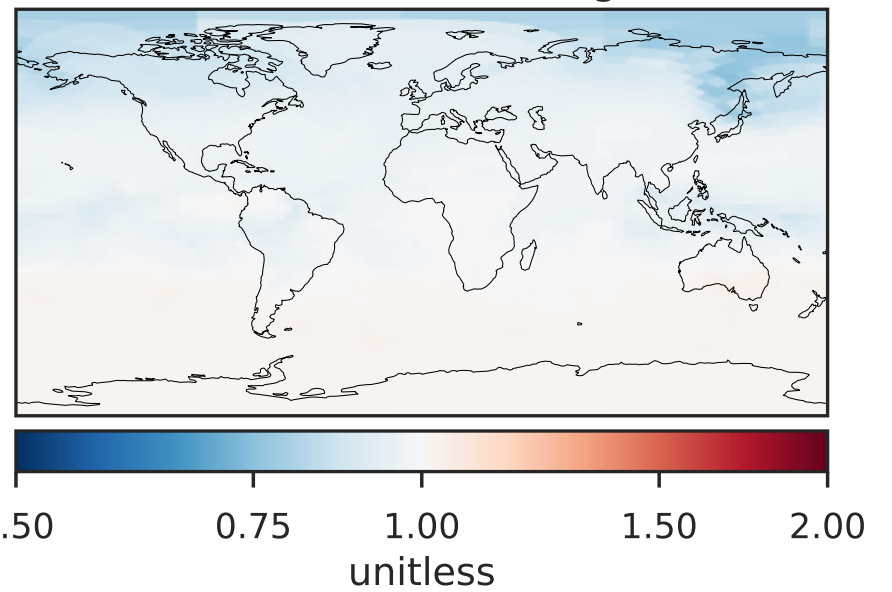
Difference (1x1.25)
Dev - Ref, Restricted Range [5%,95%]



Ratio (1x1.25)
Dev/Ref, Dynamic Range

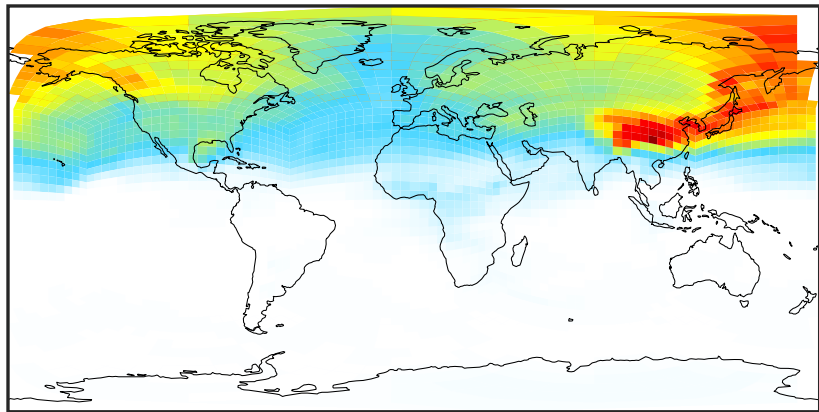


Ratio (1x1.25)
Dev/Ref, Fixed Range



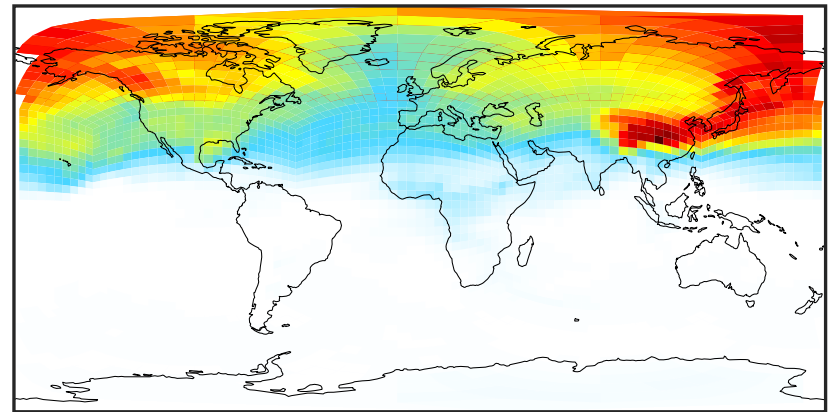
SpeciesConcVV_ASOA1 (Apr2019)

GCHP_14.0.0 (Ref)
c24



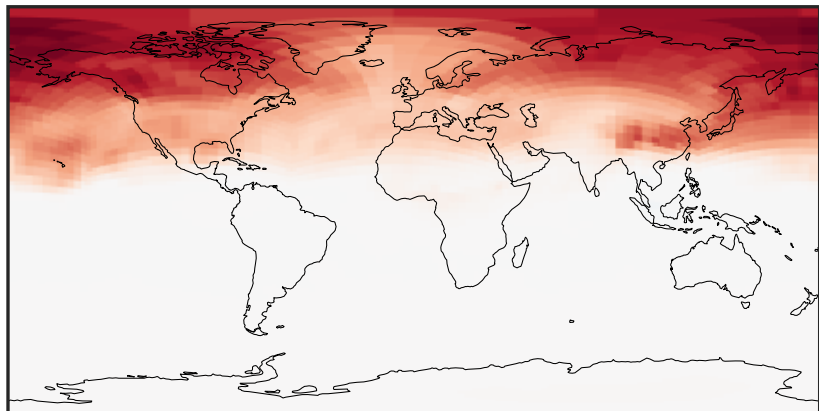
0.0015 0.0030 0.0045
µg/m3

GCHP_14.2.0 (Dev)
c24



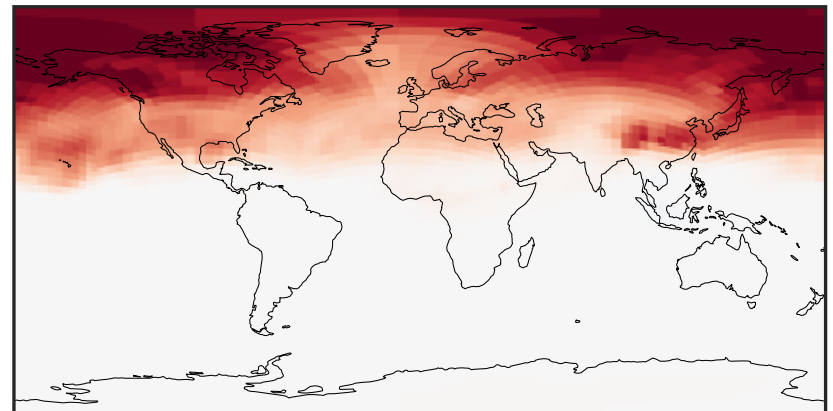
0.0015 0.0030 0.0045
µg/m3

Difference (1x1.25)
Dev - Ref, Dynamic Range



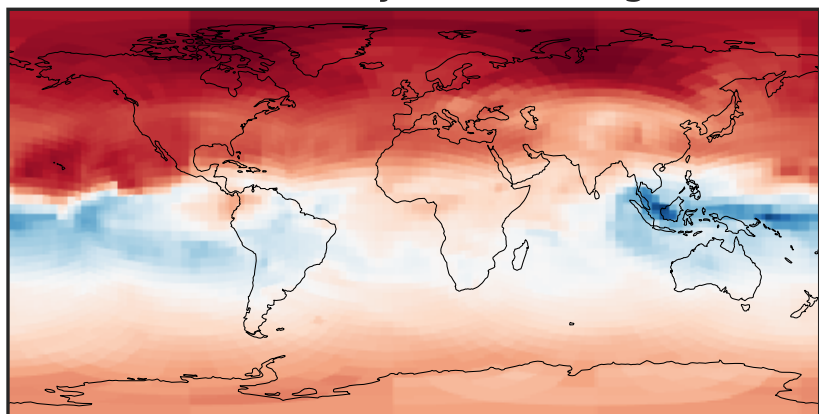
-0.0004 0.0000 0.0004
µg/m3

Difference (1x1.25)
Dev - Ref, Restricted Range [5%,95%]



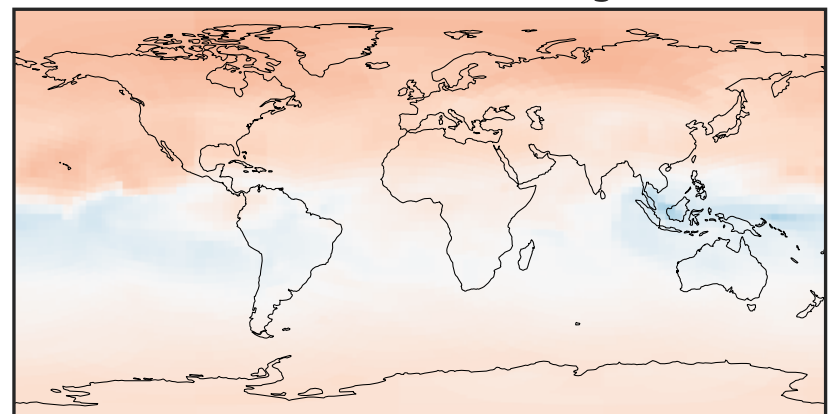
-0.0003 0.0000 0.0003
µg/m3

Ratio (1x1.25)
Dev/Ref, Dynamic Range



0.7901 0.8951 1.0000 1.1328 1.2657
unitless

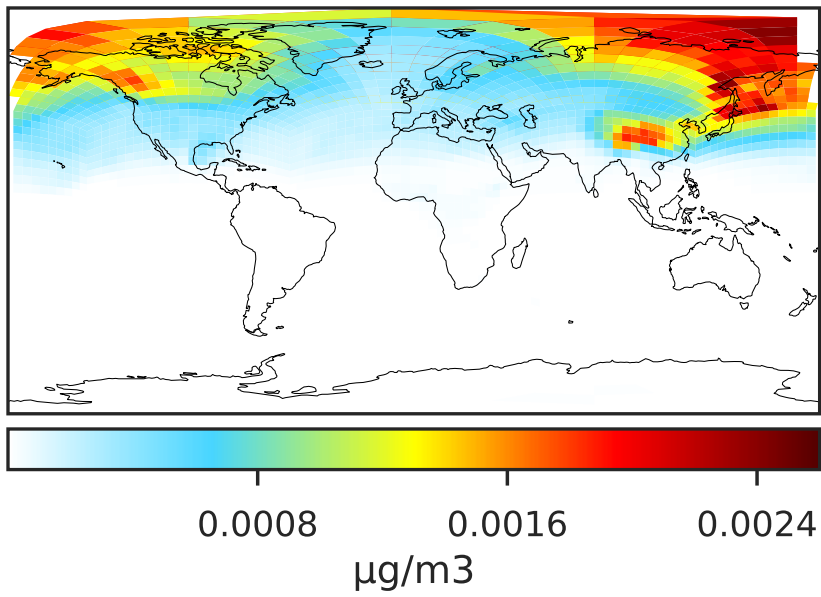
Ratio (1x1.25)
Dev/Ref, Fixed Range



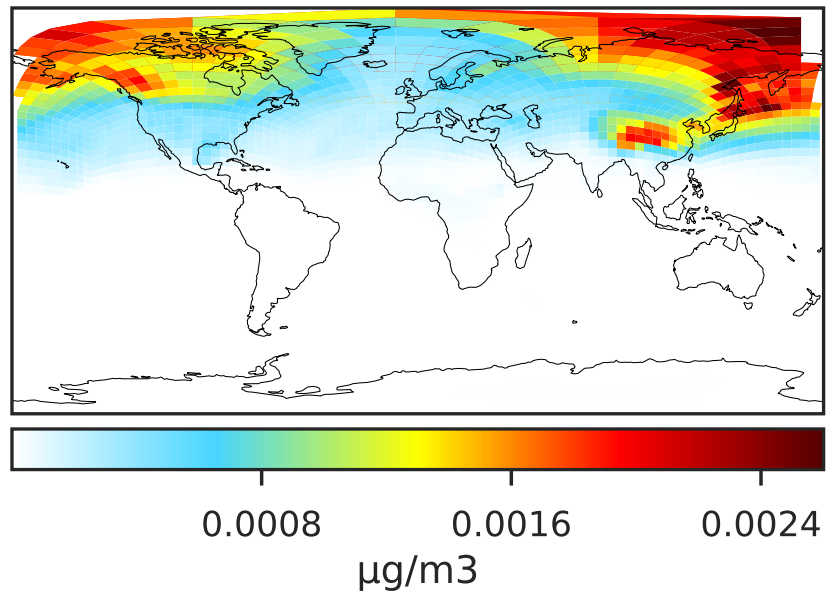
0.50 0.75 1.00 1.50 2.00
unitless

SpeciesConcVV_ASOA2 (Apr2019)

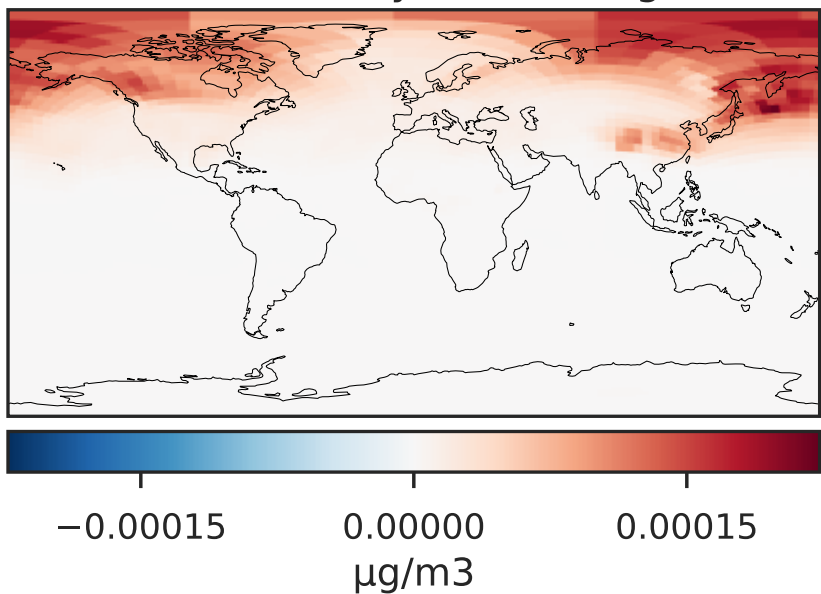
GCHP_14.0.0 (Ref)
c24



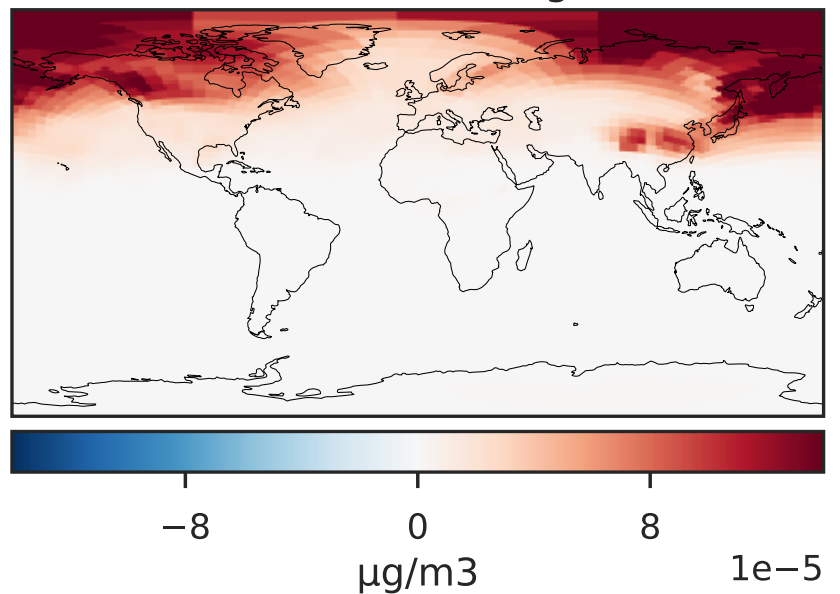
GCHP_14.2.0 (Dev)
c24



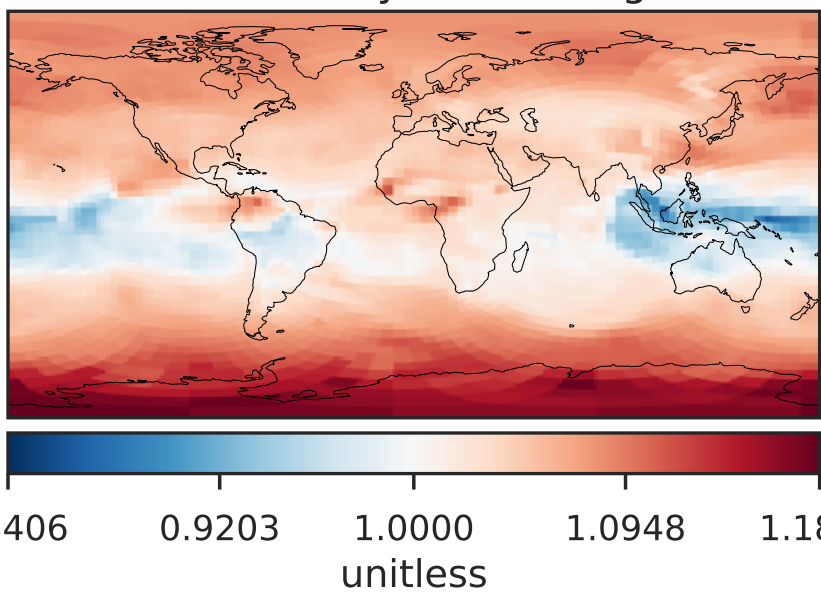
Difference (1x1.25)
Dev - Ref, Dynamic Range



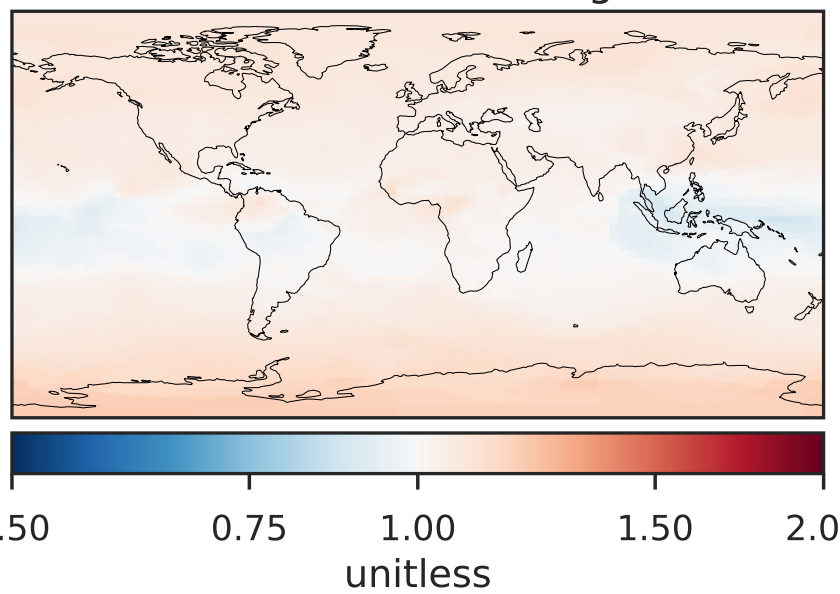
Difference (1x1.25)
Dev - Ref, Restricted Range [5%,95%]



Ratio (1x1.25)
Dev/Ref, Dynamic Range

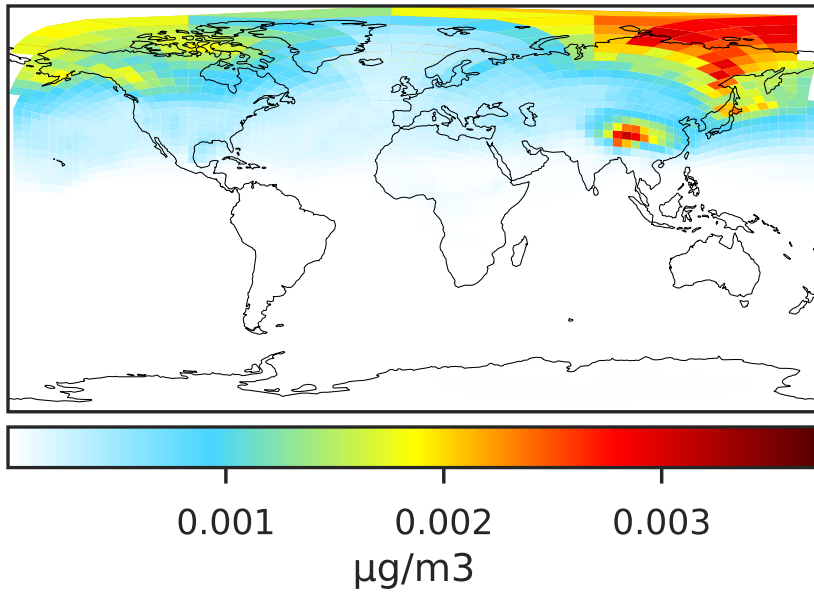


Ratio (1x1.25)
Dev/Ref, Fixed Range

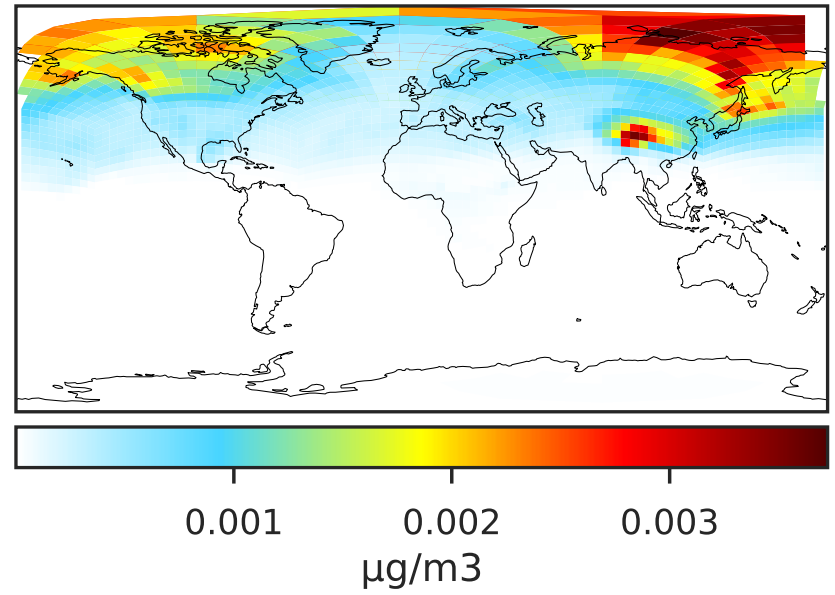


SpeciesConcVV_ASOA3 (Apr2019)

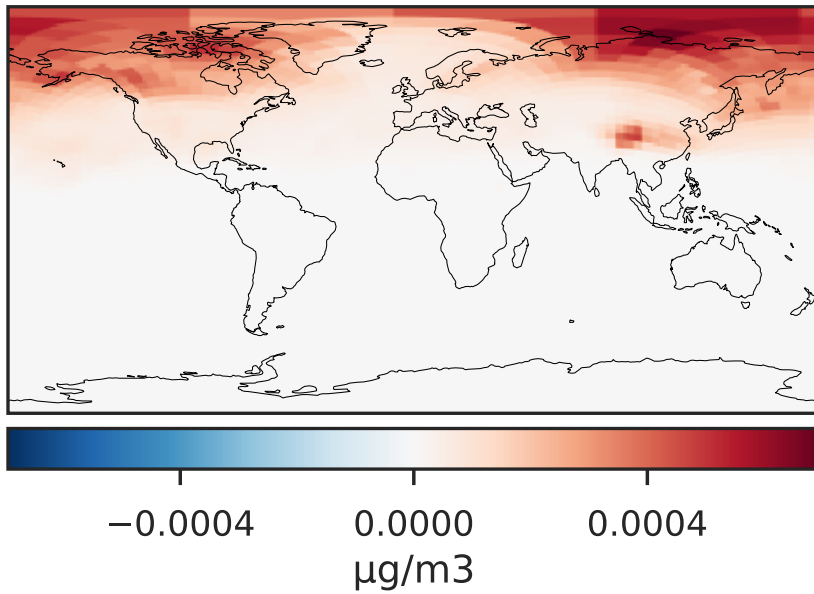
GCHP_14.0.0 (Ref)
c24



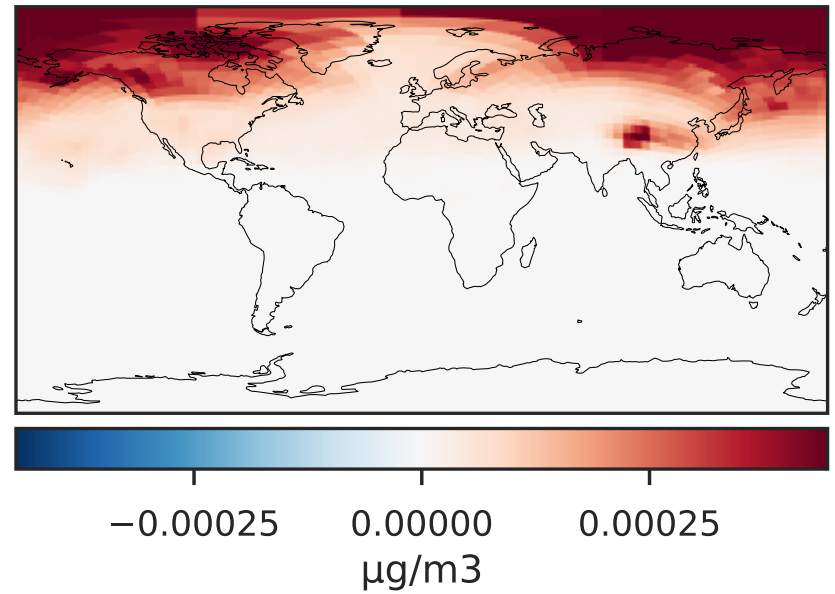
GCHP_14.2.0 (Dev)
c24



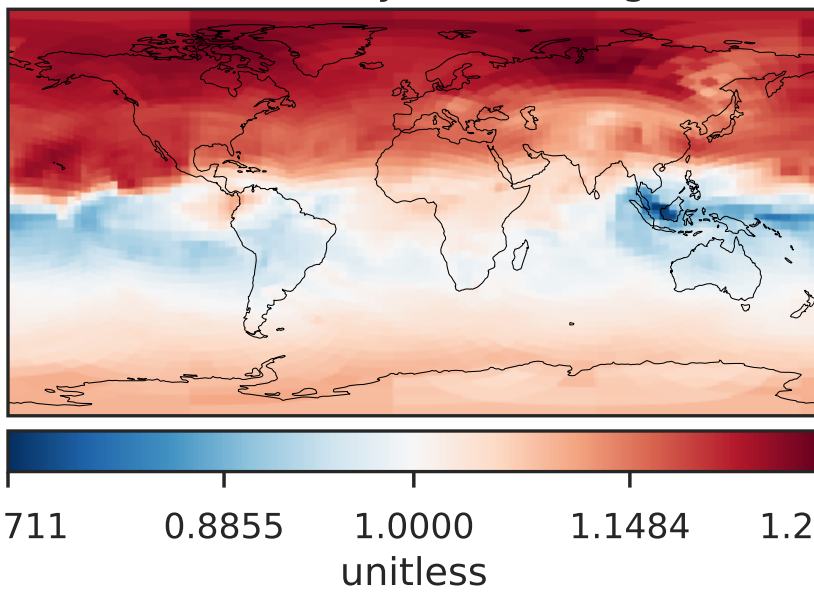
Difference (1x1.25)
Dev - Ref, Dynamic Range



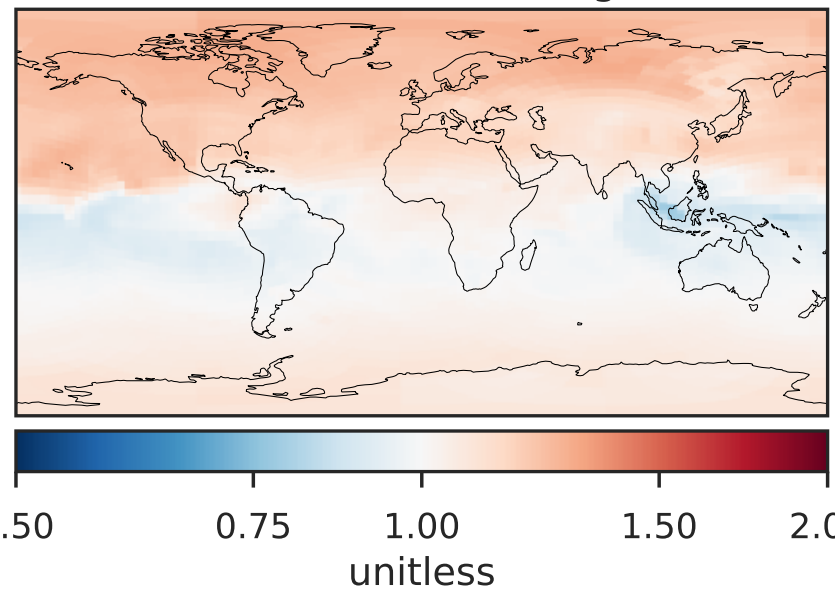
Difference (1x1.25)
Dev - Ref, Restricted Range [5%,95%]



Ratio (1x1.25)
Dev/Ref, Dynamic Range

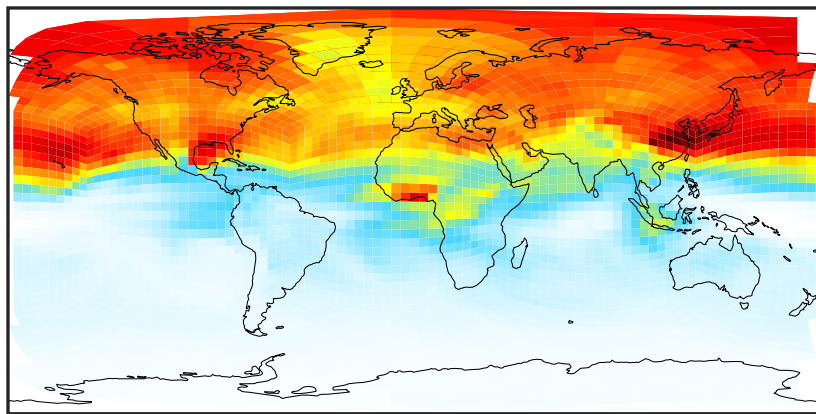


Ratio (1x1.25)
Dev/Ref, Fixed Range



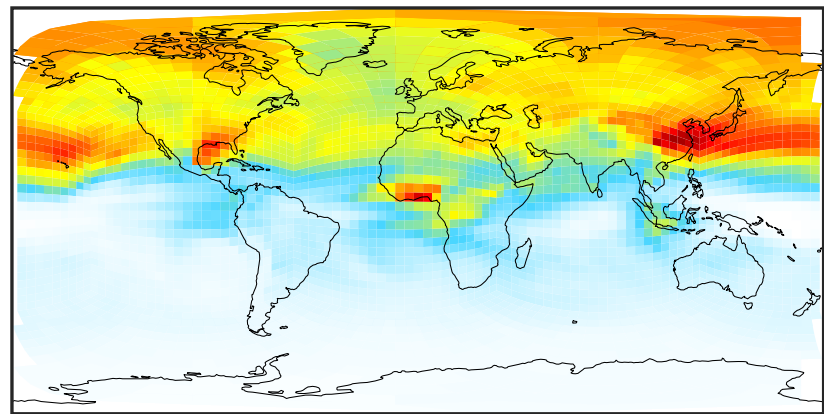
SpeciesConcVV_ASOAN (Apr2019)

GCHP_14.0.0 (Ref)
c24



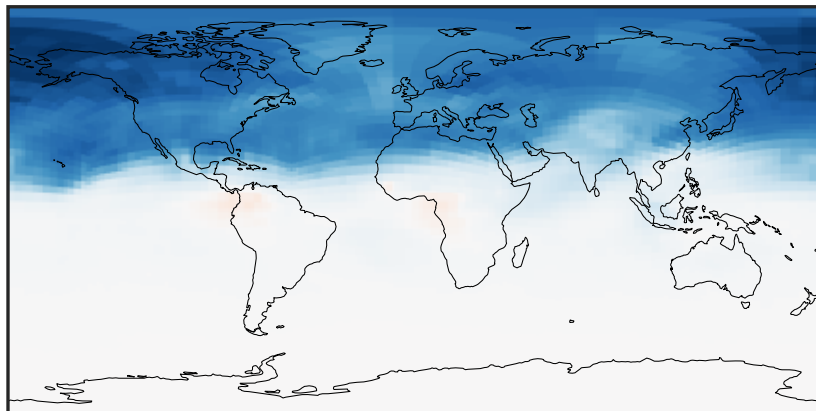
0.005 0.010 0.015
µg/m³

GCHP_14.2.0 (Dev)
c24



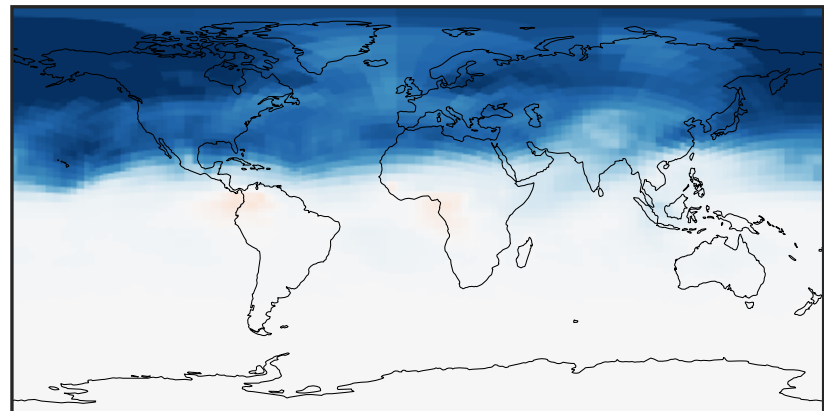
0.005 0.010 0.015
µg/m³

Difference (1x1.25)
Dev - Ref, Dynamic Range



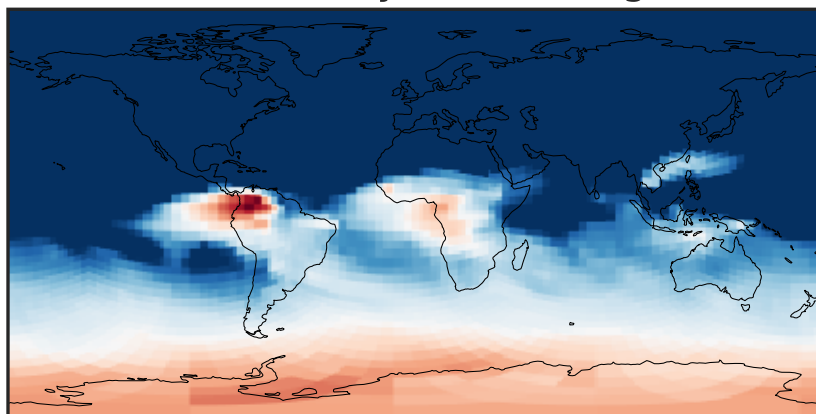
-0.002 0.000 0.002
µg/m³

Difference (1x1.25)
Dev - Ref, Restricted Range [5%,95%]



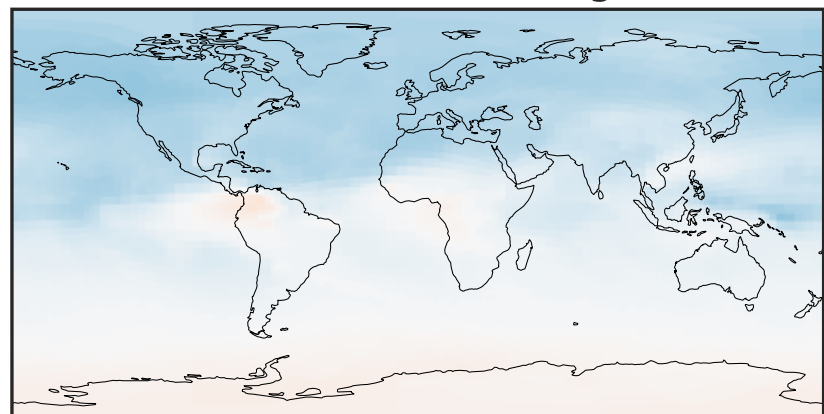
-0.0015 0.0000 0.0015
µg/m³

Ratio (1x1.25)
Dev/Ref, Dynamic Range



0.9187 0.9593 1.0000 1.0443 1.0885
unitless

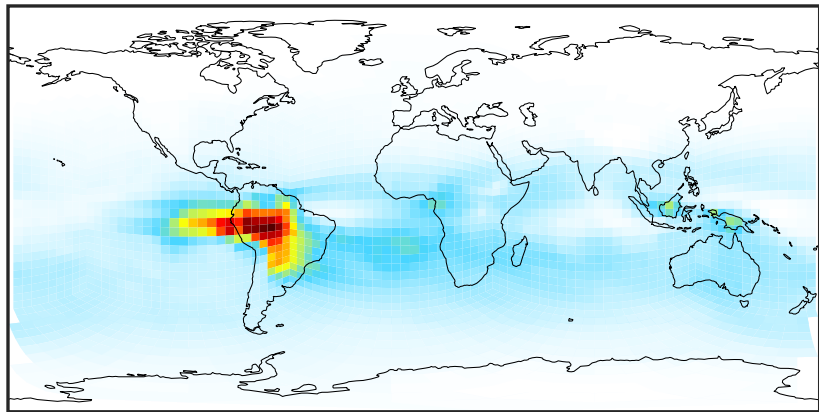
Ratio (1x1.25)
Dev/Ref, Fixed Range



0.50 0.75 1.00 1.50 2.00
unitless

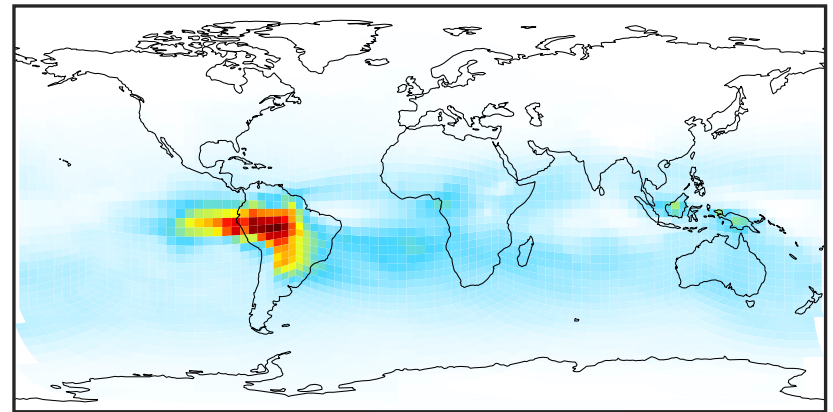
SpeciesConcVV_TSOG0 (Apr2019)

GCHP_14.0.0 (Ref)
c24



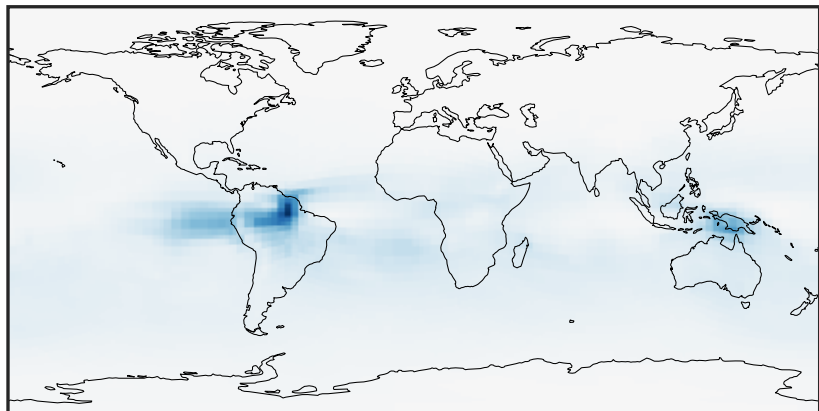
0.004 0.008 0.012
 $\mu\text{g}/\text{m}^3$

GCHP_14.2.0 (Dev)
c24



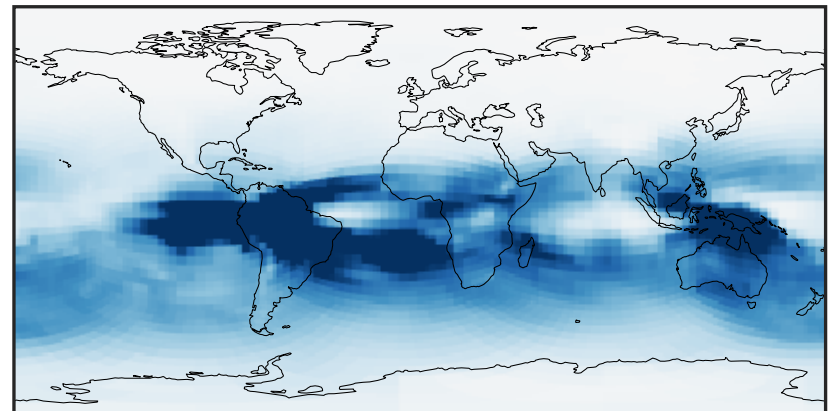
0.004 0.008 0.012
 $\mu\text{g}/\text{m}^3$

Difference (1x1.25)
Dev - Ref, Dynamic Range



-0.00025 0.00000 0.00025
 $\mu\text{g}/\text{m}^3$

Difference (1x1.25)
Dev - Ref, Restricted Range [5%,95%]



-4 0 4
 $\mu\text{g}/\text{m}^3$ $1\text{e}-5$

Ratio (1x1.25)
Dev/Ref, Dynamic Range



0.99197 0.99599 1.00000 1.00405 1.00809
unitless

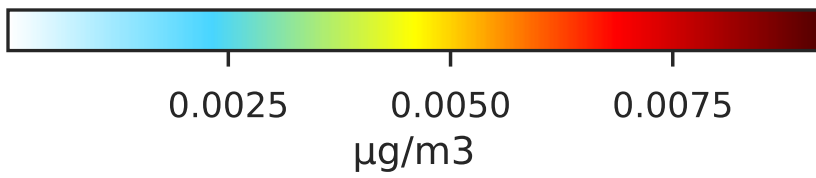
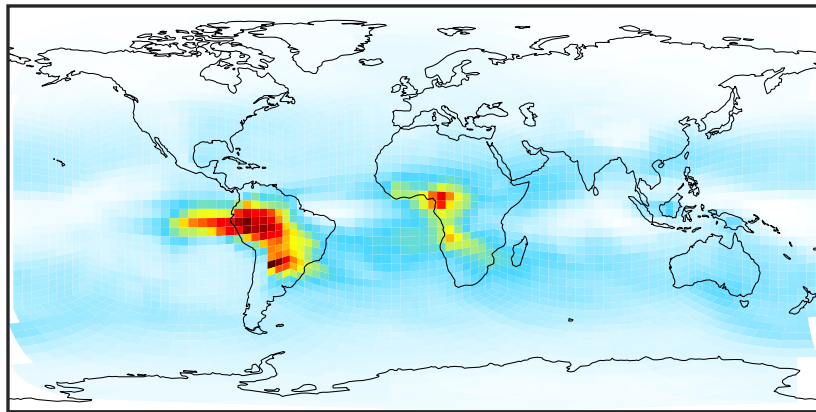
Ratio (1x1.25)
Dev/Ref, Fixed Range



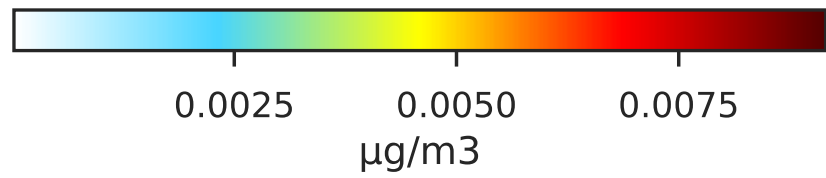
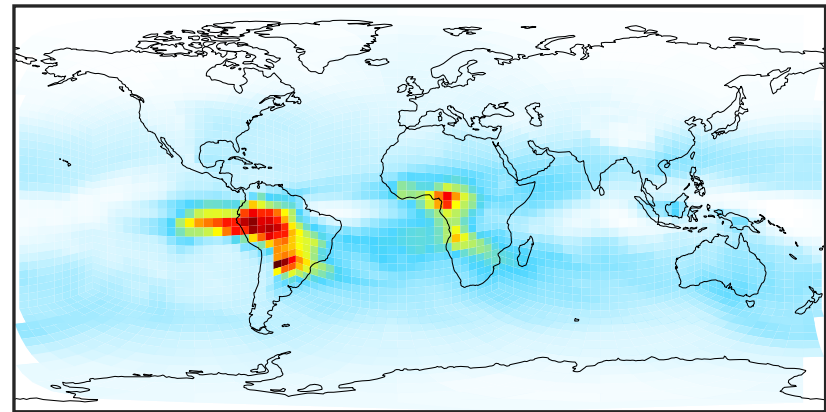
0.50 0.75 1.00 1.50 2.00
unitless

SpeciesConcVV_TSOG1 (Apr2019)

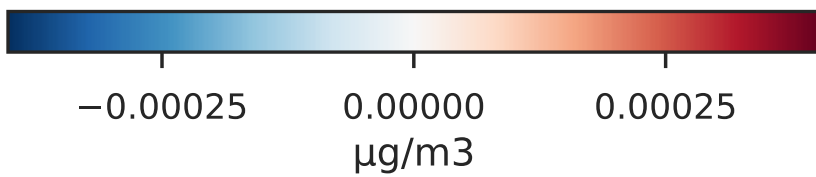
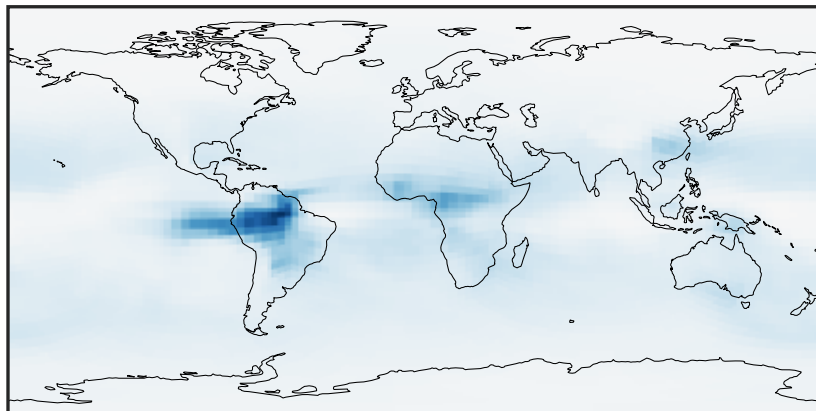
GCHP_14.0.0 (Ref)
c24



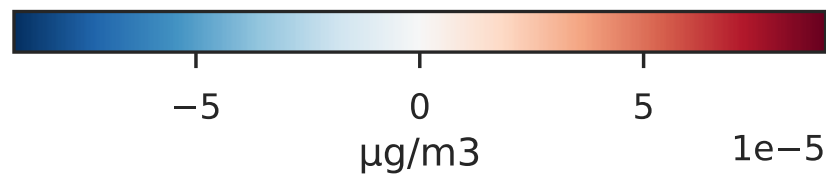
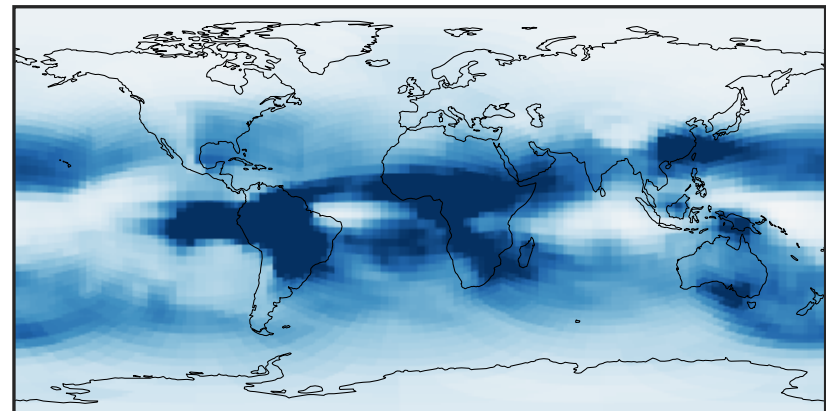
GCHP_14.2.0 (Dev)
c24



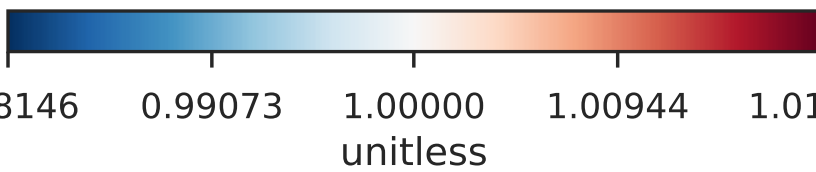
Difference (1x1.25)
Dev - Ref, Dynamic Range



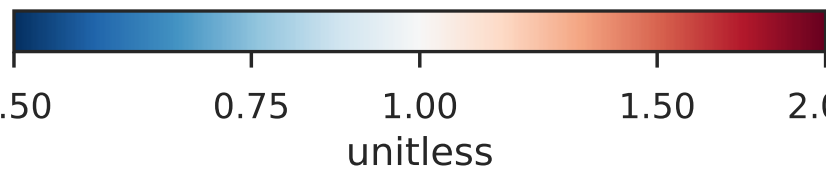
Difference (1x1.25)
Dev - Ref, Restricted Range [5%,95%]



Ratio (1x1.25)
Dev/Ref, Dynamic Range

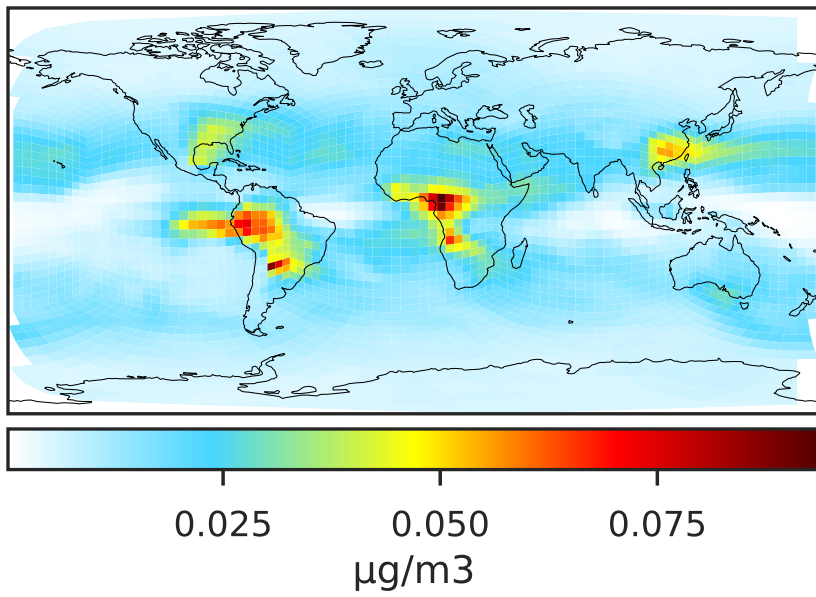


Ratio (1x1.25)
Dev/Ref, Fixed Range

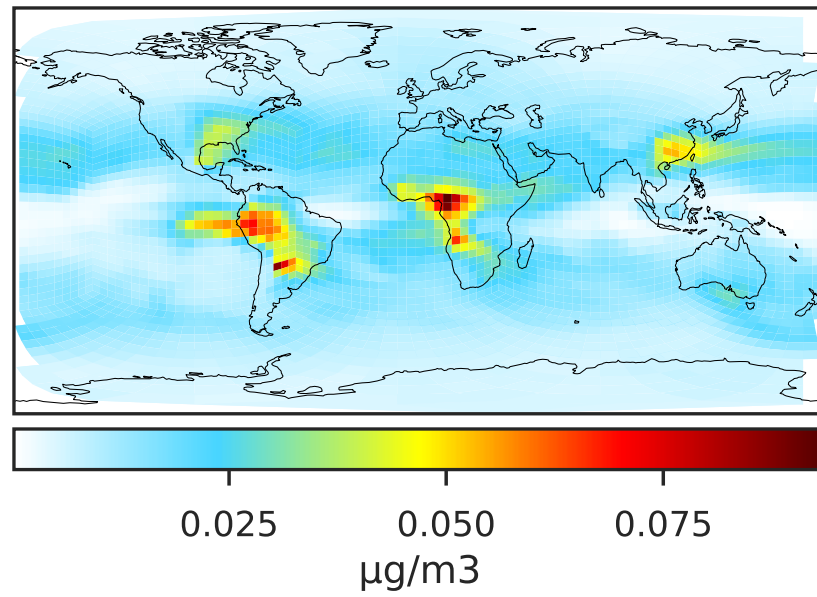


SpeciesConcVV_TSOG2 (Apr2019)

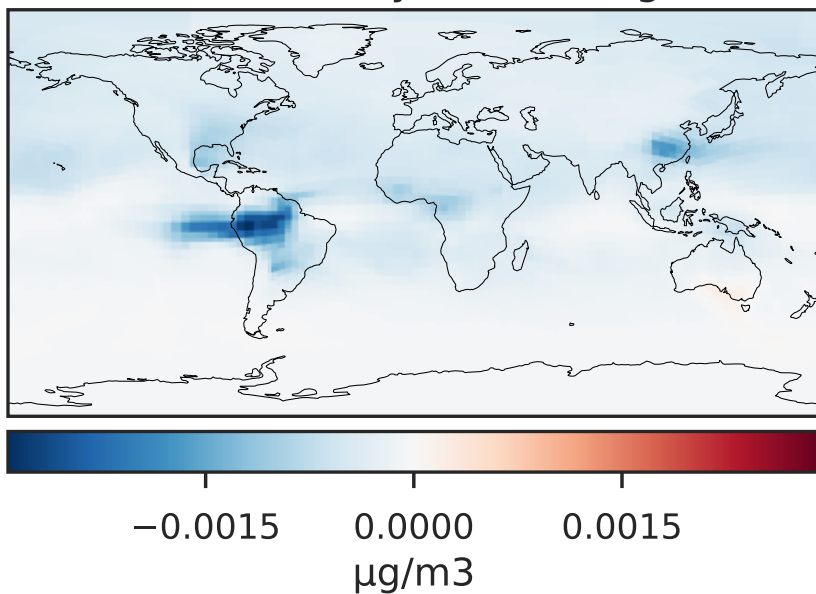
GCHP_14.0.0 (Ref)
c24



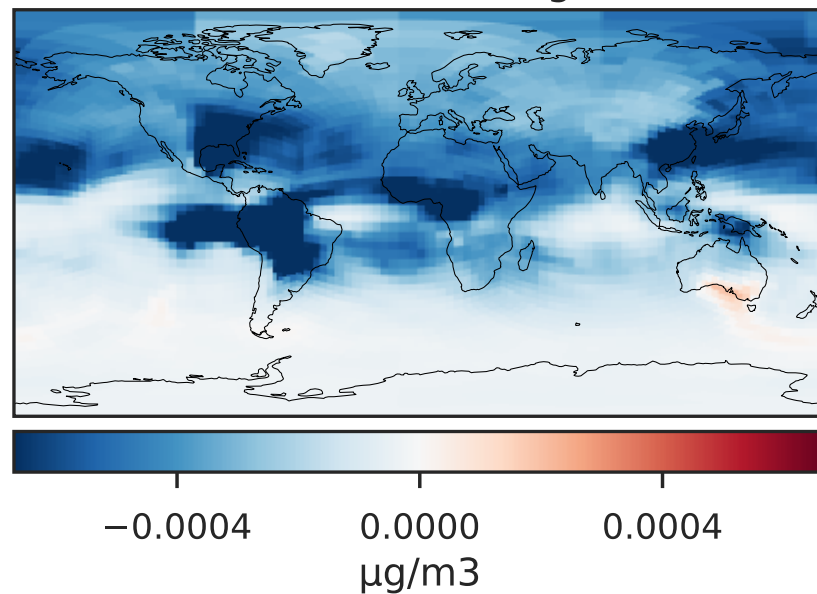
GCHP_14.2.0 (Dev)
c24



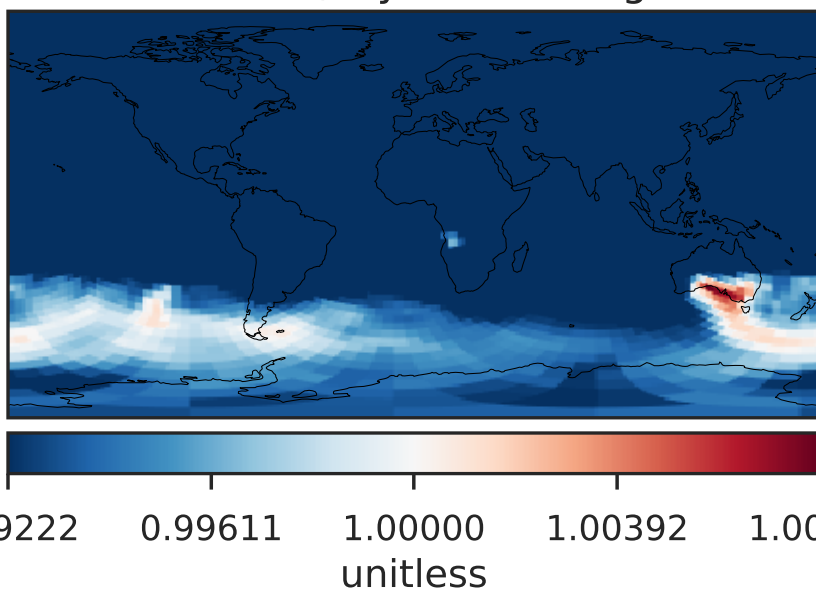
Difference (1x1.25)
Dev - Ref, Dynamic Range



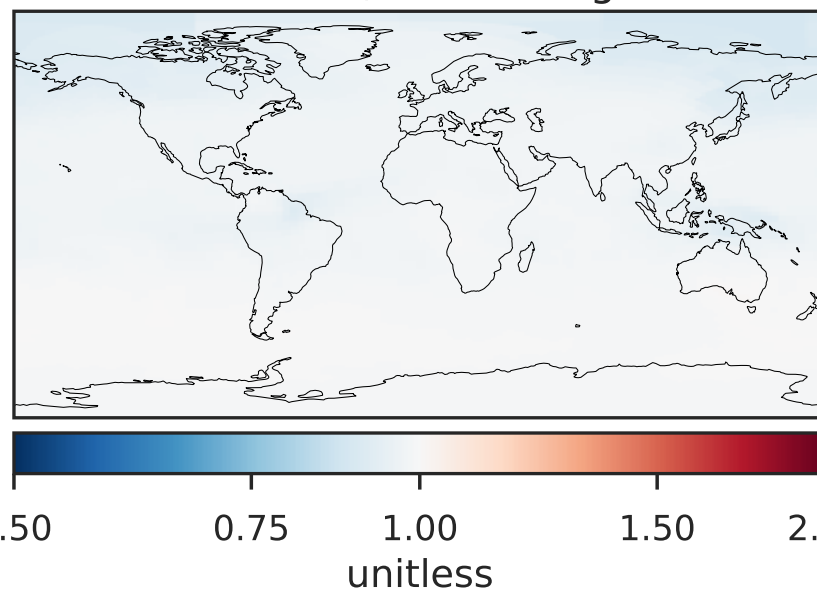
Difference (1x1.25)
Dev - Ref, Restricted Range [5%,95%]



Ratio (1x1.25)
Dev/Ref, Dynamic Range

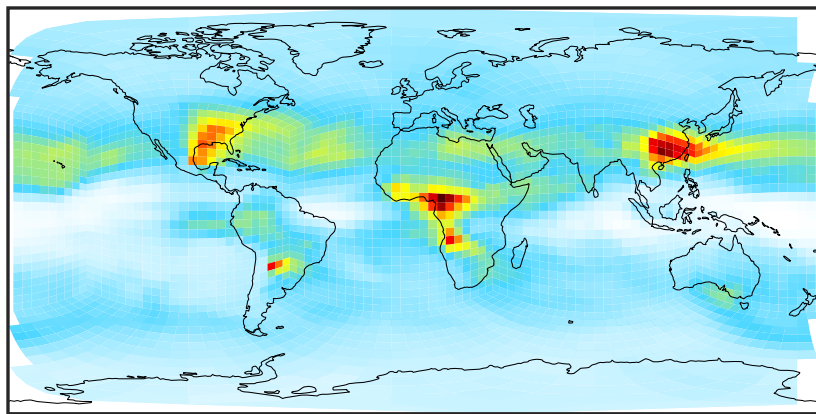


Ratio (1x1.25)
Dev/Ref, Fixed Range



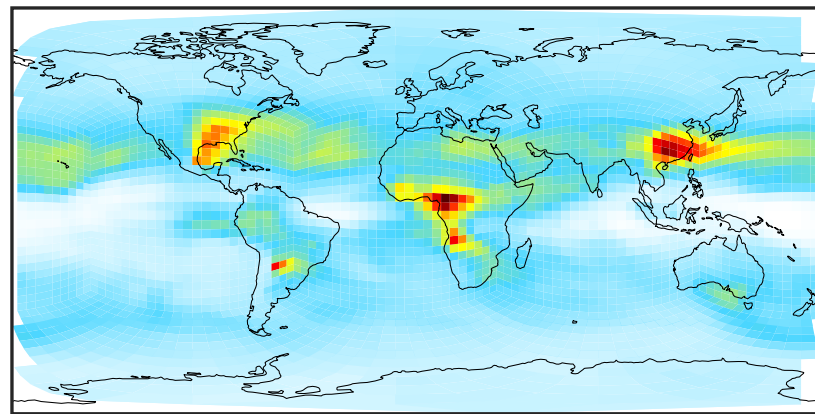
SpeciesConcVV_TSOG3 (Apr2019)

GCHP_14.0.0 (Ref)
c24



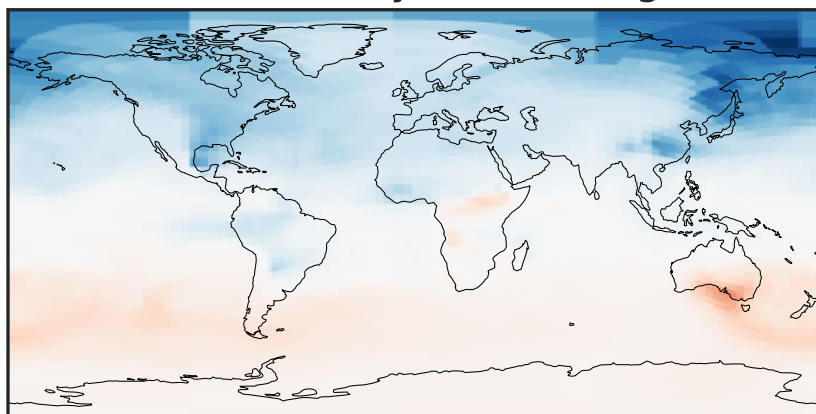
0.0003 0.0390 0.0780 0.1170 0.1563
µg/m³

GCHP_14.2.0 (Dev)
c24



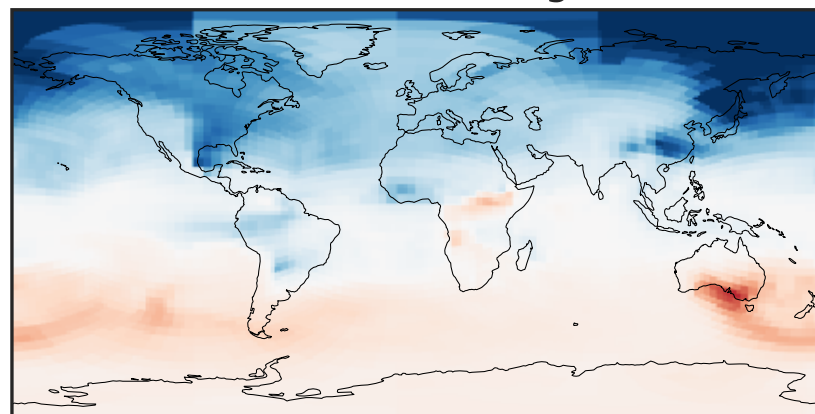
0.0003 0.0390 0.0780 0.1170 0.1563
µg/m³

Difference (1x1.25)
Dev - Ref, Dynamic Range



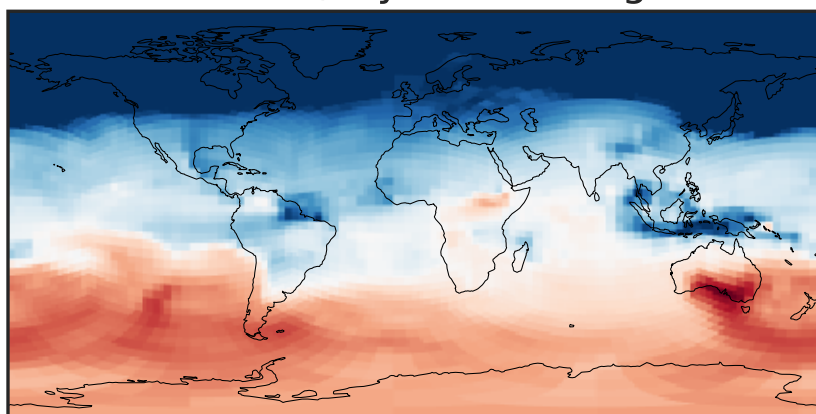
-0.0025 0.0000 0.0025
µg/m³

Difference (1x1.25)
Dev - Ref, Restricted Range [5%,95%]



-0.0015 0.0000 0.0015
µg/m³

Ratio (1x1.25)
Dev/Ref, Dynamic Range



0.96475 0.98238 1.00000 1.01827 1.03654
unitless

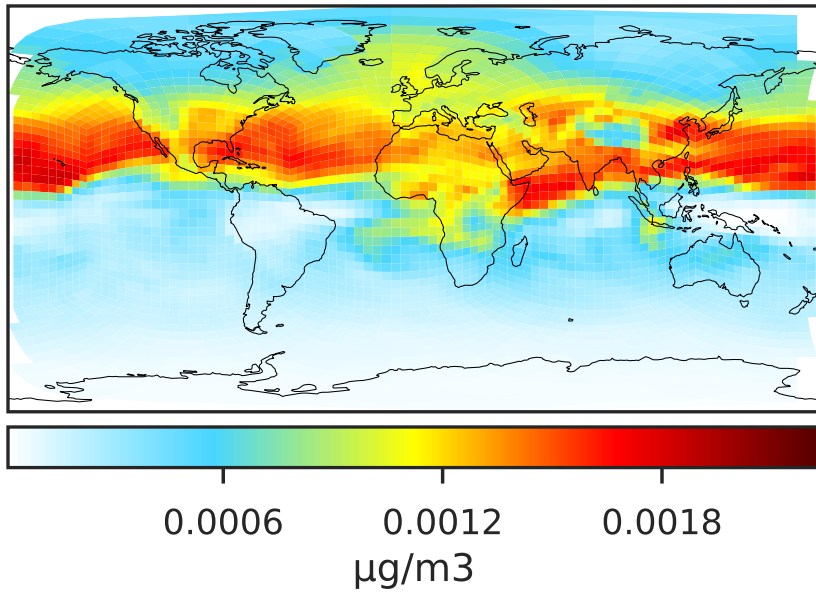
Ratio (1x1.25)
Dev/Ref, Fixed Range



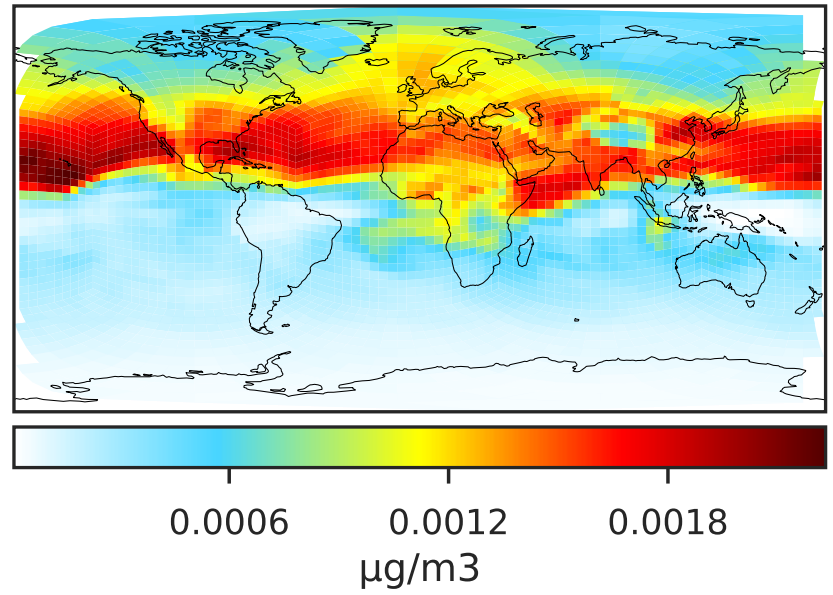
0.50 0.75 1.00 1.50 2.00
unitless

SpeciesConcVV_ASOG1 (Apr2019)

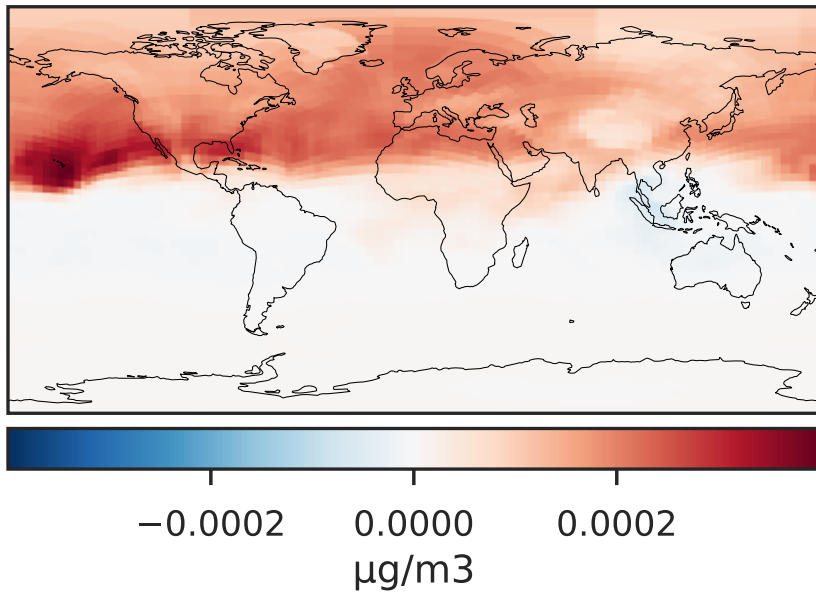
GCHP_14.0.0 (Ref)
c24



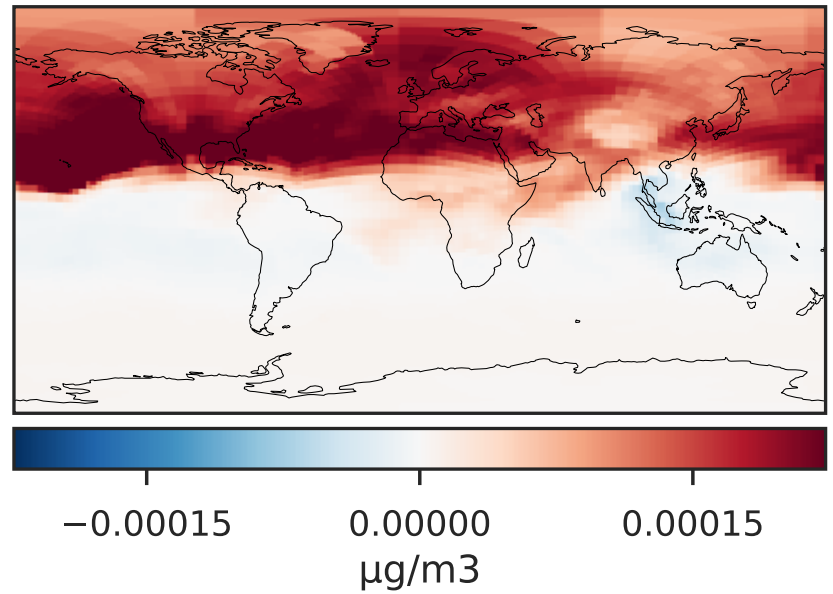
GCHP_14.2.0 (Dev)
c24



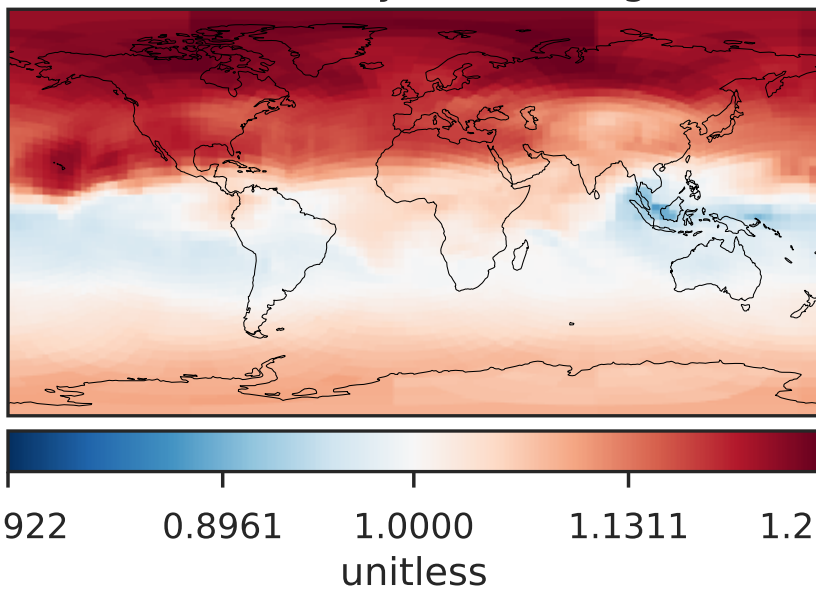
Difference (1x1.25)
Dev - Ref, Dynamic Range



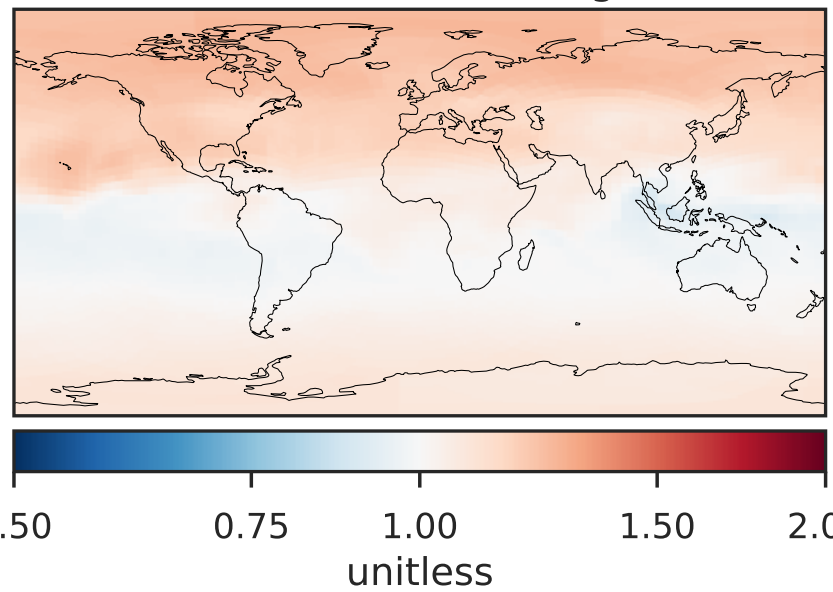
Difference (1x1.25)
Dev - Ref, Restricted Range [5%,95%]



Ratio (1x1.25)
Dev/Ref, Dynamic Range

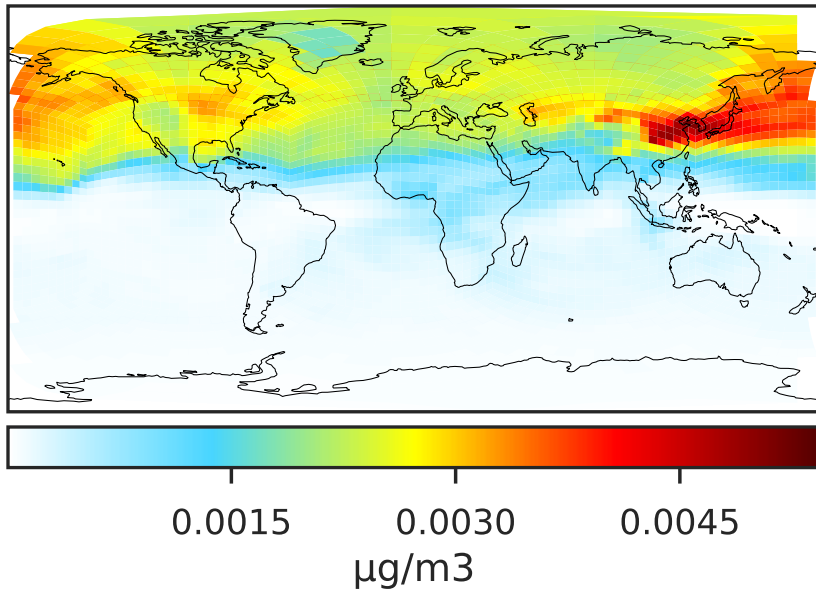


Ratio (1x1.25)
Dev/Ref, Fixed Range

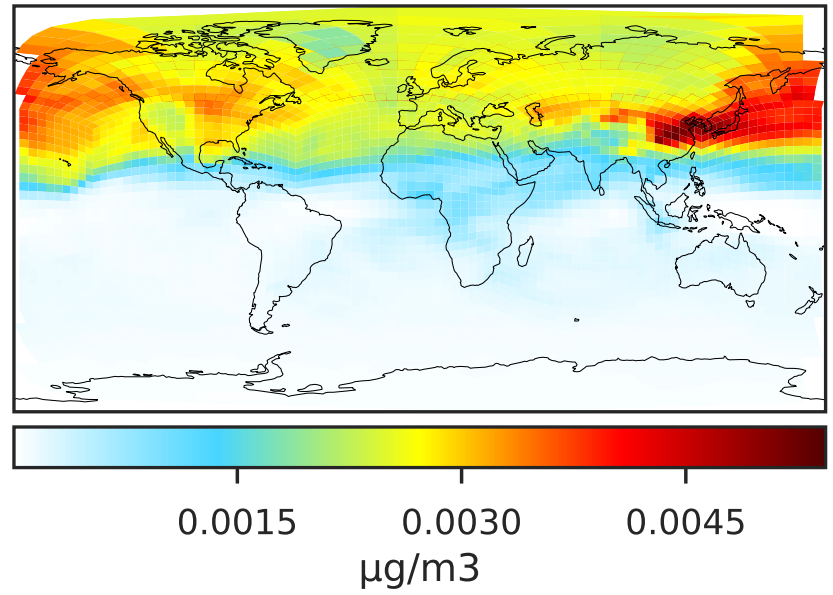


SpeciesConcVV_ASOG2 (Apr2019)

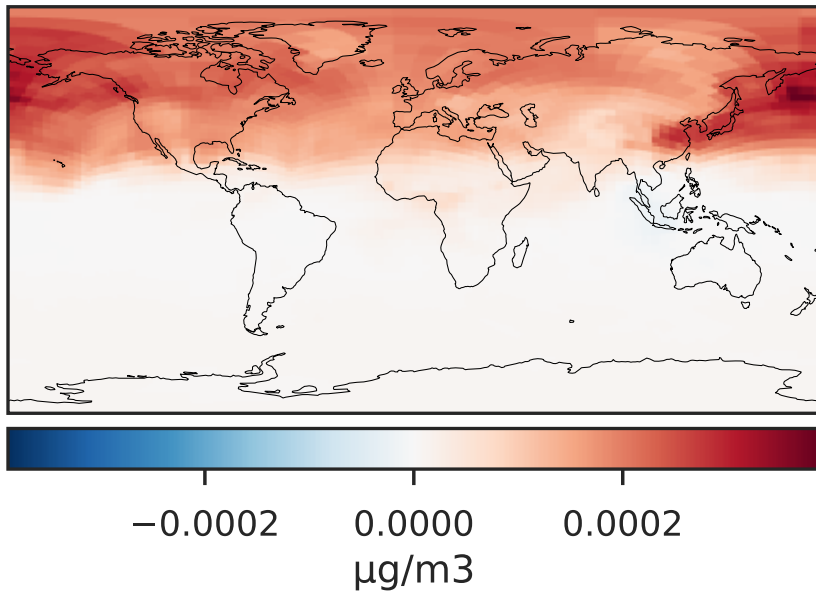
GCHP_14.0.0 (Ref)
c24



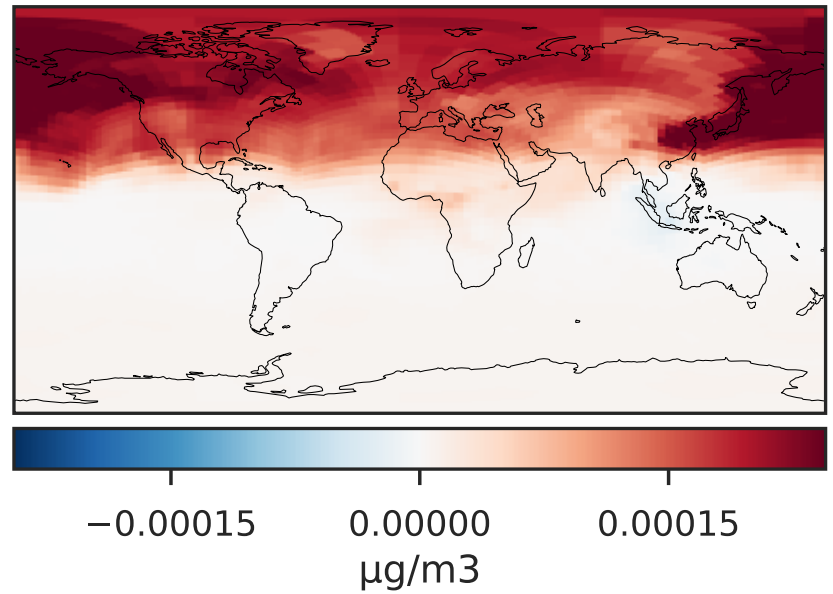
GCHP_14.2.0 (Dev)
c24



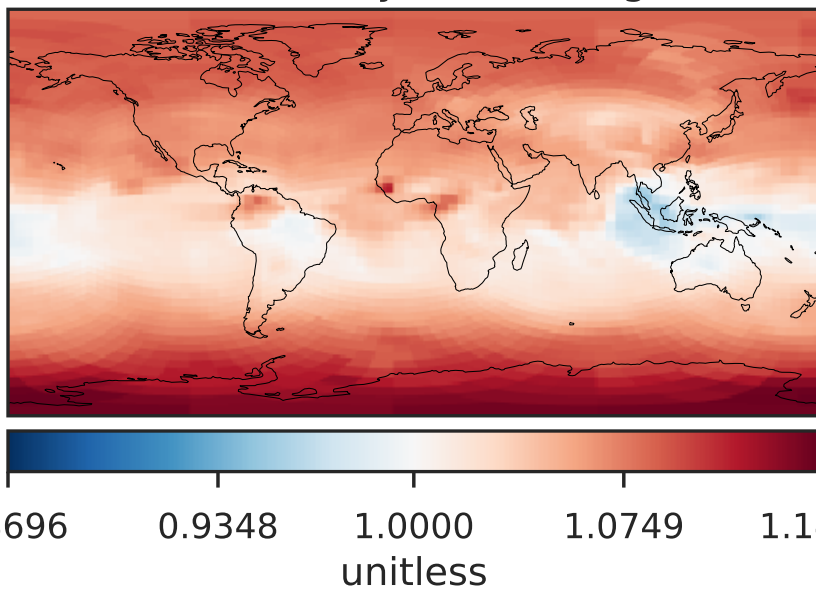
Difference (1x1.25)
Dev - Ref, Dynamic Range



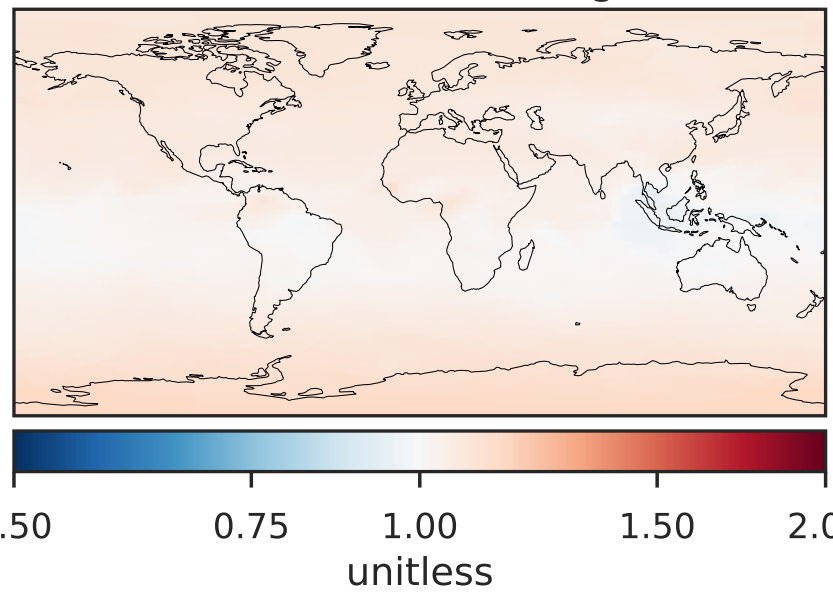
Difference (1x1.25)
Dev - Ref, Restricted Range [5%,95%]



Ratio (1x1.25)
Dev/Ref, Dynamic Range

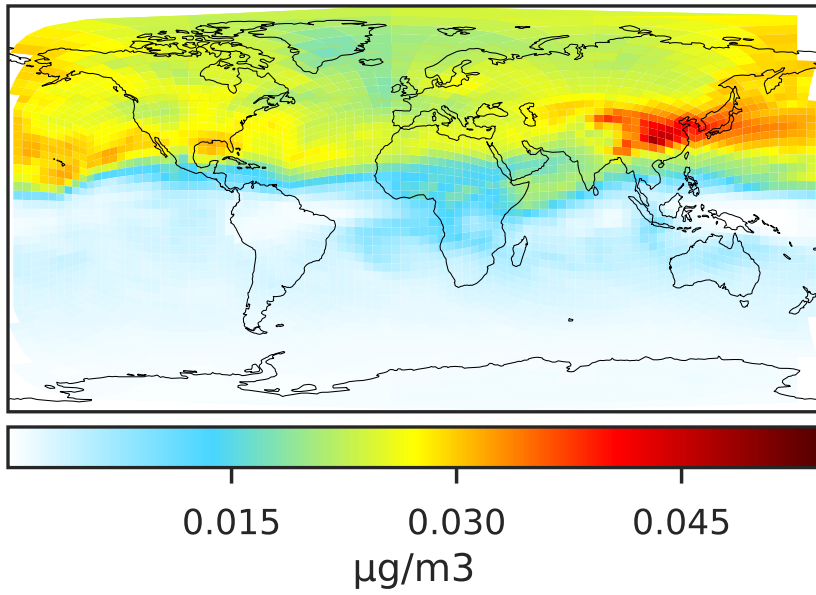


Ratio (1x1.25)
Dev/Ref, Fixed Range

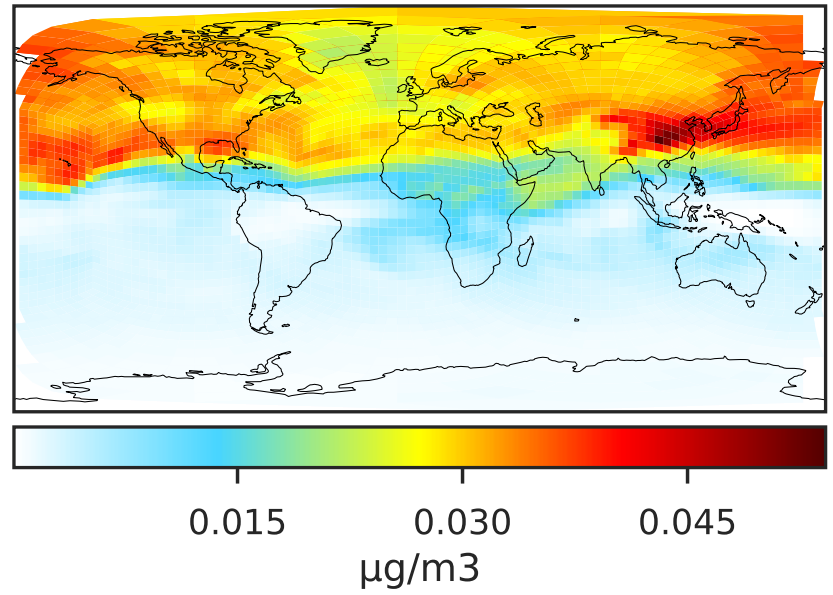


SpeciesConcVV_ASOG3 (Apr2019)

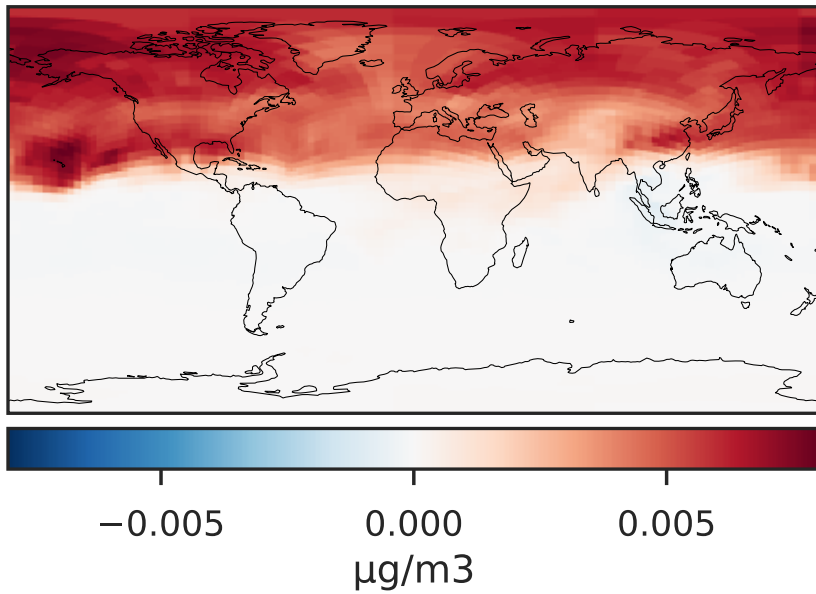
GCHP_14.0.0 (Ref)
c24



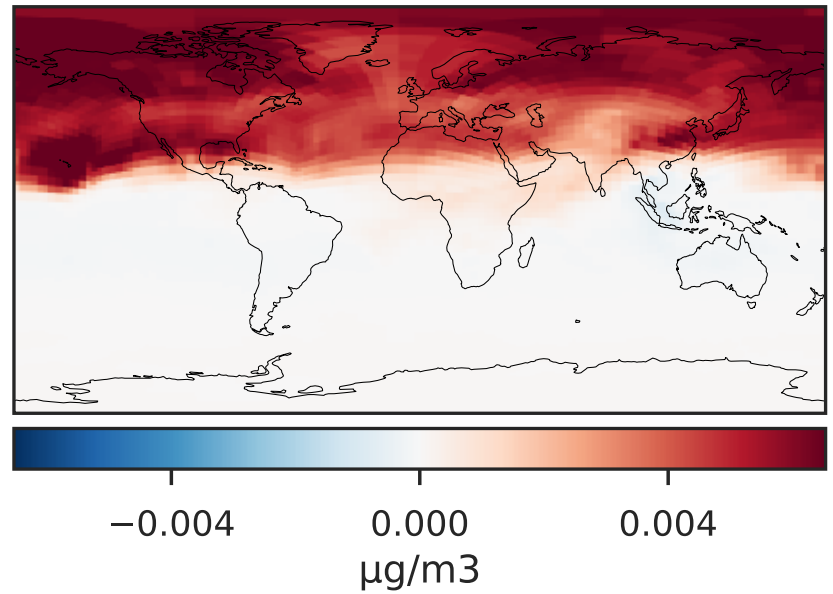
GCHP_14.2.0 (Dev)
c24



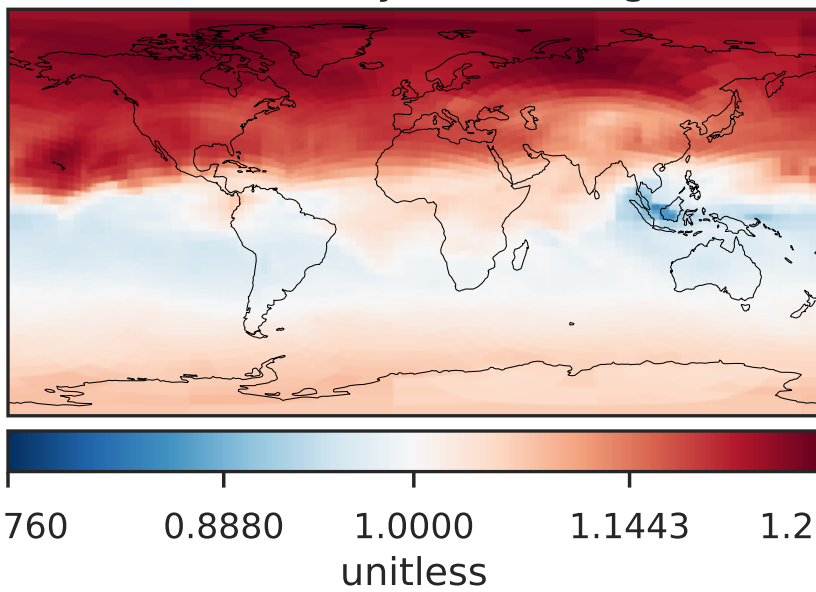
Difference (1x1.25)
Dev - Ref, Dynamic Range



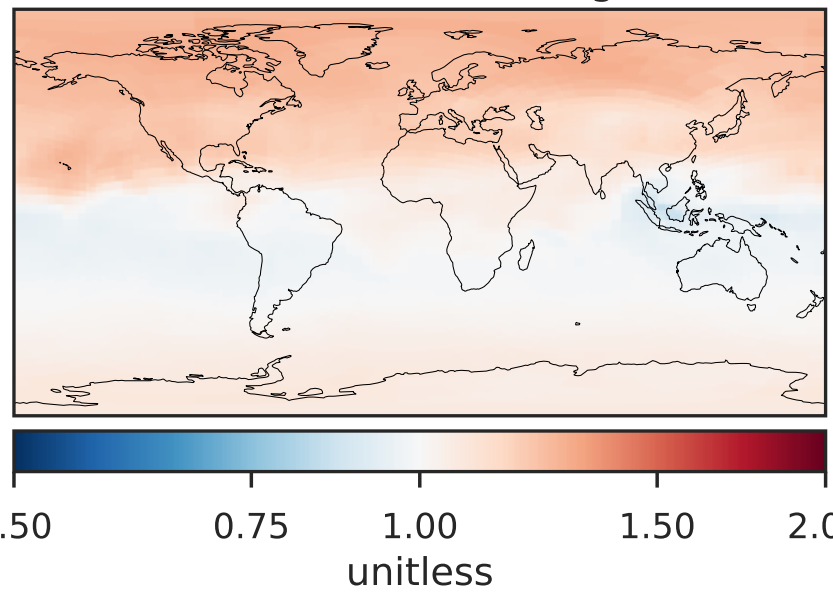
Difference (1x1.25)
Dev - Ref, Restricted Range [5%,95%]



Ratio (1x1.25)
Dev/Ref, Dynamic Range

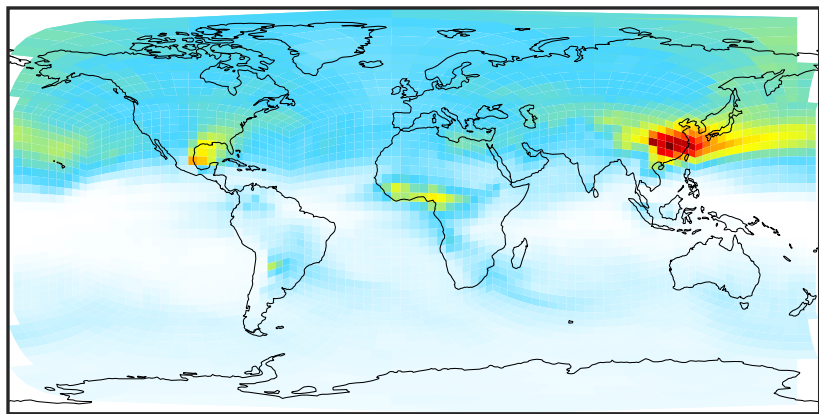


Ratio (1x1.25)
Dev/Ref, Fixed Range



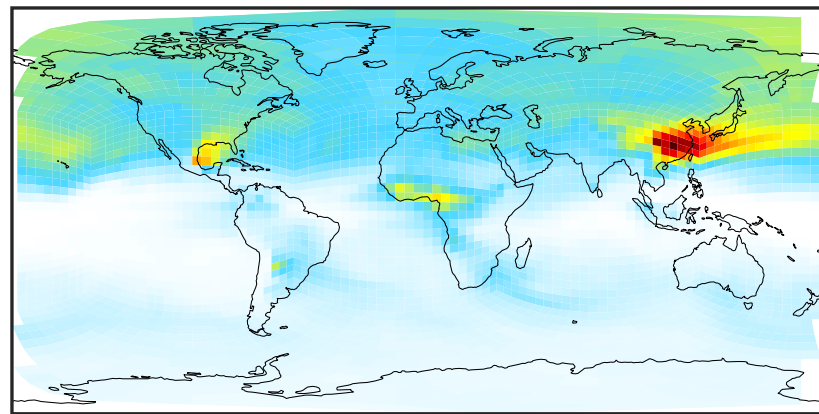
SpeciesConcVV_INDIOL (Apr2019)

GCHP_14.0.0 (Ref)
c24



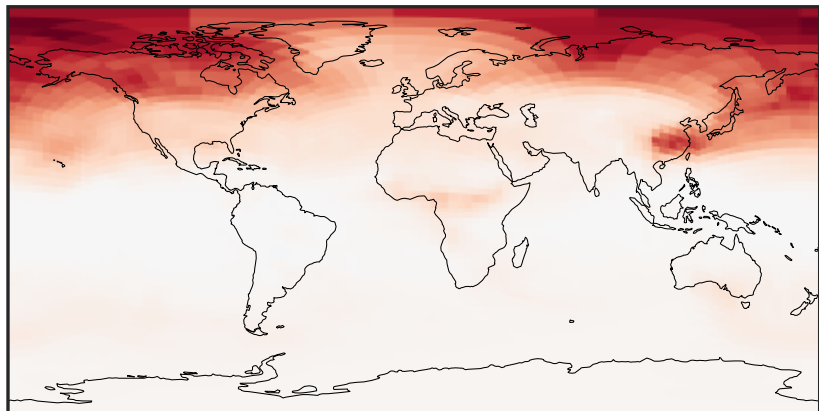
0.0001 0.0508 0.1016 0.1524 0.2033
 $\mu\text{g}/\text{m}^3$

GCHP_14.2.0 (Dev)
c24



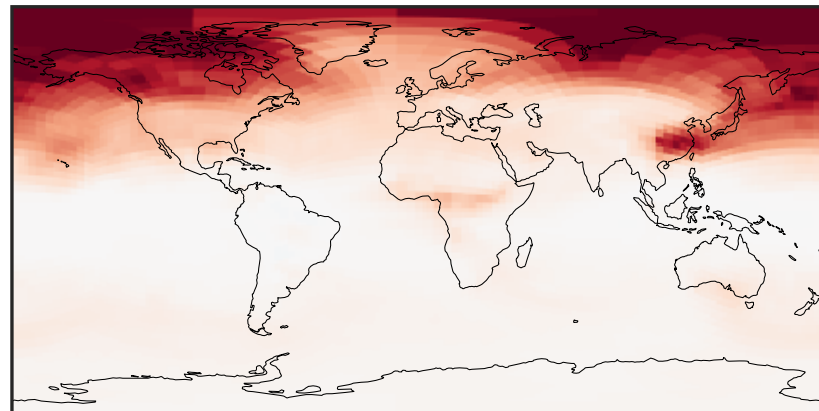
0.0001 0.0508 0.1016 0.1524 0.2033
 $\mu\text{g}/\text{m}^3$

Difference (1x1.25)
Dev - Ref, Dynamic Range



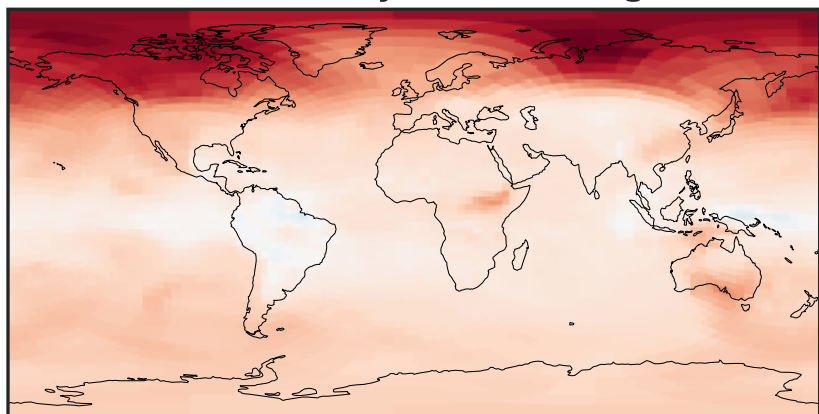
-0.008 0.000 0.008
 $\mu\text{g}/\text{m}^3$

Difference (1x1.25)
Dev - Ref, Restricted Range [5%,95%]



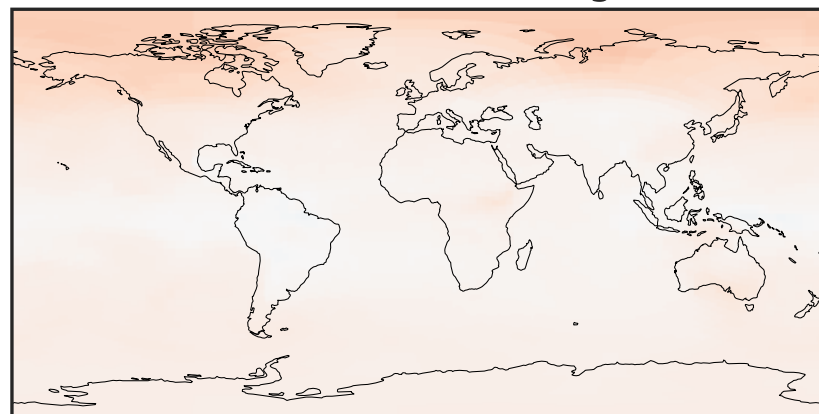
-0.006 0.000 0.006
 $\mu\text{g}/\text{m}^3$

Ratio (1x1.25)
Dev/Ref, Dynamic Range



0.8306 0.9153 1.0000 1.1020 1.2039
unitless

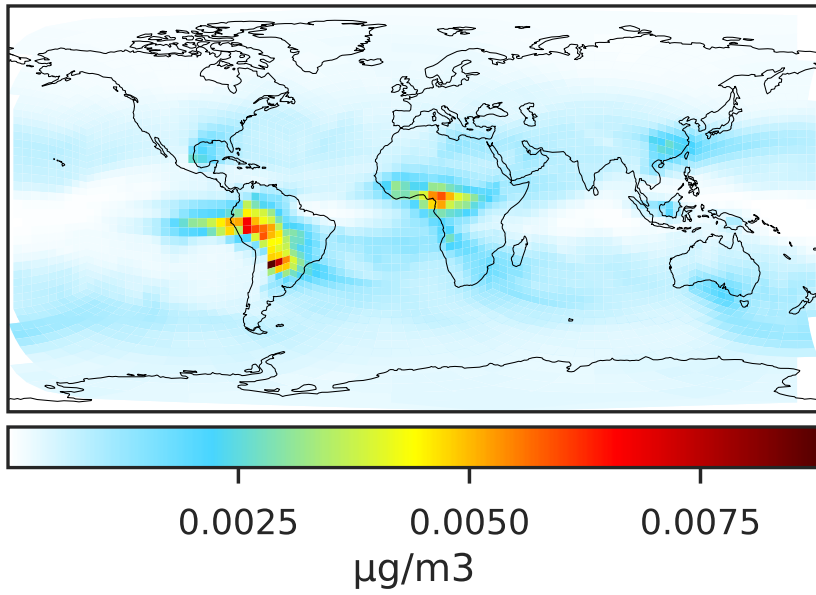
Ratio (1x1.25)
Dev/Ref, Fixed Range



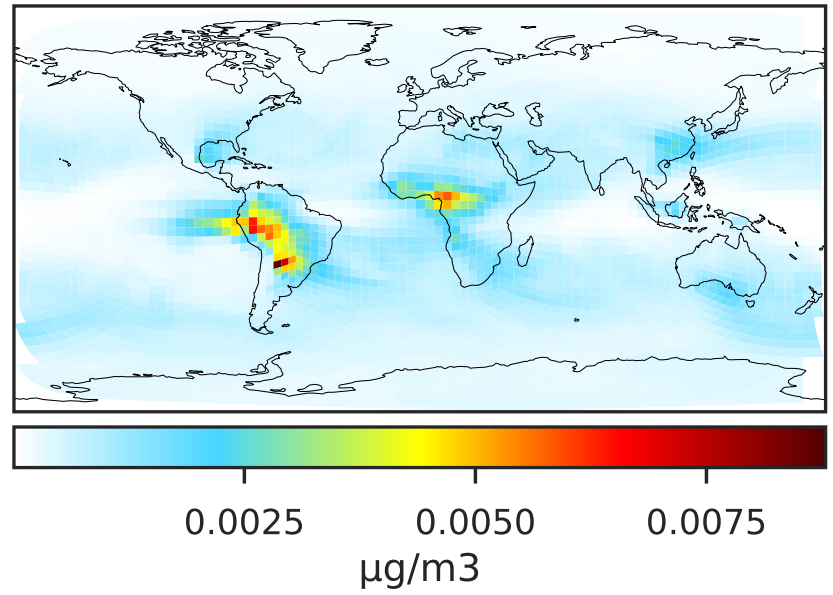
0.50 0.75 1.00 1.50 2.00
unitless

SpeciesConcVV_LVOCOA (Apr2019)

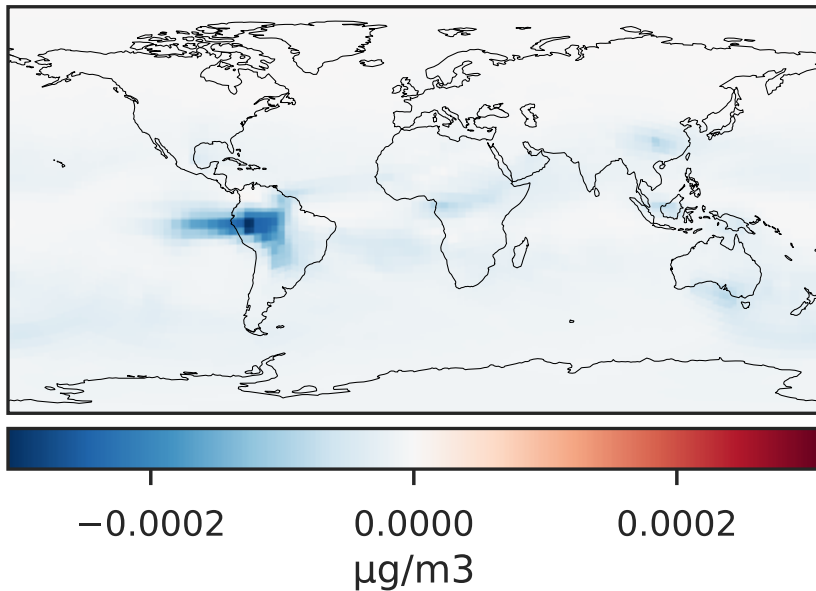
GCHP_14.0.0 (Ref)
c24



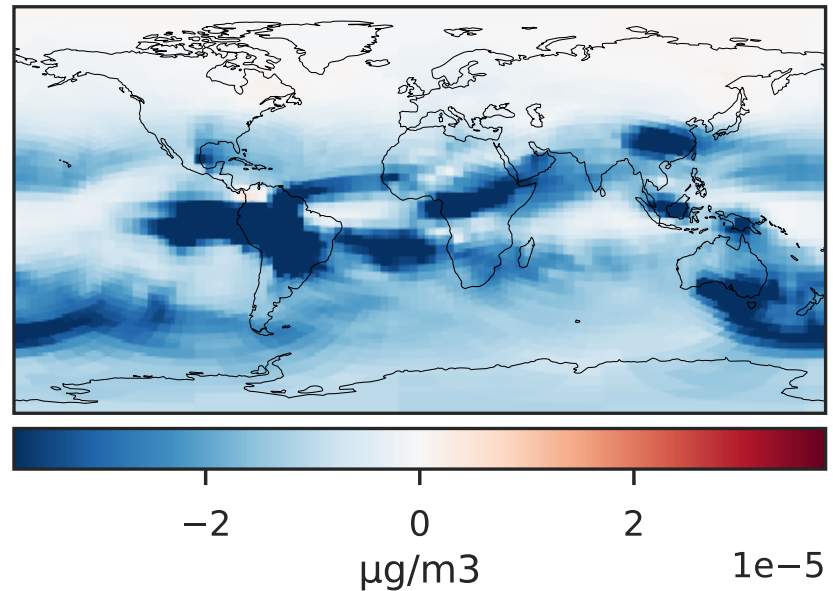
GCHP_14.2.0 (Dev)
c24



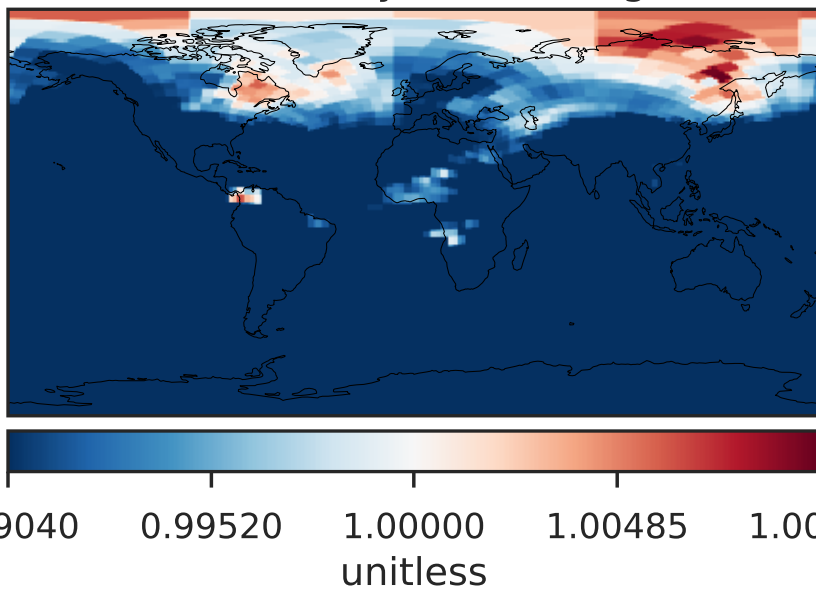
Difference (1x1.25)
Dev - Ref, Dynamic Range



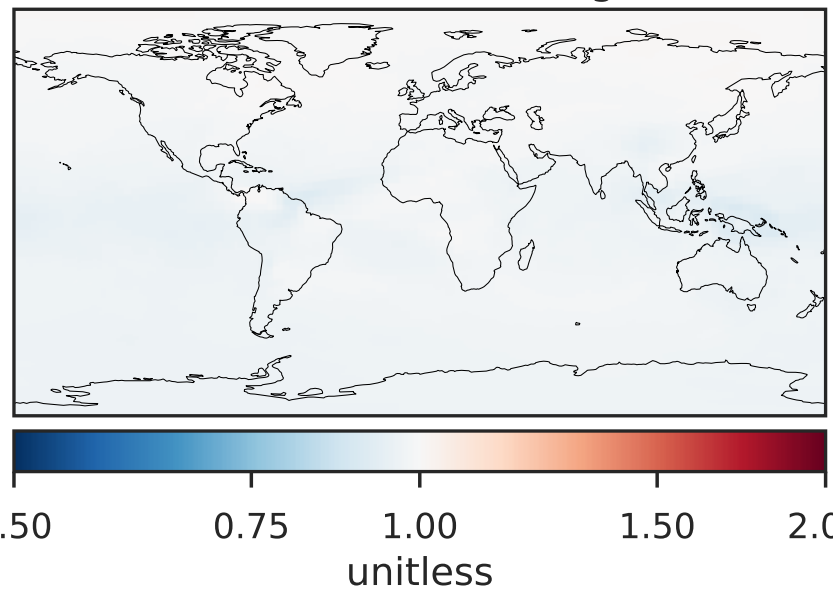
Difference (1x1.25)
Dev - Ref, Restricted Range [5%,95%]



Ratio (1x1.25)
Dev/Ref, Dynamic Range

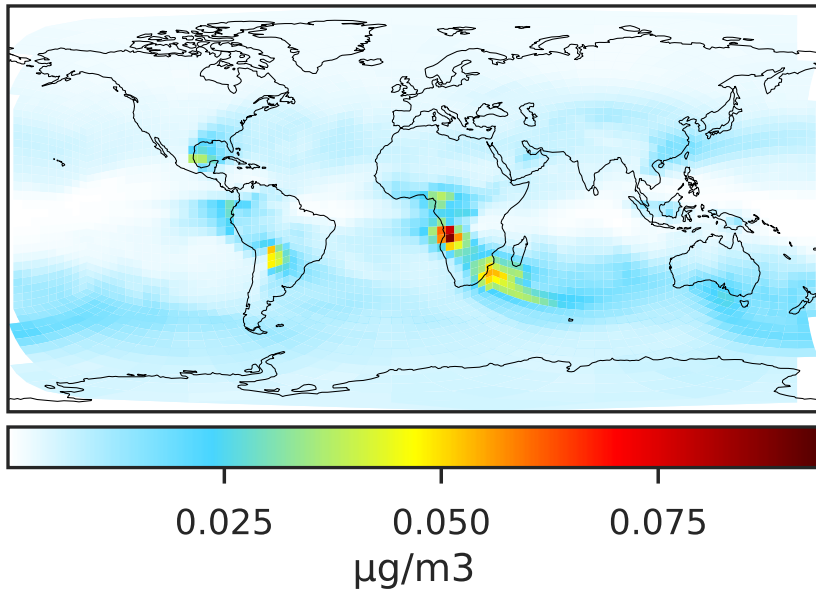


Ratio (1x1.25)
Dev/Ref, Fixed Range

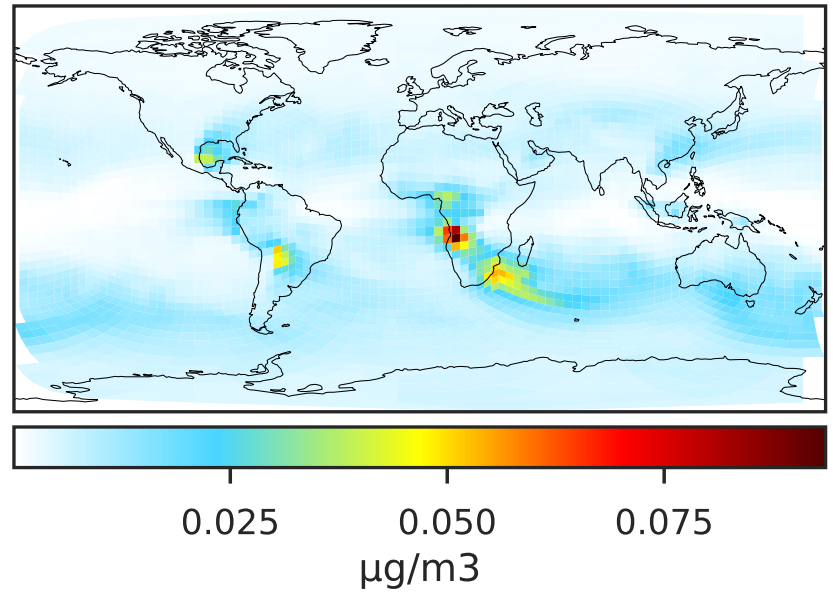


SpeciesConcVV_SOAIE (Apr2019)

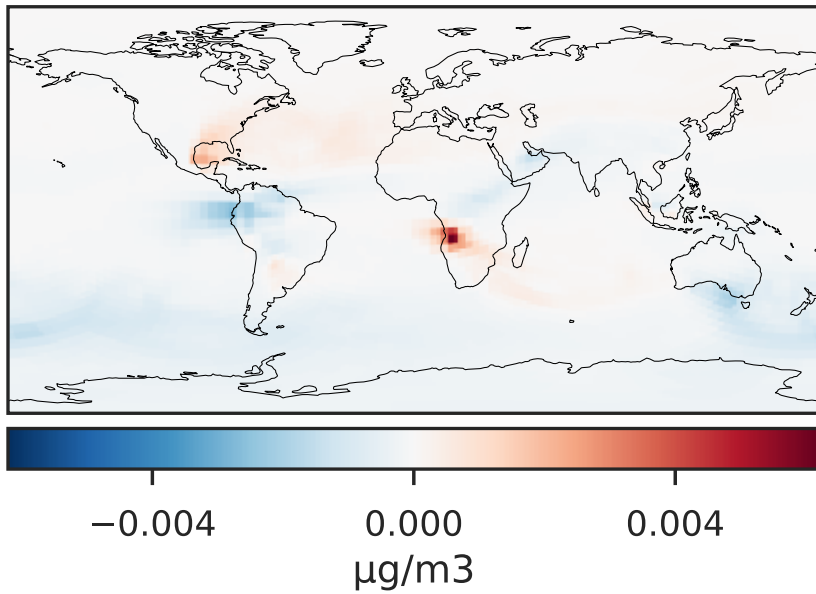
GCHP_14.0.0 (Ref)
c24



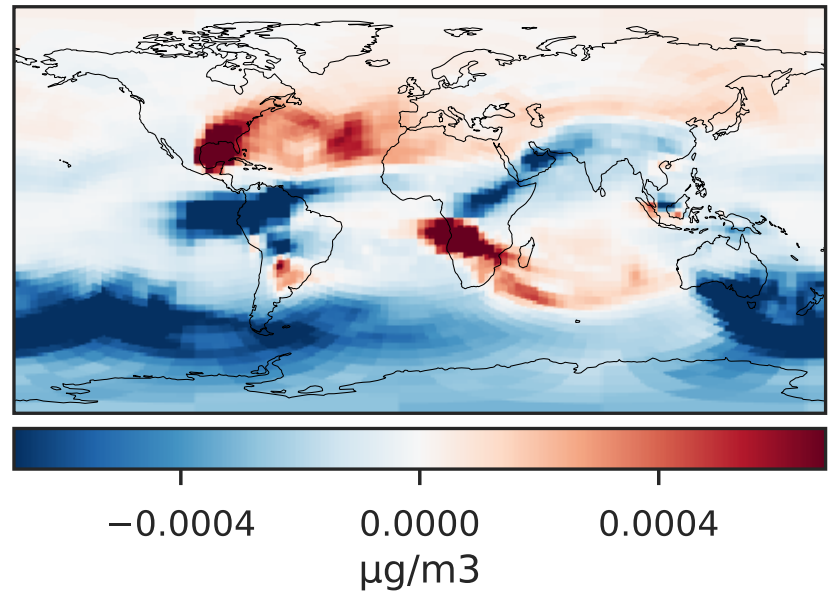
GCHP_14.2.0 (Dev)
c24



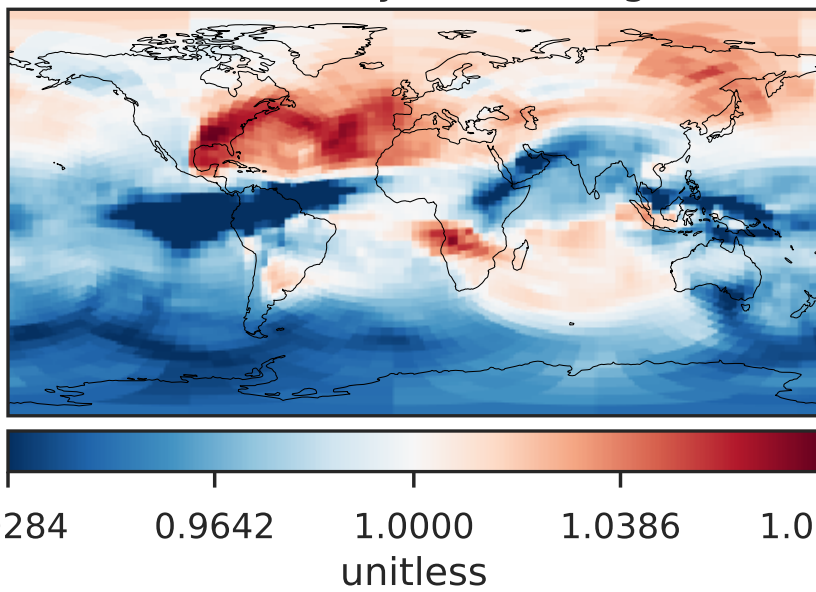
Difference (1x1.25)
Dev - Ref, Dynamic Range



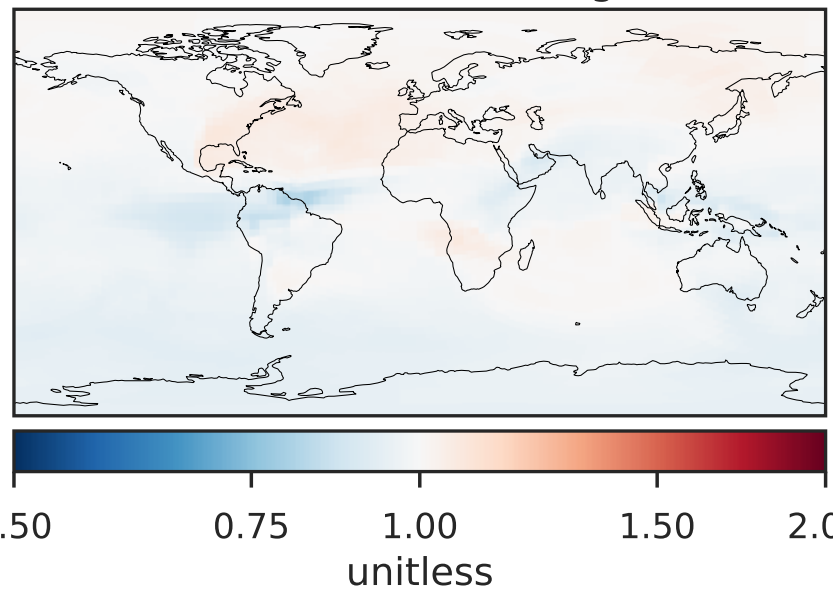
Difference (1x1.25)
Dev - Ref, Restricted Range [5%,95%]



Ratio (1x1.25)
Dev/Ref, Dynamic Range

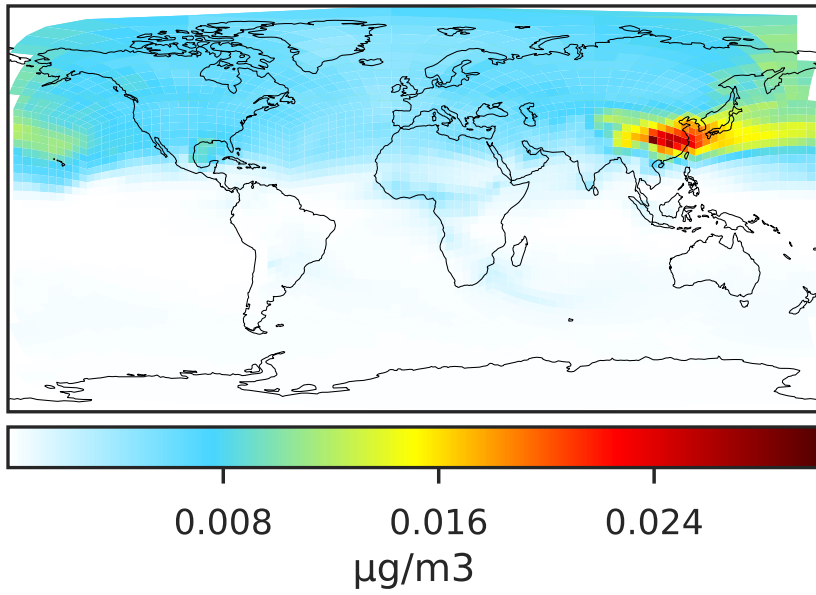


Ratio (1x1.25)
Dev/Ref, Fixed Range

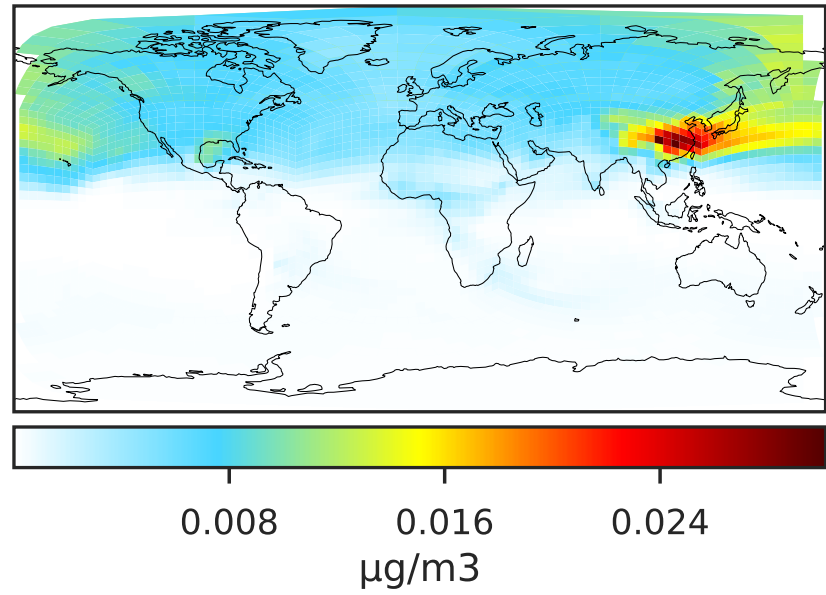


SpeciesConcVV_SOAGX (Apr2019)

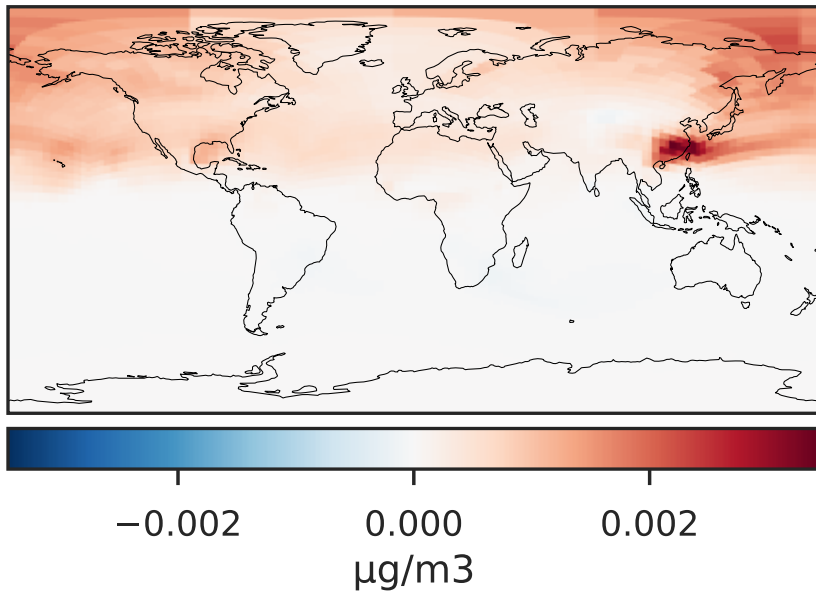
GCHP_14.0.0 (Ref)
c24



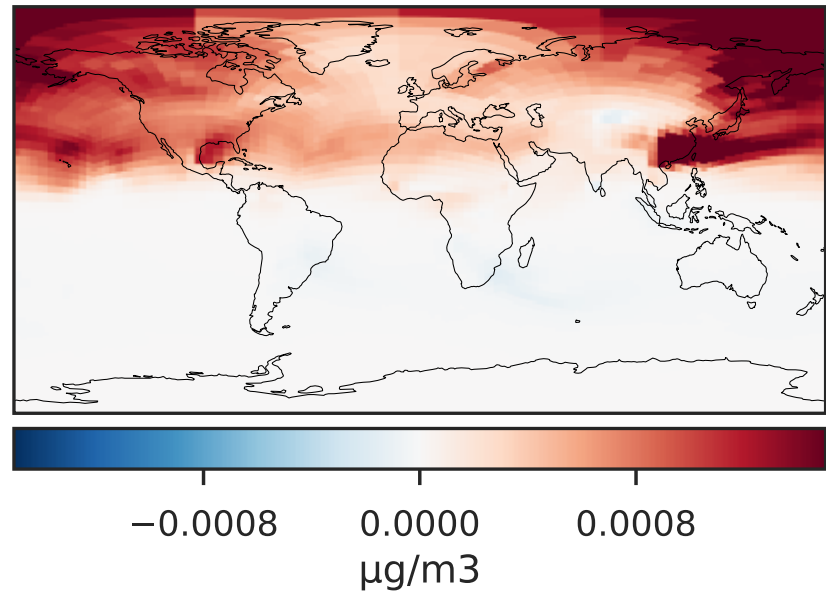
GCHP_14.2.0 (Dev)
c24



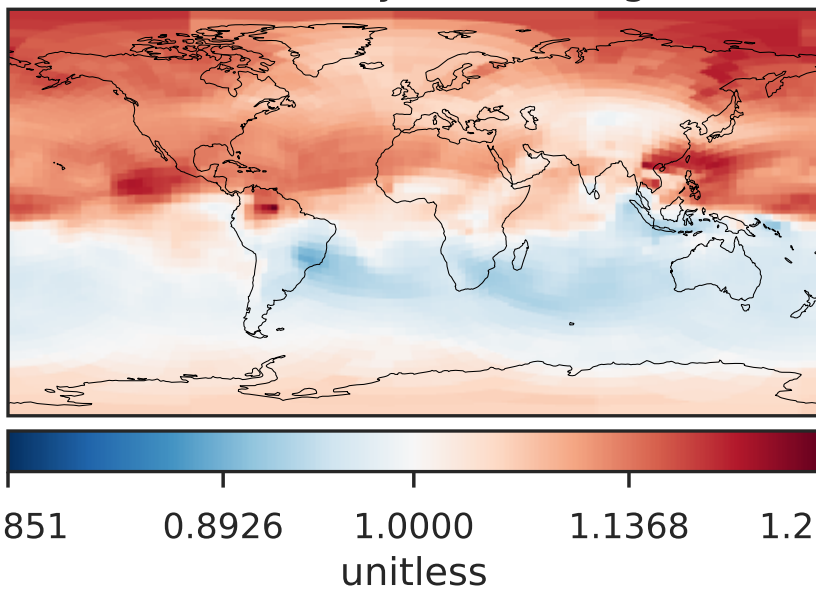
Difference (1x1.25)
Dev - Ref, Dynamic Range



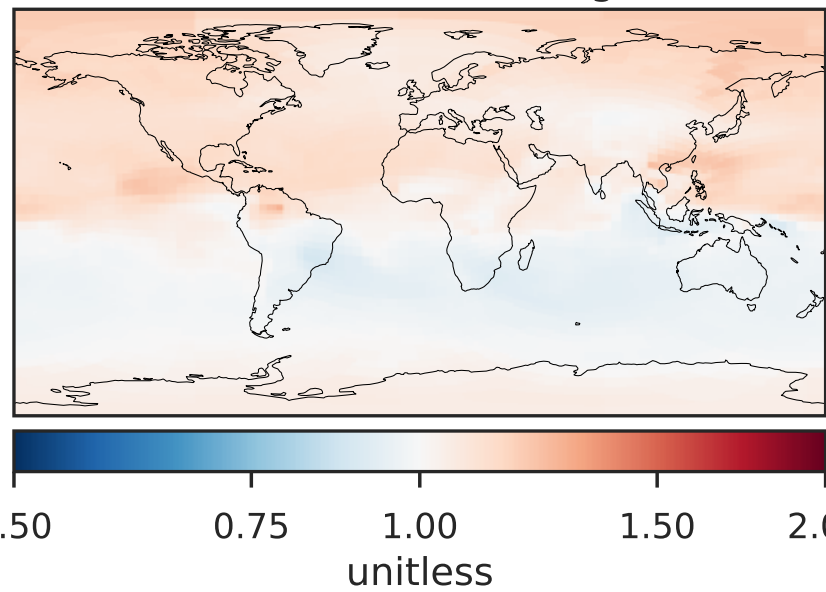
Difference (1x1.25)
Dev - Ref, Restricted Range [5%,95%]



Ratio (1x1.25)
Dev/Ref, Dynamic Range

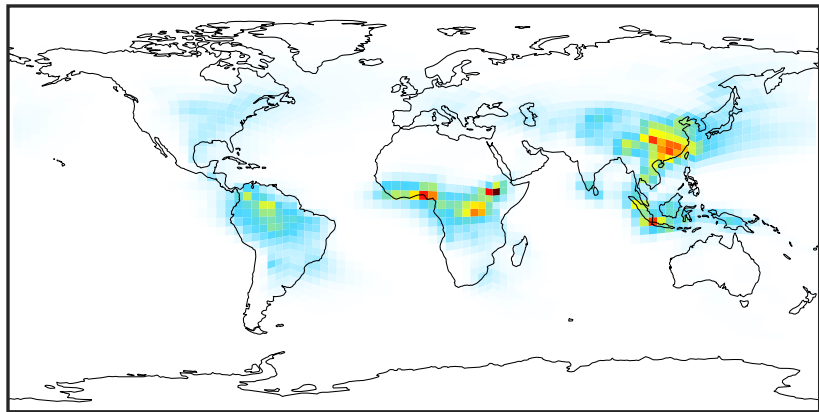


Ratio (1x1.25)
Dev/Ref, Fixed Range



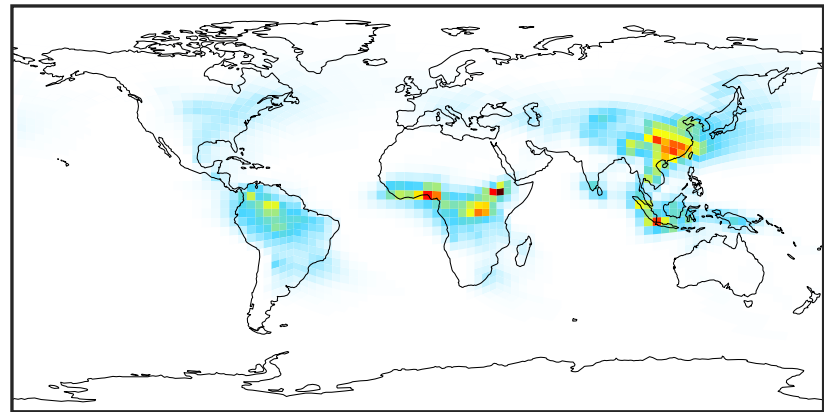
SpeciesConcVV_SOAP (Apr2019)

GCHP_14.0.0 (Ref)
c24



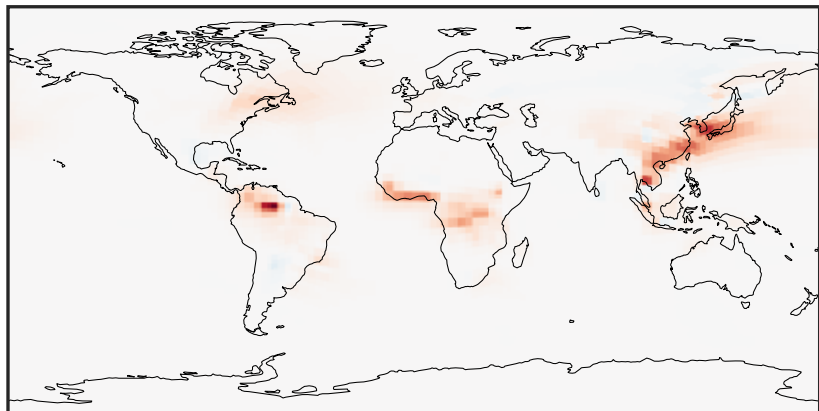
0.0000 0.0292 0.0585 0.0877 0.1169
µg/m³

GCHP_14.2.0 (Dev)
c24



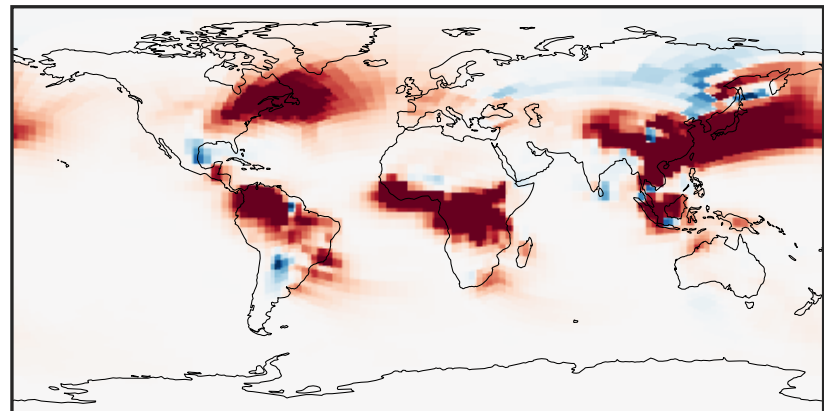
0.0000 0.0292 0.0585 0.0877 0.1169
µg/m³

Difference (1x1.25)
Dev - Ref, Dynamic Range



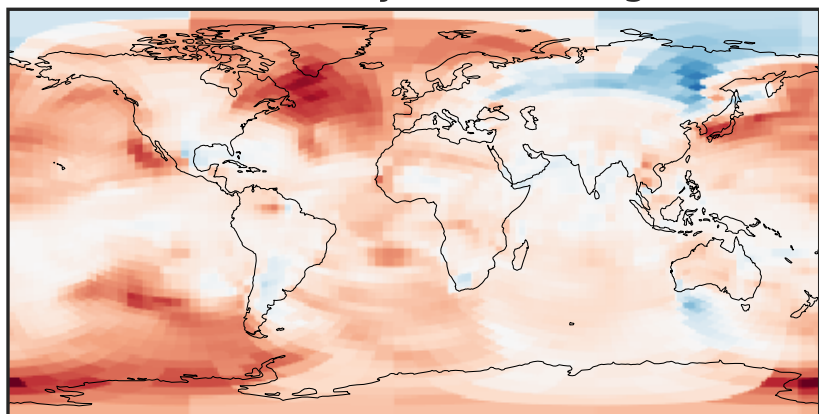
-0.001 0.000 0.001
µg/m³

Difference (1x1.25)
Dev - Ref, Restricted Range [5%,95%]



-8 0 8
µg/m³ 1e-5

Ratio (1x1.25)
Dev/Ref, Dynamic Range



0.9371 0.9686 1.0000 1.0336 1.0671
unitless

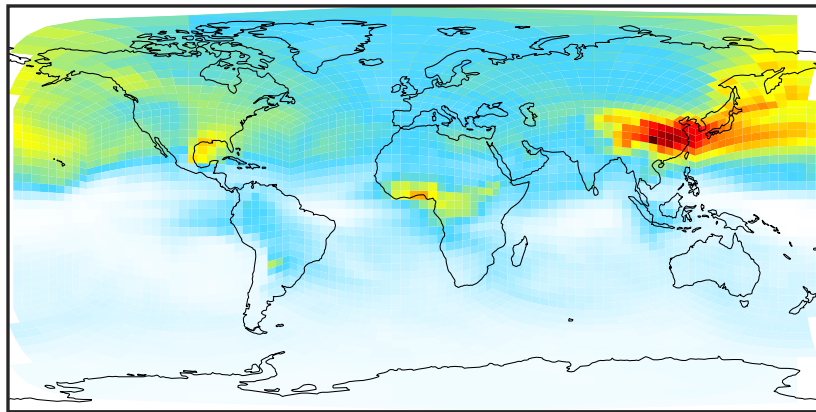
Ratio (1x1.25)
Dev/Ref, Fixed Range



0.50 0.75 1.00 1.50 2.00
unitless

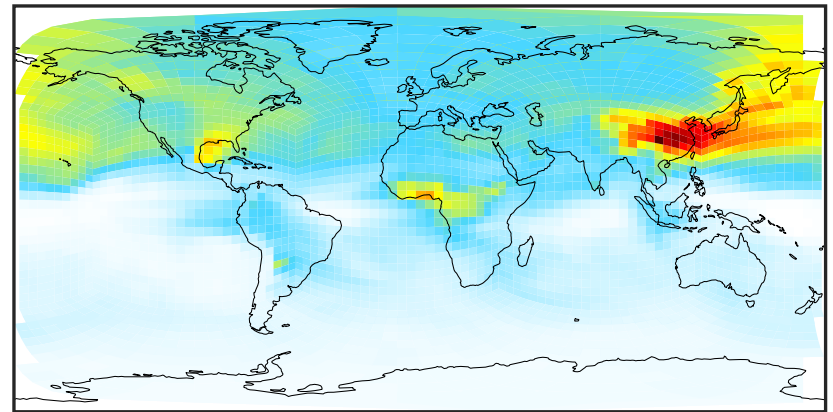
SpeciesConcVV_SOAS (Apr2019)

GCHP_14.0.0 (Ref)
c24



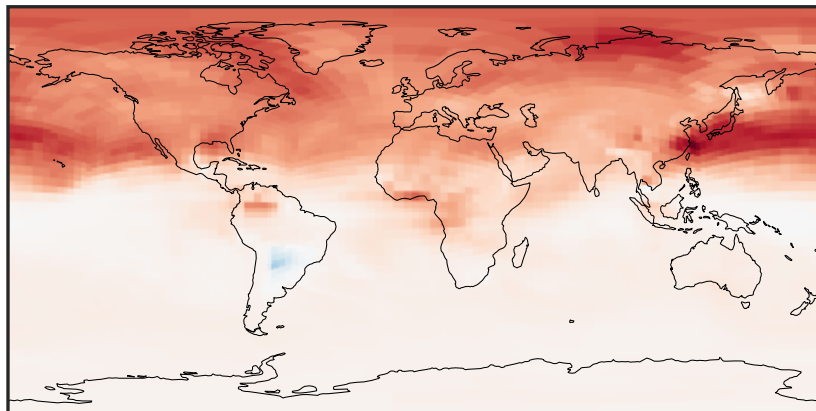
0.0009 0.1006 0.2012 0.3018 0.4034
 $\mu\text{g}/\text{m}^3$

GCHP_14.2.0 (Dev)
c24



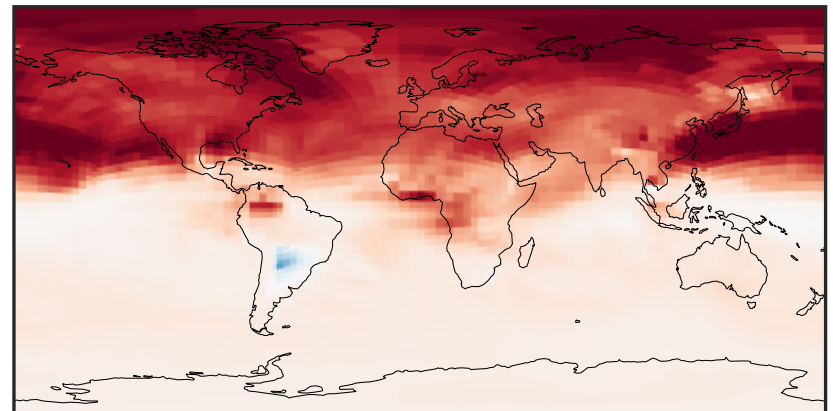
0.0009 0.1006 0.2012 0.3018 0.4034
 $\mu\text{g}/\text{m}^3$

Difference (1x1.25)
Dev - Ref, Dynamic Range



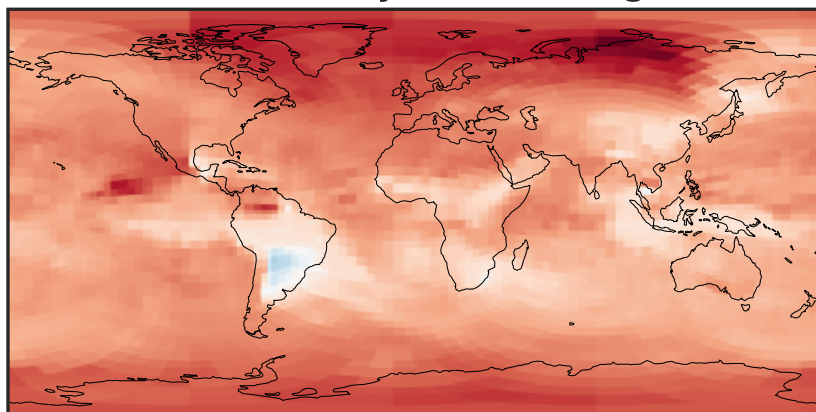
-0.002 0.000 0.002
 $\mu\text{g}/\text{m}^3$

Difference (1x1.25)
Dev - Ref, Restricted Range [5%,95%]



-0.0015 0.0000 0.0015
 $\mu\text{g}/\text{m}^3$

Ratio (1x1.25)
Dev/Ref, Dynamic Range



0.97264 0.98632 1.00000 1.01407 1.02813
unitless

Ratio (1x1.25)
Dev/Ref, Fixed Range



0.50 0.75 1.00 1.50 2.00
unitless