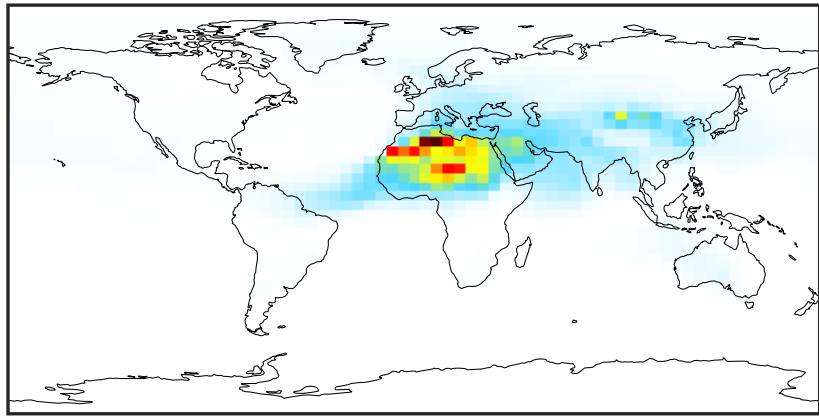


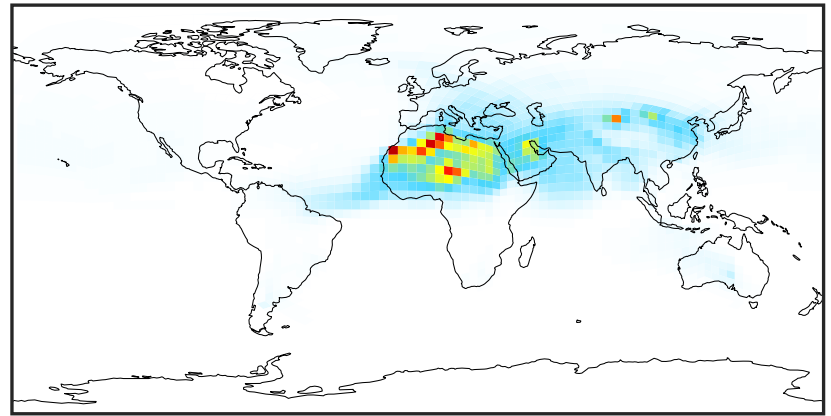
SpeciesConcVW_DST1 (Apr2019)

14.3.0-rc.0 (Ref)
4.0x5.0



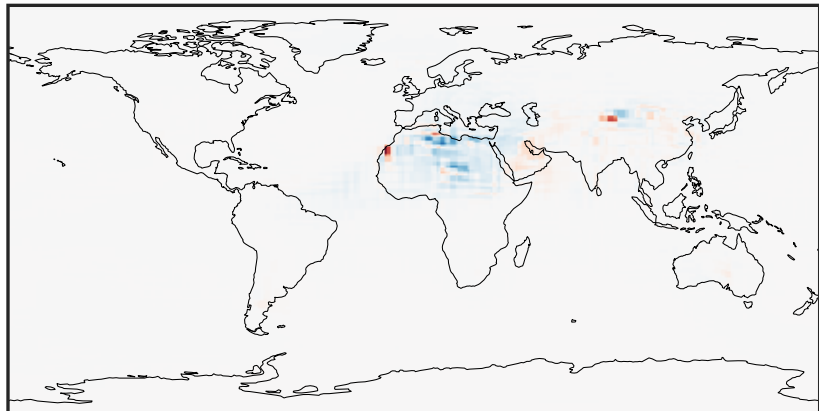
0.01 19.55 39.09 58.63 78.18
 $\mu\text{g}/\text{m}^3$

14.3.0-rc.0 (Dev)
c24



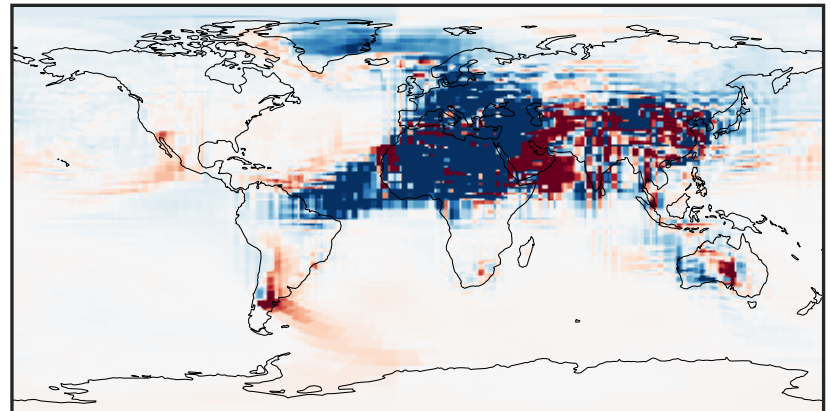
0.01 19.55 39.09 58.63 78.18
 $\mu\text{g}/\text{m}^3$

Difference (1x1.25)
Dev - Ref, Dynamic Range



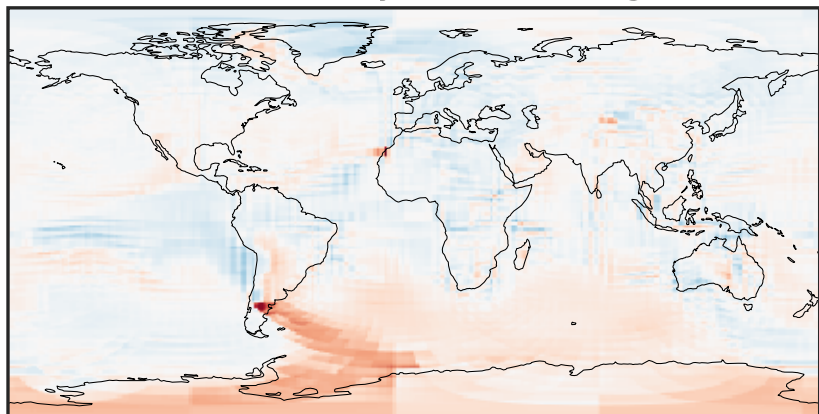
-30 0 30
 $\mu\text{g}/\text{m}^3$

Difference (1x1.25)
Dev - Ref, Restricted Range [5%,95%]



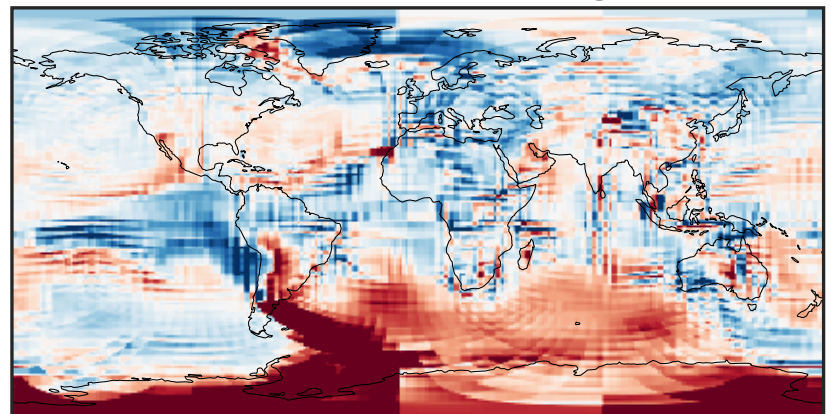
-0.882 -0.441 0.000 0.441 0.882
 $\mu\text{g}/\text{m}^3$

Ratio (1x1.25)
Dev/Ref, Dynamic Range



1e-01 1 10
unitless

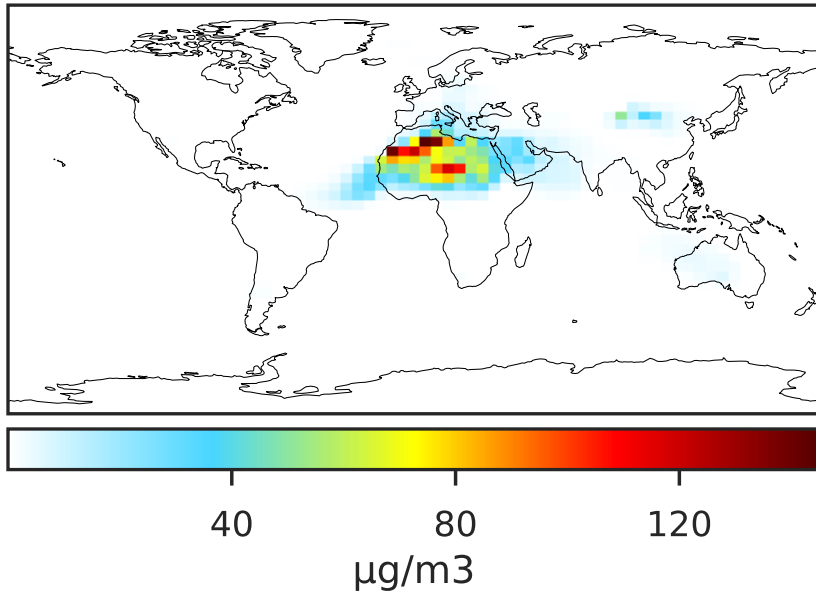
Ratio (1x1.25)
Dev/Ref, Fixed Range



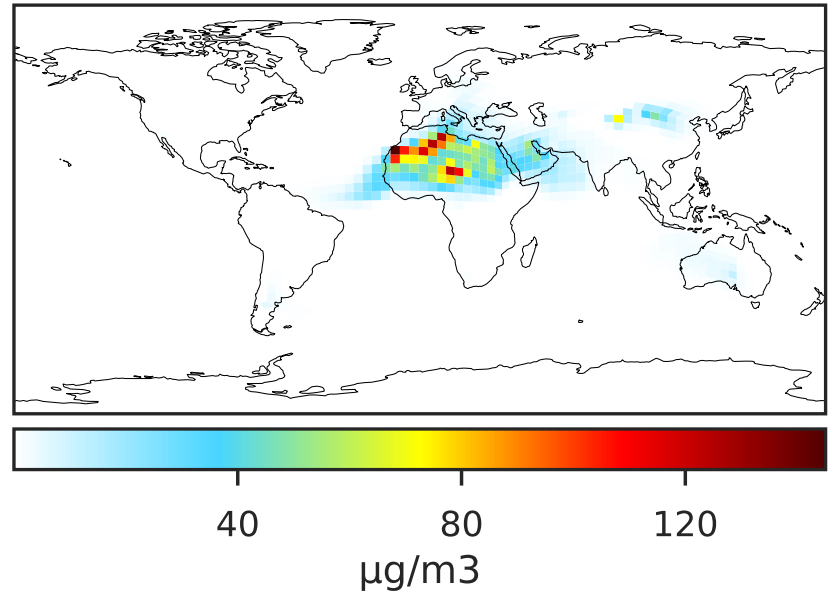
0.50 0.75 1.00 1.50 2.00
unitless

SpeciesConcVW_DST2 (Apr2019)

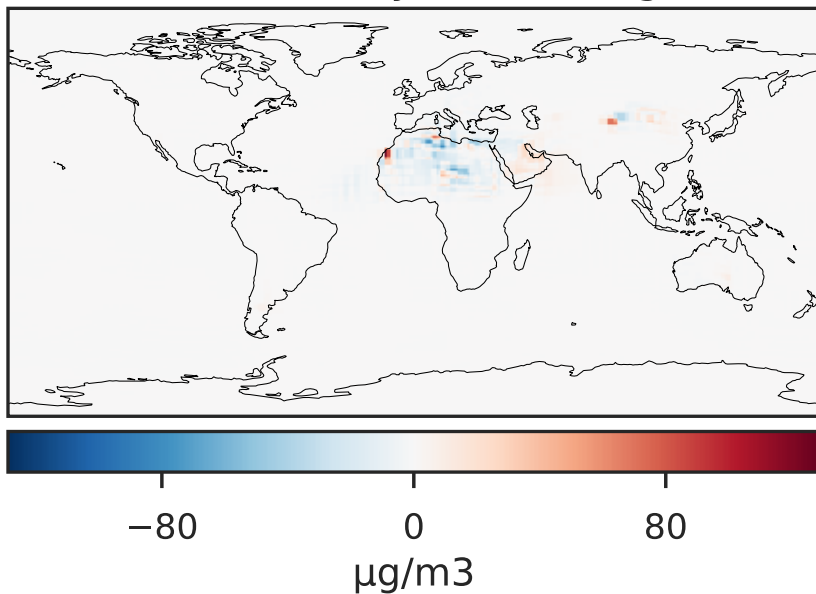
14.3.0-rc.0 (Ref)
4.0x5.0



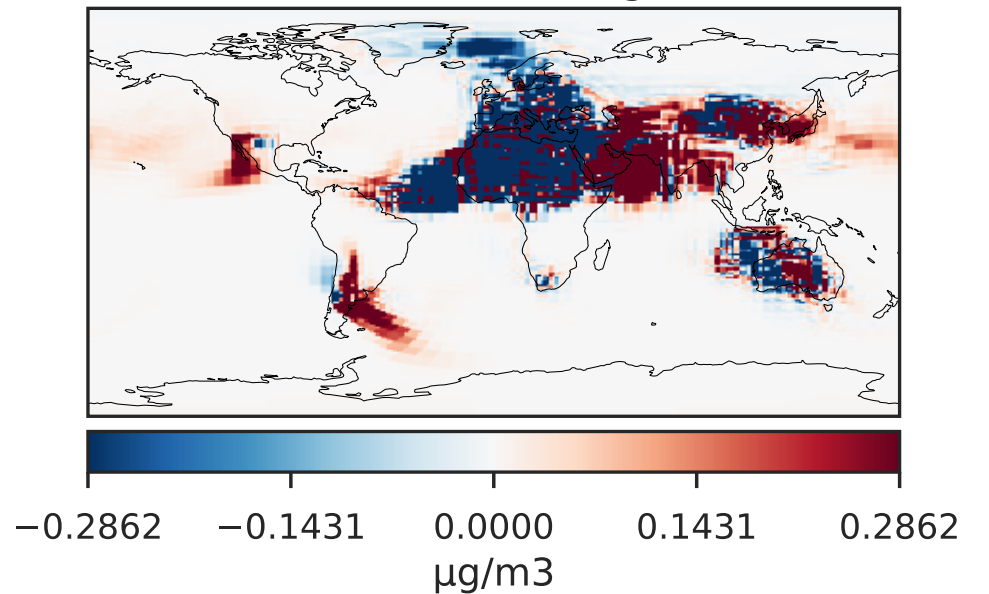
14.3.0-rc.0 (Dev)
c24



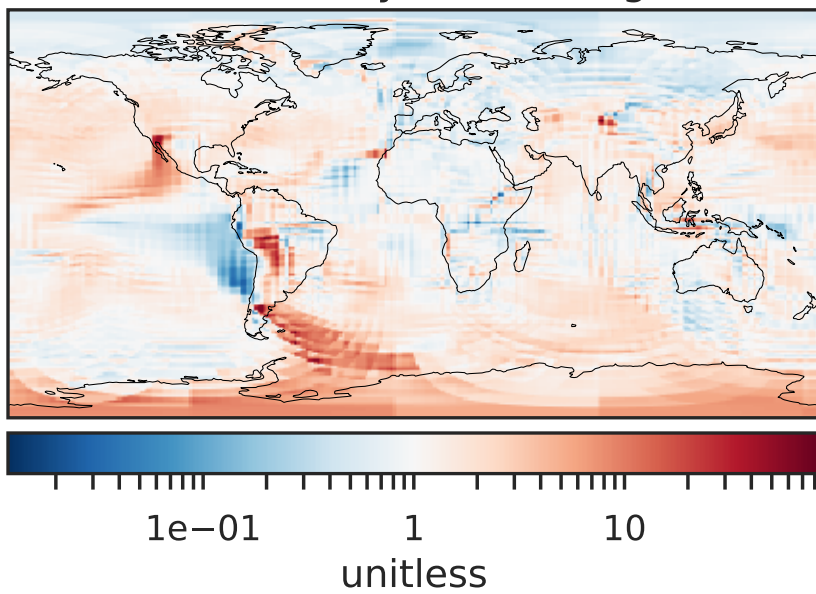
Difference (1x1.25)
Dev - Ref, Dynamic Range



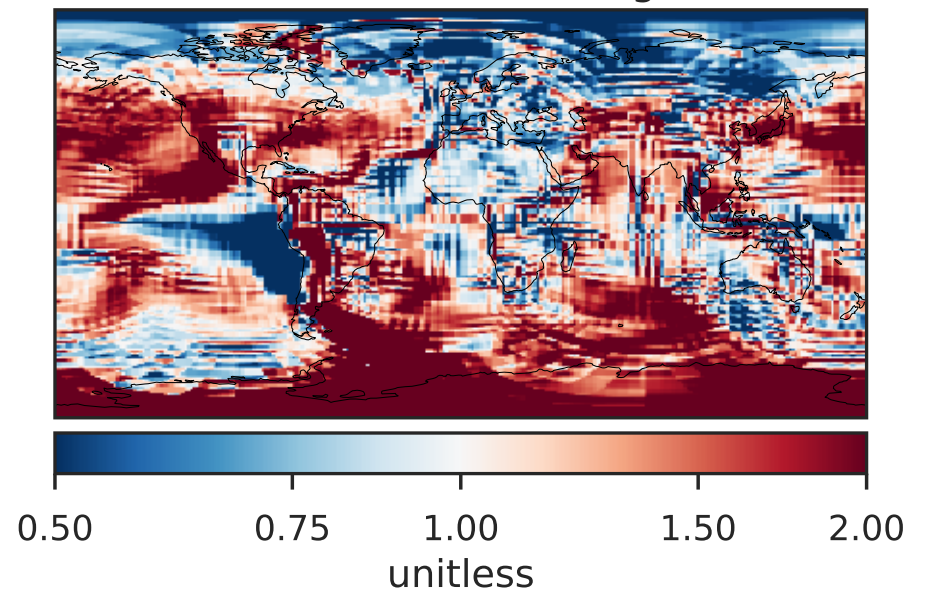
Difference (1x1.25)
Dev - Ref, Restricted Range [5%,95%]



Ratio (1x1.25)
Dev/Ref, Dynamic Range

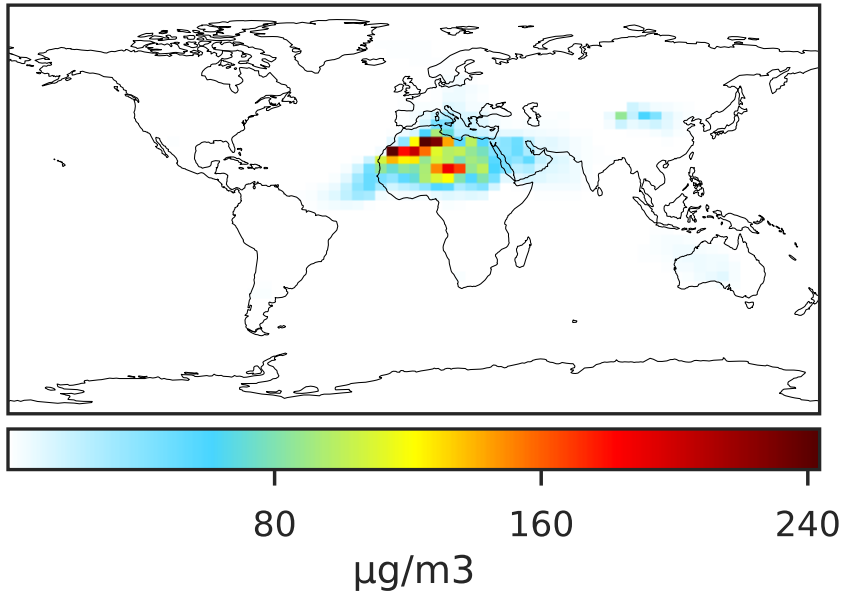


Ratio (1x1.25)
Dev/Ref, Fixed Range

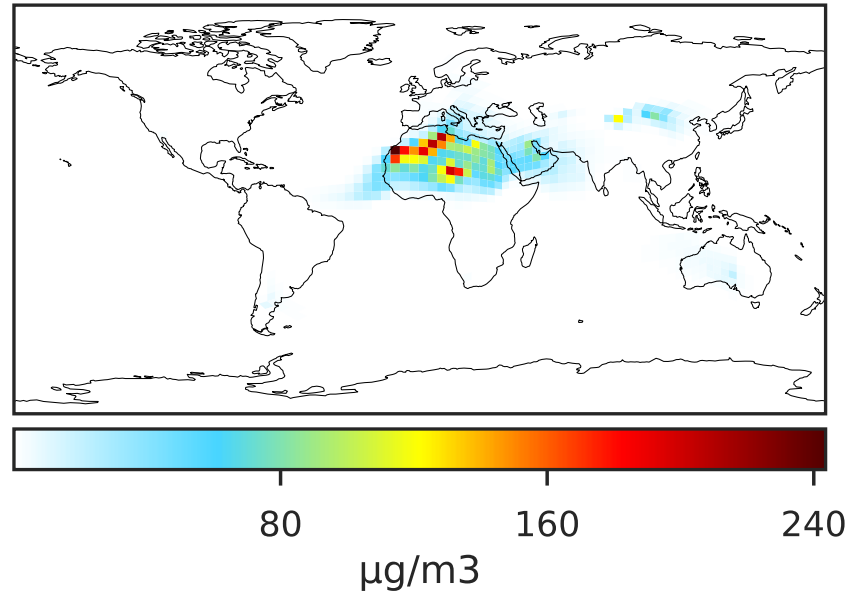


SpeciesConcVV_DST3 (Apr2019)

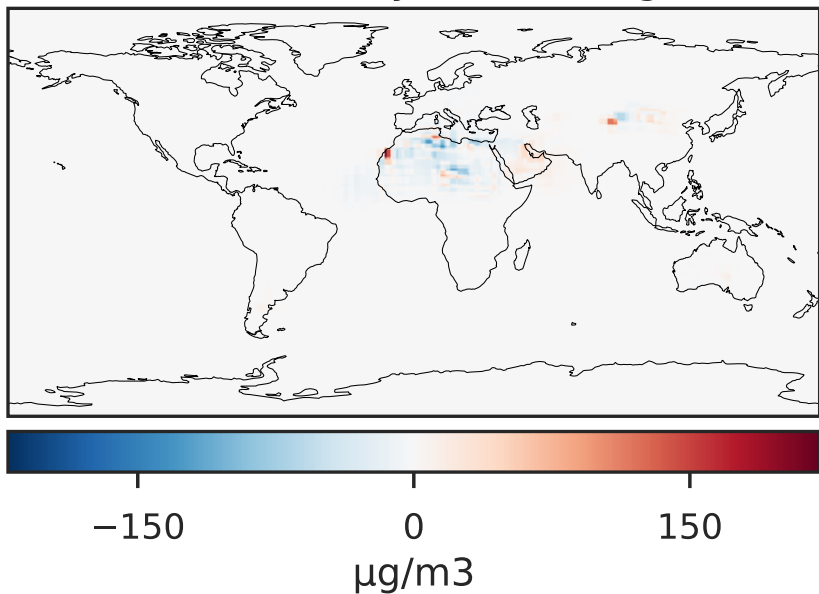
14.3.0-rc.0 (Ref)
4.0x5.0



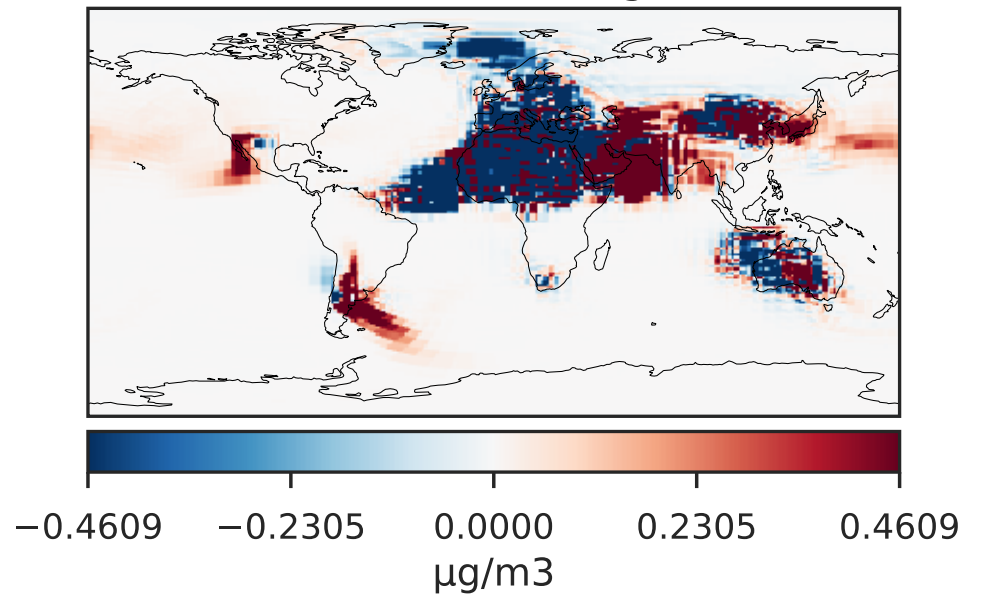
14.3.0-rc.0 (Dev)
c24



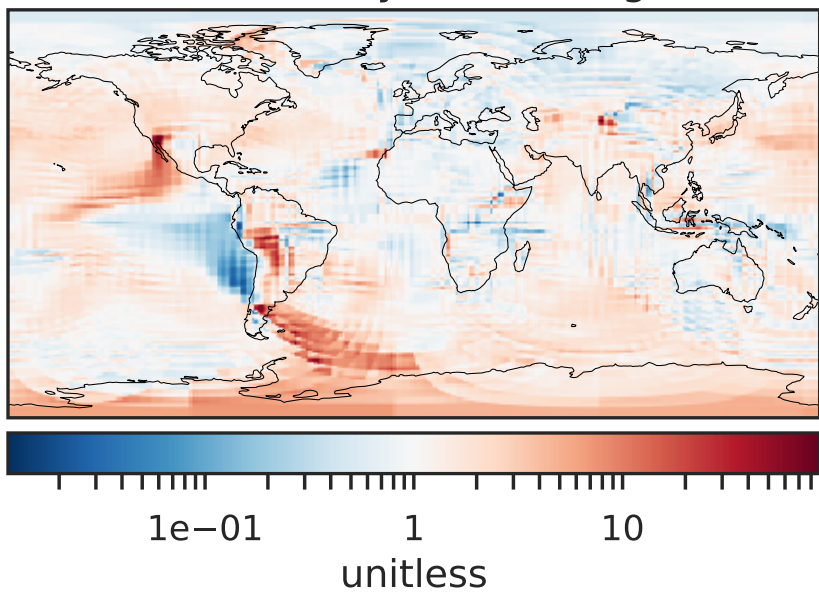
Difference (1x1.25)
Dev - Ref, Dynamic Range



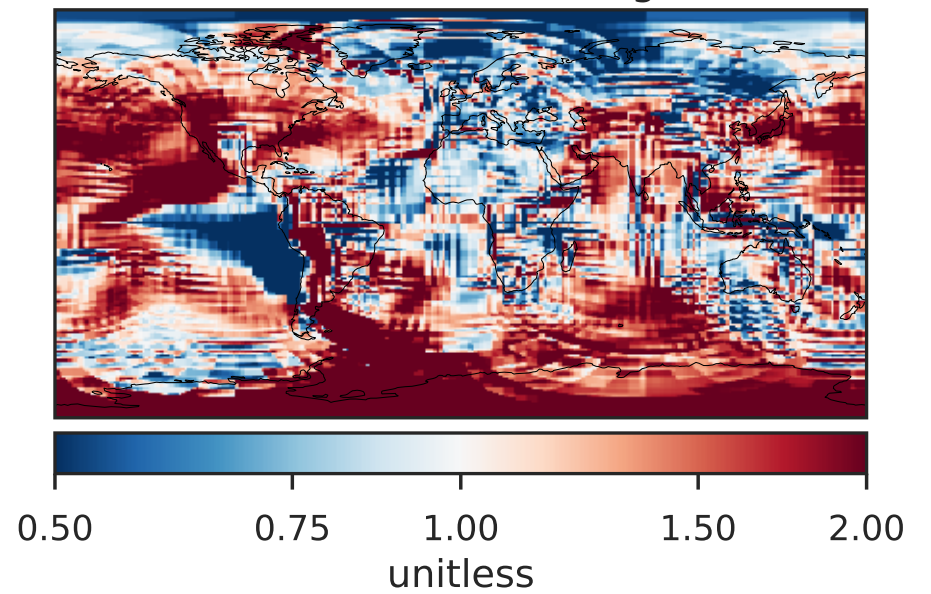
Difference (1x1.25)
Dev - Ref, Restricted Range [5%,95%]



Ratio (1x1.25)
Dev/Ref, Dynamic Range

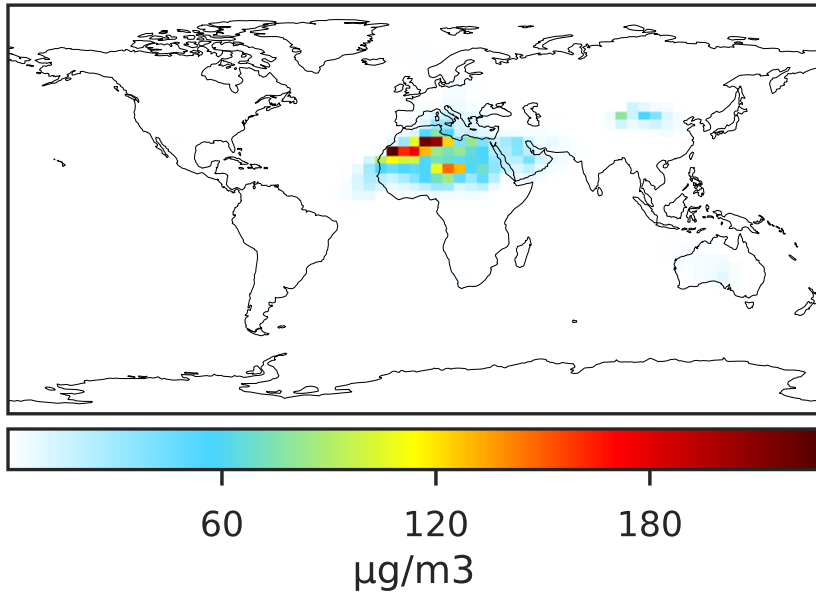


Ratio (1x1.25)
Dev/Ref, Fixed Range

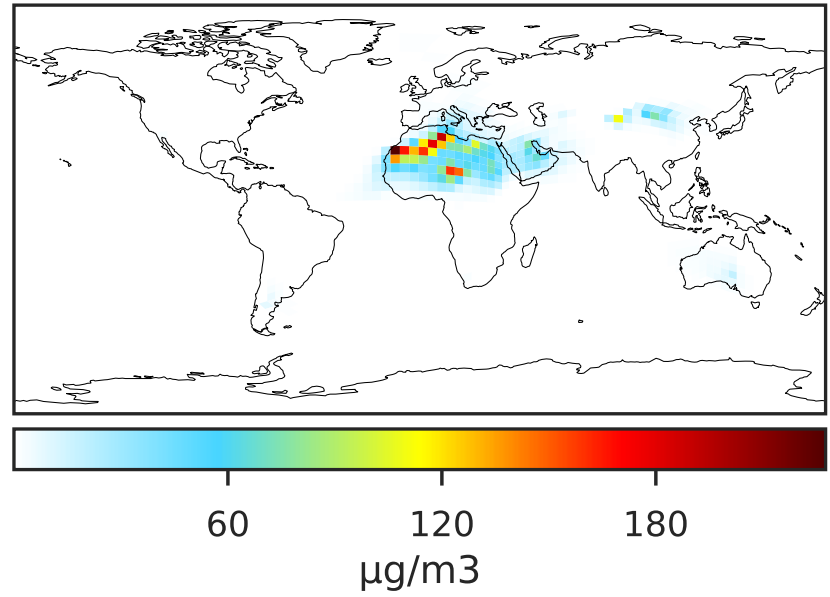


SpeciesConcVW_DST4 (Apr2019)

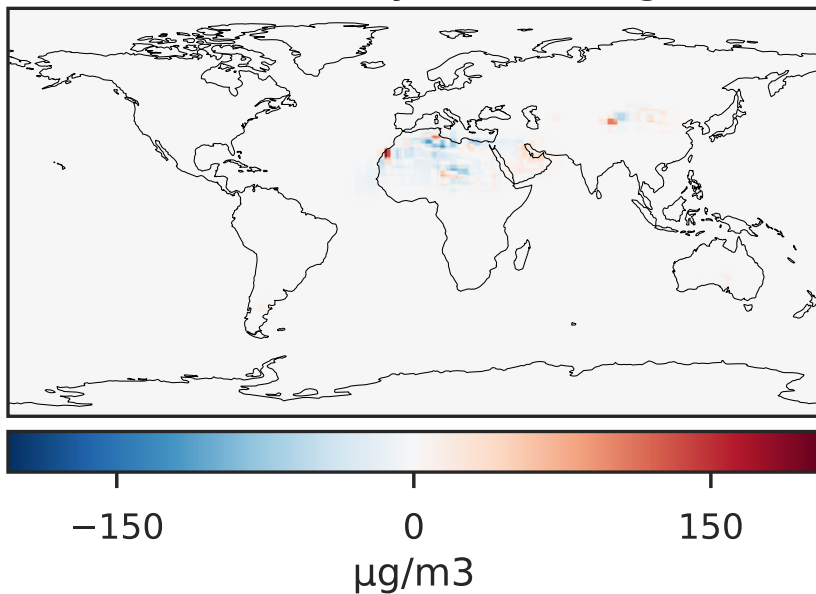
14.3.0-rc.0 (Ref)
4.0x5.0



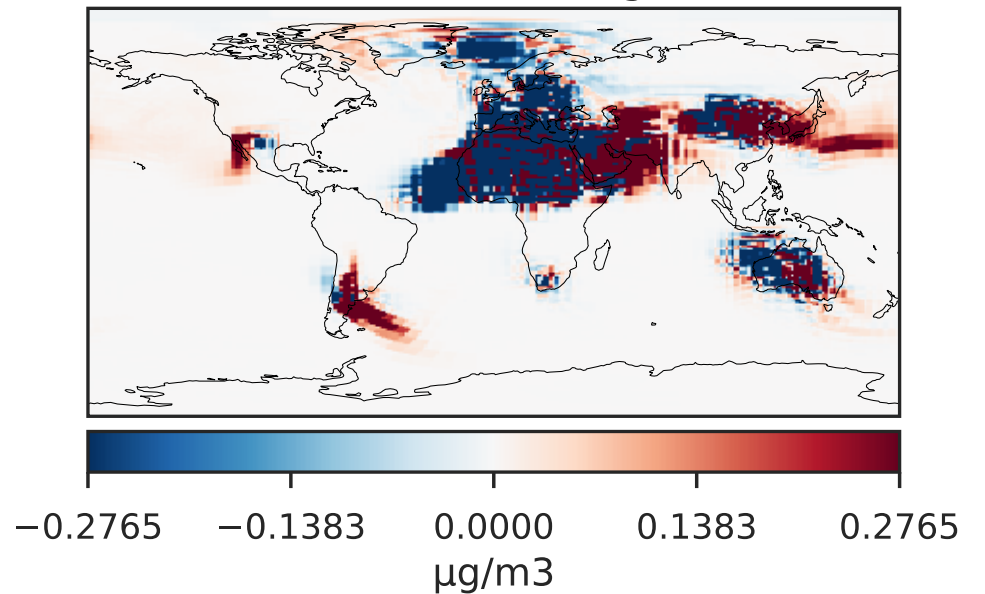
14.3.0-rc.0 (Dev)
c24



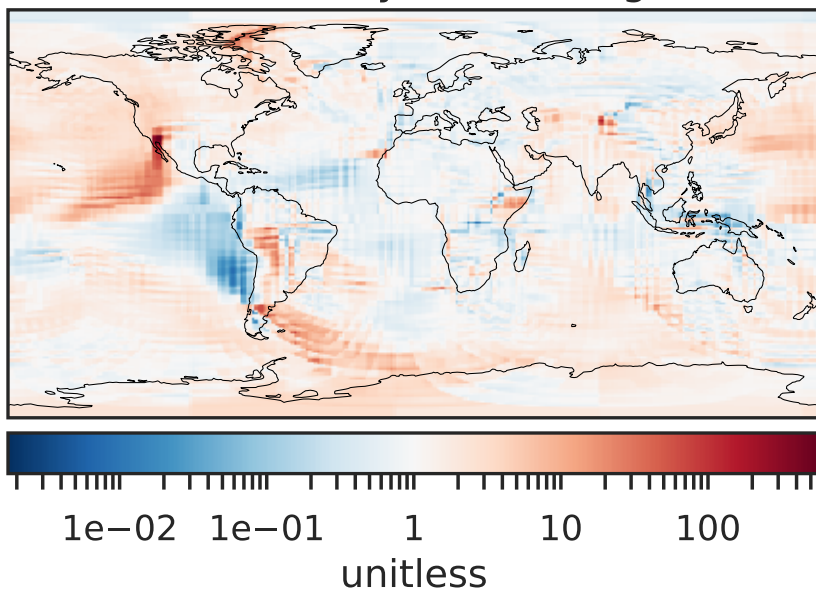
Difference (1x1.25)
Dev - Ref, Dynamic Range



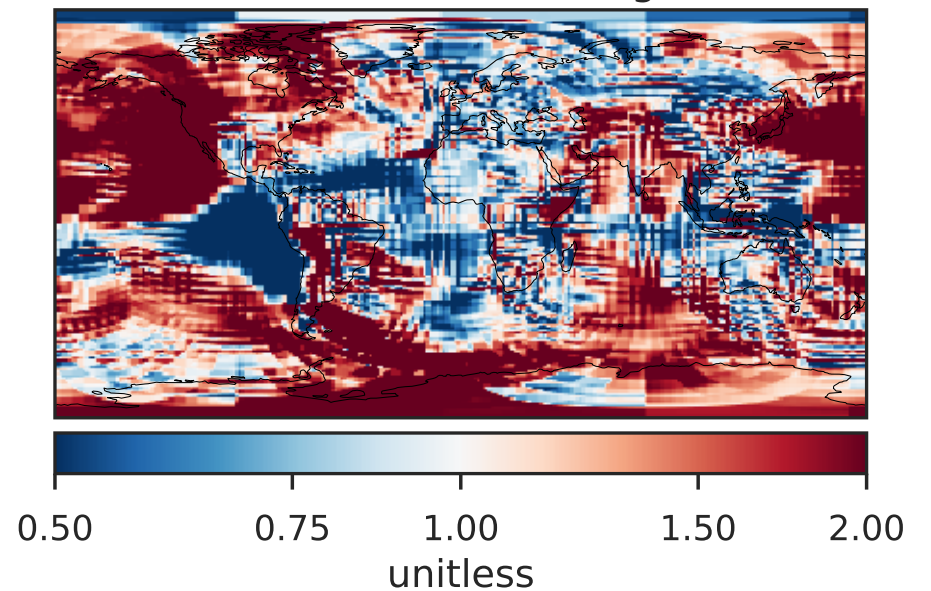
Difference (1x1.25)
Dev - Ref, Restricted Range [5%,95%]



Ratio (1x1.25)
Dev/Ref, Dynamic Range

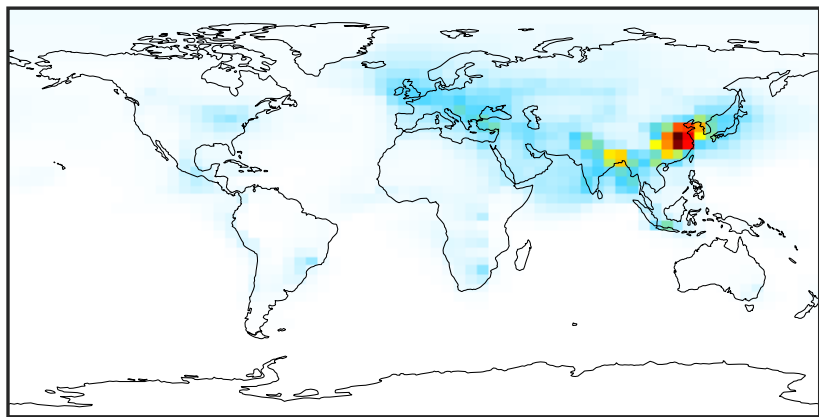


Ratio (1x1.25)
Dev/Ref, Fixed Range



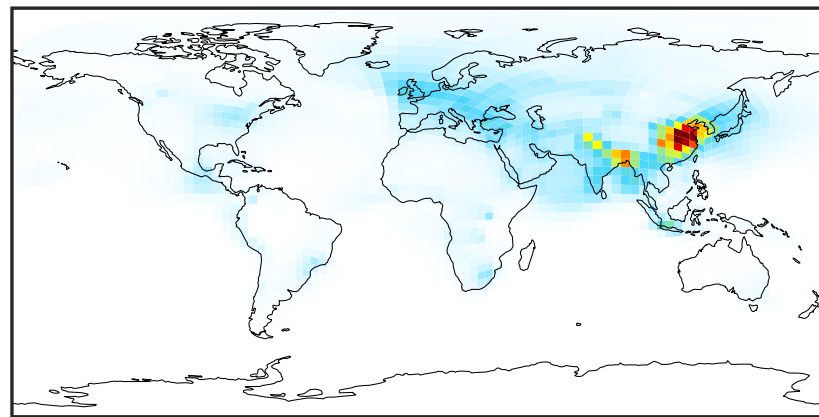
SpeciesConcVV_NH4 (Apr2019)

14.3.0-rc.0 (Ref)
4.0x5.0



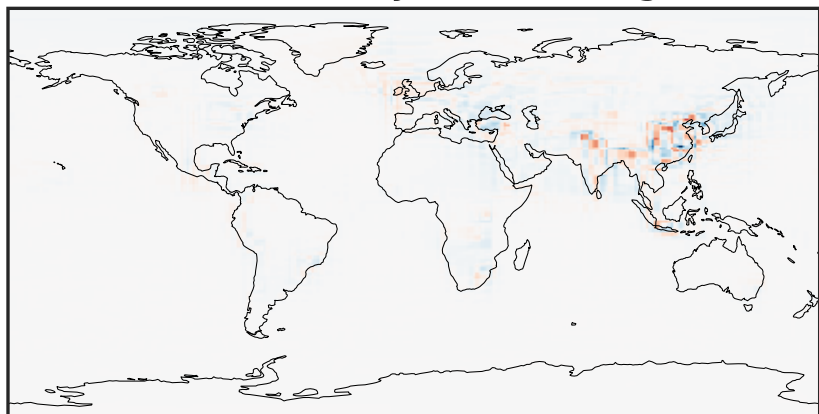
0.00 3.79 7.59 11.38 15.17
 $\mu\text{g}/\text{m}^3$

14.3.0-rc.0 (Dev)
c24



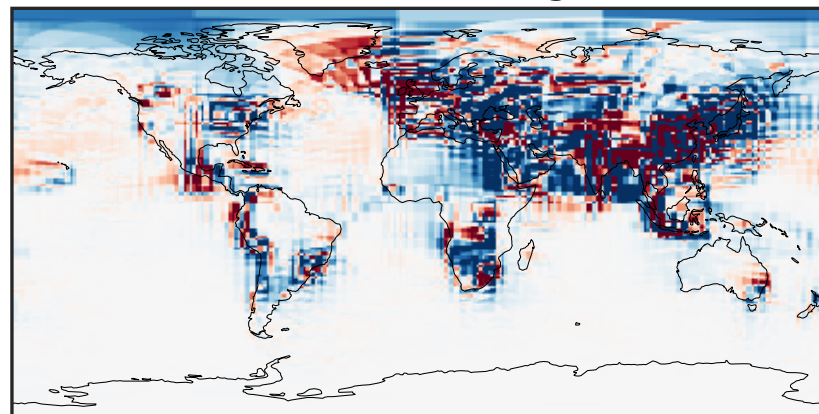
0.00 3.79 7.59 11.38 15.17
 $\mu\text{g}/\text{m}^3$

Difference (1x1.25)
Dev - Ref, Dynamic Range



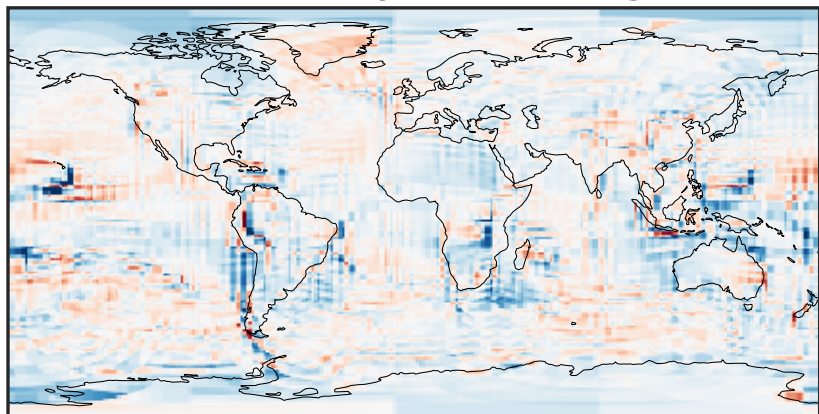
-6.14 -3.07 0.00 3.07 6.14
 $\mu\text{g}/\text{m}^3$

Difference (1x1.25)
Dev - Ref, Restricted Range [5%,95%]



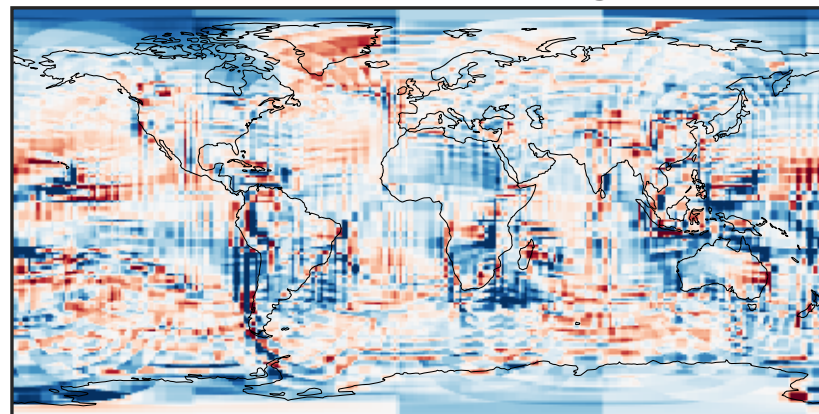
-0.1913 -0.0956 0.0000 0.0956 0.1913
 $\mu\text{g}/\text{m}^3$

Ratio (1x1.25)
Dev/Ref, Dynamic Range



0.207 0.604 1.000 2.910 4.820
unitless

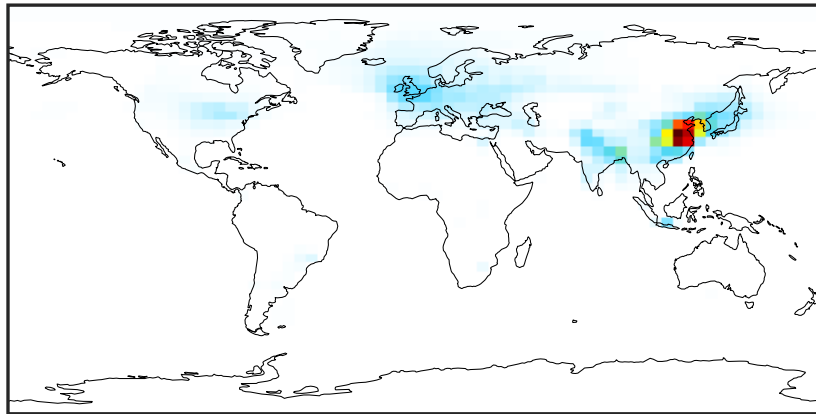
Ratio (1x1.25)
Dev/Ref, Fixed Range



0.50 0.75 1.00 1.50 2.00
unitless

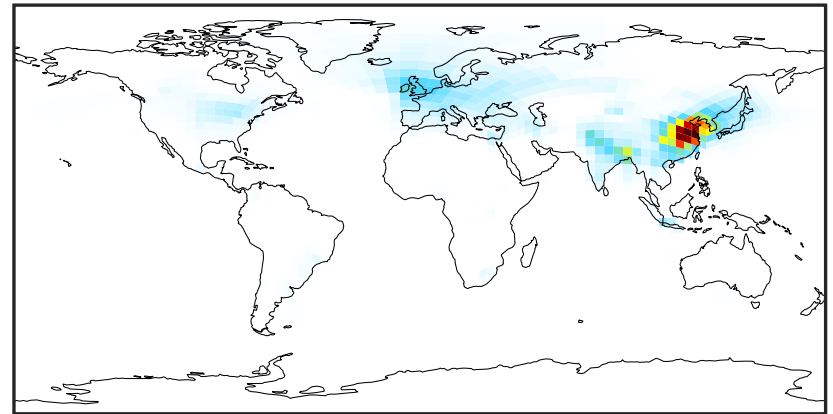
SpeciesConcVV_NIT (Apr2019)

14.3.0-rc.0 (Ref)
4.0x5.0



0.00 7.21 14.43 21.64 28.85
µg/m³

14.3.0-rc.0 (Dev)
c24



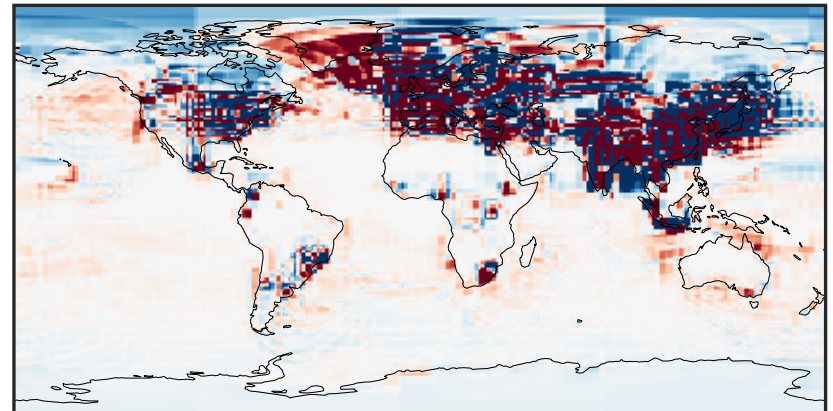
0.00 7.21 14.43 21.64 28.85
µg/m³

Difference (1x1.25)
Dev - Ref, Dynamic Range



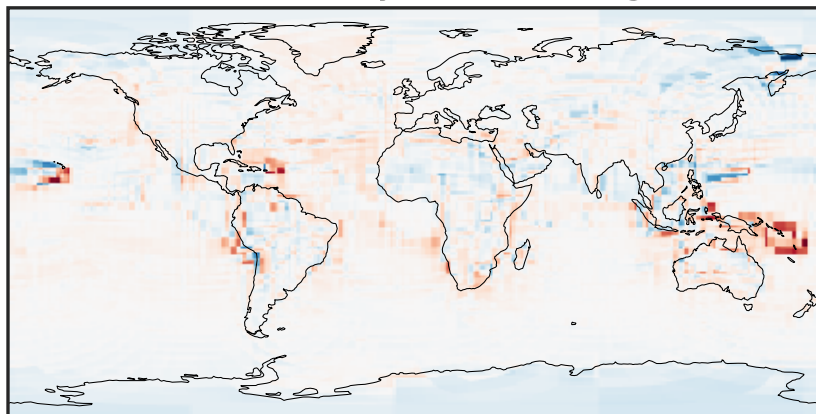
-14.70 -7.35 0.00 7.35 14.70
µg/m³

Difference (1x1.25)
Dev - Ref, Restricted Range [5%,95%]



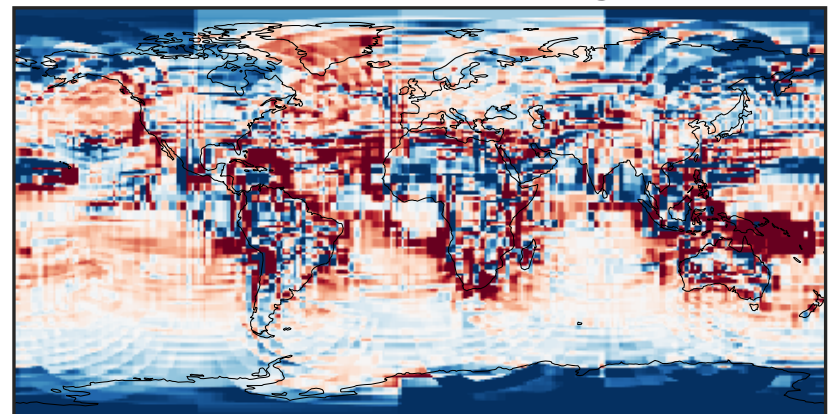
-0.1168 -0.0584 0.0000 0.0584 0.1168
µg/m³

Ratio (1x1.25)
Dev/Ref, Dynamic Range



1e-02 1e-01 1 10 100
unitless

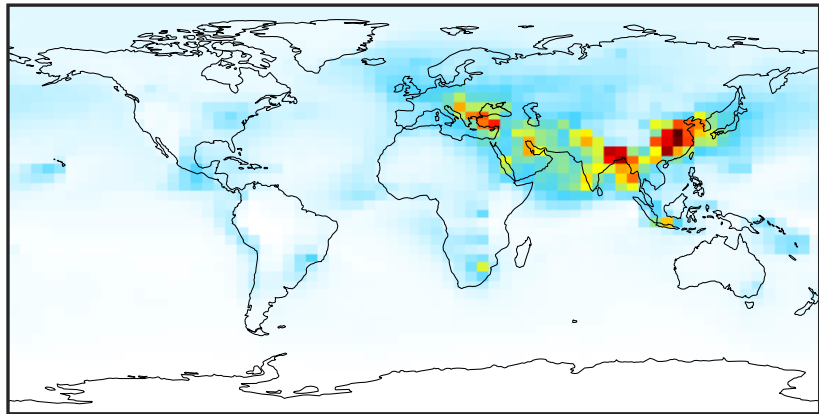
Ratio (1x1.25)
Dev/Ref, Fixed Range



0.50 0.75 1.00 1.50 2.00
unitless

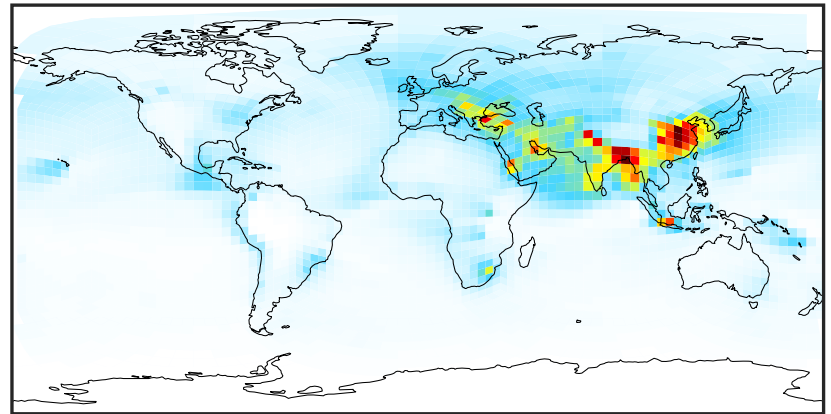
SpeciesConcVV_SO4 (Apr2019)

14.3.0-rc.0 (Ref)
4.0x5.0



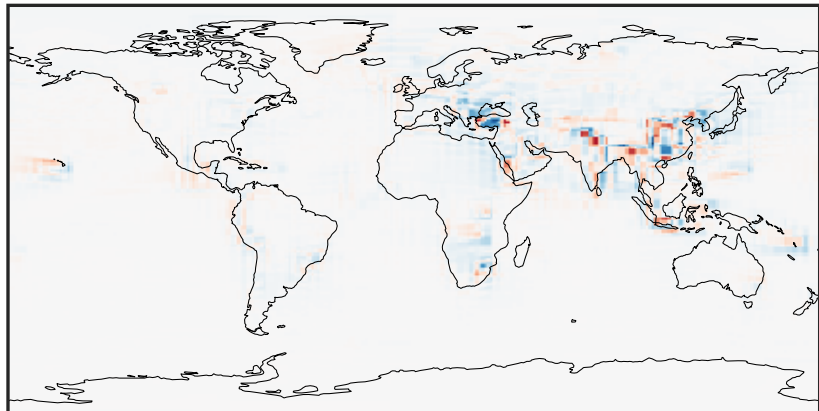
0.06 4.31 8.57 12.82 17.07
 $\mu\text{g}/\text{m}^3$

14.3.0-rc.0 (Dev)
c24



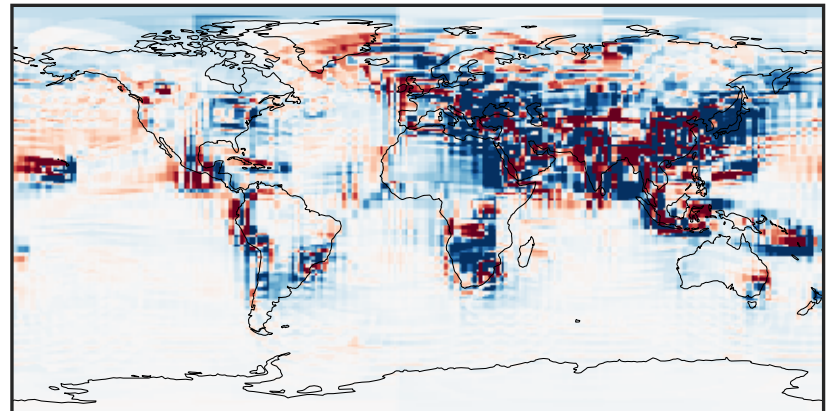
0.06 4.31 8.57 12.82 17.07
 $\mu\text{g}/\text{m}^3$

Difference (1x1.25)
Dev - Ref, Dynamic Range



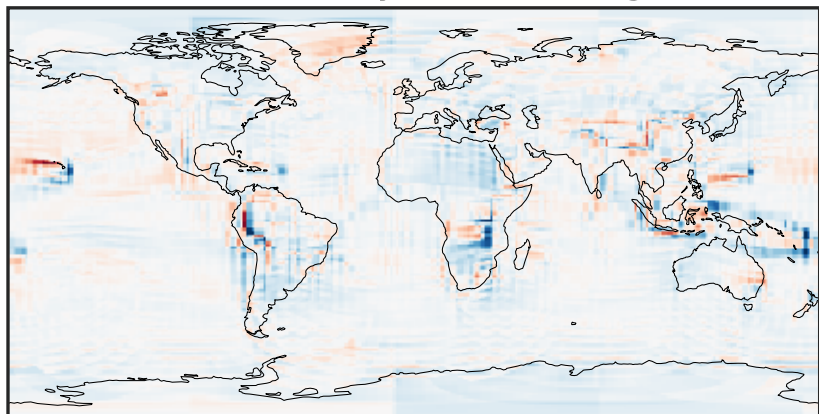
-6.81 -3.41 0.00 3.41 6.81
 $\mu\text{g}/\text{m}^3$

Difference (1x1.25)
Dev - Ref, Restricted Range [5%,95%]



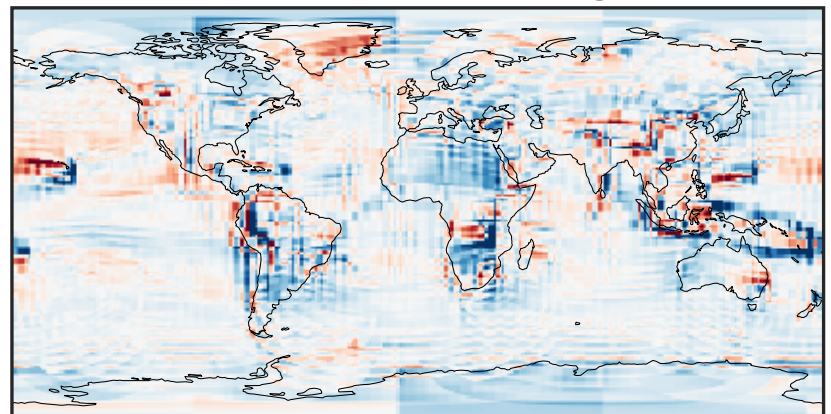
-0.4490 -0.2245 0.0000 0.2245 0.4490
 $\mu\text{g}/\text{m}^3$

Ratio (1x1.25)
Dev/Ref, Dynamic Range



0.205 0.603 1.000 2.933 4.867
unitless

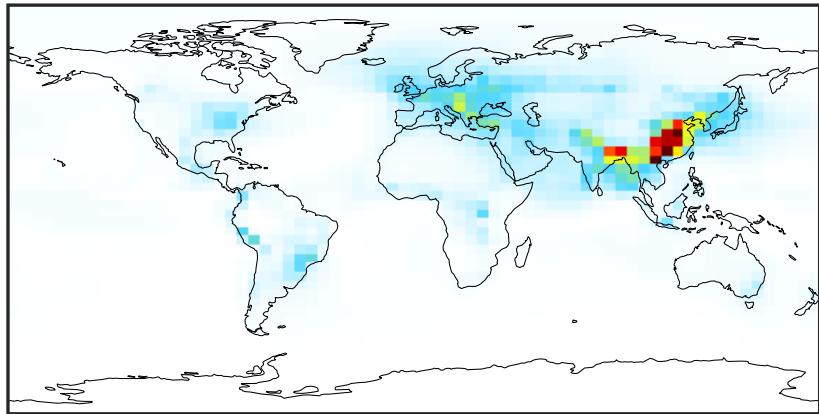
Ratio (1x1.25)
Dev/Ref, Fixed Range



0.50 0.75 1.00 1.50 2.00
unitless

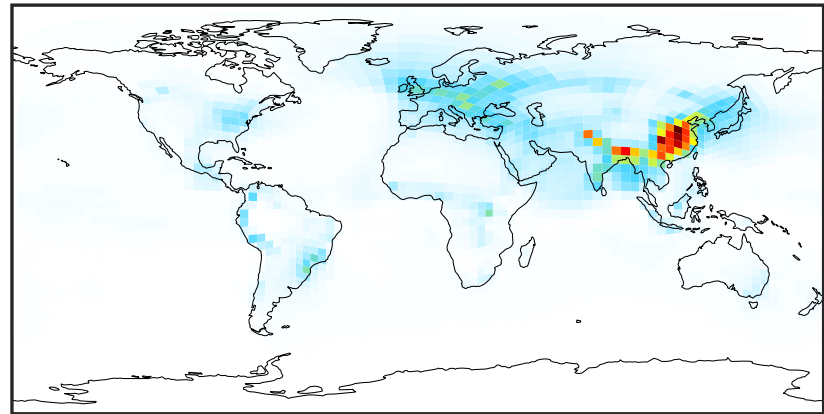
SpeciesConcVV_HMS (Apr2019)

14.3.0-rc.0 (Ref)
4.0x5.0



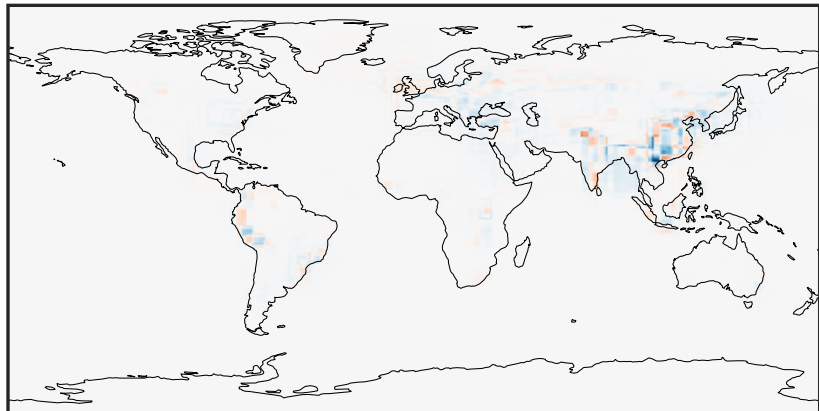
0.002 0.738 1.474 2.211 2.947
 $\mu\text{g}/\text{m}^3$

14.3.0-rc.0 (Dev)
c24



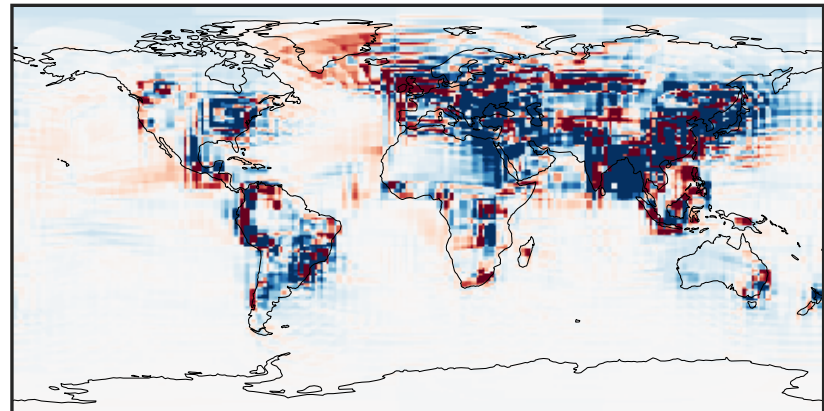
0.002 0.738 1.474 2.211 2.947
 $\mu\text{g}/\text{m}^3$

Difference (1x1.25)
Dev - Ref, Dynamic Range



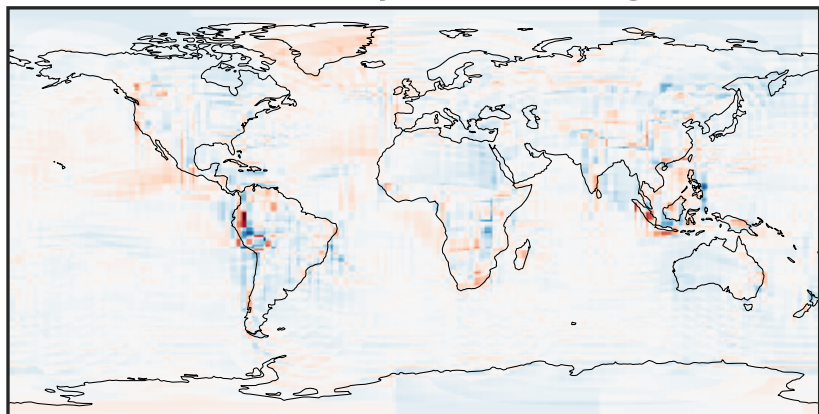
-1.966 -0.983 0.000 0.983 1.966
 $\mu\text{g}/\text{m}^3$

Difference (1x1.25)
Dev - Ref, Restricted Range [5%,95%]



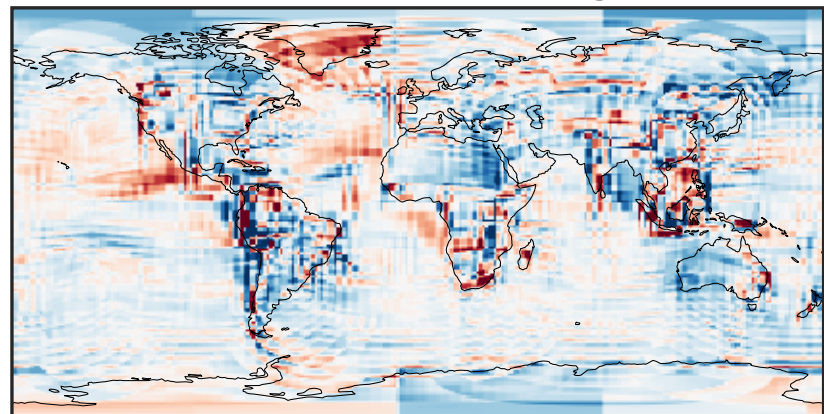
-0.025 0.000 0.025
 $\mu\text{g}/\text{m}^3$

Ratio (1x1.25)
Dev/Ref, Dynamic Range



1e-01 1 10
unitless

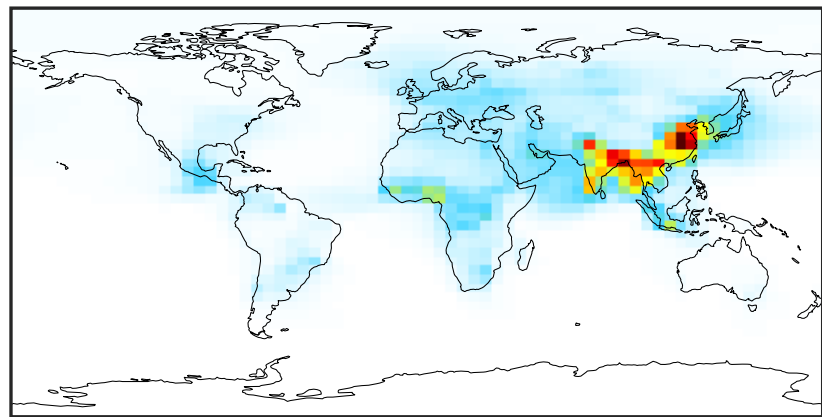
Ratio (1x1.25)
Dev/Ref, Fixed Range



0.50 0.75 1.00 1.50 2.00
unitless

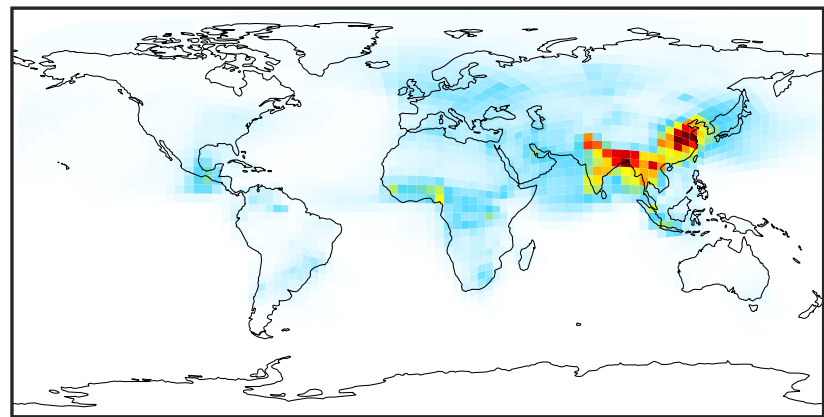
SpeciesConcVV_BCPI (Apr2019)

14.3.0-rc.0 (Ref)
4.0x5.0



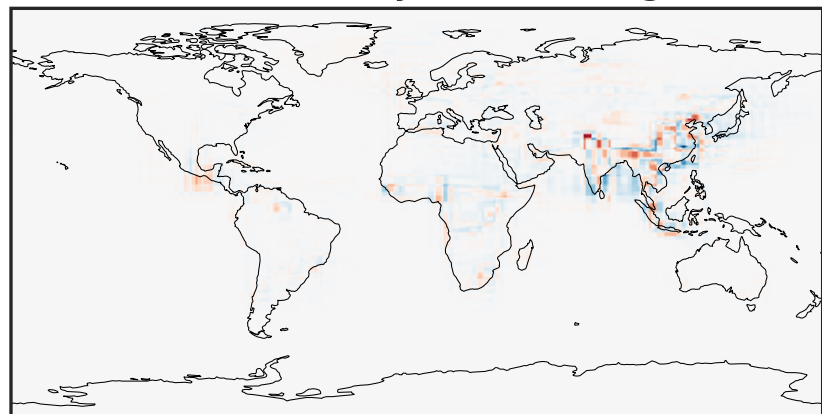
0.000 0.384 0.767 1.151 1.535
 $\mu\text{g}/\text{m}^3$

14.3.0-rc.0 (Dev)
c24



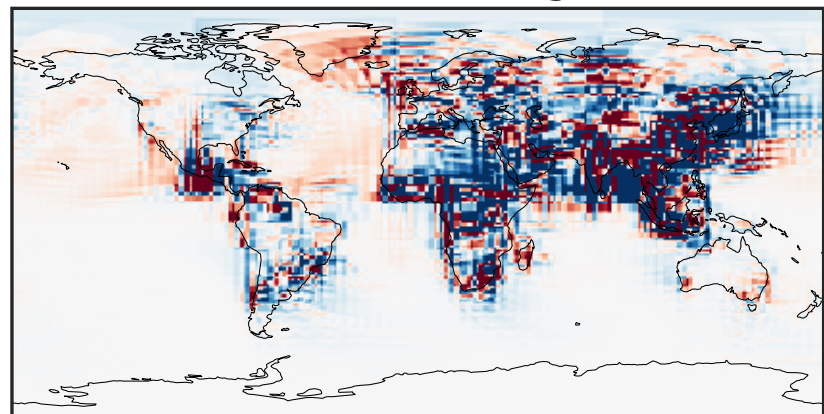
0.000 0.384 0.767 1.151 1.535
 $\mu\text{g}/\text{m}^3$

Difference (1x1.25)
Dev - Ref, Dynamic Range



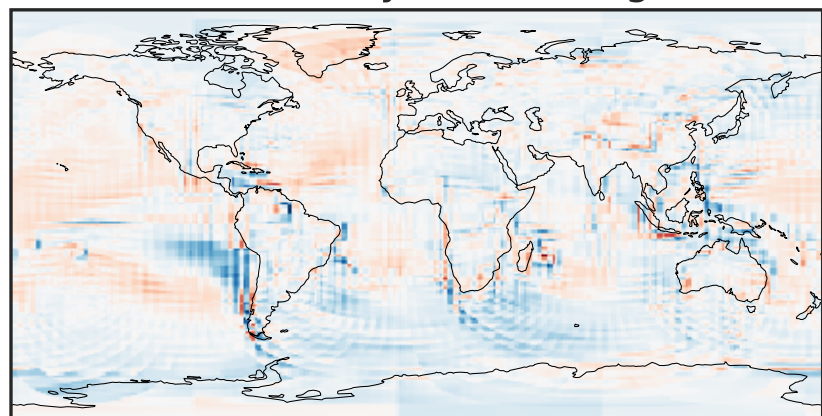
-0.616 -0.308 0.000 0.308 0.616
 $\mu\text{g}/\text{m}^3$

Difference (1x1.25)
Dev - Ref, Restricted Range [5%,95%]



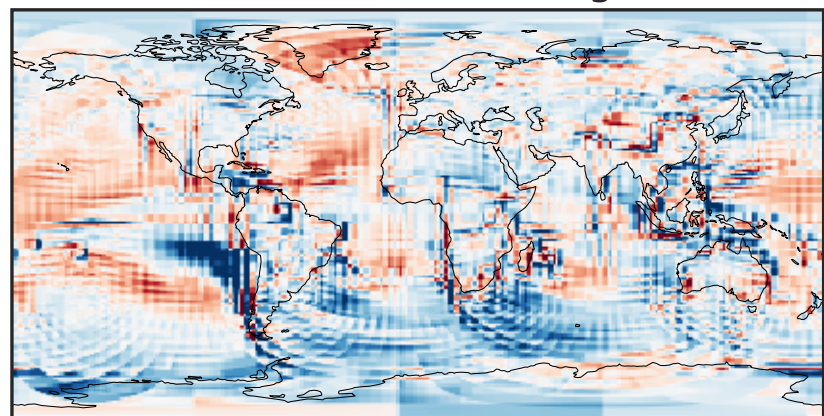
-0.015 0.000 0.015
 $\mu\text{g}/\text{m}^3$

Ratio (1x1.25)
Dev/Ref, Dynamic Range



0.165 0.582 1.000 3.537 6.074
unitless

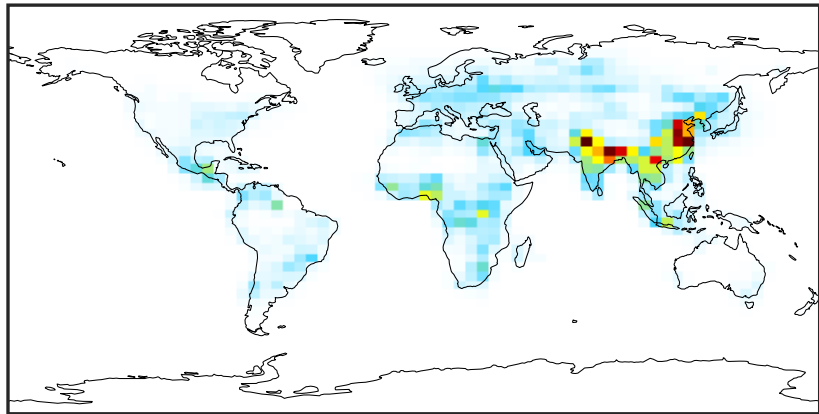
Ratio (1x1.25)
Dev/Ref, Fixed Range



0.50 0.75 1.00 1.50 2.00
unitless

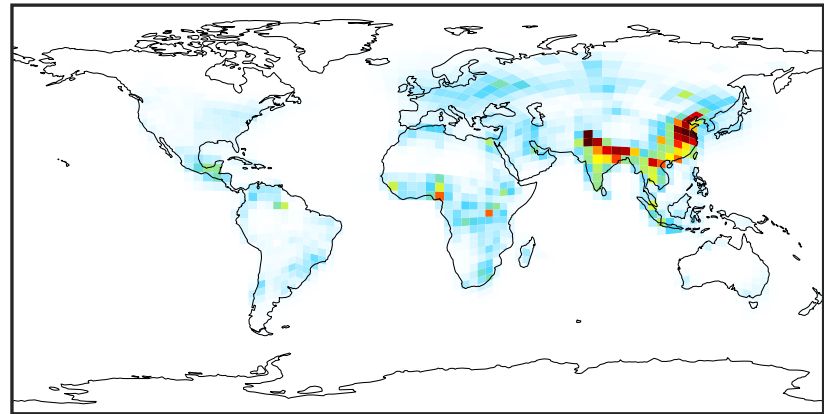
SpeciesConcVV_BCPO (Apr2019)

14.3.0-rc.0 (Ref)
4.0x5.0



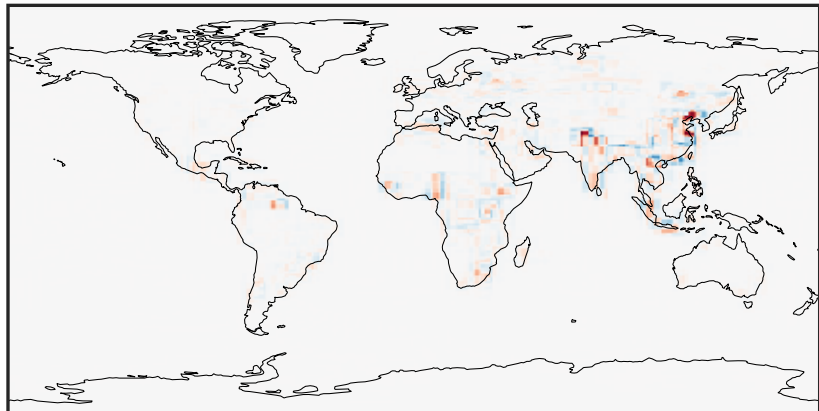
0.000 0.253 0.507 0.760 1.013
 $\mu\text{g}/\text{m}^3$

14.3.0-rc.0 (Dev)
c24



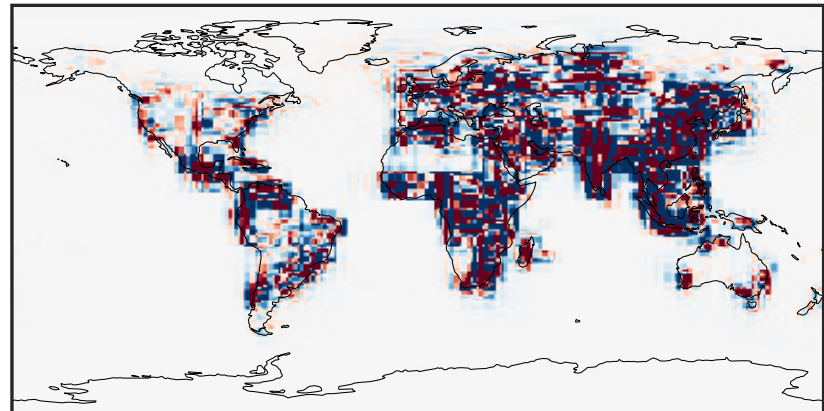
0.000 0.253 0.507 0.760 1.013
 $\mu\text{g}/\text{m}^3$

Difference (1x1.25)
Dev - Ref, Dynamic Range



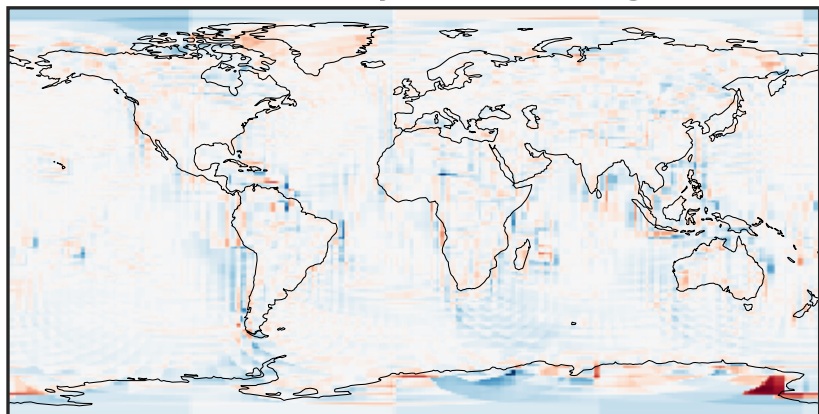
-0.623 -0.312 0.000 0.312 0.623
 $\mu\text{g}/\text{m}^3$

Difference (1x1.25)
Dev - Ref, Restricted Range [5%,95%]



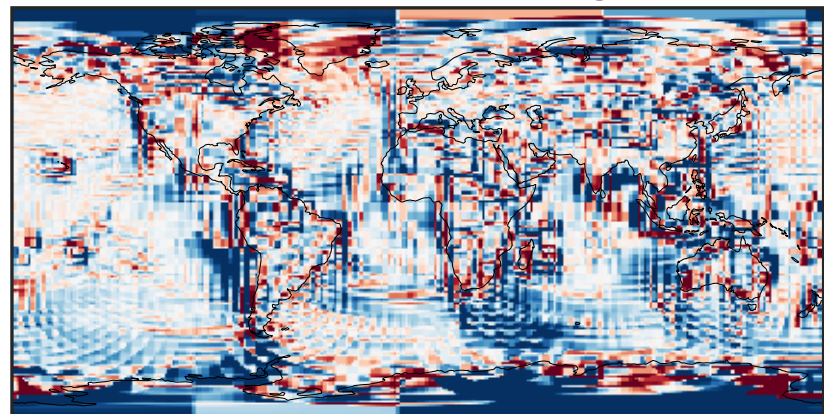
-0.008 0.000 0.008
 $\mu\text{g}/\text{m}^3$

Ratio (1x1.25)
Dev/Ref, Dynamic Range



1e-02 1e-01 1 10 100
unitless

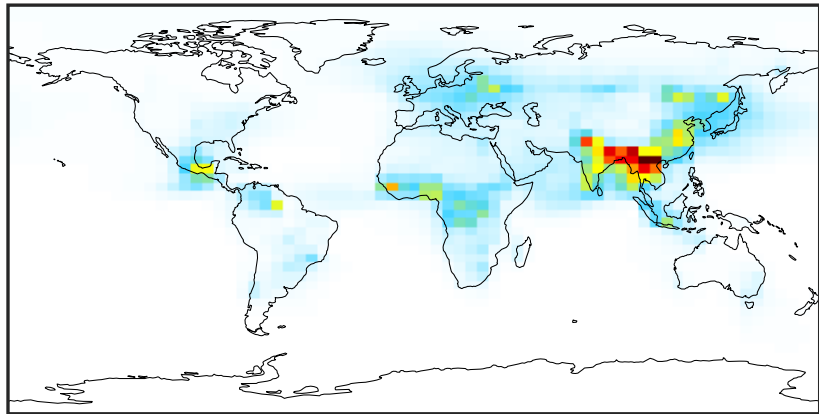
Ratio (1x1.25)
Dev/Ref, Fixed Range



0.50 0.75 1.00 1.50 2.00
unitless

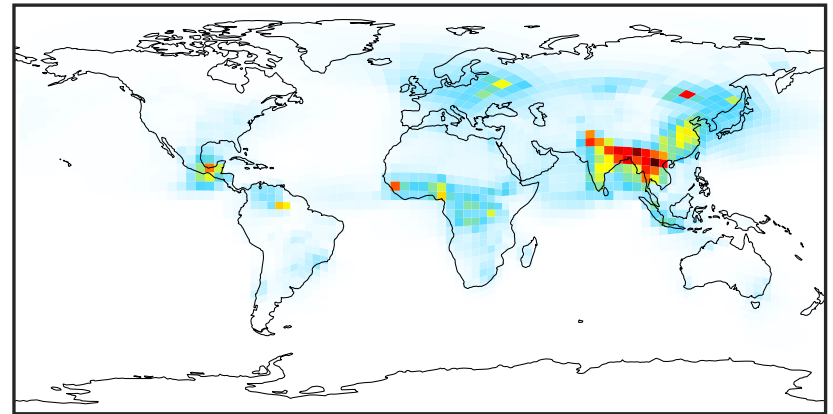
SpeciesConcVV_OCPI (Apr2019)

14.3.0-rc.0 (Ref)
4.0x5.0



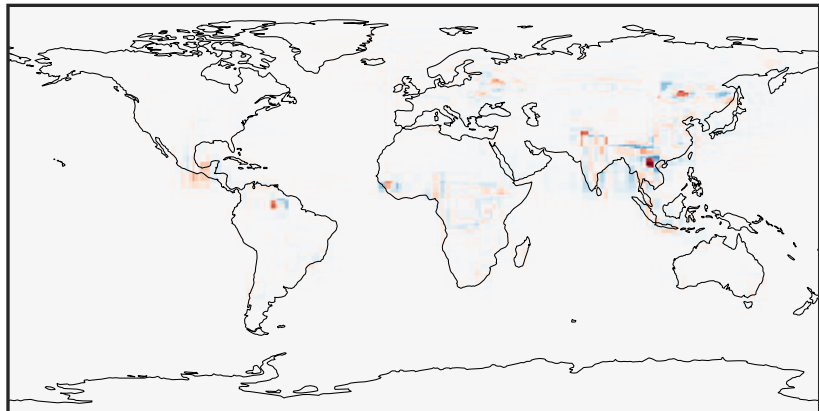
0.00 1.53 3.06 4.59 6.12
 $\mu\text{g}/\text{m}^3$

14.3.0-rc.0 (Dev)
c24



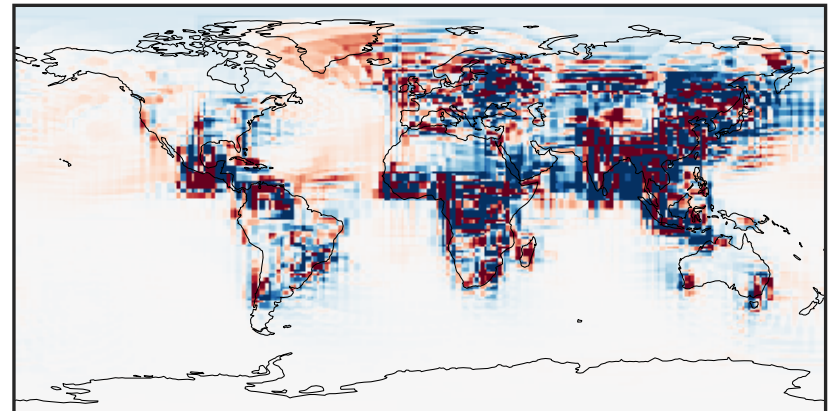
0.00 1.53 3.06 4.59 6.12
 $\mu\text{g}/\text{m}^3$

Difference (1x1.25)
Dev - Ref, Dynamic Range



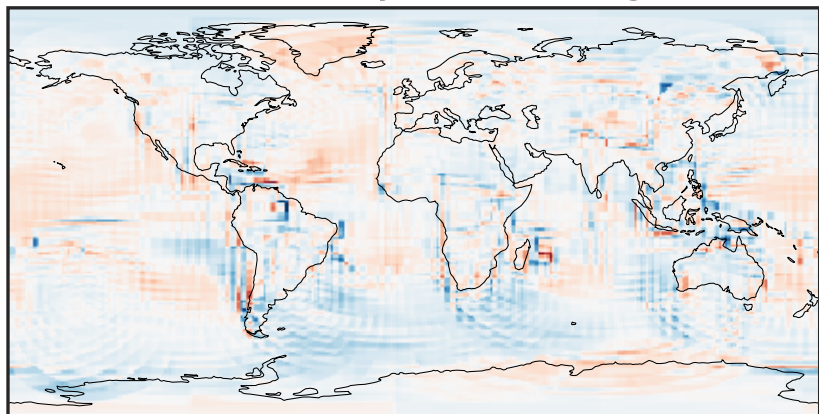
-3.641 -1.821 0.000 1.821 3.641
 $\mu\text{g}/\text{m}^3$

Difference (1x1.25)
Dev - Ref, Restricted Range [5%,95%]



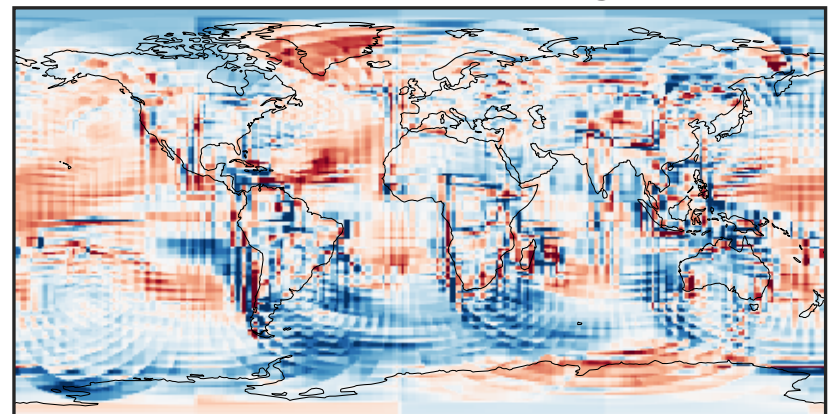
-0.0884 -0.0442 0.0000 0.0442 0.0884
 $\mu\text{g}/\text{m}^3$

Ratio (1x1.25)
Dev/Ref, Dynamic Range



0.128 0.564 1.000 4.407 7.813
unitless

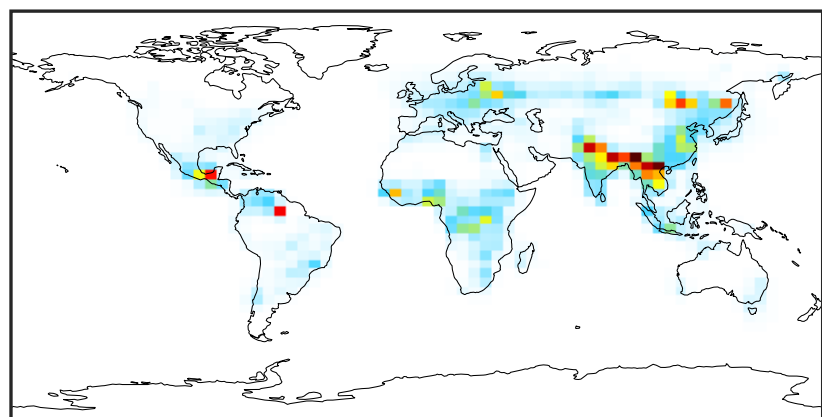
Ratio (1x1.25)
Dev/Ref, Fixed Range



0.50 0.75 1.00 1.50 2.00
unitless

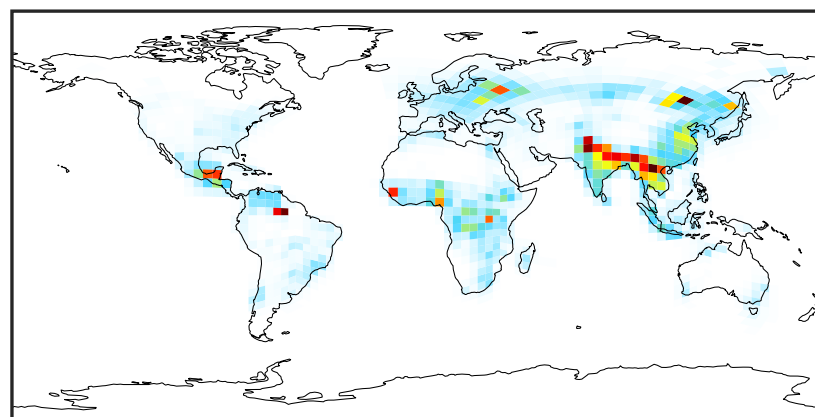
SpeciesConcVV_OCPO (Apr2019)

14.3.0-rc.0 (Ref)
4.0x5.0



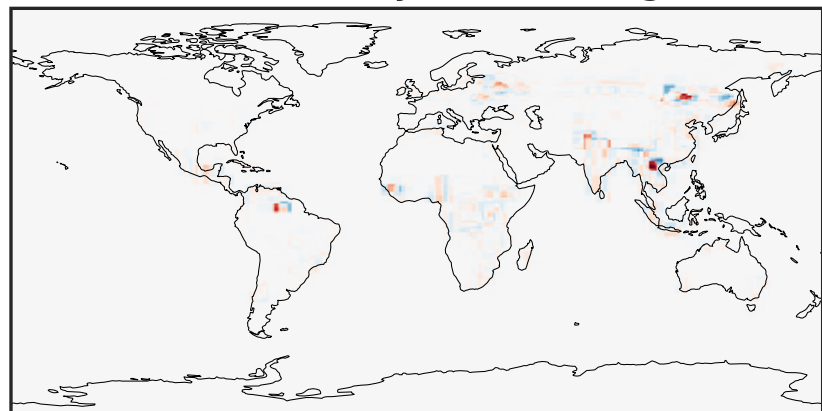
0.000 0.572 1.144 1.716 2.288
 $\mu\text{g}/\text{m}^3$

14.3.0-rc.0 (Dev)
c24



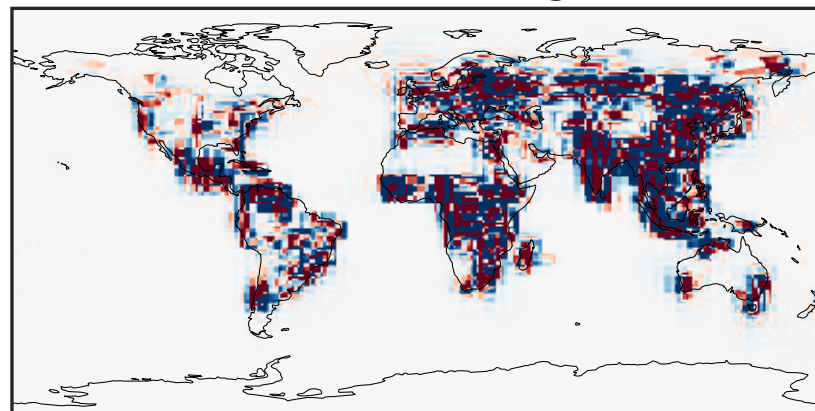
0.000 0.572 1.144 1.716 2.288
 $\mu\text{g}/\text{m}^3$

Difference (1x1.25)
Dev - Ref, Dynamic Range



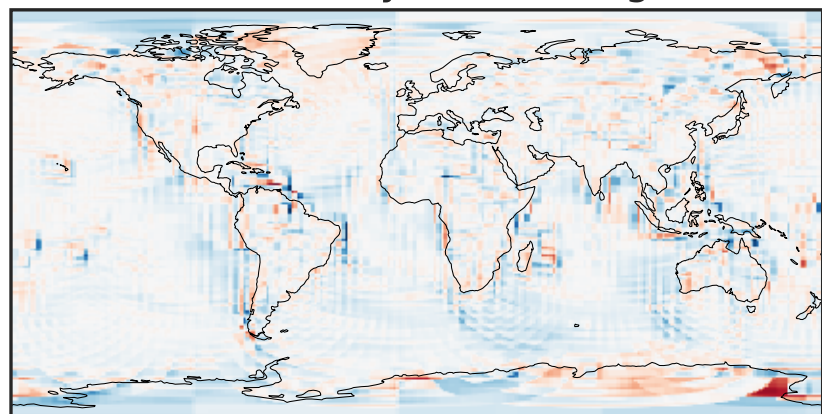
-2.010 -1.005 0.000 1.005 2.010
 $\mu\text{g}/\text{m}^3$

Difference (1x1.25)
Dev - Ref, Restricted Range [5%,95%]



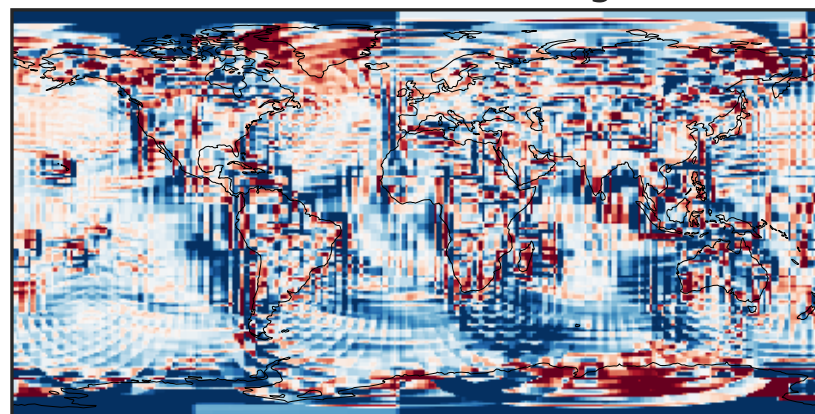
-0.015 0.000 0.015
 $\mu\text{g}/\text{m}^3$

Ratio (1x1.25)
Dev/Ref, Dynamic Range



1e-01 1 10
unitless

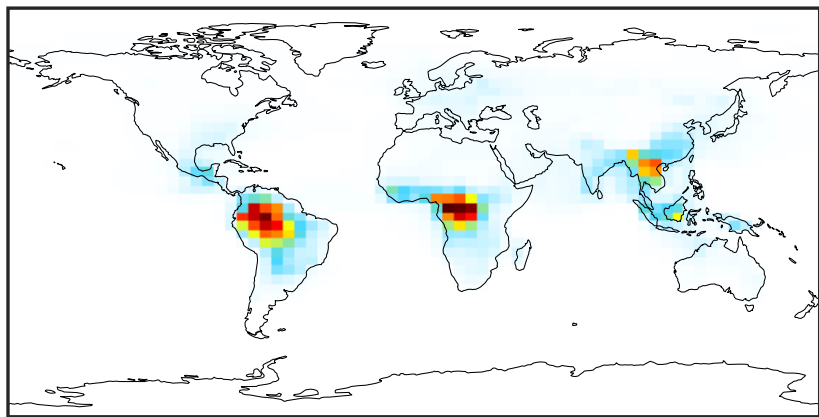
Ratio (1x1.25)
Dev/Ref, Fixed Range



0.50 0.75 1.00 1.50 2.00
unitless

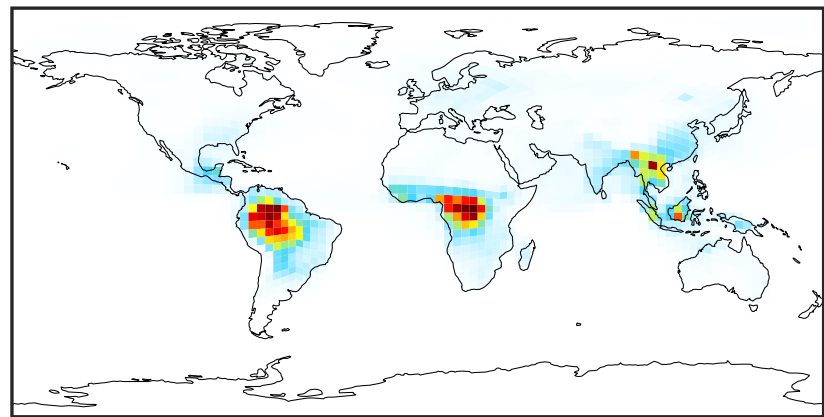
SpeciesConcVV_Complex_SOA (Apr2019)

14.3.0-rc.0 (Ref)
4.0x5.0



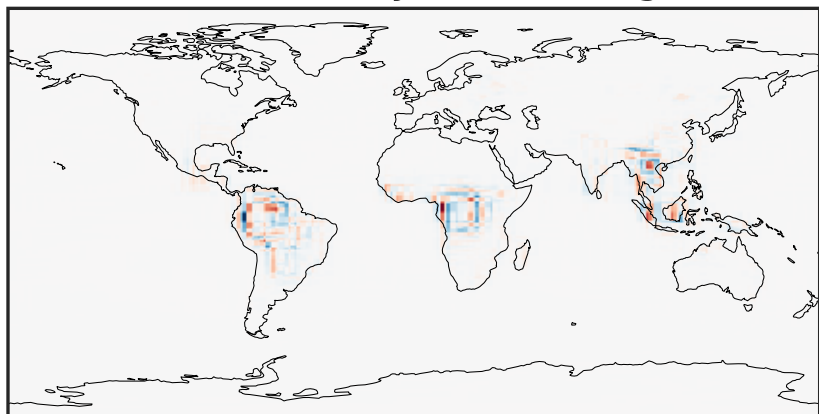
0.000 1.465 2.930 4.394 5.859
µg/m3

14.3.0-rc.0 (Dev)
c24



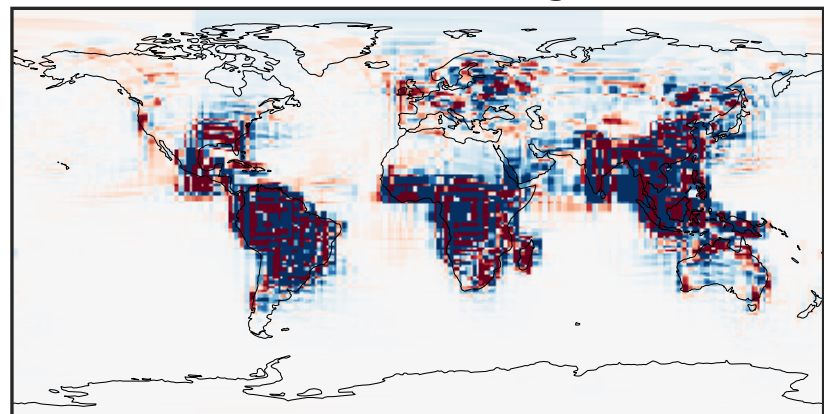
0.000 1.465 2.930 4.394 5.859
µg/m3

Difference (1x1.25)
Dev - Ref, Dynamic Range



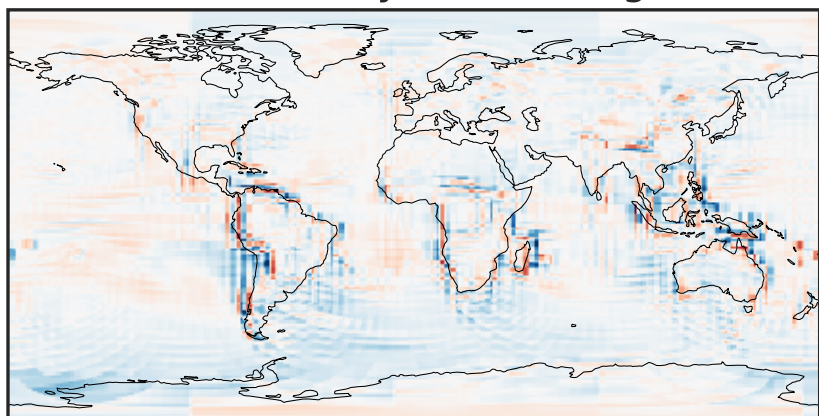
-2.623 -1.312 0.000 1.312 2.623
µg/m3

Difference (1x1.25)
Dev - Ref, Restricted Range [5%,95%]



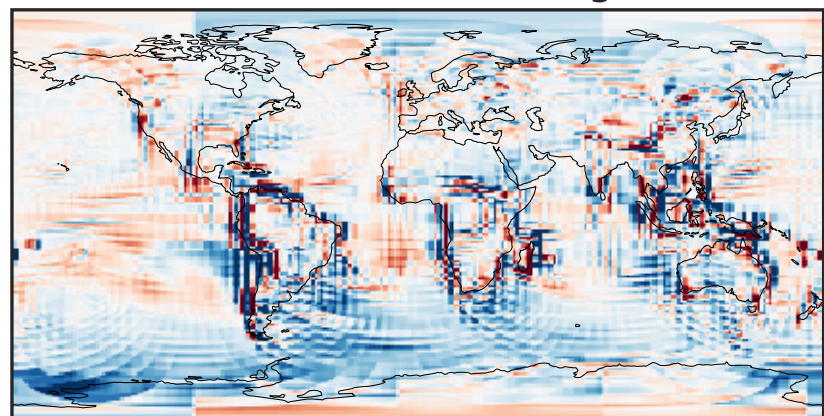
-0.02 0.00 0.02
µg/m3

Ratio (1x1.25)
Dev/Ref, Dynamic Range



0.143 0.572 1.000 3.996 6.993
unitless

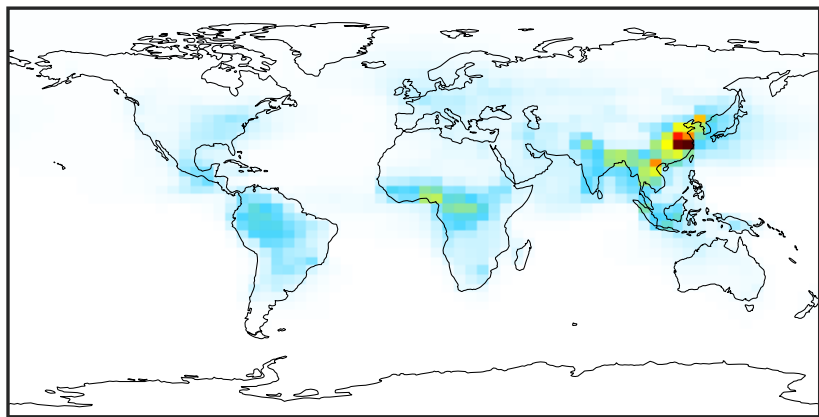
Ratio (1x1.25)
Dev/Ref, Fixed Range



0.50 0.75 1.00 1.50 2.00
unitless

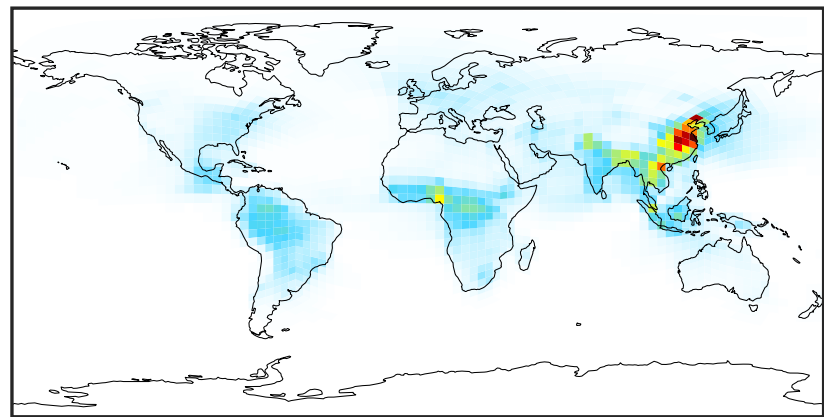
SpeciesConcVV_Simple_SOA (Apr2019)

14.3.0-rc.0 (Ref)
4.0x5.0



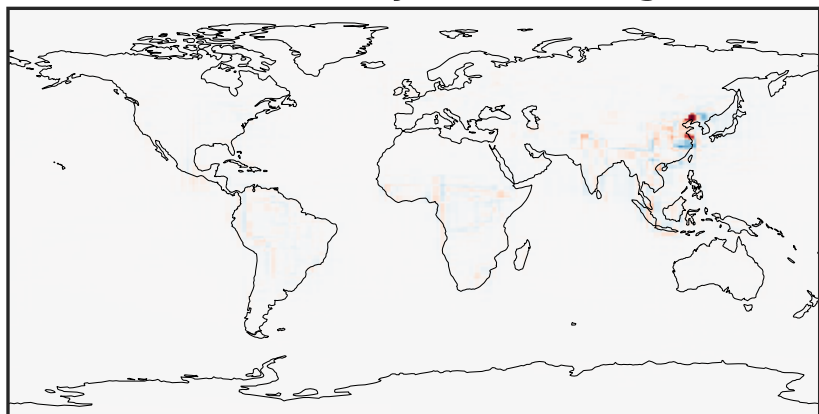
0.00 6.10 12.19 18.28 24.37
 $\mu\text{g}/\text{m}^3$

14.3.0-rc.0 (Dev)
c24



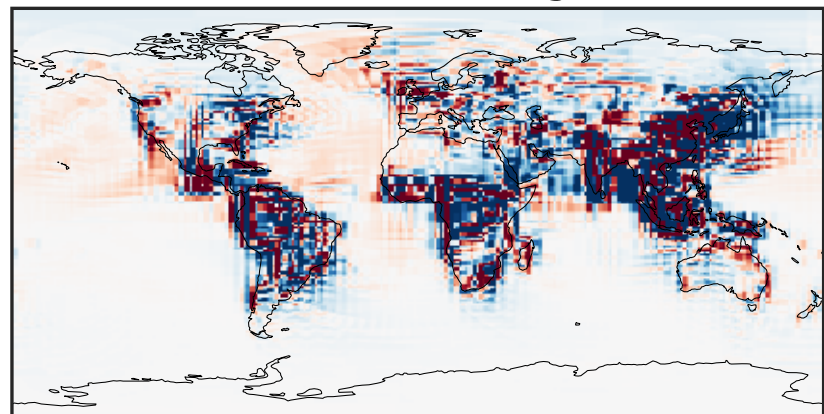
0.00 6.10 12.19 18.28 24.37
 $\mu\text{g}/\text{m}^3$

Difference (1x1.25)
Dev - Ref, Dynamic Range



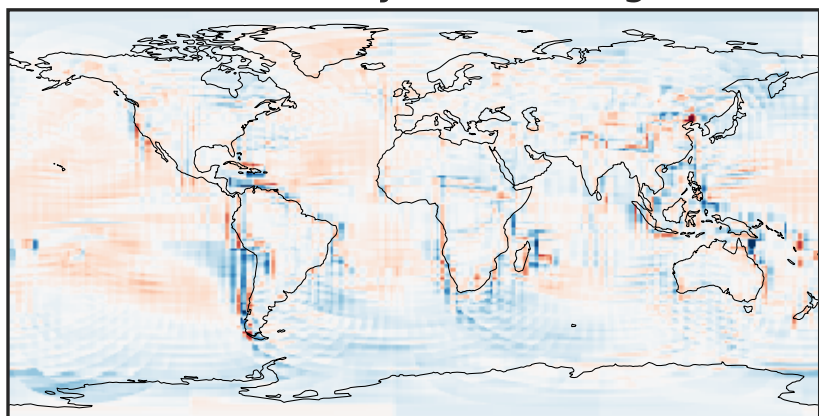
-17.72 -8.86 0.00 8.86 17.72
 $\mu\text{g}/\text{m}^3$

Difference (1x1.25)
Dev - Ref, Restricted Range [5%,95%]



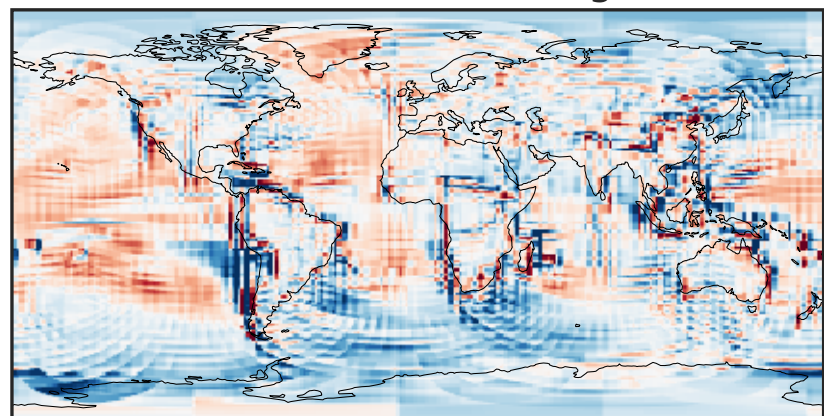
-0.2715 -0.1358 0.0000 0.1358 0.2715
 $\mu\text{g}/\text{m}^3$

Ratio (1x1.25)
Dev/Ref, Dynamic Range



0.173 0.586 1.000 3.393 5.786
unitless

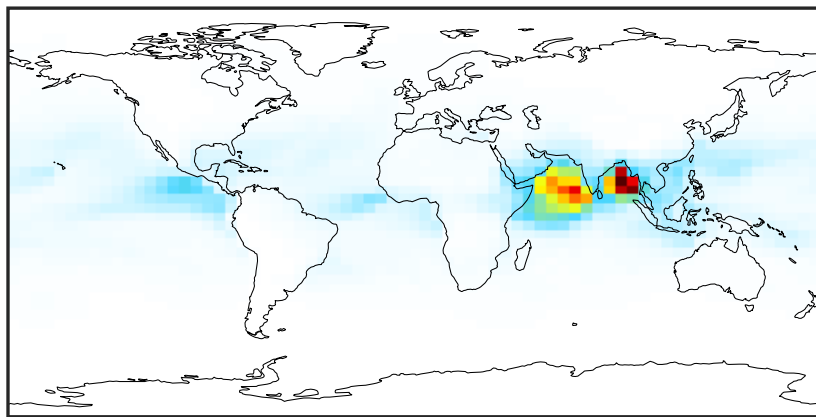
Ratio (1x1.25)
Dev/Ref, Fixed Range



0.50 0.75 1.00 1.50 2.00
unitless

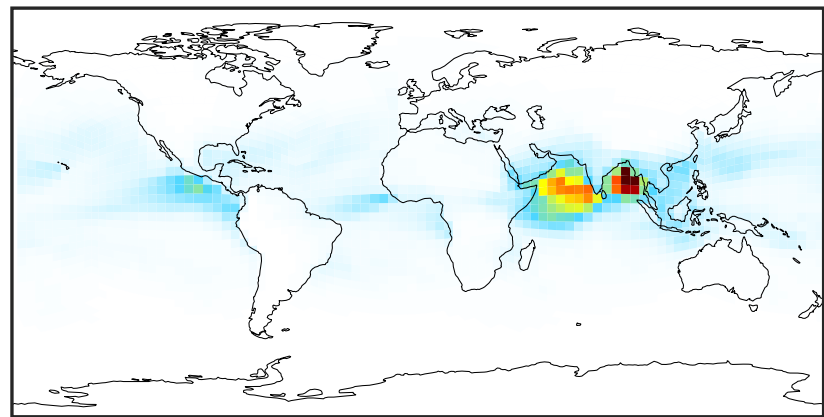
SpeciesConcVV_AERI (Apr2019)

14.3.0-rc.0 (Ref)
4.0x5.0



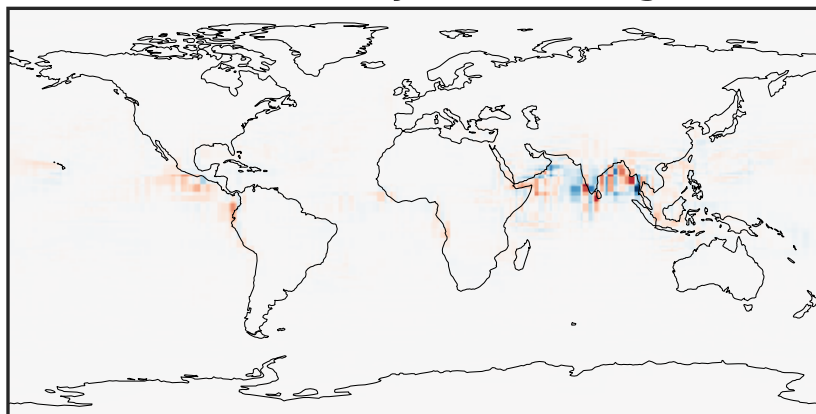
0.0002 0.0465 0.0929 0.1392 0.1856
µg/m³

14.3.0-rc.0 (Dev)
c24



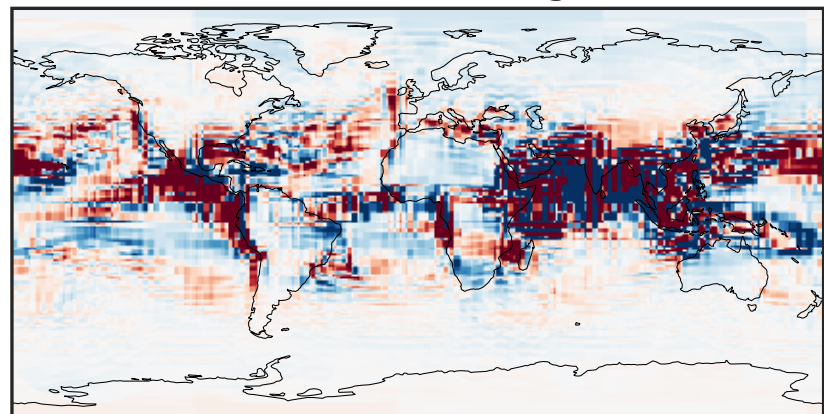
0.0002 0.0465 0.0929 0.1392 0.1856
µg/m³

Difference (1x1.25)
Dev - Ref, Dynamic Range



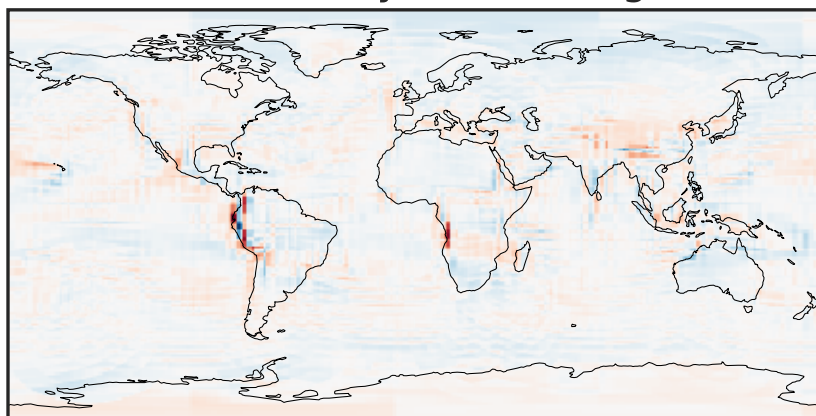
-0.0516 -0.0258 0.0000 0.0258 0.0516
µg/m³

Difference (1x1.25)
Dev - Ref, Restricted Range [5%,95%]



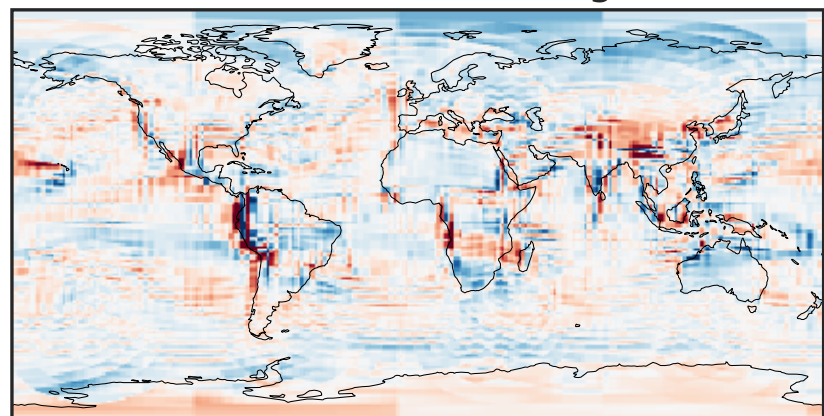
-0.0006 0.0000 0.0006
µg/m³

Ratio (1x1.25)
Dev/Ref, Dynamic Range



0.122 0.561 1.000 4.582 8.165
unitless

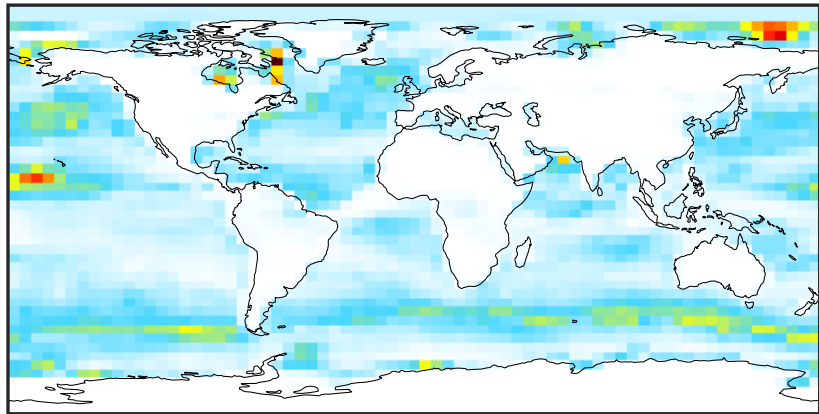
Ratio (1x1.25)
Dev/Ref, Fixed Range



0.50 0.75 1.00 1.50 2.00
unitless

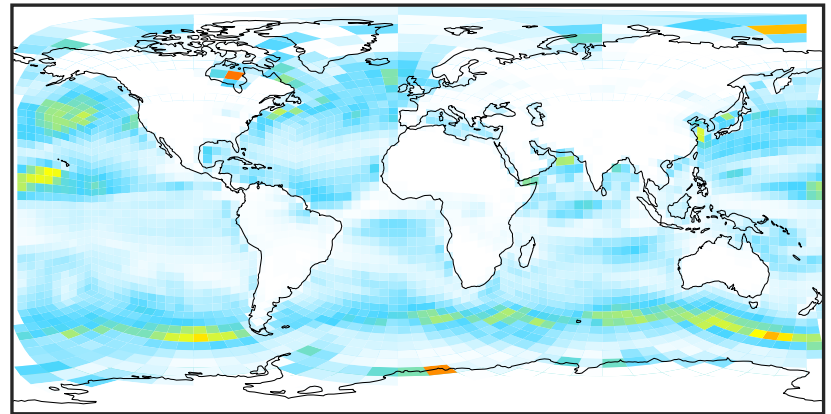
SpeciesConcVV_BrSALA (Apr2019)

14.3.0-rc.0 (Ref)
4.0x5.0



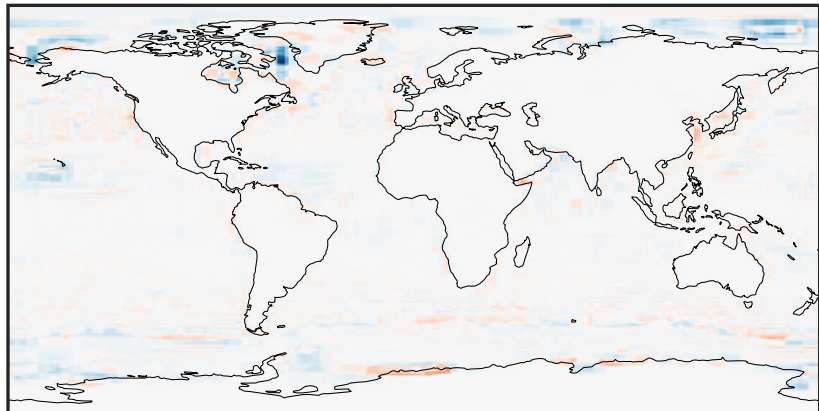
0.002 0.004 0.006
 $\mu\text{g}/\text{m}^3$

14.3.0-rc.0 (Dev)
c24



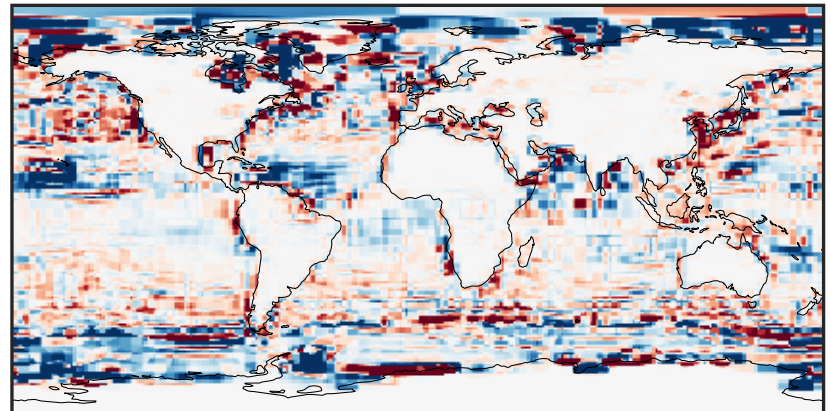
0.002 0.004 0.006
 $\mu\text{g}/\text{m}^3$

Difference (1x1.25)
Dev - Ref, Dynamic Range



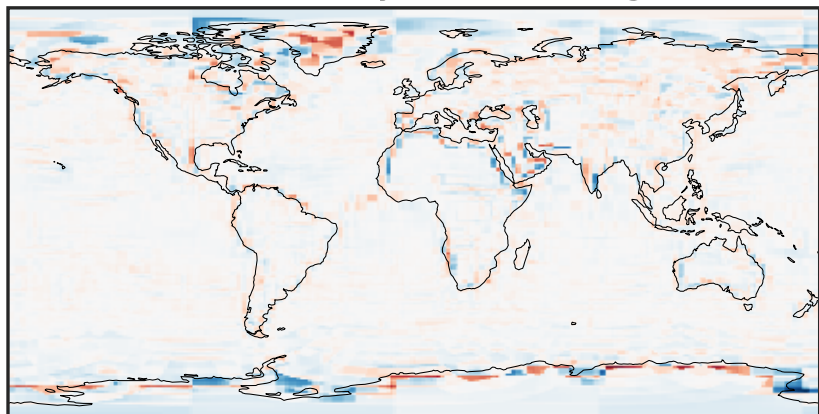
-0.003 0.000 0.003
 $\mu\text{g}/\text{m}^3$

Difference (1x1.25)
Dev - Ref, Restricted Range [5%,95%]



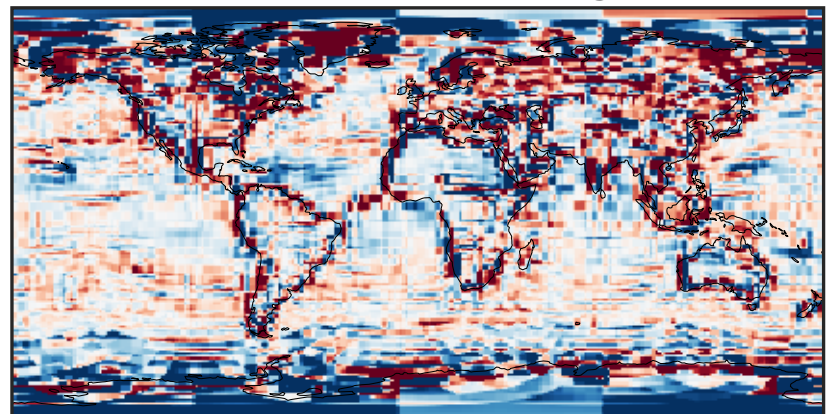
-0.00025 0.00000 0.00025
 $\mu\text{g}/\text{m}^3$

Ratio (1x1.25)
Dev/Ref, Dynamic Range



1e-03 1e-02 1e-01 1 10 100 1000
unitless

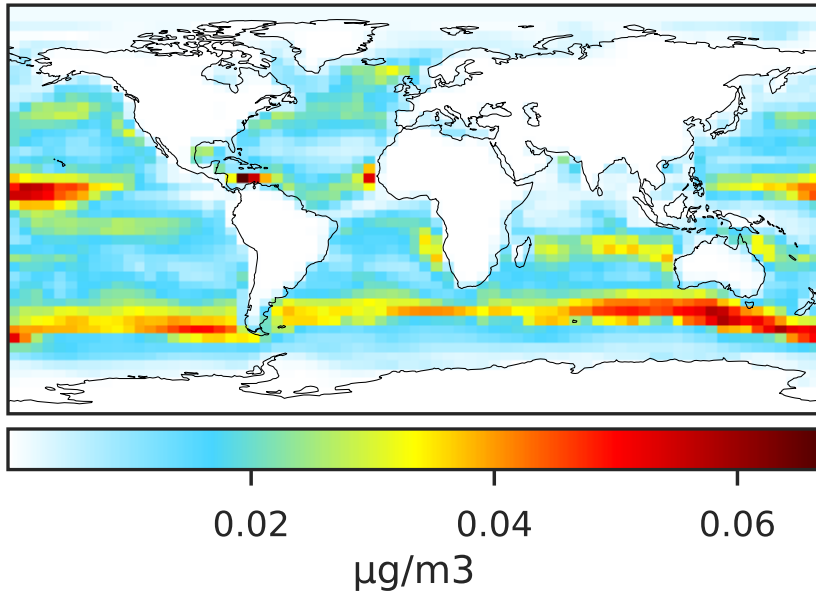
Ratio (1x1.25)
Dev/Ref, Fixed Range



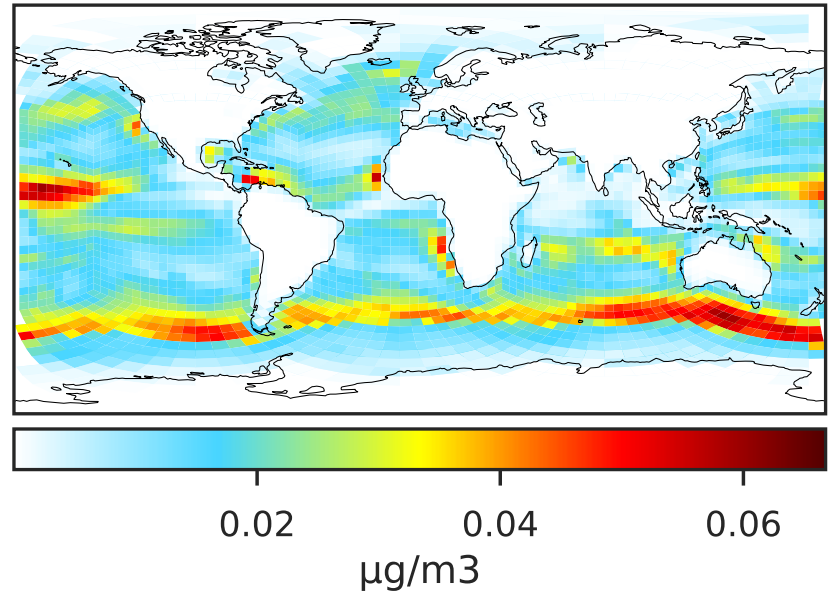
0.50 0.75 1.00 1.50 2.00
unitless

SpeciesConcVV_BrSALC (Apr2019)

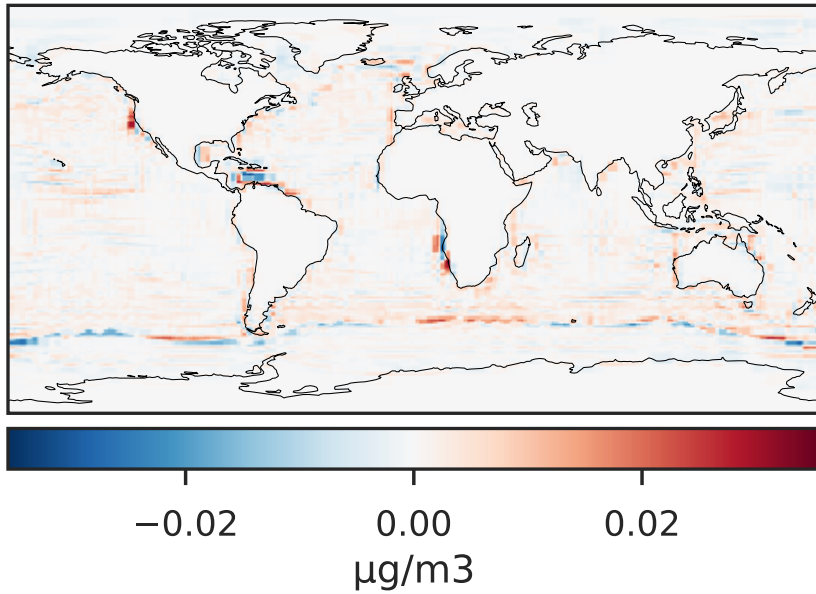
14.3.0-rc.0 (Ref)
4.0x5.0



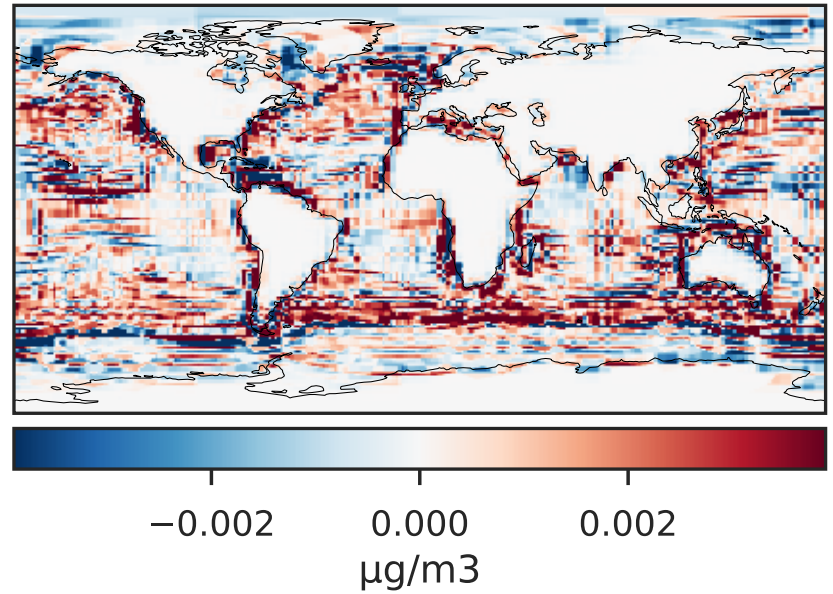
14.3.0-rc.0 (Dev)
c24



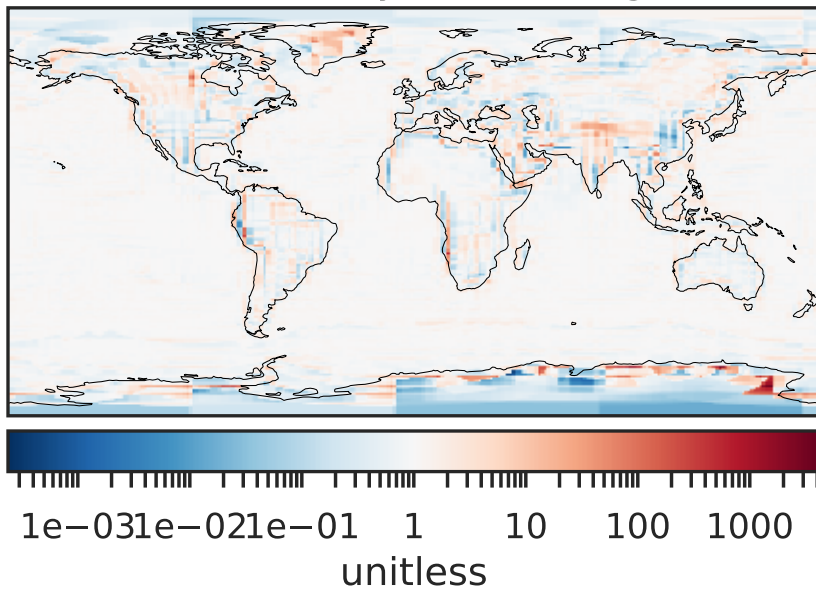
Difference (1x1.25)
Dev - Ref, Dynamic Range



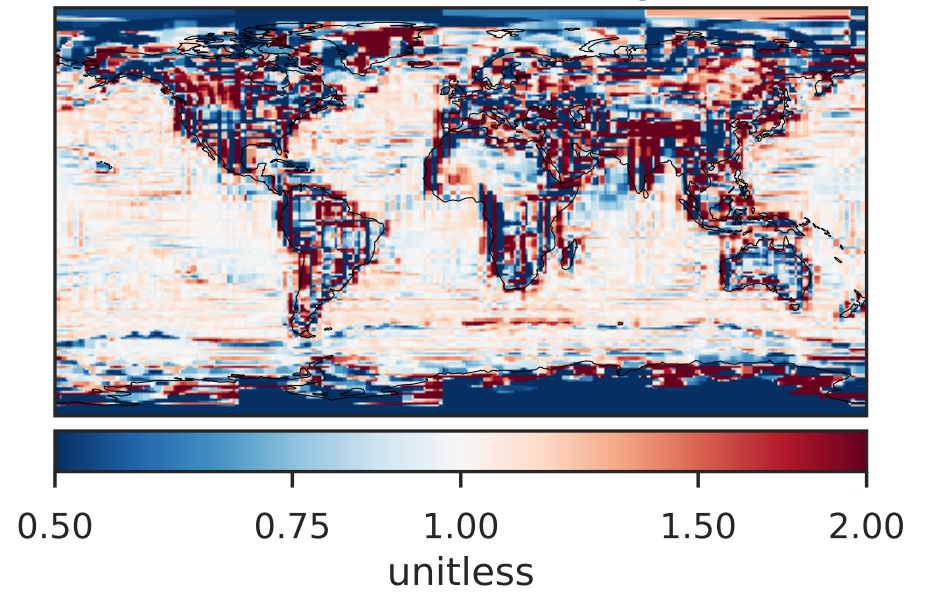
Difference (1x1.25)
Dev - Ref, Restricted Range [5%,95%]



Ratio (1x1.25)
Dev/Ref, Dynamic Range

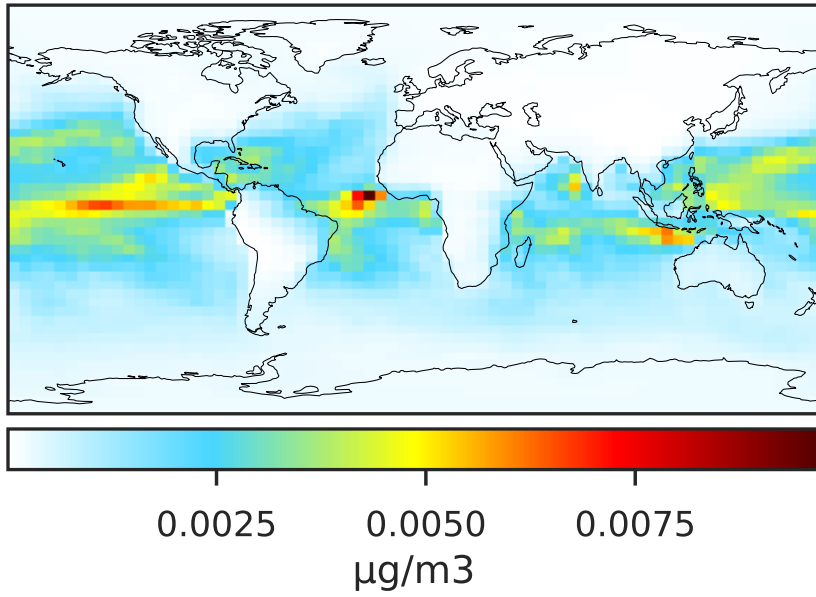


Ratio (1x1.25)
Dev/Ref, Fixed Range

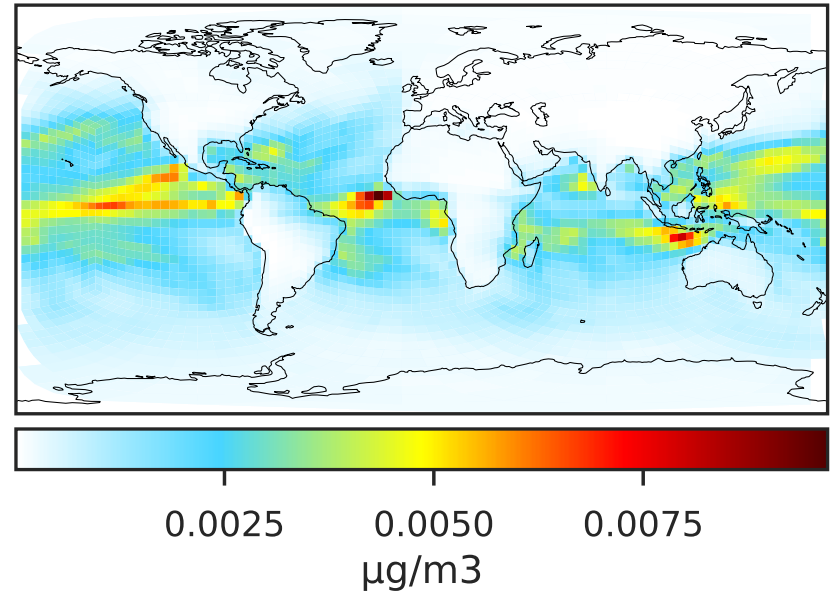


SpeciesConcVV_ISALA (Apr2019)

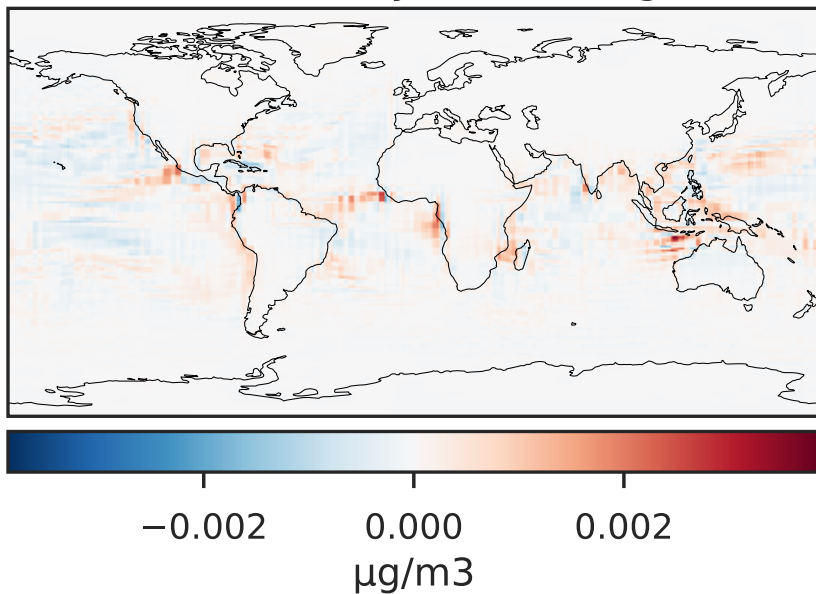
14.3.0-rc.0 (Ref)
4.0x5.0



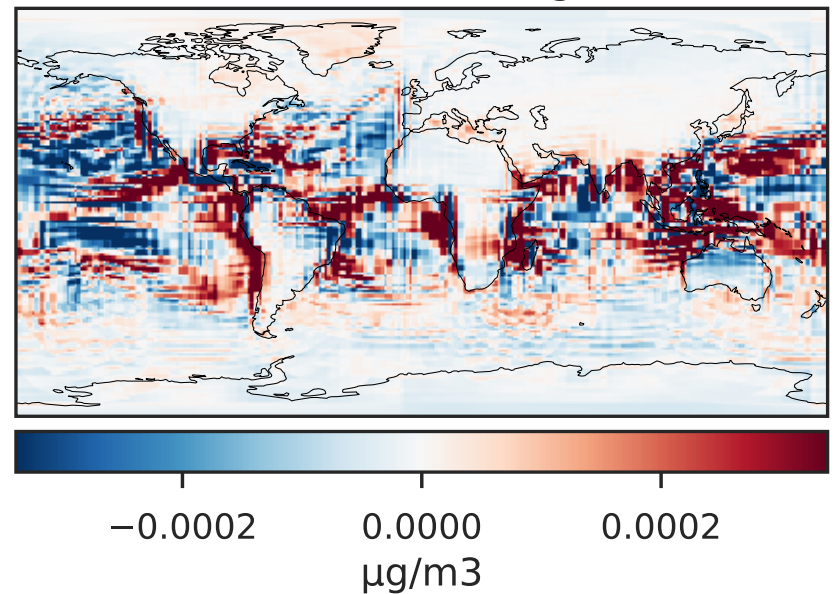
14.3.0-rc.0 (Dev)
c24



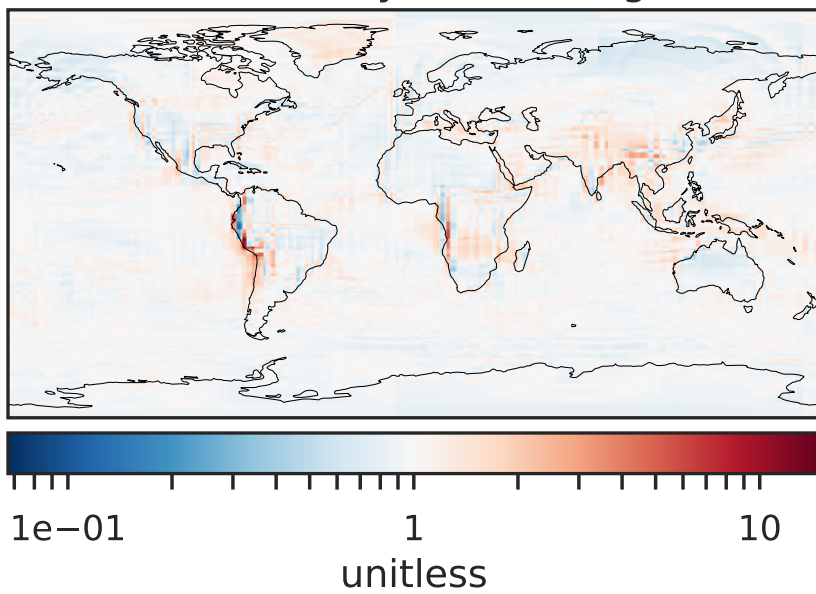
Difference (1x1.25)
Dev - Ref, Dynamic Range



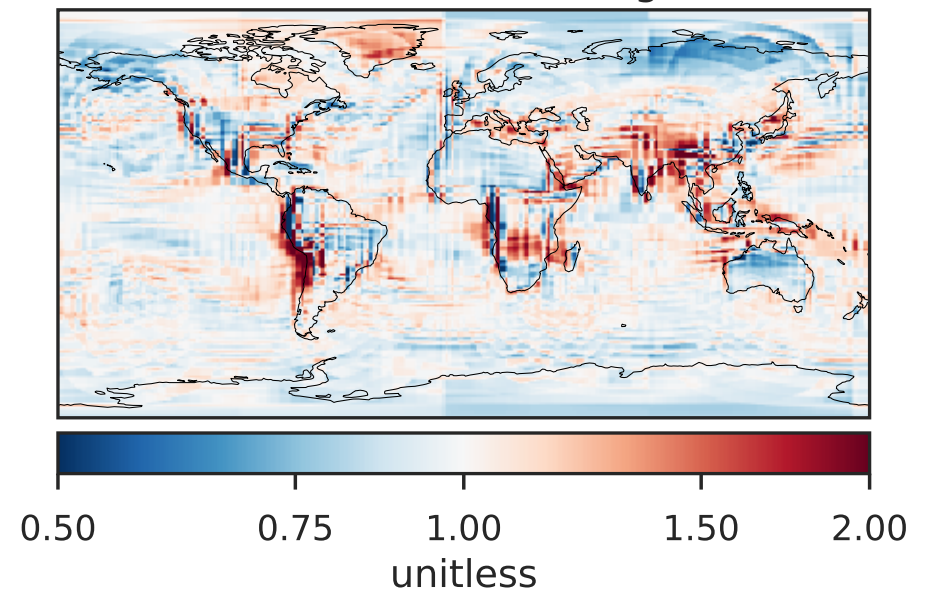
Difference (1x1.25)
Dev - Ref, Restricted Range [5%,95%]



Ratio (1x1.25)
Dev/Ref, Dynamic Range

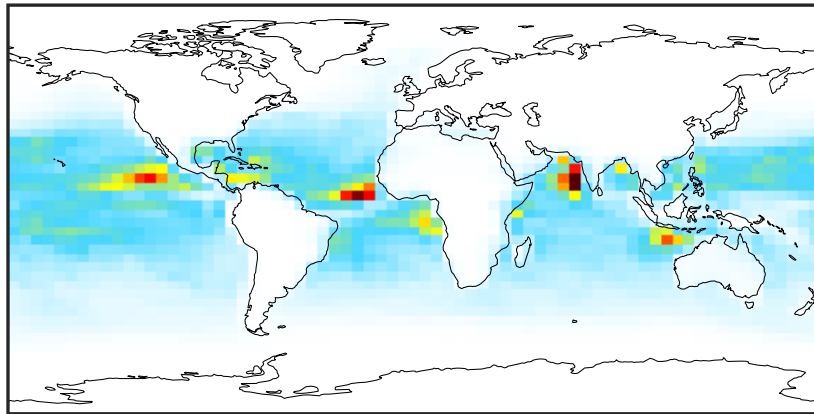


Ratio (1x1.25)
Dev/Ref, Fixed Range



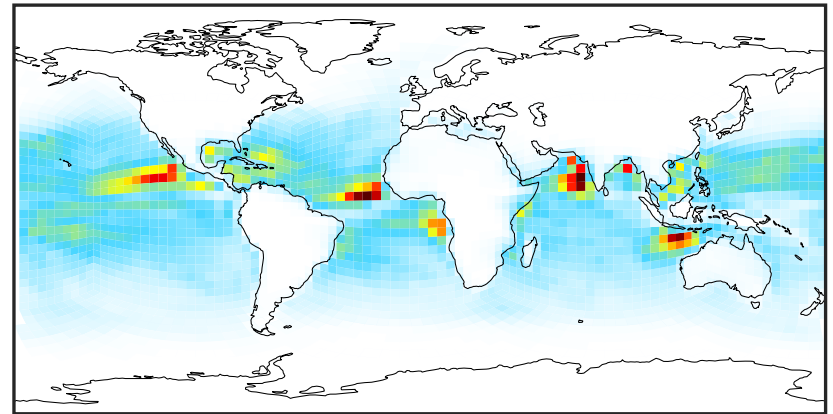
SpeciesConcVV_ISALC (Apr2019)

14.3.0-rc.0 (Ref)
4.0x5.0



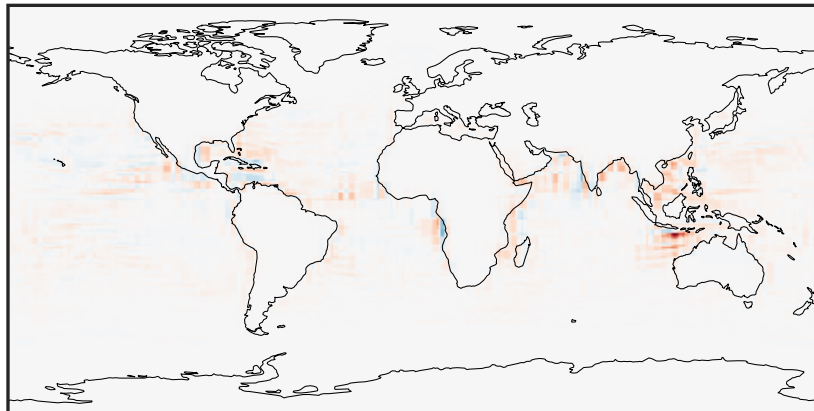
0.0025 0.0050 0.0075
 $\mu\text{g}/\text{m}^3$

14.3.0-rc.0 (Dev)
c24



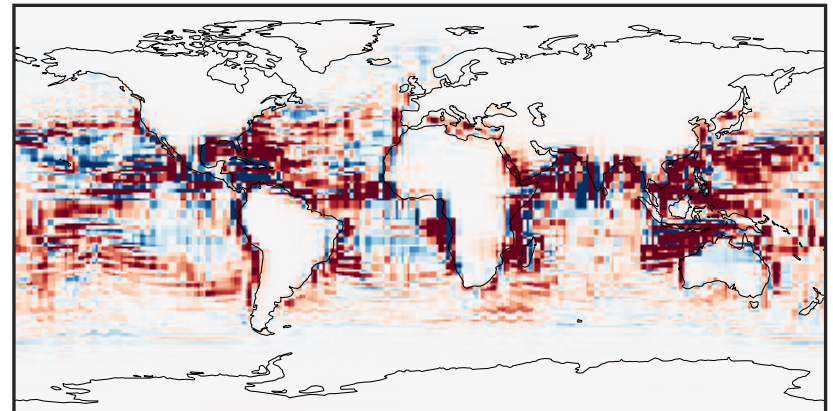
0.0025 0.0050 0.0075
 $\mu\text{g}/\text{m}^3$

Difference (1x1.25)
Dev - Ref, Dynamic Range



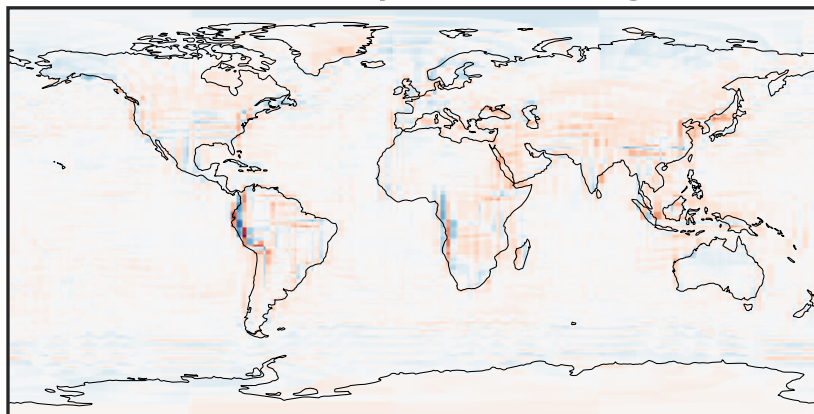
-0.004 0.000 0.004
 $\mu\text{g}/\text{m}^3$

Difference (1x1.25)
Dev - Ref, Restricted Range [5%,95%]



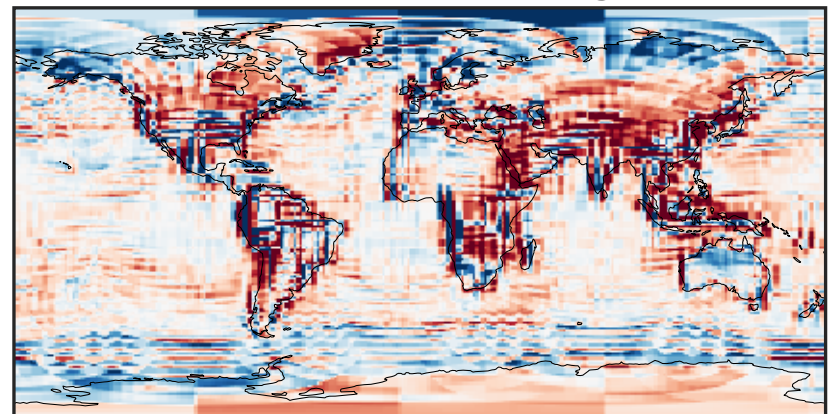
-0.0002 0.0000 0.0002
 $\mu\text{g}/\text{m}^3$

Ratio (1x1.25)
Dev/Ref, Dynamic Range



1e-02 1e-01 1 10 100
unitless

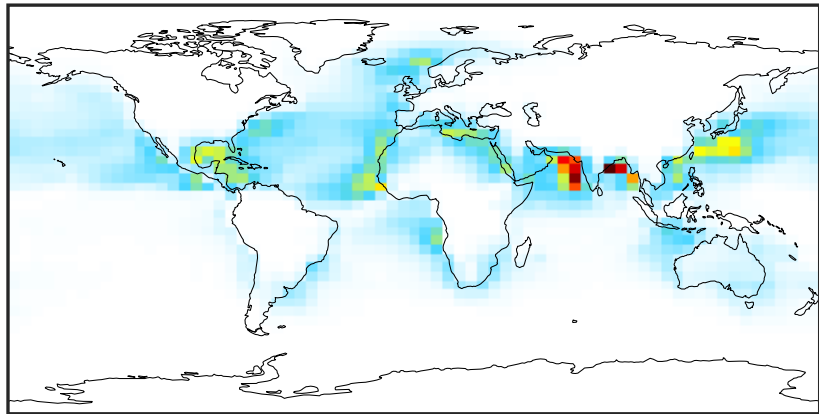
Ratio (1x1.25)
Dev/Ref, Fixed Range



0.50 0.75 1.00 1.50 2.00
unitless

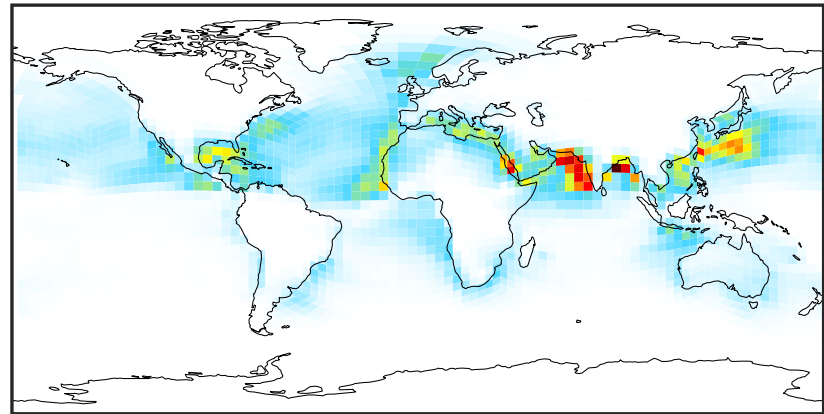
SpeciesConcVV_NITs (Apr2019)

14.3.0-rc.0 (Ref)
4.0x5.0



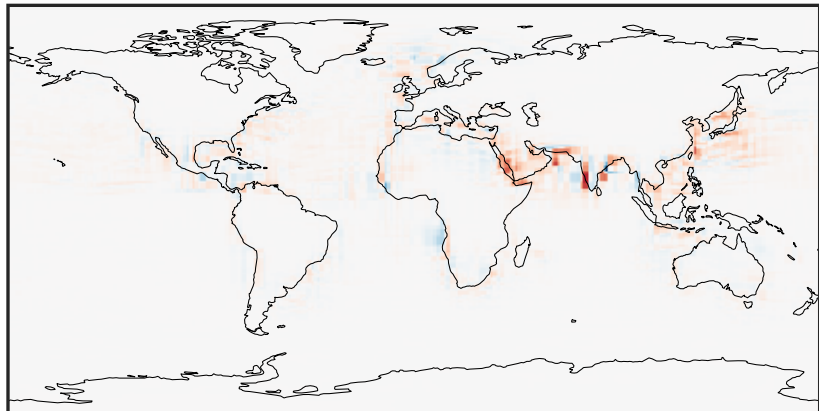
0.0000 0.1532 0.3063 0.4595 0.6126
 $\mu\text{g}/\text{m}^3$

14.3.0-rc.0 (Dev)
c24



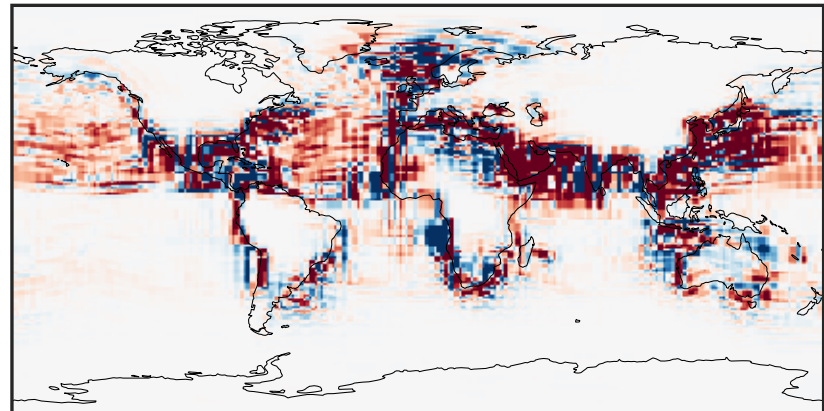
0.0000 0.1532 0.3063 0.4595 0.6126
 $\mu\text{g}/\text{m}^3$

Difference (1x1.25)
Dev - Ref, Dynamic Range



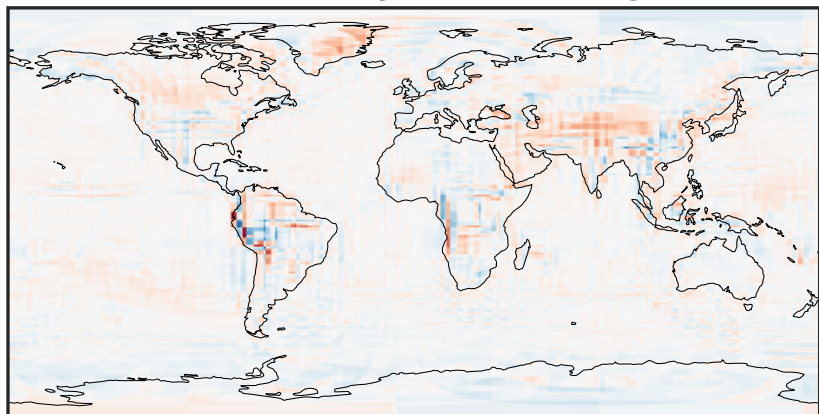
-0.4037 -0.2018 0.0000 0.2018 0.4037
 $\mu\text{g}/\text{m}^3$

Difference (1x1.25)
Dev - Ref, Restricted Range [5%,95%]



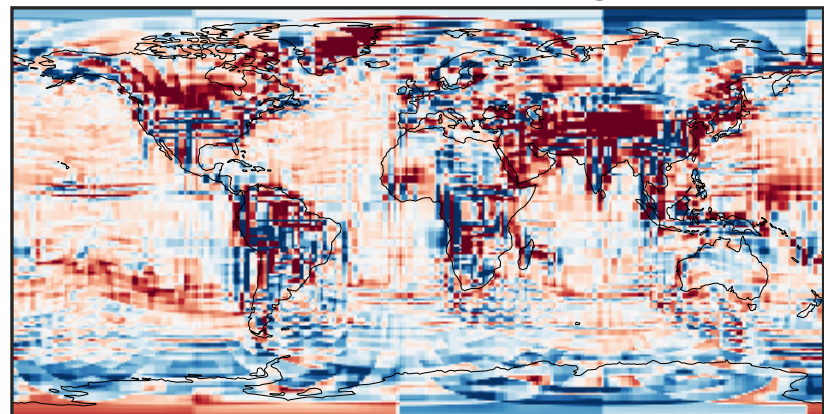
-0.01 0.00 0.01
 $\mu\text{g}/\text{m}^3$

Ratio (1x1.25)
Dev/Ref, Dynamic Range



1e-02 1e-01 1 10 100
unitless

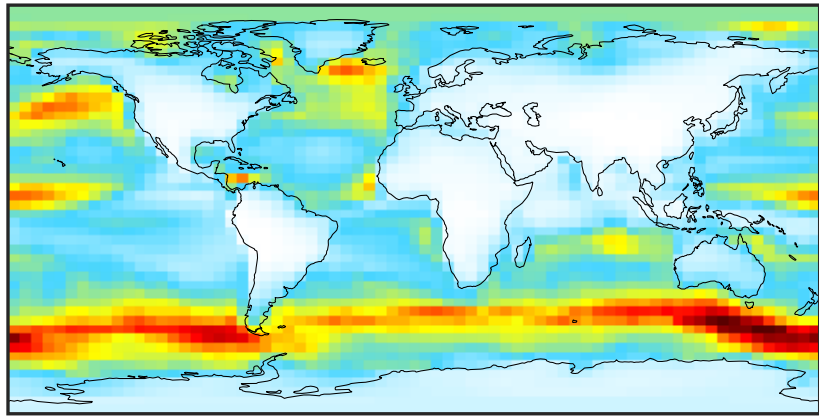
Ratio (1x1.25)
Dev/Ref, Fixed Range



0.50 0.75 1.00 1.50 2.00
unitless

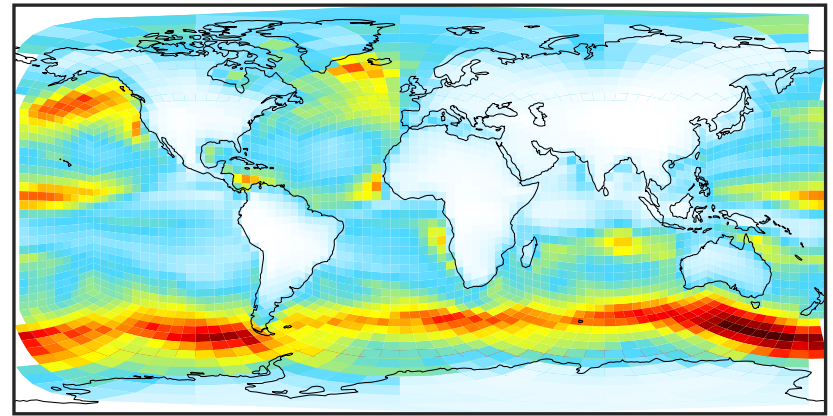
SpeciesConcVV_SALA (Apr2019)

14.3.0-rc.0 (Ref)
4.0x5.0



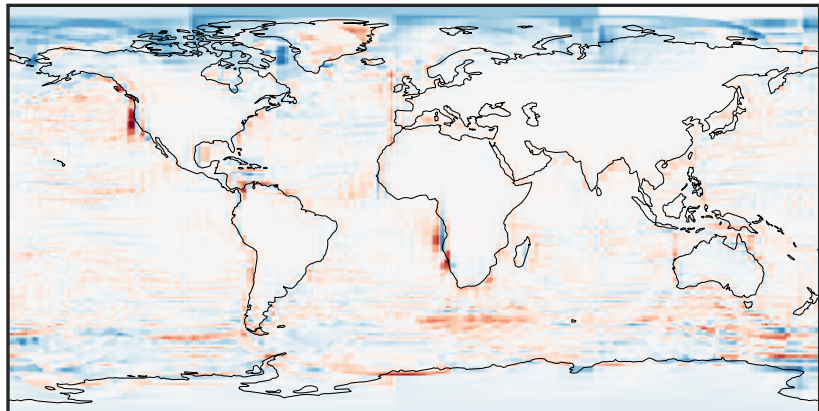
0.002 0.517 1.033 1.548 2.063
 $\mu\text{g}/\text{m}^3$

14.3.0-rc.0 (Dev)
c24



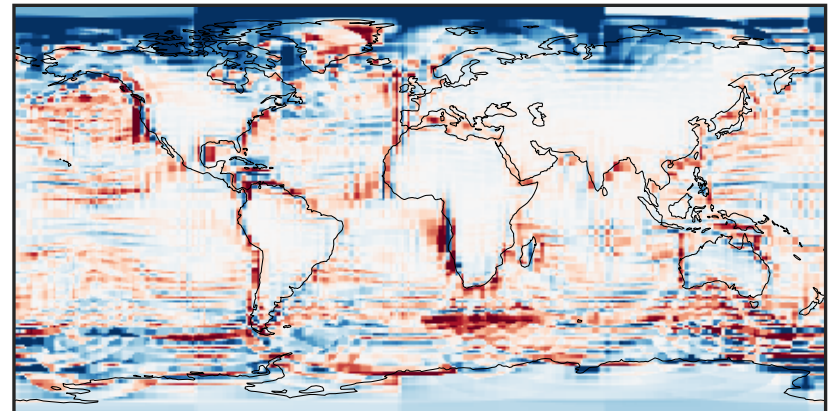
0.002 0.517 1.033 1.548 2.063
 $\mu\text{g}/\text{m}^3$

Difference (1x1.25)
Dev - Ref, Dynamic Range



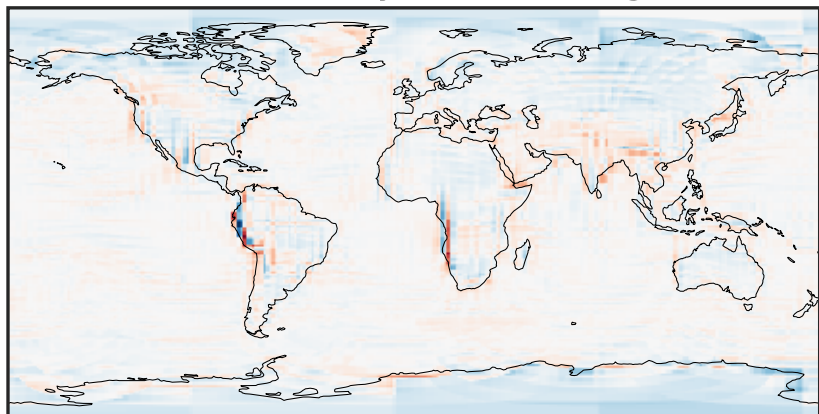
-0.653 -0.326 0.000 0.326 0.653
 $\mu\text{g}/\text{m}^3$

Difference (1x1.25)
Dev - Ref, Restricted Range [5%,95%]



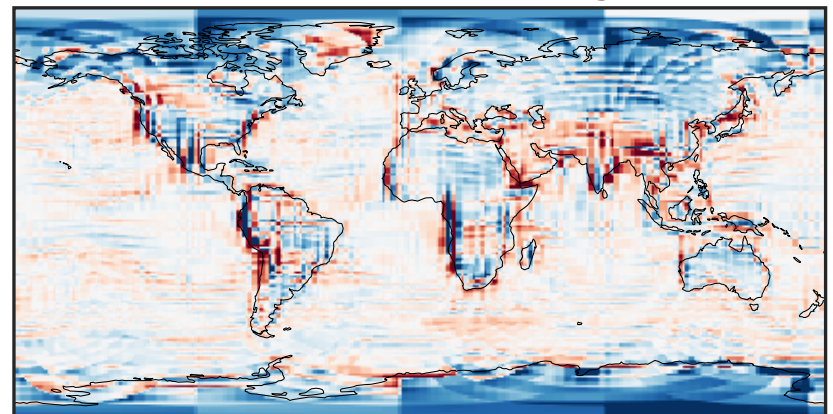
-0.2178 -0.1089 0.0000 0.1089 0.2178
 $\mu\text{g}/\text{m}^3$

Ratio (1x1.25)
Dev/Ref, Dynamic Range



1e-01 1 10
unitless

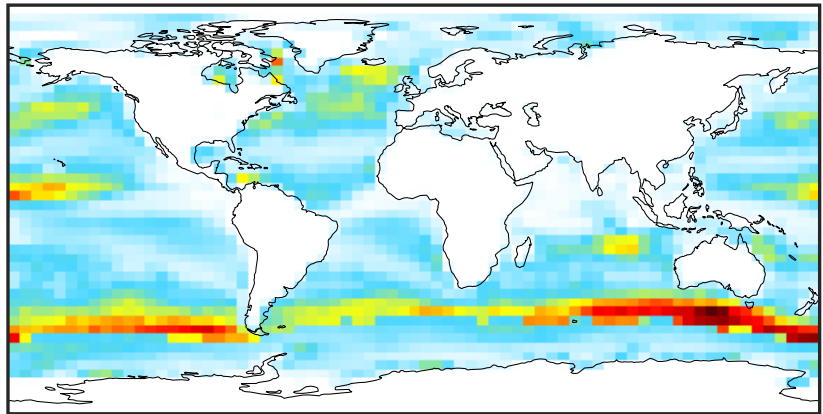
Ratio (1x1.25)
Dev/Ref, Fixed Range



0.50 0.75 1.00 1.50 2.00
unitless

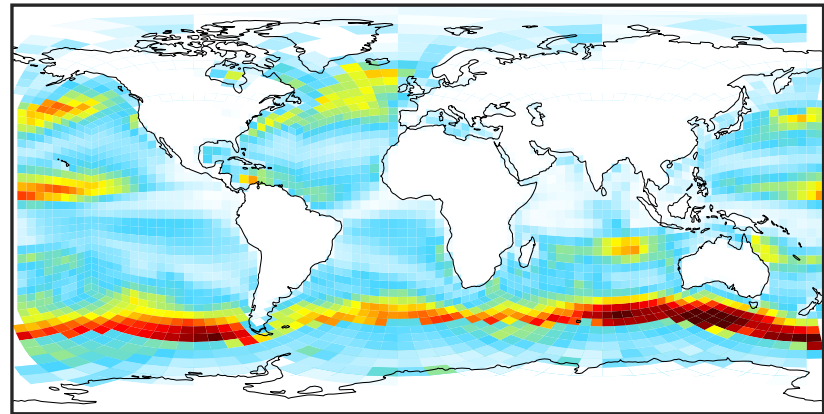
SpeciesConcVV_SALAAL (Apr2019)

14.3.0-rc.0 (Ref)
4.0x5.0



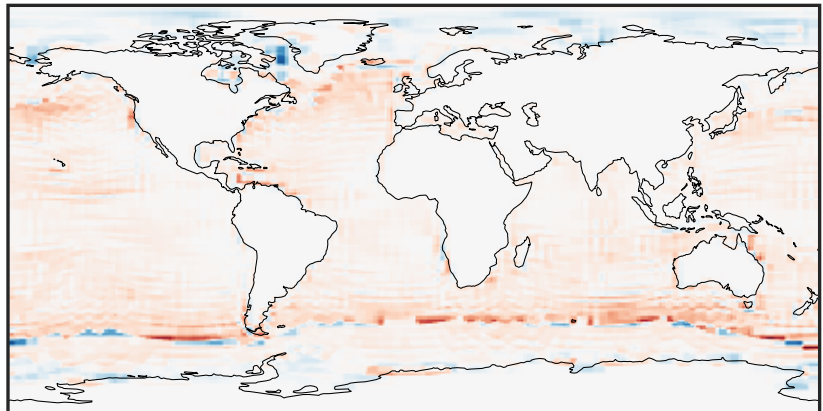
0.008 0.016 0.024
 $\mu\text{g}/\text{m}^3$

14.3.0-rc.0 (Dev)
c24



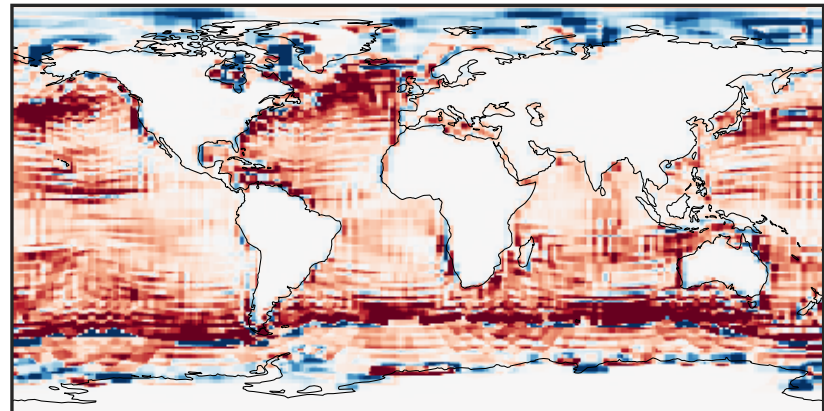
0.008 0.016 0.024
 $\mu\text{g}/\text{m}^3$

Difference (1x1.25)
Dev - Ref, Dynamic Range



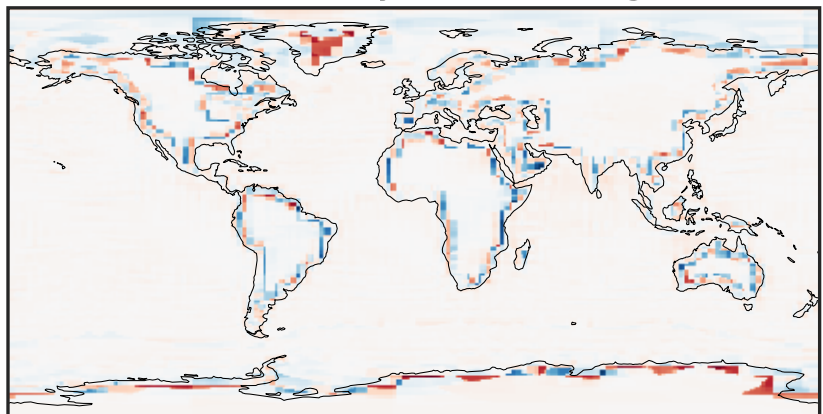
-0.01 0.00 0.01
 $\mu\text{g}/\text{m}^3$

Difference (1x1.25)
Dev - Ref, Restricted Range [5%,95%]



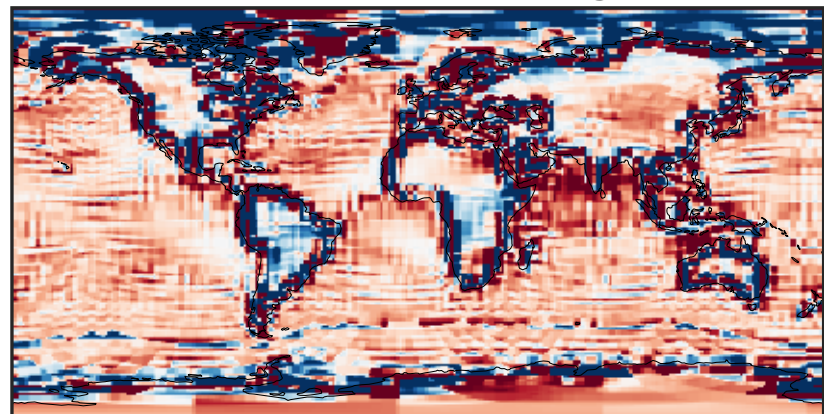
-0.0015 0.0000 0.0015
 $\mu\text{g}/\text{m}^3$

Ratio (1x1.25)
Dev/Ref, Dynamic Range



1e-05 1e-03 1e-01 10 1000 1e+05
unitless

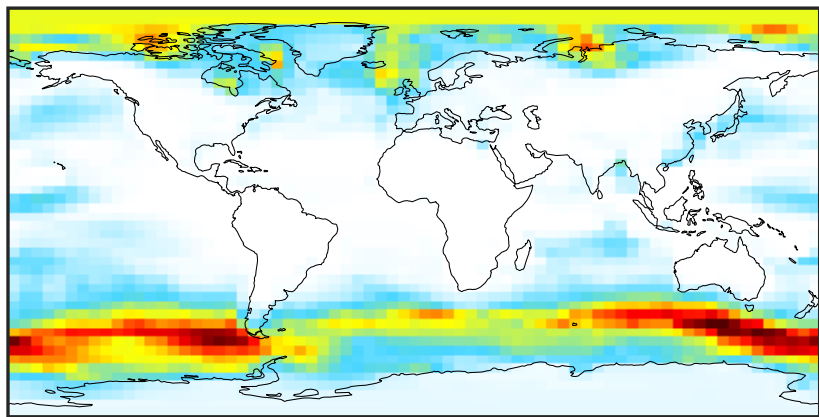
Ratio (1x1.25)
Dev/Ref, Fixed Range



0.50 0.75 1.00 1.50 2.00
unitless

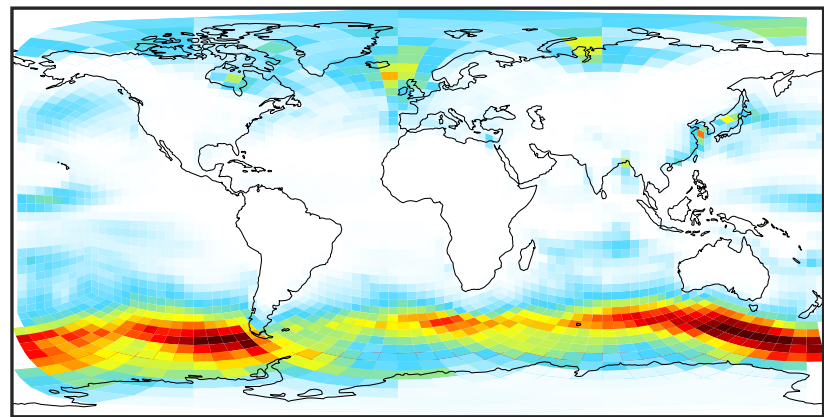
SpeciesConcVV_SALACL (Apr2019)

14.3.0-rc.0 (Ref)
4.0x5.0



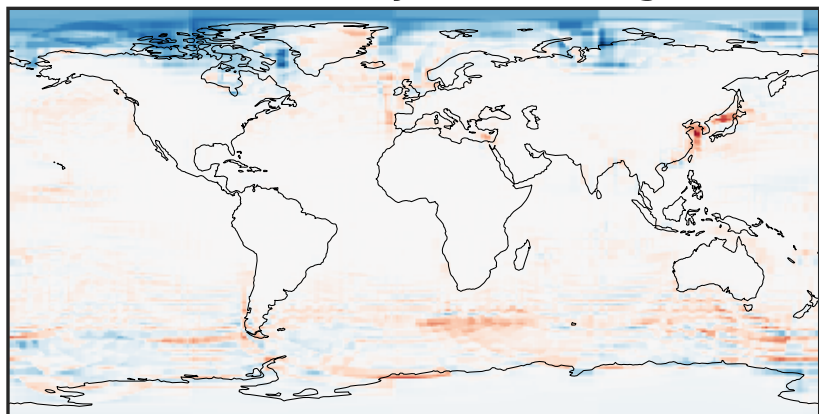
0.0000 0.2110 0.4219 0.6329 0.8438
 $\mu\text{g}/\text{m}^3$

14.3.0-rc.0 (Dev)
c24



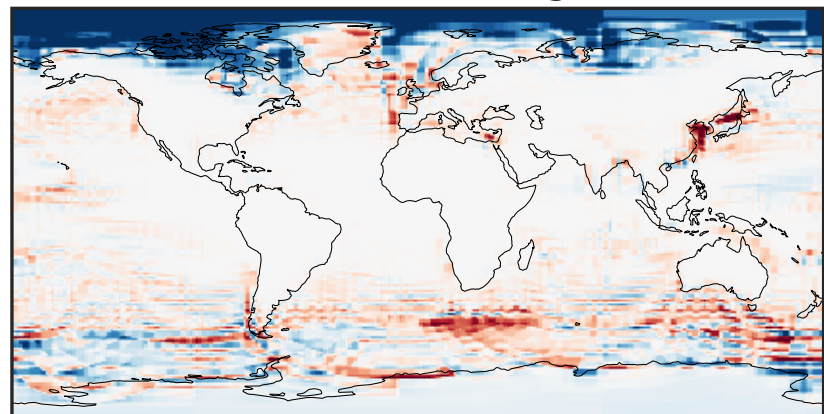
0.0000 0.2110 0.4219 0.6329 0.8438
 $\mu\text{g}/\text{m}^3$

Difference (1x1.25)
Dev - Ref, Dynamic Range



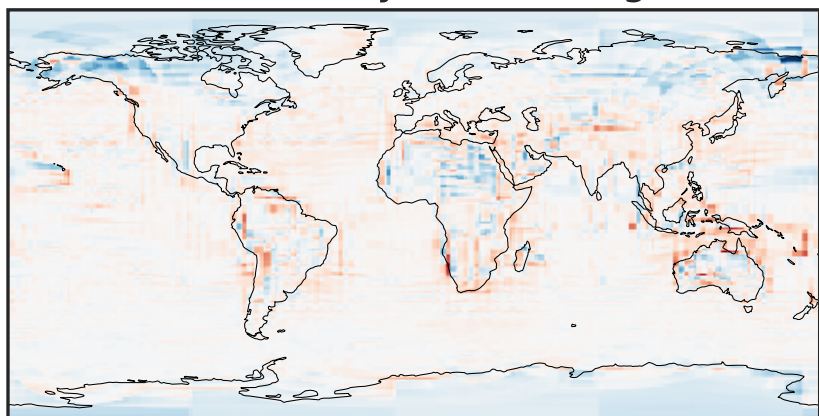
-0.4103 -0.2051 0.0000 0.2051 0.4103
 $\mu\text{g}/\text{m}^3$

Difference (1x1.25)
Dev - Ref, Restricted Range [5%,95%]



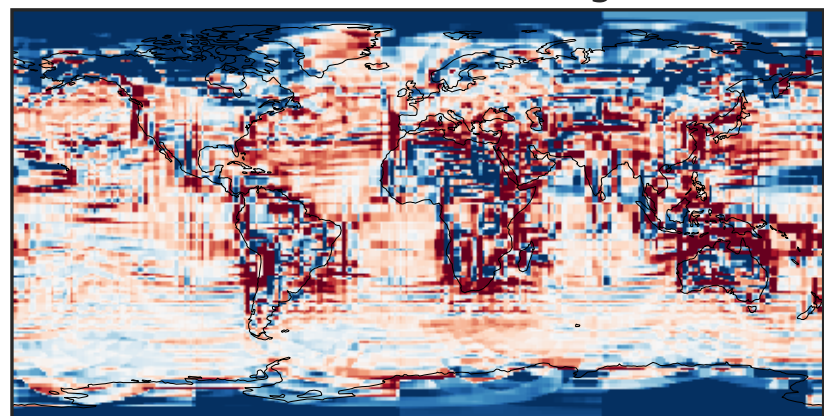
-0.1763 -0.0881 0.0000 0.0881 0.1763
 $\mu\text{g}/\text{m}^3$

Ratio (1x1.25)
Dev/Ref, Dynamic Range



1e-02 1e-01 1 10 100
unitless

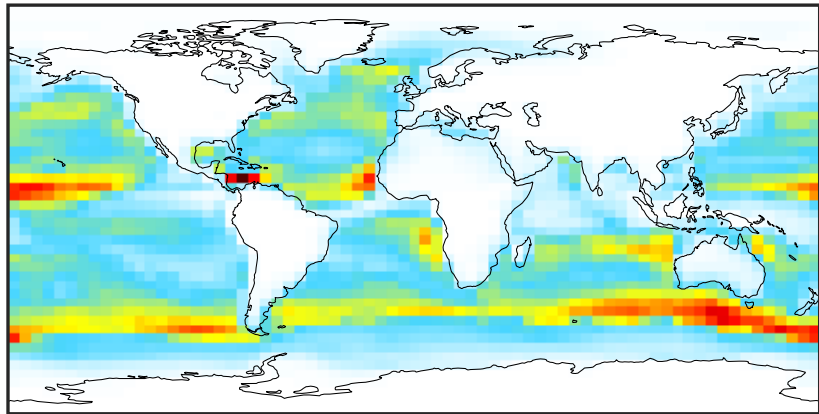
Ratio (1x1.25)
Dev/Ref, Fixed Range



0.50 0.75 1.00 1.50 2.00
unitless

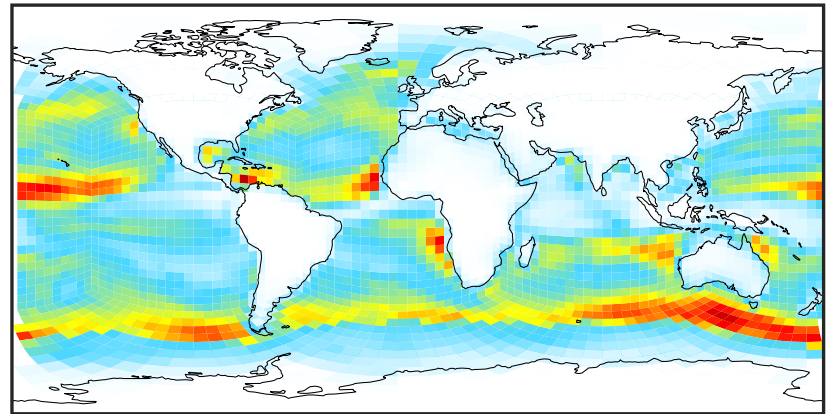
SpeciesConcVV_SALC (Apr2019)

14.3.0-rc.0 (Ref)
4.0x5.0



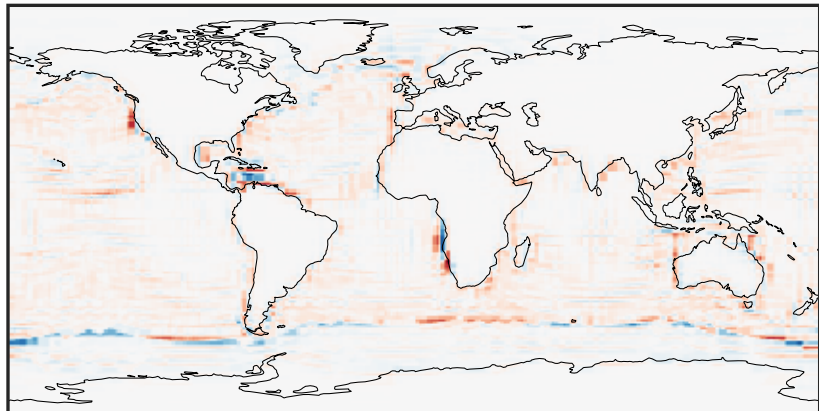
0.00 8.68 17.37 26.05 34.73
 $\mu\text{g}/\text{m}^3$

14.3.0-rc.0 (Dev)
c24



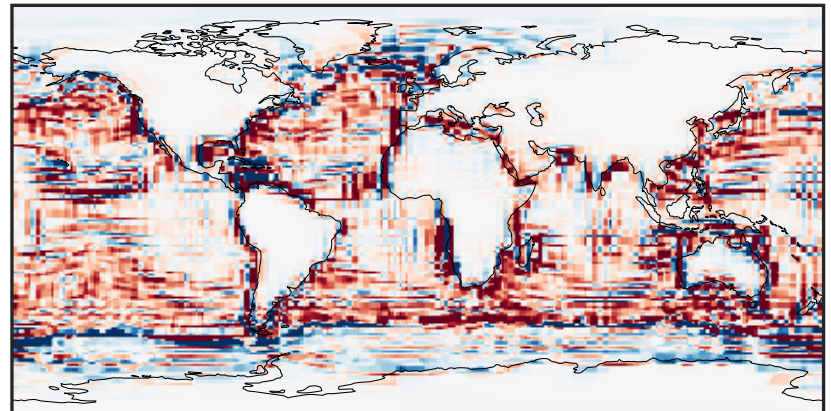
0.00 8.68 17.37 26.05 34.73
 $\mu\text{g}/\text{m}^3$

Difference (1x1.25)
Dev - Ref, Dynamic Range



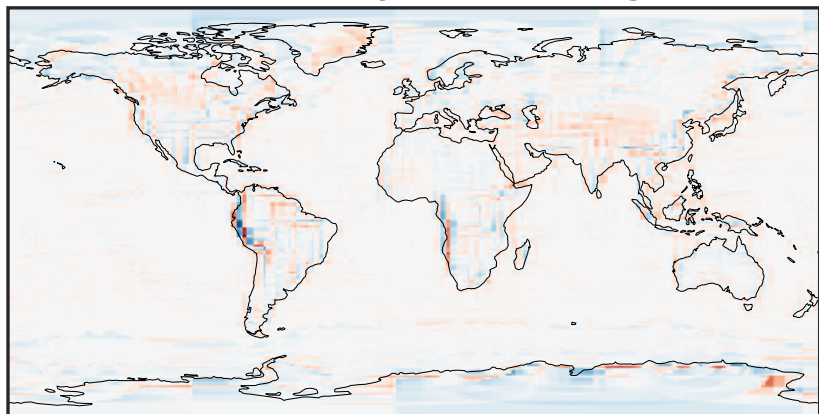
-16.10 -8.05 0.00 8.05 16.10
 $\mu\text{g}/\text{m}^3$

Difference (1x1.25)
Dev - Ref, Restricted Range [5%,95%]



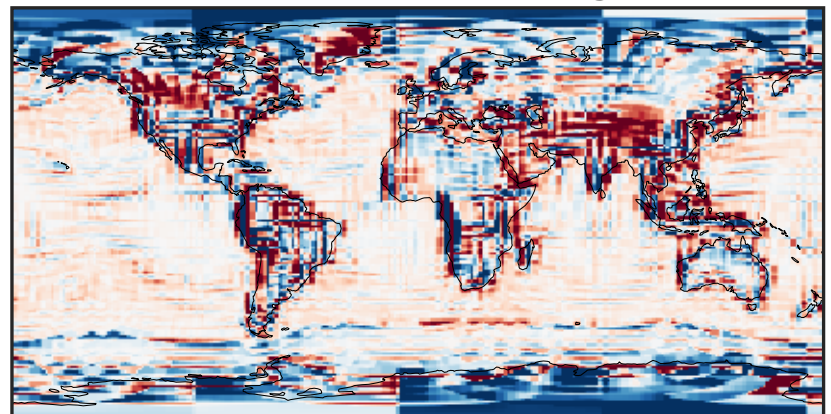
-2.014 -1.007 0.000 1.007 2.014
 $\mu\text{g}/\text{m}^3$

Ratio (1x1.25)
Dev/Ref, Dynamic Range



1e-02 1e-01 1 10 100
unitless

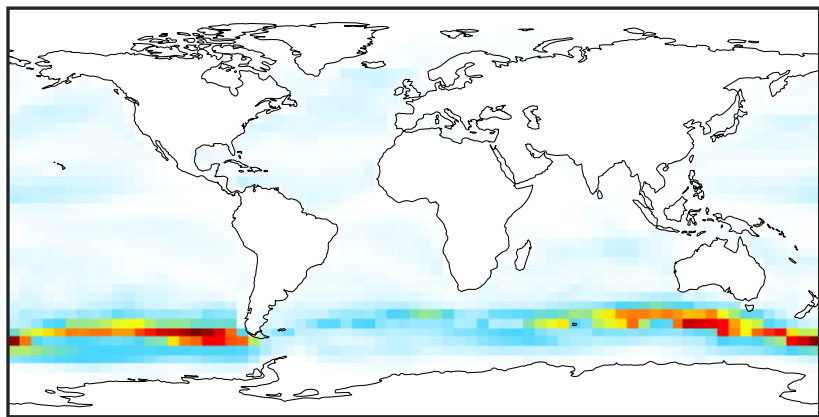
Ratio (1x1.25)
Dev/Ref, Fixed Range



0.50 0.75 1.00 1.50 2.00
unitless

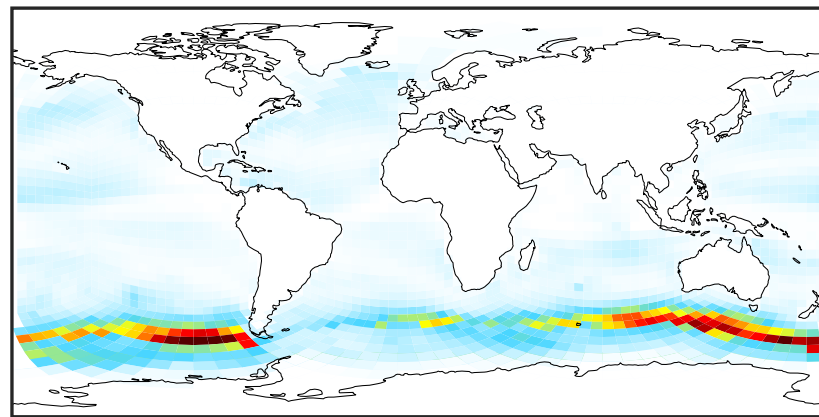
SpeciesConcVV_SALCAL (Apr2019)

14.3.0-rc.0 (Ref)
4.0x5.0



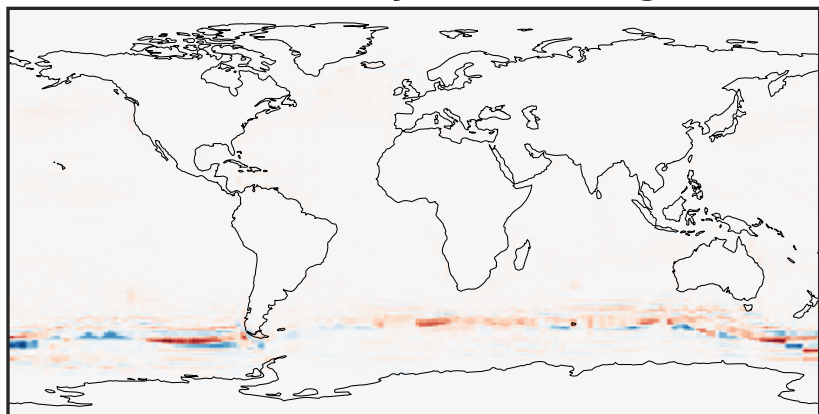
0.00 2.73 5.45 8.18 10.90
 $\mu\text{g}/\text{m}^3$

14.3.0-rc.0 (Dev)
c24



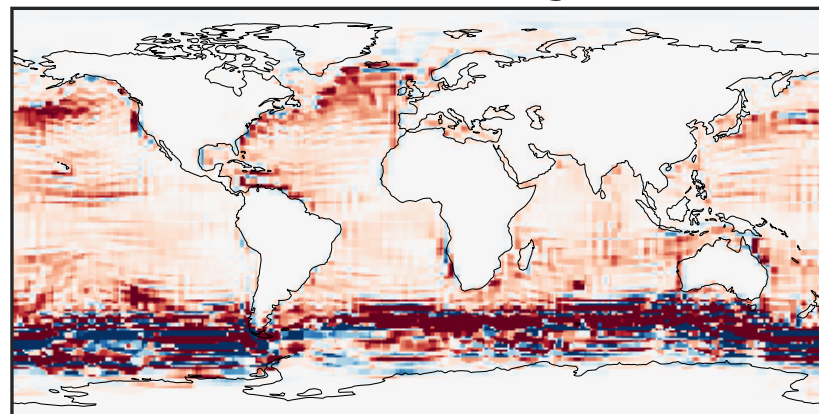
0.00 2.73 5.45 8.18 10.90
 $\mu\text{g}/\text{m}^3$

Difference (1x1.25)
Dev - Ref, Dynamic Range



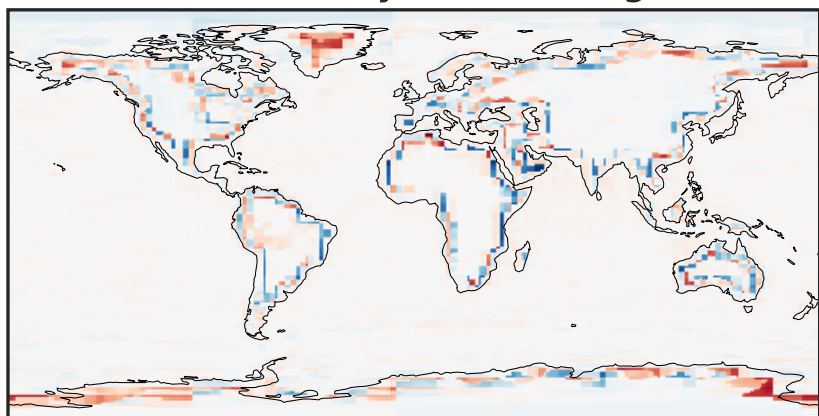
-6.8 -3.4 0.0 3.4 6.8
 $\mu\text{g}/\text{m}^3$

Difference (1x1.25)
Dev - Ref, Restricted Range [5%,95%]



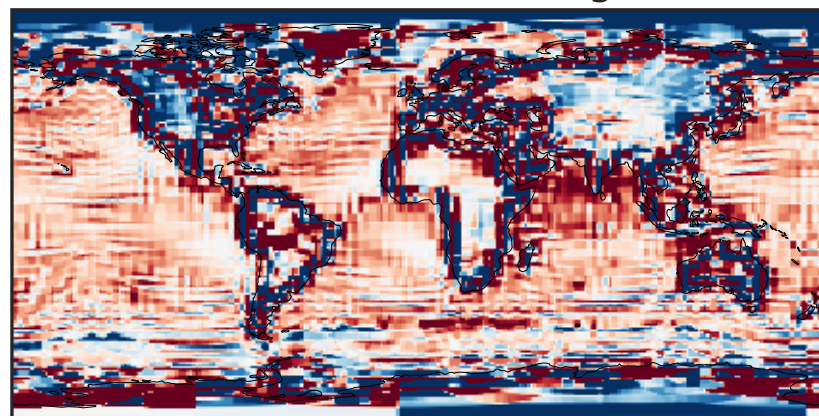
-0.3198 -0.1599 0.0000 0.1599 0.3198
 $\mu\text{g}/\text{m}^3$

Ratio (1x1.25)
Dev/Ref, Dynamic Range



1e-06 1e-03 1 1000 1e+06
unitless

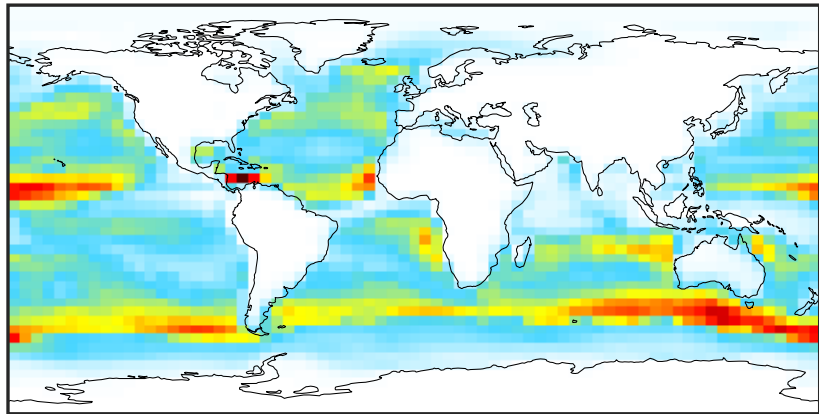
Ratio (1x1.25)
Dev/Ref, Fixed Range



0.50 0.75 1.00 1.50 2.00
unitless

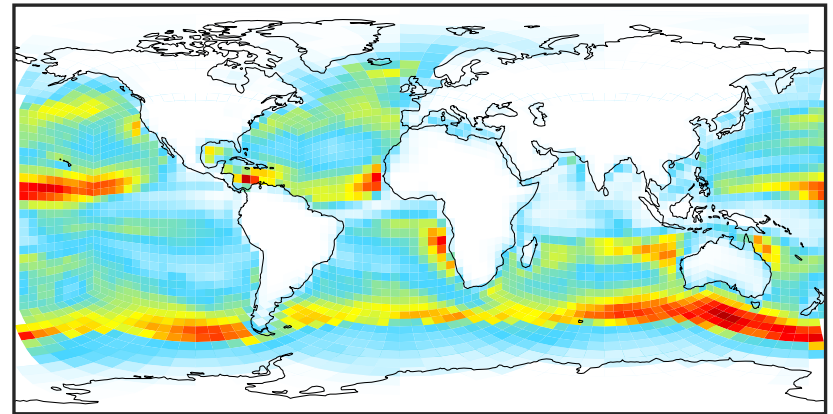
SpeciesConcVV_SALCCL (Apr2019)

14.3.0-rc.0 (Ref)
4.0x5.0



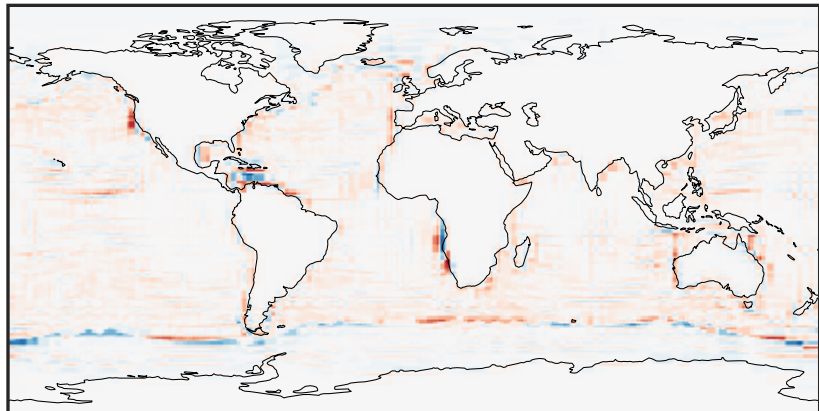
0.00 4.63 9.26 13.89 18.52
 $\mu\text{g}/\text{m}^3$

14.3.0-rc.0 (Dev)
c24



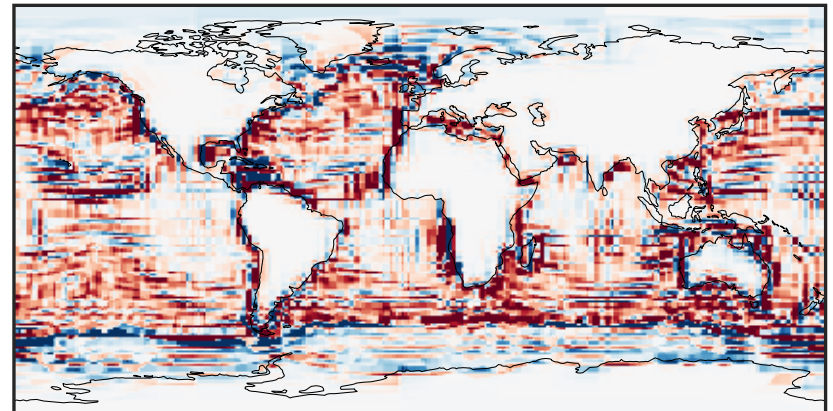
0.00 4.63 9.26 13.89 18.52
 $\mu\text{g}/\text{m}^3$

Difference (1x1.25)
Dev - Ref, Dynamic Range



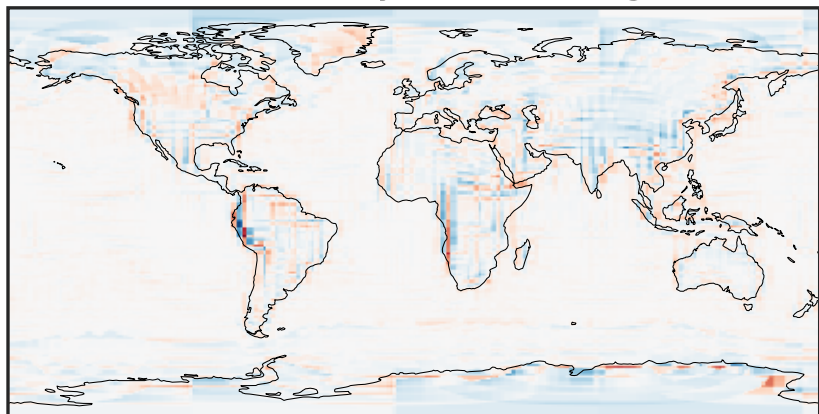
-8.85 -4.42 0.00 4.42 8.85
 $\mu\text{g}/\text{m}^3$

Difference (1x1.25)
Dev - Ref, Restricted Range [5%,95%]



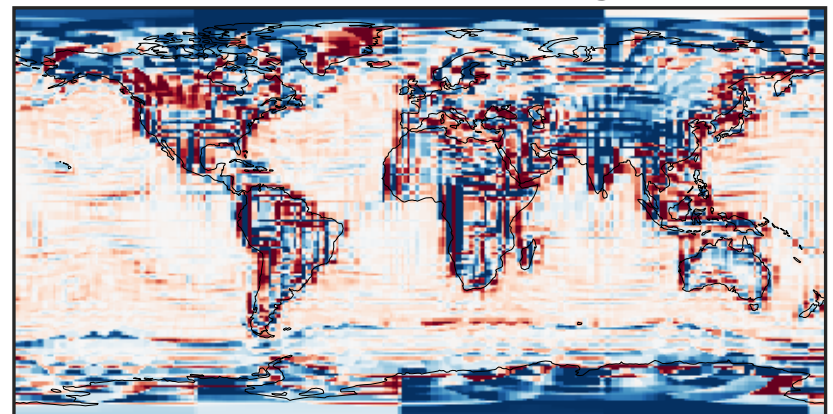
-1.069 -0.535 0.000 0.535 1.069
 $\mu\text{g}/\text{m}^3$

Ratio (1x1.25)
Dev/Ref, Dynamic Range



1e-02 1e-01 1 10 100
unitless

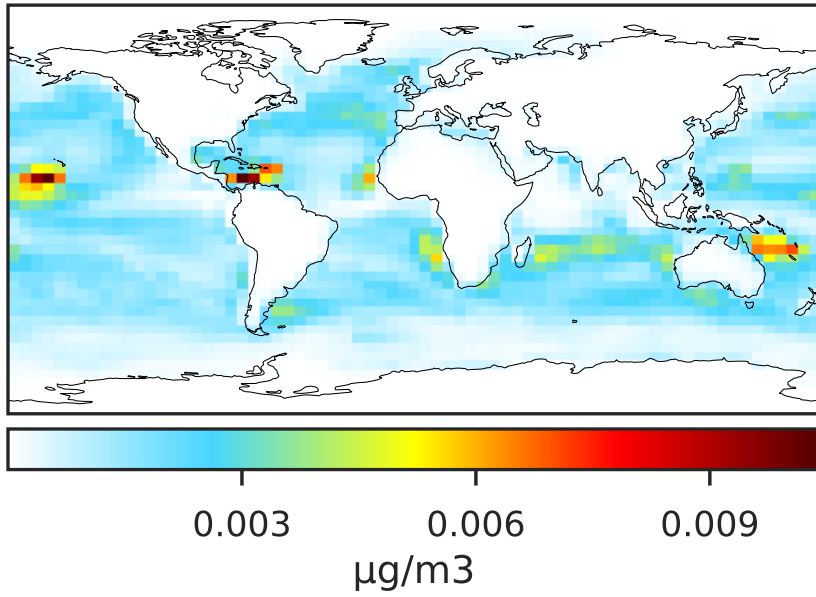
Ratio (1x1.25)
Dev/Ref, Fixed Range



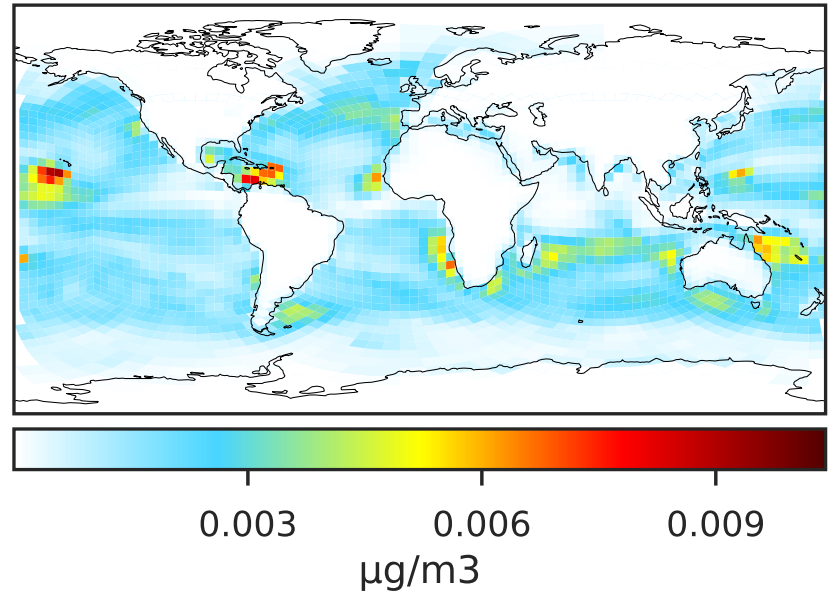
0.50 0.75 1.00 1.50 2.00
unitless

SpeciesConcVV_SO4s (Apr2019)

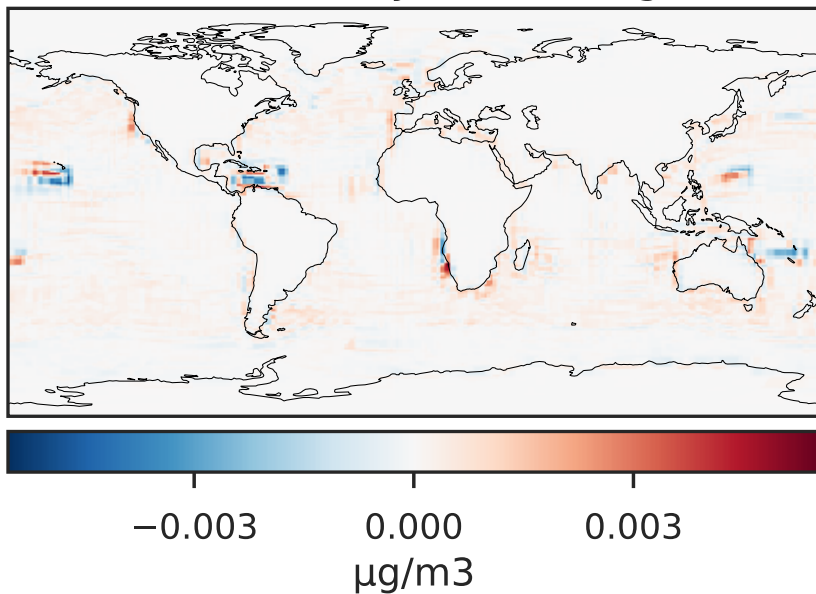
14.3.0-rc.0 (Ref)
4.0x5.0



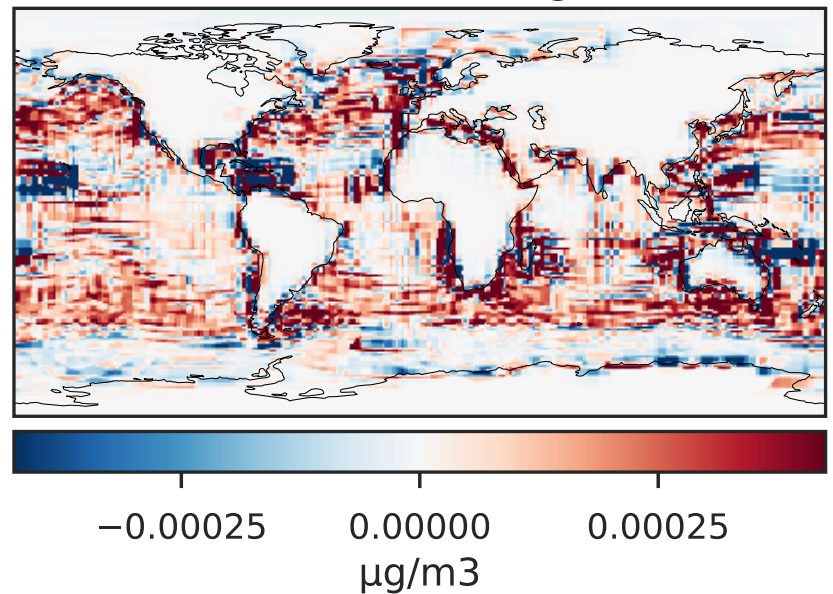
14.3.0-rc.0 (Dev)
c24



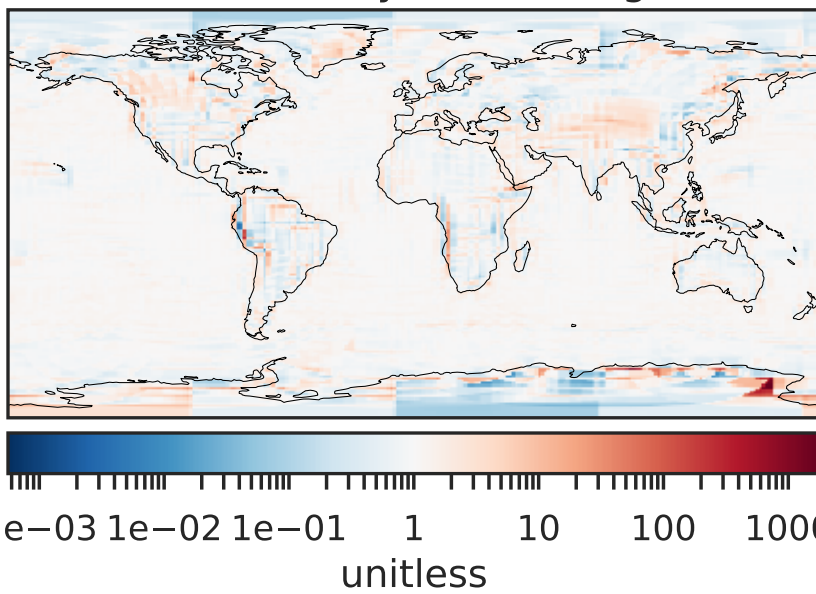
Difference (1x1.25)
Dev - Ref, Dynamic Range



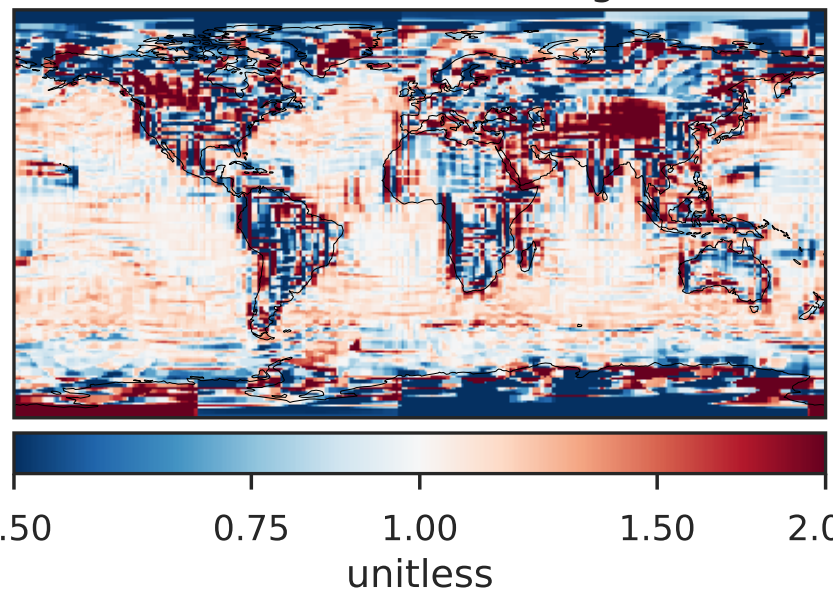
Difference (1x1.25)
Dev - Ref, Restricted Range [5%,95%]



Ratio (1x1.25)
Dev/Ref, Dynamic Range

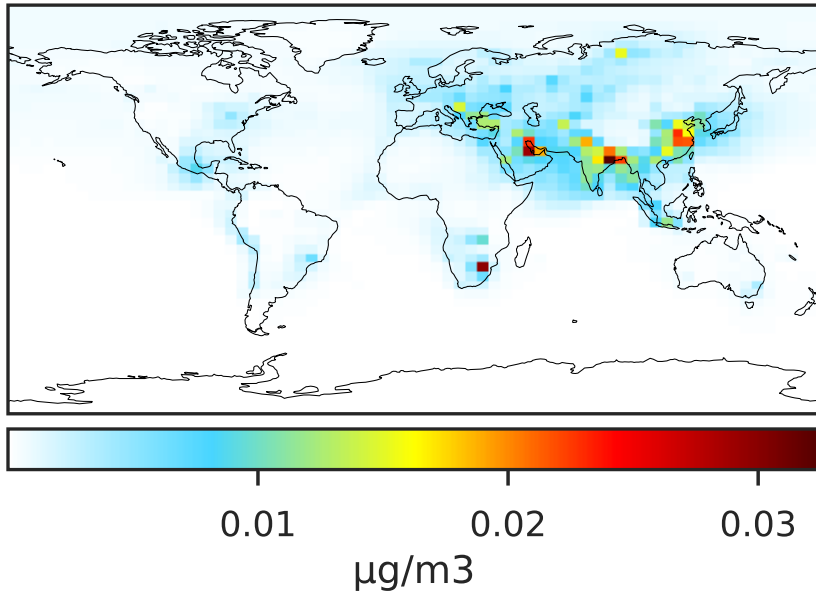


Ratio (1x1.25)
Dev/Ref, Fixed Range

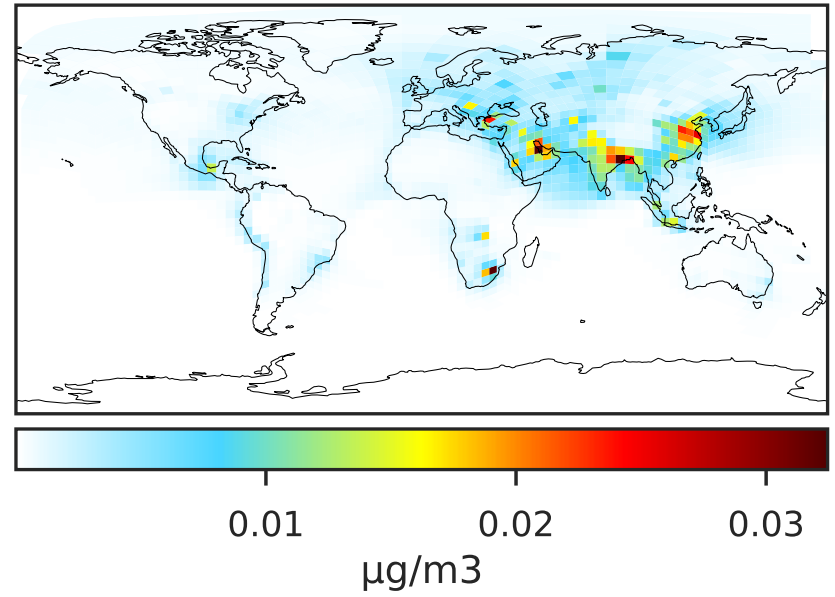


SpeciesConcVV_pFe (Apr2019)

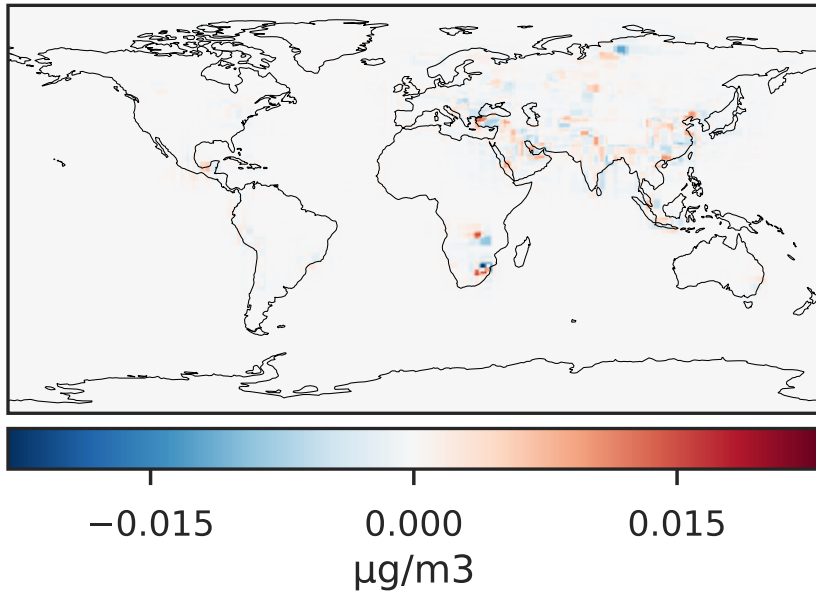
14.3.0-rc.0 (Ref)
4.0x5.0



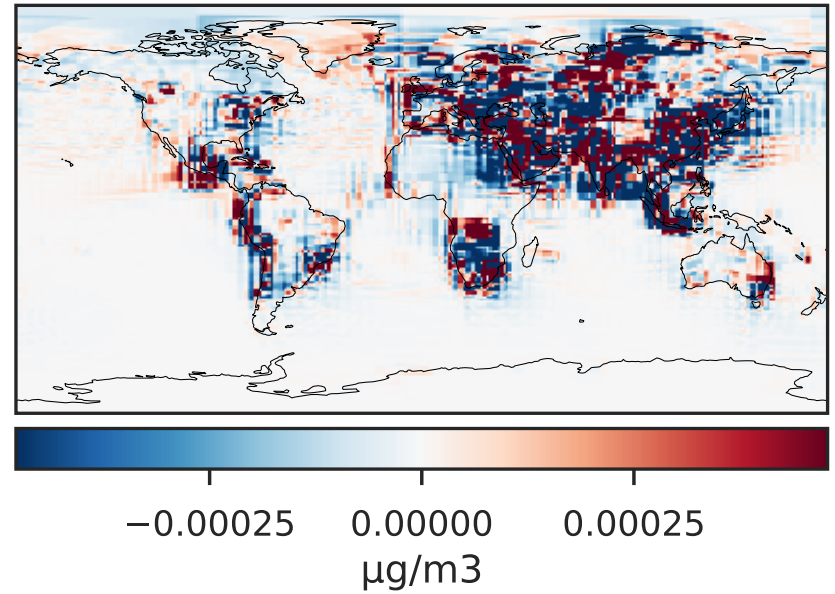
14.3.0-rc.0 (Dev)
c24



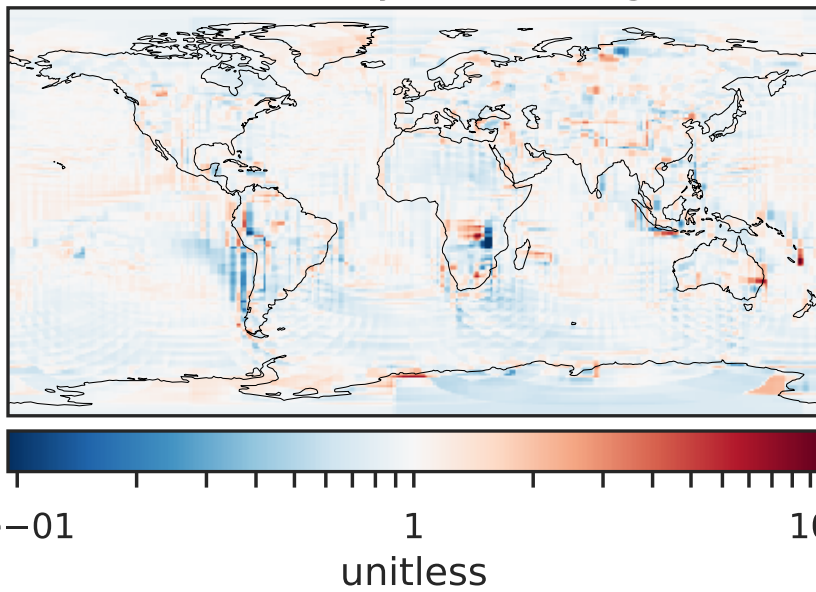
Difference (1x1.25)
Dev - Ref, Dynamic Range



Difference (1x1.25)
Dev - Ref, Restricted Range [5%,95%]



Ratio (1x1.25)
Dev/Ref, Dynamic Range



Ratio (1x1.25)
Dev/Ref, Fixed Range

