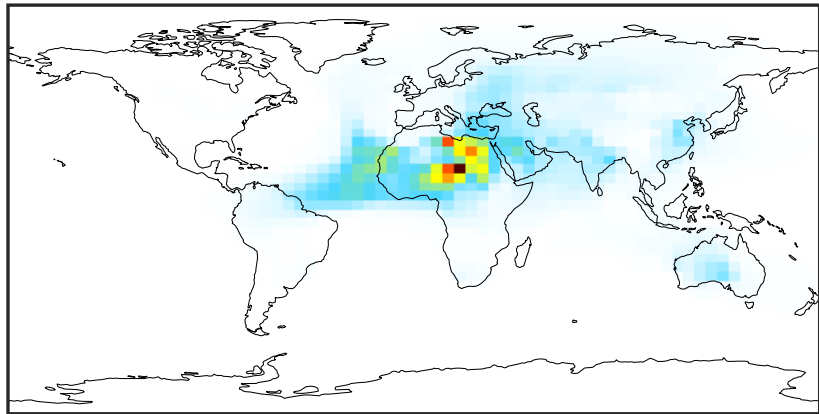


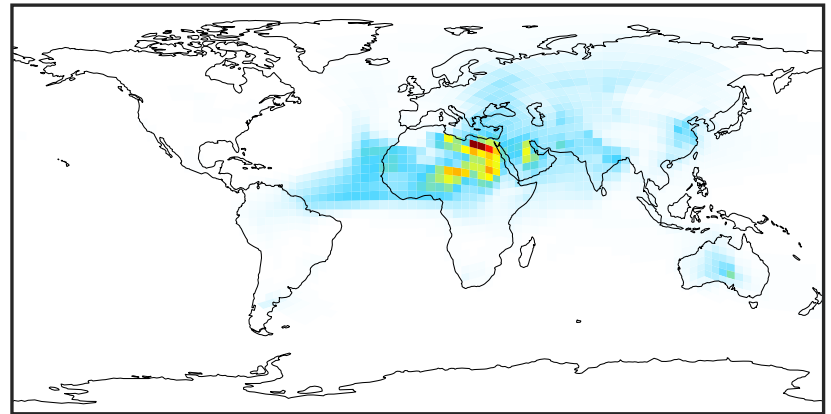
SpeciesConcVV_DST1 (Jan2019)

14.3.0-rc.0 (Ref)
4.0x5.0



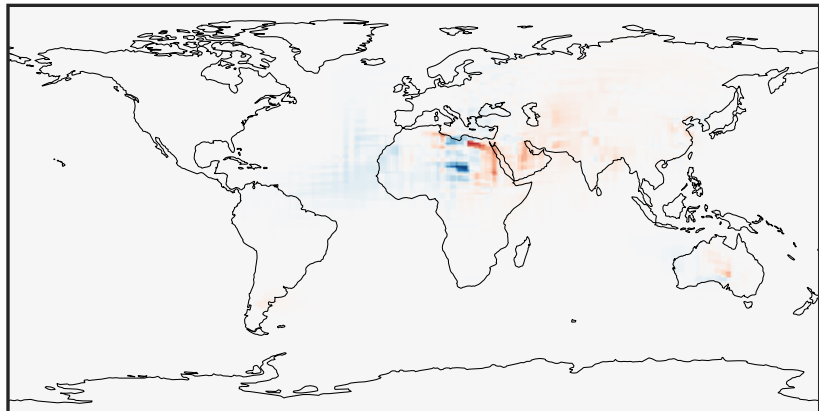
0.02 17.00 33.98 50.95 67.93
 $\mu\text{g}/\text{m}^3$

14.3.0-rc.0 (Dev)
c24



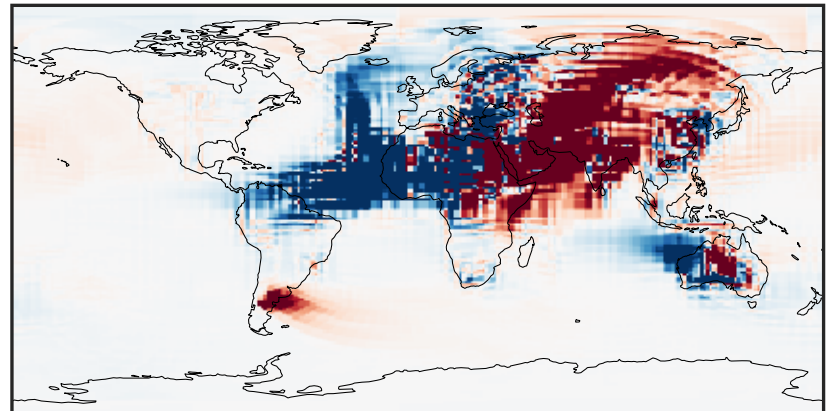
0.02 17.00 33.98 50.95 67.93
 $\mu\text{g}/\text{m}^3$

Difference (1x1.25)
Dev - Ref, Dynamic Range



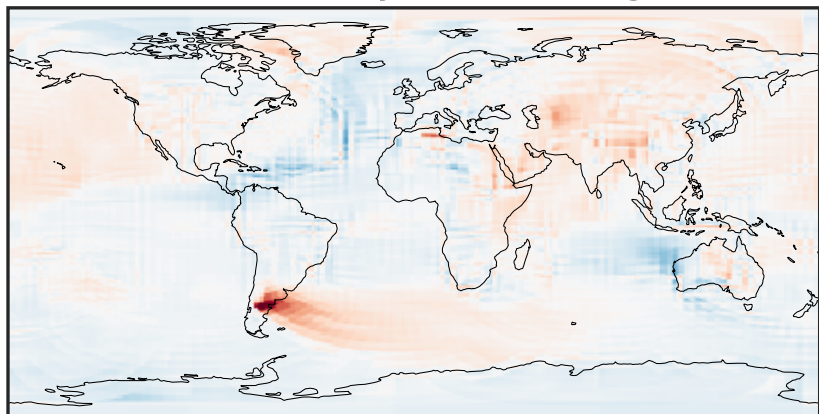
-44.17 -22.09 0.00 22.09 44.17
 $\mu\text{g}/\text{m}^3$

Difference (1x1.25)
Dev - Ref, Restricted Range [5%,95%]



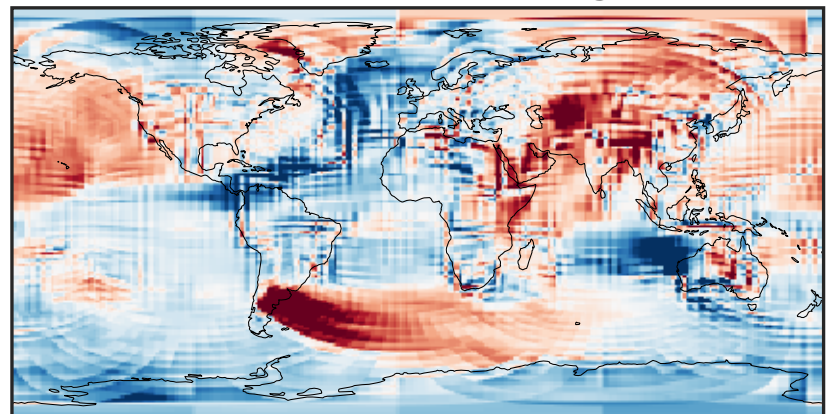
-0.802 -0.401 0.000 0.401 0.802
 $\mu\text{g}/\text{m}^3$

Ratio (1x1.25)
Dev/Ref, Dynamic Range



1e-01 1 10
unitless

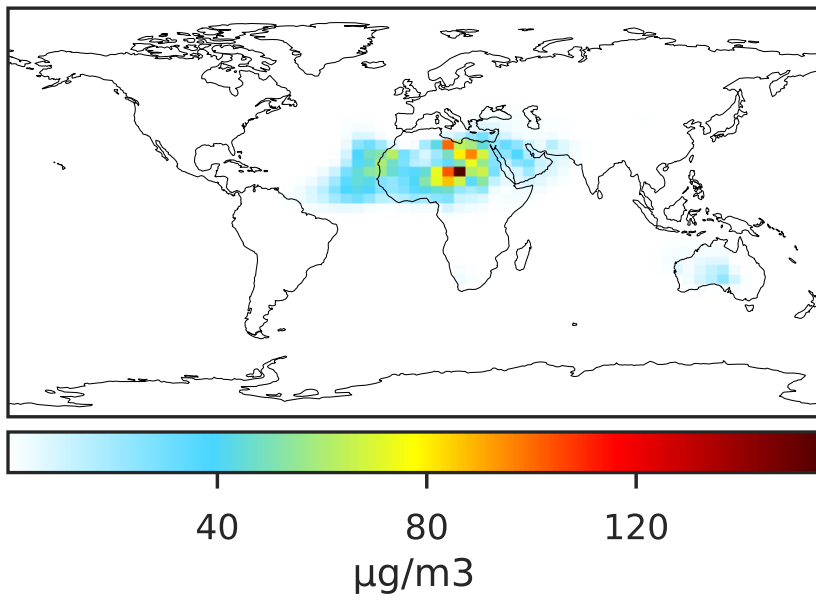
Ratio (1x1.25)
Dev/Ref, Fixed Range



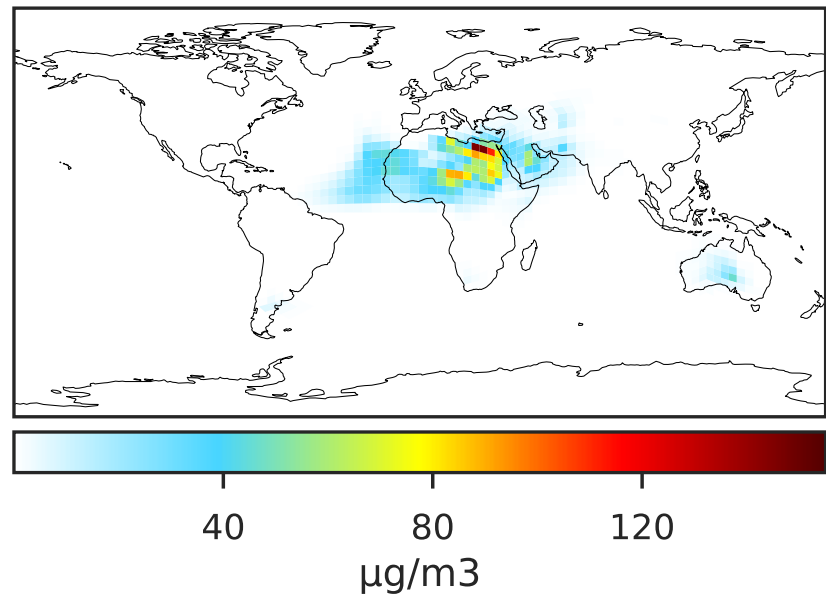
0.50 0.75 1.00 1.50 2.00
unitless

SpeciesConcVV_DST2 (Jan2019)

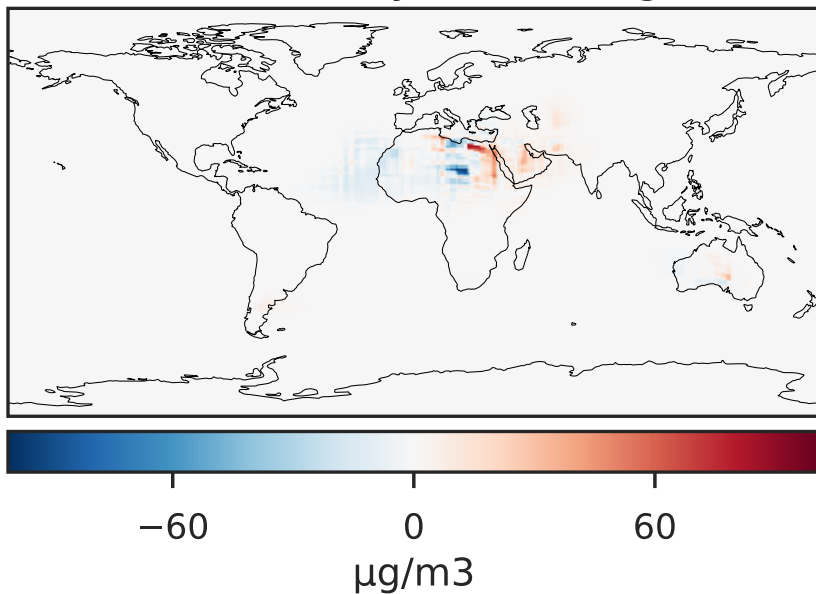
14.3.0-rc.0 (Ref)
4.0x5.0



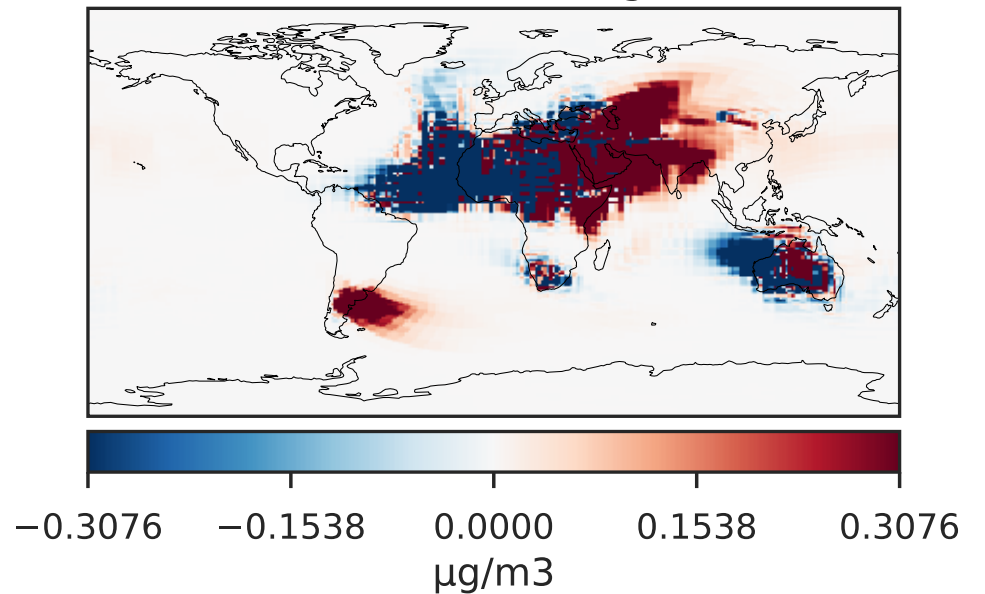
14.3.0-rc.0 (Dev)
c24



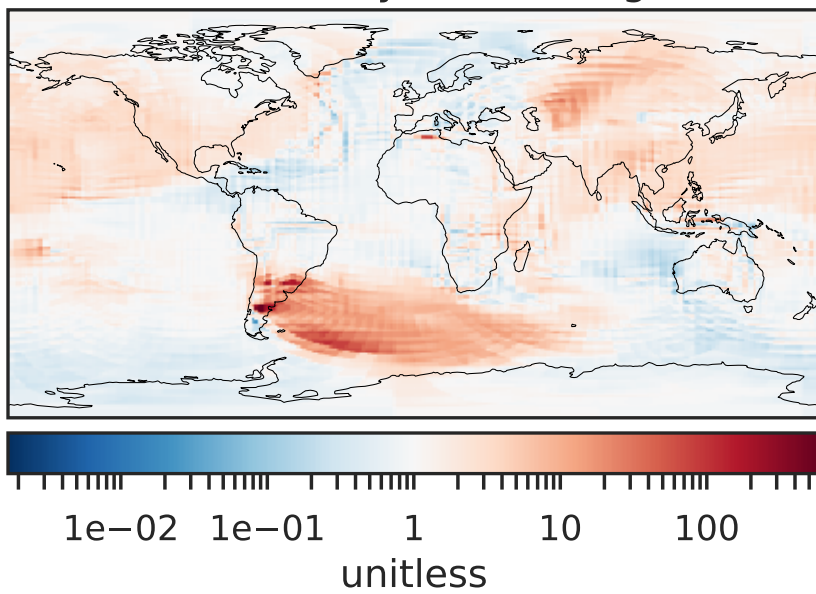
Difference (1x1.25)
Dev - Ref, Dynamic Range



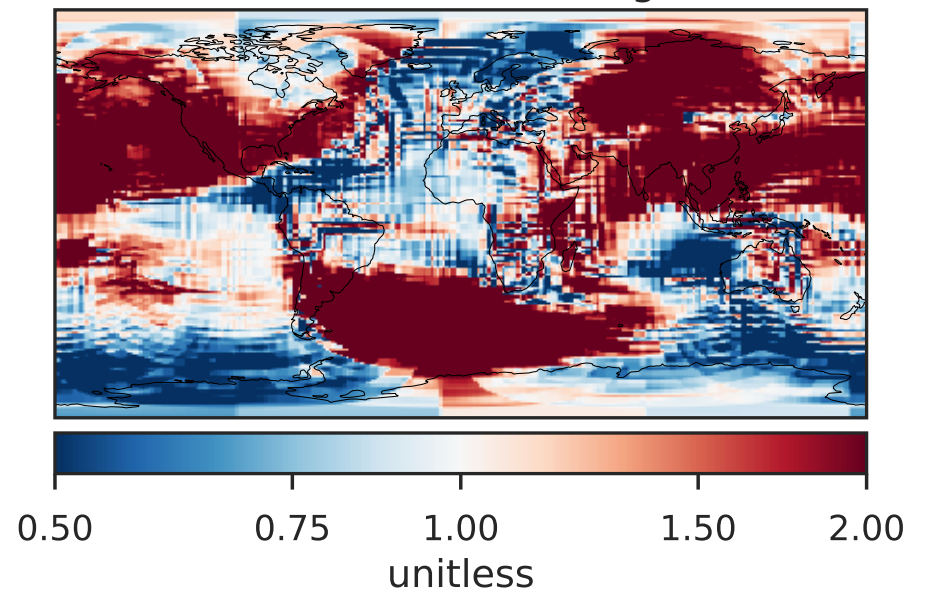
Difference (1x1.25)
Dev - Ref, Restricted Range [5%,95%]



Ratio (1x1.25)
Dev/Ref, Dynamic Range

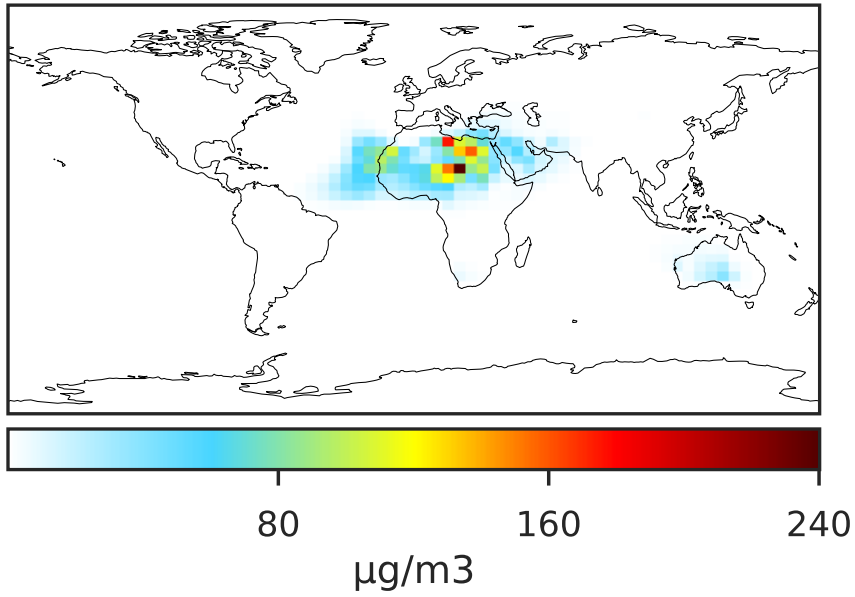


Ratio (1x1.25)
Dev/Ref, Fixed Range

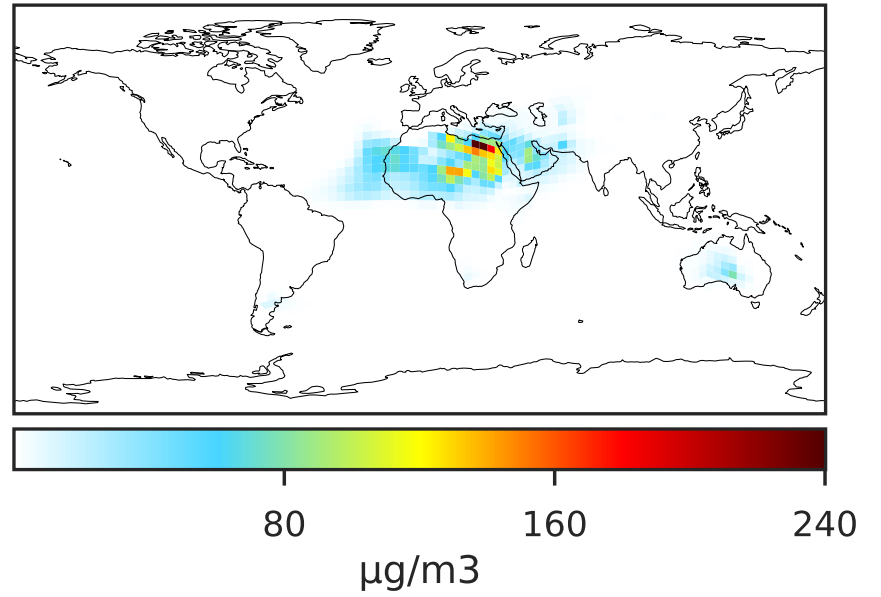


SpeciesConcVV_DST3 (Jan2019)

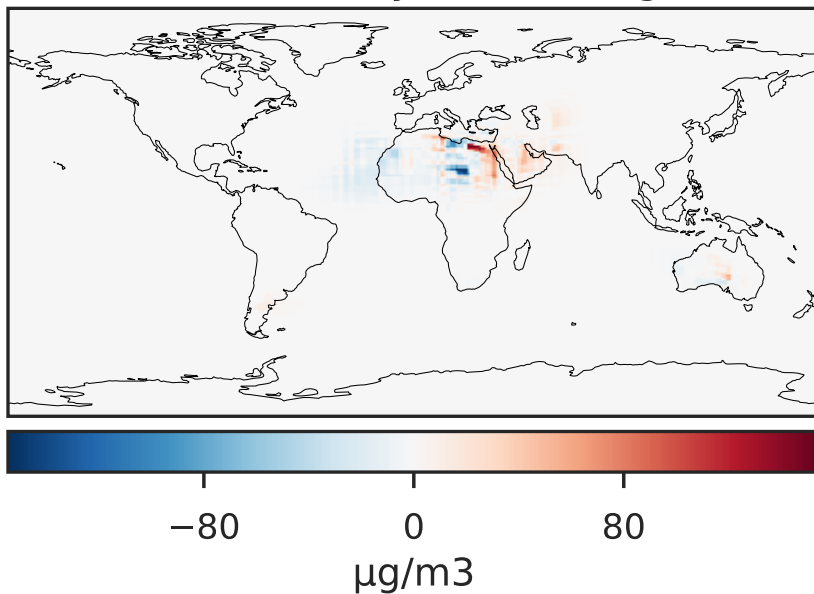
14.3.0-rc.0 (Ref)
4.0x5.0



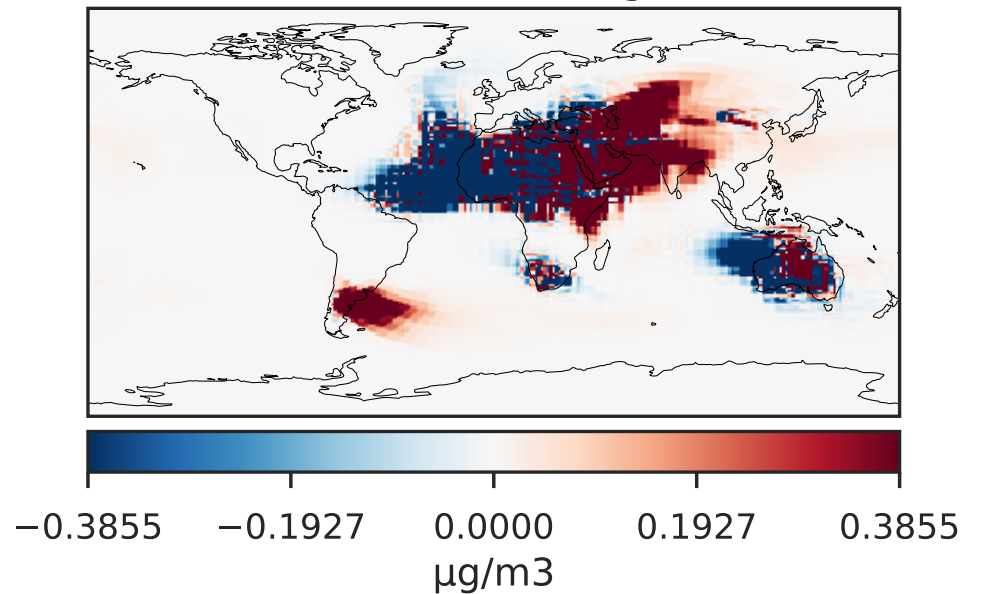
14.3.0-rc.0 (Dev)
c24



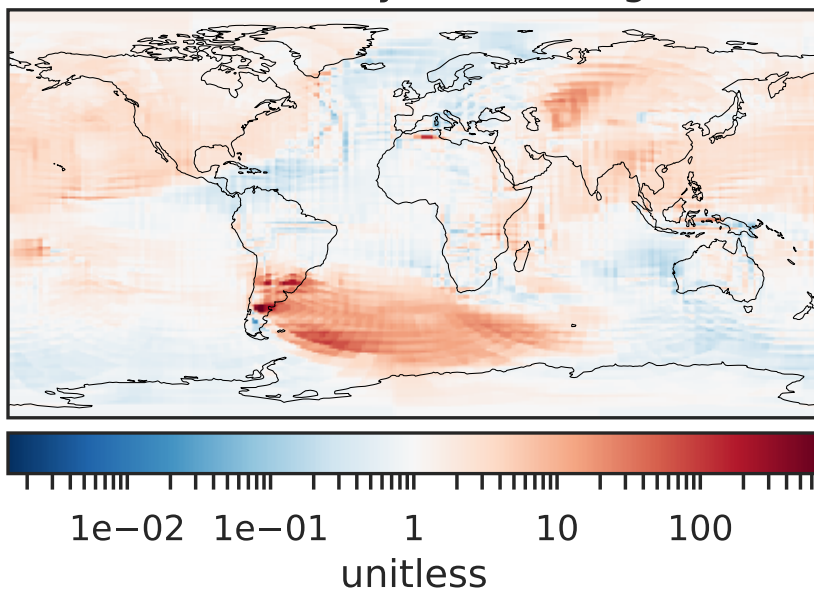
Difference (1x1.25)
Dev - Ref, Dynamic Range



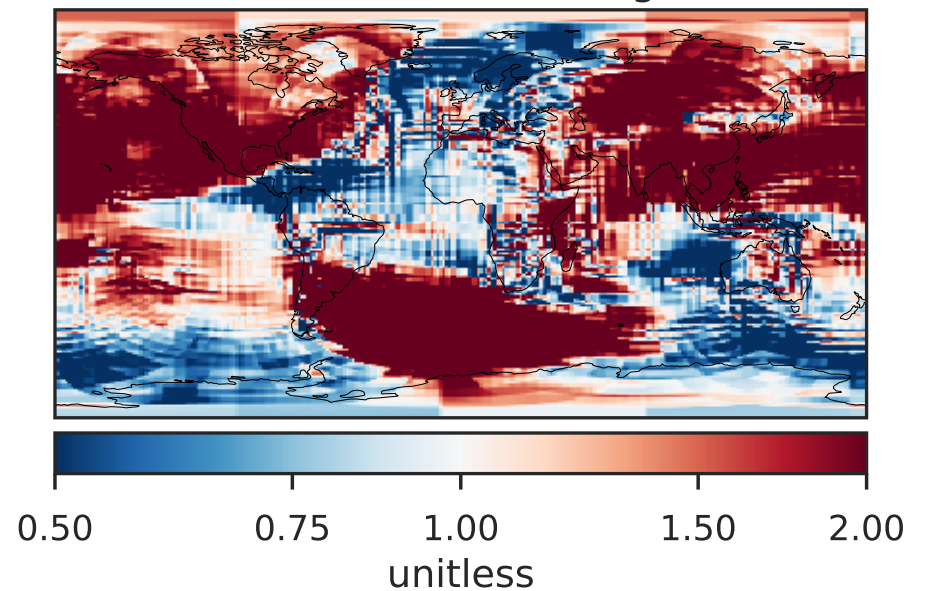
Difference (1x1.25)
Dev - Ref, Restricted Range [5%,95%]



Ratio (1x1.25)
Dev/Ref, Dynamic Range

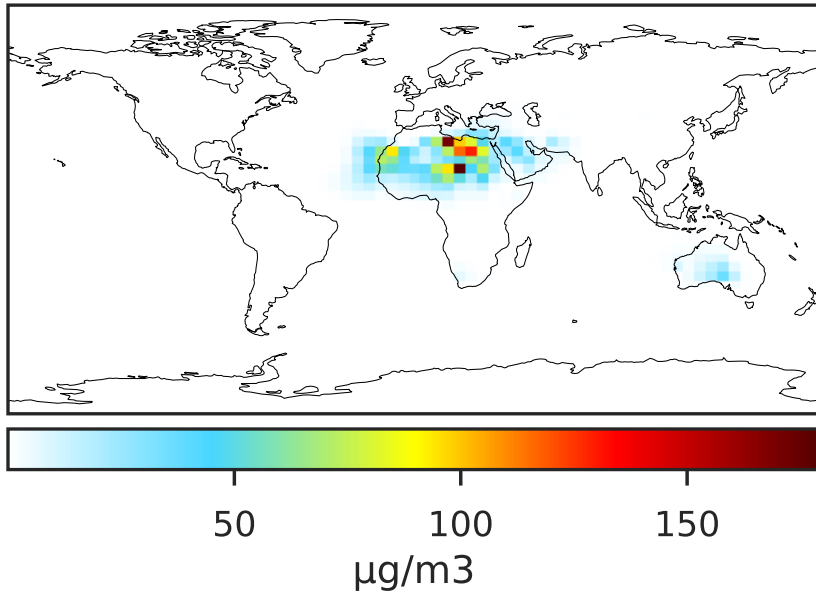


Ratio (1x1.25)
Dev/Ref, Fixed Range

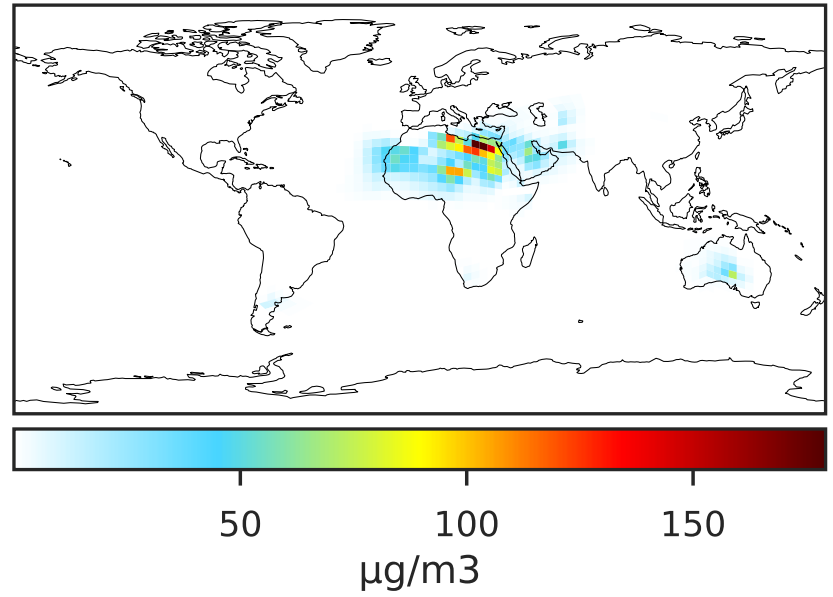


SpeciesConcVV_DST4 (Jan2019)

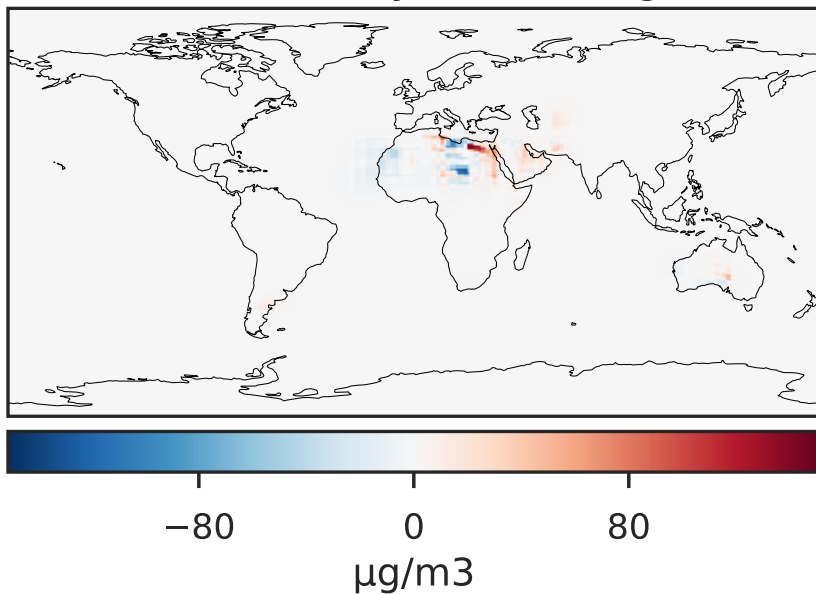
14.3.0-rc.0 (Ref)
4.0x5.0



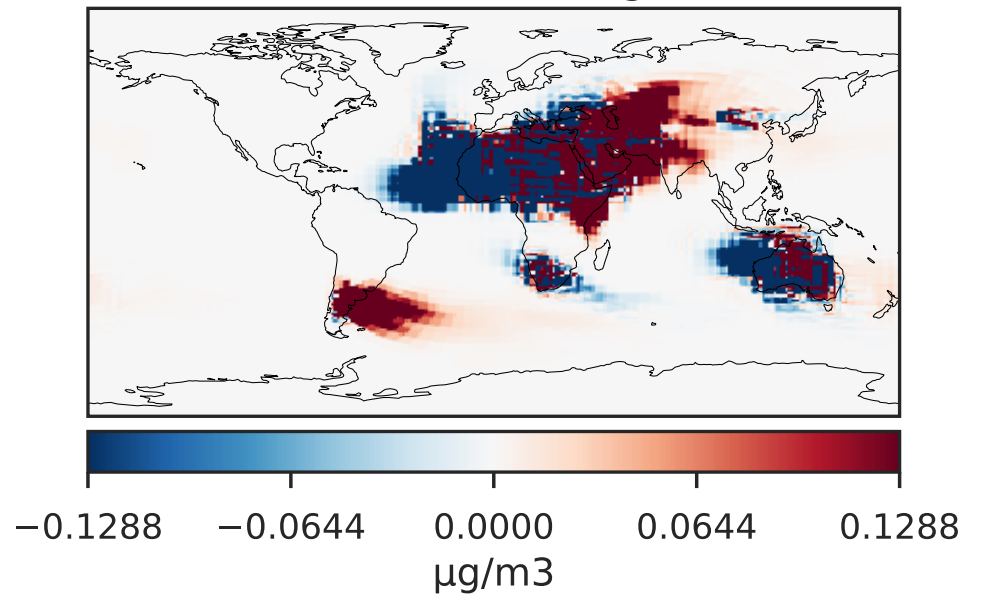
14.3.0-rc.0 (Dev)
c24



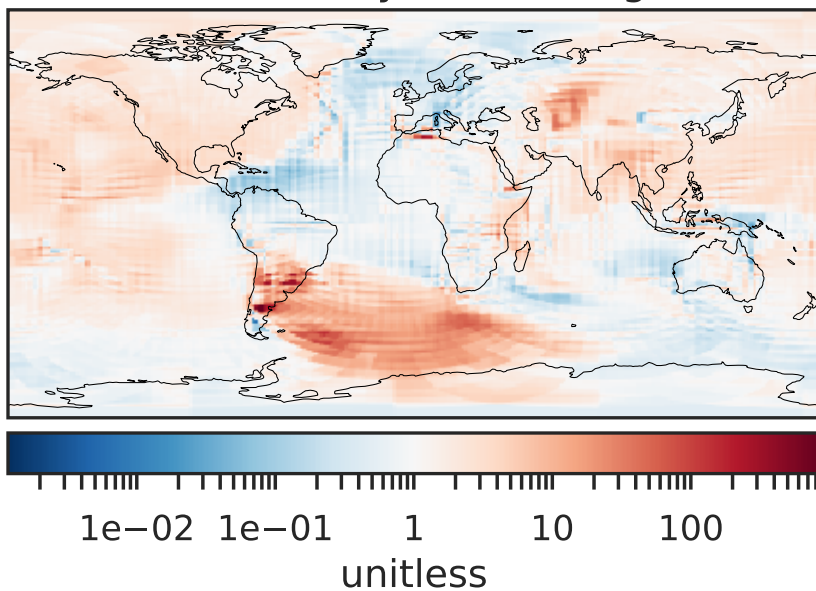
Difference (1x1.25)
Dev - Ref, Dynamic Range



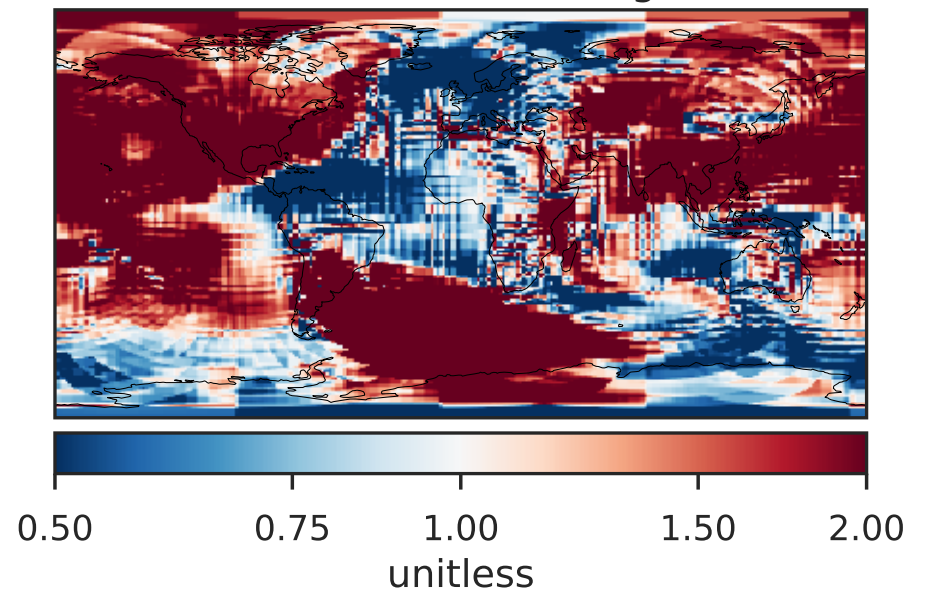
Difference (1x1.25)
Dev - Ref, Restricted Range [5%,95%]



Ratio (1x1.25)
Dev/Ref, Dynamic Range

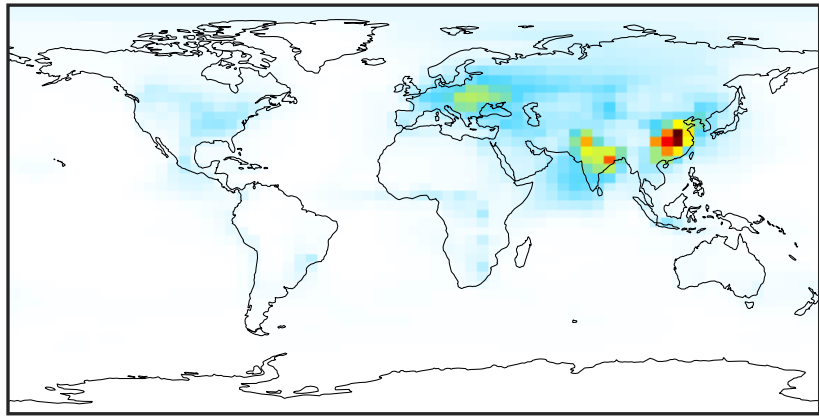


Ratio (1x1.25)
Dev/Ref, Fixed Range



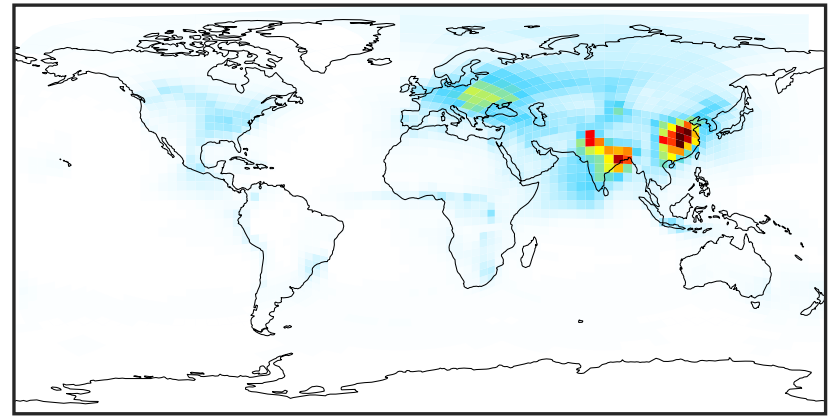
SpeciesConcVV_NH4 (Jan2019)

14.3.0-rc.0 (Ref)
4.0x5.0



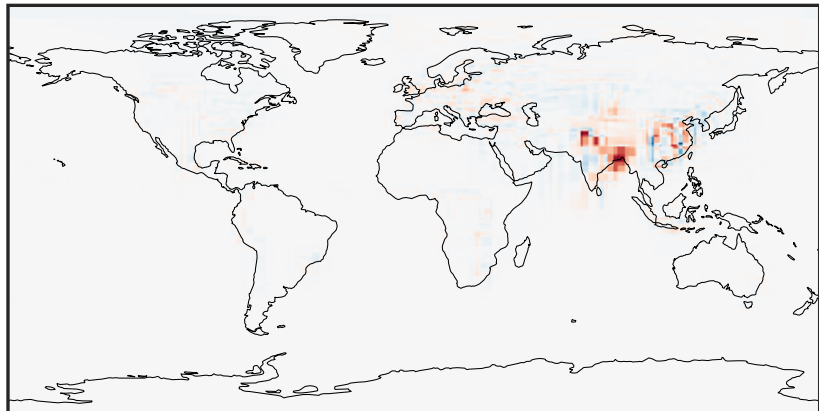
0.01 4.12 8.24 12.35 16.47
 $\mu\text{g}/\text{m}^3$

14.3.0-rc.0 (Dev)
c24



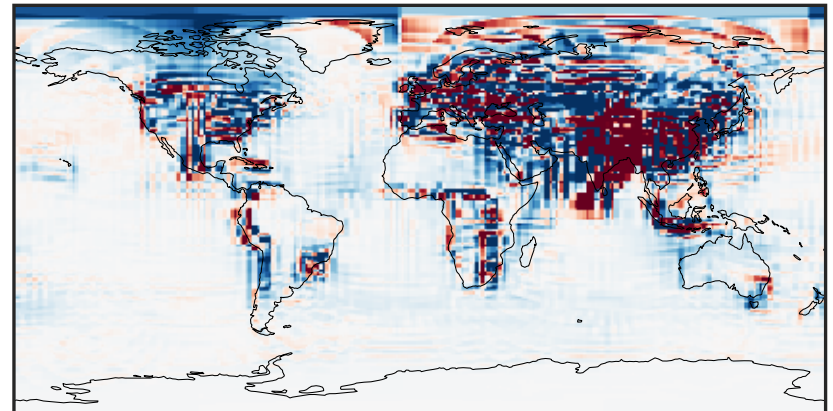
0.01 4.12 8.24 12.35 16.47
 $\mu\text{g}/\text{m}^3$

Difference (1x1.25)
Dev - Ref, Dynamic Range



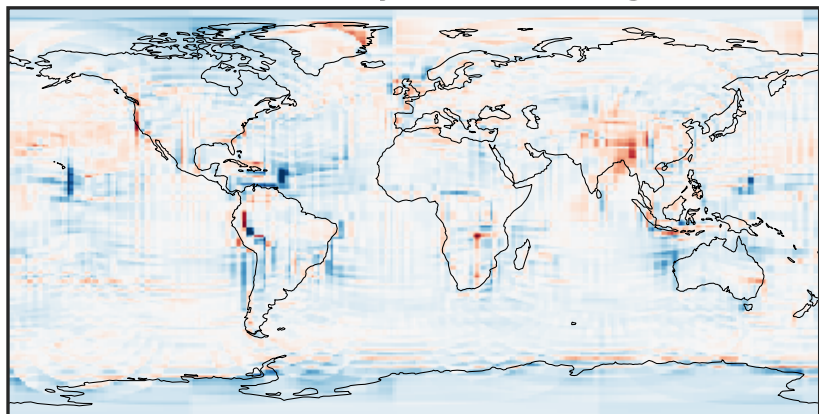
-7.09 -3.55 0.00 3.55 7.09
 $\mu\text{g}/\text{m}^3$

Difference (1x1.25)
Dev - Ref, Restricted Range [5%,95%]



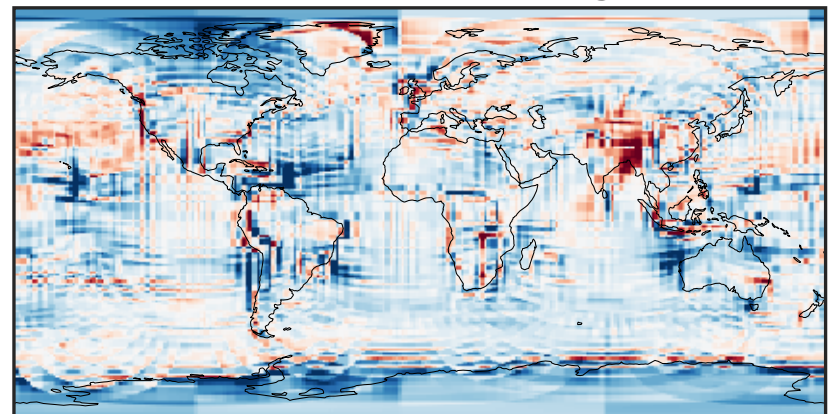
-0.1963 -0.0982 0.0000 0.0982 0.1963
 $\mu\text{g}/\text{m}^3$

Ratio (1x1.25)
Dev/Ref, Dynamic Range



0.184 0.592 1.000 3.218 5.436
unitless

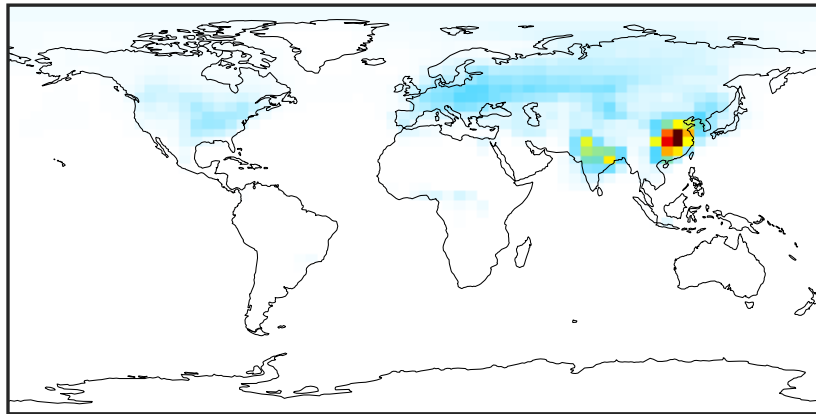
Ratio (1x1.25)
Dev/Ref, Fixed Range



0.50 0.75 1.00 1.50 2.00
unitless

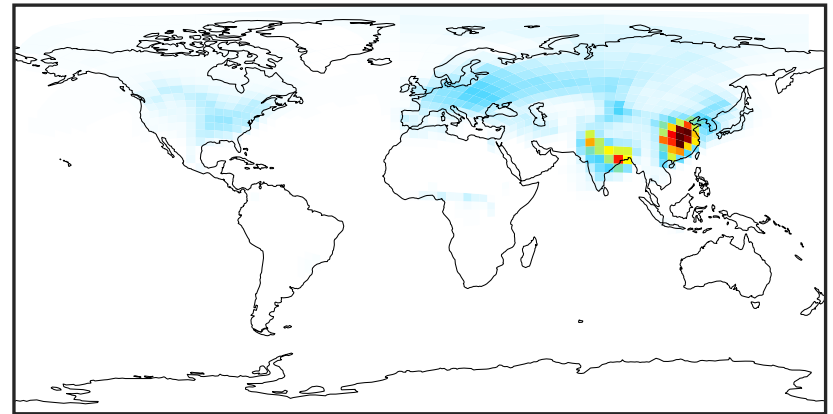
SpeciesConcVV_NIT (Jan2019)

14.3.0-rc.0 (Ref)
4.0x5.0



0.00 9.88 19.76 29.64 39.52
 $\mu\text{g}/\text{m}^3$

14.3.0-rc.0 (Dev)
c24



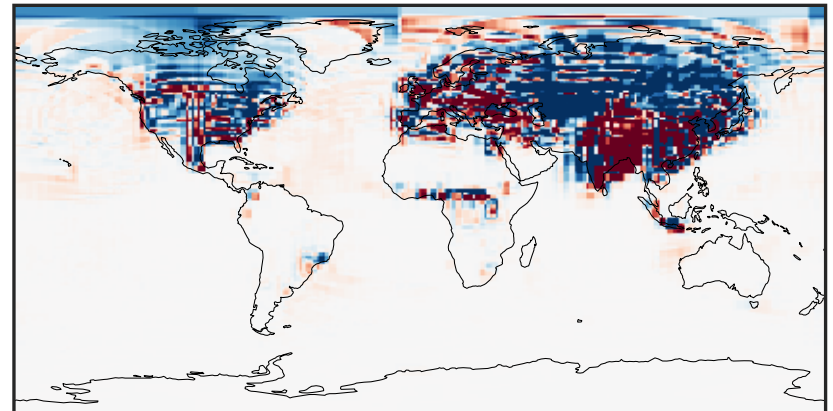
0.00 9.88 19.76 29.64 39.52
 $\mu\text{g}/\text{m}^3$

Difference (1x1.25)
Dev - Ref, Dynamic Range



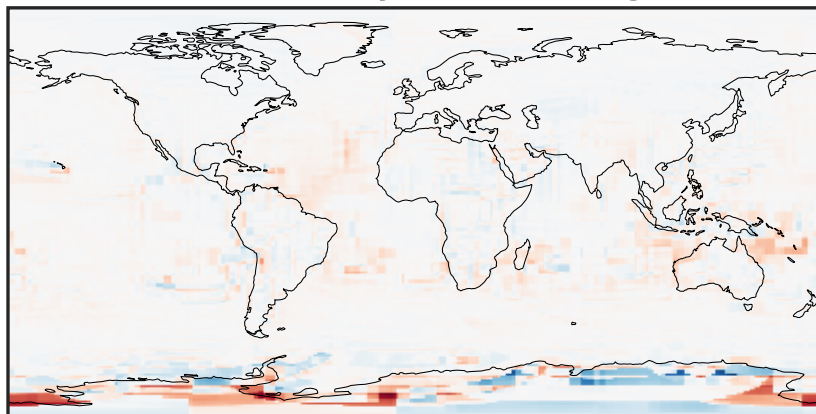
-17.97 -8.98 0.00 8.98 17.97
 $\mu\text{g}/\text{m}^3$

Difference (1x1.25)
Dev - Ref, Restricted Range [5%,95%]



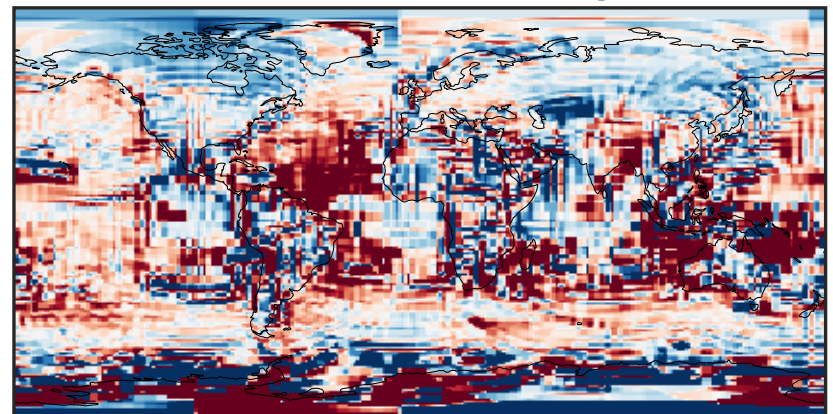
-0.3852 -0.1926 0.0000 0.1926 0.3852
 $\mu\text{g}/\text{m}^3$

Ratio (1x1.25)
Dev/Ref, Dynamic Range



1e-05 1e-02 10 1e4 1e+07
unitless

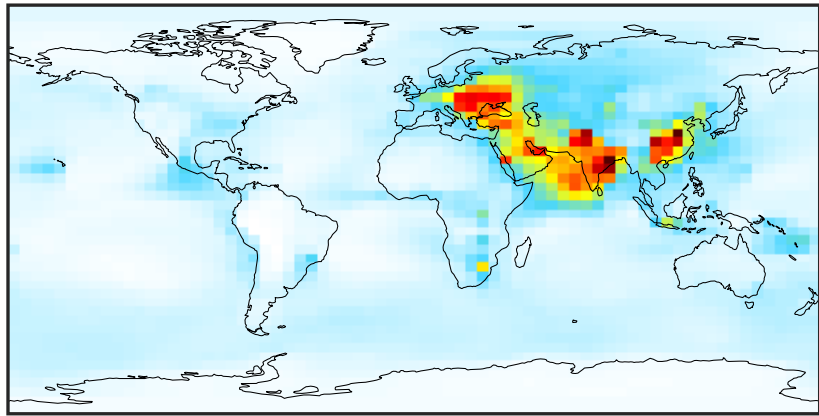
Ratio (1x1.25)
Dev/Ref, Fixed Range



0.50 0.75 1.00 1.50 2.00
unitless

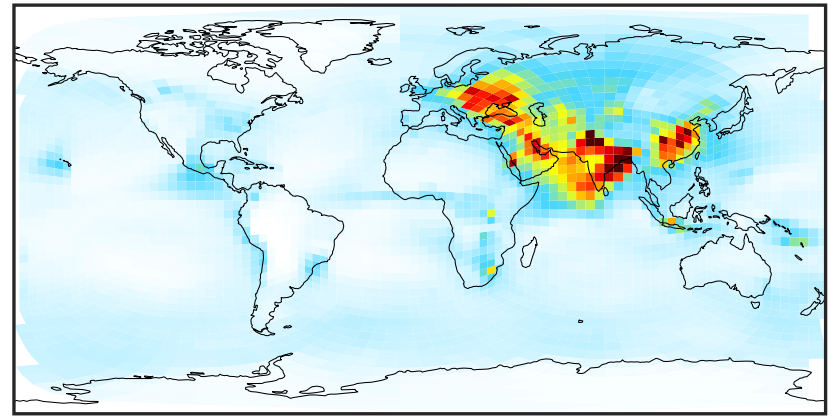
SpeciesConcVV_SO4 (Jan2019)

14.3.0-rc.0 (Ref)
4.0x5.0



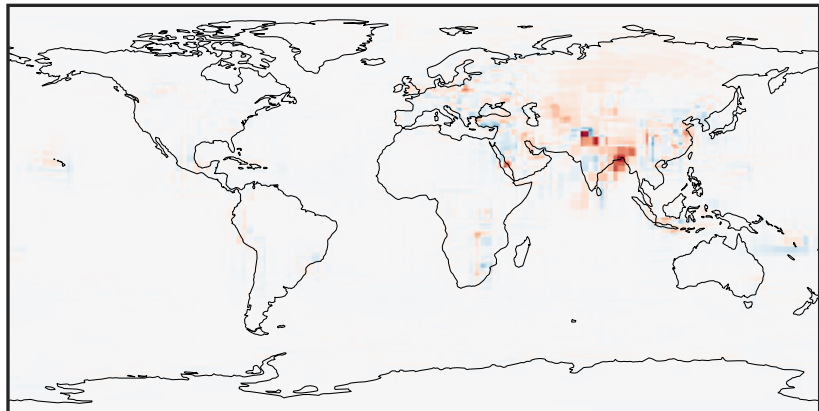
0.11 3.34 6.58 9.81 13.05
 $\mu\text{g}/\text{m}^3$

14.3.0-rc.0 (Dev)
c24



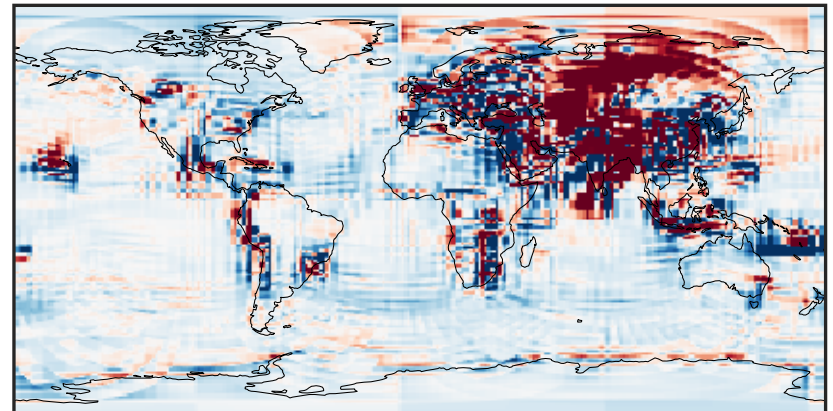
0.11 3.34 6.58 9.81 13.05
 $\mu\text{g}/\text{m}^3$

Difference (1x1.25)
Dev - Ref, Dynamic Range



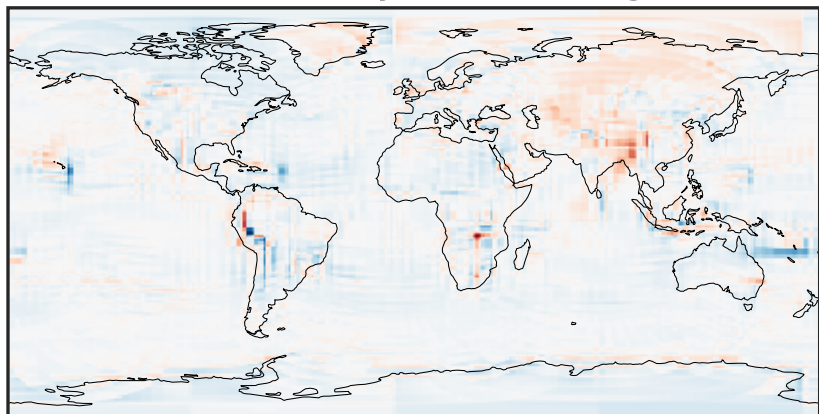
-8.99 -4.49 0.00 4.49 8.99
 $\mu\text{g}/\text{m}^3$

Difference (1x1.25)
Dev - Ref, Restricted Range [5%,95%]



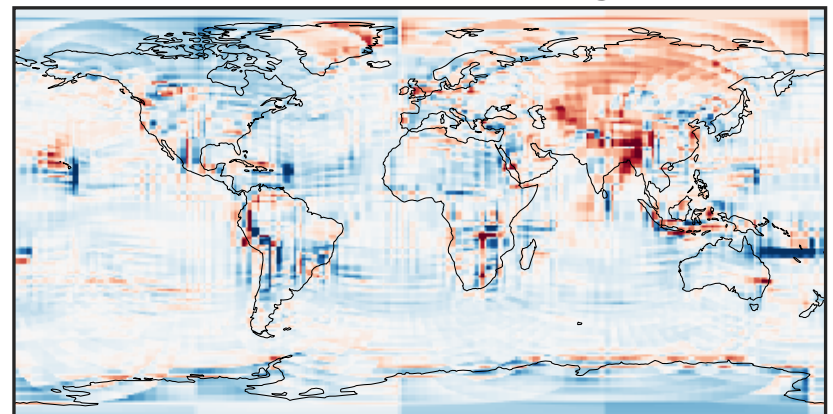
-0.3966 -0.1983 0.0000 0.1983 0.3966
 $\mu\text{g}/\text{m}^3$

Ratio (1x1.25)
Dev/Ref, Dynamic Range



0.139 0.569 1.000 4.108 7.217
unitless

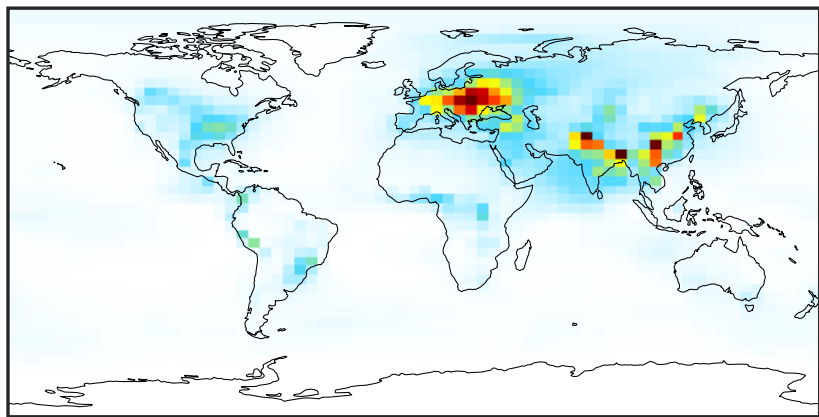
Ratio (1x1.25)
Dev/Ref, Fixed Range



0.50 0.75 1.00 1.50 2.00
unitless

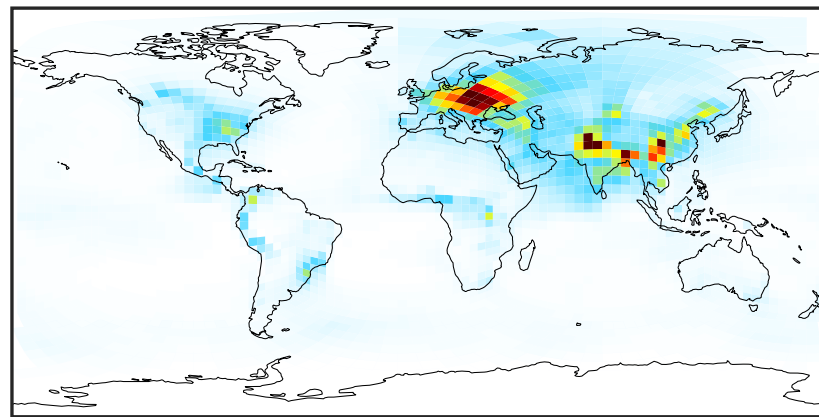
SpeciesConcVV_HMS (Jan2019)

14.3.0-rc.0 (Ref)
4.0x5.0



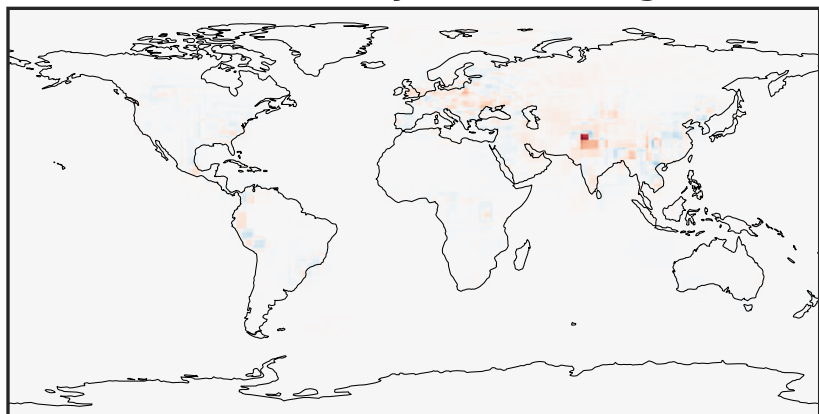
0.002 0.530 1.059 1.587 2.116
 $\mu\text{g}/\text{m}^3$

14.3.0-rc.0 (Dev)
c24



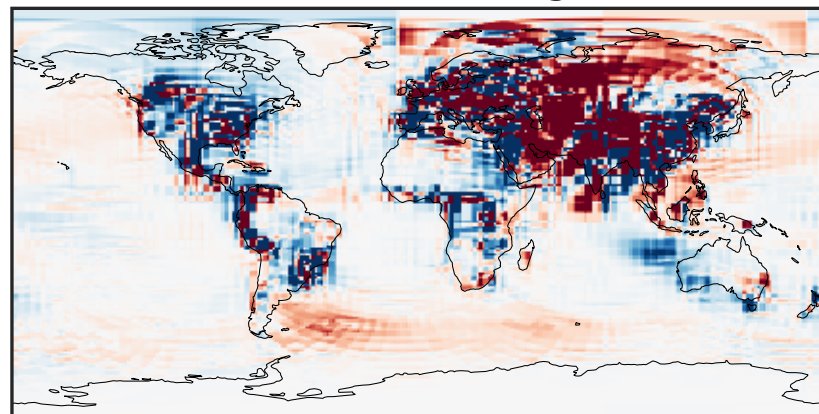
0.002 0.530 1.059 1.587 2.116
 $\mu\text{g}/\text{m}^3$

Difference (1x1.25)
Dev - Ref, Dynamic Range



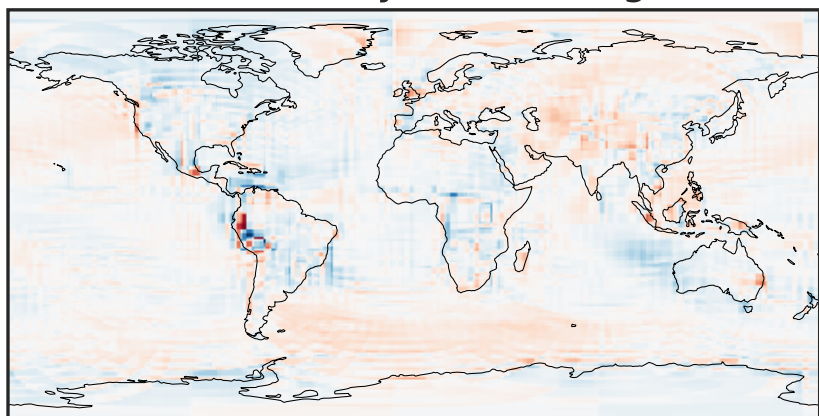
-2.614 -1.307 0.000 1.307 2.614
 $\mu\text{g}/\text{m}^3$

Difference (1x1.25)
Dev - Ref, Restricted Range [5%,95%]



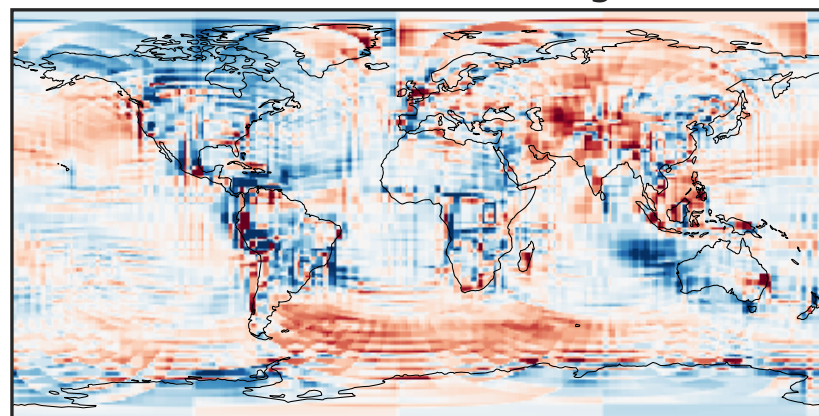
-0.025 0.000 0.025
 $\mu\text{g}/\text{m}^3$

Ratio (1x1.25)
Dev/Ref, Dynamic Range



1e-01 1 10
unitless

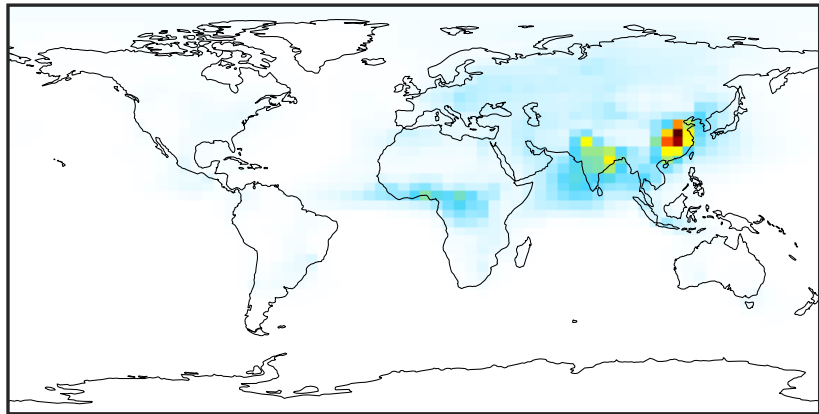
Ratio (1x1.25)
Dev/Ref, Fixed Range



0.50 0.75 1.00 1.50 2.00
unitless

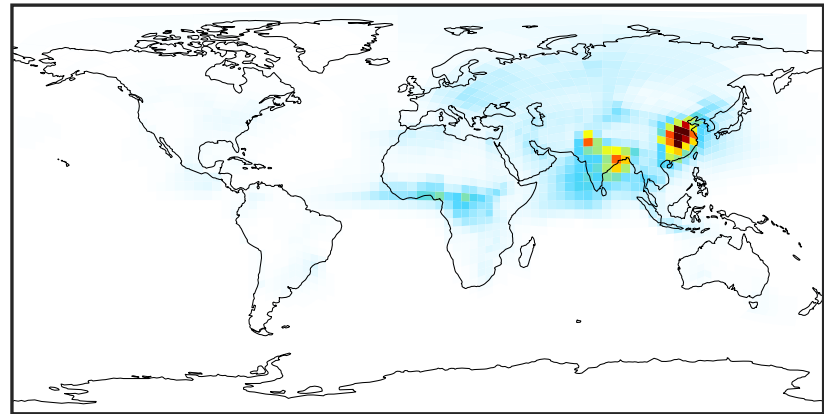
SpeciesConcVV_BCPI (Jan2019)

14.3.0-rc.0 (Ref)
4.0x5.0



0.000 1.142 2.284 3.426 4.568
µg/m³

14.3.0-rc.0 (Dev)
c24



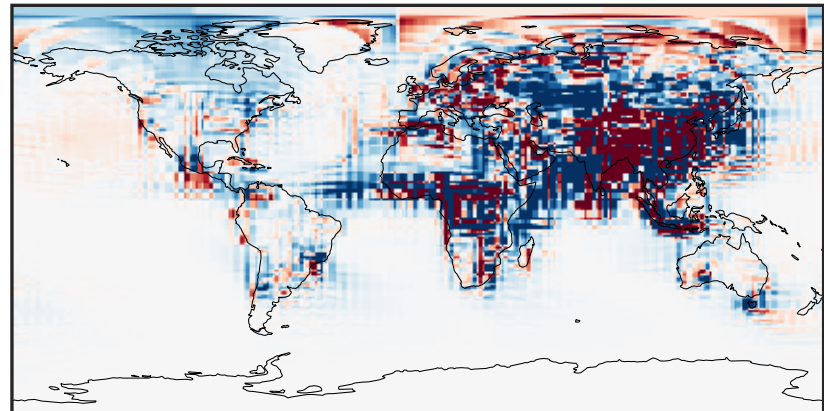
0.000 1.142 2.284 3.426 4.568
µg/m³

Difference (1x1.25)
Dev - Ref, Dynamic Range



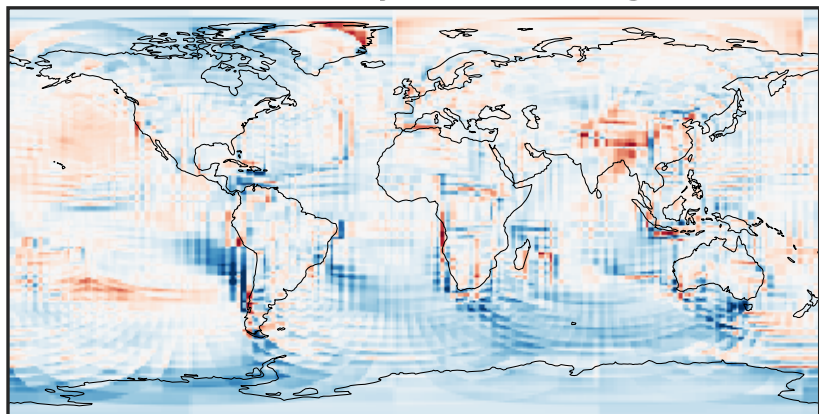
-1.78 -0.89 0.00 0.89 1.78
µg/m³

Difference (1x1.25)
Dev - Ref, Restricted Range [5%,95%]



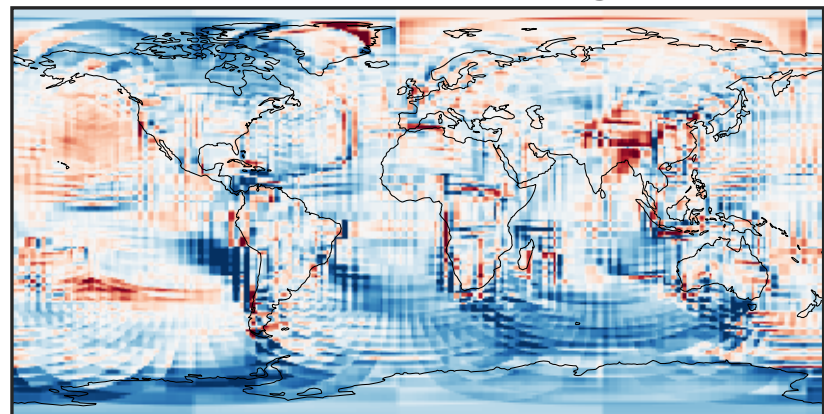
-0.02 0.00 0.02
µg/m³

Ratio (1x1.25)
Dev/Ref, Dynamic Range



0.284 0.642 1.000 2.259 3.519
unitless

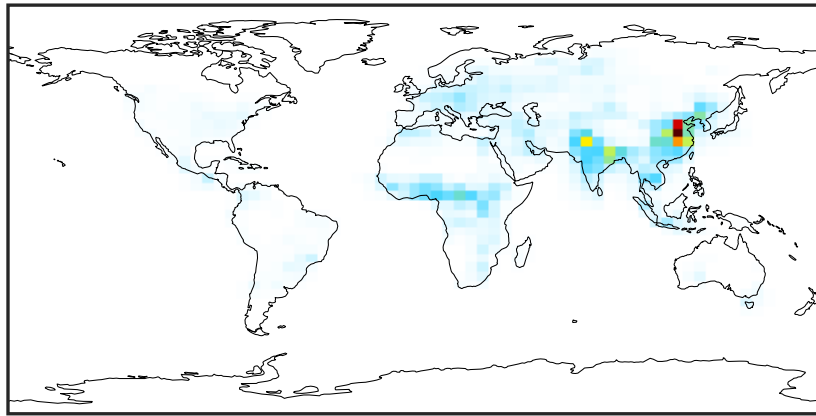
Ratio (1x1.25)
Dev/Ref, Fixed Range



0.50 0.75 1.00 1.50 2.00
unitless

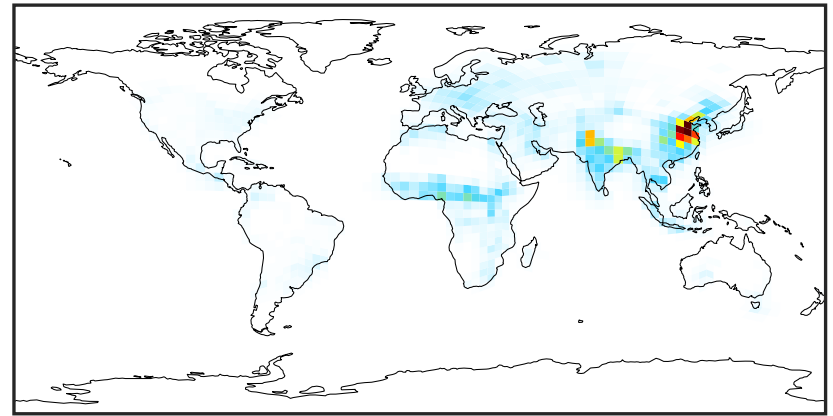
SpeciesConcVV_BCPO (Jan2019)

14.3.0-rc.0 (Ref)
4.0x5.0



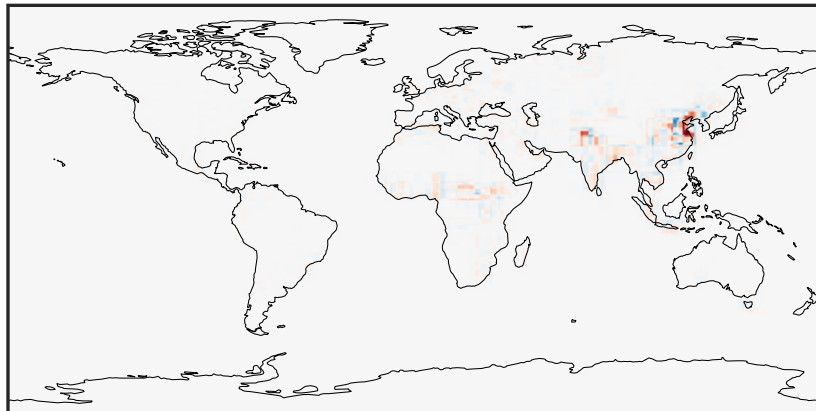
0.000 0.868 1.735 2.603 3.471
 $\mu\text{g}/\text{m}^3$

14.3.0-rc.0 (Dev)
c24



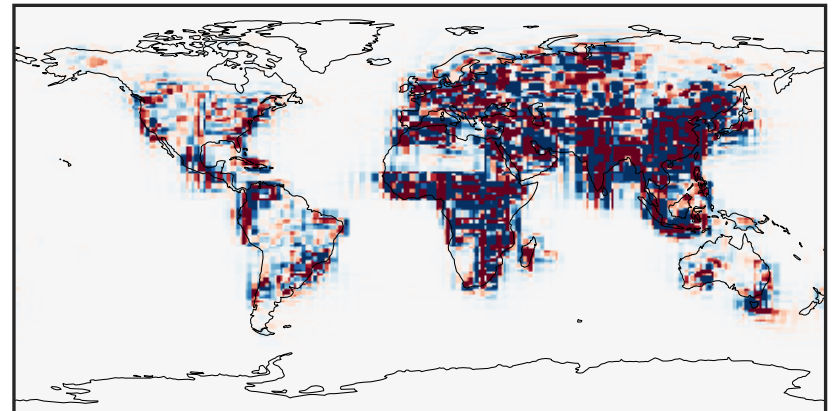
0.000 0.868 1.735 2.603 3.471
 $\mu\text{g}/\text{m}^3$

Difference (1x1.25)
Dev - Ref, Dynamic Range



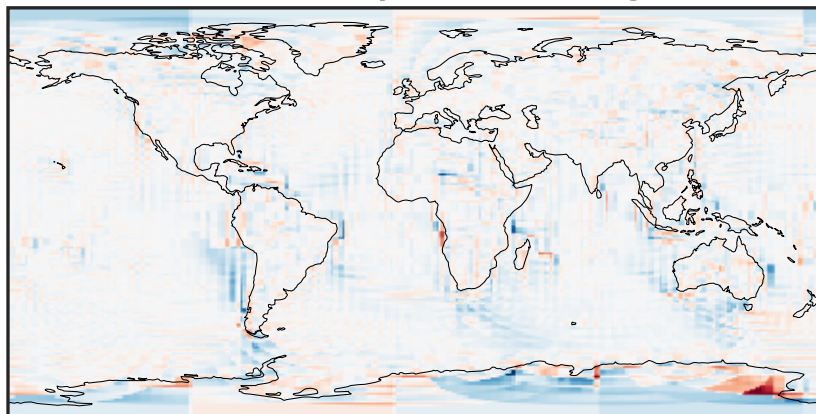
-1.722 -0.861 0.000 0.861 1.722
 $\mu\text{g}/\text{m}^3$

Difference (1x1.25)
Dev - Ref, Restricted Range [5%,95%]



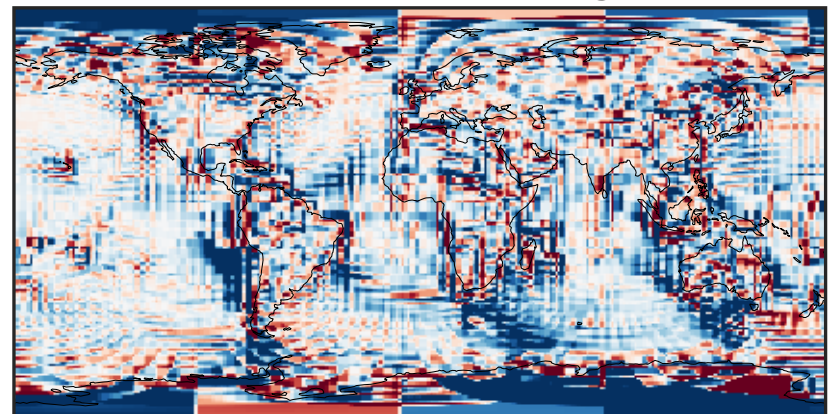
-0.01 0.00 0.01
 $\mu\text{g}/\text{m}^3$

Ratio (1x1.25)
Dev/Ref, Dynamic Range



1e-02 1e-01 1 10 100
unitless

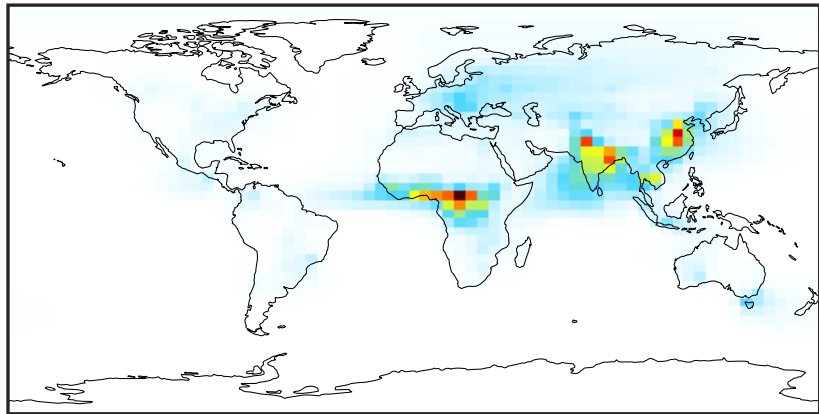
Ratio (1x1.25)
Dev/Ref, Fixed Range



0.50 0.75 1.00 1.50 2.00
unitless

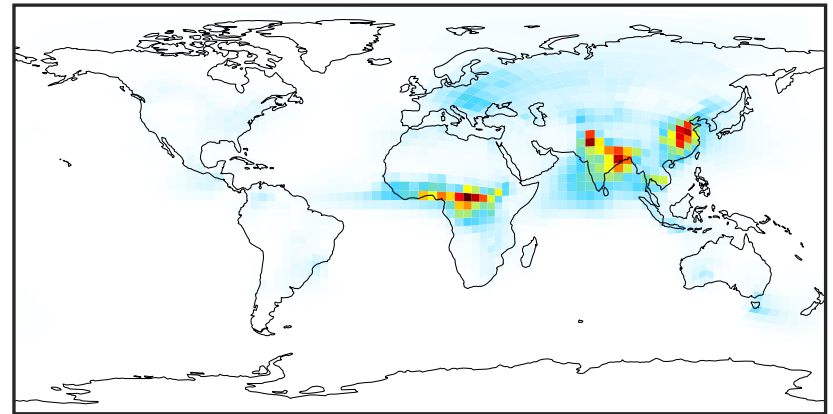
SpeciesConcVW_OCPI (Jan2019)

14.3.0-rc.0 (Ref)
4.0x5.0



0.00 3.10 6.19 9.29 12.38
µg/m³

14.3.0-rc.0 (Dev)
c24



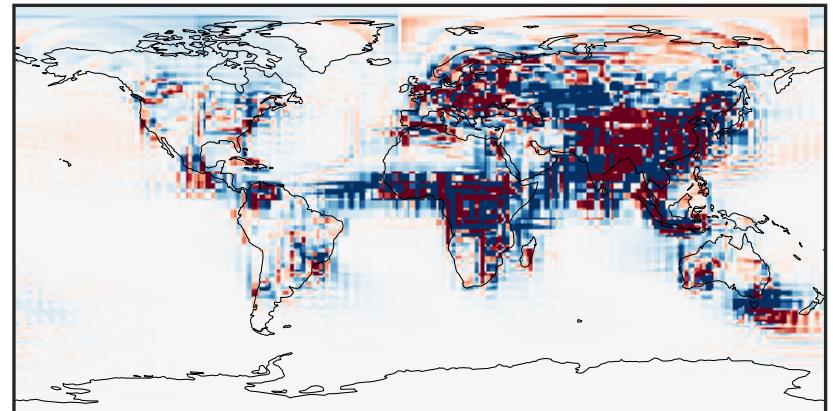
0.00 3.10 6.19 9.29 12.38
µg/m³

Difference (1x1.25)
Dev - Ref, Dynamic Range



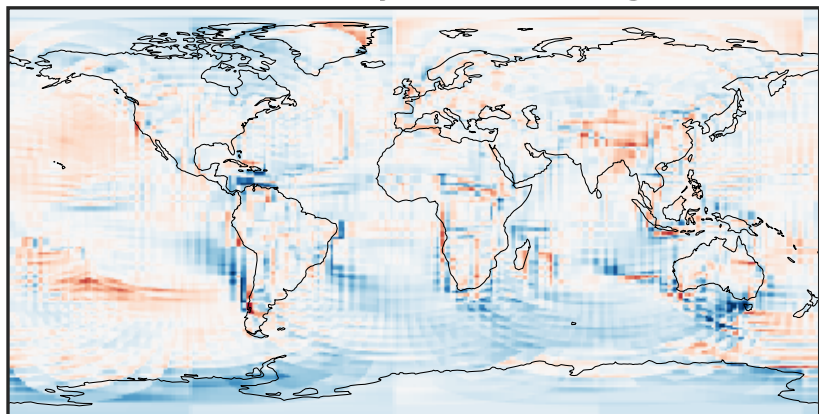
-6.02 -3.01 0.00 3.01 6.02
µg/m³

Difference (1x1.25)
Dev - Ref, Restricted Range [5%,95%]



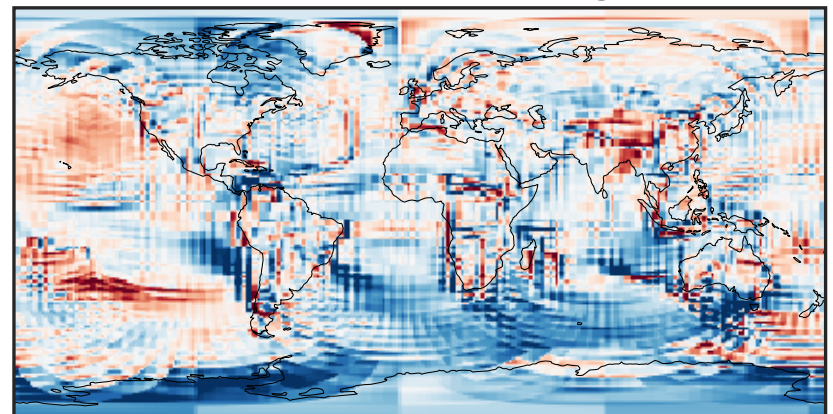
-0.1097 -0.0549 0.0000 0.0549 0.1097
µg/m³

Ratio (1x1.25)
Dev/Ref, Dynamic Range



0.182 0.591 1.000 3.248 5.495
unitless

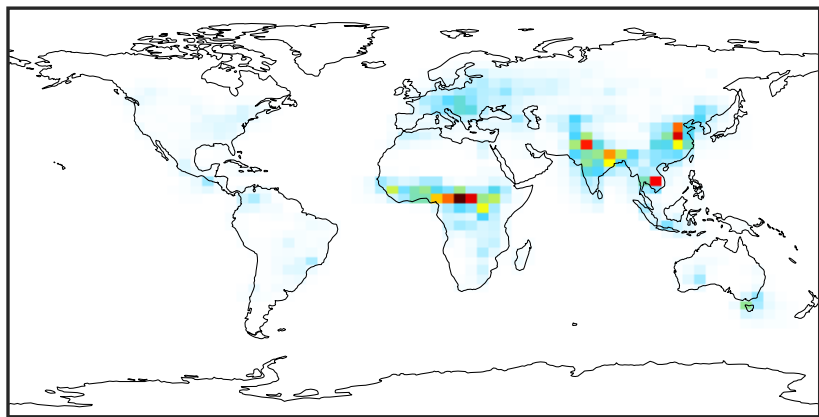
Ratio (1x1.25)
Dev/Ref, Fixed Range



0.50 0.75 1.00 1.50 2.00
unitless

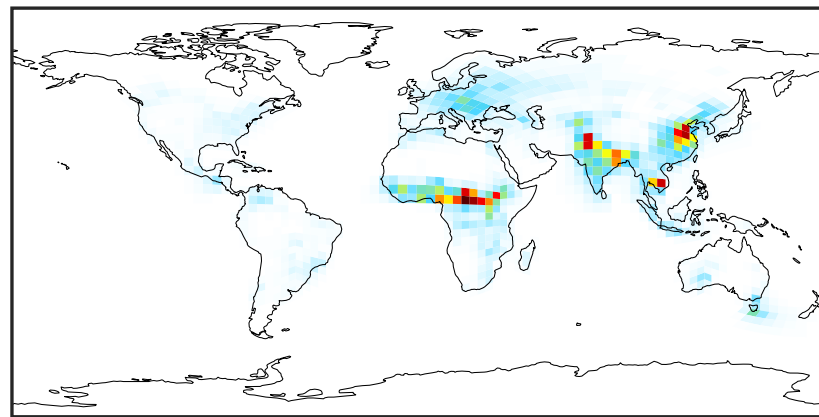
SpeciesConcVV_OCPO (Jan2019)

14.3.0-rc.0 (Ref)
4.0x5.0



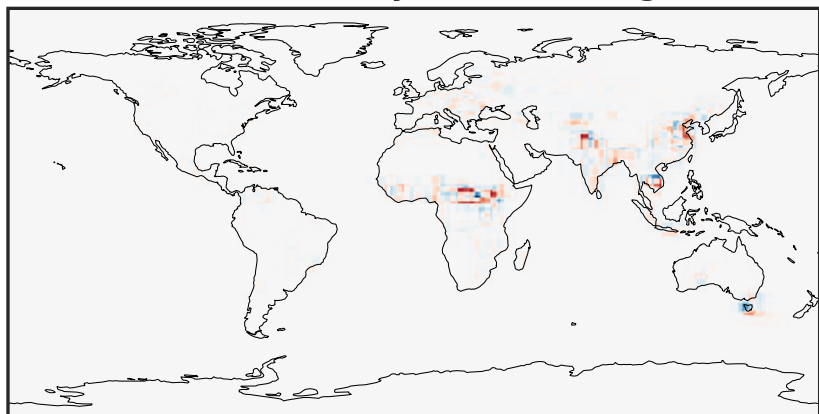
0.000 1.151 2.302 3.453 4.604
 $\mu\text{g}/\text{m}^3$

14.3.0-rc.0 (Dev)
c24



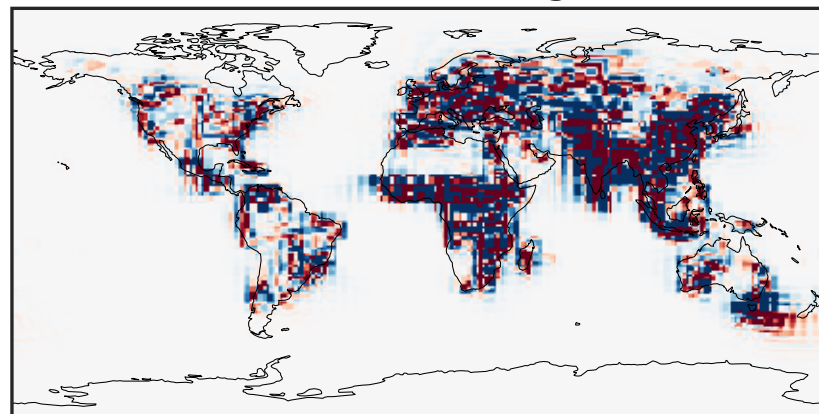
0.000 1.151 2.302 3.453 4.604
 $\mu\text{g}/\text{m}^3$

Difference (1x1.25)
Dev - Ref, Dynamic Range



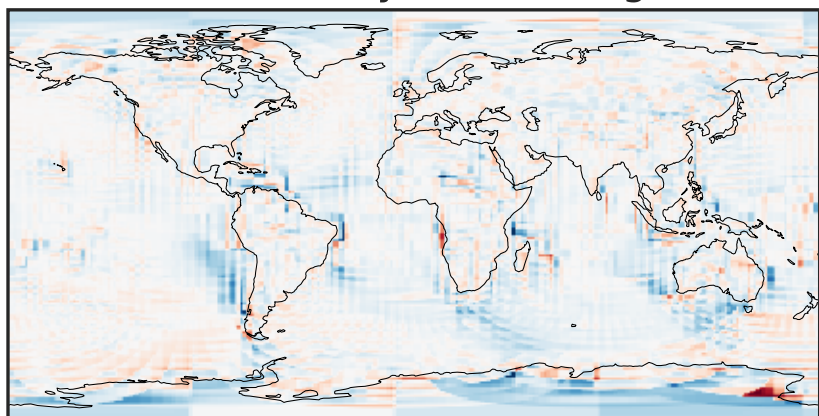
-2.548 -1.274 0.000 1.274 2.548
 $\mu\text{g}/\text{m}^3$

Difference (1x1.25)
Dev - Ref, Restricted Range [5%,95%]



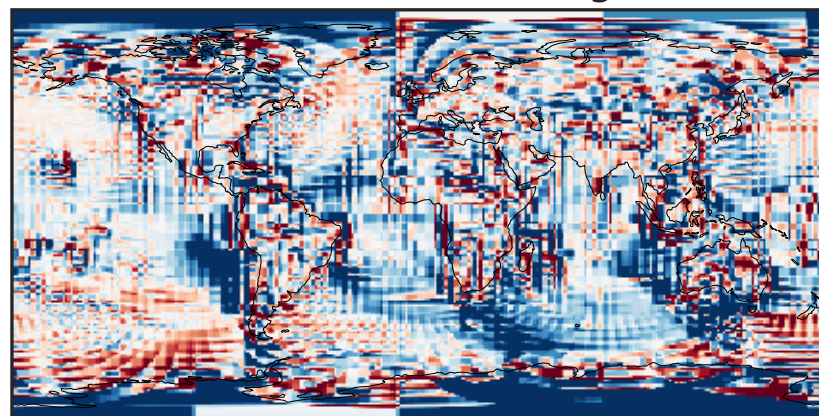
-0.02 0.00 0.02
 $\mu\text{g}/\text{m}^3$

Ratio (1x1.25)
Dev/Ref, Dynamic Range



1e-01 1 10
unitless

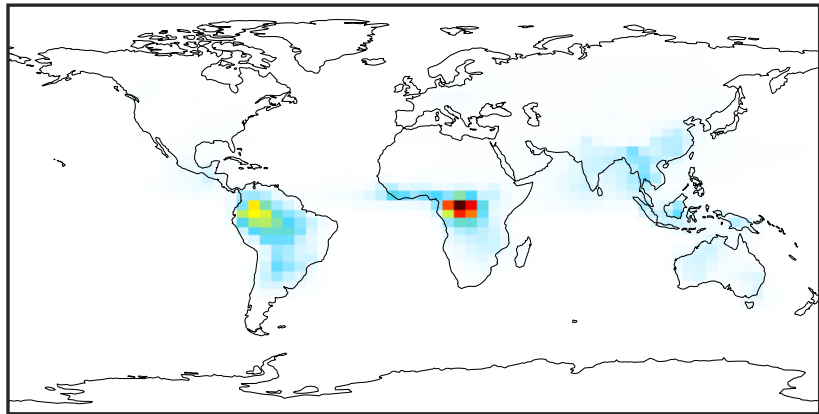
Ratio (1x1.25)
Dev/Ref, Fixed Range



0.50 0.75 1.00 1.50 2.00
unitless

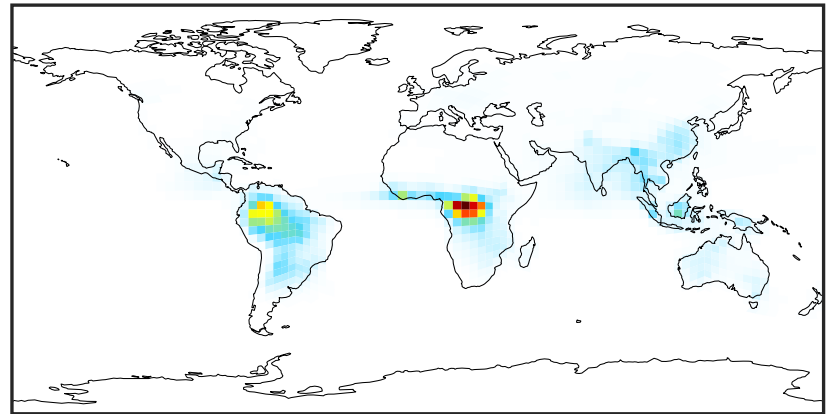
SpeciesConcVV_Complex_SOA (Jan2019)

14.3.0-rc.0 (Ref)
4.0x5.0



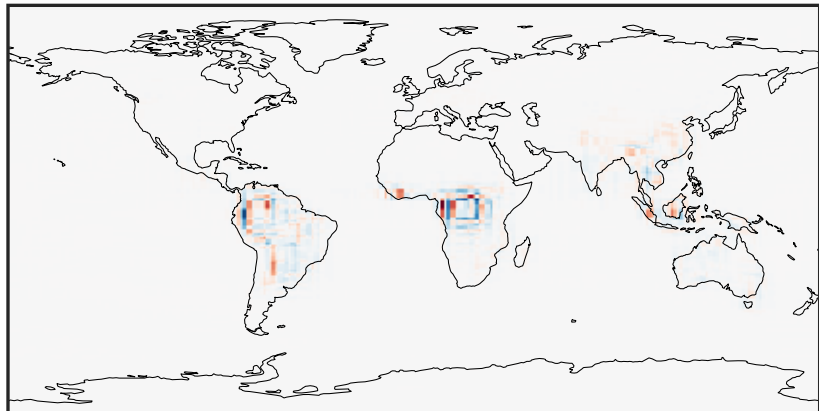
0.000 2.268 4.536 6.805 9.073
 $\mu\text{g}/\text{m}^3$

14.3.0-rc.0 (Dev)
c24



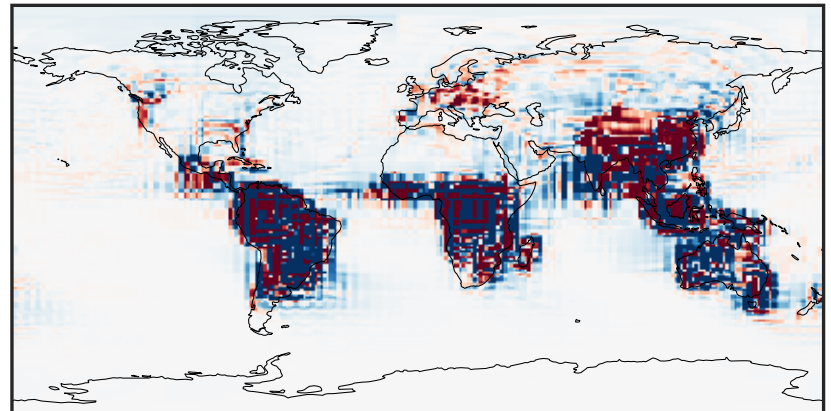
0.000 2.268 4.536 6.805 9.073
 $\mu\text{g}/\text{m}^3$

Difference (1x1.25)
Dev - Ref, Dynamic Range



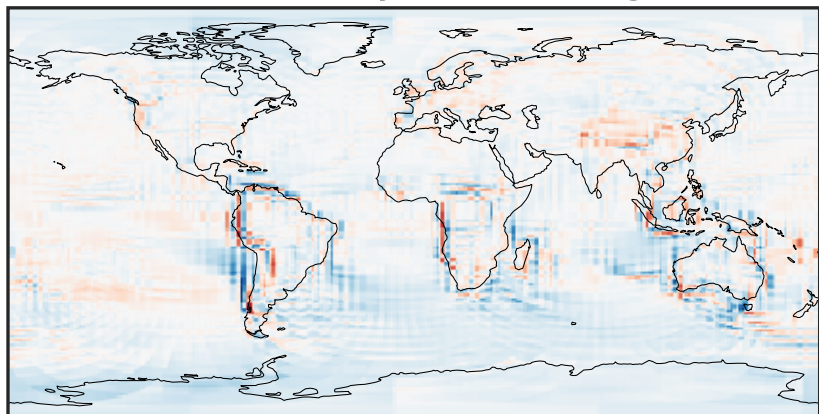
-2.492 -1.246 0.000 1.246 2.492
 $\mu\text{g}/\text{m}^3$

Difference (1x1.25)
Dev - Ref, Restricted Range [5%,95%]



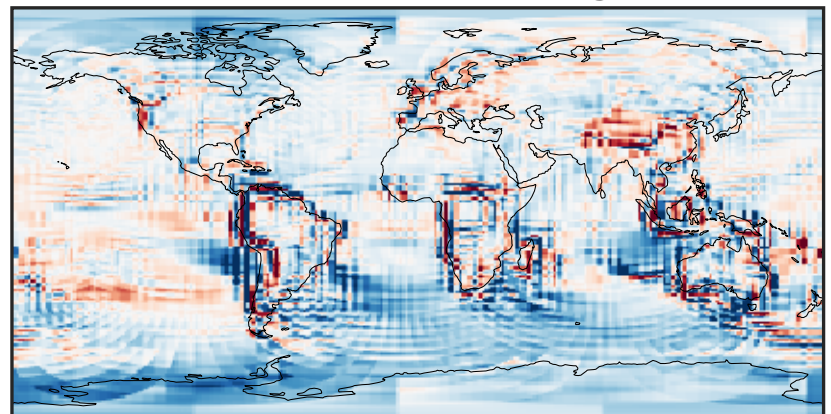
-0.015 0.000 0.015
 $\mu\text{g}/\text{m}^3$

Ratio (1x1.25)
Dev/Ref, Dynamic Range



0.129 0.565 1.000 4.376 7.751
unitless

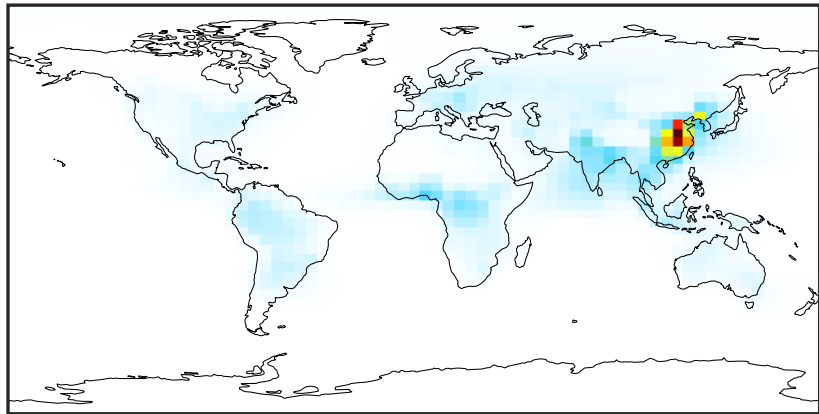
Ratio (1x1.25)
Dev/Ref, Fixed Range



0.50 0.75 1.00 1.50 2.00
unitless

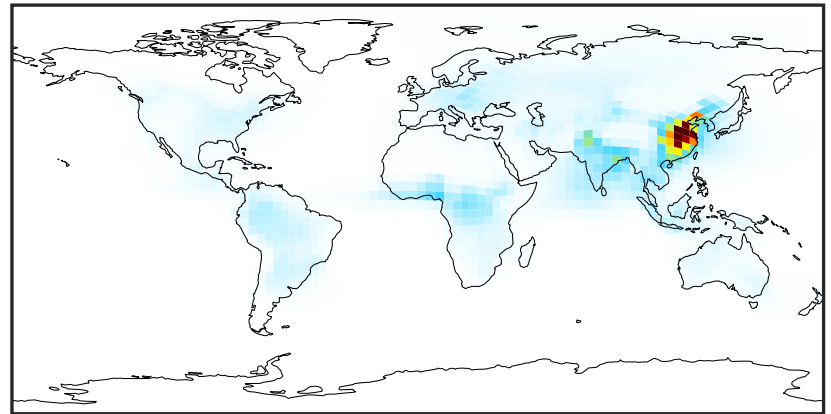
SpeciesConcVV_Simple_SOA (Jan2019)

14.3.0-rc.0 (Ref)
4.0x5.0



0.00 15.94 31.87 47.80 63.73
µg/m3

14.3.0-rc.0 (Dev)
c24



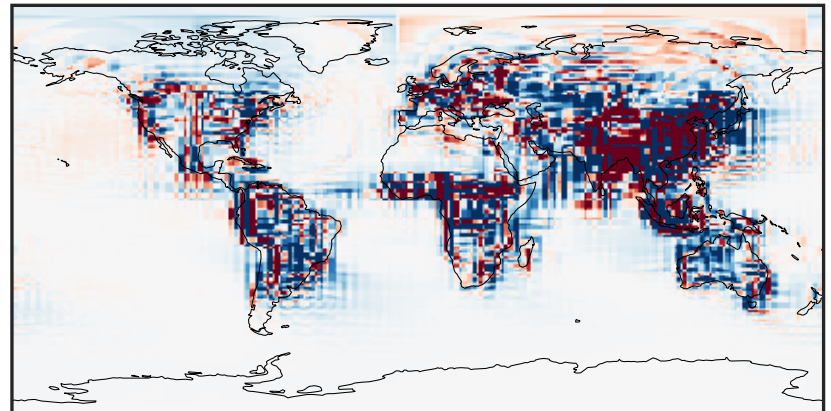
0.00 15.94 31.87 47.80 63.73
µg/m3

Difference (1x1.25)
Dev - Ref, Dynamic Range



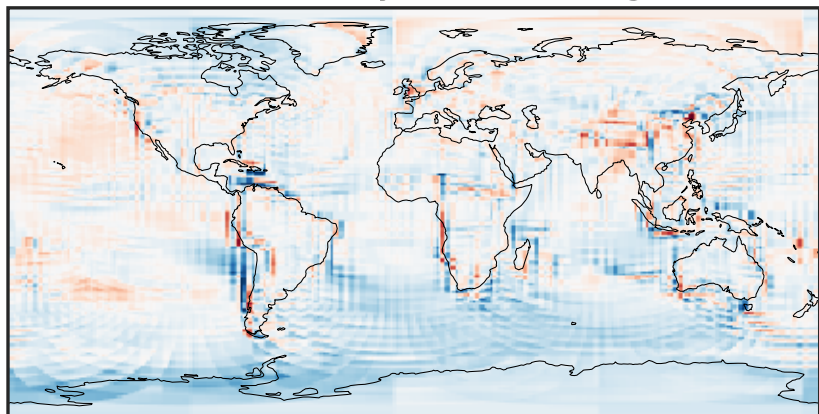
-36.37 -18.18 0.00 18.18 36.37
µg/m3

Difference (1x1.25)
Dev - Ref, Restricted Range [5%,95%]



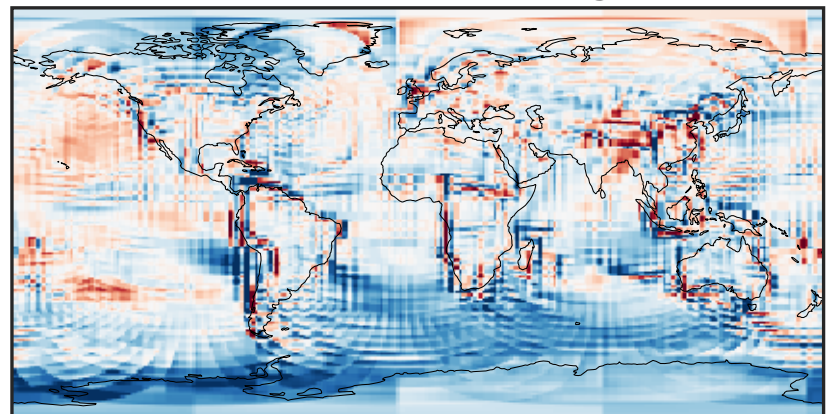
-0.3830 -0.1915 0.0000 0.1915 0.3830
µg/m3

Ratio (1x1.25)
Dev/Ref, Dynamic Range



0.219 0.610 1.000 2.782 4.564
unitless

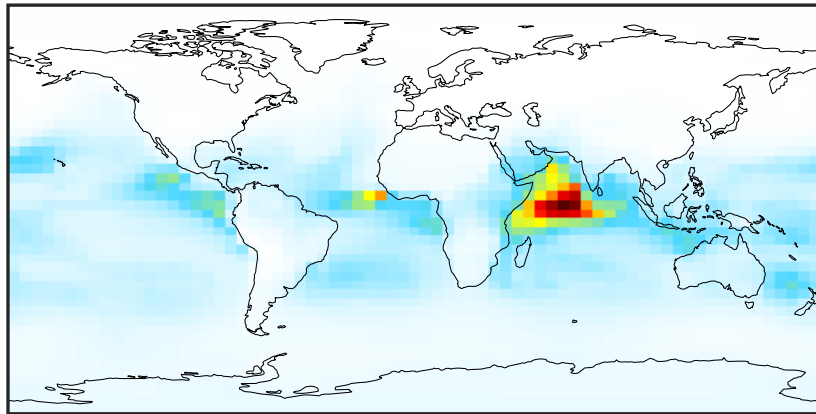
Ratio (1x1.25)
Dev/Ref, Fixed Range



0.50 0.75 1.00 1.50 2.00
unitless

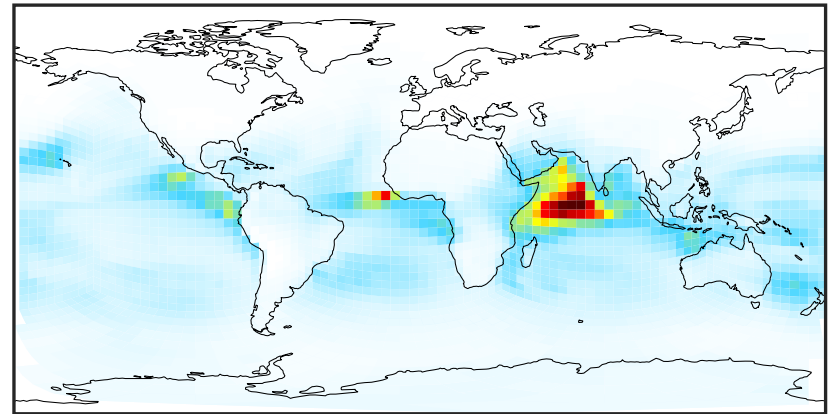
SpeciesConcVV_AERI (Jan2019)

14.3.0-rc.0 (Ref)
4.0x5.0



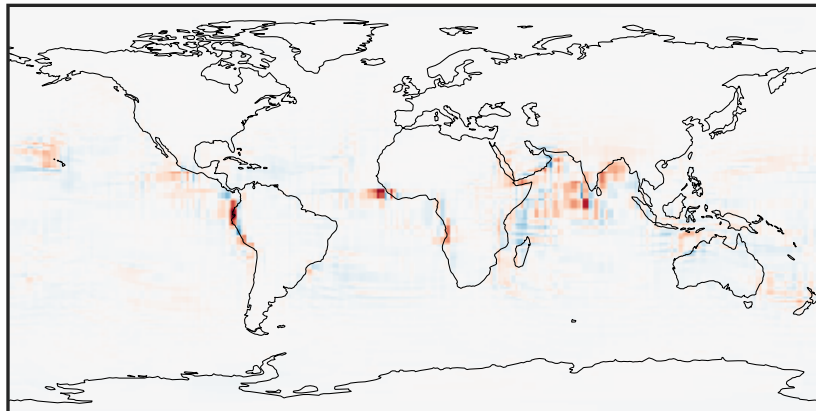
0.015 0.030 0.045
 $\mu\text{g}/\text{m}^3$

14.3.0-rc.0 (Dev)
c24



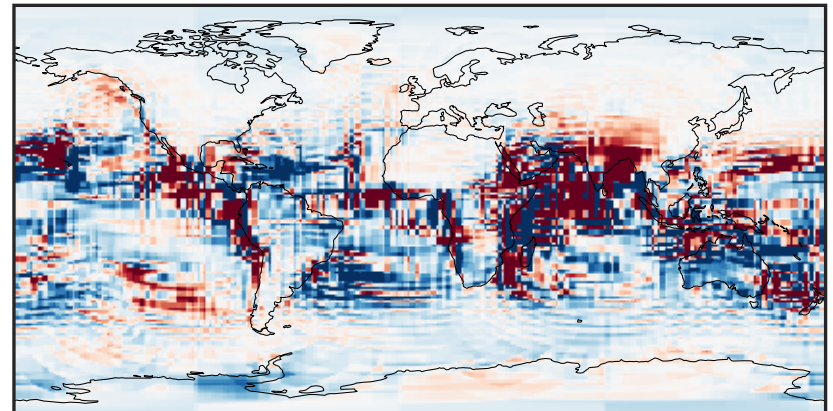
0.015 0.030 0.045
 $\mu\text{g}/\text{m}^3$

Difference (1x1.25)
Dev - Ref, Dynamic Range



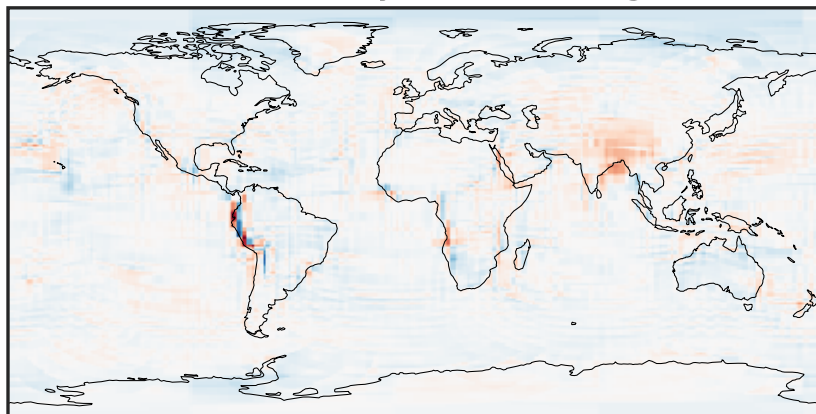
-0.008 0.000 0.008
 $\mu\text{g}/\text{m}^3$

Difference (1x1.25)
Dev - Ref, Restricted Range [5%,95%]



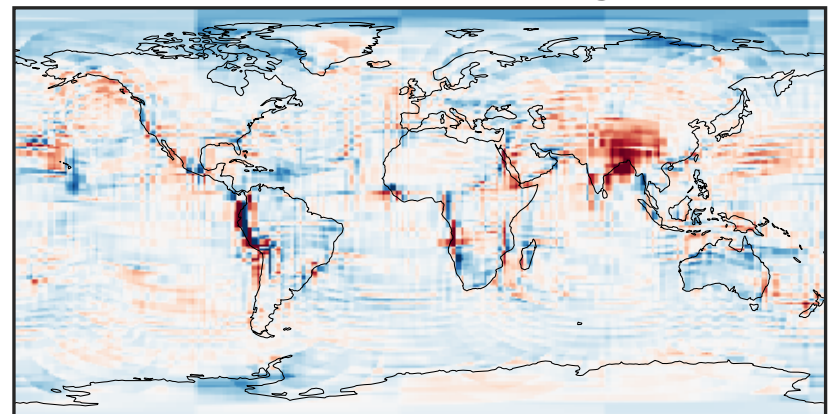
-0.0004 0.0000 0.0004
 $\mu\text{g}/\text{m}^3$

Ratio (1x1.25)
Dev/Ref, Dynamic Range



0.135 0.567 1.000 4.207 7.414
unitless

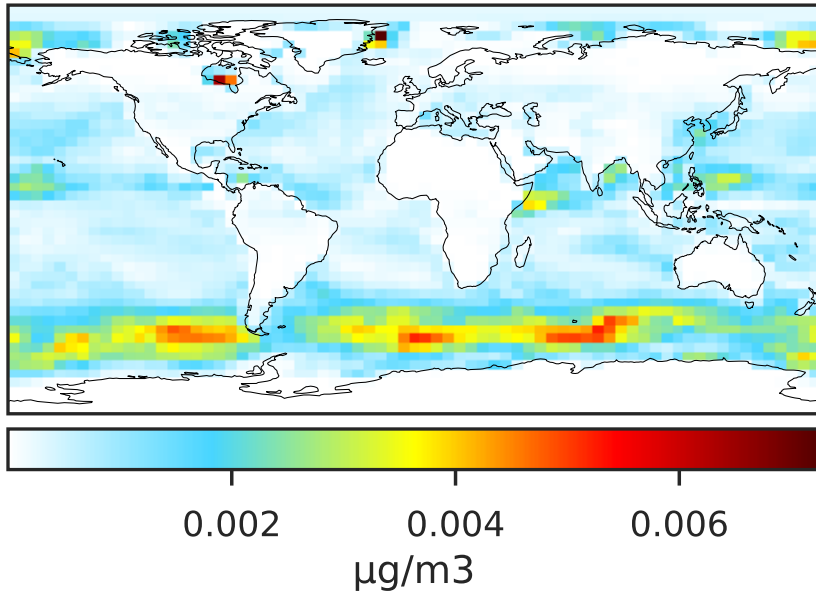
Ratio (1x1.25)
Dev/Ref, Fixed Range



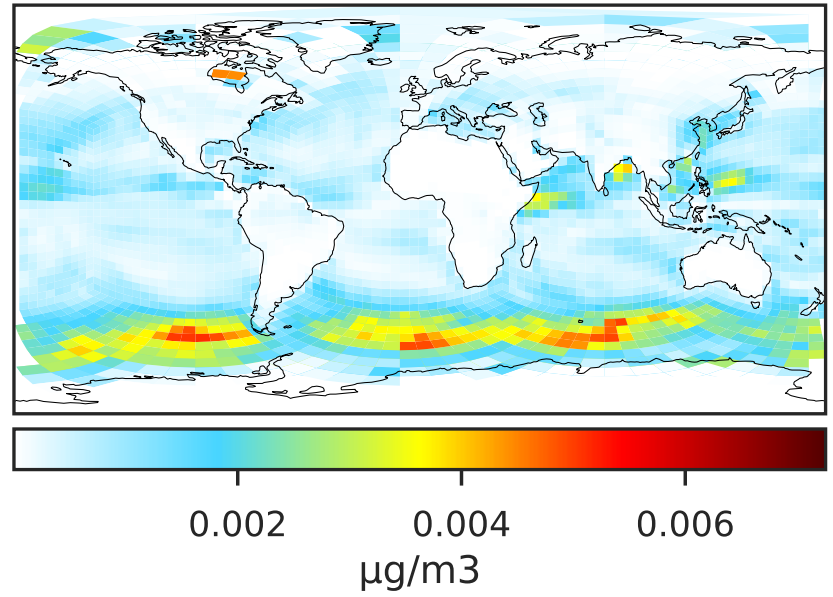
0.50 0.75 1.00 1.50 2.00
unitless

SpeciesConcVV_BrSALA (Jan2019)

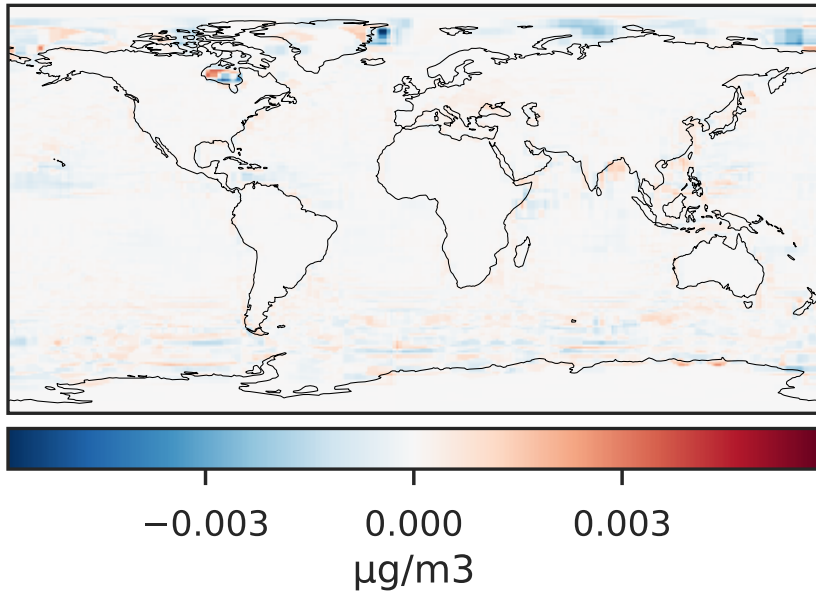
14.3.0-rc.0 (Ref)
4.0x5.0



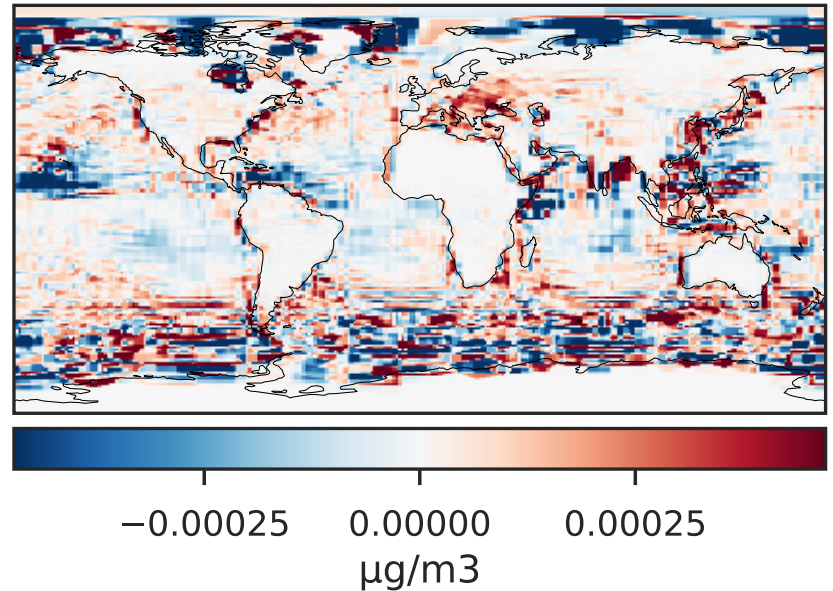
14.3.0-rc.0 (Dev)
c24



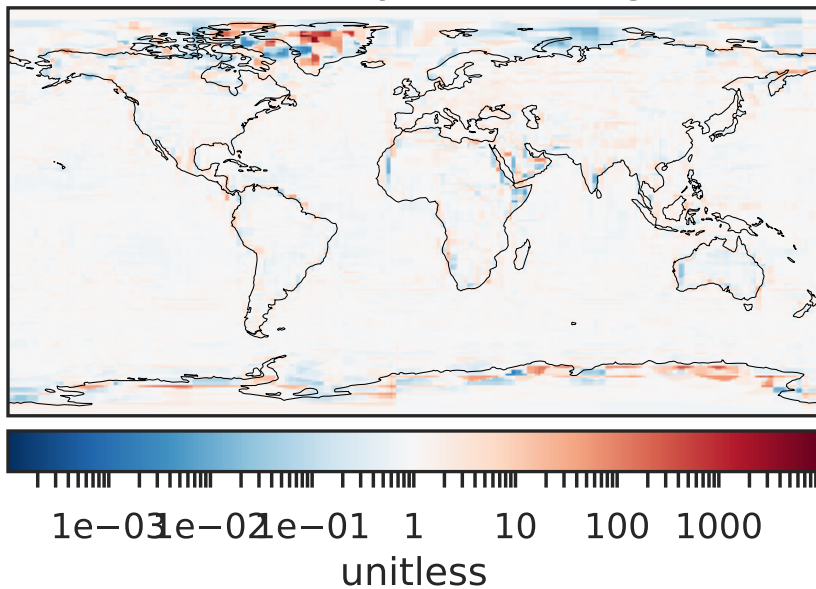
Difference (1x1.25)
Dev - Ref, Dynamic Range



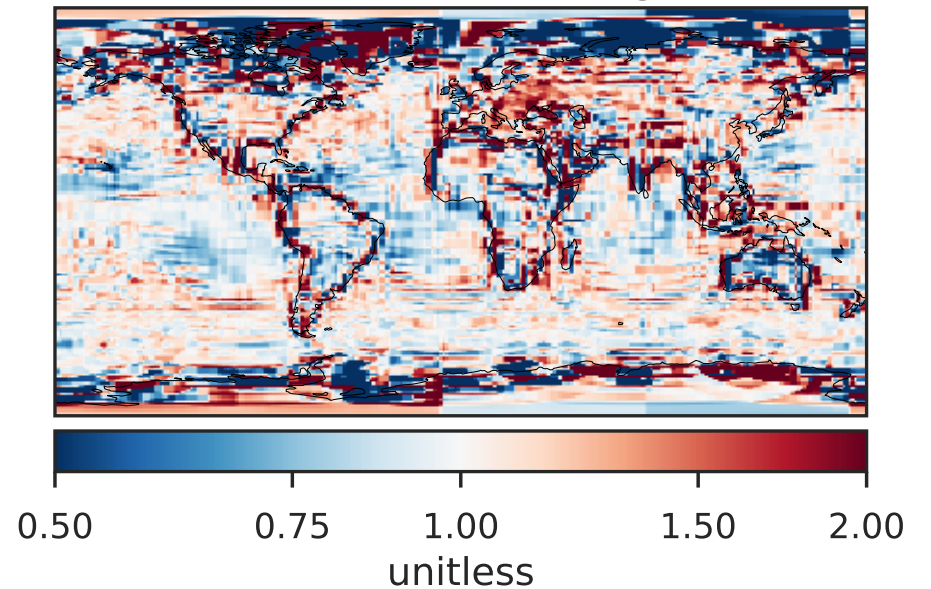
Difference (1x1.25)
Dev - Ref, Restricted Range [5%,95%]



Ratio (1x1.25)
Dev/Ref, Dynamic Range

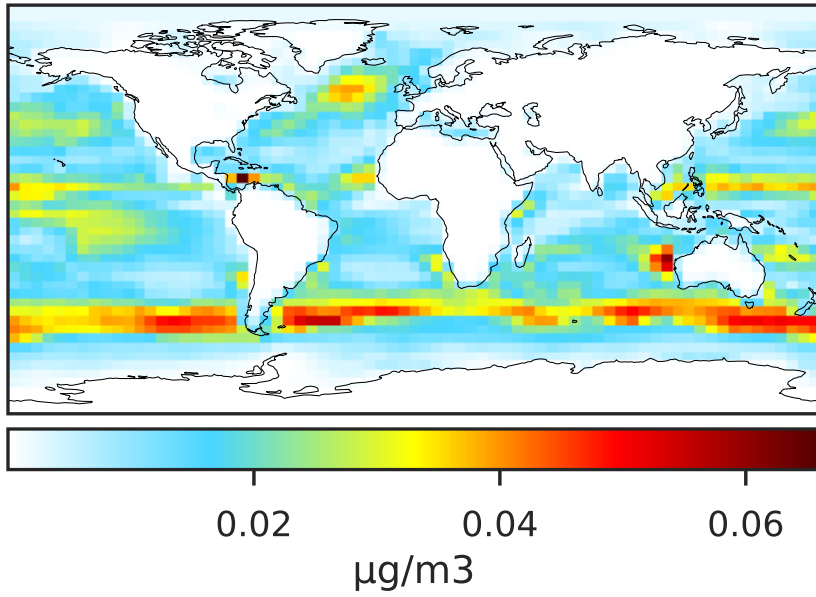


Ratio (1x1.25)
Dev/Ref, Fixed Range

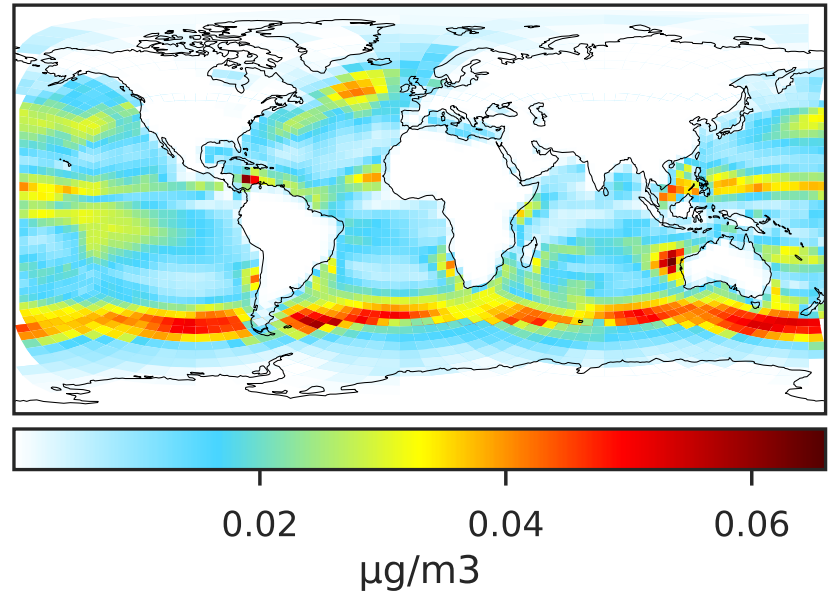


SpeciesConcVV_BrSALC (Jan2019)

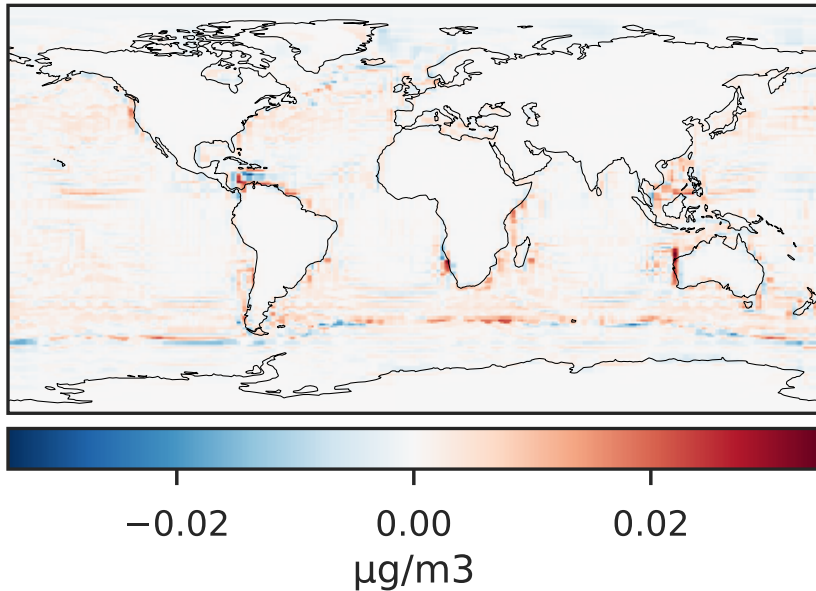
14.3.0-rc.0 (Ref)
4.0x5.0



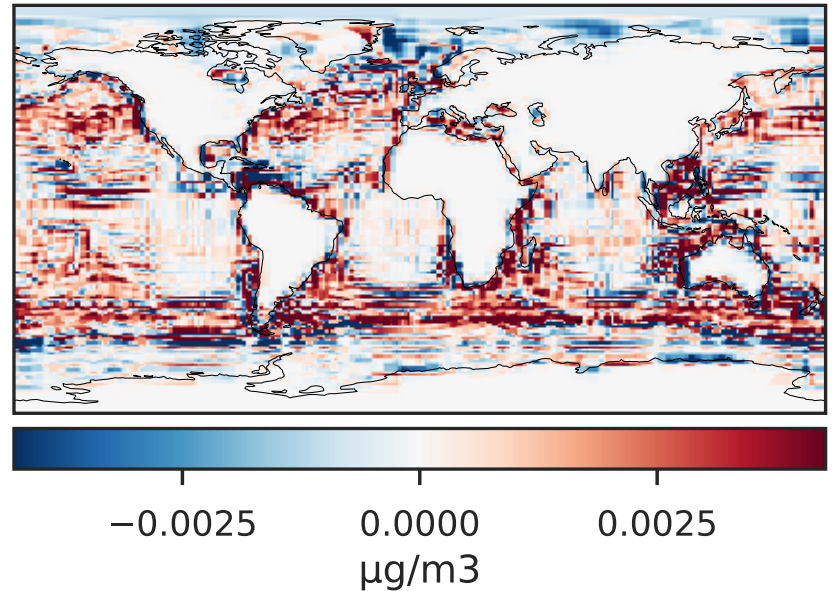
14.3.0-rc.0 (Dev)
c24



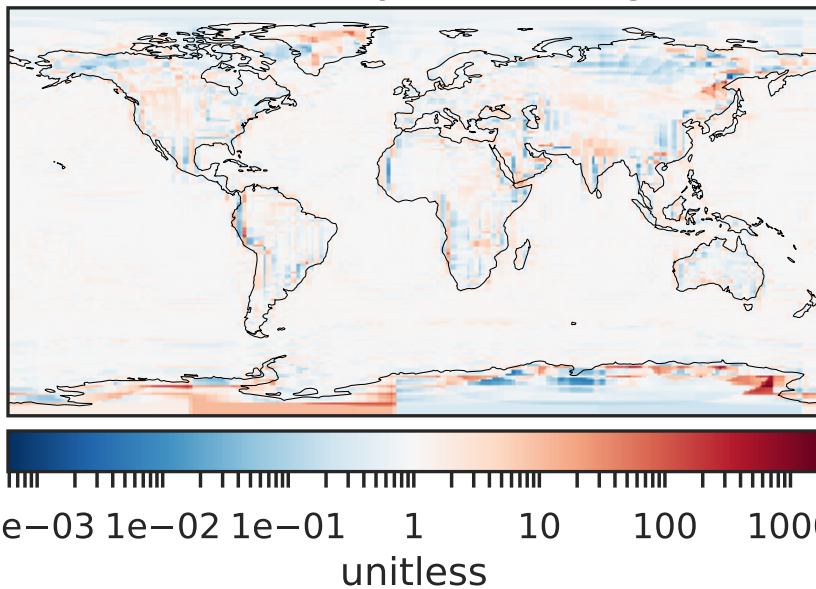
Difference (1x1.25)
Dev - Ref, Dynamic Range



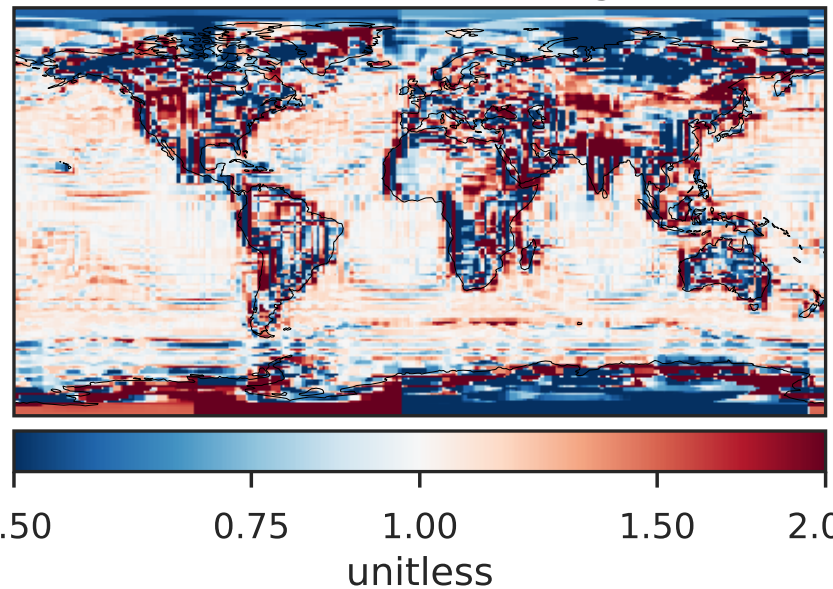
Difference (1x1.25)
Dev - Ref, Restricted Range [5%,95%]



Ratio (1x1.25)
Dev/Ref, Dynamic Range

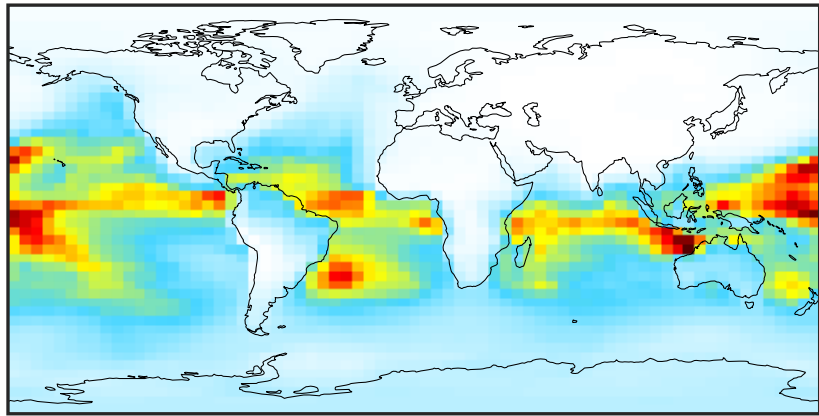


Ratio (1x1.25)
Dev/Ref, Fixed Range



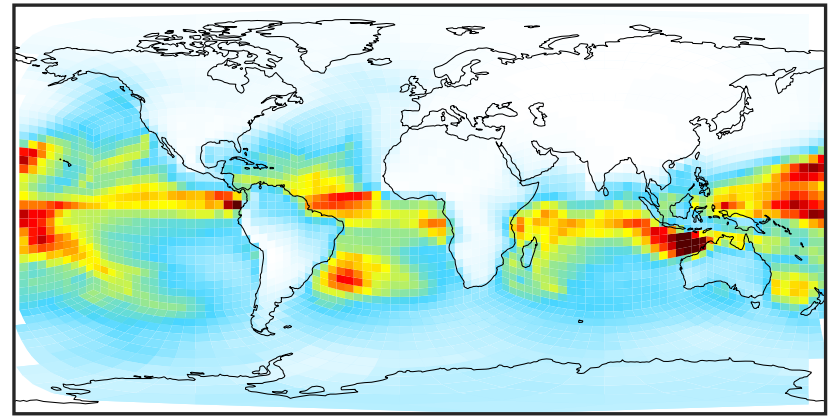
SpeciesConcVV_ISALA (Jan2019)

14.3.0-rc.0 (Ref)
4.0x5.0



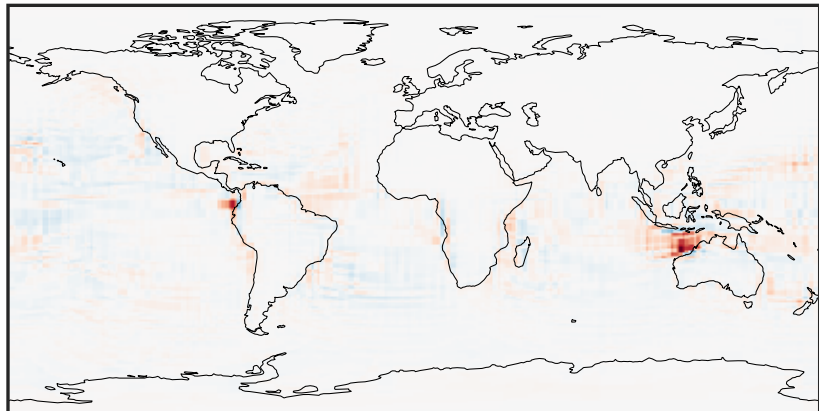
0.002 0.004 0.006
 $\mu\text{g}/\text{m}^3$

14.3.0-rc.0 (Dev)
c24



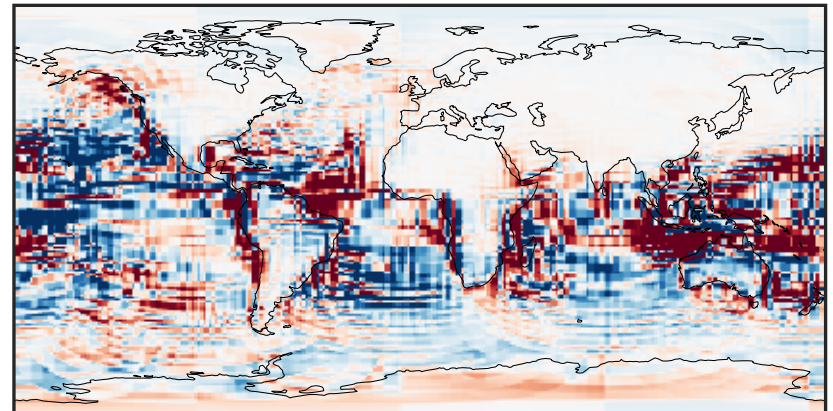
0.002 0.004 0.006
 $\mu\text{g}/\text{m}^3$

Difference (1x1.25)
Dev - Ref, Dynamic Range



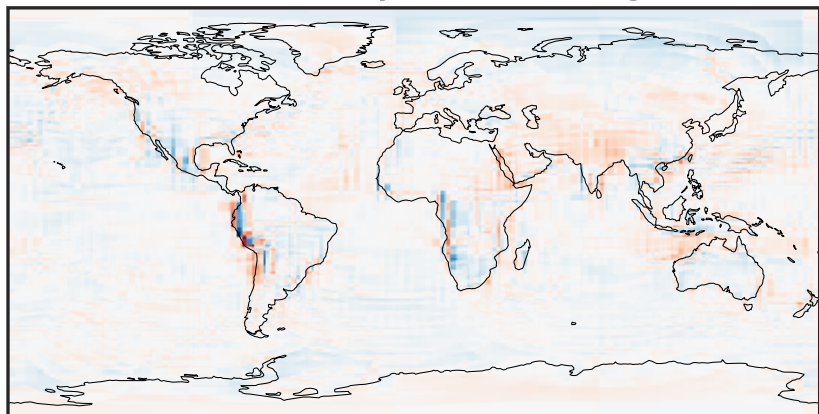
-0.0025 0.0000 0.0025
 $\mu\text{g}/\text{m}^3$

Difference (1x1.25)
Dev - Ref, Restricted Range [5%,95%]



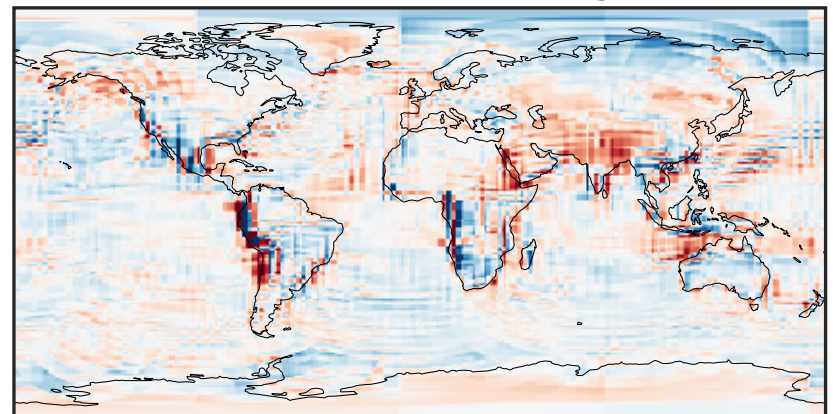
-0.00015 0.00000 0.00015
 $\mu\text{g}/\text{m}^3$

Ratio (1x1.25)
Dev/Ref, Dynamic Range



0.140 0.570 1.000 4.076 7.152
unitless

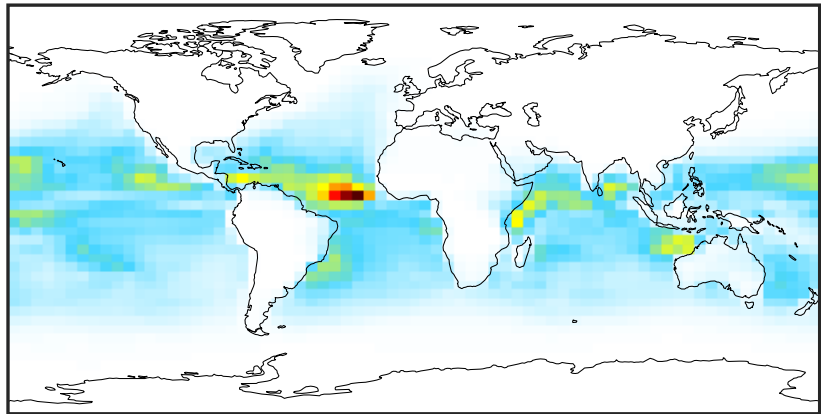
Ratio (1x1.25)
Dev/Ref, Fixed Range



0.50 0.75 1.00 1.50 2.00
unitless

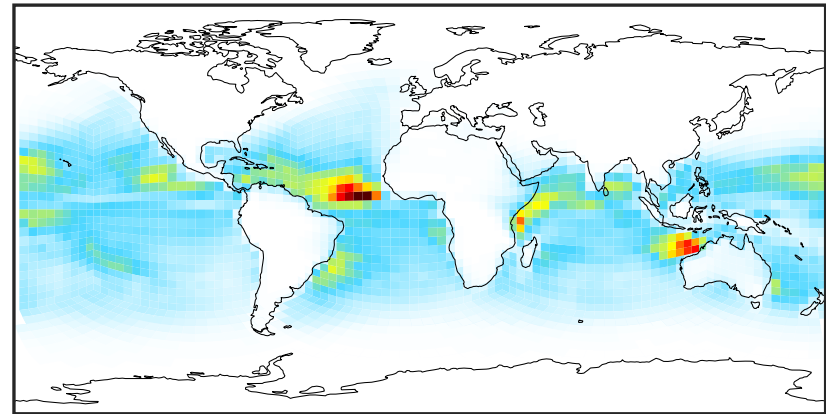
SpeciesConcVV_ISALC (Jan2019)

14.3.0-rc.0 (Ref)
4.0x5.0



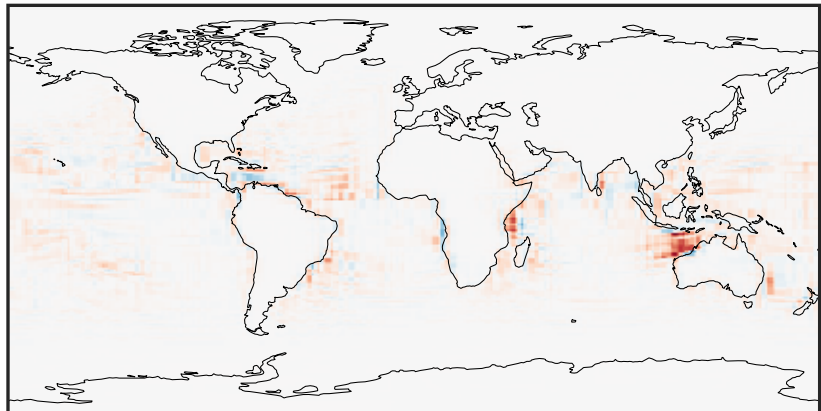
0.0025 0.0050 0.0075
 $\mu\text{g}/\text{m}^3$

14.3.0-rc.0 (Dev)
c24



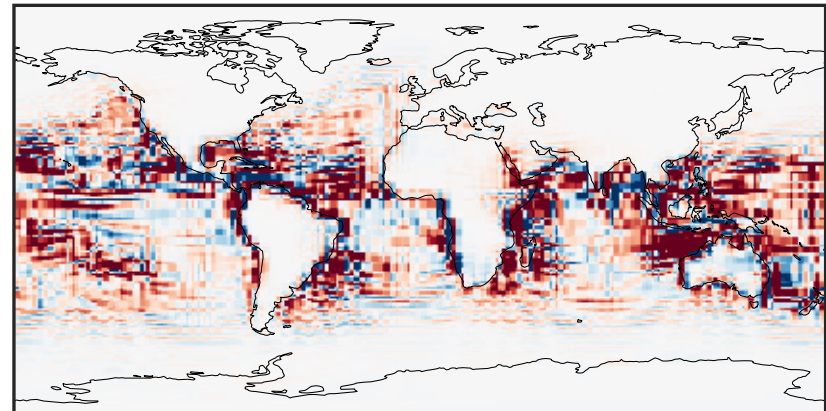
0.0025 0.0050 0.0075
 $\mu\text{g}/\text{m}^3$

Difference (1x1.25)
Dev - Ref, Dynamic Range



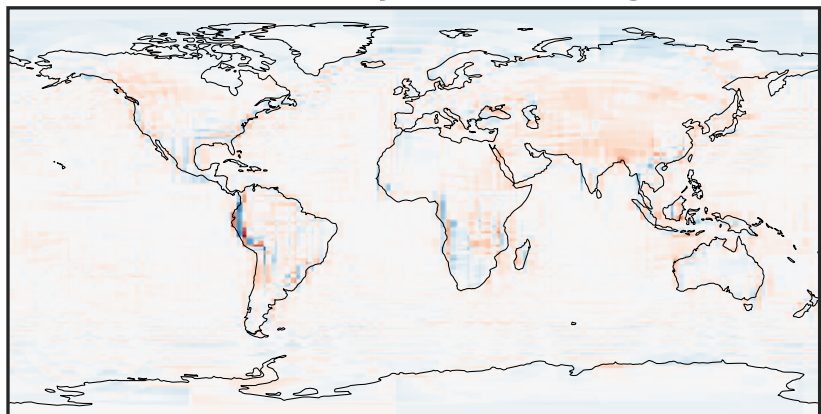
-0.002 0.000 0.002
 $\mu\text{g}/\text{m}^3$

Difference (1x1.25)
Dev - Ref, Restricted Range [5%,95%]



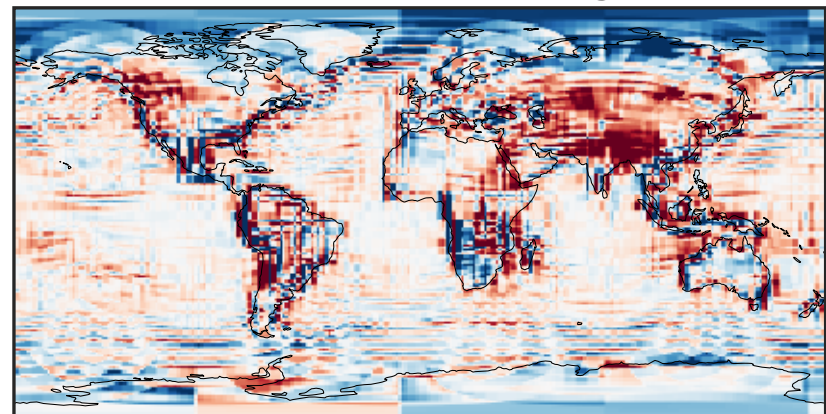
-0.00015 0.00000 0.00015
 $\mu\text{g}/\text{m}^3$

Ratio (1x1.25)
Dev/Ref, Dynamic Range



1e-02 1e-01 1 10 100
unitless

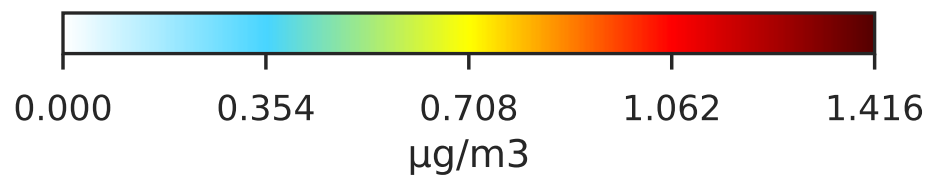
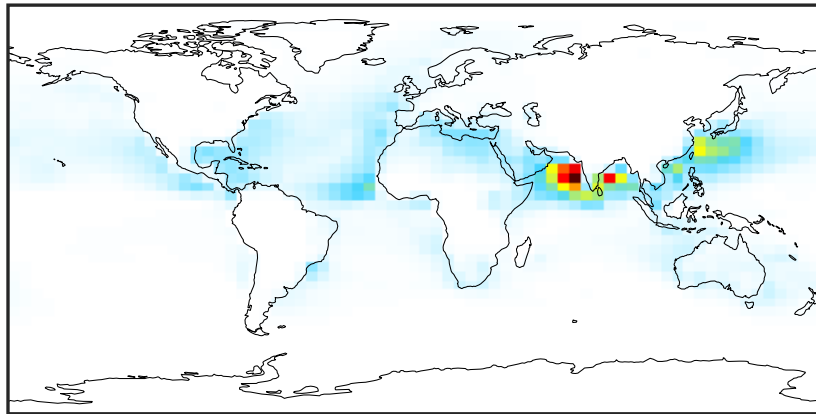
Ratio (1x1.25)
Dev/Ref, Fixed Range



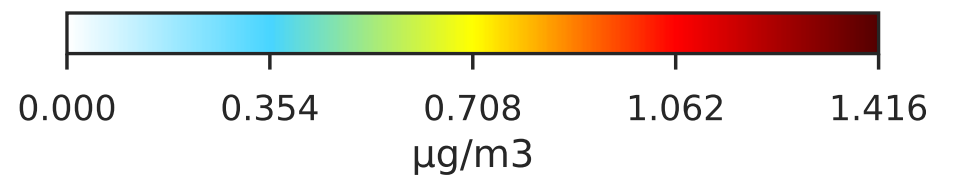
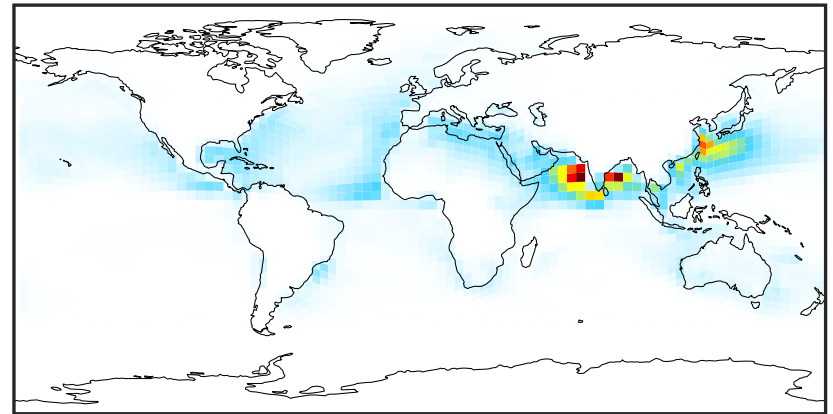
0.50 0.75 1.00 1.50 2.00
unitless

SpeciesConcVV_NITs (Jan2019)

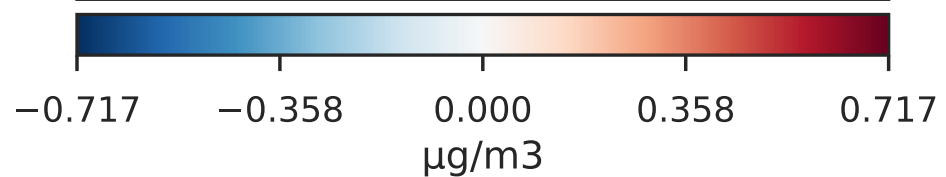
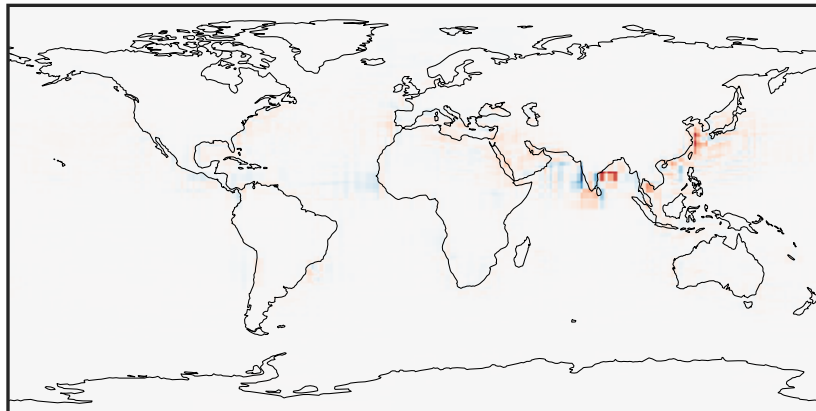
14.3.0-rc.0 (Ref)
4.0x5.0



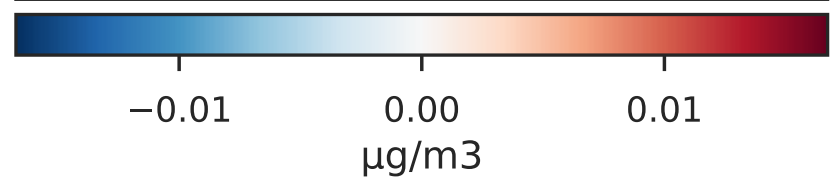
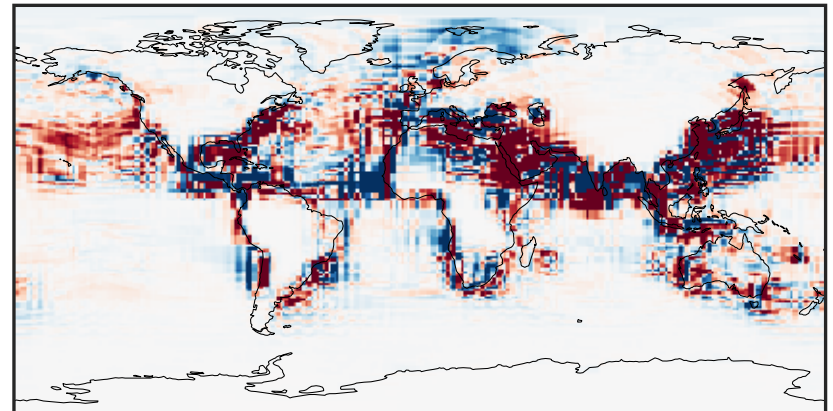
14.3.0-rc.0 (Dev)
c24



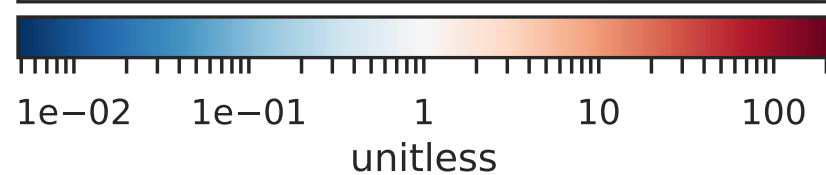
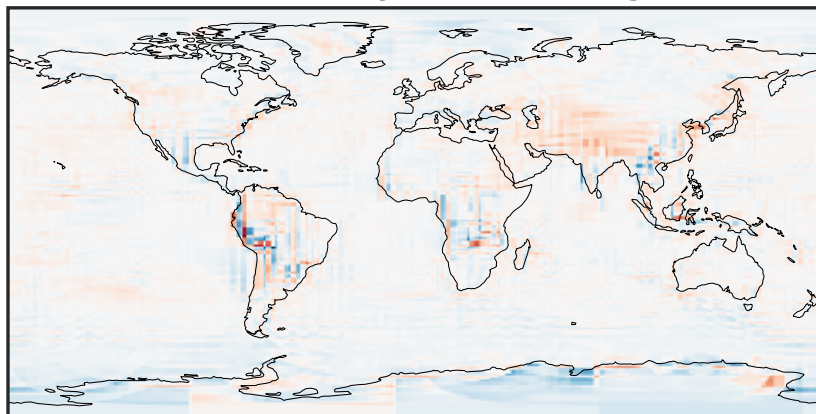
Difference (1x1.25)
Dev - Ref, Dynamic Range



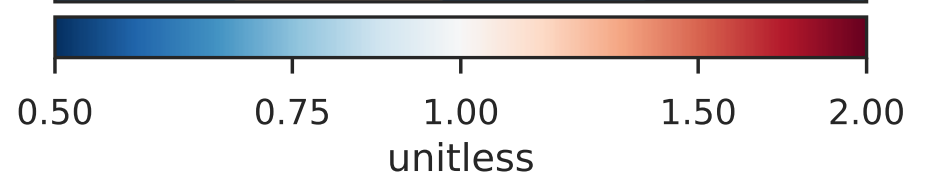
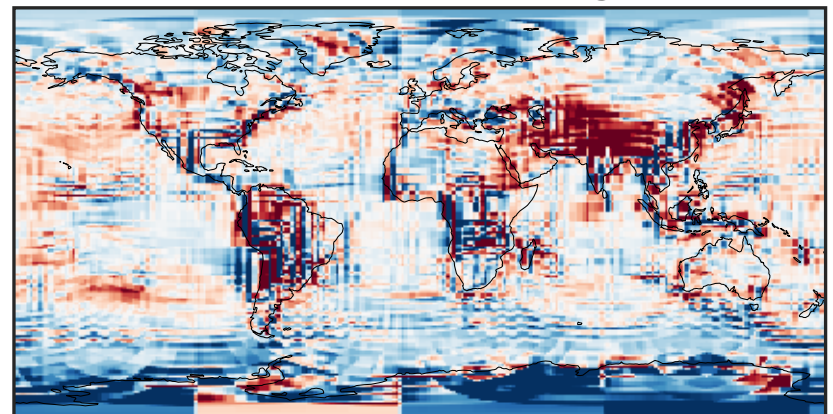
Difference (1x1.25)
Dev - Ref, Restricted Range [5%,95%]



Ratio (1x1.25)
Dev/Ref, Dynamic Range

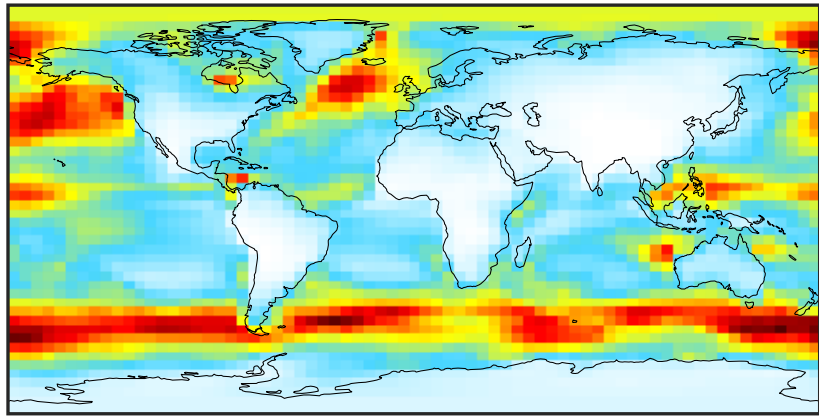


Ratio (1x1.25)
Dev/Ref, Fixed Range



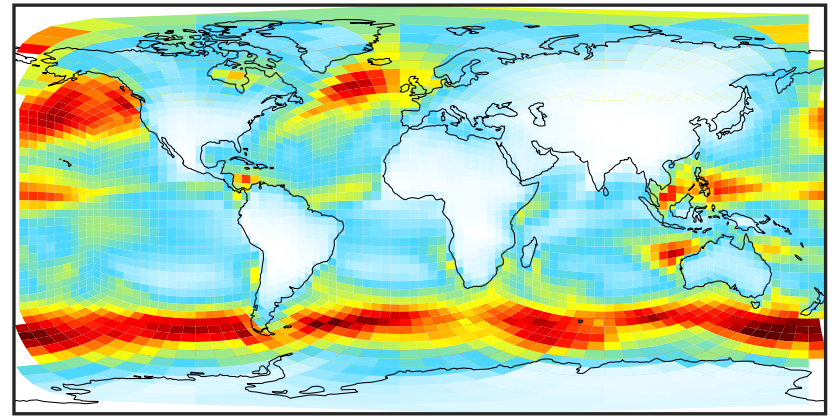
SpeciesConcVV_SALA (Jan2019)

14.3.0-rc.0 (Ref)
4.0x5.0



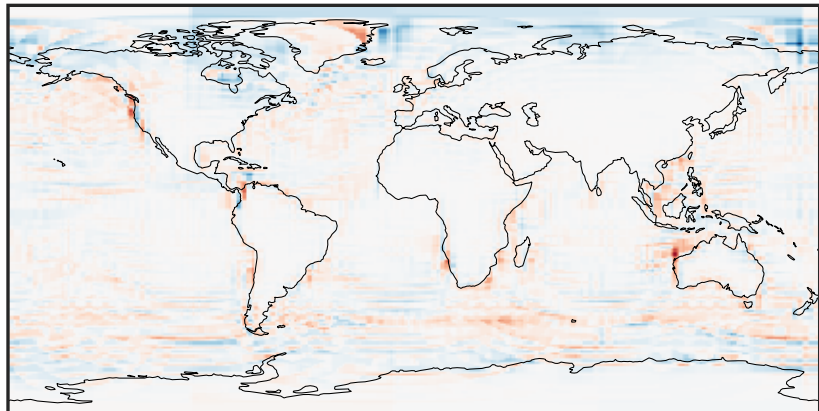
0.003 0.438 0.873 1.308 1.743
 $\mu\text{g}/\text{m}^3$

14.3.0-rc.0 (Dev)
c24



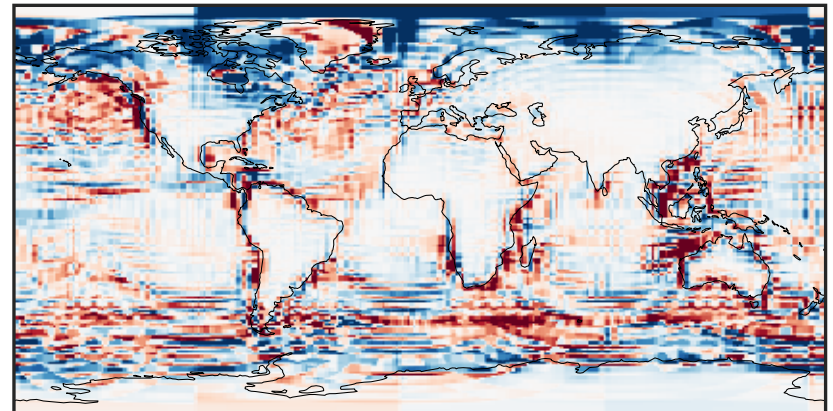
0.003 0.438 0.873 1.308 1.743
 $\mu\text{g}/\text{m}^3$

Difference (1x1.25)
Dev - Ref, Dynamic Range



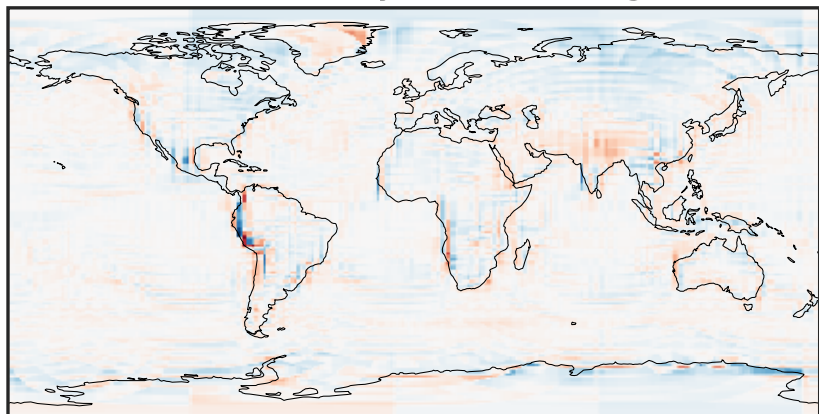
-0.866 -0.433 0.000 0.433 0.866
 $\mu\text{g}/\text{m}^3$

Difference (1x1.25)
Dev - Ref, Restricted Range [5%,95%]



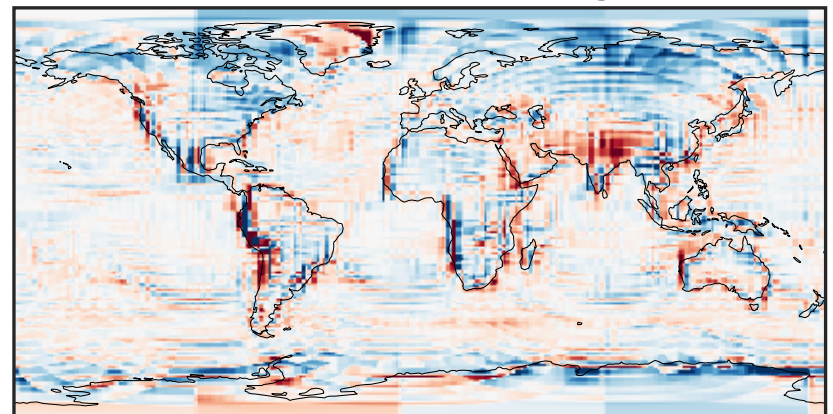
-0.1614 -0.0807 0.0000 0.0807 0.1614
 $\mu\text{g}/\text{m}^3$

Ratio (1x1.25)
Dev/Ref, Dynamic Range



0.112 0.556 1.000 4.962 8.923
unitless

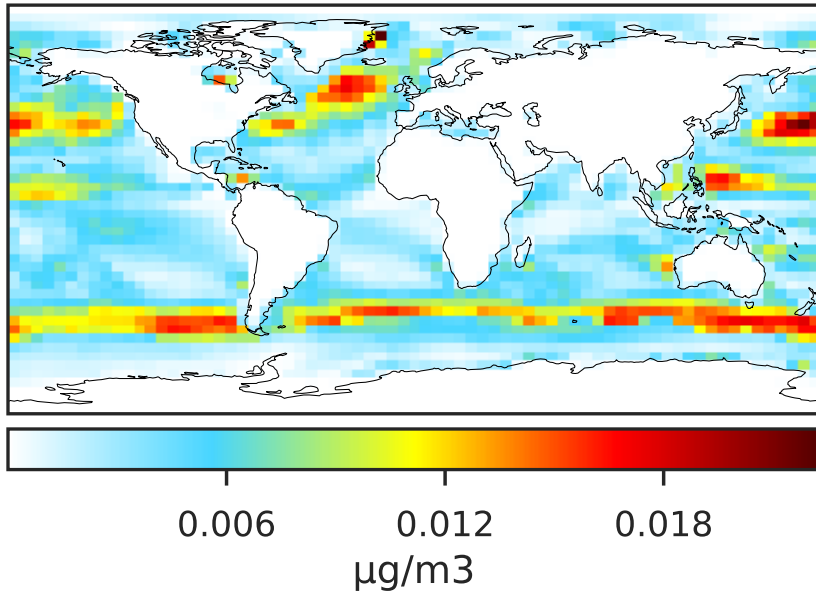
Ratio (1x1.25)
Dev/Ref, Fixed Range



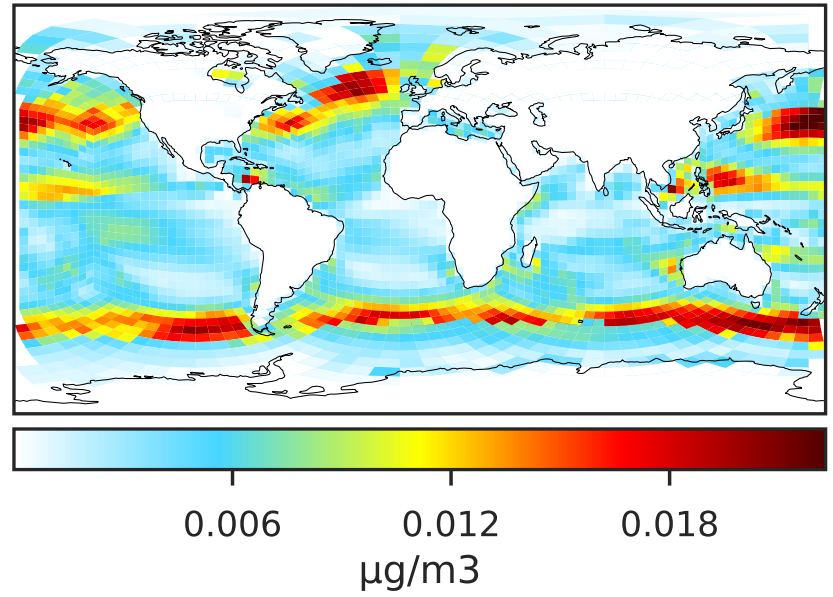
0.50 0.75 1.00 1.50 2.00
unitless

SpeciesConcVV_SALAAAL (Jan2019)

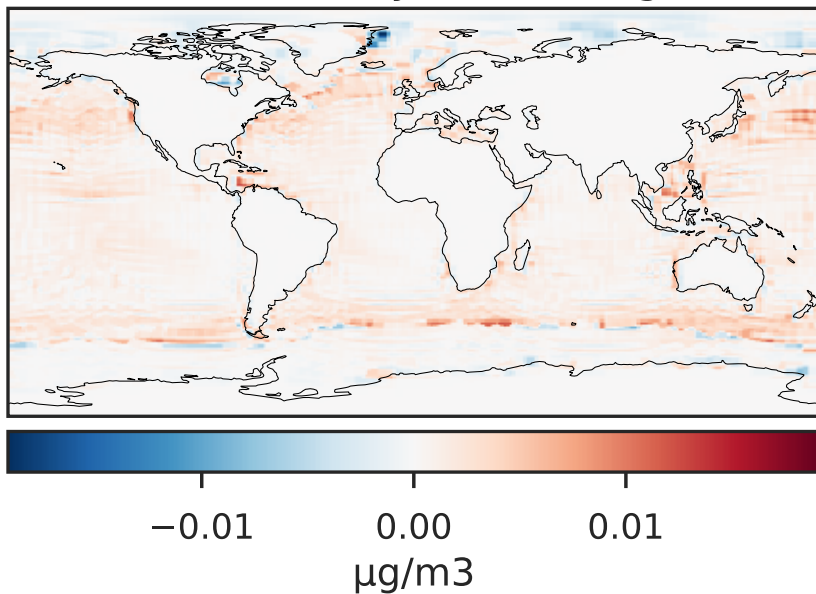
14.3.0-rc.0 (Ref)
4.0x5.0



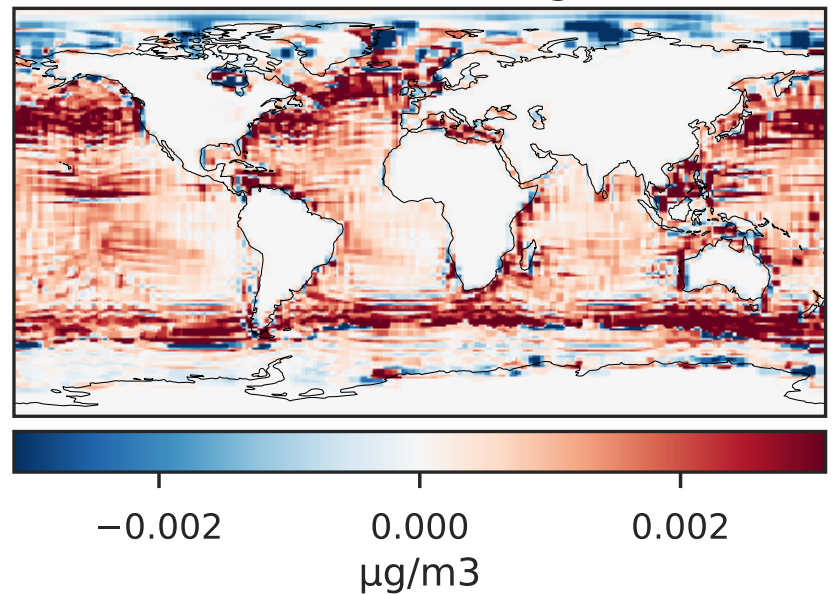
14.3.0-rc.0 (Dev)
c24



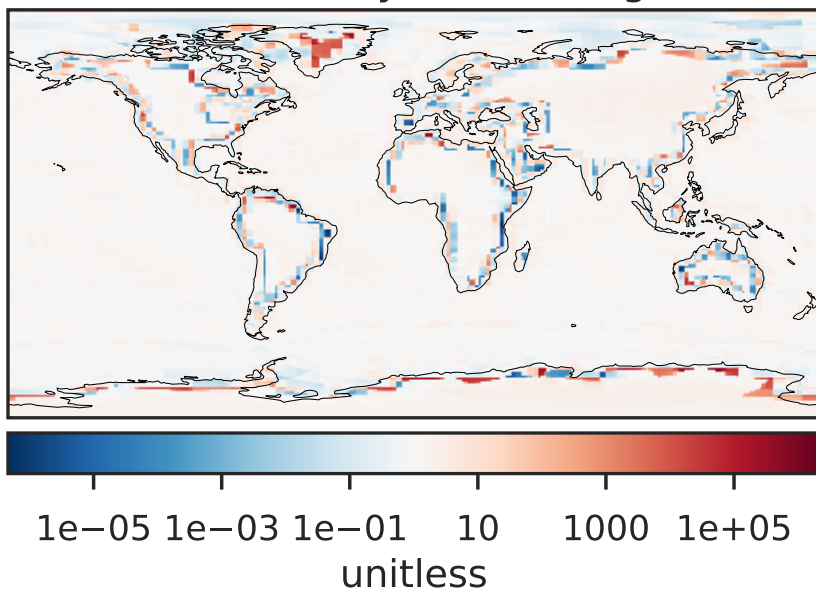
Difference (1x1.25)
Dev - Ref, Dynamic Range



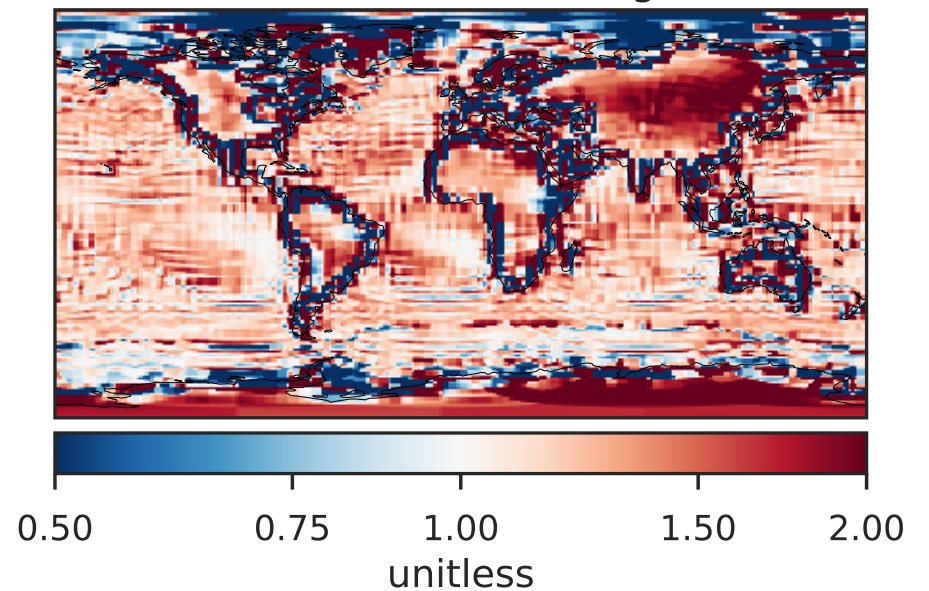
Difference (1x1.25)
Dev - Ref, Restricted Range [5%,95%]



Ratio (1x1.25)
Dev/Ref, Dynamic Range

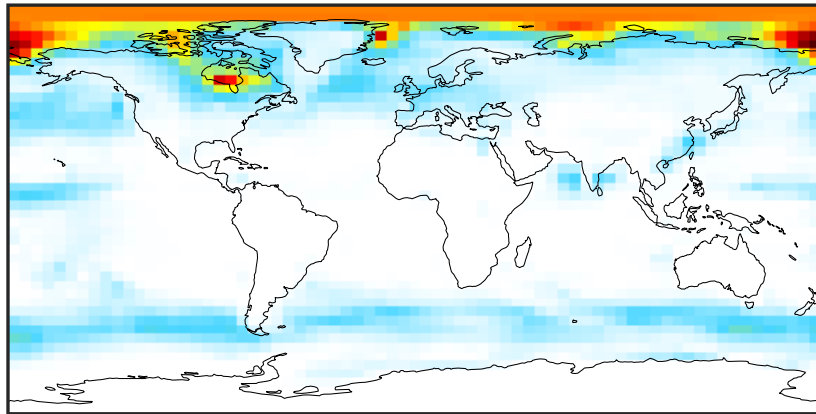


Ratio (1x1.25)
Dev/Ref, Fixed Range



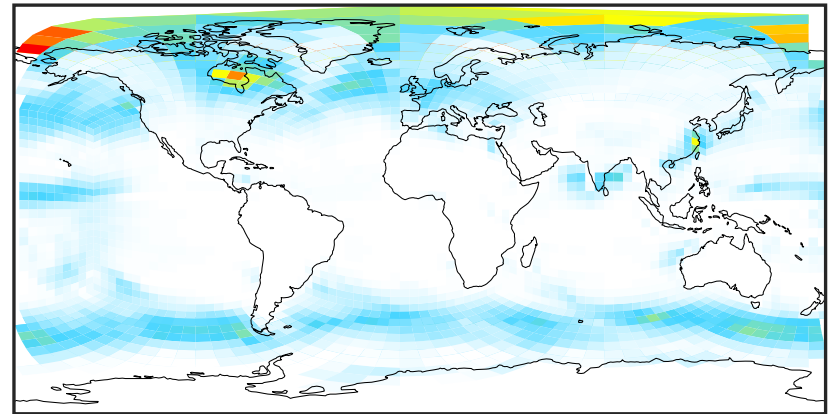
SpeciesConcVV_SALACL (Jan2019)

14.3.0-rc.0 (Ref)
4.0x5.0



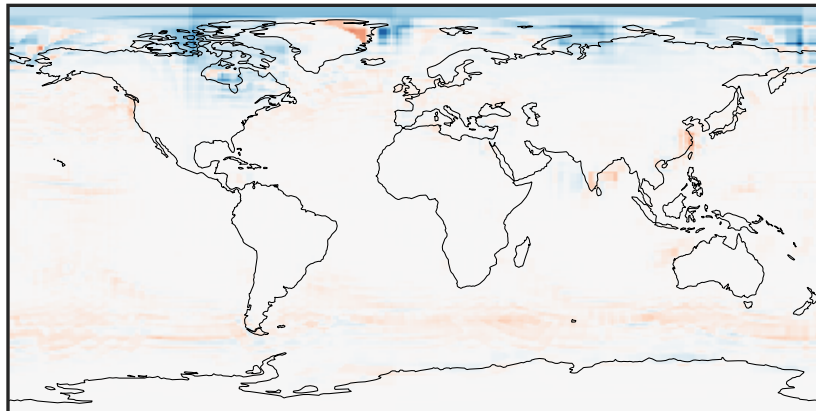
0.0000 0.2151 0.4303 0.6454 0.8606
 $\mu\text{g}/\text{m}^3$

14.3.0-rc.0 (Dev)
c24



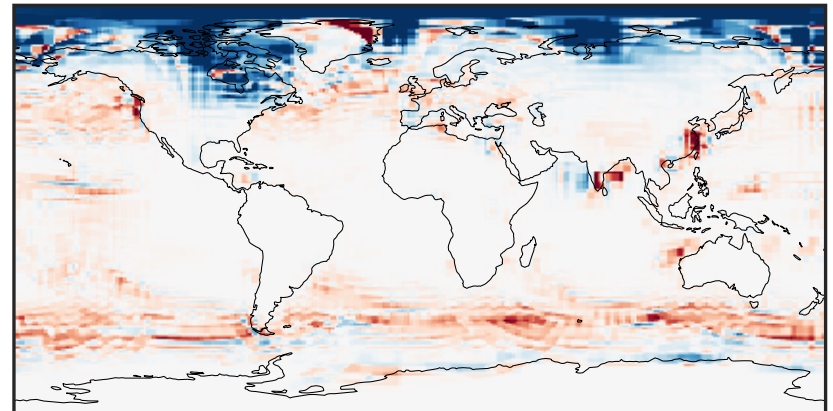
0.0000 0.2151 0.4303 0.6454 0.8606
 $\mu\text{g}/\text{m}^3$

Difference (1x1.25)
Dev - Ref, Dynamic Range



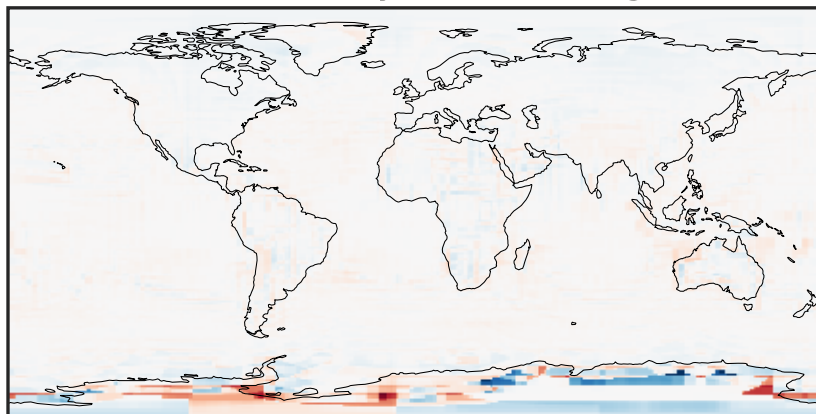
-0.524 -0.262 0.000 0.262 0.524
 $\mu\text{g}/\text{m}^3$

Difference (1x1.25)
Dev - Ref, Restricted Range [5%,95%]



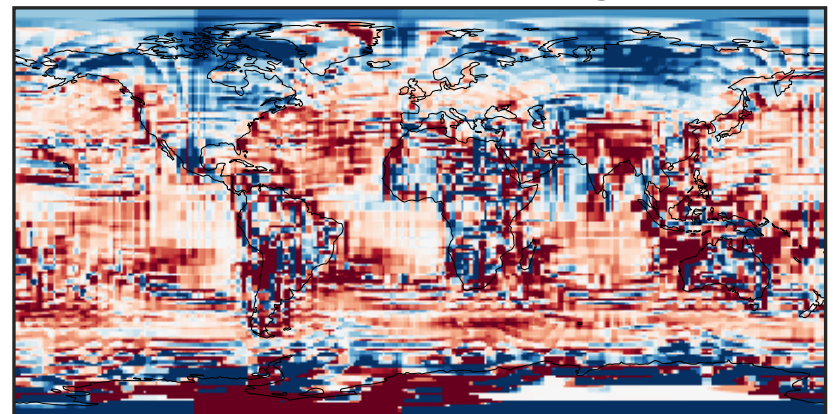
-0.1276 -0.0638 0.0000 0.0638 0.1276
 $\mu\text{g}/\text{m}^3$

Ratio (1x1.25)
Dev/Ref, Dynamic Range



1e-07 1e-04 1e-01 100 1e+05 1e+08
unitless

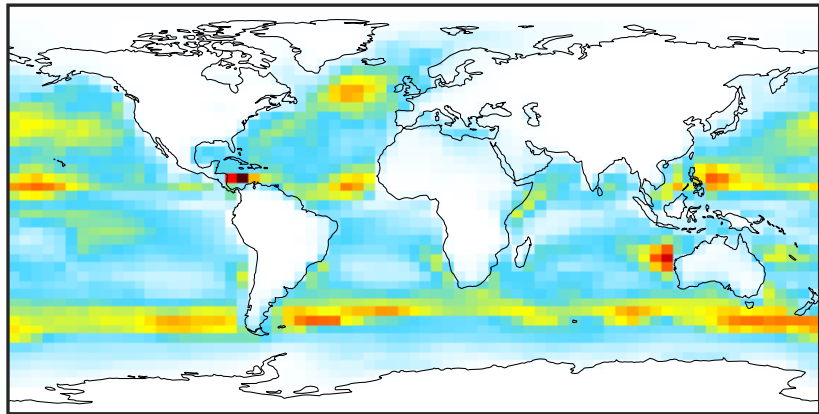
Ratio (1x1.25)
Dev/Ref, Fixed Range



0.50 0.75 1.00 1.50 2.00
unitless

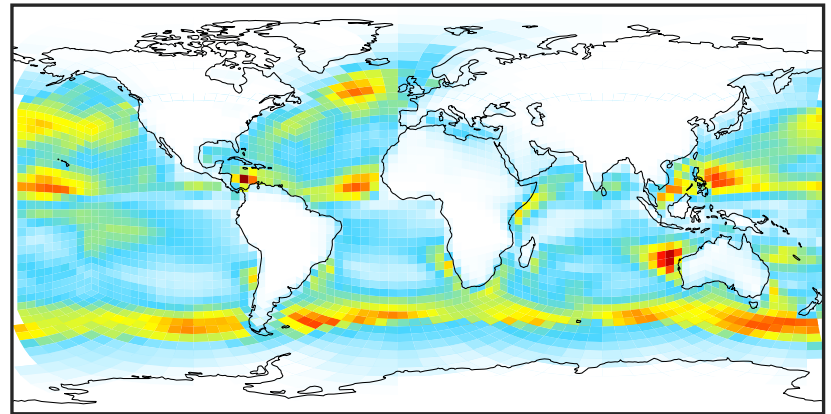
SpeciesConcVV_SALC (Jan2019)

14.3.0-rc.0 (Ref)
4.0x5.0



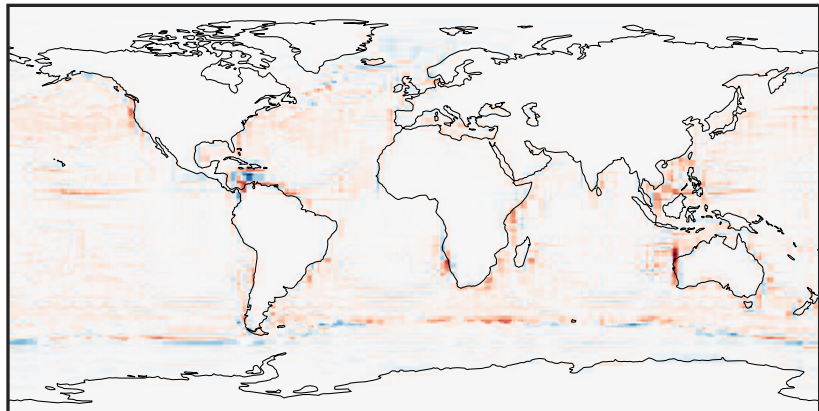
0.00 9.11 18.21 27.32 36.43
 $\mu\text{g}/\text{m}^3$

14.3.0-rc.0 (Dev)
c24



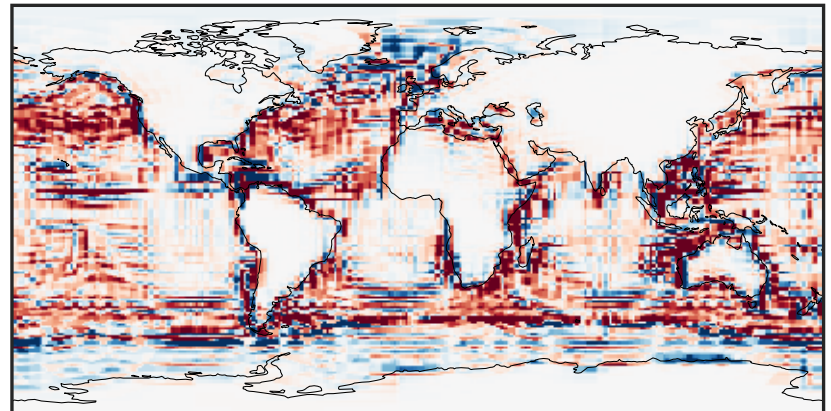
0.00 9.11 18.21 27.32 36.43
 $\mu\text{g}/\text{m}^3$

Difference (1x1.25)
Dev - Ref, Dynamic Range



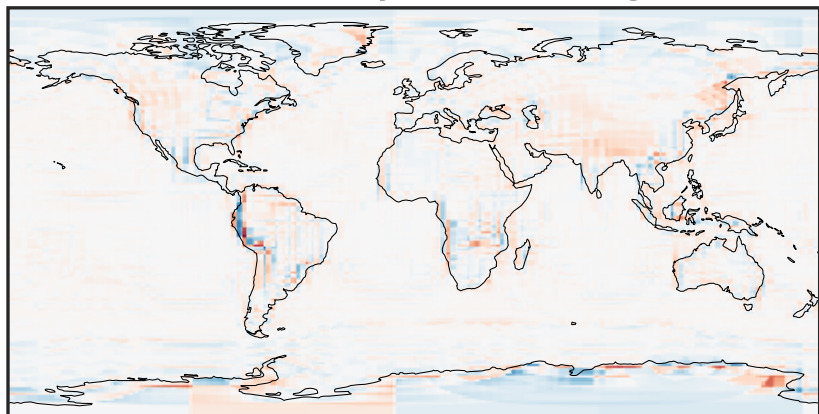
-16.91 -8.45 0.00 8.45 16.91
 $\mu\text{g}/\text{m}^3$

Difference (1x1.25)
Dev - Ref, Restricted Range [5%,95%]



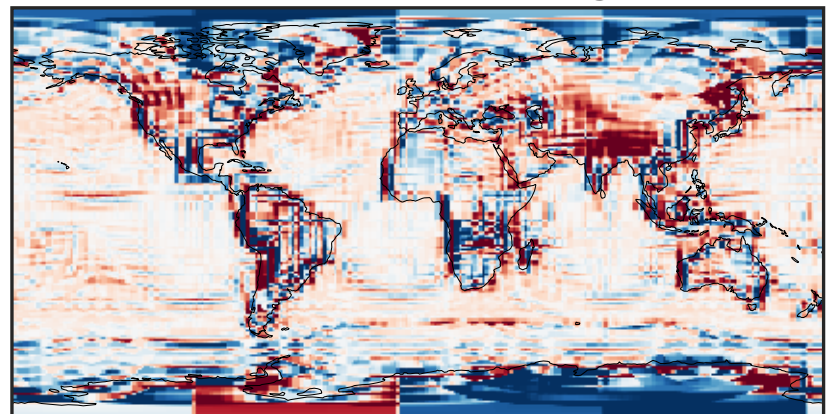
-2.135 -1.067 0.000 1.067 2.135
 $\mu\text{g}/\text{m}^3$

Ratio (1x1.25)
Dev/Ref, Dynamic Range



1e-02 1e-01 1 10 100
unitless

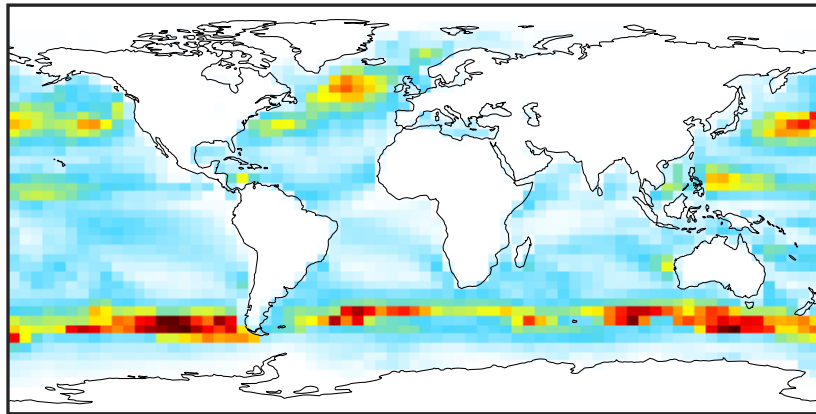
Ratio (1x1.25)
Dev/Ref, Fixed Range



0.50 0.75 1.00 1.50 2.00
unitless

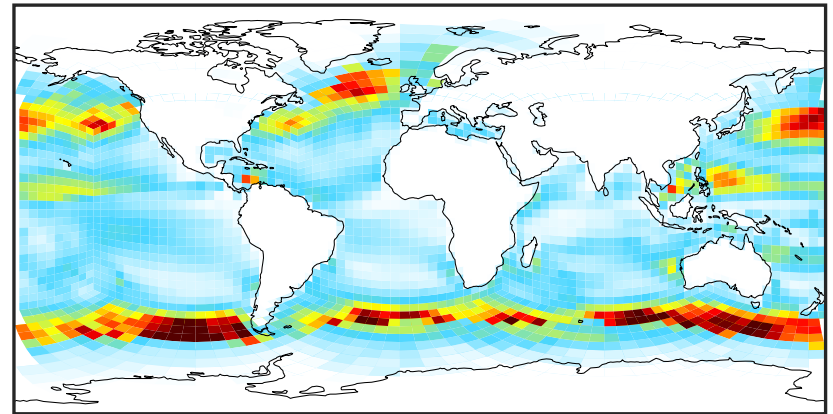
SpeciesConcVV_SALCAL (Jan2019)

14.3.0-rc.0 (Ref)
4.0x5.0



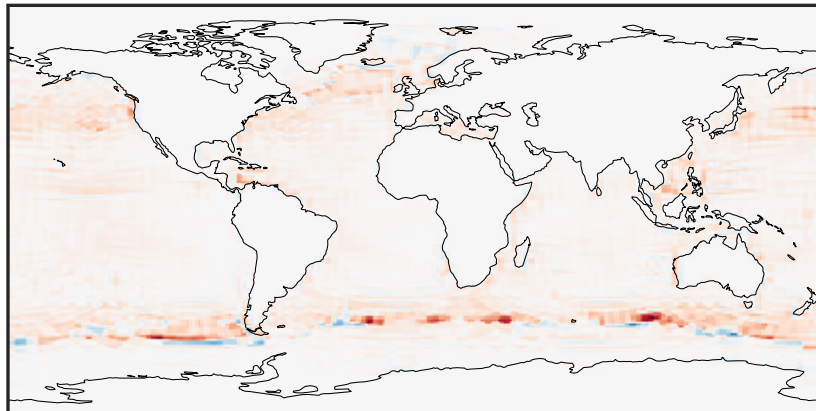
0.000 0.429 0.858 1.287 1.716
 $\mu\text{g}/\text{m}^3$

14.3.0-rc.0 (Dev)
c24



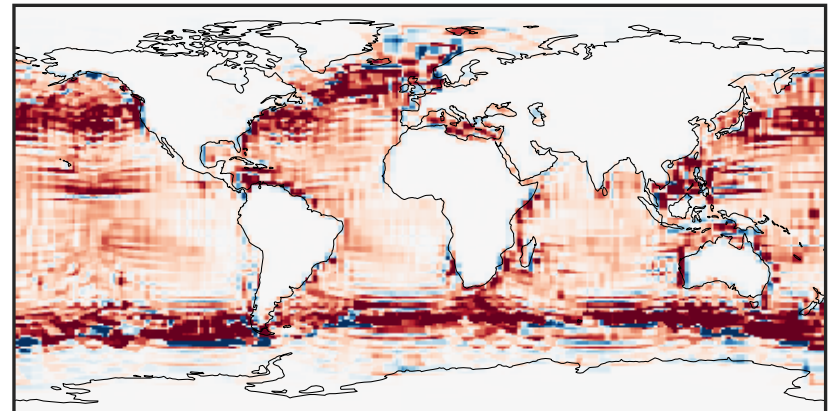
0.000 0.429 0.858 1.287 1.716
 $\mu\text{g}/\text{m}^3$

Difference (1x1.25)
Dev - Ref, Dynamic Range



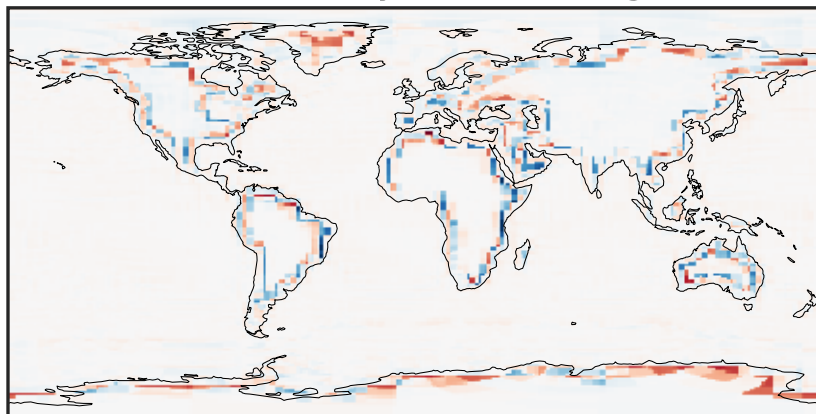
-1.645 -0.822 0.000 0.822 1.645
 $\mu\text{g}/\text{m}^3$

Difference (1x1.25)
Dev - Ref, Restricted Range [5%,95%]



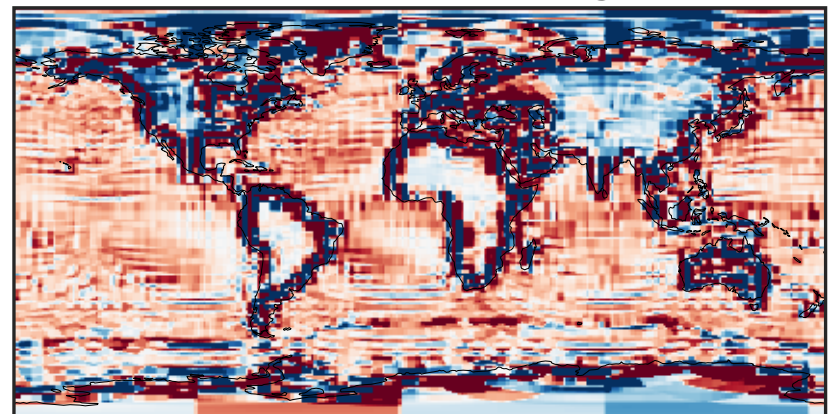
-0.2108 -0.1054 0.0000 0.1054 0.2108
 $\mu\text{g}/\text{m}^3$

Ratio (1x1.25)
Dev/Ref, Dynamic Range



1e-06 1e-03 1 1000 1e+06
unitless

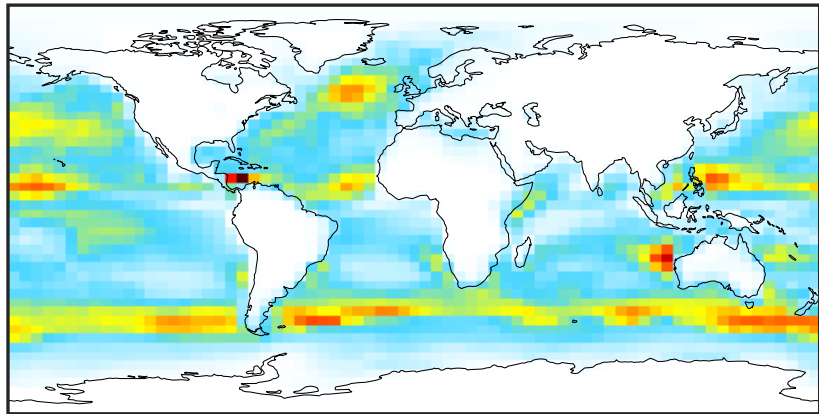
Ratio (1x1.25)
Dev/Ref, Fixed Range



0.50 0.75 1.00 1.50 2.00
unitless

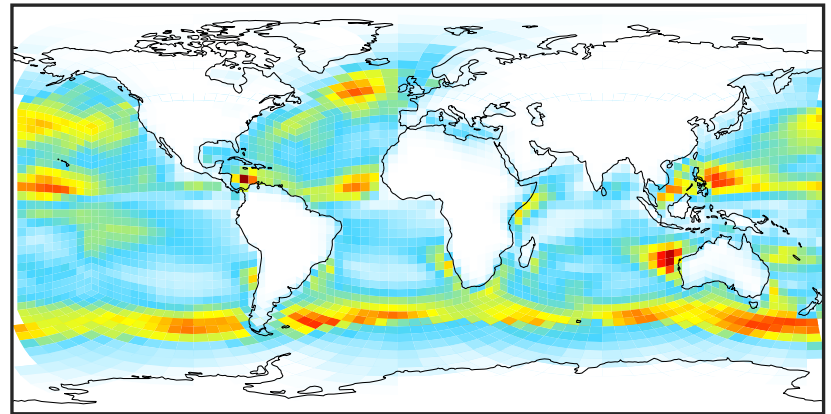
SpeciesConcVV_SALCCL (Jan2019)

14.3.0-rc.0 (Ref)
4.0x5.0



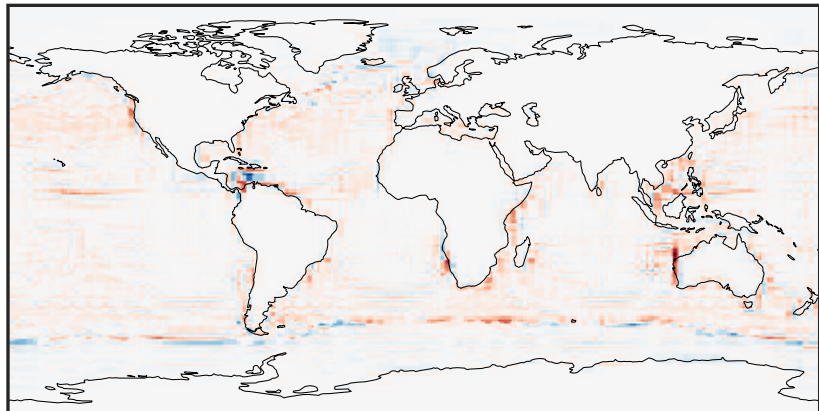
0.00 4.89 9.78 14.67 19.55
 $\mu\text{g}/\text{m}^3$

14.3.0-rc.0 (Dev)
c24



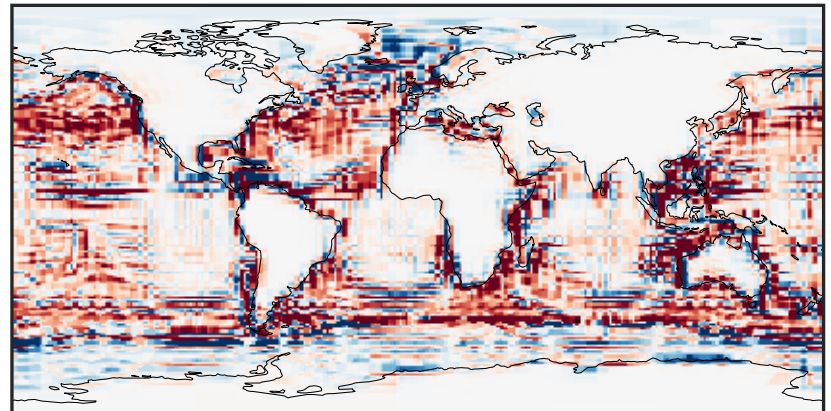
0.00 4.89 9.78 14.67 19.55
 $\mu\text{g}/\text{m}^3$

Difference (1x1.25)
Dev - Ref, Dynamic Range



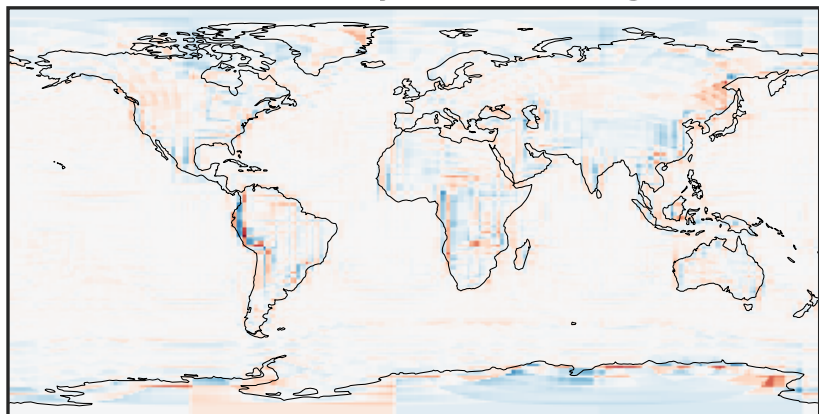
-9.17 -4.59 0.00 4.59 9.17
 $\mu\text{g}/\text{m}^3$

Difference (1x1.25)
Dev - Ref, Restricted Range [5%,95%]



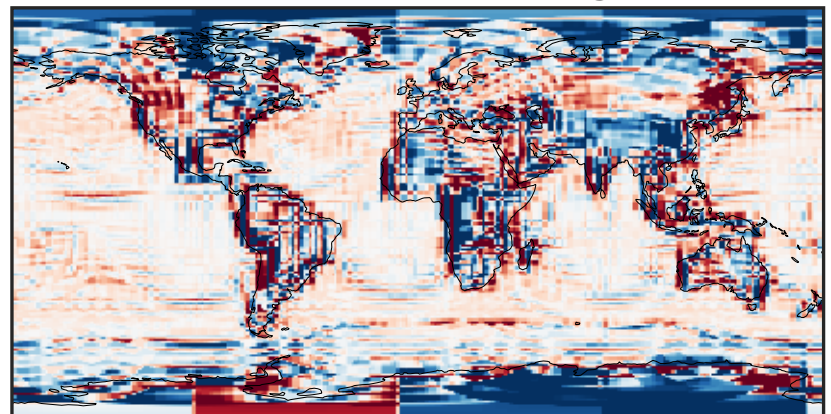
-1.165 -0.583 0.000 0.583 1.165
 $\mu\text{g}/\text{m}^3$

Ratio (1x1.25)
Dev/Ref, Dynamic Range



1e-02 1e-01 1 10 100
unitless

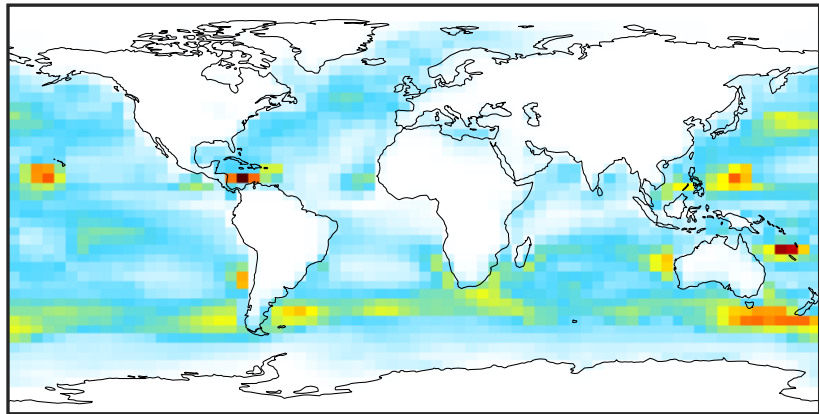
Ratio (1x1.25)
Dev/Ref, Fixed Range



0.50 0.75 1.00 1.50 2.00
unitless

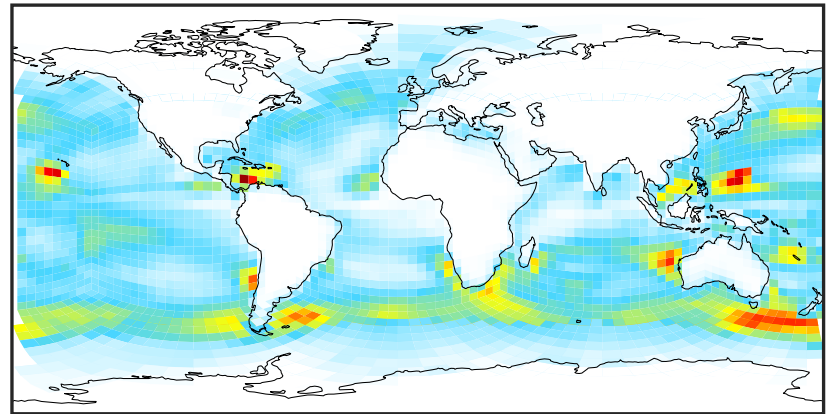
SpeciesConcVV_SO4s (Jan2019)

14.3.0-rc.0 (Ref)
4.0x5.0



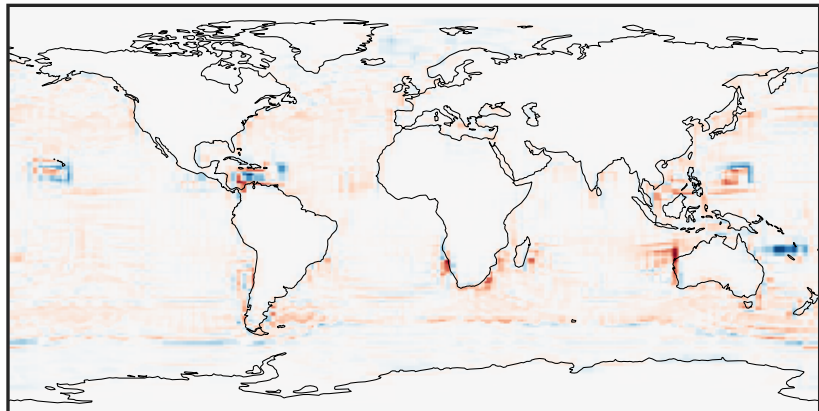
0.004 0.008 0.012
 $\mu\text{g}/\text{m}^3$

14.3.0-rc.0 (Dev)
c24



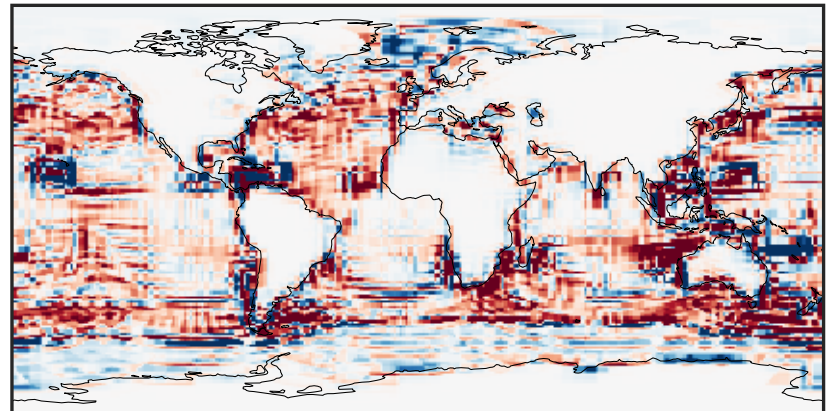
0.004 0.008 0.012
 $\mu\text{g}/\text{m}^3$

Difference (1x1.25)
Dev - Ref, Dynamic Range



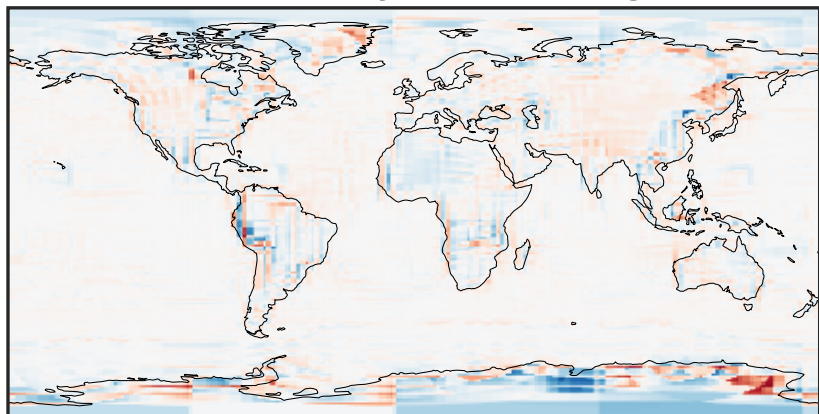
-0.003 0.000 0.003
 $\mu\text{g}/\text{m}^3$

Difference (1x1.25)
Dev - Ref, Restricted Range [5%,95%]



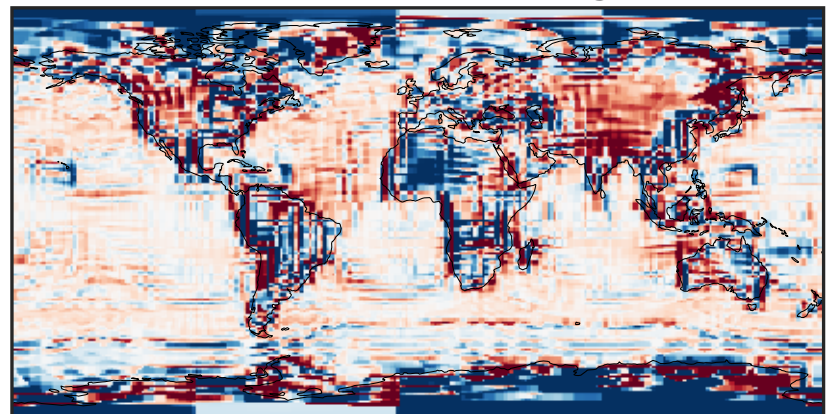
-0.0004 0.0000 0.0004
 $\mu\text{g}/\text{m}^3$

Ratio (1x1.25)
Dev/Ref, Dynamic Range



1e-02 1e-01 1 10 100
unitless

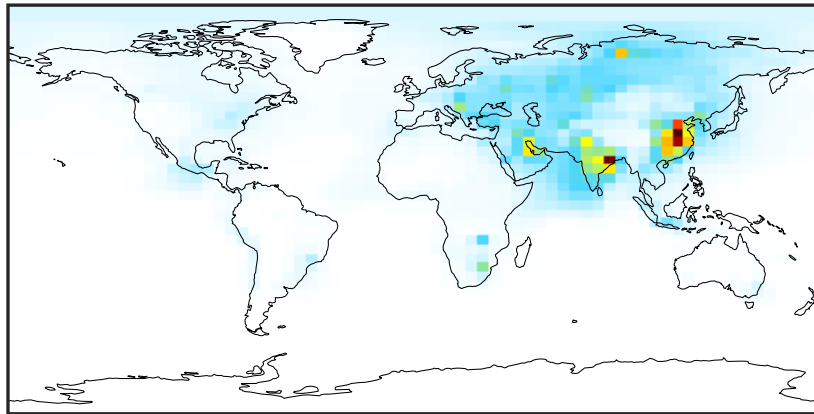
Ratio (1x1.25)
Dev/Ref, Fixed Range



0.50 0.75 1.00 1.50 2.00
unitless

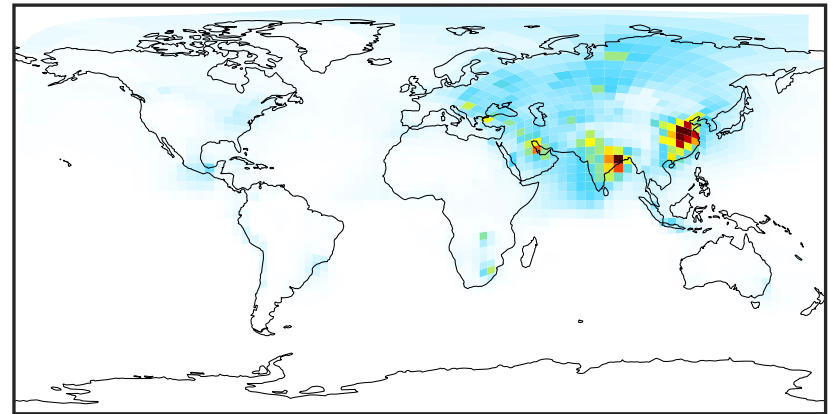
SpeciesConcVV_pFe (Jan2019)

14.3.0-rc.0 (Ref)
4.0x5.0



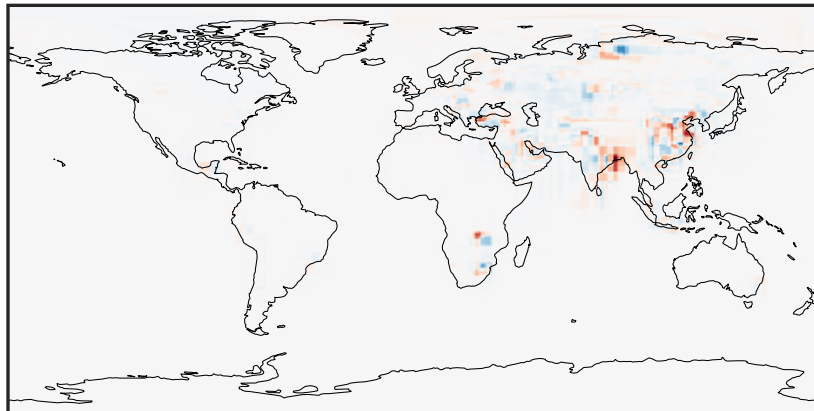
0.015 0.030 0.045
 $\mu\text{g}/\text{m}^3$

14.3.0-rc.0 (Dev)
c24



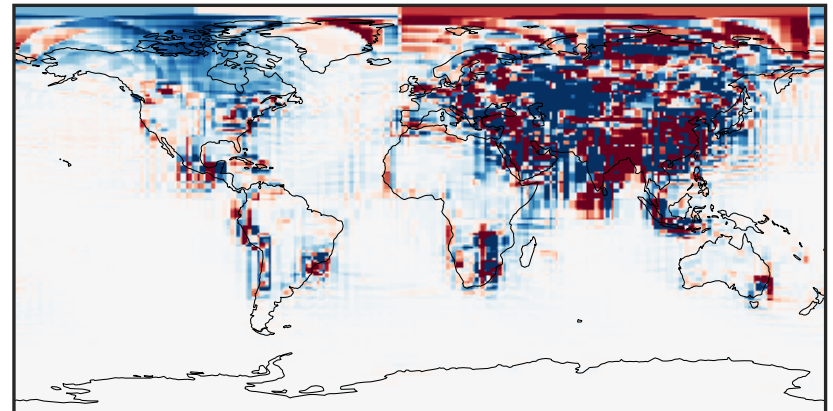
0.015 0.030 0.045
 $\mu\text{g}/\text{m}^3$

Difference (1x1.25)
Dev - Ref, Dynamic Range



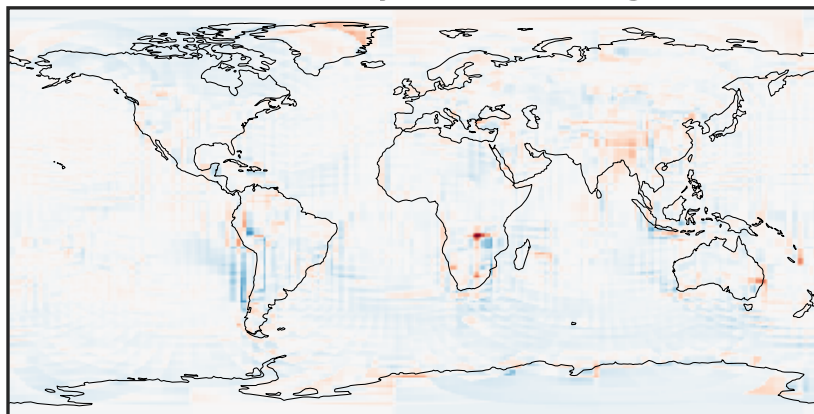
-0.015 0.000 0.015
 $\mu\text{g}/\text{m}^3$

Difference (1x1.25)
Dev - Ref, Restricted Range [5%,95%]



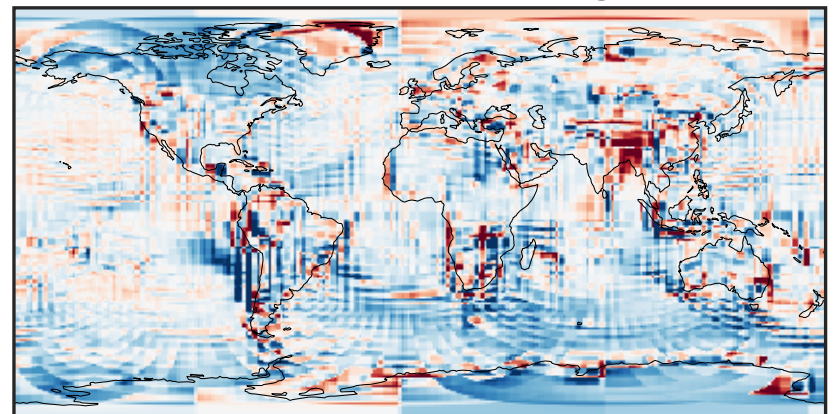
-0.0004 0.0000 0.0004
 $\mu\text{g}/\text{m}^3$

Ratio (1x1.25)
Dev/Ref, Dynamic Range



1e-01 1 10
unitless

Ratio (1x1.25)
Dev/Ref, Fixed Range



0.50 0.75 1.00 1.50 2.00
unitless