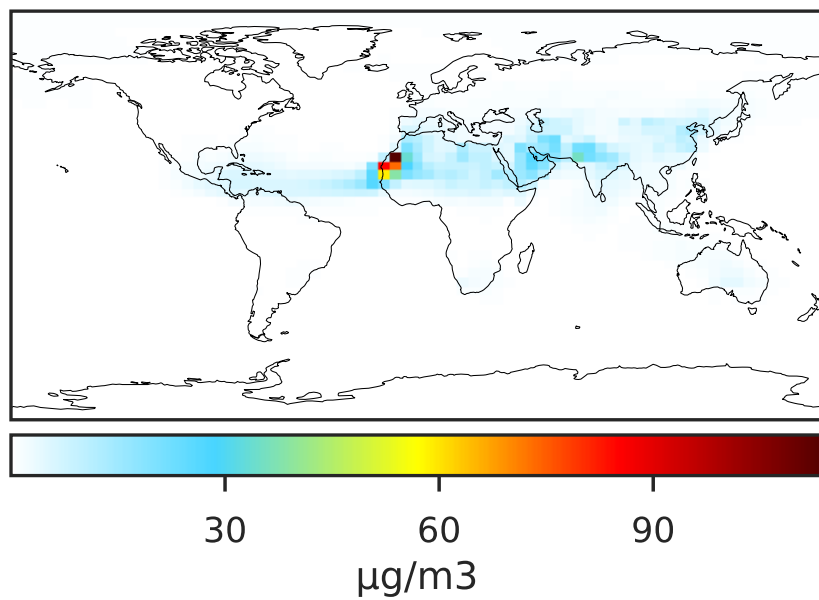
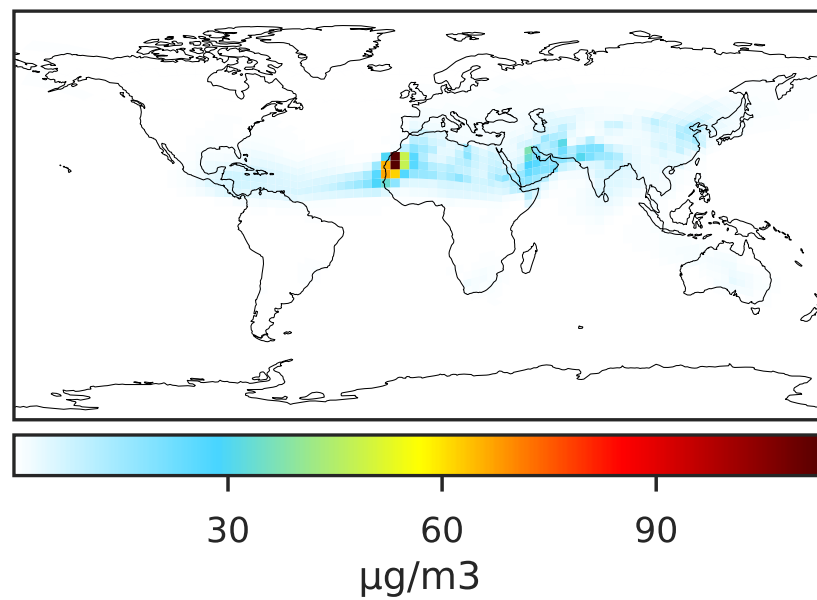


SpeciesConcVV_DST1 (Jul2019)

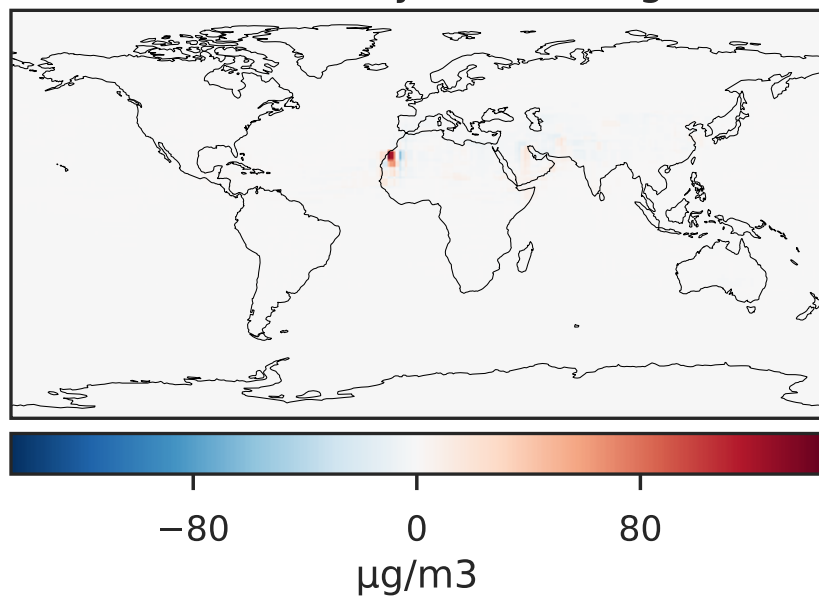
14.3.0-rc.0 (Ref)
4.0x5.0



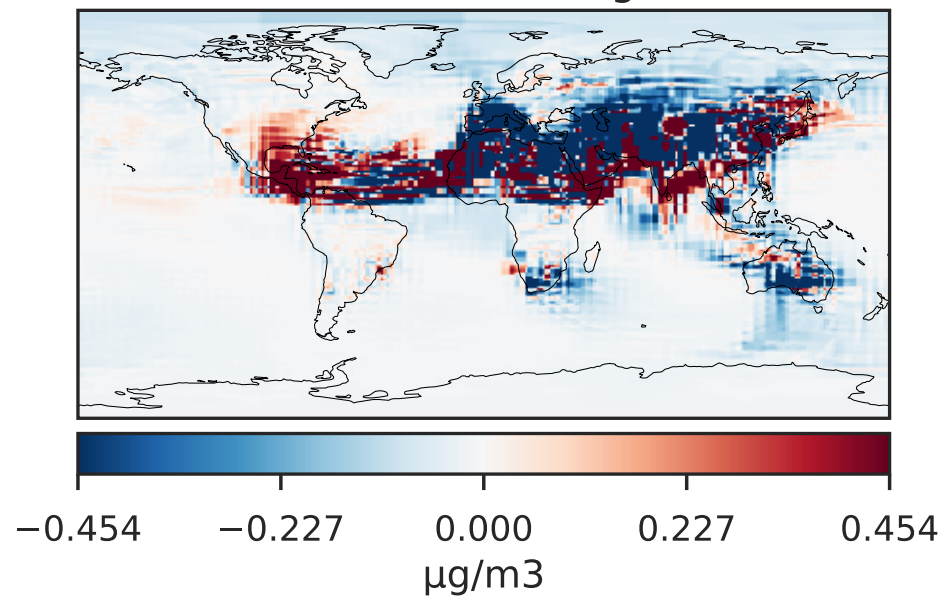
14.3.0-rc.0 (Dev)
c24



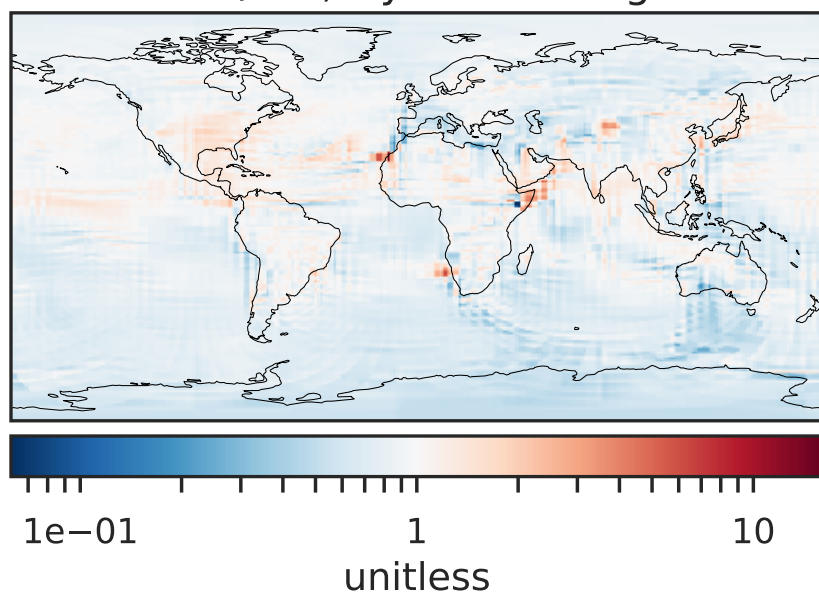
Difference (1x1.25)
Dev - Ref, Dynamic Range



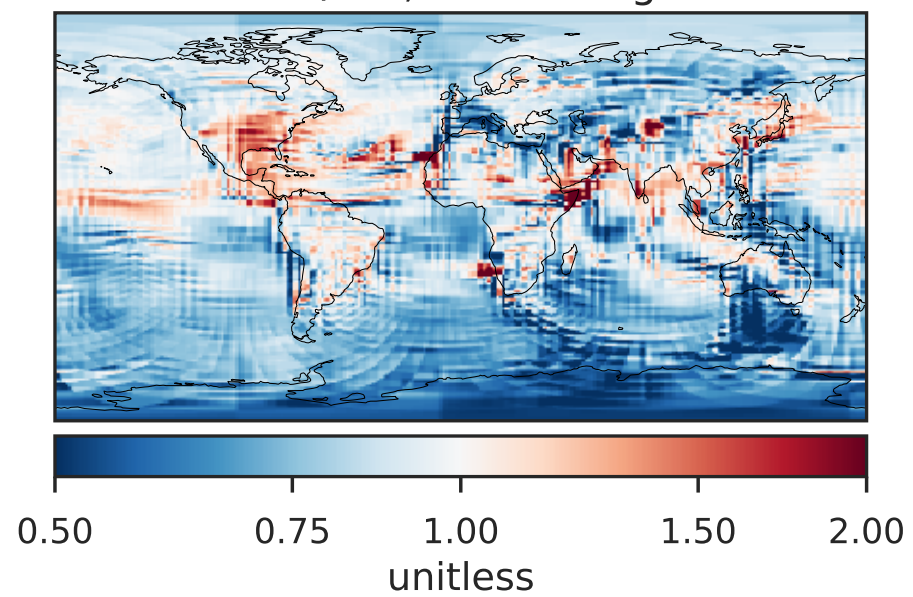
Difference (1x1.25)
Dev - Ref, Restricted Range [5%,95%]



Ratio (1x1.25)
Dev/Ref, Dynamic Range

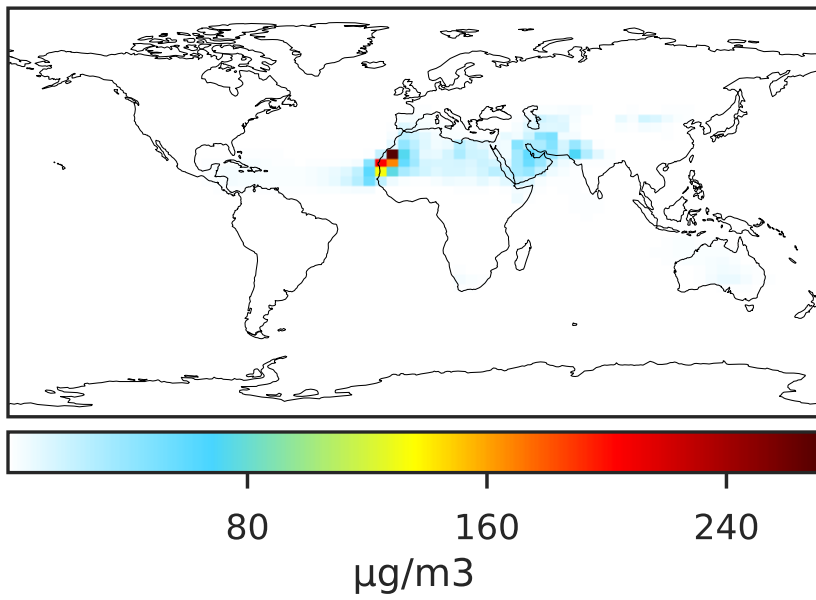


Ratio (1x1.25)
Dev/Ref, Fixed Range

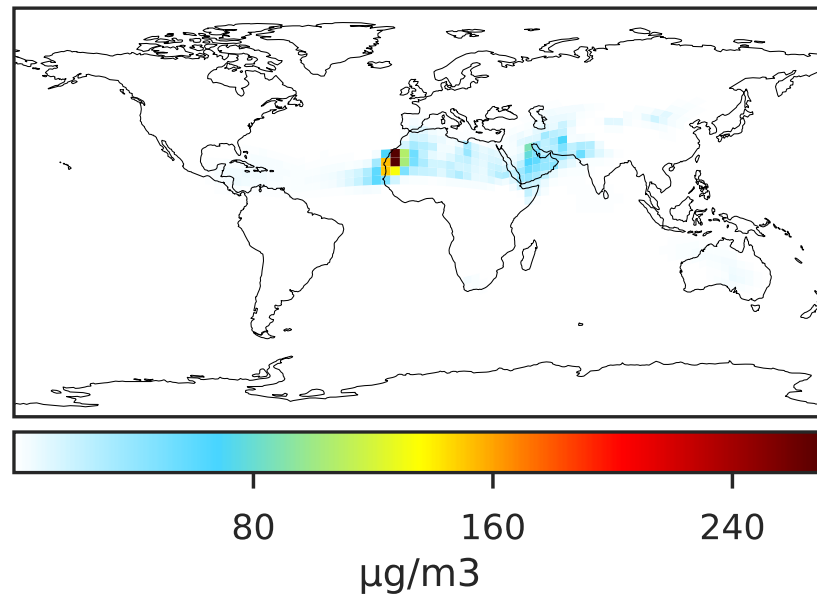


SpeciesConcVV_DST2 (Jul2019)

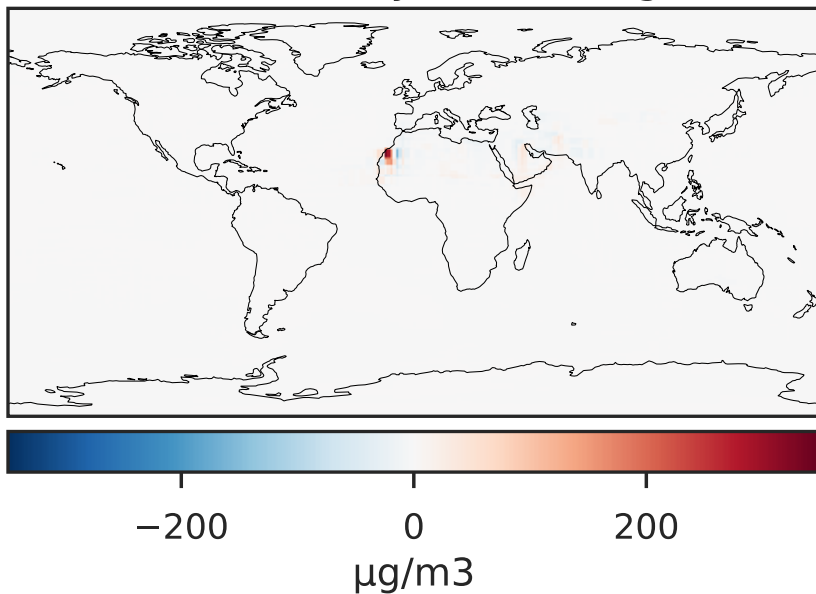
14.3.0-rc.0 (Ref)
4.0x5.0



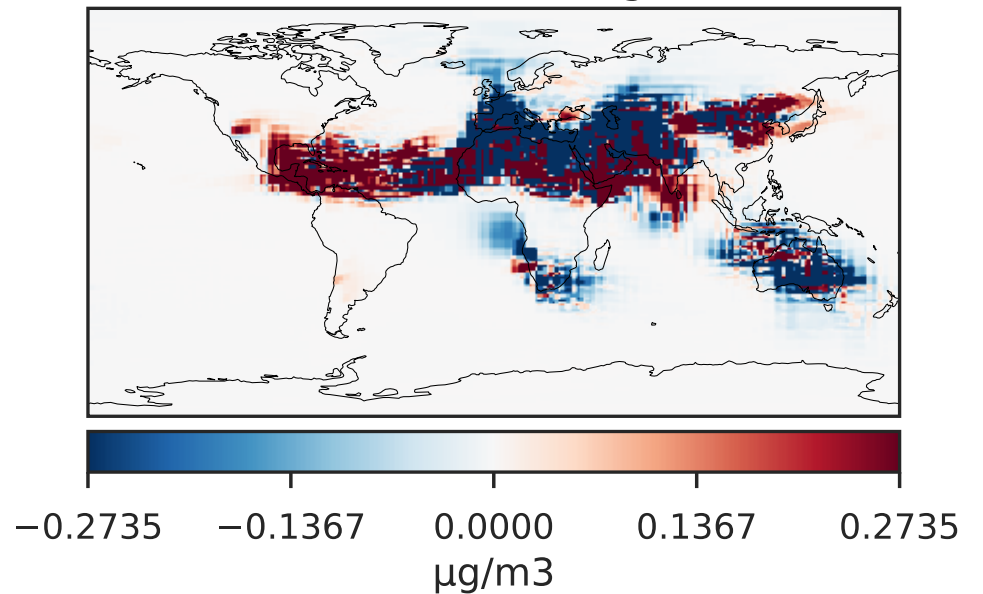
14.3.0-rc.0 (Dev)
c24



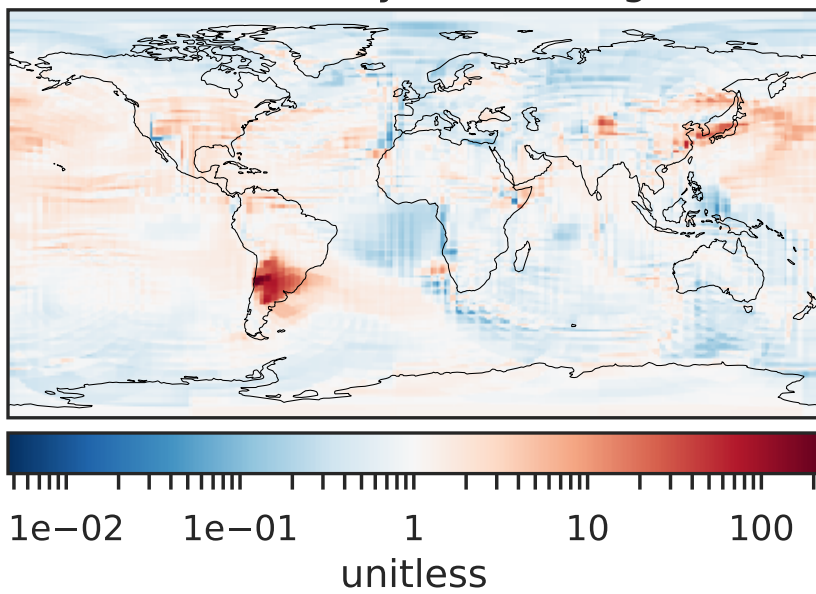
Difference (1x1.25)
Dev - Ref, Dynamic Range



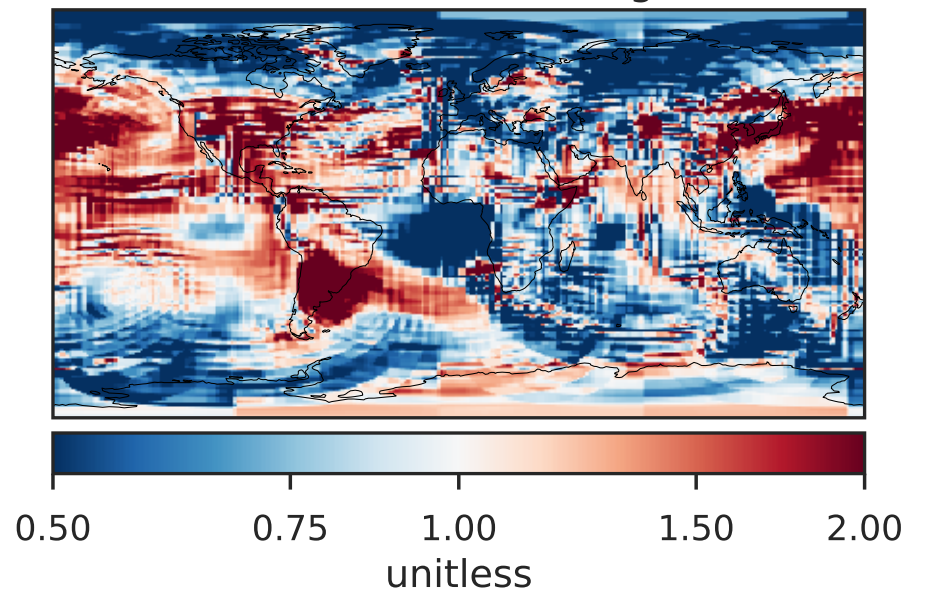
Difference (1x1.25)
Dev - Ref, Restricted Range [5%,95%]



Ratio (1x1.25)
Dev/Ref, Dynamic Range

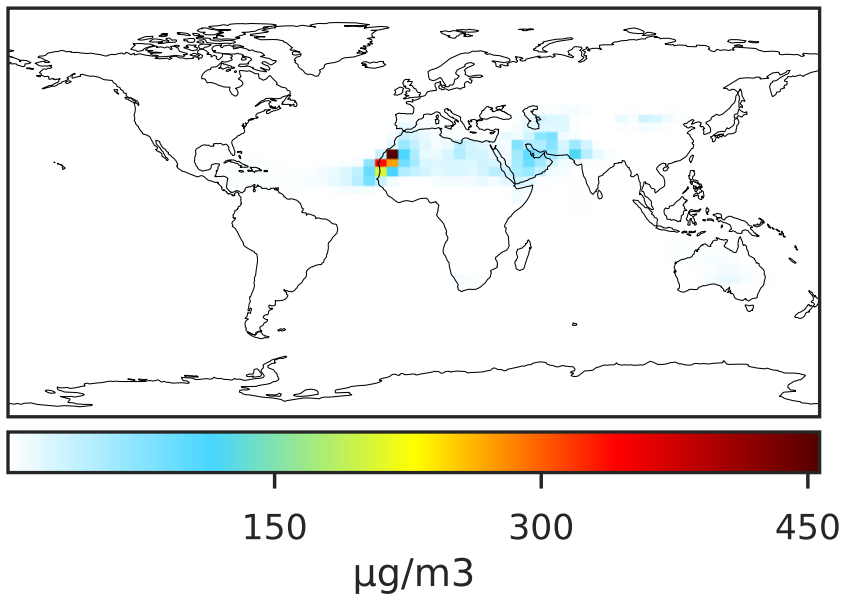


Ratio (1x1.25)
Dev/Ref, Fixed Range

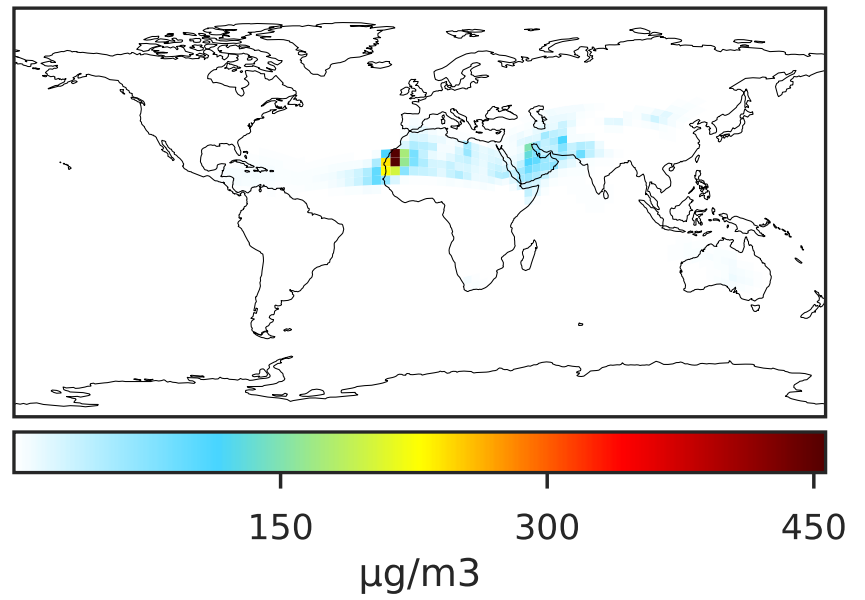


SpeciesConcVV_DST3 (Jul2019)

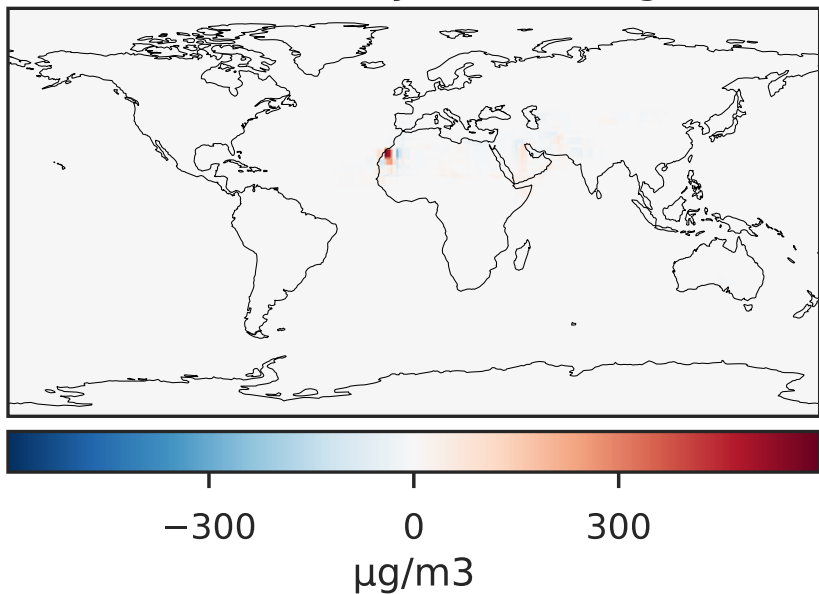
14.3.0-rc.0 (Ref)
4.0x5.0



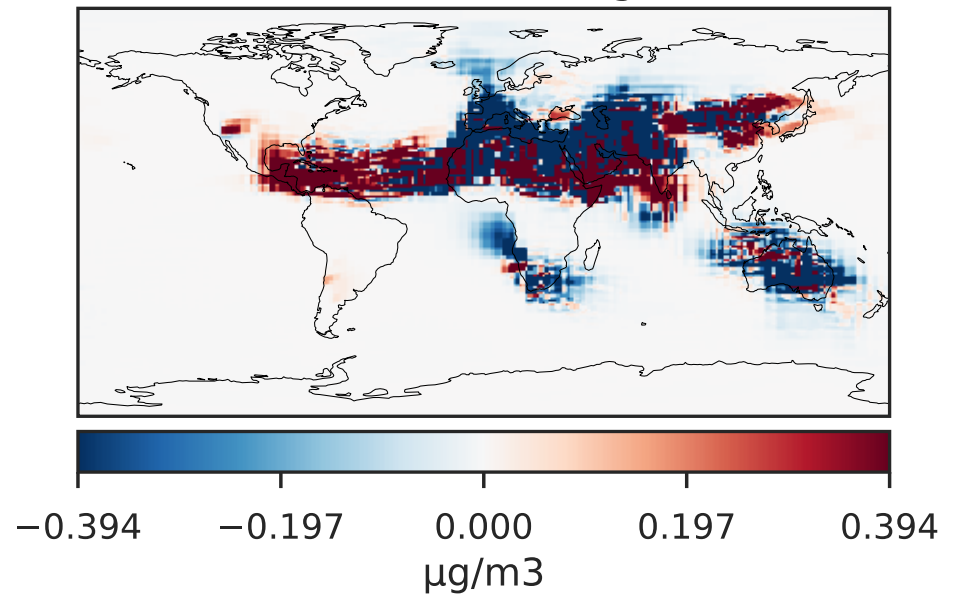
14.3.0-rc.0 (Dev)
c24



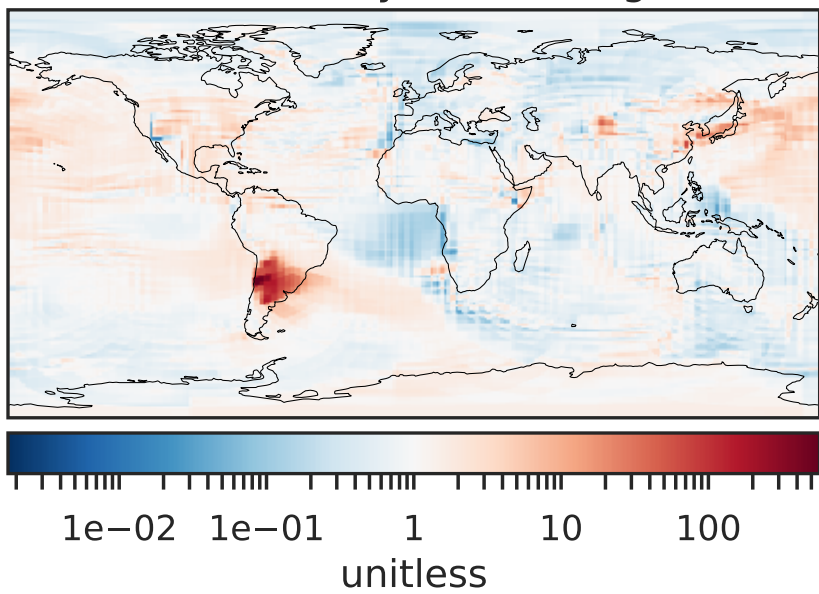
Difference (1x1.25)
Dev - Ref, Dynamic Range



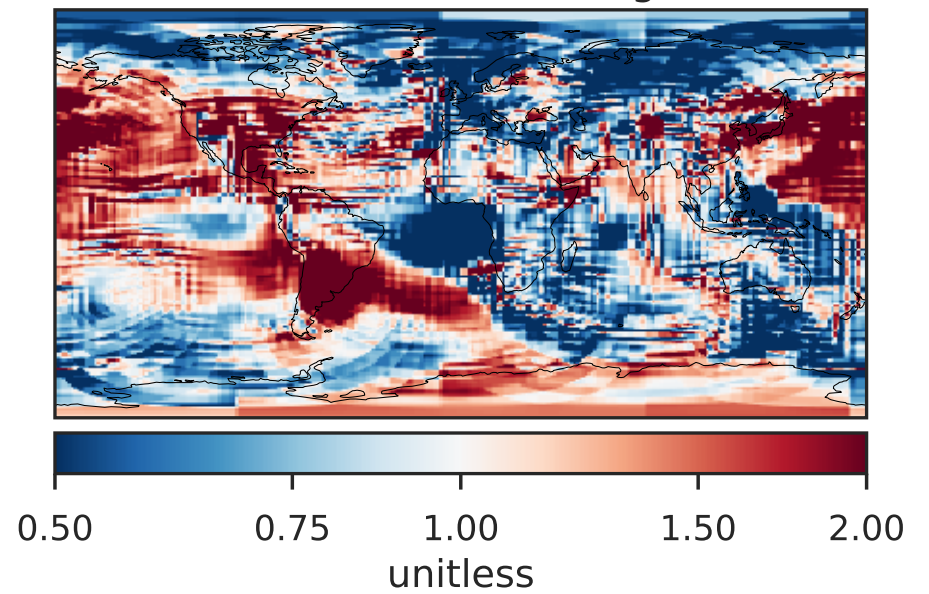
Difference (1x1.25)
Dev - Ref, Restricted Range [5%,95%]



Ratio (1x1.25)
Dev/Ref, Dynamic Range

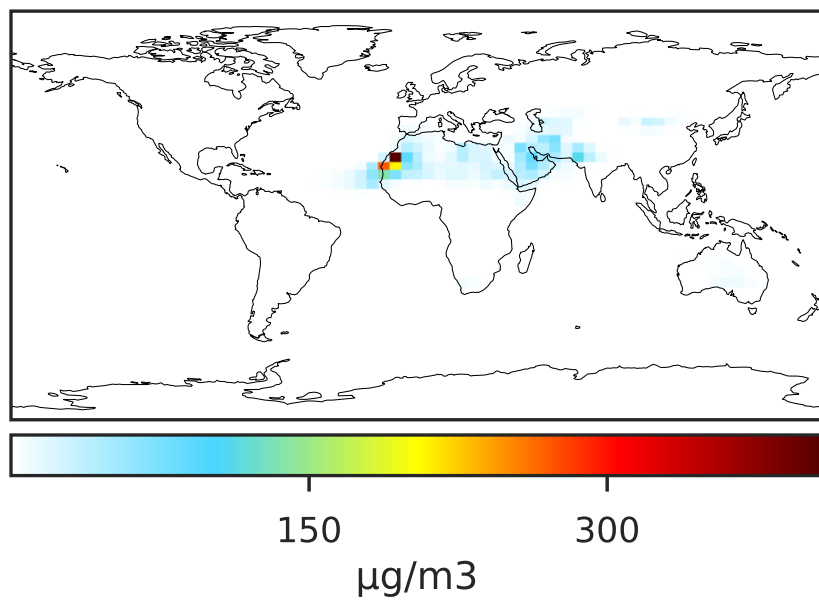


Ratio (1x1.25)
Dev/Ref, Fixed Range

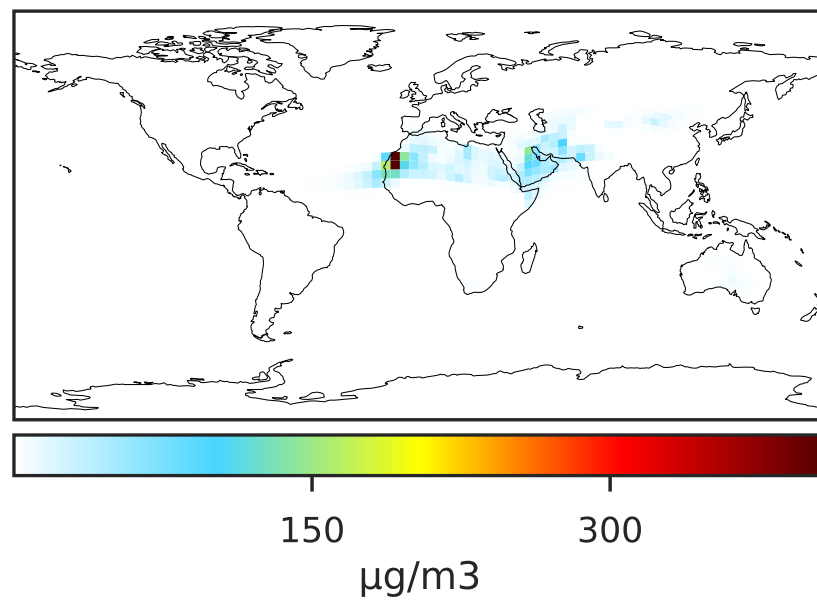


SpeciesConcVV_DST4 (Jul2019)

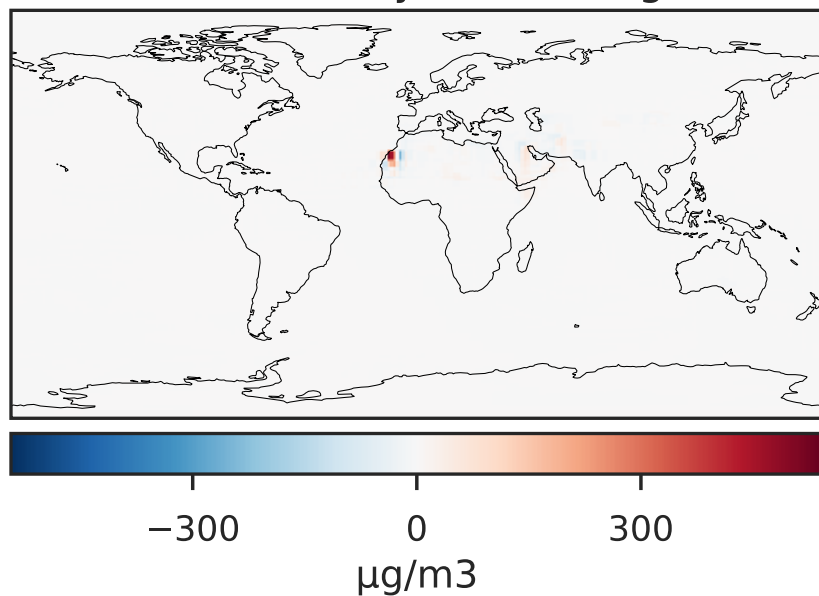
14.3.0-rc.0 (Ref)
4.0x5.0



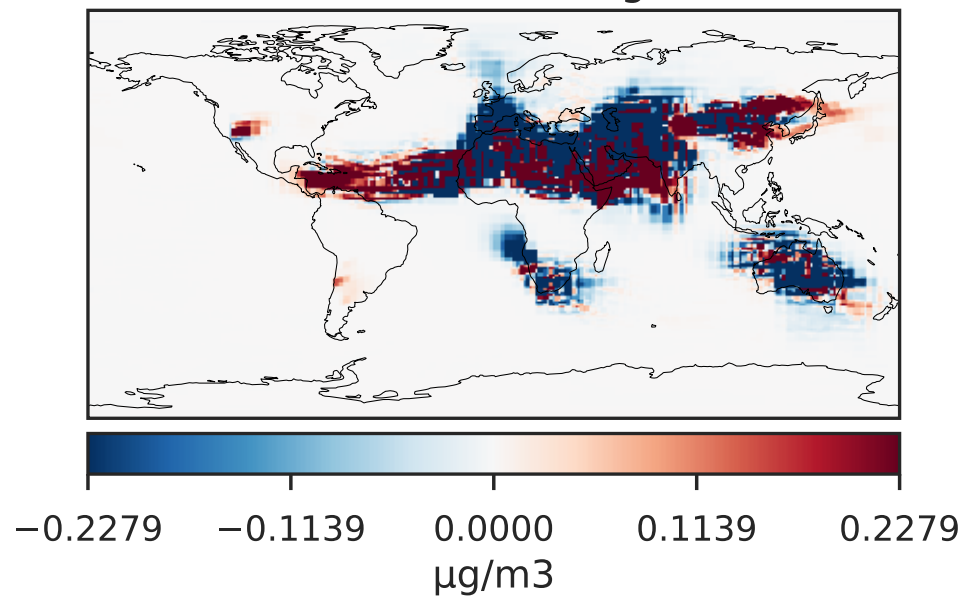
14.3.0-rc.0 (Dev)
c24



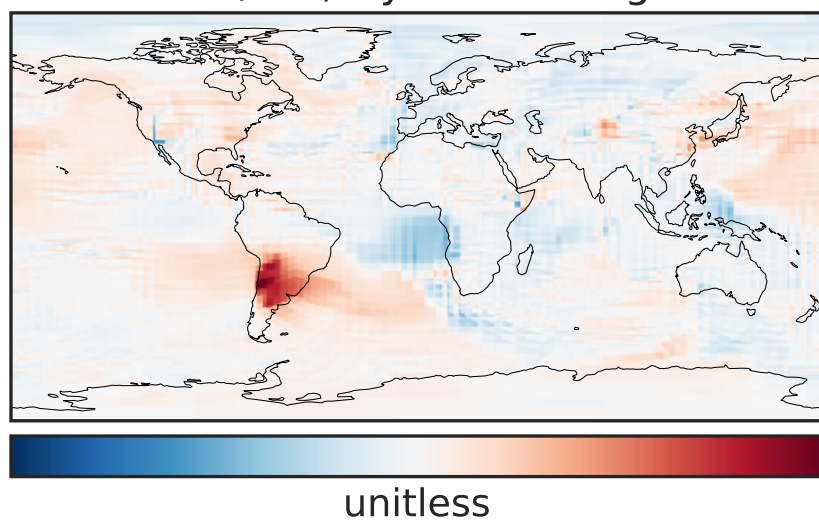
Difference (1x1.25)
Dev - Ref, Dynamic Range



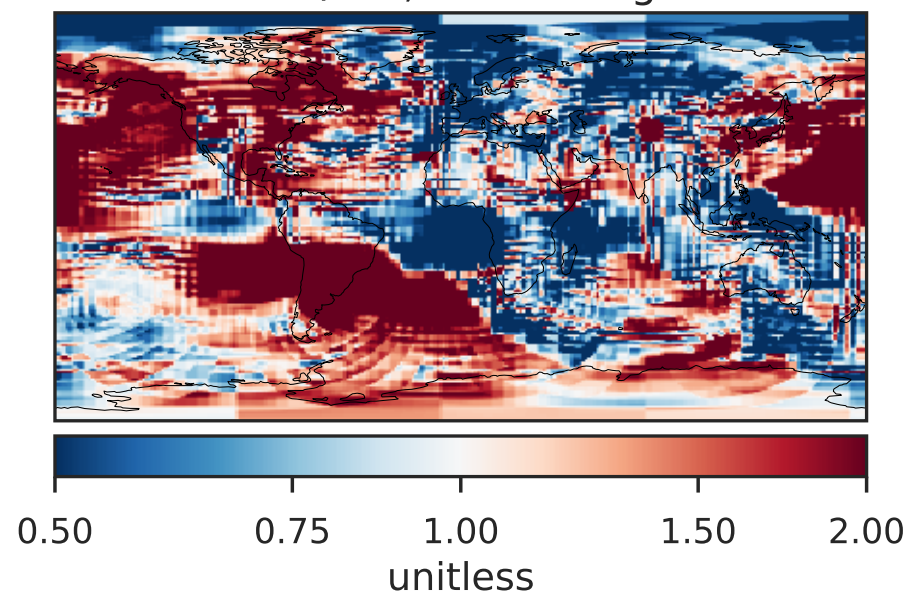
Difference (1x1.25)
Dev - Ref, Restricted Range [5%,95%]



Ratio (1x1.25)
Dev/Ref, Dynamic Range

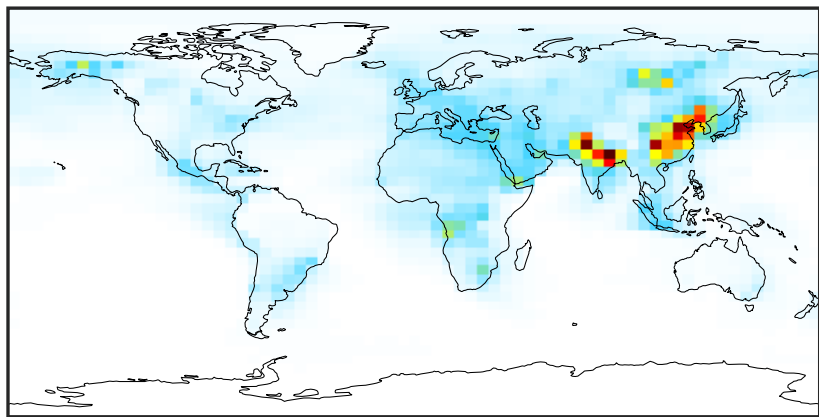


Ratio (1x1.25)
Dev/Ref, Fixed Range



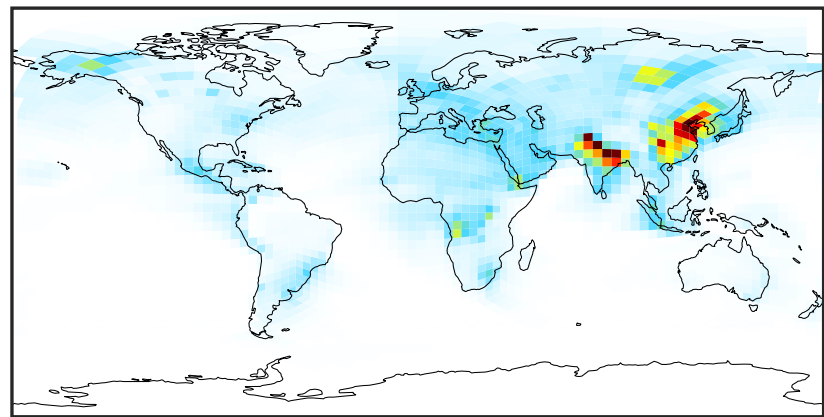
SpeciesConcVV_NH4 (Jul2019)

14.3.0-rc.0 (Ref)
4.0x5.0



0.000 1.693 3.385 5.077 6.770
 $\mu\text{g}/\text{m}^3$

14.3.0-rc.0 (Dev)
c24



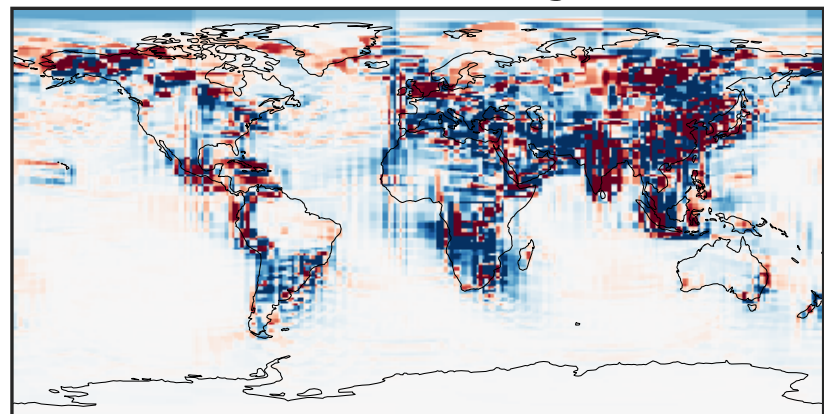
0.000 1.693 3.385 5.077 6.770
 $\mu\text{g}/\text{m}^3$

Difference (1x1.25)
Dev - Ref, Dynamic Range



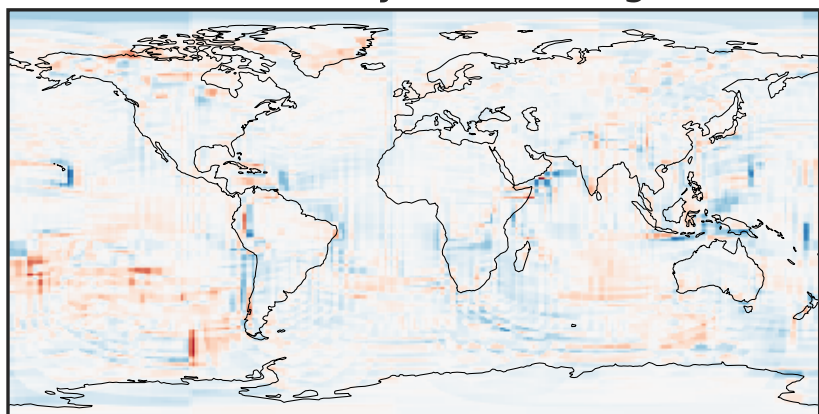
-4.887 -2.444 0.000 2.444 4.887
 $\mu\text{g}/\text{m}^3$

Difference (1x1.25)
Dev - Ref, Restricted Range [5%,95%]



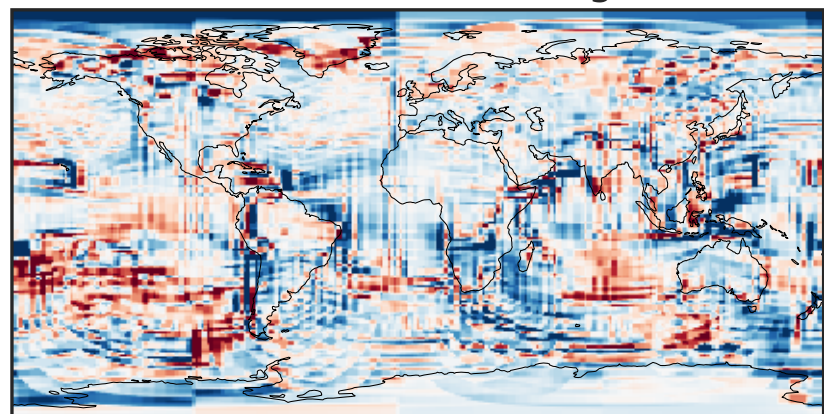
-0.1416 -0.0708 0.0000 0.0708 0.1416
 $\mu\text{g}/\text{m}^3$

Ratio (1x1.25)
Dev/Ref, Dynamic Range



1e-01 1 10
unitless

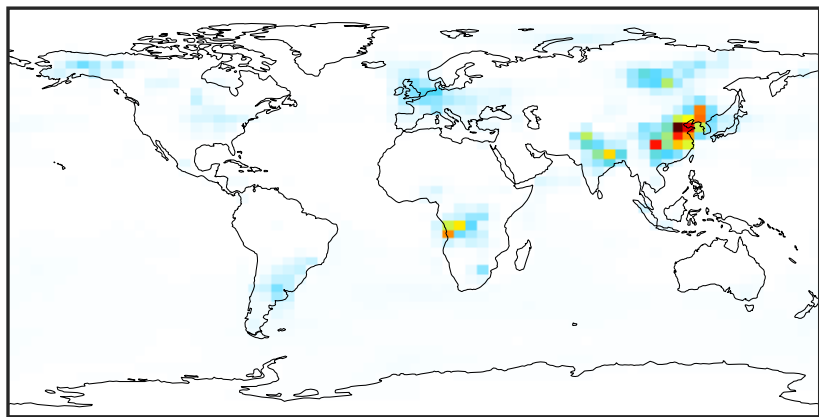
Ratio (1x1.25)
Dev/Ref, Fixed Range



0.50 0.75 1.00 1.50 2.00
unitless

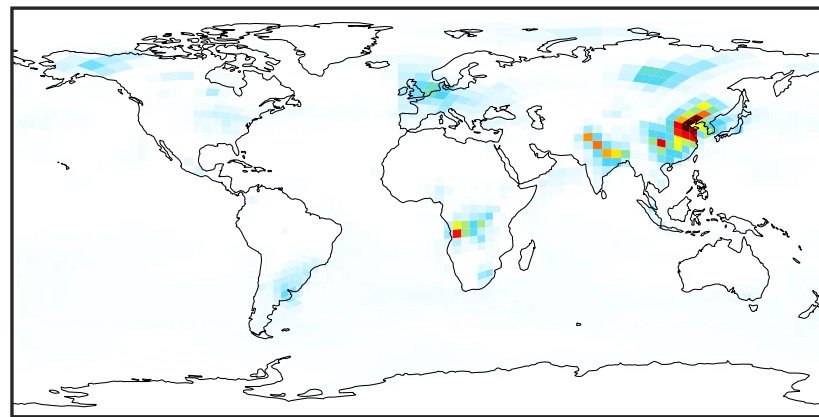
SpeciesConcVV_NIT (Jul2019)

14.3.0-rc.0 (Ref)
4.0x5.0



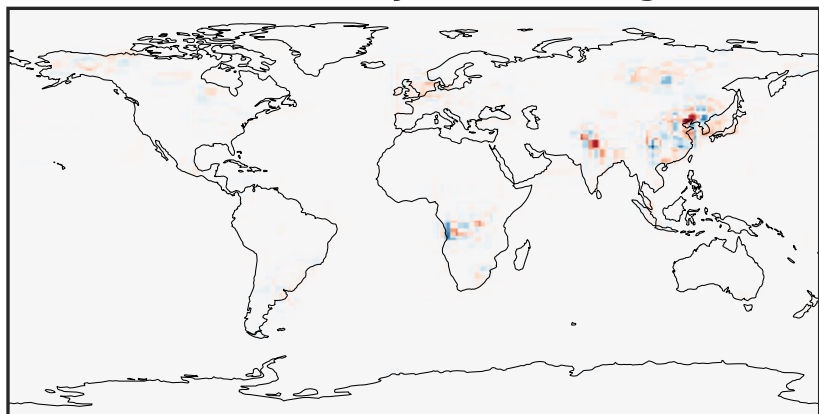
0.000 2.373 4.747 7.120 9.493
 $\mu\text{g}/\text{m}^3$

14.3.0-rc.0 (Dev)
c24



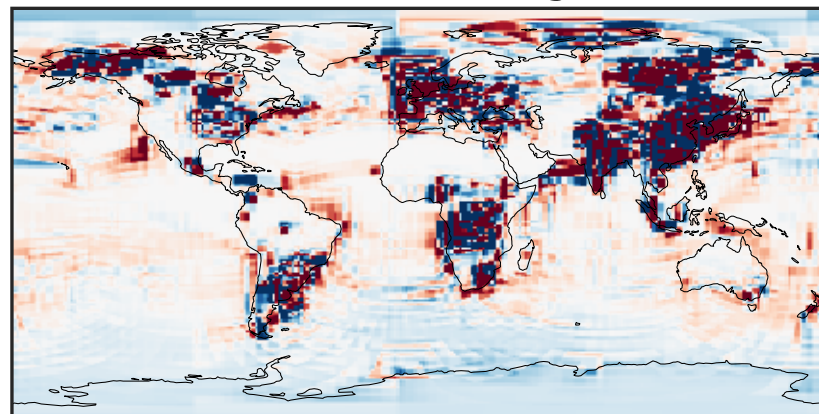
0.000 2.373 4.747 7.120 9.493
 $\mu\text{g}/\text{m}^3$

Difference (1x1.25)
Dev - Ref, Dynamic Range



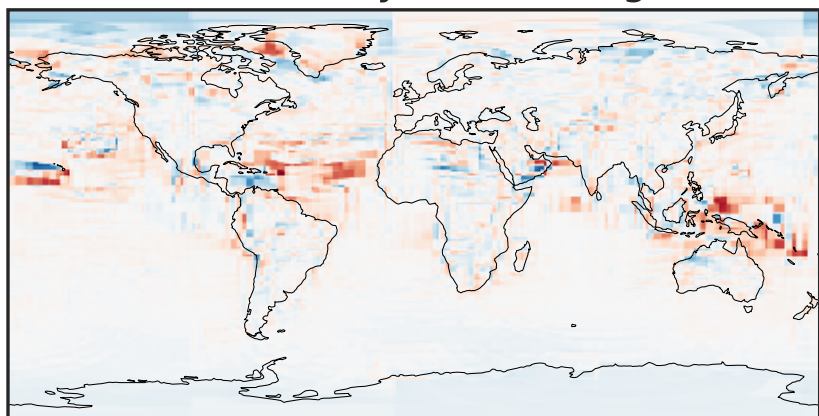
-5.08 -2.54 0.00 2.54 5.08
 $\mu\text{g}/\text{m}^3$

Difference (1x1.25)
Dev - Ref, Restricted Range [5%,95%]



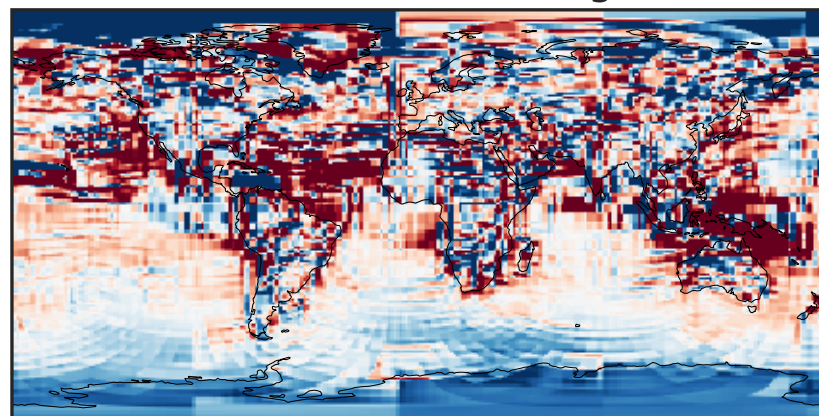
-0.0728 -0.0364 0.0000 0.0364 0.0728
 $\mu\text{g}/\text{m}^3$

Ratio (1x1.25)
Dev/Ref, Dynamic Range



1e-02 1e-01 1 10 100
unitless

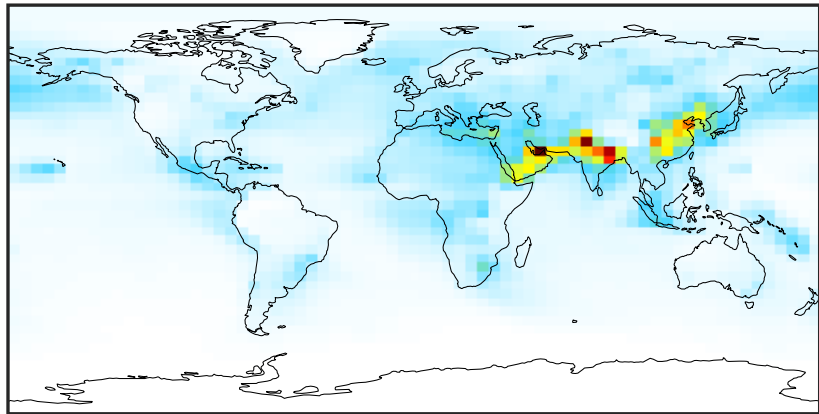
Ratio (1x1.25)
Dev/Ref, Fixed Range



0.50 0.75 1.00 1.50 2.00
unitless

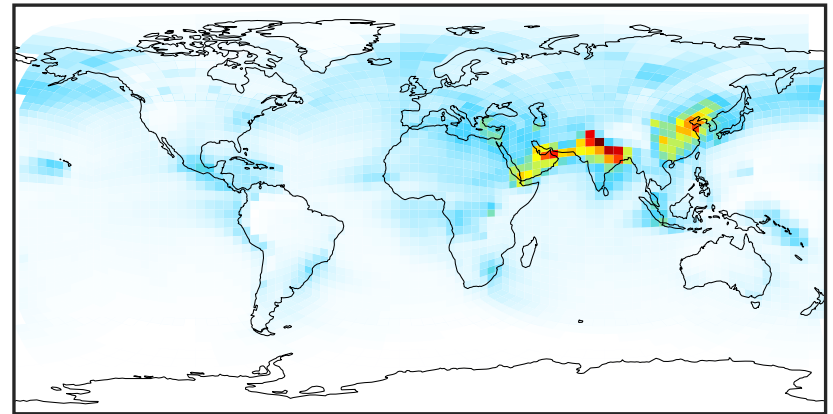
SpeciesConcVV_SO4 (Jul2019)

14.3.0-rc.0 (Ref)
4.0x5.0



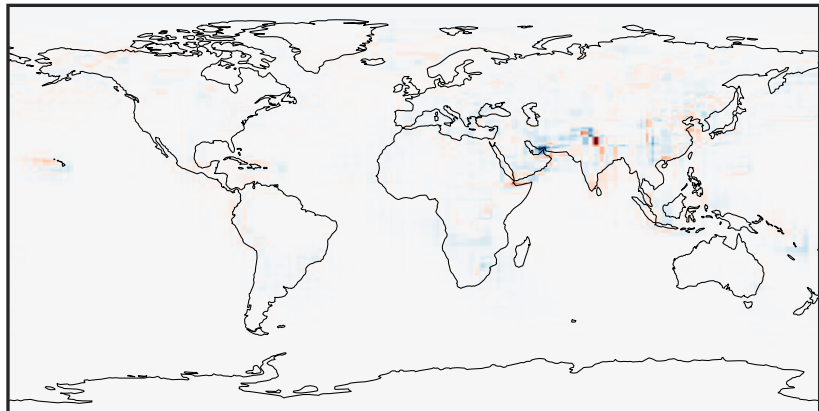
0.03 4.08 8.13 12.18 16.23
 $\mu\text{g}/\text{m}^3$

14.3.0-rc.0 (Dev)
c24



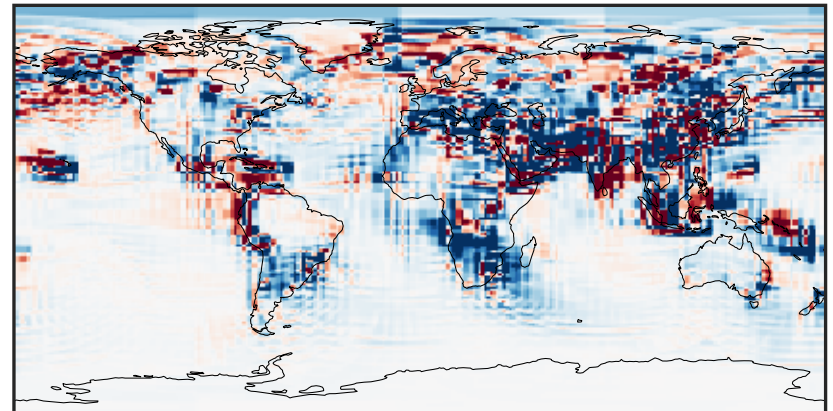
0.03 4.08 8.13 12.18 16.23
 $\mu\text{g}/\text{m}^3$

Difference (1x1.25)
Dev - Ref, Dynamic Range



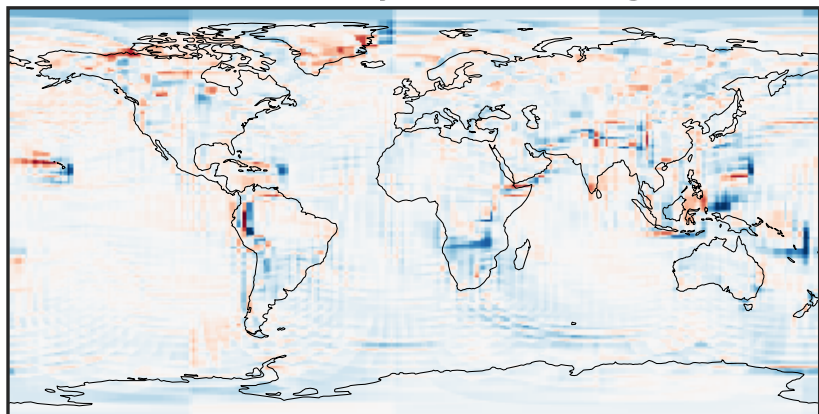
-9.79 -4.89 0.00 4.89 9.79
 $\mu\text{g}/\text{m}^3$

Difference (1x1.25)
Dev - Ref, Restricted Range [5%,95%]



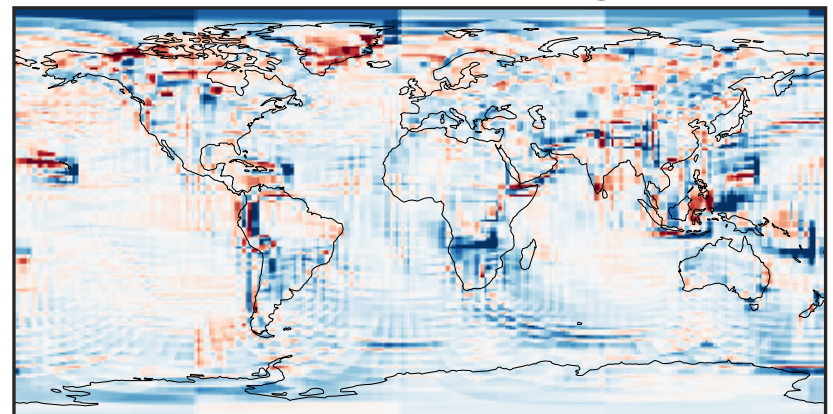
-0.3830 -0.1915 0.0000 0.1915 0.3830
 $\mu\text{g}/\text{m}^3$

Ratio (1x1.25)
Dev/Ref, Dynamic Range



0.244 0.622 1.000 2.546 4.091
unitless

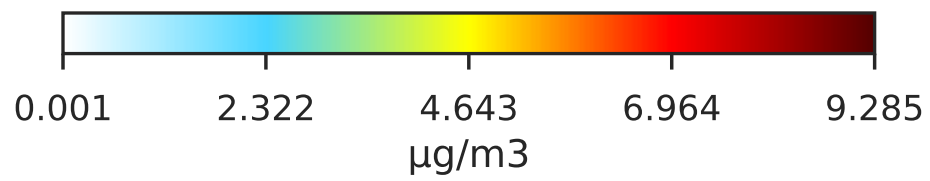
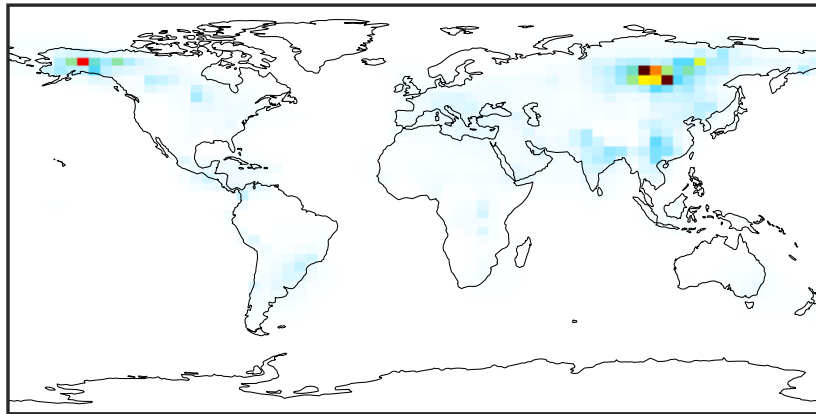
Ratio (1x1.25)
Dev/Ref, Fixed Range



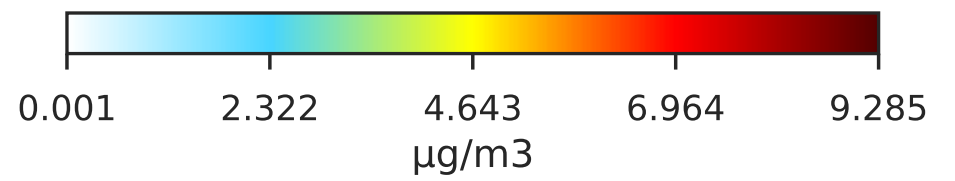
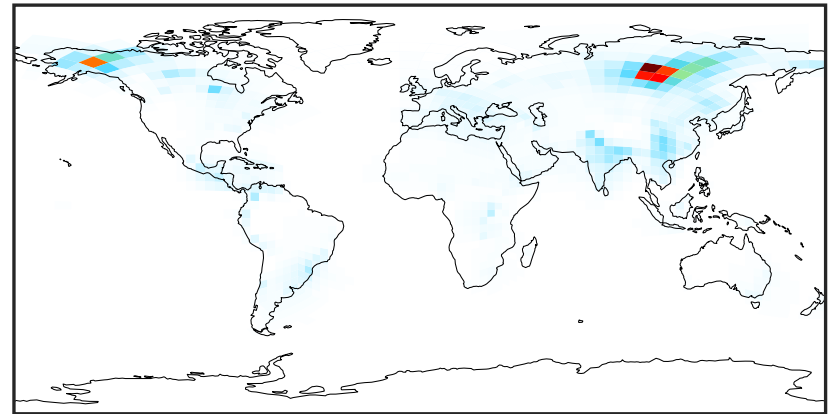
0.50 0.75 1.00 1.50 2.00
unitless

SpeciesConcVV_HMS (Jul2019)

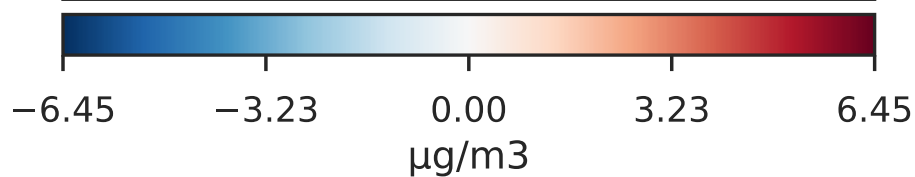
14.3.0-rc.0 (Ref)
4.0x5.0



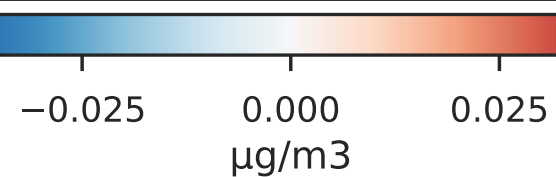
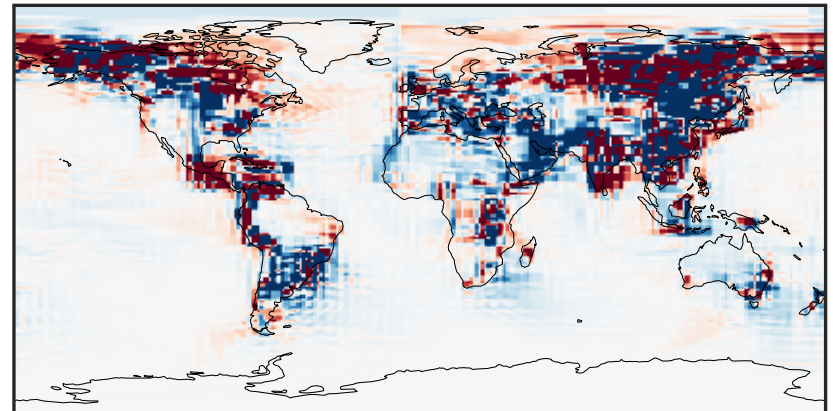
14.3.0-rc.0 (Dev)
c24



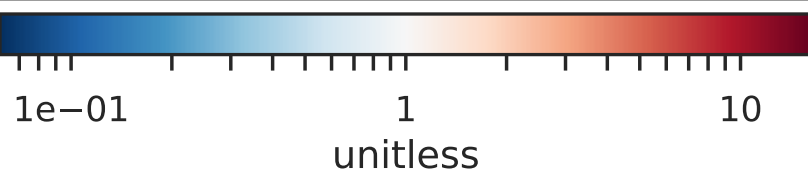
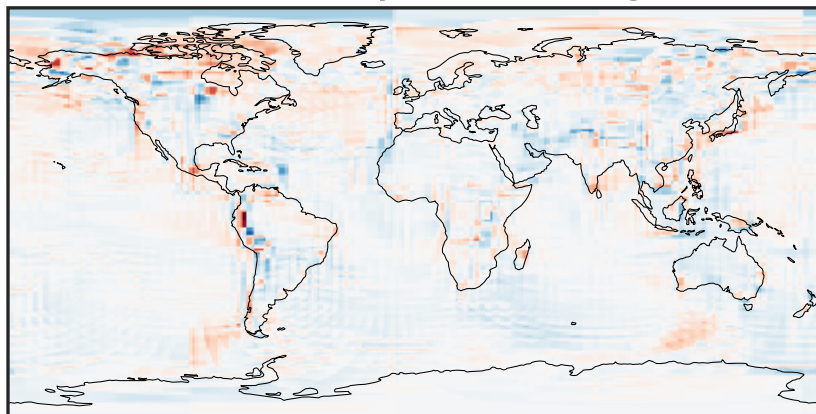
Difference (1x1.25)
Dev - Ref, Dynamic Range



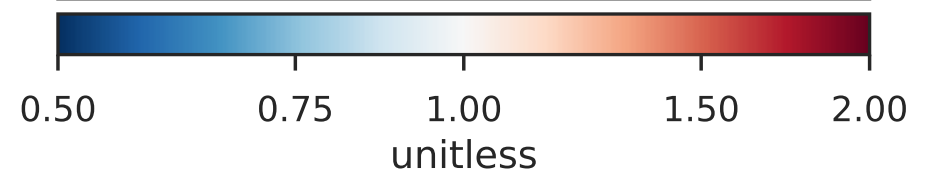
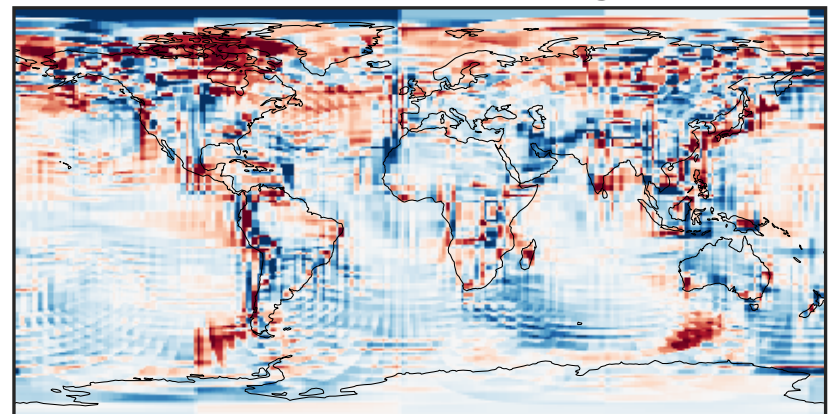
Difference (1x1.25)
Dev - Ref, Restricted Range [5%,95%]



Ratio (1x1.25)
Dev/Ref, Dynamic Range

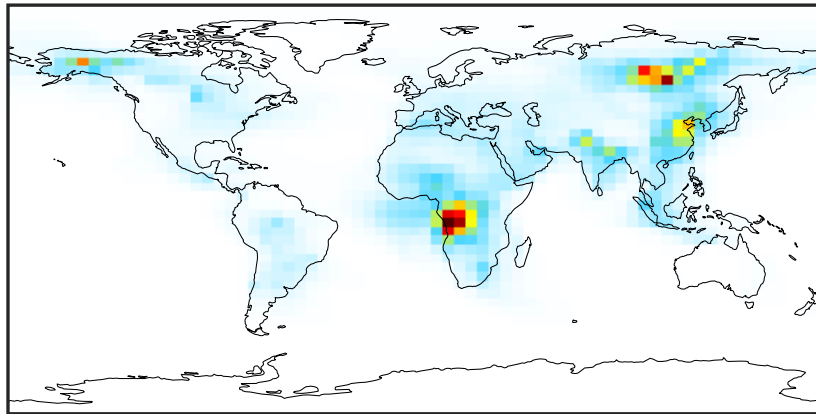


Ratio (1x1.25)
Dev/Ref, Fixed Range



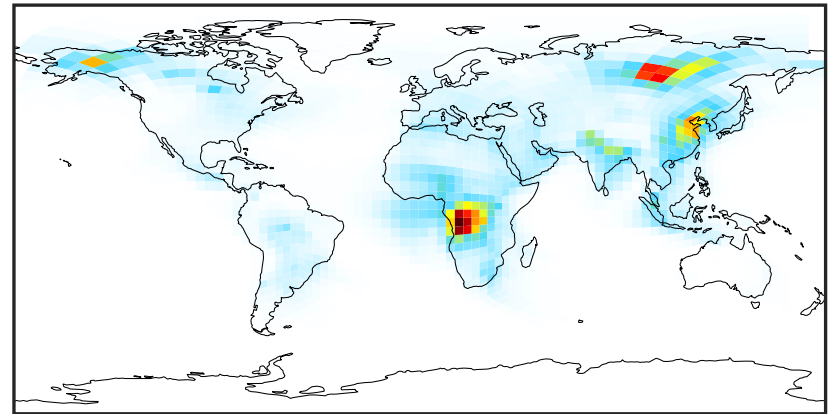
SpeciesConcVV_BCPI (Jul2019)

14.3.0-rc.0 (Ref)
4.0x5.0



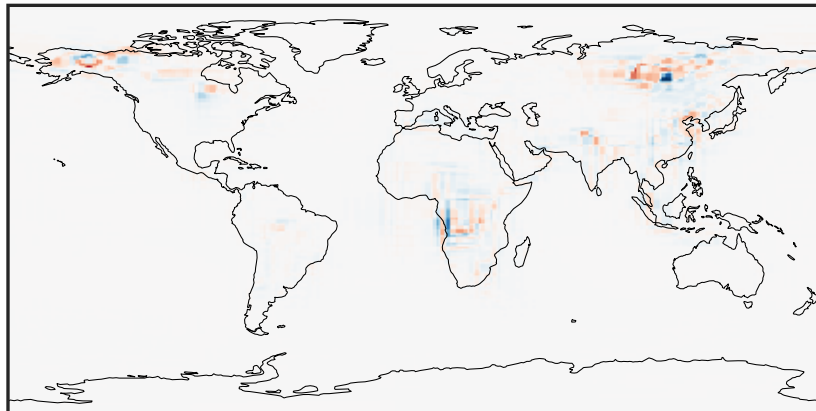
0.000 0.605 1.209 1.814 2.418
µg/m³

14.3.0-rc.0 (Dev)
c24



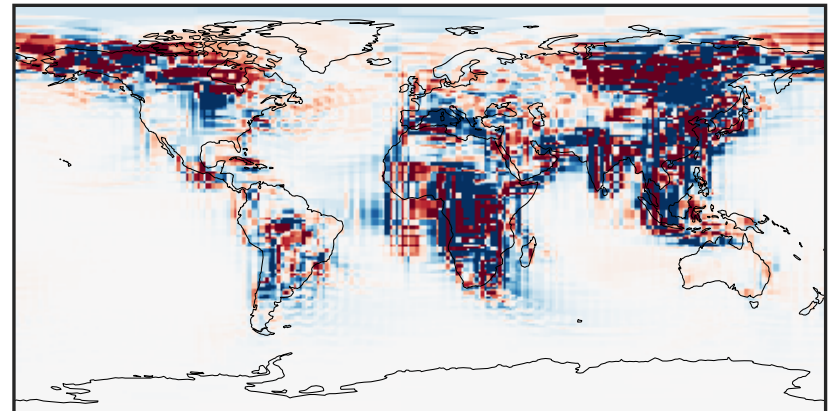
0.000 0.605 1.209 1.814 2.418
µg/m³

Difference (1x1.25)
Dev - Ref, Dynamic Range



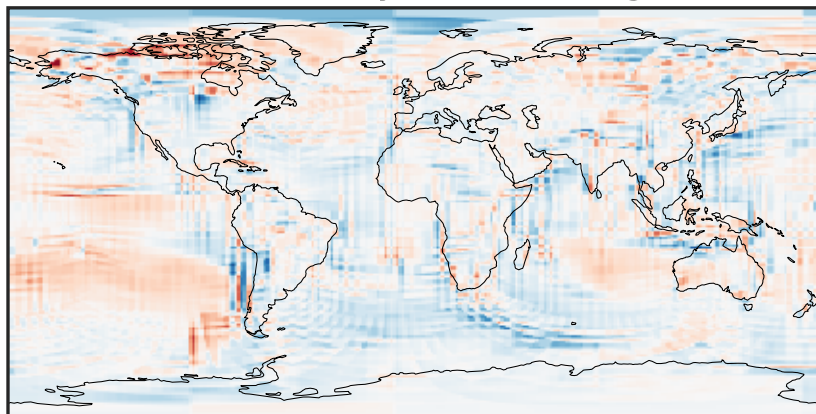
-1.286 -0.643 0.000 0.643 1.286
µg/m³

Difference (1x1.25)
Dev - Ref, Restricted Range [5%,95%]



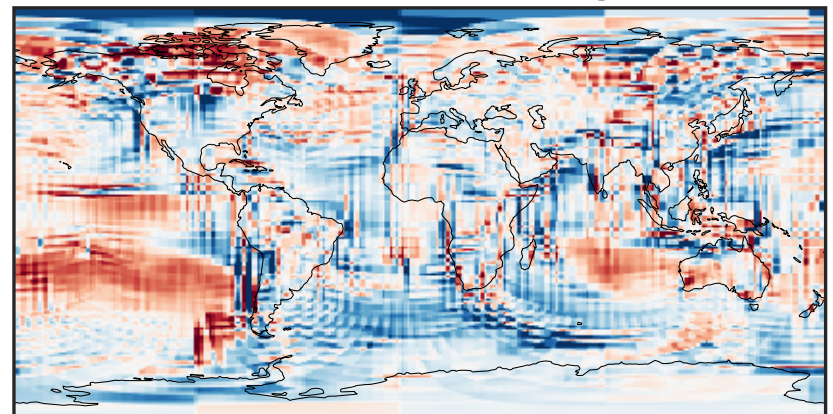
-0.02 0.00 0.02
µg/m³

Ratio (1x1.25)
Dev/Ref, Dynamic Range



0.163 0.582 1.000 3.559 6.118
unitless

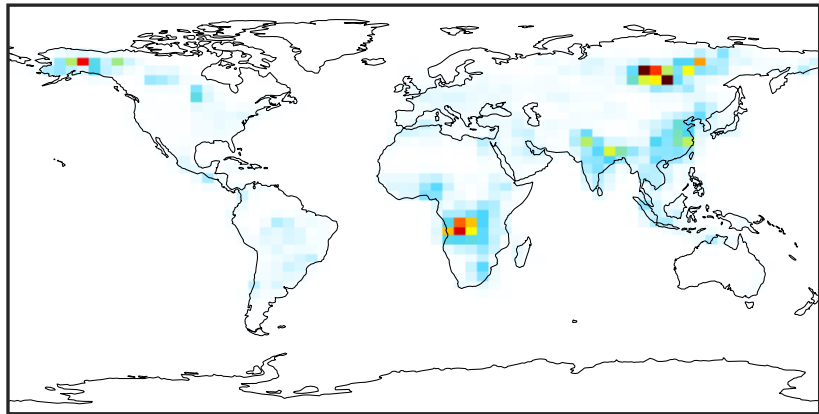
Ratio (1x1.25)
Dev/Ref, Fixed Range



0.50 0.75 1.00 1.50 2.00
unitless

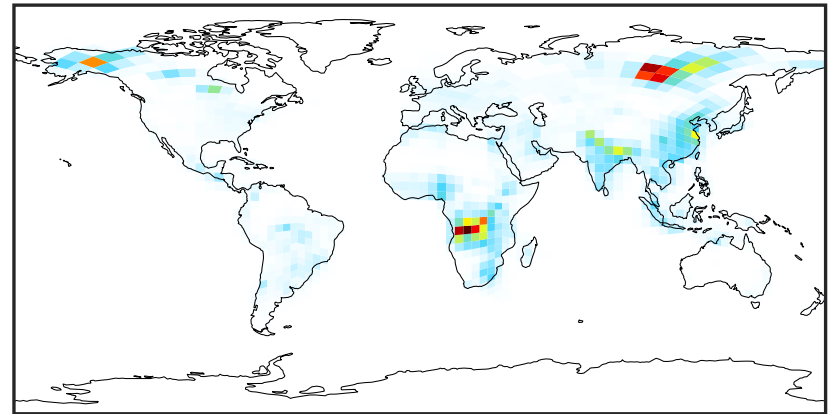
SpeciesConcVV_BCPO (Jul2019)

14.3.0-rc.0 (Ref)
4.0x5.0



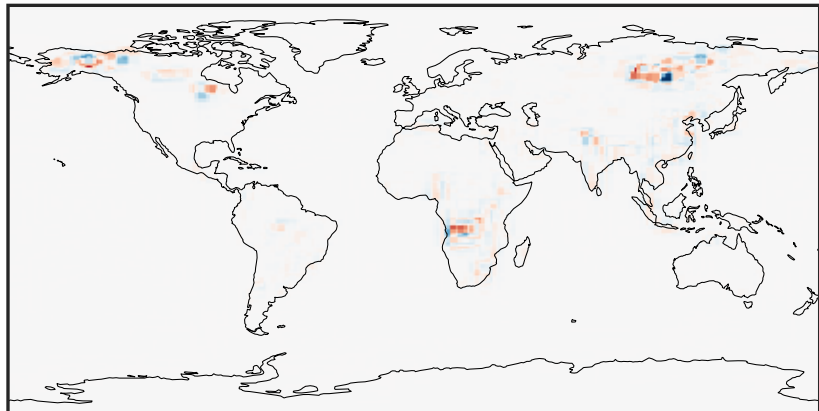
0.000 0.628 1.255 1.883 2.511
µg/m³

14.3.0-rc.0 (Dev)
c24



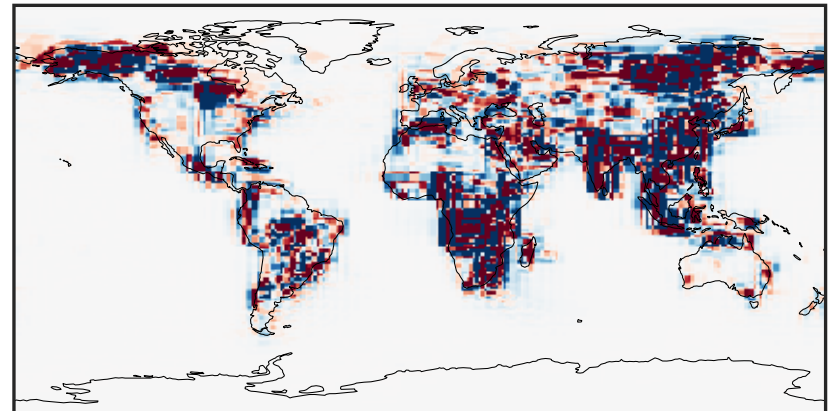
0.000 0.628 1.255 1.883 2.511
µg/m³

Difference (1x1.25)
Dev - Ref, Dynamic Range



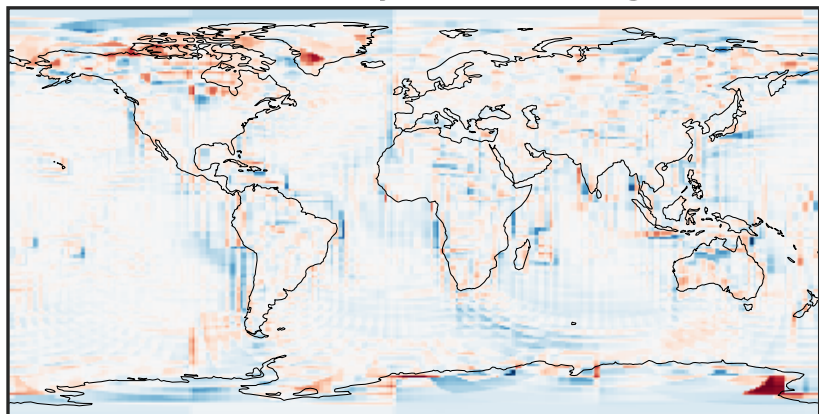
-1.761 -0.881 0.000 0.881 1.761
µg/m³

Difference (1x1.25)
Dev - Ref, Restricted Range [5%,95%]



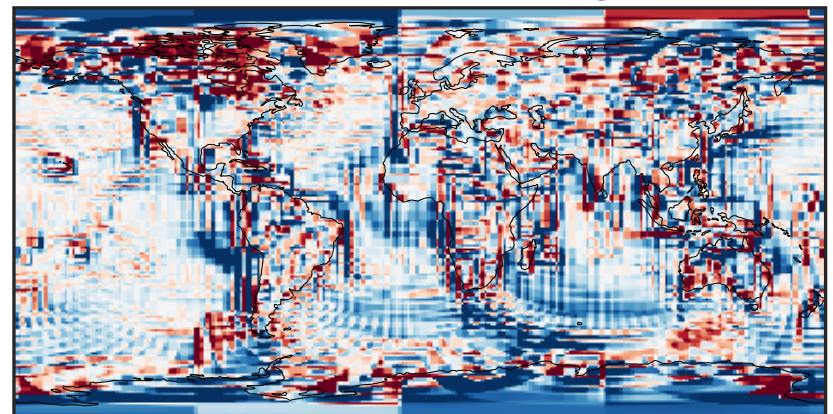
-0.015 0.000 0.015
µg/m³

Ratio (1x1.25)
Dev/Ref, Dynamic Range



1e-01 1 10
unitless

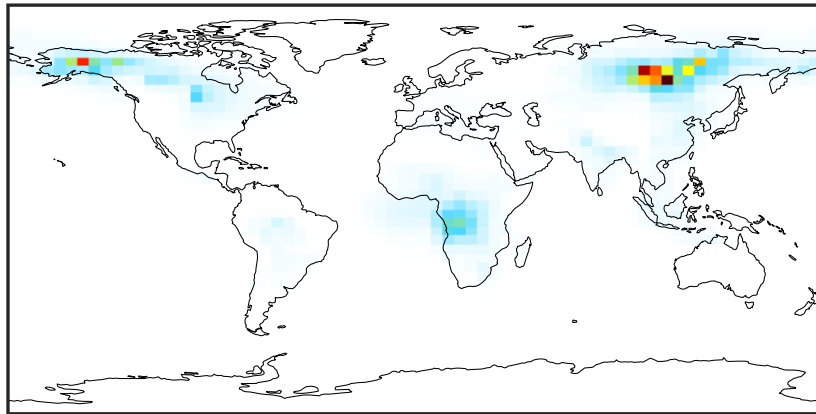
Ratio (1x1.25)
Dev/Ref, Fixed Range



0.50 0.75 1.00 1.50 2.00
unitless

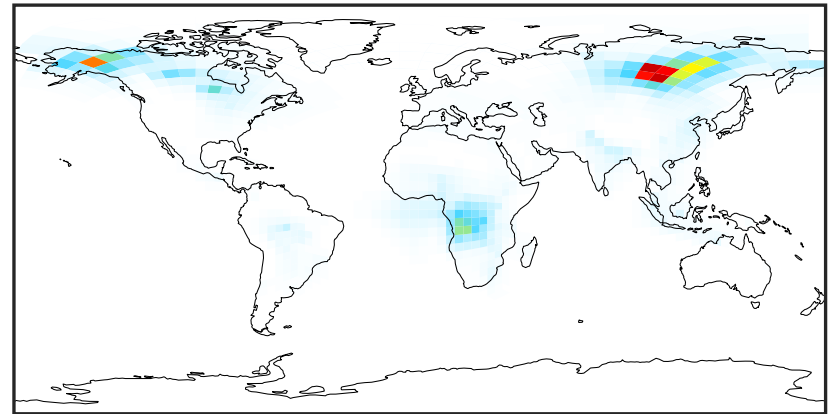
SpeciesConcVV_OCPI (Jul2019)

14.3.0-rc.0 (Ref)
4.0x5.0



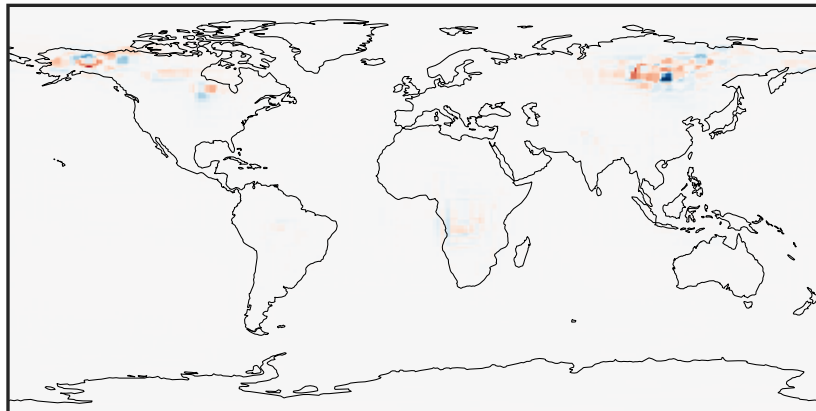
0.00 14.85 29.69 44.53 59.38
 $\mu\text{g}/\text{m}^3$

14.3.0-rc.0 (Dev)
c24



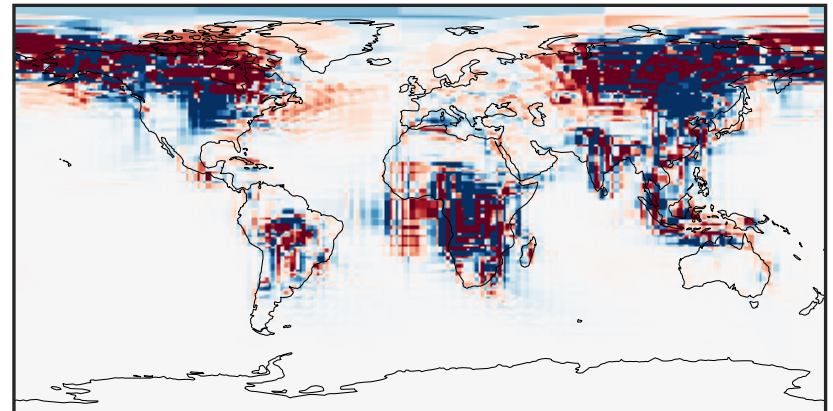
0.00 14.85 29.69 44.53 59.38
 $\mu\text{g}/\text{m}^3$

Difference (1x1.25)
Dev - Ref, Dynamic Range



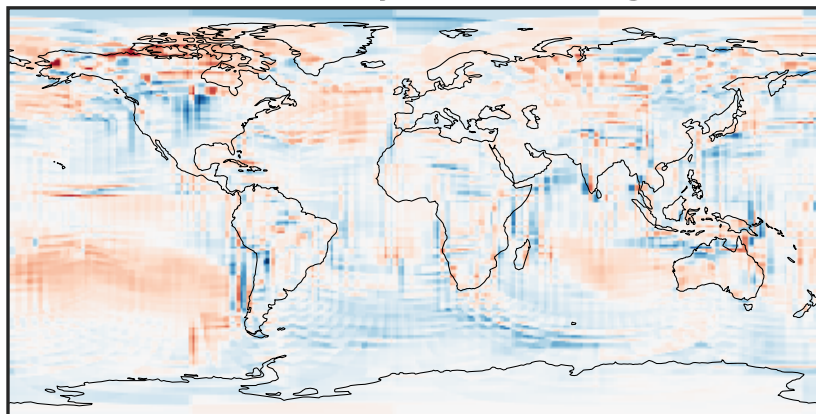
-37.39 -18.69 0.00 18.69 37.39
 $\mu\text{g}/\text{m}^3$

Difference (1x1.25)
Dev - Ref, Restricted Range [5%,95%]



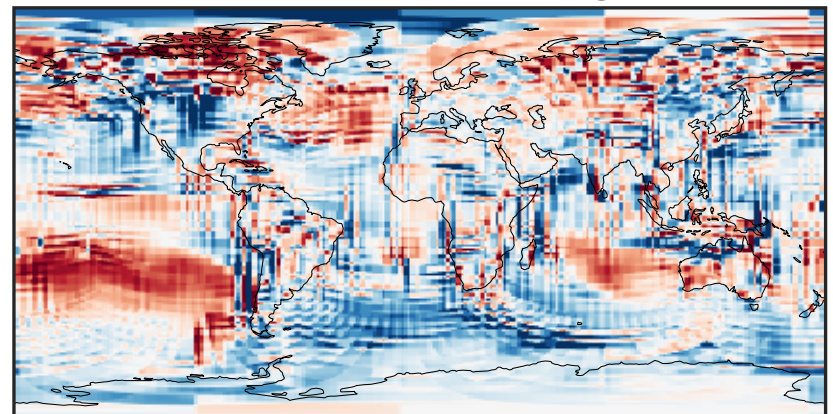
-0.2613 -0.1307 0.0000 0.1307 0.2613
 $\mu\text{g}/\text{m}^3$

Ratio (1x1.25)
Dev/Ref, Dynamic Range



0.129 0.564 1.000 4.382 7.765
unitless

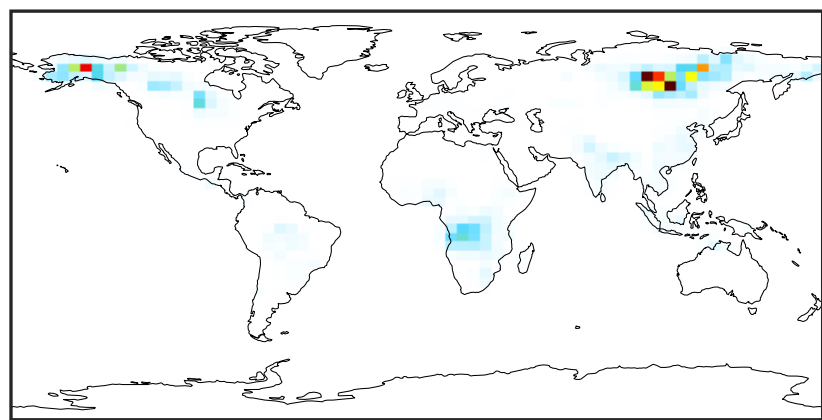
Ratio (1x1.25)
Dev/Ref, Fixed Range



0.50 0.75 1.00 1.50 2.00
unitless

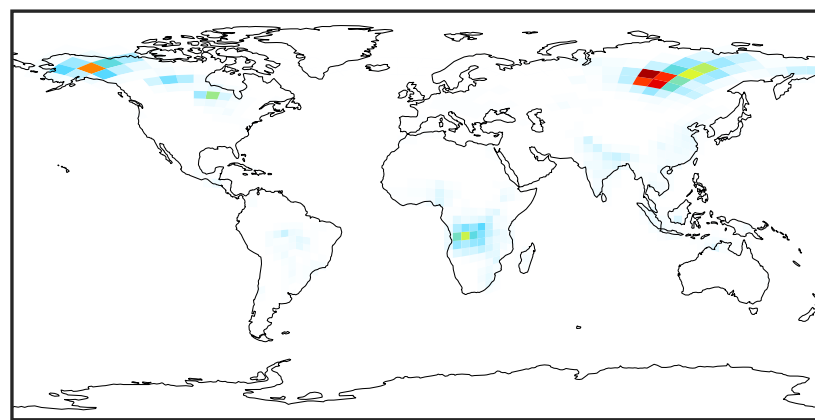
SpeciesConcVV_OCPO (Jul2019)

14.3.0-rc.0 (Ref)
4.0x5.0



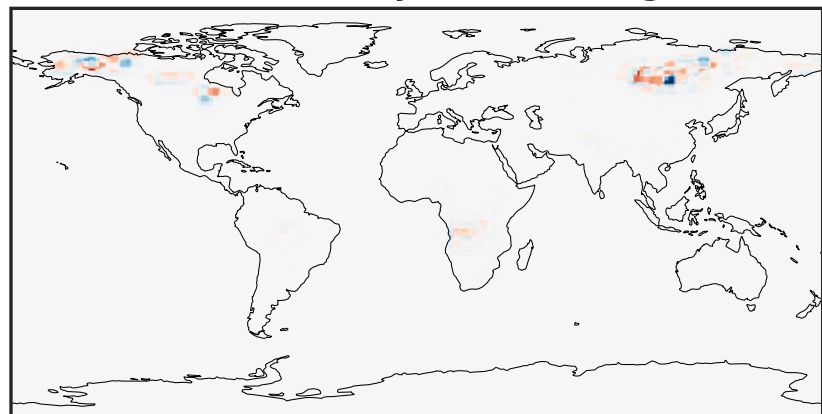
0.00 7.53 15.05 22.58 30.11
µg/m3

14.3.0-rc.0 (Dev)
c24



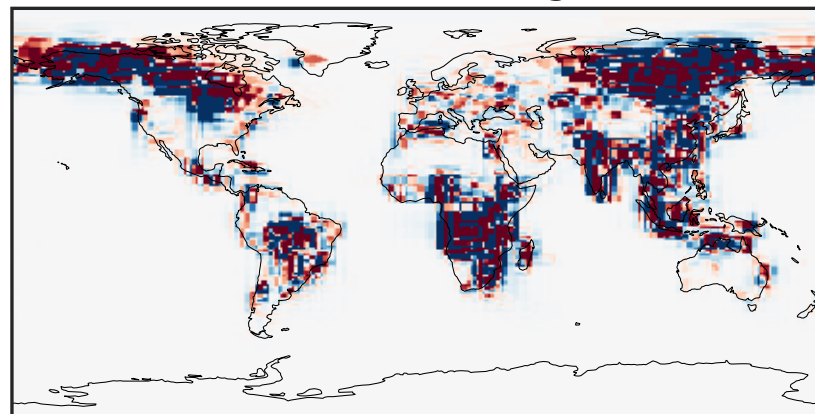
0.00 7.53 15.05 22.58 30.11
µg/m3

Difference (1x1.25)
Dev - Ref, Dynamic Range



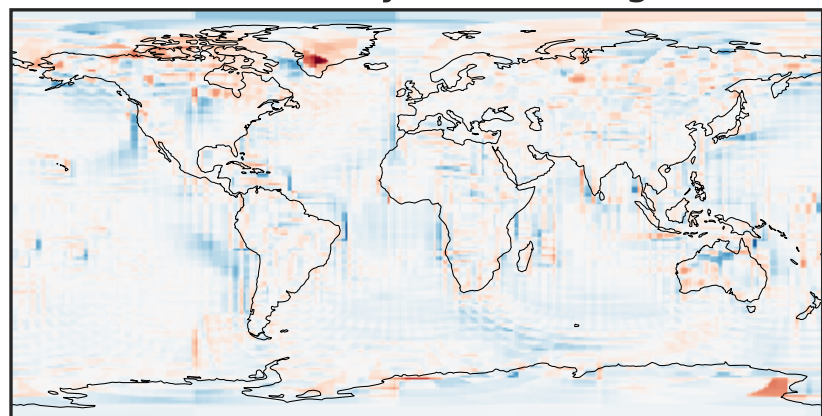
-21.13 -10.57 0.00 10.57 21.13
µg/m3

Difference (1x1.25)
Dev - Ref, Restricted Range [5%,95%]



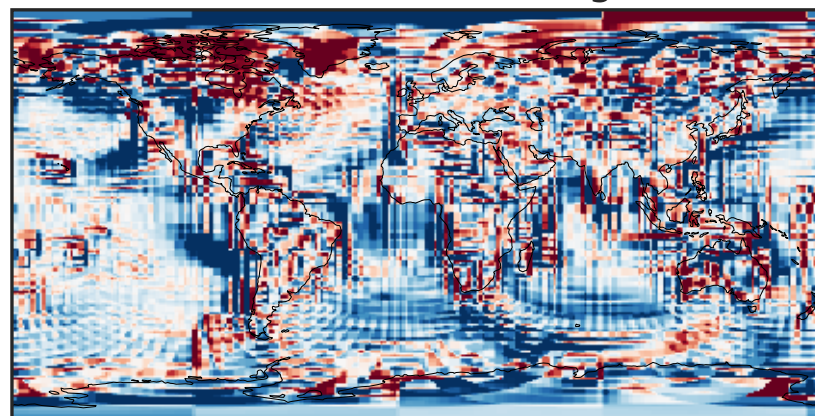
-0.0644 -0.0322 0.0000 0.0322 0.0644
µg/m3

Ratio (1x1.25)
Dev/Ref, Dynamic Range



1e-02 1e-01 1 10 100
unitless

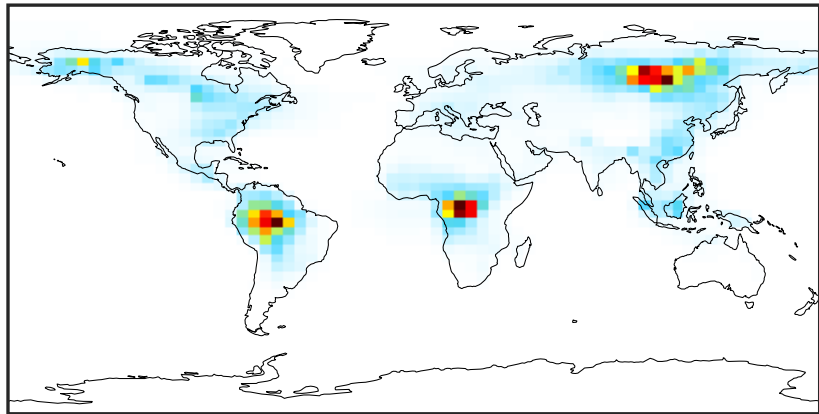
Ratio (1x1.25)
Dev/Ref, Fixed Range



0.50 0.75 1.00 1.50 2.00
unitless

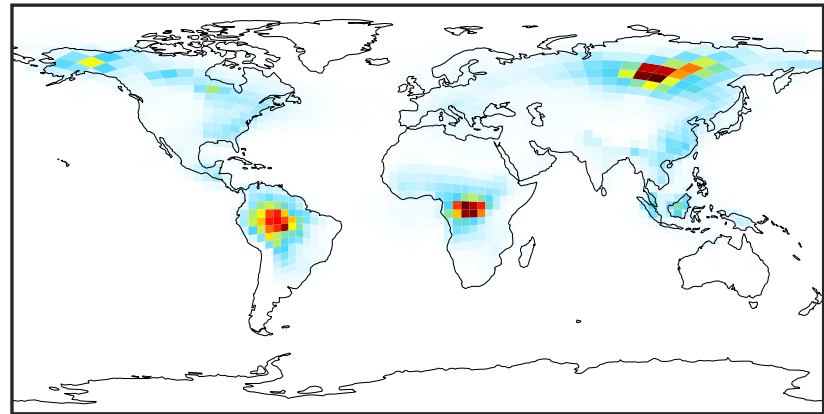
SpeciesConcVV_Complex_SOA (Jul2019)

14.3.0-rc.0 (Ref)
4.0x5.0



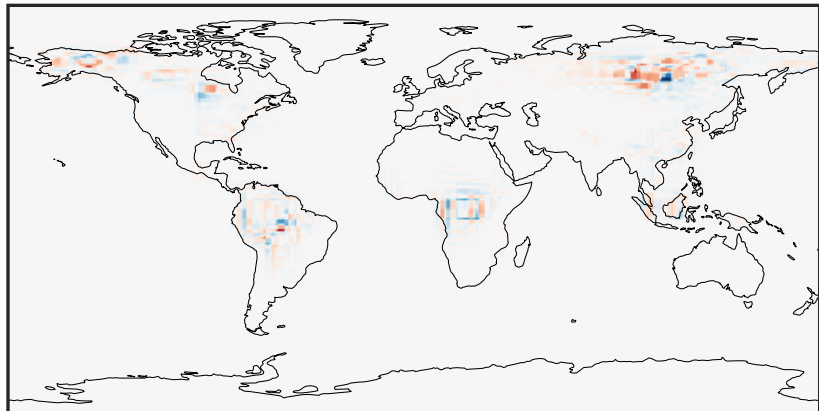
0.000 2.362 4.725 7.087 9.449
µg/m³

14.3.0-rc.0 (Dev)
c24



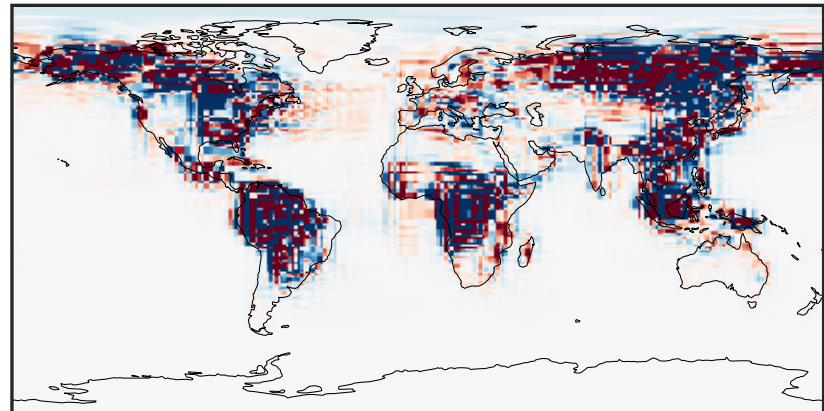
0.000 2.362 4.725 7.087 9.449
µg/m³

Difference (1x1.25)
Dev - Ref, Dynamic Range



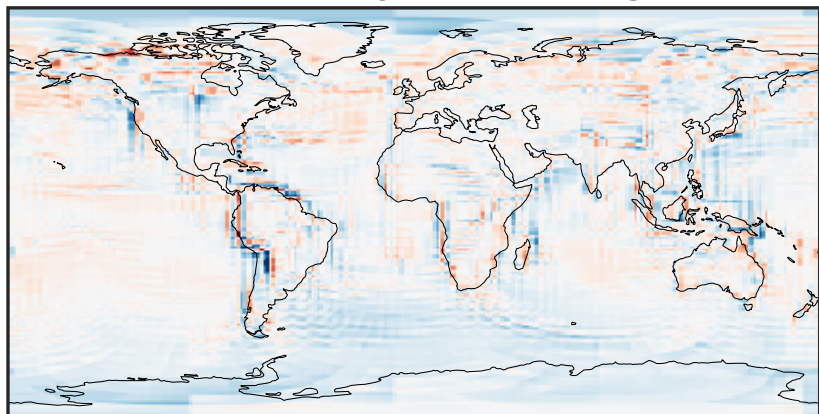
-4.951 -2.476 0.000 2.476 4.951
µg/m³

Difference (1x1.25)
Dev - Ref, Restricted Range [5%,95%]



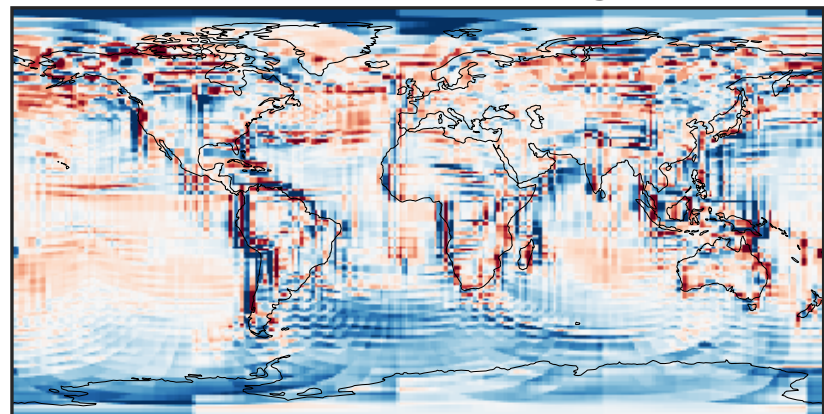
-0.0931 -0.0466 0.0000 0.0466 0.0931
µg/m³

Ratio (1x1.25)
Dev/Ref, Dynamic Range



0.116 0.558 1.000 4.794 8.588
unitless

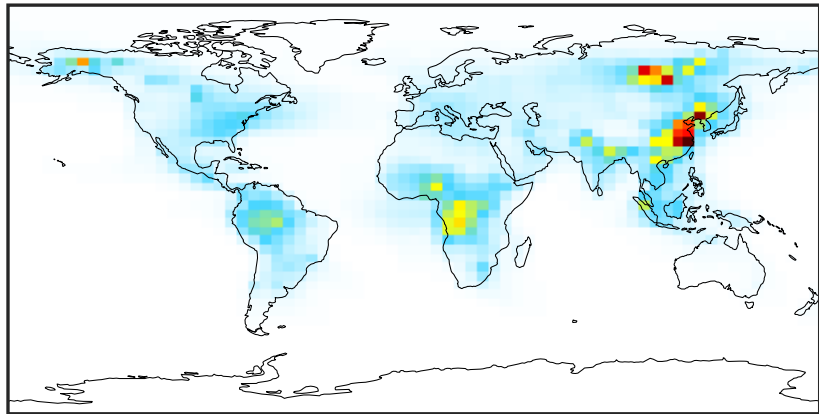
Ratio (1x1.25)
Dev/Ref, Fixed Range



0.50 0.75 1.00 1.50 2.00
unitless

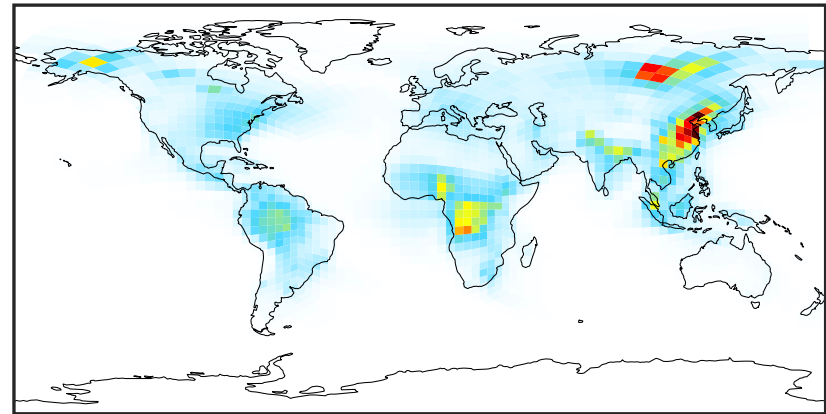
SpeciesConcVV_Simple_SOA (Jul2019)

14.3.0-rc.0 (Ref)
4.0x5.0



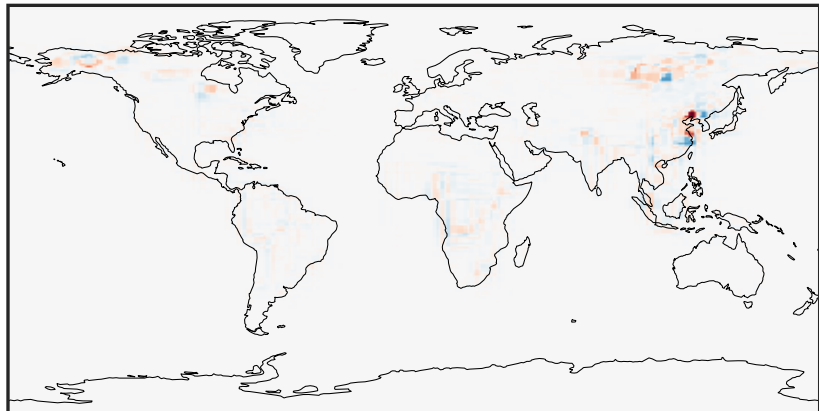
0.01 5.56 11.11 16.67 22.22
 $\mu\text{g}/\text{m}^3$

14.3.0-rc.0 (Dev)
c24



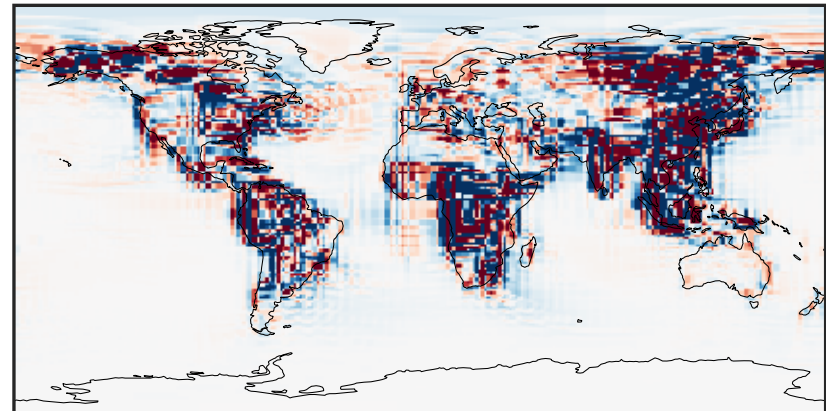
0.01 5.56 11.11 16.67 22.22
 $\mu\text{g}/\text{m}^3$

Difference (1x1.25)
Dev - Ref, Dynamic Range



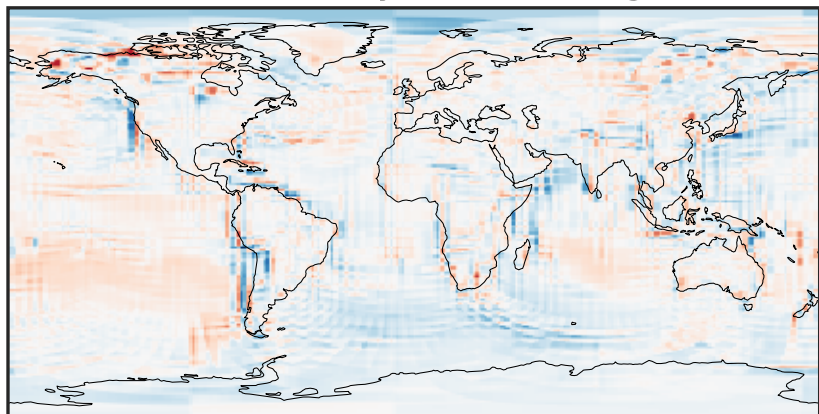
-18.8 -9.4 0.0 9.4 18.8
 $\mu\text{g}/\text{m}^3$

Difference (1x1.25)
Dev - Ref, Restricted Range [5%,95%]



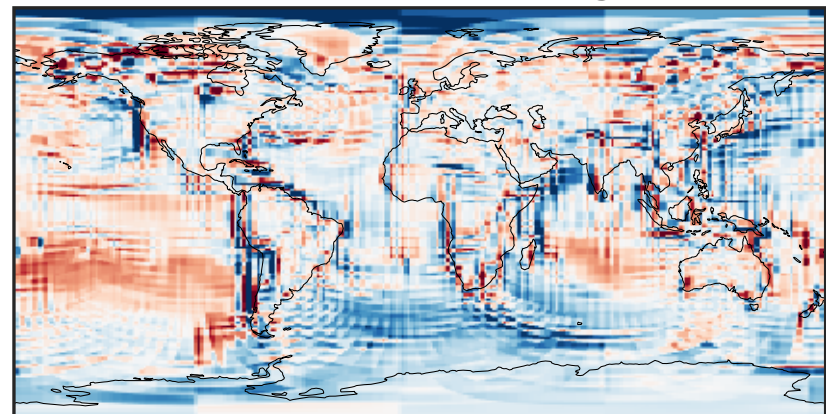
-0.378 -0.189 0.000 0.189 0.378
 $\mu\text{g}/\text{m}^3$

Ratio (1x1.25)
Dev/Ref, Dynamic Range



0.14 0.57 1.00 4.09 7.18
unitless

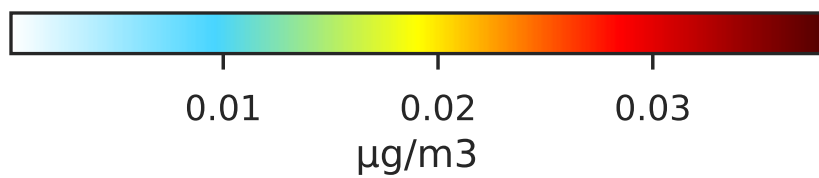
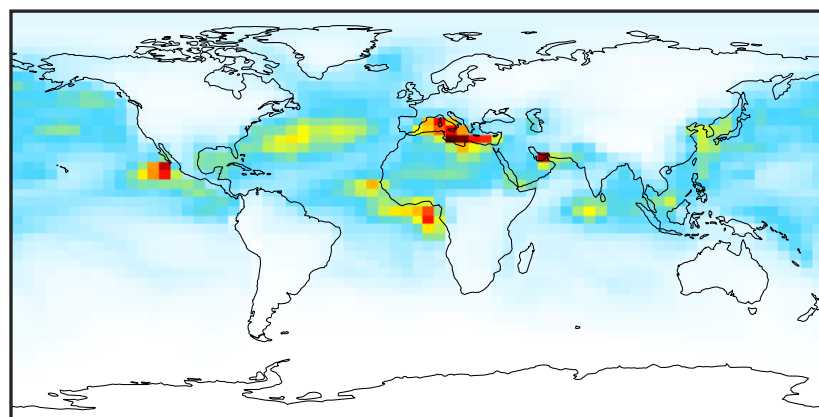
Ratio (1x1.25)
Dev/Ref, Fixed Range



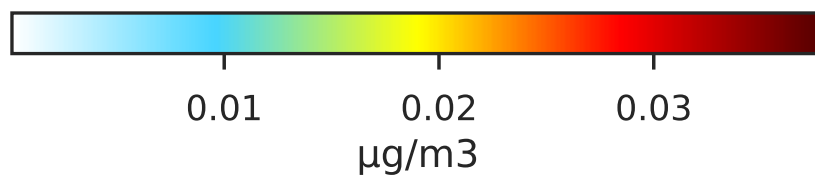
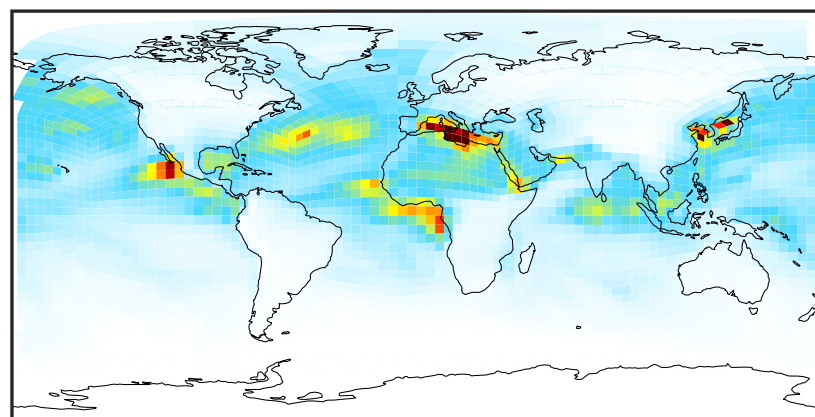
0.50 0.75 1.00 1.50 2.00
unitless

SpeciesConcVV_AERI (Jul2019)

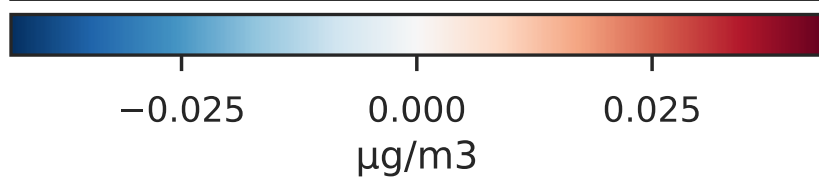
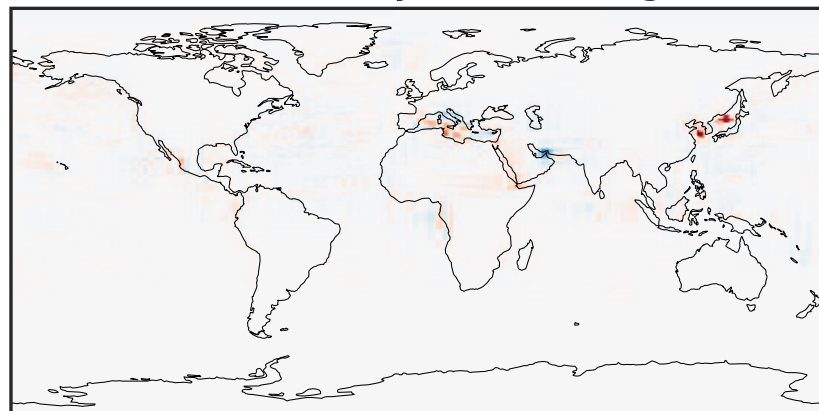
14.3.0-rc.0 (Ref)
4.0x5.0



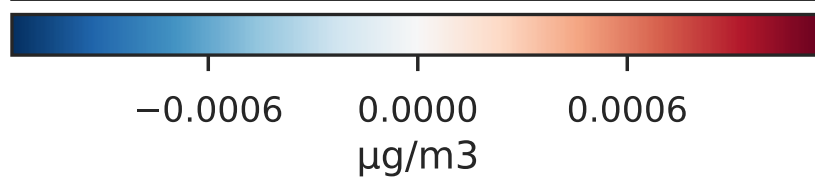
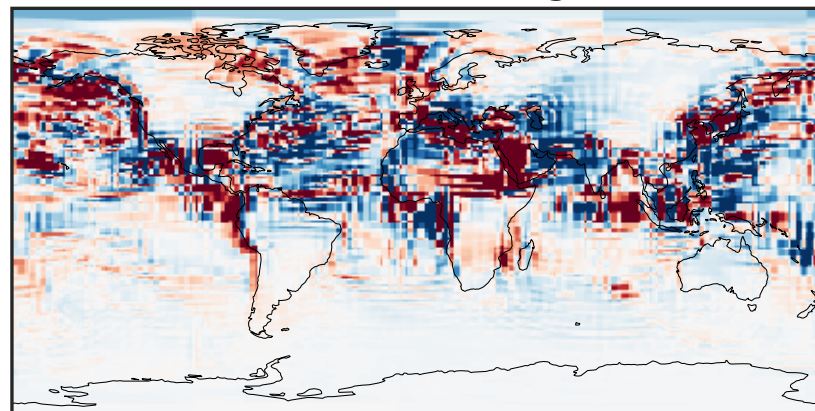
14.3.0-rc.0 (Dev)
c24



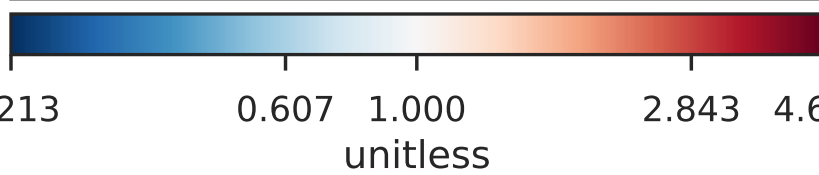
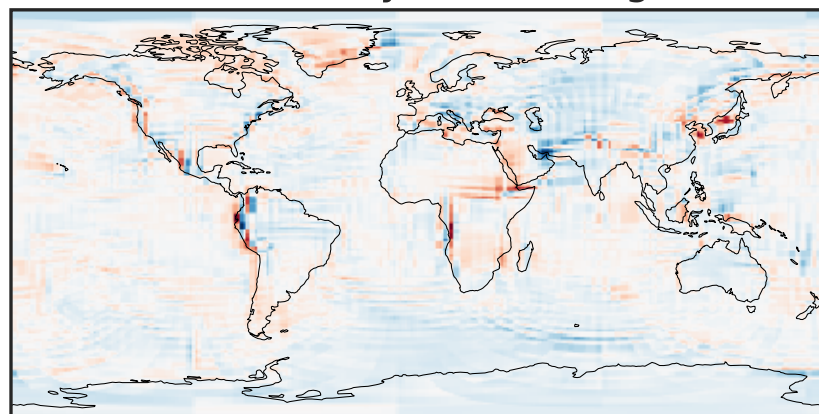
Difference (1x1.25)
Dev - Ref, Dynamic Range



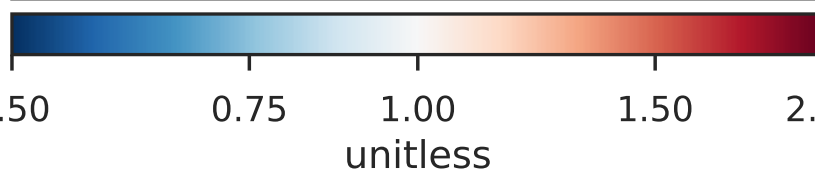
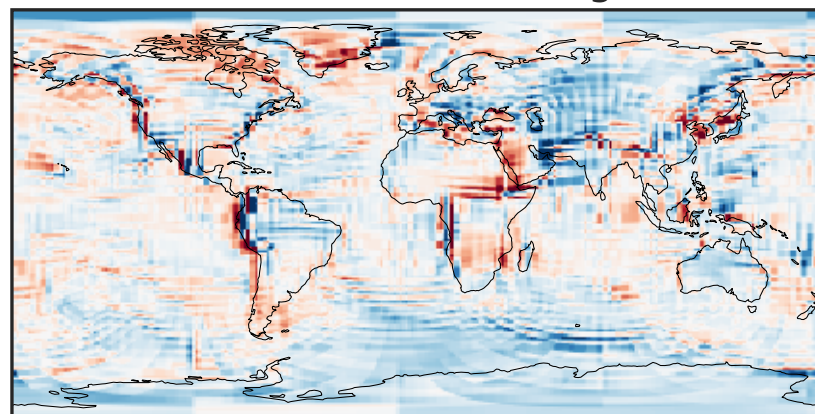
Difference (1x1.25)
Dev - Ref, Restricted Range [5%,95%]



Ratio (1x1.25)
Dev/Ref, Dynamic Range

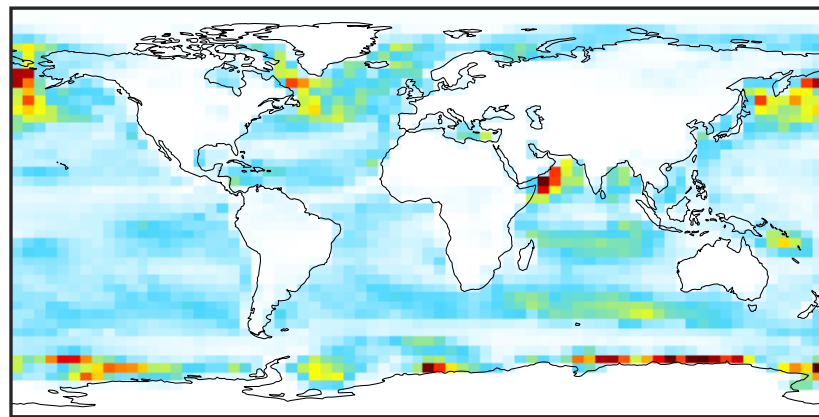


Ratio (1x1.25)
Dev/Ref, Fixed Range



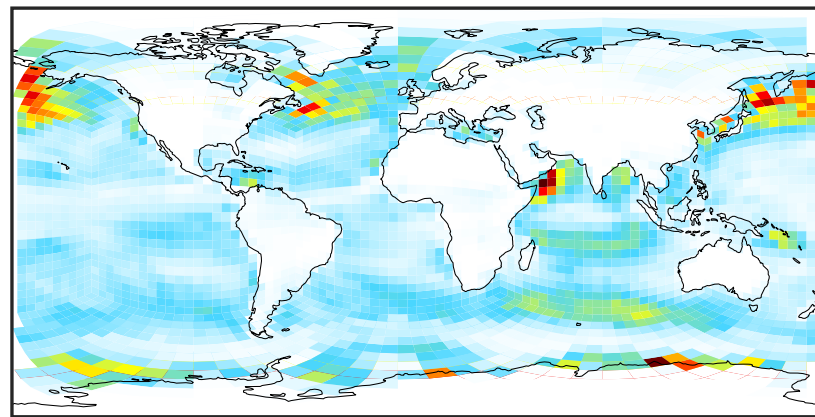
SpeciesConcVV_BrSALA (Jul2019)

14.3.0-rc.0 (Ref)
4.0x5.0



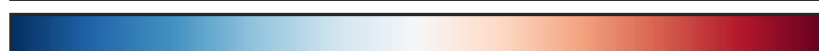
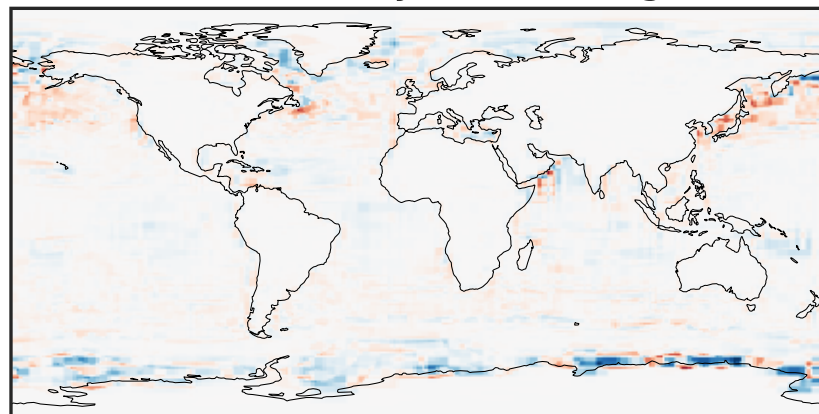
0.0015 0.0030 0.0045
μg/m³

14.3.0-rc.0 (Dev)
c24



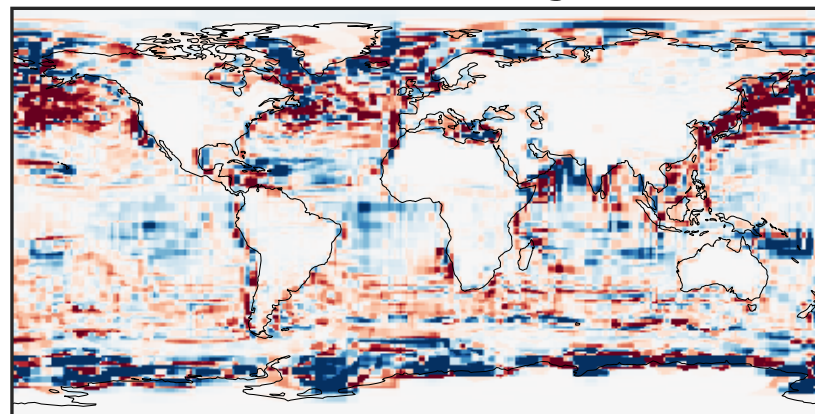
0.0015 0.0030 0.0045
μg/m³

Difference (1x1.25)
Dev - Ref, Dynamic Range



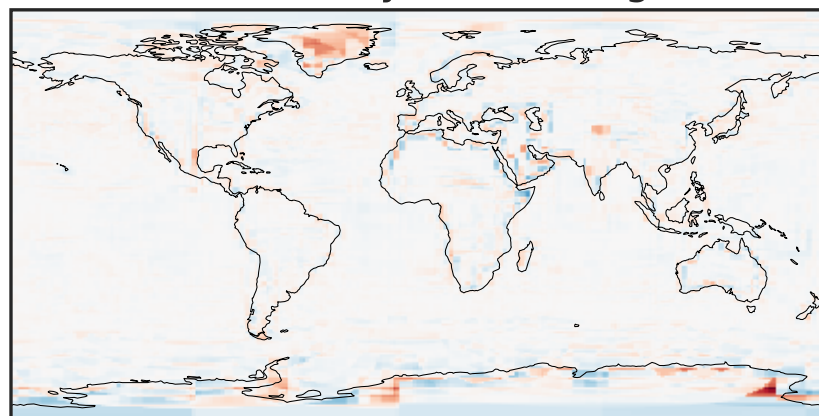
-0.0025 0.0000 0.0025
μg/m³

Difference (1x1.25)
Dev - Ref, Restricted Range [5%,95%]



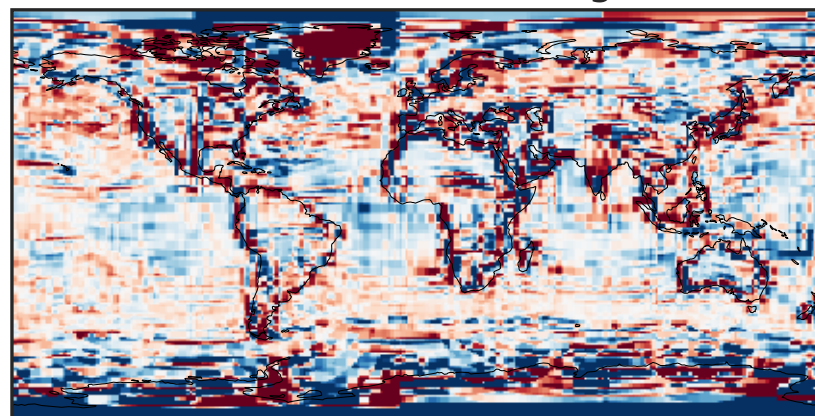
-0.00025 0.00000 0.00025
μg/m³

Ratio (1x1.25)
Dev/Ref, Dynamic Range



unitless

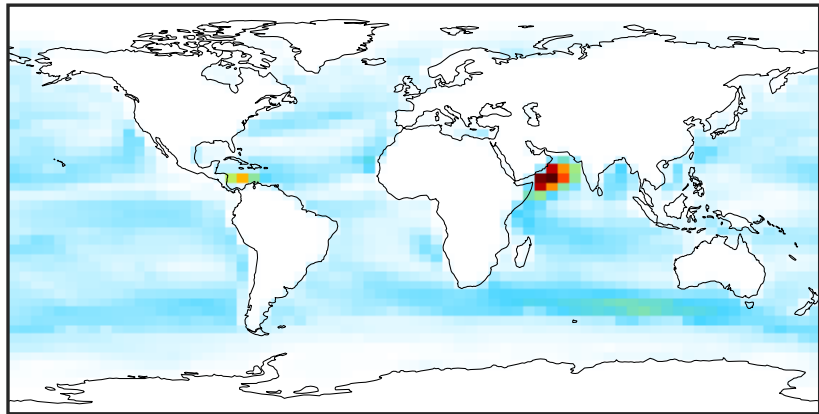
Ratio (1x1.25)
Dev/Ref, Fixed Range



0.50 0.75 1.00 1.50 2.00
unitless

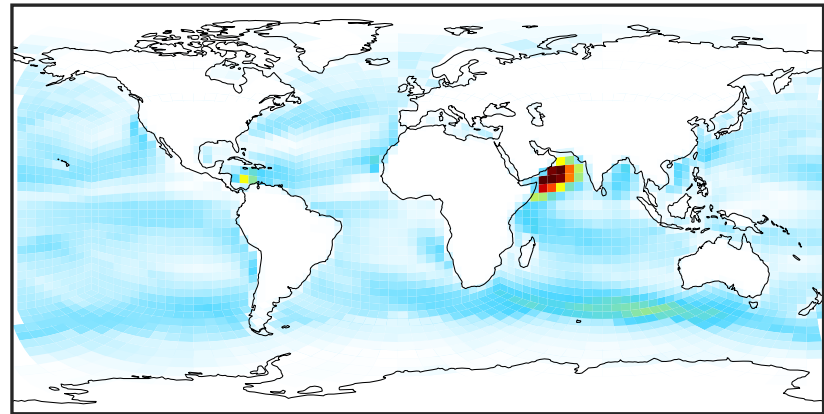
SpeciesConcVW_BrSALC (Jul2019)

14.3.0-rc.0 (Ref)
4.0x5.0



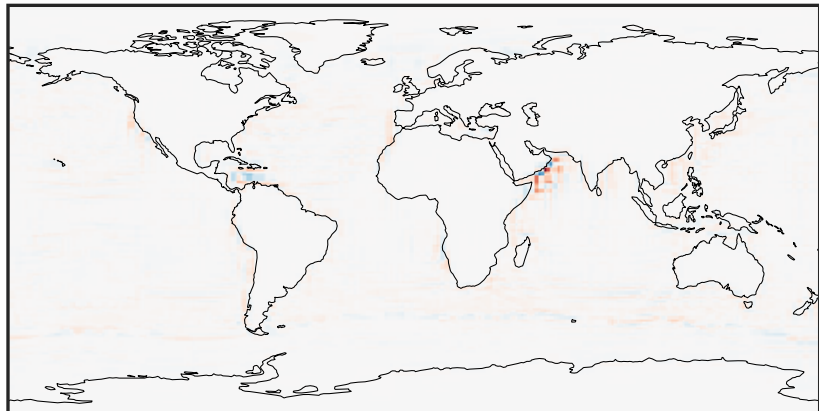
0.0000 0.0486 0.0973 0.1459 0.1945
 $\mu\text{g}/\text{m}^3$

14.3.0-rc.0 (Dev)
c24



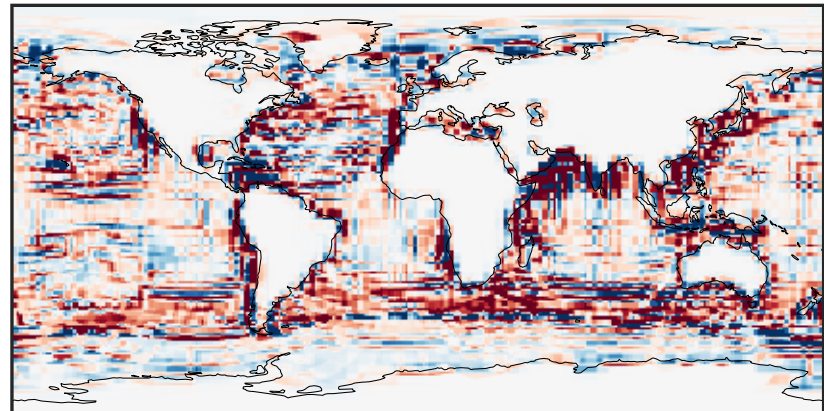
0.0000 0.0486 0.0973 0.1459 0.1945
 $\mu\text{g}/\text{m}^3$

Difference (1x1.25)
Dev - Ref, Dynamic Range



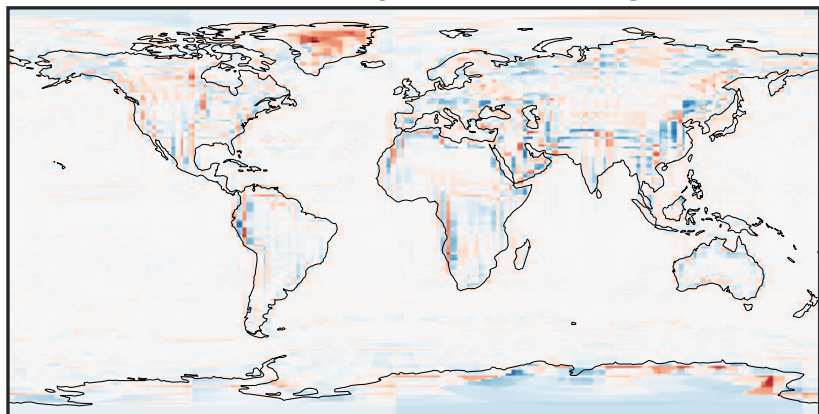
-0.1402 -0.0701 0.0000 0.0701 0.1402
 $\mu\text{g}/\text{m}^3$

Difference (1x1.25)
Dev - Ref, Restricted Range [5%,95%]



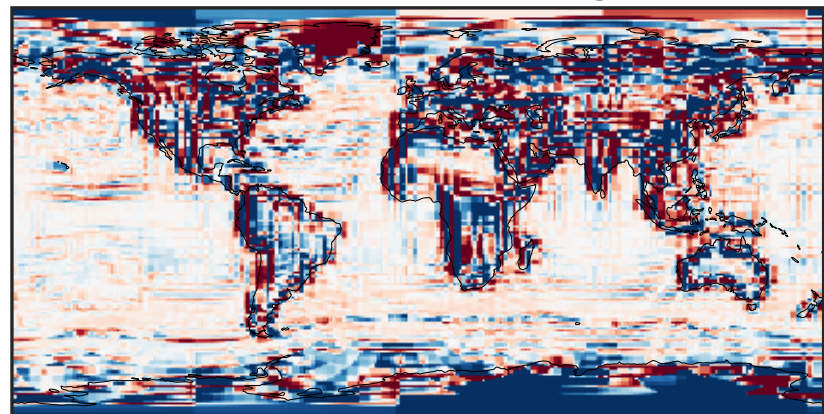
-0.0025 0.0000 0.0025
 $\mu\text{g}/\text{m}^3$

Ratio (1x1.25)
Dev/Ref, Dynamic Range



1e-03 1e-02 1e-01 1 10 100 1000
unitless

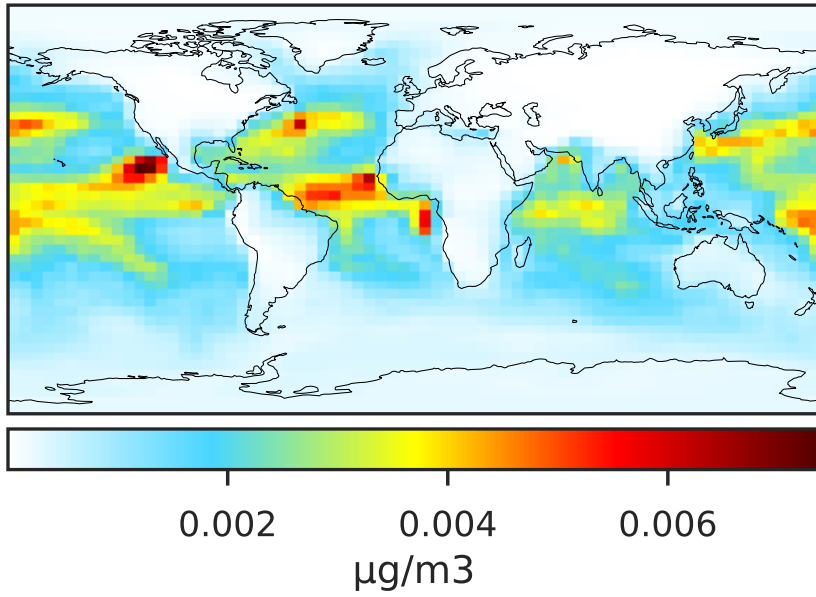
Ratio (1x1.25)
Dev/Ref, Fixed Range



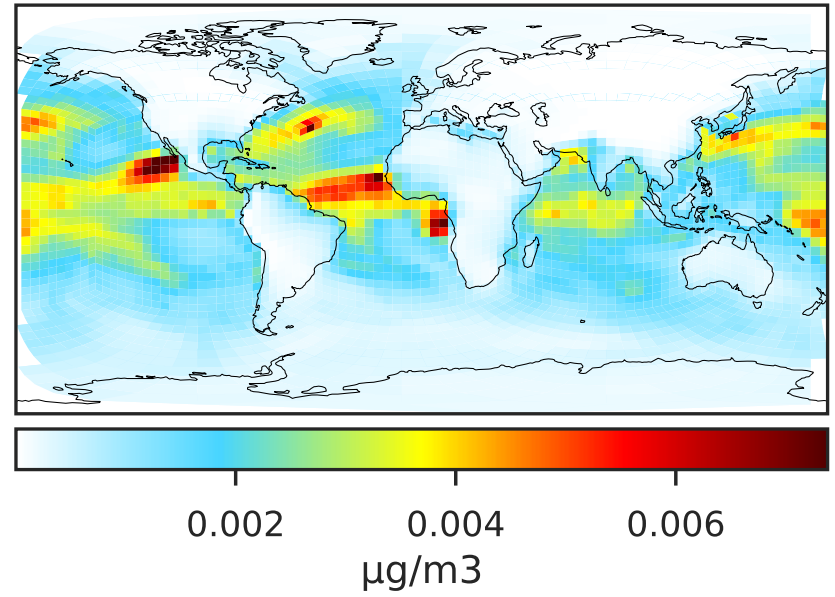
0.50 0.75 1.00 1.50 2.00
unitless

SpeciesConcVV_ISALA (Jul2019)

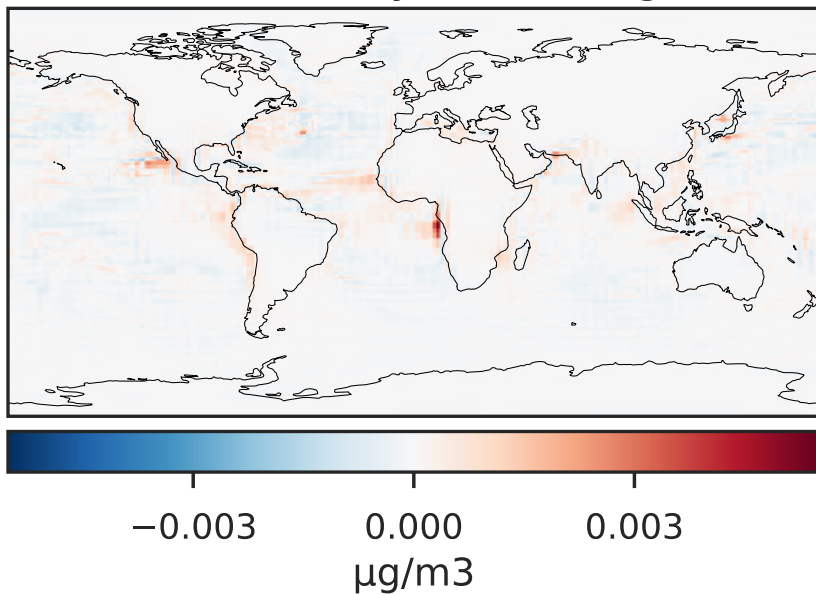
14.3.0-rc.0 (Ref)
4.0x5.0



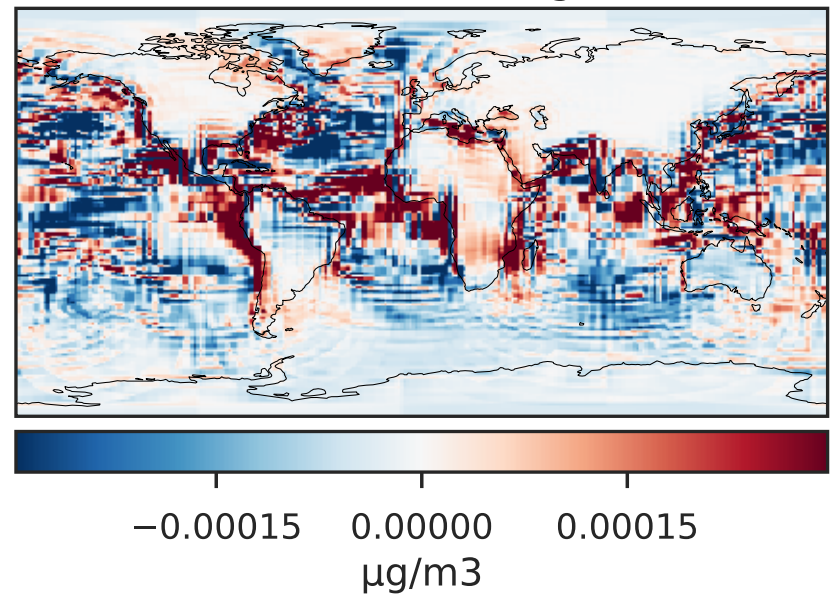
14.3.0-rc.0 (Dev)
c24



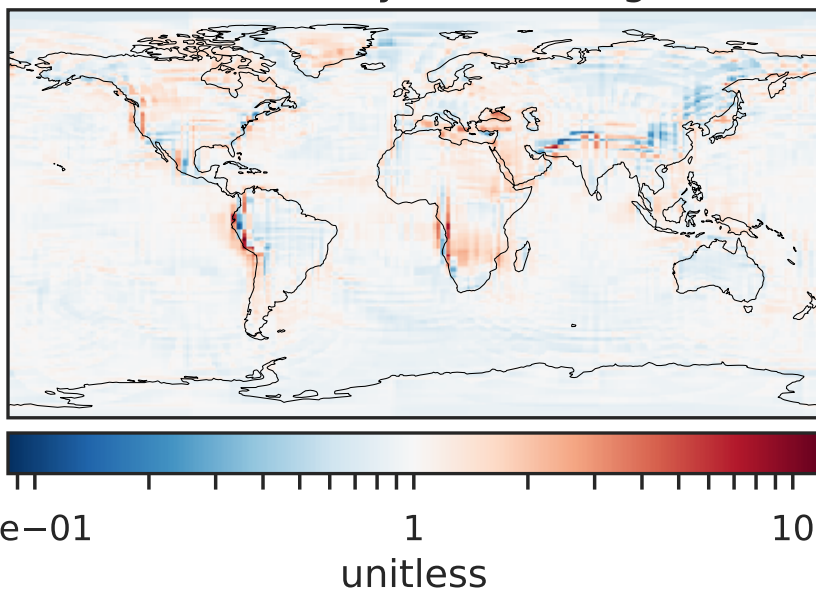
Difference (1x1.25)
Dev - Ref, Dynamic Range



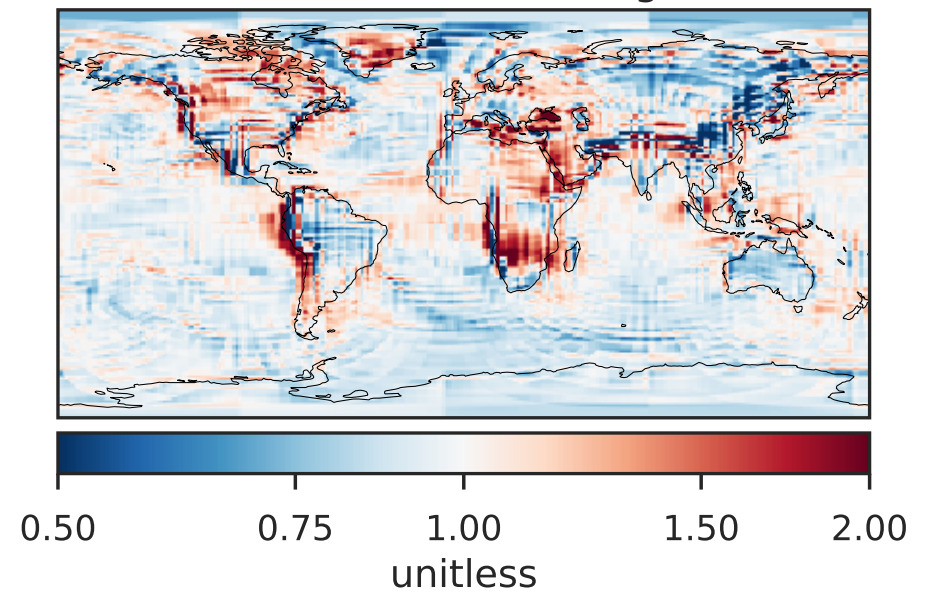
Difference (1x1.25)
Dev - Ref, Restricted Range [5%,95%]



Ratio (1x1.25)
Dev/Ref, Dynamic Range

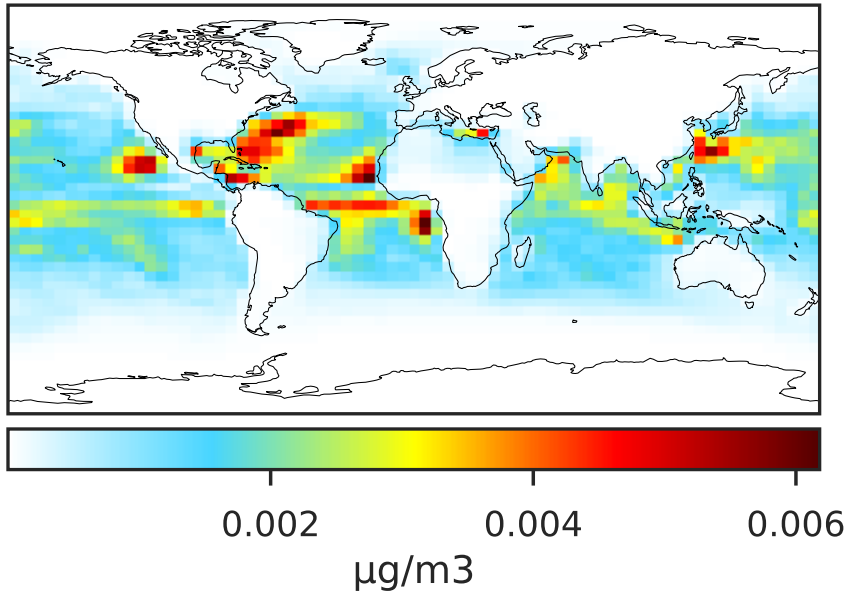


Ratio (1x1.25)
Dev/Ref, Fixed Range

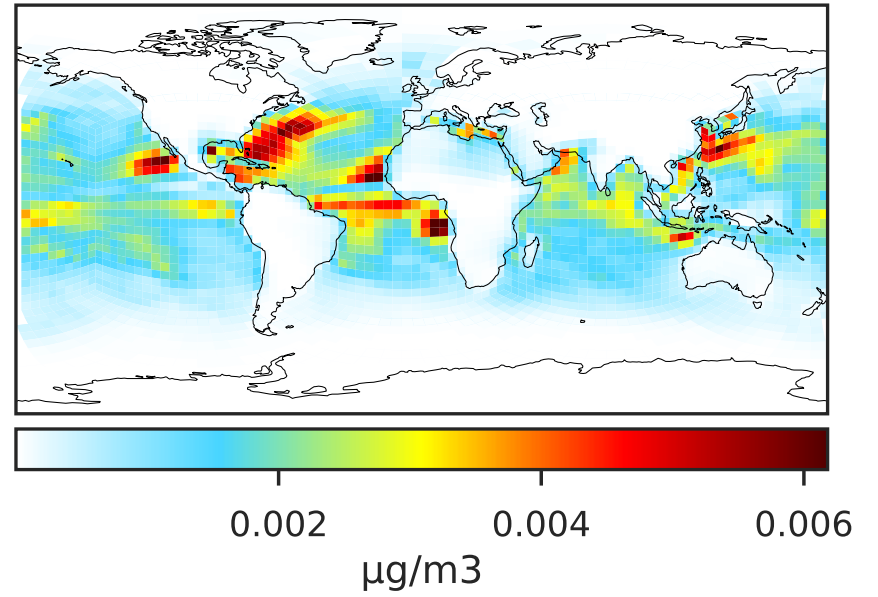


SpeciesConcVV_ISALC (Jul2019)

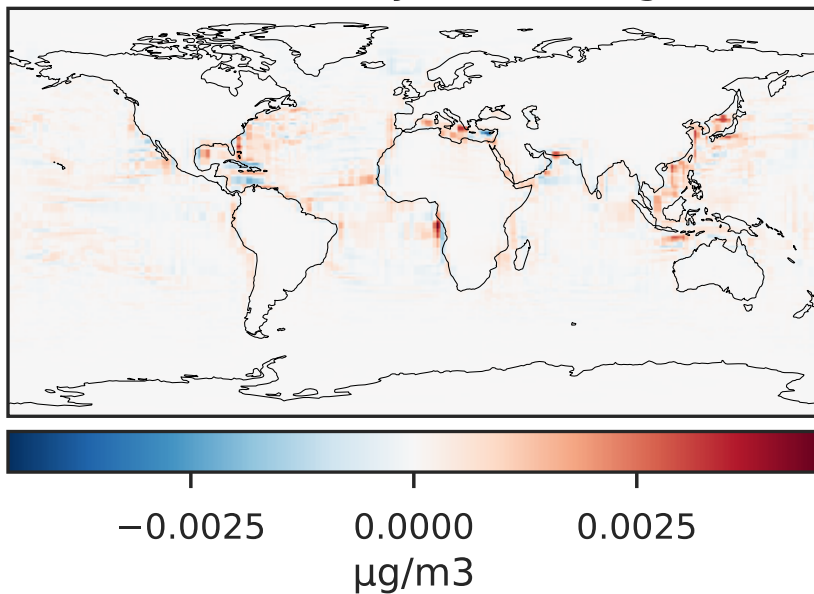
14.3.0-rc.0 (Ref)
4.0x5.0



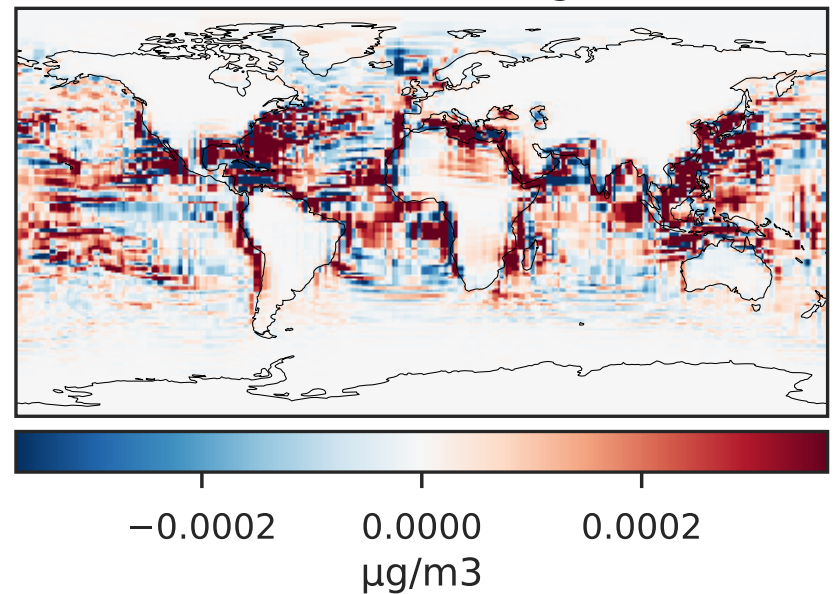
14.3.0-rc.0 (Dev)
c24



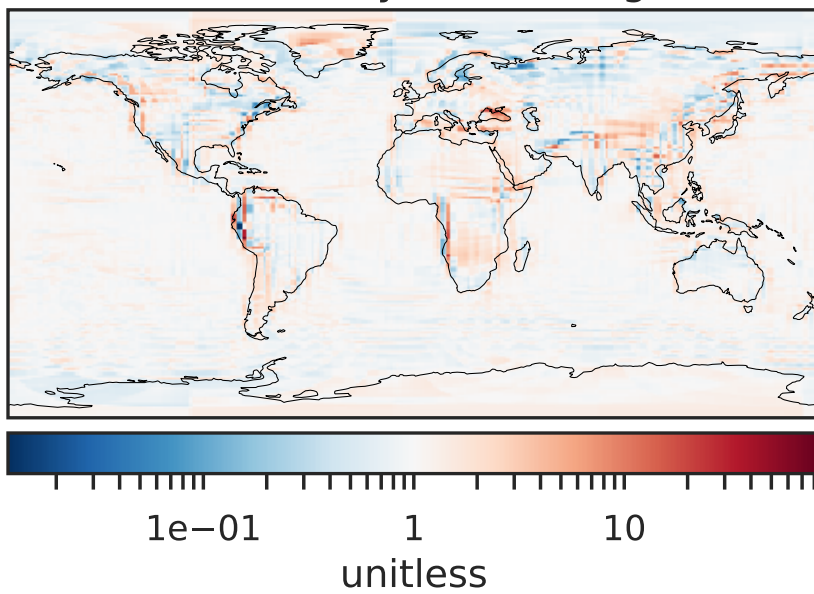
Difference (1x1.25)
Dev - Ref, Dynamic Range



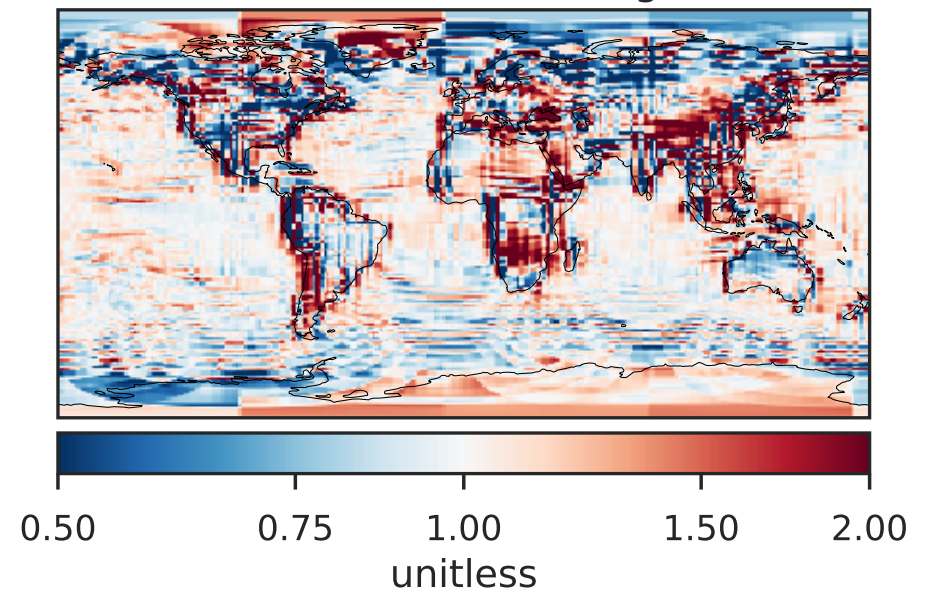
Difference (1x1.25)
Dev - Ref, Restricted Range [5%,95%]



Ratio (1x1.25)
Dev/Ref, Dynamic Range

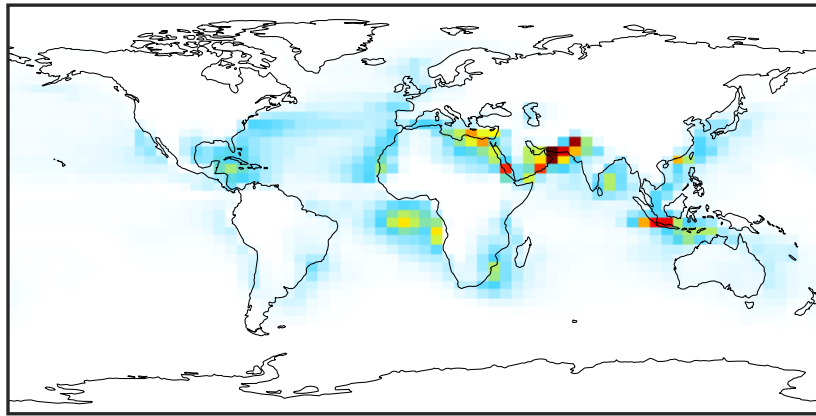


Ratio (1x1.25)
Dev/Ref, Fixed Range



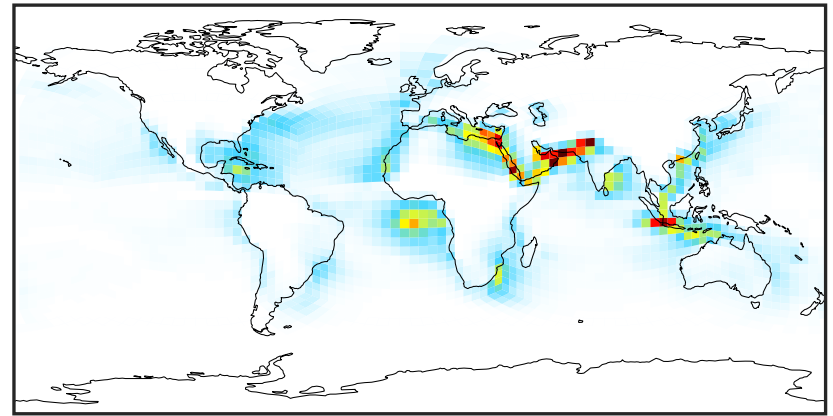
SpeciesConcVV_NITs (Jul2019)

14.3.0-rc.0 (Ref)
4.0x5.0



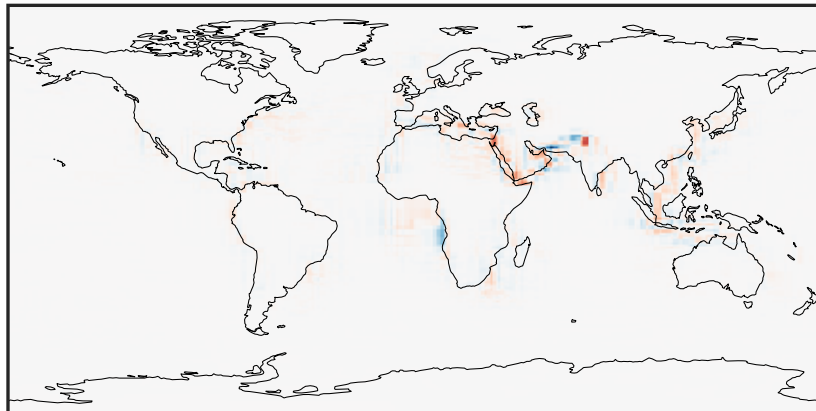
0.0000 0.2422 0.4844 0.7266 0.9688
 $\mu\text{g}/\text{m}^3$

14.3.0-rc.0 (Dev)
c24



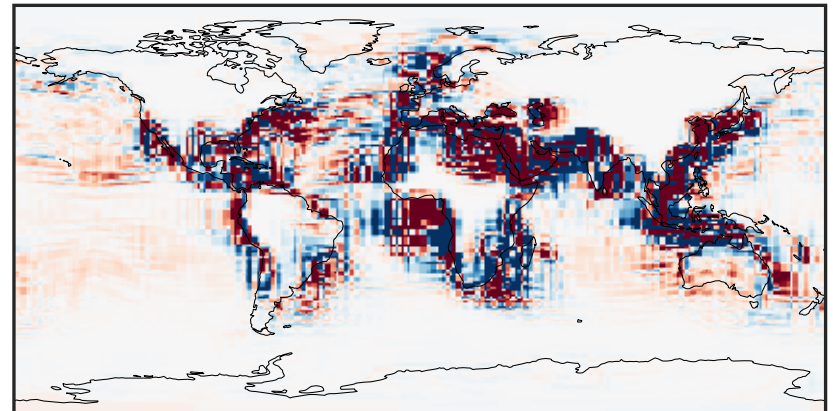
0.0000 0.2422 0.4844 0.7266 0.9688
 $\mu\text{g}/\text{m}^3$

Difference (1x1.25)
Dev - Ref, Dynamic Range



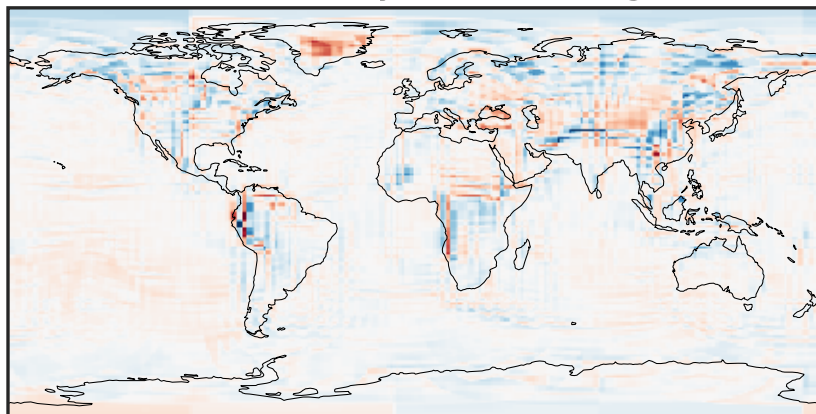
-0.863 -0.431 0.000 0.431 0.863
 $\mu\text{g}/\text{m}^3$

Difference (1x1.25)
Dev - Ref, Restricted Range [5%,95%]



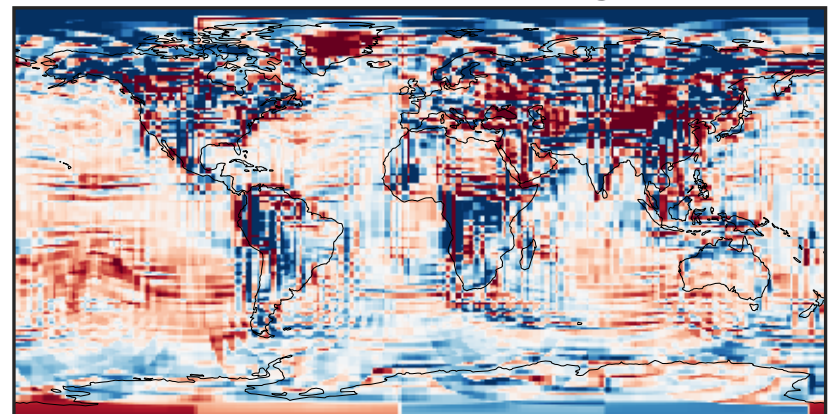
-0.01 0.00 0.01
 $\mu\text{g}/\text{m}^3$

Ratio (1x1.25)
Dev/Ref, Dynamic Range



1e-02 1e-01 1 10 100
unitless

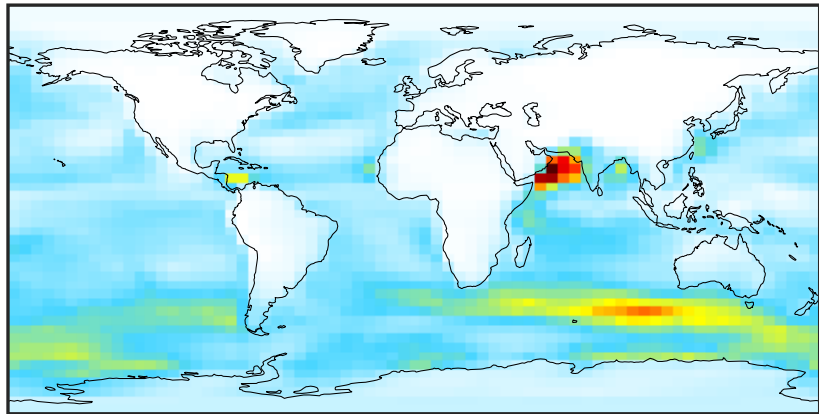
Ratio (1x1.25)
Dev/Ref, Fixed Range



0.50 0.75 1.00 1.50 2.00
unitless

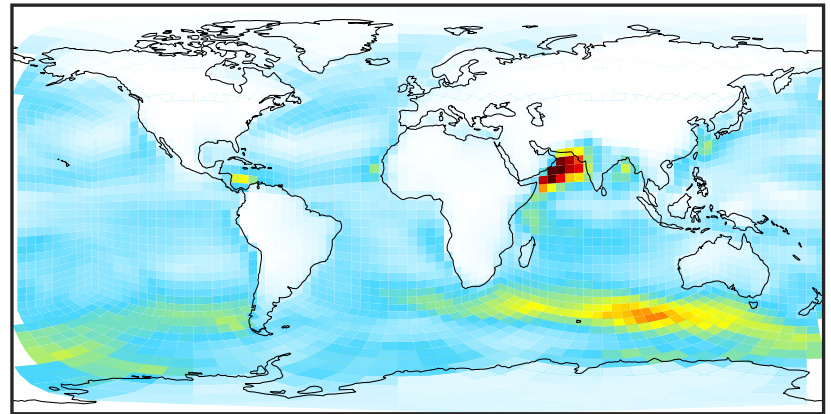
SpeciesConcVV_SALA (Jul2019)

14.3.0-rc.0 (Ref)
4.0x5.0



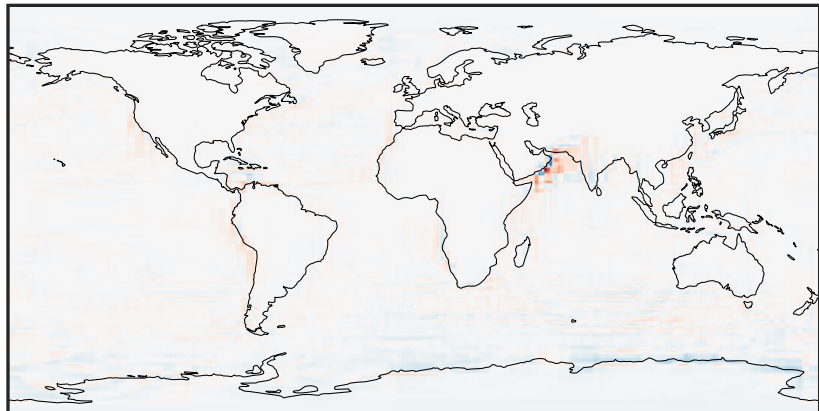
0.001 0.981 1.962 2.942 3.923
 $\mu\text{g}/\text{m}^3$

14.3.0-rc.0 (Dev)
c24



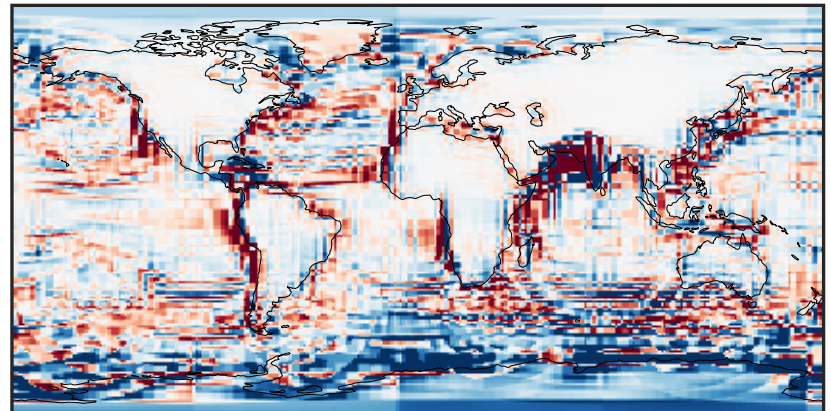
0.001 0.981 1.962 2.942 3.923
 $\mu\text{g}/\text{m}^3$

Difference (1x1.25)
Dev - Ref, Dynamic Range



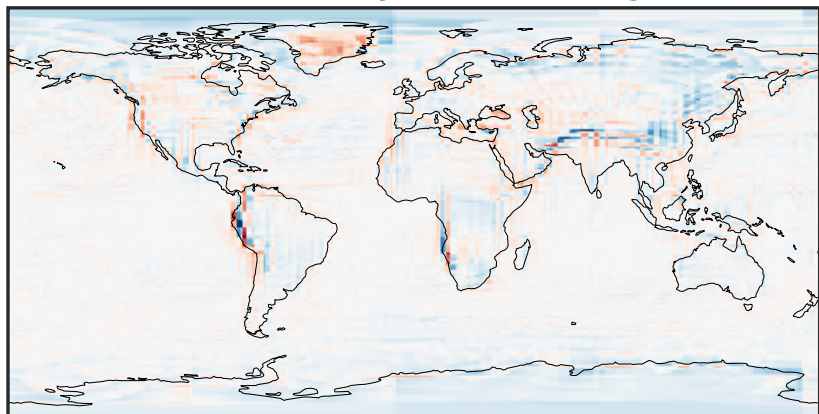
-2.723 -1.362 0.000 1.362 2.723
 $\mu\text{g}/\text{m}^3$

Difference (1x1.25)
Dev - Ref, Restricted Range [5%,95%]



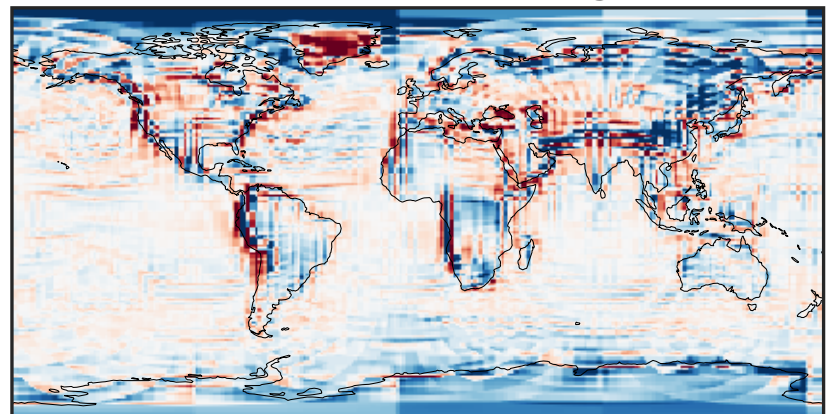
-0.142 -0.071 0.000 0.071 0.142
 $\mu\text{g}/\text{m}^3$

Ratio (1x1.25)
Dev/Ref, Dynamic Range



1e-01 1 10
unitless

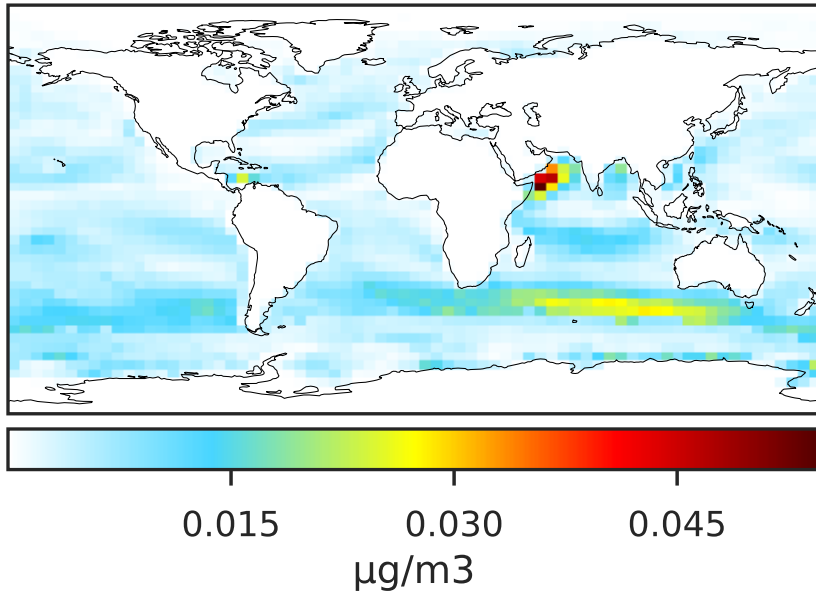
Ratio (1x1.25)
Dev/Ref, Fixed Range



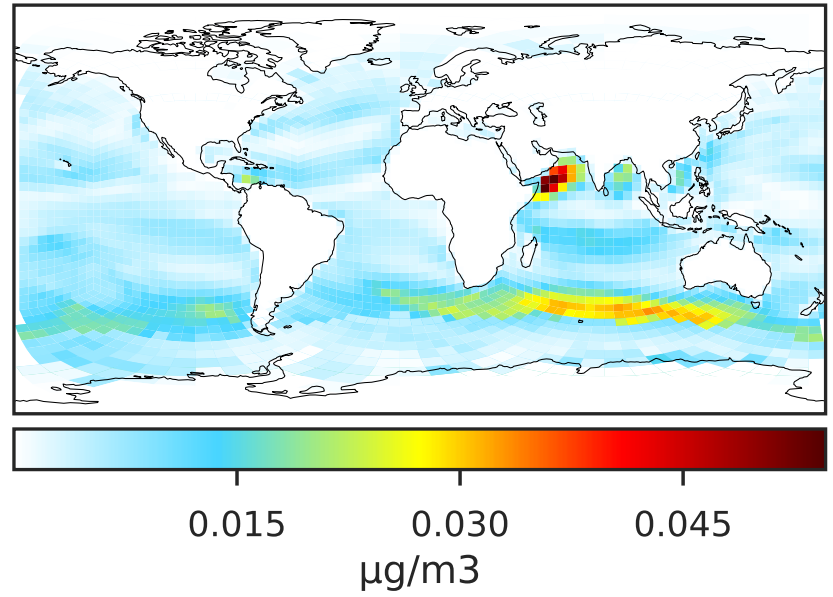
0.50 0.75 1.00 1.50 2.00
unitless

SpeciesConcVV_SALAAAL (Jul2019)

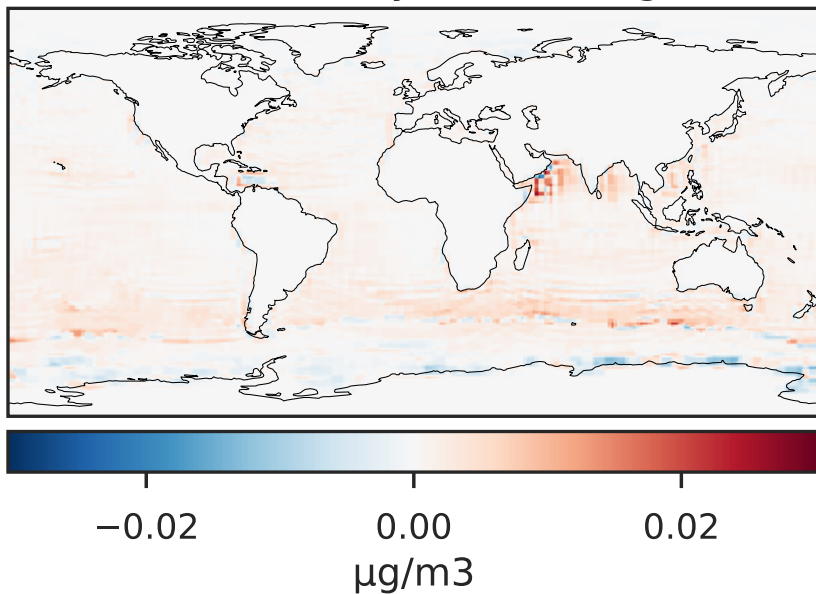
14.3.0-rc.0 (Ref)
4.0x5.0



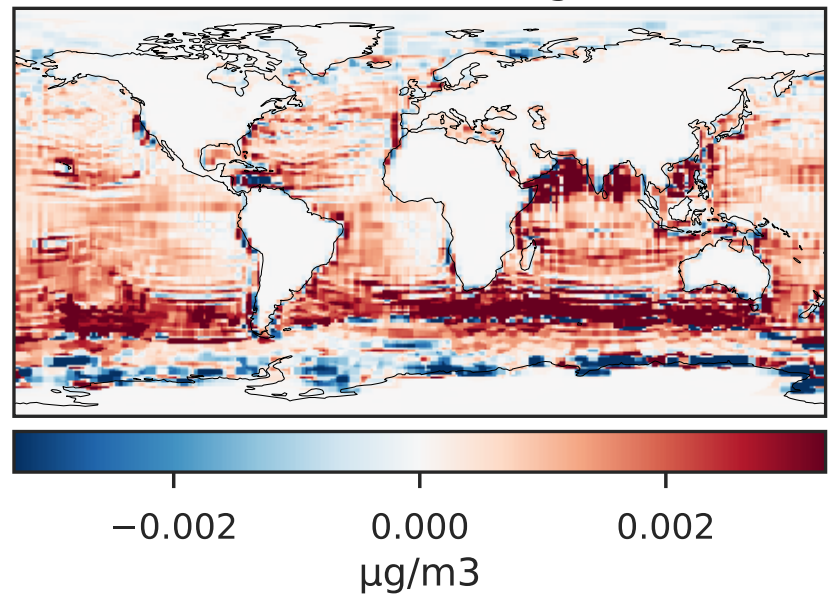
14.3.0-rc.0 (Dev)
c24



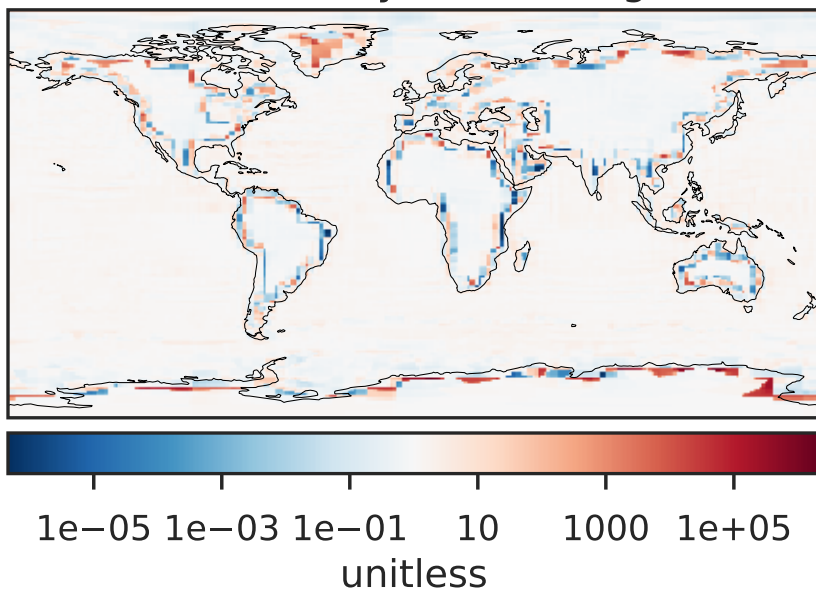
Difference (1x1.25)
Dev - Ref, Dynamic Range



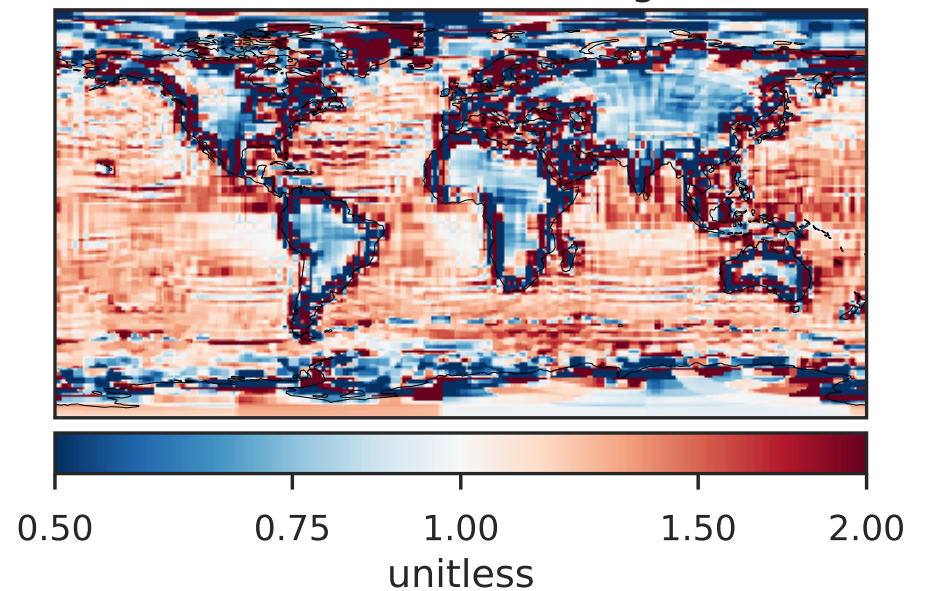
Difference (1x1.25)
Dev - Ref, Restricted Range [5%,95%]



Ratio (1x1.25)
Dev/Ref, Dynamic Range

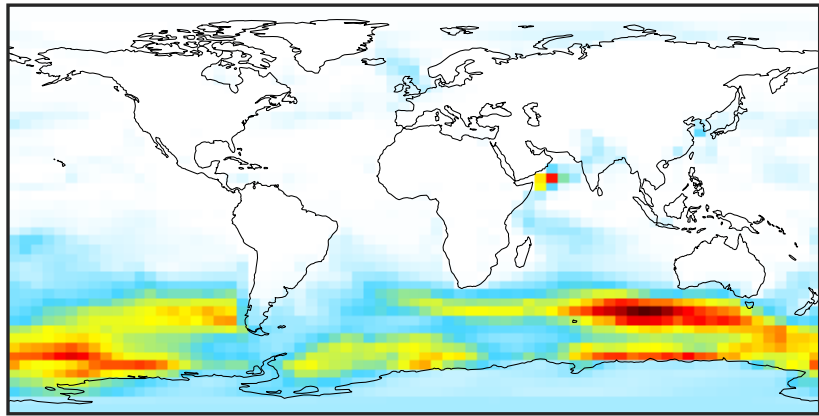


Ratio (1x1.25)
Dev/Ref, Fixed Range



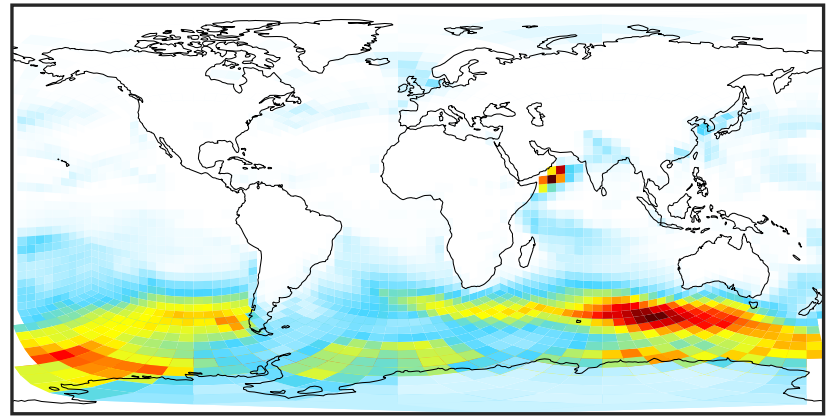
SpeciesConcVV_SALACL (Jul2019)

14.3.0-rc.0 (Ref)
4.0x5.0



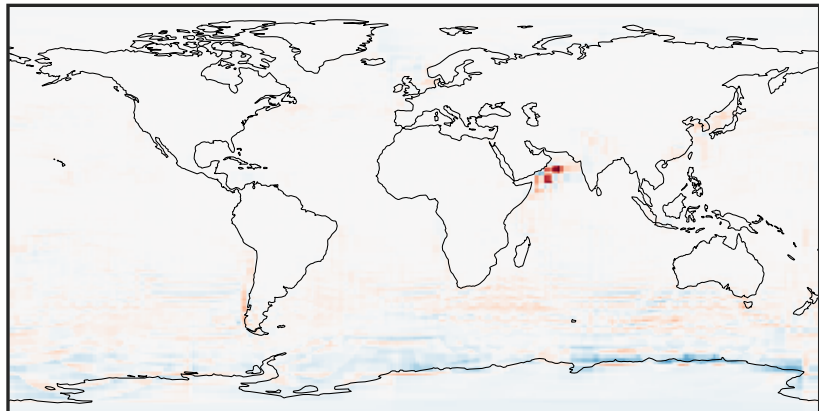
0.000 0.291 0.582 0.872 1.163
 $\mu\text{g}/\text{m}^3$

14.3.0-rc.0 (Dev)
c24



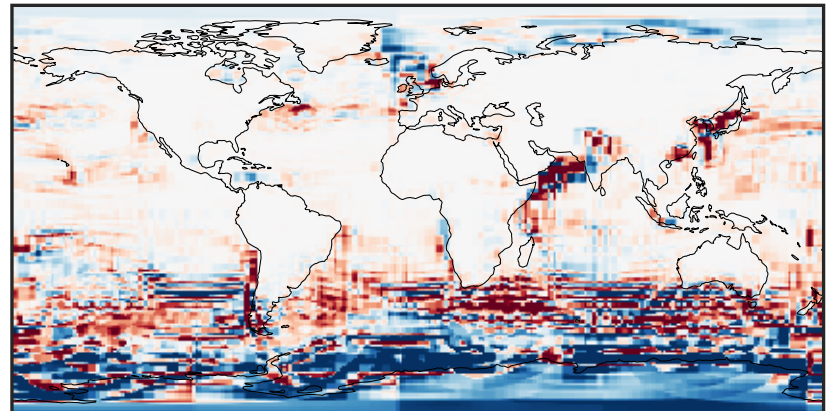
0.000 0.291 0.582 0.872 1.163
 $\mu\text{g}/\text{m}^3$

Difference (1x1.25)
Dev - Ref, Dynamic Range



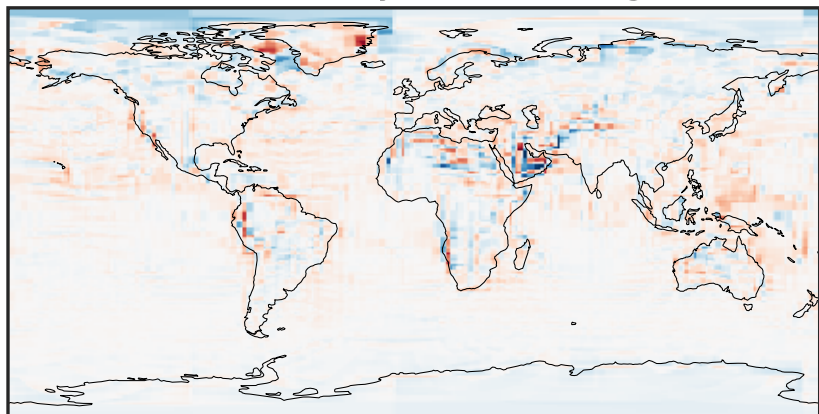
-0.815 -0.408 0.000 0.408 0.815
 $\mu\text{g}/\text{m}^3$

Difference (1x1.25)
Dev - Ref, Restricted Range [5%,95%]



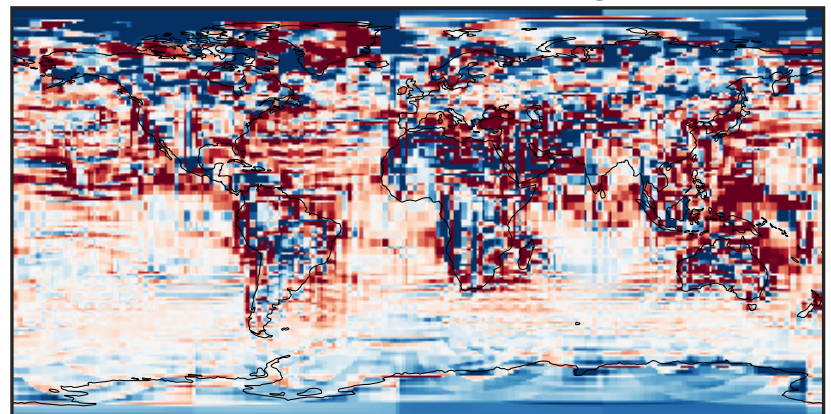
-0.0593 -0.0296 0.0000 0.0296 0.0593
 $\mu\text{g}/\text{m}^3$

Ratio (1x1.25)
Dev/Ref, Dynamic Range



1e-02 1e-01 1 10 100
unitless

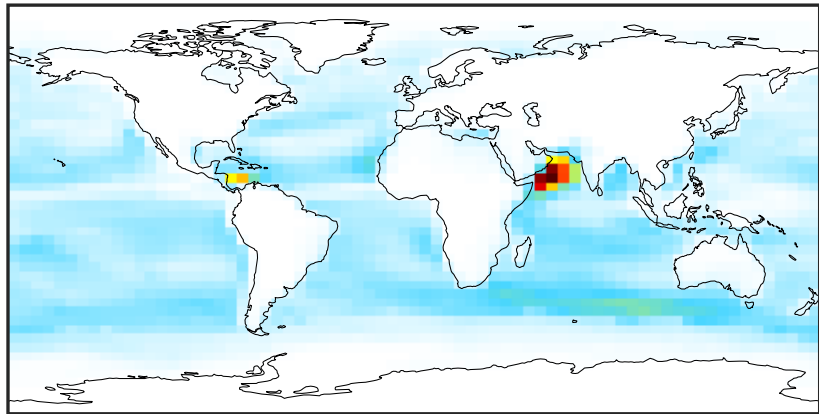
Ratio (1x1.25)
Dev/Ref, Fixed Range



0.50 0.75 1.00 1.50 2.00
unitless

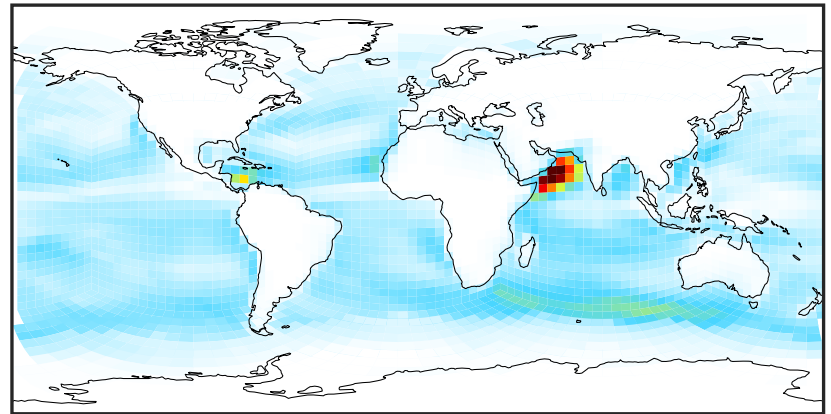
SpeciesConcVV_SALC (Jul2019)

14.3.0-rc.0 (Ref)
4.0x5.0



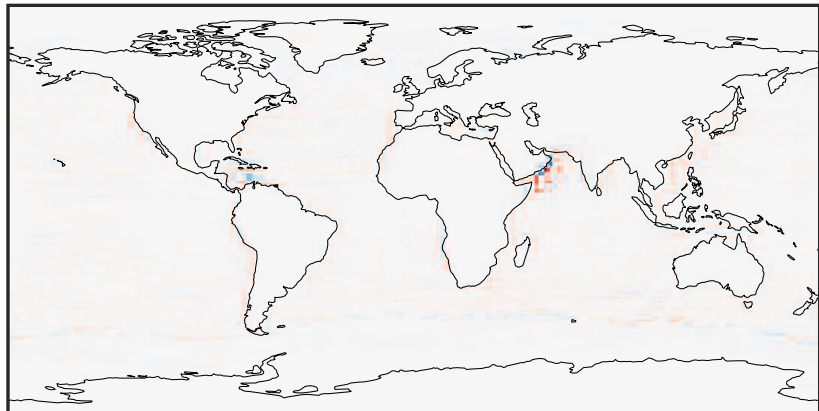
0.00 23.35 46.71 70.06 93.42
 $\mu\text{g}/\text{m}^3$

14.3.0-rc.0 (Dev)
c24



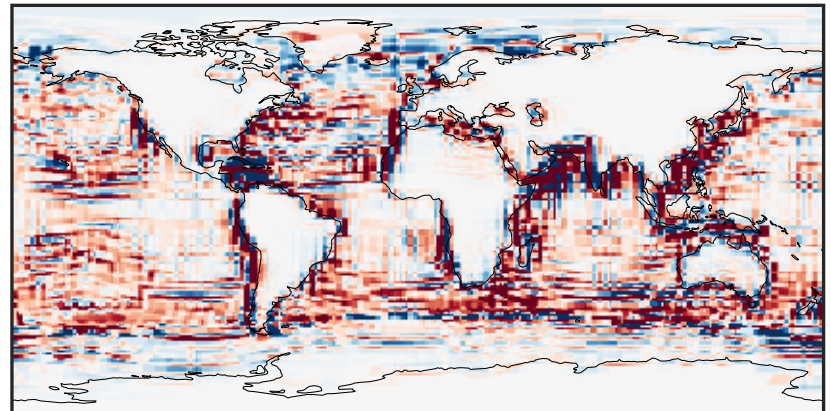
0.00 23.35 46.71 70.06 93.42
 $\mu\text{g}/\text{m}^3$

Difference (1x1.25)
Dev - Ref, Dynamic Range



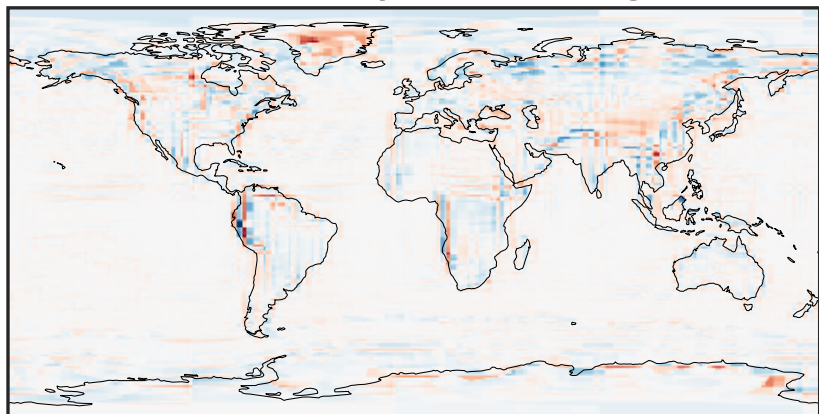
-30 0 30
 $\mu\text{g}/\text{m}^3$

Difference (1x1.25)
Dev - Ref, Restricted Range [5%,95%]



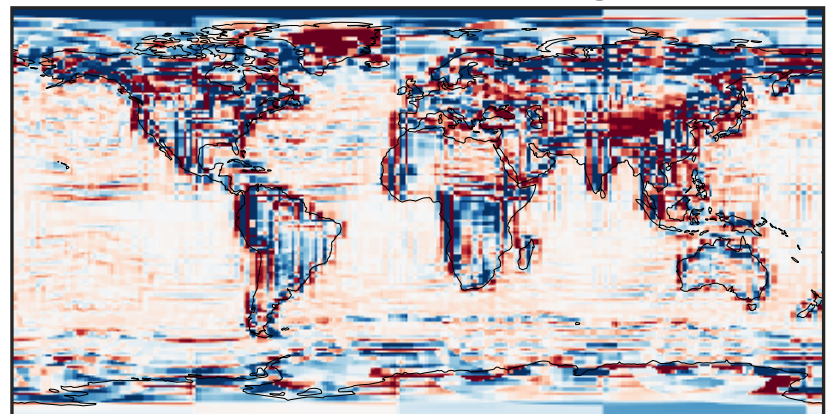
-2.22 -1.11 0.00 1.11 2.22
 $\mu\text{g}/\text{m}^3$

Ratio (1x1.25)
Dev/Ref, Dynamic Range



1e-02 1e-01 1 10 100
unitless

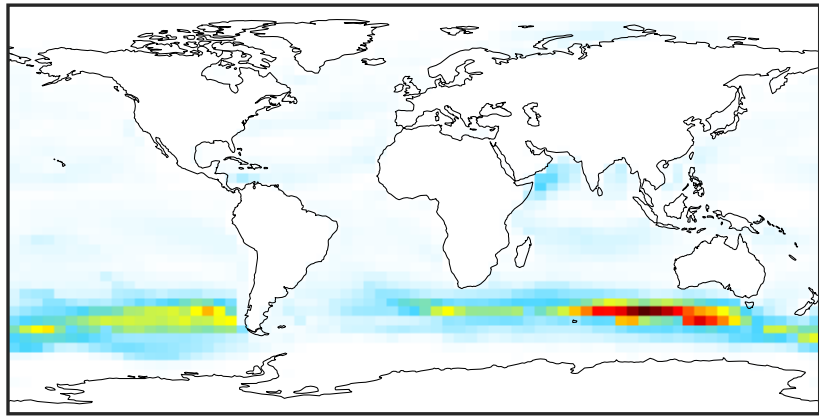
Ratio (1x1.25)
Dev/Ref, Fixed Range



0.50 0.75 1.00 1.50 2.00
unitless

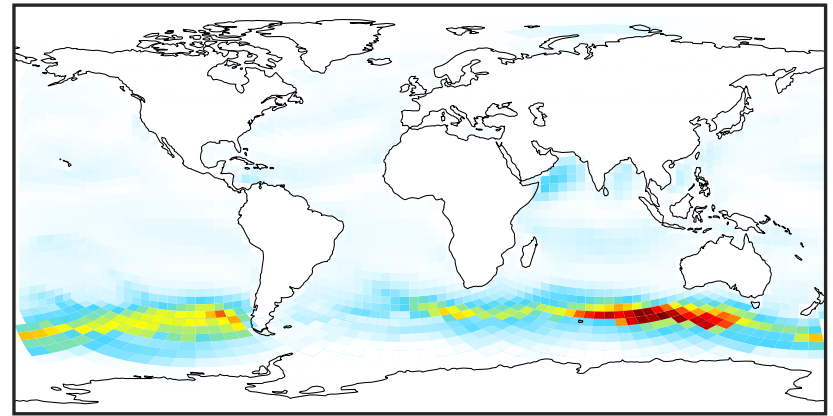
SpeciesConcVV_SALCAL (Jul2019)

14.3.0-rc.0 (Ref)
4.0x5.0



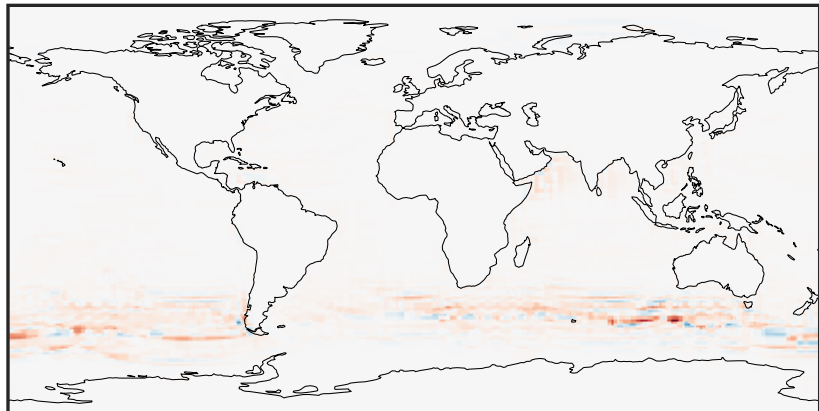
0.00 3.41 6.83 10.24 13.65
 $\mu\text{g}/\text{m}^3$

14.3.0-rc.0 (Dev)
c24



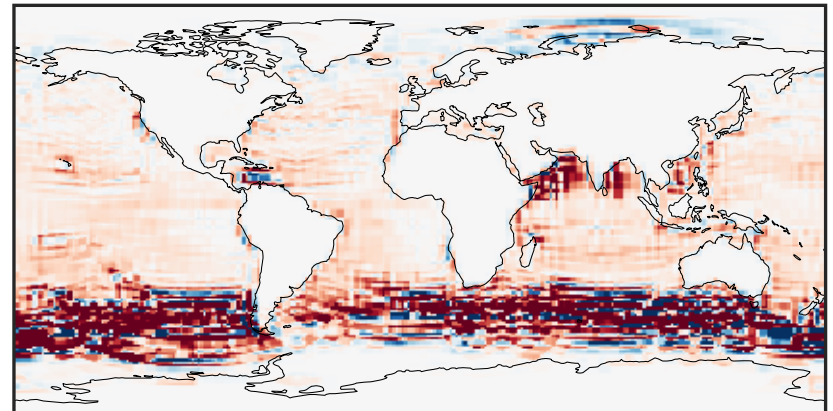
0.00 3.41 6.83 10.24 13.65
 $\mu\text{g}/\text{m}^3$

Difference (1x1.25)
Dev - Ref, Dynamic Range



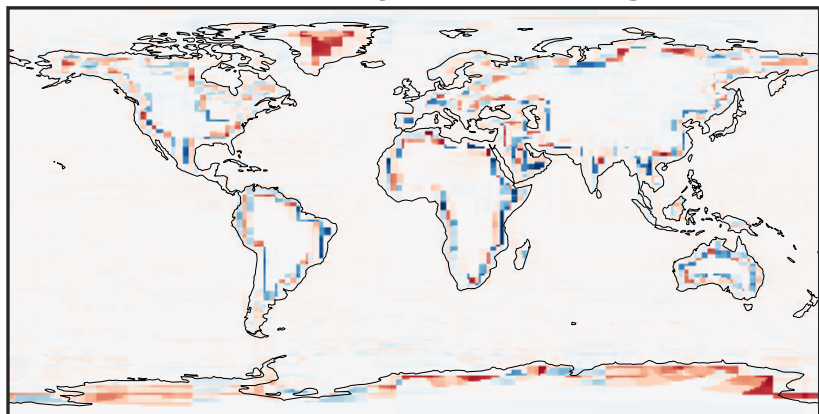
-8.28 -4.14 0.00 4.14 8.28
 $\mu\text{g}/\text{m}^3$

Difference (1x1.25)
Dev - Ref, Restricted Range [5%,95%]



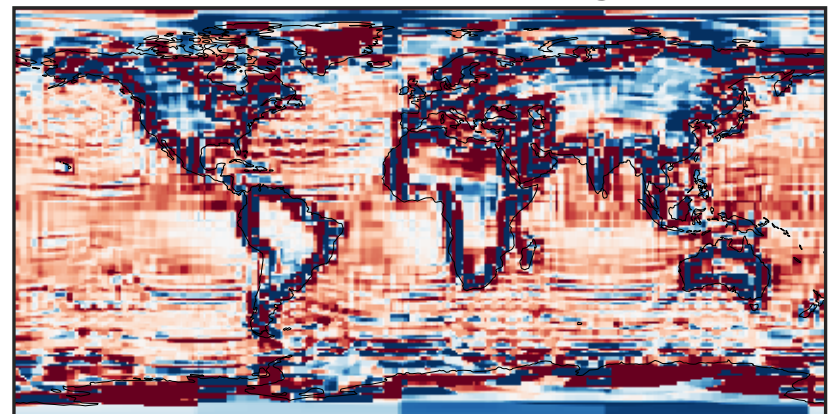
-0.4704 -0.2352 0.0000 0.2352 0.4704
 $\mu\text{g}/\text{m}^3$

Ratio (1x1.25)
Dev/Ref, Dynamic Range



1e-05 1e-02 10 1e4 1e+07
unitless

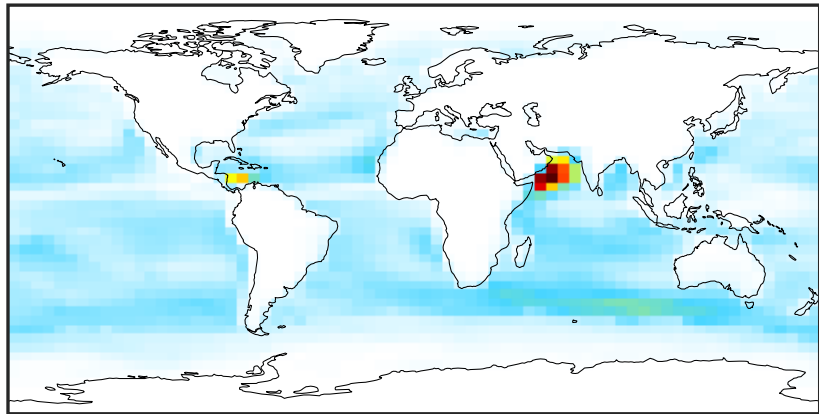
Ratio (1x1.25)
Dev/Ref, Fixed Range



0.50 0.75 1.00 1.50 2.00
unitless

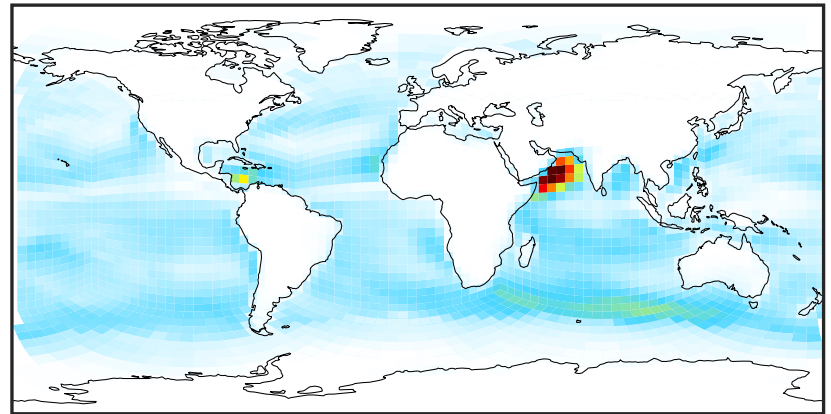
SpeciesConcVV_SALCCL (Jul2019)

14.3.0-rc.0 (Ref)
4.0x5.0



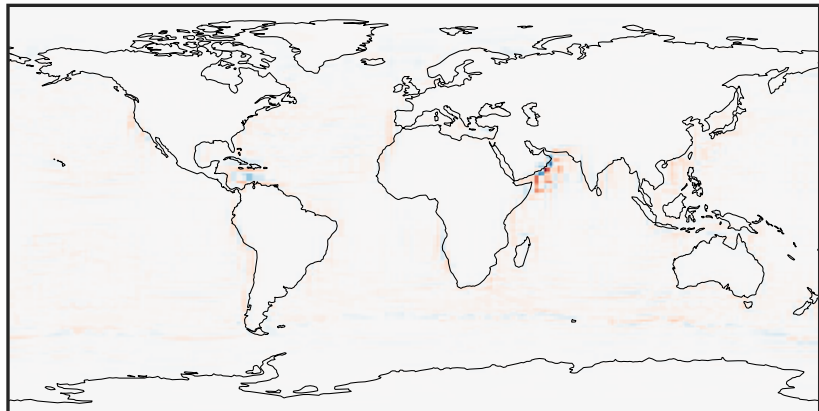
0.00 12.85 25.70 38.54 51.39
 $\mu\text{g}/\text{m}^3$

14.3.0-rc.0 (Dev)
c24



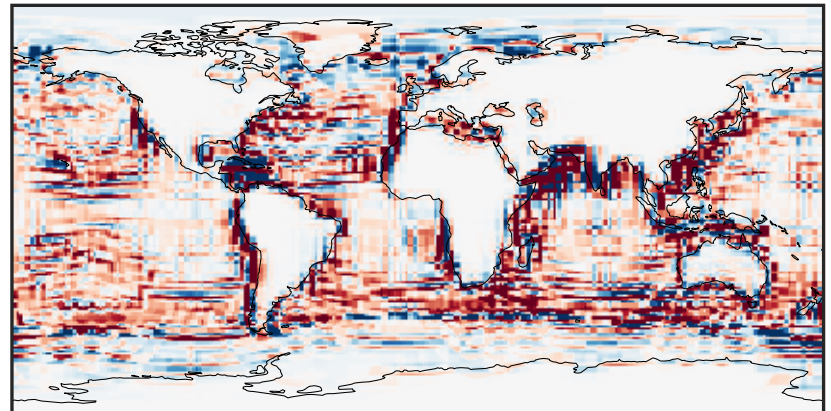
0.00 12.85 25.70 38.54 51.39
 $\mu\text{g}/\text{m}^3$

Difference (1x1.25)
Dev - Ref, Dynamic Range



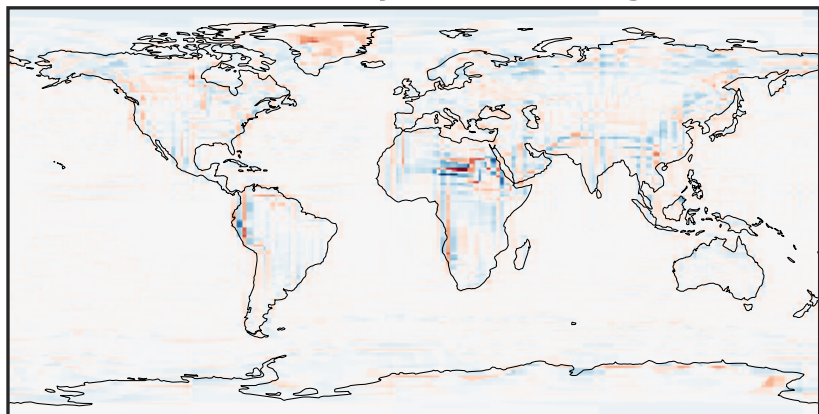
-32.90 -16.45 0.00 16.45 32.90
 $\mu\text{g}/\text{m}^3$

Difference (1x1.25)
Dev - Ref, Restricted Range [5%,95%]



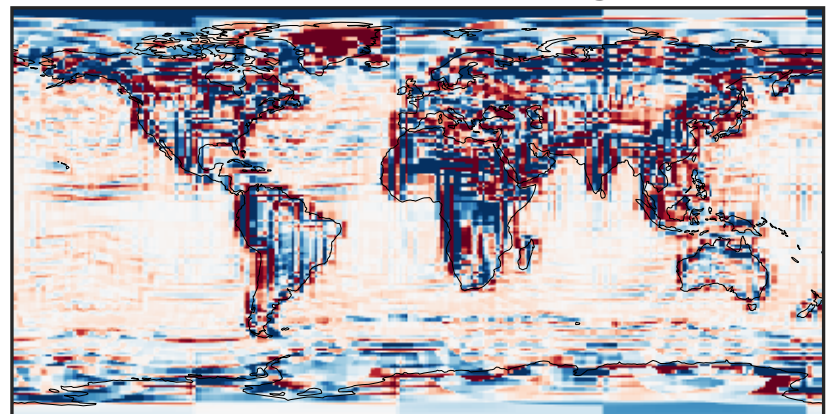
-1.211 -0.605 0.000 0.605 1.211
 $\mu\text{g}/\text{m}^3$

Ratio (1x1.25)
Dev/Ref, Dynamic Range



1e-03 1e-02 1e-01 1 10 100 1000
unitless

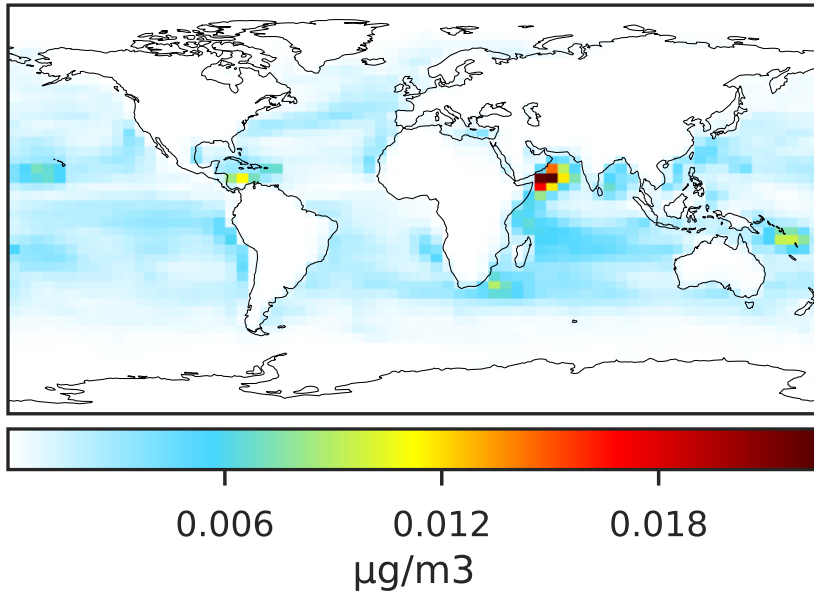
Ratio (1x1.25)
Dev/Ref, Fixed Range



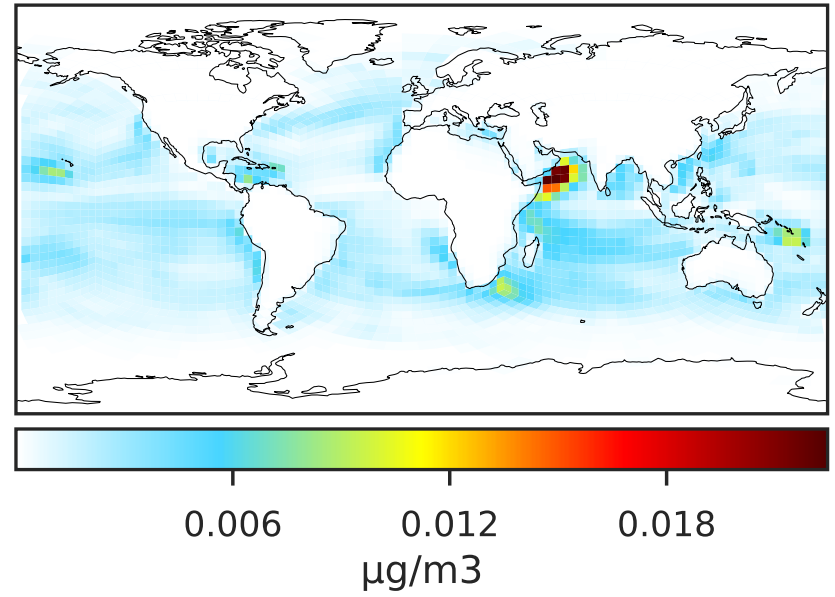
0.50 0.75 1.00 1.50 2.00
unitless

SpeciesConcVV_SO4s (Jul2019)

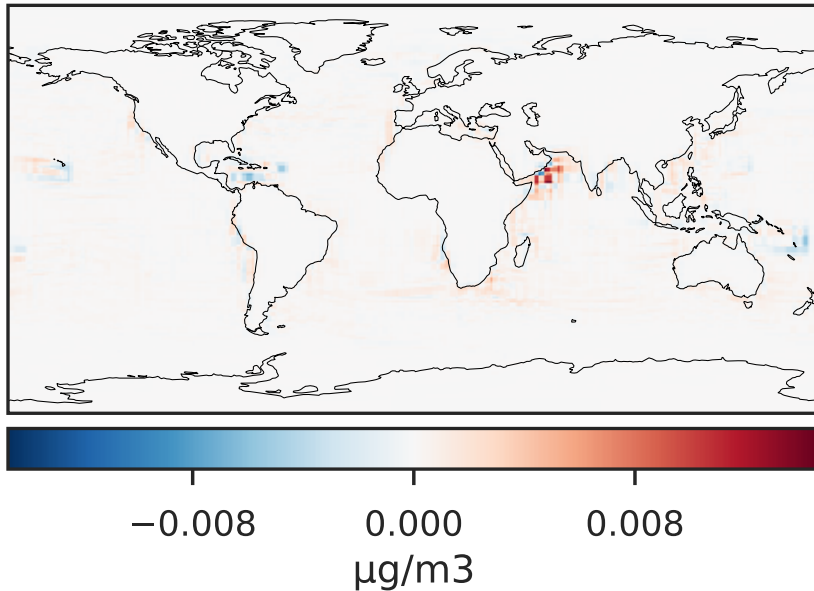
14.3.0-rc.0 (Ref)
4.0x5.0



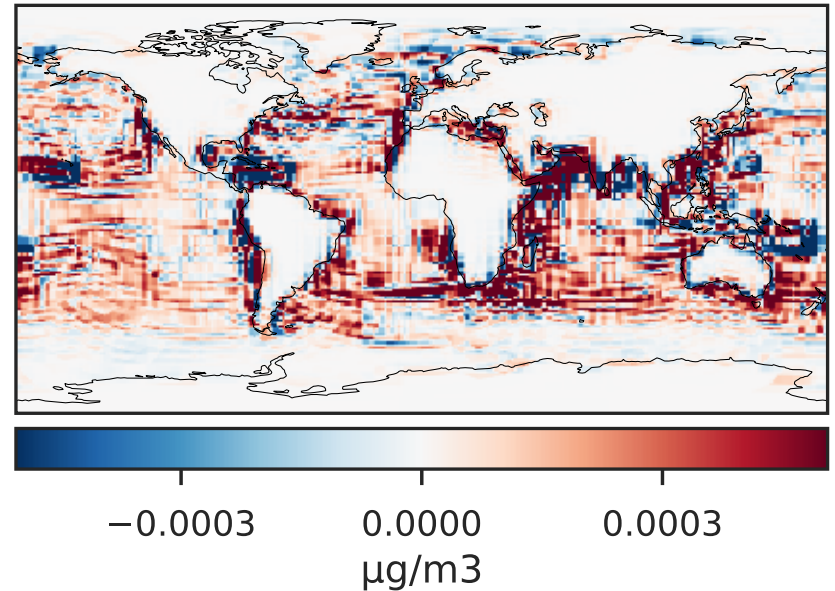
14.3.0-rc.0 (Dev)
c24



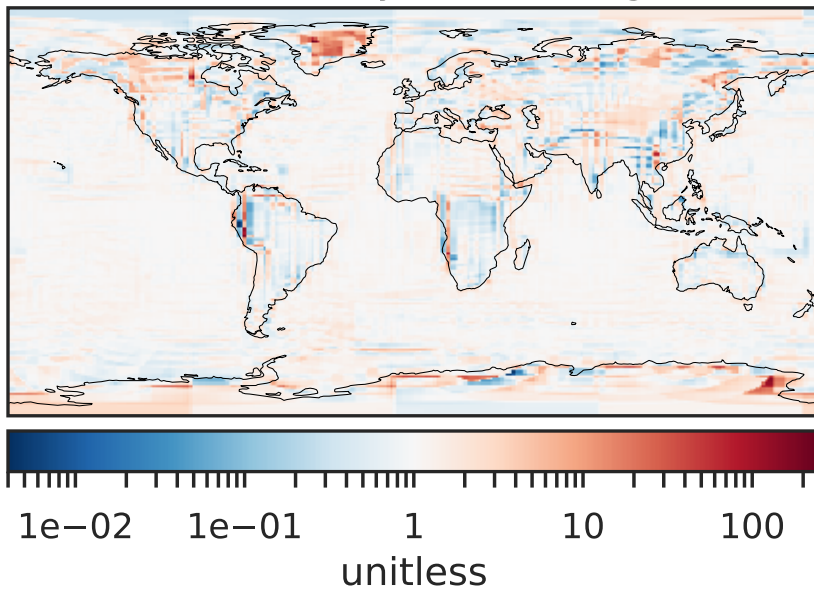
Difference (1x1.25)
Dev - Ref, Dynamic Range



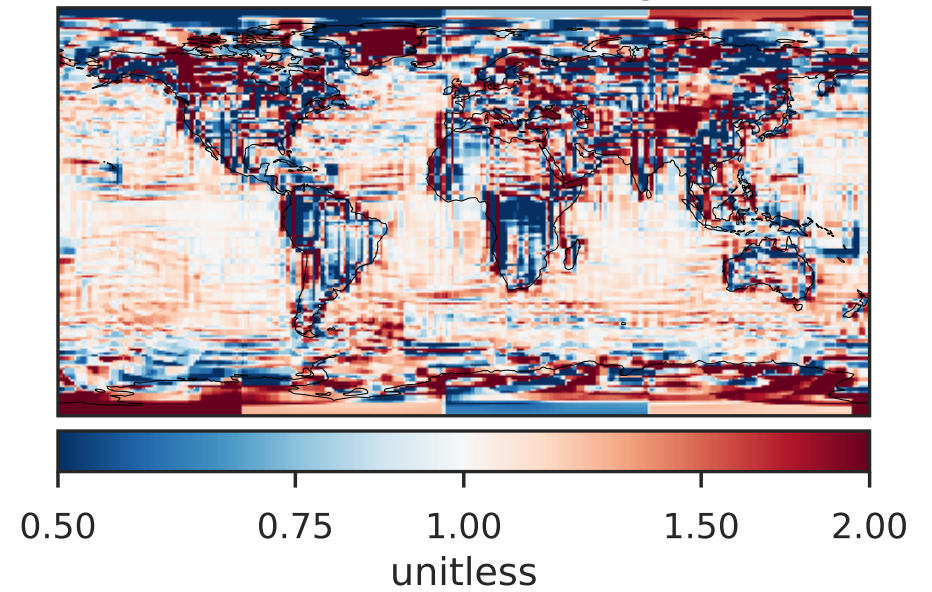
Difference (1x1.25)
Dev - Ref, Restricted Range [5%,95%]



Ratio (1x1.25)
Dev/Ref, Dynamic Range

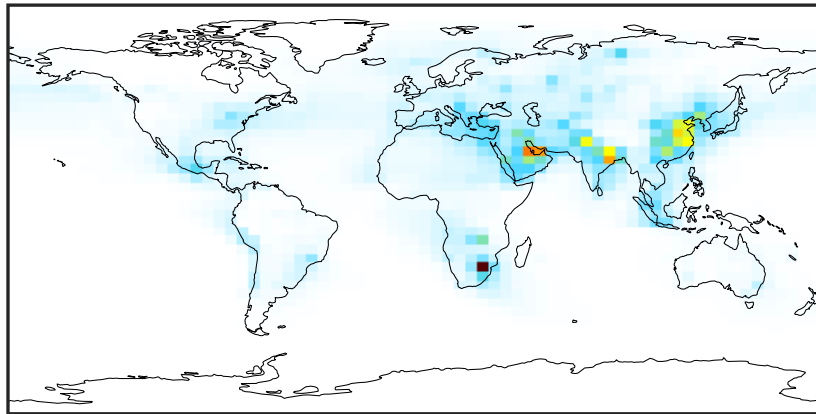


Ratio (1x1.25)
Dev/Ref, Fixed Range



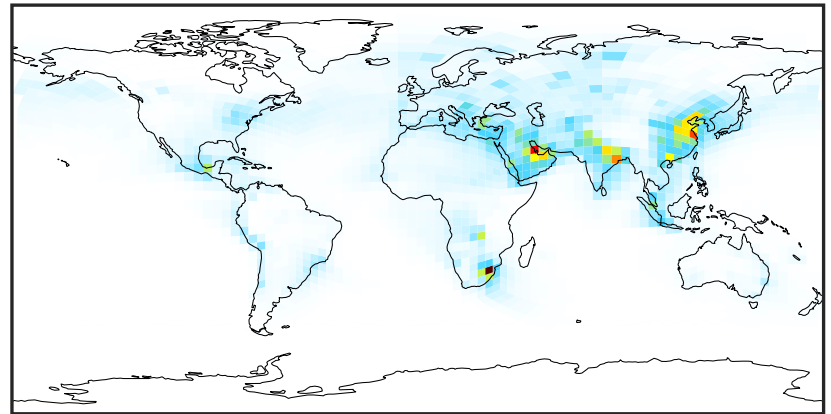
SpeciesConcVV_pFe (Jul2019)

14.3.0-rc.0 (Ref)
4.0x5.0



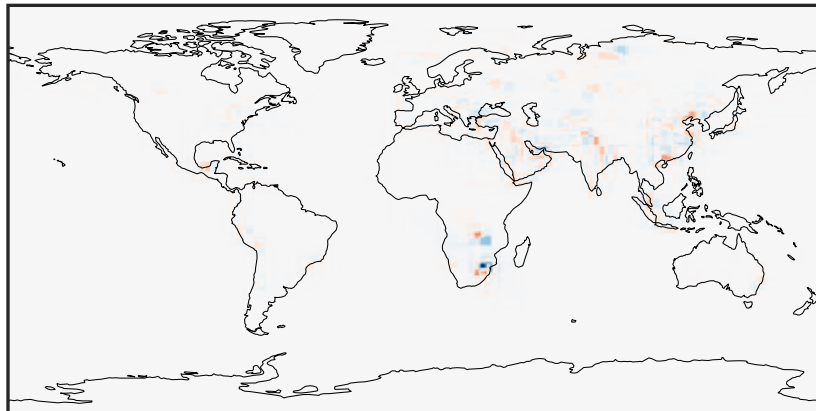
0.01 0.02 0.03
 $\mu\text{g}/\text{m}^3$

14.3.0-rc.0 (Dev)
c24



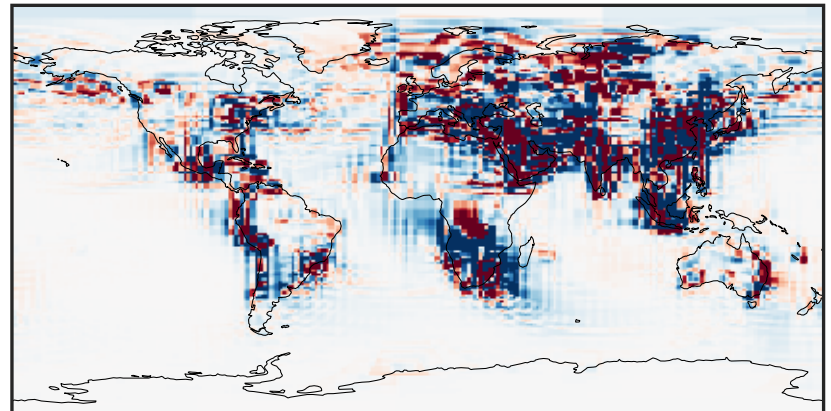
0.01 0.02 0.03
 $\mu\text{g}/\text{m}^3$

Difference (1x1.25)
Dev - Ref, Dynamic Range



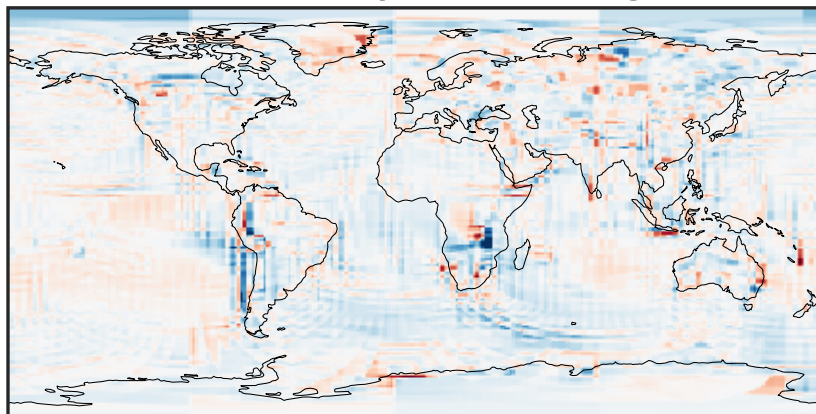
-0.015 0.000 0.015
 $\mu\text{g}/\text{m}^3$

Difference (1x1.25)
Dev - Ref, Restricted Range [5%,95%]



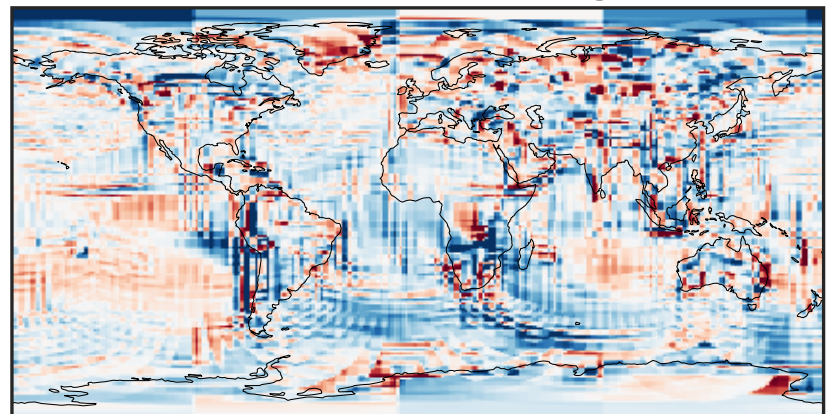
-0.00025 0.00000 0.00025
 $\mu\text{g}/\text{m}^3$

Ratio (1x1.25)
Dev/Ref, Dynamic Range



0.143 0.571 1.000 4.002 7.004
unitless

Ratio (1x1.25)
Dev/Ref, Fixed Range



0.50 0.75 1.00 1.50 2.00
unitless