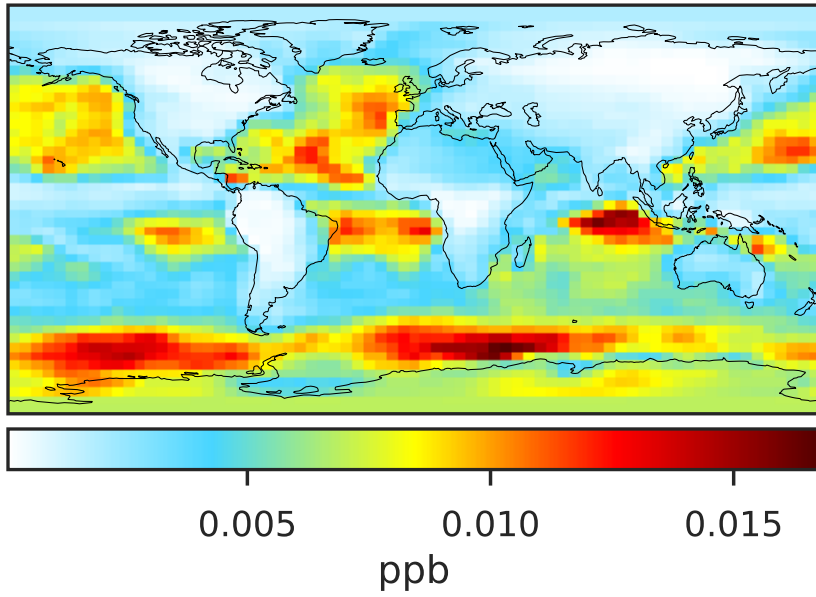
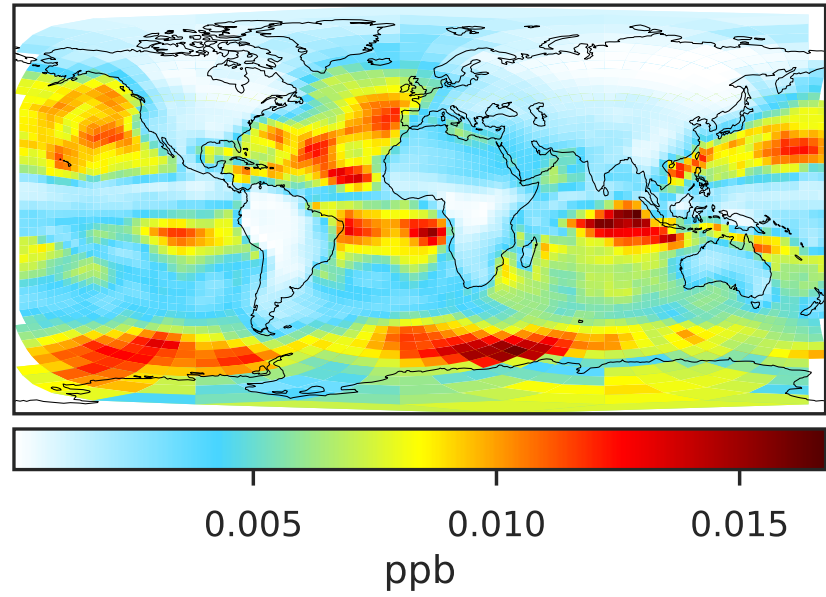


SpeciesConcVW_Bry (Oct2019)

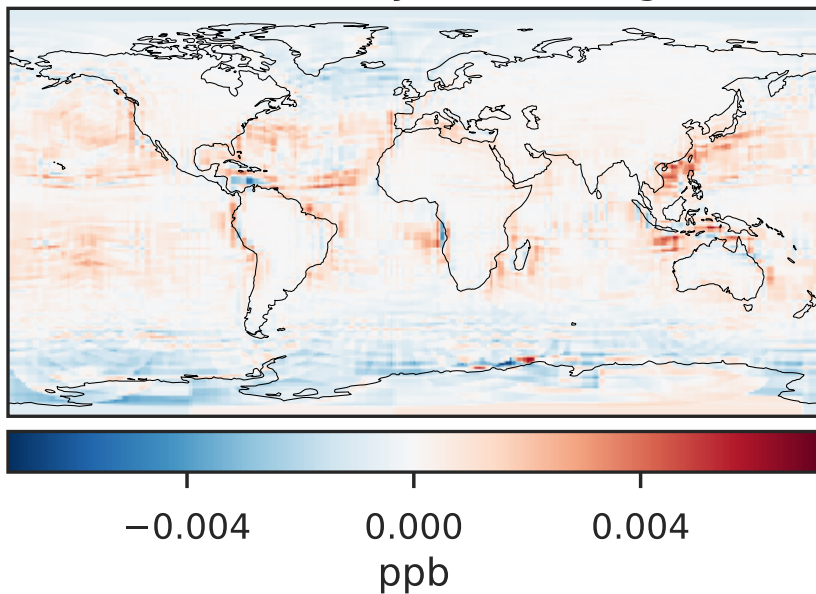
14.3.0-rc.0 (Ref)
4.0x5.0



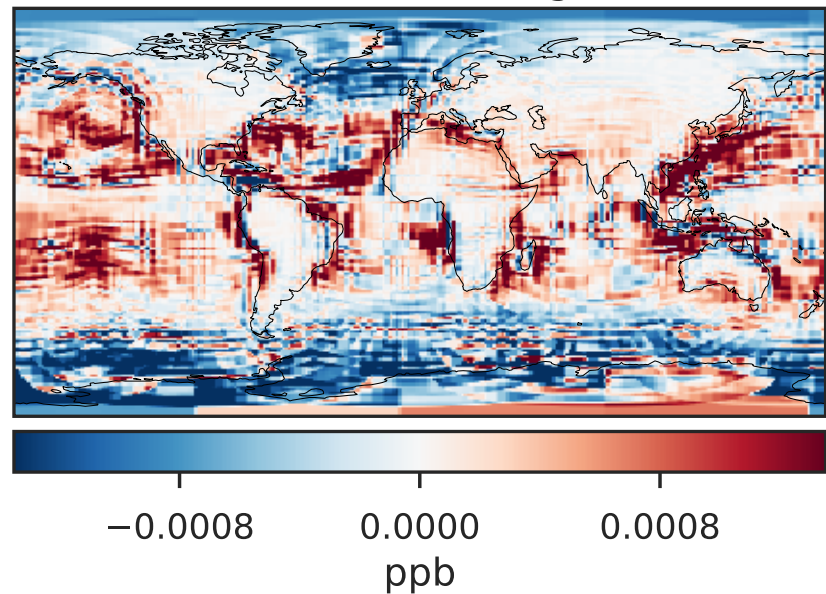
14.3.0-rc.0 (Dev)
c24



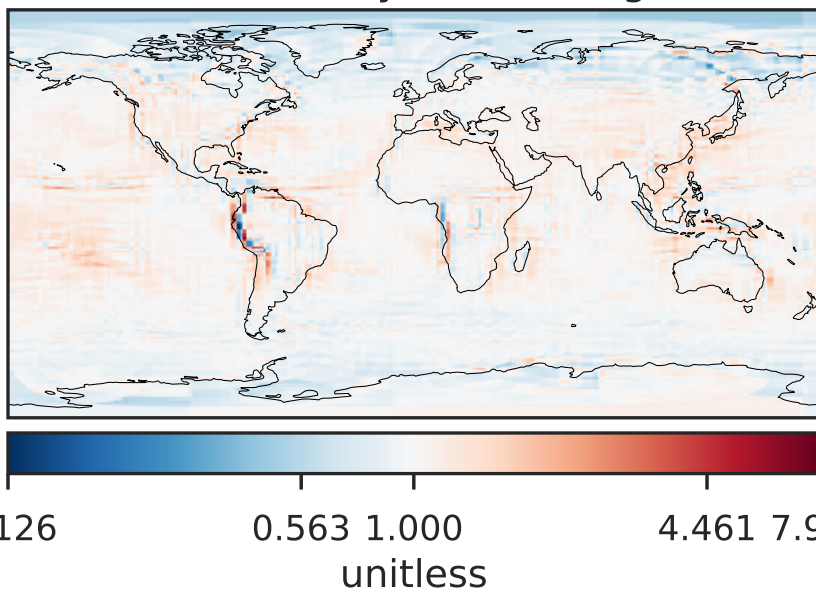
Difference (1x1.25)
Dev - Ref, Dynamic Range



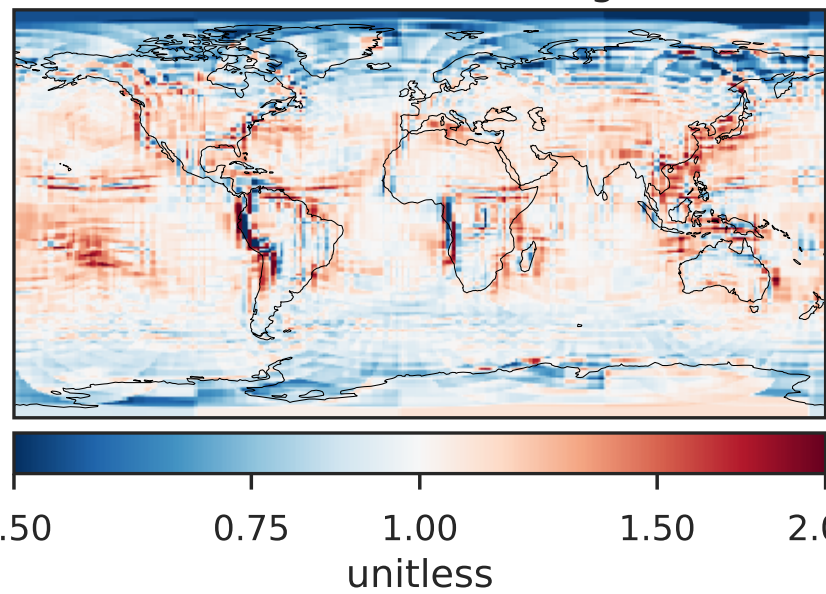
Difference (1x1.25)
Dev - Ref, Restricted Range [5%,95%]



Ratio (1x1.25)
Dev/Ref, Dynamic Range

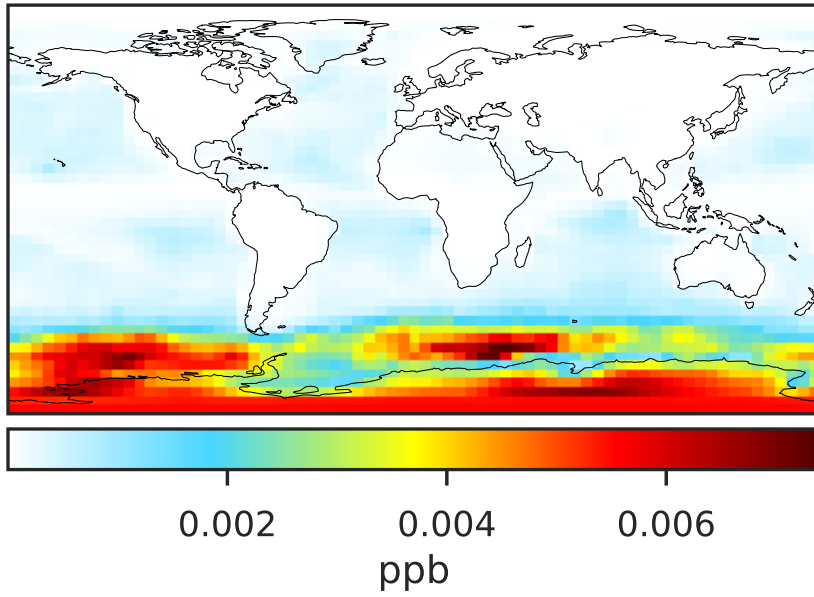


Ratio (1x1.25)
Dev/Ref, Fixed Range

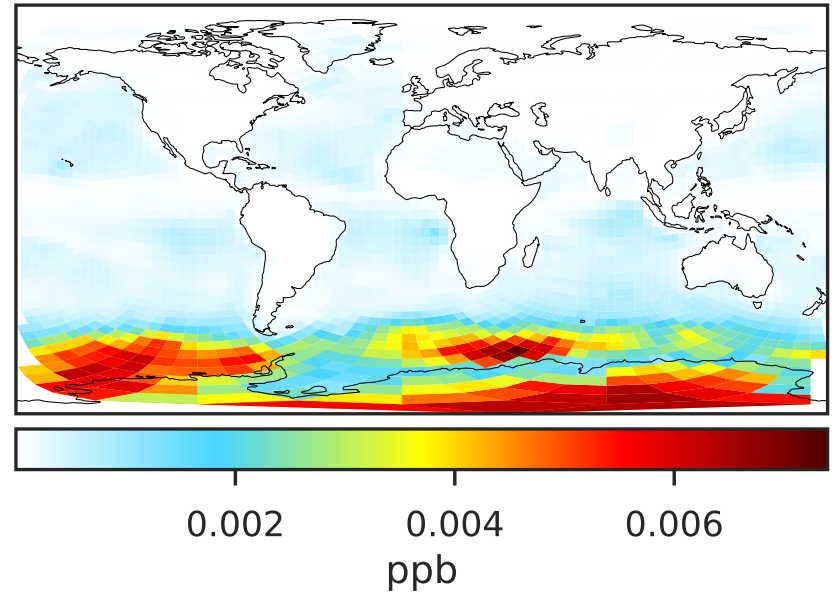


SpeciesConcVV_BrOx (Oct2019)

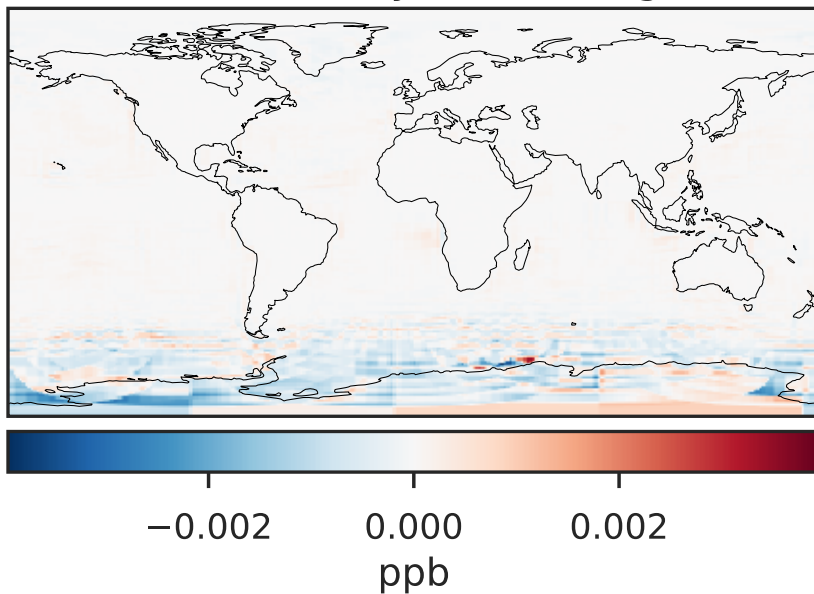
14.3.0-rc.0 (Ref)
4.0x5.0



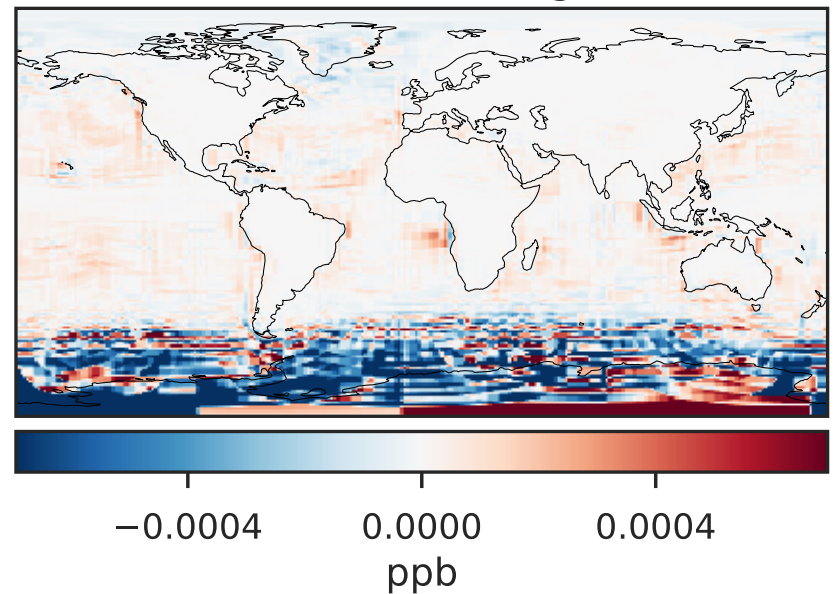
14.3.0-rc.0 (Dev)
c24



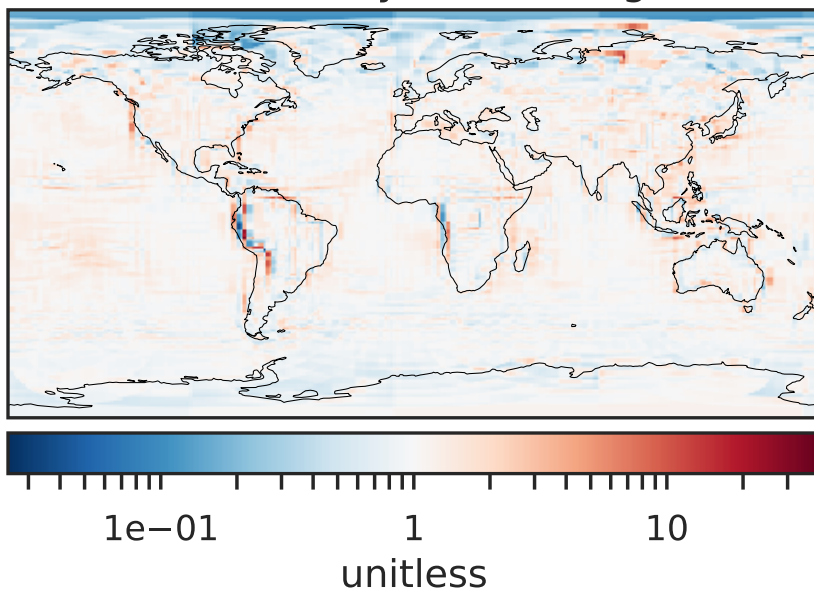
Difference (1x1.25)
Dev - Ref, Dynamic Range



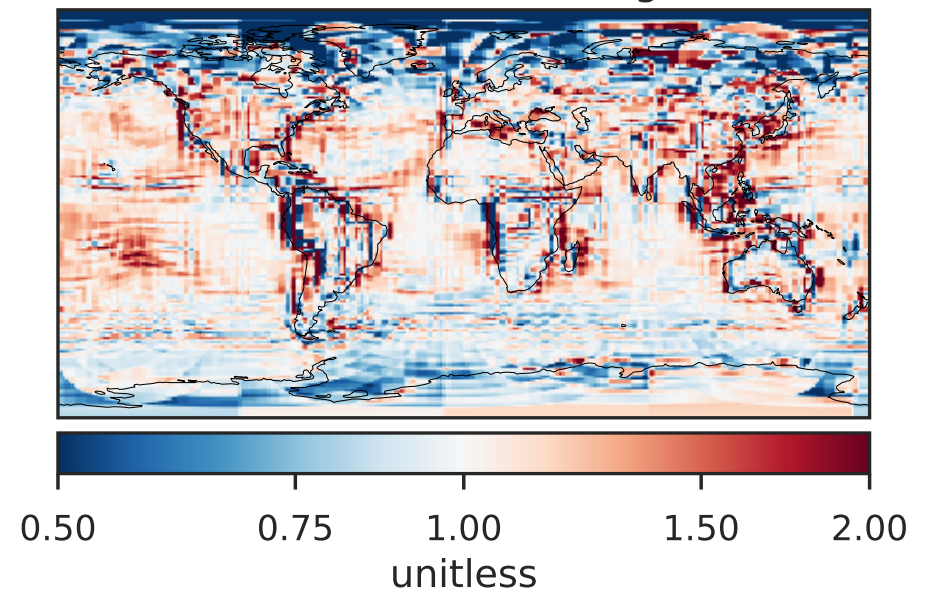
Difference (1x1.25)
Dev - Ref, Restricted Range [5%,95%]



Ratio (1x1.25)
Dev/Ref, Dynamic Range

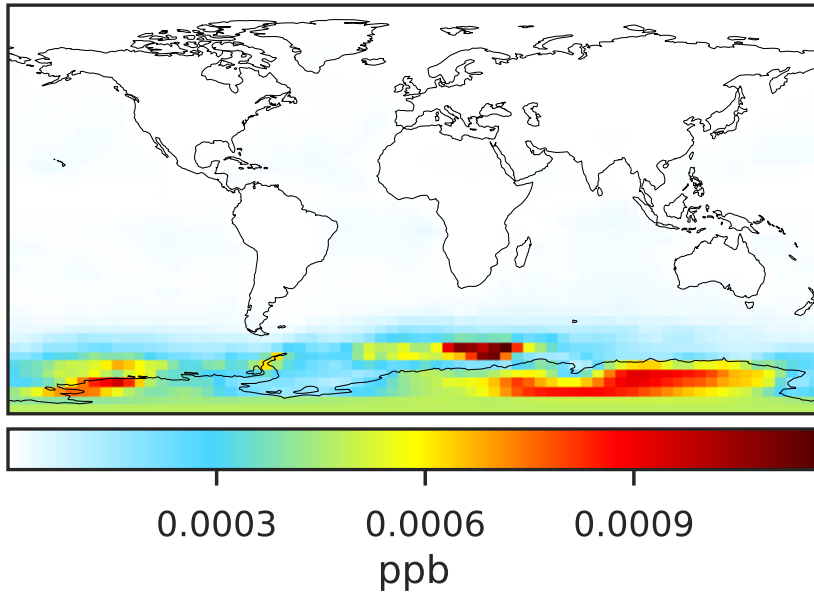


Ratio (1x1.25)
Dev/Ref, Fixed Range

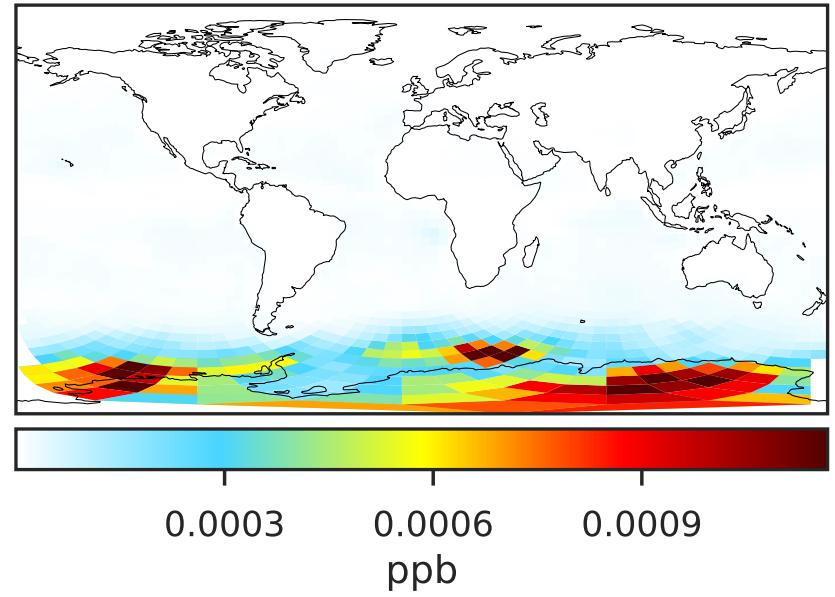


SpeciesConcVV_Br (Oct2019)

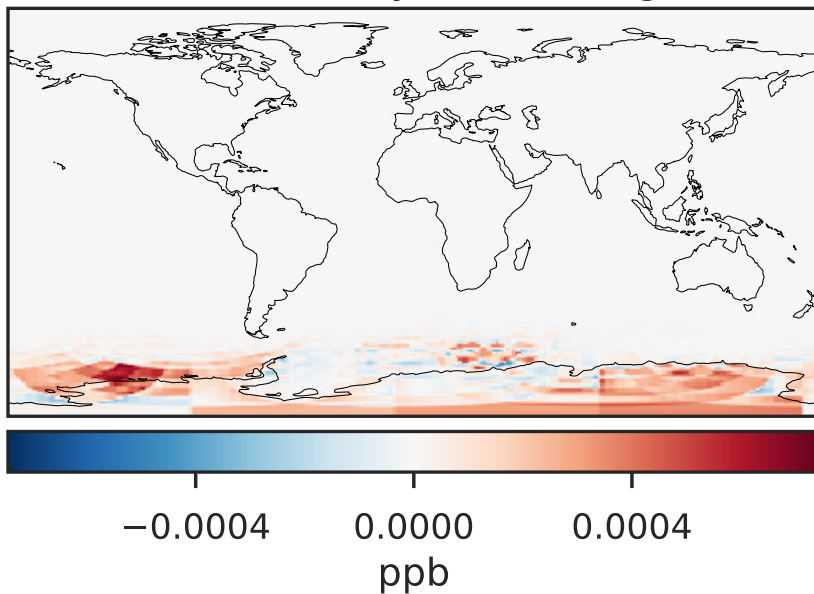
14.3.0-rc.0 (Ref)
4.0x5.0



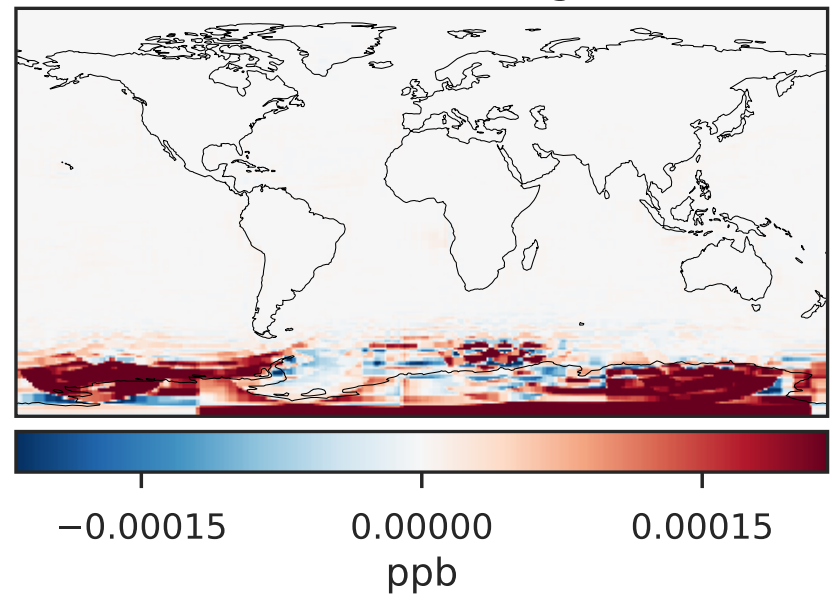
14.3.0-rc.0 (Dev)
c24



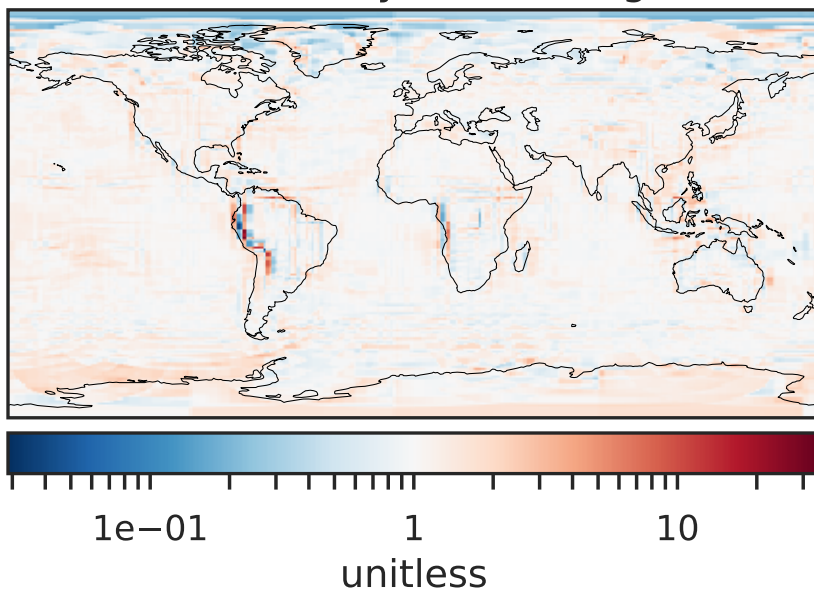
Difference (1x1.25)
Dev - Ref, Dynamic Range



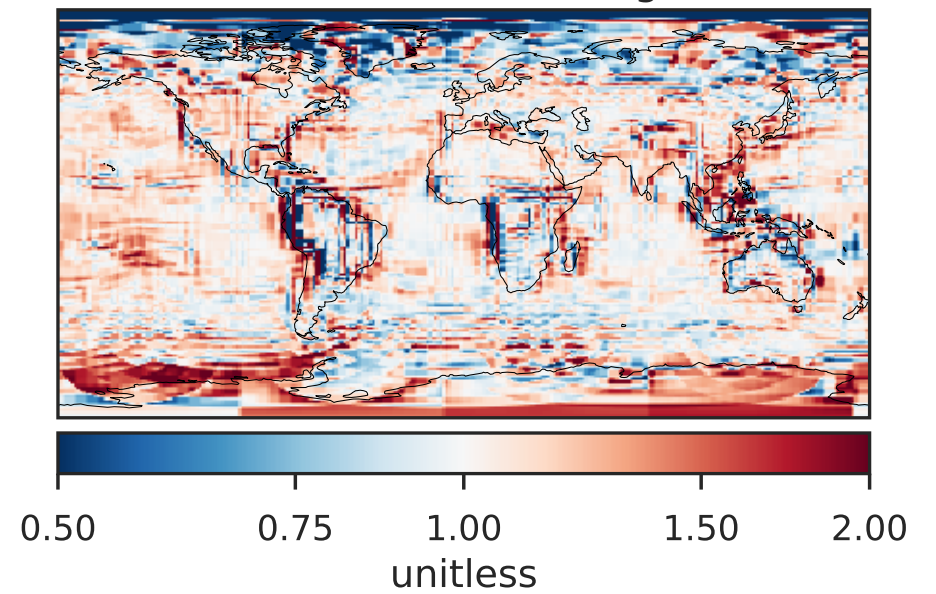
Difference (1x1.25)
Dev - Ref, Restricted Range [5%,95%]



Ratio (1x1.25)
Dev/Ref, Dynamic Range

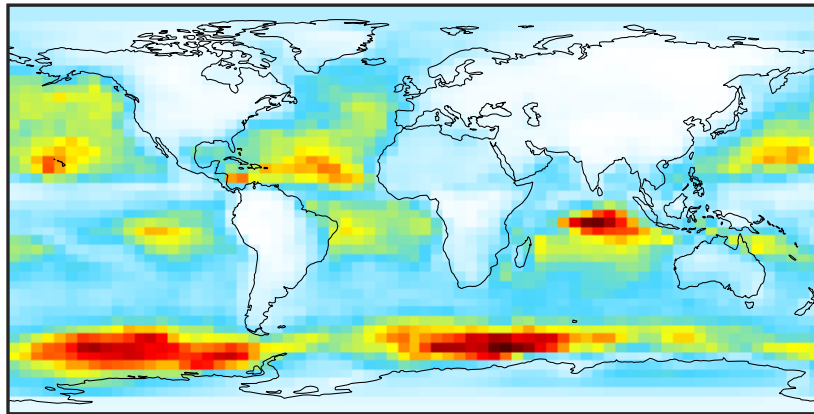


Ratio (1x1.25)
Dev/Ref, Fixed Range



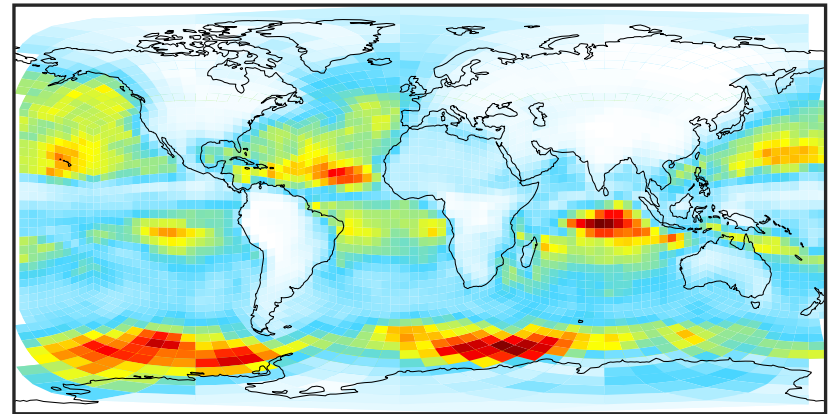
SpeciesConcVV_Br2 (Oct2019)

14.3.0-rc.0 (Ref)
4.0x5.0



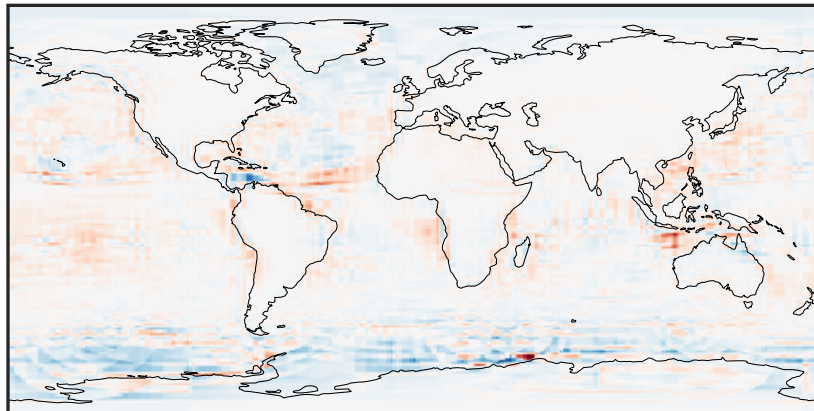
0.0008 0.0016 0.0024
ppb

14.3.0-rc.0 (Dev)
c24



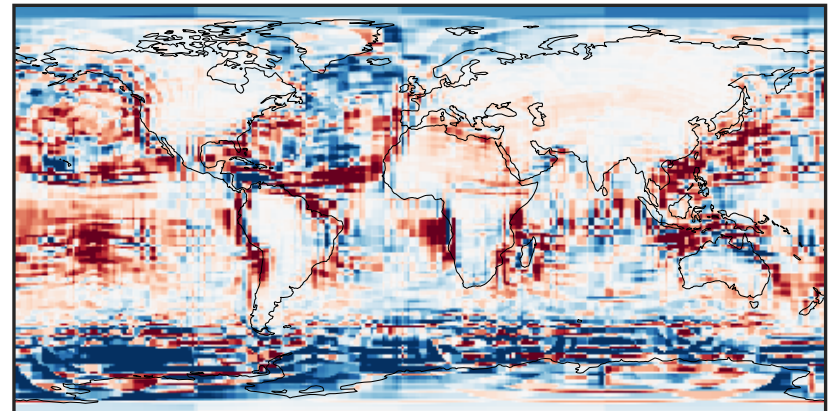
0.0008 0.0016 0.0024
ppb

Difference (1x1.25)
Dev - Ref, Dynamic Range



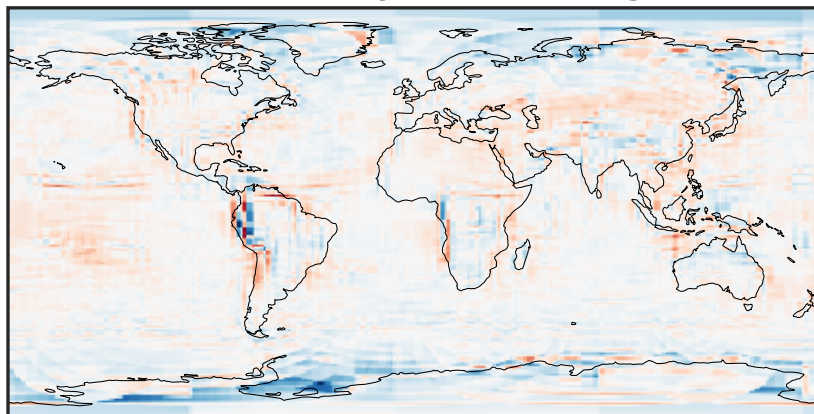
-0.0008 0.0000 0.0008
ppb

Difference (1x1.25)
Dev - Ref, Restricted Range [5%,95%]



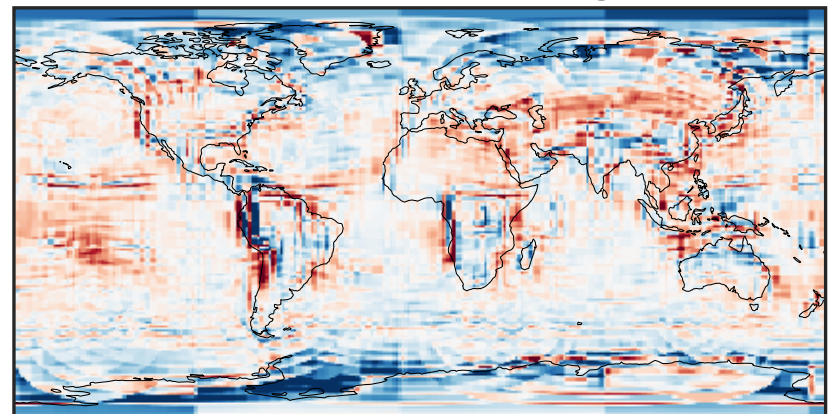
-0.0001 0.0000 0.0001
ppb

Ratio (1x1.25)
Dev/Ref, Dynamic Range



0.155 0.578 1.000 3.723 6.446
unitless

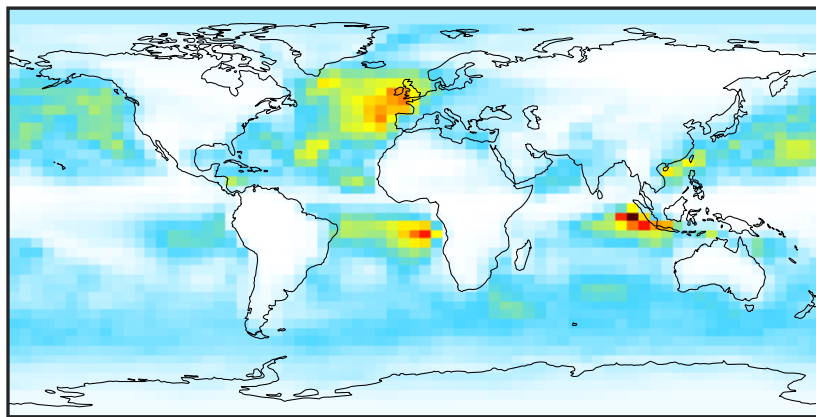
Ratio (1x1.25)
Dev/Ref, Fixed Range



0.50 0.75 1.00 1.50 2.00
unitless

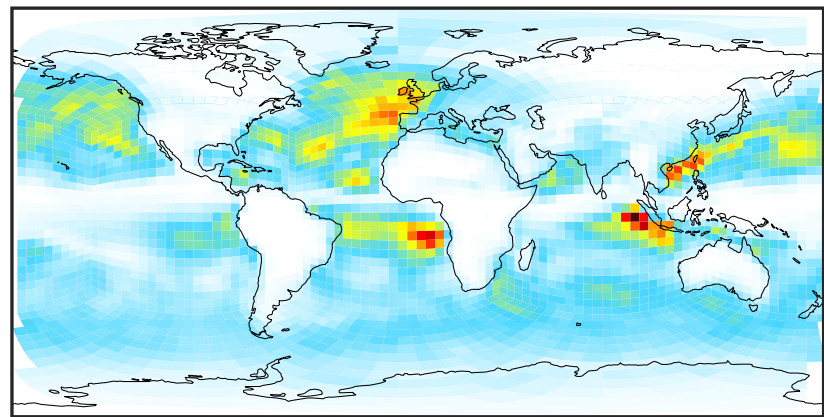
SpeciesConcVV_BrCl (Oct2019)

14.3.0-rc.0 (Ref)
4.0x5.0



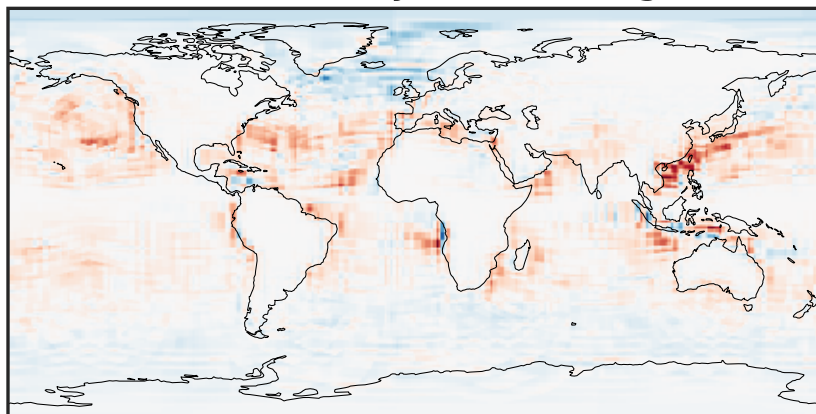
0.0015 0.0030 0.0045
ppb

14.3.0-rc.0 (Dev)
c24



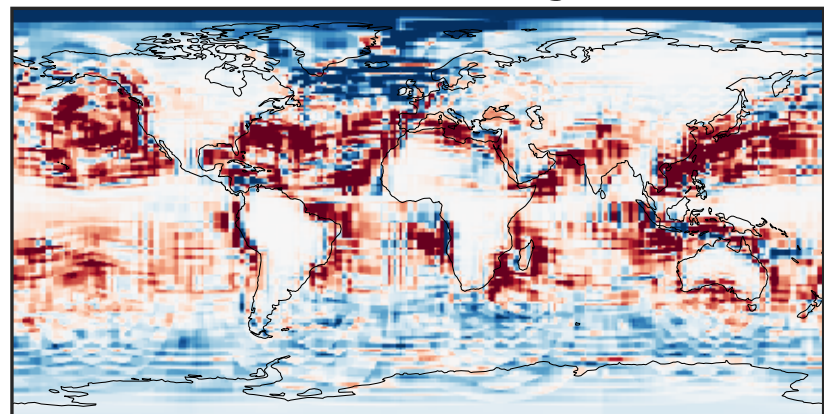
0.0015 0.0030 0.0045
ppb

Difference (1x1.25)
Dev - Ref, Dynamic Range



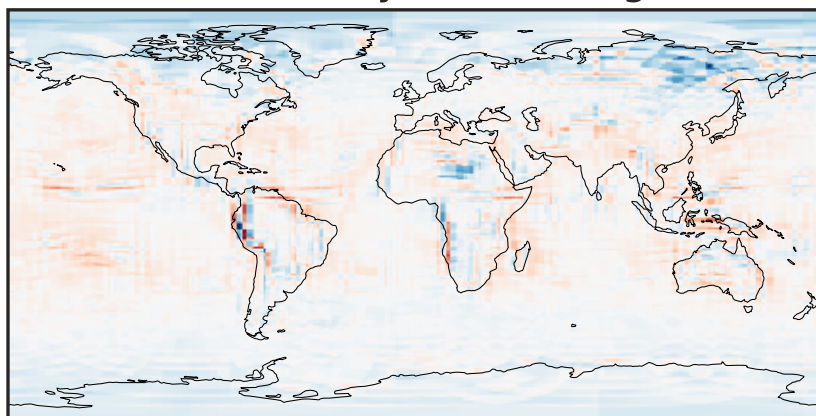
-0.001 0.000 0.001
ppb

Difference (1x1.25)
Dev - Ref, Restricted Range [5%,95%]



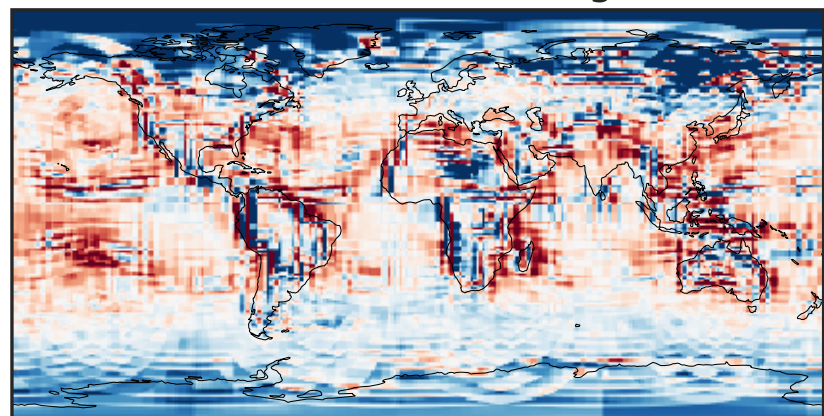
-0.0002 0.0000 0.0002
ppb

Ratio (1x1.25)
Dev/Ref, Dynamic Range



1e-01 1 10
unitless

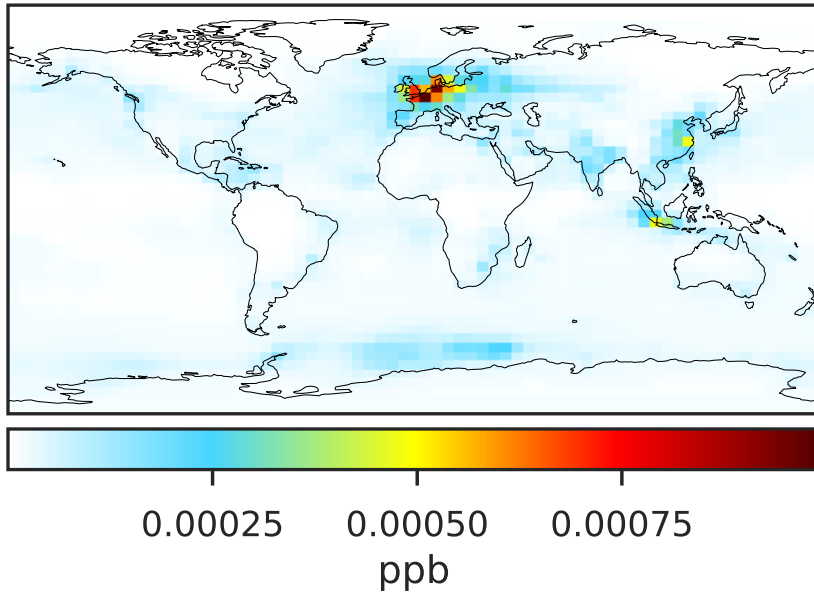
Ratio (1x1.25)
Dev/Ref, Fixed Range



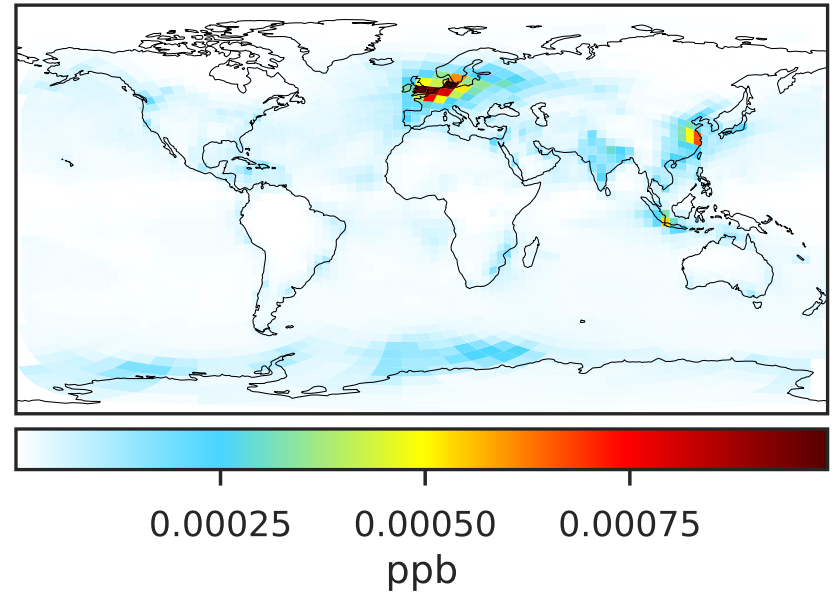
0.50 0.75 1.00 1.50 2.00
unitless

SpeciesConcVV_BrNO2 (Oct2019)

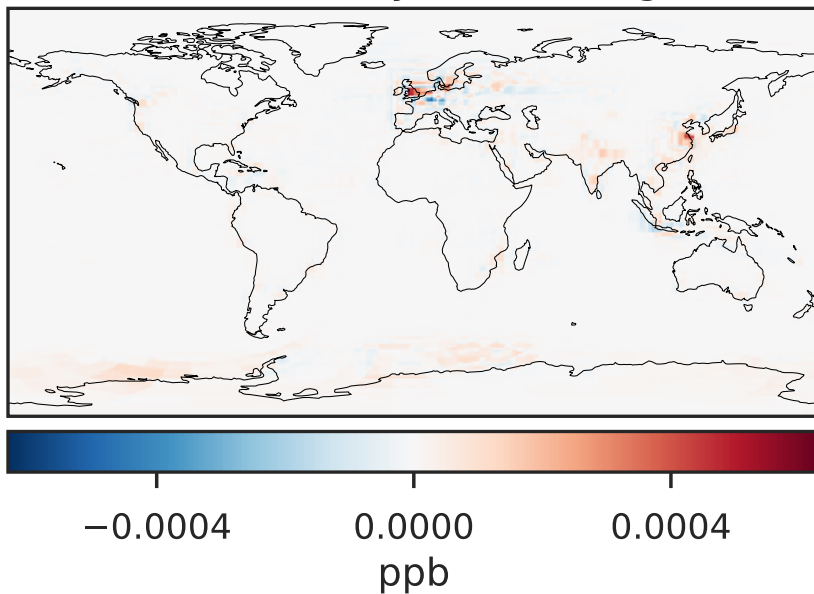
14.3.0-rc.0 (Ref)
4.0x5.0



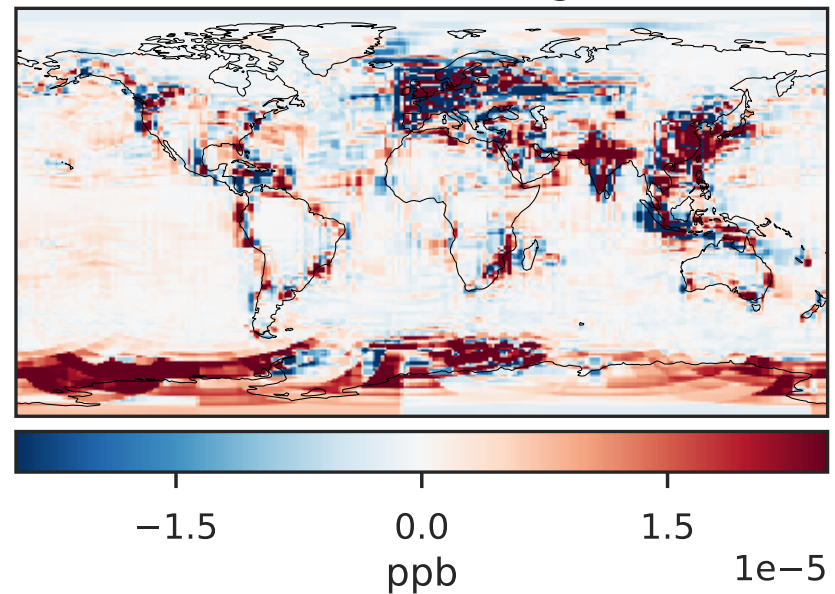
14.3.0-rc.0 (Dev)
c24



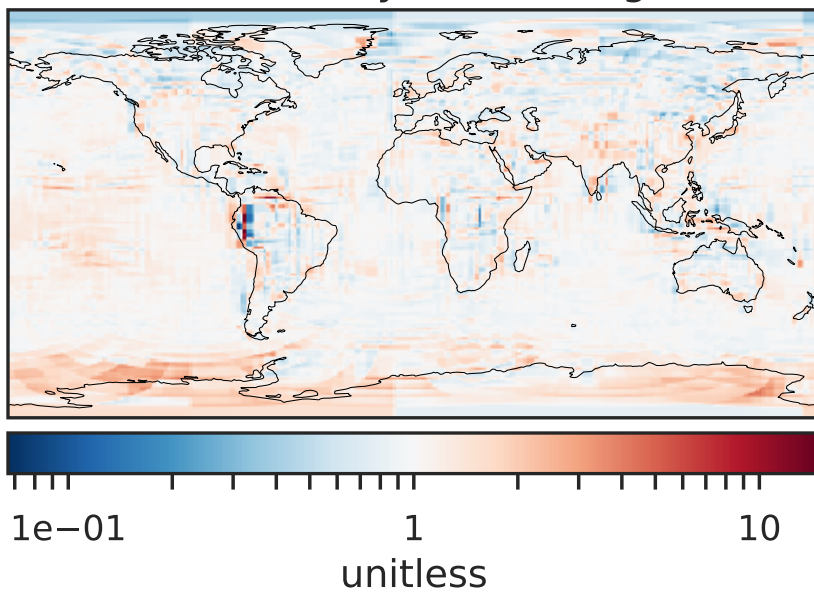
Difference (1x1.25)
Dev - Ref, Dynamic Range



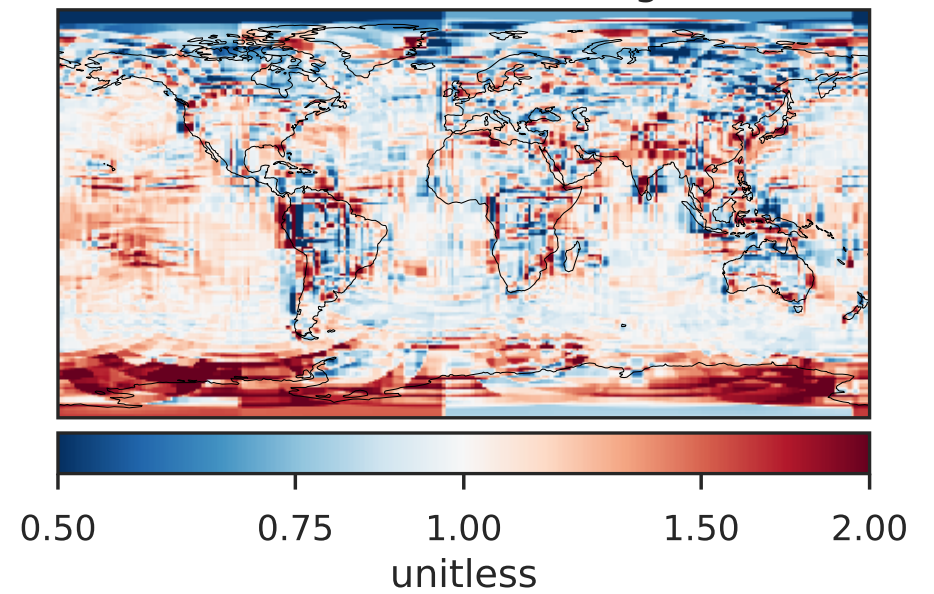
Difference (1x1.25)
Dev - Ref, Restricted Range [5%,95%]



Ratio (1x1.25)
Dev/Ref, Dynamic Range

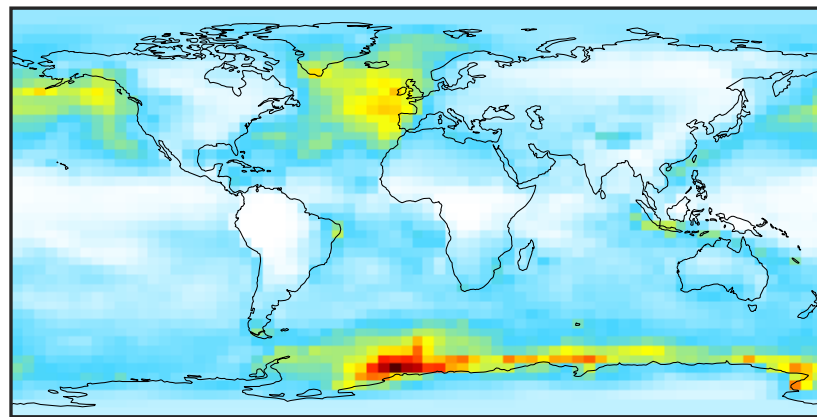


Ratio (1x1.25)
Dev/Ref, Fixed Range



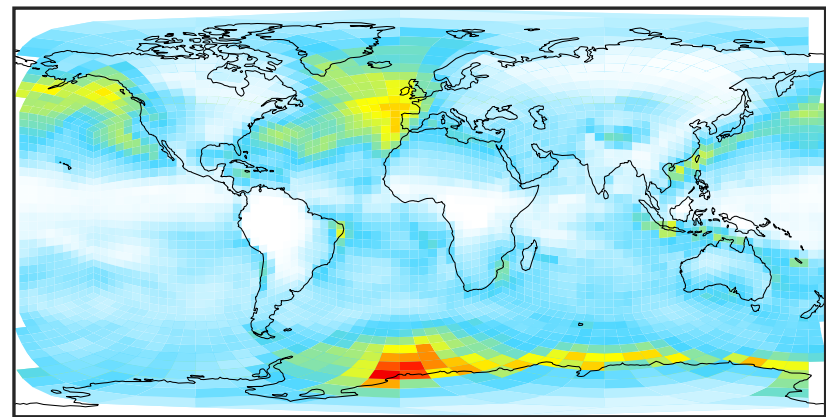
SpeciesConcVV_BrNO3 (Oct2019)

14.3.0-rc.0 (Ref)
4.0x5.0



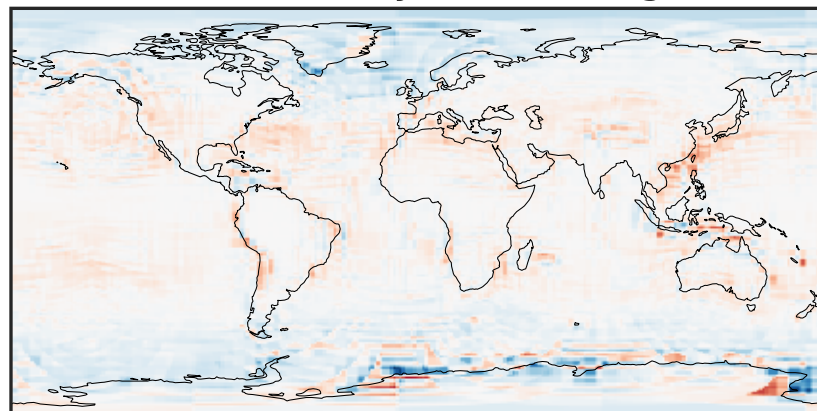
0.001 0.002 0.003
ppb

14.3.0-rc.0 (Dev)
c24



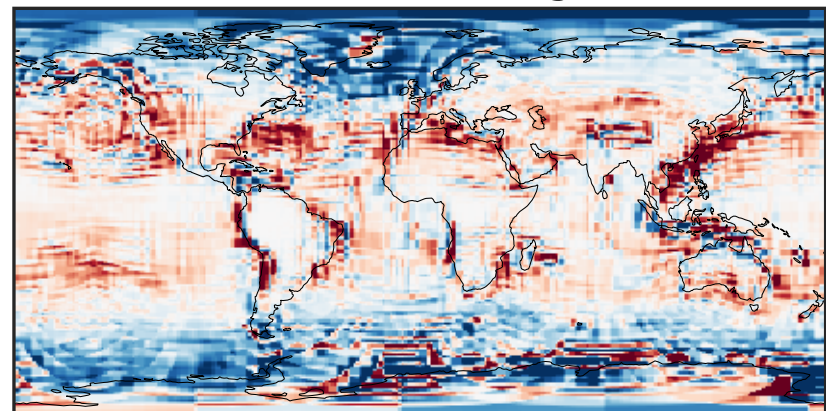
0.001 0.002 0.003
ppb

Difference (1x1.25)
Dev - Ref, Dynamic Range



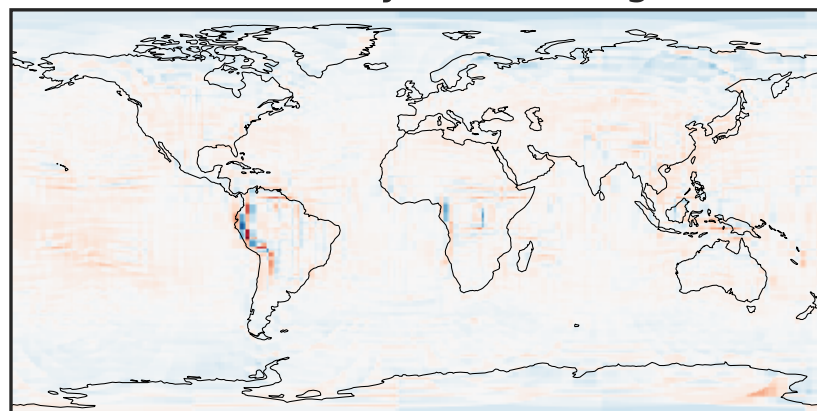
-0.0008 0.0000 0.0008
ppb

Difference (1x1.25)
Dev - Ref, Restricted Range [5%,95%]



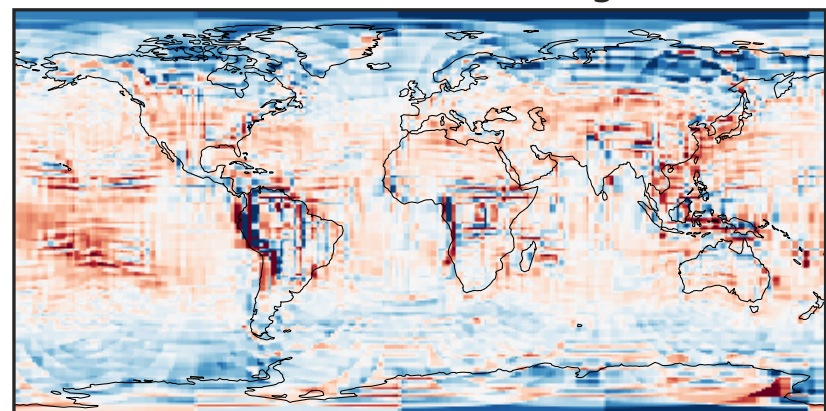
-0.00015 0.00000 0.00015
ppb

Ratio (1x1.25)
Dev/Ref, Dynamic Range



1e-01 1 10
unitless

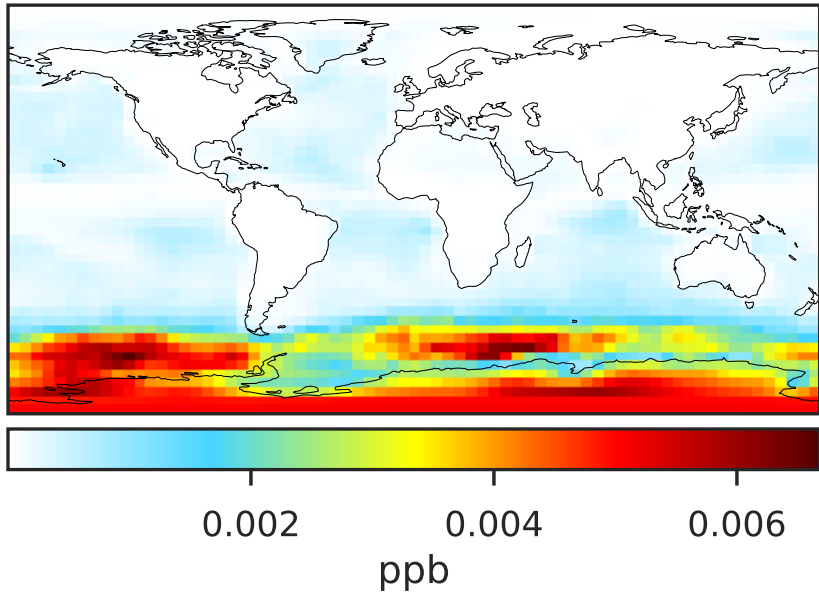
Ratio (1x1.25)
Dev/Ref, Fixed Range



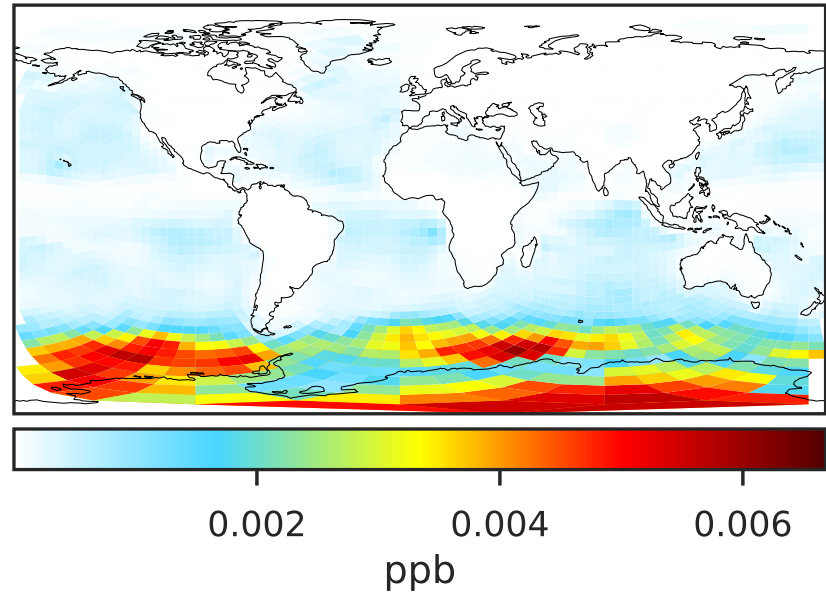
0.50 0.75 1.00 1.50 2.00
unitless

SpeciesConcVV_BrO (Oct2019)

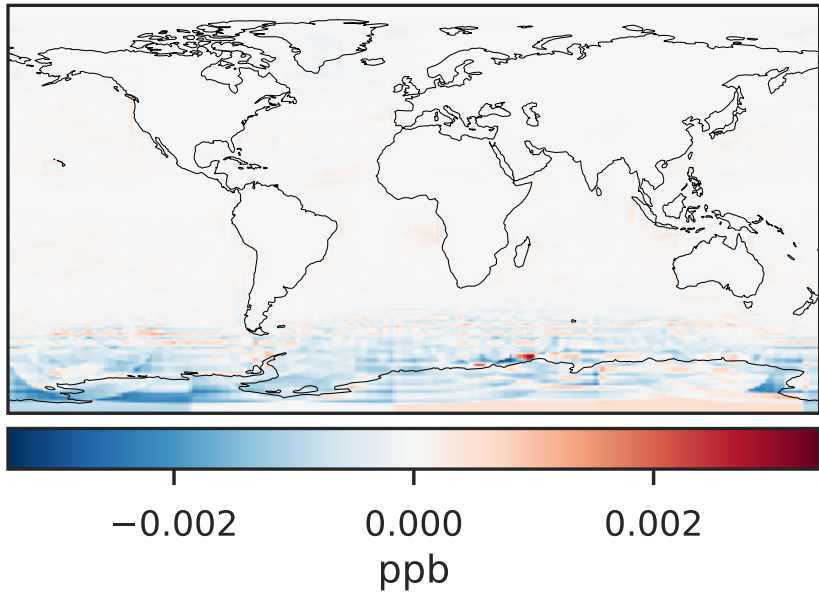
14.3.0-rc.0 (Ref)
4.0x5.0



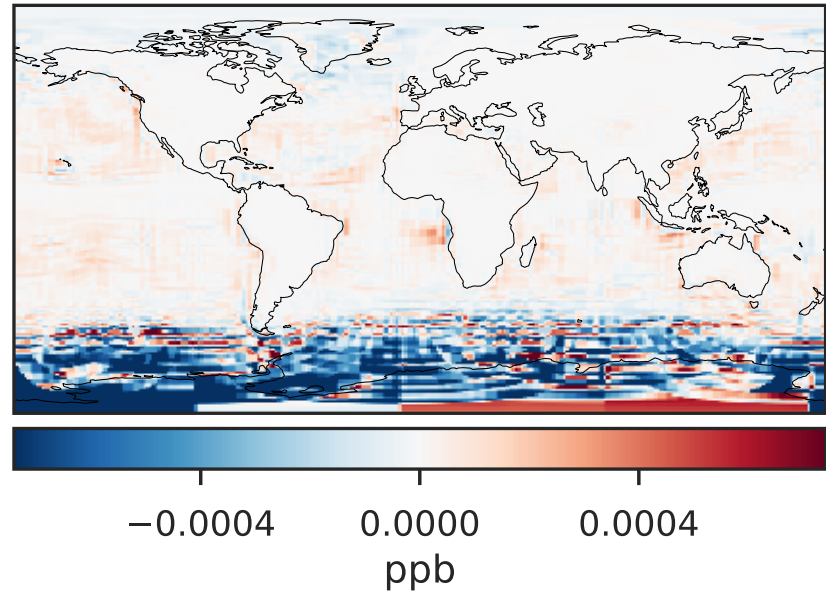
14.3.0-rc.0 (Dev)
c24



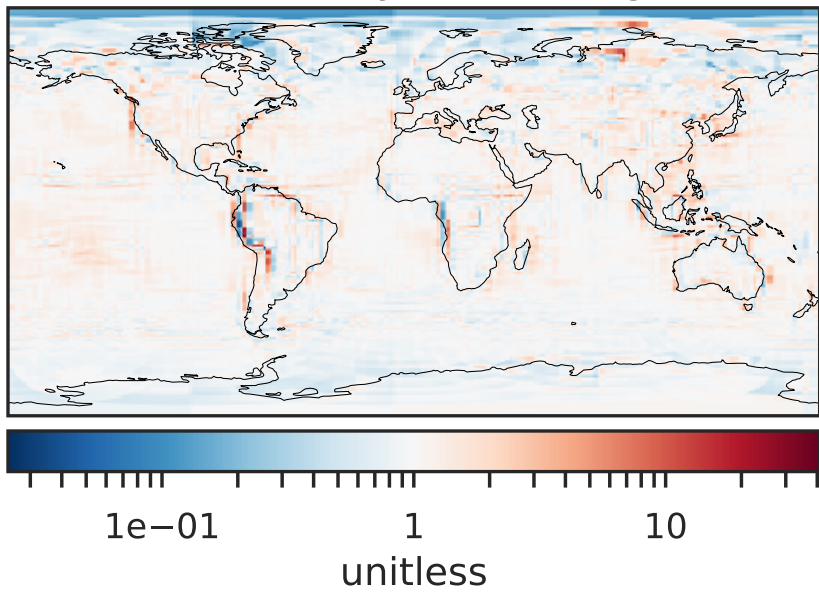
Difference (1x1.25)
Dev - Ref, Dynamic Range



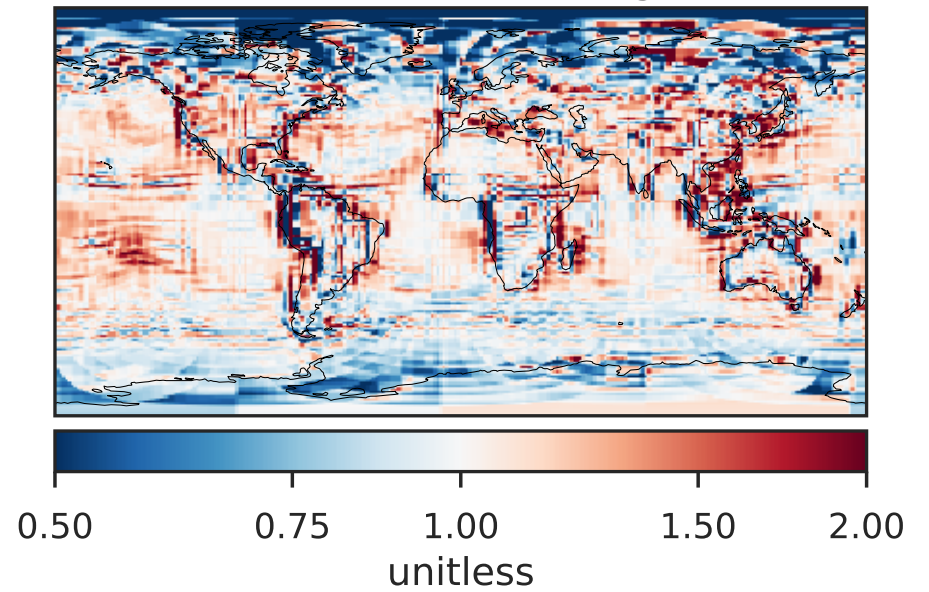
Difference (1x1.25)
Dev - Ref, Restricted Range [5%,95%]



Ratio (1x1.25)
Dev/Ref, Dynamic Range

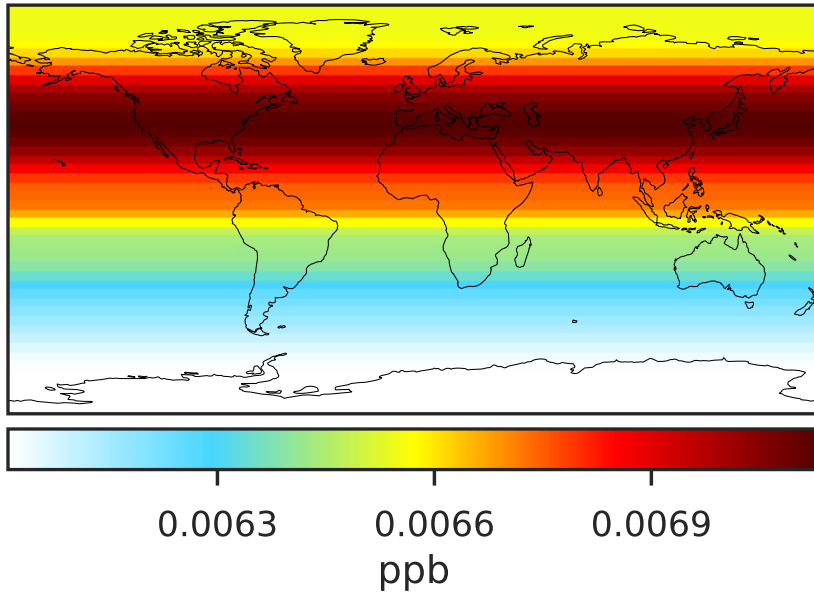


Ratio (1x1.25)
Dev/Ref, Fixed Range

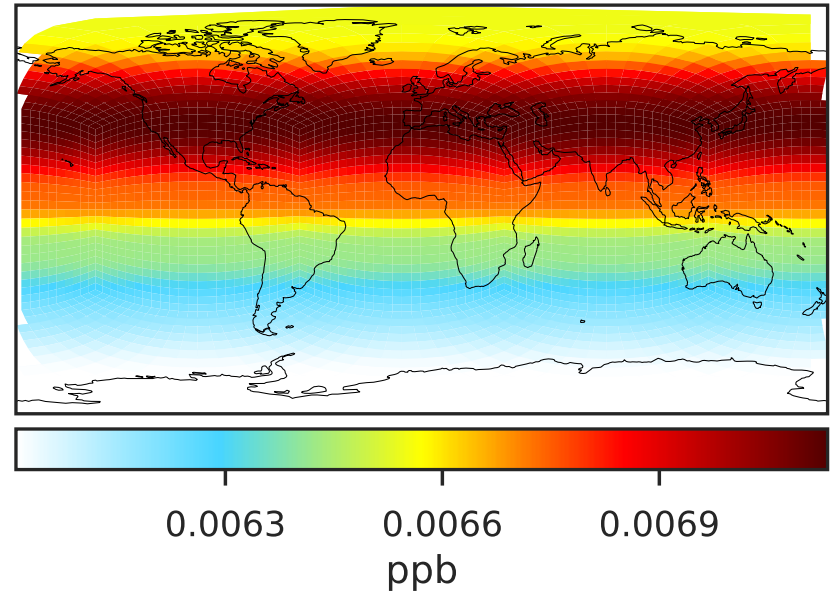


SpeciesConcVV_CH3Br (Oct2019)

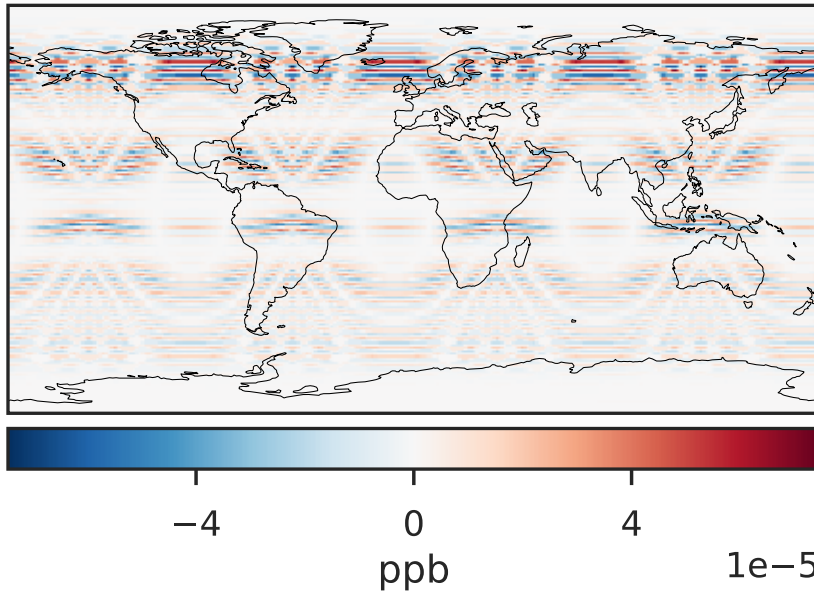
14.3.0-rc.0 (Ref)
4.0x5.0



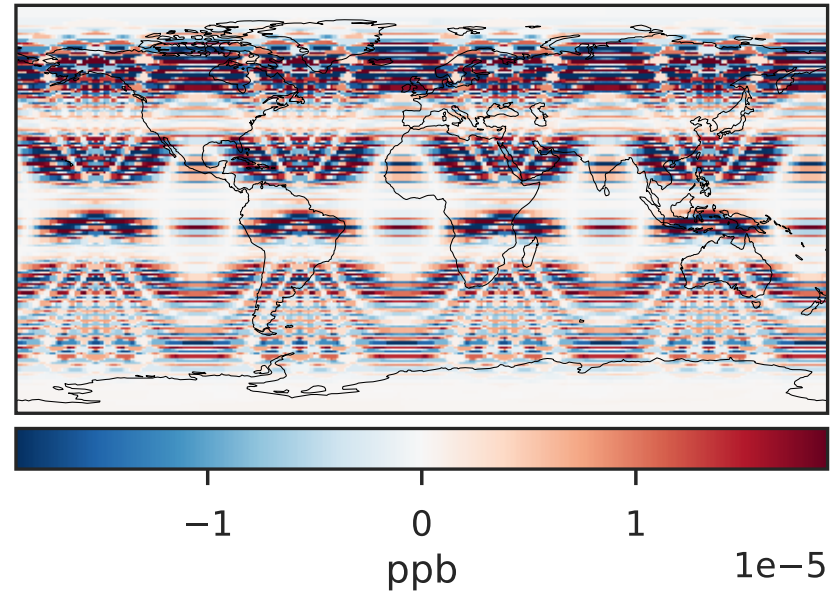
14.3.0-rc.0 (Dev)
c24



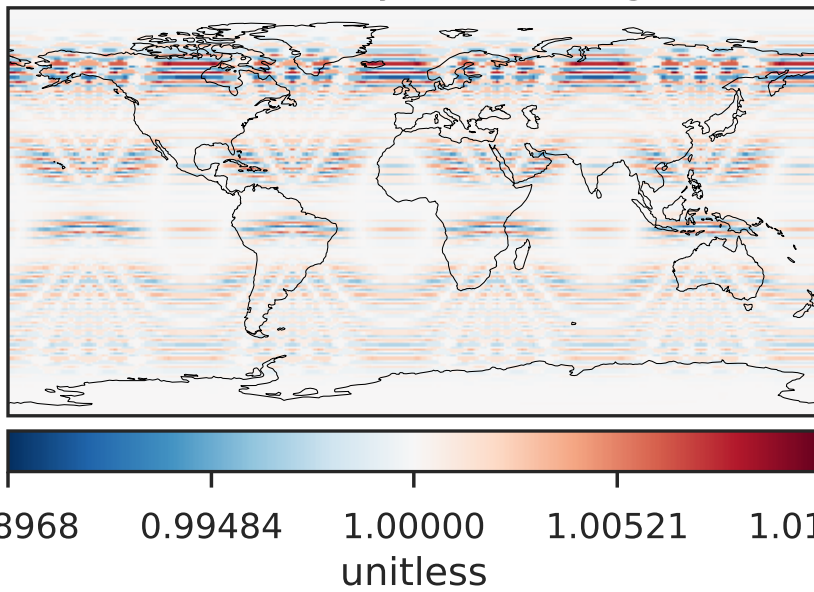
Difference (1x1.25)
Dev - Ref, Dynamic Range



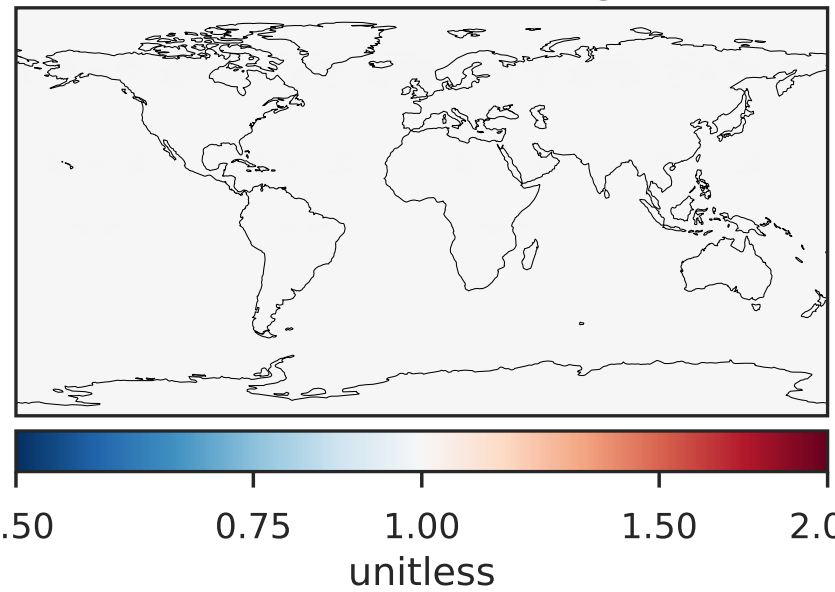
Difference (1x1.25)
Dev - Ref, Restricted Range [5%,95%]



Ratio (1x1.25)
Dev/Ref, Dynamic Range

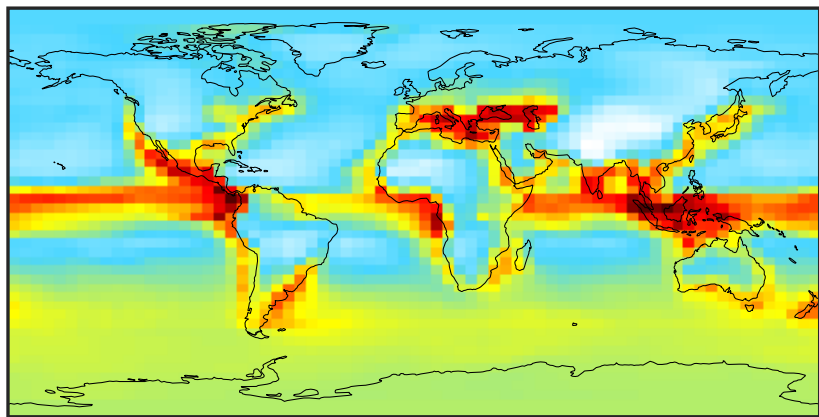


Ratio (1x1.25)
Dev/Ref, Fixed Range



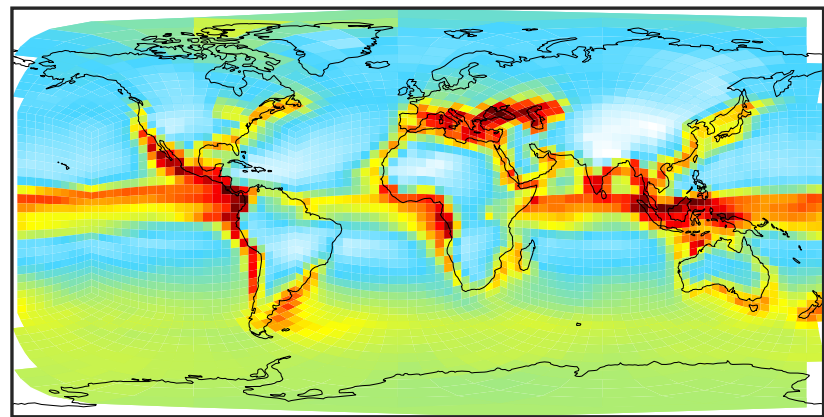
SpeciesConcVV_CH2Br2 (Oct2019)

14.3.0-rc.0 (Ref)
4.0x5.0



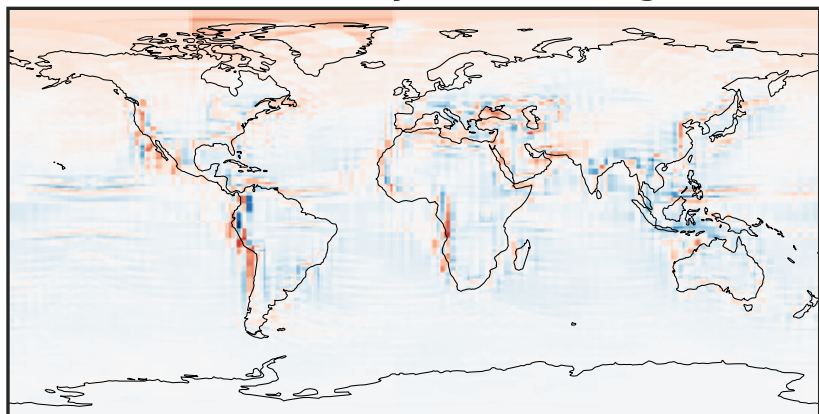
0.0006 0.0008 0.0010 0.0012
ppb

14.3.0-rc.0 (Dev)
c24



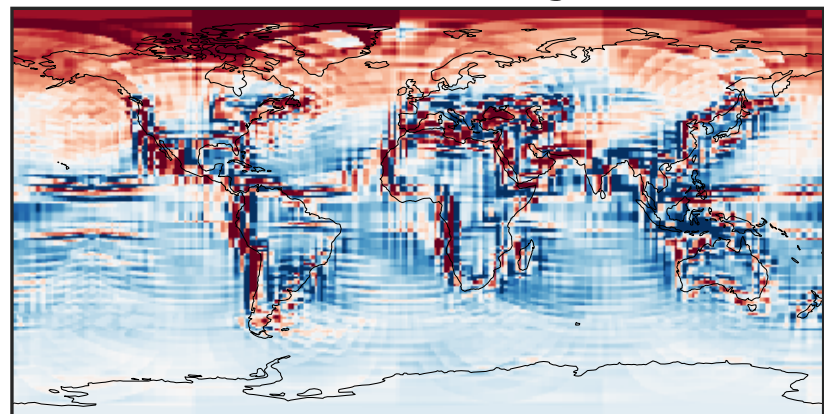
0.0006 0.0008 0.0010 0.0012
ppb

Difference (1x1.25)
Dev - Ref, Dynamic Range



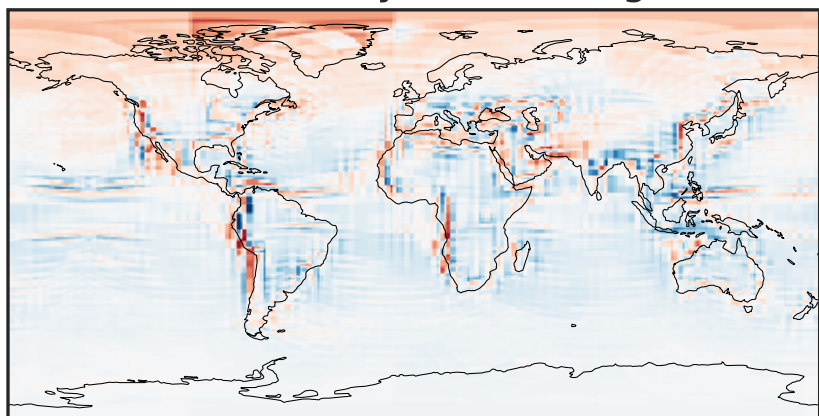
-0.0002 0.0000 0.0002
ppb

Difference (1x1.25)
Dev - Ref, Restricted Range [5%,95%]



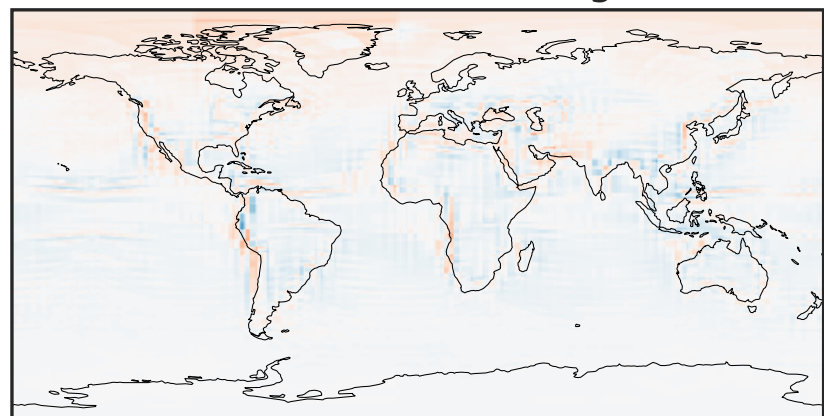
-3 0 3
ppb $1e-5$

Ratio (1x1.25)
Dev/Ref, Dynamic Range



0.7669 0.8834 1.0000 1.1520 1.3040
unitless

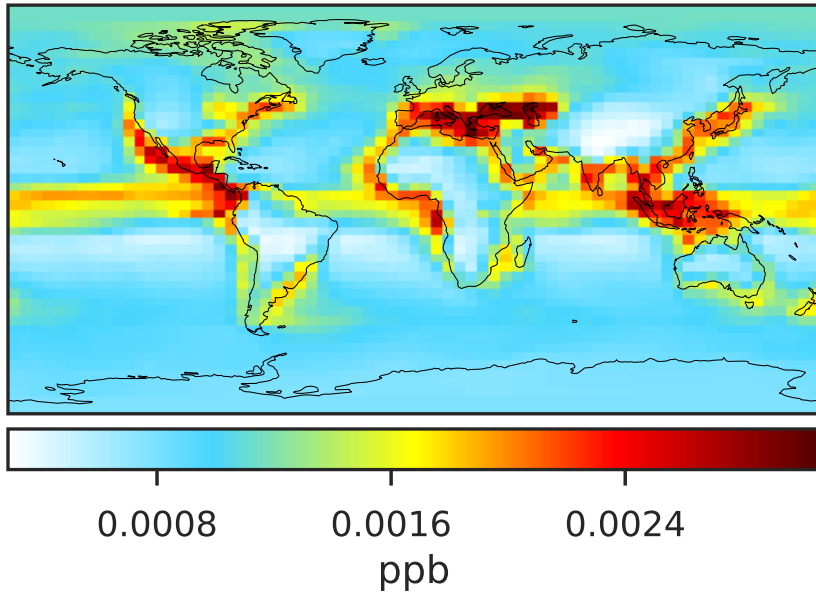
Ratio (1x1.25)
Dev/Ref, Fixed Range



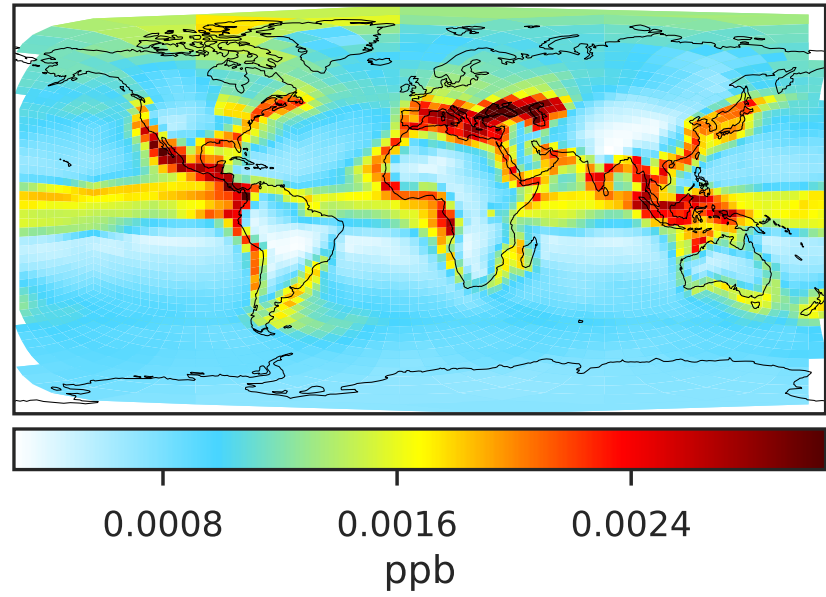
0.50 0.75 1.00 1.50 2.00
unitless

SpeciesConcVW_CHBr3 (Oct2019)

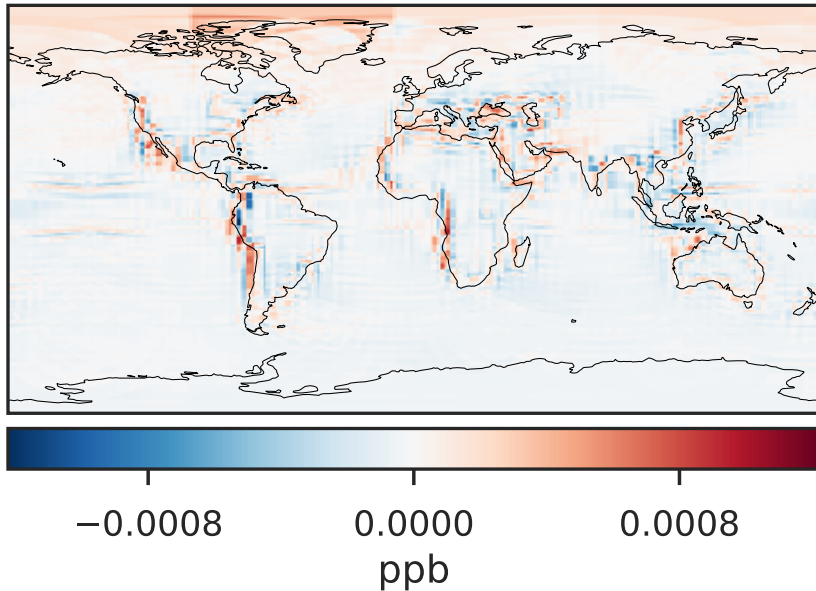
14.3.0-rc.0 (Ref)
4.0x5.0



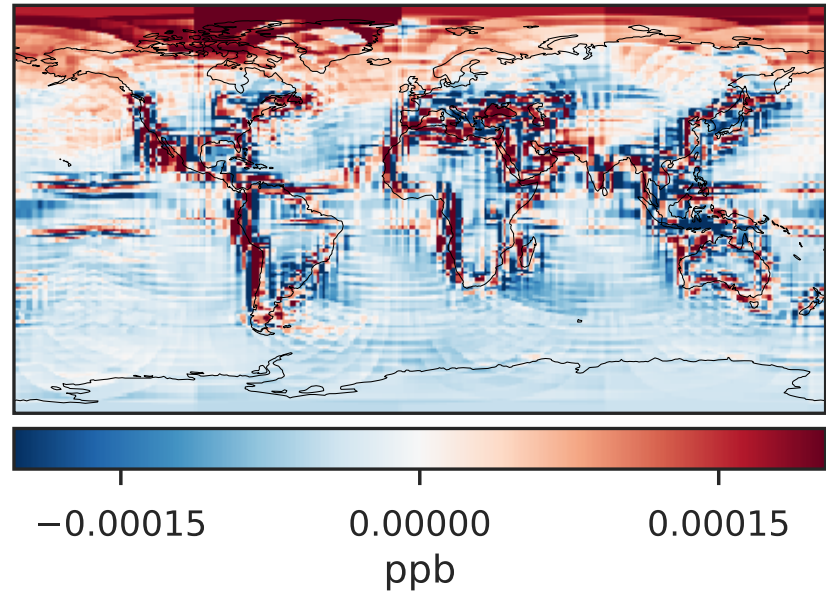
14.3.0-rc.0 (Dev)
c24



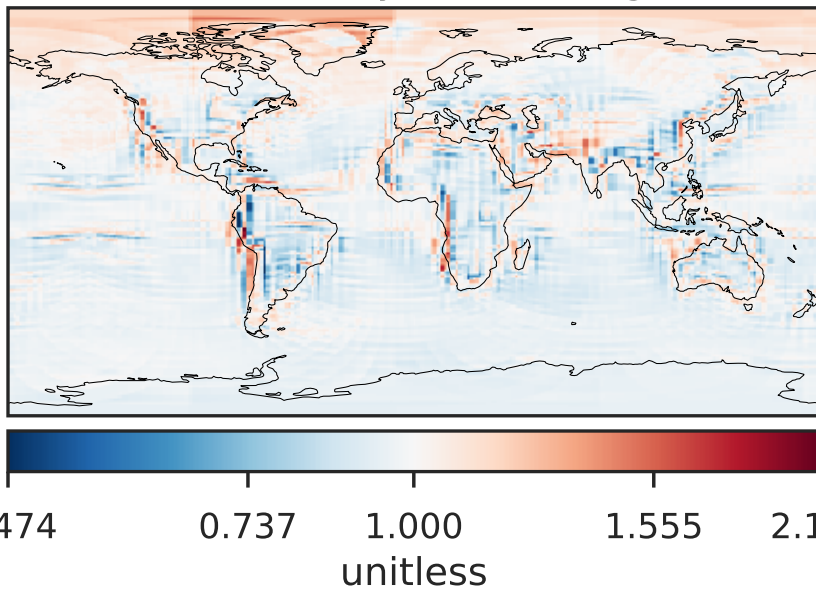
Difference (1x1.25)
Dev - Ref, Dynamic Range



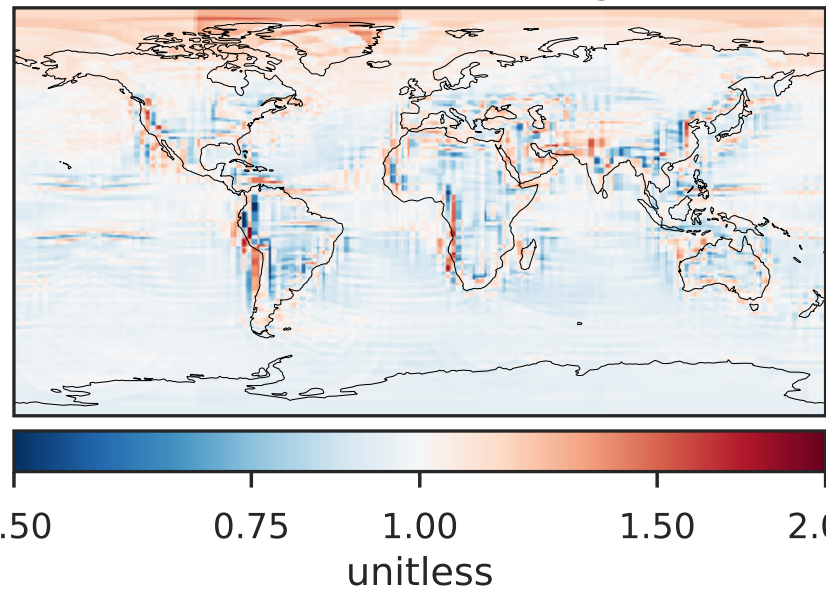
Difference (1x1.25)
Dev - Ref, Restricted Range [5%,95%]



Ratio (1x1.25)
Dev/Ref, Dynamic Range

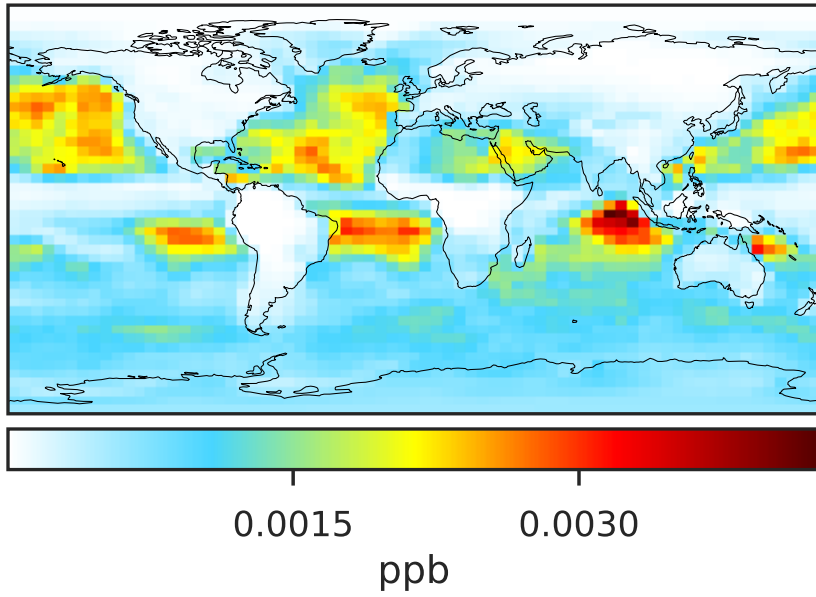


Ratio (1x1.25)
Dev/Ref, Fixed Range

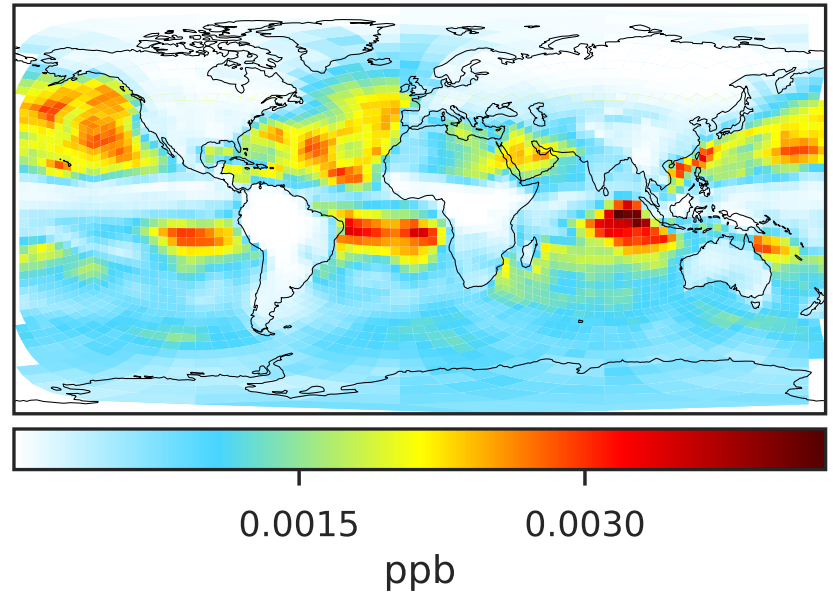


SpeciesConcVW_HOBr (Oct2019)

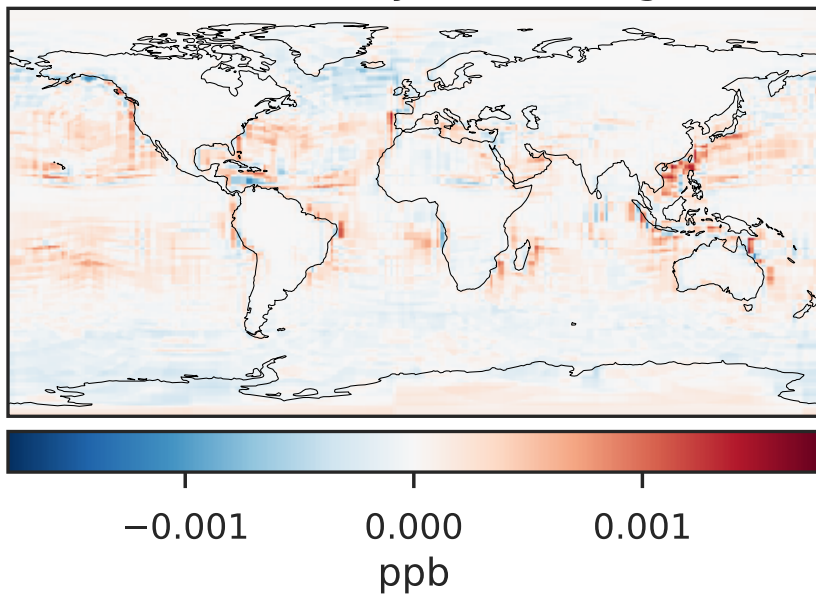
14.3.0-rc.0 (Ref)
4.0x5.0



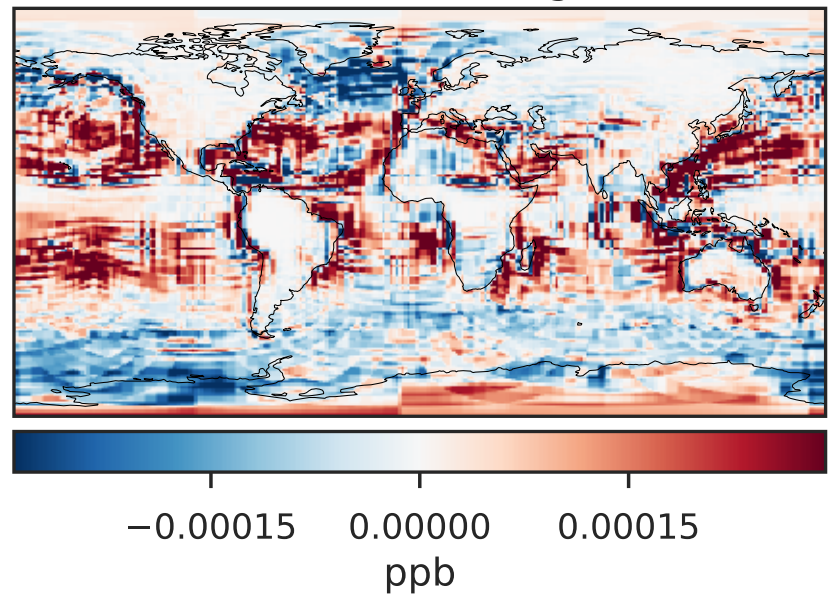
14.3.0-rc.0 (Dev)
c24



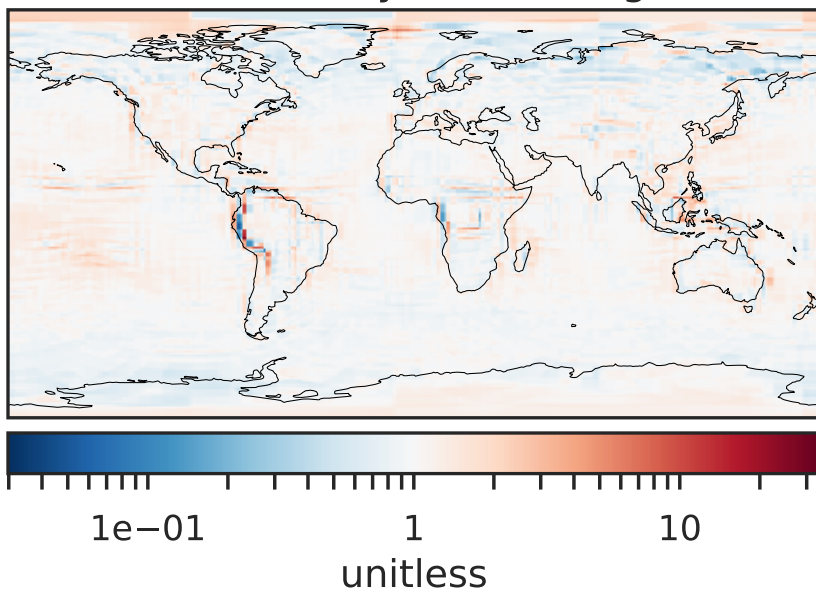
Difference (1x1.25)
Dev - Ref, Dynamic Range



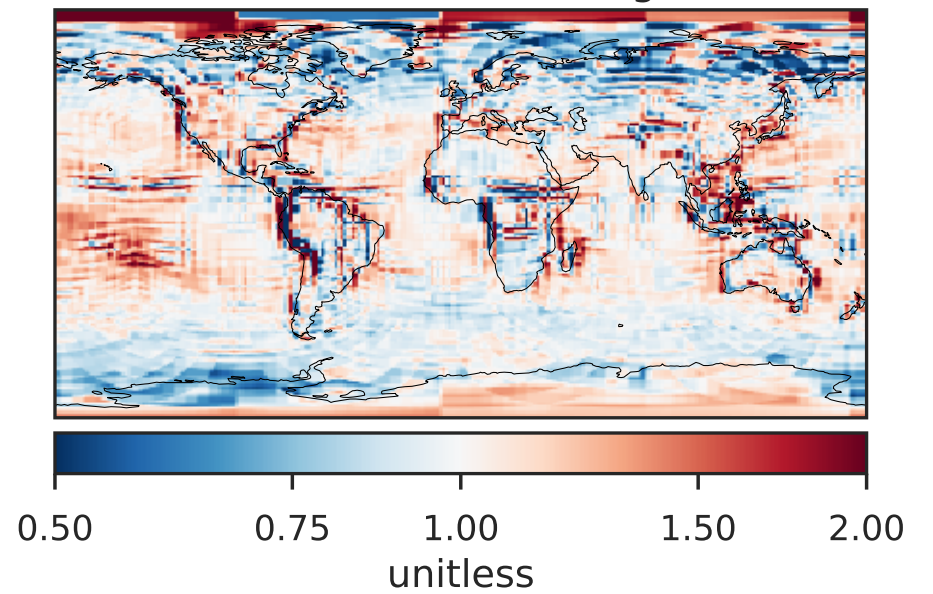
Difference (1x1.25)
Dev - Ref, Restricted Range [5%,95%]



Ratio (1x1.25)
Dev/Ref, Dynamic Range

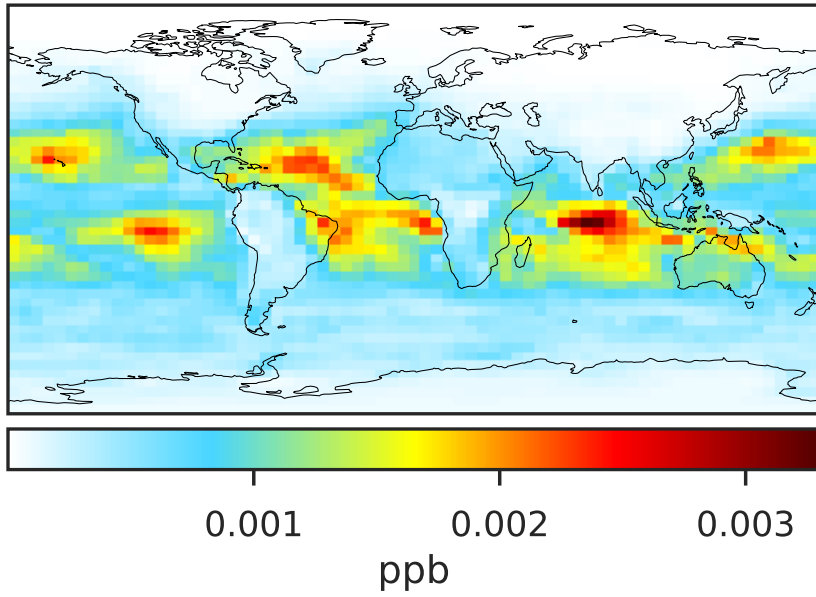


Ratio (1x1.25)
Dev/Ref, Fixed Range

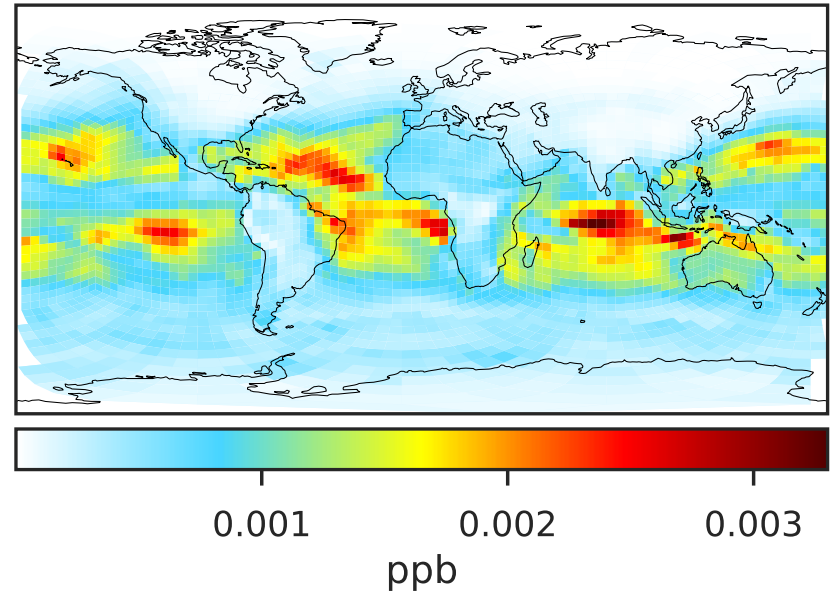


SpeciesConcVV_HBr (Oct2019)

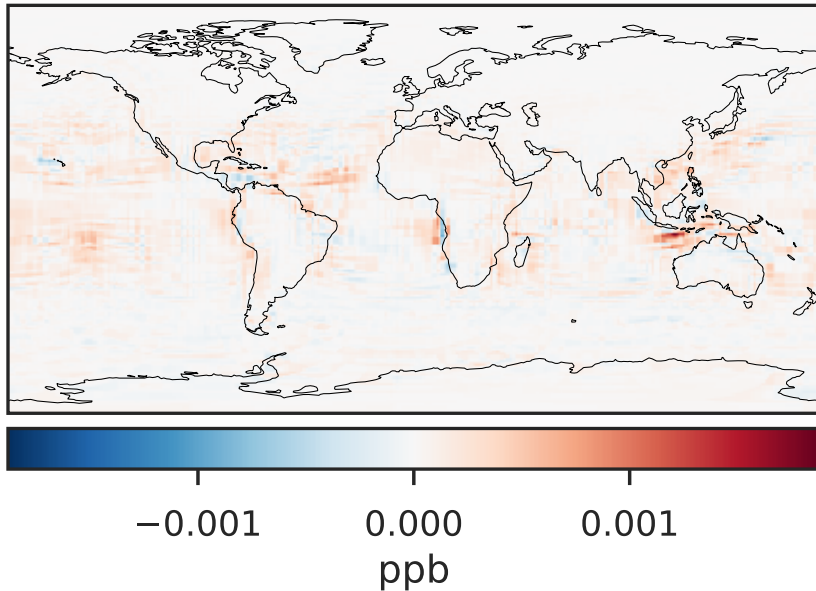
14.3.0-rc.0 (Ref)
4.0x5.0



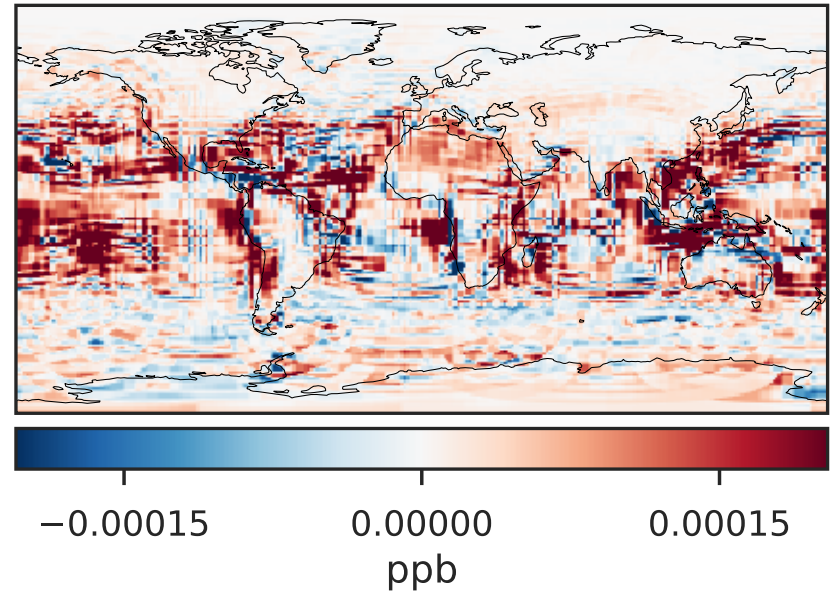
14.3.0-rc.0 (Dev)
c24



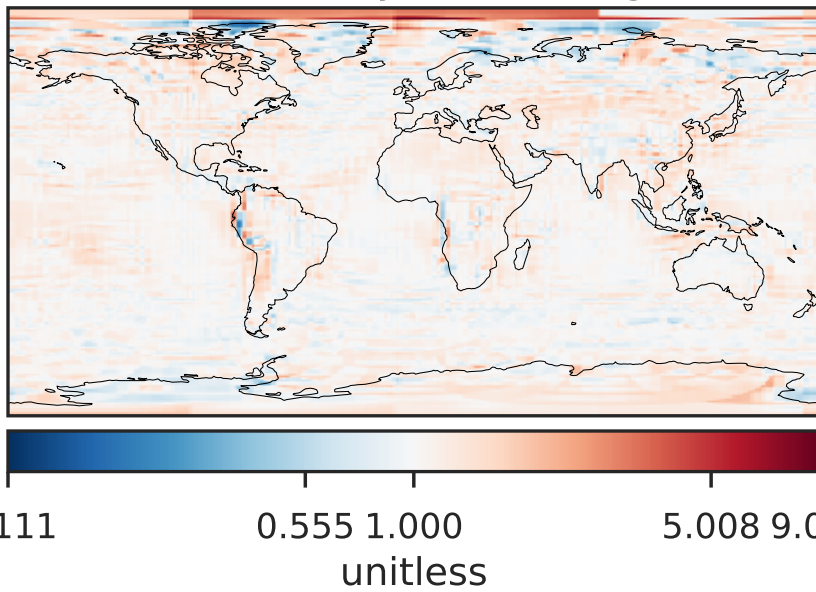
Difference (1x1.25)
Dev - Ref, Dynamic Range



Difference (1x1.25)
Dev - Ref, Restricted Range [5%,95%]



Ratio (1x1.25)
Dev/Ref, Dynamic Range



Ratio (1x1.25)
Dev/Ref, Fixed Range

