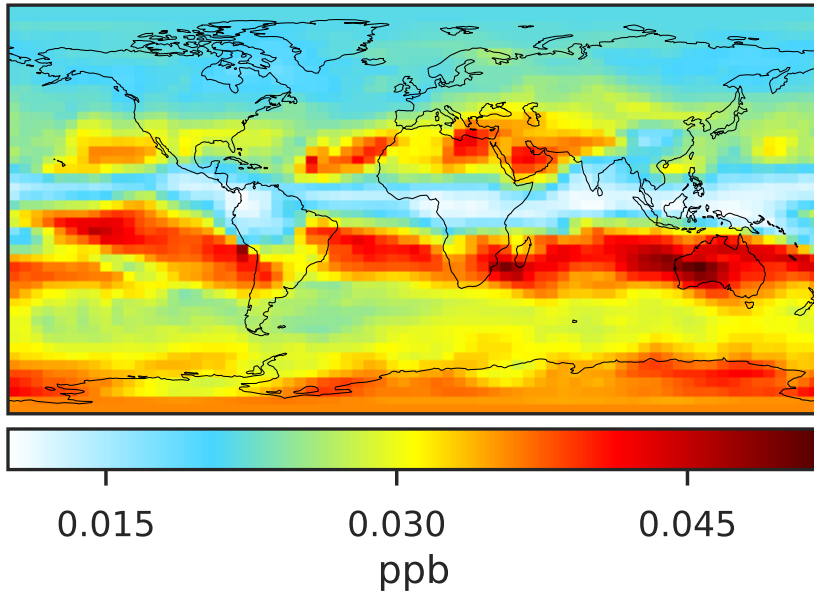
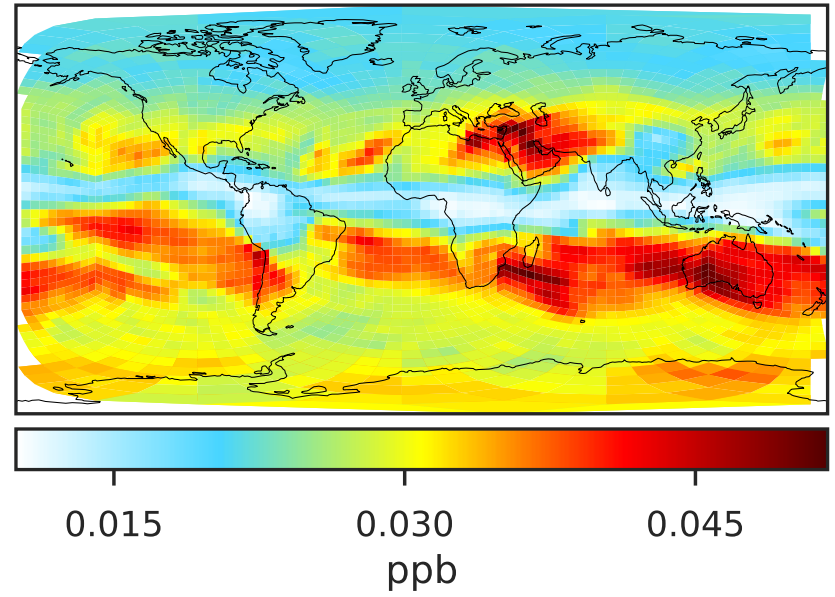


# SpeciesConcVV\_Cly (Oct2019)

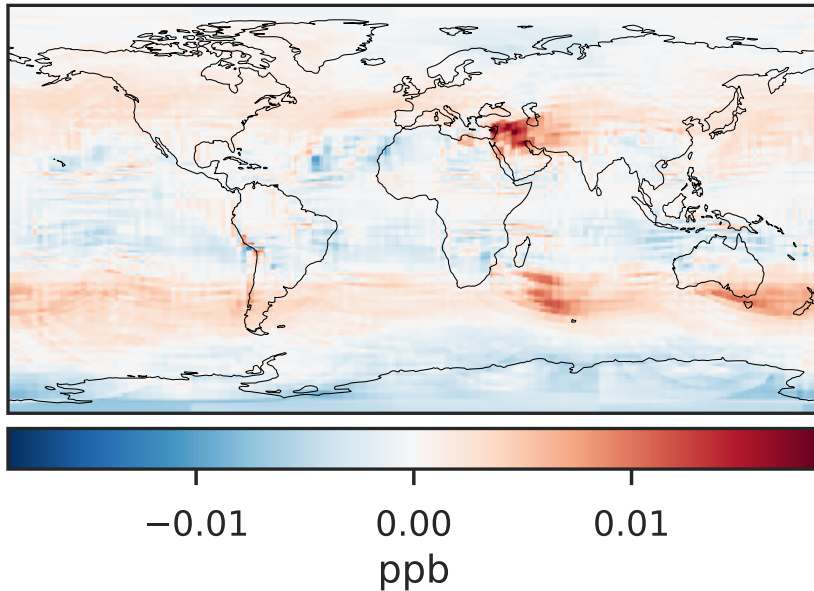
14.3.0-rc.0 (Ref)  
4.0x5.0



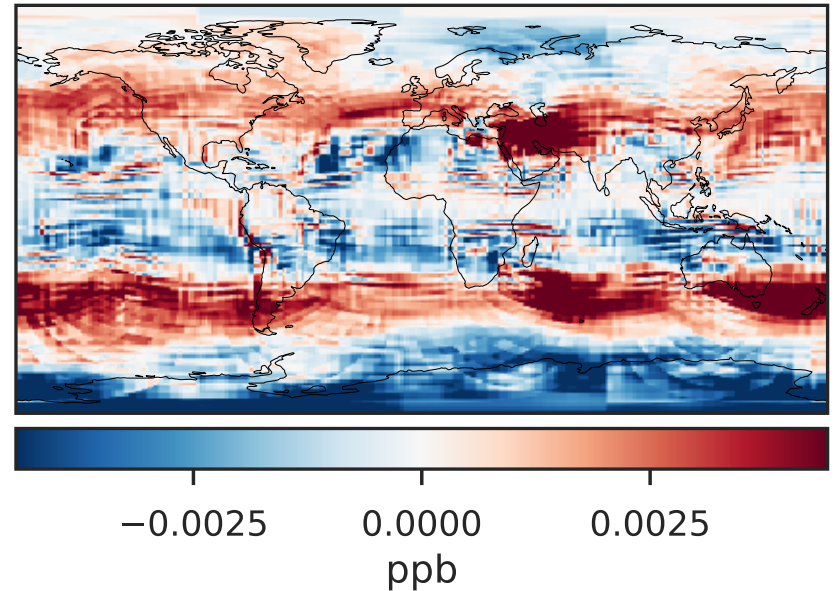
14.3.0-rc.0 (Dev)  
c24



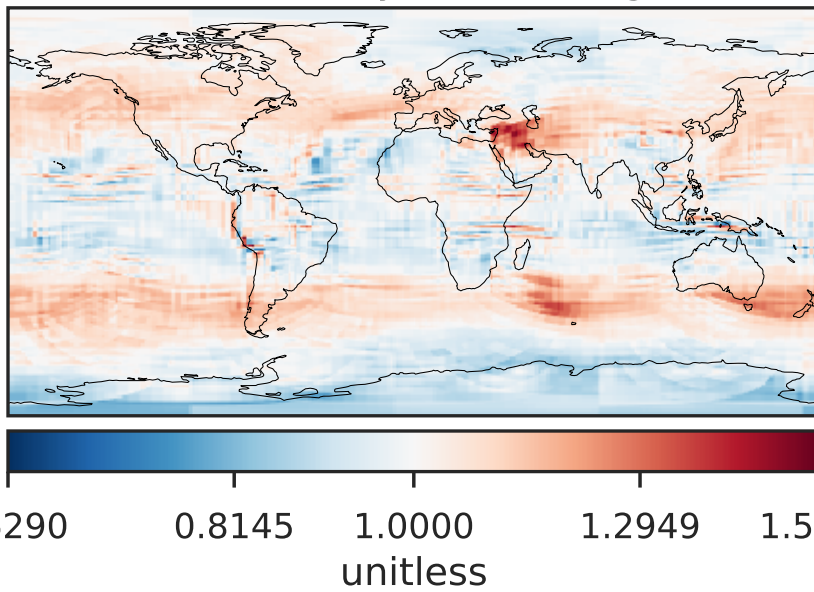
Difference (1x1.25)  
Dev - Ref, Dynamic Range



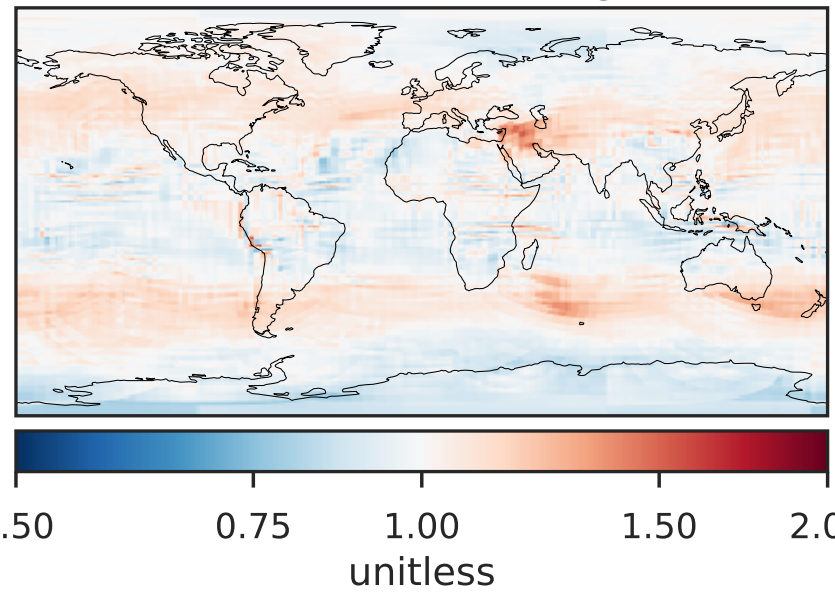
Difference (1x1.25)  
Dev - Ref, Restricted Range [5%,95%]



Ratio (1x1.25)  
Dev/Ref, Dynamic Range

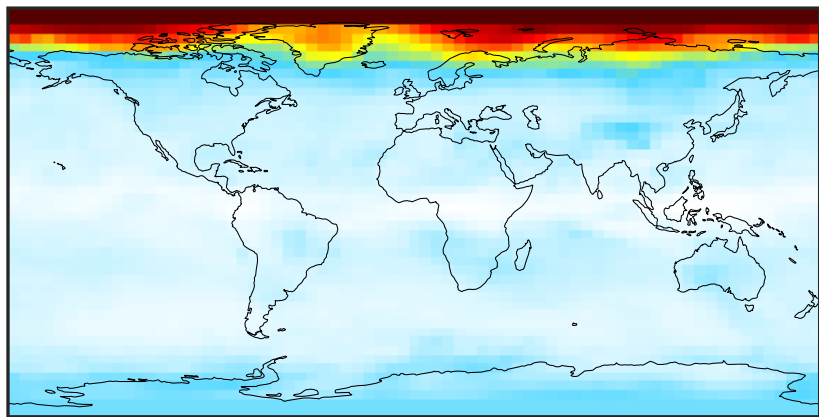


Ratio (1x1.25)  
Dev/Ref, Fixed Range



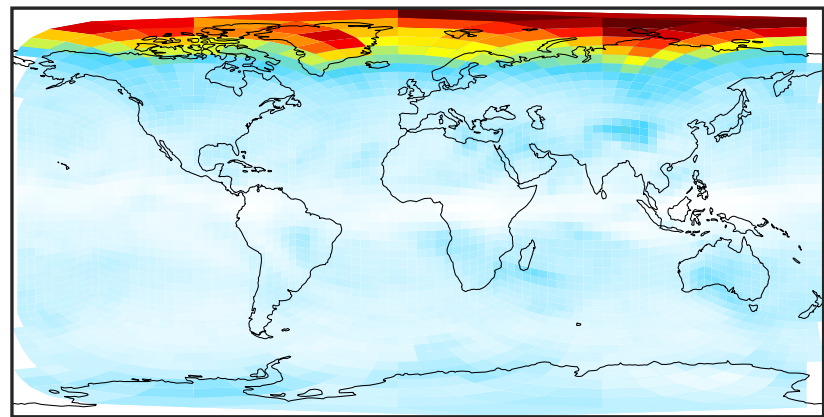
# SpeciesConcVV\_CIOx (Oct2019)

14.3.0-rc.0 (Ref)  
4.0x5.0



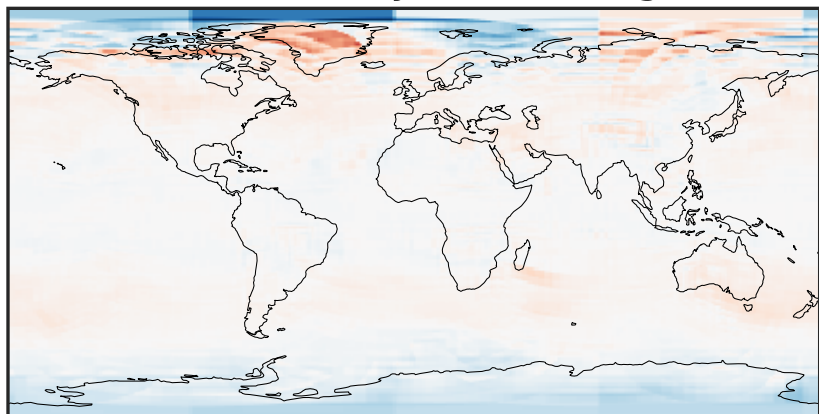
0.0015 0.0030 0.0045  
ppb

14.3.0-rc.0 (Dev)  
c24



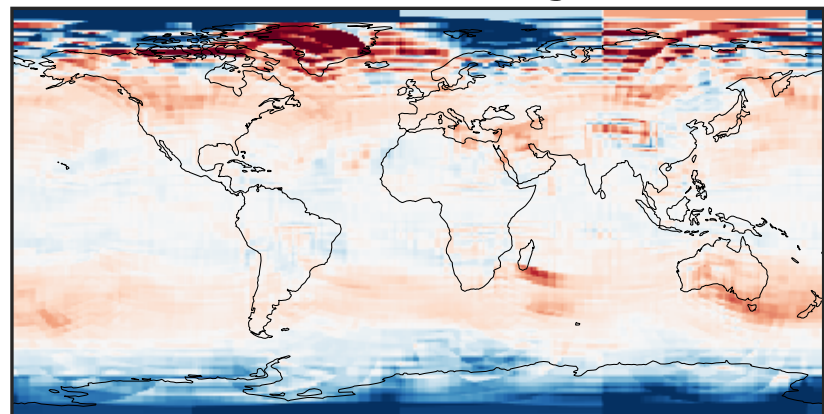
0.0015 0.0030 0.0045  
ppb

Difference (1x1.25)  
Dev - Ref, Dynamic Range



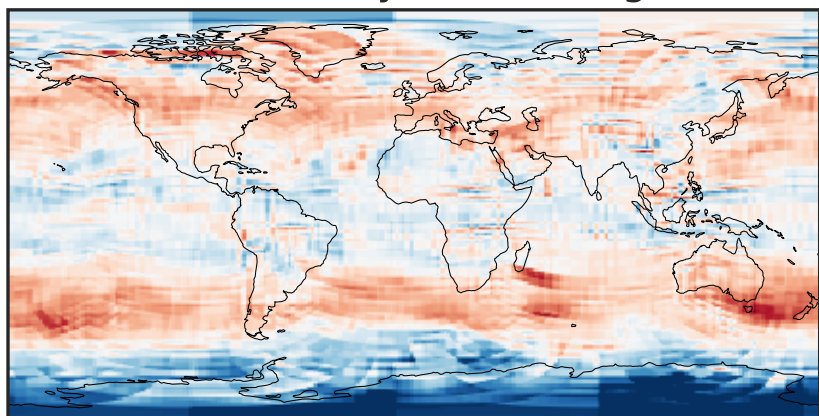
-0.0015 0.0000 0.0015  
ppb

Difference (1x1.25)  
Dev - Ref, Restricted Range [5%,95%]



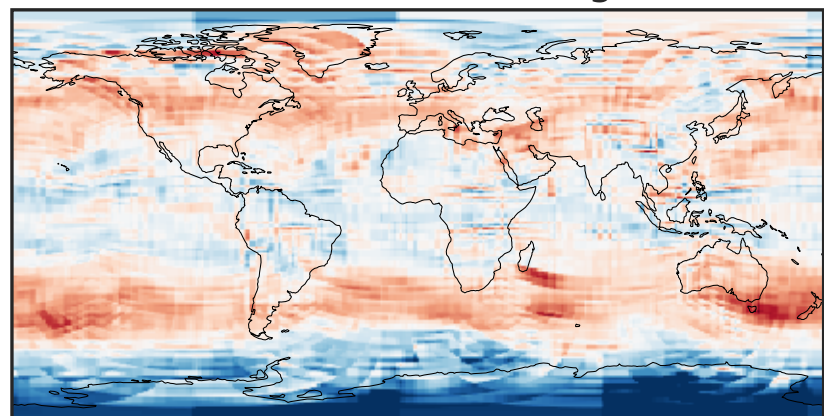
-0.0003 0.0000 0.0003  
ppb

Ratio (1x1.25)  
Dev/Ref, Dynamic Range



0.499 0.750 1.000 1.502 2.003  
unitless

Ratio (1x1.25)  
Dev/Ref, Fixed Range

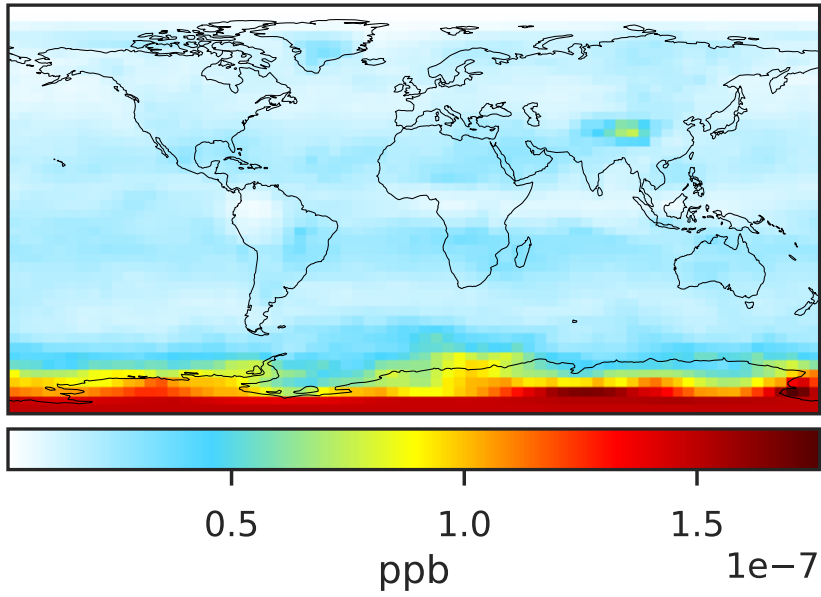


0.50 0.75 1.00 1.50 2.00  
unitless

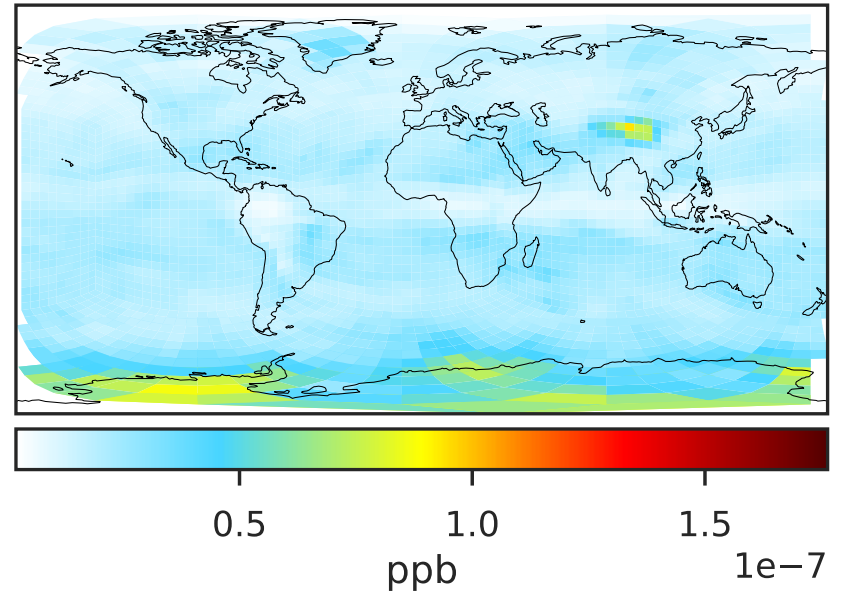


# SpeciesConcVV\_CI (Oct2019)

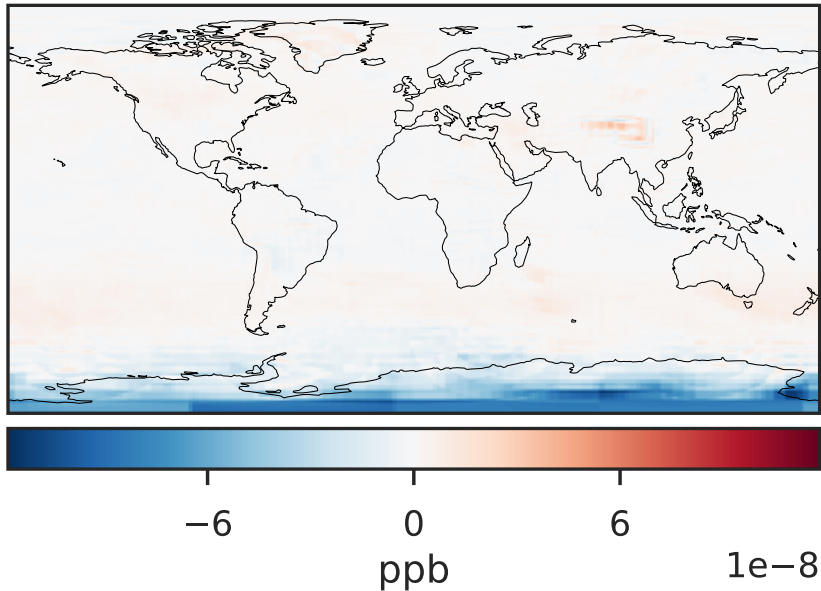
14.3.0-rc.0 (Ref)  
4.0x5.0



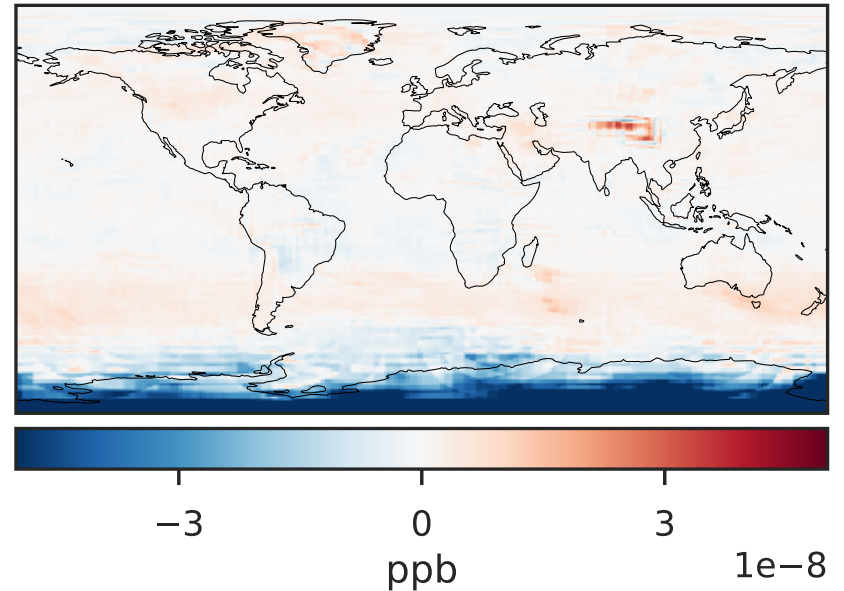
14.3.0-rc.0 (Dev)  
c24



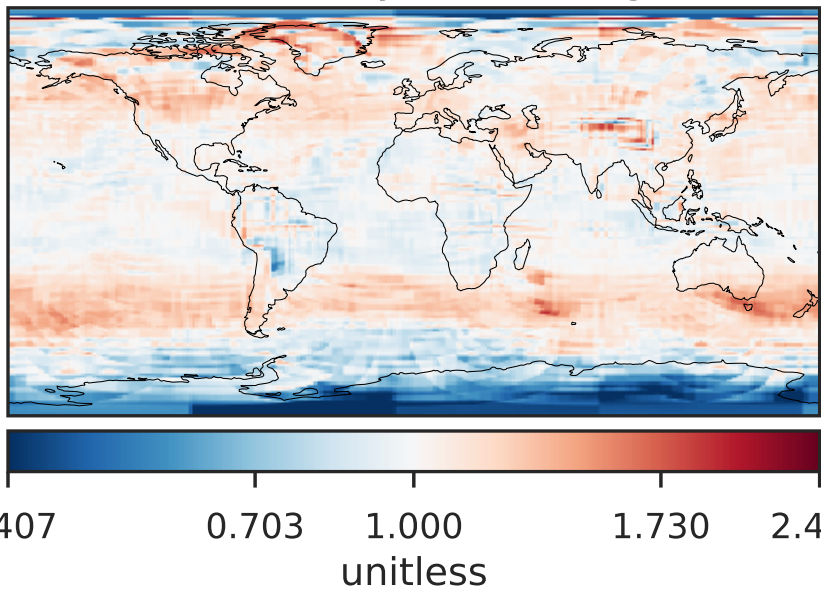
Difference (1x1.25)  
Dev - Ref, Dynamic Range



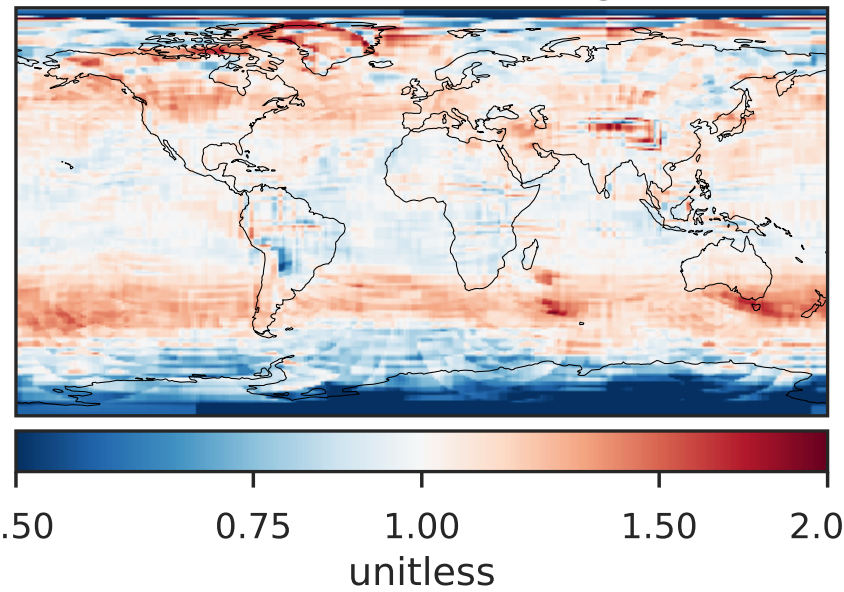
Difference (1x1.25)  
Dev - Ref, Restricted Range [5%,95%]



Ratio (1x1.25)  
Dev/Ref, Dynamic Range

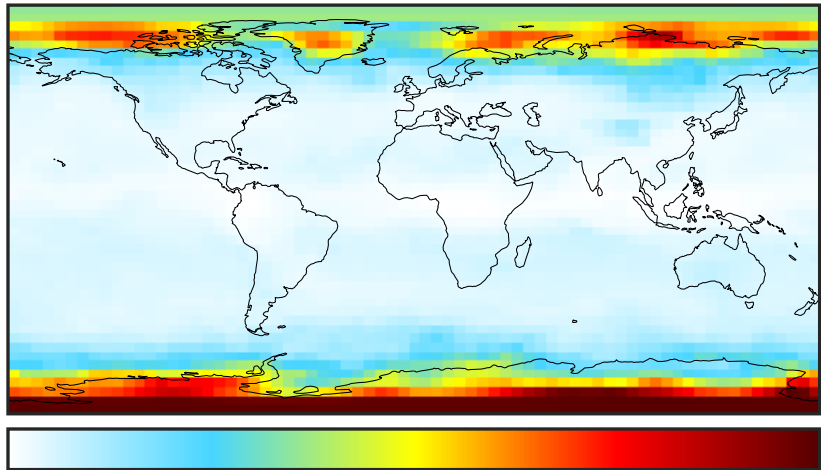


Ratio (1x1.25)  
Dev/Ref, Fixed Range



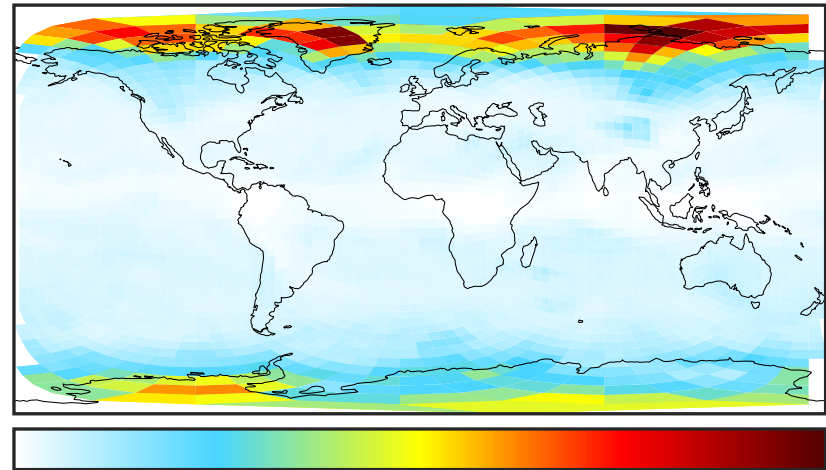
# SpeciesConcVV\_CIO (Oct2019)

14.3.0-rc.0 (Ref)  
4.0x5.0



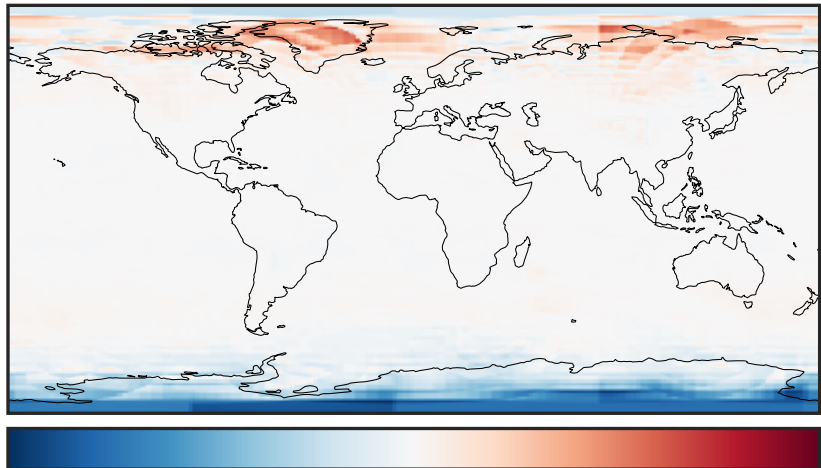
0.00015 0.00030 0.00045  
ppb

14.3.0-rc.0 (Dev)  
c24



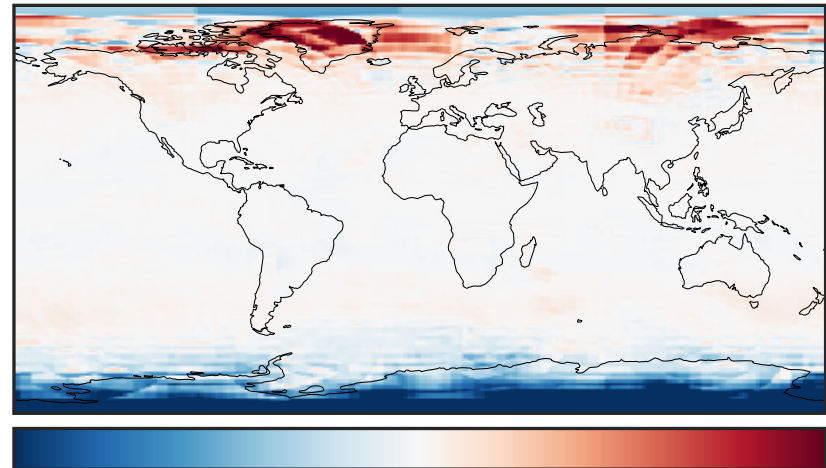
0.00015 0.00030 0.00045  
ppb

Difference (1x1.25)  
Dev - Ref, Dynamic Range



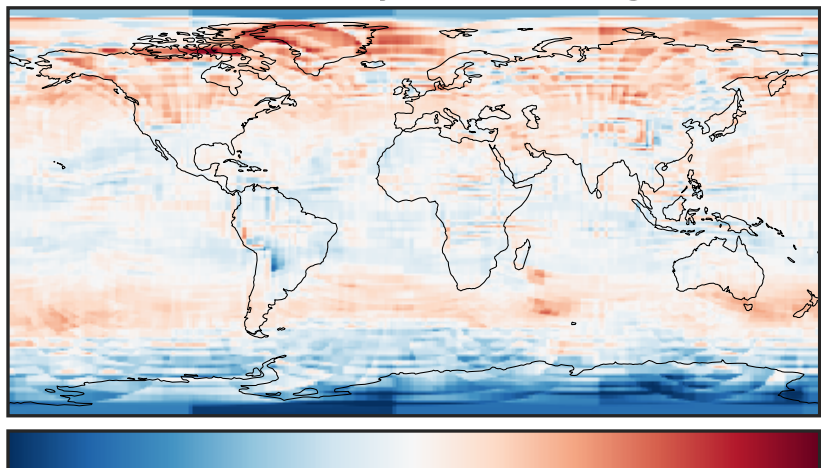
-0.0002 0.0000 0.0002  
ppb

Difference (1x1.25)  
Dev - Ref, Restricted Range [5%,95%]



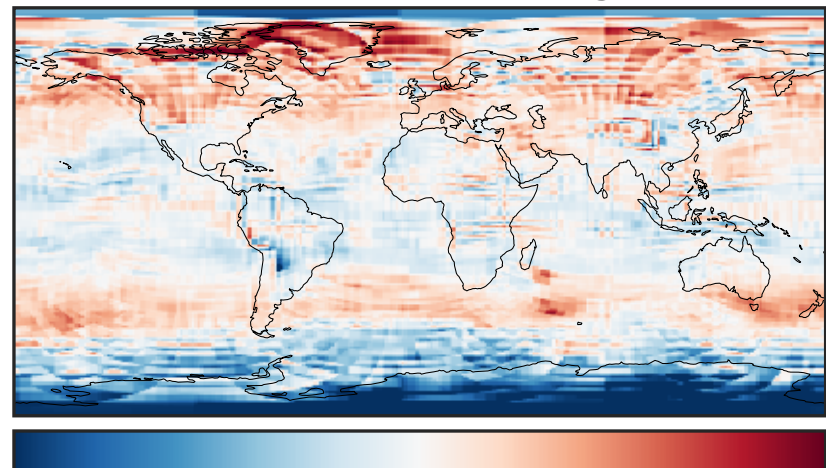
-8 0 8  
ppb  $1e-5$

Ratio (1x1.25)  
Dev/Ref, Dynamic Range



0.369 0.684 1.000 1.855 2.710  
unitless

Ratio (1x1.25)  
Dev/Ref, Fixed Range

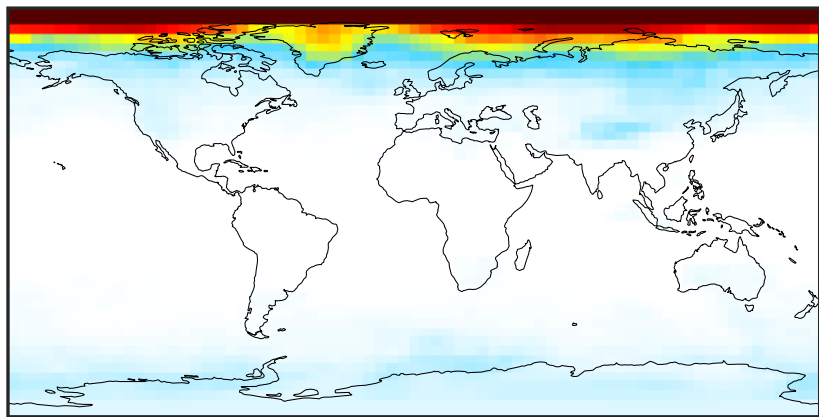


0.50 0.75 1.00 1.50 2.00  
unitless



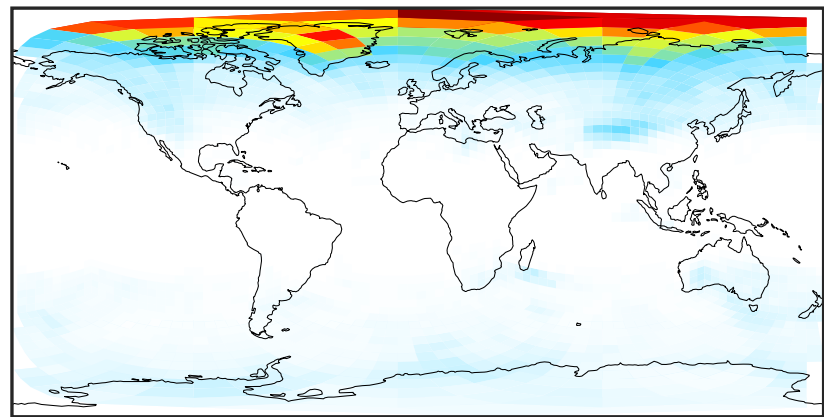
# SpeciesConcVV\_Cl2 (Oct2019)

14.3.0-rc.0 (Ref)  
4.0x5.0



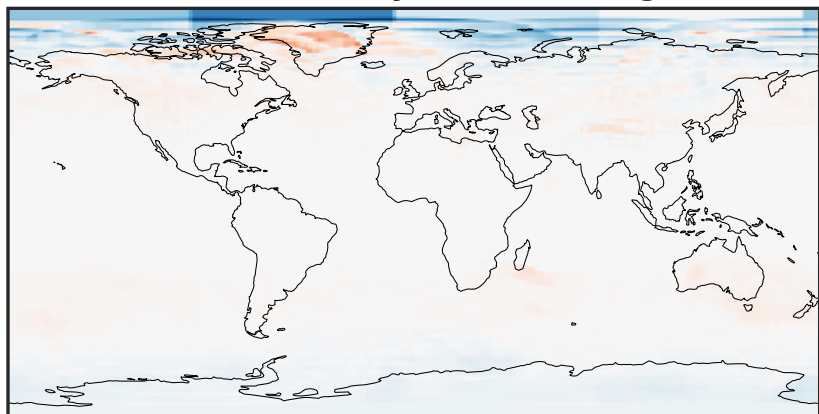
0.0005 0.0010 0.0015  
ppb

14.3.0-rc.0 (Dev)  
c24



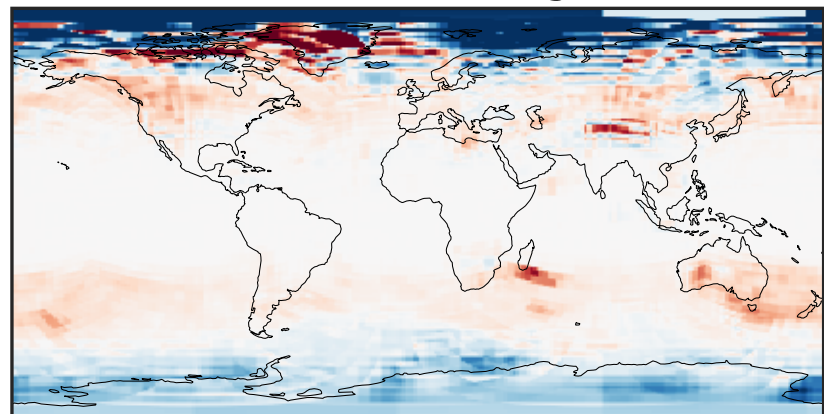
0.0005 0.0010 0.0015  
ppb

Difference (1x1.25)  
Dev - Ref, Dynamic Range



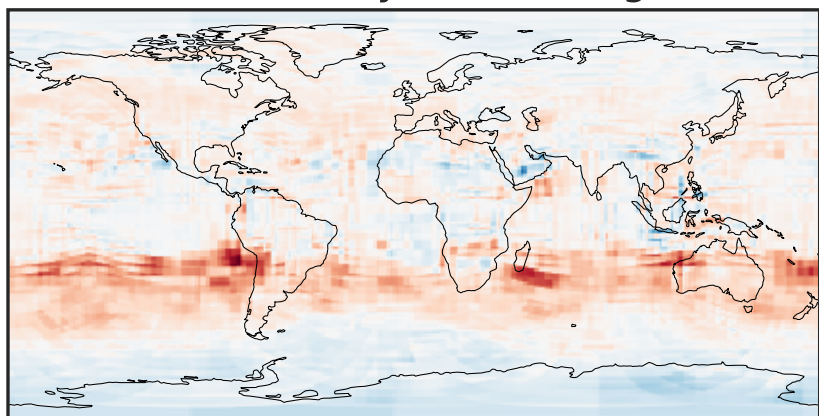
-0.0005 0.0000 0.0005  
ppb

Difference (1x1.25)  
Dev - Ref, Restricted Range [5%,95%]



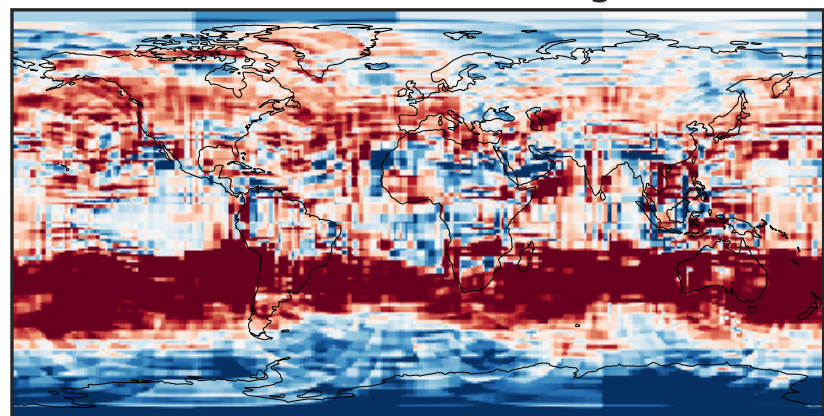
-0.0001 0.0000 0.0001  
ppb

Ratio (1x1.25)  
Dev/Ref, Dynamic Range



1e-01 1 10  
unitless

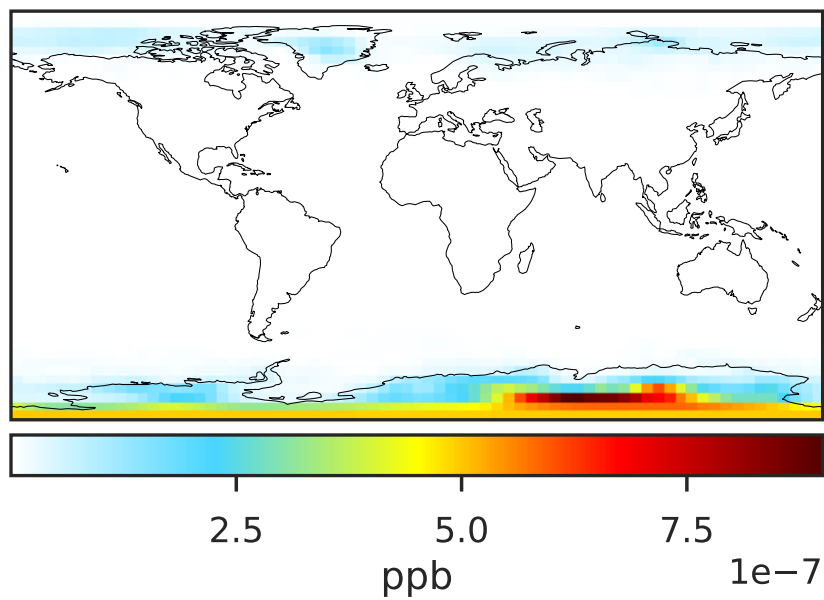
Ratio (1x1.25)  
Dev/Ref, Fixed Range



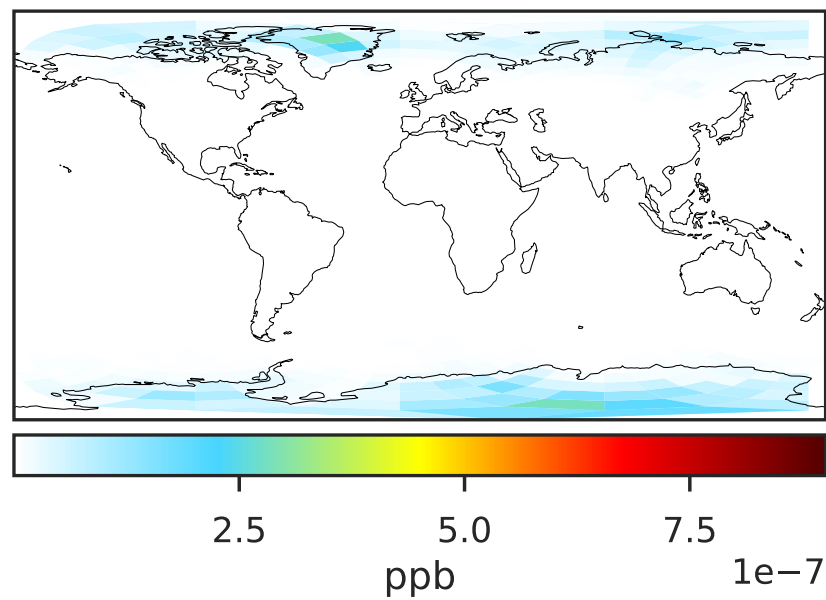
0.50 0.75 1.00 1.50 2.00  
unitless

# SpeciesConcVV\_Cl202 (Oct2019)

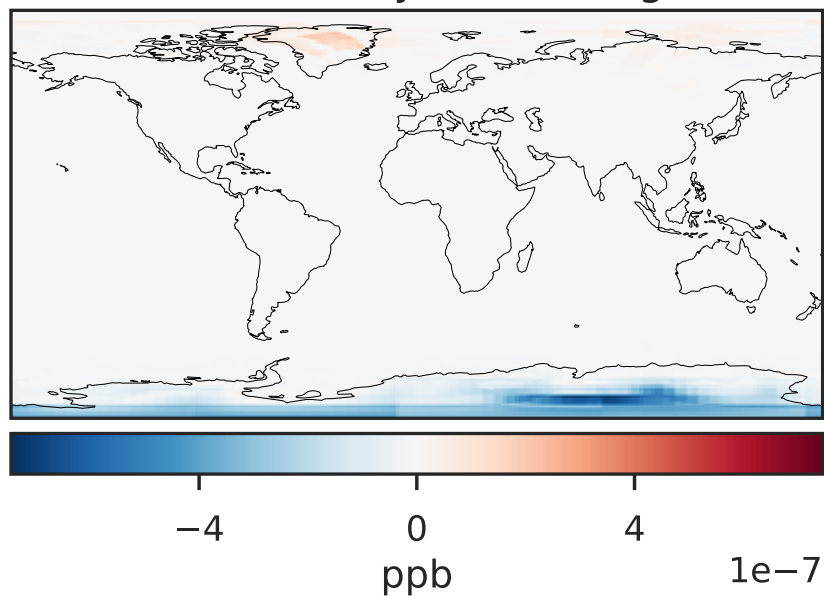
14.3.0-rc.0 (Ref)  
4.0x5.0



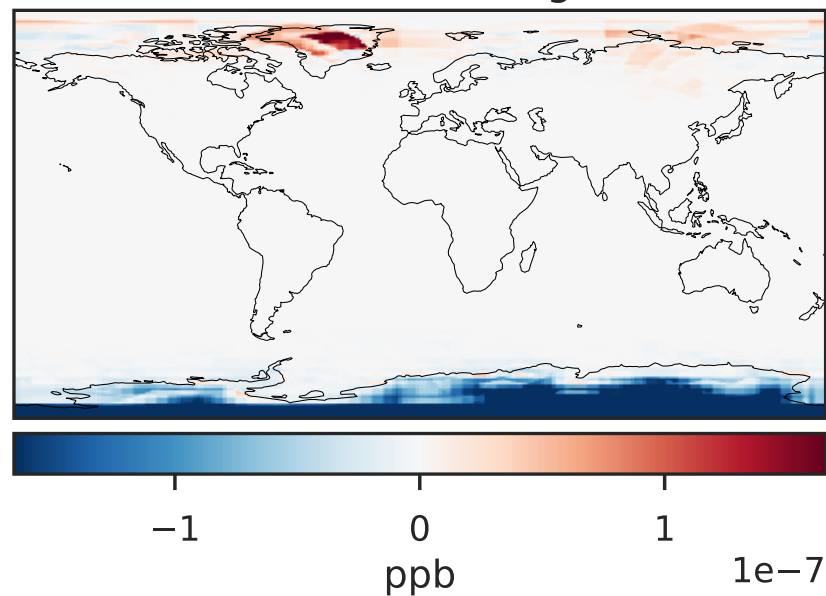
14.3.0-rc.0 (Dev)  
c24



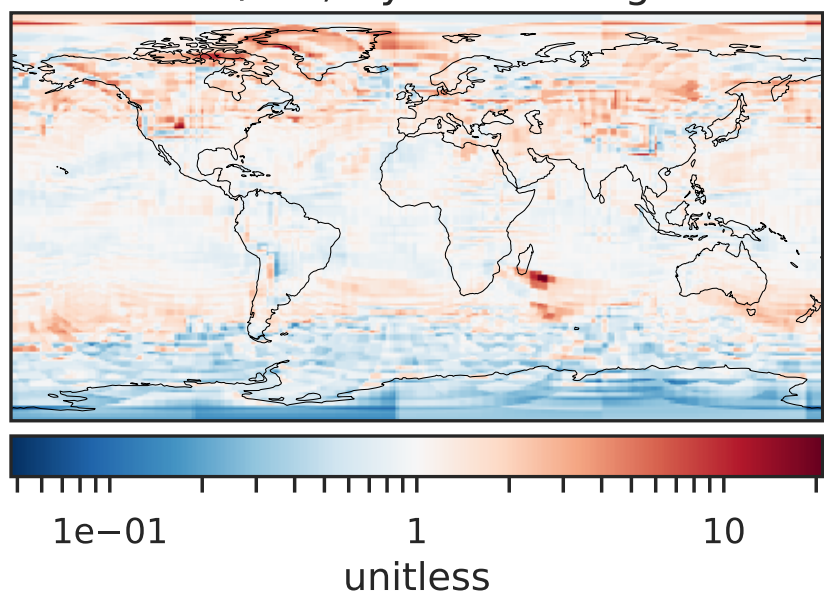
Difference (1x1.25)  
Dev - Ref, Dynamic Range



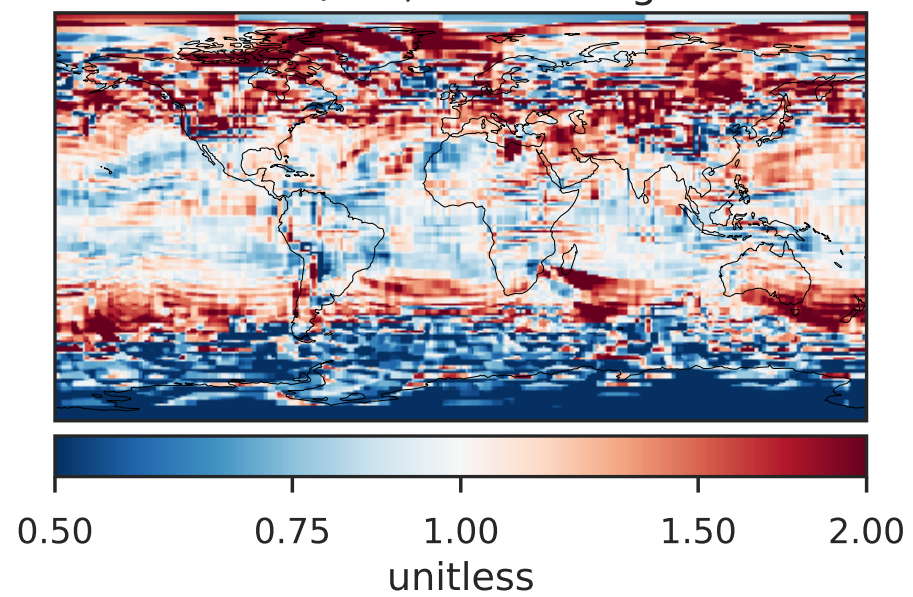
Difference (1x1.25)  
Dev - Ref, Restricted Range [5%,95%]



Ratio (1x1.25)  
Dev/Ref, Dynamic Range



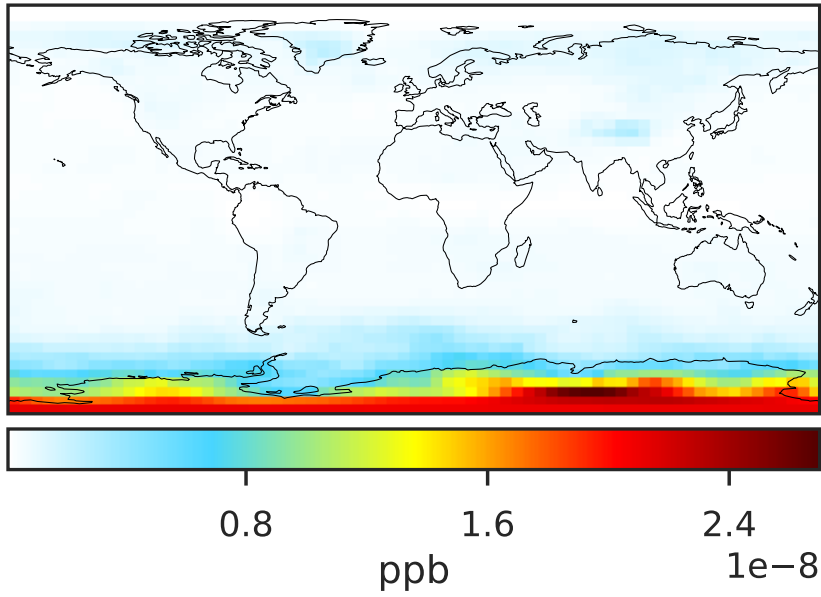
Ratio (1x1.25)  
Dev/Ref, Fixed Range



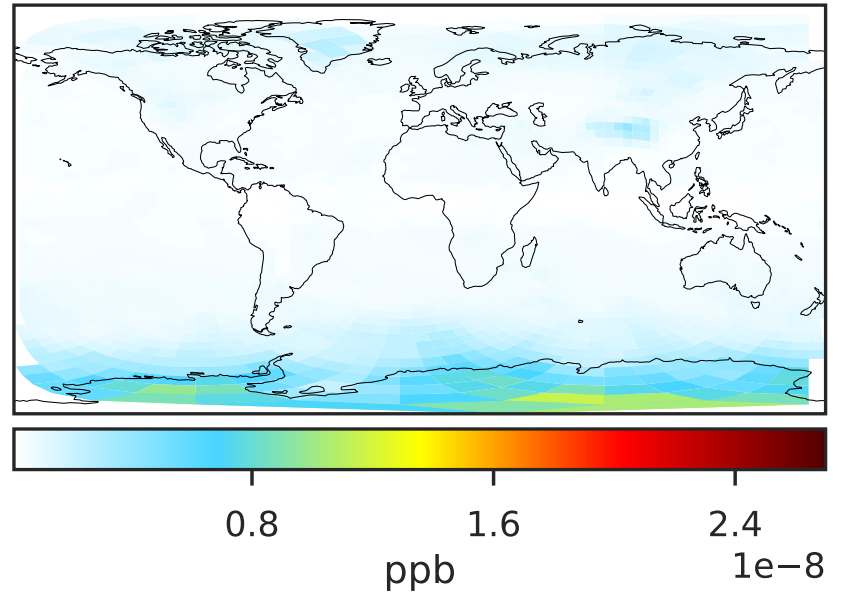


# SpeciesConcVV\_C100 (Oct2019)

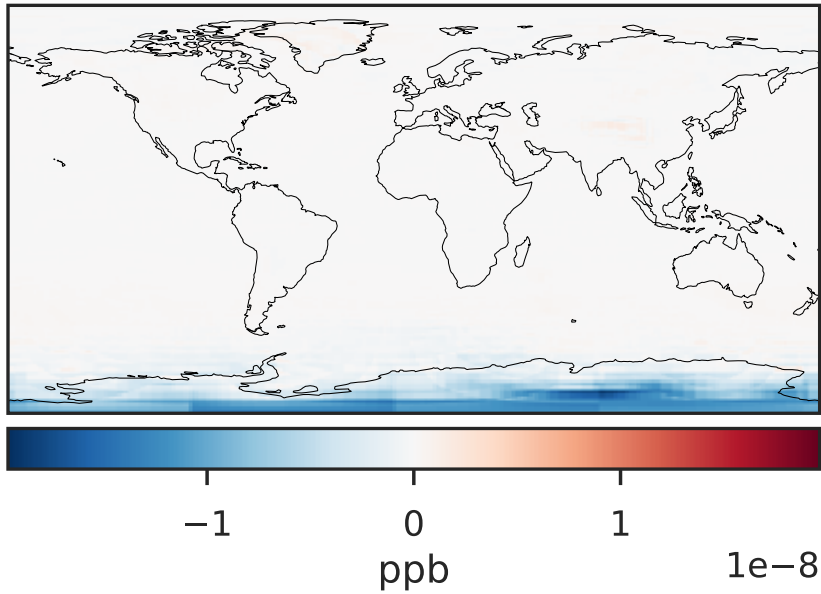
14.3.0-rc.0 (Ref)  
4.0x5.0



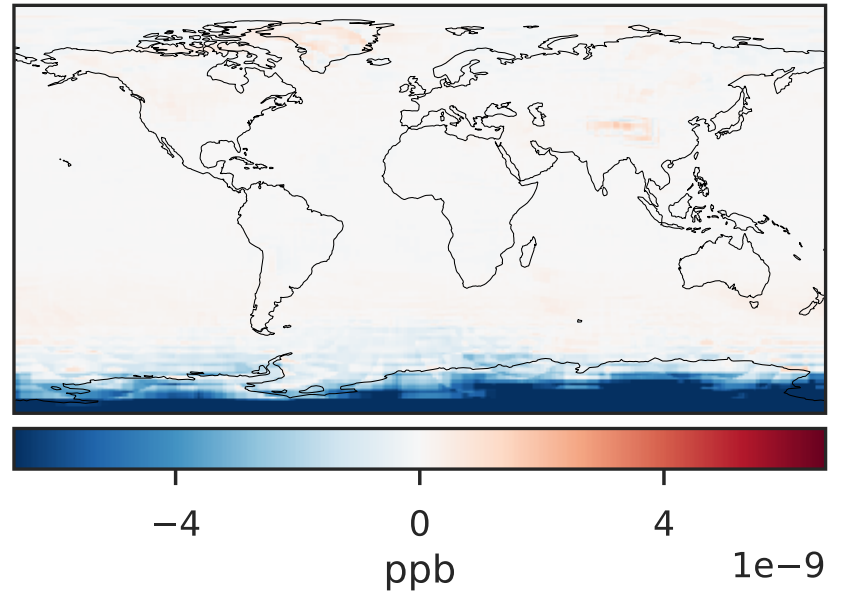
14.3.0-rc.0 (Dev)  
c24



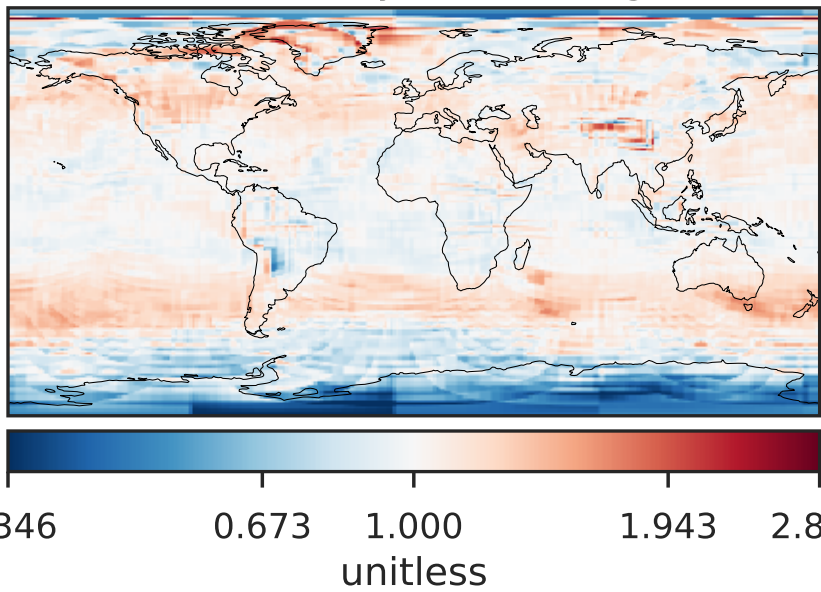
Difference (1x1.25)  
Dev - Ref, Dynamic Range



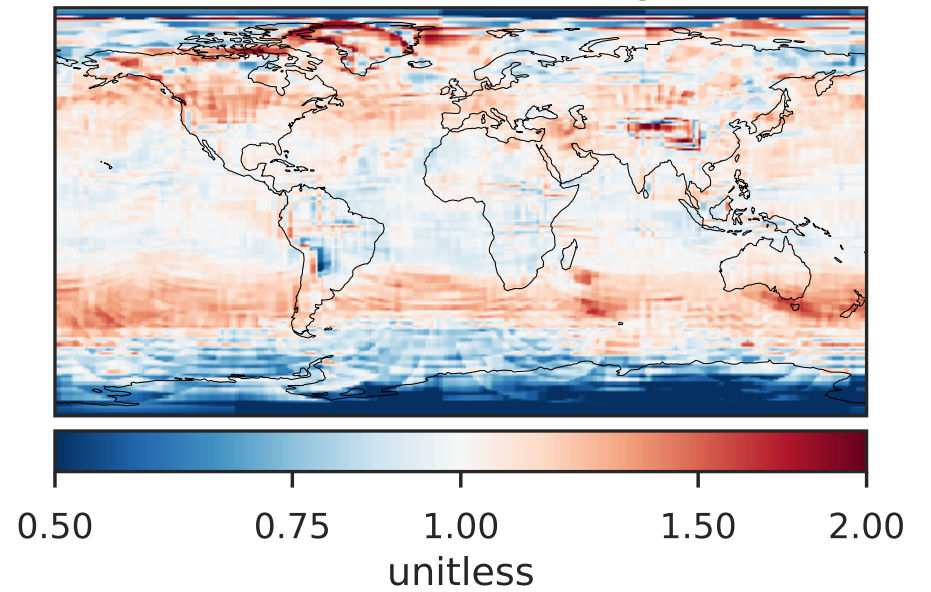
Difference (1x1.25)  
Dev - Ref, Restricted Range [5%,95%]



Ratio (1x1.25)  
Dev/Ref, Dynamic Range

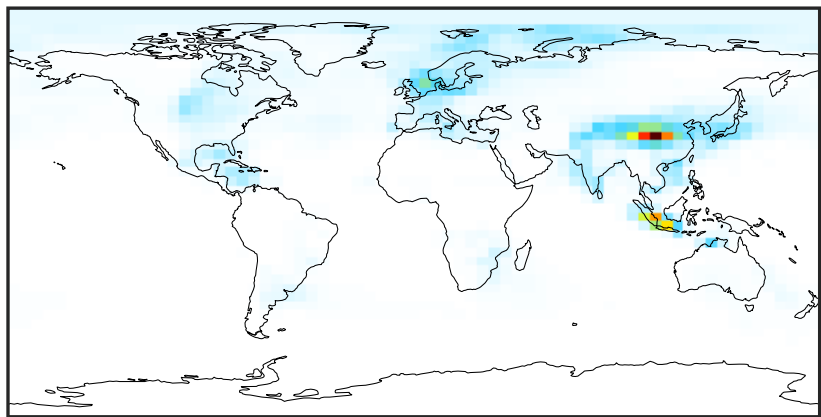


Ratio (1x1.25)  
Dev/Ref, Fixed Range



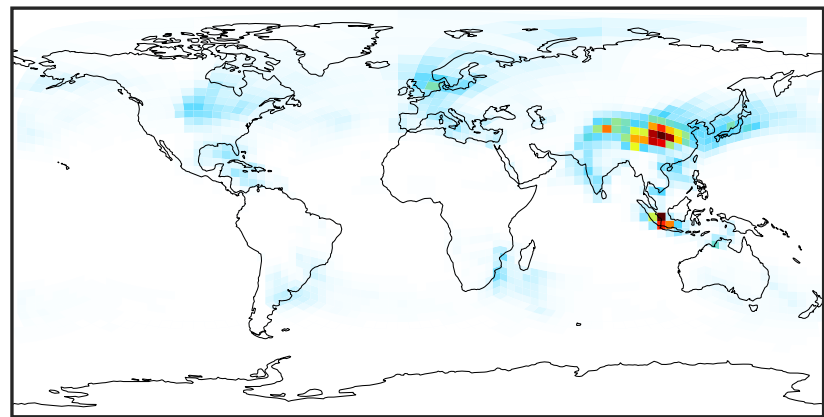
# SpeciesConcVW\_CINO2 (Oct2019)

14.3.0-rc.0 (Ref)  
4.0x5.0



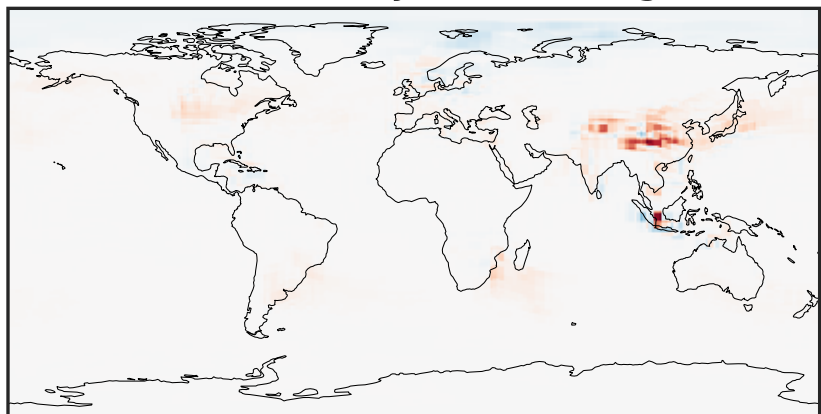
0.0001 0.0002 0.0003  
ppb

14.3.0-rc.0 (Dev)  
c24



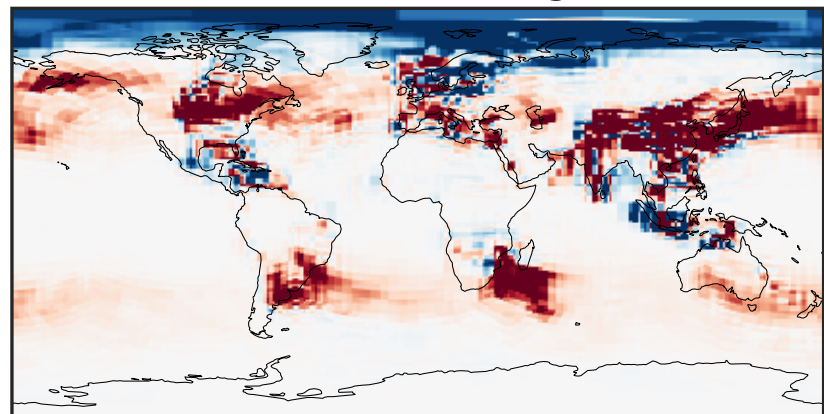
0.0001 0.0002 0.0003  
ppb

Difference (1x1.25)  
Dev - Ref, Dynamic Range



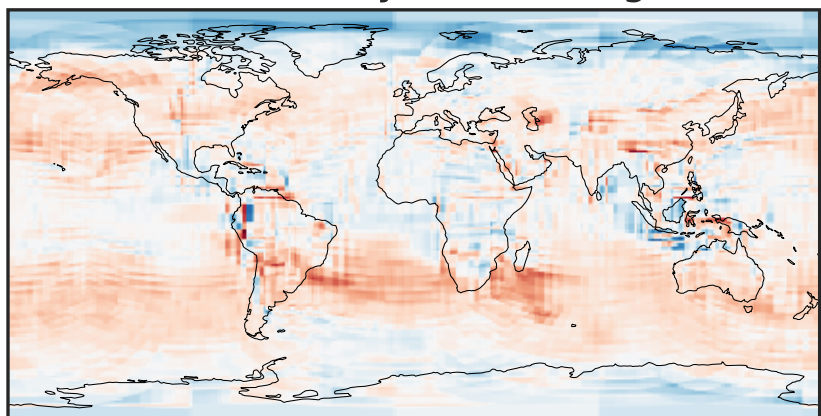
-0.00015 0.00000 0.00015  
ppb

Difference (1x1.25)  
Dev - Ref, Restricted Range [5%,95%]



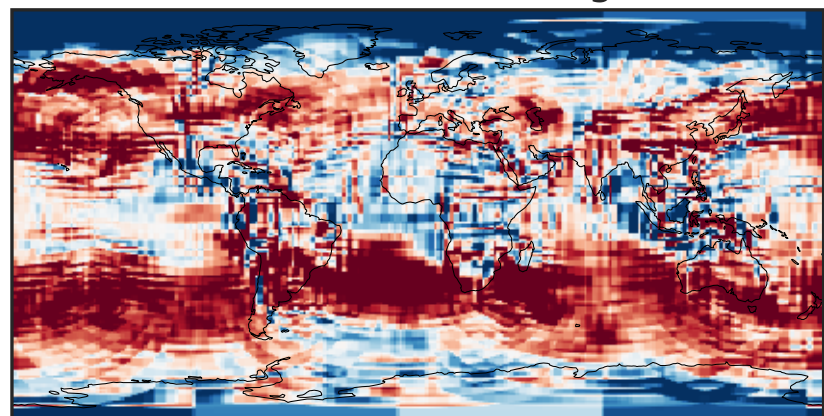
-5 0 5  
ppb 1e-6

Ratio (1x1.25)  
Dev/Ref, Dynamic Range



1e-01 1 10  
unitless

Ratio (1x1.25)  
Dev/Ref, Fixed Range

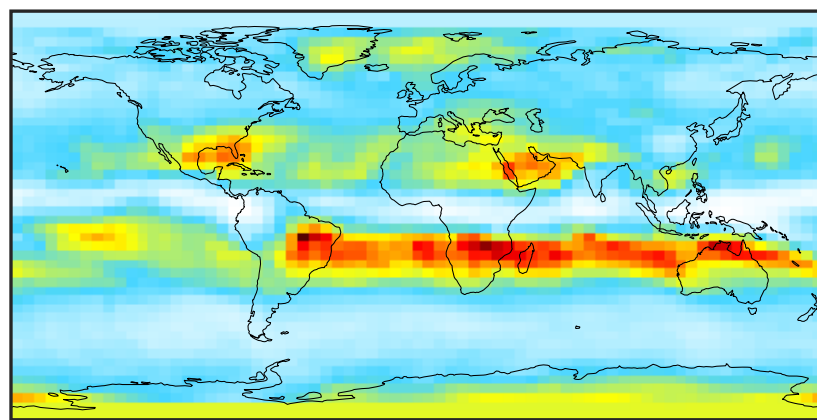


0.50 0.75 1.00 1.50 2.00  
unitless



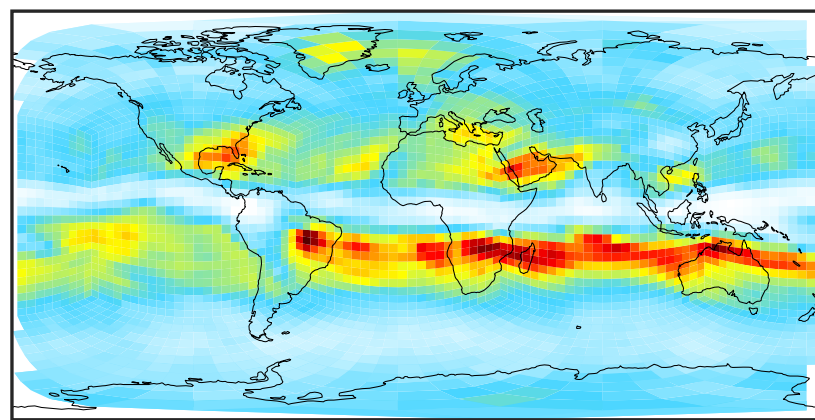
# SpeciesConcVW\_CIN03 (Oct2019)

14.3.0-rc.0 (Ref)  
4.0x5.0



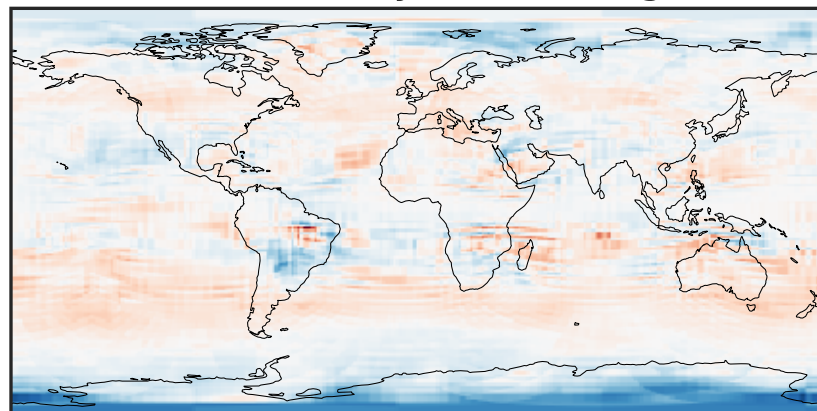
0.0003 0.0006 0.0009  
ppb

14.3.0-rc.0 (Dev)  
c24



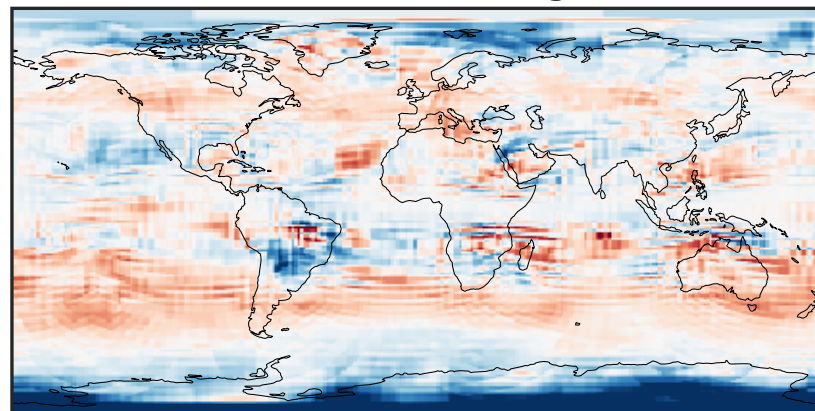
0.0003 0.0006 0.0009  
ppb

Difference (1x1.25)  
Dev - Ref, Dynamic Range



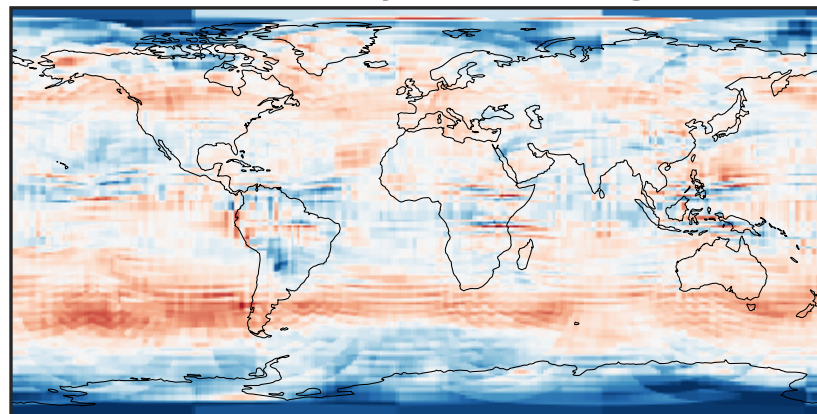
-0.00025 0.00000 0.00025  
ppb

Difference (1x1.25)  
Dev - Ref, Restricted Range [5%,95%]



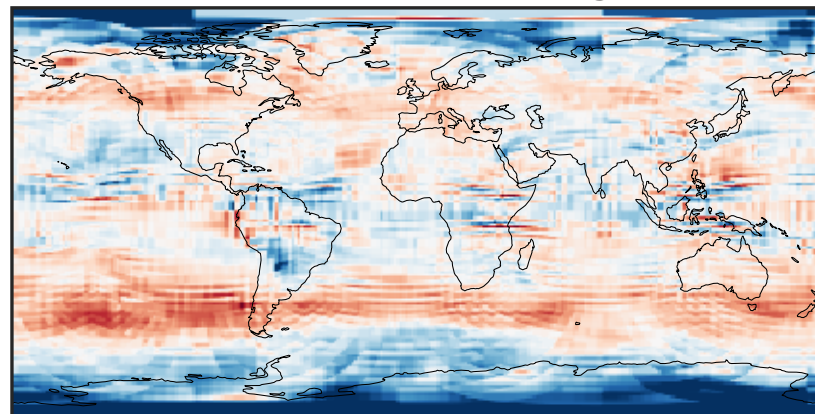
-0.00015 0.00000 0.00015  
ppb

Ratio (1x1.25)  
Dev/Ref, Dynamic Range



0.443 0.722 1.000 1.628 2.256  
unitless

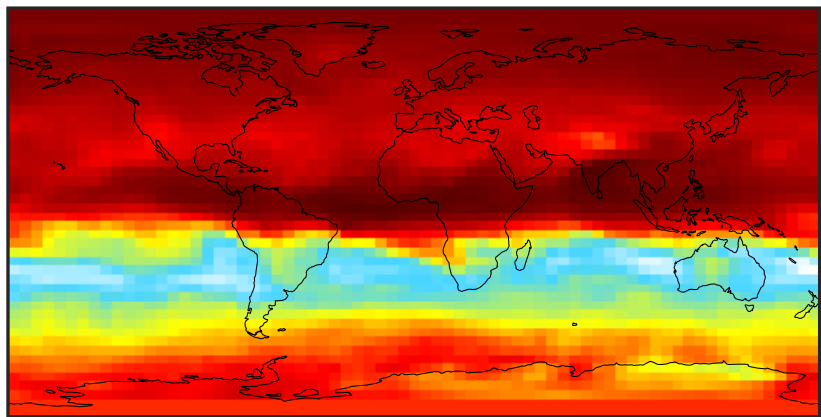
Ratio (1x1.25)  
Dev/Ref, Fixed Range



0.50 0.75 1.00 1.50 2.00  
unitless

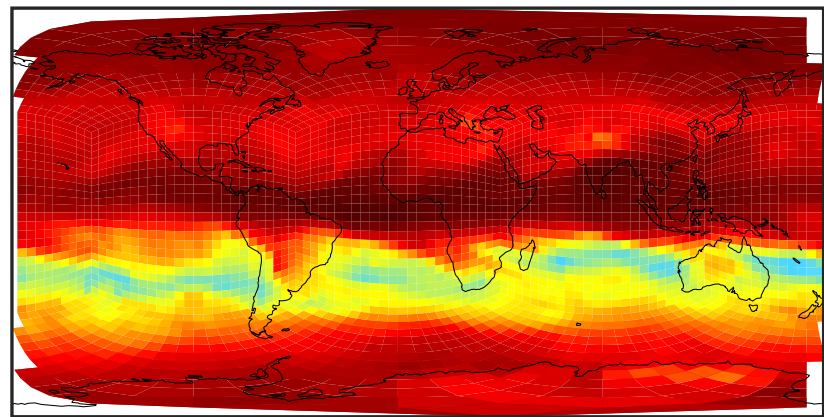
# SpeciesConcVV\_CCl4 (Oct2019)

14.3.0-rc.0 (Ref)  
4.0x5.0



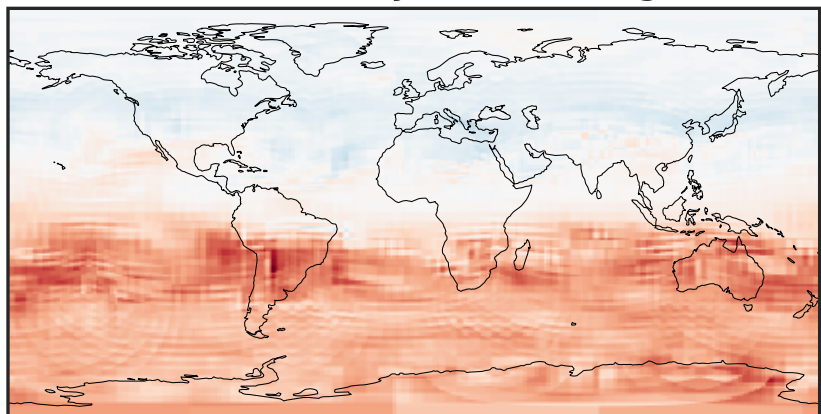
0.0765 0.0766 0.0767 0.0768  
ppb

14.3.0-rc.0 (Dev)  
c24



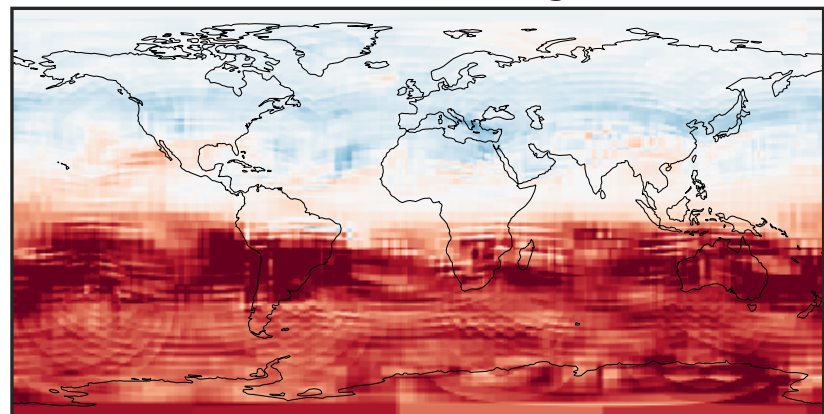
0.0765 0.0766 0.0767 0.0768  
ppb

Difference (1x1.25)  
Dev - Ref, Dynamic Range



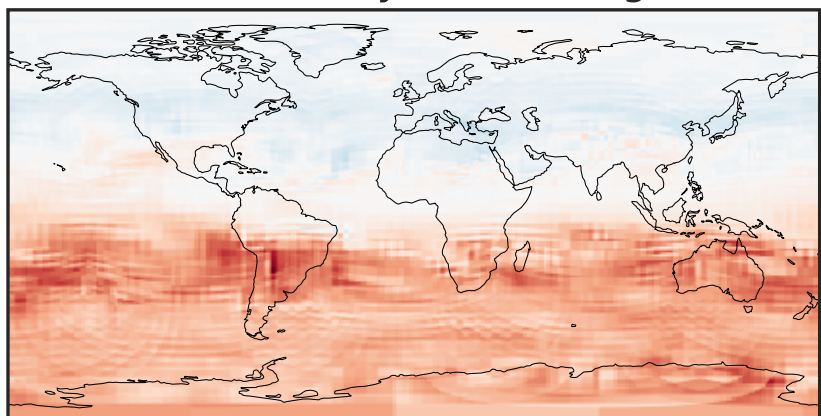
-0.0001 0.0000 0.0001  
ppb

Difference (1x1.25)  
Dev - Ref, Restricted Range [5%,95%]



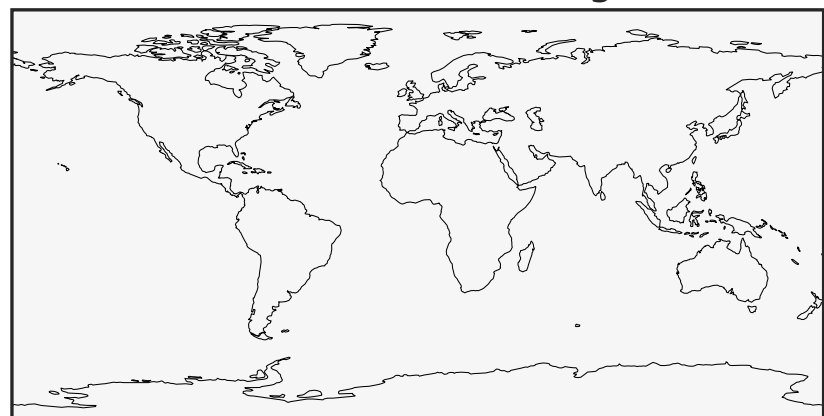
-5 0 5  
ppb 1e-5

Ratio (1x1.25)  
Dev/Ref, Dynamic Range



0.997751 0.998876 1.000000 1.001127 1.002254  
unitless

Ratio (1x1.25)  
Dev/Ref, Fixed Range

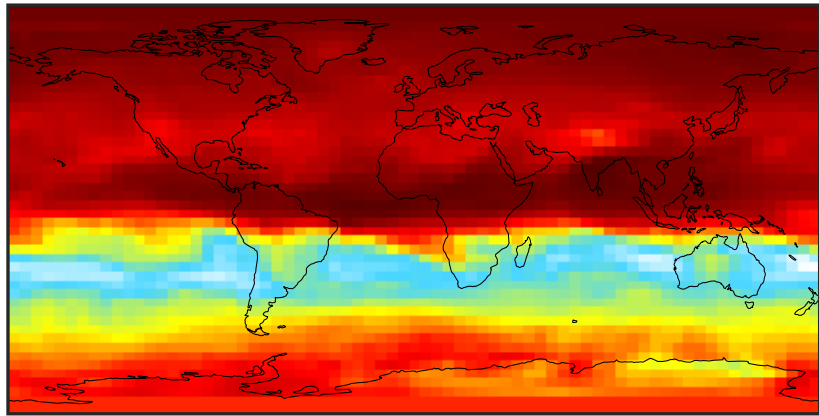


0.50 0.75 1.00 1.50 2.00  
unitless



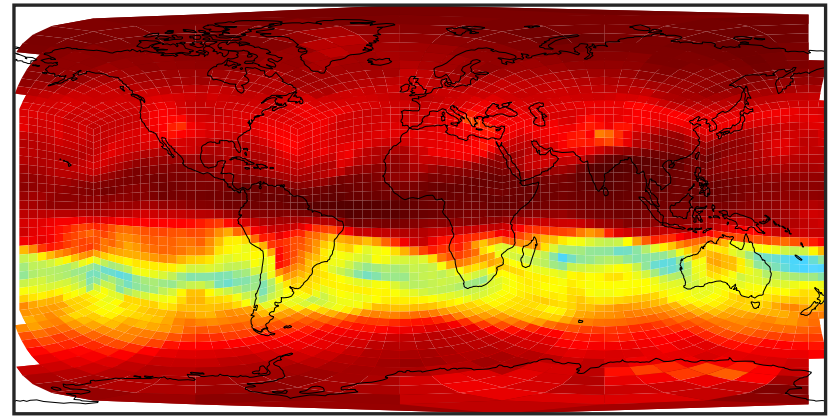
# SpeciesConcVV\_CFCs (Oct2019)

14.3.0-rc.0 (Ref)  
4.0x5.0



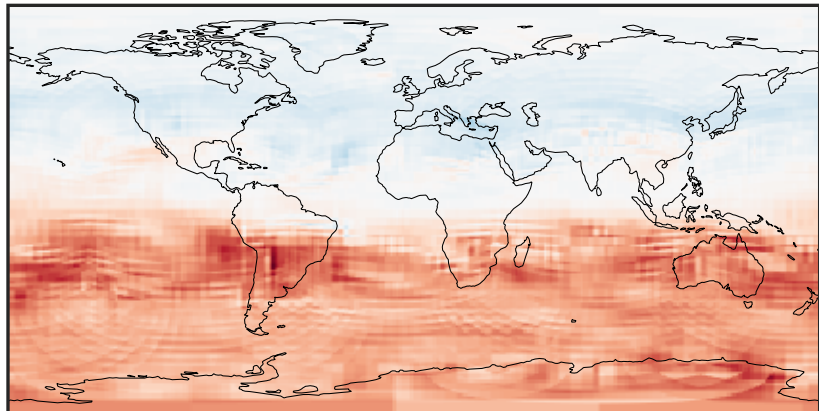
0.8134 0.8140 0.8146 0.8152  
ppb

14.3.0-rc.0 (Dev)  
c24



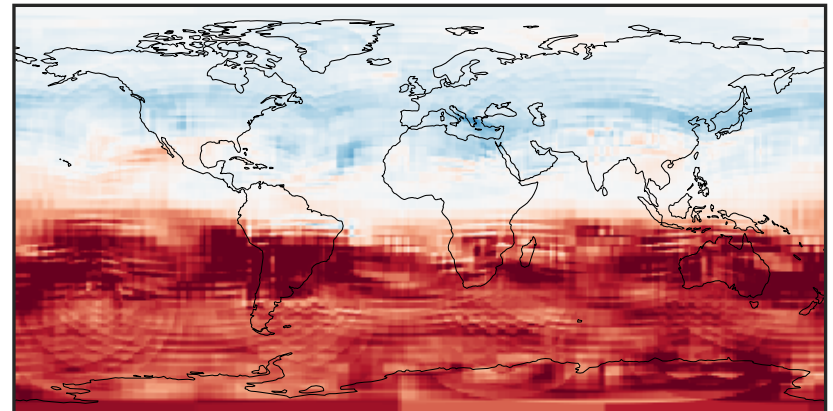
0.8134 0.8140 0.8146 0.8152  
ppb

Difference (1x1.25)  
Dev - Ref, Dynamic Range



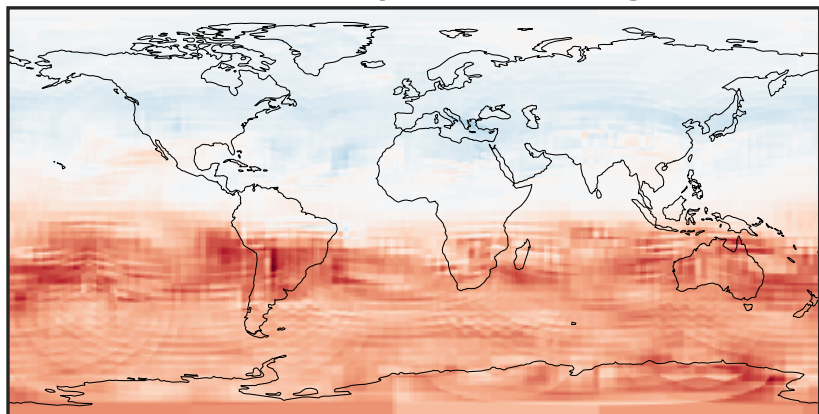
-0.0005 0.0000 0.0005  
ppb

Difference (1x1.25)  
Dev - Ref, Restricted Range [5%,95%]



-0.00025 0.00000 0.00025  
ppb

Ratio (1x1.25)  
Dev/Ref, Dynamic Range



0.998870 0.999435 1.000000 1.000566 1.001131  
unitless

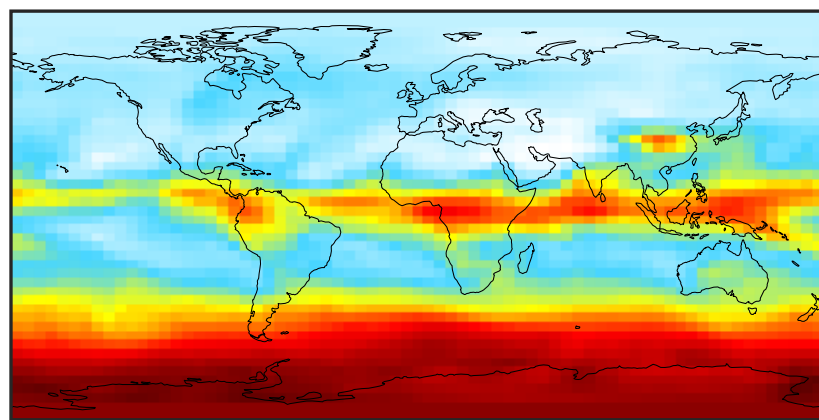
Ratio (1x1.25)  
Dev/Ref, Fixed Range



0.50 0.75 1.00 1.50 2.00  
unitless

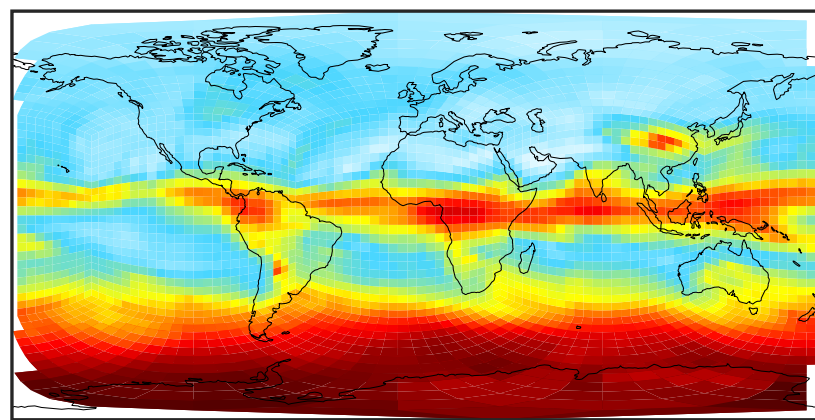
# SpeciesConcVV\_CH3Cl (Oct2019)

14.3.0-rc.0 (Ref)  
4.0x5.0



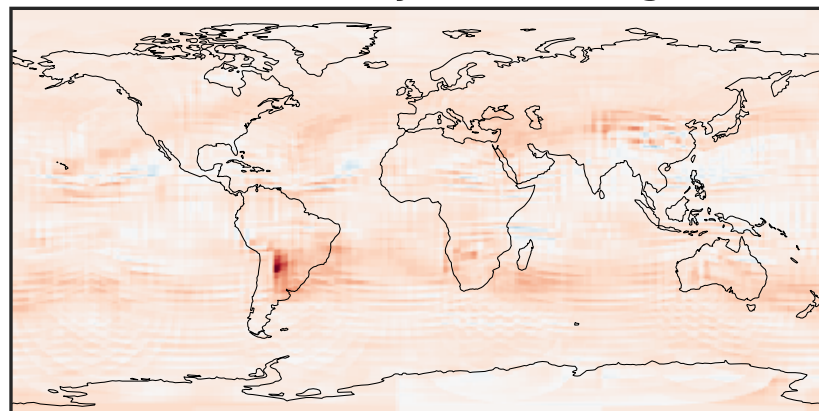
0.495 0.510 0.525  
ppb

14.3.0-rc.0 (Dev)  
c24



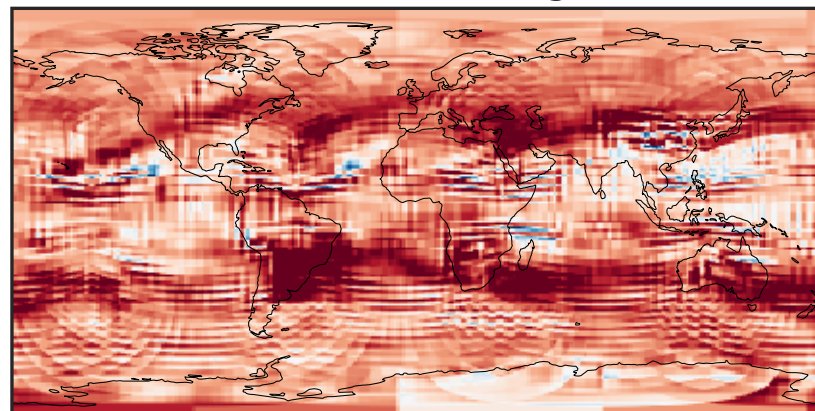
0.495 0.510 0.525  
ppb

Difference (1x1.25)  
Dev - Ref, Dynamic Range



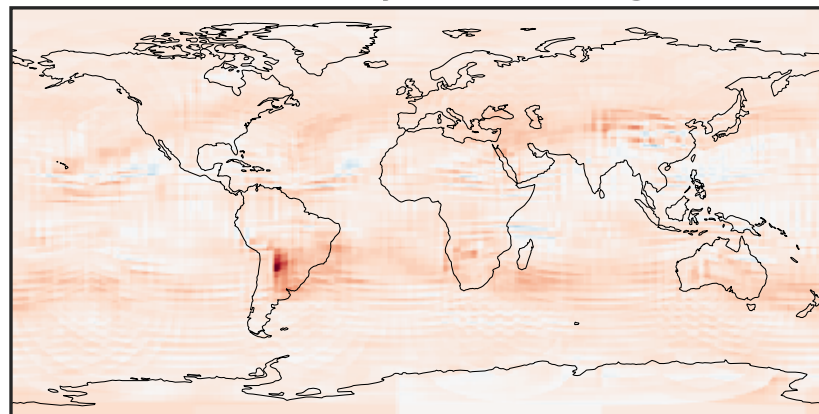
-0.01 0.00 0.01  
ppb

Difference (1x1.25)  
Dev - Ref, Restricted Range [5%,95%]



-0.002 0.000 0.002  
ppb

Ratio (1x1.25)  
Dev/Ref, Dynamic Range



0.96602 0.98301 1.00000 1.01759 1.03517  
unitless

Ratio (1x1.25)  
Dev/Ref, Fixed Range

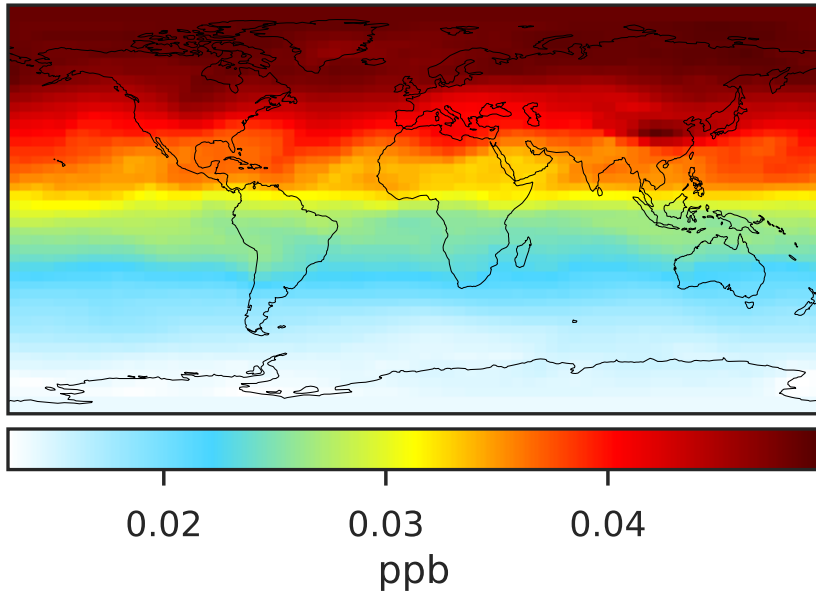


0.50 0.75 1.00 1.50 2.00  
unitless

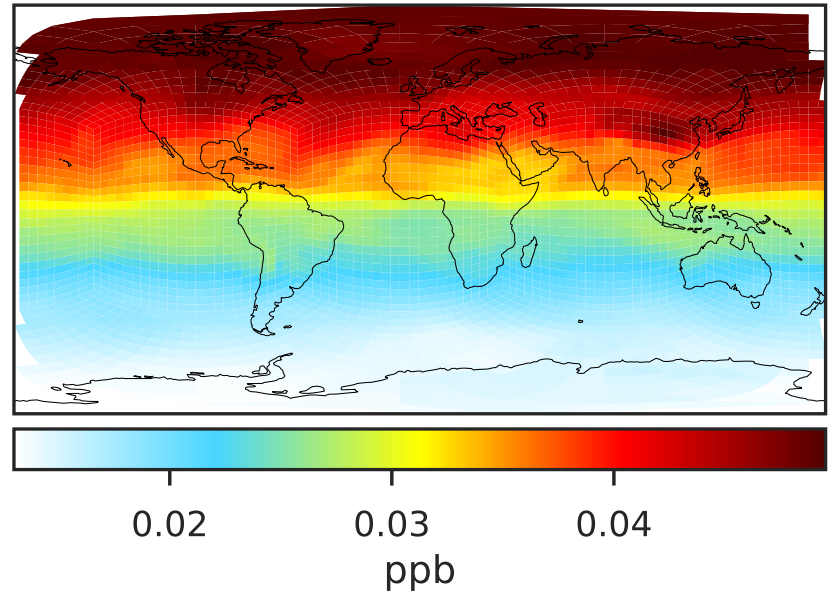


# SpeciesConcVV\_CH2Cl2 (Oct2019)

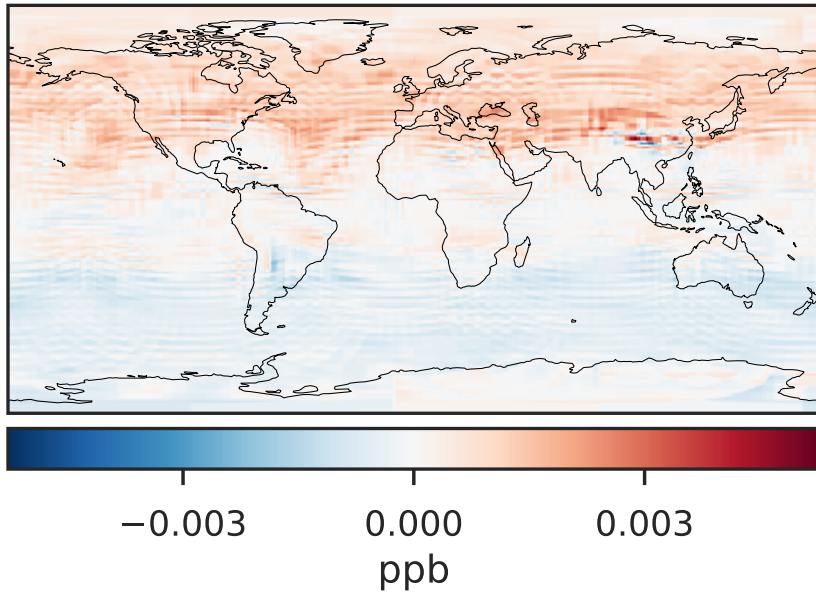
14.3.0-rc.0 (Ref)  
4.0x5.0



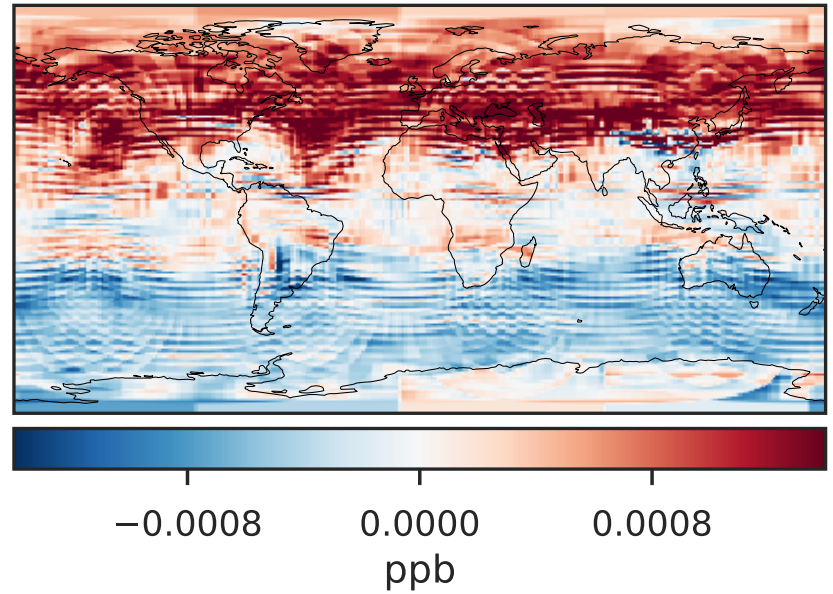
14.3.0-rc.0 (Dev)  
c24



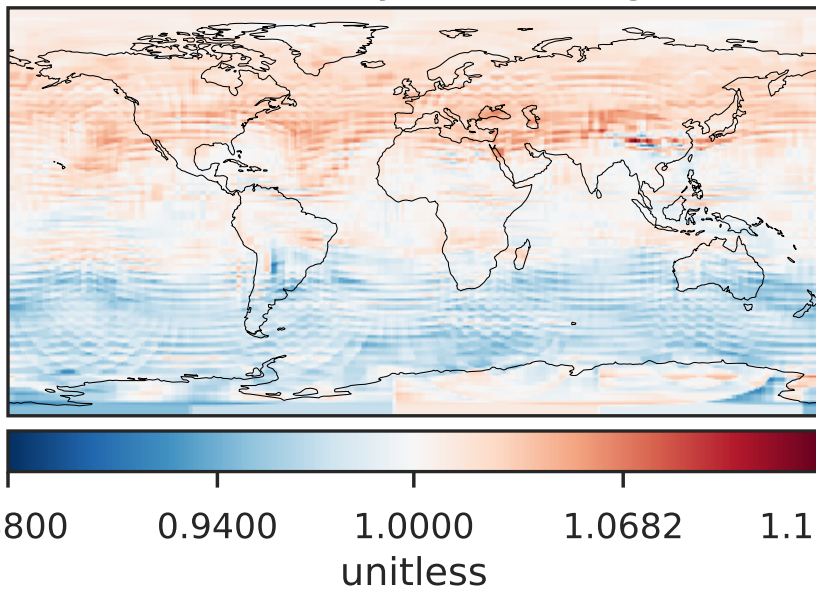
Difference (1x1.25)  
Dev - Ref, Dynamic Range



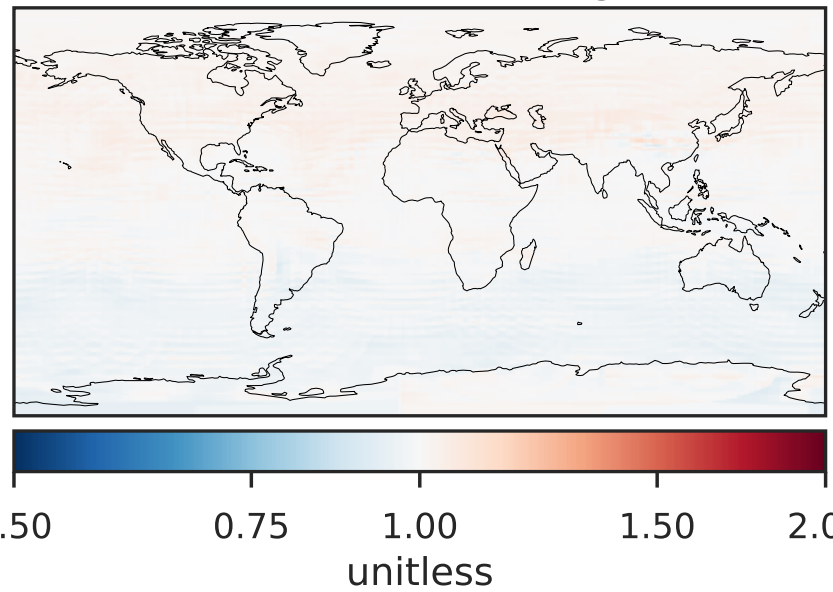
Difference (1x1.25)  
Dev - Ref, Restricted Range [5%,95%]



Ratio (1x1.25)  
Dev/Ref, Dynamic Range

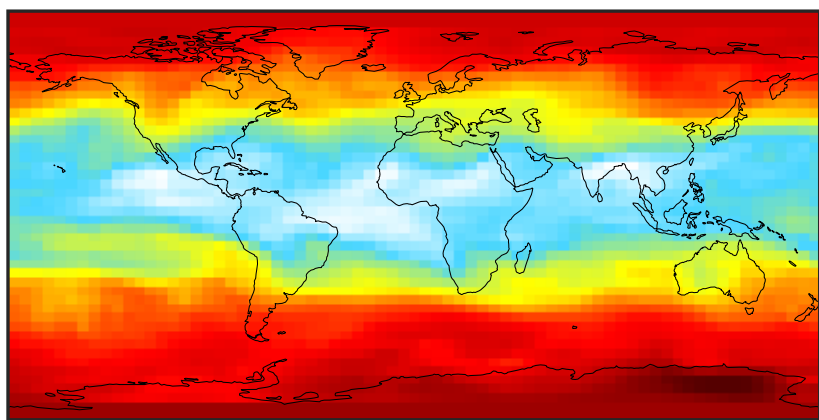


Ratio (1x1.25)  
Dev/Ref, Fixed Range



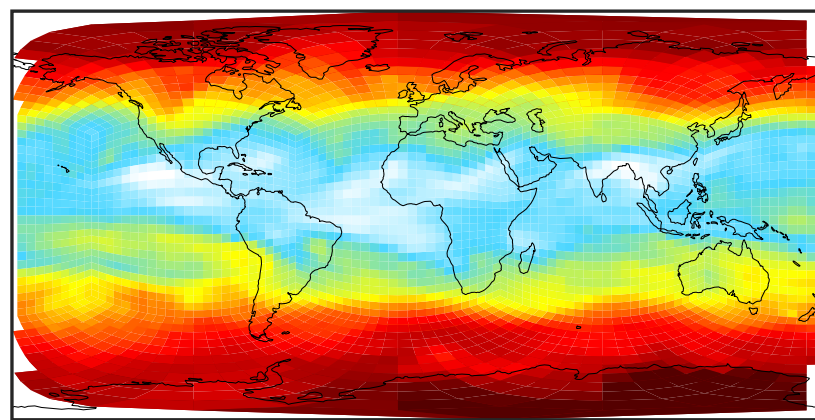
# SpeciesConcVV\_CH3CCI3 (Oct2019)

14.3.0-rc.0 (Ref)  
4.0x5.0



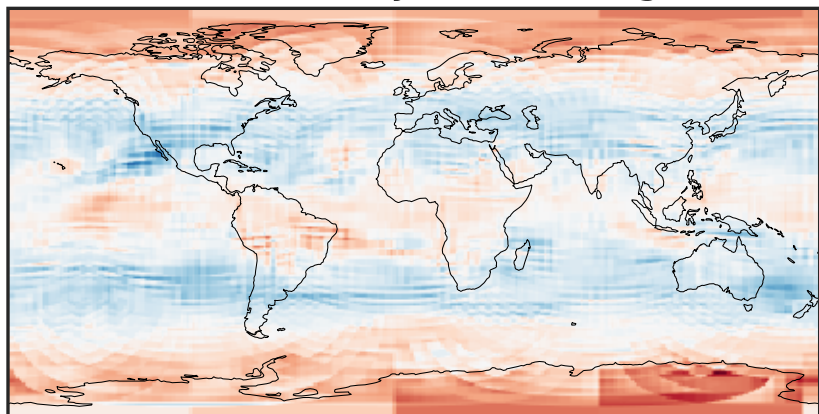
0.001285 0.001290 0.001295 0.001300  
ppb

14.3.0-rc.0 (Dev)  
c24



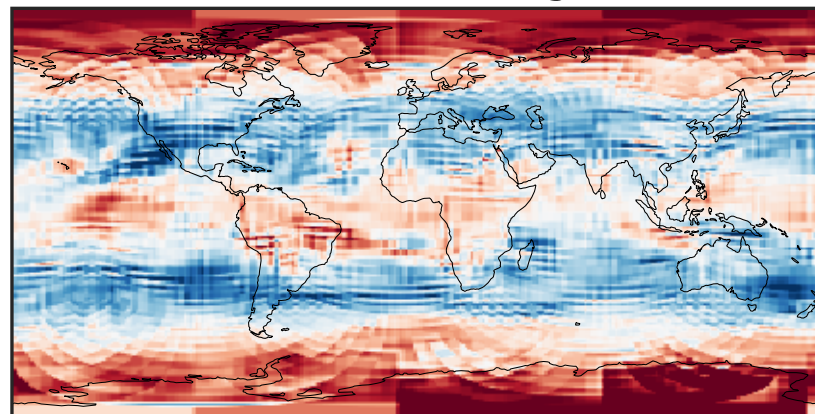
0.001285 0.001290 0.001295 0.001300  
ppb

Difference (1x1.25)  
Dev - Ref, Dynamic Range



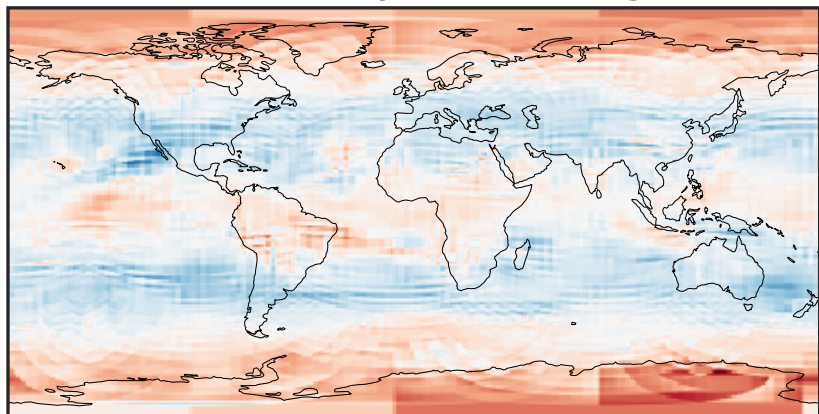
-2 0 2  
ppb 1e-6

Difference (1x1.25)  
Dev - Ref, Restricted Range [5%,95%]



-1 0 1  
ppb 1e-6

Ratio (1x1.25)  
Dev/Ref, Dynamic Range



0.997022 0.998511 1.000000 1.001493 1.002987  
unitless

Ratio (1x1.25)  
Dev/Ref, Fixed Range

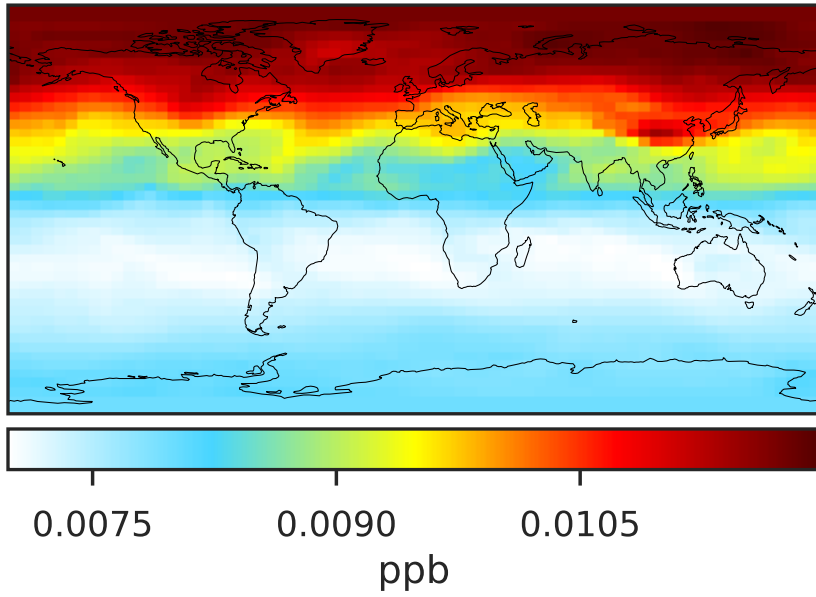


0.50 0.75 1.00 1.50 2.00  
unitless

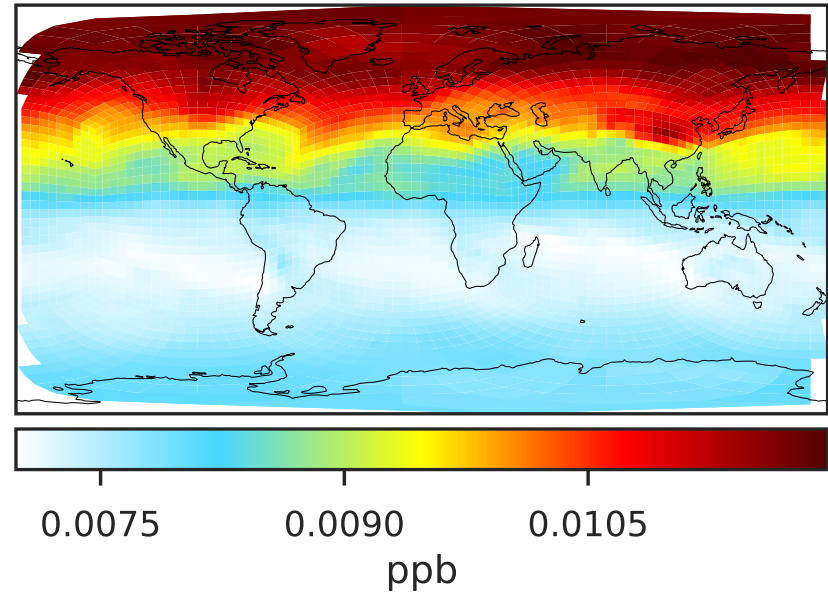


# SpeciesConcVV\_CHCl3 (Oct2019)

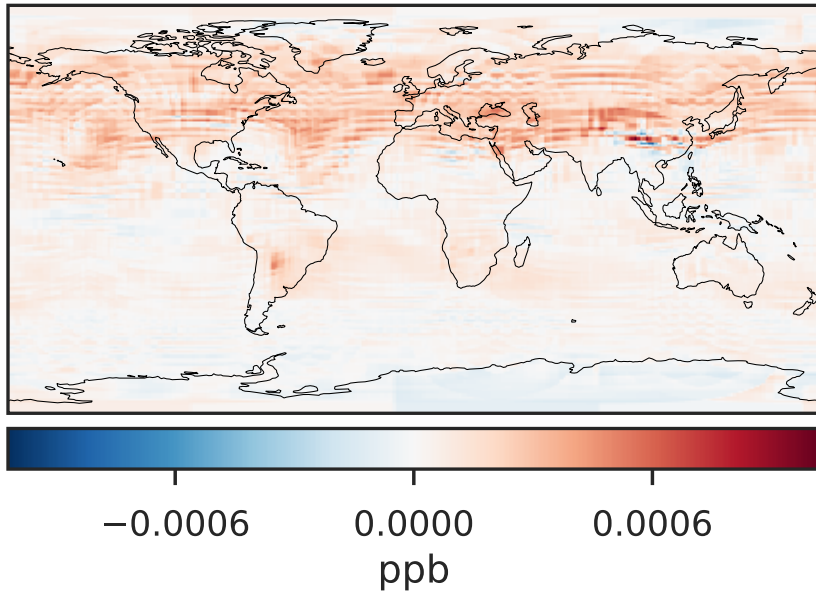
14.3.0-rc.0 (Ref)  
4.0x5.0



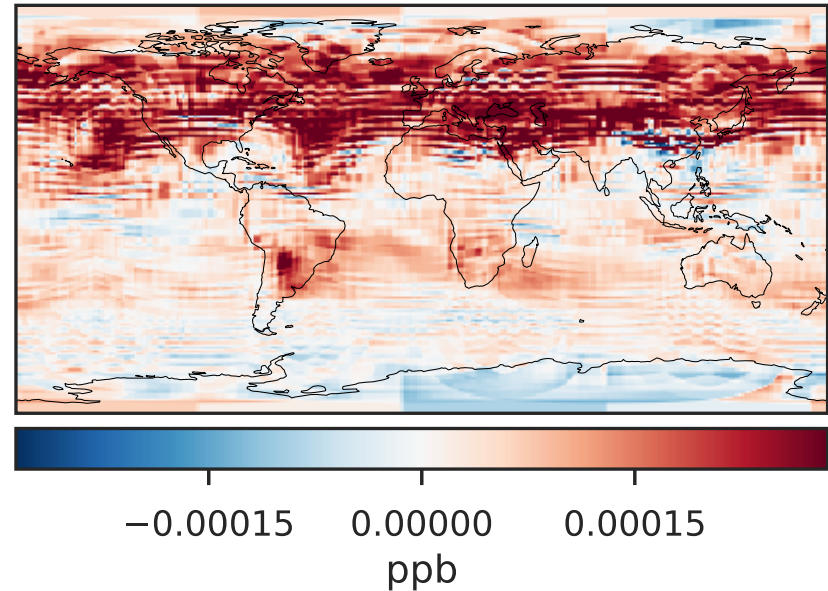
14.3.0-rc.0 (Dev)  
c24



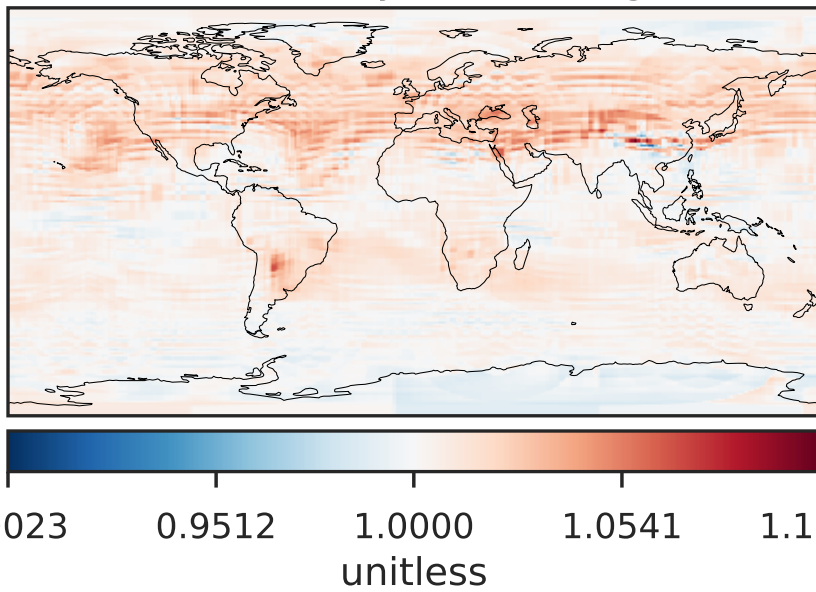
Difference (1x1.25)  
Dev - Ref, Dynamic Range



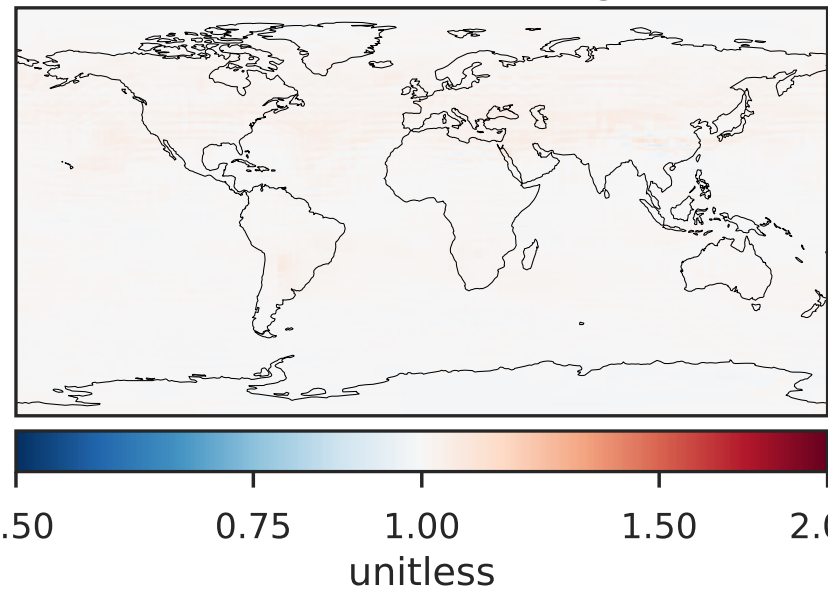
Difference (1x1.25)  
Dev - Ref, Restricted Range [5%,95%]



Ratio (1x1.25)  
Dev/Ref, Dynamic Range

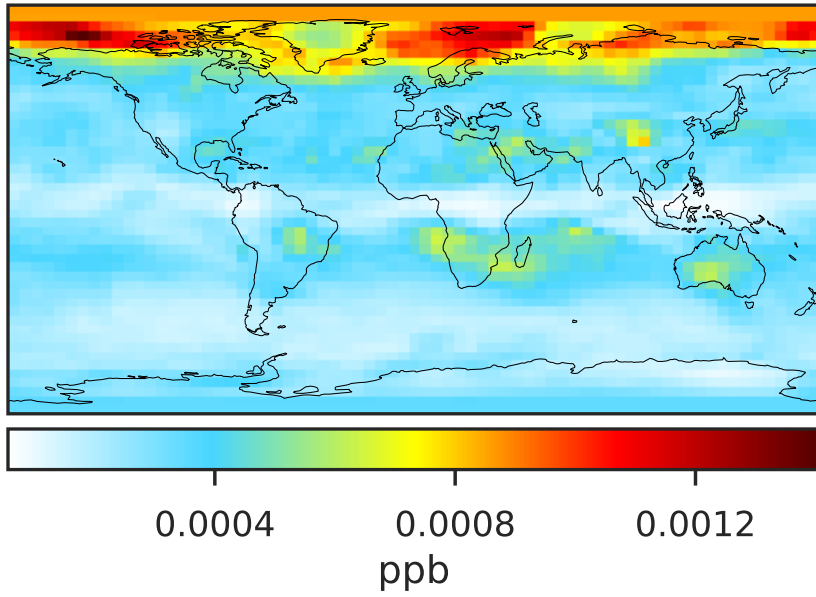


Ratio (1x1.25)  
Dev/Ref, Fixed Range

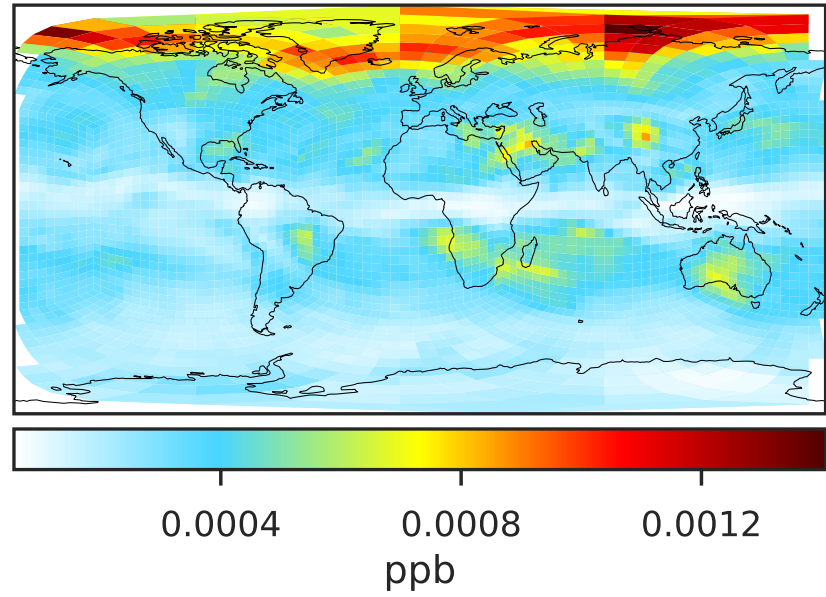


# SpeciesConcVV\_HOCl (Oct2019)

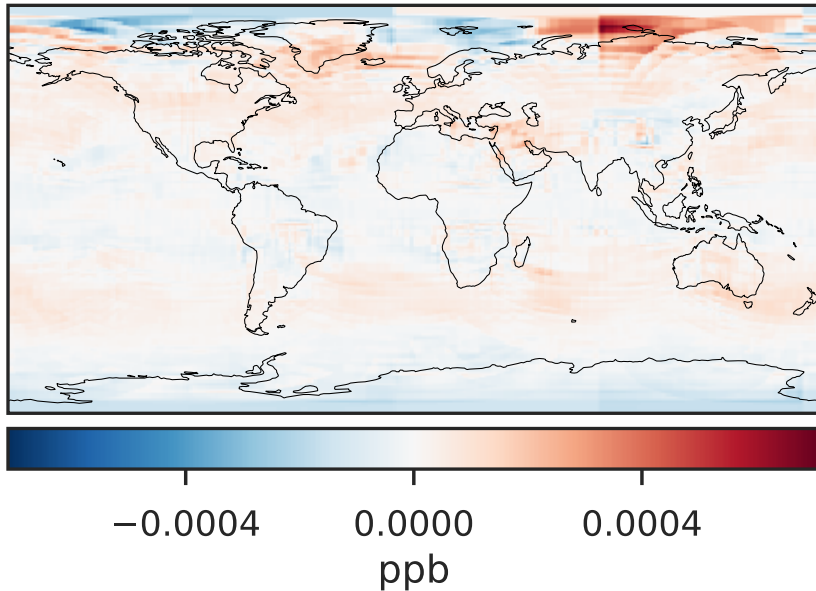
14.3.0-rc.0 (Ref)  
4.0x5.0



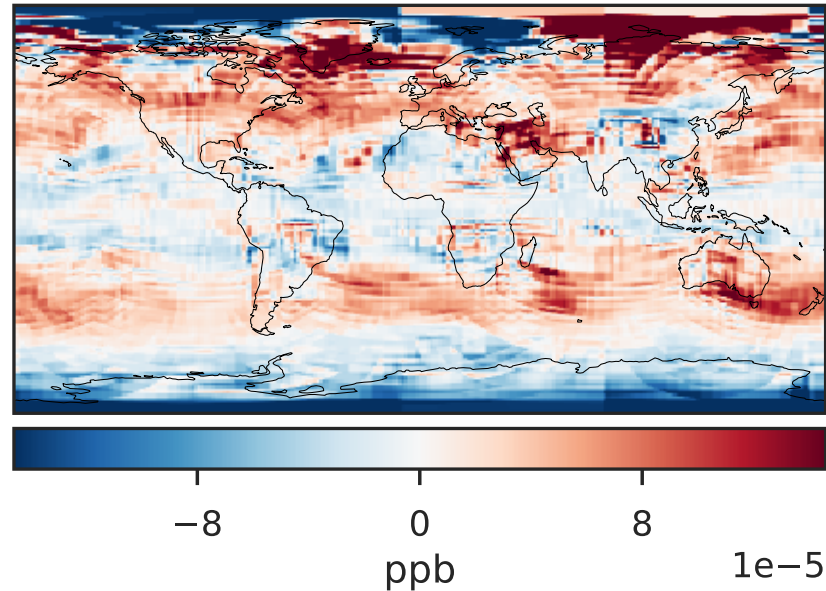
14.3.0-rc.0 (Dev)  
c24



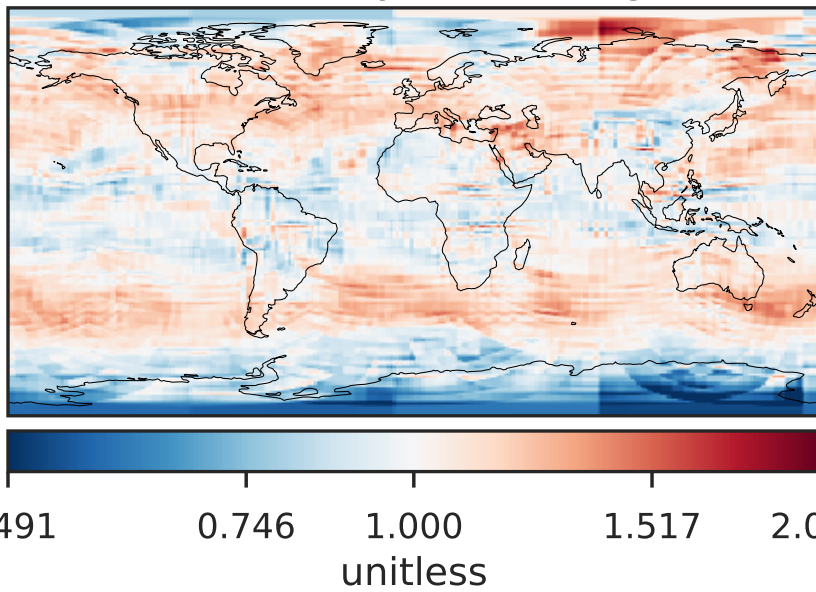
Difference (1x1.25)  
Dev - Ref, Dynamic Range



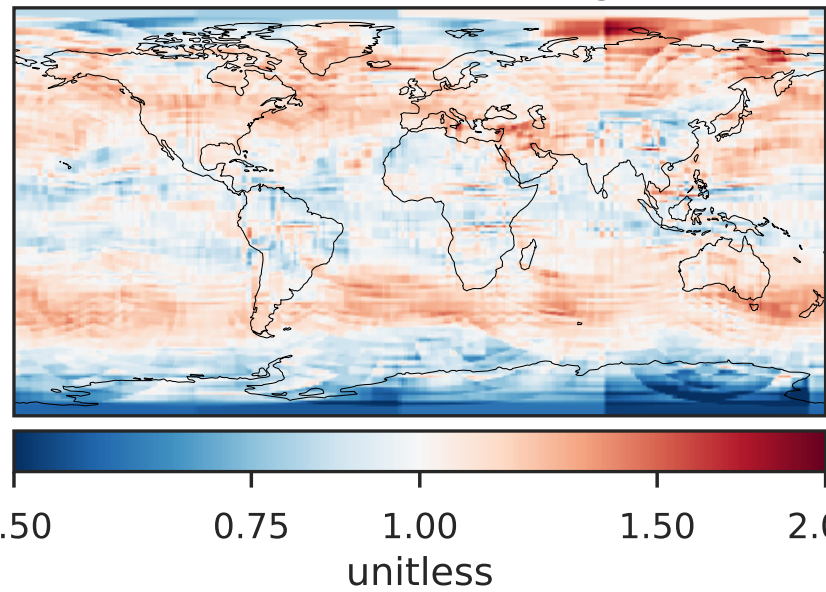
Difference (1x1.25)  
Dev - Ref, Restricted Range [5%,95%]



Ratio (1x1.25)  
Dev/Ref, Dynamic Range



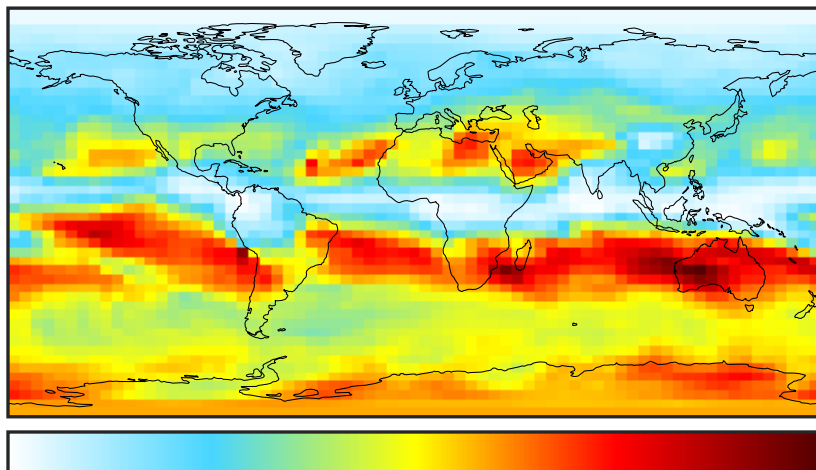
Ratio (1x1.25)  
Dev/Ref, Fixed Range





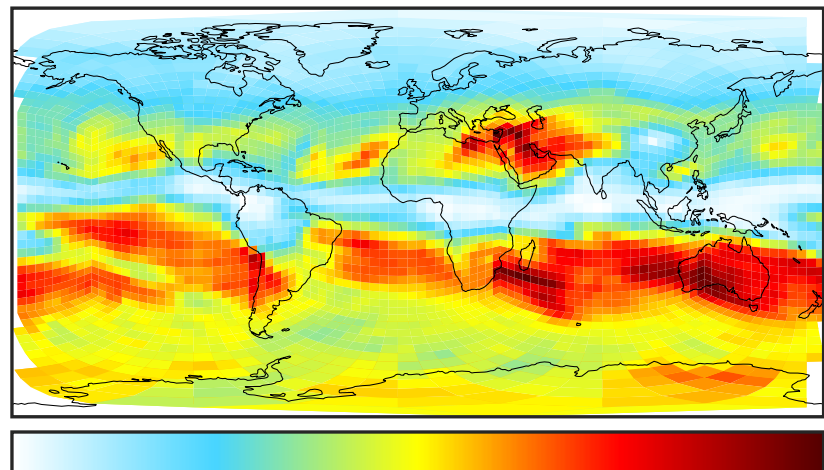
# SpeciesConcVW\_HCl (Oct2019)

14.3.0-rc.0 (Ref)  
4.0x5.0



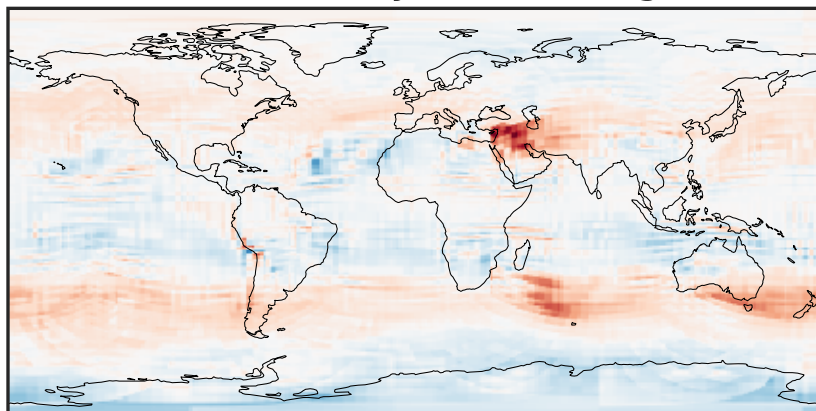
0.015 0.030  
ppb

14.3.0-rc.0 (Dev)  
c24



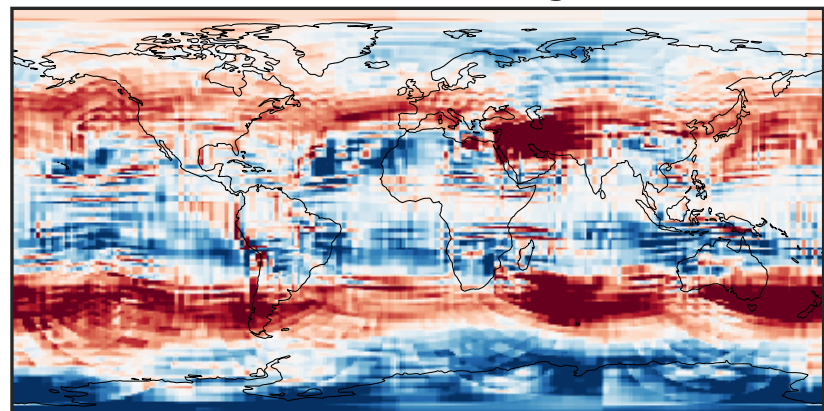
0.015 0.030  
ppb

Difference (1x1.25)  
Dev - Ref, Dynamic Range



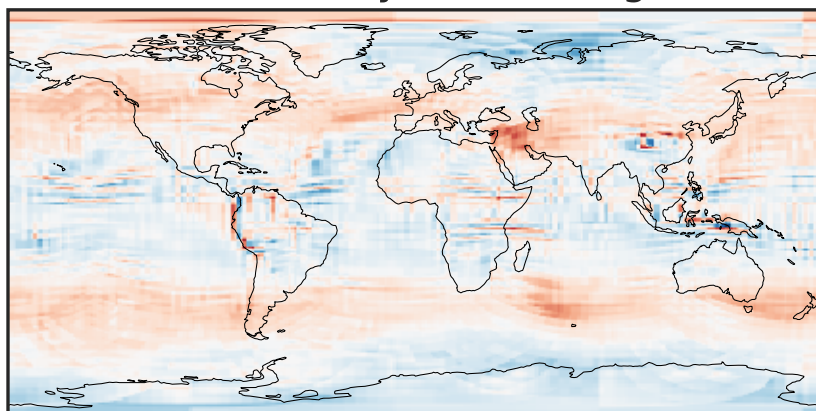
-0.01 0.00 0.01  
ppb

Difference (1x1.25)  
Dev - Ref, Restricted Range [5%,95%]



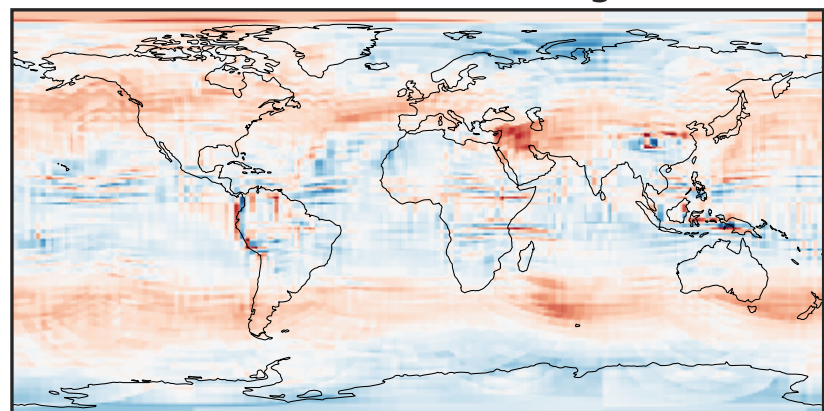
-0.002 0.000 0.002  
ppb

Ratio (1x1.25)  
Dev/Ref, Dynamic Range



0.444 0.722 1.000 1.627 2.255  
unitless

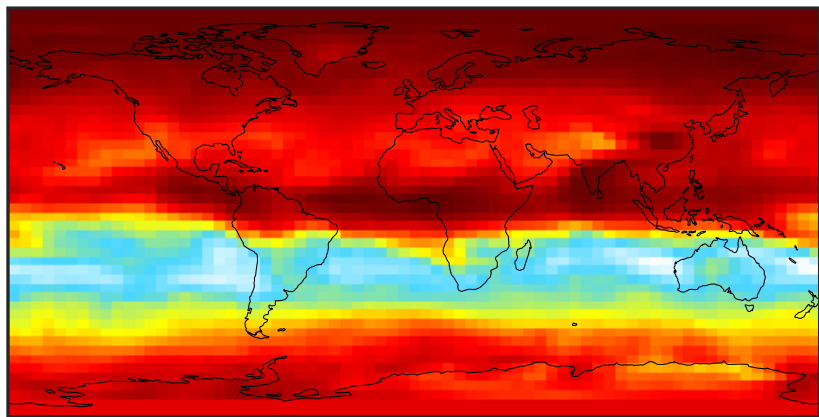
Ratio (1x1.25)  
Dev/Ref, Fixed Range



0.50 0.75 1.00 1.50 2.00  
unitless

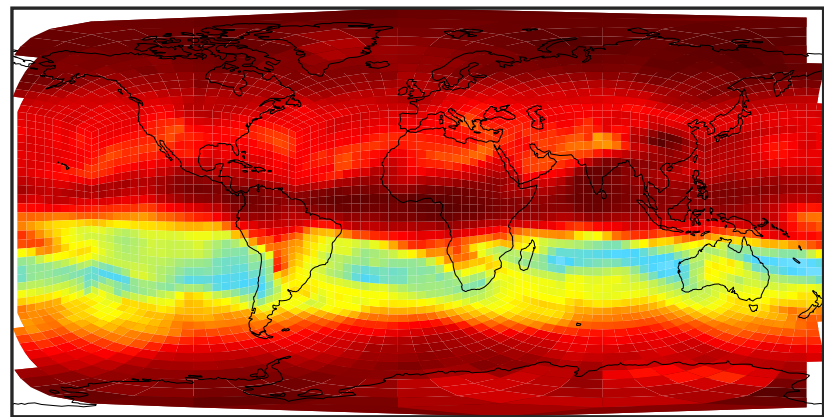
# SpeciesConcVV\_Halons (Oct2019)

14.3.0-rc.0 (Ref)  
4.0x5.0



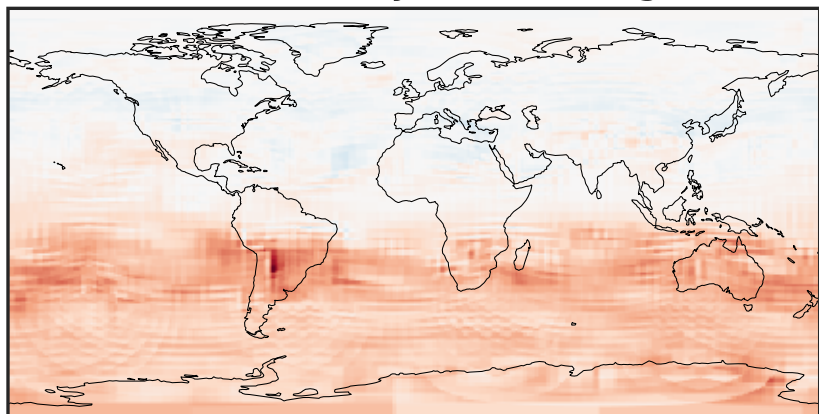
0.006895 0.006910 0.006925  
ppb

14.3.0-rc.0 (Dev)  
c24



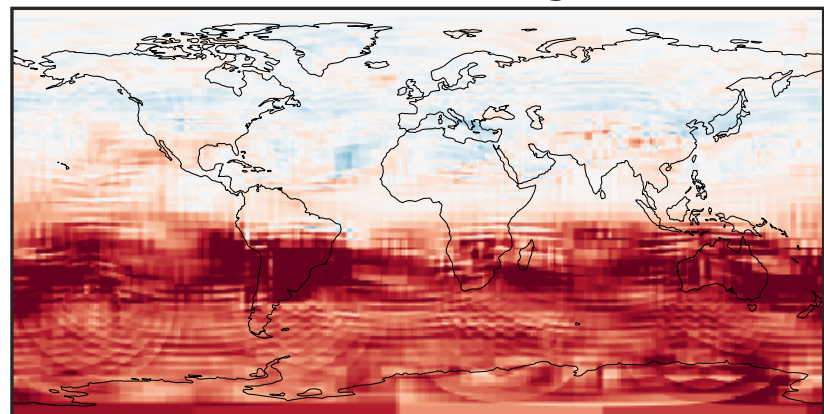
0.006895 0.006910 0.006925  
ppb

Difference (1x1.25)  
Dev - Ref, Dynamic Range



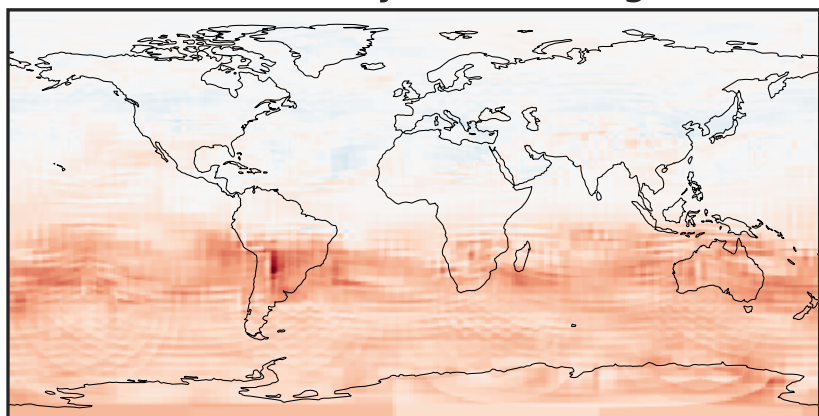
-1.5 0.0 1.5  
ppb 1e-5

Difference (1x1.25)  
Dev - Ref, Restricted Range [5%,95%]



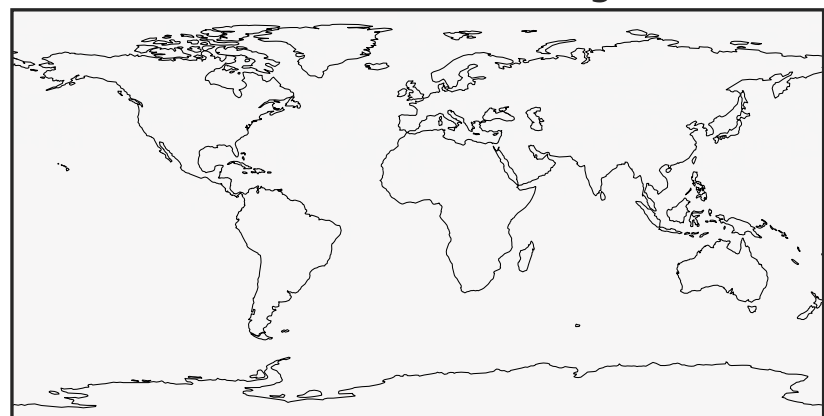
-5 0 5  
ppb 1e-6

Ratio (1x1.25)  
Dev/Ref, Dynamic Range



0.996653 0.998327 1.000000 1.001679 1.003358  
unitless

Ratio (1x1.25)  
Dev/Ref, Fixed Range

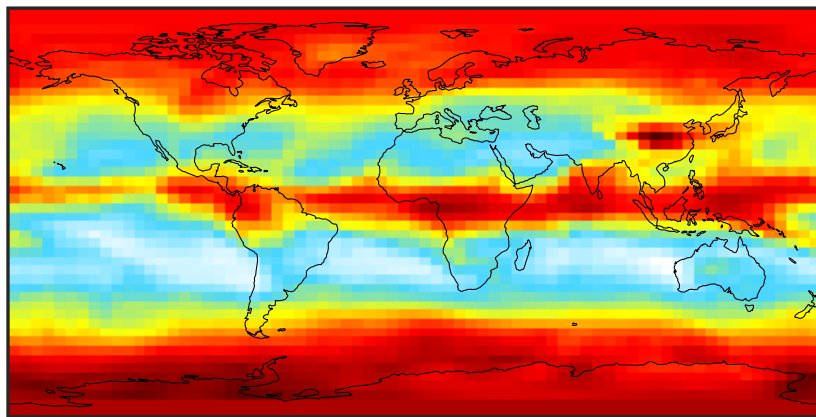


0.50 0.75 1.00 1.50 2.00  
unitless



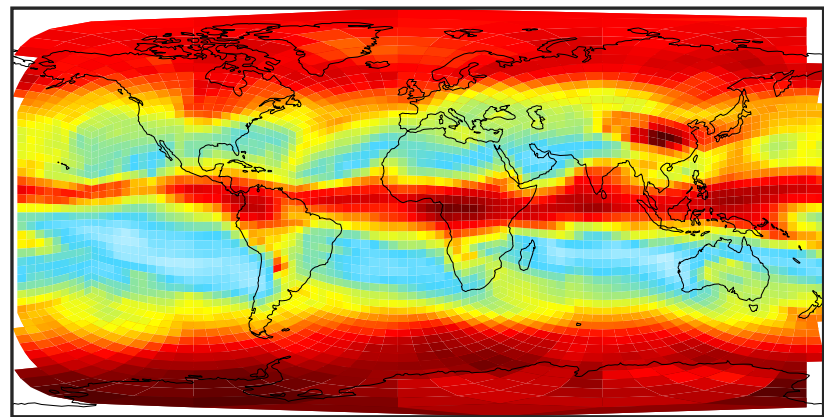
# SpeciesConcVV\_HCFCs (Oct2019)

14.3.0-rc.0 (Ref)  
4.0x5.0



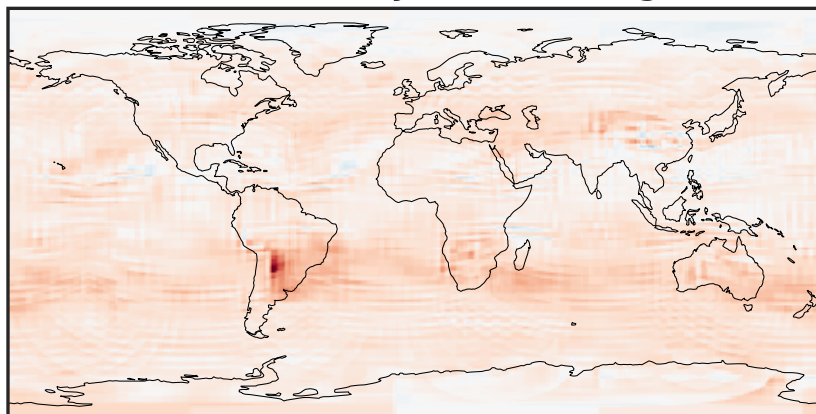
0.2960 0.2968 0.2976  
ppb

14.3.0-rc.0 (Dev)  
c24



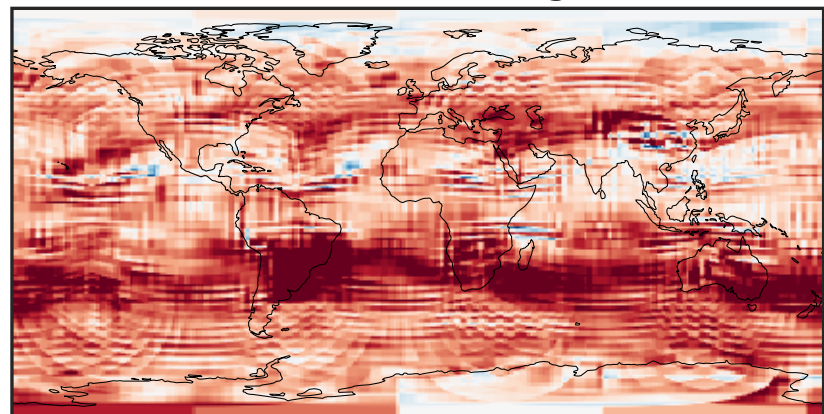
0.2960 0.2968 0.2976  
ppb

Difference (1x1.25)  
Dev - Ref, Dynamic Range



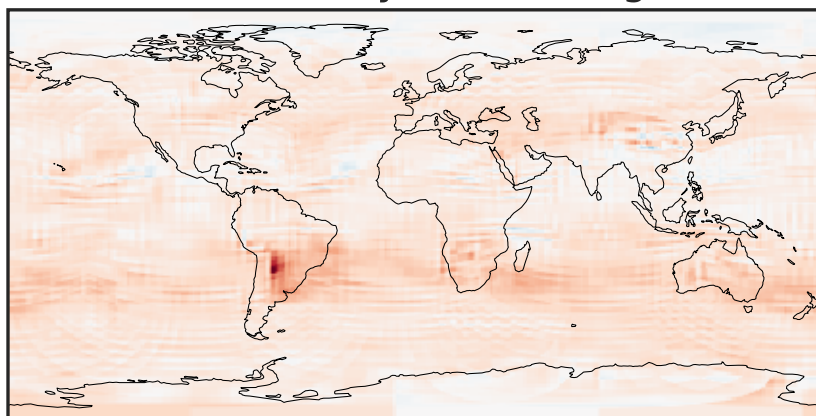
-0.0008 0.0000 0.0008  
ppb

Difference (1x1.25)  
Dev - Ref, Restricted Range [5%,95%]



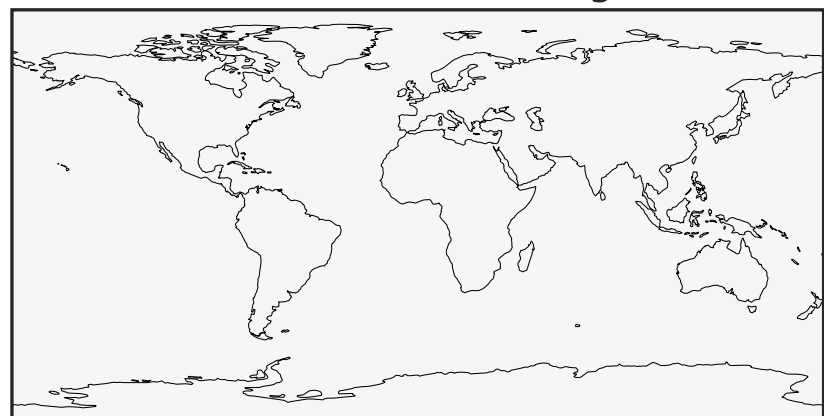
-0.0002 0.0000 0.0002  
ppb

Ratio (1x1.25)  
Dev/Ref, Dynamic Range



0.995165 0.997583 1.000000 1.002429 1.004858  
unitless

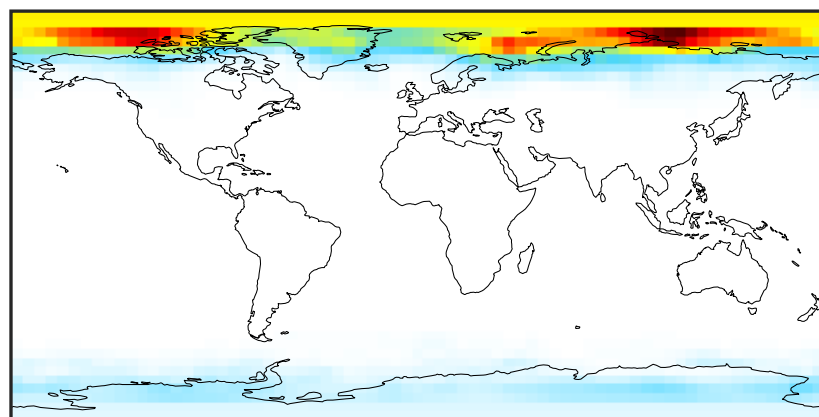
Ratio (1x1.25)  
Dev/Ref, Fixed Range



0.50 0.75 1.00 1.50 2.00  
unitless

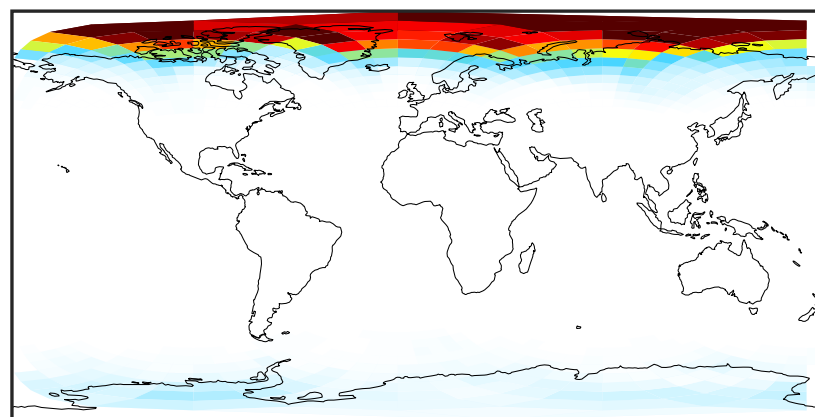
# SpeciesConcVV\_OCIO (Oct2019)

14.3.0-rc.0 (Ref)  
4.0x5.0



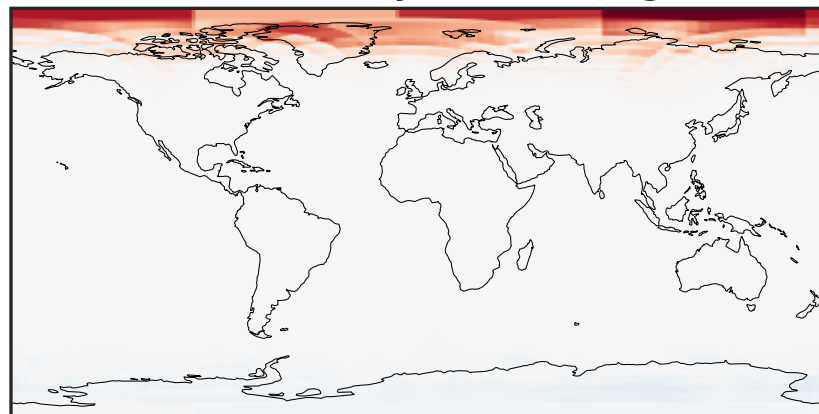
0.00008 0.00016 0.00024  
ppb

14.3.0-rc.0 (Dev)  
c24



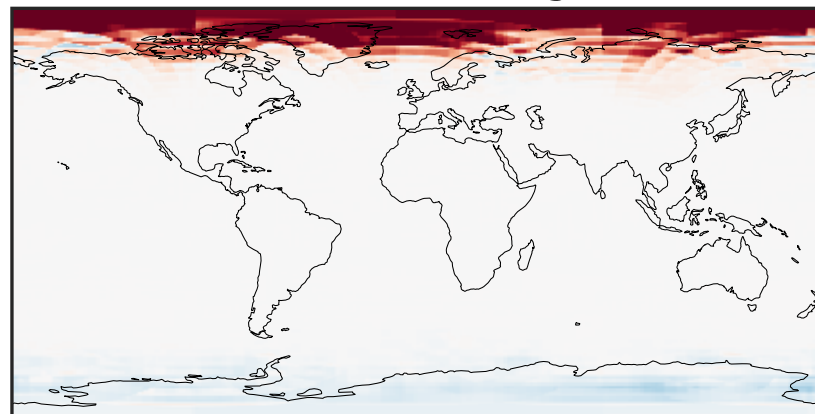
0.00008 0.00016 0.00024  
ppb

Difference (1x1.25)  
Dev - Ref, Dynamic Range



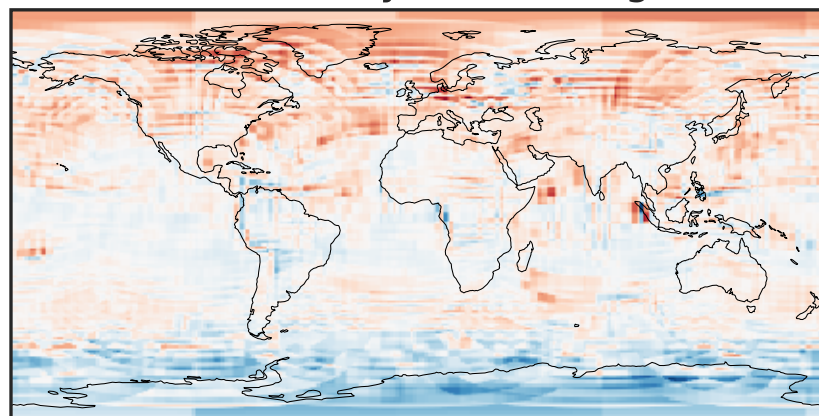
-0.00015 0.00000 0.00015  
ppb

Difference (1x1.25)  
Dev - Ref, Restricted Range [5%,95%]



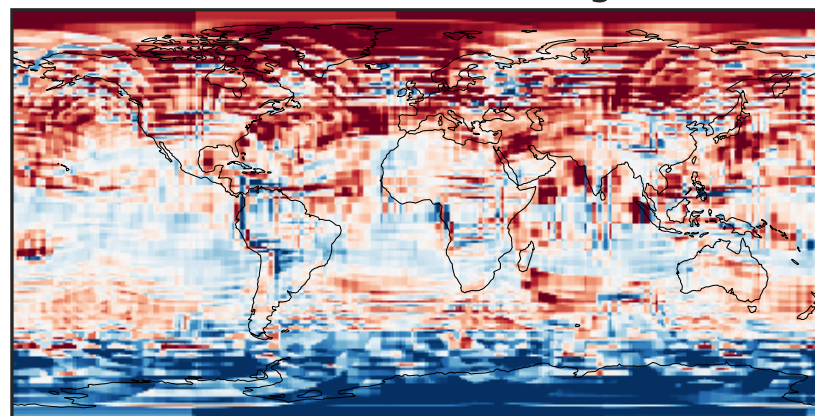
-6 0 6  
ppb  $1e-5$

Ratio (1x1.25)  
Dev/Ref, Dynamic Range



0.107 0.554 1.000 5.164 9.328  
unitless

Ratio (1x1.25)  
Dev/Ref, Fixed Range



0.50 0.75 1.00 1.50 2.00  
unitless