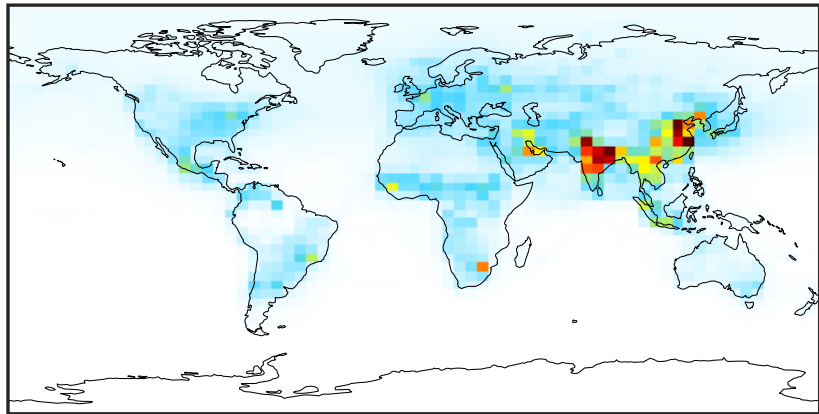


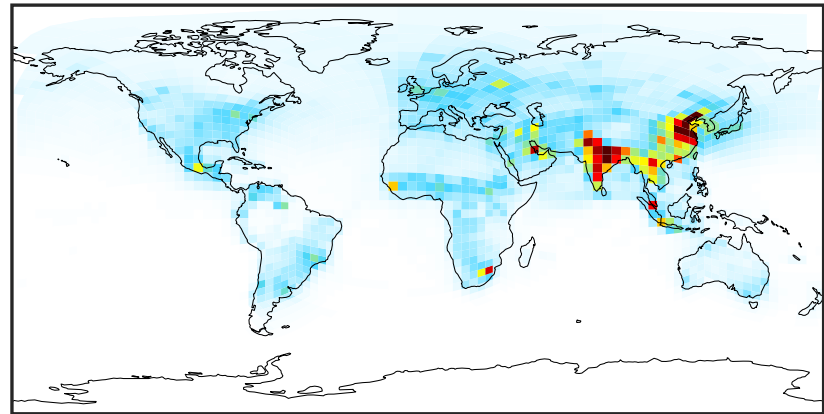
SpeciesConcVV_NOy (Apr2019)

14.3.0-rc.0 (Ref)
4.0x5.0



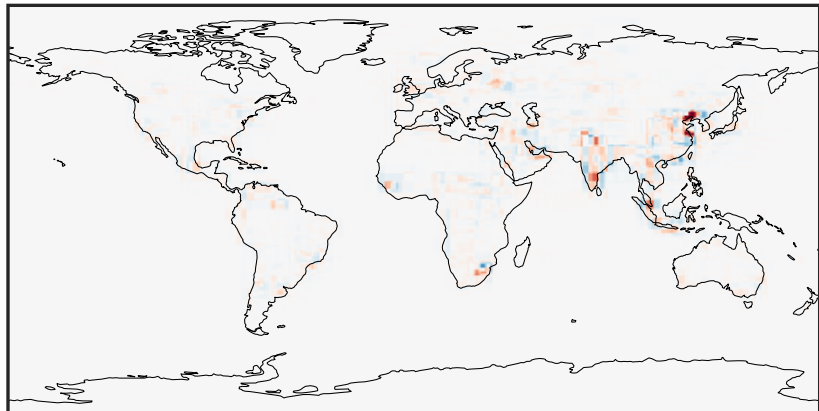
0.01 2.80 5.58 8.36 11.14
ppb

14.3.0-rc.0 (Dev)
c24



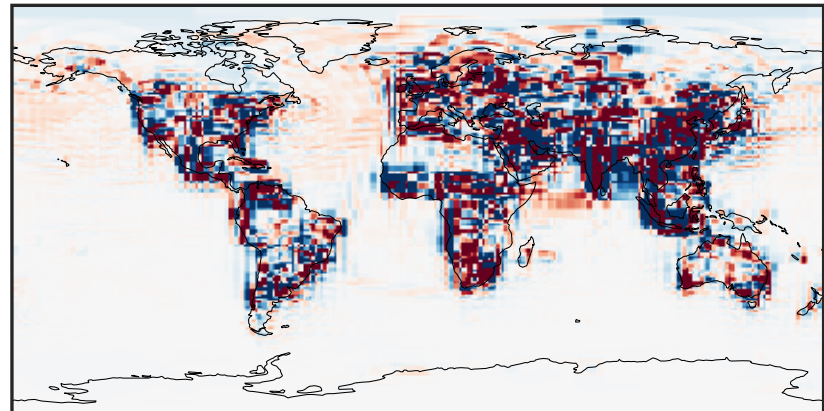
0.01 2.80 5.58 8.36 11.14
ppb

Difference (1x1.25)
Dev - Ref, Dynamic Range



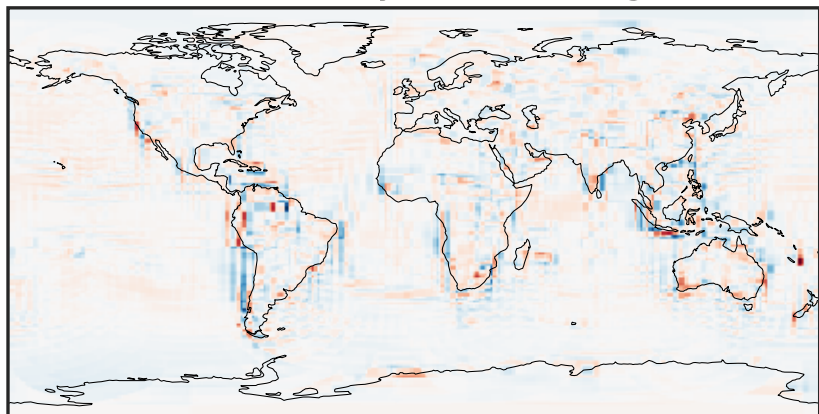
-8.13 -4.07 0.00 4.07 8.13
ppb

Difference (1x1.25)
Dev - Ref, Restricted Range [5%,95%]



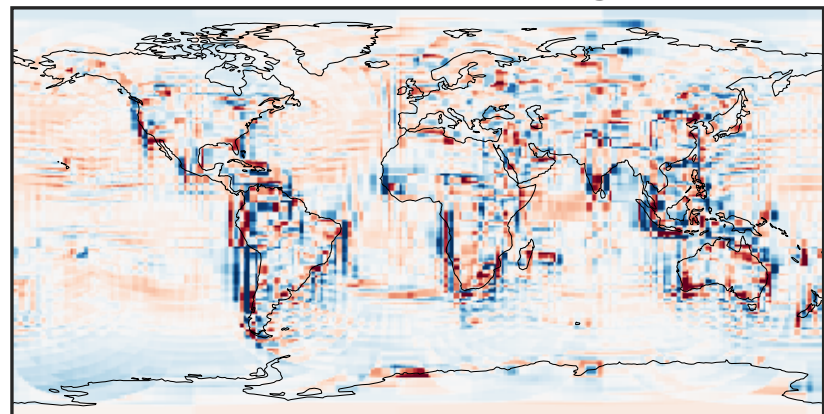
-0.2070 -0.1035 0.0000 0.1035 0.2070
ppb

Ratio (1x1.25)
Dev/Ref, Dynamic Range



0.132 0.566 1.000 4.287 7.575
unitless

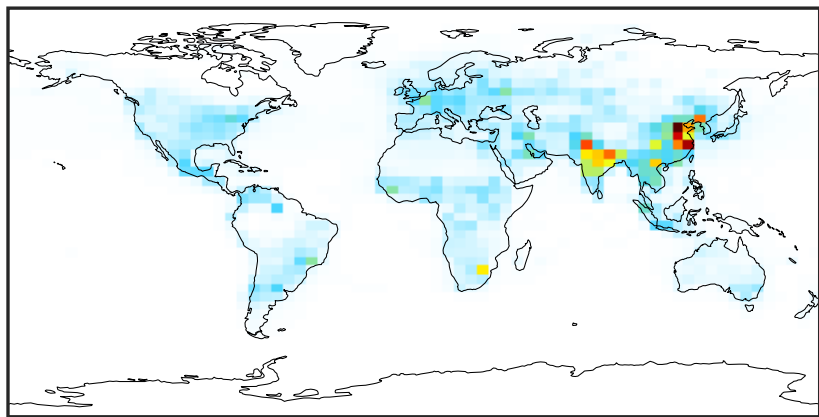
Ratio (1x1.25)
Dev/Ref, Fixed Range



0.50 0.75 1.00 1.50 2.00
unitless

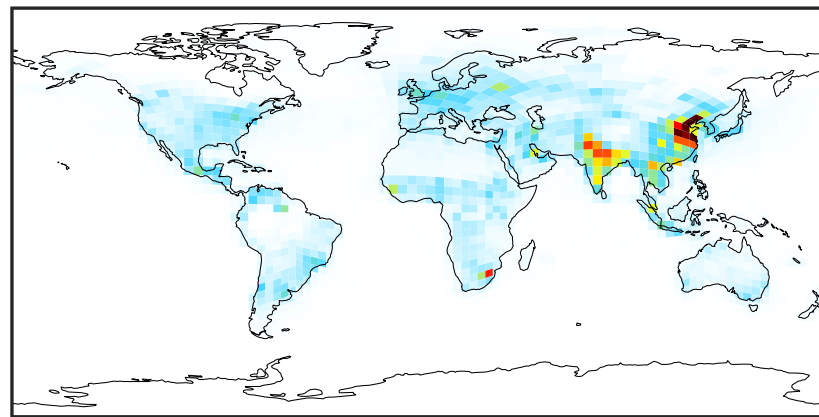
SpeciesConcVV_NOx (Apr2019)

14.3.0-rc.0 (Ref)
4.0x5.0



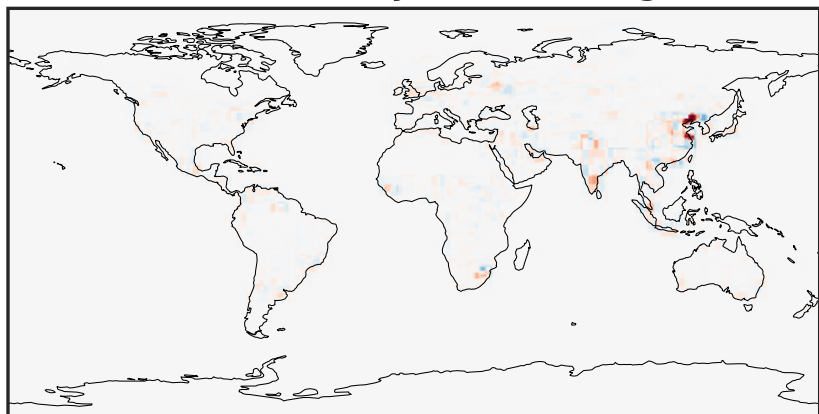
0.000 2.152 4.305 6.457 8.609
ppb

14.3.0-rc.0 (Dev)
c24



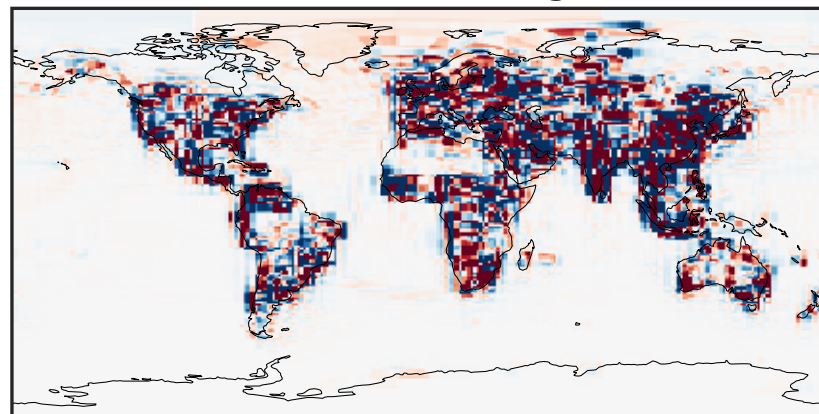
0.000 2.152 4.305 6.457 8.609
ppb

Difference (1x1.25)
Dev - Ref, Dynamic Range



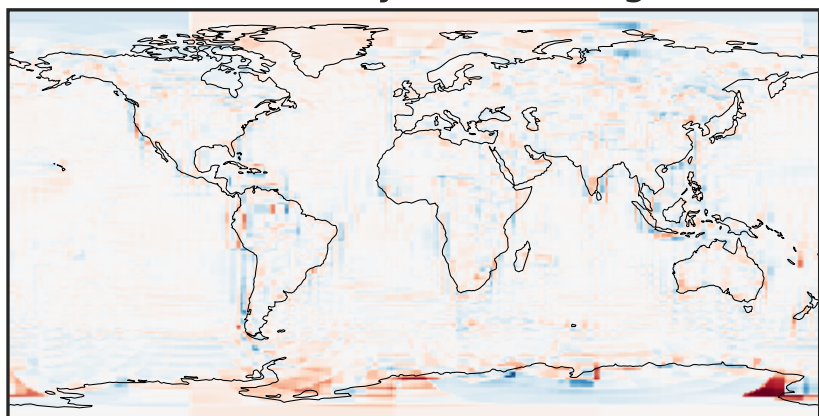
-7.6 -3.8 0.0 3.8 7.6
ppb

Difference (1x1.25)
Dev - Ref, Restricted Range [5%,95%]



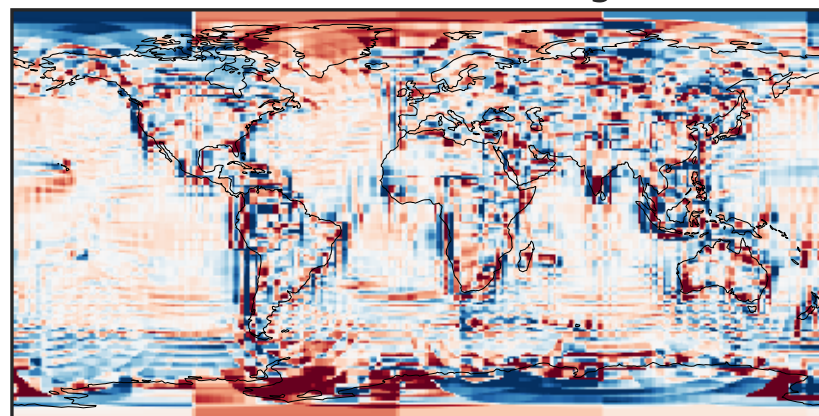
-0.1374 -0.0687 0.0000 0.0687 0.1374
ppb

Ratio (1x1.25)
Dev/Ref, Dynamic Range



1e-01 1 10
unitless

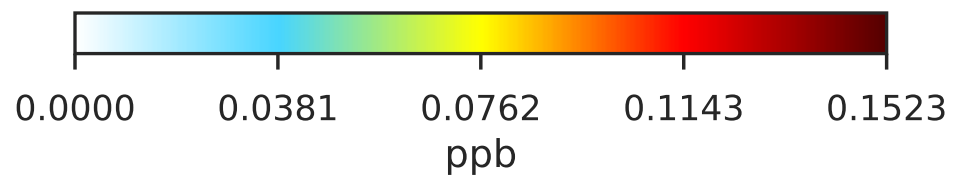
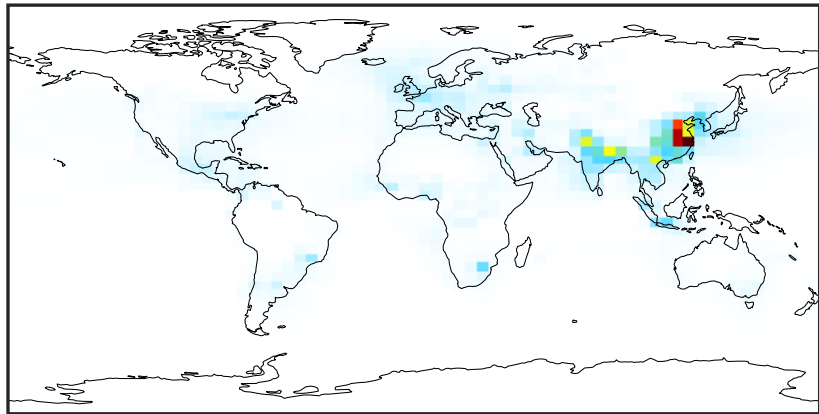
Ratio (1x1.25)
Dev/Ref, Fixed Range



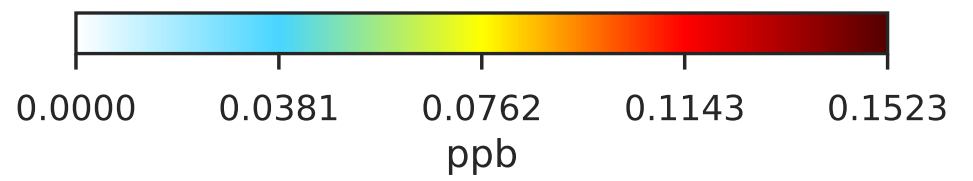
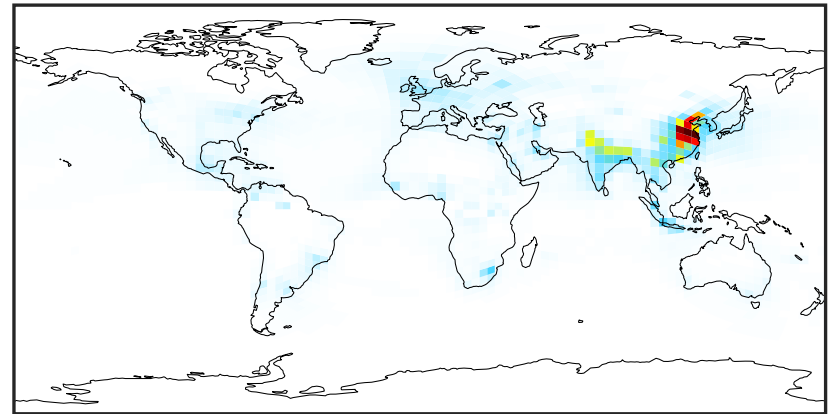
0.50 0.75 1.00 1.50 2.00
unitless

SpeciesConcVV_HNO2 (Apr2019)

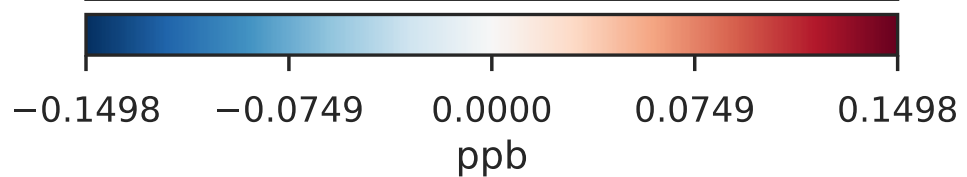
14.3.0-rc.0 (Ref)
4.0x5.0



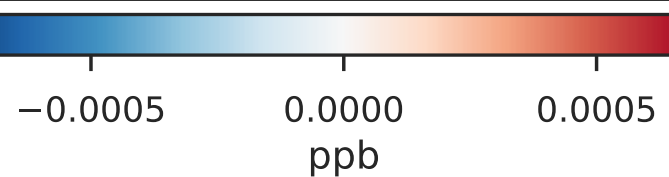
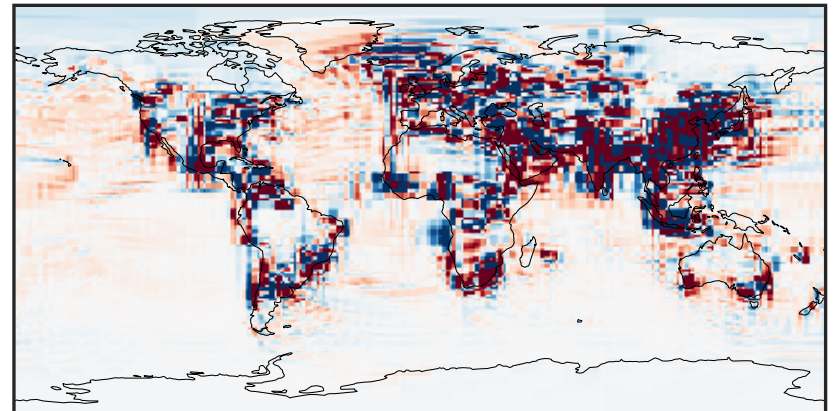
14.3.0-rc.0 (Dev)
c24



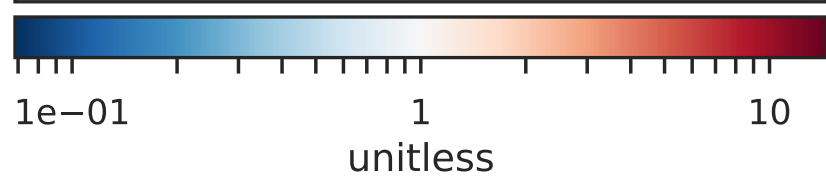
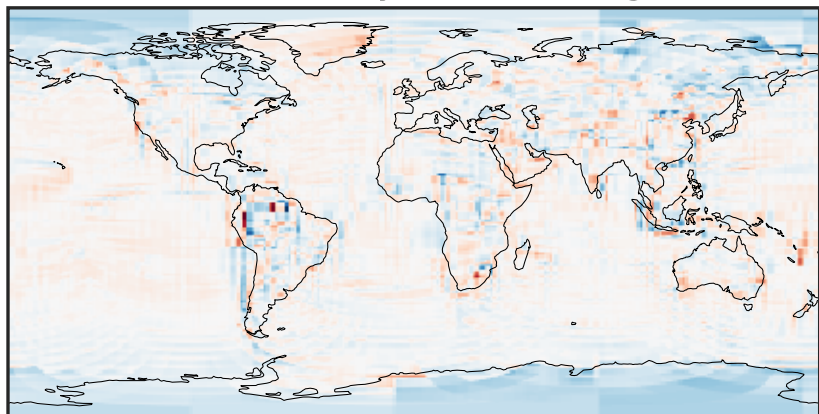
Difference (1x1.25)
Dev - Ref, Dynamic Range



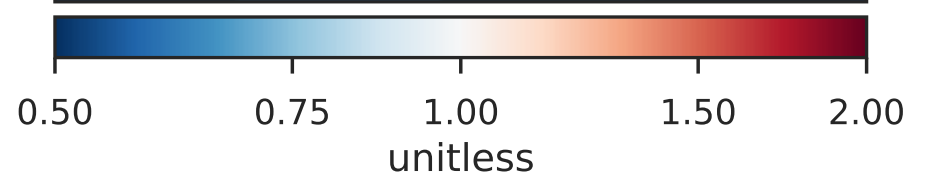
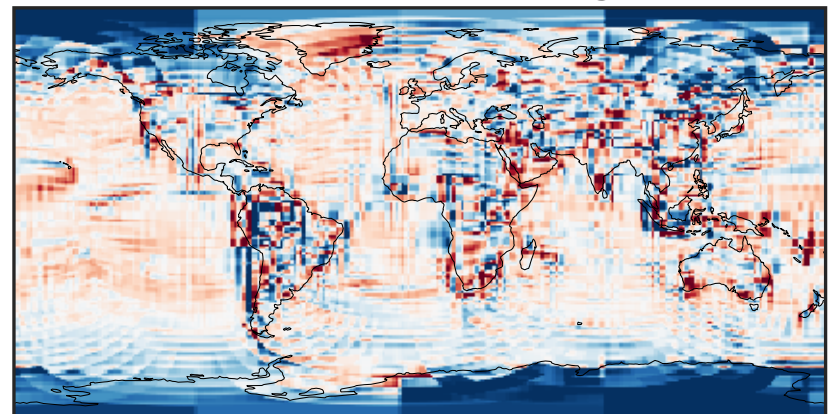
Difference (1x1.25)
Dev - Ref, Restricted Range [5%,95%]



Ratio (1x1.25)
Dev/Ref, Dynamic Range

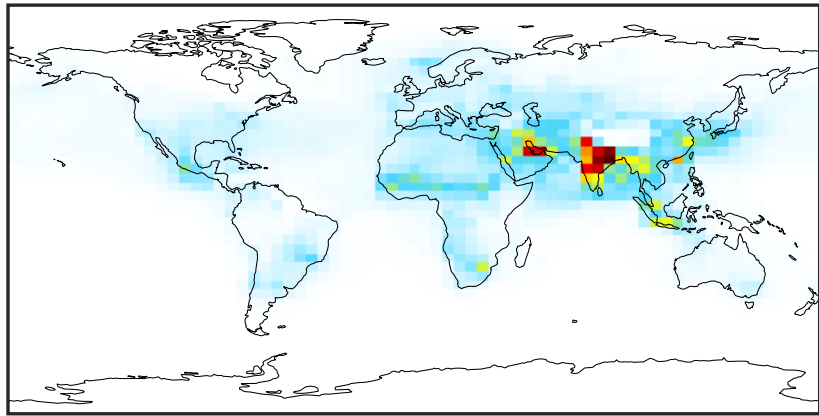


Ratio (1x1.25)
Dev/Ref, Fixed Range



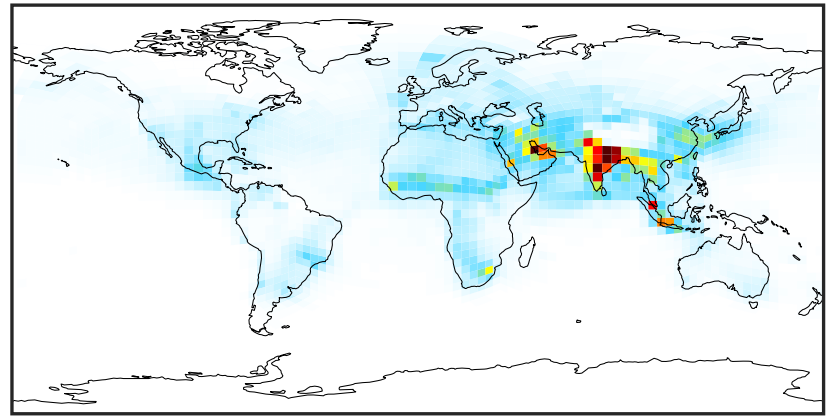
SpeciesConcVV_HNO3 (Apr2019)

14.3.0-rc.0 (Ref)
4.0x5.0



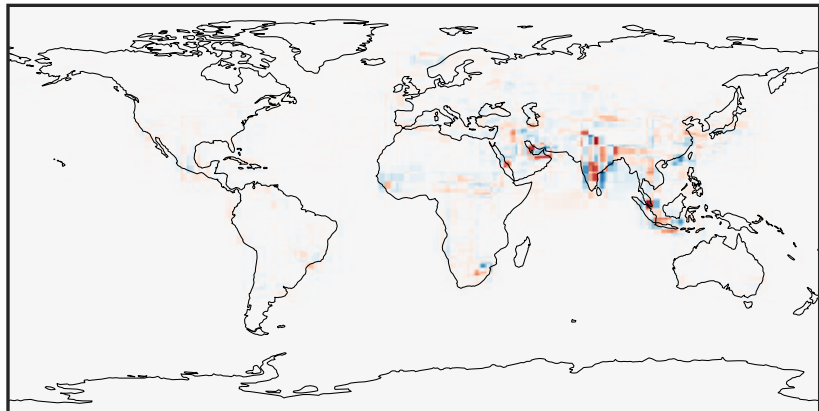
0.00 1.07 2.14 3.21 4.28
ppb

14.3.0-rc.0 (Dev)
c24



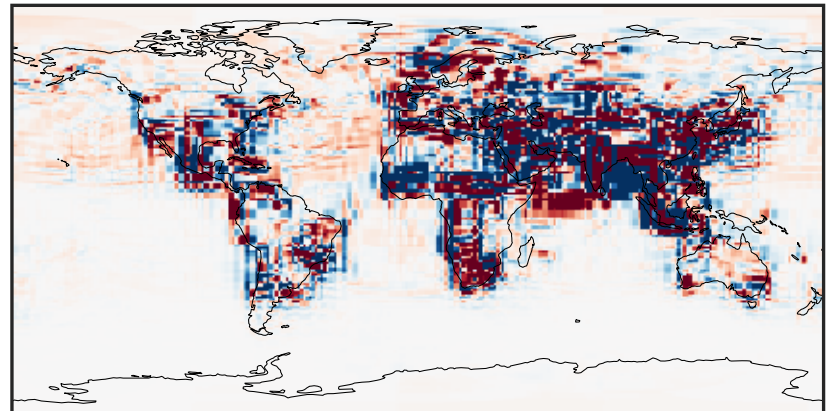
0.00 1.07 2.14 3.21 4.28
ppb

Difference (1x1.25)
Dev - Ref, Dynamic Range



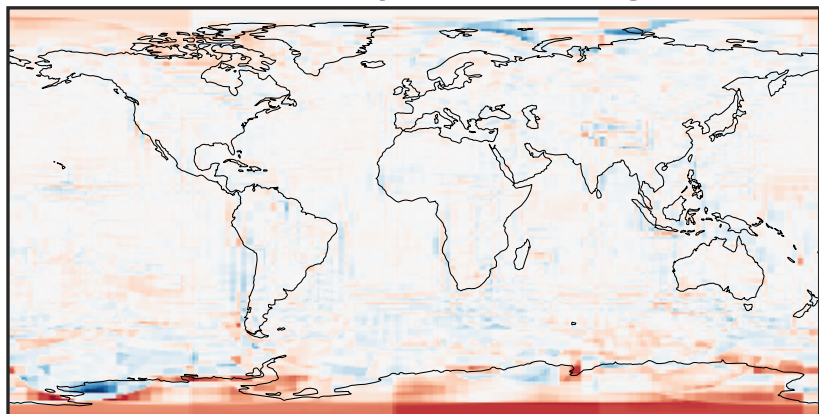
-1.928 -0.964 0.000 0.964 1.928
ppb

Difference (1x1.25)
Dev - Ref, Restricted Range [5%,95%]



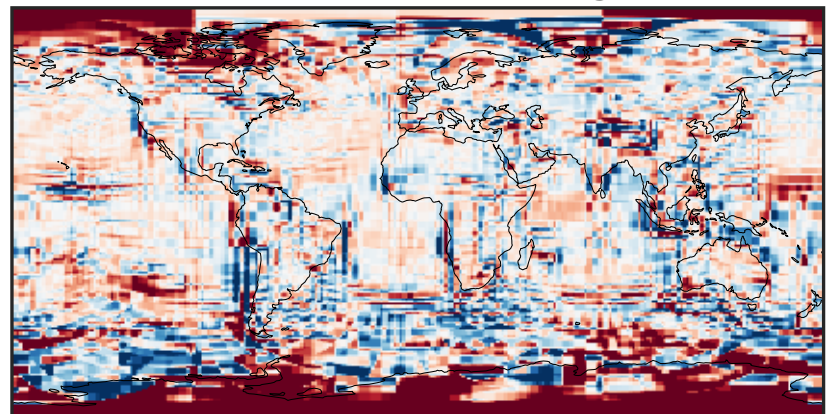
-0.0563 -0.0282 0.0000 0.0282 0.0563
ppb

Ratio (1x1.25)
Dev/Ref, Dynamic Range



1e-01 1 10
unitless

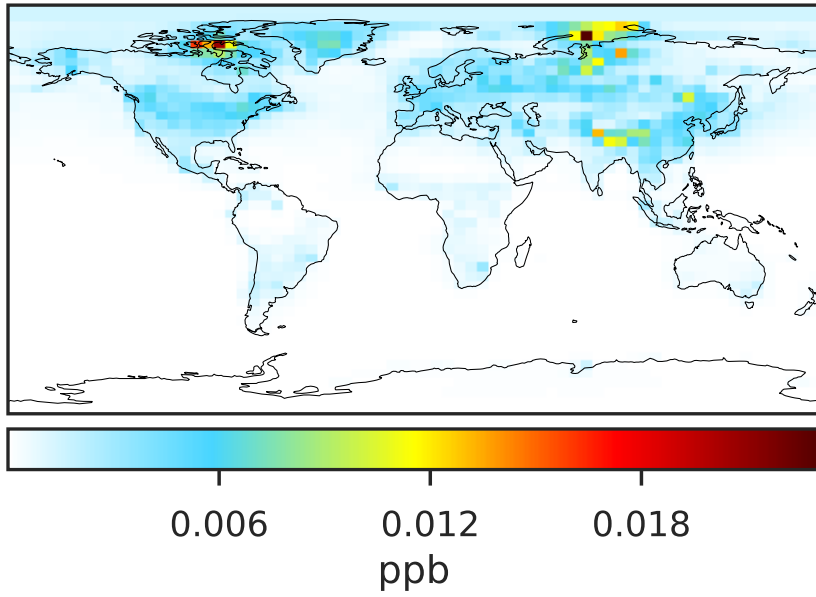
Ratio (1x1.25)
Dev/Ref, Fixed Range



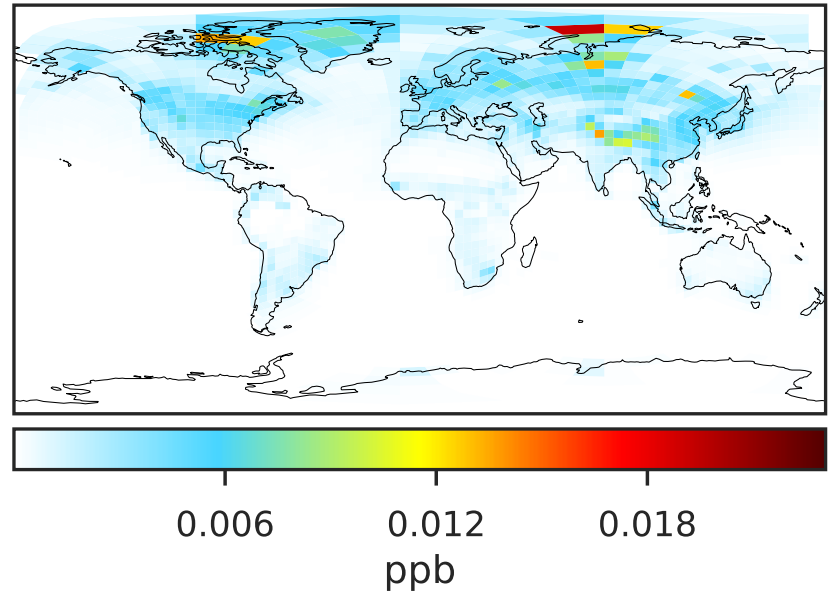
0.50 0.75 1.00 1.50 2.00
unitless

SpeciesConcVV_HNO4 (Apr2019)

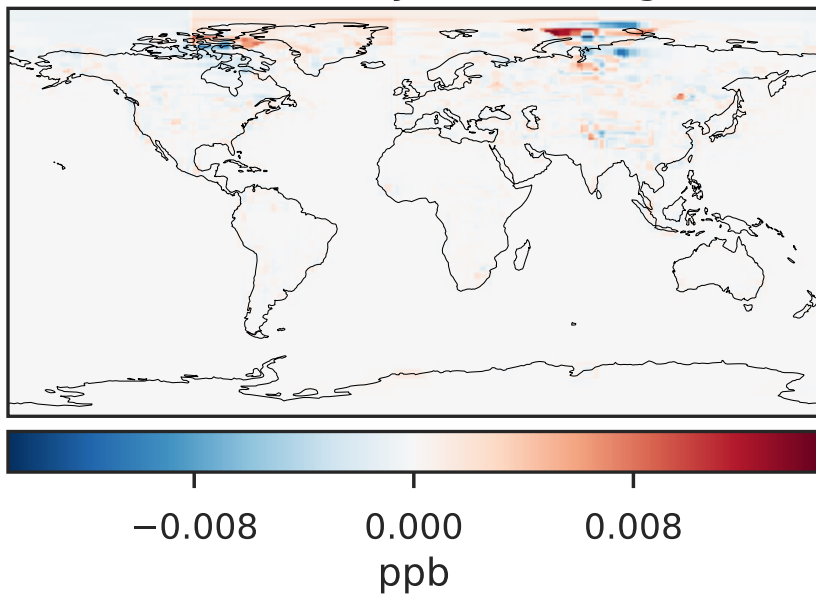
14.3.0-rc.0 (Ref)
4.0x5.0



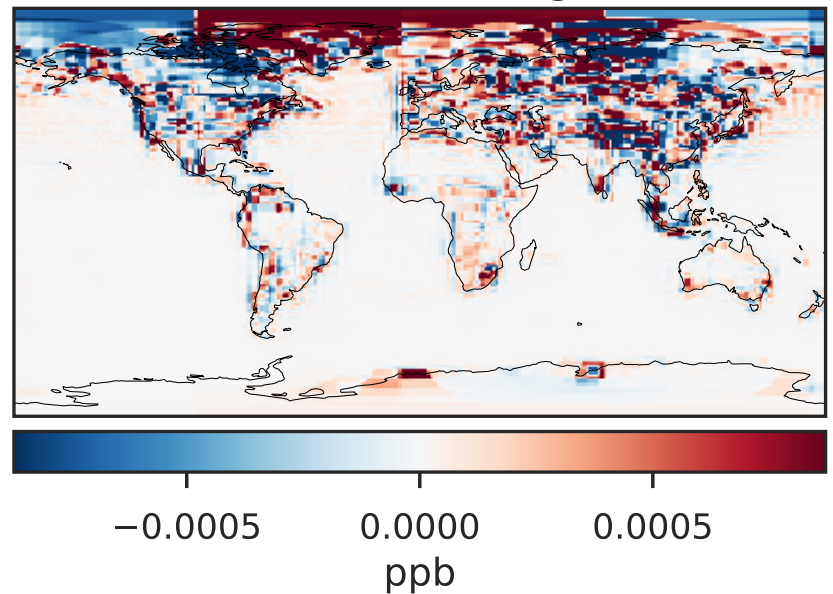
14.3.0-rc.0 (Dev)
c24



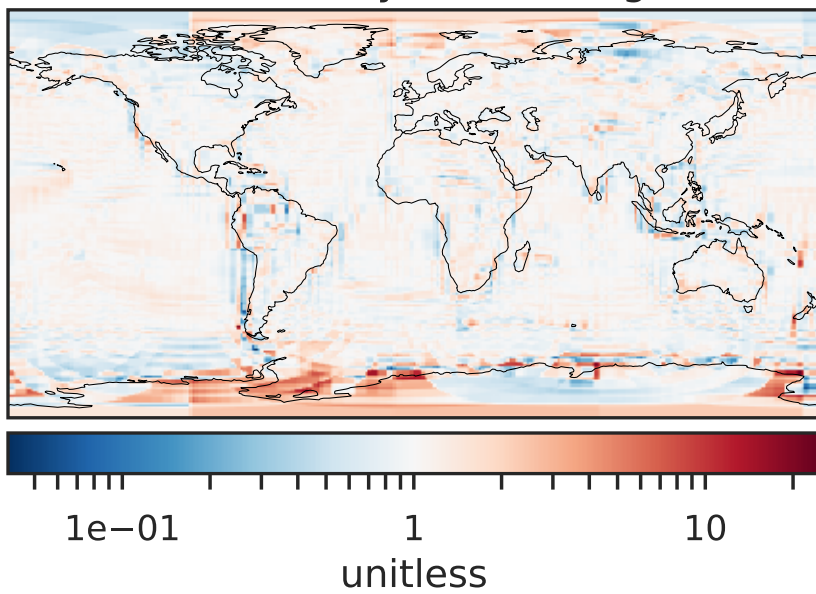
Difference (1x1.25)
Dev - Ref, Dynamic Range



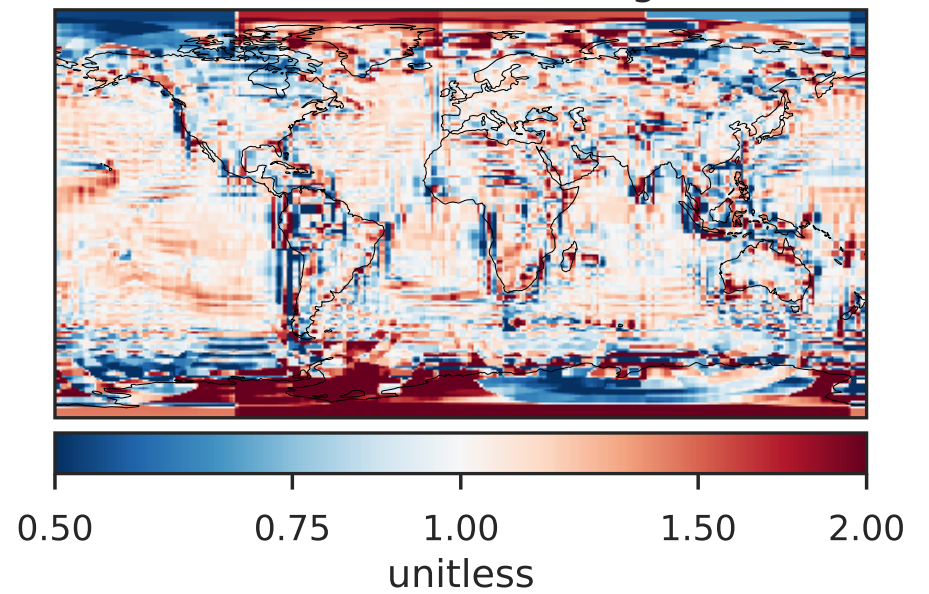
Difference (1x1.25)
Dev - Ref, Restricted Range [5%,95%]



Ratio (1x1.25)
Dev/Ref, Dynamic Range

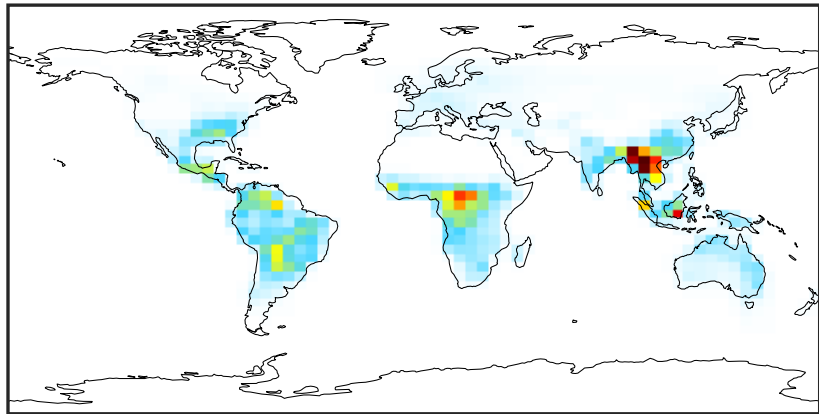


Ratio (1x1.25)
Dev/Ref, Fixed Range



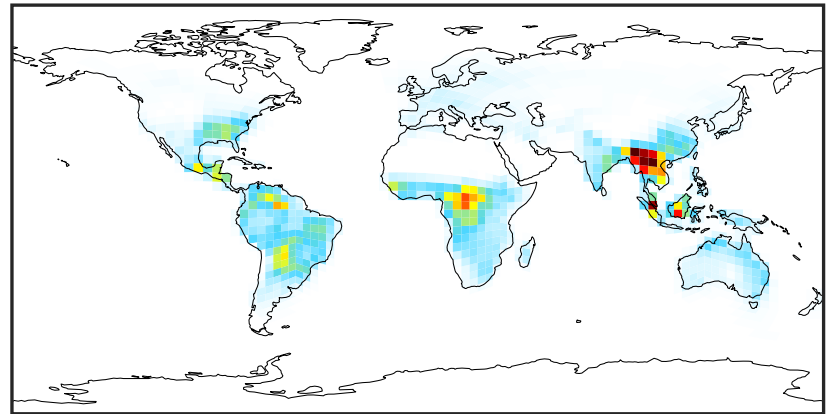
SpeciesConcVV_MPAN (Apr2019)

14.3.0-rc.0 (Ref)
4.0x5.0



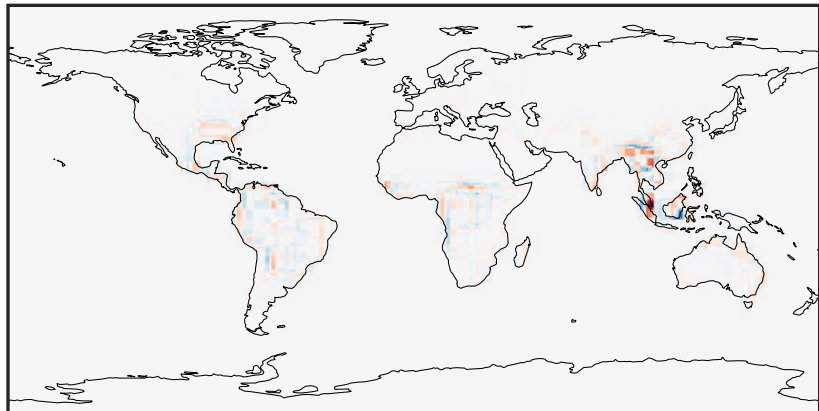
0.000 0.015 0.030
ppb

14.3.0-rc.0 (Dev)
c24



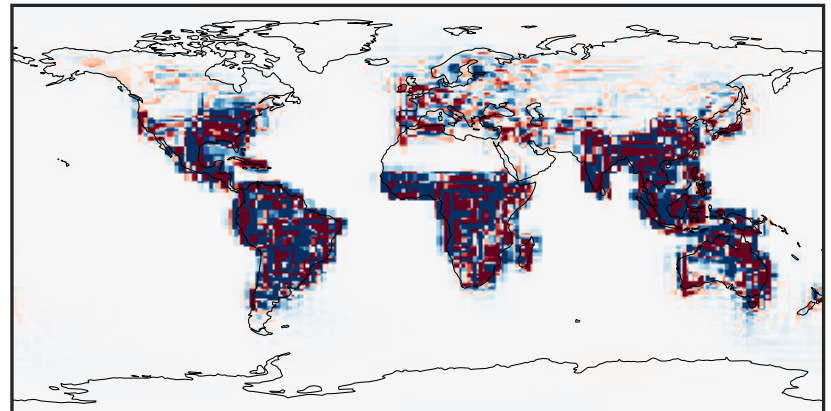
0.000 0.015 0.030
ppb

Difference (1x1.25)
Dev - Ref, Dynamic Range



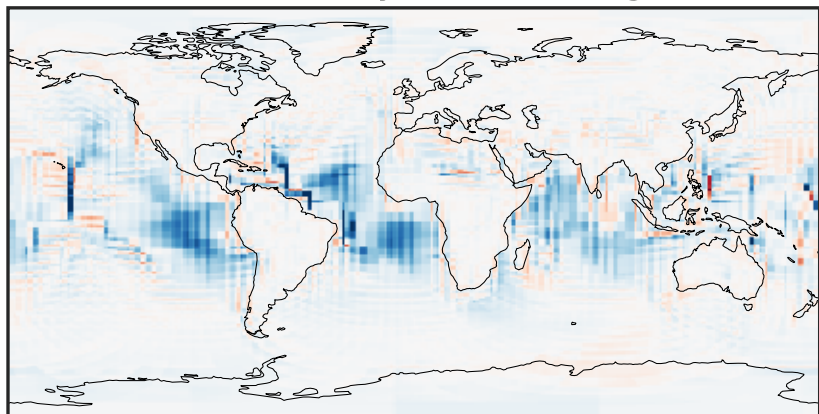
-0.015 0.000 0.015
ppb

Difference (1x1.25)
Dev - Ref, Restricted Range [5%,95%]



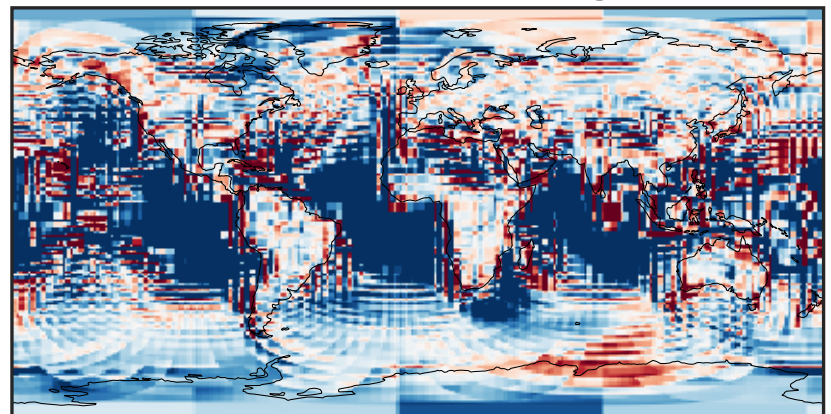
-0.00025 0.00000 0.00025
ppb

Ratio (1x1.25)
Dev/Ref, Dynamic Range



1e-03 1e-02 1e-01 1 10 100 1000
unitless

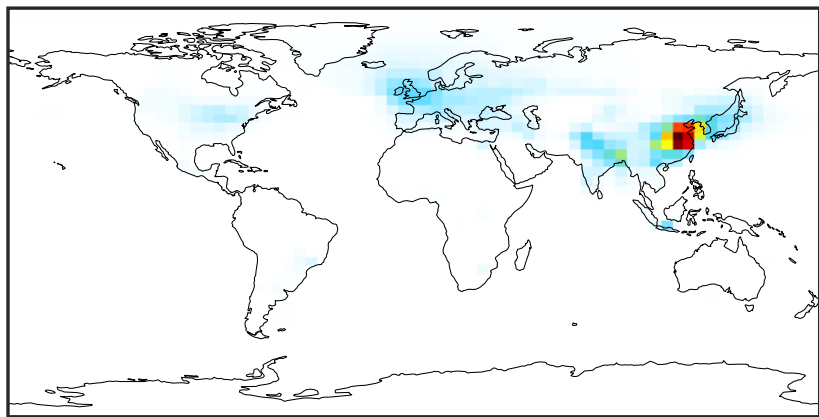
Ratio (1x1.25)
Dev/Ref, Fixed Range



0.50 0.75 1.00 1.50 2.00
unitless

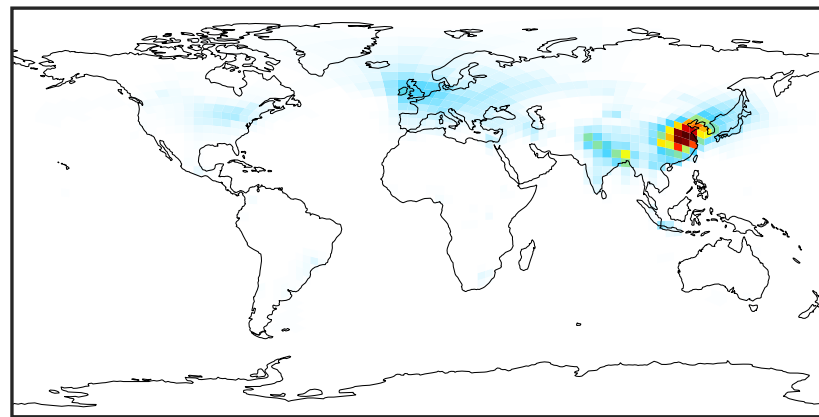
SpeciesConcVV_NIT (Apr2019)

14.3.0-rc.0 (Ref)
4.0x5.0



0.00 2.84 5.68 8.52 11.36
ppb

14.3.0-rc.0 (Dev)
c24



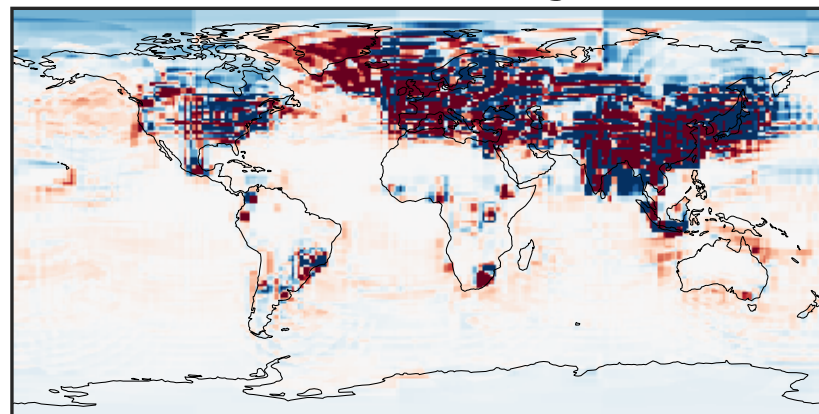
0.00 2.84 5.68 8.52 11.36
ppb

Difference (1x1.25)
Dev - Ref, Dynamic Range



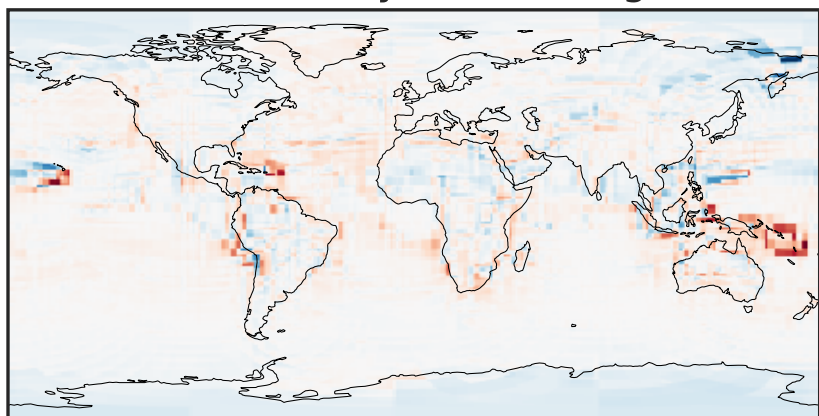
-5.76 -2.88 0.00 2.88 5.76
ppb

Difference (1x1.25)
Dev - Ref, Restricted Range [5%,95%]



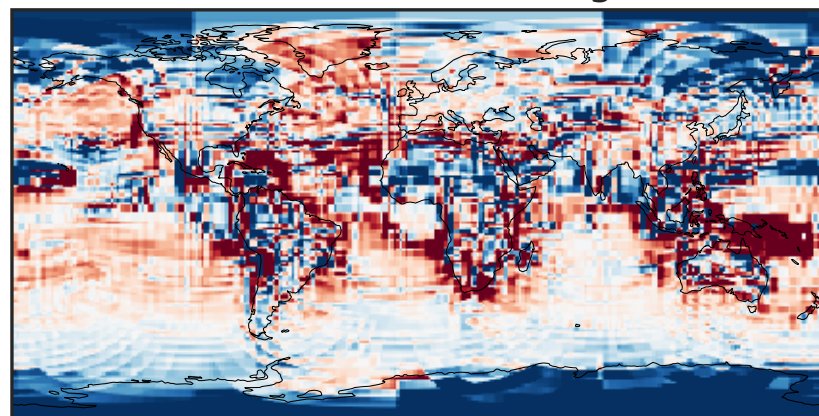
-0.025 0.000 0.025
ppb

Ratio (1x1.25)
Dev/Ref, Dynamic Range



1e-02 1e-01 1 10 100
unitless

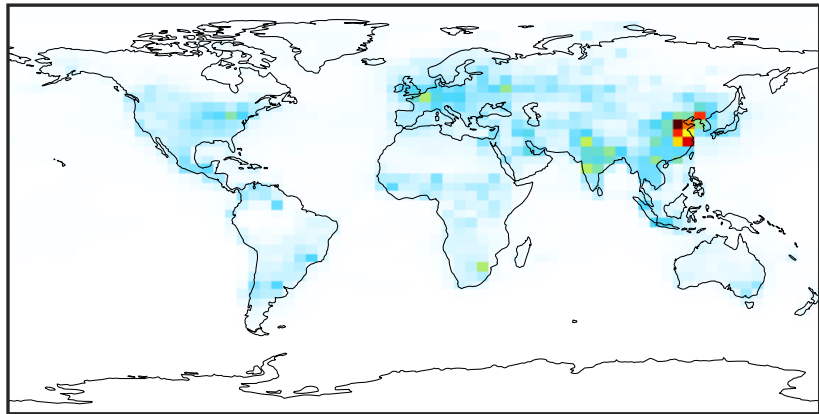
Ratio (1x1.25)
Dev/Ref, Fixed Range



0.50 0.75 1.00 1.50 2.00
unitless

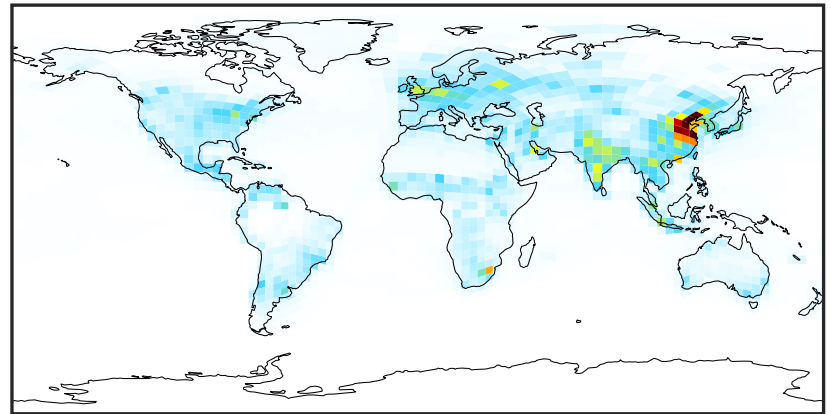
SpeciesConcVV_NO (Apr2019)

14.3.0-rc.0 (Ref)
4.0x5.0



0.0000 0.1692 0.3384 0.5076 0.6768
ppb

14.3.0-rc.0 (Dev)
c24



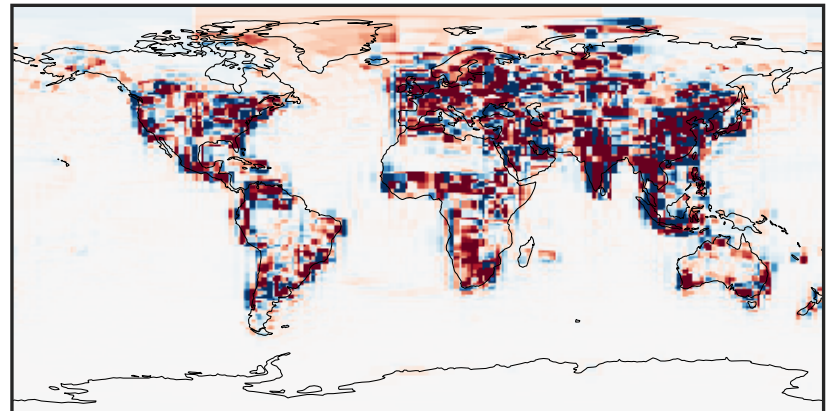
0.0000 0.1692 0.3384 0.5076 0.6768
ppb

Difference (1x1.25)
Dev - Ref, Dynamic Range



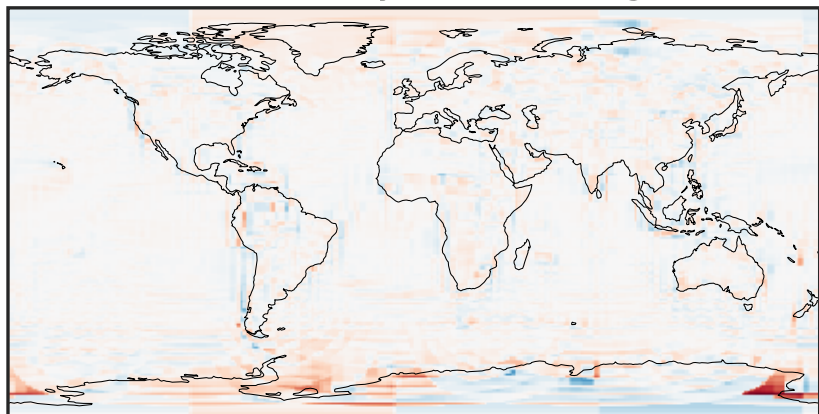
-0.675 -0.337 0.000 0.337 0.675
ppb

Difference (1x1.25)
Dev - Ref, Restricted Range [5%,95%]



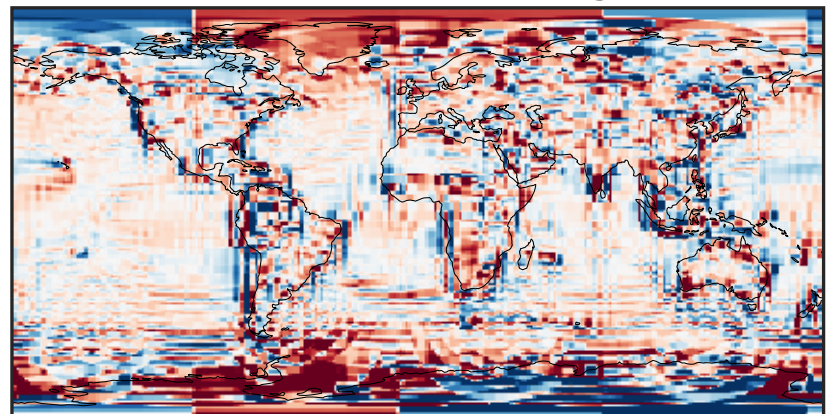
-0.008 0.000 0.008
ppb

Ratio (1x1.25)
Dev/Ref, Dynamic Range



1e-02 1e-01 1 10 100
unitless

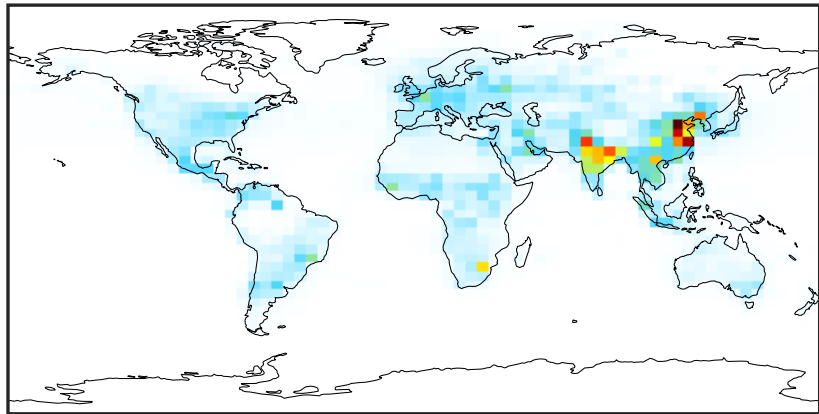
Ratio (1x1.25)
Dev/Ref, Fixed Range



0.50 0.75 1.00 1.50 2.00
unitless

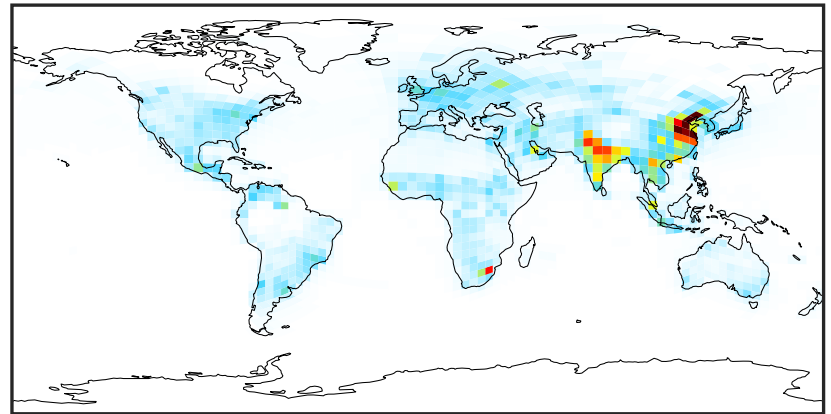
SpeciesConcVW_NO2 (Apr2019)

14.3.0-rc.0 (Ref)
4.0x5.0



0.000 1.954 3.908 5.861 7.815
ppb

14.3.0-rc.0 (Dev)
c24



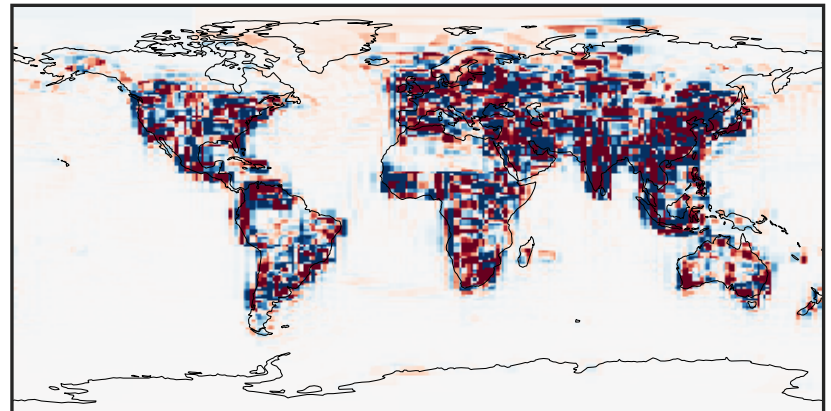
0.000 1.954 3.908 5.861 7.815
ppb

Difference (1x1.25)
Dev - Ref, Dynamic Range



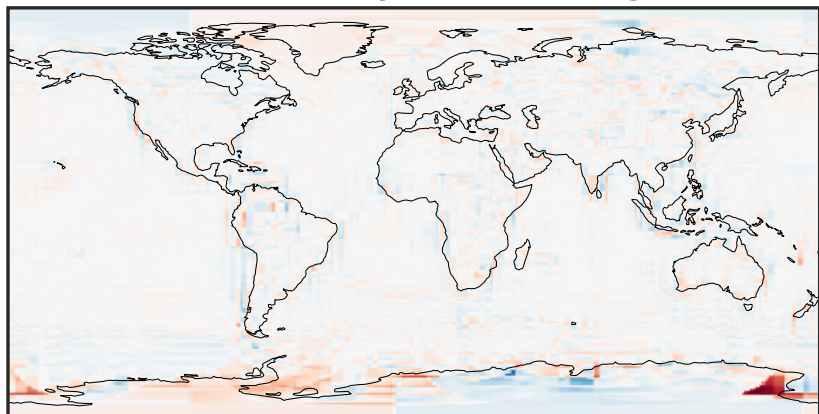
-6.86 -3.43 0.00 3.43 6.86
ppb

Difference (1x1.25)
Dev - Ref, Restricted Range [5%,95%]



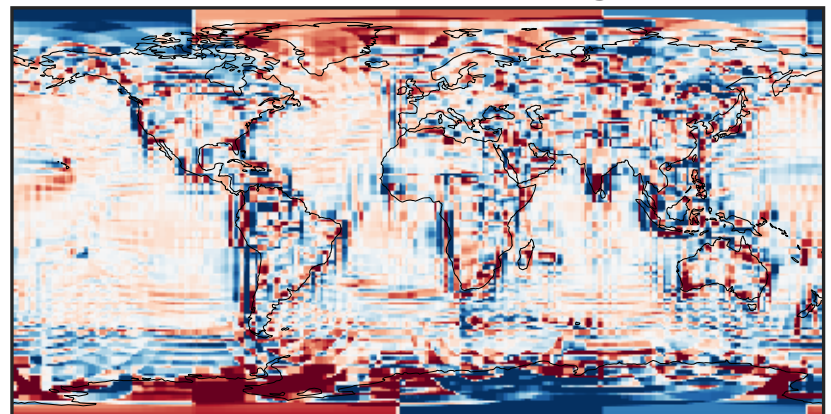
-0.1202 -0.0601 0.0000 0.0601 0.1202
ppb

Ratio (1x1.25)
Dev/Ref, Dynamic Range



1e-02 1e-01 1 10 100
unitless

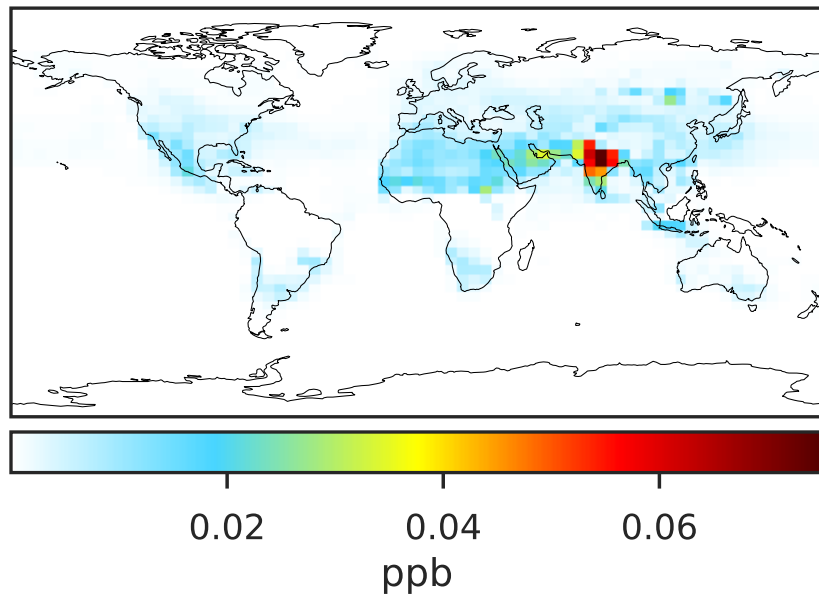
Ratio (1x1.25)
Dev/Ref, Fixed Range



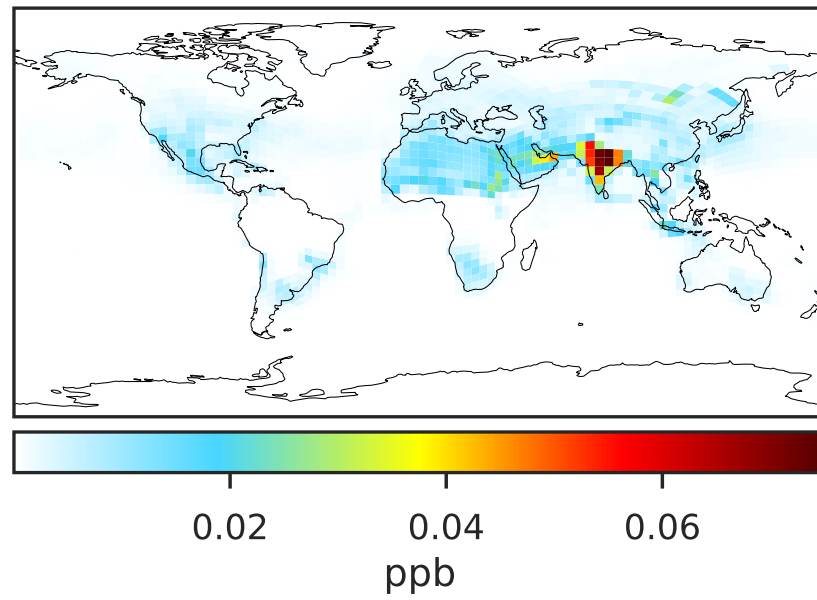
0.50 0.75 1.00 1.50 2.00
unitless

SpeciesConcVW_NO3 (Apr2019)

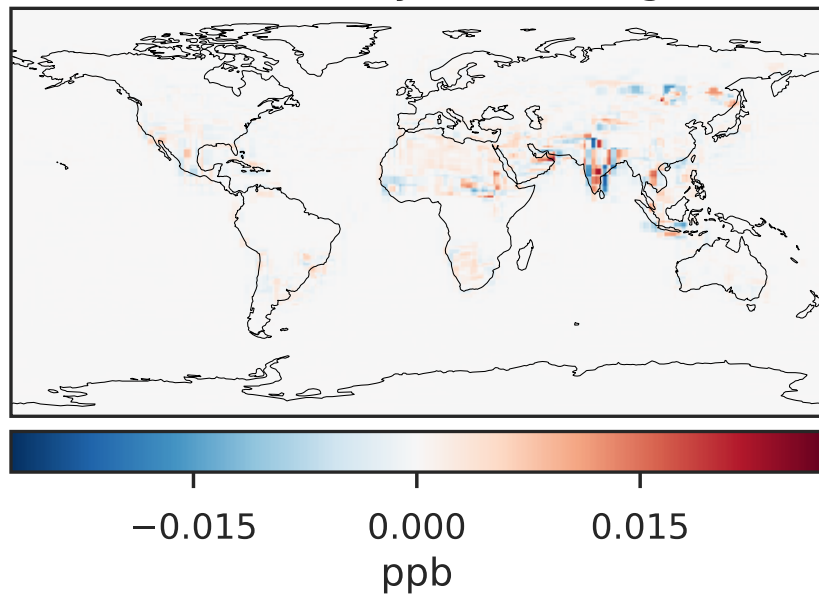
14.3.0-rc.0 (Ref)
4.0x5.0



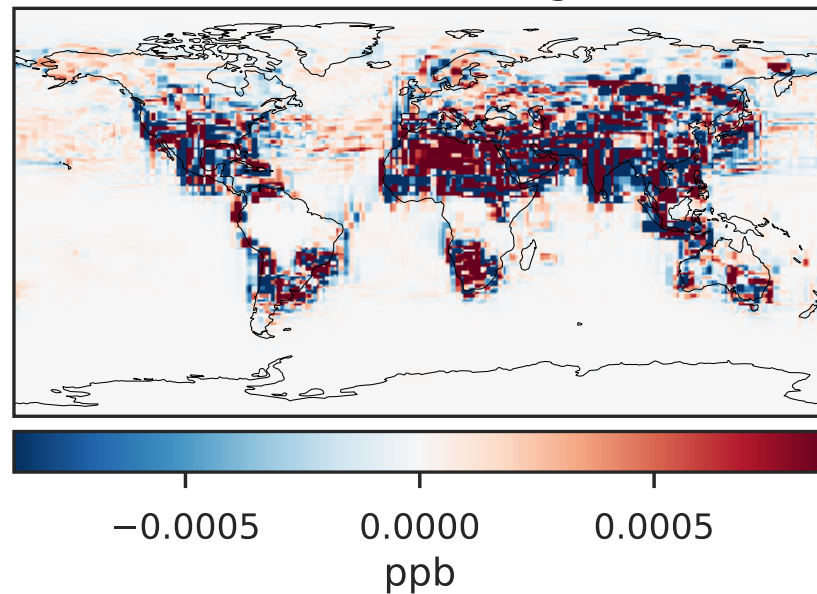
14.3.0-rc.0 (Dev)
c24



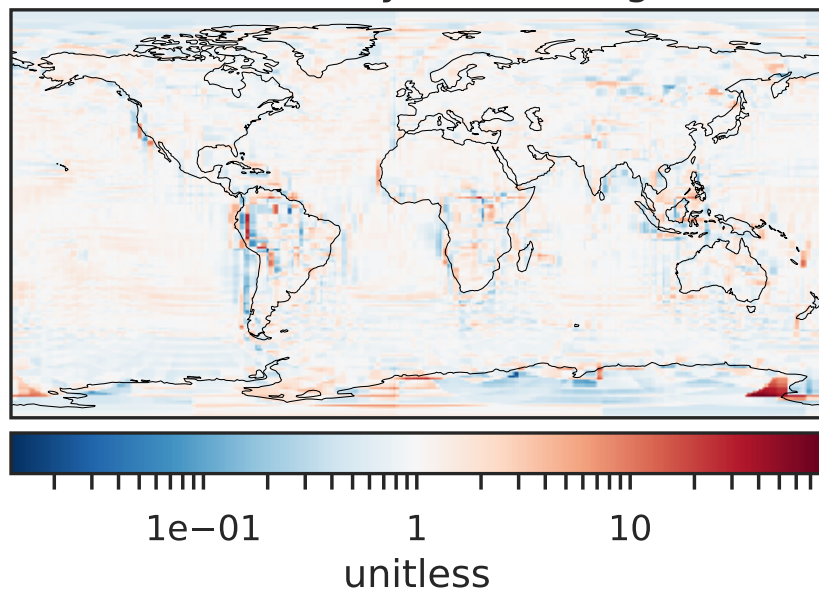
Difference (1x1.25)
Dev - Ref, Dynamic Range



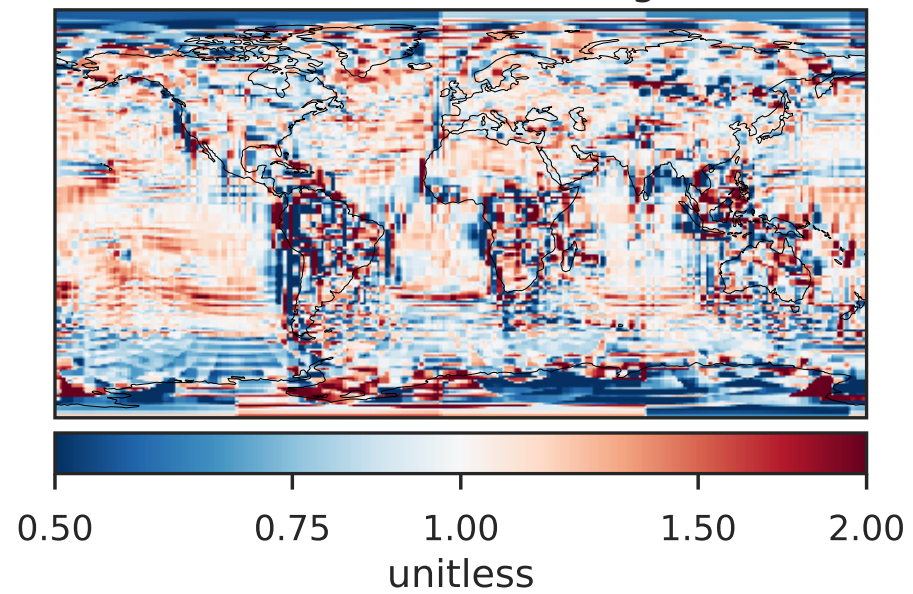
Difference (1x1.25)
Dev - Ref, Restricted Range [5%,95%]



Ratio (1x1.25)
Dev/Ref, Dynamic Range

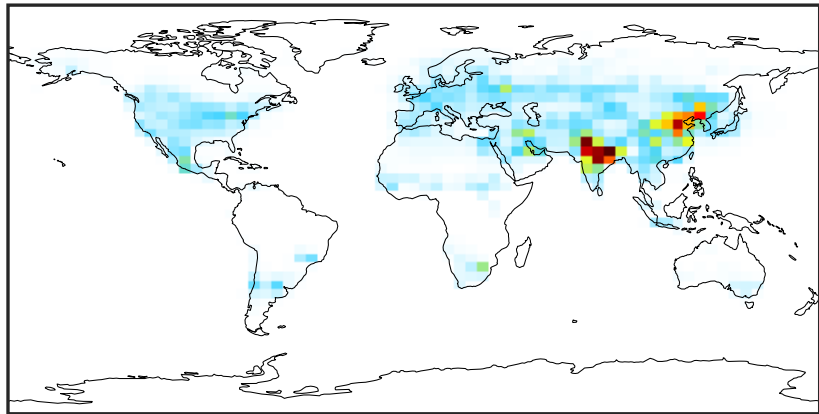


Ratio (1x1.25)
Dev/Ref, Fixed Range



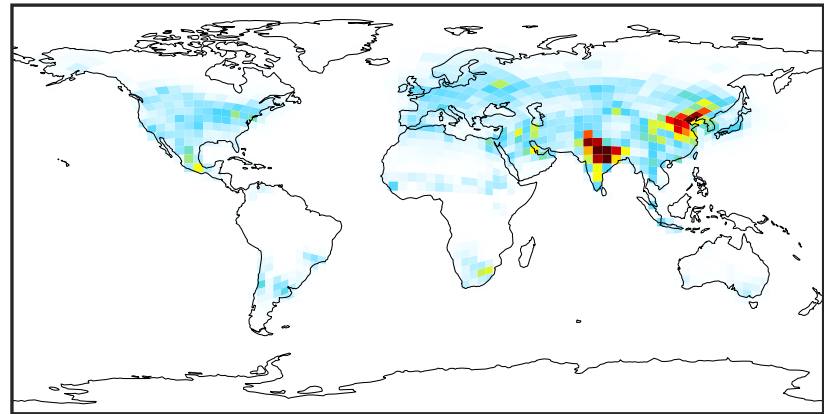
SpeciesConcVV_N2O5 (Apr2019)

14.3.0-rc.0 (Ref)
4.0x5.0



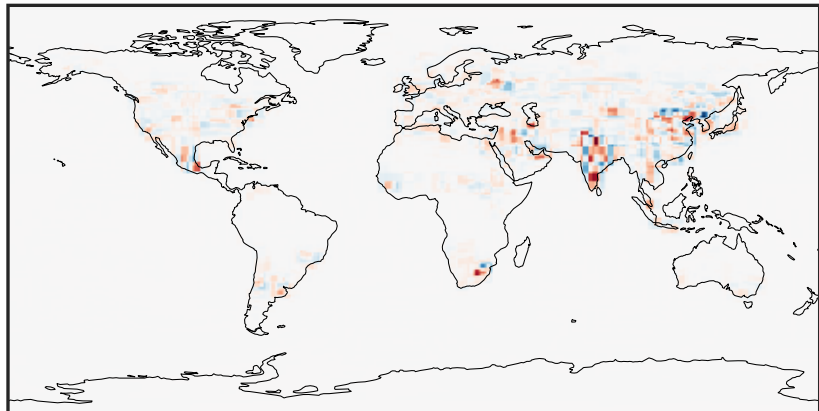
0.0000 0.0596 0.1193 0.1789 0.2385
ppb

14.3.0-rc.0 (Dev)
c24



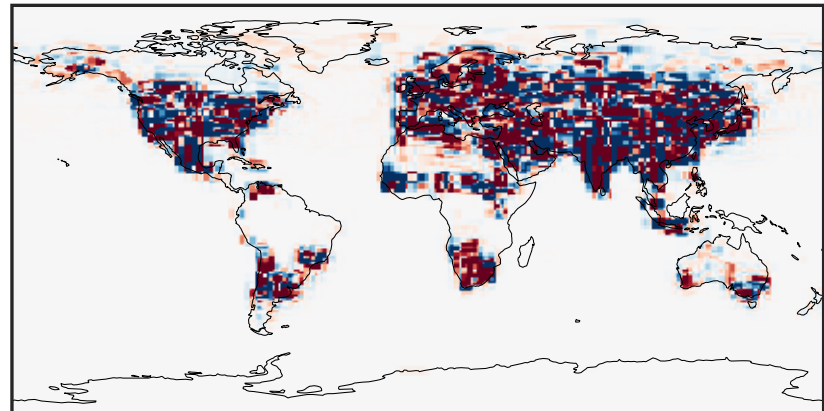
0.0000 0.0596 0.1193 0.1789 0.2385
ppb

Difference (1x1.25)
Dev - Ref, Dynamic Range



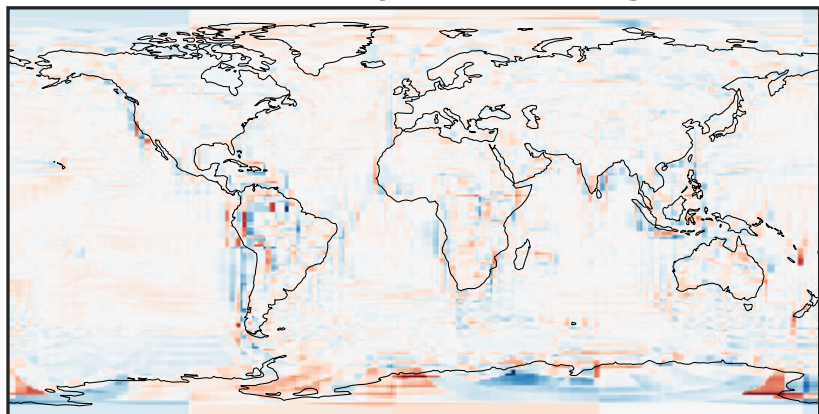
-0.1051 -0.0526 0.0000 0.0526 0.1051
ppb

Difference (1x1.25)
Dev - Ref, Restricted Range [5%,95%]



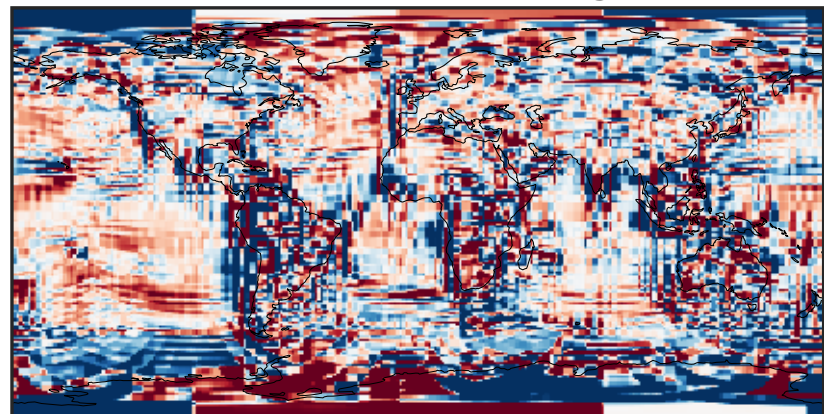
-0.002 0.000 0.002
ppb

Ratio (1x1.25)
Dev/Ref, Dynamic Range



1e-02 1e-01 1 10 100
unitless

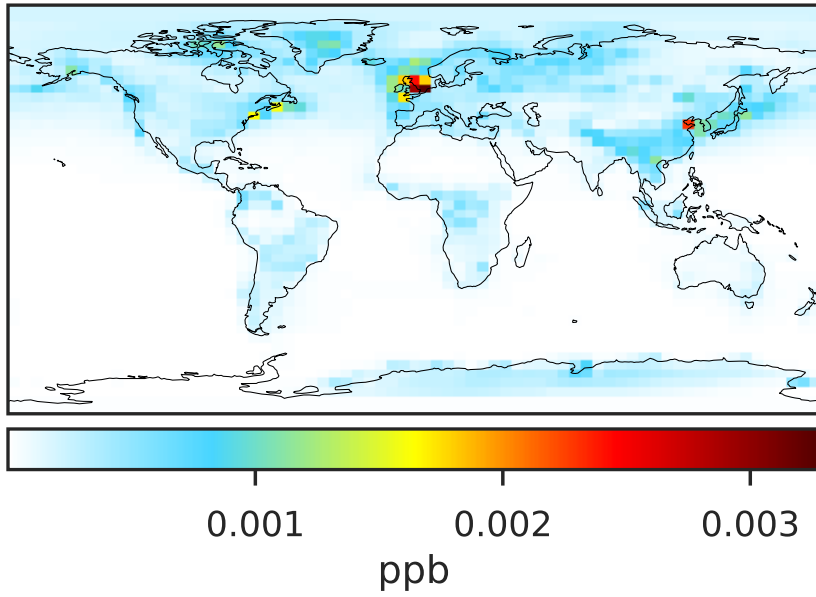
Ratio (1x1.25)
Dev/Ref, Fixed Range



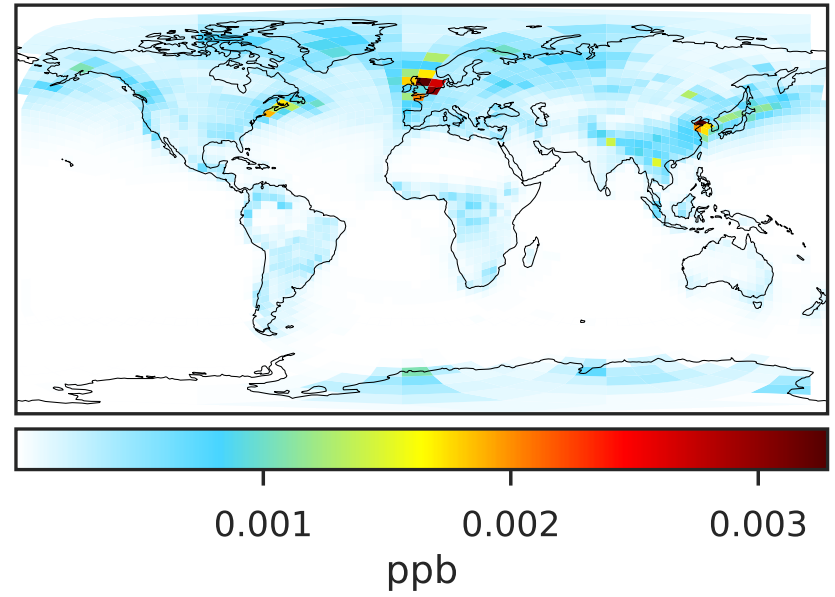
0.50 0.75 1.00 1.50 2.00
unitless

SpeciesConcVV_MPN (Apr2019)

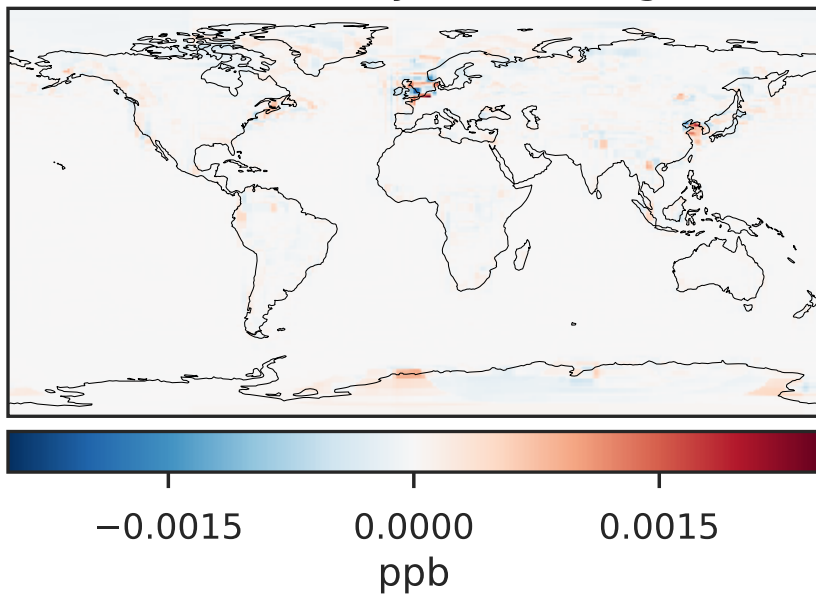
14.3.0-rc.0 (Ref)
4.0x5.0



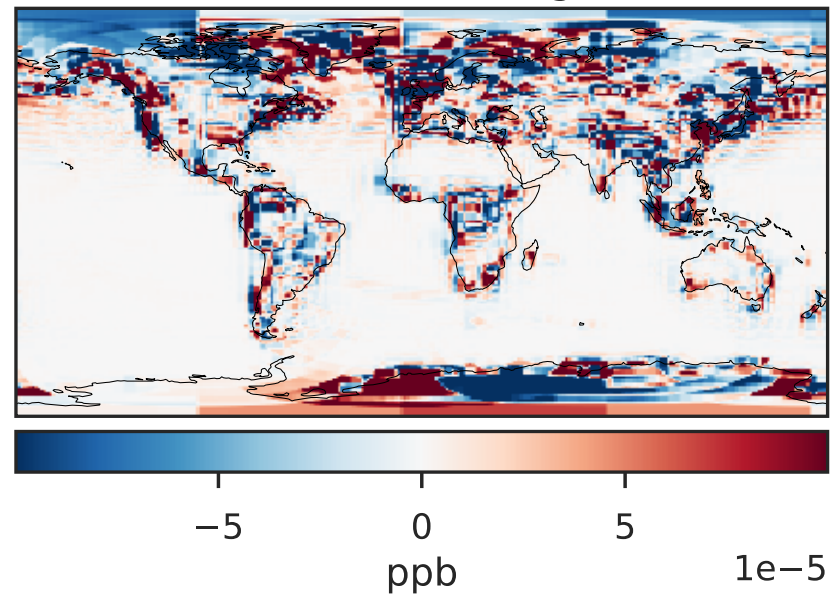
14.3.0-rc.0 (Dev)
c24



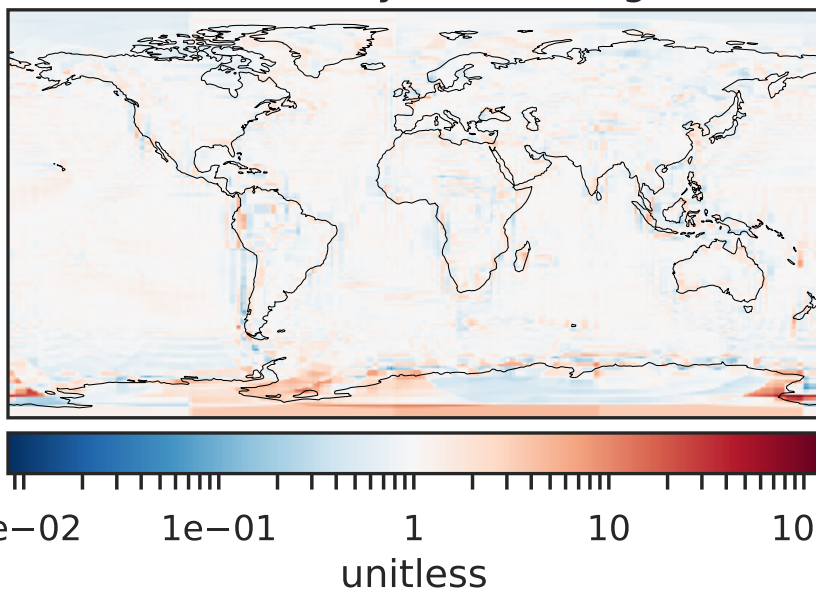
Difference (1x1.25)
Dev - Ref, Dynamic Range



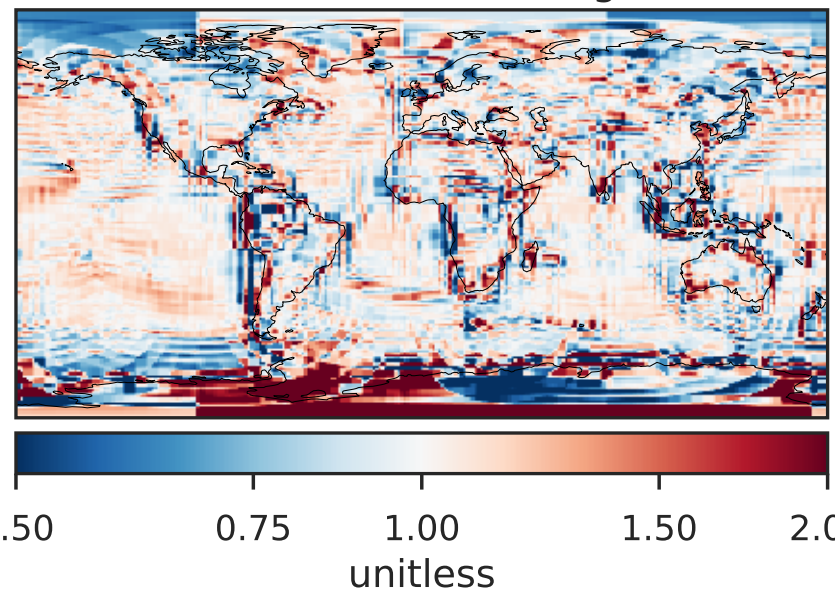
Difference (1x1.25)
Dev - Ref, Restricted Range [5%,95%]



Ratio (1x1.25)
Dev/Ref, Dynamic Range

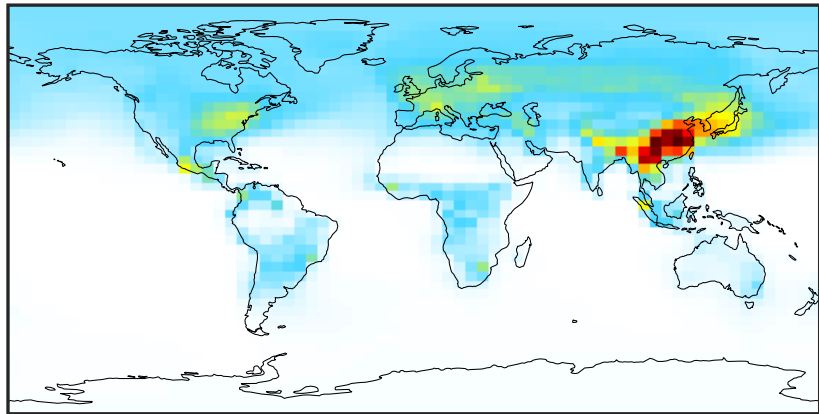


Ratio (1x1.25)
Dev/Ref, Fixed Range



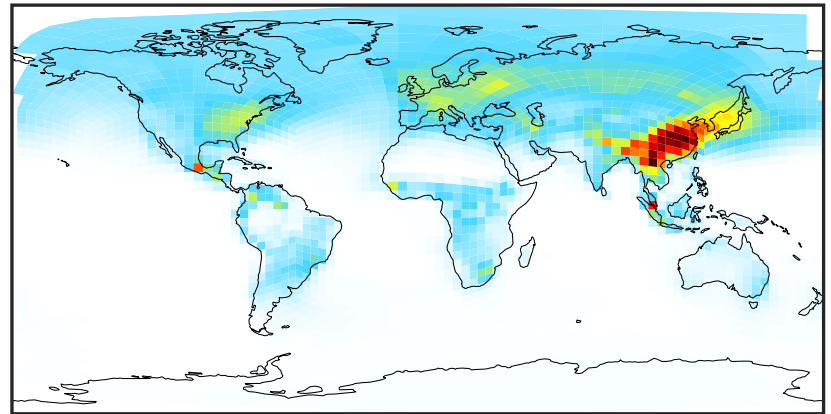
SpeciesConcVV_PAN (Apr2019)

14.3.0-rc.0 (Ref)
4.0x5.0



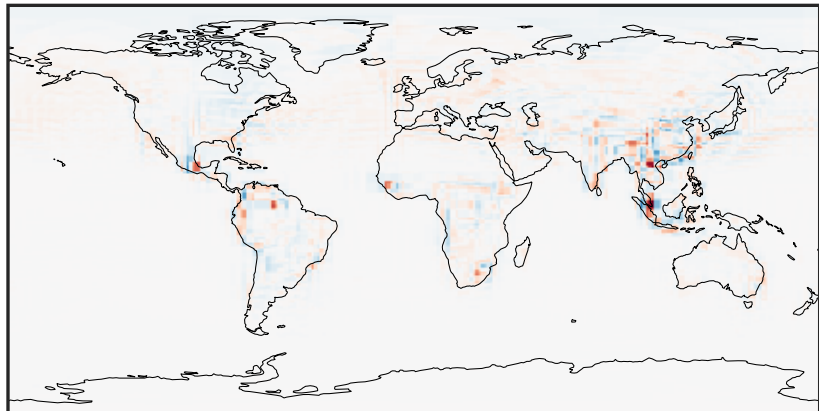
0.000 0.263 0.525 0.788 1.051
ppb

14.3.0-rc.0 (Dev)
c24



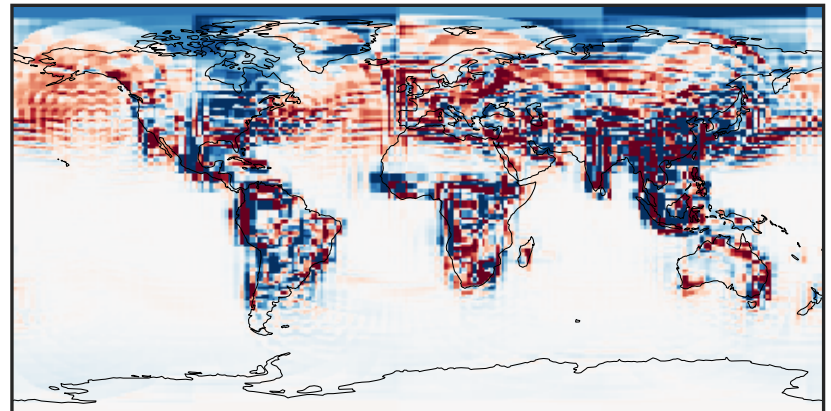
0.000 0.263 0.525 0.788 1.051
ppb

Difference (1x1.25)
Dev - Ref, Dynamic Range



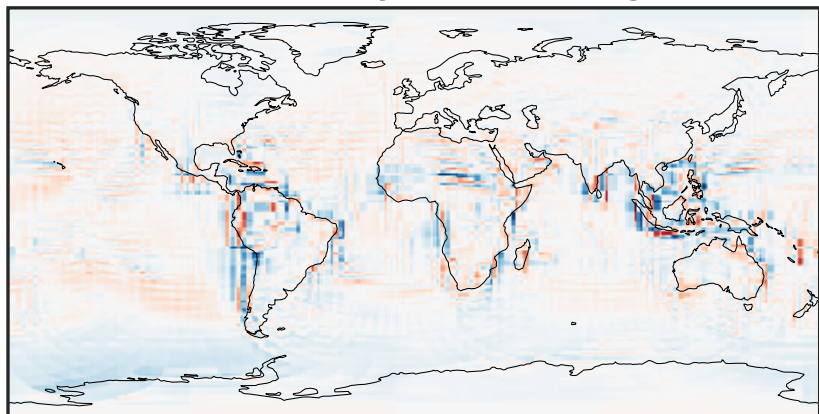
-0.4286 -0.2143 0.0000 0.2143 0.4286
ppb

Difference (1x1.25)
Dev - Ref, Restricted Range [5%,95%]



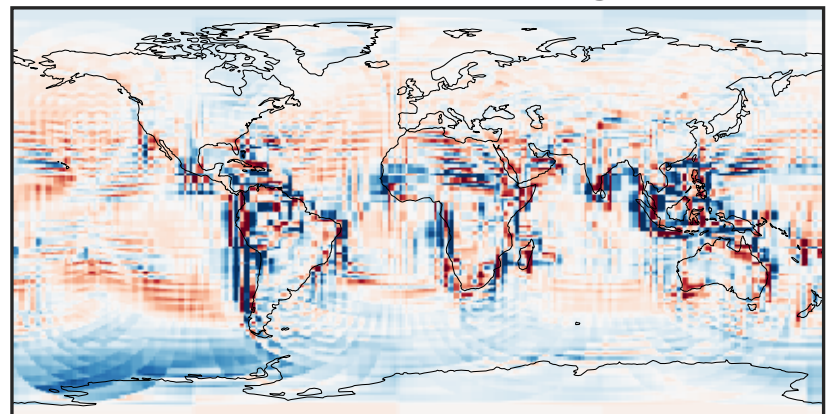
-0.015 0.000 0.015
ppb

Ratio (1x1.25)
Dev/Ref, Dynamic Range



0.128 0.564 1.000 4.395 7.790
unitless

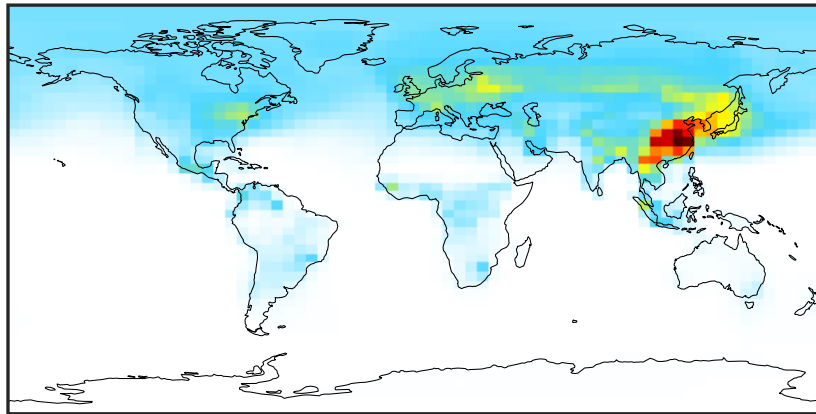
Ratio (1x1.25)
Dev/Ref, Fixed Range



0.50 0.75 1.00 1.50 2.00
unitless

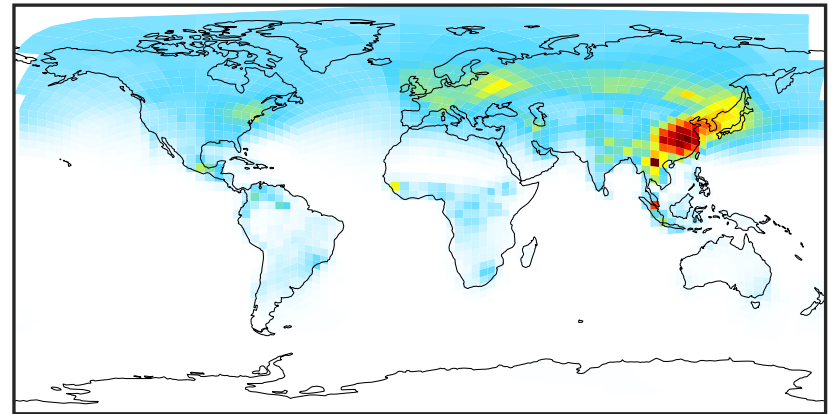
SpeciesConcVV_PPN (Apr2019)

14.3.0-rc.0 (Ref)
4.0x5.0



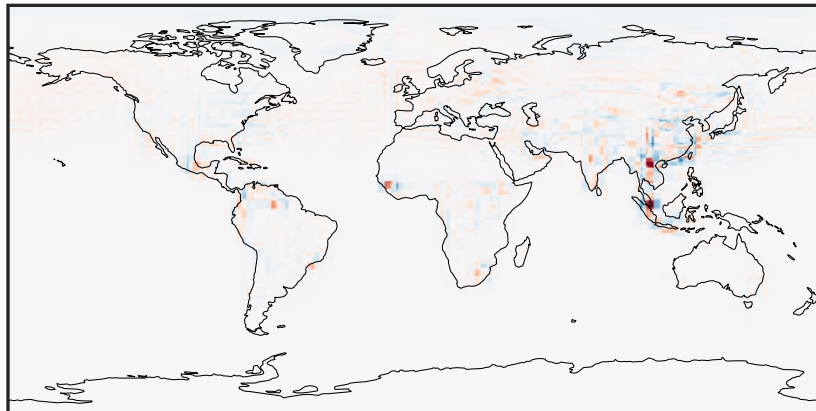
0.0000 0.0648 0.1297 0.1945 0.2593
ppb

14.3.0-rc.0 (Dev)
c24



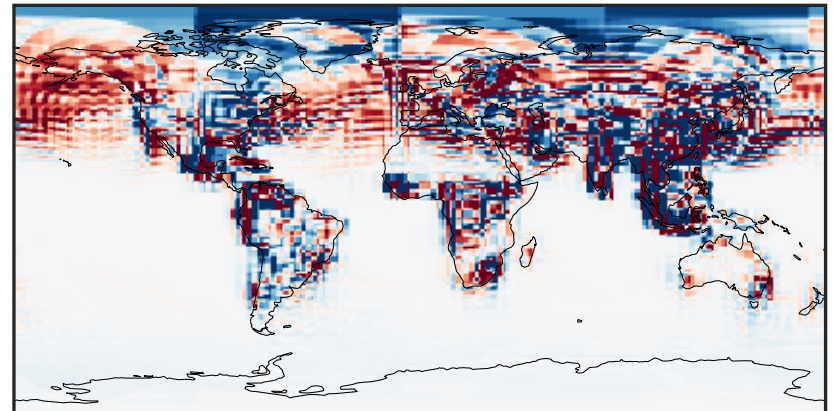
0.0000 0.0648 0.1297 0.1945 0.2593
ppb

Difference (1x1.25)
Dev - Ref, Dynamic Range



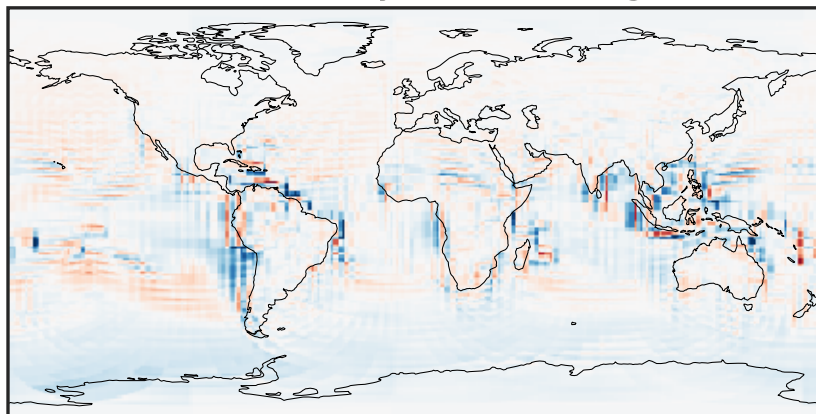
-0.1108 -0.0554 0.0000 0.0554 0.1108
ppb

Difference (1x1.25)
Dev - Ref, Restricted Range [5%,95%]



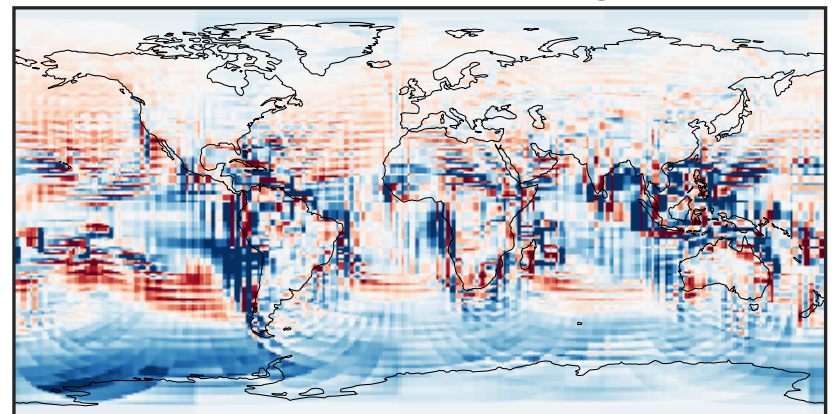
-0.0025 0.0000 0.0025
ppb

Ratio (1x1.25)
Dev/Ref, Dynamic Range



1e-01 1 10
unitless

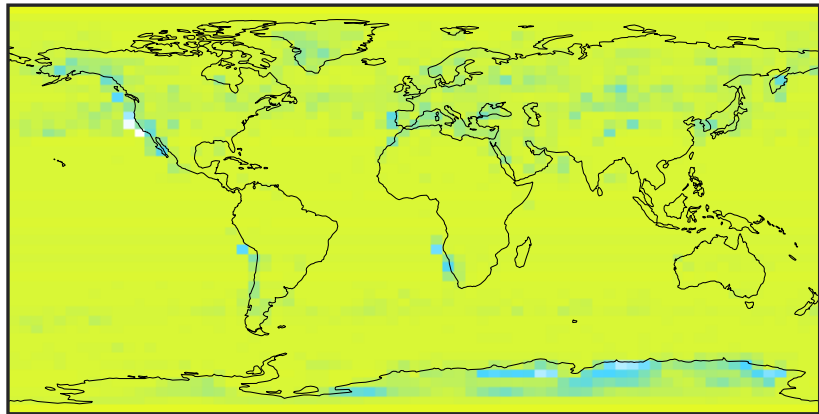
Ratio (1x1.25)
Dev/Ref, Fixed Range



0.50 0.75 1.00 1.50 2.00
unitless

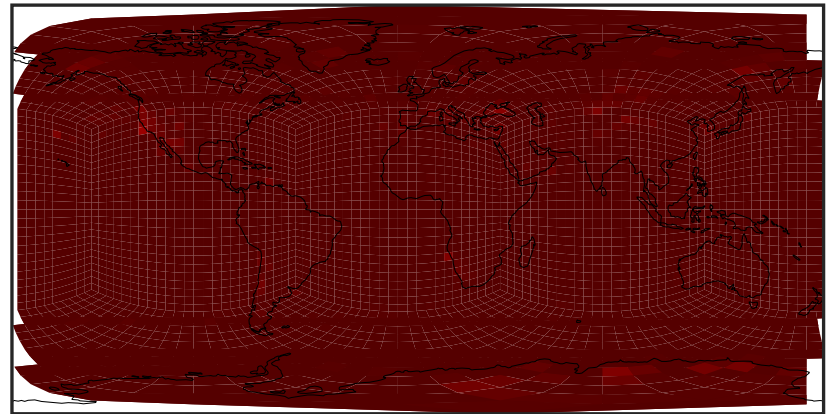
SpeciesConcVW_N2O (Apr2019)

14.3.0-rc.0 (Ref)
4.0x5.0



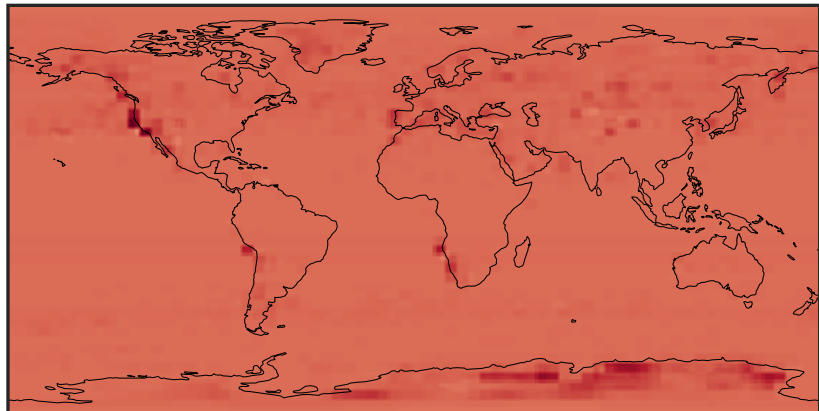
0.048 0.050 0.052
ppb +3.301e2

14.3.0-rc.0 (Dev)
c24



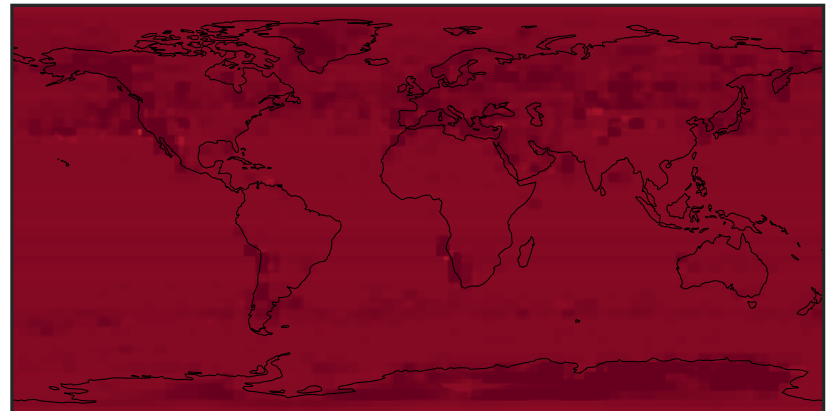
0.048 0.050 0.052
ppb +3.301e2

Difference (1x1.25)
Dev - Ref, Dynamic Range



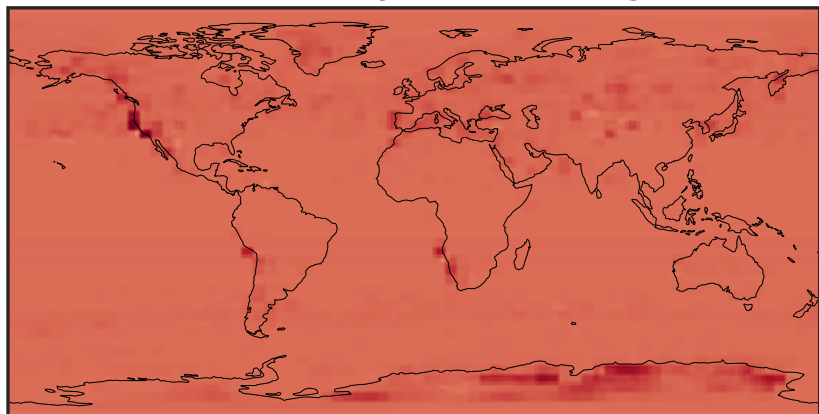
-0.004 0.000 0.004
ppb

Difference (1x1.25)
Dev - Ref, Restricted Range [5%,95%]



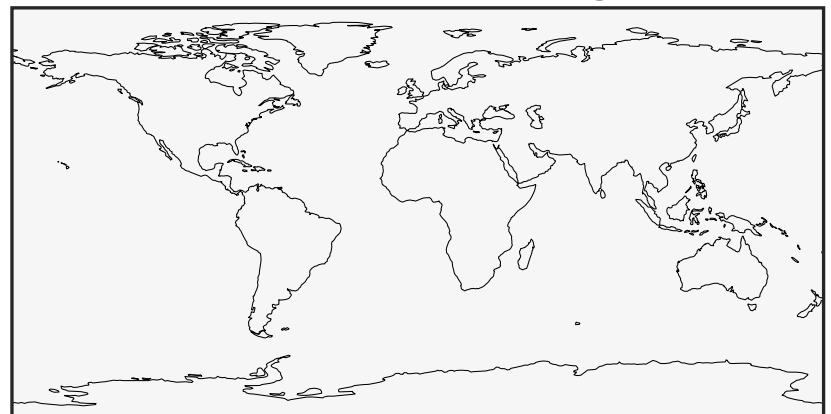
-0.002 0.000 0.002
ppb

Ratio (1x1.25)
Dev/Ref, Dynamic Range



0.9999817 1.000000 1.0000183
unitless

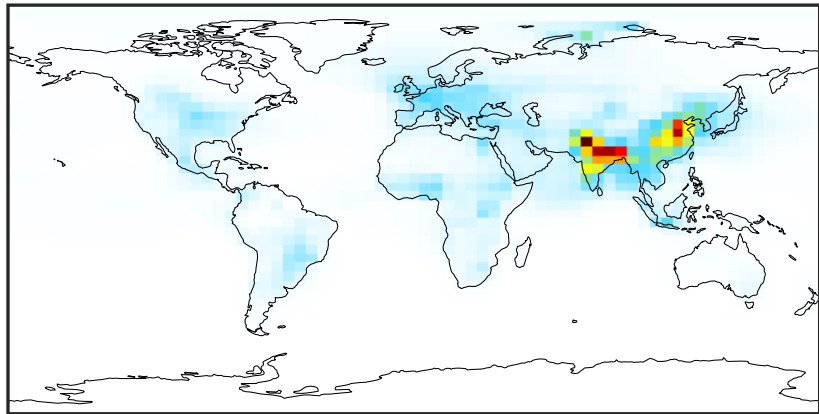
Ratio (1x1.25)
Dev/Ref, Fixed Range



0.50 0.75 1.00 1.50 2.00
unitless

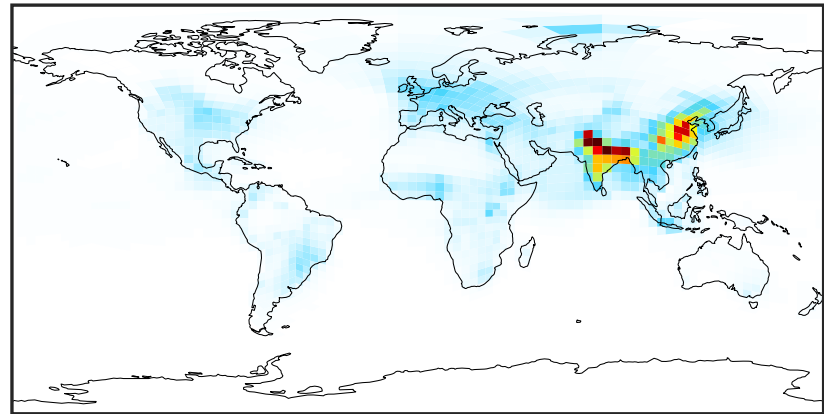
SpeciesConcVV_NHx (Apr2019)

14.3.0-rc.0 (Ref)
4.0x5.0



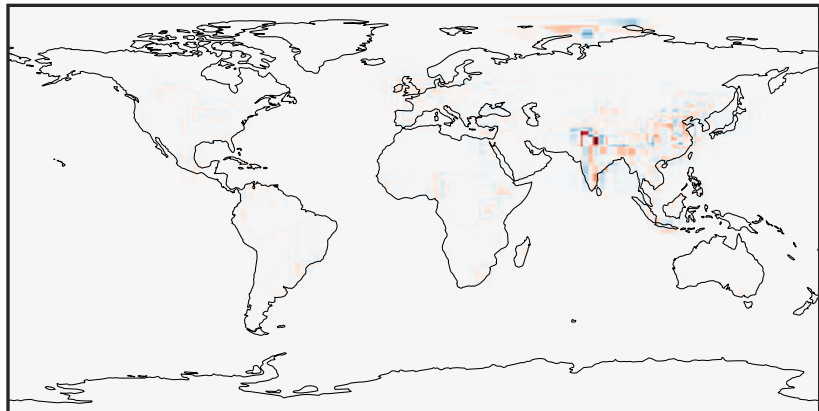
0.00 11.26 22.52 33.78 45.03
ppb

14.3.0-rc.0 (Dev)
c24



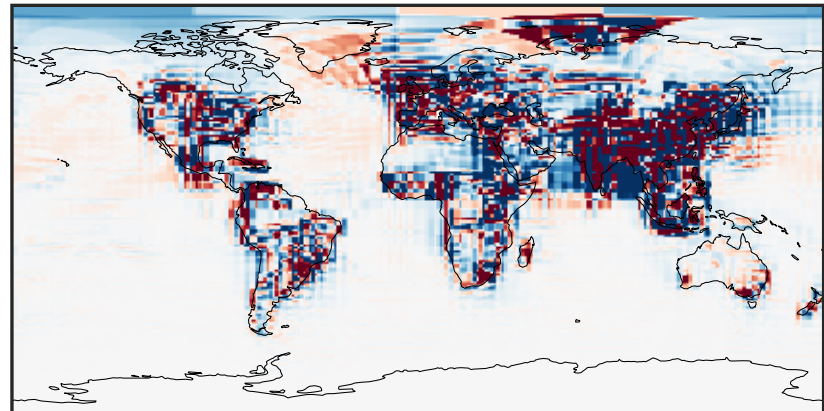
0.00 11.26 22.52 33.78 45.03
ppb

Difference (1x1.25)
Dev - Ref, Dynamic Range



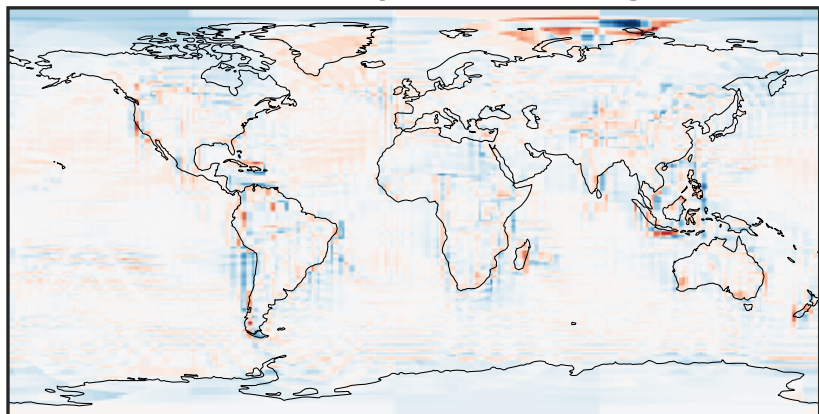
-21.33 -10.67 0.00 10.67 21.33
ppb

Difference (1x1.25)
Dev - Ref, Restricted Range [5%,95%]



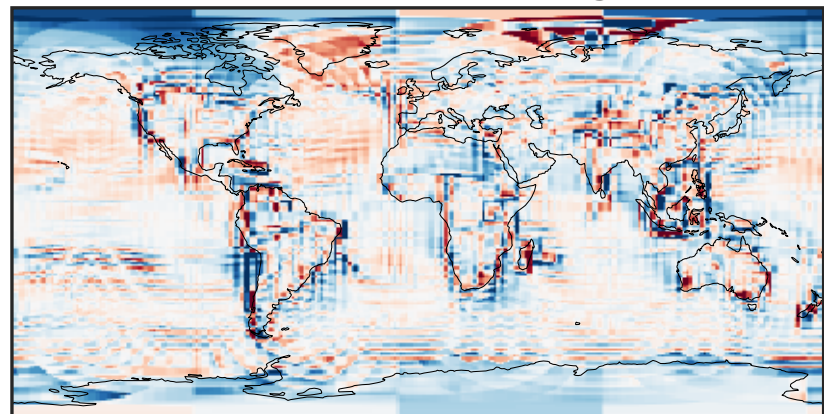
-0.4466 -0.2233 0.0000 0.2233 0.4466
ppb

Ratio (1x1.25)
Dev/Ref, Dynamic Range



0.117 0.558 1.000 4.791 8.582
unitless

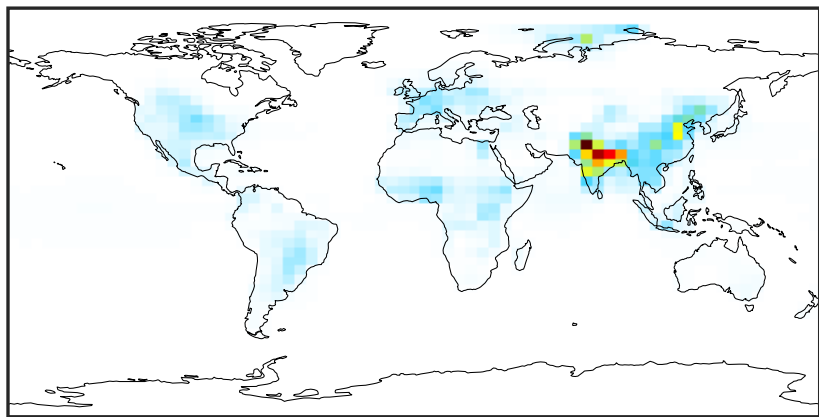
Ratio (1x1.25)
Dev/Ref, Fixed Range



0.50 0.75 1.00 1.50 2.00
unitless

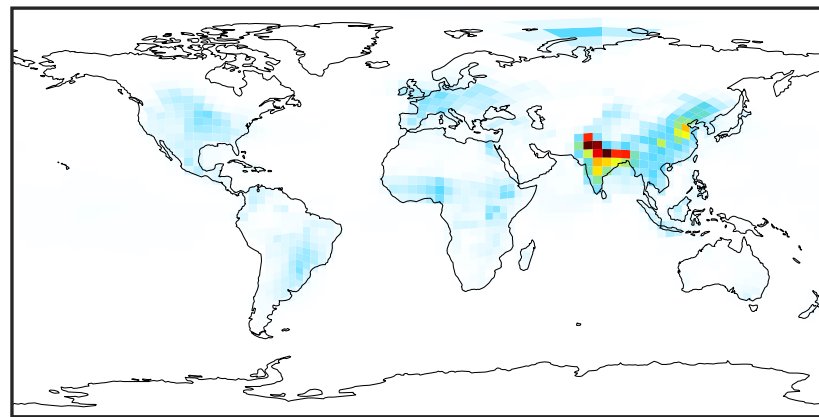
SpeciesConcVV_NH3 (Apr2019)

14.3.0-rc.0 (Ref)
4.0x5.0



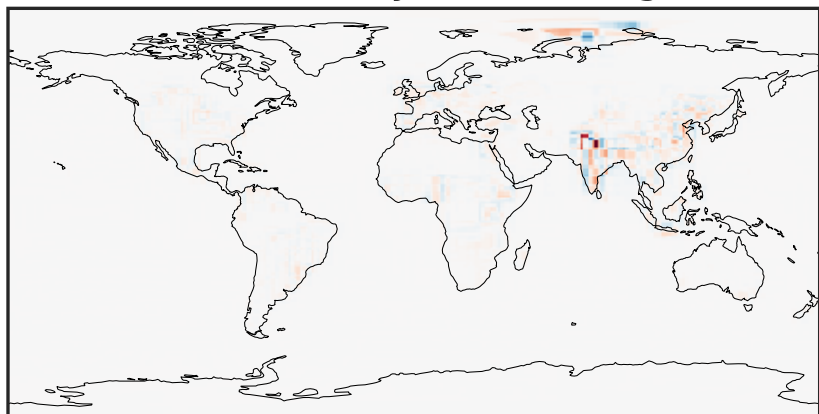
0.00 9.22 18.44 27.66 36.88
ppb

14.3.0-rc.0 (Dev)
c24



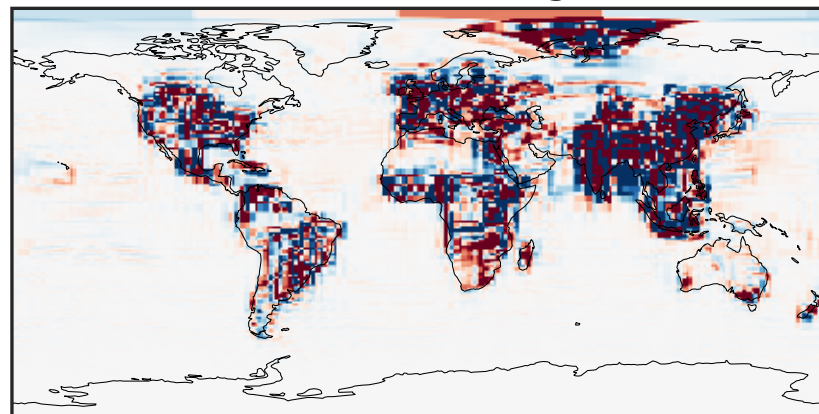
0.00 9.22 18.44 27.66 36.88
ppb

Difference (1x1.25)
Dev - Ref, Dynamic Range



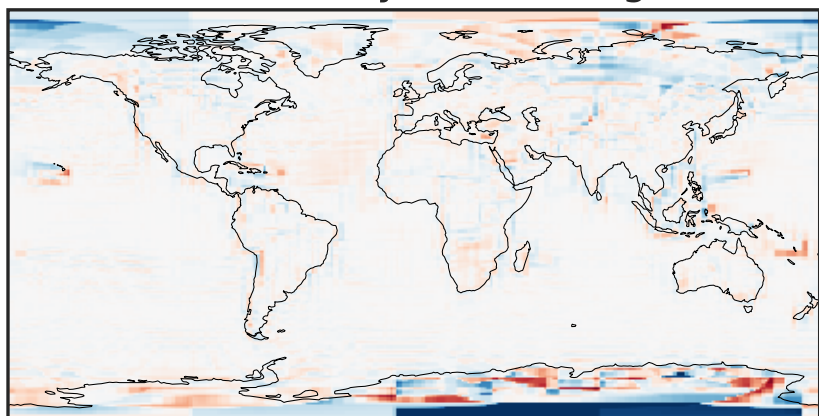
-17.84 -8.92 0.00 8.92 17.84
ppb

Difference (1x1.25)
Dev - Ref, Restricted Range [5%,95%]



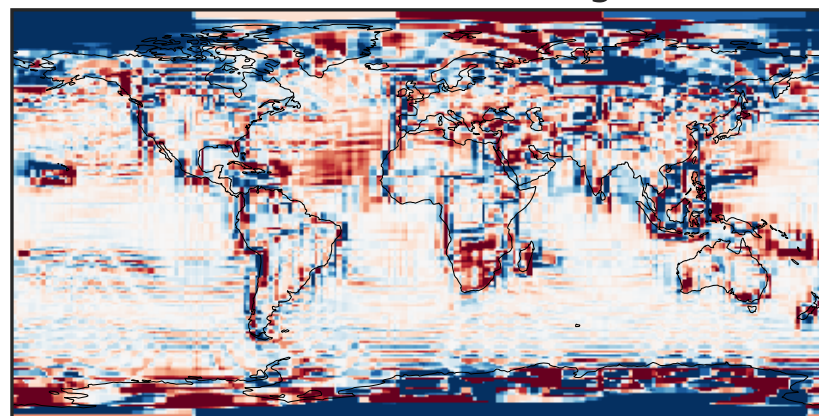
-0.3066 -0.1533 0.0000 0.1533 0.3066
ppb

Ratio (1x1.25)
Dev/Ref, Dynamic Range



1e-02 1e-01 1 10 100
unitless

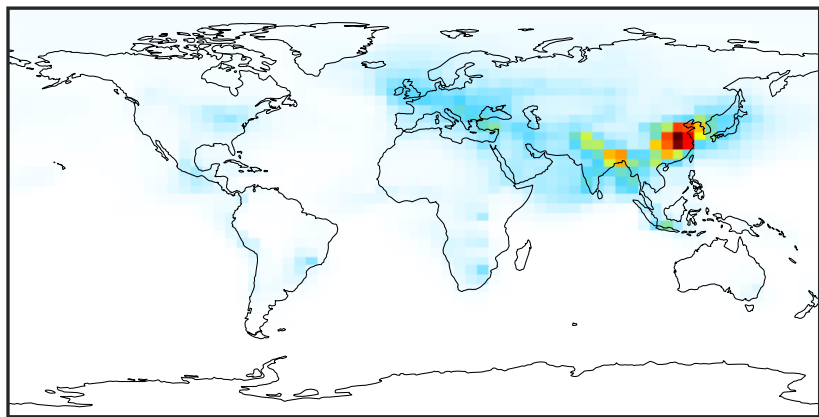
Ratio (1x1.25)
Dev/Ref, Fixed Range



0.50 0.75 1.00 1.50 2.00
unitless

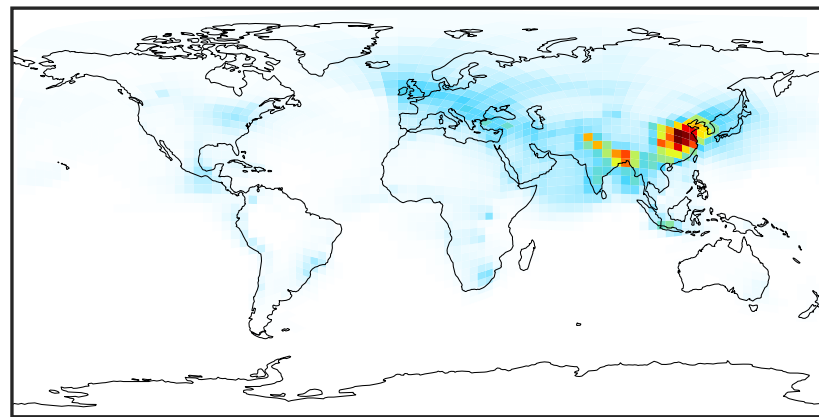
SpeciesConcVV_NH4 (Apr2019)

14.3.0-rc.0 (Ref)
4.0x5.0



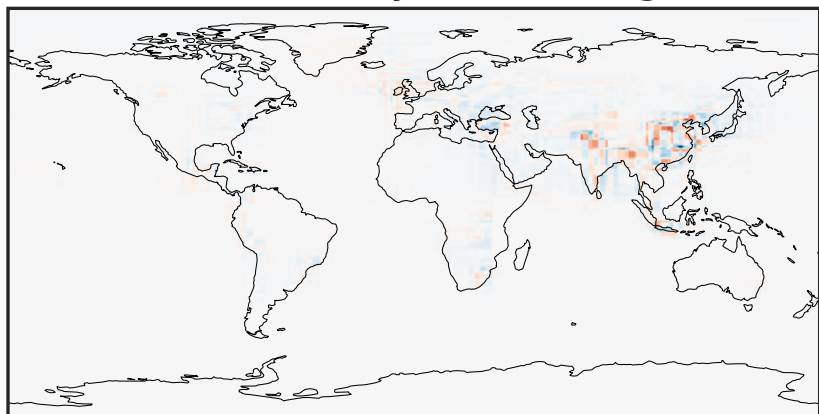
0.00 5.13 10.26 15.39 20.52
ppb

14.3.0-rc.0 (Dev)
c24



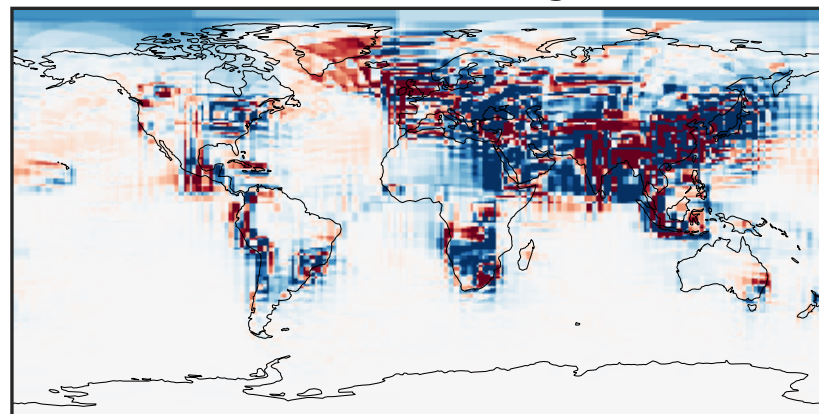
0.00 5.13 10.26 15.39 20.52
ppb

Difference (1x1.25)
Dev - Ref, Dynamic Range



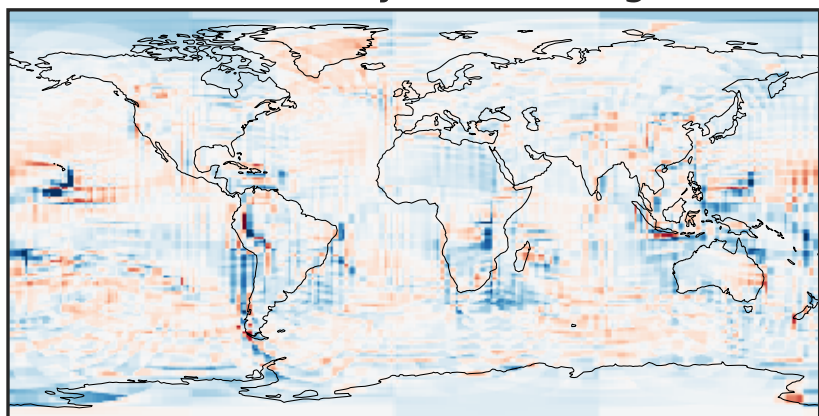
-8.18 -4.09 0.00 4.09 8.18
ppb

Difference (1x1.25)
Dev - Ref, Restricted Range [5%,95%]



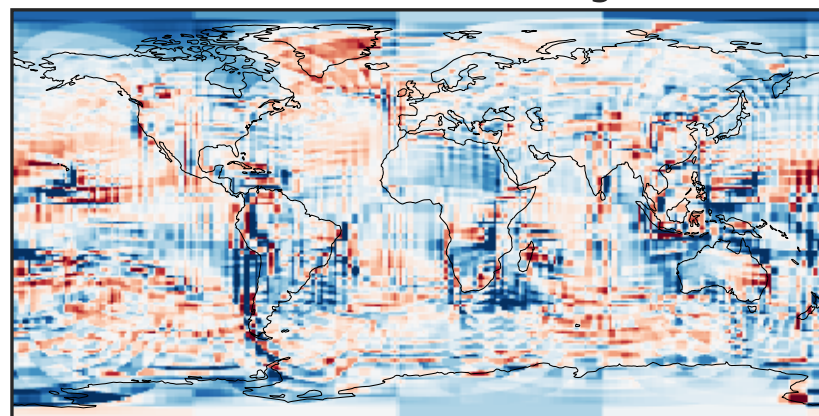
-0.2692 -0.1346 0.0000 0.1346 0.2692
ppb

Ratio (1x1.25)
Dev/Ref, Dynamic Range



0.192 0.596 1.000 3.103 5.205
unitless

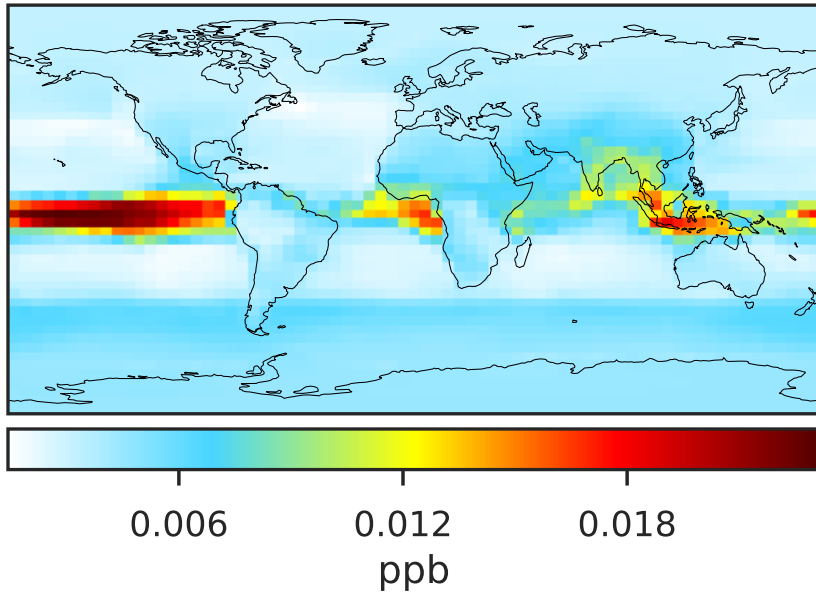
Ratio (1x1.25)
Dev/Ref, Fixed Range



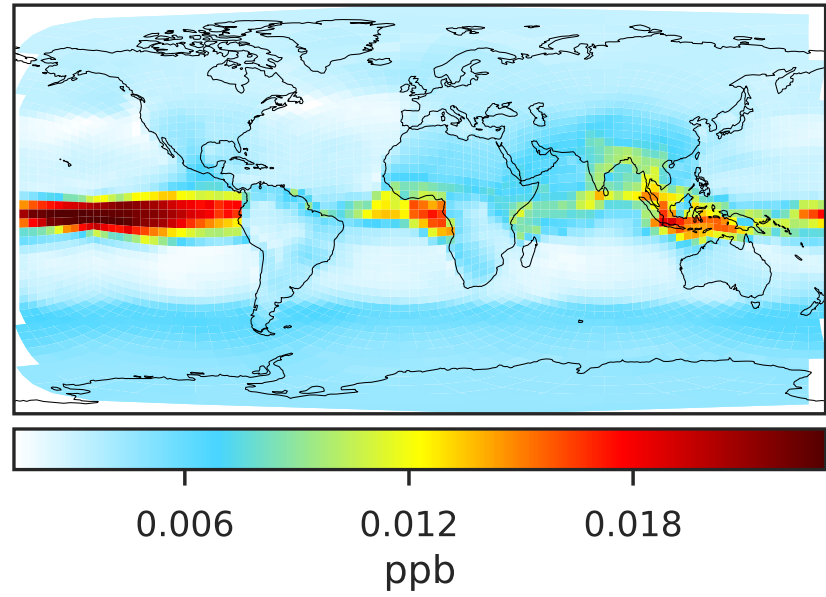
0.50 0.75 1.00 1.50 2.00
unitless

SpeciesConcVV_MENO3 (Apr2019)

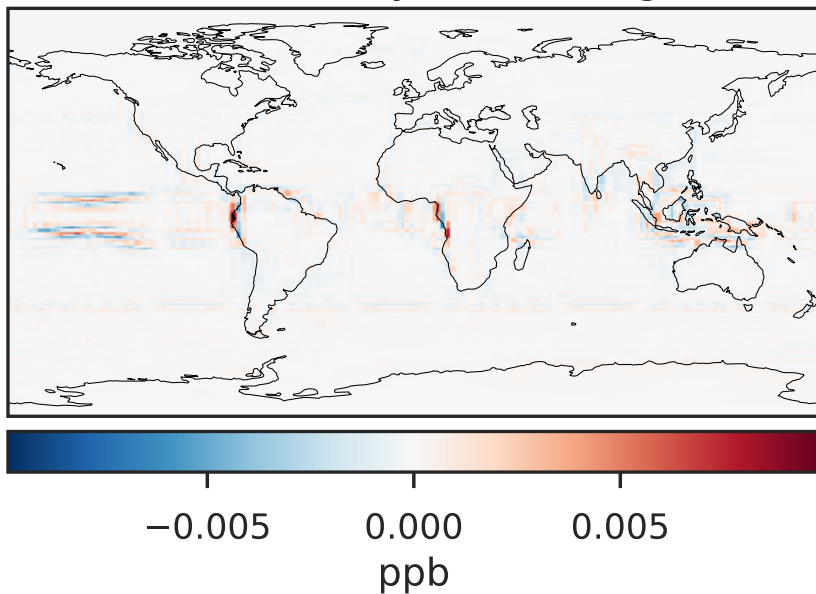
14.3.0-rc.0 (Ref)
4.0x5.0



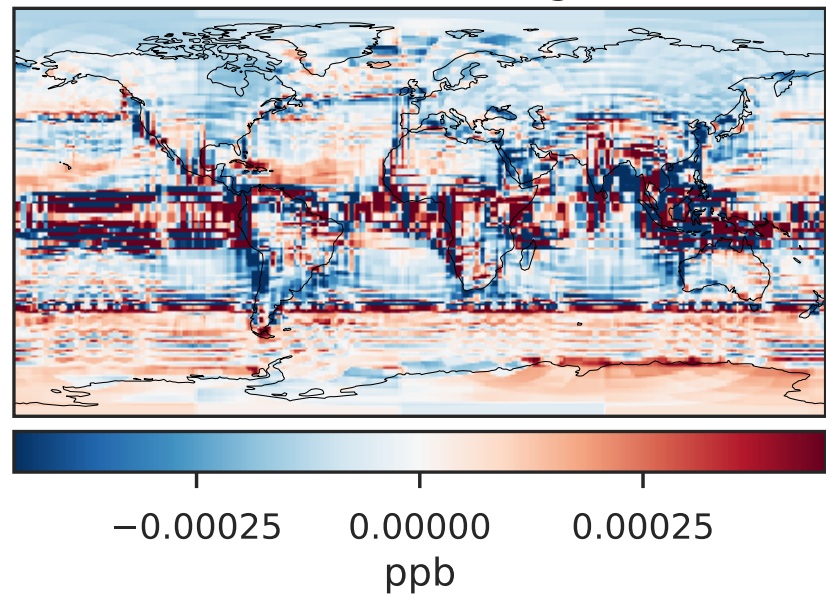
14.3.0-rc.0 (Dev)
c24



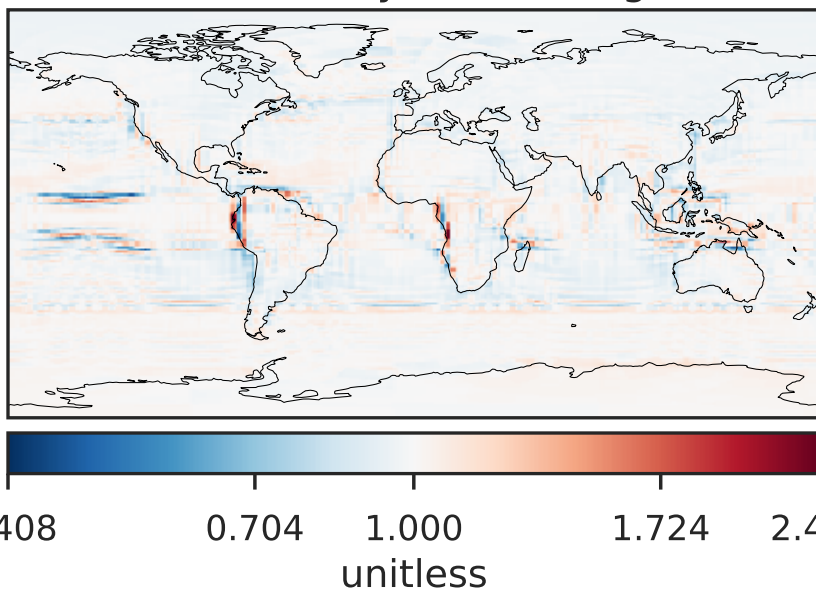
Difference (1x1.25)
Dev - Ref, Dynamic Range



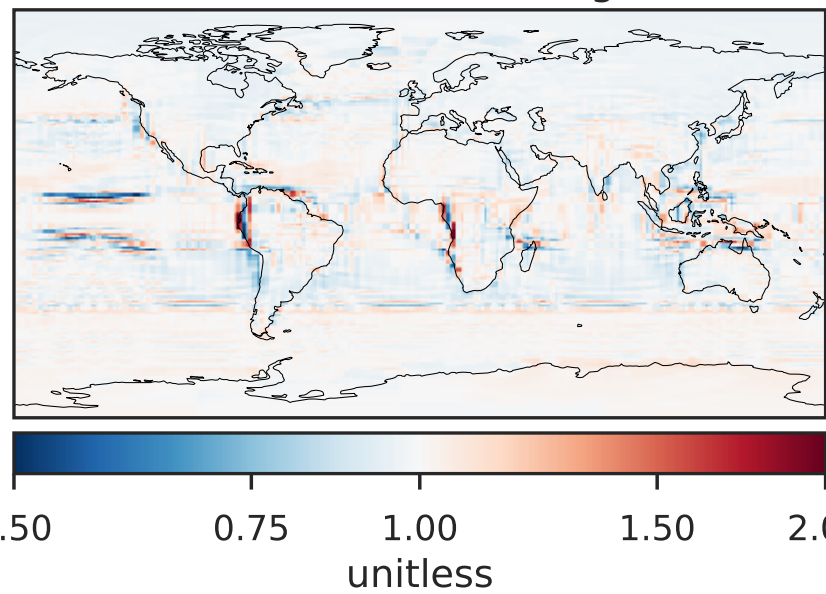
Difference (1x1.25)
Dev - Ref, Restricted Range [5%,95%]



Ratio (1x1.25)
Dev/Ref, Dynamic Range

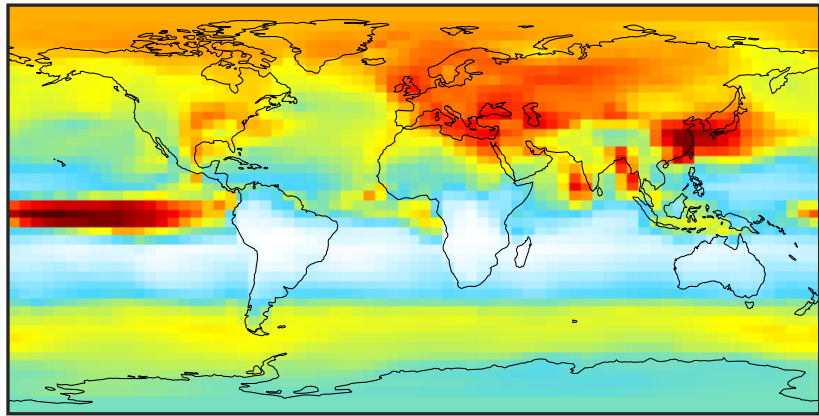


Ratio (1x1.25)
Dev/Ref, Fixed Range



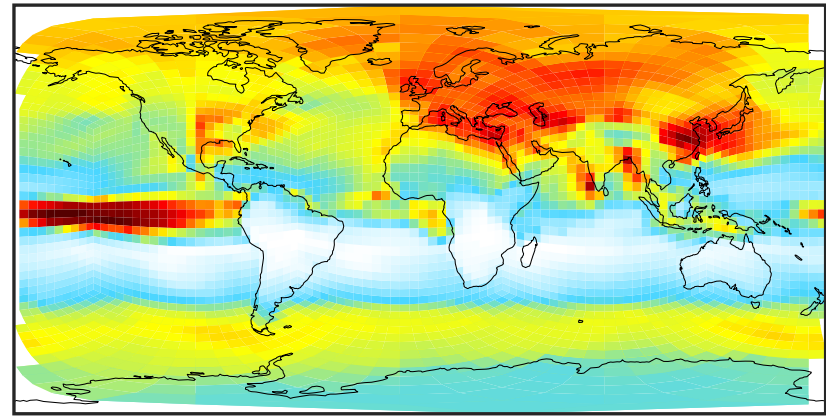
SpeciesConcVV_ETNO3 (Apr2019)

14.3.0-rc.0 (Ref)
4.0x5.0



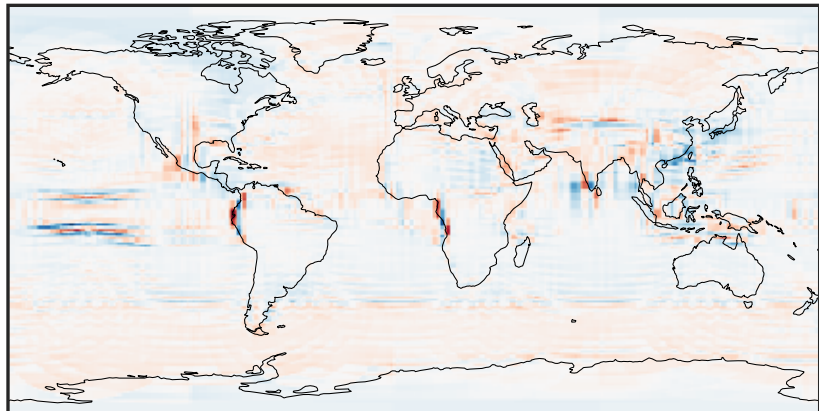
0.002 0.004 0.006 0.008
ppb

14.3.0-rc.0 (Dev)
c24



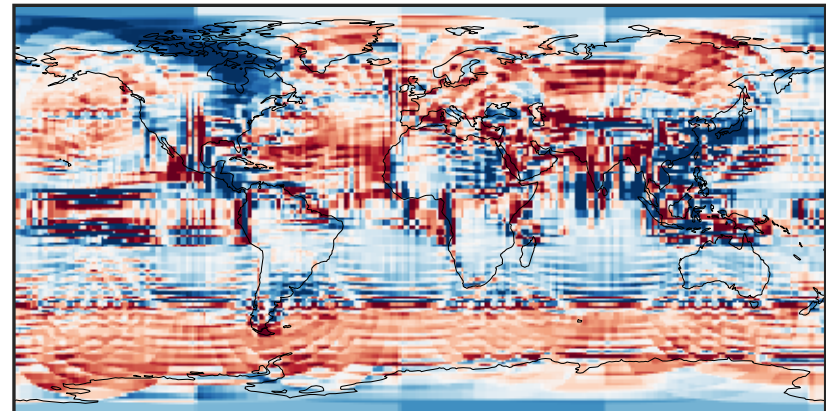
0.002 0.004 0.006 0.008
ppb

Difference (1x1.25)
Dev - Ref, Dynamic Range



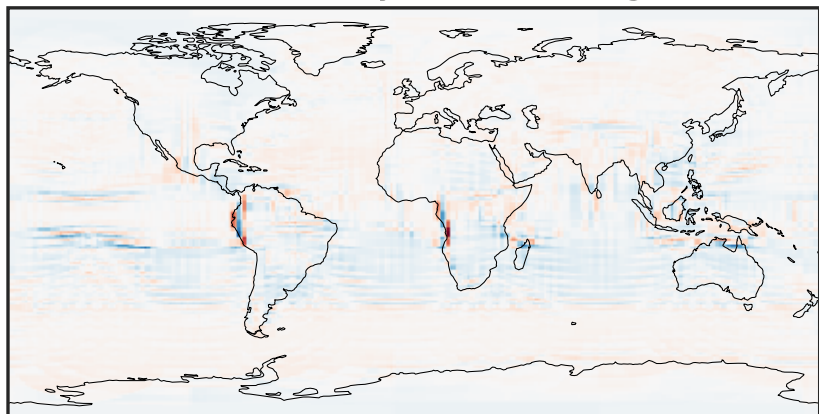
-0.0015 0.0000 0.0015
ppb

Difference (1x1.25)
Dev - Ref, Restricted Range [5%,95%]



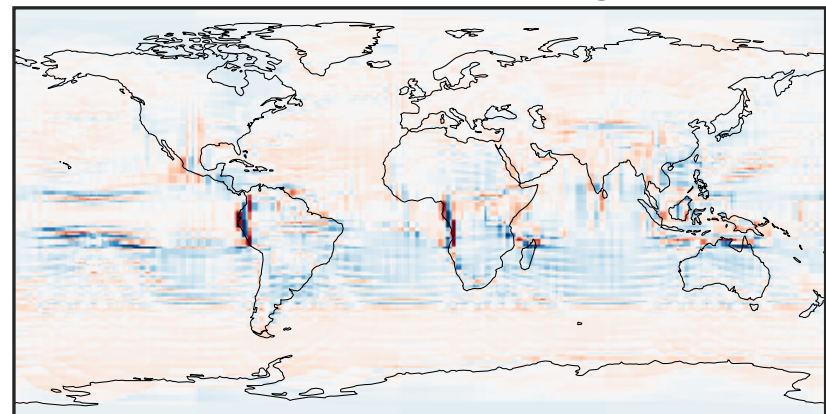
-0.0002 0.0000 0.0002
ppb

Ratio (1x1.25)
Dev/Ref, Dynamic Range



0.261 0.631 1.000 2.414 3.827
unitless

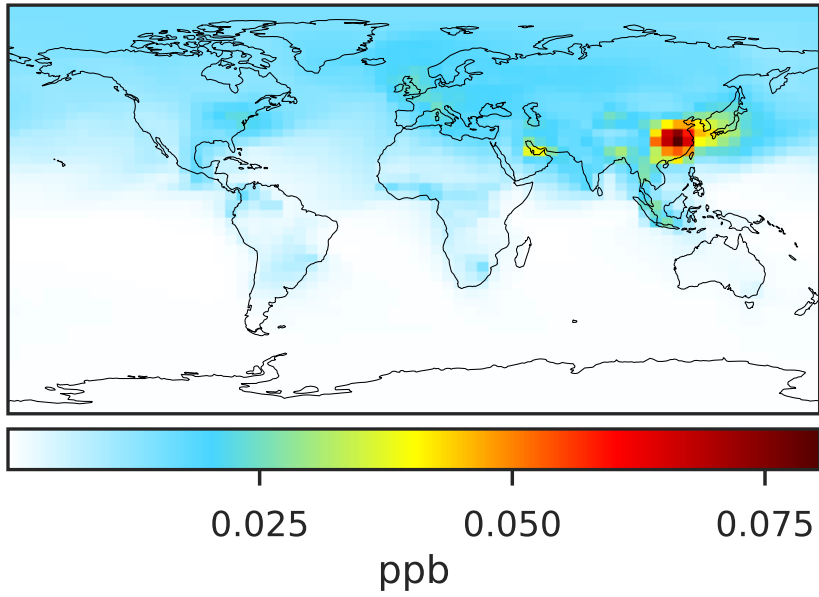
Ratio (1x1.25)
Dev/Ref, Fixed Range



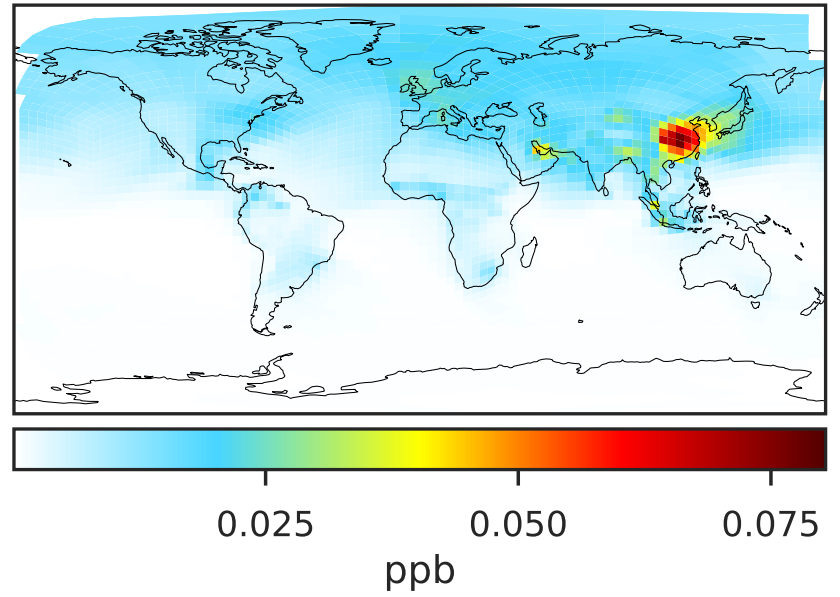
0.50 0.75 1.00 1.50 2.00
unitless

SpeciesConcVV_IPRNO3 (Apr2019)

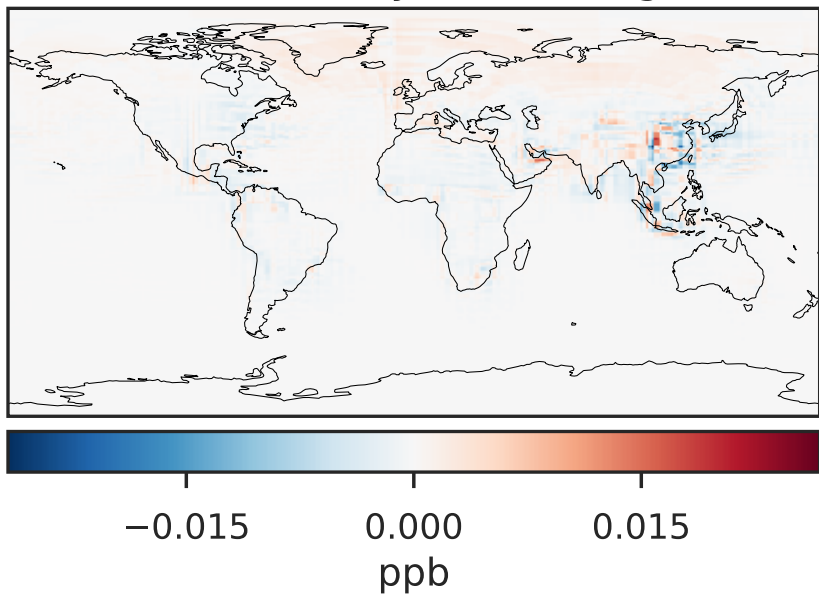
14.3.0-rc.0 (Ref)
4.0x5.0



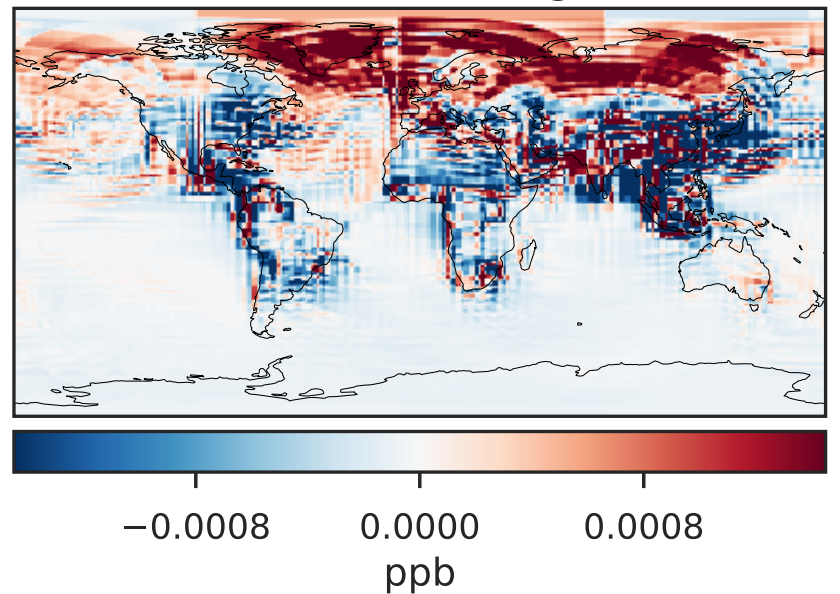
14.3.0-rc.0 (Dev)
c24



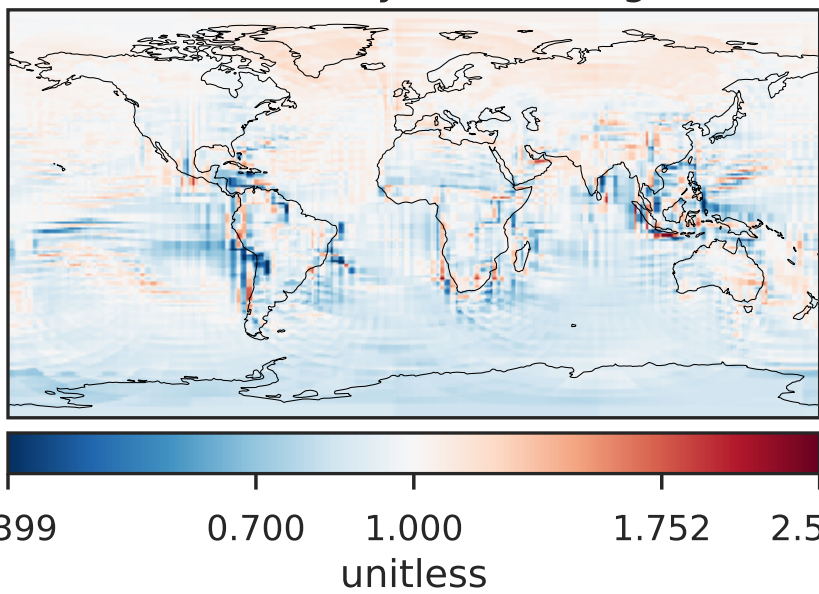
Difference (1x1.25)
Dev - Ref, Dynamic Range



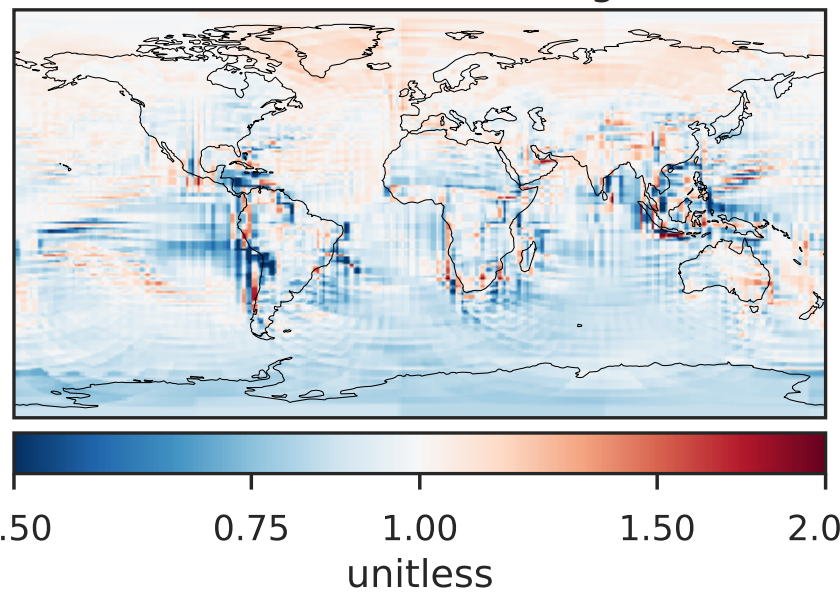
Difference (1x1.25)
Dev - Ref, Restricted Range [5%,95%]



Ratio (1x1.25)
Dev/Ref, Dynamic Range

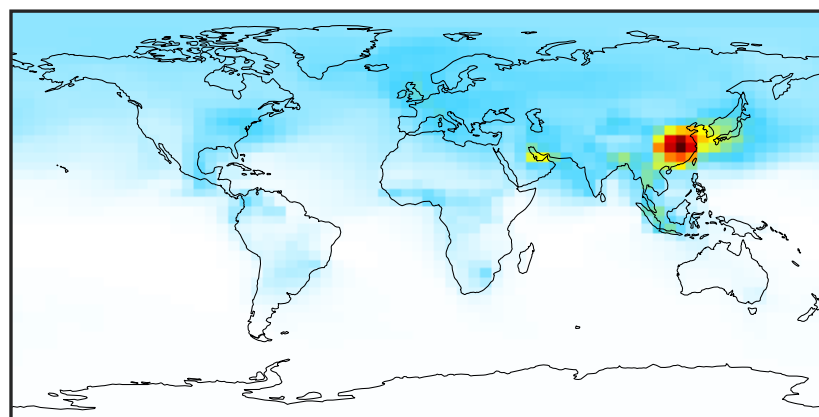


Ratio (1x1.25)
Dev/Ref, Fixed Range



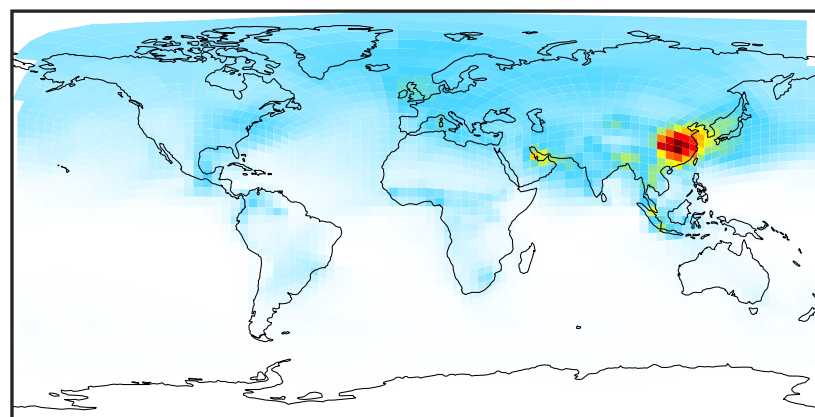
SpeciesConcVV_NPRNO3 (Apr2019)

14.3.0-rc.0 (Ref)
4.0x5.0



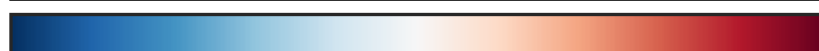
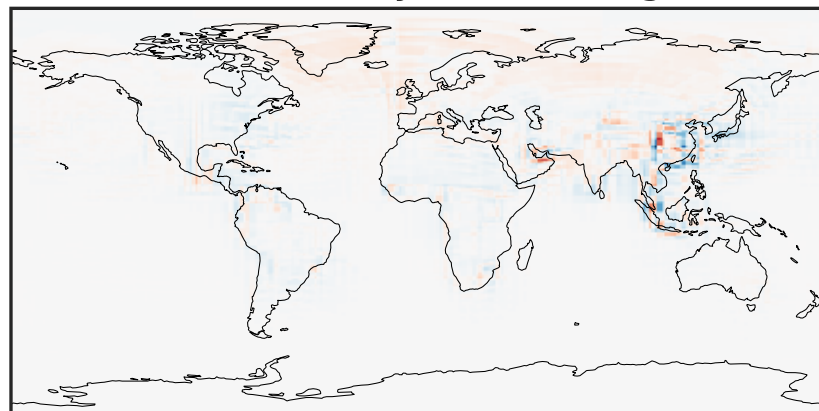
0.005 0.010 0.015
ppb

14.3.0-rc.0 (Dev)
c24



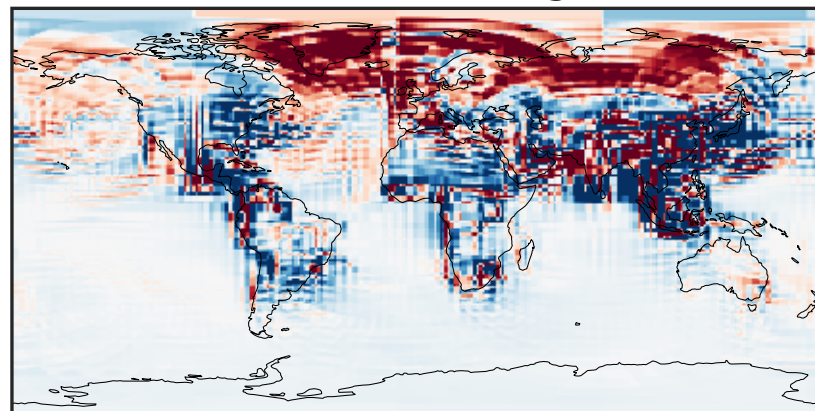
0.005 0.010 0.015
ppb

Difference (1x1.25)
Dev - Ref, Dynamic Range



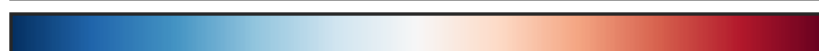
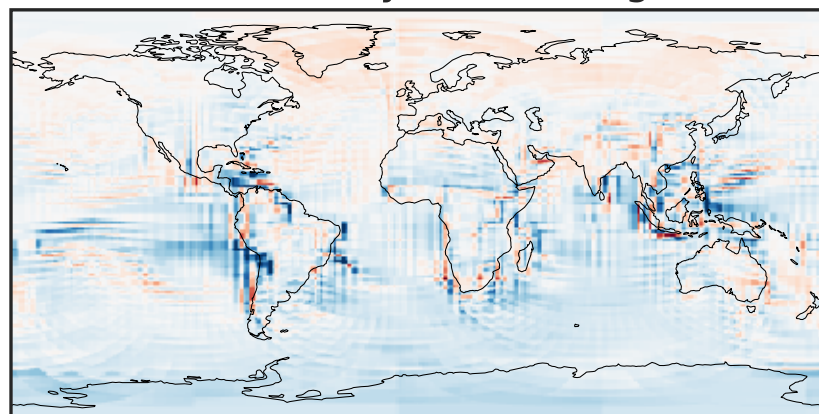
-0.004 0.000 0.004
ppb

Difference (1x1.25)
Dev - Ref, Restricted Range [5%,95%]



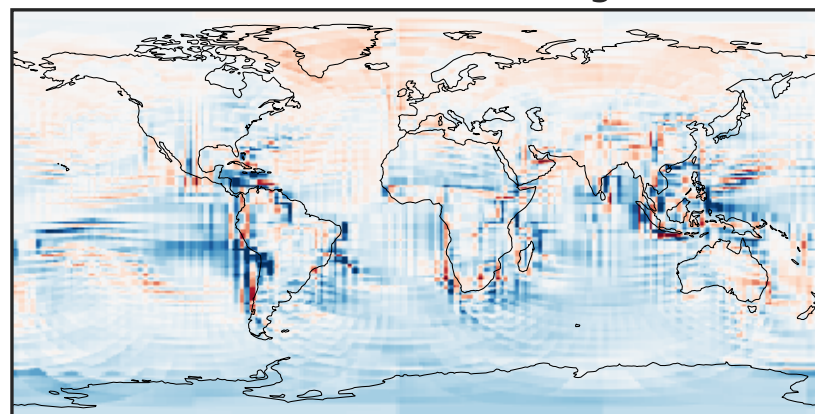
-0.0002 0.0000 0.0002
ppb

Ratio (1x1.25)
Dev/Ref, Dynamic Range



0.398 0.699 1.000 1.757 2.513
unitless

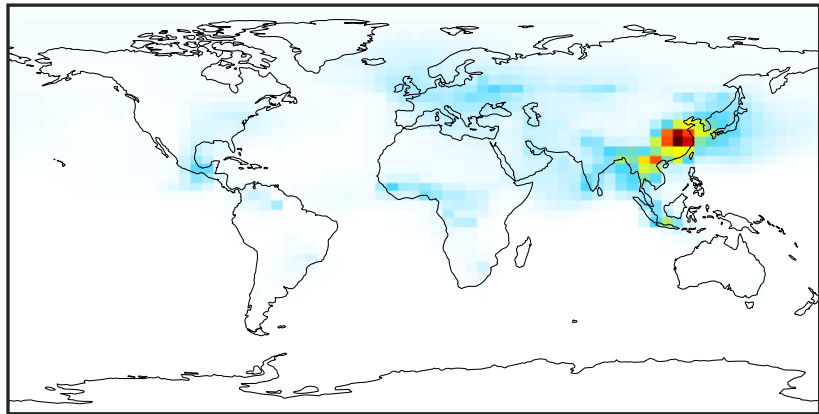
Ratio (1x1.25)
Dev/Ref, Fixed Range



0.50 0.75 1.00 1.50 2.00
unitless

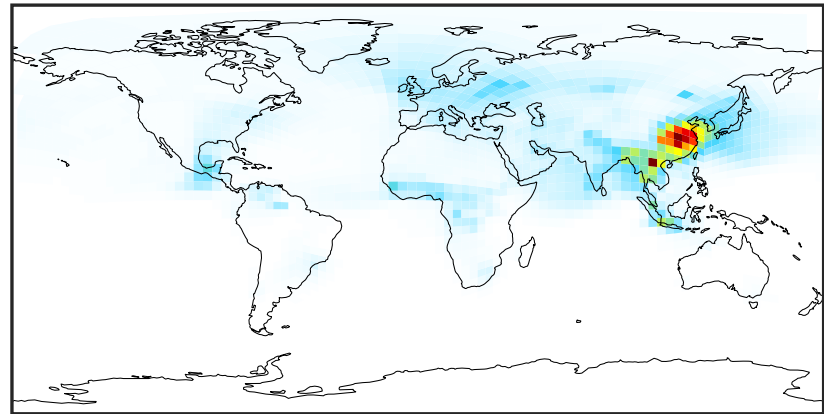
SpeciesConcVV_AONITA (Apr2019)

14.3.0-rc.0 (Ref)
4.0x5.0



0.0000 0.0541 0.1082 0.1623 0.2164
ppb

14.3.0-rc.0 (Dev)
c24



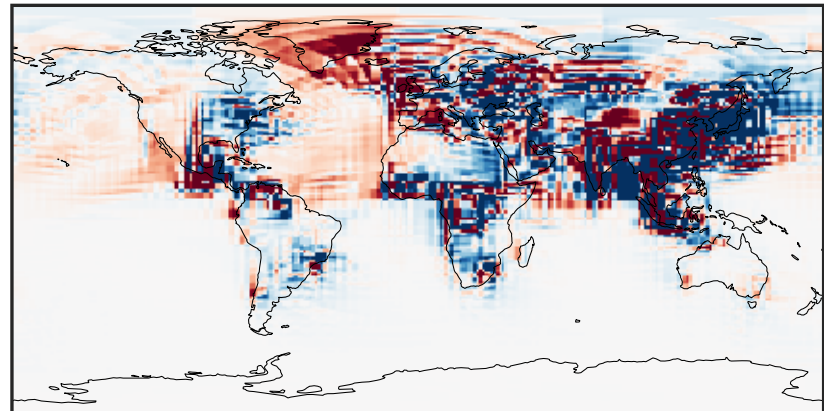
0.0000 0.0541 0.1082 0.1623 0.2164
ppb

Difference (1x1.25)
Dev - Ref, Dynamic Range



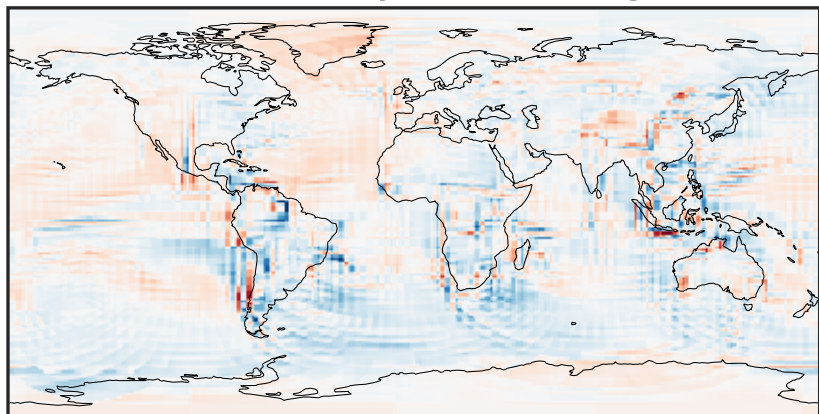
-0.10 -0.05 0.00 0.05 0.10
ppb

Difference (1x1.25)
Dev - Ref, Restricted Range [5%,95%]



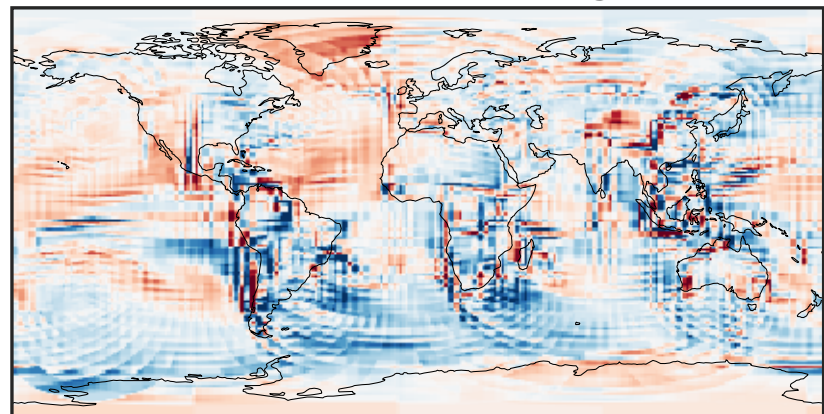
-0.001 0.000 0.001
ppb

Ratio (1x1.25)
Dev/Ref, Dynamic Range



0.197 0.598 1.000 3.042 5.083
unitless

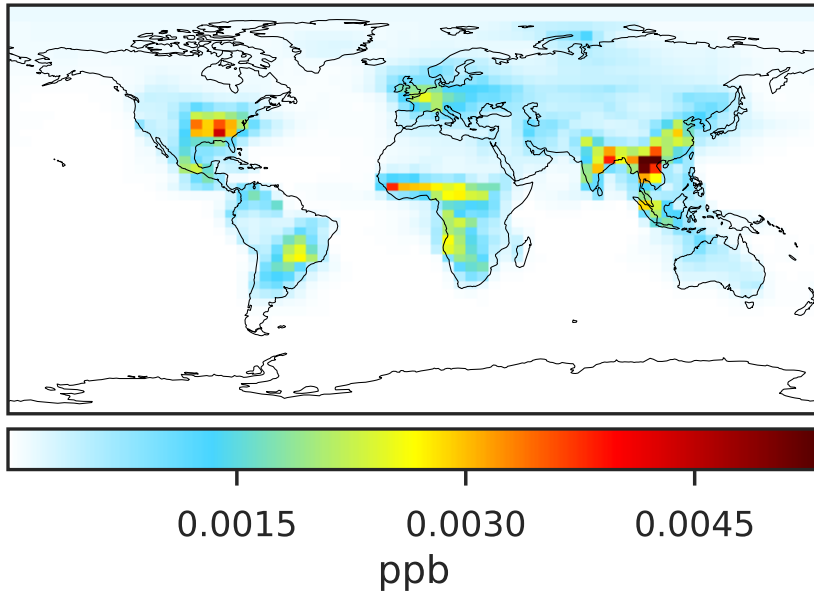
Ratio (1x1.25)
Dev/Ref, Fixed Range



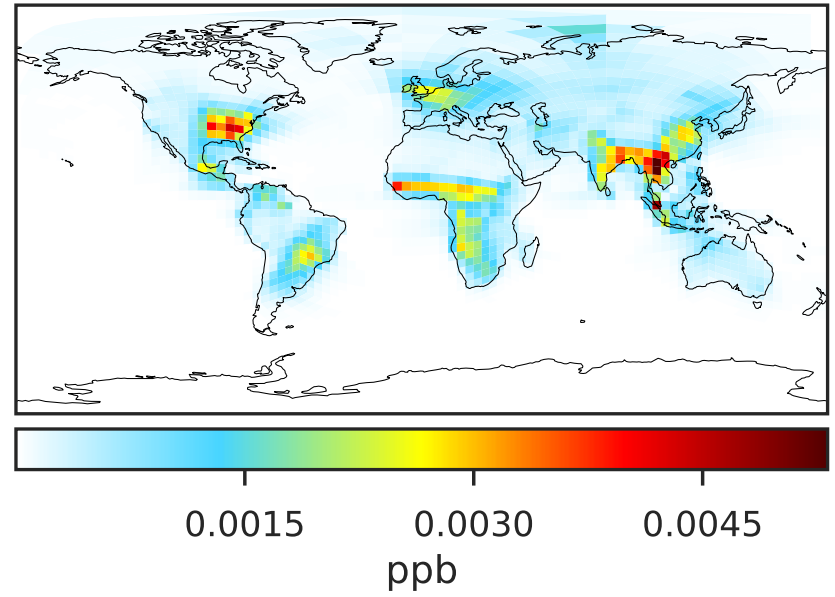
0.50 0.75 1.00 1.50 2.00
unitless

SpeciesConcVV_ETHN (Apr2019)

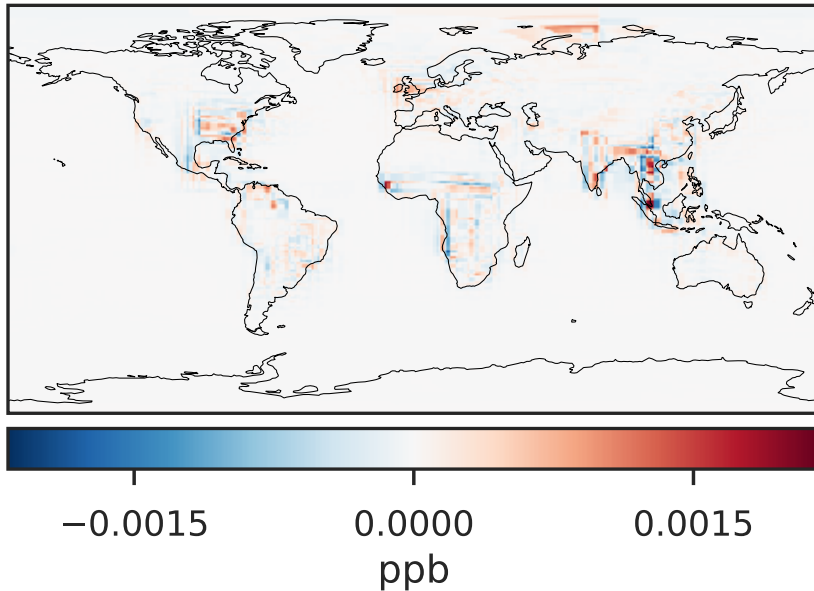
14.3.0-rc.0 (Ref)
4.0x5.0



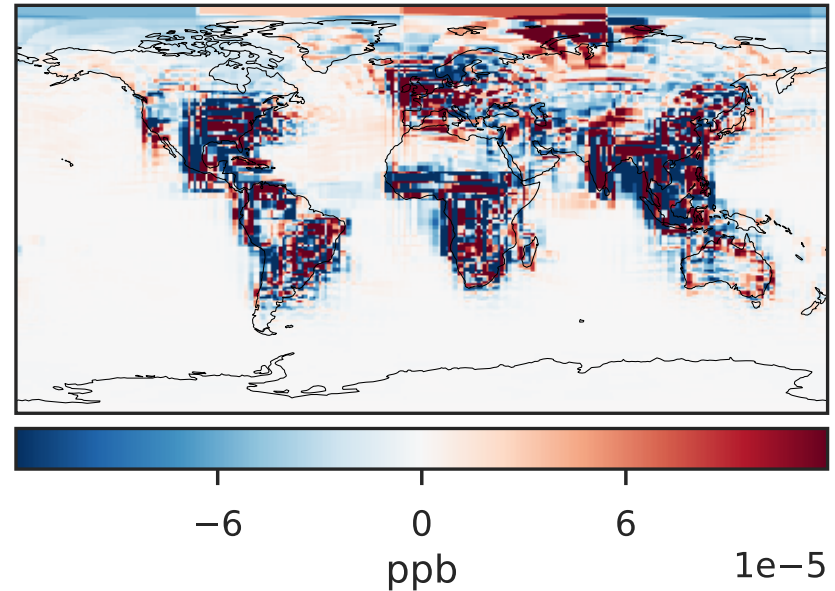
14.3.0-rc.0 (Dev)
c24



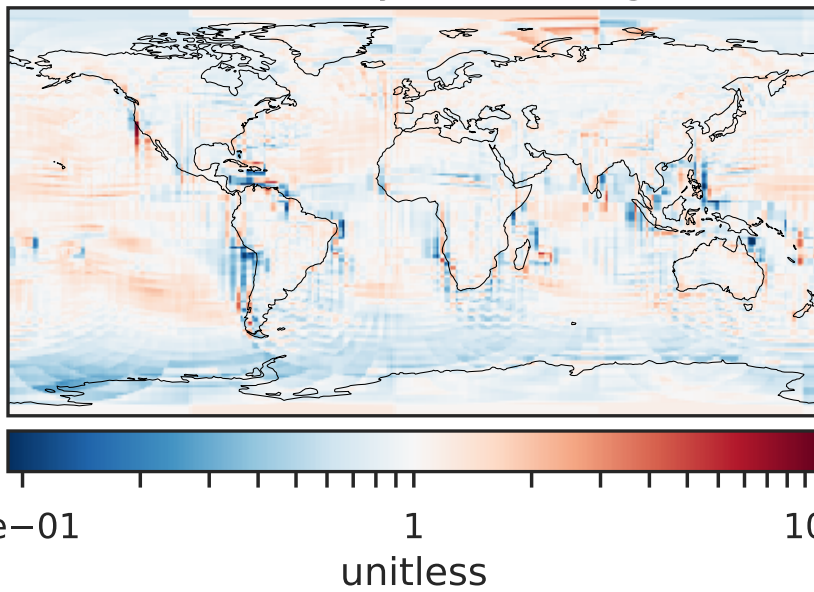
Difference (1x1.25)
Dev - Ref, Dynamic Range



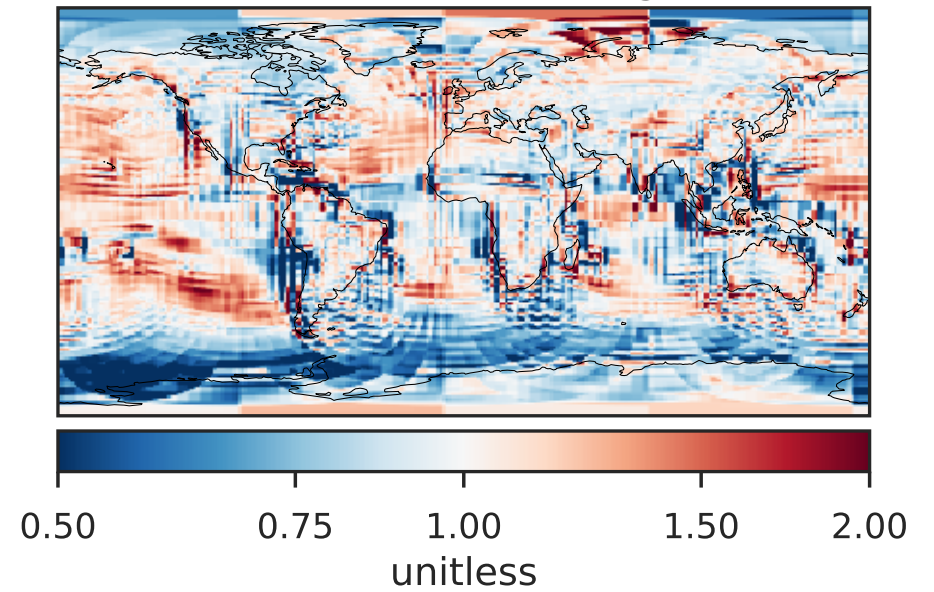
Difference (1x1.25)
Dev - Ref, Restricted Range [5%,95%]



Ratio (1x1.25)
Dev/Ref, Dynamic Range

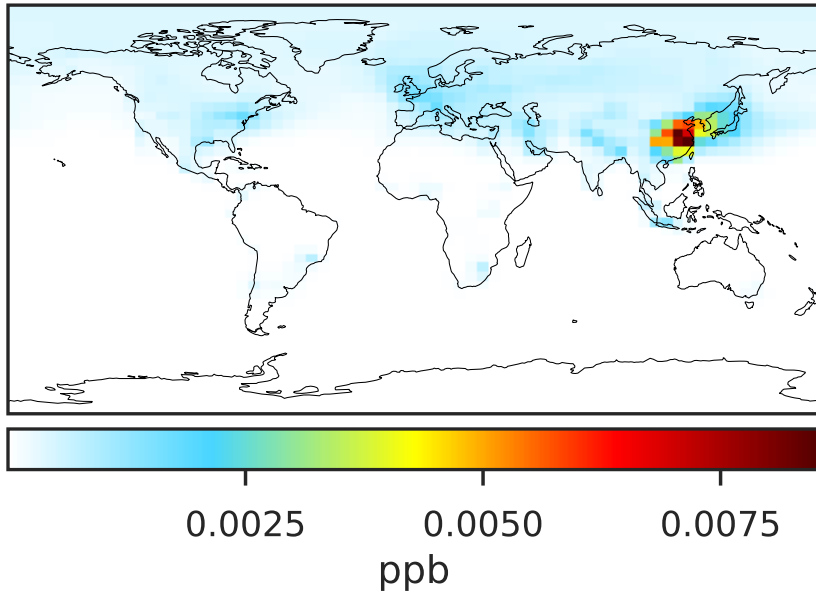


Ratio (1x1.25)
Dev/Ref, Fixed Range

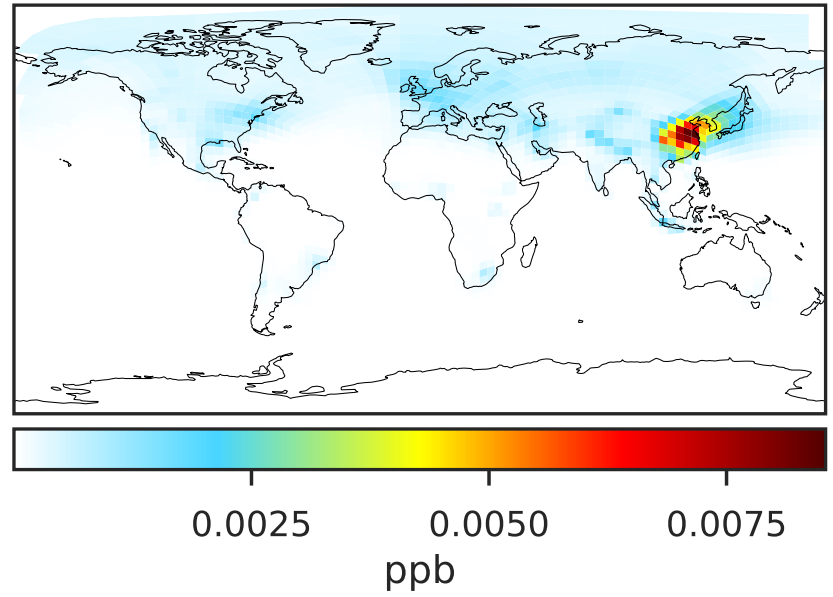


SpeciesConcVV_BZPAN (Apr2019)

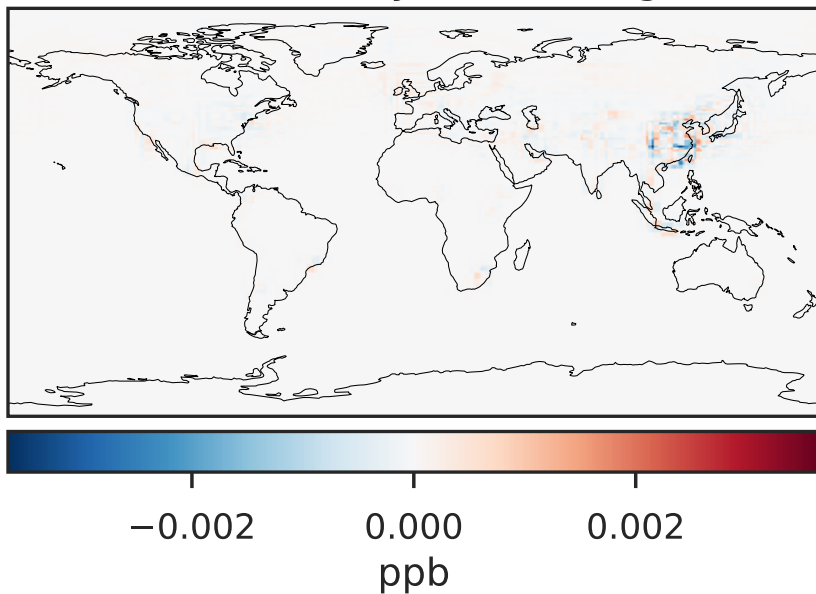
14.3.0-rc.0 (Ref)
4.0x5.0



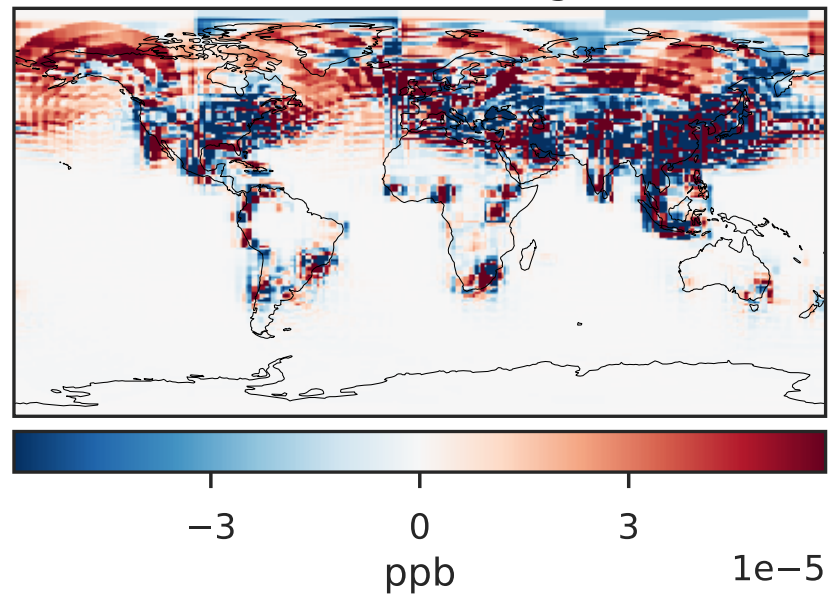
14.3.0-rc.0 (Dev)
c24



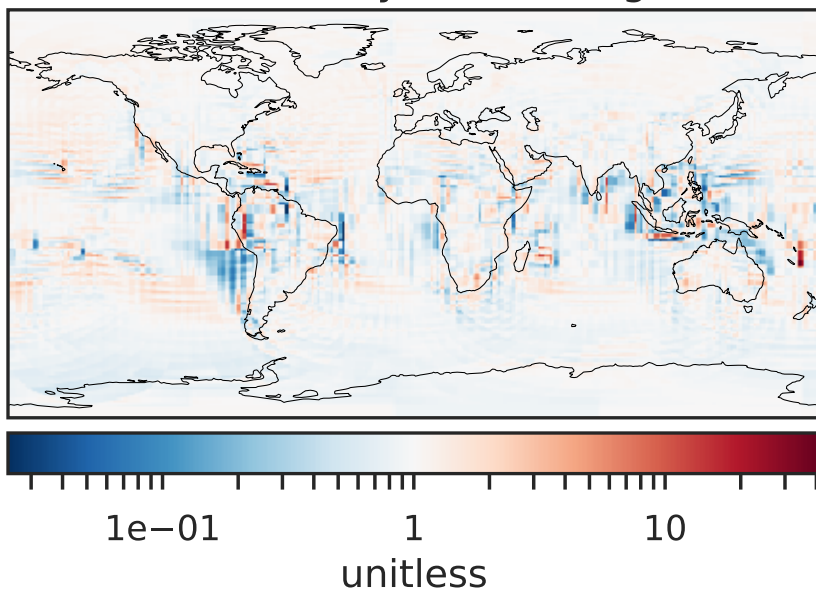
Difference (1x1.25)
Dev - Ref, Dynamic Range



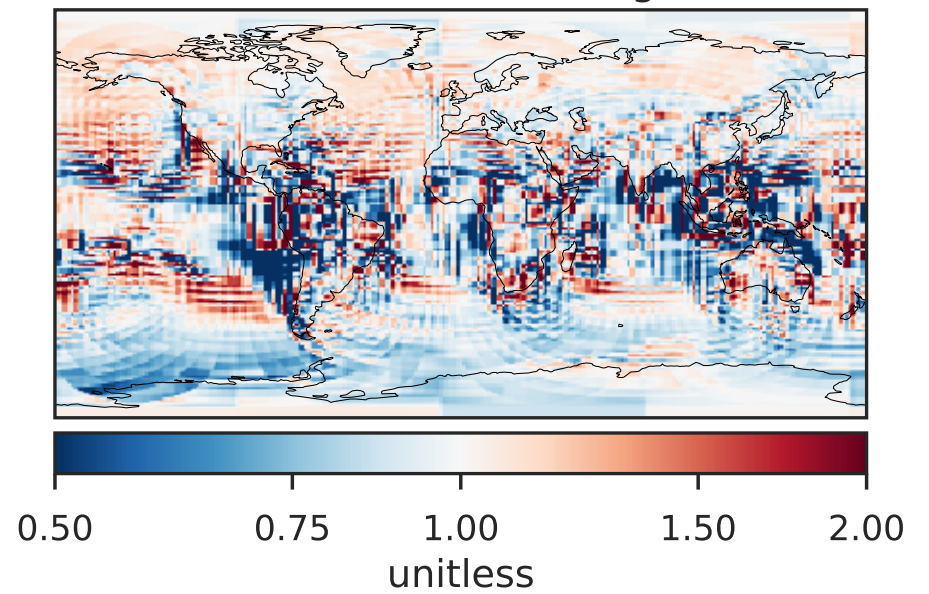
Difference (1x1.25)
Dev - Ref, Restricted Range [5%,95%]



Ratio (1x1.25)
Dev/Ref, Dynamic Range

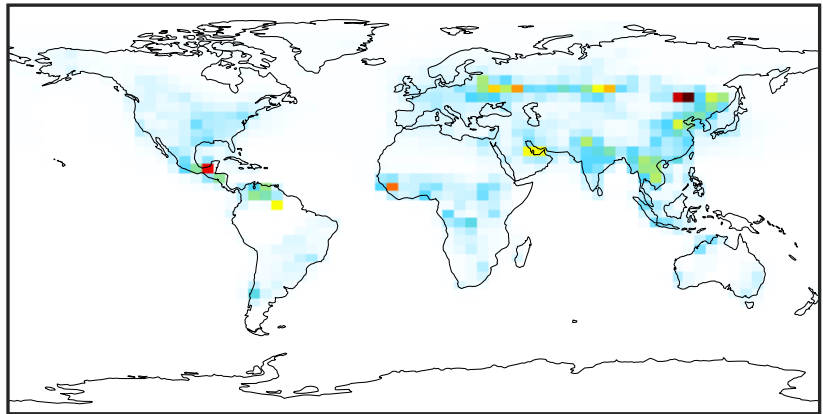


Ratio (1x1.25)
Dev/Ref, Fixed Range



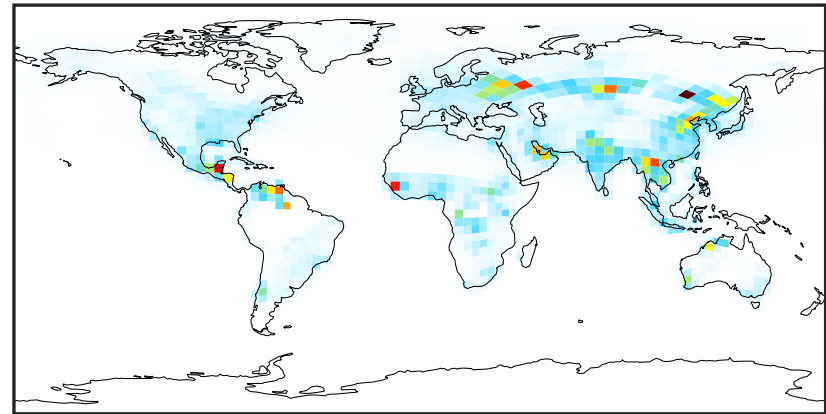
SpeciesConcVV_NPHEN (Apr2019)

14.3.0-rc.0 (Ref)
4.0x5.0



0.0025 0.0050 0.0075
ppb

14.3.0-rc.0 (Dev)
c24



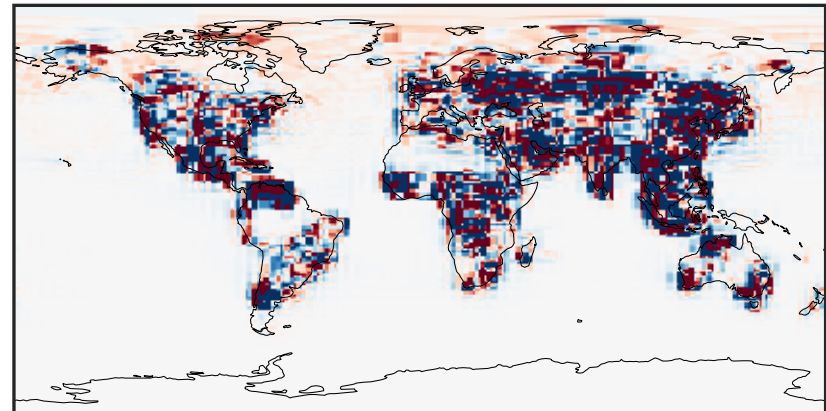
0.0025 0.0050 0.0075
ppb

Difference (1x1.25)
Dev - Ref, Dynamic Range



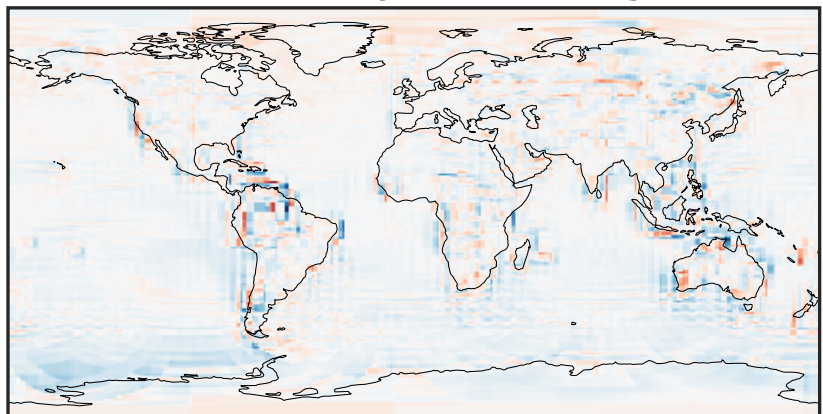
-0.006 0.000 0.006
ppb

Difference (1x1.25)
Dev - Ref, Restricted Range [5%,95%]



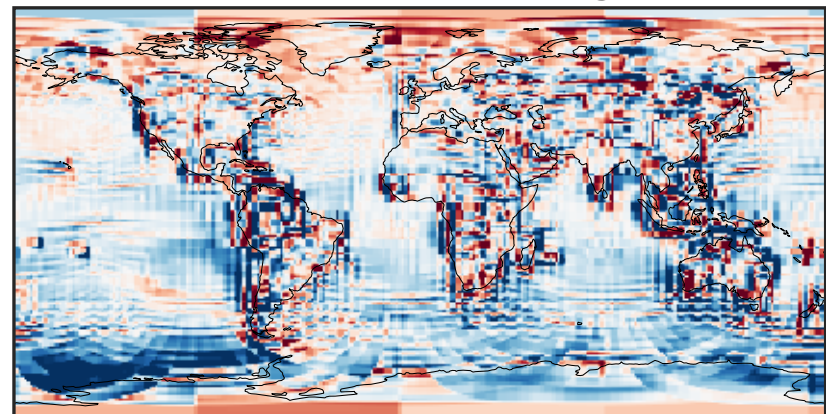
-6 0 6
ppb $1e-5$

Ratio (1x1.25)
Dev/Ref, Dynamic Range



$1e-01$ 1 10
unitless

Ratio (1x1.25)
Dev/Ref, Fixed Range



0.50 0.75 1.00 1.50 2.00
unitless