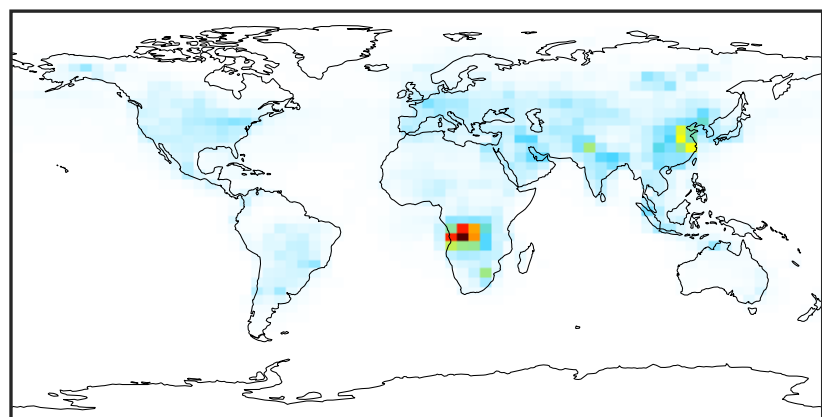


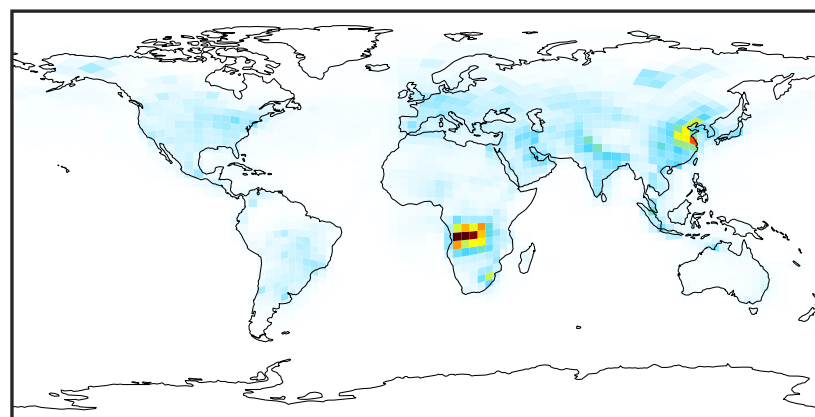
# SpeciesConcVV\_NOy (Jul2019)

14.3.0-rc.0 (Ref)  
4.0x5.0



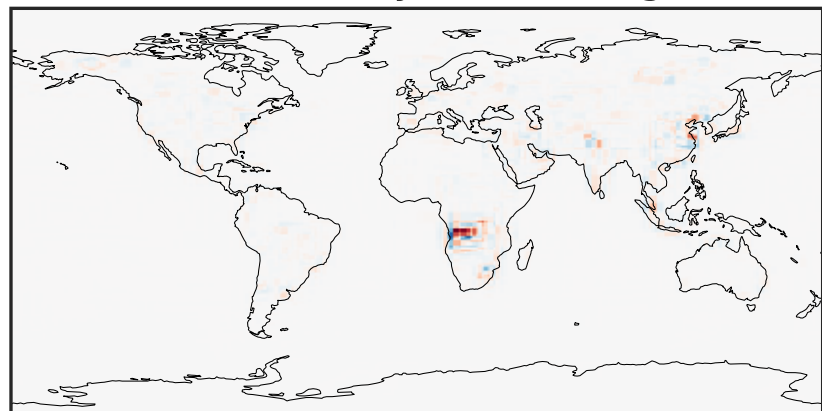
0.01 7.08 14.15 21.22 28.29  
ppb

14.3.0-rc.0 (Dev)  
c24



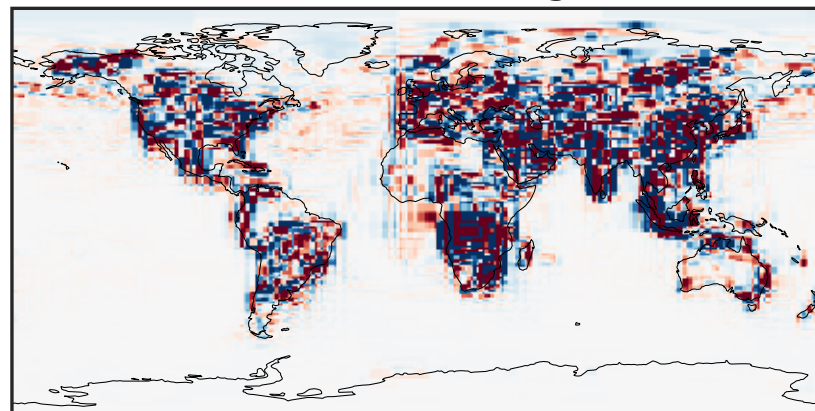
0.01 7.08 14.15 21.22 28.29  
ppb

Difference (1x1.25)  
Dev - Ref, Dynamic Range



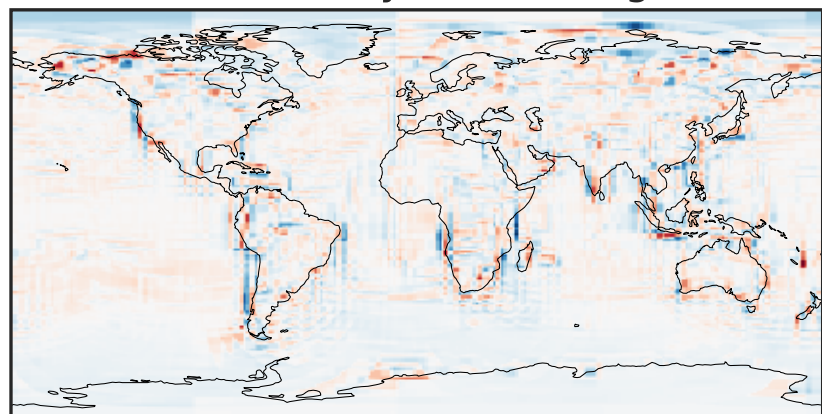
-15.44 -7.72 0.00 7.72 15.44  
ppb

Difference (1x1.25)  
Dev - Ref, Restricted Range [5%,95%]



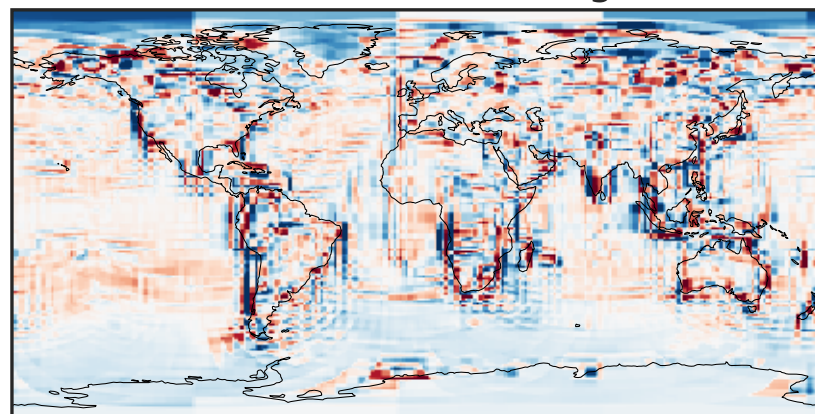
-0.2710 -0.1355 0.0000 0.1355 0.2710  
ppb

Ratio (1x1.25)  
Dev/Ref, Dynamic Range



0.143 0.572 1.000 3.996 6.991  
unitless

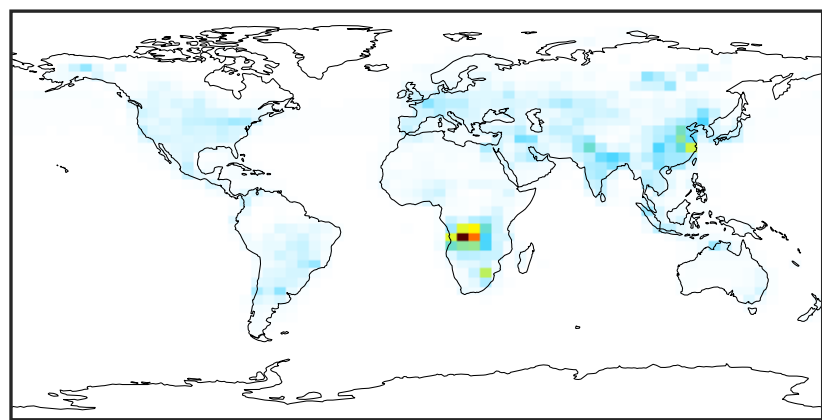
Ratio (1x1.25)  
Dev/Ref, Fixed Range



0.50 0.75 1.00 1.50 2.00  
unitless

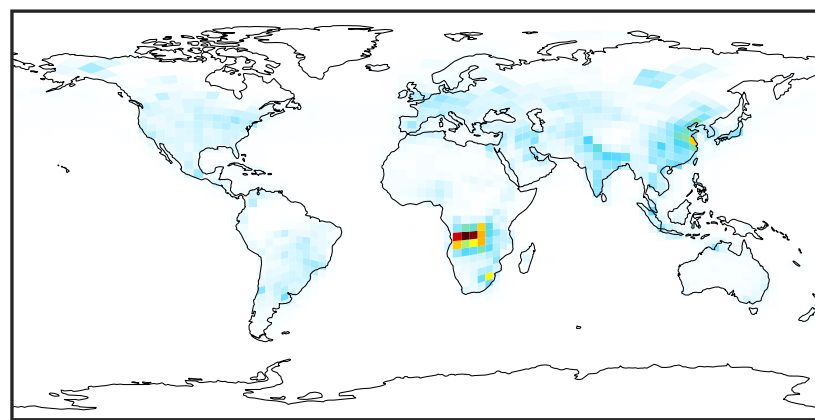
# SpeciesConcVV\_NOx (Jul2019)

14.3.0-rc.0 (Ref)  
4.0x5.0



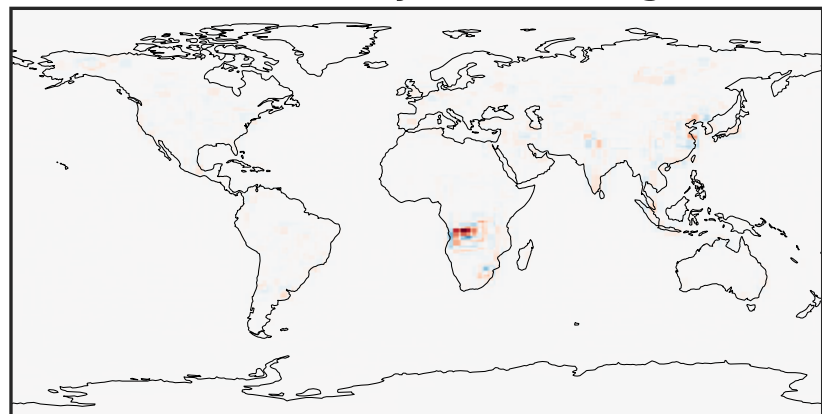
0.00 4.84 9.69 14.53 19.38  
ppb

14.3.0-rc.0 (Dev)  
c24



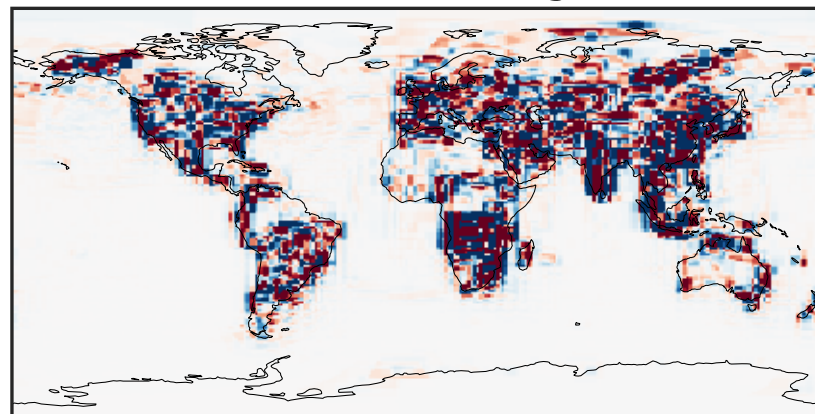
0.00 4.84 9.69 14.53 19.38  
ppb

Difference (1x1.25)  
Dev - Ref, Dynamic Range



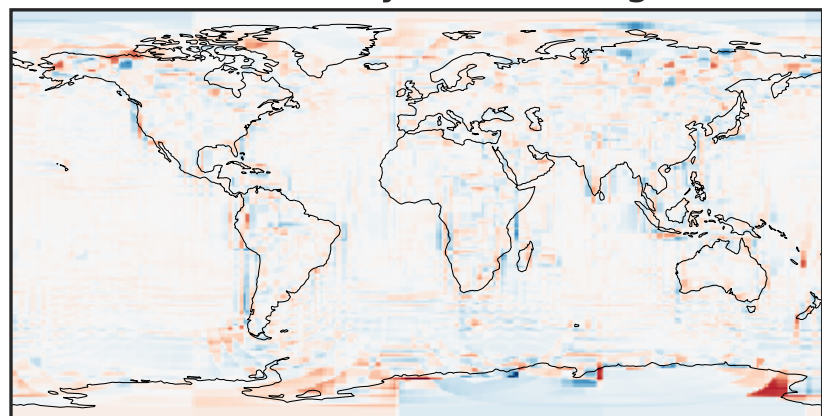
-13.32 -6.66 0.00 6.66 13.32  
ppb

Difference (1x1.25)  
Dev - Ref, Restricted Range [5%,95%]



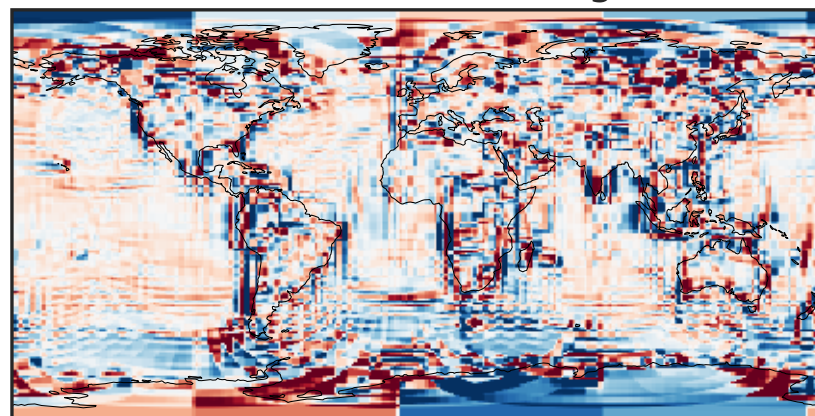
-0.1752 -0.0876 0.0000 0.0876 0.1752  
ppb

Ratio (1x1.25)  
Dev/Ref, Dynamic Range



1e-01 1 10  
unitless

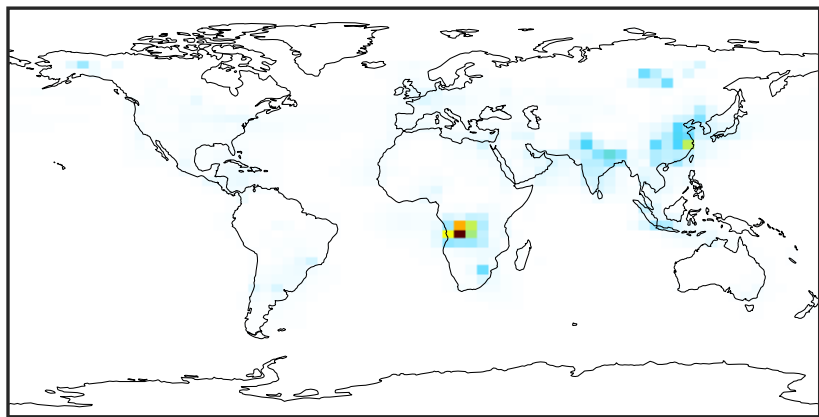
Ratio (1x1.25)  
Dev/Ref, Fixed Range



0.50 0.75 1.00 1.50 2.00  
unitless

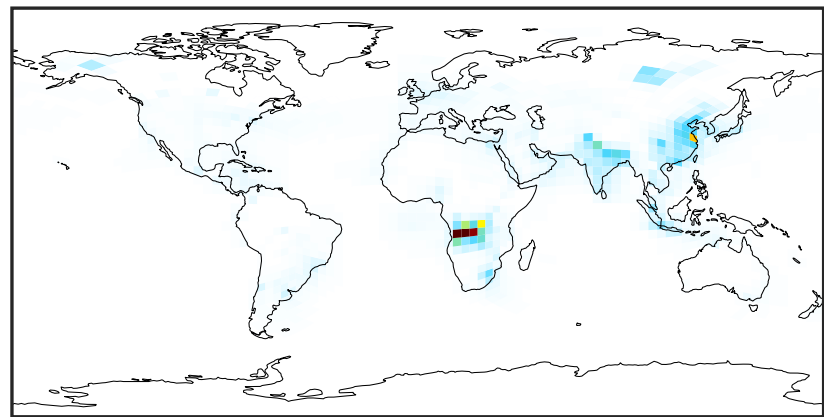
# SpeciesConcVV\_HNO2 (Jul2019)

14.3.0-rc.0 (Ref)  
4.0x5.0



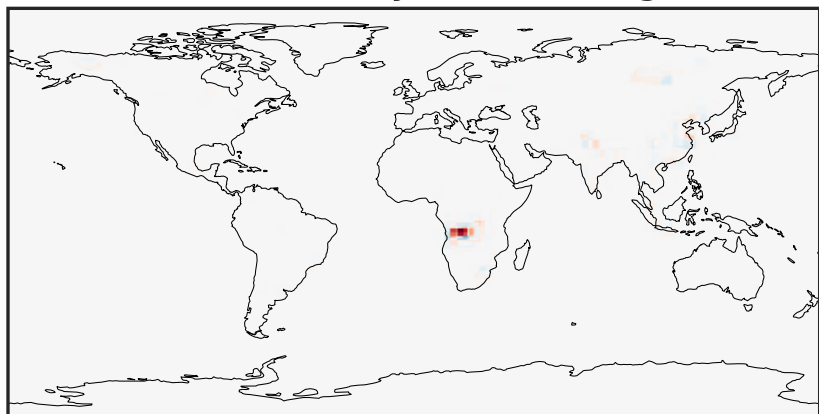
0.000 0.072 0.144 0.216 0.288  
ppb

14.3.0-rc.0 (Dev)  
c24



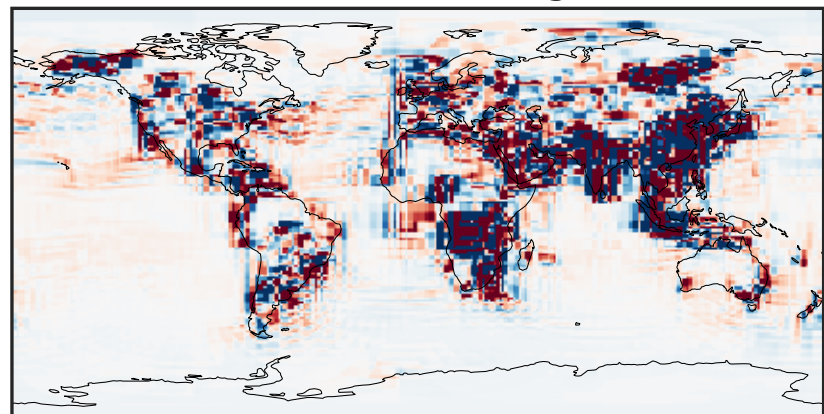
0.000 0.072 0.144 0.216 0.288  
ppb

Difference (1x1.25)  
Dev - Ref, Dynamic Range



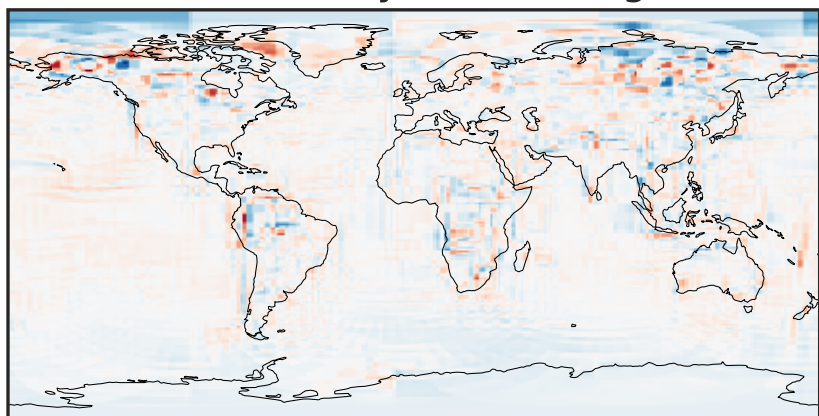
-0.3724 -0.1862 0.0000 0.1862 0.3724  
ppb

Difference (1x1.25)  
Dev - Ref, Restricted Range [5%,95%]



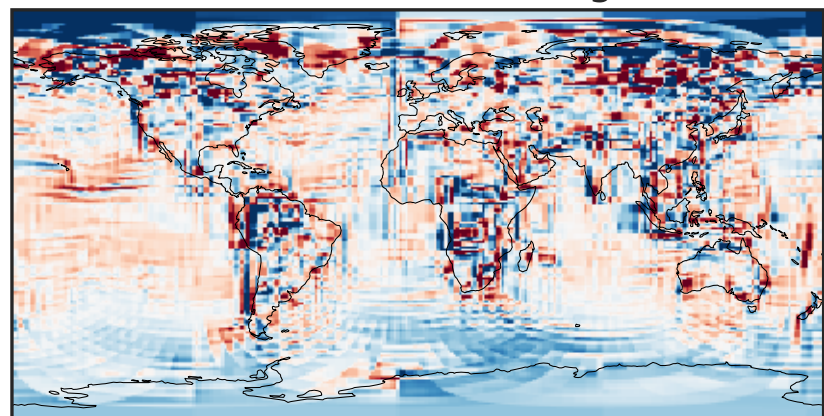
-0.0005 0.0000 0.0005  
ppb

Ratio (1x1.25)  
Dev/Ref, Dynamic Range



1e-01 1 10  
unitless

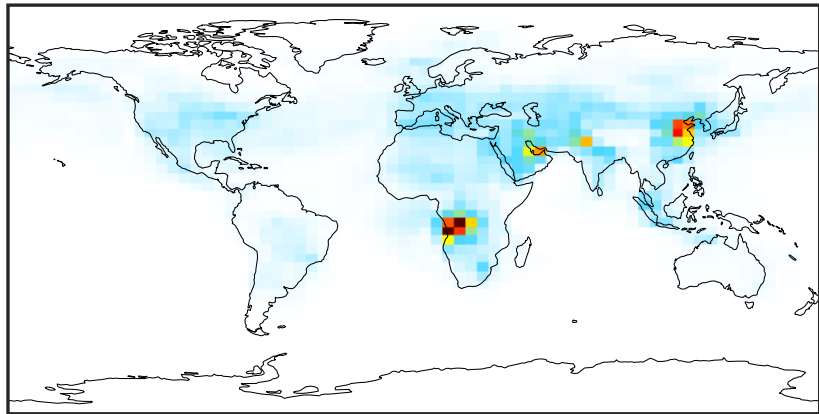
Ratio (1x1.25)  
Dev/Ref, Fixed Range



0.50 0.75 1.00 1.50 2.00  
unitless

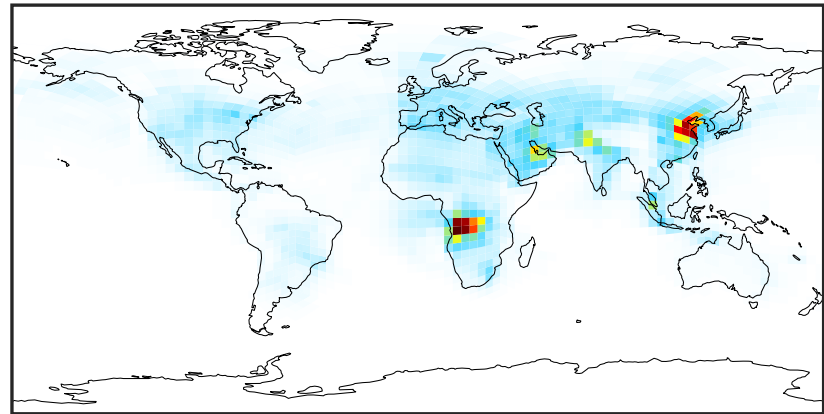
# SpeciesConcVV\_HNO3 (Jul2019)

14.3.0-rc.0 (Ref)  
4.0x5.0



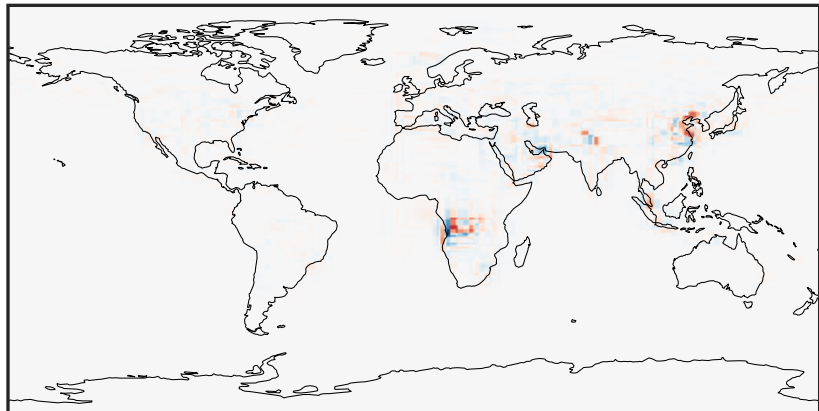
0.000 1.885 3.771 5.656 7.541  
ppb

14.3.0-rc.0 (Dev)  
c24



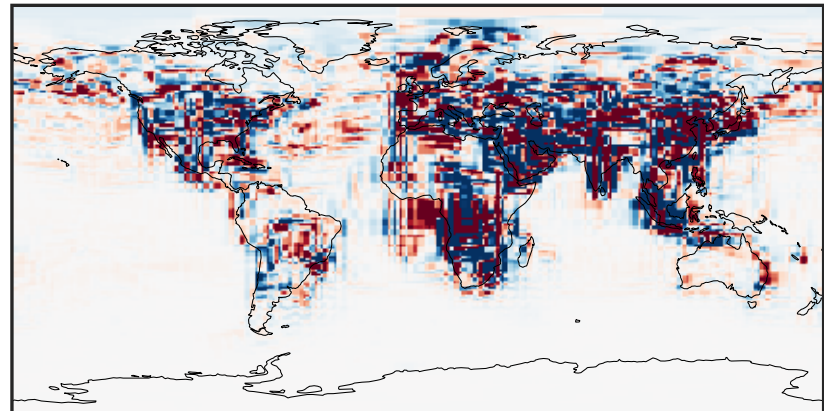
0.000 1.885 3.771 5.656 7.541  
ppb

Difference (1x1.25)  
Dev - Ref, Dynamic Range



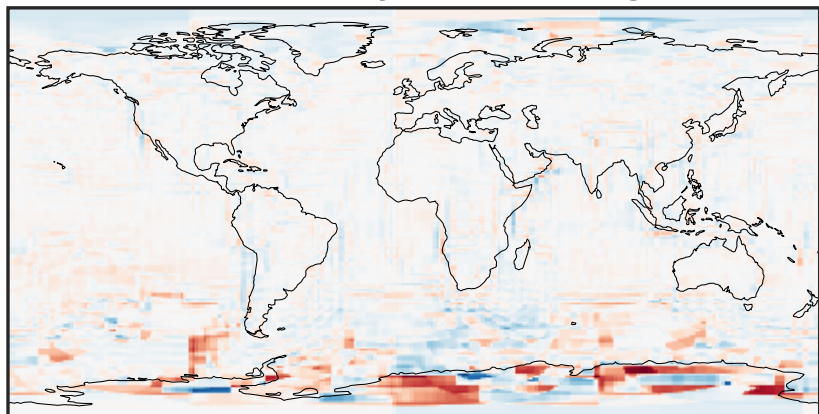
-4.043 -2.022 0.000 2.022 4.043  
ppb

Difference (1x1.25)  
Dev - Ref, Restricted Range [5%,95%]



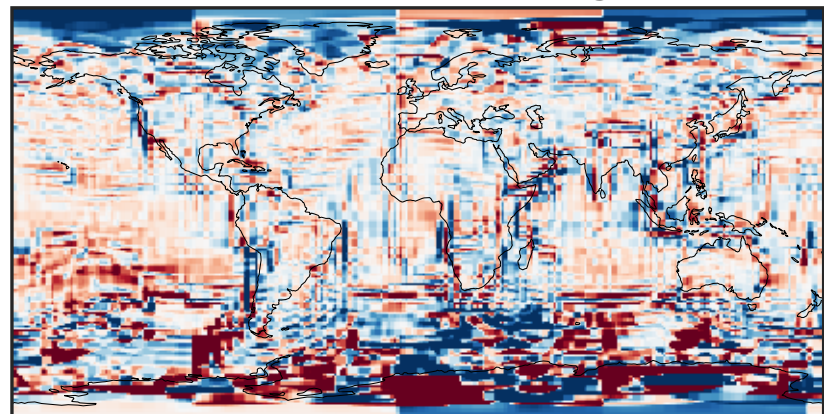
-0.0830 -0.0415 0.0000 0.0415 0.0830  
ppb

Ratio (1x1.25)  
Dev/Ref, Dynamic Range



1e-02 1e-01 1 10 100  
unitless

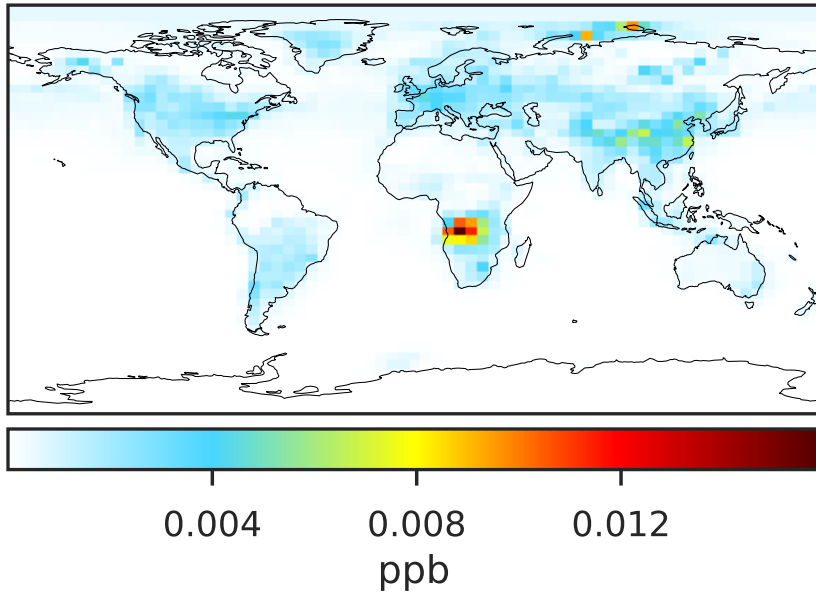
Ratio (1x1.25)  
Dev/Ref, Fixed Range



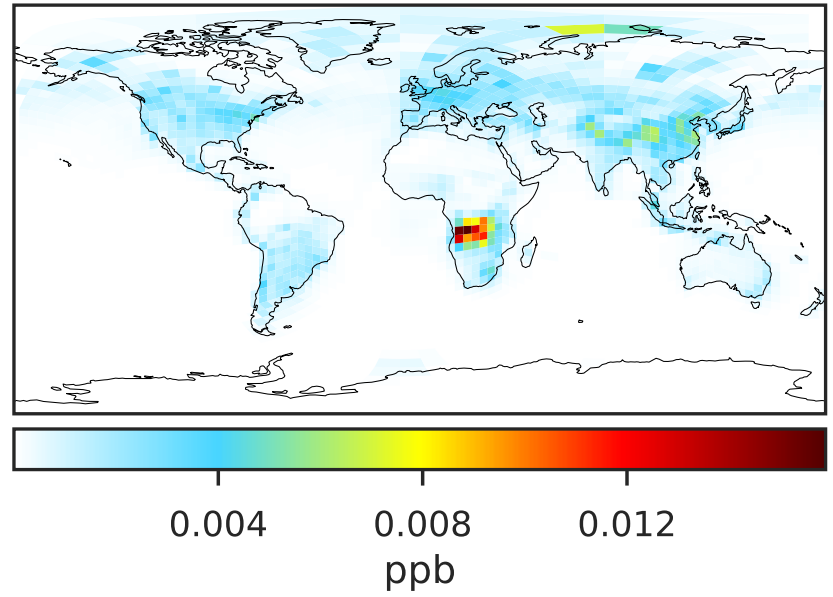
0.50 0.75 1.00 1.50 2.00  
unitless

# SpeciesConcVV\_HNO4 (Jul2019)

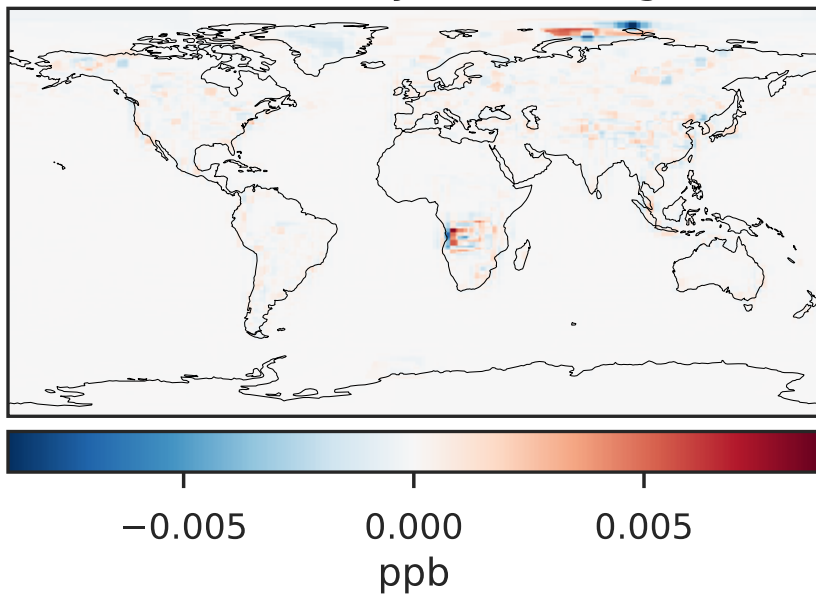
14.3.0-rc.0 (Ref)  
4.0x5.0



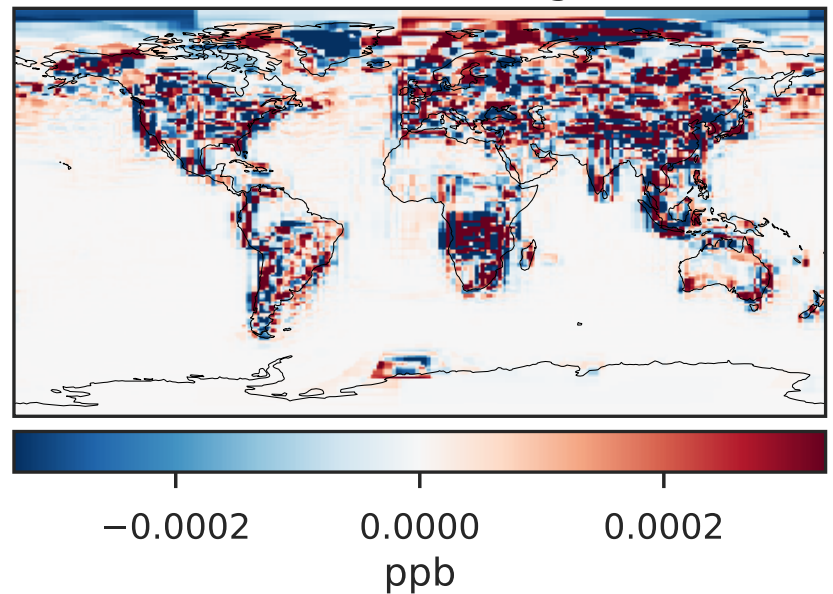
14.3.0-rc.0 (Dev)  
c24



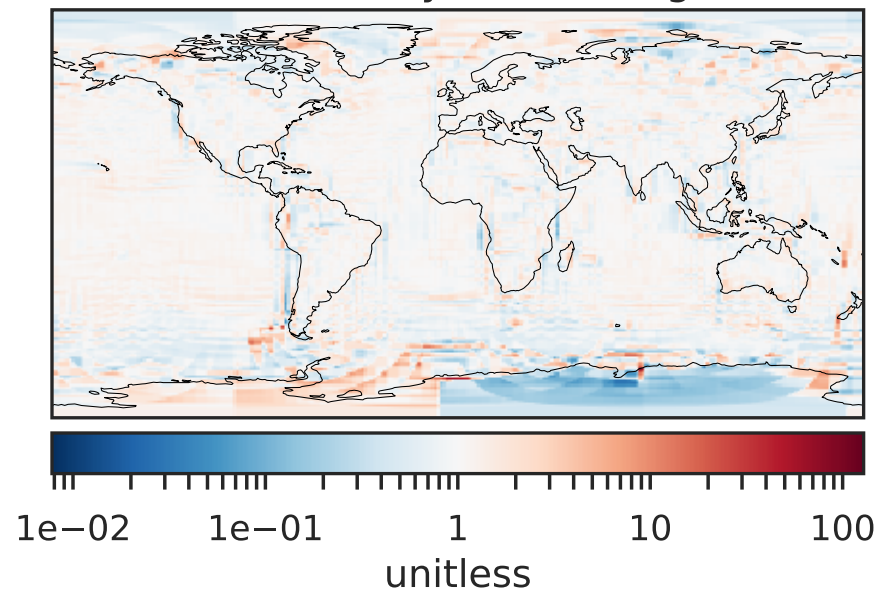
Difference (1x1.25)  
Dev - Ref, Dynamic Range



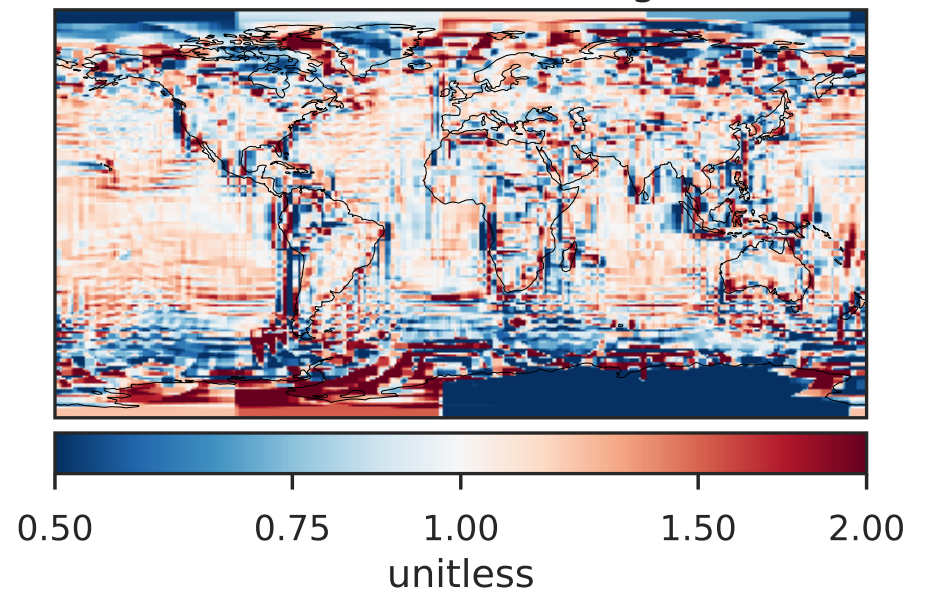
Difference (1x1.25)  
Dev - Ref, Restricted Range [5%,95%]



Ratio (1x1.25)  
Dev/Ref, Dynamic Range

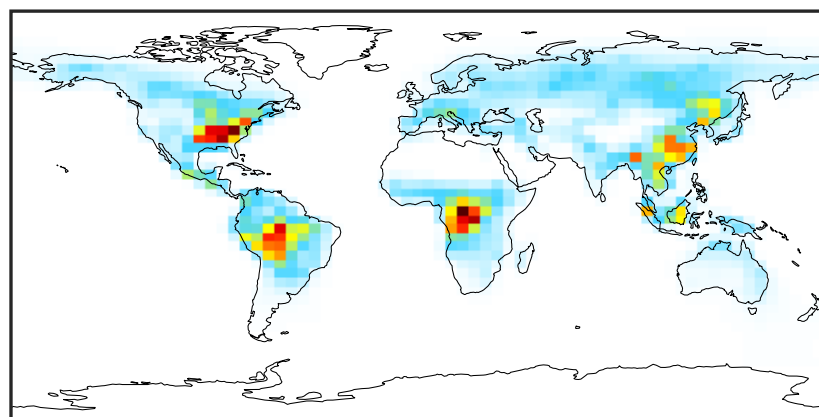


Ratio (1x1.25)  
Dev/Ref, Fixed Range



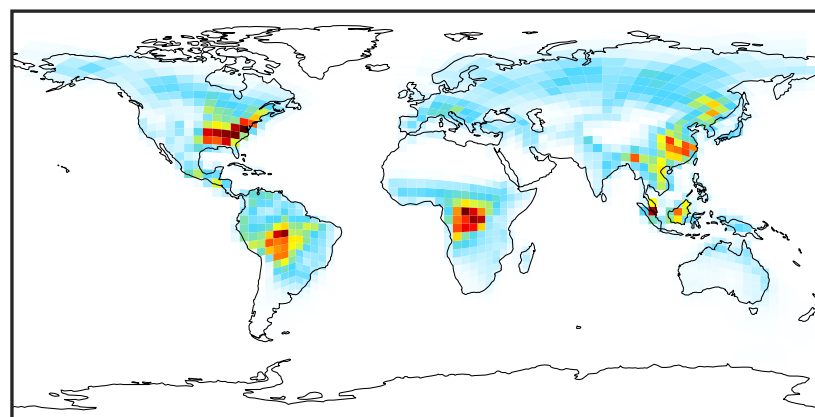
# SpeciesConcVV\_MPAN (Jul2019)

14.3.0-rc.0 (Ref)  
4.0x5.0



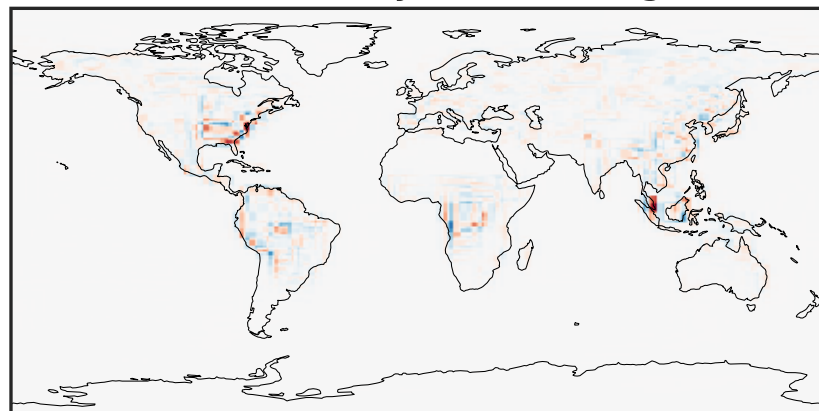
0.000 0.015 0.030  
ppb

14.3.0-rc.0 (Dev)  
c24



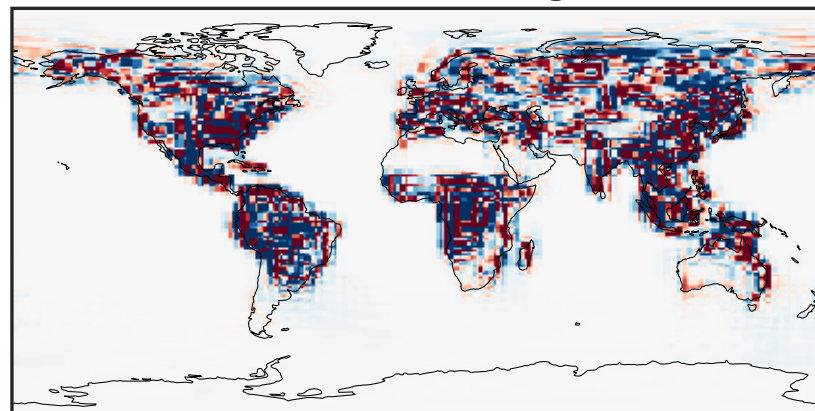
0.000 0.015 0.030  
ppb

Difference (1x1.25)  
Dev - Ref, Dynamic Range



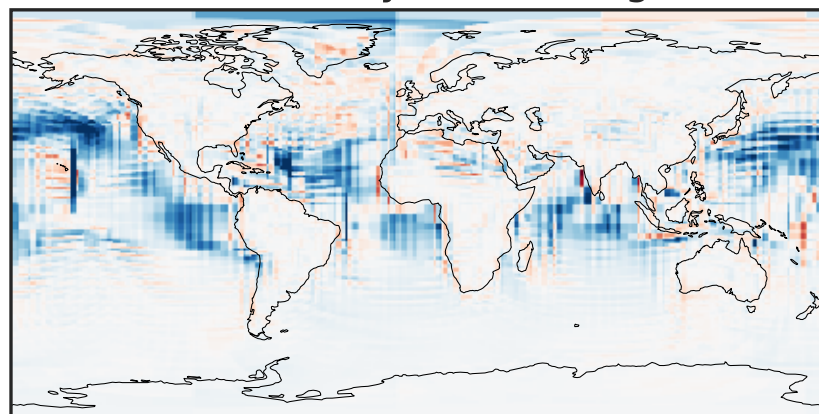
-0.015 0.000 0.015  
ppb

Difference (1x1.25)  
Dev - Ref, Restricted Range [5%,95%]



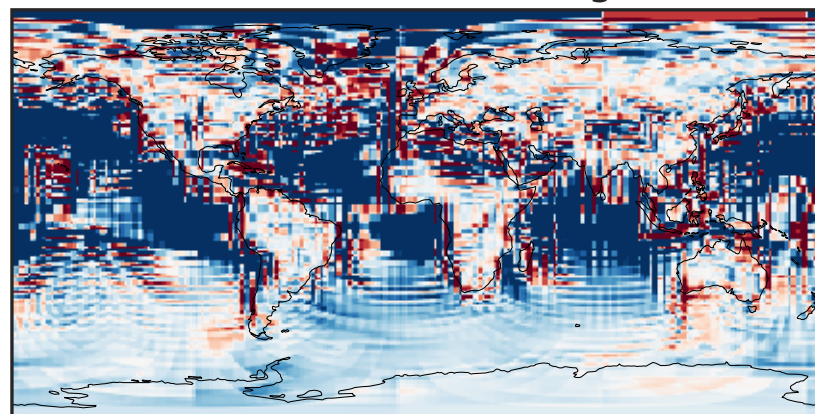
-0.0006 0.0000 0.0006  
ppb

Ratio (1x1.25)  
Dev/Ref, Dynamic Range



1e-02 1e-01 1 10 100  
unitless

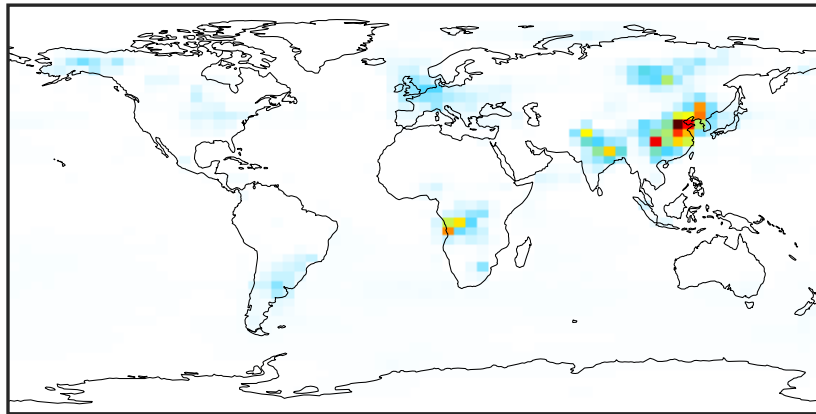
Ratio (1x1.25)  
Dev/Ref, Fixed Range



0.50 0.75 1.00 1.50 2.00  
unitless

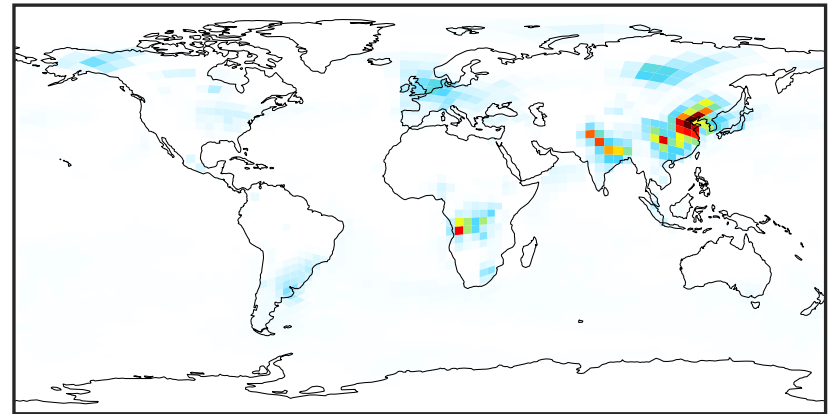
# SpeciesConcVV\_NIT (Jul2019)

14.3.0-rc.0 (Ref)  
4.0x5.0



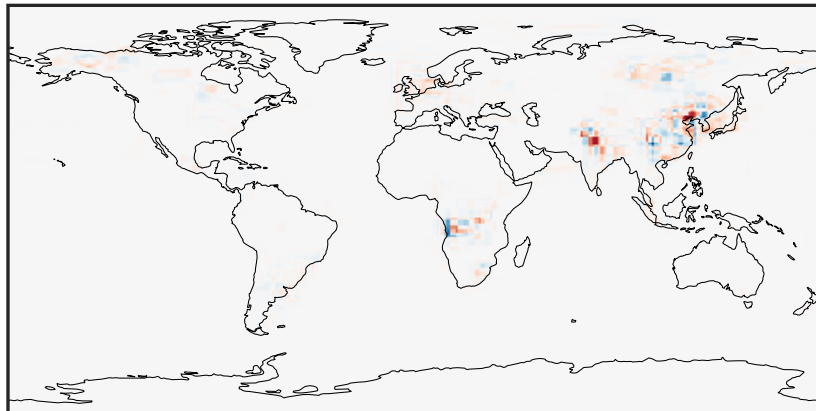
0.000 1.021 2.043 3.064 4.086  
ppb

14.3.0-rc.0 (Dev)  
c24



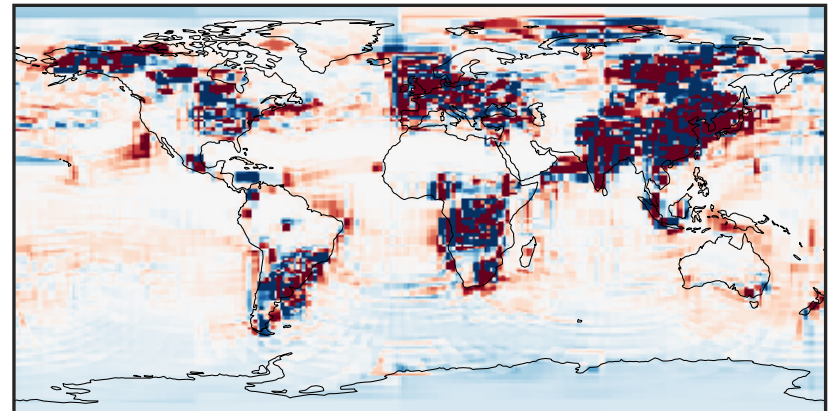
0.000 1.021 2.043 3.064 4.086  
ppb

Difference (1x1.25)  
Dev - Ref, Dynamic Range



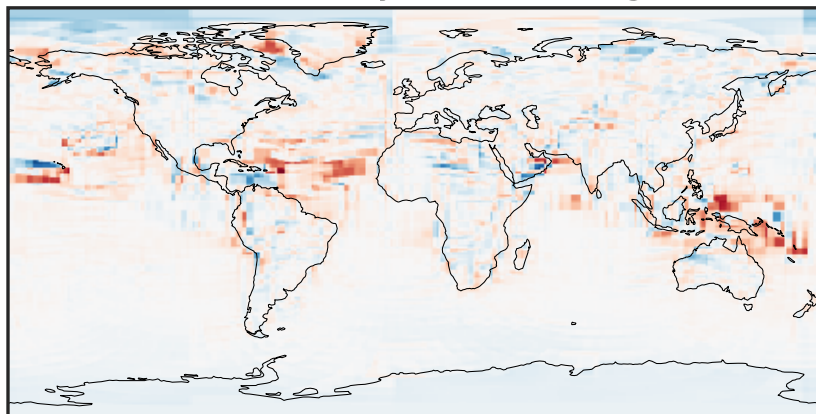
-2.155 -1.077 0.000 1.077 2.155  
ppb

Difference (1x1.25)  
Dev - Ref, Restricted Range [5%,95%]



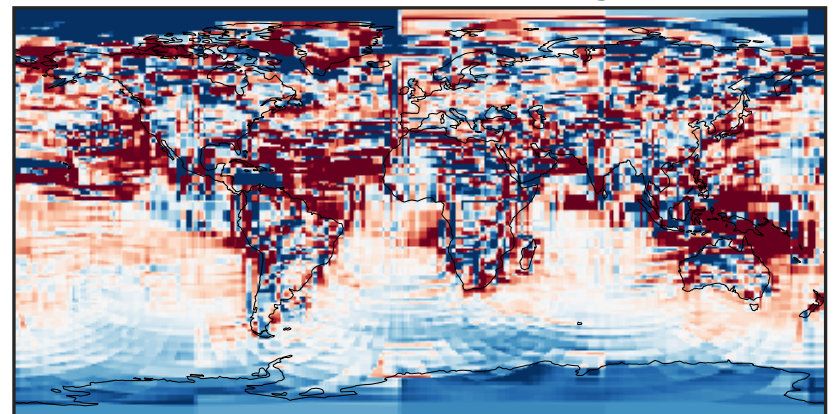
-0.02 0.00 0.02  
ppb

Ratio (1x1.25)  
Dev/Ref, Dynamic Range



1e-02 1e-01 1 10 100  
unitless

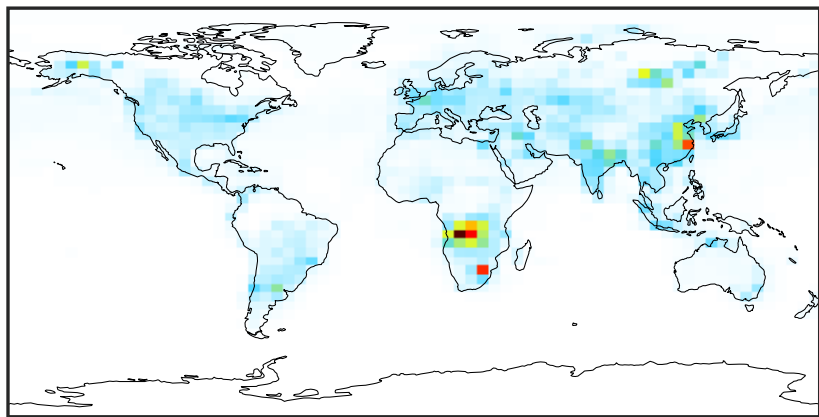
Ratio (1x1.25)  
Dev/Ref, Fixed Range



0.50 0.75 1.00 1.50 2.00  
unitless

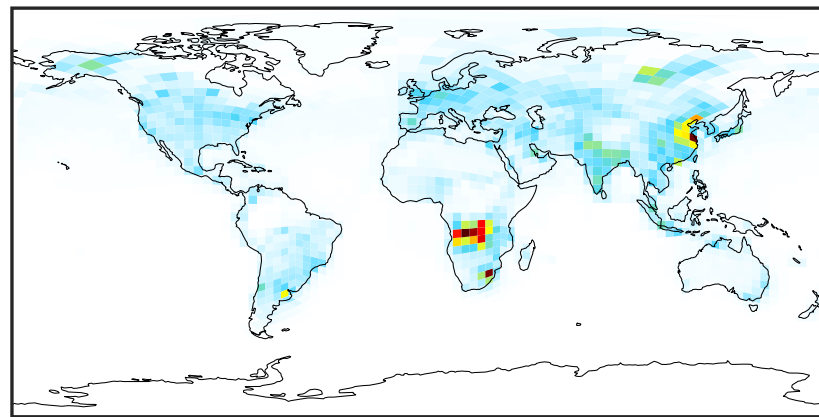
# SpeciesConcVV\_NO (Jul2019)

14.3.0-rc.0 (Ref)  
4.0x5.0



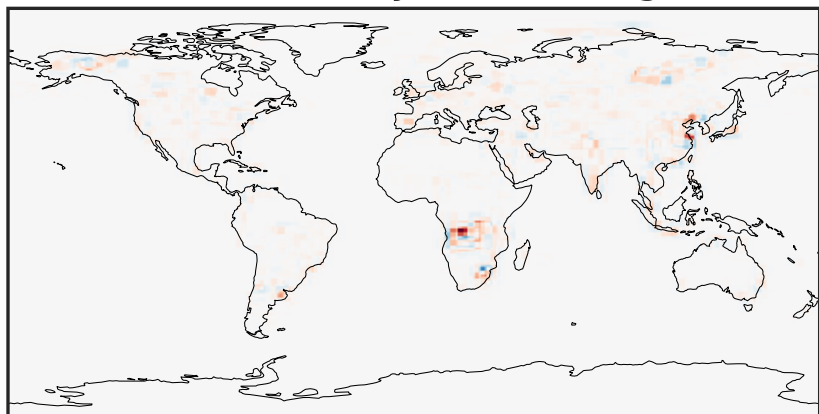
0.0000 0.1962 0.3924 0.5886 0.7848  
ppb

14.3.0-rc.0 (Dev)  
c24



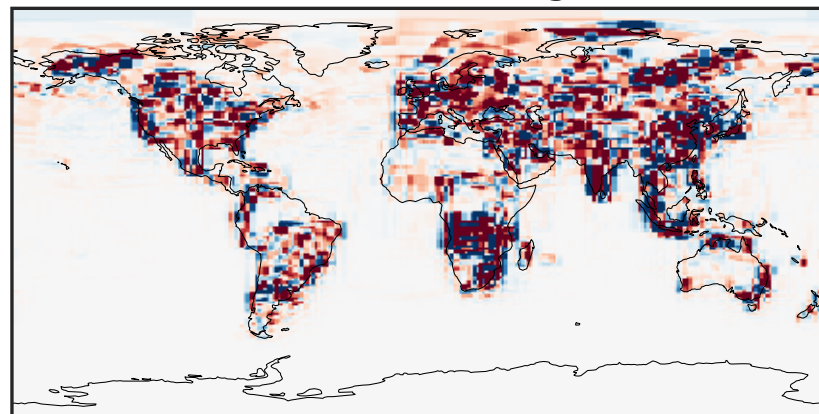
0.0000 0.1962 0.3924 0.5886 0.7848  
ppb

Difference (1x1.25)  
Dev - Ref, Dynamic Range



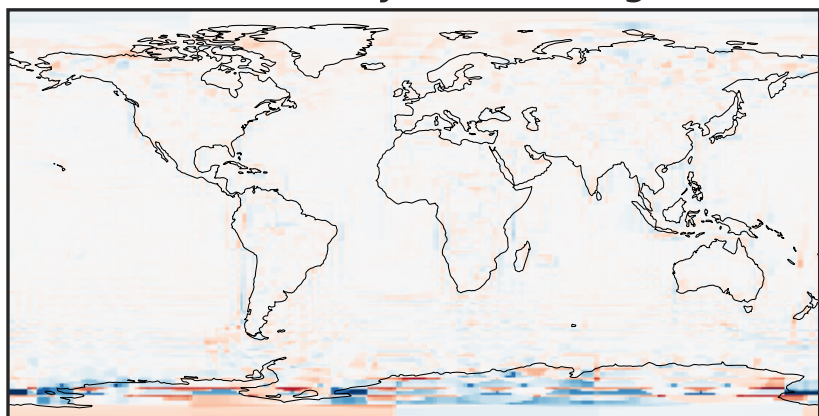
-0.618 -0.309 0.000 0.309 0.618  
ppb

Difference (1x1.25)  
Dev - Ref, Restricted Range [5%,95%]



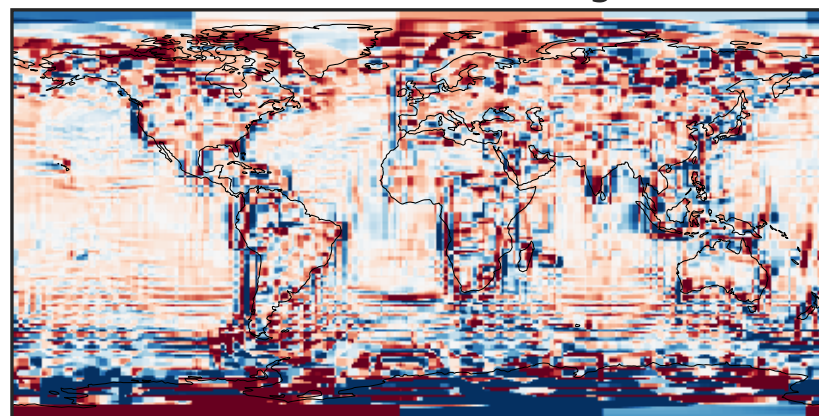
-0.015 0.000 0.015  
ppb

Ratio (1x1.25)  
Dev/Ref, Dynamic Range



1e-03 1e-02 1e-01 1 10 100 1000  
unitless

Ratio (1x1.25)  
Dev/Ref, Fixed Range

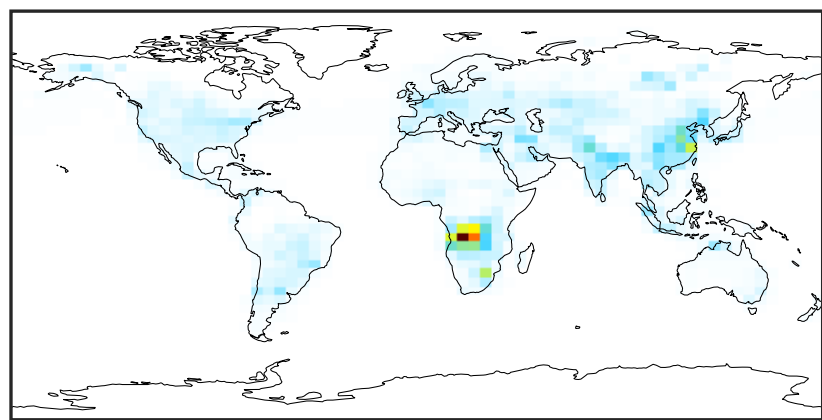


0.50 0.75 1.00 1.50 2.00  
unitless



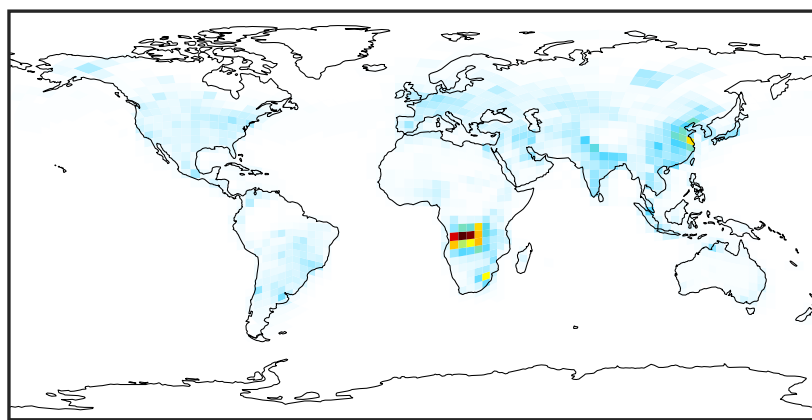
# SpeciesConcVV\_NO2 (Jul2019)

14.3.0-rc.0 (Ref)  
4.0x5.0



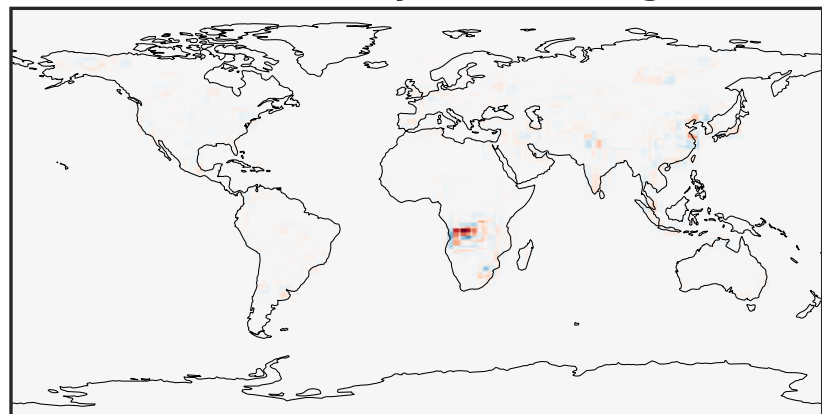
0.00 4.57 9.13 13.70 18.26  
ppb

14.3.0-rc.0 (Dev)  
c24



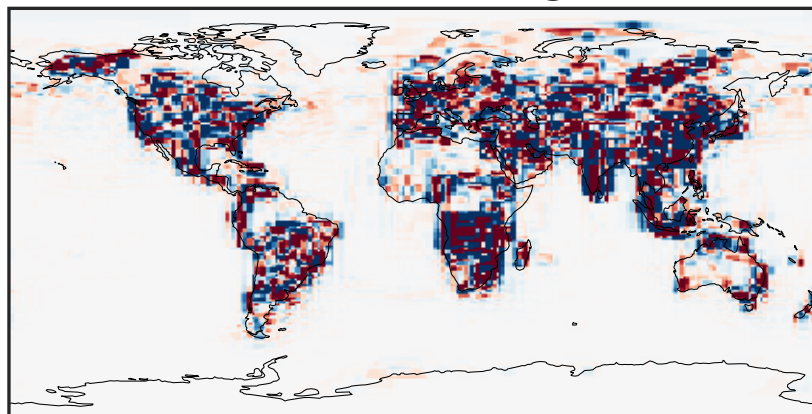
0.00 4.57 9.13 13.70 18.26  
ppb

Difference (1x1.25)  
Dev - Ref, Dynamic Range



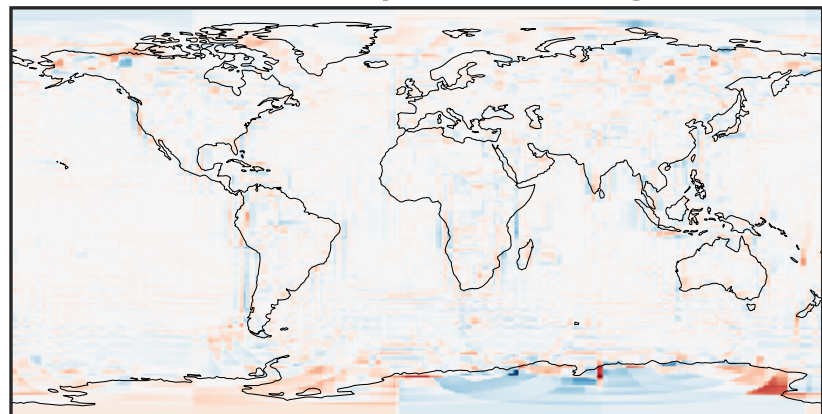
-12.34 -6.17 0.00 6.17 12.34  
ppb

Difference (1x1.25)  
Dev - Ref, Restricted Range [5%,95%]



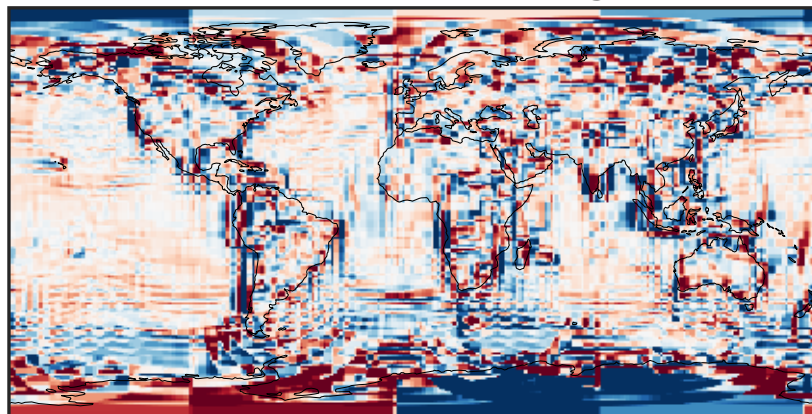
-0.1518 -0.0759 0.0000 0.0759 0.1518  
ppb

Ratio (1x1.25)  
Dev/Ref, Dynamic Range



1e-02 1e-01 1 10 100  
unitless

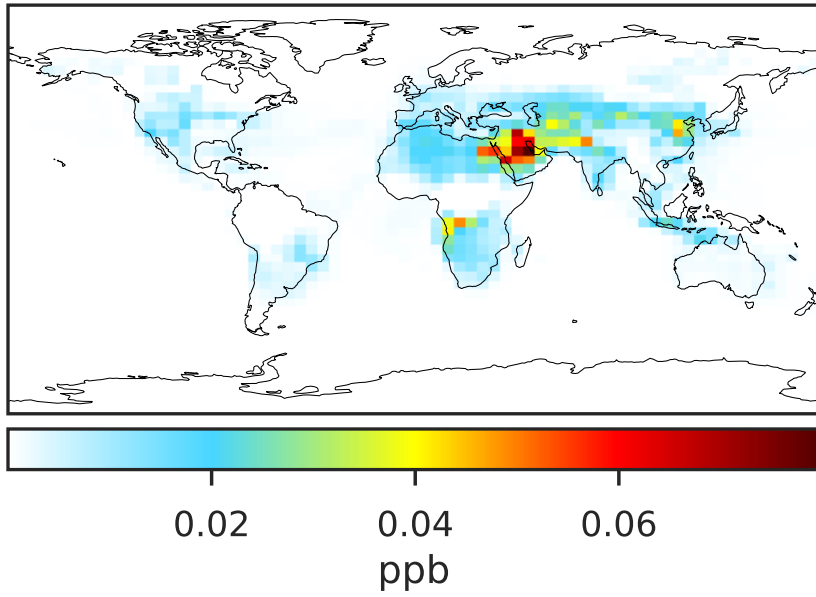
Ratio (1x1.25)  
Dev/Ref, Fixed Range



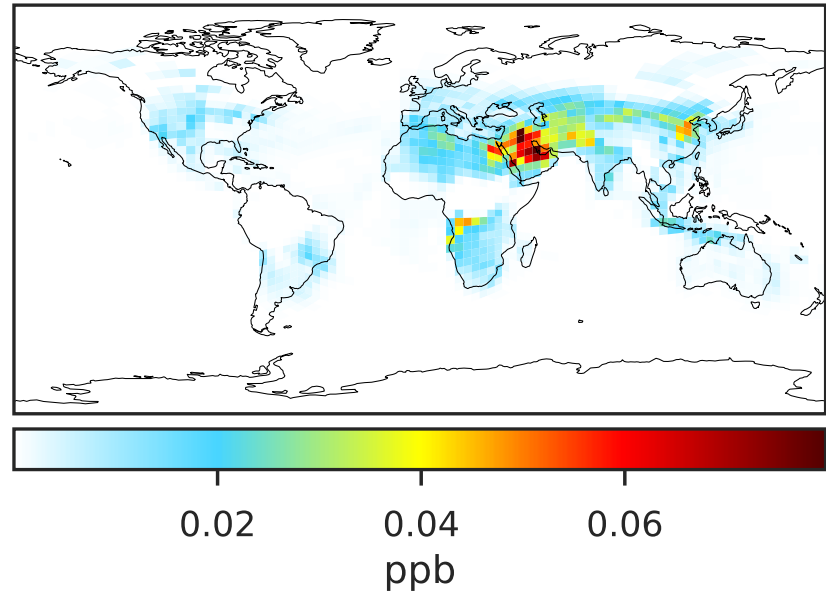
0.50 0.75 1.00 1.50 2.00  
unitless

# SpeciesConcVV\_NO3 (Jul2019)

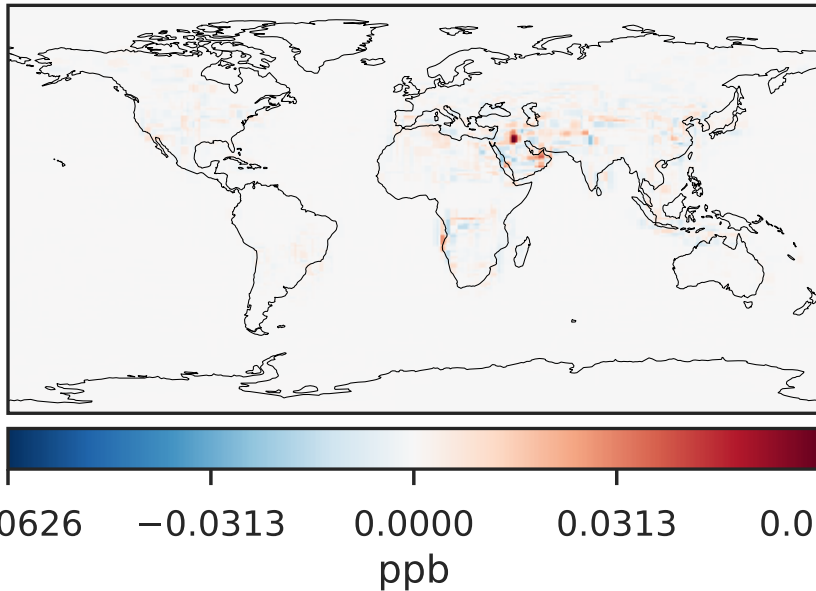
14.3.0-rc.0 (Ref)  
4.0x5.0



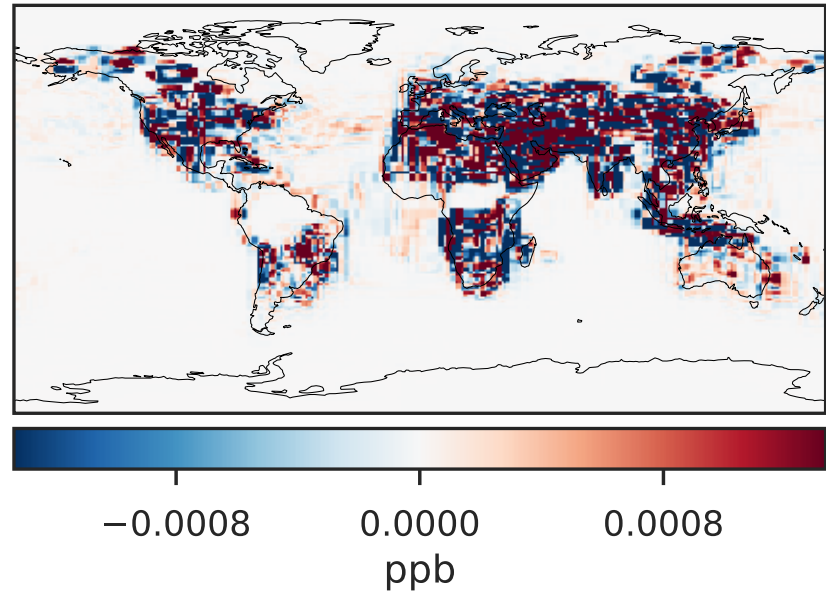
14.3.0-rc.0 (Dev)  
c24



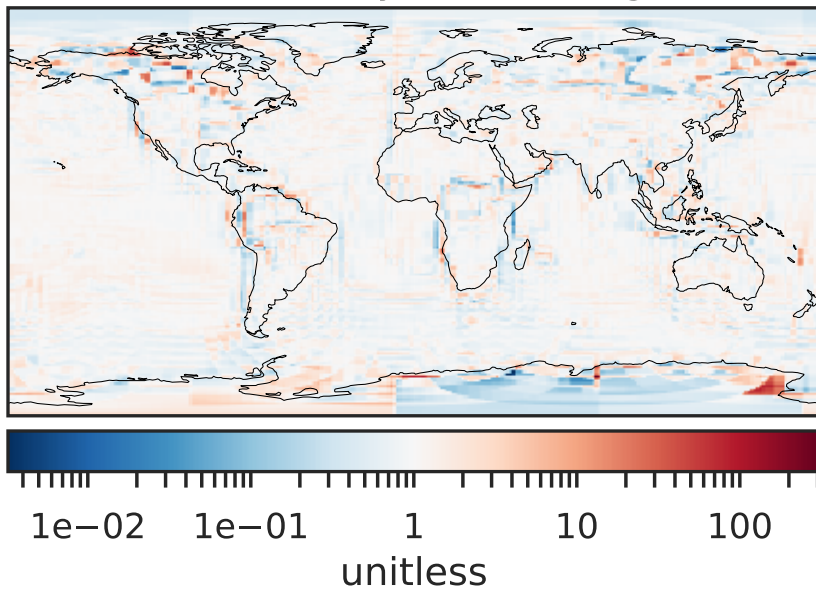
Difference (1x1.25)  
Dev - Ref, Dynamic Range



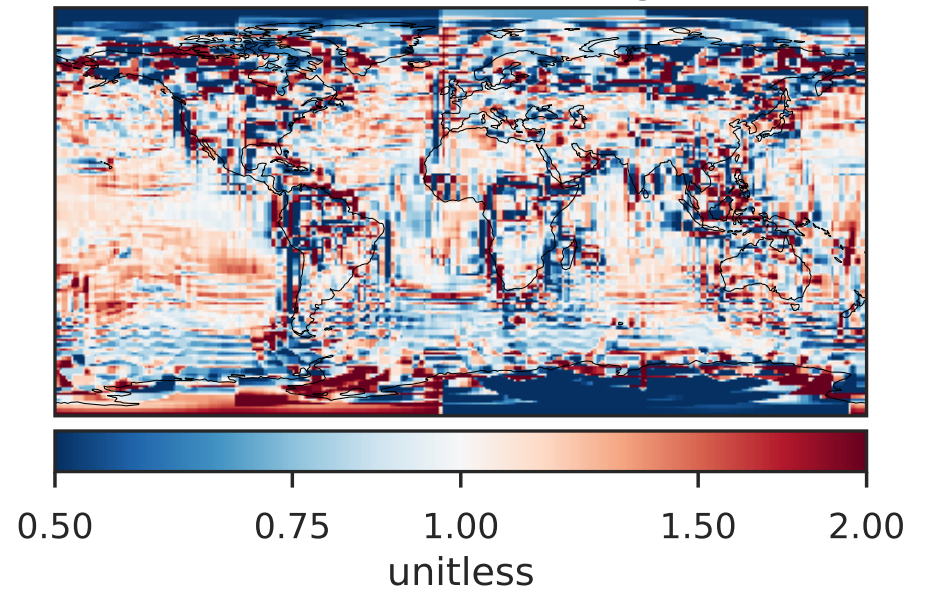
Difference (1x1.25)  
Dev - Ref, Restricted Range [5%,95%]



Ratio (1x1.25)  
Dev/Ref, Dynamic Range

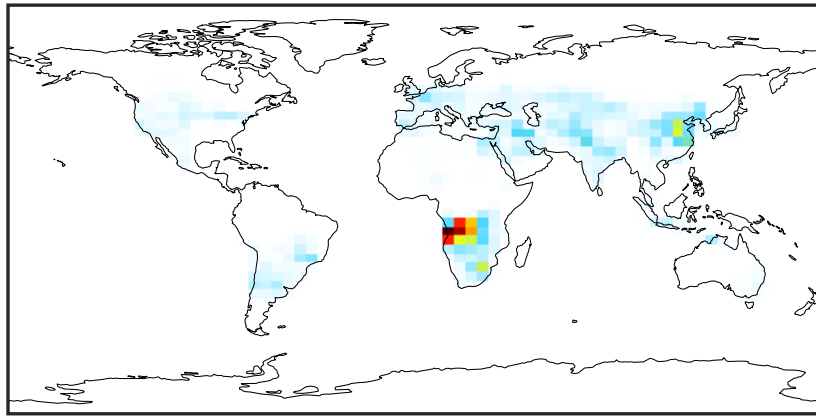


Ratio (1x1.25)  
Dev/Ref, Fixed Range



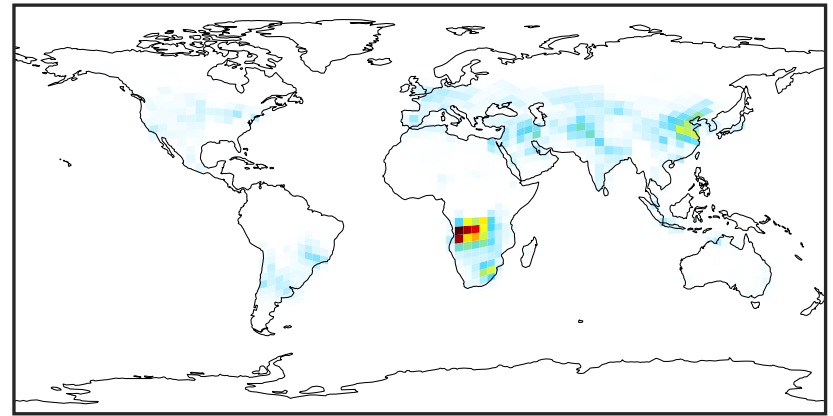
# SpeciesConcVV\_N2O5 (Jul2019)

14.3.0-rc.0 (Ref)  
4.0x5.0



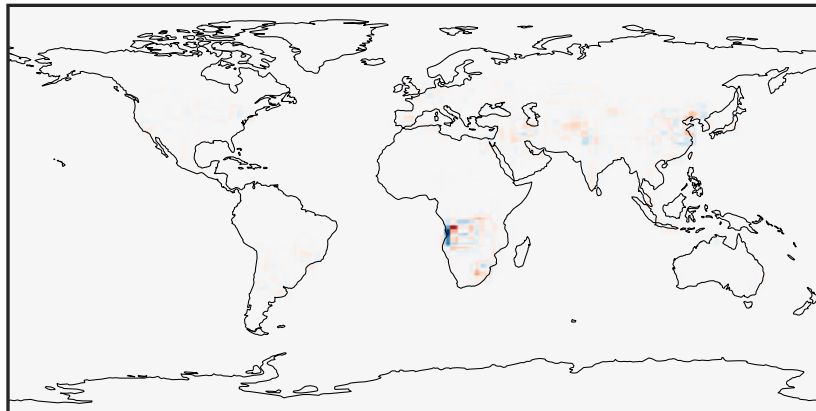
0.0000 0.1377 0.2754 0.4130 0.5507  
ppb

14.3.0-rc.0 (Dev)  
c24



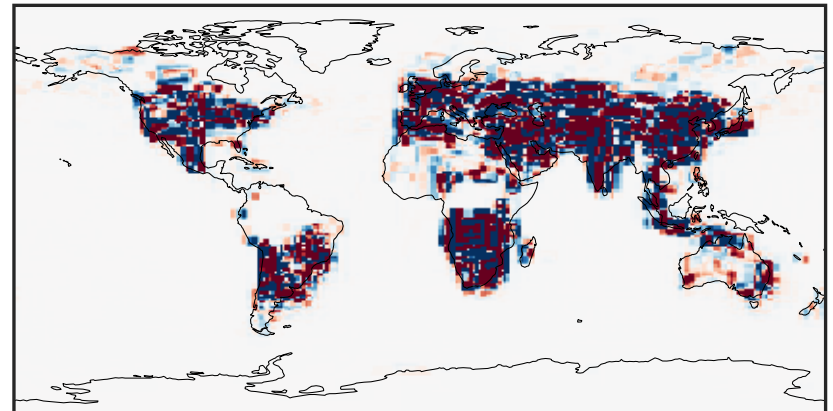
0.0000 0.1377 0.2754 0.4130 0.5507  
ppb

Difference (1x1.25)  
Dev - Ref, Dynamic Range



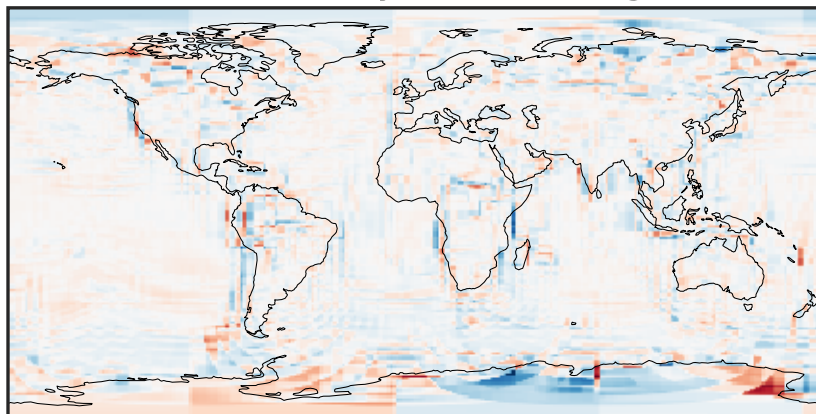
-0.4450 -0.2225 0.0000 0.2225 0.4450  
ppb

Difference (1x1.25)  
Dev - Ref, Restricted Range [5%,95%]



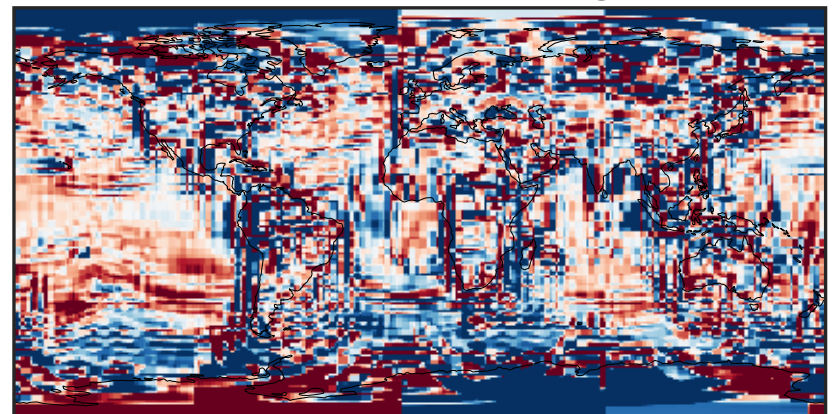
-0.0015 0.0000 0.0015  
ppb

Ratio (1x1.25)  
Dev/Ref, Dynamic Range



1e-03 1e-02 1e-01 1 10 100 1000  
unitless

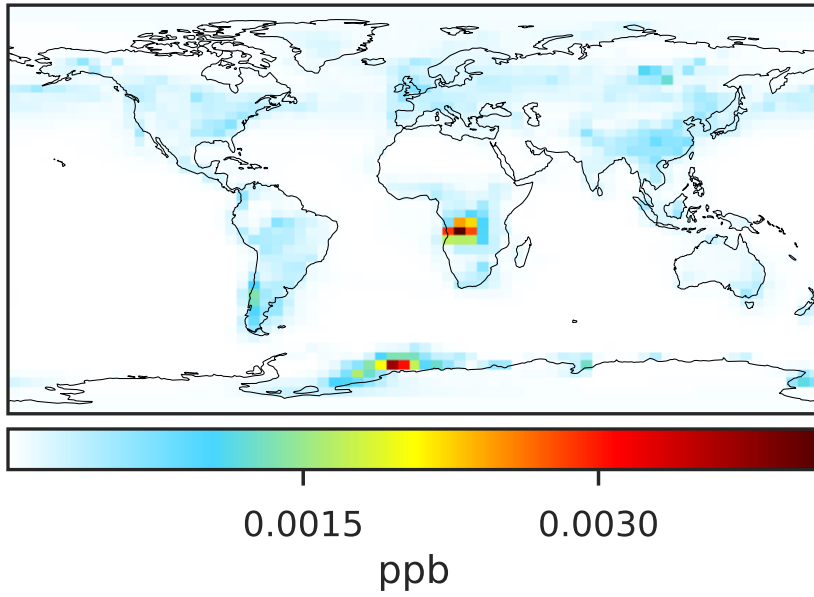
Ratio (1x1.25)  
Dev/Ref, Fixed Range



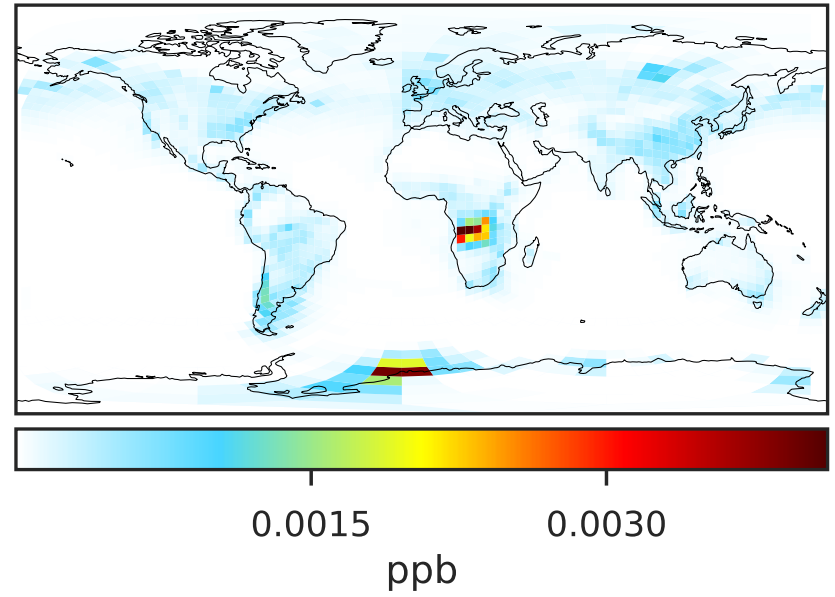
0.50 0.75 1.00 1.50 2.00  
unitless

# SpeciesConcVV\_MPN (Jul2019)

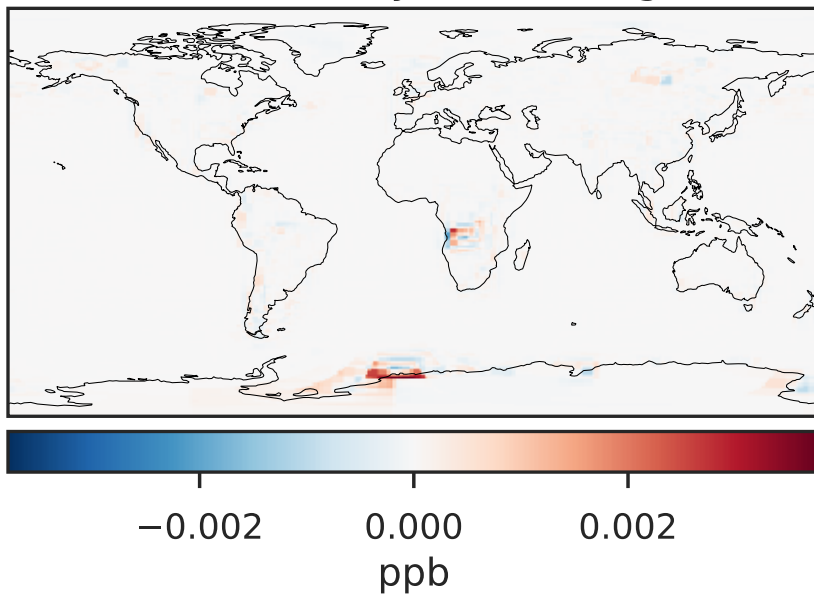
14.3.0-rc.0 (Ref)  
4.0x5.0



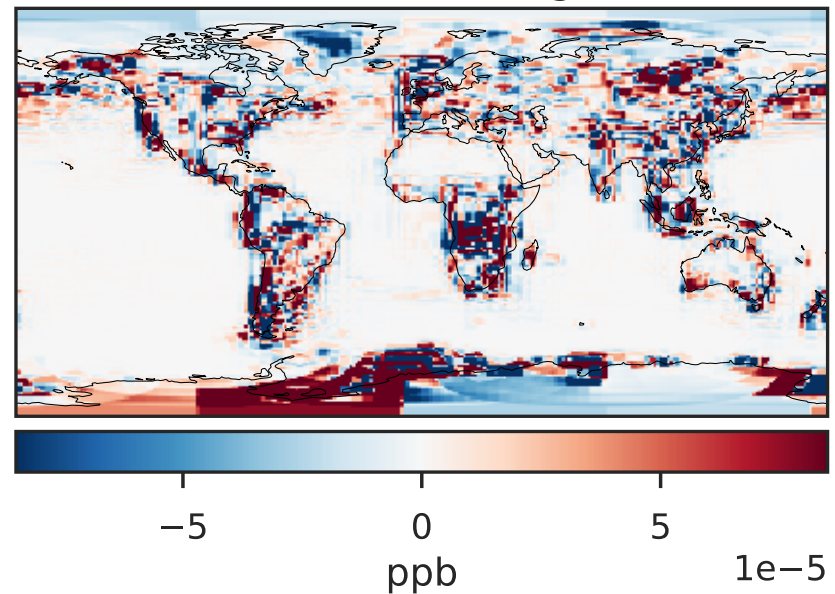
14.3.0-rc.0 (Dev)  
c24



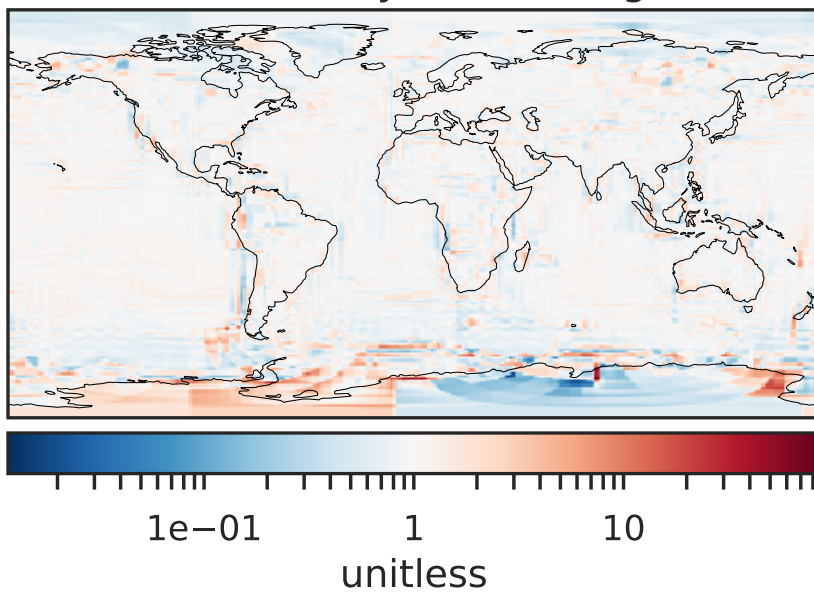
Difference (1x1.25)  
Dev - Ref, Dynamic Range



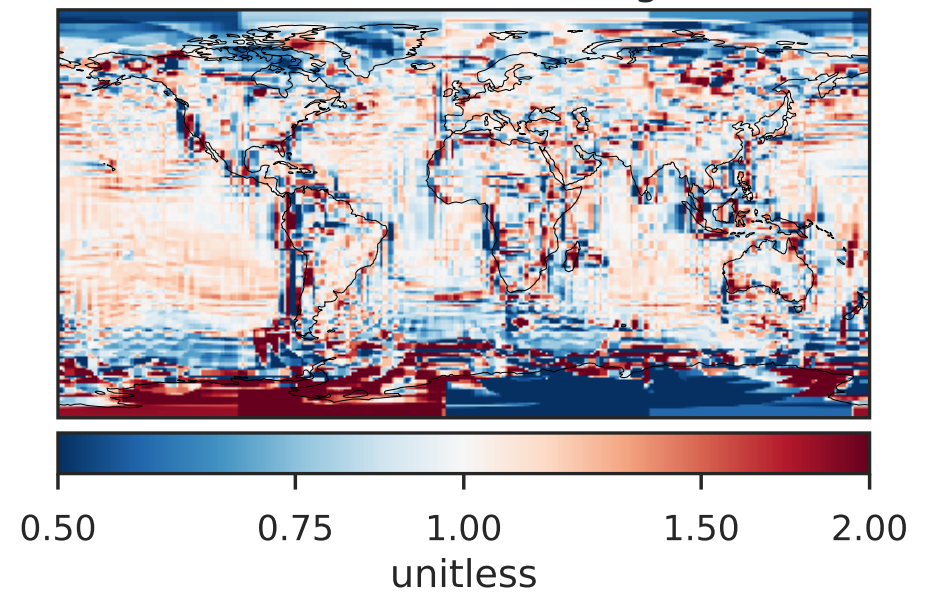
Difference (1x1.25)  
Dev - Ref, Restricted Range [5%,95%]



Ratio (1x1.25)  
Dev/Ref, Dynamic Range

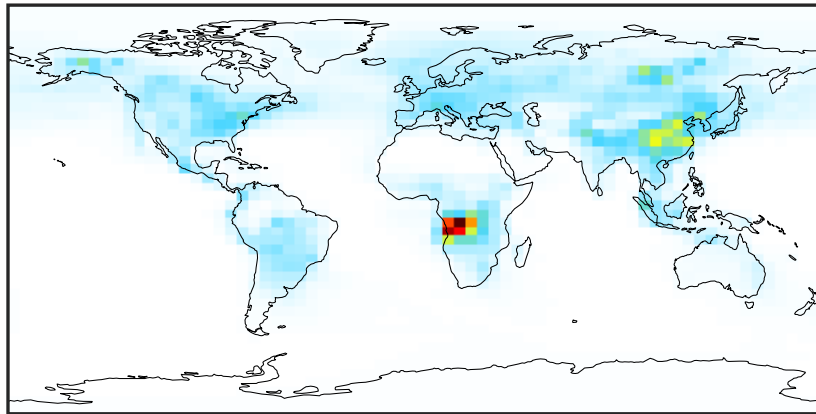


Ratio (1x1.25)  
Dev/Ref, Fixed Range



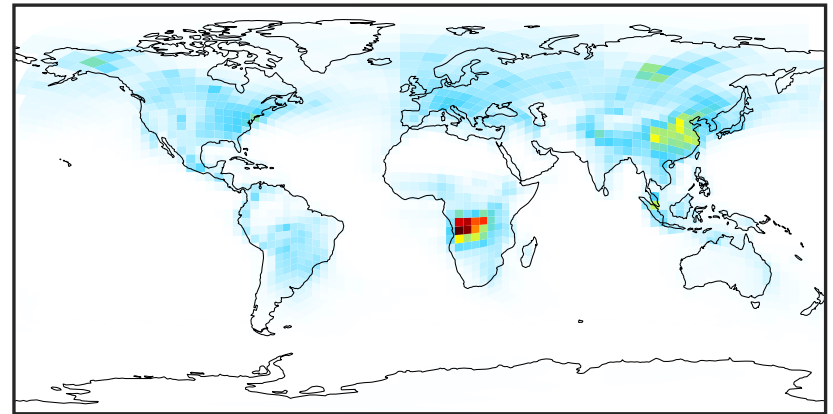
# SpeciesConcVV\_PAN (Jul2019)

14.3.0-rc.0 (Ref)  
4.0x5.0



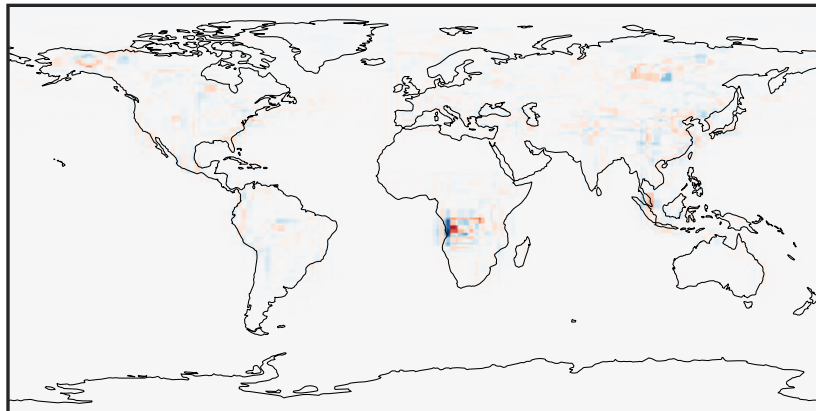
0.000 0.479 0.957 1.435 1.914  
ppb

14.3.0-rc.0 (Dev)  
c24



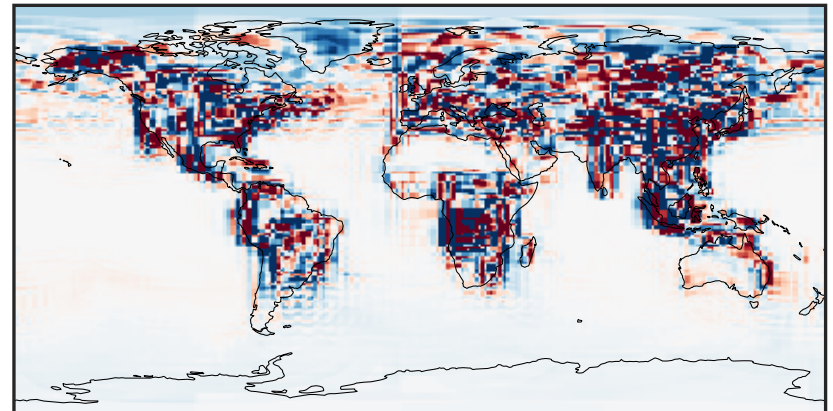
0.000 0.479 0.957 1.435 1.914  
ppb

Difference (1x1.25)  
Dev - Ref, Dynamic Range



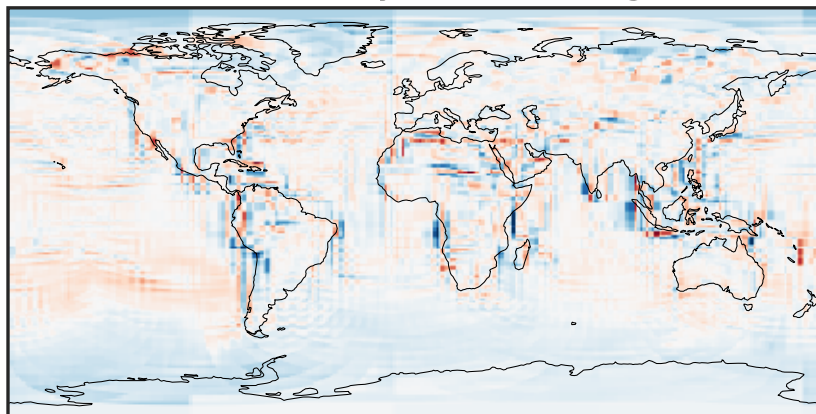
-1.003 -0.502 0.000 0.502 1.003  
ppb

Difference (1x1.25)  
Dev - Ref, Restricted Range [5%,95%]



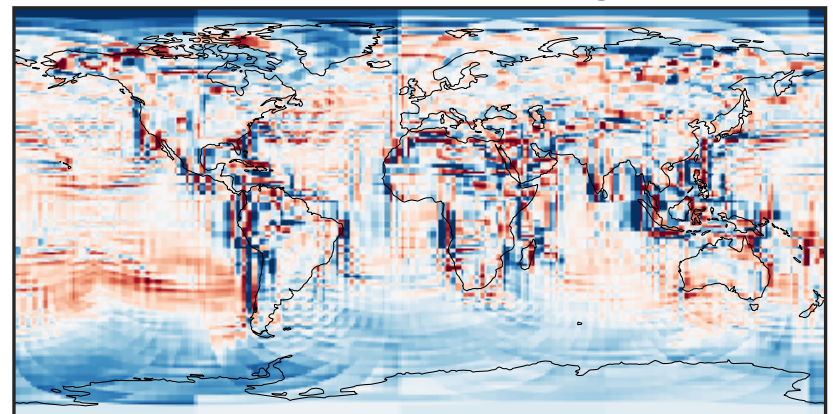
-0.02 0.00 0.02  
ppb

Ratio (1x1.25)  
Dev/Ref, Dynamic Range



0.145 0.573 1.000 3.940 6.879  
unitless

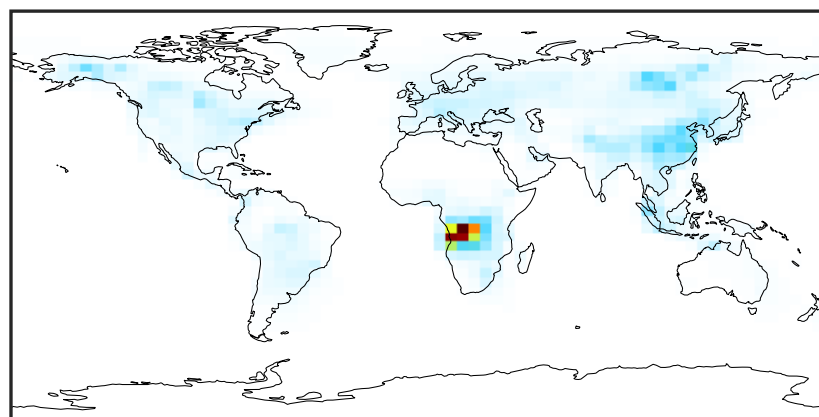
Ratio (1x1.25)  
Dev/Ref, Fixed Range



0.50 0.75 1.00 1.50 2.00  
unitless

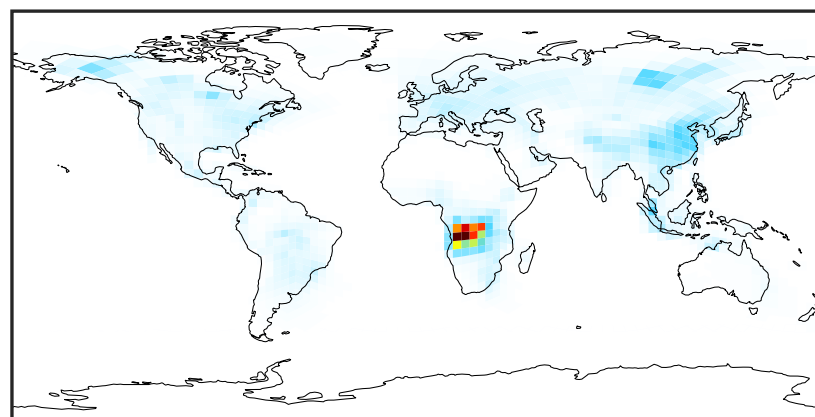
# SpeciesConcVV\_PPN (Jul2019)

14.3.0-rc.0 (Ref)  
4.0x5.0



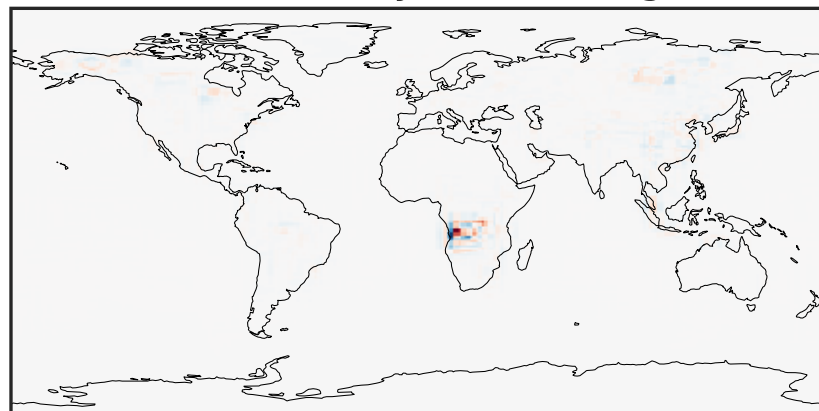
0.0000 0.2100 0.4201 0.6301 0.8401  
ppb

14.3.0-rc.0 (Dev)  
c24



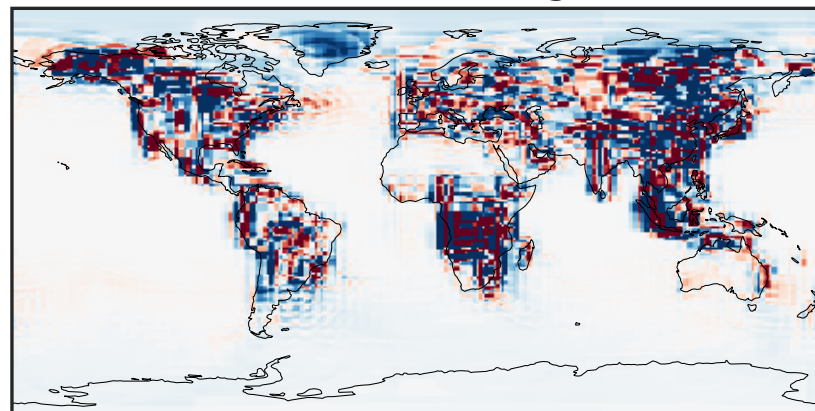
0.0000 0.2100 0.4201 0.6301 0.8401  
ppb

Difference (1x1.25)  
Dev - Ref, Dynamic Range



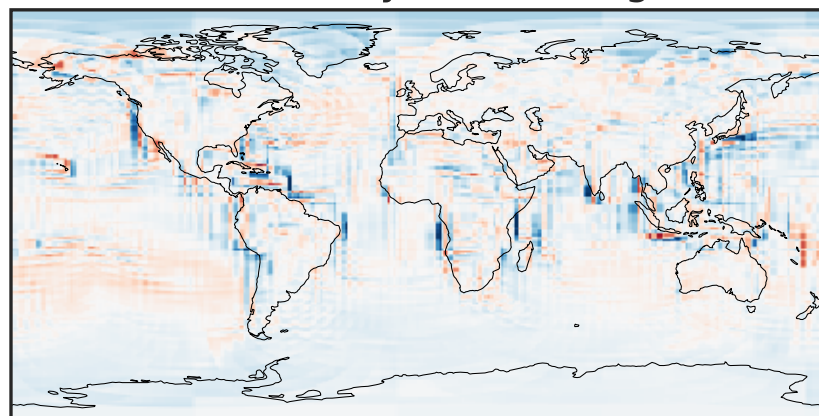
-0.536 -0.268 0.000 0.268 0.536  
ppb

Difference (1x1.25)  
Dev - Ref, Restricted Range [5%,95%]



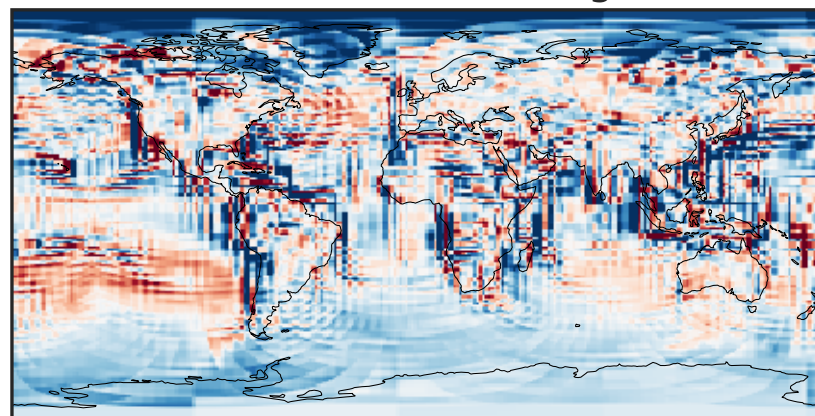
-0.003 0.000 0.003  
ppb

Ratio (1x1.25)  
Dev/Ref, Dynamic Range



1e-01 1 10  
unitless

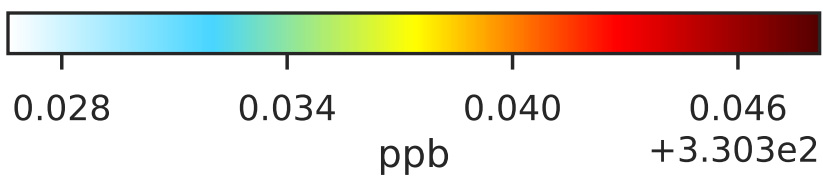
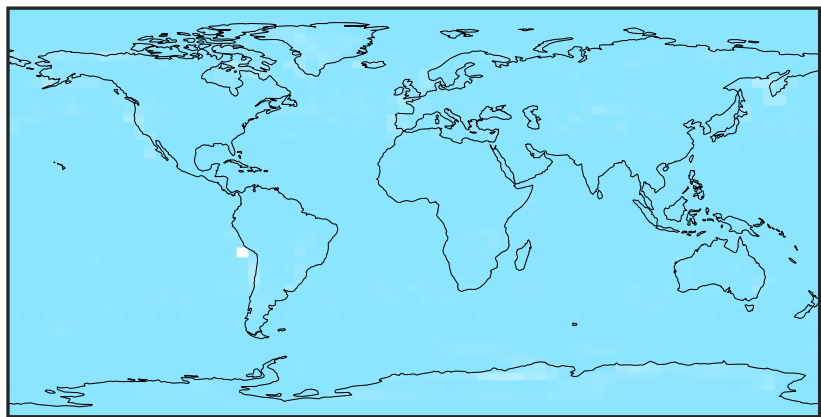
Ratio (1x1.25)  
Dev/Ref, Fixed Range



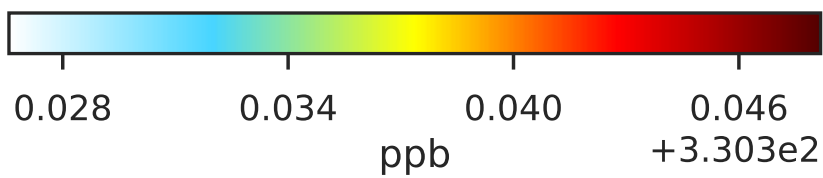
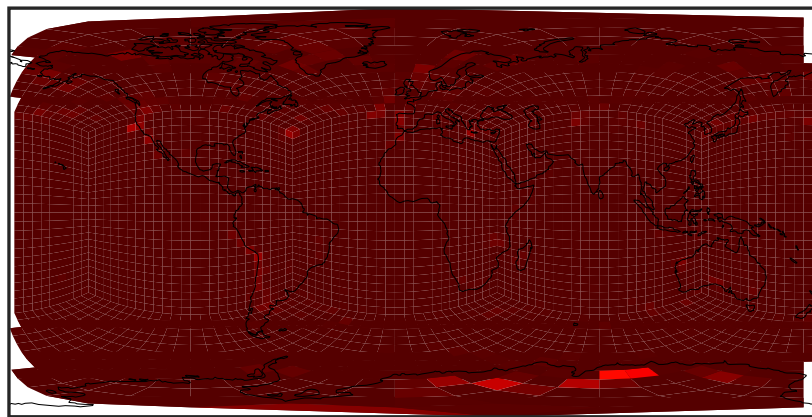
0.50 0.75 1.00 1.50 2.00  
unitless

# SpeciesConcVV\_N2O (Jul2019)

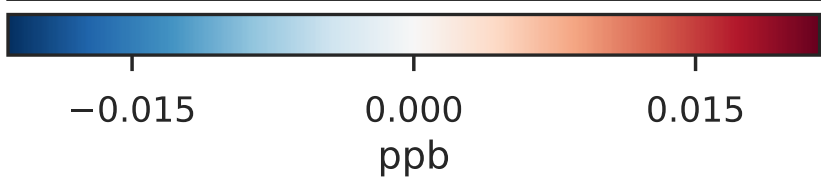
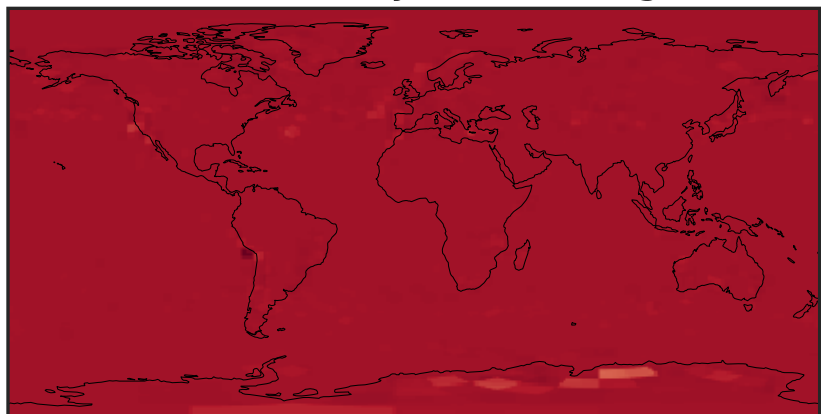
14.3.0-rc.0 (Ref)  
4.0x5.0



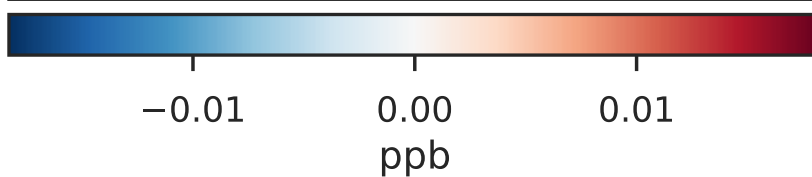
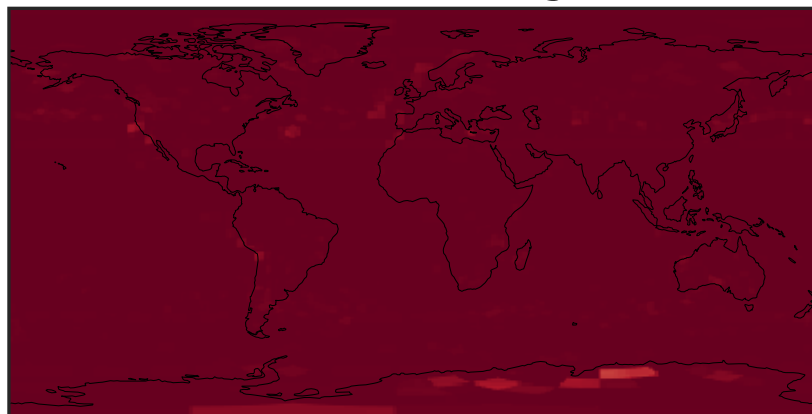
14.3.0-rc.0 (Dev)  
c24



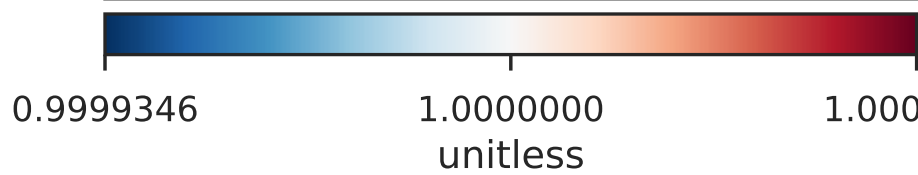
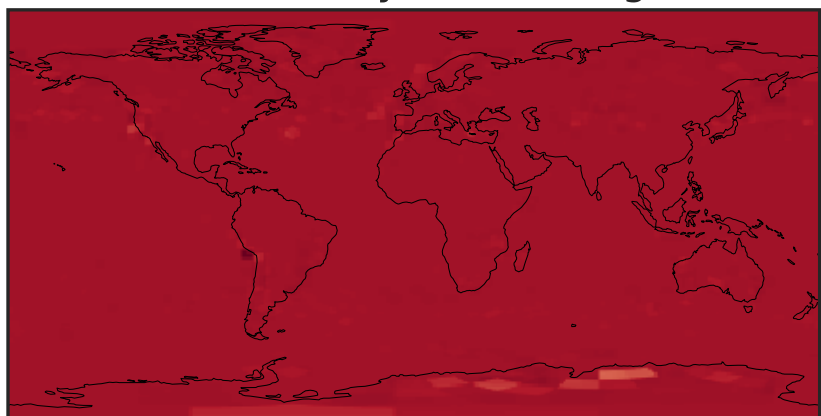
Difference (1x1.25)  
Dev - Ref, Dynamic Range



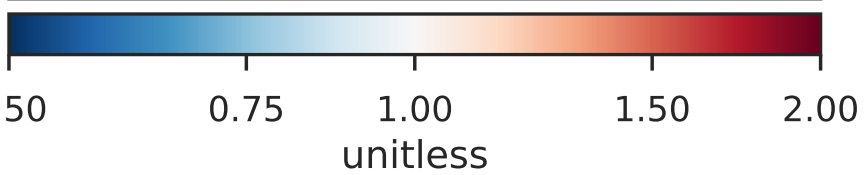
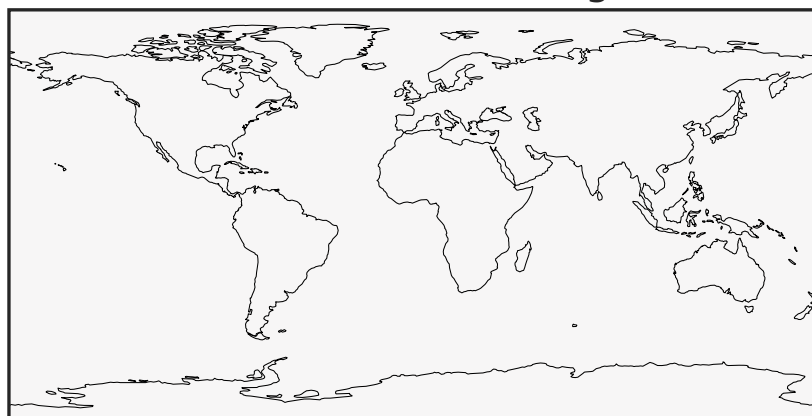
Difference (1x1.25)  
Dev - Ref, Restricted Range [5%,95%]



Ratio (1x1.25)  
Dev/Ref, Dynamic Range

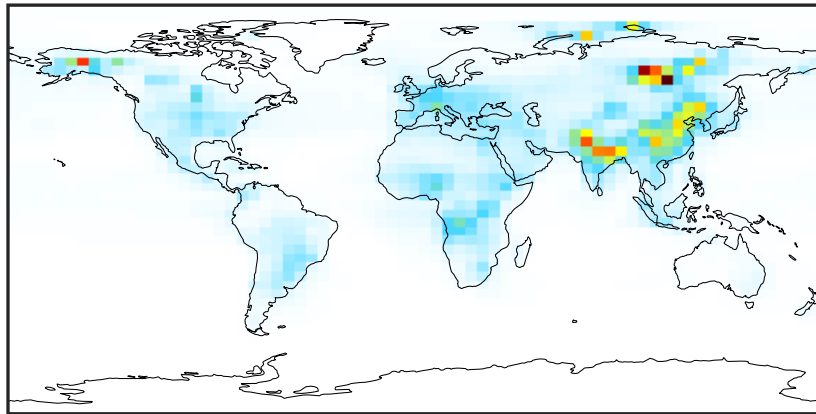


Ratio (1x1.25)  
Dev/Ref, Fixed Range



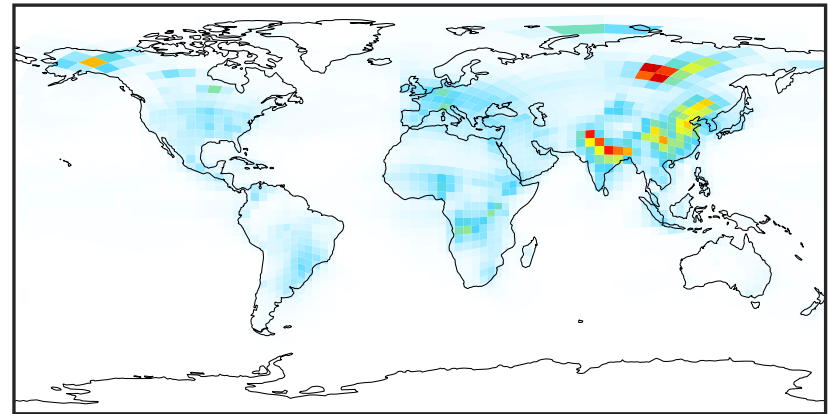
# SpeciesConcVV\_NHx (Jul2019)

14.3.0-rc.0 (Ref)  
4.0x5.0



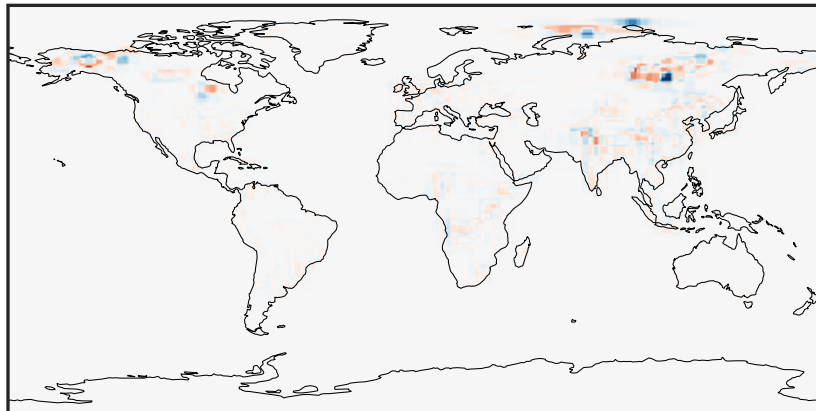
0.01 7.38 14.75 22.12 29.49  
ppb

14.3.0-rc.0 (Dev)  
c24



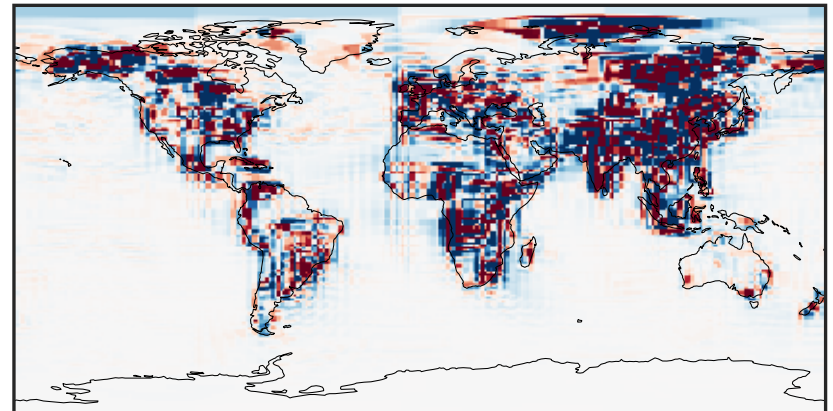
0.01 7.38 14.75 22.12 29.49  
ppb

Difference (1x1.25)  
Dev - Ref, Dynamic Range



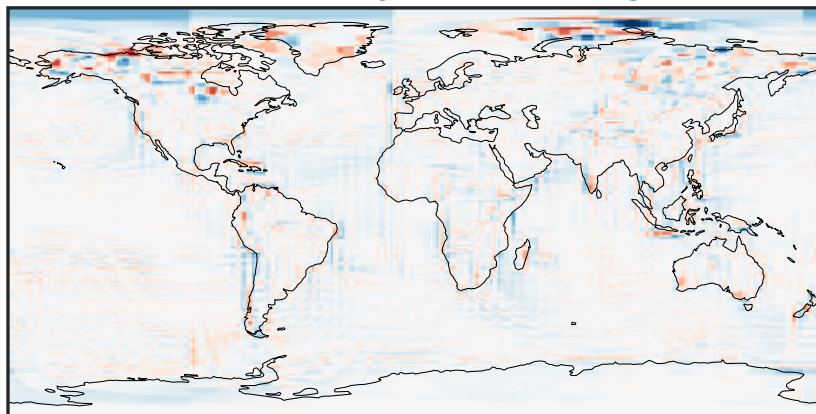
-19.74 -9.87 0.00 9.87 19.74  
ppb

Difference (1x1.25)  
Dev - Ref, Restricted Range [5%,95%]



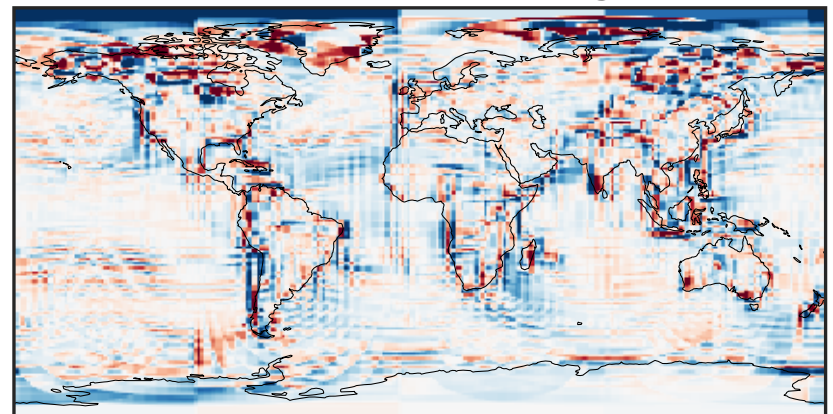
-0.4436 -0.2218 0.0000 0.2218 0.4436  
ppb

Ratio (1x1.25)  
Dev/Ref, Dynamic Range



1e-01 1 10  
unitless

Ratio (1x1.25)  
Dev/Ref, Fixed Range

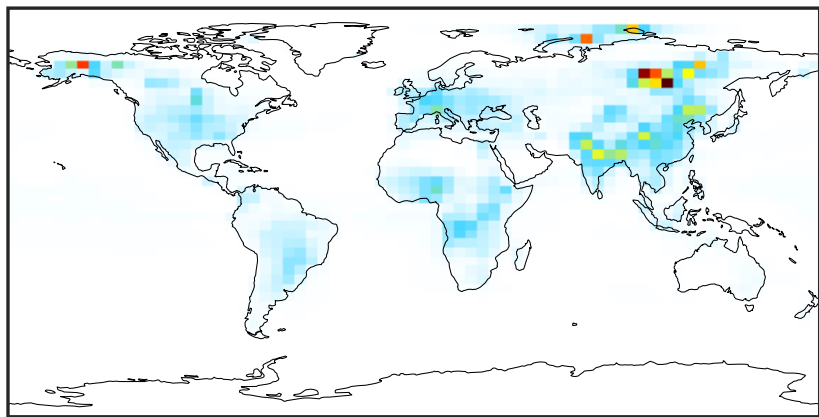


0.50 0.75 1.00 1.50 2.00  
unitless



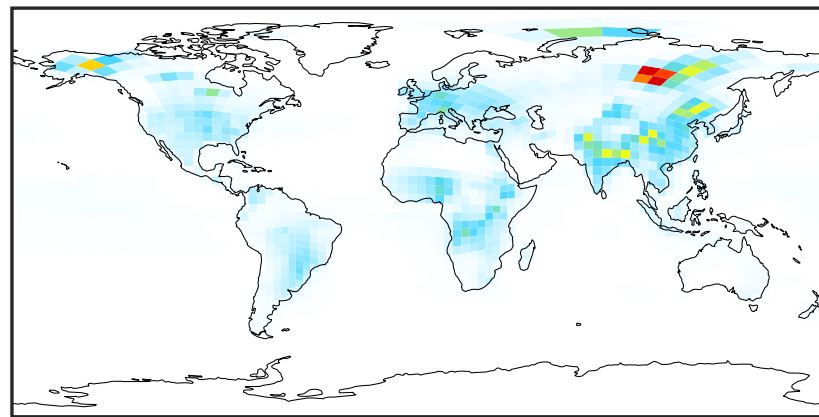
# SpeciesConcVV\_NH3 (Jul2019)

14.3.0-rc.0 (Ref)  
4.0x5.0



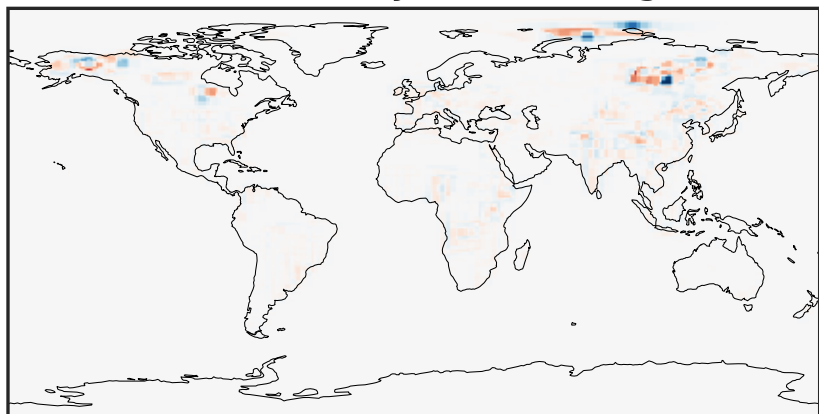
0.00 6.03 12.06 18.08 24.11  
ppb

14.3.0-rc.0 (Dev)  
c24



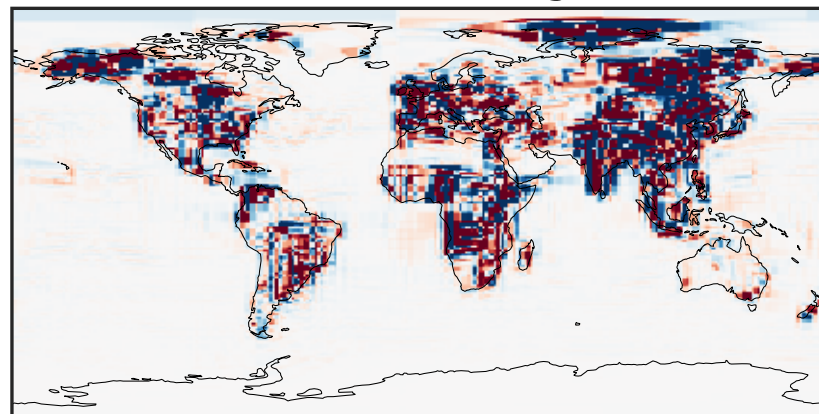
0.00 6.03 12.06 18.08 24.11  
ppb

Difference (1x1.25)  
Dev - Ref, Dynamic Range



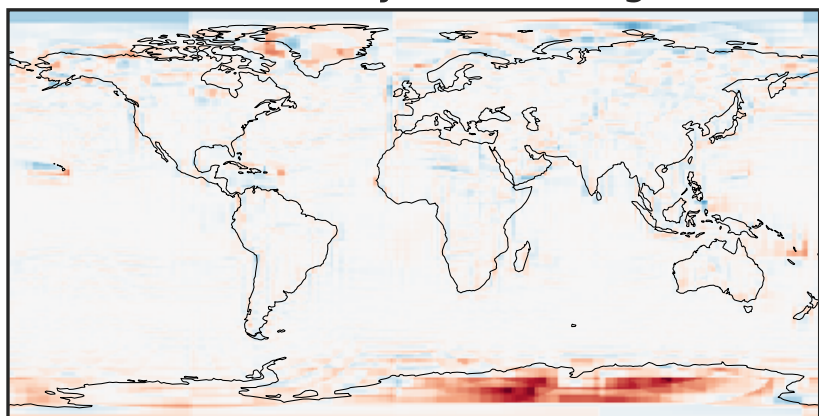
-16.76 -8.38 0.00 8.38 16.76  
ppb

Difference (1x1.25)  
Dev - Ref, Restricted Range [5%,95%]



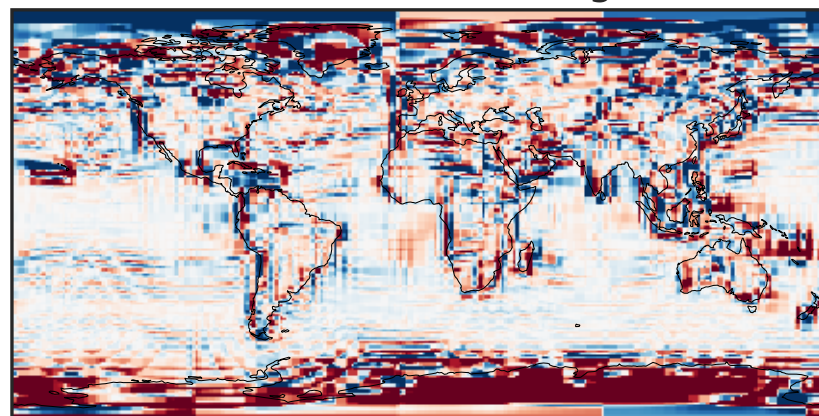
-0.3505 -0.1753 0.0000 0.1753 0.3505  
ppb

Ratio (1x1.25)  
Dev/Ref, Dynamic Range



1e-02 1e-01 1 10 100  
unitless

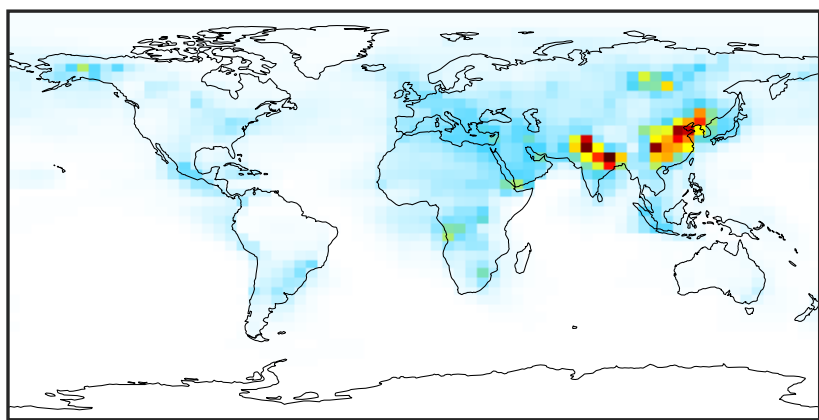
Ratio (1x1.25)  
Dev/Ref, Fixed Range



0.50 0.75 1.00 1.50 2.00  
unitless

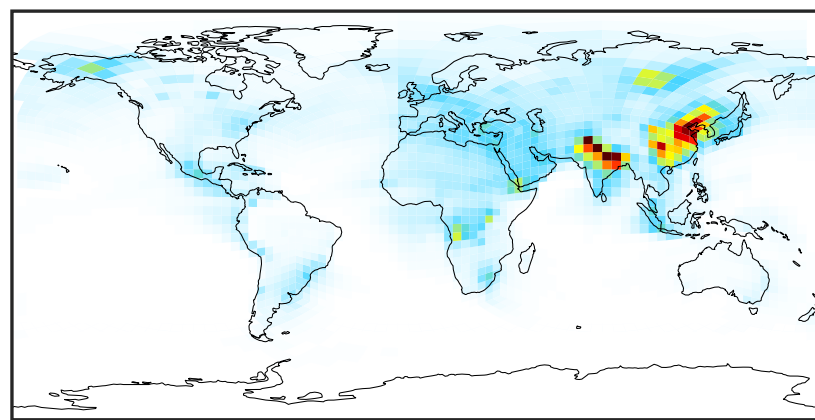
# SpeciesConcVV\_NH4 (Jul2019)

14.3.0-rc.0 (Ref)  
4.0x5.0



0.00 2.52 5.04 7.56 10.09  
ppb

14.3.0-rc.0 (Dev)  
c24



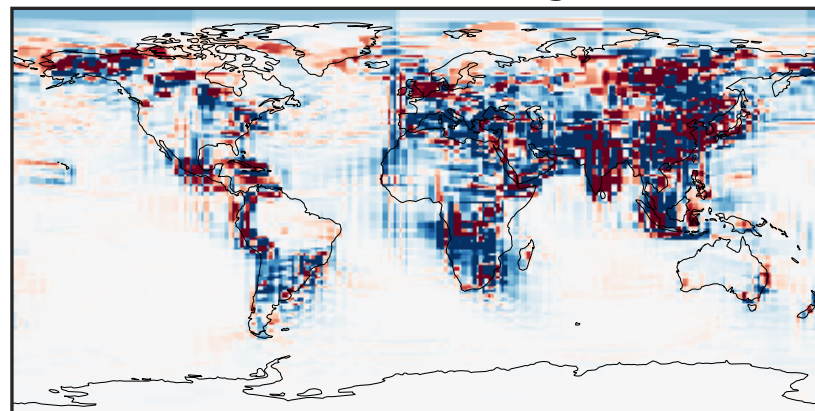
0.00 2.52 5.04 7.56 10.09  
ppb

Difference (1x1.25)  
Dev - Ref, Dynamic Range



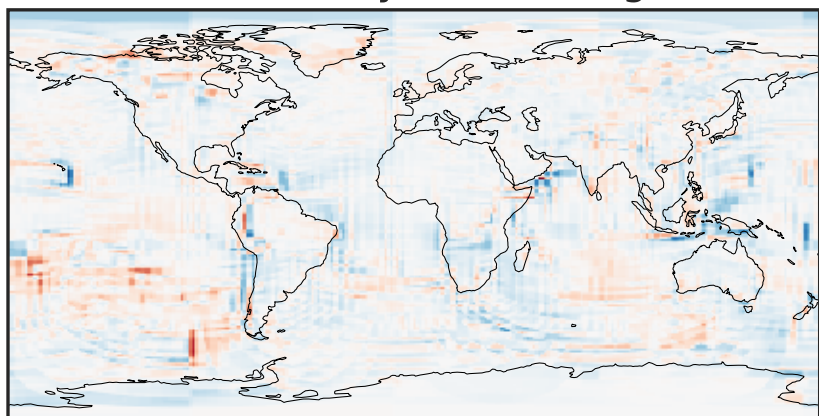
-7.16 -3.58 0.00 3.58 7.16  
ppb

Difference (1x1.25)  
Dev - Ref, Restricted Range [5%,95%]



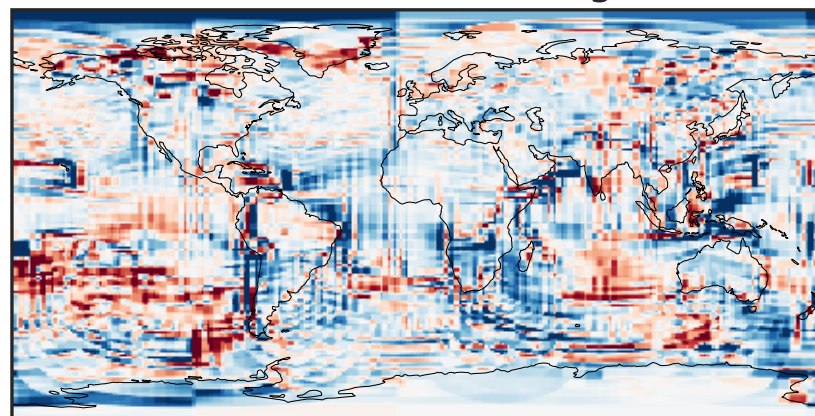
-0.2058 -0.1029 0.0000 0.1029 0.2058  
ppb

Ratio (1x1.25)  
Dev/Ref, Dynamic Range



1e-01 1 10  
unitless

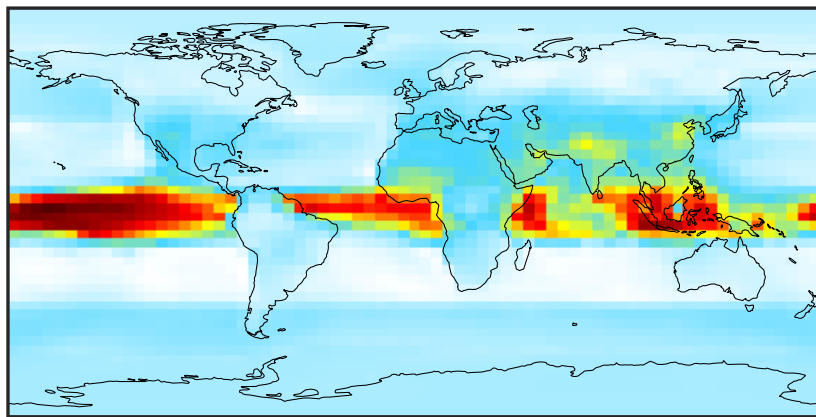
Ratio (1x1.25)  
Dev/Ref, Fixed Range



0.50 0.75 1.00 1.50 2.00  
unitless

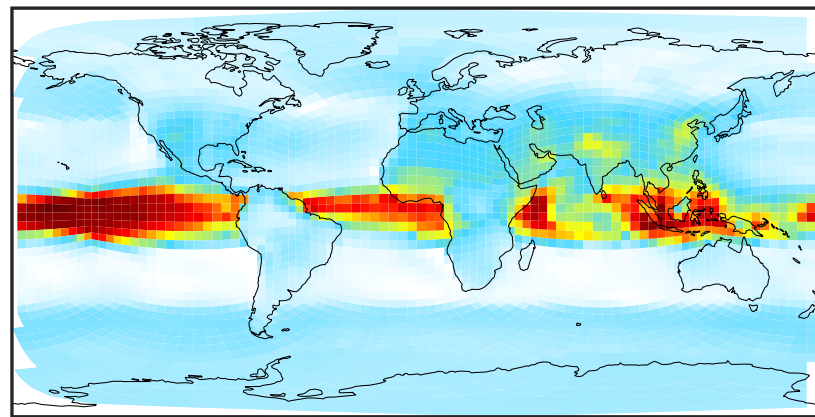
# SpeciesConcVW\_MENO3 (Jul2019)

14.3.0-rc.0 (Ref)  
4.0x5.0



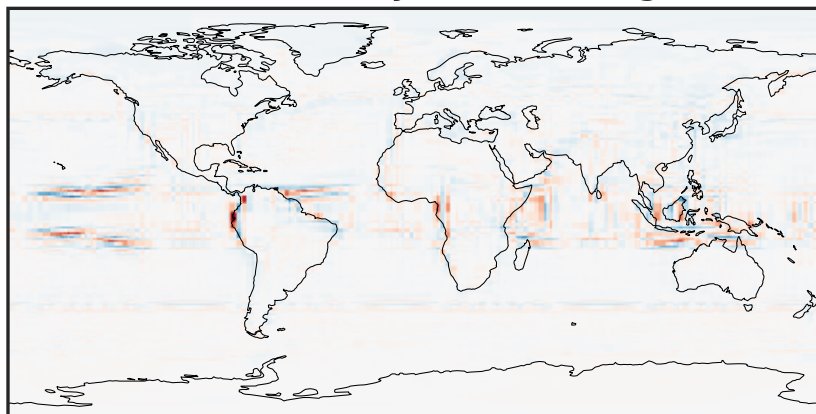
0.006 0.012 0.018  
ppb

14.3.0-rc.0 (Dev)  
c24



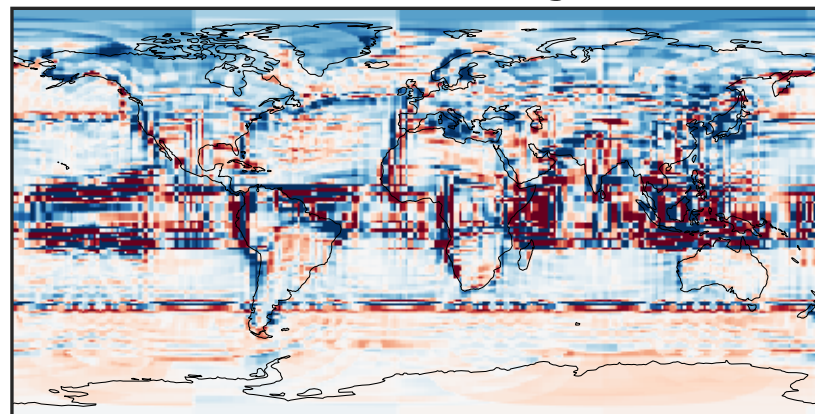
0.006 0.012 0.018  
ppb

Difference (1x1.25)  
Dev - Ref, Dynamic Range



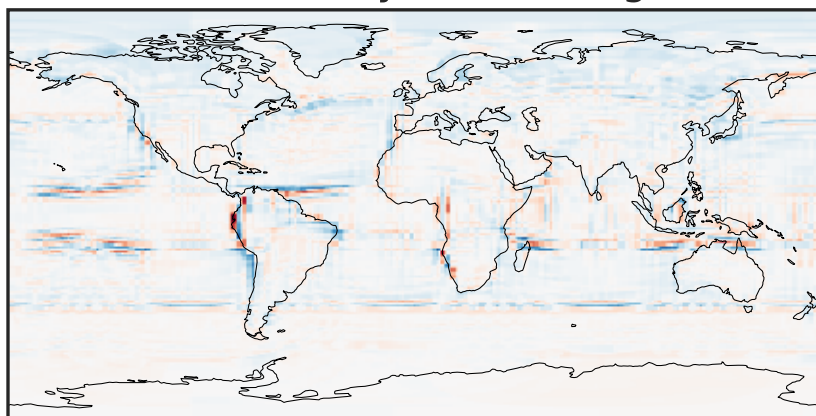
-0.005 0.000 0.005  
ppb

Difference (1x1.25)  
Dev - Ref, Restricted Range [5%,95%]



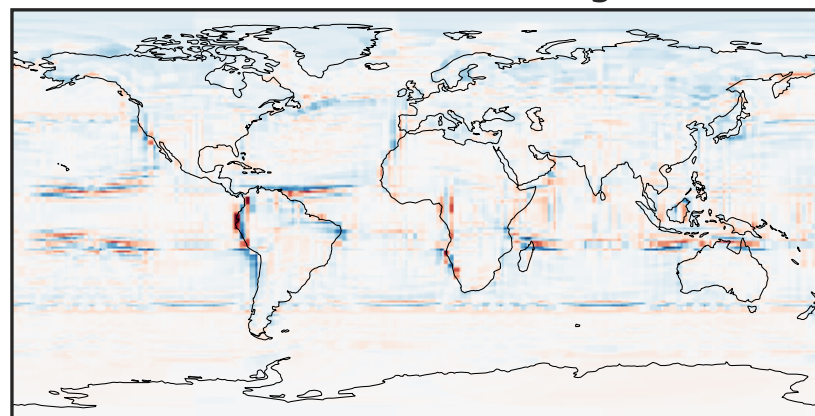
-0.0004 0.0000 0.0004  
ppb

Ratio (1x1.25)  
Dev/Ref, Dynamic Range



0.444 0.722 1.000 1.627 2.253  
unitless

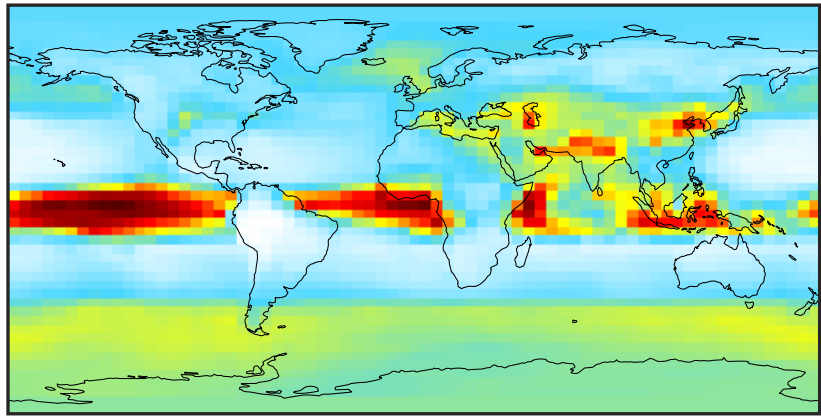
Ratio (1x1.25)  
Dev/Ref, Fixed Range



0.50 0.75 1.00 1.50 2.00  
unitless

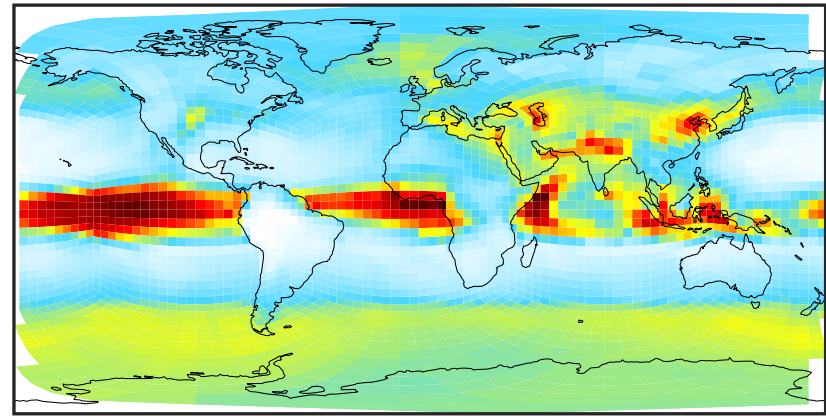
# SpeciesConcVV\_ETNO3 (Jul2019)

14.3.0-rc.0 (Ref)  
4.0x5.0



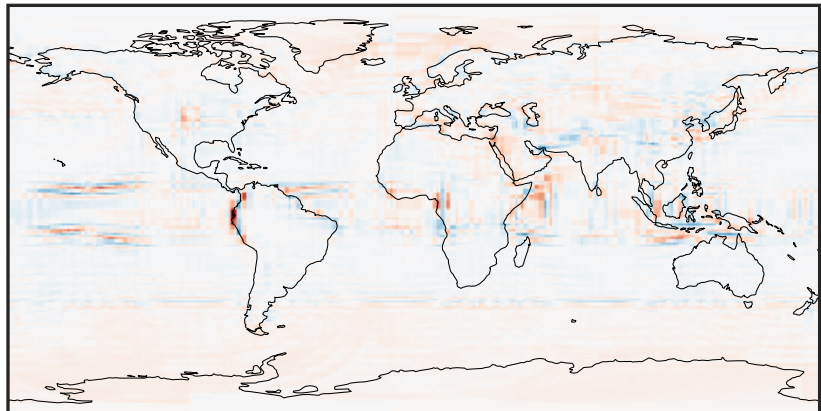
0.002 0.004 0.006 0.008  
ppb

14.3.0-rc.0 (Dev)  
c24



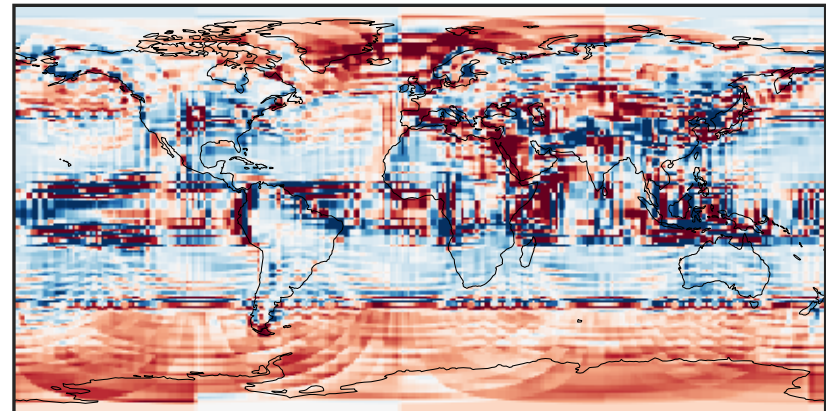
0.002 0.004 0.006 0.008  
ppb

Difference (1x1.25)  
Dev - Ref, Dynamic Range



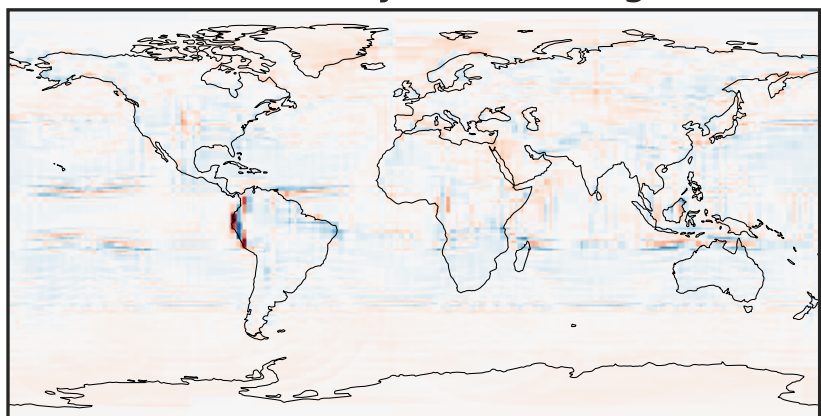
-0.002 0.000 0.002  
ppb

Difference (1x1.25)  
Dev - Ref, Restricted Range [5%,95%]



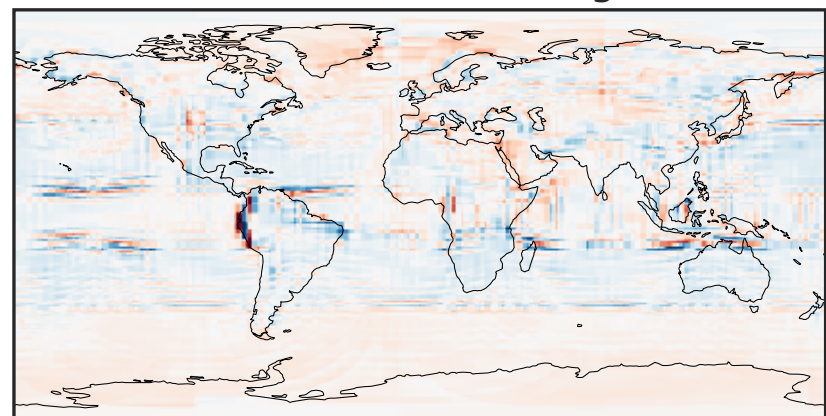
-0.0002 0.0000 0.0002  
ppb

Ratio (1x1.25)  
Dev/Ref, Dynamic Range



0.329 0.664 1.000 2.021 3.042  
unitless

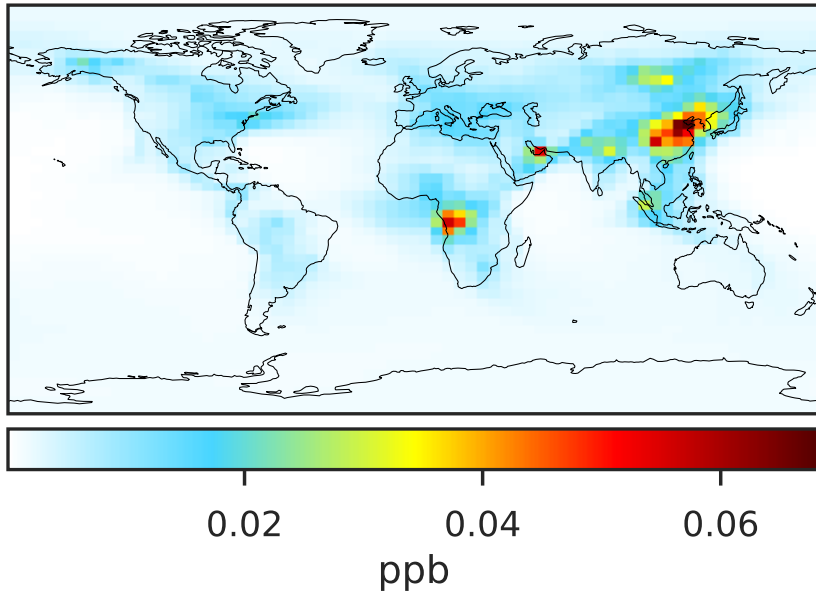
Ratio (1x1.25)  
Dev/Ref, Fixed Range



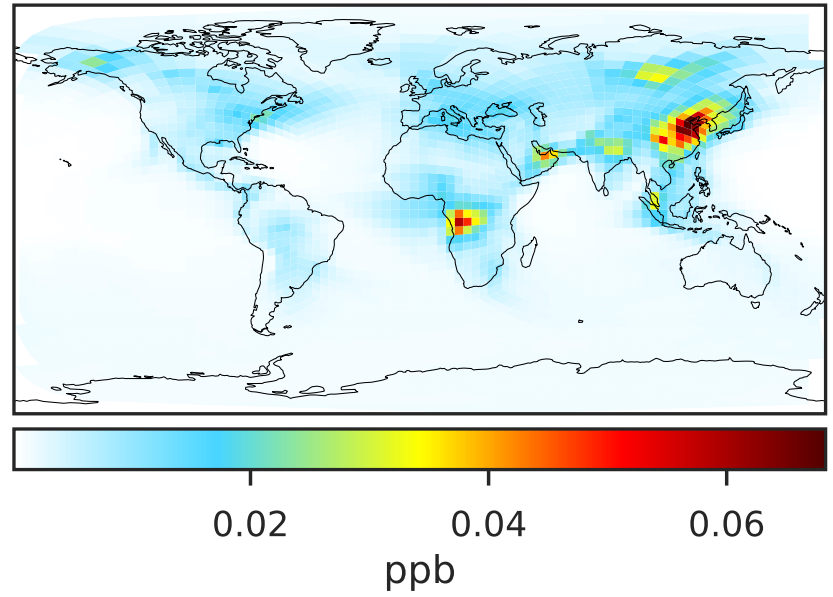
0.50 0.75 1.00 1.50 2.00  
unitless

# SpeciesConcVV\_IPRNO3 (Jul2019)

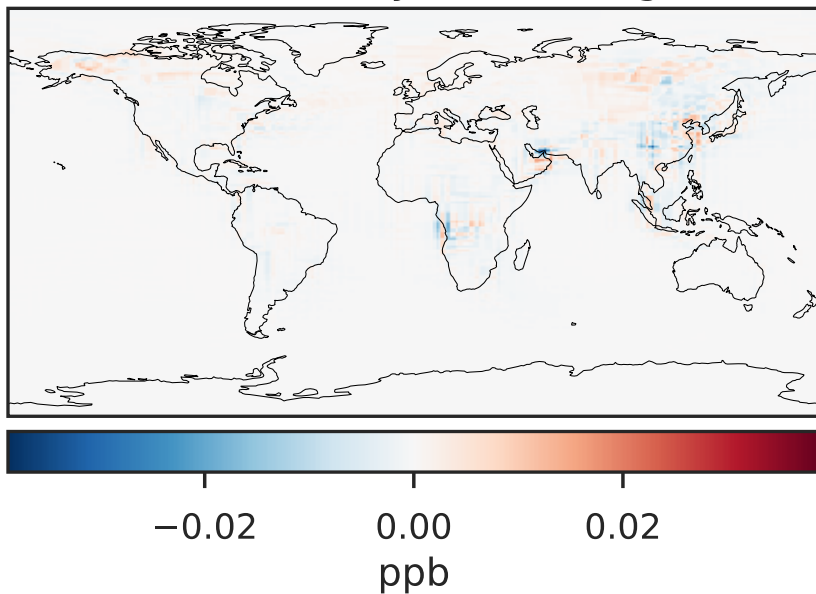
14.3.0-rc.0 (Ref)  
4.0x5.0



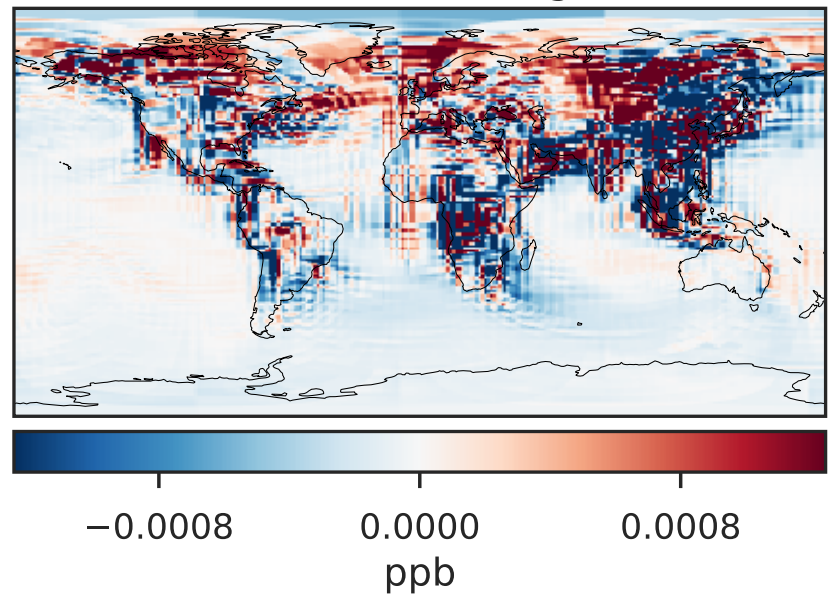
14.3.0-rc.0 (Dev)  
c24



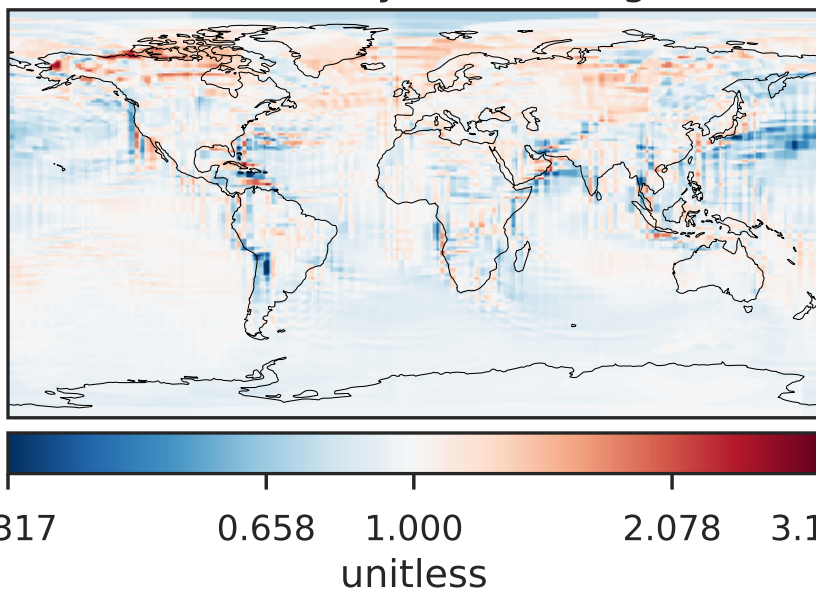
Difference (1x1.25)  
Dev - Ref, Dynamic Range



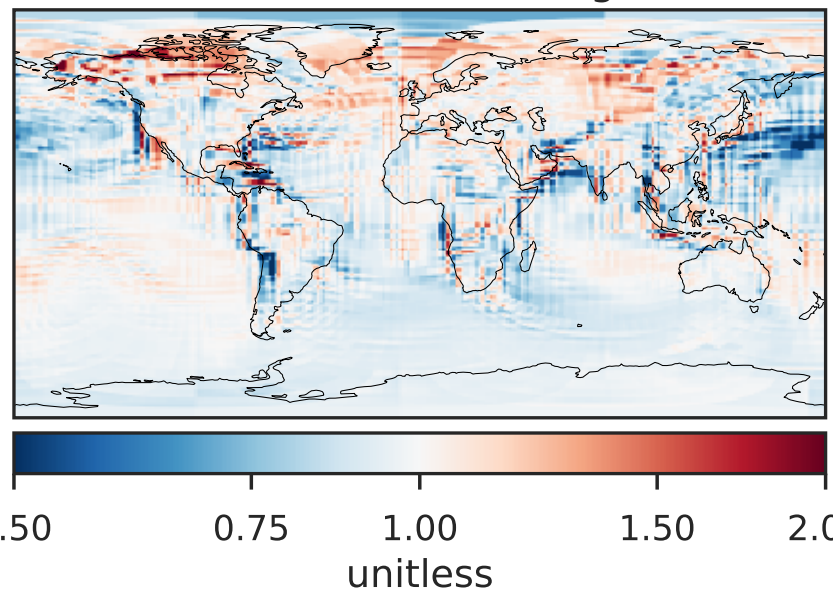
Difference (1x1.25)  
Dev - Ref, Restricted Range [5%,95%]



Ratio (1x1.25)  
Dev/Ref, Dynamic Range

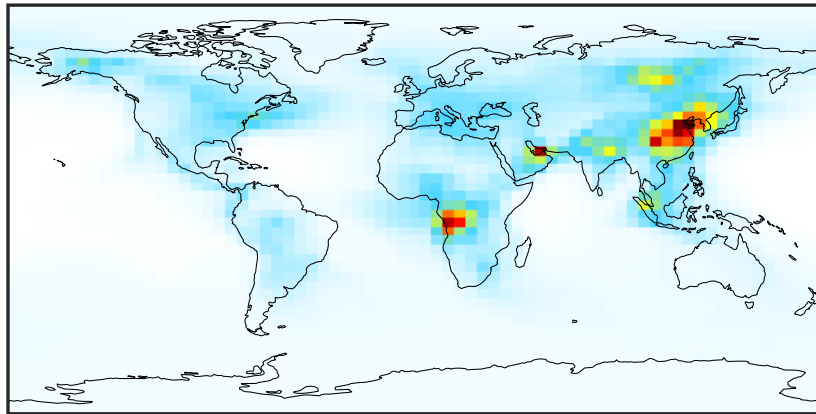


Ratio (1x1.25)  
Dev/Ref, Fixed Range



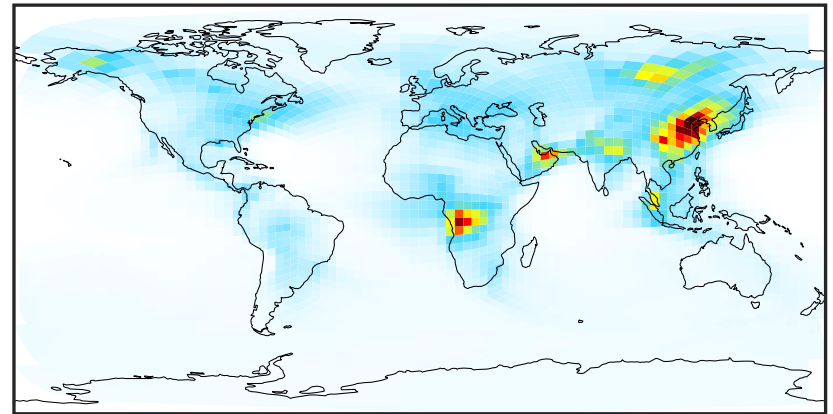
# SpeciesConcVV\_NPRNO3 (Jul2019)

14.3.0-rc.0 (Ref)  
4.0x5.0



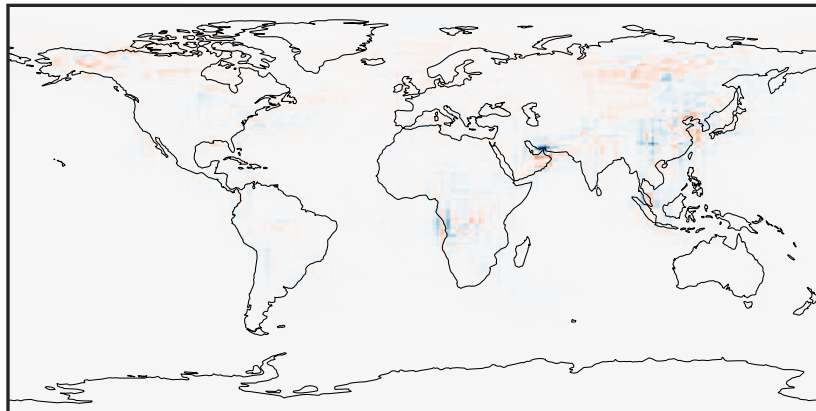
0.004 0.008 0.012  
ppb

14.3.0-rc.0 (Dev)  
c24



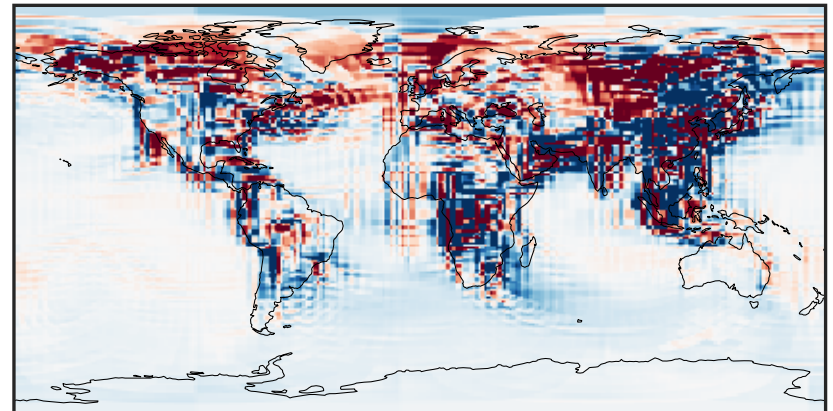
0.004 0.008 0.012  
ppb

Difference (1x1.25)  
Dev - Ref, Dynamic Range



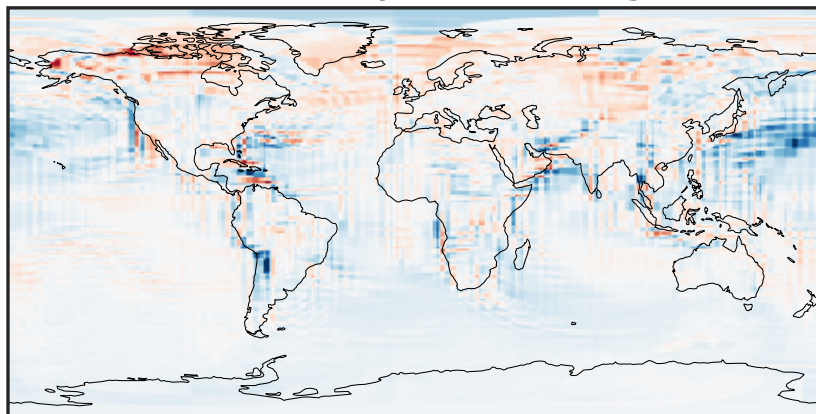
-0.006 0.000 0.006  
ppb

Difference (1x1.25)  
Dev - Ref, Restricted Range [5%,95%]



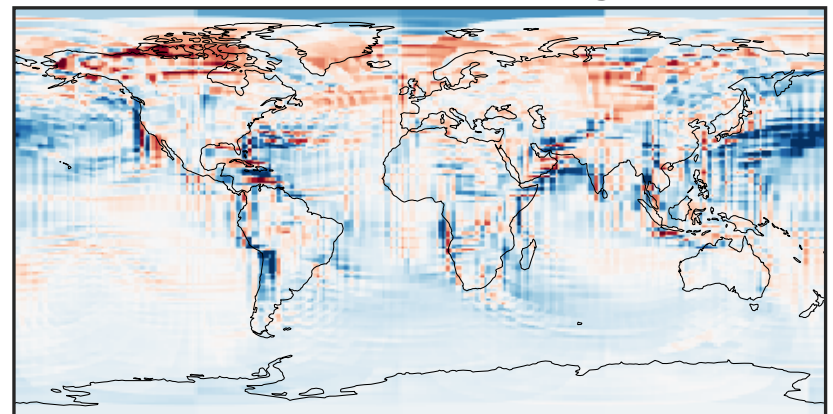
-0.0002 0.0000 0.0002  
ppb

Ratio (1x1.25)  
Dev/Ref, Dynamic Range



0.283 0.642 1.000 2.264 3.528  
unitless

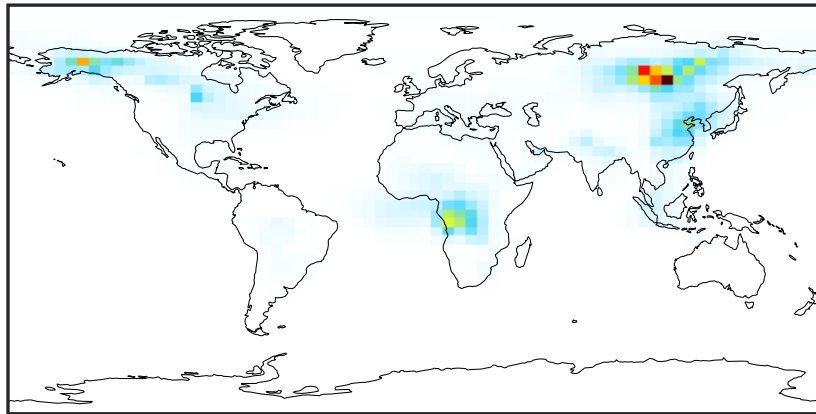
Ratio (1x1.25)  
Dev/Ref, Fixed Range



0.50 0.75 1.00 1.50 2.00  
unitless

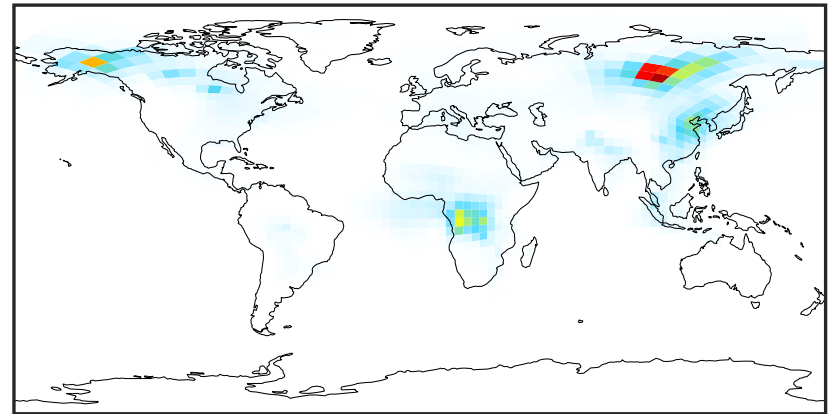
# SpeciesConcVV\_AONITA (Jul2019)

14.3.0-rc.0 (Ref)  
4.0x5.0



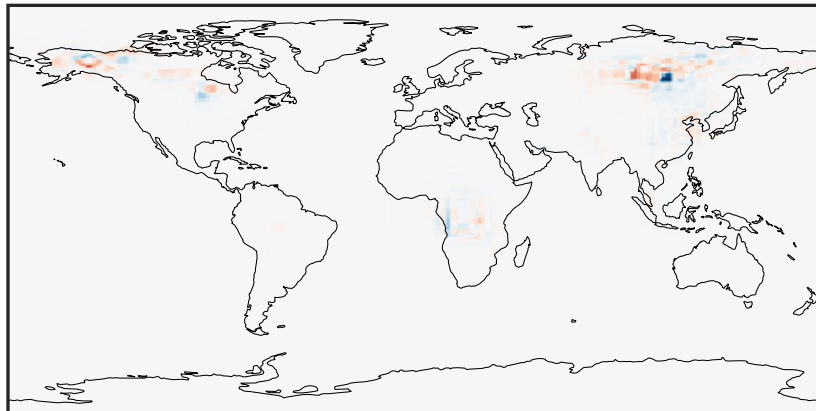
0.0000 0.1786 0.3572 0.5357 0.7143  
ppb

14.3.0-rc.0 (Dev)  
c24



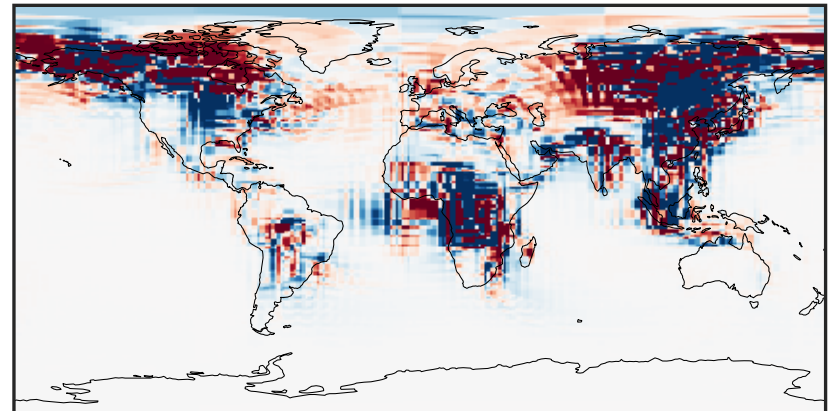
0.0000 0.1786 0.3572 0.5357 0.7143  
ppb

Difference (1x1.25)  
Dev - Ref, Dynamic Range



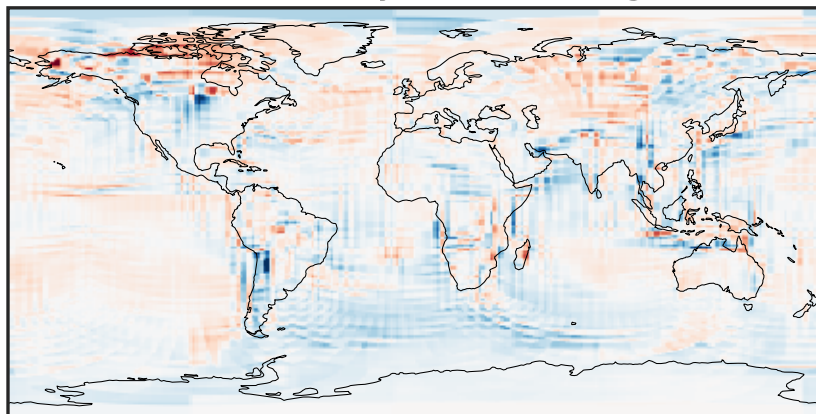
-0.4685 -0.2342 0.0000 0.2342 0.4685  
ppb

Difference (1x1.25)  
Dev - Ref, Restricted Range [5%,95%]



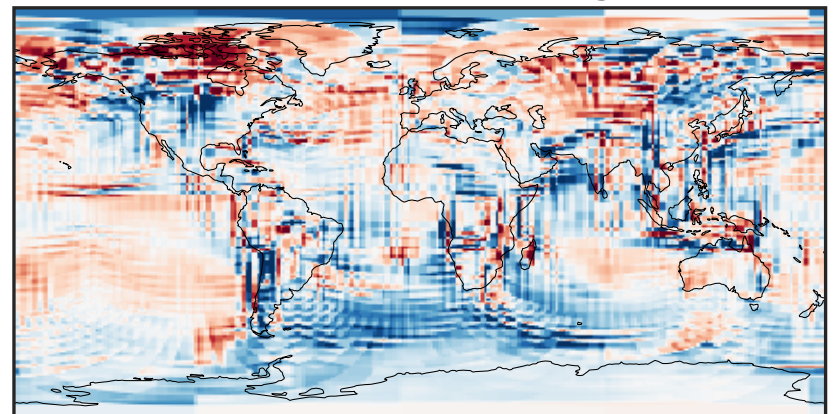
-0.002 0.000 0.002  
ppb

Ratio (1x1.25)  
Dev/Ref, Dynamic Range



0.142 0.571 1.000 4.010 7.021  
unitless

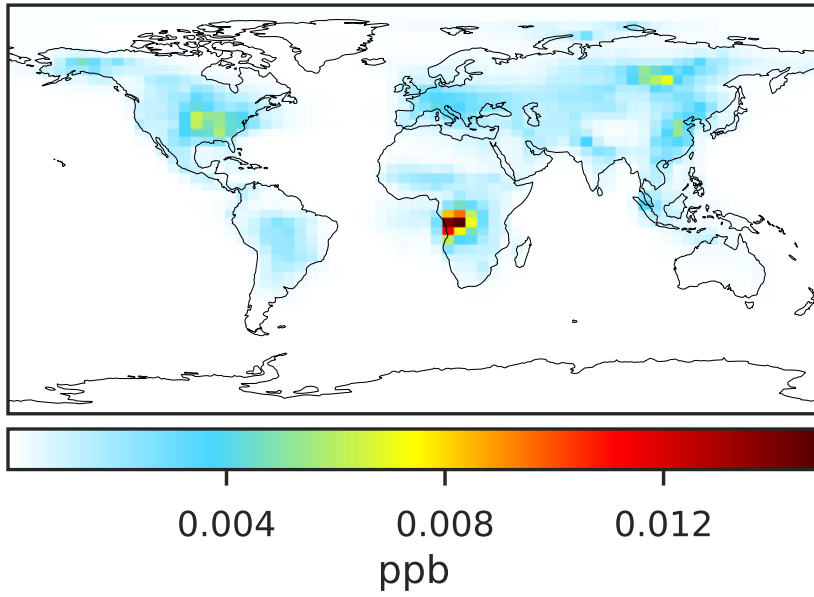
Ratio (1x1.25)  
Dev/Ref, Fixed Range



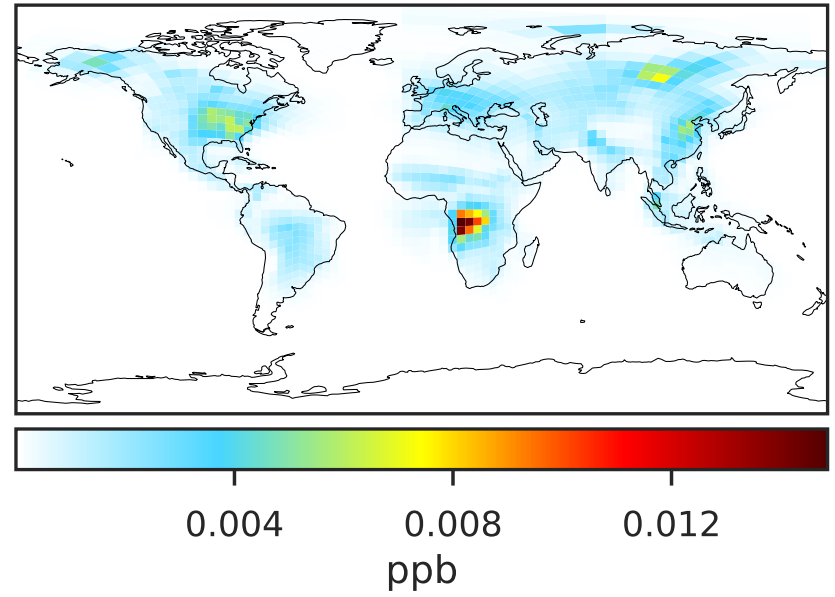
0.50 0.75 1.00 1.50 2.00  
unitless

# SpeciesConcVV\_ETHN (Jul2019)

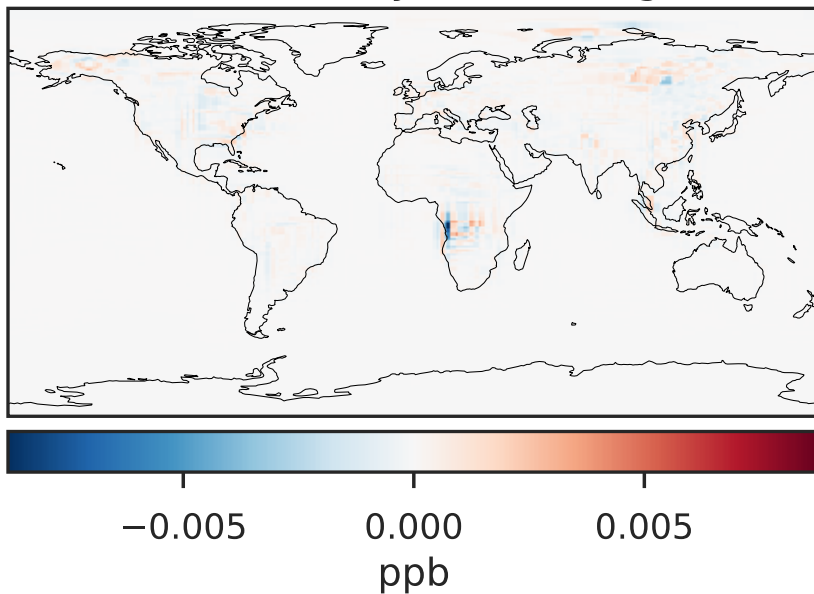
14.3.0-rc.0 (Ref)  
4.0x5.0



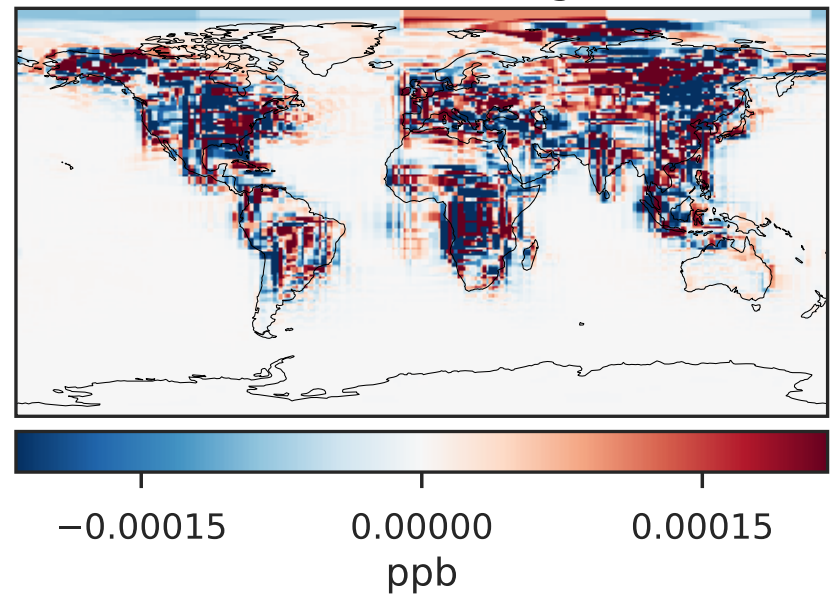
14.3.0-rc.0 (Dev)  
c24



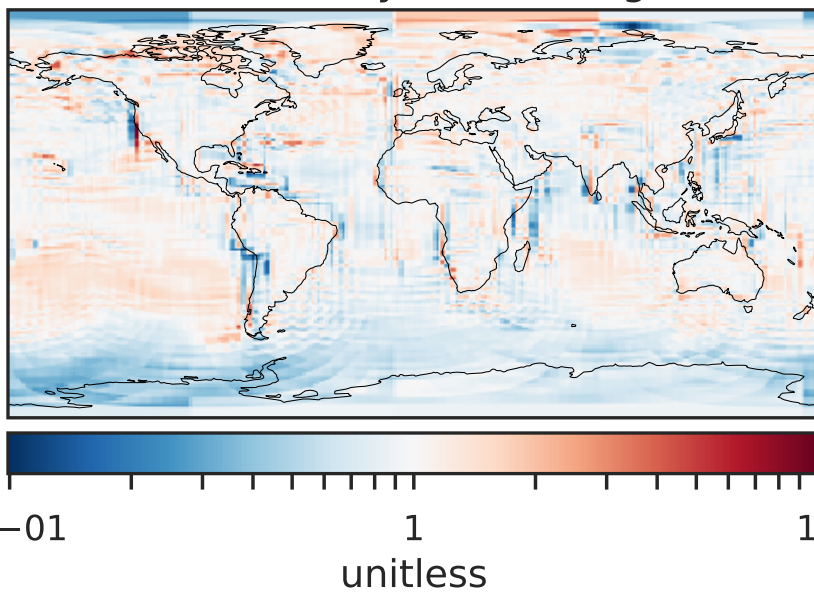
Difference (1x1.25)  
Dev - Ref, Dynamic Range



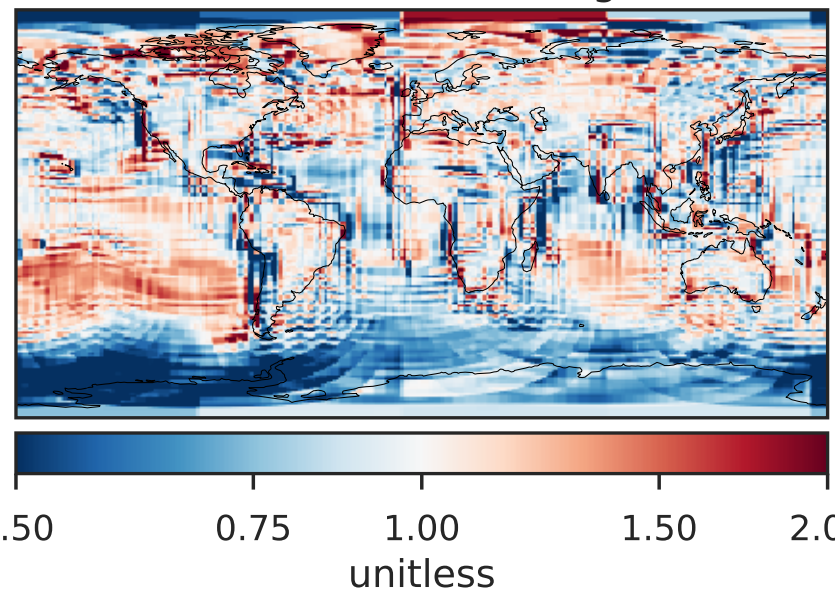
Difference (1x1.25)  
Dev - Ref, Restricted Range [5%,95%]



Ratio (1x1.25)  
Dev/Ref, Dynamic Range



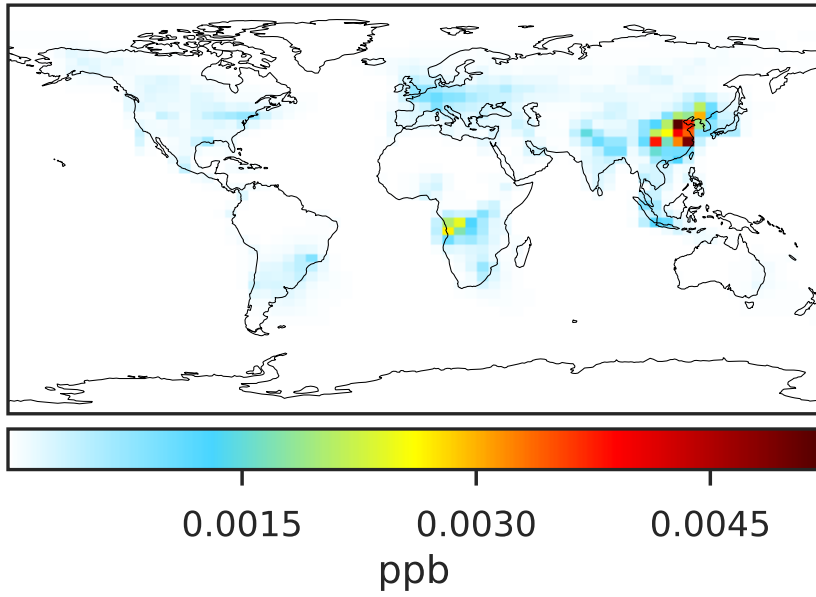
Ratio (1x1.25)  
Dev/Ref, Fixed Range



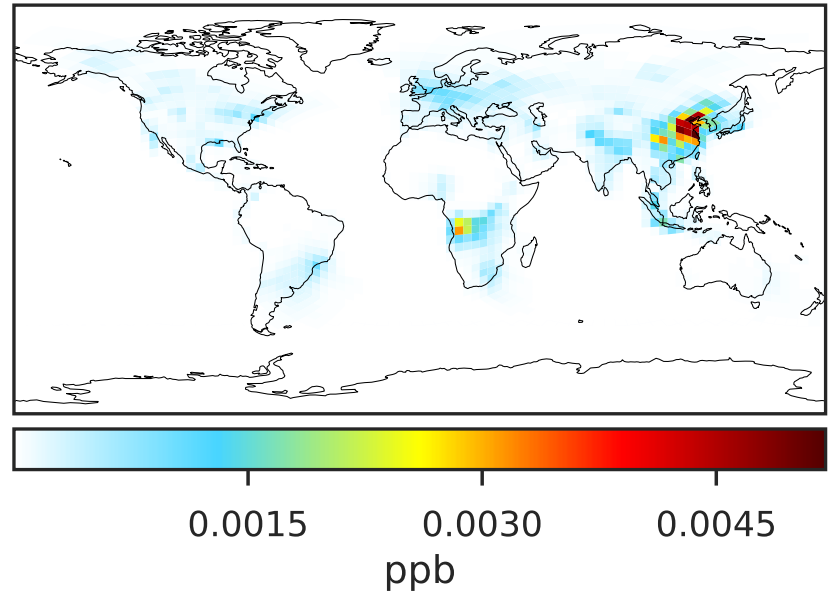


# SpeciesConcVV\_BZPAN (Jul2019)

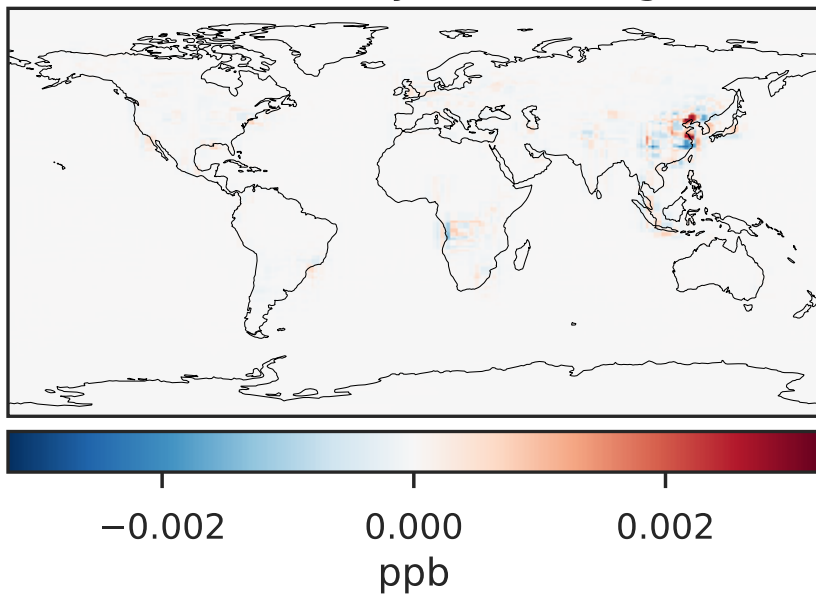
14.3.0-rc.0 (Ref)  
4.0x5.0



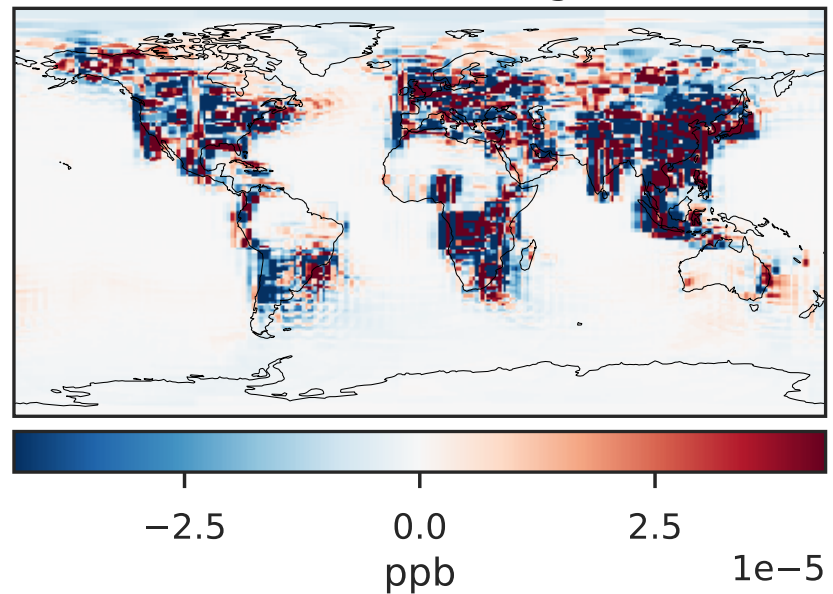
14.3.0-rc.0 (Dev)  
c24



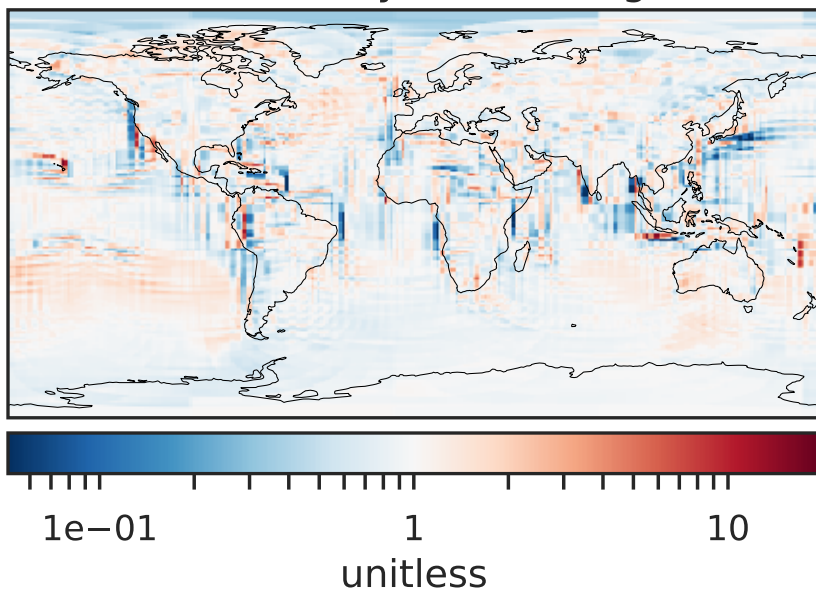
Difference (1x1.25)  
Dev - Ref, Dynamic Range



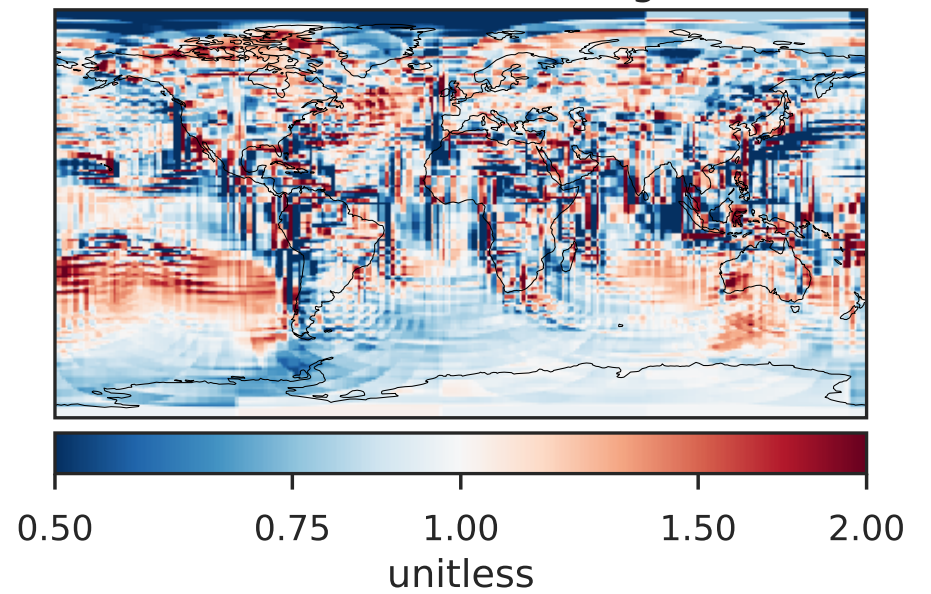
Difference (1x1.25)  
Dev - Ref, Restricted Range [5%,95%]



Ratio (1x1.25)  
Dev/Ref, Dynamic Range

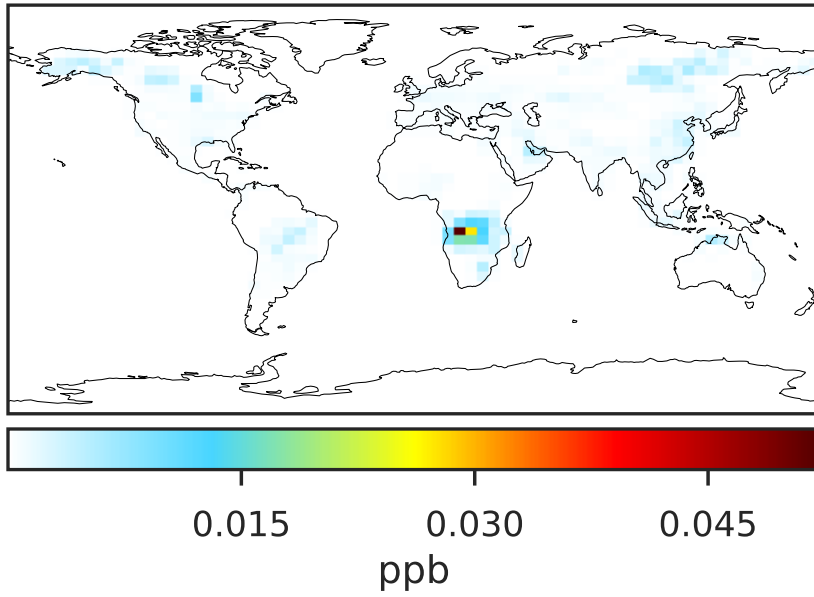


Ratio (1x1.25)  
Dev/Ref, Fixed Range

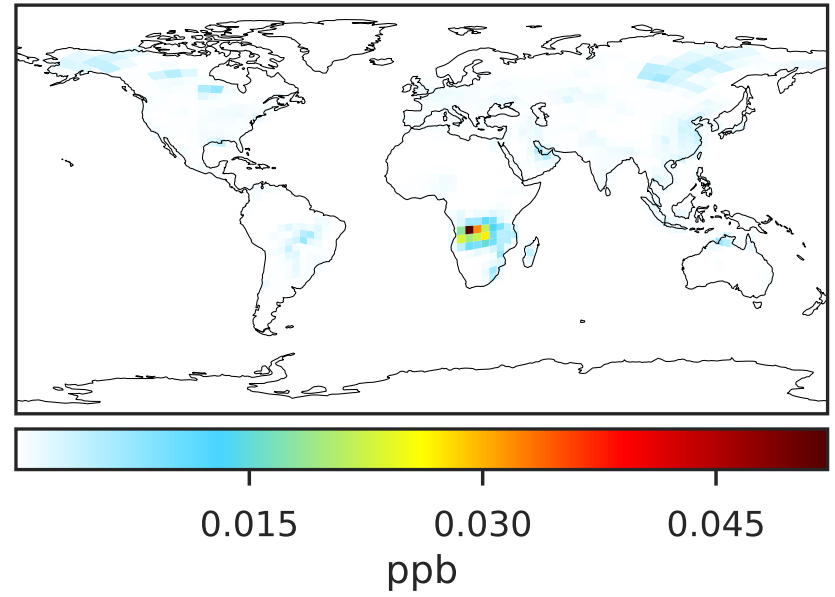


# SpeciesConcVV\_NPHEN (Jul2019)

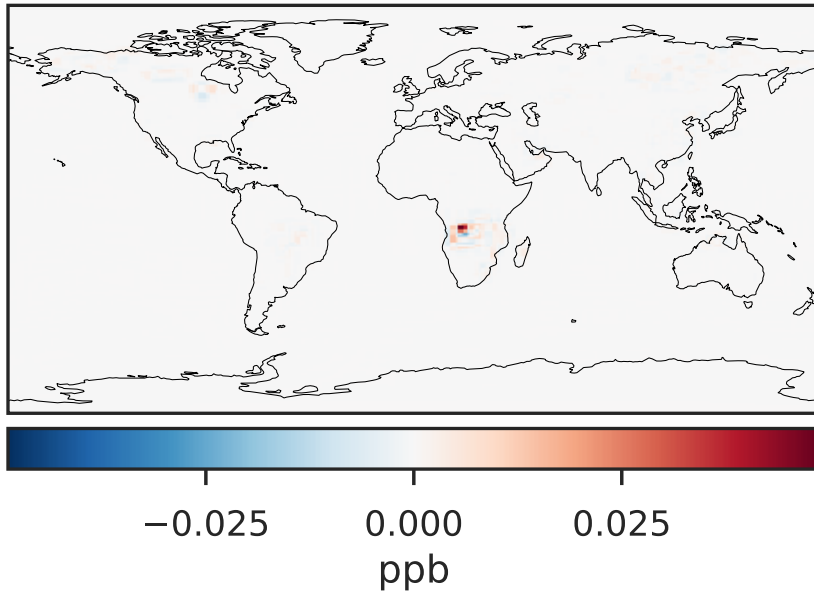
14.3.0-rc.0 (Ref)  
4.0x5.0



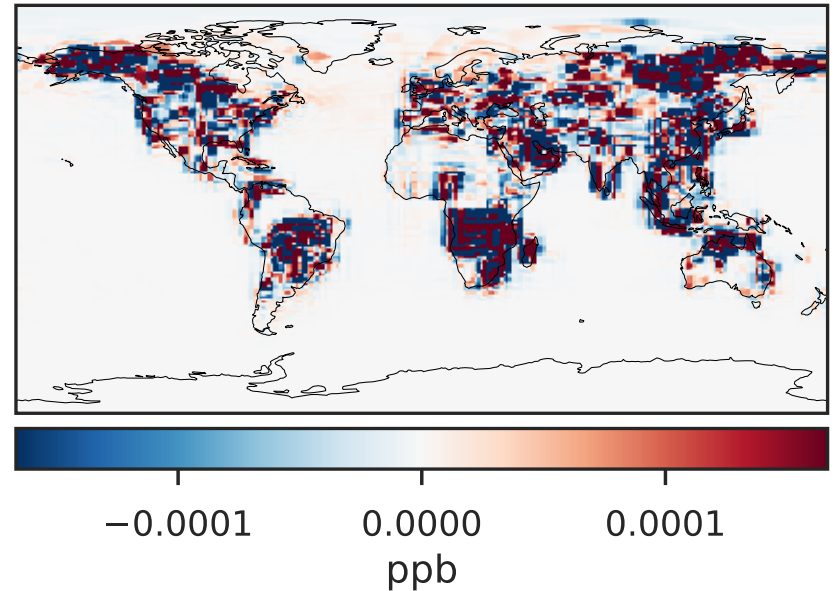
14.3.0-rc.0 (Dev)  
c24



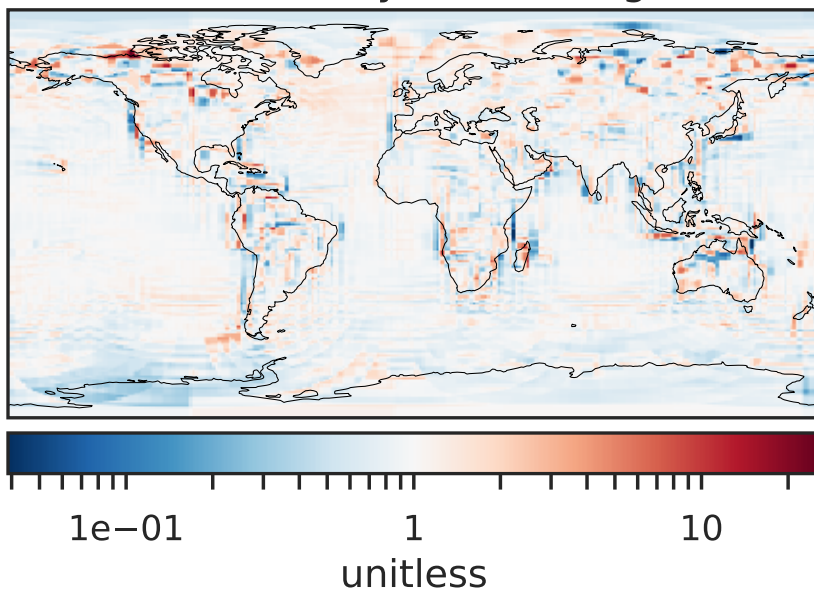
Difference (1x1.25)  
Dev - Ref, Dynamic Range



Difference (1x1.25)  
Dev - Ref, Restricted Range [5%,95%]



Ratio (1x1.25)  
Dev/Ref, Dynamic Range



Ratio (1x1.25)  
Dev/Ref, Fixed Range

