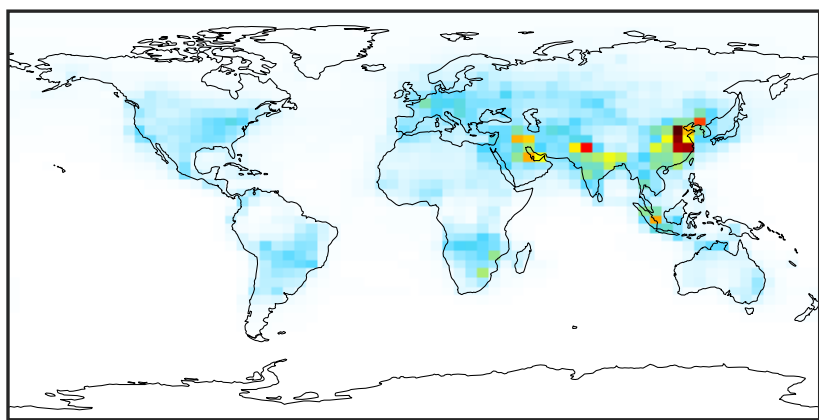


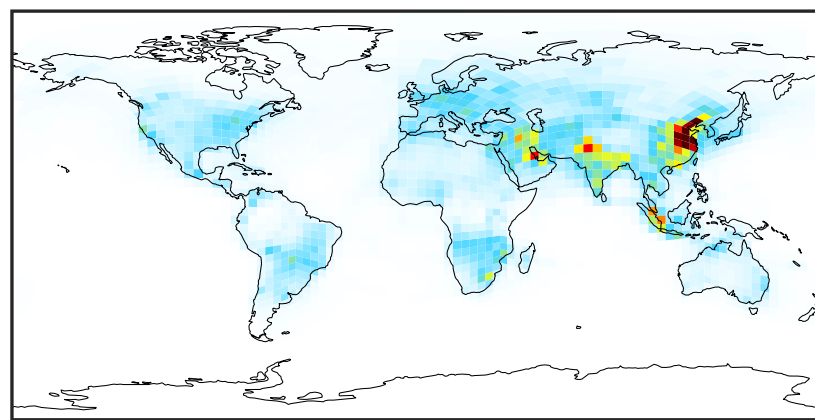
SpeciesConcVV_NOy (Oct2019)

14.3.0-rc.0 (Ref)
4.0x5.0



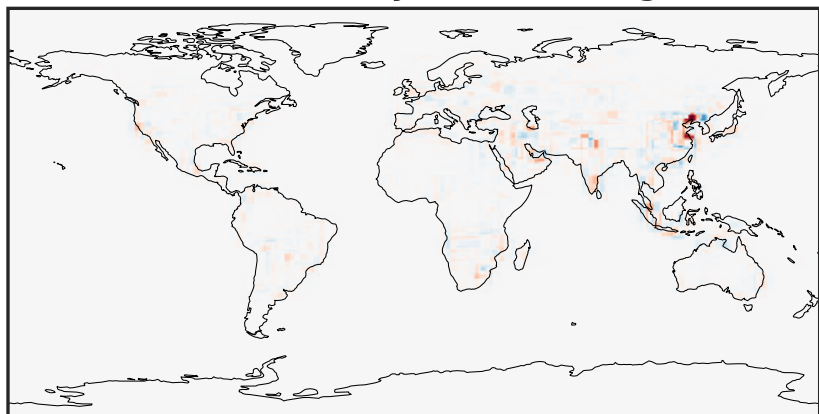
0.02 3.77 7.52 11.27 15.02
ppb

14.3.0-rc.0 (Dev)
c24



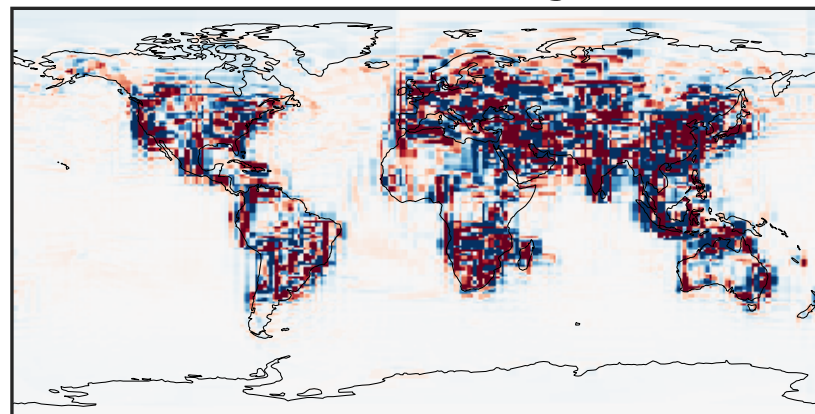
0.02 3.77 7.52 11.27 15.02
ppb

Difference (1x1.25)
Dev - Ref, Dynamic Range



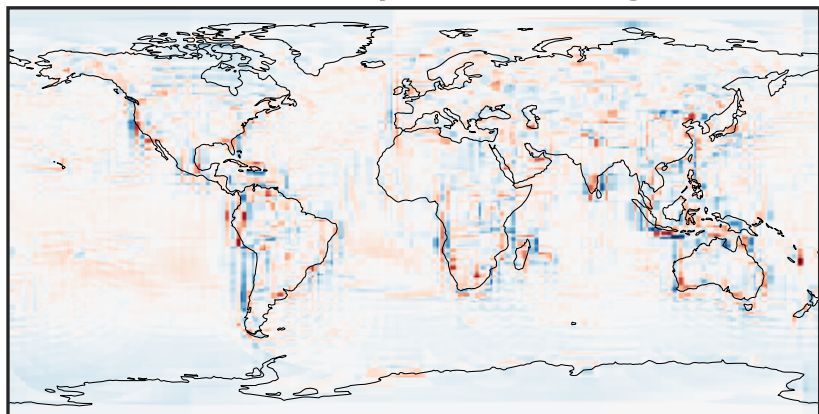
-10.67 -5.34 0.00 5.34 10.67
ppb

Difference (1x1.25)
Dev - Ref, Restricted Range [5%,95%]



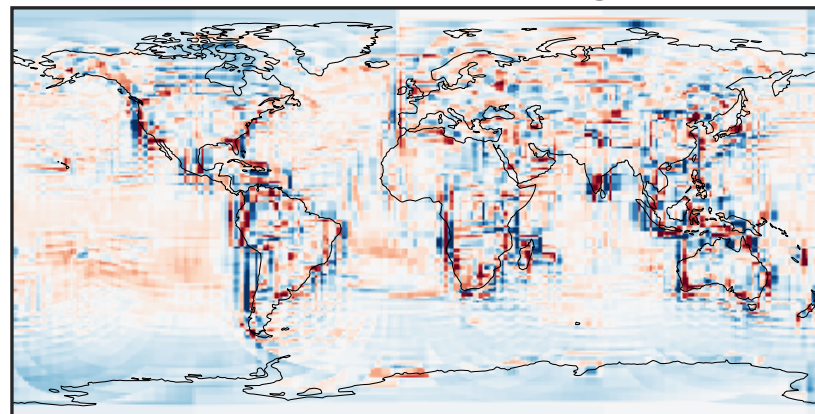
-0.2443 -0.1222 0.0000 0.1222 0.2443
ppb

Ratio (1x1.25)
Dev/Ref, Dynamic Range



0.201 0.601 1.000 2.984 4.969
unitless

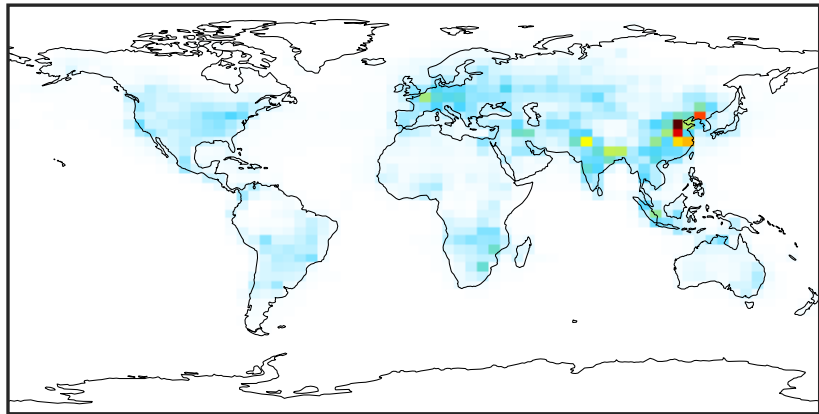
Ratio (1x1.25)
Dev/Ref, Fixed Range



0.50 0.75 1.00 1.50 2.00
unitless

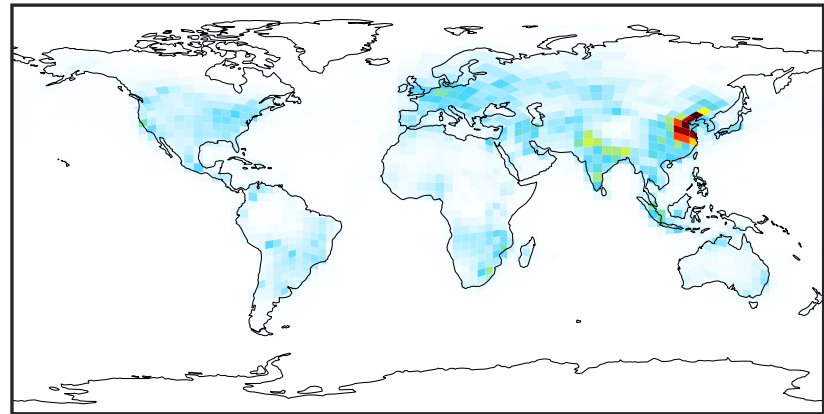
SpeciesConcVV_NOx (Oct2019)

14.3.0-rc.0 (Ref)
4.0x5.0



0.00 2.94 5.89 8.83 11.77
ppb

14.3.0-rc.0 (Dev)
c24



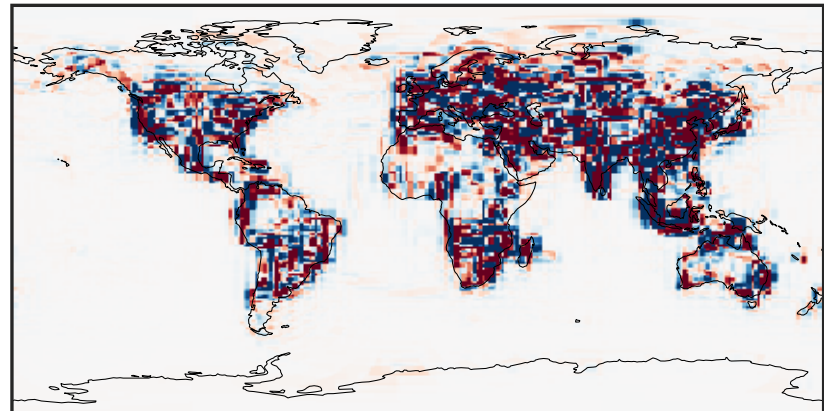
0.00 2.94 5.89 8.83 11.77
ppb

Difference (1x1.25)
Dev - Ref, Dynamic Range



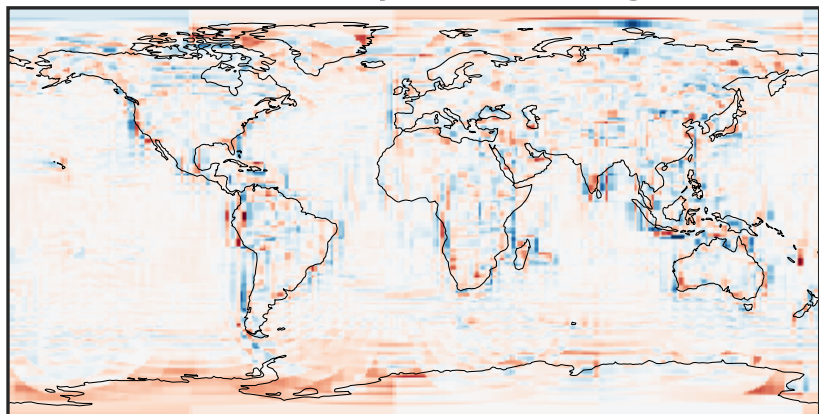
-9.67 -4.84 0.00 4.84 9.67
ppb

Difference (1x1.25)
Dev - Ref, Restricted Range [5%,95%]



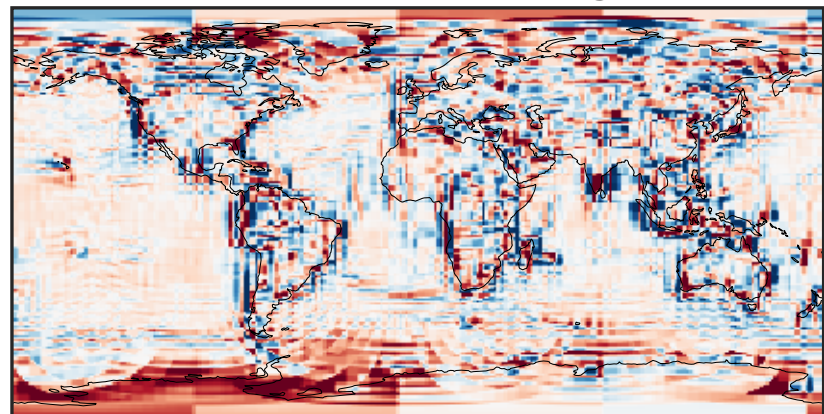
-0.16 -0.08 0.00 0.08 0.16
ppb

Ratio (1x1.25)
Dev/Ref, Dynamic Range



0.123 0.562 1.000 4.564 8.127
unitless

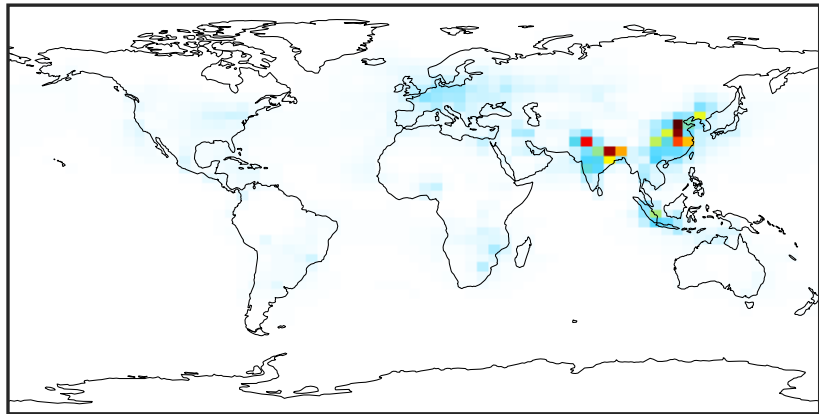
Ratio (1x1.25)
Dev/Ref, Fixed Range



0.50 0.75 1.00 1.50 2.00
unitless

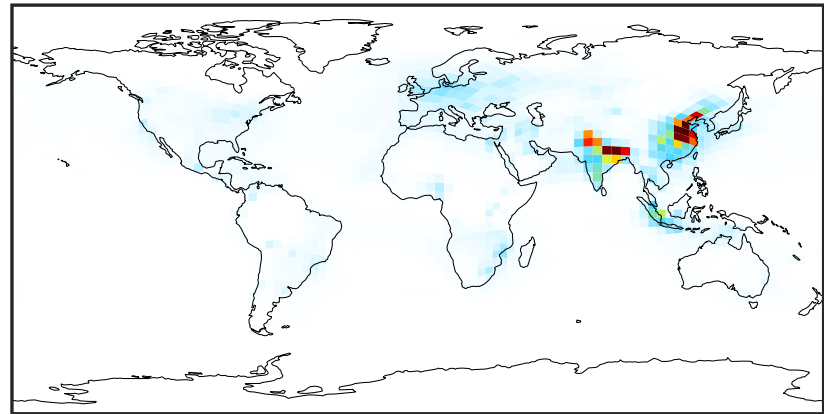
SpeciesConcVV_HNO2 (Oct2019)

14.3.0-rc.0 (Ref)
4.0x5.0



0.0000 0.0449 0.0899 0.1348 0.1797
ppb

14.3.0-rc.0 (Dev)
c24



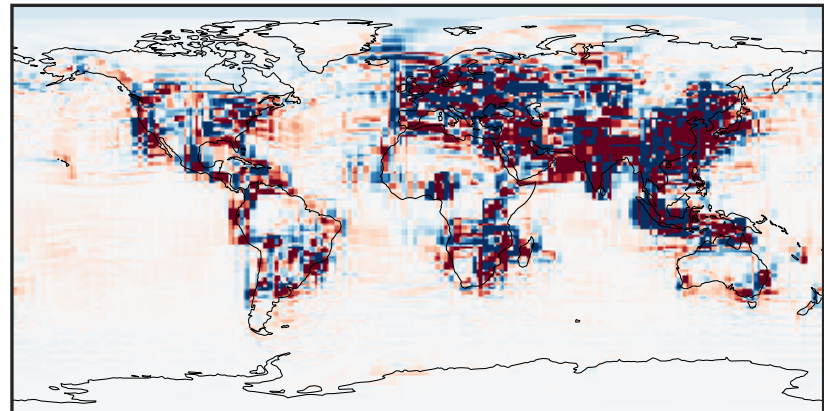
0.0000 0.0449 0.0899 0.1348 0.1797
ppb

Difference (1x1.25)
Dev - Ref, Dynamic Range



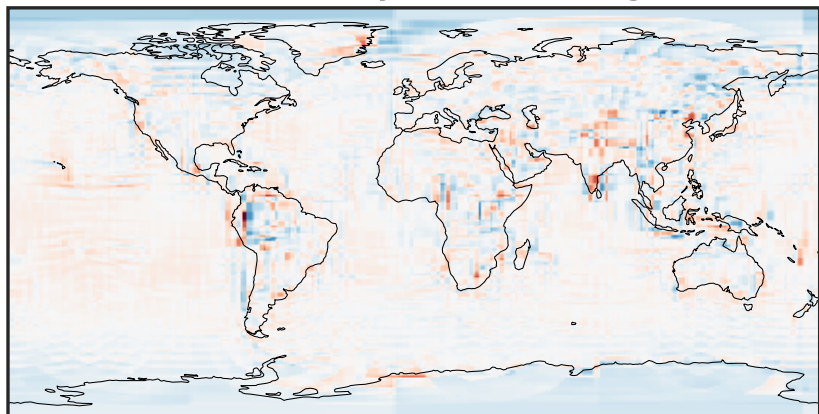
-0.1303 -0.0651 0.0000 0.0651 0.1303
ppb

Difference (1x1.25)
Dev - Ref, Restricted Range [5%,95%]



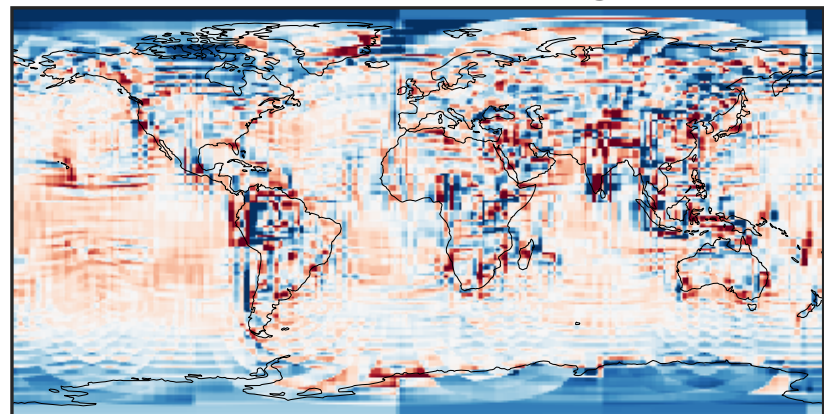
-0.0005 0.0000 0.0005
ppb

Ratio (1x1.25)
Dev/Ref, Dynamic Range



1e-01 1 10
unitless

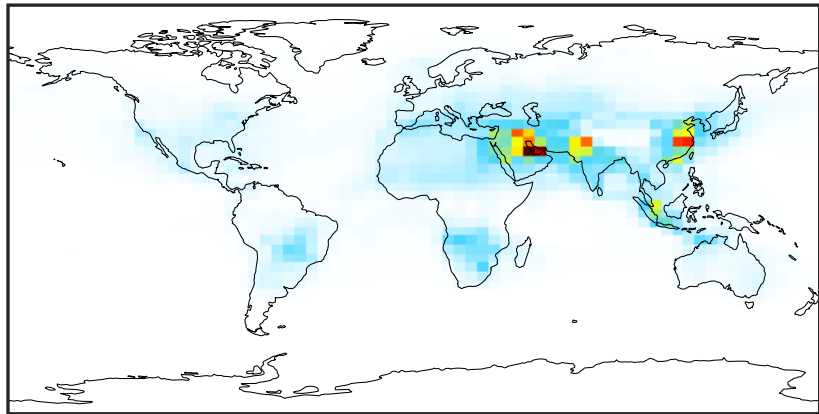
Ratio (1x1.25)
Dev/Ref, Fixed Range



0.50 0.75 1.00 1.50 2.00
unitless

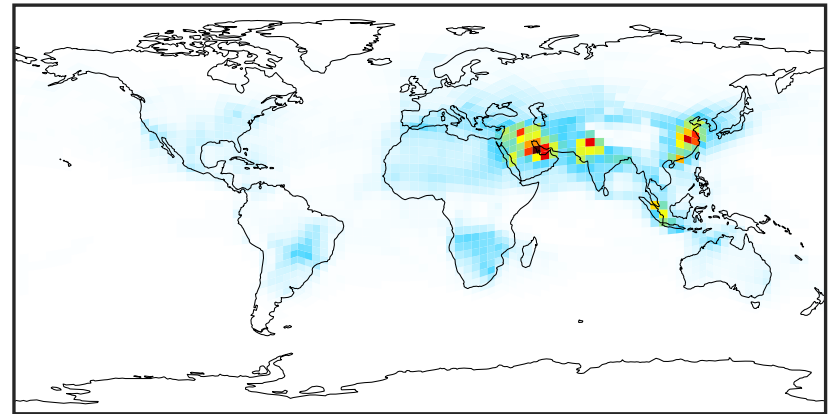
SpeciesConcVV_HNO3 (Oct2019)

14.3.0-rc.0 (Ref)
4.0x5.0



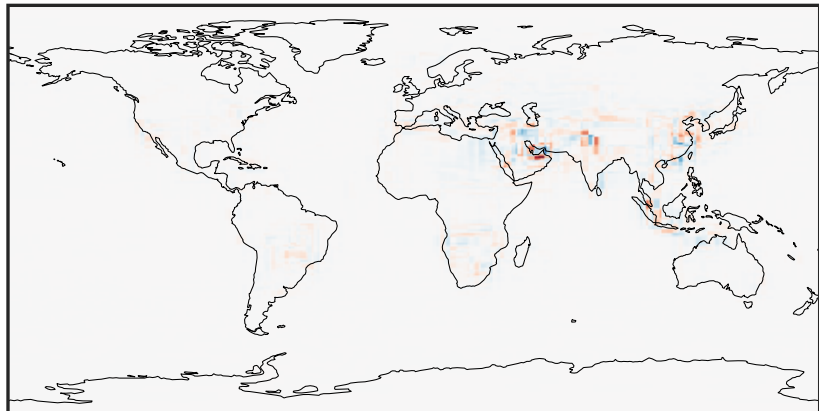
0.000 1.684 3.367 5.051 6.735
ppb

14.3.0-rc.0 (Dev)
c24



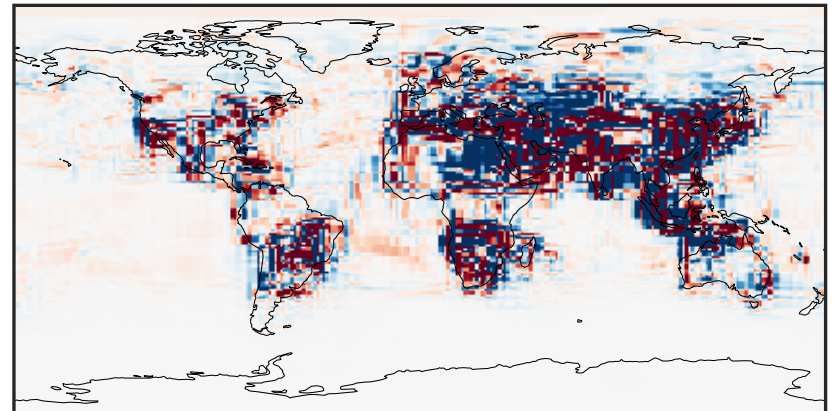
0.000 1.684 3.367 5.051 6.735
ppb

Difference (1x1.25)
Dev - Ref, Dynamic Range



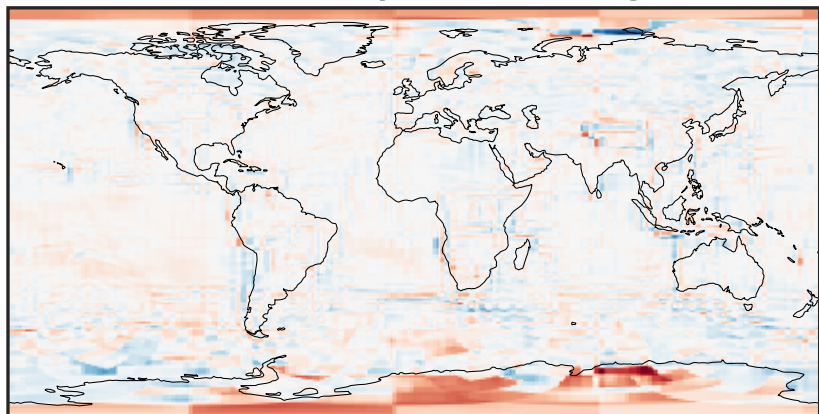
-3.568 -1.784 0.000 1.784 3.568
ppb

Difference (1x1.25)
Dev - Ref, Restricted Range [5%,95%]



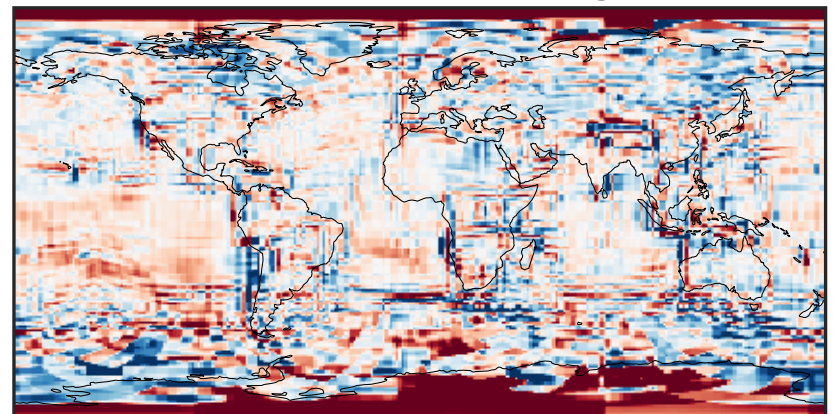
-0.0675 -0.0338 0.0000 0.0338 0.0675
ppb

Ratio (1x1.25)
Dev/Ref, Dynamic Range



1e-01 1 10
unitless

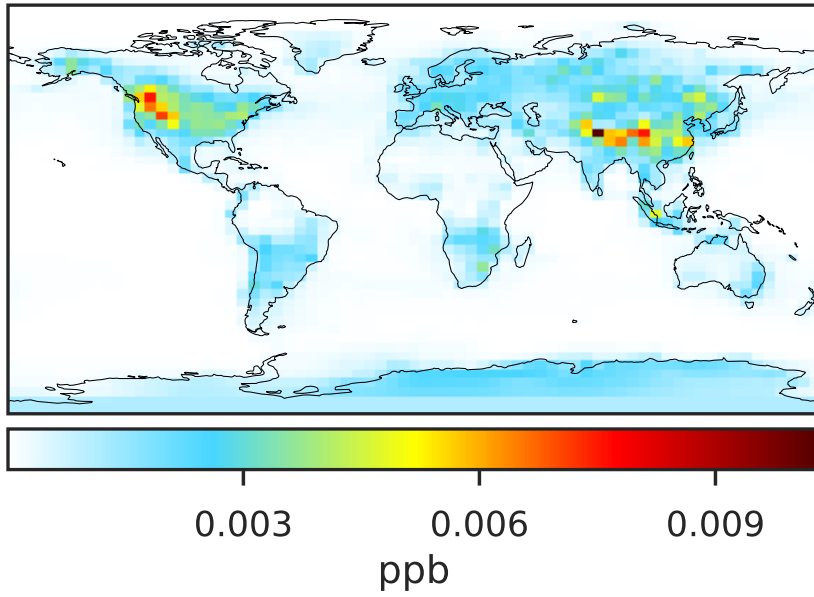
Ratio (1x1.25)
Dev/Ref, Fixed Range



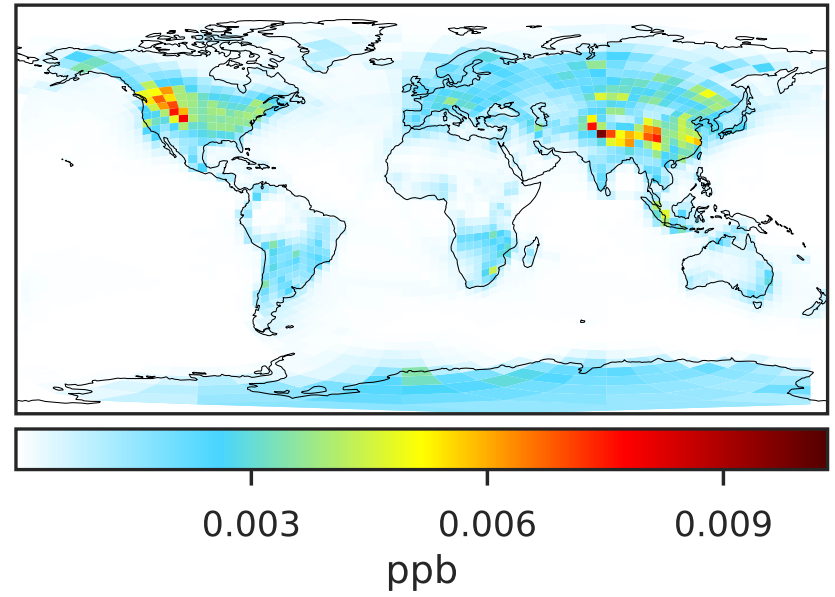
0.50 0.75 1.00 1.50 2.00
unitless

SpeciesConcVV_HNO4 (Oct2019)

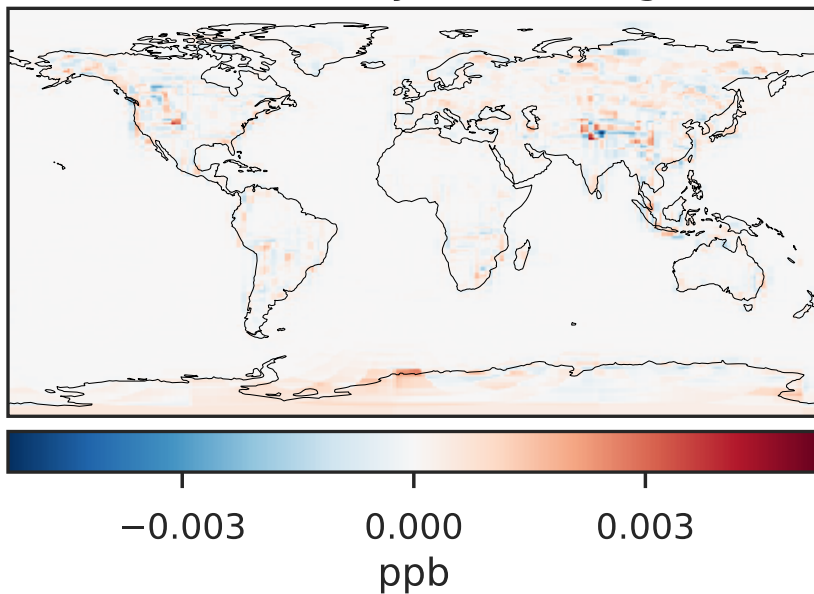
14.3.0-rc.0 (Ref)
4.0x5.0



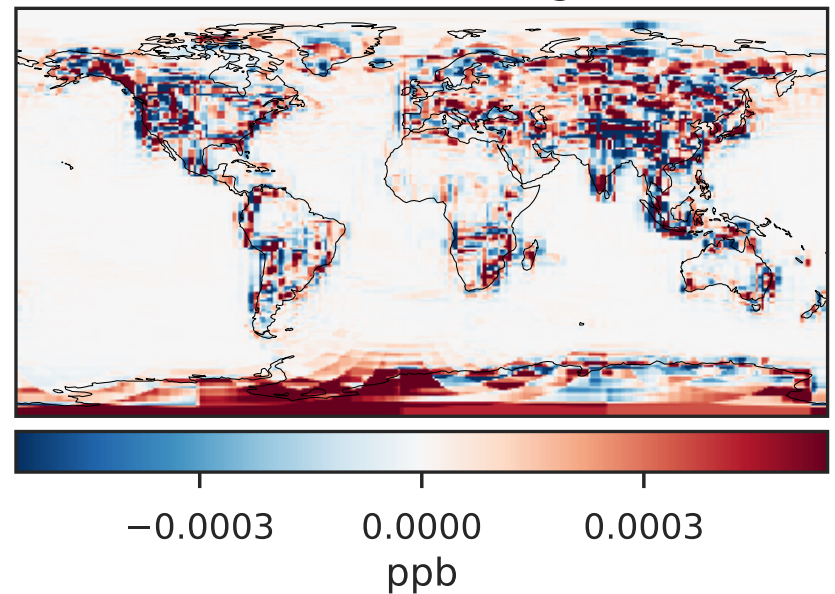
14.3.0-rc.0 (Dev)
c24



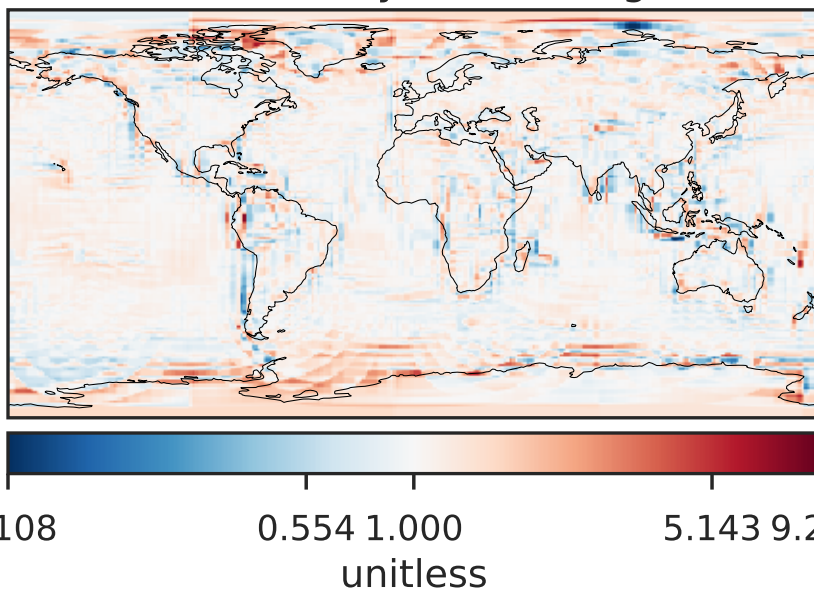
Difference (1x1.25)
Dev - Ref, Dynamic Range



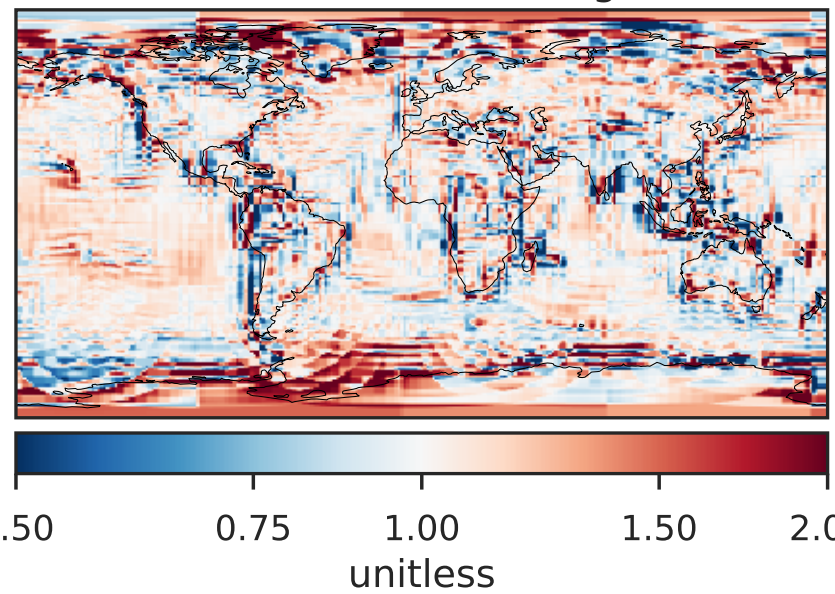
Difference (1x1.25)
Dev - Ref, Restricted Range [5%,95%]



Ratio (1x1.25)
Dev/Ref, Dynamic Range

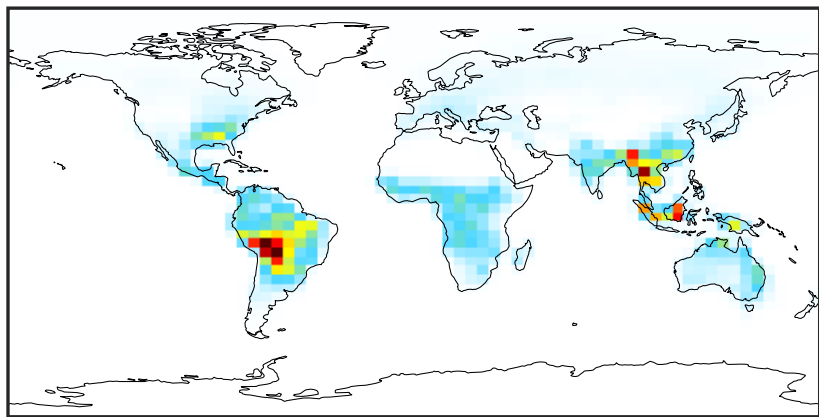


Ratio (1x1.25)
Dev/Ref, Fixed Range



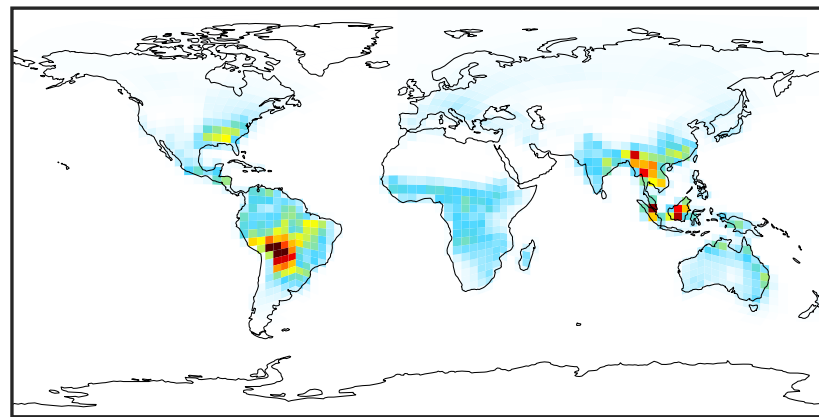
SpeciesConcVV_MPAN (Oct2019)

14.3.0-rc.0 (Ref)
4.0x5.0



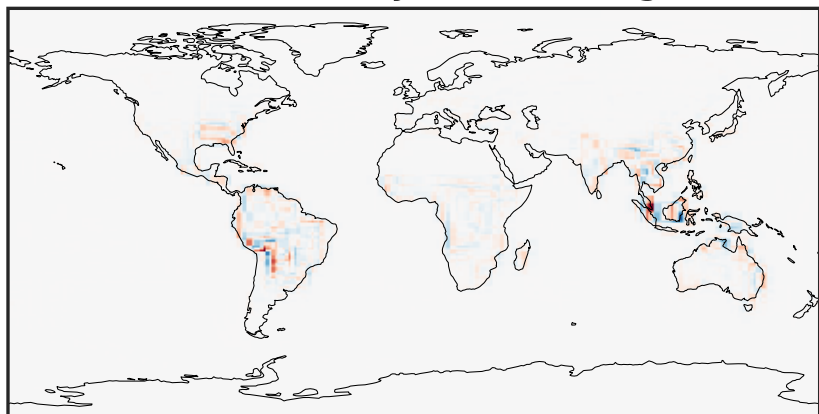
0.000 0.015 0.030
ppb

14.3.0-rc.0 (Dev)
c24



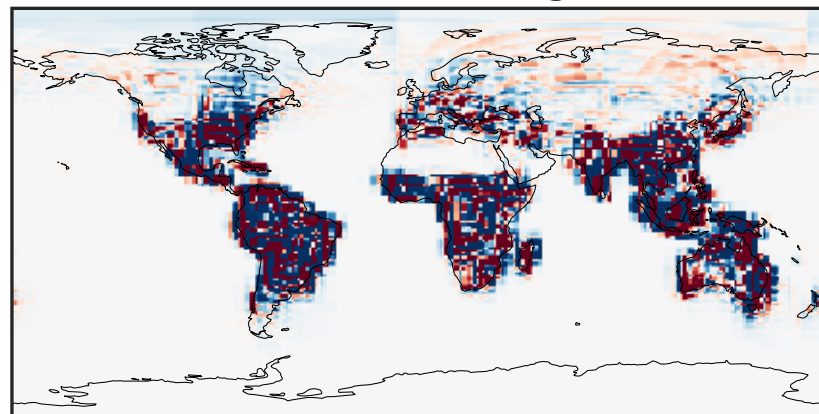
0.000 0.015 0.030
ppb

Difference (1x1.25)
Dev - Ref, Dynamic Range



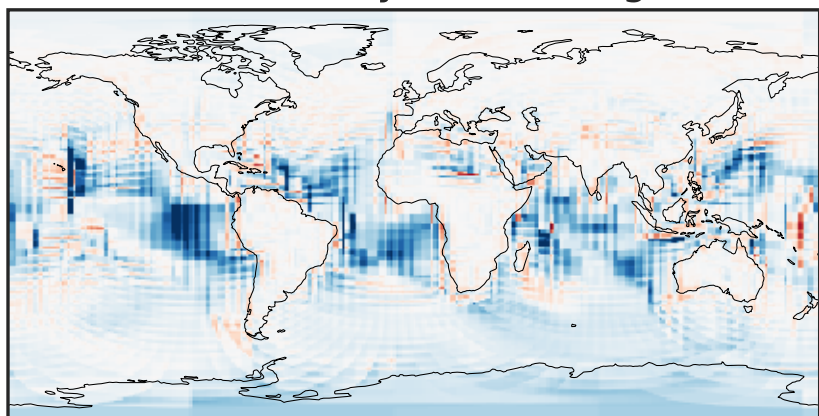
-0.015 0.000 0.015
ppb

Difference (1x1.25)
Dev - Ref, Restricted Range [5%,95%]



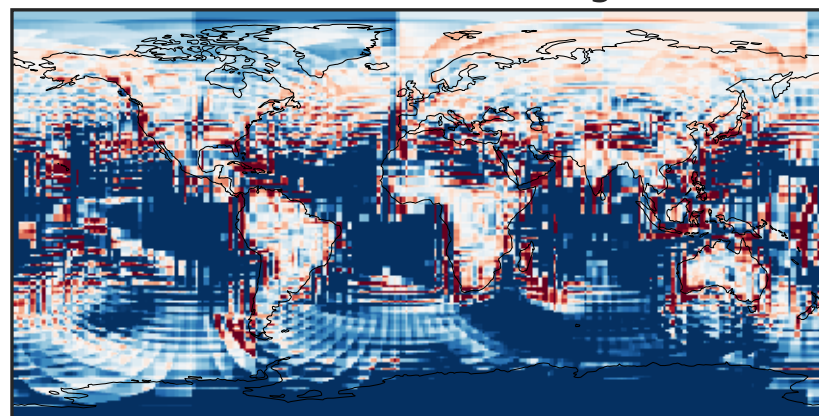
-0.00025 0.00000 0.00025
ppb

Ratio (1x1.25)
Dev/Ref, Dynamic Range



1e-02 1e-01 1 10 100
unitless

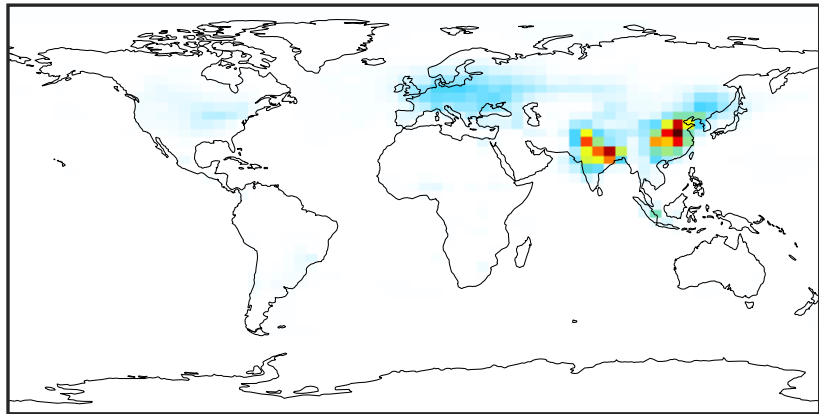
Ratio (1x1.25)
Dev/Ref, Fixed Range



0.50 0.75 1.00 1.50 2.00
unitless

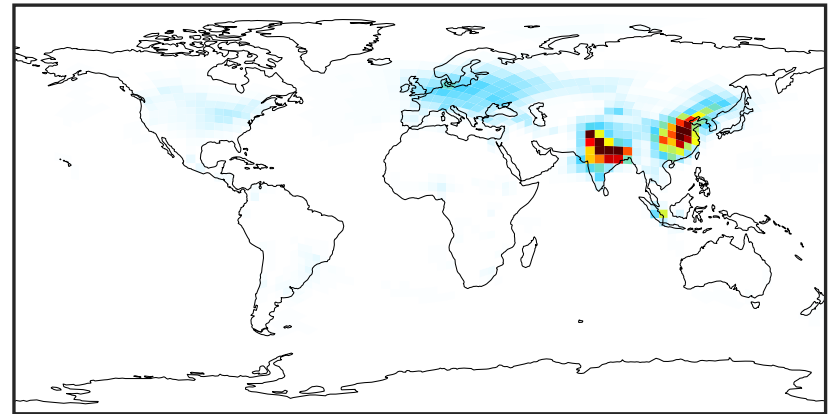
SpeciesConcVV_NIT (Oct2019)

14.3.0-rc.0 (Ref)
4.0x5.0



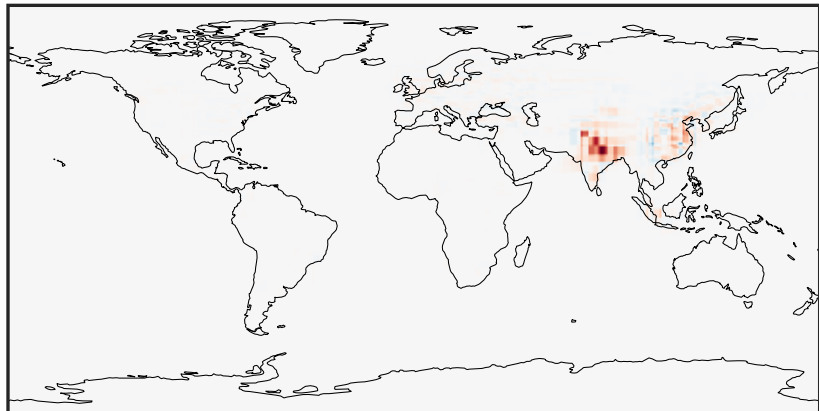
0.000 2.025 4.049 6.074 8.098
ppb

14.3.0-rc.0 (Dev)
c24



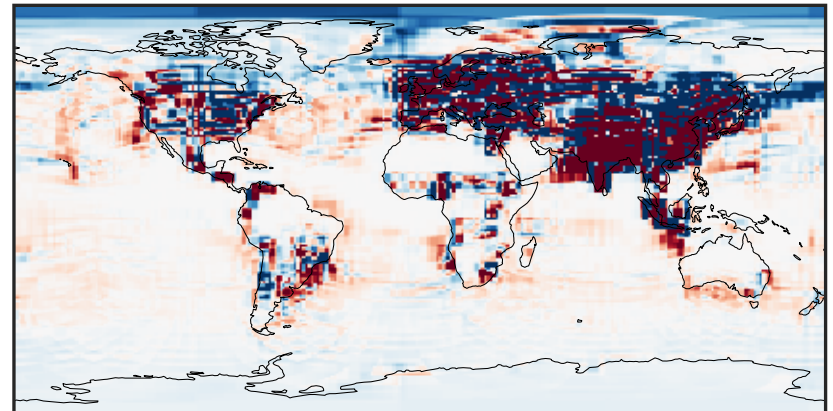
0.000 2.025 4.049 6.074 8.098
ppb

Difference (1x1.25)
Dev - Ref, Dynamic Range



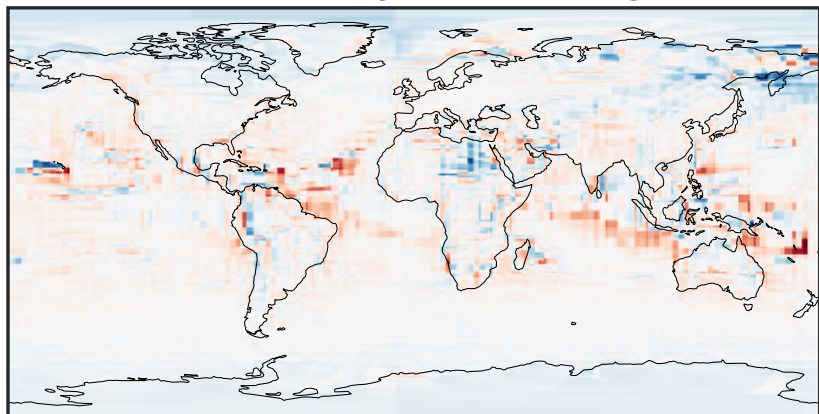
-6.81 -3.41 0.00 3.41 6.81
ppb

Difference (1x1.25)
Dev - Ref, Restricted Range [5%,95%]



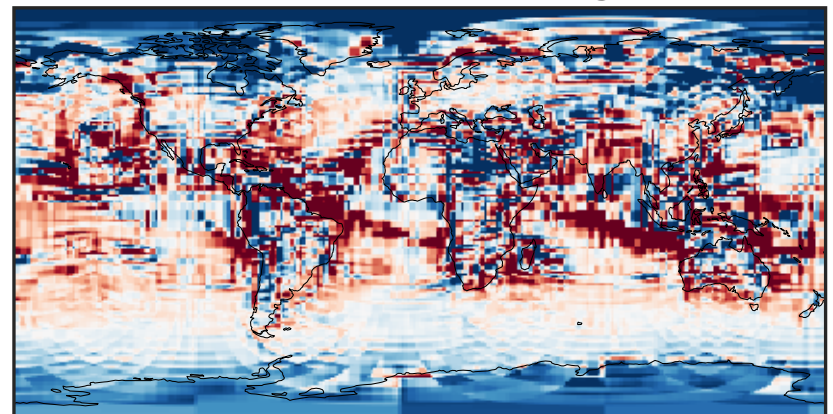
-0.02 0.00 0.02
ppb

Ratio (1x1.25)
Dev/Ref, Dynamic Range



1e-02 1e-01 1 10 100
unitless

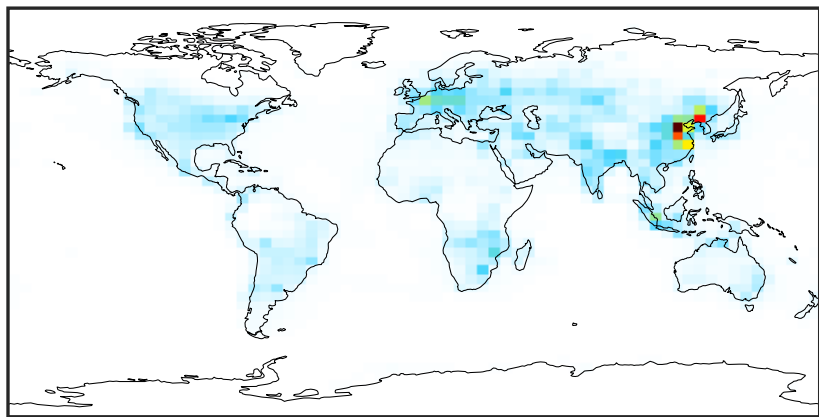
Ratio (1x1.25)
Dev/Ref, Fixed Range



0.50 0.75 1.00 1.50 2.00
unitless

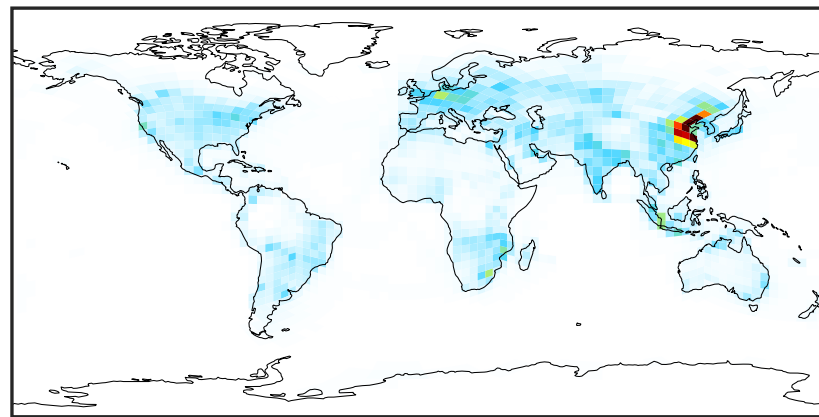
SpeciesConcVV_NO (Oct2019)

14.3.0-rc.0 (Ref)
4.0x5.0



0.0000 0.2214 0.4429 0.6643 0.8857
ppb

14.3.0-rc.0 (Dev)
c24



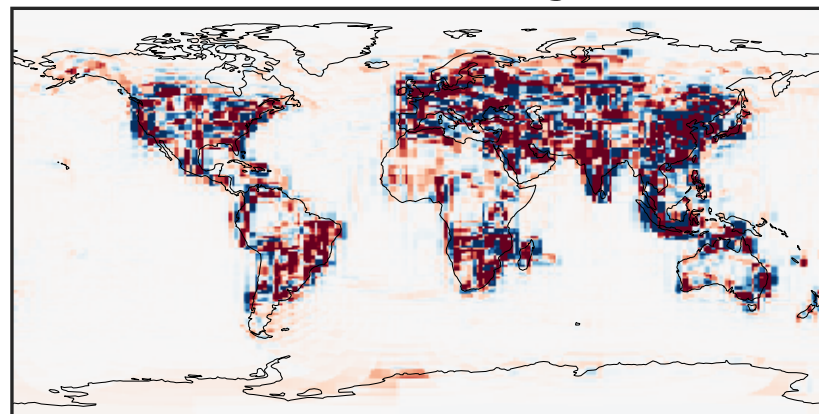
0.0000 0.2214 0.4429 0.6643 0.8857
ppb

Difference (1x1.25)
Dev - Ref, Dynamic Range



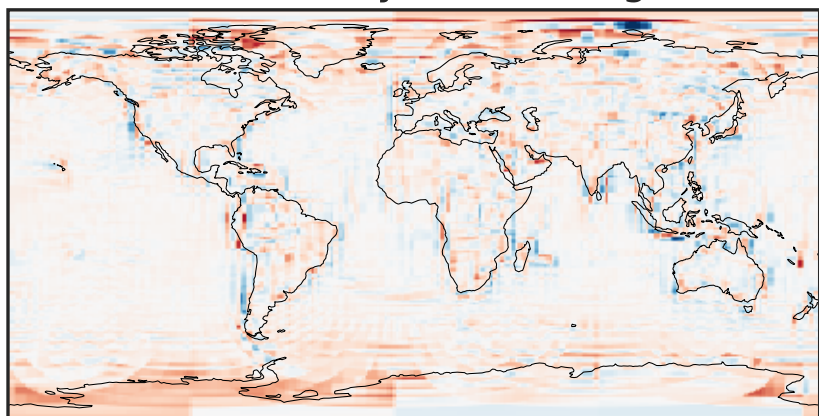
-1.0 -0.5 0.0 0.5 1.0
ppb

Difference (1x1.25)
Dev - Ref, Restricted Range [5%,95%]



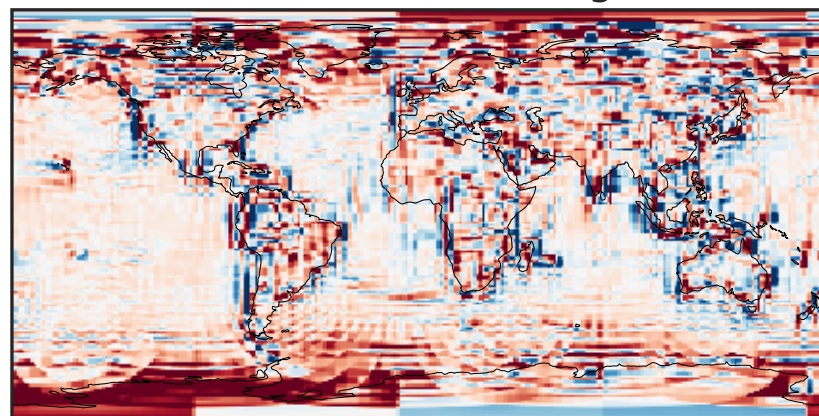
-0.008 0.000 0.008
ppb

Ratio (1x1.25)
Dev/Ref, Dynamic Range



1e-01 1 10
unitless

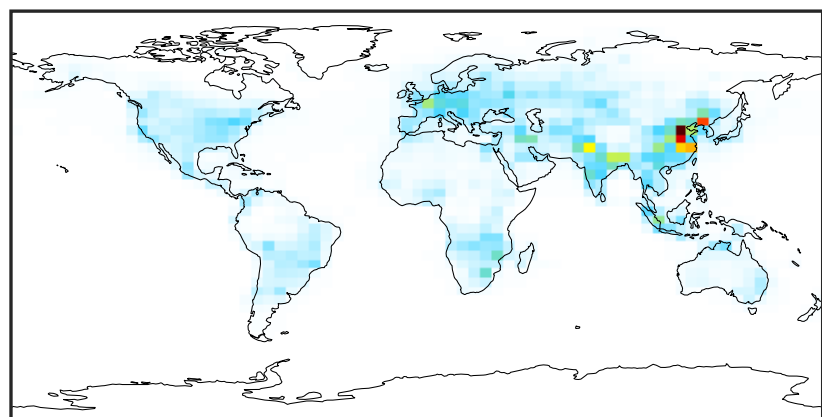
Ratio (1x1.25)
Dev/Ref, Fixed Range



0.50 0.75 1.00 1.50 2.00
unitless

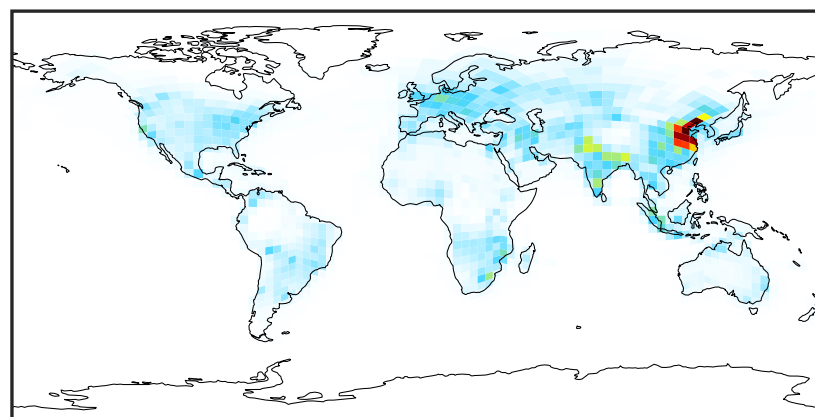
SpeciesConcVW_NO2 (Oct2019)

14.3.0-rc.0 (Ref)
4.0x5.0



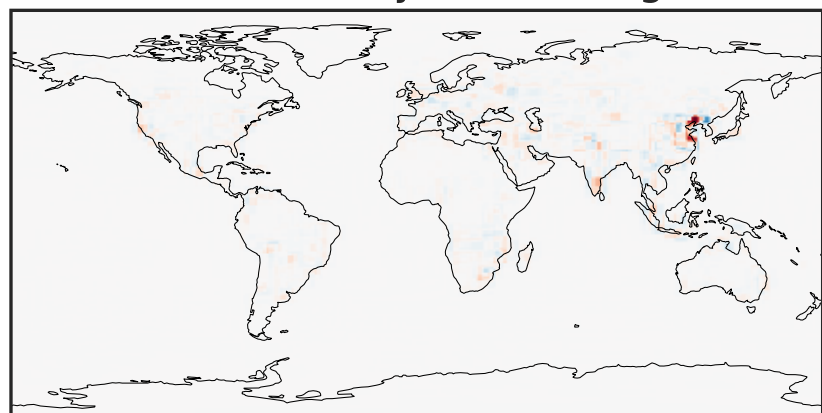
0.00 2.67 5.35 8.02 10.70
ppb

14.3.0-rc.0 (Dev)
c24



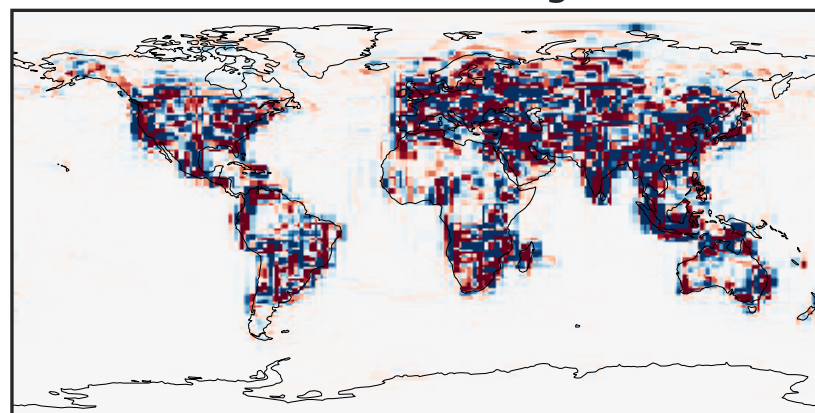
0.00 2.67 5.35 8.02 10.70
ppb

Difference (1x1.25)
Dev - Ref, Dynamic Range



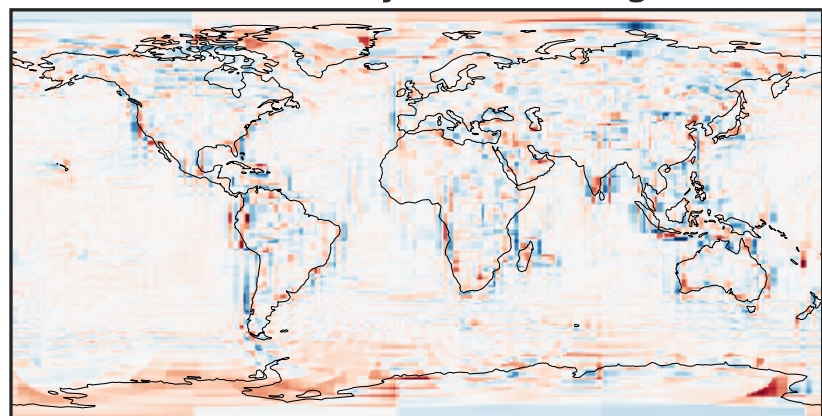
-8.55 -4.28 0.00 4.28 8.55
ppb

Difference (1x1.25)
Dev - Ref, Restricted Range [5%,95%]



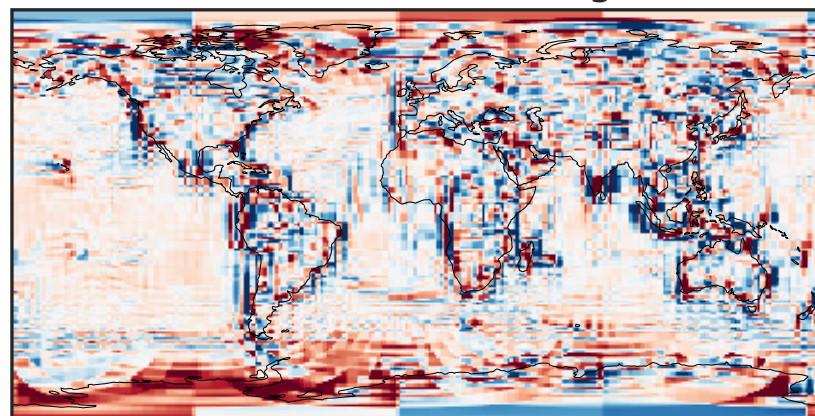
-0.1429 -0.0714 0.0000 0.0714 0.1429
ppb

Ratio (1x1.25)
Dev/Ref, Dynamic Range



0.124 0.562 1.000 4.536 8.073
unitless

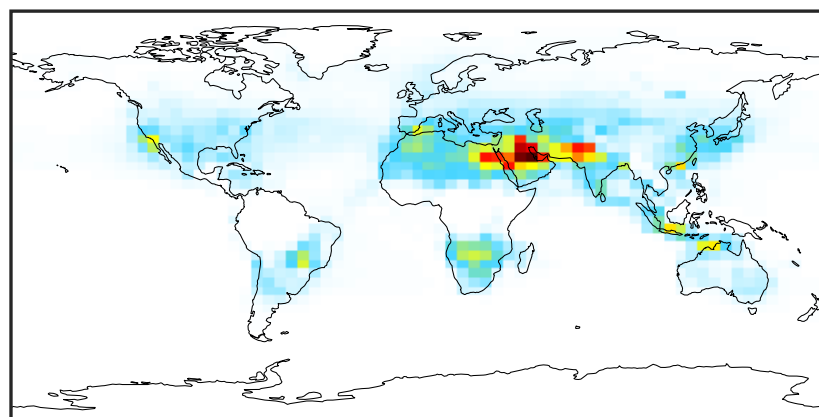
Ratio (1x1.25)
Dev/Ref, Fixed Range



0.50 0.75 1.00 1.50 2.00
unitless

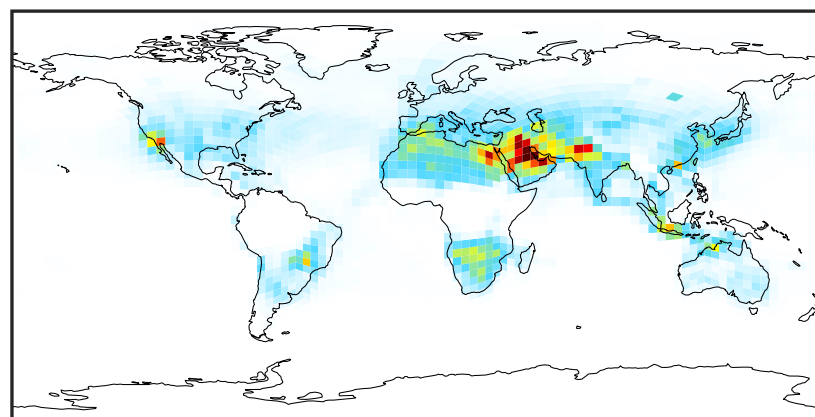
SpeciesConcVW_NO3 (Oct2019)

14.3.0-rc.0 (Ref)
4.0x5.0



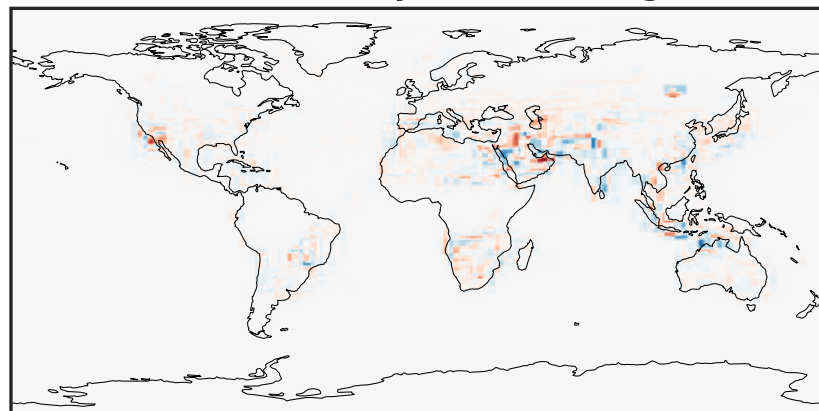
0.015 0.030 0.045
ppb

14.3.0-rc.0 (Dev)
c24



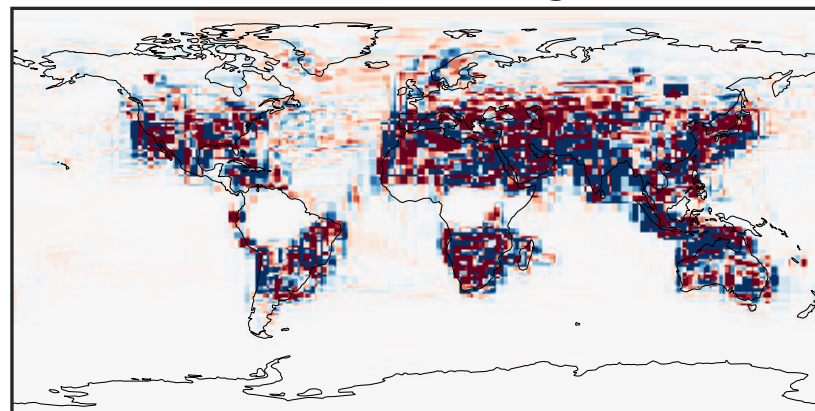
0.015 0.030 0.045
ppb

Difference (1x1.25)
Dev - Ref, Dynamic Range



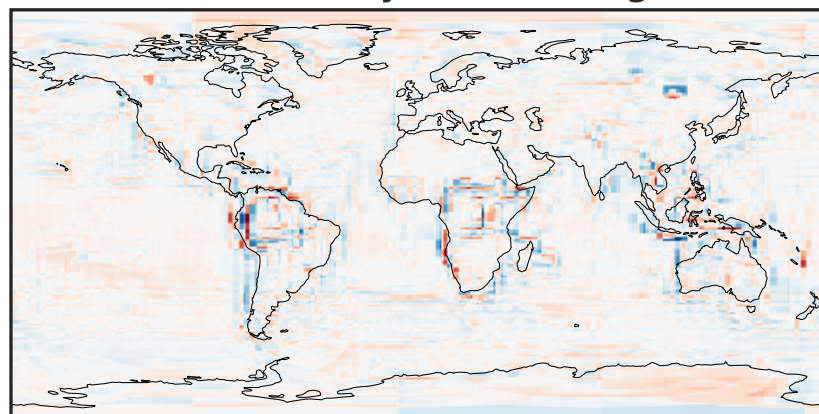
-0.015 0.000 0.015
ppb

Difference (1x1.25)
Dev - Ref, Restricted Range [5%,95%]



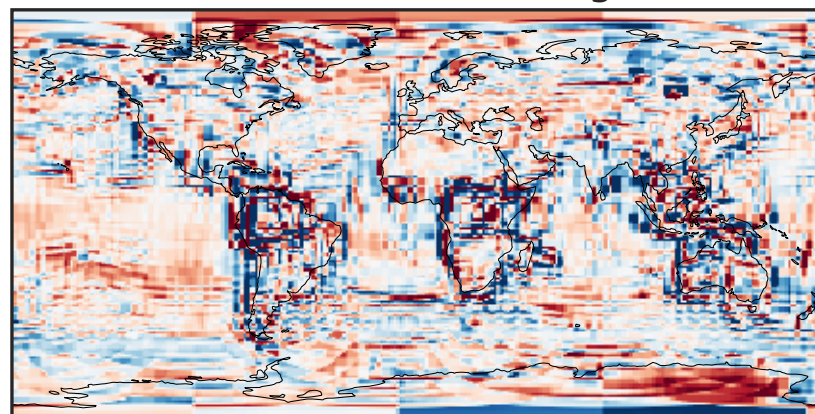
-0.0006 0.0000 0.0006
ppb

Ratio (1x1.25)
Dev/Ref, Dynamic Range



1e-01 1 10
unitless

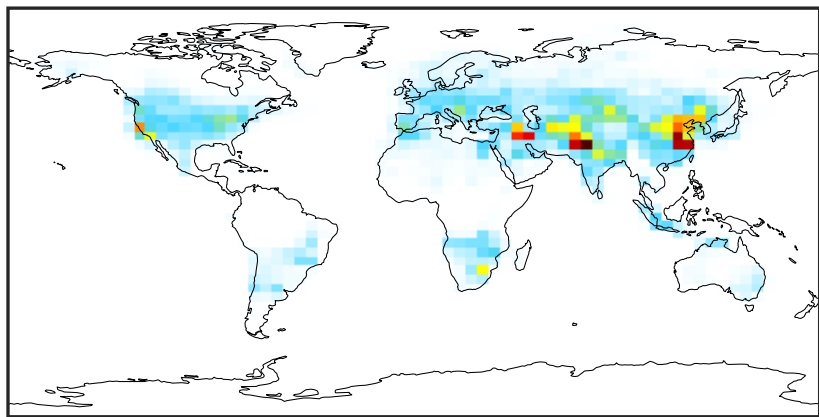
Ratio (1x1.25)
Dev/Ref, Fixed Range



0.50 0.75 1.00 1.50 2.00
unitless

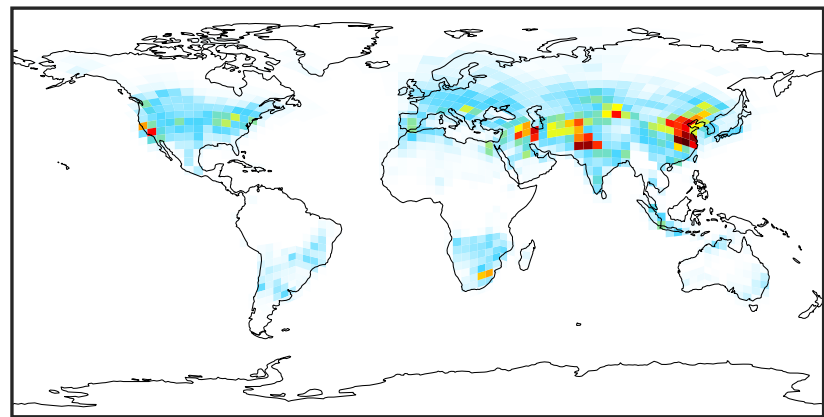
SpeciesConcVV_N2O5 (Oct2019)

14.3.0-rc.0 (Ref)
4.0x5.0



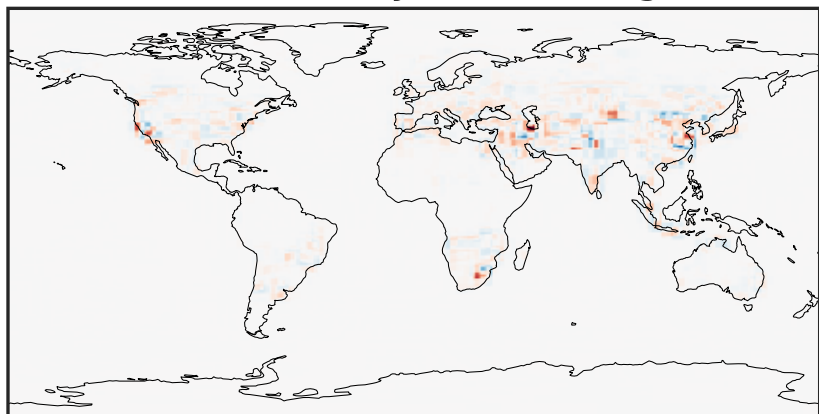
0.0000 0.0588 0.1175 0.1763 0.2351
ppb

14.3.0-rc.0 (Dev)
c24



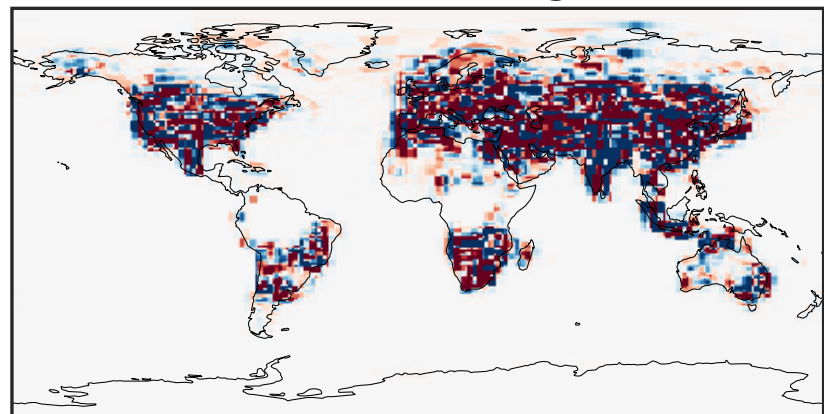
0.0000 0.0588 0.1175 0.1763 0.2351
ppb

Difference (1x1.25)
Dev - Ref, Dynamic Range



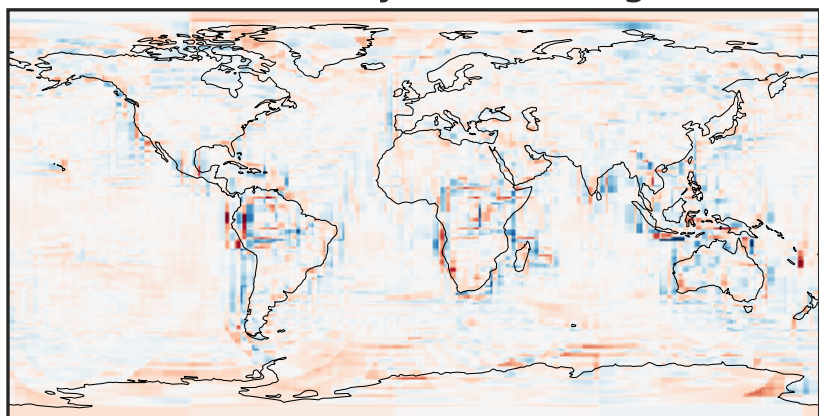
-0.1593 -0.0796 0.0000 0.0796 0.1593
ppb

Difference (1x1.25)
Dev - Ref, Restricted Range [5%,95%]



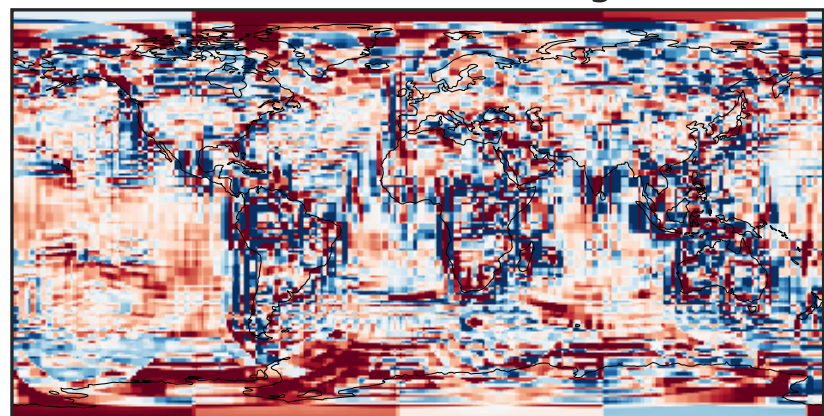
-0.0025 0.0000 0.0025
ppb

Ratio (1x1.25)
Dev/Ref, Dynamic Range



1e-02 1e-01 1 10 100
unitless

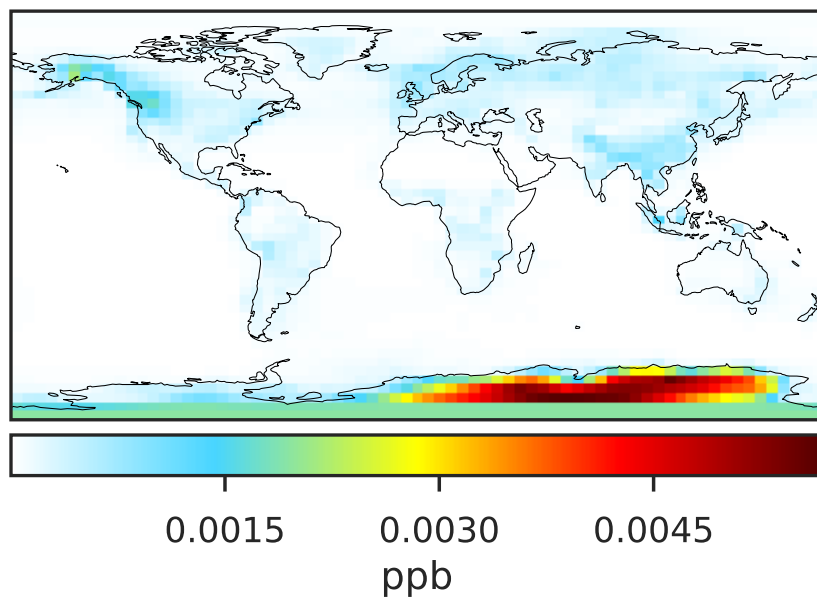
Ratio (1x1.25)
Dev/Ref, Fixed Range



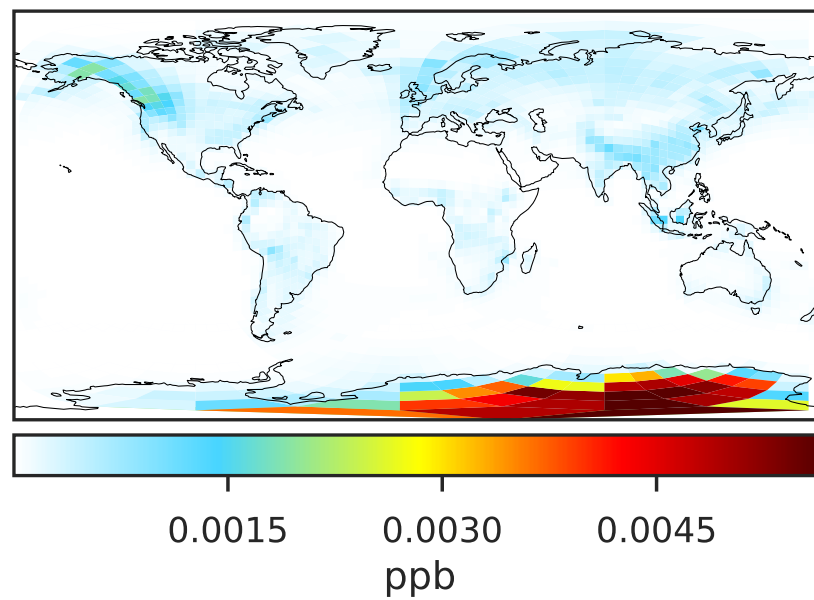
0.50 0.75 1.00 1.50 2.00
unitless

SpeciesConcVV_MPN (Oct2019)

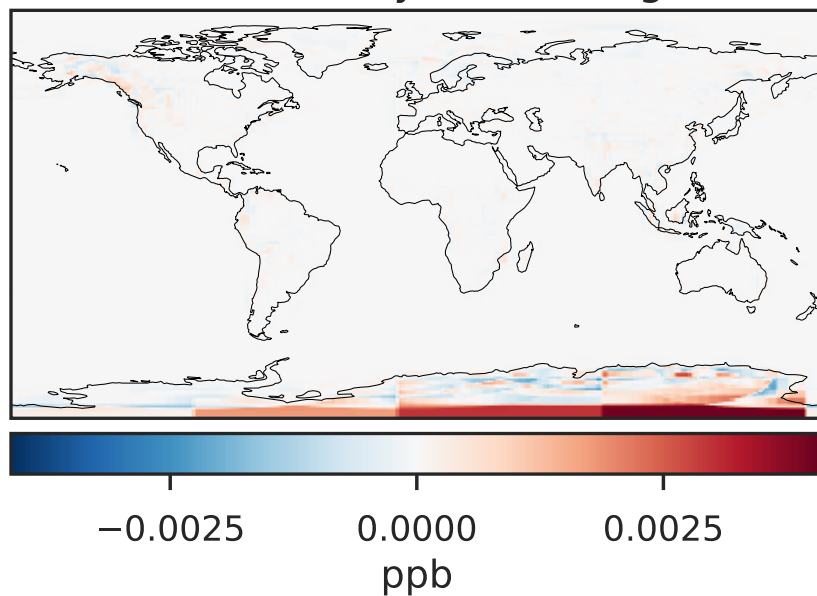
14.3.0-rc.0 (Ref)
4.0x5.0



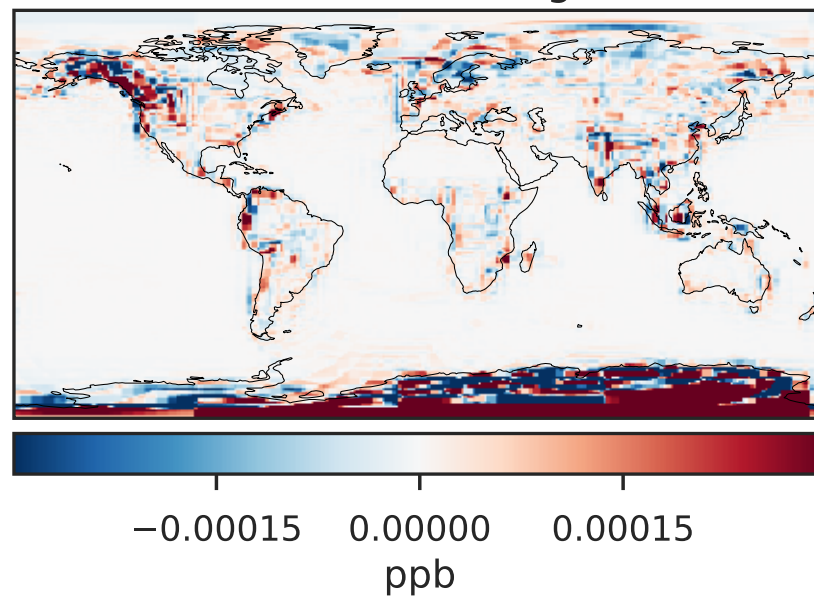
14.3.0-rc.0 (Dev)
c24



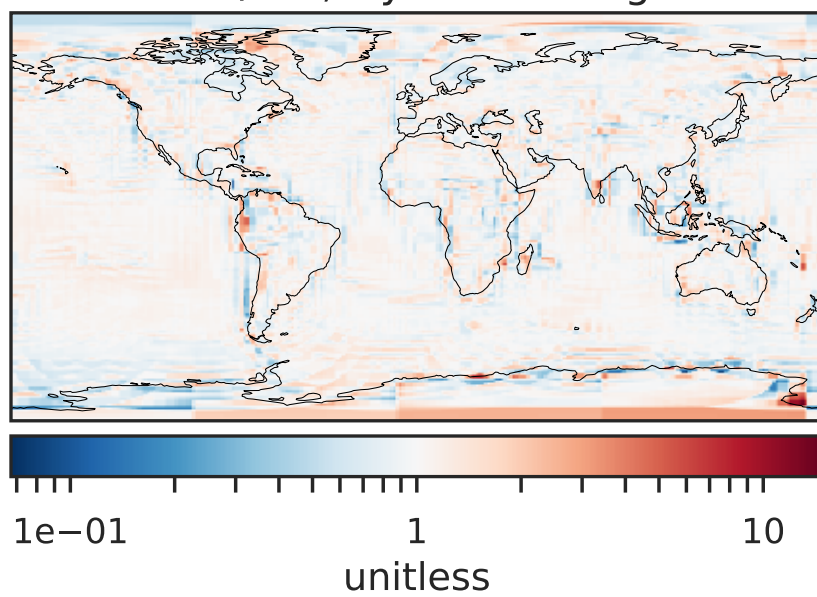
Difference (1x1.25)
Dev - Ref, Dynamic Range



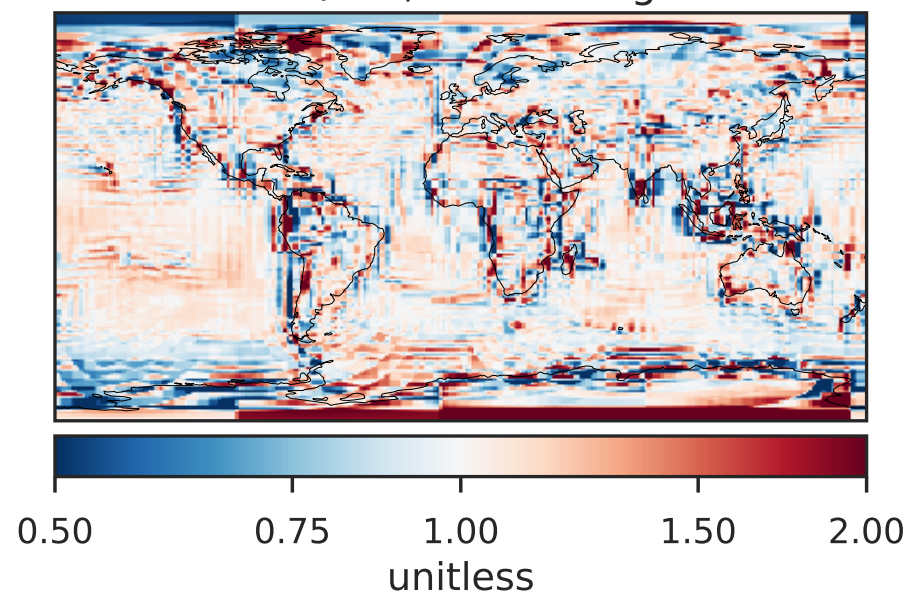
Difference (1x1.25)
Dev - Ref, Restricted Range [5%,95%]



Ratio (1x1.25)
Dev/Ref, Dynamic Range

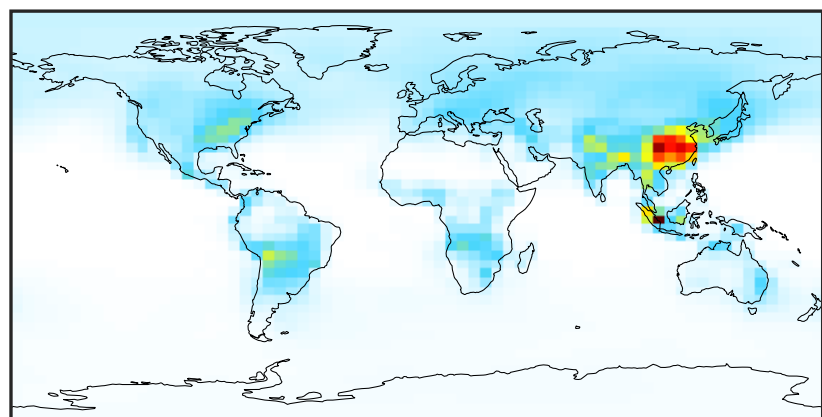


Ratio (1x1.25)
Dev/Ref, Fixed Range



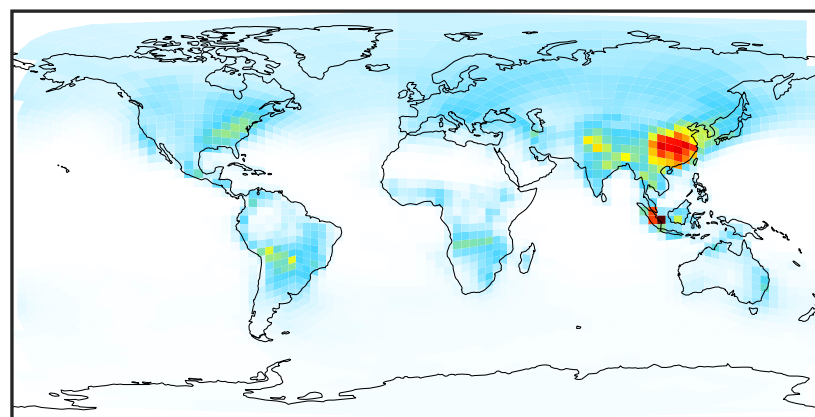
SpeciesConcVV_PAN (Oct2019)

14.3.0-rc.0 (Ref)
4.0x5.0



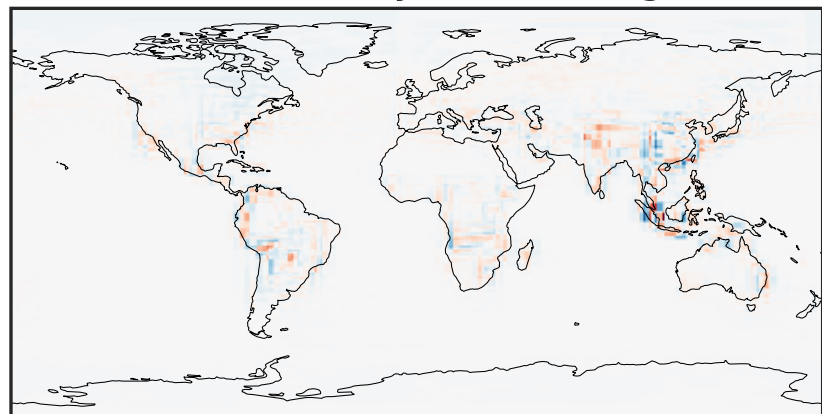
0.000 0.306 0.611 0.916 1.222
ppb

14.3.0-rc.0 (Dev)
c24



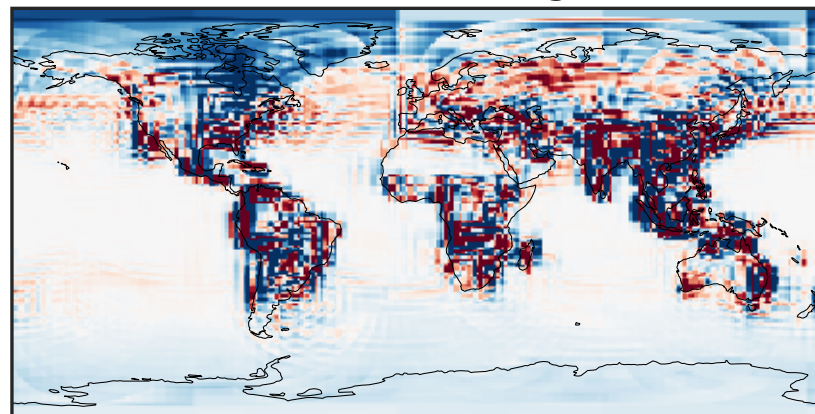
0.000 0.306 0.611 0.916 1.222
ppb

Difference (1x1.25)
Dev - Ref, Dynamic Range



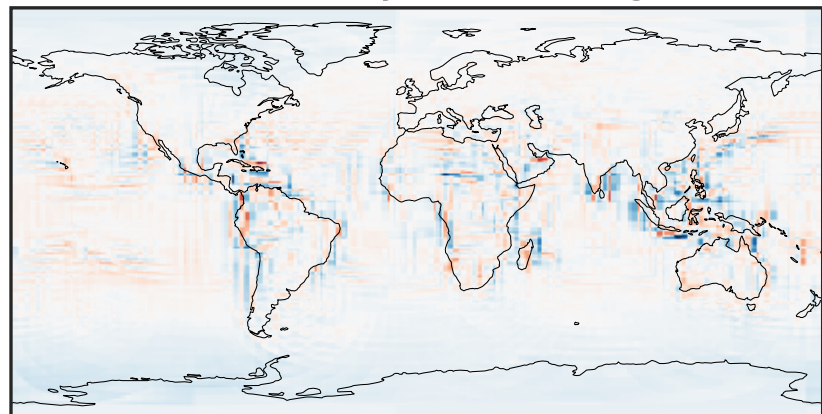
-0.4578 -0.2289 0.0000 0.2289 0.4578
ppb

Difference (1x1.25)
Dev - Ref, Restricted Range [5%,95%]



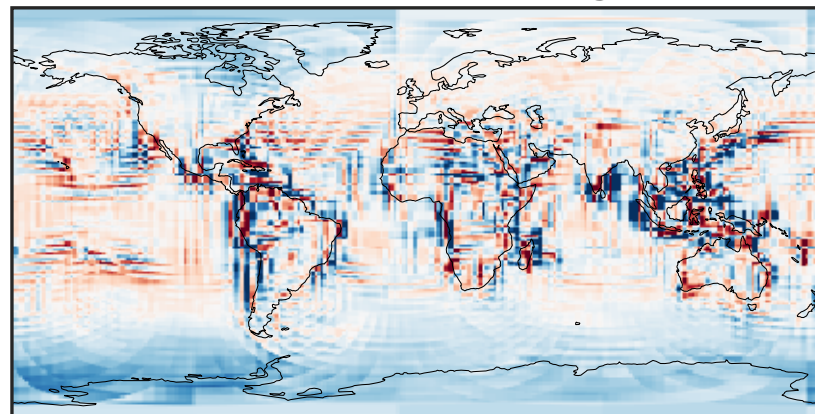
-0.015 0.000 0.015
ppb

Ratio (1x1.25)
Dev/Ref, Dynamic Range



1e-01 1 10
unitless

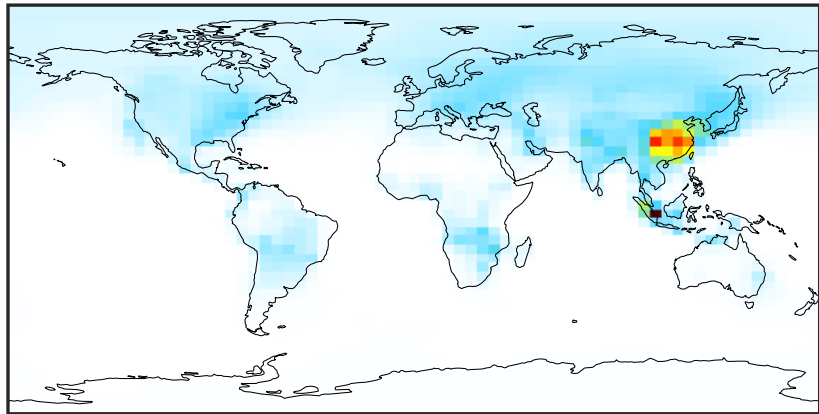
Ratio (1x1.25)
Dev/Ref, Fixed Range



0.50 0.75 1.00 1.50 2.00
unitless

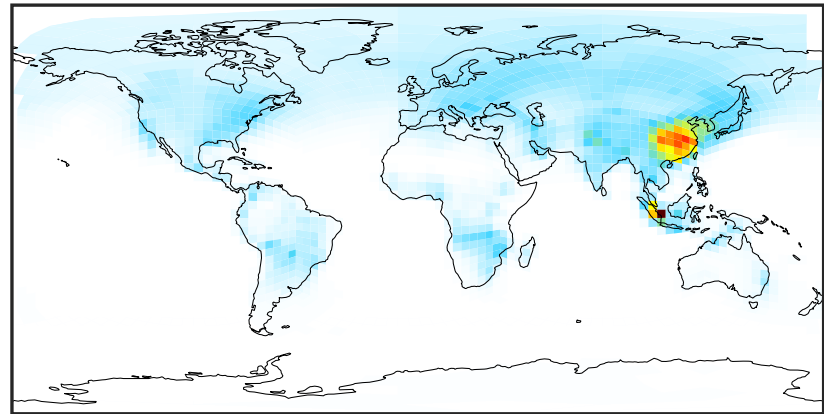
SpeciesConcVV_PPN (Oct2019)

14.3.0-rc.0 (Ref)
4.0x5.0



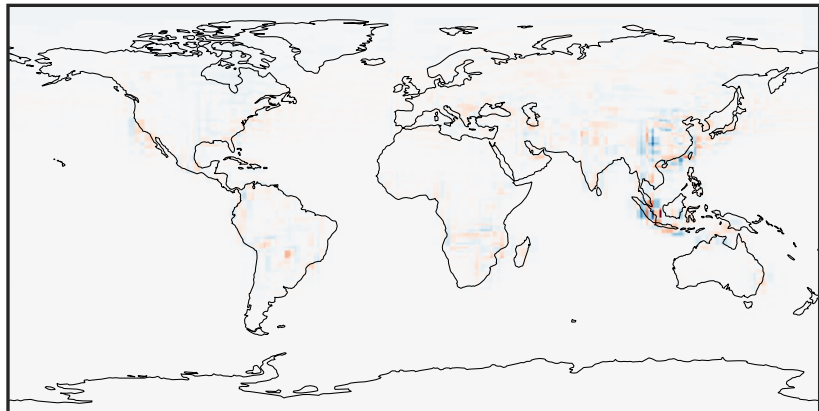
0.0000 0.0985 0.1969 0.2954 0.3939
ppb

14.3.0-rc.0 (Dev)
c24



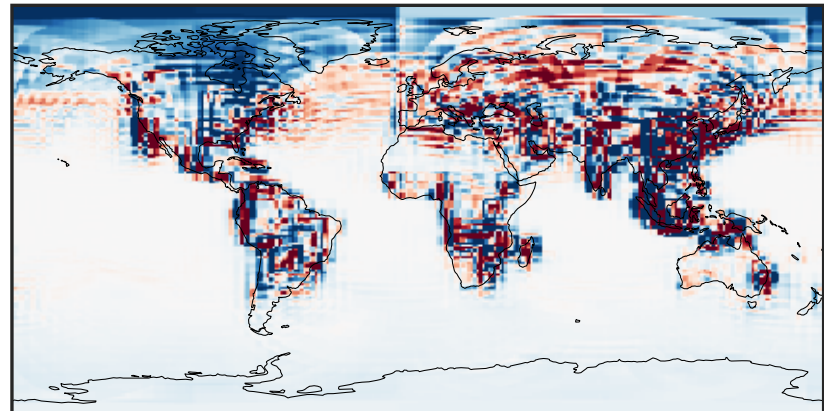
0.0000 0.0985 0.1969 0.2954 0.3939
ppb

Difference (1x1.25)
Dev - Ref, Dynamic Range



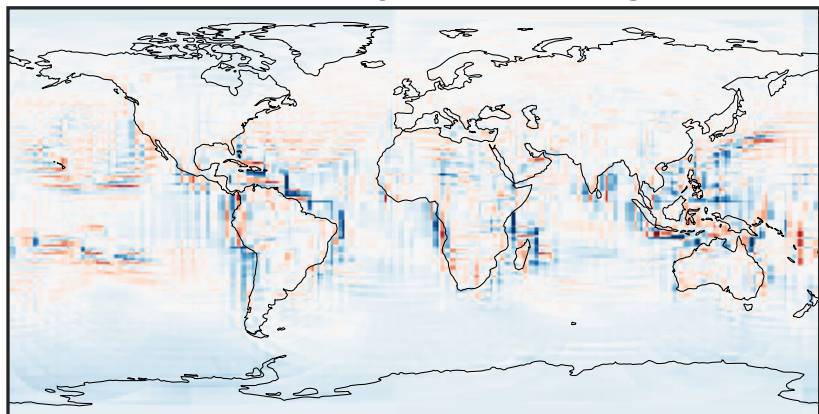
-0.1551 -0.0775 0.0000 0.0775 0.1551
ppb

Difference (1x1.25)
Dev - Ref, Restricted Range [5%,95%]



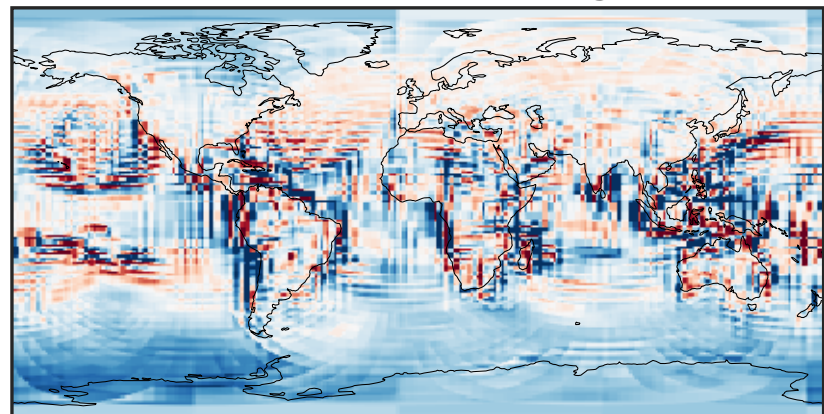
-0.003 0.000 0.003
ppb

Ratio (1x1.25)
Dev/Ref, Dynamic Range



1e-01 1 10
unitless

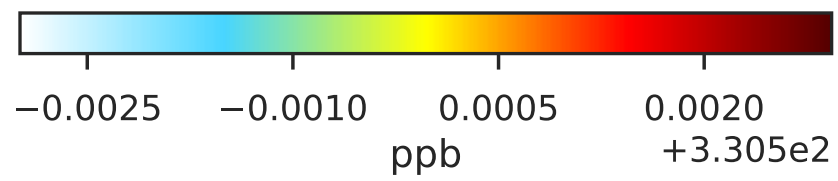
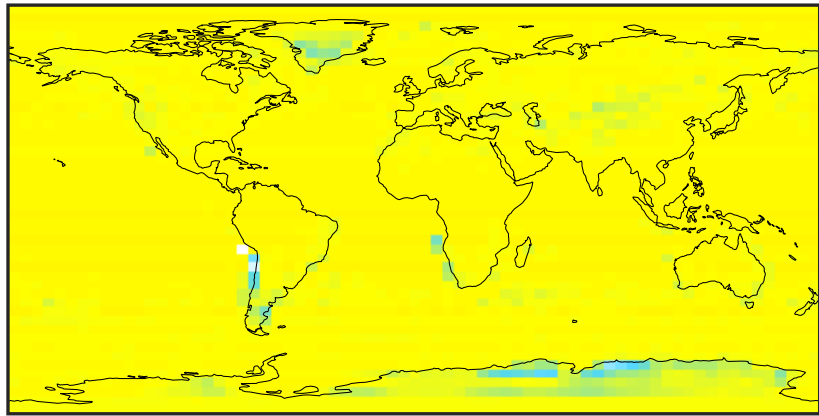
Ratio (1x1.25)
Dev/Ref, Fixed Range



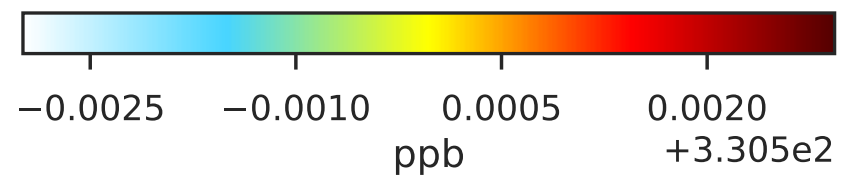
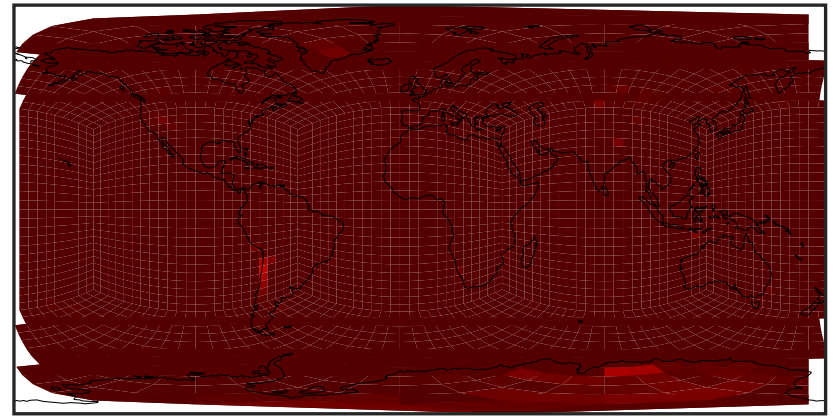
0.50 0.75 1.00 1.50 2.00
unitless

SpeciesConcVW_N2O (Oct2019)

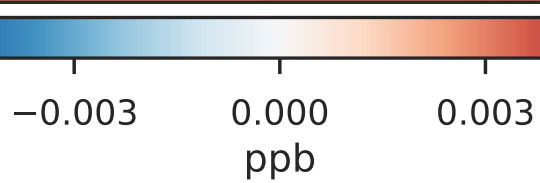
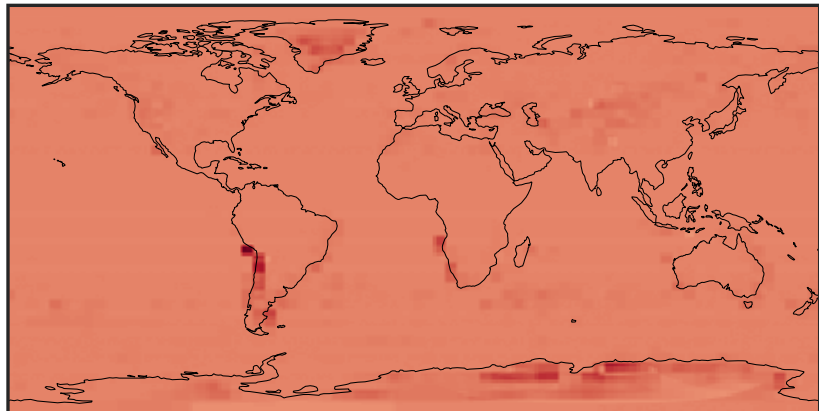
14.3.0-rc.0 (Ref)
4.0x5.0



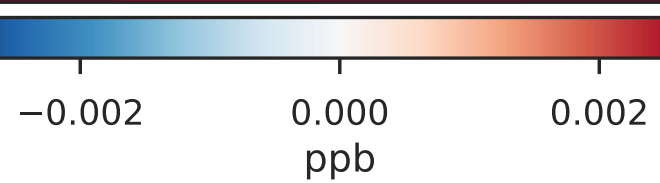
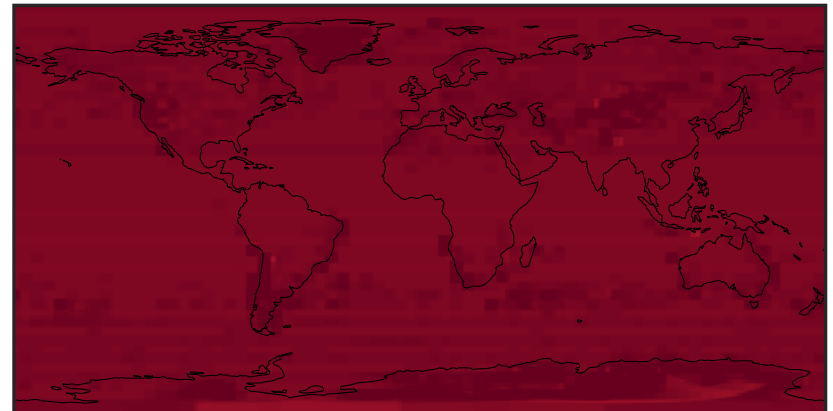
14.3.0-rc.0 (Dev)
c24



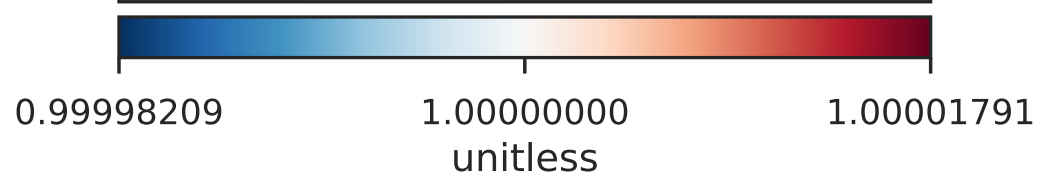
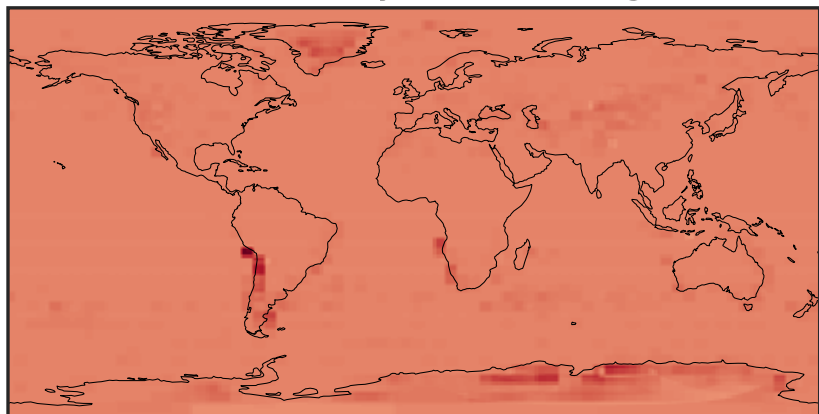
Difference (1x1.25)
Dev - Ref, Dynamic Range



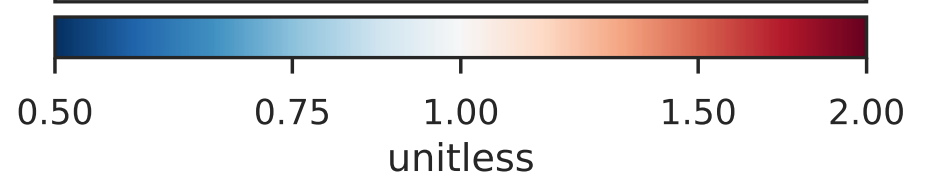
Difference (1x1.25)
Dev - Ref, Restricted Range [5%,95%]



Ratio (1x1.25)
Dev/Ref, Dynamic Range

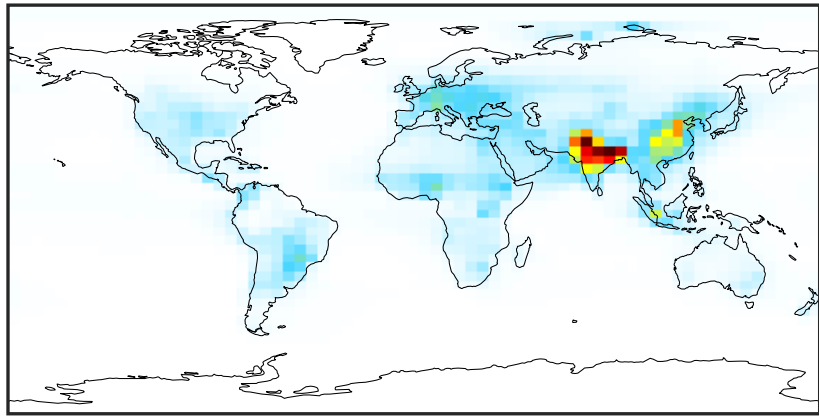


Ratio (1x1.25)
Dev/Ref, Fixed Range



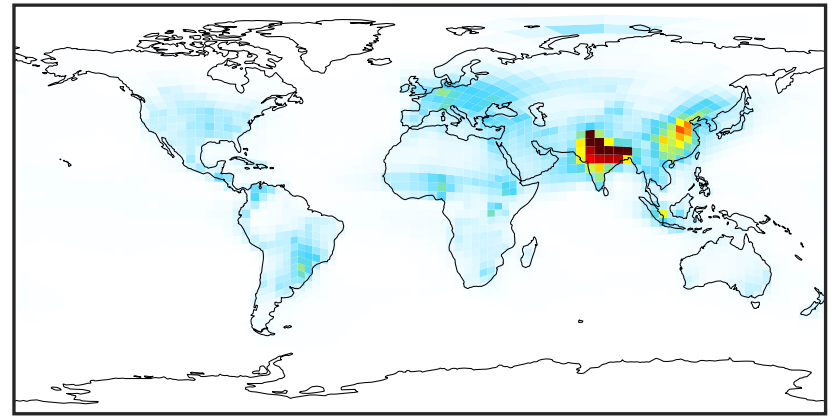
SpeciesConcVV_NHx (Oct2019)

14.3.0-rc.0 (Ref)
4.0x5.0



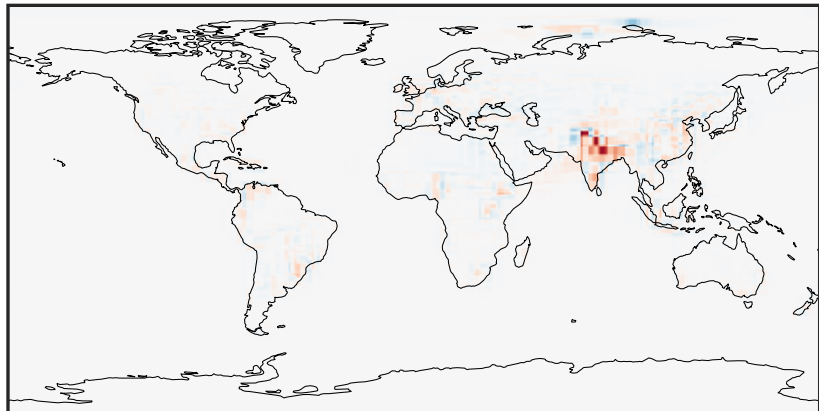
0.01 7.44 14.87 22.30 29.73
ppb

14.3.0-rc.0 (Dev)
c24



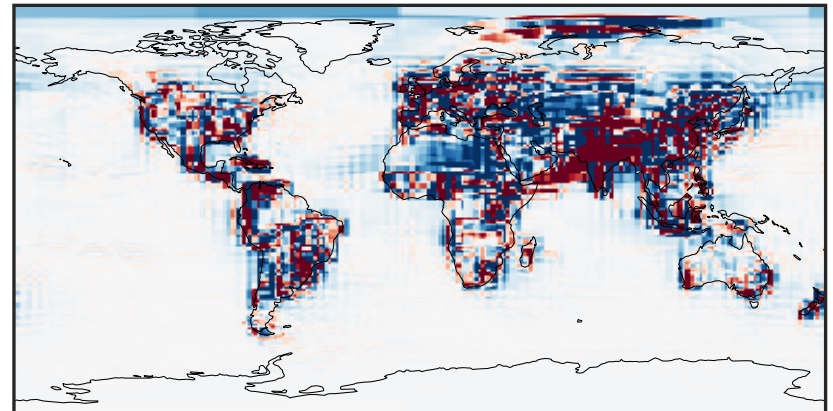
0.01 7.44 14.87 22.30 29.73
ppb

Difference (1x1.25)
Dev - Ref, Dynamic Range



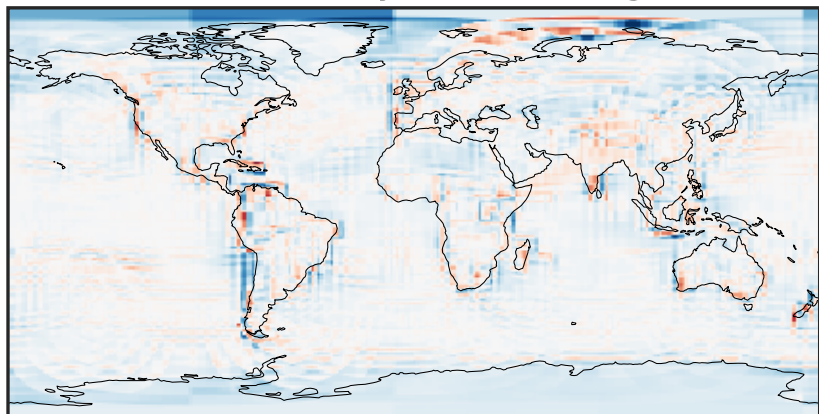
-17.03 -8.51 0.00 8.51 17.03
ppb

Difference (1x1.25)
Dev - Ref, Restricted Range [5%,95%]



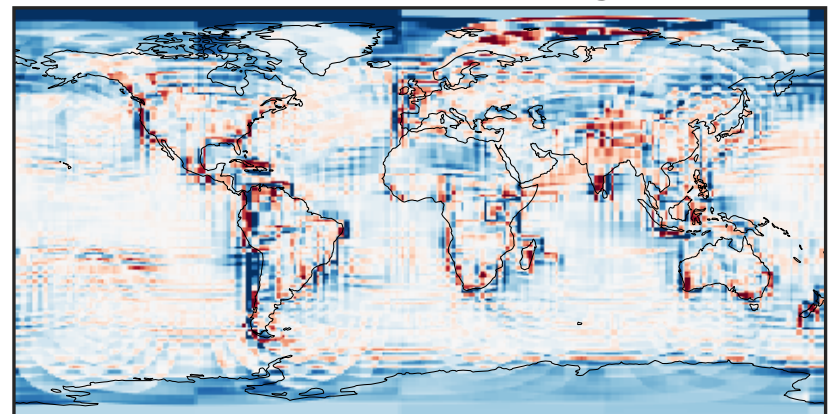
-0.410 -0.205 0.000 0.205 0.410
ppb

Ratio (1x1.25)
Dev/Ref, Dynamic Range



0.150 0.575 1.000 3.841 6.681
unitless

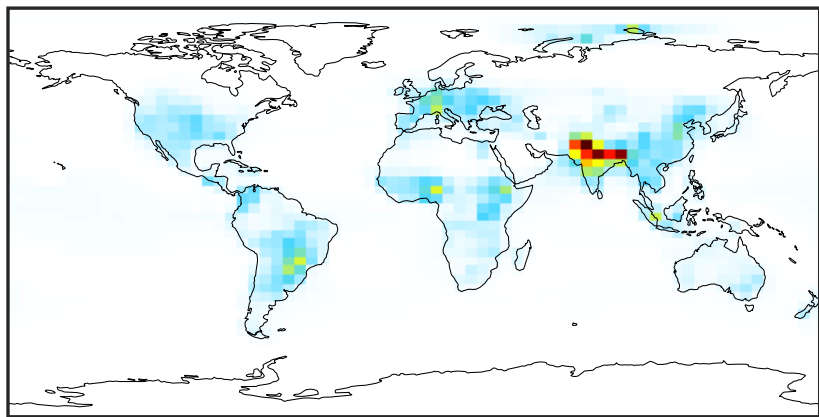
Ratio (1x1.25)
Dev/Ref, Fixed Range



0.50 0.75 1.00 1.50 2.00
unitless

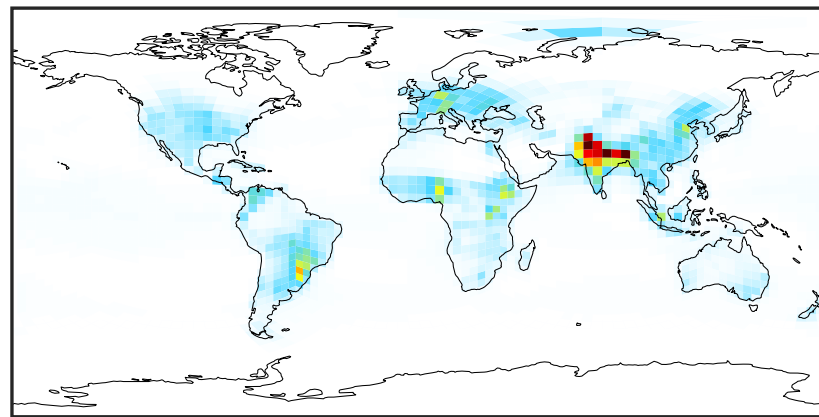
SpeciesConcVV_NH3 (Oct2019)

14.3.0-rc.0 (Ref)
4.0x5.0



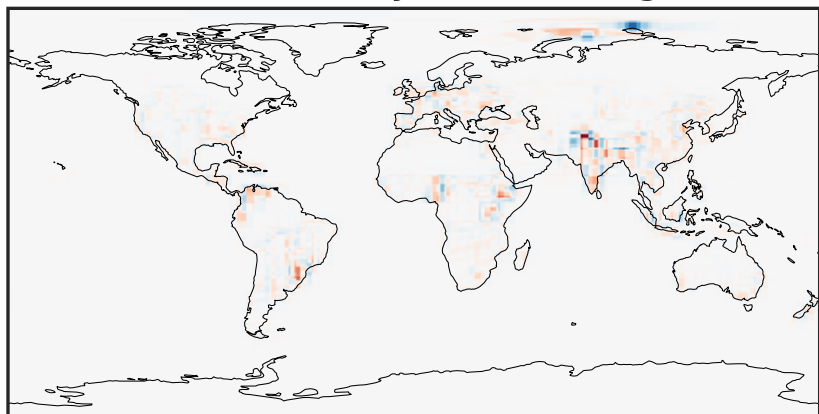
0.0 4.3 8.6 12.9 17.2
ppb

14.3.0-rc.0 (Dev)
c24



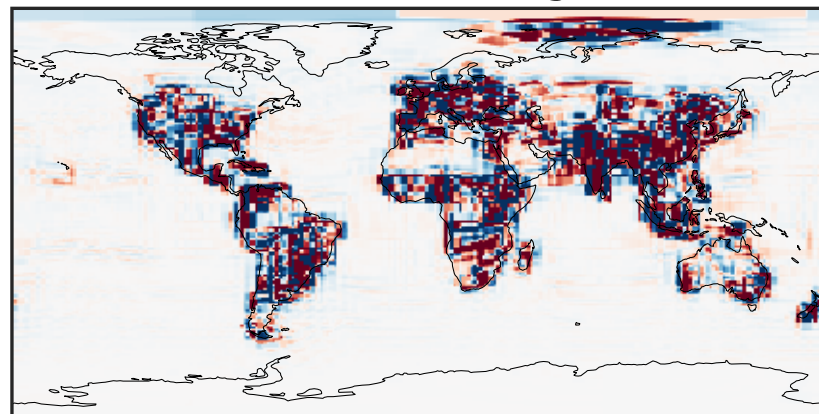
0.0 4.3 8.6 12.9 17.2
ppb

Difference (1x1.25)
Dev - Ref, Dynamic Range



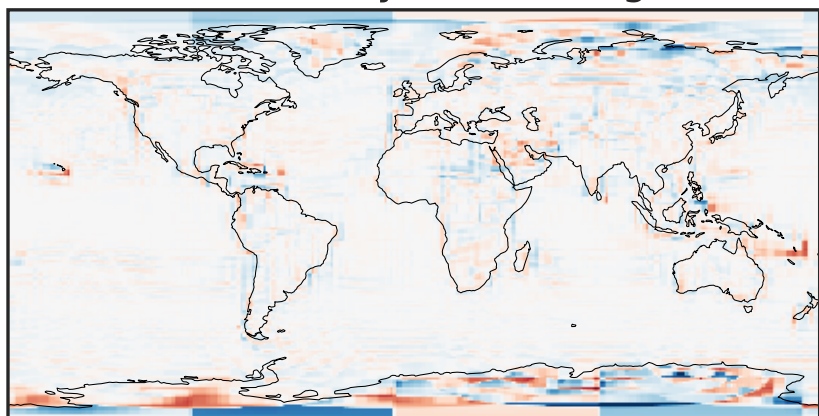
-8.10 -4.05 0.00 4.05 8.10
ppb

Difference (1x1.25)
Dev - Ref, Restricted Range [5%,95%]



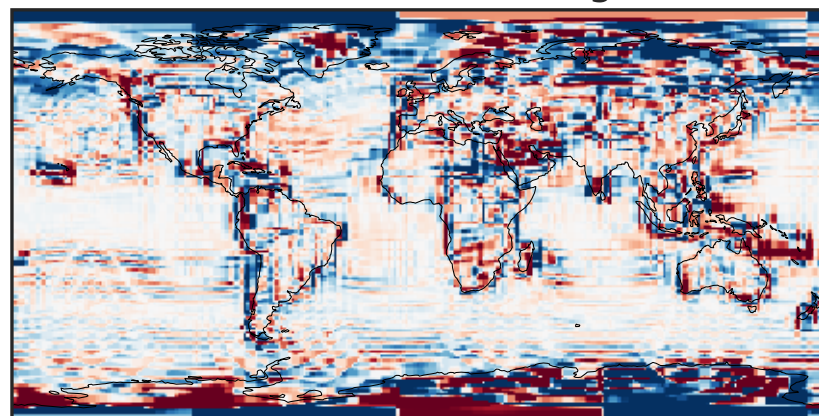
-0.252 -0.126 0.000 0.126 0.252
ppb

Ratio (1x1.25)
Dev/Ref, Dynamic Range



1e-02 1e-01 1 10 100
unitless

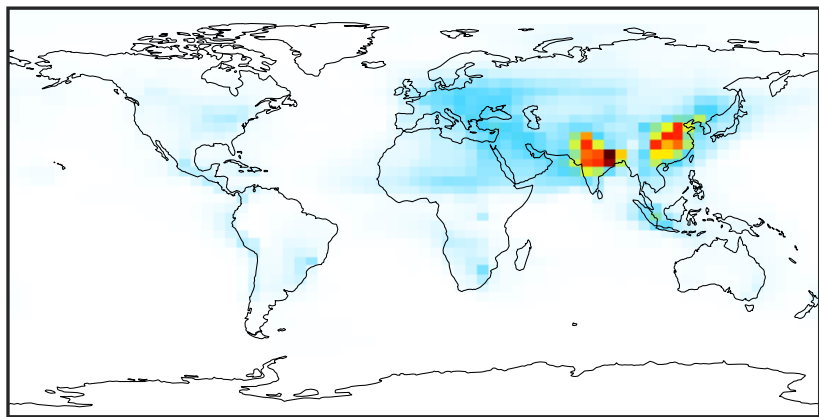
Ratio (1x1.25)
Dev/Ref, Fixed Range



0.50 0.75 1.00 1.50 2.00
unitless

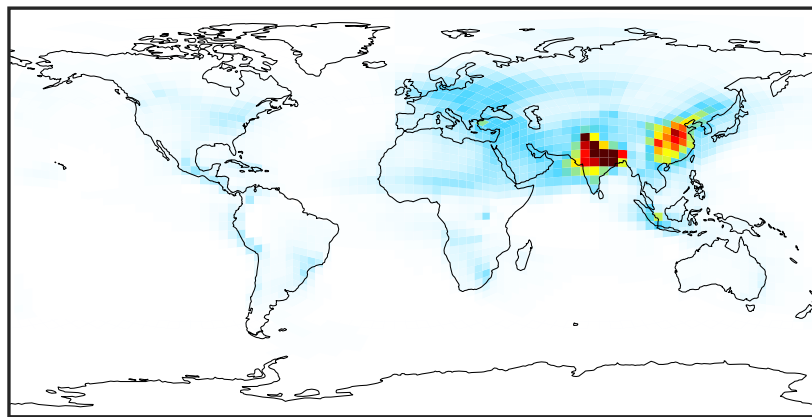
SpeciesConcVV_NH4 (Oct2019)

14.3.0-rc.0 (Ref)
4.0x5.0



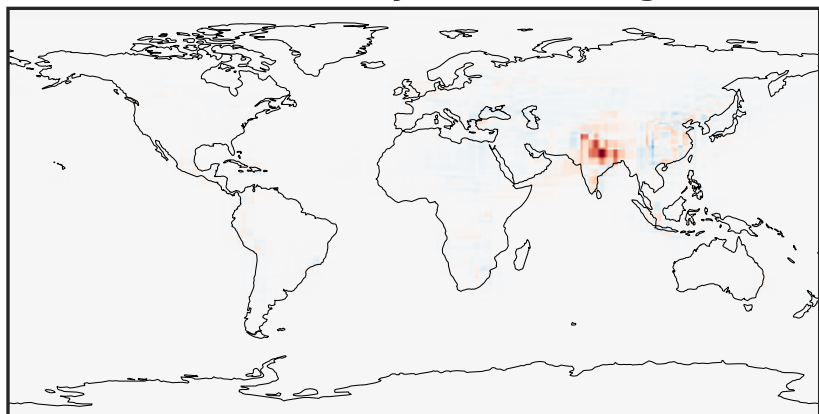
0.00 4.28 8.56 12.84 17.12
ppb

14.3.0-rc.0 (Dev)
c24



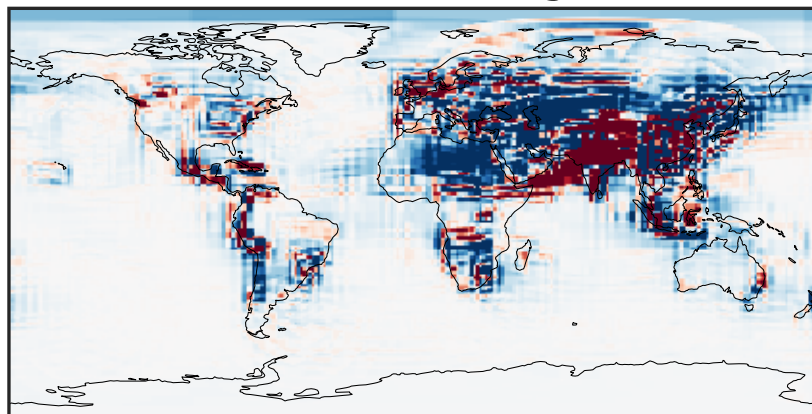
0.00 4.28 8.56 12.84 17.12
ppb

Difference (1x1.25)
Dev - Ref, Dynamic Range



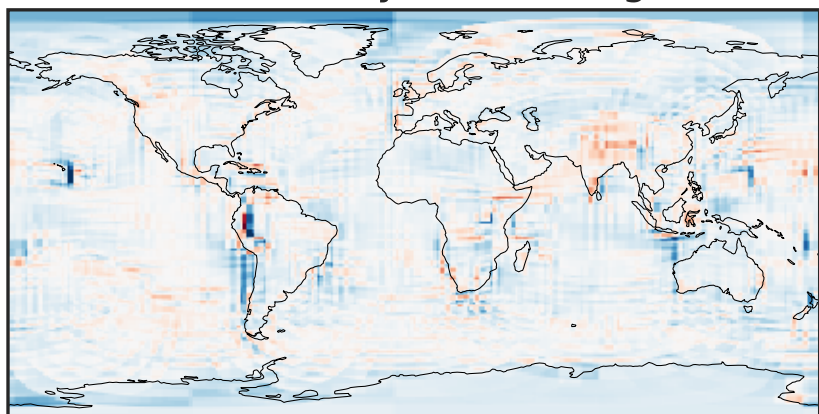
-13.10 -6.55 0.00 6.55 13.10
ppb

Difference (1x1.25)
Dev - Ref, Restricted Range [5%,95%]



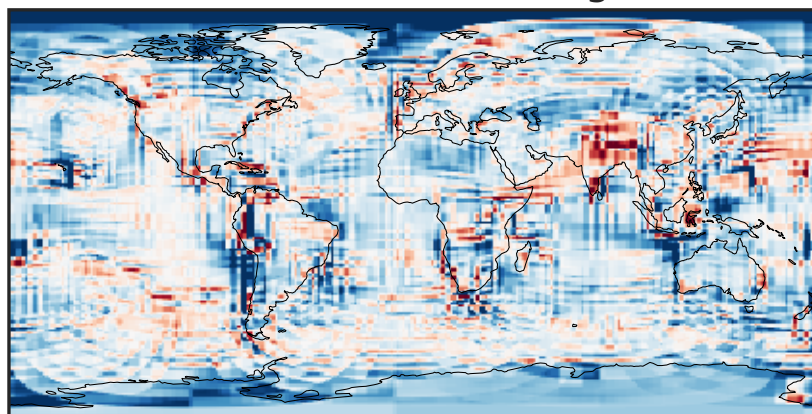
-0.2731 -0.1365 0.0000 0.1365 0.2731
ppb

Ratio (1x1.25)
Dev/Ref, Dynamic Range



0.119 0.559 1.000 4.702 8.403
unitless

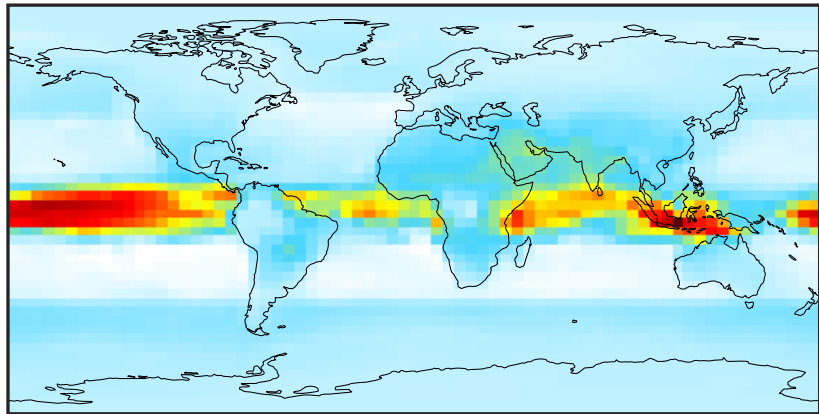
Ratio (1x1.25)
Dev/Ref, Fixed Range



0.50 0.75 1.00 1.50 2.00
unitless

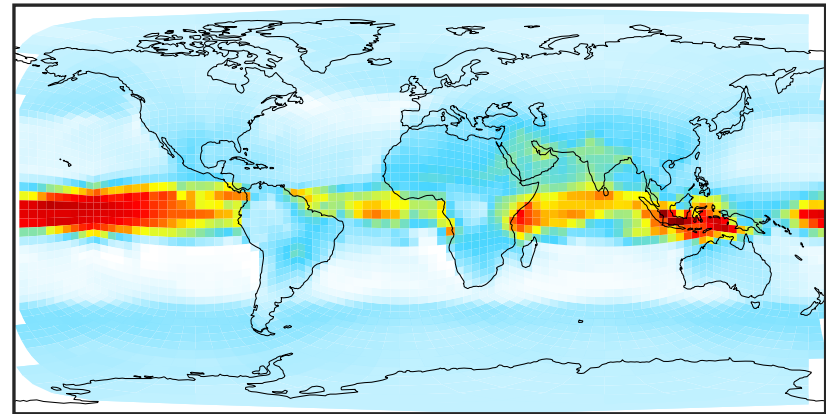
SpeciesConcVV_MENO3 (Oct2019)

14.3.0-rc.0 (Ref)
4.0x5.0



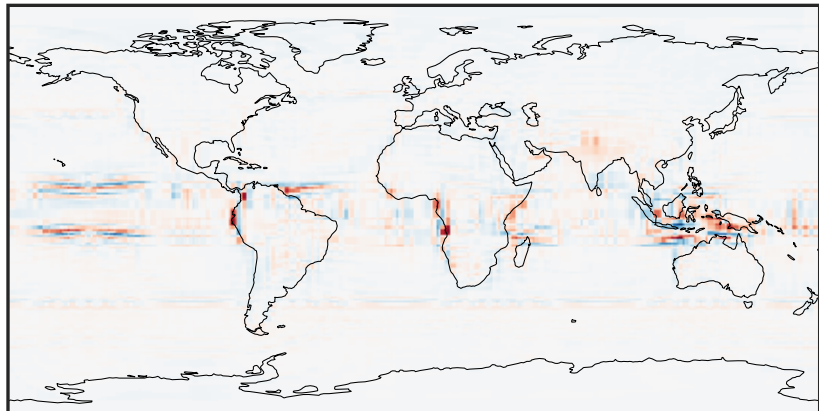
0.006 0.012 0.018 0.024
ppb

14.3.0-rc.0 (Dev)
c24



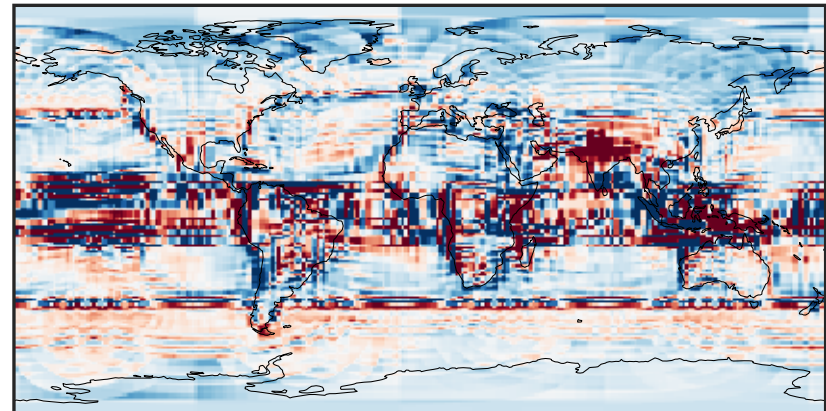
0.006 0.012 0.018 0.024
ppb

Difference (1x1.25)
Dev - Ref, Dynamic Range



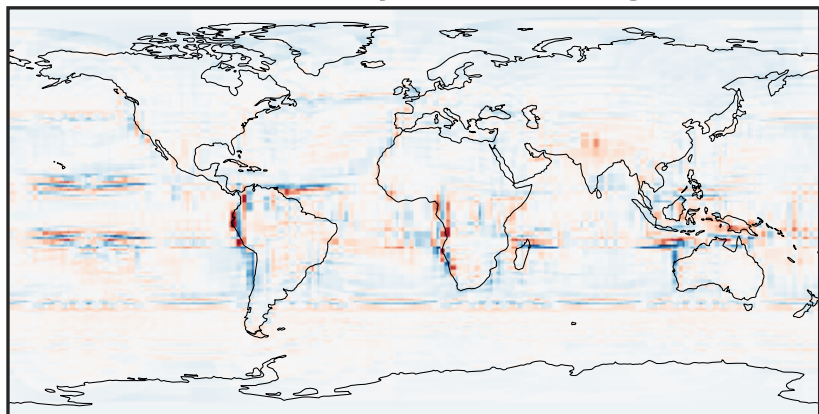
-0.004 0.000 0.004
ppb

Difference (1x1.25)
Dev - Ref, Restricted Range [5%,95%]



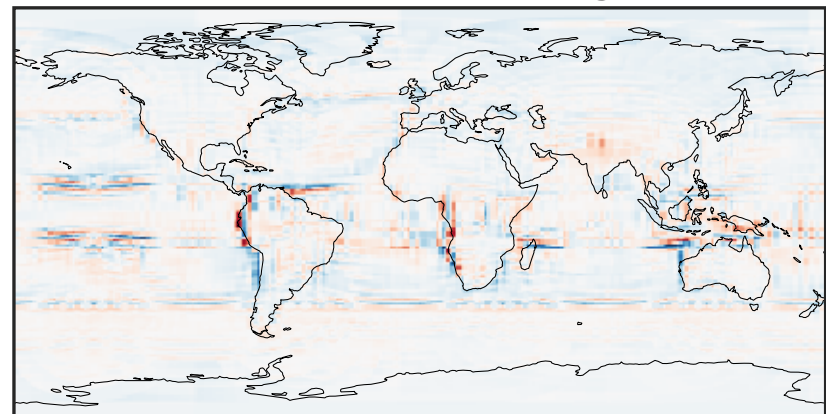
-0.0003 0.0000 0.0003
ppb

Ratio (1x1.25)
Dev/Ref, Dynamic Range



0.520 0.760 1.000 1.461 1.922
unitless

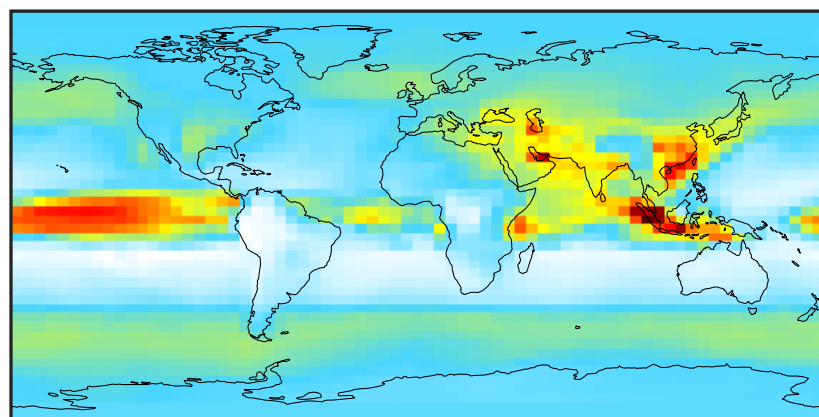
Ratio (1x1.25)
Dev/Ref, Fixed Range



0.50 0.75 1.00 1.50 2.00
unitless

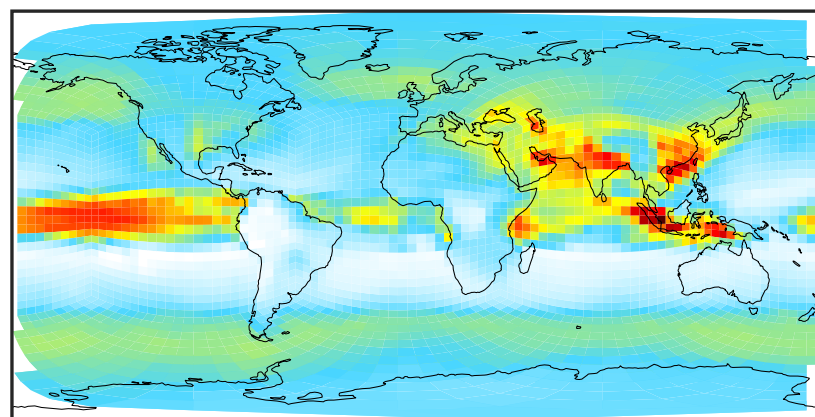
SpeciesConcVV_ETNO3 (Oct2019)

14.3.0-rc.0 (Ref)
4.0x5.0



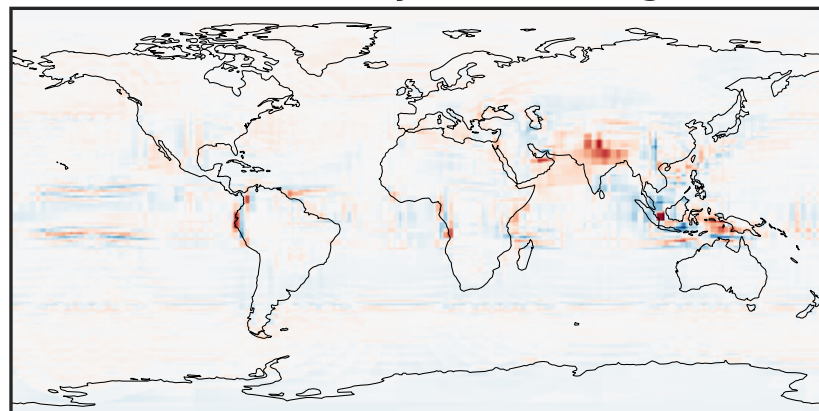
0.0025 0.0050 0.0075
ppb

14.3.0-rc.0 (Dev)
c24



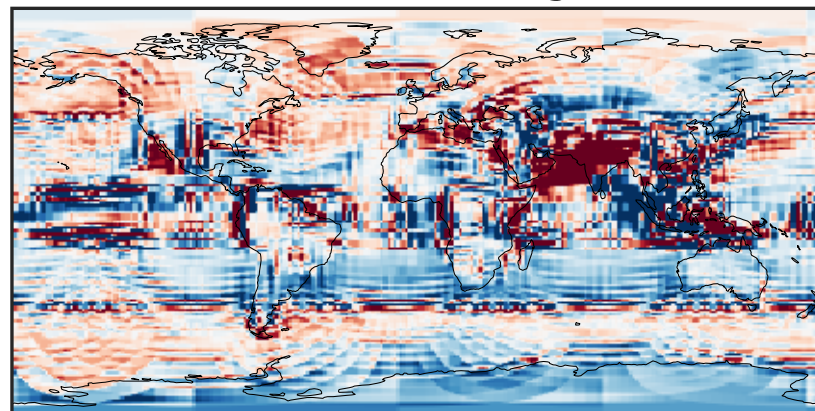
0.0025 0.0050 0.0075
ppb

Difference (1x1.25)
Dev - Ref, Dynamic Range



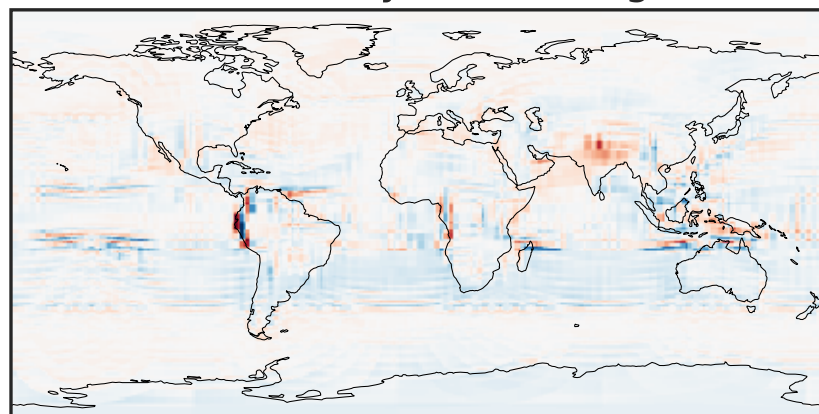
-0.002 0.000 0.002
ppb

Difference (1x1.25)
Dev - Ref, Restricted Range [5%,95%]



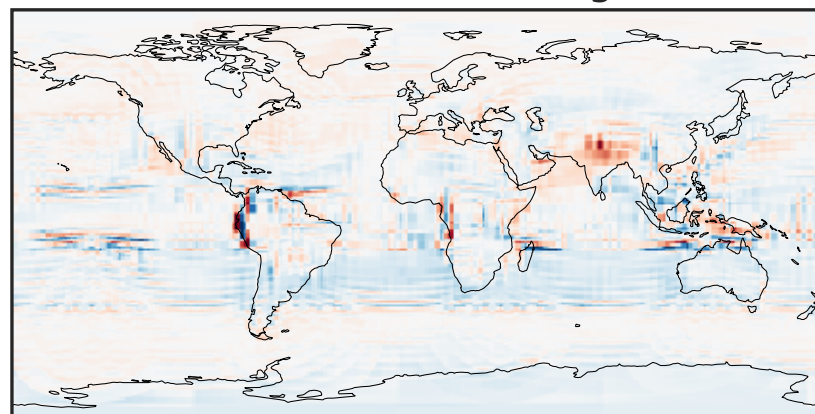
-0.00015 0.00000 0.00015
ppb

Ratio (1x1.25)
Dev/Ref, Dynamic Range



0.425 0.713 1.000 1.676 2.351
unitless

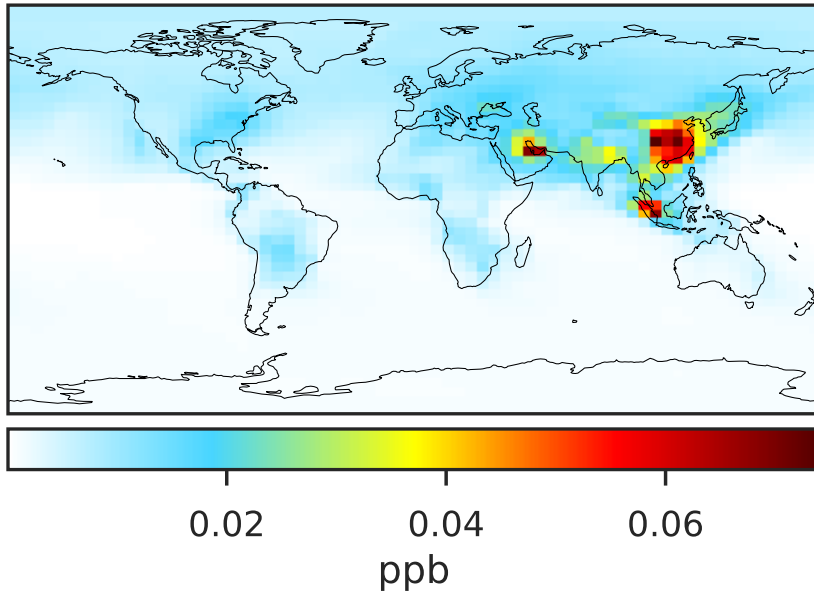
Ratio (1x1.25)
Dev/Ref, Fixed Range



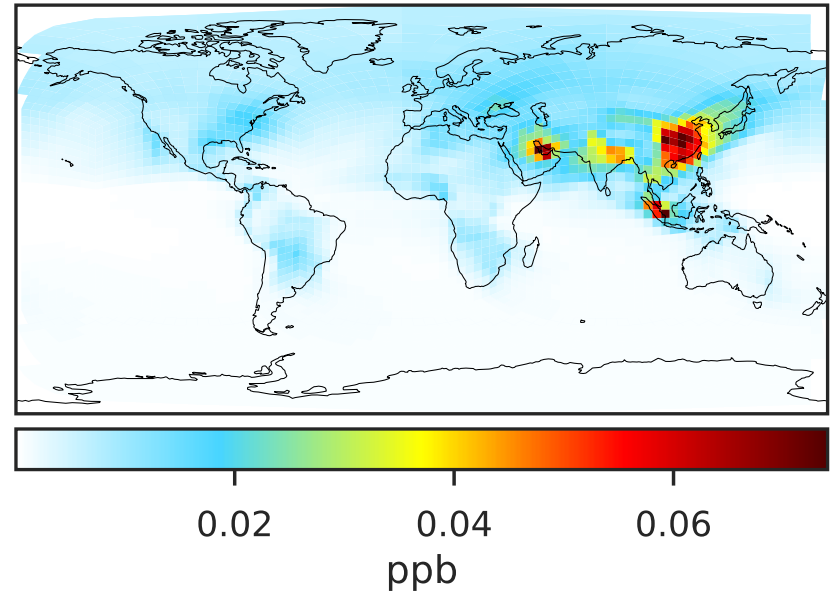
0.50 0.75 1.00 1.50 2.00
unitless

SpeciesConcVV_IPRNO3 (Oct2019)

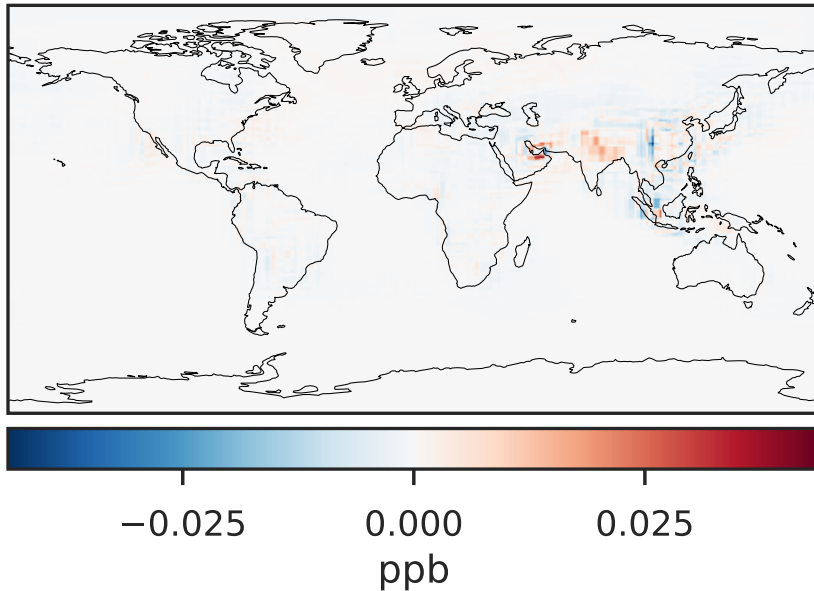
14.3.0-rc.0 (Ref)
4.0x5.0



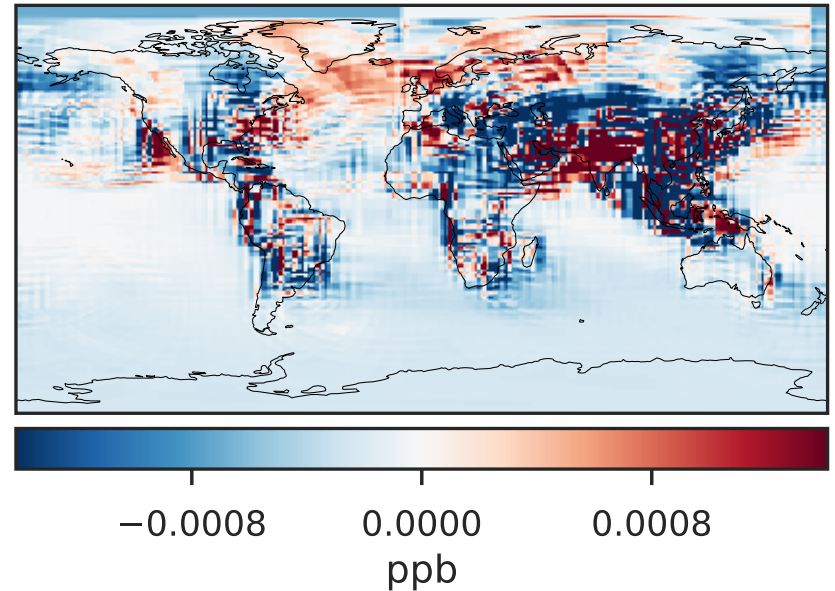
14.3.0-rc.0 (Dev)
c24



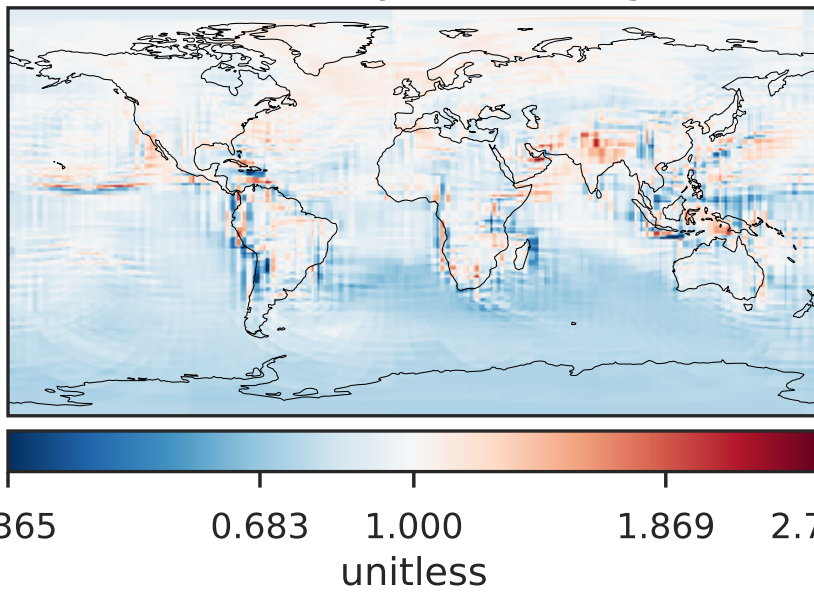
Difference (1x1.25)
Dev - Ref, Dynamic Range



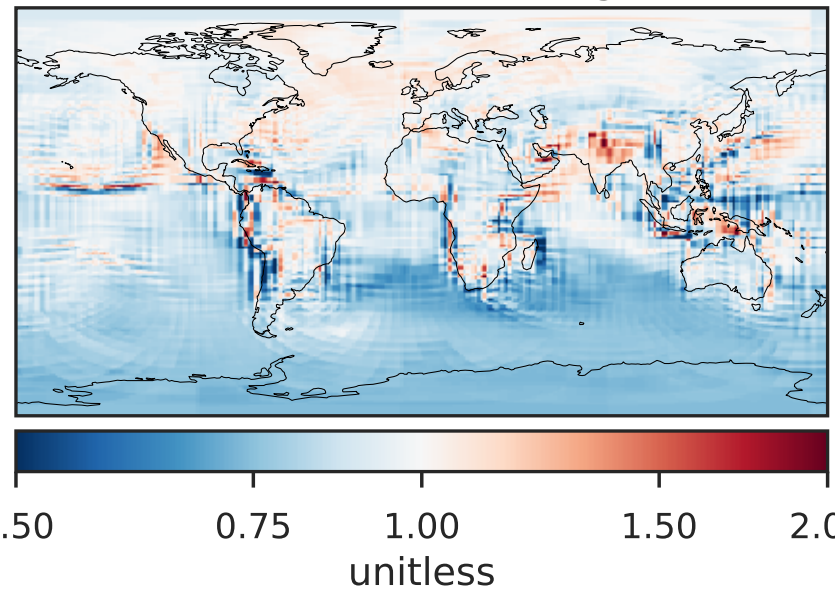
Difference (1x1.25)
Dev - Ref, Restricted Range [5%,95%]



Ratio (1x1.25)
Dev/Ref, Dynamic Range

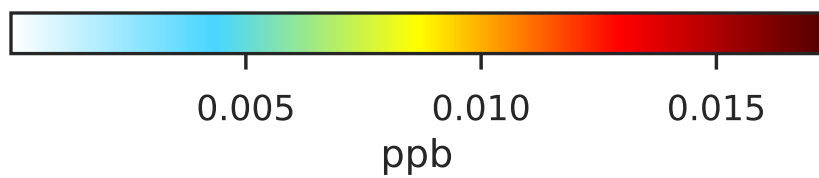
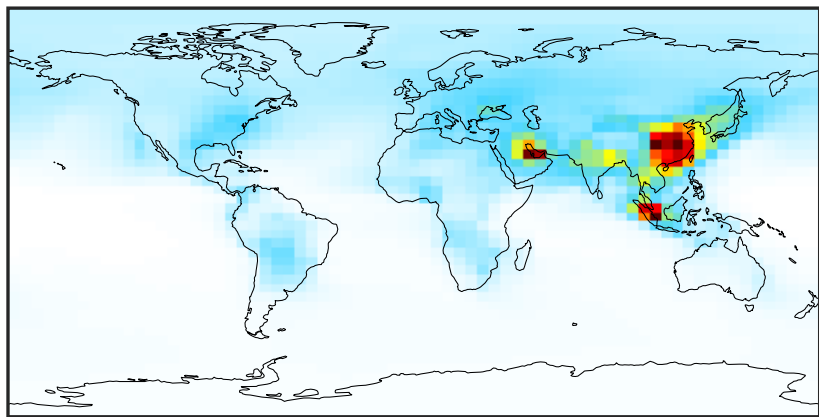


Ratio (1x1.25)
Dev/Ref, Fixed Range

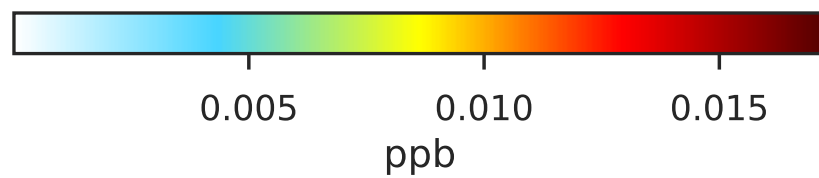
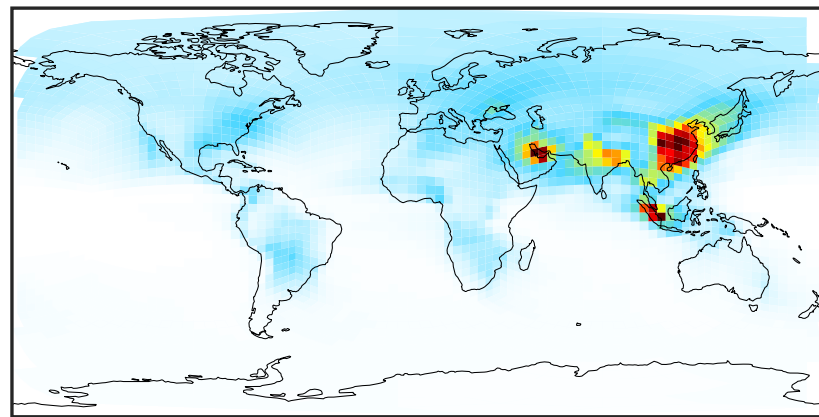


SpeciesConcVV_NPRNO3 (Oct2019)

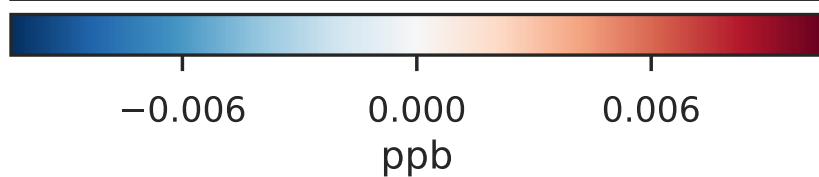
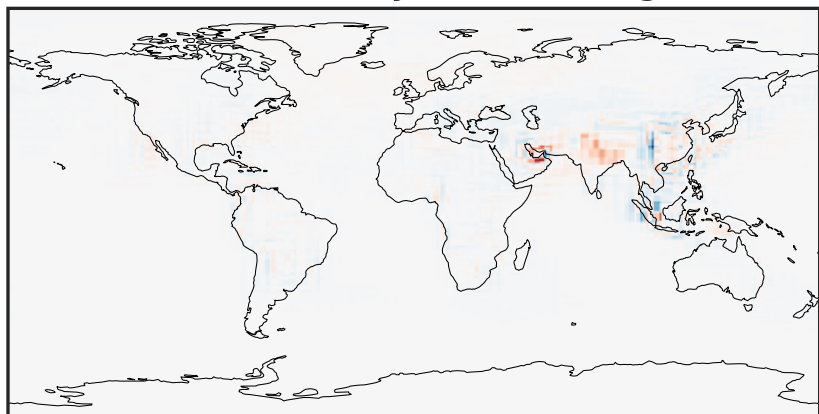
14.3.0-rc.0 (Ref)
4.0x5.0



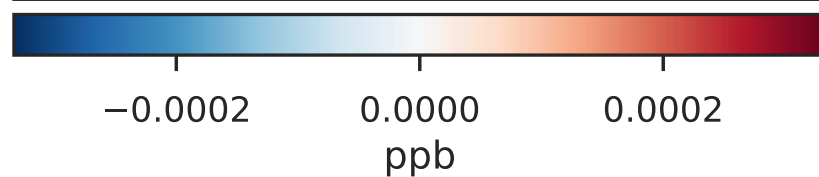
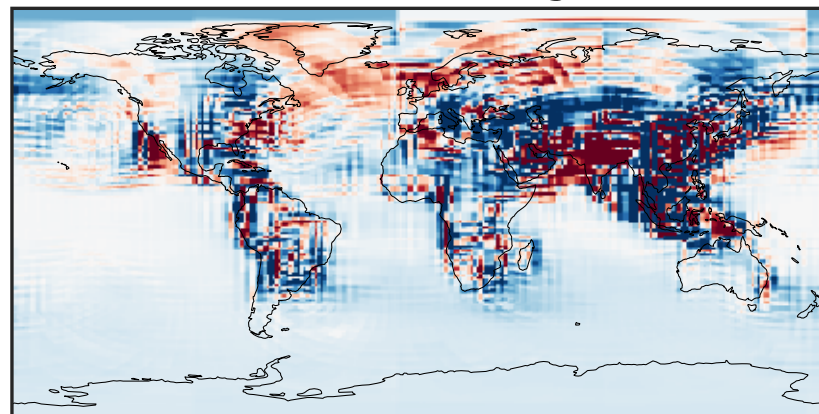
14.3.0-rc.0 (Dev)
c24



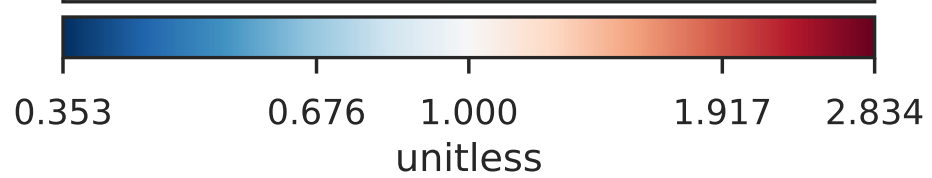
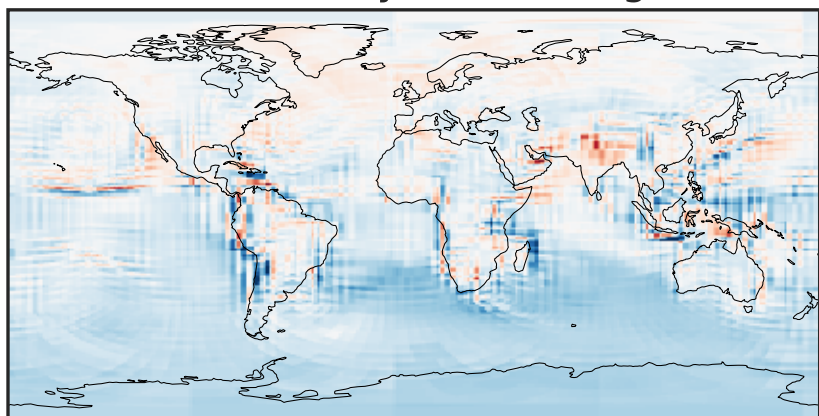
Difference (1x1.25)
Dev - Ref, Dynamic Range



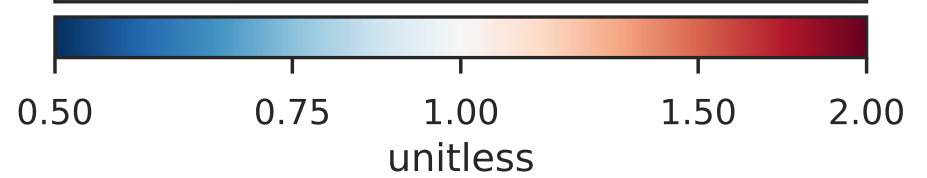
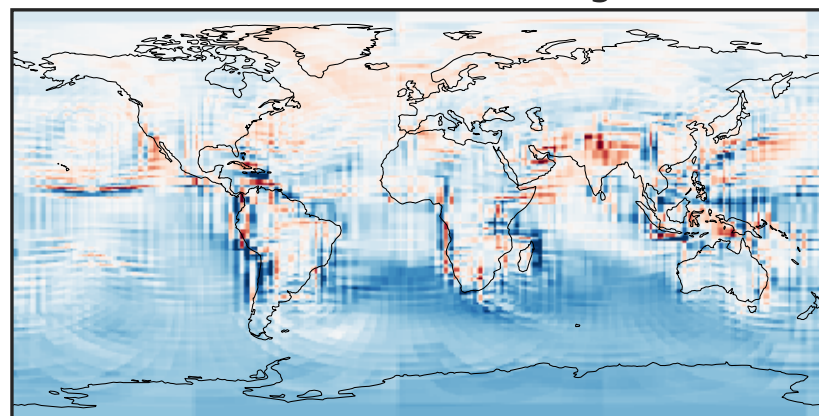
Difference (1x1.25)
Dev - Ref, Restricted Range [5%,95%]



Ratio (1x1.25)
Dev/Ref, Dynamic Range

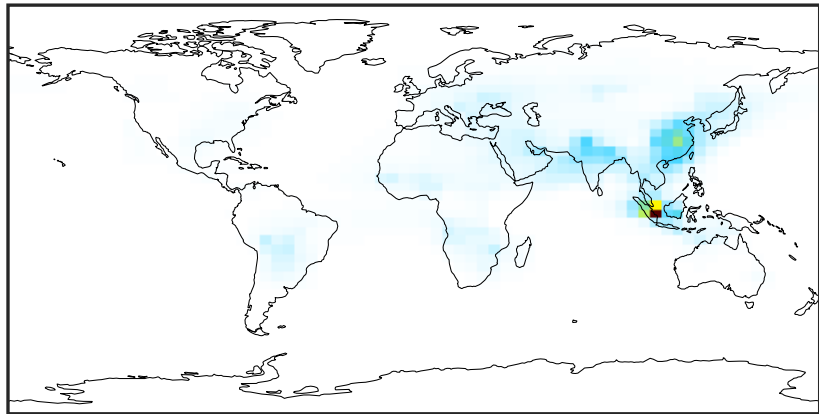


Ratio (1x1.25)
Dev/Ref, Fixed Range



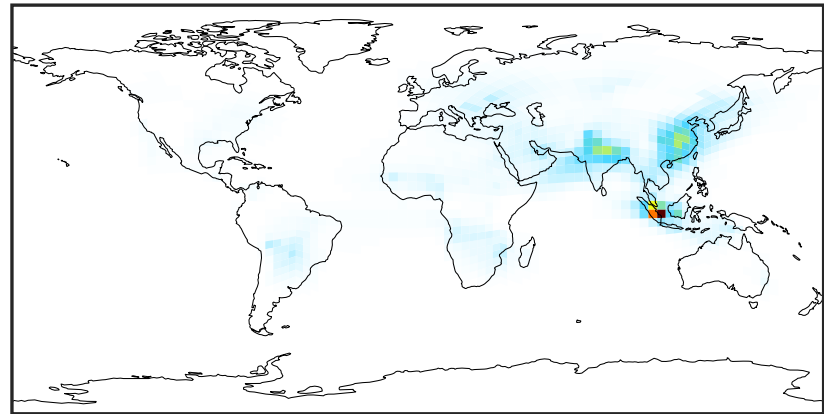
SpeciesConcVV_AONITA (Oct2019)

14.3.0-rc.0 (Ref)
4.0x5.0



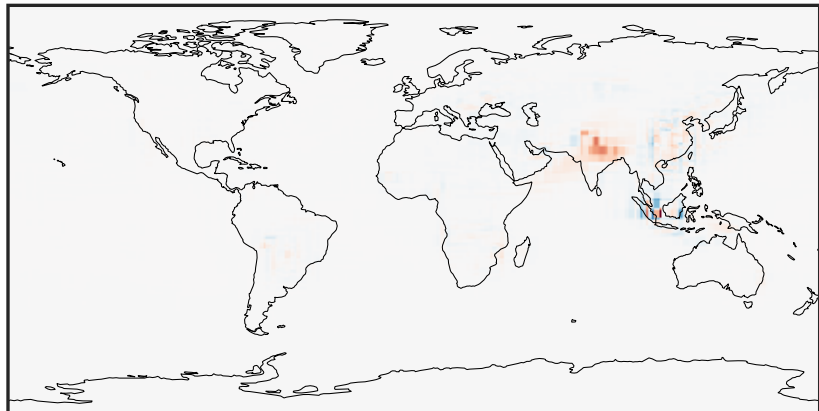
0.0000 0.1399 0.2797 0.4195 0.5593
ppb

14.3.0-rc.0 (Dev)
c24



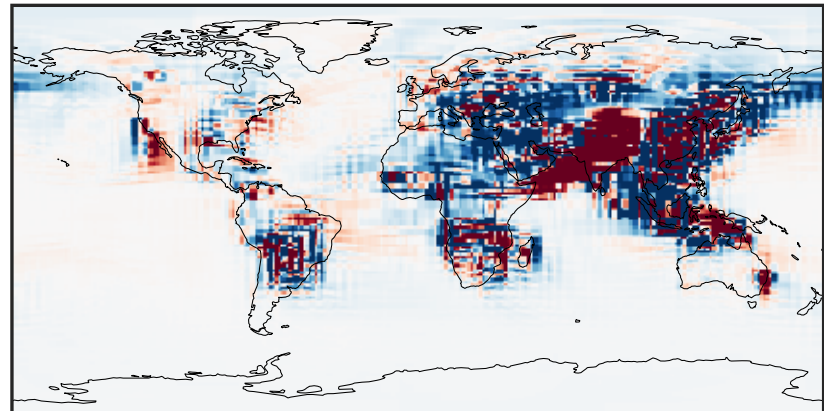
0.0000 0.1399 0.2797 0.4195 0.5593
ppb

Difference (1x1.25)
Dev - Ref, Dynamic Range



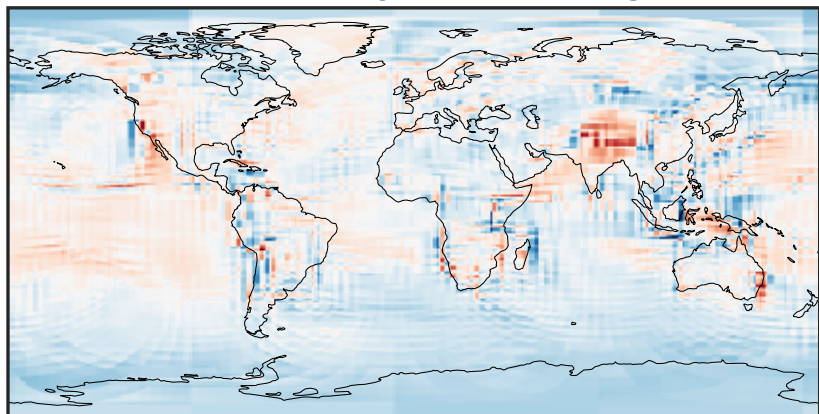
-0.2268 -0.1134 0.0000 0.1134 0.2268
ppb

Difference (1x1.25)
Dev - Ref, Restricted Range [5%,95%]



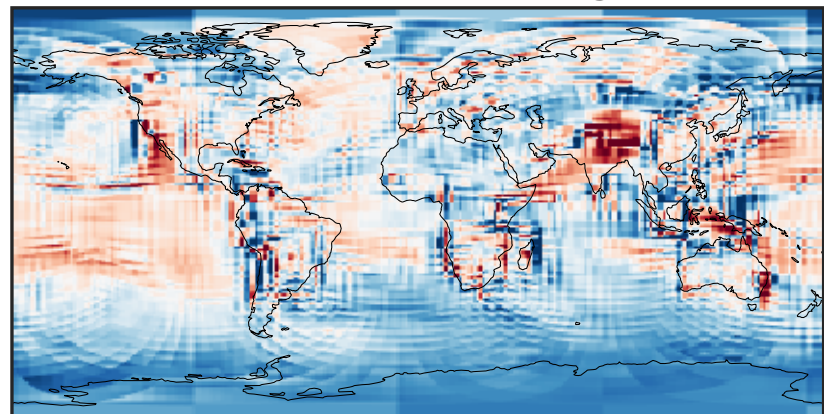
-0.0015 0.0000 0.0015
ppb

Ratio (1x1.25)
Dev/Ref, Dynamic Range



0.214 0.607 1.000 2.840 4.681
unitless

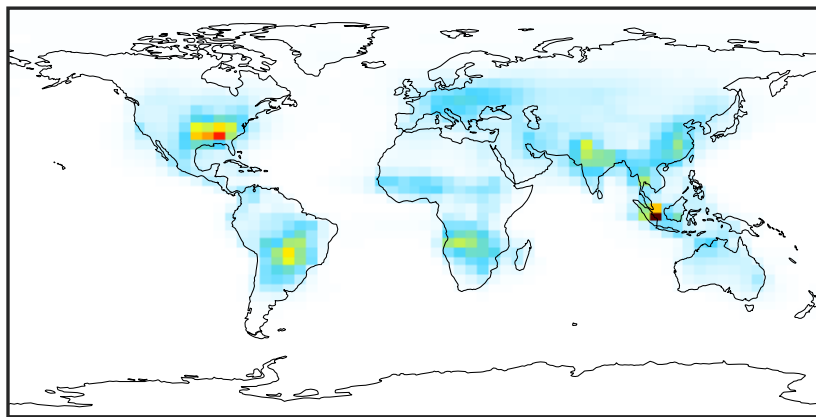
Ratio (1x1.25)
Dev/Ref, Fixed Range



0.50 0.75 1.00 1.50 2.00
unitless

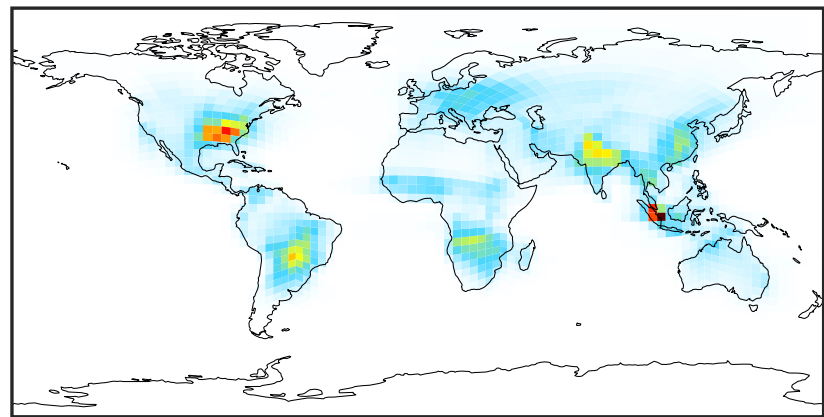
SpeciesConcVV_ETHN (Oct2019)

14.3.0-rc.0 (Ref)
4.0x5.0



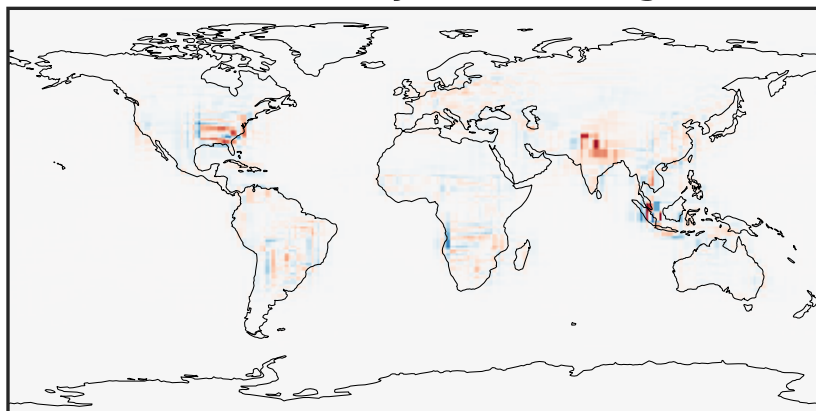
0.0025 0.0050 0.0075
ppb

14.3.0-rc.0 (Dev)
c24



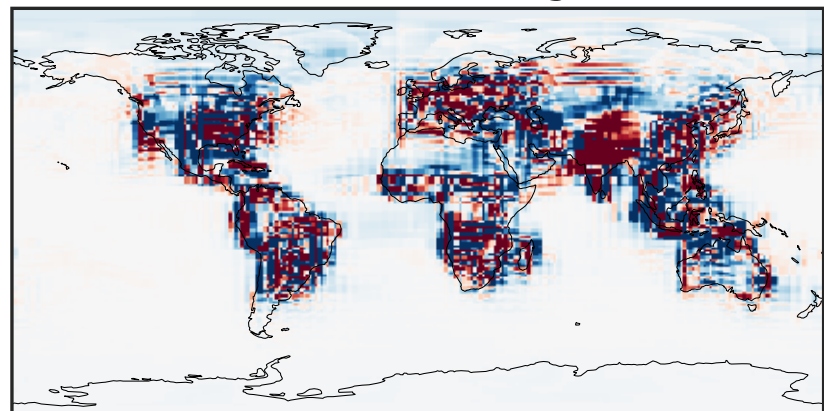
0.0025 0.0050 0.0075
ppb

Difference (1x1.25)
Dev - Ref, Dynamic Range



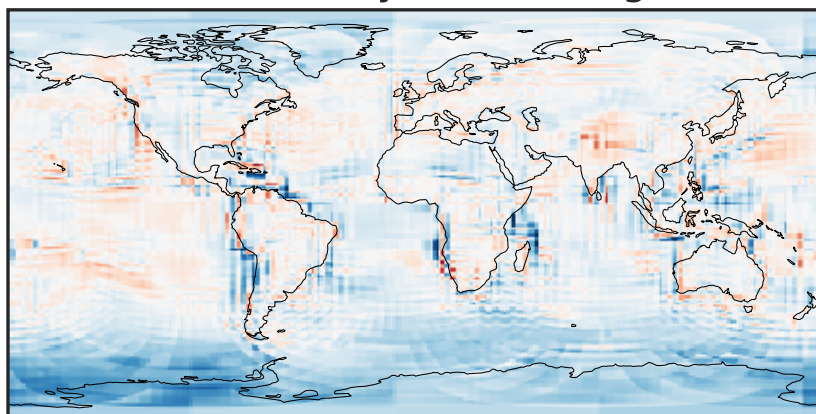
-0.002 0.000 0.002
ppb

Difference (1x1.25)
Dev - Ref, Restricted Range [5%,95%]



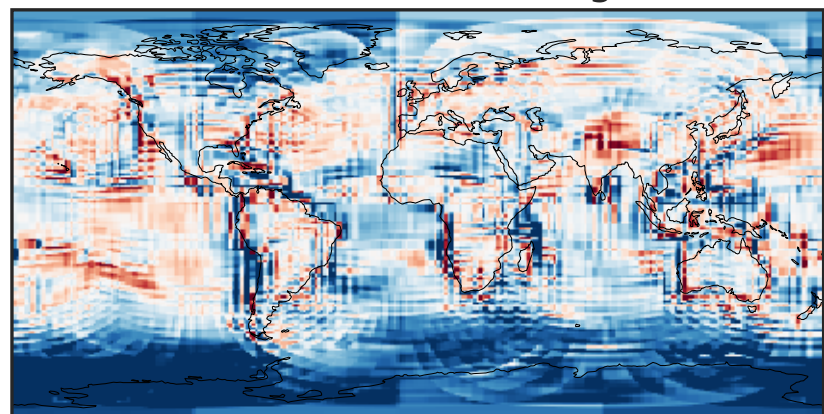
-8 0 8
ppb $1e-5$

Ratio (1x1.25)
Dev/Ref, Dynamic Range



0.147 0.574 1.000 3.892 6.784
unitless

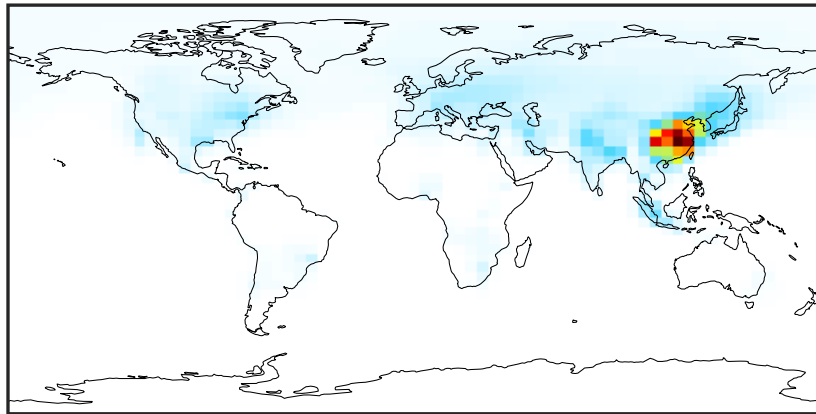
Ratio (1x1.25)
Dev/Ref, Fixed Range



0.50 0.75 1.00 1.50 2.00
unitless

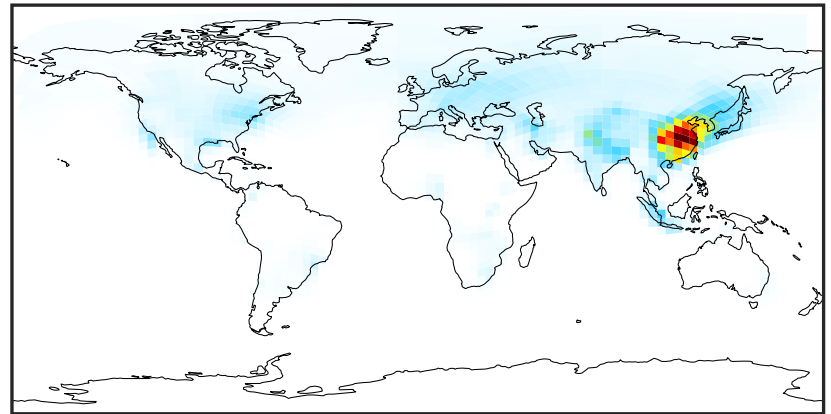
SpeciesConcVV_BZPAN (Oct2019)

14.3.0-rc.0 (Ref)
4.0x5.0



0.0025 0.0050 0.0075
ppb

14.3.0-rc.0 (Dev)
c24



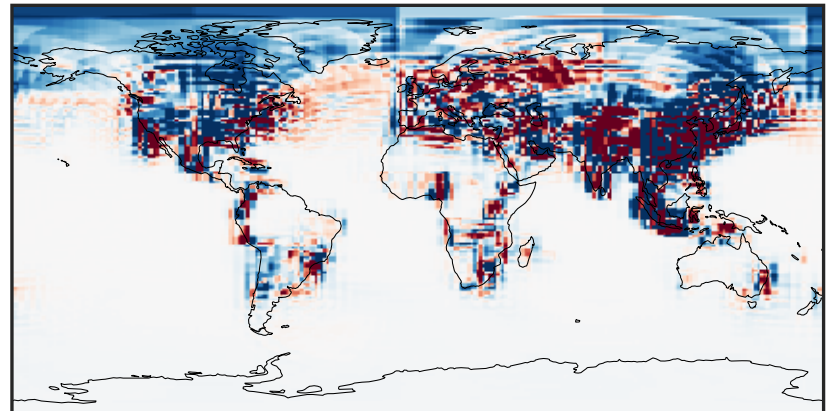
0.0025 0.0050 0.0075
ppb

Difference (1x1.25)
Dev - Ref, Dynamic Range



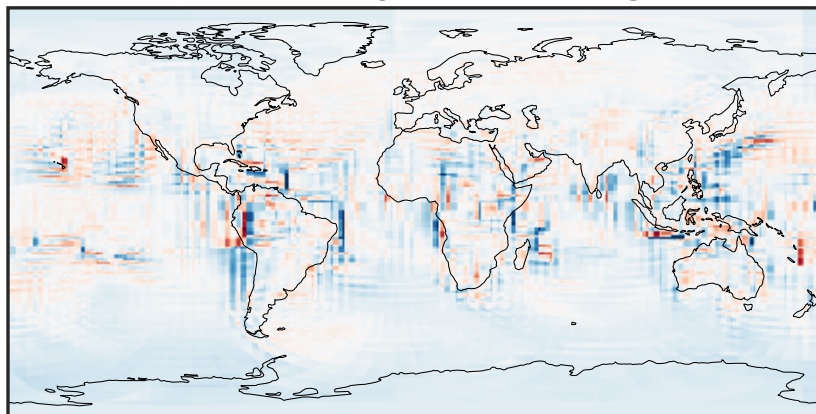
-0.003 0.000 0.003
ppb

Difference (1x1.25)
Dev - Ref, Restricted Range [5%,95%]



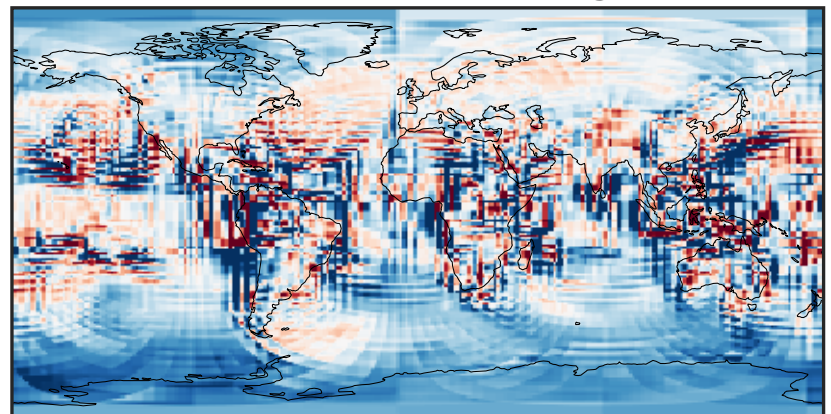
-4 0 4
ppb 1e-5

Ratio (1x1.25)
Dev/Ref, Dynamic Range



1e-01 1 10
unitless

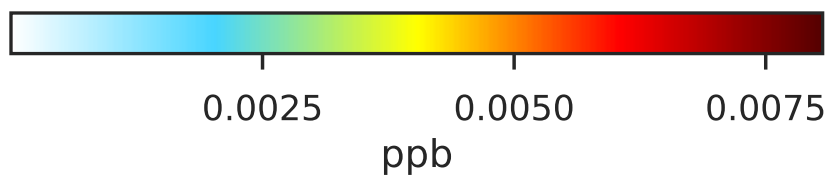
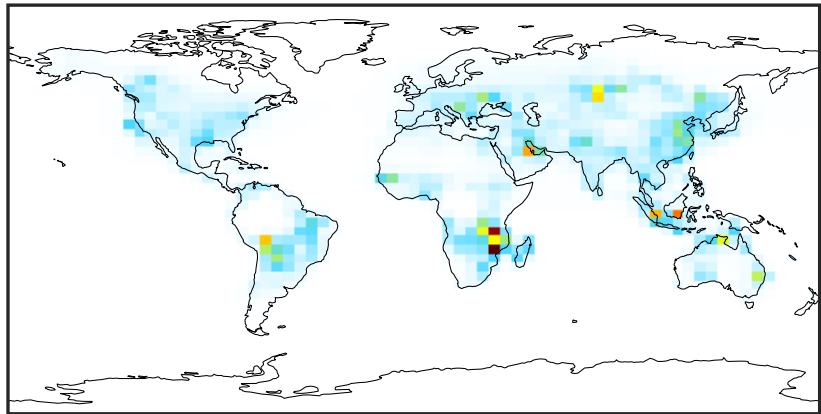
Ratio (1x1.25)
Dev/Ref, Fixed Range



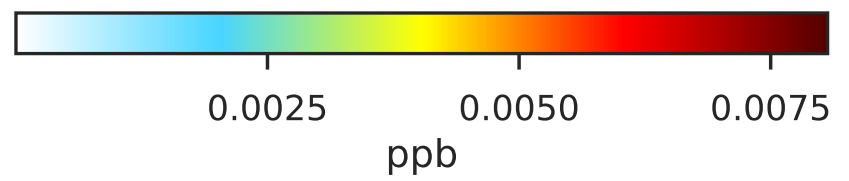
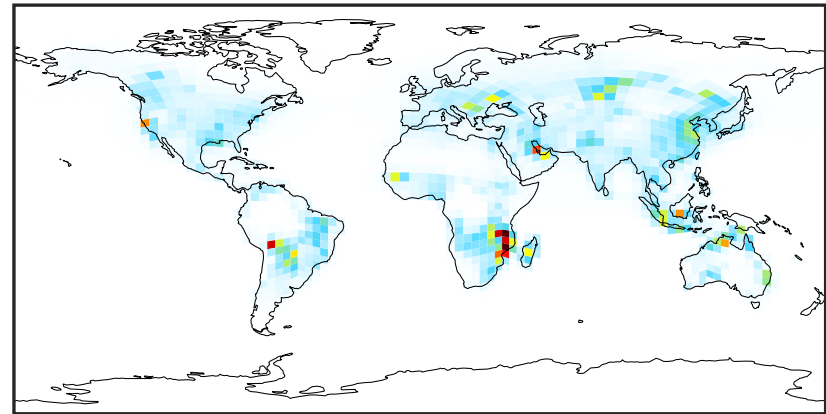
0.50 0.75 1.00 1.50 2.00
unitless

SpeciesConcVV_NPHEN (Oct2019)

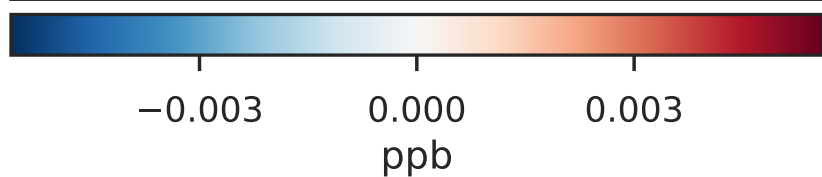
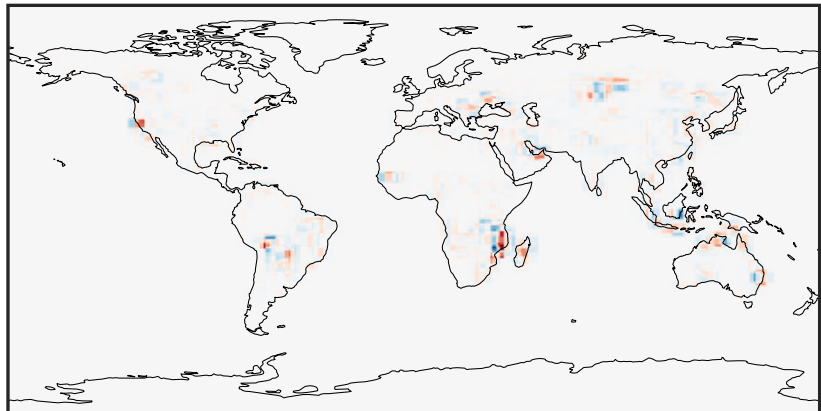
14.3.0-rc.0 (Ref)
4.0x5.0



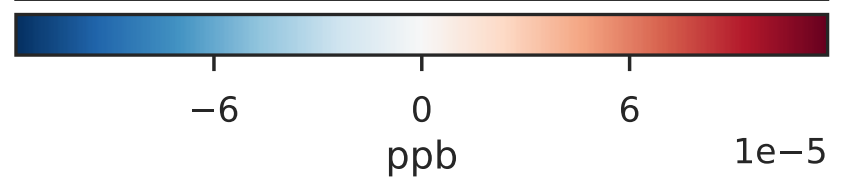
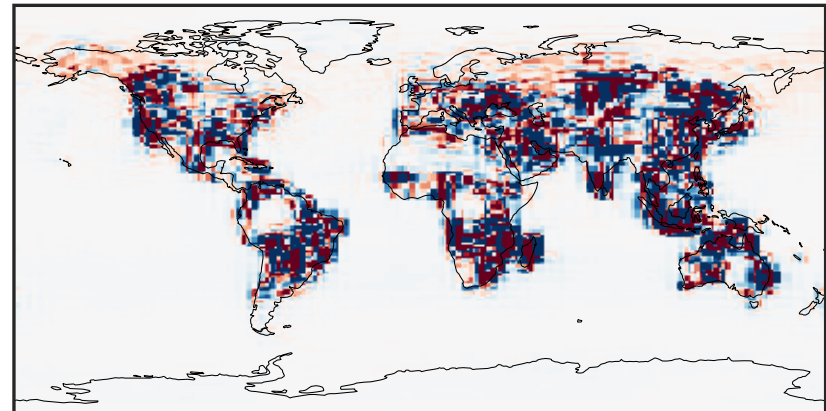
14.3.0-rc.0 (Dev)
c24



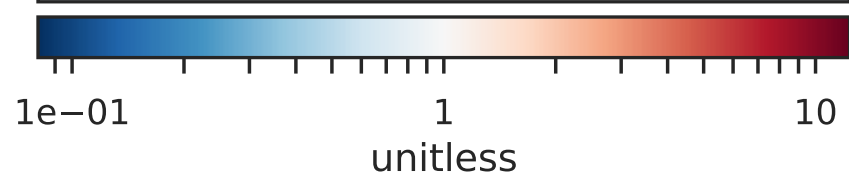
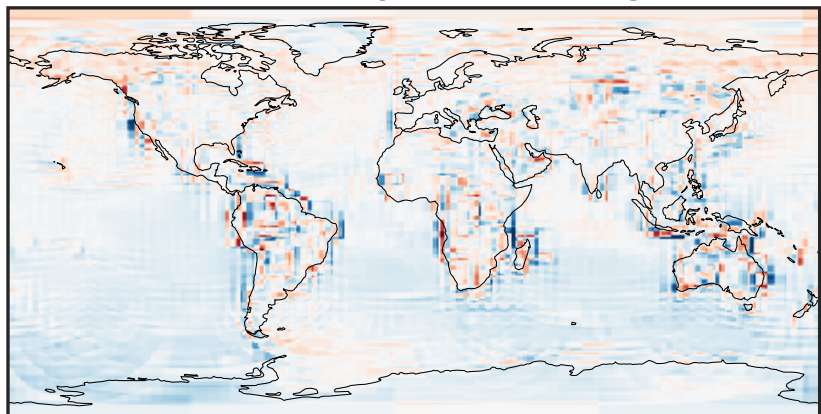
Difference (1x1.25)
Dev - Ref, Dynamic Range



Difference (1x1.25)
Dev - Ref, Restricted Range [5%,95%]



Ratio (1x1.25)
Dev/Ref, Dynamic Range



Ratio (1x1.25)
Dev/Ref, Fixed Range

