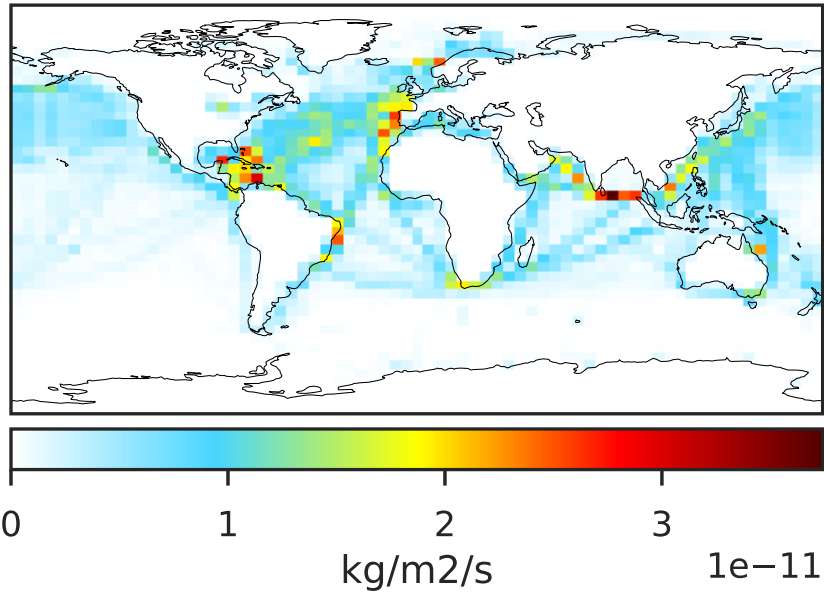
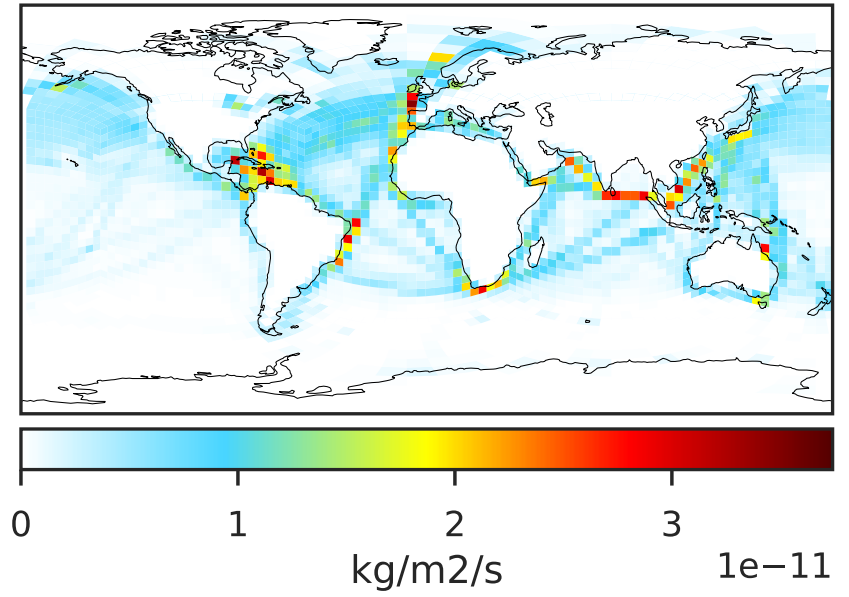


EmisO3_Ship (AnnualMean)

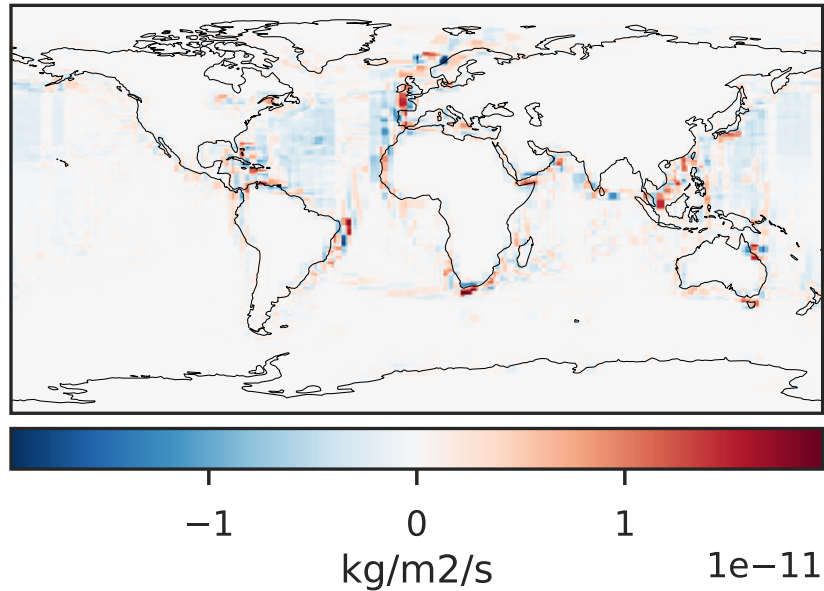
14.3.0-rc.0 (Ref)
4.0x5.0



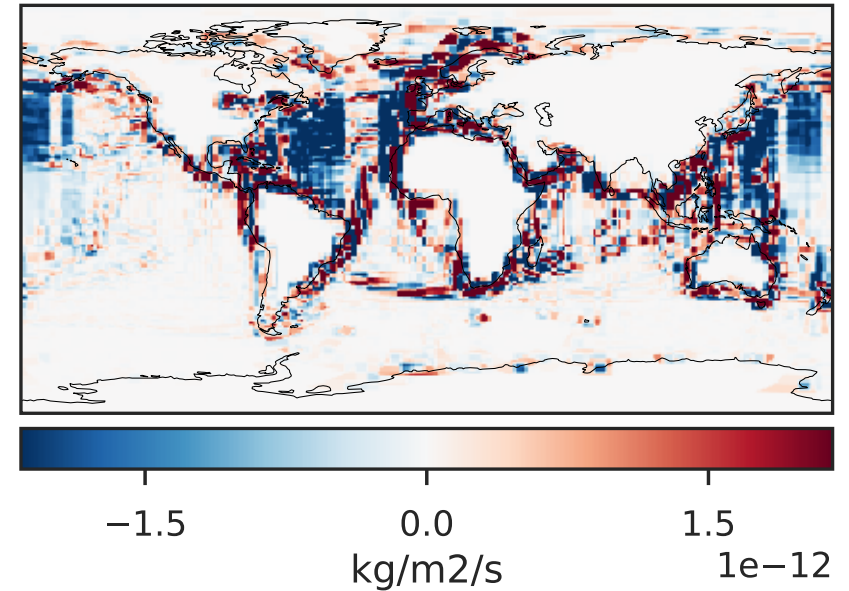
14.3.0-rc.0 (Dev)
c24



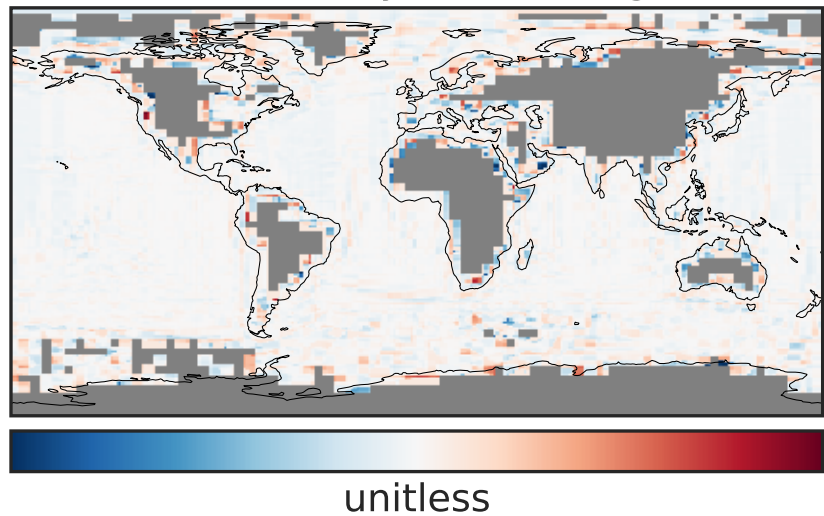
Difference (1x1.25)
Dev - Ref, Dynamic Range



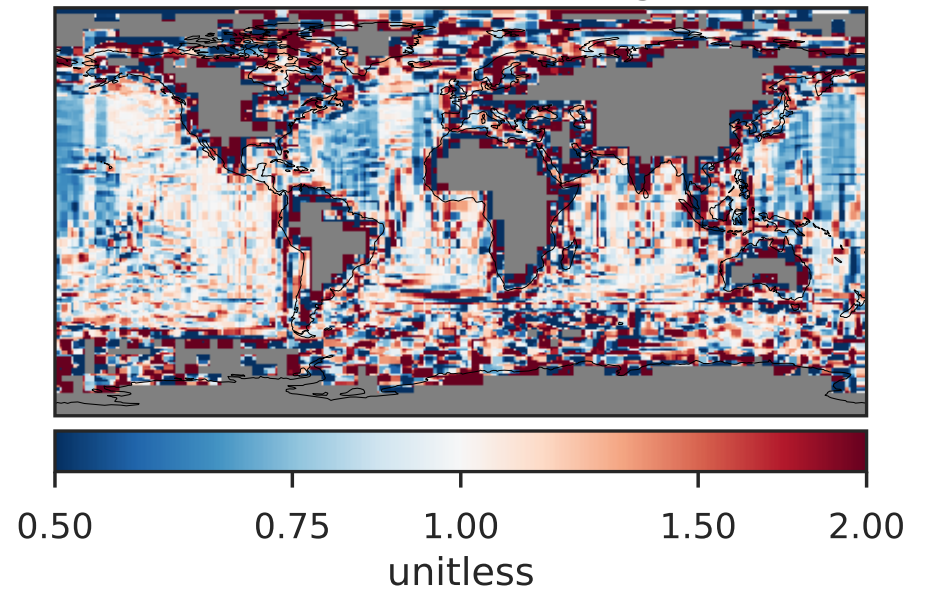
Difference (1x1.25)
Dev - Ref, Restricted Range [5%,95%]



Ratio (1x1.25)
Dev/Ref, Dynamic Range

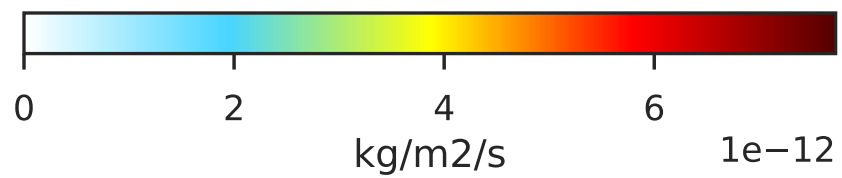
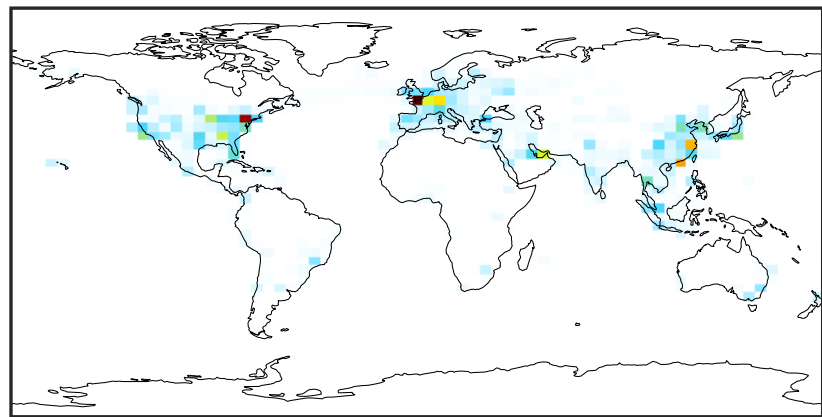


Ratio (1x1.25)
Dev/Ref, Fixed Range

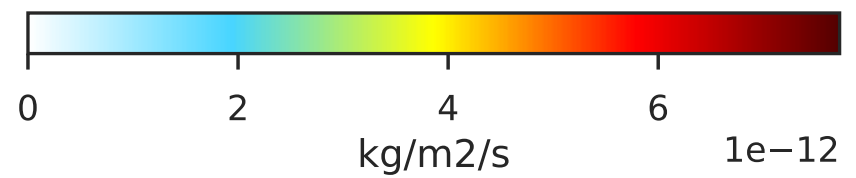
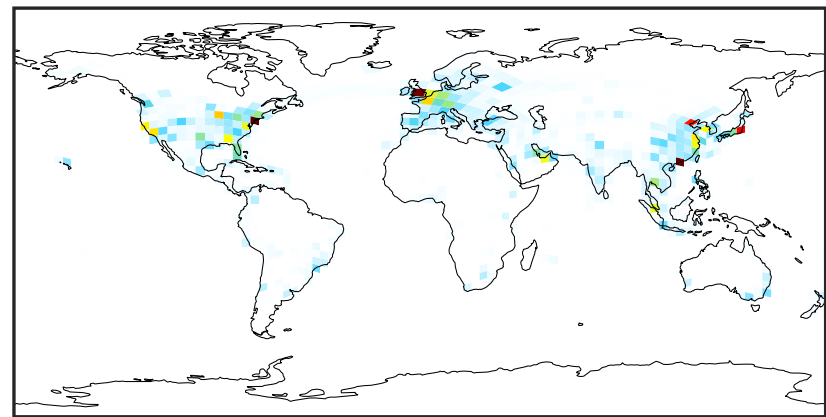


EmisCO_Aircraft (AnnualMean)

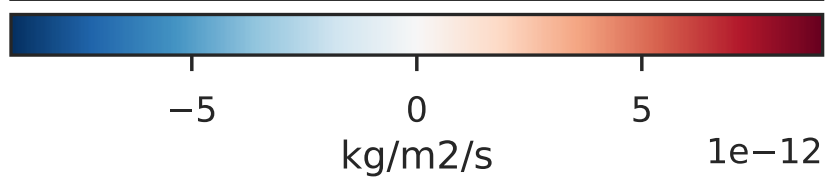
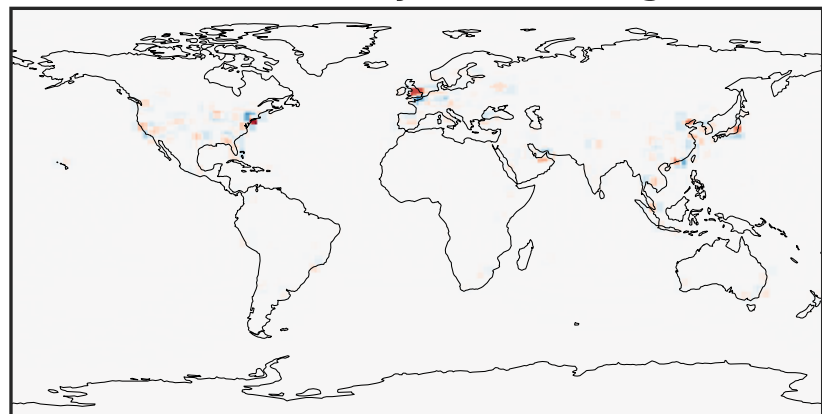
14.3.0-rc.0 (Ref)
4.0x5.0



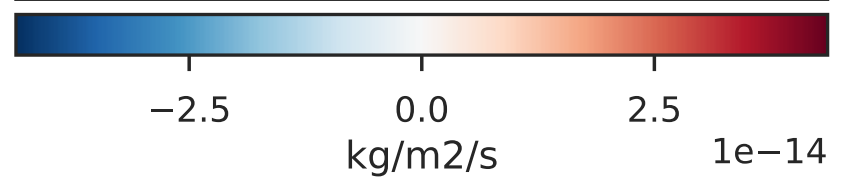
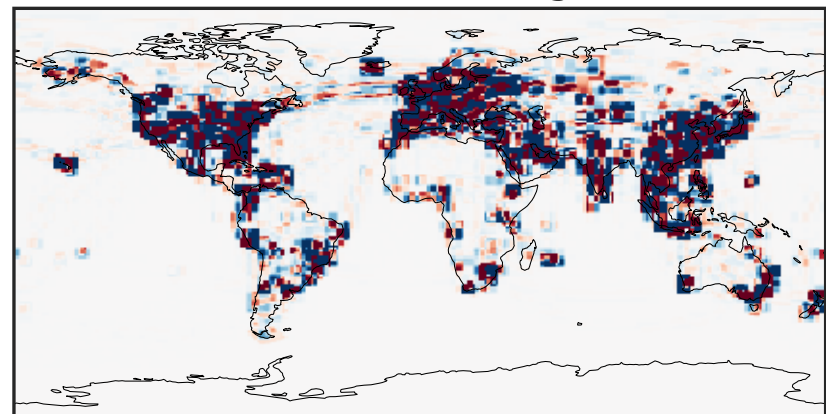
14.3.0-rc.0 (Dev)
c24



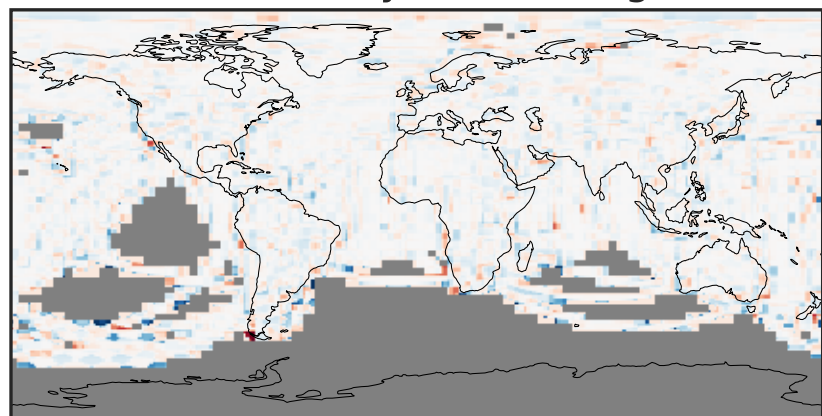
Difference (1x1.25)
Dev - Ref, Dynamic Range



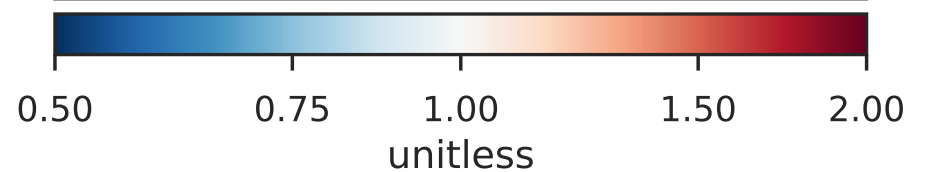
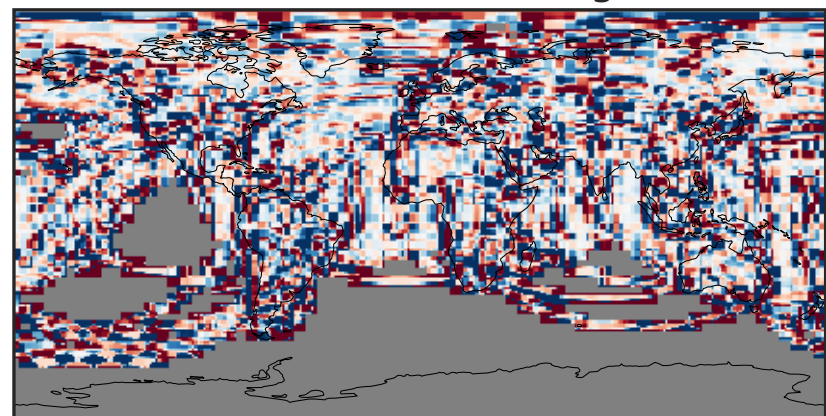
Difference (1x1.25)
Dev - Ref, Restricted Range [5%,95%]



Ratio (1x1.25)
Dev/Ref, Dynamic Range

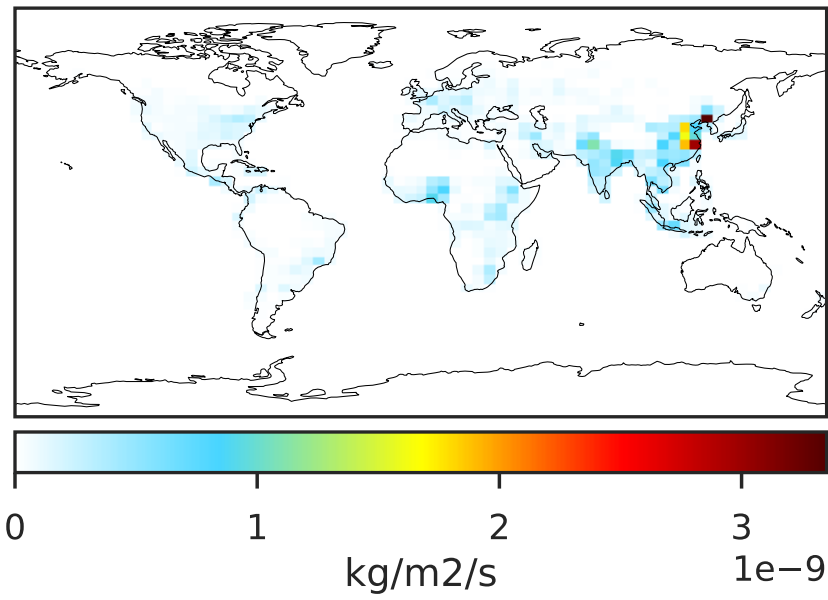


Ratio (1x1.25)
Dev/Ref, Fixed Range

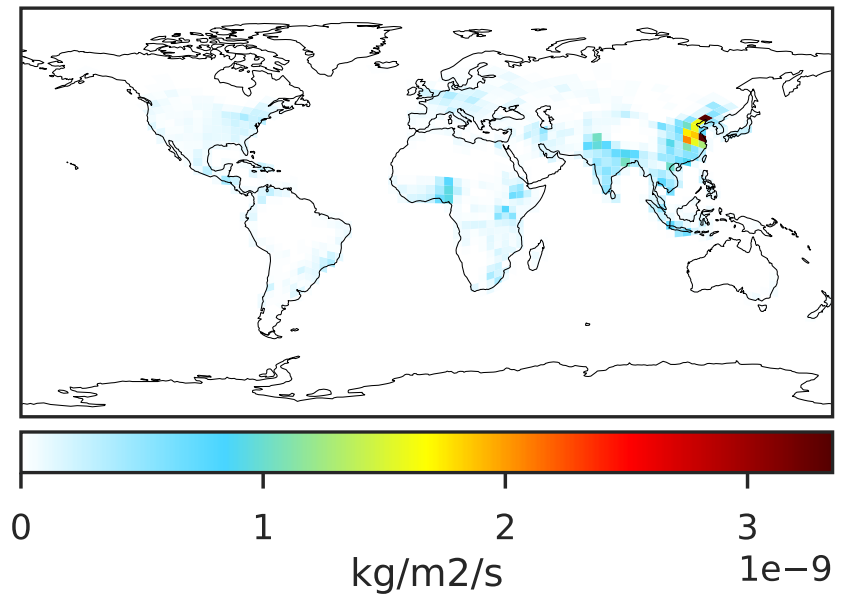


EmisCO_Anthro (AnnualMean)

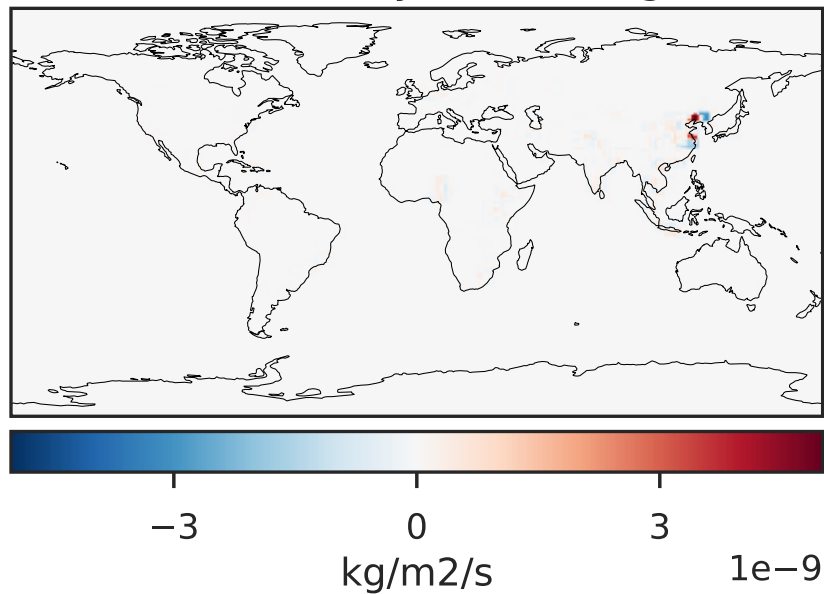
14.3.0-rc.0 (Ref)
4.0x5.0



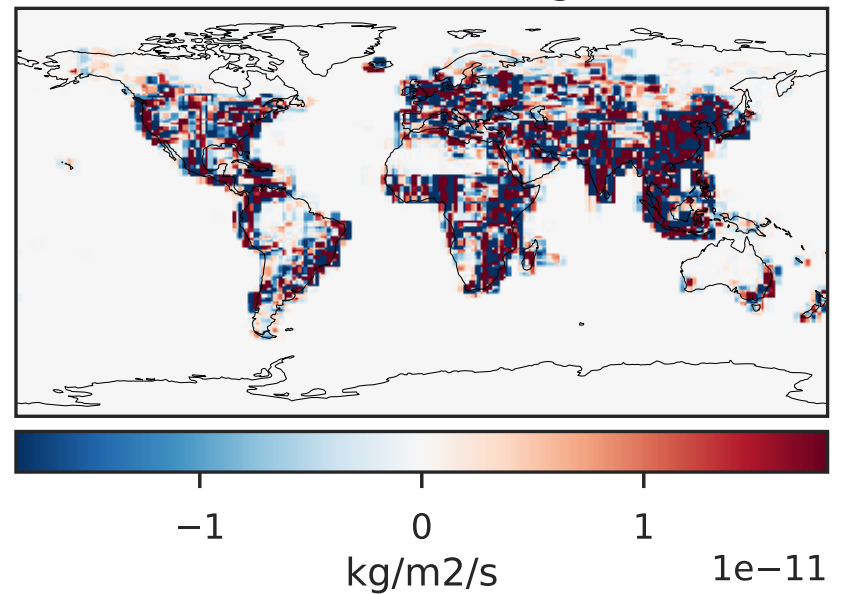
14.3.0-rc.0 (Dev)
c24



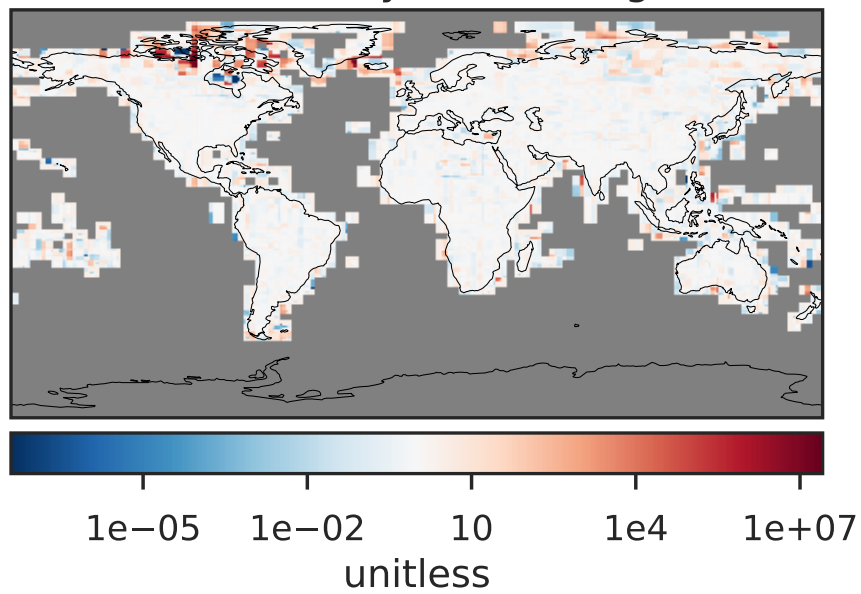
Difference (1x1.25)
Dev - Ref, Dynamic Range



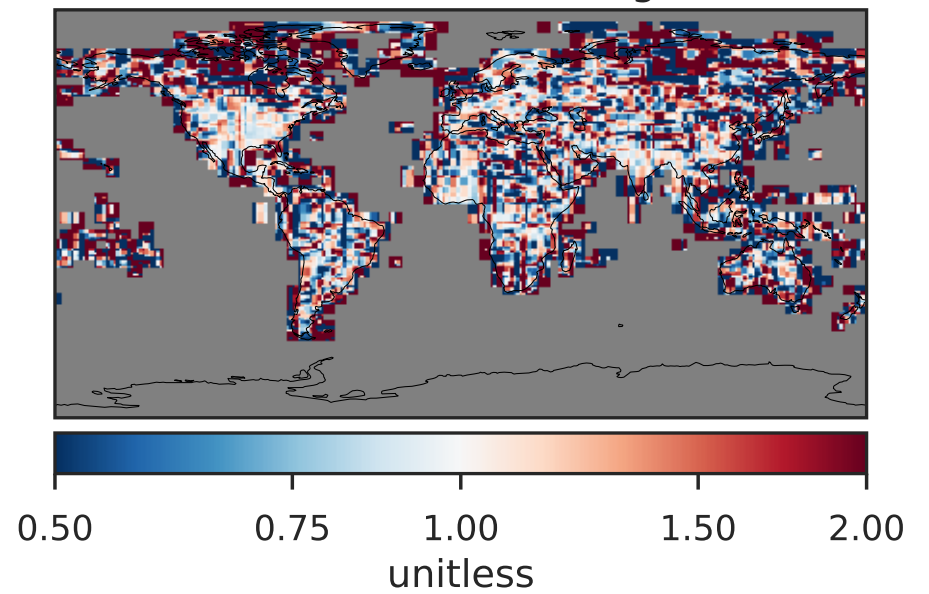
Difference (1x1.25)
Dev - Ref, Restricted Range [5%,95%]



Ratio (1x1.25)
Dev/Ref, Dynamic Range

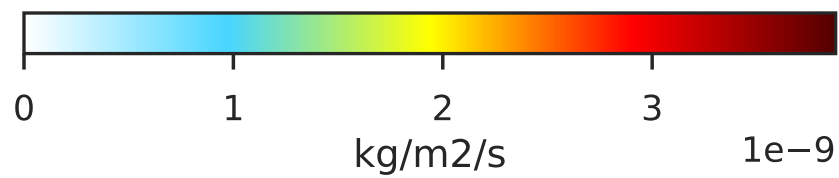
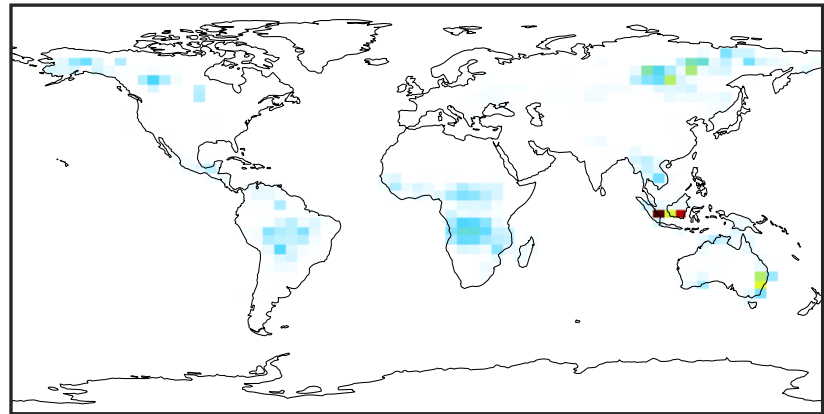


Ratio (1x1.25)
Dev/Ref, Fixed Range

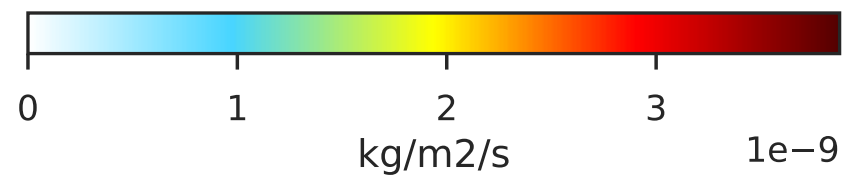
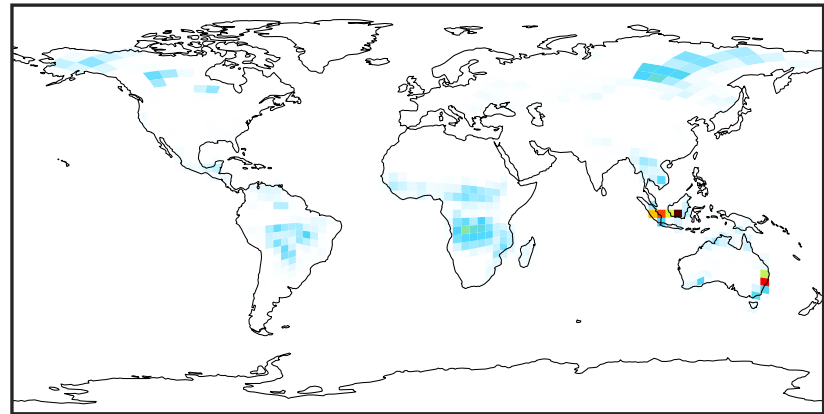


EmisCO_BioBurn (AnnualMean)

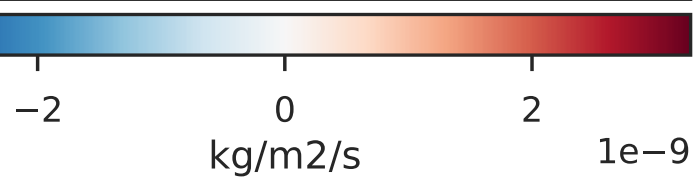
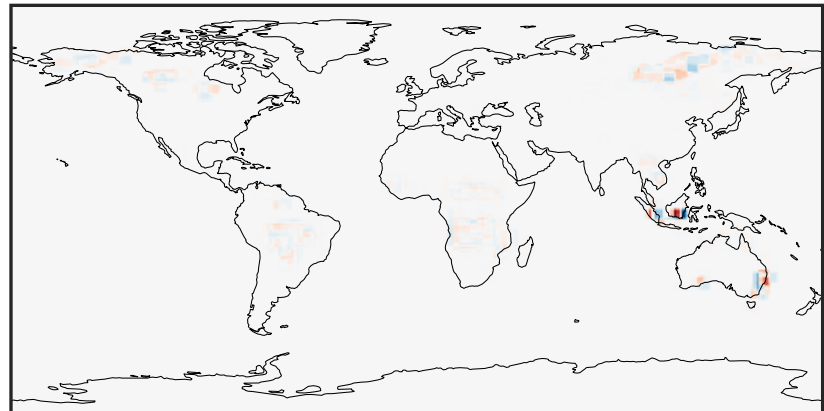
14.3.0-rc.0 (Ref)
4.0x5.0



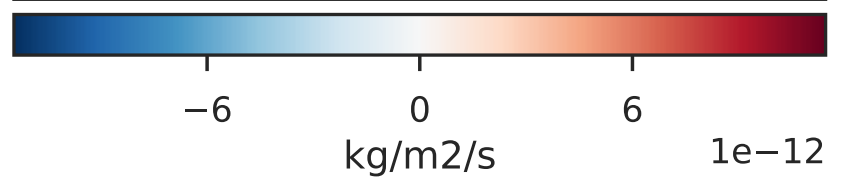
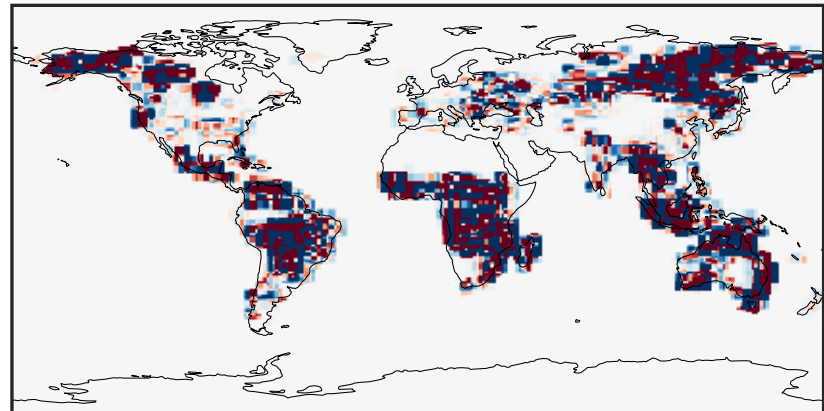
14.3.0-rc.0 (Dev)
c24



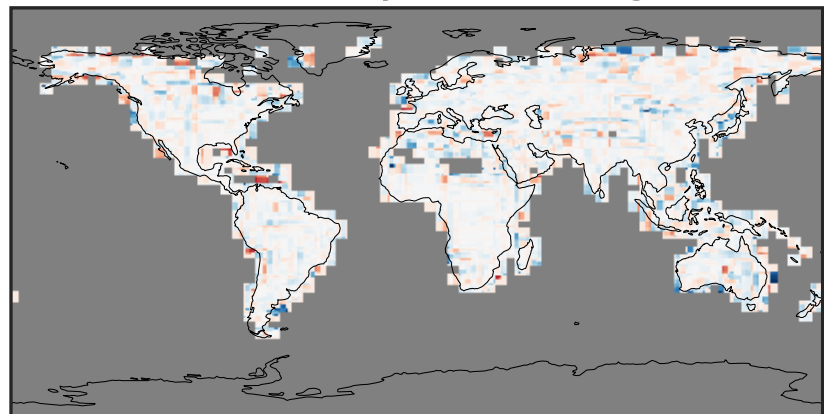
Difference (1x1.25)
Dev - Ref, Dynamic Range



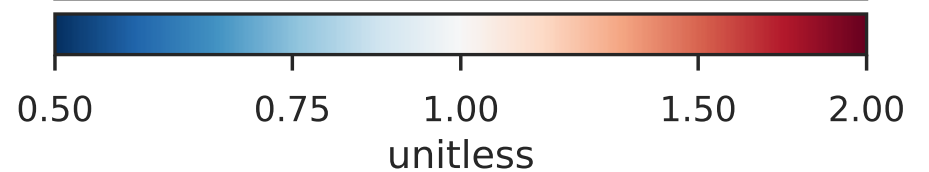
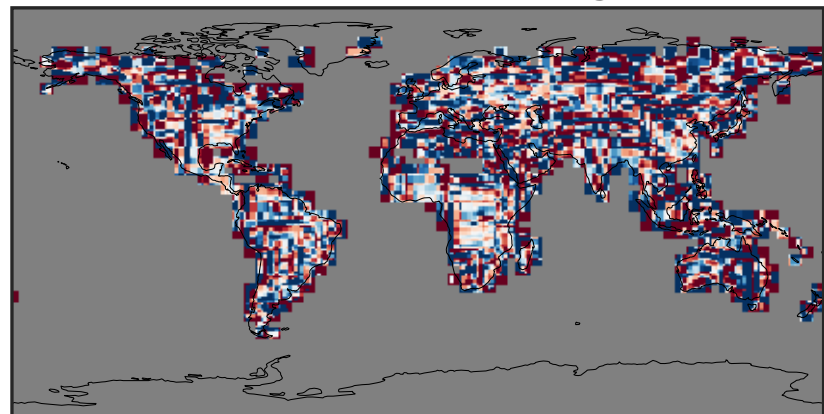
Difference (1x1.25)
Dev - Ref, Restricted Range [5%,95%]



Ratio (1x1.25)
Dev/Ref, Dynamic Range

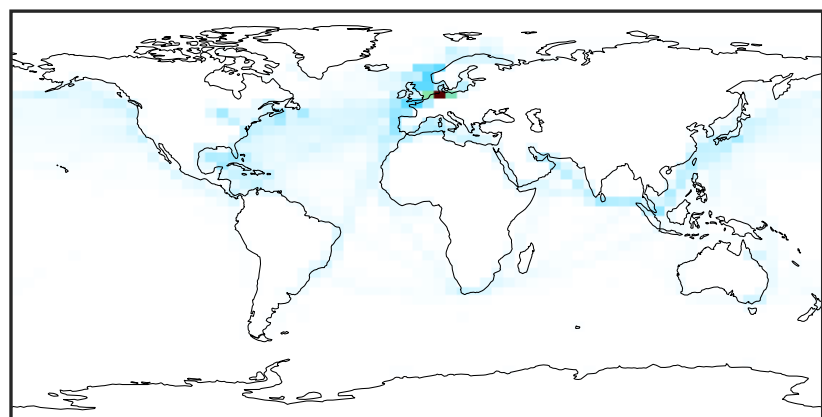


Ratio (1x1.25)
Dev/Ref, Fixed Range



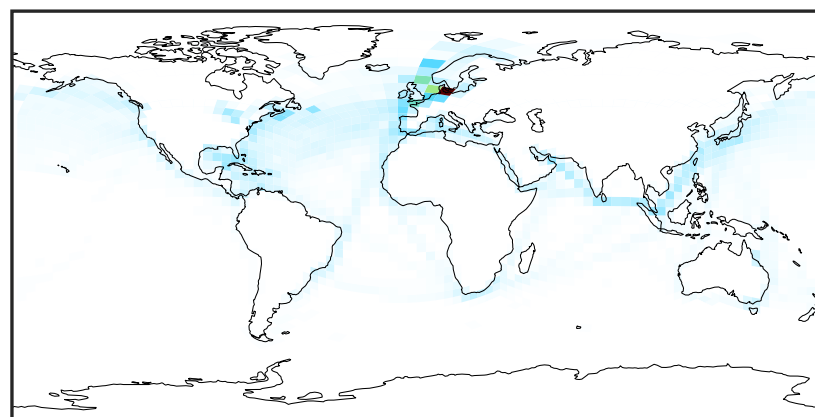
EmisCO_Ship (AnnualMean)

14.3.0-rc.0 (Ref)
4.0x5.0



0.0 1.5 3.0 $1e-12$
kg/m²/s

14.3.0-rc.0 (Dev)
c24



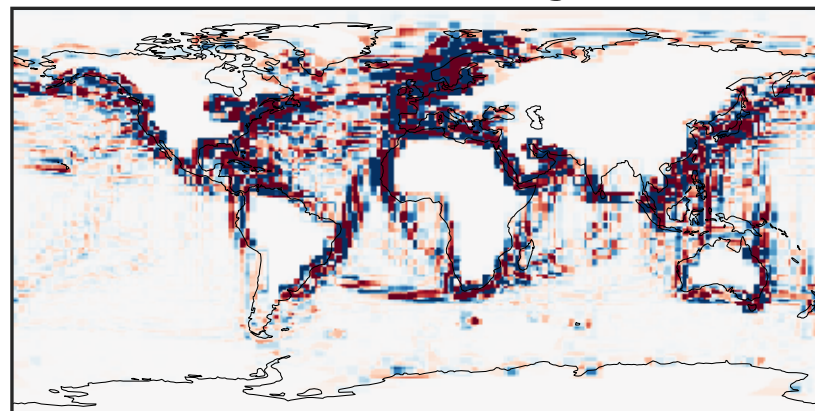
0.0 1.5 3.0 $1e-12$
kg/m²/s

Difference (1x1.25)
Dev - Ref, Dynamic Range



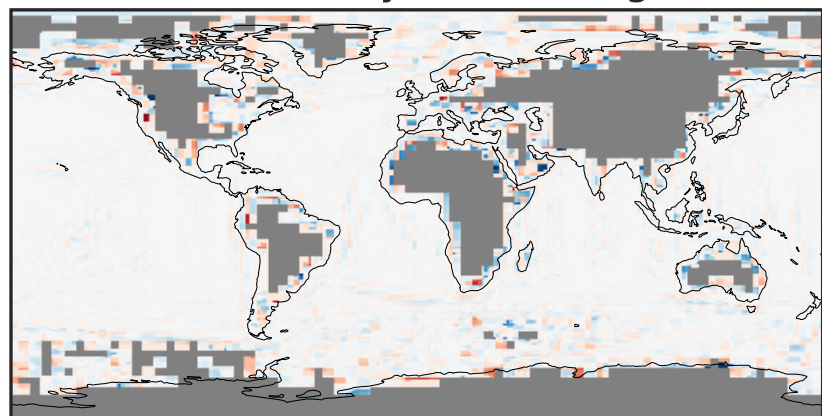
-2 0 2 $1e-12$
kg/m²/s

Difference (1x1.25)
Dev - Ref, Restricted Range [5%,95%]



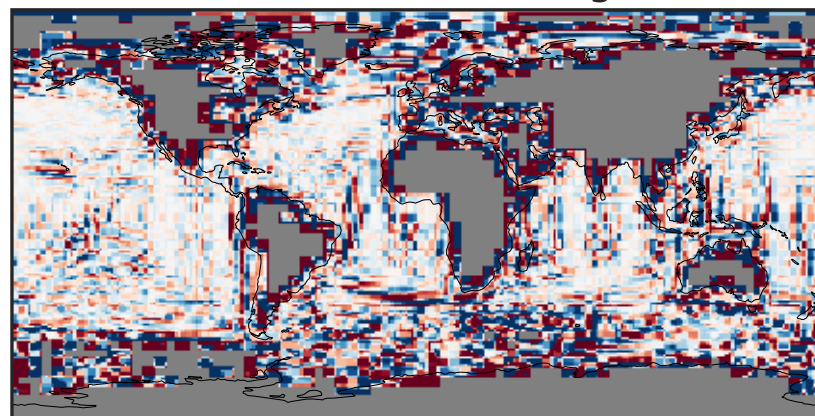
-1.5 0.0 1.5 $1e-14$
kg/m²/s

Ratio (1x1.25)
Dev/Ref, Dynamic Range



unitless

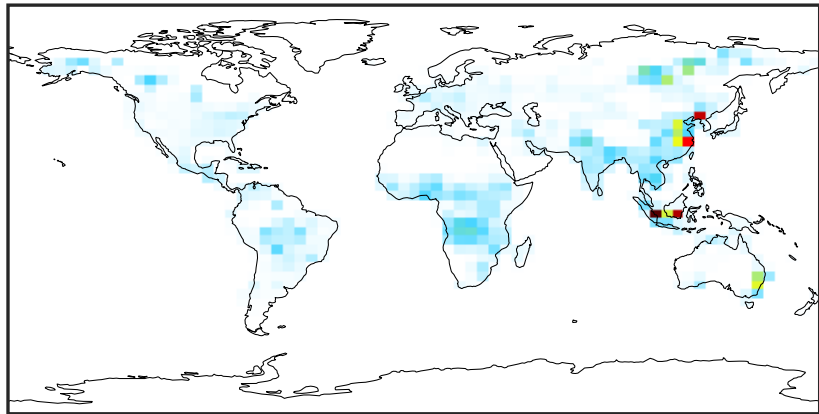
Ratio (1x1.25)
Dev/Ref, Fixed Range



0.50 0.75 1.00 1.50 2.00
unitless

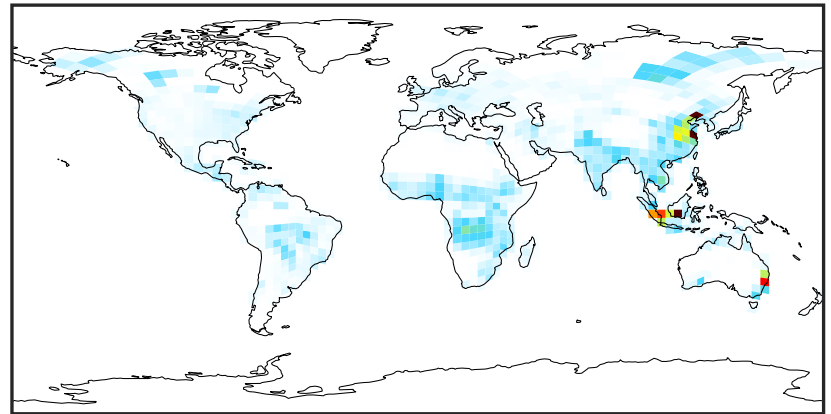
EmisCO_Total (AnnualMean)

14.3.0-rc.0 (Ref)
4.0x5.0



0.0 1.5 3.0 $1e-9$
kg/m²/s

14.3.0-rc.0 (Dev)
c24



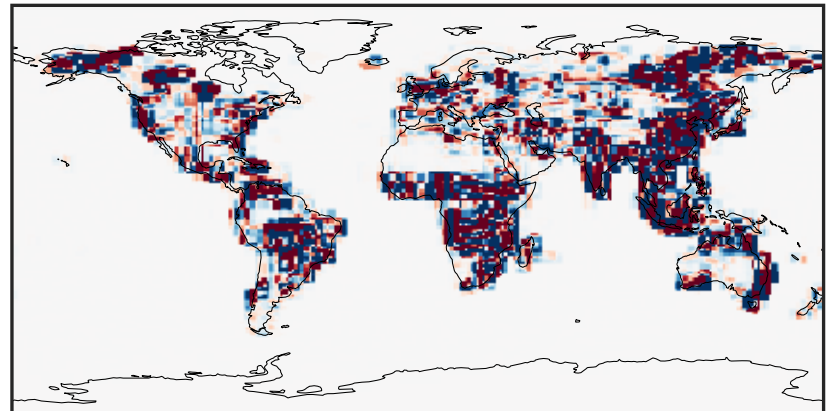
0.0 1.5 3.0 $1e-9$
kg/m²/s

Difference (1x1.25)
Dev - Ref, Dynamic Range



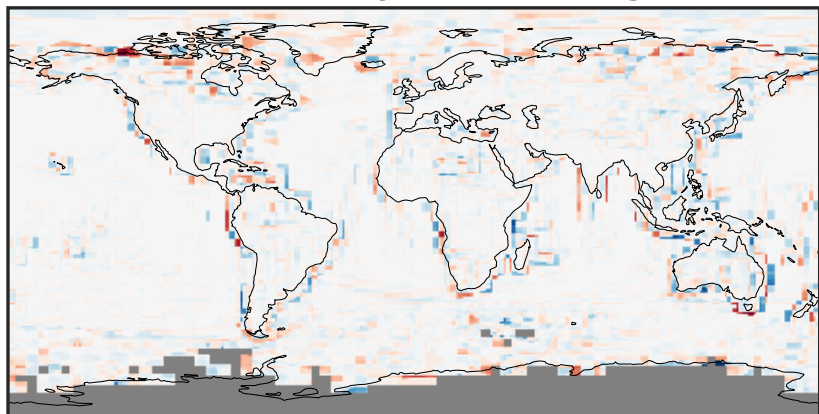
-3 0 3 $1e-9$
kg/m²/s

Difference (1x1.25)
Dev - Ref, Restricted Range [5%,95%]



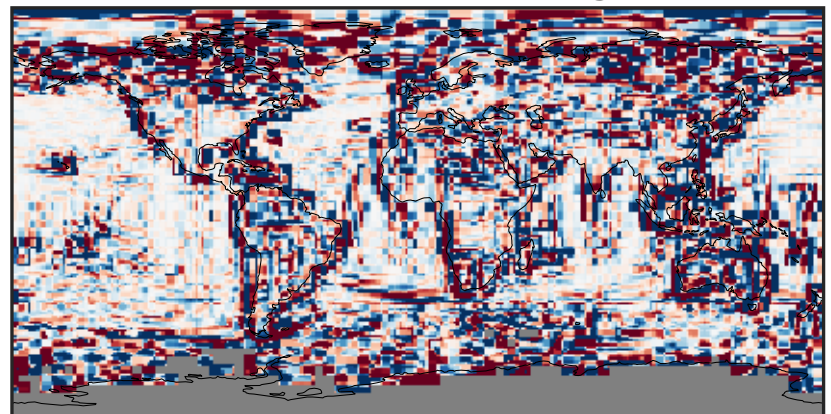
-2.5 0.0 2.5 $1e-11$
kg/m²/s

Ratio (1x1.25)
Dev/Ref, Dynamic Range



unitless

Ratio (1x1.25)
Dev/Ref, Fixed Range



0.50 0.75 1.00 1.50 2.00
unitless