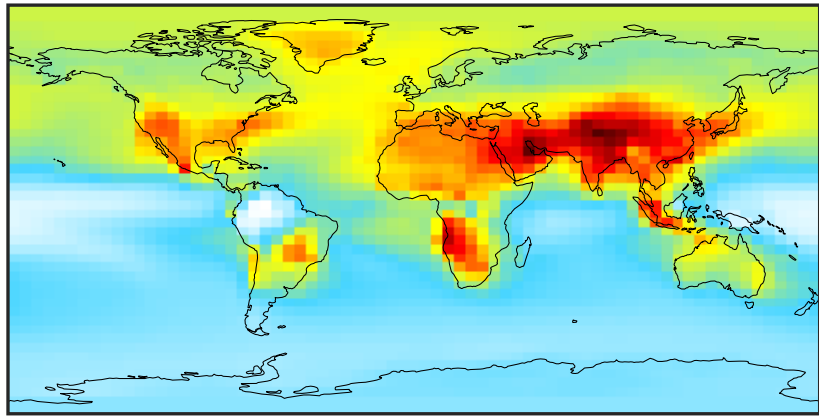


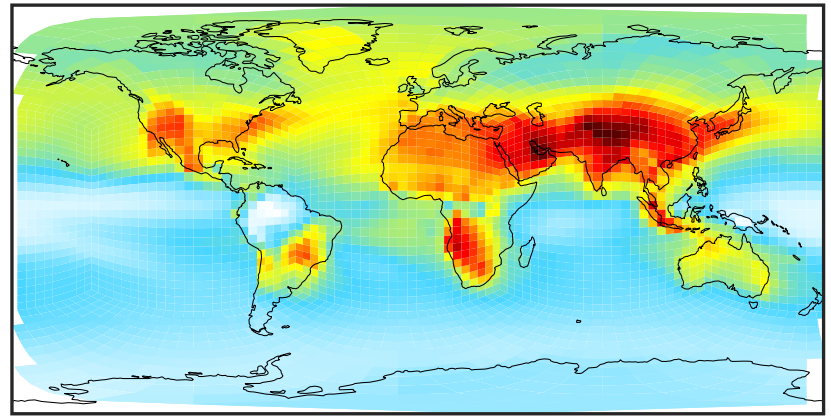
SpeciesConcVV_03 (AnnualMean)

14.3.0-rc.0 (Ref)
4.0x5.0



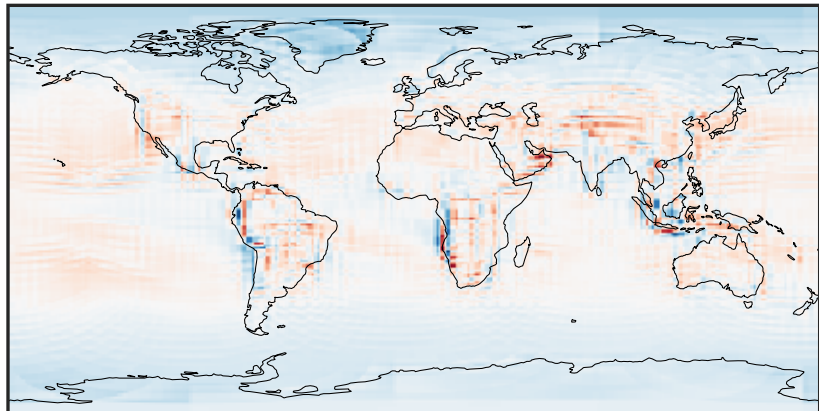
9.49 23.88 38.28 52.68 67.08
ppb

14.3.0-rc.0 (Dev)
c24



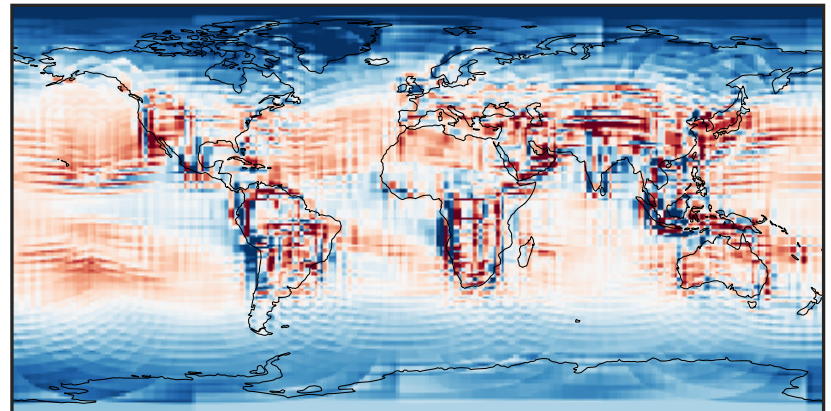
9.49 23.88 38.28 52.68 67.08
ppb

Difference (1x1.25)
Dev - Ref, Dynamic Range



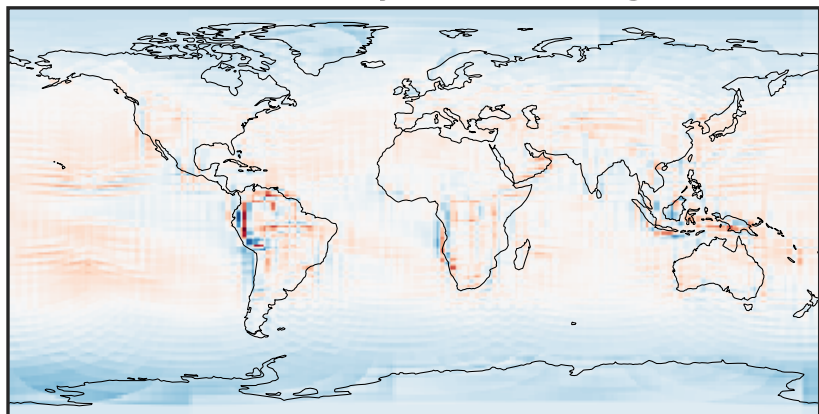
-13.27 -6.64 0.00 6.64 13.27
ppb

Difference (1x1.25)
Dev - Ref, Restricted Range [5%,95%]



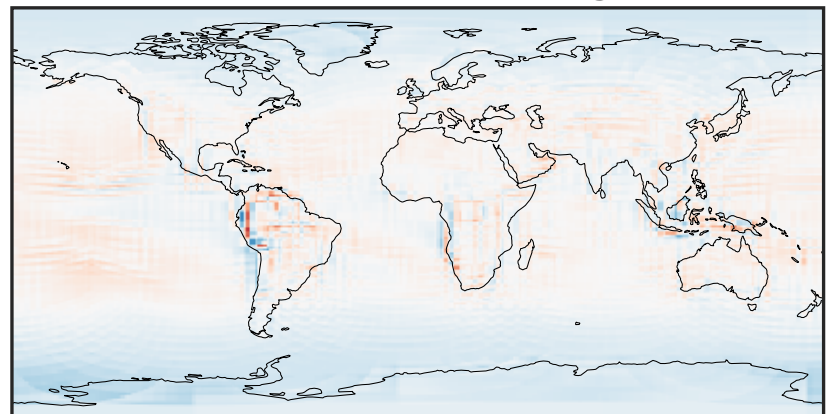
-3.691 -1.846 0.000 1.846 3.691
ppb

Ratio (1x1.25)
Dev/Ref, Dynamic Range



0.610 0.805 1.000 1.320 1.640
unitless

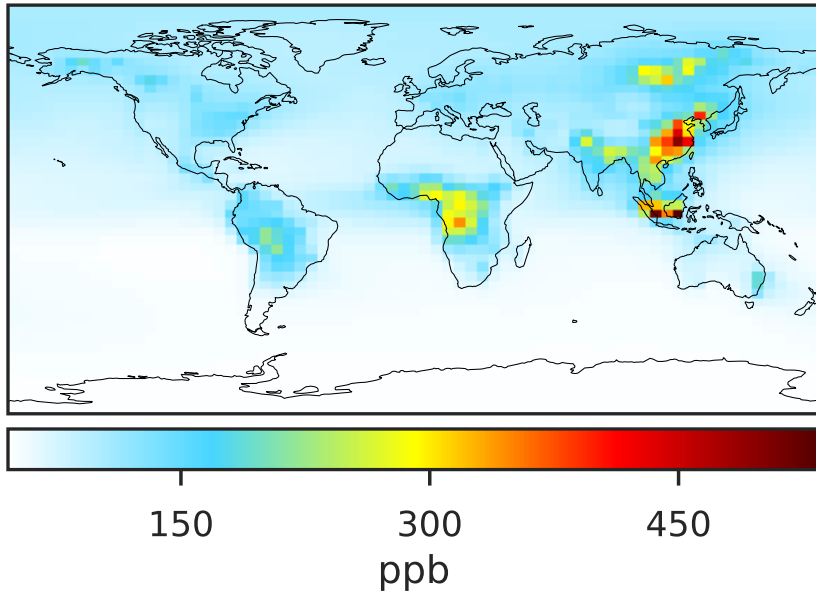
Ratio (1x1.25)
Dev/Ref, Fixed Range



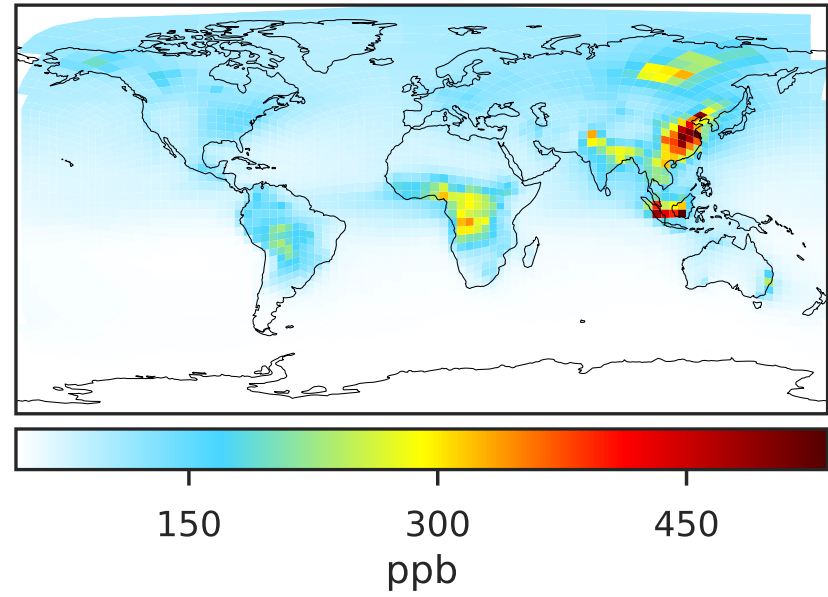
0.50 0.75 1.00 1.50 2.00
unitless

SpeciesConcVV_CO (AnnualMean)

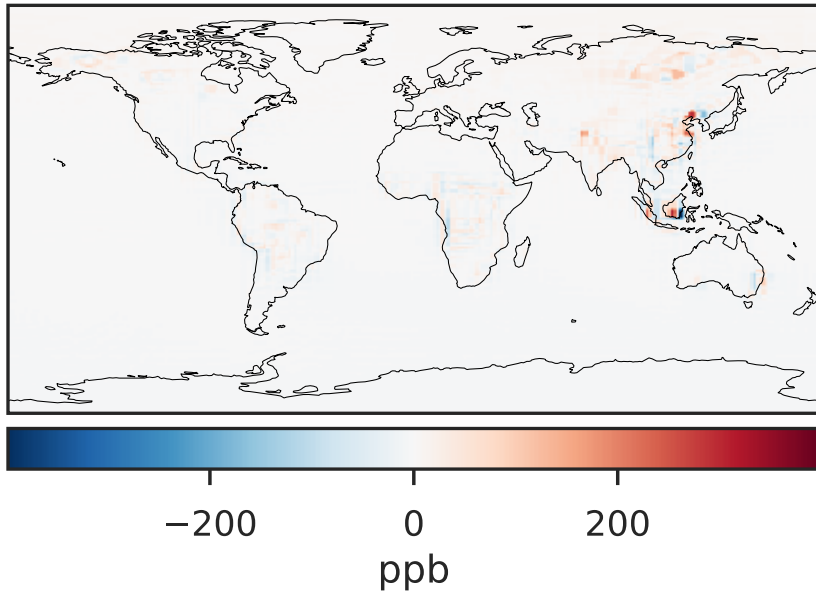
14.3.0-rc.0 (Ref)
4.0x5.0



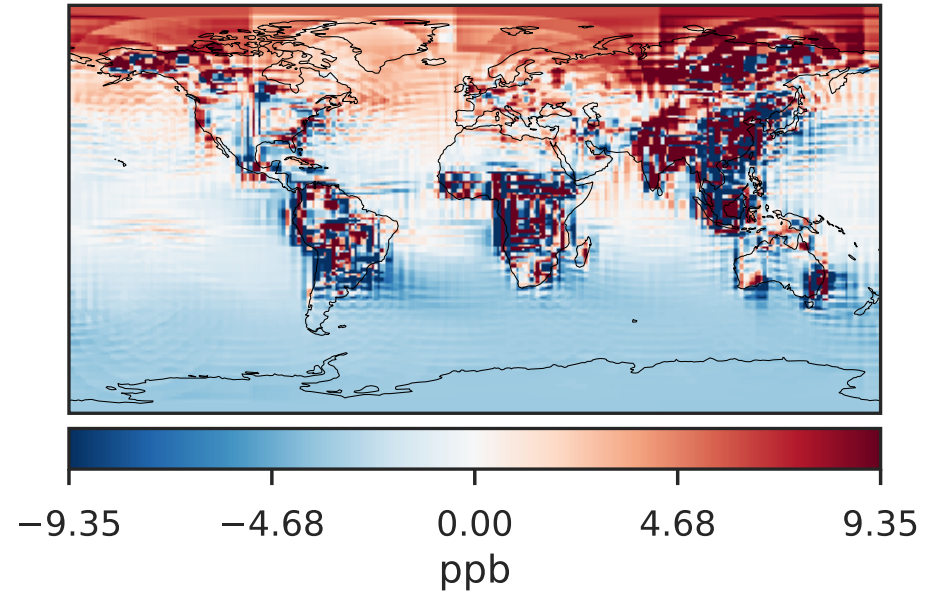
14.3.0-rc.0 (Dev)
c24



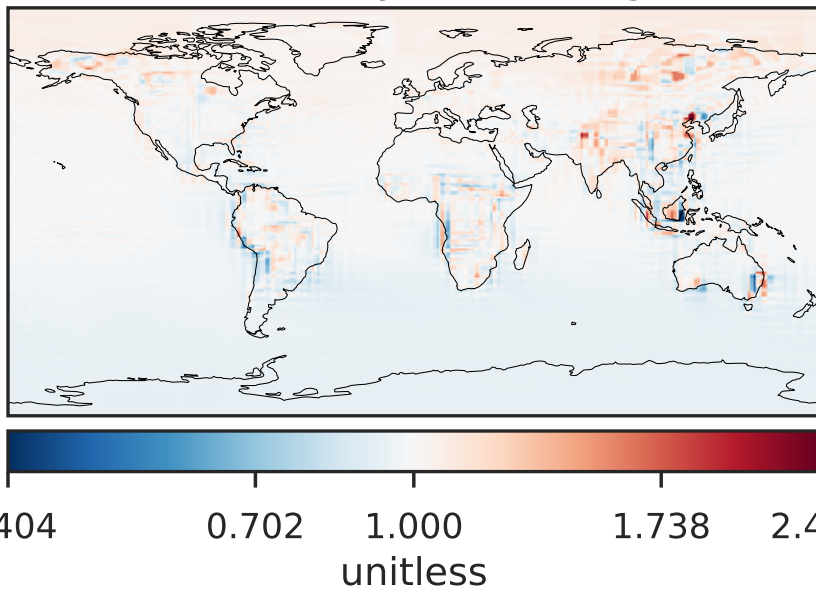
Difference (1x1.25)
Dev - Ref, Dynamic Range



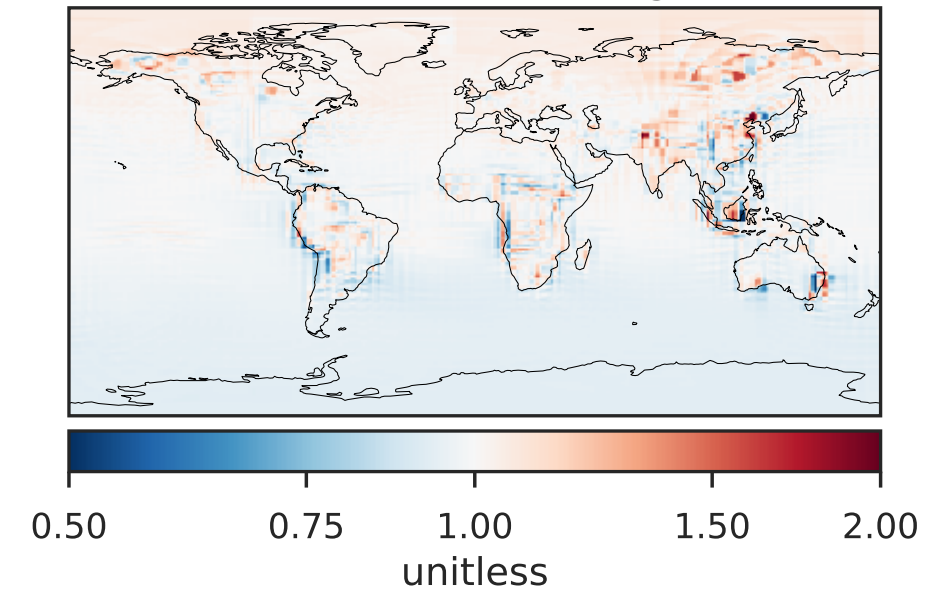
Difference (1x1.25)
Dev - Ref, Restricted Range [5%,95%]



Ratio (1x1.25)
Dev/Ref, Dynamic Range

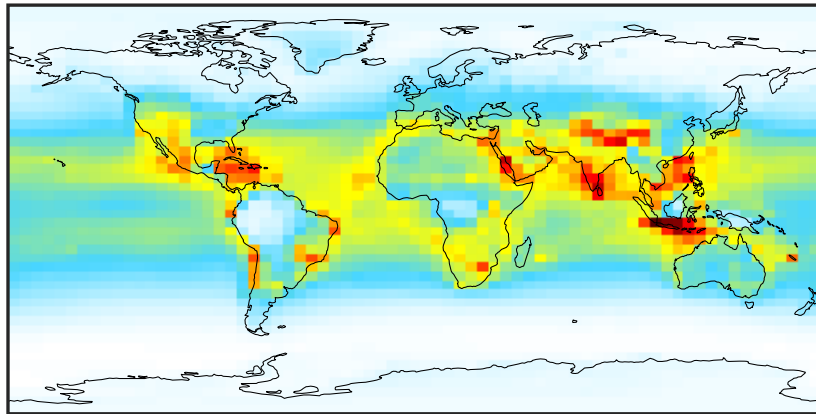


Ratio (1x1.25)
Dev/Ref, Fixed Range



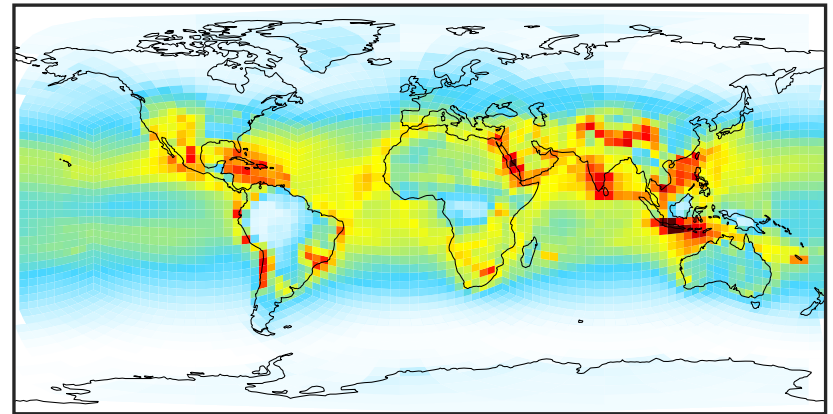
SpeciesConcVV_OH (AnnualMean)

14.3.0-rc.0 (Ref)
4.0x5.0



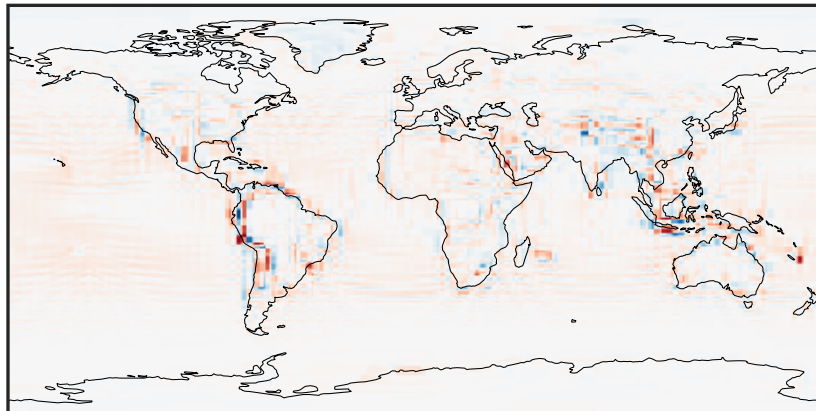
0.00005 0.00010 0.00015
ppb

14.3.0-rc.0 (Dev)
c24



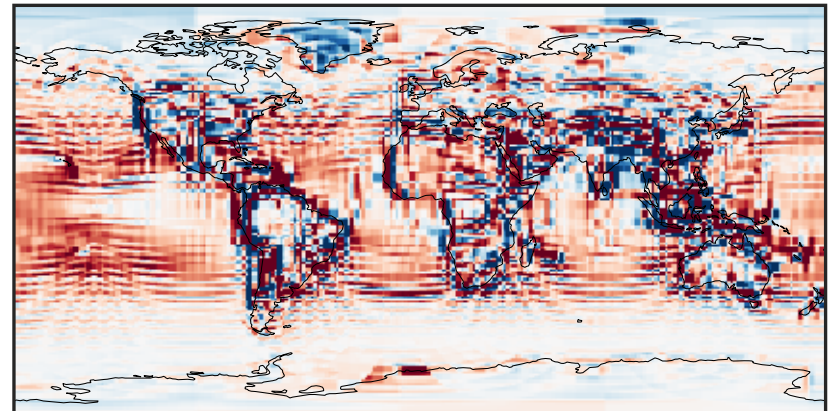
0.00005 0.00010 0.00015
ppb

Difference (1x1.25)
Dev - Ref, Dynamic Range



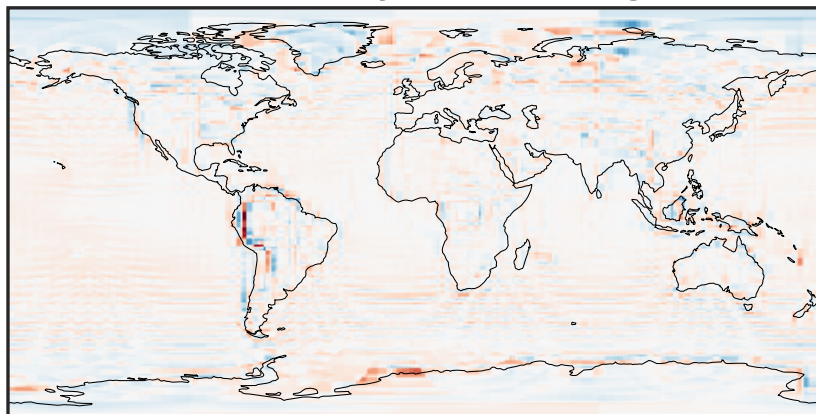
-4 0 4
ppb $1e-5$

Difference (1x1.25)
Dev - Ref, Restricted Range [5%,95%]



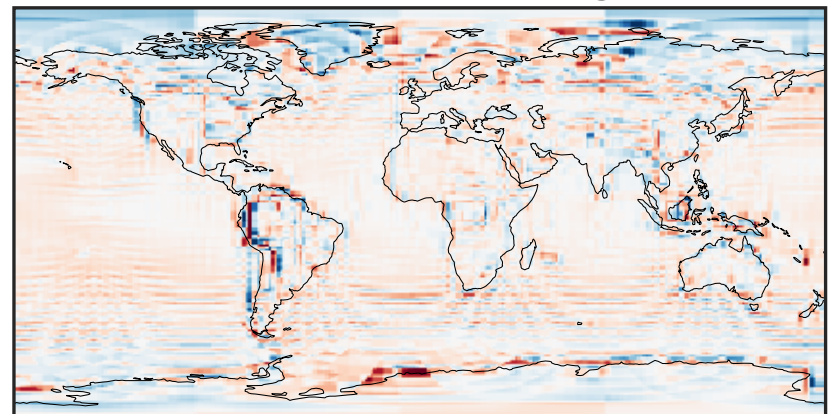
-4 0 4
ppb $1e-6$

Ratio (1x1.25)
Dev/Ref, Dynamic Range



0.259 0.629 1.000 2.431 3.861
unitless

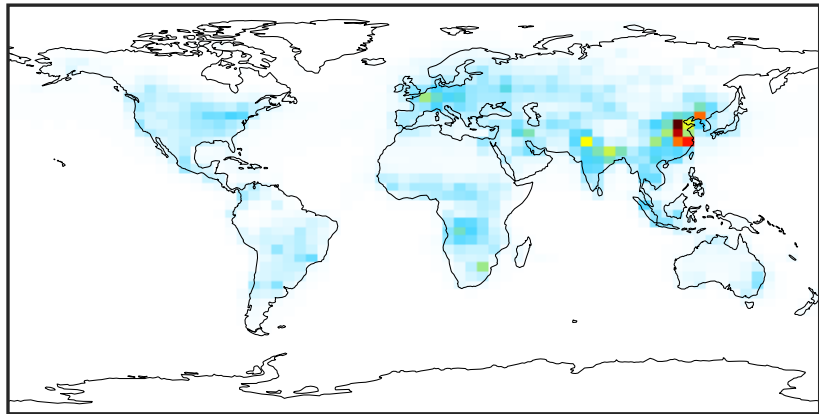
Ratio (1x1.25)
Dev/Ref, Fixed Range



0.50 0.75 1.00 1.50 2.00
unitless

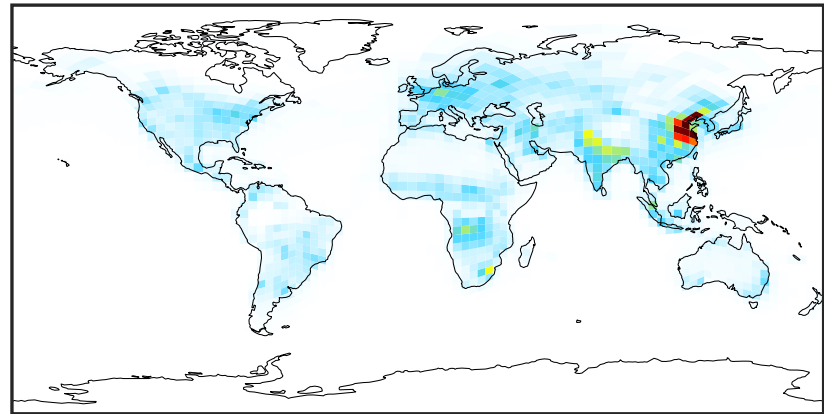
SpeciesConcVV_NOx (AnnualMean)

14.3.0-rc.0 (Ref)
4.0x5.0



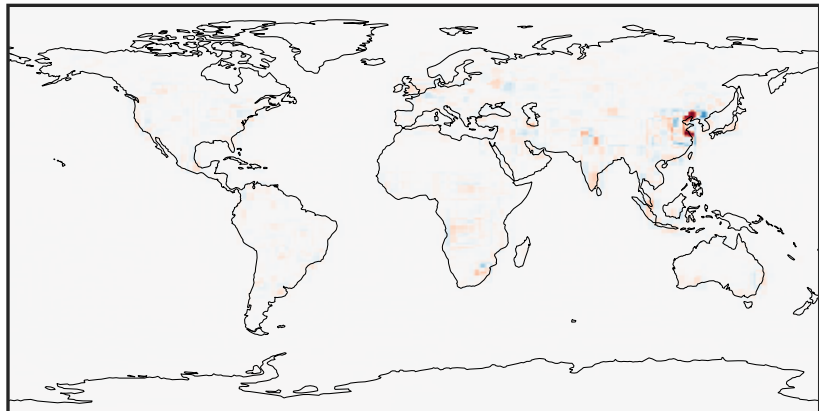
0.00 3.09 6.18 9.26 12.35
ppb

14.3.0-rc.0 (Dev)
c24



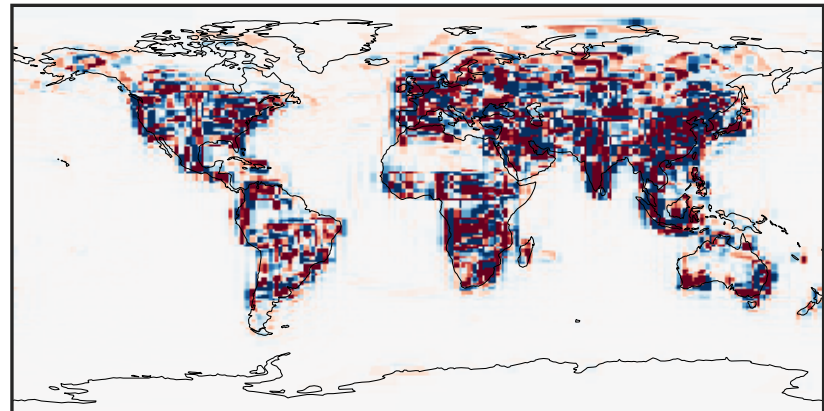
0.00 3.09 6.18 9.26 12.35
ppb

Difference (1x1.25)
Dev - Ref, Dynamic Range



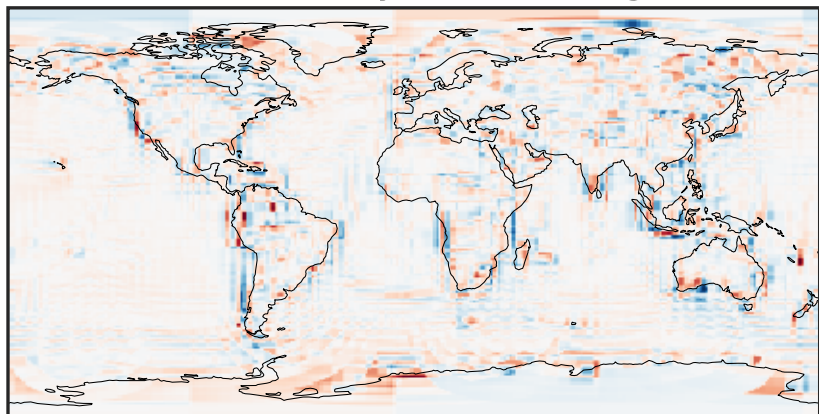
-9.08 -4.54 0.00 4.54 9.08
ppb

Difference (1x1.25)
Dev - Ref, Restricted Range [5%,95%]



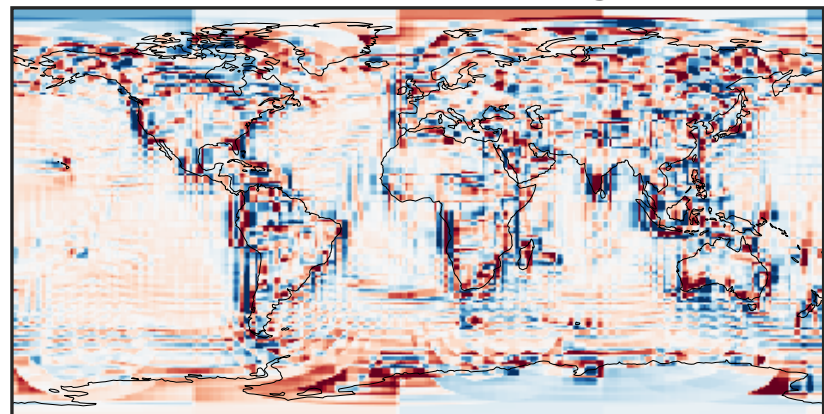
-0.1789 -0.0894 0.0000 0.0894 0.1789
ppb

Ratio (1x1.25)
Dev/Ref, Dynamic Range



0.116 0.558 1.000 4.795 8.590
unitless

Ratio (1x1.25)
Dev/Ref, Fixed Range



0.50 0.75 1.00 1.50 2.00
unitless