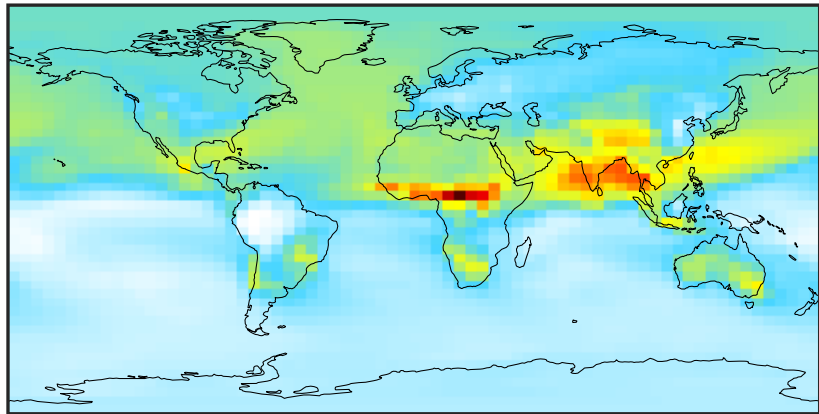


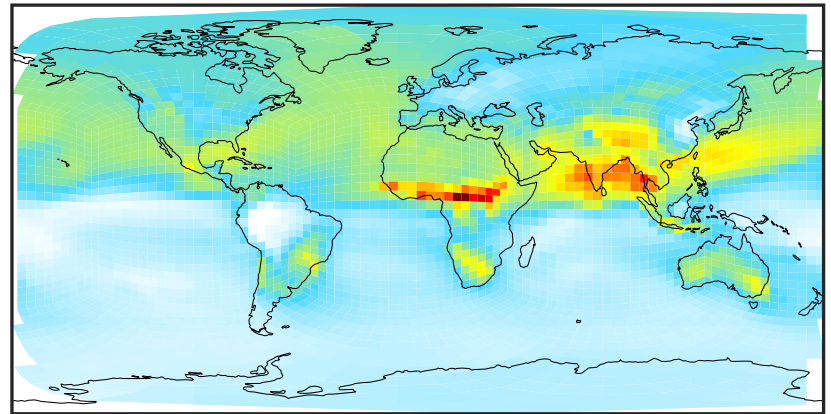
# SpeciesConcVW\_03 (Jan2019)

14.3.0-rc.0 (Ref)  
4.0x5.0



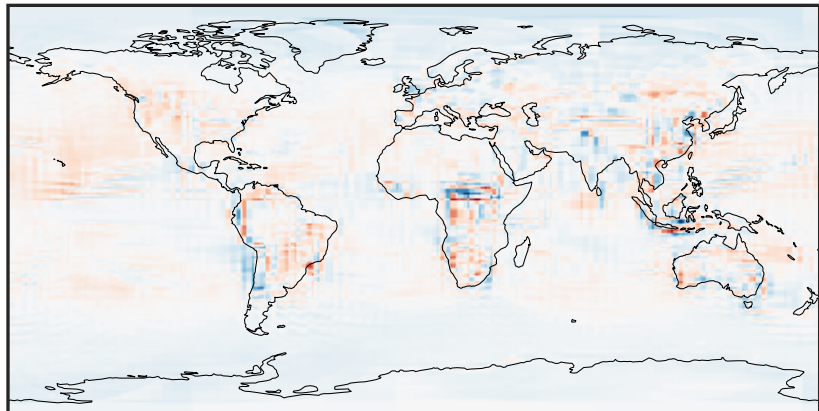
6.17 28.03 49.88 71.74 93.60  
ppb

14.3.0-rc.0 (Dev)  
c24



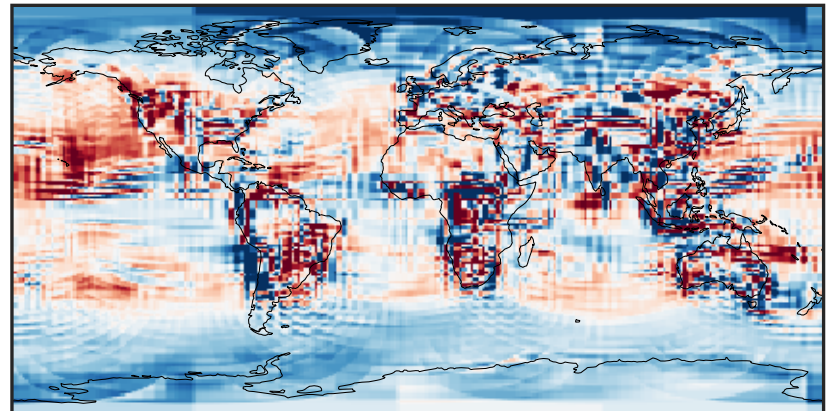
6.17 28.03 49.88 71.74 93.60  
ppb

Difference (1x1.25)  
Dev - Ref, Dynamic Range



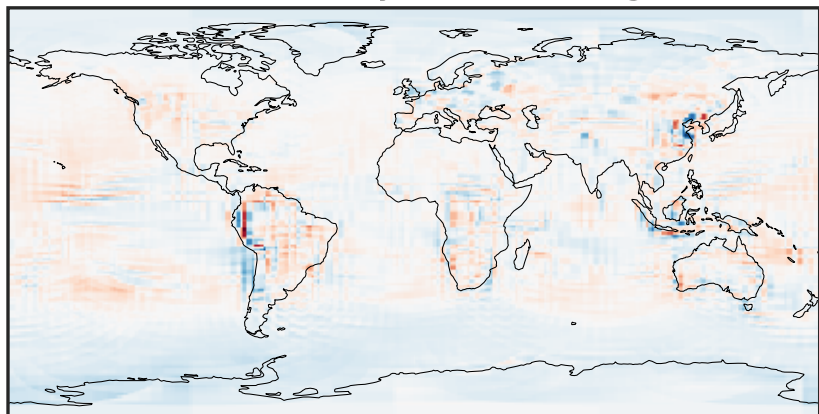
-19.77 -9.88 0.00 9.88 19.77  
ppb

Difference (1x1.25)  
Dev - Ref, Restricted Range [5%,95%]



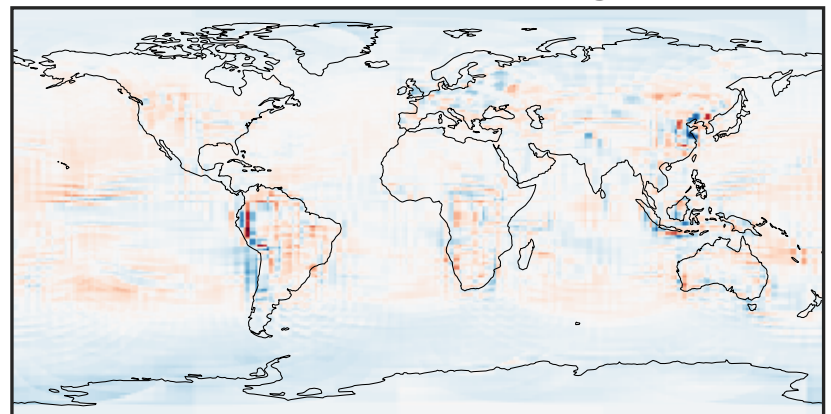
-3.053 -1.527 0.000 1.527 3.053  
ppb

Ratio (1x1.25)  
Dev/Ref, Dynamic Range



0.48 0.74 1.00 1.54 2.08  
unitless

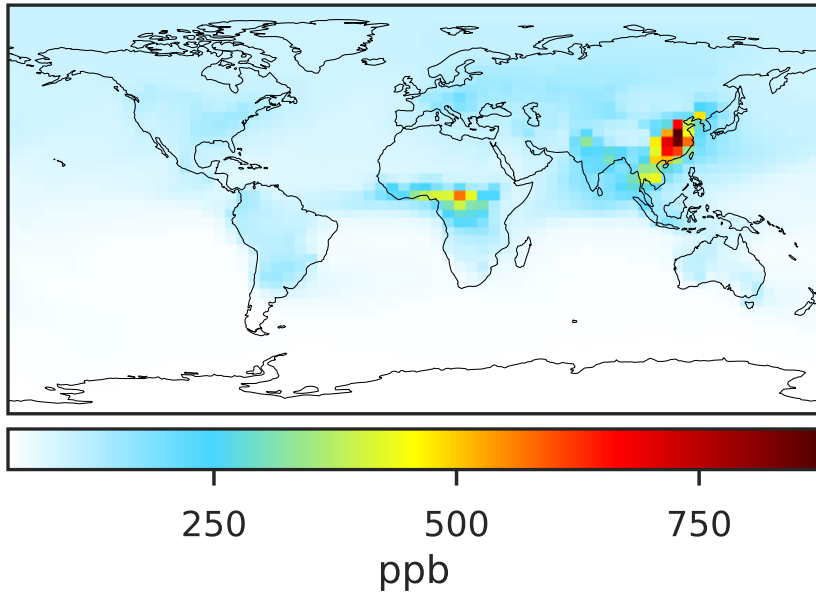
Ratio (1x1.25)  
Dev/Ref, Fixed Range



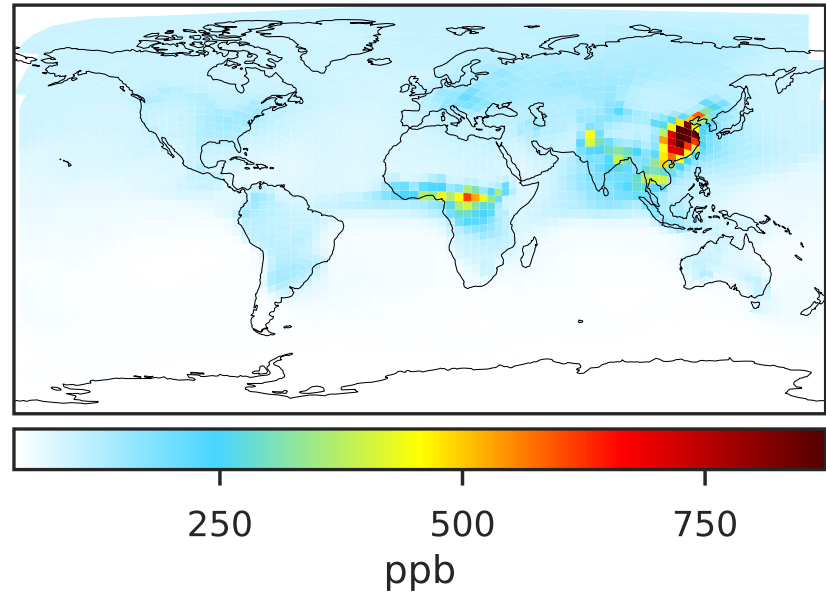
0.50 0.75 1.00 1.50 2.00  
unitless

# SpeciesConcVV\_CO (Jan2019)

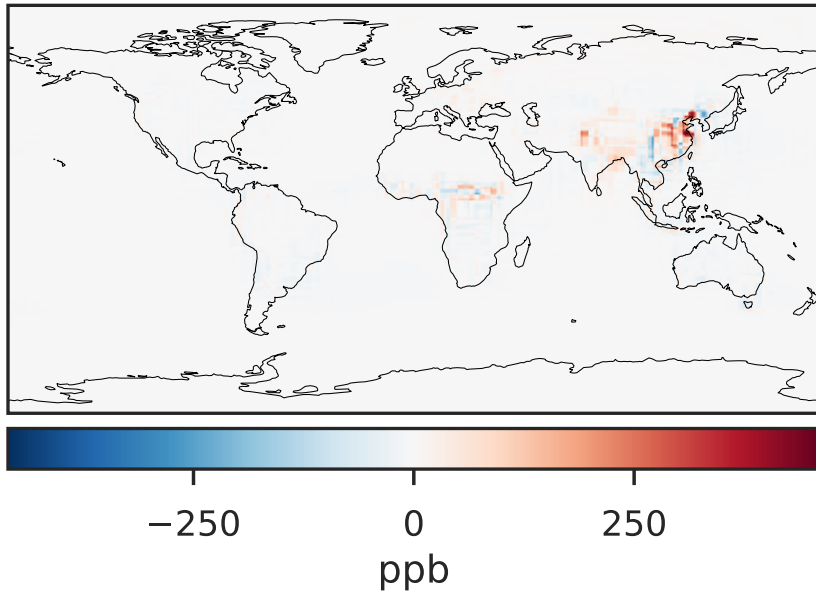
14.3.0-rc.0 (Ref)  
4.0x5.0



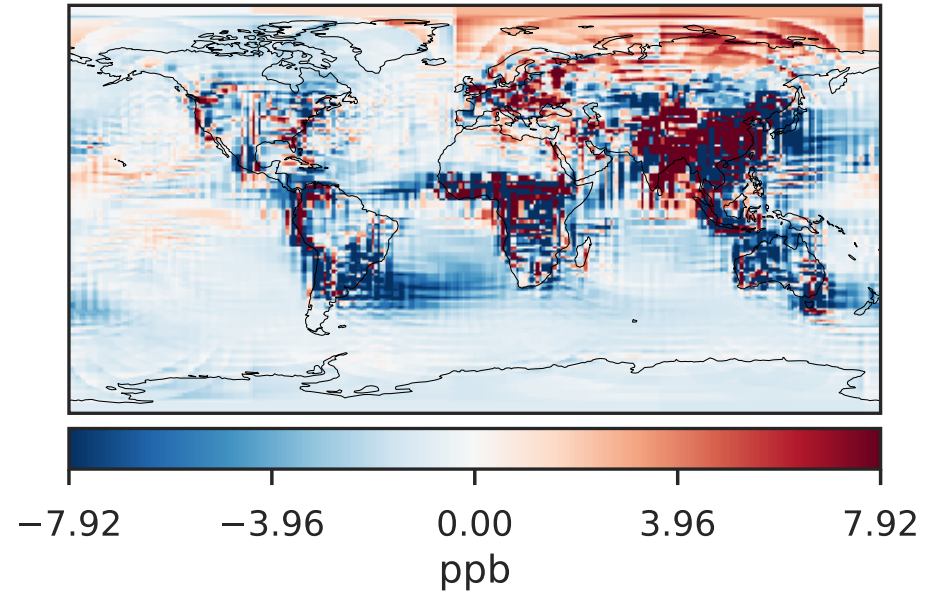
14.3.0-rc.0 (Dev)  
c24



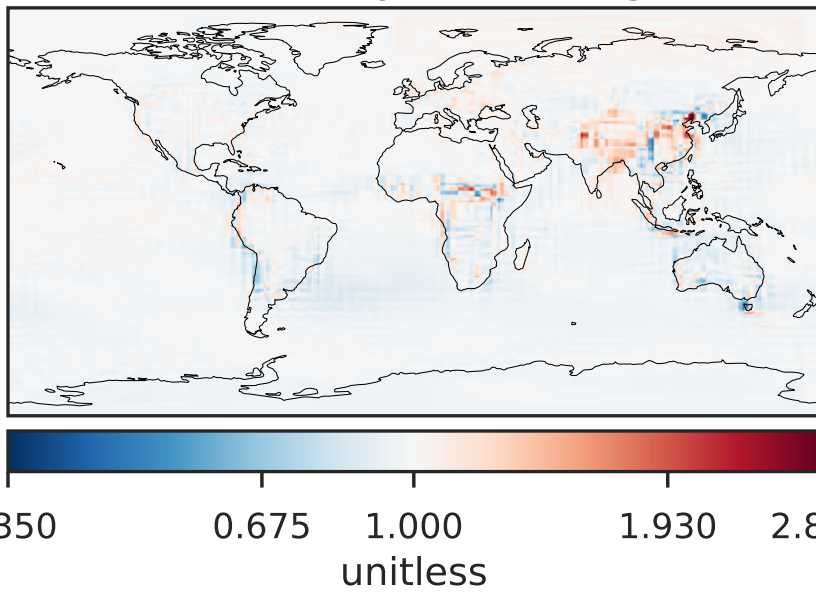
Difference (1x1.25)  
Dev - Ref, Dynamic Range



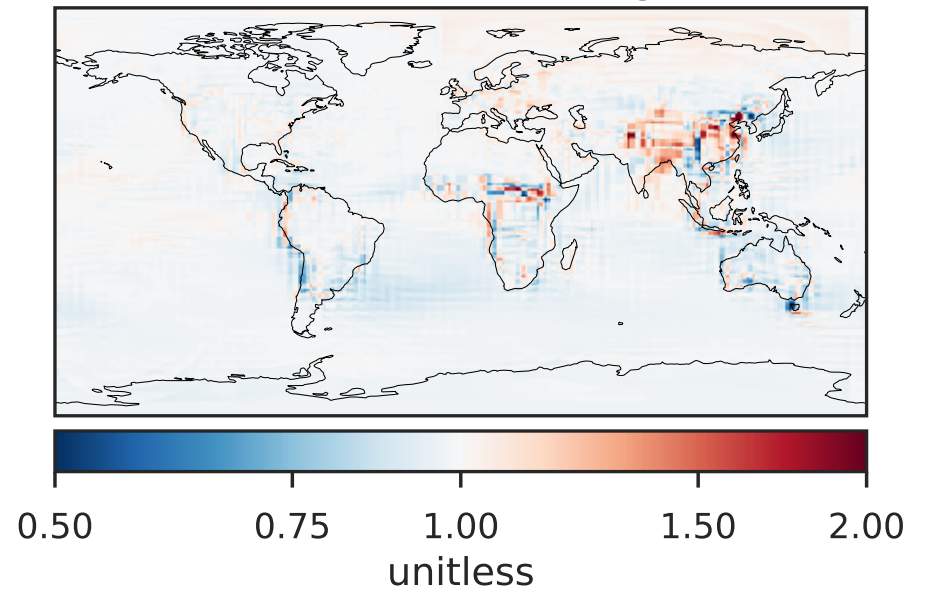
Difference (1x1.25)  
Dev - Ref, Restricted Range [5%,95%]



Ratio (1x1.25)  
Dev/Ref, Dynamic Range

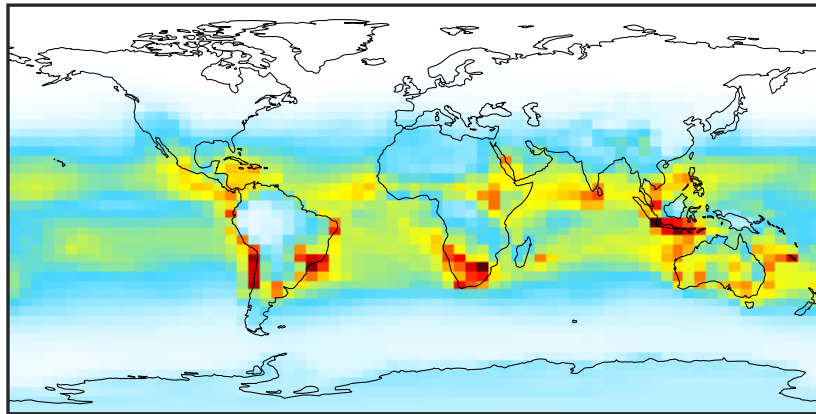


Ratio (1x1.25)  
Dev/Ref, Fixed Range



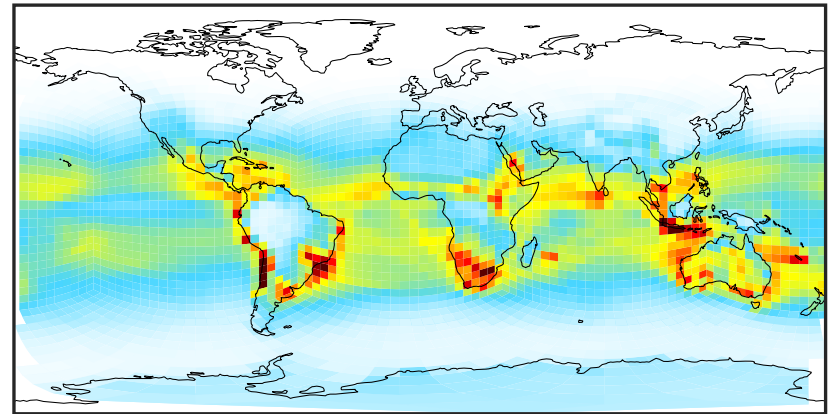
# SpeciesConcVV\_OH (Jan2019)

14.3.0-rc.0 (Ref)  
4.0x5.0



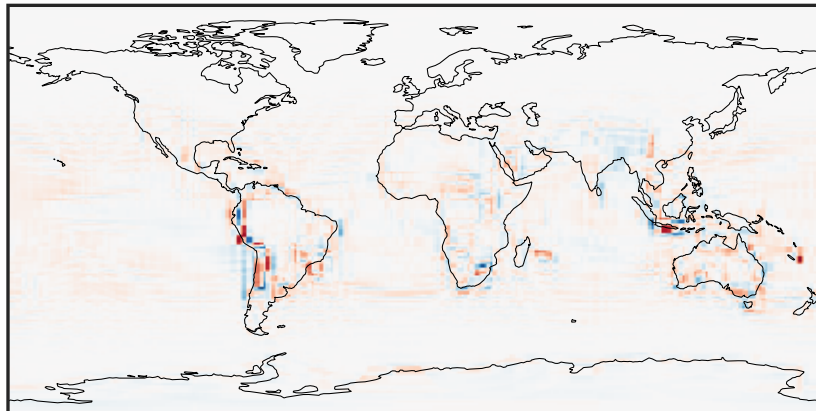
0.00005 0.00010 0.00015  
ppb

14.3.0-rc.0 (Dev)  
c24



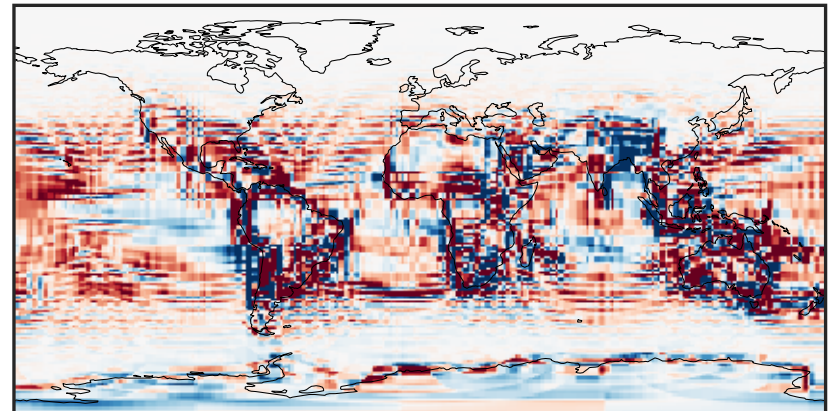
0.00005 0.00010 0.00015  
ppb

Difference (1x1.25)  
Dev - Ref, Dynamic Range



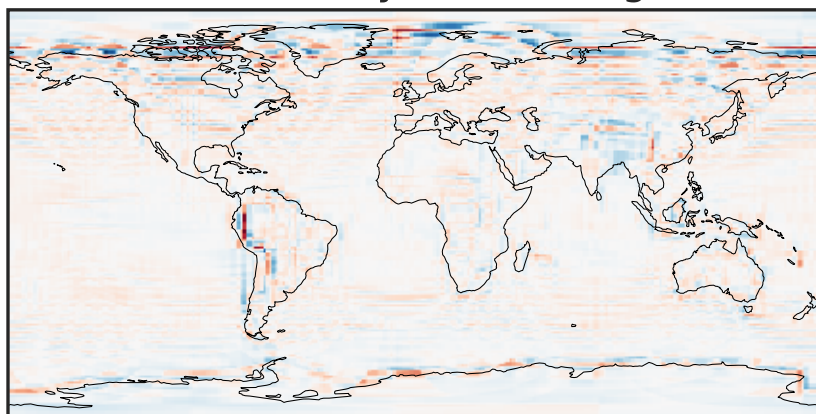
-5 0 5  
ppb  $1e-5$

Difference (1x1.25)  
Dev - Ref, Restricted Range [5%,95%]



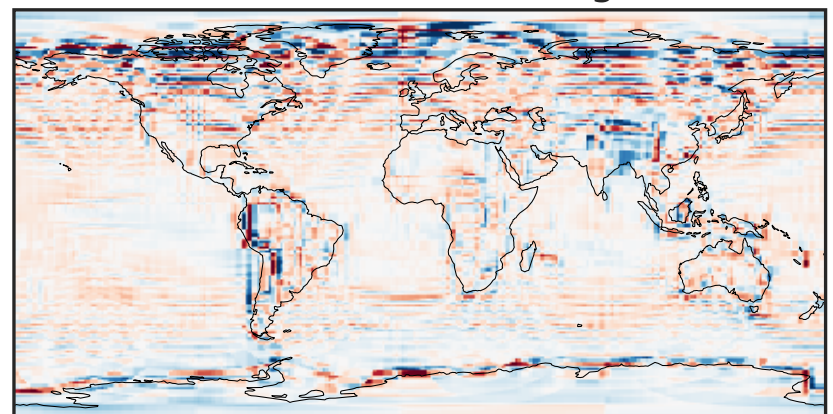
-4 0 4  
ppb  $1e-6$

Ratio (1x1.25)  
Dev/Ref, Dynamic Range



0.196 0.598 1.000 3.050 5.100  
unitless

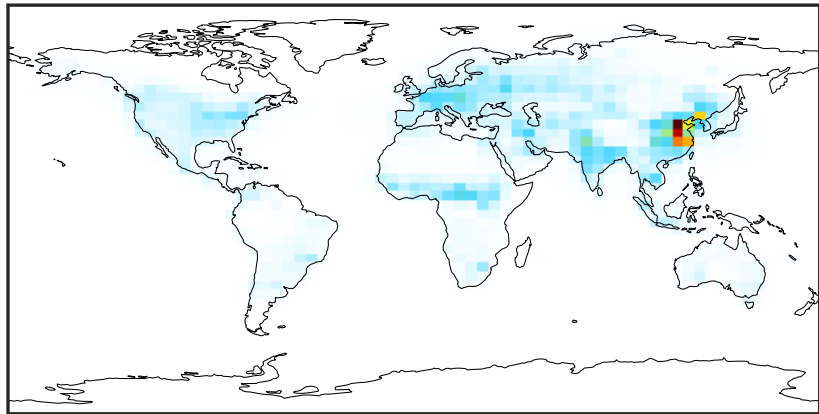
Ratio (1x1.25)  
Dev/Ref, Fixed Range



0.50 0.75 1.00 1.50 2.00  
unitless

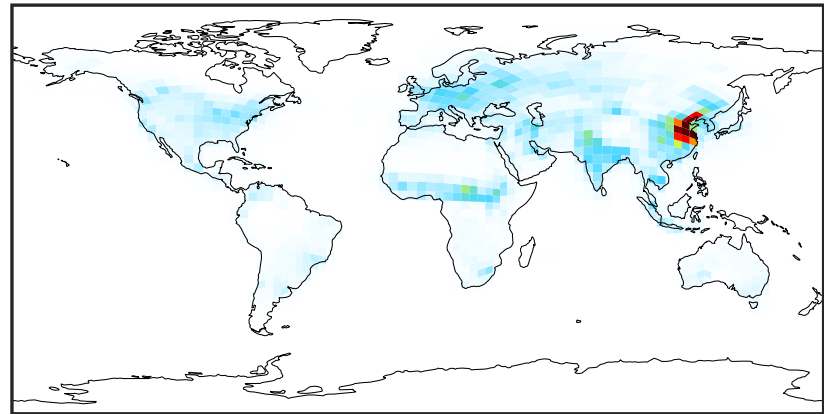
# SpeciesConcVV\_NOx (Jan2019)

14.3.0-rc.0 (Ref)  
4.0x5.0



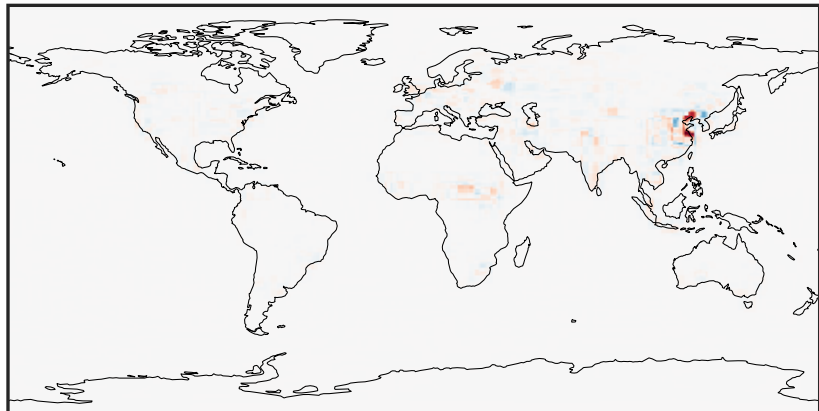
0.00 5.98 11.97 17.95 23.94  
ppb

14.3.0-rc.0 (Dev)  
c24



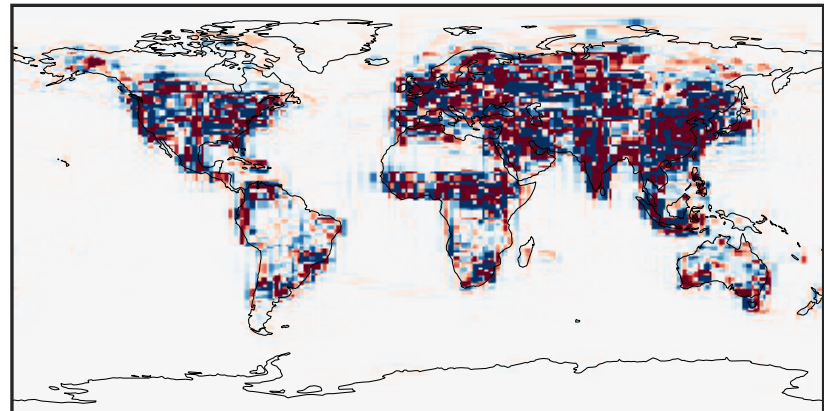
0.00 5.98 11.97 17.95 23.94  
ppb

Difference (1x1.25)  
Dev - Ref, Dynamic Range



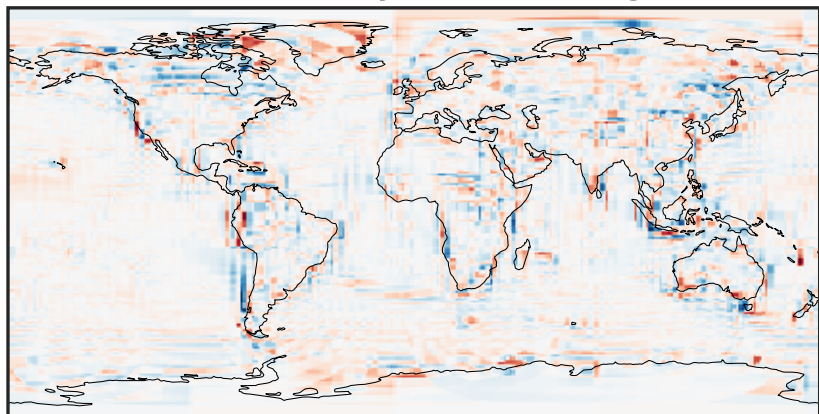
-17.28 -8.64 0.00 8.64 17.28  
ppb

Difference (1x1.25)  
Dev - Ref, Restricted Range [5%,95%]



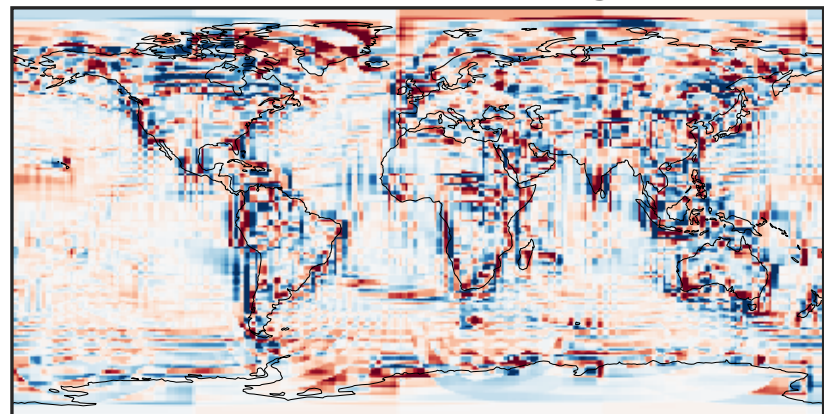
-0.2022 -0.1011 0.0000 0.1011 0.2022  
ppb

Ratio (1x1.25)  
Dev/Ref, Dynamic Range



0.120 0.560 1.000 4.671 8.342  
unitless

Ratio (1x1.25)  
Dev/Ref, Fixed Range



0.50 0.75 1.00 1.50 2.00  
unitless