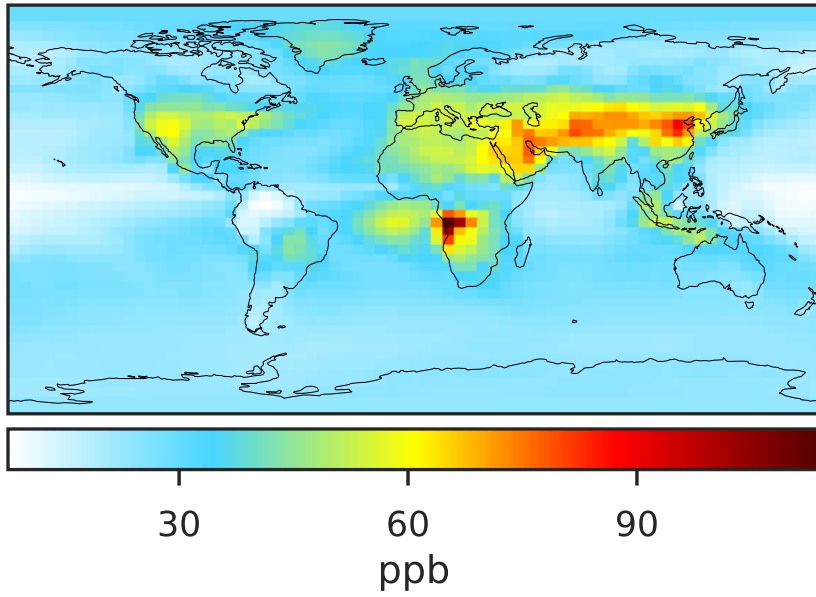
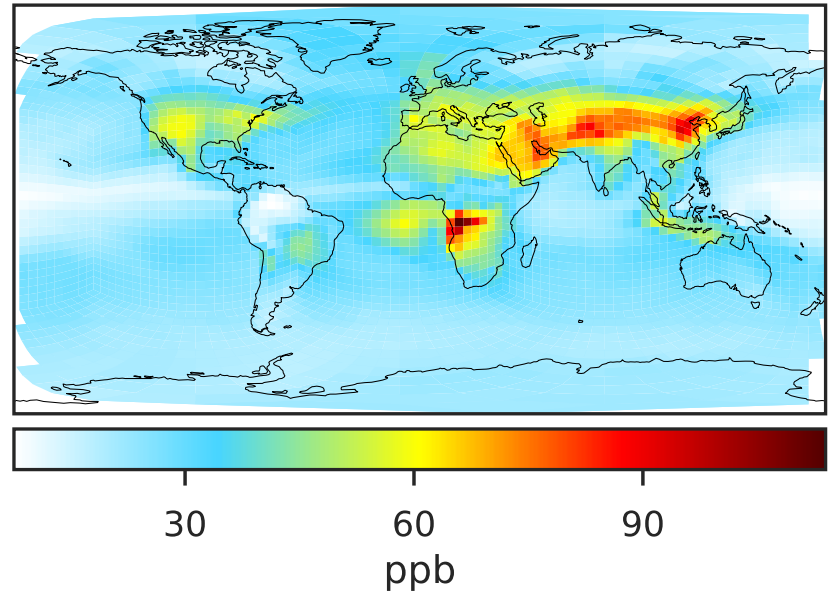


# SpeciesConcVV\_03 (Jul2019)

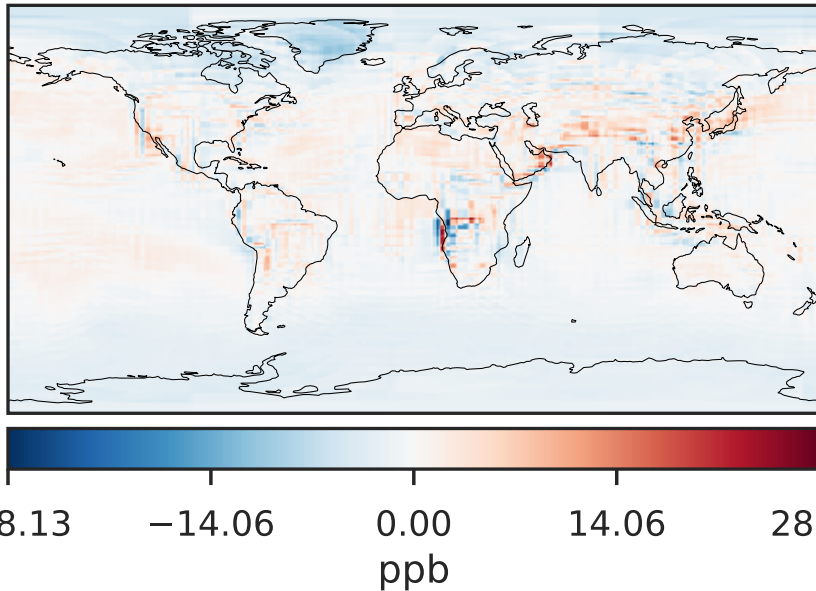
14.3.0-rc.0 (Ref)  
4.0x5.0



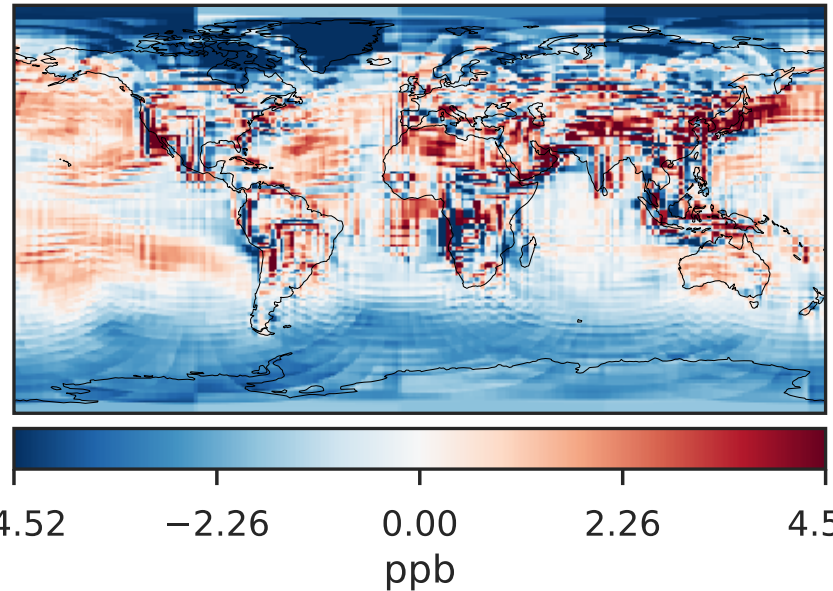
14.3.0-rc.0 (Dev)  
c24



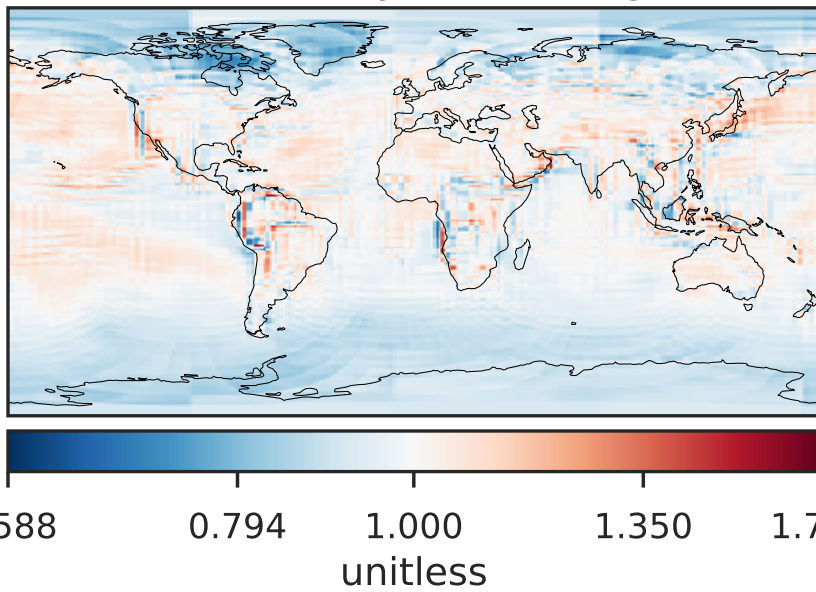
Difference (1x1.25)  
Dev - Ref, Dynamic Range



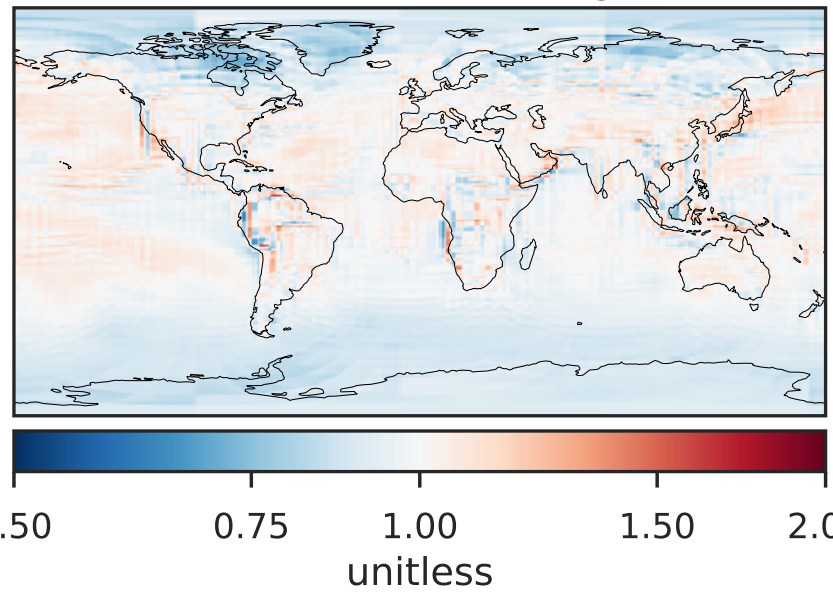
Difference (1x1.25)  
Dev - Ref, Restricted Range [5%,95%]



Ratio (1x1.25)  
Dev/Ref, Dynamic Range

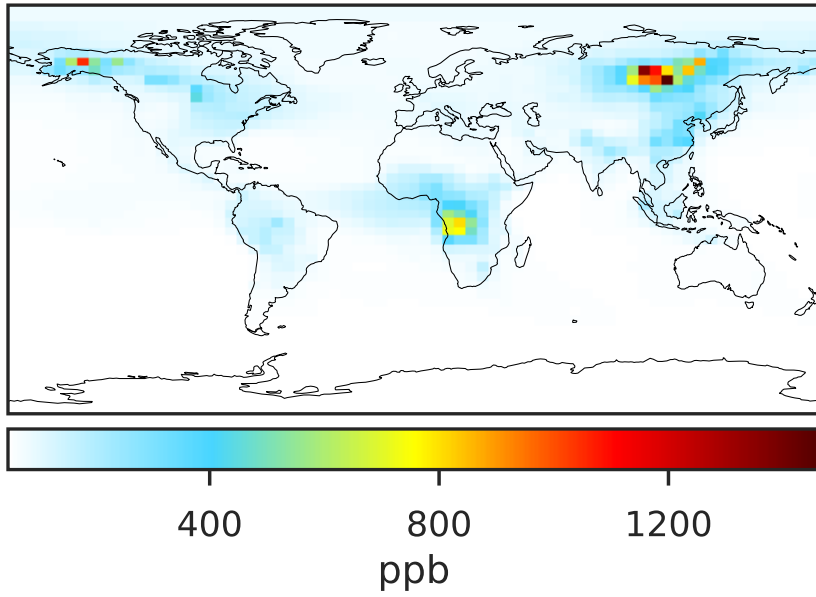


Ratio (1x1.25)  
Dev/Ref, Fixed Range

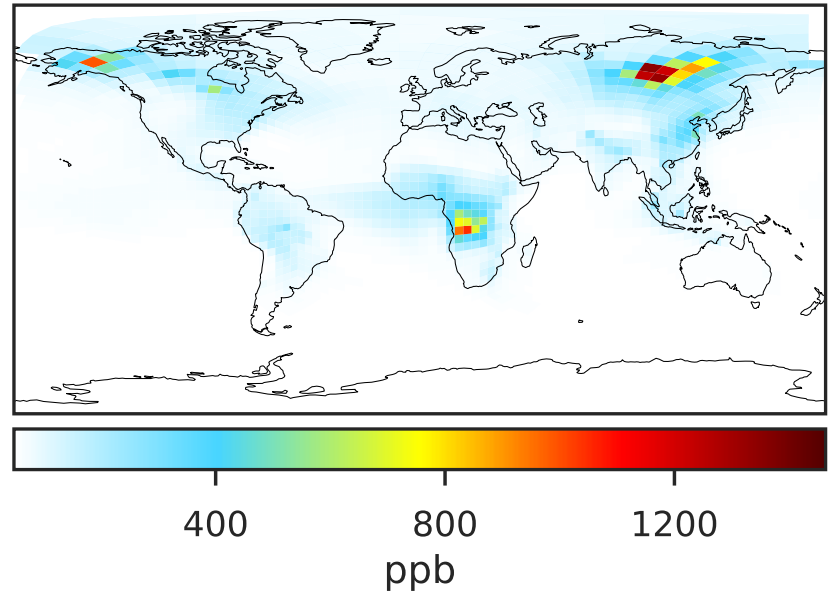


# SpeciesConcVV\_CO (Jul2019)

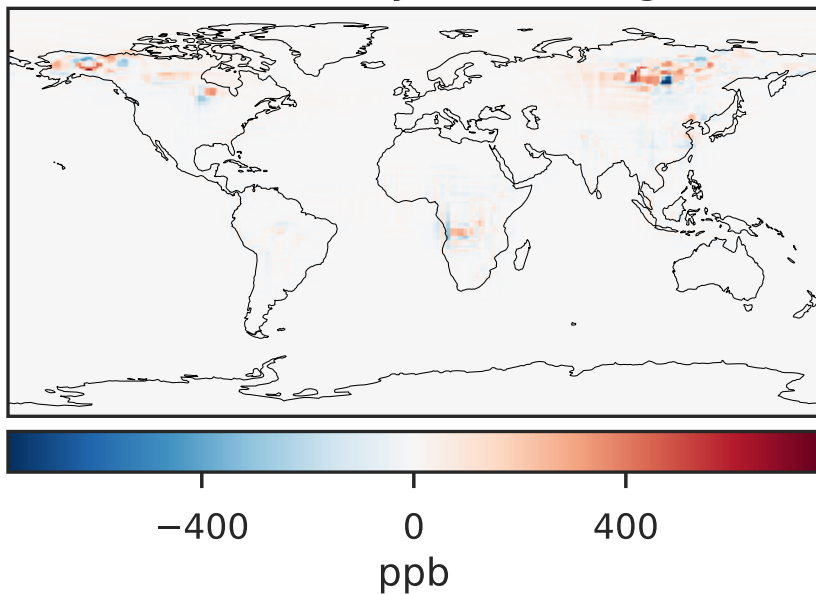
14.3.0-rc.0 (Ref)  
4.0x5.0



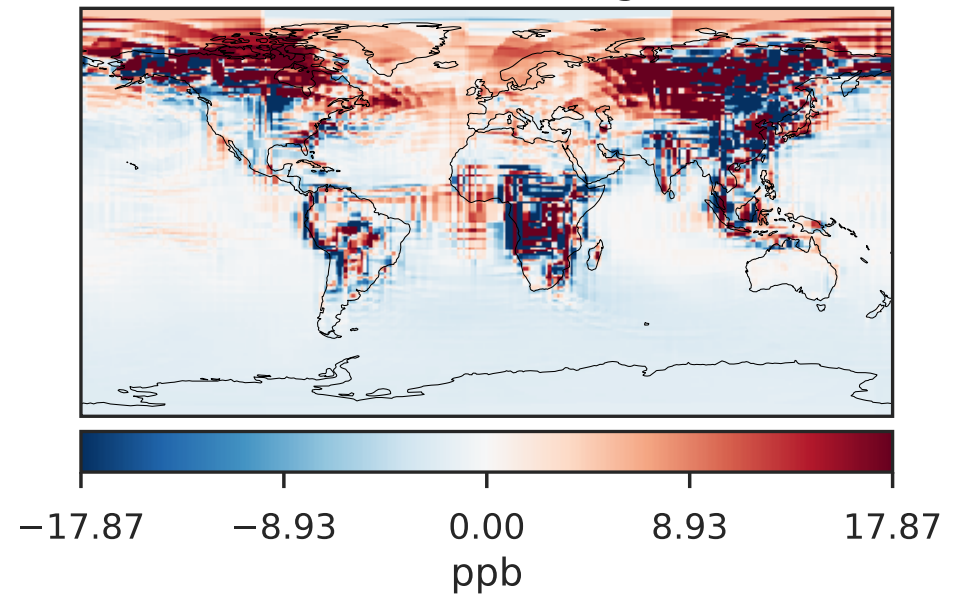
14.3.0-rc.0 (Dev)  
c24



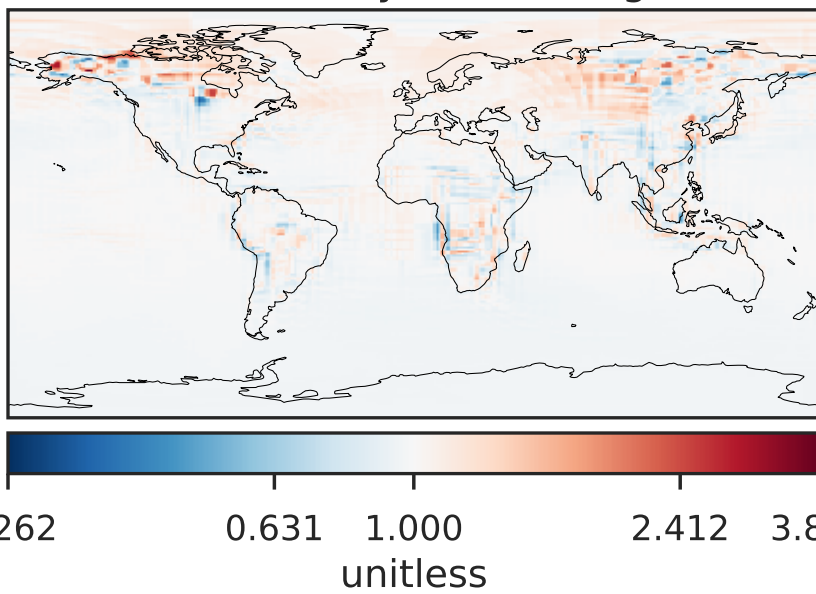
Difference (1x1.25)  
Dev - Ref, Dynamic Range



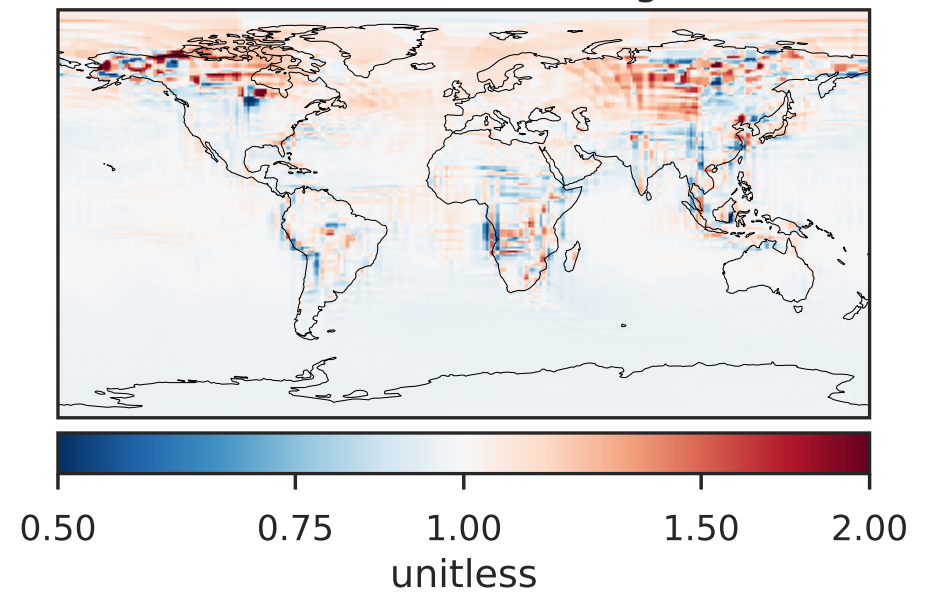
Difference (1x1.25)  
Dev - Ref, Restricted Range [5%,95%]



Ratio (1x1.25)  
Dev/Ref, Dynamic Range

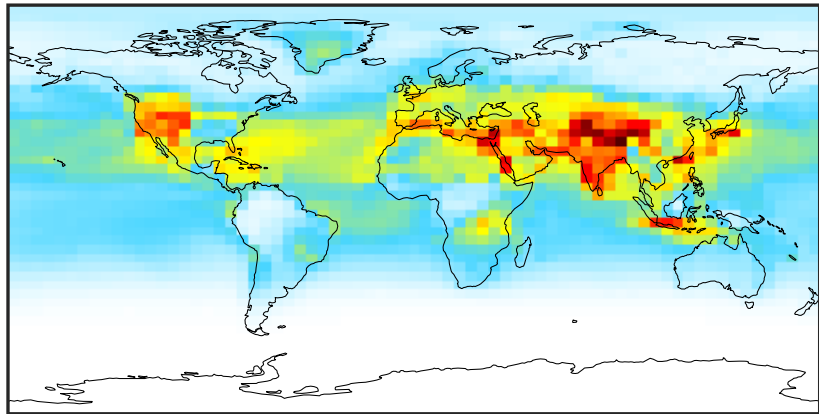


Ratio (1x1.25)  
Dev/Ref, Fixed Range



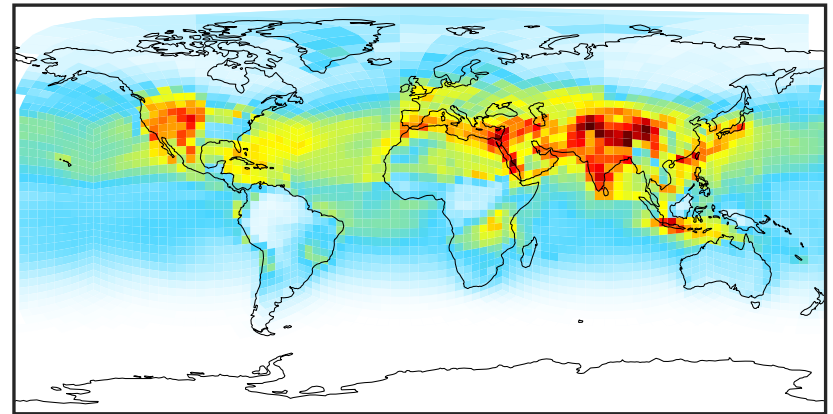
# SpeciesConcVV\_OH (Jul2019)

14.3.0-rc.0 (Ref)  
4.0x5.0



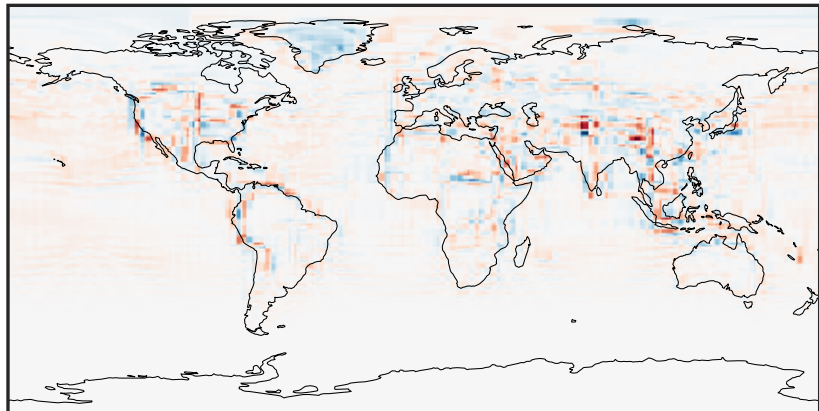
0.00008 0.00016 0.00024  
ppb

14.3.0-rc.0 (Dev)  
c24



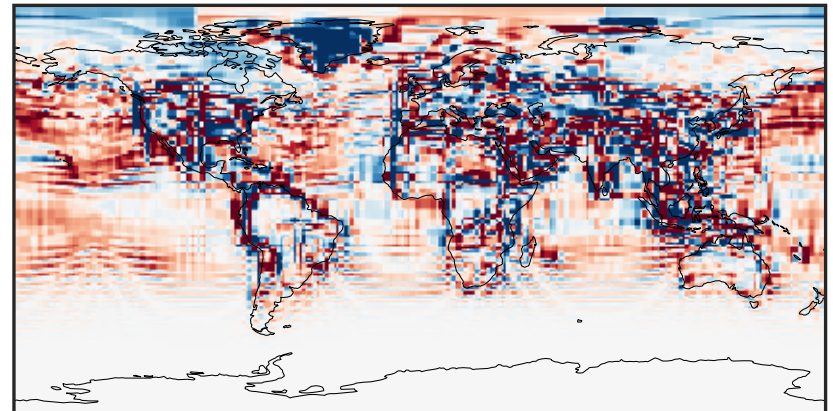
0.00008 0.00016 0.00024  
ppb

Difference (1x1.25)  
Dev - Ref, Dynamic Range



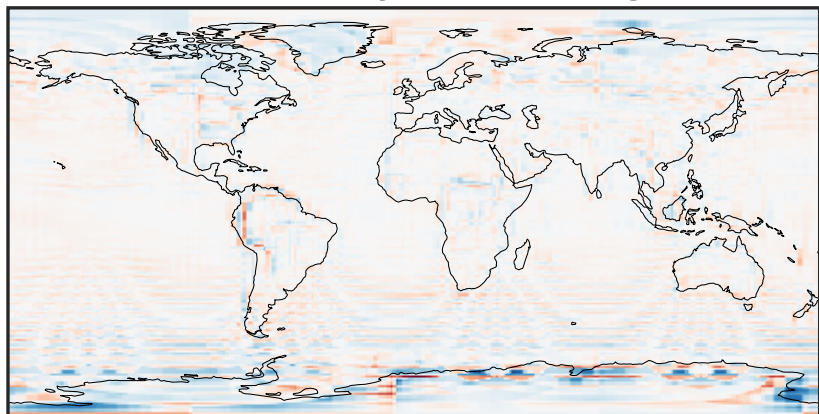
-5 0 5  
ppb  $1e-5$

Difference (1x1.25)  
Dev - Ref, Restricted Range [5%,95%]



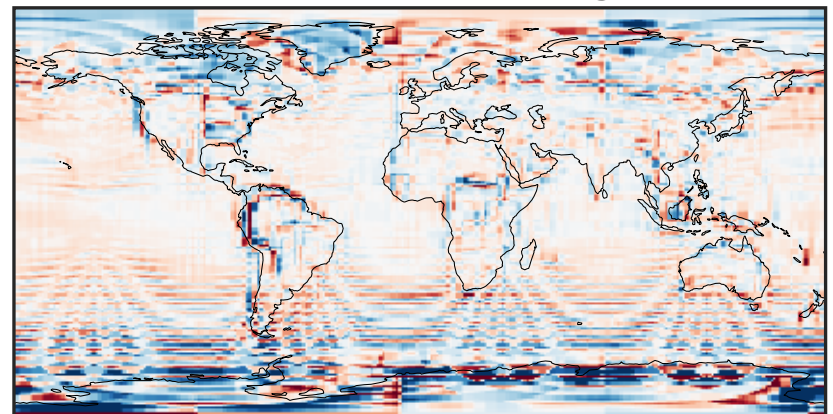
-6 0 6  
ppb  $1e-6$

Ratio (1x1.25)  
Dev/Ref, Dynamic Range



0.113 0.557 1.000 4.924 8.848  
unitless

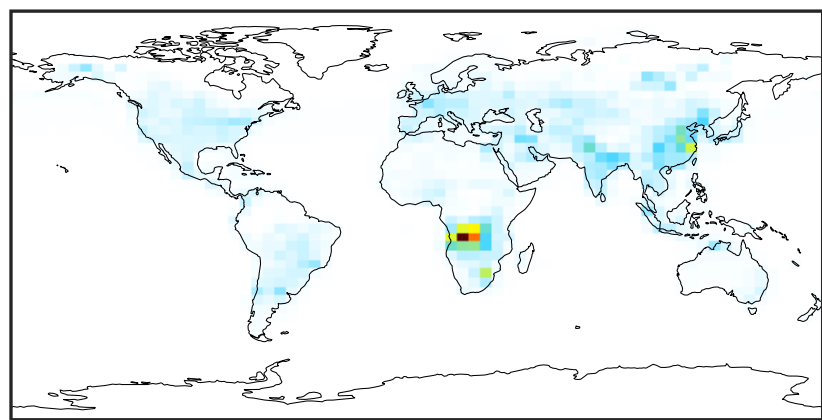
Ratio (1x1.25)  
Dev/Ref, Fixed Range



0.50 0.75 1.00 1.50 2.00  
unitless

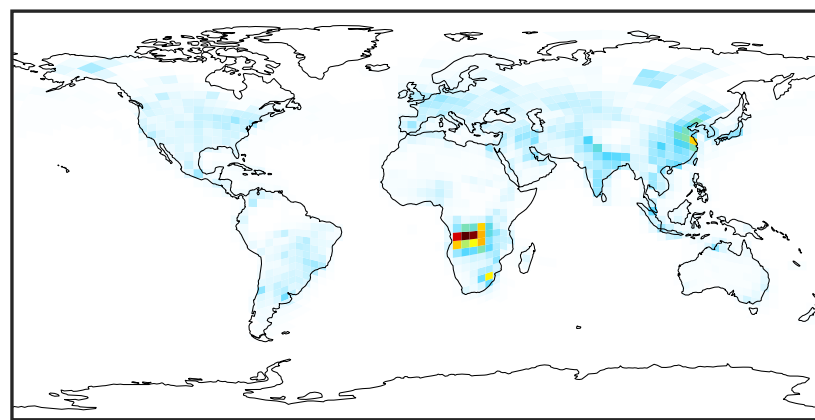
# SpeciesConcVV\_NOx (Jul2019)

14.3.0-rc.0 (Ref)  
4.0x5.0



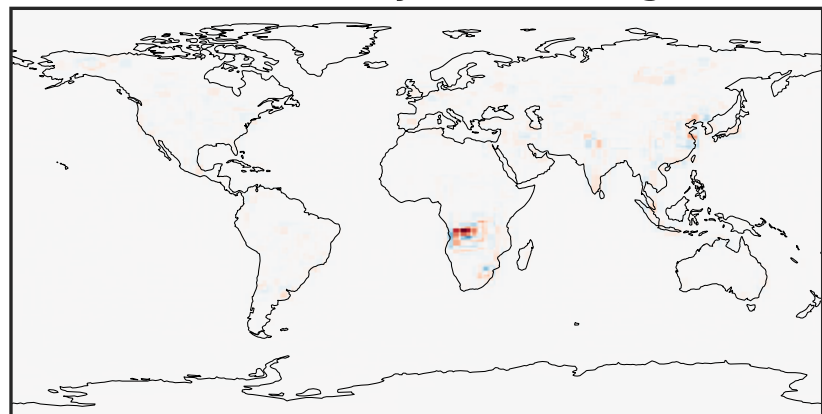
0.00 4.84 9.69 14.53 19.38  
ppb

14.3.0-rc.0 (Dev)  
c24



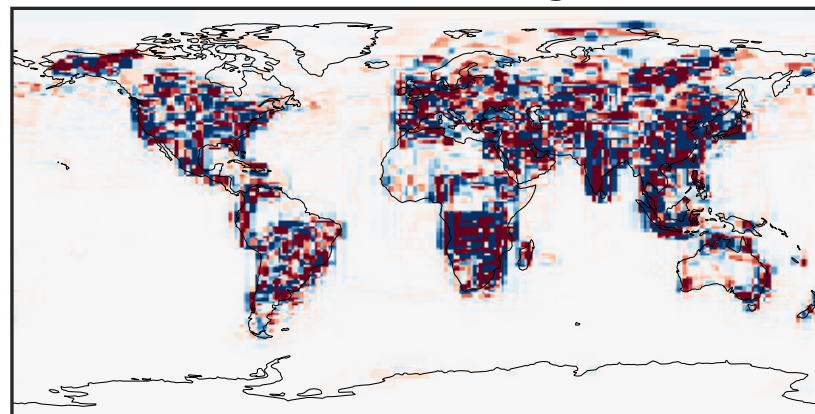
0.00 4.84 9.69 14.53 19.38  
ppb

Difference (1x1.25)  
Dev - Ref, Dynamic Range



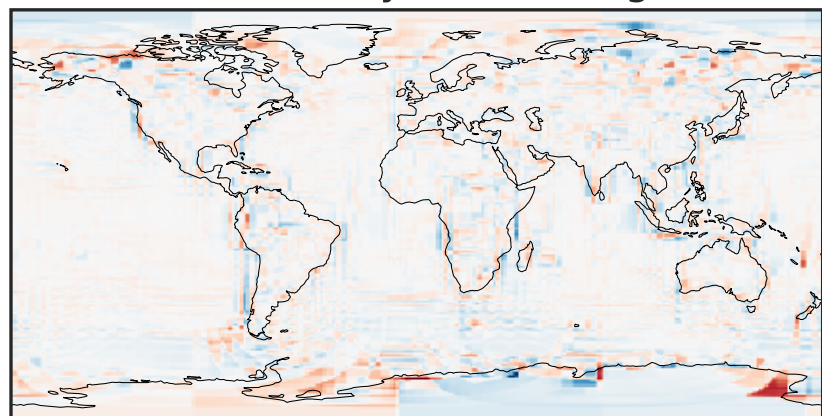
-13.32 -6.66 0.00 6.66 13.32  
ppb

Difference (1x1.25)  
Dev - Ref, Restricted Range [5%,95%]



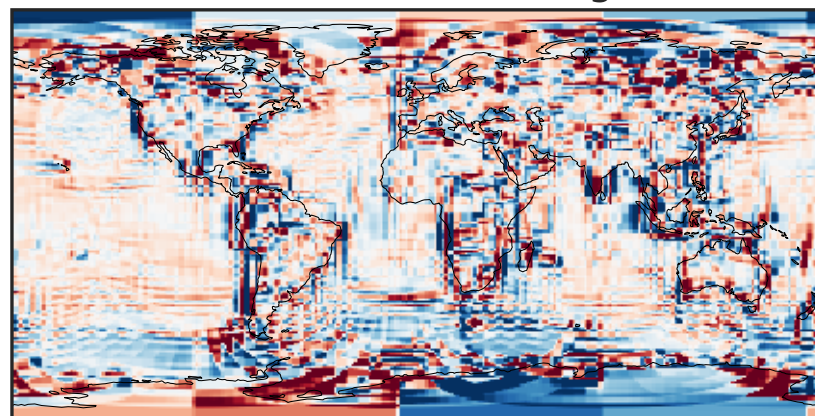
-0.1752 -0.0876 0.0000 0.0876 0.1752  
ppb

Ratio (1x1.25)  
Dev/Ref, Dynamic Range



1e-01 1 10  
unitless

Ratio (1x1.25)  
Dev/Ref, Fixed Range



0.50 0.75 1.00 1.50 2.00  
unitless