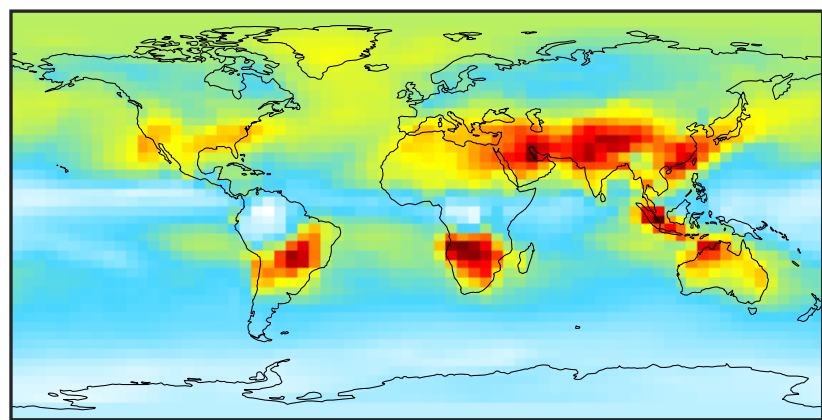


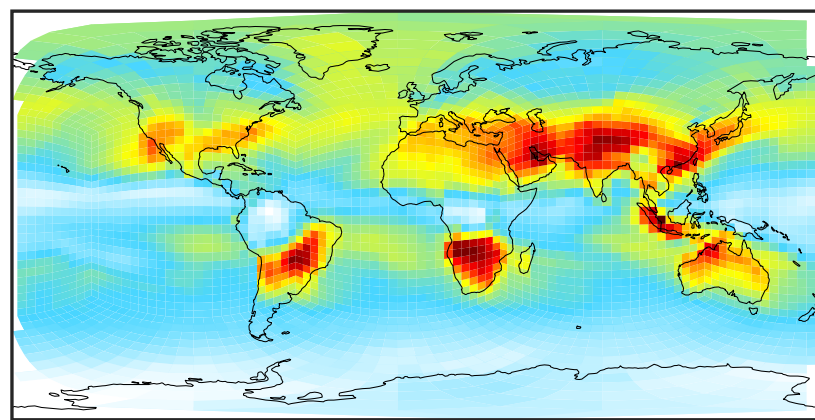
SpeciesConcVV_03 (Oct2019)

14.3.0-rc.0 (Ref)
4.0x5.0



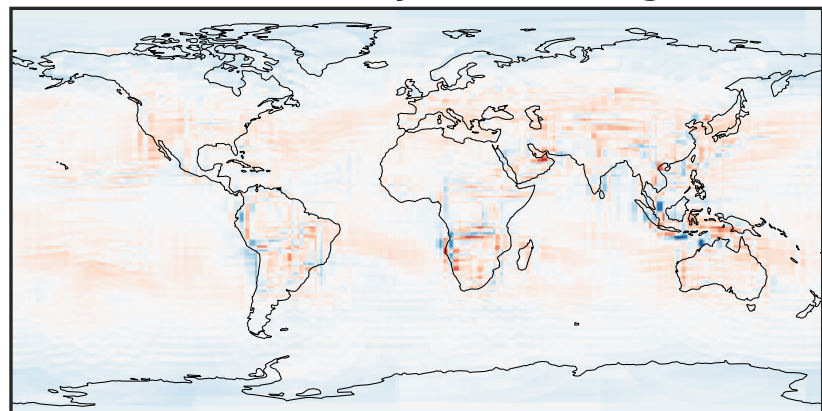
5.80 23.69 41.58 59.48 77.37
ppb

14.3.0-rc.0 (Dev)
c24



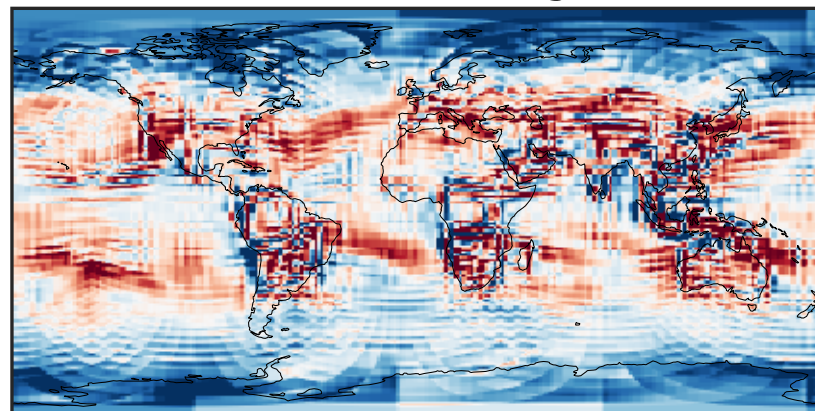
5.80 23.69 41.58 59.48 77.37
ppb

Difference (1x1.25)
Dev - Ref, Dynamic Range



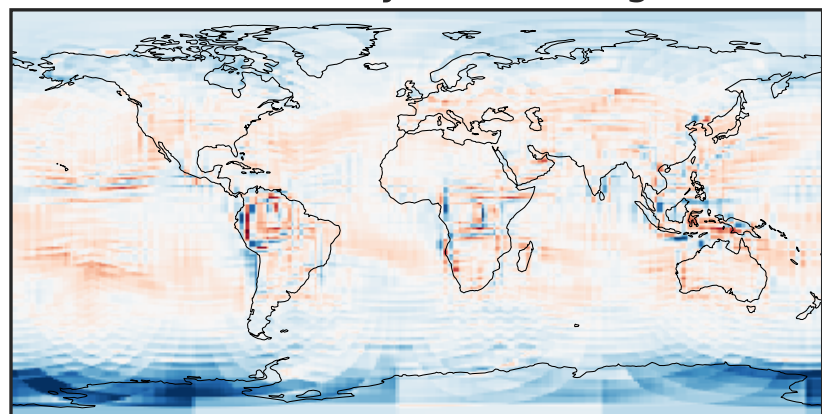
-24.11 -12.05 0.00 12.05 24.11
ppb

Difference (1x1.25)
Dev - Ref, Restricted Range [5%,95%]



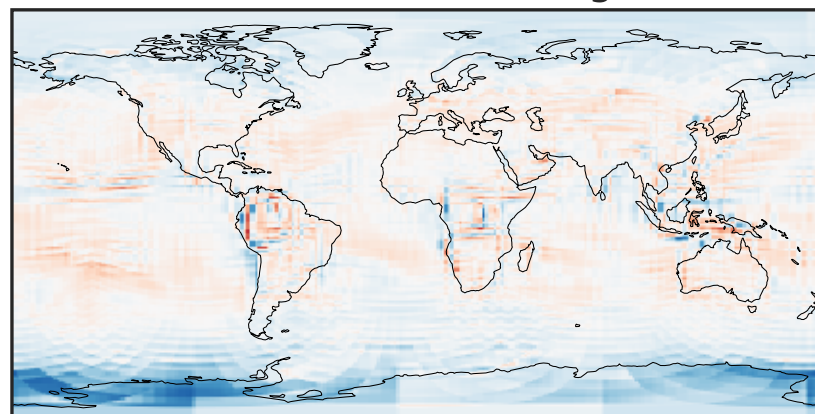
-3.821 -1.911 0.000 1.911 3.821
ppb

Ratio (1x1.25)
Dev/Ref, Dynamic Range



0.604 0.802 1.000 1.328 1.657
unitless

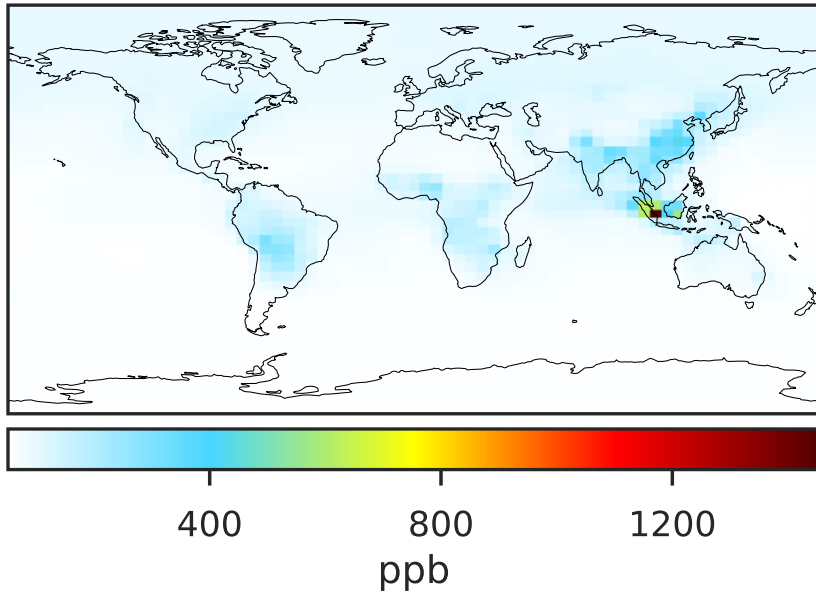
Ratio (1x1.25)
Dev/Ref, Fixed Range



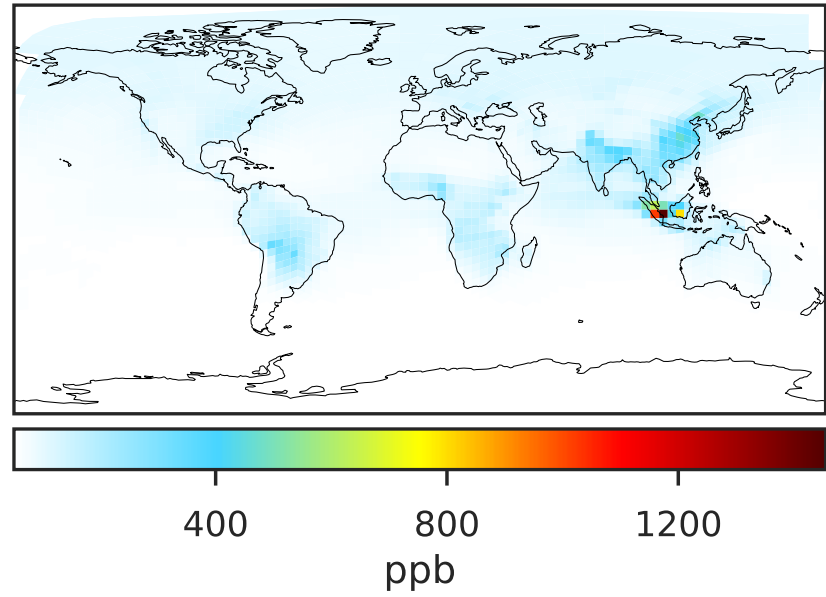
0.50 0.75 1.00 1.50 2.00
unitless

SpeciesConcVV_CO (Oct2019)

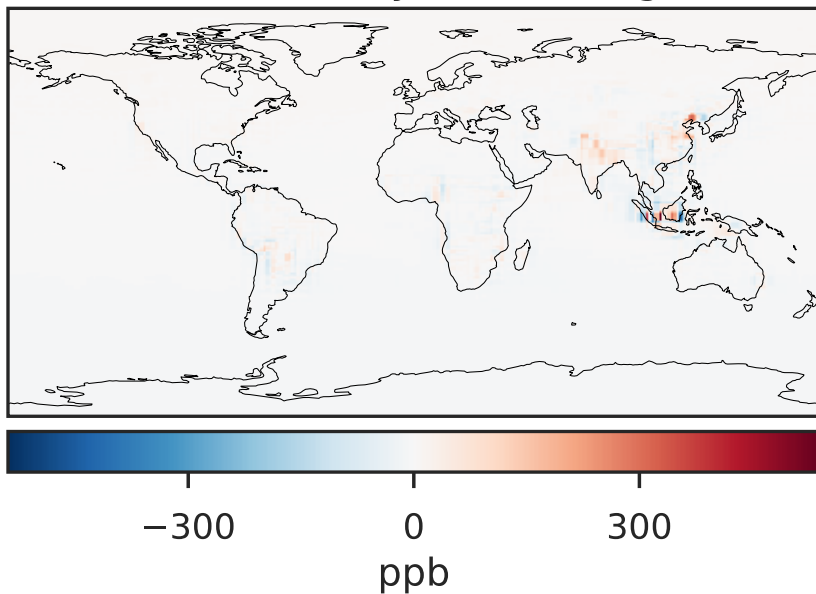
14.3.0-rc.0 (Ref)
4.0x5.0



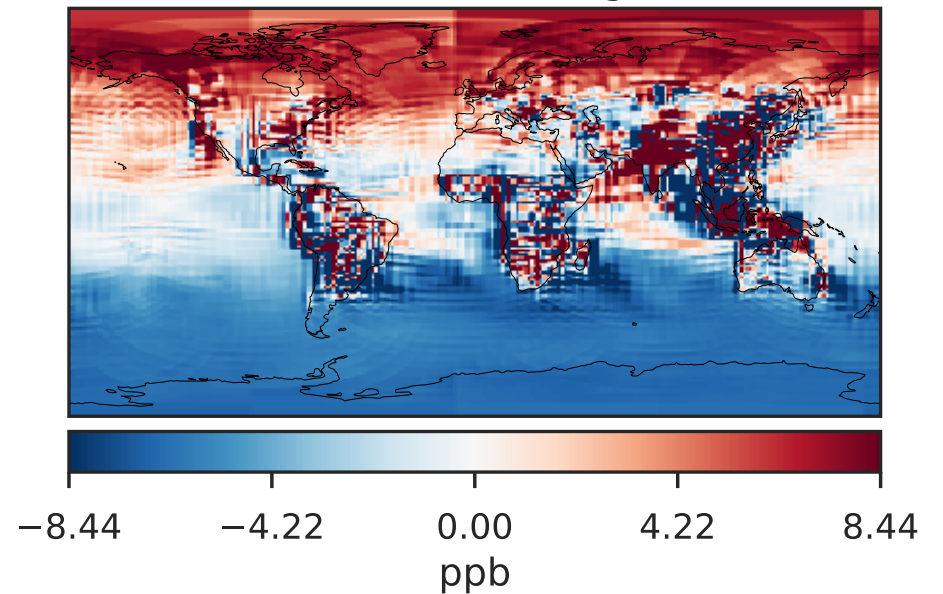
14.3.0-rc.0 (Dev)
c24



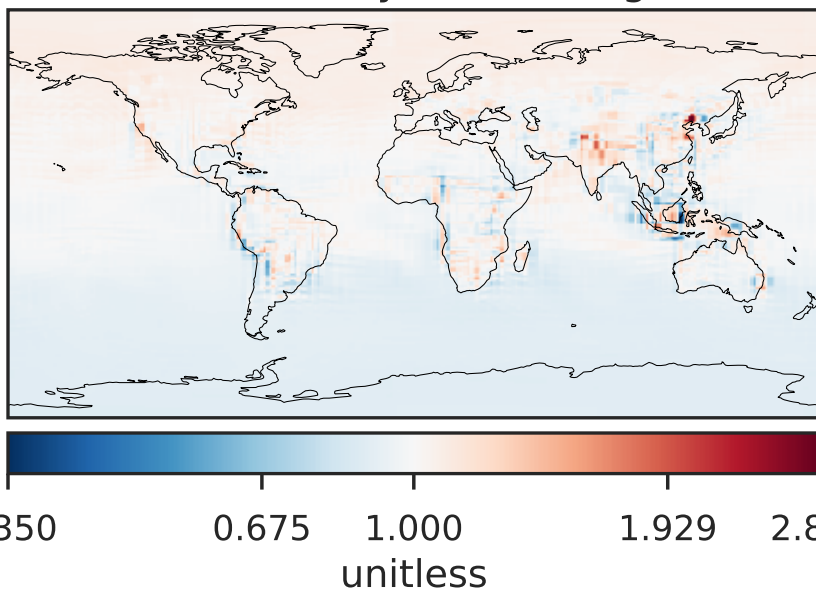
Difference (1x1.25)
Dev - Ref, Dynamic Range



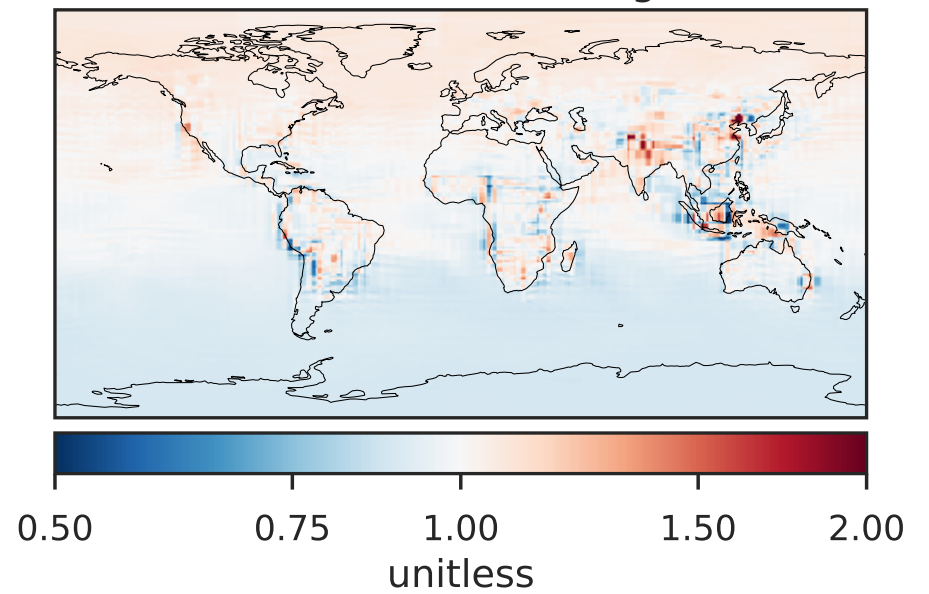
Difference (1x1.25)
Dev - Ref, Restricted Range [5%,95%]



Ratio (1x1.25)
Dev/Ref, Dynamic Range

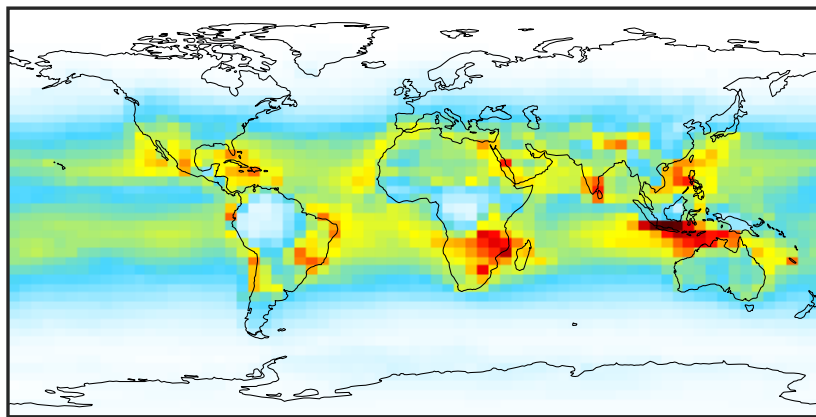


Ratio (1x1.25)
Dev/Ref, Fixed Range



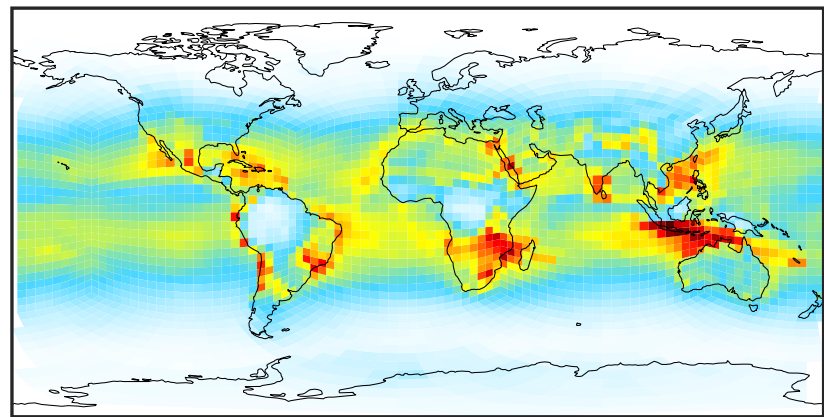
SpeciesConcVV_OH (Oct2019)

14.3.0-rc.0 (Ref)
4.0x5.0



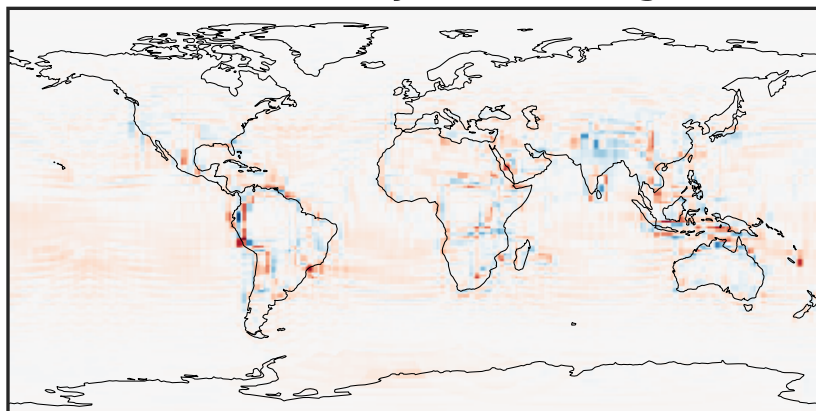
0.00005 0.00010 0.00015
ppb

14.3.0-rc.0 (Dev)
c24



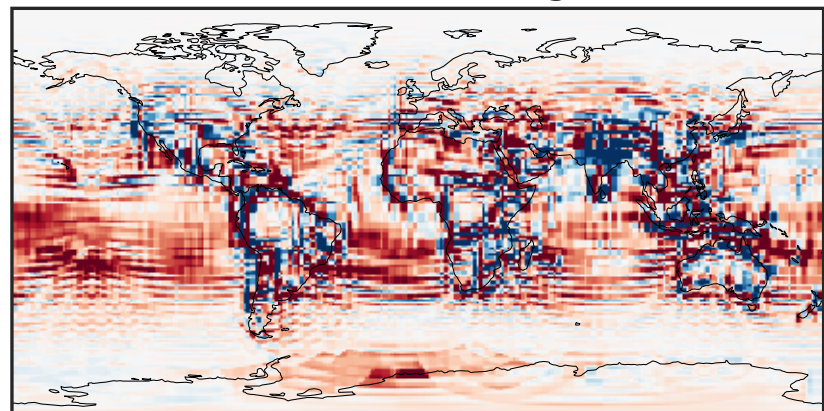
0.00005 0.00010 0.00015
ppb

Difference (1x1.25)
Dev - Ref, Dynamic Range



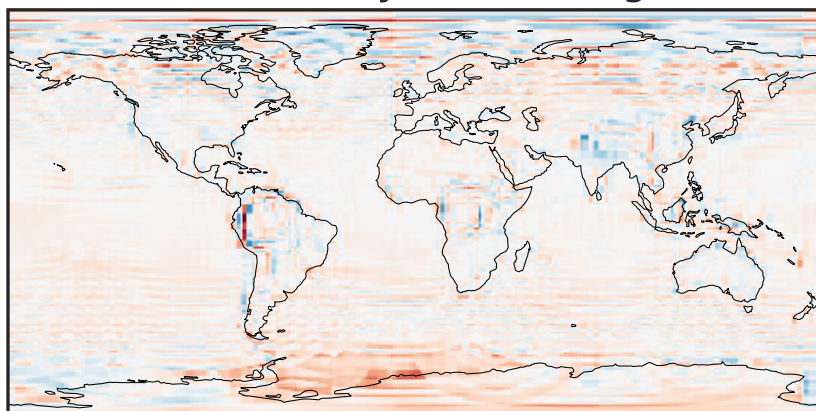
-4 0 4
ppb $1e-5$

Difference (1x1.25)
Dev - Ref, Restricted Range [5%,95%]



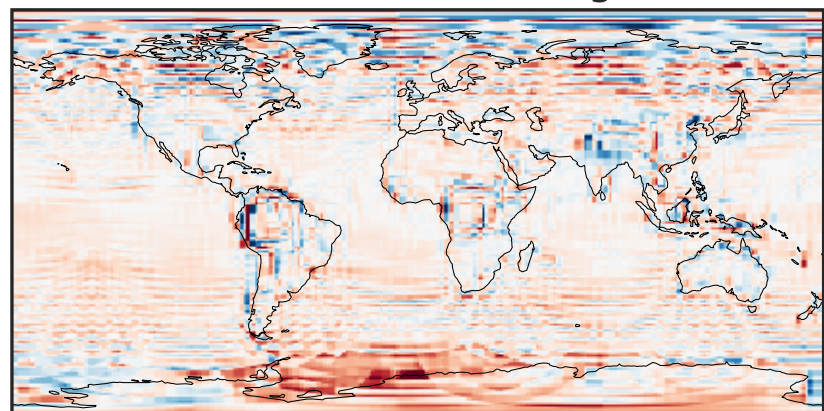
-5 0 5
ppb $1e-6$

Ratio (1x1.25)
Dev/Ref, Dynamic Range



0.265 0.632 1.000 2.388 3.775
unitless

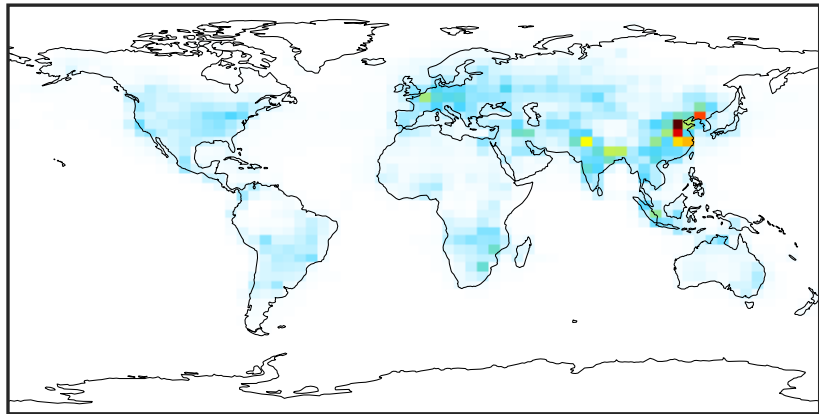
Ratio (1x1.25)
Dev/Ref, Fixed Range



0.50 0.75 1.00 1.50 2.00
unitless

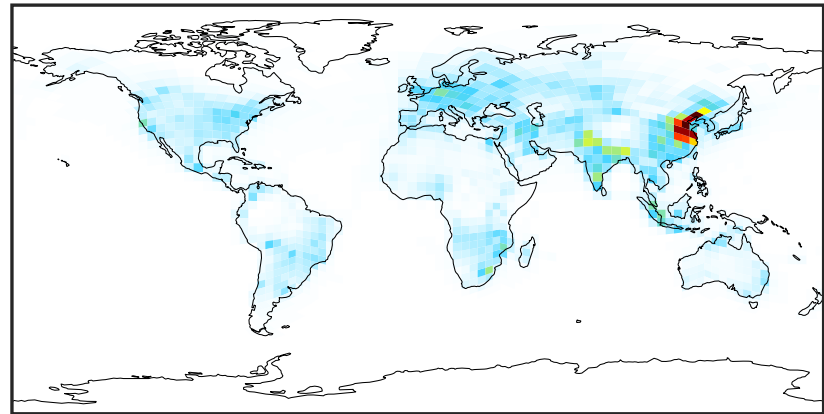
SpeciesConcVV_NOx (Oct2019)

14.3.0-rc.0 (Ref)
4.0x5.0



0.00 2.94 5.89 8.83 11.77
ppb

14.3.0-rc.0 (Dev)
c24



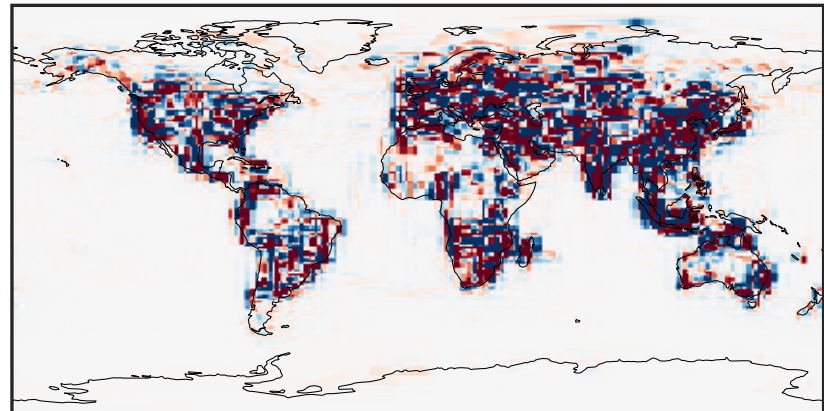
0.00 2.94 5.89 8.83 11.77
ppb

Difference (1x1.25)
Dev - Ref, Dynamic Range



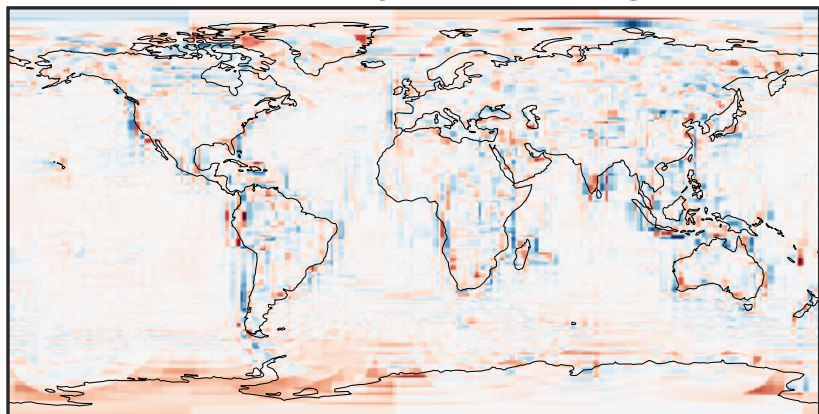
-9.67 -4.84 0.00 4.84 9.67
ppb

Difference (1x1.25)
Dev - Ref, Restricted Range [5%,95%]



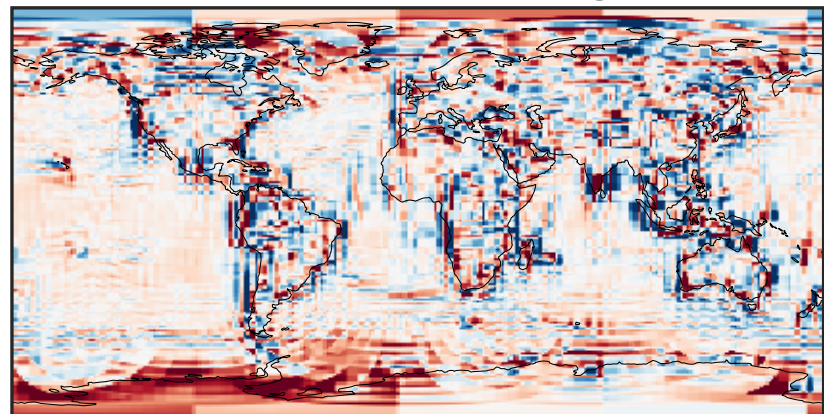
-0.16 -0.08 0.00 0.08 0.16
ppb

Ratio (1x1.25)
Dev/Ref, Dynamic Range



0.123 0.562 1.000 4.564 8.127
unitless

Ratio (1x1.25)
Dev/Ref, Fixed Range



0.50 0.75 1.00 1.50 2.00
unitless