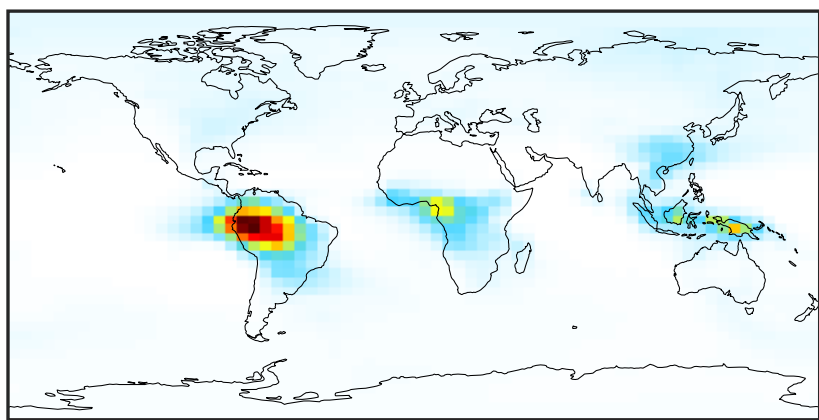


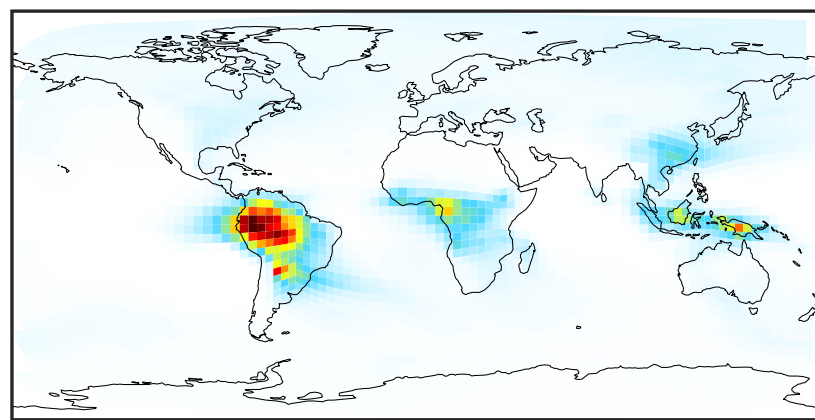
SpeciesConcVW_EOH (Apr2019)

14.3.0-rc.0 (Ref)
4.0x5.0



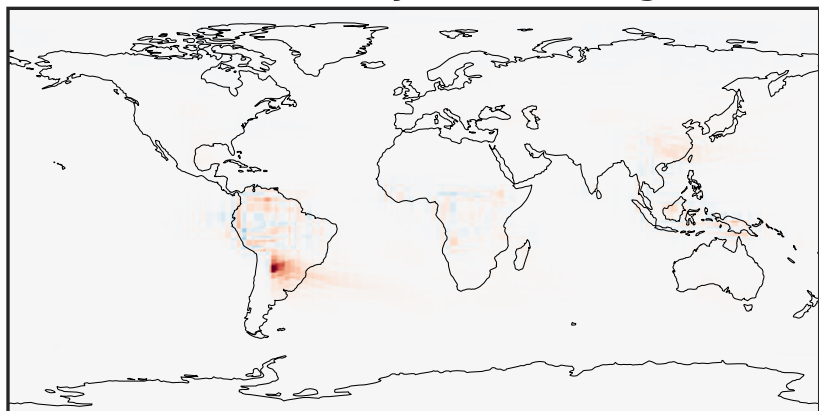
0.0001 0.0410 0.0818 0.1226 0.1635
ppb

14.3.0-rc.0 (Dev)
c24



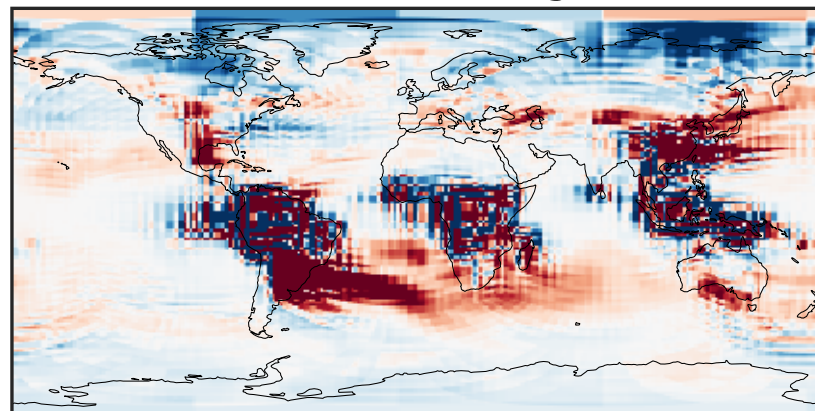
0.0001 0.0410 0.0818 0.1226 0.1635
ppb

Difference (1x1.25)
Dev - Ref, Dynamic Range



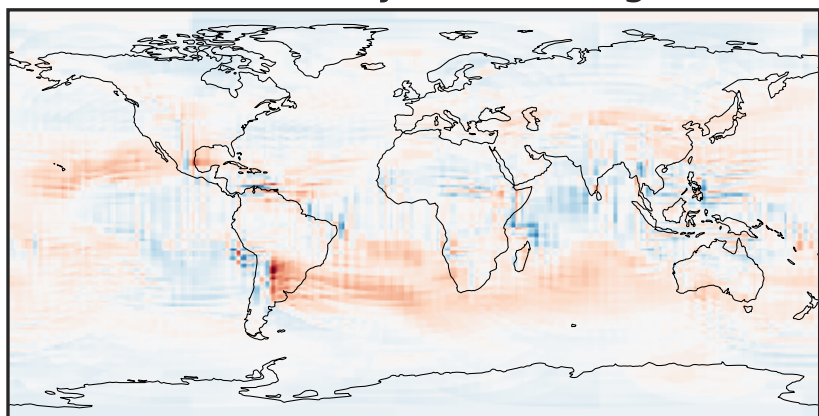
-0.1131 -0.0565 0.0000 0.0565 0.1131
ppb

Difference (1x1.25)
Dev - Ref, Restricted Range [5%,95%]



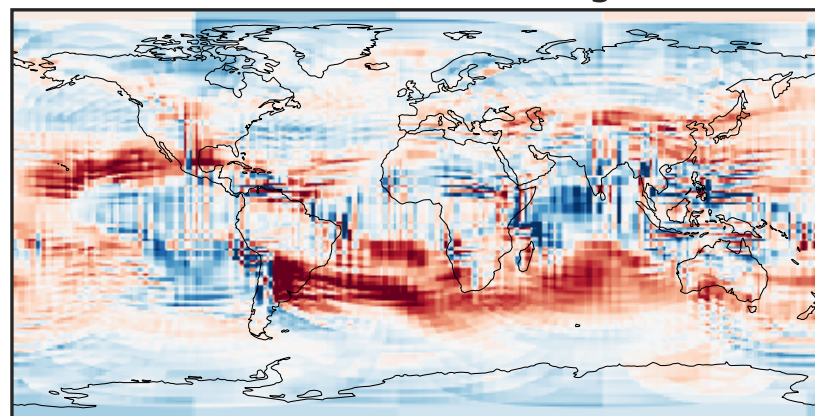
-0.001 0.000 0.001
ppb

Ratio (1x1.25)
Dev/Ref, Dynamic Range



1e-01 1 10
unitless

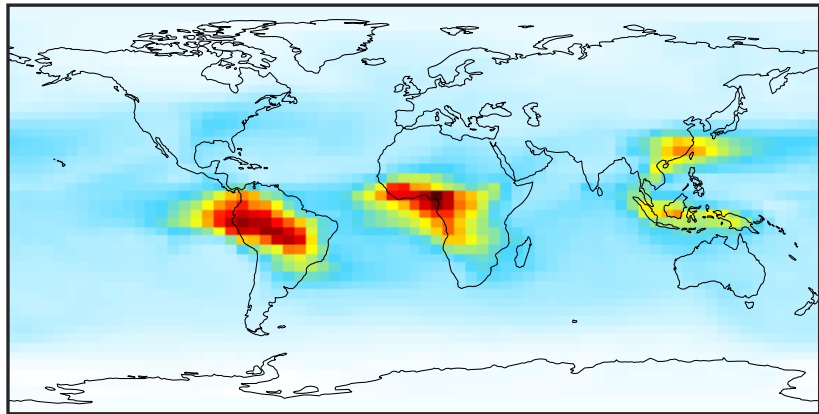
Ratio (1x1.25)
Dev/Ref, Fixed Range



0.50 0.75 1.00 1.50 2.00
unitless

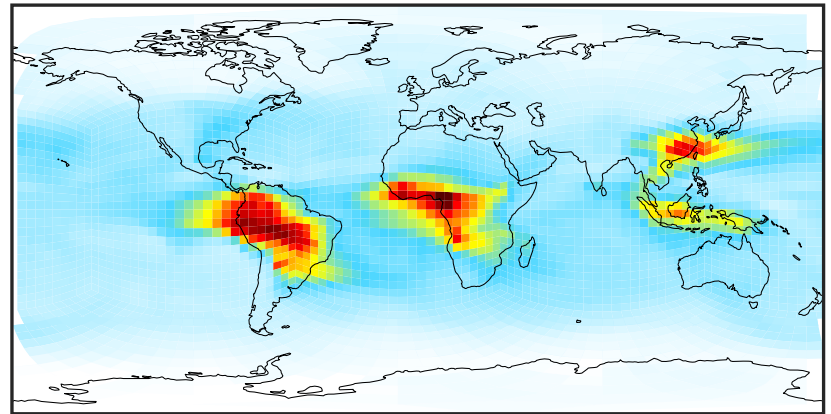
SpeciesConcVV_MOH (Apr2019)

14.3.0-rc.0 (Ref)
4.0x5.0



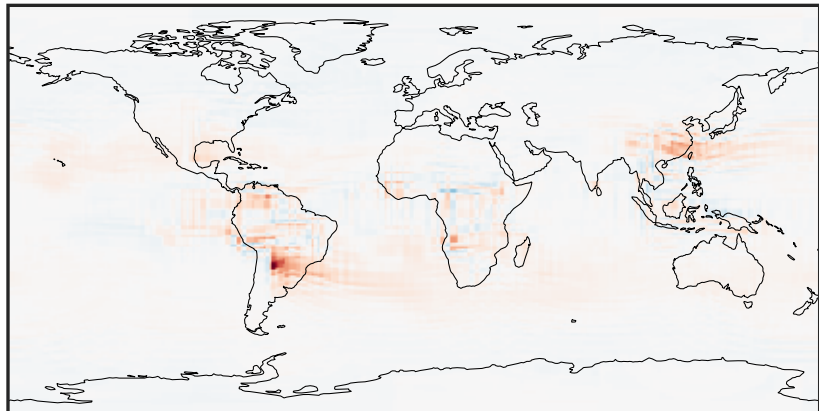
0.133 0.446 0.760 1.073 1.387
ppb

14.3.0-rc.0 (Dev)
c24



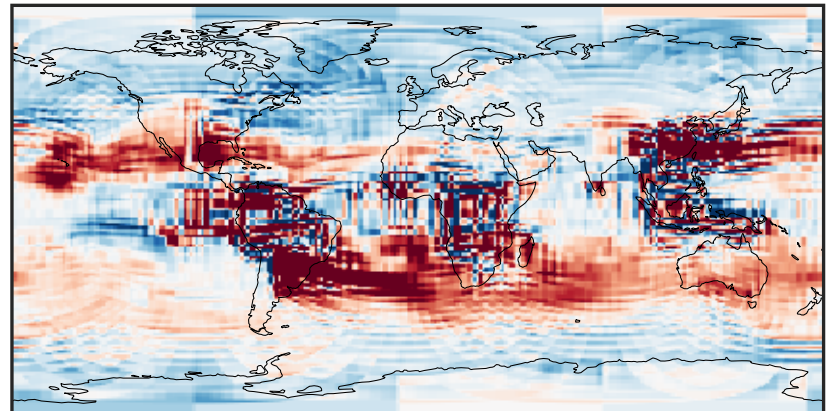
0.133 0.446 0.760 1.073 1.387
ppb

Difference (1x1.25)
Dev - Ref, Dynamic Range



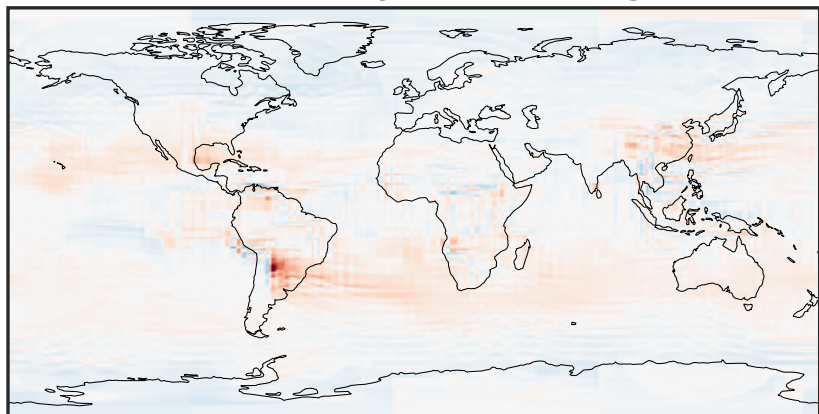
-0.634 -0.317 0.000 0.317 0.634
ppb

Difference (1x1.25)
Dev - Ref, Restricted Range [5%,95%]



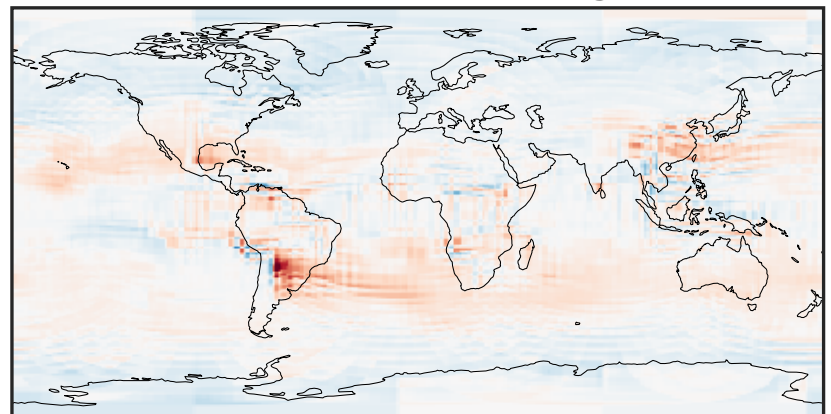
-0.025 0.000 0.025
ppb

Ratio (1x1.25)
Dev/Ref, Dynamic Range



0.370 0.685 1.000 1.850 2.699
unitless

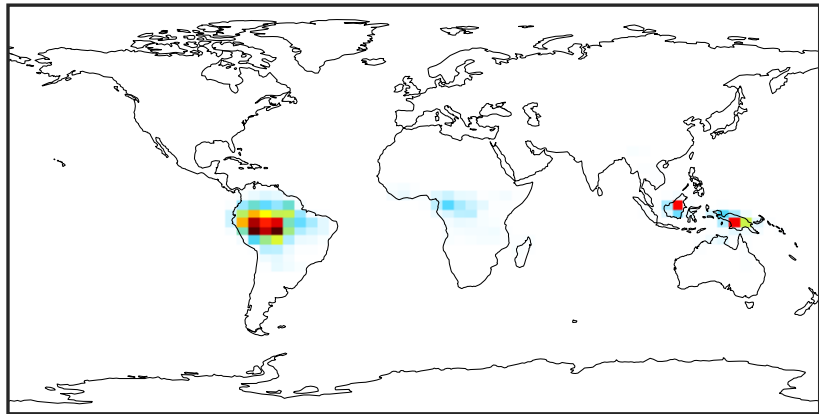
Ratio (1x1.25)
Dev/Ref, Fixed Range



0.50 0.75 1.00 1.50 2.00
unitless

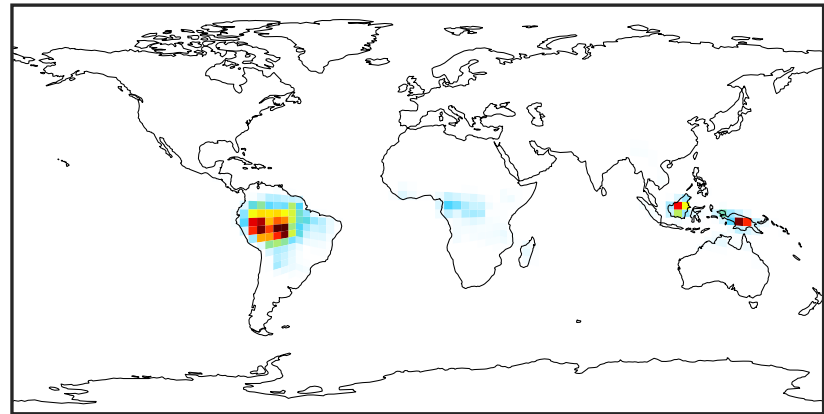
SpeciesConcVV_ISOP (Apr2019)

14.3.0-rc.0 (Ref)
4.0x5.0



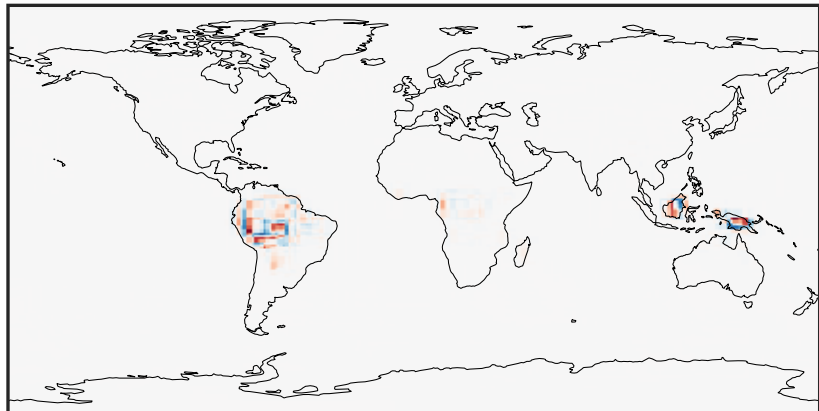
0.0000 0.0345 0.0691 0.1036 0.1382
ppb

14.3.0-rc.0 (Dev)
c24



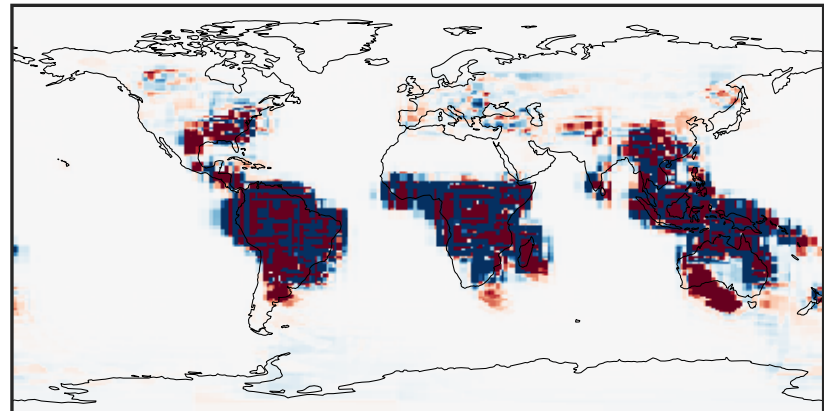
0.0000 0.0345 0.0691 0.1036 0.1382
ppb

Difference (1x1.25)
Dev - Ref, Dynamic Range



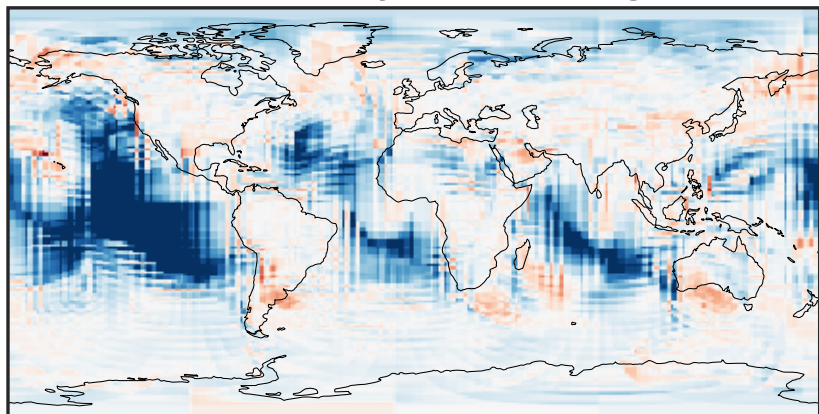
-0.0590 -0.0295 0.0000 0.0295 0.0590
ppb

Difference (1x1.25)
Dev - Ref, Restricted Range [5%,95%]



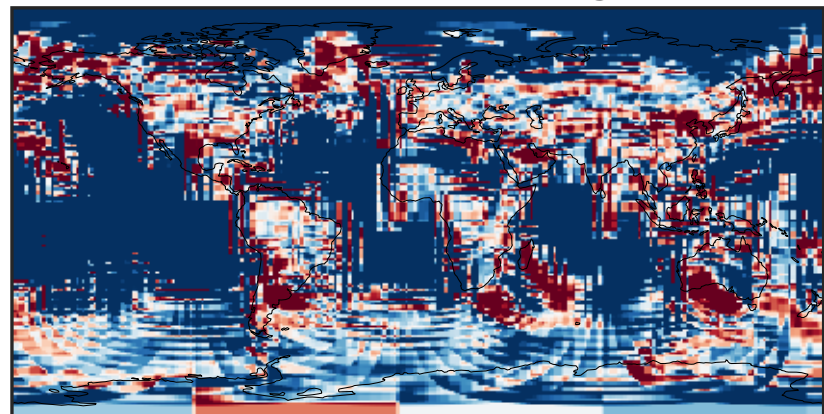
-1.5 0.0 1.5
ppb $1e-5$

Ratio (1x1.25)
Dev/Ref, Dynamic Range



1e-02 1e-01 1 10 100
unitless

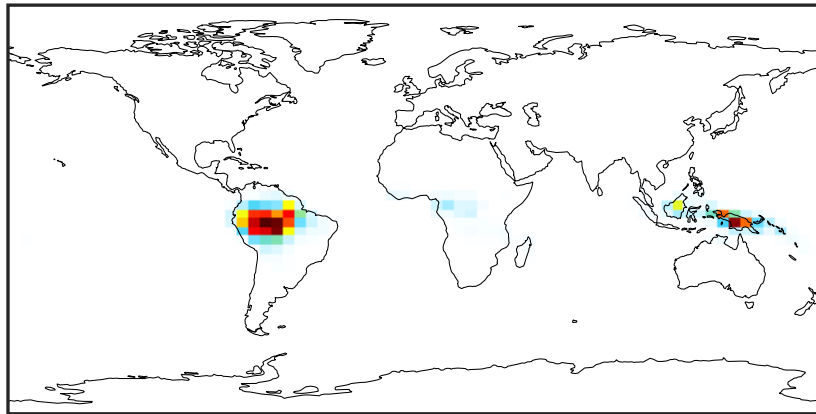
Ratio (1x1.25)
Dev/Ref, Fixed Range



0.50 0.75 1.00 1.50 2.00
unitless

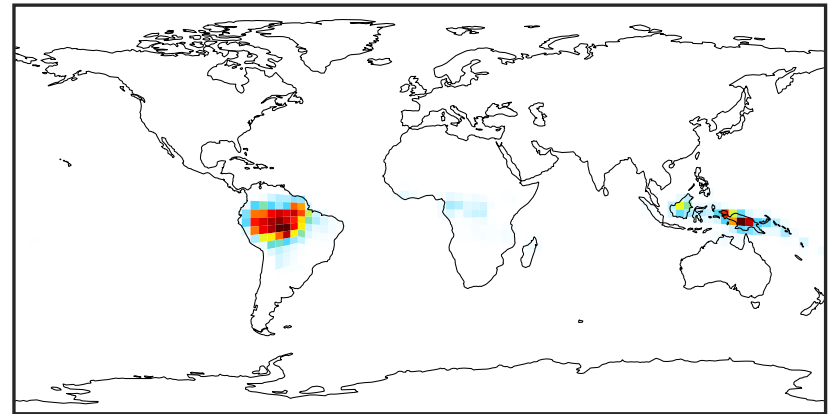
SpeciesConcVV_MTPA (Apr2019)

14.3.0-rc.0 (Ref)
4.0x5.0



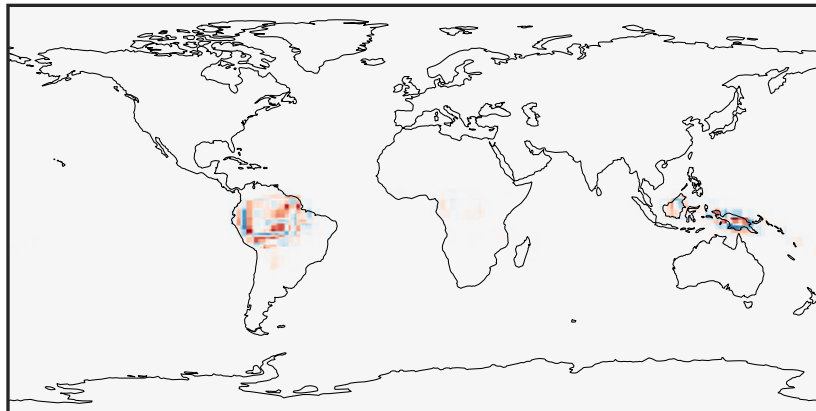
0.0000 0.0025 0.0050 0.0075
ppb

14.3.0-rc.0 (Dev)
c24



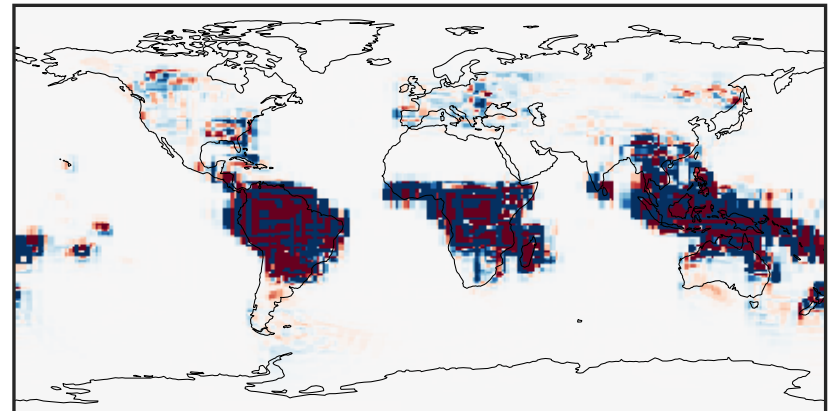
0.0000 0.0025 0.0050 0.0075
ppb

Difference (1x1.25)
Dev - Ref, Dynamic Range



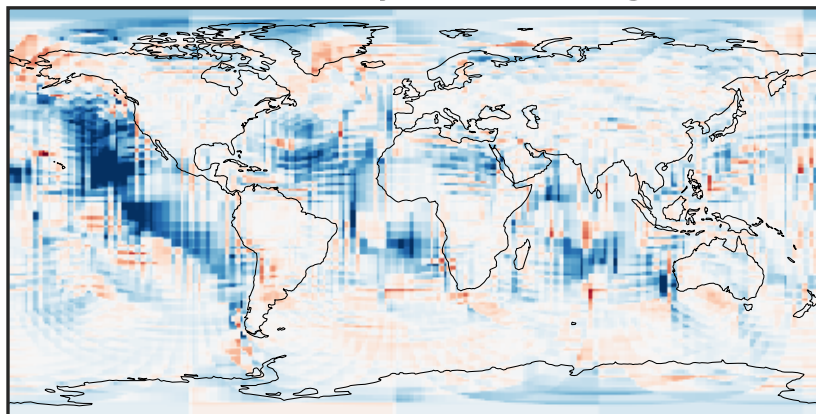
-0.002 0.000 0.002
ppb

Difference (1x1.25)
Dev - Ref, Restricted Range [5%,95%]



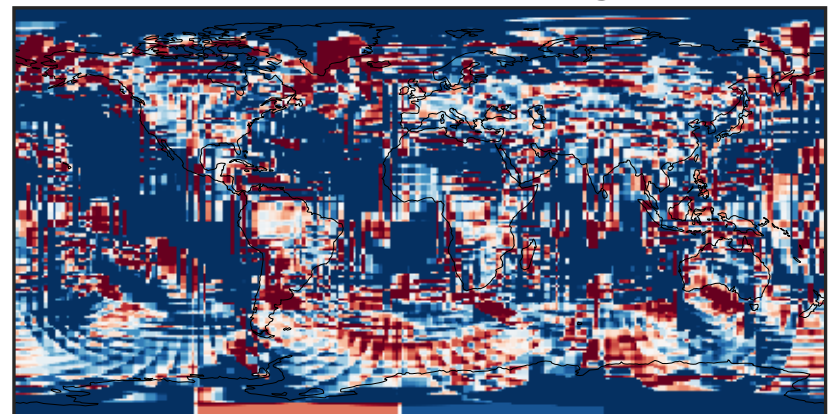
-1.5 0.0 1.5
ppb
1e-6

Ratio (1x1.25)
Dev/Ref, Dynamic Range



1e-03 1e-02 1e-01 1 10 100 1000
unitless

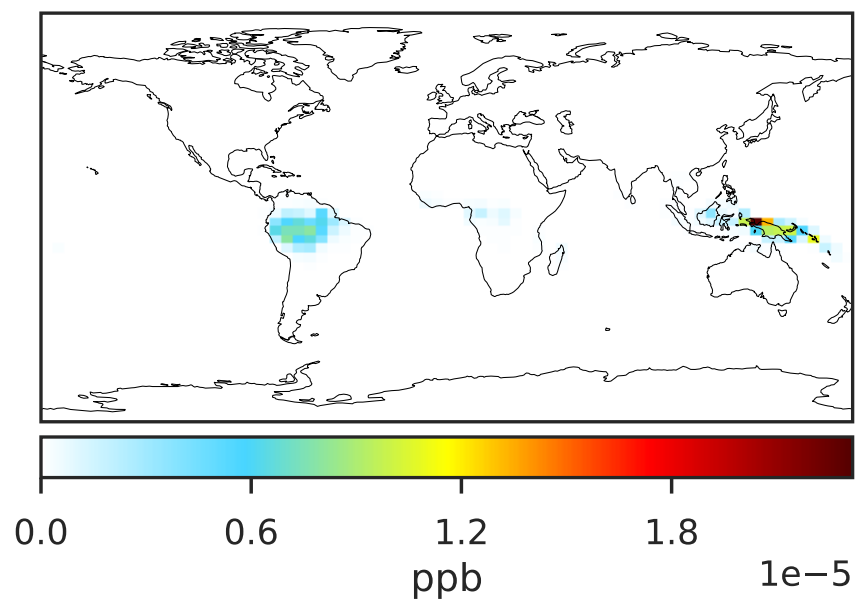
Ratio (1x1.25)
Dev/Ref, Fixed Range



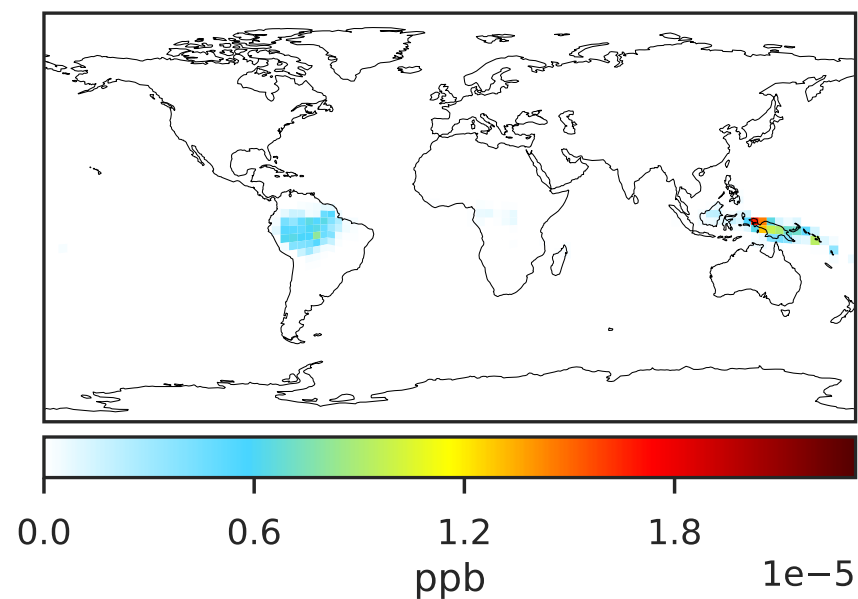
0.50 0.75 1.00 1.50 2.00
unitless

SpeciesConcVV_MTPO (Apr2019)

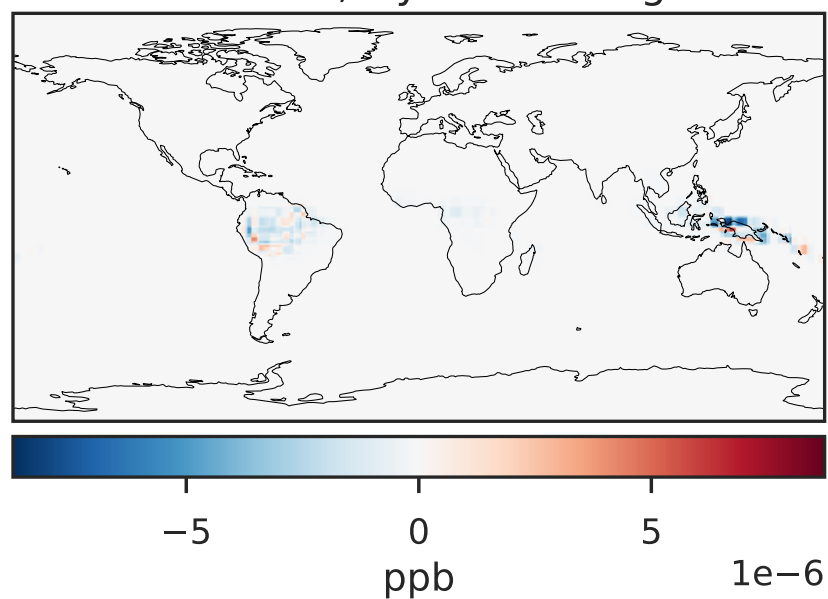
14.3.0-rc.0 (Ref)
4.0x5.0



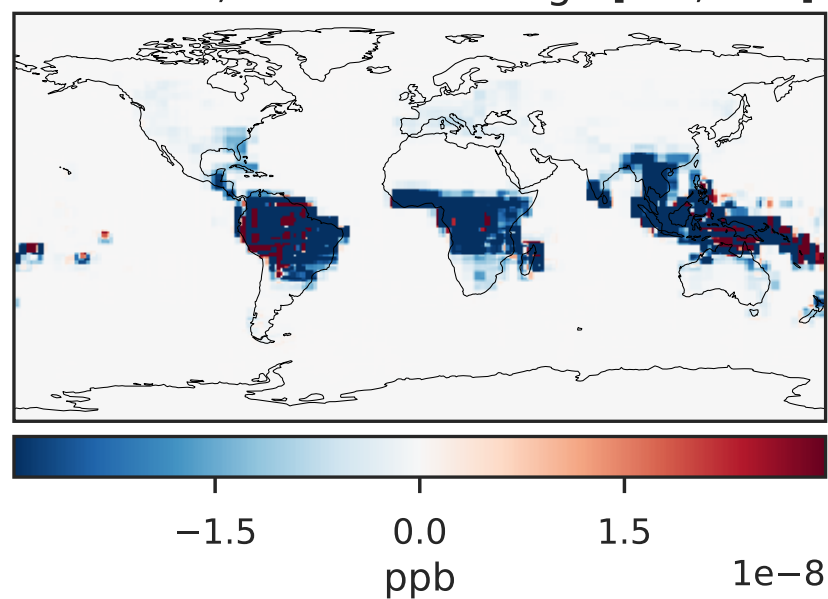
14.3.0-rc.0 (Dev)
c24



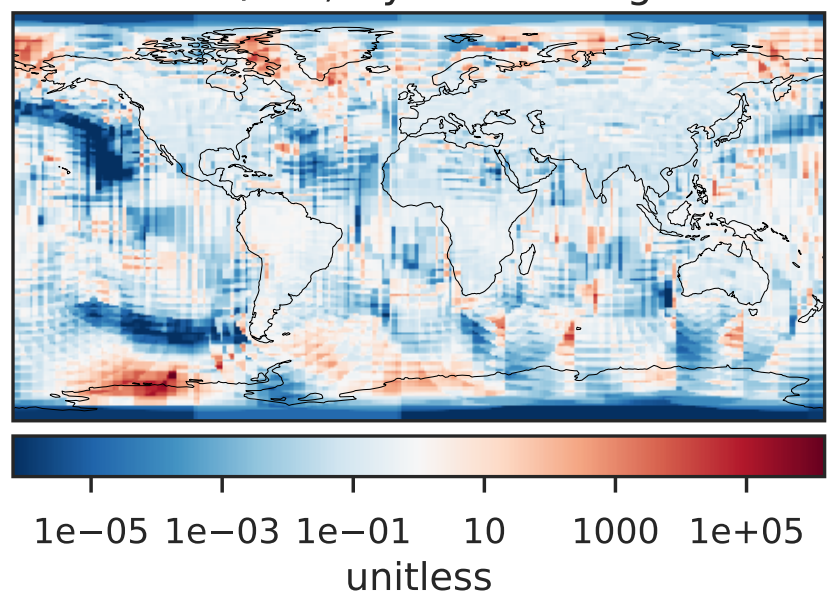
Difference (1x1.25)
Dev - Ref, Dynamic Range



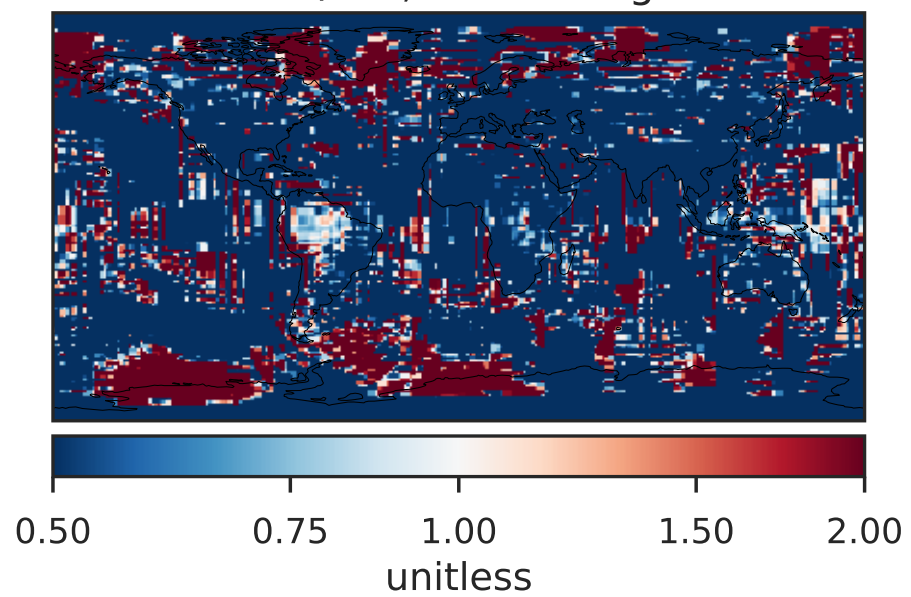
Difference (1x1.25)
Dev - Ref, Restricted Range [5%,95%]



Ratio (1x1.25)
Dev/Ref, Dynamic Range

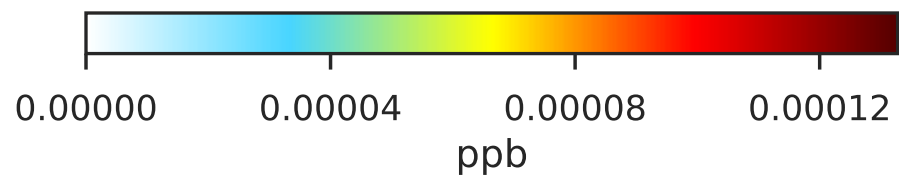
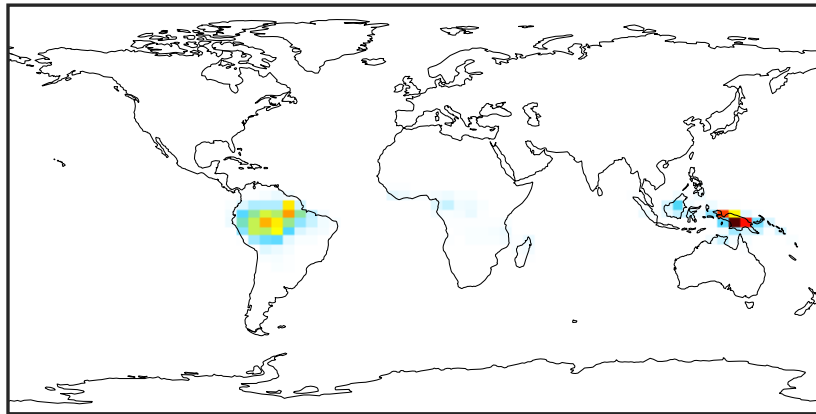


Ratio (1x1.25)
Dev/Ref, Fixed Range

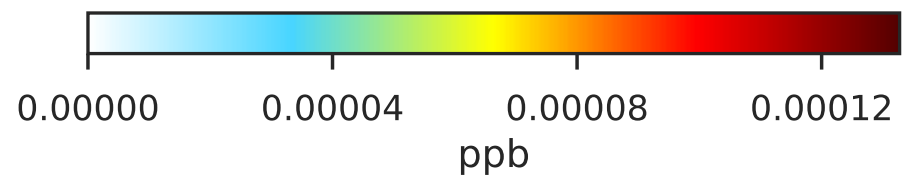
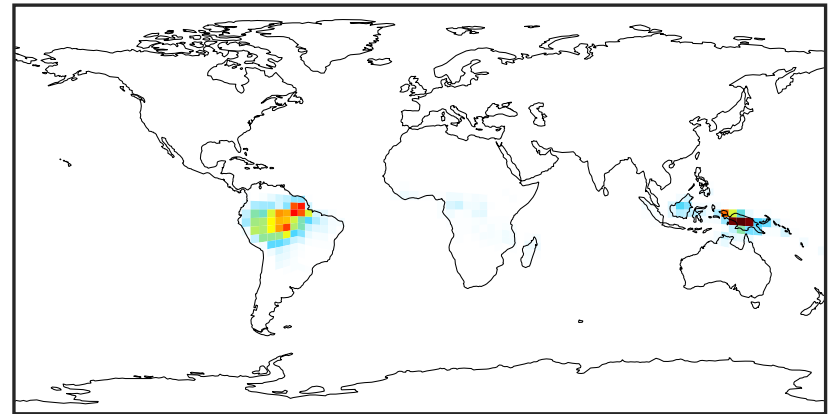


SpeciesConcVV_LIMO (Apr2019)

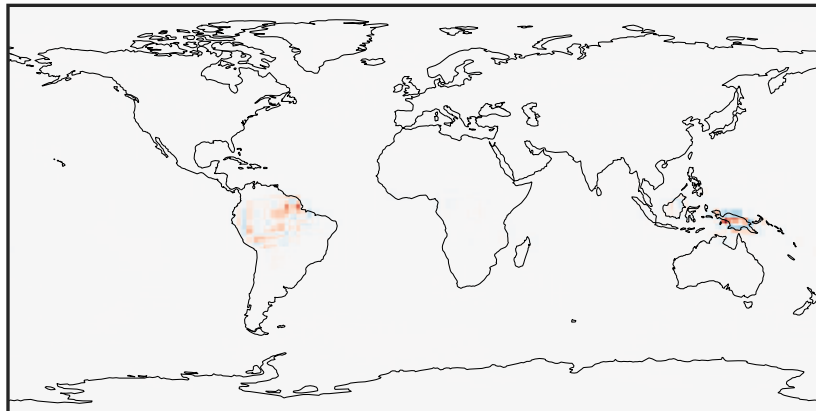
14.3.0-rc.0 (Ref)
4.0x5.0



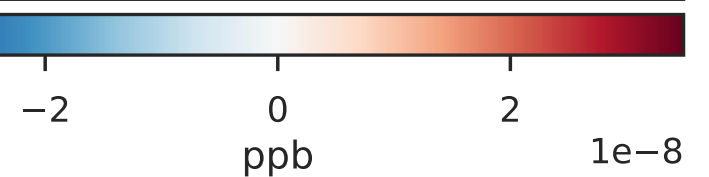
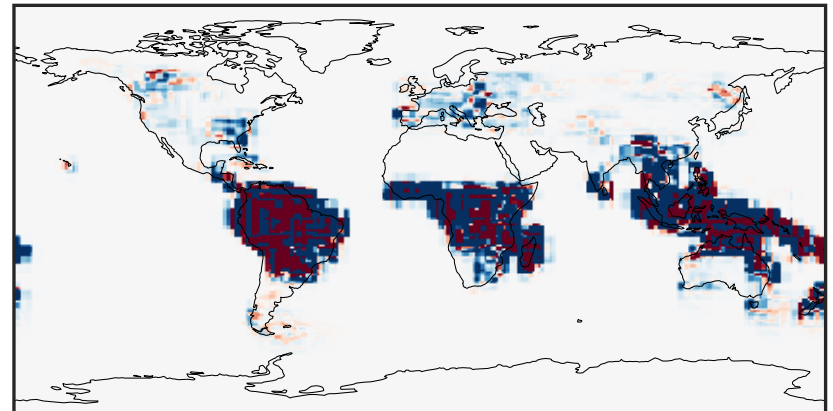
14.3.0-rc.0 (Dev)
c24



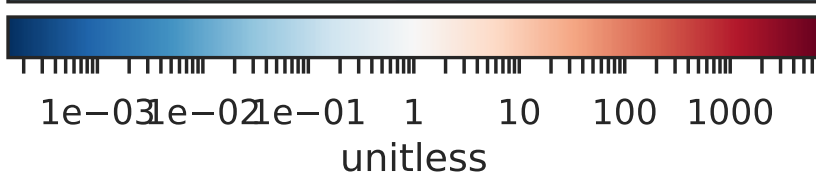
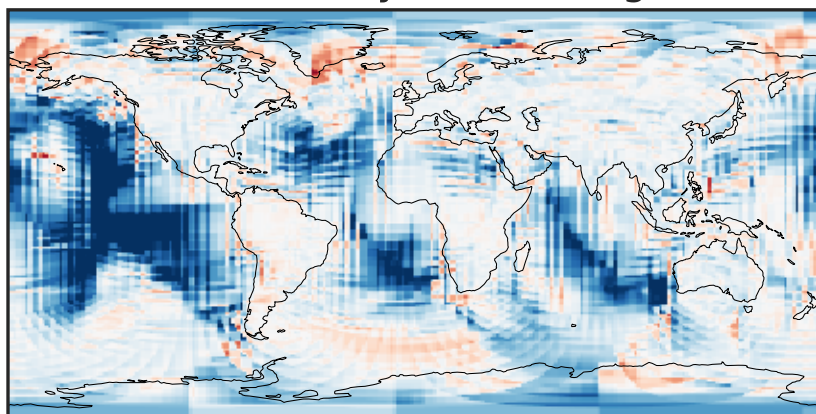
Difference (1x1.25)
Dev - Ref, Dynamic Range



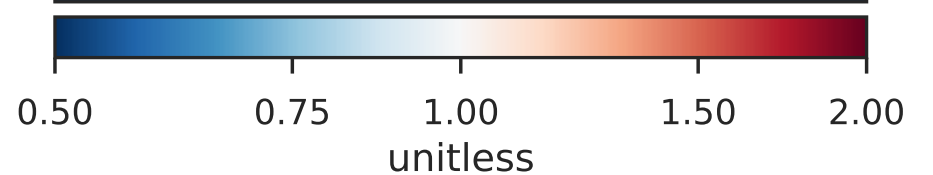
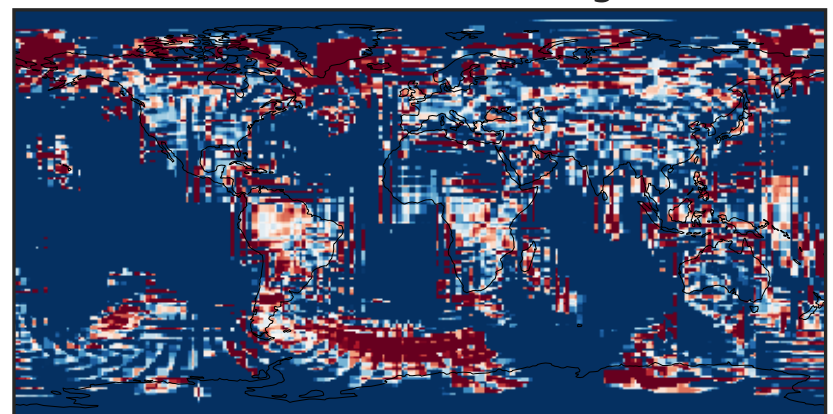
Difference (1x1.25)
Dev - Ref, Restricted Range [5%,95%]



Ratio (1x1.25)
Dev/Ref, Dynamic Range

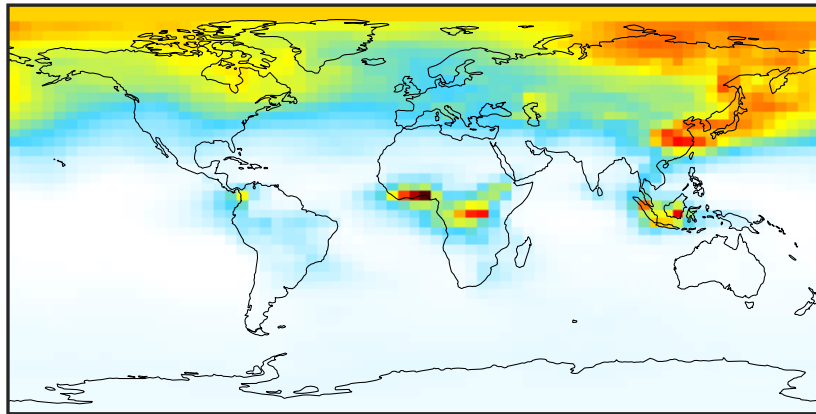


Ratio (1x1.25)
Dev/Ref, Fixed Range



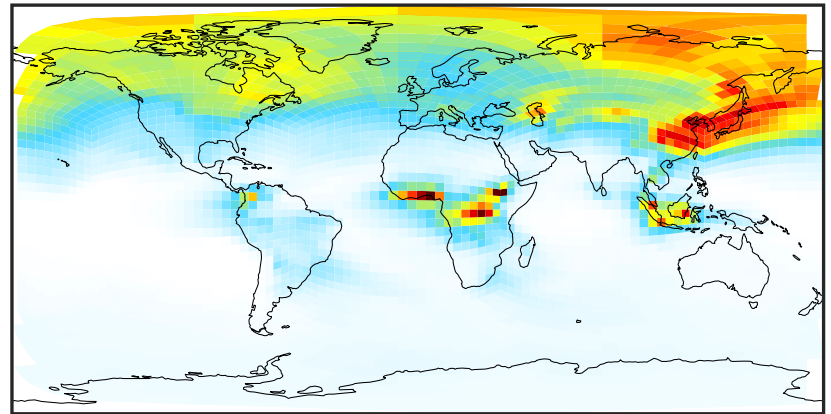
SpeciesConcVV_ALK4 (Apr2019)

14.3.0-rc.0 (Ref)
4.0x5.0



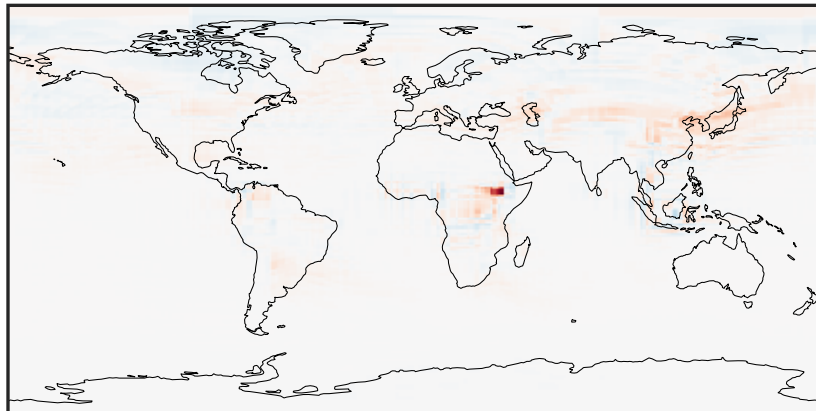
0.0005 0.0698 0.1392 0.2085 0.2778
ppb

14.3.0-rc.0 (Dev)
c24



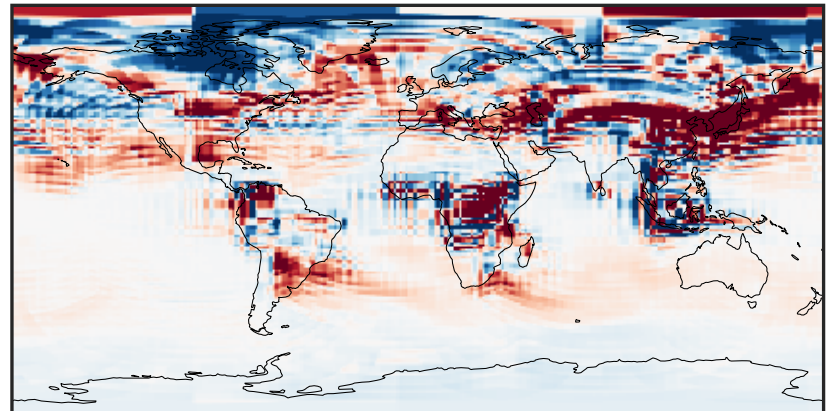
0.0005 0.0698 0.1392 0.2085 0.2778
ppb

Difference (1x1.25)
Dev - Ref, Dynamic Range



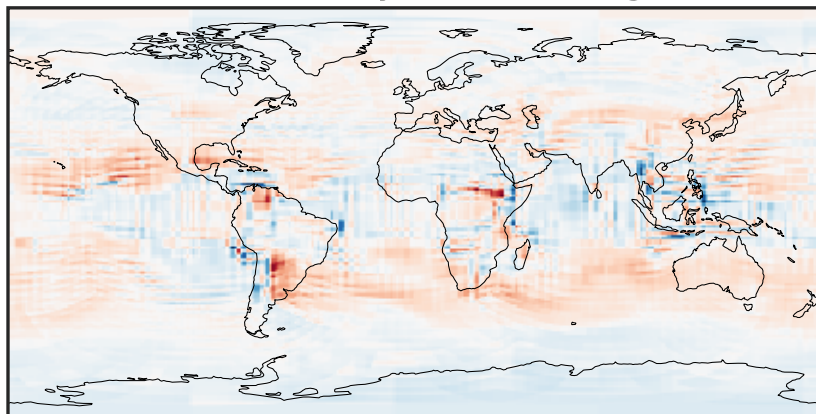
-0.2482 -0.1241 0.0000 0.1241 0.2482
ppb

Difference (1x1.25)
Dev - Ref, Restricted Range [5%,95%]



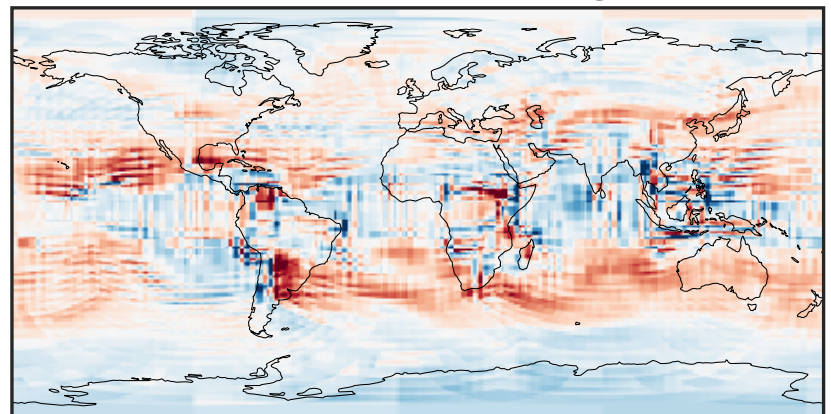
-0.008 0.000 0.008
ppb

Ratio (1x1.25)
Dev/Ref, Dynamic Range



0.240 0.620 1.000 2.579 4.158
unitless

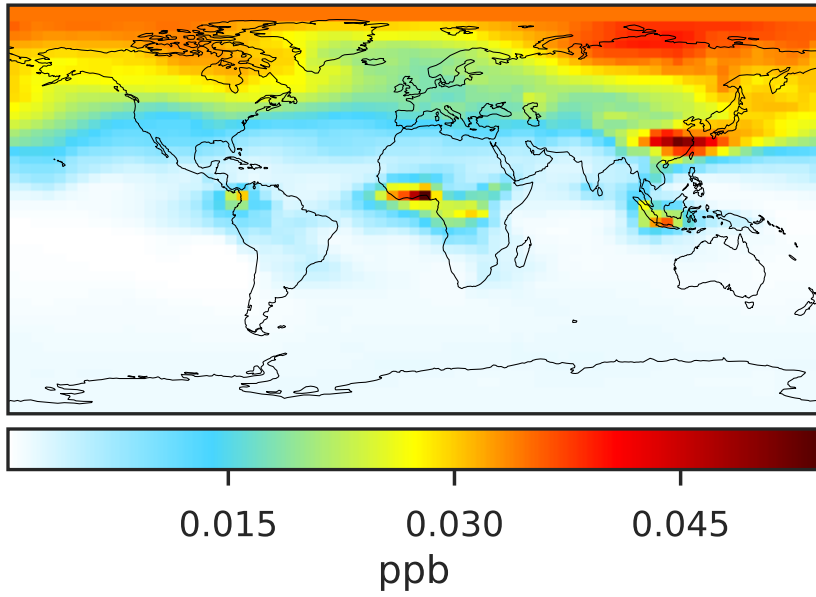
Ratio (1x1.25)
Dev/Ref, Fixed Range



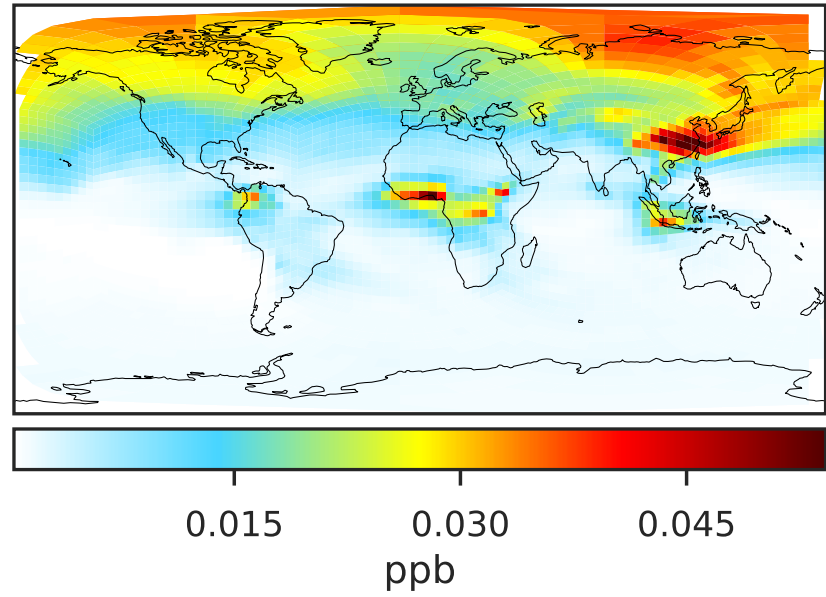
0.50 0.75 1.00 1.50 2.00
unitless

SpeciesConcVV_BENZ (Apr2019)

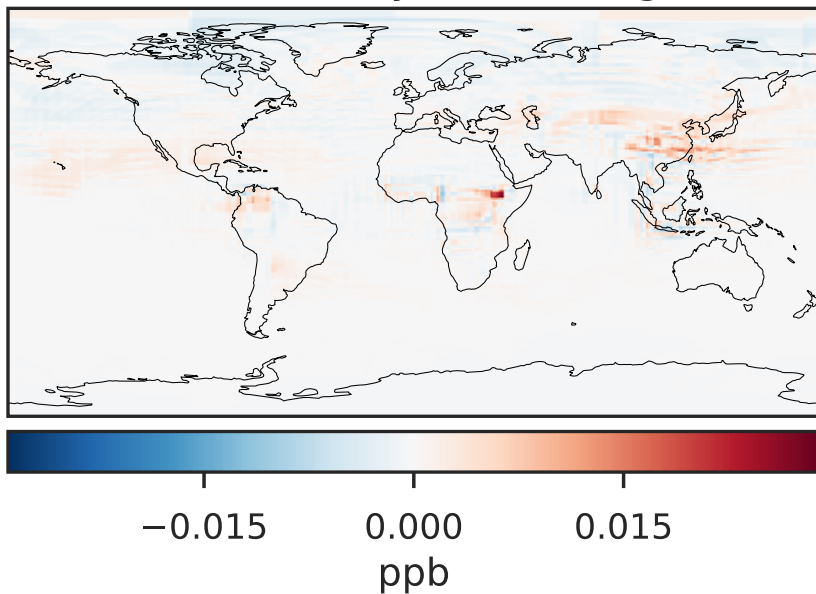
14.3.0-rc.0 (Ref)
4.0x5.0



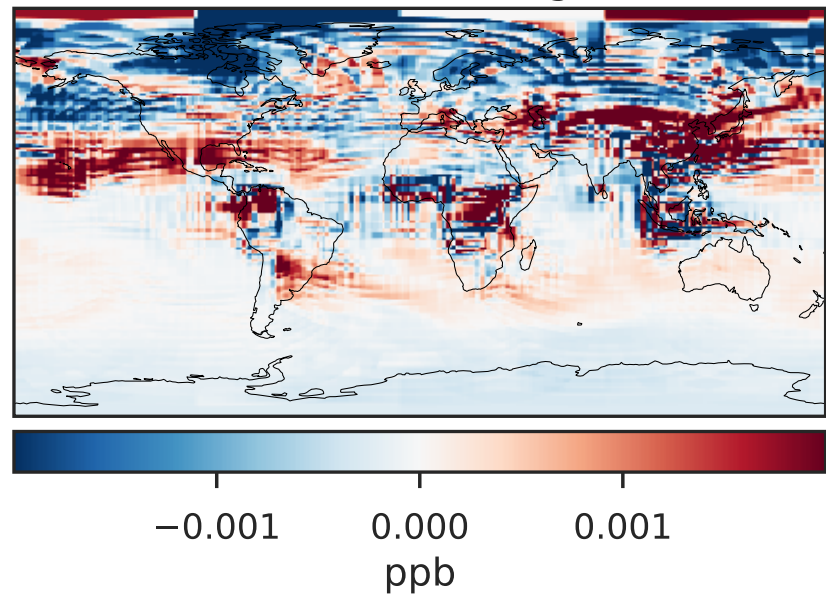
14.3.0-rc.0 (Dev)
c24



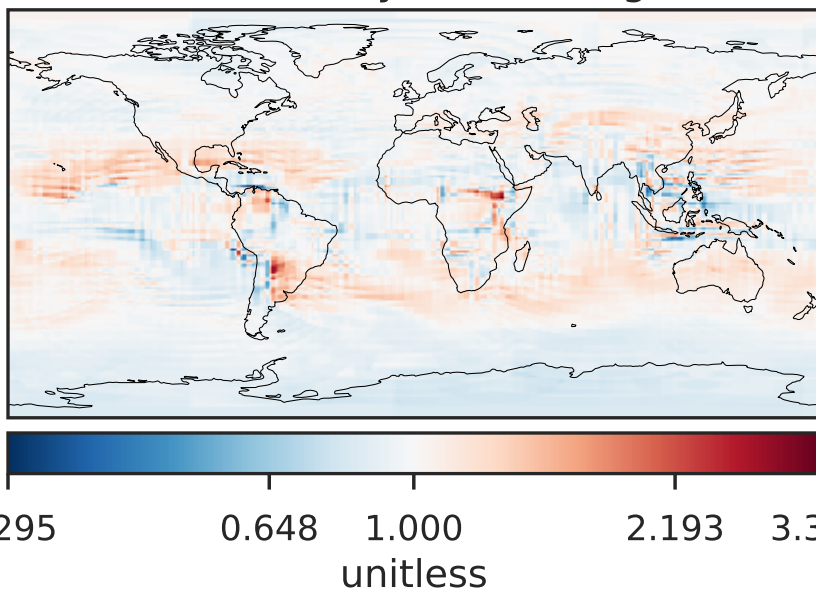
Difference (1x1.25)
Dev - Ref, Dynamic Range



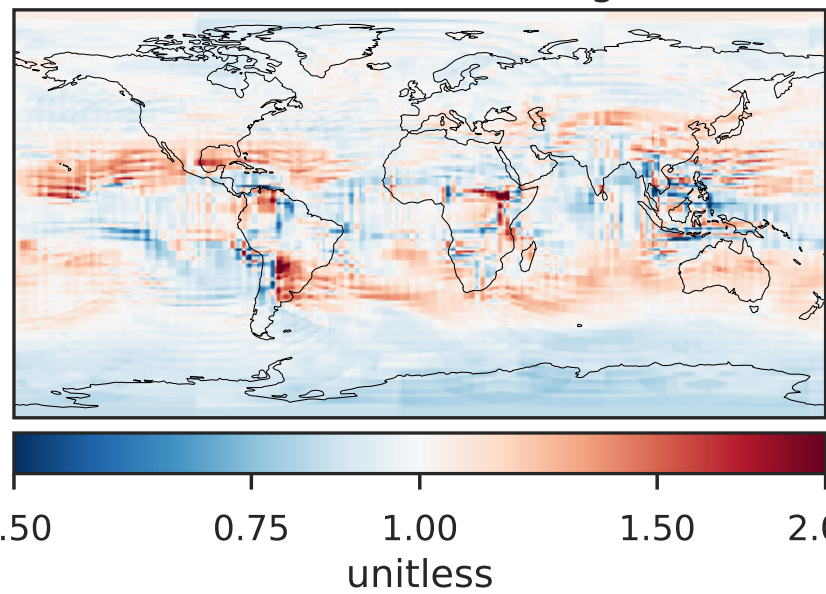
Difference (1x1.25)
Dev - Ref, Restricted Range [5%,95%]



Ratio (1x1.25)
Dev/Ref, Dynamic Range

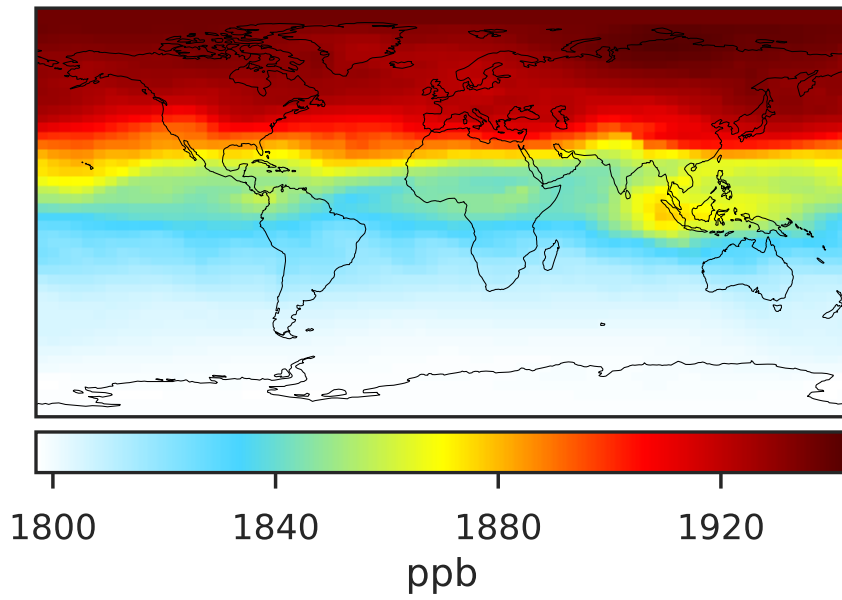


Ratio (1x1.25)
Dev/Ref, Fixed Range

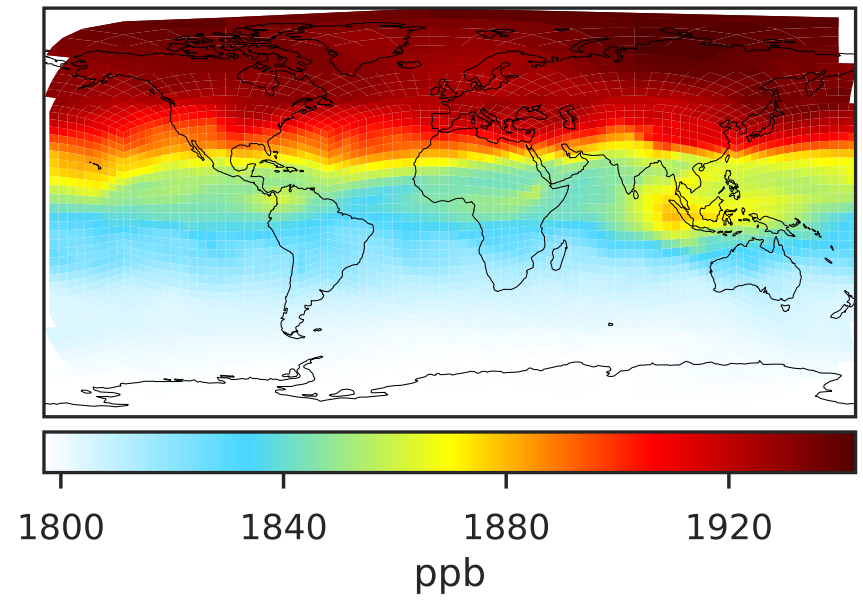


SpeciesConcVV_CH4 (Apr2019)

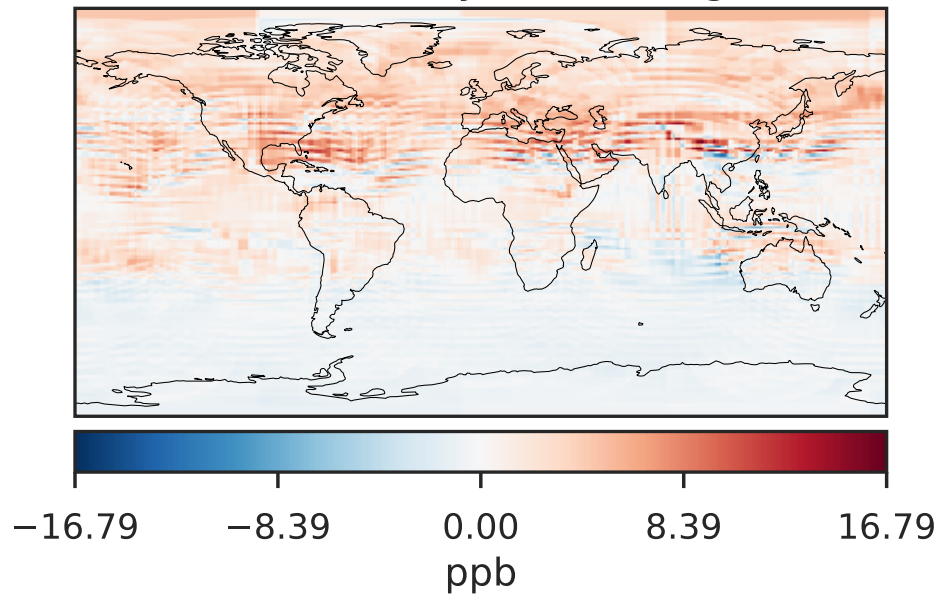
14.3.0-rc.0 (Ref)
4.0x5.0



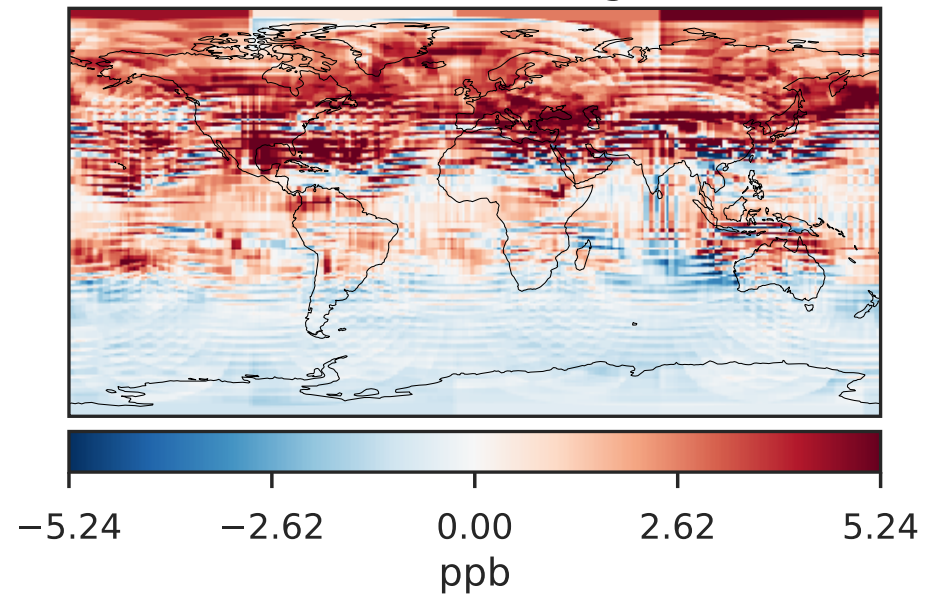
14.3.0-rc.0 (Dev)
c24



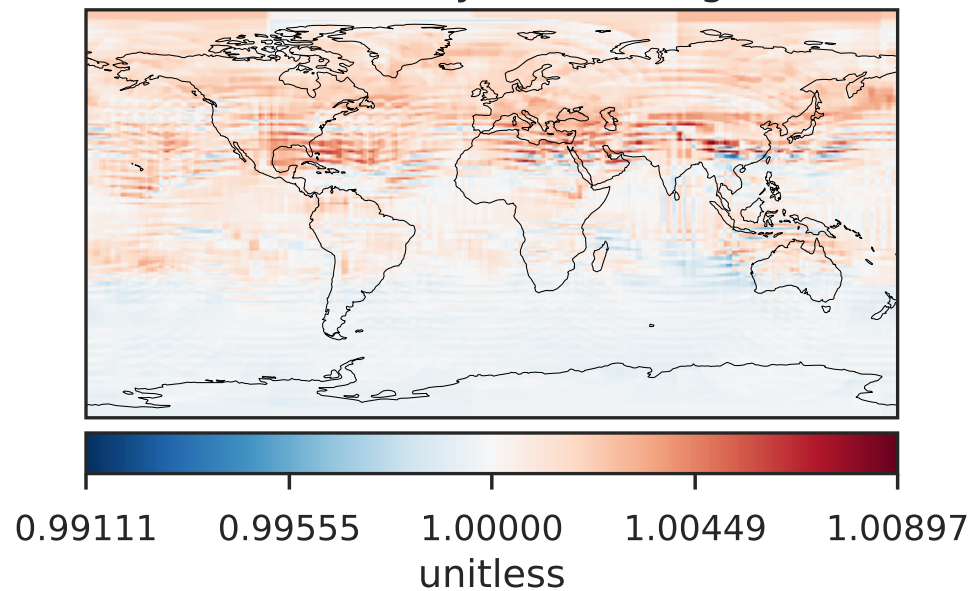
Difference (1x1.25)
Dev - Ref, Dynamic Range



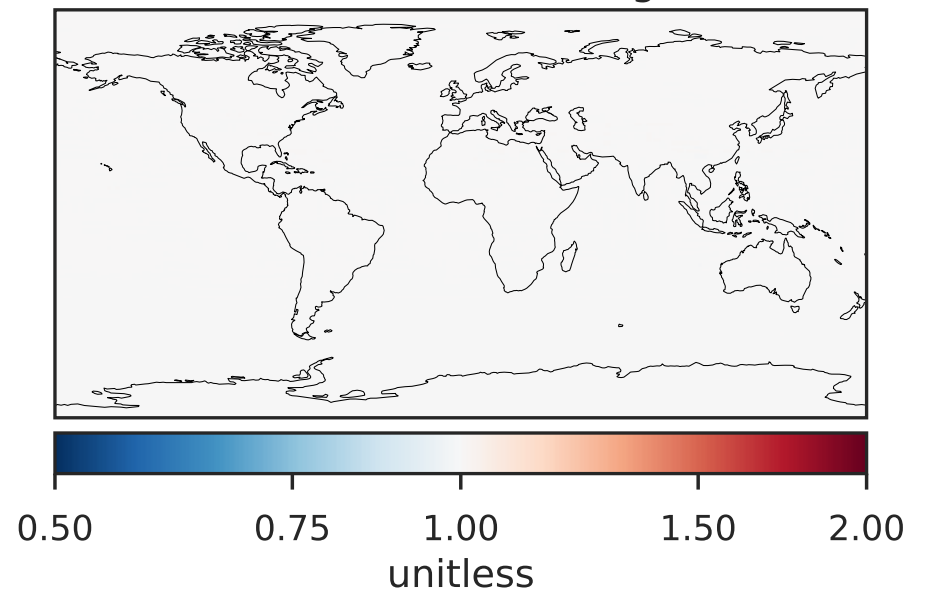
Difference (1x1.25)
Dev - Ref, Restricted Range [5%,95%]



Ratio (1x1.25)
Dev/Ref, Dynamic Range

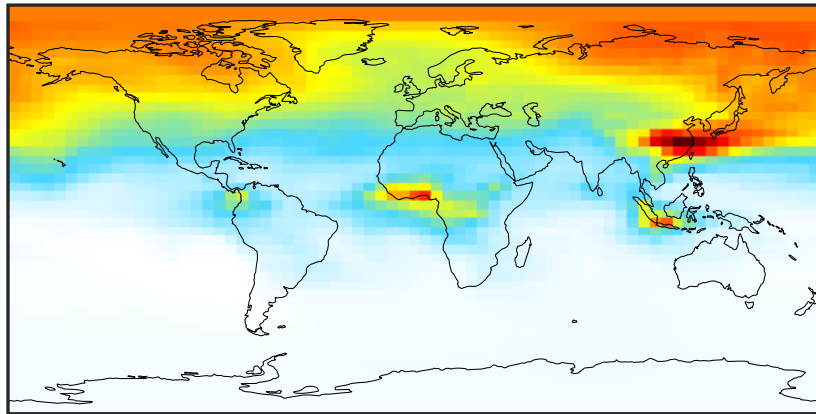


Ratio (1x1.25)
Dev/Ref, Fixed Range



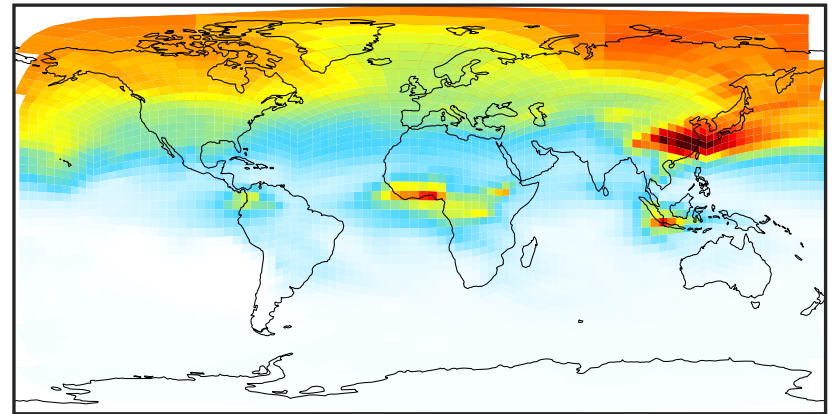
SpeciesConcVV_C2H2 (Apr2019)

14.3.0-rc.0 (Ref)
4.0x5.0



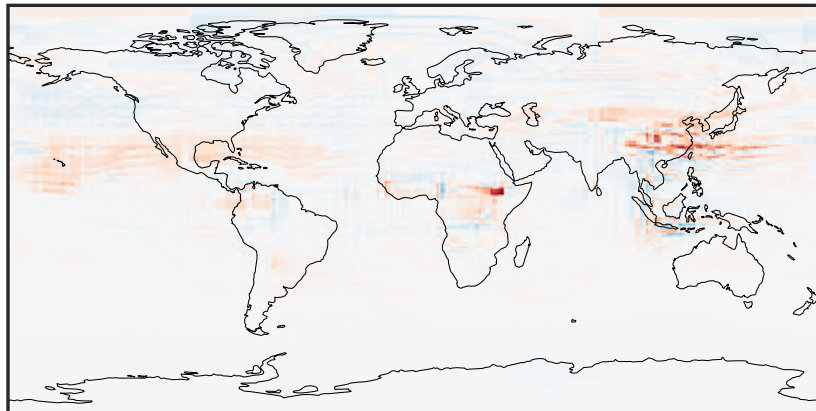
0.0046 0.0472 0.0897 0.1322 0.1748
ppb

14.3.0-rc.0 (Dev)
c24



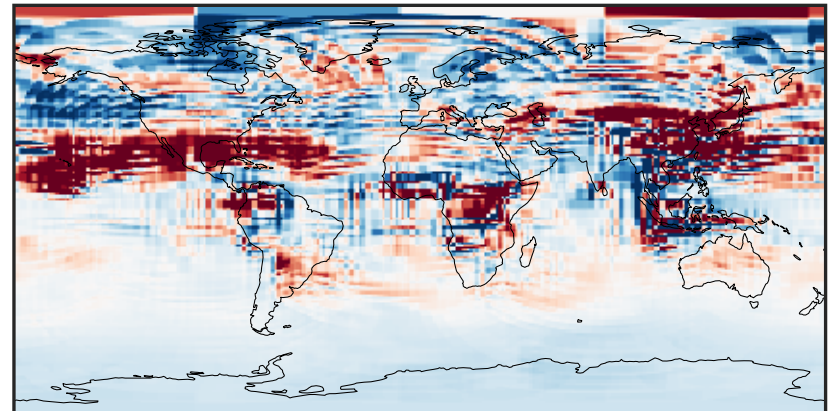
0.0046 0.0472 0.0897 0.1322 0.1748
ppb

Difference (1x1.25)
Dev - Ref, Dynamic Range



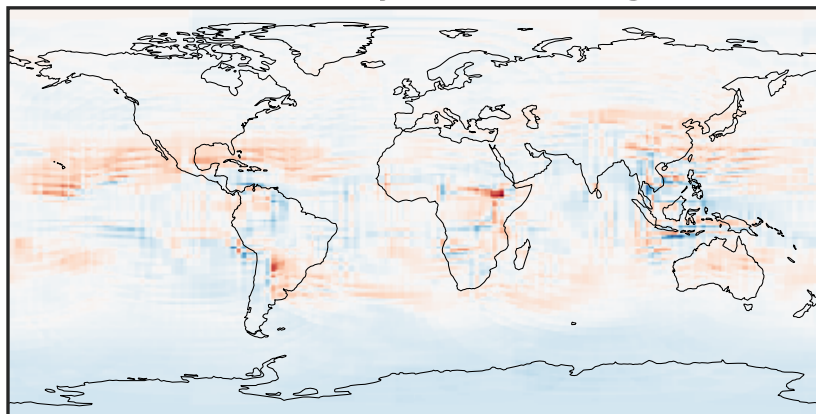
-0.0606 -0.0303 0.0000 0.0303 0.0606
ppb

Difference (1x1.25)
Dev - Ref, Restricted Range [5%,95%]



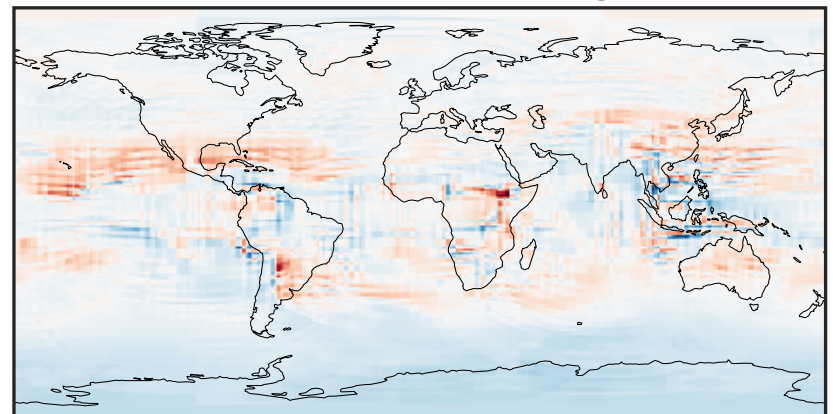
-0.003 0.000 0.003
ppb

Ratio (1x1.25)
Dev/Ref, Dynamic Range



0.410 0.705 1.000 1.719 2.438
unitless

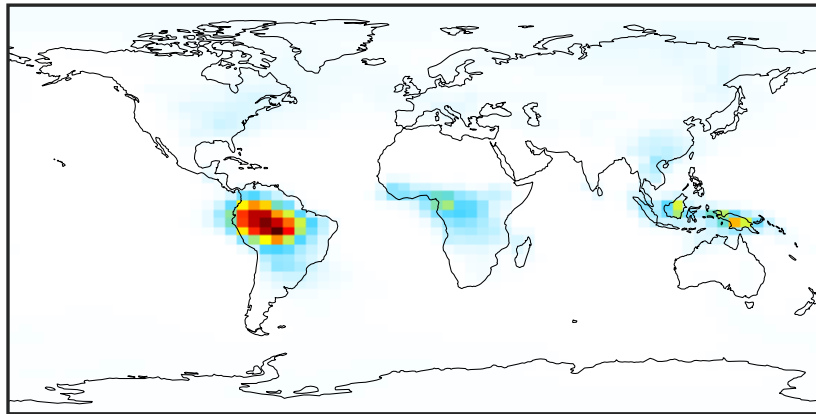
Ratio (1x1.25)
Dev/Ref, Fixed Range



0.50 0.75 1.00 1.50 2.00
unitless

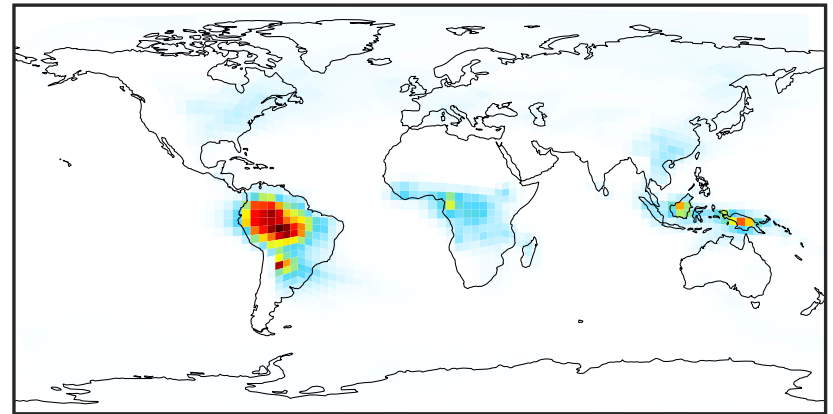
SpeciesConcVV_C2H4 (Apr2019)

14.3.0-rc.0 (Ref)
4.0x5.0



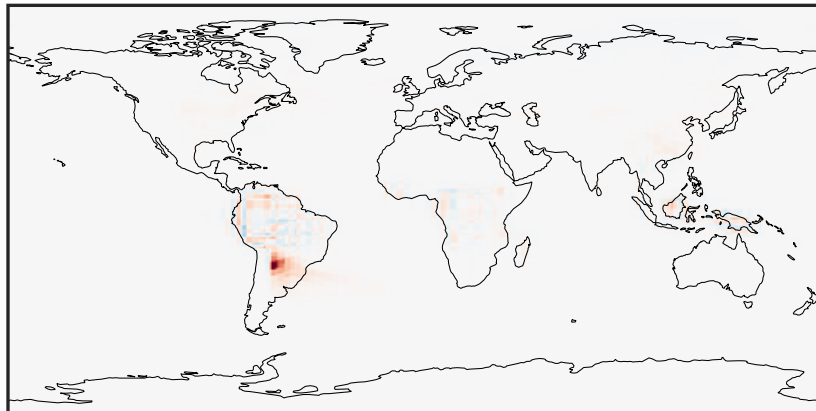
0.0000 0.0496 0.0991 0.1487 0.1983
ppb

14.3.0-rc.0 (Dev)
c24



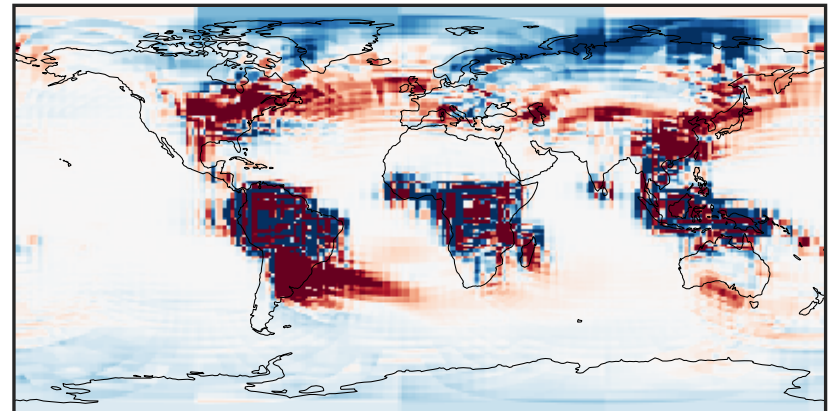
0.0000 0.0496 0.0991 0.1487 0.1983
ppb

Difference (1x1.25)
Dev - Ref, Dynamic Range



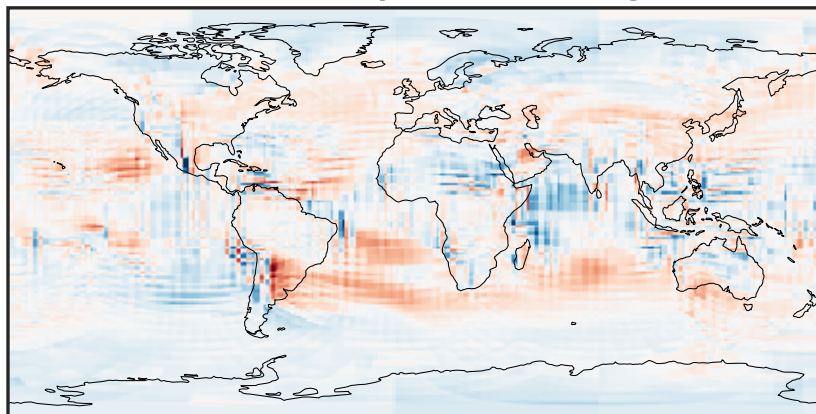
-0.1597 -0.0799 0.0000 0.0799 0.1597
ppb

Difference (1x1.25)
Dev - Ref, Restricted Range [5%,95%]



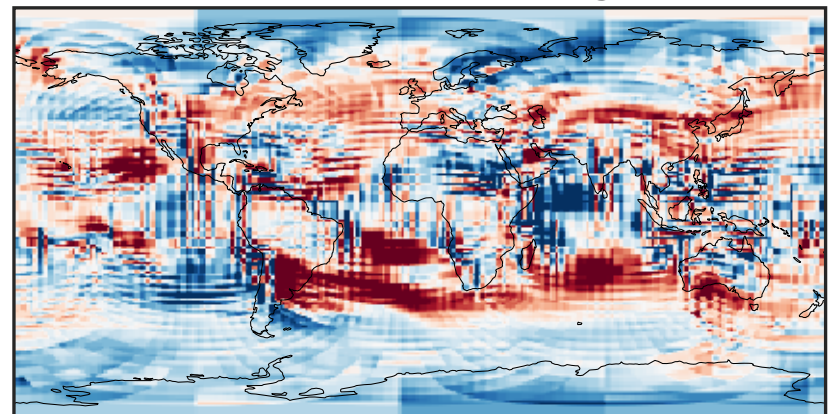
-0.001 0.000 0.001
ppb

Ratio (1x1.25)
Dev/Ref, Dynamic Range



1e-01 1 10
unitless

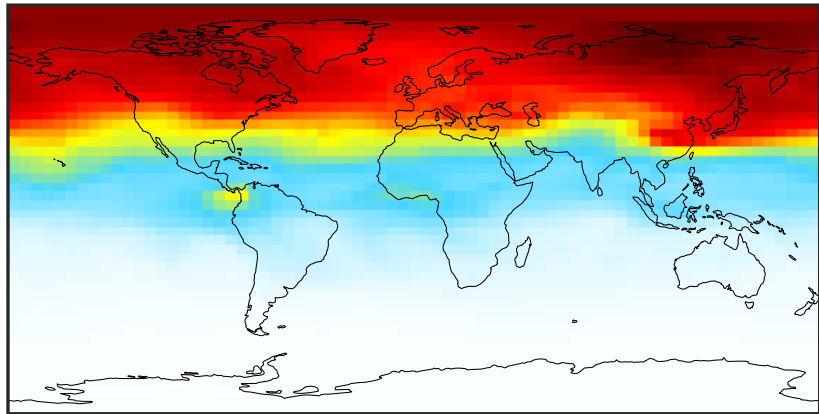
Ratio (1x1.25)
Dev/Ref, Fixed Range



0.50 0.75 1.00 1.50 2.00
unitless

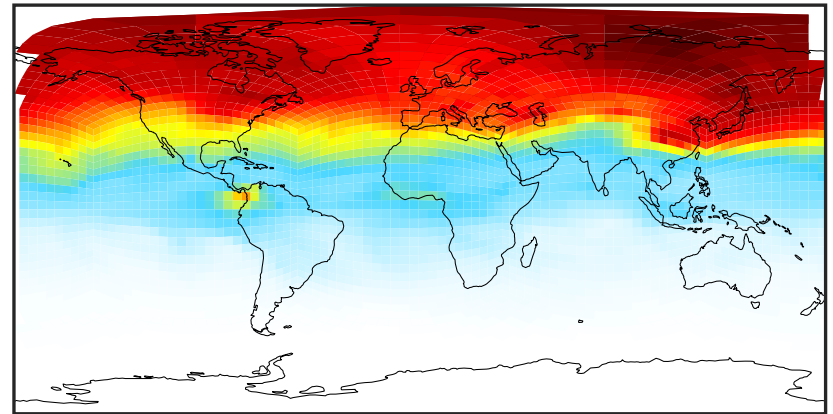
SpeciesConcVV_C2H6 (Apr2019)

14.3.0-rc.0 (Ref)
4.0x5.0



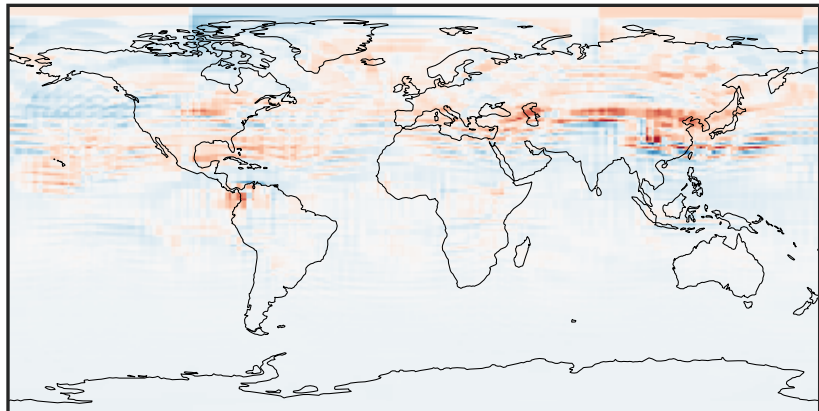
0.061 0.335 0.609 0.884 1.158
ppb

14.3.0-rc.0 (Dev)
c24



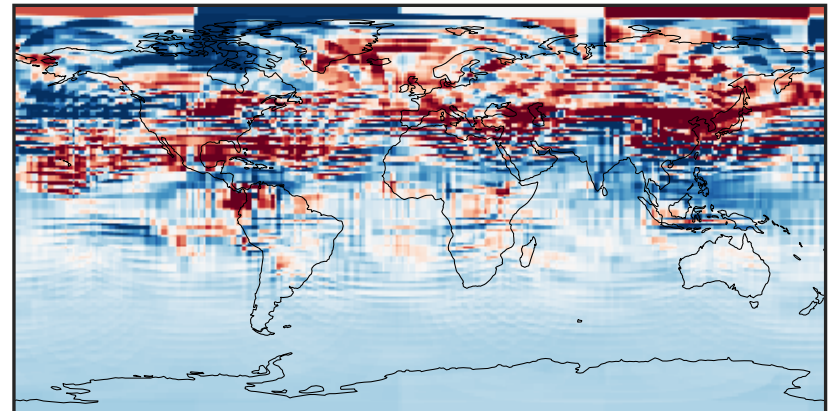
0.061 0.335 0.609 0.884 1.158
ppb

Difference (1x1.25)
Dev - Ref, Dynamic Range



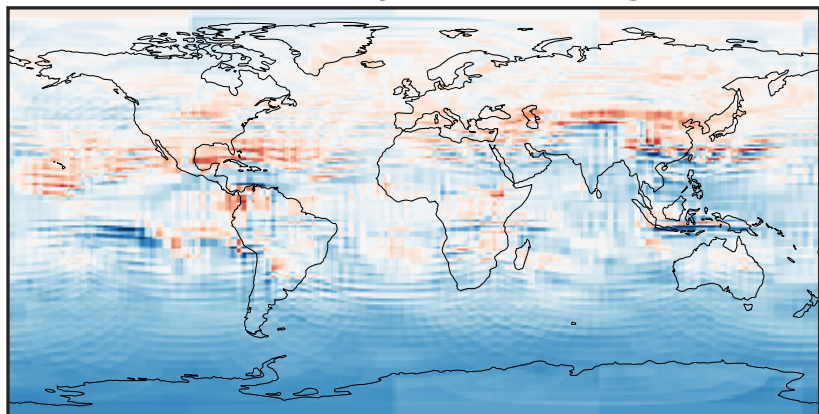
-0.1842 -0.0921 0.0000 0.0921 0.1842
ppb

Difference (1x1.25)
Dev - Ref, Restricted Range [5%,95%]



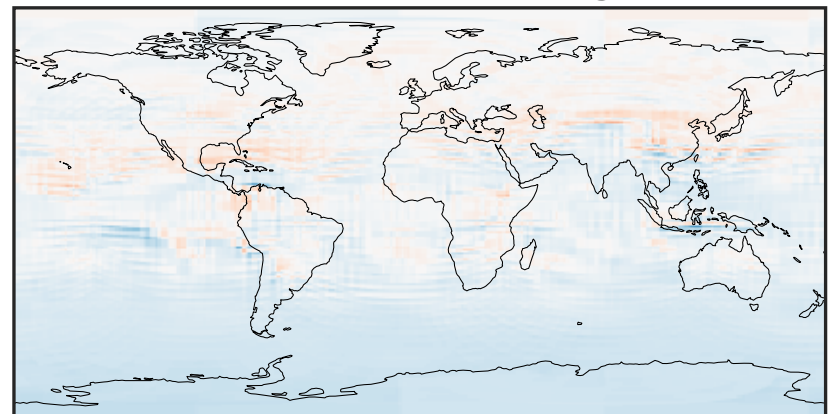
-0.02 0.00 0.02
ppb

Ratio (1x1.25)
Dev/Ref, Dynamic Range



0.7722 0.8861 1.0000 1.1475 1.2951
unitless

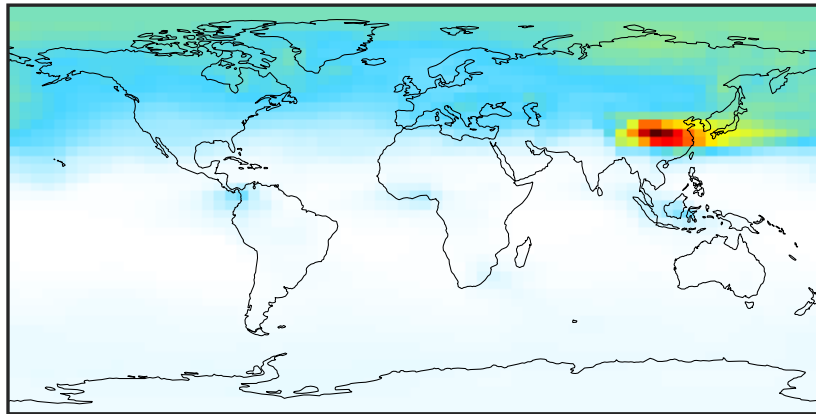
Ratio (1x1.25)
Dev/Ref, Fixed Range



0.50 0.75 1.00 1.50 2.00
unitless

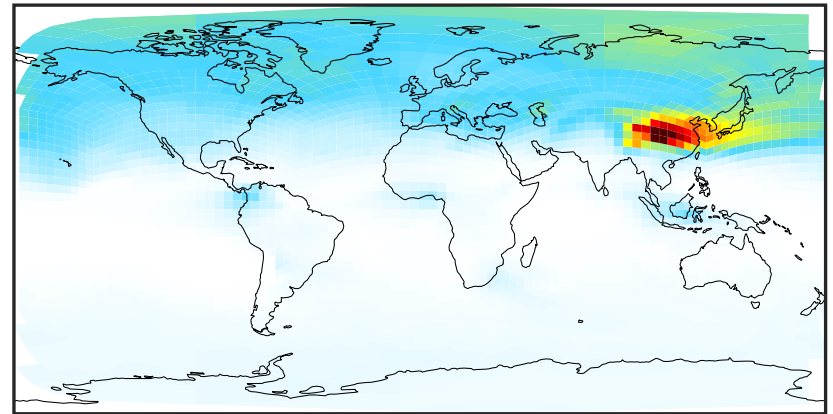
SpeciesConcVV_C3H8 (Apr2019)

14.3.0-rc.0 (Ref)
4.0x5.0



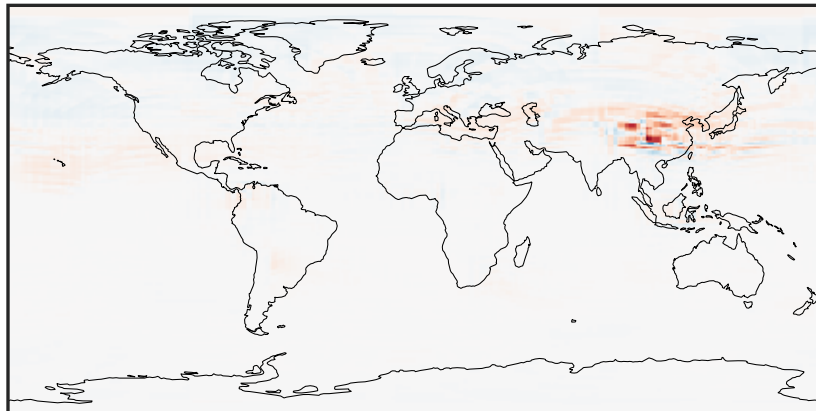
0.0011 0.1127 0.2243 0.3359 0.4475
ppb

14.3.0-rc.0 (Dev)
c24



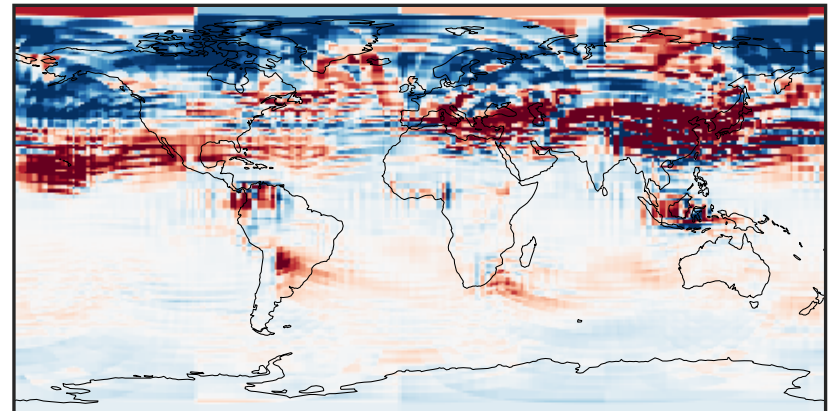
0.0011 0.1127 0.2243 0.3359 0.4475
ppb

Difference (1x1.25)
Dev - Ref, Dynamic Range



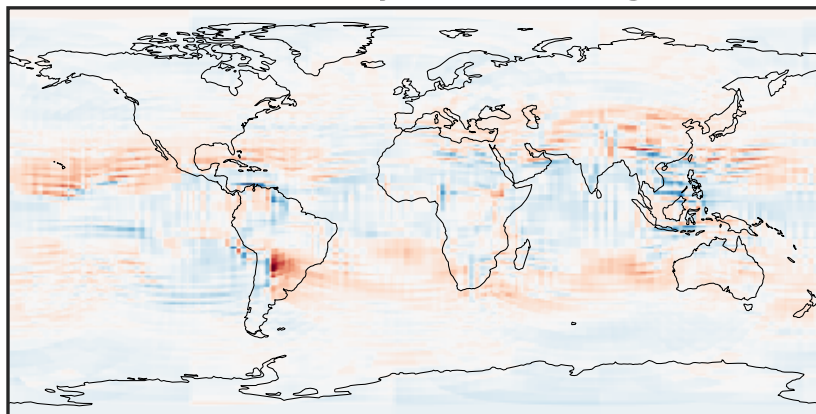
-0.2 -0.1 0.0 0.1 0.2
ppb

Difference (1x1.25)
Dev - Ref, Restricted Range [5%,95%]



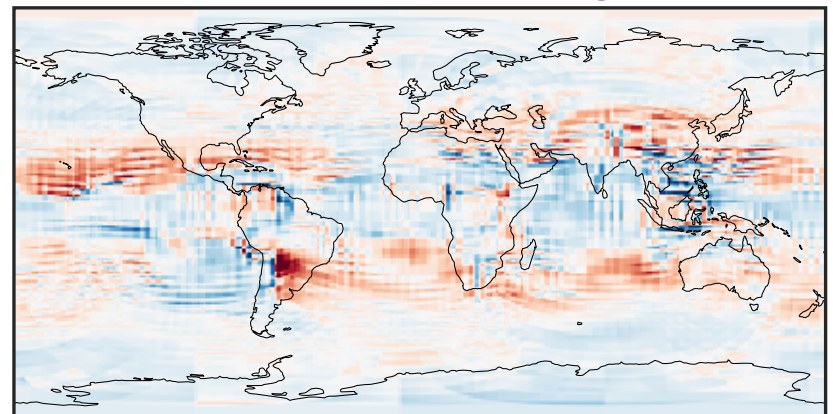
-0.005 0.000 0.005
ppb

Ratio (1x1.25)
Dev/Ref, Dynamic Range



0.284 0.642 1.000 2.261 3.522
unitless

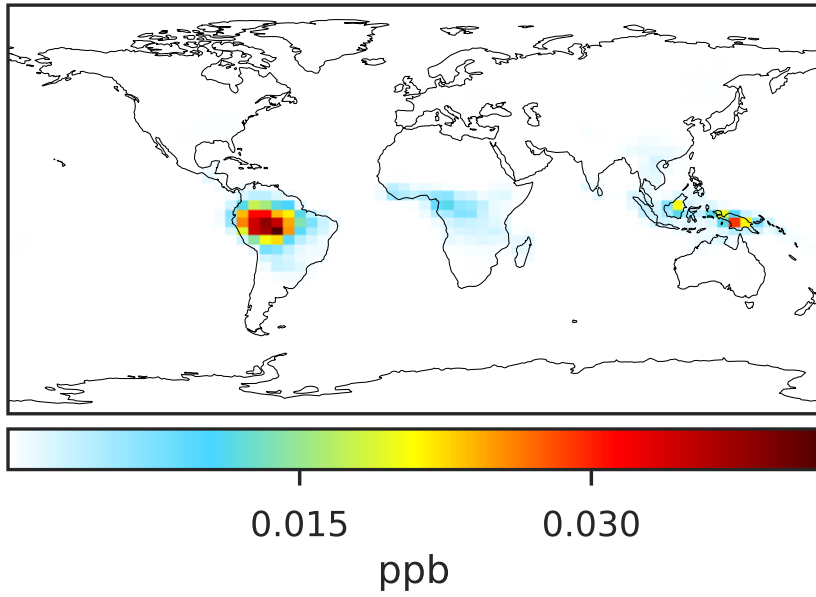
Ratio (1x1.25)
Dev/Ref, Fixed Range



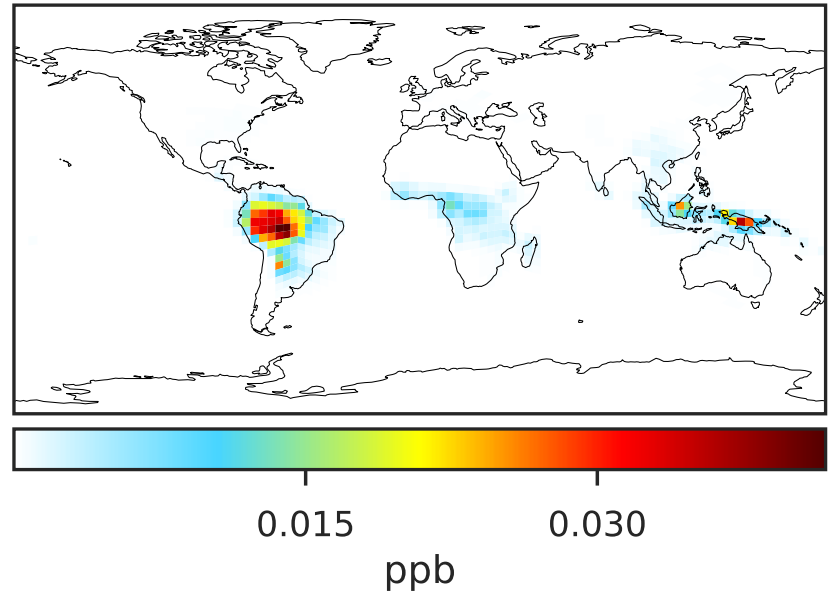
0.50 0.75 1.00 1.50 2.00
unitless

SpeciesConcVV_PRPE (Apr2019)

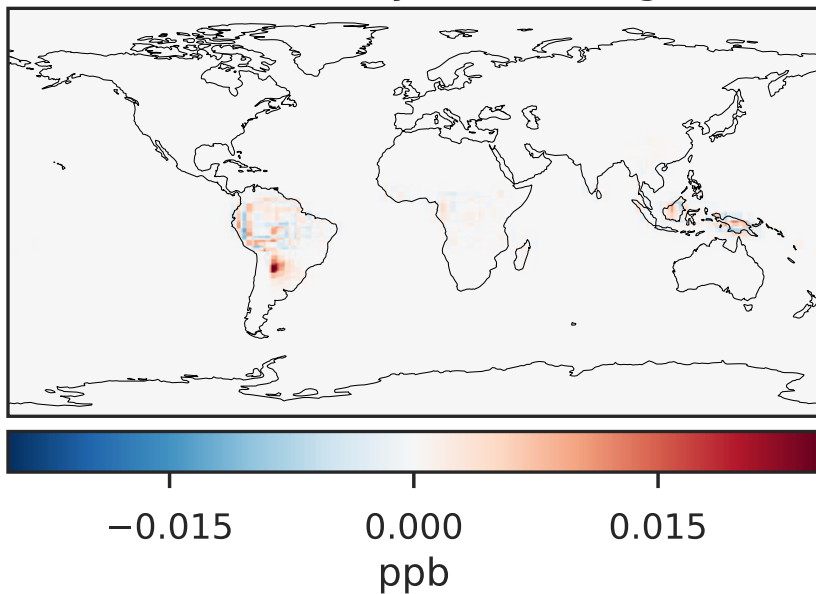
14.3.0-rc.0 (Ref)
4.0x5.0



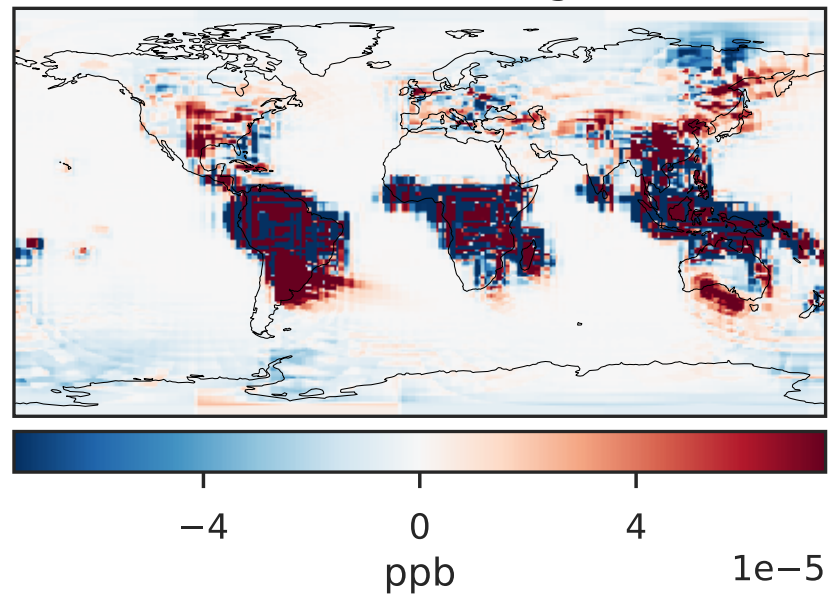
14.3.0-rc.0 (Dev)
c24



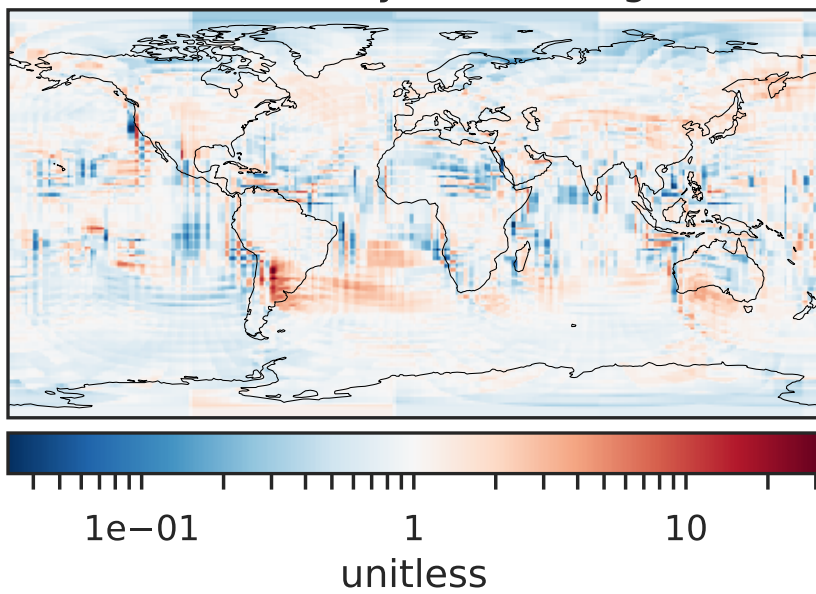
Difference (1x1.25)
Dev - Ref, Dynamic Range



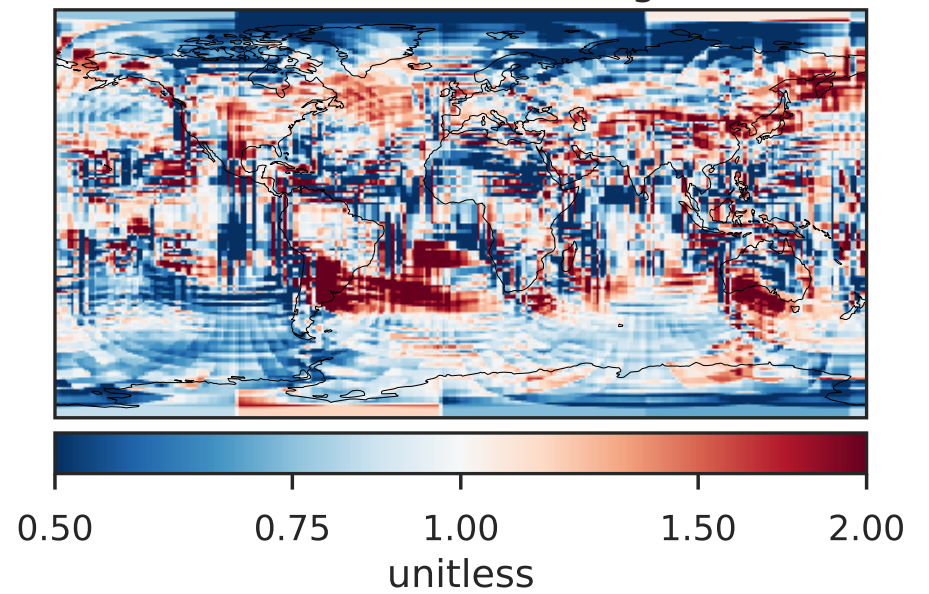
Difference (1x1.25)
Dev - Ref, Restricted Range [5%,95%]



Ratio (1x1.25)
Dev/Ref, Dynamic Range

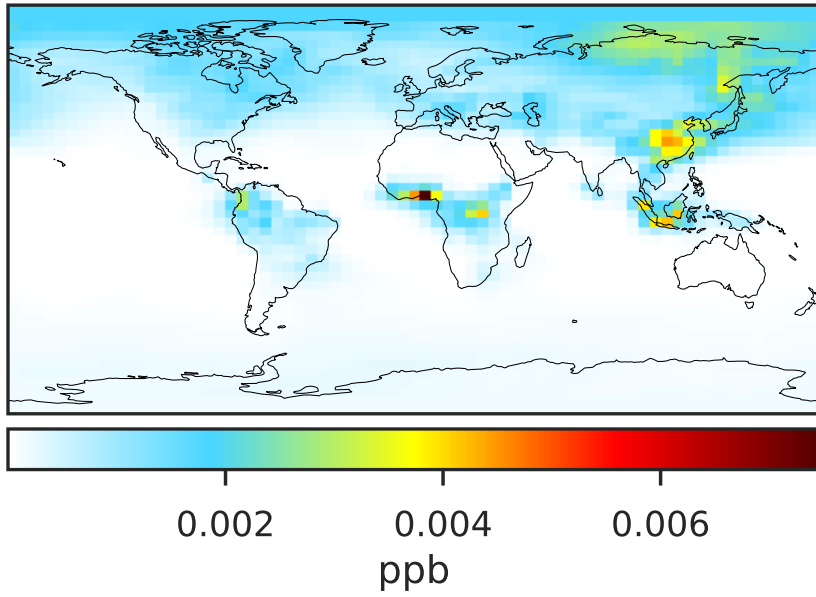


Ratio (1x1.25)
Dev/Ref, Fixed Range

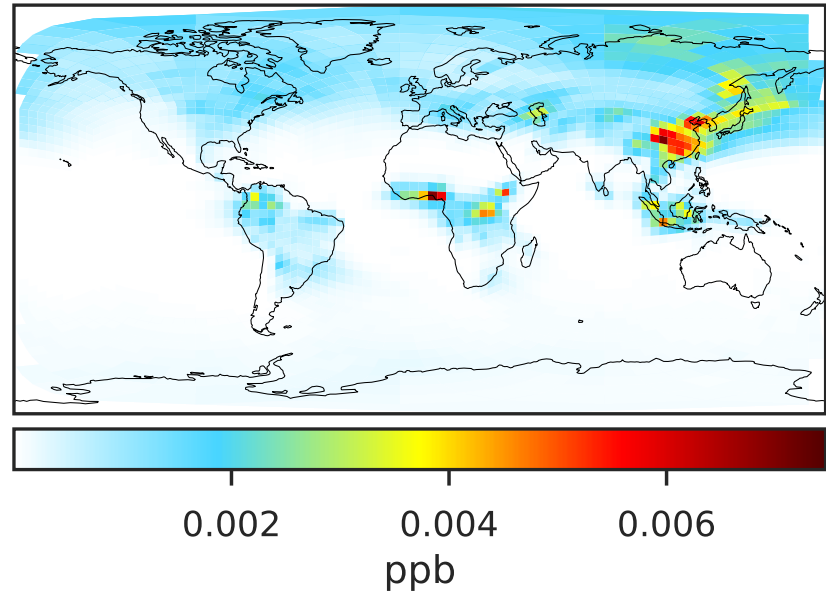


SpeciesConcVV_TOLU (Apr2019)

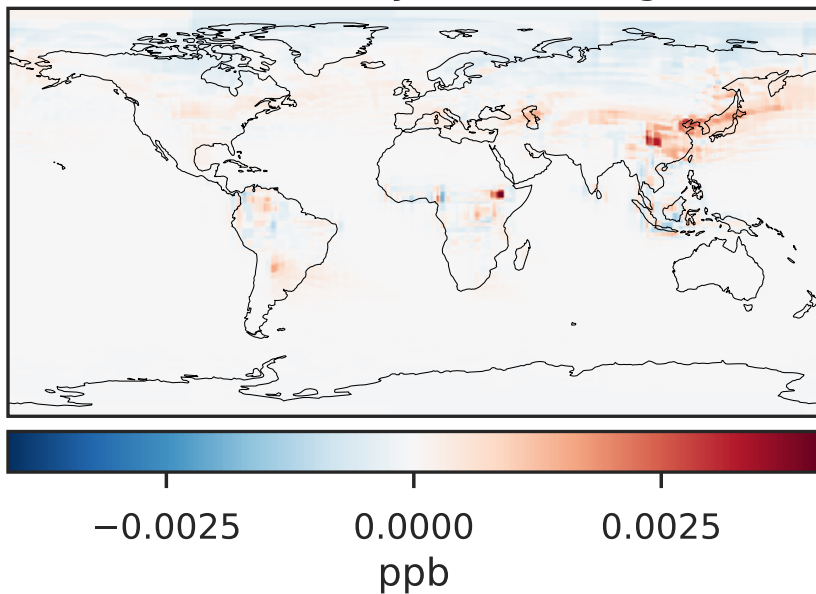
14.3.0-rc.0 (Ref)
4.0x5.0



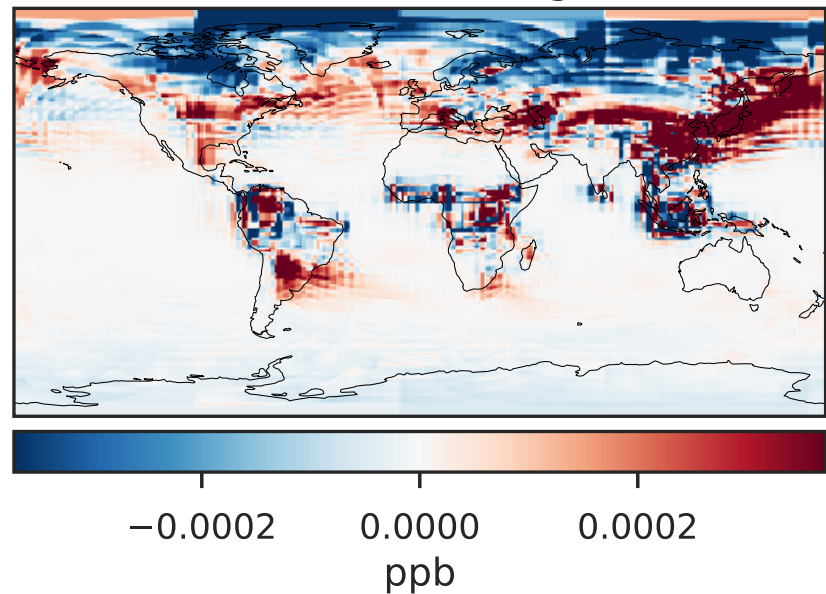
14.3.0-rc.0 (Dev)
c24



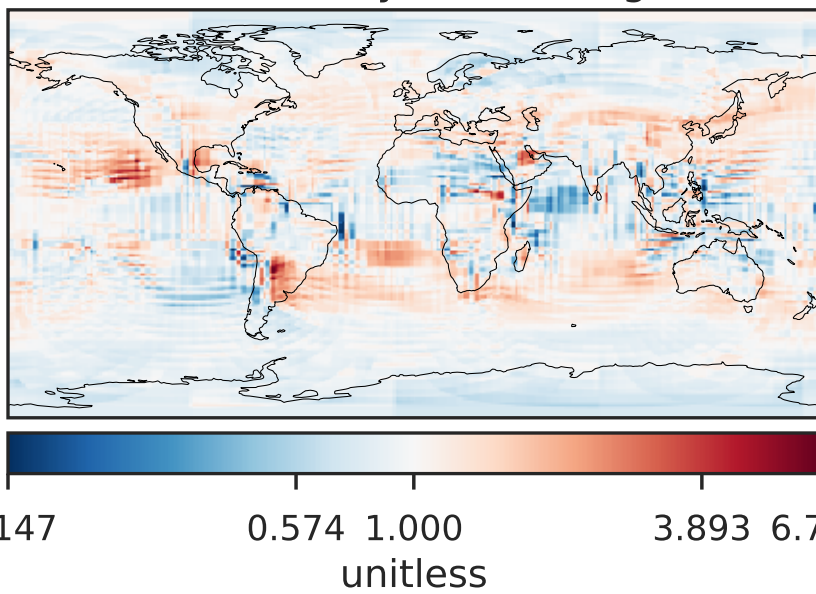
Difference (1x1.25)
Dev - Ref, Dynamic Range



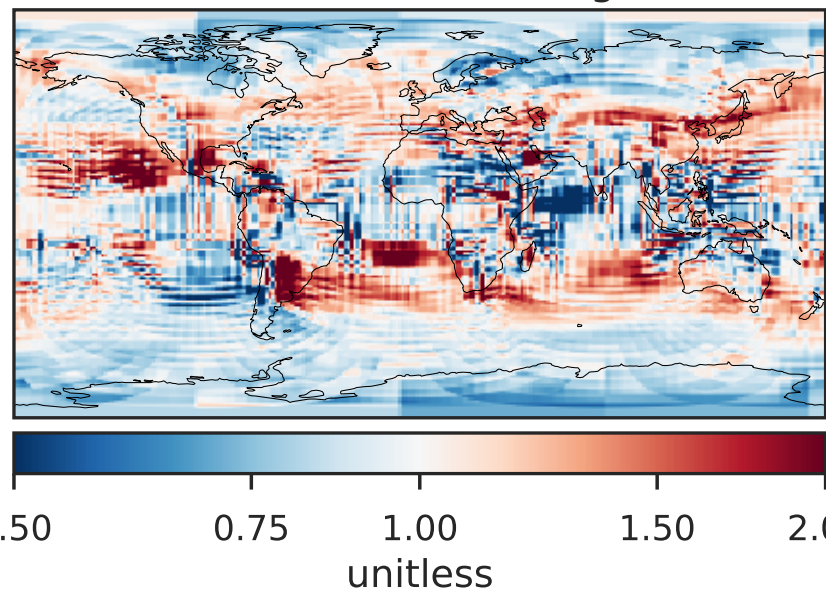
Difference (1x1.25)
Dev - Ref, Restricted Range [5%,95%]



Ratio (1x1.25)
Dev/Ref, Dynamic Range

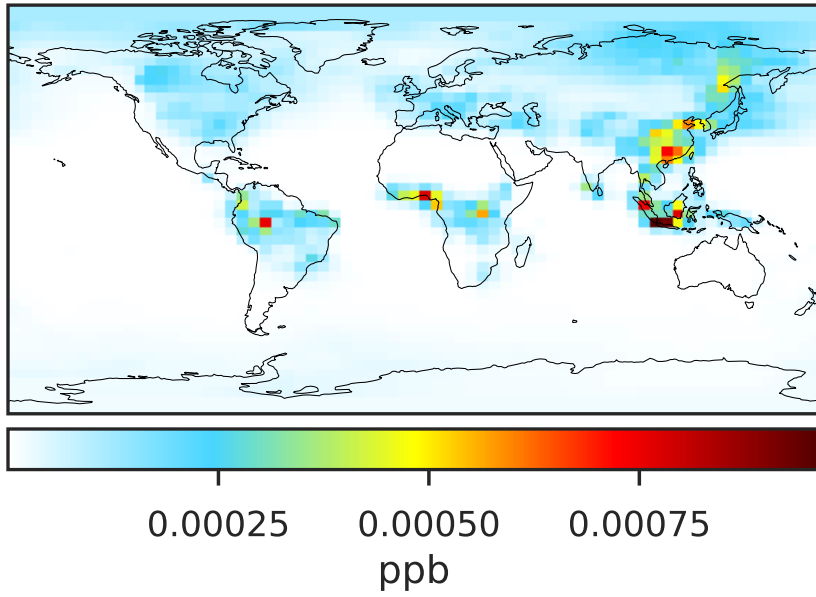


Ratio (1x1.25)
Dev/Ref, Fixed Range

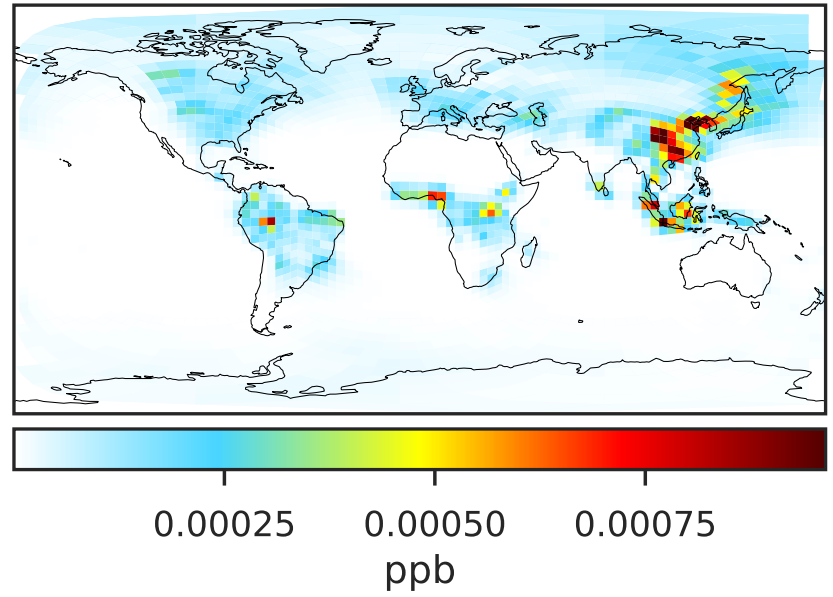


SpeciesConcVV_XYLE (Apr2019)

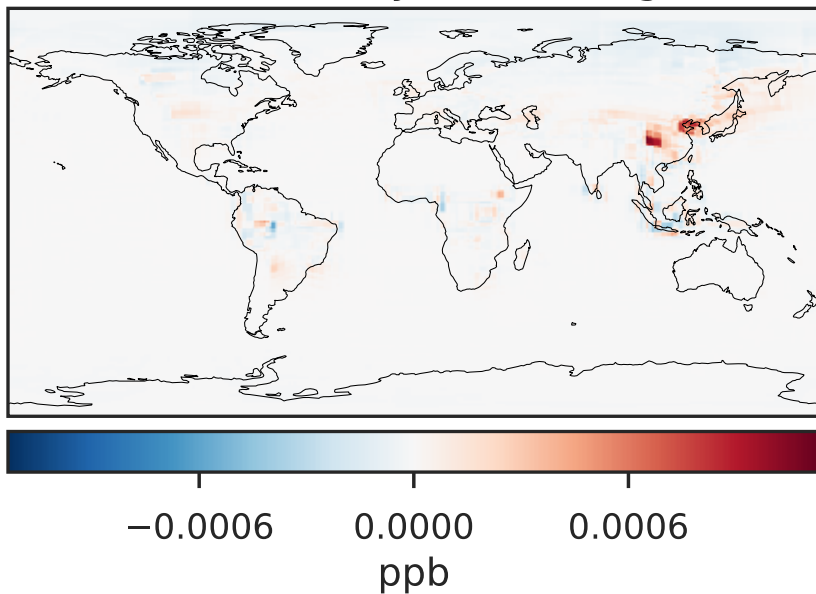
14.3.0-rc.0 (Ref)
4.0x5.0



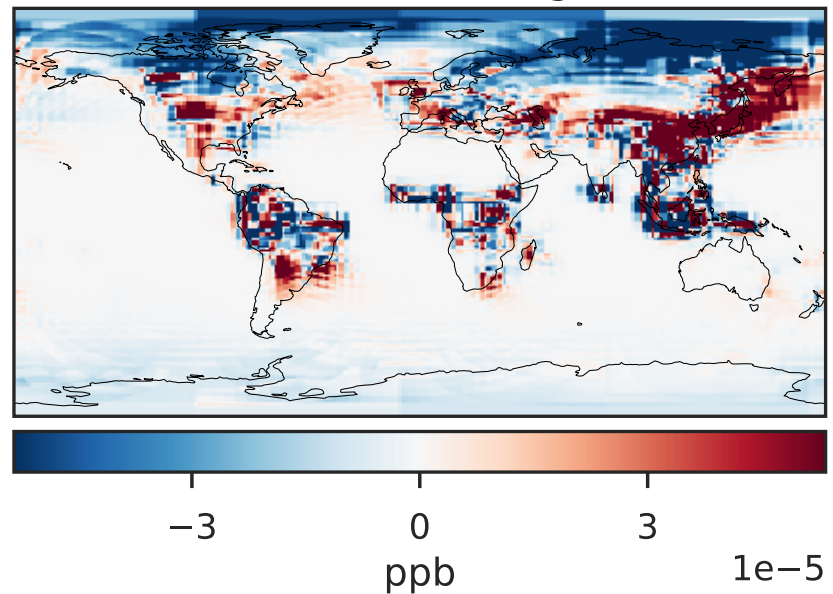
14.3.0-rc.0 (Dev)
c24



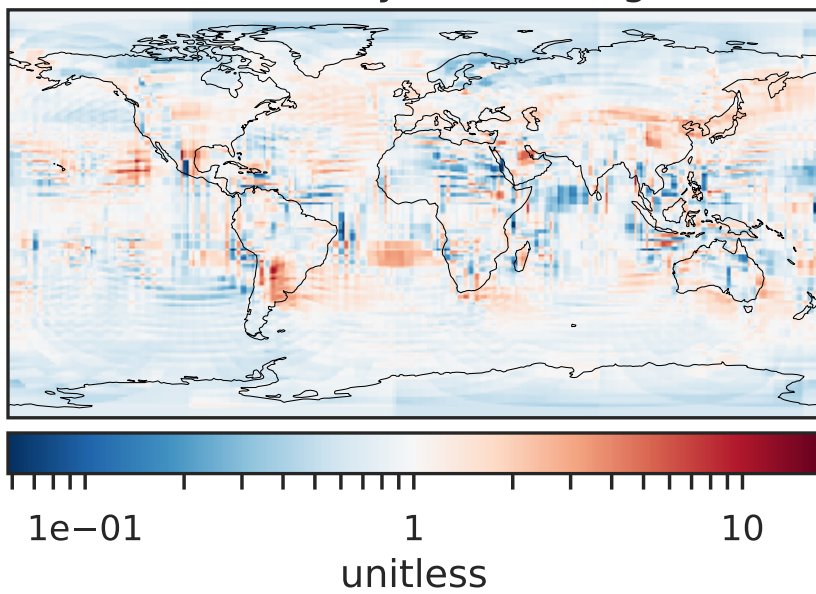
Difference (1x1.25)
Dev - Ref, Dynamic Range



Difference (1x1.25)
Dev - Ref, Restricted Range [5%,95%]



Ratio (1x1.25)
Dev/Ref, Dynamic Range



Ratio (1x1.25)
Dev/Ref, Fixed Range

